



Publication Year	2015
Acceptance in OA @INAF	2020-03-03T09:00:23Z
Title	High-resolution imaging of the molecular outflows in two mergers: IRAS 17208-0014 and NGC 1614
Authors	García-Burillo, S.; Combes, F.; Usero, A.; Aalto, S.; Colina, L.; et al.
DOI	10.1051/0004-6361/201526133
Handle	http://hdl.handle.net/20.500.12386/23083
Journal	ASTRONOMY & ASTROPHYSICS
Number	580

High-resolution imaging of the molecular outflows in two mergers: IRAS 17208-0014 and NGC 1614[★]

S. García-Burillo¹, F. Combes², A. Usero¹, S. Aalto³, L. Colina^{4,5}, A. Alonso-Herrero⁶, L. K. Hunt⁷, S. Arribas^{4,5},
 F. Costagliola⁸, A. Labiano⁹, R. Neri¹⁰, M. Pereira-Santaella⁴, L. J. Tacconi¹¹, and P. P. van der Werf¹²

¹ Observatorio Astronómico Nacional (OAN-IGN)-Observatorio de Madrid, Alfonso XII, 3, 28014 Madrid, Spain
 e-mail: s.gburillo@oan.es

² Observatoire de Paris, LERMA, CNRS, 61 av. de l'Observatoire, 75014 Paris, France

³ Department of Earth and Space Sciences, Chalmers University of Technology, Onsala Observatory, 439 94 Onsala, Sweden

⁴ Centro de Astrobiología (CSIC-INTA), Ctra de Torrejón a Ajalvir, km 4, 28850 Torrejón de Ardoz, Madrid, Spain

⁵ ASTRO-UAM, Universidad Autónoma de Madrid (UAM), Unidad Asociada CSIC, 28049 Madrid, Spain

⁶ Instituto de Física de Cantabria, CSIC-UC, 39005 Santander, Spain

⁷ INAF-Osservatorio Astrofisico di Arcetri, Largo Enrico Fermi 5, 50125 Firenze, Italy

⁸ Instituto de Astrofísica de Andalucía (CSIC), Apdo 3004, 18080 Granada, Spain

⁹ Institute for Astronomy, Department of Physics, ETH Zurich, 8093 Zurich, Switzerland

¹⁰ Institut de Radio Astronomie Millimétrique (IRAM), 300 rue de la Piscine, Domaine universitaire de Grenoble,
 38406 St. Martin d'Hères, France

¹¹ Max-Planck-Institut für extraterrestrische Physik, Postfach 1312, 85741 Garching, Germany

¹² Leiden Observatory, Leiden University, PO Box 9513, 2300 RA Leiden, The Netherlands

Received 18 March 2015 / Accepted 19 May 2015

ABSTRACT

Context. Galaxy evolution scenarios predict that the feedback of star formation and nuclear activity (AGN) can drive the transformation of gas-rich spiral mergers into (ultra) luminous infrared galaxies and, eventually, lead to the build-up of QSO/elliptical hosts.

Aims. We study the role that star formation and AGN feedback have in launching and maintaining the molecular outflows in two starburst-dominated advanced mergers, NGC 1614 ($D_L = 66$ Mpc) and IRAS 17208-0014 ($D_L = 181$ Mpc), by analyzing the distribution and kinematics of their molecular gas reservoirs. Both galaxies present evidence of outflows in other phases of their ISM.

Methods. We used the Plateau de Bure interferometer (PdBI) to image the CO(1–0) and CO(2–1) line emissions in NGC 1614 and IRAS 17208-0014, respectively, with high spatial resolution ($0''.5$ – $1''.2$). The velocity fields of the gas were analyzed and modeled to find the evidence of molecular outflows in these sources and characterize the mass, momentum, and energy of these components.

Results. While most ($\geq 95\%$) of the CO emission stems from spatially resolved (~ 2 – 3 kpc-diameter) rotating disks, we also detect in both mergers the emission from high-velocity line wings that extend up to ± 500 – 700 km s^{−1}, well beyond the estimated virial range associated with rotation and turbulence. The kinematic major axis of the line-wing emission is tilted by $\sim 90^\circ$ in NGC 1614 and by $\sim 180^\circ$ in IRAS 17208-0014 relative to the major axes of their respective rotating disks. These results can be explained by the existence of non-coplanar molecular outflows in both systems: the outflow axis is nearly perpendicular to the rotating disk in NGC 1614, but it is tilted relative to the angular momentum axis of the rotating disk in IRAS 17208-0014.

Conclusions. In stark contrast to NGC 1614, where star formation alone can drive its molecular outflow, the mass, energy, and momentum budget requirements of the molecular outflow in IRAS 17208-0014 can be best accounted for by the existence of a so far undetected (hidden) AGN of $L_{\text{AGN}} \sim 7 \times 10^{11} L_\odot$. The geometry of the molecular outflow in IRAS 17208-0014 suggests that the outflow is launched by a non-coplanar disk that may be associated with a buried AGN in the western nucleus.

Key words. galaxies: individual: IRAS 17208-0014 – galaxies: ISM – galaxies: kinematics and dynamics – galaxies: starburst – galaxies: nuclei – galaxies: individual: NGC1614

1. Introduction

Different theoretical models and numerical simulations have long foreseen that massive gas outflows powered by active galactic nuclei (AGN) and/or nuclear starbursts could link the growth of black holes and their hosts during the history of galaxy evolution, as inspired by the ground-breaking work of Silk & Rees (1998). Outflows could prevent galaxies from becoming overly massive and help regulate the fueling of both the star

formation and the nuclear activity (e.g., King 2003; Di Matteo et al. 2005, 2008; Ciotti & Ostriker 2007; Narayanan et al. 2008; Silk & Nusser 2010; Ishibashi & Fabian 2012; Faucher-Giguère & Quataert 2012; Hopkins et al. 2012, 2014; Zubovas & King 2012, 2014; Gabor & Bournaud 2014).

There is mounting observational evidence of gas outflows in different populations of starbursts and active galaxies, including ultra luminous infrared galaxies (ULIRGs), radio galaxies, quasars, and Seyferts. The outflow phenomenon concerns virtually all the phases of the interstellar medium (ISM), including the ionized gas (e.g., Heckman et al. 1990; Colina et al. 1991; Martin 1998; Holt et al. 2008; Crenshaw et al. 2010; Rupke & Veilleux 2013; Arribas et al. 2014), the neutral

[★] Based on observations carried out with the IRAM Plateau de Bure Interferometer. IRAM is supported by INSU/CNRS (France), MPG (Germany), and IGN (Spain).

atomic medium (e.g., Heckman et al. 2000; Rupke et al. 2002, 2005a, 2005b, 2005c; Morganti et al. 2005; Martin 2005, 2006; Chen et al. 2010), as well as the molecular gas phase (e.g., Feruglio et al. 2010; Fischer et al. 2010; Sturm et al. 2011; Alatalo et al. 2011, 2015; Chung et al. 2011; Aalto et al. 2012; Dasyra & Combes 2012; Maiolino et al. 2012; Combes et al. 2013; Morganti et al. 2013; Veilleux et al. 2013; Cicone et al. 2012, 2014, 2015; García-Burillo et al. 2014; González-Alfonso et al. 2014; Davies et al. 2014; Emonts et al. 2014; Sakamoto et al. 2014). This multiwavelength evidence underlines that the overall impact of outflows can only be quantified if all of their ISM phases are studied in different populations of galaxies.

Although ionized gas flows are seen to be typically a few 100 km s^{-1} faster than their atomic or molecular counterparts, the neutral medium is seen to evacuate mass (M_{out}) and energy (E_{out}) at comparably higher rates ($M_{\text{out}}(\text{neutral}) \sim (10\text{--}100) \times M_{\text{out}}(\text{ionized})$ and $E_{\text{out}}(\text{neutral}) \sim (1\text{--}100) \times E_{\text{out}}(\text{ionized})$; e.g., Rupke & Veilleux 2013). Since the molecular component is the most massive phase of the neutral ISM in the central kiloparsec regions, the study of molecular outflows is therefore crucial to gauging their global impact on galaxy evolution.

The high spatial resolution and sensitivity capabilities, allied with the enhanced bandwidth of current mm-interferometers have revealed the existence of cold molecular outflows at kiloparsec scales in a growing number of (U)LIRGs. Outflows are detected by the low-level broad line wings (up to $\sim \pm 1000 \text{ km s}^{-1}$) identified mainly, yet not exclusively, in CO lines (Feruglio et al. 2010, 2013; Cicone et al. 2012, 2014). Tracers more specific to the dense molecular gas, such as low and mid-J rotational lines of HCN and HCO^+ , have been used to study the outflow in the prototypical AGN-dominated ULIRG Mrk 231 (Aalto et al. 2012, 2015a).

Cicone et al. (2014) present new CO observations of seven ULIRGs and report detecting molecular outflows in four out of seven of their targets. The outflows, extending on kiloparsec scales, present mass load rates (dM/dt) of several $100 M_{\odot} \text{ yr}^{-1}$. Based on their compiled sample of 19 sources, they found that star formation can drive outflows with dM/dt values up to two to four times the value of the star formation rate (SFR). However, the presence of an AGN, even if weak ($L_{\text{AGN}}/L_{\text{bol}} < 0.10$), can strongly boost an outflow with $dM/dt \propto L_{\text{AGN}}$. In the most extreme quasars ($L_{\text{AGN}}/L_{\text{bol}} \geq 0.80$), outflow rates can be up to $100 \times \text{SFR}$, and therefore have a decisive impact on the fueling of the star formation and nuclear activity of their hosts.

In an attempt to study the specific role that star formation versus AGN feedback have in launching and maintaining molecular outflows in mergers, we used the Plateau de Bure interferometer (PdBI) to image the CO emission in two starburst-dominated (U)LIRGs, NGC 1614 and IRAS 17208-0014, with high spatial resolution ($0''.5\text{--}1''.2$). The two targets present previous evidence of an outflow in several gas tracers, including the ionized, the atomic, and the molecular ISM (NGC 1614: Bellocchi et al. 2012; IRAS 17208-0014: Sturm et al. 2011; Rupke & Veilleux 2013; Arribas et al. 2014). Both systems are classified as mergers in an advanced stage of interaction, and they host massive episodes of star formation. Interestingly, although recently questioned by Aalto et al. (2015b) in the case of IRAS 17208-0014, there has been no evidence to date for an energetically relevant AGN in these mergers at their late stage of evolution ($L_{\text{AGN}}/L_{\text{bol}} < 0.1\text{--}11\%$; e.g., González-Martín et al. 2009; Rupke & Veilleux et al. 2013; Herrero-Illana et al. 2014). The absence of any clear signs of ongoing nuclear activity makes the choice of these galaxies optimum in order to test the canonical evolutionary scenario where gas-rich spiral mergers lead first

to a (U)LIRG and, eventually, under the action of AGN feedback to the build-up of QSO/elliptical hosts (e.g., Sanders et al. 1988; Veilleux et al. 2009). Furthermore, the high resolution of the PdBI observations used in this work are instrumental in constraining the geometry, as well as the mass, momentum, and energy budgets of the molecular outflows unveiled in NGC 1614 and IRAS 17208-0014.

We describe in Sect. 2 the two targets that are the subject of this study. Section 3 describes the PdBI observations. Section 4 presents the CO line maps obtained and discusses the observational evidence of molecular outflows in both sources. Section 5 describes the basic properties of the molecular outflows. We discuss these results in the context of the molecular outflow phenomenon in (U)LIRGs in Sect. 6. The main conclusions of this work are summarized in Sect. 7.

2. Targets

2.1. NGC 1614

NGC 1614 ($D_A = 64 \text{ Mpc}$, $D_L = 66 \text{ Mpc}$; $1'' = 310 \text{ pc}$) is an HII-classified LIRG ($L_{\text{IR}} = 4.5 \times 10^{11} L_{\odot}$) in an advanced stage of interaction. The bolometric luminosity of NGC 1614 is mainly powered by an extreme star formation episode with an integrated SFR of $\sim 50 M_{\odot} \text{ yr}^{-1}$ (Alonso-Herrero et al. 2001, U et al. 2012). Star formation is fed by a $\sim 3 \times 10^9 M_{\odot}$ molecular gas reservoir (König et al. 2013). Numerical simulations suggest that the burst was triggered after a minor merger (Väisänen et al. 2012). In their multiwavelength study, Herrero-Illana et al. (2014) concluded that there is no evidence of an AGN in the nucleus of NGC 1614 down to an AGN-to-bolometric luminosity ratio of $< 10\%$. In agreement with this picture, not detecting the nuclear source in the $435 \mu\text{m}$ continuum image of the galaxy obtained with ALMA led Xu et al. (2015) to rule out a Compton-thick AGN in NGC 1614.

The molecular gas in this source, imaged by the OVRO, SMA, CARMA, and ALMA interferometers, is distributed in a nuclear disk and a fainter extension (Wilson et al. 2008; Olsson et al. 2010; König et al. 2013; Sliwa et al. 2014; Xu et al. 2015; Usero et al., in prep.). The recent $0''.5\text{--CO}(2\text{--}1)$ map of the SMA, published by König et al. (2013), spatially resolved the nuclear disk into an asymmetric ring of $\sim 230 \text{ pc}$ radius, similar to the CO(6–5) image of the central region obtained with ALMA by Xu et al. (2015). The disk shows an extension to the northwest in the SMA image. However, the lower resolution ($3''$) CO(1–0) map of CARMA (Sliwa et al. 2014) shows an extension to the east.

The HST-NICMOS observations published by Alonso-Herrero et al. (2001) show a compact starburst nucleus (with an estimated age of $> 10 \text{ Myr}$) surrounded by a $\sim 2''$ (600 pc) diameter ring of supergiant HII regions revealed by $\text{Pa}\alpha$ line emission, which is associated with a younger starburst ($5\text{--}10 \text{ Myr}$). Lower level emission is also detected farther out to the east over a spiral structure out to $r \sim 10''$ ($\sim 3 \text{ kpc}$). The luminosities of the giant HII regions in the ring are an order of magnitude brighter than 30Dor. The nuclear ring shows an extremely high value of the $\text{H}\alpha$ surface brightness: $\sim 60 \times 10^{41} \text{ erg s}^{-1} \text{ kpc}^{-2}$ or, equivalently, a SFR surface density of $\sim 30 M_{\odot} \text{ yr}^{-1} \text{ kpc}^{-2}$. Such values are comparable to those derived across several kpc in high- z submillimeter galaxies (Menéndez-Delmestre et al. 2013). The star-forming ring is also prominent in the high-resolution radio continuum images (Olsson et al. 2010; Herrero-Illana et al. 2014) and in the mid-infrared (MIR) polycyclic aromatic hydrocarbon

(PAH) emission maps of the galaxy (Díaz-Santos et al. 2008; Väisänen et al. 2012).

The star formation properties of the molecular gas in NGC 1614 stand out as non-standard on several counts. Among the objects studied by García-Burillo et al. (2012), NGC 1614 shows the most extreme (high) star formation efficiency of the dense molecular gas traced by the 1–0 line of HCN ($SFE_{\text{dense}} \equiv L_{\text{FIR}}/L'_{\text{HCN}} = 3800 L_{\odot}/(\text{K km s}^{-1} \text{ pc}^2)$). Furthermore, Xu et al. (2015) find a breakdown of the Kennicutt-Schmidt (KS) law on the linear scale of 100 pc in the nuclear ring, based on the gas column densities derived from the CO(6–5) map.

The kinematics of the ionized gas traced by the H α line, which was studied by Bellocchi et al. (2012), show significant departures from circular motions. Bellocchi et al. (2012) find a main component associated with a rotating gas disk and a second (broader) component blueshifted by up to 300 km s^{−1} relative to the systemic velocity (v_{sys}) of the galaxy. The latter was interpreted as the signature of a dusty outflow in the ionized gas. The blueshifted emission then comes from the outflow lobe oriented toward us, and the far-side lobe remains undetected at optical wavelengths owing to extinction. The projections of the kinematic major axes show that the rotating disk and the outflow axis differ by $\sim 90^\circ$, an indication that the outflow is oriented along the minor axis of the disk. The estimated outflow rate for the ionized gas is $\sim 44 M_{\odot} \text{ yr}^{-1}$ (Colina, private communication).

2.2. IRAS 17208-0014

IRAS 17208-0014 ($D_A = 167 \text{ Mpc}$, $D_L = 181 \text{ Mpc}$; $1'' = 810 \text{ pc}$) is a coalesced merger classified as an HII ULIRG ($L_{\text{IR}} = 2.4 \times 10^{12} L_{\odot}$) with the multiwavelength characteristics of an obscured nuclear starburst ($SFR \sim 240 M_{\odot} \text{ yr}^{-1}$) as the main driving source of its bolometric luminosity (Momjian et al. 2003; Nardini et al. 2009, 2010; Rupke & Veilleux 2013; Teng & Veilleux 2010; Iwasawa et al. 2011). However, the morphology of the X-ray source, analyzed by Iwasawa et al. (2011), shows hard X-ray emission and the tentative detection of a high-ionization Fe K α line toward the NED nuclear position. González-Martín et al. (2009) classify the source as a candidate Compton-thick AGN with $L_X \sim 10^{43} \text{ erg s}^{-1}$, leaving room for an obscured but not energetically dominant AGN in the nucleus of IRAS 17208-0014: $L_{\text{AGN}}/L_{\text{bol}} \sim 0.1\%$. However, Rupke & Veilleux (2013) estimate this fraction to be $\sim 11\%$ based on MIR diagnostics. The MIR 8.7 μm continuum emission appears clearly extended over $\sim 1.6 \text{ kpc}$. The galaxy also shows extended 11.3 μm PAH emission, but the equivalent width of this PAH feature indicates the presence of an additional nuclear continuum source that might be associated with the obscured AGN (Alonso-Herrero et al. 2014).

The optical morphology of the galaxy is patchy because of dust obscuration, but there is a well-defined nuclear source embedded in an extended disk of $\sim 2 \text{ kpc}$ -radius detected at near infrared (NIR) wavelengths (Scoville et al. 2000). The NIR disk has a $r^{1/4}$ elliptical-like profile. The outer disk of the galaxy shows two tidal tails, which betray the past interaction (Melnick & Mirabel 1990; Murphy et al. 1996). The more recent high-resolution AO-assisted NIR observations done by Keck (Medling et al. 2014) have resolved the inner disk into two overlapping nuclear disks with a small separation of $\sim 0''.2$ (200 pc).

Star formation is currently fueled by a massive molecular gas reservoir ($\sim (6-7) \times 10^9 M_{\odot}$; Downes & Solomon 1998; Wilson et al. 2008). The molecular disk of IRAS 17208-0014 was imaged in the CO(1–0) line with the PdBI with a $\sim 3''.5$ -spatial

resolution by Downes & Solomon (1998). The $2''$ (1.6 kpc)–diameter disk, barely resolved in these observations, shows a rotating pattern. The $\sim 1''$ –CO(3–2) SMA map of Wilson et al. (2008) reveals a compact $\sim 1''.5$ (1.2 kpc) diameter disk with fainter extensions farther out to the northwest and to the east.

Superposed on the overall rotating pattern, which dominates the kinematics of the disk, there is multiwavelength evidence of an outflow found in the ionized and in the neutral gas. In spite of previous negative evidence of an outflow in the ionized gas (Westmoquette et al. 2012; Rupke & Veilleux 2013), Arribas et al. (2014) report the detection of an outflowing component, based on very high signal-to-noise ratio H α spectroscopy. The maximum velocities of the ionized outflow reach moderate values of up to $v - v_{\text{sys}} \sim -300 \text{ km s}^{-1}$ and the estimated outflow rate for the ionized gas is $\sim 16 M_{\odot} \text{ yr}^{-1}$ (Colina, private communication). There is additional evidence of an outflow in the neutral gas in IRAS 17208-0014. Flows with maximum velocities of up to $v - v_{\text{sys}} \sim -650 \text{ km s}^{-1}$ and mass rates $dM/dt \sim 34 M_{\odot} \text{ yr}^{-1}$ were identified in the atomic gas in a spatially extended ($r \sim 1.6 \text{ kpc}$) structure traced by NaI D absorption lines (Rupke & Veilleux 2013). Furthermore, outflow velocities up to $v - v_{\text{sys}} \sim -370 \text{ km s}^{-1}$ with associated outflow rates of $\sim 90 M_{\odot} \text{ yr}^{-1}$ were also identified in the cold molecular gas through OH absorption lines (Sturm et al. 2011). However, this absorption line study, done with a spatial resolution of $\sim 10''$, was not optimized to derive the size and the geometry of the molecular outflow structure, leaving the true outflow rate largely unconstrained. More recently, the optical and NIR emission line ratios analyzed by Medling et al. (2015) have confirmed that there is a multiphase outflow of shocked gas extending over a wide range of spatial scales from $r \sim 400 \text{ pc}$ to $r \sim 5 \text{ kpc}$ in IRAS 17208-0014.

3. Observations

3.1. NGC 1614

Observations of NGC 1614 were carried out with the PdBI array (Guilloteau et al. 1992) between June 2012 and March 2013. We used the ABD configurations and six antennae. We observed the $J = 1-0$ line of CO (115.271 GHz at rest). During the observations we used the two polarizations of the receiver and the 3.6 GHz-wide WideX spectral correlator of the PdBI; this is equivalent to 9500 km s^{-1} at the working frequency. Rest frequencies were corrected for the recession velocity initially assumed to be $v_o(\text{HEL}) = 4795 \text{ km s}^{-1}$. The systemic velocity, redetermined in this work, is $v_{\text{sys}}(\text{HEL}) = 4763 \text{ km s}^{-1}$. Observations were conducted in single-pointing mode with a field of view (primary beam size) of $43''$ centered at $\alpha_{2000} = 04^{\text{h}}34^{\text{m}}00.03^{\text{s}}$ and $\delta_{2000} = -08^{\circ}34'44.57''$. The latter is very close to the nominal positions of the optical and NIR centers, as determined by Neff et al. (1990) and Skrutskie et al. (2006). We redetermined the dynamical center of the galaxy in this work, which coincides within the errors with the central peak detected in the 5 GHz radio continuum images obtained by Olsson et al. (2010) with MERLIN ($\alpha_{2000} = 04^{\text{h}}34^{\text{m}}00.03^{\text{s}}$ and $\delta_{2000} = -08^{\circ}34'45.01''$). Visibilities were obtained through on-source integration times of 20 min framed by short ($\sim 2 \text{ min}$) phase and amplitude calibrations on a nearby quasar. The absolute flux scale in our maps was derived to 10% accuracy based on the observations of primary calibrators whose fluxes were determined from a combined set of measurements obtained at the 30 m telescope and the PdBI array. The bandpass calibration is accurate to better than 5%.

The image reconstruction was done with the standard IRAM/GILDAS software (Guilloteau & Lucas 2000). We used both natural (NA) and uniform (UN) weighting to generate two different versions of the CO line map with a size of $51''$ and $0.1''/\text{pixel}$ sampling. The corresponding synthesized beams are 3.8×1.2 at $\text{PA} = 12^\circ$ for the NA weighting map, and 1.5×0.8 at $\text{PA} = 23^\circ$ for the UN weighting map. The conversion factors between flux (Jy beam^{-1}) and temperature units (K) are $20 \text{ K Jy}^{-1} \text{ beam}$ and $82 \text{ K Jy}^{-1} \text{ beam}$ for the NA and UN weighting datasets, respectively. The corresponding point source sensitivities derived from emission-free channels are $0.8 \text{ mJy beam}^{-1}$ (NA) and $0.9 \text{ mJy beam}^{-1}$ (UN) in 9.8 MHz (26 km s^{-1})-wide channels. The actual noise levels increase by up to a factor 2–3 in channels with strong line-emission due to inherent limitations in the deconvolution process. An image of the continuum emission of the galaxy was obtained by averaging those channels free of line emission. The point source sensitivity for the continuum map is $0.1 \text{ mJy beam}^{-1}$ in the highest resolution version of the data obtained by adopting UN weighting.

3.2. IRAS 17208-0014

Observations of IRAS 17208-0014 were carried out with the PdBI in March 2012. We used the B configuration and six antennae of the array. We observed the $J = 2-1$ line of CO (230.538 GHz at rest). As for NGC 1614, we used the two polarizations of the receiver and the WideX correlator, and this is equivalent to 4900 km s^{-1} at the CO(2–1) frequency. Rest frequencies were corrected for an adopted recession velocity of $v_o(\text{HEL}) = 12838 \text{ km s}^{-1}$. We derived the systemic velocity in this work, which is $\sim 30 \text{ km s}^{-1}$ blueshifted relative to v_o : $v_{\text{sys}}(\text{HEL}) = 12808 \text{ km s}^{-1}$. We used a single-pointed observing mode with a primary beam size of $23''$ centered at $\alpha_{2000} = 17^{\text{h}}23^{\text{m}}21.90^{\text{s}}$ and $\delta_{2000} = -00^\circ17'00.90''$, which is $< 1''$ away from the radiocontinuum peak detected in the 1.4 GHz VLBI maps of Momjian et al. (2003) and the dynamical center of the galaxy, which was determined in this work ($\alpha_{2000} = 17^{\text{h}}23^{\text{m}}21.96^{\text{s}}$ and $\delta_{2000} = -00^\circ17'00.87''$). Visibilities were obtained through on-source integration times of 20 min framed by short (~ 2 min) phase and amplitude calibrations on a nearby quasar. The absolute flux scale in our maps was derived to 10% accuracy, and the bandpass calibration is accurate to better than 5%.

We performed image deconvolution using IRAM/GILDAS software. As for NGC 1614, we used both NA and UN weighting to generate two versions of the CO map with a size of $26''$ and $0.1''/\text{pixel}$ sampling. The corresponding synthesized beams are 0.8×0.5 at $\text{PA} = 18^\circ$ for the NA weighting map, and 0.6×0.5 at $\text{PA} = 61^\circ$ for the UN weighting map. The conversion factors between flux (Jy beam^{-1}) and temperature units (K) are $62 \text{ K Jy}^{-1} \text{ beam}$ and $84 \text{ K Jy}^{-1} \text{ beam}$ for the NA and UN weighting datasets, respectively. The corresponding point source sensitivities derived from emission-free channels are $0.9 \text{ mJy beam}^{-1}$ (NA) and $1.2 \text{ mJy beam}^{-1}$ (UN) in 20 MHz (27 km s^{-1})-wide channels. The noise figures are to be increased by a factor 2–3 in channels with strong line emission. A continuum image of the galaxy was obtained by averaging channels free of line emission with a point-source sensitivity of $0.1 \text{ mJy beam}^{-1}$ in the map derived with UN weighting.

4. Results

4.1. NGC 1614: channel maps and emission centroids

Figure 1 shows the CO(1–0) velocity-channel maps observed in NGC 1614 with a spatial resolution of 3.8×1.2 at $\text{PA} = 12^\circ$,

obtained using natural weighting of the data to recover the maximum percentage of low-level emission in extended structures. We display channel maps grouped by pairs with a velocity spacing of 60 km s^{-1} from $v - v_{\text{sys}} = 0 \text{ km s}^{-1}$ with $v_{\text{sys}}(\text{HEL}) = 4763 \text{ km s}^{-1}$, a value determined by the best-fit kinemetry solution found for the mean velocity field described in Sect. 4.2.

Virtually all the CO line emission detected over significant 3σ -levels comes from the central $r \sim 10''$ (3 kpc) region that is displayed in Fig. 1. Overall, this emission extends over a roughly symmetric $\sim 900 \text{ km s}^{-1}$ -wide velocity span: $v - v_{\text{sys}} \sim [+450, -450] \text{ km s}^{-1}$. However, the bulk of the emission, up to $\approx 98\%$ of the grand total, comes from a more restricted velocity range: $|v - v_{\text{sys}}| \leq 210 \text{ km s}^{-1}$, hereafter referred to as the line core.

Figure 2 shows the CO spectrum spatially integrated over a square region of 4 kpc size to cover the full extent of the NGC 1614 disk. The emission from the line core can be satisfactorily fit by three Gaussian components. In this fit we assigned three initial values for the velocity centroids of the Gaussian components: one around v_{sys} , and two velocities symmetrically offset by $\pm 100 \text{ km s}^{-1}$ with respect to v_{sys} to cover the expected symmetric range caused by rotation found in the model of Bellocchi et al. (2012). However, outside the line core there is an excess of fainter but nevertheless statistically significant emission (up to $\sim 11\sigma$ in velocity-integrated units) which extends up to $|v - v_{\text{sys}}| \sim 450 \text{ km s}^{-1}$, hereafter referred to as the line wings (i.e., $210 \text{ km s}^{-1} < |v - v_{\text{sys}}| \leq 450 \text{ km s}^{-1}$). Emission stemming from the line core shows the signature of a rotating disk with a kinematic major axis oriented roughly north-south: emission at redshifted (blueshifted) velocities comes from the northern (southern) side of the disk, as can be guessed by inspecting Fig. 1. By contrast, outside the line core, the kinematic major axis for the line wings seems to tilt progressively toward the east-west axis (see Fig. 1).

In an attempt to quantify the kinematic decoupling of the emission of the line wings relative to the line core, we have derived the centroids of CO emission in NGC 1614 in $[\Delta\alpha, \Delta\delta]$ -units. The left-hand panel of Fig. 3 shows the CO centroids for the same velocity channels displayed in Fig. 1. The centroids of CO(1–0) emission are derived using as weighting function a power law of the flux measured at a given offset within the inner $20''$ field of view with an index $n = 1/2$ in order to optimize the contribution from extended emission and reduce accordingly the noise caused by clumpiness in this determination. Emission centroids calculated for velocity channels which are equidistant from v_{sys} are connected so as to visualize the change in PA as a function of velocity, shown in the middle panel of Fig. 3. The PA is defined for the redshifted component of the connected centroids, and it is measured east from north (i.e., negative values to the west). The right-hand panel of Fig. 3 illustrates the change in average radius r , defined as half of the mutual distance between the connected centroids, as a function of velocity. The left-hand panel of Fig. 3 identifies the dynamical center at $[\Delta\alpha, \Delta\delta] = [0'', 0'']$ as determined in Sect. 4.2. The centroid barycenter is slightly shifted relative to the dynamical center because of the non-axisymmetries in the brightness distribution of CO.

As illustrated in the middle panel of Fig. 3, the value derived for PA changes by $\sim 80^\circ$ from $|v - v_{\text{sys}}| = 60 \text{ km s}^{-1}$, where $\text{PA} \sim +13^\circ$, to $|v - v_{\text{sys}}| = 360 \text{ km s}^{-1}$, where $\text{PA} \sim -64^\circ$. We estimate a weighted mean for PA in the line core of $\text{PA}_{\text{core}} = 2 \pm 5^\circ$, and this is close to the value derived for PA using the kinemetry fit of Sect. 4.3 ($\text{PA} \sim -8^\circ \pm 5^\circ$). The corresponding weighted

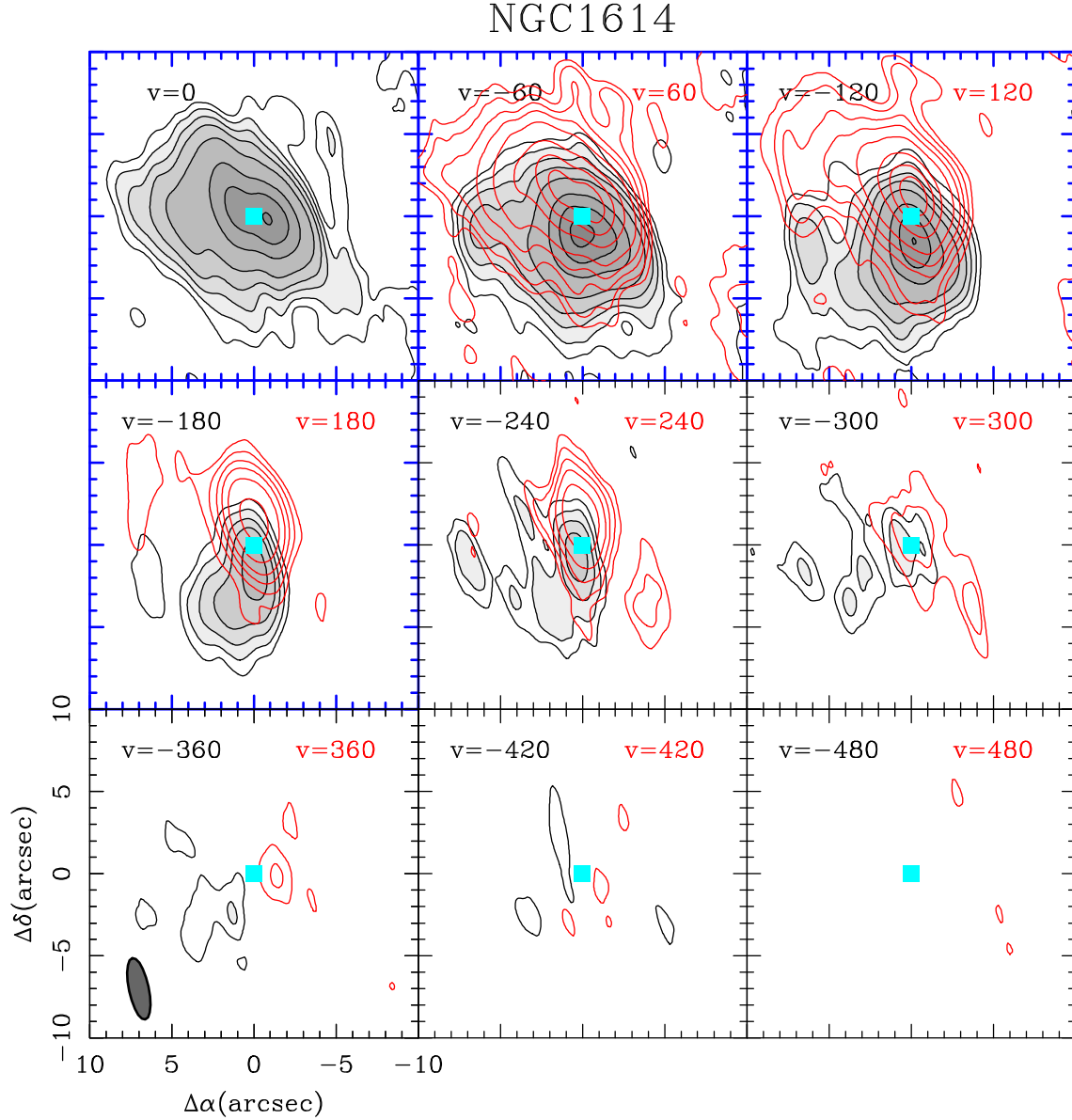


Fig. 1. CO(1–0) velocity-channel maps observed with the PdBI in the nucleus of NGC 1614 with a spatial resolution of $3''.8 \times 1''.2$ at PA = 12° obtained with natural weighting (beam is plotted as a filled ellipse in the bottom left corner of the *lower left panel*). Velocity resolution is 60 km s^{-1} . We show a field of view of $20''$, i.e., $\sim 1/2$ the diameter of the primary beam at 113.5 GHz. We display channel maps grouped by pairs from $v - v_{\text{sys}} = 0 \text{ km s}^{-1}$ in steps of 60 km s^{-1} with $v_{\text{sys}}(\text{HEL}) = 4763 \text{ km s}^{-1}$ from -480 km s^{-1} to 480 km s^{-1} . Emission at blueshifted velocities is displayed in gray scale and black contours, and emission at redshifted velocities is displayed in red contours. Contour levels are 3σ , 5σ , 8σ , 12σ , and 20σ with $1\sigma = 0.5 \text{ mJy beam}^{-1}$ for the channels of the line wings ($|v - v_{\text{sys}}| \geq 210 \text{ km s}^{-1}$), and 3σ , 5σ , 8σ , 12σ , 20σ to 80σ in steps of 20σ , with $1\sigma = 1.5 \text{ mJy beam}^{-1}$ for the channels of the line core ($|v - v_{\text{sys}}| < 210 \text{ km s}^{-1}$; boxes highlighted in blue). The position of the dynamical center ($[\Delta\alpha, \Delta\delta] = [0'', 0''] = [\alpha_{2000} = 04^{\text{h}}34^{\text{m}}00.03^{\text{s}}, \delta_{2000} = -08^\circ34'45.01'']$) is highlighted by the (blue) square marker.

mean for PA in the line wing region is $\text{PA}_{\text{wing}} = -68 \pm 15^\circ$. We can therefore conclude that the evidence of a kinematic decoupling, reflected in the measured difference $\text{PA}_{\text{wing}} - \text{PA}_{\text{core}} \sim -70 \pm 16^\circ$ is a significant $\approx 4.4\sigma$ result. However, the right-hand panel of Fig. 3 shows that there is no statistically significant change in the radial distance, which stays fairly constant at a value of $r \sim 1''.5 - 2''$ ($0.5 - 0.6 \text{ kpc}$) as a function of the velocity offset.

4.2. NGC 1614: moment maps

Figure 4 shows the first three moment maps derived from the CO(1–0) line data obtained by applying uniform weighting to the visibilities inside the velocity interval $v - v_{\text{sys}} = [+600, -600] \text{ km s}^{-1}$. Uniform weighting allows us to reach

a spatial resolution of $1''.5 \times 0''.8$ at PA = 23° . The velocity-integrated intensity map shown in the left-hand panel of Fig. 4 was derived assuming a 3σ -clipping on the intensities. The mean-velocity field and the velocity width maps, shown in the middle and right-hand panels of Fig. 4, respectively, were both derived by assuming a more demanding 5σ -clipping on the intensities to maximize the reliability of the images.

The left-hand panel of Fig. 4 shows that the CO emission comes from a spatially-resolved $11'' \times 8''$ ($3.4 \text{ kpc} \times 2.5 \text{ kpc}$) lopsided molecular disk. The disk shows an arc-like feature that runs from the northeast to the southeastern side. The strongest emission peak is located $\sim 300 \text{ pc}$ northwest relative to the central ($0'', 0''$)-offset.

NGC1614

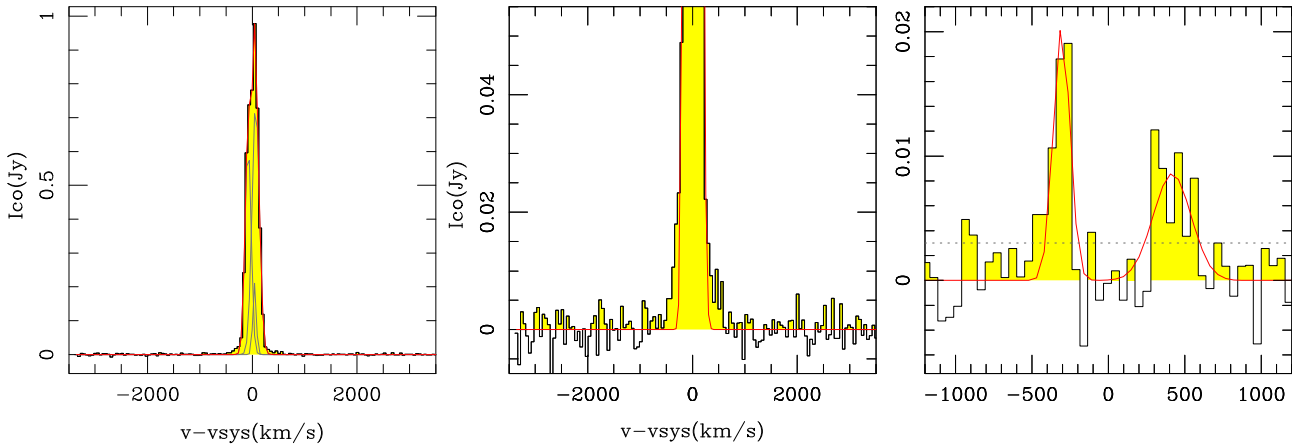


Fig. 2. CO(1–0) spectrum obtained by spatially integrating the emission over the disk of NGC 1614. We show the three individual Gaussian components fitted to the spectrum (gray curves) and the implied overall fit combining them (red curve) (*left panel*). A close-up view of the overall fit to the spectrum is shown in the *middle panel* to highlight emission from the line wings. Residuals and associated Gaussian fits are shown in the *right panel* with the typical 1σ level indicated by the dotted line.

NGC1614

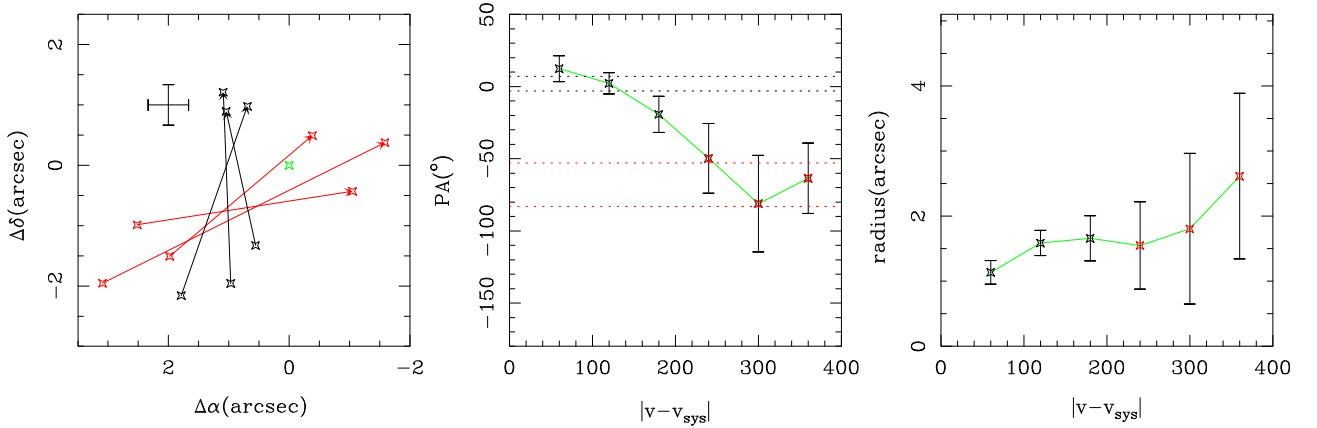


Fig. 3. Centroids of CO(1–0) emission in NGC 1614 (in $[\Delta\alpha, \Delta\delta]$ -units) derived with a velocity resolution of 60 km s^{-1} , using a power law of the flux as weighting function with index $n = 1/2$, are displayed in the *left panel*. Emission centroids calculated for velocity channels that are equidistant from v_{sys} (i.e., with a common $|v - v_{\text{sys}}|$ -offset) are connected to visualize the change of PA, defined for the redshifted component of the connected centroids and measured east from north, as a function of velocity (*middle panel*). We also plot the change in the average radius r , defined as half of the mutual distance from the connected centroids, as a function of velocity (*right panel*). Red color is used for velocity channels of the line wing and black color for the line core. The dotted black (red) line in the *middle panel* identifies the $\pm 1\sigma$ range around the average PA of the disk as derived inside the line core (line wing): $\text{PA}_{\text{core}} = 2 \pm 5^\circ$ ($\text{PA}_{\text{wing}} = -68 \pm 15^\circ$). The green marker in the *left panel* identifies the dynamical center. Error bars as a function of velocity channel are shown in the *middle* and *right* panels. Error bars in the *left panel* are for the line core.

The middle panel of Fig. 4 confirms the signature of a spatially resolved rotating disk, as described in Sect. 4.1. When assuming that the spiral features seen in the optical and NIR images of the galaxy are trailing, the gas rotation should be counterclockwise to account for the observed velocity gradient. This constrains the geometry of the galaxy disk with the eastern (western) side being the far (near) side. The choice of the $(0'', 0'')$ -offset as the nucleus maximizes the symmetry of the mean-velocity field. This location corresponds to the maximum velocity width (FWHM) measured in the disk, shown in the right-hand panel of Fig. 4, and also to the radio continuum peak of Olsson et al. (2010). Therefore this position qualifies as the dynamical center of the galaxy. The molecular gas is very turbulent: we estimate an average $\text{FWHM} \sim 80 \text{ km s}^{-1}$ over the disk. The value of FWHM is lowered to $\sim 70 \text{ km s}^{-1}$ if we exclude the central $r = 1.5''$ (0.5 kpc) of the disk to minimize the

effects of beam smearing for our current spatial resolution. This implies an intrinsic velocity dispersion of $\sigma \approx 30 \text{ km s}^{-1}$ on average.

An inspection of the middle panel of Fig. 4 indicates that while the kinematic major axis is oriented roughly north-south, the kinematic minor axis is not oriented east-west, but rather at an angle ($\geq 15^\circ$). This global tilt proves that there are significant departures from circular rotation. Additional wiggles in the velocity field, identified on the eastern side of the disk, betray non-circular motions on smaller spatial scales.

The left-hand and middle panels of Fig. 5 overlay the CO line intensities on the HST NICMOS images of NGC 1614 obtained in the $\text{Pa}\alpha$ line and in the $1.6 \mu\text{m}$ continuum by Alonso-Herrero et al. (2001). While a sizable fraction of the CO emission originates in the nuclear star-forming ring, which is barely resolved by the PdBI, fainter CO emission is also detected extending

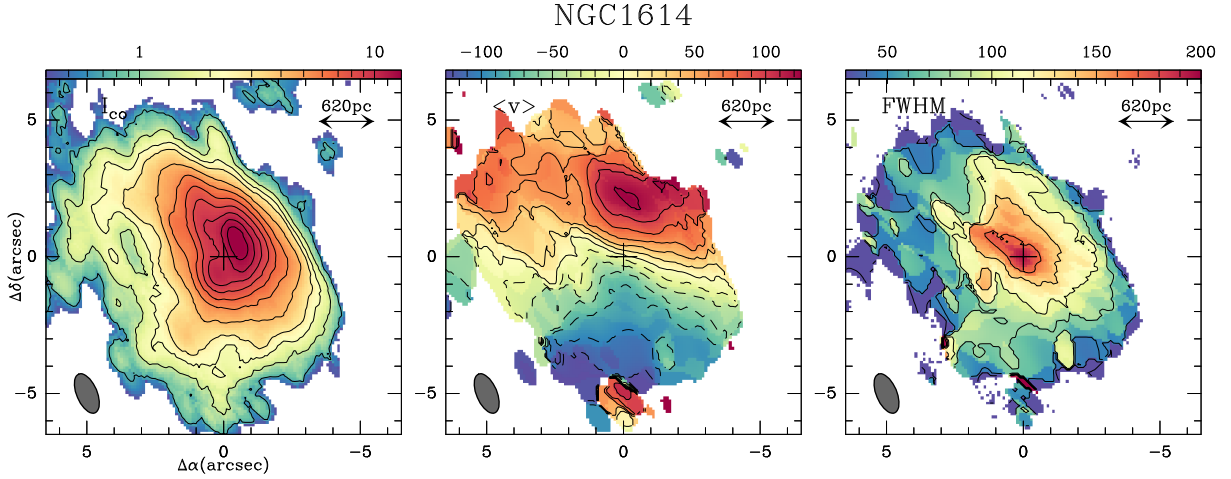


Fig. 4. *Left panel:* CO(1–0) integrated intensity map obtained in the disk of NGC 1614. The map is shown on color scale with contour levels 5%, 10%, 15%, 20%, to 90% in steps of 10% of the peak value = $14 \text{ Jy km s}^{-1} \text{ beam}^{-1}$ ($\sim 50\sigma$). *Middle panel:* the CO(1–0) isovelocity contours spanning the range (-120 km s^{-1} , 120 km s^{-1}) in steps of 20 km s^{-1} are overlaid on a false-color velocity map (linear color scale as shown). Velocities refer to $v_{\text{sys}}(\text{HEL}) = 4763 \text{ km s}^{-1}$. *Right panel:* overlay of the CO(1–0) line widths (FWHM) shown in contours ($30, 45$ to 195 km s^{-1} in steps of 30 km s^{-1}) on a false-color width map (linear scale as shown). The filled ellipses in the bottom left corner of each panel represent the CO(1–0) beam size obtained with uniform weighting ($1''.5 \times 0''.8$ at $\text{PA} = 23^\circ$). The position of the dynamical center is highlighted by the cross marker.

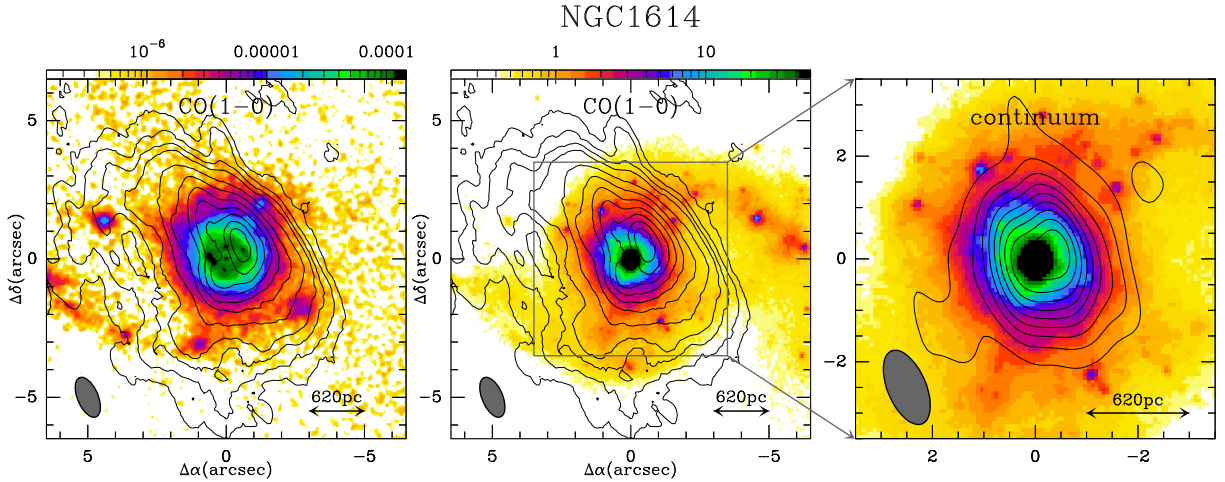


Fig. 5. *Left panel:* overlay of the CO(1–0) intensity contours (levels as in the left-hand panel of Fig. 4) on the Paα emission HST map of NGC 1614 (color scale as shown in arbitrary units). *Middle panel:* same as left panel but with CO contours overlaid on the HST/NICMOS $1.6 \mu\text{m}$ continuum image (color scale as shown in arbitrary units). *Right panel:* same as middle panel but zooming in on the continuum emission image of NGC 1614 at 113.5 GHz , in contours (10% to 90% in steps of 10% of the peak value = $2.4 \text{ mJy beam}^{-1} \sim 24\sigma$), overlaid on the HST NICMOS image. The filled ellipses represent the CO beam size.

farther out to the east up to $r \sim 6''$ (1.9 kpc), where strong Paα emission identifies the star-forming complexes of the eastern spiral arm. The right-hand panel of Fig. 5 shows that, unlike the CO line emission, the mm-continuum emission at 113.5 GHz is restricted to the nuclear ring.

4.3. NGC 1614: kinematic modeling

4.3.1. Kinemetry fit: the coplanar solution

To quantify the deviations from circular motions discussed in Sect. 4.2, we used the mean-velocity field of Fig. 4 to find the best-fit Fourier decomposition of the line-of-sight velocities using the software package *kinemetry* (Krajnović et al. 2006). A key implicit assumption of this decomposition, which we question in Sect. 4.3.2, is that the gas kinematics in NGC 1614 can be modeled by orbits that lie at all radii in a coplanar geometry.

Figure 6, which shows the radial profiles of the main terms of the Fourier decomposition of the velocity field, summarizes the results of this analysis. The c_1 term, which accounts for the (projected) circular component of the velocity field (v_{circ}), is the dominant contributor to the observed motions, as illustrated in Fig. 6a. Figure 7 shows the rotating disk solution of *kinemetry* and the associated residuals. The geometry of the rotating disk is defined by a position angle $\text{PA} = -8 \pm 5 \equiv 352 \pm 5^\circ$ (measured east from north for the receding side of the major axis) and an inclination $i = 33 \pm 2^\circ$. We also determined $v_{\text{sys}}(\text{HEL}) = 4763 \pm 10 \text{ km s}^{-1}$, as part the best-fit solution. Relative to v_{circ} , non-circular motions (v_{nonc}) derived up to the third order of the Fourier decomposition, are within a significant 10% to 30% range, as shown in Fig. 6b. Furthermore, Fig. 6c shows that the sign of the s_1 term, which represents the (projected) axisymmetric radial motions of the velocity field, is negative up to $r \sim 2''$ (0.6 kpc). This is indicative of inflowing motions at these radii for the adopted geometry of the disk when

NGC1614

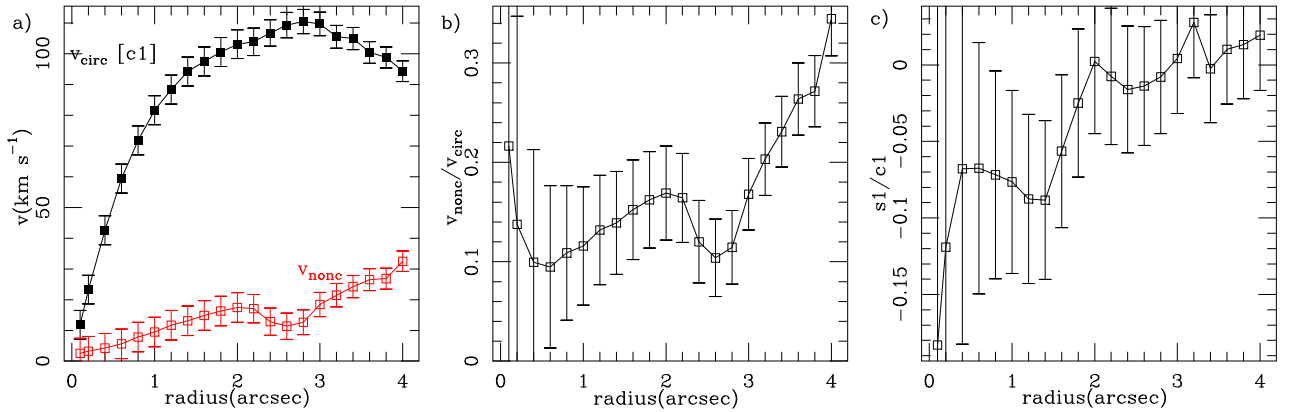


Fig. 6. **a)** c_1 radial profile (black curve) derived from the Fourier decomposition of the velocity field of NGC 1614. The c_1 term accounts for the (projected) circular component of the velocity field (v_{circ}). We also plot (red curve) the radial profile of the (projected) non-circular motions (v_{nonc}) derived up to the third order of the decomposition. **b)** Radial profile of the $v_{\text{nonc}}/v_{\text{circ}}$ ratio. **c)** Radial variation of the s_1/c_1 ratio. The s_1 term represents the (projected) axisymmetric radial motions of the velocity field. Errorbars in all panels represent 1σ errors.

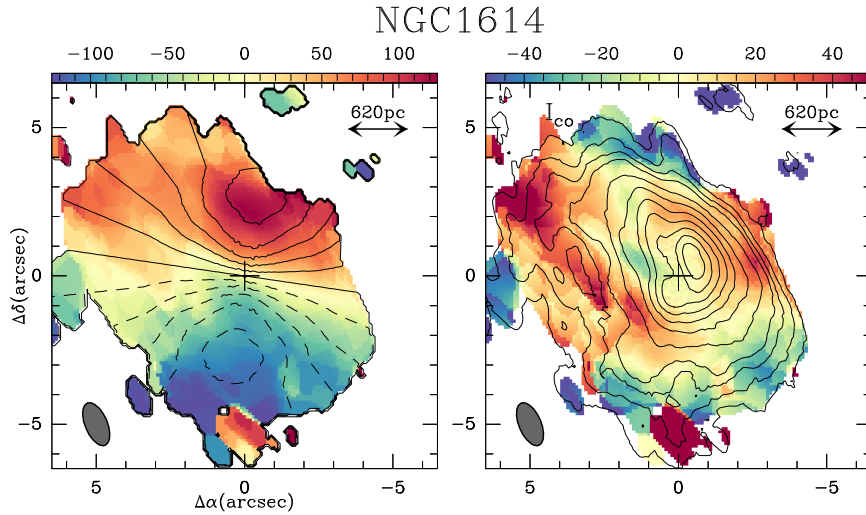


Fig. 7. *Left panel:* overlay of the velocity field of the best-fit rotating disk model (in contours spanning the range -100 km s^{-1} to 100 km s^{-1} in steps of 20 km s^{-1}) on the CO(1–0) isovelocities (color scale as shown) of NGC 1614. *Right panel:* overlay of the CO(1–0) intensity contours (levels as in the left-hand panel of Fig. 4) on the residual mean-velocity field (in color scale as shown) obtained after subtraction of the best-fit rotating disk model from the observations.

assuming the gas is coplanar. Deprojected, these in-plane motions would translate into a maximum amplitude of the radially inward field of $\leq 15 \text{ km s}^{-1}$. These low amplitude inward motions can be explained by density-wave-driven gas flows.

4.3.2. A non-coplanar outflow solution

While the coplanar solution discussed in Sect. 4.3.1 could account for the observed trend of the mean velocities fitted by kinemetry, it nevertheless fails to explain the order of magnitude and, also, the 2D pattern of the high velocity emission found in the line wings, as argued in the following.

The left-hand panel of Fig. 8 shows the position-velocity (p-v) plot taken along the kinematic major axis of the rotating disk ($\text{PA} = 352^\circ$) with the best-fit (projected) rotation curve superposed. Most of the emission in the line core lies within the estimated virial range. The latter is defined by a combination of circular rotation ($\sim \pm 100 \text{ km s}^{-1}$), turbulence ($\text{FWHM}/2 \sim \pm 40 \text{ km s}^{-1}$), and an estimated upper limit to the

contribution from in-plane non-circular motions of $\sim 1/2 \times v_{\text{circ}}$ ¹ (e.g., Colombo et al. 2014; García-Burillo et al. 2014). However, emission from the line wings, identified in Fig. 8, goes beyond the adopted virial range, arguing in favor either of a fast(er)-rotating disk or of a non-rotationally supported component.

The middle panel of Fig. 8 shows the p-v plot taken along the kinematic minor axis ($\text{PA} = 82^\circ$). The bulk of the emission from the line wings, which stems from the nuclear star-forming ring region, shows a distinct kinematic pattern: the high-velocity blueshifted (redshifted) gas is detected on the eastern (western) side of the ring up to $r \sim 2''$ (0.6 kpc), as better shown in the close-up view of the right-hand panel of Fig. 8. Taken at face value, the observed pattern invalidates the interpretation of the line wing emission as due to a fast-rotating coplanar disk. A similar pattern can be traced continuously into the lower velocities of the line core, which suggests that a single kinematic component is responsible for the velocity gradient observed along the minor axis. For the assumed geometry of the disk, this implies that the gas would be moving radially inward if it lay in the

¹ This amounts to $\pm 50 \text{ km s}^{-1}$ in NGC 1614.

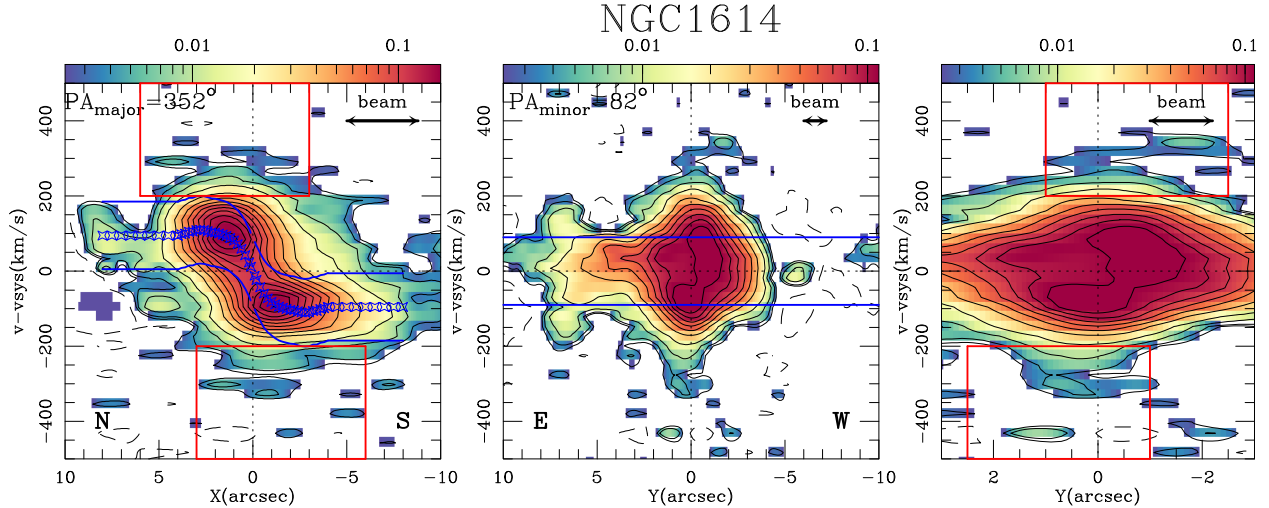


Fig. 8. *Left panel:* position-velocity (p-v) plot taken along the kinematic major axis (PA = 352°) of NGC 1614. The blue star markers delineate the (projected) rotation curve fitted in Sect. 4.3 and the allowed virial range around it (delimited by the blue lines). The red squares delimit the region where emission is detected from the line wings. Contour levels are -3σ , 3σ , 5σ , 10σ , 20σ , to 200σ in steps of 20σ with $1\sigma = 0.8 \text{ mJy beam}^{-1}$. *Middle panel:* the p-v plot taken along the kinematic minor axis (PA = 82°). Contour levels are -3σ , 3σ , 5σ , 10σ , 20σ , to 140σ in steps of 20σ with $1\sigma = 0.8 \text{ mJy beam}^{-1}$. The allowed virial range is delimited by the blue curves. *Right panel:* same as *middle panel* but zooming in on the central $\pm 3''$ region around the center. The red squares delimit the region where emission is detected from the line wings. In all panels the velocity scales are relative to v_{sys} , and the spatial scales (X and Y) are relative to the dynamical center. We show the spatial resolutions projected along the major axis (*left panel*) and along the minor axis (*middle and right panels*) obtained with NA weighting.

galaxy plane. In particular, emission from the line wings would be coming from gas moving inward at very high velocities of up to $\sim (200-400)/\sin(i) \text{ km s}^{-1} = 370-740 \text{ km s}^{-1}$. However, this regime is well beyond the expected range of inward velocities of a typical density-wave gas flow.

In contrast, if we abandon the restriction of the coplanar solution for the gas, the kinematic pattern of the line wings can be satisfactorily explained either by a non-coplanar (less extreme) inflow solution or, alternatively, by a molecular outflow, depending on the adopted geometry. As argued below, the non-coplanar outflow solution is favored. In the outflow scenario, the blueshifted velocities would stem from the lobe pointing toward us on the eastern side of the disk, while the redshifted velocities would be behind the disk on the western side. This outflow model for CO agrees perfectly with the geometry of the H α outflow discovered by Bellocchi et al. (2012). The non-detection of redshifted H α emission indicates that this component is located behind the disk, and therefore remained undetected owing to extinction. The extinction derived from the $1.6 \mu\text{m}/2.2 \mu\text{m}$ color map of Alonso-Herrero et al. (2001) appears to be higher on the western side of the ring. The similar spatial extent and (blueshifted) velocities measured for the H α and CO features suggest that both are part of the same outflowing component. The observed tilt in the major axis of the molecular outflow relative to the PA of the rotating disk ($\sim 80^\circ$ as discussed in Sect. 4.1) suggests that the outflow has a significant component that is oriented perpendicular to the rotating disk. This geometry is typically found in star-forming-driven molecular outflows, like the ones discovered in the starbursts M 82 and NGC 253 (García-Burillo et al. 2001; Walter et al. 2002; Bolatto et al. 2013b; Salas et al. 2014). However, we cannot exclude that an AGN can also contribute to drive the outflow (see discussion in Sect. 5.3).

4.4. IRAS 17208-0014: channel maps and emission centroids

Figure 9 shows the CO(2–1) velocity-channel maps observed in IRAS 17208-0014 with a spatial resolution of $0''.6 \times 0''.5$ at

PA = 61°, obtained using uniform weighting of the data. We display channel maps grouped by pairs with a velocity spacing of 60 km s^{-1} from $v - v_{\text{sys}} = 0 \text{ km s}^{-1}$ with $v_{\text{sys}}(\text{HEL}) = 12808 \text{ km s}^{-1}$, a value determined by the best-fit solution described in Sect. 4.6.

Most of the CO emission stems from the central $r \sim 2''$ (1.7 kpc) region shown in Fig. 9. The emission covers a wide and remarkably asymmetric velocity range: $v - v_{\text{sys}} = [+450, -750] \text{ km s}^{-1}$. However, up to $\sim 99\%$ of the total emission comes from a narrower and symmetric velocity range: $v - v_{\text{sys}} \sim [+450, -450] \text{ km s}^{-1}$. Following the notation adopted in NGC 1614, we also refer to this central velocity interval as the line core and identify the emission outside this range as coming from the line wing (i.e., $-450 \text{ km s}^{-1} > v - v_{\text{sys}} \geq -750 \text{ km s}^{-1}$). Although at an admittedly lower level compared to the line core, emission from the line wing reaches an overall statistical significance of about $\sim 15\sigma$ in velocity-integrated units.

Figure 10 shows the CO emission profile extracted from the position where the emission in the line wing is maximum at $[\Delta\alpha, \Delta\delta] = [0'', -0''.2]$, which corresponds to $\alpha_{2000} = 17^{\text{h}}23^{\text{m}}21.963^{\text{s}}$, $\delta_{2000} = -00^\circ17'01.03''$. We used three Gaussian components to fit the emission from the line core. As in NGC 1614, the fit left a residual of emission, which in IRAS 17208-0014 is identified at highly blueshifted velocities in the range $v - v_{\text{sys}} = [-450, -750] \text{ km s}^{-1}$ and a tentatively detected component around -950 km s^{-1} . This blueshifted line wing has no redshifted counterpart, unlike in NGC 1614. Emission from the line core reveals a rotating disk with a kinematic major axis oriented at a small angle relative to the east-west axis: emission at redshifted (blueshifted) velocities comes from the eastern (western) side of the disk, as illustrated in Fig. 9. Within the limits of our spatial resolution, Fig. 9 shows that emission in the line wing shifts progressively from the western to the eastern side of the disk as the velocity offset increases, i.e., showing an opposite trend compared to the line core. This is a signature of kinematic decoupling of the gas emitting at high velocities.

We have derived the centroids of CO emission in IRAS 17208-0014 to quantify the structure of the different

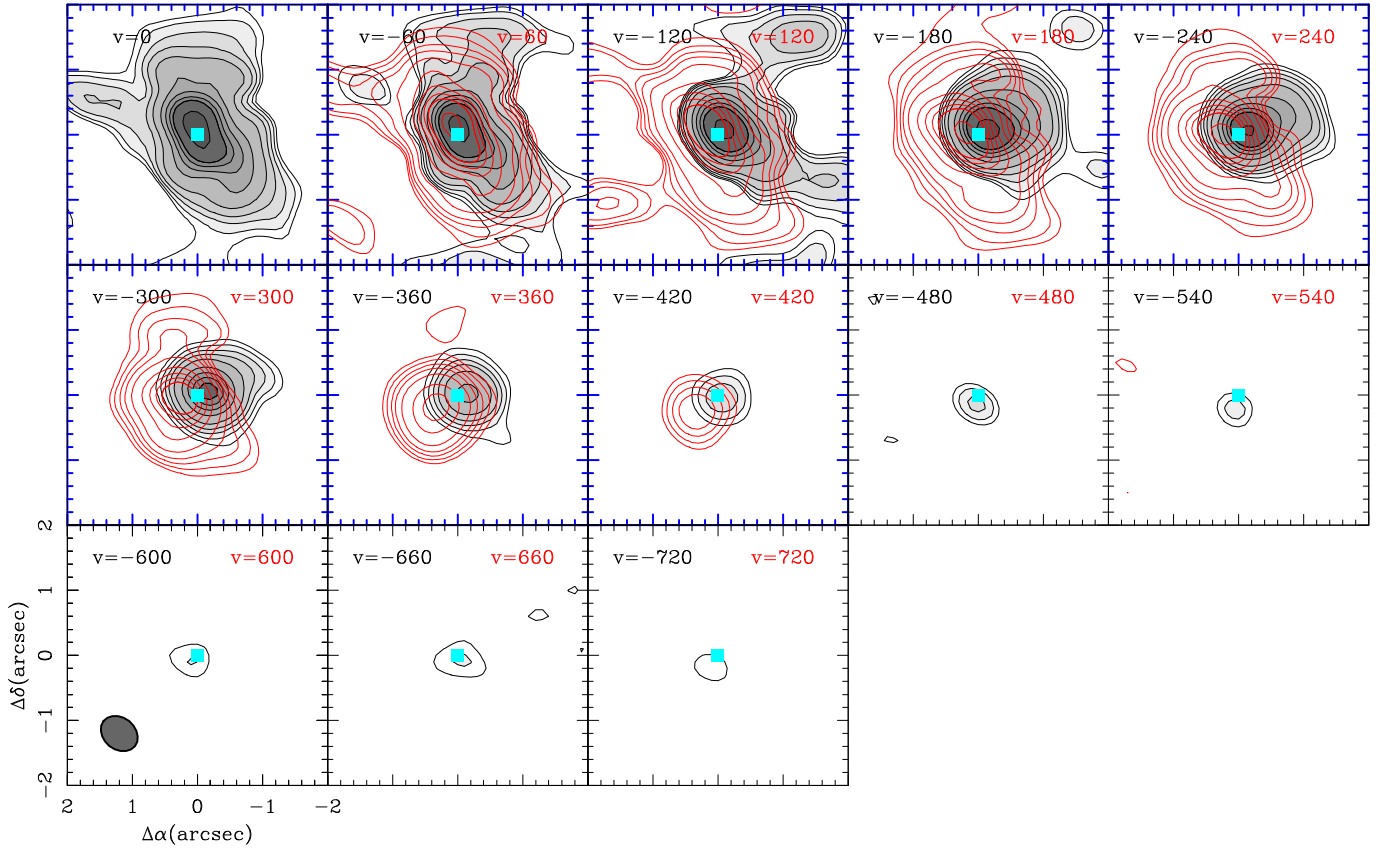


Fig. 9. CO(2–1) velocity-channel maps observed with the PdBI in the nucleus of IRAS 17208–0014 with a spatial resolution of $0''.6 \times 0''.5$ at PA = 61° (beam is plotted as a filled ellipse in the bottom left corner of the *lower left panel*). Velocity resolution is 60 km s^{-1} . We show a field of view of $4''$, i.e., $\sim 1/5$ the diameter of the primary beam at 221.1 GHz. We display channel maps grouped by pairs from $v - v_{\text{sys}} = 0 \text{ km s}^{-1}$ in steps of 60 km s^{-1} with $v_{\text{sys}}(\text{HEL}) = 12\,808 \text{ km s}^{-1}$ from -720 km s^{-1} to 720 km s^{-1} . Emission at blueshifted velocities is displayed in gray scale and black contours, and emission at redshifted velocities is displayed in red contours. Contour levels are 3σ , 5σ , and 8σ with $1\sigma = 0.7 \text{ mJy beam}^{-1}$ for the channels of the line wing ($|v - v_{\text{sys}}| \geq 450 \text{ km s}^{-1}$), and 3σ , 5σ , 8σ , 12σ , 20σ , to 100σ in steps of 20σ , and 160σ with $1\sigma = 1.4 \text{ mJy beam}^{-1}$ for the channels of the line core ($|v - v_{\text{sys}}| < 450 \text{ km s}^{-1}$; boxes highlighted in blue). The position of the dynamical center ($[\Delta\alpha, \Delta\delta] = [0'', 0''] = [\alpha_{2000} = 17^{\text{h}}23^{\text{m}}21.96^{\text{s}}, \delta_{2000} = -00^\circ17'00.87'']$) is highlighted by the (blue) square marker.

kinematic components following the same procedure as described in Sect. 4.1 for NGC 1614. Figure 11 shows both the centroids and the PA and r profiles obtained for the same velocity channels as are displayed in Fig. 9. As shown in the middle panel of Fig. 11, the value of PA stays fairly constant inside the line core around $\text{PA}_{\text{core}} = 105 \pm 2^\circ$, an angle that is close to the value derived in Sect. 4.5 for the PA of the rotating disk ($\text{PA} \sim 113^\circ \pm 3^\circ$). In stark contrast, the PA values for the line wing centroids oscillate around a weighted mean of $\text{PA}_{\text{wing}} = 340^\circ \pm 20^\circ$, an indication that its apparent kinematic major axis is virtually reversed: the PA of the line wing changes by an angle $\geq 230^\circ$ relative to the line core². We conclude that the evidence of a kinematic decoupling, reflected in the measured difference $\text{PA}_{\text{wing}} - \text{PA}_{\text{core}} \sim 235 \pm 20^\circ$ is a significant $\sim 10\sigma$ result. Furthermore, the line wing channels show lower r values ($\sim 0''.1\text{--}0''.2$ (80–160 pc)) compared to the line core (up to $\sim 0''.3$ (240 pc)), indicating that the gas emitting at anomalous velocities lies at comparatively smaller radii.

² In the absence of a redshifted counterpart in the line wing, we derived the PA for this component using the central offset and the blueshifted channel centroids as reference.

4.5. IRAS 17208–0014: moment maps

Figure 12 shows the moment maps derived from the CO(2–1) line data inside the velocity interval $v - v_{\text{sys}} = [-1000, 500] \text{ km s}^{-1}$. As for NGC 1614, we used different clippings: a 3σ -clipping on the intensities to derive the zero-order moment (left-hand panel of Fig. 12) and a 5σ -clipping to derive the mean-velocity field and the velocity width maps (shown in the middle and right-hand panels of Fig. 12, respectively).

The left-hand panel of Fig. 12 shows that the CO emission comes from a spatially-resolved $3''.3 \times 2''.2$ ($2.7 \text{ kpc} \times 1.8 \text{ kpc}$) molecular disk feature that is noticeably elongated along PA $\sim 20^\circ$. The overall morphology of the CO disk is similar to the northeast-southwest elongated structure seen in the dust extinction, as derived from the $2.2 \mu\text{m}/1.1 \mu\text{m}$ HST color image of Scoville et al. (2000). However, compared to the CO(3–2) disk of Wilson et al. (2008), the CO(2–1) disk is a factor 1.5–2 larger. As shown in the mean-velocity field of the middle panel of Fig. 12, which confirms the signature of a spatially resolved rotating disk, the morphological and kinematical major axes of the CO disk are roughly orthogonal. This implies that the intrinsic elongation of the disk should be more pronounced after deprojection. Three fainter protrusions and a detached clump extend

IRAS17208-0014

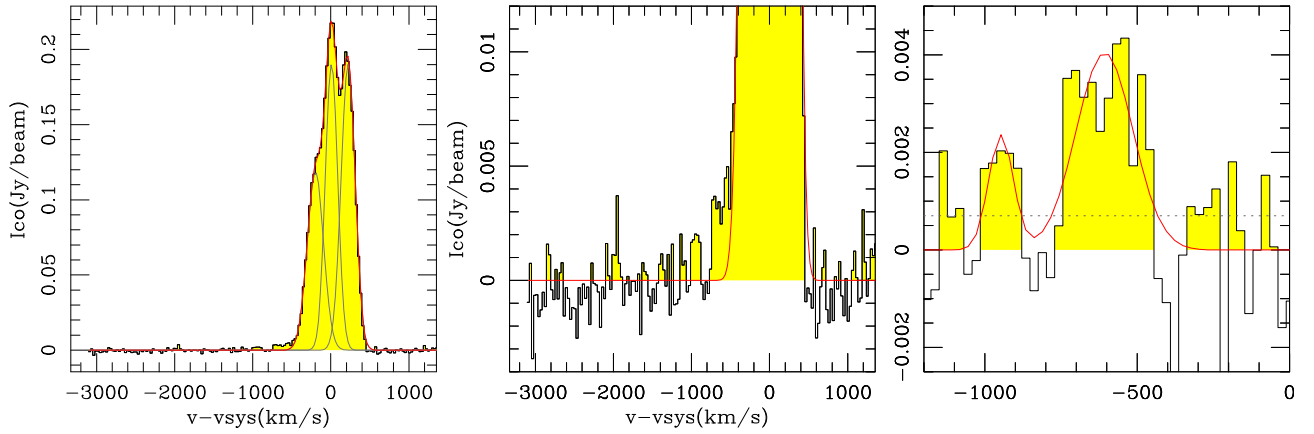


Fig. 10. Same as Fig. 2 but for the CO(2–1) spectrum obtained toward the position that maximizes the emission in the line wing in IRAS 17208-0014 at $\alpha_{2000} = 17^{\text{h}}23^{\text{m}}21.963^{\text{s}}$, $\delta_{2000} = -00^{\circ}17'01.03''$.

IRAS17208-0014

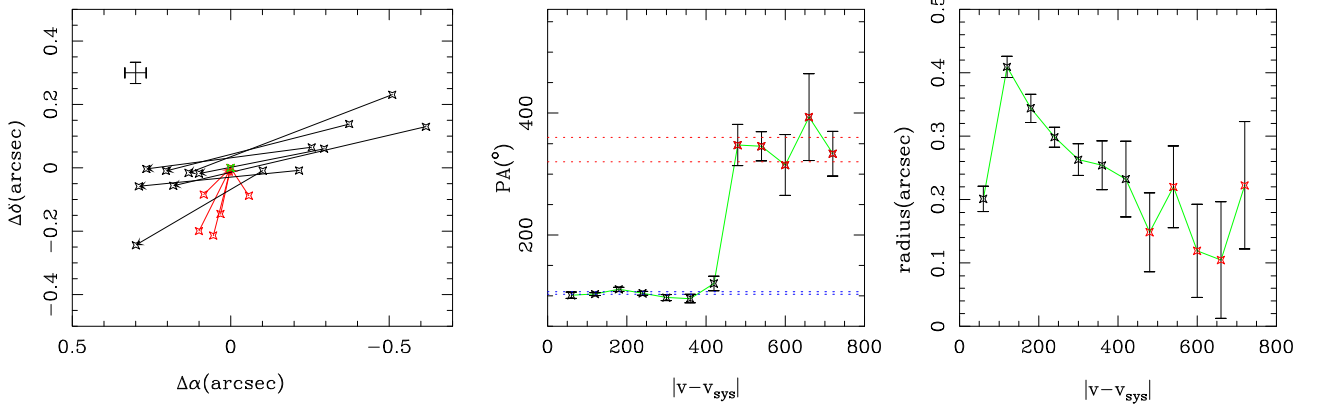


Fig. 11. Same as Fig. 3 but for the centroids of CO(2–1) emission in IRAS 17208-0014.

IRAS17208-0014

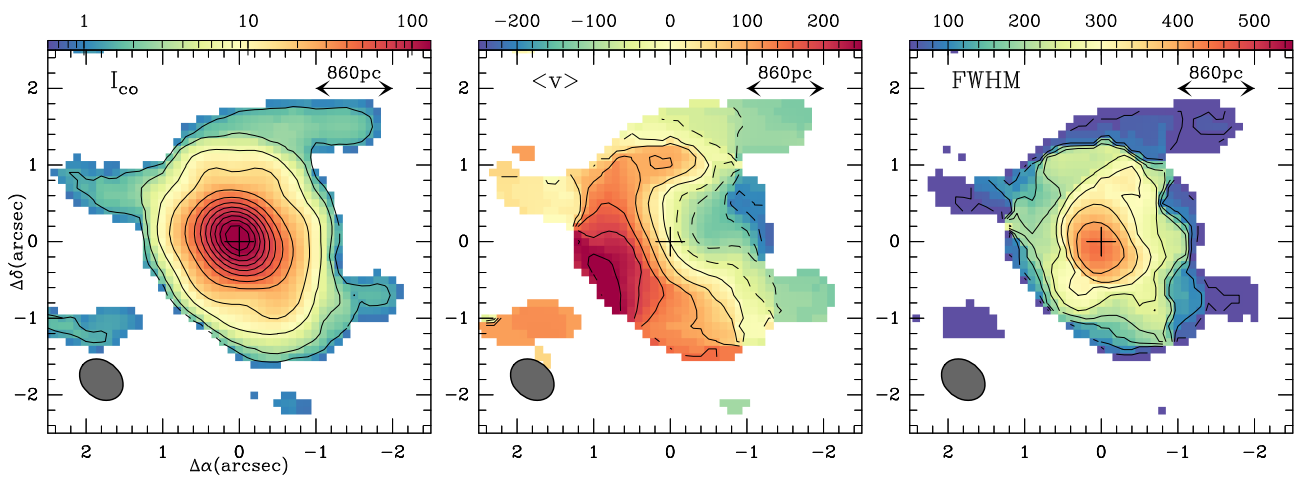


Fig. 12. *Left panel:* the CO(2–1) integrated intensity map obtained in the disk of IRAS 17208-0014. The map is shown in color scale with contour levels 1%, 2%, 5%, 10%, to 90% in steps of 10% of the peak value = $143 \text{ Jy km s}^{-1} \text{ beam}^{-1}$ ($\sim 300\sigma$). *Middle panel:* the CO(2–1) isovelocity contours spanning the range (-250 km s^{-1} , 250 km s^{-1}) in steps of 50 km s^{-1} are overlaid on a false-color velocity map (linear color scale as shown). Velocities refer to $v_{\text{sys}}(\text{HEL}) = 12808 \text{ km s}^{-1}$. *Right panel:* overlay of the CO(2–1) line widths (FWHM) shown in contours (50 to 550 km s^{-1} in steps of 50 km s^{-1}) on a false-color width map (linear scale as shown). The filled ellipses in the bottom left corner of each panel represent the CO(2–1) beam size ($0''.6 \times 0''.5$ at $\text{PA} = 61^\circ$). The position of the dynamical center is highlighted by the cross marker.

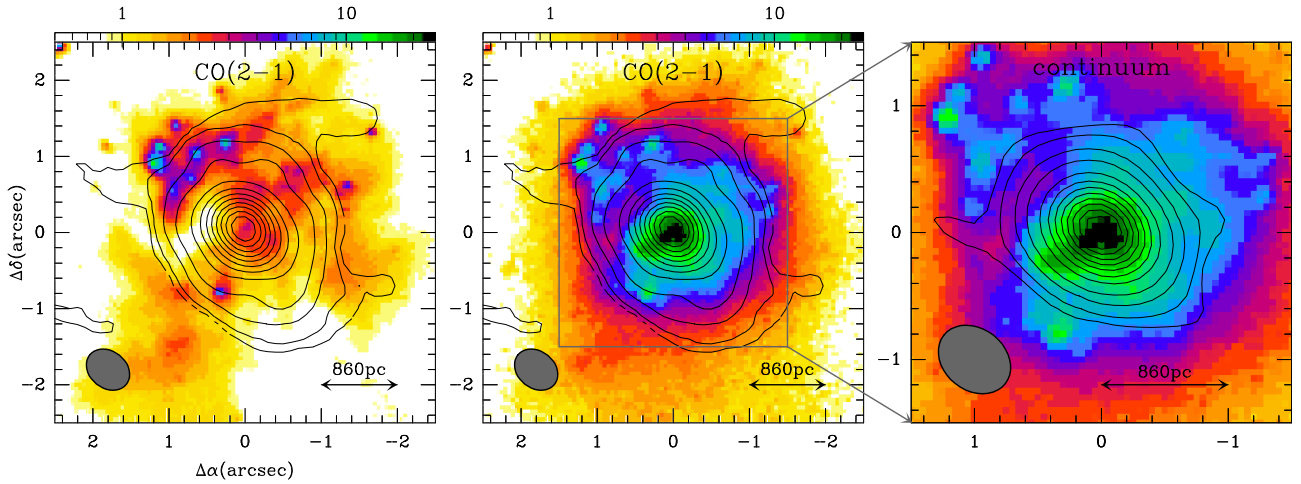


Fig. 13. *Left panel:* overlay of the CO(2–1) intensity contours (levels as in the left-hand panel of Fig. 12) on the HST optical image of IRAS 17208-0014 obtained in the *F814W* band (color scale as shown in arbitrary units). *Middle panel:* same as *left panel* but with CO contours overlaid on the HST image obtained with NICMOS in the *F160W* band (color scale as shown in arbitrary units). *Right panel:* same as *middle panel* but zooming in on the continuum emission image of IRAS 17208-0014 at 221.1 GHz, in contours (1%, 2%, 5%, 10%, to 90% in steps of 10% of the peak value = $30.4 \text{ mJy beam}^{-1} \sim 250\sigma$), overlaid on the HST NICMOS image. The filled ellipses represent the CO beam size.

the disk emission farther out up to $r \sim 2.2''$ (1.8 kpc). Most of these CO extensions coincide in position with similar features of the $2.2 \mu\text{m}/1.1 \mu\text{m}$ HST color image of Scoville et al. (2000).

If, as discussed by Arribas & Colina (2003), the spiral arms and the most prominent tidal feature of the optical images of the galaxy (e.g., Melnick & Mirabel 1990; Solomon et al. 1997) are assumed to be trailing, gas rotation should be counterclockwise, and the observed CO velocity field would imply that the northeastern side of the disk is the near side. The $(0'', 0'')$ -offset, initially adopted as the nucleus of the galaxy, maximizes the symmetry of the mean-velocity field. It also corresponds to the maximum velocity width (FWHM) measured in the disk, as shown in the right-hand panel of Fig. 12, and, also, to the peak of the continuum emission at 221.1 GHz, as shown in the right-hand panel of Fig. 13. Therefore we adopt this position as the dynamical center of the galaxy.

The average FWHM of the CO line in the disk is $\sim 170 \text{ km s}^{-1}$, and this is lowered to $\sim 150 \text{ km s}^{-1}$ if we exclude the central $r = 0''.3$ (0.2 kpc) of the disk to minimize the effects of beam smearing. This would imply an anomalously high average velocity dispersion of $\sigma \simeq 64 \text{ km s}^{-1}$. However, the same estimate is a factor of two lower if we derive it in the outer disk region ($r > 1''.5$ (1.2 kpc)), an indication that there are unresolved gradients of circular and non-circular motions in the disk. According to the middle panel of Fig. 12, the kinematic major axis of the rotating disk is oriented along $\text{PA} \sim 110^\circ$. However, there are significant departures from circular rotation, identified by wiggles in the velocity field at several locations in the disk.

The left-hand and middle panels of Fig. 13 overlay the CO line intensities on the HST optical and NIR images of IRAS 17208-0014 obtained in the *F814W* and *F160W* bands and published, respectively, by Arribas & Colina (2003) (from program 6346 by PI: K. Borne) and Scoville et al. (2000). The bulk of the CO emission is associated with the compact starburst region, which hosts $\simeq 18$ massive star clusters cataloged by Scoville et al. (2000). Unlike the CO line emission, the mm-continuum emission at 221.1 GHz, yet spatially resolved³, is

mostly restricted to the compact starburst region, as shown in the right-hand panel of Fig. 13.

4.6. IRAS 17208-0014: kinematic modeling

4.6.1. Kinemetry fit: the coplanar solution

As for NGC 1614, we used the CO mean-velocity field of IRAS 17208-0014 to find the best-fit Fourier decomposition of the line-of-sight velocities using kinemetry (Krajinović et al. 2006). Figure 14 shows the radial profiles of the main terms of the Fourier decomposition, and Fig. 15 shows the rotating disk solution of kinemetry and the residuals of the fit. As expected, circular rotation accounted for by the c_1 term is dominant throughout the disk (Fig. 14a). The best-fit geometry for the rotating disk is defined by a position angle $\text{PA} = 113 \pm 3^\circ$ and an inclination $i = 55 \pm 3^\circ$. We also determined $v_{\text{sys}}(\text{HEL}) = 12808 \pm 15 \text{ km s}^{-1}$ as part of the fit. Relative to v_{circ} , non-circular motions (v_{nonc}) are within a 2% to 50% range with a clear trend that shows higher non-circular motions at larger radii (Fig. 14b). Furthermore, based on the sign of the s_1 term, the pattern of the purely radial motions is undefined in the central $r \sim 1''.2$ (1 kpc) region, where the s_1/c_1 ratio shows an oscillating profile compatible with zero. Outside this central region, motions are indicative of a moderate outflow in the radial range $r \sim 1''.2\text{--}1''.9$ (1–1.5 kpc), while they suggest inflow farther out at $r > 1''.9$ (1.5 kpc). Deprojected, these motions would translate into a maximum amplitude of $\leq 25 \text{ km s}^{-1}$. The s_1 term in IRAS 17208-0014 is nevertheless a small fraction ($\leq 0.2\text{--}0.3$) of v_{nonc} in the outer molecular disk ($r > 1''.5$ (0.8 kpc)).

4.6.2. A non-coplanar outflow solution

Overall, similar to NGC 1614, the order of magnitude of the fitted noncircular motions can be explained as due to density waves. However, this scenario, which implicitly assumes that gas is in a coplanar geometry, is unable to explain the order of magnitude or even the asymmetric pattern of the high velocities ascribed to the line wing, as argued below.

³ The continuum emission has a deconvolved size of $0''.3 \times 0''.2$, determined by task UVFIT of GILDAS.

IRAS17208-0014

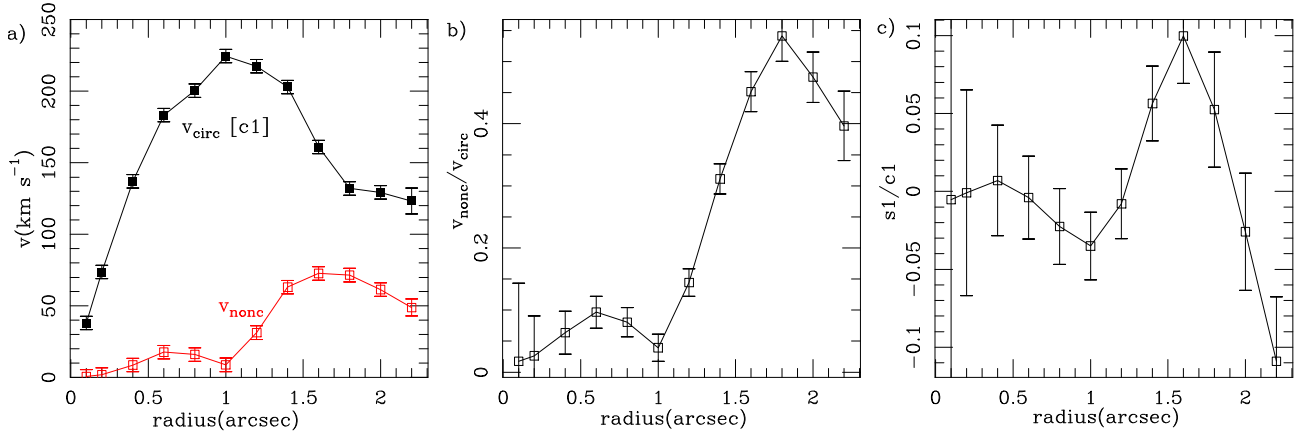


Fig. 14. Same as Fig. 6, but derived from the Fourier decomposition of the velocity field of IRAS 17208-0014.

IRAS17208-0014

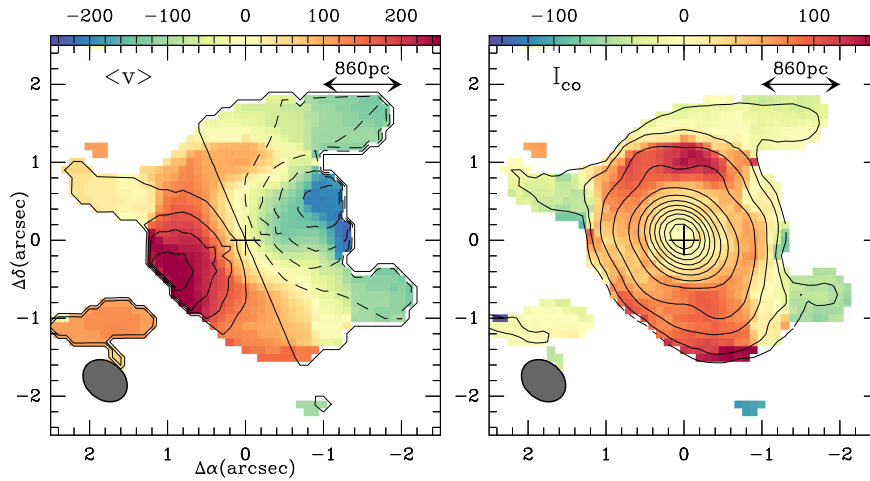


Fig. 15. Same as Fig. 7, but showing here the comparison between the CO(2–1) observations and the best-fit model in IRAS 17208-0014. Contours in the *left panel* span the range -200 km s^{-1} to 200 km s^{-1} in steps of 50 km s^{-1} . The CO(2–1) intensity contours in the *right panel* are as in the *left-hand panel* of Fig. 12. Color scales in both panels are as shown.

The left-hand panel of Fig. 16 shows the major axis p-v plot (along $\text{PA} = 113^\circ$) with the projected best-fit rotation curve superposed. A sizeable fraction of the emission in the line core lies within the virial range determined by a combination of circular rotation ($\sim \pm 230 \text{ km s}^{-1}$), turbulence ($\text{FWHM}/2 \sim \pm 85 \text{ km s}^{-1}$), and an upper limit to the likely contribution from in-plane non-circular motions⁴. While the left-hand panel of Fig. 16 shows that the model, limited by beam smearing effects, may have underestimated the rotation curve gradient in the central $r \leq 0''.5$ (0.4 kpc) region, a hypothetically steeper rotation curve would nevertheless fail to explain the line wing feature: the stark asymmetry of the line wing, only detected at blue velocities, argues against rotational support as an explanation of high velocities. Furthermore, as illustrated best in the right-hand panel of Fig. 16, with the achieved spatial resolution we locate the line wing feature in a quadrant of the p-v plot that is formally assigned to gas in (coplanar) counter-rotation. Nevertheless, the coexistence of two opposite spin gas components at the same radii is highly unlikely because of the intrinsic dissipative nature of the gas.

The alternative non-coplanar solution for the line wing in IRAS 17208-0014 can be used to invoke either inflow or outflow, depending on the adopted geometry. However, the detection by Arribas et al. (2014) of a similar, yet less extreme, blueshifted $\text{H}\alpha$ component in IRAS 17208-0014 favors the outflow scenario for the line wing, similar to the case of NGC 1614 discussed in Sect. 4.3. In addition, the atomic and molecular outflows seen, respectively, in the Na I D line (Rupke & Veilleux 2013) and in the OH line (Sturm et al. 2011) give further support to the outflow scenario as an explanation for the CO extreme velocities in IRAS 17208-0014.

5. Basic properties of the molecular outflows of NGC 1614 and IRAS 17208-0014

5.1. Morphology

Figure 17 shows the CO intensity maps of the molecular outflows in NGC 1614 and IRAS 17208-0014, derived by integrating the emission of the line wing components defined, respectively, in Sects. 4.1 and 4.4. We cannot rule out that emission at lower radial velocities apparently within the virial range is not

⁴ This amounts to $\pm 115 \text{ km s}^{-1}$ in IRAS 17208-0014.

IRAS17208–0014

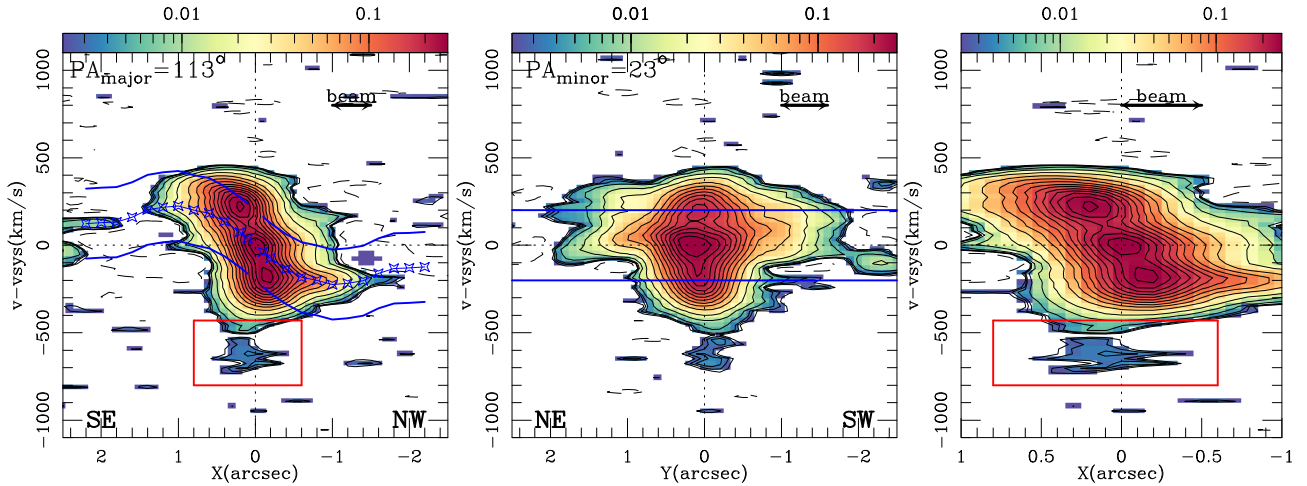


Fig. 16. *Left panel:* the (p-v) plot taken along the kinematic major axis ($PA = 113^\circ$) of IRAS 17208-0014. As in Fig. 8, we delineate the (projected) rotation curve and the allowed virial range around it. Similarly, we delimit the region where emission is detected from the line wing. *Middle panel:* the p-v plot taken along the kinematic minor axis ($PA = 23^\circ$). As in Fig. 8, the allowed virial range is delimited by the blue curves. *Right panel:* same as *left panel* but zooming in on the central $\pm 1''$ region around the center. In all panels, contour levels are -2σ , 2σ , 2.5σ , 3σ , 5σ , 10σ , 20σ , to 220σ in steps of 20σ with $1\sigma = 1.2 \text{ mJy beam}^{-1}$. The velocity scale is relative to v_{sys} . The spatial scales (X and Y) are relative to the dynamical center. We highlight the spatial resolution (beam size) achieved with UN weighting in each panel.

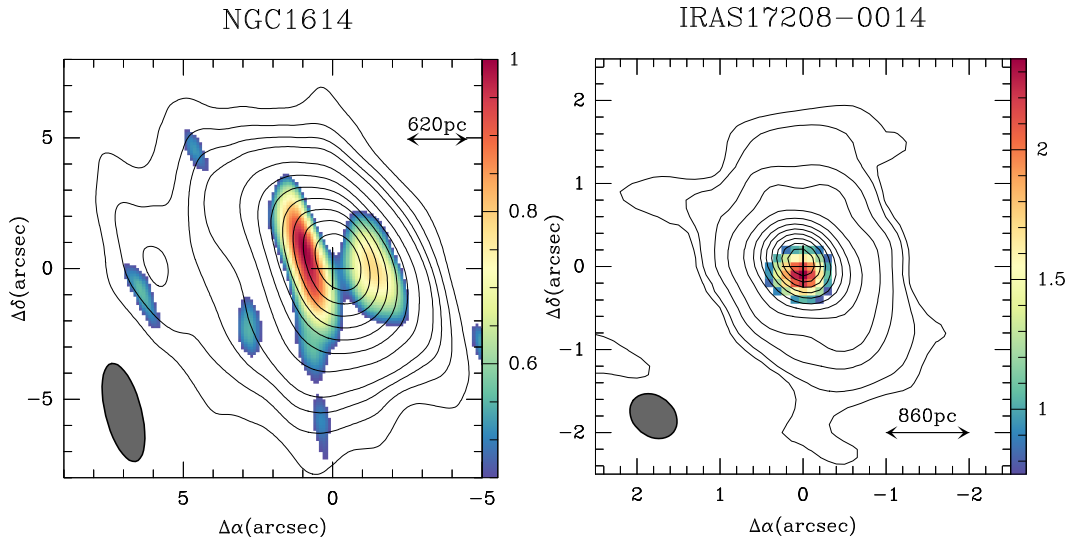


Fig. 17. *Left panel:* overlay of the CO(1–0) intensity contours of the disk of NGC 1614, obtained by integrating the emission of the NA weighting dataset inside the line core, on the intensity map of the molecular outflow (in color), obtained by integrating the emission inside the line wing region. The two velocity intervals are defined in Sect. 4.1. Color scale spans the range $[5\sigma, 11\sigma]$, and contour levels are: 5%, 10%, 15%, 20%, to 90% in steps of 10% of the peak value $= 38 \text{ Jy km s}^{-1} \text{ beam}^{-1}$. *Right panel:* same as *left panel* but obtained from the UN weighting dataset of IRAS 17208-0014. The color scale spans the range $[5\sigma, 15\sigma]$, and contour levels are 1%, 2%, 5%, 10%, to 90% in steps of 10% of the peak value $= 127 \text{ Jy km s}^{-1} \text{ beam}^{-1}$. The two velocity intervals are defined in Sect. 4.4.

coming also from outflowing gas seen at a larger angle relative to the line of sight. However, we purposely adopt here the most conservative definition of the outflows by restricting their velocity ranges to the most extreme values associated with the line wings (see however discussion in Sect. 5.4).

The molecular outflow in NGC 1614 consists mainly of two barely resolved knots of emission located close to the nucleus along $PA \sim 90^\circ$ at $(\Delta\alpha, \Delta\delta) = (+0''.8 \sim 250 \text{ pc}, 0'')$ and $(-1''.5 \sim -470 \text{ pc}, 0'')$ (see the left-hand panel of Fig. 17). The east (west) knot corresponds to the blueshifted (redshifted) lobe of the outflow. The knots are bridged by lower level emission at the center. This morphology is reminiscent of a biconical outflow uniformly filled by the outflowing gas. Overall, the bulk of the molecular outflow is cospatial with the $2''$ -diameter

$Pa\alpha$ star-forming ring imaged by Alonso-Herrero et al. (2001). However, the $H\alpha$ emission coming from the blueshifted lobe of the outflow, identified by Bellocchi et al. (2012), extends farther out up to $r \sim 5''$ (1.6 kpc) on the eastern side of the disk. In this region, there is tentative evidence of outflowing CO emission that stems from a number (~ 4) of clumps. The velocity range of the outflow is comparable in CO and $H\alpha$: the approaching outflow lobe is blueshifted by $\sim 200\text{--}500 \text{ km s}^{-1}$ relative to v_{sys} in both tracers.

The molecular outflow in IRAS 17208-0014, identified as a blueshifted component, is associated with an off-centered knot of barely resolved emission located at $(\Delta\alpha, \Delta\delta) = (0'', -0''.2 \sim -160 \text{ pc})$ (see the right-hand panel of Fig. 17). Within the errors this coincides with the position of the peak H_2 emission mapped

Table 1. Molecular outflow properties.

Sources	R_{out} (pc)	V_{out} (km s ⁻¹)	M_{out} (M_{\odot})	\dot{M}_{out} (M_{\odot} yr ⁻¹)	$\frac{\dot{M}_{\text{out}}}{SFR}$ –	L_{out} (L_{\odot})	$\frac{L_{\text{out}}}{L_{\text{SNe}}}$ –	$\frac{L_{\text{out}}}{L_{\text{AGN}}}$ –	\dot{P}_{out} (g cm s ⁻²)	$\frac{\dot{P}_{\text{out}}}{L_{\text{bol}}/c}$ –	$\frac{\dot{P}_{\text{out}}}{L_{\text{AGN}}/c}$ –
NGC 1614	560	360	3.2×10^7	40	0.8	6.5×10^8	0.06	$>0.05^a$	1.4×10^{35}	1.9	$>65^a$
IRAS 17208	160	600	4.6×10^7	330	1.4^b 2.0^d	1.6×10^{10}	0.4^b 0.6^d	$>6^c$ 0.02^e	1.6×10^{36}	5	$>5 \times 10^{3c}$ 17^e

Notes. All properties are derived for the line wing components as defined in Sects. 4.1 and 4.4 assuming $\alpha = 33^\circ$ and 35° in Eqs. (1), (3), and (4) for NGC 1614 and IRAS 17208-0014, respectively. Outflow mass rates, momentum rates, and kinetic luminosities have uncertainties of ± 0.34 dex, ± 0.36 dex, and ± 0.40 dex, respectively. The mass, momentum, and energy loading factors have associated uncertainties of ± 0.43 dex. See Sect. 5.3 for details. ^(a) Derived assuming $L_{\text{AGN}}^{\text{NGC 1614}} < 1.3 \times 10^{10} L_{\odot}$ (Pereira-Santaella et al., in prep.). ^(b) Derived assuming $SFR = 240 M_{\odot} \text{ yr}^{-1}$. ^(c) Derived assuming $L_{\text{AGN}}^{\text{IRAS 17208}} < 2.4 \times 10^9 L_{\odot}$ (González-Martín et al. 2009). ^(d) Derived assuming $SFR = 0.7 \times 240 = 168 M_{\odot} \text{ yr}^{-1}$. ^(e) Derived assuming $L_{\text{AGN}}^{\text{IRAS 17208}} \sim 7.2 \times 10^{11} L_{\odot}$ (Aalto et al. 2015b.).

by Medling et al. (2014), attributed to shocked gas at the base of an outflow coming from the nucleus of one of the two stellar disks (Medling et al. 2015). In contrast, the neutral atomic outflow traced by the blueshifted NaI D absorption comes from a wide angle ($\geq 50^\circ$) and spatially extended component (up to $r \geq 2'' \sim 1.6$ kpc in the plane of the sky) (Rupke & Veilleux 2013). Overall, the morphology of the atomic outflow is elongated along the CO kinematic major axis with hardly any extension along the minor axis, mimicking a wide angle (single) conical outflow. The CO outflow shows radial velocities similar to those measured for the atomic gas in the inner $r \sim 1''$ (0.8 kpc): velocities are blueshifted by ~ 600 km s⁻¹ relative to v_{sys} in both tracers. However, the (blueshifted) velocities of the H₂ outflow measured by Medling et al. (2015) are \sim a factor of 5 lower than the CO values. In Sect. 5.4 we propose a redefinition of the line wing velocities, which results in a change in the morphology, mass, and energetics of the CO outflow.

5.2. Mass, energy, and momentum rates

To quantify the mass load budget ($\dot{M}_{\text{out}} \equiv dM_{\text{out}}/dt$), we use the expression

$$\dot{M}_{\text{out}} = 3 \times V_{\text{out}} \times M_{\text{out}}/R_{\text{out}} \times \tan(\alpha), \quad (1)$$

where M_{out} is the molecular gas mass of the outflow, R_{out} is its (projected) radial size, and V_{out} is the (projected) velocity of the outflowing gas. We also have to assume a certain geometry given by the angle α , which stands for the angle between the outflow and the line of sight. Equation (1) assumes a conical outflow uniformly filled by the outflowing gas (Maiolino et al. 2012; Cicone et al. 2014).

Alternatively, in the case of a single explosive (not continuous) event, an estimate of the outflow rate can be derived from

$$\dot{M}_{\text{out}} = V_{\text{out}} \times M_{\text{out}}/R_{\text{out}} \times \tan(\alpha), \quad (2)$$

where the ratio $(V_{\text{out}}/R_{\text{out}})^{-1}$ represents the dynamical time required for the gas to reach its present location. The outflow rate from Eq. (2) is one third of the value derived from Eq. (1).

Equation (1) was used by Cicone et al. (2014) to study the properties of the molecular outflows in their compiled sample of galaxies. In the case of NGC 1614, the observed morphology of the outflow favors the biconical filled outflow scenario, and we also adopt here Eq. (1) in IRAS 17208-0014 for consistency and to facilitate the comparison with the work of Cicone et al. (2014).

The kinetic luminosity (L_{out}) and momentum rate ($\dot{P}_{\text{out}} \equiv dP_{\text{out}}/dt$) of the outflows are derived, respectively, from Eqs. (3) and (4), as follows

$$L_{\text{out}} = 1/2 \times \dot{M}_{\text{out}} \times (V_{\text{out}}/\cos(\alpha))^2 \quad (3)$$

$$\dot{P}_{\text{out}} = \dot{M}_{\text{out}} \times V_{\text{out}}/\cos(\alpha). \quad (4)$$

Table 1 lists the values of M_{out} , V_{out} , and R_{out} used to calculate \dot{M}_{out} , L_{out} , and \dot{P}_{out} in NGC 1614 and IRAS 17208-0014. The masses M_{mol} , which include the mass of helium, were calculated from the CO data cubes by integrating the emission of the lines in the line wings and assuming a conservatively low CO-to-H₂ conversion factor for the CO(1–0) line, which is typical of mergers: $\sim 1/5$ of the MW value; i.e., we adopt $X_{\text{CO}} = 1/5 \times 2 \times 10^{20} \text{ cm}^{-2} (\text{K km s}^{-1})^{-1}$ (Downes & Solomon 1998; Tacconi et al. 2008; Daddi et al. 2010; Genzel et al. 2010; Bolatto et al. 2013a). For IRAS 17208-0014, we adopt a 2–1/1–0 brightness temperature ratio of 1 to derive M_{out} from the CO(2–1) integrated flux.

The implied outflow rates given by Eq. (1) are $\dot{M}_{\text{out}} \sim 62 \times \tan(\alpha) M_{\odot} \text{ yr}^{-1}$ in NGC 1614, and $\sim 510 \times \tan(\alpha) M_{\odot} \text{ yr}^{-1}$ in IRAS 17208-0014. Assuming that the outflow in NGC 1614 is perpendicular to the main disk, a geometry suggested by the observed kinematics discussed in Sect. 4.1, $\alpha = i = 33^\circ$, then $\dot{M}_{\text{out}} \sim 40 M_{\odot} \text{ yr}^{-1}$. We have discarded the coplanar solution for the IRAS 17208-0014 outflow ($\alpha = 90^\circ - i = 35^\circ$, with $i = 55^\circ$) in Sect. 4.6, but its geometry is less well constrained. The observed kinematics nevertheless suggest that the approaching cone is not perpendicular to the disk ($\alpha < i = 55^\circ$). We therefore adopt 35° in the following as an indicative upper limit to α in IRAS 17208-0014, which implies that $\dot{M}_{\text{out}} \sim 330 M_{\odot} \text{ yr}^{-1}$.

5.3. Powering sources of the molecular outflows: SF or AGN-driven?

To investigate what the likely drivers of the observed molecular outflows are (star formation and/or AGN feedback), we derived the mass, energy, and momentum loading factors. These are defined, respectively, as: 1) the ratio of \dot{M}_{out} to the integrated SFR (\dot{M}_{out}/SFR); 2) the ratio of L_{out} to the estimated luminosity of the AGN ($L_{\text{out}}/L_{\text{AGN}}$) and to the total kinetic luminosity injected by supernova explosions ($L_{\text{out}}/L_{\text{SNe}}$); and 3) the ratio of \dot{P}_{out} to the total momentum rate transferred either by the AGN photons ($\dot{P}_{\text{out}}/(L_{\text{AGN}}/c)$) or by all the photons ($\dot{P}_{\text{out}}/(L_{\text{bol}}/c)$). The kinetic luminosity due to supernovae is estimated as $L_{\text{SNe}} (\text{erg s}^{-1}) \sim 7 \times 10^{41} SFR (M_{\odot} \text{ yr}^{-1})$ (Veilleux et al. 2005). We evaluate $L_{\text{bol}} \sim L_{\text{IR}}$ in NGC 1614 and

Table 2. Re-evaluation of the molecular outflow properties in IRAS 17208-0014.

Source	R_{out} (pc)	V_{out} (km s ⁻¹)	M_{out} (M_{\odot})	\dot{M}_{out} (M_{\odot} yr ⁻¹)	$\frac{\dot{M}_{\text{out}}}{SFR}$ –	L_{out} (L_{\odot})	$\frac{L_{\text{out}}}{L_{\text{SNe}}}$ –	$\frac{L_{\text{out}}}{L_{\text{AGN}}}$ –	\dot{P}_{out} (g cm s ⁻²)	$\frac{\dot{P}_{\text{out}}}{L_{\text{bol}}/c}$ –	$\frac{\dot{P}_{\text{out}}}{L_{\text{AGN}}/c}$ –
IRAS 17208	160	500	2×10^8	1200	5 ^a	4×10^{10}	1 ^a	$>15^b$	4.8×10^{36}	15	$>1.5 \times 10^{4b}$
	–	–	–	–	7 ^c	–	1.4 ^c	0.05 ^d	–	–	51 ^d

Notes. New properties derived for the line wings as defined in Sect. 5.4 assuming $\alpha = 35^\circ$. Outflow mass rates, momentum rates, and kinetic luminosities have uncertainties of ± 0.34 dex, ± 0.36 dex, and ± 0.40 dex, respectively. The mass, momentum, and energy loading factors have associated uncertainties of ± 0.43 dex. See Sect. 5.3 for details. ^(a) Derived assuming $SFR = 240 M_{\odot} \text{ yr}^{-1}$. ^(b) Derived assuming $L_{\text{AGN}}^{\text{IRAS 17208}} < 2.4 \times 10^9 L_{\odot}$ (González-Martín et al. 2009). ^(c) Derived assuming $SFR = 0.7 \times 240 = 168 M_{\odot} \text{ yr}^{-1}$. ^(d) Derived assuming $L_{\text{AGN}}^{\text{IRAS 17208}} \sim 7.2 \times 10^{11} L_{\odot}$ (Aalto et al. 2015b).

$L_{\text{bol}} \sim 1.15 \times L_{\text{IR}}$ in IRAS 17208-0014, in line with the prescriptions adopted by Veilleux et al. (2009) and Cicone et al. (2014) for luminous and ultraluminous starbursts.

We have explored a range of values for L_{AGN} . In NGC 1614 Herrero-Illana et al. (2014) estimated an upper limit to the non-detected AGN in this source $L_{\text{AGN}}/L_{\text{bol}} < 10\%$, i.e., $L_{\text{AGN}} < 4.5 \times 10^{10} L_{\odot}$. In the following we nevertheless adopt the more restrictive upper limit to the AGN luminosity in NGC 1614 derived by Pereira-Santaella et al. (in prep.), who combined the continuum observations at $435 \mu\text{m}$ of ALMA (Xu et al. 2015) and the high-resolution MIR observations (at $24.5 \mu\text{m}$) done with the CanariCam instrument of the GTC, to do a SED fitting of the nuclear emission in a $0''.5$ -aperture: $L_{\text{AGN}} < 1.3 \times 10^{10} L_{\odot} \sim 3\% L_{\text{bol}}$. In IRAS 17208-0014, the values discussed in the literature for L_{AGN} span a wide range from $L_{\text{AGN}}/L_{\text{bol}} < 0.01\%$, i.e., $L_{\text{AGN}} < 2.4 \times 10^9 L_{\odot}$, as determined by González-Martín et al. (2009), based on X-ray observations, up to $L_{\text{AGN}}/L_{\text{bol}} \sim 0.3$; i.e., $L_{\text{AGN}} \sim 7.2 \times 10^{11} L_{\odot}$, as derived by Aalto et al. (2015b), based on the modeling of the vibrationally excited HCN emission detected in the nucleus. Table 1 lists the values obtained for the loading factors as defined above.

We have evaluated the uncertainties associated with the quantities listed in Table 1 (and also those listed in Table 2 and the related Fig. 20). Outflow mass rates, momentum rates, and kinetic luminosities have estimated uncertainties of ± 0.34 dex, ± 0.36 dex, and ± 0.40 dex, respectively. These include the ± 0.3 dex uncertainties on the mass estimates caused by calibration and conversion factors, as well as the errors on the sizes, the inclinations, and the velocities of the outflow, contributing ± 0.1 dex each. The corresponding mass, momentum, and energy loading factors have associated uncertainties of ± 0.43 dex, assuming that uncertainties on SFR and L_{SNe} , derived from L_{IR} , are of ± 0.17 dex. The errors on L_{AGN} (and those derived for the magnitudes that depend on them) are reflected in the upper limit and wide range of values available for NGC 1614 and IRAS 17208-0014, respectively. Overall, these error estimates are in line with the ones commonly derived in the literature for observations of molecular outflows similar to those presented in this work (see, e.g., Cicone et al. 2014).

An inspection of the results listed in Table 1 leads to the following conclusions regarding the nature of the powering sources of the outflows in NGC 1614 and IRAS 17208-0014.

NGC 1614

The bulk of the total SFR comes from the nuclear ring ($\sim 50 M_{\odot} \text{ yr}^{-1}$; Alonso-Herrero et al. 2001; U et al. 2012). In this region, where the molecular outflow is detected, SFR is comparable to \dot{M}_{out} . Furthermore, the energy and momentum requirements of the outflow, measured by $L_{\text{out}}/L_{\text{SNe}}$ and $\dot{P}_{\text{out}}/(L_{\text{bol}}/c)$, can be met by the star formation activity of the ring, assuming a conservatively low coupling efficiency ($\sim 6\%$)

for the energy injected by supernovae explosions and a very low momentum boost (~ 1.9) for all the photons (which come mainly from star formation). Similarly, based on the most restrictive limit on L_{AGN} , the putative AGN in NGC 1614 could also drive the outflow, although in this scenario the momentum boost of AGN photons should be ≥ 60 . This factor is nevertheless at the higher end of the range of values predicted by AGN feedback models under the assumption that molecular outflows are energy-conserving: $\dot{P}_{\text{out}}/(L_{\text{AGN}}/c) \sim 10\text{--}50$ (Faucher-Giguère & Quataert 2012). In summary, both star formation and AGN activity could cooperate to drive the molecular outflow in this source. The geometry of the line wing emission described in Sect. 4.1 indicates that the outflow axis is nearly perpendicular to the rotating disk, and it is spatially extended. While we cannot exclude that an AGN can also contribute to launch the outflow in a direction perpendicular to the disk, that the region in the disk where the outflow is detected extends on scales $\sim 0.5\text{--}1$ kpc suggests that star formation might be its main driving agent.

IRAS 17208-0014

As in NGC 1614, the integrated $SFR \sim 240 M_{\odot} \text{ yr}^{-1}$, derived from a star-formation-dominated IR luminosity using a Chabrier IMF and the prescription of Kennicutt (1998), is comparable to \dot{M}_{out} . Furthermore, the energy requirements of the outflow can only be met by assuming a significantly high coupling efficiency ($\sim 40\%$) for the energy injected by supernovae. The momentum boost factor is nevertheless moderate (~ 5) if all photons are considered to contribute. In this scenario where most of the bolometric luminosity comes from star formation ($L_{\text{AGN}} < 2.4 \times 10^9 L_{\odot}$; González-Martín et al. 2009), the AGN power falls short of accounting for the luminosity and momentum rate of the molecular outflow by large factors. However, if the limit on the AGN luminosity is as high as $\sim 30\%$ of L_{bol} (Aalto et al. 2015b), i.e., a factor of three higher than estimated from MIR diagnostics by Rupke & Veilleux (2013), this hidden AGN would be able to explain the molecular outflow with a low coupling efficiency, $L_{\text{out}}/L_{\text{AGN}} \sim 0.02$, and a moderate momentum boost factor, $\dot{P}_{\text{out}}/(L_{\text{AGN}}/c) \sim 17$. The geometry of the line wing emission discussed in Sect. 4.4, which indicates that the outflow axis is not perpendicular to the large-scale rotating structure, suggests that the outflow is launched by a non-coplanar disk that hosts either a compact starburst and/or an AGN. A merger episode could explain a *random* orientation of the inner circumnuclear gas disk relative to the larger scale disk. We describe in Sect. 5.4 an alternative (less restrictive) definition of the velocities of the outflow in IRAS 17208-0014 and the implications thereof.

5.4. An extreme AGN-driven outflow in IRAS 17208-0014?

The molecular outflow axis in IRAS 17208-0014 is significantly tilted relative to the kinematic major axis of the rotating disk,

IRAS17208-0014

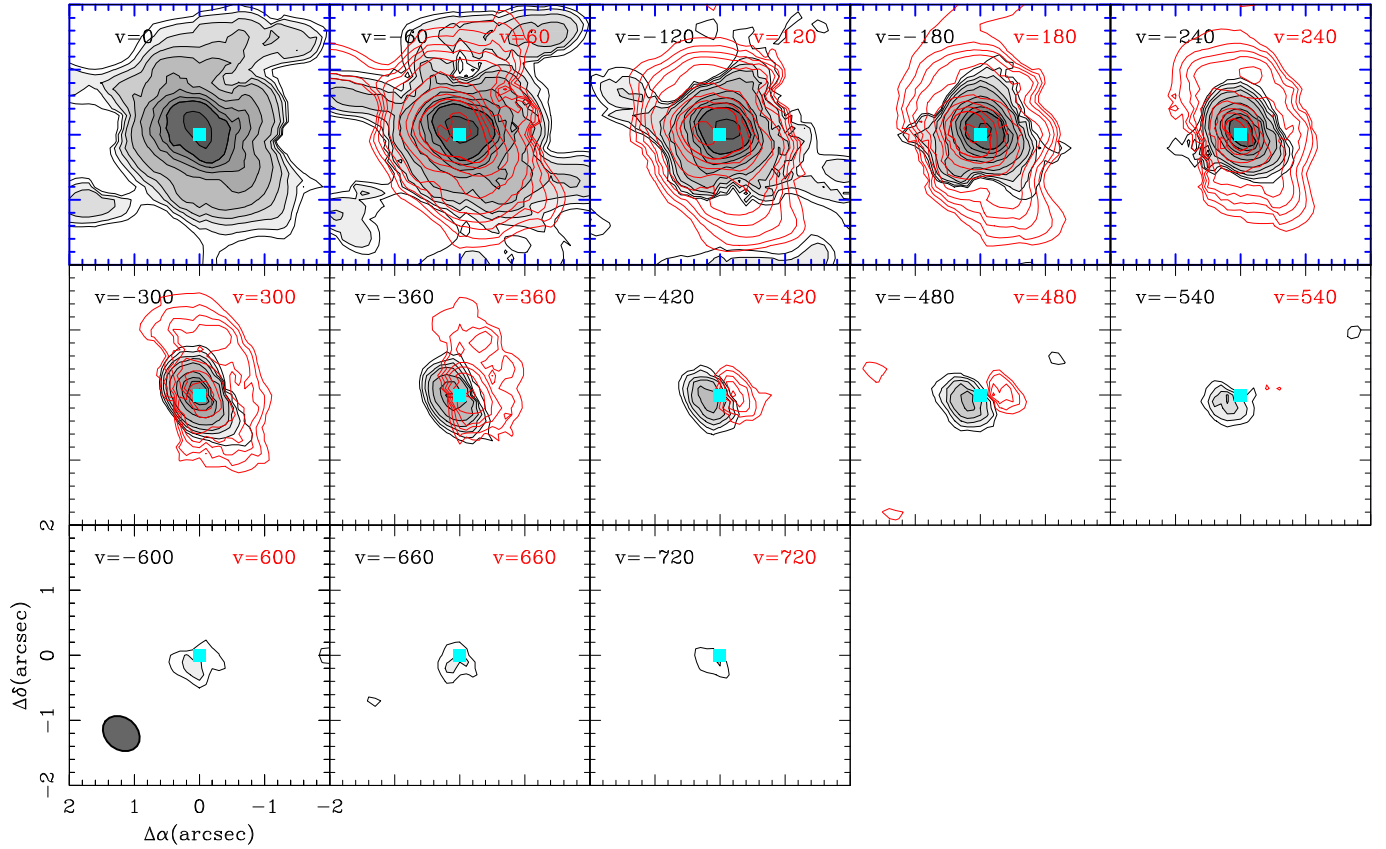


Fig. 18. CO(2-1) velocity-channel maps of IRAS 17208-0014 obtained after subtracting the rotation curve model, as discussed in Sect. 5.4. Contours, symbols, and scales are the same as in Fig. 9. The dividing line between the line core and the line wing is here shifted to $|v - v_{\text{sys}}| \sim 300 \text{ km s}^{-1}$.

as discussed in Sect. 4.6.1. To evaluate the intrinsic velocity boost in the outflow relative to the rotating frame of the disk in IRAS 17208-0014, we obtained a new version of the data cube by subtracting the rotation curve model derived in Sect. 4.6.1⁵ at each pixel.

Figure 18 shows the same velocity-channel maps as are displayed in Fig. 9 but after subtracting the rotation curve. This figure highlights that the decoupling of the outflow component relative to the rotating disk, which is revealed by the apparent reversal of the respective kinematic major axes, is identified by visual inspection at $|v - v_{\text{sys}}| \geq 300 \text{ km s}^{-1}$. This result significantly expands the velocity range of the line wings, here defined relative to the rotating frame of the disk, compared to the description of Sect. 4.4. In particular, the redshifted counterpart of the outflow, which remained unnoticed in Fig. 9, is now identified in the range $v - v_{\text{sys}} = [+300, +540] \text{ km s}^{-1}$ (see Fig. 18).

To quantify the effect of the decoupling, we show the centroids of CO emission in IRAS 17208-0014 in Fig. 19, as well as the PA and r profiles obtained for the velocity channels shown in Fig. 18. As illustrated by the middle panel of Fig. 19, the value of PA for $|v - v_{\text{sys}}| \leq 200 \text{ km s}^{-1}$ is $\text{PA}_{\text{core}} = 107 \pm 8^\circ$, i.e., close to the PA of the rotating disk derived in Sect. 4.6.1. This indicates that the rotation pattern is still present in this velocity range of the kinematically rescaled data, reflecting that

the model underestimates the intrinsic rotation curve, as already mentioned in Sect. 4.6.2. In stark contrast, the PA values for the centroids at $|v - v_{\text{sys}}| \geq 300 \text{ km s}^{-1}$ oscillate around a weighted mean of $\text{PA}_{\text{wing}} = 308^\circ \pm 5^\circ$, revealing a true reversal of the kinematic major axis of the outflow relative to the disk. We conclude that the evidence of a kinematic decoupling, reflected in the measured difference $\text{PA}_{\text{wing}} - \text{PA}_{\text{core}} \sim 201 \pm 9^\circ$ is a significant $\geq 20\sigma$ result. Furthermore, the line wing channels show slightly lower r values ($\sim 0''.2$ (160 pc)) compared to the line core defined in Sect. 4.4 (up to $\sim 0''.3$ (240 pc); see the right-hand panel of Fig. 11).

Table 2 lists the new values obtained for the loading factors of the outflow in IRAS 17208-0014 derived from the redefined velocity range. The enhanced mass loading factor ($\dot{M}_{\text{out}}/SFR \sim 5-7$) cannot be easily explained by star formation activity alone. From the observational point of view, mass loading factors exceeding unity are rarely seen in actively star-forming mergers, in particular in the range $SFR > 100 M_\odot \text{ yr}^{-1}$ applicable to IRAS 17208-0014 (Rupke et al. 2005b; Sturm et al. 2011). Moreover, Table 2 shows that the required efficiency for converting the energy injected by supernovae into mechanical energy of the outflow would be unrealistically high ($\geq 100\%$). Characteristic values defined observationally for the energy conversion efficiency oscillate between 10% and, at most, 50% (Veilleux et al. 2005; Veilleux 2008). By contrast, a putative hidden AGN of $L_{\text{AGN}} \sim 7.2 \times 10^{11} L_\odot$ would be a viable driving agent of the molecular outflow in this source. This scenario would require a moderate coupling efficiency,

⁵ We note that applying the same correction to the data cube of NGC 1614 (results are not shown here) had no significant effect on the velocity pattern of the outflow because the latter is oriented close to the minor axis of the rotating disk, as discussed in Sect. 4.3.1.

IRAS17208-0014

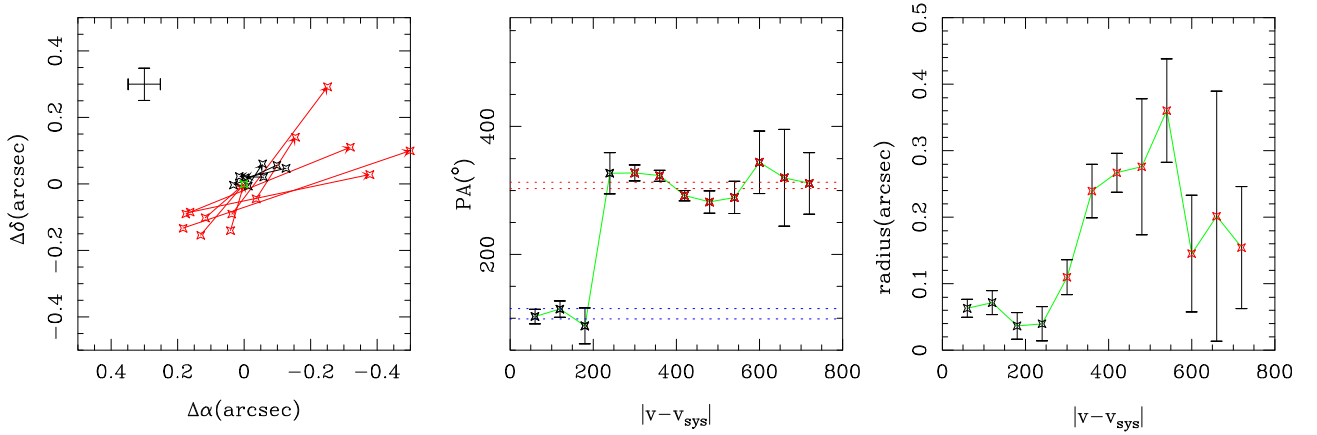


Fig. 19. Same as Fig. 11 but for the centroids of CO(2–1) emission in IRAS 17208-0014 derived from the data cube after subtraction of the rotation curve. Red is used for velocity channels of the line wings as redefined in Sect. 5.4. Black is used for the line core.

$L_{\text{out}}/L_{\text{AGN}} \sim 0.05$, and an admittedly high momentum boost factor, $\dot{P}_{\text{out}}/(L_{\text{AGN}}/c) \sim 51$. These values are nevertheless in line with those commonly derived in other AGN-driven outflows (Cicone et al. 2014).

Independent evidence of a possible hidden AGN in IRAS 17208-0014 can be found in the new ALMA observations of the ($v_2 = 1$) 4–3 HCN vibrational line emission (Aalto et al. 2015b). IRAS 17208-0014 is part of a family of (U)LIRGs where the emission in vibrationally excited lines seems to emerge from buried, compact ($r < 17\text{--}70$ pc) nuclei that have very high implied MIR surface brightness $> 5 \times 10^{13} L_{\odot} \text{ kpc}^{-2}$. These nuclei are likely powered by accreting supermassive black holes (SMBHs) and/or hot (> 200 K) extreme starbursts. The reported extreme surface brightness of the hidden core in IRAS 17208-0014 would be able to excite the HCN vibrational line by intense $14 \mu\text{m}$ emission. The new observations of IRAS 17208-0014 presented by Aalto et al. (2015b) also show evidence of an extreme outflow in the dense molecular gas traced by the ground vibrational state ($v = 0$) HCN(4–3) line emission imaged by ALMA.

6. Molecular outflows of NGC 1614 and IRAS 17208-0014 in context

We compiled a sample of 23 nearby galaxies where molecular outflows have been observed and detected to date, taking the sample of 18 objects studied by Cicone et al. (2014) as starting point, complemented here by new data recently obtained in five targets. These additions include two Seyferts (NGC 1433: Combes et al. 2013 and the CND of NGC 1068 \equiv NGC 1068-CND: García-Burillo et al. 2014) and three mergers (the southern nucleus of NGC 3256 \equiv NGC 3256-S: Sakamoto et al. 2014 and Emonts et al. 2014, as well as NGC 1614 and IRAS 17208-0014: this work). We have also included the new outflow parameters derived by Alatalo et al. (2015) in NGC 1266. Figure 20 illustrates the different scaling relations (on logarithmic scale) obtained in an attempt to identify the driving agents of the molecular outflows inside the parameter space probed by the sample.

The new data of NGC 1433, NGC 1068-CND, NGC 1614, and NGC 3256-S follow the correlation between the outflow rate and the AGN luminosity found by Cicone et al. (2014) in their sample, which is an indication that the molecular outflow in these sources can be AGN-driven (left-hand panel of Fig. 20).

The location of IRAS 17208-0014 in the $SFR-L_{\text{AGN}}$ diagram depends critically on the wide range of values for the AGN power discussed in Sect. 5.3. This source follows the correlation if the highest value of L_{AGN} is adopted but it becomes an outlier, like the pure starbursts of Cicone et al. (2014), if the low end of L_{AGN} is assumed.

The middle panel of Fig. 20 shows the outflow rate as a function of the SFR. In this diagram, NGC 1433, NGC 1068-CND, and NGC 3256-S share the location of other AGN-driven outflows as they all depart from the 1:1 line followed by pure starbursts. In contrast, NGC 1614 follows the correlation of pure starbursts, an indication that star formation can also cooperate to drive the outflow in this source. The location of IRAS 17208-0014 in this diagram depends on the value adopted for \dot{M}_{out} : the more extreme loading factors discussed in Sect. 5.4 put it beyond the 2–3:1 line predicted by numerical simulations that include radiative and mechanical feedback in star-forming galaxies (Hopkins et al. 2012; Lagos et al. 2013).

The right-hand panel of Fig. 20 shows the momentum boost factor as a function of the mass-loading factor for the compiled sample. Galaxy outflows in the upper left-hand (lower right-hand) quadrant with momentum-boost factors > 50 (< 50) and mass-loading factors < 2.5 (> 2.5) qualify as star formation (AGN) driven systems. Galaxies lying in the lower left-hand quadrant are mixed systems to the extent that both star formation and AGN can cooperate to drive the outflow in these sources. NGC 1614 is close to this undefined region. Galaxies like NGC 3256-S, which lies in the upper right-hand quadrant, likely require other mechanisms like radio jets to drive the outflow. The location of IRAS 17208-0014 in this diagnostic diagram reflects a range of possible classifications. However, if we assume the properties derived in Sect. 5.4, a hidden AGN is the most likely powering source of the outflow in this source.

7. Summary and conclusions

We have used the PdBI to image the CO emission in two starburst-dominated (U)LIRGs: NGC 1614 and IRAS 17208-0014 with high spatial resolution ($0''.5\text{--}1''.2$). The two targets, classified as mergers in an advanced stage of interaction, are vigorous star-forming systems ($SFR \geq 50\text{--}240 M_{\odot} \text{ yr}^{-1}$), and they present evidence of an outflow in several ISM phases, including the ionized and the neutral gas. The high resolution of

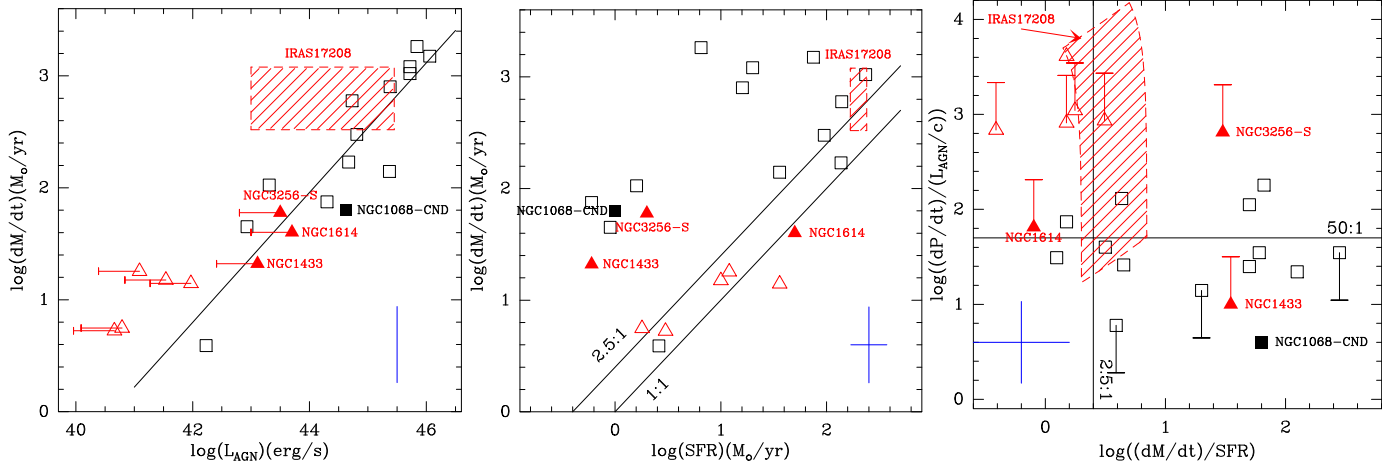


Fig. 20. Scaling relations derived for the molecular outflows observed in the sample of galaxies compiled for this work: outflow mass-loss rate as a function of the AGN bolometric luminosity (*left panel*), outflow mass-loss rate as a function of the SFR (*middle panel*), and momentum boost factor as a function of mass-loading factor (*right panel*). Open symbols identify galaxies from the sample of Ciccone et al. (2014). Open (red) triangles show the data from pure starburst galaxies; open (black) squares identify the data of low and high-luminosity AGNs, where the presence of an AGN has been securely detected. Filled symbols identify the data from the new additions discussed in Sect 6: NGC 1433 (Combes et al. 2013), the CND of NGC 1068 \equiv NGC 1068-CND (García-Burillo et al. 2014), the southern nucleus of NGC 3256 \equiv NGC 3256-S (Sakamoto et al. 2014; Emonts et al. 2014), as well as NGC 1614 and IRAS 17208-0014 (this work). The hashed polygons show the allowed range of values for IRAS 17208-0014 in all the panels. The line in the *left panel* shows the linear fit to the AGN sample. Lines in the *middle* and *right panels* illustrate different values of the mass and momentum loading factors. One-sided errorbars identify upper and lower limits on the values plotted in all the panels. In the bottom right of the *left* and *middle panels* and in the bottom left of the *right panel* we show 1σ errorbars that are representative of the whole sample used in this work (see discussion in Sect. 5.3 and Ciccone et al. 2014).

the PdBI observations used in this work are instrumental in constraining the geometry, as well as the mass, momentum, and energy budgets of the molecular outflows discovered in NGC 1614 and IRAS 17208-0014.

We summarize the main results of our study as follows.

- The CO(1–0) emission in NGC 1614 has been mapped with a spatial resolution of $1''.5 \times 0''.8$. The bulk of the CO emission comes from a spatially resolved ($3.4 \text{ kpc} \times 2.5 \text{ kpc}$), lopsided molecular disk. The disk shows an arc-like feature that runs from the northeastern to the southeastern side. A sizable fraction of the CO emission originates in the 600 pc-diameter star-forming ring of supergiant HII regions, which is associated with a young starburst ($SFR \sim 50 M_{\odot} \text{ yr}^{-1}$). Fainter CO emission is also detected and extends farther out to the east up to $r \sim 1.9 \text{ kpc}$.
- The CO emission in NGC 1614 extends over a symmetric $\sim 900 \text{ km s}^{-1}$ -wide velocity span. The bulk of the emission comes from a more restricted velocity range: $|v - v_{\text{sys}}| \leq 210 \text{ km s}^{-1}$ (the line core). We also detect emission that extends up to $|v - v_{\text{sys}}| \sim 450 \text{ km s}^{-1}$ (the line wings). Emission from the line core shows the signature of rotating disk with a kinematic major axis oriented roughly north-south, as confirmed by a Fourier decomposition of the mean velocity field. In contrast, the kinematic major axis for the line wings is tilted progressively toward the east-west axis, an indication of strong kinematic decoupling of the high-velocity gas. The kinematic pattern of the line wings can be explained by a non-coplanar molecular outflow.
- The molecular outflow in NGC 1614 has a mass of $3.2 \times 10^7 M_{\odot}$ and consists mainly of two knots of emission that are co-spatial with the nuclear star-forming ring. The eastern (western) knot is blue(red)-shifted by $\sim 360 \text{ km s}^{-1}$ on average. The blueshifted velocity ranges of the outflow are comparable in CO and H α . The mass, energy, and momentum budget requirements of the molecular outflow in NGC 1614 can be met by the star formation activity taking place in the ring. The putative AGN in NGC 1614 could also drive the outflow. The geometry of the line wing emission indicates that the outflow axis is nearly perpendicular to the rotating disk, and it is spatially extended on scales $\sim 0.5\text{--}1 \text{ kpc}$. This suggests that star formation is the most likely driving agent of the outflow, although a contribution from a putative AGN cannot be excluded.
- The CO(2–1) emission in IRAS 17208-0014 has been mapped with a spatial resolution $0''.6 \times 0''.5$. The CO emission comes from a spatially resolved ($2.7 \text{ kpc} \times 1.8 \text{ kpc}$) molecular disk. The morphology of the CO disk is similar to the northeast-southwest elongated structure seen in the dust extinction, as derived from the $2.2 \mu\text{m}/1.1 \mu\text{m}$ HST color images. Three fainter protrusions and a detached clump extend the disk emission farther out up to $r \sim 1.8 \text{ kpc}$. The molecular disk feeds a vigorous star formation episode ($SFR \sim 240 M_{\odot} \text{ yr}^{-1}$).
- The CO emission in IRAS 17208-0014 covers a wide and asymmetric velocity range: $v - v_{\text{sys}} = [+450, -750] \text{ km s}^{-1}$. However, up to $\sim 99\%$ of the total emission comes from a narrower velocity range: $v - v_{\text{sys}} \sim [+450, -450] \text{ km s}^{-1}$ (the line core) that shows the characteristic feature of spatially resolved rotating disk with $\text{PA} = 113 \pm 3^\circ$, as determined by a Fourier decomposition of the mean velocity field. Rotation is perturbed by strong non-circular motions. Gas emission from the blueshifted line wing is kinematically decoupled from the disk: its apparent kinematic major axis is virtually reversed. This pattern can be explained by a non-coplanar molecular outflow. This scenario is reinforced after subtracting the rotation curve, which reveals that the kinematic decoupling of the outflow starts at $|v - v_{\text{sys}}| \geq 300 \text{ km s}^{-1}$.
- The molecular outflow in IRAS 17208-0014 has a mass of $2 \times 10^8 M_{\odot}$ and consists of two knots of emission located at $r \sim 160 \text{ pc}$. The southeast (northwest) knot is blue(red)-shifted by $\sim 500 \text{ km s}^{-1}$ on average. The blueshifted velocity

ranges of the outflow are similar in atomic, ionized, and molecular gas. In stark contrast to NGC 1614, the mass, energy, and momentum budget requirements of the molecular outflow in IRAS 17208-0014 cannot be met by its star formation activity. Instead, a putative hidden AGN of $L_{\text{AGN}} \sim 7.2 \times 10^{11} L_{\odot}$ would be a viable driving agent of the molecular outflow in this source. The geometry of the molecular outflow, with an axis that is not perpendicular to the large-scale rotating structure, suggests that the outflow is launched by a non-coplanar disk.

The molecular outflow in NGC 1614 is likely triggered by its vigorous star formation activity, which is mainly concentrated in the 600 pc-diameter nuclear ring of the galaxy. This explains the extended nature of the outflow, but also its orientation, which is roughly orthogonal relative to the large-scale rotating disk. In the case of IRAS 17208-0014, the molecular outflow geometry and energetics can be explained best as driven by an AGN. It is tempting to identify which of the two overlapping nuclear stellar disks discovered in IRAS 17208-0014, which lie $0''.2$ (200 pc) apart and which were recently discovered by Medling et al. (2014), is responsible for launching the outflow in this source. Although our spatial resolution ($0''.5$) is insufficient to precisely locate the origin of the outflow spatially, the observed kinematics can be used to make a tentative identification. Medling et al. (2014) characterize the two rotating stellar disks kinematically: the major axis is oriented at PA $\sim 40^\circ$ for the W nucleus and at PA $\sim 128^\circ$ for the E nucleus. While the PA of the large-scale rotating molecular disk (PA $\sim 113^\circ$) is closer to the orientation of the E disk, the derived molecular outflow axis (PA $\sim 308^\circ$) is, within a 2° tolerance, perpendicular to the W disk. This suggests that the launching mechanism of the molecular outflow in IRAS 17208-0014 lies in a buried AGN associated with the W nucleus. To be obtained with the ALMA interferometer, higher resolution observations are required to unambiguously identify the launching mechanism of the molecular outflow in IRAS 17208-0014.

Acknowledgements. We acknowledge the IRAM staff from the Plateau de Bure and from Grenoble for carrying out the observations and help provided during the data reduction. We used observations made with the NASA/ESA *Hubble* Space Telescope, and obtained from the *Hubble* Legacy Archive. We thank Dr. Anne Medling for sharing information on the absolute coordinates of the stellar nuclear disks of IRAS 17208-0014. S.G.B. thanks the Paris Observatory for its economic support and hospitality during his stay in August 2014. S.G.B. acknowledges support from Spanish grants AYA2010-15169 and from the Junta de Andalucía through TIC-114 and the Excellence Project P08-TIC-03531. S.G.B. and A.L. acknowledge support from MICIN within program CONSOLIDER INGENIO 2010, under grant “Molecular Astrophysics: The *Herschel* and ALMA Era-ASTROMOL” (ref CSD2009-00038). S.G.B., A.U., L.C., and S.A. acknowledge support from Spanish grant AYA2012-32295. F.C. acknowledges the European Research Council for the Advanced Grant Program Num. 267399-Momentum. A.A.H. acknowledges support from the Spanish Plan Nacional grant AYA2012-31447 (partly funded by the FEDER program).

References

Aalto, S., García-Burillo, S., Muller, S., et al. 2012, *A&A*, **537**, A44
Aalto, S., García-Burillo, S., Muller, S., et al. 2015a, *A&A*, **574**, A85
Aalto, S., Costagliola, S. M. F., Gonzalez-Alfonso, E., et al. 2015b, *A&A*, submitted [[arXiv:1504.06824](https://arxiv.org/abs/1504.06824)]
Alatalo, K., Blitz, L., Young, L. M., et al. 2011, *ApJ*, **735**, 88
Alatalo, K., Lacy, M., Lanz, L., et al. 2015, *ApJ*, **798**, 31
Alonso-Herrero, A., Engelbracht, C. W., Rieke, M. J., Rieke, G. H., & Quillen, A. C. 2001, *ApJ*, **546**, 952
Alonso-Herrero, A., Ramos Almeida, C., Esquej, P., et al. 2014, *MNRAS*, **443**, 2766
Arribas, S., & Colina, L. 2003, *ApJ*, **591**, 791
Arribas, S., Colina, L., Bellocchi, E., Maiolino, R., & Villar-Martín, M. 2014, *A&A*, **568**, A14

Bellocchi, E., Arribas, S., & Colina, L. 2012, *A&A*, **542**, A54
Bolatto, A. D., Wolfire, M., & Leroy, A. K. 2013a, *ARA&A*, **51**, 207
Bolatto, A. D., Warren, S. R., Leroy, A. K., et al. 2013b, *Nature*, **499**, 450
Chen, Y.-M., Tremonti, C. A., Heckman, T. M., et al. 2010, *AJ*, **140**, 445
Chung, A., Yun, M. S., Narayanan, G., Heyer, M., & Erickson, N. R. 2011, *ApJ*, **732**, L15
Cicone, C., Feruglio, C., Maiolino, R., et al. 2012, *A&A*, **543**, A99
Cicone, C., Maiolino, R., Sturm, E., et al. 2014, *A&A*, **562**, A21
Cicone, C., Maiolino, R., Gallerani, S., et al. 2015, *A&A*, **574**, A14
Ciotti, L., & Ostriker, J. P. 2007, *ApJ*, **665**, 1038
Colina, L., Lipari, S., & Macchetto, F. 1991, *ApJ*, **379**, 113
Colombo, D., Meidt, S. E., Schinnerer, E., et al. 2014, *ApJ*, **784**, 4
Combes, F., García-Burillo, S., Casasola, V., et al. 2013, *A&A*, **558**, A124
Crenshaw, D. M., Schmitt, H. R., Kraemer, S. B., Mushotzky, R. F., & Dunn, J. P. 2010, *ApJ*, **708**, 419
Daddi, E., Elbaz, D., Walter, F., et al. 2010, *ApJ*, **714**, L118
Dasyra, K. M., & Combes, F. 2012, *A&A*, **541**, L7
Davies, R. I., Maciejewski, W., Hicks, E. K. S., et al. 2014, *ApJ*, **792**, 101
Díaz-Santos, T., Alonso-Herrero, A., Colina, L., et al. 2008, *ApJ*, **685**, 211
Di Matteo, T., Springel, V., & Hernquist, L. 2005, *Nature*, **433**, 604
Di Matteo, T., Colberg, J., Springel, V., Hernquist, L., & Sijacki, D. 2008, *ApJ*, **676**, 33
Downes, D., & Solomon, P. M. 1998, *ApJ*, **507**, 615
Emonts, B. H. C., Piqueras-López, J., Colina, L., et al. 2014, *A&A*, **572**, A40
Faucher-Giguère, C.-A., & Quataert, E. 2012, *MNRAS*, **425**, 605
Feruglio, C., Maiolino, R., Piconcelli, E., et al. 2010, *A&A*, **518**, L155
Feruglio, C., Fiore, F., Maiolino, R., et al. 2013, *A&A*, **549**, A51
Fischer, J., Sturm, E., González-Alfonso, E., et al. 2010, *A&A*, **518**, L41
Gabor, J. M., & Bournaud, F. 2014, *MNRAS*, **441**, 1615
García-Burillo, S., Martín-Pintado, J., Fuente, A., & Neri, R. 2001, *ApJ*, **563**, L27
García-Burillo, S., Usero, A., Alonso-Herrero, A., et al. 2012, *A&A*, **539**, A8
García-Burillo, S., Combes, F., Usero, A., et al. 2014, *A&A*, **567**, A125
Genzel, R., Tacconi, L. J., Gracia-Carpio, J., et al. 2010, *MNRAS*, **407**, 2091
González-Alfonso, E., Fischer, J., Graciá-Carpio, J., et al. 2014, *A&A*, **561**, A27
González-Martín, O., Masegosa, J., Márquez, I., & Guainazzi, M. 2009, *ApJ*, **704**, 1570
Guilloteau, S., & Lucas, R. 2000, in *Imaging at Radio through Submillimeter Wavelengths*, eds. J. G. Mangum, & S. J. E. Radford, *ASP Conf. Ser.*, **217**, 299
Guilloteau, S., Delannoy, J., Downes, D., et al. 1992, *A&A*, **262**, 624
Heckman, T. M., Armus, L., & Miley, G. K. 1990, *ApJS*, **74**, 833
Heckman, T. M., Lehnert, M. D., Strickland, D. K., & Armus, L. 2000, *ApJS*, **129**, 493
Herrero-Illana, R., Pérez-Torres, M. Á., Alonso-Herrero, A., et al. 2014, *ApJ*, **786**, 156
Holt, J., Tadhunter, C. N., & Morganti, R. 2008, *MNRAS*, **387**, 639
Hopkins, P. F., Quataert, E., & Murray, N. 2012, *MNRAS*, **421**, 3522
Hopkins, P. F., Kereš, D., Oñorbe, J., et al. 2014, *MNRAS*, **445**, 581
Ishibashi, W., & Fabian, A. C. 2012, *MNRAS*, **427**, 2998
Iwasawa, K., Sanders, D. B., Teng, S. H., et al. 2011, *A&A*, **529**, A106
Kennicutt, R. C., Jr. 1998, *ApJ*, **498**, 541
King, A. 2003, *ApJ*, **596**, L27
König, S., Aalto, S., Muller, S., Beswick, R. J., & Gallagher, J. S. 2013, *A&A*, **553**, A72
Krajinović, D., Cappellari, M., de Zeeuw, P. T., & Copin, Y. 2006, *MNRAS*, **366**, 787
Lagos, C. D. P., Lacey, C. G., & Baugh, C. M. 2013, *MNRAS*, **436**, 1787
Maiolino, R., Gallerani, S., Neri, R., et al. 2012, *MNRAS*, **425**, L66
Martin, C. L. 1998, *ApJ*, **506**, 222
Martin, C. L. 2005, *ApJ*, **621**, 227
Martin, C. L. 2006, *ApJ*, **647**, 222
Medling, A. M., Vivian, U., Guedes, J., et al. 2014, *ApJ*, **784**, 70
Medling, A. M., Vivian, U., Rich, J. A., et al. 2015, *MNRAS*, **448**, 2301
Melnick, J., & Mirabel, I. F. 1990, *A&A*, **231**, L19
Menéndez-Delmestre, K., Blain, A. W., Swinbank, M., et al. 2013, *ApJ*, **767**, 151
Momjian, E., Romney, J. D., Carilli, C. L., Troland, T. H., & Taylor, G. B. 2003, *ApJ*, **587**, 160
Morganti, R., Tadhunter, C. N., & Oosterloo, T. A. 2005, *A&A*, **444**, L9
Morganti, R., Frieswijk, W., Oonk, R. J. B., Oosterloo, T., & Tadhunter, C. 2013, *A&A*, **552**, L4
Murphy, T. W., Jr., Armus, L., Matthews, K., et al. 1996, *AJ*, **111**, 1025
Narayanan, D., Cox, T. J., Kelly, B., et al. 2008, *ApJS*, **176**, 331
Nardini, E., Risaliti, G., Salvati, M., et al. 2009, *MNRAS*, **399**, 1373
Nardini, E., Risaliti, G., Watabe, Y., Salvati, M., & Sani, E. 2010, *MNRAS*, **405**, 2505
Neff, S. G., Hutchings, J. B., Standord, S. A., & Unger, S. W. 1990, *AJ*, **99**, 1088

- Olsson, E., Aalto, S., Thomasson, M., & Beswick, R. 2010, [A&A](#), **513**, A11
- Rupke, D. S. N., & Veilleux, S. 2013, [ApJ](#), **768**, 75
- Rupke, D. S., Veilleux, S., & Sanders, D. B. 2002, [ApJ](#), **570**, 588
- Rupke, D. S., Veilleux, S., & Sanders, D. B. 2005a, [ApJS](#), **160**, 87
- Rupke, D. S., Veilleux, S., & Sanders, D. B. 2005b, [ApJS](#), **160**, 115
- Rupke, D. S., Veilleux, S., & Sanders, D. B. 2005c, [ApJ](#), **632**, 751
- Sakamoto, K., Aalto, S., Combes, F., Evans, A., & Peck, A. 2014, [ApJ](#), **797**, 90
- Salas, P., Galaz, G., Salter, D., et al. 2014, [ApJ](#), **797**, 134
- Sanders, D. B., Soifer, B. T., Elias, J. H., Neugebauer, G., & Matthews, K. 1988, [ApJ](#), **328**, L35
- Scoville, N. Z., Evans, A. S., Thompson, R., et al. 2000, [AJ](#), **119**, 991
- Silk, J., & Rees, M. J. 1998, [A&A](#), **331**, L1
- Silk, J., & Nusser, A. 2010, [ApJ](#), **725**, 556
- Sliwa, K., Wilson, C. D., Iono, D., Peck, A., & Matsushita, S. 2014, [ApJ](#), **796**, L15
- Solomon, P. M., Downes, D., Radford, S. J. E., & Barrett, J. W. 1997, [ApJ](#), **478**, 144
- Skrutskie, M. F., Cutri, R. M., Stiening, R., et al. 2006, [AJ](#), **131**, 1163
- Sturm, E., González-Alfonso, E., Veilleux, S., et al. 2011, [ApJ](#), **733**, L16
- Tacconi, L. J., Genzel, R., Smail, I., et al. 2008, [ApJ](#), **680**, 246
- Teng, S. H., & Veilleux, S. 2010, [ApJ](#), **725**, 1848
- Vivian, U., Sanders, D. B., Mazzarella, J. M., et al. 2012, [ApJS](#), **203**, 9
- Väisänen, P., Rajpaul, V., Zijlstra, A. A., Reunanen, J., & Kotilainen, J. 2012, [MNRAS](#), **420**, 2209
- Veilleux, S. 2008, [New Astron. Rev.](#), **52**, 289
- Veilleux, S., Cecil, G., & Bland-Hawthorn, J. 2005, [ARA&A](#), **43**, 769
- Veilleux, S., Rupke, D. S. N., Kim, D.-C., et al. 2009, [ApJS](#), **182**, 628
- Veilleux, S., Meléndez, M., Sturm, E., et al. 2013, [ApJ](#), **776**, 27
- Walter, F., Weiss, A., & Scoville, N. 2002, [ApJ](#), **580**, L21
- Westmoquette, M. S., Clements, D. L., Bendo, G. J., & Khan, S. A. 2012, [MNRAS](#), **424**, 416
- Wilson, C. D., Petitpas, G. R., Iono, D., et al. 2008, [ApJS](#), **178**, 189
- Xu, C. K., Cao, C., Lu, N., et al. 2015, [ApJ](#), **799**, 11
- Zubovas, K., & King, A. 2012, [ApJ](#), **745**, L34
- Zubovas, K., & King, A. R. 2014, [MNRAS](#), **439**, 400