



Publication Year	2017
Acceptance in OA @INAF	2020-08-20T09:38:46Z
Title	Planck intermediate results. LI. Features in the cosmic microwave background temperature power spectrum and shifts in cosmological parameters
Authors	Planck Collaboration; Aghanim, N.; Akrami, Y.; Ashdown, M.; Aumont, J.; et al.
DOI	10.1051/0004-6361/201629504
Handle	http://hdl.handle.net/20.500.12386/26732
Journal	ASTRONOMY & ASTROPHYSICS
Number	607

Planck intermediate results. LI.

Features in the cosmic microwave background temperature power spectrum and shifts in cosmological parameters

Planck Collaboration: N. Aghanim⁵¹, Y. Akrami^{54,85}, M. Ashdown^{61,5}, J. Aumont⁵¹, M. Ballardini^{28,43,46}, A. J. Banday^{83,8}, R. B. Barreiro⁵⁶, N. Bartolo^{27,57}, S. Basak⁷², K. Benabed^{52,82}, M. Bersanelli^{31,44}, P. Bielewicz^{70,8,72}, A. Bonaldi⁵⁹, L. Bonavera¹⁵, J. R. Bond⁷, J. Borrill^{11,79}, F. R. Bouchet^{52,77}, C. Burigana^{43,29,46}, E. Calabrese⁸⁰, J.-F. Cardoso^{64,1,52}, A. Challinor^{53,61,10}, H. C. Chiang^{22,6}, L. P. L. Colombo^{18,58}, C. Combet⁶⁵, B. P. Crill^{58,9}, A. Curto^{56,5,61}, F. Cuttaia⁴³, P. de Bernardis³⁰, A. de Rosa⁴³, G. de Zotti^{40,72}, J. Delabrouille¹, E. Di Valentino^{52,77}, C. Dickinson⁵⁹, J. M. Diego⁵⁶, O. Doré^{58,9}, A. Ducout^{52,50}, X. Dupac³⁵, S. Dusini⁵⁷, G. Efstathiou^{61,53}, F. Elsner^{19,52,82}, T. A. Enßlin⁶⁸, H. K. Eriksen⁵⁴, Y. Fantaye^{34,2}, F. Finelli^{43,46}, F. Forastieri^{29,47}, M. Frailis⁴², E. Franceschi⁴³, A. Frolov⁷⁶, S. Galeotta⁴², S. Galli^{60,52*}, K. Ganga¹, R. T. Génova-Santos^{55,14}, M. Gerbino^{81,71,30}, J. González-Nuevo^{15,56}, K. M. Górski^{58,86}, A. Gruppuso^{43,46}, J. E. Gudmundsson^{81,71,22}, D. Herranz⁵⁶, E. Hivon^{52,82}, Z. Huang⁷⁴, A. H. Jaffe⁵⁰, W. C. Jones²², E. Keihänen²¹, R. Keskitalo¹¹, K. Kiiveri^{21,39}, J. Kim⁶⁸, T. S. Kisner⁶⁷, L. Knox²⁴, N. Krachmalnicoff³¹, M. Kunz^{13,51,2}, H. Kurki-Suonio^{21,39}, G. Lagache^{4,51}, J.-M. Lamarre⁶³, A. Lasenby^{5,61}, M. Lattanzi^{29,47}, C. R. Lawrence⁵⁸, M. Le Jeune¹, F. Levrier⁶³, A. Lewis²⁰, P. B. Lilje⁵⁴, M. Lilley^{52,77}, V. Lindholm^{21,39}, M. López-Caniego³⁵, P. M. Lubin²⁵, Y.-Z. Ma^{59,73}, J. F. Macías-Pérez⁶⁵, G. Maggio⁴², D. Maino^{31,44}, N. Mandolesi^{43,29}, A. Mangilli^{51,62}, M. Maris⁴², P. G. Martin⁷, E. Martínez-González⁵⁶, S. Matarrese^{27,57,37}, N. Mauri⁴⁶, J. D. McEwen⁶⁹, P. R. Meinhold²⁵, A. Mennella^{31,44}, M. Migliaccio^{53,61}, M. Millea^{24,78,52†}, M.-A. Miville-Deschênes^{51,7}, D. Molinari^{29,43,47}, A. Moneti⁵², L. Montier^{83,8}, G. Morgante⁴³, A. Moss⁷⁵, A. Narimani¹⁷, P. Natoli^{29,3,47}, C. A. Oxborrow¹², L. Pagano^{30,48}, D. Paoletti^{43,46}, G. Patanchon¹, L. Patrizii⁴⁶, V. Pettorino³⁸, F. Piacentini³⁰, L. Polastri^{29,47}, G. Polenta^{3,41}, J.-L. Puget⁵¹, J. P. Rachen^{16,68}, B. Racine⁵⁴, M. Reinecke⁶⁸, M. Remazeilles^{59,51,1}, A. Renzi^{34,49}, M. Rossetti^{31,44}, G. Roudier^{1,63,58}, J. A. Rubiño-Martín^{55,14}, B. Ruiz-Granados⁸⁴, L. Salvati³⁰, M. Sandri⁴³, M. Savelainen^{21,39}, D. Scott¹⁷, C. Sirignano^{27,57}, G. Sirri⁴⁶, L. Stanco⁵⁷, A.-S. Suur-Uski^{21,39}, J. A. Tauber³⁶, D. Tavagnacco^{42,32}, M. Tenti⁴⁵, L. Toffolatti^{15,56,43}, M. Tomasi^{31,44}, M. Tristram⁶², T. Trombetti^{43,29}, J. Valiviita^{21,39}, F. Van Tent⁶⁶, P. Vielva⁵⁶, F. Villa⁴³, N. Vittorio³³, B. D. Wandelt^{52,82,26}, I. K. Wehus^{58,54}, M. White²³, A. Zacchei⁴², and A. Zonca²⁵

(Affiliations can be found after the references)

April 24, 2017

ABSTRACT

The six parameters of the standard Λ CDM model have best-fit values derived from the *Planck* temperature power spectrum that are shifted somewhat from the best-fit values derived from WMAP data. These shifts are driven by features in the *Planck* temperature power spectrum at angular scales that had never before been measured to cosmic-variance level precision. We investigate these shifts to determine whether they are within the range of expectation and to understand their origin in the data. Taking our parameter set to be the optical depth of the reionized intergalactic medium τ , the baryon density ω_b , the matter density ω_m , the angular size of the sound horizon θ_* , the spectral index of the primordial power spectrum, n_s , and $A_s e^{-2\tau}$ (where A_s is the amplitude of the primordial power spectrum), we examine the change in best-fit values between a WMAP-like large angular-scale data set (with multipole moment $\ell < 800$ in the *Planck* temperature power spectrum) and an all angular-scale data set ($\ell < 2500$ *Planck* temperature power spectrum), each with a prior on τ of 0.07 ± 0.02 . We find that the shifts, in units of the 1σ expected dispersion for each parameter, are $\{\Delta\tau, \Delta A_s e^{-2\tau}, \Delta n_s, \Delta\omega_m, \Delta\omega_b, \Delta\theta_*\} = \{-1.7, -2.2, 1.2, -2.0, 1.1, 0.9\}$, with a χ^2 value of 8.0. We find that this χ^2 value is exceeded in 15 % of our simulated data sets, and that a parameter deviates by more than 2.2σ in 9 % of simulated data sets, meaning that the shifts are not unusually large. Comparing $\ell < 800$ instead to $\ell > 800$, or splitting at a different multipole, yields similar results. We examine the $\ell < 800$ model residuals in the $\ell > 800$ power spectrum data and find that the features there that drive these shifts are a set of oscillations across a broad range of angular scales. Although they partly appear like the effects of enhanced gravitational lensing, the shifts in Λ CDM parameters that arise in response to these features correspond to model spectrum changes that are predominantly due to non-lensing effects; the only exception is τ , which, at fixed $A_s e^{-2\tau}$, affects the $\ell > 800$ temperature power spectrum solely through the associated change in A_s and the impact of that on the lensing potential power spectrum. We also ask, “what is it about the power spectrum at $\ell < 800$ that leads to somewhat different best-fit parameters than come from the full ℓ range?” We find that if we discard the data at $\ell < 30$, where there is a roughly 2σ downward fluctuation in power relative to the model that best fits the full ℓ range, the $\ell < 800$ best-fit parameters shift significantly toward the $\ell < 2500$ best-fit parameters. In contrast, including $\ell < 30$, this previously noted “low- ℓ deficit” drives n_s up and impacts parameters correlated with n_s , such as ω_m and H_0 . As expected, the $\ell < 30$ data have a much greater impact on the $\ell < 800$ best fit than on the $\ell < 2500$ best fit. So although the shifts are not very significant, we find that they can be understood through the combined effects of an oscillatory-like set of high- ℓ residuals and the deficit in low- ℓ power, excursions consistent with sample variance that happen to map onto changes in cosmological parameters. Finally, we examine agreement between *Planck* TT data and two other CMB data sets, namely the *Planck* lensing reconstruction and the TT power spectrum measured by the South Pole Telescope, again finding a lack of convincing evidence of any significant deviations in parameters, suggesting that current CMB data sets give an internally consistent picture of the Λ CDM model.

Key words. Cosmology: observations – Cosmology: theory – cosmic background radiation – cosmological parameters

1. Introduction

Probably the most important high-level result from the *Planck* satellite¹ (Planck Collaboration I 2016) is the good agreement of the statistical properties of the cosmic microwave background anisotropies (CMB) with the predictions of the 6-parameter standard Λ CDM cosmological model (Planck Collaboration XV 2014; Planck Collaboration XVI 2014; Planck Collaboration XI 2016; Planck Collaboration XIII 2016). This agreement is quite remarkable, given the very significant increase in precision of the *Planck* measurements over those of prior experiments. The continuing success of the Λ CDM model has deepened the motivation for attempts to understand *why* the Universe is so well-described as having emerged from Gaussian adiabatic initial conditions with a particular mix of baryons, cold dark matter (CDM), and a cosmological constant (Λ).

Since the main message from *Planck*, and indeed from the Wilkinson Microwave Anisotropy Probe (WMAP; Bennett et al. 2013) before it, has been the continued success of the 6-parameter Λ CDM model, attention naturally turns to precise details of the values of the best-fit parameters of the model. Many cosmologists have focused on the parameter shifts with respect to the best-fit values preferred by pre-*Planck* data. Compared to the WMAP data, for example, *Planck* data prefer a somewhat slower expansion rate, higher dark matter density, and higher matter power spectrum amplitude, as discussed in several Planck Collaboration papers (Planck Collaboration XV 2014; Planck Collaboration XVI 2014; Planck Collaboration XI 2016; Planck Collaboration XIII 2016), as well as in Addison et al. (2016). These shifts in parameters have increased the degree of tension between CMB-derived values and those determined from some other astrophysical data sets, and have thereby motivated discussion of extensions to the standard cosmological model (e.g., Verde et al. 2013; Marra et al. 2013; Efstathiou 2014; Wyman et al. 2014; MacCrann et al. 2015; Seehars et al. 2015; Hildebrandt et al. 2016). However, none of these extensions are strongly supported by the *Planck* data themselves (e.g., see discussion in Planck Collaboration XIII 2016).

Despite the interest that the shifts in best-fit parameters has generated, there has not yet been an identification of the particular aspects of the *Planck* data, and their differences with WMAP data, that give rise to the shifts. The main goal of this paper is to identify the aspects of the data that lead to the shifts, and to understand the physics that drives Λ CDM parameters to respond to these differences in the way they do. We choose to pursue this goal with analysis that is entirely internal to the *Planck* data. In carrying out this *Planck*-based analysis, we still shed light on the WMAP-to-*Planck* parameter shifts, because when we restrict ourselves to modes that WMAP measures at high signal-to-noise ratio, the WMAP and *Planck* temperature maps agree well (e.g., Kovács et al. 2013; Planck Collaboration XXXI 2014). The qualitatively new attribute of the *Planck* data that leads to the parameter shifts is the high-precision measurement

of the temperature power spectrum in the $600 \lesssim \ell \lesssim 2000$ range.² Restricting our analysis to be internal to *Planck* has the advantage of simplicity, without altering the main conclusions.

We also investigate the consistency of the differences in parameters inferred from different multipole ranges with expectations, given the Λ CDM model and our understanding of the sources of error. The consistency of such parameter shifts has been previously studied in Planck Collaboration XI (2016), Couchot et al. (2015), and Addison et al. (2016). In studying the consistency of parameters inferred from $\ell < 1000$ with those inferred from $\ell > 1000$ Addison et al. (2016) claim to find significant evidence for internal inconsistencies in the *Planck* data. Our analysis improves upon theirs in several ways, mainly through our use of simulations to account for covariances between the pair of data sets being compared, as well as the “look elsewhere effect,” and the departure of the true distribution of the shift statistics away from a χ^2 distribution.

Much has already been demonstrated about the robustness of the *Planck* parameter results to data processing, data selection, foreground removal, and instrument modelling choices Planck Collaboration XI (2016). We will not revisit all of that here. However, having identified the power spectrum features that are causing the shifts in cosmological parameters, we show that these features are all present in multiple individual frequency channels, as one would expect from the previous studies. The features in the data therefore appear to be cosmological in origin.

The *Planck* polarization maps, and the *TE* and *EE* polarization power spectra determinations they enable, are also new aspects of the *Planck* data. These new data are in agreement with the *TT* results and point to similar shifts away from the WMAP parameters (Planck Collaboration XIII 2016), although with less statistical weight. In order to focus on the primary driver of the parameter shifts, namely the temperature power spectrum, we ignore polarization data except for the constraint on the value of the optical depth τ coming from polarization at the largest angular scales, which in practice we fold in with a prior on τ .

Our primary analysis is of the shift in best-fit cosmological parameters as determined from: (1) a prior on the value of τ (as a proxy for low- ℓ polarization data) and PlanckTT³ data restricted to $\ell < 800$;⁴ and (2) the same τ prior and the full ℓ -range ($\ell < 2500$) of PlanckTT data. Taking the former data set as a proxy for WMAP, these are the parameter shifts that have been of great interest to the community. There is of course a degree of arbitrariness in the particular choice of $\ell = 800$ for defining the low- ℓ data set. One might argue for a lower ℓ , based on the fact that the WMAP temperature maps reach a signal-to-noise ratio of unity by $\ell \approx 600$, and thus above 600 the power spectrum error bars are at least twice as large as the *Planck* ones. However, we explicitly select $\ell = 800$ for our primary analysis because it splits the weight on Λ CDM parameters coming from *Planck* so

²Although the South Pole Telescope and Atacama Cosmology Telescope had already measured the CMB *TT* power spectrum over this multipole range (e.g., Story et al. 2013; Das et al. 2014), *Planck*’s dramatically increased sky coverage leads to a much more precise power spectrum determination.

³In common with other *Planck* papers, we use PlanckTT to refer to the full *Planck* temperature-only C_ℓ^{TT} likelihood. We often omit the “TT” when also specifying a multipole range, e.g. by *Planck* $\ell < 800$ we mean PlanckTT $\ell < 800$.

⁴To avoid unnecessary detail, we write ℓ_{\max} of 800, 1000, and 2500, even though the true ℓ_{\max} values are 796, 996, and 2509 (since this is where the nearest data bins happen to fall). For brevity, the implied ℓ_{\min} is always 2 unless otherwise stated, e.g. $\ell < 800$ means $2 \leq \ell < 800$.

*Corresponding author: Silvia Galli, gallis@iap.fr

†Corresponding author: Marius Millea, millea@iap.fr

¹*Planck* (<http://www.esa.int/Planck>) is a project of the European Space Agency (ESA) with instruments provided by two scientific consortia funded by ESA member states and led by Principal Investigators from France and Italy, telescope reflectors provided through a collaboration between ESA and a scientific consortium led and funded by Denmark, and additional contributions from NASA (USA).

that half is from $\ell < 800$ and half is from $\ell > 800$,⁵ Addressing the parameter shifts from $\ell < 800$ versus $\ell > 800$ is a related and interesting issue, and while our main focus is on the comparison of the full- ℓ results to those from $\ell < 800$, we compute and show the low- ℓ versus high- ℓ results as well. Additionally, in Appendix A we perform an exhaustive search over many different choices for the multipole at which to split the data.

In addition to the high- ℓ *Planck* temperature data, inferences of the reionization optical depth obtained from the low- ℓ *Planck* polarization data also have an important impact on the determination of the other cosmological parameters. The parameter shifts that have been discussed in the literature to date have generally assumed a constraint on τ coming from *Planck* LFI polarization data (Planck Collaboration XI 2016; Planck Collaboration XIII 2016). During the writing of this paper, new and tighter constraints on τ were released using improved *Planck* HFI polarization data (Planck Collaboration Int. XLVI 2016; Planck Collaboration Int. XLVII 2016). These are consistent with the previous ones, shrinking the error by about a factor of 2 and moving the best fit to slightly lower values of τ . To make our work more easily comparable to previous discussions, and because the impact of this updated constraint is not very large, we have chosen to write the main body of this paper assuming the old τ prior. This also allows us to more cleanly isolate and discuss separately the impact of the new prior, which we do in a later section of this paper.

Our focus here is on the results from *Planck*, and so an in-depth study comparing the *Planck* results with those from other cosmological data sets is beyond our scope. Nevertheless, there do exist claims of internal inconsistencies in CMB data (Addison et al. 2016; Riess et al. 2016), with the parameter shifts we discuss here playing an important role, since they serve to drive the PlanckTT best fits away from those of the two other CMB data sets, namely the *Planck* measurements of the $\phi\phi$ lensing potential power spectrum (Planck Collaboration XVII 2014; Planck Collaboration XV 2016) and the South Pole Telescope (SPT) measurement of the TT damping tail (Story et al. 2013). Thus, we also briefly examine whether there is any evidence of discrepancies that are not just internal to the PlanckTT data, but also when comparing with these other two probes.

The features we identify that are driving the changes in parameters are approximately oscillatory in nature, a part of them with a frequency and phasing such that they could be caused by a smoothing of the power spectrum, of the sort that is generated by gravitational lensing. We thus investigate the role of lensing in the parameter shifts. The impact of lensing in PlanckTT parameter estimates has previously been investigated via use of the parameter “ A_L ” that artificially scales the lensing power spectrum (as discussed on p. 28 of Planck Collaboration XVI 2014 and p. 24 of Planck Collaboration XIII 2016). Here we introduce a new method that more directly elucidates the impact of lensing on cosmological parameter determination.

Given that we regard the $\ell < 2500$ *Planck* data as providing a better determination of the cosmological parameters than the $\ell < 800$ *Planck* data, it is natural to turn our primary question around and ask: what is it about the $\ell < 800$ data that makes the inferred parameter values differ from the full ℓ -range parameters? Addressing this question, we find that the deficit in low-

multipole power at $\ell \lesssim 30$, the “low- ℓ deficit,”⁶ plays a significant role in driving the $\ell < 800$ parameters away from the results coming from the full ℓ -range.

The paper is organized as follows. Section 2 introduces the shifts seen in parameters between using *Planck* $\ell < 800$ data and full- ℓ data. Section 3 describes the extent to which the observed shifts are consistent with expectations; we make some simplifying assumptions in our analysis and justify their use here. Section 4 represents a pedagogical summary of the physical effects underlying the various parameter shifts. We then turn to a more detailed characterization of the parameter shifts and their origin. The most elementary, unornamented description of the shifts is presented in Sect. 5.1, followed by a discussion of the effects of gravitational lensing in Sect. 5.2 and the role of the low- ℓ deficit in Sect. 5.3. In Sect. 5.4 we consider whether there might be systematic effects significantly impacting the parameter shifts and in Sect. 5.5 we add a discussion of the effect of changing the τ prior. Finally, we comment on some differences with respect to other CMB experiments in Sect. 6 and conclude in Sect. 7.

Throughout we work within the context of the 6-parameter, vacuum-dominated, cold dark matter (Λ CDM) model. This model is based upon a spatially flat, expanding Universe whose dynamics are governed by general relativity and dominated by cold dark matter and a cosmological constant (Λ). We shall assume that the primordial fluctuations have Gaussian statistics, with a power-law power spectrum of adiabatic fluctuations. Within that framework the usual set of cosmological parameters used in CMB studies is: $\omega_b \equiv \Omega_b h^2$, the physical baryon density; $\omega_c \equiv \Omega_c h^2$, the physical density of cold dark matter (or ω_m for baryons plus cold dark matter plus neutrinos); θ_* , the ratio of sound horizon to angular diameter distance to the last-scattering surface; A_s , the amplitude of the (scalar) initial power spectrum; n_s , the power-law slope of those initial perturbations; and τ , the optical depth to Thomson scattering through the reionized intergalactic medium. Here the Hubble constant is expressed as $H_0 = 100 h \text{ km s}^{-1} \text{ Mpc}^{-1}$. In more detail, we follow the precise definitions used in Planck Collaboration XVI (2014) and Planck Collaboration XIII (2016).

Parameter constraints for our simulations and comparison to data use the publicly available CosmoSlik package, and the full simulation pipeline code will be released publicly pending acceptance of this work. Other parameter constraints are determined using cosmomc (Lewis & Bridle 2002). Theoretical power spectra are calculated with CAMB (Lewis et al. 2000).

2. Parameters from low- ℓ versus full- ℓ *Planck* data

Fig. 1 compares the constraints on six parameters of the base- Λ CDM model from the PlanckTT+ τ prior data for $\ell < 2500$ with those using only the data at $\ell < 800$. We have imposed a specific prior on the optical depth, $\tau = 0.07 \pm 0.02$, as a proxy for the *Planck* LFI low- ℓ polarization data, in order to make it easier to compare the constraints, and to restrict our investigation to the TT power spectrum only. As mentioned before, we will discuss the impact of the newer HFI polarization results in Sect. 5.5.

We see that the constraints from the full data set are tighter than those from using only $\ell < 800$, and the best-fit values are

⁵More precisely, the product of eigenvalues of the two Fisher information matrices (see e.g., Schervish 1996, for a definition)—one for $\ell < 800$ and the other for $\ell > 800$ —is approximately equal at this multipole split.

⁶This is the same feature that has sometimes previously been called the “low- ℓ anomaly.” We choose to use the name “low- ℓ deficit” throughout this work to avoid ambiguity with other large scale “anomalies” and because it is more appropriate for a feature of only moderate significance. See Sect. 5.3 for further discussion.

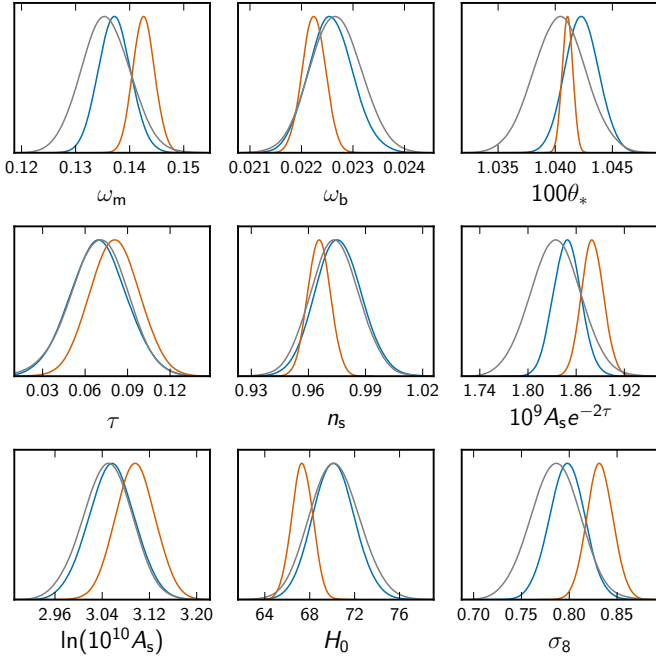


Fig. 1. Cosmological parameter constraints from PlanckTT+ τ prior for the full multipole range (orange) and for $\ell < 800$ (blue)—see the text for the definitions of the parameters. Note that the constraints are generally in good agreement, with the full *Planck* data providing tighter limits on the parameters; however, the best-fit values certainly do shift. It is these shifts that we seek to explain in this paper. A prior $\tau = 0.07 \pm 0.02$ has been used here as a proxy for the effect of the low- ℓ polarization data (with the impact of a different prior discussed later). As a comparison, we also show results for WMAP TT data combined with the same prior on τ (grey).

slightly shifted. It is these shifts that we seek to explain in the later sections. Fig. 1 also shows constraints from the WMAP TT spectrum. As already mentioned, these constraints are qualitatively very similar to those from *Planck* $\ell < 800$, although not exactly the same, since WMAP reaches the cosmic variance limit closer to $\ell = 600$. Nevertheless, as was already shown by Kovács et al. (2013), the CMB maps themselves agree very well. The small differences in parameter inferences (the largest of which is a roughly 1σ difference in θ_*), are presumably due to small differences in sky coverage and WMAP instrumental noise. We see that the dominant source of parameter shifts between *Planck* and WMAP is the new information contained in the $\ell > 800$ modes, and that by discussing parameter shifts internal to *Planck* we are also directly addressing the differences between WMAP and *Planck*.

Fig. 1 shows the shifts for some additional derived parameters, as well as the basic 6-parameter set. In particular, one can choose to use the conventional cosmological parameter H_0 , rather than the CMB parameter θ_* , as part of a 6-parameter set. Of course neither choice is unique, and we could have also focused on other derived quantities in addition to six that span the space; for the amplitude, we have presented results for the usual choice A_s , but added panels for the alternative choices $A_s e^{-2\tau}$ (which will be important later in this paper) and σ_8 (the rms density variation in spheres of size $8h^{-1}$ Mpc in linear theory at $z = 0$). The shifts shown in Fig. 1 are fairly

representative of the sorts of shifts that have already been discussed in previous papers (e.g., Planck Collaboration XVI 2014; Planck Collaboration XI 2016; Addison et al. 2016), despite different choices of τ prior and ℓ ranges.

To simplify the analysis as much as possible, throughout most of this paper we will choose our parametrization of the six degrees of freedom in the Λ CDM model so that we reduce the correlations between parameters, and also so that our choice maps onto the physically meaningful effects that will be described in Sect. 4. While a choice of six parameters satisfying both criteria is not possible, we have settled on θ_* , ω_m , ω_b , n_s , $A_s e^{-2\tau}$, and τ . Most of these choices are standard, but two are not the same as those focused on in most CMB papers: we have chosen ω_m instead of ω_c , because the former governs the size of the horizon at the epoch of matter-radiation equality, which controls both the potential-envelope effect and the amplitude of gravitational lensing (see Sect. 4); and we have chosen to use $A_s e^{-2\tau}$ in place of A_s , because the former is much more precisely determined and much less correlated with τ . Physically, this arises because at angular scales smaller than those that subtend the horizon at the epoch of reionization ($\ell \simeq 10$) the primary impact of τ is to suppress power by $e^{-2\tau}$ (again, see Sect. 4).

As a consequence of this last fact, the temperature power spectrum places a much tighter constraint on the combination $A_s e^{-2\tau}$ than it does on τ or A_s . Due to the strong correlation between these two parameters, any extra information on one will then also translate into a constraint on the other. For this reason, a change in the prior we use on τ will be mirrored by a change in A_s , given a fixed $A_s e^{-2\tau}$ combination. Conversely, the extra information one obtains on A_s from the smoothing of the small-scale power spectrum due to gravitational lensing will be mirrored by a change in the recovered value of τ (and this will be important, as we will show later). As a result, since we will mainly focus on the shifts of $A_s e^{-2\tau}$ and τ , we will often interpret changes in the value of τ as a proxy for changes in A_s (at fixed $A_s e^{-2\tau}$), and thus for the level of lensing observed in the data (see Sect. 5.2).

3. Comparison of parameter shifts with expectations

In light of the shifts in parameters described in the previous section, we would of course like to know whether they are large enough to indicate a failure of the Λ CDM model or the presence of systematic errors in the data, or if they can be explained simply as an expected statistical fluctuation arising from instrumental noise and sample variance. The aim of this section is to give a precise determination based on simulations, in particular one that avoids several approximations used by previous analyses.

One of the first attempts to quantify the shifts was performed in appendix A of Planck Collaboration XVI (2014), and was based on a set of Gaussian simulations. More recent studies using the *Planck* 2015 data have generally compared posteriors of disjoint sets of *Planck* multipole ranges (e.g., Planck Collaboration XI 2016; Addison et al. 2016). There, the χ^2 is computed,

$$\chi^2 = (\bar{\mathbf{p}}^{(1)} - \bar{\mathbf{p}}^{(2)})\Sigma^{-1}(\bar{\mathbf{p}}^{(1)} - \bar{\mathbf{p}}^{(2)}), \quad (1)$$

with $\Sigma = \mathbf{C}^{(1)} + \mathbf{C}^{(2)}$, where $\mathbf{C}^{(a)}$ are the parameter posterior covariances of the two data sets and $\bar{\mathbf{p}}^a$ are the vectors of parameter means. A probability to exceed χ^2 is then calculated assuming a χ^2 distribution with degrees of freedom equal to the number of

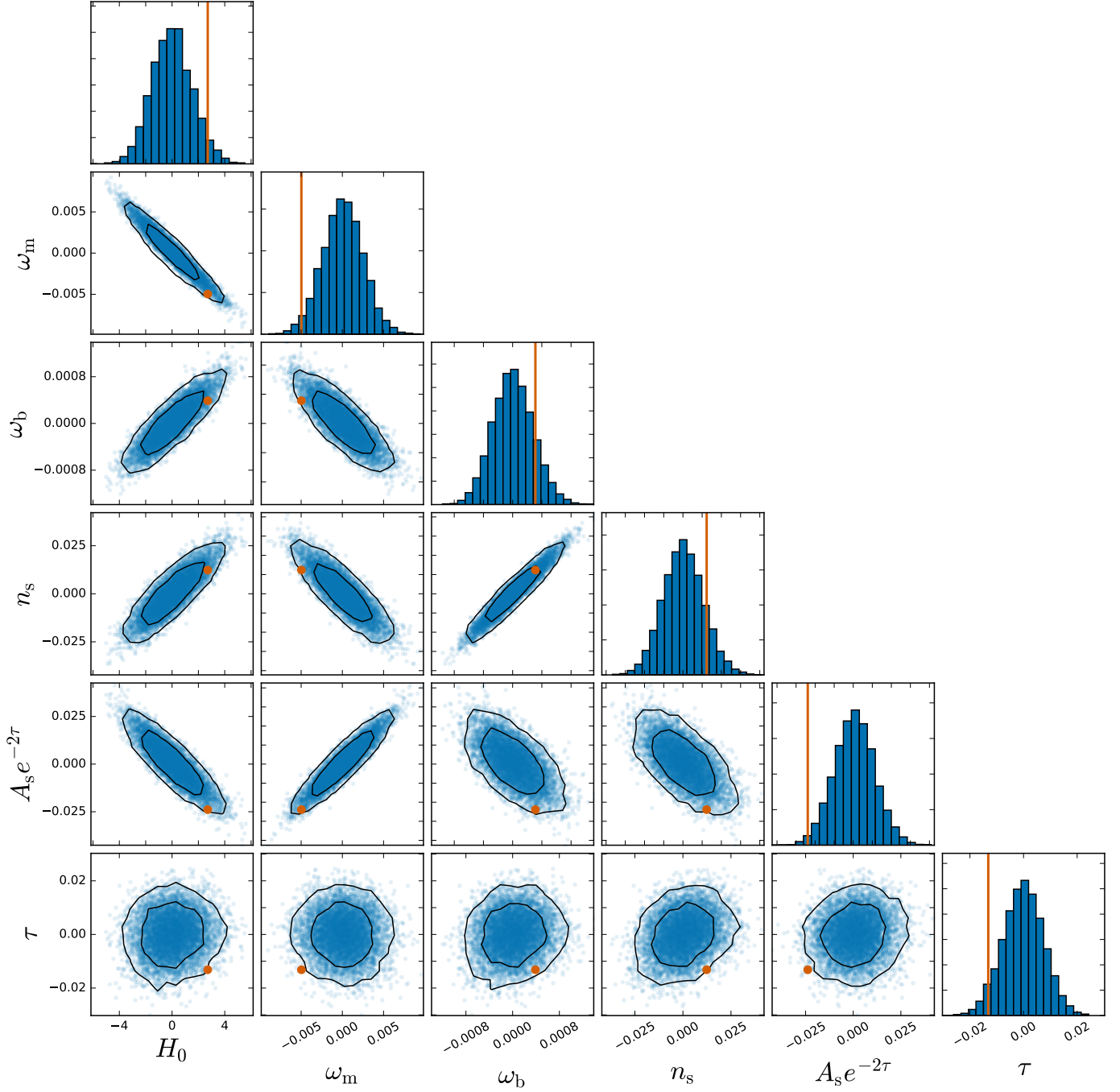


Fig. 2. Differences in best-fit parameters between $\ell < 800$ and $\ell < 2500$ as compared to expectations from a suite of simulations. The cloud of blue points and the histograms are the distribution from simulations (discussed in Sect. 3), while the orange points and lines are the shifts found in the data. Although the shifts may appear to be generally large for this particular choice of parameter set, it is important to realise that this is *not* an orthogonal basis, and that there are strong correlations among parameters; when this is taken into account, the overall significance of these shifts is 1.4σ , and the significance of the biggest outlier ($A_s e^{-2\tau}$), after accounting for look-elsewhere effects, is 1.7σ . Fig. 3 shows these same shifts in a more orthogonal basis that makes judging these significance levels easier by eye. Choosing a different multipole at which to split the data, or comparing low ℓ s versus high ℓ s alone, does not change this qualitative level of agreement. We note that the parameter mode discussed in Sect. 3.2 is *not* projected out here, since it would correspond to moving any data point by less than the width of the point itself.

parameters. This number is usually five, since τ is ignored because prior information on τ went into both sets of estimated parameters.

There are assumptions, both explicit and implicit in previous analyses, which we avoid with our procedure. We take into account the covariance in the parameter errors from one data set to the next, and do not assume that the parameter errors are

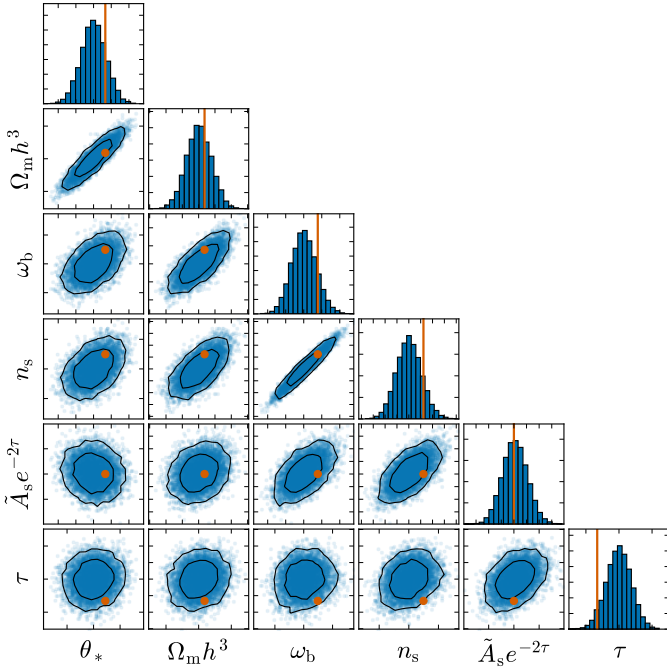


Fig. 3. Visually it might seem that the data point in the 6-parameter space of Fig. 2 is a much worse outlier than only 1.4σ . One way to see that it really is only 1.4σ is to transform to another parameter space, as shown in this figure. Linear transformations leave the χ^2 unaffected, and while ours here are not exactly linear, the shifts are small enough that they can be approximated as linear and the χ^2 is largely unchanged (in fact it is slightly worse, 1.6σ). We have chosen these parameters so the shifts are more decorrelated while still using physical quantities. The parameter \tilde{A}_s is the amplitude at a pivot of scale of $k = 0.035 \text{ Mpc}^{-1}$, chosen since there is no shift in $\tilde{A}_s e^{-2\tau}$. Tick marks are omitted here for clarity.

normally distributed. Additionally our procedure allows us to include τ in the set of compared parameters. As we will see, our more exact procedure shows that consistency is somewhat better than would have appeared to be the case otherwise.

3.1. Description of Simulations

To calculate the expected shifts, we generate a suite of simulated *Planck* data and, for each data set, compute a likelihood and numerically maximize it to obtain the best-fit parameters, subject to various multipole range cuts. The difference in best-fit parameters between different cuts builds up a distribution of the expected shifts, which can be compared to the shifts seen in real data. The goal of these simulations is to be as consistent as possible with the approximations made in the real analysis (as opposed to, for example, the suite of end-to-end simulations described in Planck Collaboration XI 2016, which aim to simulate systematics *not* directly accounted for by the real likelihood). In this sense, our simulations are a self-consistency check of *Planck* data and likelihood products. We will now describe these simulations in more detail.

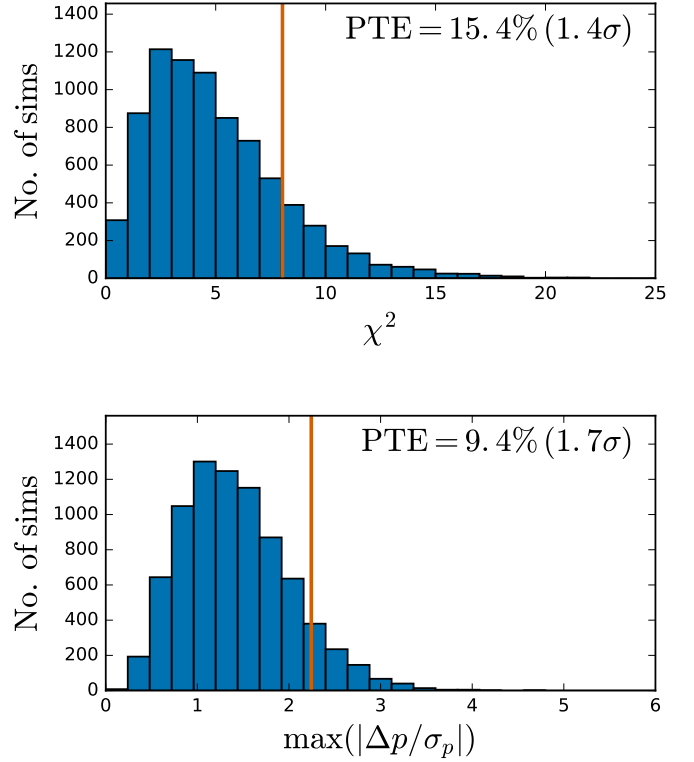


Fig. 4. Distribution of two different statistics computed on the simulations (blue histogram) and on the data (orange line). The first is the χ^2 statistic, where we compute χ^2 for the change in parameters between $\ell < 800$ and $\ell < 2500$, with respect to the covariance of the expected shifts. The second is a “biggest outlier” statistic, where we search for the parameter with the largest change, in units of the standard deviation of the simulated shifts. We give the probability to exceed (PTE) on each panel. For both statistics, we find that the observed shifts are largely consistent with expectations from simulations.

For each simulation, we draw a realization of the data independently at $\ell < 30$ and at $\ell > 30$.⁷ At $\ell < 30$ we draw realizations directly at the map level, whereas for $\ell > 30$ we use the *plik_lite* CMB covariance (described in Planck Collaboration XI 2016) to draw power spectrum realizations. For both $\ell < 30$ and $\ell > 30$, each realization is drawn assuming a fiducial model. This model is the best-fit Λ CDM model for the PlanckTT data, with τ fixed to 0.07, and the *Planck* calibration parameter, y_p , fixed to 1. More explicitly, we use $\{A_s e^{-2\tau}, n_s, \omega_m, \omega_b, \theta_*, \tau, y_p\} = \{1.886, 0.959, 0.1438, 0.02206, 1.04062, 0.07, 1\}$. The reason for fixing τ and the calibration in obtaining the fiducial model is that for the analysis of each simulation, priors on these two parameters are applied, centred on 0.07 and 1, respectively; if our fiducial model had different values, the distribution of best-fits across simulations for those and all correlated parameters would be biased from their fiducial values, and one would need to re-centre the distributions. Our procedure is more straightforward and clearer to interpret. In any case, our analysis is not very sensitive to the exact fiducial values and we have checked that for a

⁷We thus ignore ℓ -to- ℓ correlations across this multipole, consistent with what is assumed in the real likelihood (Planck Collaboration XI 2016).

fiducial model with $\tau = 0.055$ the significance levels of the shifts given in the next section change by $< 0.1 \sigma$.⁸

For $\ell > 30$, we draw a random Gaussian sample from the `plik_lite` covariance and add it to the fiducial model. This, along with the covariance itself, forms the simulated likelihood. The `plik_lite` covariance includes in it uncertainties due to foregrounds, beams, and inter-frequency calibration, hence these are naturally included in our analysis. We note that the level of uncertainty from these sources is determined from the *Planck* $\ell < 2500$ data themselves (extracted via a Gibbs-sampling procedure, assuming only the frequency dependence of the CMB). Thus, we do not expect exactly the same parameters from `plik` and `plik_lite` when restricted to an ℓ_{\max} below 2500 because `plik_lite` includes some information on foregrounds from $\ell_{\max} < \ell < 2500$.⁹ For our purposes, this is actually a benefit of using `plik_lite`, since it lets us put well-motivated priors on the foregrounds for any value of ℓ_{\max} in a way that does not double count any data. Regardless of that, the difference between `plik` and `plik_lite` is not very large. For example, the largest of any parameter difference at $\ell_{\max} = 1000$ is 0.15σ (in the σ of that parameter for $\ell_{\max} = 1000$), growing to 0.35σ at $\ell_{\max} = 1500$, and of course back to effectively zero by $\ell_{\max} = 2500$. Regardless, since our simulations and analyses of real data are performed with the same likelihood, our approach is fully self-consistent.

At $\ell < 30$, so as to simulate the correct non-Gaussian shape of the C_ℓ posteriors, we draw a map-level realization of the fiducial CMB power spectrum. In doing so, we ignore uncertainties due to foregrounds, inter-frequency calibration, and noise; we will show below that this is a sufficient approximation. For the likelihood, rather than compute the `Commander` (Planck Collaboration IX 2016; Planck Collaboration X 2016) likelihood for each simulation (which in practice would be computationally prohibitive), we instead use the following simple but accurate analytic approximation. With no masking, the probability distribution of $(2\ell + 1)\hat{C}_\ell/C_\ell$ is known to be exactly a χ^2 distribution with $2\ell + 1$ degrees of freedom (here \hat{C}_ℓ is the observed spectrum and C_ℓ is the theoretical spectrum). Our approximation posits that, for our masked sky, $f_\ell(2\ell + 1)\hat{C}_\ell/C_\ell$ is drawn from $\chi^2[f_\ell(2\ell + 1)]$, with f_ℓ an ℓ -dependent coefficient determined for our particular mask via simulations, and with \hat{C}_ℓ being the mask-deconvolved power spectrum. Approximations very similar to this have been studied previously by Benabed et al. (2009) and Hamimeche & Lewis (2008). Unlike some of those works, our approximation here does not aim to be a general purpose low- ℓ likelihood, rather just to work for our specific case of assuming the Λ CDM model and when combined with data up to $\ell \simeq 800$ or higher. While it is not a priori obvious that it is sufficient in these cases, we can perform the following test. We run parameter estimation on the real data, replacing the full `Commander` likelihood with our approximate likelihood using \hat{C}_ℓ and f_ℓ as derived from the `Commander` map and mask. Note that this also tests the effect of fixing the foregrounds and inter-frequency calibrations, since we are using just the best-fit `Commander` map, and it also tests the effect of ignoring noise uncertainties, since our likelihood approximation does not include them. We find that, for both an

$\ell < 800$ and an $\ell < 2500$ run,¹⁰ no parameter deviates from the real results by more than 0.05σ , with several parameters changing much less than that; hence we find that our approximation is good enough for our purposes. Additionally, in Appendix B we describe a complementary test that scans over many realizations of the CMB sky as well, also finding the approximation to be sufficient.

The likelihood from each simulation is combined with a prior on τ of 0.07 ± 0.02 (with other choices of priors discussed in Sect. 5.5). It is worth emphasizing that the exact same prior is imposed on every simulation, and hence implicitly we are not drawing realizations of different polarization data to go along with the realizations of temperature data that we have discussed above. This is a valid choice because the polarization data are close to noise dominated and therefore largely uncorrelated with the temperature data. We have chosen to do this because our aim is to examine parameter shifts between different subsets of temperature data, rather than between temperature versus polarization, and thus we regard the polarization data as a fixed external prior. Had we sampled the polarization data, the significance levels of shifts would have been slightly smaller because the expected scatter on τ and correlated parameters would be slightly larger. We have explicitly checked this fact by running a subset of the simulations (ones for $\ell < 800$ and $\ell < 2500$) with the mean of the τ prior randomly drawn from its prior distribution for each simulation, i.e., we have implicitly drawn realizations of the polarization data. We find that the significance levels of the different statistics discussed in the following section are reduced by 0.1σ or less. Note that this same subset of simulations is described further in Appendix B, where it is used as an additional verification of our low- ℓ approximation.

3.2. Results

With the simulated data and likelihoods in hand, we now numerically maximize the likelihood for each of the realizations to obtain best-fit parameters. The maximization procedure uses “Powell’s method” from the SciPy package (Jones et al. 2001–2016) and has been tested to be robust to a satisfactory level by running it on the true data at all ℓ splits, beginning from several different starting points, and ensuring convergence to the same minimum. We find in all cases that convergence is sufficient to ensure that none of the significance values given in this section change by more than 0.1σ .

Using the computational power provided by the volunteers at Cosmology@Home,¹¹ whose computers ran a large part of these computations, we have been able to run simulations not just for $\ell < 800$ and $\ell < 2500$, but for roughly 100 different subsets of data, with around 5000 realizations for each. We discuss some of these results in this section, with a more comprehensive set of tests given in Appendix A.

Figure 2 shows the resulting distribution of parameter shifts expected between the $\ell < 800$ and $\ell < 2500$ cases, compared to the shift seen in the real data. To quantify the overall consistency, we pick a statistic, compute its value on the data as well as on the simulations, then compute the probability to exceed (PTE) the data value based on the distribution of simulations. We then turn this into the equivalent number of σ , such that a 1-dimensional Gaussian has the same 2-tailed PTE. We use two particular statistics:

⁸In Sect. 5.5 we discuss changing the *prior* on τ , rather than changing its fiducial value, which *does* affect the significance levels somewhat.

⁹Of course, the two likelihoods are identical when $\ell_{\max} = 2500$, as demonstrated in Planck Collaboration XI (2016).

¹⁰The low ℓ s have more relative weight in the $\ell < 800$ case, hence that is the more stringent test.

¹¹<http://www.cosmologyathome.org>

- the χ^2 statistic, computing $\chi^2 = \Delta\mathbf{p} \Sigma^{-1} \Delta\mathbf{p}$, where $\Delta\mathbf{p}$ is the vector of shifts in parameters between the two data sets and Σ is the covariance of these shifts from the set of simulations;
- the max-param statistic, where we scan for $\max(|\Delta\mathbf{p}/\sigma_p|)$, i.e., the most deviant parameter from the set $\{\theta_s, \omega_m, \omega_b, A_s e^{-2\tau}, n_s, \tau\}$, in terms of the expected shifts from the simulations, σ_p .

There are of course an infinite number of statistics one could compute, but these two are reasonable choices, which test agreement across all parameters as well on individual outliers.

In the case of the χ^2 statistic, and when one is comparing two nested sets of data (by “nested” we mean that one data set contains the other, i.e., $\ell < 800$ is part of $\ell < 2500$), there is an added caveat. In cases like this, there is the potential for the existence of one or more directions in parameter space for which expected shifts are extremely small compared to the posterior constraint on the same mode. These correspond to parameter modes where very little new information has been added, and hence one should see almost no shift. It is thus possible that the χ^2 statistic is drastically altered by a change to the observed shifts that is in fact insignificant at our level of interest. Such a mode can be excited by any number of things, such as systematics, effects of approximations, minimizer errors, etc., but at a very small level. These modes can be enumerated by simultaneously diagonalizing the covariance of expected shifts and the covariance of the posteriors, and ordering them by the ratio of eigenvalues. For the case of comparing $\ell < 800$ and $\ell < 2500$, we find that the worst offending mode corresponds to altering the observed shifts in $\{H_0, \omega_m, \omega_b, A_s e^{-2\tau}, n_s, \tau\}$ by $\{0.02, -0.01, 0.02, -0.003, 0.04, 0.01\}$ in units of the 1σ posteriors from $\ell < 2500$. This can change the significance of the χ^2 statistic by an amount that corresponds to 0.6σ , despite no cosmological parameter nor linear combination of them having changed by more than a few percent of each σ . To mitigate this effect and hence to make the χ^2 statistic more meaningful for our desired goal of assessing consistency, we quote significance levels after projecting out any modes whose ratio of eigenvalues is greater than 10 (which in our case is just the aforementioned mode). We emphasize that removal of this mode is not meant to, nor does it, hide any problems; in fact, in some cases the χ^2 becomes worse after removal. The point is that without removing it we would be sensitive to shifts in parameters at extremely small levels that we do not care about. In any case, this mode removal is only necessary for the case of the χ^2 statistic and nested data sets, which is only a small subset of the tests performed in this paper.

Results for several data splits are summarized in Table 1, with the comparison of $\ell < 800$ to $\ell < 2500$ given in the first row and shown more fully in Fig. 4. In this case, we find that the parameter shifts are in fairly good agreement with expectations from simulations, with significance levels of 1.4σ and 1.7σ from the two statistics, respectively. We also note that the qualitative level of agreement is largely unchanged when considering $\ell < 800$ versus $\ell > 800$ or when splitting at $\ell = 1000$.

Of the other data splits shown in Table 1, the $\ell < 1000$ versus $\ell > 1000$ case may be of particular interest, since it is discussed extensively in Addison et al. (2016). Although not the main focus in their paper, those authors find 1.8σ as the level of the overall agreement by applying the equivalent of our Eq. (1) to the shifts in five parameters, namely $\{\theta_s, \omega_c, \omega_b, \log A_s, n_s\}$. This is similar to our result, although higher by 0.2σ . There are three main contributors to this difference. Firstly, although Addison et al. drop τ in the comparison to try to mitigate the effect of the prior on τ having induced correlations in the two data sets,

Table 1. Consistency of various data splits, as determined from two statistics computed on data and simulations. Fig. 4 shows the actual distribution from simulations for the first row in this table. Entries marked with a dagger symbol have had a parameter mode projected out, as discussed in Sect. 3.2.

Data set 1	Data set 2	Test	
		χ^2	max-param
$\ell < 800$	$\ell < 2500$	$1.4\sigma^\dagger$	1.7σ ($A_s e^{-2\tau}$)
$\ell < 800$	$\ell > 800$	1.6σ	2.1σ ($A_s e^{-2\tau}$)
$\ell < 1000$	$\ell < 2500$	$1.8\sigma^\dagger$	1.5σ ($A_s e^{-2\tau}$)
$\ell < 1000$	$\ell > 1000$	1.6σ	1.6σ (ω_m)
$30 < \ell < 800$	$\ell > 30$	$1.2\sigma^\dagger$	1.3σ (τ)
$30 < \ell < 800$	$\ell > 800$	1.2σ	1.2σ ($A_s e^{-2\tau}$)
$30 < \ell < 1000$	$\ell > 30$	$1.4\sigma^\dagger$	1.5σ (τ)
$30 < \ell < 1000$	$\ell > 1000$	1.2σ	0.7σ (ω_m)

they keep $\log A_s$ as a parameter, which is highly correlated with τ . This means that their comparison fails to remove the correlations, nor does it take them into account. One could largely remove the correlation by switching to $A_s e^{-2\tau}$ (which is much less correlated with τ); this has the effect of reducing the significance of the shifts by 0.3σ . Secondly, the Addison et al. analysis puts no priors on the foreground parameters, which is especially important for the $\ell > 1000$ part. For example, fixing the foregrounds to their best-fit levels from $\ell < 2500$ reduces the significance by an additional 0.2σ . Finally, our result uses six parameters as opposed to five (since we are able to correctly account for the prior on τ); this increases the significance back up by around 0.3σ .

There is an additional point that Addison et al. (2016) fail to take into account when quoting significance levels—and the same issue arises in some other published claims of parameter shifts that focus on a single parameter. This is that one should not pick out the most extreme outlying parameter without assessing how large the largest expected shift is among the full set of parameters. In other words, one should account for what are sometimes called “look elsewhere” effects (see Planck Collaboration XVI 2016, for a discussion of this issue in a different context). Our simulations allow us to do this easily. For example, in the $\ell < 1000$ versus $\ell > 1000$ case, the biggest change in any parameter is a 2.3σ shift in ω_m ; however, the significance of finding a 2.3σ outlier when searching through six parameters with our particular correlation structure is only 1.6σ , which is the value we quote in Table 1.

To summarize this section, we do not find strong evidence of inconsistency in the parameter shifts from $\ell < 800$ to those from $\ell < 2500$, when compared with expectations, nor from any of the other data splits shown in Table 1. We also find that the results of Addison et al. (2016) somewhat exaggerate the significance of tension, for a number of reasons, as discussed above.

As a final note, we show in Table 2 the consistency of various data splits as in Table 1, but using data and simulations that have a prior of $\tau = 0.055 \pm 0.010$ instead of $\tau = 0.07 \pm 0.02$. In general the agreement between different splits changes by between -0.1 and 0.3σ , thus slightly worse. A detailed discussion of these results will be presented in Section 5.5.

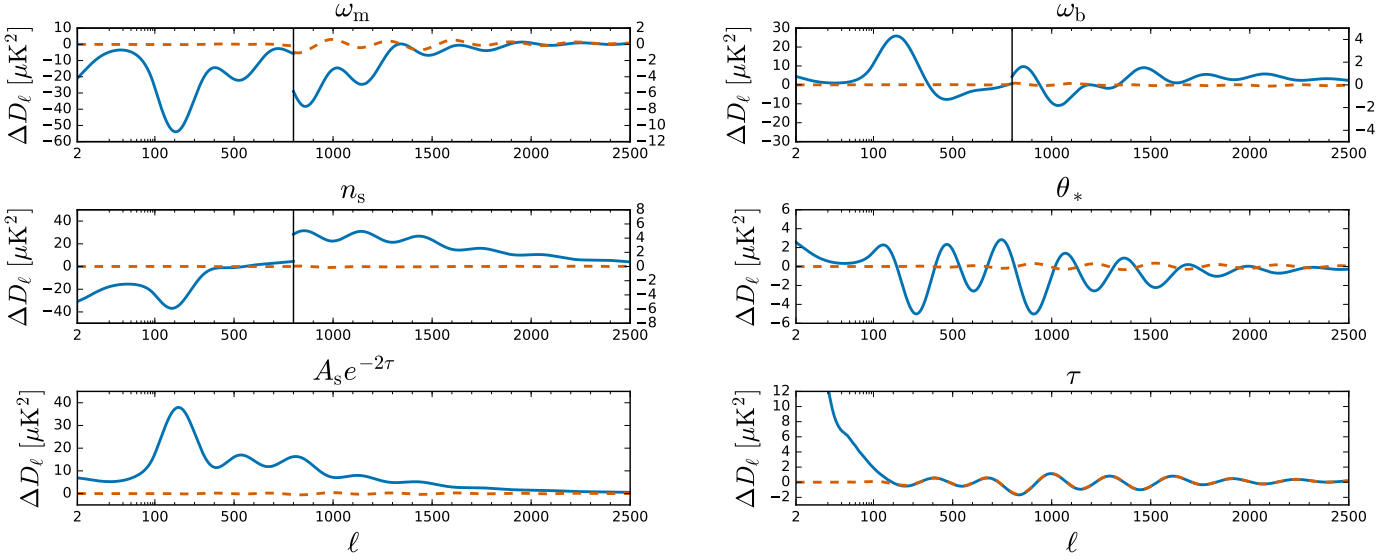


Fig. 5. Response of $\mathcal{D}_\ell^{TT} \equiv \ell(\ell+1)C_\ell/2\pi$ to 1σ increases in each of the parameters (calculated using CAMB, Lewis et al. 2000). All changes are made with the other five parameters pictured here held fixed. The dashed orange line in each panel shows the contribution from gravitational lensing alone. Note that the y-axis scale changes in some of the panels at $\ell = 800$.

Table 2. Same as Table. 1, but using data and simulations that have a prior of $\tau = 0.055 \pm 0.010$ instead of $\tau = 0.07 \pm 0.02$. See Sect. 5.5 for more discussion on the impact of this updated constraint on τ . Entries marked with a \dagger have had a parameter mode projected out, as discussed in Sect. 3.2.

Data set 1	Data set 2	Test	
		χ^2	max-param
$\ell < 800$	$\ell < 2500$	$1.8\sigma^\dagger$	2.1σ ($A_s e^{-2\tau}$)
$\ell < 800$	$\ell > 800$	1.9σ	2.2σ ($A_s e^{-2\tau}$)
$\ell < 1000$	$\ell < 2500$	$1.9\sigma^\dagger$	1.9σ ($A_s e^{-2\tau}$)
$\ell < 1000$	$\ell > 1000$	1.9σ	1.5σ (ω_m)

4. Physical explanation of the power spectrum response to changing Λ CDM parameters

Having studied the question of the magnitude of the parameter shifts relative to expectations, we now turn to an analysis of why the best-fit model parameters change in the particular way that they do. Understanding this requires reviewing exactly how changes to Λ CDM parameters affect the CMB power spectrum, so that these can be matched with the features in the data that drive the changes. The material in this section is meant as background for the narrative that will come later, and readers may want to skip it on a first reading; nevertheless, the information collected here is not available in any single source elsewhere, and will be important for understanding the relationship between parameters and power spectrum features. The key information is the response of the angular power spectrum to changes in parameters, shown in Fig. 5. In Sect. 5 we will close the loop on how the physics embodied in the curves of Fig. 5 interacts with the residual features in the power spectrum to give the parameter shifts we see in Fig. 1.

The structure in the CMB anisotropy spectrum arises from gravity-driven oscillations in the baryon-photon plasma before

recombination (e.g., Peebles & Yu 1970; Zel’dovich et al. 1972). Fortunately our understanding of the CMB spectrum has become highly developed, so we are able to understand the physical causes (see Fig. 5) of the shifts already discussed as arising from the interaction of gravitational lensing, the early integrated Sachs-Wolfe (ISW, Sachs & Wolfe 1967) effect, the potential envelope, and diffusion damping. In this section we review the physics behind the $\partial C_\ell^{TT}/\partial p_i$ curves and clarify some interesting interactions by “turning off” various effects. The reader is referred to Peacock (1999), Liddle & Lyth (2000), and Dodelson (2003) for basic textbook treatments of the physics of CMB anisotropies.

4.1. The matter density: ω_m

We begin by considering how changes in the matter density affect the power spectrum, leading to the rising behaviour seen in the top left panel of Fig. 5. Note that here we have plotted the linear response in the quantity $\mathcal{D}_\ell \equiv \ell(\ell+1)C_\ell/2\pi$ rather than C_ℓ .

Since much of the relevant action occurs near horizon crossing, a description of the physics is best accomplished by picking a gauge; we choose the Newtonian gauge here and focus primarily on the potentials Φ and Ψ and the density. Within this picture, the impact of the matter density comes from the “early integrated Sachs-Wolfe effect” (i.e., the evolution of the potentials immediately after last scattering) and from the “potential envelope”. The effect of main interest to us is the latter—the enhancement of power above $\ell \simeq 100$ arising due to the near-resonant driving of the acoustic oscillations by decaying potentials as they cross the horizon near, or earlier than, the epoch of matter-radiation equality (Hu & White 1996a, 1997; Hu et al. 1996). Overdense modes that enter the horizon during radiation domination ($\rho_m/\rho_{\text{rad}} \ll 1$) cannot collapse rapidly enough into their potential wells (due to the large pressure of the radiation) to prevent the potentials from decaying due to the expansion of the Universe. The time it takes the potential to decay is closely related to the time at

which the photons reach their maximal compression and hence maximal energy density perturbation. The near-resonant driving of the oscillator, and the fact that the photons do not lose (as much) energy climbing out of the potential well (as they gained falling in), leads to a large increase in observed amplitude of the temperature perturbation over its initial value. For modes that enter the horizon later, the matter density perturbations contribute more to the potentials, which are (partially) stabilized against decay by the contribution of the CDM. This reduces the amplitude enhancement. The net result is an ℓ -dependent boost to the power spectrum amplitude, transitioning from unity at low ℓ to a factor of over 10 in the high- ℓ limit. This boost is known as the “potential envelope.” It is not immediately apparent in the power spectrum, due to the effects of damping at high ℓ , but it imprints a large dependence on ω_m and can be uncovered if the effects of damping and line-of-sight averaging are removed (e.g., figure 7 of Hu & White 1997).

The characteristic scale of the power boost is set by the angular scale, θ_{eq} , which is the comoving size of the horizon at the epoch of matter-radiation equality projected from the last-scattering surface. Thus the CMB spectra are sensitive to θ_{eq} . In the Λ CDM model θ_{eq} depends almost solely on the redshift of matter-radiation equality, z_{eq} (with an additional, very weak, dependence on Ω_m). Higher ω_m means higher z_{eq} and thus θ_{eq} is smaller; the rise in power from low ℓ (modes that entered at $z < z_{\text{eq}}$) to high ℓ (modes that entered at $z > z_{\text{eq}}$) gets shifted to higher ℓ . This shifting of the transition to higher ℓ results in a decrease in power in the region of the transition and thus the shape of the change in \mathcal{D}_ℓ^{TT} shown in Fig. 5. As we will see in Sect. 5.1, an oscillatory decrease in lower ℓ power (from increasing ω_m) will be a key part of our explanation for the parameter shifts. Indeed, once the impact of the low multipoles is reduced by the addition of high- ℓ data, the increase in power near the first peak from a redder spectrum must be countered by a higher ω_m (and other shifts, see Sect. 5.3).

Additional dependence on ω_m comes from the change in the damping scale and how recombination proceeds. The damping scale is the geometric mean of the horizon and the mean free path at recombination, and changing the expansion rate changes this scale (Silk 1968; Hu & Sugiyama 1995b). An increase in ω_m corresponds to a decrease in the physical damping scale (which corresponds to a decreased angular scale at fixed distance to last scattering). However, within the range of variation in ω_m allowed by *Planck*, changes in damping are a sub-dominant effect.

Finally, the anisotropies we observe are modified from their primordial form due to the effects of lensing by large-scale structure along the line of sight. One effect of lensing is to “smear” the acoustic peaks and troughs, reducing their contrast (Seljak 1996). The peak smearing by lensing depends on ω_m through the decay of small-scale potentials between horizon crossing and the epoch of equality (see e.g., Pan et al. 2014). While ω_m is an important contributor to the lensing effect, we will see in Sect. 5.2 that lensing will primarily drive shifts in τ and $A_s e^{-2\tau}$.

4.2. The baryon density: ω_b

For the nearly scale-invariant, adiabatic perturbations of interest to us, the presence of baryons causes a modulation in the heights of the peaks in the power spectrum and a change in the damping scale due to the change in the mean free path. Physically a non-zero baryon-photon momentum density ratio, $R = 3\rho_b/(4\rho_\gamma)$, alters the zero-point of the acoustic oscillations away from zero effective temperature ($\Theta_0 + \Psi = 0$) to $\Theta_0 + (1 - R)\Psi = 0$ (see e.g., Seljak 1994; Hu & Sugiyama 1995a; Hu et al. 1997). For

non-zero $R\Psi$ this leads to a modulation of even and odd peak heights, enhancing the odd peaks (corresponding to compression into a potential well) with $R\Psi < 0$ and reducing the even peaks (corresponding to rarefactions in potential wells). Given only low- ℓ data, such as for WMAP, the relative heights of the first and second peaks, in particular, are important for determining R and therefore ω_b . An increase in ω_b boosts the first peak relative to the second, as is apparent in the ω_b panel of Fig. 5. We will see in Sect. 5.1 that the inclusion of the high- ℓ data will lead to a decrease in ω_b , which will be required to better match the ratio of the first and second peaks once the other parameters have shifted.

A change in ω_b also changes the mean free path of photons near recombination, and the process of recombination itself, thus affecting the diffusion damping scale. As with an increase in ω_m , an increase in ω_b decreases the physical damping scale. The angular scale which this corresponds to depends on the distance to last scattering, which can be altered by changing ω_b , depending on what other quantities are held fixed. For the choice shown in Fig. 5, we find that the angular scale decreases as well, leading to less damping and the excess of power seen at high ℓ in the ω_b panel.

4.3. The optical depth: τ

Reionization in the late Universe recouples the CMB photons to the matter field, but not as tightly as before recombination (since the matter density has dropped by over six orders of magnitude in the intervening period). Scattering of photons off electrons in the ionized intergalactic medium suppresses the power in the primary anisotropies on scales smaller than the horizon at reionization ($\ell \gtrsim 10$) by $e^{-2\tau}$ (Kaiser 1984; Efstathiou 1988; Sugiyama et al. 1993; Hu & White 1996b). Because of this, increasing τ at fixed $A_s e^{-2\tau}$ keeps the power spectrum at $\ell \gg 10$ nearly constant. The small wiggles in the τ panel are entirely from the increased gravitational lensing power, due to the increase in A_s necessary to keep $A_s e^{-2\tau}$ constant. At very low ℓ this increase in A_s directly boosts anisotropies.

Increasing $A_s e^{-2\tau}$ at fixed τ results in changes to \mathcal{D}_ℓ^{TT} that are almost exactly proportional to \mathcal{D}_ℓ^{TT} , with small corrections due to the second-order effect of gravitational lensing.

4.4. The spectral index, n_s , and acoustic scale, θ_*

The final two effects are very easy to understand. A change in the spectral index of the primordial perturbations yields a corresponding change to the observed CMB power spectrum (e.g., Knox 1995). Increasing n_s with the amplitude fixed at the pivot point $k = k_0 = 0.05 \text{ Mpc}^{-1}$, increases (decreases) power at $\ell \gtrless (\lesssim) 550$, since modes with $k = k_0$ project into angular scales near $\ell = 550$. We will see in Sect. 5.1 that a tilt towards redder spectra (i.e. a decrease in high- ℓ power) will be necessary to best fit the high- ℓ data. Alternatively, as discussed in Sect. 5.3, when not tightly constrained by the $\ell > 1000$ data, a higher n_s allows a better fit to the “deficit” of power at $\ell < 30$.

The predominant effect of altering θ_* (which, with the other parameters held fixed, is performed by modifying ω_Λ) is to stretch the spectrum in the ℓ direction, causing large changes in the rapidly-varying regions of the spectrum between peaks and troughs. Note that the high sensitivity of the power spectrum to this scaling parameter (e.g., Kosowsky et al. 2002) means that small variations in θ_* can swamp those of other parameters. In Sect. 5.1 we will see that one of the differences between the

$\ell < 800$ best-fit model and that for $\ell < 2500$ is a variation in θ_* that shifts the third peak in the angular power spectrum slightly to the right, removing some oscillatory residuals.

4.5. The Hubble constant, H_0

With these effects in hand it is easy to understand how changes in other parameters, such as H_0 , impact \mathcal{D}_ℓ^{TT} . As discussed in [Planck Collaboration XVI \(2014, section 3.1\)](#), the characteristic angular size of fluctuations in the CMB (θ_*) is exceptionally well and robustly determined (better than 0.1%). Within the Λ CDM model this angle is a ratio of the sound horizon at the time of last scattering and the angular diameter distance to last scattering. The sound horizon is determined by the redshift of recombination, ω_m , and ω_b , so the constraint on θ_* translates into a constraint on the distance to last scattering, which in turn becomes a constraint on the 3-dimensional subspace $\omega_m - \omega_b - h$. Marginalizing over ω_b gives a strong degeneracy between ω_m and h , which can be approximately expressed as $\Omega_m h^3 = \text{constant}$ (as will be important in [Sect. 5.3](#)). For example, an increase in ω_m decreases the sound horizon as $\omega_m^{-0.25}$ (softened by the influence of radiation) and hence the distance to last scattering must decrease, to hold θ_* fixed. This distance is an integral of $1/H(z)$, with $H^2(z) \propto \{\omega_m[(1+z)^3 - 1] + h^2\}$ for the dominant contribution from $z \ll z_{\text{eq}}$. Thus h must decrease in order for the distance to last scattering not to decrease too much.

4.6. Lensing

As mentioned earlier, the anisotropies we observe are modified from their primordial form by several secondary processes, among them the deflection of CMB photons by the gravitational lensing associated with large-scale structure (see e.g., [Lewis & Challinor 2006](#), for a review). These deflections serve to “smear” the last scattering surface, leading to a smoothing of the peaks and troughs in the angular power spectrum, as well as generating excess power on small scales, B -mode polarization, and non-Gaussian signatures. Our focus is on the first effect.

Gradients in the gravitational potential bend the paths of photons by a few arcminutes, with the bend angles coherent over degree scales, leading to a pattern of distortion and magnification on the initially Gaussian CMB sky. In magnified regions the power is shifted to lower ℓ , while in demagnified regions it is shifted to higher ℓ . Across the whole sky this reduces the contrast of the peaks and troughs in the power spectrum (while conserving the total power), and generates an almost power-law tail to very high ℓ . The amplitude of the peak smearing is set by (transverse gradients of) the (projected) gravitational potential and this is sensitive to parameters (such as A_s and ω_m), which change its amplitude or shape. The separate topic of CMB lensing through the 4-point functions (to derive $C_\ell^{\phi\phi}$) is discussed in [Sect. 6.3](#).

5. Connecting parameter shifts to data to physics

With an understanding of the different ways in which the Λ CDM model parameters can adjust the TT spectrum, we can now begin to try to explain the parameter shifts of main interest for this paper. We start in [Sect. 5.1](#) by showing how the best-fit model has adjusted from its $\ell < 800$ solution to match the new data at $\ell > 800$. This story tracks more or less chronologically how our best understanding of the Λ CDM model has progressed, since the modes at $\ell \lesssim 800$ had mostly been measured first with

WMAP. Additionally, it highlights the features of the *Planck* data that are important for driving parameter shifts with respect to the $\ell < 800$ best-fit model.

The question answered in [Sect. 5.1](#) is “what caused the parameters to shift from their $\ell < 800$ values to their $\ell < 2500$ ones?” A different, and also useful, question is “what causes there to be shifts at all, i.e., where do the *differences* come from?” This puts the $\ell < 800$ and $\ell > 800$ data on more equal footing, allowing us to pick aspects of each that generate most of the difference between the two. Although the resulting story is not unique, we find that the particular choice we have made results in a helpful explanation. It leads us to identify the connection with gravitational lensing, which we discuss in [Sect. 5.2](#), and of the low- ℓ deficit, which we discuss in [Sect. 5.3](#).

5.1. From $\ell < 800$ to $\ell < 2500$

We begin by examining how parameters shift as we increase ℓ_{max} from 800 to 2500. The best-fit parameters from the range $\ell < \ell_{\text{max}}$ are shown by the solid blue curve in [Fig. 6](#) (where ℓ_{split} is, in this case, ℓ_{max}). Although eight parameters are displayed in this figure, for the purpose of explaining shifts it is important to consider only six parameters at a time (since there are only six degrees of freedom in the Λ CDM model). We will use the set of six discussed in [Sect. 2](#), for the reasons described there. As a reminder, they are θ_* , ω_m , ω_b , n_s , $A_s e^{-2\tau}$, and τ . Focusing on these parameters, one can see in [Fig. 6](#) the following changes:

- a sharp drop in θ_* between $\ell_{\text{max}} = 800$ and 1000;
- a highly correlated gradual drop in ω_b , drop in n_s , increase in ω_m , and increase in $A_s e^{-2\tau}$ across the whole multipole range;
- an increase in τ between $\ell_{\text{max}} = 1000$ and 1500.

[Figure 7](#) illustrates even more explicitly how these different multipole ranges cause the parameter shifts. This figure compresses a large amount of information into a combination of 10 panels, the full understanding of which requires a slow stepwise explanation. Each of the panels in the left column shows residuals of the data relative to the best-fit $\ell < 800$ model. The thick black line is the best-fit model for $\ell < \ell_{\text{max}}$, with ℓ_{max} increased in each subsequent panel and represented by the darker data points (varying from $\ell_{\text{max}} = 800$ in the top panels to $\ell_{\text{max}} = 2500$ in the bottom panels).

In panel (1a) of [Fig. 7](#) we have $\ell_{\text{max}} = 800$ and thus we see directly the residuals in the $\ell > 800$ data with respect to the $\ell < 800$ model that cause the parameter shifts of main interest for this work. We will sometimes refer to these features as the “oscillatory residuals”; for definiteness, we are referring to the upward trends at $\ell \simeq \{900, 1300, 1600, 1800\}$ and downward ones at $\ell \simeq \{1100, 1400, 1700\}$. Note that these oscillations are (roughly) out of phase with the CMB peaks themselves, a point which will be important for future discussion.

We can assess the significance of the residuals at the power spectrum level by computing their χ^2 . With the same $\Delta\ell = 50$ bins as in [Fig. 7](#), we find $\chi^2 = 36.4$ for 34 bins, equivalent to a 0.6σ Gaussian fluctuation. This lack of significance in the residuals in the power spectrum itself underscores the fact that we are not talking about large residuals here, even if they happen to appear more significant in the cosmological parameter space. Finally, we point out that these residuals are of course not inherent to the $\ell > 800$ data themselves, rather to the difference with the best-fit model predicted from the $\ell < 800$ data; in [Sect. 5.3](#) we will comment on how the $\ell < 30$ data in particular threw off this model from the best estimate coming from the full ℓ range.

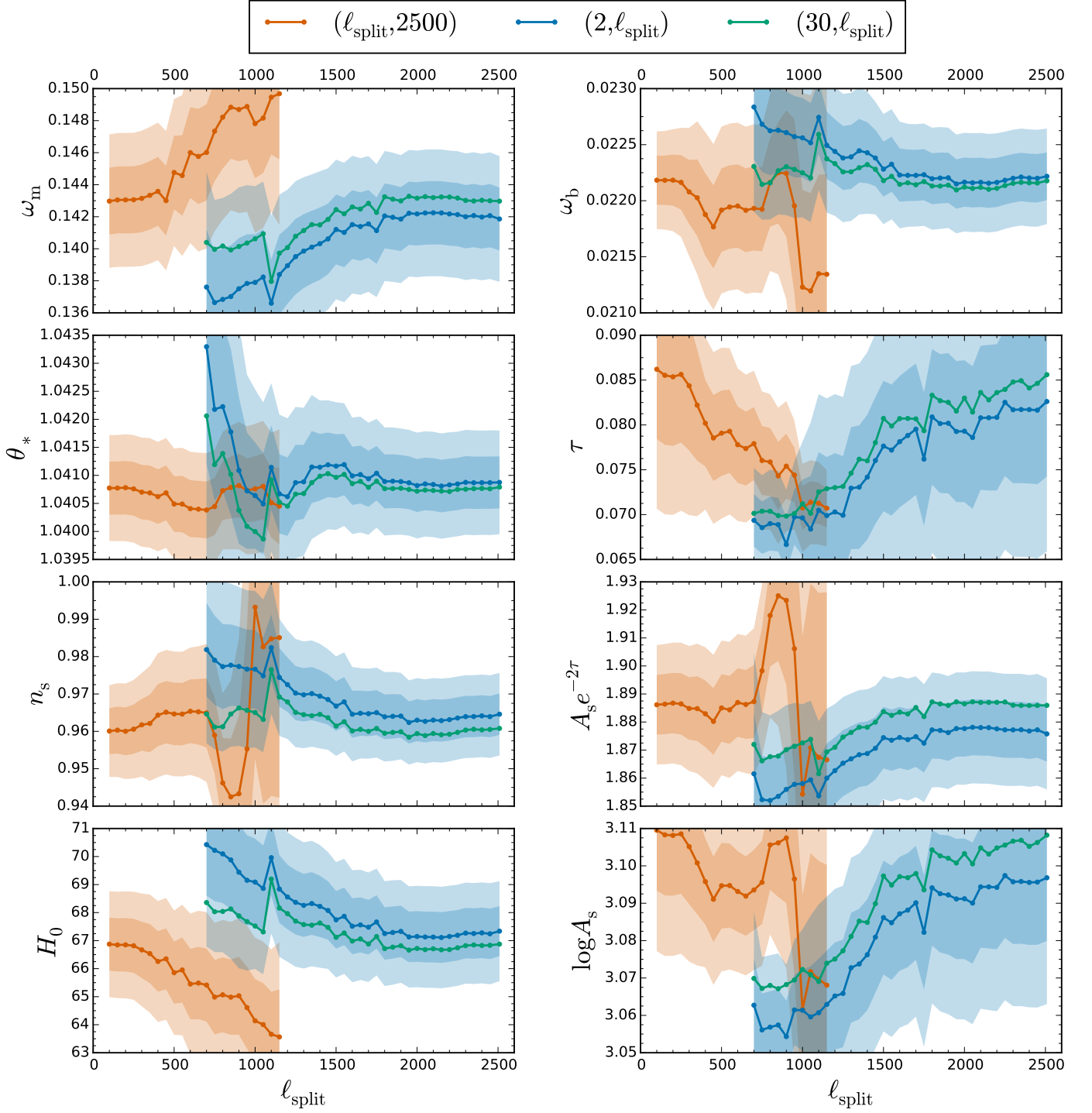


Fig. 6. Shifts in the best-fit values of parameters when one considers the multipole range either below or above different values of ℓ_{split} . This uses the PlanckTT+ τ prior data combination, with $\ell > 30$ computed using `plik_lite`. The different lines correspond to restricting the data to $\ell < \ell_{\text{split}}$ (blue), $30 < \ell < \ell_{\text{split}}$ (green), and $\ell > \ell_{\text{split}}$ (orange). These shifts are described in Sect. 5.1. One can see here that excising the $\ell < 30$ region moves the low- ℓ parameters closer to the high- ℓ parameters, as discussed in detail in Sect. 5.3. Error bands are the ± 1 and $\pm 2\sigma$ scatter in the simulations away from the input fiducial model. We have chosen to plot this quantity as opposed to posterior constraints on these parameters (which is different because of our prior on τ) because it is these bands that are appropriate for comparing the blue and orange lines against each other. Note that this has the perhaps counter-intuitive effect of having the error bands in the τ panel increase as more data are added. None of the local “spikes” are found to be significant, as can be seen from the bottom panel of Fig. A.1.

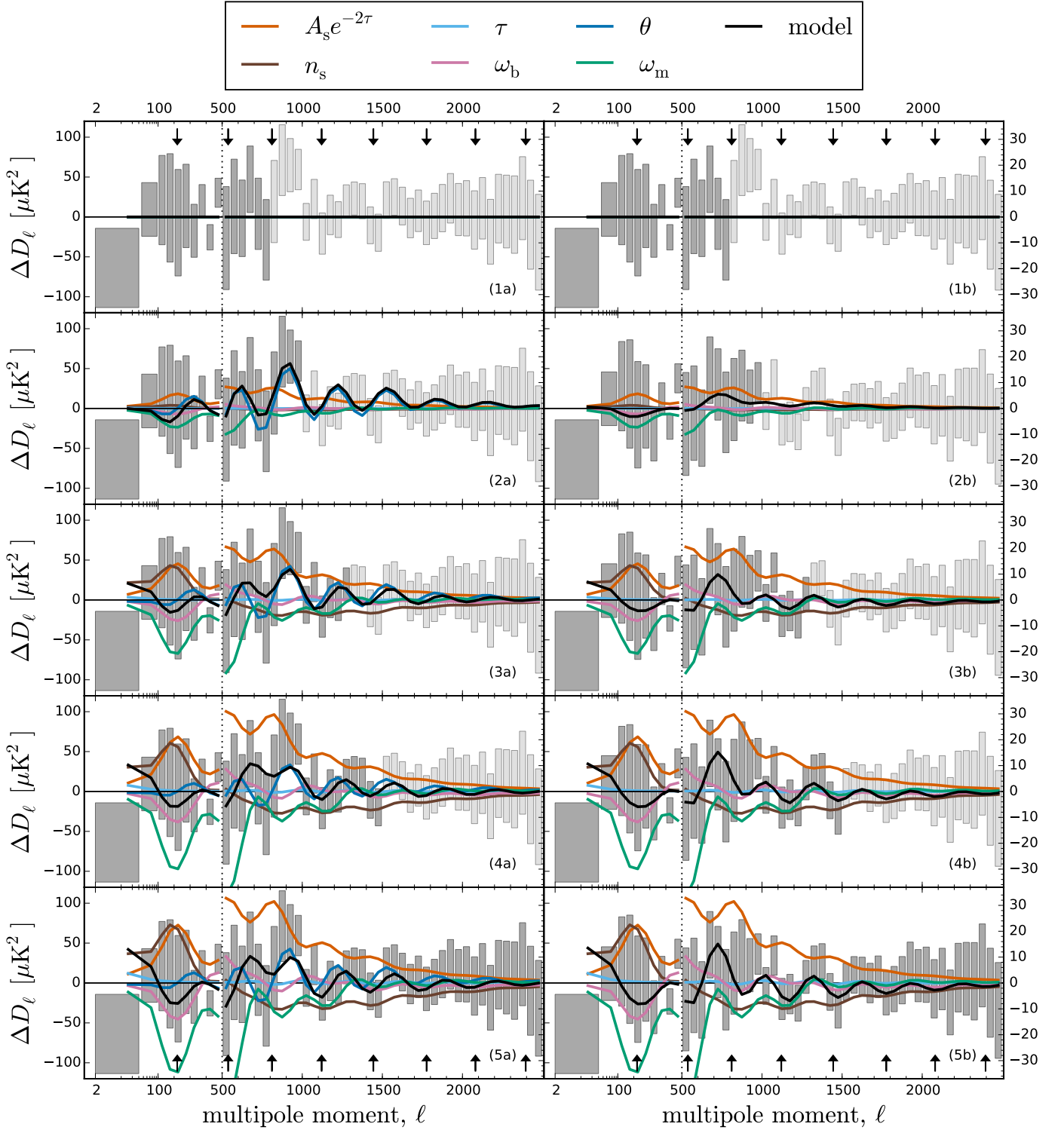


Fig. 7. How the best-fit $\ell < \ell_{\max}$ PlanckTT+ τ prior Λ CDM model adjusts as ℓ_{\max} is increased from 800 to 2500 (going from the top panels to the bottom panels). *Left column:* all panels show residuals relative to the $\ell < 800$ model. *Planck* power spectrum binned estimates and $\pm 1\sigma$ errors on the CMB spectrum, as extracted with `plik_lite`, are shown as grey boxes. Note the change in y-axis scale at $\ell = 500$, indicated by the vertical dotted line. The solid black line is the best-fit model for $\ell < \ell_{\max}$, where ℓ_{\max} is different for each panel, as indicated by which of the boxes are shaded darker. The various coloured lines indicate the *linear* response to the shift in individual parameters between their $\ell < 800$ best-fit value and their $\ell < \ell_{\max}$ one. *Right column:* identical to the left column, except that the contribution from θ_* (i.e., the blue line from the corresponding left panel) has been subtracted from the sums, as well as from the actual model and from the data. For reference, the arrows in the top and bottom panels show the locations of the peaks in the power spectrum.

Beginning now to increase ℓ_{\max} up to 1000, in panel (2a) we see the model adjusting to match the data in the 800 to 1000 region. We would also like to understand why and how the various parameters have shifted to incorporate these data, which we can do in the following way. Under the approximation of linear response, it is possible to break apart the total change in the model into the contribution from each individual parameter. This is given by the quantity $\Delta p_i dC_\ell/dp_i$, where p_i represents each of the parameters and Δp_i is the shift in each parameter's value between the two cases being compared. If the linear approximation were perfect, the sum of the contributions from each parameter would give exactly the total shift; here we find that the approximation is accurate to 10 % of the total shift, which is sufficient for our discussion here. We have computed these derivatives for the best-fit $\ell < 800$ model. Because these are linear responses, the model can only change their amplitudes.

Panel (2a) of Fig. 7 shows that the only response with significant support on the 800–1000 region is θ_* , which indeed shifts to almost perfectly pick up the difference there. The effect is essentially that the third peak has shifted slightly to the right. With the other parameters held fixed, this change in θ_* alone is responsible for lowering H_0 by $0.5 \text{ km s}^{-1} \text{ Mpc}^{-1}$. An additional decrease in H_0 , by about the same amount, can be ascribed to an increase of the matter density, which, in combination with an increased $A_s e^{-2\tau}$, better fits the position of the second trough at $\ell \simeq 650$.

Because no further increase in ℓ_{\max} changes θ_* by much (and because *Planck*'s measurement of θ_* is so sensitive that the oscillation caused by changing θ_* can be accommodated by only a small shift in its value), we subtract its effect from the model and data to better see the effects of the other parameters and we plot the result in the right column of Fig. 7. With this shift in θ_* subtracted, panel (2b) shows that qualitatively this makes the oscillatory features that we have already seen become slightly more pronounced.

The first way in which the parameters adjust to fit the remaining data is via movement along a parameter direction involving ω_b , ω_m , $A_s e^{-2\tau}$, and n_s . Although this is a fairly complicated combination, the biggest change in the spectrum comes from the increase in primordial power that results in an *oscillatory increase* in the CMB spectrum, and an increase in the matter density that results in an *oscillatory decrease* in power. This leaves an oscillatory pattern oscillating about zero when we consider $\ell_{\max} = 1000$. As we increase ℓ_{\max} between panels (2b) and (5b), this same parameter mode grows in amplitude. Furthermore, the effect of the change in the primordial power spectrum, both the increase in amplitude and tilt towards redder spectra, is also necessary to match the oscillations. This combination of parameters, and in particular the decrease in n_s , also drives disagreement with the very lowest bin in this figure, $\ell < 30$ (as we discuss in Sect. 5.3).

Finally, we observe an increase in τ and a corresponding increase in A_s , which, although barely visible in Fig. 7, does also track the same oscillatory features. We discuss this shift further in Sect. 5.2.

To summarize, the features in the $\ell > 800$ data that are primarily responsible for the shifts in parameters are largely oscillatory, as seen in e.g., panel (1a) of Fig. 7. After an initial shift in θ_* to pick up the excess between $\ell = 800$ and 1000, the remaining residuals are tracked by two directions in parameter space, namely an increase in τ and a movement along the $A_s e^{-2\tau} - n_s - \omega_b - \omega_m$ degeneracy direction, both of which serve to increase the amplitude of the oscillations.

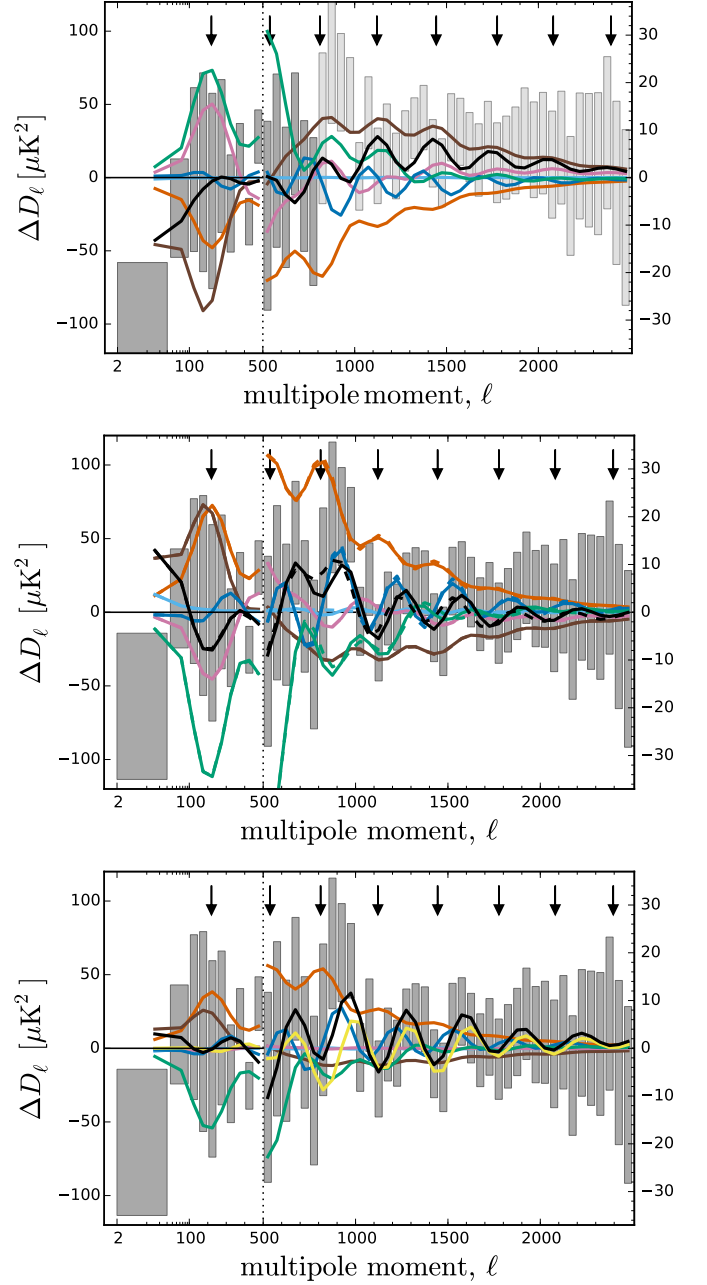


Fig. 8. Power spectrum residuals for a few additional cases, in the same format as Fig. 7. Note that for the top panel, the fiducial model is the best-fit from $30 < \ell < 800$, as opposed to from $\ell < 800$, as is the case in Fig. 7 and in the bottom two panels of this figure. In all cases the black line is the best-fit Λ CDM model in the range indicated by the shaded data boxes. The coloured lines are the linear responses to the shifts in parameters between these two best-fit solutions. *Top:* The way in which the best-fit model from $30 < \ell < 800$ is “thrown off” by inclusion of $\ell < 30$ data. Note that although visually the $\ell > 800$ data appears to be a better fit with $\ell < 30$, the χ^2 is worse by $\Delta\chi^2 = 3.2$. *Middle:* Same as panel (5a) of Fig. 7, but with dashed lines showing the responses with the gravitational potential fixed. *Bottom:* Same as panel (5a) of Fig. 7, but with an additional free parameter, A_L , shown in yellow. This added degree of freedom tracks reasonably well the oscillatory residuals, leaving smaller shifts for the other parameters and a reduced low- ℓ deficit.

Table 3. Comparison of the expected dispersion (“Exp.”) and observed (“Obs.”) parameter shifts between pairs of datasets. We show results for the case where we use all the lowest multipoles, where we excise the $\ell < 30$ multipoles, and where we also fix the lensing potential, as described in Sect. 5.2. The shifts are shown in units of standard deviation of the respective $\ell < 800$ runs for each case. The ratio between observed shifts and expected dispersions becomes smaller when excising the $\ell < 30$ multipoles, and even more when factoring out the impact of lensing. Note the final column has expected shifts calculated as in equation 53 of Planck Collaboration XI (2016) rather than using simulations.

Parameters	(2, 800) vs. (2, 2500)			(30, 800) vs. (30, 2500)			(30, 800) vs. (30, 2500), fixlens		
	Exp. [σ]	Obs. [σ]	Obs./Exp.	Exp. [σ]	Obs. [σ]	Obs./Exp.	Exp. [σ]	Obs. [σ]	Obs./Exp.
ω_b	0.8	0.9	1.1	0.8	0.0	0.0	0.8	-0.5	0.6
ω_m	0.8	-1.6	2.0	0.8	-0.7	0.9	0.7	-0.3	0.4
θ_{MC}	0.9	0.9	0.9	0.9	0.4	0.4	0.9	0.2	0.2
τ	0.4	-1.0	1.7	0.4	-0.7	1.9	0.2	-0.0	0.2
$\ln(10^{10} A_s)$	0.4	-1.0	2.4	0.4	-1.0	2.2	0.1	-0.2	1.7
n_s	0.8	1.0	1.2	0.9	0.0	0.0	0.9	-0.5	0.5
H_0	0.8	1.4	1.8	0.8	0.5	0.6	0.8	0.1	0.1
$A_s e^{-2\tau}$	0.7	-1.5	2.2	0.7	-0.9	1.3	0.6	-0.7	1.1

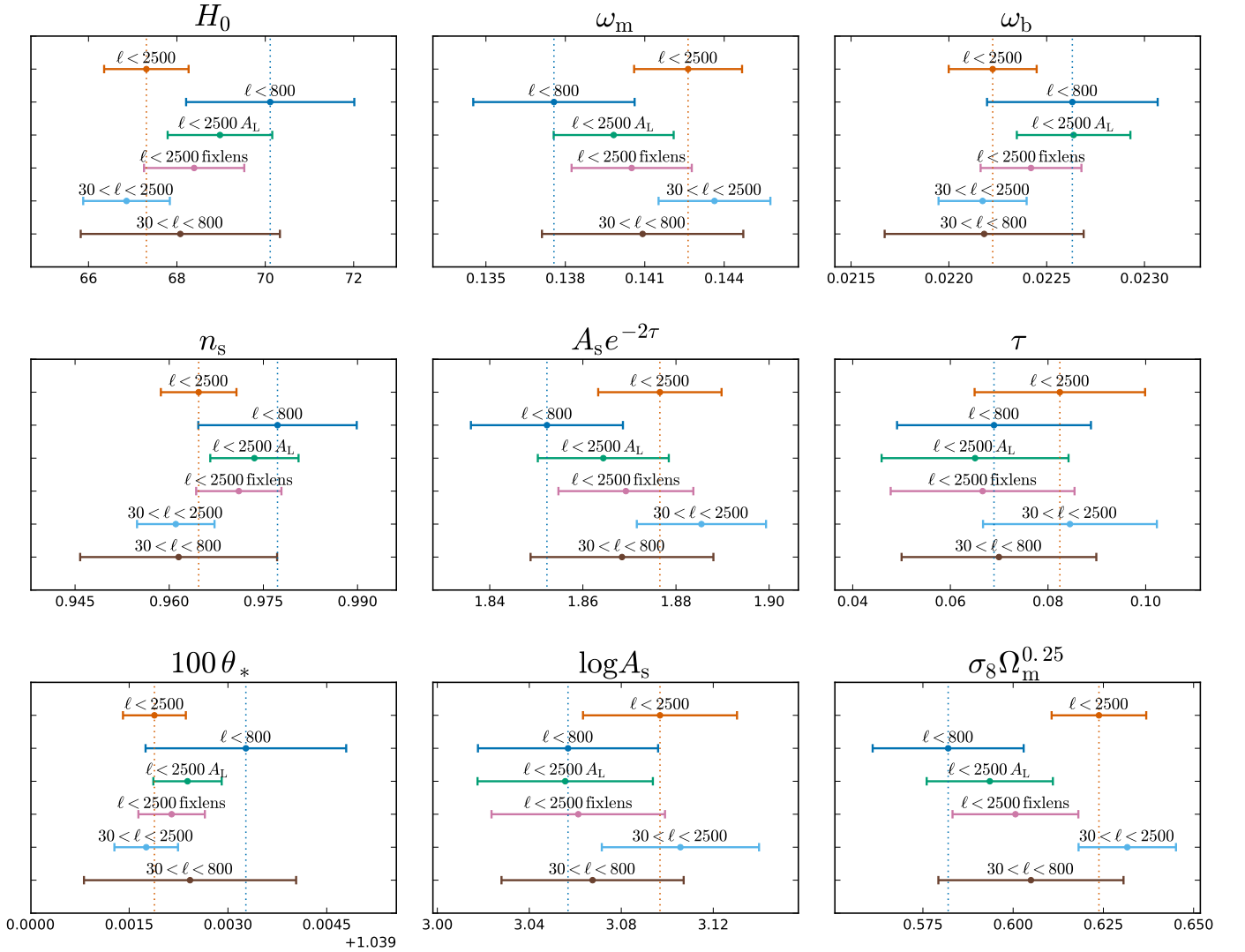


Fig. 9. Marginal mean and 68 % error bars on cosmological parameters estimated with different data choices, assuming the Λ CDM model (unless otherwise labelled). We use the PlanckTT likelihood in combination with a prior $\tau = 0.07 \pm 0.02$. Excising the low multipoles, i.e., $\ell < 30$, substantially improves the agreement between the parameters from $\ell < 800$ and the $\ell < 2500$ range. Further agreement is then achieved when removing the effect of gravitational lensing.

5.2. Gravitational lensing

Having described the shifts fairly pragmatically, we now turn to trying to understand what, physically, is driving them. It is clear that the oscillatory residuals are important, and qualitatively we can see that they look like extra smoothing of the peaks and hence resemble the effects of gravitational lensing. Indeed, along with the parameter shifts themselves, much attention has been given in the literature to the fact that the *Planck* high- ℓ data appear to favour an overly enhanced gravitational lensing potential with respect to that expected from Λ CDM (Planck Collaboration XIII 2016; Couchot et al. 2015; Addison et al. 2016). Given this, and noting that the parameters shift to increase A_s and ω_m (both of which increase the gravitational lensing potential) it may be tempting to think that the parameter shifts are dominantly driven by a desire to increase lensing and hence increase peak smoothing at high ℓ . We will see, however, that this only explains about a third of the total shifts and instead most of the change in the best-fit model spectrum is related to non-lensing effects such as changing the matter envelope (Sect. 4.1) and the primordial tilt (Sect. 4.4).

The effect of lensing of the TT spectrum has traditionally been studied by introducing an additional phenomenological parameter, A_L , which artificially scales the lensing potential power spectrum used to calculate the lensed CMB spectra. By definition $A_L = 1$ corresponds to Λ CDM. The *Planck* $\ell < 2500$ data prefer a value higher than unity, $A_L = 1.22 \pm 0.10$ (Planck Collaboration XIII 2016). The bottom panel of Fig. 8 shows the same power spectrum residual and linear responses of Fig. 7, now with A_L as an additional free parameter. As we see, the response from increasing A_L on its own does a somewhat good job of fitting the data, particularly at $\ell > 1000$, leaving smaller shifts in the other parameters. We do note, however, that although some of the other cosmological parameters shift closer to the values preferred by the $\ell < 800$ case,¹² differences remain. For example, as shown in Fig. 9, about half of the shifts (in e.g., ω_m and H_0) remain even in the Λ CDM+ A_L case. Thus, the shift in parameters between $\ell < 800$ and $\ell < 2500$ cannot be entirely explained through an extra peak-smoothing effect at high ℓ ; other aspects of the data are also independently pointing to similar shifts.

In terms of understanding physically how the features in the $\ell > 800$ data are fit by the Λ CDM model, the A_L test is, however, not entirely useful. The Λ CDM model, unlike Λ CDM+ A_L , is of course *not* free to arbitrarily increase the lensing potential; it must do so through other parameters that also have non-lensing related effects. Thus the particular way in which Λ CDM chooses to optimally fit the features will be a balance between lensing and non-lensing effects. It is now useful to define more exactly the question we are seeking to answer. Ascertaining what aspects of the data “are lensing” is an ill-defined question; conversely, ascertaining which parts of the change between two model power spectra come from lensing is perfectly well defined because we can theoretically calculate the two spectra with and without lensing included. This is what is shown in the middle panel of Fig. 8. Here we plot the same power spectrum linear responses as in Fig. 7, but additionally (as the dashed lines) we remove the contribution from changing the lensing potential; more precisely, the dashed lines are dC_ℓ/dp , with C_ℓ being the *unlensed* power spectrum. Thus, even without affecting the lensing potential, the shifts in parameters we have been discussing

cause the spectrum to largely match the oscillatory features we see in the data.

In terms of cosmological parameters, we can verify that most of the shifts are still there even in the absence of changes to the gravitational lensing potential with the following test. We again look at shifts between $\ell < 800$ and $\ell < 2500$, but for the $\ell < 2500$ case we fix the lensing potential to its own best-fit from $\ell < 2500$. In doing so, the cosmological parameters no longer impact the amplitude of the lensing potential, which is already at the value favoured by the full ℓ -range fit. Any remaining shifts must reflect features in the data that are not accounted for by the change to the lensing potential alone, and are instead fit by non-lensing effects of changing the cosmological parameters. We find, as shown in Fig. 9, that the majority of the shifts are still present. For example, H_0 still moves from (70.0 ± 1.9) with $\ell < 800$ to $(68.4 \pm 1.1) \text{ km s}^{-1} \text{ Mpc}^{-1}$ with $\ell < 2500$ and fixed lensing. Roughly speaking, about two thirds of the shift in the Hubble constant and other parameters comes from non-lensing effects.

The only exception to lensing being a sub-dominant part of the shifts is τ and the corresponding change in A_s , whose entire shift is explained by lensing. This confirms what we might expect, since at $\ell > 100$ the *only* effect of changing τ (at fixed $A_s e^{-2\tau}$) is via lensing effects, and if the non-lensing effect of τ at $\ell < 100$ would have been driving its shift, it is clear from Fig. 7 that it would have shifted in the other direction. We have gone further and also investigated whether the part of shifts in A_s and ω_m that *are* related to lensing are due to the fact that both of these parameters directly impact the lensing amplitude, or whether this is rather through the correlation between the two due to non-lensing effects in the power spectrum. We checked this by fixing the lensing potential to the $30 < \ell < 800$ best-fit case, and letting only A_s change its amplitude. We find that in this case, A_s and τ are forced to values even higher than in the standard $30 < \ell < 2500$ case, while the posterior of ω_m remains very close to the best-fit of the $30 < \ell < 800$ case. We thus conclude that it is indeed the direct impact of both ω_m and A_s on the lensing amplitude that is important.

One reason the sub-dominant impact of lensing discussed in this section is subtle is because of a coincidental parameter degeneracy. As discussed in the previous section, fitting the oscillatory features increases ω_m and $A_s e^{-2\tau}$. By coincidence, these shifts both increase the lensing potential *and* increase the amplitude of the peak smoothing via non-lensing effects, but it is the latter that is more important.

5.3. The low- ℓ deficit

With part of the shifts explained by a preference, albeit sub-dominant, for an increased lensing potential, we now seek to explain the rest of the differences. If we are free to attribute the variations to specific multipoles in either of the two data sets we are comparing, there is not a unique way to tell this story. For example, one could look further at the $\ell > 800$ data and isolate what, aside from the lensing piece we have just described, is causing the shifts. We choose here a different path, which we believe is more elucidating and attributes the remaining difference to the $\ell < 800$ data instead. It also has the advantage that it likely explains, chronologically, why the parameters have shifted (since, again, these modes were measured first with WMAP). The specific explanation is that a large remaining part of the differences is due to multipoles at $\ell < 30$ having “thrown off” the $\ell < 800$ result.

¹²The best-fit cosmology of the $\ell < 800$ case is not significantly influenced by the impact of lensing.

In the previous section, it was noted that as the model adjusted to fit the data in the $1000 < \ell < 1500$ region, the fit at $\ell < 30$ became much worse. This is evidence that the $\ell < 30$ region might play a major role in driving disagreement between the low and high multipoles. Indeed, “anomalies” related to the low- ℓ ’s have been discussed extensively in the literature, for example the low quadrupole or the localized “dip” near $\ell \simeq 20$ (Bennett et al. 1996; Hinshaw et al. 2003; Spergel et al. 2003; Peiris et al. 2003; Mortonson et al. 2009; Cai et al. 2015). Here we are interested mainly in the overall deficit in power across the entire $\ell \lesssim 30$ region (which does of course gain *some* contributions from the low quadrupole and the $\ell \simeq 20$ dip, but also from other multipoles); we refer to this as the “low- ℓ deficit.” This is exactly the same deficit in power discussed previously in Planck Collaboration XV (2014), Planck Collaboration XVI (2014), Planck Collaboration XIII (2016), and others papers, where it is sometimes called the “low- ℓ anomaly.” We explicitly call it a “power deficit” here to avoid confusion with any other “anomalies” at low- ℓ , and because it is a more appropriate name for a feature of only moderate significance. Indeed, if one models the deficit simply as an overall power rescaling at $\ell < 30$ with respect to the Λ CDM model, its significance is 1.1σ when considering the $\ell < 800$ data, growing to 1.6σ for the full- ℓ range (since the Λ CDM model prediction is moved higher).¹³ Assuming Λ CDM, the low- ℓ deficit is thus most likely a sample-variance fluctuation in C_ℓ that happens to be concentrated at the lowest multipoles. Despite interpretation of the deficit from different perspectives (e.g. Contaldi et al. 2003; Iqbal et al. 2015; Chen & Lin 2016), up until now, its effect on the parameter shifts has not been thoroughly explored.

Indeed, when excising the range $\ell < 30$, we observe a relatively large, correlated shift in parameters, as shown in Fig. 9. For example, H_0 shifts from $(70.0 \pm 1.9) \text{ km s}^{-1} \text{ Mpc}^{-1}$ when using $\ell < 800$ to $(68.0 \pm 2.2) \text{ km s}^{-1} \text{ Mpc}^{-1}$ when using $30 < \ell < 800$, much closer to the value preferred by the full multipole Planck cosmology, which is $(67.3 \pm 1.0) \text{ km s}^{-1} \text{ Mpc}^{-1}$. This shift is 1.8 times larger than the expected shift from simulations for the two data sets, in line with its somewhat anomalous nature. Although the deviations induced by these low multipoles are not statistically very significant, they are one of the main sources of difference between the $\ell < 800$ and $\ell < 2500$ parameters, as also shown in Table 3. Furthermore, if one considers this “deficit” as a mere statistical fluctuation in the power spectrum, the fact that it happens to occur at the lowest multipoles gives it greater weight in shifting parameter like n_s than if it had occurred elsewhere. In detail we find that the shifts between the two ranges $\{\Delta A_s e^{-2\tau}, \Delta n_s, \Delta \omega_m, \Delta \omega_b, \Delta H_0, \Delta \tau\}$ in units of the 1σ expected shifts are $\{-2.2, 1.2, -2.0, 1.1, 1.8, -1.7\}$; without $\ell < 30$ in either data set, they become $\{-1.3, 0.0, -0.9, -0.0, 0.6, -1.9\}$.

We now turn to understanding in more detail the way that the low- ℓ deficit sources these parameter differences. This discussion follows closely the top panel of Fig. 8, which shows how one goes from the $30 < \ell < 800$ best-fit (the fiducial model against which the points in the figure are differenced) to the $\ell < 800$ best-fit (the black line). Here we see how the low amplitude of the first 30 multipoles can be fit by a correlated change in n_s , ω_b , ω_m , and $A_s e^{-2\tau}$. In particular, with the $30 < \ell < 800$ best-fit as a starting point, the model needs to decrease power at $\ell < 30$

to fit the low- ℓ deficit; this can be achieved with an increase in n_s , which tilts the spectrum and decreases power at the lowest multipoles. However, this has three additional effects that trigger the response of the other cosmological parameters. Firstly, since the increase in n_s reduces power not just at $\ell < 30$ but over the entire $\ell \lesssim 550$ part of the power spectrum (because our pivot scale corresponds to $\ell \simeq 550$), ω_m decreases to compensate by shifting the matter envelope and increasing the early ISW effect (see Sect. 4.1). The change in ω_m in turn raises the value of H_0 due to the angular diameter distance degeneracy discussed in Sect. 4.5. Secondly, the increase in n_s increases the amplitude of the power spectrum at $\ell \gtrsim 550$; this can be compensated by a lower value of $A_s e^{-2\tau}$. Thirdly, this shift in $A_s e^{-2\tau}$ also reduces power around the first peak, and so yields an increase in ω_b , which increases the amplitude to partially compensate (through the modulation effect described in Sect. 4.2). Finally, some further adjustments are achieved by selecting a larger value of θ_* , which shifts the position of the peaks to the left. Comparatively speaking, excising $\ell < 30$ from $\ell < 2500$ leads to shifts that are similar to those just described but of smaller amplitude, since the excised region is a smaller fraction of the data. Hence, the parameter shifts are smaller without $\ell < 30$, as can be seen in Fig. 9.

As a final check, we have tested the degeneracy between the low- ℓ deficit and the peak smoothing effect. The purpose of this test is to verify that these are two *different* effects, and that one cannot be explained with the other through degeneracies among cosmological parameters. In order to perform this test, we use an additional parameter A_{low} that multiplies the amplitude of the power spectrum at $\ell < 30$. This parametrization does not fully capture the feature at low- ℓ , but should be enough for our purpose here, since we verified that the results we obtain in the Λ CDM + A_{low} case overlap those from excising completely the $\ell < 30$ region. We then estimate parameters for a Λ CDM + $A_L + A_{\text{low}}$ case. Fig. 10 shows the results of this exercise. As expected, we find a moderate degeneracy between A_L and A_{low} , at the level of 30 %, which reduces the deviations of both these parameters. Therefore, when looking at parameter shifts due to one of these two effects, one has to keep in mind that they are somewhat correlated. At the same time, since in Fig. 10 both parameters remain deviant at more than about the 1σ level, this test suggests that *both* effects are present and cannot mutually explain each other.

5.4. Robustness tests

A large number of tests were performed in Planck Collaboration XI (2016) in order to validate the robustness of the Planck likelihood against possible systematics (for more details, see section 5 in that paper). We recall here briefly the tests performed on the high- ℓ TT likelihood, and describe an additional one that has been added specifically for this work.

The Planck likelihood was tested against methodological (e.g., incorrect likelihood approximations), instrumental (e.g., incorrect instrument characterization) and astrophysical (e.g., incorrect foreground modelling) systematics, through specific tests and the use of simulations. These three sources were shown, to the best of our knowledge, to introduce a possible bias on cosmological parameters smaller than about 0.2σ .

More specifically, a number of tests were performed to assess the impact of the use of: “detset” cross-spectra in place of “half-mission” ones (the former are less affected by systematics that are uncorrelated between detectors, the latter by systematics with timescales shorter than half of the mission); smaller

¹³See sections 8 and 9 of Planck Collaboration XX (2016) for alternative investigations of the significance of the power deficit using $P(k)$ reconstruction and parameterized model fits. Inflationary models with features are not found to give sufficiently improved fits (compared to a featureless power spectrum) to justify adding the additional parameters.

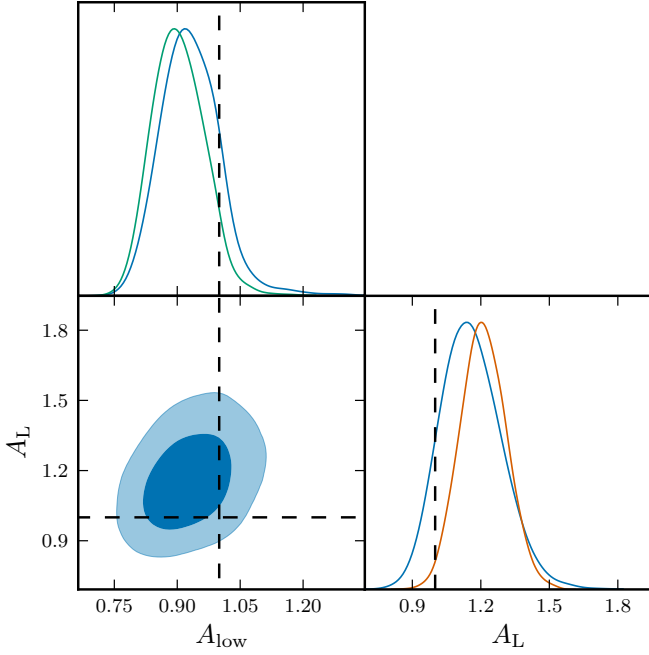


Fig. 10. Posterior distributions for A_{low} (which phenomenologically parametrizes the low- ℓ deficit by multiplying the amplitude of the power spectrum at multipoles smaller than $\ell < 30$) and for A_L (which parametrizes the peak smoothing effect). We show the results for a $\Lambda\text{CDM}+A_{\text{low}}+A_L$ model (black solid line), for $\Lambda\text{CDM}+A_{\text{low}}$ (blue) and for $\Lambda\text{CDM}+A_L$ (red). Although a degeneracy is present between the two parameters, small deviations with respect to the ΛCDM expectations remain even when varying both parameters at the same time.

Galactic masks (less contaminated by foregrounds); Galactic dust template and amplitude priors; beam uncertainties; and frequency cross-spectra. All of these showed consistent results.

The latter test is particularly interesting. The baseline Plik likelihood at $\ell > 30$ uses half-mission cross-spectra from the 100, 143, and 217-GHz frequency channels. Consistent results are obtained if one takes out one frequency at a time. For example, using two frequencies at a time with $\ell > 30$, a prior on $\tau = 0.07 \pm 0.02$, and leaving foregrounds free to vary, for the Hubble parameter we obtain: $(67.0 \pm 1.1) \text{ km s}^{-1} \text{ Mpc}^{-1}$ for 100 and 143 GHz; $(67.1 \pm 1.1) \text{ km s}^{-1} \text{ Mpc}^{-1}$ for 100 and 217 GHz; and $(66.9 \pm 1.0) \text{ km s}^{-1} \text{ Mpc}^{-1}$ for 143 and 217 GHz. These are in excellent agreement with the final result using all three frequencies, $(66.9 \pm 0.95) \text{ km s}^{-1} \text{ Mpc}^{-1}$. This indicates that if the *Planck* results are affected by systematic effects, then all the main CMB channels must be affected in a similar way.

Another consistency check comes from the comparison of the results from the TT spectrum with those obtained from the high- ℓ polarization power spectra. Although known to be affected by small levels of residual systematics, both TE and EE provide cosmological parameters that are consistent with those from TT . We discuss this point further in Sect. 6.1.

We also present here an additional test to verify that the shifts analysed in the previous sections are consistently present in different frequency channels. In order to do this, we estimated cosmological parameters from $\ell < 800$ and $\ell > 800$ using one frequency spectrum at a time, i.e., the 143×143 , 143×217 , or 217×217 combinations. Due to the low resolution of the

100×100 data, for this case we only estimate parameters for $\ell < 800$. We only use the Plik likelihood at $\ell > 30$ in combination with a prior on τ . As shown in Fig. 11 we find very good agreement between the different cases, suggesting that the shifts are not induced by one particular frequency. This confirms the findings of Planck Collaboration XI (2016).

In Fig. 12 we also show the frequency residuals with respect to the best fit of the $\ell < 800$ case. We find that the features identified in Sect. 5 to be driving the shifts are present in all frequency channels. This also confirms the findings of section 5 of Planck Collaboration XI (2016), which showed good agreement in the comparison of the inter-frequency residuals.

5.5. Impact of the τ prior

While this paper was being prepared, an updated analysis of *Planck* HFI large-scale polarization data was released (Planck Collaboration Int. XLVI 2016). These results give somewhat smaller values of the optical depth to reionization, with smaller uncertainties than from previous results. The tightest constraint derived is $\tau = 0.055 \pm 0.009$, with slightly different values resulting from other choices of data combination and treatment, e.g., $\tau = 0.058 \pm 0.012$ in Planck Collaboration Int. XLVII (2016). By comparison, the prior we have been using is $\tau = 0.07 \pm 0.02$ (which was picked to correspond roughly to previous *Planck* LFI results). This tightening of the error bar and change in the central value affects the significance of the parameter shifts we have been discussing. Although this paper could have been written from the beginning with this updated constraint on τ , we chose not to and instead discuss its impact separately here because: (1) it does not have a very big impact on the main results of this paper; (2) the parameter shifts that have been discussed extensively to this point in the community were the ones coming from the earlier τ constraint; and (3) we can more clearly isolate and discuss the effect of the new prior in this way.

As discussed in Planck Collaboration Int. XLVI (2016), the lower value of τ leads to some shifts in ΛCDM parameters from the full ℓ -range. At fixed $A_s e^{-2\tau}$, the main effect of lowering τ is to reduce A_s and hence reduce the gravitational lensing potential and associated smoothing of the peaks. A secondary effect of changing τ at very low ℓ 's (e.g., see Fig. 5) is too small with respect to the error bars at these these multipoles to have an appreciable effect. The $\ell < 800$ data are largely insensitive to the peak smoothing, so no other parameters besides τ and A_s are affected (and we note that A_s alone is not one of the six parameters with which we compute the significance of the shifts). Conversely, the $\ell > 800$ data *do* have sensitivity to gravitational lensing, hence other parameters try and shift to compensate for the decreased smoothing of the peaks. The way that they do this is exactly along the degeneracy direction discussed in Sect. 5.2, which gives extra peak smoothing and involves increasing ω_m and $A_s e^{-2\tau}$, while reducing n_s and ω_b . This leads to, for example, a decrease in H_0 of about $0.5 \text{ km s}^{-1} \text{ Mpc}^{-1}$. This is in the direction of making the shifts slightly more significant.

The exact level of agreement when using the updated constraint on τ is summarized in Table 2. These numbers come from running simulations identical to those which led to Table 1 except that we use a prior on τ of 0.055 ± 0.010 instead. In practice this means that the prior applied to each simulation is different, as well as the fiducial model from which the simulations are drawn, since this model is obtained with τ fixed to the mean of the prior (as discussed in Sect. 3.1). Generally, the effective agreement changes by between -0.1 and 0.3σ , thus slightly

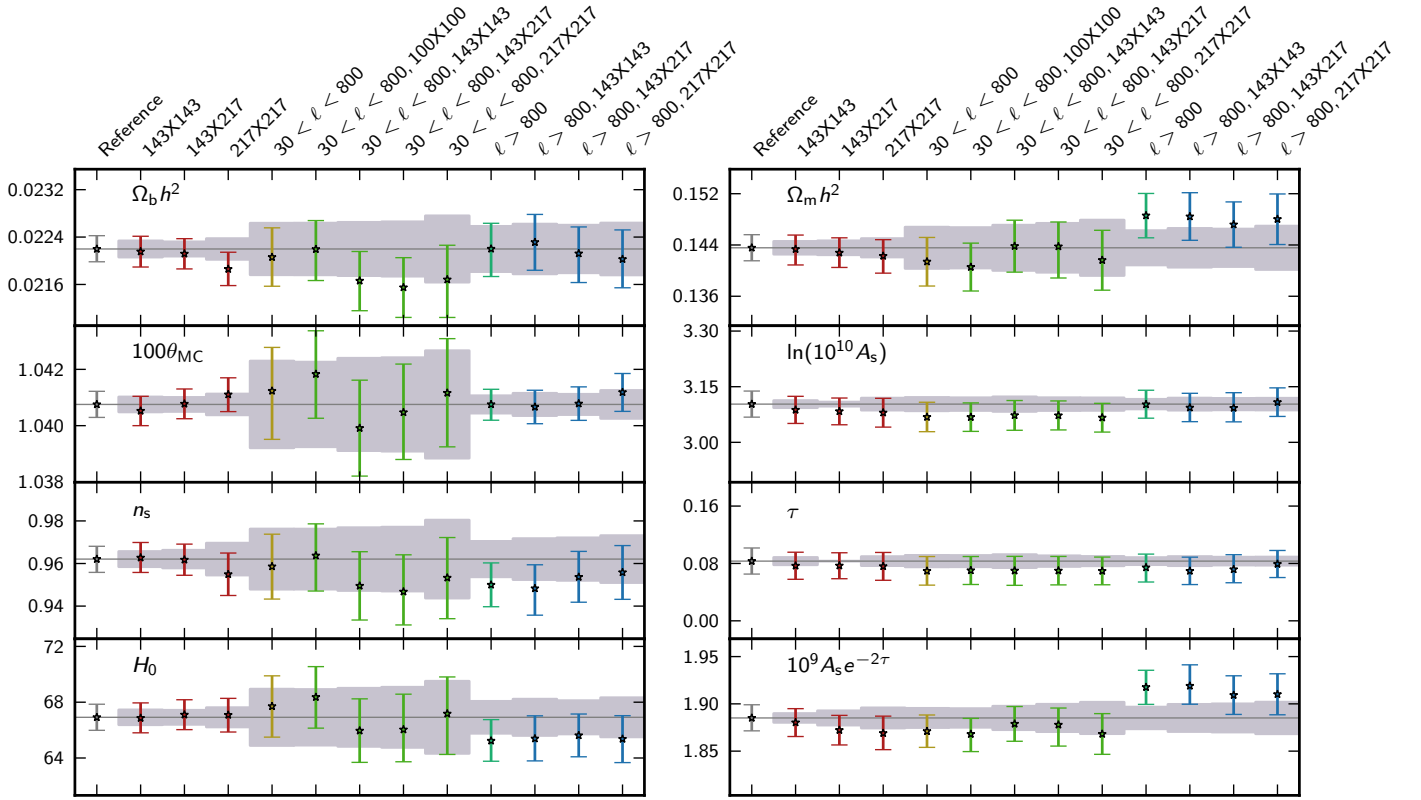


Fig. 11. Constraints on cosmological parameters from data derived from individual frequencies. The data used is $30 < \ell < 2500$ unless otherwise labeled, and in combination with a prior on τ . The reference case combines all frequencies. The constraints for $30 < \ell < 800$ and $\ell > 800$ are obtained with foreground parameters fixed to the best fit of the reference case. The grey band shows the $\pm 1\sigma$ expected shifts in cosmological parameters with respect to the reference case (calculated as in equation 53 of [Planck Collaboration XI 2016](#)). For this test we use the `PlikTT` likelihood, as described in [Planck Collaboration XI \(2016\)](#). Results from individual frequencies are in very good agreement.

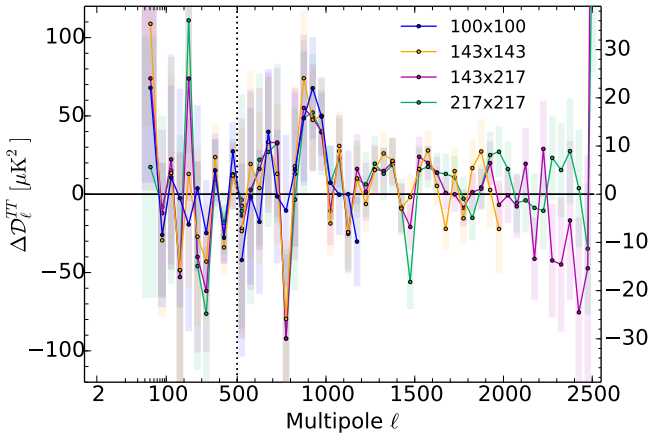


Fig. 12. Residuals for different frequency combinations with respect to the $\ell = 2\text{--}800$ best-fit model. For each frequency we only show the ℓ range used in the *Planck* likelihood. Although these data subsets are noisy, the oscillatory-like feature seems consistent across frequencies.

worse. In any case, the differences due to the lower value of τ do not qualitatively alter the main conclusions from this paper,

and Table 2 should be considered our best estimate of the level of agreement.

Given that we have seen a lower τ prior increase the significance of the shifts, we might also ask if a higher τ prior can reduce them. Indeed, the *PlanckTT* data alone do prefer a higher value of τ ([Planck Collaboration II 2016](#); [Couchot et al. 2015](#)), so one might be tempted to think that perhaps the parameter shifts reflect a tension between the values of τ from *PlanckTT* and from large scale polarization. To some extent this is true, and we have checked the significance of the shifts between $\ell < 800$ and $\ell < 2500$ with a prior of $\tau = 0.10 \pm 0.02$, finding that they are reduced from 1.4σ to 1.0σ . This is consistent with the results of [Addison et al. \(2016\)](#), who also showed that a higher value of τ can reduce the size of the shifts, although given the results from *Planck* HFI polarization it is very unlikely that τ actually being significantly higher than thought could be a realistic solution to any tension that might be present.

6. Comparison with other data sets

Having considered the internal consistency of the *PlanckTT* data themselves, as well as implicitly considering the comparison with WMAP, we now extend our discussion to a number of other CMB data sets. Although many measurements and analyses of the CMB have been made that have a bearing on agreement with *Planck* (e.g., [Calabrese et al. 2013](#); [Story et al. 2013](#); [Das et al. 2014](#); [Louis et al. 2014](#); [Naess et al. 2014](#); [George et al. 2015](#)), it

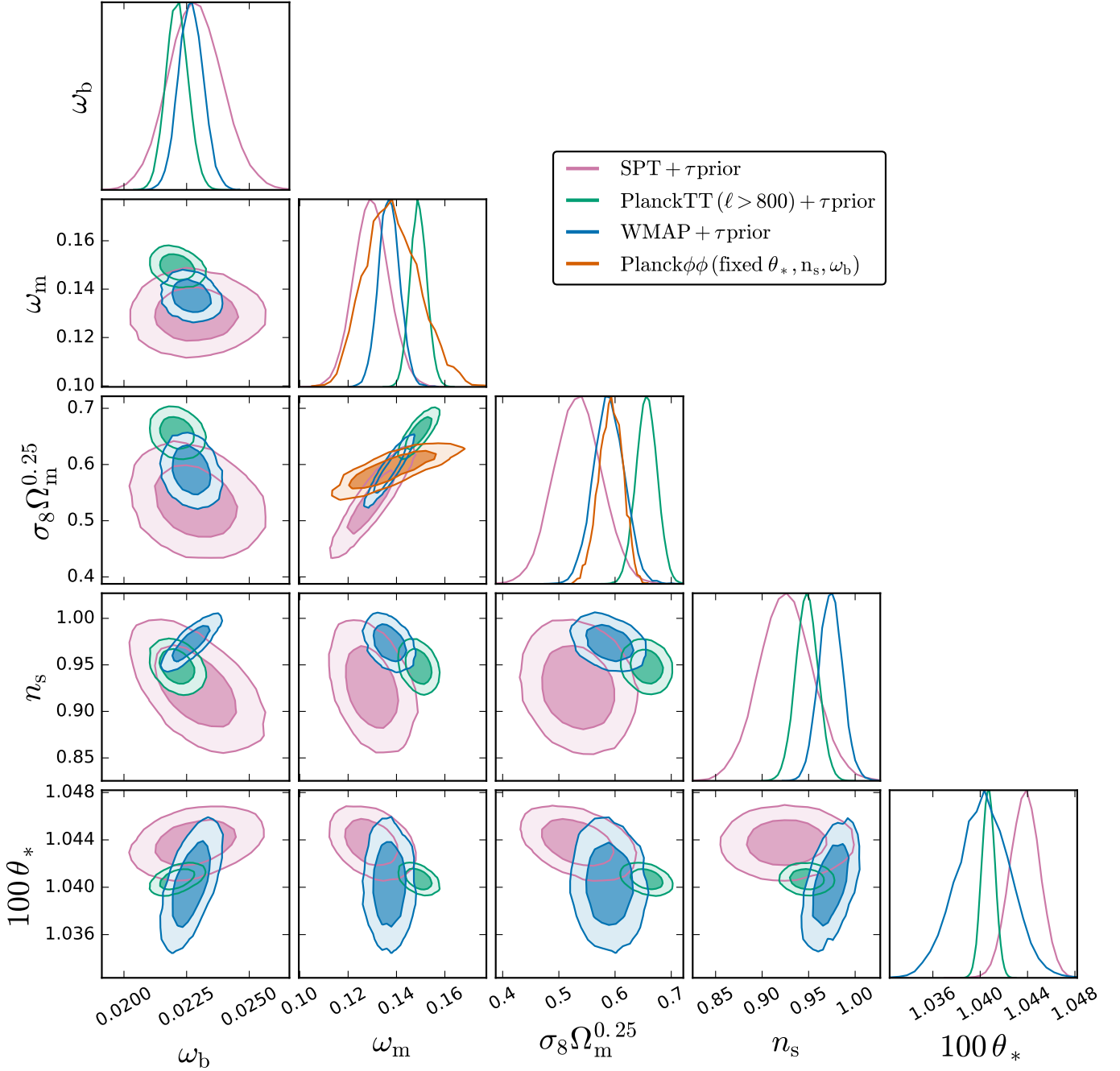


Fig. 13. Constraints on Λ CDM parameters from: SPT data from [Story et al. \(2013\)](#) in pink; PlanckTT $\ell > 800$ in green; and WMAP in blue. Except for the latter data set, which has no sensitivity to τ , all others have been combined with a prior $\tau = 0.07 \pm 0.02$. The significance of parameter shifts between these three approximately uncorrelated data sets can be roughly calculated using Eq. (1). We find no strong evidence of discrepancies, with SPT and WMAP agreeing at the 1.7σ level, Planck $\ell > 800$ and WMAP agree even better at 1.1σ , while Planck $\ell > 800$ and SPT agree with each other at 2.1σ . Also plotted in orange is Planck $\phi\phi$ with θ_* , ω_b , and n_s fixed to the Planck best-fit values. This data set, across the two parameters it constrains, is also not in significant tension with the others. Sect. 6 discusses these comparisons in more detail.

is impossible here to discuss them all in detail. We thus limit ourselves only to those that are the most constraining on Λ CDM parameters and therefore have the power to test the level of consistency most stringently. We will specifically consider the Planck TE , EE , and $\phi\phi$ power spectra, as well as measurements of the TT damping tail from [Story et al. \(2013\)](#).

6.1. Comparison with Planck polarization

The first analysis of Planck high- ℓ TE and EE spectra was presented in [Planck Collaboration XI \(2016\)](#). Consistency between parameters obtained from TE and EE with those obtained from TT was discussed in [Planck Collaboration XIII \(2016\)](#), which showed that error bars on Λ CDM parameters obtained from TE alone are of similar magnitude

to those from TT , and the best-fit values are generally within 0.5σ . For example, from $\text{PlikTE}+\tau\text{prior}$ we find $H_0 = (67.9 \pm 0.93) \text{ km s}^{-1} \text{ Mpc}^{-1}$ as compared to $(66.9 \pm 0.95) \text{ km s}^{-1} \text{ Mpc}^{-1}$ from $\text{PlikTT}+\tau\text{prior}$. The EE constraints are considerably noisier, but generally within 1σ , with $\text{PlikEE}+\tau\text{prior}$ giving $H_0 = (70.0 \pm 2.8) \text{ km s}^{-1} \text{ Mpc}^{-1}$, for example. Because cosmic variance partially correlates the TE and EE constraints with those from TT , determining the exact level of consistency requires simulations. This study was discussed in appendix C.3.6 of [Planck Collaboration XI \(2016\)](#), where it was found that the cosmological parameters obtained from EE and TE are in agreement with those obtained with TT . Given that there are still some residual systematic effects in the polarization spectra, which prevented them from being used for the baseline parameters for the 2015 *Planck* release ([Planck Collaboration XI 2016](#)), we stop at this point, rather than performing any more sophisticated tests. Further comparisons will be made following the next *Planck* data release.

6.2. Comparison with SPT

The tightest constraints on ΛCDM parameters obtained from the TT damping tail with a single experiment other than *Planck* come from the South Pole Telescope (SPT, as presented in [Story et al. 2013](#)). As such, assessment of the level of consistency between the two is of great interest. Disagreement between the two data sets has been claimed as an argument that the parameter shifts we have been discussing are not of cosmological origin ([Addison et al. 2016](#)). Although a more detailed comparison is outside of the scope of this paper, we perform a few basic tests of compatibility here, showing that any tension between *Planck* and SPT is not very statistically significant.

On their own, the SPT data are not very constraining on ΛCDM parameters because the sky coverage is about a factor of 10 times smaller than *Planck*'s. If we limit *Planck* to $\ell > 800$, roughly the same multipoles measured by SPT, the errors on all ΛCDM parameters are twice as large or more, as can be seen by comparing the green and pink contours in Fig. 13. Combining SPT with WMAP yields somewhat tighter ΛCDM constraints, although still larger than *Planck*'s full- ℓ range. It is not straightforward to compare *Planck* and WMAP+SPT because both *Planck* and WMAP are cosmic variance limited at low multipoles and hence very correlated. Instead, we will limit ourselves to data sets that are uncorrelated and use Eq. (1), which we will apply to the five parameters shown in Fig. 13. This will suffer from all of the problems mentioned in Sect. 3, but will still give us a rough idea of the level of agreement. For WMAP+SPT versus *Planck* $\ell > 800$ we find $\chi^2 = 12.0$, which is equivalent to a 2.1σ fluctuation. SPT alone compared to *Planck* $\ell > 800$ yields $\chi^2 = 11.9$, also equivalent to 2.1σ . We can additionally compare SPT to the *Planck* full multipole range, which gives $\chi^2 = 12.3$, equivalent to 2.2σ . Although we cannot compare WMAP+SPT and *Planck* directly, we already know from [Kovács et al. \(2013\)](#) that WMAP and *Planck* agree extremely well over the common multipole range. Therefore, we would expect WMAP+SPT and *Planck* parameters to be consistent to a similar level as the numbers just quoted.

Additionally, we point out that despite the impression sometimes given, both implicitly and explicitly, that the *Planck* high- ℓ 's are “anomalous” with respect to parameters derived from WMAP, the same and more can be said of the SPT parameters. Again using Eq. (1) and the five ΛCDM parameters shown in Fig. 13, WMAP and SPT agree to within 1.7σ , while WMAP and *Planck* $\ell > 800$ are in *better* agreement, 1.1σ . Of course,

given the significances we have seen in this section, the point is that we find no strong evidence for disagreement between any of these different CMB data sets.

6.3. Comparison with Planck lensing

Finally, we consider the level of agreement with the power spectrum of the gravitational lensing reconstruction from *Planck* data. It has previously been noted that there is some tension between this data set and PlanckTT ([Planck Collaboration XIII 2016](#); [Planck Collaboration XV 2016](#); [Addison et al. 2016](#)).

One way to quantify agreement is via constraints on the A_L parameter. As described in Sect. 5.2, this scales the gravitational lensing potential used in the calculation of the TT spectrum. A similar parameter, usually called $A_{\phi\phi}$, can be introduced when computing constraints from PlanckTT+lensing, this time scaling the lensing potential used in the lensing likelihood (but not the one used in the TT spectrum calculation). We find $A_L = 1.21 \pm 0.10$ from PlanckTT, compared to $A_{\phi\phi} = 0.95 \pm 0.04$, a difference of 2.6σ . This comparison, however, is somewhat misleading because $A_{\phi\phi}$ and A_L are a rescaling of the lensing potential with respect to two different models. If we remove these intermediary models and compare directly the lensing power preferred by the two data sets, for example $C_\ell^{\phi\phi}$ at $\ell = 100$, agreement is instead 2.3σ .

Another way to compare these data sets, which has the advantage that it assumes ΛCDM unlike the previous case, is to simply analyse each data set independently given the ΛCDM model and compare constraints on parameters. These constraints are shown in Fig. 13, in orange for PlanckTT and in green for lensing (the lensing data assume a fixed θ_* , although are largely insensitive to the exact value). The parameter most often compared is $\sigma_8\Omega_m^{0.25}$ because it is a good proxy for the amplitude of the lensing potential and is most tightly constrained by the lensing data. Here, we find $\sigma_8\Omega_m^{0.25} = 0.600 \pm 0.011$ from Planck $\phi\phi$ and 0.623 ± 0.013 from PlanckTT, a difference of 1.3σ . We note that this agreement becomes even better with the addition of the lower prior on τ discussed in Sect. 5.5.

As pointed out by [Addison et al. \(2016\)](#), despite this good agreement over the full ℓ -range, the constraint on $\sigma_8\Omega_m^{0.25}$ from just the $\ell > 1000$ data is in tension with lensing at 2.4σ . Unlike for the full ℓ -range, however, constraints from $\ell > 1000$ on a second parameter, ω_m , are now comparable to those from lensing, hence it makes sense to include this in the comparison. This slightly reduces the tension to 2.2σ .

[Addison et al. \(2016\)](#) further pointed out that the quantity $\sigma_8\Omega_m^{0.25}$ is internally inconsistent within the *Planck* temperature data themselves at a level of 2.9σ between $\ell < 1000$ and $\ell > 1000$. We find instead 2.5σ . The most likely source of difference is that we use `plik_lite`, which we believe gives the more correct result, since it imposes more reasonable priors on the foreground parameters and thus reflects more realistically our knowledge of foreground contamination.

To conclude this section, although it is possible to single out specific parameter differences, overall we find no significant evidence of any strong discrepancies between the PlanckTT and Planck $\phi\phi$ data.

7. Conclusions

The main goals of this paper have been threefold: (i) to isolate the features in the *Planck* $\ell > 800$ temperature power spectrum that cause the shifts in parameters away from the $\ell < 800$ (or sim-

ilarly WMAP) parameters; (ii) to assess the consistency of these shifts with expectations; and (iii) to provide an explanation of the physics behind why the parameters are shifting. In our view, such a physical explanation and this “opening of the likelihood black box” serves to assuage some of the concern that one might initially have about the apparently unlikely nature of some of the shifts, and hence increases the confidence one places in the *Planck* data. While some discussions of points (i) and (ii) have already appeared in the literature, we have greatly expanded and clarified them here.

In particular, we have made extensive use of numerical simulations in order to evaluate the consistency of the results obtained from a large number of different multipole ranges. This allowed us to properly account for the correlations between the different ℓ ranges and compute the exact posterior distribution of the expected parameter shifts, avoiding the use of a Gaussian approximation, contrary to what was done in previous studies. In evaluating the probability of a shift in the most deviant parameter out of the six Λ CDM ones, we also pointed out the importance of taking into account look-elsewhere effects (i.e., marginalizing over the set of parameters).

We have found that the cosmological parameters inferred from $\ell < 800$ versus the full multipole range $\ell < 2500$ in the context of the Λ CDM model are consistent with each other within approximately 10% PTE. We find similar significance levels when evaluating the probability of shifts in the most deviant parameters, when comparing high- ℓ data with low- ℓ , or when splitting at multipoles other than $\ell = 800$. Table 1 and Fig. A.1 summarize these results. In light of the recent *Planck* results on the reionization optical depth (Planck Collaboration Int. XLVI 2016; Planck Collaboration Int. XLVII 2016), we find that using a lower and tighter prior of $\tau = 0.055 \pm 0.010$ has a mild impact on the significance levels of the parameter shifts, increasing them by about 0.3σ .

The discussion of point (iii), i.e., explaining the physics underlying the shifts, has not previously existed at all. While we point out that the interpretation of the shifts is not unique, we provide one possible explanation by connecting features in the spectra with shifts in parameters. We find that when reducing the lever arm of the data by only using the larger angular scales ($\ell < 800$), cosmological parameters are more strongly affected by the low- ℓ deficit, i.e., the apparent lack of power at $\ell < 30$. To decrease power at $\ell < 30$, n_s increases, $A_s e^{-2\tau}$ is then lowered to reduce power at $\ell \gtrsim 500$, ω_m decreases to compensate the induced change of power below $\ell \approx 500$, while ω_b increases to reduce the amplitude of the second peak (which was raised by the decrease in ω_m). The Hubble constant is in turn pulled high to keep the angular size of the horizon unchanged.

On the other hand, we find that the small-scale results are influenced by the preference for a larger smoothing of the power spectrum peaks and troughs at $\ell \gtrsim 1000$. While at face value it might seem like this smoothing is the sign of an excess amplitude of gravitational lensing, we find that most of the shifts in the Λ CDM parameters serve not to increase the lensing potential, but rather to fit these features through non-lensing related effects. While neither the peak smoothing nor low- ℓ features are statistically very significant, and could just be statistical fluctuations in the data, we show that they can explain a large part of the observed parameter shifts.

In summary, we have identified the main features of the data leading to the observed parameter shifts and explained the physics of why the parameters of the Λ CDM model adjust in the way they do to fit these features. Further, we find that these shifts are not in strong disagreement with expectations for the size of

such differences among a set of parameters; thus there is no requirement to explain such shifts with either systematic effects or new physics.

Acknowledgements. The Planck Collaboration acknowledges the support of: ESA; CNES, and CNRS/INSU-IN2P3-INP (France); ASI, CNR, and INAF (Italy); NASA and DoE (USA); STFC and UKSA (UK); CSIC, MINECO, JA, and RES (Spain); Tekes, AoF, and CSC (Finland); DLR and MPG (Germany); CSA (Canada); DTU Space (Denmark); SER/SSO (Switzerland); RCN (Norway); SFI (Ireland); FCT/MCTES (Portugal); ERC and PRACE (EU). A description of the Planck Collaboration and a list of its members, indicating which technical or scientific activities they have been involved in, can be found at <http://www.cosmos.esa.int/web/planck/planck-collaboration>. Part of the analysis for this paper was run on computers operated by WestGrid (www.westgrid.ca) and Compute Canada (www.computeCanada.ca). This work was also supported by the Labex ILP (reference ANR-10-LABX-63). We thank all of the users of Cosmology@Home for donating computing time in support of this work, and in particular the top contributors, MaDCow (Thomas Wooton), 25000ghz (Roberto Piantoni), and Rally1965, as well as the top team, BOINC.Italy.

References

- Addison, G. E., Huang, Y., Watts, D. J., et al., Quantifying Discordance in the 2015 Planck CMB Spectrum. 2016, *ApJ*, 818, 132, [arXiv:1511.00055](#)
- Benabed, K., Cardoso, J.-F., Prunet, S., & Hivon, E., TEASING: a fast and accurate approximation for the low multipole likelihood of the cosmic microwave background temperature. 2009, *MNRAS*, 400, 219, [arXiv:0901.4537](#)
- Bennett, C. L., Banday, A. J., Gorski, K. M., et al., Four-Year COBE DMR Cosmic Microwave Background Observations: Maps and Basic Results. 1996, *ApJ*, 464, L1, [arXiv:astro-ph/9601067](#)
- Bennett, C. L., Larson, D., Weiland, J. L., et al., Nine-year Wilkinson Microwave Anisotropy Probe (WMAP) Observations: Final Maps and Results. 2013, *ApJS*, 208, 20, [arXiv:1212.5225](#)
- Cai, Y.-F., Ferreira, E. G. M., Hu, B., & Quintin, J., Searching for features of a string-inspired inflationary model with cosmological observations. 2015, *Phys. Rev. D*, 92, 121303, [arXiv:1507.05619](#)
- Calabrese, E., Hlozek, R. A., Battaglia, N., et al., Cosmological parameters from pre-planck cosmic microwave background measurements. 2013, *Physical Review D*, 87, 103012
- Chen, P. & Lin, Y.-H., What initial condition of inflation would suppress the large-scale CMB spectrum? 2016, *Phys. Rev. D*, 93, 023503, [arXiv:1505.05980](#)
- Contaldi, C. R., Peloso, M., Kofman, L., & Linde, A., Suppressing the lower multipoles in the CMB anisotropies. 2003, *J. Cosmology Astropart. Phys.*, 7, 002, [arXiv:astro-ph/0303636](#)
- Couchot, F., Henrot-Versillé, S., Perdureau, O., et al., Relieving tensions related to the lensing of CMB temperature power spectra. 2015, *ArXiv e-prints*, [arXiv:1510.07600](#)
- Das, S., Louis, T., Nolte, M. R., et al., The Atacama Cosmology Telescope: temperature and gravitational lensing power spectrum measurements from three seasons of data. 2014, *J. Cosmology Astropart. Phys.*, 4, 014, [arXiv:1301.1037](#)
- Dodelson, S. 2003, *Modern cosmology* (Academic Press)
- Efstathiou, G. 1988, in *Large-Scale Motions in the Universe: A Vatican study Week*, ed. V. C. Rubin & G. V. Coyne, 299–319
- Efstathiou, G., H_0 revisited. 2014, *MNRAS*, 440, 1138, [arXiv:1311.3461](#)
- George, E. M., Reichardt, C. L., Aird, K. A., et al., A Measurement of Secondary Cosmic Microwave Background Anisotropies from the 2500 Square-degree SPT-SZ Survey. 2015, *The Astrophysical Journal*, 799, 177
- Hamimeche, S. & Lewis, A., Likelihood analysis of CMB temperature and polarization power spectra. 2008, *Phys. Rev. D*, 77, 103013, [arXiv:0801.0554](#)
- Hildebrandt, H., Viola, M., Heymans, C., et al., KiDS-450: Cosmological parameter constraints from tomographic weak gravitational lensing. 2016, *ArXiv e-prints*, [arXiv:1606.05338](#)
- Hinshaw, G., Spergel, D. N., Verde, L., et al., First-Year Wilkinson Microwave Anisotropy Probe (WMAP) Observations: The Angular Power Spectrum. 2003, *ApJS*, 148, 135, [arXiv:astro-ph/0302217](#)
- Hu, W. & Sugiyama, N., Anisotropies in the cosmic microwave background: an analytic approach. 1995a, *ApJ*, 444, 489, [arXiv:astro-ph/9407093](#)
- Hu, W. & Sugiyama, N., Toward understanding CMB anisotropies and their implications. 1995b, *Phys. Rev. D*, 51, 2599, [arXiv:astro-ph/9411008](#)
- Hu, W., Sugiyama, N., & Silk, J., The Physics of Microwave Background Anisotropies. 1996, *ArXiv Astrophysics e-prints*, [arXiv:astro-ph/9604166](#)
- Hu, W., Sugiyama, N., & Silk, J., The physics of microwave background anisotropies. 1997, *Nature*, 386, 37, [arXiv:astro-ph/9504057](#)

- Hu, W. & White, M., Acoustic Signatures in the Cosmic Microwave Background. 1996a, *ApJ*, 471, 30, [arXiv:astro-ph/9602019](#)
- Hu, W. & White, M., CMB anisotropies in the weak coupling limit. 1996b, *A&A*, 315, 33, [arXiv:astro-ph/9507060](#)
- Hu, W. & White, M., The Damping Tail of Cosmic Microwave Background Anisotropies. 1997, *ApJ*, 479, 568, [arXiv:astro-ph/9609079](#)
- Iqbal, A., Prasad, J., Souradeep, T., & Malik, M. A., Joint Planck and WMAP assessment of low CMB multipoles. 2015, *J. Cosmology Astropart. Phys.*, 6, 014, [arXiv:1501.02647](#)
- Jones, E., Oliphant, T., Peterson, P., et al. 2001–2016, *SciPy: Open source scientific tools for Python*, [Online; version 0.14.0]
- Kaiser, N., Minimal anisotropy of the microwave background radiation in the gravitational instability picture. 1984, *ApJ*, 282, 374
- Knox, L., Determination of inflationary observables by cosmic microwave background anisotropy experiments. 1995, *Phys. Rev. D*, 52, 4307, [arXiv:astro-ph/9504054](#)
- Kosowsky, A., Milosavljevic, M., & Jimenez, R., Efficient cosmological parameter estimation from microwave background anisotropies. 2002, *Phys. Rev. D*, 66, 063007, [arXiv:astro-ph/0206014](#)
- Kovács, A., Carron, J., & Szapudi, I., On the coherence of WMAP and Planck temperature maps. 2013, *MNRAS*, 436, 1422, [arXiv:1307.1111](#)
- Lewis, A. & Bridle, S., Cosmological parameters from CMB and other data: A Monte Carlo approach. 2002, *Phys. Rev. D*, 66, 103511, [arXiv:astro-ph/0205436](#)
- Lewis, A. & Challinor, A., Weak gravitational lensing of the CMB. 2006, *Phys. Rep.*, 429, 1, [arXiv:astro-ph/0601594](#)
- Lewis, A., Challinor, A., & Lasenby, A., Efficient computation of CMB anisotropies in closed FRW models. 2000, *Astrophys. J.*, 538, 473, [arXiv:astro-ph/9911177](#)
- Lewis, A., Challinor, A., & Lasenby, A., Efficient Computation of Cosmic Microwave Background Anisotropies in Closed Friedmann-Robertson-Walker Models. 2000, *ApJ*, 538, 473, [arXiv:astro-ph/9911177](#)
- Liddle, A. R. & Lyth, D. H. 2000, *Cosmological Inflation and Large-Scale Structure* (Cambridge University Press), 414
- Louis, T., Addison, G. E., Hasselfield, M., et al., The Atacama Cosmology Telescope: Cross Correlation with Planck maps. 2014, *Journal of Cosmology and Astroparticle Physics*, 2014, 016
- MacCrann, N., Zuntz, J., Bridle, S., Jain, B., & Becker, M. R., Cosmic discordance: are Planck CMB and CFHTLenS weak lensing measurements out of tune? 2015, *MNRAS*, 451, 2877, [arXiv:1408.4742](#)
- Marra, V., Amendola, L., Sawicki, I., & Valkenburg, W., Cosmic Variance and the Measurement of the Local Hubble Parameter. 2013, *Physical Review Letters*, 110, 241305, [arXiv:1303.3121](#)
- Mortonson, M. J., Dvorkin, C., Peiris, H. V., & Hu, W., CMB polarization features from inflation versus reionization. 2009, *Phys. Rev. D*, 79, 103519, [arXiv:0903.4920](#)
- Naess, S., Hasselfield, M., McMahon, J., et al., The Atacama Cosmology Telescope: CMB Polarization at $200 < \ell < 9000$. 2014, *Journal of Cosmology and Astroparticle Physics*, 2014, 007
- Pan, Z., Knox, L., & White, M., Dependence of the cosmic microwave background lensing power spectrum on the matter density. 2014, *MNRAS*, 445, 2941, [arXiv:1406.5459](#)
- Peacock, J. A. 1999, *Cosmological Physics* (Cambridge University Press), 704
- Peebles, P. J. E. & Yu, J. T., Primeval Adiabatic Perturbation in an Expanding Universe. 1970, *ApJ*, 162, 815
- Peiris, H. V., Komatsu, E., Verde, L., et al., First-Year Wilkinson Microwave Anisotropy Probe (WMAP) Observations: Implications For Inflation. 2003, *ApJS*, 148, 213, [arXiv:astro-ph/0302225](#)
- Planck Collaboration XV, *Planck* 2013 results. XV. CMB power spectra and likelihood. 2014, *A&A*, 571, A15, [arXiv:1303.5075](#)
- Planck Collaboration XVI, *Planck* 2013 results. XVI. Cosmological parameters. 2014, *A&A*, 571, A16, [arXiv:1303.5076](#)
- Planck Collaboration XVII, *Planck* 2013 results. XVII. Gravitational lensing by large-scale structure. 2014, *A&A*, 571, A17, [arXiv:1303.5077](#)
- Planck Collaboration XXXI, *Planck* 2013 results. XXXI. Consistency of the *Planck* data. 2014, *A&A*, 571, A31, [arXiv:1508.03375](#)
- Planck Collaboration I, *Planck* 2015 results. I. Overview of products and results. 2016, *A&A*, in press, [arXiv:1502.01582](#)
- Planck Collaboration II, *Planck* 2015 results. II. Low Frequency Instrument data processing. 2016, *A&A*, in press, [arXiv:1502.01583](#)
- Planck Collaboration IX, *Planck* 2015 results. IX. Diffuse component separation: CMB maps. 2016, *A&A*, in press, [arXiv:1502.05956](#)
- Planck Collaboration X, *Planck* 2015 results. X. Diffuse component separation: Foreground maps. 2016, *A&A*, in press, [arXiv:1502.01588](#)
- Planck Collaboration XI, *Planck* 2015 results. XI. CMB power spectra, likelihoods, and robustness of parameters. 2016, *A&A*, in press, [arXiv:1507.02704](#)
- Planck Collaboration XIII, *Planck* 2015 results. XIII. Cosmological parameters. 2016, *A&A*, in press, [arXiv:1502.01589](#)
- Planck Collaboration XV, *Planck* 2015 results. XV. Gravitational lensing. 2016, *A&A*, in press, [arXiv:1502.01591](#)
- Planck Collaboration XVI, *Planck* 2015 results. XVI. Isotropy and statistics of the CMB. 2016, *A&A*, in press, [arXiv:1506.07135](#)
- Planck Collaboration XX, *Planck* 2015 results. XX. Constraints on inflation. 2016, *A&A*, in press, [arXiv:1502.02114](#)
- Planck Collaboration Int. XLVI, *Planck* intermediate results. XLVI. Reduction of large-scale systematic effects in HFI polarization maps and estimation of the reionization optical depth. 2016, *A&A*, submitted, [arXiv:1605.02985](#)
- Planck Collaboration Int. XLVII, *Planck* intermediate results. XLVII. Constraints on reionization history. 2016, *A&A*, submitted, [arXiv:1605.03507](#)
- Riess, A. G., Macri, L. M., Hoffmann, S. L., et al., A 2.4% Determination of the Local Value of the Hubble Constant. 2016, *ArXiv e-prints*, [arXiv:1604.01424](#)
- Sachs, R. K. & Wolfe, A. M., Perturbations of a Cosmological Model and Angular Variations of the Microwave Background. 1967, *ApJ*, 147, 73
- Schervish, M. 1996, *Theory of Statistics*, Springer Series in Statistics (Springer New York)
- Seehars, S., Grandis, S., Amara, A., & Refregier, A., Quantifying Concordance. 2015, *ArXiv e-prints*, [arXiv:1510.08483](#)
- Seljak, U., A two-fluid approximation for calculating the cosmic microwave background anisotropies. 1994, *ApJ*, 435, L87, [arXiv:astro-ph/9406050](#)
- Seljak, U., Gravitational Lensing Effect on Cosmic Microwave Background Anisotropies: A Power Spectrum Approach. 1996, *ApJ*, 463, 1, [arXiv:astro-ph/9505109](#)
- Silk, J., Cosmic Black-Body Radiation and Galaxy Formation. 1968, *ApJ*, 151, 459
- Spergel, D. N., Verde, L., Peiris, H. V., et al., First-Year Wilkinson Microwave Anisotropy Probe (WMAP) Observations: Determination of Cosmological Parameters. 2003, *ApJS*, 148, 175, [arXiv:astro-ph/0302209](#)
- Story, K. T., Reichardt, C. L., Hou, Z., et al., A Measurement of the Cosmic Microwave Background Damping Tail from the 2500-Square-Degree SPT-SZ Survey. 2013, *ApJ*, 779, 86, [arXiv:1210.7231](#)
- Sugiyama, N., Silk, J., & Vittorio, N., Reionization and Cosmic Microwave Anisotropies. 1993, *ApJ*, 419, L1, [arXiv:astro-ph/9310051](#)
- Verde, L., Protopapas, P., & Jimenez, R., Planck and the local Universe: Quantifying the tension. 2013, *Physics of the Dark Universe*, 2, 166, [arXiv:1306.6766](#)
- Wyman, M., Rudd, D. H., Vanderveld, R. A., & Hu, W., Neutrinos Help Reconcile Planck Measurements with the Local Universe. 2014, *Physical Review Letters*, 112, 051302, [arXiv:1307.7715](#)
- Zel'dovich, Y. B., Rakhmatulina, A. K., & Syunyaev, R. A., The Observation of Fluctuations of Relict Radio Emission as a Method of Distinguishing Adiabatic Perturbations from Other Forms of Perturbations of Material Density in the Universe Which Lead to Galaxy Formation. 1972, *Radiophysics and Quantum Electronics*, 15, 121

Appendix A: A more exhaustive set of tests

The main focus of this paper has been on shifts between parameters derived from $\ell < 800$ data and those from $\ell < 2500$ data. We considered this the most interesting choice because $\ell = 800$ evenly splits the Fisher information on Λ CDM parameters in the PlanckTTdata; additionally, we focused on low- ℓ parameters versus full- ℓ parameters (as opposed to low- ℓ versus high- ℓ), since this is most directly relevant for the issue of WMAP versus Planck parameter shifts.

Despite this decision, we would like to know if our particular choice of $\ell_{\text{split}} = 800$ greatly affected results, either making them seem more or less consistent than otherwise. Additionally, in terms of a generic test of the Planck data, there are many other data splits that one might consider to test the consistency even more stringently. We present results from a more exhaustive set of such tests in this appendix. More specifically, we look at three different ways of splitting the data:

1. $\ell < \ell_{\text{split}}$ vs. $\ell < 2500$;
2. $\ell < \ell_{\text{split}}$ vs. $\ell > \ell_{\text{split}}$;
3. $\ell < \ell_{\text{split}}$ vs. $\ell > \ell_{\text{split}} + 50$.

We do this at several different values of ℓ_{split} across the range allowed by our simulations. For each case, we compute the χ^2 and max-param statistics.

Of course, since we are now explicitly scanning over statistical tests, we need to account for a posteriori corrections to interpret the significance of any outliers we find. This is the same effect already discussed in the context of searching for a maximally discrepant parameter, but now for finding a maximally discrepant partitioning of the data. It is straightforward to calculate these corrections based on the suite of simulations. For each realization, we search for the most discrepant result as a function of ℓ_{split} . We then compare the result on the real data against this distribution and compute a PTE as before.

We have computed results varying ℓ_{split} between 650 and 2500 with a step size $\Delta\ell = 50$. The results are shown in Fig. A.1. The blue line shows the raw (so-called “local”) significance for each case, computed exactly as described in Sect. 3.2. The significance shows considerable scatter, as one might expect due to noise, with no outlier above roughly 2.5σ . We see that any other choice of ℓ_{split} in the vicinity of 800 would have given the same qualitative results that we have focused in the main body of this paper.

If we search for the ℓ_{split} which gives the largest local significance, we need to account for the look-elsewhere effect to interpret the true significance of this outlier. This is given by the orange line and labeled “global.” For example, if for some ℓ_{split} we find a local significance of 2σ , then the global significance is the fraction of simulations for which we find a shift at *any* ℓ_{split} with a local significance exceeding 2σ . Generally speaking, this marginalization lowers the significance of any outliers we find by around 1σ . To be clear, we are not claiming the actual significance of the shifts presented in the main body of the paper are lower by 1σ , since we did not choose $\ell_{\text{split}} = 800$ based on finding a most discrepant data split. Nevertheless, if we now look through Fig. A.1 for outliers (for example the roughly 2.5σ outlier in the top right panel at $\ell_{\text{split}} = 1100$), it is clear that the true significance is somewhat lower. The conclusion after this wider set of tests is that we find no evidence for any inconsistency in the data that was hidden by our specific choice of data partitioning.

Appendix B: The low- ℓ approximation

The simulations used in this paper make use of an approximate low- ℓ likelihood, as discussed in Sect. 3.1. Our main check of this approximation, as described in that section, is to estimate parameters from $\ell < 800$ with the actual `Commander` likelihood swapped out for our approximate likelihood applied to the `Commander` CMB map. The $\ell < 800$ case is important because it gives more weight to the low multipoles than, for example, $\ell < 2500$; hence it is a more stringent test of the approximation. In either case, we find that all Λ CDM parameters are within 0.05σ and thus that the approximation is good enough.

Of course, this test relies on one particular realization of the CMB (namely, our actual CMB sky), and it is technically possible that this realization randomly conspired to make our approximation seem better than it actually is. In this appendix we therefore describe a further test that looks at many different realizations.

If our low- ℓ approximation is correct, it should be the case that the mean of the best-fit values from the simulations recovers the input fiducial parameters, and the scatter in the simulations should be the same as the posterior constraints from an MCMC chain run with the `Commander` likelihood. An error in the approximation at low ℓ , even just in the error bars, could manifest itself as both a bias in the mean of the best-fit parameters and a scatter that does not match the true posterior.

In Fig. B.1 we show a distribution of the best-fit values from simulations for the $\ell < 800$ case, along with the input fiducial values and the posteriors from a chain (which have been re-centred on the fiducial values). However, there is one detail different about these simulations than the ones used in the main body of the paper. Whereas those all have the same prior on τ applied (so as to be consistent with what is done to the real data), these simulations have a different prior for each realization; the prior is still Gaussian with a width of 0.02, but its mean has been randomly sampled from 0.07 ± 0.02 itself. This is akin to having drawn realization of the low- ℓ polarization data, and although it has no bearing on the accuracy of the low- ℓ approximation, it is necessary in order that the scatter actually matches the posterior. We find then, as expected, that the simulations are centred on the fiducial values to within the scatter expected from the finite number of simulations, and the distribution does indeed track the posterior constraint. We therefore conclude that our low- ℓ approximation is sufficient and our previous determination of its accuracy on the real data was not affected by our particular realization of the CMB. We stress that this is not an easy test to pass; for example, we have checked that had we used the traditional f_{sky} approximation this test would have failed noticeably.

- ¹ APC, AstroParticule et Cosmologie, Université Paris Diderot, CNRS/IN2P3, CEA/Irfu, Observatoire de Paris, Sorbonne Paris Cité, 10, rue Alice Domon et Léonie Duquet, 75205 Paris Cedex 13, France
- ² African Institute for Mathematical Sciences, 6-8 Melrose Road, Muizenberg, Cape Town, South Africa
- ³ Agenzia Spaziale Italiana Science Data Center, Via del Politecnico snc, 00133, Roma, Italy
- ⁴ Aix Marseille Université, CNRS, LAM (Laboratoire d'Astrophysique de Marseille) UMR 7326, 13388, Marseille, France
- ⁵ Astrophysics Group, Cavendish Laboratory, University of Cambridge, J J Thomson Avenue, Cambridge CB3 0HE, U.K.
- ⁶ Astrophysics & Cosmology Research Unit, School of Mathematics, Statistics & Computer Science, University of KwaZulu-Natal, Westville Campus, Private Bag X54001, Durban 4000, South Africa
- ⁷ CITA, University of Toronto, 60 St. George St., Toronto, ON M5S 3H8, Canada
- ⁸ CNRS, IRAP, 9 Av. colonel Roche, BP 44346, F-31028 Toulouse cedex 4, France
- ⁹ California Institute of Technology, Pasadena, California, U.S.A.
- ¹⁰ Centre for Theoretical Cosmology, DAMTP, University of Cambridge, Wilberforce Road, Cambridge CB3 0WA, U.K.
- ¹¹ Computational Cosmology Center, Lawrence Berkeley National Laboratory, Berkeley, California, U.S.A.
- ¹² DTU Space, National Space Institute, Technical University of Denmark, Elektrovej 327, DK-2800 Kgs. Lyngby, Denmark
- ¹³ Département de Physique Théorique, Université de Genève, 24, Quai E. Ansermet, 1211 Genève 4, Switzerland
- ¹⁴ Departamento de Astrofísica, Universidad de La Laguna (ULL), E-38206 La Laguna, Tenerife, Spain
- ¹⁵ Departamento de Física, Universidad de Oviedo, Avda. Calvo Sotelo s/n, Oviedo, Spain
- ¹⁶ Department of Astrophysics/IMAPP, Radboud University Nijmegen, P.O. Box 9010, 6500 GL Nijmegen, The Netherlands
- ¹⁷ Department of Physics & Astronomy, University of British Columbia, 6224 Agricultural Road, Vancouver, British Columbia, Canada
- ¹⁸ Department of Physics and Astronomy, Dana and David Dornsife College of Letter, Arts and Sciences, University of Southern California, Los Angeles, CA 90089, U.S.A.
- ¹⁹ Department of Physics and Astronomy, University College London, London WC1E 6BT, U.K.
- ²⁰ Department of Physics and Astronomy, University of Sussex, Brighton BN1 9QH, U.K.

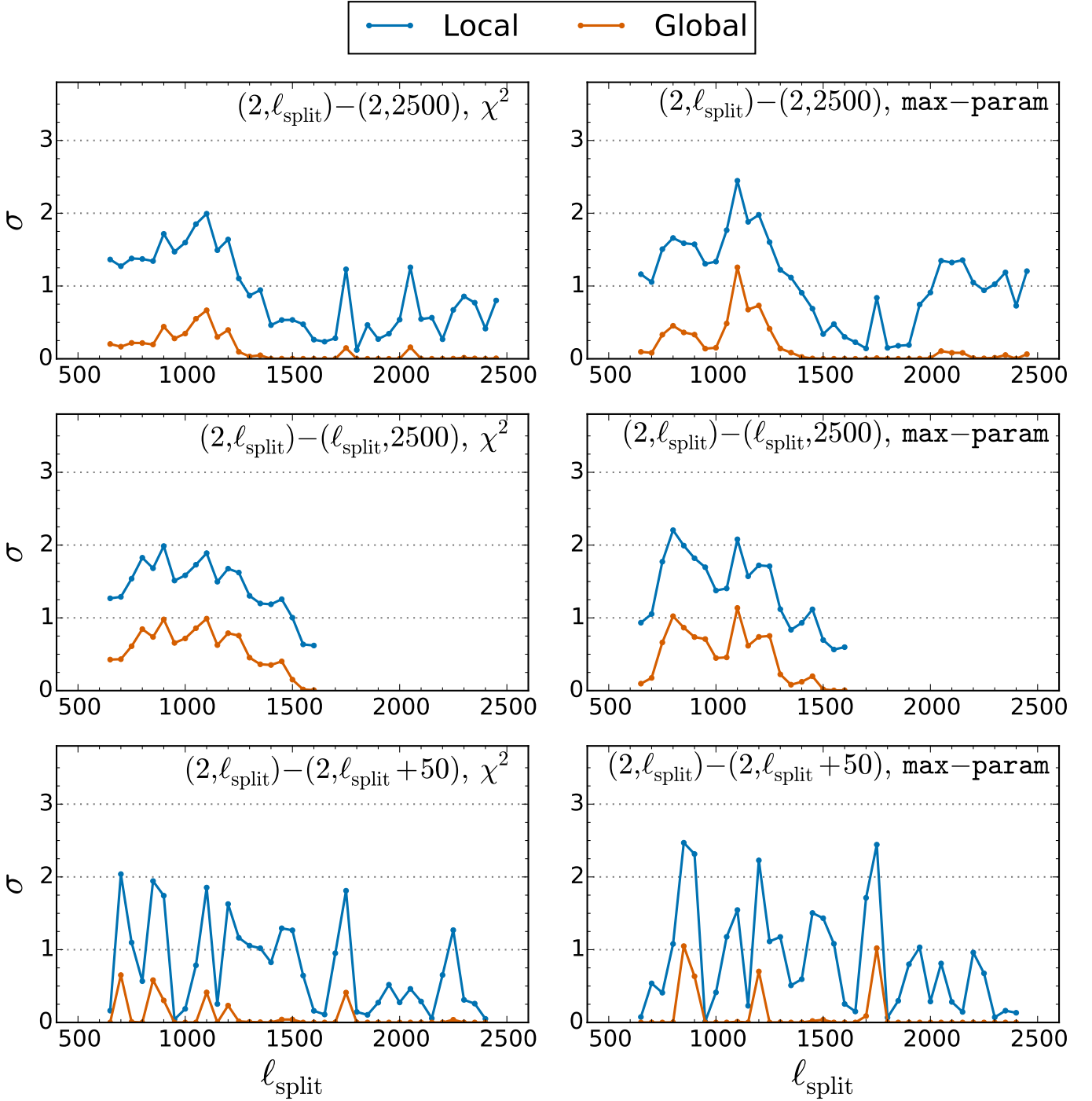


Fig. A.1. Significance levels (in units of effective σ) of the parameter shifts between two multipole ranges, according to a given statistic, as a function of ℓ_{split} . The specific choice of the two multipole ranges and the statistic used are labelled on each panel. The blue line is the “local” significance, calculated as described in Sect. 3.2. The orange line is the “global” significance which should be used to interpret the significance of any outliers we find (see Appendix A for further description).

²¹ Department of Physics, Gustaf Hållströmin katu 2a, University of Helsinki, Helsinki, Finland

²² Department of Physics, Princeton University, Princeton, New Jersey, U.S.A.

²³ Department of Physics, University of California, Berkeley, California, U.S.A.

²⁴ Department of Physics, University of California, One Shields Avenue, Davis, California, U.S.A.

²⁵ Department of Physics, University of California, Santa Barbara, California, U.S.A.

²⁶ Department of Physics, University of Illinois at Urbana-Champaign, 1110 West Green Street, Urbana, Illinois, U.S.A.

²⁷ Dipartimento di Fisica e Astronomia G. Galilei, Università degli Studi di Padova, via Marzolo 8, 35131 Padova, Italy

²⁸ Dipartimento di Fisica e Astronomia, Alma Mater Studiorum, Università degli Studi di Bologna, Viale Berti Pichat 6/2, I-40127, Bologna, Italy

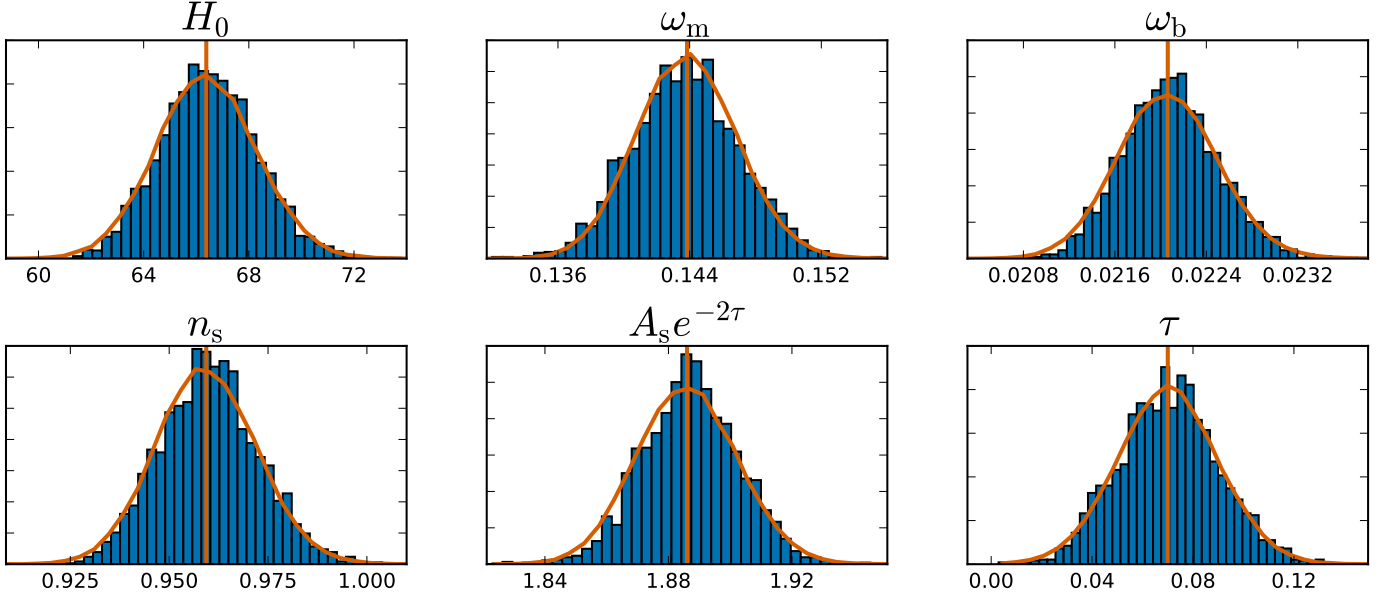


Fig. B.1. Histograms showing the distribution of best-fit $\ell < 800$ parameters from simulations performed using our low- ℓ approximation. The vertical line is the input fiducial model and the contours show the posteriors from an $\ell < 800$ chain using the actual Commander likelihood at low ℓ . The unbiased recovery of the fiducial parameters and agreement with the posteriors is a stringent test of the validity of our low- ℓ approximation. We note that these simulations, unlike the ones used in the main body of the paper to determine significance levels, have the prior on τ handled slightly differently, so as to allow us to use them as a test of the low- ℓ approximation (see Appendix B for discussion).

- ²⁹ Dipartimento di Fisica e Scienze della Terra, Università di Ferrara, Via Saragat 1, 44122 Ferrara, Italy
- ³⁰ Dipartimento di Fisica, Università La Sapienza, P. le A. Moro 2, Roma, Italy
- ³¹ Dipartimento di Fisica, Università degli Studi di Milano, Via Celoria, 16, Milano, Italy
- ³² Dipartimento di Fisica, Università degli Studi di Trieste, via A. Valerio 2, Trieste, Italy
- ³³ Dipartimento di Fisica, Università di Roma Tor Vergata, Via della Ricerca Scientifica, 1, Roma, Italy
- ³⁴ Dipartimento di Matematica, Università di Roma Tor Vergata, Via della Ricerca Scientifica, 1, Roma, Italy
- ³⁵ European Space Agency, ESAC, Planck Science Office, Camino bajo del Castillo, s/n, Urbanización Villafranca del Castillo, Villanueva de la Cañada, Madrid, Spain
- ³⁶ European Space Agency, ESTEC, Keplerlaan 1, 2201 AZ Noordwijk, The Netherlands
- ³⁷ Gran Sasso Science Institute, INFN, viale F. Crispi 7, 67100 L'Aquila, Italy
- ³⁸ HGSFP and University of Heidelberg, Theoretical Physics Department, Philosophenweg 16, 69120, Heidelberg, Germany
- ³⁹ Helsinki Institute of Physics, Gustaf Hållströmin katu 2, University of Helsinki, Helsinki, Finland
- ⁴⁰ INAF - Osservatorio Astronomico di Padova, Vicolo dell'Osservatorio 5, Padova, Italy
- ⁴¹ INAF - Osservatorio Astronomico di Roma, via di Frascati 33, Monte Porzio Catone, Italy
- ⁴² INAF - Osservatorio Astronomico di Trieste, Via G.B. Tiepolo 11, Trieste, Italy
- ⁴³ INAF/IASF Bologna, Via Gobetti 101, Bologna, Italy
- ⁴⁴ INAF/IASF Milano, Via E. Bassini 15, Milano, Italy
- ⁴⁵ INFN - CNAF, viale Berti Pichat 6/2, 40127 Bologna, Italy
- ⁴⁶ INFN, Sezione di Bologna, viale Berti Pichat 6/2, 40127 Bologna, Italy
- ⁴⁷ INFN, Sezione di Ferrara, Via Saragat 1, 44122 Ferrara, Italy
- ⁴⁸ INFN, Sezione di Roma 1, Università di Roma Sapienza, Piazzale Aldo Moro 2, 00185, Roma, Italy

- ⁴⁹ INFN, Sezione di Roma 2, Università di Roma Tor Vergata, Via della Ricerca Scientifica, 1, Roma, Italy
- ⁵⁰ Imperial College London, Astrophysics group, Blackett Laboratory, Prince Consort Road, London, SW7 2AZ, U.K.
- ⁵¹ Institut d'Astrophysique Spatiale, CNRS, Univ. Paris-Sud, Université Paris-Saclay, Bât. 121, 91405 Orsay cedex, France
- ⁵² Institut d'Astrophysique de Paris, CNRS (UMR7095), 98 bis Boulevard Arago, F-75014, Paris, France
- ⁵³ Institute of Astronomy, University of Cambridge, Madingley Road, Cambridge CB3 0HA, U.K.
- ⁵⁴ Institute of Theoretical Astrophysics, University of Oslo, Blindern, Oslo, Norway
- ⁵⁵ Instituto de Astrofísica de Canarias, C/Vía Láctea s/n, La Laguna, Tenerife, Spain
- ⁵⁶ Instituto de Física de Cantabria (CSIC-Universidad de Cantabria), Avda. de los Castros s/n, Santander, Spain
- ⁵⁷ Istituto Nazionale di Fisica Nucleare, Sezione di Padova, via Marzolo 8, I-35131 Padova, Italy
- ⁵⁸ Jet Propulsion Laboratory, California Institute of Technology, 4800 Oak Grove Drive, Pasadena, California, U.S.A.
- ⁵⁹ Jodrell Bank Centre for Astrophysics, Alan Turing Building, School of Physics and Astronomy, The University of Manchester, Oxford Road, Manchester, M13 9PL, U.K.
- ⁶⁰ Kavli Institute for Cosmological Physics, University of Chicago, Chicago, IL 60637, USA
- ⁶¹ Kavli Institute for Cosmology Cambridge, Madingley Road, Cambridge, CB3 0HA, U.K.
- ⁶² LAL, Université Paris-Sud, CNRS/IN2P3, Orsay, France
- ⁶³ LERMA, CNRS, Observatoire de Paris, 61 Avenue de l'Observatoire, Paris, France
- ⁶⁴ Laboratoire Traitement et Communication de l'Information, CNRS (UMR 5141) and Télécom ParisTech, 46 rue Barrault F-75634 Paris Cedex 13, France
- ⁶⁵ Laboratoire de Physique Subatomique et Cosmologie, Université Grenoble-Alpes, CNRS/IN2P3, 53, rue des Martyrs, 38026 Grenoble Cedex, France
- ⁶⁶ Laboratoire de Physique Théorique, Université Paris-Sud 11 & CNRS, Bâtiment 210, 91405 Orsay, France

- ⁶⁷ Lawrence Berkeley National Laboratory, Berkeley, California, U.S.A.
- ⁶⁸ Max-Planck-Institut für Astrophysik, Karl-Schwarzschild-Str. 1, 85741 Garching, Germany
- ⁶⁹ Mullard Space Science Laboratory, University College London, Surrey RH5 6NT, U.K.
- ⁷⁰ Nicolaus Copernicus Astronomical Center, Polish Academy of Sciences, Bartycka 18, 00-716 Warsaw, Poland
- ⁷¹ Nordita (Nordic Institute for Theoretical Physics), Roslagstullsbacken 23, SE-106 91 Stockholm, Sweden
- ⁷² SISSA, Astrophysics Sector, via Bonomea 265, 34136, Trieste, Italy
- ⁷³ School of Chemistry and Physics, University of KwaZulu-Natal, Westville Campus, Private Bag X54001, Durban, 4000, South Africa
- ⁷⁴ School of Physics and Astronomy, Sun Yat-Sen University, 135 Xingang Xi Road, Guangzhou, China
- ⁷⁵ School of Physics and Astronomy, University of Nottingham, Nottingham NG7 2RD, U.K.
- ⁷⁶ Simon Fraser University, Department of Physics, 8888 University Drive, Burnaby BC, Canada
- ⁷⁷ Sorbonne Université-UPMC, UMR7095, Institut d'Astrophysique de Paris, 98 bis Boulevard Arago, F-75014, Paris, France
- ⁷⁸ Sorbonne Universités, Institut Lagrange de Paris (ILP), 98 bis Boulevard Arago, 75014 Paris, France
- ⁷⁹ Space Sciences Laboratory, University of California, Berkeley, California, U.S.A.
- ⁸⁰ Sub-Department of Astrophysics, University of Oxford, Keble Road, Oxford OX1 3RH, U.K.
- ⁸¹ The Oskar Klein Centre for Cosmoparticle Physics, Department of Physics, Stockholm University, AlbaNova, SE-106 91 Stockholm, Sweden
- ⁸² UPMC Univ Paris 06, UMR7095, 98 bis Boulevard Arago, F-75014, Paris, France
- ⁸³ Université de Toulouse, UPS-OMP, IRAP, F-31028 Toulouse cedex 4, France
- ⁸⁴ University of Granada, Departamento de Física Teórica y del Cosmos, Facultad de Ciencias, Granada, Spain
- ⁸⁵ University of Heidelberg, Institute for Theoretical Physics, Philosophenweg 16, 69120, Heidelberg, Germany
- ⁸⁶ Warsaw University Observatory, Aleje Ujazdowskie 4, 00-478 Warszawa, Poland