



Publication Year	2018
Acceptance in OA@INAF	2021-01-18T14:30:08Z
Title	The mystery of the "Kite" radio source in Abell 2626: Insights from new Chandra observations
Authors	Ignesti, A.; GITTI, MYRIAM; BRUNETTI, GIANFRANCO; O'Sullivan, E.; Sarazin, C.; et al.
DOI	10.1051/0004-6361/201731380
Handle	http://hdl.handle.net/20.500.12386/29825
Journal	ASTRONOMY & ASTROPHYSICS
Number	610

The mystery of the “Kite” radio source in Abell 2626: Insights from new *Chandra* observations

A. Ignesti^{1,2}, M. Gitti^{1,2}, G. Brunetti², E. O’Sullivan³, C. Sarazin⁴, and K. Wong^{5,6}

¹ Dipartimento di Fisica e Astronomia, Università di Bologna, via Gobetti 93/2, 40129 Bologna, Italy
e-mail: alessandro.ignesti2@unibo.it

² INAF, Istituto di Radioastronomia di Bologna, via Gobetti 101, 40129 Bologna, Italy

³ Harvard-Smithsonian Center for Astrophysics, 60 Garden Street, Cambridge, MA 02138, USA

⁴ Department of Astronomy, University of Virginia, 530 McCormick Road, Charlottesville, VA 22903, USA

⁵ Department of Physics and Astronomy, Minnesota State University, Mankato, MN 56001, USA

⁶ Eureka Scientific, Inc., 2452 Delmer Street Suite 100, Oakland, CA 94602-3017, USA

Received 15 June 2017 / Accepted 21 December 2017

ABSTRACT

Context. We present the results of a new *Chandra* study of the galaxy cluster Abell 2626. The radio emission of the cluster shows a complex system of four symmetric arcs without known correlations with the thermal X-ray emission. The mirror symmetry of the radio arcs toward the center and the presence of two optical cores in the central galaxy suggested that they may be created by pairs of precessing radio jets powered by dual active galactic nuclei (AGNs) inside the core dominant galaxy. However, previous observations failed to observe the second jetted AGN and the spectral trend due to radiative age along the radio arcs, thus challenging this interpretation.

Aims. The new *Chandra* observation had several scientific objectives, including the search for the second AGN that would support the jet precession model. We focus here on the detailed study of the local properties of the thermal and non-thermal emission in the proximity of the radio arcs, in order to obtain further insights into their origin.

Methods. We performed a standard data reduction of the *Chandra* dataset deriving the radial profiles of temperature, density, pressure and cooling time of the intra-cluster medium. We further analyzed the two-dimensional (2D) distribution of the gas temperature, discovering that the south-western junction of the radio arcs surrounds the cool core of the cluster.

Results. We studied the X-ray surface brightness and spectral profiles across the junction, finding a cold front spatially coincident with the radio arcs. This may suggest a connection between the sloshing of the thermal gas and the nature of the radio filaments, raising new scenarios for their origin. A tantalizing possibility is that the radio arcs trace the projection of a complex surface connecting the sites where electrons are most efficiently reaccelerated by the turbulence that is generated by the gas sloshing. In this case, diffuse emission embedded by the arcs and with extremely steep spectrum should be most visible at very low radio frequencies.

Key words. galaxies: clusters: individual: Abell 2626 – galaxies: individual: IC5338, IC5337 – galaxies: clusters: intracluster medium – X-rays: galaxies: clusters – radiation mechanisms: thermal

1. Introduction

Chandra high-resolution X-ray images of many merging and relaxed clusters revealed that the sloshing of cold sub-clumps of the intra-cluster medium (ICM) may form prominent contact discontinuities, or cold fronts (e.g., Markevitch & Vikhlinin 2007). Cold fronts are seen as sharp edges in the cluster X-ray images and temperature maps, and they are identified as temperature discontinuities in pressure balance with the ICM. On the other hand, radio observations revealed that a number of cool-core clusters host a radio mini-halo – a faint, diffuse radio source with a steep spectrum ($\alpha < -1$, where the flux density as a function of frequency is $S_\nu \propto \nu^\alpha$) and a size comparable to that of the cool-core region (e.g., Feretti et al. 2012; Giacintucci et al. 2017). A number of mechanisms have been proposed for the origin of the relativistic, radio-emitting electrons (e.g., Gitti et al. 2002; Pfrommer & Enßlin 2004, for leptonic and hadronic models, respectively), but the physics of the mechanisms that produces mini-halos is still debated (e.g., Brunetti & Jones 2014).

The galaxy cluster Abell 2626 (hereafter A2626) is a low-redshift ($z=0.0553$, Struble & Rood 1999), regular, poor

cluster, with an estimated mass of $1.3 \times 10^{15} M_\odot$ and a virial radius of 1.6 Mpc (Mohr et al. 1996). The most luminous galaxy is the central dominant (cD) galaxy IC5338, which hosts a pair of optical nuclei with a projected separation of ~ 3.5 arcsec, of which only the southern one has a counterpart also in the radio (Owen et al. 1995) and hard X-ray bands (see Wong et al. 2008, Fig. 3). A2626 also hosts the S0 galaxy IC5337, that was previously classified as a jellyfish galaxy by Poggianti et al. (2016) for its optical properties. In the X-ray band, A2626 appears as a relaxed cluster with a roundish morphology. It is a cool-core cluster with estimated X-ray luminosity of 1.9×10^{44} erg s⁻¹ and mass accretion rate of $4 M_\odot$ yr⁻¹ (e.g., Bravi et al. 2016). On the other hand, in the radio band A2626 shows a peculiar, extended emission with arc-like, symmetric features forming a striking kite-like global morphology (Gitti et al. 2004; Gitti 2013; Kale & Gitti 2017; Ignesti et al. 2017), whose origin is still unclear. Initially, Gitti et al. (2004) proposed that the cluster hosts a candidate radio mini-halo embedding the northern (N) and southern (S) arcs, whereas Wong et al. (2008) argued that such elongated radio features may be produced by jet precession triggered by the reciprocal gravitational interactions of the two

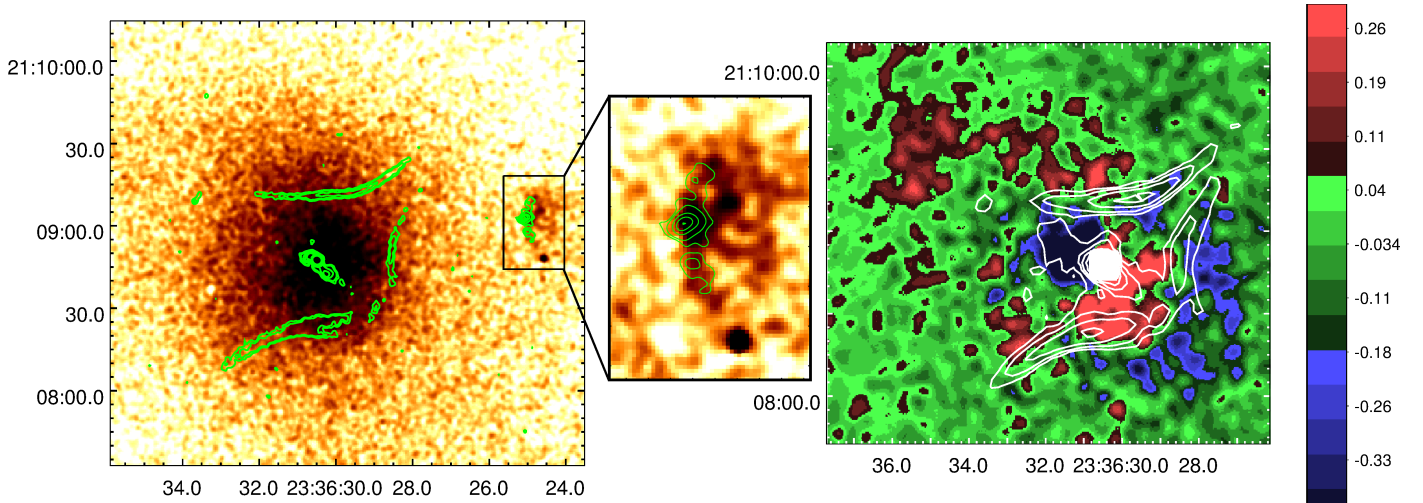


Fig. 1. *Left:* 0.5–2 keV *Chandra* image of A2626 smoothed with a 3-pixel Gaussian filter (1 ACIS pixel = 0.5''), with a zoom on IC5337 and with the 1.4 GHz radio emission overlaid in green contours (from Fig. 2 of Gitti 2013, resolution $\sim 1.2''$). *Right:* SB residual map obtained by subtracting the β -model, smoothed with an 8-pixel Gaussian filter (color map), and with the 1.4 GHz radio emission overlaid in white contours (from Fig. 3 of Gitti 2013, resolution $\sim 4.2''$). As indicated by the color-bar on the *right*, the over-densities in units of counts $\text{px}^{-2} \text{s}^{-1}$ are shown in red and the subsdensities in blue.

cores of the cD galaxy. Their scenario was proposed when only the N and S arcs were known. However, the subsequent discovery of the third (Gitti 2013) and fourth (Kale & Gitti 2017) radio arcs to the west (W) and east (E) directions, respectively, and the estimated time scales of the precession period (Ignesti et al. 2017) challenged this model.

In this work we present the analysis of the new *Chandra* observations of A2626, searching for the evidence of a second active galactic nucleus (AGN) that may explain the second pair of radio arcs, and for correlations between the thermal and non-thermal plasma in the radio-arc regions. We adopt a Λ CDM cosmology with $H_0 = 70 \text{ km s}^{-1} \text{ Mpc}^{-1}$, $\Omega_M = 1 - \Omega_\Lambda = 0.3$. The cluster luminosity distance is 246.8 Mpc, and the angular scale is 1 arcsec = 1.1 kpc¹. The confidence level of the reported values is 90% (1.64 σ).

2. Observation and data reduction

Galaxy cluster A2626 was observed with the *Chandra* space observatory in October 2013 for 110 ks (ObsID: 16136, PI: C. Sarazin). The dataset was reprocessed with CIAO v4.8 using CALDB v2.7.2 and corrected for known time-dependent gain and charge transfer inefficiency problems following techniques similar to those described in the *Chandra* analysis threads². In order to filter out strong background flares, we also applied screening of the event files, slightly reducing the effective observation time to 109 ks. We used blank-sky background files normalized to the count rate of the source image in the 10–12 keV band for background subtraction. Finally, we identified and removed the point sources using the CIAO task WAVDETECT, with the detection threshold set to the default value of 10^{-6} .

3. Results

In this work we focus on the results of our analysis concerning the correlations of the local properties of the ICM with the radio arcs, in order to gain further insights into their origin. In

particular, after an analysis of the global properties of the cluster, we analyzed the two-dimensional (2D) distribution of the thermal properties of the ICM in the proximity of the radio arcs. In Figs. 1 and 3 we overlay the 1.4 GHz radio emission (from Gitti 2013) imaged at slightly different resolutions, depending on the specific aim of each image.

3.1. Global X-ray properties

We report in Fig. 1 (left panel) the 0.5–2.0 keV raw image of A2626 smoothed with a Gaussian filter. We detected three point sources associated with A2626, the southern core of IC5338 (23h 36m 30.5s, +21d 08m 47.7s), the core of IC5337 (23h 36m 25.0s, +21d 09m 2.9s) and one in the southern tail of IC5337 (23h 36m 24.6s, +21d 08m 48.4s) that does not have a radio counterpart. We did not detect any hard (2.0–10.0 keV) X-ray emission associated to the northern core of IC5338, in agreement with the results of Wong et al. (2008). By considering the contribution of the thermal emission of the ICM and the instrumental background, we were able to estimate an upper limit for its X-ray luminosity of $1.3 \times 10^{40} \text{ erg s}^{-1}$ (0.5–7.0 keV band). Therefore, we cannot find evidence that the second pair of radio arcs are due to a second AGN, although it could be that the AGN has just turned off.

In order to study the dynamical state of the cluster, we estimated the cooling time radial profile $t_c(r)$ based on the temperature and density radial profiles. The cooling time t_c is the time-scale of the cooling processes acting in the ICM and it can be derived as follows (e.g., Gitti et al. 2012):

$$t_c(r) = \frac{\gamma}{\gamma - 1} \frac{kT}{\mu X n_e(r) \Lambda(T(r))}, \quad (1)$$

where $\gamma = 5/3$ is the adiabatic index, $\mu \simeq 0.6$ is the mean molecular weight, $X \simeq 0.7$ is the hydrogen mass fraction of the ICM, $n_e(r)$ and $\Lambda(T(r))$ are the electron density of the ICM and the cooling function (e.g., Sutherland & Dopita 1993) at the radius r . The radius at which the cooling time is 3 Gyr is typically referred to as the cooling radius, R_C , and it delimits the cool core that is the region where the cooling processes are efficient.

¹ <http://www.astro.ucla.edu/#7Ewright/CosmoCalc.html>

² <http://cxc.harvard.edu/ciao/threads/index.html>

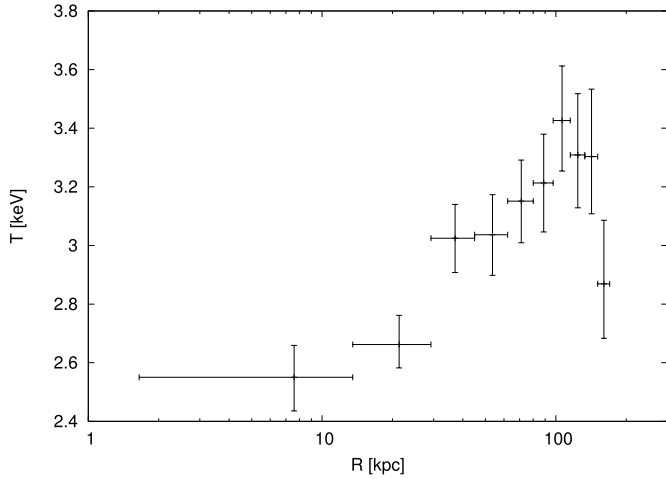


Fig. 2. Azimuthally-averaged projected radial temperature profile of A2626 inside 170 kpc.

We estimated $R_C \approx 23$ kpc, in agreement with Bravi et al. (2016). We then extracted the spectrum of the whole cluster inside R_C to estimate its cooling luminosity and the mass accretion rate. We fitted the spectrum with the `wabs*(apec+mkcflow)` model in Xspec v.12.9, where the `mkcflow` model takes into account an isobaric multi-phase cooling flow component in addition to the thermal emission of the ICM modeled by `apec` (Arnaud 1996). We concluded that A2626 is a weak cooling flow cluster, with a mass accretion rate of $2.5 \pm 0.8 M_\odot \text{ yr}^{-1}$ and a cooling luminosity of $4.2 \times 10^{43} \text{ erg s}^{-1}$ in the 0.5–7 keV energy band. The mean temperature inside R_C is 2.4 ± 0.1 keV. These results are in agreement with Wong et al. (2008) and Bravi et al. (2016).

We extracted the azimuthally averaged radial temperature profile in circular annuli (Fig. 2), that reveals that the temperature decreases from a maximum value of ~ 3.4 keV to ~ 2.6 keV towards the center, with a discontinuity at ~ 30 kpc. We observed a second temperature drop in the outermost bin at ~ 170 kpc. The possible cause of this drop is discussed in Sect. 3.2.

In order to search for correlations with the radio arcs, we carried out a morphological analysis by subtracting a 2D β -model (Cavaliere & Fusco-Femiano 1976) of surface brightness (SB) distribution to highlight over-densities or depressions in the ICM distribution. We performed this operation with the software SHERPA of CIAO v4.9. The best-fit values for the core radius, R , the index β , and the amplitude, A , are $R = 26.1 \pm 0.5$ arcsec, $\beta = 0.400 \pm 0.003$, and $A = 4.86 \pm 0.08 \text{ counts s}^{-1} \text{ arcmin}^{-2}$. The SB model has been centered on the southern nucleus of IC5338 and the emission of the core of IC5338, and IC5337 has been masked because it was not related to the cluster thermal emission. We also performed a fit with a double β -model, usually adopted for cool-core clusters (e.g., Xue & Wu 2000), finding that the addition of a second component does not significantly improve the fit.

In Fig. 1 (right panel) we report the residual map with the 1.4 GHz radio contours overlaid (from Fig. 3 of Gitti 2013). This map shows that there is an emission excess, which is related to an over-density of the ICM, that is remarkably delimited by the south-western (SW) junction of the radio arcs. On a larger scale to the north, the map shows another over-density with a spiral-like morphology. We also observe a depression on the east of the core that was already noticed by Shin et al. (2016), who argued that it may be related to AGN activities. We are cautious about claiming the detection of a cavity, because

we cannot exclude that it may be an artifact produced by the asymmetrical SB distribution around the core, similar to the sub-density seen outside of the SW junction. However, the spatial connection of the X-ray depression with the central radio emission (Fig. 1, right panel) may support its interpretation as a radio-filled cavity.

3.2. Spectral temperature map

The spectral temperature map shown in Fig. 3 (top) was created using the techniques described in O’Sullivan et al. (2011). The map pixels are $\sim 5''$ (10 ACIS physical pixels) square. The value in each pixel is the best-fitting temperature obtained from an absorbed `apec` model fit to a spectrum extracted from a circular region centred on the pixel, with a radius chosen to ensure that it contains at least 1500 net counts. The effective resolution of the map is therefore determined by the size of the extraction regions, whose radii range from $\sim 5''$ in the cluster center to $\sim 20''$ in the outskirts. Since the spectral extraction regions are larger than the map pixels, individual pixel values are not independent and the maps are, thus, analogous to adaptively smoothed images, with more smoothing in regions of lower surface brightness. In the bottom-right panel of Fig. 3 we report the relative error map. To produce this map we divided the mean error in each pixel, which corresponds to the arithmetic mean between the 1- σ upper and lower bounds, by the best-fit temperature in that pixel. Uncertainties on the kT measurements range from $\sim 7\%$ to $\sim 10\%$.

In Fig. 3 (top panel) we also report the contours of the radio emission at 1.4 GHz to identify possible correlations between the radio arcs and the ICM. This map shows that the ICM exhibits an inner cold region with $T_{\text{cold}} < 2.8$ keV and an outer hot region with $T_{\text{hot}} \sim 3.4$ keV. Remarkably, the edge of these regions coincides with the SW junction of the radio arcs. In the opposite direction, the cold ICM is not confined to the inner part of A2626, but it is elongated outside in a spiral-like shape that coincides with the northern spiral feature observed in the SB residual map (Fig. 1, right panel) and resembles the cold spirals often related to the sloshing of the ICM (e.g., Markevitch & Vikhlinin 2007).

The temperature map also shows that IC5337 is leaving a trail of cold plasma ($T \sim 2.3$ keV). Our result, in agreement with Wong et al. (2008), may confirm that the jellyfish galaxy is losing its cold atmosphere due to the interactions with the ICM. The accurate study of IC5337 is the object of a paper in preparation.

Lastly, we note the presence of a cold feature to the south-west edge of the map (not shown in Fig. 3, top panel) located at the same radial distance as the last annulus of the temperature profile (Fig. 2). In order to estimate the contribution of this feature to the mean temperature of the last temperature bin, we divided the last annulus into different sectors, including and excluding this feature, and compared the resulting spectral fits. In particular, in a 270 degree-wide sector excluding the feature we measured a temperature of 3.4 ± 0.2 keV, which is higher than the value that we report in the azimuthally averaged radial profile (2.9 ± 0.2 keV). Therefore, we conclude that the presence of this feature is likely to be the cause of the temperature drop observed in the outermost bin at ~ 170 kpc.

3.3. Analysis of the south-west junction

The SB residual (Fig. 1, right panel) and the spectral temperature (Fig. 3, top) maps show that the ICM physical properties inside the SW radio arcs are different from outside, so we focused our analysis on the region across the SW junction to understand why.

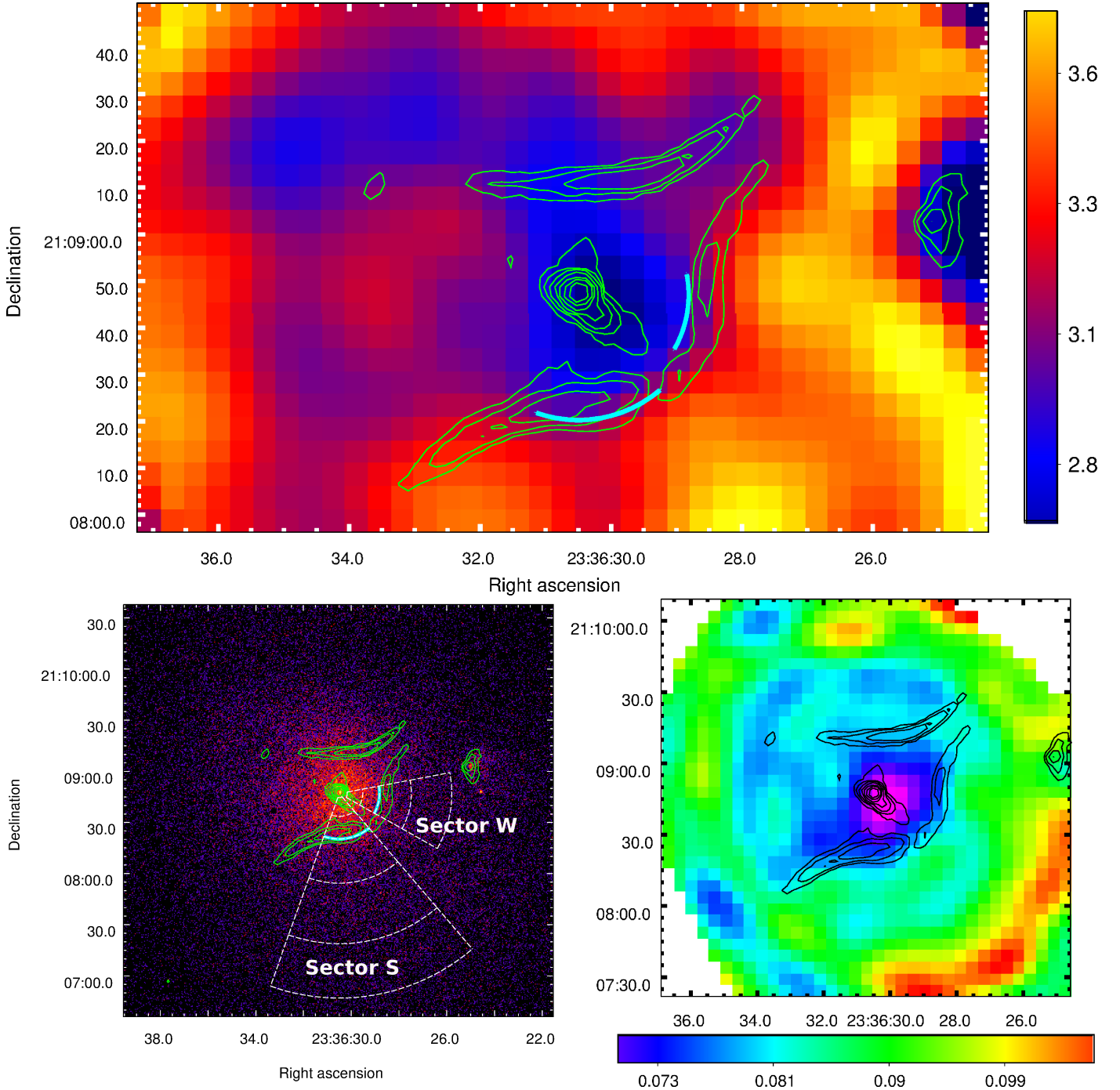


Fig. 3. *Top:* temperature map of A2626. The color-bar indicates the ICM temperature in keV. In green are reported the contours of the 1.4 GHz radio emission from Gitti (2013, resolution $\sim 3.3''$), in cyan the position of the cold fronts determined by our analysis. *Bottom-left:* raw image of A2626. In green are reported the same 1.4 GHz contours as in the top panel, in white the sectors where we extracted the spectral profiles, where we have highlighted in cyan the position of the SB jumps. *Bottom-right:* relative temperature error map. In black are reported the same 1.4 GHz contours as in the top panel.

By following the geometry of the cold region observed in Fig. 3, we divided the SW cluster region into several sectors. In these regions we extracted the background-subtracted, exposure-corrected SB radial profiles and we fitted them with a broken power-law model (as described in Nulsen et al. 2005) in order to determine the position of the SB jumps that we observe in the 2D residual map (Fig. 1, right panel). In two sectors to the south and to the west, which are shown in the bottom-left panel of Fig. 3 labeled as “Sector S” and “Sector W”, we detected SB jumps located at distances from the core of 29.5 kpc and 26.4 kpc,

respectively. They are associated to an ICM density jump of $1.32^{+0.15}_{-0.13}$ (Sector S) and $1.37^{+0.19}_{-0.17}$ (Sector W), both detected above the 3σ level. We checked the solidity of our result by varying the extraction sectors (in both angular width and radial binning), always finding a density jump detection above 3σ .

We then divided the sectors into several annuli, which are reported in Fig. 3 (bottom-left panel), to extract the ICM temperature, density and pressure radial profiles, by fitting the spectra of each annulus with both the projected wabs-apec and the de-projected project-wabs-apec Xspec models, making

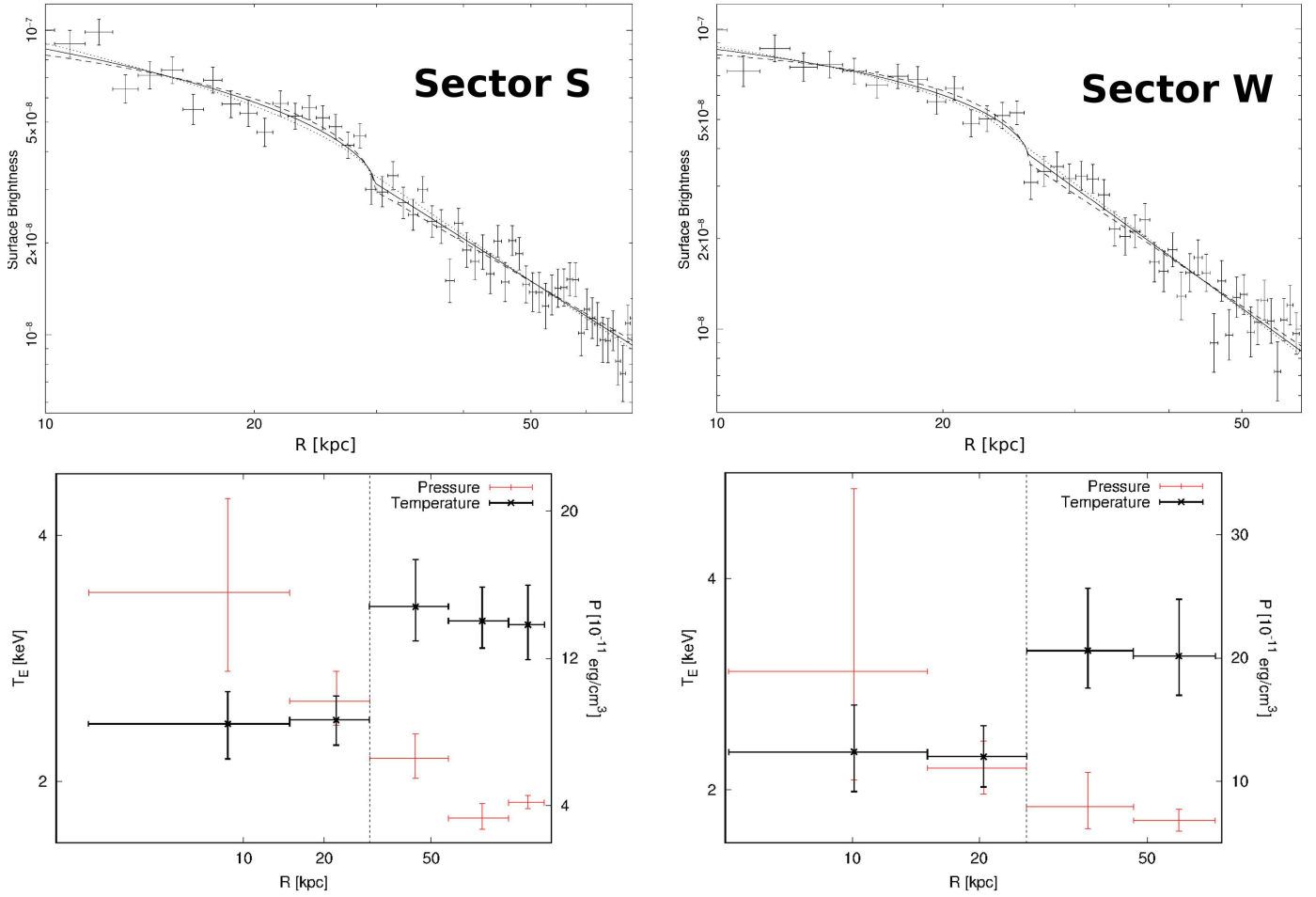


Fig. 4. Radial profiles observed in the southern (*left*) and western (*right*) sectors reported in Fig. 3. In each panel: *Top*: SB profile with the best-fit to the broken power-law model. The SB is expressed in units of $\text{counts px}^{-2} \text{s}^{-1}$, the radius is in units of kpc. The dashed lines show the upper and lower confidence bounds of the best-fit density ratios (corresponding to $1.32_{-0.13}^{+0.15}$ for the Sector S and to $1.37_{-0.17}^{+0.19}$ for the Sector W). *Bottom*: projected temperature (black) and de-projected pressure (red) profiles. The black dashed line indicates the position of the front determined by the broken power-law fit to the SB profile shown in the *upper panels*.

sure to place the second and the third annuli across the SB jump. We report the temperature and pressure profiles in Fig. 4. The profiles show that the SB jumps coincide with a significant drop in the temperature toward the center, from $3.42_{-0.28}^{+0.38}$ keV to $2.50_{-0.21}^{+0.19}$ keV in Sector S and from $3.32_{-0.36}^{+0.59}$ keV to $2.31_{-0.29}^{+0.29}$ keV in Sector W. We observed the temperature drops in both the projected and de-projected profiles with a confidence level above 3σ . The pressure is instead continuous, thus indicating rough pressure balance across the front, which is a signature of the presence of a cold front. Therefore, we argue that A2626 shows a weak cold front in the proximity of the radio arcs. We note that a similar feature has recently been observed in the Perseus cluster (Walker et al. 2017).

4. Discussion and future prospects

In this work, we have analyzed a new *Chandra* observation of A2626 in order to gain insights into the origin of the radio arcs. We have searched for evidence of the AGN activity of the northern core of IC5338, which has been invoked as a possible origin of the arcs west and east, and we have been able to provide an upper limit for its X-ray luminosity, $L_X < 1.3 \times 10^{40} \text{ erg s}^{-1}$. Moreover, we have analyzed the 2D distribution of the thermal properties of the ICM in order to find possible correlations between the thermal and non-thermal plasma. In this section, we

summarize our work and propose a new qualitative scenario that may explain the origin of the radio arcs.

The new *Chandra* data presented here led to the discovery of a cold front in the proximity of the SW radio arcs. This is the most important result in our paper. Indeed the spatial coincidence between the cold front (at least the part of the front that is visible) and the SW radio arc may suggest a connection between the radio arcs and the dynamics of the thermal gas.

One possibility is that the arcs are ghost relativistic bubbles shaped and gently compressed (i.e., at low compression rate) by the motion of the gas. The observed morphology may thus arise from the action of complex gas motions at the boundary of the sloshing region on a buoyant cloud of relativistic plasma. If on the one hand this might appear to be a possible explanation for the SW junction, on the other hand the shape of the arc N (and of the arc E seen in Kale & Gitti 2017) appears more tricky and would require a customized geometry. It is worth mentioning that radio filaments with very steep spectrum are indeed seen in LOFAR observations of galaxy clusters with complex gas dynamics (e.g., Shimwell et al. 2016; de Gasperin et al. 2017). The large occurrence of these filaments at low radio frequencies naturally results from their steep spectrum. On the other hand, the steep spectrum makes them very rare at higher frequencies. A2626 might indeed be one of these rare cases, where the seed relativistic bubbles that are compressed and advected by

gas motion may originate from the radio activity of the AGNs in the core in the last Gyr of so.

At the same time, however, we may also speculate that the arcs are the brightest parts of a mini-halo that is generated in the region of the core bounded by the sloshing cold fronts. A connection between mini-halos and cold fronts has been observed by [Mazzotta & Giacintucci \(2008\)](#). Numerical simulations show that the sloshing of the gas in these regions amplifies the magnetic field within the cold front and generates turbulence that may reaccelerate relativistic particles producing mini-halos ([ZuHone et al. 2011, 2013](#)). In this scenario the acceleration rates and magnetic fields vary within the volume of the cluster core. The strongest acceleration rates are observed in many cases near the cold front surfaces of the simulated clusters. In fact simulated images show that mini-halos become increasingly patchy and filamentary at frequencies higher than an observed synchrotron frequency ν_0 (Figs. 10–12 in [ZuHone et al. 2013](#)). The maximum steepening frequency ν_s can be obtained by combining the equations for the momentum-diffusion coefficients (Eqs. (33) and (34) in [ZuHone et al. 2013](#)) with the equation for the reacceleration time that is requested to generate synchrotron emission at a given frequency in these models (Eq. (14) in [Brunetti & Lazarian 2016](#)). In the case of A2626 we estimated:

$$\frac{\nu_s}{\text{MHz}} \simeq 700 \left(\frac{v_t}{200 \text{ km s}^{-1}} \right)^4 \left(\frac{R^c}{0.25} \right)^2 \left(\frac{\langle k \rangle}{3.6 \text{ kpc}^{-1}} + \frac{k_{mfp}}{6.3 \text{ kpc}^{-1}} \right)^2 / 4. \quad (2)$$

The parameters v_t , R^c , $\langle k \rangle$ and k_{mfp} are the turbulent velocity, the fraction of turbulent energy in the form of compressive modes, the average wavenumber and the wavenumber associated to the mean free path of the particles, respectively (see [ZuHone et al. 2013](#), for further details). In Eq. (2) we assumed a homogeneous magnetic field $B = B_{CMB} / \sqrt{3}$. According to Eq. (2), the frequency of maximum synchrotron emission that we obtain by assuming the normalized values of the parameters is of the order of 700 MHz. Therefore, an observation at this frequency probing for the presence of the mini-halo will be a crucial test for the turbulent acceleration scenario.

It may be that in A2626 the sloshing sustains a process of acceleration of electrons that is less efficient than in other mini-halos. Our observations may be picking up only the boundaries of the mini-halo where turbulence is higher and electrons are reaccelerated with an efficiency that is high enough to produce GHz emission. More specifically, according to Eq. (2), a turbulent velocity $\sim 150\text{--}200 \text{ km s}^{-1}$ is needed to produce a steepening frequency $\nu_s \sim 0.5\text{--}1 \text{ GHz}$ that is sufficient to explain the spectrum of the arcs observed in the range 1.4–3.0 GHz, ($\alpha \sim 2\text{--}3$, [Ignesti et al. 2017](#)). However a decrease in turbulent velocity by a factor 2 would give a steepening frequency about 1 order of magnitude smaller. As a consequence of this, the steep spectrum emission in which the arcs are embedded should be brightest at lower radio frequencies. We note that also in this case explaining the observed shape of the arcs requires a specific 3D geometry of the gas sloshing. The detailed investigation of the 3D dynamics of the cold front would require tailored numerical simulations, which are beyond the aims of this paper. On the other hand, the presence of very steep spectrum emission between the arcs may be tested by deep LOFAR observations.

5. Summary and conclusion

In this paper we report on the analysis of new *Chandra* observations of the core region of the cluster A2626. The most

important result of the paper is the discovery of a cold front. Interestingly this cold front is found in the proximity of the SW radio arcs suggesting a connection between the sloshing of the gas and the origin of the mysterious radio arcs in the cluster.

Radio arcs may be produced by the advection and gentle compression of seed ghost radio bubbles by the gas sloshing in the cold front or they may be the brightest regions of a mini-halo generated in the cold front region of the cluster. The latter hypothesis is somehow supported by numerical simulations of turbulent reacceleration in cold fronts. These simulations show filamentary radio structures arising near the surface of the cold fronts in the case that the reacceleration mechanisms are inefficient in generating emission at the observing frequencies. The expectation of this latter scenario is that diffuse inter-arcs emission with very steep spectrum should be brightest at lower frequencies.

In both cases the kite-like morphology of the radio arcs remains puzzling and further steps require the use of tailored numerical simulations of sloshing cold fronts to decipher the 3D geometry.

Acknowledgments. We thank the Referee for providing a constructive report that has improved the presentation of the results. We thank P. Nulsen for providing the software required to produce the SB fit reported in Fig. 4 and M. Markevitch for useful discussion. AI thanks A. Botteon and G. Lanzuisi for useful discussions. MG, GB acknowledge partial support from PRIN-INAF 2014. EOS was supported in part by NASA grants GO5-16123X and GO6-17121X. CLS was supported in part by NASA *Chandra* grants GO4-15123X, GO5-16131X, and GO5-16146X. KWW was partially supported by *Chandra* grants GO5-16125X and GO6-17108X, and NASA ADAP grant NNH16CP10C.

References

- Arnaud, K. A. 1996, in *Astronomical Data Analysis Software and Systems V*, eds. G. H. Jacoby, & J. Barnes, *ASP*, 101, 17
- Bravi, L., Gitti, M., & Brunetti, G. 2016, *MNRAS*, 455, L41
- Brunetti, G., & Jones, T. W. 2014, *Int. J. Modern Phys. D*, 23, 30007
- Brunetti, G., & Lazarian, A. 2016, *MNRAS*, 458, 2584
- Cavaliere, A., & Fusco-Femiano, R. 1976, *A&A*, 49, 137
- de Gasperin, F., Intema, H. T., Shimwell, T. W., et al. 2017, *Sci. Adv.* 3, e1701634
- Feretti, L., Giovannini, G., Govoni, F., & Murgia, M. 2012, *A&A Rev.*, 20, 54
- Giacintucci, S., Markevitch, M., Cassano, R., et al. 2017, *ApJ*, 841, 71
- Gitti, M. 2013, *MNRAS*, 436, L84
- Gitti, M., Brunetti, G., & Setti, G. 2002, *A&A*, 386, 456
- Gitti, M., Brunetti, G., Feretti, L., & Setti, G. 2004, *A&A*, 417, 1
- Gitti, M., Brighenti, F., & McNamara, B. R. 2012, *Adv. Astron.*, 2012
- Ignesti, A., Gitti, M., Brunetti, G., Feretti, L., & Giovannini, G. 2017, *A&A*, 604, A21
- Kale, R., & Gitti, M. 2017, *MNRAS*, 466, L19
- Markevitch, M., & Vikhlinin, A. 2007, *Phys. Rep.*, 443, 1
- Mazzotta, P., & Giacintucci, S. 2008, *ApJ*, 675, L9
- Mohr, J. J., Geller, M. J., & Wegner, G. 1996, *AJ*, 112, 1816
- Nulsen, P. E. J., Hambrick, D. C., McNamara, B. R., et al. 2005, *ApJ*, 625, L9
- O’Sullivan, E., Giacintucci, S., David, L. P., Vrtiljek, J. M., & Raychaudhury, S. 2011, *MNRAS*, 411, 1833
- Owen, F. N., Ledlow, M. J., & Keel, W. C. 1995, *AJ*, 109, 14
- Pfrommer, C., & Enßlin, T. A. 2004, *A&A*, 413, 17
- Poggianti, B. M., Fasano, G., Omizzolo, A., et al. 2016, *AJ*, 151, 78
- Shimwell, T. W., Luckin, J., Brüggem, M., et al. 2016, *MNRAS*, 459, 277
- Shin, J., Woo, J.-H., & Mulchaey, J. S. 2016, *ApJS*, 227, 31
- Struble, M. F., & Rood, H. J. 1999, *ApJS*, 125, 35
- Sutherland, R. S., & Dopita, M. A. 1993, *ApJS*, 88, 253
- Walker, S. A., Hlavacek-Larrondo, J., Gendron-Marsolais, M., et al. 2017, *MNRAS*, 468, 2506
- Wong, K.-W., Sarazin, C. L., Blanton, E. L., & Reiprich, T. H. 2008, *ApJ*, 682, 155
- Xue, Y.-J., & Wu, X.-P. 2000, *MNRAS*, 318, 715
- ZuHone, J., Markevitch, M., & Brunetti, G. 2011, *Mem. Soc. Astron. It.*, 82, 632
- ZuHone, J. A., Markevitch, M., Brunetti, G., & Giacintucci, S. 2013, *ApJ*, 762, 78