



Publication Year	2020
Acceptance in OA @INAF	2021-01-20T10:25:43Z
Title	The Beautiful Mess in Abell 2255
Authors	Botteon, A.; BRUNETTI, GIANFRANCO; van Weeren, R. J.; Shimwell, T. W.; Pizzo, R. F.; et al.
DOI	10.3847/1538-4357/ab9a2f
Handle	http://hdl.handle.net/20.500.12386/29864
Journal	THE ASTROPHYSICAL JOURNAL
Number	897



The Beautiful Mess in Abell 2255

A. Botteon^{1,2}, G. Brunetti², R. J. van Weeren¹, T. W. Shimwell^{1,3}, R. F. Pizzo³, R. Cassano², M. Iacobelli³, F. Gastaldello⁴, L. Birzan⁵, A. Bonafede^{2,6}, M. Brüggén⁵, V. Cuciti⁵, D. Dallacasa^{2,6}, F. de Gasperin⁵, G. Di Gennaro¹, A. Drabant⁷, M. J. Hardcastle⁸, M. Hoeft⁷, S. Mandal¹, H. J. A. Röttgering¹, and A. Simionescu^{1,9,10}

¹Leiden Observatory, Leiden University, PO Box 9513, 2300 RA Leiden, The Netherlands; botteon@strw.leidenuniv.nl

²INAF—IRA, via P. Gobetti 101, I-40129 Bologna, Italy

³ASTRON, the Netherlands Institute for Radio Astronomy, Postbus 2, 7990 AA Dwingeloo, The Netherlands

⁴INAF—IASF Milano, via A. Corti 12, I-20133 Milano, Italy

⁵University of Hamburg, Hamburger Sternwarte, Gojenbergsweg 112, D-21029 Hamburg, Germany

⁶Dipartimento di Fisica e Astronomia, Università di Bologna, via P. Gobetti 93/2, I-40129 Bologna, Italy

⁷Thüringer Landessternwarte, Sternwarte 5, D-07778 Tautenburg, Germany

⁸Centre for Astrophysics Research, University of Hertfordshire, College Lane, Hatfield AL10 9AB, UK

⁹SRON Netherlands Institute for Space Research, Sorbonnelaan 2, 3584 CA Utrecht, The Netherlands

¹⁰Kavli Institute for the Physics and Mathematics of the Universe (WPI), The University of Tokyo, Kashiwa, Chiba 277-8583, Japan

Received 2020 February 20; revised 2020 May 14; accepted 2020 June 5; published 2020 July 7

Abstract

We present LOFAR observations of one of the most spectacular objects in the radio sky: Abell 2255. This is a nearby ($z = 0.0806$) merging galaxy cluster hosting one of the first radio halos ever detected in the intracluster medium (ICM). The deep LOFAR images at 144 MHz of the central $\sim 10 \text{ Mpc}^2$ region show a plethora of emission on different scales, from tens of kiloparsecs to above megaparsec sizes. In this work, we focus on the innermost region of the cluster. Among the numerous interesting features observed, we discover remarkable bright and filamentary structures embedded in the radio halo. We incorporate archival WSRT 1.2 GHz data to study the spectral properties of the diffuse synchrotron emission and find a very complex spectral index distribution in the halo spanning a wide range of values. We combine the radio data with Chandra observations to investigate the connection between the thermal and nonthermal components by quantitatively comparing the radio and X-ray surface brightness and the spectral index of the radio emission with the thermodynamical quantities of the ICM. Despite the multitude of structures observed in the radio halo, we find that the X-ray and radio emission are overall well correlated. The fact that the steepest spectrum emission is located in the cluster center and traces regions with high entropy possibly suggests the presence of seed particles injected by radio galaxies that are spread in the ICM by the turbulence generating the extended radio halo.

Unified Astronomy Thesaurus concepts: Galaxy clusters (584); Abell clusters (9); Intracluster medium (858); Extragalactic radio sources (508); Radio astronomy (1338); Radio interferometry (1346); Extended radiation sources (504); Tailed radio galaxies (1682); X-ray astronomy (1810); Non-thermal radiation sources (1119)

1. Introduction

Mergers between galaxy clusters are very energetic events capable of releasing up to $\sim 10^{64}$ ergs on a few gigayear timescale in the intracluster medium (ICM). A significant fraction of the energy involved in cluster mergers is dissipated by weak shocks and turbulence, heating the gas (e.g., Markevitch & Vikhlinin 2007), while a smaller percentage can be channeled into nonthermal components, namely relativistic particles and magnetic fields, that reveal themselves through megaparsec-scale diffuse radio emission (e.g., van Weeren et al. 2019, for a review). The presence of diffuse synchrotron sources associated with the ICM raises fundamental questions about the processes responsible for the conversion of the energy dissipated by large-scale motions generated during cluster mergers into particle acceleration mechanisms on much smaller scales (e.g., Brunetti & Jones 2014, for a review). According to the current leading scenario, turbulence is believed to be responsible for the formation of the central and roughly spherical sources called radio halos, while shocks play a role in the generation of the elongated and polarized sources found in cluster outskirts, known as radio relics.

The galaxy cluster Abell 2255 (hereafter A2255) is a nearby ($z = 0.0806$) system in a complex dynamical state. The merger dynamics are still unclear from optical observations

(e.g., Burns et al. 1995; Yuan et al. 2003; Golovich et al. 2019) and possibly involve multiple substructures colliding along different merger axes. Multiple X-ray observations show an ICM emission slightly elongated in the E–W direction and the presence of temperature asymmetries, confirming the unrelaxed state of the system (e.g., Feretti et al. 1997; Davis & White 1998; Sakelliou & Ponman 2006; Akamatsu et al. 2017). A2255 was one of the earliest clusters to be found to host a diffuse radio halo at its center (Jaffe & Rudnick 1979). Detailed studies of the radio halo and relic (located in the NE) have been performed with the Westerbork Synthesis Radio Telescope (WSRT; Feretti et al. 1997; Pizzo et al. 2008; Pizzo & de Bruyn 2009; Pizzo et al. 2011) and with the Very Large Array (VLA; Govoni et al. 2005, 2006), unveiling a complex structure in the diffuse radio emission, which extends up to large distances from the center of the galaxy cluster. In addition, a large number of tailed radio galaxies are found in the cluster environment, among which some are embedded in the halo emission (e.g., Harris et al. 1980; Feretti et al. 1997; Miller & Owen 2003). A summary of the properties of A2255 collected from the literature is reported in Table 1.

In this paper, we report on the results from new LOFAR High Band Antennas (144 MHz) observations of A2255 together with archival WSRT (1.2 GHz) and Chandra data.

Table 1
Properties of A2255 Derived from the Literature

Property	Value
z	0.0806
R.A. (h, m, s)	17 12 31
decl. ($^{\circ}$, $'$, $''$)	+64 05 33
M_{500} ($10^{14} M_{\odot}$)	5.38 ± 0.06
L_{500} (10^{44} erg s $^{-1}$)	2.08 ± 0.02
K_0 (keV cm 2)	529 ± 28
kT_{vir} (keV)	5.8 ± 0.2
$P_{1.4}$ (10^{23} W Hz $^{-1}$)	9.0 ± 0.5

Note. Redshift (z ; Struble & Rood 1999), equatorial coordinates, mass within r_{500} (M_{500} ; Planck Collaboration XXVII 2016), luminosity in the 0.5–2.0 keV band within r_{500} (L_{500} ; Eckert et al. 2017), central entropy (K_0 ; Cavagnolo et al. 2009), virial temperature (kT_{vir} of Hudson et al. 2010), radio halo power at 1.4 GHz ($P_{1.4}$; Govoni et al. 2005).

This manuscript is organized as follows. In Section 2, we give an overview of the observations and data reduction. In Section 3, we present the radio and X-ray images, and the results from the surface brightness and spectral analyses. In Section 4, we discuss our findings and compare them with other works in the literature. In Section 5 we summarize and present our conclusions. Throughout the paper, we adopt a Λ CDM cosmology with $\Omega_{\Lambda} = 0.7$, $\Omega_m = 0.3$, and $H_0 = 70$ km s $^{-1}$ Mpc $^{-1}$, in which $1''$ corresponds to 1.512 kpc at the cluster redshift and use the convention $S_{\nu} \propto \nu^{-\alpha}$ for radio synchrotron spectrum.

2. Observations and Data Reduction

2.1. LOFAR

A2255 was observed by LOFAR as part of the LOFAR Two-meter Sky Survey (LoTSS; Shimwell et al. 2017, 2019), an ongoing deep low-frequency survey of the northern sky. Each LoTSS pointing consists of 8 hr observations in the 120–168 MHz frequency band, centered at 144 MHz. The field of A2255 was covered by three LoTSS pointings (P254+65, P258+63, P260+65), which were processed with data reduction pipeline¹¹ v2.2 developed by the LOFAR Surveys Key Science Project (see Section 5 in Shimwell et al. 2019). The pipeline carries out direction-dependent calibration with KILLMS (Tasse 2014a, 2014b; Smirnov & Tasse 2015) and performs imaging of the entire LOFAR field of view (FoV) with DDFACET (Tasse et al. 2018).

We further enhanced the quality of the images of the field covering A2255 by performing additional phase and amplitude self-calibration loops in a square region of 1 deg 2 centered on the target to mitigate for residual artifacts left over by the automated pipeline. All sources outside this region were subtracted out from the uv data. A self-calibration cycle was then performed on the combined data set after correcting for the LOFAR station beam at the target position. This extraction and recalibration scheme has already been applied in recent LOFAR works (e.g., Botteon et al. 2019; Cassano et al. 2019; Hardcastle et al. 2019), and it will be discussed in more detail in a forthcoming paper (R. J. van Weeren et al. 2020, in preparation).

¹¹ <https://github.com/mhardcastle/ddf-pipeline>

Final imaging was performed with WSCLEAN v2.6 (Offringa et al. 2014) by using suitable taperings of the visibilities and Briggs weightings (Briggs 1995) to obtain images at different resolutions. We checked the LOFAR flux density scale by comparing the brightest compact sources extracted from the TIFR GMRT Sky Survey-Alternative Data Release (TGSS-ADR1; Intema et al. 2017) with the LOFAR image. No flux density scale offset was found. We adopt a conservative calibration error of 20% on LOFAR flux density measurements, as was done by LoTSS (Shimwell et al. 2019).

2.2. WSRT

We used the WSRT 1.2 GHz data set and image that were originally published by Pizzo & de Bruyn (2009) to study the spectral index properties of A2255. A full description of the deep observations (4×12 hr with 4 different configurations of the WSRT) and data reduction is given by Pizzo & de Bruyn (2009). The final WSRT image has a resolution of $15'' \times 14''$ and a noise level of $10 \mu\text{Jy beam}^{-1}$.

2.3. Chandra

A2255 was observed twice with Chandra ACIS-I, for a total exposure time of 45 ks. For this work, we retrieved the observation with the longest exposure (40 ks, ObsID 894) available from the Chandra data archive. The data set was processed with CIAO v4.11 from the `level=1` event file using the Chandra CALDB v4.8.2 following the standard Chandra data reduction threads.¹² Observation periods affected by soft proton flares were removed using the `lc_clean` routine by inspecting the light curve extracted from the S2 chip in the 0.5–7.0 keV band. The final cluster image was created in the 0.5–2.0 keV band and has a cleaned exposure time of 32 ks. X-ray point sources were detected using the `wavdetect` task, confirmed by eye, and replaced with pixel values interpolated from surrounding regions with `dmfilth`.

Spectral analysis of the cluster thermal gas was performed with XSPEC v12.10.0c (Arnaud 1996). Contaminating radio and X-ray sources were removed from the Chandra event file before spectral extraction. We made use of blank-sky field data sets scaled by the ratio of the 9.5–12.0 keV count rates to create background spectra. The ICM emission was modeled with an absorbed thermal plasma. The redshift of A2255 ($z = 0.0806$), Galactic column density toward the cluster ($N_{\text{H}} = 2.74 \times 10^{20}$ cm $^{-2}$, from Willingale et al. 2013), and ICM metallicity (assumed to be 0.3 of the solar value) were fixed during the fitting procedure. The normalization of the thermal model and the temperature were used to derive pseudo-pressure and pseudo-entropy values of the ICM following Botteon et al. (2018).

3. Results

3.1. The Environment of A2255

The high sensitivity and high density of short LOFAR baselines provide an unprecedented view of the multitude of radio structures in A2255, which range from a few tens of kiloparsecs up to cluster-scale emission. Remarkably, extended emission from the ICM is recovered by both the medium- ($10''9 \times 7''0$) and high-resolution ($5''0 \times 3''8$) images shown

¹² <http://cxc.harvard.edu/ciao/threads/index.html>

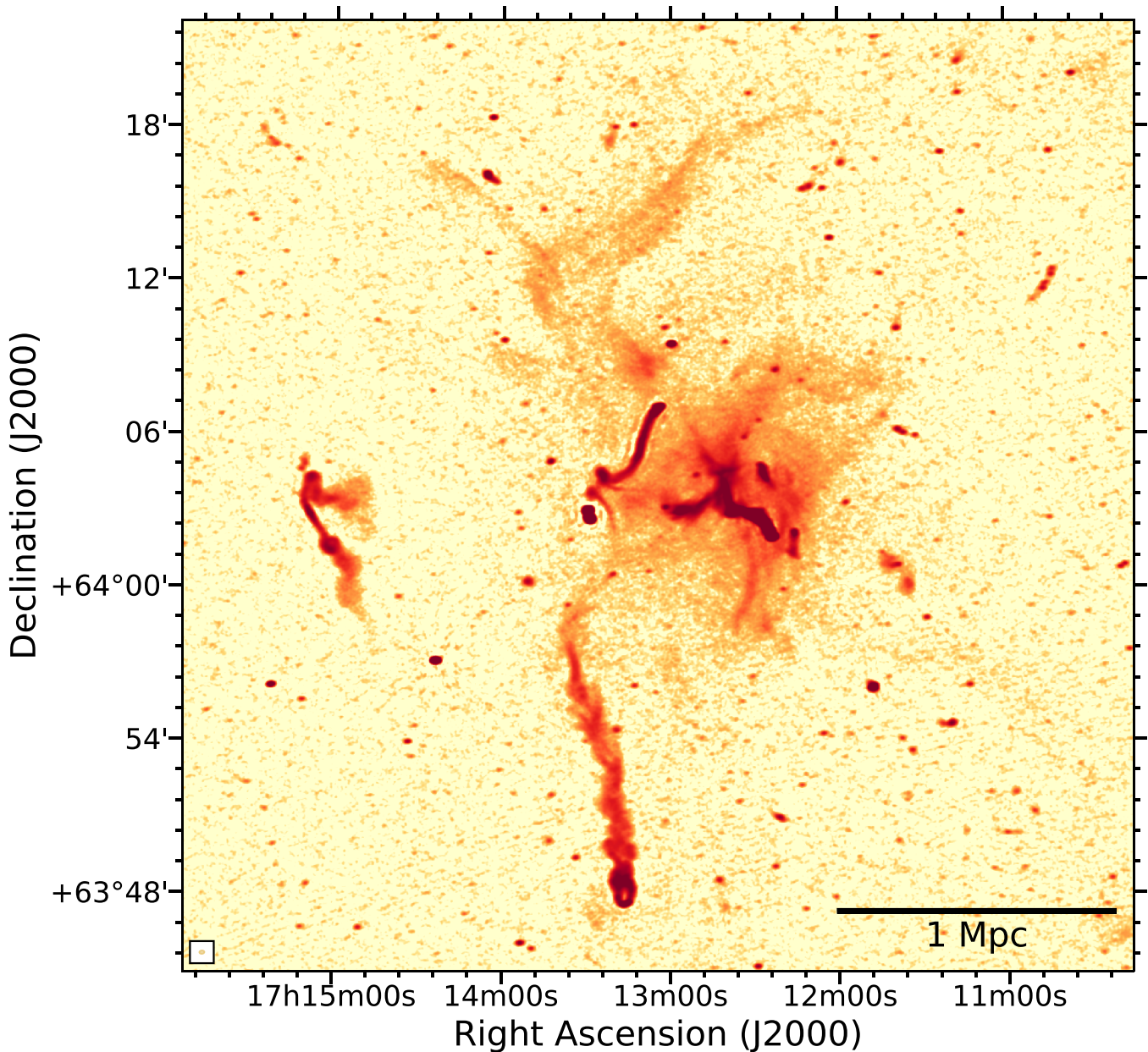


Figure 1. LOFAR medium-resolution ($10''9 \times 7''0$) image at 144 MHz of A2255 with $\sigma = 85 \mu\text{Jy beam}^{-1}$ obtained with a `robust=-0.5` weighting of the visibilities and a Gaussian uv taper of $5''$.

in Figures 1 and 2. Reaching noise levels below $100 \mu\text{Jy beam}^{-1}$, these are among the deepest images of a galaxy cluster ever produced so far at low frequencies. This offers a unique opportunity to understand the origin of nonthermal phenomena in the ICM.

The FoV of the reported images spans $\sim 10 \text{ Mpc}^2$ centered on the radio halo. A number of bright sources are detected in this region, most of which are embedded in the diffuse emission. In Figure 2, we have labeled in black the sources following Harris et al. (1980). These descriptive names were based on WSRT observations at 610 MHz and 1.4 GHz. The highly sensitive and higher-resolution LOFAR images at 144 MHz show the presence of new sources in A2255 that we named and labeled in blue in Figure 2 as well. Starting from the innermost region, the known sources are the Goldfish, the Double, the Original Tailed Radio Galaxy (TRG), and the Sidekick. Each of these radio galaxies has an optical

counterpart associated with the cluster (Miller & Owen 2003). The newly discovered sources are the Trail, the T-bone, the Ghost, the Comma, and the Counter-comma. We shall show later that only the Trail seems directly related to a cluster member galaxy. These sources will be discussed in Section 4.1. Diffuse emission in the ICM is found in the form of a radio halo (at the center) and a radio relic (in the NE). The two are connected by the NE bridge of radio emission. Two protuberances, the NE spur connected to the relic (tentatively reported by Pizzo & de Bruyn 2009) and the S spur embedded in the halo, are also detected. At $\sim 1.6 \text{ Mpc}$ from the cluster center, the extended radio galaxies known as the Embryo and the Beaver are observed. The tail of the Beaver extends over a megaparsec, fading out into the radio halo.

In this paper, we focus on the central ($\sim 1.5 \times 1.5 \text{ Mpc}^2$), high signal-to-noise ratio (S/N) region of the cluster, with particular emphasis on the radio halo. The analysis of the

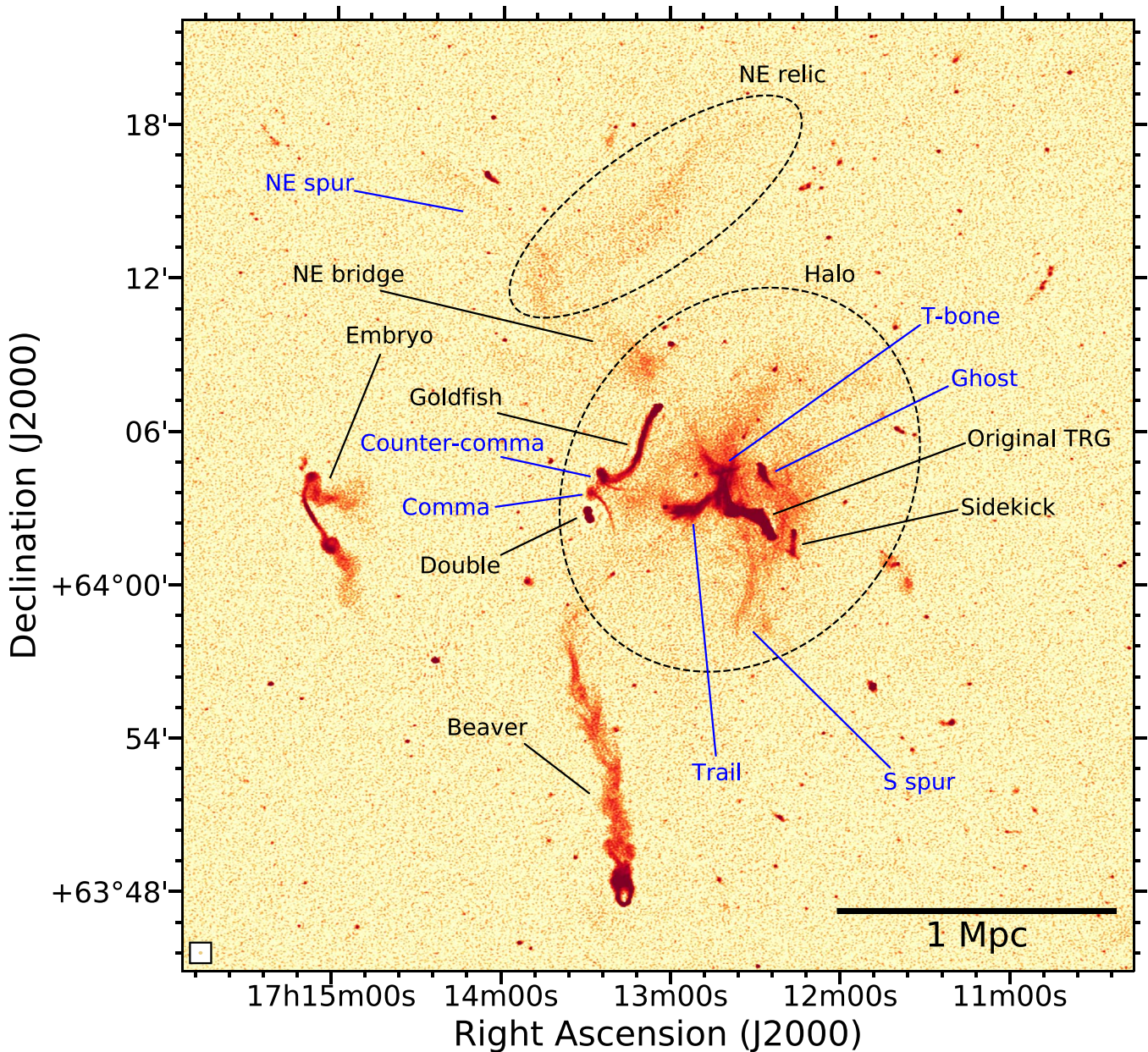


Figure 2. LOFAR high-resolution ($5''0 \times 3''8$) image at 144 MHz of A2255 with $\sigma = 95 \mu\text{Jy beam}^{-1}$ obtained with `robust=-1.0` (i.e., close to uniform weighting) in which radio sources labeled in black follow the nomenclature used in Harris et al. (1980) while those labeled in blue are identified in this work for the first time.

emission on larger scales will be presented in a forthcoming paper that will exploit deeper (75 hr) LOFAR observations.

3.2. Surface Brightness Analysis

In Figure 3, we report LOFAR, WSRT, and Chandra observations of A2255. The LOFAR image (left) was convolved to the resolution of $15'' \times 14''$, which is the same resolution of the original WSRT image (center) reported in Pizzo & de Bruyn (2009). For visualization purposes, the Chandra image (right) was smoothed to a resolution of $\sim 5''$ and point sources were cosmetically removed as described above. The FoV of the Chandra observation covers the central region of the cluster, where the radio halo emission is observed with WSRT at 1.2 GHz. LOFAR recovers much more diffuse emission because (i) operating at low frequency, it is more

sensitive to steep spectrum emission and (ii) it has shorter baselines than the WSRT 1.2 GHz observation. The radio halo extension is roughly twice in size at 144 MHz than at 1.2 GHz. In particular, compared to Figure 1, the lower resolution enhances the faint emission in the region between the halo and NE relic, and between the end of the Beaver’s tail and the Original TRG.

In the past, radio halos were typically described as smooth and regular sources with a morphology recalling that of the X-ray thermal emission. Highly sensitive observations with new-generation instruments (LOFAR, uGMRT, JVLA) are changing our view of radio halos, unveiling the presence of a large diversity of surface brightness structures; A2255 is probably the most remarkable example. Its complex morphology with straight (polarized) filaments forming a rectangular shape (indicated by arrows in Figure 3, central panel) was

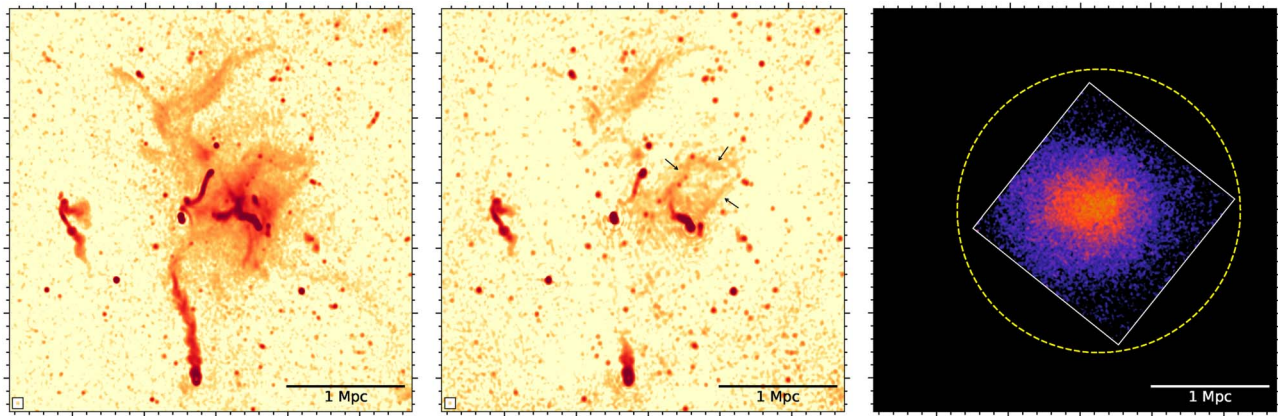


Figure 3. LOFAR 144 MHz (left) and WSRT 1.2 GHz (center, from Pizzo & de Bruyn 2009) images of A2255 at the same resolution of $15'' \times 14''$. The noise levels in the images are $120 \mu\text{Jy beam}^{-1}$ and $10 \mu\text{Jy beam}^{-1}$ for LOFAR and WSRT, respectively. The arrows in the WSRT image indicate the three straight (polarized) filaments reported in Govoni et al. (2005) and Pizzo et al. (2011). The Chandra image of the cluster in the 0.5–2.0 keV band (right) has been smoothed to a resolution of $\sim 5''$ for visualization purposes. The white region denotes the ACIS-I FoV while the yellow circle indicates the approximate location of r_{500} .

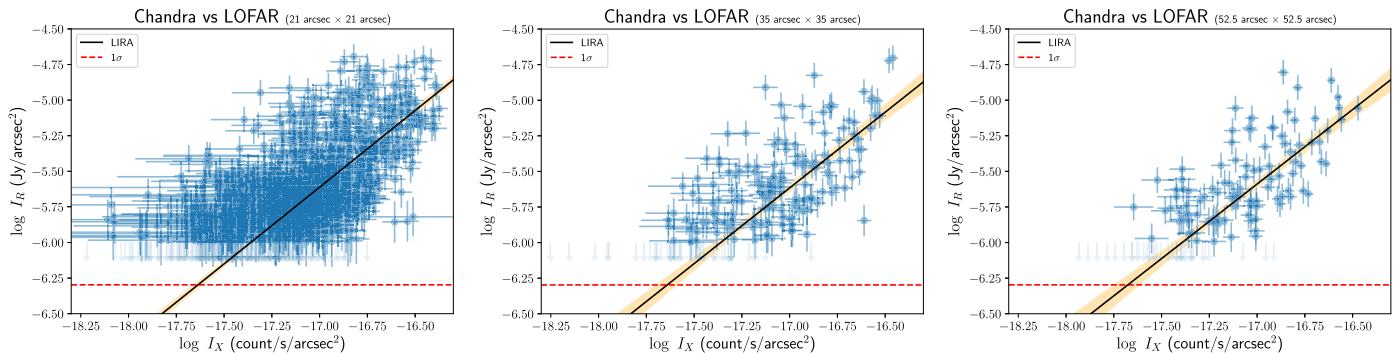


Figure 4. X-ray vs. radio surface brightnesses computed on the same grid for the central region of A2255. The analysis was performed on the LOFAR image shown in Figure 3 (left panel) using grids with different cell sizes (from left to right). Upper limits refer to cells where the radio surface brightness is below the 2σ level. The errors displayed on the radio measurements are obtained by summing in quadrature the statistic and systematic uncertainties. In the fitting process, only the statistical error was considered. LIRA best-fit relations are reported with the corresponding 95% confidence regions.

already pointed out by the >1 GHz observations with the VLA (Govoni et al. 2005) and WSRT (Pizzo & de Bruyn 2009; Pizzo et al. 2011). The new LOFAR data add further complexity to our picture of A2255, where a plethora of structures on various scales are embedded within the central diffuse emission.

The close similarity between radio halo and cluster X-ray emission suggests an interplay between thermal and nonthermal components in the ICM (e.g., Govoni et al. 2001). This can be verified in a quantitative way by dividing the cluster into several square regions (or cells) that compose a grid where the X-ray and radio surface brightnesses are evaluated and compared. The data are generally described with a power law of the generic form

$$\log(I_R) = A \log(I_X) + B, \quad (1)$$

where the the slope of the scaling A determines whether the radio brightness (i.e., the magnetic field strength and relativistic particle density) declines faster (if $A > 1$) than the X-ray brightness (i.e., the thermal gas density), or vice versa (if $A < 1$). Govoni et al. (2001) found a slope consistent with a linear relation for A2255 by using ROSAT and the WSRT 333 MHz observations reported in Feretti et al. (1997).

Thanks to the highly sensitive LOFAR image at 144 MHz and the X-ray observation with higher angular resolution performed with Chandra, we can investigate the point-to-point radio/X-ray correlation in A2255 in a more detailed way. The

Table 2

Slope (A) from the LIRA Fitting to Equation (1), and the Spearman (r_s) and Pearson (r_p) Correlation Coefficients of the Data in Figure 4

Parameters	A	r_s	r_p
$I_R - I_X$ ($21'' \times 21''$)	1.08 ± 0.06	0.58	0.68
$I_R - I_X$ ($35'' \times 35''$)	1.06 ± 0.15	0.58	0.61
$I_R - I_X$ ($52.5'' \times 52.5''$)	1.05 ± 0.17	0.63	0.61

analysis was performed on the images shown in Figure 3 by adopting the procedure described as follows.

We start with the creation of three grids. We selected a region of 14×14 arcmin² roughly centered on the radio halo (R.A.: $17^{\text{h}}12^{\text{m}}31^{\text{s}}.7$, decl.: $+64^{\circ}03'48''.2$) and divided it into square cells with sizes $21'' \times 21''$, $35'' \times 35''$, and $52.5'' \times 52.5''$. The finest grid ensures that each cell is larger than the beam of the radio image. Cells outside the Chandra FoV are excluded from the grids. Because the goal is to investigate the connection between the nonthermal and thermal components in the ICM, we identified both point-like and extended (such as tailed radio galaxies) contaminating sources in the radio and X-ray images. We also note that the Trail and the T-bone (see Figure 2) were excluded because, despite their uncertain nature, their high brightness compared to the surrounding medium suggests a possible connection with radio galaxies. Cells intersecting the contaminating sources were removed from the

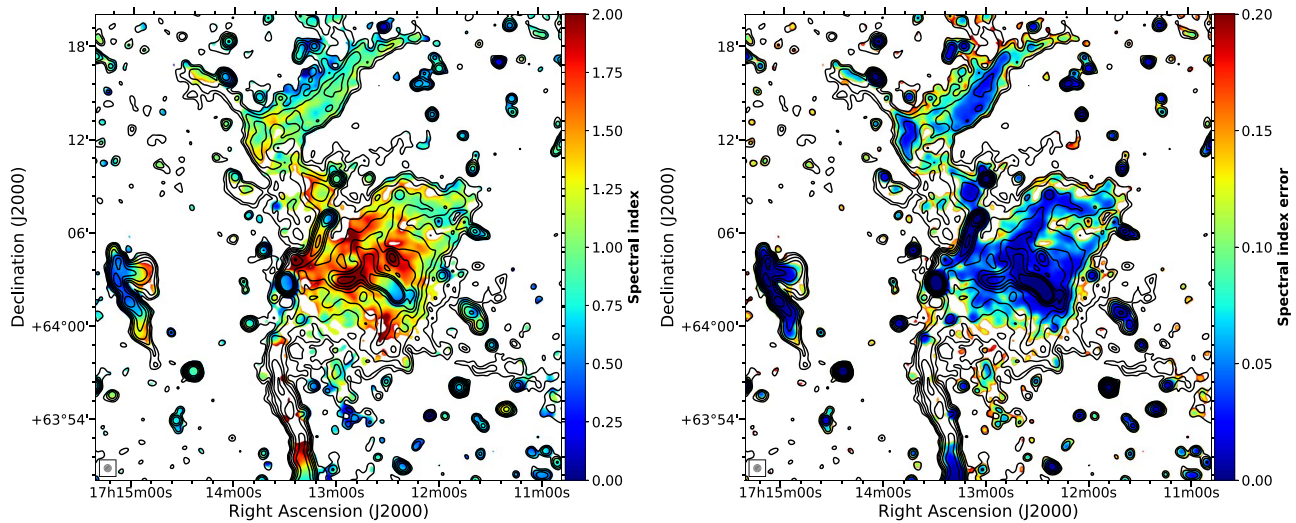


Figure 5. Spectral index map between 144 MHz and 1.2 GHz of the central radio emission in A2255 at a resolution of $28'' \times 28''$ (left) with the corresponding (statistical) error map (right). LOFAR contours at the same resolution starting from $360 \mu\text{Jy beam}^{-1}$ and spaced by a factor of 2 are shown. Pixels with values below 3σ were not considered in the computation of the spectral index.

grids. The final grids are reported in Appendix A. Then, we calculated the integrated radio and X-ray surface brightnesses and compared them. The X-ray surface brightness values were obtained by converting the Chandra ACIS-I count rate in the 0.5–2.0 keV band in the cells assuming a thermal model with temperature as reported in Table 1. Results are shown in Figure 4. We note the presence of a large intrinsic scatter in the plots; this may play a role in determining the slope between I_R and I_X (see below).

The two surface brightnesses are positively correlated, in agreement with other works in the literature (e.g., Feretti et al. 2001; Govoni et al. 2001; Giacintucci et al. 2005; Rajpurohit et al. 2018). The general approach adopted in the past to find the slope of the correlation was to consider only data points above 3σ in the radio image during linear regression. The introduction of a threshold is indeed necessary as the reconstruction of an interferometric image can generate artifacts and biases leading to unreliable flux densities at low S/N. However, we note that the introduction of a threshold combined with a large intrinsic scatter can introduce a bias in the correlation, if the selection effect is not taken into account by the regression method. In Appendix B, we discuss these aspects in detail. In our case, we use a threshold of 2σ in the radio image and perform linear regression on Equation (1) by adopting the R package LIRA¹³ (Sereni 2016), which is a Bayesian hierarchical approach to fit data with heteroscedastic and intrinsic scatter that can address selection effects in the response variable (Malmquist bias). In Table 2, we summarize the slopes and correlation coefficients of the $I_R - I_X$ relations of Figure 4. Our results suggest a linear relation between radio and X-ray surface brightness.

3.3. Spectral Analysis

Radio spectral index maps provide useful information on the origin of the diffuse and discrete synchrotron sources. We use the deep LOFAR and WSRT data to produce a spectral index map between 144 MHz and 1.2 GHz of the central region of A2255. The map, reported in Figure 5, has been obtained from images convolved to the same resolution of $28'' \times 28''$, regridded to

identical pixel size, corrected for any position misalignment, and with matched inner- uv coverage of 150λ . The contribution of discrete sources (extended or point-like) can be easily disentangled from the diffuse emission of the ICM. Pixels with flux densities below 3σ in the radio images were blanked. Our spectral index map has more than a factor of 5 higher resolution and covers a factor of ~ 2 broader frequency range than those presented in Pizzo & de Bruyn (2009). Although the adoption of a 3σ threshold is an approach commonly adopted in the literature for the computation of spectral index maps, we note that in our case this cut introduces a bias toward flatter spectral index values because of the higher sensitivity of LOFAR data to steep spectrum emission. The impact of the different thresholds in the measurement of the spectral index and their statistical distribution across the radio halo are investigated later in the paper.

By looking at Figure 5, nuclear emission from radio galaxies displays typical values $\alpha = 0.5-0.6$, while a signature of particle aging (i.e., spectral steepening) is evident along the tails of the Original TRG, the Goldfish, and the Embryo. The most extreme case is represented by the Beaver, which is ~ 3 times more extended at 144 MHz than at 1.2 GHz (Figure 3). By using low-resolution multifrequency WSRT observations, Pizzo & de Bruyn (2009) reported spectral index values up to $\alpha \sim 3$ for the tail of the Beaver.

Radio relics often show clear radial spectral index gradients that are interpreted as electron aging due to merger shocks moving outwards (e.g., Giacintucci et al. 2008; Bonafede et al. 2009; van Weeren et al. 2010). The NE radio relic in A2255 manifests a marginal spectral steepening toward the cluster center (from $\alpha = 0.8-0.9$ to $\alpha \sim 1$), and it is characterized by two parallel structures elongated along the relic major axis that encompass a region with flatter spectrum ($\alpha = 0.7-0.8$). These features are also observed in surface brightness (Figure 3) and are similar to the strands detected in the Sausage and Toothbrush relics (Di Gennaro et al. 2018; Rajpurohit et al. 2018). Faint diffuse emission with a flat spectrum ($\alpha = 0.5-0.6$) is observed extending from the center of the relic toward the cluster outskirts in the putative preshock region (approximately at R.A.: $17^{\text{h}}13^{\text{m}}18^{\text{s}}$, decl.: $+64^{\circ}15'10''$). This emission resembles that labeled R5 in the Sausage relic (see Di Gennaro et al. 2018).

¹³ <https://cran.r-project.org/web/packages/lira>

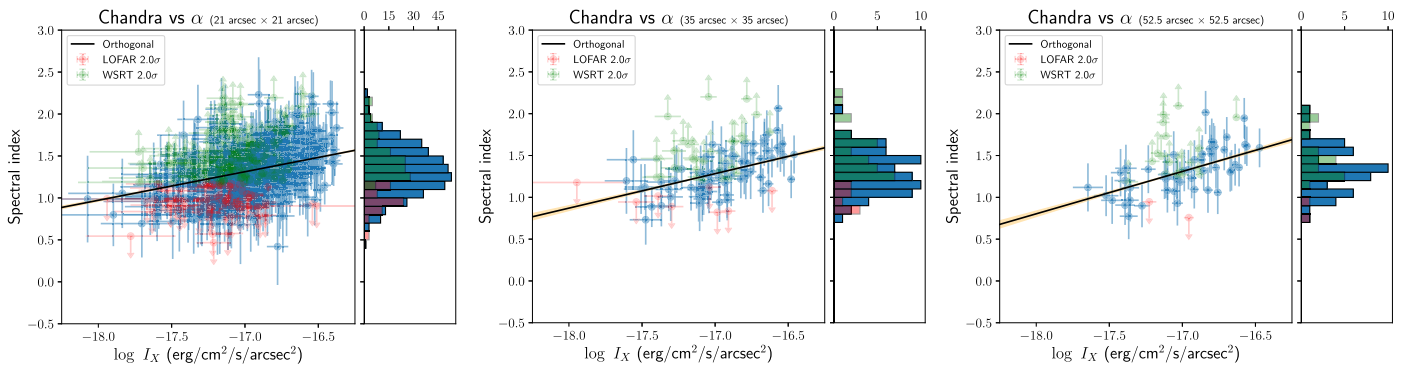


Figure 6. X-ray surface brightness vs. spectral index of the radio halo emission (in blue) using grids with different cell sizes (from left to right). The histograms of the spectral index values are shown on the right panels. The LOFAR and WSRT 2σ limits are reported in red and green, respectively. BCES-orthogonal best-fit relations are reported with the corresponding 95% confidence regions.

The E region of the relic and the NE bridge below have comparable spectral index fluctuations with values up to $\alpha \sim 1.4$.

The innermost region of A2255 shows a mix of radio plasma with a broad distribution of spectral index values. The steepest spectrum emission is provided by the newly discovered Ghost, T-bone, and Trail sources, which are characterized by $\alpha = 2\text{--}2.5$. Despite the high number of discrete sources embedded in the radio halo, a complex spectral index distribution can also be inferred for the diffuse ICM emission. The flatter values ($\alpha \sim 1$) are found in the NW region of the halo, which is clearly detected by WSRT at 1.2 GHz (Figure 3, central panel). Patches of emission with very steep spectrum ($\alpha > 1.6$) are located around the Ghost, between the Trail and the Goldfish, and in the S spur.

We study more quantitatively the distribution of spectral index values in the halo and its connection with the thermal gas with a point-to-point analysis of the images shown in Figure 3 (note that we produced another LOFAR image at $15'' \times 14''$ with $uv_{\min} = 150\lambda$ for this kind of analysis). We follow a similar approach to that described in Section 3.2, rejecting the same contaminating discrete sources and adopting the three grids characterized by different cell sizes. As discussed in Appendix B, only cells with emission above 2σ in the radio images are considered in the computation of α and in the calculation of the corresponding X-ray surface brightness. Instead, cells where the emission is below this threshold in one of the two instruments are considered as upper or lower limits on the spectral index assuming $I_R = 2\sigma$. Results are shown in Figure 6. In Appendix B, we investigate how different thresholds impact this kind of analysis.

The right panels of Figure 6 show the histograms of the spectral index values across the radio halo. We found that the distribution's mean value and its standard deviation have a small variation with the adopted grid and thresholds, which are $\bar{\alpha} \sim 1.3$ and $\sigma_\alpha \sim 0.3$ (see Table B1 in Appendix B). Following the argument of Vacca et al. (2014) and Pearce et al. (2017), if the broad fluctuation of α is due to measurement errors, the mean value of the spectral index error should be comparable to the standard deviation of the spectral index distribution. We found that σ_α is three times larger than the (statistical) measurement error, indicating that the dispersion of spectral index values is statistically significant in the radio halo in A2255. We note that the mean spectral index obtained is in good agreement with the integrated spectral index of $\alpha \sim 1.3$ reported in Pizzo & de Bruyn (2009). Nonetheless, the larger number of lower limits compared to the

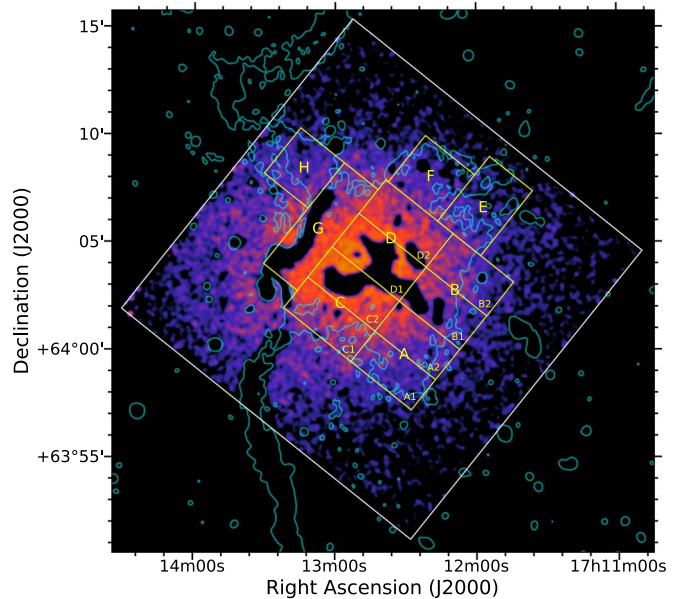


Figure 7. Regions adopted for the (radio and X-ray) spectral analysis and used to derive the quantities shown in Figure 8. The 5σ level LOFAR contour (Figure 3) is overlaid in cyan on the Chandra color image. Contaminating LOFAR, WSRT, and Chandra sources are blanked.

number of upper limits in Figure 6 indicates the presence of a bias toward flatter spectral indexes due to the limited sensitivity of the WSRT data. Therefore, the average spectrum is likely steeper than $\bar{\alpha} = 1.3$, and the dispersion is probably also larger than $\sigma_\alpha = 0.3$. Deeper observations at high frequency are required to confirm this statement.

Figure 6 also shows a hint of a correlation between the spectral index of the radio halo and the X-ray surface brightness of the ICM. The Spearman and Pearson correlation coefficients and the best-fit slopes obtained assuming a relation of the form

$$\alpha = A \log(I_X) + B \quad (2)$$

are summarized in Table B1 in Appendix B. A few words of caution about the slopes obtained should be given. Contrary to the case of the $I_R - I_X$ relation, where the distribution of data points has a clear cut on the y-axis (Figure 4), the $\alpha - I_X$ plane is populated both by upper and lower limits at different levels. These generate a complex regression problem that cannot be handled even by a sophisticated Bayesian method such as LIRA. For this reason, we performed linear regression only taking into account

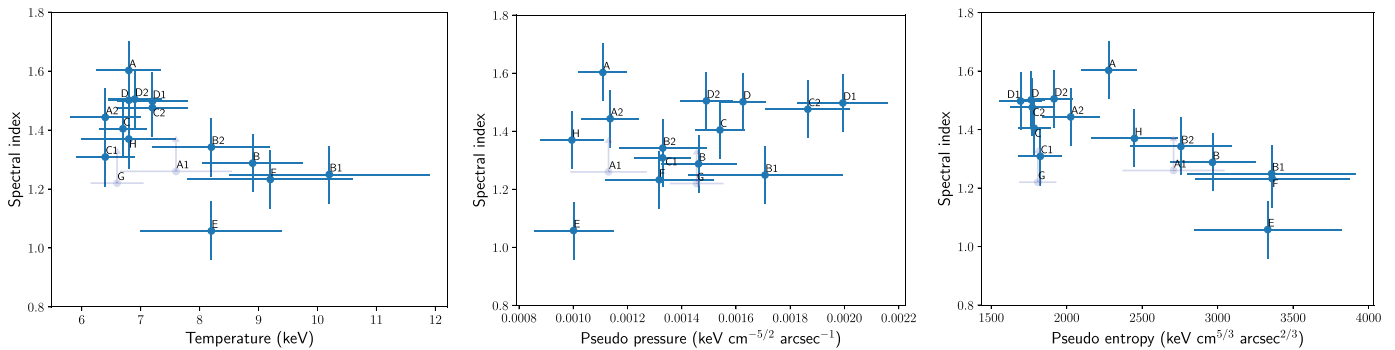


Figure 8. Spectral index of the radio halo against the thermodynamical quantities of the ICM evaluated in the same regions: temperature (left), pseudo-pressure (center), and pseudo-entropy (right). The prefix “pseudo” underscores the fact that these quantities are projected along the line of sight. Lower limits on the spectral index have been computed assuming the 2σ level emission in WSRT. Points are labeled following Figure 7.

Table 3

Spearman (r_s) and Pearson (r_p) Correlation Coefficients for the Points Corresponding to Subregions (A)–(D), (E), (F), and (H) in Figure 8

Parameters	r_s	r_p
$kT - \alpha$	-0.51 ± 0.28	-0.57 ± 0.19
$P - \alpha$	$+0.49 \pm 0.30$	$+0.51 \pm 0.27$
$K - \alpha$	-0.78 ± 0.19	-0.84 ± 0.12

Note. Due to the low number of data points, we evaluate the uncertainties in the coefficient via 10^4 bootstrap realizations of the correlations by shuffling the data points with repetition.

the “detections” (blue points in Figure 6) using the bivariate correlated errors and intrinsic scatter (BCES) orthogonal method (Akritas & Bershady 1996). Although ignoring the presence of upper/lower limits could affect the determination of the slope, we note that it would not change the existence of a positive and mild trend between the spectral index and X-ray surface brightness, which is the main result that we want to highlight. In this respect, the slopes reported in the paper serve only as an indication of the steepness of the correlation and should not be used to draw physical conclusions. In Appendix B, we report results for different threshold values.

To complete the spectral study of the cluster, we extract and fit spectra of the thermal ICM and compare the results with the values of the spectral index of the diffuse radio emission evaluated in the same regions. The selection of the regions is not trivial as we have to deal with three data sets (LOFAR, WSRT, and Chandra) characterized by different S/Ns. We roughly followed the LOFAR 5σ level emission and divided the cluster into eight regions labeled (A) to (H) in Figure 7. The largest and innermost regions (A)–(D) were further divided into two additional subregions. In Figure 8, we compare the radio spectral index with the thermodynamical quantities of the ICM. Due to the small number of points, we do not perform linear regression, and we just report the Spearman and Pearson correlation coefficients in Table 3. Whereas there is no strong evidence for tight relations between the spectral index and temperature/pseudo-pressure (the Spearman and Pearson coefficients vary in the range $\sim|0.2-0.8|$), the presence of a negative relation between α and the pseudo-entropy seems to hold even when the uncertainties on r_s and r_p are taken into account.

4. Discussion

The new LOFAR images at 144 MHz of A2255 show a high level of complexity of the emission over a broad range of



Figure 9. Composite optical (SDSS, RGB) + radio (LOFAR 144 MHz, red) image of the central region of A2255. The Double, the Goldfish, the Trail, the T-bone, the Original TRG, the Ghost, and the Sidekick radio sources are displayed (see Figure 2). The FoV of the panel is $\sim 0.9 \text{ Mpc} \times 0.7 \text{ Mpc}$.

spatial scales. The spectral analysis in combination with the published WSRT data at 1.2 GHz (Pizzo & de Bruyn 2009) reveals a mixture of electrons with different properties in the cluster environment, with regions characterized by ultrastep spectrum ($\alpha > 2$) emission. A complicated system such as A2255 deserves multiple studies ranging from the population of radio galaxies with peculiar morphologies to the extended diffuse emission in the cluster outskirts. Due to the forthcoming deep LOFAR observations (75 hr) of the cluster, in this paper we focused on the radio halo and investigated its connection with the thermal gas. In what follows, we discuss our results and compare them with those from other radio halos.

4.1. Surface Brightness Properties

One of the most remarkable features that emerges from the LOFAR images (Figures 1 and 2) is the multitude of interactions between radio galaxies, the halo, and the ICM in the cluster center. In Figure 9, we show an optical/radio overlay of the central region of A2255. Clear optical counterparts can be identified for the Double, the Goldfish, and the Original TRG sources (see also Miller & Owen 2003). Associating optical counterparts with the bright and filamentary emission due to the Trail and T-bone is not trivial. These sources are detected only with LOFAR and trace some of the pixels with the steepest spectrum in the spectral index

map (Figure 5). A possible connection between the E part of the Trail with a cluster member galaxy is noted. However, the surface brightness properties of the Trail are not similar to those of other tailed radio galaxies in the field (e.g., the Goldfish and the Original TRG), in which there is a connection with the bright nuclear emission of the host galaxy (Figure 9). This might suggest a different origin. The Trail extends toward the west, where it mixes with the end of the Original TRG forming the emission named T-bone. The origin of these structures could be related to the interactions between member galaxies during the cluster merger. As a consequence of galaxy encounters, old relativistic electrons can be stripped and gain energy in the turbulent wakes produced behind galaxies moving through the ICM generating steep spectrum emission (e.g., Jaffe 1980; Roland 1981). Alternatively, they may trace fossil radio plasma revived by ICM motions (e.g., Enßlin & Gopal-Krishna 2001), forming the so-called radio phoenixes (e.g., Slee et al. 2001; Cohen & Clarke 2011; van Weeren et al. 2011; Kale & Dwarakanath 2012; Mandal et al. 2020); moreover, the possible connection between the T-bone and Original TRG could also indicate the presence of a Gently Re-Energized Tail (GR_{ET}; de Gasperin et al. 2017). Regardless of their precise origin, the existence of “radio ghosts” in the ICM (i.e., sources that are detected only at low frequencies; Enßlin 1999) provides evidence of a population of seed electrons that could then be reaccelerated and spread into the cluster environment by the ICM turbulence generated during the cluster merger event, as required by the leading models of radio halo formation (Brunetti et al. 2001; Petrosian 2001; Brunetti & Lazarian 2007; Donnert et al. 2013; Pinzke et al. 2017). The complex morphology and rapid surface brightness variations observed at the center of A2255 likely suggest that the radio plasma is dynamically interacting with velocity shears from turbulent motions and weak shocks in the ICM.

The diffuse emission from the radio halo also displays distinctive surface brightness features. Elongated structures are detected in the form of the S spur and in the three straight filaments in the NW region (see Figure 3, central panel) that were already seen in higher frequency observations (Govoni et al. 2005; Pizzo et al. 2011). These filaments still have an unclear origin. They are embedded in the diffuse halo emission and show polarization levels of $\sim 20\%$ – 40% at 1.4 GHz (Govoni et al. 2005). A hypothesis advanced by Pizzo et al. (2011) from a deep rotation measure synthesis study is that the filaments may be related to radio relics located in the foreground of the cluster. The flatter spectral index values observed in the NW region (Figure 5) would be in agreement with this scenario as halos typically have steeper spectral indexes than relics. Therefore, despite the absence of obvious features in the X-ray image of this region, we find likely the possibility that we are observing a mixture of emission due to the superposition of the radio halo and other structures along the line of sight. Indeed, the presence of X-ray features (such as surface brightness jumps) can be hindered when radio relics are observed face on.

Despite the remarkable features observed in the radio images, we found that the radio surface brightness is overall correlated with the X-ray surface brightness (Figure 4). Although the point-to-point analysis of radio halos has been investigated in about 10 clusters (Feretti et al. 2001; Govoni et al. 2001; Giacintucci et al. 2005; Brown & Rudnick 2011; Shimwell et al. 2014; Rajpurohit et al. 2018; Cova et al. 2019; Hoang et al. 2019; Xie et al. 2020), the results are still controversial. First, the correlation can be tight (e.g., Feretti et al. 2001; Govoni et al. 2001) or very mild/absent (e.g., Shimwell et al. 2014; Cova et al. 2019). Second, the

best-fit slopes vary over a broad range of values, from 0.25 (Hoang et al. 2019) to 1.25 (Rajpurohit et al. 2018). In principle, the slope of the correlation could parameterize the particle acceleration mechanism (Dolag & Enßlin 2000; Govoni et al. 2001; Brunetti 2004; Pfrommer et al. 2008). Different slopes (or the absence of a correlation) might also indicate that radio halos do not follow a universal scaling (see Section 5.3 in Shimwell et al. 2014 for possible reasons), meaning that several processes contribute to the acceleration mechanisms and transport of electrons. Moreover, we also do not exclude that different methods (e.g., grid selection, linear regression procedure) used in the literature to derive the scalings may lead to dissimilar results (although the range of values appears to be too broad to entirely explain the slopes observed). In particular, we remark that setting a threshold in σ on the radio measurements to calculate the linear regression introduces a selection bias that can affect the fitting of the data if not properly taken into account (Appendix B).

To summarize, we found a good relationship between the point-to-point radio and X-ray surface brightnesses of A2255. The correlation shows a large intrinsic scatter, which is reduced if grids with large cell sizes are used. The presence of this scatter demonstrates that the acceleration mechanisms are also sensitive to the details of local physical conditions (seeds and/or microphysics). We used LIRA, which is able to treat the truncated distribution of data points generated by the 2σ cut adopted on the radio surface brightness, to fit the $I_R - I_X$ relation and obtained slopes that are consistent with linear scalings.

4.2. Spectral Properties

The spectral index map presented in Figure 5 shows a complex spectral index distribution spanning a wide range of values across the radio halo region. A clear contribution to the extreme flat and steep spectra are the extended radio galaxies embedded in the diffuse emission. The high surface brightness at low frequency of some of these features (e.g., the Trail and the T-bone) in combination with their steep spectrum emission ($\alpha > 2$) possibly indicates that they are pockets of radio plasma revived by ICM motions during the cluster merger (see also Section 4.1). In our study, we focused on the diffuse emission. Besides the point-to-point analysis of the surface brightness, in Section 3.3 we compared the spectral index of the diffuse emission and the fitting of the X-ray spectra of the thermal ICM in the same cluster regions.

First, we compared the spectral index versus the the X-ray surface brightness, finding a mild positive trend (Figure 6 and Appendix B). As the X-ray surface brightness declines toward the cluster outskirts, this result indicates a prevalence of steep spectrum emission in the cluster center. While old plasma emission from the cluster’s central radio galaxies has been excluded in the analysis (Section 3.3), we cannot rule out some level of residual contamination. Similar plots have been produced in the past (e.g., Shimwell et al. 2014; Hoang et al. 2019), and in some, cases azimuthally averaged spectral index profiles have also been reported (e.g., Orrù et al. 2007; Vacca et al. 2014; Pearce et al. 2017). A possible, mild, radial steepening has been noticed for A2744 by Pearce et al. (2017), whereas no clear trends are observed in the other cases.¹⁴ Following the discussion in Appendix B, we remark that the threshold used to compute α

¹⁴ Earlier works also claimed the presence of spectral steepening in other systems (e.g., Giovannini et al. 1993; Feretti et al. 2004); however, these studies were performed without matching the uv coverages of the instruments, making the results uncertain.

combined with a large intrinsic scatter plays a role in the determination of the slope, in this case introducing possible observational biases at different frequencies (namely the different sensitivity of LOFAR and WSRT) that are difficult to take into account even when using advanced regression algorithms.

Peculiar results on the halo in A2255 are also provided by the spectral index distribution, where a broad range of values appears statistically significant (Figure 6, right panels, and Appendix B). To the best of our knowledge, possible complexity in the spectral index distribution has been quantitatively reported only by Pearce et al. (2017), who could attribute only $\sim 50\%$ of the dispersion of the spectral index distribution of the halo in A2744 to measurement errors. The distribution of spectral index obtained is projected along the line of sight and has a dispersion $\sigma_{\alpha, \text{proj}} \sim 0.3$. If we assume a scenario where α varies in the volume of the halo, the observed distribution only provides a lower limit to the intrinsic distribution of spectral index values. More quantitatively, following Hoang et al. (2019), if we assume that α changes stochastically on a spatial scale L , the intrinsic scatter is $\sigma_{\alpha, \text{intr}} \sim \sigma_{\alpha, \text{proj}} \times \sqrt{N_L}$, where N_L is the number of independent cells of size L that are intercepted along the line of sight. In Appendix B, we have shown that the scatter does not change dramatically with the cell size, implying (in the above scenario) that we are in the condition where the scale L is similar to or larger than the cell size ($\gtrsim 50\text{--}70$ kpc), implying an intrinsic scatter in the range $\sigma_{\alpha, \text{intr}} \sim 0.6\text{--}0.9$. This is a very large scatter that would indicate a very inhomogeneous interplay between acceleration rate and seed particles across the halo volume. Conversely, a remarkably low scatter is observed for the radio halos in the Toothbrush cluster (van Weeren et al. 2016) and in A520 (Hoang et al. 2019). These differences may suggest that the turbulent energy is not homogeneously dissipated in the halo volume and that different timescales and dynamical states in the merger can lead to diverse properties of the turbulence in the ICM. As a final remark, we note that we also did not find a significant dependence of the dispersion of I_R on the cell size, indicating a similar scale of the spatial variation of electrons per unit volume.

As the last step of our analysis, we searched for a connection between radio and X-ray spectral information. In this case, the analysis was done in a smaller number of cluster regions (with larger sizes) to overcome the problem of the different S/Ns of the three data sets. A comparison between spatially resolved spectral index and temperature values has been first reported in Orrù et al. (2007), who found that the regions with the highest gas temperature trace the flatter spectrum emission of the radio halo in A2744. Recently, this result was called into question by Pearce et al. (2017), who used deeper radio and X-ray data for the same cluster and found no strong evidence for the existence of a correlation between the two quantities (see also Shimwell et al. 2014 for the case of the Bullet cluster). We find a negative trend between temperature and spectral index for A2255 and, for the first time, we also searched for a possible relation between α and pseudo-pressure/pseudo-entropy (Figure 8). We do not find strong evidence for a tight a $P\text{--}\alpha$ correlation but highlight an anticorrelation between spectral index and pseudo-entropy. Both higher temperature and high pseudo-entropy are expected to trace regions where gas has been heated and mixed by shocks and turbulent motions (e.g., Shi et al. 2020; Gaspari et al. 2014). Therefore, one may suppose that the dynamics of the gas and the turbulence (more precisely, the turbulent energy flux) that is damped into particles correlate with entropy, making reacceleration more efficient (and thus producing radio emission with flatter spectrum) in higher entropy regions. On the other hand,

we cannot exclude that this trend comes from the combination of increasing entropy and temperature profile toward cluster outskirts and the excess of steep spectrum emission in the cluster center (Figure 6). The investigation of these possible correlations and their physical implications requires detailed studies that are beyond the scope of this paper.

5. Conclusions

We have presented LOFAR observations at 120–168 MHz of the nearby merging galaxy cluster A2255. The images reported in the paper are among the deepest ever obtained on a galaxy cluster at low frequencies; remarkably, these come from a large-area sky survey, LoTSS. The picture emerging from our work is that of one of the most intricate diffuse radio sources known to date. In the central $\sim 10 \text{ Mpc}^2$ region, radio emission is found to span a wide range of physical scales and is mainly contributed by diffuse emission from the ICM and extended emission from tailed radio galaxies. Among the new features discovered by LOFAR, we highlight the presence of filamentary and distorted structures on different scales with a very steep spectrum ($\alpha > 2$) embedded in the radio halo. These observations are suggestive of a complex gas dynamics including shear and turbulent motions and (possibly) weak shocks in the ICM.

We used archival WSRT observations at 1.2 GHz and Chandra data to investigate the spectral properties of the cluster and to study the connection between thermal and nonthermal components in the ICM.

The point-to-point comparison between the X-ray and radio surface brightnesses of the ICM indicates that the two are correlated. Our results are consistent with linear scalings and have been obtained by taking into account the presence of the 2σ cut used to evaluate the radio surface brightness. We remark that the slope of the correlation in the case of a large intrinsic scatter can be biased if this selection effect is not treated by the fitting algorithm.

We found that the radio halo displays a broad range of spectral index values, possibly indicating a mix of populations of seed electrons with different properties injected by cluster radio galaxies and distributed and reaccelerated in the ICM by merger-induced turbulent motions. A mild trend observed between the X-ray surface brightness and radio spectral index suggests a prevalence of steep spectrum emission in the innermost cluster region. We also compared the spectral index with the thermodynamical quantities of the ICM evaluated in the same cluster regions. While we could not firmly claim strong relations between spectral index and temperature/pseudo-pressure, we found possible evidence for an anticorrelation between α and pseudo-entropy. If confirmed, this could indicate a connection between the spectrum of the radio emission and turbulent energy flux or heating and mixing of the gas in the ICM. We believe that these correlations (or the lack thereof) deserve further investigation in the future.

In this paper, we focused on the central region of A2255 using three pointings coming from LoTSS. The analysis of other features in the system, such as the extended emission at a large distance from the cluster center, will be performed in forthcoming works that will exploit deep (75 hr), pointed LOFAR observations of the cluster.

We thank the anonymous referee for helpful comments and A. Ignesti and M. Sereno for useful discussions during the preparation of this paper. A. Botteon and R.J.v.W. acknowledge support from VIDI research program with project number

639.042.729, which is financed by the Netherlands Organisation for Scientific Research (NWO). A.Bonafede acknowledges support from ERC-Stg DRANOEL 714245 & MIUR FARE SMS. G.D.G. acknowledges support from the ERC Advanced Investigator program NewClusters 321271. A.D. acknowledges support by the BMBF Verbundforschung under grant 05A17STA. H.J.A.R. acknowledges support from the ERC Advanced Investigator program NewClusters 321271. LOFAR (van Haarlem et al. 2013) is the LOw Frequency ARray designed and constructed by ASTRON. It has observing, data processing, and data storage facilities in several countries, which are owned by various parties (each with their own funding sources), and are collectively operated by the ILT foundation under a joint scientific policy. The ILT resources have benefited from the following recent major funding sources: CNRS-INSU, Observatoire de Paris and Université d'Orléans, France; BMBF, MIWF-NRW, MPG, Germany; Science Foundation Ireland (SFI), Department of Business, Enterprise and Innovation (DBEI), Ireland; NWO, The Netherlands; The Science and Technology Facilities Council, UK; Ministry of Science and Higher Education, Poland; Istituto Nazionale di Astrofisica (INAF), Italy. This research made use of the Dutch national e-infrastructure with support of the SURF Cooperative (e-infra 180169) and the LOFAR e-infra group, and of the LOFAR IT computing infrastructure supported and operated by INAF, and

by the Physics Department of Turin University (under the agreement with Consorzio Interuniversitario per la Fisica Spaziale) at the C3S Supercomputing Centre, Italy. The Jülich LOFAR Long Term Archive and the German LOFAR network are both coordinated and operated by the Jülich Supercomputing Centre (JSC), and computing resources on the supercomputer JUWELS at JSC were provided by the Gauss Centre for Supercomputing e.V. (grant CHTB00) through the John von Neumann Institute for Computing (NIC). This research made use of the University of Hertfordshire high-performance computing facility and the LOFAR-UK computing facility located at the University of Hertfordshire and supported by STFC [ST/P000096/1]. The scientific results reported in this article are based in part on data obtained from the Chandra Data Archive. SRON Netherlands Institute for Space Research is supported financially by the Netherlands Organisation for Scientific Research (NWO). This research made use of APLpy, an open-source plotting package for Python (Robitaille & Bressert 2012).

Facilities: LOFAR, WSRT, Chandra.

Appendix A

Grids for Point-to-point Analysis

The three grids with different cell sizes used to evaluate the radio and X-ray surface brightnesses for the point-to-point analysis are shown in Figure A1.

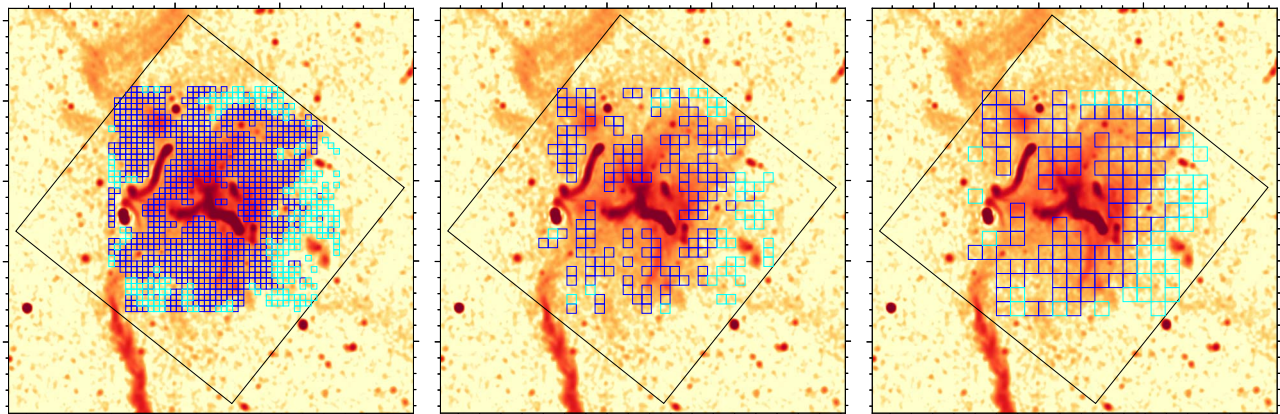


Figure A1. Grids used for the point-to-point analysis overlaid on the LOFAR images at $15'' \times 14''$ resolution. From left to right, the cells displayed are those used to compute the values in Figure 4 ($21'' \times 21''$, $35'' \times 35''$, and $52.5'' \times 52.5''$). Blue and cyan cells mark regions where the radio emission is above or below 2σ , respectively. The black region denotes the ACIS-I FoV.

Appendix B Impact of the Threshold on the Radio Analysis

Artifacts in interferometric radio images arising in the process of image reconstruction can bias the flux density estimates especially for extended sources with low S/N. We quantify this effect by using our LOFAR observations of A2255. First, we created a model of a radio halo with an exponential surface brightness profile with a similar extension to that observed in A2255 (Figure B1, left panel). Second, we Fourier-transformed the image of the mock halo and added it in the LOFAR visibilities consisting of Gaussian random noise. This radio halo model was restored using the same WSCLEAN parameters adopted in the LOFAR imaging, leading to the recovered image shown in Figure B1 (central panel). We used these two images to compare on a point-to-point basis the flux density recovered in the restored image with that in the model image as a function of the S/N (of the restored image). As negative flux densities are possible in radio images due to artifacts and random thermal noise fluctuations, we plotted the absolute values of the ratio between the two flux densities and the S/N (basically, $S/N < 0$ when the the observed flux density is negative). Results are shown in Figure B1 (right panel) and show that at

high S/N the emission of the mock radio halo is well recovered (i.e., the ratio between the flux densities is ~ 1), while a large scatter is evident at low significance ($\lesssim 1\sigma$). The same trend is observed by varying by a factor of 2 the e -folding radius of the injected halo. This demonstrates that the flux densities observed in radio images at low S/N are not reliable, and that only flux densities above a certain threshold should be considered in the analysis. In the case of real observations, where radio halo morphologies are more complex than an exponential profile and the noise is possibly not Gaussian, our results suggest that a threshold of $\gtrsim 2\sigma$ should be applied when measuring radio flux densities.

Although the general approach that has been used in the literature to compare the radio and X-ray surface brightnesses of clusters hosting radio halos was to adopt a threshold on the radio surface brightness, we note that this choice can introduce a bias in the determination of the $I_R - I_X$ slope in case of large intrinsic scatter. We prove this by performing linear regression on Equation (1) using the BCES-orthogonal method (Akritas & Bershady 1996) and by considering different values of the threshold. Results are summarized in Figure B2. The trend obtained between I_R and I_X is overall consistent between the different grids and demonstrates that applying higher thresholds on I_R leads to flatter slopes. The reason is that close to the

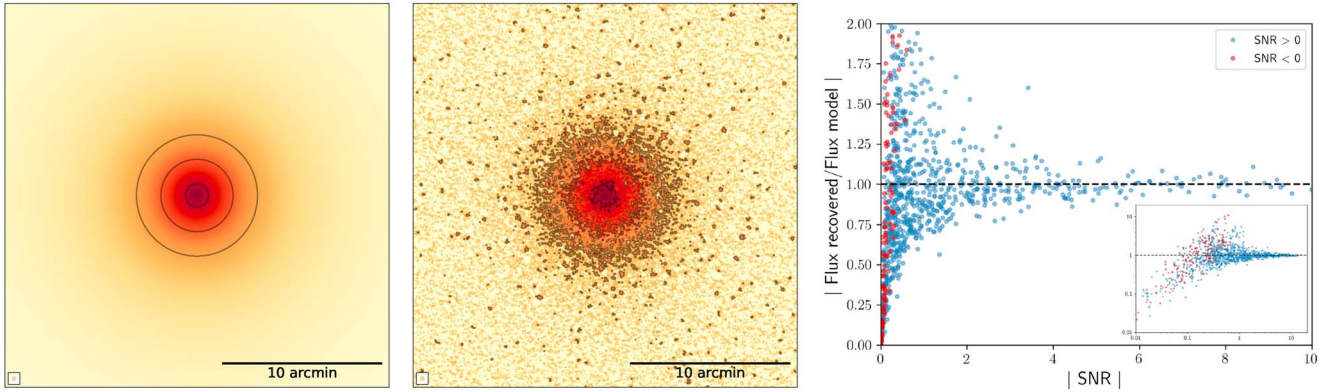


Figure B1. Exponential radio halo model injected in the visibilities (left) and corresponding restored image (center) at the same resolution of $15'' \times 15''$. The color scale in the two images is matched, and contours/circles are drawn at levels of $120 \times [3, 6, 12] \mu\text{Jy beam}^{-1}$. The absolute value of the ratio between the recovered flux and injected flux as a function of the absolute value of the S/N (right) has been computed on a point-to-point basis from the images shown in the other two panels. The inset shows a zoom-out of the panel plotted in log-scale.

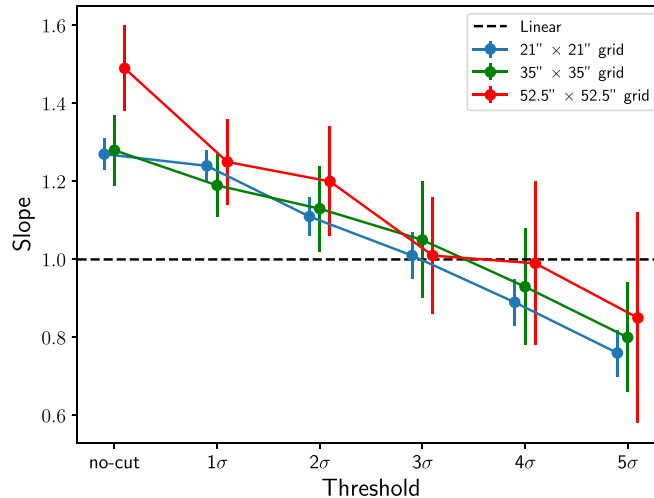


Figure B2. Slope of the $I_R - I_X$ relation obtained with the BCES-orthogonal method as a function of the radio threshold used to fit the data for the three different grids. Points are slightly offset on the x -axis for visualization purposes.

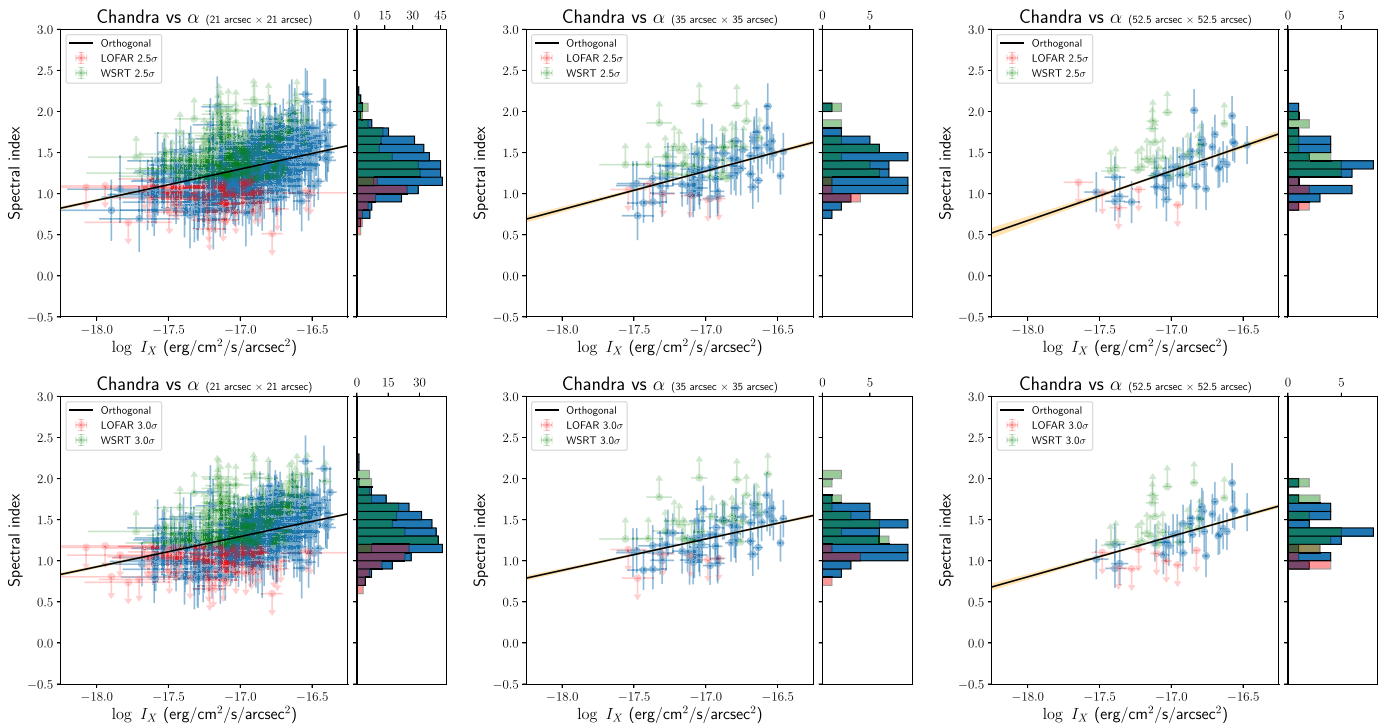


Figure B3. Same as Figure 6, but for thresholds of 2.5σ (top) and 3σ (bottom) and for different grids (from left to right).

Table B1

Spectral Index Mean Value ($\bar{\alpha}$) with Its Standard Deviation (σ_α), Slope (A) from the BCES-orthogonal Fitting to Equation (2), and Spearman (r_s) and Pearson (r_p) Correlation Coefficients Relative to the Plots Shown in Figures 6 and B3

Threshold	$\bar{\alpha}$	σ_α	A	r_s	r_p
$21'' \times 21''$					
2.0σ	1.34	0.30	0.34 ± 0.03	0.50	0.48
2.5σ	1.33	0.28	0.38 ± 0.03	0.55	0.55
3.0σ	1.34	0.26	0.37 ± 0.04	0.55	0.55
$35'' \times 35''$					
2.0σ	1.30	0.25	0.41 ± 0.08	0.63	0.61
2.5σ	1.30	0.26	0.47 ± 0.08	0.65	0.66
3.0σ	1.29	0.23	0.38 ± 0.06	0.63	0.63
$52.5'' \times 52.5''$					
2.0σ	1.32	0.27	0.51 ± 0.10	0.69	0.66
2.5σ	1.33	0.27	0.60 ± 0.12	0.73	0.69
3.0σ	1.36	0.24	0.49 ± 0.09	0.74	0.74

detection threshold, the selection only picks up the upscattered values, which leads to an overestimate of the mean value of I_R at low I_X and an underestimate of the slope. This motivates the choice of a Bayesian regression method, such as LIRA (Serenio 2016), which is able to take into account the effect of this Malmquist bias.

We now investigate the impact of the threshold adopted on the computation of the spectral index distribution and on the correlation $\alpha - I_X$ presented in Section 3.3. In Figure B3, we reproduce the plots shown in Figure 6 by adopting thresholds of 2.5σ and 3σ . Results are summarized in Table B1. First, we note that there is only a small variation of the mean spectral index value $\bar{\alpha}$ and its standard deviation σ_α with the thresholds

and grids used. Second, we note that the spectral index is always positively correlated with the X-ray surface brightness and that this trend would not change even when assuming the most conservative values for the upper and lower limits. In this case, we warn the reader that the reported slopes should be taken with caution as they were derived without taking into account the limits on the spectral indexes.

ORCID iDs

A. Botteon <https://orcid.org/0000-0002-9325-1567>
G. Brunetti <https://orcid.org/0000-0003-4195-8613>
R. J. van Weeren <https://orcid.org/0000-0002-0587-1660>
T. W. Shimwell <https://orcid.org/0000-0001-5648-9069>
R. Cassano <https://orcid.org/0000-0003-4046-0637>
M. Iacobelli <https://orcid.org/0000-0001-9118-2097>
F. Gastaldello <https://orcid.org/0000-0002-9112-0184>
A. Bonafede <https://orcid.org/0000-0002-5068-4581>
M. Brüggén <https://orcid.org/0000-0002-3369-7735>
V. Cuciti <https://orcid.org/0000-0003-4454-132X>
F. de Gasperin <https://orcid.org/0000-0003-4439-2627>
G. Di Gennaro <https://orcid.org/0000-0002-8648-8507>
M. J. Hardcastle <https://orcid.org/0000-0003-4223-1117>
S. Mandal <https://orcid.org/0000-0002-2669-4798>
H. J. A. Röttgering <https://orcid.org/0000-0001-8887-2257>
A. Simionescu <https://orcid.org/0000-0002-9714-3862>

References

- Akamatsu, H., Mizuno, M., Ota, N., et al. 2017, *A&A*, 600, A100
Akritas, M. G., & Bershady, M. A. 1996, *ApJ*, 470, 706
Arnaud, K. 1996, in ASP Conf. Ser. 101, *Astronomical Data Analysis Software and Systems V*, ed. G. Jacoby & J. Barnes (San Francisco, CA: ASP), 17
Bonafede, A., Giovannini, G., Feretti, L., Govoni, F., & Murgia, M. 2009, *A&A*, 494, 429
Botteon, A., Cassano, R., Eckert, D., et al. 2019, *A&A*, 630, A77
Botteon, A., Gastaldello, F., & Brunetti, G. 2018, *MNRAS*, 476, 5591

- Briggs, D. 1995, *BAAS*, **27**, 1444
- Brown, S., & Rudnick, L. 2011, *MNRAS*, **412**, 2
- Brunetti, G. 2004, *JKAS*, **37**, 493
- Brunetti, G., & Jones, T. 2014, *IJMPD*, **23**, 30007
- Brunetti, G., & Lazarian, A. 2007, *MNRAS*, **378**, 245
- Brunetti, G., Setti, G., Feretti, L., & Giovannini, G. 2001, *MNRAS*, **320**, 365
- Burns, J., Roettiger, K., Pinkney, J., et al. 1995, *ApJ*, **446**, 583
- Cassano, R., Botteon, A., di Gennaro, G., et al. 2019, *ApJL*, **881**, L18
- Cavagnolo, K., Donahue, M., Voit, G., & Sun, M. 2009, *ApJS*, **182**, 12
- Cohen, A., & Clarke, T. 2011, *AJ*, **141**, 149
- Cova, F., Gastaldello, F., Wik, D., et al. 2019, *A&A*, **628**, A83
- Davis, D., & White, R., III 1998, *ApJ*, **492**, 57
- de Gasperin, F., Intema, H., Shimwell, T., et al. 2017, *SciA*, **3**, e1701634
- Di Gennaro, G., van Weeren, R., Hoeft, M., et al. 2018, *ApJ*, **865**, 24
- Dolag, K., & Enßlin, T. 2000, *A&A*, **362**, 151
- Donner, J., Dolag, K., Brunetti, G., & Cassano, R. 2013, *MNRAS*, **429**, 3564
- Eckert, D., Etori, S., Pointecouteau, E., et al. 2017, *AN*, **338**, 293
- Enßlin, T. 1999, in *Diffuse Thermal and Relativistic Plasma in Galaxy Clusters*, ed. H. Boehringer, L. Feretti, & P. Schuecker (Garching: Max-Planck-Institut für Extraterrestrische Physik), 275
- Enßlin, T., & Gopal-Krishna 2001, *A&A*, **366**, 26
- Feretti, L., Boehringer, H., Giovannini, G., & Neumann, D. 1997, *A&A*, **317**, 432
- Feretti, L., Fusco-Femiano, R., Giovannini, G., & Govoni, F. 2001, *A&A*, **373**, 106
- Feretti, L., Orrù, E., Brunetti, G., et al. 2004, *A&A*, **423**, 111
- Gaspari, M., Churazov, E., Nagai, D., Lau, E., & Zhuravleva, I. 2014, *A&A*, **569**, A67
- Giacintucci, S., Venturi, T., Brunetti, G., et al. 2005, *A&A*, **440**, 867
- Giacintucci, S., Venturi, T., Macario, G., et al. 2008, *A&A*, **486**, 347
- Giovannini, G., Feretti, L., Venturi, T., Kim, K.-T., & Kronberg, P. 1993, *ApJ*, **406**, 399
- Golovich, N., Dawson, W., Wittman, D., et al. 2019, *ApJ*, **882**, 69
- Govoni, F., Enßlin, T., Feretti, L., & Giovannini, G. 2001, *A&A*, **369**, 441
- Govoni, F., Murgia, M., Feretti, L., et al. 2005, *A&A*, **430**, L5
- Govoni, F., Murgia, M., Feretti, L., et al. 2006, *A&A*, **460**, 425
- Hardcastle, M., Croston, J., Shimwell, T., et al. 2019, *MNRAS*, **488**, 3416
- Harris, D., Kapahi, V., & Ekers, R. 1980, *A&AS*, **39**, 215
- Hoang, D., Shimwell, T., van Weeren, R., et al. 2019, *A&A*, **622**, A20
- Hudson, D., Mittal, R., Reiprich, T., et al. 2010, *A&A*, **513**, A37
- Intema, H., Jagannathan, P., Mooley, K., & Frail, D. 2017, *A&A*, **598**, A78
- Jaffe, W. 1980, *ApJ*, **241**, 925
- Jaffe, W., & Rudnick, L. 1979, *ApJ*, **233**, 453
- Kale, R., & Dwarakanath, K. 2012, *ApJ*, **744**, 46
- Mandal, S., Intema, H., van Weeren, R., et al. 2020, *A&A*, **634**, A4
- Markevitch, M., & Vikhlinin, A. 2007, *PhR*, **443**, 1
- Miller, N., & Owen, F. 2003, *AJ*, **125**, 2427
- Offringa, A., McKinley, B., Hurley-Walker, N., et al. 2014, *MNRAS*, **444**, 606
- Orrù, E., Murgia, M., Feretti, L., et al. 2007, *A&A*, **467**, 943
- Pearce, C., van Weeren, R., Andrade-Santos, F., et al. 2017, *ApJ*, **845**, 81
- Petrosian, V. 2001, *ApJ*, **557**, 560
- Pfrommer, C., Enßlin, T., & Springel, V. 2008, *MNRAS*, **385**, 1211
- Pinzke, A., Oh, S., & Pfrommer, C. 2017, *MNRAS*, **465**, 4800
- Pizzo, R., & de Bruyn, A. 2009, *A&A*, **507**, 639
- Pizzo, R., de Bruyn, A., Bernardi, G., & Brentjens, M. 2011, *A&A*, **525**, A104
- Pizzo, R., de Bruyn, A., Feretti, L., & Govoni, F. 2008, *A&A*, **481**, L91
- Planck Collaboration XXVII 2016, *A&A*, **594**, A27
- Rajpurohit, K., Hoeft, M., van Weeren, R., et al. 2018, *ApJ*, **852**, 65
- Robitaille, T., & Bressert, E. 2012, *APLpy: Astronomical Plotting Library in Python*, Astrophysics Source Code Library, ascl:1208.017
- Roland, J. 1981, *A&A*, **93**, 407
- Sakellidou, I., & Ponman, T. 2006, *MNRAS*, **367**, 1409
- Sereno, M. 2016, *MNRAS*, **455**, 2149
- Shi, X., Nagai, D., Aung, H., & Wetzell, A. 2020, *MNRAS*, **495**, 784
- Shimwell, T., Brown, S., Feain, I., et al. 2014, *MNRAS*, **440**, 2901
- Shimwell, T., Röttgering, H., Best, P., et al. 2017, *A&A*, **598**, A104
- Shimwell, T., Tasse, C., Hardcastle, M., et al. 2019, *A&A*, **622**, A1
- Slee, O., Roy, A., Murgia, M., Andernach, H., & Ehle, M. 2001, *AJ*, **122**, 1172
- Smirnov, O., & Tasse, C. 2015, *MNRAS*, **449**, 2668
- Struble, M. F., & Rood, H. J. 1999, *ApJS*, **125**, 35
- Tasse, C. 2014a, arXiv:1410.8706
- Tasse, C. 2014b, *A&A*, **566**, A127
- Tasse, C., Hugo, B., Mirmont, M., et al. 2018, *A&A*, **611**, A87
- Vacca, V., Feretti, L., Giovannini, G., et al. 2014, *A&A*, **561**, A52
- van Haarlem, M., Wise, M., Gunst, A., et al. 2013, *A&A*, **556**, A2
- van Weeren, R., Brunetti, G., Brügger, M., et al. 2016, *ApJ*, **818**, 204
- van Weeren, R., de Gasperin, F., Akamatsu, H., et al. 2019, *SSRv*, **215**, 16
- van Weeren, R., Röttgering, H., & Brügger, M. 2011, *A&A*, **527**, A114
- van Weeren, R., Röttgering, H., Brügger, M., & Hoeft, M. 2010, *Sci*, **330**, 347
- Willingale, R., Starling, R., Beardmore, A., Tanvir, N., & O'Brien, P. 2013, *MNRAS*, **431**, 394
- Xie, C., van Weeren, R., Lovisari, L., et al. 2020, *A&A*, **636**, A3
- Yuan, Q., Zhou, X., & Jiang, Z. 2003, *ApJS*, **149**, 53