



Publication Year	2019
Acceptance in OA@INAF	2021-02-17T17:12:20Z
Title	Discovery of a Double Blue Straggler Sequence in M15: New Insight into the Core-collapse Process
Authors	Beccari, G.; Ferraro, F. R.; Dalessandro, Emanuele; Lanzoni, B.; RASO, SILVIA; et al.
DOI	10.3847/1538-4357/ab13a4
Handle	http://hdl.handle.net/20.500.12386/30445
Journal	THE ASTROPHYSICAL JOURNAL
Number	876



Discovery of a Double Blue Straggler Sequence in M15: New Insight into the Core-collapse Process

G. Beccari¹, F. R. Ferraro², E. Dalessandro³, B. Lanzoni², S. Raso^{2,3}, L. Origlia³, E. Vesperini⁴, J. Hong⁵,
A. Sills⁶, A. Dieball^{7,8}, and C. Knigge⁷

¹European Southern Observatory, Karl-Schwarzschild-Straße 2, D-85748 Garching bei München, Germany

²Dipartimento di Fisica e Astronomia, Università di Bologna, Via Gobetti 93/2, Bologna, Italy

³INAF Osservatorio di Astrofisica e Scienza dello Spazio di Bologna, Via Gobetti 93/3, Bologna, Italy

⁴Department of Astronomy, Indiana University, Swain West, 727 E. 3rd Street, IN 47405 Bloomington, USA

⁵Kavli Institute for Astronomy and Astrophysics, Peking University, Yi He Yuan Lu 5, HaiDian District, Beijing 100871, People's Republic of China

⁶Department of Physics and Astronomy, McMaster University, Hamilton, Ontario L8S 4M1, Canada

⁷Physics and Astronomy, University of Southampton, Southampton SO17 1BJ, UK

⁸Helmholtz-Institut für Strahlen und Kernphysik, Nussallee 14-16, D-53115 Bonn, Germany

Received 2018 October 23; revised 2019 March 23; accepted 2019 March 25; published 2019 May 7

Abstract

In this paper we report the discovery of a double blue straggler star (BSS) sequence in the core of the core-collapsed cluster M15 (NGC 7078). We performed a detailed photometric analysis of the extremely dense core of the cluster using a set of images secured with the Advanced Camera for Survey in the High Resolution Channel mode on board the *Hubble Space Telescope*. The proper combination of the large number of single frames in the near-UV (F220W), and blue (F435W) filters allowed us to perform a superb modeling of the point-spread function and an accurate deblending procedure. The color–magnitude diagram revealed the presence of two distinct parallel sequences of blue stragglers. In particular, the blue BSS sequence is characterized by the intriguing presence of two different branches. The first branch appears extremely narrow, it extends up to 2.5 mag brighter than the cluster main-sequence turnoff (MS-TO) point, and it is nicely reproduced by a 2 Gyr old collisional isochrone. The second branch extends up to 1.5 mag from the MS-TO and it is reproduced by a 5.5 Gyr old collisional isochrone. Our observations suggest that each of these branches is mainly constituted by a population of nearly coeval collisional BSSs of different masses generated during two episodes of high collisional activity. We discuss the possibility that the oldest episode corresponds to the core-collapse (CC) event (occurred about 5.5 Gyr ago), while the most recent one (occurred about 2 Gyr ago) is associated with a core oscillation in the post-CC evolution. The discovery of these features provides further strong evidence in support of the connection between the BSS properties and globular cluster dynamical evolution, and it opens new perspectives on the study of CC and post-CC evolution.

Key words: blue stragglers – globular clusters: individual (NGC 7078) – stars: kinematics and dynamics

1. Introduction

In the color–magnitude diagram (CMD) of any stellar aggregates blue straggler stars (BSSs) typically appear as a sparse and scattered population of stars lying in a region at brighter magnitudes and bluer colors with respect to the cluster main-sequence turnoff (MS-TO) stars (Sandage 1953; Ferraro et al. 1997, 2003, 2012, 2018; Piotto et al. 2004; Lanzoni et al. 2007; Leigh et al. 2007; Simunovic & Puzia 2016).

Their location in the CMD, combined with further observational evidence (Shara et al. 1997; Gilliland et al. 1998; Ferraro et al. 2006; Fiorentino et al. 2014), suggests that they are hydrogen burning stars more massive than the parent cluster stars at the MS-TO. These exotica have been suggested to be powerful tools to investigate the internal dynamical evolution of the parent cluster (Ferraro et al. 2012, 2018; Alessandrini et al. 2016; Lanzoni et al. 2016). BSSs are generated through two main formation channels: (1) mass-transfer (MT) phenomena and/or coalescence in primordial binary systems (McCrea 1964), and (2) direct stellar collisions (Hills & Day 1976). While the first process (which is driven by the secular evolution of binary systems) is common to any stellar environment (low- and high-density stellar systems, as globular and open clusters, dwarf galaxies, the Galactic field), the second one requires a high-density environment, where the rate of stellar collisions is increased. Note that a collisional

environment can also affect the efficiency of the MT formation channel, since dynamical interactions involve single and binary stars thus favoring the tightening of binaries. The congested central regions of high-density globular clusters (GCs) are the ideal habitat where collisions can occur. Hence in such an environment both the BSS channels can be active (Ferraro et al. 1993, 1995), although the MT formation channel seems to be the most active one (see Davies et al. 2004; Knigge et al. 2009).

Although a few intriguing spectroscopic features have been interpreted as the fingerprints of the MT formation channels (see Ferraro et al. 2006), BSSs produced by different formation processes still appear photometrically indistinguishable. In this respect, a promising route of investigation was opened by the discovery of two distinct sequences of BSSs in the post core-collapse (CC) cluster M30 by Ferraro et al. (2009). After this discovery, a similar feature has been detected in NGC 362 (Dalessandro et al. 2013) and NGC 1261 (Simunovic et al. 2014). In only one case has a double BSS sequence been detected in a young cluster in the Large Magellanic Cloud (Li et al. 2018a, 2018b). However, it has been argued (Dalessandro et al. 2019a, 2019b) that the observed bifurcation could be an artifact due to field star contamination.

The main characteristic ubiquitously detected in these clusters is the presence of a narrow BSS sequence on the blue side of the CMD, separated through a clear-cut gap from a more scattered population of BSSs on the red side. The

narrowness of the blue sequence demonstrates that it is populated by a nearly coeval population of stars with different masses, generated over a relatively short period of time. Moreover, the perfect agreement of the blue sequence locus with collisional isochrones (Sills et al. 2009) suggests that these objects have been formed through collisions. Instead, the red sequence is by far too red to be reproduced by collisional models of any age. All these facts support the hypothesis that the origin of the blue BSS sequence is related to a phenomenon able to enhance the probability of collisions over a relatively short period of time, thus promoting the formation of collisional BSSs. Ferraro et al. (2009) proposed that this phenomenon is the cluster CC. This hypothesis has been recently confirmed by numerical simulations (Portegies Zwart 2019).

In this context, Ferraro et al. (2009) also suggested that the properties of the blue-BSS sequence (essentially its extension in luminosity) can be used to date the epoch of CC. In short, while the MS-TO luminosity is a sensitive indicator of the age of the cluster, the luminosity of TO point of the blue BSS sequence can be used to determine the epoch at which the collisional event has promoted the formation of this stellar population. In fact the comparison with collisional models allowed the dating of the epoch of the CC event: approximately 2 Gyr ago in M30 (Ferraro et al. 2009) and NGC 1261 (Simunovic et al. 2014), and 0.2 Gyr ago in NGC 362 (Dalessandro et al. 2013).

Recent Monte Carlo simulations of synthetic MT-BSSs (Jiang et al. 2017) showed that the blue-BSS sequence can also be populated by MT-BSSs. This finding by itself does not invalidate the possibility that the blue BSS sequence might be mainly populated by collisional BSSs, since the easiest way to reproduce the observed narrowness of the blue sequence and the adjacent gap is still the hypothesis that the vast majority of BSSs along this sequence formed almost simultaneously, instead, as a result of a continuous process extending over a long time interval. Conversely, the result of Jiang et al. (2017) might explain the presence of the few W Uma stars (which are close binaries) actually detected by Ferraro et al. (2009) and Dalessandro et al. (2013) along the blue BSS sequence in M30 and in NGC 362. In this framework it is important to stress that, although the location in the CMD cannot be used to individually distinguish collisional from MT-BSSs, it mirrors the occurrence of the two formation mechanisms: when a narrow blue sequence is detected, this is mainly populated by collisional BSSs, with some possible contamination from MT-BSSs (as the WUma variables detected along the blue sequences); the red side, instead, cannot be reproduced by any of the available collisional models (Sills et al. 2009) and is mainly populated by MT-BSSs with some contamination from evolved BSSs generated by collisions.

In this paper we present the discovery of a double BSS sequence in the post-CC cluster M15 (NGC 7078). Indeed, M15 is one of the most massive ($\log M = 6.3M_{\odot}$, several 10^9M_{\odot}) and dense ($\log \rho_0 = 6.2M_{\odot} \text{ pc}^{-3}$) clusters of the Galaxy. As emphasized by Leigh et al. (2013), while binary evolution seems to be the dominant channel for BSS formation, the fact that M15 has one of the densest and most massive cores among Galactic GCs, makes it the ideal environment in which to expect the collisional formation channel to be relevant. This fact has been recently confirmed by Leigh et al. (2019) where the authors foresee the collisions via 2+2 interactions to play a

crucial role on the formation of BSSs in post-CC clusters. Since the very first detections of a central cusp in its surface brightness profile (Djorgovski & King 1986; Lauer et al. 1991; Stetson 1994) it has been considered as a sort of “prototype” of post-CC clusters, and it is still cataloged as such in all the most recent GC compilations (see the updated version of the Harris Catalog). The BSS sequence studied here shows a complex structure that might provide crucial information on the CC phenomenon.

2. Data Reduction

In this work we use a set of archival high resolution images obtained with the Advanced Camera for Survey (ACS) on board the *Hubble Space Telescope* (HST). The core of the cluster was observed with the High Resolution Channel (HRC) mode of the ACS in the F220W and F435W filters (hereafter, U_{220} and B_{435} , respectively). The HRC provides a supreme spatial resolution, with a pixel scale of $\sim 0.028 \times 0.025 \text{ arcsec}^2 \text{ pixel}^{-1}$ in a field of view of $29'' \times 26''$. A total of 13 images of 125 s of exposure time each were acquired in the B_{435} filter under the program GO-10401 (PI Chandar), while $8 \times 290 \text{ s}$ exposures were taken with the U_{220} filter under the program GO-9792 (PI Knigge). These images were already used in Dieball et al. (2007) and Haurberg et al. (2010) to probe the stellar population in the innermost regions of the cluster. As described in Haurberg et al. (2010), the HRC images were combined using a dedicated software developed by Jay Anderson and similar to DrizzlePack.⁹ In short, the software combines single raw images of a given band to improve the sampling of the point-spread function (PSF). A $3'' \times 3''$ section of a super sampled frame thus obtained in the B_{435} band is shown in Figure 1 (left panel), where it is also compared to a single raw exposure (right panel). As immediately visible in the figure, the software allows us to reduce the pixel size to $\sim 0.0125 \times 0.0125 \text{ arcsec}^2 \text{ pixel}^{-1}$ on the combined images, thus doubling the effective spatial resolution in both the U_{220} and the B_{435} filters. This image processing is crucial as it allows us to resolve the stars in the very central region of the cluster, where the stellar crowding is too severe even for the resolving power of the HRC (see also Figure 1 from Haurberg et al. 2010).

We first performed a standard PSF fitting photometry on the two super sampled U_{220} and B_{435} frames using DAOPHOT-II (Stetson 1987). The catalog was calibrated into the VEGAMAG system using the recipe from Sirianni et al. (2005) and adopting the most recent zero-points available through the ACS Zero-point Calculator.¹⁰ All the post-MS stellar evolutionary sequences typical of a GC are well distinguishable on the first version of the CMD shown in the left panel of Figure 2. Still, we notice a number of objects falling in the region brighter than the Sub-Giant Branch (SGB) and bluer than the Red Giant Branch (RGB).

The origin and the reliability of these stars (sometime called “yellow stragglers”) is a well known problem and it has been discussed in many papers in the literature. The vast majority of these objects have been demonstrated to be optical blends (see, e.g., Figure 8 in Ferraro et al. 1992 and Figure 7 in Ferraro et al. 1991, where a few examples of deblending are illustrated). Here, we used the package ROMAFOT (Buonanno et al. 1983) to

⁹ http://www.stsci.edu/hst/HST_overview/drizzlepac

¹⁰ <https://acszeropoints.stsci.edu>

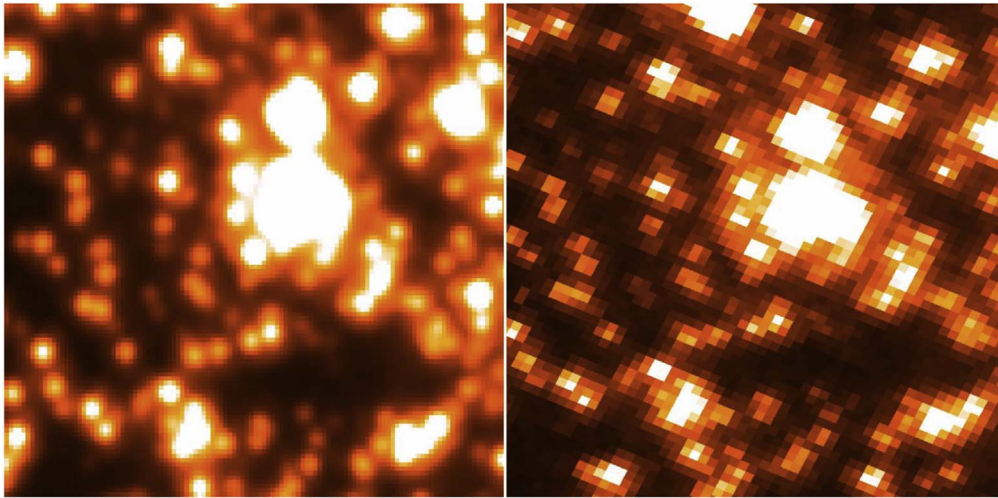


Figure 1. Comparison between the central $1''.5 \times 1''.5$ region of M15 as seen through the super sampled B_{435} image, and that observed through a single exposure in the same filter (left and right panels, respectively). North is up and east is to the left.

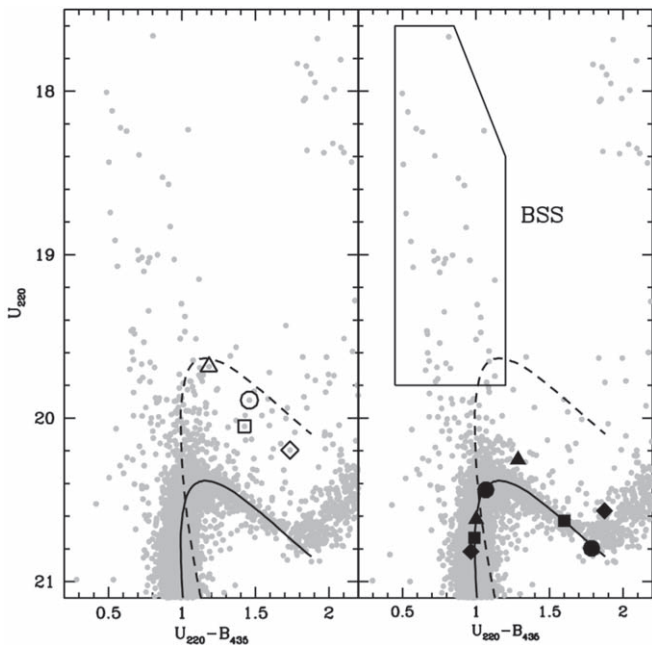


Figure 2. CMDs obtained with standard PSF fitting photometry (left panel) and our deblending procedure with ROMAFOT (right panel). For reference, the best-fit isochrone and the equal-mass binary sequence are shown as solid and dashed lines, respectively. As is apparent, many stars are located between these two lines in the left panel: the vast majority of these objects turned out to be blends due to poor PSF fitting. For illustration purposes, four blends are highlighted with open symbols in the left-hand panel and their corresponding deblended components are marked with the same (solid) symbols in the right panel. Each of the four blends is the combination of an MS-TO and an SGB star. The box used to select the BSS population is also shown.

manually inspect the quality of the residuals of the initial PSF fitting process, and to iteratively improve the quality of the PSF fitting for a selection of individual problematic stars. ROMAFOT is a software developed to perform accurate photometry in crowded fields. While the PSF fitting procedure with ROMAFOT requires a higher level of manual interaction by the user with respect to DAOPHOTII, it has the unique advantage of a graphical interface that allows the user to improve the local deconvolution of stellar profiles (see also Monelli et al. 2015). Indeed the results of the analysis with ROMAFOT fully confirm

the findings by Ferraro et al. (1991, 1992): most of the objects lying in the yellow stragglers region turned out to be blends. For the sake of illustration, in the left panel of Figure 2 we highlight four spurious sources (open symbols) due to poor PSF fitting. As shown in the right-hand panel, each of these sources is indeed the blend of an MS-TO and an SGB star (solid symbols). These sources are also highlighted with the same symbols on the B_{435} images shown in Figure 3. In Figure 2 we also plot the equal-mass binary sequence (dashed line) and the adopted BSS selection box. It is evident that the conservative BSS selection discussed in Section 3 (considering only BSSs brighter than $U = 19.8$) prevents any significant contamination from unresolved binaries and blends.

The iterative deblending process described above was used to optimize the PSF modeling of all the objects lying outside the well recognizable canonical evolutionary sequences in the CMD, including all the BSSs. In Figure 4 we show the final CMD obtained at the end of the accurate deblending procedure. It should be noted that the HRC data set that we use in this paper allows us to resolve stars with a separation larger than $\sim 0''.012$, which translates into a separation of ~ 125 au at the distance of M15 (10.4 kpc). Hence, even after our deblending procedure, it is still possible that a few unresolved binaries and blends with separation smaller than 125 au are still populating the “yellow straggler region.” On the other hand, some of these objects could also be BSSs that are evolving from their main-sequence (core hydrogen burning) stage to a more evolved evolutionary phase (the SGB). Still, given the overall low number of BSSs, and taking into account that the SGB stage at the typical BSS mass ($\sim 1.2 M_{\odot}$) is quite rapid, we expect just a few evolved BSSs in this part of the CMD.

3. The BSS Population in the Core of M15

The CMD shown in Figure 4 demonstrates the outstanding quality of the data, which allows us to properly sample the hot stellar population in the core of M15 and to detect MS stars well below the MS-TO. Thanks to the use of the U_{220} filter, the hot horizontal-branch (HB) stars describe a very narrow and well defined sequence. This fact per se demonstrates already the excellent photometric quality of the data (see also Dieball et al. 2007). The same applies to the RGB stars whose

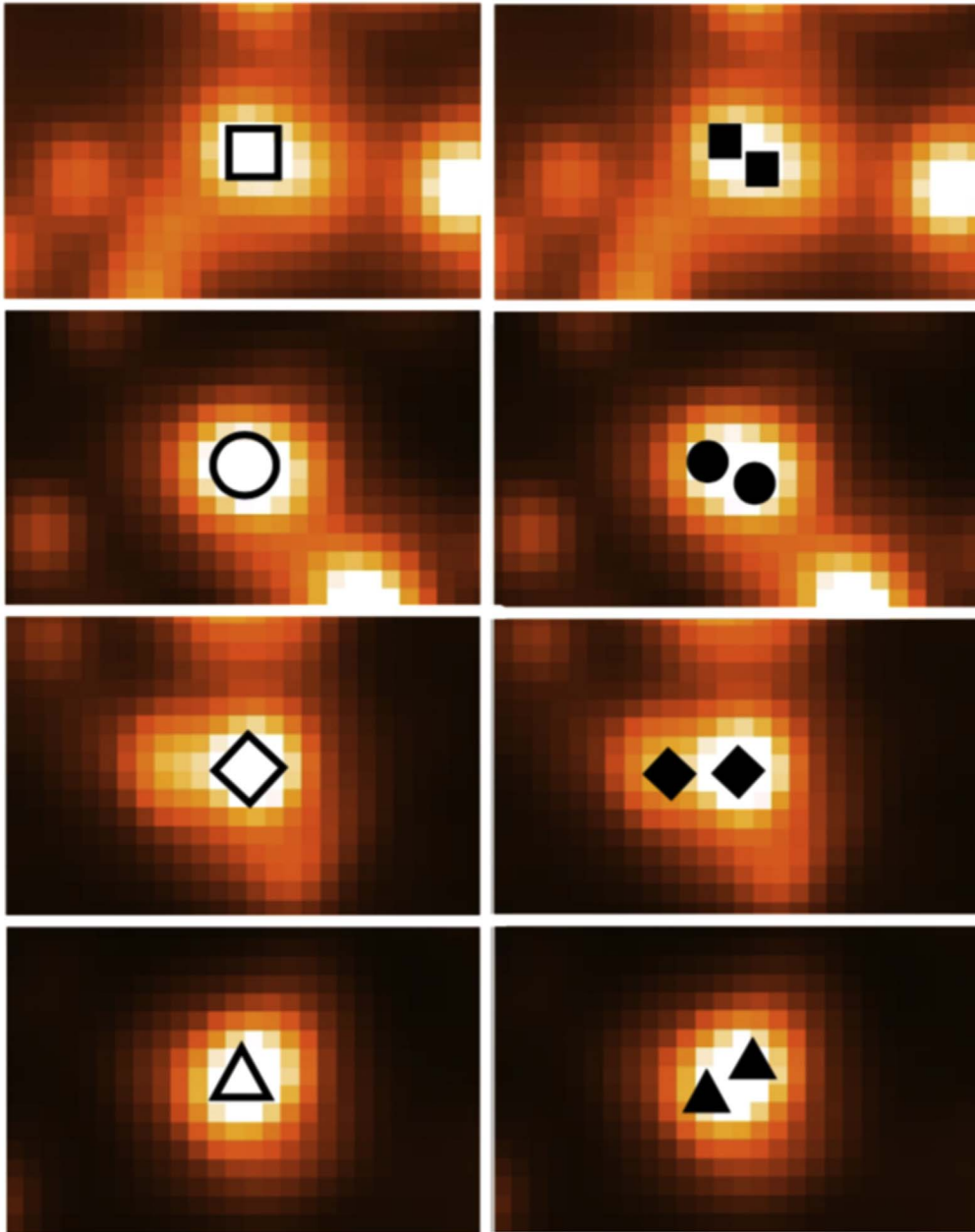


Figure 3. B_{435} images of the same sources discussed in Figure 2: the single (blended) objects in our starting photometry are marked with empty symbols in the left panels, while the corresponding resolved components, obtained after our deblending procedure with ROMAFOT, are shown with the same (solid) symbols in the right panels.

sequence spans almost 2.5 mag in color on the CMD. As expected, the use of the UV filter clearly suppresses the contribution of the RGB stars to the total cluster’s light, making this plane optimal for sampling the hottest stellar populations in the cluster (see also Ferraro et al. 1997, 2003, 2018; Raso et al. 2017).

3.1. A Double Sequence of BSS

A surprising feature clearly visible in the CMD of Figure 4 is the presence of two distinct, parallel and well separated sequences of BSSs. The two sequences are almost vertical in the CMD, in a magnitude range $20 < U_{220} < 18$, and located at $(U_{220}-B_{435}) \sim 0.8$ and ~ 1.2 . A similar feature was previously detected using optical bands in the GCs M30, NGC 362, and NGC 1261 (Ferraro et al. 2009; Dalessandro et al. 2013; Simunovic et al. 2014,

respectively). This is the first time that such a feature has been detected in a UV-CMD.

We show in Figure 5 a portion of the CMD zoomed on the BSS region. Hereafter, we will consider as bona fide BSSs those stars populating the region of the CMD in the color ranges explicitly mentioned above and with $U \lesssim 19.8$. As discussed above, such a conservative magnitude threshold guarantees that the BSS sample is negligibly affected by residual blended sources and unresolved binaries (see the right panel in Figure 2). In the left panel we show with a dashed line the fit to the bluest sequence of BSSs. We take this line as a reference and we then calculate the distance in $(U_{220}-B_{435})$ color of the BSSs observed at $U_{220} < 19.8$ (black dots). In the rightmost panel we show the histogram of the distribution of the color’s distances. This is clearly not unimodal: at least two

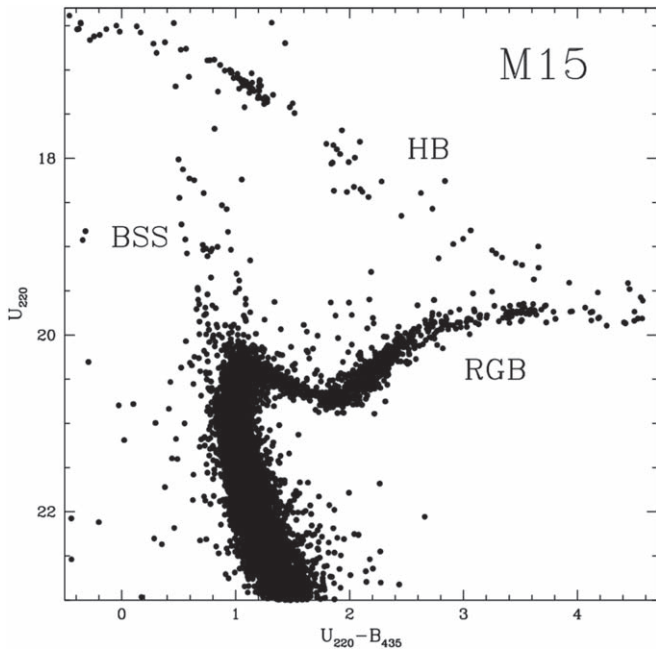


Figure 4. Final, debledned UV-CMD of the core of M15. The position in the CMD of the Blue Straggler star (BSS) population, and of the Red-Giant Branch (RGB) and Horizontal Branch (HB) evolutionary sequences is labeled.

peaks, with a clear gap in between, are well distinguishable. To assess the statistical significance of such bimodality, we used the Gaussian mixture modeling (GMM) algorithm presented by Muratov & Gnedin (2010), which works under the assumption that the multimodes of a distribution are well modeled via Gaussian functions. We found that the separation of the means of the two peaks relative to their widths is $D = 4.71 \pm 0.78$. The parametric bootstrap probability of drawing such a value of D randomly from a unimodal distribution is 3.6%. The probability of drawing the measured kurtosis is 0.4%. As such, all three statistics clearly indicate that the observed BSS color distribution in the UV-CMD is bimodal. The GMM code also provides the user with the probability distribution of each element to belong to a given peak. We find that 27 and 15 stars have a probability $>98\%$ to belong to the bluest and reddest peak, respectively. Their location in the CMD is shown in Figure 6. The two stars shown as black dots in the figure have a probability of 96% (36%) and 69% (31%) to belong to the bluest (reddest) sequence. We also used the Dip test of unimodality (Hartigan & Hartigan 1985) to further investigate the significance of the deviation from unimodality of the BSS color distribution shown in Figure 5. The Dip test has the benefit of being insensitive to the assumption of Gaussianity. We found that the observed BSS color distribution has 98.5% probability to deviate from a unimodal distribution. The tests described above hence indicate that the bimodality of the BSS sequence that we have found in the UV-CMD of M15 is a statistically solid result.

In order to further prove the presence of the observed bimodality in the BSS color distribution, we retrieved a number of high resolution images of the core of M15 obtained with the *HST*/WFC3 (GO-13297; PI: Piotto). These images, obtained using the F275W and F336W filters were already used in Raso et al. (2017) to investigate the dynamical age of the cluster through the study of the BSS’ radial distribution (see also Lanzoni et al. 2016). We stress here that the plate scale of

$\sim 0''.04$ offered by the WFC3 did not allow the authors to firmly detect the double BSS sequence in the core of the cluster as reported in this work. Interestingly enough, hints for the presence of a double BSS sequence are visible in the CMD of M15 shown in Figure 22 of Piotto et al. (2015).

We used the photometric catalog obtained by Raso et al. (2017) to resolve the BSS in a region outside the area covered by our HRC data out to a radius $r = 80''$. Moreover, we used several hundreds of stars in common between the WFC3 and our HRC catalog to accurately register the position of the stars in the HRC catalog to the WFC3 position. We then used ALLFRAME (Stetson 1994) to obtain accurate PSF fitting photometry of the F275W and F336W images of the WFC3 using as input catalog of stellar centroids the coordinates of HRC stars registered on the WFC3 coordinate system.

We show on Figure 7 the CMDs obtained with the two data sets. Clearly the separation of the BSS into a blue and red sequences according to the selection done in the HRC plane, holds also in the CMD obtained with the WFC3.

3.2. Variable BSS

Dieball et al. (2007) used the HRC data set to identify the variable stars in the core of M15 (see their Table 2). We have used their catalog to identify possible variable among the BSS population. We have found seven variables among our BSS populations, namely, V20, V22, V33, V37, V39, V38, and V41 (nomenclature from Table 2 of Dieball et al. 2007). The location of these variables in the CMD is shown with open symbols in Figure 6. Two variables (V22 and V33; open pentagons) are classified as SX-Ph, two are classified as cataclysmic variable (CV) candidates (V39 and V41; open circles), two are unclassified variables observed in the CMD region of BSSs (V37 and V38; open triangles), and V20 is classified as a candidate B-HB star (open square). The variables V37, V38, V39, and V41 show flickering, i.e., irregular and small (few tenths of a magnitude) variations on short timescales. For this reason, Dieball et al. (2007) identify them as candidate CVs. While V37 and V38 are indeed located along the BSS sequence also in the CMD shown by Dieball et al. (2007), the authors speculate that V39 and V41 might be early CVs. Our UV-CMD convincingly shows that these stars are all BSSs. Additional observations are needed to firmly assess the nature of these variables, primarily to clarify if they are binary systems or single stars. Indeed a few W Uma Variables (which are contact binaries) have been found along both the BSS sequences in M30 (Ferraro et al. 2009) and NGC 362 (Dalessandro et al. 2013). Using dedicated theoretical models, Jiang et al. (2017) found that the contribution of the MT-BSSs to the blue or red sequence strongly depends on the contribution of the donor to the total luminosity of the unresolved binary system. Hence our observations further support the possibility that both collisional and MT-BSSs can populate the blue sequence.

3.3. A Collisional Sequence

We used a set of tracks and isochrones extracted from the collisional model library of Sills et al. (2009) to evaluate whether the location of the blue BSS sequence in M15 is in agreement with the locus predicted by BSS collisional models (as previously found in M30 and in NGC 362). While the details of the model are described in Sills et al. (2009), we list

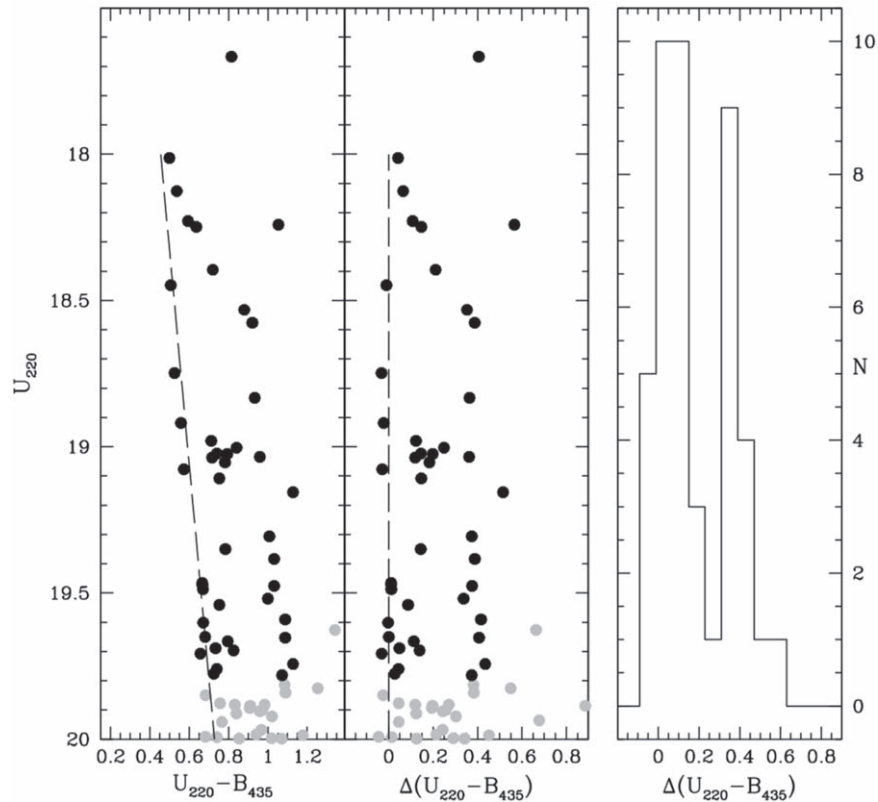


Figure 5. Left panel: portion of the CMD zoomed on the BSS region. All the BSSs used in this study (which are brighter than $U_{220} < 19.8$) are marked as black circles. The dashed line shows a fit to the bluest stars of the blue-BSS population. The line is used as a reference to calculate the distribution in $U_{220}-B_{435}$ color of the BSS population. Central panel: rectification of the CMD, showing the color distance $\Delta(U_{220}-B_{435})$ of the surveyed stars from the mean ridge line of the blue-BSS population (dashed line, the same as in the left panel). Right panel: histogram of the BSS color distances from the mean ridge line of the blue population.

shortly here the main ingredients: (1) BSSs are formed by direct collisions between two unrelated main-sequence stars (a set of 16 cases are investigated and involving the collisions of 0.4, 0.6, and 0.8 M_{\odot} stars). (2) Evolutionary tracks have been calculated by using the Yale Rotational Evolutionary Code (YREC, Guenther et al. 1992). (3) Collisional products are generated by using the code “*Make Me A Star*” (Lombardi et al. 2002) that uses the YREC results to calculate (via the so-called “*sort by entropy*” method) the structure and chemical profile of the collision products. (4) Collisions are assumed to occur with a periastron separation of 0.5 times the sum of the radii of the two stars. (5) Any rotation of the collision product is neglected. (6) Finally, the recipe outlined in Sills et al. (1997) has been adopted to evolve the collision products from the end of the collision to the main sequence: in particular, the evolution is stopped when the energy generation due to hydrogen burning was larger than that due to gravitational contraction, which corresponds to the zero age main sequence for a normal pre-main-sequence evolutionary track.

We have colored the tracks and isochrones in the U_{220} and B_{435} photometric bands by convolving a grid of suitable Kurucz (1993) stellar spectra of appropriate metallicity ($[\text{Fe}/\text{H}] \sim -2.4$ Harris 1996, 2010 ed.) with the transmission curves of the used ACS/HRC filters. Thus, for each given stellar temperature and gravity, both the color and the bolometric corrections in the Vegamag system have been computed.

A 2 Gyr old collisional isochrone thus obtained is shown in Figure 6 (gray thick line): a distance modulus $(m-M)_0 = 15.14$ and a color excess $E(B-V) = 0.08$ (Harris 1996, 2010 ed.) have been adopted. As can be seen, the 2 Gyr isochrone well

reproduces the brightest portion of the blue sequence (with $U_{220} < 19.2$). To better illustrate the expected post-MS evolutionary path of collisional BSS we also plotted the track (dashed line) of a $0.6 + 0.6M_{\odot}$ collisional product whose TO point occurs at 2 Gyr. As a sanity check we also plotted a canonical single star 12 Gyr old isochrone of appropriate metallicity (black long-dashed line). As can be seen, it nicely reproduces the single star MS-TO of the cluster, thus demonstrating that the transformation and the adopted choice of distance modulus and reddening are appropriate. The impressive agreement of the 2 Gyr collisional isochrone with the brightest portion of the blue sequence strongly supports the hypothesis that these BSSs have been simultaneously formed by an event that, about 2 Gyr ago, led to a significant increase of the stellar interaction rate. On the other hand, the red-BSS sequence cannot be reproduced by collisional models by any of the available collisional models, regardless of the age. All the features revealed by our analysis so far nicely resemble what was found in the study of the BSS populations in M30 and NGC 362. Still, the BSSs in M15 show an additional intriguing feature.

3.4. An Additional Intriguing Feature

As can be seen from Figure 6, a clump of seven stars (approximately at $U_{220} = 19$) together with a few sparse stars at lower luminosity, can be distinguished in the region of the CMD between the blue and red BSS sequences. As explained in Section 2, we manually checked the accuracy of the PSF fitting solution for each of these stars. Moreover, the visual inspection of their location on the ACS/HR images indicates

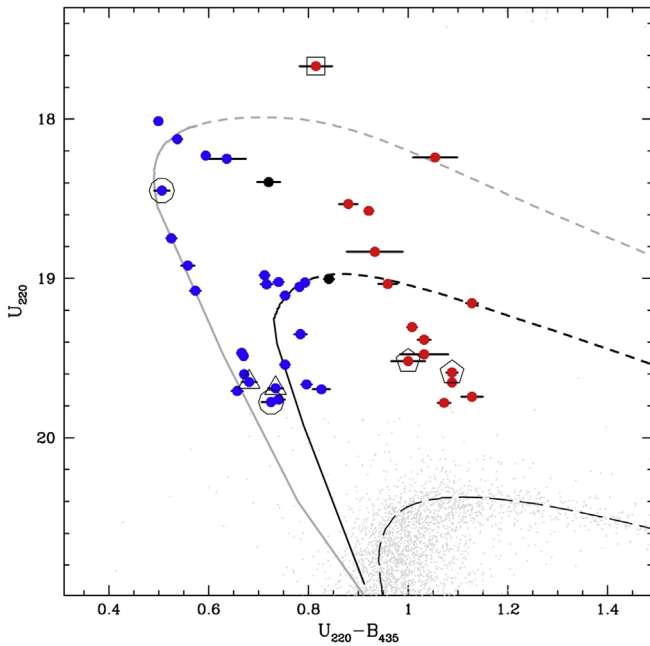


Figure 6. UV-CMD zoomed on the BSS population. The stars belonging to the blue-BSS and red-BSS sequences are shown as blue and red circles, respectively. Each BSS is assigned to a given sequence according to a statistical test based on the Gaussian mixture modeling (GMM) algorithm presented in Muratov & Gnedin (2010). The two stars shown as black circles have a probability of 96% (36%) and 69% (31%) to belong to the blue (red) sequence. Variable BSSs are highlighted with open symbols (see the text). Two collisional isochrones, of 2 Gyr (thick gray line) and 5.5 Gyr (thick black line), are superimposed to the observed CMD. The evolutionary tracks of a $0.6 + 0.6M_{\odot}$ and a $0.6 + 0.4M_{\odot}$ collision product are also plotted (gray and black dashed lines, respectively). For the sake of comparison, we also mark the 12 Gyr old isochrone for normal (single) stars (black long-dashed line).

that they are not contaminated by bright neighbors. We also carefully analyzed the shape of the brightness profile of each star and the corresponding parameters characterizing their PSF: indeed this analysis fully confirms that they are not blends, but well-measured single stars.

Although we are dealing with a small number of stars (and the statistical significance is therefore unavoidably low), such a clump of BSSs between the two sequences has never been observed before, neither in M30 nor in NGC 362, where the overall population numbers are similar, but this region of the CMD is essentially empty. Hence, the question raised is “What is the origin of these objects?” Following the scenario suggested by Ferraro et al. (2009), stars within the gap should be evolved (post-MS) BSSs that, because of the natural stellar evolution aging process, are leaving the MS stage. However, for being as clumped as observed, these stars should be all evolving at the same rate and have been caught in the same evolutionary stage. This seems to be quite implausible, especially because the post-MS evolutionary timescale is rapid. Instead the comparison with a 5.5 Gyr old collisional isochrone (black thick line in Figure 6) shows an impressive match: the CMD location of the clump is nicely reproduced by the TO point of this model. Such a nice correspondence suggests that the observed clump is made of collisional BSSs with an age of 5.5 Gyr that are currently reaching the main-sequence TO evolutionary stage. By definition, the TO is the phase during which a star is leaving the MS and moves to the SGB stage, keeping roughly the same brightness (i.e., magnitude) while becoming colder (redder). Hence it is not surprising to have an

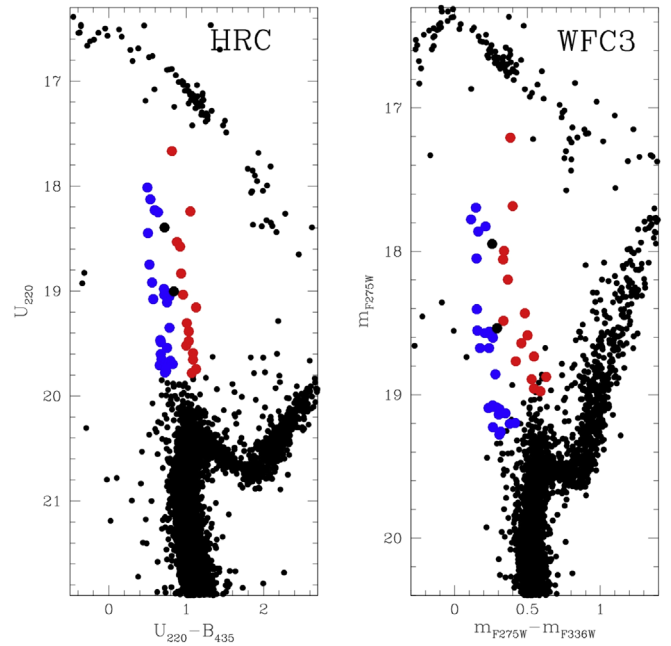


Figure 7. UV-CMD obtained in the same area with the HRC (left panel) and WFC3 (right panel; see the text for details) zoomed on the BSS population. The stars belonging to the blue-BSS and red-BSS sequences are shown as blue and red circles, respectively.

over-density at this position in the CMD. In the same plot we also show the corresponding collisional track to illustrate the post-MS evolution of the collisional BSS currently located at the MS-TO point (in this case the BSS originated from the collision of two stars of $0.4M_{\odot}$ and $0.6M_{\odot}$, respectively; black dashed line).

3.5. BSS Radial Distribution

We plot in Figure 8 the cumulative radial distribution of the BSSs belonging to the blue and the red sequences (blue/solid and red/dashed lines, respectively). As explained in Section 3 we used a photometric catalog obtained with the WFC3 to extend the BSS radial distribution out to a radius $r = 80''$. As expected the BSSs are significantly more segregated than normal MS stars (black dotted line), regardless of which population they belong to. As also found in the GCs M30 and NGC 362, the red sequence appears to be more segregated than the blue one. As discussed in Dalessandro et al. (2013), this difference may offer further support for a difference formation history of the two populations. In short the blue-BSSs, born as a consequence of increase of collisions during the CC, have been also kicked outward during collisional interactions while most of the red BSSs sank into the cluster center because of dynamical friction and did not suffer significant hardening during the CC phase. The Kolmogorov–Smirnov test applied to the cumulative radial distributions suggests that the blue and the red sequences do not belong to the same parental population at an only 1.5σ level of significance. We stress here that this is likely due to the small number statistics of the two populations. The inset in the figure shows the cumulative radial distributions of the BSS along the two branches of the blue sequence. The BSSs populating the youngest collisional sequence (dashed line) appear more centrally segregated than the oldest ones (solid line). Although the two subpopulations

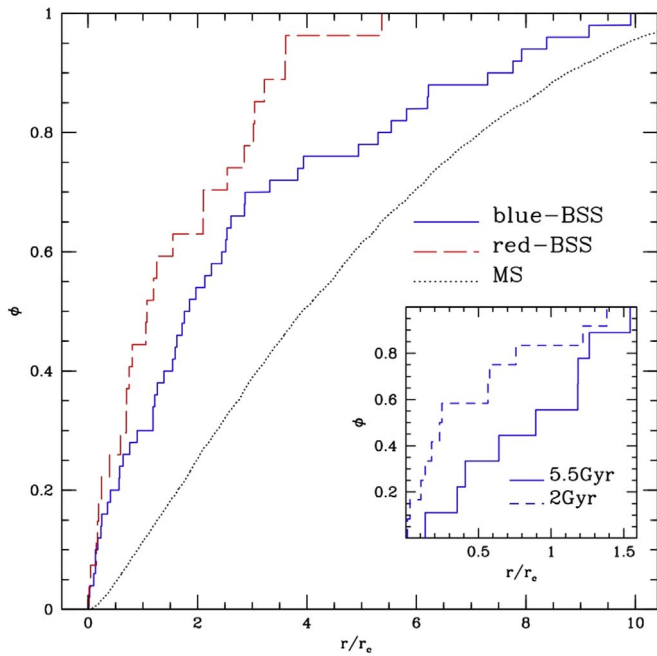


Figure 8. Cumulative radial distributions of the BSSs belonging to the blue and the red populations (blue/solid and red/dashed lines, respectively) as a function of the core radius $r_c = 0.14$ (Harris 1996, 2010 ed.). The cumulative radial distribution of MS stars is also shown for comparison (black dotted line). The inset shows the cumulative radial distributions of the BSSs observed along the two branches of the blue sequence: those with CMD position well reproduced by a 2 Gyr collisional isochrone (dashed line), and those corresponding to the 5.5 Gyr collisional isochrone (solid line).

include only a few stars each, the statistical significance of such a difference turns out to be of the order of $1.5\text{--}2\sigma$.

4. Discussion

As previously discussed, the presence of a double sequence of BSSs is a feature that was already discovered using optical photometry in the core of the GCs M30, NGC 362, and NGC 1261.

Ferraro et al. (2009) first suggested that the presence of two parallel sequences of BSSs in the CMD can be explained by the coexistence of BSSs formed through two different formation mechanisms: the blue sequence would be originated mainly by collisions, while the red sequence derives from a continuous MT formation process (see also Dalessandro et al. 2013 and Xin et al. 2015). This scenario has been recently confirmed by a set of simulations that follow the evolution of a sample of BSSs generated by stellar collisions (Portegies Zwart 2019). This work concludes that the blue BSS chain detected in M30 can be indeed populated by collisional BSSs originated (over a short timescale) during the CC phase, thus finally proving that CC can be at the origin of a narrow sequence of nearly coeval Blue BSSs. Conversely, the photometric properties of BSSs generated by MT processes in binary systems are currently controversial, since different models seem to predict different MT-BSS distributions in the CMD (see the case of the models computed for M30 by Xin et al. 2015 and Jiang et al. 2017). In addition, even admitting that MT-BSSs may extend to the blue side of the BSS distribution in the CMD, it is unclear if and how MT processes alone could produce two split sequences, distinctly separated by a gap. Since at the moment there are no consolidated and specific models of BSS formation through

MT for M15, here we focus on the blue sequence that, in this cluster, shows the most intriguing features. The nice match between the blue-BSS locus in the CMD and the collisional isochrones of Sills et al. (2009) strongly suggests that this population could be produced during a dynamical phase characterized by a high rate of stellar collisions. Moreover, in striking similarity with previous cases, the fact that the blue BSSs in the CMD appear so nicely aligned along the collisional isochrone MS suggest that they were mostly generated over a relatively short timescale (within a few 10^8 Myr), thus representing an essentially coeval population. The superb photometric quality of the data presented here allows us to make a significant step forward in our understanding of this phenomenon. It is particularly interesting that in M15 we are able to distinguish possible substructures along the collisional sequence. The two branches discovered here, in fact, can be interpreted as two generations of collisional BSSs, possibly formed during two distinct episodes of intense dynamical interactions. Since M15 is a core-collapsed cluster (see, e.g., Djorgovski & King 1986; Chernoff & Djorgovski 1989; Murphy et al. 2011), such episodes can quite possibly be associated with the cluster’s structural properties at the time of CC and during the dynamical stages following this event. In particular, after reaching a phase of deep CC, clusters may undergo a series of core oscillations driven by gravothermal effects and binary activity (see, e.g., Bettwieser & Sugimoto 1984; Cohn et al. 1989; Heggie & Ramamani 1989; Takahashi & Inagaki 1991; Makino 1996; McMillan & Engle 1996; Heggie & Giersz 2009; Breen & Heggie 2012), characterized by several distinct phases of high central density followed by more extended stages during which a cluster rebounds toward a structure with lower density and a more extended core. Interestingly, Grabhorn et al. (1992) performed detailed numerical simulations, including post-collapse core oscillations, able to reproduce the contemporary presence of a large core radius (13 pc) and a cusp in the stellar density profile of M15 as revealed by early *HST* observations from Lauer et al. (1991).

The two branches of blue-BSS sequence might be the outcome of the increased rate of collisions during two separate density peaks in the post-CC evolution. In order to provide a general illustration of the possible history of the cluster’s structural evolution leading to the observed blue-BSS branches, we show in Figure 9 the time evolution of the 1% Lagrangian radius (top panel) and of the collisional parameter (bottom panel) as obtained from a Monte Carlo simulation run with the MOCCA code (Giersz et al. 2008). The collisional parameter $\Gamma = \rho_c^2 r_c^3 / \sigma_c$ (where ρ_c , r_c , and σ_c are, respectively, the cluster’s central density, core radius and central velocity dispersion) is often used to provide a general quantitative measure of the rate of stellar collisions in a GC (see, e.g., Davies et al. 2004). The simulation presented here starts from the initial structural properties discussed in Hong et al. (2017), with 7×10^5 stars, no primordial binaries and an initial half-mass-radius equal to 2 pc. We point out that the adopted simulation and initial conditions do not consist of a detailed model of M15, but just illustrate the general evolution of a cluster reaching a phase of deep CC and undergoing core oscillations in the post-CC phase.

As shown in Figure 9, the initial deep CC (clearly distinguishable at $t/t_{CC} = 1$) leads to the largest increase in the value of Γ , and is followed by several distinct recollapse

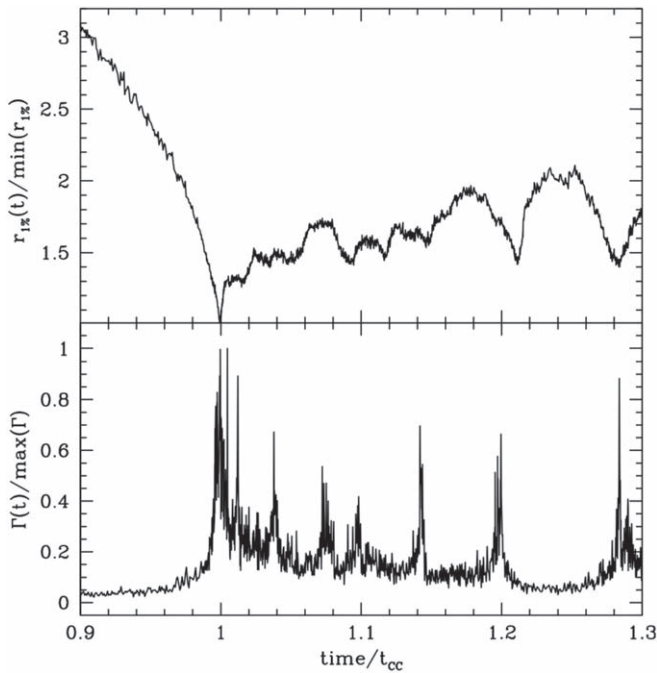


Figure 9. Time evolution of the 1% Lagrangian radius ($r_{1\%}$, top panel) and of the collisional parameter (Γ , bottom panel) as measured in a Monte Carlo simulation of GC evolution (see the text). Time is normalized to the core-collapse time (t_{cc}), while $r_{1\%}$ and Γ are normalized, respectively, to their minimum and maximum values (note that for the simulation shown here $t_{cc} \simeq 11.9$ Gyr and the time interval shown in the plots corresponds to about 4.8 Gyr).

episodes leading to secondary peaks of different magnitudes in the collisional parameter (all smaller than the initial peak associated with the first collapse). The time interval between the various peaks in Γ is not constant and, for the simulation presented here, typically ranges from approximately a few hundred million years to approximately a billion years. Although we strongly emphasize that models exploring in detail the actual BSS production in each collapse episode, along with a proper characterization of the collision events and the number of stars involved, are necessary (see, e.g., Banerjee 2016), here we suggest that the BSS populations observed along the two branches of the blue-BSS sequence in M15 might be produced during the initial deep collapse and during one of the subsequent collapse events, one sufficiently deep to trigger a significant number of collisions and BSS production.

Note that a similar argument was used by Simunovic et al. (2014) to explain the presence of a few bright BSSs located on the blue side of the blue-BSS sequence in NGC 1261. However, this cluster does not show the typical signature of CC, and for this reason the authors suggest that it is currently experiencing a bounce state.

5. Summary

We used an exceptional set of high resolution ACS/HRC images to explore the stellar population in the collapsed core of the GC M15. A high-precision UV-CMD has revealed the existence of two clear-cut sequences of BSSs. In particular, we discovered that the blue sequence, which should be populated by collisional BSSs in the interpretative scenario proposed by Ferraro et al. (2009), consists of two distinct branches nicely

reproduced by collisional isochrones of 2 and 5.5 Gyr. We interpret these features as the observational signature of two major collisional episodes suffered by M15, likely connected to the collapse of its core: the first one (possibly tracing the beginning of the CC process) occurred approximately 5.5 Gyr ago, while the most recent one dates back 2 Gyr ago. This result reinforces the evidence of the strong link existing between the observational properties of the BSS population in a cluster and its dynamical history (Ferraro et al. 2009, 2012, 2018), and it opens a window to gather a deeper understanding of CC and post-CC evolution, as well as the link between these dynamical phases and a cluster's stellar content.

We are grateful to the anonymous referee for precious comments and suggestions. We are grateful to Jay Anderson and Nathalie C. Haurberg for providing us with the processed ACS/HRC images. This research used the facilities of the Canadian Astronomy Data Centre operated by the National Research Council of Canada with the support of the Canadian Space Agency. F.R.F. is grateful to the Indiana University for the hospitality during his stay in Bloomington, when part of this work was performed.

ORCID iDs

G. Beccari <https://orcid.org/0000-0002-3865-9906>
 F. R. Ferraro <https://orcid.org/0000-0002-2165-8528>
 E. Dalessandro <https://orcid.org/0000-0003-4237-4601>
 B. Lanzoni <https://orcid.org/0000-0001-5613-4938>
 S. Raso <https://orcid.org/0000-0003-4592-1236>
 L. Origlia <https://orcid.org/0000-0002-6040-5849>
 A. Sills <https://orcid.org/0000-0003-3551-5090>
 A. Dieball <https://orcid.org/0000-0002-3704-7190>

References

- Alessandrini, E., Lanzoni, B., Mocchi, Ferraro, F. R., & Vesperini, E. 2016, *ApJ*, **833**, 252
 Banerjee, S. 2016, *MmSAI*, **87**, 497
 Bettwieser, E., & Sugimoto, D. 1984, *MNRAS*, **208**, 493
 Breen, P. G., & Heggie, D. C. 2012, *MNRAS*, **425**, 2493
 Buonanno, R., Buscema, G., Corsi, C. E., Ferraro, I., & Iannicola, G. 1983, *A&A*, **126**, 278
 Chernoff, D. F., & Djorgovski, S. 1989, *ApJ*, **339**, 904
 Cohn, H., Hut, P., & Wise, M. 1989, *ApJ*, **342**, 814
 Dalessandro, E., Ferraro, F. R., Bastian, N., et al. 2019a, *A&A*, **621**, A45
 Dalessandro, E., Ferraro, F. R., Bastian, N., et al. 2019b, *RNAAS*, **3**, 38
 Dalessandro, E., Ferraro, F. R., Massari, D., et al. 2013, *ApJ*, **778**, 135
 Davies, M. B., Piotto, G., & de Angeli, F. 2004, *MNRAS*, **349**, 129
 Dieball, A., Knigge, C., Zurek, D. R., et al. 2007, *ApJ*, **670**, 379
 Djorgovski, S., & King, I. R. 1986, *ApJL*, **305**, L61
 Ferraro, F. R., Beccari, G., Dalessandro, E., et al. 2009, *Natur*, **462**, 1028
 Ferraro, F. R., Clementini, G., Fusi Pecci, F., & Buonanno, R. 1991, *MNRAS*, **252**, 357
 Ferraro, F. R., Clementini, G., Fusi Pecci, F., Sortino, R., & Buonanno, R. 1992, *MNRAS*, **256**, 391
 Ferraro, F. R., Fusi Pecci, F., & Bellazzini, M. 1995, *A&A*, **294**, 80
 Ferraro, F. R., Lanzoni, B., Dalessandro, E., et al. 2012, *Natur*, **492**, 393
 Ferraro, F. R., Lanzoni, B., Raso, S., et al. 2018, *ApJ*, **860**, 36
 Ferraro, F. R., Paltrinieri, B., Fusi Pecci, F., et al. 1997, *A&A*, **324**, 915
 Ferraro, F. R., Pecci, F. F., Cacciari, C., et al. 1993, *AJ*, **106**, 2324
 Ferraro, F. R., Sabbi, E., Gratton, R., et al. 2006, *ApJL*, **647**, L53
 Ferraro, F. R., Sills, A., Rood, R. T., Paltrinieri, B., & Buonanno, R. 2003, *ApJ*, **588**, 464
 Fiorentino, G., Lanzoni, B., Dalessandro, E., et al. 2014, *ApJ*, **783**, 34
 Giersz, M., Heggie, D. C., & Hurley, J. R. 2008, *MNRAS*, **388**, 429
 Gilliland, R. L., Bono, G., Edmonds, P. D., et al. 1998, *ApJ*, **507**, 818

- Grabhorn, R. P., Cohn, H. N., Lugger, P. M., & Murphy, B. W. 1992, *ApJ*, **392**, 86
- Guenther, D. B., Demarque, P., Kim, Y.-C., & Pinsonneault, M. H. 1992, *ApJ*, **387**, 372
- Harris, W. E. 2010, arXiv:1012.3224
- Harris, W. E. 1996, *AJ*, **112**, 1487
- Hartigan, J. A., & Hartigan, P. M. 1985, *AnSta*, **13**, 70
- Haurberg, N. C., Lubell, G. M. G., Cohn, H. N., et al. 2010, *ApJ*, **722**, 158
- Heggie, D. C., & Giersz, M. 2009, *MNRAS*, **397**, L46
- Heggie, D. C., & Ramamani, N. 1989, *MNRAS*, **237**, 757
- Hills, J. G., & Day, C. A. 1976, *ApJL*, **17**, 87
- Hong, J., Vesperini, E., Belloni, D., & Giersz, M. 2017, *MNRAS*, **464**, 2511
- Jiang, D., Chen, X., Li, L., & Han, Z. 2017, *ApJ*, **849**, 100
- King, I. R. 1966, *AJ*, **71**, 64
- Kirsten, F., & Vlemmings, W. H. T. 2012, *A&A*, **542**, A44
- Knigge, C., Leigh, N., & Sills, A. 2009, *Natur*, **457**, 288
- Kurucz, R. L. 1993, in IAU Coll. 138: Peculiar versus Normal Phenomena in A-type and Related Stars (San Francisco, CA: ASP), 87
- Lanzoni, B., Ferraro, F. R., Alessandrini, E., et al. 2016, *ApJL*, **833**, L29
- Lanzoni, B., Sanna, N., Ferraro, F. R., et al. 2007, *ApJ*, **663**, 1040
- Lauer, T. R., Holtzman, J. A., Faber, S. M., et al. 1991, *ApJL*, **369**, L45
- Leigh, N., Knigge, C., Sills, A., et al. 2013, *MNRAS*, **428**, 897
- Leigh, N., Sills, A., & Knigge, C. 2007, *ApJ*, **661**, 210
- Leigh, N. W. C., Panurach, T., Simunovic, M., et al. 2019, *MNRAS*, **482**, 231
- Li, C., Deng, L., de Grijs, R., Jiang, D., & Xin, Y. 2018a, *ApJ*, **856**, 25
- Li, C., Deng, L., de Grijs, R., Jiang, D., & Xin, Y. 2018b, *RNAAS*, **2**, 215
- Lombardi, J. C., Jr., Warren, J. S., Rasio, F. A., Sills, A., & Warren, A. R. 2002, *ApJ*, **568**, 939
- Makino, J. 1996, *ApJ*, **471**, 796
- McCrea, W. H. 1964, *MNRAS*, **128**, 147
- McMillan, S. L. W., & Engle, K. A. 1996, in IAU Symp. 174, Dynamical Evolution of Star Clusters: Confrontation of Theory and Observations (Dordrecht: Kluwer), 379
- Monelli, M., Testa, V., Bono, G., et al. 2015, *ApJ*, **812**, 25
- Muratov, A. L., & Gnedin, O. Y. 2010, *ApJ*, **718**, 1266
- Murphy, B. W., Cohn, H. N., & Lugger, P. M. 2011, *ApJ*, **732**, 67
- Piotto, G., De Angeli, F., King, I. R., et al. 2004, *ApJL*, **604**, L109
- Piotto, G., Milone, A. P., Bedin, L. R., et al. 2015, *AJ*, **149**, 91
- Portegies Zwart, S. 2019, *A&A*, **621**, L10
- Raso, S., Ferraro, F. R., Dalessandro, E., et al. 2017, *ApJ*, **839**, 64
- Sandage, A. R. 1953, *AJ*, **58**, 61
- Shara, M. M., Saffer, R. A., & Livio, M. 1997, *ApJL*, **489**, L59
- Sills, A., Karakas, A., & Lattanzio, J. 2009, *ApJ*, **692**, 1411
- Sills, A., Lombardi, J. C., Jr., Baily, C. D., et al. 1997, *ApJ*, **487**, 290
- Simunovic, M., & Puzia, T. H. 2016, *MNRAS*, **462**, 3401
- Simunovic, M., Puzia, T. H., & Sills, A. 2014, *ApJL*, **795**, L10
- Sirianni, M., Jee, M. J., Benítez, N., et al. 2005, *PASP*, **117**, 1049
- Sosin, C., & King, I. R. 1997, *AJ*, **113**, 1328
- Stetson, P. B. 1987, *PASP*, **99**, 191
- Stetson, P. B. 1994, *PASP*, **106**, 250
- Takahashi, K., & Inagaki, S. 1991, *PASJ*, **43**, 589
- Xin, Y., Ferraro, F. R., Lu, P., et al. 2015, *ApJ*, **801**, 67