



<b>Publication Year</b>	2019
<b>Acceptance in OA @INAF</b>	2021-02-25T11:06:33Z
<b>Title</b>	On the origin of central abundance drops in the intracluster medium of galaxy groups and clusters
<b>Authors</b>	LIU, ANG; Zhai, Meng; TOZZI, Paolo
<b>DOI</b>	10.1093/mnras/stz533
<b>Handle</b>	<a href="http://hdl.handle.net/20.500.12386/30612">http://hdl.handle.net/20.500.12386/30612</a>
<b>Journal</b>	MONTHLY NOTICES OF THE ROYAL ASTRONOMICAL SOCIETY
<b>Number</b>	485

# On the origin of central abundance drops in the intracluster medium of galaxy groups and clusters

Ang Liu<sup>1</sup>,<sup>2,3</sup> Meng Zhai<sup>4</sup> and Paolo Tozzi<sup>1</sup>

<sup>1</sup>INAF Osservatorio Astrofisico di Arcetri, Largo E. Fermi, I-50122 Firenze, Italy

<sup>2</sup>Department of Physics, Sapienza University of Rome, I-00185 Rome, Italy

<sup>3</sup>Department of Physics, University of Rome Tor Vergata, I-00133, Rome, Italy

<sup>4</sup>Key Laboratory of Optical Astronomy, National Astronomical Observatories, Chinese Academy of Sciences, Beijing 100012, China

Accepted 2019 February 19. Received 2019 February 19; in original form 2018 November 14

## ABSTRACT

A central drop of ICM Fe abundance has been observed in several cool-core clusters. It has been proposed that this abundance drop may be due, at least partially, to the depletion of Fe into dust grains in the central, high-density regions. According to this scenario, noble gas elements such as Ar and Ne are not expected to be depleted into dust, and therefore should not show any drop, but follow the general increase of metal abundance towards the centre. In this work, we test this scenario by measuring with *Chandra* data the radial profiles of Ar and Ne in a sample of 12 groups and clusters where a central drop in Fe abundance has been detected. We confirm the presence of the Fe drop in 10 out of 12 clusters at more than  $2\sigma$  c.l., and 4 Ar drops with similar significance. We also find 4 Ne drops, with the caveat that Ne abundance measurement from CCD spectra suffers from systematics not completely under control. Our results are consistent with an abundance drop common to the three elements. When comparing the profiles, we find that, on average, the abundance profiles of Ar and Ne are significantly higher than Fe and steeper towards the centre, while they all gradually become consistent with solar composition at  $r \geq 0.05r_{500}$ . We also check that Si and S profiles are mostly consistent with Fe. This result confirms a scenario in which some fraction of Fe is depleted into dust grains in the inner regions, although the global central abundance drop is mostly due to mechanical processes, like the displacement of metal-rich ICM from the very centre to larger radii by AGN-driven feedback. Finally, we report the detection of an Fe drop in the cluster MACSJ1423.8+2404 at  $z = 0.543$ , showing that this feature appears early on in cool-core clusters.

**Key words:** galaxies: clusters: intracluster medium – X-rays: galaxies: clusters.

## 1 INTRODUCTION

X-ray observations of galaxy groups and clusters have shown that the intracluster medium (ICM) in the core can be so dense that the central cooling time is significantly shorter than the cluster lifetime, particularly in the innermost few tens of kpc, as measured in high-resolution *Chandra* data (see Cavagnolo et al. 2009). If the cooling proceeded isobarically, the ICM would be doomed to cool rapidly, forming a cooling flow with a mass deposition rate  $\dot{M}$  that can reach  $100\text{--}1000 M_{\odot} \text{ yr}^{-1}$ , as directly derived from the total X-ray luminosity of the core region (see Fabian 1994). Among the unavoidable consequences, one would expect a large amount of cold gas falling on to the central galaxy (called the brightest cluster galaxy, from now on BCG) and a star formation rate (SFR)

comparable to the predicted  $\dot{M}$ . However, the observed SFRs in BCGs are observed to be modest, of the order of few  $M_{\odot} \text{ yr}^{-1}$  (except few relevant cases), consistent with being entirely fueled by the stellar mass loss from the BCG itself (Voit & Donahue 2011). In addition, the amount of cold gas has been known since long time to be much lower than that expected from the high cooling-flow rates, thanks to the measurements of CO emission from molecular gas and other observables (see McNamara & O’Connell 1989; Edge 2001). The final blow to the isobaric cooling-flow paradigm was provided to the observations with the reflection grating spectrometer (RGS) onboard *XMM-Newton*, whose high-resolution spectra of cluster cores showed the absence of the metal emission lines associated to gas cooler than  $1/3$  of the virial temperature (Peterson et al. 2001; Peterson & Fabian 2006). This finding, in turn, implies that the bulk of the gas in the core must be prevented from cooling by some heating mechanisms, leaving only a minority of the ICM, if any, available for complete cooling. Eventually, the cooling-flow model

\* E-mail: liuang@arcetri.astro.it (AL); mzhai@nao.cas.cn (MZ)

has been superseded by the cool-core picture (Molendi & Pizzolato 2001).

Many candidates have been proposed as contributors of the heating process. Among them: cosmic rays (Böhringer & Morfill 1988), star formation and supernovae (Domainko et al. 2004; Li & Bryan 2012), dissipation of gas turbulence induced either by buoyancy of bubbles inflated by the central active galactic nucleus (AGN) or by minor and major mergers (see Kravtsov, Nagai & Vikhlinin 2005; Heinz et al. 2006; McNamara & Nulsen 2007; Fabian 2012; Gaspari, Brighenti & Ruszkowski 2013), or a combination of mixing and heating associated to vortices formed during the inflation of the bubbles (Hillel & Soker 2016). The large amount of mechanical energy stored in the bubbles carved in the ICM by radio jets makes AGN feedback the strongest candidate as the main heating source. Thanks to the unprecedented angular resolution of *Chandra*, the detailed X-ray image of the Perseus cluster presented for the first time a clear view of the complex structures arising in the ICM due to AGN feedback, such as cavities and ripples (Fabian et al. 2003, 2006). Recently, the observations of the Perseus cluster with *Hitomi* provided a unique measurement of the ICM dynamics associated to the feedback process (Hitomi Collaboration et al. 2016). This increasing amount of evidence clearly shows that the dynamics and thermodynamics of the ICM are strongly affected by AGN feedback, although the discussion on the heating process is still open, and we are far from having a coherent picture of the cycle of baryons in cool cores.

An unambiguous signature of these processes is left in the metal abundance distribution and its evolution, a topic which rapidly gained attention from the scientific community since the beginning of the era of *Chandra* and *XMM-Newton*. Evidence of chemodynamical impact of AGN feedback are now directly observed in the X-ray data (Kirkpatrick et al. 2009; Simionescu et al. 2009; O’Sullivan et al. 2011), and, at the same time, supported by continuously improving hydrodynamical simulations (Roediger et al. 2007; Sijacki et al. 2007; Churazov, Ruszkowski & Schekochihin 2013). A striking example is provided by the observed enhancement of metals around the bubbles (Kirkpatrick, McNamara & Cavagnolo 2011), strongly suggesting that the inflation of the cavities uplifts the highly enriched ICM bringing it at larger radii. Further insights came from detailed studies of the metallicity peaks commonly observed at the centre of cool-core clusters at moderate and high redshift (De Grandi et al. 2004; McDonald et al. 2018). In particular, the measurement of the broadening of the distribution of metals across cosmic epochs in cool-core clusters provides further support to the nuclear activity as the main contributor of metal mixing in the ICM (De Grandi et al. 2014). Recently, in Liu et al. (2018) we showed that the width of the iron (Fe) peak increases by a factor of 3 from redshift  $z \sim 1$  to  $z \sim 0.05$ .

In this paper, we focus on an apparently minor property of the metal distribution in the ICM, which, instead, may provide a relevant missing link between the hot and cold phases of the baryons cycling in and around the BCGs. It consists in a small-scale (of the order of 10 kpc) decrement at the centre of the abundance peak in cool cores, a feature that we call *central abundance drop*, and that has long been known thanks to *Chandra* and *XMM-Newton* studies of single, low-redshift clusters (Johnstone et al. 2002; Sanders & Fabian 2002; Sanders & Fabian 2007; Million et al. 2010; Panagoulia, Fabian & Sanders 2013) and confirmed recently by more extensive studies (Panagoulia, Sanders & Fabian 2015; Mernier et al. 2017). This feature is better observed exploiting the high spatial resolution of the *Chandra* satellite in cool-core clusters, but has also been confirmed with *XMM-Newton* in low redshift clusters (Mernier et al. 2017).

In addition, the abundance drop has been observed both in Fe, which is the most prominent line-emitting element in X-ray spectra, and in other elements like sulphur (S) and silicon (Si) (Panagoulia et al. 2015; Mernier et al. 2017). The Fe abundance drop has been observed usually in association with cavities, and therefore it may be ascribed to the local effects of AGN feedback, effectively pushing the highly enriched gas from the innermost regions toward larger radii (Simionescu et al. 2009; Kirkpatrick et al. 2011). As a result, the measured abundance will decrease somehow at small radii and correspondingly increase at larger radii, at the point of inverting locally the abundance gradient on a spatial scale corresponding to the efficiency of the uplifting of the metal-enriched gas, and creating the abundance drop. Clearly, the uplifting of the innermost, mostly enriched gas implies a similar decrease for all the elements, also if the mechanism is not due to the inflation of bubbles from the ICM, but to other mechanical processes like core sloshing (Ghizzardi, De Grandi & Molendi 2014).

Other possible interpretations have been proposed, like contamination from a central X-ray emitting AGN in the ICM spectrum, or an underestimate of the helium content at small radii as a result of mass sedimentation (Ettori & Fabian 2006; Mernier et al. 2017). However, the former interpretation cannot explain abundance drops which are observed far from the AGN position, nor the second interpretation can justify why many cool-core clusters do not exhibit central abundance drop. Another possible effect is the non-negligible optical depth of some resonance line, that may result, in principle, in a decrease of the global ion abundance measured assuming an optically thin medium in the densest ICM regions. Resonance scattering has been now measured for the Helium-like iron emission line by *Hitomi* (Hitomi Collaboration et al. 2018), however, it appears to be relevant only in the analysis of high-resolution spectra, while it has a limited impact on the global metallicity measured from CCD spectra and it is not effective in removing the central dip (see Sanders & Fabian 2006; Gendron-Marsolais et al. 2017). See however Simionescu et al. (2019) for a more comprehensive discussion on the comparison of high-resolution spectra with those obtained from CCD data on the measurement of the abundance pattern in the ICM.

Finally, a relevant physical mechanism that may play a role here, is the depletion of Fe and several other metals (including Si and S) into dust grains present in the diffuse gas close to the BCG. This is supported by the detection of cold dust filaments in optical and infrared in clusters with central abundance drop (Panagoulia et al. 2013, 2015). Depletion of Fe and other reactive metals is expected if the enriched gas from star formation and stellar mass loss in the BCG remains cool and distinct from the hot surrounding ICM, due to the higher ambient pressure (Voit & Donahue 2011). Being trapped into dust filaments, a significant part of Fe is released into the ICM on a longer time-scale and displaced with respect to non-reactive elements, namely when the dust-rich gas is uplifted by nuclear activity into lower density and hotter regions (see discussion in Panagoulia et al. 2013). This dust-depletion mechanism can be tested by comparing the radial abundance profiles of Fe to that of noble gas elements that are not expected to be embedded into dust grains. The two noble elements that are potentially detectable in high-S/N spectra of clusters are neon (Ne) and argon (Ar). While the former is hard to measure because blended with the dominant emission from the Fe L-shell complex in CCD spectra, the latter can be firmly detected thanks to the Ar XVII and Ar XVIII emission lines which appear isolated in the range 3.0–3.3 keV for low- $z$  clusters. Therefore, in this paper we aim at exploiting the angular resolution of *Chandra* data to measure the spatially

**Table 1.** The sample of groups and clusters with a significant detection of central Fe abundance drop considered for this work. The exposure times are computed after data reduction. The values of  $r_{500}$  are taken from the cluster compilation in Pinto et al. (2015) and Liu et al. (2018). The central Fe abundance drop detection is obtained from the following references: P15: Panagoulia et al. (2015); M17: Mernier et al. (2017); SF02: Sanders & Fabian (2002); M10: Million et al. (2010); J02: Johnstone et al. (2002); L18: Liu et al. (2018).

Cluster name	$z$	$r_{500}$ (Mpc)	<i>Chandra</i> Obs ID	Exp. time (ks)	Reference
NGC 4636	0.0031	0.35	323, 324, 3926, 4415	203.5	P15, M17
NGC 5846	0.0057	0.36	7923	90.0	P15, M17
NGC 5813	0.0065	0.44	5907, 9517, 12951–3, 13246–7, 13253, 13255	635.3	P15, M17
NGC 5044	0.0093	0.56	798, 9399, 17195–6, 17653, 17654, 17666	417.7	P15, M17
Centaurus	0.0114	0.83	4954–5, 5310, 16223–5, 16534, 16607–10	666.3	SF02, P15, M17
A262	0.0161	0.74	2215, 7921	28.7	P15
A3581	0.0220	0.72	12884	83.9	M17
Ophiuchus	0.0280	1.22	16142–3, 16464, 16626–7, 16633–5, 16645, 3200	259.9	M10
A2199	0.0303	1.00	497–8, 10748, 10803–5	157.3	J02
2A0335	0.0349	1.05	919, 7939, 9792	102.5	P15, M17
A1991	0.0590	0.82	3193	38.1	P15
MACSJ1423.8+2404	0.5431	0.97	4195	38.9	L18

resolved abundance profiles of Ar, and possibly of Ne, in a sample of groups and clusters in which a central Fe abundance drop has been previously detected, and compare them to the profiles of Fe and other elements.

The paper is organized as follows. In Section 2, we describe the sample of clusters and groups with previous detection of central abundance drops, the data we use in this work, and our analysis strategy. In Section 3, we present the measured radial abundance profiles of Fe, Ar, Ne, Si, and S, and show how our results can be used to constrain the dust grain scenario. In Section 4, we discuss the reliability of our spectral analysis strategy. Our conclusions are summarized in Section 5. Throughout this paper, we adopt the 7-yr WMAP cosmology with  $\Omega_{\Lambda} = 0.73$ ,  $\Omega_{\text{m}} = 0.27$ , and  $H_0 = 70.4 \text{ km s}^{-1} \text{ Mpc}^{-1}$  (Komatsu et al. 2011). Quoted error bars correspond to a  $1\sigma$  confidence level, unless noted otherwise.

## 2 CLUSTER SAMPLE, DATA REDUCTION, AND ANALYSIS

### 2.1 Selection of the sample

Our main scientific goal is to find a signature of dust depletion in the ICM of galaxy groups and clusters, in terms of a selective decrement in the abundance of Fe, Si, and S with respect to noble elements in the central regions. Dust depletion into dust grains is expected to be efficient in high-density environments, where some of the enriched gas, particularly that associated to the stellar mass loss, remains cool and distinct from the hot ICM due to the high pressure. Therefore, to constrain the impact of dust depletion on the Fe distribution, we select a sample of cool-core clusters with a firm detection of a central Fe drop. Due to the high angular resolution needed for this study, we also require the use of *Chandra* data.

So far, the largest systematic investigation of abundance drop across the *Chandra* archive is provided by the work of Panagoulia et al. (2015), where eight groups and clusters are reported to have central abundance drop with high statistical significance (NGC 4696/Centaurus, NGC 5846, 2A0335+096, NGC 4636 Abell 1991, Abell 262, NGC 5813, NGC 5044). Detection of Fe drop in single objects are reported for Abell 2199 (Johnstone et al. 2002), Ophiuchus (Million et al. 2010), NGC 4696/Centaurus (Sanders & Fabian 2002; Panagoulia et al. 2013), and Perseus (Sanders & Fabian 2007). In addition, 14 objects have been shown to have

a decrease of the Fe abundance in their core on the basis of *XMM-Newton* data in Mernier et al. (2017). All of them have been observed also by *Chandra*, and six were already included among the clusters with significant drop in Panagoulia et al. (2015). Among the remaining eight, one is the Perseus clusters, while the remaining seven are M49, M86, Abell 189 (NGC 533), Fornax, HCG62, NGC 4325, and Abell 3581, with the last three also included in Panagoulia et al. (2015) among those with low-significance Fe drop.

To draw a final list of targets relevant for our study, we combine all these sources and perform a preliminary test on the detectability of the Ar line complex, by fitting the spectrum of each cluster in the innermost 20 kpc, then setting the Ar abundance  $Z_{\text{Ar}}$  to zero and checking whether the  $\Delta C_{\text{stat}} \geq 2.7$ . With this criterion, we select all the eight clusters with high-significance drop in Panagoulia et al. (2015), plus Abell 2199, Ophiuchus, and Abell 3581. We exclude the Perseus cluster (Sanders & Fabian 2007) since the exceptional data quality for this cluster (1.4 Ms total exposure with *Chandra*) allows one to attempt such an investigation in single 2D regions, rather than an azimuthally averaged profile. For this reason, we decided to postpone the analysis of Perseus to another paper with a dedicated 2D, spatially resolved spectral analysis.

Therefore, we identify 11 groups and clusters viable for our study. Since all these well-documented cases are found at low redshift ( $z < 0.1$ ), we also include, for the sake of discussion, a high-redshift cluster where we serendipitously detected for the first time a shallow central drop (MACSJ1423.8+2404 at  $z = 0.543$ ; Liu et al. 2018). The list of the 12 clusters and groups discussed in this work is shown in Table 1, where we also report the X-ray data, redshift, total exposure time, and  $r_{500}$  as measured in the literature. Clearly, we made best use of the *Chandra* archive, and include all the available observations for each cluster. However, we exclude a few obsid when they have different data acquisition mode or period, and, at the same time, provide a minor contribution to the total exposure time. Therefore, we discard Obsid 788 for NGC 5846, Obsid 1650 for A3581, Obsid 1657 for MACSJ1423, and Obsid 504, 505, 4190 and 4191 for Centaurus. We remind that we are not interested in a complete sample of clusters and groups with a central abundance drop, but we just require a reliable sample to investigate whether we can identify the signature of dust depletion with our analysis strategy. Essentially, our sample is mostly based on the results of Panagoulia et al. (2015) and Mernier et al. (2017) for the Fe profile, with the inclusion of a few other well-studied cases.

## 2.2 Data reduction

Data reduction is performed with CIAO 4.10, adopting the latest release of the *Chandra* Calibration Database at the time of writing (CALDB 4.7.8). Unresolved sources within the ICM, typically due to AGN not associated to the cluster, are identified with wavdetect, checked visually and eventually removed. In particular, we pay attention to possible nuclear emission from the BCG, that may affect the spectrum of the innermost bin. Nuclear emission from the BCG is found in about 20 percent of all the clusters, and preferentially in cool cores, despite the AGN luminosity is typically low, of the order of  $10^{43}$  erg s<sup>-1</sup> (see Yang et al. 2018). Thanks to the angular resolution of *Chandra*, this consists in removing a circle of 1.2 arcsec at the centre of the innermost bin.

The spectra are extracted in circular concentric rings, centred at the peak of X-ray emission in 0.5–7 keV band image, smoothed with a Gaussian function with full width at half-maximum 1.5 arcsec after removing unresolved sources. The annuli are chosen adaptively on the image to ensure a roughly equal number of net counts, and in any case larger than 2000 in the 0.5–7 keV band, in each annulus. For clusters with multiple observations, we extract the spectrum and compute the response matrix file (RMF) and ancillary response file (ARF) for each observation separately. Background spectra are extracted from regions far from the ICM emission in each Obsid. When the ICM emission fills the entire CCD, we use the background generated from the ‘blank sky’ files with the blanksky script. This choice may not be accurate in the outermost regions beyond  $0.1r_{500}$  which, however, are not relevant in this work. In the core regions, we discuss here the accuracy of few per cent provided by the ‘blank sky’ background spectra is not affecting our results.

## 2.3 Spectral analysis strategy

The spectral fits are performed with XSPEC 12.10.1 (Arnaud 1996) using C-statistics (Cash 1979). All the abundance values in this paper are relative to the solar values of Asplund et al. (2009). We note that these photospheric results are significantly smaller, for the most abundant elements like C, N, O, Ne, and Fe, than those recommended in the widely used compilations of Anders & Grevesse (1989) and Grevesse & Sauval (1998). In particular, the Fe abundance in solar units turns out to be larger by a factor 1.6. Galactic absorption is described by the model tbabs (Wilms, Allen & McCray 2000), where the best choice for the value of Galactic H I column density is initially set to the value corresponding to the cluster position in the H I survey of Kalberla et al. (2005). However, we notice in several cases that a different value of  $NH_{\text{Gal}}$  is needed to obtain an acceptable fit, therefore we leave the  $NH_{\text{Gal}}$  parameter free to vary (see the Discussion section for further details). For clusters with multiple observations, the spectra corresponding to the same ring are fitted with linked parameters.

Particular care must be taken in modelling the thermal structure of the ICM, since we necessarily have more than one temperature component in each spectrum. This may be simply due to projection effects of background and foreground ICM belonging to outer shells in presence of strong temperature and abundance gradients across the line of sight, particularly in the innermost regions. We also know that the complex ICM structure in strong cool-cores with cavities can create strong departure from spherical symmetry. This complexity is clearly emerging thanks to the high-signal spectra in our sample, and, therefore, it is not possible to assume a dominant single-temperature component in each bin, particularly because

this choice may bias the metallicity low, as noticed in several studies (Buote 2000; Buote et al. 2003; Gastaldello et al. 2010). Therefore, in this work we adopt the simplest approach which provides statistically acceptable fits, which consists in using two temperatures in each spectrum. Previous works investigating the abundance drop in cool-core clusters already showed that a two-temperature model is relatively unaffected by projection effects and return reliable values of metal abundance (Panagoulia et al. 2013). We also verify a posteriori the goodness of the fit to make sure that our strategy provides an acceptable modelization of the observed spectrum. Finally, we assume that the abundance of each element we consider is the same in both temperature components, a choice that is necessary to obtain robust results and will be further detailed in the Discussion section.

The emission lines of Ar and Ne have very different diagnostics. The signal from Ar is contributed by the  $K_{\alpha}$  lines of Ar XVII and Ar XVIII (He-like and H-like Ar) which appear clearly above the continuum in the energy range 3.0–3.3 keV, far from other emission lines. In this case, the capability of detecting Ar depends merely on the strength of the signal, on the Ar abundance itself, and on the ICM temperature, so that the associated error is essentially dominated by Poisson noise. The diagnostics for Ne is completely different, since the  $K_{\alpha}$  lines from Ne X and Ne IX are blended with the overwhelming Fe XXII–XIX line complex (plus the less prominent O VII and O VIII line complex) at 1 keV, and cannot be resolved into single lines at the spectral resolution of ACIS-I or ACIS-S. Clearly, the value and the associated error of the Ne abundance is dramatically dependent on the capability of properly modelling the complex line blend around 1 keV, which may well not reproduced with only two temperatures. For this reason, the Ne profile has been measured only in a few cases so far (see de Plaa et al. 2004). Despite that, we present and discuss our measurements of Ne abundance obtained with the two-temperature assumption, with the caveat that the associated errors is a lower limit to the real uncertainty.

According to this scheme, we measure the abundance of metals by fitting the projected spectrum in each annulus with a double vpec thermal plasma emission model (Smith et al. 2001) with AtomDB version 3.0.9, leaving free the two temperatures and the corresponding emission measure (normalization), the Galactic absorption  $NH_{\text{Gal}}$ , and the abundances of Fe, Ar, Ne, S, Si, O, Mg, and Ca which are assumed to be the same in the two-temperature components. All the other abundance values are linked to Fe. The abundance of Helium is always fixed to solar value.

Finally, in this work we focus on the projected quantities, with no attempt to deproject the abundance profiles we obtain, similarly to the approach of Mernier et al. (2017). Deprojection procedures, which are commonly adopted in the literature mostly to obtain 3D temperature profiles and measure hydrostatic masses (see e.g. Churazov et al. 2003; Russell, Sanders & Fabian 2008) are known to have little effects on the abundance profiles (see also Rasmussen & Ponman 2007). In addition, the complexity of the thermal structure in cool cores, particularly with evident cavities, would result in an incorrect result if deprojected under the assumption of spherical symmetry, as noticed by Panagoulia et al. (2015).

## 3 RADIAL ABUNDANCE PROFILES

In this work, we are mostly interested in the comparison of the Fe profiles to those of Ar and, with the mentioned caveats, Ne. We also discuss S and Si that are expected to be also depleted similarly to Fe, while we are not able to obtain an accurate characterization of

the profiles of O, Ca, and Mg, which, therefore, are not included in this investigation.

The azimuthally averaged, projected abundance profiles of  $Z_{\text{Fe}}$ ,  $Z_{\text{Ar}}$ , and  $Z_{\text{Ne}}$  for the 12 clusters in our sample are shown in Fig. 1, while the profiles of Si and S are shown in Fig. 2. From a visual inspection, we see that we are able to confirm a statistically significant Fe drop in most of the clusters, and to identify drop in the Ar abundance in some of them. We also notice that the shape of the Ne profiles often appears to be consistent or at least comparable with that of Fe and Ar, suggesting that Ne profiles are plausible, and that, despite our measured Ne profile may be affected by unknown statistical uncertainties, we definitely have a statistically significant global detection of Ne across the sample in the core region.

Since the Fe profiles of these clusters have been already published, despite with different analysis techniques and, in some cases, different data sets, we carefully check for differences between our results and the literature. If we compare our projected profiles with the deprojected Fe profiles in Panagoulia et al. (2015), we find a good agreement, except in a few remarkable cases. In NGC 5813, we find a clear smooth drop in the innermost 5 kpc, opposed to the sharp drop within 5 kpc in Panagoulia et al. (2015). We also find a smoother and more pronounced iron drop in A3581, which is considered only a possible drop in Panagoulia et al. (2015), despite their large error bars create no tension with our profile. While these differences may be due to the deprojection procedure, the results for 2A0335 are dramatically discrepant. In this cluster, we find an iron peak opposed to the well-defined iron drop shown in Panagoulia et al. (2015). We actually find that switching from 1T *apec* model to our reference 2T *apec* model is critical to find the peak. We also find a strong dependence of the temperature profile on the  $NH_{\text{Gal}}$  value, which we measure to be  $3.1 \times 10^{21} \text{ cm}^{-2}$  as in Pinto et al. (2015), as opposed to lower value used for this clusters in Panagoulia et al. (2015). The value of  $NH_{\text{Gal}}$  is found to strongly affect the Fe abundance particularly for a 2T *apec* model. Our result is in agreement with Werner et al. (2006). However, the peculiar nature of the core of 2A0335, characterized by bright blobs and a complex metallicity map in the 2D analysis (see Sanders, Fabian & Taylor 2009) suggests that assuming azimuthally average value for the ICM may provide contradictory results depending on details of the analysis, including the choice of the centre (we assumed the BCG position in this case). We conclude that 2A0335 should not be included among the list of clusters showing a central Fe drop. We also find consistency with Lakhchaura et al. (2019) for the Fe and Ar profiles of the Centaurus cluster, despite the different choice of the size of the radial bins hampers a detailed comparison. We also find that our projected Fe profile of the Ophiuchus cluster and the deprojected one in Million et al. (2010) are compatible. Despite the different angular resolution makes it very difficult the comparison of *Chandra* and *XMM-Newton* profiles in the innermost regions, we find a broad consistency with the Fe profiles of NGC 4636, NGC 5044, NGC 5813 measured with *XMM-Newton* in Mernier et al. (2017), while we notice some differences in the cases of A3581, NGC 5846, and Perseus. Significant difference, instead, are found for A262 and A1991, which were, in fact, not classified as Fe-drop by Mernier et al. (2017). Overall, we find that the Fe profiles obtained with our approach are broadly consistent with literature, while significant differences occur in particular cases with extremely complex core structure, or in data with lower angular resolution.

We note, however, that the precise identification of the central drop is not straightforward and may be rather uncertain if based on, e.g. the distance between the highest and the lowest values in

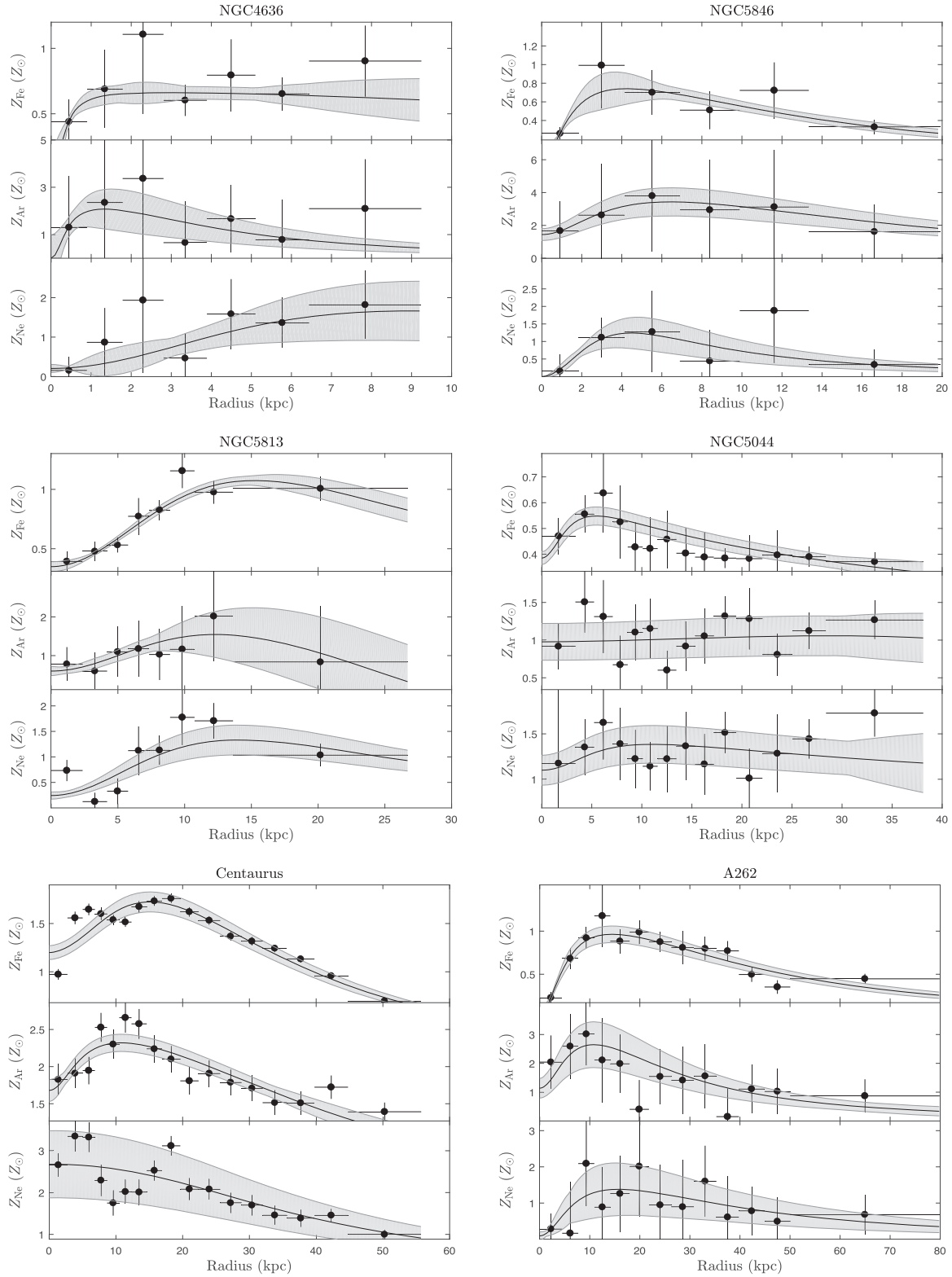
each profile, since it would be sensitive to the width of the annuli, and blurred by the statistical noise. Therefore, to better quantify the abundance drops in a uniform way, we fit each profile with an empirical function with five free parameters, able to reproduce a smooth, non-monotonic profile:

$$Z(r) = A \cdot \frac{\frac{r}{B} + C}{\frac{r}{B} + 1} \cdot \frac{1}{(1 + (\frac{r}{D})^2)^E}, \quad (1)$$

where the parameters  $B$  and  $D$  are the spatial scales corresponding to the drop in the inner few tens of kpc, and the outer profile, respectively, while the parameter  $C$  corresponds to the minimum value in the centre. This functional shape is a simplified version of the profile used to described the temperature in Vikhlinin et al. (2006), and it is overdetermined given our data quality. However, this function can reasonably reproduce the behaviour of all the different profiles. We stress that the parameters in the function have no direct physical meanings, but allow us to obtain a fit to all the profiles and the associated uncertainty as a function of the physical radius. The fit of the profile and the uncertainty on  $\Delta Z$  are obtained with a Monte Carlo approach. Eventually, we visually inspect the profiles to search for any poor fitting and check the  $\chi^2$  values, finding that in all the cases we obtain acceptable fits. We remark that in the fits we allowed the minimum abundance values in each bin to be negative, an aspect that hardly affect single-cluster profiles (only a few points in Ophiuchus and A2199 turn out to be negative) but is relevant particularly in the stacking procedure, that may be slightly biased high if all the values are forced to be positive.

From the the best-fitting analytic function, we can directly quantify the central abundance drop as  $\Delta Z = Z_{\text{peak}} - Z_{\text{in}}$ , where  $Z_{\text{in}}$  is the fitted abundance at the radius of the innermost bin, and  $Z_{\text{peak}}$  is the maximum value of the fitted abundance. The uncertainty on  $\Delta Z$  is obtained by assuming the  $1\sigma$  uncertainties of  $Z_{\text{peak}}$  and  $Z_{\text{in}}$  and summing them in quadrature. A central drop is identified only when  $\Delta Z$  has a significance level higher than  $2\sigma$ . The measured values of  $\Delta Z$  are shown for Fe, Ar, and Ne in the second, third, and fourth column, respectively, of Table 2. Our results confirm that all the clusters in our sample exhibit a central Fe abundance drop at more than  $2\sigma$  c.l., except for A2199 and 2A0335. However, we find a significant Ar drop in only four sources (NGC 5813, Centaurus, A2199, and A1991) at more than  $2\sigma$ , despite we have hints of a drop in most of the other sources. Formally, we also find a central drop in Ne abundance in four clusters (NGC 5846, NGC 5813, A3581, and A1991) at more than  $2\sigma$ . We notice that, given the larger uncertainties in the profiles of Ar and Ne, our results are consistent with an abundance drop common to the three elements, which suggests a mechanical process removing the highly enriched ICM from the innermost region as an explanation for the observed profiles. We also remark that the detection of abundance drop in MACSJ1423.8+2404 at  $z = 0.543$  implies that this feature is also present in high redshift clusters, and that the mechanism generating it has already taken place at a look-back time of 6 Gyr.

We can push further our analysis by stacking the abundance profiles of each element after rescaling the radius of each cluster by  $r_{500}$ . We divide the  $[0-0.15] r_{500}$  interval into six bins choosing the width in order to have a comparable number of data points in each bin. The values of  $r_{500}$  are taken from the compilation of clusters presented in Pinto et al. (2015) and Liu et al. (2018). We then average all the data points in each bin weighted by the inverse squared errors and by the overlap of the geometric area of each physical annulus with the final bin, following the method of Leccardi & Molendi (2008). In addition, we also allow the free abundance parameters to be negative for the stacking, since



**Figure 1.** The abundance profiles of Fe (top), Ar (middle), and Ne (bottom) for all the groups and clusters in our sample, as a function of the physical radius in kpc. Abundances are expressed in units of solar values as in Asplund et al. (2009). Solid line and shaded area show the best fit function given in equation (1), and the  $1\sigma$  confidence interval, respectively.

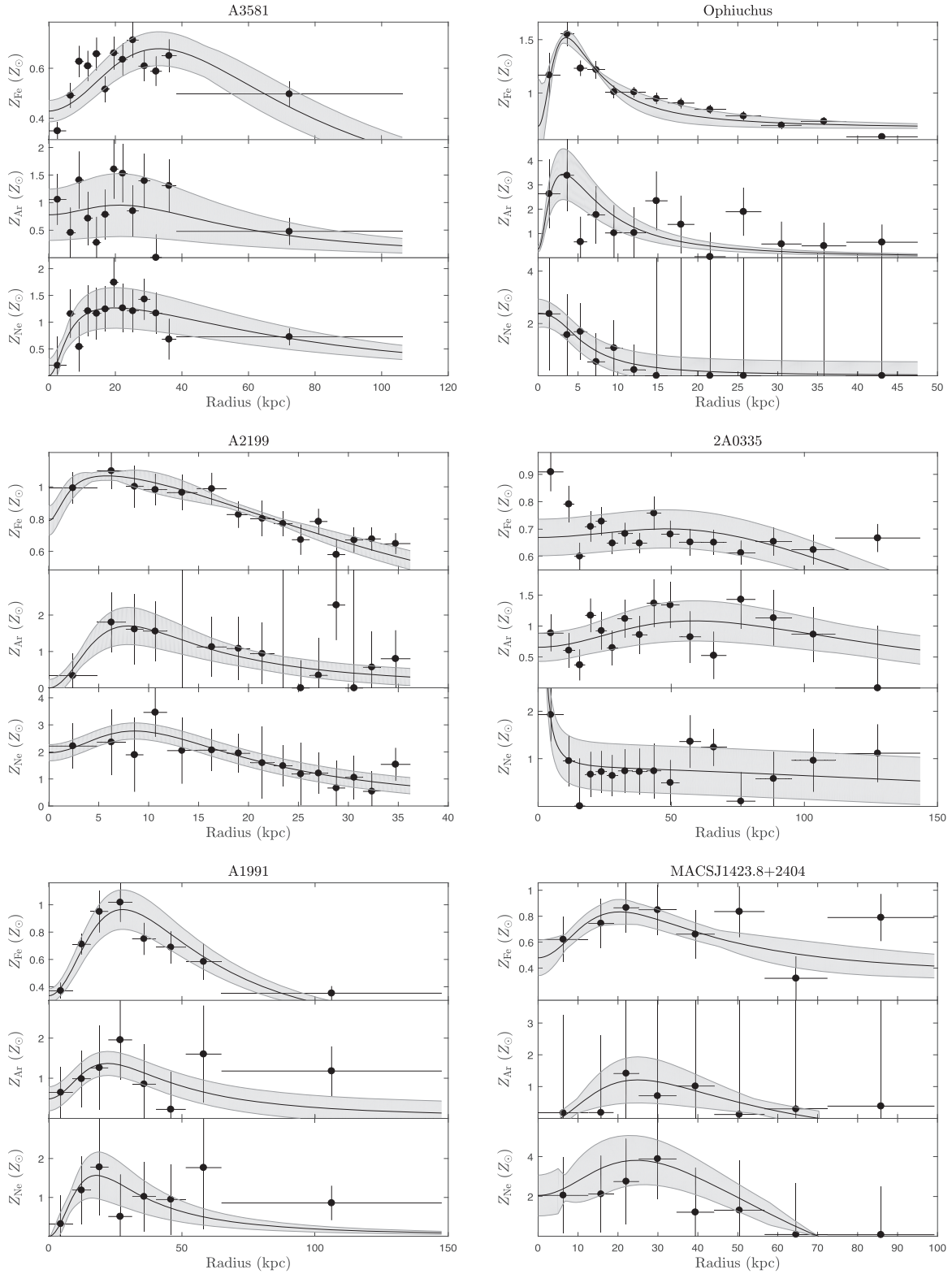


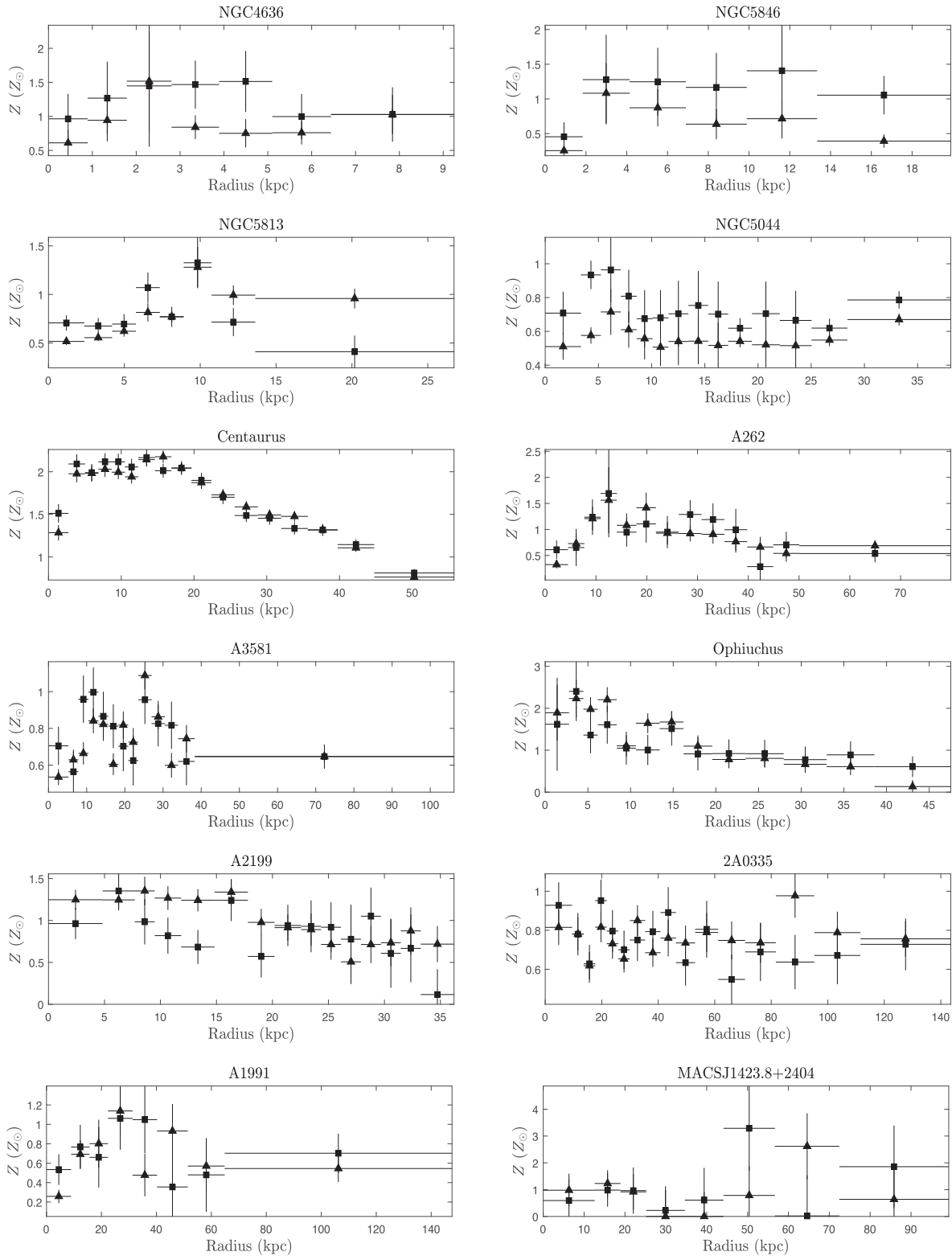
Figure 1 – continued

this is the only way to properly deal with noise. As discussed in Leccardi & Molendi (2008), forcing the abundance to be always positive may result in a positive statistical bias when averaging out the profiles. In the investigation of the stacked profiles, we

consider also S and Si, whose single-cluster profiles are shown in Fig. 2.

The stacked abundance profiles of Fe, Ar, Ne, Si, and S are shown in the top panel of Fig. 3. We find that in the central regions, the





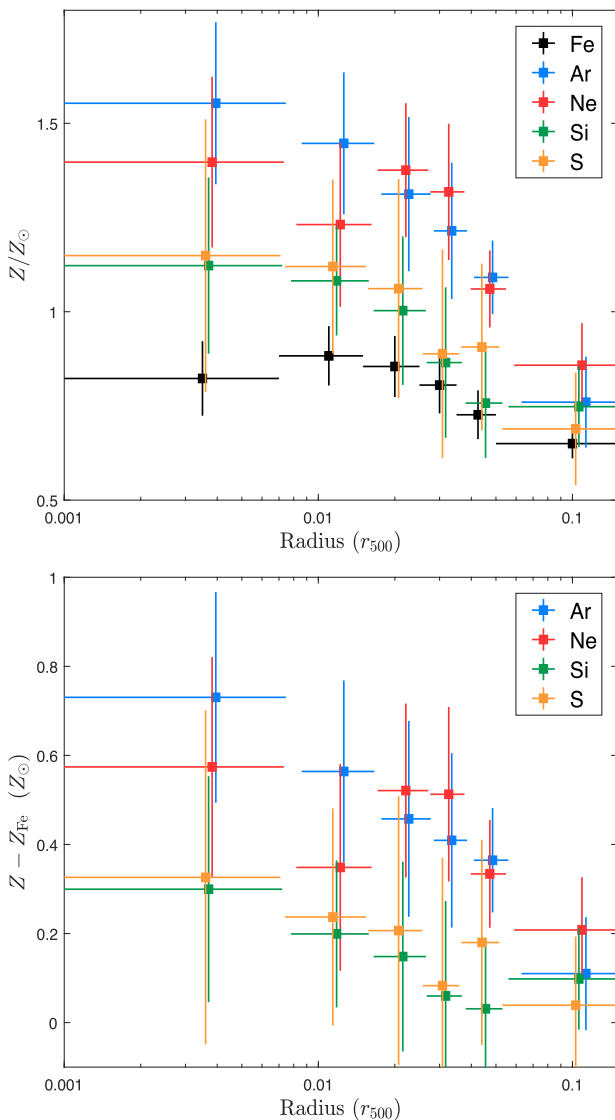
**Figure 2.** Abundance profiles of Si (solid triangles) and S (solid squares) for all the groups and clusters in our sample as a function of the physical radius in kpc. Abundances are expressed in units of solar values as in Asplund et al. (2009).

average abundances of Ar and Ne in our sample are significantly higher than that of Fe, while they tend to be consistent in the outermost bin, corresponding to  $[0.05-0.15] r_{500}$ . On the other hand, the profiles of Si and S are consistent with Fe within  $1\sigma$ , despite

they tend to show a slight increase. However, the most interesting and convincing feature is the much larger gradient of the Ar and Ne profiles with respect to Fe, Si, and S, which are all elements that may be depleted into cold dust grains. It is useful to remind

**Table 2.** The magnitude of the abundance drop, defined as  $\Delta Z = Z_{\text{peak}} - Z_{\text{in}}$ , for Fe, Ar, and Ne is shown in columns 2, 3, and 4, respectively. In columns 5, 6, and 7, we list the distance between the maximum of the X-ray emission and the peak of the abundance profiles in kpc. The offset between the BCG and the X-ray emission peak is also given in column 8.

Cluster	$\Delta Z(\text{Fe})$	$\Delta Z(\text{Ar})$	$\Delta Z(\text{Ne})$	$D_{\text{Fe}}$ (kpc)	$D_{\text{Ar}}$ (kpc)	$D_{\text{Ne}}$ (kpc)	$D_{\text{BCG}}$ (kpc)
NGC 4636	$0.25 \pm 0.08$	$0.86 \pm 0.92$	–	$2.9 \pm 2.0$	$1.3 \pm 0.7$	–	0.16
NGC 5846	$0.49 \pm 0.17$	$1.78 \pm 0.95$	$1.04 \pm 0.45$	$4.3 \pm 2.2$	$6.4 \pm 3.4$	$4.4 \pm 1.7$	0.12
NGC 5813	$0.71 \pm 0.05$	$0.92 \pm 0.45$	$1.06 \pm 0.30$	$14.8 \pm 2.5$	$12.2 \pm 4.3$	$14.0 \pm 5.4$	0.16
NGC 5044	$0.09 \pm 0.04$	–	$0.26 \pm 0.26$	$5.5 \pm 2.5$	–	$10.4 \pm 7.1$	0.22
Centaurus	$0.51 \pm 0.12$	$0.58 \pm 0.16$	–	$14.9 \pm 4.8$	$10.4 \pm 5.6$	–	1.56
A262	$0.74 \pm 0.10$	$1.22 \pm 0.90$	$1.11 \pm 0.74$	$14.3 \pm 5.4$	$10.7 \pm 6.0$	$15.4 \pm 9.0$	0.99
A3581	$0.24 \pm 0.08$	$0.17 \pm 0.74$	$1.01 \pm 0.45$	$33.1 \pm 12.6$	$21.1 \pm 21.1$	$19.0 \pm 11.0$	0.19
Ophiuchus	$0.42 \pm 0.16$	$1.03 \pm 1.29$	–	$3.5 \pm 0.7$	$3.1 \pm 1.5$	–	2.25
A2199	$0.07 \pm 0.07$	$1.18 \pm 0.56$	$0.63 \pm 0.42$	$5.6 \pm 3.1$	$7.8 \pm 3.1$	$8.5 \pm 3.9$	1.98
2A0335	$0.03 \pm 0.09$	$0.41 \pm 0.40$	–	$46.7 \pm 42.7$	$56.7 \pm 33.5$	–	7.06
A1991	$0.57 \pm 0.16$	$0.99 \pm 0.45$	$1.25 \pm 0.61$	$27.5 \pm 10.0$	$21.9 \pm 10.4$	$17.8 \pm 7.3$	4.76
MACSJ1423.8+2404	$0.25 \pm 0.12$	$1.15 \pm 0.76$	$1.63 \pm 1.45$	$20.4 \pm 7.7$	$24.7 \pm 11.0$	$24.3 \pm 8.3$	–

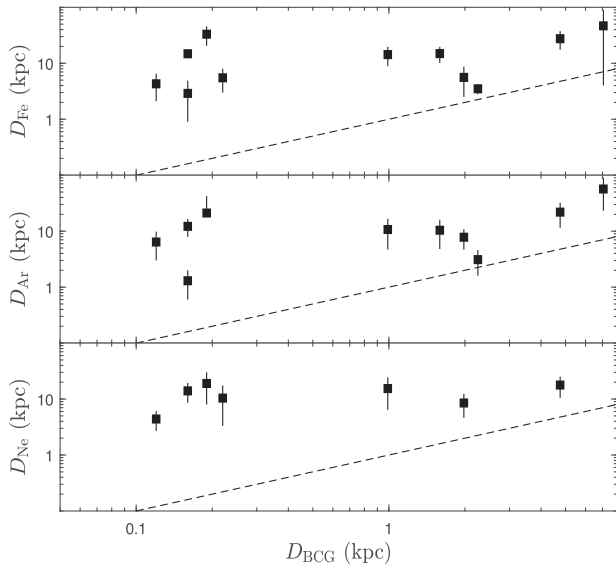


**Figure 3.** Upper panel: The stacked abundance profiles of Fe, Ar, Ne, Si, and S in our sample, as a function of the rescaled radius  $r/r_{500}$ . Bottom panel: Abundance excess profiles of Ar, Ne, Si, and S relative to Fe. The data points have been slightly shifted on the  $x$ -axis for clarity.

that at larger radii, Ar abundance has been shown to be comparable or lower with respect to Fe (see Mernier et al. 2017). The same behaviour can be seen in the absolute difference of the abundance of different elements as a function of radius, which is shown in the lower panel of Fig. 3. We find that the difference  $Z_{\text{Ar}} - Z_{\text{Fe}}$  decreases systematically with radius, while  $Z_{\text{Si}} - Z_{\text{Fe}}$  and  $Z_{\text{S}} - Z_{\text{Fe}}$  show a much milder decrease with radius. We cannot draw any conclusion on the quantity  $Z_{\text{Ne}} - Z_{\text{Fe}}$  given the large uncertainties, not to mention the unknown systematics. Finally, we verified a posteriori that the stacked profiles are not dominated by the Centaurus cluster, despite it has by far the highest quality spectra. The stacked profiles obtained after excluding the Centaurus cluster have only negligible differences with respect to the results shown in Fig. 3.

In Table 2, we also list the distance of the abundance peak of each element from the peak in the X-ray surface brightness, and, in the last column, the displacement of the BCG from the X-ray peak. We unambiguously identify the BCG of all the clusters but MACSJ1423.8+2404. The coordinates of the BCG come from the 2MASS catalogue or NED/SIMBAD. The position of the abundance peak is measured from the best fit of the abundance profile of the corresponding element. For most of the clusters, we find that  $D_{\text{BCG}}$  is much smaller than the distance from the abundance peak to the cluster centre, implying that the BCG is inside the ‘hole’ carved into the abundance distribution. There is only one exception: the Ophiuchus cluster, with  $D_{\text{BCG}} = 2.25$  kpc, and  $D_{\text{Fe}} = 3.5 \pm 1.1$  kpc. This is consistent with the clear signatures of an ongoing merger found by Million et al. (2010). For this cluster, we recompute the abundance profiles after setting the centre on the position of the BCG, and we obtain a consistent result. In Fig. 4, we show the relation between  $D_{\text{Fe}}$ ,  $D_{\text{Ar}}$ ,  $D_{\text{Ne}}$ , and  $D_{\text{BCG}}$ . We find no statistically significant trend among the BCG displacement and the position of the peak of the abundance profiles. Therefore, we conclude that there is no association between the displacement of the abundance peak (as a proxy for the size of the abundance drop region) and the offset of the BCG with respect to the X-ray centroid in our sample.

To summarize, we find four clusters with a drop in the Ar abundance profile at more than  $2\sigma$  c.l., compared to 10 clusters with an Fe drop at the same significance level. This indication of a different spatial distribution among this two elements is further strengthened by our analysis of the stacked profiles, where the normalization and the slope of the Ar profile are clearly different from that of Fe, implying a larger Ar abundance in the core regions at radii  $\leq 0.05 r_{500}$ . Possibly, the same trend is present in the Ne profile. At the same time, we find overall consistency between the profile

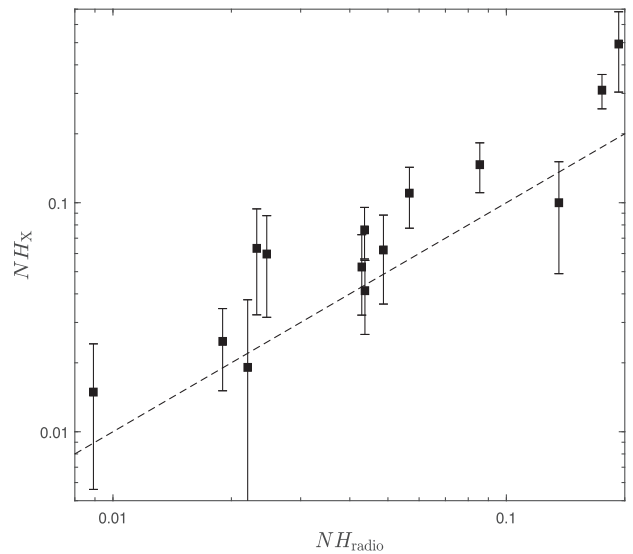


**Figure 4.** The displacement of the abundance peak with respect to the X-ray centroid are shown for Fe, Ar, and Ne as a function of the offset between the BCG position and the X-ray centroid  $D_{\text{BCG}}$ . The dashed line shows the  $D_Z - D_{\text{BCG}}$  relation as a reference.

of Fe, Si, and S, apart from a modest enhancement, confirming a significant difference in the spatial distribution of elements that may be depleted into dust grains, and of noble elements. Therefore, despite our analysis confirms that the abundance drop is a characteristic shared by all the elements, suggesting that the uplifting of high-metallicity gas driven by bubbles is an effective process, we also found a significant difference between Ne and Ar and the other elements. This result implies that the depletion of Fe into dust grains during the baryon cycle in cool-core groups and clusters is also an effective process in shaping the abundance profiles. Since here we focus on projected values, further assumptions and a detailed modelization are both needed before quantifying the effects of dust depletion in terms of Fe mass loss, a task which goes beyond the scope of this paper.

#### 4 DISCUSSION: ROBUSTNESS OF THE SPECTRAL ANALYSIS

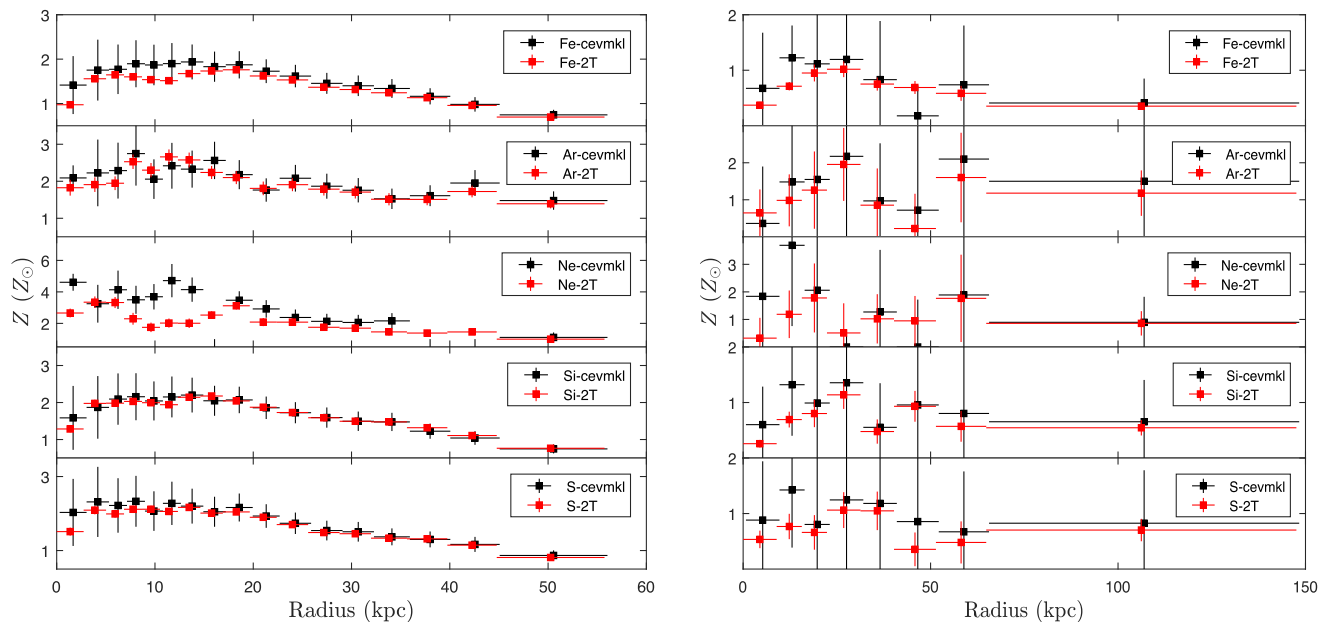
In this section, we discuss some aspects of our spectral analysis which may potentially introduce fitting bias. The first aspect is the choice of leaving the Galactic absorption parameter  $NH_{\text{Gal}}$  free to vary in each bin. It is a common choice in X-ray spectral fitting to freeze  $NH_{\text{Gal}}$  to the value of Kalberla et al. (2005). However, given the high signal of our spectra, and the complex thermal structure in each bin, a fluctuation in  $NH_{\text{Gal}}$  (which, we remind, is obtained from an H I map smoothed on a scale of 1 deg) may bias one or both the temperature components of our model. To investigate the robustness of our strategy, we compare the best-fitting values of  $NH_{\text{Gal}}$ , averaged across the annuli in each cluster, with the value from Kalberla et al. (2005). As shown in Fig. 5, the values are often consistent within  $1\sigma$ , but a slight positive bias is observed with the best-fitting values being on average 20 per cent higher. We repeated our fit forcing  $NH_{\text{Gal}}$  to be equal to the H I value, and found that our results do not change qualitatively, except in the remarkable case of 2A0335, as discussed in Section 3. However, in many cases the quality of the fit is significantly worse, and this is reflected



**Figure 5.** The Galactic H I column density from Kalberla et al. (2005) compared to the average  $NH_{\text{Gal}}$  best-fitting values obtained in each source of our sample. The dashed line shows the  $NH_X = NH_{\text{radio}}$  relation.

in a systematic underestimation of the statistical error bars on the abundance values. The results presented in this work therefore are conservatively based on the fits obtained with free  $NH_{\text{Gal}}$ .

A more fundamental and critical aspect of our analysis is the model of thermal structure of the ICM, which we approximate with two-temperature components. We explore the effects of assuming a more complex underlying temperature structure, despite it cannot be constrained efficiently with CCD data. To do that, we repeat our fit with a `cevmk1` model, which is used to model the emission from a multitemperature plasma. Emission measures from different temperature components follow a power law in temperature, while the abundance ratios are defined in the usual way and are shared by all the temperature components. While we fix the minimum temperature to a reference value of 0.5 keV, the maximum temperature is set to a value somewhat larger than the largest temperature we found in our reference analysis, and leave the slope of the emission measure–temperature relation free to vary. In this way, we can explore the effects of having a continuous distribution of temperatures with respect to assuming only two values. We find that our results do not change significantly, as shown in Fig. 6, where we plot the Fe, Ar, Ne, Si, and S profiles obtained in the two modelizations (2T `vapcc` compared to `cevmk1`) for Centaurus and Abell 1991, which represent the highest and lowest quality spectra in our sample. Not unexpectedly, the Ne profile is the only one that is noticeably affected, confirming our caveats that our results for Ne strongly depend on the modelization of the 1 keV line emission blend, and therefore are particularly sensitive to the thermal model we assume. Since we have no reasons to prefer a `cevmk1` rather than a double `vapcc` model, we decide to keep Ne profiles according to our reference analysis, confirming the warning on unknown systematic uncertainties in addition to the statistical errors. Finally, we warn that differences between the results from `vapcc` and `cevmk1` may also be due to different modelization of the Fe–L line complex built-in the two models. In particular, our reference model `vapcc` is continuously updated, while `cevmk1` and `mekal` are no longer updated since several years. Some differences in the model may show up despite the low resolution of CCD spectra, but are typically

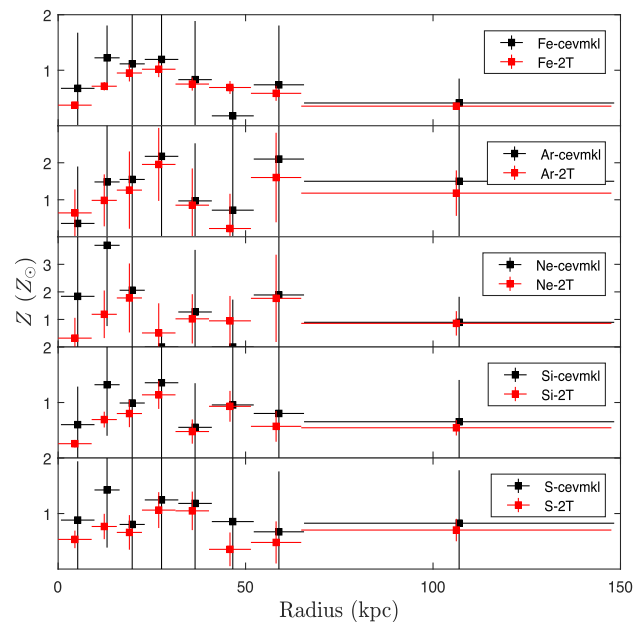


**Figure 6.** The abundance profiles of Fe, Ar, Ne, Si, and S for the Centaurus (left-hand panels) and Abell 1991 (right-hand panels) obtained with the `cevmk1` model (filled black squares) and our reference two-temperature `vapEc` modelization (filled red squares). The points of the `cevmk1` model have been slightly shifted along the  $x$ -axis for clarity.

smaller than the typical statistical uncertainties we have in our data. A systematic comparison of the different atomic models goes beyond the goals of this paper.<sup>1</sup>

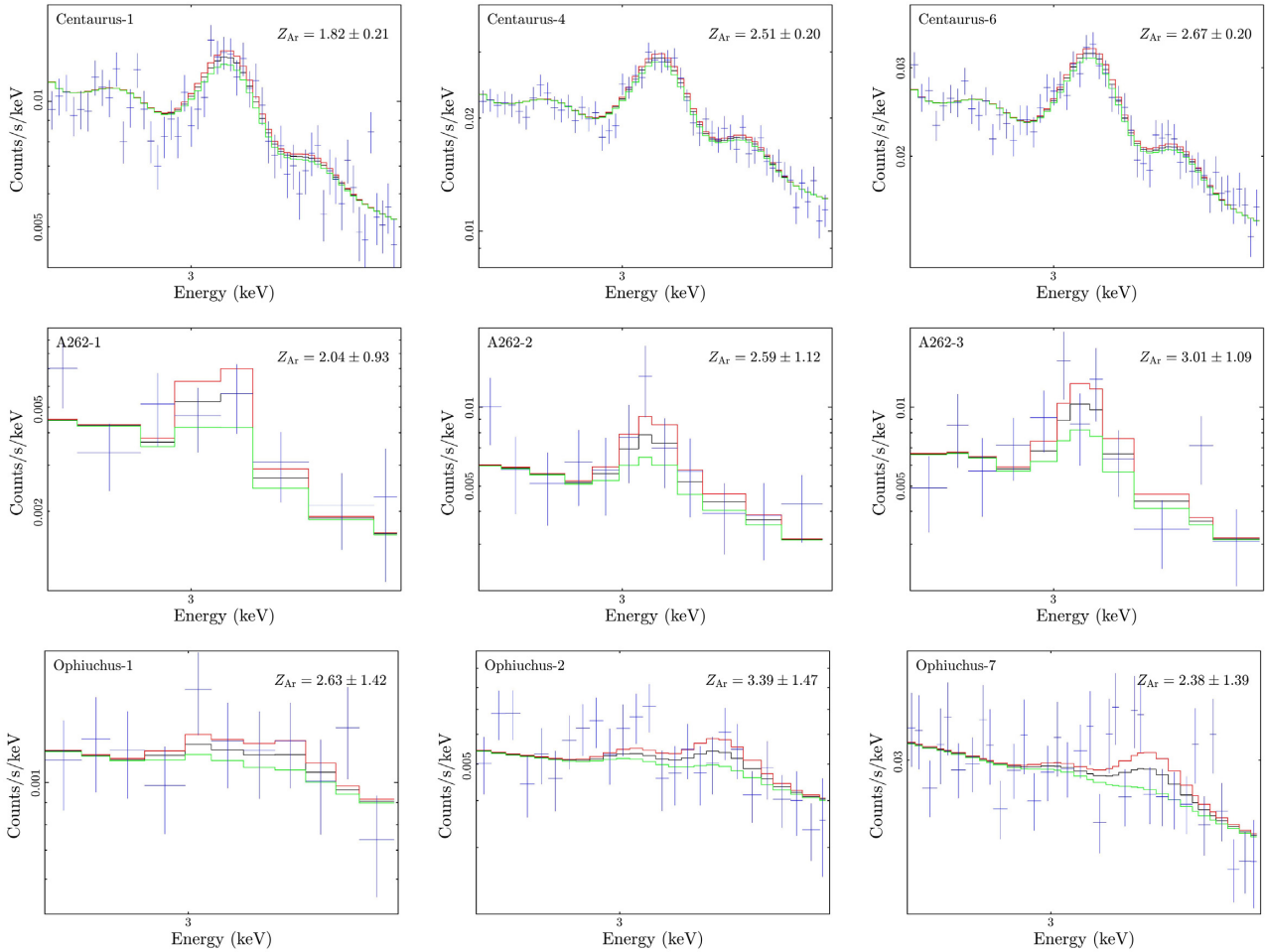
Another source of potential systematics in our approach can be due to the use of a single abundance value common to the two-temperature components. In general, the two temperatures should be considered a proxy for the real temperature structure of the ICM along the line of sight. This, in turn, can be due to the projection of ICM at different temperature, or to the presence of different phases at the same radius, or both. In any case, the abundance values associated to different temperature components may well be different, and there are no compelling reasons to force them to be equal. This is expected on the basis of the much scattered but clear correlation between metallicity and temperature in the core of clusters, or between metallicity and entropy (see Liu et al. 2018, for a recent measurement of the abundance–entropy correlation in a sample of *Chandra* clusters). However, because of the modest CCD spectral resolution, if we relax the hypothesis of a single abundance value dominating the emission in each ring, the degeneracy between the temperature and abundance would be so large to hamper the measurement of abundance radial profiles other than Fe. The next major step forward to take in this direction will be offered by X-ray bolometers, which will allow one to resolve single lines across the soft X-ray spectrum and provide a mean to associate an abundance value to each temperature component, enabling at the same time a much more structured thermal modelization. Admittedly, in this work we are compelled to assume a single abundance value for all the temperature components in each annulus, but we are aware that this assumption may be tested at least in the only available data obtained with an X-ray bolometer thanks to the *Hitomi* mission (Hitomi Collaboration et al. 2016). Therefore, we postpone this test to a more detailed work on the Perseus cluster.

<sup>1</sup>A detailed comparison can be found in <http://www.atomdb.org/Issues/mekalspex.php>.



Finally, it has been found that effective area calibrations are different among major, currently available X-ray CCDs (see Simionescu et al. 2019), and this effect can bias the measurement of metal abundance, particularly when the fit is driven by energy range far from that where the relevant lines are. In other words, the level of continuum can be poorly fitted, and this can severely affect the equivalent width of faint lines. For example, we notice that in a few cases (Centaurus, A262 and Ophiuchus) the maximum measured value of the Ar abundance is remarkably higher than  $2 Z_{\odot}$ . To investigate whether these high values were actually spurious, first we perform a visual check, finding that the continuum level appears to be properly fitted in our spectra. A few relevant examples are presented in Fig. 7, where we show the 2.7–3.5 keV range of the stacked spectra corresponding to three bins of Centaurus (bin 1, 4, and 6 with  $Z_{\text{Ar}} = 1.82 \pm 0.21$ ,  $2.51 \pm 0.20$ , and  $2.67 \pm 0.20$ , respectively), A262 (bin 1, 2, and 3 with  $Z_{\text{Ar}} = 2.04 \pm 0.93$ ,  $2.59 \pm 1.12$ , and  $3.01 \pm 1.09$ , respectively), and Ophiuchus (bin 1, 2, and 7 with  $Z_{\text{Ar}} = 2.63 \pm 1.42$ ,  $3.39 \pm 1.47$ , and  $2.38 \pm 1.39$ , respectively). We recall that the best-fitting models, shown as solid lines, are obtained separately fitting the spectra from single Obsid, and not the stacked spectrum. In all the cases, the uncertainties in the continuum appear to be well within the statistical uncertainties, despite for the Ophiuchus cluster the spectrum is very noisy and the uncertainty on Ar abundance may be larger than the estimated error bars. We verified that our results do not change after removing the profile of the Ophiuchus cluster from the stacked abundance profiles. We conclude that the unexpectedly high values of Ar abundance found in some bins are properly characterized and have well-measured uncertainties, except one case that may be affected by systematics, but is not relevant to our main conclusions.

To better test the robustness of our results with respect to calibration uncertainties, we adopt the strategy followed in Lakhchaura et al. (2019), where the abundances are remeasured in the 2.9–3.5 keV narrowband by leaving the normalization free, and the temperature, Galactic absorption frozen to the best-fitting values of the broad-

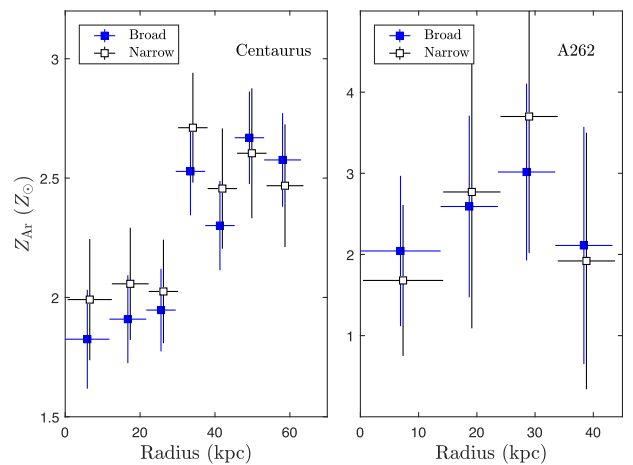


**Figure 7.** Narrow band (2.7–3.5 keV) stacked spectra of the first, fourth, and sixth bins of Centaurus, the first, second, and third bins of A262, and the first, second, and seventh bins of Ophiuchus. The best-fitting models with  $1\sigma$  upper and lower envelopes, as obtained from the broad-band fit, are shown as black, red and green solid lines, respectively.

band fit. In particular, we show in Fig. 8 the Ar abundance profiles in Centaurus and A262 computed in the narrowband and broad-band fits. Although some difference is present, the significance of the drop in the Ar abundance is not affected. Therefore, we confirm that our results are not significantly affected by clear uncertainties in the broad-band Chandra calibration.

## 5 CONCLUSIONS

In this work, we analyse the abundance profiles in clusters where a central drop in the Fe abundance has been reported in the literature. Our aim is to test the origin of this feature, which may be associated to a mechanical process, like the uplifting of highly enriched ICM in the centre by AGN feedback, or to Fe depletion into dust grains, or to both processes. We exploit the exquisite angular resolution of *Chandra* to measure the abundance in the innermost regions of a sample of 12 cool-core clusters, thanks to the spectral resolution of the ACIS detectors. In particular, we compute the abundance profile of Ar and, within the limits of our assumptions, Ne, that cannot be incorporated into dust, and therefore should not exhibit a central abundance drop if due to dust depletion, when compared to the abundance profiles of other elements like Fe, Si, or S. Our conclusions are summarized as follows.



**Figure 8.**  $Z_{\text{Ar}}$  profiles of the inner most regions of Centaurus and A262. Solid-blue and empty-black squares represent the results from the 0.5–7 keV broad-band, and the 2.9–3.5 keV narrow band, respectively. The black data points have been slightly shifted along the  $x$ -axis for clarity.

(i) We confirm the detection of the Fe drop in 10 out of 12 clusters at a significance level larger than  $2\sigma$ , in broad agreement with the literature.

(ii) We are able to compute Ar abundance profiles out to  $0.15r_{500}$  after assuming a two-temperature structure for the ICM. We also present the profiles of Ne, which, however, are likely affected by systematics due to partial modelling of the line emission blend including Ne lines. We are, however, able to show that our abundance profiles for all the other metals (Fe, Ar, Si, and S) are not significantly affected by our specific choice for the thermal modellization of the ICM.

(iii) We find central abundance drops of Ar in four clusters at a confidence level of more than  $2\sigma$ , and, formally, four clusters with abundance drops of Ne. Si and S abundance profiles are found to be broadly consistent with Fe. Overall, our results are consistent with all the metals showing a central drop in abundance, therefore suggesting that a mechanical process directly removing the highly enriched ICM from the centre, as the observed uplift of dense ICM driven by cavities carved by the central AGN, should be the main origin of the central abundance drops.

(iv) We further extend our results by stacking the profiles in six bins in the range  $[0-0.15]r_{500}$ , finding that Ar (and possibly Ne) has significantly larger abundance in the centre with respect to Fe, Si, and S, and that its profile shows a much steeper gradient. This result, in turn, suggests that the dust grain scenario is indeed taking place in the centre of these clusters, and has a significant effect in producing the Fe drop, which sums up to the mechanical removal of the most enriched gas. We successfully test the robustness of our conclusions with respect to the thermal modellization of the ICM, the spectral analysis strategy and possible calibration uncertainties.

(v) We confirm the detection of central Fe abundance drop in the galaxy cluster MACSJ1423.8+2404 at redshift 0.543, indicating that this feature is not confined to low redshift clusters, but has occurred in this cool-core cluster at least 6 Gyr ago.

To summarize, we conclude that the signature of dust depletion can be observed in the abundance profiles of nearby, bright groups and clusters as a difference between the abundance profiles of noble gas like Ar and Ne and that of dust-depletable elements like Fe, Si, and S. While some additional work can be done in this field on the basis of CCD data from the *Chandra* and *XMM-Newton* archives, a major improvement will be enabled only by the use of future X-ray bolometers. The capability of measuring with high accuracy the amount of Fe lost from the ICM because of dust depletion will be an important information to constrain the cycle of baryons in the centre of cool-core clusters and the interplay of the ICM with the interstellar medium of the BCG.

## ACKNOWLEDGEMENTS

We thank Simone Bianchi for useful discussions. We also thank the anonymous referee for a detailed and constructive report which significantly improved the paper. We acknowledge financial contribution from the Istituto Nazionale di Astrofisica (INAF) PRIN-SKA 2017 program 1.05.01.88.04 (*ESKAPE*) and from the agreement ASI-INAF n.2017-14-H.O.

## REFERENCES

Anders E., Grevesse N., 1989, *Geochim. Cosmochim. Acta*, 53, 197  
 Arnaud K. A., 1996, in Jacoby G. H., Barnes J., eds, ASP Conf. Ser. Vol. 101, *Astronomical Data Analysis Software and Systems V*. Astron. Soc. Pac., San Francisco, p. 17

Asplund M., Grevesse N., Sauval A. J., Scott P., 2009, *ARA&A*, 47, 481  
 Buote D. A., 2000, *MNRAS*, 311, 176  
 Buote D. A., Lewis A. D., Brighenti F., Mathews W. G., 2003, *ApJ*, 595, 151  
 Böhringer H., Morfill G. E., 1988, *ApJ*, 330, 609  
 Cash W., 1979, *ApJ*, 228, 939  
 Cavagnolo K. W., Donahue M., Voit G. M., Sun M., 2009, *ApJS*, 182, 12  
 Churazov E., Forman W., Jones C., Böhringer H., 2003, *ApJ*, 590, 225  
 Churazov E., Ruszkowski M., Schekochihin A., 2013, *MNRAS*, 436, 526  
 De Grandi S., Ettori S., Longhetti M., Molendi S., 2004, *A&A*, 419, 7  
 De Grandi S., Santos J. S., Nonino M., Molendi S., Tozzi P., Rossetti M., Fritz A., Rosati P., 2014, *A&A*, 567, A102  
 de Plaa J., Kaastra J. S., Tamura T., Pointecouteau E., Mendez M., Peterson J. R., 2004, *A&A*, 423, 49  
 Domainko W., Gitti M., Schindler S., Kapferer W., 2004, *A&A*, 425, L21  
 Edge A. C., 2001, *MNRAS*, 328, 762  
 Ettori S., Fabian A. C., 2006, *MNRAS*, 369, L42  
 Fabian A. C., 1994, *ARA&A*, 32, 277  
 Fabian A. C., 2012, *ARA&A*, 50, 455  
 Fabian A. C., Sanders J. S., Allen S. W., Crawford C. S., Iwasawa K., Johnstone R. M., Schmidt R. W., Taylor G. B., 2003, *MNRAS*, 344, L43  
 Fabian A. C., Sanders J. S., Taylor G. B., Allen S. W., Crawford C. S., Johnstone R. M., Iwasawa K., 2006, *MNRAS*, 366, 417  
 Gaspari M., Brighenti F., Ruszkowski M., 2013, *Astron. Nachr.*, 334, 394  
 Gastaldello F. et al., 2010, *A&A*, 522, A34  
 Gendron-Marsolais M. et al., 2017, *ApJ*, 848, 26  
 Ghizzardi S., De Grandi S., Molendi S., 2014, *A&A*, 570, A117  
 Grevesse N., Sauval A. J., 1998, *Space Sci. Rev.*, 85, 161  
 Heinz S., Brügggen M., Young A., Levesque E., 2006, *MNRAS*, 373, L65  
 Hillel S., Soker N., 2016, *MNRAS*, 455, 2139  
 Hitomi Collaboration et al., 2016, *Nature*, 535, 117  
 Hitomi Collaboration et al., 2018, *PASJ*, 70, 10  
 Johnstone R. M., Allen S. W., Fabian A. C., Sanders J. S., 2002, *MNRAS*, 336, 299  
 Kalberla P. M. W., Burton W. B., Hartmann D., Arnal E. M., Bajaja E., Morras R., Pöppel W. G. L., 2005, *A&A*, 440, 775  
 Kirkpatrick C. C., Gitti M., Cavagnolo K. W., McNamara B. R., David L. P., Nulsen P. E. J., Wise M. W., 2009, *ApJ*, 707, L69  
 Kirkpatrick C. C., McNamara B. R., Cavagnolo K. W., 2011, *ApJ*, 731, L23  
 Komatsu E. et al., 2011, *ApJS*, 192, 18  
 Kravtsov A. V., Nagai D., Vikhlinin A. A., 2005, *ApJ*, 625, 588  
 Lakhchaura K., Mernier F., Werner N., 2019, *A&A*, 623, A17  
 Lakhchaura K., Mernier F., Werner N., 2019, *A&A*, 623, A17  
 Leccardi A., Molendi S., 2008, *A&A*, 487, 461  
 Liu A., Tozzi P., Yu H., De Grandi S., Ettori S., 2018, *MNRAS*, 481, 361  
 Li Y., Bryan G. L., 2012, *ApJ*, 747, 26  
 McDonald M. et al., 2018, *ApJ*, 870, 13  
 McNamara B. R., Nulsen P. E. J., 2007, *ARA&A*, 45, 117  
 McNamara B. R., O'Connell R. W., 1989, *AJ*, 98, 2018  
 Mernier F. et al., 2017, *A&A*, 603, A80  
 Million E. T., Allen S. W., Werner N., Taylor G. B., 2010, *MNRAS*, 405, 1624  
 Molendi S., Pizzolato F., 2001, *ApJ*, 560, 194  
 O'Sullivan E., Giacintucci S., David L. P., Vrtilek J. M., Raychaudhury S., 2011, *MNRAS*, 411, 1833  
 Panagoulia E. K., Fabian A. C., Sanders J. S., 2013, *MNRAS*, 433, 3290  
 Panagoulia E. K., Sanders J. S., Fabian A. C., 2015, *MNRAS*, 447, 417  
 Peterson J. R., Fabian A. C., 2006, *PhR*, 427, 1  
 Peterson J. R. et al., 2001, *A&A*, 365, L104  
 Pinto C. et al., 2015, *A&A*, 575, A38  
 Rasmussen J., Ponman T. J., 2007, *MNRAS*, 380, 1554  
 Roediger E., Brügggen M., Rebusco P., Böhringer H., Churazov E., 2007, *MNRAS*, 375, 15  
 Russell H. R., Sanders J. S., Fabian A. C., 2008, *MNRAS*, 390, 1207  
 Sanders J. S., Fabian A. C., 2002, *MNRAS*, 331, 273  
 Sanders J. S., Fabian A. C., 2006, *MNRAS*, 370, 63

- Sanders J. S., Fabian A. C., 2007, *MNRAS*, 381, 1381  
Sanders J. S., Fabian A. C., Taylor G. B., 2009, *MNRAS*, 396, 1449  
Sijacki D., Springel V., Di Matteo T., Hernquist L., 2007, *MNRAS*, 380, 877  
Simionescu A., Werner N., Böhringer H., Kaastra J. S., Finoguenov A., Brüggén M., Nulsen P. E. J., 2009, *A&A*, 493, 409  
Simionescu A. et al., 2019, *MNRAS*, 483, 1701  
Smith R. K., Brickhouse N. S., Liedahl D. A., Raymond J. C., 2001, *ApJ*, 556, L91  
Vikhlinin A., Kravtsov A., Forman W., Jones C., Markevitch M., Murray S. S., Van Speybroeck L., 2006, *ApJ*, 640, 691  
Voit G. M., Donahue M., 2011, *ApJ*, 738, L24  
Werner N., de Plaa J., Kaastra J. S., Vink J., Bleeker J. A. M., Tamura T., Peterson J. R., Verbunt F., 2006, *A&A*, 449, 475  
Wilms J., Allen A., McCray R., 2000, *ApJ*, 542, 914  
Yang L., Tozzi P., Yu H., Lusso E., Gaspari M., Gilli R., Nardini E., Risaliti G., 2018, *ApJ*, 859, 65

This paper has been typeset from a  $\text{\TeX/L\TeX}$  file prepared by the author.