



Publication Year	2022
Acceptance in OA	2025-02-25T16:29:46Z
Title	The probability of galaxy-galaxy strong lensing events in hydrodynamical simulations of galaxy clusters
Authors	MENEGHETTI, MASSIMO, RAGAGNIN, Antonio, BORGANI, Stefano, CALURA, Francesco, Despali, Giulia, GIOCOLI, Carlo, GRANATO, Gian Luigi, Grillo, Claudio, MOSCARDINI, LAURO, RASIA, ELENA, Rosati, Piero, ANGORA, Giuseppe, BASSINI, LUIGI, BERGAMINI, PIETRO, Caminha, Gabriel B., GRANATA, Giovanni, MERCURIO, Amata, METCALF, ROBERT BENTON, Natarajan, Priyamvada, NONINO, Mario, PIGNATARO, GIADA VENUSTA, Ragone Figueroa, Cinthia, VANZELLA, Eros, Acebron, Ana, Dolag, Klaus, MURANTE, Giuseppe, TAFFONI, Giuliano, TORNATORE, Luca, Tortorelli, Luca, VALENTINI, MILENA
Publisher's version (DOI)	10.1051/0004-6361/202243779
Handle	http://hdl.handle.net/20.500.12386/36231
Journal	ASTRONOMY & ASTROPHYSICS
Volume	668

The probability of galaxy–galaxy strong lensing events in hydrodynamical simulations of galaxy clusters

Massimo Meneghetti^{1,2}, Antonio Ragagnin^{3,4,5}, Stefano Borgani^{6,4}, Francesco Calura¹, Giulia Despali⁷, Carlo Giocoli^{1,2,3}, Gian Luigi Granato^{4,8,5}, Claudio Grillo^{9,10}, Lauro Moscardini^{3,1,2}, Elena Rasia^{4,5}, Piero Rosati¹¹, Giuseppe Angora^{11,13}, Luigi Bassini¹², Pietro Bergamini^{9,1}, Gabriel B. Caminha¹⁷, Giovanni Granata⁹, Amata Mercurio¹³, Robert Benton Metcalf^{3,1}, Priyamvada Natarajan¹⁴, Mario Nonino⁴, Giada Venusta Pignataro^{3,18}, Cinthia Ragone-Figueroa^{8,15,4}, Eros Vanzella¹, Ana Acebron⁹, Klaus Dolag^{16,17}, Giuseppe Murante⁴, Giuliano Taffoni⁴, Luca Tornatore⁴, Luca Tortorelli¹⁶, and Milena Valentini¹⁶

(Affiliations can be found after the references)

Received 13 April 2022 / Accepted 19 September 2022

ABSTRACT

Context. An excess of galaxy–galaxy strong lensing (GGSL) in galaxy clusters compared to expectations from the Λ cold-dark-matter (CDM) cosmological model has recently been reported. Theoretical estimates of the GGSL probability are based on the analysis of numerical hydrodynamical simulations in Λ CDM cosmology.

Aims. We quantify the impact of the numerical resolution and active galactic nucleus (AGN) feedback scheme adopted in cosmological simulations on the predicted GGSL probability, and determine if varying these simulation properties can alleviate the gap with observations.

Methods. We analyze cluster-size halos ($M_{200} > 5 \times 10^{14} M_{\odot}$) simulated with different mass and force resolutions and implementing several independent AGN feedback schemes. Our analysis focuses on galaxies with Einstein radii in the range $0''.5 \leq \theta_E \leq 3''$.

Results. We find that improving the mass resolution by factors of 10 and 25, while using the same galaxy formation model that includes AGN feedback, does not affect the GGSL probability. We find similar results regarding the choice of gravitational softening. On the contrary, adopting an AGN feedback scheme that is less efficient at suppressing gas cooling and star formation leads to an increase in the GGSL probability by a factor of between 3 and 6. However, we notice that such simulations form overly massive galaxies whose contribution to the lensing cross section would be significant but that their Einstein radii are too large to be consistent with the observations. The primary contributors to the observed GGSL cross sections are galaxies with smaller masses that are compact enough to become critical for lensing. The population with these required characteristics appears to be absent from simulations.

Conclusion. Based on these results, we reaffirm the tension between observations of GGSL and theoretical expectations in the framework of the Λ CDM cosmological model. The GGSL probability is sensitive to the galaxy formation model implemented in the simulations. Still, all the tested models have difficulty simultaneously reproducing the stellar mass function and the internal structure of galaxies.

Key words. dark matter – galaxies: clusters: general – gravitational lensing: strong

1. Introduction

In the cold-dark-matter (CDM) paradigm, dark-matter halos form hierarchically, with the most massive systems resulting from mergers between smaller ones. Thus, dark-matter halos contain a full hierarchy of substructures in the form of sub-halos (Giocoli et al. 2008, 2010).

Galaxy clusters are ideal astrophysical laboratories for testing this prediction of the CDM paradigm because their content is dark-matter-dominated. With virial masses as large as a few times $10^{15} M_{\odot}$, they are the strongest gravitational lenses in the universe. Strong gravitational lensing occurs when distant background galaxies are in near-perfect alignment with the massive foreground cluster and when the deflection of light by the gravity of the cluster results in highly distorted, multiple images of individual background galaxies. The extended dark-matter distribution in cluster halos is responsible for most of these features. Galaxy clusters simultaneously split numerous distant sources into multiple images and produce highly distorted gravitational arcs over regions of size on the order of ~ 1 arcmin. At the same time, the larger-scale dense cluster environments enhance the strong lensing effects produced on scales of a few arcsec-

onds by the sub-halos they host. Occasionally, arclets and additional multiple images of distant galaxies appear around individual cluster member galaxies. We can use these galaxy–galaxy strong lensing (GGSL) effects inside clusters to infer the mass of the sub-halos in which the cluster galaxies are embedded (Natarajan & Kneib 1997; Natarajan et al. 2002, 2009).

Mass mapping via gravitational lensing has become an increasingly popular method for constraining the matter distribution in these objects (see, e.g., Soucail et al. 1987; Fort et al. 1988; Lynds & Petrosian 1989; Kneib et al. 1996; Broadhurst et al. 2005; Smith et al. 2005; Limousin et al. 2007, 2008, 2012, 2016; Jullo et al. 2007; Jullo & Kneib 2009; Kneib & Natarajan 2011; Kneib & Natarajan 2011; Postman et al. 2012; Monna et al. 2015, 2017). The high resolution of the imaging cameras aboard the *Hubble* Space Telescope (HST) has greatly impacted our ability to identify multiply imaged galaxies in the fields of several galaxy clusters. Particularly significant are several multi-cycle HST programs that recently targeted strong lensing clusters, such as the Cluster Lensing And Supernova survey with *Hubble* (CLASH; Postman et al. 2012), the Hubble Frontier Fields (HFF) initiative (Lotz et al. 2017), the REionization Lensing Cluster Survey (RELICS; Cerny et al. 2018), and the Beyond

Ultra-deep Frontier Fields And Legacy Observations (BUFFALO; [Steinhardt et al. 2020](#)). In these observational programs, several tens to hundreds of multiply imaged candidates and strongly lensed galaxies have been identified.

Follow-up spectroscopy by several independent groups has been ongoing for the bright, highly magnified multiple images in these clusters ([Rosati et al. 2014](#); [Balestra et al. 2013](#); [Treu et al. 2015](#); [Caminha et al. 2017a](#); [Mercurio et al. 2021](#)) as well as for the more challenging fainter objects. Integral field observations with the Multi-Unit Spectroscopic Explorer (MUSE) at the Very Large Telescope (VLT) have contributed invaluable to strong lensing modeling (see, e.g., [Karman et al. 2015](#); [Grillo et al. 2015, 2016](#); [Vanzella et al. 2021](#); [Caminha et al. 2019](#); [Jauzac et al. 2021](#); [Bergamini et al. 2021](#); [Richard et al. 2021](#); [Granata et al. 2022](#)). Thanks to its tremendous efficiency and sensitivity to line emitters, this instrument has expanded the list of confirmed strongly lensed galaxies available for mapping matter distribution and made unprecedented resolution possible in several galaxy clusters. Mass models have been built incorporating these constraints. They include self-similar smooth mass components to describe the large-scale cluster dark-matter halos and small-scale dark-matter substructures. These are generally assumed to be traced by bright cluster galaxies ([Natarajan & Kneib 1997](#); [Richard et al. 2014](#); [Diego et al. 2015, 2016](#); [Jauzac et al. 2015, 2016](#); [Atek et al. 2015](#); [Grillo et al. 2015, 2016](#); [Treu et al. 2016](#); [Kawamata et al. 2016](#); [Caminha et al. 2016, 2017b,a](#); [Limousin et al. 2016](#); [Lagattuta et al. 2017](#)). VLT/MUSE spectroscopy has also been critical for producing complete samples of confirmed cluster members for this purpose.

From a theoretical point of view, we can study the internal structure of galaxy clusters in the framework of the CDM paradigm with numerical hydrodynamical simulations. These simulations allow us to investigate the growth and the evolution of galaxy clusters in the cosmological context. If their resolution is high enough, we can use them to predict several properties of the sub-halos, such as their mass profiles, abundance, radial distribution function, and even their capacity to produce strong lensing effects ([Despali & Vegetti 2017](#); [Despali et al. 2020, 2022](#)).

Some studies in the literature have already used the outcome of strong lensing models and hydrodynamical simulations to test these predictions of the CDM paradigm (e.g., [Natarajan & Springel 2004](#)). Simulations show that the mass and radial distributions of sub-halos are nearly universal, with the former being a (truncated) power law with slope $\alpha \approx -0.9$ (see, e.g., [Ghigna et al. 2000](#); [Natarajan et al. 2007](#); [Dolag et al. 2009](#); [Giocoli et al. 2010](#); [Bahé et al. 2017](#); [Despali & Vegetti 2017](#)) and the second being much less concentrated than that of the dark-matter particles ([Gao et al. 2004, 2012](#); [Springel et al. 2008](#)). [Grillo et al. \(2015\)](#) find that the HFF cluster MACSJ 0416.1-2403 contains an unexpectedly high number of high-mass galaxies (i.e., with circular velocities $v_c > 100 \text{ km s}^{-1}$) compared to simulations (see also [Munari et al. 2016](#); [Bonamigo et al. 2018](#)), while [Natarajan et al. \(2017\)](#) noticed that the radial distribution of the observed visible substructures in clusters Abell 2744, MACSJ 0416.1-2403, and MACSJ 1149.5+2223 is inconsistent with numerical simulations.

More recently, [Meneghetti et al. \(2020, hereafter M20\)](#) reported an excess of GGSL events in a sample of 11 observed galaxy cluster lenses compared to expectations from Λ CDM hydrodynamic simulations. This result suggests that observed cluster member galaxies are more compact than their simulated counterparts. This and the former discrepancies between

simulations and observations may signal a potential problem with the CDM paradigm and/or as yet undiagnosed systematic issues with simulations. In particular, sub-halo properties may be affected by several physical processes that are known to be challenging to model and realistically include in simulations. For example, numerical simulations show that satellite halos can be gradually destroyed after being accreted, until they are completely dissolved in the host halo (see, e.g., [Diemand et al. 2004](#); [van den Bosch et al. 2005](#); [Giocoli et al. 2008, 2010](#); [Han et al. 2016](#); [Jiang & van den Bosch 2016](#); [van den Bosch 2017](#); [Bahé et al. 2019](#)). While there are known physical mechanisms that lead to the disruption of the satellite halos, additional numerical effects may also be at play. Tidal stripping and tidal heating can indeed remove large fractions of the mass of dark-matter sub-halos. Baryonic physics and processes such as cooling or energy feedback could impact the efficiency with which sub-halos can be destroyed and also alter their internal structure ([Frenk et al. 1988](#); [Garrison-Kimmel et al. 2017](#)). On the other hand, it is well known that sub-halos can also dissolve in N -body simulations because of numerical artifacts – limited mass and force resolution in a simulation, a problem well known to computational cosmologists as “overmerging” ([Carlberg 1994](#); [Moore et al. 1996](#); [Klypin et al. 1999](#); [van Kampen 2000](#); [van den Bosch et al. 2018](#)).

In this paper we delve deep into how the resolution and adopted active galactic nucleus (AGN) feedback schemes impact the GGSL probability measured in numerical hydrodynamical simulations of cluster assembly. To assess the relevance of these simulation properties, we repeat the analysis of M20 on a sample of galaxy clusters re-simulated with different particle masses, softening lengths, and AGN feedback schemes. We also compare the simulations to a selection of four observed galaxy clusters for which we recently constructed detailed strong lensing mass models.

The paper is structured as follows: In Sect. 2 we introduce the method for computing the GGSL probability; in Sect. 3.1 we present the observational data set; and in Sect. 4 we introduce the simulation data sets, discussing the differences between them. In Sect. 5 we show the results of the analysis performed on the different simulated data sets. We quantify the GGSL probability and determine which galaxies contribute primarily to the GGSL cross section. Finally, we draw our conclusions in Sect. 6.

2. Probability of GGSL events

To describe their strong lensing properties, we assume that the mass distribution of galaxy clusters is characterized by the projected surface mass density $\Sigma(\theta)$. The vector θ indicates the angular position on the lens plane.

The lens convergence, $\kappa(\theta)$, is defined as the ratio between the surface density and the critical surface density,

$$\kappa(\theta) = \frac{\Sigma(\theta)}{\Sigma_{\text{cr}}}, \quad (1)$$

where

$$\Sigma_{\text{cr}}(z_l, z_s) \equiv \frac{c^2}{4\pi G} \frac{D_s}{D_l D_{ls}}. \quad (2)$$

The quantities D_l , D_s , and D_{ls} are the angular diameter distances between the observer and the lens, the observer and the source, and the lens and the source, respectively. Further details on lensing basics can be found in, for example, [Meneghetti \(2021\)](#); see

also Kneib & Natarajan 2011; Meneghetti et al. 2013; Umetsu 2020, for some reviews on cluster lensing).

A light ray emitted by a source at redshift z_s , crossing the lens plane at position θ , is deflected by the reduced deflection angle

$$\alpha(\theta) = \frac{1}{\pi} \int \kappa(\theta') \frac{\theta - \theta'}{|\theta - \theta'|^2} d^2\theta', \quad (3)$$

where the integral is extended to the whole lens plane.

Using the first partial derivatives of the deflection angle components α_1 and α_2 , we define the shear tensor, whose components γ_1 and γ_2 are

$$\begin{aligned} \gamma_1(\theta) &= \frac{1}{2} \left[\frac{\partial \alpha_1(\theta)}{\partial \theta_1} - \frac{\partial \alpha_2(\theta)}{\partial \theta_2} \right] \\ \gamma_2(\theta) &= \frac{\partial \alpha_1(\theta)}{\partial \theta_2} = \frac{\partial \alpha_2(\theta)}{\partial \theta_1}. \end{aligned} \quad (4)$$

The shear modulus is $\gamma(\theta) = \sqrt{\gamma_1^2(\theta) + \gamma_2^2(\theta)}$.

Following the definition of M20, the GGSL cross section for a given source redshift, z_s , is the area on the source plane enclosed by cluster galaxies' tangential caustics. We computed it as follows.

We began from the map of the tangential eigenvalue of the lensing Jacobian, $\lambda_t(\theta)$. This is defined as

$$\lambda_t(\theta) = 1 - \kappa(\theta) - \gamma(\theta). \quad (5)$$

We then found the tangential critical lines, which are the zero-level contours of $\lambda_t(\theta)$:

$$\theta_t : \lambda_t(\theta_t) = 0. \quad (6)$$

Because of its multiple mass components, a galaxy cluster typically has many tangential critical lines. The largest ones are associated with the overall smooth cluster dark-matter halo. We call these critical lines ‘‘primary’’. A cluster can have more than one primary critical line. For example, a cluster can have multiple large-scale mass components, remnants from major mergers. Each of these mass components has its critical line. Our criterion to identify the primary critical lines is based on the size of the effective Einstein radius. Given a critical line enclosing the area A_c , the Einstein radius is given by

$$\theta_E = \sqrt{\frac{A_c}{\pi}}. \quad (7)$$

We define as primary the critical lines that have $\theta_E > 5''$, independent of the source redshift.

On the contrary, ‘‘secondary’’ tangential critical lines associated with the galaxy-scale sub-halos have smaller Einstein radii. In particular, we consider those critical lines satisfying the condition $0''.5 \leq \theta_E \leq 3''$, regardless of the source redshift. The lower limit on the Einstein radius is motivated by the fact that smaller critical lines may not be properly resolved in the numerical simulations that we consider in this paper. We decide to exclude the secondary critical lines with $\theta_E > 3''$ for reasons that will be explained in Sect. 5.3.

Once the critical lines have been identified, we mapped them onto the source plane using the lens equation (see, e.g., Meneghetti 2021), and we obtained the corresponding caustics,

$$\beta_c = \theta_c - \alpha(\theta_c), \quad (8)$$

for each caustic, we measured the enclosed area, σ_i . Summing the areas of all caustics, we obtained the total cluster GGSL cross section, $\sigma_{\text{GGSL}}(z_s) = \sum \sigma_i(z_s)$. We repeated this procedure by changing z_s to measure how the cross section varies as a function of the source redshift.

To compute the probability of GGSL events for sources at a given redshift, we divided the total cross section by the area in the source plane, which corresponds, via the lens equation, to the region relevant for the lens deflection angle field, $A_s(z_s)$:

$$P_{\text{GGSL}}(z_s) = \frac{\sigma_{\text{GGSL}}(z_s)}{A_s(z_s)}. \quad (9)$$

It should be noted that we compute the cross sections in the limit of point sources. The cross sections would be larger for extended sources. Indeed, in this case strong lensing effects can occur even if the sources are not entirely contained by the caustics. Thus, the values reported in this paper for both observed and simulated lenses are lower limits of the true GGSL cross sections and probabilities.

3. Application to observations

3.1. Observational data set

In this paper, we focus on four galaxy clusters, namely Abell S1063 ($z = 0.3457$, Balestra et al. 2013), MACS J0416.1-2403 ($z = 0.397$, Balestra et al. 2016), MACS J1206.2-0847 ($z = 0.439$, Biviano et al. 2013), and PSZ1 G311.65-18.48 ($z = 0.443$, Dahle et al. 2016). These clusters are well known strong gravitational lenses. Deep multiband observations with *Hubble* have revealed several tens of background galaxies that appear as distorted arcs and sets of multiple images (Postman et al. 2012; Lotz et al. 2017; Rivera-Thorsen et al. 2019; Pignataro et al. 2021). The HST images also contain several examples of GGSL events (Grillo et al. 2014; Parry et al. 2016; Caminha et al. 2017a; Vanzella et al. 2017; Desprez et al. 2018; M20).

By modeling these large sets of strong lensing features, we have resolved the inner structure of the dark-matter halos in these clusters down to galaxy scales. The details of the reconstructions themselves can be found in a series of prior papers (Bergamini et al. 2019, 2021; Pignataro et al. 2021). In short, we used the so-called parametric approach implemented in the publicly available lens inversion code LENSTOOL (see, e.g., Kneib et al. 1996; Jullo et al. 2007; Kneib & Natarajan 2011; Meneghetti et al. 2017). The adopted model characterizes the cluster as a combination of mass components whose density profiles are analytic functions dependent on a few parameters. In addition, it assumes that luminous cluster galaxies trace the mass in the dark-matter substructure. The contribution of the entire population of cluster members to the cluster mass budget is modeled using scaling relations such as the Faber-Jackson (Faber & Jackson 1976; Natarajan & Kneib 1997). We used MUSE integral field spectroscopy to measure the internal kinematics of a subset of cluster galaxies and used them to calibrate these scaling relations. In lens optimization, one searches for the best-fit parameters that minimize the distance between the observed and model-predicted multiple images. The optimization result is a projected mass map fully described by parameters that allow us to disentangle the mass into the large-scale cluster dark-matter halo and the smaller-scale galaxy components.

We validated the lens models on the scales relevant for this work through a series of tests. We refer the reader to the

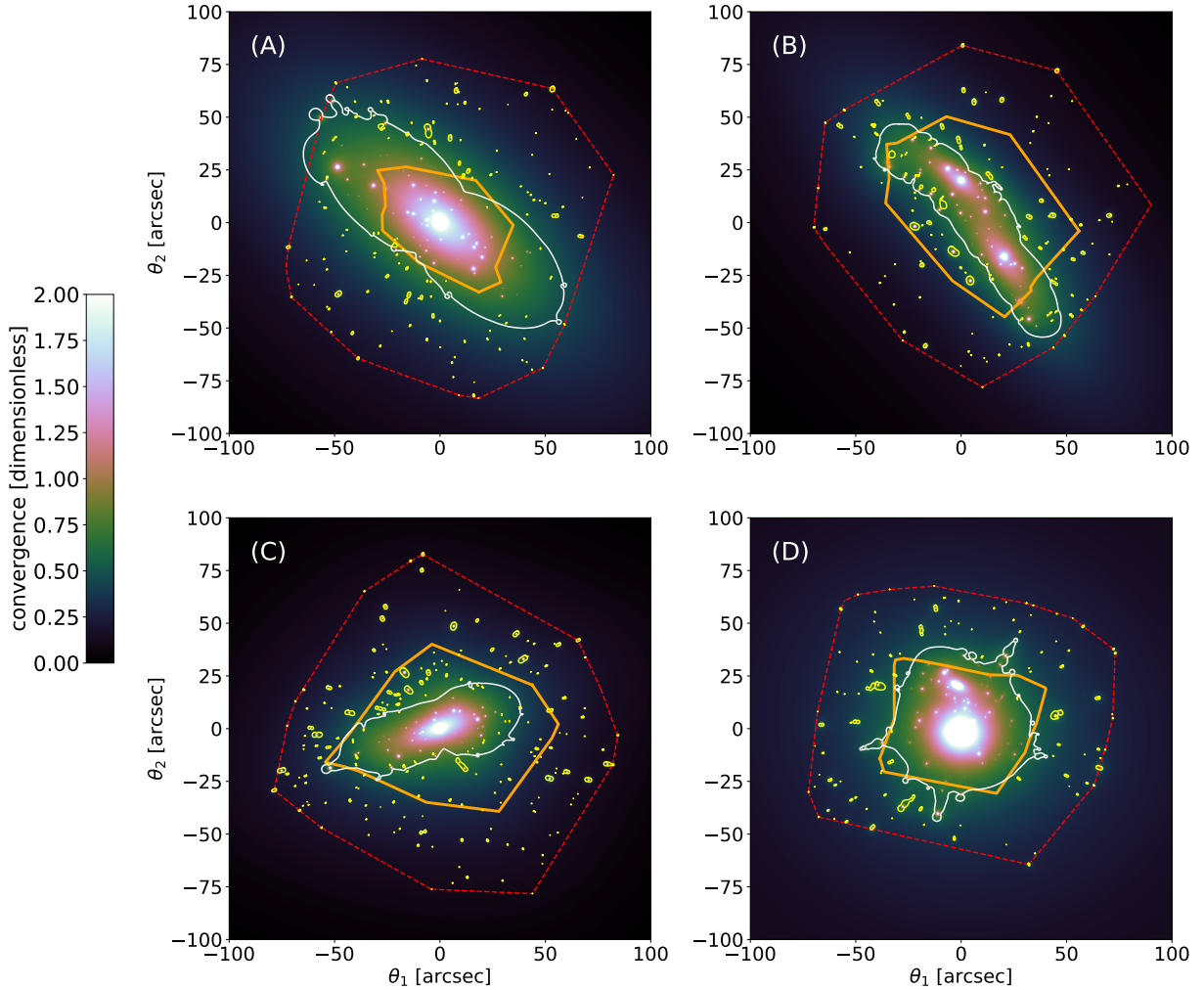


Fig. 1. Reconstructed convergence maps for $z_s = 3$ of Abell S1063 (*panel A*), MACS J0416.1-2403 (*panel B*), MACS J1206.2-0847 (*panel C*), and PSZ1 G311.65-18.48 (*panel D*). We also show the primary and secondary critical lines (solid white and yellow lines, respectively). The dashed red lines mark the region in the lens plane containing all the cluster members included in the mass models. When mapped onto the source plane, these lines correspond to the thick solid orange lines, which show the size of the region in the source plane that contains all the secondary caustics.

Supplementary Materials section of ME20 for an in-depth discussion on the validation procedure.

In Fig. 1 we show the convergence maps of the four clusters with overlaid the primary and secondary tangential critical lines for $z_s = 3$ (solid white and yellow lines, respectively). We used these models to compute the GGSL cross sections and probabilities as outlined in Sect. 2.

The selection of the cluster members included in the lens models is relevant for this analysis. Only cluster galaxies within the dashed red lines in Fig. 1 contribute to the cluster deflection fields. We identified them either spectroscopically or because their colors are consistent with the cluster red sequences. In addition, we retained only galaxies with apparent magnitude $m_{F160W} \leq 24$ in the HST/Wide Field Camera 3 (WFC3) $F160W$ band. Only the galaxies included in the lens model are assumed to contribute to the GGSL cross section.

Most of the cluster galaxies are massive and compact enough to have their own (secondary) critical lines. Because of the cluster magnification, the corresponding caustics occupy regions in the source plane significantly smaller than those enclosed by the dashed red lines. We mark these regions in Fig. 1 with thick solid orange lines. To calculate the GGSL probability, we divided the GGSL cross sections by the areas A_s enclosed within these lines.

3.2. Comparison to M20

This approach is different from that utilized in M20, who mapped the entire field-of-view of $200'' \times 200''$ onto the source plane to compute $A_s(z_s)$. This field-of-view, however, is larger than the reconstructed cluster region. A significant portion of it does not contain cluster galaxies because they were not included in the lens model. For this reason, the GGSL probabilities calculated in M20 for Abell S1063, MACS J0416.1-2403, and MACS J1206.2-0847 are smaller than those reported here in this paper.

These three clusters were part of the 11 cluster sample used in the M20 analysis. In particular, they formed the reference sample in that work. Here we add PSZ1 G311.65-18.48. We focus on these four clusters because we consider their models more robust on the scales of the cluster galaxies, compared to the other models included in the M20 analysis. As explained, for these clusters we could employ galaxy kinematics measurements to calibrate the scaling relations used to model the cluster member contribution to the lensing signal.

We verified that adding the other clusters used in M20 would increase the average GGSL probability by $\geq 20\%$. Thus, our estimate of the GGSL probability in the observational data set is conservative.

We also verified that the distribution of the Einstein radii of the secondary critical lines in the four clusters of our sample do not differ significantly from that in the sample of M20. As it will be discussed in details in Sect. 5.3, both distributions are truncated at $\theta_{E,\text{cut}} \sim 3''$.

4. Application to numerical simulations

4.1. Numerical data sets

The simulated cluster halos used in this paper belong to a suite of numerical hydrodynamical simulations, dubbed the Dianoga suite, that have been extensively studied in several previous works, including several lensing analyses (e.g., Meneghetti et al. 2010; Killedar et al. 2012; Rasia et al. 2012). We focus on a sample of seven cluster-size halos. They were first identified in a low-resolution periodic simulation box with a co-moving size of ~ 1.4 Gpc for a flat Λ CDM model with present matter density parameter $\Omega_{m,0} = 0.24$ and baryon density parameter $\Omega_{b,0} = 0.04$. The Hubble constant adopted was $H_0 = 72 \text{ km s}^{-1} \text{ Mpc}^{-1}$ and the normalization of the matter power spectrum on a scale of $8 h^{-1} \text{ Mpc}$ was $\sigma_8 = 0.8$, where $h = H_0/100$. The primordial power spectrum of the density fluctuations adopted was $P(k) \propto k^n$ with $n = 0.96$. The parent simulation followed 1024^3 collision-less particles in the box. The clusters were identified at $z = 0$ using a standard friends-of-friends algorithm, and their Lagrangian region was then re-simulated at higher resolution employing the Zoomed Initial Conditions (ZIC) code (Tormen et al. 1997; Bonafede et al. 2011). The resolution was progressively degraded outside this region to save computational time while still ensuring that the larger-scale tidal field is accurately described. The Lagrangian region was large enough to ensure that only high-resolution particles were present within five virial radii of the clusters.

The re-simulations were then carried out using the TreePM-SPH code Gadget3 (Springel 2005), adopting an improved smoothed particle hydrodynamics (SPH) solver (Beck et al. 2016). Our treatment implements several recipes for the relevant physical processes that operate, and these are summarized as follows. Metallicity-dependent radiative cooling and the effect of a uniform time-dependent UV background are modeled as in Planelles et al. (2014). A sub-resolution model for star formation from a multiphase interstellar medium is implemented as in Springel & Hernquist (2003). Kinetic feedback driven by a supernova (SN) is in the form of galactic winds. Metal production from SN-II, SN-Ia, and asymptotic-giant-branch stars follows the recipe by Tornatore et al. (2007).

The seven cluster halos that we study in this paper were simulated with different mass and spatial resolutions and implemented galaxy formation models characterized by various independent AGN-feedback schemes. In all cases, the simulations began from the same initial conditions.

As specified below, the details of these models can be found elsewhere, here we briefly summarize them¹.

1xRF18. The first set of simulations, which we dub 1xRF18, implements the feedback scheme proposed by Ragone-Figueroa et al. (2013; based on previous work by Springel et al. 2005) with some modifications as outlined in

¹ We present a complementary analysis of the simulations used in this work in Ragagnin et al. (2022), where we discuss in details several properties of the cluster galaxies (stellar masses, mass profiles, radial distribution functions, etc.). Tables 1 and 2 of that paper summarize the properties of the simulations.

Ragone-Figueroa et al. (2018). The gas particles are assumed to be multiphase when their density exceeds the threshold of 0.1 cm^{-3} , and their temperature is $T < 2.5 \times 10^5 \text{ K}$. Multiphase particles comprise a cold and a hot phase in pressure equilibrium. Particles in the cold phase can cool and form stars. Black holes (BHs) with an initial mass of $M_{\text{BH}} \sim 7 \times 10^6 M_{\odot}$ are seeded in sub-halos with mass $M > 3 \times 10^{11} M_{\odot}$. The Eddington limited gas accretion rate onto BHs, \dot{M}_{BH} , is computed by multiplying the Bondi rate by a boost factor, α . A distinction is made between the cold and hot accretion modes. The gas temperature threshold separating these two accretion modes is set at $T = 5 \times 10^5 \text{ K}$. Cold and hot accretion correspond to two different boost factors, namely $\alpha_{\text{cold}} = 100$ and $\alpha_{\text{hot}} = 10$, motivated to match observational constraints at $z = 0$. The rate of available energy feedback from BH accretion is $\dot{E} = \epsilon_f \epsilon_r \dot{M}_{\text{BH}} c^2$, where the parameters ϵ_r and ϵ_f describe the fraction of accreted mass transformed into radiation and the fraction of radiated energy thermally coupled to the gas particles, respectively. The scheme also accounts for cold cloud evaporation. The parameters ϵ_r and ϵ_f are calibrated to reproduce the observed relation between BH mass and stellar mass in spheroids, that is, the Magorrian relation (Magorrian et al. 1998). Specifically, the 1xRF18 simulations adopt $\epsilon_r = 0.07$ and $\epsilon_f = 0.1$ and assume a transition from a quasar mode to a radio mode AGN feedback when the accretion rate becomes smaller than a given fraction of the Eddington limit, $\dot{M}_{\text{BH}}/\dot{M}_{\text{Edd}} = 10^{-2}$. In radio mode, the feedback efficiency ϵ_f is increased to 0.7.

To counteract numerical effects that tend to move BHs away from the stellar system in which they were first seeded, Ragone-Figueroa et al. (2018) also implement an algorithm to keep the BHs at the center of their dark-matter halos. Pinning the BHs is particularly relevant for this study because the absence of AGN feedback at the center of massive galaxies due to BH wandering leads to catastrophic cooling and excessive star formation that may artificially increase the GGSL cross section. Ragone-Figueroa et al. (2018) show that the energy feedback model implemented in their simulations, which comprise the seven clusters in our sample, produce brightest cluster galaxies (BCGs) with stellar masses in excellent agreement with the observations. Bassini et al. (2019) also show that these simulations predict a stellar mass function that matches the observations at the high-mass end but is lower by a factor of ~ 2 at masses lower than $8.5 \times 10^{11} M_{\odot}$.

The mass resolution for the dark-matter and gas particles is $m_{\text{DM}} = 1.1 \times 10^9 M_{\odot}$ and $m_{\text{gas}} = 2.1 \times 10^8 M_{\odot}$, respectively. For the gravitational force, a Plummer-equivalent softening length of $\epsilon = 7.7 \text{ ckpc}$ (co-moving kiloparsec) is used for dark-matter and gas particles, whereas $\epsilon = 4.2 \text{ ckpc}$ for BH and star particles.

1xR15. The 1xR15 sample is a subsample of the simulations described in Rasia et al. (2015). Some of these clusters were also analyzed in M20. The AGN feedback model implemented in these simulations is presented in detail in Steinborn et al. (2015) and Hirschmann et al. (2014). The main difference with the model used in the 1xRF18 simulations is that the released thermal energy accounts for contributions by mechanical outflows and radiation, which are computed separately in the code. The outflow component dominates at accretion rates below $\sim 0.01 \dot{M}_{\text{Edd}}$. This results in an additional parameter that describes the outflow efficiency ϵ_o . The parameters ϵ_r and ϵ_o are not constant but are allowed to vary as a function of the BH mass and accretion rate. This implies a continuous transition between the feedback processes acting in the radio and quasar modes. The model is calibrated to reproduce the Magorrian relation

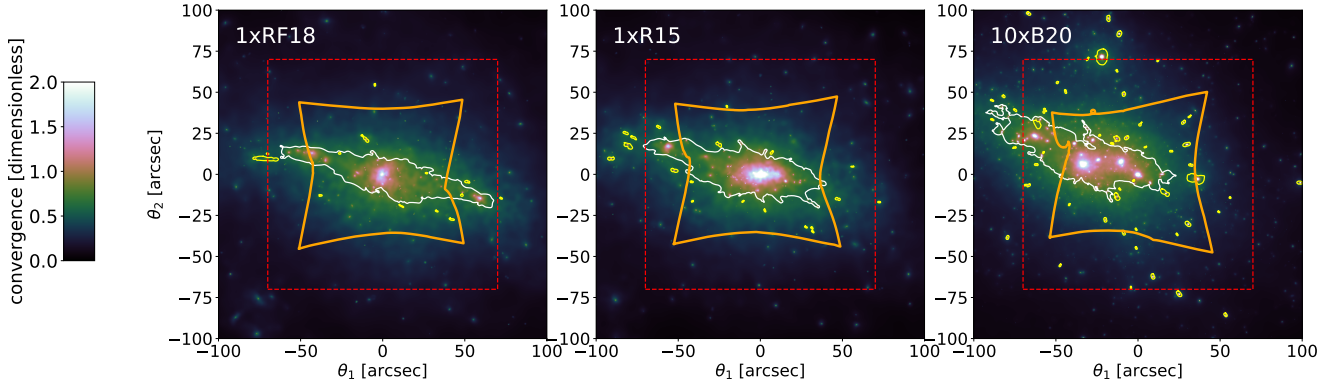


Fig. 2. Examples of convergence map for $z_s = 3$ for a simulated cluster at $z_l \sim 0.4$. The *left*, *central*, and *right panels* show the maps for the same halo in the 1xRF18, 1xR15, and 10xB20 samples. The solid white and yellow lines show the primary and secondary tangential critical lines. The dashed red line indicates the region where we identify the secondary critical lines for measuring the GGSL probability. The solid orange line shows the boundaries of this region on the source plane.

($\epsilon_f = 0.05$), but it also reproduces quite well the observed stellar mass function over a wide range of masses (Steinborn et al. 2015). The mass resolution is identical to the 1xRF18 simulations, but the Plummer-equivalent softening length is smaller: 5.2 ckpc for the dark-matter and gas particles and 2.7 ckpc for BH and star particles.

10xB20. The 10xB20 clusters are a subsample of the simulations presented by Bassini et al. (2020). The mass resolution is a factor of 10 higher than in the 1xR15 and 1xRF18 simulations. Thus, the particle mass for the dark-matter and gas particles is $m_{\text{DM}} = 1.1 \times 10^8 M_\odot$ and $m_{\text{gas}} = 2.1 \times 10^7 M_\odot$, respectively. The gravitational softening is $\epsilon = 1.9$ ckpc for the dark-matter and gas particles and 0.5 ckpc for the BH and star particles. BHs with an initial mass of $M_{\text{BH}} \sim 5.5 \times 10^5 M_\odot$ are seeded in subhalos whenever the following conditions are simultaneously fulfilled: (i) the total stellar mass is higher than $2.8 \times 10^9 M_\odot$; (ii) the stellar-to-dark-matter mass ratio is higher than 0.05; (iii) the gas mass is equal to or larger than 10% of the stellar mass; and (iv) no other central BH is already present.

Bassini et al. (2020) implement a feedback scheme similar to that of Ragone-Figueroa et al. (2018), but with few significant modifications. They do not impose a temperature threshold to define multiphase gas particles, and the energy released by AGN feedback is not used to evaporate the cold phase of gas particles. Under these conditions, cold particles can cool more efficiently and form more stars. Thus, this model agrees better with the observed stellar mass function at intermediate masses, but it over-predicts the number of massive galaxies. As shown by Bassini et al. (2020), these simulations also tend to produce overly massive BCGs compared to observations. This problem is common to several other simulation suites as reported in the literature, including the HYDRANGEA/EAGLE, Illustris-The Next Generation (TNG), and Feedback Acting on Baryons in Large-scale Environments (FABLE) simulations (Bahé et al. 2017; Pillepich et al. 2018; Henden et al. 2020). Bassini et al. (2020) also implement a different algorithm to prevent BH wandering compared to Ragone-Figueroa et al. (2018). The parameters ϵ_r and ϵ_f are set to 0.07 and 0.16, respectively, to reproduce the Magorrian relation at $z = 0$. As we discuss later in this paper, we simulate two subsets of the Dianoga cluster sample with the same AGN feedback model implemented in the 10xB20 simulations, but with mass resolution lower by a factor of 10 and higher by a factor of 2.5, respectively.

4.2. Lensing analysis

For each of the seven cluster halos in all simulation sets, we consider the mass distributions at six different redshifts between $z_{\text{min}} = 0.24$ and $z_{\text{max}} = 0.55$. The four clusters in the observational data set have redshifts in this range. Thus, we can compare them safely to the simulations.

For each simulation snapshot, we generated three lens planes by projecting the particles within cylinders of depth 10 Mpc along the axes of the simulation box. We followed the procedure outlined in M20 to produce the surface density maps. We used the python code PY-SPHVIEWER (Benitez-Llambay 2015) to smooth the particle mass distributions using an adaptive SPH scheme. We converted the surface density maps into deflection angle maps using fast-Fourier-transform techniques to solve Eq. (3) and compute the GGSL cross sections and probabilities as explained in Sect. 2. M20 measured the GGSL probability in regions of 200×200 arcsec centered on each cluster. This paper considers smaller areas of $150'' \times 150''$, comparable to those within which we identified the cluster members included in the lens models in the observational data set. These regions correspond to smaller A_s when mapped onto the source planes (as shown by the solid orange line in Fig. 2). As a result, the GGSL probabilities reported in this paper are higher than those quoted by M20 by a factor of ~ 1.5 . We adopted this new area constraint to better match the various simulated subsamples studied here.

For each simulation set, our sample consists of 126 lens planes. We discard those corresponding to cluster masses $M_{200} < 5 \times 10^{14} M_\odot$, where M_{200} is the mass within the radius enclosing a mean density of $200 \times \rho_{\text{crit}}$, and ρ_{crit} is the critical density of the universe. After this selection, the median M_{200} masses of the 1xRF18, 1xR15, and 10xB20 samples are $1.34 \times 10^{15} M_\odot$, $1.32 \times 10^{15} M_\odot$, and $1.1 \times 10^{15} M_\odot$, respectively. Based on weak and strong lensing analyses, Abell S1063, MACS J0416.1-2403, MACS J1206.2-0847 have estimated masses in the range $10^{15} \lesssim M_{200} \lesssim 2 \times 10^{15} M_\odot$ (Umetsu et al. 2014, 2016, 2018; Merten et al. 2015). The mass of PSZ1 G311.65-18.48 estimated from *Planck* Sunyaev-Zeldovich (SZ) data is $M_{500} \sim 6.6 \times 10^{14}$ (Planck Collaboration XX 2014; Dahle et al. 2016), where M_{500} is the mass corresponding to an overdensity of $500 \times \rho_{\text{crit}}$. Converting to M_{200} assuming a typical concentration-mass relation (Hu & Kravtsov 2003), we obtain $M_{200} \sim 8.5 \times 10^{14} M_\odot$.

We show examples of convergence maps for the same cluster halo in the three simulation sets in Fig. 2. The source redshift is $z_s = 3$. We notice that the halo in the 10xB20 simulation contains

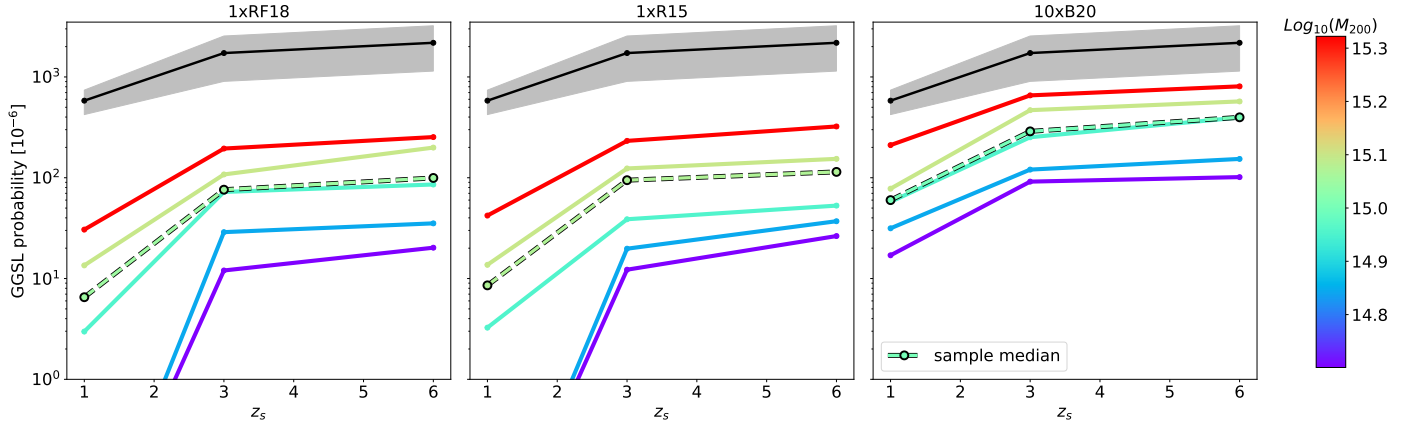


Fig. 3. GGSL probability as a function of the source redshift. The mean GGSL probability among our observational sample is shown with the solid black line in all panels. The gray color band shows the 99% confidence interval, computed by bootstrap sampling. The results for the 1xRF18, 1xR15, and 10xB20 simulation sets are shown in the *left*, *central*, and *right* panels, respectively. Each solid colored line corresponds to the median of GGSL probability in mass bins. The colors reflect the cluster mass, as indicated in the color bar on the right. The dashed black lines show the median probability among all cluster projections.

several massive galaxies that are not equally prominent in the 1xR15 and 1xRF18 maps. As in Fig. 1, the white and yellow solid lines indicate the primary and secondary tangential critical lines, respectively.

5. Results

5.1. GGSL probabilities

Figure 3 shows the mean GGSL probability in the observational data set as a function of the source redshift along with the 99% confidence interval. We show the results for the simulated clusters using solid colored lines, with different colors indicating different cluster masses, M_{200} . We group the cluster projections into five mass bins, whose edges are $5 \times 10^{14} M_{\odot}$, $6 \times 10^{14} M_{\odot}$, $8 \times 10^{14} M_{\odot}$, $10^{15} M_{\odot}$, $1.5 \times 10^{15} M_{\odot}$, and $3 \times 10^{15} M_{\odot}$. Although the data sets contain only seven clusters, we remind that we project each of them along three orthogonal lines of sight. In addition, we use snapshots of each cluster at six different redshifts. The left, central, and right panels refer to the 1xRF18, 1xR15, and 10xB20 simulation sets, respectively. The dashed lines show the medians among all cluster projections in each data set and are colored according to the median mass in each sample.

All simulated clusters, independent of the simulation set they belong to, have GGSL probabilities consistently smaller than those of the observational data set. For the samples 1xRF18 and 1xR15, the results are very similar. The cluster halos with the highest GGSL probabilities fall short of the observations by a factor of ~ 7 at $z_s > 3$, on average. The median GGSL probability in these simulations is lower by more than one order of magnitude than in the observational set, thus confirming the results of M20.

The efficiency of the AGN feedback models implemented in these two types of simulations is similar (as discussed in Ragagnin et al. 2022). The softening length of the 1xRF18 simulations is larger than that of the 1xR15 simulations, the cluster halos in 1xRF18 sample contain 25% fewer low-mass galaxies ($M_{\text{sub}} \lesssim 10^{11} M_{\odot}$) in their inner regions. Interestingly, the nearly identical GGSL probabilities we measure in the 1xRF18 and 1xR15 simulations indicate that softening has a low impact on the GGSL cross sections of the simulated clusters. Thus, most of the GGSL signal in these halos originates from galaxies of mass

$M_{\text{sub}} \gtrsim 10^{11} M_{\odot}$. On the contrary, as reported in Fig. S5 of M20, the GGSL events observed in MACS J0416.1-2403 and MACS J1206.2-0847 are produced by cluster galaxies with estimated masses $M_{\text{sub}} < 10^{11} M_{\odot}$.

As shown in the right panel of Fig. 3, the gap between the 10xB20 simulations and the observational data sets is significantly smaller. For example, the simulated halos with the highest GGSL probabilities fall short of the observations by only a factor of 3 in this case. Still, however, the median GGSL probability is smaller than the observed value by a factor of 5.

The increment of GGSL probability in 10xB20 compared to the 1xRF18 and 1xR15 simulations depends on cluster mass. As shown in Fig. 4, it is larger for low-mass than for high-mass clusters. If we consider cluster halos in two mass bins, corresponding to masses $7 \times 10^{14} M_{\odot} \leq M_{200} < 10^{15} M_{\odot}$ and $M_{200} \geq 10^{15} M_{\odot}$ we can compute the median ratios of the GGSL probabilities of the 10xB20 clusters to those of the 1xR15 in the two bins. For the most massive halos, the ratio is $\lesssim 3$ at $z_s \geq 3$, while it is $\lesssim 6$ for the clusters in the smallest mass bin. As explained above, such an increment is still insufficient to fill the gap with the observations.

All the simulated cluster samples contain a majority of clusters with masses $M_{200} > 10^{15} M_{\odot}$. Consequently, the median GGSL probability increment for the whole sample is similar to that of the most massive clusters, except at $z_s = 1$. For low source redshifts, the differences between 10xB20 and 1xR15 simulations in the smallest mass bin are much more significant and amount to a factor of ~ 35 .

Galaxies in low-mass clusters in the 1x simulations are often subcritical for lensing, that is, they do not develop secondary critical lines, especially at low source redshifts. Therefore, it is not surprising that the differences between the 10xB20 and 1x simulations emerge more significantly at small cluster masses and for low z_s .

Our procedure to compute the GGSL cross section only accounts for the contributions to the GGSL cross section from nonresonant caustics (i.e., those that do not merge with the caustic of the primary lens). This approach is applied consistently to both simulated and observed lenses. In principle, in simulations that form more stars, a large fraction of secondary caustics may merge with the primary caustic and not be accounted for. This may potentially lead to underestimating the effect of a stronger cooling on the GGSL probability. If this effect were significant, however,

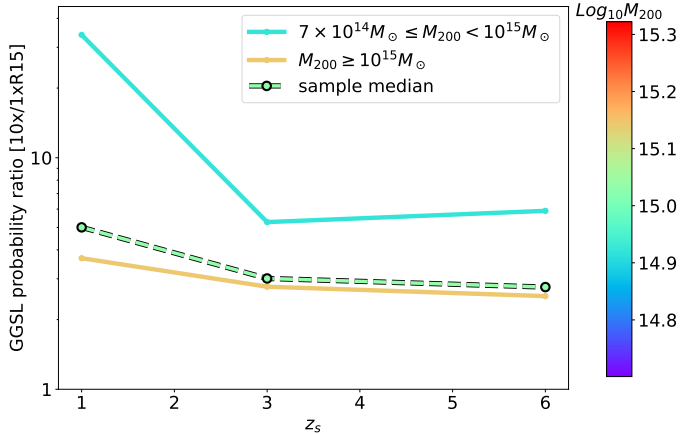


Fig. 4. Median ratio of the GGSL probabilities in the 10xB20 sample to those in the 1xR15 sample as a function of the source redshift. We show the results separately for clusters with masses larger and smaller than $10^{15} M_{\odot}$, as shown by the different colors of the solid lines. The dashed line shows the median ratio of the GGSL probabilities in the whole sample.

we would expect the sizes of the primary critical lines to be systematically larger in the 10xB20 than in the 1xR15 and 1xRF18 simulations. Instead, we do not find any evidence of this effect.

5.2. Effects of resolution and AGN feedback

We want to establish if the higher GGSL probability in the 10xB20 sample compared to the 1x samples is mainly due to these simulations' higher spatial and force resolutions or to their less efficient feedback scheme. In higher-resolution simulations, the inner structure of galaxies is better resolved, preventing the smaller sub-halos from being destroyed due to numerical effects. At the other end, a lower feedback efficiency implies more substantial cooling and higher star formation that may cause the formation of denser galaxies that are more powerful strong lenses.

The Dianoga suite contains simulations (although for only four cluster halos) carried out at the exact mass resolution of the 1xR15 and 1xRF18 samples, but with the same AGN feedback model implemented in the 10xB20 simulations. The softening lengths are 4.2 ckpc for the dark-matter and gas particles and 1 ckpc for the BH and star particles, respectively. We dub these simulations 1xB20. In addition, for another subsample of four Dianoga cluster halos, simulations were carried out also with a mass resolution 25 times better than in the 1xB20 sample and using the same feedback scheme of B20. In this case, the softening lengths are 1.38 ckpc for dark-matter and gas particles and 0.35 ckpc for star and BH particles. We refer to these simulations as 25xB20. We perform the same lensing analysis outlined above also with these smaller data sets and compare the results to the corresponding subsets of 10xB20 simulations.

Figure 5 shows three convergence maps for the same cluster projection in the 1xB20 and 10xB20, and 25xB20 sets. The maps refer to a source redshift of $z_s = 3$. We also show the primary and secondary critical lines in white and yellow, respectively. There are no obvious differences between the three simulations regarding the numbers and sizes of secondary critical lines. This result suggests that the three lenses have similar GGSL probabilities.

We find similar results by analyzing the sample of 12 cluster projections at $z \sim 0.4$ obtained from all four clusters available in the 1xB20 and 25xB20 samples. The median relative variation of

GGSL probability between these simulation sets and the 10xB20 cluster halos are shown in Fig. 6. Although the error bars are quite large, on average, the GGSL probability is nearly independent from resolution. We show the results for a source redshift of $z_s = 3$. They are similar for other source redshifts. The GGSL probabilities slightly decrease, rather than increase, as a function of mass resolution. We conclude that the increment of GGSL probability between the 1x (RF18 or R15) and 10xB20 simulations is mostly due to the different feedback schemes implemented in these simulations rather than the higher numerical resolution in the 10xB20 data set.

Our results agree with those of M20, who carried out extensive tests to ensure that the limited resolution of the 1xR15 simulations was not impacting their measurements of the GGSL cross sections and probabilities. On the contrary, they are inconsistent with those of Robertson (2021), based on the C-EAGLE simulations, who claims that the GGSL cross sections measured by M20 are under-estimated by up to a factor of 2. This inconsistency most likely depends on the method employed by Robertson (2021) for quantifying the impact of mass resolution. In our analysis, we consider a set of clusters simulated with three different resolution levels. This is critically important to preserve the appropriate dynamical state of sub-halos while changing only the resolution. On the other hand, the low-resolution clusters considered in Robertson (2021) were generated by resampling the particle distributions of higher-resolution simulations. Under-sampling a high-resolution simulation to a given number of particles is not expected to produce the same results as running a lower-resolution simulation with the same number of particles.

5.3. Galaxy contributions to the GGSL cross sections

The GGSL probability is an integrated quantity, meaning it does not inform us on the properties of the individual galaxies, but rather of those that contribute mostly to the GGSL signal.

We can characterize the galaxies in terms of their equivalent Einstein radii (Eq. (7)). In practice, not all galaxies have their own critical lines and, in several cases, the critical lines associated with nearby galaxies merge forming larger critical lines enclosing more than one galaxy. Thus, if N_{crit} is the total number of secondary critical lines and N_{sub} is the total number of galaxies in a cluster, we have that $N_{\text{crit}} \leq N_{\text{sub}}$.

The Einstein radius measures the enclosed projected mass and is sensitive to the galaxy mass profile and to the local background cluster surface density. It is also dependent on the intensity of the cluster shear field.

In Fig. 7 we show the average number density of secondary critical lines in the observational and simulation data sets as a function of their Einstein radius. We assume $z_s = 6$ in this analysis. For this source redshift, the clusters produce the largest number of secondary critical lines. The results for $z_s = 3$ are very similar. In the observational data set (black histogram), the distribution of Einstein radii has a cut-off at $\theta_{\text{E,cut}} \sim 3''$. The histogram is the median among 50 reconstructions of each cluster in the observational data set, obtained by sampling the posterior distributions of the model parameters. The gray band around the black histogram indicates the 99% confidence intervals of the median, estimated by bootstrap sampling. The number density of critical lines with $\theta_{\text{E}} < \theta_{\text{E,cut}}$ exceeds that of the 10xB20 sample (light blue histogram) by a factor of ~ 2 . In the case of the 1x simulations (dashed dark blue and orange histograms), the gap with observations is a factor of ~ 7 , consistent with the results of M20.

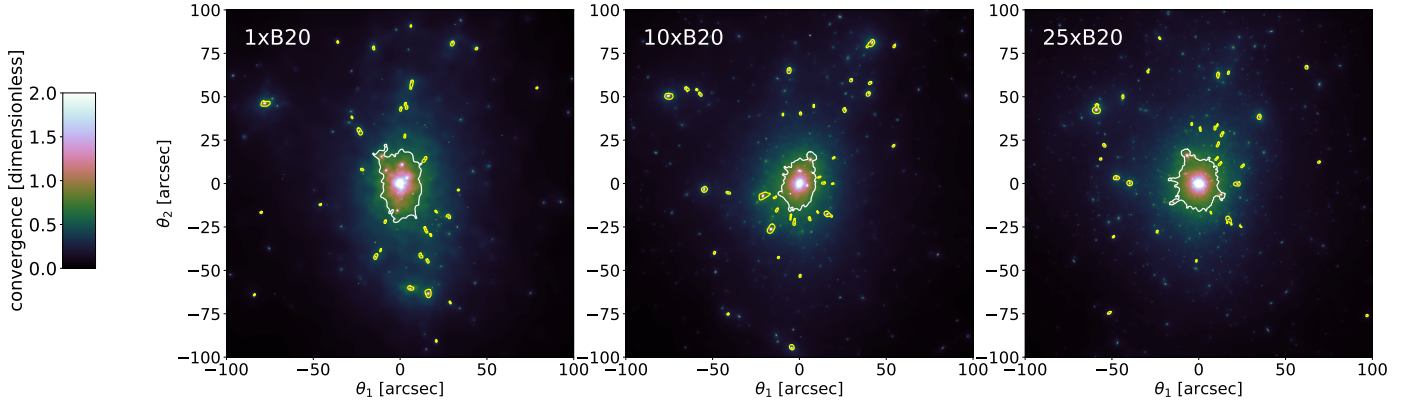


Fig. 5. Convergence maps for $z_s = 3$ of a cluster halo simulated with the same AGN feedback scheme of the 10xB20 simulations, but with different mass resolutions and softening lengths. See the text for more details.

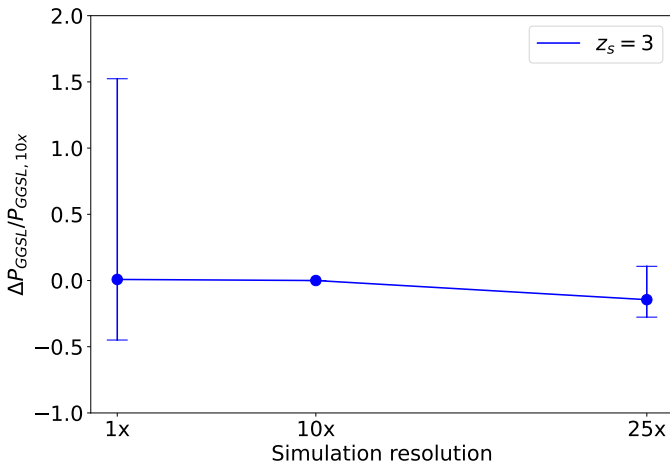


Fig. 6. Median relative change of GGSL probability with respect to the 10xB20 set, as a function of the mass resolution in the B20 simulations. The error bars show the 99% confidence limits.

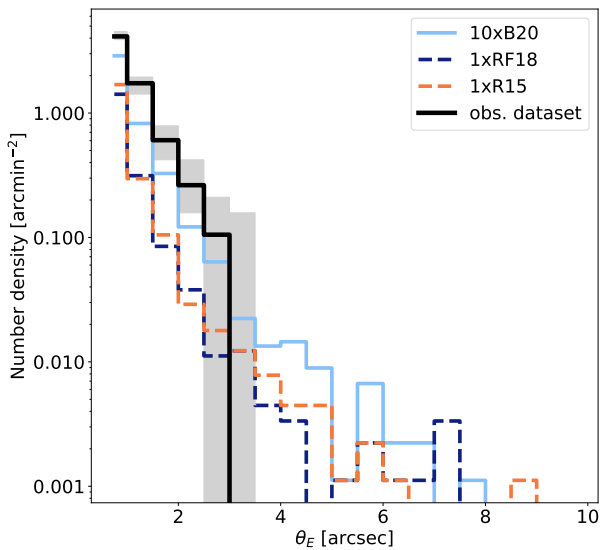


Fig. 7. Number density of secondary critical lines (for $z_s = 6$) as a function of their equivalent Einstein radius, θ_E . We show the results for the observational data set with the black histogram. The gray band indicates their 100% confidence limits. The light blue, dark blue, and orange histograms show the results for the 10xB20, 1xRF18, and 1xR15 simulation data sets, respectively.

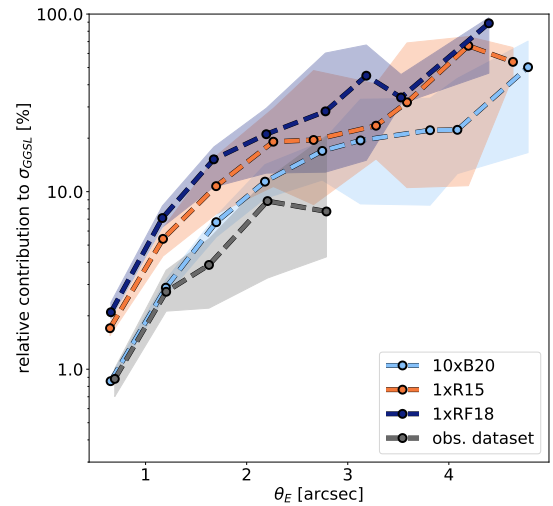


Fig. 8. Median relative contribution of galaxies with Einstein radius θ_E to the GGSL cross section of the host cluster. We assume $z_s = 6$. The dashed black line shows the results for the observational data set. The dashed light blue, orange, and dark blue lines refer to the 10xB20, 1xR15, and 1xRF18 simulation data sets, respectively. The colored bands show the 99% confidence limits of the median.

Interestingly, the Einstein radius distributions of the simulation data sets have tails extending to $\theta_E \sim 8\text{--}9''$. As noted earlier, the clusters in the observational data set do not have secondary critical lines with such large extensions as a function of Einstein radius.

M20 define an upper limit $\theta_{E,\text{max}} = 5''$ for the Einstein radii of secondary critical lines used to compute the GGSL cross sections (see also [Robertson 2021](#)). In Fig. 8, we show the relative contribution of galaxies with a given Einstein radius θ_E to the total GGSL cross section of their host cluster. We quantify it by computing the median ratio between the galaxy cross section (i.e., the area of its caustic) and the cluster GGSL cross section in bins of equal Einstein radius. Using different colors, we show the results for the observational and the 10xB20, 1xR15, and 1xRF18 simulation data sets. The figure shows that individual galaxies in the observational data set typically contribute to a few percent of the total GGSL cross section of their host cluster. The total cross section is the result of a large number of individual contributions. On the contrary, the GGSL cross sections of simulated clusters are contributed by fewer galaxies with a more significant weight, as

indicated by the higher curve normalizations. Those with Einstein radii $\theta_E > 3''$, which are missing in the observational data set, can make up to 50–90% of the total cross section. This effect is particularly striking in the 1x simulations but is also substantial for the 10xB20 data set. Thus, the choice of $\theta_{E,\max}$ to define the GGSL cross section is of great importance. In our calculations, we chose $\theta_{E,\max} = 3''$ to be consistent with the maximum Einstein radius measured in the observational data set.

5.4. Large Einstein radii

We focus on the critical lines in the simulation sets with $\theta_E > \theta_{E,\text{cut}}$. As explained earlier, we do not find critical lines with these large sizes in the observational data set and we aim at better understanding their origin. We divide them into two categories. The first includes the so-called singles, that is, critical lines that originate from single galaxies. The second comprises the critical lines resulting from mergers of smaller critical lines. They enclose multiple galaxies, and, for this reason, we call them “groups”. We show examples of these two categories of critical lines in Fig. 9, for each simulation data set. We overlay the critical lines onto the convergence maps to visualize the mass distribution in the galaxies.

In Fig. 10 we show the counts of these large critical lines in each of the two categories for all simulation data sets. In the case of the 1xRF18 and 1xR15 simulations, about two-thirds of the critical lines are classified as groups. Only a minority of them are singles. This partition is inverted in the 10xB20 data set, where the singles are more abundant than the groups.

This difference is interesting because it shows that single galaxy-scale sub-halos in the 10xB20 simulations are massive and compact enough to become critical for lensing. Their critical lines have Einstein radii typical of small galaxy clusters and groups. We expect that the dense cluster environments contribute to making cluster galaxies capable of producing strong lensing effects. However, as noted above, Einstein radii as large as $\sim 5''$ are inconsistent with the observations of cluster galaxies.

On the contrary, the few large critical lines in the 1xR15 and 1xRF18 samples are predominantly associated with groups of galaxies, indicating that in most cases, single galaxies would remain subcritical or develop much smaller Einstein radii. The examples in Fig. 9 show that the galaxy mass distribution in the 1x simulations is more diffuse than in the 10xB20 sample. As we pointed out in Sect. 4, the AGN feedback scheme implemented in these simulations is more efficient than in the 10xB20 simulations. For this reason, gas cooling and star formation occur at lower rates, preventing the formation of stellar cores as dense as those that form in the 10xB20 simulations. In addition, as described by Ragone-Figueroa et al. (2012), strong AGN feedback also causes the inner region of the galaxy dark-matter halos to expand and their density profile to flatten.

5.5. Galaxy compactness

In Fig. 11 we show the median Einstein radius of secondary critical lines in bins of increasing galaxy mass for the observational and simulation data sets. For the observational data set, the galaxy masses are given by the LENSTOOL reconstructions, where each sub-halo is attached to a cluster galaxy. For the simulation data sets, the particles belonging to each galaxy are identified using the software SUBFIND, as outlined in Ragagnin et al. (2022). Since, as discussed earlier, several secondary critical lines contain more than one galaxy, we compute the total sub-

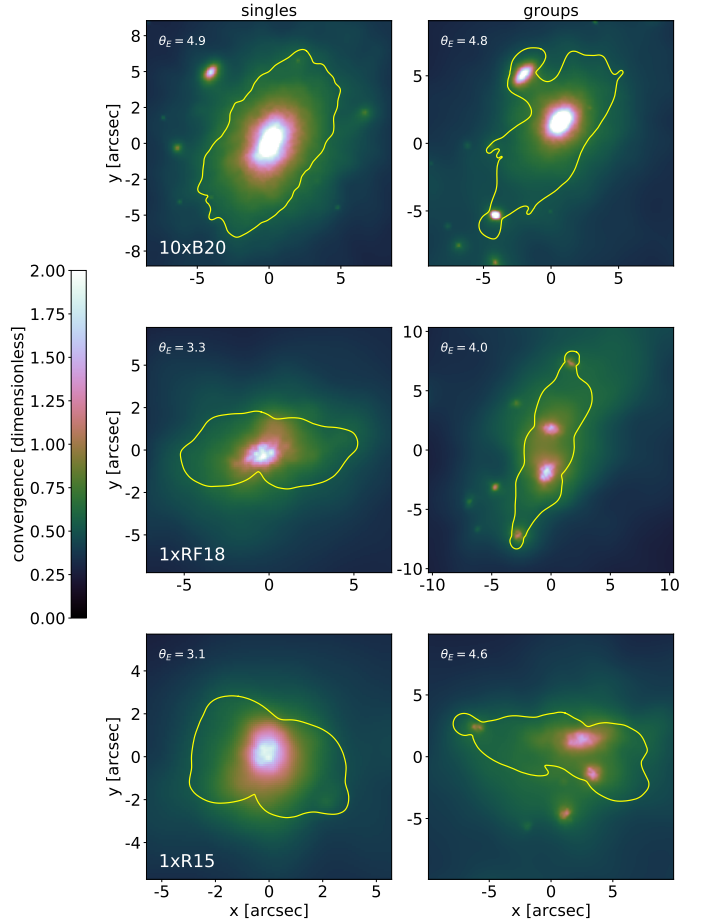


Fig. 9. Secondary critical lines in the simulated data sets. The yellow lines in the *left and right panels* show examples of critical lines with $\theta_E > \theta_{E,\text{cut}}$, classified as “singles” and “groups,” respectively. *From the upper to the bottom panels*, the critical lines (for $z_s = 6$) are overlaid onto the convergence maps of simulated clusters in the 10x, 1xRF18, and 1xR15 samples. The value of the corresponding Einstein radius is reported in each panel.

halo mass associated with each secondary critical line by adding the masses of all the galaxies it contains.

As expected, the Einstein radius grows as a function of the galaxy mass. Galaxies in the observational data set (black squares and error bars) have Einstein radii systematically larger than their simulated counterparts with similar masses. At masses $\lesssim 2 \times 10^{11} M_\odot$, the difference amounts to $\sim 50\text{--}60\%$, independently of the simulation data set. Interestingly, in this mass limit, the average Einstein radii of simulated galaxies are smaller than the threshold of $0.5''$, below which we do not account for the galaxy contribution to the GGSL cross section. As the galaxy mass increases, the gap between the B20 simulations and the observations reduces. This result holds independently of the resolution; in other words, the Einstein radii of galaxies in the 1x, 10x, and 25x simulations (light blue symbols and error bars) are very similar at fixed galaxy mass. Once more, this result confirms that the mass resolution has a negligible impact on our conclusions. The galaxies in the 1xR15 and 1xRF18 simulations have Einstein radii significantly smaller than those in the observational data at all mass scales.

The observational data set does not contain galaxies with masses $\gtrsim 2 \times 10^{12} M_\odot$ producing secondary critical lines. On the contrary, several massive galaxies exist in the simulation data

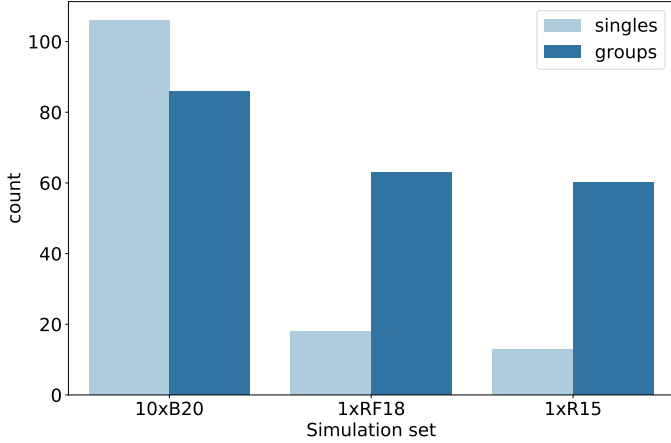


Fig. 10. Counts of singles and groups in the three simulation data sets. The results refer to all secondary critical lines with $\theta_E > \theta_{E,\text{cut}}$ for $z_s = 1, 3, \text{ and } 6$.

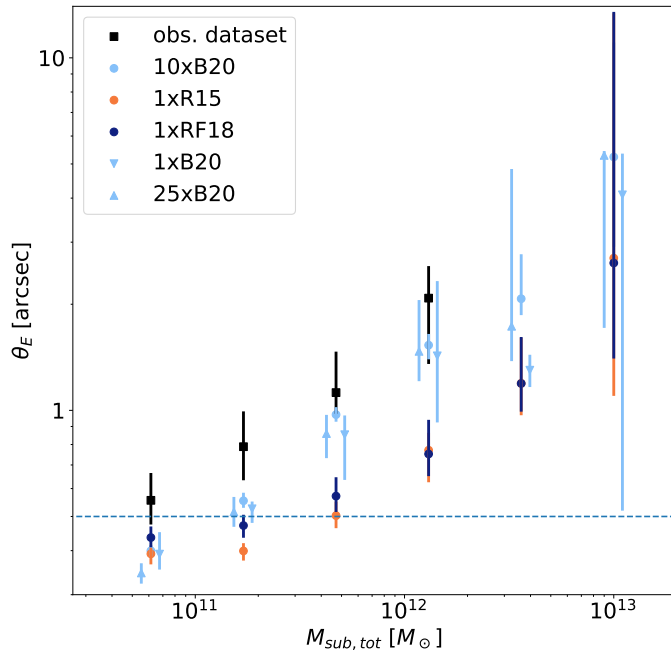


Fig. 11. Median Einstein radius as a function of the total galaxy mass. The results refer to a source redshift of $z_s = 6$. We use different symbols and colors to display the differences between the data sets. The error bars show the 99% confidence intervals of the median, computed by bootstrapping the Einstein radius measurements in bins of different sub-halo masses. The horizontal dashed line shows the threshold below which secondary critical lines do not contribute to the GGSL cross sections in our analysis.

sets. They have large Einstein radii, as discussed in the previous section.

M20 show that, at fixed mass, the maximum circular velocities of galaxies in the 1xR15 simulations are systematically lower than measured in cluster galaxies (e.g., Bergamini et al. 2019). The maximum circular velocity, V_{max} , is often quoted as a proxy for the galaxy compactness. Thus, they conclude that simulated galaxies are less compact than their observed counterparts. Consequently, they are less efficient strong lenses and have smaller Einstein radii. Ragagnin et al. (2022) show that a similar result holds for the galaxies in the 1xRF18 data set. In the

10xB20 (and in the 1xB20 and 25xB20) simulations, the relation between V_{max} and galaxy mass is fully consistent with the 1xRF18 and 1xR15 simulations at masses $M_{\text{sub}} \lesssim 10^{11} M_{\odot}$. On the contrary, at higher masses, the relation is steeper: the galaxies in the 10xB20 simulations have larger V_{max} than galaxies of equal mass in the 1xRF18 and 1xR15 data sets. Apparently, this behavior brings the 10xB20 simulations in better agreement with the observed $V_{\text{max}} - M_{\text{sub}}$ relation at these mass scales. However, as shown by Bassini et al. (2020), their AGN feedback model leads to the formation of central galaxies whose stellar masses are too high compared to observations. Thus, the effects of baryons on the inner region of massive galaxies in these simulations is overestimated. They cause the formation of overly massive, compact galaxies that lie on the extrapolation of the observed $V_{\text{max}} - M_{\text{sub}}$ relation in a mass range rarely populated by real galaxies. The presence of huge secondary critical lines associated with single galaxies in the 10xB20 data set reflects the same problem. Unrealistically massive galaxies with dense stellar cores are very efficient strong lenses. Thus, their Einstein radii are larger than those of the BCGs.

Bahé (2021) reports a similar steepening of the $V_{\text{max}} - M_{\text{sub}}$ relation at high masses in the HYDRANGEA/C-EAGLE simulations. The stellar masses of central galaxies in C-EAGLE are 0.3–0.6 dex above their observed counterparts (Bahé et al. 2017; Ragone-Figueroa et al. 2018). Thus, the HYDRANGEA/C-EAGLE likely suffer from the same systematic problem as our 10xB20 simulations. Robertson (2021) uses these simulations to compute the GGSL probability. They find, unsurprisingly, that for the most massive cluster halos in their sample, the integrated GGSL is consistent with observations. If their simulations are similar to ours, it is very likely that a significant contribution to their GGSL cross section comes from significantly more massive galaxies that are not present in the observations, as we report above.

M20 showed in their Fig. S9 that, by switching off the AGN feedback, the GGSL probability increases by up to one order of magnitude. Indeed, Peirani et al. (2019) show that, in absence of feedback, simulated galaxies develop very compact mass distributions characterized by steep density profiles. This effect indicates that we can in fact mitigate the discrepancy between observed and simulated GGSL probability by changing the feedback model. Unfortunately, the price to pay is that the resulting simulated galaxies then have unrealistically high stellar masses and baryon fractions in clear and strong disagreement with observations.

6. Summary and conclusions

In this paper we compare the GGSL probability in numerical hydrodynamical simulations, implementing different mass and force resolutions and AGN feedback models. The data sets include seven massive galaxy cluster halos identified in a parent dark-matter-only Λ CDM cosmological simulation that were re-simulated at higher mass and force resolution, including baryons, starting from the same initial conditions using the zoom-in technique. From their particle distributions at different redshifts, we derived hundreds of projected mass distributions whose lensing properties we studied using the ray-tracing technique. We compared the GGSL probability in the simulations with results from the strong lensing mass modeling of four observed galaxy clusters. Three clusters (Abell S1063, MACS J0416.1-2403, and MACS J1206.2-0847) belong to the CLASH and HFF samples. They were part of the reference sample of M20. An additional

object included here, PSZ1 G311.65-18.48, is part of the *Planck* SZ-selected cluster sample. We recently modeled these clusters using a novel technique that combines HST imaging and VLT/MUSE spectroscopy data. The method delivers improved mass reconstructions on the scales of cluster galaxies.

The cluster halos in the 10xB20 data set were simulated with ten-times better mass resolution than in the 1xRF18 and 1xR15 data sets. In addition, they implement an AGN feedback scheme that is less efficient at suppressing gas cooling and star formation. The 1xRF18 and 1xR15 data sets have the same particle masses but different softening lengths.

We summarize our results as follows:

- Independent of the resolution and AGN feedback scheme adopted, the GGSL probabilities in all simulation data sets are lower than in the observed galaxy cluster lenses.
- The GGSL probability in the higher mass resolution 10xB20 data set is higher than in the 1xRF18 and 1xR15 data sets. The difference in GGSL between these simulations depends on the cluster mass. For cluster halos with masses $M_{200} > 10^{15} M_{\odot}$, we measure a GGSL probability that is higher by a factor of ~ 3 . For lower-mass cluster halos, the difference amounts to a factor of ~ 6 .
- For a subsample of the 10xB20 data set, we ran new simulations using the same AGN feedback scheme but lowered the mass resolution by a factor of 10. Compared with the original 10xB20 simulations, we find that the GGSL probability changes by only a few percent. We find similar results by increasing the mass resolution by a factor of 2.5 compared to the 10xB20 data set. Thus, we exclude that mass resolution strongly impacts the results. On the contrary, the higher GGSL probability in the 10xB20 simulations is due to the less efficient AGN feedback scheme, which favors the formation of dense stellar cores and overly massive galaxies.
- The AGN feedback schemes implemented in the 1xRF18 and 1xR15 simulations have comparable efficiency at suppressing gas cooling and star formation. Despite the larger gravitational softening of the 1xRF18 simulations, the GGSL probabilities in the two data sets are very similar. Thus, force resolution also has a small impact on the GGSL results.
- We quantified the size of the critical lines used to compute the GGSL cross sections and probability using their equivalent Einstein radius, θ_E . The distribution of Einstein radii in observed galaxy clusters is truncated at $\theta_{E,\text{cut}} \sim 2.5''$. On the contrary, simulated cluster galaxies develop critical lines with Einstein radii as large as $\sim 8''$. In the 10xB20 simulations, the critical lines with $\theta_E > \theta_{E,\text{cut}}$ on average contribute at least 20% of the GGSL cross section. In some cases, particularly in the cluster lenses with the largest GGSL cross sections, their contribution is much more substantial ($\geq 50\%$).
- Most of the critical lines with $\theta_E > \theta_{E,\text{cut}}$ in the 1xRF18 and 1xR15 simulations enclose multiple galaxies. Thus, they are the result of the mergers of smaller critical lines. Single galaxies in these simulations are unable to produce such large critical lines. On the contrary, in the 10xB20 simulations, more than 50% of the critical lines with $\theta_E > \theta_{E,\text{cut}}$ enclose a single galaxy. Thanks to their less efficient AGN feedback scheme, these simulations form compact and massive galaxies, becoming super-critical for strong lensing. Such extended critical lines are inconsistent with observations and are associated with overly massive galaxies.

Based on these results, we reaffirm the tension, previously reported in M20, between observations of GGSL in galaxy clus-

ters and theoretical expectations in the framework of the Λ CDM cosmological model. Observed cluster galaxies are stronger lenses than galaxies in numerical hydrodynamical simulations. It is unclear if we can fully resolve this discrepancy by changing the nature of dark matter or improving the baryonic physics treatment in the simulations. An AGN feedback scheme that implies more efficient gas cooling and star formation can reduce the gap with observations in terms of GGSL probability. However, the demographics of the sub-halos that produce GGSL events are significantly different. A small number of overly massive galaxies in these simulations provide a significant fraction of the GGSL cross section. On the contrary, lower-mass galaxies, the more significant contributors to the GGSL cross sections in observed galaxy clusters, are inefficient strong lenses in the simulations because, at fixed mass, they are less compact than their observed counterparts.

We conclude that current numerical simulations in the Λ CDM cosmological model have difficulty in simultaneously reproducing the stellar mass function and the galaxy internal structure. We emphasize that GGSL in galaxy clusters can be a promising method for investigating the consistency of galaxy and star formation models with observations. We look forward to testing numerical simulations in dark-matter models different from the CDM paradigm and implementing alternative AGN feedback schemes.

Acknowledgements. Simulations have been carried out using MARCONI at CINECA (Italy), with CPU time assigned through grants IS CRA B, and through INAF-CINECA and University of Trieste – CINECA agreements; at the Tianhe-2 platform of the Guangzhou Supercomputer Center by the support from the National Key Program for Science and Technology Research and Development (2017YFB0203300); using MENDIETA Cluster from CCAD-UNC, which is part of SNCAD-MinCyT (Argentina). We acknowledge financial contributions by PRIN-MIUR 2017WSCC32 “Zooming into dark matter and proto-galaxies with massive lensing clusters” (P.I.: P. Rosati), INAF “main-stream” 1.05.01.86.20: “Deep and wide view of galaxy clusters (P.I.: M. Nonino)” and INAF “main-stream” 1.05.01.86.31 “The deepest view of high-redshift galaxies and globular cluster precursors in the early Universe” (P.I.: E. Vanzella). Part of this work was supported by the German Deutsche Forschungsgemeinschaft, DFG project number Ts 17/2–1. AR acknowledges support by MIUR-DAAD contract number 34843 “The Universe in a Box”. SB acknowledges partial financial support from the INDARK INFN grant. MV is supported by the Alexander von Humboldt Stiftung and the Carl Friedrich von Siemens Stiftung. MV and KD acknowledge support by the Deutsche Forschungsgemeinschaft (DFG, German Research Foundation) under Germany’s Excellence Strategy – EXC-2094 – 390783311. KD also acknowledges support through the COMPLEX project from the European Research Council (ERC) under the European Union’s Horizon 2020 research and innovation program grant agreement ERC-2019-AdG 882679. We are especially grateful for the support by M. Petkova through the Computational centre for Particle and Astrophysics (C²PAP). PN acknowledges the Black Hole Initiative (BHI) at Harvard University, which is supported by grants from the Gordon and Betty Moore Foundation and the John Templeton Foundation, for hosting her. GBC acknowledges the Max Planck Society for financial support through the Max Planck Research Group for S. H. Suyu and the academic support from the German Centre for Cosmological Lensing.

References

- Atek, H., Richard, J., Jauzac, M., et al. 2015, *ApJ*, 814, 69
 Bahé, Y. M. 2021, *MNRAS*, 505, 1458
 Bahé, Y. M., Barnes, D. J., Dalla Vecchia, C., et al. 2017, *MNRAS*, 470, 4186
 Bahé, Y. M., Schaye, J., Barnes, D. J., et al. 2019, *MNRAS*, 485, 2287
 Balestra, I., Vanzella, E., Rosati, P., et al. 2013, *A&A*, 559, L9
 Balestra, I., Mercurio, A., Sartoris, B., et al. 2016, *ApJS*, 224, 33
 Bassini, L., Rasia, E., Borgani, S., et al. 2019, *A&A*, 630, A144
 Bassini, L., Rasia, E., Borgani, S., et al. 2020, *A&A*, 642, A37
 Beck, A. M., Murante, G., Arth, A., et al. 2016, *MNRAS*, 455, 2110
 Benitez-Llambay, A. 2015, <https://doi.org/10.5281/zenodo.21703>

- Bergamini, P., Rosati, P., Mercurio, A., et al. 2019, *A&A*, **631**, A130
- Bergamini, P., Rosati, P., Vanzella, E., et al. 2021, *A&A*, **645**, A140
- Biviano, A., Rosati, P., Balestra, I., et al. 2013, *A&A*, **558**, A1
- Bonafede, A., Dolag, K., Staszyszyn, F., Murante, G., & Borgani, S. 2011, *MNRAS*, **418**, 2234
- Bonamigo, M., Grillo, C., Ettori, S., et al. 2018, *ApJ*, **864**, 98
- Broadhurst, T., Benítez, N., Coe, D., et al. 2005, *ApJ*, **621**, 53
- Caminha, G. B., Grillo, C., Rosati, P., et al. 2016, *A&A*, **587**, A80
- Caminha, G. B., Grillo, C., Rosati, P., et al. 2017a, *A&A*, **600**, A90
- Caminha, G. B., Grillo, C., Rosati, P., et al. 2017b, *A&A*, **607**, A93
- Caminha, G. B., Rosati, P., Grillo, C., et al. 2019, *A&A*, **632**, A36
- Carlberg, R. G. 1994, *ApJ*, **433**, 468
- Cerny, C., Sharon, K., Andrade-Santos, F., et al. 2018, *ApJ*, **859**, 159
- Dahle, H., Aghanim, N., Guennou, L., et al. 2016, *A&A*, **590**, L4
- Despli, G., & Vegetti, S. 2017, *MNRAS*, **469**, 1997
- Despali, G., Lovell, M., Vegetti, S., Crain, R. A., & Oppenheimer, B. D. 2020, *MNRAS*, **491**, 1295
- Despali, G., Vegetti, S., White, S. D. M., et al. 2022, *MNRAS*, **510**, 2480
- Desprez, G., Richard, J., Jauzac, M., et al. 2018, *MNRAS*, **479**, 2630
- Diego, J. M., Broadhurst, T., Zitrin, A., et al. 2015, *MNRAS*, **451**, 3920
- Diego, J. M., Broadhurst, T., Wong, J., et al. 2016, *MNRAS*, **459**, 3447
- Diemand, J., Moore, B., & Stadel, J. 2004, *MNRAS*, **352**, 535
- Dolag, K., Borgani, S., Murante, G., & Springel, V. 2009, *MNRAS*, **399**, 497
- Faber, S. M., & Jackson, R. E. 1976, *ApJ*, **204**, 668
- Fort, B., Prieur, J. L., Mathez, G., Mellier, Y., & Soucail, G. 1988, *A&A*, **200**, L17
- Frenk, C. S., White, S. D. M., Davis, M., & Efstathiou, G. 1988, *ApJ*, **327**, 507
- Gao, L., White, S. D. M., Jenkins, A., Stoehr, F., & Springel, V. 2004, *MNRAS*, **355**, 819
- Gao, L., Navarro, J. F., Frenk, C. S., et al. 2012, *MNRAS*, **425**, 2169
- Garrison-Kimmel, S., Wetzell, A., Bullock, J. S., et al. 2017, *MNRAS*, **471**, 1709
- Ghigna, S., Moore, B., Governato, F., et al. 2000, *ApJ*, **544**, 616
- Giocoli, C., Tormen, G., & van den Bosch, F. C. 2008, *MNRAS*, **386**, 2135
- Giocoli, C., Tormen, G., Sheth, R. K., & van den Bosch, F. C. 2010, *MNRAS*, **404**, 502
- Granata, G., Mercurio, A., Grillo, C., et al. 2022, *A&A*, **659**, A24
- Grillo, C., Gobat, R., Presotto, V., et al. 2014, *ApJ*, **786**, 11
- Grillo, C., Suyu, S. H., Rosati, P., et al. 2015, *ApJ*, **800**, 38
- Grillo, C., Karman, W., Suyu, S. H., et al. 2016, *ApJ*, **822**, 78
- Han, J., Cole, S., Frenk, C. S., & Jing, Y. 2016, *MNRAS*, **457**, 1208
- Henden, N. A., Puchwein, E., & Sijacki, D. 2020, *MNRAS*, **498**, 2114
- Hirschmann, M., Dolag, K., Saro, A., et al. 2014, *MNRAS*, **442**, 2304
- Hu, W., & Kravtsov, A. V. 2003, *ApJ*, **584**, 702
- Jauzac, M., Richard, J., Jullo, E., et al. 2015, *MNRAS*, **452**, 1437
- Jauzac, M., Richard, J., Limousin, M., et al. 2016, *MNRAS*, **457**, 2029
- Jauzac, M., Klein, B., Kneib, J.-P., et al. 2021, *MNRAS*, **508**, 1206
- Jiang, F., & van den Bosch, F. C. 2016, *MNRAS*, **458**, 2848
- Jullo, E., & Kneib, J.-P. 2009, *MNRAS*, **395**, 1319
- Jullo, E., Kneib, J. P., Limousin, M., et al. 2007, *New J. Phys.*, **9**, 447
- Karman, W., Caputi, K. I., Grillo, C., et al. 2015, *A&A*, **574**, A11
- Kawamata, R., Oguri, M., Ishigaki, M., Shimasaku, K., & Ouchi, M. 2016, *ApJ*, **819**, 114
- Killedar, M., Borgani, S., Meneghetti, M., et al. 2012, *MNRAS*, **427**, 533
- Klypin, A., Gottlöber, S., Kravtsov, A. V., & Khokhlov, A. M. 1999, *ApJ*, **516**, 530
- Kneib, J.-P., & Natarajan, P. 2011, *A&ARv*, **19**, 47
- Kneib, J.-P., Ellis, R. S., Smail, I., Couch, W. J., & Sharples, R. M. 1996, *ApJ*, **471**, 643
- Lagattuta, D. J., Richard, J., Clément, B., et al. 2017, *MNRAS*, **469**, 3946
- Limousin, M., Richard, J., Jullo, E., et al. 2007, *ApJ*, **668**, 643
- Limousin, M., Richard, J., Kneib, J.-P., et al. 2008, *A&A*, **489**, 23
- Limousin, M., Ebeling, H., Richard, J., et al. 2012, *A&A*, **544**, A71
- Limousin, M., Richard, J., Jullo, E., et al. 2016, *A&A*, **588**, A99
- Lotz, J. M., Koekemoer, A., Coe, D., et al. 2017, *ApJ*, **837**, 97
- Lynds, R., & Petrosian, V. 1989, *ApJ*, **336**, 1
- Magorrian, J., Tremaine, S., Richstone, D., et al. 1998, *AJ*, **115**, 2285
- Meneghetti, M. 2021, *Introduction to Gravitational Lensing: WithPython Examples, Lecture Notes in Physics* (Springer International Publishing)
- Meneghetti, M., Rasia, E., Merten, J., et al. 2010, *A&A*, **514**, A93
- Meneghetti, M., Bartelmann, M., Dahle, H., & Limousin, M. 2013, *Space Sci. Rev.*, **177**, 31
- Meneghetti, M., Natarajan, P., Coe, D., et al. 2017, *MNRAS*, **472**, 3177
- Meneghetti, M., Davoli, G., Bergamini, P., et al. 2020, *Science*, **369**, 1347
- Mercurio, A., Rosati, P., Biviano, A., et al. 2021, *A&A*, **656**, A147
- Merten, J., Meneghetti, M., Postman, M., et al. 2015, *ApJ*, **806**, 4
- Monna, A., Seitz, S., Zitrin, A., et al. 2015, *MNRAS*, **447**, 1224
- Monna, A., Seitz, S., Balestra, I., et al. 2017, *MNRAS*, **466**, 4094
- Moore, B., Katz, N., & Lake, G. 1996, *ApJ*, **457**, 455
- Munari, E., Grillo, C., De Lucia, G., et al. 2016, *ApJ*, **827**, L5
- Natarajan, P., & Kneib, J.-P. 1997, *MNRAS*, **287**, 833
- Natarajan, P., & Springel, V. 2004, *ApJ*, **617**, L13
- Natarajan, P., Kneib, J.-P., & Smail, I. 2002, *ApJ*, **580**, L11
- Natarajan, P., De Lucia, G., & Springel, V. 2007, *MNRAS*, **376**, 180
- Natarajan, P., Kneib, J.-P., Smail, I., et al. 2009, *ApJ*, **693**, 970
- Natarajan, P., Chadayammuri, U., Jauzac, M., et al. 2017, *MNRAS*, **468**, 1962
- Parry, W. G., Grillo, C., Mercurio, A., et al. 2016, *MNRAS*, **458**, 1493
- Peirani, S., Sonnenfeld, A., Gavazzi, R., et al. 2019, *MNRAS*, **483**, 4615
- Pignataro, G. V., Bergamini, P., Meneghetti, M., et al. 2021, *A&A*, **655**, A81
- Pillepich, A., Springel, V., Nelson, D., et al. 2018, *MNRAS*, **473**, 4077
- Planck Collaboration XX. 2014, *A&A*, **571**, A20
- Planelles, S., Borgani, S., Fabjan, D., et al. 2014, *MNRAS*, **438**, 195
- Postman, M., Coe, D., Benítez, N., et al. 2012, *ApJS*, **199**, 25
- Ragagnin, A., Meneghetti, M., Bassini, L., et al. 2022, *A&A*, **665**, A16
- Ragone-Figueroa, C., Granato, G. L., & Abadi, M. G. 2012, *MNRAS*, **423**, 3243
- Ragone-Figueroa, C., Granato, G. L., Murante, G., Borgani, S., & Cui, W. 2013, *MNRAS*, **436**, L70
- Ragone-Figueroa, C., Granato, G. L., Ferraro, M. E., et al. 2018, *MNRAS*, **479**, 1125
- Rasia, E., Meneghetti, M., Martino, R., et al. 2012, *New J. Phys.*, **14**, 055018
- Rasia, E., Borgani, S., Murante, G., et al. 2015, *ApJ*, **813**, L17
- Richard, J., Smith, G. P., Kneib, J., et al. 2010, *MNRAS*, **404**, 325
- Richard, J., Jauzac, M., Limousin, M., et al. 2014, *MNRAS*, **444**, 268
- Richard, J., Claeysens, A., Lagattuta, D., et al. 2021, *A&A*, **646**, A83
- Rivera-Thorsen, T. E., Dahle, H., Chisholm, J., et al. 2019, *Science*, **366**, 738
- Robertson, A. 2021, *MNRAS*, **504**, L7
- Rosati, P., Balestra, I., Grillo, C., et al. 2014, *The Messenger*, **158**, 48
- Smith, G. P., Kneib, J.-P., Smail, I., et al. 2005, *MNRAS*, **359**, 417
- Soucail, G., Fort, B., Mellier, Y., & Picat, J. P. 1987, *A&A*, **172**, L14
- Springel, V. 2005, *MNRAS*, **364**, 1105
- Springel, V., & Hernquist, L. 2003, *MNRAS*, **339**, 289
- Springel, V., Di Matteo, T., & Hernquist, L. 2005, *MNRAS*, **361**, 776
- Springel, V., Wang, J., Vogelsberger, M., et al. 2008, *MNRAS*, **391**, 1685
- Steinborn, L. K., Dolag, K., Hirschmann, M., Prieto, M. A., & Remus, R.-S. 2015, *MNRAS*, **448**, 1504
- Steinhardt, C. L., Jauzac, M., Acebron, A., et al. 2020, *ApJS*, **247**, 64
- Tormen, G., Bouchet, F. R., & White, S. D. M. 1997, *MNRAS*, **286**, 865
- Tornatore, L., Borgani, S., Dolag, K., & Matteucci, F. 2007, *MNRAS*, **382**, 1050
- Treu, T., Schmidt, K. B., Brammer, G. B., et al. 2015, *ApJ*, **812**, 114
- Treu, T., Brammer, G., Diego, J. M., et al. 2016, *ApJ*, **817**, 60
- Umetsu, K. 2020, *A&ARv*, **28**, 7
- Umetsu, K., Medezinski, E., Nonino, M., et al. 2014, *ApJ*, **795**, 163
- Umetsu, K., Zitrin, A., Gruen, D., et al. 2016, *ApJ*, **821**, 116
- Umetsu, K., Sereno, M., Tam, S.-I., et al. 2018, *ApJ*, **860**, 104
- van den Bosch, F. C. 2017, *MNRAS*, **468**, 885
- van den Bosch, F. C., Tormen, G., & Giocoli, C. 2005, *MNRAS*, **359**, 1029
- van den Bosch, F. C., Ogiya, G., Hahn, O., & Burkert, A. 2018, *MNRAS*, **474**, 3043
- van Kampen, E. 2000, arXiv e-prints [arXiv:astro-ph/0008453]
- Vanzella, E., Castellano, M., Meneghetti, M., et al. 2017, *ApJ*, **842**, 47
- Vanzella, E., Caminha, G. B., Rosati, P., et al. 2021, *A&A*, **646**, A57

- 1 INAF-Osservatorio di Astrofisica e Scienza dello Spazio di Bologna, Via Piero Gobetti 93/3, 40129 Bologna, Italy
e-mail: massimo.meneghetti@inaf.it
- 2 INFN-Sezione di Bologna, Viale Berti Pichat 6/2, 40127 Bologna, Italy
- 3 Dipartimento di Fisica e Astronomia “Augusto Righi”, Alma Mater Studiorum Università di Bologna, via Gobetti 93/2, 40129 Bologna, Italy
- 4 INAF – Osservatorio Astronomico di Trieste, via G.B. Tiepolo 11, 34143 Trieste, Italy
- 5 IFPU – Institute for Fundamental Physics of the Universe, Via Beirut 2, 34014 Trieste, Italy
- 6 Astronomy Unit, Department of Physics, University of Trieste, via Tiepolo 11, 34131 Trieste, Italy
- 7 Zentrum für Astronomie der Universität Heidelberg, Institut für Theoretische Astrophysik, Albert-Ueberle-Str. 2, 69120 Heidelberg, Germany
- 8 Instituto de Astronomía Teórica y Experimental (IATE), Consejo Nacional de Investigaciones Científicas y Técnicas de la República Argentina (CONICET), Universidad Nacional de Córdoba, Laprida 854, X5000BGR Córdoba, Argentina

⁹ Dipartimento di Fisica, Università degli Studi di Milano, Via Celoria 16, 20133 Milano, Italy

¹⁰ INAF – IASF Milano, via A. Corti 12, 20133 Milano, Italy

¹¹ Dipartimento di Fisica e Scienze della Terra, Università degli Studi di Ferrara, Via Saragat 1, 44122 Ferrara, Italy

¹² Center for Theoretical Astrophysics and Cosmology, Institute for Computational Science, University of Zurich, Winterthurerstrasse 190, 8057 Zurich, Switzerland

¹³ INAF-Osservatorio Astronomico di Capodimonte, Via Moiariello 16, 80131 Napoli, Italy

¹⁴ Department of Astronomy, Yale University, New Haven, CT, USA

¹⁵ Observatorio Astronómico de Córdoba, Universidad Nacional de Córdoba, Laprida 854, X5000BGR Córdoba, Argentina

¹⁶ Universitäts-Sternwarte, Fakultät für Physik, Ludwig-Maximilians-Universität München, Scheinerstr.1, 81679 München, Germany

¹⁷ Max-Planck-Institut für Astrophysik (MPA), Karl-Schwarzschild Strasse 1, 85748 Garching bei München, Germany

¹⁸ INAF – Istituto di Radioastronomia di Bologna, Via Gobetti 101, 40129 Bologna, Italy