



Publication Year	2020
Acceptance in OA	2025-03-05T13:08:52Z
Title	Line shapes in narrow-line Seyfert 1 galaxies: a tracer of physical properties?
Authors	Berton, M., Björklund, I., Lähteenmäki, A., Congiu, E., Järvelä, E., Terreran, G., LA MURA, Giovanni
Publisher's version (DOI)	10.31577/caosp.2020.50.1.270
Handle	http://hdl.handle.net/20.500.12386/36440
Journal	CONTRIBUTIONS OF THE ASTRONOMICAL OBSERVATORY SKALNATÉ PLESO
Volume	50

Line shapes in narrow-line Seyfert 1 galaxies: a tracer of physical properties?

M. Berton^{1,2}, I. Björklund³, A. Lähteenmäki^{2,3}, E. Congiu⁴,
E. Järvelä^{5,2}, G. Terreran⁶ and G. La Mura⁷

¹ *Finnish Centre for Astronomy with ESO (FINCA), University of Turku, Quantum, Vesilinnantie 5, FI-20014, University of Turku, Finland, (E-mail: marco.berton@utu.fi)*

² *Aalto University Metsähovi Radio Observatory, Metsähovintie 114, FI-02540 Kylmälä, Finland*

³ *Aalto University Department of Electronics and Nanoengineering, P.O. Box 15500, FI-00076, Aalto, Finland*

⁴ *Las Campanas Observatory - Carnegie Institution of Washington, Colina El Pino Casilla 601, La Serena, Chile*

⁵ *Department of Physics, University of California, Santa Barbara, CA 93106-9530, USA*

⁶ *Center for Interdisciplinary Exploration and Research in Astrophysics CIERA, Department of Physics and Astronomy, Northwestern University, Evanston, IL 60208, USA*

⁷ *Laboratory of Instrumentation and Experimental Particle Physics, Av. Prof. Gama Pinto, 2 - 1649-003 Lisboa, Portugal*

Received: July 31, 2019; Accepted: September 26, 2019

Abstract. Line profiles can provide fundamental information on the physics of active galactic nuclei (AGN). In the case of narrow-line Seyfert 1 galaxies (NLS1s) this is of particular importance since past studies revealed how their permitted line profiles are well reproduced by a Lorentzian function instead of a Gaussian. This has been explained with different properties of the broad-line region (BLR), which may present a more pronounced turbulent motions in NLS1s with respect to other AGN. We investigated the line profiles in a recent large NLS1 sample classified using SDSS, and we divided the sources into two subsamples according to their line shapes, Gaussian or Lorentzian. The line profiles clearly separate all the properties of NLS1s. Black hole mass, Eddington ratio, [O III], and Fe II strength are all very different in the Lorentzian and Gaussian samples. We interpret this in terms of evolution within the class of NLS1s. The Lorentzian sources may be the youngest objects, while Gaussian profiles may be typically associated to more evolved objects. Further detailed spectroscopic studies are needed to fully confirm our hypothesis.

Key words: Galaxies: active – quasars: emission lines – Line: profiles – Galaxies: evolution

1. Introduction

Among active galactic nuclei (AGN), narrow-line Seyfert 1 galaxies (NLS1s) are often considered as “rebels”, which hardly fit into the unified models (Antonucci, 1993; Urry & Padovani, 1995). Recognized as a separate class more than 30 years ago (Osterbrock & Pogge, 1985), by definition they are those AGN in which the full width at half maximum (FWHM) of $H\beta$ is lower than 2000 km s^{-1} and the flux ratio $[O \text{ III}]\lambda 5007/H\beta < 3$ (Osterbrock & Pogge, 1985). An additional criterion for NLS1s is the presence of strong Fe II multiplets (Goodrich, 1989), although their presence is not always required, and the origin of the iron abundance and its physics are still not clear (Marziani et al., 2018b, Bon et al., 2019, submitted). Their steep X-ray spectral indexes (Boller et al., 1992) and the presence of relativistic jets in these AGN (Abdo et al., 2009a,b; Berton, 2018) further complicate the NLS1 picture.

Some of these characteristics can be explained, from a physical point of view, by the presence of a relatively low-mass black hole (10^6 - $10^8 M_{\odot}$, see Peterson, 2011) which is accreting close to or above the Eddington limit (Boroson & Green, 1992; Boller et al., 1996; Sulentic et al., 2000; Marziani et al., 2001; Zhou et al., 2006; Cracco et al., 2016; Rakshit et al., 2017; Chen et al., 2018). Due to this, NLS1s are located at the extreme end of the so-called eigenvector 1 (EV1), and constitute a class of extreme accretors (Sulentic & Marziani, 2015; Śniegowska et al., 2018; Marziani et al., 2018b), a property which would allow a more physically accurate definition than the classic FWHM-based criterion (Marziani et al., 2018a).

An explanation which accounts for the low black hole mass, the high accretion rate, and several other NLS1 properties, is that these AGN are younger with respect to classical broad-line Seyfert 1 (BLS1s, e.g., see Mathur, 2000; Berton et al., 2016a, 2017; Järvelä et al., 2017)¹. In this phase, these AGN are growing fast to eventually turn into fully-developed BLS1s. Although this point is still debated (e.g., see D’Ammando et al., 2018; Sbarrato et al., 2018), much evidence has been accumulated in support of the evolutionary hypothesis (for full reviews on their multiwavelength properties, see Komossa, 2008; Gallo, 2018; Komossa, 2018; Lister, 2018).

Interestingly enough, a property which seems to differ in NLS1s and BLS1s is the profile of their permitted lines, particularly that of $H\beta$. While most type 1 AGN typically have a Gaussian line profile, in NLS1s the profile is instead well reproduced by a Lorentzian function (Moran et al., 1996; Véron-Cetty et al., 2001; Sulentic et al., 2002; Cracco et al., 2016). This is particularly true when only the broad component of $H\beta$ is considered. Most broad-line profiles indeed can be well fitted by a broad component, either Gaussian or Lorentzian, and a weaker narrow Gaussian component.

¹Unless otherwise specified, in the following we will use the term BLS1s referring to both non-jetted sources, like classical Seyfert 1, and jetted sources with broad permitted lines such as high-excitation radio galaxies and flat-spectrum radio quasars.

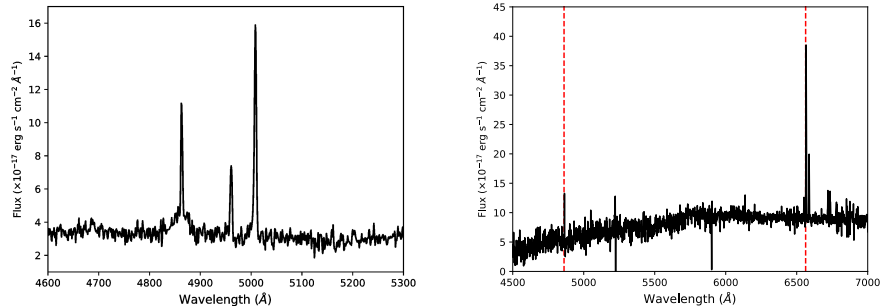


Figure 1. Two examples of spurious sources present in R17. **Left panel:** the spectrum of SDSS J143900.17+431440.9 (spec-6061-56076-0704). The three lines are, from left to right, H β , [O III] λ 4959, [O III] λ 5007. Although classified as an NLS1, this object is an intermediate type AGN, as shown by the presence of two well-separated kinematic components in the H β profile. **Right panel:** the spectrum of SDSS J155806.47+523748.2 (spec-0618-52049-0008), which can be classified as a LINER. The NLS1 classification was likely due to a wrong redshift reported in SDSS ($z = 0.401$ in SDSS, while the correct value is 0.069). The lines marked with the vertical red dashed lines are H β and H α , which were used to measure the correct redshift value.

However, it is known that a small fraction of NLS1s have Gaussian line profiles. Whether the different line profile is connected to different physical properties is still unclear. To answer this question, we decided to study the new large sample of NLS1s selected from the Sloan Digital Sky Survey (SDSS) by Rakshit et al. (2017, hereafter R17). In this proceeding we will carry out a simple statistical analysis of the line profiles, connect them with the other observed properties of NLS1s, and provide a physical interpretation for these results based on the evolutionary hypothesis. In Sect. 2 we present the sample selection, in Sect. 3 we discuss the impact of redshift on our sample, in Sect. 4 we present our results, in Sect. 5 we discuss them, and in Sect. 6 we provide a brief summary of this work. In the following, we adopt the standard Λ CDM cosmology, with $H = 70 \text{ km s}^{-1} \text{ Mpc}^{-1}$, $\Omega_m = 0.3$, $\Omega_\Lambda = 0.7$ (Komatsu et al., 2011).

2. Sample selection

As mentioned above, we used the sample of 11101 NLS1s selected by R17. They selected the sample starting from the SDSS DR12, using the standard classification criteria of $\text{FWHM}(\text{H}\beta)$ and $[\text{O III}]/\text{H}\beta$ flux ratio. The redshift limit of R17 is $z < 0.8$. Among the sources they selected, we considered only those whose signal-to-noise ratio (SNR) in the $\lambda 5100\text{\AA}$ continuum is higher than 5, finding

7070 sources. The SNR criterion decreases the chances of finding sources where an appropriate spectral analysis cannot be performed. As shown by Sulentic & Marziani (2015), spectral measurement can often be unreliable in noisy spectra. Indeed, in R17 some spurious non-NLS1 sources are definitely present, in particular intermediate type AGN, which R17 did not consider but meet both the FWHM and [O III]/H β criteria of NLS1s. Examples of an intermediate Seyfert and of a wrong identification are shown in Fig. 1.

On the remaining 7070 sources, we performed an extremely simple test. The profile of permitted lines in type 1 AGN typically shows two kinematic components, physically corresponding to the broad-line region (BLR) and the narrow-line region (NLR). However, in the NLS1 population the H β line usually has an extremely weak narrow component (see Fig. 3 by Sulentic et al., 2002). The line profile, after redshift correction and continuum subtraction, can indeed be fitted with a single function to reproduce the BLR emission. Therefore, we fitted each line profile with a Lorentzian and Gaussian profiles and used the reduced chi-squared χ^2_ν test to select the best fit. We included only sources which are well-reproduced with either of these simple models to our final sample.

By means of visual inspection of the spectra and of all the results of the fitting procedure, we decided to apply the following selection criteria also on the χ^2_ν . We excluded all those sources for which the $\chi^2_\nu \leq 0.5$ and $\chi^2_\nu \geq 5$, because in most cases their spectra were either noisy or misclassified as shown in Fig. 1. The lower limit in χ^2_ν was introduced to avoid overfitting. When $3.5 < \chi^2_\nu < 5$, we accepted only sources with SNR > 20. Only in high SNR objects, in fact, such high χ^2_ν still indicates a good representation of the H β profile. Between $2.5 < \chi^2_\nu < 3.5$, we also imposed the criterion SNR > 15, while if $2 < \chi^2_\nu < 2.5$ we imposed SNR > 10. All remaining sources with $0.5 < \chi^2_\nu < 2$ were included in the samples. To decide whether a source is to be included in the Lorentzian (L) or the Gaussian (G) subsample, we considered the minimum distance from a $\chi^2_\nu = 1$. These selection criteria inevitably miss some NLS1s. However, our aim is not to obtain complete subsamples, but to include a statistically significant number of sources both in G and L sample, and selecting at the same time only genuine NLS1s. Using this technique, we found 3933 NLS1s whose line profile can be reproduced with a single component, either Gaussian or Lorentzian. In particular, 2894 of them exhibit a Lorentzian profile (L sources), while the remaining 1039 sources are better reproduced with a single Gaussian profile (G sources).

We recognize the simplicity of this model. Firstly, we did not correct for the Galactic absorption, because on the very short wavelength interval we are considering (4000-5500Å) it is basically a constant and it can be neglected. We also did not subtract the host galaxy contribution and the Fe II multiplets. However, our procedure selects those sources where a single component is a good representation of the H β line. This means that if the host galaxy contribution and the Fe II pseudo-continuum cause a significant deviation from an extremely simple line profile, the source was rejected and not included in the sample because of our selection criteria. In conclusion, this technique automatically selects sources

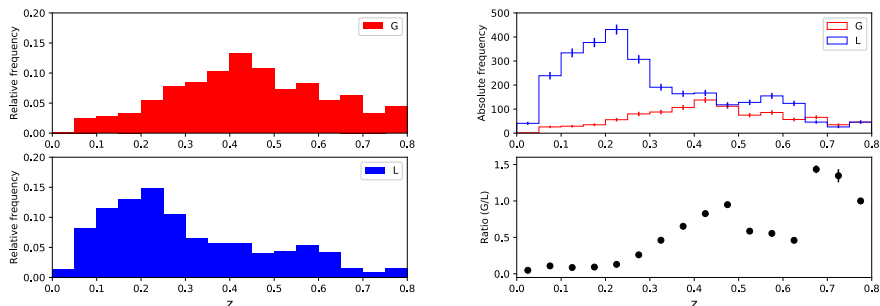


Figure 2. Redshift distributions of the two samples. The red color represents sources with a Gaussian profile, while the blue color indicates Lorentzian profiles. In the left figure we show the normalized distribution of sources per redshift bin. Hereafter each redshift bin has a width of 0.05. In the right figure, the top panel shows the total number of sources per redshift bin, while the bottom panel shows the ratio between the number of G and L sources as a function of redshift.

in which Fe II and host galaxy do not significantly contribute to the $H\beta$ profile. A more detailed analysis of the other line profiles, including an accurate subtraction of host galaxy and Fe II components, will be published in an upcoming paper (Berton et al., in prep.).

These factors not accounted for the line fitting would have a much stronger influence in measurements of the physical quantities. However, all the properties we are using are extracted from the R17 catalog, in which the Galactic absorption, the host galaxy, and the Fe II contribution have been taken into account. For each source, we used the measurements of redshift, $R4570^2$, black hole mass, Eddington ratio, and $[O\ III]\lambda 5007$ luminosity. For each property we carried out a Kolmogorov-Smirnov (K-S) test to compare the distributions of Lorentzian and Gaussian sources. In this case, the null hypothesis is that the two distributions of sources originate from the same population of objects. The p-values of each test are shown in the last column of Table 1. When the distributions are not normal but log-normal like, we also tested the differences between their tails by applying the Anderson-Darling (A-D) test (Hou et al., 2009; Berton et al., 2016b). The null hypothesis, again, is that the two distributions originate from the same population. In both cases we rejected the null hypothesis only at a 99% confidence level, thus when the p-value is lower than 0.01.

² $R4570$ is defined as the flux ratio between the Fe II multiplets and the $H\beta$ line.

3. Redshift distributions

The first result is that the redshift distribution of G and L sources are very different (p-value 1×10^{-97}). The normalized frequencies of the distributions are shown in the left panel of Fig. 2, while in the right panel we show the total number of L and G sources per redshift bin, and the ratio between G and L sources. The error associated to each bin assumes a Poisson distribution, so it is the square root of the number of sources in each bin. The ratio remains roughly constant up to $z = 0.25$, with approximately $\sim 10\%$ of G sources and 90% of L sources. This result is comparable to the results by Cracco et al. (2016), who found that up to $z = 0.35$ the fraction of L sources is 96% . The small difference between these result can be accounted to different selection criteria. Cracco et al. (2016), in fact, selected only sources with very high SNR, and this could introduce a small bias toward luminous objects.

Above $z = 0.25$, the number of Gaussian sources tends to increase rapidly, while the number of L objects decreases. Above $z = 0.5$ there are more sources in the G sample than in the L sample. This result could be attributed to a selection effect. When the redshift increases, the SNR tends to decrease, so the wings typical of Lorentzian profiles tend to disappear in the continuum noise. Therefore, without prominent wings a Lorentzian profile can be easily modeled with a Gaussian. We tried to test the effect of redshift on line profiles by comparing it with the SNR ratio. In fact, a selection effect should be present if SNR systematically decreases with redshift.

Indeed, we found that SNR has a non-negligible dependence on the redshift, with a Pearson correlation coefficient of -0.54 (p-value ~ 0), and a Spearman rank of -0.58 (p-value ~ 0). Therefore, redshift may play a role, even if it may not be the only factor causing a the difference between Lorentzian and Gaussian sources. In fact, we note that Gaussian sources are found also when the SNR is high. Therefore, the difference between these two samples does not seem to be solely due to a selection effect. However, to make our results more robust we decided to test the distributions of physical properties of G and L sources not only on the entire sample, but also at $z < 0.25$, where the ratio between L and G sources is roughly constant and redshift effects are very likely negligible.

4. Physical properties of the sources

As mentioned above, the physical quantities we extracted from R17 are black hole mass, Eddington ratio, relative Fe II strength (R4570), monochromatic continuum luminosity at 5100 \AA , and [O III] integrated luminosity. Their mean and median values, and the standard deviation of each sample are shown in Table 1. The distributions of each physical property for both samples are shown in Figs. 3, 4, 5, 6, and 7. All left panels refer only to sources with $z < 0.25$, while the right panel shows the entire sample up to $z = 0.8$.

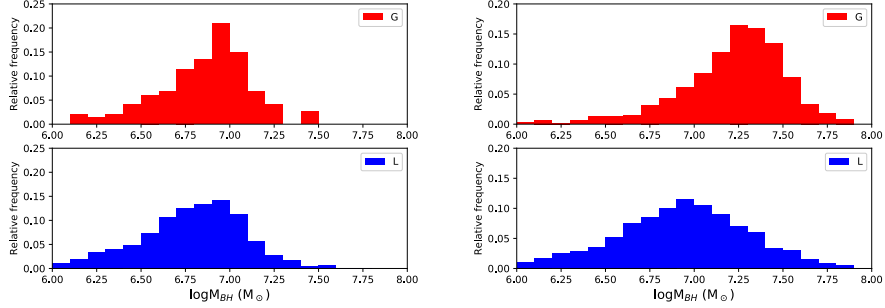


Figure 3. Distribution of black hole masses of the two samples. **Left panel:** distribution of sources up to the redshift limit $z=0.25$; **right panel:** distributions of the whole samples, with redshift limit $z=0.8$. Colors as in Fig. 2.

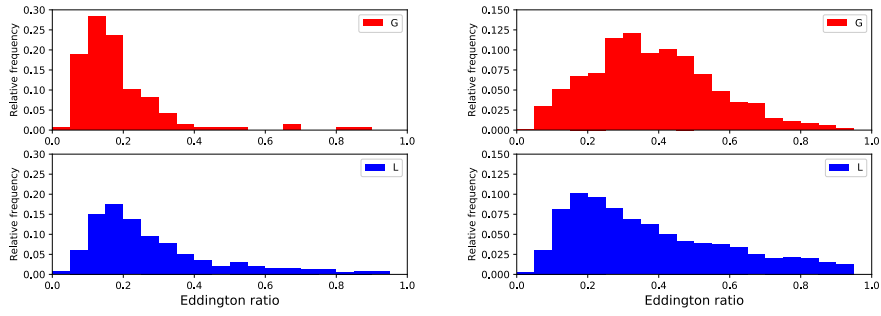


Figure 4. Distribution of Eddington ratio of the two samples. Colors as in Fig. 2 and panels as in Fig. 3.

The black hole mass in R17 was estimated under the assumption of virialized gas, with:

$$M_{BH} = f \frac{v^2 R_{BLR}}{G} . \quad (1)$$

The FWHM($H\beta$) broad component was used as a proxy for the rotational velocity of the gas surrounding the black hole. They assumed that the broad component can be always represented with a Lorentzian function. Therefore, they decomposed the $H\beta$ profile using a Lorentzian to represent the broad component, and a Gaussian to represent the narrow component. The BLR radius was calculated from the $\lambda 5100 \text{ \AA}$ continuum luminosity with the relation by Bentz et al. (2013). The factor f , which is dependent on the BLR geometry, was fixed to $3/4$ assuming a spherical distribution of clouds. The use of FWHM in black

Table 1. Statistical properties of the samples. Columns: (1) measured property (black hole mass in M_{\odot} , Eddington ratio and R4570 adimensional, logarithm of the monochromatic continuum luminosity (λL_{λ}) at 5100 Å in erg s^{-1} , and logarithm of the [O III] luminosity in erg s^{-1}); (2) mean in the Gaussian sample; (3) median in the Gaussian sample; (4) standard deviation in the Gaussian sample; (5) mean in the Lorentzian sample; (6) median in the Lorentzian sample; (7) standard deviation in the Lorentzian sample; (8) K-S test p-value.

Property	Mean	Median	σ	Mean	Median	σ	p-value
$z < 0.8$	G			L			
$\log M_{BH}$	7.21	7.26	0.32	6.90	6.93	0.41	1×10^{-111}
Edd ratio	0.43	0.38	0.41	0.60	0.38	0.75	4×10^{-21}
R4570	0.62	0.59	0.37	0.67	0.62	0.40	2×10^{-3}
$\log \lambda L_{\text{cont}}$	43.92	44.0	0.48	43.66	43.66	0.53	1×10^{-49}
$\log L_{[\text{OIII}]}$	41.54	41.55	0.47	41.35	41.34	0.52	5×10^{-22}
$z < 0.25$	G			L			
$\log M_{BH}$	6.82	6.90	0.32	6.75	6.80	0.35	5×10^{-3}
Edd ratio	0.19	0.16	0.13	0.35	0.24	0.36	3×10^{-14}
R4570	0.60	0.60	0.42	0.63	0.56	0.40	2×10^{-1}
$\log \lambda L_{\text{cont}}$	43.18	43.20	0.43	43.33	43.34	0.42	5×10^{-4}
$\log L_{[\text{OIII}]}$	42.11	42.11	0.42	41.84	41.88	0.70	2×10^{-11}

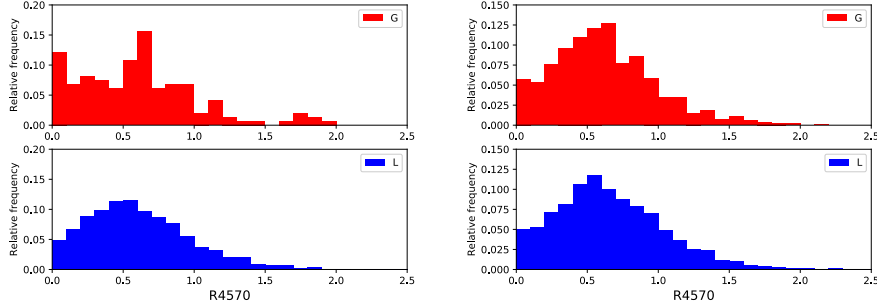


Figure 5. Distribution of R4570 of the two samples. Colors as in Fig. 2 and panels as in Fig. 3.

hole mass calculation is not ideal, since it has been shown that the second-order moment of the line is a better proxy for the velocity and less dependent on BLR geometry (Peterson, 2011; Foschini et al., 2015; Berton et al., 2015; Peterson & Dalla Bontà, 2018). However, since our aim is to compare the two distributions and not to obtain precise mass values, the use of FWHM is acceptable. The K-S

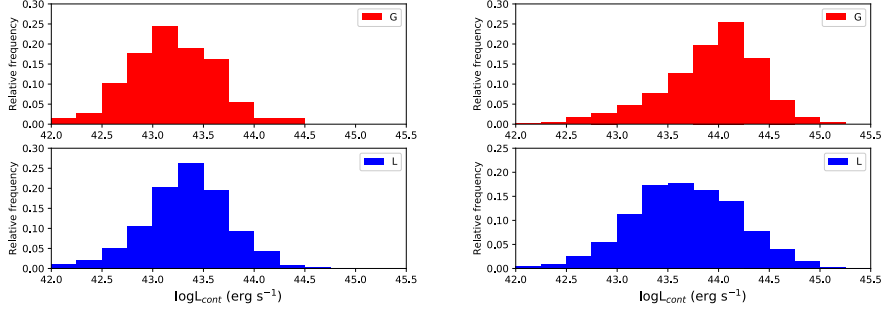


Figure 6. Distribution of the monochromatic continuum luminosity at 5100 Å of the two samples. Colors as in Fig. 2 and panels as in Fig. 3.

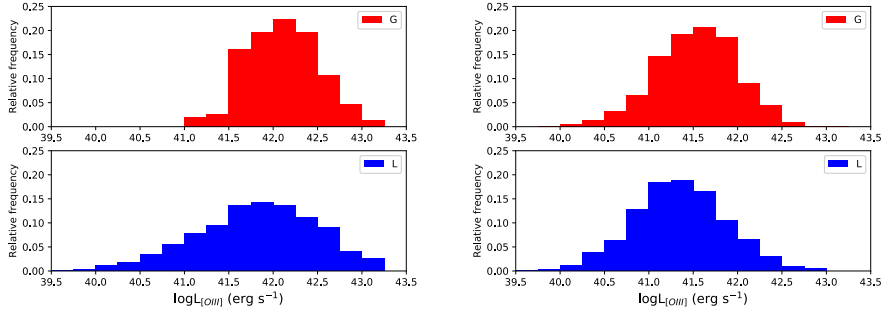


Figure 7. Distribution of [O III] luminosity of the two samples. Colors as in Fig. 2 and panels as in Fig. 3.

test rejects the null hypothesis at high confidence level both at low redshift and in the whole sample. The difference however is relatively small up to $z=0.25$, while it is remarkably large when the whole sample is considered. In both cases, mean and median mass are lower among L sources, but the mass of G sources at high redshift is significantly larger than those at low z .

The Eddington ratio was calculated, following R17, as the ratio between the bolometric luminosity and the Eddington luminosity. For the bolometric luminosity they assumed it to be nine times the monochromatic luminosity at $\lambda 5100$ Å. The Eddington luminosity was calculated as $L_{Edd} = 1.3 \times 10^{38} M_{BH}/M_{\odot}$, where M_{BH} is the black hole mass. The distributions are rather different, but at $z < 0.25$ this difference seems to be more significant. Given the shape of the distributions, seen in Fig. 4, we also carried out the A-D test to understand whether the tails of the two distributions are also statistically different. The

test confirms the difference both at low redshift and for the whole sample, rejecting the null hypothesis at a 99% confidence level. Indeed, it seems that the Eddington ratio is higher in L sources, and this is particularly evident at low redshift. At high redshift, the median values of the two samples are the same. However, there is a much larger number of high Eddington objects in the L sample than in the G sample, and this is in agreement with the larger mean value for this parameter in L sources, and with the result of the A-D test.

The Fe II multiplets flux was measured by R17 using the template provided by Kovačević et al. (2010), and later divided by the $H\beta$ flux to obtain the R4570 parameter. The two distributions are not statistically different below $z=0.25$. This result is confirmed both by the K-S test and by the A-D test. Both, in fact, do not reject the null hypothesis. When instead the whole samples are compared, the null hypothesis is rejected by both tests at 99% confidence level, suggesting that R4570 is in fact different between G and L sources. In particular, it seems that R4570 is slightly larger in L sources than in G sources.

The monochromatic luminosity of the continuum at 5100 Å was measured directly on the spectrum. The K-S test allows us to reject the null hypothesis in both redshift intervals. However, the behavior radically changes with the redshift. While up to $z=0.25$ on average L sources are brighter than G sources, when high- z objects are considered the result is the opposite, with G sources becoming brighter.

Finally, the [O III] flux was measured by fitting the $\lambda\lambda 4959, 5007$ lines with two Gaussians each, one to represent the core component, and the second to reproduce the wing (e.g., see Sulentic et al., 2000; Marziani et al., 2003; Komossa et al., 2008). Both in the low redshift domain and in the whole sample, the K-S test allows us to reject the null hypothesis, suggesting that the two sample do not originate from the same population of sources. The [O III] luminosity is indeed larger in G sources than in L sources. The difference becomes more evident when sources at high redshift are included. This result is particularly interesting in the light of the behavior found in the continuum luminosity, where the ionizing photons originate. While at high- z an increase in continuum luminosity corresponds to an increased [O III] luminosity, as expected, at low- z this does not happen, suggesting that another factor contributes to the larger [O III] luminosity observed in G sources (see next Section).

5. Discussion

As shown in Sect. 4, basically all physical properties of Gaussian and Lorentzian NLS1s are different. In the following we will discuss them one by one, and in the end provide a speculative picture regarding the evolution of these objects.

First of all, out of 3933 sources, approximately 2894 ($\sim 74\%$) can be better reproduced by a Lorentzian profile, while the remaining $\sim 26\%$ have a Gaussian line profile. The fraction of G sources is larger than what found by other studies.

For example, Cracco et al. (2016) found 96% of the profiles to be Lorentzian. However, as discussed above, we found that the redshift distribution of Gaussian profiles is concentrated at higher redshifts than Lorentzian, therefore a selection effect may be present. Indeed, when the sample is limited to $z=0.25$, the percentage of L sources is $\sim 90\%$, rather close to what was found in other works.

The different line profiles can be interpreted in terms of BLR geometry. As shown by Gaskell (2009), the BLR geometry in AGN seems to have a bird's nest appearance with velocity components

$$v_{keplerian} > v_{turbulent} \gtrsim v_{inflow} . \quad (2)$$

The presence of Keplerian motion was remarkably showed with VLTI observations of 3C 273 (Gravity Collaboration et al., 2018), and several authors (e.g., Kollatschny & Zetzl, 2011; Goad et al., 2012; Kollatschny & Zetzl, 2013a) claimed that the Gaussian profile originates when the BLR motion is dominated by a Keplerian rotation. However, in NLS1s the relation may be different, with

$$v_{keplerian} \sim v_{turbulent} , \quad (3)$$

while nothing can be said (yet) about the inflow velocity. Lorentzian profiles seem in fact to be associated with microturbulence (Goad et al., 2012), possibly pointing out that this kind of motion is significantly stronger in NLS1s. Such turbulent motion is likely associated with the vertical structure of the BLR, since it is due to random motion of the clouds above and below the equatorial plane (Kollatschny & Zetzl, 2013b). Indeed, a prominent fountain-like vertical structure has been also observed in AGN with Lorentzian line profiles of the Mg II line (Popović et al., 2019). All of this may indicate that the BLR geometry in NLS1s is less flattened than in other AGN, in agreement with the independence of line width from AGN inclination (Vietri et al., 2018).

5.1. Black hole mass

Black hole mass has always been the most discussed property of NLS1s, in particular after the discovery of γ -ray emission from those with a beamed relativistic jet (Abdo et al., 2009a,b). The presence of relativistic jets in these low-mass AGN was indeed a shocking discovery, since it contradicted the well-established paradigm according to which only high mass black holes are able to launch a relativistic jet (Laor, 2000). Some authors, indeed, tried to reconcile NLS1s, and extreme accretors in general, with the paradigm (Decarli et al., 2008; Chiaberge & Marconi, 2011). However, reverberation mapping (Peterson & Dalla Bontà, 2018) confirmed that NLS1s are characterized by a black hole with a mass lower than $10^8 M_{\odot}$. Furthermore, the low jet power observed in jetted NLS1s is likely associated with their low black hole mass (Foschini, 2014; Foschini et al., 2015). Jet power, indeed, scales non-linearly with black hole mass (Heinz & Sunyaev, 2003). For the same reason, the radio luminosity of beamed jetted NLS1s (Foschini, 2017) is lower with respect to other blazars, suggesting that they may

be the low-luminosity tail of the blazar population (Berton et al., 2016a). Last but not least the fact that, unlike other AGN, NLS1s are typically hosted in disk galaxies (both non-jetted and jetted, see Crenshaw et al., 2003; Deo et al., 2006; Orban de Xivry et al., 2011; Mathur et al., 2012; Kotilainen et al., 2016; Olguín-Iglesias et al., 2017; Järvelä et al., 2018; Berton et al., 2019), suggests that their black hole mass is lower than that of BLS1s, since the black hole mass tends to scale with the host galaxy morphology (Kormendy & Ho, 2013).

Our findings indicate that black hole masses change within the NLS1 population. The L and G distributions, both at low redshift and among the whole sample, are different from each other. This difference seems to be more prominent at large z . A selection effect could be present since the most luminous sources, seen at larger distances, may have a larger black hole mass and, as mentioned above, they preferentially belong to G sample. However, the presence of this difference at low z seems to indicate that it is not entirely a selection effect. Furthermore, this result is somewhat expected. The black hole mass is linearly dependent on the FWHM of $H\beta$ and a Lorentzian profile, for simple geometrical reasons, has a lower FWHM than a Gaussian profile with the same flux. If the $H\beta$ flux does not change, therefore, the derived black hole mass will be lower in Lorentzian sources (which in turn gives a higher Eddington ratio, a feature we also observe).

We must stress that such different behavior is not a bias: the line profile reflects a difference in the physical properties of the sources, therefore the different black hole mass distribution is a real effect. Furthermore, the black hole mass calculation we adopted in this work is the same for both line profiles. As mentioned above, the black hole mass we used are the same estimated by R17. In addition to a Gaussian to represent the narrow component, they decomposed the $H\beta$ profile fitting the broad component with either a Lorentzian or two Gaussians, according to the χ^2 statistics, when both $H\alpha$ and $H\beta$ were present in the spectrum (low z). They used instead a Lorentzian profile when only $H\beta$ is present in the spectrum. Assuming that the narrow component is the same in both cases, a Lorentzian broad component would yield to a lower FWHM with respect to a Gaussian broad component, thus slightly underestimating the black hole mass in the Gaussian sample. As a result, the intrinsic separation between the mass distributions of L and G sources should be even larger, and this would be evident particularly for high- z sources.

5.2. Eddington ratio, continuum and [O III] luminosity

It is widely known that NLS1s are extreme accretors, typically showing a rather high Eddington ratio (Boroson & Green, 1992; Marziani et al., 2018b, 2019). This phenomenon is believed to be the driver of the EV1 properties of AGN, and it actually accounts for many attributes of NLS1s. Strong disk winds are often observed in these sources (e.g., Jin et al., 2017a,b; Gallo et al., 2019), and the high Eddington ratio could also be responsible for the bulk outflowing

motion often observed in their NLR (Zamanov et al., 2002; Marziani et al., 2003; Komossa et al., 2008).

In our samples, we found that Lorentzian sources have a systematically different Eddington ratio, usually higher with respect to Gaussian sources. The mean and median values of Eddington ratio of the whole sample are higher than the mean and median of low redshift objects. Since black hole masses tend also to be larger when the entire sample is considered, this indicates that the bolometric luminosity of sources at high redshift is larger. This is expected, since low-luminosity sources at high z are simply not visible. Therefore, the effect of redshift is very prominent on the results we obtained for the whole sample.

What we observe in the redshift-limited sample is way more interesting. The difference between the two distribution is very large, and significantly larger than the difference observed between the two black hole mass distributions. This indicates that the bolometric luminosity of G sources and L sources are also different at low z , as shown by the different distributions of continuum luminosity³. In particular, it seems that at low redshift L sources are brighter than G sources. Indeed, as found from the continuum luminosity, in our low- z sample the median value of bolometric luminosity of G sources is 1.4×10^{44} erg s⁻¹, while in L sources the median is 2.0×10^{44} erg s⁻¹. Even if the difference is not so pronounced, this is an interesting result since it is in contradiction with what we observe in the [O III] luminosity. The G sources, indeed, are brighter than L sources (1.3×10^{42} erg s⁻¹ for G sources and 6.9×10^{41} erg s⁻¹ for L sources), but the brighter continuum in L sources should indeed produce brighter high ionization lines, such as [O III], within the same class of objects. The difference in [O III] distribution also rules out the possibility that the difference between L and G sources is inclination. Since [O III] luminosity is an isotropic property, if L and G sources were seen at different angles their [O III] luminosities should be the same.

5.3. Iron and R4570

The origin of iron in NLS1s is still unclear. However, it is well known that iron originates in supernova explosions, particularly from Ia and core-collapse supernovae (Ib, Ic, II). Authors already suggested that the origin of metals in AGN can be connected with starburst events (Heller & Shlosman, 1994; Collin & Zahn, 1999). NLS1s, in particular, are well known to be objects with an enhanced star formation rate with respect to BLS1s (Sani et al., 2010; Caccianiga et al., 2015). A high star formation rate can naturally lead to the explosion of several core-collapse supernovae in addition to Ia SNe, thus increasing the metallicity of these AGN (Chen et al., 2009; Million et al., 2011). When galaxy-galaxy interaction is ongoing, as observed in the hosts of several jetted NLS1s (Antón et al., 2008; D’Ammando et al., 2018; Järvelä et al., 2018; Berton et al., 2019),

³We remind that the bolometric luminosity was estimated by multiplying the monochromatic luminosity times a constant value.

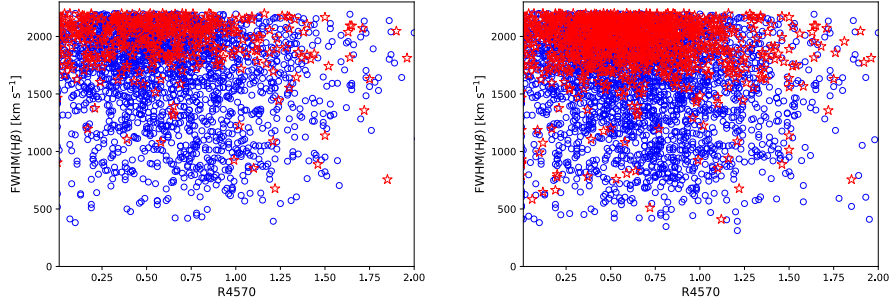


Figure 8. Position of our sources on the EV1 plane. The x-axis is the R4570, the y-axis is the FWHM(H β). Colors as in Fig. 2 and panels as in Fig. 3.

star formation events and supernovae explosions may be even more common. For example, in the case of IRAS 20181-2244, the star formation rate was estimated from the near infrared to be close to $300 M_{\odot} \text{ yr}^{-1}$ (Caccianiga et al., 2015), and its host galaxy is clearly undergoing a major merging event (Berton et al., 2019). These events may trigger a large number of core-collapse supernovae explosions in a rather short timescale. Additionally, given the typical velocity of supernovae ejecta (5000 km s^{-1}), the products of the explosion can cross a Milky Way-sized galaxy in a few 10^6 years, a timescale possibly shorter than a typical NLS1 activity event (10^8 years, Komossa, 2018). If the star formation is circumnuclear, as pointed out by Sani et al. (2010), the timescale to feed iron and other metals into the nuclear region is even shorter.

The distributions of R4570 are statistically different when the whole sample is considered, but at low z the R4570 seems identical in L and G sources. It is worth noting that R4570 does not depend only on Fe II strength, but also on the H β flux. Therefore, a lower R4570 does not necessarily reflect on the Fe II flux directly (Cracco et al., 2016). In the case of our low- z sample, in analogy with what happens for [O III], the H β luminosity is higher in the G sample than in the L sample (median logarithmic values 42.45 vs 42.18 for G and L, respectively). If the R4570 in L and G sources is approximately the same, this result implies that the Fe II strength is higher in G sources. The same result is found when using the whole samples. In this case the ratio R4570 is generally lower in G sources. As before, H β is instead significantly brighter in G sources, therefore the Fe II strength is even higher when high- z sources are included in the sample.

5.4. A complete picture? EV1 and intraclass evolution

To have a better understanding of the previous results, we plotted our sources on the EV1 plane. Although in general the y-axis of EV1 is the FWHM of H β broad component, in our case the H β line is well represented by a single component, therefore we used the total FWHM of the line. What is shown in Fig. 8 is extremely interesting. While L sources are basically spread on the whole diagram, the bulk of G sources is located close to the FWHM threshold of NLS1s, and on the left part of the diagram. This is the region where the vertical branch of the EV1 begins. This may suggest that G sources act like a “bridge”, connecting Lorentzian sources of the so-called population A (FWHM < 4000 km s⁻¹, Sulentic et al., 2000) with the mostly Gaussian sources that belong to population B (FWHM > 4000 km s⁻¹).

As already mentioned, many authors suggested that the driver of EV1 is the Eddington ratio (Boroson & Green, 1992). This idea is consistent with what we see in our plot, since G sources are located on the upper part of the diagram, where the Eddington ratio is supposed to decrease. However, some authors suggested that the EV1 represents the equivalent of a main sequence for quasars (Sulentic & Marziani, 2015), and that the position of the sources on this sequence may be connected to their age (Fraix-Burnet et al., 2017a,b). Indeed, the black hole mass could be used as a sort of an “arrow of time”. Since black hole mass can only grow, young sources must have lower masses than old sources. On the EV1, this would mean that population A sources are the progenitors of population B objects, with NLS1s being the youngest of all. Furthermore, given the different distributions of G and L sources on the EV1, and the fact that population B sources are largely dominated by Gaussian line profiles, we hypothesize that intraclass evolution could occur within the NLS1 population, and that L sources are the progenitors of G sources. It is already well known, in fact, that there is no sharp transition between NLS1s and BLS1s, but their properties form a continuous distribution (e.g., Cracco et al., 2016). It is therefore natural to expect the existence of an intermediate class of sources, which constitutes a link between the youngest NLS1s and their older evolved counterparts.

This evolutionary scenario could account for our previous results. The black hole mass increases going from L to G sources, in agreement with what mentioned before. If L sources are recently switched-on AGN, it is possible that they are surrounded by a dense environment consisting of gas clouds, dust, and stars. In these initial phases the accreting material is more abundant, which could account for the higher Eddington ratio. When the activity goes on for a long time, the Eddington ratio slightly decreases, while the AGN approaches the BLS1 phase and moves on the EV1 toward population B. We highlight that this model does not require a continuous single accretion episode. Separate activity episodes, possibly due to disk instabilities (Czerny et al., 2009), do not affect this hypothesis. The [O III] luminosity could be due to a change in the BLR geometry, reflected by the different line profiles. As mentioned above, L sources

may have a non-negligible vertical structure, which could increase the covering factor for the NLR. The ionizing continuum produced by the accretion disk that could reach the NLR may be absorbed by a more spherical BLR, accounting for weaker high ionization lines. With time, disk winds and radiation pressure may blow away the turbulent clouds, leaving a BLR dominated by Keplerian motion, and decreasing the covering factor for the NLR.

Finally, Fe II strength may also be included into this scenario, if we assume that the Fe II abundance is connected to the star formation rate. AGN activity is known to heat the gas and suppress star formation (Morganti, 2017). Therefore, supernova events may be less common in sources where the AGN activity has been ongoing for a long time. However, if NLS1s evolve from Lorentzian objects to Gaussian objects, we should observe an increasing amount of iron with increasing age. All the iron atoms, indeed, are formed during the early phase of the AGN life, and this behavior is essentially what we observe among our samples.

An interesting example that may fit into our picture is that of Mrk 783. This NLS1 was not included in our study, since its $H\beta$ profile cannot be reproduced by a single component (Berton et al., 2015; Congiu et al., 2017a,b). However, when the narrow component is subtracted, its line profile can be classified as Gaussian. In radio this NLS1 shows a prominent diffuse radio emission on kpc-scale, which can be interpreted in terms of relativistic jet precession or even as a relic emission. Therefore, despite being an NLS1, it is unlikely to be a very young source since, unlike most jetted NLS1s (Berton et al., 2018), it already had the time to develop a prominent diffuse emission. Its other properties are reminiscent of those of Gaussian sources. The black hole mass is in the higher end of NLS1s distribution ($4.3 \times 10^7 M_{\odot}$, Berton et al., 2015), its Eddington ratio is quite low (0.11, Berton et al., 2015), and its [O III] line is quite strong with respect to $H\beta$ ($R_{5007} \sim 2.9$). Only the iron is slightly different from the typical properties of the Gaussian sample, since the iron is basically not present with the only exception of a few high ionization lines (Congiu et al., in prep.). However, Mrk 783, in conclusion, could be a good example for this scenario, since its properties seem to fit this evolutionary picture.

6. Summary

In this work we analyzed the physical properties of two subsamples of NLS1 galaxies extracted from the SDSS. We divided them into Lorentzian and Gaussian sources according to the profile that better represents their $H\beta$ line. We later introduced a redshift limit at $z=0.25$ in the sample, in order to study both low-redshift objects and the sample as a whole. Our main result is that most of their physical properties seem to differ. From Lorentzian to Gaussian sources the black hole mass tends to increase, the Eddington ratio decreases, the Fe II strength decreases, and the [O III] luminosity increases.

We try to fit these differences into the context of the quasar main sequence and the EV1, suggesting that Lorentzian sources are the progenitors of Gaussian sources. This groundbreaking scenario seems to account for most of the observed results. In particular, the increased black hole mass may be used as an arrow of time which is representative of AGN evolution. If this hypothesis is correct, AGN may be born as NLS1s with Lorentzian line profiles, later evolve to NLS1s with a Gaussian profile, and eventually move in the EV1 region where population B sources are.

This model is still rather speculative, and needs further confirmation. A more careful analysis of the line profiles on large samples of NLS1s is needed in order to better separate Gaussian and Lorentzian sources. Furthermore, this study should be extended to the entire population A of the EV1, to see if this trend can be confirmed, and eventually to all type 1 AGN. An upcoming paper will be dedicated to the careful analysis of NLS1 spectra, and will provide a more complete view on this important issue.

Acknowledgements. MB would like to warmly thank the organizers of the 12th Serbian Conference on Spectral Line Shapes in Astrophysics for the interesting and fruitful meeting. The authors are grateful to P. Marziani, W. Kollatschny, E. Bon, S. Ciroi, and L. Foschini for helpful suggestions and discussions. This research has made use of the NASA/IPAC Extragalactic Database (NED) which is operated by the Jet Propulsion Laboratory, California Institute of Technology, under contract with the National Aeronautics and Space Administration. Funding for the Sloan Digital Sky Survey has been provided by the Alfred P. Sloan Foundation, and the U.S. Department of Energy Office of Science. The SDSS web site is <http://www.sdss.org>. SDSS-III is managed by the Astrophysical Research Consortium for the Participating Institutions of the SDSS-III Collaboration including the University of Arizona, the Brazilian Participation Group, Brookhaven National Laboratory, Carnegie Mellon University, University of Florida, the French Participation Group, the German Participation Group, Harvard University, the Instituto de Astrofísica de Canarias, the Michigan State/Notre Dame/JINA Participation Group, Johns Hopkins University, Lawrence Berkeley National Laboratory, Max Planck Institute for Astrophysics, Max Planck Institute for Extraterrestrial Physics, New Mexico State University, University of Portsmouth, Princeton University, the Spanish Participation Group, University of Tokyo, University of Utah, Vanderbilt University, University of Virginia, University of Washington, and Yale University.

References

- Abdo, A. A., Ackermann, M., Ajello, M., et al., Fermi/Large Area Telescope Discovery of Gamma-Ray Emission from a Relativistic Jet in the Narrow-Line Quasar PMN J0948+0022. 2009a, *Astrophys. J.*, **699**, 976, DOI: 10.1088/0004-637X/699/2/976
- Abdo, A. A., Ackermann, M., Ajello, M., et al., Radio-Loud Narrow-Line Seyfert 1 as a New Class of Gamma-Ray Active Galactic Nuclei. 2009b, *Astrophys. J., Lett.*, **707**, L142, DOI: 10.1088/0004-637X/707/2/L142

- Antón, S., Browne, I. W. A., & Marchã, M. J., The colour of the narrow line Sy1-blazar 0324+3410. 2008, *Astron. Astrophys.*, **490**, 583, DOI: 10.1051/0004-6361/20078926
- Antonucci, R., Unified models for active galactic nuclei and quasars. 1993, *ARA&A*, **31**, 473, DOI: 10.1146/annurev.aa.31.090193.002353
- Bentz, M. C., Denney, K. D., Grier, C. J., et al., The Low-luminosity End of the Radius-Luminosity Relationship for Active Galactic Nuclei. 2013, *Astrophys. J.*, **767**, 149, DOI: 10.1088/0004-637X/767/2/149
- Berton, M., An updated view on the parent population of γ -ray emitting narrow-line Seyfert 1 galaxies. 2018, in *Proceedings of Science, vol. Revisiting narrow-line Seyfert 1 galaxies and their place in the Universe. 9-13 April 2018*, 26
- Berton, M., Caccianiga, A., Foschini, L., et al., Compact steep-spectrum sources as the parent population of flat-spectrum radio-loud narrow-line Seyfert 1 galaxies. 2016a, *Astron. Astrophys.*, **591**, A98, DOI: 10.1051/0004-6361/201628171
- Berton, M., Congiu, E., Ciroi, S., et al., The Interacting Late-type Host Galaxy of the Radio-loud Narrow-line Seyfert 1 IRAS 20181-2244. 2019, *Astron. J.*, **157**, 48, DOI: 10.3847/1538-3881/aaf5ca
- Berton, M., Congiu, E., Järvelä, E., et al., Radio-emitting narrow-line Seyfert 1 galaxies in the JVLA perspective. 2018, *Astron. Astrophys.*, **614**, A87, DOI: 10.1051/0004-6361/201832612
- Berton, M., Foschini, L., Caccianiga, A., et al., An orientation-based unification of young jetted active galactic nuclei: the case of 3C 286. 2017, *Frontiers in Astronomy and Space Sciences*, **4**, 8, DOI: 10.3389/fspas.2017.00008
- Berton, M., Foschini, L., Ciroi, S., et al., [O III] line properties in two samples of radio-emitting narrow-line Seyfert 1 galaxies. 2016b, *Astron. Astrophys.*, **591**, A88, DOI: 10.1051/0004-6361/201527056
- Berton, M., Foschini, L., Ciroi, S., et al., Parent population of flat-spectrum radio-loud narrow-Line Seyfert 1 galaxies. 2015, *Astron. Astrophys.*, **578**, A28
- Boller, T., Brandt, W. N., & Fink, H., Soft X-ray properties of narrow-line Seyfert 1 galaxies. 1996, *Astron. Astrophys.*, **305**, 53
- Boller, T., Meurs, E. J. A., Brinkmann, W., et al., ROSAT All Sky Survey observations of IRAS galaxies. 1992, *Astron. Astrophys.*, **261**, 57
- Boroson, T. A. & Green, R. F., The emission-line properties of low-redshift quasi-stellar objects. 1992, *Astrophys. J., Suppl.*, **80**, 109, DOI: 10.1086/191661
- Caccianiga, A., Antón, S., Ballo, L., et al., WISE colours and star formation in the host galaxies of radio-loud narrow-line Seyfert 1. 2015, *Mon. Not. R. Astron. Soc.*, **451**, 1795, DOI: 10.1093/mnras/stv939
- Chen, S., Berton, M., La Mura, G., et al., Probing narrow-line Seyfert 1 galaxies in the southern hemisphere. 2018, *Astron. Astrophys.*, **615**, A167, DOI: 10.1051/0004-6361/201832678
- Chen, Y.-M., Wang, J.-M., Yan, C.-S., Hu, C., & Zhang, S., The Starburst-Active Galactic Nucleus Connection: The Role of Young Stellar Populations in Fueling Su-

- permissive Black Holes. 2009, *Astrophys. J., Lett.*, **695**, L130, DOI: 10.1088/0004-637X/695/2/L130
- Chiaberge, M. & Marconi, A., On the origin of radio loudness in active galactic nuclei and its relationship with the properties of the central supermassive black hole. 2011, *Mon. Not. R. Astron. Soc.*, **416**, 917, DOI: 10.1111/j.1365-2966.2011.19079.x
- Collin, S. & Zahn, J.-P., Star Formation in Accretion Disks Around Massive Black Holes and Pregalactic Enrichment. 1999, *Astrophys. Space Sci.*, **265**, 501, DOI: 10.1023/A:1002191506811
- Congiu, E., Berton, M., Giroletti, M., et al., Kiloparsec-scale emission in the narrow-line Seyfert 1 galaxy Mrk 783. 2017a, *Astron. Astrophys.*, **603**, A32, DOI: 10.1051/0004-6361/201730616
- Congiu, E., Contini, M., Ciroi, S., et al., Extended Narrow-Line Region in Seyfert Galaxies. 2017b, *Frontiers in Astronomy and Space Sciences*, **4**, 27, DOI: 10.3389/fspas.2017.00027
- Cracco, V., Ciroi, S., Berton, M., et al., A spectroscopic analysis of a sample of narrow-line Seyfert 1 galaxies selected from the Sloan Digital Sky Survey. 2016, *Mon. Not. R. Astron. Soc.*, **462**, 1256, DOI: 10.1093/mnras/stw1689
- Crenshaw, D. M., Kraemer, S. B., & Gabel, J. R., The Host Galaxies of Narrow-Line Seyfert 1 Galaxies: Evidence for Bar-Driven Fueling. 2003, *Astron. J.*, **126**, 1690, DOI: 10.1086/377625
- Czerny, B., Siemiginowska, A., Janiuk, A., Nikiel-Wroczyński, B., & Stawarz, L., Accretion Disk Model of Short-Timescale Intermittent Activity in Young Radio Sources. 2009, *Astrophys. J.*, **698**, 840, DOI: 10.1088/0004-637X/698/1/840
- D'Ammando, F., Acosta-Pulido, J. A., Capetti, A., et al., The host galaxy of the γ -ray-emitting narrow-line Seyfert 1 galaxy PKS 1502+036. 2018, *Mon. Not. R. Astron. Soc.*, **478**, L66, DOI: 10.1093/mnrasl/sly072
- Decarli, R., Dotti, M., Fontana, M., & Haardt, F., Are the black hole masses in narrow-line Seyfert 1 galaxies actually small? 2008, *Mon. Not. R. Astron. Soc.*, **386**, L15, DOI: 10.1111/j.1745-3933.2008.00451.x
- Deo, R. P., Crenshaw, D. M., & Kraemer, S. B., The Host Galaxies of Narrow-Line Seyfert 1 Galaxies: Nuclear Dust Morphology and Starburst Rings. 2006, *Astron. J.*, **132**, 321, DOI: 10.1086/504894
- Foschini, L., The Unification of Relativistic Jets. 2014, *International Journal of Modern Physics Conference Series*, **28**, 1460188, DOI: 10.1142/S2010194514601884
- Foschini, L., What we talk about when we talk about blazars? 2017, *Frontiers in Astronomy and Space Sciences*, **4**, 6, DOI: 10.3389/fspas.2017.00006
- Foschini, L., Berton, M., Caccianiga, A., et al., Properties of flat-spectrum radio-loud narrow-line Seyfert 1 galaxies. 2015, *Astron. Astrophys.*, **575**, A13, DOI: 10.1051/0004-6361/201424972
- Fraix-Burnet, D., D'Onofrio, M., & Marziani, P., Phylogenetic Analyses of Quasars and Galaxies. 2017a, *Frontiers in Astronomy and Space Sciences*, **4**, 20, DOI: 10.3389/fspas.2017.00020

- Fraix-Burnet, D., Marziani, P., D’Onofrio, M., & Dultzin, D., The phylogeny of quasars and the ontogeny of their central black holes. 2017b, *Frontiers in Astronomy and Space Sciences*, **4**, 1, DOI: 10.3389/fspas.2017.00001
- Gallo, L., X-ray perspective of Narrow-line Seyfert 1 galaxies. 2018, in *Proceedings of Science, vol. Revisiting narrow-line Seyfert 1 galaxies and their place in the Universe*, 34
- Gallo, L. C., Gonzalez, A. G., Waddell, S. G. H., et al., Evidence for an emerging disc wind and collimated outflow during an X-ray flare in the narrow-line Seyfert 1 galaxy Mrk 335. 2019, *Mon. Not. R. Astron. Soc.*, **484**, 4287, DOI: 10.1093/mnras/stz274
- Gaskell, C. M., What broad emission lines tell us about how active galactic nuclei work. 2009, *NewAR*, **53**, 140, DOI: 10.1016/j.newar.2009.09.006
- Goad, M. R., Korista, K. T., & Ruff, A. J., The broad emission-line region: the confluence of the outer accretion disc with the inner edge of the dusty torus. 2012, *Mon. Not. R. Astron. Soc.*, **426**, 3086, DOI: 10.1111/j.1365-2966.2012.21808.x
- Goodrich, R. W., Spectropolarimetry of ‘narrow-line’ Seyfert 1 galaxies. 1989, *Astrophys. J.*, **342**, 224, DOI: 10.1086/167586
- Gravity Collaboration, Sturm, E., Dexter, J., et al., Spatially resolved rotation of the broad-line region of a quasar at sub-parsec scale. 2018, *Nature*, **563**, 657, DOI: 10.1038/s41586-018-0731-9
- Heinz, S. & Sunyaev, R. A., The non-linear dependence of flux on black hole mass and accretion rate in core-dominated jets. 2003, *Mon. Not. R. Astron. Soc.*, **343**, L59, DOI: 10.1046/j.1365-8711.2003.06918.x
- Heller, C. H. & Shlosman, I., Fueling nuclear activity in disk galaxies: Starbursts and monsters. 1994, *Astrophys. J.*, **424**, 84, DOI: 10.1086/173874
- Hou, A., Parker, L. C., Harris, W. E., & Wilman, D. J., Statistical Tools for Classifying Galaxy Group Dynamics. 2009, *Astrophys. J.*, **702**, 1199, DOI: 10.1088/0004-637X/702/2/1199
- Järvelä, E., Lähteenmäki, A., & Berton, M., Near-infrared morphologies of the host galaxies of narrow-line Seyfert 1 galaxies. 2018, *Astron. Astrophys.*, **619**, A69, DOI: 10.1051/0004-6361/201832876
- Järvelä, E., Lähteenmäki, A., Lietzen, H., et al., Large-scale environments of narrow-line Seyfert 1 galaxies. 2017, *Astron. Astrophys.*, **606**, A9, DOI: 10.1051/0004-6361/201731318
- Jin, C., Done, C., & Ward, M., Super-Eddington QSO RX J0439.6-5311 - I. Origin of the soft X-ray excess and structure of the inner accretion flow. 2017a, *Mon. Not. R. Astron. Soc.*, **468**, 3663, DOI: 10.1093/mnras/stx718
- Jin, C., Done, C., Ward, M., & Gardner, E., Super-Eddington QSO RX J0439.6-5311 - II. Multiwavelength constraints on the global structure of the accretion flow. 2017b, *Mon. Not. R. Astron. Soc.*, **471**, 706, DOI: 10.1093/mnras/stx1634
- Kollatschny, W. & Zetzl, M., Broad-line active galactic nuclei rotate faster than narrow-line ones. 2011, *Nature*, **470**, 366, DOI: 10.1038/nature09761

- Kollatschny, W. & Zetzl, M., The shape of broad-line profiles in active galactic nuclei. 2013a, *Astron. Astrophys.*, **549**, A100, DOI: 10.1051/0004-6361/201219411
- Kollatschny, W. & Zetzl, M., Vertical broad-line region structure in nearby active galactic nuclei. 2013b, *Astron. Astrophys.*, **558**, A26, DOI: 10.1051/0004-6361/201321685
- Komatsu, E., Smith, K. M., Dunkley, J., et al., Seven-year Wilkinson Microwave Anisotropy Probe (WMAP) Observations: Cosmological Interpretation. 2011, *Astrophys. J., Suppl.*, **192**, 18, DOI: 10.1088/0067-0049/192/2/18
- Komossa, S., Narrow-line Seyfert 1 Galaxies. 2008, in *Revista Mexicana de Astronomía y Astrofísica Conference Series*, Vol. **32**, *Revista Mexicana de Astronomía y Astrofísica Conference Series*, 86–92
- Komossa, S., Multi-wavelength properties of radio-loud Narrow-line Seyfert 1 galaxies. 2018, in *Proceedings of Science, vol. Revisiting narrow-line Seyfert 1 galaxies and their place in the Universe*, 15
- Komossa, S., Xu, D., Zhou, H., Storchi-Bergmann, T., & Binette, L., On the Nature of Seyfert Galaxies with High [O III] λ 5007 Blueshifts. 2008, *Astrophys. J.*, **680**, 926, DOI: 10.1086/587932
- Kormendy, J. & Ho, L. C., Coevolution (Or Not) of Supermassive Black Holes and Host Galaxies. 2013, *Ann. Rev. Astron. Astrophys.*, **51**, 511, DOI: 10.1146/annurev-astro-082708-101811
- Kotilainen, J. K., León-Tavares, J., Olgún-Iglesias, A., et al., Discovery of a Pseudobulge Galaxy Launching Powerful Relativistic Jets. 2016, *Astrophys. J.*, **832**, 157, DOI: 10.3847/0004-637X/832/2/157
- Kovačević, J., Popović, L. Č., & Dimitrijević, M. S., Analysis of Optical Fe II Emission in a Sample of Active Galactic Nucleus Spectra. 2010, *Astrophys. J., Suppl.*, **189**, 15, DOI: 10.1088/0067-0049/189/1/15
- Laor, A., On Black Hole Masses and Radio Loudness in Active Galactic Nuclei. 2000, *Astrophys. J., Lett.*, **543**, L111, DOI: 10.1086/317280
- Lister, M., Radio Properties of Narrow-Line Seyfert 1 Galaxies. 2018, in *Revisiting narrow-line Seyfert 1 galaxies and their place in the Universe. 9-13 April 2018. Padova Botanical Garden*, 22
- Marziani, P., Bon, E., Bon, N., et al., Quasars: From the Physics of Line Formation to Cosmology. 2019, *Atoms*, **7**, 18, DOI: 10.3390/atoms7010018
- Marziani, P., del Olmo, A., D’Onofrio, M., et al., Narrow-line Seyfert 1s: what is wrong in a name? 2018a, in *Proceedings of Science, vol. Revisiting narrow-line Seyfert 1 galaxies and their place in the Universe*, 2
- Marziani, P., Dultzin, D., Sulentic, J. W., et al., A main sequence for quasars. 2018b, *Frontiers in Astronomy and Space Sciences*, **5**, 6, DOI: 10.3389/fspas.2018.00006
- Marziani, P., Sulentic, J. W., Zwitter, T., Dultzin-Hacyan, D., & Calvani, M., Searching for the Physical Drivers of the Eigenvector 1 Correlation Space. 2001, *Astrophys. J.*, **558**, 553, DOI: 10.1086/322286

- Marziani, P., Zamanov, R. K., Sulentic, J. W., & Calvani, M., Searching for the physical drivers of eigenvector 1: influence of black hole mass and Eddington ratio. 2003, *Mon. Not. R. Astron. Soc.*, **345**, 1133, DOI: 10.1046/j.1365-2966.2003.07033.x
- Mathur, S., Narrow-line Seyfert 1 galaxies and the evolution of galaxies and active galaxies. 2000, *Mon. Not. R. Astron. Soc.*, **314**, L17, DOI: 10.1046/j.1365-8711.2000.03530.x
- Mathur, S., Fields, D., Peterson, B. M., & Grupe, D., Supermassive Black Holes, Pseudobulges, and the Narrow-line Seyfert 1 Galaxies. 2012, *Astrophys. J.*, **754**, 146, DOI: 10.1088/0004-637X/754/2/146
- Million, E. T., Werner, N., Simionescu, A., & Allen, S. W., Core-collapse supernova enrichment in the core of the Virgo cluster. 2011, *Mon. Not. R. Astron. Soc.*, **418**, 2744, DOI: 10.1111/j.1365-2966.2011.19664.x
- Moran, E. C., Halpern, J. P., & Helfand, D. J., Classification of IRAS-selected X-Ray Galaxies in the ROSAT All-Sky Survey. 1996, *Astrophys. J., Suppl.*, **106**, 341, DOI: 10.1086/192341
- Morganti, R., The many routes to AGN feedback. 2017, *Frontiers in Astronomy and Space Sciences*, **4**, 42, DOI: 10.3389/fspas.2017.00042
- Olguín-Iglesias, A., Kotilainen, J. K., León Tavares, J., Chavushyan, V., & Añorve, C., Evidence of bar-driven secular evolution in the gamma-ray narrow-line Seyfert 1 galaxy FBQS J164442.5+261913. 2017, *Mon. Not. R. Astron. Soc.*, **467**, 3712, DOI: 10.1093/mnras/stx022
- Orban de Xivry, G., Davies, R., Schartmann, M., et al., The role of secular evolution in the black hole growth of narrow-line Seyfert 1 galaxies. 2011, *Mon. Not. R. Astron. Soc.*, **417**, 2721, DOI: 10.1111/j.1365-2966.2011.19439.x
- Osterbrock, D. E. & Pogge, R. W., The spectra of narrow-line Seyfert 1 galaxies. 1985, *Astrophys. J.*, **297**, 166, DOI: 10.1086/163513
- Peterson, B. & Dalla Bontà, E., Reverberation Mapping and Implications for Narrow-Line Seyfert 1 Galaxies. 2018, in *Proceedings of Science, vol. Revisiting narrow-line Seyfert 1 galaxies and their place in the Universe*, 8
- Peterson, B. M., Masses of Black Holes in Active Galactic Nuclei: Implications for Narrow-Line Seyfert 1 Galaxies. 2011, in *Narrow-Line Seyfert 1 Galaxies and their Place in the Universe*, 32
- Popović, L. Č., Kovačević-Dojčinović, J., & Marčeta-Mandić, S., The structure of the Mg II broad line emitting region in Type 1 AGNs. 2019, *Mon. Not. R. Astron. Soc.*, **484**, 3180, DOI: 10.1093/mnras/stz157
- Rakshit, S., Stalin, C. S., Chand, H., & Zhang, X.-G., A Catalog of Narrow Line Seyfert 1 Galaxies from the Sloan Digital Sky Survey Data Release 12. 2017, *Astrophys. J., Suppl.*, **229**, 39, DOI: 10.3847/1538-4365/aa6971
- Sani, E., Lutz, D., Risaliti, G., et al., Enhanced star formation in narrow-line Seyfert 1 active galactic nuclei revealed by Spitzer. 2010, *Mon. Not. R. Astron. Soc.*, **403**, 1246, DOI: 10.1111/j.1365-2966.2009.16217.x

- Sbarrato, T., Dotti, M., Ghirlanda, G., & Tavecchio, F., Study of the orientation of narrow-line Seyfert 1. 2018, *Astron. Astrophys.*, **616**, A43, DOI: 10.1051/0004-6361/201732451
- Śniegowska, M., Czerny, B., You, B., et al., Properties of active galaxies at the extreme of Eigenvector 1. 2018, *Astron. Astrophys.*, **613**, A38, DOI: 10.1051/0004-6361/201730433
- Sulentic, J. & Marziani, P., Quasars in the 4D Eigenvector 1 Context: a stroll down memory lane. 2015, *Frontiers in Astronomy and Space Sciences*, **2**, 6, DOI: 10.3389/fspas.2015.00006
- Sulentic, J. W., Marziani, P., Zamanov, R., et al., Average Quasar Spectra in the Context of Eigenvector 1. 2002, *Astrophys. J., Lett.*, **566**, L71, DOI: 10.1086/339594
- Sulentic, J. W., Zwitter, T., Marziani, P., & Dultzin-Hacyan, D., Eigenvector 1: An Optimal Correlation Space for Active Galactic Nuclei. 2000, *Astrophys. J., Lett.*, **536**, L5, DOI: 10.1086/312717
- Urry, C. M. & Padovani, P., Unified Schemes for Radio-Loud Active Galactic Nuclei. 1995, *Publ. Astron. Soc. Pac.*, **107**, 803, DOI: 10.1086/133630
- Véron-Cetty, M.-P., Véron, P., & Gonçalves, A. C., A spectrophotometric atlas of Narrow-Line Seyfert 1 galaxies. 2001, *Astron. Astrophys.*, **372**, 730, DOI: 10.1051/0004-6361:20010489
- Vietri, A., Berton, M., Ciroi, S., et al., The link between X-ray complexity and optical lines in NLS1s. 2018, in *Proceedings of Science, vol. Revisiting narrow-line Seyfert 1 galaxies and their place in the Universe*, 47
- Zamanov, R., Marziani, P., Sulentic, J. W., et al., Kinematic Linkage between the Broad- and Narrow-Line-emitting Gas in Active Galactic Nuclei. 2002, *Astrophys. J., Lett.*, **576**, L9, DOI: 10.1086/342783
- Zhou, H., Wang, T., Yuan, W., et al., A Comprehensive Study of 2000 Narrow Line Seyfert 1 Galaxies from the Sloan Digital Sky Survey. I. The Sample. 2006, *Astrophys. J., Suppl.*, **166**, 128, DOI: 10.1086/504869