



<b>Publication Year</b>	2021
<b>Acceptance in OA</b>	2025-03-10T10:27:38Z
<b>Title</b>	The CALYPSO IRAM-PdBI survey of jets from Class 0 protostars. Exploring whether jets are ubiquitous in young stars
<b>Authors</b>	PODIO, Linda, Tabone, B., CODELLA, Claudio, Gueth, F., Maury, A., Cabrit, S., Lefloch, B., Maret, S., Belloche, A., André, P., Anderl, S., Gaudel, M., TESTI, Leonardo
<b>Publisher's version (DOI)</b>	10.1051/0004-6361/202038429
<b>Handle</b>	<a href="http://hdl.handle.net/20.500.12386/36566">http://hdl.handle.net/20.500.12386/36566</a>
<b>Journal</b>	ASTRONOMY & ASTROPHYSICS
<b>Volume</b>	648

# The CALYPSO IRAM-PdBI survey of jets from Class 0 protostars

## Exploring whether jets are ubiquitous in young stars<sup>★</sup>

L. Podio<sup>1</sup>, B. Tabone<sup>2</sup>, C. Codella<sup>1,3</sup>, F. Gueth<sup>4</sup>, A. Maury<sup>5,6</sup>, S. Cabrit<sup>7,3</sup>, B. Lefloch<sup>3</sup>, S. Maret<sup>3</sup>, A. Belloche<sup>8</sup>,  
P. André<sup>5</sup>, S. Anderl<sup>3</sup>, M. Gaudel<sup>5</sup>, and L. Testi<sup>9</sup>

<sup>1</sup> INAF – Osservatorio Astrofisico di Arcetri, Largo E. Fermi 5, 50125 Firenze, Italy  
e-mail: [lpodio@arcetri.astro.it](mailto:lpodio@arcetri.astro.it)

<sup>2</sup> Leiden Observatory, Leiden University, PO Box 9513, 2300 RA Leiden, The Netherlands

<sup>3</sup> Univ. Grenoble Alpes, CNRS, IPAG, 38000 Grenoble, France

<sup>4</sup> Institut de Radioastronomie Millimétrique (IRAM), 38406 Saint-Martin-d'Hères, France

<sup>5</sup> Laboratoire d'Astrophysique (AIM), CEA, CNRS, Université Paris-Saclay, Université Paris Diderot, Sorbonne Paris Cité, 91191 Gif-sur-Yvette, France

<sup>6</sup> Harvard-Smithsonian Center for Astrophysics, Cambridge, MA02138, USA

<sup>7</sup> PSL Research University, Sorbonne Universités, Observatoire de Paris, LERMA, CNRS, Paris France

<sup>8</sup> Max-Planck-Institut für Radioastronomie, Auf dem Hügel 69, 53121 Bonn, Germany

<sup>9</sup> ESO, Karl Schwarzschild Straße 2, 85748 Garching bei München, Germany

Received 15 May 2020 / Accepted 20 December 2020

### ABSTRACT

**Aims.** As a part of the CALYPSO Large Program, we aim to constrain the properties of protostellar jets and outflows by searching for corresponding emission in a sample of 21 Class 0 protostars covering a broad range of internal luminosities ( $L_{\text{int}}$  from  $0.035 L_{\odot}$  to  $47 L_{\odot}$ ).

**Methods.** We analyzed high angular ( $\sim 0''.5$ – $1''.0$ ) resolution IRAM Plateau de Bure Interferometer (PdBI) observations in three typical outflow and jet tracers, namely: CO (2–1), SO ( $5_6$ – $4_5$ ), and SiO (5–4). We obtained the detection rate, spatial distribution, kinematics, and collimation of the outflow and jet emission in the three lines. Molecular column densities and abundances, the jet mass-loss and momentum rates, and mechanical luminosity are estimated from the integrated line intensities.

**Results.** Blue- and red-shifted emission in CO (2–1), which probes outflowing gas, was detected in all the sources in the sample and detected for the first time in the cases of SerpS-MM22 and SerpS-MM18b. Collimated high-velocity jets in SiO (5–4) were detected in 67% of the sources (for the first time in IRAS4B2, IRAS4B1, L1448-NB, SerpS-MM18a) and 77% of these also showed jet or outflow emission in SO ( $5_6$ – $4_5$ ). The detection rate of jets in SiO and SO increases with internal luminosity. In five sources (that is, 24% of the sample) SO ( $5_6$ – $4_5$ ) is elongated and reveals a velocity gradient perpendicular to the jet direction, hence, it probes the inner envelope or the disk, or both. The detected SiO jets are collimated (typical opening angle,  $\alpha \sim 10^\circ$ ) and surrounded by wider angle SO ( $\alpha \sim 15^\circ$ ) and CO ( $\alpha \sim 25^\circ$ ) emission. The abundance of SO relative to  $\text{H}_2$  ranges from  $<10^{-7}$  up to  $10^{-6}$ , whereas for SiO, the lower limits were found to range from  $>2.4 \times 10^{-7}$  to  $>5 \times 10^{-6}$ , with the exception of the jets from IRAS4A1 and IRAS4A2, which show low SiO abundance ( $\leq 2$ – $6 \times 10^{-8}$ ). The mass-loss rates range from  $\sim 7 \times 10^{-8} M_{\odot} \text{yr}^{-1}$  up to  $\sim 3 \times 10^{-6} M_{\odot} \text{yr}^{-1}$  for  $L_{\text{int}} \sim 1$ – $50 L_{\odot}$ .

**Conclusions.** The CALYPSO IRAM-PdBI survey shows that the outflow phenomenon is ubiquitous in our sample of protostars and that the detection rate of high-velocity collimated jets increases for increasing protostellar accretion, with at least 80% of the sources with  $L_{\text{int}} > 1 L_{\odot}$  driving a jet. The detected protostellar flows exhibit an onion-like structure, where the SiO jet is nested into a wider angle SO and CO outflow. On scales  $>300$  au the SiO jets are less collimated ( $4^\circ$ – $12^\circ$ ) than atomic jets from Class II sources ( $\sim 3^\circ$ ), possibly due to projection effects and contamination by SiO emission from the bow-shocks. On the other hand, velocity asymmetry between the two jet lobes are detected in one third of the sources, similarly to Class II atomic jets, suggesting that the same launching mechanism is at work. Most of the jets are SiO rich, which indicates very efficient release of  $>1$ – $10\%$  of elemental silicon in gas phase likely in dust-free winds, launched from inside the dust sublimation radius. The estimated mass-loss rates are larger by up to five orders of magnitude than what was measured for Class II jets, indicating that the ejection decreases as the source evolves and accretion fades. Similarly to Class II sources, the mass-loss rates are  $\sim 1$ – $50\%$  of the mass accretion rate,  $\dot{M}_{\text{acc}}$ , suggesting that the correlation between mass ejection and mass accretion holds along the star-formation process from  $10^4$  yr up to a few Myr.

**Key words.** stars: formation – stars: protostars – ISM: jets and outflows – ISM: molecules – ISM: abundances

## 1. Introduction

The earliest stages of the process leading to the formation of a low-mass, Sun-like star are expected to be associated with

supersonic (around  $100 \text{ km s}^{-1}$ ) collimated jets. This ejection phenomenon is invoked to remove angular momentum from the protostar-disk system and allow the material to accrete from the disk onto the central object (see, e.g., Frank et al. 2014, and references therein). Jets, in turn, accelerate the dense material of the cloud surrounding the protostar creating slower ( $\sim 10 \text{ km s}^{-1}$ ) molecular outflows, which are observable on a large scale (typically 0.1 pc) mainly through CO low-J rotational lines (see, e.g., Lada 1985).

<sup>★</sup> The calibrated data and continuum and line maps analysed in the paper are part of the IRAM PdBI Large Program CALYPSO and are available on the IRAM webpage at the following link: <https://www.iram.fr/ILPA/LP010/>

Although these jets are thought to be driven by a magneto-centrifugal process which extracts and accelerates the material from the rotating star-disk system, the launching mechanism is still far from being clear. As a consequence, what is also unclear is the region the jet is launched from: whether it comes from inside the dust sublimation radius at fractions of au from the star or from a larger region of the accretion disk. In the first case, the molecular jet may be driven by the stellar surface (“stellar wind”, Glassgold et al. 1991) or the inner disk region, either by an X-wind (Shang et al. 2007) or by a dust-free magneto-hydrodynamical (MHD) disk wind as was shown in the recent modeling carried out by Tabone et al. (2020). In the second case, rather, the molecular jet originates from an extended disk region as in the models of dusty magnetized disk winds (Pudritz et al. 2007; Panoglou et al. 2012).

In the last 15 yr there have been a number of surveys in the (sub-)millimeter range aimed to address different aspects of the star-formation process at its earliest stages, that is, the protostellar multiplicity, the magnetic field topology in star-forming regions, and the presence of disks and outflows. These surveys mainly targeted continuum emission and CO low-J transitions at intermediate resolution (3–4”) (e.g., Jørgensen et al. 2007; Hull et al. 2014; Lee et al. 2016; Tobin et al. 2016, 2018) and have shown that large-scale outflow emission is commonly associated with protostellar objects. However, the lack of angular resolution had not always allowed us to investigate whether all protostellar sources in multiple systems are associated with outflows and to reveal the outflow-accelerating engine, that is, the high-velocity collimated jet, which is directly ejected from the star-disk system and, therefore, is key in regulating the accretion and ejection process and the angular momentum removal.

To date, there have only been a few detailed studies at sub-arcsecond resolution that have targeted the primary molecular jet in a few prototypical protostellar objects, such as in HH 211, HH 212, L1448-C, L1157, or B335, by using selective jet tracers, such as SiO (Cabrit et al. 2007, 2012; Codella et al. 2007, 2014a; Hirano et al. 2006, 2010; Podio et al. 2015, 2016; Lee et al. 2007a,b, 2009, 2017; Bjerkeli et al. 2019). These studies revealed that protostellar jets may be as collimated as atomic jets from Class II sources observed at optical/NIR wavelengths (Dougados et al. 2000; Bacciotti et al. 2000; Woitas et al. 2002; Cabrit 2007; Agra-Amboage et al. 2011) and they show a similar correlation between the mass ejection and mass accretion rates. In a few cases, they also show signatures of rotation (e.g., Lee et al. 2017; Bjerkeli et al. 2019; Lee 2020, and references therein). Recently, a survey of five molecular outflows in the Serpens star forming region was performed with ALMA (Tychoniec et al. 2019). However, a statistical study at sub-arcsecond angular resolution of a large sample of protostellar jets is still lacking.

It is now time to enlarge the sample of observed protostellar jets and to perform a statistical study on jets and outflows occurrence and properties using selected molecular line tracers in the mm-spectral window. To this aim, here we perform a survey of 21 protostars in the most active star-forming regions visible in the northern hemisphere conducted with IRAM PdB array in the context of the CALYPSO large program<sup>1</sup>, targeting three lines which are typical outflow and jet tracers, that is, CO (2–1), SO (5<sub>6</sub>–4<sub>5</sub>), and SiO (5–4). The first goal of this effort is to answer a simple but crucial question regarding whether jets, and, in general, mass ejection phenomena are commonly observed in Class 0 protostars. The second goal is to

derive the jet properties, that is, the jet velocity and width, and the molecular abundances, which are crucial for understanding what region of the disk-protostar system jets are launched from and for constraining models of jet launching, as well as to reconstruct the mass ejection and mass accretion history from the protostellar to the pre-main sequence stage. Finally, a third goal is to obtain a large database for follow-up observations at the extremely high-spatial resolution as the observations performed for the HH 212 jet (e.g., Codella et al. 2014a; Lee et al. 2017), for instance.

The paper is structured as follows. The sample of protostars covered by the CALYPSO Large Program and analyzed in the context of this paper is presented in Sect. 2. Then in Sect. 3, we describe the acquired observations and the data reduction process. The methodology we applied to establish the occurrence of outflows and jets and to derive their properties and the obtained results are presented in Sect. 4. Then in Sect. 5, we discuss the occurrence and the properties of the detected protostellar jets and we compare them with those of jets from pre-main sequence sources. Finally, we summarize our conclusions in Sect. 6.

## 2. The sample

The CALYPSO survey was carried out with the IRAM-PdB interferometer towards 16 fields centered on known Class 0 protostars (i.e., 10<sup>4</sup>–10<sup>5</sup> yr old solar analogue protostars, André et al. 2000, 2010), observed at 94, 219, and 231 GHz. The targeted sources are all located in the Gould Belt clouds at  $d < 450$  pc. Seven of the targeted fields are located in the most active sites of star formation in the Perseus cloud: that is, L1448 (2A, NB, and C objects) and NGC 1333 (IRAS2A, SVS13, IRAS4A, and IRAS4B). In addition, we observed four sources located in different portions of the Serpens Main and South regions: SerpM-S68N, SerpM-SMM4, SerpS-MM18, and SerpS-MM22. The selected sample contains also: (i) three Class 0 sources in Taurus (IRAM04191, L1521-F, and L1527), (ii) L1157, located in the Cepheus constellation, and driving the prototypical chemically rich outflow, and (iii) the GF9–2 protostar, located in the east-west filamentary dark cloud GF9. Several of these fields are associated with more than one protostar (e.g., L1448-NA and L1448-NB are in the same field), or to multiple systems (e.g., L1448-NB1 and L1448-NB2) identified from the analysis of the millimeter continuum emission in the CALYPSO maps by Maury et al. (2019). Therefore the CALYPSO sample consists of 25 Class 0 protostars, four Class I and one continuum source whose nature is still unknown (VLA3), as summarized in Table 1. In the table, we report for each source the position of the continuum peak at 1.3 mm and the systemic velocity ( $V_{\text{sys}}$ ) extracted from the CALYPSO dataset (Maury et al. 2019; Maret et al. 2020), the distance ( $d$ ), the internal luminosity ( $L_{\text{int}}$ ), the mass of the envelope ( $M_{\text{env}}$ ), and the Class (0 or I). Following Dunham et al. (2008), the internal luminosity is derived by Ladjelate et al. (in prep.) using the 70  $\mu\text{m}$  measurements provided by the *Herschel* Gould Belt survey (André et al. 2010) and is a more reliable probe of the accretion luminosity than the bolometric luminosity,  $L_{\text{bol}}$ , because it is not affected by external heating of the envelope by the interstellar radiation field,  $L_{\text{ext}}$  ( $L_{\text{bol}} = L_{\text{int}} + L_{\text{ext}}$ ). The latter adds on average a few tenths of a solar luminosity and significantly contributes to  $L_{\text{bol}}$  in sources with low accretion luminosity. Protostars belonging to multiple systems are grouped together in Table 1 and the same systemic velocity and distance of the primary protostar (marked in bold-face) is assumed. For the binaries with no mass estimate of their individual envelopes, the value corresponds to the fraction of the

<sup>1</sup> <http://irfu.cea.fr/Projects/Calyпсо>  
<https://www.iram-institute.org/EN/content-page-317-7-158-240-317-0.html>

**Table 1.** Properties of the protostars identified from the analysis of the CALYPSO continuum maps (see Maury et al. 2019).

Source	$\alpha(\text{J2000})^{(a)}$ ( $^{\text{h}} \text{ } ^{\text{m}} \text{ } ^{\text{s}}$ )	$\delta(\text{J2000})^{(a)}$ ( $^{\circ} \text{ } ' \text{ } ''$ )	$V_{\text{sys}}^{(b)}$ ( $\text{km s}^{-1}$ )	$d^{(c)}$ (pc)	$L_{\text{int}}^{(d)}$ ( $L_{\odot}$ )	$M_{\text{env}}^{(e)}$ ( $M_{\odot}$ )	Class <sup>(f)</sup>
<b>L1448-2A</b>	03 25 22.405	+30 45 13.26	+4.2	293	4.7 (0.5)	1.2	0
(L1448-2Ab)	03 25 22.355	+30 45 13.16			<4.7	0.6	0
<b>L1448-NB1</b>	03 25 36.378	+30 45 14.77	+4.9	293	<3.9	3.3	0
(L1448-NB2)	03 25 36.315	+30 45 15.15			3.9	1.6	0
L1448-NA	03 25 36.498	+30 45 21.85			6.4 (0.6)	0.8	I
L1448-NW <sup>(**)</sup>	03 25 36.680	+30 45 33.86			–	–	0
<b>L1448-C</b>	03 25 38.875	+30 44 05.33	+5.1	293	11 (1)	1.9	0
L1448-CS	03 25 39.132	+30 43 58.04			3.6	0.16	I
<b>IRAS2A1</b>	03 28 55.570	+31 14 37.07	+7.5	293	47 (5)	7.9	0
<b>SVS13B</b>	03 29 03.078	+31 15 51.74	+8.5	293	3.1 (1.6)	2.8	0
SVS13A	03 29 03.756	+31 16 03.80			44 (5)	0.8	I
SVS13C <sup>(**)</sup>	03 29 01.980	+31 15 38.14			–	–	0
(VLA3)	03 29 03.378	+31 16 03.33			–	–	unknown
<b>IRAS4A1</b>	03 29 10.537	+31 13 30.98	+6.3	293	<4.7	9.9	0
IRAS4A2	03 29 10.432	+31 13 32.12			4.7 (0.5)	2.3	0
<b>IRAS4B1</b>	03 29 12.016	+31 13 08.02	+6.8	293	2.3 (0.3)	3.3	0
(IRAS4B2)	03 29 12.841	+31 13 06.84			<0.16	1.4	0
<b>IRAM04191</b>	04 21 56.899	+15 29 46.11	+6.7	140	0.05 (0.01)	0.5	0
<b>L1521-F</b>	04 28 38.941	+26 51 35.14	+6.6	140	0.035 (0.01)	0.7	0
<b>L1527</b>	04 39 53.875	+26 03 09.66	+5.7	140	0.9 (0.1)	1.2	0
<b>SerpM-S68N</b>	18 29 48.091	+01 16 43.41	+9.2	436	11 (2)	11	0
(*)SerpM-S68Nb	18 29 48.707	+01 16 55.53			1.8 (0.2)	–	0
(*)(SerpM-S68Nc) <sup>(**)</sup>	18 29 48.811	+01 17 04.24			1.4 (0.2)	–	I
<b>SerpM-SMM4a</b>	18 29 56.716	+01 13 15.65	+8.8	436	2.2 (0.2)	6.7	0
(SerpM-SMM4b)	18 29 56.525	+01 13 11.58			<2.6	1.0	0
<b>SerpS-MM18a</b>	18 30 04.118	–02 03 02.55	+8.1	350	13 (4)	4.5	0
(SerpS-MM18b)	18 30 03.541	–02 03 08.33			16 (4)	0.9	0
<b>SerpS-MM22</b>	18 30 12.310	–02 06 53.56	+6.2	350	0.4 (0.2)	0.9	0
<b>L1157</b>	20 39 06.269	+68 02 15.70	+2.6	352	4.0 (0.4)	3.0	0
<b>GF9-2</b>	20 51 29.823	+60 18 38.44	–3.0	474	1.7	2.8	0

**Notes.** <sup>(a)</sup>Positions of the 1.3 mm continuum peak emission are extracted from the CALYPSO dataset (Maury et al. 2019). <sup>(b)</sup>Systemic velocities,  $V_{\text{sys}}$ , correspond to the mean velocity of  $\text{C}^{18}\text{O}$  (2–1) emission on the source continuum peak position as fit by Maret et al. (2020), except for GF9-2 (from  $^{13}\text{CO}$  (2–1)), IRAM04191 (Belloche et al. 2002), L1521-F (from  $\text{NH}_3$  (1,1), Codella et al. 1997), and SerpM-SMM4 (from  $\text{CO}$  (3–2), Dionatos et al. 2010). For multiple systems the systemic velocity of the primary is reported. <sup>(c)</sup>Distances: Ortiz-León et al. (2018a) for the Perseus sources; Zucker et al. (2019) for the Taurus sources and L1157; Ortiz-León et al. (2017, 2018b) for SerpM; Palmeirim et al. (in prep.) for SerpS; C. Zucker (priv. comm.) for GF9-2. For multiple systems the distance of the primary is reported. <sup>(d)</sup>Internal luminosities are derived by Ladjelate et al. (in prep.), from the  $70 \mu\text{m}$  flux from the *Herschel* Gould Belt survey observations at  $8''$  spatial resolution (André et al. 2010), except for GF9-2 for which we use the value by Wiesemeyer et al. (1997) rescaled to the distance given in the fifth column. The uncertainty is in parentheses when available, and is larger for SVS13B because of the proximity to SVS13A. For SerpM-SMM4b the upper limit is given by the bolometric luminosity (Aso et al. 2019). <sup>(e)</sup>Envelope mass from Maury et al. (2019) and references therein. For the binaries with no mass estimate of their individual envelopes, the value corresponds to the fraction of the total envelope mass in proportion of the peak flux densities at 1.3 mm given by Maury et al. (2019). The masses have been re-scaled to the distances given in Col. 5. <sup>(f)</sup>The classification as Class 0, I, or candidate protostellar object (in parentheses) is based on Maury et al. (2019). <sup>(g)</sup>For SerpM-S68Nb and SerpM-S68Nc we follow the same naming as Maury et al. (2019). The names of the two sources are inverted with respect to the classification by Williams & Myers (2000), also followed by Dionatos et al. (2010). <sup>(\*\*)</sup>Protostellar companions which lie outside of the primary beam at 231 GHz ( $\sim 21''$ ).

total envelope mass in proportion of the peak flux densities at 1.3 mm (see [Maury et al. 2019](#); [Belloche et al. 2020](#)). As shown in Table 1 the CALYPSO sample covers a wide range of internal luminosities ( $L_{\text{int}}$  from 0.035 to  $47 L_{\odot}$ ), and envelope masses ( $M_{\text{env}}$  from 0.5 to  $9.9 M_{\odot}$ ), which makes it a unique laboratory for the study of the occurrence and properties of collimated jets as a function of the properties of the driving protostars.

Of the 30 sources identified by [Maury et al. \(2019\)](#) in the CALYPSO observations, 7 are tentative protostellar candidates, reported in parenthesis in Table 1. Between these, 2 are part of a close binary system, that is, they are located less than one beam away from the primary (L1448-2Ab and L1448-NB2). In these cases, we consider the binary system as a single source for the assessment of the outflow or jet occurrence as it is not possible at the resolution of our dataset to understand whether only one or both components of the close binary systems are driving an outflow or jet. Moreover, the two Class 0 and the Class I protostars indicated by \*\* in Table 1 lie outside of the primary beam at 231 GHz (L1448-NW, SVS13C, and SerpM-S68Nc). This causes a strong attenuation in the emission, possibly leading to the non-detection of faint line emission from jets. In fact, previous observations at lower resolutions covering a larger field-of-view report slowly outflowing extended gas in CO (2–1) and CO (1–0) for two of these sources (the Class 0 protostars L1448-NW and SVS13C, [Lee et al. 2015b](#); [Plunkett et al. 2013](#)), which is not detected in our CALYPSO CO maps due to attenuation. As we want to assess the jet occurrence in an homogeneous sample where all sources are observed down to roughly the same sensitivity threshold, we excluded these three sources from our statistics. Also, VLA3 is not included in the sample for the outflow or jet survey because its protostellar nature and its internal luminosity cannot be derived as it cannot be separated from the much brighter source SVS13A in the *Herschel* maps. No outflow associated with this continuum source was detected in the CALYPSO maps presented by [Lefèvre et al. \(2017\)](#). Based on the above criteria, the sample analyzed to investigate the jet occurrence consists of 21 Class 0 and 3 Class I protostars, which are those reported in Table 3. Due to the small number, for the Class I sources the analysis is limited to establish the detection rate of outflows and jets and the derivation of their position angle (PA; see Sect. 4.1) but they are not further discussed in this paper, which focuses on the properties of jets from Class 0 protostars.

### 3. Observations and data reduction

The CALYPSO sources were observed with the IRAM-PdBI during several tracks between September 2010 and March 2013 using the six-antenna array in the most extended (A) and intermediate (C) configurations. The shortest and longest baselines are 16 m and 762 m, respectively, allowing us to recover emission at scales from  $\sim 8''$  down to  $\sim 0''.4$ . WideX<sup>2</sup> backends were used to cover the full 3.8 GHz spectral window at the spectral resolution of 2 MHz ( $\sim 2.6 \text{ km s}^{-1}$  at 1.3 mm) for three spectral setups centered at 231, 219, and 94 GHz (corresponding to 1.30, 1.37, and 3.19 mm, respectively). In addition, higher resolution backends ( $\sim 0.1 \text{ km s}^{-1}$ , subsequently smoothed to  $1 \text{ km s}^{-1}$ ) were employed to observe the CO (2–1), SO (5<sub>6</sub>–4<sub>5</sub>), and SiO (5–4) lines (see Table 2). The phase root mean square (rms) was typically  $\leq 50^\circ$  and  $80^\circ$  for the A and C tracks, respectively, the precipitable water vapor (pwv) was 0.5–1 mm (A) and  $\sim 1$ –2 mm (C), and system temperatures were usually  $\sim 100$ –160 K

**Table 2.** Properties of the lines targeted by the CALYPSO survey.

Line	Frequency <sup>(a)</sup> (MHz)	$E_{\text{up}}$ <sup>(a)</sup> (K)	$\log_{10}(A_{ij})$ <sup>(a)</sup> (s <sup>-1</sup> )	$n_{\text{cr}}$ <sup>(b)</sup> (cm <sup>-3</sup> )
CO (2–1)	230 538.000	16.6	−6.2	$7.3 \times 10^3$
SO (5 <sub>6</sub> –4 <sub>5</sub> )	219 949.442	35.0	−3.9	$7.7 \times 10^5$
SiO (5–4)	217 104.980	31.3	−3.3	$1.6 \times 10^6$

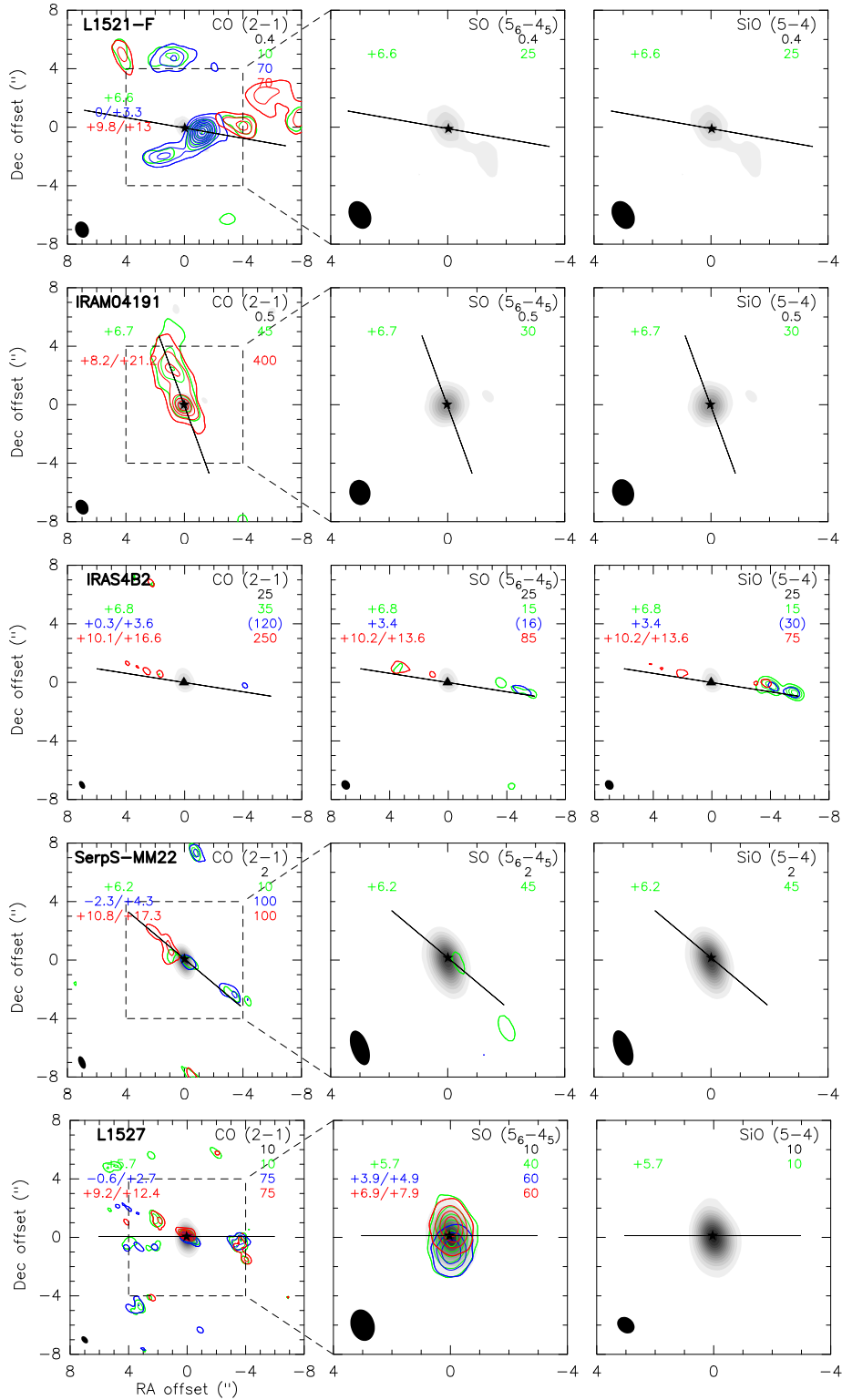
**Notes.** <sup>(a)</sup>Molecular parameters from the CDMS database ([Müller et al. 2001](#)). <sup>(b)</sup>The critical densities are computed at  $T = 100 \text{ K}$ , using collisional rate coefficients from [Yang et al. \(2010\)](#) (CO), [Lique et al. \(2006\)](#) (SO), and [Balança et al. \(2018\)](#) (SiO).

(A) and 150–250 K (C). Calibration was carried out following standard procedures, using GILDAS-CLIC<sup>3</sup>. Strong quasars such as 3C273 and 3C454.3 were used to calibrate the correlator bandpass, while the absolute flux density scale was mainly estimated by observing MWC349 and 3C84, with a final uncertainty less than 15%. The continuum emission was removed from the visibility tables to produce continuum-free line tables. Self-calibration was performed on the source continuum emission for all sources with bright dust continuum emission, that is, with continuum peak flux  $>80 \text{ mJy beam}^{-1}$  at 231 GHz (see Table 3 of [Maury et al. 2019](#)) and the self-calibrated phase solutions were applied to the continuum-subtracted line tables. We carried out imaging with the GILDAS/MAPPING software, adopting a robust weighting parameter of 1<sup>4</sup> and obtaining typical synthesized beams of  $0''.4$ – $0''.9$ , except for the weakest continuum emission sources in the sample (i.e., IRAM 04191, L1521F, and GF9-2), for which we used a natural weighting to maximize the sensitivity to point sources obtaining synthesized beams of  $0''.7$ – $1''.0$  ([Maury et al. 2019](#)). These beam sizes correspond to an angular resolution of:  $\sim 130$ – $220 \text{ au}$  for the sources in Perseus ( $d = 293 \text{ pc}$ , [Ortiz-León et al. 2018a](#)) and Taurus (two out of the three sources in Taurus have weak continuum emission, hence the larger beam sizes are compensated by the smaller distance,  $d = 140 \text{ pc}$ , [Zucker et al. 2019, with the exception of L1527, for which an angular resolution of  \$\sim 60\$ – \$130 \text{ au}\$  is reached\); and of  \$\sim 220\$ – \$350 \text{ au}\$  for the sources located in Serpens \( \$d = 436 \text{ pc}\$  for Serpens M, \[Ortiz-León et al. 2017, 2018b,  \\$d = 350 \text{ pc}\\$  for Serpens S, \\[Palmeirim et al., in prep.\\]\\(#\\)\\), Cepheus \\( \\$d = 352 \text{ pc}\\$ , \\[Zucker et al. 2019\\]\\(#\\)\\), and GF9 \\( \\$d = 474 \text{ pc}\\$ , C. Zucker, priv. comm.\\). The synthesized beam and corresponding angular resolution for the 16 targeted fields are summarized in Tables A.1–A.3 and shown in Fig. 1. The present paper is based on analysis of the 1.3 mm and 1.4 mm observations of CO \\(2–1\\), SiO \\(5–4\\), and SO \\(5<sub>6</sub>–4<sub>5</sub>\\), which are three standard tracers of molecular jets and outflows, hence they are ideal when tackling the array of open questions on protostellar jets presented in Sect. 1. As the jet and outflow emission is faint and spread over a wide range of blue-shifted and red-shifted velocities, we preferentially analyzed the WideX datacubes, which are at lower spectral resolution to increase the signal-to-noise ratio of the line emission. The WideX datacubes were resampled at a resolution of  \\$3.25 \text{ km s}^{-1}\\$  \\(CO \\(2–1\\)\\),  \\$3.4 \text{ km s}^{-1}\\$  \\(SO \\(5<sub>6</sub>–4<sub>5</sub>\\), and SiO \\(5–4\\)\\), reaching a typical rms noise per channel for the final continuum-subtracted datacubes of  \\$\sim 2\\$ – \\$10 \text{ mJy beam}^{-1}\\$ . In some cases, we\]\(#\)](#)

<sup>3</sup> <https://www.iram.fr/IRAMFR/GILDAS/>

<sup>4</sup> For more information on weighting schemes performed by the GILDAS/MAPPING software, see <https://www.iram.fr/IRAMFR/GILDAS/doc/html/map-html/node32.html>

<sup>2</sup> <https://www.iram-institute.org/EN/content-page-120-4-35-47-118-120.html>



**Fig. 1.** Integrated maps of the CO (2–1), SO (5<sub>6</sub>–4<sub>5</sub>), and SiO (5–4) emission for the Class 0 protostars of the CALYPSO sample (*left, center, and right panels*). Continuum at 1.3 mm (grey scale) and integrated line emission at systemic, blue-, and red-shifted velocities (green, blue, and red contours) are shown. The systemic velocity (one channel) and the velocity of the first and last channels over which blue- and red-shifted emission was integrated (in km s<sup>−1</sup>) are labeled in the top-left corner (in green, blue, and red respectively). When the emission is detected on a single channel, its central velocity is labeled. The 5σ intensity of the corresponding integrated emission (in mJy km s<sup>−1</sup> beam<sup>−1</sup>) is labeled in the top-right corners with the same colour coding. The 5σ intensity of the continuum (in mJy beam<sup>−1</sup>) is also labeled in black. The contours are from 5σ with steps of 5σ. When the emission is faint the contours are from 3σ with steps of 3σ and the corresponding values are indicated in parentheses. The black stars (or triangles) indicate the positions of the protostars (or candidate protostars) identified by [Maury et al. \(2019\)](#), the black solid line shows the jet or outflow PA. The beam size is shown in the bottom-left corner.

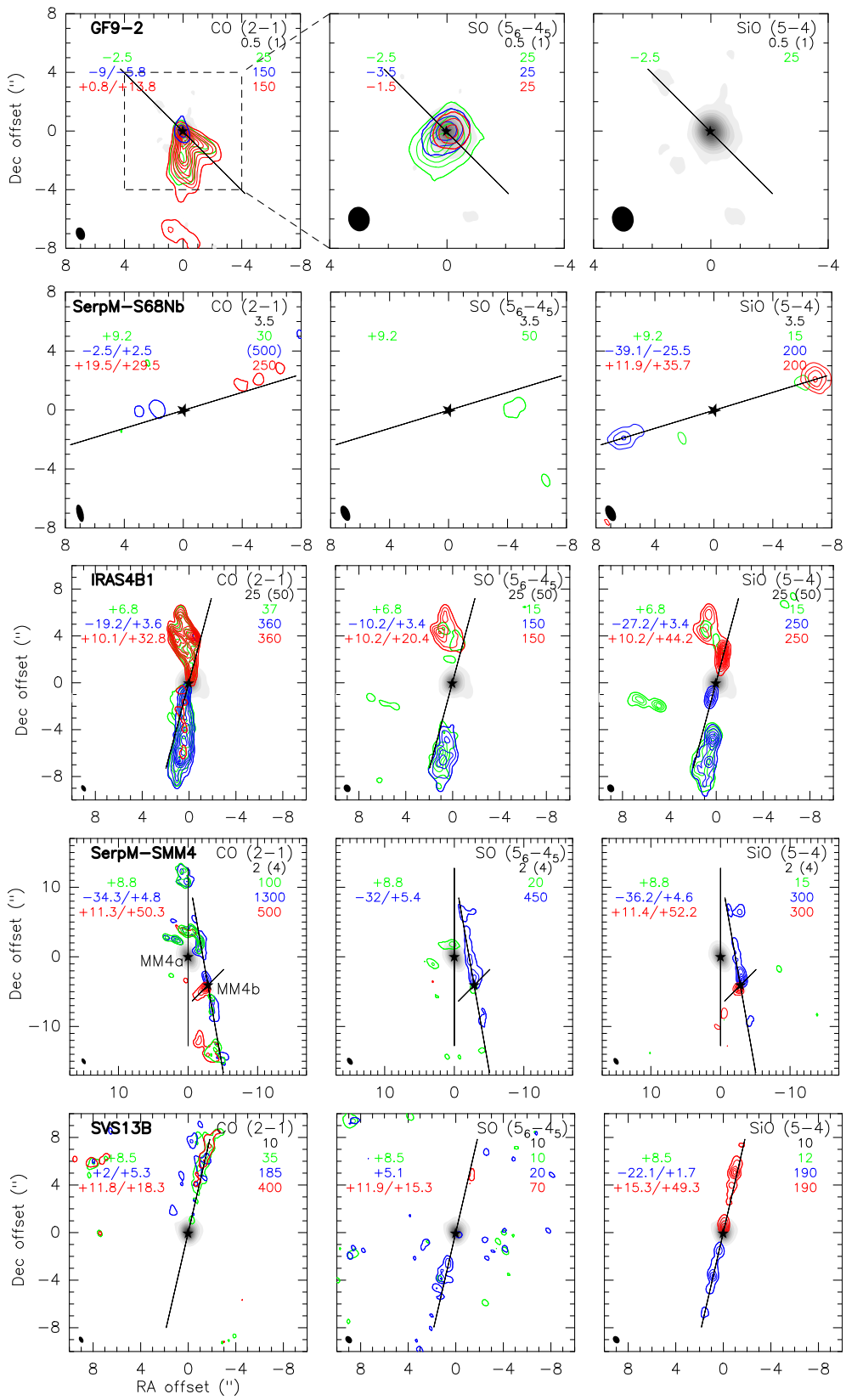


Fig. 1. continued.

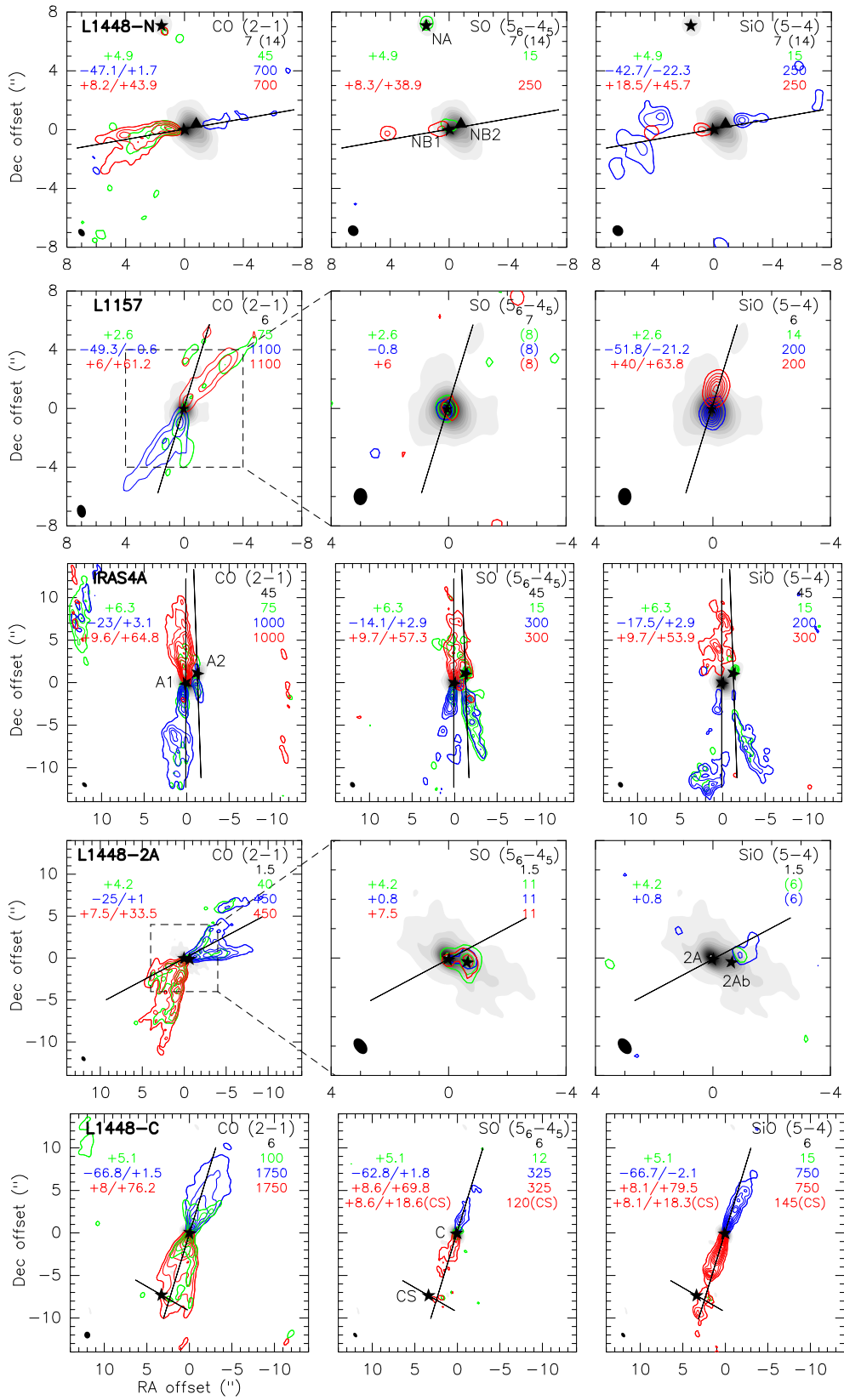


Fig. 1. continued.

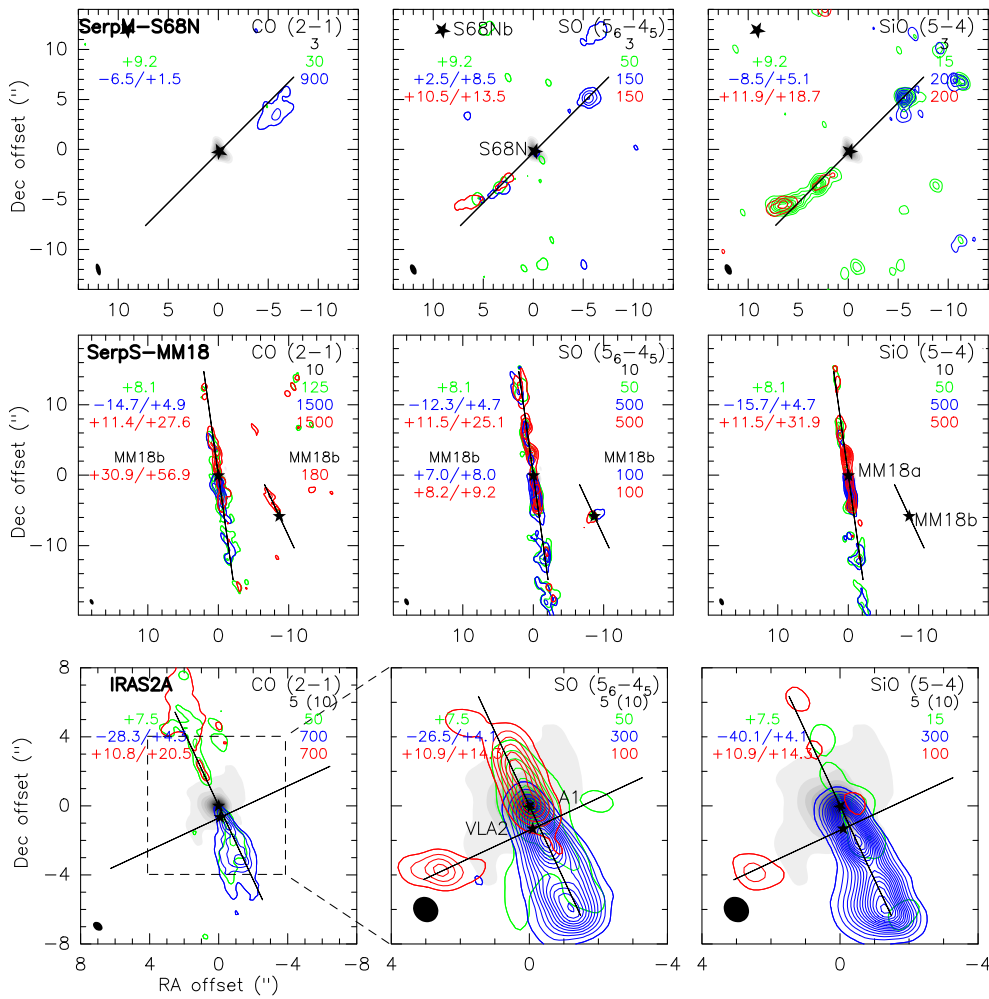


Fig. 1. continued.

analyzed the higher resolution datacubes ( $1 \text{ km s}^{-1}$ ). The spectral resolution and the rms noise per channel of the CO (2–1), SO ( $5_6-4_5$ ), and SiO (5–4) datacubes for the 16 targeted fields are listed in Tables A.1–A.3.

#### 4. Methodology and results

In this section, we present the methodology we applied in analysing the CALYPSO CO (2–1), SO ( $5_6-4_5$ ), and SiO (5–4) line cubes and our obtained results (discussed in Sect. 5). The integrated line emission maps for all the Class 0 sources in our sample are presented in Sect. 4.1, Fig. 1. From the maps, we establish the detection rate of outflows and jets (Fig. 2), we estimate the position angles of the detected flows (Table 3), and extract position-velocity (PV) diagrams of the emission along them (Fig. B.1). For the sources where an SiO jet is detected at  $>10\sigma$  in the integrated maps<sup>5</sup>, we estimate the jet

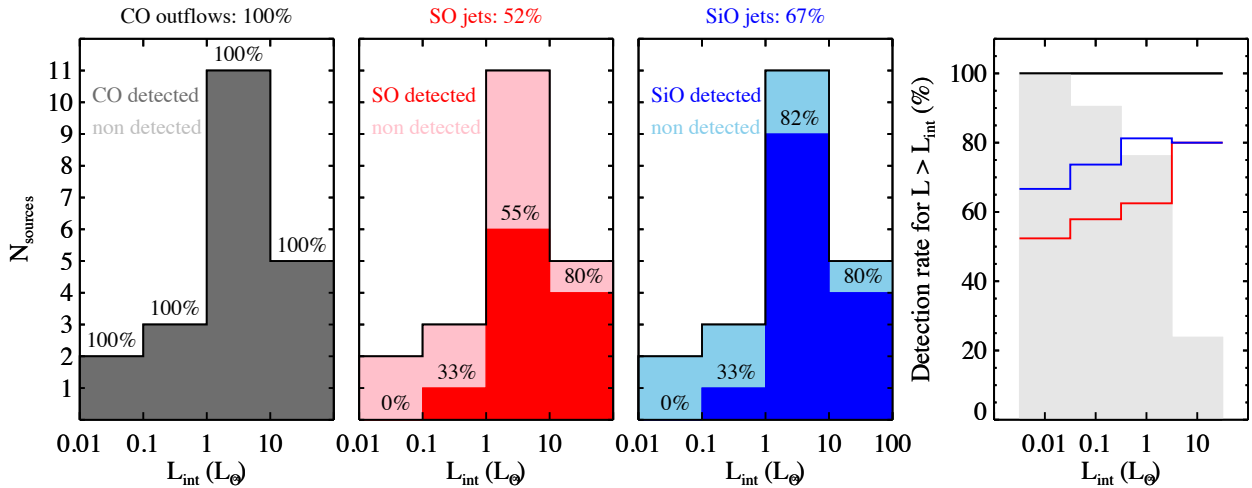
<sup>5</sup> The contours of the integrated maps shown in Fig. 1 are from  $5\sigma$  with steps of  $5\sigma$ , therefore a  $5\sigma$  detection corresponds to one contour, a  $10\sigma$  detection to two contours. The  $5\sigma$  level of the integrated maps is different for each source and tracer as it depends on the rms noise per channel of the corresponding datacube (as reported in Tables A.1–A.3) and on the velocity interval over which the emission is integrated. The velocity interval of integration and the corresponding  $5\sigma$  level are labeled in each map in Fig. 1 and spans between 10

properties, that is, their velocity and spatio-kinematical structure (Sect. 4.2, Fig. 3), the width and opening angle (Sect. 4.3, Figs. D.1, 4, 5), the molecular column densities and abundances (Sect. 4.4, Table 5, Fig. 6), and the jet energetics, that is, the jet mass-loss and momentum rates and mechanical luminosities (Sect. 4.5, Table 5, Fig. 7).

##### 4.1. Detection rate of outflows and jets

To assess the presence of outflows and jets associated with the protostars identified in the CALYPSO survey (Maury et al. 2019, see Table 1), we analyzed the CO (2–1), SO ( $5_6-4_5$ ), and SiO (5–4) datacubes and searched for emission at blue- and red-shifted velocities with respect to the source systemic velocity,  $V_{\text{sys}}$ , reported in Table 1. Maps of the CO (2–1), SO ( $5_6-4_5$ ), and SiO (5–4) emission are produced by integrating the datacubes on the blue- and red-shifted velocity channels where line emission is detected. Figure 1 presents the integrated line emission maps for all the sources in the CALYPSO sample. The  $V_{\text{LSR}}$  velocity of the first and last channels over which the line emission is integrated is labeled (only one velocity value is

and  $50 \text{ mJy km s}^{-1} \text{ beam}^{-1}$  when line emission is detected only in one channel to  $\sim 100-1700 \text{ mJy km s}^{-1} \text{ beam}^{-1}$  when emission is integrated on several velocity channels (up to 21 channels, i.e.  $\sim 70 \text{ km s}^{-1}$ , for L1448-C). The  $5\sigma$  levels reported in Fig. 1 are rounded.



**Fig. 2.** Number of sources associated with outflows and jets as traced by CO (2–1) (black, *left*), SO (5<sub>6</sub>–4<sub>5</sub>) (red, *middle-left*), and SiO (5–4) (blue, *middle-right*) as a function of the internal luminosity,  $L_{\text{int}}$ , of the 21 Class 0 protostars in the CALYPSO sample. The detection rate for each  $L_{\text{int}}$  bin (in logarithmic scale) is reported above the histogram, while the detection rate for the whole sample is labeled on top of each panel. The detection rate of jets and outflows for  $L > L_{\text{int}}$  is shown in the *right panel*, with the same colour coding. The grey histogram shows the fraction of sources for  $L > L_{\text{int}}$ .

given when emission is detected only in one channel), along with the  $5\sigma$  intensity of the integrated emission (on the top-left and top-right corners of each panel, respectively). We claim that the outflow is detected if the map of CO (2–1) shows resolved blue- and/or red-shifted emission at  $\geq 5\sigma$  associated with the source in the integrated maps<sup>5</sup>, while blue- or red-shifted SiO (5–4) emission is used as a probe of collimated jets. If SO (5<sub>6</sub>–4<sub>5</sub>) is detected at  $\geq 5\sigma$  along the same direction and on a similar velocity range as SiO, we can claim that the jet is detected also in SO. If SiO is detected the jet position angle ( $\text{PA}_{\text{jet}}$ ) is determined from the SiO peaks located closest to the source; when instead SiO is not detected, the outflow PA ( $\text{PA}_{\text{outflow}}$ ) is inferred from the distribution of CO (2–1). Then, position-velocity diagrams of the CO (2–1), SO (5<sub>6</sub>–4<sub>5</sub>), and SiO (5–4) emission are extracted along the outflow or jet PA and shown in Fig. B.1.

The detection of outflows and jets, that is, of blue- and red-shifted emission in the CO (2–1), SO (5<sub>6</sub>–4<sub>5</sub>), and SiO (5–4) lines, in the CALYPSO sample of Class 0 and I protostars and the estimated PAs are summarized in Table 3. The sources are listed by increasing internal luminosity, as  $L_{\text{int}}$  is a probe of the accretion luminosity, which, in turn, is expected to correlate with the mass ejection rate hence with the jet brightness (see, e.g., Hartigan et al. 1995). In Cols. 3 and 4, we report whether the source is associated with a hot corino or a disk identified by the analysis of the source spectra and of the <sup>13</sup>CO (2–1), C<sup>18</sup>O (2–1), and SO (5<sub>6</sub>–4<sub>5</sub>) line maps, respectively (Belloche et al. 2020; Maret et al. 2020). Columns 5–8 report the detection of blue- red-shifted emission in the three jet tracers (CO (2–1), SO (5<sub>6</sub>–4<sub>5</sub>), SiO (5–4)) and the position angle of the detected emission ( $\text{PA}_{\text{jet/outflow}}$ ). For L1521-F, L1527, and SerpM-SMM4a we do not detect emission in the SiO and SO lines, and the CO emission does not show a clear structure. Therefore, the position angle reported in Table 3 is taken from previous studies (Tokuda et al. 2016; Hogerheijde et al. 1998; Tobin et al. 2012; Aso et al. 2018) (see Appendix F for the notes on these sources).

Figure 2 shows the number of detections and the detection rate of jets and outflows in each of the three tracers (CO (2–1), SO (5<sub>6</sub>–4<sub>5</sub>), SiO (5–4)) as a function of the source internal luminosity,  $L_{\text{int}}$ , for the Class 0 protostars in our sample. The figure indicates that outflow emission in the CO (2–1) line maps is

detected in 21 Class 0 protostars out of 21. Emission in SiO (5–4) is detected in 14 sources, which means that at least 67% of the Class 0 protostars drive an SiO jet. Finally, 11 of the 14 protostars with an SiO jet show emission along the jet PA in SO (5<sub>6</sub>–4<sub>5</sub>), indicating that about 79% of the SiO jets are also detected in the SO line (with a detection rate of SO jets of 52% over the whole sample of 21 Class 0 protostars). Five more sources out of the 21 Class 0 protostars show blue- and red-shifted emission in SO (5<sub>6</sub>–4<sub>5</sub>) (L1527, GF9-2, L1157, L1448-2A, and SerpS-MM18b). In these sources, however, the spatial and velocity distribution of the SO emission is not in agreement with that of CO (2–1) (and SiO (5–4) in the case of L1157), which probes the outflow (see the integrated maps in Fig. 1 and the position-velocity diagrams in Fig. B.1). The possible origin of the SO (5<sub>6</sub>–4<sub>5</sub>) for these five sources is discussed in Sect. 5.

Concerning the three Class I protostars in the CALYPSO sample, there is blue- or red-shifted CO (2–1) emission (or both) detected in two sources out of three. The exception is the Class I source L1448-NA for which no line emission is detected in our CALYPSO line maps. However, previous lower resolution observations of CO (2–1) show evidence of slow outflowing gas (Lee et al. 2015b). Taking into account this previous detection, CO outflows are detected in three Class I protostars out of three, hence, all Class I sources are associated with outflows. SiO and SO jet emission is detected in two of them (L1448-CS and SVS13A), with the exception of the Class I L1448-NA, hence the detection rate of SiO jets is 67%, the same as for Class 0 protostars. We note, however, that the emission from the L1448-CS jet overlaps on the bright emission of the jet driven by L1448-C, impeding us to derive the jet properties (see Appendix F). On the other hand, the morphology and properties of the jet associated with SVS13A based on the CALYPSO data are already presented in Lefèvre et al. (2017). Therefore, the properties of the jets from the three Class I sources in our sample are not presented in the following sections.

#### 4.2. Jet spatio-kinematical structure

Based on the integrated maps in Fig. 1 and the PV diagrams in Fig. B.1 we investigate the spatio-kinematical properties of the

**Table 3.** Detection of outflows and jets as traced by CO (2–1), SO (5<sub>6</sub>–4<sub>5</sub>), and SiO (5–4) lines in the CALYPSO sample of Class 0 and I protostars.

Source	$L_{\text{int}}$ ( $L_{\odot}$ )	COMs <sup>(a)</sup>	Disk <sup>(b)</sup>	Outflow/Jet <sup>(c)</sup>			PA <sub>jet/outflow</sub> <sup>(d)</sup> (°)
				CO	SO	SiO	
<i>Class 0</i>							
L1521-F	0.035(0.01)			Y			+260(B) <sup>(e)</sup>
IRAM04191	0.05(0.01)			Y			+20(R)
(IRAS4B2)	<0.16			Y*	Y*	Y*	–99
SerpS-MM22	0.4(0.2)			Y			+230
L1527	0.9(0.1)		Y	Y	D		–90 <sup>(e)</sup>
GF9-2	1.7			Y	D/E?		50
SerpM-S68Nb	1.8(0.2)			Y*		Y	+108
SerpM-SMM4a	2.2(0.2)			Y			0(B) <sup>(e)</sup>
IRAS4B1	2.3(0.3)	Y	y	Y	Y	Y	+165
(SerpM-SMM4b)	<2.6			Y	Y	Y	+10(B)/+135(R)
SVS13B	3.1(1.6)		y	Y*	Y*	Y	+167
L1448-NB1 (+NB2)	3.9		y	Y	Y	Y	–80
L1157	4.0(0.4)	y		Y	D/E?	Y	+163
IRAS4A1	<4.7			Y	Y	Y	+180
IRAS4A2	4.7(0.5)	Y		Y	Y	Y	+182
L1448-2A (+2Ab)	4.7(0.5)			Y	D/E?	Y*	+118 <sup>(f)</sup>
L1448-C	11(1)	Y	Y	Y	Y	Y	–17
SerpM-S68N	11(2)	y		Y	Y	Y	–45
SerpS-MM18a	13(4)	Y	y	Y	Y	Y	+188
(SerpS-MM18b)	16(4)			Y	D/E?		+205(R)
IRAS2A1	47(5)	Y	y	Y	Y	Y	+205
<i>Class I</i>							
L1448-CS	3.6			Y	Y	Y	+60(R)
L1448-NA	6.4(0.6)			Y <sup>e</sup>			+40 <sup>(e)</sup>
SVS13A (+VLA3)	44(5)	Y		Y	Y	Y	+155

**Notes.** <sup>(a)</sup>Emission from three (“y”) or more than three (“Y”) complex organic molecules (COMs) based on the CALYPSO survey (Belloche et al. 2020). <sup>(b)</sup>“y” indicates disk candidates, i.e., sources which show a velocity gradient perpendicular to the jet axis (within  $\pm 45^\circ$ ) at a few hundred au scales in one of the disk tracers ( $^{13}\text{CO}$  (2–1),  $\text{C}^{18}\text{O}$  (2–1), and  $\text{SO}$  (5<sub>6</sub>–4<sub>5</sub>)). “Y” indicates the detection of a Keplerian rotating disk (based on the CALYPSO survey, see Table 3 by Maret et al. 2020). <sup>(c)</sup>“Y” indicates outflow/jet blue- and/or red-shifted emission detected in CO (2–1), SO (5<sub>6</sub>–4<sub>5</sub>), and SiO (5–4) at  $>10\sigma$  in the integrated maps. The asterix (“Y\*”) indicates emission at  $5\text{--}10\sigma$ . For SO (5<sub>6</sub>–4<sub>5</sub>): “D” indicates emission from the disk, “D/E?” indicates compact emission at low blue- and red-shifted velocities, and with a velocity gradient perpendicular to the jet (except for L1448-2A), originating from the inner envelope or the disk. <sup>(d)</sup>The jet or outflow position angles are given for the blue-shifted lobe from North to East. If the blue- and red-shifted lobes have different PA or if only one of the two lobes is detected, this is indicated by the label (B) or (R). <sup>(e)</sup>For L1521-F, L1527, and SerpM-SMM4a, we do not detect SiO and SO, and CO emission does not show a clear structure. The reported PA are taken from Tokuda et al. (2016), Hogerheijde et al. (1998), Tobin et al. (2012), Aso et al. (2018). For L1448-NA we do not detect emission in any of the tracer, and the PA is from CO (2–1) observations by Lee et al. (2015b). <sup>(f)</sup>The jet PA is taken to be in the middle of the CO cavities.

flows for the 12 Class 0 sources that exhibit an SiO jet detected at  $>10\sigma$  in the integrated maps (see Table 3). For these jets, the CO (2–1), SO (5<sub>6</sub>–4<sub>5</sub>), and SiO (5–4) line spectra are extracted at the position of the blue- and red-shifted SiO emission peaks (knots) located closest to the driving protostar, denoted as B and R (see Fig. C.1). The RA and Dec offsets of the innermost SiO knots, B and R, and their distance from the driving source are given in Table 4.

The line spectra in Fig. C.1 show several emission components: SiO (5–4), which is commonly used as a selective probe of the jet, emits mainly at high velocity (HV), that is, at velocities of  $15\text{--}80\text{ km s}^{-1}$  with respect to the source systemic velocity, which correspond, for a median jet inclination of  $60^\circ$  to the line of sight, to deprojected velocities of  $30\text{--}160\text{ km s}^{-1}$ ; the bulk of CO (2–1) emission, instead, is at low velocity (LV:  $<15\text{ km s}^{-1}$  with respect to  $V_{\text{sys}}$ ). This kinematical difference between SiO and CO also reflects in a different spatial distribution of the two molecules. The line maps in Fig. 1 and the PV diagrams in Fig. B.1 show that the SiO emission is more collimated and

is concentrated on smaller areas of the spatial-velocity space than CO in most of the sources (IRAS4B1, SerpM-SMM4b, L1448NB, L1157, IRAS4A1 and A2, L1448-C, and IRAS2A1). In these sources, SiO probes the collimated jet and, in some cases, it also probes bright terminal shocks with (IRAS4B1, L1448NB) or without (IRAS4A1 and A2) a CO counterpart. The CO emission is transversally more open and in some cases, it also extends out to almost twice larger distances than SiO (SerpM-SMM4b, L1157, L1448-2A, IRAS2A1). This suggests that the CO emission is dominated by emission from the outflow, that is, from the surrounding material that is put into motion or entrained by the jet. However, in most of the jet sources, CO (2–1) has a secondary peak at high velocity and the CO HV component looks co-spatial with SiO in the PV diagrams, suggesting that in the HV range, CO probes the jet similarly to SiO. There are a few exceptions, for instance, for sources where in the line spectra, there is no clear separation between low and high-velocity components in all three tracers that is likely due to the low inclination of the flow (IRAS4A2, SerpM-S68N, and SerpS-MM18a)

**Table 4.** Properties of the blue- and red-shifted SiO knots closest to the driving sources, B and R, as derived from the spectra in Fig. C.1.

Source		RA <sub>off</sub> , Dec <sub>off</sub> <sup>(a)</sup> (" , ")	Distance <sup>(b)</sup> (")	HV <sup>(c)</sup> (km s <sup>-1</sup> )	V <sub>rad</sub> <sup>(d)</sup> (km s <sup>-1</sup> )	V <sub>rad,f</sub> /V <sub>rad,s</sub> <sup>(e)</sup>	F <sub>CO</sub> <sup>(f)</sup> (K km s <sup>-1</sup> )	F <sub>SO</sub> <sup>(f)</sup> (K km s <sup>-1</sup> )	F <sub>SiO</sub> <sup>(f)</sup> (K km s <sup>-1</sup> )
SerpM-S68Nb	B	(+5.99, -2.05)	6.33	-50/-20	-45	7.8 ± 2.3	<0.8	–	25.0
	R	(-6.91, +2.05)	7.21	+17/+40	+6		6.5	–	20.3
IRAS4B1	B	(+0.57, -1.27)	1.39	-30/-5	-17	1.0 ± 0.1	27.8	–	72.1
	R	(-0.53, +2.53)	2.58	+16/+50	+17		55.4	5.6	169.3
SerpM-SMM4b	B	(-0.28, +0.91)	0.95	-38/-8	-39	1.1 ± 0.1	47.0	27.8	68.3
	R	(+0.23, -0.49)	0.54	+30/+60	+36		74.4	8.8	69.2
SVS13B	B	(+0.37, -1.61)	1.65	-37/+8.5	-24	1.4 ± 0.2	<3.0	–	50.2
	R	(-0.03, +0.39)	0.39	+8.5/+58	+16		<3.0	–	77.6
L1448NB	B	(-1.98, +0.53)	2.05	-34/-20	-34	1.1 ± 0.1	<1.7	–	41.7
	R	(+0.82, +0.03)	0.82	+40/+54	+37		27.8	1.1	17.6
L1157	B	(+0.00, -0.22)	0.22	-60/-20	-34	1.6 ± 0.1	22.0	–	143.9
	R	(-0.10, +0.58)	0.58	+30/+70	+54		45.2	–	125.4
IRAS4A1	B	(+0.31, -1.47)	1.50	-30/-10	-16	2.1 ± 0.2	77.5	9.4	16.9
	R	(+0.21, +1.33)	1.35	+30/+70	+34		276.6	37.6	28.5
IRAS4A2	B	(+0.11, -2.31)	2.31	-10/+6.3	-6	1.1 ± 0.4	177.5	47.2	25.2
	R	(+0.71, +2.29)	3.40	+6.3/+40	+7		145.1	58.1	55.2
L1448-C	B	(-0.30, +1.10)	1.14	-70/-22	-51	1.1 ± 0.1	160.5	64.7	501.1
	R	(+0.30, -0.80)	0.85	+25/+85	+48		222.5	75.8	869.7
SerpM-S68N	B	(-5.46, +5.39)	7.67	-7/+5	-4	1.5 ± 1.1	30.0	7.6	32.6
	R	(+2.54, -2.91)	3.86	+12/+21	+3		<0.7	–	8.5
SerpS-MM18a	B	(-0.10, -0.90)	0.91	-17/-2	-10	1.3 ± 0.3	191.1	63.7	159.2
	R	(+0.30, +2.90)	2.92	+21/+32	+13		98.9	34.3	71.2
IRAS2A1	B	(-0.58, -1.07)	1.22	-32/-9	-24	–	150.3	113.2	181.6

**Notes.** <sup>(a)</sup>RA and Dec offset of the innermost SiO knots B and R. <sup>(b)</sup>Distance of the innermost SiO knots B and R. <sup>(c)</sup>High-velocity range (HV) where CO (2–1) and SO (5<sub>6</sub>–4<sub>5</sub>) trace jet emission as SiO (5–4). <sup>(d)</sup>Jet radial velocity in the innermost SiO knots B and R estimated as the velocity of the SiO emission peak in the B and R spectra with respect to the source systemic velocity given in Table 1. The estimated jet radial velocities are affected by an uncertainty of ±1.7 km s<sup>-1</sup> due to the resolution of our spectra. <sup>(e)</sup>Ratio between the radial velocities, V<sub>rad</sub>, of the blue- and red-shifted innermost knots, B and R. The ratio is computed between the velocity of the faster knot, V<sub>rad,f</sub>, over the velocity of the slower knot, V<sub>rad,s</sub>. <sup>(f)</sup>CO (2–1), SO (5<sub>6</sub>–4<sub>5</sub>), and SiO (5–4) line intensity integrated on the high-velocity range (HV) (F<sub>CO</sub>, F<sub>SO</sub>, F<sub>SiO</sub>).

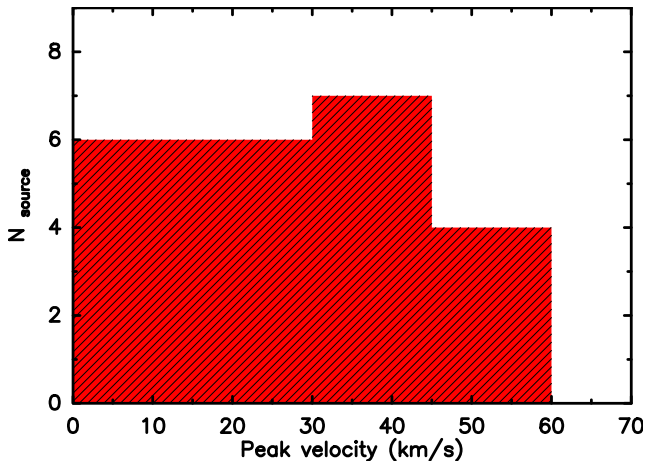
and sources where the high-velocity jet emission seen in SiO has no counterpart in CO (SerpM-S68Nb blue lobe, SVS13B both lobes, L1448-NB blue lobe, and SerpM-S68N red lobe). We refer to the latter objects as “CO-poor” jets. Furthermore, SO (5<sub>6</sub>–4<sub>5</sub>), when detected in the 12 SiO jet sources, may have different origins: in the jet, it exhibits spatio-kinematical distribution that is very similar to that of SiO in the maps and in the PV diagrams (SerpM-SMM4b, SVS13B, L1448NB, IRAS4A1 and A2, L1448-C, SerpM-S68N, SerpS-MM18a, IRAS2A1), in the terminal shocks (IRAS4B1), or in a compact region around the source, where it likely probes the disk or the inner envelope (L1157, L1448-2A). A more robust comparison of the spatio-kinematical distribution of the SiO emission with that of the CO and SO LV and HV components requires spatial resolution of ~10 au, as shown for example for the study of the prototypical protostellar jet from HH 212 (Lee et al. 2018).

Based on the spectra we define for each jet lobe the high-velocity ranges where CO (2–1) and SO (5<sub>6</sub>–4<sub>5</sub>) are likely to trace the same jet component as SiO (5–4). The HV ranges (in V<sub>LSR</sub>) are summarized in Table 4. The identification of the high-velocity ranges is further supported by the inspection of the position-velocity diagrams (see Fig. B.1). As explained above, CO emission is mostly dominated by low or intermediate velocity material that corresponds to the wider flow surrounding the jet. However, the high-velocity SiO emission which probes the jet, also has counterparts in CO and SO for many of the sources and they appear co-spatial in the PV diagrams, which suggests

that they all trace the same gas component in the jet with little or no contamination by the outflow or by entrained material. Then we estimate the jet radial velocity in the two innermost knots B and R along the blue- and red-shifted lobes as the velocity of the SiO emission peak in the B and R spectra with respect to the systemic velocity ( $V_{\text{rad}} = V_{\text{peak}} - V_{\text{sys}}$ ) and we report them in Table 4. The estimated jet radial velocities are affected by an uncertainty of ±1.7 km s<sup>-1</sup> due to the resolution of our spectra.

The distribution of radial velocities of the jet lobes, V<sub>rad</sub>, inferred from the SiO spectra is shown in Fig. 3. The distribution is flat within the statistical uncertainty, in agreement with a randomly oriented jet distribution. This indicates that the jets for which the SiO emission peak is detected at low velocity (IRAS4A2, SerpM-S68N, and SerpS-MM18a) may actually be high-velocity jets seen close to the plane of the sky. The derived median radial velocity of the high-velocity jet component is 30 ± 10 km s<sup>-1</sup>. Estimates of the jet inclination and of the deprojected jet velocity are available only for a few jets in our sample, as detailed in the notes on the individual sources (Appendix F) and discussed in Sect. 4.5. Many of the jets in our sample show asymmetries between the two lobes either in their morphology or their velocity.

First of all, one out of 12 SiO jets is monopolar, the jet from IRAS2A1 (Codella et al. 2014b). High-velocity emission in the three tracers is detected only in the blue lobe, while the low-velocity emission associated with the outflow is detected in both lobes. In the sub-sample of the 11 SiO bipolar jets,



**Fig. 3.** Distribution of jet radial velocities in the CALYPSO sample. The values correspond to the velocity of the SiO emission peak in the spectra extracted at the position of the blue- and red-shifted SiO knots close to the driving protostar, B and R (see Fig. C.1).

morphological asymmetries between the two lobes are also observed (see the integrated maps in Fig. 1). The jet from SerpM-SMM4b shows different PA (and inclination, Aso et al. 2018) between the blue and red lobes, while 5 out of the 12 jets show an S-shaped morphology, which suggests jet precession around its axis (namely IRAS4B1, L1448-NB, L1157, IRAS4A1, and IRAS4A2). The precession patterns of the jets from L1157 and IRAS4A2 based on the CALYPSO data are discussed in two previous papers (Podio et al. 2016; Santangelo et al. 2015). The jet from SerpS-MM18a is wiggling, which is also suggestive of a slight precession, as was previously discussed by Plunkett et al. (2015). Hence, 50% of the SiO jets show detectable precession or wiggling at our resolution. This is the first time that the statistical occurrence of this property can be estimated.

Finally, some of the eleven SiO bipolar jets show an asymmetry in the velocity between the two lobes. The degree of the velocity asymmetry is quantified by estimating the ratio between the radial velocities of the blue- and red-shifted innermost SiO knots, B and R. In particular, it is computed as the ratio between the velocity of the faster knot,  $V_{\text{rad},f}$ , over the velocity of the slower knot,  $V_{\text{rad},s}$ , as reported in Table 4. The error on this ratio depends on the uncertainty on the determination of the radial velocity of the two jet lobes ( $\pm 1.7 \text{ km s}^{-1}$ ) due to the resolution of our spectra. For the jets of IRAS4A2, SerpM-S68N and SerpS-MM18a, which show very low radial velocities (possibly due to low inclination), the radial velocities ratio,  $V_{\text{rad},f}/V_{\text{rad},s}$ , is affected by a large uncertainty and this prevents us from drawing a conclusion on whether the jet is or is not asymmetric in velocity. Based on the derived  $V_{\text{rad},f}/V_{\text{rad},s}$  ratios and their uncertainties, the radial velocity of the blue-shifted and red-shifted lobes differ by factor of 1.4–2.1 for three jets (namely SVS13B, L1157, and IRAS4A1), and by a factor of 7.8 for SerpM-S68Nb. As the detection of velocity asymmetries for jets at low inclination is hindered by the low spectral resolution of our data ( $3.4 \text{ km s}^{-1}$ ), the number of detected velocity asymmetric jets should be considered a lower limit. We conclude that at least 33% of the observed jets has a velocity asymmetry of 1.3–7.8.

#### 4.3. Jet width and opening angle

We investigate the collimation properties of the flows for the 12 Class 0 sources that exhibit an SiO jet detected at  $>10\sigma$  in

the integrated maps (see Table 3). The width of the red and blue jet and outflow lobes in each of the three tracers (CO, SO, and SiO) is measured from the emission maps integrated on the red-shifted and blue-shifted velocity ranges, respectively, as indicated in Fig. 1. The widths are measured by fitting the spatial profile of the line emission perpendicular to the jet axis (PA given in Table 3) with a Gaussian profile at each position along the jet. Deconvolved widths, corresponding to twice the jet radius,  $2R_{\text{jet}}$ , are then derived by correcting the full width at half maximum (FWHM) of the observed emission,  $\text{FWHM}_{\text{obs}}$ , for the size of the beam transverse to the jet axis (see Appendix D). The deconvolution method allows us to infer jet widths smaller than the beam if the signal-to-noise ratio (S/N) is high enough to measure a  $\text{FWHM}_{\text{obs}}$  larger than the transverse beam size. Therefore, this procedure is applied to each source and each molecular line if detected at  $>10\sigma$  in the integrated maps. Spatially resolved emission showing asymmetric cavity walls or complex bow-shock structures that strongly deviate from a Gaussian distribution have been discarded (e.g., SiO red-shifted emission in IRAS4A, see Fig. 1). Figure 4 collects the jet width,  $2R_{\text{jet}}$ , in the three tracers (CO (2–1), SO (5<sub>6</sub>–4<sub>5</sub>), and SiO (5–4)) for the 12 sources driving an SiO jet as a function of the distance from source. The estimates of the flow width for each source separately are presented in Fig. D.1.

After deconvolution by the beam, jet widths appear to be always larger than  $\approx 50$  au, even for SiO jets observed very close to the driving source. For example, the beam-corrected width of the SiO jet driven by L1157 is about 80 au at a distance from the source of 100 au. In contrast, ALMA observations of SiO at very high angular resolution (e.g., Lee et al. 2017,  $0.02''$  or 8 au resolution) and VLBI observations (e.g., Claussen et al. 1998) towards Class 0 jets suggest that jet widths are  $<20$  au within 100 au distance. Our beam deconvolution method neglects the effect of residual phase noise and cleaning artifacts which result in an effective resolution that is lower than the resolution implied by the clean beam. Consequently, we choose to consider the widths that are smaller than the size of the transverse beam to be only (inclusive) upper limits on the true width of the jet (cyan points in Fig. 4). Measurements taken within a beam from the driving source are also discarded since the true flow width may vary a lot within a beam.

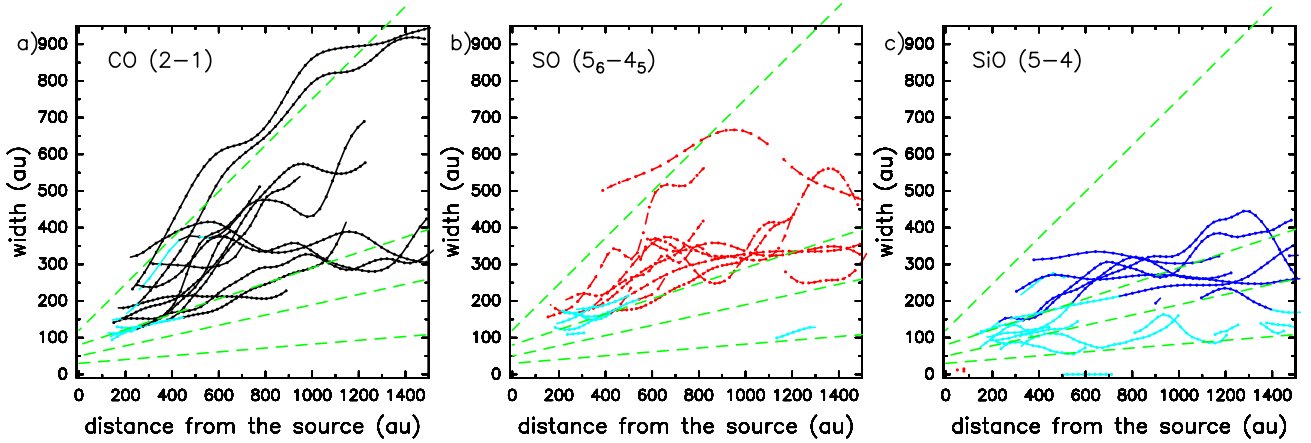
Figure 4 shows that the width of the flow globally increases with the distance from the source. However, the complex variation of the jet width with distance prevents us from defining an opening angle of the flow for each source. For comparison with opening angles measured in atomic Class II and Class I jets on similar scales, following a statistical approach we derive the average collimation properties of the sample by fitting the measured flow widths in Fig. 4 with straight lines according to the following equation:

$$2R_{\text{jet}} = 2R_0 + 2 \tan(\alpha/2)z, \quad (1)$$

where  $z$  is the distance from source,  $\alpha$  is the apparent full opening angle of the flow<sup>6</sup>, and  $R_0$  is a constant offset. The last quantity is introduced following studies of Class II jets (Agra-Amboage et al. 2011; Dougados et al. 2000; Hartigan et al. 2004; Maurri et al. 2014). Since Eq. (1) is simply a parametric formula to fit the jet width at distances of  $\sim 200$ –1500 au from the driving source,  $R_0$  should not be interpreted as the launching point of the flow.

Figure 4 shows that the collimation properties of the velocity-integrated emission depend markedly on the molecular

<sup>6</sup> Due to projection effects, the true opening angle is smaller:  $\tan(\alpha_{\text{true}}) = \tan(\alpha) \times \sin(i)$ , where  $i$  is the inclination to the line of sight.



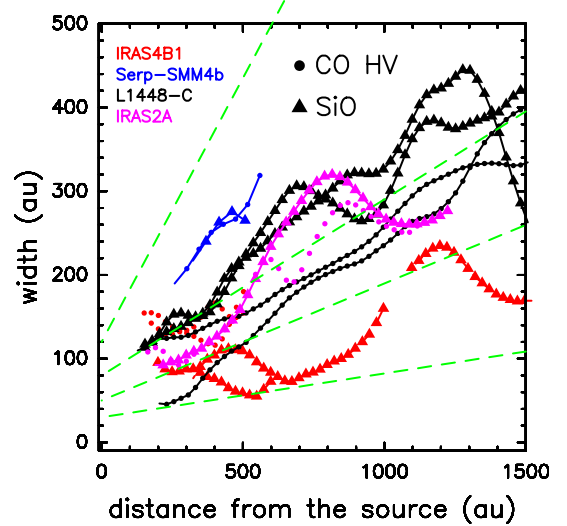
**Fig. 4.** Deconvolved widths ( $2R_{\text{jet}}$ ) of CO (a), SO (b), and SiO (c) emission along the jet axis within 1500 au from protostars. Only flow detected above  $10\sigma$  are measured. Non-axisymmetric structures that are well spatially resolved are discarded. Cyan lines indicate widths that are smaller than the transverse beam and consequently considered as inclusive upper limits. Green dashed lines correspond to straight lines with full opening angles of  $\alpha = 3^\circ, 8^\circ, 12^\circ,$  and  $35^\circ$  and initial width of 30, 50, 80, and 120 au outlining the collimation properties of the flow in different tracers.

tracer. Opening angles of the CO (2–1) emission span a wide range of value between  $8^\circ$  and  $35^\circ$  with a median value of  $\sim 25^\circ$ . SO ( $5_6-4_5$ ) emission is more collimated and shows typical opening angles of  $\sim 15^\circ$ . SiO (5–4) emission is even more collimated with a typical opening angle of about  $10^\circ$  and with minimum values as low as  $4^\circ$ . Thus, the bulk emission of the three lines highlights different regions of the flow, with SiO tracing the most collimated jet, CO the broader component, and SO a flow of intermediate collimation.

We also measured the width of the high-velocity CO emission and compare the results with the width of the SiO emission in Fig. 5. As explained in Sect. 4.2 the high-velocity ranges where CO (2–1) and SO ( $5_6-4_5$ ) trace the same jet component as SiO (5–4) are defined based on the line spectra extracted at the position of the innermost SiO knots (see Table 4 and Fig. C.1) and on the inspection of the PV diagrams (see Fig. B.1). When selecting only the high-velocity component, the CO emission is as collimated as the SiO emission, which is a further indication that high-velocity CO traces the same component probed by SiO, namely, the jet. The same conclusion applies to SO.

#### 4.4. Molecular column densities and abundances

For the 12 Class 0 protostars driving an SiO jet detected at  $> 10\sigma$  in the integrated maps (see Table 3), we estimate the beam-averaged column density and the abundance of CO, SO, and SiO in the high-velocity jet component for the blue- and redshifted lobes. To this aim, the CO (2–1), SO ( $5_6-4_5$ ), and SiO (5–4) line intensities extracted at the position of the innermost SiO knots, B and R, are integrated on the high-velocity range shown in Fig. C.1 and summarized in Table 4. As shown by the position-velocity diagrams in Fig. B.1 and by the measurements of the flow width in Fig. 5, in the defined high-velocity ranges, the emission in the CO (2–1) and SO ( $5_6-4_5$ ) lines is co-spatial with that of SiO (5–4) and shares the same width. Therefore, we assume that in the HV range the emission in the three tracers originate from the same gas component. Moreover, based on the high radial velocity of the HV component ( $15-80 \text{ km s}^{-1}$ ) and on its collimation (see Fig. 5), we assume that the bulk of the HV emission originates primarily from the jet and that the contribution from entrained material along the jet is negligible. We further assume local thermodynamic equilibrium (LTE) at



**Fig. 5.** Deconvolved widths ( $2R_{\text{jet}}$ ) of SiO (triangles) and high-velocity CO (dots) emission (high-velocity intervals defined in Table 4). Only the jet lobes where both SiO and high-velocity CO are detected above  $10\sigma$  at the same positions along the jet are plotted. Colors code the sources. At high velocity, the CO emission appears as collimated as the SiO jet emission. Green dashed lines correspond to straight lines with full opening angles of  $\alpha = 3^\circ, 8^\circ, 12^\circ,$  and  $35^\circ$  and initial width of 30, 50, 80, and 120 au outlining the collimation properties of the flow.

a kinetic temperature,  $T_K = 100 \text{ K}$ , and optically thin emission. Possible deviations from these assumptions are discussed below. Based on the above assumptions we derive the molecules' beam-averaged column densities in the jet,  $N_{\text{CO}}$ ,  $N_{\text{SO}}$ , and  $N_{\text{SiO}}$ , from the line intensities integrated on HV.

The non-LTE analysis of multiple SiO and CO transitions in the large velocity gradient (LVG) approximation in a few prototypical Class 0 jets has shown that the typical gas density and temperature in the high-velocity range are of  $10^5-10^7 \text{ cm}^{-3}$  and  $30-500 \text{ K}$  (e.g., Gibb et al. 2004; Cabrit et al. 2007; Podio et al. 2015; Spezzano et al. 2020). Therefore, the assumption of LTE is well justified for the CO (2–1) line, whose critical density is well below the typical gas density in jets ( $\sim 7.3 \times 10^3 \text{ cm}^{-3}$ ,

see Table 2), while the SO and SiO lines may be sub-thermally excited if the gas density is lower than their critical density ( $\sim 7.7 \times 10^5 \text{ cm}^{-3}$  and  $\sim 1.6 \times 10^6 \text{ cm}^{-3}$ , see Table 2). To estimate the uncertainty affecting the estimates of the column density in the non-LTE case we use the statistical equilibrium, one-dimensional radiative transfer code RADEX adopting plane parallel slab geometry (van der Tak et al. 2007). We find that the SO and SiO column densities may be underestimated by a factor of up to 5 if  $n_{\text{H}_2} = 10^5 \text{ cm}^{-3}$ . Moreover, the column densities of CO, SO, and SiO are overestimated by a factor of  $\sim 1.5$  if the gas temperature is lower than assumed (20 K), and are underestimated by a factor of  $\sim 1.6$ ,  $\sim 3.5$  if the temperature is higher (200 and 500 K, respectively). These uncertainties are illustrated in Fig. E.1.

If lines are optically thick, the beam averaged column density derived in the optically thin limit is only a lower limit on the true column density. Previous studies have shown that jet emission may be optically thick even at high velocities (e.g., Cabrit et al. 2012; Podio et al. 2015). Therefore, in Appendix E, we propose a criterion to flag lines that are (or may be) optically thick by using the ratio of the brightness temperature of the CO (2–1), SO (5<sub>6</sub>–4<sub>5</sub>), and SiO (5–4) lines in the HV range ( $T_{\text{B}}^{\text{CO}}$ ,  $T_{\text{B}}^{\text{SO}}$ ,  $T_{\text{B}}^{\text{SiO}}$ , respectively). Based on the discussion in Appendix E, we note that the opacity of the CO and SiO lines is constrained using the following criteria. (1) If  $0.7 \times T_{\text{B}}^{\text{CO}} \leq T_{\text{B}}^{\text{SiO}} \leq T_{\text{B}}^{\text{CO}}$ , both lines are very likely optically thick and the beam averaged  $N_{\text{CO}}$  and  $N_{\text{SiO}}$  derived in the optically thin limit are both considered as strict lower limits. No constraint on the SiO/CO abundance ratio can be obtained in this case. (2) If  $T_{\text{B}}^{\text{SiO}} > T_{\text{B}}^{\text{CO}}$ , CO (2–1) is optically thin and SiO (5–4) may be optically thick. We then consider the derived  $N_{\text{SiO}}$  as an inclusive lower limit and we can derive a lower limit on the SiO/CO abundance ratio. (3) If  $T_{\text{B}}^{\text{SiO}} < 0.7 \times T_{\text{B}}^{\text{CO}}$ , the SiO (5–4) line is considered to be optically thin whereas the CO (2–1) line may be optically thick. We then consider the derived  $N_{\text{CO}}$  as an inclusive lower limit and we obtain an upper limit on the SiO/CO abundance ratio. The brightness temperature of the SO (5<sub>6</sub>–4<sub>5</sub>) line is always much smaller than the brightness temperature of CO (2–1), suggesting that the SO emission is optically thin.

Based on the above criteria, the brightness temperature ratios  $T_{\text{B}}^{\text{SiO}}/T_{\text{B}}^{\text{CO}}$  measured at the SiO emission peak in the B and R spectra in Fig. C.1 indicate that for all but two jets in our sample (IRAS4A1 and IRAS4A2), that is, for  $\sim 82\%$  of the SiO knots, the SiO (5–4) emission is (or may be) optically thick. Therefore, the estimated SiO column densities are strict (for L1448-NB knot R, SerpM-SMM4b knot R, SerpM-S68N knot B, SerpS-MM18a, and IRAS2A1 knot B) or inclusive (for all the other jet lobes) lower limits. For CO, we also obtain strict lower limits for the five sources above, while we estimate an upper limit on the CO abundance for the jet lobes where no CO is detected in the B and R knots (the “CO-poor” jets: SerpM-S68Nb knot B, SVS13B knots B and R, L1448-NB knot B, and SerpM-S68N knot R). Based on the estimated column densities and on the assumption that the emission in the three tracers originates from the same jet component, the abundances of SO and SiO are derived as  $X_{\text{SO}} = X_{\text{CO}} \times N_{\text{SO}}/N_{\text{CO}}$  and  $X_{\text{SiO}} = X_{\text{CO}} \times N_{\text{SiO}}/N_{\text{CO}}$ , where  $X_{\text{CO}} = 10^{-4}$  is the assumed CO abundance in the jet with respect to  $\text{H}_2$ <sup>7</sup>.

<sup>7</sup> The adopted value of  $[\text{CO}]/[\text{H}] = 5 \times 10^{-5}$  is based on the correlation of the total CO abundance (gas+ice) and the visual extinction  $A_{\text{V}}$  in the well shielded ISM (Whittet et al. 2010) using a standard  $N_{\text{H}}/A_{\text{V}} = 2 \times 10^{21} \text{ cm}^{-2} \text{ mag}^{-1}$ . Since high-velocity protostellar jets are launched well inside the CO ice-line, all CO is in the gas phase. If the jet

The estimated molecular column densities and abundances averaged over the beam and the HV range for the blue- and red-shifted inner knots of the high-velocity jets are summarized in Table 5 and in Fig. 6, where the values are shown as a function of the source internal luminosity,  $L_{\text{int}}$ . As the CO abundance in jets is uncertain (see footnote 7), in Fig. 6, we also plot the SO and SiO abundance with respect to CO ( $X_{\text{SO}}/X_{\text{CO}} = N_{\text{SO}}/N_{\text{CO}}$ , and  $X_{\text{SiO}}/X_{\text{CO}} = N_{\text{SiO}}/N_{\text{CO}}$ ). We find that the beam-averaged column density of SO is  $N_{\text{SO}} \sim 10^{13} - 3 \times 10^{15} \text{ cm}^{-2}$ , and  $N_{\text{SiO}}$  goes from a minimum of  $4 \times 10^{13} \text{ cm}^{-2}$  to  $> 2 \times 10^{15} \text{ cm}^{-2}$  for the jets where the SiO emission is (or could be) optically thick. The CO column density ranges from  $\sim 10^{16} \text{ cm}^{-2}$  up to  $> 3 \times 10^{17} \text{ cm}^{-2}$ , with the exception of the “CO-poor” jets for which we derive an upper limit of a few  $10^{15} \text{ cm}^{-2}$ . The abundance of SO with respect to  $\text{H}_2$  goes from values  $< 10^{-7}$  to  $10^{-6}$ . For SiO, the inferred abundances,  $X_{\text{SiO}}$ , are lower limits for the jets where the SiO emission is (or could be) optically thick ( $X_{\text{SiO}}$  ranges from values larger than a few  $10^{-7}$  to values larger than a few  $10^{-6}$  for the “CO-poor” jets), whereas for the two jets where CO and SiO are optically thick in both lobes (SerpS-MM18a, IRAS2A1), it was not possible to derive an estimate of  $X_{\text{SiO}}$ . Low SiO abundances are found only for IRAS4A1 and IRAS4A2 ( $X_{\text{SiO}} \leq 2-6 \times 10^{-8}$ ).

#### 4.5. Jet energetics

For the 12 Class 0 protostars driving an SiO jet detected at  $> 10\sigma$  (see Table 3), we estimate the jet mass-loss and momentum rates, and the jet mechanical luminosity from the CO beam-averaged column density inferred from the high-velocity CO emission at the position of the innermost blue- and red-shifted SiO knots, B and R. As discussed in Sects. 4.2 and 4.4, while CO emission at low velocity probes the outflowing entrained material, the emission at high velocity is more collimated and has the same width and displacement as the SiO emission (see the width of the HV emission in Fig. 5 and the PV of SiO and CO emission in Fig. B.1). Hence, we assume that the bulk of the CO HV emission originates from the jet and that the contribution from entrained gas is negligible. To further minimize the possible contribution from entrained material, the CO column densities and mass-loss rates are inferred close to the driving source, that is, at the position of the B and R inner knots. In fact, at larger distances, the jet could be more affected by the interaction with the surrounding medium, hence, by gas entrainment, and part of the emission could be filtered out by the interferometer. This approach also guarantees that the jet properties are derived via the same methodology with regard to all the jets in our sample, including those where only a single red-shifted and blue-shifted knot is detected.

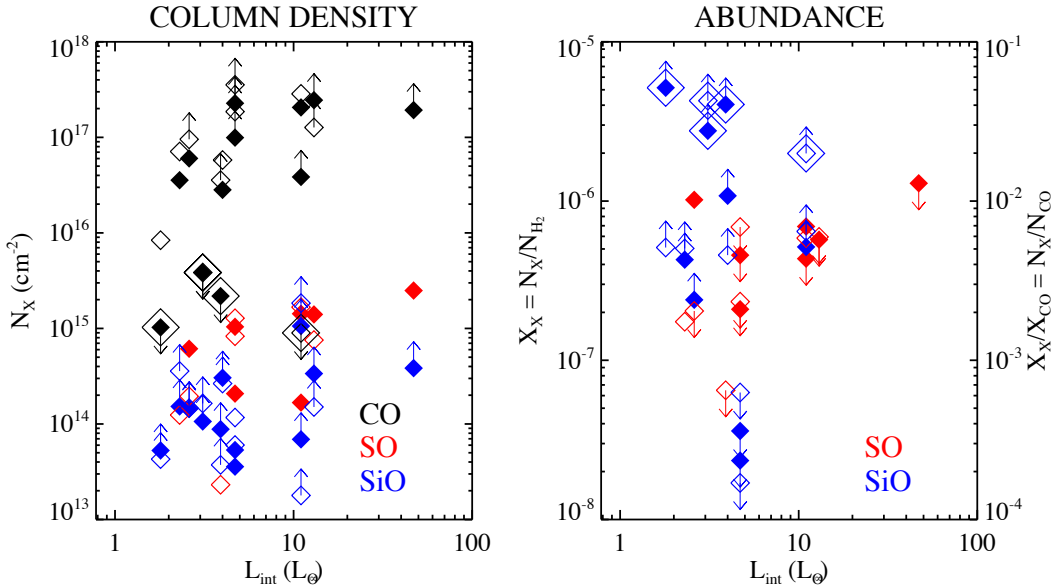
The mass-loss rate of the molecular jet is typically estimated assuming that the mass in the jet flows at constant density and speed along the jet axis over the beam length. However, the gas in the SiO knots where the gas column density is estimated is highly compressed by shocks, therefore the mass-loss rate is corrected for a factor of  $1/\sqrt{C} \sim 1/3$ , where  $C$  is the compression factor (e.g., Hartigan et al. 1994). Taking shock compression into account, we infer the mass-loss rate as  $\dot{M}_{\text{jet}} = 1/\sqrt{C} \times m_{\text{H}_2} \times (N_{\text{CO}}/X_{\text{CO}}) \times b_l \times V_{\text{tan}}$  (e.g., Lee et al. 2007b; Podio et al. 2015), where  $m_{\text{H}_2}$  is the mass of molecular hydrogen,  $N_{\text{CO}}$  the CO beam-averaged column density over the HV range,  $X_{\text{CO}} = 10^{-4}$  the assumed CO abundance (see

is launched from inside the dust sublimation radius, the CO abundance could be larger or smaller by a factor of  $\geq 3$  (see, e.g., Glassgold et al. 1991; Tabone et al. 2020).

**Table 5.** Beam-averaged molecular column densities and abundances, mass-loss and momentum rates, and jet mechanical luminosities for the 12 sources driving an SiO jet detected at  $>10\sigma$  in the integrated maps (see Table 3).

Source		$L_{\text{int}}$ ( $L_{\odot}$ )	$N_{\text{CO}}^{(a)}$ ( $10^{17} \text{ cm}^{-2}$ )	$N_{\text{SO}}^{(a)}$ ( $10^{14} \text{ cm}^{-2}$ )	$N_{\text{SiO}}^{(a)}$ ( $10^{14} \text{ cm}^{-2}$ )	$X_{\text{SO}}^{(b)}$ ( $10^{-7}$ )	$X_{\text{SiO}}^{(b)}$ ( $10^{-7}$ )	$\dot{M}_{\text{jet}}^{(c)}$ ( $10^{-7} M_{\odot} \text{ yr}^{-1}$ )	$\dot{P}_{\text{jet}}^{(c)}$ ( $10^{-5} M_{\odot} \text{ yr}^{-1} \text{ km s}^{-1}$ )	$L_{\text{jet}}^{(c)}$ ( $L_{\odot}$ )
SerpM-S68Nb	B	1.8	<0.01	–	$\geq 0.5$	–	$>51.5$	<0.08	<0.08	<0.006
	R		0.08	–	$\geq 0.4$	–	$\geq 5.1$	0.7	0.7	0.06
IRAS4B1	B	2.3	0.4	–	$\geq 1.5$	–	$\geq 4.3$	1.2	1.2	0.1
	R		0.7	1.2	$\geq 3.6$	1.7	$\geq 5.0$	2.3	2.3	0.2
SerpM-SMM4b	B	<2.6	0.6	6.1	$\geq 1.4$	10.2	$\geq 2.4$	3.4	3.4	0.3
	R		>1.0	1.9	>1.5	<2.0	–	>8.7	>8.7	>0.7
SVS13B	B	3.1	<0.04	–	$\geq 1.1$	–	>27.6	<0.1	<0.1	<0.01
	R		<0.04	–	$\geq 1.6$	–	>42.7	<0.1	<0.1	<0.01
L1448NB	B	3.9	<0.02	–	$\geq 0.9$	–	>40.4	<0.07	<0.07	<0.006
	R		>0.4	0.2	>0.4	<0.6	–	>1.2	>1.2	>0.1
L1157	B	4.0	0.3	–	$\geq 3.0$	–	$\geq 10.8$	1.6	1.6	0.1
	R		0.6	–	$\geq 2.7$	–	$\geq 4.6$	2.9	2.9	0.2
IRAS4A1	B	<4.7	$\geq 1.0$	2.1	0.4	$\leq 2.1$	$\leq 0.4$	$\geq 4.0$	$\geq 4.0$	$\geq 0.3$
	R		$\geq 3.5$	8.3	0.6	$\leq 2.3$	$\leq 0.2$	$\geq 14$	$\geq 14$	$\geq 1.1$
IRAS4A2	B	4.7	$\geq 2.3$	10.4	0.5	$\leq 4.6$	$\leq 0.2$	$\geq 9.5$	$\geq 9.5$	$\geq 0.8$
	R		$\geq 1.9$	12.8	1.2	$\leq 6.9$	$\leq 0.6$	$\geq 7.8$	$\geq 7.8$	$\geq 0.6$
L1448-C	B	11	2.1	14.2	$\geq 10.6$	6.9	$\geq 5.1$	9.7	9.7	0.8
	R		2.9	16.7	$\geq 18.4$	5.9	$\geq 6.4$	13.8	13.8	1.1
SerpM-S68N	B	11	>0.4	1.7	>0.7	<4.3	–	>3.3	>3.3	>0.3
	R		<0.01	–	$\geq 0.2$	–	>19.9	<0.08	<0.08	<0.006
SerpS-MM18a	B	13	>2.5	14.0	>3.4	<5.7	–	>11.5	>11.5	>0.9
	R		>1.3	7.6	>1.5	<5.9	–	>5.9	>5.9	>0.5
IRAS2A1	B	47	>1.9	24.9	>3.8	<12.9	–	>6.7	>6.7	>0.5

**Notes.** <sup>(a)</sup>Beam-averaged CO, SO, and SiO column densities in the jet ( $N_{\text{CO}}$ ,  $N_{\text{SO}}$ ,  $N_{\text{SiO}}$ ) are derived from the CO, SO, and SiO line intensity integrated on the high-velocity range at the position of the blue-shifted and red-shifted SiO emission knots closest to the driving sources, B and R (see Table 4 and the spectra in Fig. C.1). We assume LTE, optically thin emission at  $T_{\text{K}} = 100$  K. The lower and upper limits reported in the table refer to the cases where the CO (2–1) and/or SiO (5–4) emission is (or could be) optically thick based on the  $T_{\text{B}}^{\text{SiO}}/T_{\text{B}}^{\text{CO}}$  ratio (see Sect. 4.4). <sup>(b)</sup>The abundances of SO and SiO are derived as  $X_{\text{SO}} = X_{\text{CO}} \times N_{\text{SO}}/N_{\text{CO}}$  and  $X_{\text{SiO}} = X_{\text{CO}} \times N_{\text{SiO}}/N_{\text{CO}}$  assuming  $X_{\text{CO}} = N_{\text{CO}}/N_{\text{H}_2} = 10^{-4}$ . <sup>(c)</sup>Mass-loss and momentum rates ( $\dot{M}_{\text{jet}}$ ,  $\dot{P}_{\text{jet}}$ ), and the jet mechanical luminosity ( $L_{\text{jet}}$ ) are derived from  $N_{\text{CO}}$  assuming  $V_{\text{jet}} = 100 \text{ km s}^{-1}$ .



**Fig. 6.** Beam-averaged column densities ( $N_X$  in  $\text{cm}^{-2}$ , left), and SO and SiO abundances (right) versus the source internal luminosity ( $L_{\text{int}}$  in  $L_{\odot}$ ). Molecular abundances are with respect to  $\text{H}_2$  on the left axis (assuming  $[\text{CO}]/[\text{H}_2] = 10^{-4}$ ) and with respect to CO on the right axis. The values are inferred for the 12 Class 0 protostars driving an SiO jet detected at  $>10\sigma$  in the integrated maps (see Table 3) at the position of the closest blue- and red-shifted SiO knots, B and R (filled and empty small diamonds, respectively; see Tables 4 and 5). Black, red, and blue symbols are for CO, SO, and SiO, respectively. Lower and upper limits are indicated by upward and downward arrows. The jet knots where no CO is detected (the “CO-poor” jets) are indicated by larger empty diamonds. For these knots we derive upper limits on  $N_{\text{CO}}$ , and lower limits on  $X_{\text{SiO}}$ .

footnote 7),  $b_t$  the linear size of the transverse beam (see Appendix D), and  $V_{\text{tan}}$  the tangential component of the jet velocity,  $V_{\text{jet}}$ , that is,  $V_{\text{tan}} = \sqrt{V_{\text{jet}}^2 - V_{\text{rad}}^2}$ .

The true jet velocity,  $V_{\text{jet}}$ , as well as its tangential component,  $V_{\text{tan}}$ , can be recovered by correcting the observed radial velocity,  $V_{\text{rad}}$ , for the jet inclination. However, estimates of the inclination are available only for a few jets in our sample and they are obtained using different methods: for SerpM-SMM4, Aso et al. (2018) suggest that the two lobes have different inclination based on the assumption that they have the same intrinsic momentum ( $i \sim 36^\circ$  and  $i \sim 70^\circ$  from the line of sight for the blue and red lobe, respectively), which gives deprojected velocities of  $\sim 105 \text{ km s}^{-1}$  and  $\sim 50 \text{ km s}^{-1}$ , respectively; for SVS13B Segura-Cox et al. (2016) estimates a disk inclination of  $\sim 71^\circ$ , which implies  $V_{\text{jet}} = 74 \text{ km s}^{-1}$  for the blue lobe, and  $49 \text{ km s}^{-1}$  for the red lobe if we deproject the  $V_{\text{rad}}$  at the emission peak (see Table 4), and velocities up to  $150 \text{ km s}^{-1}$  if we consider the maximum  $V_{\text{rad}}$  in our spectra (in agreement with Bachiller et al. 1998b); for L1157 the model by Podio et al. (2016) indicates precession on a cone inclined by  $73^\circ$  to the line of sight, which implies  $V_{\text{jet}} \sim 87 \text{ km s}^{-1}$  and  $\sim 137 \text{ km s}^{-1}$  in the blue and red lobe, respectively; finally, for L1448-C the jet velocity derived from proper motion studies is  $V_{\text{jet}} \sim 98 \pm 4$  and  $\sim 78 \pm 1 \text{ km s}^{-1}$  for the blue- and red-shifted lobes, respectively ( $i = 34 \pm 4^\circ$  and  $i = 46 \pm 5^\circ$  from the plane of sky, Yoshida et al. 2021). In conclusion, even if the estimated jet inclinations are obtained with different methods and are affected by large uncertainties, the derived  $V_{\text{jet}}$  values are always consistent with  $V_{\text{jet}} = 100 \pm 50 \text{ km s}^{-1}$ . Moreover, this value is also consistent with observations of other prototypical Class 0 jets where SiO proper motions have been measured (e.g.,  $V_{\text{jet}} \sim 115 \pm 50 \text{ km s}^{-1}$  for HH 212, Lee et al. 2015a, and  $\sim 114 \pm 50 \text{ km s}^{-1}$  for HH 211, Jhan & Lee 2016). Therefore, we assume that the jet velocity is  $100 \text{ km s}^{-1}$  for all the jets in our sample. This ensures that the same method to derive  $\dot{M}_{\text{jet}}$  is applied to all the jets in the sample, without making assumptions on the jet inclination when estimates are not available or very uncertain<sup>8</sup>.

The determination of the mass-loss rate allows us to estimate the momentum rate,  $\dot{P}_{\text{jet}} = \dot{M}_{\text{jet}} \times V_{\text{jet}}$ , and the jet mechanical luminosity  $L_{\text{jet}} = 1/2 \times \dot{M}_{\text{jet}} \times V_{\text{jet}}^2$  at the position of the innermost blue- and red-shifted SiO knots, B and R. As the inferred mass-loss and momentum rates, and mechanical luminosities depend linearly on the estimated beam-averaged CO column density,  $N_{\text{CO}}$ , they are affected by the uncertainties on  $N_{\text{CO}}$  due to the assumed temperature and LTE conditions. Moreover, as we assume optically thin emission to derive  $N_{\text{CO}}$ , the estimated  $\dot{M}_{\text{jet}}$ ,  $\dot{P}_{\text{jet}}$ , and  $L_{\text{jet}}$  values should be regarded as lower limits for all jets where the comparison of CO and SiO spectra indicates that the CO emission is (or could be) optically thick (i.e., when  $T_{\text{B}}^{\text{SiO}}/T_{\text{B}}^{\text{CO}} \leq 1$ , see Sect. 4.4). Finally, the  $\dot{M}_{\text{jet}}$ ,  $\dot{P}_{\text{jet}}$ , and  $L_{\text{jet}}$  values are uncertain by a factor of 3-10 due to the assumption on the CO abundance, on  $V_{\text{jet}}$ , and on the compression factor, which depends on the unknown shock parameters (magnetic field

<sup>8</sup> Rough estimates of the inclination are available for a few other jets, e.g. IRAS4A and IRAS4B1, but are affected by even larger uncertainties. For example, for IRAS4B1 early studies suggest that the jet is almost perpendicular to the plane of the sky based on its morphology ( $i \sim 0^\circ$ , Maret et al. 2009;  $i \sim 15\text{--}30^\circ$ , Yıldız et al. 2012) or on VLBI H<sub>2</sub>O water maser observations ( $i \sim 10\text{--}35^\circ$ , Desmurs et al. 2009), while Marvel et al. (2008) found the maser outflows to be nearly in the plane of the sky ( $i \sim 77^\circ$ ). Similarly for IRAS4A Yıldız et al. (2012) suggest an inclination of  $\sim 45\text{--}60^\circ$  to the line of sight, Koumpia et al. (2016) of  $\sim 70^\circ$ , and Marvel et al. (2008) of  $\sim 88^\circ$ .

and shock speed, Hartigan et al. 1994). This, however, does not affect the general trends and the comparison with the mass accretion rates and the mass-loss rates estimated for Class II sources, which are discussed in Sect. 5.5.

The estimated mass-loss and momentum rates, and jet mechanical luminosities for the blue and red lobes of the jets are summarized in Table 5. Figure 7 shows the sum of the jet mass-loss rate,  $\dot{M}_{\text{jet}}$ , and of the jet mechanical luminosity,  $L_{\text{jet}}$ , on the innermost knots of the two jet lobes, B and R. For the jets with one ‘‘CO-poor’’ lobe, the other lobe shows CO emission in the HV range (sometimes possibly thick), hence the total  $\dot{M}_{\text{jet}}$  and  $L_{\text{jet}}$  shows up as a firm value (SerpM-S68Nb) or lower limit (L1448-NB, SerpM-S68N) in Fig. 7. The exception is SVS13B for which no CO is detected in both lobes and we could only infer an upper limit on the total mass-loss rate and mechanical luminosity. We find that the two-sided jet mass-loss rates (sum over the blue and red inner knots) span from values of  $\sim 7 \times 10^{-8} M_{\odot} \text{ yr}^{-1}$  up to  $\sim 3 \times 10^{-6} M_{\odot} \text{ yr}^{-1}$ . Consequently, the total jet momentum rates vary between  $\sim 7 \times 10^{-6} M_{\odot} \text{ yr}^{-1} \text{ km s}^{-1}$  up to  $\sim 3 \times 10^{-4} M_{\odot} \text{ yr}^{-1} \text{ km s}^{-1}$ , while the jet mechanical luminosity summed on the two lobes (i.e. the total jet power) is between  $0.06 L_{\odot}$  and  $2 L_{\odot}$ . The exception is the ‘‘CO-poor’’ jet SVS13B for which we obtain  $\dot{M}_{\text{jet}} < 2 \times 10^{-8} M_{\odot} \text{ yr}^{-1}$ ,  $\dot{P}_{\text{jet}} < 2 \times 10^{-6} M_{\odot} \text{ yr}^{-1} \text{ km s}^{-1}$ , and  $L_{\text{jet}} < 0.02 L_{\odot}$ . The obtained values are discussed in Sect. 5.5.

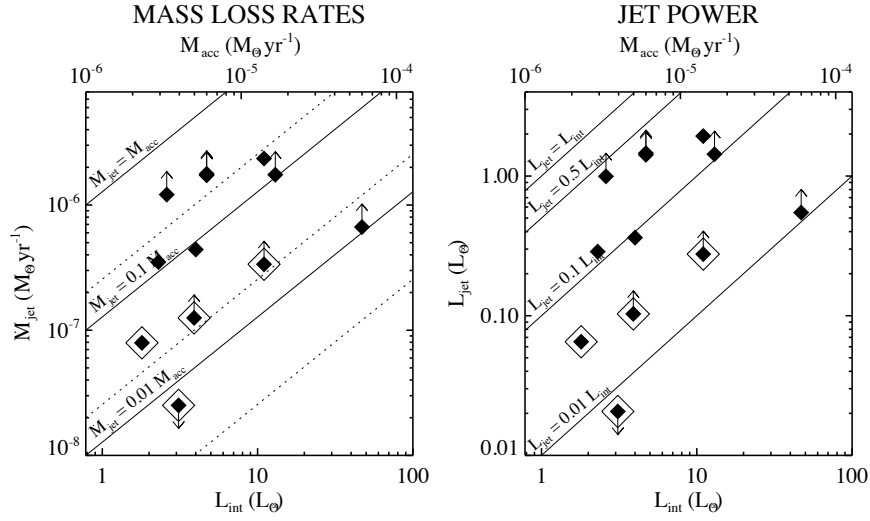
## 5. Discussion

### 5.1. Considering whether outflows and jets could be ubiquitous at the protostellar stage

As summarized in Sect. 4.1, Table 3, and Fig. 2, outflow emission in CO (2–1) is detected in all the Class 0 and Class I protostars in our sample (21 and 3 sources, respectively), indicating that the outflow phenomenon is ubiquitous in the CALYPSO sample of protostars.

High-velocity collimated jets emitting in the SiO (5–4) line are detected in 67% of the sample, which is a higher detection rate than previously found. For example, Gibb et al. (2004) found that only 45% of the Class 0 sources in their sample are associated with SiO jets, likely due to the lower angular resolution and sensitivity of their observations.

SO (5<sub>6</sub>–4<sub>5</sub>) jet and outflow emission is detected in 52% of the Class 0 protostars and 67% of the Class I sources, and for all of them, the spatio-kinematical distribution of the SO emission follows that of SiO (see the position-velocity diagrams in Fig. B.1 and line spectra in Fig. C.1). In five more sources (L1527, GF9-2, L1157, L1448-2A, SerpS-MM18b), that is, 24% of the Class 0 protostars, the detected SO (5<sub>6</sub>–4<sub>5</sub>) emission is compact and elongated perpendicularly to the jet or outflow PA with a velocity gradient along the same direction (perpendicular to the jet or outflow). This indicates that the SO emission does not probe ejection but, instead, could trace the inner flattened envelope, the disk, or the accretion shock at disk-envelope interface (e.g., Sakai et al. 2014b; Maret et al. 2020). Unfortunately, with the exception of L1527 whose SO emission has been analyzed in detail by Maret et al. (2020), for the other sources, the SO emission is too weak to allow for a study of the gas kinematics to assess their origin. Follow-up observations at higher angular resolution and sensitivity would be crucial for achieving an understanding of the origin of SO (5<sub>6</sub>–4<sub>5</sub>) in these sources. Therefore, based on our survey, we find that SiO emission unambiguously probes the jet, while SO may also be a probe of the inner envelope and disk.



**Fig. 7.** Two-sided jet mass-loss rates ( $\dot{M}_{\text{jet}}$  in  $M_{\odot} \text{yr}^{-1}$ , left), and jet mechanical luminosities ( $L_{\text{jet}}$  in  $L_{\odot}$ , right) versus the source internal luminosity ( $L_{\text{int}}$  in  $L_{\odot}$ ). The values are inferred for the 12 Class 0 protostars driving an SiO jet detected at  $>10\sigma$  in the integrated maps (see Table 3).  $\dot{M}_{\text{jet}}$  and  $L_{\text{jet}}$  are the sum over the closest blue- and red-shifted SiO knots, B and R (see Tables 4 and 5). Lower and upper limits are indicated by upward and downward arrows. The jet knots where no CO is detected (the “CO-poor” jets) are indicated by larger empty diamonds. For the jets with only one “CO-poor” lobe, the total  $\dot{M}_{\text{jet}}$  and  $L_{\text{jet}}$  is dominated by the estimate obtained for the other lobe, hence, they show up as a firm value or lower limit (depending if CO in the other lobe is optically thin or thick). The exception is SVS13B for which no CO is detected in both lobes, hence, only an upper limit is derived for the total  $\dot{M}_{\text{jet}}$  and  $L_{\text{jet}}$ . The black lines in the *left panel* indicate  $\dot{M}_{\text{jet}} = [0.01, 0.1, 1] \times \dot{M}_{\text{acc}}$ , with  $\dot{M}_{\text{acc}}$  estimated from  $L_{\text{int}}$ , assuming a protostellar mass of  $0.05 M_{\odot}$  or  $0.25 M_{\odot}$  (solid and dotted lines, respectively). The  $\dot{M}_{\text{acc}}$  values labeled on the upper *x-axis* correspond to  $M_{*} = 0.05 M_{\odot}$ . The black solid lines in the *right panel* indicate  $L_{\text{jet}} = [0.01, 0.1, 0.5, 1] \times L_{\text{int}}$ .

Despite the small size of our sample, Fig. 2 indicates that the detection rate of jets increases with the source internal luminosity up to  $\sim 80\%$  for sources with  $L_{\text{int}} > 1 L_{\odot}$ . The internal luminosity,  $L_{\text{int}}$ , is a probe of the mass accretion rate onto the source,  $\dot{M}_{\text{acc}}$ , and the mass ejection rate is expected to be proportional to the mass accretion rate ( $\dot{M}_{\text{jet}} \sim 0.01\text{--}0.3\dot{M}_{\text{acc}}$ , according to magnetohydro-dynamical models of the jet launch and observations of Class II sources, e.g., Ferreira et al. 2006; Hartigan et al. 1995). Hence, the fact that the jet detection rate increases with  $L_{\text{int}}$  confirms the correlation between accretion and ejection rates found for more evolved sources and suggests that the jets driven by the less-accreting and less-ejecting protostars in our sample may remain undetected at the sensitivity level of our observations.

Finally, it is interesting to note that high-velocity collimated emission in all three jet tracers (CO, SO, and SiO) is detected for the protostellar candidates, IRAS4B2 and SerpM-SMM4b, and only in CO for the candidate SerpS-MM18b. This strongly supports their identification as protostars.

### 5.2. Jet velocity

The median radial velocity of the SiO jets detected in the CALYPSO sample, as derived at the position of the innermost SiO knots, is about  $30 \text{ km s}^{-1}$  (see Fig. 3). In contrast, Nisini et al. (2018) find a median radial velocity of  $70 \text{ km s}^{-1}$  for the high-velocity components (HVC) seen in the [OI] line at  $6300 \text{ \AA}$  in a large sample of Class II sources. The difference in velocity between protostellar and Class II jets may depend on the different tracers (SiO and [OI], respectively). However, if we assume that both SiO and [OI] probe the collimated jet launched directly by the disk and not entrained gas, this difference indicates that the velocity of the jet increases from the protostellar stage to the Class II stage by a factor of about 2. Because of the selection bias

of the HVC component in Class II sources (an [OI] jet seen on the plane of the sky would not be considered as jet component), this number should be considered as an upper limit. In the following, we assume that the CALYPSO sample probes a Class 0 population that will eventually form Class II objects with a similar IMF as the sample analyzed in Nisini et al. (2018). Adopting the model of Bontemps et al. (1996) to describe the growth of a protostar, and assuming that the median age of the Class 0 protostars in our CALYPSO sample is half of the duration of the Class 0 phase ( $\sim 3 \times 10^4 \text{ yr}$ , according to the former reference), the median mass of Class 0 protostars is  $0.3M_{*}$ , where  $M_{*}$  is the mass of the final star. The Keplerian velocity at a given distance from the central object would then increase by a factor of  $\sim 1.8$  between samples of Class 0 and Class II objects. According to disk winds models of the jet launch, the velocity of the jet scales with the Keplerian velocity at the launching radius (see, e.g., Ferreira et al. 2006). In this scenario, the increase of the jet velocity with age is consistent with a jet launched from the same region of the disk around a central object of increasing mass.

Moreover, for at least 33% of the detected SiO bipolar jets the radial velocity of the two lobes differ by a factor of 1.4–2.1 (and 7.8 for SerpM-S68Nb). The occurrence and degree of velocity asymmetries inferred for the protostellar jets in the CALYPSO sample are in agreement with what was found for optical jets from T Tauri stars. For example, Hirth et al. (1994) find that about 53% of their sample of 15 bipolar optical jets show a difference in velocity between the two jet lobes of a factor of 1.4–2.6 (see also, Hirth et al. 1997; Melnikov et al. 2009; Podio et al. 2011).

### 5.3. Jet collimation

The CALYPSO maps and position-velocity diagrams of the detected jets, and the estimates of their widths (see

Figs. 1, B.1, 4, and 5) show, on a statistical basis, that protostellar molecular flows exhibit an onion-like structure with nested components of different velocities that are highlighted by different lines: CO (2–1) probes slow and wide angle outflows ( $\sim 8\text{--}35^\circ$  opening angle), while the high-velocity jet is collimated and best traced by SiO ( $\sim 10^\circ$  opening angle) but is also seen in CO and SO when high-velocity components are selected. Interestingly, higher angular resolution observations toward the HH 212 Class 0 system show a similar onion-like structure on a smaller scale ( $<200$  au) with SiO tracing a collimated jet launched from  $\sim 0.3$  au, and SO tracing a broader and slower outflow, possibly associated with an MHD disk wind launched from a larger radius in the disk (Lee et al. 2017, 2018; Tabone et al. 2017). In the latter studies, rotation signatures detected in both the jet and the outflow were used to derive the launching zone. We note, however, that our CALYPSO resolution is too low to uncover rotation signatures and derive the launching radius.

The jet width,  $2R_{\text{jet}}$ , derived from the spatial profile of the SiO (5–4) line can be compared with the results obtained for atomic jets driven by Class I and Class II sources. The lowest dashed green curve in Fig. 4 shows the typical collimation inferred for Class I and Class II high-velocity atomic jets on the same scale probed by our observations, that is, 300–1500 au, with an opening angle of  $\sim 3^\circ$  and a width of  $\sim 80$  au at 800 au distance (e.g., Agra-Amboage et al. 2011; Dougados et al. 2000; Reipurth et al. 2000; Woitas et al. 2002). Figures 4 and D.1 show that except for IRAS4B1, SVS13B, and L1448-NB, most of the high-velocity SiO jets in our sample appear systematically broader than Class I and Class II atomic jets. This could be due to the lower resolution of the CALYPSO observations ( $\sim 0''.4\text{--}1.1''$ , i.e.,  $\sim 120\text{--}480$  au at  $d = 293\text{--}436$  pc) compared to studies of Class I and II sources ( $\sim 0''.1$ , i.e. 14–46 au  $d = 140\text{--}460$ ), as well as to projection effects, and to the lower temperature regime probed by SiO emission with respect to the atomic lines, which makes SiO sensitive to emission by bow-shocks wings further out than optical lines in atomic jets. Higher angular resolutions observations are required to probe the collimation properties of SiO jets down to  $<100$  au scale as for atomic jets from Class II sources. To date jet width measurements on  $<100$  au scales were obtained only for two protostellar jets observed at a few au resolution with ALMA, that is, HH 212 (Lee et al. 2017) and B355 (Bjerkeli et al. 2019), who find that the jet width is comparable or even smaller than what was found for Class II atomic jets (see, e.g., the recent review by Lee 2020).

#### 5.4. Origins of gas phase SiO

The SiO abundances inferred for the high-velocity jets in the CALYPSO sample are summarized in Table 5 and Fig. 6. For eight out of the twelve SiO jets detected at  $>10\sigma$  in the integrated maps, we infer a lower limit on the SiO abundance which ranges from  $>2.4 \times 10^{-7}$  up to  $>5 \times 10^{-6}$ . These values are larger than what was estimated by previous low resolution observations (e.g., Gibb et al. 2004) and they require for  $>1\%$  up to  $>10\%$  of elemental Silicon is released in the gas phase, assuming the silicon solar abundance,  $[\text{Si}/\text{H}]_{\odot} \sim 3.5 \times 10^{-5}$  (Holweger 2001).

Two types of scenarios have been invoked to account for the release of silicon into the gas phase, and the subsequent formation of SiO, in jets (see, e.g., Cabrit et al. 2012): (i) shock processing of silicate grains in a dusty wind launched from the disk (e.g., Panoglou et al. 2012) and (ii) silicon release at the base of dust-free jets launched from within the dust-sublimation radius of silicates (e.g., Glassgold et al. 1991; Tabone et al. 2020). In the following, we discuss these two scenarios by

comparing the SiO abundances inferred for the jets in the CALYPSO sample with what is predicted by models of shocks and dust-free jets.

In the first scenario, SiO jets trace dusty material, either in a magneto-hydrodynamical disk wind launched from beyond the dust sublimation radius of silicates ( $R_{\text{sub}} \approx 0.15 \text{ au} \sqrt{L_{\text{bol}}/L_{\odot}}$ , i.e.  $\sim 0.5$  au for a bolometric luminosity  $L_{\text{bol}} \sim 10 L_{\odot}$ , Yvart et al. 2016) or envelope material entrained by the jet. Most of the silicon is initially locked in the grain cores but may be released in the gas phase in the shocks occurring along the jet. Models of C-type magnetized shocks show that due to ion-neutral decoupling, grain cores are sputtered and silicon is released into the gas phase (Schilke et al. 1997). Subsequent reactions with  $\text{O}_2$  or OH produce SiO in the warm post-shock region. Stationary C-shock models predict an SiO abundance ( $X_{\text{SiO}} = N_{\text{SiO}}/N_{\text{H}_2}$ ) in the range of  $8 \times 10^{-8} \leq X_{\text{SiO}} < 6 \times 10^{-7}$  for shock velocities of  $20\text{--}50 \text{ km s}^{-1}$  and pre-shock densities of  $n_{\text{H}} = 10^4\text{--}10^6 \text{ cm}^{-3}$  (Gusdorf et al. 2008a). The upper edge of the predicted values is at the lower edge of the lower limits on  $X_{\text{SiO}}$  inferred for the jets in the CALYPSO sample ( $X_{\text{SiO}}$  from  $>2.4 \times 10^{-7}$  up to  $>5 \times 10^{-6}$ ). Moreover, the timescale to sputter Si from grains and produce large abundance of SiO ( $>10^{-7}$ ) in C-type shocks is  $>100$  yr, unless the pre-shock density is high ( $n_{\text{H}} = 10^6 \text{ cm}^{-3}$ ). This timescale may be too long to account for the observed SiO abundances in the knots close to the source, which have short dynamical timescales ( $<100$  yr). For example, the SiO abundance in the L1157 jet is  $>10^{-6}$ , which implies that at least 2% of elemental silicon is released in the gas phase in the knot B located at a distance of  $\sim 80$  au from the driving source (see Tables 4 and 5), indicating that this large abundance is reached in  $\sim 5$  yr if the jet travels at  $\sim 100 \text{ km s}^{-1}$  (Podio et al. 2016). On the other hand, C-type shock models assuming that 5–10% of the silicon is initially locked in the dust mantles in the form of SiO (Gusdorf et al. 2008b), or models including dust shattering and grain vaporization at high density ( $n_{\text{H}} \geq 10^5 \text{ cm}^{-3}$ , Guillet et al. 2011) enhance the release of silicon into the gas phase (up to  $\sim 8\%$ ) and the formation of SiO (up to an abundance of  $4 \times 10^{-7}\text{--}10^{-6}$ ) on a timescale of  $\leq 10$  yr. Dust processing could efficiently produce SiO also in J-type shocks, though requiring higher shock velocities and high magnetization (Guillet et al. 2009). In both C-type and J-type shock models, the fraction of silicon released into the gas phase and converted into SiO depends crucially on the shock velocity and pre-shock density. However, whatever the considered processes and shock parameters (pre-shock density and shock velocity), the lower limits on the SiO abundance inferred for the jets in our sample (from  $>2.4 \times 10^{-7}$  up to  $>5 \times 10^{-6}$ ) are at the upper edge or larger than the values predicted by shocks models ( $10^{-6}$  at most).

Alternatively, if SiO jets are launched within the dust-sublimation radius of silicates, the majority of silicon is released into the gas phase at the base of the jet. However, pioneering models of dust-free stellar winds have shown that the abundance of molecules, such as SiO and CO, can be severely reduced when a far ultra-violet (FUV) field is present for two reasons: (i) in the absence of dust, the FUV field can more easily penetrate the unscreened flow and photodissociate molecules; (ii)  $\text{H}_2$  formation on grains, the starting point of molecule synthesis, is severely reduced (Glassgold et al. 1991). On the other hand, recent models of laminar dust-free disk winds show that if the jet is launched from the disk within the dust-sublimation radius, CO and SiO may be abundant if the mass-loss rate is  $\geq 10^{-6} M_{\odot} \text{ yr}^{-1}$  and the temperature is  $T \gtrsim 800 \text{ K}$  (Tabone et al. 2020). In the optimal case, SiO is the main carrier of elemental Si with SiO/CO ratio as high as 0.1. For lower mass-loss

rates, the abundance of SiO and CO is predicted to drop by several orders of magnitudes. Our observations show that two of the jets that are SiO rich also have high observed mass-loss rates (as derived from CO) (SerpM-SMM4b, L1448-C), in agreement with the predictions by dust-free disk winds. However, even jets with observed mass-loss rates  $<10^{-6} M_{\odot} \text{ yr}^{-1}$  (namely, SerpM-S68Nb, IRAS4B1, SVS13B, L1448-NB, L1157, and SerpM-S68N) show large SiO abundances ( $X_{\text{SiO}}$  from  $>5 \times 10^{-7}$  to  $>5 \times 10^{-6}$ ). This could be due to the presence of a non-vanishing fraction of surviving dust or to the impact of shocks which are expected to increase the SiO abundance by compressing and heating the gas (Tabone et al. 2020). In conclusion, our finding that protostellar jets are SiO rich on a large sample of sources support the pioneering result of Cabrit et al. (2012) who found a SiO abundance which accounts for up to 40% of elemental silicon in the jet from HH 212. In this context, dust-free jets can be a viable scenario to explain SiO-rich jets.

### 5.5. Ejection and accretion properties

The estimated mass-loss rates,  $\dot{M}_{\text{jet}}$ , and jet mechanical luminosities,  $L_{\text{jet}}$ , are key to the understanding of the role of jets in the energy budget of the star-formation process. To date, these parameters have been estimated only for a handful of Class 0 protostellar jets (e.g., Lee 2020, and references therein). In the following, we compare the mass-loss rates estimated for the Class 0 sources in the CALYPSO sample with the  $\dot{M}_{\text{jet}}$  derived for Class II sources and with estimates of the mass accretion rates.

There is increasing observational evidence that accretion and ejection in young stars are episodic (e.g., Audard et al. 2014; Plunkett et al. 2015). However, an empirical correlation of the time-averaged CO outflow force with the quiescent (current) accretion luminosity is observed in Class 0 sources (e.g., Bontemps et al. 1996). Similarly, a correlation between the time-averaged mass-loss rates of atomic jets and the accretion rates has been observed for T Tauri stars (e.g., Hartigan et al. 1995; Ellerbroek et al. 2013). Therefore, even if outbursts dominate the integrated momentum injected in outflows, it appears that the time-averaged results correlates with the quiescent level of accretion. The reason for such a behavior is unclear. Simulations proposed to explain the knotty structure of jets show that even if the mass-loss rate of the jet is constant, the knots can be produced by a small periodical variation of the ejection velocity (e.g., Raga et al. 1990; Lee & Sahai 2004).

Our goal is to use the empirical correlations between ejection and accretion rates as a proxy for investigating potential similarities or differences in the ejection mechanism with source age by making a comparison with similar correlations found for other samples. Figure 7 shows that the two-sided jet mass-loss rates,  $\dot{M}_{\text{jet}}$ , inferred from high-velocity CO emission, range from  $7 \times 10^{-8} M_{\odot} \text{ yr}^{-1}$  up to  $3 \times 10^{-6} M_{\odot} \text{ yr}^{-1}$  for  $L_{\text{int}} \sim 1\text{--}50 L_{\odot}$ . These values are in agreement with those found for a few other molecular jets from Class 0 protostars (e.g., Lee 2020, and references therein) and are larger by up to five orders of magnitude than the  $\dot{M}_{\text{jet}}$  values estimated for atomic jets driven by Class II sources (from  $\sim 10^{-11}$  to a few  $10^{-8} M_{\odot} \text{ yr}^{-1}$ , e.g., Hartigan et al. 1995; Coffey et al. 2008; Podio et al. 2012). This indicates that the ejection rate decreases from a few  $10^{-6}$  to  $10^{-11} M_{\odot} \text{ yr}^{-1}$  as the source evolves from the Class 0 to the Class II stages and accretion proceeds at a slower pace. Observational studies of Class II sources compare the jet mass-loss

rate, inferred from the luminosity of atomic emission lines, with the mass accretion rate, derived from veiling or Hydrogen emission lines (e.g., Hartigan et al. 1995; Muzerolle et al. 1998) and show that the ejection and accretion rates are correlated; in particular,  $\dot{M}_{\text{jet}}/\dot{M}_{\text{acc}}$  varies between 0.01 and 0.3 (Hartigan et al. 1995; Coffey et al. 2008; Cabrit 2007; Ellerbroek et al. 2013). To compare the ejection properties of the Class 0 protostellar jets detected by CALYPSO with those of the Class II atomic jets, we derive the mass accretion rates of the protostars in our sample from their internal luminosity. Assuming that the source internal luminosity is due to the gravitational energy released by the accretion onto the protostar, that is,  $L_{\text{int}} = L_{\text{acc}}$ , the source mass accretion rate ( $\dot{M}_{\text{acc}}$ ) can be estimated as  $\dot{M}_{\text{acc}} = L_{\text{int}} R_{*} / (G M_{*})$ . We assume that the stellar radius is  $R_{*} = 2 R_{\odot}$  (Stahler 1988) and for the protostellar mass we assume a range of values  $M_{*} = 0.05\text{--}0.25 M_{\odot}$  (e.g., Yen et al. 2017). This range of masses encompasses the kinematic estimates obtained for a few Class 0 protostars, including three sources in our sample (L1157, IRAS4A2, L1448-C), from the fit of the rotation curves of their disk (e.g., Choi et al. 2010; Kwon et al. 2015; Lee 2020). The estimated mass accretion rates are highly uncertain because they depend strongly on the protostellar properties which are unknown for most of the sources in our sample, and because accretion may be episodic and characterized by accretion bursts. However, Fig. 7 shows that assuming low protostellar mass,  $M_{*} = 0.05 M_{\odot}$ , the estimated mass-loss rates are 10–50% of the mass accretion rates for two-sided jets, while for the monopolar jet IRAS2A1 and the jets with one “CO-poor” lobe the mass-loss rate is 1–10% of  $\dot{M}_{\text{acc}}$ . The exception is SVS13B, where both jets lobes are “CO-poor”, for which we find  $\dot{M}_{\text{jet}} < 0.01 \dot{M}_{\text{acc}}$ . If we assume that the protostellar mass is  $M_{*} = 0.25 M_{\odot}$ , the inferred  $\dot{M}_{\text{acc}}$  values are lower by a factor of 5. Therefore, for three jets (SerpM-SMM4b, IRAS4A1, and IRAS4A2), we find  $\dot{M}_{\text{jet}} \geq \dot{M}_{\text{acc}}$ , while for the rest of our sample we find  $\dot{M}_{\text{jet}} \sim 0.01\text{--}0.5 \dot{M}_{\text{acc}}$ . Despite the large spread of  $\dot{M}_{\text{jet}}$  values (by about 1 order of magnitude at a given  $L_{\text{int}}$ ) our estimates indicate that the jet mass-loss rates increases with the protostellar internal luminosity between 1 and  $50 L_{\odot}$ , hence, with the mass accretion rate (between  $\sim 1.3 \times 10^{-6} M_{\odot} \text{ yr}^{-1}$  and  $\sim 6 \times 10^{-5} M_{\odot} \text{ yr}^{-1}$ , respectively, for  $M_{*} = 0.05 M_{\odot}$ ). Moreover, the correlation between the mass accretion rate and the mass ejection rate holds from the early protostellar stage probed by our CALYPSO survey ( $10^4$  yr) to evolved T Tauri stars of 1 Myr (e.g., Hartigan et al. 1995).

The total jet power, that is, the sum of the jet mechanical luminosity over the innermost knots along the blue and red lobes (B and R),  $L_{\text{jet}}$ , is 10–50% of the source internal luminosity,  $L_{\text{int}}$ , for most of the jets in our sample (7 out of 12 jets), confirming the results found by Lee (2020) collecting all the recent studies of six Class 0 protostellar jets from the literature. Despite the uncertainties affecting our estimates of  $L_{\text{jet}}$  mainly due to the uncertainty on the estimated CO column density, and on the assumed jet velocity, compression factor, and CO abundance, the correlation between  $L_{\text{jet}}$  and  $L_{\text{int}}$  suggests that the gravitational energy released by accretion onto the protostar could be efficiently extracted and converted into mechanical energy transported by the jet. The exceptions are the jets where one lobe is “CO-poor”, as in the case of SerpM-S68N and Nb, L1448-NB, and in the case of the monopolar jet IRAS2A1, which exhibit lower luminosity jets (i.e.,  $L_{\text{jet}} \geq 0.01\text{--}0.1 L_{\text{int}}$ ). Finally, CO is not detected in both lobes of the SVS13B jet, therefore we infer an upper limit on its mechanical luminosity,  $L_{\text{jet}} < 0.02 L_{\odot}$ , i.e.  $<0.01 L_{\text{int}}$ . This value is much lower than what is derived for all

the other jets in the sample, which could be explained by, for instance, an abnormally low CO abundance in this jet.

## 6. Conclusions

In this paper, we present a statistical survey of the occurrence and properties of jets and outflows in a sample of 21 Class 0 protostars mainly located in Perseus, Taurus, and Serpens. Our analysis is based on IRAM-PdBI observations of CO (2–1), SO (5<sub>6</sub>–4<sub>5</sub>), and SiO (5–4) taken in the context of the CALYPSO Large Program. The main results of our analysis may be summarized as follows:

- The observed tracers show the following differentiation: SiO (5–4) probes the collimated jet; CO (2–1) traces wide angle outflows at low velocity and the collimated jet at high velocities, where it is co-spatial with SiO; SO (5<sub>6</sub>–4<sub>5</sub>) is associated to the jet similarly to SiO in 52% of the sources (e.g., IRAS4A1, IRAS4A2, L1448-C, SerpS-MM18a, IRAS2A1). In 25% of the sources (L1527, GF9-2, L1157, L1448-2A, SerpS-MM18b), the SO emission probes a compact circumstellar region with a small velocity gradient perpendicular to the jet and outflow axis ( $|V - V_{\text{sys}}| < 3 \text{ km s}^{-1}$ ). This suggests that in these sources either SO traces the inner envelope or the disk, or the accretion shock at the interface between them, as in the case of L1527 (Sakai et al. 2014b; Maret et al. 2020).
- Collimated high-velocity jets traced by SiO (5–4) are detected in 67% of the sources and 79% of these also show jet emission in SO (5<sub>6</sub>–4<sub>5</sub>). The detection rate of jets increases with  $L_{\text{int}}$ , which is a probe of the mass accretion rate onto the protostar. This confirms the expected correlation between the mass accretion and the mass ejection rate (which, in turn, is proportional to the brightness of the emission lines). Hence, the non-detection of jet emission associated with the less-accreting sources could be an observational bias and deeper observations could demonstrate that jets are ubiquitous in our sample. We detect for the first time high-velocity collimated SiO and SO jets in IRAS4B1, L1448-NB, and SerpS-MM18a, and in two protostellar candidates (IRAS4B2, and SerpS-MM18b, with the latter only in CO), supporting their identification as Class 0 protostars.
- Slow outflow emission in CO (2–1) is detected in 100% of the 21 Class 0 protostars suggesting that ejection phenomena are ubiquitous at the protostellar stage. We report for the first time the detection of a CO outflow for SerpS-MM22 and SerpS-MM18b.
- The median radial velocity of the detected SiO protostellar jets is  $30 \text{ km s}^{-1}$ , that is, about two times smaller than the median radial velocity of atomic jets driven by Class II sources (Nisini et al. 2018). Assuming that the velocity of the jet scales with the Keplerian velocity at the launching point, the increase of the jet velocity with age is consistent with a jet launched from the same region of the disk around a central object of increasing mass. Moreover, at least 33% of the detected SiO bipolar jets show a velocity asymmetry between the two lobes by a factor of 1.3 – 2.1, with the exception of SerpM-S68Nb, which shows a larger difference (by a factor of 7.8). The occurrence and degree of velocity asymmetries inferred for the protostellar jets in the CALYPSO sample are in agreement with what was found for optical atomic jets from T Tauri stars (Hirth et al. 1994). The similarity in knot spacings and velocity asymmetries between Class 0 and Class II jets suggests that

the jet launching mechanism in protostars of  $10^4 \text{ yr}$  might be similar to that in Class II sources ( $10^6 \text{ yr}$ ).

- We find that 50% of the 12 SiO jets detected in our sample show non-straight jets and this might indicate precession or wiggling.
- The observed protostellar flows have an onion-like structure: SiO (5–4) emission (the “jet probe”) is more collimated than SO (5<sub>6</sub>–4<sub>5</sub>) emission, which in turn is narrower than CO (2–1) (the “outflow probe”), with median opening angles of  $10^\circ$ ,  $15^\circ$ , and  $25^\circ$ , respectively. However, high-velocity CO emission is as collimated as SiO. This indicates that low-velocity CO probes entrained material in the outflow, while high-velocity CO traces the collimated jet. At scales larger than 300 au, most of the high-velocity SiO jets are broader ( $\sim 4^\circ$ – $12^\circ$  collimation) than Class I and Class II atomic jets ( $\sim 3^\circ$  collimation). This could be due to projection effects as well as to contamination by the bow-shock wings at the low temperature probed by SiO.
- We find that SiO (5–4) is optically thick in 26% of the inner jet knots, and possibly thick in another 56%. At least 67% (8/12) of the jets are SiO rich ( $X_{\text{SiO}}$  goes from  $>2.4 \times 10^{-7}$  to  $>5 \times 10^{-6}$ ), which requires that  $>1$ – $10\%$  of silicon is released in the gas phase, confirming the pioneering result by Cabrit et al. (2012) for the HH 212 jet. This is difficult to explain in a scenario where dusty material launched from outside the dust sublimation radius is processed in shocks, especially in the inner knots which have short dynamical timescales ( $\leq 10 \text{ yr}$ ) (see, e.g., shock models by GUSDORF et al. 2008a,b). On the other hand, formation of SiO in dust-free jets can be a viable scenario to explain SiO-rich jets for mass-loss rates  $\geq 10^{-6} M_\odot \text{ yr}^{-1}$ .
- The mass-loss rates of the detected Class 0 molecular jets,  $\dot{M}_{\text{jet}}$ , as derived from high-velocity CO emission, range from  $7 \times 10^{-8} M_\odot \text{ yr}^{-1}$  up to values of  $\sim 3 \times 10^{-6} M_\odot \text{ yr}^{-1}$  for internal luminosities of the driving protostars of  $\sim 1$ – $50 L_\odot$ . These  $\dot{M}_{\text{jet}}$  values are larger by up to five orders of magnitude than those measured for atomic jets driven by Class II sources (from  $\sim 10^{-11}$  to a few  $10^{-8} M_\odot \text{ yr}^{-1}$ , Hartigan et al. 1995; Coffey et al. 2008; Podio et al. 2012). Moreover, despite the uncertainties affecting the estimates of the mass accretion rates for Class 0 protostars, due to the unknown protostellar mass and radius, we find that  $\dot{M}_{\text{jet}} \sim 0.1$ – $0.5 \dot{M}_{\text{acc}}$  for most of the jets, with the exception of the “CO-poor” and monopolar jets for which  $\dot{M}_{\text{jet}} \sim 0.01$ – $0.1 \dot{M}_{\text{acc}}$ . These  $\dot{M}_{\text{jet}}/\dot{M}_{\text{acc}}$  ratios are similar to those found for atomic Class II jets ( $\dot{M}_{\text{jet}} \sim 0.01$ – $0.3 \dot{M}_{\text{acc}}$ , Hartigan et al. 1995; Cabrit 2007; Coffey et al. 2008; Podio et al. 2012) and indicate that the correlation between ejection and accretion holds over the whole star-formation process, from protostellar objects of  $10^4 \text{ yr}$  to pre-main sequence stars of 1 Myr.
- The total jet power ( $L_{\text{jet}} = 1/2 \times \dot{M}_{\text{jet}} \times V_{\text{jet}}^2$ ) is 10–50% of the source internal luminosity for  $\sim 60\%$  of the jets in the sample. This indicates that the gravitational energy released by accretion onto the protostar could be efficiently extracted and converted into mechanical energy in the jet. For “CO-poor” and monopolar jets the jet power is lower ( $\geq 1$ – $10\%$  of the internal luminosity, with the exception of SVS13B, for which  $L_{\text{jet}} < 1\% L_{\text{int}}$ ).

*Acknowledgements.* We thank the IRAM staff for their support in carrying out the CALYPSO observations and the INSU “Action Spécifique ALMA” for their financial support to the CALYPSO collaboration. We are grateful to the anonymous referee for their instructive comments and suggestions. This work was also

supported by the PRIN-INAF 2016 “The Cradle of Life – GENESIS-SKA (General Conditions in Early Planetary Systems for the rise of life with SKA)”, and the European MARIE SK?ODOWSKA-CURIE ACTIONS under the European Union’s Horizon 2020 research and innovation program, for the Project “Astro-Chemistry Origins” (ACO), Grant No 811312. L.P. acknowledges the European Union FP7, GA No. 267251. B.T. acknowledges support from the research program Dutch Astrochemistry Network II with project number 614.001.751, which is (partly) financed by the Dutch Research Council (NWO).

## References

- Agra-Amboage, V., Dougados, C., Cabrit, S., & Reunanen, J. 2011, *A&A*, **532**, A59
- André, P., Motte, F., & Bacmann, A. 1999, *ApJ*, **513**, L57
- André, P., Ward-Thompson, D., & Barsony, M. 2000, *Protostars and Planets IV* (Tucson, AZ: University of Arizona Press), 59
- André, P., Men’shchikov, A., Bontemps, S., et al. 2010, *A&A*, **518**, L102
- Anglada, G., Rodríguez, L. F., & Torrelles, J. M. 2000, *ApJ*, **542**, L123
- Aso, Y., Hirano, N., Aikawa, Y., et al. 2018, *ApJ*, **863**, 19
- Aso, Y., Hirano, N., Aikawa, Y., et al. 2019, *ApJ*, **887**, 209
- Audard, M., Ábrahám, P., Dunham, M. M., et al. 2014, *Protostars and Planets VI*, eds. H. Beuther, R. S. Klessen, C. P. Dullemond, & T. Henning (Tucson, AZ: University of Arizona Press), 387
- Bacciotti, F., Mundt, R., Ray, T. P., et al. 2000, *ApJ*, **537**, L49
- Bachiller, R., Cernicharo, J., Martín-Pintado, J., Tafalla, M., & Lazareff, B. 1990, *A&A*, **231**, 174
- Bachiller, R., André, P., & Cabrit, S. 1991, *A&A*, **241**, L43
- Bachiller, R., Guilloteau, S., Dutrey, A., Planesas, P., & Martín-Pintado, J. 1995, *A&A*, **299**, 857
- Bachiller, R., Codella, C., Colomer, F., Liechti, S., & Walmsley, C. M. 1998a, *A&A*, **335**, 266
- Bachiller, R., Guilloteau, S., Gueth, F., et al. 1998b, *A&A*, **339**, L49
- Bachiller, R., Pérez Gutiérrez, M., Kumar, M. S. N., & Tafalla, M. 2001, *A&A*, **372**, 899
- Balança, C., Dayou, F., Faure, A., Wiesenfeld, L., & Feautrier, N. 2018, *MNRAS*, **479**, 2692
- Barsony, M., Ward-Thompson, D., André, P., & O’Linger, J. 1998, *ApJ*, **509**, 733
- Belloche, A., André, P., Despois, D., & Blinder, S. 2002, *A&A*, **393**, 927
- Belloche, A., Maury, A. J., Maret, S., et al. 2020, *A&A*, **635**, A198
- Bjerkeli, P., Ramsey, J. P., Harsono, D., et al. 2019, *A&A*, **631**, A64
- Blake, G. A., Sandell, G., van Dishoeck, E. F., et al. 1995, *ApJ*, **441**, 689
- Bontemps, S., André, P., Terebey, S., & Cabrit, S. 1996, *A&A*, **311**, 858
- Bottinelli, S., Ceccarelli, C., Williams, J. P., & Lefloch, B. 2007, *A&A*, **463**, 601
- Bourke, T. L., Myers, P. C., Evans, Neal J., I., et al. 2006, *ApJ*, **649**, L37
- Cabrit, S. 2007, *IAU Symp.*, **243**, 203
- Cabrit, S., Codella, C., Gueth, F., et al. 2007, *A&A*, **468**, L29
- Cabrit, S., Codella, C., Gueth, F., & Gusdorf, A. 2012, *A&A*, **548**, L2
- Casali, M. M., Eiroa, C., & Duncan, W. D. 1993, *A&A*, **275**, 195
- Choi, M. 2001, *ApJ*, **553**, 219
- Choi, M. 2005, *ApJ*, **630**, 976
- Choi, M., Hodapp, K. W., Hayashi, M., et al. 2006, *ApJ*, **646**, 1050
- Choi, M., Tatematsu, K., & Kang, M. 2010, *ApJ*, **723**, L34
- Claussen, M. J., Marvel, K. B., Wootten, A., & Wilking, B. A. 1998, *ApJ*, **507**, L79
- Codella, C., Welsler, R., Henkel, C., Benson, P. J., & Myers, P. C. 1997, *A&A*, **324**, 203
- Codella, C., Cabrit, S., Gueth, F., et al. 2007, *A&A*, **462**, L53
- Codella, C., Lefloch, B., Ceccarelli, C., et al. 2010, *A&A*, **518**, L112
- Codella, C., Cabrit, S., Gueth, F., et al. 2014a, *A&A*, **568**, L5
- Codella, C., Maury, A. J., Gueth, F., et al. 2014b, *A&A*, **563**, L3
- Coffey, D., Bacciotti, F., & Podio, L. 2008, *ApJ*, **689**, 1112
- Curiel, S., Raymond, J. C., Rodríguez, L. F., Canto, J., & Moran, J. M. 1990, *ApJ*, **365**, L85
- De Simone, M., Codella, C., Testi, L., et al. 2017, *A&A*, **599**, A121
- Desmurs, J. F., Codella, C., Santiago-García, J., Tafalla, M., & Bachiller, R. 2009, *A&A*, **498**, 753
- Dionatos, O., Nisini, B., Codella, C., & Giannini, T. 2010, *A&A*, **523**, A29
- Dougados, C., Cabrit, S., Lavalley, C., & Ménard, F. 2000, *A&A*, **357**, L61
- Dunham, M. M., Evans, Neal J., I., Bourke, T. L., et al. 2006, *ApJ*, **651**, 945
- Dunham, M. M., Crapsi, A., Evans, Neal J., I., et al. 2008, *ApJS*, **179**, 249
- Ellerbroek, L. E., Podio, L., Kaper, L., et al. 2013, *A&A*, **551**, A5
- Ferreira, J., Dougados, C., & Cabrit, S. 2006, *A&A*, **453**, 785
- Frank, A., Ray, T. P., Cabrit, S., et al. 2014, *Protostars and Planets VI*, eds. H. Beuther, R. S. Klessen, C. P. Dullemond, & T. Henning (Tucson, AZ: University of Arizona Press), 451
- Furuya, R. S., Kitamura, Y., Wootten, A., Claussen, M. J., & Kawabe, R. 2003, *ApJS*, **144**, 71
- Furuya, R. S., Kitamura, Y., & Shinnaga, H. 2019, *ApJ*, **871**, 137
- Gibb, A. G., Richer, J. S., Chandler, C. J., & Davis, C. J. 2004, *ApJ*, **603**, 198
- Girart, J. M., & Acord, J. M. P. 2001, *ApJ*, **552**, L63
- Glassgold, A. E., Mamon, G. A., & Huggins, P. J. 1991, *ApJ*, **373**, 254
- Gueth, F., Guilloteau, S., & Bachiller, R. 1996, *A&A*, **307**, 891
- Gueth, F., Guilloteau, S., & Bachiller, R. 1998, *A&A*, **333**, 287
- Guillet, V., Jones, A. P., & Pineau Des Forêts, G. 2009, *A&A*, **497**, 145
- Guillet, V., Pineau Des Forêts, G., & Jones, A. P. 2011, *A&A*, **527**, A123
- Guilloteau, S., Bachiller, R., Fuente, A., & Lucas, R. 1992, *A&A*, **265**, L49
- Gusdorf, A., Cabrit, S., Flower, D. R., & Pineau Des Forêts, G. 2008a, *A&A*, **482**, 809
- Gusdorf, A., Pineau Des Forêts, G., Cabrit, S., & Flower, D. R. 2008b, *A&A*, **490**, 695
- Gutermuth, R. A., Bourke, T. L., Allen, L. E., et al. 2008, *ApJ*, **673**, L151
- Hartigan, P., Morse, J. A., & Raymond, J. 1994, *ApJ*, **436**, 125
- Hartigan, P., Edwards, S., & Ghandour, L. 1995, *ApJ*, **452**, 736
- Hartigan, P., Edwards, S., & Pierson, R. 2004, *ApJ*, **609**, 261
- Hirano, N., Liu, S.-Y., Shang, H., et al. 2006, *ApJ*, **636**, L141
- Hirano, N., Ho, P. T. P., Liu, S.-Y., et al. 2010, *ApJ*, **717**, 58
- Hirth, G. A., Mundt, R., Solf, J., & Ray, T. P. 1994, *ApJ*, **427**, L99
- Hirth, G. A., Mundt, R., & Solf, J. 1997, *A&AS*, **126**, 437
- Hodapp, K.-W., & Ladd, E. F. 1995, *ApJ*, **453**, 715
- Hogerheijde, M. R., van Dishoeck, E. F., Blake, G. A., & van Langevelde, H. J. 1998, *ApJ*, **502**, 315
- Holweber, H. 2001, *AIP Conf. Ser.*, **598**, 23
- Hull, C. L. H., Plambeck, R. L., Kwon, W., et al. 2014, *ApJS*, **213**, 13
- Jhan, K.-S., & Lee, C.-F. 2016, *ApJ*, **816**, 32
- Jørgensen, J. K., Hogerheijde, M. R., Blake, G. A., et al. 2004a, *A&A*, **415**, 1021
- Jørgensen, J. K., Hogerheijde, M. R., van Dishoeck, E. F., Blake, G. A., & Schöier, F. L. 2004b, *A&A*, **413**, 993
- Jørgensen, J. K., Harvey, P. M., Evans, Neal J., I., et al. 2006, *ApJ*, **645**, 1246
- Jørgensen, J. K., Bourke, T. L., Myers, P. C., et al. 2007, *ApJ*, **659**, 479
- Knee, L. B. G., & Sandell, G. 2000, *A&A*, **361**, 671
- Koumpia, E., van der Tak, F. F. S., Kwon, W., et al. 2016, *A&A*, **595**, A51
- Kwon, W., Fernández-López, M., Stephens, I. W., & Looney, L. W. 2015, *ApJ*, **814**, 43
- Kwon, W., Stephens, I. W., Tobin, J. J., et al. 2019, *ApJ*, **879**, 25
- Lada, C. J. 1985, *ARA&A*, **23**, 267
- Lee, C.-F. 2020, *A&ARv*, **28**, 1
- Lee, C.-F., & Sahai, R. 2004, *ApJ*, **606**, 483
- Lee, C.-F., Mundy, L. G., Stone, J. M., & Ostriker, E. C. 2002, *ApJ*, **576**, 294
- Lee, C.-F., Ho, P. T. P., & White, S. M. 2005, *ApJ*, **619**, 948
- Lee, C.-F., Ho, P. T. P., Hirano, N., et al. 2007a, *ApJ*, **659**, 499
- Lee, C.-F., Ho, P. T. P., Palau, A., et al. 2007b, *ApJ*, **670**, 1188
- Lee, C.-F., Hirano, N., Palau, A., et al. 2009, *ApJ*, **699**, 1584
- Lee, C.-F., Hirano, N., Zhang, Q., et al. 2015a, *ApJ*, **805**, 186
- Lee, K. I., Dunham, M. M., Myers, P. C., et al. 2015b, *ApJ*, **814**, 114
- Lee, K. I., Dunham, M. M., Myers, P. C., et al. 2016, *ApJ*, **820**, L2
- Lee, C.-F., Ho, P. T. P., Li, Z.-Y., et al. 2017, *Nat. Astron.*, **1**, 0152
- Lee, C.-F., Li, Z.-Y., Codella, C., et al. 2018, *ApJ*, **856**, 14
- Lefèvre, C., Cabrit, S., Maury, A. J., et al. 2017, *A&A*, **604**, L1
- Lefloch, B., Castets, A., Cernicharo, J., & Loinard, L. 1998, *ApJ*, **504**, L109
- Lefloch, B., Bachiller, R., Ceccarelli, C., et al. 2018, *MNRAS*, **477**, 4792
- Lique, F., Dubernet, M. L., Spielteufel, A., & Feautrier, N. 2006, *A&A*, **450**, 399
- Looney, L. W., Mundy, L. G., & Welch, W. J. 2000, *ApJ*, **529**, 477
- Maret, S., Bergin, E. A., Neufeld, D. A., et al. 2009, *ApJ*, **698**, 1244
- Maret, S., Belloche, A., Maury, A. J., et al. 2014, *A&A*, **563**, L1
- Maret, S., Maury, A. J., Belloche, A., et al. 2020, *A&A*, **635**, A15
- Marvel, K. B., Wilking, B. A., Claussen, M. J., & Wootten, A. 2008, *ApJ*, **685**, 285
- Maurri, L., Bacciotti, F., Podio, L., et al. 2014, *A&A*, **565**, A110
- Maury, A. J., André, P., Hennebelle, P., et al. 2010, *A&A*, **512**, A40
- Maury, A. J., André, P., Men’shchikov, A., Könyves, V., & Bontemps, S. 2011, *A&A*, **535**, A77
- Maury, A. J., Belloche, A., André, P., et al. 2014, *A&A*, **563**, L2
- Maury, A. J., André, P., Testi, L., et al. 2019, *A&A*, **621**, A76
- McMullin, J. P., Mundy, L. G., Wilking, B. A., Hezel, T., & Blake, G. A. 1994, *ApJ*, **424**, 222
- Melnikov, S. Y., Eisloffel, J., Bacciotti, F., Woitas, J., & Ray, T. P. 2009, *A&A*, **506**, 763
- Mizuno, A., Onishi, T., Hayashi, M., et al. 1994, *Nature*, **368**, 719
- Müller, H. S. P., Thorwirth, S., Roth, D. A., & Winnewisser, G. 2001, *A&A*, **370**, L49
- Muzerolle, J., Hartmann, L., & Calvet, N. 1998, *AJ*, **116**, 2965
- Nisini, B., Antonucci, S., Alcalá, J. M., et al. 2018, *A&A*, **609**, A87
- Ohashi, N., Saigo, K., Aso, Y., et al. 2014, *ApJ*, **796**, 131
- O’Linger, J., Wolf-Chase, G., Barsony, M., & Ward-Thompson, D. 1999, *ApJ*, **515**, 696

- Onishi, T., Mizuno, A., & Fukui, Y. 1999, *PASJ*, 51, 257
- Ortiz-León, G. N., Dzib, S. A., Kounkel, M. A., et al. 2017, *ApJ*, 834, 143
- Ortiz-León, G. N., Loinard, L., Dzib, S. A., et al. 2018a, *ApJ*, 865, 73
- Ortiz-León, G. N., Loinard, L., Dzib, S. A., et al. 2018b, *ApJ*, 869, L33
- Panoglou, D., Cabrit, S., Pineau Des Forêts, G., et al. 2012, *A&A*, 538, A2
- Persson, M. V., Jørgensen, J. K., & van Dishoeck, E. F. 2012, *A&A*, 541, A39
- Plunkett, A. L., Arce, H. G., Corder, S. A., et al. 2013, *ApJ*, 774, 22
- Plunkett, A. L., Arce, H. G., Mardones, D., et al. 2015, *Nature*, 527, 70
- Podio, L., Eisloffel, J., Melnikov, S., Hodapp, K. W., & Bacciotti, F. 2011, *A&A*, 527, A13
- Podio, L., Kamp, I., Flower, D., et al. 2012, *A&A*, 545, A44
- Podio, L., Codella, C., Gueth, F., et al. 2015, *A&A*, 581, A85
- Podio, L., Codella, C., Gueth, F., et al. 2016, *A&A*, 593, L4
- Pudritz, R. E., Ouyed, R., Fendt, C., & Brandenburg, A. 2007, *Protostars and Planets V*, eds. B. Reipurth, D. Jewitt, & K. Keil (Tucson, AZ: University of Arizona Press), 277
- Raga, A. C., Canto, J., Binette, L., & Calvet, N. 1990, *ApJ*, 364, 601
- Reipurth, B., Yu, K. C., Heathcote, S., Bally, J., & Rodríguez, L. F. 2000, *AJ*, 120, 1449
- Sadavoy, S. I., Di Francesco, J., André, P., et al. 2014, *ApJ*, 787, L18
- Sakai, N., Sakai, T., & Yamamoto, S. 2006, *PASJ*, 58, L15
- Sakai, N., Oya, Y., Sakai, T., et al. 2014a, *ApJ*, 791, L38
- Sakai, N., Sakai, T., Hirota, T., et al. 2014b, *Nature*, 507, 78
- Santangelo, G., Murillo, N. M., Nisini, B., et al. 2015, *A&A*, 581, A91
- Schilke, P., Walmsley, C. M., Pineau des Forêts, G., & Flower, D. R. 1997, *A&A*, 321, 293
- Segura-Cox, D. M., Harris, R. J., Tobin, J. J., et al. 2016, *ApJ*, 817, L14
- Shang, H., Li, Z. Y., & Hirano, N. 2007, *Protostars and Planets V*, eds. B. Reipurth, D. Jewitt, & K. Keil (Tucson, AZ: University of Arizona Press), 261
- Spezzano, S., Codella, C., Podio, L., et al. 2020, *A&A*, 640, A74
- Stahler, S. W. 1988, *ApJ*, 332, 804
- Stephens, I. W., Dunham, M. M., Myers, P. C., et al. 2017, *ApJ*, 846, 16
- Tabone, B., Cabrit, S., Bianchi, E., et al. 2017, *A&A*, 607, L6
- Tabone, B., Godard, B., Pineau des Forêts, G., Cabrit, S., & van Dishoeck, E. F. 2020, *A&A* 636, A60
- Tafalla, M., Bachiller, R., Lefloch, B., et al. 2015, *A&A*, 573, L2
- Takahashi, S., Ohashi, N., & Bourke, T. L. 2013, *ApJ*, 774, 20
- Taquet, V., Codella, C., de Simone, M., et al. 2020, *A&A*, 637, A63
- Tobin, J. J., Looney, L. W., Mundy, L. G., Kwon, W., & Hamidouche, M. 2007, *ApJ*, 659, 1404
- Tobin, J. J., Hartmann, L., Chiang, H.-F., et al. 2012, *Nature*, 492, 83
- Tobin, J. J., Dunham, M. M., Looney, L. W., et al. 2015, *ApJ*, 798, 61
- Tobin, J. J., Looney, L. W., Li, Z.-Y., et al. 2016, *ApJ*, 818, 73
- Tobin, J. J., Looney, L. W., Li, Z.-Y., et al. 2018, *ApJ*, 867, 43
- Tokuda, K., Onishi, T., Saigo, K., et al. 2014, *ApJ*, 789, L4
- Tokuda, K., Onishi, T., Matsumoto, T., et al. 2016, *ApJ*, 826, 26
- Tychoniec, L., Hull, C. L. H., Kristensen, L. E., et al. 2019, *A&A*, 632, A101
- van der Tak, F. F. S., Black, J. H., Schöier, F. L., Jansen, D. J., & van Dishoeck, E. F. 2007, *A&A*, 468, 627
- Wakelam, V., Ceccarelli, C., Castets, A., et al. 2005, *A&A*, 437, 149
- Whittet, D. C. B., Goldsmith, P. F., & Pineda, J. L. 2010, *ApJ*, 720, 259
- Wiesemeyer, H., Guesten, R., Wink, J. E., & Yorke, H. W. 1997, *A&A*, 320, 287
- Wiesemeyer, H., Cox, P., Gusten, R., & Zylka, R. 1999, *ESA SP*, 427, 533
- Williams, J. P., & Myers, P. C. 2000, *ApJ*, 537, 891
- Woitas, J., Ray, T. P., Bacciotti, F., Davis, C. J., & Eisloffel, J. 2002, *ApJ*, 580, 336
- Yang, B., Stancil, P. C., Balakrishnan, N., & Forrey, R. C. 2010, *ApJ*, 718, 1062
- Yen, H.-W., Koch, P. M., Takakuwa, S., et al. 2017, *ApJ*, 834, 178
- Yıldız, U. A., Kristensen, L. E., van Dishoeck, E. F., et al. 2012, *A&A*, 542, A86
- Yoshida, T., Hsieh, T.-H., Hirano, N., & Aso, Y. 2021, *ApJ*, 906, 112
- Yvart, W., Cabrit, S., Pineau des Forêts, G., & Ferreira, J. 2016, *A&A*, 585, A74
- Zucker, C., Speagle, J. S., Schlafly, E. F., et al. 2019, *ApJ*, 879, 125