



<b>Publication Year</b>	2019
<b>Acceptance in OA</b>	2021-02-15T12:56:41Z
<b>Title</b>	Radio observations of the merging galaxy cluster Abell 520
<b>Authors</b>	Hoang, D. N., Shimwell, T. W., van Weeren, R. J., BRUNETTI, Gianfranco, Röttgering, H. J. A., Andrade-Santos, F., BOTTEON, Andrea, Brügger, M., CASSANO, Rossella, Drabent, A., De Gasperin, F., Hoeft, M., Intema, H. T., Rafferty, D. A., Shweta, A., Stroe, A.
<b>Publisher's version (DOI)</b>	10.1051/0004-6361/201833900
<b>Handle</b>	<a href="http://hdl.handle.net/20.500.12386/30395">http://hdl.handle.net/20.500.12386/30395</a>
<b>Journal</b>	ASTRONOMY & ASTROPHYSICS
<b>Volume</b>	622

## Radio observations of the merging galaxy cluster Abell 520

D. N. Hoang<sup>1</sup>, T. W. Shimwell<sup>2,1</sup>, R. J. van Weeren<sup>1</sup>, G. Brunetti<sup>3</sup>, H. J. A. Röttgering<sup>1</sup>, F. Andrade-Santos<sup>4</sup>, A. Botteon<sup>3,5</sup>, M. Brüggen<sup>6</sup>, R. Cassano<sup>3</sup>, A. Drabent<sup>7</sup>, F. de Gasperin<sup>6</sup>, M. Hoeft<sup>7</sup>, H. T. Intema<sup>1</sup>, D. A. Rafferty<sup>6</sup>, A. Shweta<sup>8</sup>, and A. Stroe<sup>9</sup>

<sup>1</sup> Leiden Observatory, Leiden University, PO Box 9513, NL-2300 RA Leiden, The Netherlands  
e-mail: [hoang@strw.leidenuniv.nl](mailto:hoang@strw.leidenuniv.nl)

<sup>2</sup> Netherlands Institute for Radio Astronomy (ASTRON), PO Box 2, 7990 AA Dwingeloo, The Netherlands

<sup>3</sup> INAF-Istituto di Radioastronomia, via P. Gobetti 101, 40129 Bologna, Italy

<sup>4</sup> Harvard-Smithsonian for Astrophysics, 60 Garden Street, Cambridge, MA 02138, USA

<sup>5</sup> Dipartimento di Fisica e Astronomia, Università di Bologna, via P. Gobetti 93/2, 40129 Bologna, Italy

<sup>6</sup> Hamburger Sternwarte, University of Hamburg, Gojenbergsweg 112, 21029 Hamburg, Germany

<sup>7</sup> Thüringer Landessternwarte, Sternwarte 5, 07778 Tautenburg, Germany

<sup>8</sup> Indian Institute of Science Education and Research (IISER), Pune, India

<sup>9</sup> European Southern Observatory, Karl-Schwarzschild-Str. 2, 85748 Garching, Germany

Received 18 July 2018 / Accepted 10 September 2018

### ABSTRACT

**Context.** Extended synchrotron radio sources are often observed in merging galaxy clusters. Studies of the extended emission help us to understand the mechanisms in which the radio emitting particles gain their relativistic energies.

**Aims.** We examine the possible acceleration mechanisms of the relativistic particles that are responsible for the extended radio emission in the merging galaxy cluster Abell 520.

**Methods.** We performed new 145 MHz observations with the LOw Frequency ARay (LOFAR) and combined these with archival Giant Metrewave Radio Telescope (GMRT) 323 MHz and Very Large Array (VLA) 1.5 GHz data to study the morphological and spectral properties of extended cluster emission. The observational properties are discussed in the framework of particle acceleration models associated with cluster merger turbulence and shocks.

**Results.** In Abell 520, we confirm the presence of extended ( $760 \times 950 \text{ kpc}^2$ ) synchrotron radio emission that has been classified as a radio halo. The comparison between the radio and X-ray brightness suggests that the halo might originate in a cocoon rather than from the central X-ray bright regions of the cluster. The halo spectrum is roughly uniform on the scale of 66 kpc. There is a hint of spectral steepening from the SW edge towards the cluster centre. Assuming diffusive shock acceleration (DSA), the radio data are suggestive of a shock Mach number of  $M_{\text{SW}} = 2.6^{+0.3}_{-0.2}$  that is consistent with the X-ray derived estimates. This is in agreement with the scenario in which relativistic electrons in the SW radio edge gain their energies at the shock front via acceleration of either thermal or fossil electrons. We do not detect extended radio emission ahead of the SW shock that is predicted if the emission is the result of adiabatic compression. An X-ray surface brightness discontinuity is detected towards the NE region that may be a counter shock of Mach number  $M_{\text{NE}}^{\text{X}} = 1.52 \pm 0.05$ . This is lower than the value predicted from the radio emission which, assuming DSA, is consistent with  $M_{\text{NE}} = 2.1 \pm 0.2$ .

**Conclusions.** Our observations indicate that the radio emission in the SW of Abell 520 is likely effected by the prominent X-ray detected shock in which radio emitting particles are (re-)accelerated through the Fermi-I mechanism. The NE X-ray discontinuity that is approximately collocated with an edge in the radio emission hints at the presence of a counter shock.

**Key words.** acceleration of particles – galaxies: clusters: individual: Abell 520 – galaxies: clusters: intracluster medium – large-scale structure of Universe

### 1. Introduction

Non-thermal components, i.e. relativistic particles and magnetic fields, in the intra-cluster medium (ICM) are important tracers of the formation and evolution of large-scale structures. The origin of these components and the role they play in the physical processes in the ICM during cluster mergers are still being investigated. There is evidence that extended synchrotron emission, namely haloes and relics, can be generated during the mergers of sub-clusters and groups during which a part of the gravitational energy goes into particle acceleration and amplification of large-scale magnetic fields (for reviews see [Brüggen et al. 2011](#); [Ferretti et al. 2012](#); [Brunetti & Jones 2014](#)).

Radio haloes are megaparsec-scale, faint synchrotron sources that are approximately co-spatial with the thermal emission

from the ICM. At moderate observing resolutions, these haloes are measured to be unpolarised down to a few percent at  $\sim$ GHz frequencies. The mechanism of particle acceleration is powered by turbulence that is introduced during a merging event (e.g. [Brunetti et al. 2001](#); [Petrosian 2001](#); [Fujita et al. 2003](#); [Cassano & Brunetti 2005](#); [Brunetti & Lazarian 2007, 2016](#); [Pinzke et al. 2017](#)). Hadronic cosmic ray (CR) proton-proton collisions in the ICM may also contribute to the observed radiation as they produce secondary relativistic electrons (e.g. [Dennison 1980](#); [Blasi & Colafrancesco 1999](#); [Dolag & Ensslin 2000](#); [Miniati et al. 2001](#); [Pfrommer & Enßlin 2004](#); [Pfrommer 2008](#); [Keshet & Loeb 2010](#); [Enßlin et al. 2011](#)). However, current limits from the *Fermi*-LAT severely challenge a scenario of pure hadronic models for radio haloes

(e.g. Jeltema & Profumo 2011; Brunetti et al. 2012; Zandanel et al. 2014; Ackermann & Ajello 2010; Ackermann et al. 2016), thereby leaving open the possibility of hadronic models in which secondary particles are re-accelerated by turbulence Brunetti & Lazarian (2011), Brunetti et al. (2017), Pinzke et al. (2017).

Radio relics are faint, elongated synchrotron sources in the peripheral regions of galaxy clusters. These relics can have projected sizes up to  $\sim$  megaparsecs and are often measured to have a high degree of polarisation of up to 70 percent. Relics are thought to form from merger or accretion shocks that accelerate particles to relativistic energies via, for example the Fermi-I diffusive shock acceleration (DSA; e.g. Enßlin et al. 1998; Roettiger et al. 1999; Enßlin & Gopal-Krishna 2001; Pfrommer 2008). However, the merger shocks with Mach number of  $\mathcal{M} \lesssim 5$  might be insufficient to generate the observed brightness and spectra of relics in a number of clusters (e.g. Stroe et al. 2013; van Weeren et al. 2013, 2016a, 2017; Bonafede et al. 2014, Akamatsu et al. 2015; Shimwell et al. 2015; Vazza et al. 2015; Botteon et al. 2016a; Hoang et al. 2017, 2018). To overcome this problem, a pre-existing population of fossil electrons that is re-accelerated at shock is required to be present prior to the shock passage (e.g. Markevitch et al. 2005; Kang & Ryu 2011; Kang et al. 2012).

Studies of the processes occurring at cluster shock fronts are best carried out using systems for which accurate observational constraints can be derived. The best observations require relatively strong shocks ( $\mathcal{M} \lesssim 3$ ), which are usually found in the peripheral regions of galaxy clusters where the electron density is very low ( $\lesssim 10^{-4} \text{ cm}^{-3}$ ). However, in these regions the low gas density can make it challenging to observe temperature and surface brightness (SB) discontinuities with the current generation of X-ray telescopes (Markevitch & Vikhlinin 2007; Botteon et al. 2018). Additionally, to best study the shocks it is preferable to minimise the mixing of different populations of electrons along the line of sight and large spherical shocks are preferred, since for these shocks the de-projection is more accurate. As merger induced shocks in clusters are rare because the systems must be caught within a limited stage of the overall merging event, there are only a handful of known strong shocks ( $\mathcal{M}_X \sim 2 - 3$ ) that meet these conditions, namely those in Abell 520 (Markevitch et al. 2005), Abell 2146 Russell et al. (2011, 2012), Abell 665 (Dasadia et al. 2016), Abell 115 (e.g. Botteon et al. 2016a), and El Gordo (Botteon et al. 2016b).

## 2. Galaxy cluster Abell 520

The Train Wreck Cluster Abell 520 (hereafter A520;  $z = 0.201$ ) is a highly disturbed merging galaxy cluster with a merger axis  $\sim 60^\circ$  to the plane of the sky (e.g. Proust et al. 2000; Mahdavi et al. 2007; Girardi et al. 2008; Markevitch et al. 2005; Govoni et al. 2001b; Jee et al. 2012; Vacca et al. 2014). The total mass for A520 is estimated to be  $M = 7.8 \times 10^{14} M_\odot$  in Planck Collaboration XXVII (2016). Previous studies at radio wavelengths have revealed  $\sim$ Mpc-scale, faint ( $\sim \mu\text{Jy arcsec}^{-2}$  at 1.4 GHz) emission associated with the ICM, which has been classified as a radio halo (e.g. Giovannini et al. 1999; Govoni et al. 2001b; Vacca et al. 2014). The spectral energy distribution was found to be patchy with a mean value of  $-1.25^1$  and a dispersion of 0.22 according to observations at a resolution of  $39''$  (Vacca et al. 2014). In the SW region, the level of radio emission rapidly drops at the location of a prominent  $\mathcal{M}_X = 2.1_{-0.3}^{+0.4}$  bow shock, where the shock strength was derived from SB and

temperature jumps from *Chandra* X-ray data (Markevitch et al. 2005; Wang et al. 2016, 2018). In addition there may be another shock towards the NE of the cluster (Wang et al. 2016) but the radio emission in this region has not been carefully examined. Edges of radio haloes, such as that in the SW of A520, at the locations of shocks have been observed in several other clusters (Markevitch 2010; Brown & Rudnick 2011; Macario et al. 2011; Shimwell et al. 2016; van Weeren et al. 2016a). However, a few of these situations, including in Abell 520, are puzzling since the expected properties of a radio relic, such as spectral transversal steepening gradients, have not been detected (Vacca et al. 2014).

In this paper, our main aim is to examine the low-frequency emission from the cluster and to use these measurements to better constrain the spectral energy distribution of the diffuse synchrotron emission. This allows us to search for a spectral index structure associated with the shock in the SW. In addition we can also examine the structure of the radio emission in the NE at the location of the possible shock front identified by Wang et al. (2016). To achieve this aim, we observed the cluster with the LOw Frequency ARray (LOFAR; van Haarlem et al. 2013) using high band antennas (HBA; 120–168 MHz) and combined these data with existing Giant Metrewave Radio Telescope (GMRT) 306–339 MHz and Very Large Array (VLA) 1–2 GHz data. We also make use of archival *Chandra* X-ray data.

In this study, we assume  $H_0 = 70 \text{ km s}^{-1} \text{ Mpc}^{-1}$ ,  $\Omega_M = 0.3$  and  $\Omega_\Lambda = 0.7$ . In this cosmology, an angular distance of 1 arcmin corresponds to a physical scale of 198.78 kpc at the cluster redshift of  $z = 0.201$ .

## 3. Observations and data reduction

### 3.1. LOFAR 145 MHz

The LOFAR 145 MHz observations of A520 were performed for a total of 7.3 h divided equally between 17–25 April 2017 (project: LC7\_025). The calibrator 3C 147 was observed for 10 minutes. A summary of the observations is given in Table 1.

The calibration of the LOFAR data was carried out using the facet calibration scheme to correct for the direction-independent and direction-dependent effects, which are implemented in the PreFactor<sup>2</sup> and Factor<sup>3</sup> pipelines. The data reduction procedure is described in detail in van Weeren et al. (2016b), Williams et al. (2016), and de Gasperin et al. (2019). In particular, the data were flagged for radio interference frequency (RFI) with Aoflagger (Offringa et al. 2012), were removed the contamination of the bright sources in the distant side lobes (i.e. Cassiopeia A, Taurus A), and were corrected for the initial phase offsets between the XX and YY polarisations. The clock offsets of different stations were also removed. The flux scale of the target data was calibrated according to the Scaife & Heald (2012) flux scale using the primary calibrator 3C 147. In Factor, the data were corrected for direction-dependent distortions that are mainly caused by ionospheric effects and errors in the beam model. After this pipeline processing, the final calibrated data from the different observations were combined for imaging (see details in Sect. 3.4).

### 3.2. GMRT 323 MHz

A520 was observed with the GMRT 323 MHz on 31 October 2014 and 21 August 2015 for a total of 17.2 h (project: 27\_070;

<sup>2</sup> <https://github.com/lofar-astron/prefactor>

<sup>3</sup> <https://github.com/lofar-astron/factor>

<sup>1</sup> The convention  $S \propto \nu^\alpha$  is used in this paper.

**Table 1.** Radio observations of A520.

Telescope	LOFAR 145 MHz	GMRT 323 MHz	VLA 1.5 GHz
Project	LC7_25	27_070	AF349, AC706, AC776
Observation IDs	L584441, L589773	7394, 8007	–
Configuration	–	–	C, D
Calibrator	3C 147	3C 147	3C 48, 3C 147, 3C 138, 3C 286
Observation dates	Apr. 17 and 25, 2017	Oct. 31, 2014; Aug. 21, 2015	1998 Dec. 8; 1999 Mar. 19 2004 Aug. 30; 2005 Aug. 30
Total on-source time (h)	7.3	17.2	15.1
Correlations	Full Stokes	RR, LL	Full Stokes
Bandwidth (MHz)	48	33	150
Channel width (MHz)	0.0122	0.1302	50
Time resolution (s)	1	16	10
Number of (used) stations	62	28	24–27

PI: A. Shweta and R. Athreya). The calibrator 3C 147 was observed before and after the target. The observation details are summarised in Table 1.

The calibration of the GMRT data was carried out in SPAM (Source Peeling and Atmospheric Modelling; Intema et al. 2009). In this procedure the absolute flux scale was calibrated using 3C 147 and a source model consistent with the Scaife & Heald (2012) flux density scale. The data were flagged for RFI, and the gain and bandpass were calibrated. The direction-dependent calibration was performed with multiple self-calibration loops to correct for the ionospheric phase delay towards the direction of the target. The final calibrated data were used to make continuum images of A520 (see Sect. 3.4 for details).

### 3.3. VLA 1.5 GHz

We combined multiple archival *L*-band data sets centred on A520. These data were observed in C and D configurations. The data were originally presented in Govoni et al. (2001b; project: AF349) and Vacca et al. (2014; project: AC776 and AC706). Details of the observations are summarised in Table 1.

The VLA data are separately calibrated in CASA using the flux calibrator 3C 48 for project AF349, 3C 147 for project AC776, 3C 147, 3C 138, and 3C 286 for project AC706. The phase calibrator is 0459 + 024 for project AF349 and 0503 + 020 for projects AC706 and AC776. The amplitude is calibrated according to the Perley & Butler (2013) flux scale, which has an uncertainty of a few percent for these calibrators. After the initial calibration, the data are self-calibrated with phase-only calibration steps before phase-amplitude calibration steps. The calibrated data from all observations are combined in the  $(u, v)$ -plane and used to make continuum images of A520 (see Sect. 3.4).

### 3.4. Continuum imaging and spectrum mapping

To map the diffuse emission from A520, the LOFAR, GMRT, and VLA calibrated data sets were deconvolved with the MS-MFS (multi-scale and multi-frequency synthesis) CLEAN algorithm in CASA (McMullin et al. 2007; Cornwell 2008; Rau & Cornwell 2011). The MS-MFS option was used to properly model frequency-dependent emission and more accurately deconvolve extended objects. A wide-field algorithm (W-projection; Cornwell et al. 2005; Cornwell 2008) was also used to account for the baseline non-coplanarity over the sky. The diffuse emission at different spatial scales was enhanced using Briggs (1995)

weighting schemes with multiple robust values (see Table 2). The primary beam correction for LOFAR was performed by dividing the image by the square root of the .avgpb map generated by AWimager (Tasse et al. 2013). Whereas, the GMRT images were divided by a primary beam approximated by<sup>4</sup>

$$A(x) = 1 - \frac{3.397}{10^3}x^2 + \frac{47.192}{10^7}x^4 - \frac{30.931}{10^{10}}x^6 + \frac{7.803}{10^{13}}x^8, \quad (1)$$

where  $x = f \times \theta$  with  $f = 0.323$  GHz and angular distance  $\theta$  from the pointing centre in arcminutes. The VLA images were primary beam corrected using the built-in pbcor option of the CASA CLEAN task.

Spectral index maps of A520 were made with the LOFAR, GMRT, and VLA Stokes I images that were made using similar imaging parameters (i.e. *uv*-range, MS-MFS, W-projection options, Briggs' robust weighting; see Table 2). Additionally, we used an outertaper to adjust the weightings of long baselines to obtain a spatial resolution of  $\sim 20''$  for each of the maps. The LOFAR, GMRT, and LOFAR Stokes I images were then smoothed with 2D Gaussians to a common resolution of exactly  $20''$ . These images were also corrected for any astrometric misalignments between the images. To do this, we fit 2D Gaussians to compact sources in the images. The central positions of the Gaussians were considered as approximate locations of the sources. The misalignments between the images was taken to be the mean of the offsets between the locations of the compact sources. The images were then regridded to be identical in size. To calculate the spectral index map, only the  $\geq 3\sigma$  pixels that were detected in at least two images were used. These were fit with a power-law function of the form  $S \propto \nu^\alpha$ . The spectral index errors were calculated taking into account the image noise and a flux scale uncertainty of 15% for LOFAR, 10% for GMRT, and 5% for VLA.

We note that to ideally recover the same spatial scales at each frequency the *uv*-coverage of each data set should be matched. Generally, this matching is approximated by imaging the data sets with a uniform weighting scheme and with a common *uv*-coverage in each data set, but this can result in a significantly increased noise level. Therefore, to maintain a sufficient S/N detection of A520 we have instead imaged the data with equal *uv*-range and a combination of a robust parameter and taper to ensure that the images produced are of approximately equal resolution.

<sup>4</sup> GMRT User's manual.

**Table 2.** Image properties.

Telescope	$uv$ -range ( $k\lambda$ )	robust <sup>a</sup>	Outertaper ( $''$ )	Resolution ( $''^2$ , p.a.)	$\sigma$ ( $\mu\text{Jy beam}^{-1}$ )	Fig.
LOFAR	$\geq 0.100$	0.0	15	$31.3 \times 20.4$ ( $47.7^\circ$ )	460	1
	0.114–16.220	0.0	5	$20 \times 20^b$	450	3 <sup>c</sup>
GMRT	$\geq 0.100$	0.0	15	$18.3 \times 15.5$ ( $60.8^\circ$ )	100	1
	0.114–16.220	0.0	16	$20 \times 20^b$	130	3 <sup>c</sup>
VLA	0.114–16.220	0.0	5	$19.5 \times 18.7$ ( $-43.1^\circ$ )	26	1, 3 <sup>c</sup>

**Notes.** <sup>(a)</sup>Briggs weighting of  $uv$  data; <sup>(b)</sup>smoothed; <sup>(c)</sup>spectral index map.

### 3.5. Chandra

Archival *Chandra* data in the energy band of 0.5–2.0 keV were fully calibrated and are published as part of an X-ray sample study in [Andrade-Santos et al. \(2017\)](#) from which we acquired the calibrated data. The observation IDs of the archival data used are 528, 4215, 7703, 9424, 9425, 9426, and 9430, resulting in a total observing duration of 528 ks.

## 4. Results

In Figs. 1 and 2, we present the continuum images of A520 obtained with the LOFAR 145 MHz, GMRT 323 MHz, and VLA 1.5 GHz observations. The image properties are summarised in Table 2. The radio images show the detection of diffuse emission associated with the ICM as well as multiple radio galaxies. To study the spectral properties of the extended radio sources, we combine the LOFAR, GMRT, and VLA data to make the spectral index map in Fig. 3.

### 4.1. Radio halo

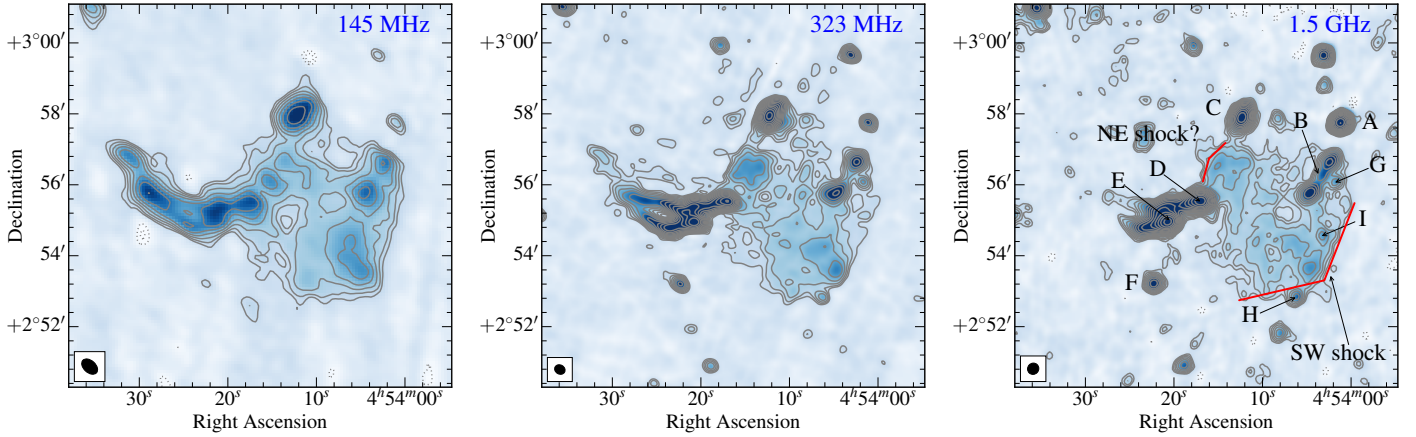
Similar to previous observations, the new LOFAR 145 MHz and GMRT 323 MHz images (Figs. 1 and 2) show the presence of a giant radio halo ( $760 \times 950 \text{ kpc}^2$ ) with an overall morphology that approximately traces the X-ray emission of A520 (e.g. [Giovannini et al. 1999](#); [Govoni et al. 2001b](#); [Vacca et al. 2014](#)). We used the LOFAR, GMRT, and VLA  $20''$  maps that are made with identical imaging parameters (i.e.  $uv$ -range 0.114–16.220  $k\lambda$ , Briggs' robust weighting 0.0) to measure the integrated flux for the halo emission. The measurement is done within an elliptical region (i.e. the blue thick ellipse in Fig. 3) with regions contaminated by the emission from the radio galaxies B, D, E, H, G, and I masked out. The elliptical region was chosen to roughly follow the  $3\sigma$  contour of the LOFAR detected emission. Since the SB of the halo is approximately uniform within the  $\lesssim 450 \text{ kpc}$ -radius central region (see Fig. 1, also Fig. 6 in [Vacca et al. 2014](#)), we assume that the SB in the masked regions can be extrapolated from the unmasked regions. The integrated flux of the halo is then calculated as the integrated flux measured in the unmasked region multiplied by a factor to account for the area of the masked regions (see Fig. 3). The total error quoted for the integrated flux measurements is the quadratic sum of the uncertainty in the flux scale and image noise. The integrated fluxes of the halo at 145 MHz, 323 MHz, and 1.5 GHz are  $229.7 \pm 34.8 \text{ mJy}$ ,  $90.5 \pm 9.2 \text{ mJy}$ , and  $18.8 \pm 1.0 \text{ mJy}$ , respectively. For comparison with the [Wang et al. \(2018\)](#) measurement, which uses the same VLA data, we repeat the calculation for the flux within a region encompassing the  $1\sigma$  contour. The halo flux within this region is  $20.6 \pm 1.1 \text{ mJy}$  and is consistent with the value of  $20.2 \pm 1.5 \text{ mJy}$  that was measured in a radio galaxy

subtracted image presented in [Wang et al. \(2018\)](#). Another flux measurement for the extended emission at 1.4 GHz in [Cassano et al. \(2013\)](#) is  $19.4 \pm 1.4 \text{ mJy}$ , which is in agreement with our estimate. [Vacca et al. \(2014\)](#) obtain a lower value of  $16.7 \pm 0.6 \text{ mJy}$  for the halo flux, but they did not extrapolate their measurements to estimate the contribution from masked regions, which might explain the difference.

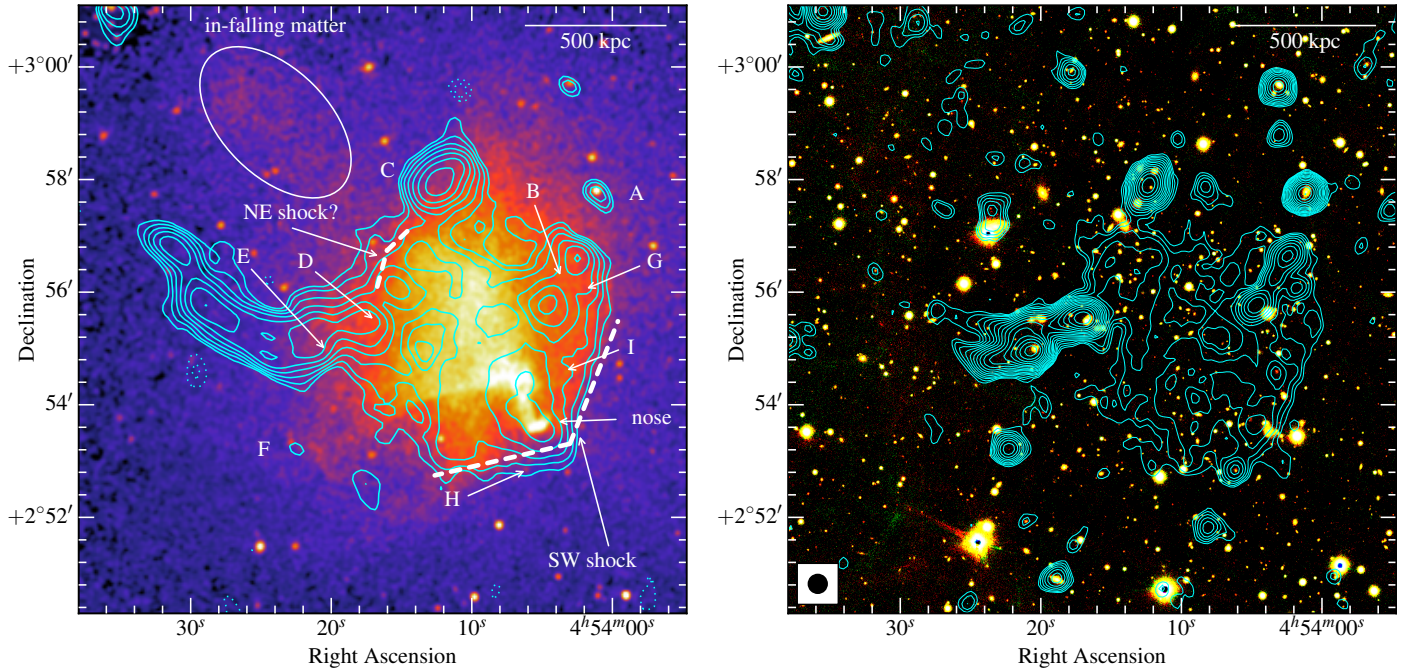
To estimate the spectral index of the halo, we fit the integrated fluxes with a single power-law function,  $S \propto \nu^\alpha$ , which describes the synchrotron emission mechanism. As plotted in Fig. 4, the integrated spectrum of the halo follows the power-law relation with an index of  $\alpha_{145 \text{ MHz}}^{1.5 \text{ GHz}} = -1.04 \pm 0.05$ . Our measurement of the integrated spectral index is in line with the estimate of  $\alpha_{325 \text{ MHz}}^{1.4 \text{ GHz}} = -1.12 \pm 0.05$  in [Vacca et al. \(2014\)](#). In the central region of the halo, the integrated spectral index is estimated to be  $\alpha_{145 \text{ MHz}}^{1.5 \text{ GHz}} = -1.03 \pm 0.06$ . Examining the spatial distribution of the halo spectrum, we find that the spectral index over the inner region of the halo (i.e. black thin ellipse in Fig. 3) remains approximately constant around a mean of  $-1.01$  with a scatter of 0.12. A similar situation is found in the larger region (i.e.  $\bar{\alpha} = -1.03$  in the blue thick ellipse in Fig. 3). However, Fig. 3 also indicates that there are small changes of the spectral indices in the NE and SW region on scales larger than the beam size. These estimates of the spectral index, based on the distribution of the spectral indices, are also consistent with the integrated spectral index values above.

### 4.2. Southwest region of the radio halo

The radio continuum images in Fig. 1 show excess emission in the SW region of the radio halo, which is consistent with previous observations in for example [Giovannini et al. \(1999\)](#), [Govoni et al. \(2001b\)](#), and [Vacca et al. \(2014\)](#). The SW radio emission roughly follows the bullet-like shock front detected with the X-ray observations ([Markevitch et al. 2005](#)). The radio emission increases sharply across the SW shock front from west to east. Assuming that the upper limit for the radio emission in the pre-shock region is  $1\sigma$  of the background noise, the increase in the radio SB is  $\sim 4$ ,  $\sim 5$ , and  $\sim 8$  times at 145 MHz, 323 MHz, and 1.5 GHz, respectively. In Fig. 5, we plot the regions where the SB and spectral indices are extracted to examine the spatial distribution of the radio emission and spectral energy distribution. The profiles in Fig. 6 show that the radio emission in the region behind the SW shock continues to increase, most significantly at low frequencies, before gradually decreasing in the region  $\sim 230 \text{ kpc}$  away from the SW radio edge. The spectrum index in the SW radio edge is flattest at the  $3\sigma$  SW edge with  $-0.84 \pm 0.11$  and steepens to  $-1.13 \pm 0.07$  at  $\sim 165 \text{ kpc}$  towards the cluster centre from the SW  $3\sigma$  contour. This spectral trend can also be seen in the spectral index map (Fig. 3). Our spectral index



**Fig. 1.** Radio continuum images of A520. The contours are from  $\pm 3\sigma$  and are spaced by  $\sqrt{2}$ . The image noise is  $\sigma = 460, 100,$  and  $26 \mu\text{Jy beam}^{-1}$  for the LOFAR, GMRT, and VLA images, respectively. The sources are labelled in the VLA image, partly adapting the notation in Vacca et al. (2014). The synthesised beams are shown in the bottom left corners.



**Fig. 2.** *Chandra* 0.5–2.0 keV (left panel) and PanSTARRS colour (right panel) images of A520. The LOFAR (left) and GMRT (right) contours are identical to those in Fig. 1.

measurement between 145 MHz and 1.5 GHz at the SW radio edge is flatter than the previous estimate of  $\alpha_{323\text{MHz}}^{1.4\text{GHz}} = -1.25$ , which was derived from lower (39'') resolution data in Vacca et al. (2014).

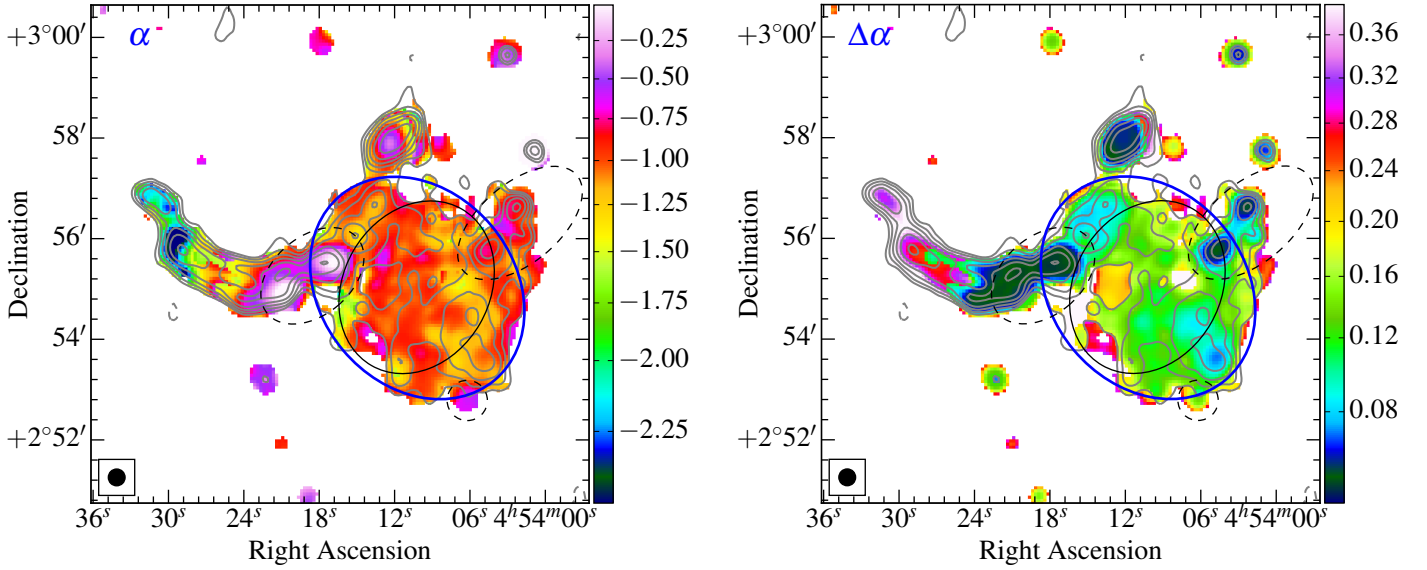
#### 4.3. Northeast region of the radio halo

Towards the NE direction, the radio emission of the halo gradually increases before sharply decreasing at the NE edge (Fig. 1). An enhancement in the extended radio emission (i.e. projected size of  $\sim 65$  kpc in radius) is detected at  $\sim 3\sigma$  at 1.5 GHz, but is slightly less visible at the lower frequencies of 145 MHz and 323 MHz. At the NE edge there is a hint that the spectral index seems to steepen in the NE-SW direction, but the steepening trend of the spectral index is still uncertain owing to the large errors in the spectral measurement (see the spectral index profile in Fig. 6, bottom panel).

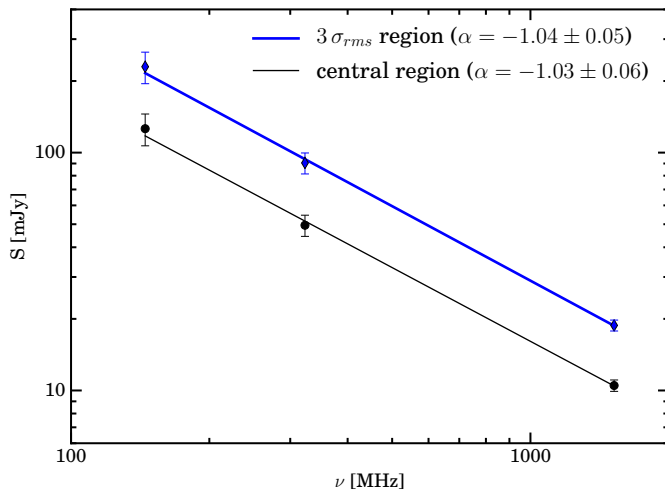
A number of merging clusters generate double shocks that propagate on diametrically opposite sides of the cluster centre (e.g. Russell et al. 2011; Dasadia et al. 2016; Urdampilleta et al. 2018). In A520, a shock ( $\mathcal{M}_X = 2.1$ ; Markevitch et al. 2005) is detected in the SW region of the cluster and Wang et al. (2016) discussed a possibility of a counter shock in the NE side of the cluster. To further search for a possible counter shock, we fit the X-ray SB emission with a broken power-law function<sup>5</sup>, assuming that the X-ray emission is spherically symmetric about a point at the cluster centre. The fitted function is consistent with underlying broken power-law particle density profile,

$$n(r) = \begin{cases} C n_0 \left(\frac{r}{r_{\text{break}}}\right)^{-a_d} & \text{if } r \leq r_{\text{break}} \\ n_0 \left(\frac{r}{r_{\text{break}}}\right)^{-a_u} & \text{if } r > r_{\text{break}} \end{cases}, \quad (2)$$

<sup>5</sup> Using PyXel, available on <https://github.com/gogrean/PyXel>

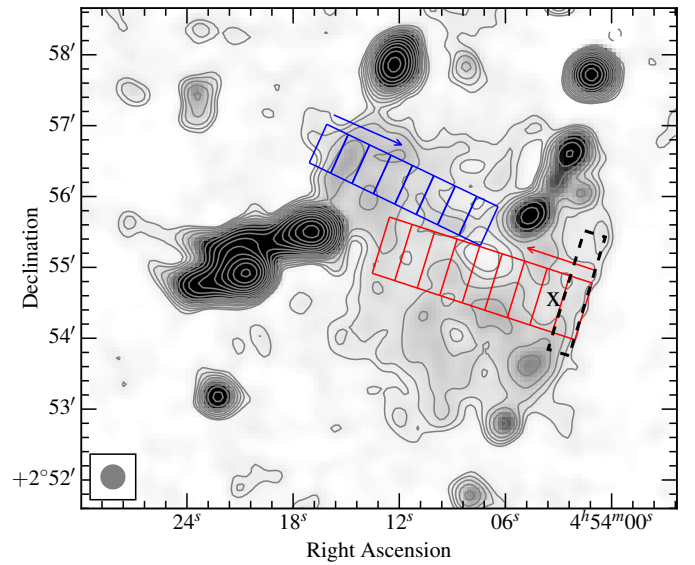


**Fig. 3.** Spectral index from 145 MHz to 1.5 GHz (*left panel*) and error (*right panel*) maps of A520. In the both panels, the blue thick ellipse roughly follows the  $3\sigma$  contour of the halo emission. The black thin ellipse shows the inner region of the halo. The black dashed regions are masked. The LOFAR contours begin with  $3\sigma$ , where  $\sigma = 450 \mu\text{Jy beam}^{-1}$ , and are spaced with  $\sqrt{2}$ .



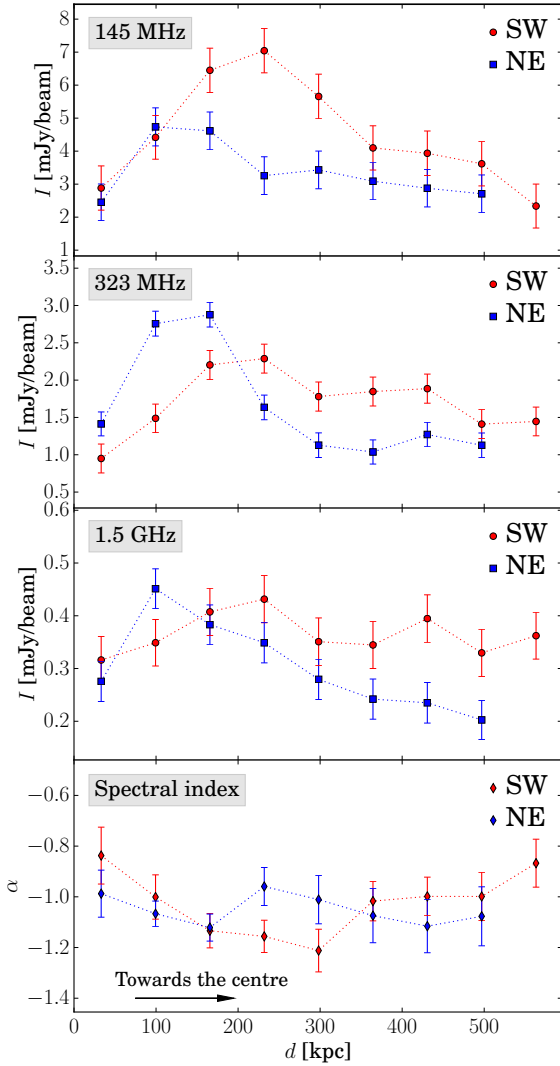
**Fig. 4.** Integrated spectrum between 145 MHz and 1.5 GHz for the radio halo. The integrated fluxes are measured within the  $3\sigma$  contour (blue thick) and central (black thin) regions in Fig. 3.

where  $C = n_d/n_u$  is the shock compression factor or particle density jump (the subscripts  $d$  and  $u$  stand for downstream and upstream regions, respectively);  $r_{\text{break}}$  is the location of the SB discontinuity;  $a$  is the slope of the power-law function; and  $n_0$  is normalisation factor or particle density at the  $r_{\text{break}}$  location of the upstream region. We find the best-fit parameters for the selected sector (see Fig. 7) that has a compression factor of  $C = 1.74 \pm 0.07$ , coincidentally close to the outer edges of the radio emission. The SB jump is located  $428.6^{+1.2}_{-0.9}$  kpc from the sector centre (i.e.  $4^{\text{h}}54^{\text{m}}07.96^{\text{s}}, +2^{\text{d}}55^{\text{m}}29.64^{\text{s}}$ ). The best-fit indices are  $a_d = 0.23 \pm 0.02$  and  $a_u = 1.56 \pm 0.17$ . The normalisation factor is  $n_0 = (20.1 \pm 0.4) \times 10^{-3} \text{ cm}^{-1}$ . The 90 percent uncertainties of the best-fit parameters have been taken into account the uncertainty of 3 percent in the quiescent background as used in Wang et al. (2016). The particle density jump suggests the presence of either a cold front or shock front at the  $r_{\text{break}}$  location.



**Fig. 5.** Rectangular regions in the SW and NE directions where SB and spectral indices are plotted in Fig. 6. The black dashed rectangle is where the spectral index right behind the SW shock is estimated. The X cross indicates the location of a compact source I that is subtracted from the VLA data. The VLA contours are identical to those in Fig. 1 (right).

If the detected discontinuity in the X-ray SB is due to a cold front, the ICM thermal pressure must be balanced in the upstream and downstream regions (or  $T_u/T_d = C$ ). To check this possibility, we estimate temperature on both sides of the density jump location from the *Chandra* data. The selected upstream and downstream regions are shown in Fig. 7. We obtain a temperature of  $T_u = 8.57^{+1.48}_{-1.16}$  keV for the pre-shock region and a slightly higher temperature in the post-shock region  $T_d = 9.49^{+0.90}_{-0.88}$  keV, but this is still within the  $1\sigma$  significance. Wang et al. (2016) estimated a slight decrease in the temperature in the post-shock region (i.e.  $\sim 9$  keV), but the decrease is still within their  $1\sigma$  uncertainty and they use larger regions (i.e. C3 and C4 in their



**Fig. 6.** Surface brightness (*top panels*) and spectral index (*bottom panel*) profiles from outer edges towards cluster centre for the regions in the SW and NE directions in Fig. 5. Towards the cluster centre, the spectral index is steepened for the SW radio emission and remains approximately constant for the NE radio emission.

Fig. 4) than the regions we used in Fig. 7 in this work. It is also noted that the temperature estimate in the NE region might be contaminated by other sources such as the in-falling hot matter (see Fig. 2) or the nearby X-ray emission in the regions of sources C, D, and E (Wang et al. 2016). The temperature value we estimate implies that if the SB jump is due to a cold front then  $C = 0.90 \pm 0.16$ . This is inconsistent with the SB jump of  $C = 1.74 \pm 0.07$  from the broken power-law fitting of the X-ray emission. Therefore, the assumption that the SB jump is because of the presence of a cold front might be unlikely.

In the case in which the discontinuity is caused by a merger shock front, the compression of the ICM plasma is directly related to the shock Mach number by the Rankine-Hugoniot jump relation,

$$\mathcal{M}_x = \sqrt{\frac{2C}{\gamma + 1 - C(\gamma - 1)}}, \quad (3)$$

where  $\gamma = 5/3$  is the adiabatic index of the ICM plasma. Given the compression factor of  $C = 1.74 \pm 0.07$ , we have

$\mathcal{M}_{\text{NE}}^x = 1.52 \pm 0.05$ , which is smaller than the SW shock Mach number ( $\mathcal{M}_{\text{SW}}^x = 2.4^{+0.4}_{-0.2}$ ; Wang et al. 2018), but is still in the range of values that are typically estimated for cluster merger shocks (i.e.  $\mathcal{M}_x \lesssim 3$ ) in the literature (e.g. Russell et al. 2010; Macario et al. 2011; Akamatsu et al. 2015; Botteon et al. 2016a,b; Dasadia et al. 2016). The shock Mach number can also be related to the temperature jump at the shock,

$$\mathcal{M}_x = \sqrt{\frac{[(8T_{\text{du}} - 7) + [(8T_{\text{du}} - 7)^2 + 15]^{1/2}]}{5}}, \quad (4)$$

where  $T_{\text{du}} = \frac{T_{\text{d}}}{T_{\text{u}}}$  (e.g. Landau & Lifshitz 1959; Markevitch & Vikhlinin 2007; Finoguenov et al. 2010; van Weeren et al. 2016a). The Mach number derived from the temperature is  $\mathcal{M}_{\text{NE}}^x = 1.1^{+0.3}_{-0.2}$ , which is slightly smaller than the value we estimate from the SB jump above. As mentioned, the precise temperature value might be biased by the contaminating sources in the NE region, which are not easily removed (e.g. Wang et al. 2016).

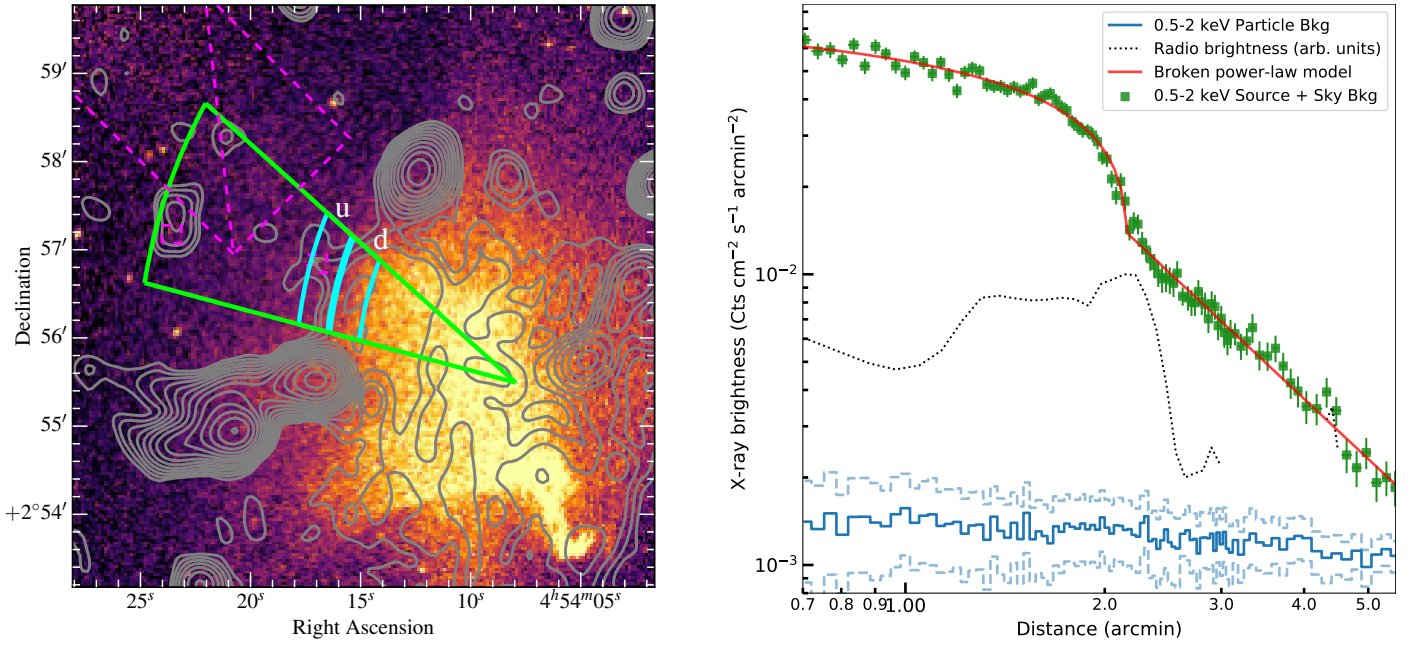
## 5. Discussion

### 5.1. Radio halo

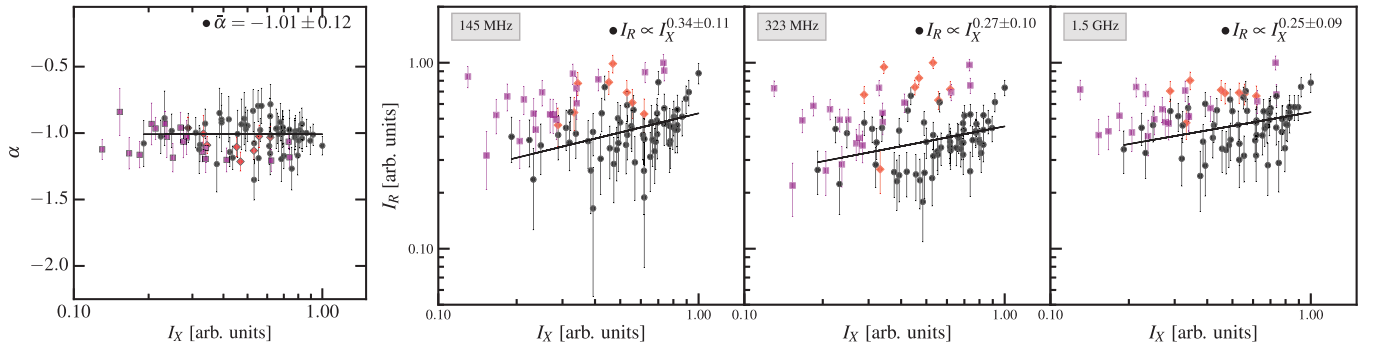
Despite the accurate characterisation of the radio emission in A520, it remains uncertain whether or not the emission can be entirely attributed to a halo or if there is additional radio relic emission (e.g. Govoni et al. 2001b; Vacca et al. 2014). The radio halo coincides with the region swept by the SW shock and by the (possible) NE shock. Shocks are detected coincident with the edges of a number of radio haloes (e.g. Markevitch et al. 2005; Markevitch 2010; Macario et al. 2011; Shimwell et al. 2014), suggesting that they might drive a turbulent region bounded by tangential magnetic fields in which particles are confined and re-accelerated.

Although the overall shape of the halo follows the X-ray emission, the radio brightness of the halo is very flat, especially at 1.5 GHz (Fig. 1). A correlation between radio and X-rays is observed only in the region of the trail/bullet-like structure in the southern region where the radio and X-ray emission appears brighter (Fig. 2). However, in general the radio brightness does not follow the X-ray emission. This is clear in Fig. 8 where we show the point-to-point radio to X-ray brightness using cells of the beam size (i.e.  $20''$  or 66 kpc). Basically only a tentative trend in the form of  $I_R \propto I_X^b$ , where  $b = 0.34 \pm 0.11$ ,  $0.27 \pm 0.10$ , and  $0.25 \pm 0.09$  at 145 MHz, 323 MHz, and 1.5 GHz, respectively, is observed in the central region of the halo. This is similar to a case reported by Shimwell et al. (2014) who found no significant correlation between radio halo and X-ray brightness in the bullet cluster 1E 0657–55.8. However, the relation between the radio and X-ray brightness in A520 is different from a number of cases of regular and roundish radio haloes reported in the literature where a clear correlation, typically slightly sublinear, is found between the radio and X-ray brightness (e.g.  $b \approx 0.64$ –0.99; Govoni et al. 2001a,b; Feretti et al. 2001; Venturi et al. 2013; Rajpurohit et al. 2018). This suggests that the haloes in A520 and the bullet cluster may be at similar evolution states, but their states may be different from those of the haloes in the clusters that follow the scaling relation.

All models that have been proposed for the formation of radio haloes predict a connection between radio and X-ray emission (e.g. see Brunetti & Jones 2014 for review). This is straightforward in hadronic models (including the models where secondary particles are re-accelerated by turbulence) because the



**Fig. 7.** *Left panel:* sector where SB are extracted from the *Chandra* X-ray data. The magenta dashed regions are masked to remove the point sources and the emission from the NE plasma that is falling into the cluster. The blue regions represent where temperature is calculated for upstream and downstream ICM regions. *Right panel:* SB profile towards the NE region and the best-fit radial SB profile (red).



**Fig. 8.** Scatter plots of spectral index and radio SB ( $I_R$ ) as a function of X-ray SB ( $I_X$ ). The regions for extracting data are shown in the overlaid image (*left panel*). The data points are plotted in the same colour as the regions in the overlaid image (i.e. black circles for the central regions, magenta squares for the regions in the SW direction, and red diamonds for the regions in the NE direction). The best-fit parameters are obtained for the central regions.

ICM that produces the X-ray radiation also provides the targets for the inelastic collisions that generate the radio emitting secondary electrons. Also in the case in which primary seed electrons are re-accelerated by turbulence, the energy reservoir to re-accelerate particles is extracted from the turbulent and kinetic energy of the thermal ICM. This should induce some connection between thermal and non-thermal quantities. One possibility to explain the properties of the extended radio emission in A520 is that the radio and X-ray emission are not co-spatial and that the majority of the radio emission is produced in a thick perturbed cocoon that bounds the volume. The halo is swept by the outgoing shocks and embeds the very central dense substructures that appear bright in the X-ray band. This situation may explain the connection between the edges of the halo and shocks and, in fact, it is not surprising given the very particular evolutionary stage of A520. According to Wang et al. (2016), the very peculiar twisted structure that dominates the X-ray emission in A520 traces the gas from a disrupted cool core that is swept away from the central galaxy of its former host sub-cluster by ram pressure

in the downstream region of the SW shock. This gas is observed to form a physically connected trail of dense and cold clumps resembling a leg with a bright foot, knee, and leg along the ridge extending about 300 kpc east from the knee (Wang et al. 2018). The twisted structure suggests that motions in the shocked gas surrounding the trail are turbulent, however the cool gas within the trail itself is probably not turbulent because at this early stage ram pressure stripping prevents the development of instabilities at its boundaries and the mixing of the trail with the hot surrounding medium (Takizawa 2005).

Another important clue to the origin of the radio halo is provided by the spectral index distribution in A520. As already mentioned in Sect. 4.1, the spectral index in the radio halo is fairly constant  $\alpha \approx -1.03$  with a scatter of  $\sim 0.12$  on beam scales (i.e. 20'' or 66 kpc). We performed simulations to examine whether the scatter is due to statistical errors (i.e. from the image noise) or the intrinsic spectral features of the halo. First, we assume that the radio halo has a constant spectral index (i.e.  $\alpha = -1.03$ , meaning no intrinsic scatter). Using the observed

VLA 1.5 GHz map, we generate the halo flux distribution at 145 MHz and 323 MHz. Gaussian noise is then added to the maps at levels that are estimated from the observed LOFAR, GMRT and VLA maps (see Table 2). The spectral index maps derived from the simulated radio maps are used to calculate the anticipated scatter in spectral index. The cells we used have the size of the beam (i.e. 20''; see Fig. 8). We find that the observed spectral index scatter of 0.12 on the scales of the beam size is consistent with the scatter recovered from the simulated spectral index maps (i.e.  $\Delta\alpha_{\text{sim.}} = 0.13 \pm 0.02$ ) where the statistical errors are from the image noise alone. On larger scales, there are hints of possible spectral variations, for example the southern region of the halo (the nose and bullet-like/trail; the magenta squares in Fig. 8) shows a spectral index that is steeper than the SW region of the halo (Fig. 3), still spectral variations are fairly small, in the range 0.1–0.2, if we exclude the regions in the SW direction (i.e. magenta squares). A more detailed investigation on spectral variations in the halo using, for example simulations and a theoretical analysis, is beyond the aim of this paper. However, the projected distribution of spectral indices in the halo can be used to infer basic constraints. For example, using a conservative limit  $\Delta\alpha_{\text{proj.}} < 0.12$  on spatial scales of the beam (i.e. 20'') and assuming that the spectral index in the halo volume can change stochastically around a mean value, the intrinsic scatter is roughly  $\Delta\alpha_{\text{intr.}} \approx \sqrt{N} \times \Delta\alpha_{\text{proj.}}$ , where  $N \approx 10$  is the number of beam cells intercepted along the line of sight, implying  $\Delta\alpha_{\text{intr.}} < 0.38$ . Such a small-moderate scatter of the spectrum in the halo volume is also consistent with the hypothesis that the majority of the radio emission is generated in a smooth extended cocoon rather than from the central regions in which strong X-ray gradients and disrupted cool core are observed.

## 5.2. South-west radio edge

Markevitch et al. (2005) and Wang et al. (2018) discussed whether the radio emission close to the prominent SW shock could be induced by adiabatic compression or Fermi-I processes. The Fermi-I processes generate synchrotron emitting relativistic electrons by accelerating electrons either directly from the thermal pool or re-accelerating mildly relativistic electrons from a seed population of pre-existing fossil plasma. In this section we reassess these possibilities making use of our new measurements.

### 5.2.1. Shock acceleration

In the DSA model, relativistic electrons with the Lorentz factor  $\gamma \gg 10^3$ , which emit radio synchrotron emission in  $\sim\mu\text{G}$  magnetic fields, are (re-)accelerated by a shock. The sources of the relativistic electrons could be either the thermal electrons or a pre-existing population of fossil electrons in the ICM. Unless the fossil electrons have flat spectrum, the spectral index ( $\alpha_{\text{inj}}$ ) of the injected CR electrons is related to the shock Mach number  $\mathcal{M}$  (e.g. Blandford & Eichler 1987),

$$\alpha_{\text{inj}} = \frac{1}{2} - \frac{\mathcal{M}^{2+1}}{\mathcal{M}^{2-1}}. \quad (5)$$

The relativistic electrons injected by the shock have an energy spectrum distribution of  $\frac{dN}{dE} \propto E^{-\delta_{\text{inj}}}$ , where  $\delta_{\text{inj}} = 1 - 2\alpha_{\text{inj}}$ . In cases in which the electron cooling time is much quicker than the lifetime of the shock, the integrated spectral index of the radio emission in the region behind the shock is steeper than the injection index by 0.5 (i.e.  $\alpha_{\text{int}} = \alpha_{\text{inj}} - 0.5$ ; Ginzburg & Sirovatskii 1969).

The electron cooling due to the synchrotron and IC energy losses is one of the key observational links between large-scale shocks and extended radio emission in merging galaxy clusters. Observationally, the cooling results in a characteristic steepening of the spectral index of the radio emission with distance from the shock front (e.g. van Weeren et al. 2010). Despite the SW region of A520 hosting a strong shock, previously radio observations have not detected the spectral steepening in the region behind the shock (Vacca et al. 2014). The lack of detection may be due to sensitivity and resolution limitations.

In Sect. 4.2, we used the 20''-resolution images to show that the spectral index for the radio emission steepens in the region behind the SW shock front. The spectral index immediately behind the shock front is  $\alpha_{145\text{MHz}}^{1.5\text{GHz}} = -0.85 \pm 0.06$ . For a proper comparison with the X-ray study in Wang et al. (2018), we measure in this section the index in the post-shock region where the shock Mach number is highest (i.e. region N1+N2 in Wang et al. 2018; also see the black dashed rectangle in Fig. 5). According to the DSA model, if the relativistic electrons in the SW edge are (re-)accelerated from the thermal pool or steep-spectrum fossil electrons with the injection index of  $-0.85 \pm 0.06$ , the shock should have a Mach number of  $\mathcal{M}_{\text{SW}} = 2.6_{-0.2}^{+0.3}$ . Our estimate of the shock Mach number is in line with the measurements from X-ray data (e.g.  $\mathcal{M}_{\text{SW}}^{\text{X}} = 2.4_{-0.2}^{+0.4}$  in Wang et al. 2018). The agreement between the radio and X-ray derived Mach numbers for the SW shock implies that, in this case, the spectral properties of the radio emission at the SW edge are consistent with the DSA scenario in which the radio emitting relativistic electrons are either accelerated from the thermal pool or re-accelerated from a pre-existing population of fossil plasma.

In the shock-related (re-)acceleration scenario, radio emission is brightest at the shock front and becomes fainter in the downstream region where steeper spectrum emission should be detected (e.g. van Weeren et al. 2010; Rajpurohit et al. 2018). However, the brightest emission in the SW region of A520 is found at a far distance (i.e.  $\sim 220\text{ kpc}$ ) from the SW shock front and is located at the region of the steepest spectrum emission (Fig. 6), which seems to be inconsistent with the shock-related (re-)acceleration. A possibility for this mismatching is that the downstream shock-related emission is mixed with the emission from the halo due to smoothing and/or projection effects. Otherwise, the agreement between the radio and X-ray derived Mach numbers might be a random coincidence. To separate the two scenarios, polarisation observations will be required.

### 5.2.2. Shock compression

Another possible mechanism for the radio emission at the SW edge is the gas compression of fossil electrons by the merger shock as discussed in Markevitch et al. (2005). Since magnetic fields are embedded in the ICM plasma, the adiabatic compression by the shock amplifies the magnetic field strength and increases the energy density of pre-existing relativistic electrons. A requirement for this scenario to happen is that both fossil electrons and magnetic fields must be present and produce synchrotron emission before the shock passage. Given a population of fossil electrons of a power-law energy spectrum,  $dN/d\gamma = N_0\gamma^{-\delta}$ , the synchrotron emissivity per unit volume immediately behind the shock front is proportional to the shock compression factor  $C$ ,

$$I_\nu \propto C^{(2/3)\delta+1}. \quad (6)$$

Under the hypothesis of power-law distribution of the emitting electrons, the predicted relation, Eq. (6), between the radio emission in the pre- and post-shock regions by the compression model provides means for observationally testing of the model. A recent study by Wang et al. (2018) investigated this scenario using the VLA 1.4 GHz data, but no extended emission is detected in the pre-shock region. By modelling the radio emission in the shock regions, Wang et al. (2018) have found that an emissivity jump of a factor of 10 (or 16) is inconsistent with the VLA data at  $3\sigma$  (or  $2\sigma$ ) significance. Given the estimated parameters for the shock (i.e.  $\alpha = -1.25$ ,  $C_{\text{nose}} = 2.7$ ), Wang et al. (2018) found a predicted emissivity jump of 16, meaning that the compression model is rejected at  $2\sigma$  significance. If the CRs lose most of their energy within 130 kpc, the spectral index immediately behind the shock was approximated as  $\alpha = -1.25 + 0.50 = -0.75$ . In this case, the compression model predicts a jump of 9, which increases the statistical significance of rejecting the compression model to  $3\sigma$  (Wang et al. 2018). The spectral index value used in Wang et al. (2018) was estimated from a low-resolution ( $39''$  or 130 kpc) spectral index map by Vacca et al. (2014). This may bias the spectral measurement as high-resolution maps are required to resolve the spatial distribution of the source spectrum.

Our  $20''$  resolution spectral index map in Fig. 3 quantifies the steepening of the spectral index behind the SW shock front (also see the spectral index profile in Fig. 6, bottom). The spectral index between 145 MHz and 1.5 GHz in a  $20''$  wide region behind the SW edge (i.e. the N1+N2 sector in Wang et al. 2018; see Fig. 5) is  $\alpha = -0.85 \pm 0.06$ . With this higher-resolution measurement of the spectral index, we estimate that the emissivity in the pre-shock region should be  $10 \pm 3$  times lower than that in the region immediately behind the shock front, according to the adiabatic compression model (Eq. (6)). This prediction can be ruled out at the  $2\text{--}3\sigma$  confidence levels, based on our new spectral index measurement and the modelling of the radio emission in the shock region in Wang et al. (2018). In the calculation, we have used a power-law spectrum slope of  $\delta = 1 - 2\alpha = 2.64$  and a shock compression factor of  $C(\theta) = C_{\text{nose}} \sqrt{\cos(\theta)}$ , which is the correction for the azimuthal dependence in the measurement of the gas density jump (here  $\theta$  is the angle from the shock nose; Wang et al. 2018). We used  $C_{\text{nose}} = 2.7 \pm 0.3$ , which is the maximum density jump at the location of the shock nose (i.e. region N1 in Wang et al. 2018). The true spectral index at the SW shock front might be even flatter if the relativistic electrons radiate a significant amount of their energies within the  $20''$  resolution region we use here. This would further lower the predicted emissivity jump and increase the significance at which this scenario could be ruled out.

The generation of the relativistic electrons at the SW shock is therefore unlikely to be solely caused by the adiabatic compression of the fossil electrons. However, this does not exclude the scenario in which the adiabatic compression and re-acceleration of fossil electrons by the shock simultaneously occur because the predicted emissivity jump, depending on the spectrum of the pre-existing relativistic electrons, might be considerably higher in this case (Markevitch et al. 2005) and could still be consistent with the constraints obtained by Wang et al. (2018) using the VLA data set.

### 5.3. North-east radio edge

The origin of the excess radio emission in the NE region remains unclear. The detection of the SB X-ray jump coincident with the location of the NE radio edge in Fig. 7 might imply a possible

connection between the thermal and non-thermal processes in the ICM. In Sect. 4.3, we find that the discontinuity in the X-ray SB corresponds to a shock Mach number of  $M_X = 1.52 \pm 0.05$  if a counter merger shock is present. The true value of the Mach number could be higher since the X-ray emission in the region beyond the SB jump location contains emission from the in-falling materials (e.g. Wang et al. 2016), which might lower the apparent X-ray SB jump and the derived Mach number. In the radio bands, the spatial energy distribution of the radio emission in Fig. 6 does not indicate a clear spectral steepening in the inner region from the X-ray SB jump as it has been observed in a number of shock-related relics (e.g. Orrù et al. 2007; Giacintucci et al. 2008; Stroe et al. 2013; Bonafede et al. 2014; van Weeren et al. 2010, 2016a, 2017; Hoang et al. 2018). This might be due to the large errors associated with the spectral index measurements. However, if the NE radio emission is related to a shock, the spectral index of  $-1.08 \pm 0.12$  at the outermost region would imply a shock Mach number of  $M_{\text{NE}} = 2.1 \pm 0.2$ , which is a higher prediction than the value we obtained from the X-ray data (i.e.  $M_X = 1.52 \pm 0.05$ ).

## 6. Conclusions

We present multi-frequency radio continuum images of the merging galaxy cluster A520 using the new LOFAR 145 MHz data and the archival GMRT 323 MHz and VLA 1.5 GHz data. Combining the multi-frequency radio data sets, we study the morphology and spectral energy distribution of the extended radio emission from the ICM. We also re-analyse the existing *Chandra* X-ray data to search for the possible counter shock in the NE region that was pointed out in Wang et al. (2016). The main results are described below.

Firstly, we confirm the presence of the large-scale ( $760 \times 950 \text{ kpc}^2$ ) synchrotron radio emission from the cluster that was detected with the VLA 1.4 GHz observations (e.g. Giovannini et al. 1999; Govoni et al. 2001b; Vacca et al. 2014). The radio emission in the SW region is enhanced behind the X-ray detected shock. The spectral index measured at the SW radio edge is consistent with the DSA model (acceleration or re-acceleration), assuming the shock Mach number measured with the X-ray observations ( $M_X = 2.4^{+0.4}_{-0.2}$ ; Wang et al. 2018). A spectral steepening is also detected from the SW edge towards the cluster centre. The radio emission is brightest at the steep spectrum region behind the shock front, which is unexpected because of the shock (re-)accelerated electrons age in the downstream region. This might suggest a mixing/projection between halo and the downstream emission from shock (re-)accelerated particles.

Secondly, our analysis on the new  $20''$  spectral index map indicates that the extended emission might consist of a radio halo in the centre and, possibly, two other sources in the SW and NE regions. No strong variations of the spectral index of the halo are measured. Furthermore, the radio brightness of the halo is fairly flat and poorly correlated with the X-ray brightness. These facts may suggest that the halo is generated in an extensive turbulent cocoon swept by the outgoing shocks rather than from the very central regions where complex substructures are seen in the X-ray emission.

Thirdly, we do not detect extended radio emission in front of the SW shock with the radio observations at 145 MHz, 323 MHz, and 1.5 GHz. This disagrees with the prediction by the gas adiabatic compression model. Our results are in line with a recent study in Wang et al. (2018).

Finally, we detect an X-ray SB discontinuity in the NE region of the cluster, as was also pointed out in Wang et al. (2016),

which might indicate the presence of a counter merger shock ( $M_{\text{NE}}^X = 1.52 \pm 0.05$ ). In the same region, a small enhancement of radio emission is visible at high frequencies. If the NE radio emission is shock related, we might detect the steepening of the spectral index behind the X-ray discontinuity. However, we are unable to confirm this owing to the large uncertainty in our spectral measurements.

**Acknowledgements.** We thank the anonymous referee for helpful comments. DNH, TS, and HR acknowledge support from the ERC Advanced Investigator programme NewClusters 321271. RJvW acknowledges support from the VIDI research programme with project number 639.042.729, which is financed by the Netherlands Organisation for Scientific Research (NWO). The LOFAR group in Leiden is supported by the ERC Advanced Investigator programme NewClusters 321271. AD acknowledges support by the BMBF Verbundforschung under the grant 05A17STA. FdG is supported by the VENI research programme with project number 639.041.542, which is financed by the Netherlands Organisation for Scientific Research (NWO). This paper is based (in part) on data obtained with the International LOFAR Telescope (ILT) under project code LC7\_025. LOFAR (van Haarlem et al. 2013) is the Low Frequency ARray designed and constructed by ASTRON. It has observing, data processing, and data storage facilities in several countries, which are owned by various parties (each with their own funding sources), and are collectively operated by the ILT foundation under a joint scientific policy. The ILT resources have benefited from the following recent major funding sources: CNRS-INSU, Observatoire de Paris, and Université d'Orléans, France; BMBF, MIWF-NRW, MPG, Germany; Science Foundation Ireland (SFI), Department of Business, Enterprise and Innovation (DBEI), Ireland; NWO, The Netherlands; The Science and Technology Facilities Council, UK; Ministry of Science and Higher Education, Poland. We thank the staff of the GMRT who made these observations possible. The GMRT is run by the National Centre for Radio Astrophysics of the Tata Institute of Fundamental Research. The National Radio Astronomy Observatory is a facility of the National Science Foundation operated under cooperative agreement by Associated Universities, Inc. The scientific results reported in this article are based in part on data obtained from the *Chandra* Data Archive, observations made by the *Chandra* X-ray Observatory and published previously in cited articles. This research has made use of software provided by the *Chandra* X-ray Center (CXC) in the application packages CIAO, ChIPS, and Sherpa.

## References

- Ackermann, M., Ajello, M., Allafort, A., et al. 2010, *ApJ*, **717**, L71  
 Ackermann, M., Ajello, M., Albert, A., et al. 2016, *ApJ*, **819**, L49  
 Akamatsu, H., van Weeren, R. J., O'Gree, G. A., et al. 2015, *A&A*, **582**, A87  
 Andrade-Santos, F., Jones, C., Forman, W. R., et al. 2017, *ApJ*, **843**, 76  
 Blandford, R., & Eichler, D. 1987, *Phys. Rep.*, **154**, 1  
 Blasi, P., & Colafrancesco, S. 1999, *Astropart. Phys.*, **12**, 169  
 Bonafede, A., Intema, H. T., Brügggen, M., et al. 2014, *ApJ*, **785**, 1  
 Botteon, A., Gastaldello, F., Brunetti, G., & Dallacasa, D. 2016a, *MNRAS*, **460**, L84  
 Botteon, A., Gastaldello, F., Brunetti, G., & Kale, R. 2016b, *MNRAS*, **463**, 1534  
 Botteon, A., Gastaldello, F., & Brunetti, G. 2018, *MNRAS*, **476**, 5591  
 Briggs, D. 1995, PhD Thesis, The New Mexico Institute of Mining and Technology, USA  
 Brown, S., & Rudnick, L. 2011, *MNRAS*, **412**, 2  
 Brügggen, M., Bykov, A., Ryu, D., & Rottgering, H. 2011, *Space Sci. Rev.*, **166**, 187  
 Brunetti, G., & Jones, T. W. 2014, *Int. J. Mod. Phys. D*, **23**, 1430007  
 Brunetti, G., & Lazarian, A. 2007, *MNRAS*, **378**, 245  
 Brunetti, G., & Lazarian, A. 2011, *MNRAS*, **410**, 127  
 Brunetti, G., & Lazarian, A. 2016, *MNRAS*, **458**, 2584  
 Brunetti, G., Setti, G., Feretti, L., & Giovannini, G. 2001, *MNRAS*, **320**, 365  
 Brunetti, G., Blasi, P., Reimer, O., et al. 2012, *MNRAS*, **426**, 956  
 Brunetti, G., Zimmer, S., & Zandanel, F. 2017, *MNRAS*, **472**, 1506  
 Cassano, R., & Brunetti, G. 2005, *MNRAS*, **357**, 1313  
 Cassano, R., Etori, S., Brunetti, G., et al. 2013, *ApJ*, **777**, 141  
 Cornwell, T. J. 2008, *IEEE J. Sel. Top. Signal Process.*, **2**, 793  
 Cornwell, T., Golap, K., & Bhatnagar, S. 2005, *ASP Conf. Ser.*, **347**, 86  
 Dasadia, S., Sun, M., Sarazin, C., et al. 2016, *ApJ*, **820**, L20  
 de Gasperin, F., Dijkema, T. J., Drabent, A., et al. 2019, *A&A*, **622**, A5 (LOFAR S1)  
 Dennison, B. 1980, *ApJ*, **239**, L93  
 Dolag, K., & Ensslin, T. A. 2000, *A&A*, **362**, 151  
 Enßlin, T. A., & Gopal-Krishna 2001, *A&A*, **366**, 26  
 Enßlin, T. A., Biermann, P. L. P., Klein, U., et al. 1998, *A&A*, **409**, 395  
 Enßlin, T., Pfrommer, C., Miniati, F., & Subramanian, K. 2011, *A&A*, **527**, A99  
 Feretti, L., Fusco-Femiano, R., Giovannini, G., & Govoni, F. 2001, *A&A*, **373**, 106  
 Feretti, L., Giovannini, G., Govoni, F., & Murgia, M. 2012, *A&ARv*, **20**, 54  
 Finoguenov, A., Sarazin, C. L., Nakazawa, K., Wik, D. R., & Clarke, T. E. 2010, *ApJ*, **715**, 1143  
 Fujita, Y., Takizawa, M., & Sarazin, C. L. 2003, *ApJ*, **584**, 190  
 Giacintucci, S., Venturi, T., Macario, G., et al. 2008, *A&A*, **486**, 347  
 Ginzburg, V., & Syrovatskii, S. 1969, *The Origin of Cosmic Rays* (New York: Gordon and Breach)  
 Giovannini, G., Tordi, M., & Feretti, L. 1999, *New Astron.*, **4**, 141  
 Girardi, M., Barrena, R., Boschin, W., & Ellingson, E. 2008, *A&A*, **395**, 18  
 Govoni, F., Enßlin, T. A., Feretti, L., & Giovannini, G. 2001a, *A&A*, **369**, 441  
 Govoni, F., Feretti, L., Giovannini, G., et al. 2001b, *A&A*, **819**, 803  
 Hoang, D. N., Shimwell, T. W., Stroe, A., et al. 2017, *MNRAS*, **471**, 1107  
 Hoang, D. N., Shimwell, T. W., van Weeren, R. J., et al. 2018, *MNRAS*, **478**, 2218  
 Intema, H. T., van der Tol, S., Cotton, W. D., et al. 2009, *A&A*, **501**, 1185  
 Jee, M. J., Mahdavi, A., Hoekstra, H., et al. 2012, *ApJ*, **747**, 96  
 Jeltema, T. E., & Profumo, S. 2011, *ApJ*, **728**, 53  
 Kang, H., & Ryu, D. 2011, *ApJ*, **734**, 18  
 Kang, H., Ryu, D., & Jones, T. W. 2012, *ApJ*, **756**, 97  
 Keshet, U., & Loeb, A. 2010, *ApJ*, **722**, 737  
 Landau, L., & Lifshitz, E. 1959, *Fluid Mechanics* (London: Pergamon Press)  
 Macario, G., Markevitch, M., Giacintucci, S., et al. 2011, *ApJ*, **728**, 82  
 Mahdavi, A., Hoekstra, H., Babul, A., Balam, D., & Capak, P. 2007, *ApJ*, **668**, 806  
 Markevitch, M. 2010, *Twelfth Marcel Grossmann Meet. Relativ. Gen.*, **14**  
 Markevitch, M., & Vikhlinin, A. 2007, *Phys. Rep.*, **443**, 1  
 Markevitch, M., Govoni, F., Brunetti, G., & Jerius, D. 2005, *ApJ*, **627**, 733  
 McMullin, J., Waters, B., Schiebel, D., Young, W., & Golap, K. 2007, *ASP Conf. Ser.*, **376**, 127  
 Miniati, F., Jones, T. W., Kang, H., & Ryu, D. 2001, *ApJ*, **562**, 233  
 Offringa, A. R., van de Gronde, J. J., & Roerdink, J. B. T. M. 2012, *A&A*, **539**, A95  
 Orrù, E., Murgia, M., Feretti, L., et al. 2007, *A&A*, **467**, 943  
 Perley, R. A., & Butler, B. J. 2013, *ApJS*, **204**, 19  
 Petrosian, V. 2001, *ApJ*, **557**, 560  
 Pfrommer, C. 2008, *MNRAS*, **385**, 1242  
 Pfrommer, C., & Enßlin, T. A. 2004, *MNRAS*, **352**, 76  
 Pinzke, A., Oh, S. P., & Pfrommer, C. 2017, *MNRAS*, **465**, 4800  
 Planck Collaboration XXVII. 2016, *A&A*, **594**, A27  
 Proust, D., Cuevas, H., Capelato, H. V., et al. 2000, *A&A*, **355**, 443  
 Rajpurohit, K., Hoeft, M., van Weeren, R. J., et al. 2018, *ApJ*, **852**, 68  
 Rau, U., & Cornwell, T. J. 2011, *A&A*, **532**, A71  
 Roettiger, K., Burns, J. O., & Stone, J. M. 1999, *ApJ*, **518**, 603  
 Russell, H. R., Sanders, J. S., Fabian, A. C., et al. 2010, *MNRAS*, **406**, 1721  
 Russell, H. R., van Weeren, R. J., Edge, A. C., et al. 2011, *MNRAS*, **417**, L1  
 Russell, H. R., McNamara, B. R., Sanders, J. S., et al. 2012, *MNRAS*, **423**, 236  
 Scaife, A. M. M., & Heald, G. H. 2012, *MNRAS*, **423**, L30  
 Shimwell, T. W., Brown, S., Feain, I. J., et al. 2014, *MNRAS*, **440**, 2901  
 Shimwell, T. W., Markevitch, M., Brown, S., et al. 2015, *MNRAS*, **449**, 1486  
 Shimwell, T. W., Luckin, J., Brügggen, M., et al. 2016, *MNRAS*, **459**, 277  
 Stroe, A., van Weeren, R. J., Intema, H. T., et al. 2013, *A&A*, **555**, A110  
 Takizawa, M. 2005, *ApJ*, **629**, 791  
 Tasse, C., van der Tol, S., van Zwieten, J., van Diepen, G., & Bhatnagar, S. 2013, *A&A*, **553**, A105  
 Urdampilleta, I., Akamatsu, H., Mernier, F., et al. 2018, *A&A*, **618**, A74  
 Vacca, V., Feretti, L., Giovannini, G., et al. 2014, *A&A*, **561**, A52  
 van Haarlem, M. P., Wise, M. W., Gunst, A. W., et al. 2013, *A&A*, **556**, A2  
 van Weeren, R. J., Rottgering, H. J. A., Brügggen, M., & Hoeft, M. 2010, *Science*, **330**, 347  
 van Weeren, R. J., Fogarty, K., Jones, C., et al. 2013, *ApJ*, **769**, 101  
 van Weeren, R. J., Brunetti, G., Brügggen, M., et al. 2016a, *ApJ*, **818**, 204  
 van Weeren, R. J., Williams, W. L., Hardcastle, M. J., et al. 2016b, *ApJS*, **223**, 2  
 van Weeren, R. J., Andrade-Santos, F., Dawson, W. A., et al. 2017, *Nat. Astron.*, **1**, 0005  
 Vazza, F., Eckert, D., Brügggen, M., et al. 2015, *MNRAS*, **451**, 2198  
 Venturi, T., Giacintucci, S., Dallacasa, D., et al. 2013, *A&A*, **551**, A24  
 Wang, Q. H. S., Markevitch, M., & Giacintucci, S. 2016, *ApJ*, **833**, 99  
 Wang, Q. H. S., Giacintucci, S., & Markevitch, M. 2018, *ApJ*, **856**, 162  
 Williams, W. L., van Weeren, R. J., Röttgering, H. J. A., et al. 2016, *MNRAS*, **460**, 2385  
 Zandanel, F., Pfrommer, C., & Prada, F. 2014, *MNRAS*, **438**, 124