













|                                  |  |
|----------------------------------|--|
| <b>Publication Year</b>          | 2024   |
| <b>Acceptance in OA</b>          | 2025-05-14T13:35:56Z   |
| <b>Title</b>                     | A radio bubble shredded by gas sloshing?   |
| <b>Authors</b>                   | BOTTEON, Andrea, GASTALDELLO, Fabio, ZuHone, J. A., Balboni, M., BARTALUCCI, Iacopo, BRUNETTI, Gianfranco, BONAFEDE, Annalisa, Brüggem, M., Shimwell, T. W., van Weeren, R. J. |
| <b>Publisher's version (DOI)</b> | 10.1093/mnras/stad3305   |
| <b>Handle</b>                    | <a href="http://hdl.handle.net/20.500.12386/37123">http://hdl.handle.net/20.500.12386/37123</a>  |
| <b>Journal</b>                   | MONTHLY NOTICES OF THE ROYAL ASTRONOMICAL SOCIETY  |
| <b>Volume</b>                    | 527  |

# A radio bubble shredded by gas sloshing?

A. Botteon <sup>1</sup>★, F. Gastaldello <sup>2</sup>, J. A. ZuHone <sup>3</sup>, M. Balboni <sup>2,4</sup>, I. Bartalucci <sup>2</sup>, G. Brunetti <sup>1</sup>,  
A. Bonafede <sup>1,5</sup>, M. Brüggén <sup>6</sup>, T. W. Shimwell <sup>7,8</sup> and R. J. van Weeren <sup>8</sup>

<sup>1</sup>INAF – IRA, via P. Gobetti 101, I-40129 Bologna, Italy

<sup>2</sup>INAF – IASF Milano, via A. Corti 12, I-20133 Milano, Italy

<sup>3</sup>Center for Astrophysics, Harvard & Smithsonian, 60 Garden St, Cambridge MA 02138, USA

<sup>4</sup>DiSAT, Università degli Studi dell’Insubria, via Valleggio 11, I-22100 Como, Italy

<sup>5</sup>Dipartimento di Fisica e Astronomia, Università di Bologna, via P. Gobetti 93/2, I-40129 Bologna, Italy

<sup>6</sup>Hamburger Sternwarte, Universität Hamburg, Gojenbergsweg 112, D-21029 Hamburg, Germany

<sup>7</sup>ASTRON, the Netherlands Institute for Radio Astronomy, Postbus 2, NL-7990 AA Dwingeloo, the Netherlands

<sup>8</sup>Leiden Observatory, Leiden University, PO Box 9513, NL-2300 RA Leiden, the Netherlands

Accepted 2023 October 24. Received 2023 October 22; in original form 2023 September 6

## ABSTRACT

We report on the detection of diffuse radio emission with peculiar morphology in the central region of the galaxy cluster Abell 2657. The most striking feature identified in our 144 MHz LOFAR image is a bifurcated radio arc that extends for a projected size of 150–200 kpc. From the analysis of *XMM-Newton* data, we find clear evidence of gas sloshing in the cluster and a possible dip in X-ray surface brightness between the two radio arcs which deserves confirmation. Interestingly, the synchrotron emission of the bifurcated radio arc is stretched along the sloshing spiral. We compare our observational results with numerical simulations of non-thermal components interacting with gas motions. We suggest that the detected emission may trace a radio bubble shredded by gas sloshing, where relativistic electrons and magnetic fields are expected to be stretched and stirred as a consequence of tangential flows induced by the spiralling gas motion. Lastly, we report on the presence of two thin (6–7 kpc in width) and parallel strands of radio emission embedded in the outer arc that are morphologically similar to the emerging population of non-thermal filaments observed in galaxy clusters, radio galaxies, and the Galactic centre. While this work further demonstrates the complex interplay between thermal and non-thermal components in the intracluster medium, follow-up observations in radio and X-rays are required to firmly determine the origin of the features observed in Abell 2657.

**Key words:** radiation mechanisms: non-thermal – radiation mechanisms: thermal – galaxies: clusters: general – galaxies: clusters: individual: A2657 – galaxies: clusters: intracluster medium.

## 1 INTRODUCTION

Galaxy clusters, the largest gravitationally bound objects in the Universe, enable us to study the large-scale structure formation process and several aspects of plasma (astro)physics. Indeed, clusters are permeated by a hot and diffuse plasma, known as the intracluster medium (ICM), the thermal component of which can be observed in the X-ray band due to its thermal bremsstrahlung emission. This plasma contains signatures left by numerous astrophysical phenomena that occur during cluster formation and evolution. In particular, gas motions can be driven by major/minor mergers and by energetic outbursts of the active galactic nucleus (AGN) such as those associated with the brightest cluster galaxy (BCG), leading to the generation of shocks, cold fronts, and turbulence in the ICM (e.g. Markevitch & Vikhlinin 2007; Simionescu et al. 2019; ZuHone & Su 2022, for reviews).

The thermal gas in the ICM is known to have a strong interplay with the non-thermal components, namely relativistic electrons and

magnetic fields, that can be studied in the radio band due to their synchrotron emission. For example it is currently believed that turbulence and shocks in the ICM lead to the formation of diffuse cluster-scale radio sources, although the role of additional physical processes is still under investigation (e.g. Brunetti & Jones 2014; van Weeren et al. 2019, for reviews). Another well-studied interaction between non-thermal components and the hot cluster atmosphere is probed by the displacement of thermal gas due to bubbles of radio plasma ejected by the central AGN, which leads to the establishment of radio lobes/X-ray cavities systems (e.g. McNamara & Nulsen 2007, 2012; Fabian 2012; Gitti, Brighenti & McNamara 2012, for reviews).

In recent years, the study of non-thermal phenomena in galaxy clusters and their relation with the thermal gas properties and dynamics has been enhanced thanks to highly sensitive observations performed with modern radio interferometers. New data show a wealth of radio features with increasing complexity in the ICM that suggest a tight connection between outflows of cluster radio galaxies, thermal gas motions, and diffuse synchrotron sources. In particular, the non-thermal plasma ejected by AGN in clusters is believed to play a fundamental role in the formation of extended cluster radio emission

\* E-mail: [andrea.botteon@inaf.it](mailto:andrea.botteon@inaf.it)

as it may enrich the environment with seed relativistic electrons and magnetic fields that can be re-accelerated and amplified by shocks and turbulence in the ICM. The interaction between non-thermal components injected by radio galaxies and thermal gas motions in clusters has been the subject of recent magnetohydrodynamical (MHD) simulations (Vazza et al. 2021, 2023; ZuHone et al. 2021a, b; Fabian, ZuHone & Walker 2022). These works indicate that non-thermal components (i) can be efficiently spread and fill a significant volume of the ICM during the cluster formation process and (ii) their emission can take a variety of morphologies in the radio band due to the complex interplay with thermal gas motions. In this paper, we report on the observation of a peculiar diffuse radio emission in the centre of a galaxy cluster that could represent one of such interplay.

Abell 2657 (RA:  $23^{\text{h}}44^{\text{m}}51^{\text{s}}$ , Dec.:  $+09^{\circ}08'40''$ ), hereafter A2657, is a galaxy cluster at  $z = 0.04$  (Smith et al. 2004). Due to its X-ray flux of  $2.5 \times 10^{-11}$  erg s $^{-1}$  cm $^{-2}$  in the 0.1–2.4 keV band, it belongs to the Highest X-ray FLUX Galaxy Cluster Sample (HIFLUGCS; Reiprich & Böhringer 2002). In Hudson et al. (2010), it is classified as a weak cool-core cluster with a virial temperature of  $3.5 \pm 0.1$  keV and an overall roundish morphology, although some weak indications of dynamical disturbance have been pointed out (e.g. Markevitch et al. 1998). A2657 appears in the second catalogue of *Planck* Sunyaev-Zel’dovich sources with the name PSZ2G096.77-50.29, where it is reported to have a mass within 500 times the critical density at the cluster redshift of  $M_{500} = (1.5 \pm 0.2) \times 10^{14} M_{\odot}$  (Planck Collaboration XXVII 2016), which makes it a relatively low-mass system to host cluster-scale diffuse radio emission.

In the following, we study the central region of A2657 by using recent LOw Frequency ARray (LOFAR; van Haarlem et al. 2013) observations and archival *XMM-Newton* data. We complement our analysis by comparing the observational results with that from state-of-the-art numerical simulations. We assume a  $\Lambda$  cold dark matter cosmology with  $\Omega_{\Lambda} = 0.7$ ,  $\Omega_{\text{m}} = 0.3$ , and  $H_0 = 70$  km s $^{-1}$  Mpc $^{-1}$  throughout. At  $z = 0.04$ , this corresponds to a luminosity distance of  $D_{\text{L}} = 176.5$  Mpc and to an angular scale of  $0.791$  kpc arcsec $^{-1}$ . We adopt the convention  $S_{\nu} \propto \nu^{-\alpha}$  for radio synchrotron spectrum, where  $S_{\nu}$  is the flux density at frequency  $\nu$  and  $\alpha$  is the spectral index.

## 2 DATA REDUCTION

### 2.1 LOFAR

A2657 was observed in the context of the LOFAR Two-meter Sky Survey (LoTSS; Shimwell et al. 2017, 2019). LoTSS observations employ the LOFAR High Band Antenna (HBA) with a 48 MHz bandwidth (120–168 MHz) centred at 144 MHz, reaching sensitivities  $\sim 100$   $\mu\text{Jy beam}^{-1}$  at 6 arcsec resolution. These sensitivities are typically achieved with 8 or 12 h duration observations depending on whether the survey pointing is at declination greater or less than  $20^{\circ}$  to mitigate the worse sensitivity of low-declination fields that are generally those observed at the lowest elevations. At the central frequency of HBA, the LOFAR full width at half-maximum is  $3.96^{\circ}$ . Since the pointings of the survey grid are separated by  $\sim 2.6^{\circ}$ , it occurred that A2657 was covered by two fields: P355+08 and P355+11, respectively centred at  $0.97^{\circ}$  and  $1.85^{\circ}$  from the target. These pointings do not belong to the latest publicly released sky area (i.e. LoTSS-DR2; Shimwell et al. 2022), but will be part of a future data release.

LoTSS observations are processed by the LOFAR Surveys Key Science Project team by means of automated pipelines that produce direction-dependent corrected images of the survey pointings (van Weeren et al. 2016; Williams et al. 2016; de Gasperin et al. 2019; Tasse et al. 2021; Shimwell et al. 2022). Image quality toward specific

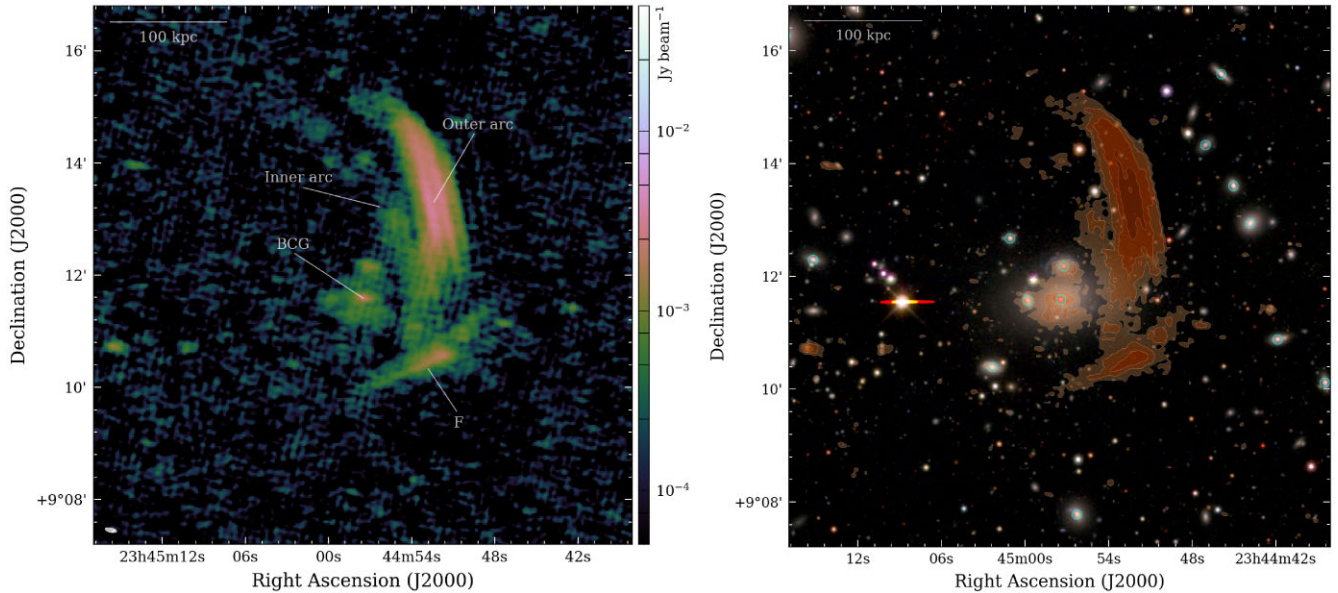
targets can be further improved by adopting the ‘extraction + selfcal’ procedure described in van Weeren et al. (2021). In brief, this method consists of subtracting sources in the  $uv$ -plane outside a small region containing the target of interest, phase-shifting the visibilities to the centre of this region, correcting for the LOFAR primary beam toward this direction, and performing additional self-calibration loops. To date, this technique has been adopted for the analysis of hundreds of targets (e.g. van Weeren et al. 2021; Botteon et al. 2022b; Heesen et al. 2022). We applied this strategy also to the two survey fields covering A2657, ‘extracting’ a sky region of  $33$  arcmin  $\times$   $33$  arcmin. The smaller field of view of the new data set also allows for fast re-imaging, which we performed with WSCLEAN v3.1.1 (Offringa et al. 2014) enabling the multiscale multifrequency deconvolution (Offringa & Smirnov 2017) with a ROBUST =  $-0.5$  weighting of the visibilities (Briggs 1995), unless stated otherwise.

We searched for possible offsets in the LOFAR flux density scale, which may occur because of inaccuracies in the LOFAR beam model (e.g. Hardcastle et al. 2016), by cross-matching a catalogue of compact sources extracted from LOFAR with the NRAO VLA Sky Survey (NVSS; Condon et al. 1998), following the strategy described in Hardcastle et al. (2021) and Shimwell et al. (2022). We found that our LOFAR images needed to be corrected by a multiplicative factor of 1.30; throughout this paper, we adopt a conservative systematic uncertainty of 20 per cent on flux density measurements.

### 2.2 XMM-Newton

We retrieved from the *XMM-Newton* Science Archive the three observations available on A2657 (ObsIDs: 0300210601, 0402190301, and 0505210301), with roughly the same exposure time, for a total of 91 ks. We processed the data using the Extended Source Analysis Software (ESAS; Snowden et al. 2008) embedded in the *XMM-Newton* Scientific Analysis System (SAS v16.1) following the analysis steps described in detail in Ghirardini et al. (2019). We applied the soft protons cleaning procedure through the MOS-FILTER and PN-FILTER tasks, employing light curves in the 2.5–8.5 keV energy range. For each camera onboard *XMM-Newton* (i.e. MOS1, MOS2, and pn), we generated photon-count images in the 0.7–1.2 keV band, a spectral range chosen to optimise the signal-to-noise of the cluster thermal emission (e.g. Ettori et al. 2010), and derived the corresponding exposure maps with the tool EEXPMAP. Following this, we implemented the strategy outlined in Ghirardini et al. (2019) to remove the particle background. This involved creating background images that accounted for both the particle background and residual soft protons. To maximise the statistic, we combined the photon-count images, exposure maps, and background files of the three cameras for the three processed ObsIDs. For the analysis of surface brightness profiles, we used PYPROFFIT (Eckert et al. 2020).

The spectral analysis has been performed by using ObsID 0300210601, since it was the only ObsID with sufficient exposure uncontaminated by soft protons ( $\sim 10$  ks) to perform a spectral study. We produced X-ray spectroscopic temperature maps following the wavelet filtering algorithm described in Bourdin et al. (2004, 2013) and Bourdin & Mazzotta (2008). This algorithm samples the field of view of the instrument by using square grids, with size increasing by powers of 2 and allowing at least 200 photons in each grid element. It extracts the spectrum and locally estimates the temperature  $kT$  and its associated fluctuations  $\sigma_{kT}$  on various analysis scales by fitting a spectral model to the data. Then, the algorithm convolves the set of  $kT$  and  $\sigma_{kT}$  by complementary high-pass and low-pass analysis filters to obtain wavelet coefficients. These wavelet coefficients are then subject to thresholding based on a  $1\sigma$  confidence level to reconstruct



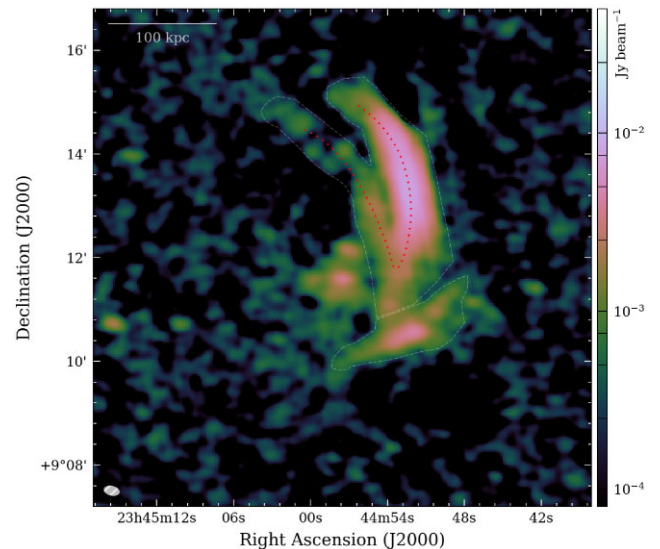
**Figure 1.** *Left panel:* LOFAR image at 144 MHz of the inner  $\sim 450$  kpc<sup>2</sup> of A2657 with the main features discussed in the text labelled. The noise of the image is  $\sigma = 100 \mu\text{Jy beam}^{-1}$  and the beam size, shown in the bottom left corner, is  $13.2 \text{ arcsec} \times 5.5 \text{ arcsec}$ . *Right panel:* composite optical/radio image of the same region. The optical  $g, r, z$  image in the background is from the DESI Legacy Imaging Surveys (Dey et al. 2019). Orange colours denote the radio emission of the left panel, where contours are spaced by a factor of 2 from  $3\sigma$ . Cyan circles mark galaxies with redshift  $0.035 < z < 0.045$  in the NASA/IPAC Extragalactic Database (NED).

a denoised temperature map (we refer the reader to Bourdin et al. 2004; Bourdin & Mazzotta 2008, for further details).

### 3 RESULTS

The LOFAR image of A2657 of Fig. 1 shows the presence of a prominent diffuse arc-shaped emission at 144 MHz to the west of the BCG. The emission appears bifurcated into a brighter ‘outer’ arc and a fainter ‘inner’ arc, which blend together towards their Southern edges. The radio emission between the two arcs is depleted, and the surface brightness dip increases in width south to north. We note that the Northern region of the inner arc is detected at low significance in Fig. 1, where it appears patchy, but it is better recovered in the lower resolution image of Fig. 2 (at the cost of a less defined separation between the two arcs), which was obtained with a 10 arcsec Gaussian taper on the visibilities. No clear optical counterparts can be identified for the two arcs nor for the patches of emission in the inner arc (cf. right hand panel of Fig. 1). The flux density at 144 MHz of the bifurcated arc measured in the white region reported in Fig. 2 is  $216 \pm 43 \text{ mJy}$ ,  $\sim 85$  per cent of which is accounted by the outer arc. We note that the flux density error is dominated by the uncertainty on the LOFAR flux scale, and that disentangling the contribution of each arc to the total measured flux density is somehow arbitrary as their emission blends in the Southern direction. Based on the non-detection of diffuse emission in A2657 at 1.4 GHz from the NVSS (Condon et al. 1998) and considering the mean surface brightness of the bifurcated radio arc at 144 MHz ( $8.06 \mu\text{Jy/arcsec}^2$ ), we estimate a  $2\sigma$  ( $3\sigma$ ) lower limit for its spectral index of  $\alpha > 1.3$  ( $\alpha > 1.1$ ). For the outer arc, the  $2\sigma$  ( $3\sigma$ ) limit is  $\alpha > 1.4$  ( $\alpha > 1.2$ ). The radio emission extends for about 150–200 kpc in projection along the north–south direction.

Another diffuse, linear feature, that we labelled ‘F’ in Fig. 1, is observed with LOFAR close to the centre of A2657. This radio emission is located  $\sim 80$  kpc south-west from the BCG, it is elongated



**Figure 2.** Low-resolution LOFAR image at  $18.7 \text{ arcsec} \times 11.4 \text{ arcsec}$  with noise  $\sigma = 160 \mu\text{Jy beam}^{-1}$ . The beam size is shown in the bottom left corner. Dotted red lines mark the bifurcated radio arc. Flux density measurements were performed in the regions delimited by dash-dotted white lines.

for  $\sim 125$  kpc along its major axis, with a transverse size of  $\sim 25$  kpc (all distances are projected on the plane of the sky). Its flux density at 144 MHz measured in the white region reported in Fig. 2 is  $40 \pm 8 \text{ mJy}$ . In this case, the lower limit on the spectral index estimated from the source mean surface brightness at 144 MHz ( $5.55 \mu\text{Jy/arcsec}^2$ ) and the non-detection at 1.4 GHz from the NVSS at  $2\sigma$  ( $3\sigma$ ) is  $\alpha > 1.1$  ( $\alpha > 0.9$ ).

We summarise the main properties of the diffuse radio sources detected in A2657 in Table 1.

**Table 1.** Properties of the diffuse sources in A2657. Reported quantities are: largest-linear size (LLS), flux density ( $S_{144}$ ) and radio power ( $P_{144}$ ) at 144 MHz, and  $2\sigma$  lower limit of the spectral index ( $\alpha$ ).

| Source         | LLS<br>(kpc) | $S_{144}$<br>(mJy) | $P_{144}$<br>( $\times 10^{23}$ W Hz $^{-1}$ ) | $\alpha$ |
|----------------|--------------|--------------------|--|----------|
| Bifurcated arc | 150 – 200    | $216 \pm 43$       | $8.1 \pm 1.6$                                  | $> 1.3$  |
| F              | 125          | $40 \pm 8$         | $1.5 \pm 0.3$                                  | $> 1.1$  |

In the *XMM-Newton* 0.7–1.2 keV image and corresponding Gaussian gradient magnitude (GGM) filtered image of A2657 (top panels of Fig. 3), we observe signs of a mildly disturbed ICM. In particular, the GGM filter produces a smoothed image of the surface brightness gradient magnitude (e.g. Sanders et al. 2016), and for the case of A2657 it highlights a spiral-like pattern of the thermal gas emission. We extract two surface brightness profiles across this spiral and report the presence of weak surface brightness discontinuities (bottom panels of Fig. 3) by fitting the data assuming an underlying density model consisting of two power-laws projected along the line of sight,  $n_{\text{in}} \propto r^a$  and  $n_{\text{out}} \propto r^b$ , on the inner and outer sides of the edge, with a density jump  $\mathcal{C}$  at the radial distance of the discontinuity  $r_j$ . This is the typical model adopted to describe surface brightness edges in the ICM (e.g. Markevitch & Vikhlinin 2007). The best-fitting density and radial jumps for the north-west and south sectors are  $\mathcal{C}^{\text{NW}} = 1.3 \pm 0.1$  and  $\mathcal{C}^{\text{S}} = 1.3 \pm 0.1$ , and  $r_j^{\text{NW}} = 2.21_{-0.07}^{+0.06}$  and  $r_j^{\text{S}} = 1.97_{-0.09}^{+0.04}$  arcmin. Quoted errors refer to the standard deviations associated with the fitting procedure.

The temperature distribution of the ICM can provide useful insights both on the dynamical state of the cluster and on the nature of the surface brightness discontinuities (as shocks and cold fronts show inverted temperature jumps). Our temperature map of A2657 shows a cold gas spiral extending in anticlockwise direction from the cluster centre (Fig. 4). This gas spiral has a temperature of 2.9–3.2 keV and is mirrored in the residual image obtained by subtracting the azimuthally averaged cluster emission from the *XMM-Newton* 0.7–1.2 keV image (Fig. 5). These are typical features of gas sloshing in the ICM (e.g. Ascasibar & Markevitch 2006), and suggest that the surface brightness discontinuities detected in Fig. 3 trace sloshing cold fronts. Interestingly, the bifurcated radio arc lays in projection on the dense and cold spiral and is roughly stretched along the same direction while source F is located at the interface of the sloshing gas spiral (Figs 4 and 5), where the Southern surface brightness profile shows a discontinuity (bottom right panel of Fig. 3). As we shall discuss in Section 4.1, this connection possibly gives a hint of the origin of the radio emission.

## 4 DISCUSSION

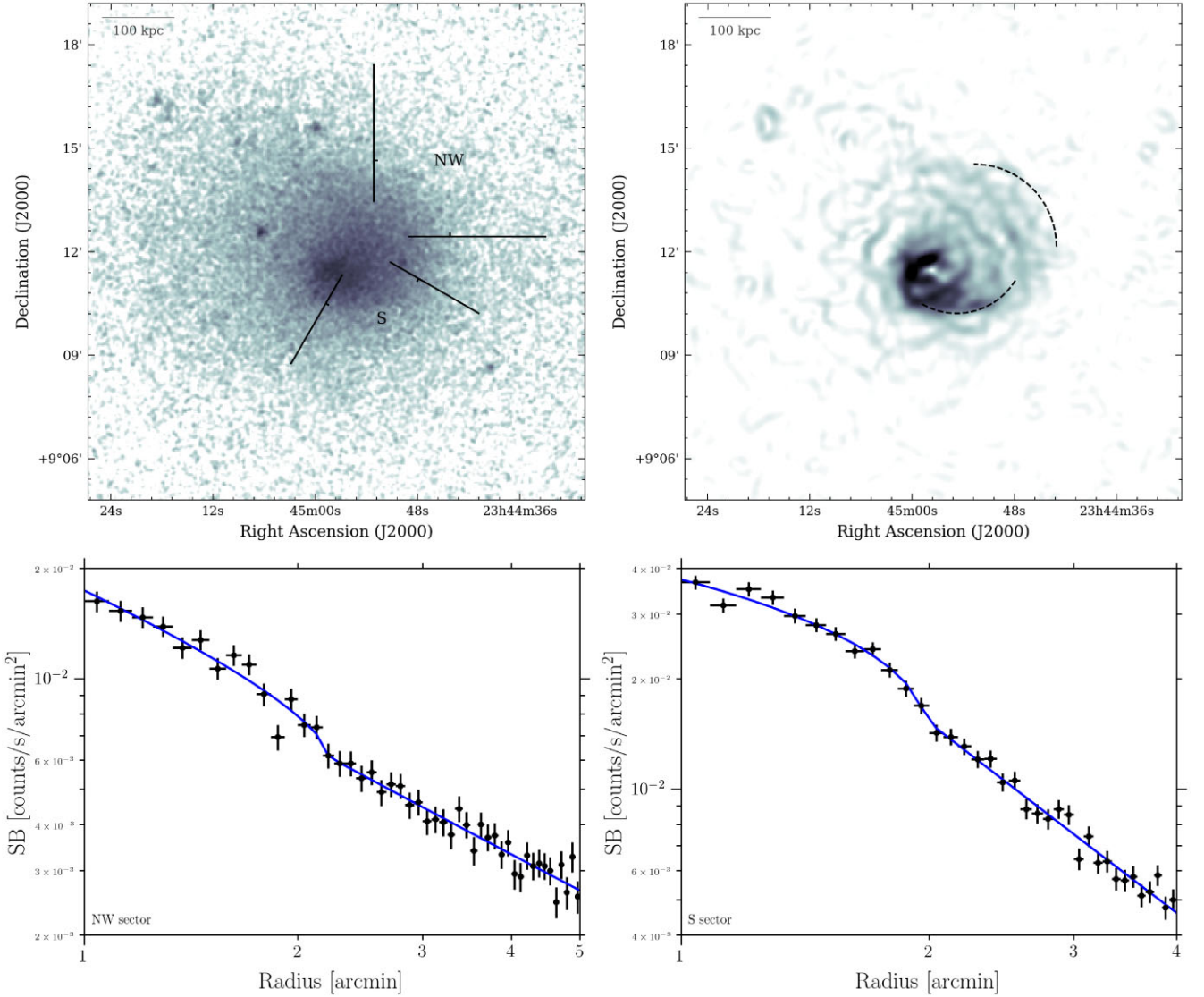
### 4.1 Origin of the bifurcated radio arc

Diffuse non-thermal sources in the ICM are being observed in an increasing number of galaxy clusters (e.g. Duchesne et al. 2021; van Weeren et al. 2021; Botteon et al. 2022b; Hoang et al. 2022; Knowles et al. 2022, for recent collections). Despite this, we are not aware of any other system showing emission from a bifurcated arc such as that we detected in A2657. In dynamically relaxed sloshing clusters, it is possible to observe diffuse radio emission in the form of mini haloes (e.g. Giacintucci et al. 2017). However, these kinds of sources are typically roundish in morphology and fill the central cluster volume, with sizes roughly ranging from 50 to 500 kpc. Giant radio haloes span even larger scales ( $> 1$  Mpc) and are mostly detected in strongly

disturbed clusters (e.g. Cassano et al. 2010, 2023). Instead, arc-shaped emission is generally a distinctive characteristic of radio relics (e.g. van Weeren et al. 2010), but in the case of relics the emission is offset with respect to the cluster central region, extends over large scales (even beyond the Mpc-scale), and the host cluster shows evidence of an ongoing major merger event. Neither of these classes of diffuse sources in the ICM seems to reflect the properties of the newly discovered emission in A2657.

Although there is not an obvious connection between radio emission and cluster galaxies (Fig. 1, right hand panel), it is likely that the emission observed with LOFAR at the centre of A2657 is related to AGN plasma. Low-frequency radio observations are indeed particularly efficient in the detection of ultrasteep radio emission due to fossil plasma ejected by past AGN activity. Eventually, this old plasma may be re-energised in the ICM via processes that are unrelated to the progenitor radio galaxy and that boost the emissivity of the aged radio plasma (e.g. Slee et al. 2001; van Weeren et al. 2009; Cohen & Clarke 2011; Kale & Dwarakanath 2012; Mandal et al. 2020; Hodgson et al. 2021). These sources are sometimes referred to as radio phoenixes, show amorphous morphologies, and a commonly adopted scenario to explain their origin is the adiabatic compression of old relativistic radio plasma due to the passage of a shock wave (e.g. Enßlin & Gopal-Krishna 2001; Enßlin & Brüggén 2002). Whilst a clear candidate to have ejected non-thermal components in A2657 could be its BCG (which is detected at 144 MHz and shows a diffuse component on scales of  $\sim 45$  kpc surrounding its nucleus), the presence of shocks capable of adiabatically compressing the plasma on scales  $> 100$  kpc is more difficult to explain in such a dynamically relaxed system (weak shocks from AGN outbursts typically span a few 10s of kpc, see e.g. McNamara & Nulsen 2012 and references therein). Nonetheless, the relativistic plasma may also interact with the gas which is sloshing in the cluster gravitational potential well. Radio structures similar to source F in A2657 have indeed been pointed out by recent LOFAR observations of other sloshing systems (e.g. A1775, Botteon et al. 2021; NGC507, Brienza et al. 2022), where steep spectrum radio emission at the interface of the cold gas spiral has been interpreted as remnant plasma advected, compressed, and re-energised by the sloshing motion. Strong shear motions under cold fronts have also been suggested to be responsible of the abrupt deflections observed in some radio galaxy tails (e.g. NGC1272 in the Perseus cluster, Gendron-Marsolaïs et al. 2021; J1333-3141 in A3562, Giacintucci et al. 2022; PKS0446-20 in A514, Lee et al. 2023). Moreover, patches of diffuse radio emission may also be generated due to the re-acceleration of relativistic plasma as a consequence of the intermittent and patchy turbulent motions in the ICM induced by gas sloshing (e.g. ZuHone et al. 2013). The bifurcated radio arc is instead a more regular structure with a very peculiar morphology, and in the following we propose a possible origin for this feature aided by results from recent MHD simulations with passive tracers devoted to the study of the evolution of non-thermal plasma in sloshing clusters.

In ZuHone et al. (2021a, b), MHD simulations were used to explore the possibility that AGN-blown radio lobes could be turned into radio relics by sloshing gas motions. They tested two types of off-axis binary cluster mergers that differ only in the properties of the sub-cluster. They also adopted two different approaches to inject relativistic electrons in the ICM: bidirectional jets from the central AGN and isolated bubble from an off-centre radio galaxy. In all cases, the non-thermal plasma is found to swirl in spiral motions, following the thermal gas. This leads to the generation of structures that are stretched due to strong tangential motions induced

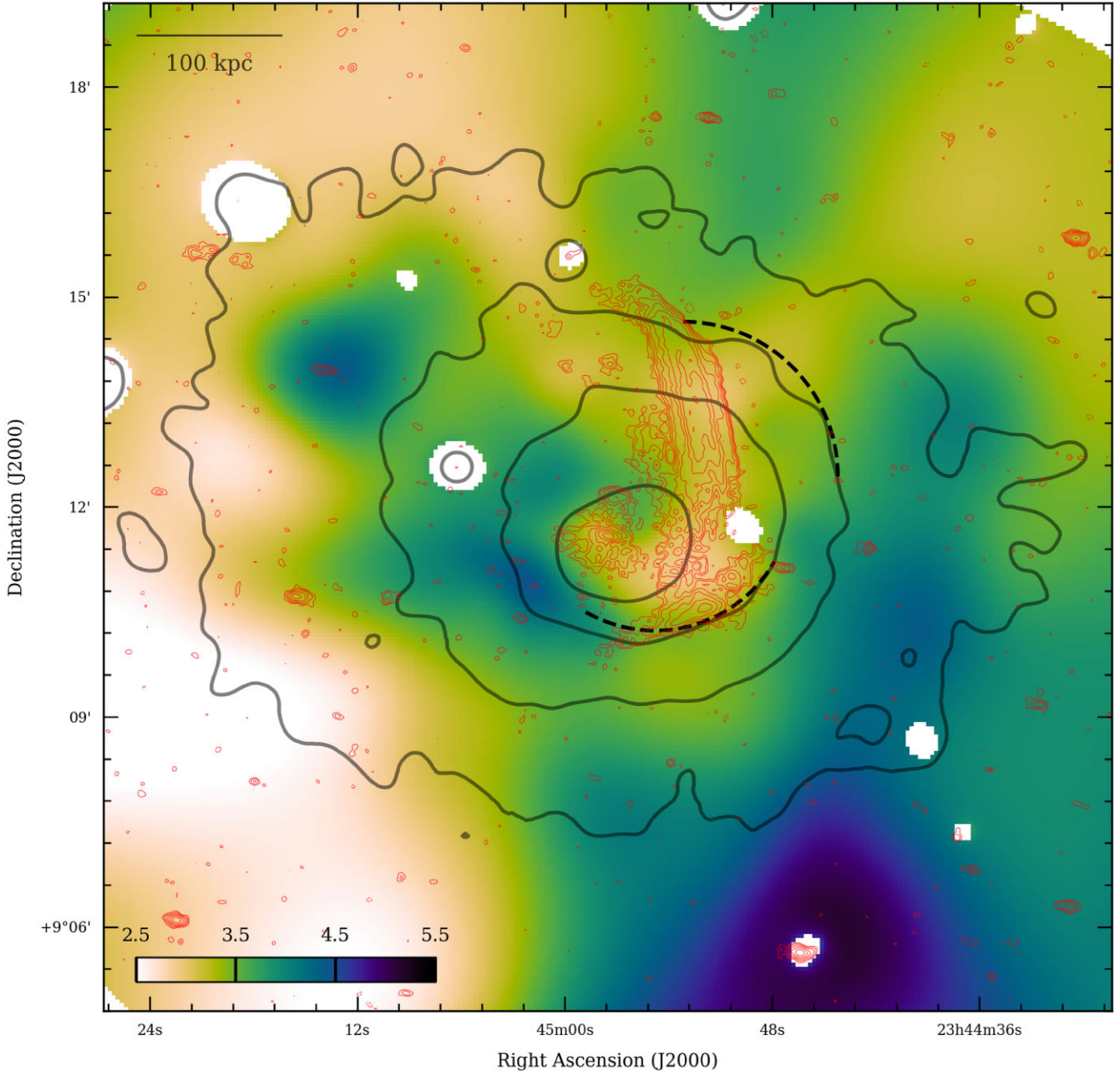


**Figure 3.** *Top panels:* Exposure-corrected background-subtracted *XMM-Newton* image in the 0.7–1.2 keV band (left) and corresponding GGM filtered image on scales of 10 arcsec (right) of A2657. Sectors used for the analysis of surface brightness profiles are reported in black, with inner ticks/dashed arcs marking the best-fitting surface brightness jump radii. *Bottom panels:* Surface brightness profiles for the north-west (left) and south (right) sectors with best-fitting broken power-law model reported in blue. The  $\chi^2/\text{d.o.f.}$  of the fits are 40.6/43 (north-west sector) and 33.2/31 (south sector).

by sloshing. In particular, the distribution of the passive tracers of a single bubble injected in the less violent merger configuration (which produces gentle and prolonged sloshing motions) is shown to take a bifurcated morphology under a certain viewing angle (see fig. 11 in ZuHone et al. 2021b). A single bubble that is extended over  $\sim$ a few 10s of kpc will encounter different ICM conditions at different locations on its surface. The result is that the bubble breaks apart as different parts of it mix with the surrounding ICM to different degrees (acquiring different entropies and thus buoyancies), and acquire different velocities. This feature in the simulations resembles the morphology of the radio emission observed in our LOFAR images of A2657. We note that in these simulations the arcs extend for  $>1$  Mpc, which is greater than the size of the radio emission detected in A2657. However, in these simulations, the radio bubble was placed at a large distance (200 kpc) from the cluster centre to test whether gas motions could spread the passive tracers for Mpc-scales, which are the typical extents of radio relics.

More recently, Fabian, ZuHone & Walker (2022) investigated the evolution of radio bubbles in cool-core clusters with MHD simulations of a Perseus-like system. They showed that bubbles that are buoyantly rising in a sloshing ICM and interact with the sloshing cold fronts can be dislocated and disrupted by thermal gas motions. In particular, bubbles can acquire elongated morphologies due to the tangential flows associated with the sloshing (see appendix A in Fabian, ZuHone & Walker 2022). In that paper, snapshots from simulations are reported until 150 Myr after the core passage of the sub-cluster. As gas motions persist, the bubbles can be expected to become increasingly distorted and stretched. For this reason, we produced additional snapshots at later stages of the sloshing/bubbles interaction from the same simulations of Fabian, ZuHone & Walker (2022). Details of the simulations are given in that work, but we highlight their most important characteristics here.

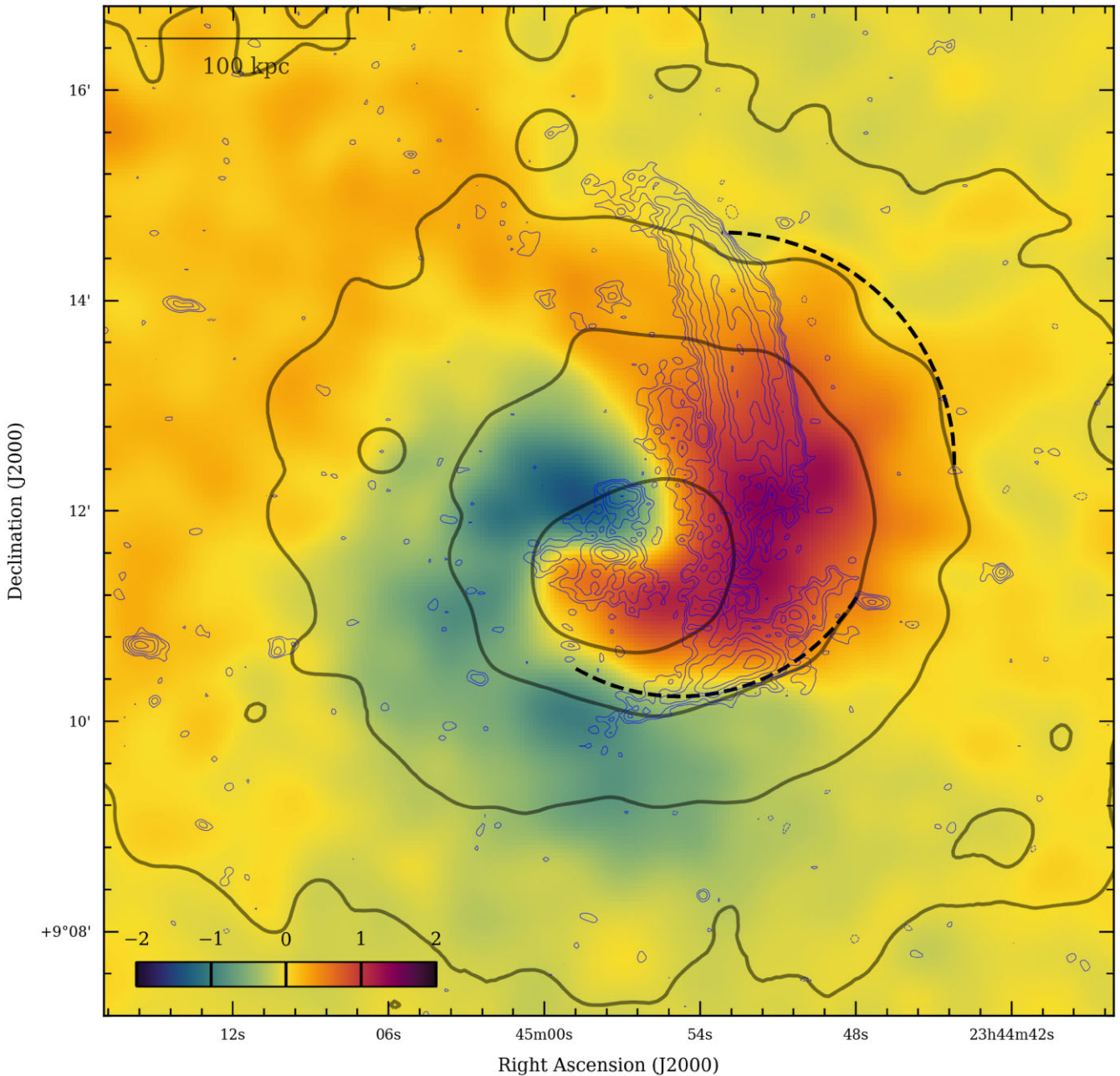
The simulations use the AREPO code (Springel 2010; Pakmor & Springel 2013; Marinacci et al. 2018) to evolve the equations of



**Figure 4.** Temperature map in keV units obtained with *XMM-Newton*. Contours denote the emission from *XMM-Newton* (in thick black lines) and from LOFAR (in thin red lines). LOFAR contours are obtained from the image of Fig. 1, and are spaced by a factor of  $\sqrt{2}$  from  $3\sigma$  (with the  $-3\sigma$  contour reported in dashed). Dashed arcs are the same of Fig. 3. Blanked pixels correspond to regions masked out from the analysis because of the presence of point sources.

MHD, dark matter, and self-gravity. The simulations model a cool-core cluster with  $M \sim 10^{15} M_{\odot}$ , with initial conditions taken from previous works (Ascasibar & Markevitch 2006; ZuHone, Markevitch & Johnson 2010; ZuHone et al. 2016, 2018b, 2021b; ZuHone, Zavala & Vogelsberger 2019). This particular cluster experiences an off-axis encounter with a sub-cluster of  $M \sim 2 \times 10^{14} M_{\odot}$  with only dark matter. The merger plane of this sub-cluster lies entirely within the  $x$ - $y$  plane of the simulation domain, initiating sloshing motions that lead to the creation of cold fronts. The ICM in the simulation has an initially tangled magnetic field with an initial plasma parameter  $\beta = p_{\text{th}}/p_{\text{B}} = 100$  (where  $p_{\text{th}}$  and  $p_{\text{B}}$  are the thermal and magnetic

pressure, respectively). To model the effect of AGN jets, we use the method of Weinberger et al. (2017), which injects a bidirectional jet that is kinetically dominated, low density, and collimated. Kinetic, thermal, and magnetic energy is injected into two small spherical regions situated a few kpc from the location of a black hole particle positioned at the cluster potential minimum. The material injected by the jet consists of a 50/50 mixture of two fluids. One fluid possesses an adiabatic index of  $\gamma = 4/3$ , representing cosmic rays, while the other has an adiabatic index of  $\gamma = 5/3$ , the same as the ICM. The cosmic ray fluid adheres to the same momentum and energy equations as the ICM, except for the difference in adiabatic index.

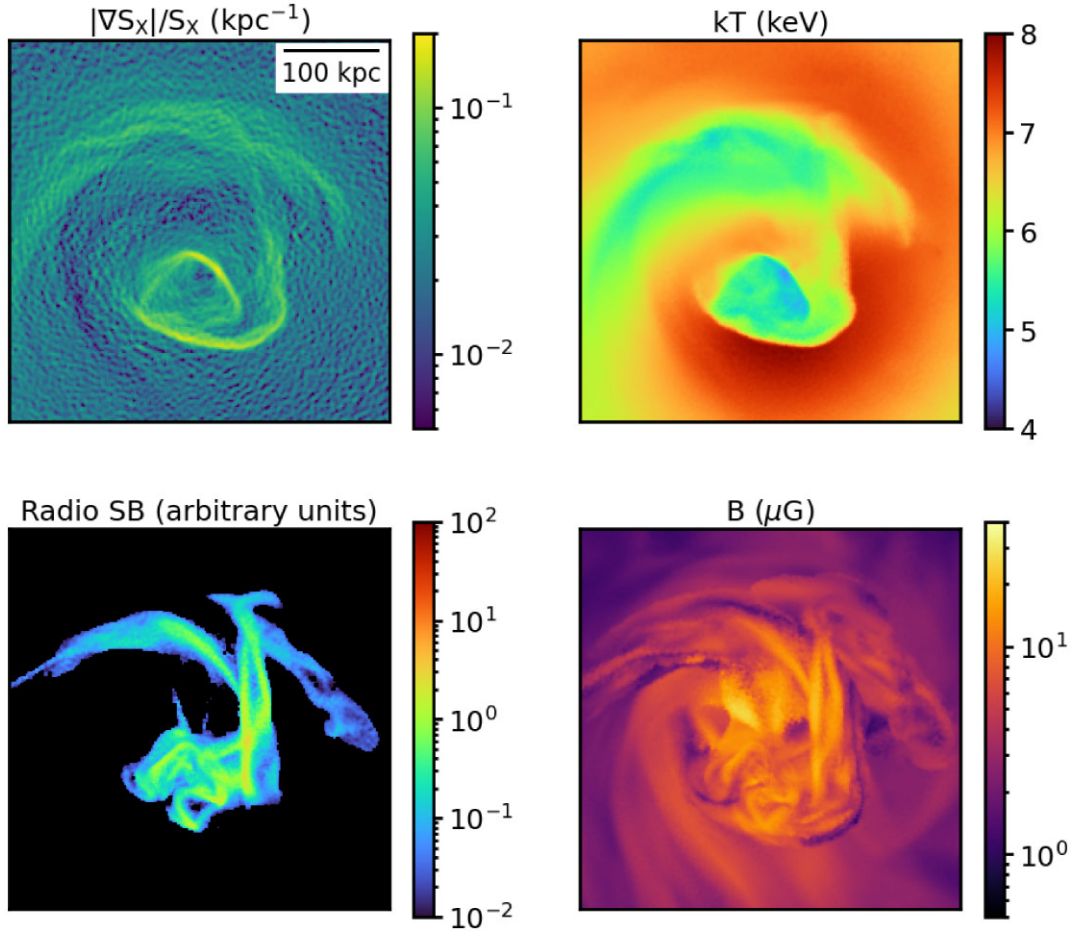


**Figure 5.** Residual X-ray emission obtained after subtracting the azimuthally averaged cluster emission from the *XMM-Newton* 0.7–1.2 keV image. Contours and arcs are the same of Fig. 4.

In the simulation shown here, the jets are fired in the  $x$ -direction with a power  $P_{\text{jet}} = 10^{45}$  erg  $\text{s}^{-1}$  for a duration of  $t_{\text{jet}} = 50$  Myr, so the resulting total energy injected is  $E_{\text{jet}} \sim 1.6 \times 10^{60}$  erg in each direction, which is a sum of kinetic, thermal, and magnetic energy. Within the jet region, the magnetic and thermal pressures are balanced ( $\beta_{\text{jet}} = 1$ ), and the injected magnetic field is purely toroidal. The jets are injected 0.75 Gyr after the closest passage of the sub cluster.

In Fig. 6, we report new snapshots of the simulated cluster core region for a projection and epoch selected to closely match the case of A2657. In Fig. 7, we instead show snapshots at different epochs (measured from the moment of jet injection) showing the evolution of

the X-ray and radio emission from the initial inflation of the bubbles to the end condition. The comparison of our observations with the MHD simulations discussed above gives a tantalising indication that A2657 may represent a case where an AGN-injected radio bubble evacuated by an outflow of the BCG is being shredded as a consequence of the interplay with the ongoing sloshing gas. We note that tangential flows can stir and compress non-thermal components in the ICM, where synchrotron radio emission can arise due to the enhanced density of relativistic electrons and the formation of strongly magnetised layers (e.g. ZuHone, Markevitch & Lee 2011). However, when the radiative age of the emitting plasma is shorter than the magnetic field amplification time-scale, i.e.  $t_{\text{rad}}$

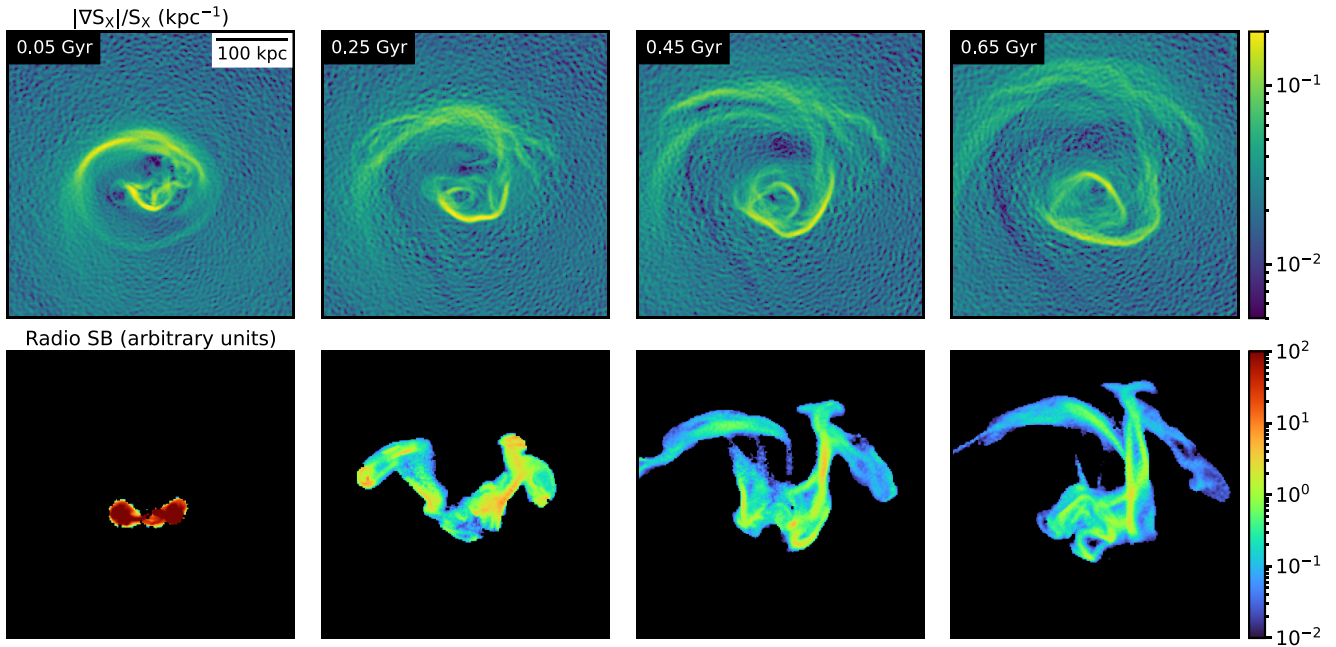


**Figure 6.** A snapshot from a simulation showing the X-ray surface brightness gradient computed using a GGM filter (top left panel), the emission-weighted projected temperature (top right panel), projected radio emission (bottom left panel), and projected (mass-weighted) magnetic field (bottom right panel) from an epoch chosen to resemble the bifurcated radio emission observed in A2657.

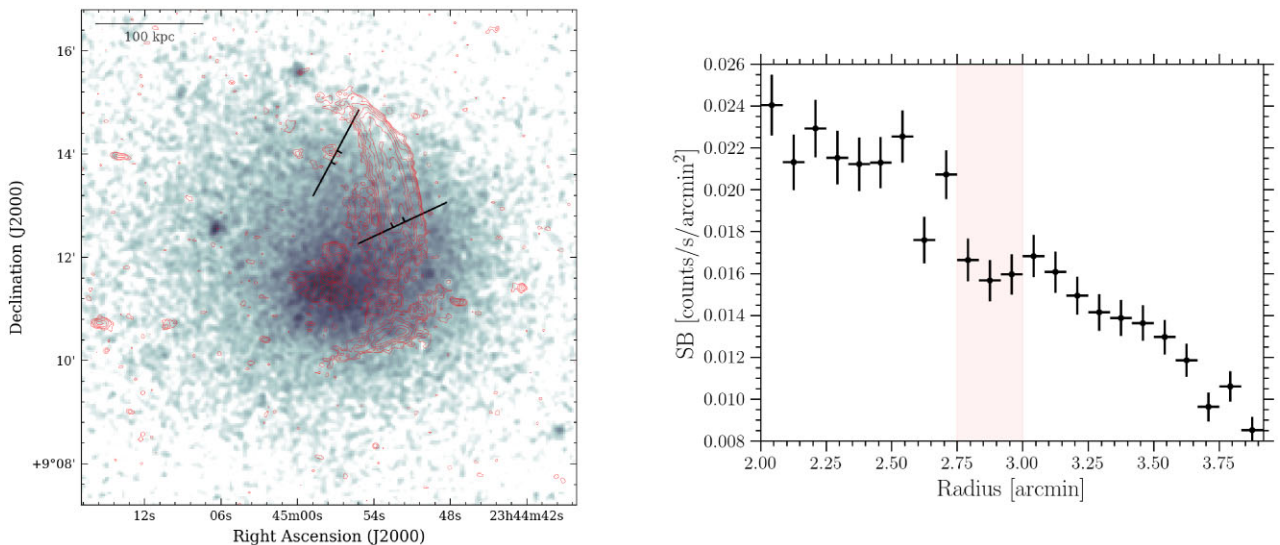
$< t_B$ , the cooling of relativistic electrons becomes shorter and the bulk of synchrotron radiation is progressively emitted at very low frequencies. This scenario is in line with our simulations that suggest  $t_B$  of the same order of the time-scale necessary for a bubble to be shredded by sloshing to produce an emission stretched for  $>100$  kpc, i.e.  $\sim 500$  Myr (cf. Fig. 7), compared to  $t_{\text{rad}} \sim 115$  Myr (considering 144 MHz and a reference magnetic field  $B = 10 \mu\text{G}$ ). The fact that  $t_{\text{rad}}$  is shorter than both  $t_B$  and the time necessary to transport electrons on  $>100$  kpc scale may require the presence of re-acceleration mechanisms to keep electrons radiating on the observed large-scale structure detected with LOFAR in A2657 (see Rudnick et al. 2022 for the case of 3C40). In this respect, future radio observations will be very important to measure the integrated and resolved spectral properties of the emission and constrain its origin.

One of the most striking pieces of evidence of the interplay between thermal and non-thermal components in the ICM is provided by the connection between sub-structures observed in X-rays that are mirrored in radio and vice versa (e.g. Botteon et al. 2023). From a closer inspection of X-ray images of A2657, we noticed the possible presence of underdense gas in the region between the inner and outer arcs. For this reason, we extracted a surface brightness profile from the *XMM-Newton* image across this region. After experimenting with sectors with different apertures, radial

ranges, and centres, we adopted the sector shown in Fig. 8, which led to the surface brightness profile reported in the same figure. This sector was chosen to maximise what may be a depletion of the X-ray emission co-located with the region where the two radio arcs split. We note that the significance of this dip in the X-ray surface brightness profile depends on the sector choice possibly because of its subtle nature and the large PSF of *XMM-Newton*. Unfortunately, the only existing observation of A2657 in the *Chandra* archive is too shallow to investigate this possible feature at higher angular resolution. If confirmed by deeper observations, this could represent an interesting case where there is a cospatial bifurcation/split of the radio and X-ray emission in the ICM. We note that depletions of the X-ray emission have been reported in other galaxy clusters. These may trace plasma depletion layers where the thermal gas is squeezed out of narrow strongly magnetised layers because of the enhanced magnetic pressure therein (e.g. Wang, Markevitch & Giacintucci 2016; Wang & Markevitch 2018) or hydrodynamical features that develop due to instabilities in the flow that produce bay- and hook-like structures (e.g. Roediger et al. 2011, 2012; ZuHone et al. 2018a; Walker et al. 2018, 2022). As the radio emission in A2657 is depleted in the region of the possible X-ray surface brightness dip, it is unlikely that this feature is related to a strongly magnetised layer, where the radio emission should be instead enhanced. Additionally, an X-ray surface brightness decrement tangential to the cluster centre may



**Figure 7.** Evolution of the X-ray surface brightness gradient (top panels) and radio emission (bottom panels) from the simulation shown in Fig. 6 at epochs  $\Delta t = 0.05, 0.25, 0.45,$  and  $0.65$  Gyr after the jet ignition.



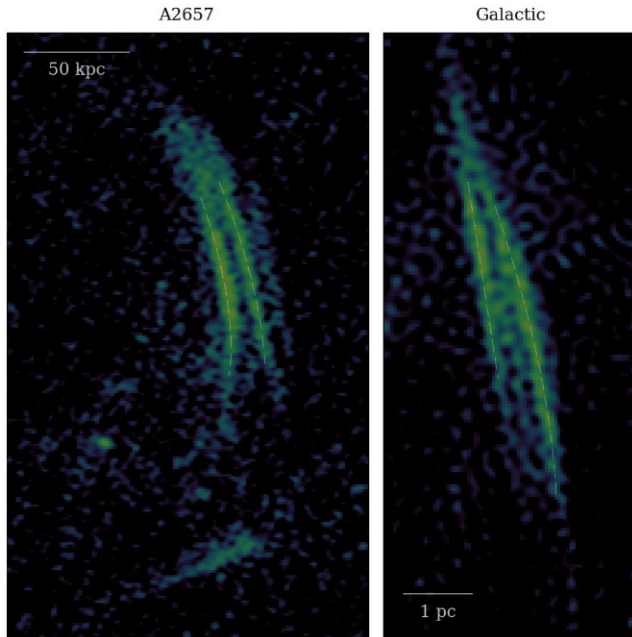
**Figure 8.** In the *XMM-Newton* image on the left panel we report the sector used to extract the X-ray surface brightness profile shown in the right panel. Inner ticks in the sector mark the radial range highlighted in the profile that may exhibit a surface brightness dip. Radio contours are the same of Fig. 4.

also be a consequence of the stretching and flattening of a cavity that is rising in the ICM while approaching a sloshing cold front surface (Fabian, Zuhone & Walker 2022).

#### 4.2 Thin strands in the outer arc

In the LOFAR image of Fig. 1, we noticed the presence of two parallel strands of emission embedded in the outer arc, stretched along its major axis. To better highlight these strands, we produced a higher resolution image with  $\text{ROBUST} = -1.25$ , which we show in the left panel of Fig. 9. These structures are resolved with a width of 6–7 kpc and extend for  $\sim 150$  kpc.

Non-thermal filaments are being observed in an increasing number of synchrotron sources. Remarkable cases where thin and parallel strands of emission were observed include: the radio relics in the Sausage (Di Gennaro et al. 2018) and Toothbrush (Rajpurohit et al. 2018, 2020) clusters; the cluster/group radio galaxies ESO137-006 (Ramatsoku et al. 2020), Trail/T-bone/Original TRG complex in A2255 (Botteon et al. 2020, 2022a), IC4296 (Condon et al. 2021), Nest200047 (Brienza et al. 2021), and 3C40 (Rudnick et al. 2022); and the large population of filaments in the Galactic centre (see Yusef-Zadeh et al. 2022a, b, c, for recent work). Recently, Yusef-Zadeh, Arendt & Wardle (2022d) pointed out the morphological similarity between the magnetised filaments in the ICM and Galactic centre,



**Figure 9.** Comparison between the thin filaments of the outer arc in A2657 (left panel) and the thin filaments observed in the Galactic plane (right panel). The left panel shows a LOFAR image of A2657 at 144 MHz ( $6.2 \text{ arcsec} \times 4.0 \text{ arcsec}$ ) while the right panel shows a zoom-in of the MeerKAT Galactic centre mosaic at 1.28 GHz ( $4.0 \text{ arcsec} \times 4.0 \text{ arcsec}$ ) by Heywood et al. (2022).

arguing that they may originate from similar processes occurring on very different scales. In Fig. 9, we also found an analogy between the strands detected in the outer arc in A2657 and one of the filaments observed in the Galactic centre (namely, G359.563+0.249, nicknamed the ‘Edge-on Spiral’ by Yusef-Zadeh et al. 2022a). The origin of these structures is still under investigation and their study could unveil important aspects of the microphysics of weakly magnetised plasma, such as the particle acceleration mechanisms, the amplification of the magnetic field, and the propagation mode of the relativistic electrons therein (Thomas, Pfrommer & Enßlin 2020; Rudnick et al. 2022; Yusef-Zadeh, Arendt & Wardle 2022d; Ruszkowski & Pfrommer 2023).

## 5 CONCLUSIONS

We reported on the detection of peculiar diffuse radio emission in the central region of the nearby galaxy cluster A2657. The emission was discovered thanks to LOFAR observations at 144 MHz, and consists of a bifurcated radio arc and of an additional diffuse feature that we labelled F. Based on the non-detection of diffuse emission in A2657 at 1.4 GHz from the NVSS, we estimated  $2\sigma$  limits on the spectral index of  $\alpha > 1.3$  and  $\alpha > 1.1$  for the bifurcated arc and source F, respectively. From the analysis of archival *XMM-Newton* observations, we found clear signatures of gas sloshing, demonstrated by a spiral of cold gas in the temperature map which is mirrored in the GGM-filtered and X-ray residual images, and by the presence of cold fronts. The bifurcated radio arc is stretched along the gas spiral while source F is located at the interface of the cold gas. This likely suggests a connection between the origin of the non-thermal emission and gas motions in the ICM.

We searched for structures analogous to those observed in A2657 in recent MHD simulations (ZuHone et al. 2021a, b; Fabian, ZuHone & Walker 2022) that investigate the evolution of non-thermal

components in sloshing clusters. We found that relativistic electrons and magnetic fields can take similar elongated and bifurcated morphologies as a consequence of the strong tangential flows induced by the spiral motion of the thermal gas. We thus speculated that the bifurcated radio emission in the centre of A2657 traces an AGN-bubble that was injected into the ICM and later shredded by gas sloshing.

A tentative dip in the X-ray surface brightness profile across the two radio arcs is reported with *XMM-Newton*. The dip is cospatial with the region where the bifurcated radio emission depletes. A deep X-ray follow-up observation with *Chandra* would allow to firmly claim the dip of X-ray emission and study its properties and connection with the non-thermal plasma. We also report on the presence of two thin parallel strands of radio emission embedded in the outer arc similar to those observed in other cluster diffuse sources, radio galaxies, and in the Galactic centre. In this case, follow-up radio observations would be desired to study the spectral trends of the non-thermal emission, which would be beneficial both for understanding the origin of the thin strands and corroborating the proposed scenario of radio bubble shredded by gas sloshing. As tangential motions can stir magnetic fields and these features stretch along the sloshing spiral, at high frequency we may expect to detect polarised emission due to the presence of aligned magnetic fields.

This work shows the potential of the joint analysis of radio/X-ray observations of galaxy clusters supported by the interpretation with MHD numerical simulations. The combination of observational and numerical results is powerful for the investigation and understanding of the strong interplay between thermal and non-thermal components in the ICM.

## ACKNOWLEDGEMENTS

We thank the anonymous referee for the timely report and comments. ABotteon acknowledges financial support from the European Union – Next Generation EU. JAZ acknowledges support from the *Chandra* X-ray Centre, which is operated by the Smithsonian Astrophysical Observatory for and on behalf of NASA under contract NAS8-03060. ABonafede acknowledges support from ERC-Stg DRA-NOEL number 714245 and MIUR FARE grant ‘SMS’. RJvW acknowledges support from the ERC-Stg ClusterWeb 804208. LOFAR (van Haarlem et al. 2013) is the LOFAR ARray designed and constructed by ASTRON. It has observing, data processing, and data storage facilities in several countries, which are owned by various parties (each with their own funding sources), and are collectively operated by the ILT foundation under a joint scientific policy. The ILT resources have benefitted from the following recent major funding sources: CNRS-INSU, Observatoire de Paris and Université d’Orléans, France; BMBF, MIWF-NRW, MPG, Germany; Science Foundation Ireland (SFI), Department of Business, Enterprise, and Innovation (DBEI), Ireland; NWO, the Netherlands; The Science and Technology Facilities Council, UK; Ministry of Science and Higher Education, Poland; Istituto Nazionale di Astrofisica (INAF), Italy. This research made use of the Dutch national e-infrastructure with support of the SURF Cooperative (e-infra 180169) and the LOFAR e-infra group, and of the LOFAR-IT computing infrastructure supported and operated by INAF, and by the Physics Department of Turin University (under the agreement with Consorzio Interuniversitario per la Fisica Spaziale) at the C3S Supercomputing Centre, Italy. The Jülich LOFAR Long Term Archive and the German LOFAR network are both coordinated and operated by the Jülich Supercomputing Centre (JSC), and computing resources on the supercomputer JUWELS at JSC were provided by the Gauss Centre

for Supercomputing e.V. (grant number CHTB00) through the John von Neumann Institute for Computing (NIC). This research made use of the University of Hertfordshire high-performance computing facility and the LOFAR-UK computing facility located at the University of Hertfordshire and supported by STFC [ST/P000096/1]. The simulations were performed on the ‘Pleiades’ high-performance computing system at the NASA Advanced Supercomputing facility at NASA/Ames Research Center. This research made use of the NASA/IPAC Extragalactic Database (NED), operated by the Jet Propulsion Laboratory (California Institute of Technology), under contract with the National Aeronautics and Space Administration. The scientific results reported in this article are based in part on observations obtained with *XMM-Newton*, an ESA science mission with instruments and contributions directly funded by ESA Member States and NASA. This research made use of APLPY, an open-source plotting package for PYTHON (Robitaille & Bressert 2012), the colourmaps in the CMASHER package (van der Velden 2020), and the LEGACYSTAMPS package (<https://github.com/tikk3r/legacystamps>).

## DATA AVAILABILITY

The observational data underlying this article are available in the LOFAR Long Term Archive (LTA; <https://lta.lofar.eu>) under projects LT10\_010 and LT14\_004 and in the *XMM-Newton* Science Archive (<http://nxa.esac.esa.int>) under ObsIDs 0300210601, 0402190301, and 0505210301. Simulation data will be made available upon reasonable request to the authors.

## REFERENCES

- Ascasibar Y., Markevitch M., 2006, *ApJ*, 650, 102  
 Botteon A. et al., 2020, *ApJ*, 897, 93  
 Botteon A. et al., 2021, *A&A*, 649, A37  
 Botteon A. et al., 2022a, *Science Adv.*, 8, eabq7623  
 Botteon A. et al., 2022b, *A&A*, 660, A78  
 Botteon A., Markevitch M., van Weeren R. J., Brunetti G., Shimwell T. W., 2023, *A&A*, 674, A53  
 Bourdin H., Mazzotta P., 2008, *A&A*, 479, 307  
 Bourdin H., Sauvageot J., Slezak E., Bijaoui A., Teyssier R., 2004, *A&A*, 414, 429  
 Bourdin H., Mazzotta P., Markevitch M., Giacintucci S., Brunetti G., 2013, *ApJ*, 764, 82  
 Brienza M. et al., 2021, *Nat. Astron.*, 5, 1261  
 Brienza M. et al., 2022, *A&A*, 661, A92  
 Briggs D., 1995, *Bull. Am. Astron. Soc.*, 27, 1444  
 Brunetti G., Jones T. W., 2014, *IJMPD*, 23, 30007  
 Cassano R., Etori S., Giacintucci S., Brunetti G., Markevitch M., Venturi T., Gitti M., 2010, *ApJ*, 721, L82  
 Cassano R. et al., 2023, *A&A*, 672, A43  
 Cohen A., Clarke T. E., 2011, *AJ*, 141, 149  
 Condon J. J., Cotton W., Greisen E., Yin Q., Perley R. A., Taylor G. B., Broderick J., 1998, *AJ*, 115, 1693  
 Condon J. J., Cotton W., White S. V., Legodi S., Goedhart S., McAlpine K., Ratcliffe S., Camilo F., 2021, *ApJ*, 917, 18  
 de Gasperin F. et al., 2019, *A&A*, 622, A5  
 Dey A. et al., 2019, *AJ*, 157, 168  
 Di Gennaro G. et al., 2018, *ApJ*, 865, 24  
 Duchesne S. W., Johnston-Hollitt M., Offringa A. R., Pratt G. W., Zheng Q., Dehghan S., 2021, *PASA*, 38, e010  
 Eckert D., Finoguenov A., Ghirardini V., Grandis S., Kaefer F., Sanders J. S., Ramos-Ceja M. E., 2020, *Open J. Astrophys.*, 3, 12  
 Enßlin T. A., Brüggen M., 2002, *MNRAS*, 331, 1011  
 Enßlin T. A., Gopal-Krishna, 2001, *A&A*, 366, 26  
 Etori S., Gastaldello F., Leccardi A., Molendi S., Rossetti M., Buote D. A., Meneghetti M., 2010, *A&A*, 524, A68

- Fabian A. C., 2012, *ARA&A*, 50, 455  
 Fabian A. C., Zuhone J. A., Walker S. A., 2022, *MNRAS*, 510, 4000  
 Gendron-Marsolais M.-L. et al., 2021, *ApJ*, 911, 56  
 Ghirardini V. et al., 2019, *A&A*, 621, A41  
 Giacintucci S., Markevitch M., Cassano R., Venturi T., Clarke T. E., Brunetti G., 2017, *ApJ*, 841, 71  
 Giacintucci S. et al., 2022, *ApJ*, 934, 49  
 Gitti M., Brighenti F., McNamara B. R., 2012, *Adv. Astron.*, 2012, 950641  
 Hardcastle M. J. et al., 2016, *MNRAS*, 462, 1910  
 Hardcastle M. J. et al., 2021, *A&A*, 648, A10  
 Heesen V. et al., 2022, *A&A*, 664, A83  
 Heywood I. et al., 2022, *ApJ*, 925, 165  
 Hoang D. N. et al., 2022, *A&A*, 665, A60  
 Hodgson T., Bartalucci I., Johnston-Hollitt M., McKinley B., Vazza F., Wittor D., 2021, *ApJ*, 909, 198  
 Hudson D., Mittal R., Reiprich T. H., Nulsen P. E., Andernach H., Sarazin C. L., 2010, *A&A*, 513, A37  
 Kale R., Dwarakanath K., 2012, *ApJ*, 744, 46  
 Knowles K. et al., 2022, *A&A*, 657, A56  
 Lee W., Zuhone J., Jee M. J., Hyeonhan K., Kale R., Ahn E., 2023, *ApJ*, 957, L4  
 Mandal S. et al., 2020, *A&A*, 634, A4  
 Marinacci F. et al., 2018, *MNRAS*, 480, 5113  
 Markevitch M., Vikhlinin A., 2007, *Phys. Rep.*, 443, 1  
 Markevitch M., Forman W. R., Sarazin C. L., Vikhlinin A., 1998, *ApJ*, 503, 77  
 McNamara B. R., Nulsen P. E., 2007, *ARA&A*, 45, 117  
 McNamara B. R., Nulsen P. E., 2012, *New J. Phys.*, 14, 55023  
 Offringa A. R., Smirnov O. M., 2017, *MNRAS*, 471, 301  
 Offringa A. R. et al., 2014, *MNRAS*, 444, 606  
 Pakmor R., Springel V., 2013, *MNRAS*, 432, 176  
 Planck Collaboration XXVII, 2016, *A&A*, 594, A27  
 Rajpurohit K. et al., 2018, *ApJ*, 852, 65  
 Rajpurohit K. et al., 2020, *A&A*, 636, A30  
 Ramatsoku M. et al., 2020, *A&A*, 636, L1  
 Reiprich T. H., Böhringer H., 2002, *ApJ*, 567, 716  
 Robitaille T. P., Bressert E., 2012, APLpy: Astronomical Plotting Library in Python, Astrophysics Source Code Library, record ascl:1208.017  
 Roediger E., Brüggem M., Simionescu A., Böhringer H., Churazov E., Forman W. R., 2011, *MNRAS*, 413, 2057  
 Roediger E., Lovisari L., Dupke R. A., Ghizzardi S., Brüggem M., Kraft R. P., Machacek M., 2012, *MNRAS*, 420, 3632  
 Rudnick L. et al., 2022, *ApJ*, 935, 168  
 Ruszkowski M., Frommer C., 2023, preprint ([arXiv:2306.03141](https://arxiv.org/abs/2306.03141))  
 Sanders J. S., Fabian A. C., Russell H. R., Walker S. A., Blundell K. M., 2016, *MNRAS*, 460, 1898  
 Shimwell T. W. et al., 2017, *A&A*, 598, A104  
 Shimwell T. W. et al., 2019, *A&A*, 622, A1  
 Shimwell T. W. et al., 2022, *A&A*, 659, A1  
 Simionescu A. et al., 2019, *Space Sci. Rev.*, 215, 24  
 Slee O., Roy A., Murgia M., Andernach H., Ehle M., 2001, *AJ*, 122, 1172  
 Smith R. J. et al., 2004, *AJ*, 128, 1558  
 Snowden S., Mushotzky R. F., Kuntz K., Davis D., 2008, *A&A*, 478, 615  
 Springel V., 2010, *MNRAS*, 401, 791  
 Tasse C. et al., 2021, *A&A*, 648, A1  
 Thomas T., Frommer C., Enßlin T. A., 2020, *ApJ*, 890, L18  
 van der Velden E., 2020, *J. Open Source Softw.*, 5, 2004  
 van Haarlem M. et al., 2013, *A&A*, 556, A2  
 van Weeren R. J., Röttgering H. J., Brüggem M., Cohen A., 2009, *A&A*, 508, 75  
 van Weeren R. J., Röttgering H. J., Brüggem M., Hoeft M., 2010, *Science*, 330, 347  
 van Weeren R. J. et al., 2016, *ApJS*, 223, 2  
 van Weeren R. J., de Gasperin F., Akamatsu H., Brüggem M., Feretti L., Kang H., Stroe A., Zandanel F., 2019, *Space Sci. Rev.*, 215, 16  
 van Weeren R. J. et al., 2021, *A&A*, 651, A115  
 Vazza F., Wittor D., Brunetti G., Brüggem M., 2021, *A&A*, 653, A23

- Vazza F., Wittor D., Di Federico L., Brüggén M., Brienza M., Brunetti G., Brighenti F., Pasini T., 2023, *A&A*, 669, A50
- Walker S. A., ZuHone J. A., Fabian A. C., Sanders J. S., 2018, *Nat. Astron.*, 2, 292
- Walker S. A., Mirakhor M., ZuHone J. A., Sanders J. S., Fabian A. C., Diwanji P., 2022, *ApJ*, 929, 37
- Wang Q. H., Markevitch M., 2018, *ApJ*, 868, 45
- Wang Q. H., Markevitch M., Giacintucci S., 2016, *ApJ*, 833, 99
- Weinberger R., Ehlert K., Pfrommer C., Pakmor R., Springel V., 2017, *MNRAS*, 470, 4530
- Williams W. L. et al., 2016, *MNRAS*, 460, 2385
- Yusef-Zadeh F., Arendt R., Wardle M., Boldyrev S., Heywood I., Cotton W., Camilo F., 2022a, *MNRAS*, 515, 3059
- Yusef-Zadeh F., Arendt R., Wardle M., Heywood I., Cotton W., 2022b, *MNRAS*, 517, 294
- Yusef-Zadeh F., Arendt R., Wardle M., Heywood I., Cotton W., Camilo F., 2022c, *ApJ*, 925, L18
- Yusef-Zadeh F., Arendt R., Wardle M., 2022d, *ApJ*, 939, L21
- ZuHone J. A., Su Y., 2022, in Bambi C., Santangelo A., eds, *Handbook of X-ray and Gamma-ray Astrophysics*. Springer Singapore, p. 93
- ZuHone J. A., Markevitch M., Johnson R. E., 2010, *ApJ*, 717, 908
- ZuHone J. A., Markevitch M., Lee D., 2011, *ApJ*, 743, 16
- ZuHone J. A., Markevitch M., Brunetti G., Giacintucci S., 2013, *ApJ*, 762, 78
- ZuHone J. A., Miller E. D., Simionescu A., Bautz M., 2016, *ApJ*, 821, 6
- ZuHone J. A., Kowalik K., Öhman E., Lau E. T., Nagai D., 2018a, *ApJS*, 234, 4
- ZuHone J. A., Miller E. D., Bulbul E., Zhuravleva I., 2018b, *ApJ*, 853, 180
- ZuHone J. A., Zavala J., Vogelsberger M., 2019, *ApJ*, 882, 119
- ZuHone J. A., Ehlert K., Weinberger R., Pfrommer C., 2021a, *Galaxies*, 9, 91
- ZuHone J. A., Markevitch M., Weinberger R., Nulsen P. E., Ehlert K., 2021b, *ApJ*, 914, 73

This paper has been typeset from a  $\text{\TeX}/\text{\LaTeX}$  file prepared by the author.