



Publication Year	2016
Acceptance in OA	2020-05-08T15:04:15Z
Title	The amazing diversity in the hot gas content of an X-ray unbiased massive galaxy clusters sample
Authors	ANDREON, Stefano, Serra, Ana Laura, MORETTI, Alberto, TRINCHIERI, Ginevra
Publisher's version (DOI)	10.1051/0004-6361/201527408
Handle	http://hdl.handle.net/20.500.12386/24657
Journal	ASTRONOMY & ASTROPHYSICS
Volume	585

The amazing diversity in the hot gas content of an X-ray unbiased massive galaxy clusters sample

S. Andreon¹, Ana Laura Serra², A. Moretti¹, and G. Trinchieri¹

¹ INAF–Osservatorio Astronomico di Brera, via Brera 28, 20121 Milano, Italy
e-mail: stefano.andreon@brera.inaf.it

² Dip. di Fisica, Università degli Studi di Milano, via Celoria 16, 20133 Milano, Italy

Received 21 September 2015 / Accepted 10 November 2015

ABSTRACT

We aim to determine the intrinsic variety, at a given mass, of the properties of the intracluster medium in clusters of galaxies. This requires a cluster sample selected independently of the intracluster medium content for which reliable masses and subsequent X-ray data can be obtained. We present one such sample, consisting of 34 galaxy clusters selected independently of their X-ray properties in the nearby ($0.050 < z < 0.135$) Universe and mostly with $14 < \log M_{500}/M_{\odot} \lesssim 14.5$, where masses are dynamically estimated. We collected the available X-ray observations from the archives and then observed the remaining clusters with the low-background *Swift* X-ray telescope, which is extremely useful for sampling a cluster population expected to have low surface brightness. We found that clusters display a large range (up to a factor 50) in X-ray luminosities within r_{500} at a given mass, whether or not the central emission ($r < 0.15r_{500}$) is excised, unveiling a wider cluster population than seen in Sunayev-Zeldovich surveys or inferred from the population seen in X-ray surveys. The measured dispersion is 0.5 dex in L_X at a given mass.

Key words. galaxies: clusters: intracluster medium – X-rays: galaxies: clusters – galaxies: clusters: general – methods: statistical

1. Introduction

The X-ray observations of the hot intracluster medium (ICM) of galaxy clusters provide quantities such as its mass, temperature (T), and X-ray luminosity (L_X). The analysis of the scaling relations between these physical quantities gives considerable insight into the physical processes occurring in the ICM (e.g., Rosati et al. 2002; Voit 2005). Scaling relations provide the basis for cosmological estimates based on galaxy clusters (e.g., Vikhlinin et al. 2009).

Scaling relations have generally been derived for X-ray selected samples. However, it is becoming generally appreciated (Pacaud et al. 2007; Stanek et al. 2006; Pratt et al. 2009; Andreon et al. 2011; Andreon & Moretti 2011; Eckert et al. 2011; Planck Collaboration IX 2011; Planck Collaboration Int. 2012; Maughan et al. 2012) that X-ray selected clusters offer a biased view of the cluster population because, at a given mass, brighter-than-average clusters are easier to select and include in a sample, while fainter-than-average clusters are easily missed. In X-ray selected samples, the amplitude of the bias cannot be determined from the data (and selection function) alone, and input from non-X-ray selected samples is needed to break the degeneracy between the intercept and the scatter of the scaling relations. Alternatively, a strong prior on one of the parameters, for example based on numerical simulations, should be adopted (e.g., Vikhlinin et al. 2009). In spite of the interest on the subject and the general awareness of the biases induced by the X-ray selection, a sample of clusters observed in X-rays whose selection is, at a given mass, independent of the cluster ICM content is still missing in the literature. In this respect, Sunayev-Zeldovich (SZ) based surveys do not seem to represent an alternative, given that they also use the ICM to select the clusters, thus, they may miss clusters with low gas fractions.

Our current (and future) understanding of the complex physics involved in the cluster formation (see, e.g., Maughan et al. 2012), as well as the cosmological power of surveys, are severely affected by these systematics that can be understood only with the aid of cluster samples that are not X-ray selected. Future cosmological surveys (e.g., eROSITA), designed to supply large amounts of data from clusters, will benefit from an accurate understanding of the biases associated with the X-ray selection because the biases can only be understood with the aid of cluster samples that are *not* X-ray selected.

A population of clusters under-represented in X-ray selected samples have been already discovered among SZ-selected clusters (Planck Collaboration IX 2011; Planck Collaboration Int. 2012). The size of the missing population is not yet quantified; moreover, the SZ selection is not a satisfactorily alternative because being based on the ICM content it can miss clusters with low gas fractions. Andreon & Moretti (2011) studied a color-selected cluster sample and found a large variety (0.5 dex) of X-ray luminosities at a given richness. Given that richness correlates tightly with mass (e.g., Andreon & Hurn 2010; Andreon 2015), this suggests that there is a large variety in the L_X at a given mass. So far, however, this is based on indirect evidence because the mass of the studied clusters has not been directly measured.

To firmly establish the variety of intracluster medium properties of galaxy clusters of a given mass and to break the degeneracies between the parameters of the X-ray cluster scaling relations is paramount to assemble cluster samples having three features: 1) observed in X-ray; 2) with known mass; and 3) whose selection is, at a given cluster mass, independent of the intracluster medium content. If masses are derived from the X-ray data, then one should account for the covariance between

Table 1. Cluster sample and results of the analysis.

Id	Ra	Dec	z	$\log M_{500}$	err	N	$\log M_{500}$	err	n	Telescope	t_{exp}	$\log L_X$	err	$\log L_X$	err
(1)	(2)	(3)	(4)	$[M_{\odot}]$	dex	(7)	$[M_{\odot}]$	dex	(10)	(11)	ks	erg s^{-1}	dex	erg s^{-1}	dex
CL2081	0.167	14.550	0.093	14.39	0.09	94	13.94	0.28	11	<i>Swift</i>	9.5	42.44	0.11	42.09	0.19
CL2015	13.966	-9.986	0.055	14.36	0.09	214	14.27	0.12	61	<i>Swift</i>	9.0	42.97	0.05	42.79	0.06
CL2045	22.887	0.556	0.079	13.86	0.10	66	13.95	0.16	45	<i>Swift</i>	10.1	43.20	0.03	43.11	0.04
CL2010	29.071	1.051	0.080	14.34	0.09	179	14.39	0.12	92	<i>Swift</i>	9.4	43.25	0.04	43.10	0.05
CL2007	46.572	-0.140	0.109	14.28	0.09	164	14.22	0.14	57	<i>Swift</i>	9.1	42.84	0.09	42.68	0.12
CL3023	122.535	35.280	0.084	14.05	0.09	173	14.31	0.17	44	<i>Swift</i>	9.6	43.08	0.04	42.88	0.05
CL3030	126.371	47.130	0.127	14.52	0.15	364	14.67	0.07	156	<i>Swift</i>	16.5	44.05	0.01	43.93	0.02
CL3009	136.977	52.790	0.099	13.89	0.09	72	13.39	0.24	17	<i>Swift</i>	8.4	42.97	0.05	42.70	0.08
CL1209	149.161	-0.358	0.087	14.03	0.09	115	14.29	0.15	43	<i>XMM</i>	49.4	42.54	0.02	42.23	0.03
CL3053	160.254	58.290	0.073	13.52	0.27	99	13.63	0.20	31	<i>Swift</i>	14.4	42.61	0.08	42.48	0.07
CL3000	163.402	54.870	0.072	14.58	0.09	180	14.18	0.15	59	<i>Swift</i>	8.8	43.51	0.03	43.35	0.05
CL3046	164.599	56.790	0.135	14.62	0.09	172	14.63	0.15	104	<i>Swift</i>	9.0	44.46	0.01	44.37	0.01
										<i>Chandra</i>	7.7	44.48	0.01	44.37	0.01
CL1033	167.747	1.128	0.097	13.83	0.12	77	13.79	0.21	20	<i>Swift</i>	9.0	43.15	0.04	43.05	0.05
CL1073	170.726	1.114	0.074	14.20	0.09	149	14.15	0.12	63	<i>Chandra</i>	21.7	43.17	0.03	43.10	0.03
										<i>Swift</i>	14.6	43.03	0.05	42.95	0.06
CL3013	173.311	66.380	0.115	14.28	0.13	148	14.29	0.12	111	<i>Swift</i>	9.7	44.05	0.01	43.89	0.02
CL1014	175.299	5.735	0.098	14.40	0.09	120	14.40	0.16	51	<i>Swift</i>	12.0	43.47	0.03	43.31	0.04
CL1020	176.028	5.798	0.103	13.94	0.35	29	14.61	0.14	43	<i>Swift</i>	6.8	43.74	0.02	43.61	0.03
CL1038	179.379	5.098	0.076	14.21	0.09	95	14.28	0.13	54	<i>Swift</i>	8.7	43.43	0.03	43.37	0.03
CL1015	182.570	5.386	0.077	13.85	0.19	79	14.14	0.15	37	<i>Swift</i>	17.3	43.65	0.01	43.55	0.01
CL1120	188.611	4.056	0.085	14.02	0.09	50	14.33	0.21	25	<i>Swift</i>	10.9	42.63	0.09	42.50	0.11
CL1041	194.673	-1.761	0.084	14.31	0.09	370	14.58	0.11	153	<i>Chandra</i>	38.2	44.39	0.01	44.17	0.01
CL1132	195.143	-2.134	0.085	13.79	0.24	42	13.70	0.17	27	<i>Swift</i>	9.6	42.34	0.10	42.04	0.15
CL1052	195.719	-2.516	0.083	14.31	0.09	262	14.57	0.10	96	<i>XMM</i>	49.5	43.65	0.01	43.39	0.01
CL1009	198.057	-0.974	0.085	14.00	0.26	236	14.28	0.12	56	<i>Chandra</i>	20.9	43.38	0.01	43.24	0.02
CL1022	199.821	-0.919	0.083	13.86	0.12	87	13.56	0.16	36	<i>XMM</i>	31.2	42.55	0.10	42.55	0.10
CL3049	203.264	60.120	0.072	13.63	0.10	49	13.86	0.23	32	<i>Swift</i>	12.3	43.09	0.03	42.97	0.03
CL1030	206.165	2.860	0.078	14.16	0.09	86	14.12	0.21	41	<i>Swift</i>	13.1	42.75	0.06	42.54	0.09
CL1001	208.256	5.134	0.079	14.30	0.11	171	14.57	0.09	124	<i>Swift</i>	31.0	43.87	0.01	43.79	0.01
CL1067	212.022	5.418	0.088	13.92	0.38	57	14.29	0.14	42	<i>Swift</i>	10.9	43.33	0.04	43.25	0.04
CL1018	214.398	2.053	0.054	13.68	0.24	123	14.27	0.10	79	<i>Swift</i>	9.7	42.83	0.04	42.73	0.05
CL1011	227.107	-0.266	0.091	14.23	0.17	48	14.46	0.14	42	<i>Swift</i>	13.7	42.96	0.05	42.77	0.07
CL1039	228.809	4.386	0.098	14.32	0.16	76	14.63	0.13	68	<i>XMM</i>	11.0	43.52	0.02	43.42	0.02
CL1047	229.184	-0.969	0.118	14.01	0.23	121	13.81	0.23	28	<i>Swift</i>	8.8	43.71	0.03	43.63	0.04
										<i>XMM</i>	39.6	43.78	0.01	43.70	0.01
CL3020	232.311	52.860	0.073	14.12	0.14	81	14.18	0.18	53	<i>Swift</i>	7.3	43.30	0.04	43.20	0.04

Notes. The table lists: cluster id (Col. 1); coordinates (Cols. 2 and 3); redshift z (Col. 4); caustic masses M_{500} (Cols. 5 and 6); number of galaxies within the caustics (Col. 7); velocity-dispersion based masses M_{500} (Cols. 8 and 9); number of galaxies within r_{200} and $|\Delta_v| < 3500 \text{ km s}^{-1}$ (Col. 10); X-ray telescope used (Col. 11); effective exposure time (Col. 12); X-ray luminosity $L_X(<r_{500})$ in the $[0.5, 2]$ keV band (Cols. 13 and 14); core-excised X-ray luminosity $L_X(0.1 r_{500} < r < r_{500})$ in the $[0.5, 2]$ keV band (Cols. 15 and 16).

X-ray luminosity and mass induced by the double use of the same photons.

The purpose of this work is to build, observe, and analyze one such cluster sample. To this end, in 2011 our team started an observational program with the X-ray telescope on board of *Swift*, dubbed X-ray unbiased cluster survey (XUCS). With this program, we were able to uncover a wider range in luminosities relatively to what expected on the basis of the Representative *XMM-Newton* Cluster Structure survey (REXCESS), or even *Planck* selected clusters. The impatient reader may want to quickly browse Sect. 2 (sample selection), read Sect. 3 (which illustrates the main conclusion of the paper with an example), skip the technical analysis in Sect. 4, and read the results based on the whole sample in Sect. 5.

Throughout this paper, we assume $\Omega_M = 0.3$, $\Omega_\Lambda = 0.7$, and $H_0 = 70 \text{ km s}^{-1} \text{ Mpc}^{-1}$. Results of stochastic computations are given in the form $x \pm y$, where x and y are the posterior mean and standard deviation. The latter also corresponds to 68% intervals because we only summarize posteriors close to Gaussian in this way.

2. Sample selection

Our sample, named XUCS, consists of 34 clusters in the very nearby universe ($0.050 < z < 0.135$) extracted from the C4 catalog (Miller et al. 2005) in regions of low Galactic absorption.

The C4 catalog identifies clusters as overdensities in the local Universe in a seven-dimensional space (position, redshift, and colors; see Miller et al. 2005, for details) using SDSS data (Abazajian et al. 2004). Among all C4 high-quality clusters (>30 spectroscopic members within a radius of 1.5 Mpc, 55 on average) with a (dynamical) mass $\log M > 14.2 M_{\odot}$ (derived from the C4 $\sigma_v > 500 \text{ km s}^{-1}$), we selected the 34 nearest (to minimize exposure times) which are also smaller than the *Swift* XRT field of view ($r_{500} \lesssim 9$ arcmin).

The XUCS cluster sample is listed in Table 1. There is no X-ray selection in our sample, meaning that 1) the probability of inclusion of the cluster in the sample is independent of its X-ray luminosity (or count rate); and that 2) no cluster is kept or removed on the basis of its X-ray properties¹.

As detailed in Table 2, many of our sample clusters were already detected by the previous generation of X-ray telescopes and surveys (e.g., REFLEX and NORAS; Bohringer et al. 2000, 2004), some are listed in the Abell et al. (1989) catalog and

¹ Our original program targeted a slightly larger cluster sample. However, because of the approximation in the coordinates listed in the optical C4 catalog, the center of a few clusters fell too close to XRT field-of-view boundaries, or in some cases, was missed altogether. Furthermore, the dynamical analysis of two of the original clusters shows that they are two parts of the same dynamical entity at the r_{200} scale, making the derived masses of the individual clusters unreliable. For this reason, we removed these two targets from the sample.

Table 2. Literature names.

Id	Literature names
CL2081	
CL2005	A117, PSZ2G126.72-72.82
CL2045	A208, RXC J0131.7+0033, MCXCJ0131.7+0033
CL2010	A279
CL2007	A412
CL3023	A628
CL3030	A655, RXC J0825.5+4707, MCXCJ0825.5+4707, PSZ2G172.63+35.15
CL3009	XCLASS 1943
CL1209	
CL3053	
CL3000	RXC J1053.7+5452, MCXCJ1053.7+5452
CL3046	A1132, MCXCJ1058.4+5647, PSZ2G149.22+54.18
CL1033	A1189
CL1073	A1238, RXC J1122.8+0106, MCXCJ1122.8+0106
CL3013	A1302, MCXCJ1133.2+6622, PSZ2G134.70+48.91
CL1014	A1346, PSZ2G261.88+62.85
CL1020	
CL1038	A1424, MCXCJ1157.4+0503
CL1015	ZWCL1207.5+0542, RXC J1210.3+0523, MCXCJ1210.3+0523
CL1120	
CL1041	A1650, RXC J1258.6-0145, MCXCJ1258.6-0145, Hydra, PSZ2G306.66+61.06
CL1132	
CL1052	A1663, RXC J1302.8-0230, MCXCJ1302.8-0230, PSZ2G308.64+60.26
CL1009	A1692, RXJ1218.9+0515
CL1022	2PI0.084J1319.3-0055
CL3049	
CL1030	A1780
CL1001	A1809, MCXCJ1353.0+0509, PSZ2G339.47+63.56
CL1067	A1864
CL1018	MKW6
CL1011	A2026, XMMXCSJ1508.4-0015
CL1039	A2048
CL1047	A2051, RXC J1516.5-0056, MCXCJ1516.5-0056, PSZ2G000.04+45.13
CL3020	

some are also in the Planck cluster catalog (Planck Collaboration XXVII 2015). This information, not used to select the sample, is given for completeness and it also illustrates that the clusters selected are real structures present in other catalogs.

We collected the few X-ray observations present in the *XMM-Newton* or Chandra archives and we observed 28 clusters with *Swift* (individual exposure times between 9 and 31 ks, total exposure time ~ 0.35 Ms, see Table 1). *Swift* has the advantage of a low X-ray background (Moretti et al. 2009), making it extremely useful for sampling a cluster population expected to have low surface brightness (Andreon & Moretti 2011).

3. The straightforward comparison

To illustrate the diversity in ICM properties of clusters of a given mass in the simplest possible way, we consider two clusters, CL3013 and CL2007. We chose these two clusters because they have identical masses ($\log M_{500}/M_{\odot} = 14.28$) and velocity dispersions (600 km s^{-1} ; see Fig. 1); very similar redshifts ($z = 0.115$ and 0.109); similar number of galaxies within the caustics (~ 150); and X-ray data of the same depth (~ 9.5 ks with *Swift* XRT; see Table 1) in directions having the same Galactic absorption. The *Swift* XRT images shown in Fig. 2 indicate that the X-ray emission of the two clusters is vastly different. We collected 1027 net photons in $[0.5-2]$ keV band for CL3013, and 65 for CL2007 within 0.83 Mpc (corresponding to the r_{500} value). The more detailed analysis presented in Sect. 4.1 confirms the large (a factor ~ 16) difference in luminosities (total and core-excised) and that the difference is not due to a cool core in CL3013 because the latter has a ~ 10 times larger count rate at all radii.

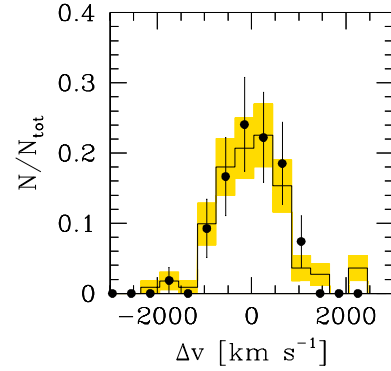


Fig. 1. Velocity distribution of the galaxies in clusters CL3013 (histogram) and CL2007 (points). Error-bars to the histogram are shown with the shading. In this purely illustrative figure, error-bars are simply \sqrt{n} -based.

As discussed in detail in Sect. 5, CL3013 and CL2007 differ too much in X-ray luminosity to obey the low-scatter scaling relation of X-ray selected cluster samples, such as the Representative *XMM-Newton* Cluster Structure survey (REXCESS) sample (Bohringer et al. 2007), even after taking the X-ray selection of the latter into account. This is the main result of this work, which we now illustrate for the full sample.

4. Collective analysis of the full sample

In the following, we describe the analysis procedures to compute the mass and X-ray luminosity in the $[0.5-2]$ keV band of the clusters of our sample.

4.1. X-ray analysis

A few clusters of our sample were observed with *XMM-Newton* (EPIC-MOS1 and 2; Turner et al. 2001) and Chandra ACIS-I (Garmire et al. 2003; see Table 1 for details²), which also reports effective exposure times (after flares cleaning). The remaining clusters were observed with the X-ray telescope (XRT) on board the *Swift* satellite (Gehrels et al. 2004)³. We reduced the X-ray data using the standard data reduction procedures (Moretti et al. 2009; XMMSAS⁴ or CIAO⁵).

As shown in Figs. 2 and 3, clusters in our sample show a variety of X-ray morphologies. CL3000 shows an offset between the galaxy number density distribution and the X-ray emission (see Fig. 3), a bit like the Bullet cluster (Clowe et al. 2004). CL1022 is a bimodal cluster formed by two distinct clumps of X-ray emitting gas and galaxies (each one peaked on its own brightest cluster galaxy; BCG hereafter) of comparable richness and X-ray luminosity. The other clusters show a range of morphologies from regular (CL1209, see Fig. 3) to bimodal/irregulars, as evaluated from the available number of photons (the median is

² XMM obsid 0206430101 (PI C. Miller), 0201751301 (PI P. Mazzotta), 0201902101 (PI H. Bohringer), and 0653810601 (PI Ming Sun); Chandra obsid 4990 and 4991 (PI Bower), 5823 (PI Donahue), and 13376 (PI Murray).

³ *Swift* proposals id 8110004, 9120007, and 1013012 (PI S. Andreon), about one third of them executed on Italian time.

⁴ <http://xmm.esac.esa.int/sas>

⁵ <http://cxc.harvard.edu/ciao/>

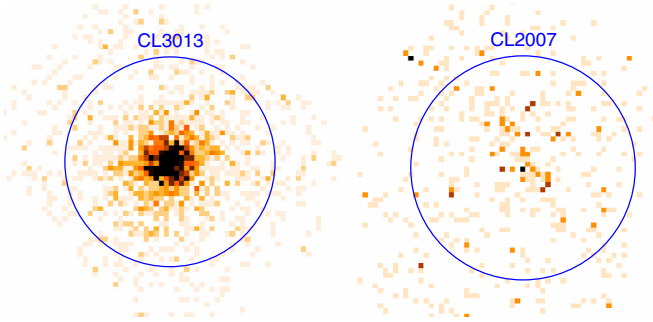


Fig. 2. Binned X-ray image of CL3013 and CL2007 in the [0.5–2] keV band observed for about 9.5 ks each with XRT on *Swift*. These clusters have identical masses, velocity dispersions, and redshift, but X-ray luminosities differing by a factor 15. The circle shows the 0.83 Mpc radius (the r_{500} value).

400 photons within $0.15r_{500} < r < r_{500}$ and 550 within $r < r_{500}$ in the [0.5–2] keV band⁶.

Point sources are detected by a wave detection algorithm, and we masked pixels affected by them when calculating radial profiles and fluxes. In our analysis, we used exposure maps to calculate the effective exposure time accounting for dithering, vignetting, CCD defects, gaps, and excised regions.

Since *Swift* observations are taken with different roll angles and sometimes different pointing centers, the exposure map may show large differences at very large off-axis angles. To avoid regions of too low exposure, we only consider regions where the exposure time is larger than 50% of the central value. Furthermore, we truncate the radial profile when one-third of the circumference is outside the 50% exposure region defined above. We take the position of the BCG closest to the X-ray peak as cluster center (the northern one in case of bimodal cluster CL1022).

To measure the surface brightness profile, we extract the distance from the cluster center r of individual photon in the [0.5–2] keV band, and we individually fit them (i.e., without any radial binning, as detailed in Andreon et al. 2008, 2011; a similar approach is followed in CIAO-Sherpa), with the following generalized β model adapted from Vikhlinin et al. (2006):

$$S(r) \propto S_0(r/r_c)^{-\alpha}(1 + (r/r_c)^2)^{-3\beta+0.5+\alpha/2} + C, \quad (1)$$

where S_0 , r_c , and C are the central surface brightness, core radius, and the background constant, respectively. The α parameter models the power-law-type cusp typical of cool-core clusters and is a parameter requested by the data of some of our clusters. Chandra data also require us to excise the inner 3–5 arcsec region because of the BCG emission. Our fit accounts for vignetting, excised regions, background level, variation in exposure time, and Poisson fluctuations using the likelihood in Andreon et al. (2008). The parameter β is fixed at 2/3 because our data cannot constrain all parameters for all clusters. For the other parameters, we took weak priors, and, in particular, we took a uniform prior for S_0 and C , constrained to be positive (to avoid unphysical values), and a Gaussian prior on r_c with the center equal to $r_{500}/5$ (suggested by Ettori et al. 2015), with a 30% sigma (i.e., $r_c \in (0, r_{500})$ with 99% probability). A posteriori, all (posterior mean) r_c are well within this range.

⁶ The radius r_Δ is the radius within which the enclosed average mass density is Δ times the critical density at the cluster redshift. It is computed during the dynamical analysis in Sect. 4.2.2.

As an example, Fig. 4 shows the observed surface brightness profile, the fitted generalized beta model, and its 68% uncertainty for the two clusters shown in Fig. 2. CL3013 has no cool core and a ~ 10 times larger count rate than CL 2007, at all radii, as mentioned in Sect. 3.

By integrating the fitted model within the ranges $0 < r < r_{500}$ and $0.15r_{500} < r < r_{500}$ and assuming a 3.5 keV temperature, we obtain the X-ray luminosity within r_{500} , $L_{500} = L_X(< r_{500})$, and the core-excised luminosity, $L_{500,ce} = L_X(0.15 < r/r_{500} < 1)$, listed in Table 1. Adopting $kT = 8$ keV would only change the derived luminosities by 0.01 dex. This ensures that our conclusions below are not resulting from temperature variations that we have neglected across the sample. The smallest $0.15r_{500}$ radius is 49 arcsec, much larger than PSF of the used instruments ($\lesssim 8$ arcsec), so that the contribution of any cool-core flux spilled out of the excised region is negligible.

For all but two clusters r_{500} is smaller than the radius of the (conservatively taken) last point in the surface brightness profile, r_{last} . For CL2015 and CL3000 it is marginally outside it and we measure the extrapolation based on the best-fit model to be 6 to 8%. The error on the uncertain extrapolation is automatically accounted for by our L_X computation (via Eq. (1)).

Although our radial profile model is very flexible in describing the surface brightness profile of clusters, it assumes a unimodal X-ray emission and, therefore, cannot deal with the bimodal CL1022 cluster. For this cluster, the X-ray luminosity is derived by simple aperture photometry centering the aperture on the northern clump (and ignoring gaps, regions unobserved because of other sources, variation in exposure time, etc.). As a check, we derive the X-ray luminosities of CL1132 and CL1015 in a similar way, i.e., by simply counting photons in the image and with the same limitations as before. We found results consistent with those derived by fitting a radial profile, which provides more reliable L_X errors however.

Three clusters have data from two X-ray telescopes and we compared the resulting luminosities from the different instruments. CL3046 has identical luminosities, the other two clusters differ by an amount that is negligible for our purposes (~ 0.1 dex). Similarly, the luminosities within the REXCESS (Pratt et al. 2009) r_{500} of the two clusters in common with REXCESS are consistent.

4.2. Dynamical analysis

Data for the dynamical analysis are drawn from the 12th SDSS data release (Alam et al. 2015), Galaxy And Mass Assembly (Liske et al. 2015; Baldry et al. 2014), 2dF (Colless et al. 2001), 6dF (Jones et al. 2009), Rines et al. (2013), Hill & Oegerle (1993), Miller et al. (2002), and Pimblet et al. (2006). Both velocity dispersion and caustics analyses below assume the center fixed at the location of the BCG closest to the X-ray peak.

4.2.1. Velocity dispersion based masses

The determination of a dispersion in presence of interlopers/outliers/background is a well-known problem with a long history: Beers et al. (1990) reduced the impact of the contaminating population by using lower weights for objects in the wings of the distribution. Andreon et al. (2008), Wojtak et al. (2011), and Andreon & Waeber (2015) modeled the probability that an object belongs to the interesting, or contaminating, population based on relative velocity from the barycenter, which improves the velocity dispersion estimates upon previous

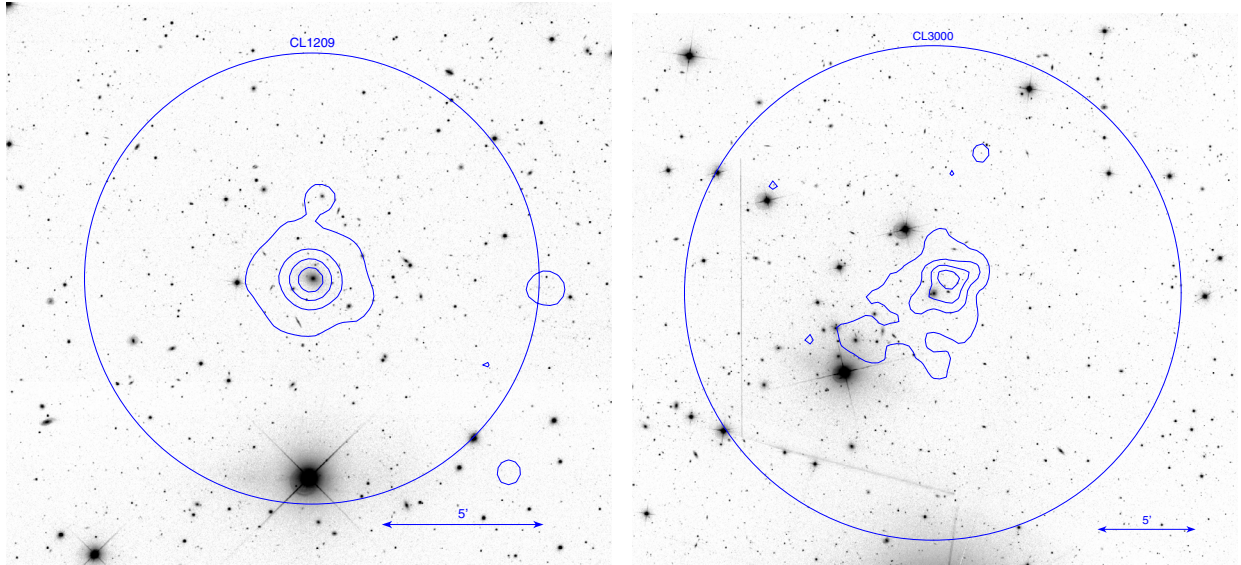


Fig. 3. Optical (r -band) image of CL1209 (*left-hand panel*) and CL3000 (*right-hand panel*) with superimposed X-ray contours in the [0.5–2] keV band, the latter smoothed with a Gaussian with $\sigma \sim 45$ arcsec. The two clusters are among the X-ray faintest for their mass. The circle radius is equal to r_{500} . North is up, east is to the left.

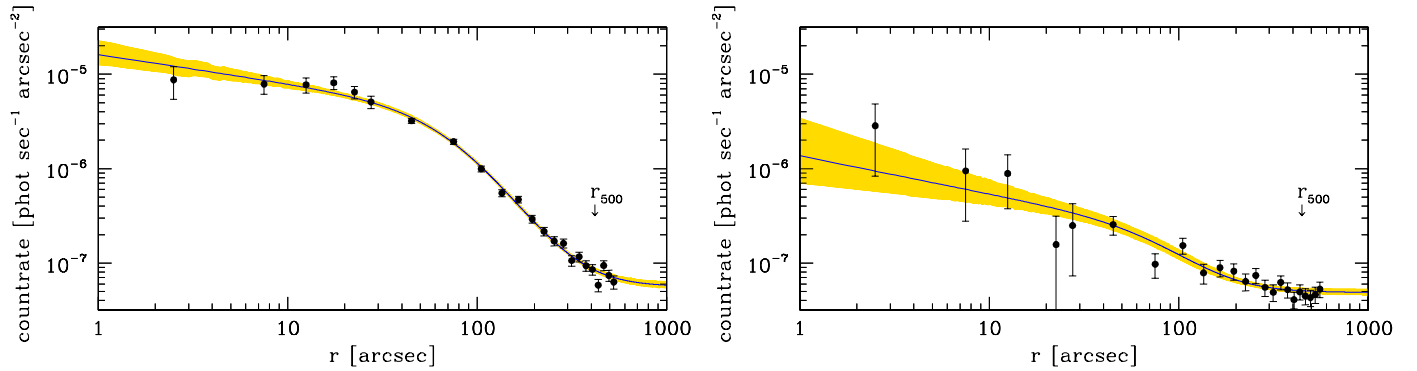


Fig. 4. X-ray radial profile ([0.5–2] keV band) of the clusters CL3013 (*left-hand panel*) and CL2007 (*right-hand panel*). The arrow marks the r_{500} value.

approaches (Andreon et al. 2008; Andreon 2010). Here, we further refine the method with the full cluster centric distance information (i.e., not just the information that the galaxy is inside the considered radial range) in addition to velocity information.

First, we only consider galaxies within $\Delta v < 3500 \text{ km s}^{-1}$ and $r < r_{200}$ because outside this range galaxies are unlikely to be virialized cluster members. Second, following previous works, we model the distribution in the velocity space as a sum of a Gaussian (for cluster members) and a uniform distribution (for foreground/background galaxies) zeroed outside $\Delta v = 3500 \text{ km s}^{-1}$ because we discard galaxies with $\Delta v > 3500 \text{ km s}^{-1}$. Third, we model the distribution in the radial direction as a King profile (for cluster members) plus a constant (for foreground/background galaxies), zeroed at $r > r_{200}$ because galaxies at larger radii are discarded from the sample. By fitting a radial profile, we improve upon previous approaches because we use the radial information in full. The radius r_{200} is, however, unknown. We derive it through simple iterations; we first adopt a radius of 20 arcmin, and we derive σ_v from galaxies within this region, then we convert σ_v in M_{200} using the $\sigma_v - M_{200}$ relation in Evrard et al. (2008). Since $r_{200} \propto M_{200}^{1/3}$, we then select

only galaxies within this r_{200} , and repeat the procedure two more times. Convergence is already achieved at the first iteration.

We fit the spatial-velocity model to the (unbinned) position and velocity data by means of a Markov-chain Monte-Carlo sampler. We adopt uniform prior on parameters, zeroed outside the physically acceptable range. Table 1 lists the derived cluster mass (obtained from the measured σ_v using the $M_{200} - \sigma_v$ in Evrard et al. 2008, and then in M_{500} assuming a Navarro et al. 1997 profile with concentration $c = 5$), the number of fitted galaxies, and velocity barycenter. With $c = 3$, masses would differ by about 0.04 dex, a difference negligible compared to our errors. The median number of fitted galaxies (positions and velocities) within r_{200} is 51, the interquartile range is 32. The median mass of the cluster sample is $\log M_{500}/M_{\odot}$ is 14.2, the interquartile range is 0.4 dex. As mentioned, the probabilistic approach offers more precise measurements and more robust estimates of the uncertainties than older approaches basically because more information in the data is used.

For a few clusters the assumption of a background population of galaxies uniform in velocity is not satisfied by the data because of the presence of velocity-coherent structures (a filament

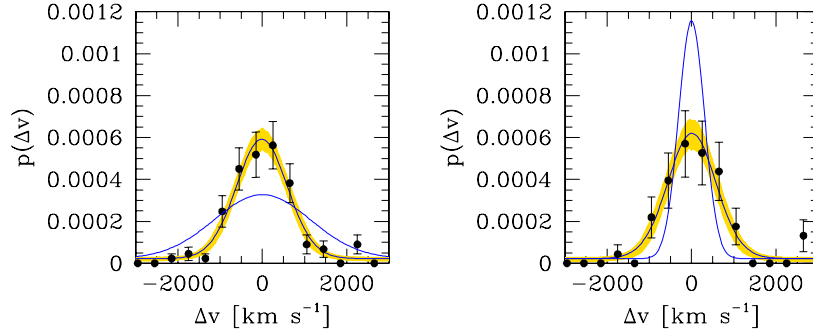


Fig. 5. Velocity distribution of the galaxies in the clusters CL3013 (*left-hand panel*) and CL2007 (*right-hand panel*). The solid line is the mean model fitted to the individual galaxy data in the $r - v$ plane, while the shading indicates the 68% uncertainty (highest posterior density interval). Points and approximated error bars are derived by ignoring the radial information, binning galaxies in velocity bins, and adopting approximated Poisson errors, as is commonly found in the literature. The blue curves shows the distribution appropriate for their observed X-ray luminosity (see Sect. 5.4 for details).

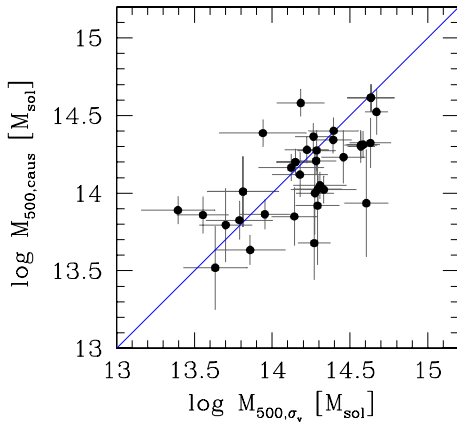


Fig. 6. Caustic masses (ordinate) vs. velocity dispersion based masses (abscissa). The blue line indicates equality and it is not a fit to the data.

or a group). In these cases, we narrowed the radial and/or velocity ranges to make our assumption valid. The caustic analysis described below and an attentive inspection of the space-phase diagram is quite useful to recognize these structures.

Figure 5 shows the observed data, the fitted model, and its 68% uncertainty for the two clusters in Figs. 1, 2, and 4.

4.2.2. Caustics masses

Caustic masses within r_{200} , M_{200} , have been derived following Diaferio & Geller (1997), Diaferio (1999) and Serra et al. (2011). Basically, the caustic technique performs a measurement of the line-of-sight escape velocity and has the advantage of not assuming virial equilibrium, assumed instead when estimating velocity-dispersion-based masses. It only uses redshift and position of the galaxies to identify the caustics on the redshift diagram (clustrocentric distance vs. line-of-sight velocity), whose amplitude is a measure of the escape velocity of the cluster. The mass of a spherical shell within the radius r is just the integral of the square of the caustic amplitude times the filling factor F , taken to be 0.5 in agreement with Diaferio & Geller (1997) and Diaferio (1999). A byproduct of the caustic technique is the construction of a binary tree that arranges the galaxies

hierarchically, according to their binding energy. This tool⁷ is useful for recognizing possible structures in the considered field. To force convergence on the cluster under study (instead of a nearby but distinct cluster in the field), we fixed the cluster center at the optical/X-ray center.

Table 1 lists the cluster masses M_{500} , derived from the caustic M_{200} by assuming a Navarro et al. (1997) profile with concentration $c = 5$, as for σ_v -based masses. To account for systematic errors, mostly due to the intrinsic triaxial structure of halos, we adopt as mass error the maximum between 20% and the statistical error (Serra et al. 2011; Gifford & Miller 2013). The median number of members within the caustics is 116 and the interquartile range is 45. The median mass of the cluster sample is $\log M_{500}/M_{\odot}$ is 14.2 and the interquartile range is 0.4 dex.

Eight XUCS clusters have caustic masses also derived in Rines et al. (2006; 2013). Six out of eight clusters have masses in agreement at 1σ level or better, the remaining two clusters at $\sim 1.5\sigma$.

While positions and velocities are used by both the caustic analysis and velocity dispersion determinations, their use is very different. For example, the dynamical analysis uses galaxies within r_{200} , while this restriction does not apply to the caustic technique, which instead mostly uses galaxies at $r \gtrsim r_{200}$ (and the two r_{200} are not necessarily the same). Furthermore, while we assume a uniform distribution in velocity space when we derive masses from the velocity dispersion, the caustic technique does not make this assumption.

Masses inferred from velocity dispersions agree extremely well with those inferred from caustics (see Fig. 6). The mean χ^2 is 1.3 and the average scatter is 1.1 times the value expected based on the quoted errors. Furthermore, we understand the reason for the difference of the masses of the two clusters with the largest differences ($\sim 2\sigma$): CL3000 is likely to have underestimated caustic errors and the velocity dispersion of CL1018 is likely overestimated because of a possible background velocity structure not accounted for.

5. X-ray luminosity vs. masses

The left-hand panels of Fig. 7 show the X-ray luminosity L_{500} (bottom panels) and the core-excised X-ray luminosity $L_{500,ce}$ (top panels) vs. mass for our cluster sample.

⁷ CausticApp is publicly available at <http://personalpages.to.infn.it/~serra/causticapp.html>

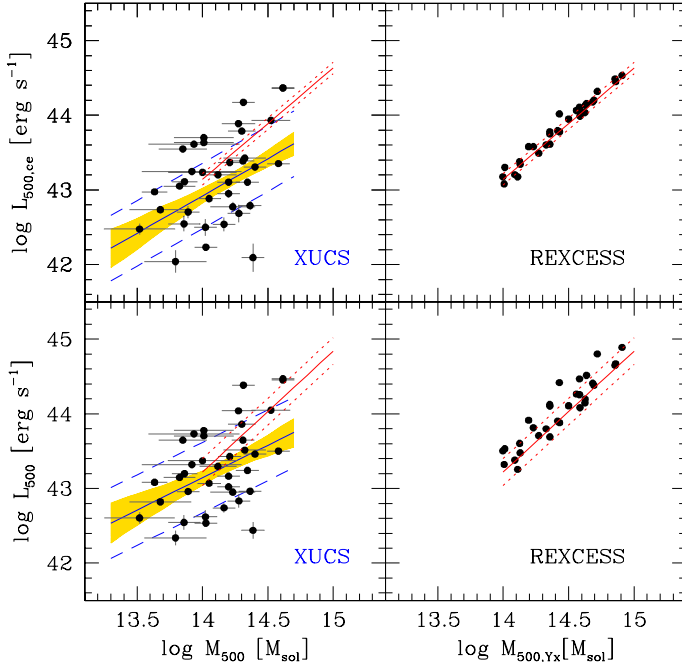


Fig. 7. X-ray luminosity ([0.5–2] keV band) vs. Mass. *Top panels:* core-excised. *Bottom panels:* non-core excised. *Left-hand panels:* our (XUCS) sample. *Right-hand panels:* REXCESS sample. The solid (red) and dotted lines are the REXCESS Malmquist-bias corrected mean and estimated scatter. The solid blue line surrounded by a yellow shading indicates our fit to our data. The shading indicates its 68% uncertainty and the dashed blue dashed lines indicate the fit model \pm the intrinsic scatter.

We fit the data above with a linear relation with intrinsic scatter and errors⁸ with the JAGS Markov-chain Monte-Carlo sampler, which adopts weak priors on parameters. For core-excised luminosities we found

$$\log L_{500,ce} = (0.82 \pm 0.33)(\log M_{500}/M_{\odot} - 14.2) + 43.2 \pm 0.1, \quad (2)$$

with an intrinsic scatter of 0.50 ± 0.07 , and a very similar result for total luminosities

$$\log L_{500} = (0.85 \pm 0.31)(\log M_{500}/M_{\odot} - 14.2) + 43.3 \pm 0.1, \quad (3)$$

with an intrinsic scatter of 0.47 ± 0.07 . Luminosities are expressed in erg s^{-1} and the scatter accounts for both the noisiness of mass and X-ray luminosity. These results are robust to the modeling of the scatter: we find indistinguishable results by replacing the assumed Gaussian scatter with a Student's distribution with 10 deg of freedom, which is more robust to the presence of outliers because has more extended tails (Andreon 2012, details how to implement it). We find the same scatter when we restrict our attention to $\log M_{500}/M_{\odot} > 14$.

The right-hand panels of Fig. 7 show X-ray luminosity vs. mass, but for the REXCESS (Pratt et al. 2009) cluster sample. This sample is composed of X-ray selected clusters in the range $0.06 < z < 0.17$. By construction, plotted points tend to be above the fit line because the line represent the scaling relation inclusive of a correction for the X-ray selection function. The XUCS sample, is, as mentioned, X-ray unbiased and largely overlaps REXCESS in redshift ($0.06 < z < 0.17$ vs.

⁸ The fitting code is distributed in Chapter 8.4 of Andreon & Waiver (2015), in Andreon & Hurn (2013) and also available at http://www.brera.mi.astro.it/~andreon/BayesianMethodsForThePhysicalSciences/model8.4_bug

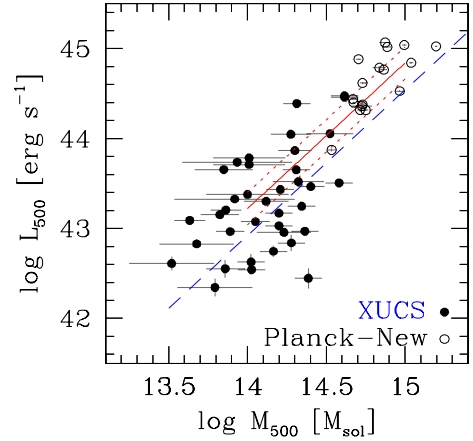


Fig. 8. X-ray luminosity ([0.5–2] keV band) vs. mass for our sample (*left-hand panel*) and the new Planck clusters (*right-hand panel*). Masses for Planck clusters are Y_X -based, whereas they are caustics based for XUCS. The solid (red) and dotted lines are the REXCESS Malmquist-bias corrected mean and mean \pm the estimated scatter. The long dashed (blue) line is the mean REXCESS scaling offset by 0.3 dex describing the lower envelope of Planck clusters. Several XUCS clusters are below this envelope.

$0.05 < z < 0.14$). The mass ranges are also largely overlapping: 70% of XUCS and 50% of REXCESS clusters are in the $14 < \log M_{500}/M_{\odot} < 14.5$ range. While the REXCESS sample tightly obeys the luminosity-mass scaling, the XUCS cluster sample shows a much larger diversity in luminosity at a given mass.

The scatter observed in XUCS is 2.7 (L_{500}) and 7 ($L_{500,ce}$) times the one inferred in REXCESS accounting for the X-ray selection. Therefore, the observed scatter found in our sample cannot be simply explained within the scatter derived accounting for the X-ray selection bias. Rather, with this sample we have unveiled a cluster population exhibiting a larger range of properties for the same mass. This is true also if we consider the $\log M_{500}/M_{\odot} > 14$ mass range (see Fig. 7).

The variety seen in XUCS is also larger than that seen by Hicks et al. (2013): the few clusters studied by these authors occupy the low L_X side of the REXCESS distribution, while our clusters go well below. The large variety is indirectly confirmed by Andreon & Moretti (2011), who observed a 0.5 dex scatter at a given richness, which is known to be a low scatter proxy of mass (e.g., Andreon & Hurn 2010; Andreon 2015). That sample, however, lacks direct measurements of mass.

5.1. Is variety correlated to X-ray morphology?

Inspection of the X-ray images of clusters with low X-ray luminosity for their mass do not show any obvious relation between morphology of the X-ray emission and the location of the cluster in the $L_X - M_{500}$ plane. For example, CL3000 (see Fig. 3, 0.8 dex below the mean REXCESS relation) is an irregular cluster, and, based on the displacement between X-ray emission and galaxies, an interacting cluster. However, CL1001 shows a similar morphology but it falls close to the REXCESS mean. Furthermore, while CL2007 (see Fig. 2, 1.0 dex below the mean REXCESS relation) is irregular and of low luminosity for its mass, CL1209 (1.0 dex below the mean REXCESS relation) is also of low luminosity but its X-ray appearance is fairly regular (see Fig. 3). Therefore, this suggests no obvious relation between the X-ray morphology and position in the L_X -mass plane. Paper II will more accurately explore this evidence.

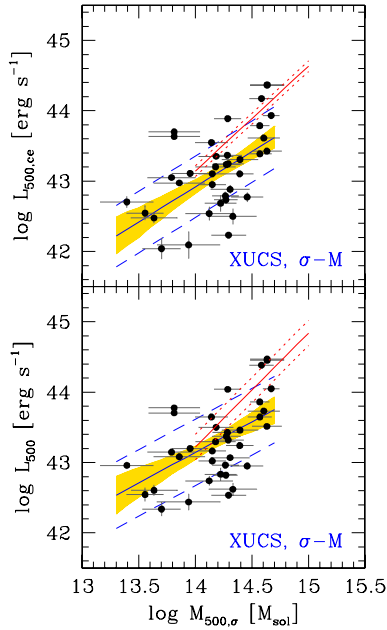


Fig. 9. X-ray luminosity ([0.5–2] keV band) vs. velocity-dispersion-based masses. *Top panel:* core-excised luminosities. *Bottom panel:* non-core-excised luminosities. Shading, solid line and dashed corridor are uncertainty on the mean model, mean model, and mean model \pm the intrinsic scatter, respectively.

5.2. A variety larger than pointed out by Planck?

Figure 8 shows the X-ray luminosity vs. mass scaling relation for XUCS and for the subsample of new (i.e., not previously known) Planck clusters (Planck Collaboration IX 2011). Masses for Planck cluster are (as REXCESS) based on the pseudo-pressure parameter Y_X (Kravtsov et al. 2006). The relation defined by the Planck clusters also shows a larger variety than REXCESS (Planck Collaboration IX 2011). While they do not reach the amplitude displayed by this sample, the more extreme point is just 0.3 dex ($<3\sigma$) below the best-fit REXCESS relation. In XUCS, CL2081 ($\log M_{500}/M_\odot = 14.4$) is off by 1.4 dex, and almost half of the whole sample is more than 0.3 dex fainter than the REXCESS mean (long dashed line). Although the two data sets are sampling complementary parts of the mass function (Planck above, and XUCS below, $\log M_{500}/M_\odot = 14.5$), the variety in the X-ray luminosity at a given mass that we see is larger than observed by Planck, suggesting either that Planck is only unveiling part of the population unveiled by XUCS or that the scatter is mass-dependent. An SZ-selected sample is expected to show a reduced variety of X-ray properties from numerical simulations (Angulo et al. 2012) because the ICM that is emitting in X-ray is also responsible for the inverse Compton effect; this makes the two observables, and selections based on them, correlated.

5.3. Is variety due to wrong X-ray fluxes?

In this section and in the following sections we investigate possible reasons for the different behaviour of the XUCS and REXCESS samples, starting with the exploration of possible inaccuracies in the L_X determination.

In Sect. 3 we show two clusters with similar mass but very different X-ray luminosities. It is very hard to explain a difference, in excess of 900 counts, needed to reconcile the two luminosities, from a faulty data analysis, in particular, when the total

number of photons collected in the image of CL2007 is of about 700, inclusive of background and other sources. In Sect. 4.1 we showed that L_X derived by aperture counting is consistent with our more elaborate analysis accounting for excised regions, gaps, variation in exposure time, etc, and that we obtain consistent values using different telescopes. Our L_X is also consistent with that derived by REXCESS for the two clusters in common. Finally, a lack of knowledge of the X-ray temperature affects L_X to a negligible level (0.01 dex) that is 50 times too small to explain the observed 0.5 dex scatter.

To have overly faint clusters we must have overestimated their backgrounds. A plot of the L_X residuals vs. background value shows that this is not the case: overly faint clusters do not have larger values of estimated background, and, furthermore, all XRT background estimates are within 15%, thanks to the stability of the low *Swift* X-ray background. To further check the background subtraction, we recompute the CL1067 X-ray luminosity using the background from a pointing 31 arcmin away from the cluster. The X-ray luminosity increases by 0.05 dex, 1.5 times the quoted error and ten times smaller than needed to explain the observed L_X scatter at a given M . To summarize, we are confident that the cluster X-ray luminosities are precisely measured and cannot be the source of the observed scatter.

5.4. Is variety due to wrong cluster masses?

The L_X -mass scaling explored thus far uses masses derived from caustics, which does not assume the hydrostatic equilibrium nor a relaxed status for the cluster. The noise and bias of caustic masses have been characterized by a few independent teams who use different simulation methods and assumptions. Serra et al. (2011) used hydrodynamic simulations and find a bias of $<5\%$ at about r_{200} ($\sim 10\%$ at most radii), uncertainties on individual determinations of about 25% (at about r_{200}), and errors in agreement with the uncertainties above. Gifford & Miller (2013), via N -body simulations, also found a small bias (smaller than 4%) and uncertainties on individual determination of about 10–15%. Gifford et al. (2013) confirmed and extended these results with N -body simulations populated by galaxies using different semi-analytic prescriptions. Svensmark et al. (2015), using N -body simulations, found no bias and a $\sim 15\%$ scatter. To explain the observed variance in L_X at a given mass, caustic masses should have a scatter of 300% (in addition to the quoted errors).

Observations also indicate that caustic masses cannot be much noisier than their quoted error (i.e., cannot have underestimated errors) because they correlate with almost no scatter with richness (Andreon 2015), which in turns correlates with almost no scatter with weak-lensing mass (Andreon & Congdon 2014). This latter correlation adopts fixed-aperture masses and, therefore, the source of the tight relation cannot be an effect introduced using mass-related apertures such as r_{200} .

In spite of the evidence provided by previous authors that caustic masses and errors are accurate and well understood, and in addition to our accounting of the mass noisiness in our analysis, we want to test our results further by considering masses derived from the galaxy velocity dispersion.

Figure 9 shows the luminosity-mass scaling relation using these masses. By fitting the data we found scaling relation consistent with those measured with caustic masses, namely: for core-excised luminosities

$$\log L_{500,ce} = (1.00 \pm 0.28)(\log M_{500}/M_\odot - 14.2) + 43.1 \pm 0.1, \quad (4)$$

$$\log L_{500} = (0.85 \pm 0.31)(\log M_{500}/M_\odot - 14.2) + 43.3 \pm 0.1, \quad (5)$$

with an intrinsic scatter of 0.47 ± 0.07 . In particular, both scatter estimates are in agreement with those derived with caustic masses, confirming the variety found there.

These X-ray luminosities are still measured within the r_{500} radius derived from caustics. In order to check that the scatter is not due to mismatched apertures, we also adopted radii derived from velocity dispersions (see Sect. 4.2.1). The large variety of L_X values at a given mass is still there. Finally, we checked that using the Munari et al. (2013) relation in place of the Evrard et al. (2008) relation (to convert velocity dispersions in masses) does not affect the scatter at all. Indeed, it can be easily shown mathematically that the scatter is unaffected by whatever velocity dispersions vs. masses relation is used, provided it is a continuous function.

To quantify the amplitude of the error on σ_v needed to explain the scatter of the L_X -mass relation, let us consider again the clusters CL3013 and CL2007. The slope of the scale relation between core-excised luminosity and mass is 1.49 (Pratt et al. 2009), the slope between mass and velocity dispersion is close to 3 (e.g., Evrard et al. 2008; Munari et al. 2013). Therefore, from scaling relations, the velocity dispersion of CL3013 should be almost twice the velocity dispersion of CL2007 (as shown by the blue solid line in Fig. 5, the velocity distribution that is expected to match the cluster X-ray luminosity). Clearly, this is ruled out by the data.

5.5. Could be the REXCESS scatter underestimated?

As already remarked, several works (Planck Collaboration IX 2011; Andreon & Moretti 2011; Hicks et al. 2013) find a more variegated cluster population than inferred from the REXCESS sample, i.e., that the REXCESS scatter underestimates the total scatter in L_X at a given mass. Here we want to focus on a relevant assumption at the base of the mass derivation. Pratt et al. (2009) derive masses from $Y_X = M_{\text{gas}}T$, where the product is largely driven by the change in M_{gas} because T changes by about 25% for most of the REXCESS sample, while M_{gas} variations are of about 100%. The gas mass and L_X are derived from the same X-ray photons, in particular, from two closely related radial profiles (of n_e and n_e^2), inducing a covariance between the Y_X -derived mass and L_X because of the double use of the same information. In fact, Maughan et al. (2007) find a linear relation between $\log M_{\text{gas}}$ and $\log L_X$ with a negligible (3%) scatter. Said simply, a cluster brighter/fainter for its mass also has a larger/smaller Y_X -based mass, moving mostly along the $L_X - M_{Y_X}$ relation, giving a false impression of a small variance in the REXCESS sample. Since only the orthogonal component of the scatter has been measured and reported by Pratt et al. (2009), the orthogonal scatter underestimated the L_X scatter at a given mass.

The above (neglected) covariance is a general feature of the L_X vs. M_{Y_X} analysis, and applies to Y_X based *Planck* masses in Fig. 6: the variety in the *Planck* sample may be larger than it appears in Fig. 6. Instead, caustic masses are not derived using X-ray photons. This kind of covariance is absent for our mass- L_X determination and our scatter is not underestimated for that reason.

6. Summary and discussion

To firmly establish the variety of intracluster medium properties of clusters of a given mass and to break the degeneracies between the parameters of the X-ray cluster scaling relations is important to assemble cluster samples with the following

three features: 1) observed in X-ray; 2) with known mass; and; 3) whose selection is, at a given cluster mass, independent of the intracluster medium content. Having masses derived independently of the X-ray data is also useful to neglect the covariance induced by the double use of the X-ray photons. The sample, XUCS, presented in this paper offers, for perhaps the first time, an X-ray unbiased view of the cluster population because the cluster sample is assembled independently of the ICM content; at a given mass, clusters are in our sample independent of their X-ray luminosity. It consists of 34 massive clusters ($\log M_{500}/M_\odot > 13.5$ with 70% of the clusters within $14 < \log M_{500}/M_\odot \lesssim 14.5$) in the nearby Universe ($0.05 < z < 0.135$), observed in X-ray, with abundant spectroscopic data (116 galaxies within the caustics on average), and reliable masses.

XUCS reveals an unexpected variety in X-ray luminosity at a given mass, up to a factor 50. The scatter in X-ray luminosity (total or core-excised) is 0.5 dex. The observed range (and spread) in XUCS is about five times larger than the spread inferred from REXCESS after accounting for the X-ray selection of the latter. We are not just recovering those clusters known to be missed in X-ray selected samples, but a broader population missed altogether by REXCESS. The variety we observe in XUCS also seems larger than in the new *Planck* cluster sample. This suggests that either *Planck* is only partially probing the full population seen by XUCS, although the two surveys cover complementary parts of the cluster mass function, or that the scatter in L_X at a given mass is mass dependent (larger at lower masses).

Various tests have shown that our X-ray luminosities are reliable and not the cause of the observed variety. Furthermore, by using core-excised X-ray luminosities, we verified that the variety is not due to a central luminosity excess. Masses are derived independently of the X-ray data. In particular, we use caustic masses, which have the advantage of not assuming virial equilibrium nor a relaxed status for the cluster, or velocity dispersion-based masses, which have reliable errors. In both cases, we found the same variety of ICM properties at a given mass.

We know that clusters show a variety in their ICM properties, and in fact there are many individual examples of the effects of AGN feedback (e.g., Voit & Donahue 2005), star formation (e.g., Nagai 2006), mergers (Rowley et al. 2004), radiative cooling and other nongravitational effects on the ICM properties. However, the frequency with which these processes occurs in the general cluster population cannot be inferred from an etherogenous collection of clusters and requires an X-ray unbiased sample. In XUCS, we found a scatter of 0.50 dex at a given mass, indicating a much more etherogenous population than previously believed based on X-ray or SZ selected samples. It is left to a future paper to study the implications of the large scatter above on our understanding of the complex ICM physics. Here we just mention that past numerical simulations attempted to infer which physical processes are running in clusters (and the sub-grid physics) by matching slope, intercept, and scatter of observed and simulated scaling relations (e.g., Young et al. 2011). Our larger observed variety prompts some stochasticity (across clusters) of the importance of the different processes, or asks us to enlarge the range of values of parameters addressing the sub-grid physics currently kept fixed or bounded in a narrow range (e.g., Pike et al. 2014).

It is believed that X-ray luminosity is a reliable mass proxy with controllable scatter (e.g., Maughan 2007; Pratt et al. 2009), which has important implications for cluster surveys such as *Planck* and eROSITA, and ultimately for the use of the cluster population for cosmological purposes. At first sight, the variety seen in our sample severely reduces the use of X-ray luminosity,

including the core-excised one, no longer a mass proxy of moderate scatter. This has an obvious consequence on inferring mass from the observable, and a subtle effect on the knowledge of the selection function, which is central for cosmological tests, of X-ray selected samples. Since the scatter is large, it is hard to characterize the fraction of the population seen by the survey. On the other end, it might be possible to identify subsamples of clusters with a lower variance at a given mass, for example, those with $\log M_{500}/M_{\odot} > 14.5$, which may show a smaller spread, as Fig. 8 may suggest, and perform cosmological tests using these. We defer a more detailed discussion to a later paper, when the results of our current X-ray observing campaign on more massive clusters will be completed.

Acknowledgements. A.L.S. acknowledges useful discussions with Antonaldo Diaferio. For the standard SDSS III and GAMA acknowledgements see <https://www.sdss3.org/collaboration/boiler-plate.php> and <http://www.gama-survey.org/pubs/ack.php>

References

- Abazajian, K., Adelman-McCarthy, J. K., Agüeros, M. A., et al. 2004, *AJ*, **128**, 502
- Abell, G. O., Corwin, H. G., Jr., & Olowin, R. P. 1989, *ApJS*, **70**, 1
- Alam, S., Albareti, F. D., Allende Prieto, C., et al. 2015, *ApJS*, **219**, 12
- Andreon, S. 2010, in *Bayesian Methods in Cosmology*, eds. M. Hobson, A. Jaffe, A. Liddle, P. Mukherjee, D. Parkinson (New York, Cambridge, UK: Cambridge University Press)
- Andreon, S. 2012, *A&A*, **546**, A6
- Andreon, S. 2015, *A&A*, **582**, A100
- Andreon, S., & Congdon, P. 2014, *A&A*, **568**, A23
- Andreon, S., & Hurn, M. A. 2010, *MNRAS*, **404**, 1922
- Andreon, S., & Moretti, A. 2011, *A&A*, **536**, A37
- Andreon, S., & Weaver, B. 2015, *Bayesian Methods for the Physical Sciences. Learning from Examples in Astronomy and Physics* (Springer)
- Andreon, S., de Propriis, R., Puddu, E., Giordano, L., & Quintana, H. 2008, *MNRAS*, **383**, 102
- Andreon, S., Trinchieri, G., & Pizzolato, F. 2011, *MNRAS*, **412**, 2391
- Angulo, R. E., Springel, V., White, S. D. M., et al. 2012, *MNRAS*, **426**, 2046
- Baldry, I. K., Alpaslan, M., Bauer, A. E., et al. 2014, *MNRAS*, **441**, 2440
- Beers, T. C., Flynn, K., & Gebhardt, K. 1990, *AJ*, **100**, 32
- Böhringer, H., Voges, W., Huchra, J. P., et al. 2000, *ApJS*, **129**, 435
- Böhringer, H., Schuecker, P., Guzzo, L., et al. 2004, *A&A*, **425**, 367
- Böhringer, H., Schuecker, P., Pratt, G. W., et al. 2007, *A&A*, **469**, 363
- Clowe, D., Gonzalez, A., & Markevitch, M. 2004, *ApJ*, **604**, 596
- Colless, M., Dalton, G., Maddox, S., et al. 2001, *MNRAS*, **328**, 1039
- Diaferio, A. 1999, *MNRAS*, **309**, 610
- Diaferio, A., & Geller, M. J. 1997, *ApJ*, **481**, 633
- Eckert, D., Molendi, S., & Paltani, S. 2011, *A&A*, **526**, A79
- Ettori, S. 2015, *MNRAS*, **446**, 2629
- Evrard, A. E., Bialek, J., Busha, M., et al. 2008, *ApJ*, **672**, 122
- Garmire, G. P., Bautz, M. W., Ford, P. G., Nousek, J. A., & Ricker, G. R., Jr. 2003, *Proc. SPIE*, **4851**, 28
- Gehrels, N., Chincarini, G., Giommi, P., et al., 2004, *ApJ*, **611**, 1005
- Gifford, D., & Miller, C. J. 2013, *ApJ*, **768**, L32
- Gifford, D., Miller, C., & Kern, N. 2013, *ApJ*, **773**, 116
- Hicks, A. K., Pratt, G. W., Donahue, M., et al. 2013, *MNRAS*, **431**, 2542
- Hill, J. M., & Oegerle, W. R. 1993, *AJ*, **106**, 831
- Jones, D. H., Read, M. A., Saunders, W., et al. 2009, *MNRAS*, **399**, 683
- Kravtsov, A. V., Vikhlinin, A., & Nagai, D. 2006, *ApJ*, **650**, 128
- Liske, J., Baldry, I. K., Driver, S. P., et al. 2015, *MNRAS*, **452**, 2087
- Maughan, B. J. 2007, *ApJ*, **668**, 772
- Maughan, B. J., Giles, P. A., Randall, S. W., Jones, C., & Forman, W. R. 2012, *MNRAS*, **421**, 1583
- Miller, C. J., Krughoff, K. S., Batuski, D. J., & Hill, J. M. 2002, *AJ*, **124**, 1918
- Miller, C. J., Nichol, R. C., Reichart, D., et al. 2005, *AJ*, **130**, 968
- Moretti, A., Pagani, C., Cusumano, G., et al. 2009, *A&A*, **493**, 501
- Munari, E., Biviano, A., Borgani, S., Murante, G., & Fabjan, D. 2013, *MNRAS*, **430**, 2638
- Navarro, J. F., Frenk, C. S., & White, S. D. M. 1997, *ApJ*, **490**, 493
- Nagai, D. 2006, *ApJ*, **650**, 538
- Pacaud, F., Pierre, M., Adami, C., et al. 2007, *MNRAS*, **382**, 1289
- Pike, S. R., Kay, S. T., Newton, R. D. A., Thomas, P. A., & Jenkins, A. 2014, *MNRAS*, **445**, 1774
- Pimbblet, K. A., Smail, I., Edge, A. C., et al. 2006, *MNRAS*, **366**, 645
- Planck Collaboration IX. 2011, *A&A*, **536**, A9
- Planck Collaboration XXVII. 2015, *A&A*, submitted [[arXiv:1502.01598](https://arxiv.org/abs/1502.01598)]
- Planck Collaboration Int. 2012, *A&A*, **543**, A102
- Pratt, G. W., Croston, J. H., Arnaud, M., & Böhringer, H. 2009, *A&A*, **498**, 361
- Rines, K., Geller, M. J., Diaferio, A., & Kurtz, M. J. 2013, *ApJ*, **767**, 15
- Rosati, P., Borgani, S., & Norman, C. 2002, *ARA&A*, **40**, 539
- Rowley, D. R., Thomas, P. A., & Kay, S. T. 2004, *MNRAS*, **352**, 508
- Serra, A. L., Diaferio, A., Murante, G., & Borgani, S. 2011, *MNRAS*, **412**, 800
- Stanek, R., Evrard, A. E., Böhringer, H., Schuecker, P., & Nord, B. 2006, *ApJ*, **648**, 956
- Svensmark, J., Wojtak, R., & Hansen, S. H. 2015, *MNRAS*, **448**, 1644
- Turner, M. J. L., Abbey, A., Arnaud, M., et al. 2001, *A&A*, **365**, L27
- Vikhlinin, A., Kravtsov, A., Forman, W., et al. 2006, *ApJ*, **640**, 691
- Vikhlinin, A., Burenin, R. A., Ebeling, H., et al. 2009, *ApJ*, **692**, 1033
- Voit, G. M. 2005, *Rev. Mod. Phys.*, **77**, 207
- Voit, G. M., & Donahue, M. 2005, *ApJ*, **634**, 955
- Wojtak, R., Hansen, S. H., & Hjorth, J. 2011, *Nature*, **477**, 567
- Young, O. E., Thomas, P. A., Short, C. J., & Pearce, F. 2011, *MNRAS*, **413**, 691