



Publication Year	2021
Acceptance in OA	2022-05-31T11:44:11Z
Title	The MUSE Deep Lensed Field on the Hubble Frontier Field MACS J0416. Star-forming complexes at cosmological distances
Authors	VANZELLA, Eros, Caminha, G. B., Rosati, P., MERCURIO, AMATA, CASTELLANO, MARCO, MENEGHETTI, MASSIMO, Grillo, C., Sani, E., Bergamini, P., CALURA, Francesco, Caputi, K., CRISTIANI, Stefano, CUPANI, Guido, FONTANA, Adriano, GILLI, Roberto, GRAZIAN, Andrea, Gronke, M., MIGNOLI, Marco, NONINO, Mario, PENTERICCI, Laura, TOZZI, Paolo, Treu, T., Balestra, I., Dijkstra, M.
Publisher's version (DOI)	10.1051/0004-6361/202039466
Handle	http://hdl.handle.net/20.500.12386/32127
Journal	ASTRONOMY & ASTROPHYSICS
Volume	646

The MUSE Deep Lensed Field on the *Hubble* Frontier Field MACS J0416

Star-forming complexes at cosmological distances^{★,★★}

E. Vanzella¹, G. B. Caminha², P. Rosati^{3,1}, A. Mercurio⁴, M. Castellano⁵, M. Meneghetti¹, C. Grillo⁶, E. Sani⁷,
P. Bergamini¹, F. Calura¹, K. Caputi², S. Cristiani⁸, G. Cupani⁸, A. Fontana⁵, R. Gilli¹, A. Grazian⁹,
M. Gronke^{10,★★★}, M. Mignoli¹, M. Nonino⁸, L. Pentericci⁵, P. Tozzi¹¹, T. Treu¹², I. Balestra¹³, and M. Dijkstra¹⁴

¹ INAF – OAS, Osservatorio di Astrofisica e Scienza dello Spazio di Bologna, Via Gobetti 93/3, 40129 Bologna, Italy
e-mail: eros.vanzella@inaf.it

² Kapteyn Astronomical Institute, University of Groningen, Postbus 800, 9700 AV Groningen, The Netherlands

³ Dipartimento di Fisica e Scienze della Terra, Università degli Studi di Ferrara, Via Saragat 1, 44122 Ferrara, Italy

⁴ INAF – Osservatorio Astronomico di Capodimonte, Via Moiariello 16, 80131 Napoli, Italy

⁵ INAF – Osservatorio Astronomico di Roma, Via Frascati 33, 00078 Monte Porzio Catone, RM, Italy

⁶ Dipartimento di Fisica, Università degli Studi di Milano, Via Celoria 16, 20133 Milano, Italy

⁷ European Southern Observatory, Alonso de Cordova 3107, Casilla 19, Santiago 19001, Chile

⁸ INAF – Osservatorio Astronomico di Trieste, Via G. B. Tiepolo 11, 34143 Trieste, Italy

⁹ INAF – Osservatorio Astronomico di Padova, Vicolo Osservatorio 5, 35122 Padova, Italy

¹⁰ Department of Physics & Astronomy, Johns Hopkins University, Baltimore, MD 21218, USA

¹¹ INAF – Osservatorio Astrofisico di Arcetri, Largo E. Fermi, 50125 Firenze, Italy

¹² Department of Physics and Astronomy, University of California, Los Angeles, CA 90095, USA

¹³ OmegaLambdaTec GmbH, Lichtenbergstrasse 8, 85748 Garching bei Munchen, Germany

¹⁴ Stitch Fix Inc. 1 Montgomery Tower, San Francisco, CA 94104, USA

Received 18 September 2020 / Accepted 23 October 2020

ABSTRACT

Context. A census of faint and tiny star forming complexes at high redshift is key to improving our understanding of reionizing sources, galaxy growth, and the formation of globular clusters.

Aims. We present the MUSE Deep Lensed Field (MDLF) program, which is aimed at unveiling the very faint population of high redshift sources that are magnified by strong gravitational lensing and to significantly increase the number of constraints for the lens model.

Methods. We describe Deep MUSE observations of 17.1 h of integration on a single pointing over the *Hubble* Frontier Field galaxy cluster MACS J0416, providing line flux limits down to 2×10^{-19} erg s⁻¹ cm⁻² within 300 km s⁻¹ and continuum detection down to magnitude 26, both at the three sigma level at $\lambda = 7000$ Å. For point sources with a magnification (μ) greater than 2.5 (7.7), the MDLF depth is equivalent to integrating more than 100 (1000) h in blank fields, as well as complementing non-lensed studies of very faint high- z sources. The source-plane effective area of the MDLF with $\mu > 6.3$ is <50% of the image-plane field of view.

Results. We confirm spectroscopic redshifts for all 136 multiple images of 48 source galaxies at $0.9 < z < 6.2$. Within those galaxies, we securely identify 182 multiple images of 66 galaxy components that we use to constrain our lens model. This makes MACS J0416 the cluster with the largest number of confirmed constraints for any strong lens model to date. We identify 116 clumps belonging to background high- z galaxies; the majority of them are multiple images and span magnitude, size, and redshift intervals of $[-18, -10]$, $[~400-3]$ parsec and $1 < z < 6.6$, respectively, with the faintest or most magnified ones probing possible single gravitationally bound star clusters. The multiplicity introduced by gravitational lensing allows us, in several cases, to triple the effective integration time up to ~ 51 h exposure per single family, leading to a detection limit for unresolved emission lines of a few 10^{-20} erg s⁻¹ cm⁻², after correction for lensing magnification. Ultraviolet high-ionization metal lines (and HeII λ 1640) are detected with $S/N > 10$ for individual objects down to de-lensed magnitudes between 28 and 30. The median stacked spectrum of 33 sources with a median $M_{UV} \approx -17$ and $\langle z \rangle = 3.2$ ($1.7 < z < 3.9$) shows high-ionization lines, suggesting that they are common in such faint sources.

Conclusions. Deep MUSE observations, in combination with existing HST imaging, allowed us to: (1) confirm redshifts for extremely faint high- z sources; (2) peer into their internal structure to unveil clumps down to 100–200 pc scale; (3) in some cases, break down such clumps into star-forming complexes matching the scales of bound star clusters (<20 pc effective radius); (4) double the number of constraints for the lens model, reaching an unprecedented set of 182 bona-fide multiple images and confirming up to 213 galaxy cluster members. These results demonstrate the power of JWST and future adaptive optics facilities mounted on the Extremely Large Telescopes (e.g., European-ELT Multi-conjugate Adaptive Optics RelaY, MAORY, coupled with the Multi-AO Imaging Camera for Deep Observations, MICADO) or Very Large Telescope (e.g., MCAO Assisted Visible Imager and Spectrograph, MAVIS) when combined in studies with gravitational telescopes.

Key words. gravitational lensing: strong – Galaxy: formation – galaxies: high-redshift – galaxies: star clusters: general

* Full Table A.2 is only available at the CDS via anonymous ftp to cdsarc.u-strasbg.fr (130.79.128.5) or via <http://cdsarc.u-strasbg.fr/viz-bin/cat/J/A+A/646/A57>

** Based on observations collected at the European Southern Observatory for Astronomical research in the Southern Hemisphere under ESO programmes ID 0100.A-0763(A) (PI E. Vanzella), 094.A-0115B (PI J. Richard), 094.A-0525(A) (PI F.E. Bauer).

*** *Hubble* fellow.

1. Introduction

The key capabilities of extremely large telescopes (ELTs) for the exploration of the distant Universe will provide unprecedented access to faint luminosities (thanks to a large collecting area) and angular resolution down to ~ 10 milliarcsec (mas) thanks to the technology of adaptive optics (AO). In the near future, the imminent launch of the *James Webb* Space Telescope (JWST) will open up a new wavelength domain redward of the *K*-band that is crucial for capturing rest-frame optical lines well within the reionization epoch. These future facilities will allow us to routinely analyze the internal structures of high-redshift galaxies at unprecedented small spatial scales. With a typical point spread function (PSF) of ~ 10 mas (milli-arcsecond) and a pixel scale of 4 mas per pixel, the high-redshift galaxies that remain unresolved today will finally be dissected into resolution elements of 80 (60) parsec at a redshift of 3 (6), eventually providing constraints down to spatial scales of ~ 20 (30) pc per pixel (e.g., E-ELT/MAORY-MICADO). In this regard, star-forming complexes (< 200 pc size) at high redshift and high mass star clusters (e.g., < 30 pc radius) will be accessed and compared to local similar star-forming regions, allowing for detailed studies of (1) star-formation modes (e.g., location and spectral signatures of massive stars); (2) the presence of high-ionization lines and the related ionization photon production efficiency (e.g., Bouwens et al. 2016; Amorín et al. 2017; Senchyna et al. 2017, 2019, 2020a; Chevallard et al. 2018; Lam et al. 2019); and (3) interactions with the surrounding medium (feedback), including the capacity to modulate the opacity of the interstellar medium to ionizing radiation up to circumgalactic scales (which is key for the escape of ionizing photons, e.g., Erb 2015; Grazian et al. 2017; Vanzella et al. 2020a; He et al. 2020). These are all key ingredients in the pursuit of answers to two of the most pressing questions in current observational cosmology: (i) what sources reionized the Universe (e.g., Robertson et al. 2015; Giallongo et al. 2015; Meyer et al. 2020; Eide et al. 2020; Dayal et al. 2020); (ii) how globular clusters formed (Renzini et al. 2015; Renzini 2017; Pfeffer et al. 2018, 2019; Calura et al. 2019; Bastian & Lardo 2018); (iii) and how these two questions might be related to each other (e.g., Ricotti 2002; Schaerer & Charbonnel 2011; Katz & Ricotti 2013; Boylan-Kolchin 2018; Ma et al. 2020; He et al. 2020).

Indeed, it has been established in the local Universe that the fraction of forming stars located in gravitationally bound star clusters (also known as cluster formation efficiency, Γ^1), increases as the star-formation rate surface density increases (Adamo et al. 2017, 2020a,b); this, in turn, relates to the increasing gas pressure in high gas surface density conditions (Kruijssen 2012; Li et al. 2018). It has also been proposed that Γ positively correlates with redshift, such that, on average, high-density conditions and merger rate in the high redshift Universe would favor $\Gamma > 30\text{--}40\%$, whereas it is of a few percent at low redshift ($z < 2$) (e.g., Pfeffer et al. 2018). Similar arguments, based on the present-day volume density of globular clusters projected back in time, suggest that at $z \gtrsim 5$, about half of the stellar mass of the Universe was located in star clusters (Renzini 2017), thus suggesting that a significant fraction of the star formation of the Universe in the first Gyr took place in these systems. Therefore, if reionization was mainly driven by star formation – which is mostly confined to bound star clusters – then it is plausible that young star clusters played an essential role in

this process (e.g., Ricotti 2002; Boylan-Kolchin 2018; Bik et al. 2018; Vanzella et al. 2020a; Herenz et al. 2017a).

For the reasons described above, a census of gravitationally-bound young star clusters at high redshift would represent a big step forward in this investigation. Observationally, such a census requires improvements in angular resolution and depth in the rest frame UV with HST. Observations in the rest frame optical and longer wavelengths (JWST and ALMA) will then be necessary to understand their physical properties in detail.

Even though angular resolution of 10–20 mas in the rest frame UV is currently not attainable overall, significant progress has been made in terms of depth with the VLT, which is performing very deep spectroscopy of the faintest sources in what is currently the deepest field obtained with *Hubble* (the *Hubble* Ultra Deep Field, HUDF, Beckwith et al. 2006; Illingworth et al. 2013; Koekemoer et al. 2013). The initial results from an extended integration time (> 30 h), obtained with the VLT multi-unit spectroscopic explorer (MUSE, Bacon et al. 2012) in the HUDF, have been presented in a series of recent works (e.g., Bacon et al. 2017; Inami et al. 2017; Maseda et al. 2018, 2020; Wisotzki et al. 2018; Kusakabe et al. 2020; Feltre et al. 2020)², confirming redshifts for galaxies as faint as magnitude-30 (Brinchmann et al. 2017), including a set of “HST-dark” MUSE sources with detected emission lines (typically $\text{Ly}\alpha$) with no detection of HST counterparts (Inami et al. 2017; Mary et al. 2020). The VLT/MUSE coverage has revolutionized the study of the high-redshift Universe at $z < 6.65$ in the post-reionization epoch (Bacon 2020).

A complementary approach is the use of gravitational lensing magnification (μ) (e.g., Bradley et al. 2014; Atek et al. 2014, 2015, 2018; Treu et al. 2015; Karman et al. 2015, 2017; Caminha et al. 2019; Erb et al. 2019; Richard et al. 2014) provided by clusters of galaxies, which makes background sources brighter and larger on the sky, thus allowing for a much higher effective resolution than in blank fields with the same observational setup. For example, the combination of (1) MUSE integral field spectroscopy; (2) lensed fields; and (3) deep multi-frequency HST imaging (such as the *Hubble* Frontier Fields, HFF hereafter, Lotz et al. 2017; Koekemoer et al. 2014) has led to the confirmation of an unprecedented number of multiple images per field up to a redshift of $z \approx 6.7$ (Caminha et al. 2017; Lagattuta et al. 2019). These identifications are crucial for constructing high-precision lens models. Such observations have given us a first glimpse of what will be accessible with ELTs or extreme AO facilities such as VLT/MAVIS³ in blank fields.

The sub-kpc spatial resolution provided by lensing magnification revealed spatial variations of, for instance, $\text{Ly}\alpha$ emission along the arcs (e.g., Claeysens et al. 2019), and, in combination with HST deep imaging, it allowed the detection of faint lensed sources (e.g., Mahler et al. 2018). As an interesting example, some star-forming complexes, discovered in the HFFs, have characteristic sizes smaller than 100 pc along with other physical parameters that make them good candidates for globular cluster precursors (Vanzella et al. 2016, 2017a,b). In fact, along the maximum tangential stretch provided by strong lensing, the effective resolution of HST reaches a few tens of pc, while the boosted signal-to-noise ratio (S/N) enables a morphological analysis that would be impossible in blank fields. One such a case is the compact object behind MACS J0416, identified as a

² The complete list is available here: <http://muse-vlt.eu/science/publications/>

³ <http://mavis-ao.org/mavis/> and <https://arxiv.org/abs/2009.09242> for the Phase A Science Cases.

¹ Γ is defined as the cluster formation rate (CFR) divided by the star formation rate (SFR) of the hosting galaxy (Bastian 2008).

young massive star cluster with an intrinsic (i.e., delensed) magnitude of 31.3 and effective radius smaller than 13 pc, which is hosted in a dwarf galaxy at $z = 6.149$ (Vanzella et al. 2019; Calura et al. 2020). Similarly, high-redshift star-forming clumps (<200 pc size) have been identified in various lensed fields, suggesting that a hierarchically structured star-formation topology emerges whenever the angular resolution increases (see also, Livermore et al. 2015; Kawamata et al. 2015; Rigby et al. 2017; Johnson et al. 2017; Dessauges-Zavadsky et al. 2017; Cava et al. 2018; Zick et al. 2020). In a recent spectacular case, a highly magnified, finely structured giant arc has been identified as the first example of a young (3 Myr old) massive star cluster at $z = 2.37$, directly detected in the Lyman continuum ($\lambda < 912 \text{ \AA}$) and contributing to the ionization of the IGM (Vanzella et al. 2020a; Rivera-Thorsen et al. 2019; Chisholm et al. 2019).

There are two key aspects in the study of the distant Universe in lensed fields driven by MUSE integral field spectroscopy: (1) the $1' \times 1'$ field of view integral field unit (IFU) provides spectroscopic redshifts without any target pre-selection, significantly enlarging the discovery space (the identification of globular cluster precursors and extremely faint sources with intrinsic magnitude >31 are two examples among a number of others); and (2) dozens of multiple images can be easily identified by the IFU in a single observation, even when distorted or extended. This yields a vast gain in efficiency compared to traditional target-oriented “multi-slit spectroscopy”, at least when a large field of view is not required and when the density of targets is high.

The dramatic increase in spectroscopically confirmed multiple images is key for producing robust magnification maps with lens models, with a much improved understanding of the systematic uncertainties affecting magnification values and their gradients across the image (e.g., Grillo et al. 2015, 2016; Meneghetti et al. 2017; Caminha et al. 2017; Atek et al. 2018; Treu et al. 2016). This remains a critical step for inferring intrinsic physical properties or the geometry of highly magnified galaxies.

The confirmation of lensed sources with intrinsic magnitudes in the range of 30–33 via $\text{Ly}\alpha$ emission shows that sources without HST imaging counterparts are common in lensed fields and at fluxes fainter than those of similar HST–dark MUSE sources found in the HUDF. An example is the high equivalent width ($>1000 \text{ \AA}$ rest-frame) $\text{Ly}\alpha$ arclet at $z = 6.629$, straddling a caustic, which is confirmed in the MDLF. The HST counterpart is barely detected in HST imaging (with an observed magnitude of ≥ 31 at 2σ level), which corresponds to an intrinsic magnitude fainter than 35. This suggests that such star-forming complex possibly hosts extremely metal-poor (or Pop III) stellar populations (see Vanzella et al. 2020b, or details). This is perhaps the most compelling example of a blind spectroscopic detection, as it would be impossible to place a slit over such an object based on deep imaging alone.

To push the frontier of integral field spectroscopy of the high redshift Universe, we present in this work the MUSE Deep Lensed Field over the North-East part of the *Hubble* Frontier Field galaxy cluster MACSJ0416.1–2403 (hereafter MACSJ0416). We show that a total integration of 17.1 h in a single MUSE pointing on the magnified region of the cluster produces point-like source detection that would require >100 ($\mu > 2.5$) to >1000 ($\mu > 7.5$) hours of integration without lensing (where μ is the magnification factor). With the addition of publicly available data in the south-west region of the same galaxy cluster (with 11 h integration; see Sect. 2.3), the number of confirmed multiple images increases to the unprecedented number of 182 in the redshift range of $0.9 < z < 6.2$. A new lens model

based on this set of images is presented in an accompanying paper by Bergamini et al. (2021). Soon after this paper appeared on astro-ph, Richard et al. (2021) submitted a paper presenting an atlas of MUSE observations of 12 clusters and corresponding lens models. This study included the new MUSE deep observations of MACSJ0416 presented here.

The present work is structured as follows: Sect. 2 presents the MUSE observations and data reduction. Section 3 presents the full set of multiple images. Section 4 focuses on the sample of star forming clumps identified among the multiple images, and Sect. 5 details the spectral stacking and the most relevant high-ionization lines. Individual sources are presented in Sect. 6, highlighting two examples of extremely small objects as potential gravitationally bound star clusters. We assume a flat cosmology with $\Omega_M = 0.3$, $\Omega_\Lambda = 0.7$ and $H_0 = 70 \text{ km s}^{-1} \text{ Mpc}^{-1}$.

2. The MUSE Deep Lensed Field: Observations and data reduction

Deep MUSE (Bacon et al. 2012) observations were allocated in period 100 (Prog.ID 0100.A-0763(A) – PI E. Vanzella) on a single pointing covering the north-east (NE) lensed region of the HFF galaxy cluster MACSJ0416 (Fig. 1). Out of a total of 19 observing blocks (OBs) that were scheduled (22.1 h, including overhead), 16 have been successfully acquired with quality A or B (84%)⁴. Table 1 lists the log of the observations that were executed in the period between November 2017 till August 2019. 14 OBs out of 16 have been acquired with the assistance of Ground Layer Adaptive Optics (GLAO) provided by the GALACSI module. Each exposure was offset by fractions of arcseconds and rotated by 90° to improve sky subtraction. The image quality was very good, spanning the range between 0'4–0'8, with a median PSF full width at half maximum (FWHM) of 0'6. The same NE field of the galaxy cluster was observed within a GTO program (Prog.ID 094.A-0115B, PI: J. Richard) in November 2014, for a total of two hours split into four exposures (Caminha et al. 2017). We added the 2014 dataset to our MUSE data, eventually producing a total integration time of 17.1 h on-sky with a final optimal image quality of 0'6. In the following, we refer to this deep pointing as the MUSE Deep Lensed Field (MDLF).

2.1. Data reduction

We used the MUSE data reduction pipeline version 2.8.1 (Weilbacher et al. 2014) to process the raw data and create the final stacked data-cube. All standard calibration procedures were applied to the science exposures (i.e., bias and flat field corrections, wavelength and flux calibration, etc.). In order to reduce the remaining instrumental signatures due to slice-to-slice flux variations of the instrument, we used the self-calibration method. This method is based on the MUSE Python Data Analysis Framework (Bacon et al. 2016) and implemented in the last versions of the standard reduction pipeline provided by ESO. The

⁴ The quality control of OBs executed in service mode is based on the specified constraints in the OB for airmass, atmospheric transparency, image quality and seeing, Moon constraints, twilight constraint, as well as Strehl ratio for Adaptive Optics mode observations (as requested). If all constraints are fulfilled, the OB is marked with the grade “A”, while the “B” quality control is assigned if some constraint is up to 10% violated. The observations with quality control grades A or B are completed, while those with quality control grade “C” (out of constraints) are re-scheduled and may be repeated (www.eso.org).

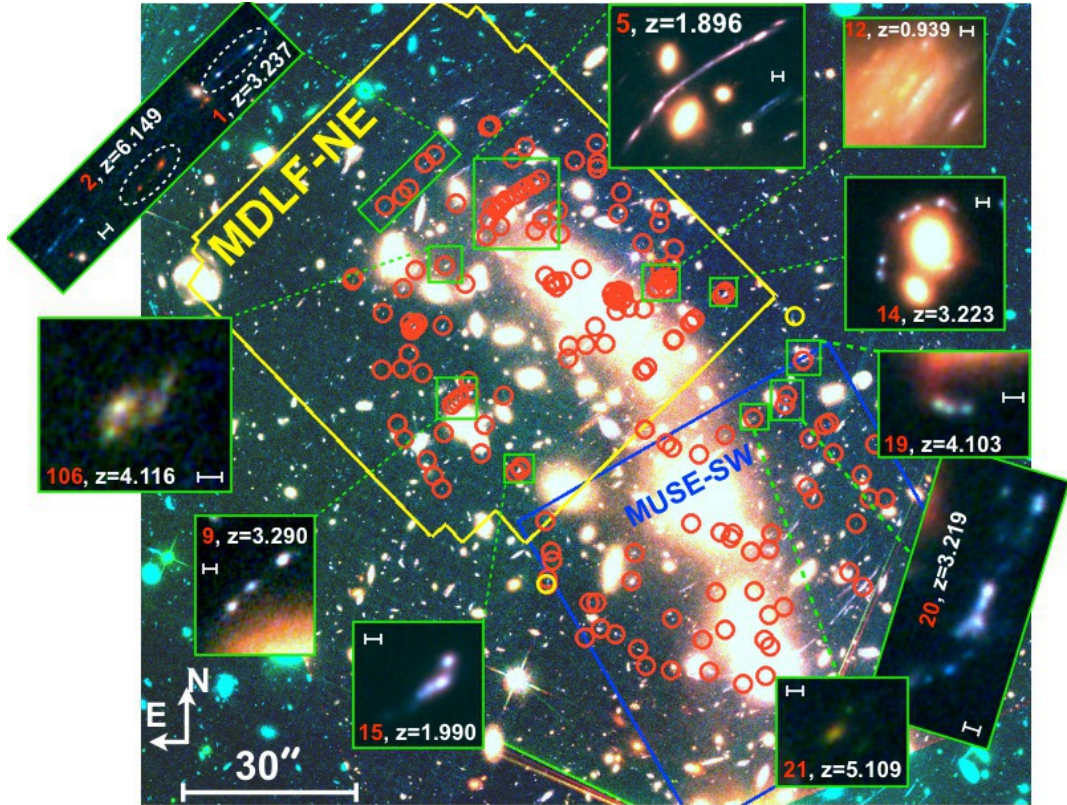


Fig. 1. Color image of the HFF galaxy cluster MACSJ0416 shown in the main panel (red, green, and blue as $F105W$, $F814W$, and $F606W$, respectively). The MDLF centered in the north-east part of the cluster is outlined by the yellow contour (17.1 h integration time), while the blue contour shows the observation in the south-west (11 h integration, PI Bauer, 094.A-0525(A)). The red circles mark the positions of the 182 multiple images used to constrain the lens model (Bergamini et al. 2021). The insets show zoomed examples of strongly lensed objects with detected clumps in the redshift range of $1.5 < z < 6.5$ (discussed in detail in Sect. 4). In each inset, the catalog ID (red number) and redshift are indicated, while the segment marks the $0''.3$ scale. Yellow circles mark two images not covered by MUSE, which are however included in the multiple images sample due to their mirroring lensing properties.

final astrometry was performed matching sources detected with SExtractor (Bertin & Arnouts 1996) in the white image of the final data-cube and detections in the HFF filter $F606W$ image. Finally, we applied the Zurich Atmosphere Purge (Soto et al. 2016) on the data-cube in order to remove the still remaining sky residuals.

Four OBs, indicated as “NOAO” in Table 1, have been observed with an average natural seeing (i.e., without GLAO) of $0''.6$, and simply included in the co-addition of all OBs following the procedure described above. For these datacubes no Raman lines due to the laser are present, especially in the wavelength range of $5800\text{--}6000\text{ \AA}$. However, the final co-added cube is dominated by OBs obtained with GLAO (14 out of 18).

The final data-cube has a spatial pixel scale of $0''.2$, a spectral coverage from 4700 \AA to 9350 \AA , with a dispersion of 1.25 \AA pix^{-1} and a fairly constant spectral resolution of 2.6 \AA over the entire spectral range. The total integration time is 17.1 h, with an image quality of $0''.6$, as measured on two stars available in the field.

2.2. Depth of the MDLF

The performances and the depth achievable with the VLT/MUSE instrument have been well monitored in the past few years from extensive observations, from a few to dozens of hours of integration time (e.g., Inami et al. 2017). In particular, the

very deep campaign performed in the *Hubble* Ultra Deep field, HUDF (e.g., Bacon et al. 2017; Maseda et al. 2018, and references therein), suggest a growing S/N that is fully in line with the expected integration time (see also, Bacon et al. 2015). Under the assumption of similar observing conditions and data reduction technique, a proper rescaling of the depth reported from deep GTO program (e.g., Inami et al. 2017) would suggest a line flux limit for our 17.1 h MDLF of $\approx 2 \times 10^{-19}\text{ erg s}^{-1}\text{ cm}^{-2}$ at 3σ , $\lambda = 7000\text{ \AA}$ and within an aperture of $0''.8$ diameter.

Similarly to what described by Herenz et al. (2017b), we then carried out a posteriori checks of the noise fluctuation of the reduced data cube (i.e., after the full data reduction) by placing 600 non-overlapping apertures (of $0''.8$ diameter) on positions visually extracted from the white image (obtained by collapsing the full wavelength range) and not intercepting evident sources. The location of the apertures is plotted over the white image in Fig. 2. We then calculated the flux within each aperture by integrating it over a velocity width of $dv = 300\text{ km s}^{-1}$ (kept constant across the full wavelength range), typical of $\text{Ly}\alpha$ emission in high redshift galaxies. The mean and rms, as well as the median and the 68% central interval within the 16th and 84th percentiles within the 600 apertures, were extracted at each wavelength with an incremental step of 1.5 \AA . Figure 2 shows the median and percentiles as a function of wavelength. The pattern of the sky spectrum clearly emerges, as well as the increased noise in the wavelength range of $5800\text{ \AA}\text{--}6000\text{ \AA}$ due to the GLAO sodium-based laser. We derive a 3σ limit of $1.5 \times 10^{-19}\text{ erg s}^{-1}\text{ cm}^{-2}$ at

Table 1. Summary of the MDLF observations.

Date	Quality	OB name
MDLF		
22/23-Nov.-2017	A	WFM_J0416_NOAO_1
10/11-Jan.-2018	A	WFM_J0416_NOAO_2
21/22-Feb.-2018	C	WFM_J0416_NOAO_3
12/13-Mar.-2018	X	WFM_J0416_AO_1
4/5-Nov.-2018	A	WFM_J0416_AO_10
5/6-Nov.-2018	B	WFM_J0416_AO_1
5/6-Nov.-2018	A	WFM_J0416_AO_2
6/7-Nov.-2018	A	WFM_J0416_AO_4
2/3-Dec.-2018	A	WFM_J0416_AO_11
4/5-Dec.-2018	A	WFM_J0416_AO_13
12/13-Dec.-2018	A	WFM_J0416_AO_14
11/12-Jan.-2019	B	WFM_J0416_AO_5
16/17-Jan.-2019	C	WFM_J0416_AO_6
25/26-Jan.-2019	A	WFM_J0416_AO_6
27/28-Feb.-2019	A	WFM_J0416_AO_17
28-Feb./1-Mar.-2019	A	WFM_J0416_AO_7
3/4-Mar.-2019	A	WFM_J0416_AO_8
2/3-Aug.-2019	A	WFM_J0416_AO_9
30/31-Aug.-2019	A	WFM_J0416_AO_18
GTO		
17-Dec.-2014	A	WFM_J0416_NOAO
17-Dec.-2014	A	WFM_J0416_NOAO

Notes. The log of the observed OBs is reported. The typical exposure time (on sky) of each OB is 3340s. The bottom two rows refer to the previous 2 h observation from the GTO. The column “OB name” indicates the observing mode (“WFM” = wide field mode) and the use (or not) of the adaptive optics “AO/NOAO”, meaning “on/off”.

7000 Å (where no OH sky lines are present) within an aperture of 0.8 diameter and collapsed over 300 km s^{-1} along the wavelength direction.

The magnification across the field provided by the gravitational lensing effect further decreases the detectable line flux limit in the MDLF when compared to the *Hubble* Ultra Deep Field (Bacon et al. 2017). Assuming a point-like emitting source and that, at first order, the magnification is the ratio between the observed flux and the de-lensed (intrinsic) one, $\mu = F_{\text{obs}}/F_{\text{intr}}$, the equivalent integration time (texp) in absence of lensing required to obtain the same S/N achievable in lensed fields is obtained by rescaling the MDLF integration to μ^2 . $T(\text{MDLF}) \times \mu^2$, where $T(\text{MDLF}) = 17.1 \text{ h}$. Figure 3 shows the texp map needed to obtain the same depth of MDLF without lensing. It is widely known that strong lensing boosts the detection of faint sources and represents a complementary approach to observations in blank fields, however, deep observations like the MDLF allow us to reach equivalent texp $\approx 100 \text{ h}$ even in regions where magnification is modest, $\mu \sim 2\text{--}3$. The 90% of the MDLF field of view is equivalent, in terms of depth, to $>100 \text{ h}$ of integration in non-lensed fields (with the most magnified regions pushing texp up to 1000 h where $\mu > 7.7$). The same figure also shows the equivalent 3-sigma line flux limit after rescaling to texp. Line fluxes down to a few $10^{-20} \text{ erg s}^{-1} \text{ cm}^{-2}$ can be probed in regions with large magnification (texp $> 200 \text{ h}$). Such a depth allows us to detect high-ionization lines on individual objects with intrinsic magnitudes 27–30 (see Sect. 5). The outer regions of the galaxy cluster at relatively low- μ have the advantage to be relatively free from contamination by galaxy cluster members and are less

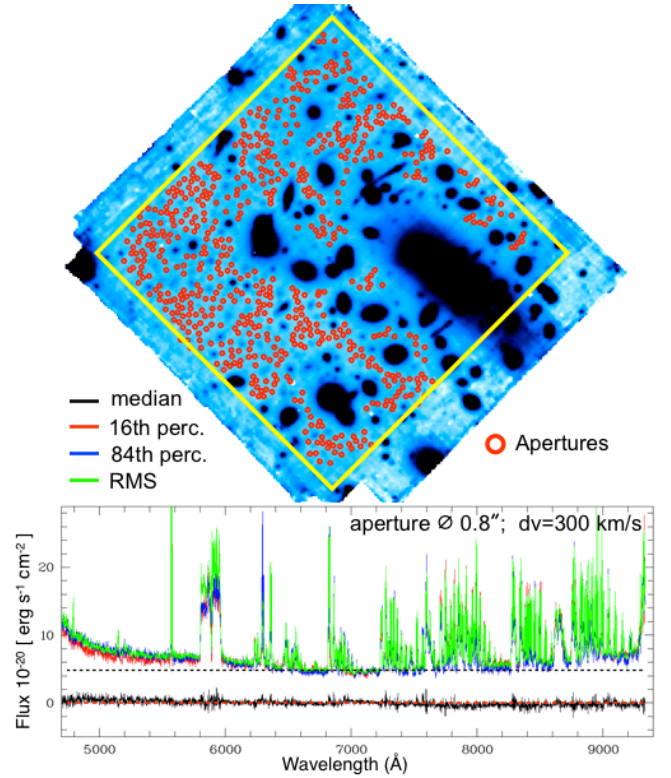


Fig. 2. Top panel: white-light image of the MDLF is shown together with the 600 non-overlapping apertures placed in empty zones not intercepting visible objects in the image. The corresponding median value calculated at each wavelength and consistent with the zero level (black line), 16th–84th percentiles (red and blue lines), and the rms (green line) are reported below the white image. Apertures have a diameter of 0.8 and the statistics is computed on each aperture by collapsing slices within $\Delta v = 300 \text{ km s}^{-1}$. The pattern of the sky emission lines is evident. The increased noise in the range of $5800 < \lambda < 6000 \text{ Å}$ is due to the emission of the laser used for ground layer AO.

affected by large uncertainties on the magnification, being far from the critical lines. The major drawback of strongly lensed fields is the smaller intrinsic area probed behind the lens when compared to the non-lensed fields. An illustration of this effect is shown in Fig. 4, which shows the cumulative surface area on the lens plane probed by the MDLF as a function of magnification (in magnitude units). The surface area decreases rapidly with μ reaching half of its original coverage when $\mu \sim 6.3$.

2.3. The MUSE pointing in the South-West: MUSE-SW

Relatively deep observations in the SW region of the same galaxy cluster (J0416) were carried out under the ID 094.A-0525(A) program (PI: F.E. Bauer). This includes 58 exposures of approximately 11 min each, executed over the period October 2014 – February 2015. We use the same reduced data-cube described in Caminha et al. (2017). Despite a relatively long exposure in the SW pointing (formally 11 h integration), the S/N of the spectra does not scale according to expectations, resulting to an equivalent integration of $\sim 4 \text{ h}$ only. Caminha et al. (2017) attribute this inconsistent depth to the significantly worse seeing of the SW pointing (1" vs. typically 0.6") and the large number of short exposures used which, due to residual systematics in the background subtraction, did not yield the expected depth in the coadded data-cube. As discussed in Bergamini et al. (2021),

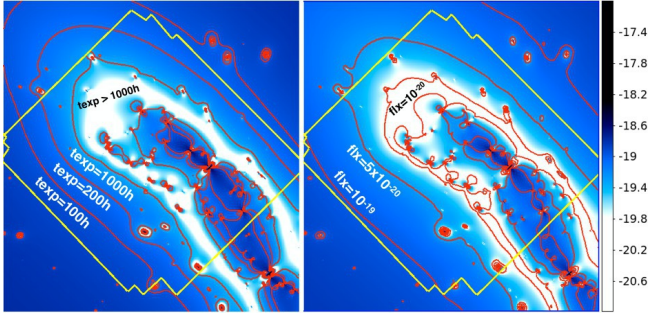


Fig. 3. *Left:* equivalent exposure time needed to reach the same S/N probed with the MDLF without lensing, assuming point-like sources at $z = 6$. Contours of iso-exposure are shown (100, 200, 1000 h equivalent integration). We note that the MDLF is equivalent to 100h integration in blank fields already with modest magnification, $\mu \sim 2.5$. *Right:* map of the 3-sigma line flux limit adopting a velocity width of 300 km s^{-1} and a circular aperture of 0.6 diameter, based on the same assumptions as in the left panel. The color-bar indicates the log of flux values in $\text{erg s}^{-1} \text{ cm}^{-2}$, whereas the three contours correspond to the flux (fx) of 10^{-19} , 5×10^{-20} , and $10^{-20} \text{ erg s}^{-1} \text{ cm}^{-2}$.

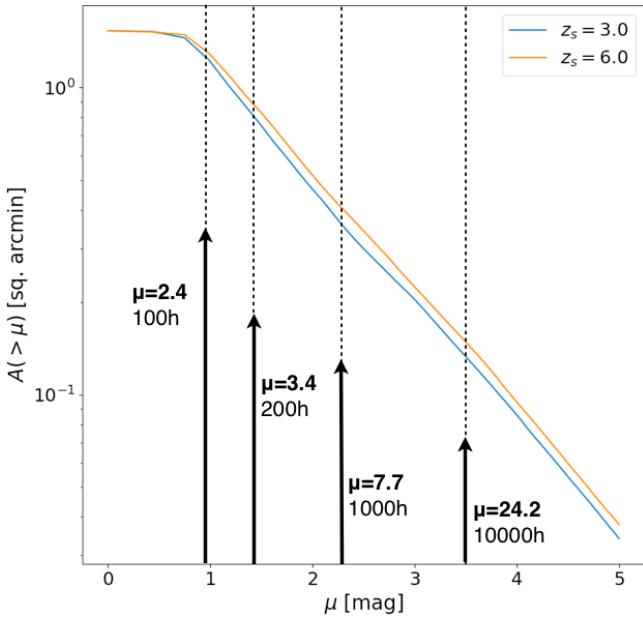


Fig. 4. Cumulative surface area of the MDLF in the image plane as a function of magnification in magnitude units ($\mu[\text{mag}] = 2.5 \log_{10}(\mu)$) for redshift 6 (orange line) and 3 (blue line). Arrows mark the magnifications corresponding to the exposure time ($=100, 200, 1000, 10000 \text{ h}$) as shown in Fig. 3, necessary for obtaining the same depth of the MDLF without lensing.

the depth provided by the MDLF produces a major gain in the number of bona fide multiple images, as discussed in the next section.

3. Catalog of multiple images

In combining MUSE-SW and the initial two hours of integration in the north-east from GTO observations, [Caminha et al. \(2017\)](#) identified 37 galaxies producing 102 multiple images in the redshift range of $1 < z < 6.2$. The MDLF and a careful identification of confirmed additional lensed families led to an unprecedented set of 182 multiple images, spanning the same redshift range of $0.9 < z < 6.2$. To search for new sources,

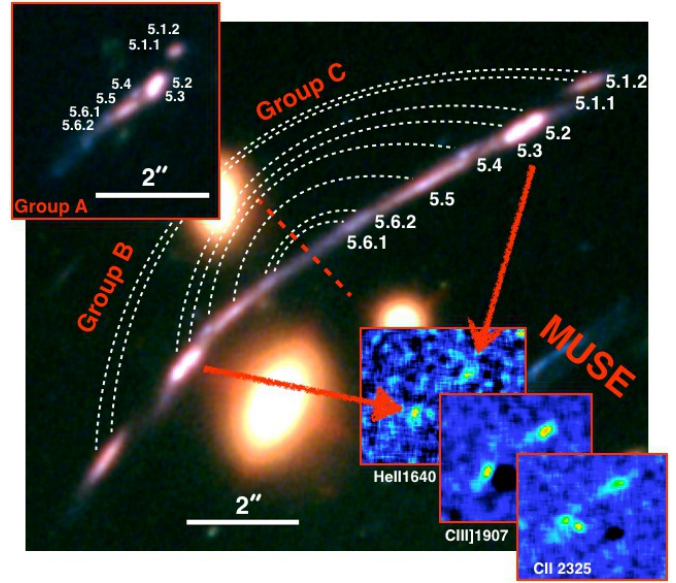


Fig. 5. Eight clumps identified for source 5 are marked with IDs 5.1.2, 5.1.1, 5.2, 5.3, 5.4, 5.5, 5.6.2, 5.6.1 and indicated on both sides of the critical line (red dashed line), labeled as group C (5c) and B (5b). The top-left inset shows on the same scale the least magnified image 5a, in which all the corresponding clumps can be recognized. The bottom-right insets show the continuum-subtracted narrow-band images extracted from MUSE around the wavelength of the most prominent high ionization emission lines.

we followed the procedure described in [Caminha et al. \(2017\)](#). Firstly, using our lens model we looked in the vicinity of the predicted positions of multiple images of families partially lacking spectroscopic information. This led us to complete the spectroscopic information of several lensed systems. Secondly, new sources have been identified by exploring narrow-band continuum subtracted cubes and analyzing spectra extracted at the position of candidate multiply imaged objects. This process was based on (a) visual inspection of color images, (b) the assistance by the lens model which was progressively refined ([Bergamini et al. 2021](#)), (c) the ASTRODEEP photometric redshift catalog ([Castellano et al. 2016](#); [Merlin et al. 2016](#)). Different versions of continuum-subtracted cubes were generated varying the width of the central window within which slices are collapsed (with typical $\Delta v = 300\text{--}500 \text{ km s}^{-1}$) and the redward and blueward regions used to estimate the continuum level, typically with widths of $20\text{--}30 \text{ \AA}$.

The MDLF observations allowed us to increase significantly the number of multiple images in the NE region of the cluster and triple the S/N of the previous 2h exposure data-cube from GTO. Individual sources contain in some cases multiply imaged clumps (see, e.g., Fig. 5 and Sect. 4), in which more than one family can be part of the same high- z galaxy⁵. In particular, the

⁵ A family is defined as a set of multiple images of the same background object. An object can be either a single galaxy or a single sub-component of the same galaxy (e.g., a clump). For example, source 5 has 6 families with three multiple images each (a,b,c): 5.1(abc), 5.2(abc), 5.3(abc), 5.4(abc), 5.5(abc), and 5.6(abc), which have been used to constrain the lens model. In some cases, HST single-band imaging reveals that individual families are further split into two knots, which are labeled with an extra digit, e.g., 5.1.1 and 5.1.2 or 5.6.1 and 5.6.2. These extra knots are not used as constraints in the lens model. Source 1, made of multiple images 1a, 1b, and 1c corresponds to only one family.

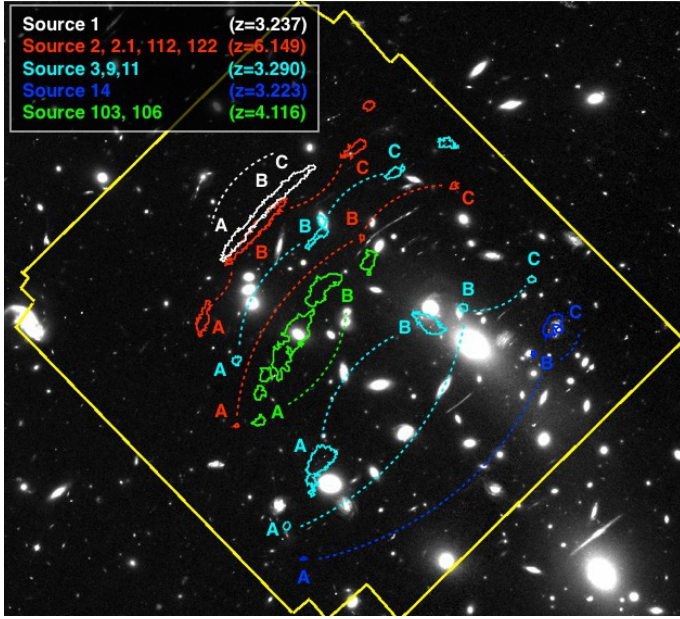


Fig. 6. Examples of the most prominent multiply imaged Ly α emitting regions spatially resolved in the MDLF. Multiple images are indicated as A, B and C (connected with dotted lines) with color-coded contours at the 2σ level calculated on the continuum-subtracted narrow-band MUSE images, centered on Ly α emission. In the case of source 14, the CIV $\lambda 1548$ emission is shown instead of Ly α (being deficient in Ly α emission (see also Fig. C.1 and discussion in Vanzella et al. 2017b)). For more details about sources 103 and 106, see Fig. 7.

total number of families increases to 66, with the new ones covering the redshift range of $0.9 < z < 6.2$. As a result, the number of individual high redshift galaxies generating the set of multiple images is lower than 66, amounting to 48 independent sources. The arclet at $z = 6.629$ has not been included among the constraints of the model because no clear HST counterparts have been currently identified (see Vanzella et al. 2020b).

As discussed in Sect. 4, a close inspection of the confirmed multiple images in deep HST data reveals a significant fraction of multiply imaged clumps emerging from each high- z galaxy. Those that are firmly identified are included as constraints in the lens model. The number of clumps typically increases where magnification increases, eventually making them individually recognizable (enhanced spatial scale) and detectable (enhanced S/N). The inclusion of multiple clumps is particularly useful for better constraining the position of critical lines and the high magnification values in these regions. Such examples are families 5 at $z = 1.8961$ (see Fig. 5) and source 12 at $z = 0.9390$, in which the large magnification close to the critical lines is better sampled by a high spatial density of local constraints corresponding to star-forming clumps (see Bergamini et al. 2021 for more details).

At the end of this process, the spectroscopic confirmation of new high- z galaxies and the addition of individual clumps increase the total number of multiple images used for the lens model to 182 (66 families), spanning the redshift range of $0.9 < z < 6.2$. Bergamini et al. (2021) present the details of the lens model, which is currently the one exploiting the largest number of spectroscopically confirmed constraints for any galaxy cluster. It includes 80 additional multiple images compared to the previous model and 213 confirmed galaxy cluster members (20 more than in the previous model), by reproducing the positions of all 182 multiple images with an rms accuracy of only $0''.40$. In

Appendix A, we present the details of all multiple images, showing, for each of them, the HST cutouts and MUSE narrow band continuum-subtracted imaging at the wavelength position of the most relevant emission lines.

The Ly α emission is often spatially resolved and extends beyond the HST counterpart down to the very faint fluxes permitted by lensing magnification. A dedicated analysis of the spatially extended Ly α emission and intrinsic spatially-varying profiles (e.g., relative intensities of the blue and red peaks) will be presented in a future work. An example showing the most prominent cases in the MDLF is reported in Fig. 6, where multiple images of Ly α nebulae at $z = 3$ –6 extend along the tangential direction and possibly include even fainter clustered sources (currently not detected on HST images, e.g., Mas-Ribas & Dijkstra 2016) contributing to the Ly α emission. One of them, source 9, shows a spatially-varying multiple Ly α emission and nebular high-ionization lines emerging from three well-recognized knots (this system was already presented in Vanzella et al. 2017c using much shallower MUSE observations).

The depth of the MDLF also allows us to confirm sources without Ly α emission, down to magnitude ≈ 26 . One example is source 106b at $z = 4.116$ (see Fig. 7), for which the continuum-break is clearly detected, its redshift is measured by cross-correlating the spectrum with high- z templates⁶, and found consistent with the spatially offset Ly α nebula. Interestingly, the spectroscopic redshift is also in very good agreement with the photometric redshift derived from ASTRODEEP, $z_{\text{phot}} = 4.20$ (Castellano et al. 2016). As discussed in the Sect. 4, source 106b is also a good example of how a galaxy can be resolved into several sub-components by strong lensing (at least six star-forming regions of ~ 100 –200 parsec size).

In addition to the set of multiple images specifically used by Bergamini et al. (2021) to constrain the lens model, we also released a version of the MUSE spectroscopic catalog that includes all the sources we identified in the MUSE datacubes. By combining the MDLF and MUSE-SW pointing, this catalog contains 424 individual objects, spanning the redshift interval up to $z = 6.7$, thus extending the sample of 182 multiple images (48 objects). Faint sources with observed magnitude down to $m_{1500} > 28$ have been confirmed, corresponding to intrinsic $m_{1500} > 29$ –30 in the case of $\mu \approx 3$ –6. The typical error at this magnification regime is less than 20%, implying that the error on the intrinsic magnitude is mainly dominated by the photometric uncertainty (for the given cosmology).

Figure 8 shows three examples of the aforementioned cases. In particular, the spectra of two of these confirmed very faint sources at $z = 3.613$ (ID = -99) and $z = 2.927$ (ID = 2046) (in magenta and red colors respectively) have intrinsic magnitudes $m_{1500} = 31.1$ and 29.6, with an error of 0.3 mag (including the magnification uncertainty). ID = 2046 also shows an extremely blue ultraviolet slope with a relatively small error, as estimated from the HST F606W, F814W and F105W photometric bands, $\beta = -2.9 \pm 0.2$ ($F_{\lambda} \propto \lambda^{-\beta}$, Castellano et al. 2012). Interestingly, the same object also shows a very large equivalent width of the Ly α ($220 \pm 25 \text{ \AA}$) and the presence of faint nebular CIV $\lambda 1548$, 1550 doublet, associated to an object with an estimated stellar mass of a few million solar masses ($10^{6.8} M_{\odot}$).

Another example in Fig. 8 shows that deep MUSE observations of (intrinsically) relatively bright, moderately magnified galaxies ($\mu \approx 3$ –6) reveal or consolidate spectral features

⁶ Redshifts have been measured using the Eazy package within the Pandora environment (Garilli et al. 2010).

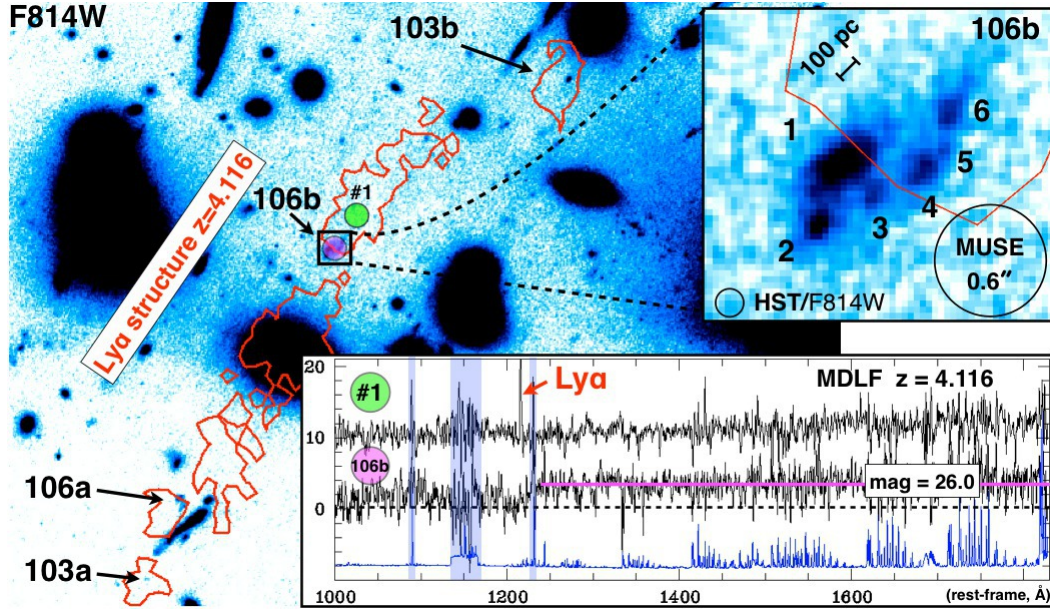


Fig. 7. Ly α nebulae (red contours at $2\text{-}\sigma$ level) including images 106(a,b) and 103(a,b), belonging to the same physical structure at $z = 4.116$, are shown in the main panel (HST ACS/F814W band). In the top-right inset, the lensed galaxy 106b broken in six clumps is shown; the smaller ones (2–6) have intrinsic UV magnitude $\approx 30.5\text{--}31$ (corresponding to $M_{\text{UV}} \approx -15$) and intrinsic sizes of the order of (or smaller than) 100 pc along the tangential stretch, as indicated by the ruler. The bottom inset shows two one-dimensional spectra extracted from the MDLF. One is on galaxy 106b (within a circular aperture of $1.2''$ diameter, see magenta circle). We note the ultraviolet continuum of 106b with $F814W = 26.01 \pm 0.03$ is well-detected (magenta line) above the zero level (black dashed line), and its continuum-break confirmed at $z = 4.116$. The top spectrum is extracted from a nearby region showing Ly α emission without HST counterpart (green circle with $1.2''$ diameter, labeled as #1), vertically shifted at position 10 for illustrative purposes. The error spectrum is shown in blue at the bottom to highlight the location of the sky emission lines. The shaded band marks the wavelength region affected by the GLAO sodium-based laser.

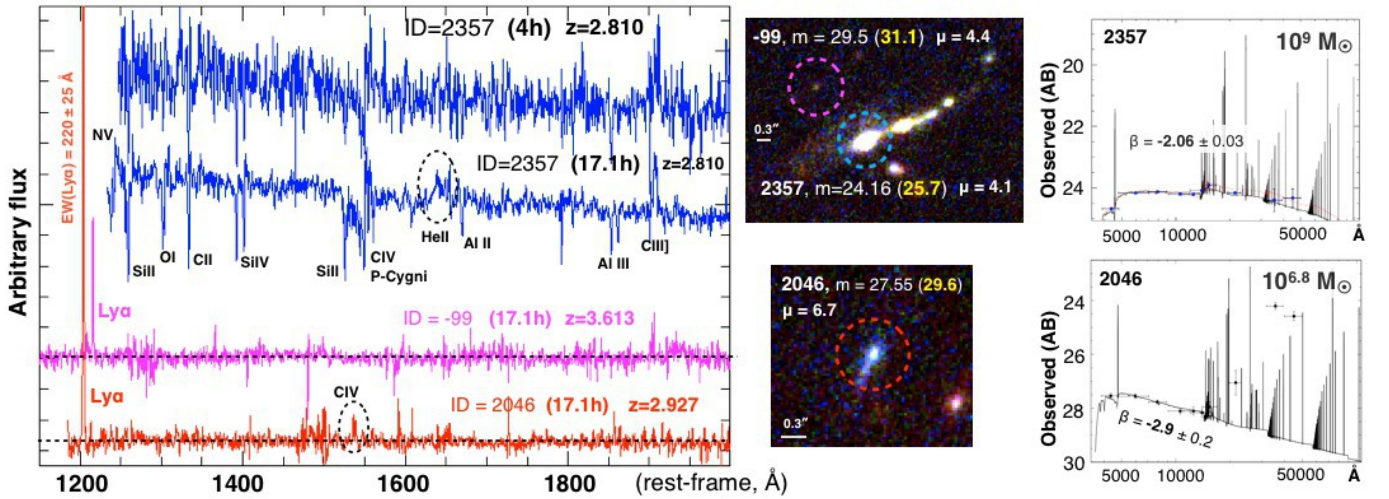


Fig. 8. Examples of MUSE spectra of moderately magnified sources not producing multiple images. *Left panel:* one dimensional spectra are color coded accordingly to the dashed circles marking the sources in the HST color images (*middle panels*). The spectrum of source 2357 from four hours of integration without AO is compared with the one from the MDLF full depth (17.1 h) including AO (the P Cygni profile of the CIV is affected by the increased noise due to laser AO correction). The deep spectrum shows many features in absorption, whereas in emission, the CIII] $\lambda\lambda 1907, 1909$ and broad HeII $\lambda 1640$ (marked with a dashed ellipse) are clearly detected, as well as a possible P Cygni of the [NV] $\lambda\lambda 1239, 1243$, close to the blue edge of the spectral coverage. Two other faint objects, 2046 and –99, are shown with magenta and red colors. The observed (intrinsic) magnitude is shown in the *middle panels*, with the intrinsic one reported with a yellow color. Source 2046, with $m_{1500} = 31.1 \pm 0.3$, shows a large Ly α equivalent width of $220 \pm 25 \text{ \AA}$ rest-frame and a very steep ultraviolet slope, $\beta = -2.9 \pm 0.2$. Nebular CIV $\lambda 1548, 1550$ doublet is also detected for this object (see dashed ellipse on the red spectrum). *Rightmost panels:* SED fits and magnitudes as performed by [Castellano et al. \(2016\)](#). The red spectrum is blueshifted by 12 \AA with respect to the other spectra for illustrative purposes.

clearly associated with the presence of massive stars. Source 2357 is the brightest clump of a complex system at $z = 2.810$ showing various knots. Its observed magnitude of 24.16 (25.7 intrinsic) makes it relatively bright, however, the increased

S/N provided by the MDLF reveals multiple spectral features (if compared to the initial four-hour integration), such as the broad HeII $\lambda 1640$ and CIV P-Cygni profile, both indicating the presence of strong stellar winds arising from massive

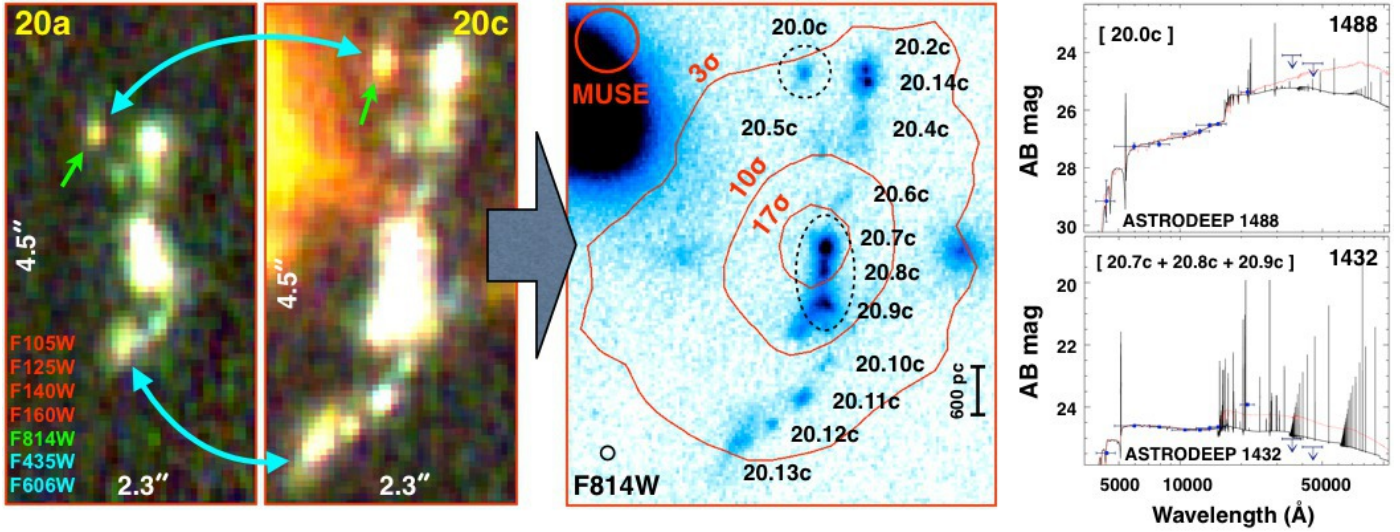


Fig. 9. Example of a magnified $z = 3.222$ galaxy (source 20). Deep color RGB images of components 20a and 20c are shown in the *two leftmost panels*; the knot showing a redder color with respect to the rest of the galaxy is marked with a green arrow. Cyan arrows mark the two extremes of the structure, indicating the corresponding physical regions. *Middle panel*: $F814W$ blue color-code HST image details the most magnified component 20c, in which at least 13 clumps are identified, across a region of 8 physical kpc on the source plane. The contours are drawn from the MUSE Ly α emission. The MUSE and ACS/ $F184W$ PSF sizes are indicated with a red (top-left) and black (bottom-left) circles. The SED-fits (from the ASTRODEEP photometric catalog, Castellano et al. 2016) of two regions marked with dashed black ellipses are shown in the *rightmost panels*. The mirrored symmetry between images 20a and 20c confirms that all clumps belong to the galaxy, including knot 20.0 showing a clearly different color (see SED fits). The physical scale is reported on image $F814W$, bottom-right (1 HST pixel corresponds roughly to 60 pc along the vertical extension of the galaxy in the source plane).

O and WR stars, with a possibly further signature of P Cygni of NV λ 1240 indicative of ages younger than 5 Myr (e.g., Senchyna et al. 2020b; Vanzella et al. 2020a; Chisholm et al. 2019). Appendix A presents the spectroscopic catalog of all high- z objects, including some that are not multiple images.

4. Clumpy high- z galaxies

A common morphological property of high redshift star-forming galaxies is the presence of clumps (Zanella et al. 2015, 2019), that seem to emerge whenever the angular resolution increases. Strong gravitational lensing reveals such clumps down to a ~ 100 pc scale (Livermore et al. 2015; Rigby et al. 2017; Cava et al. 2018) that further continue fragmenting downwards, approaching the sizes of massive stellar clusters ($\lesssim 30$ pc) in high magnification regimes, $\mu > 10$ (Vanzella et al. 2019, 2020a; Johnson et al. 2017).

The identification of star-forming clumps in the secure multiple images discussed here has been visually performed by looking at HST/ACS and WFC3 images and their RGB color version, in addition to taking into account the mirroring and parity properties introduced by strong lensing (see Appendix B). The latter reinforces the identification of extremely faint clumps (e.g., observed magnitude $> 29-30$) that are otherwise elusive even for deep spectroscopy; this represents a unique advantage provided by lensing. Figure 9 shows an example where at least 13 clumps associated to source 20 at $z = 3.222$ are identified, including very faint or isolated knots which display in some cases different colors (see also source 5, Fig. 5). Other examples are shown in Appendix B.

All high- z multiple images have been visually inspected and the consistency with their parity properly checked. Among the 66 families spanning the redshift range of $1 < z < 6.2$, we identify structured clumps in the majority of the high- z galaxies (more than 60%). Appendix B describes the sample of

clumps, reporting for each of them the HST cutouts and MUSE spectra. Despite lensing magnification acting to magnify (and distort) galaxies, the identification of clumps is typically not performed by automatic tools of source extraction (e.g., SExtractor package, Bertin & Arnouts 1996) since a delicate trade-off between de-blending and detection threshold segmentation is needed. Indeed, the majority of the clumps discussed here are not present in the ASTRODEEP (Castellano et al. 2016) or HFF Deep Space (Shipley et al. 2018) catalogs of HFF J0416. Moreover, the presence of bright cluster galaxies in the field makes faint object detection and photometry (contamination) difficult. In order to characterize their magnitude distribution and homogenize measurements, we made use of the APHOT tool (Merlin et al. 2019) and we performed photometric measurements on each of them over the same images used to build the ASTRODEEP color catalog. To estimate their magnitudes, we adopted $2 \times FWHM$ diameter apertures and measure their local background through a sigma clipping procedure in annuli of 10 pixel radius, at 1.2 times the Kron radii around each source (see Merlin et al. 2019 for details). The figures in Appendix B reveal that such clumps have rather compact sizes, several of them are marginally resolved or entirely unresolved and slightly elongated. The inferred magnitude can therefore be somewhat affected, however, we did not apply any correction in this work since our scope is focused on the characterization of the new parameter space opened by these observations – specifically, the size and luminosity at the faint end.

Figure 10 shows the observed/intrinsic magnitude distribution of all clumps at $z < 4.8$ ($z > 4.8$) extracted from the HFF HST/ $F814W$ ($F105W$) band, as well as the observed or intrinsic Ly α fluxes. The absolute magnitude spans the range of $[-18, -10]$ with a median of -16 , over a redshift range of $[1-6.7]$, with a median of $z = 3.5$. The distribution of the Ly α fluxes is shown in the same figure. Fluxes were extracted from a fixed aperture of $0''.8$ diameter; we did not attempt to

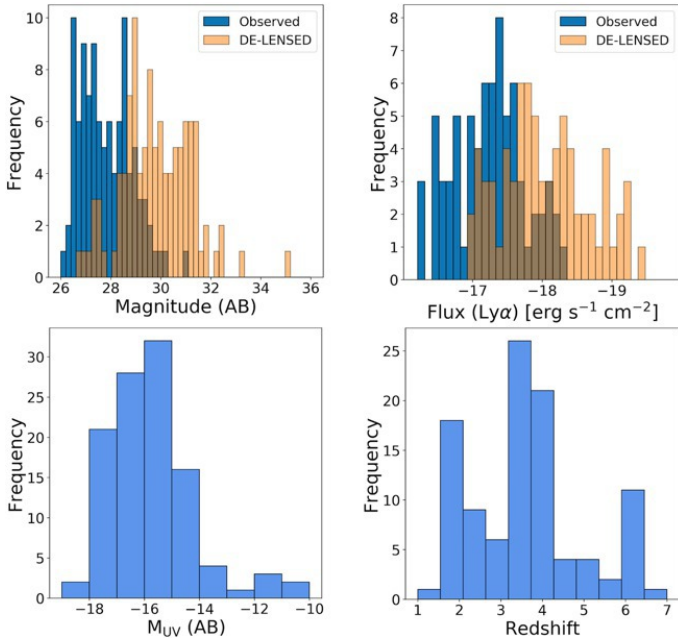


Fig. 10. Observed (de-lensed) 1500 Å magnitude distributions (*top-left*) and observed (de-lensed) Ly α flux distribution (*top-right*) for the sample of clumps (individual sources). *Bottom panels*: absolute magnitude (*left*) and redshift (*right*) distributions. No multiple images are included. The median absolute magnitude of the sample is -16 corresponding to an AB magnitude ~ 30 .

tune apertures to capture the different morphology of the emitting regions, which are also shaped by lensing distortion. Unfortunately, the MUSE PSF ($FWHM = 0''.6$) prevents us from extracting spectra for the majority of the clumps, which are blended because of the lower angular resolution with respect to HST. With this caveat in mind, it is worth stressing that for compact Ly α emitters the measured fluxes extend down to a few $10^{-19} \text{ erg s}^{-1} \text{ cm}^{-2}$, with the faintest tail approaching $10^{-20} \text{ erg s}^{-1} \text{ cm}^{-2}$, as in the case discussed by Vanzella et al. (2020b) at $z = 6.629$ straddling the caustic, implying extremely faint and small sizes of the emitting regions. High-ionization emission lines (typically emerging from much smaller regions than those producing scattered Ly α , and typically aligned with the HST stellar continuum) are also captured at the faintest luminosities in single sources and with high S/N ratios on the stacked spectrum, as described in Sect. 5.

An accurate estimate of the size of each object (e.g., the effective radius) will be part of a future work. Here, we perform a first analysis by computing the physical size that the HST PSF would have if it had been placed at the same locations, using the magnification maps from our new lens model. Clearly this is a simple assumption and would overestimate the effective radius for compact point-like objects (for which the PSF deconvolution would lead to radii even smaller than the pure PSF, comparable to a single HST pixel, e.g., Vanzella et al. 2019). Conversely, it would underestimate the size in the case of extended objects (see how clumps appear in Appendix B and figures therein). Figure 11 shows the half width at half maximum (HWHM) as a function of the intrinsic absolute magnitude, redshift, and intrinsic magnitude for the whole sample.

Several clumps appear as faint as (or fainter than) those reported by Maseda et al. (2018; or Feltre et al. 2020) from the MUSE deep observations performed in the *Hubble* Ultra Deep Field, where magnitudes 30–31 are probed with $S/N < 5$. In

the present case, and not surprisingly, strong lensing allows us to probe physical scales out of reach in blank fields (e.g., $< 100 \text{ pc}$) and access comparable flux limits with high S/N or even faint sources that have been totally missed in non-lensed fields (e.g., intrinsic magnitude fainter than 31). We note, in fact, that several such tiny star-forming regions (e.g., $M_{UV} > -16$) are well-detected with $S/N > 10$, thus allowing a morphological and SED-fitting analysis even on single sources. As an example, a point-like object with an intrinsic magnitude of 29.5 will move down to a magnitude of 26.5 with a magnification of $\mu = 10$; such a magnitude is typically measured with $S/N > 20$ at the HFF depth. Similarly, MDLF-like observations will probe emission lines at unprecedented faint flux levels (see Sect. 5).

In order to highlight the gain provided by strong lensing, Fig. 11 also includes a sample of galaxies extracted from non-lensed fields at $3.5 < z < 6.5$ (from the GOODS-South, Vanzella et al. 2009; Giavalisco et al. 2004). High- z galaxies studied in non-lensed fields have typical sizes of kpc (or subpc) scale and magnitudes typically brighter than $M_{UV} = -18$. In lensed fields and in this work, the same class of sources can be decomposed into clumps of 100–200 pc size at typical magnitude $M_{UV} = -16$ as the angular resolution increases. These clumps includes the most extreme cases for which single star clusters can be probed, down to $M_{UV} = -15$ with sizes smaller than 50 parsec (e.g., Zick et al. 2020; Bouwens et al. 2017a; Kawamata et al. 2015), including globular cluster precursors (Vanzella et al. 2017a, 2019). Concerning the very faint-end of the magnitude-size distribution, sources that are barely detected – even when assisted by lensing magnification – correspond to intrinsic magnitudes in the range of 33–35, with extreme cases even fainter than 35 (Vanzella et al. 2020b). It is worth stressing that unresolved objects (smaller than 40–50 pc) showing prominent Ly α emission at $z = 3.5$ and suggesting a high ionization field provided by young stellar populations, with magnitudes fainter than $m_{1500} = 31$ ($M_{UV} = -14.8$), correspond to stellar masses of $\lesssim 10^6 M_{\odot}$ in the instantaneous burst assumption and are weakly dependent on metallicity or IMF (Leitherer et al. 2014). Irrespective of the nature of such objects, they are more likely to belong to the realm of star-forming complexes or even massive star clusters with $M_{UV} = -13$ or fainter (Atek et al. 2015, 2018; Alavi et al. 2014, 2016; Bouwens et al. 2017a; Livermore et al. 2017). Thus, the current demography of the faint-end of the ultraviolet luminosity functions of “high- z galaxies” may be contaminated or even perhaps dominated by these low-mass star systems (Pozzetti et al. 2019; Boylan-Kolchin 2018; Elmegreen et al. 2012), implying that the term “galaxy” for this class of faint sources does not seem appropriate.

5. Spectral stacking and high-ionization nebular lines detected on individual sources to $M_{UV} \sim -16$

Before discussing the method used to coadd spectra from a set of sources, it is worth mentioning two main differences between lensed and non-lensed fields. First, in lensed fields, the high-redshift background sources are contaminated by the intracluster light and by generally red galaxy cluster members, especially in the innermost regions of the galaxy cluster. Therefore, spectral features due foreground cluster galaxies may remain imprinted in the final stacked spectrum if not subtracted properly. Second, the presence of multiple images allows us to increase the effective total integration time for a single family. For example, when

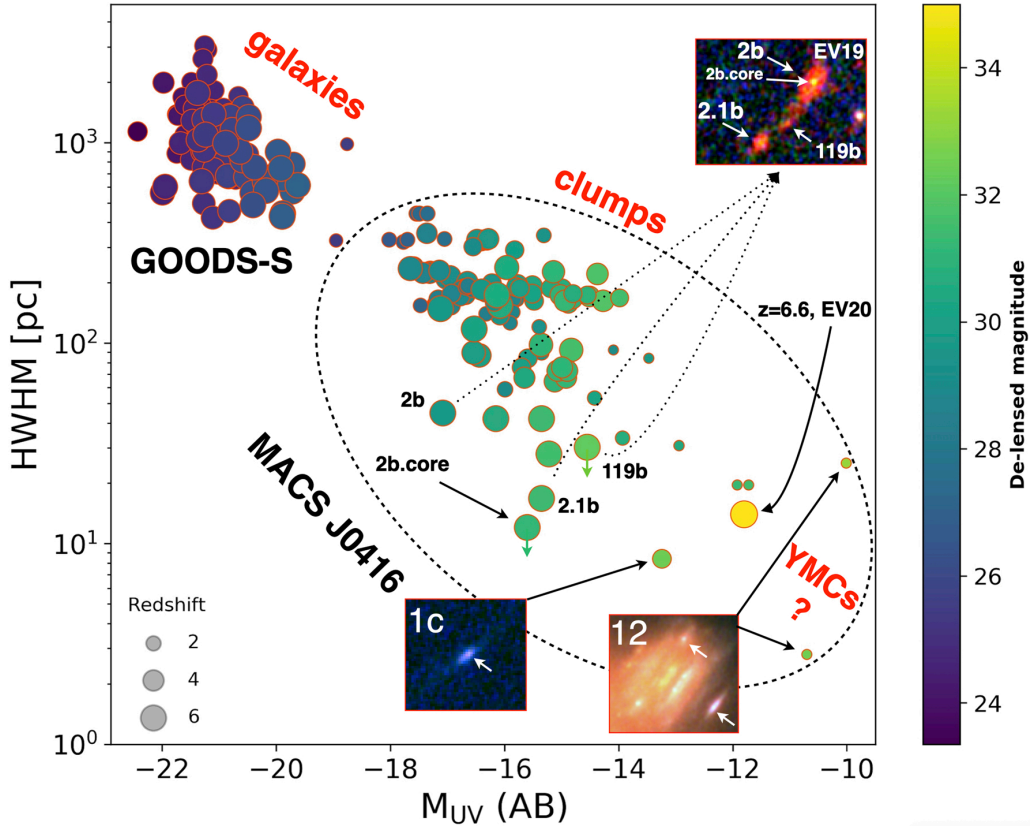


Fig. 11. Intrinsic size (HWHM) as a function of absolute magnitude for all the clumps or single compact (isolated) sources identified in the MDLF. The points are color-coded according to their intrinsic magnitude (color bar on the right) and size-coded with the redshift value. The cloud of points in the top-left of the diagram represents non-lensed objects belonging to the GOODS-South field (see text). The insets show the color images of three examples with large magnification and possibly hosting extremely small objects, compatible with being single star clusters, such as the source dubbed “D1core” (EV19, Vanzella et al. 2019) or the star complex possibly hosting Pop III stellar population (EV20, Vanzella et al. 2020b). Images 1c and 12 are discussed in Sect. 6. From top-left to the bottom-right of the diagram, luminosity from -22 to -10 and sizes from kpc to a few parsec scale embrace galaxies, clumps, and star clusters. The error on M_{UV} depends on the magnification and photometric uncertainties, and is typically ≤ 0.5 mag for the lensed sources. The typical error on the HWHM also depends on magnification and, conservatively, it is within the 50% of the reported value.

three multiple images with similar levels of magnification (e.g., comparable magnitudes) and free from foreground contamination are available, the total integration time for the single source increases to 51.3 h (17.1×3). Naturally, when only one image is available (for whatever reason), the integration time reduces to the original integration of 17.1 h for the MDLF (a similar argument applies to the SW pointing).

We mitigate the first issue by stacking continuum-subtracted spectra. This procedure implies that we miss the final continuum slope of the coadded spectrum and it tends to wash out the absorption lines as well, even though some signature of absorption lines still persist (see below). In this section, we focus on the detection of emission lines.

We adopted the following strategy to compute the stacked spectrum: (1) For spectra in the redshift range of $1.7 < z < 3.9$, the CIII] $\lambda\lambda 1907, 1909$ line wavelength is captured by MUSE. The systemic redshifts have been measured from at least one of the following nebular high-ionization emission lines: CIV $\lambda 1548, 1550$, HeII $\lambda 1640$, OIII] $\lambda 1661, 1666$, and CIII] $\lambda 1908$, which often are detected on individual spectra (as also the median stacked spectrum demonstrates, see below). The redshift from the Ly α line is used if no other lines are present. Here, we decided to exclude the sample at $z > 3.9$, for which the high-ionization lines mainly lie in the forest of sky emission lines. (2) Each one-dimensional spectrum is continuum-subtracted by

using a smoothing-spline and successively weighted by the inverse of the corresponding error spectrum provided by the MUSE pipeline. The resulting continuum-subtracted S/N spectra have more regular sky residuals and can be considered as S/N detection maps. The measurements of line ratios are, however, performed on the continuum-subtracted stack. (3) Spectra belonging to multiple images of the same family have been combined by computing a weighted average, where the weights are assigned after a visual inspection of each multiple image, based on the observed magnitudes, the magnifications factors, and presence of possible contaminants (e.g., by excluding the cases outshone by nearby foreground objects).

In this way, we selected 61 (out of 66) individual objects, excluding five of them due to redundant information – namely, close clumps that are undistinguished by the MUSE extraction aperture of $0''.8$ in diameter and that would enter more than one time in the stacking); 33 out of 61 satisfy the condition $1.7 < z < 3.9$. The average weighted exposure time for the 61 objects is 33 h (ranging between 17.1–51.3 h) and the equivalent total weighted integration time for the stacked spectrum in the wavelength range of Ly α –CIII] $\lambda 1908$ spans between 600 to 1000 h, without including the amplification μ . By adopting an average $\mu = 4$, the equivalent integration time needed to obtain a similar depth in unlensed fields would add up to $\geq 10\,000$ h.

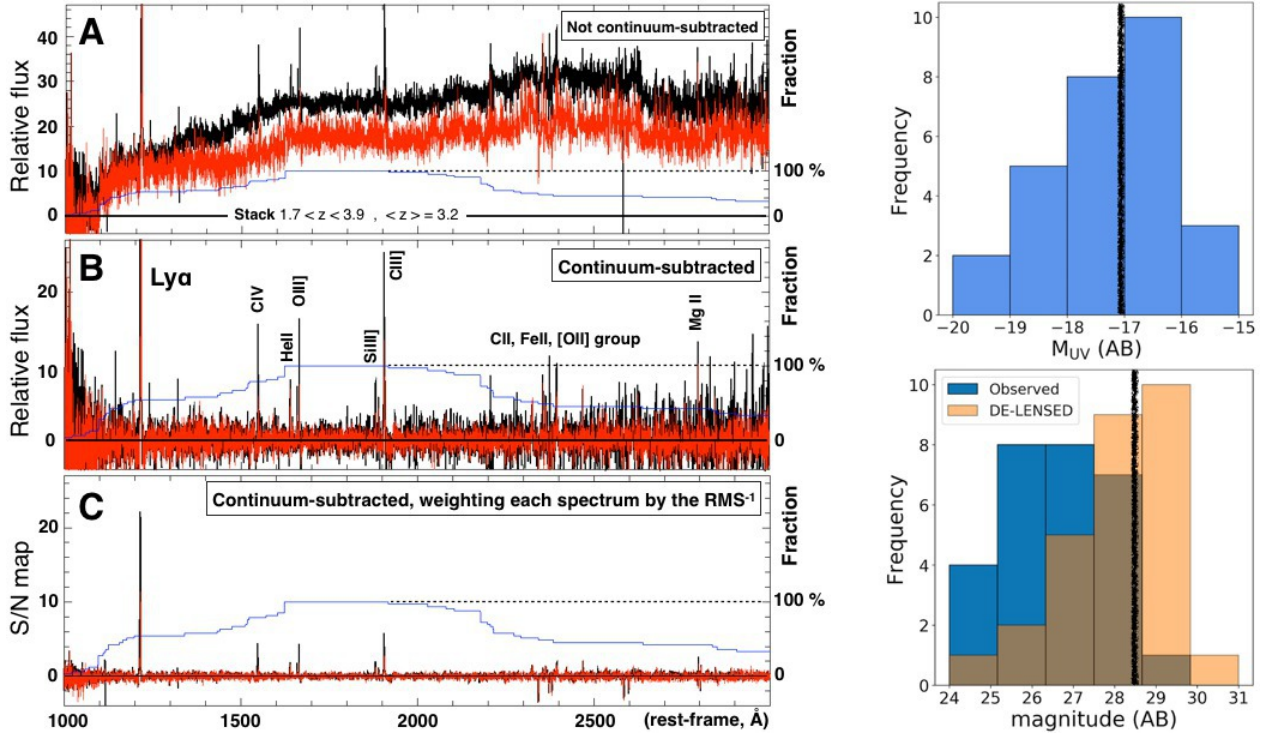


Fig. 12. Left panels: mean (median) stacked spectrum of 33 sources at redshift $1.7 < z < 3.9$ shown in black (red). Panel A: raw stacking of sources without any continuum subtraction. The contamination from the foreground galaxy cluster is evident. Middle panel B: the spectra are stacked after subtracting the continuum. Panel C: result of weighting by the inverse of the noise the continuum subtracted spectra (see Fig. 13 for a zoomed version), which we use as an emission line detection map. The blue curve in panels A–C shows the percentage of input spectra (out of 33) entering in the stacking. Right panels: top-right histogram shows the delensed absolute magnitudes of the sources in the stack; bottom-right panel: observed (blue) and intrinsic (orange) magnitudes. The vertical black stripes indicate the median values of the distributions.

Figure 12 illustrates the stacking steps. The raw mean/median stack without continuum subtraction is shown in panel A, highlighting the smooth red pattern emerging from the foreground cluster contamination. The mean/median stack of continuum subtracted spectra is reported in panel B. The S/N detection map obtained after inversely weighting each continuum-subtracted spectrum by its error spectrum is shown in panel C. The latter is the best probe for the presence of faint emission lines (including some absorption lines).

Figure 13 zooms in on panel C of Fig. 12. The stacked median (mean) S/N detection map clearly reveals the presence of high-ionization emission lines from Ly α up to MgII λ 2800, for sources with magnitude spanning the range of $[-15, -19]$ and a median absolute magnitude $M_{UV} = -17.1$. Magnitude distribution of the objects entering the stack are shown in the right panels of Fig. 12. They include 28 sources for which reliable photometry could be obtained. The line ratios among key nebular emission lines discussed by Feltre et al. (2016) calculated from the continuum-subtracted stacked spectrum (panel B of Fig. 12) suggest that, on average, the ionizing source is dominated by stellar emission, rather than being powered by AGNs. In particular, the line ratios $\text{Log}_{10}(\text{CIV}\lambda 1548, 1550/\text{HeII}\lambda 1640) = 0.294 \pm 0.026$ and $\text{Log}_{10}(\text{OIII}]\lambda 1661, 1666/\text{HeII}\lambda 1640) = 0.381 \pm 0.043$ lie well within the area populated by star-forming regions (e.g., Feltre et al. 2016; Gutkin et al. 2016; Mainali et al. 2017; Vanzella et al. 2017b). The same conclusion is reached based on the CIII] $\lambda\lambda$ 1907, 1909, CIV λ 1548, 1550, and HeII λ 1640 line ratios. It is also worth noting that such nebular lines are at best marginally resolved at the MUSE spectral resolution ($R \approx 3000$, $d\lambda = 2.6 \text{ \AA}$), implying line widths σ_v (or $FWHM$) $\lesssim 50$

(120 km s^{-1}). Indeed, some cases subsequently observed with VLT/X-shooter at higher spectral resolution of $R = 8900$, for instance, source 14 discussed here, show that such nebular lines can be as narrow as σ_v (or $FWHM$) $\lesssim 15$ (33 km s^{-1}), being marginally resolved also in the X-shooter data (Vanzella et al. 2016, 2017b).

Unlike in Feltre et al. (2020), where no lines are individually detected at $S/N > 3$ for individual objects, the combination of lensing and deep MUSE observations allows us to detect several high-ionization lines individually, even for objects with de-delensed magnitudes as faint as ~ 28 – 30 . In fact the intrinsic fluxes of such lines are in the range of a few 10^{-20} – $10^{-18} \text{ erg s}^{-1} \text{ cm}^{-2}$ in single sources (three examples are shown in Fig. 14). In Appendix D, we show stacks of a subset of faint one-dimensional spectra for which high-ionization lines have been detected individually.

The sample of lensed sources observed with the MDLF confirms the results obtained by Feltre et al. (2020; Maseda et al. 2018) on the HUDF, extending the luminosity range down to $M_{UV} = -16$ and increasing the wavelength coverage up to $\lambda \sim 2800 \text{ \AA}$. High-ionization lines are common in very low-luminosity regimes (confirmed even for single $m > 28$ – 30 objects), given their presence in the median stack over the full sample (see Appendix D for a comparison between mean and median stack for a subset of sources). While such nebular emission lines will be modeled individually elsewhere, we note here that the presence of nebular emission doublet at the CIV λ 1548, 1550 wavelengths emerging from the ionized gas is indicative of very low ($Z < 0.002$) interstellar metallicity (Senchyna et al. 2017, 2019; Vidal-García et al. 2017),

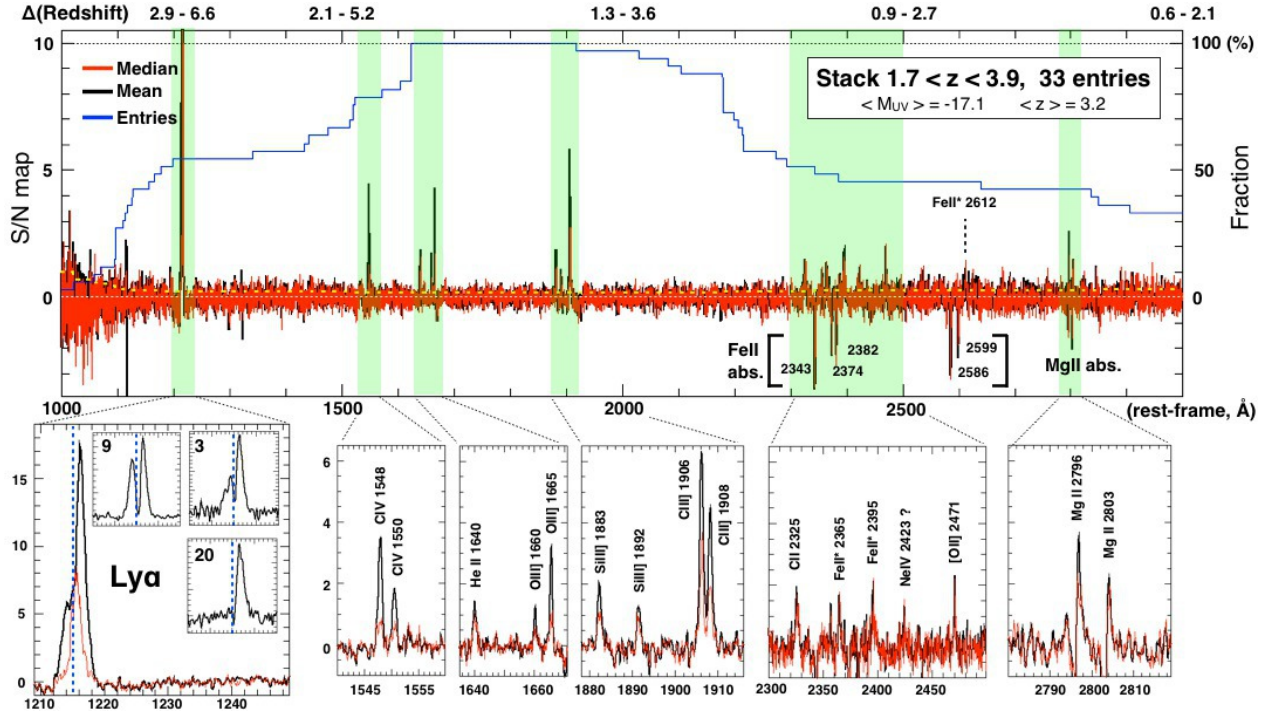


Fig. 13. Mean (median) S/N stacked detection map of sources lying in the redshift range of $1.7 < z < 3.9$ is shown in black (red) on the *top panel*. The number of entries included in the stack is shown in blue and the fraction reported in the right *Y-axis*, where 100% corresponds to 33 entries. On the top axis, the corresponding redshift interval probed by MUSE is indicated for the rest-frame wavelengths reported on the *X-axis*. The yellow dashed line represent the 1-sigma error of the stack, increasing at the edges of the wavelength range. The green transparent stripes indicate the positions of the most relevant groups of high-ionization lines, whose zoomed versions are shown in the *bottom panels*. *Bottom leftmost panel*: the zoomed $\text{Ly}\alpha$ line is shown and is a result of a variety of different line profiles; as an example, three different cases are reported in the insets of the same panel, extracted from sources 9, 3, and 20 shown in relative flux units, with the systemic redshift indicated with the vertical blue dashed lines.

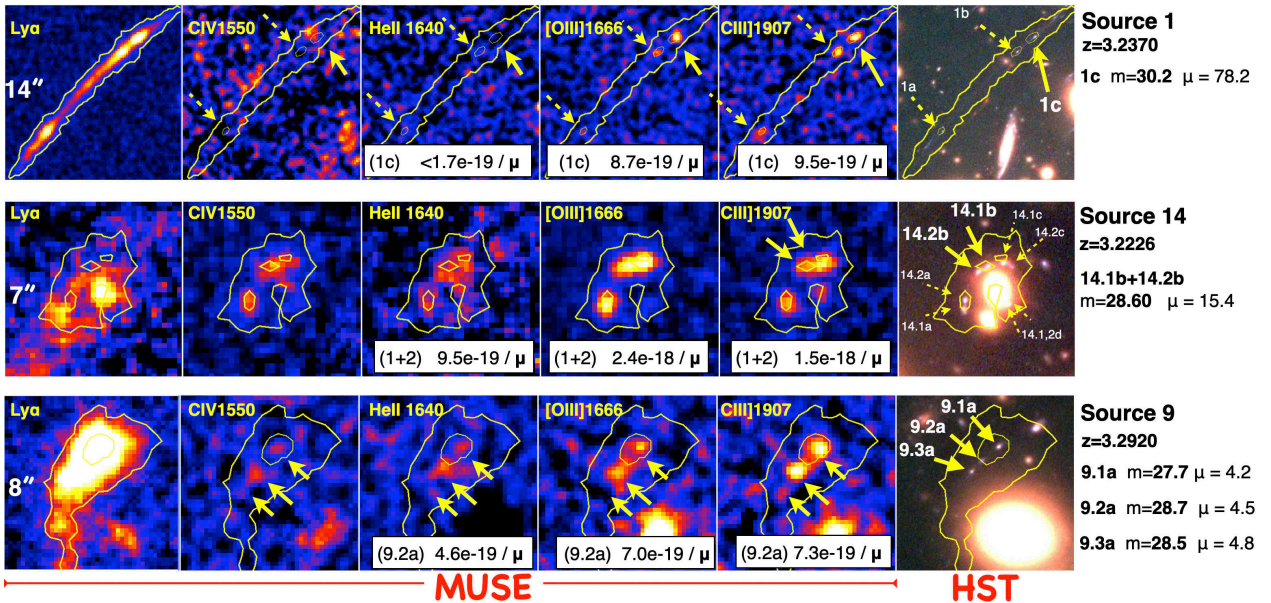


Fig. 14. Three examples for which high-ionization emission lines are detected individually. *From left to right*: most relevant atomic transitions (labeled on each panel). Yellow contours outline $\text{Ly}\alpha$ (CIV) in the *top* and *bottom (middle)* rows to 2- and 10- σ levels. The MUSE continuum-subtracted narrow-band images ($\Delta v = 300 \text{ km s}^{-1}$) have been smoothed with a 2×2 boxcar filter along the spatial dimension. On the right, the color HST image (red = $F105W$, green = $F814W$, blue = $F606W$) with arrows showing relevant sources. Solid arrows refer to individual sources, while the dashed ones to the associated multiple images, when present. Measured line fluxes are also reported for HeII , $[\text{OIII}]$ and CIII ; the intrinsic values are obtained using the μ values quoted on the right, together with redshifts and de-lensed magnitudes. Magnifications for sources 1 and 14 are also reported in Table E.1. We note the case of source 9 (*bottom*) where high-ionization lines emerge differently from the three individual clumps (9.1a, 9.2a, 9.3a). The $\text{Ly}\alpha$ emission in the *leftmost panels* show a typical arc-like shape (*top*, Vanzella et al. 2017a), a deficit of $\text{Ly}\alpha$ emission if compared to carbon emission (*middle*, see one-dimensional spectrum in Appendix C and Vanzella et al. 2017b), and a $\text{Ly}\alpha$ nebula (*bottom*, Vanzella et al. 2017c).

especially for the fraction of sources where such nebular emission is most prominent and dominates the averaged stacked spectrum. Not surprisingly, the sources probed in this work at the faintest luminosity regime sample the tail of the very low stellar mass objects ($10^{6-8} M_{\odot}$), for which a low metallicity would be expected by extrapolating the mass-metallicity relation at such masses and redshift (see [Maiolino & Mannucci 2019](#), for a review). The stacked spectrum shown in Fig. 13 complements in terms of luminosity and stellar mass the stacked spectrum derived from the Project MEGaSaURA (the Magellan Evolution of Galaxies Spectroscopic and Ultraviolet Reference Atlas, [Rigby et al. 2018a,b](#)). In that study, a composite spectrum of 14 highly magnified star-forming galaxies at $1.6 < z < 3.6$, with stellar mass $\geq 10^9 M_{\odot}$ and median sub-solar metallicity (37% Z_{\odot}), reveals numerous weak nebular emission lines, stellar photospheric absorption lines and strong absorption from interstellar medium on a high signal-to-noise detected continuum. Unlike the MEGaSaURA stacked spectrum, the spectrum reported here includes much fainter objects and shows evident narrow nebular emission lines (including the $\text{HeII}\lambda 1640$) that are not (or only marginally) present in the brighter galaxy sample used in [Rigby et al. \(2018b\)](#).

It is worth noting that in several cases nebular high-ionization lines emerge from single clumps, as shown in Fig. 14 for sources 1, 9, and 14. In particular, source 9 shows three distinct clumps, 9.1a, 9.2a and 9.3a, each one barely resolved in HST images implying effective radii smaller than 100–200 pc. The bluest of the three (and the most nucleated one, 9.2a) shows the strongest $\text{HeII}\lambda 1640$ emission. Gravitational lensing allows us to identify such small clumps and (in this case) to extract spectra for each of them. Another (and most extreme) example is the Sunburst arc, in which the very large magnification allowed us to recognize a single 3 Myr old star cluster, showing evident P-Cygni profiles of Nv , CIV and broad $\text{HeII}\lambda 1640$ arising from O-type and Wolf-Rayet stars ([Vanzella et al. 2020a](#)).

6. Gravitationally bound star clusters at cosmological distance and prospects for future AO-assisted instrumentation

In this section, we discuss the interpretation of the clumps in terms of gravitationally bound star clusters, in the context of current observational limits and future AO-assisted instrumentation. The typical uncertainty on the amplification factor μ (including systematics) at high magnification regimes, $\mu > 5$, is on the order of 20–40% and is discussed in Appendix E for a subset of sources discussed in this work.

6.1. Looking for bound star clusters at high redshift

A way to assess whether a stellar cluster is gravitationally bound is to calculate its dynamical age Π , defined as the ratio between the age and the crossing time T_{CR} , $\Pi = \text{Age}/T_{\text{CR}}$. The crossing time expressed in Myr is defined as $T_{\text{CR}} = 10 \times (R_{\text{eff}}^3/GM)^{0.5}$, where M and R_{eff} are the stellar mass and the effective radius, respectively, and $G \approx 0.0045 \text{ pc}^{-3} M_{\odot}^{-1} \text{ Myr}^{-2}$ is the gravitational constant. Stellar systems evolved for more than a crossing time have $\Pi > 1$, suggestive of being bound ([Gieles & Portegies Zwart 2011](#); see also discussion by [Adamo et al. 2020b](#)). This criterion has been used extensively for the identification of star clusters in the local Universe (e.g., [Calzetti et al. 2015](#); [Adamo et al. 2017](#); [Ryon et al. 2017](#)). The criterion is valid under the assumptions that

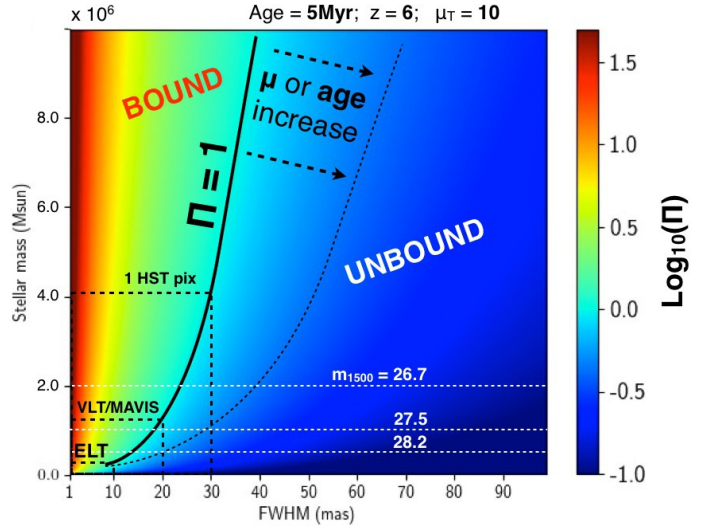


Fig. 15. Dynamical age in logarithmic units (color-coded) as a function of stellar mass and angular resolution (milliarcsecond, mas), for a 5 Myr-old star cluster placed at $z = 6$ and observed at tangential magnification $\mu_T = 10$. The solid black curve marks the locus of $\Pi = 1$ separating bound ($\Pi > 1$) from unbound ($\Pi < 1$) systems. The cases of HST (1 pixel, 30 mas), VLT/MAVIS with an expected FWHM of 20 mas and E-ELT/MAORY-MICADO with FWHM of 10 mas are shown. VLT/MAVIS and E-ELT/MAORY-MICADO can probe star clusters down to a few $10^5 M_{\odot}$, provided that the S/N and the knowledge of the PSF allow a proper morphological analysis and/or PSF deconvolution. The slope of the $\Pi = 1$ curve flattens if the magnification and/or the age of the system increase (dotted curve). UV apparent magnitudes at 1500 \AA , corresponding to 2, 1 and $0.5 \times 10^6 M_{\odot}$ objects, are indicated as horizontal white dotted lines.

the system is in virial equilibrium, follows a Plummer density profile and the light traces the underlying mass.

Figure 15 shows the required angular resolution needed to distinguish among bound and unbound star clusters as a function of stellar mass. For this exercise, the age of the cluster is fixed at 5 Myr, $z = 6$ and magnification $\mu_T = 10$ (the stretch along the tangential direction over which the size is probed). Instruments like E-ELT/MAORY-MICADO and VLT/MAVIS will reach 10 and 20 mas resolution in the near infrared and optical wavelengths, respectively, formally allowing for the identification of bound star clusters down to a few $10^5 M_{\odot}$ (with the adopted μ). Clearly, the discerning power depends on the S/N and the knowledge of the PSF over the field of view. The S/N, in turn, depends on the magnification factor. For illustration, we compute the image plane magnitude of a star cluster with stellar mass M as a function of μ . Assuming an instantaneous burst and Salpeter IMF, a 5 Myr old star cluster has an absolute magnitude $M_{1500} \approx -16.7$ ([Leitherer et al. 2014](#)), which corresponds to a reference magnitude $m_{1500}^{\text{ref}} = 30.0(28.8)$ at redshift 6(3). Therefore, the lensed apparent magnitude, m can be written as:

$$m = m_{1500}^{\text{ref}} - 2.5 \log_{10}(\mu) - 2.5 \log_{10}(10^{-6} M/M_{\odot}). \quad (1)$$

The equation implies that a young $5 \times 10^5 M_{\odot}$ star cluster, magnified by $\mu = 10$ at redshift 6(3), has a magnitude 28.2(27.0). It is worth noting that the very compact size of star clusters (e.g., $R_{\text{eff}} < 30 \text{ pc}$, [Adamo et al. 2020b](#)) will favor the detection in deep imaging, in comparison to extended sources (e.g., Fig. 4 of [Bouwens et al. 2017b](#)). While dedicated simulations using realistic AO-based PSFs are needed to quantify the size reconstruction as a function of the S/N, we note that magnitudes $\lesssim 28$ are

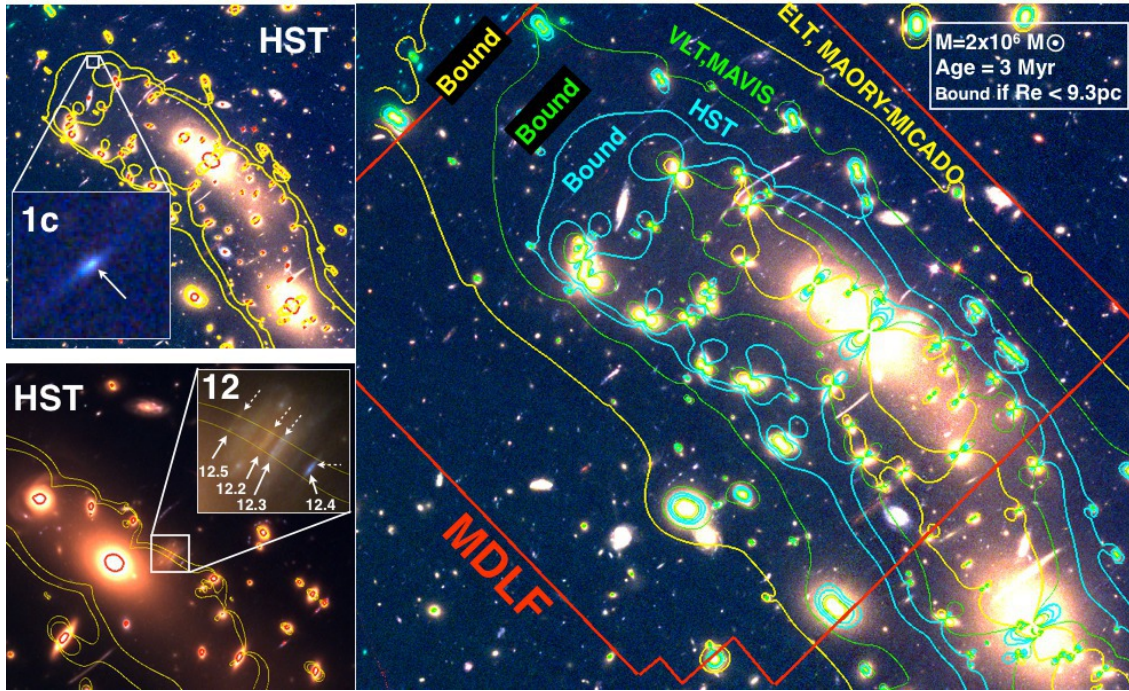


Fig. 16. *Left panels:* locus of dynamical age $\Pi = 1$ at the redshift of image 1c ($z = 3.237$, top) and 12 ($z = 0.939$, bottom) is highlighted with yellow contours; a star cluster with an effective radius matching one HST pixel (30 mas) lying within such contours is gravitationally bound if its age is larger than 3 Myr or it has a stellar mass larger than $2 \times 10^6 M_{\odot}$. The compact knots detected in image 1c and 12 are candidate gravitationally-bound star clusters under the above assumptions. The insets show the zoomed source 1c and 12, with arrows indicating the most magnified knots. *Right panel:* same contours of $\Pi = 1$ at the redshift of source 1 adopting the HST 30 mas pix^{-1} scale (cyan line), VLT/MAVIS (7.5 mas pix^{-1} , green line), and E-ELT/MAORY-MICADO (4 mas pix^{-1} , yellow line) are superimposed onto the same HST color image shown in the left panels (red = $F105W$, green = $F814W$ and blue = $F606W$). The layout of the MDLF is shown in red. It is worth noting that ELT can probe gravitationally bound young massive clusters even with moderate magnification $2 < \mu < 4$, a regime in which μ is free from systematic errors and by foreground contamination by galaxy cluster members.

plausibly within reach of big telescopes, especially considering that relatively massive star clusters with $M > 10^6 M_{\odot}$ will be even brighter, $m < 27.5$. Moreover, E-ELT/MAORY-MICADO, with a moderate magnification of $\mu = 3$, will easily identify massive $M \approx 10^7 M_{\odot}$ star clusters expected to have $m = 26.3$ (from Eq. (1)), while still probing a physical scale of 11 pc pix^{-1} , considering the MICADO pixel scale of 4 mas and $\mu_T = 2$ (assuming $\mu = 3 = \mu_T \times \mu_R$, i.e., the tangential stretch slightly dominates over the radial one, as typically happens for the MDLF). By reaching star-cluster like sizes with modest magnifications, the ELTs will pave the way for the exploration of much larger volumes than those currently accessible with 8–10 m telescopes that require high magnification (e.g., $\mu > 10$ in Fig. 4).

Currently, deep HST imaging on lensed fields and PSF deconvolution down to the single HST pixel (30 mas) on MUSE-confirmed sources is producing intriguing candidate star clusters. In order to explore the potential of HST observations, we calculate the lensed dynamical-age-cross-section starting from the magnification maps of J0416 extracted from the latest Bergamini et al. (2021) lens model. As an exercise, Fig. 16 shows the contours of dynamical age $\Pi = 1$ assuming a star cluster age of 3 Myr, a stellar mass of $2 \times 10^6 M_{\odot}$ and assuming the object is not (or it is marginally) resolved down to an effective radius $R_{\text{eff}} = 1$ HST pixel of 30 mas (the same figure also shows the case for E-ELT/MAORY-MICADO and VLT/MAVIS). Such a limit has been recently reached with, for example, Galfit (Peng et al. 2010) after a proper PSF deconvolution (e.g., Vanzella et al. 2019; Zick et al. 2020). Contours at $\Pi = 1$ have been calculated at the redshift of source 1 ($z = 3.237$)

and source 12 ($z = 0.939$), which seem to host very small knots. Figure 16 shows the resulting area within which $\Pi > 1$ under the above assumptions (i.e., the region within which 1 HST pixel probes < 9.3 pc, which is the corresponding R_{eff} at $\Pi = 1$), with the positions of the observed images 1c and knots of source 12. The very large tangential magnification coupled with their very nucleated appearance is a suggestion that their sizes are extremely small.

Source 1. Image 1c shows an effective radius of 2.5 pixels (Vanzella et al. 2017a) that would correspond to < 10 pc along the tangential stretch ($\mu_T \approx 69$). Specifically, the same tangentially elongated image also shows a nearly point-like spatially offset knot (indicated with a white arrow in Fig. 16, see also bottom-right panel of Fig. 2 in Vanzella et al. 2017a). The effective radius of such a knot is even smaller than the entire image 1c, conservatively not larger than 2 pixels with a size smaller than 7 pc. Under the assumption that the knot hosted on image 1c is not younger than 3 Myr and with a stellar mass not smaller than $10^6 M_{\odot}$, a $R_{\text{eff}} < 7$ pc would imply $\Pi > 1$, matching the condition for a gravitationally-bound star cluster. The distribution of possible Π depends on the solutions for the stellar mass and ages within certain confidence levels, given the magnification uncertainty, and it is not calculated here. However, it represents a good candidate-bound star cluster that is likely dominating the Ly α and high-ionization line emission (see image 1c on Fig. 14) and that will need further exploration, for instance, by adding near-infrared spectroscopic observations to constrain the aforementioned age and stellar mass. Such an object is also reminiscent of similar local star clusters dominating the ionization field and

the Ly α emission (e.g., [Bik et al. 2018](#)). A very similar object showing a spatially offset knot hosted in a more elongated image has been discussed by [Zick et al. \(2020\)](#), however, with a lower magnification regime that allows them to put constraints down to 40 pc physical scale.

Source 12. Source 12 is a spiral galaxy at $z = 0.939$ that is straddling the corresponding critical line. Its proximity to several nearly point-like knots hosted in 12 (12.2, 12.3, 12.4, and 12.5) suggests magnification values in the range of 20–100, strongly stretch along the tangential direction ([Bergamini et al. 2021](#)) and corresponding to a spatial scale of 10–1 pc pix $^{-1}$, respectively. Knots 12.2, 12.3, 12.4, and 12.5 are shown in Fig. 16 (also Fig. A.1). Assuming a HWHM of 0.06'' for the HST ACS/F435W PSF (of 0'':12, [Merlin et al. 2016](#)), a rough estimate of the sizes span the range of 4–20 pc along the tangential direction. Under the above assumptions (age and stellar masses), the knots would touch the boundaries where $\Pi > 1$ (Fig. 16), especially the object 12.4b,c that is extremely close to the critical line with a plausible size smaller than 6 pc. Performing a detailed mass, age, and size estimation of such extreme cases it is not the scope of this work, however Fig. 16 shows that relatively rare (due to the required magnification) gravitationally bound star clusters can be identified at cosmological distance with HST imaging on lensed fields (see also the analysis of the *Sunburst* arc in [Vanzella et al. 2020a](#)).

6.2. A possible pair of massive star clusters at $z = 3.223$

Source 14 is exceptional, given that it is magnified by the galaxy cluster that produces three multiple images and a couple of cluster members, which further splits one of the images into four. In total, source 14 generates six images, 14a–f ([Caminha et al. 2017](#), see also [Bergamini et al. 2021](#)). [Vanzella et al. \(2017b\)](#) based on two initial hours of MUSE integration confirmed five out of six multiple images, with the sixth and the least magnified one (14f) being tentatively identified via photometric redshift. Here, we confirm the five previously identified images and revisit the identification of the sixth 14f, now confirmed with the MDLF. In particular, image 14f corresponds to the ASTRODEEP source ID=1127 with a magnitude of $F814W = 27.78 \pm 0.07$ (see Appendix C). The magnification at the location of 14f is $\mu = 2.1 \pm 0.1$, implying an intrinsic magnitude for source 14 of 28.6.

Surprisingly, the most magnified version of source 14 (e.g., 14a or 14b) shows that the spatially unresolved image 14f is made of two distinct and much smaller knots (labeled as “1” and “2”), which do not appear at position f (Fig. C.1). The two very magnified knots at position a (or b) have very similar ultraviolet magnitude (≈ 26.5 , [Vanzella et al. 2017b](#)) and are separated by ~ 390 pc in the source plane. Assuming that each knot contributes equally to the observed magnitude of 28.6, the intrinsic magnitude of each of them is of the order of ~ 29.4 . This value may be a lower limit to the brightness if the host galaxy contributes any flux.

The updated magnification, inferred by comparing the observed fluxes and using the improved lens model, implies that source 14 is made of a pair of compact knots having $R_{\text{eff}} \lesssim 30$ pc each, with both having a de-lensed magnitude of $\gtrsim 29.4$, or $M_{1500} \gtrsim -16.3$ (see Appendix C). From the SED-fitting performed by [Vanzella et al. \(2017b\)](#), we know that their ages span the range of 10–30 Myr and stellar masses are in the range of $(1-10) \times 10^6 M_{\odot}$. Intriguingly, the combination of these quantities (e.g., $R_{\text{eff}} \sim 30$ pc, $M = 5 \times 10^6 M_{\odot}$ and Age = 20 Myr) produces a dynamical age of $\Pi \approx 2$, supporting the hypothe-

sis that the two knots are indeed a pair of gravitationally bound massive stellar systems separated by 390 pc on the source plane and approaching the definition of young massive star clusters. Radii of the order of 30 pc appear quite large for local star clusters (e.g., [Bastian & Lardo 2018](#)). However, more typical values of $\lesssim 25$ pc are still within the uncertainties of the present data.

From the perspective of ELT performance, an instrument such as MAORY-MICADO will probe a spatial scale of 50 pc at the redshift of image 14f magnified by $\mu = 2.1$, allowing for the identification of the two knots (unresolved by HST), although each one will be not spatially resolved. Remarkably, MAORY-MICADO with 10 mas PSF resolution on images 14.1a, 14.2a, 14.1b, 14.2b ($\mu \approx 15$) will probe 6.7 pc (or 2.7 pc pix $^{-1}$, adopting 1 pix = 4 mas), along the direction of the maximum stretch ($\mu_{\text{T}} \sim 11$). If MAORY-MICADO will probe 2.7 pc pix $^{-1}$ in the rest-frame optical wavelengths, VLT/MAVIS will cover the rest-frame ultraviolet down to ~ 5 pc pix $^{-1}$ on the same images (adopting 7.5 pc pix $^{-1}$)⁷. This will be a dramatic step forward in the study of these kinds of objects, allowing us to calculate what fraction of the stars in the galaxy have formed in gravitationally bound star clusters (the cluster formation efficiency, Γ). It is worth noting that if at least one of the two knots is a gravitationally bound star cluster and the host is marginally contributing to the emerging ultraviolet light (as the most magnified images seem to imply), then it would suggest a large $\Gamma \sim 50\%$ in this system. In other words, more than half of the ultraviolet light comes from stars bounded in a star cluster. If they are a physical pair of massive clusters, then Γ could be well above 50%. Rare and large Γ values ($\gtrsim 80\%$) in the local Universe under extreme environment conditions (starburst galaxies) have been observed with masses as high as $10^7 M_{\odot}$. Recently, [Adamo et al. \(2020a\)](#) described such cases for a sample of six galaxies within 80 Mpc distance from the Earth, suggesting that such large values of Γ and high truncation mass of the star cluster mass function would be more common in the high redshift Universe. State-of-the-art instruments will allow us to begin exploring these properties in greater detail.

7. Conclusions

In this work, we present the MUSE Deep Lens Field (MDLF) with a total integration time of 17.1 h over a single pointing, targeting one of the best cosmic telescopes, HFF MACS J0416 at $z = 0.396$, and providing line flux limits down to 2×10^{-19} erg s $^{-1}$ cm $^{-2}$ within 300 km s $^{-1}$ and continuum detection down to magnitude 26, both at three sigma level at $\lambda = 7000$ Å. While the effective area probed in lensed fields rapidly decreases with the magnification μ , when compared to non-lensed fields (Fig. 4), the combination of a long exposure (17.1 h) and amplification allow us to probe very faint fluxes, which would require well above 100 h in blank fields. Specifically, about 90% of the MDLF field of view is equivalent to >100 h integration without lensing, assuming point-like emission (see Fig. 3). By combining deep MUSE spectroscopy with deep HST multi-band imaging, we obtain the following initial results:

1. We increased the number of multiple images to 182 in the redshift range of $0.9 < z < 6.2$, emerging from 66 families extracted from 48 background individual sources. These multiple images, including multiple clumps detected around the critical lines, are used to constrain the new

⁷ It is worth noting that the very limited sky-coverage offered by MUSE in the narrow field mode configuration make the observation of such objects prohibitive.

lens model presented by Bergamini et al. (2021) in an accompanying paper. This unprecedented number of spectroscopically confirmed images enhance significantly the reliability of the magnification maps for high redshift studies (e.g., Johnson & Sharon 2016; Caminha et al. 2016).

2. The majority of the multiple images show star-forming clumps over a wide redshift range, as discussed in Sect. 4 and Appendix B. Strong lensing geometry coupled to MUSE spectroscopy allow us to confirm very compact and faint objects, including sub-components that would be beyond reach also at the MDLF depth. In a future work, lensing magnification of such systems will enable individual analysis (e.g. SED fitting) and in some cases to perform localized spectroscopy, with an effective resolution of 100–200 pc physical scale (as shown in Figs. 5, 7, 9, and discussed in Appendix B).
3. High ionization metal lines of CIV λ 1548, 1550, OIII λ 1661, 1666, [SiIII] λ 1883, 1892 and CIII λ 1907, 1909 (including HeII λ 1640) have been detected with S/N in the range of >5 –30 on individual objects down to intrinsic magnitude 28–30, with de-lensed line fluxes of 10^{-20} – 10^{-19} erg s $^{-1}$ cm $^{-2}$, including several with sizes smaller than <200 pc (see examples in Figs. 14 and C.1). Such lines emerge very clearly in the mean and median stacked spectra (Fig. 13). At a median redshift $z=3.2$, the high-ionization lines seem to persist down the faintest limits probed by the MDLF, for instance, $M_{UV} \approx -16$, thus extending the results of Feltre et al. (2020) to fainter luminosity regimes. In particular, the cases showing the most prominent nebular lines are indicative of a low-metallicity regime.
4. Candidates for gravitationally bound star clusters with sizes smaller than 30 pc have been identified at cosmological distance (Sect. 6), including a doubly imaged likely physical pair young massive star cluster separated by ~ 400 pc in the source plane (source 14). Dynamical-age-cross sections have been calculated and prospects for future AO-assisted instrumentation discussed in Sect. 6. In particular, future instruments with resolutions of 10–20 mas (e.g., E-ELT/MAORY-MICADO or VLT/MAVIS) will be able to identify young gravitationally-bound star clusters with ages smaller than <5 Myr and stellar masses $\gtrsim 10^5 M_{\odot}$ up to the reionization epoch.

The MDLF gives us a first glimpse of the high redshift universe at luminosity and resolution that would have been impossible just a few years ago. It demonstrates very clearly the power of gravitational telescopes in complementing the physical parameter space accessible with the deepest blank fields, in which reaching MLDF depths would require 100–1000 h and the resolution would be unattainable. The main limitation of the MLDF is the progressively smaller volume probed in highly magnified regions. This limitation can be overcome by a concerted campaign of deep MUSE follow-up observations of lensing clusters.

Acknowledgements. We thank the anonymous referee for the careful reading and constructive comments. This project is partially funded by PRIM-MIUR 2017WSCC32 “Zooming into dark matter and proto-galaxies with massive lensing clusters”. We acknowledge funding from the INAF for “interventi aggiuntivi a sostegno della ricerca di main-stream” (1.05.01.86.31). PB acknowledges financial support from ASI through the agreement ASI-INAF n. 2018-29-HH.0. MM acknowledges support from the Italian Space Agency (ASI) through contract “Euclid – Phase D” and from the grant MIUR PRIN 2015 “Cosmology and Fundamental Physics: illuminating the Dark Universe with Euclid”. FC acknowledges support from grant PRIN MIUR 2017 – 20173ML3WW_s. CG acknowledges support by VILLUM FONDEN Young Investigator Programme through grant no. 10123. KC and GBC acknowledge funding from the ERC through

the award of the Consolidator Grant ID 681627-BUILDUP. EV thanks Davide Vanzella for helping collecting data from the literature shown in Fig. 11. TT acknowledges support by the National Science Foundation through grant NSF-1810822 “COLLABORATIVE RESEARCH: The Final Frontier: Spectroscopic Probes of Galaxies at the Epoch of Reionization”. MG was supported by by NASA through HST-HF2-51409. This research made use of the following open-source packages for Python and we are thankful to the developers of these: Matplotlib (Hunter 2007), MPDAF (Piqueras et al. 2019), PyMUSE (Pessa et al. 2020), Numpy (van der Walt et al. 2011).

References

- Adamo, A., Ryon, J. E., Messa, M., et al. 2017, *ApJ*, 841, 131
 Adamo, A., Hollyhead, K., Messa, M., et al. 2020a, *MNRAS*, 499, 3267
 Adamo, A., Zeidler, P., Kruijssen, J. M. D., et al. 2020b, *Space Sci. Rev.*, 216, 69
 Alavi, A., Siana, B., Richard, J., et al. 2014, *ApJ*, 780, 143
 Alavi, A., Siana, B., Richard, J., et al. 2016, *ApJ*, 832, 56
 Amorín, R., Fontana, A., Pérez-Montero, E., et al. 2017, *Nat. Astron.*, 1, 0052
 Atek, H., Richard, J., Kneib, J.-P., et al. 2014, *ApJ*, 786, 60
 Atek, H., Richard, J., Kneib, J.-P., et al. 2015, *ApJ*, 800, 18
 Atek, H., Richard, J., Kneib, J.-P., & Schaerer, D. 2018, *MNRAS*, 479, 5184
 Bacon, R. 2020, *IAU Symposium*, 352, 325
 Bacon, R., Accardo, M., Adjali, L., et al. 2012, *The Messenger*, 147, 4
 Bacon, R., Brinchmann, J., Richard, J., et al. 2015, *A&A*, 575, A75
 Bacon, R., Piqueras, L., Conseil, S., Richard, J., & Shepherd, M. 2016, *Astrophysics Source Code Library* [record ascl:1611.003]
 Bacon, R., Conseil, S., Mary, D., et al. 2017, *A&A*, 608, A1
 Bastian, N. 2008, *MNRAS*, 390, 759
 Bastian, N., & Lardo, C. 2018, *ARA&A*, 56, 83
 Beckwith, S. V. W., Stiavelli, M., Koekemoer, A. M., et al. 2006, *AJ*, 132, 1729
 Bergamini, P., Rosati, P., Vanzella, E., et al. 2021, *A&A*, 645, A140
 Bertin, E., & Arnouts, S. 1996, *A&AS*, 117, 393
 Bik, A., Östlin, G., Menacho, V., et al. 2018, *A&A*, 619, A131
 Bouwens, R. J., Smit, R., Labbé, I., et al. 2016, *ApJ*, 831, 176
 Bouwens, R. J., Oesch, P. A., Illingworth, G. D., Ellis, R. S., & Stefanon, M. 2017a, *ApJ*, 843, 129
 Bouwens, R. J., Illingworth, G. D., Oesch, P. A., et al. 2017b, *ApJ*, 843, 41
 Boylan-Kolchin, M. 2018, *MNRAS*, 479, 332
 Bradley, L. D., Zitron, A., Coe, D., et al. 2014, *ApJ*, 792, 76
 Brinchmann, J., Inami, H., Bacon, R., et al. 2017, *A&A*, 608, A3
 Calura, F., D’Ercole, A., Vesperini, E., Vanzella, E., & Sollima, A. 2019, *MNRAS*, 489, 3269
 Calura, F., Vanzella, E., Carniani, S., et al. 2020, *MNRAS*, 500, 3083
 Calzetti, D., Lee, J. C., Sabbi, E., et al. 2015, *AJ*, 149, 51
 Caminha, G. B., Grillo, C., Rosati, P., et al. 2016, *A&A*, 587, A80
 Caminha, G. B., Grillo, C., Rosati, P., et al. 2017, *A&A*, 600, A90
 Caminha, G. B., Rosati, P., Grillo, C., et al. 2019, *A&A*, 632, A36
 Castellano, M., Fontana, A., Grazian, A., et al. 2012, *A&A*, 540, A39
 Castellano, M., Amorín, R., Merlin, E., et al. 2016, *A&A*, 590, A31
 Cava, A., Schaerer, D., Richard, J., et al. 2018, *Nat. Astron.*, 2, 76
 Chevallard, J., Charlot, S., Senchyna, P., et al. 2018, *MNRAS*, 479, 3264
 Chisholm, J., Rigby, J. R., Bayliss, M., et al. 2019, *ApJ*, 882, 182
 Claeysens, A., Richard, J., Blaizot, J., et al. 2019, *MNRAS*, 489, 5022
 Dayal, P., Volonteri, M., Choudhury, T. R., et al. 2020, *MNRAS*, 495, 3065
 Dessauges-Zavadsky, M., Schaerer, D., Cava, A., Mayer, L., & Tamburello, V. 2017, *ApJ*, 836, L22
 Eide, M. B., Ciardi, B., Graziani, L., et al. 2020, *MNRAS*, 498, 6083
 Elmegreen, B. G., Malhotra, S., & Rhoads, J. 2012, *ApJ*, 757, 9
 Erb, D. K. 2015, *Nature*, 523, 169
 Erb, D. K., Berg, D. A., Auger, M. W., et al. 2019, *ApJ*, 884, 7
 Feltre, A., Charlot, S., & Gutkin, J. 2016, *MNRAS*, 456, 3354
 Feltre, A., Maseda, M. V., Bacon, R., et al. 2020, *A&A*, 641, A118
 Garilli, B., Fumana, M., Franzetti, P., et al. 2010, *PASP*, 122, 827
 Giallongo, E., Grazian, A., Fiore, F., et al. 2015, *A&A*, 578, A83
 Giavalisco, M., Ferguson, H. C., Koekemoer, A. M., et al. 2004, *ApJ*, 600, L93
 Gieles, M., & Portegies Zwart, S. F. 2011, *MNRAS*, 410, L6
 Grazian, A., Giallongo, E., Paris, D., et al. 2017, *A&A*, 602, A18
 Grillo, C., Suyu, S. H., Rosati, P., et al. 2015, *ApJ*, 800, 38
 Grillo, C., Karman, W., Suyu, S. H., et al. 2016, *ApJ*, 822, 78
 Gutkin, J., Charlot, S., & Bruzual, G. 2016, *MNRAS*, 462, 1757
 He, C.-C., Ricotti, M., & Geen, S. 2020, *MNRAS*, 492, 4858
 Herenz, E. C., Hayes, M., Papaderos, P., et al. 2017a, *A&A*, 606, L11
 Herenz, E. C., Urrutia, T., Wisotzki, L., et al. 2017b, *A&A*, 606, A12
 Hunter, J. D. 2007, *Comput. Sci. Eng.*, 9, 90
 Illingworth, G. D., Magee, D., Oesch, P. A., et al. 2013, *ApJS*, 209, 6

- Inami, H., Bacon, R., Brinchmann, J., et al. 2017, *A&A*, 608, A2
- Johnson, T. L., & Sharon, K. 2016, *ApJ*, 832, 82
- Johnson, T. L., Rigby, J. R., Sharon, K., et al. 2017, *ApJ*, 843, L21
- Karman, W., Caputi, K. I., Grillo, C., et al. 2015, *A&A*, 574, A11
- Karman, W., Caputi, K. I., Caminha, G. B., et al. 2017, *A&A*, 599, A28
- Katz, H., & Ricotti, M. 2013, *MNRAS*, 432, 3250
- Kawamata, R., Ishigaki, M., Shimasaku, K., Oguri, M., & Ouchi, M. 2015, *ApJ*, 804, 103
- Koekemoer, A. M., Ellis, R. S., McLure, R. J., et al. 2013, *ApJS*, 209, 3
- Koekemoer, A. M., Avila, R. J., Hammer, D., et al. 2014, *Am. Astron. Soc. Meet. Abstr.*, 223, 254.02
- Kruijssen, J. M. D. 2012, *MNRAS*, 426, 3008
- Kusakabe, H., Blaizot, J., Garel, T., et al. 2020, *A&A*, 638, A12
- Lagattuta, D. J., Richard, J., Bauer, F. E., et al. 2019, *MNRAS*, 485, 3738
- Lam, D., Bouwens, R. J., Labbé, I., et al. 2019, *A&A*, 627, A164
- Leitherer, C., Ekström, S., Meynet, G., et al. 2014, *ApJS*, 212, 14
- Li, H., Gnedin, O. Y., & Gnedin, N. Y. 2018, *ApJ*, 861, 107
- Livermore, R. C., Jones, T. A., Richard, J., et al. 2015, *MNRAS*, 450, 1812
- Livermore, R. C., Finkelstein, S. L., & Lotz, J. M. 2017, *ApJ*, 835, 113
- Lotz, J. M., Koekemoer, A., Coe, D., et al. 2017, *ApJ*, 837, 97
- Ma, X., Quataert, E., Wetzel, A., Faucher-Giguère, C. A., & Boylan-Kolchin, M. 2020, *ArXiv e-prints* [arXiv:2006.10065]
- Mahler, G., Richard, J., Clément, B., et al. 2018, *MNRAS*, 473, 663
- Mainali, R., Kollmeier, J. A., Stark, D. P., et al. 2017, *ApJ*, 836, L14
- Maiolino, R., & Mannucci, F. 2019, *A&ARv*, 27, 3
- Mary, D., Bacon, R., Conseil, S., Piqueras, L., & Schutz, A. 2020, *A&A*, 635, A194
- Mas-Ribas, L., & Dijkstra, M. 2016, *ApJ*, 822, 84
- Maseda, M. V., Bacon, R., Franx, M., et al. 2018, *ApJ*, 865, L1
- Maseda, M. V., Bacon, R., Lam, D., et al. 2020, *MNRAS*, 493, 5120
- Meneghetti, M., Natarajan, P., Coe, D., et al. 2017, *MNRAS*, 472, 3177
- Merlin, E., Amorín, R., Castellano, M., et al. 2016, *A&A*, 590, A30
- Merlin, E., Pilo, S., Fontana, A., et al. 2019, *A&A*, 622, A169
- Meyer, R. A., Kakiichi, K., Bosman, S. E. I., et al. 2020, *MNRAS*, 494, 1560
- Peng, C. Y., Ho, L. C., Impey, C. D., & Rix, H.-W. 2010, *AJ*, 139, 2097
- Pessa, I., Tejos, N., & Moya, C. 2020, *ASP Conf. Ser.*, 522, 61
- Pfeffer, J., Kruijssen, J. M. D., Crain, R. A., & Bastian, N. 2018, *MNRAS*, 475, 4309
- Pfeffer, J., Bastian, N., Kruijssen, J. M. D., et al. 2019, *MNRAS*, 490, 1714
- Piqueras, L., Conseil, S., Shepherd, M., et al. 2019, *ASP Conf. Ser.*, 521, 545
- Pozzetti, L., Maraston, C., & Renzini, A. 2019, *MNRAS*, 485, 5861
- Renzini, A. 2017, *MNRAS*, 469, L63
- Renzini, A., D'Antona, F., Cassisi, S., et al. 2015, *MNRAS*, 454, 4197
- Richard, J., Jauzac, M., Limousin, M., et al. 2014, *MNRAS*, 444, 268
- Richard, J., Claeysens, A., Lagattuta, D. J., et al. 2021, *A&A*, in press, <https://doi.org/10.1051/0004-6361/202039462>
- Ricotti, M. 2002, *MNRAS*, 336, L33
- Rigby, J. R., Johnson, T. L., Sharon, K., et al. 2017, *ApJ*, 843, 79
- Rigby, J. R., Bayliss, M. B., Sharon, K., et al. 2018a, *AJ*, 155, 104
- Rigby, J. R., Bayliss, M. B., Chisholm, J., et al. 2018b, *ApJ*, 853, 87
- Rivera-Thorsen, T. E., Dahle, H., Chisholm, J., et al. 2019, *Science*, 366, 738
- Robertson, B. E., Ellis, R. S., Furlanetto, S. R., & Dunlop, J. S. 2015, *ApJ*, 802, L19
- Ryon, J. E., Gallagher, J. S., Smith, L. J., et al. 2017, *ApJ*, 841, 92
- Schaerer, D., & Charbonnel, C. 2011, *MNRAS*, 413, 2297
- Senchyna, P., Stark, D. P., Vidal-García, A., et al. 2017, *MNRAS*, 472, 2608
- Senchyna, P., Stark, D. P., Chevallard, J., et al. 2019, *MNRAS*, 488, 3492
- Senchyna, P., Stark, D. P., Mirocha, J., et al. 2020a, *MNRAS*, 494, 941
- Senchyna, P., Stark, D. P., Charlot, S., et al. 2020b, *MNRAS*, submitted [arXiv:2008.09780]
- Shipley, H. V., Lange-Vagle, D., Marchesini, D., et al. 2018, *ApJS*, 235, 14
- Soto, K. T., Lilly, S. J., Bacon, R., Richard, J., & Conseil, S. 2016, *MNRAS*, 458, 3210
- Treu, T., Schmidt, K. B., Brammer, G. B., et al. 2015, *ApJ*, 812, 114
- Treu, T., Brammer, G., Diego, J. M., et al. 2016, *ApJ*, 817, 60
- van der Walt, S., Colbert, S. C., & Varoquaux, G. 2011, *Comput. Sci. Eng.*, 13, 22
- Vanzella, E., Giavalisco, M., Dickinson, M., et al. 2009, *ApJ*, 695, 1163
- Vanzella, E., De Barros, S., Cupani, G., et al. 2016, *ApJ*, 821, L27
- Vanzella, E., Calura, F., Meneghetti, M., et al. 2017a, *MNRAS*, 467, 4304
- Vanzella, E., Castellano, M., Meneghetti, M., et al. 2017b, *ApJ*, 842, 47
- Vanzella, E., Balestra, I., Gronke, M., et al. 2017c, *MNRAS*, 465, 3803
- Vanzella, E., Calura, F., Meneghetti, M., et al. 2019, *MNRAS*, 483, 3618
- Vanzella, E., Caminha, G. B., Calura, F., et al. 2020a, *MNRAS*, 491, 1093
- Vanzella, E., Meneghetti, M., Caminha, G. B., et al. 2020b, *MNRAS*, 494, L81
- Vidal-García, A., Charlot, S., Bruzual, G., & Hubeny, I. 2017, *MNRAS*, 470, 3532
- Weilbacher, P. M., Streicher, O., Urrutia, T., et al. 2014, in *Astronomical Data Analysis Software and Systems XXIII*, eds. N. Manset, & P. Forshay, 485, 451
- Wisotzki, L., Bacon, R., Brinchmann, J., et al. 2018, *Nature*, 562, 229
- Zanella, A., Daddi, E., Le Floch, E., et al. 2015, *Nature*, 521, 54
- Zanella, A., Le Floch, E., Harrison, C. M., et al. 2019, *MNRAS*, 489, 2792
- Zick, T. O., Weisz, D. R., Ribeiro, B., et al. 2020, *MNRAS*, 493, 5653

Appendix A: The MUSE spectroscopic catalog

Figure A.1 show the 182 multiple images extracted from the HST/WFC3 *F814W* or *F105W* bands in the case the redshift is lower (higher) than $z = 5.2$. Each thumbnail includes a one-dimensional MUSE spectrum zoomed at the location of the most relevant emission lines: $\text{Ly}\alpha$ or $\text{CIII}] \lambda\lambda 1907, 1909$, specifically at the position of the blue component of the doublet (1906.05 \AA). Redshifts are measured by cross-correlating the spectra with templates of high redshift galaxies using the Pandora

software package, within the Easy-Z environment (Garilli et al. 2010). Redshifts have also been secured from different emission lines or absorption lines in the cases where neither $\text{Ly}\alpha$ or $\text{CIII}] \lambda\lambda 1907, 1909$ are present. The list of multiple images, coordinates RA, Dec and redshifts are reported in Table A.1.

In addition to the set of multiple images, we also release the first version of the full MUSE catalog collecting also sources not showing multiple images. An extracted example of the catalog is reported in Table A.2, while the full list is available at the CDS.

Table A.1. Confirmed multiple images used in the lens model of Bergamini et al. (2021).

ID	RA	Dec	Redshift	ID	RA	Dec	Redshift
1a	64.049084	-24.062862	3.2370	9.2b	64.039996	-24.066651	3.2899
1b	64.046959	-24.060797	3.2370	9.3a	64.045504	-24.072672	3.2899
1c	64.046449	-24.060397	3.2370	9.3b	64.039925	-24.066616	3.2899
2a	64.050874	-24.066542	6.1485	10a	64.044564	-24.072092	2.0930
2b	64.047842	-24.062059	6.1485	10b	64.039576	-24.066623	2.0930
2c	64.043586	-24.059005	6.1485	10c	64.034336	-24.063734	2.0930
2.1a	64.050804	-24.066410	6.1485	11a	64.046841	-24.075385	3.2920
2.1b	64.048175	-24.062403	6.1485	11b	64.038515	-24.065965	3.2920
2.1c	64.043408	-24.058915	6.1485	11c	64.035223	-24.064731	3.2920
3a	64.049232	-24.068174	3.2900	12.1b	64.036838	-24.067456	0.9392
3b	64.045269	-24.062763	3.2900	12.1c	64.036504	-24.067024	0.9392
3c	64.041556	-24.059997	3.2900	12.2b	64.036658	-24.067316	0.9392
4a	64.048126	-24.066957	2.1070	12.2c	64.036592	-24.067231	0.9392
4b	64.047468	-24.066039	2.1070	12.3b	64.036567	-24.067368	0.9392
4c	64.042209	-24.060541	2.1070	12.3c	64.036496	-24.067272	0.9392
5.1a	64.047367	-24.068671	1.8961	12.4b	64.036283	-24.067485	0.9392
5.1b	64.043479	-24.063523	1.8961	12.4c	64.036267	-24.067462	0.9392
5.1c	64.040783	-24.061609	1.8961	12.5b	64.036904	-24.067201	0.9392
5.2c	64.041083	-24.061802	1.8961	12.5c	64.036833	-24.067101	0.9392
5.2a	64.047462	-24.068823	1.8961	12.6b	64.036608	-24.067572	0.9392
5.2b	64.043075	-24.063084	1.8961	12.6c	64.036292	-24.067157	0.9392
5.3a	64.047483	-24.068851	1.8961	13a	64.039245	-24.070383	1.0055
5.3b	64.043021	-24.063021	1.8961	13b	64.038301	-24.069728	1.0055
5.3c	64.041162	-24.061848	1.8961	13c	64.034234	-24.066016	1.0055
5.4a	64.047583	-24.068884	1.8961	14.1a	64.034492	-24.066956	3.2226
5.4b	64.042908	-24.062865	1.8961	14.1b	64.034188	-24.066485	3.2226
5.4c	64.041479	-24.061979	1.8961	14.1c	64.034000	-24.066439	3.2226
5.5a	64.047650	-24.068971	1.8961	14.1d	64.033967	-24.066901	3.2226
5.5b	64.042762	-24.062771	1.8961	14.1e	64.035171	-24.067919	3.2226
5.5c	64.041704	-24.062128	1.8961	14.1f	64.046063	-24.076785	3.2226
5.6a	64.047737	-24.069012	1.8961	14.2a	64.034467	-24.066860	3.2226
5.6b	64.042571	-24.062628	1.8961	14.2b	64.034304	-24.066543	3.2226
5.6c	64.042071	-24.062319	1.8961	14.2c	64.033900	-24.066493	3.2226
6a	64.047808	-24.070164	3.6070	15.1a	64.041804	-24.075731	1.9904
6b	64.043657	-24.064401	3.6070	15.2a	64.041833	-24.075826	1.9904
6c	64.037676	-24.060756	3.6070	15.4a	64.042096	-24.075976	1.9904
7a	64.047098	-24.071105	2.0850	15.1b	64.035250	-24.070988	1.9904
7b	64.040664	-24.063586	2.0850	15.1c	64.030771	-24.067126	1.9904
7c	64.039795	-24.063081	2.0850	15.2b	64.035171	-24.071002	1.9904
8a	64.044624	-24.071488	2.2820	15.2c	64.030771	-24.067217	1.9904
8b	64.040485	-24.066330	2.2820	15.4b	64.035008	-24.070843	1.9904
8c	64.034256	-24.062997	2.2820	15.4c	64.030996	-24.067308	1.9904
9.1a	64.045104	-24.072345	3.2899	16.1a	64.033596	-24.069500	2.0955
9.1b	64.040079	-24.066738	3.2899	16.2a	64.033525	-24.069446	2.0955
9.2a	64.045350	-24.072512	3.2899	16.1b	64.032600	-24.068616	2.0955

Notes. The identifiers (with “a,b,c...” indicating the corresponding multiple images), the observed positions RA, Dec and redshift are listed. (*)The object is not covered by the MUSE field of view, however is confirmed because of the evident parity introduced by strong lensing.

Table A.1. continued.

ID	RA	Dec	Redshift	ID	RA	Dec	Redshift
16.1c	64.032446	-24.068435	2.0955	32c	64.022988	-24.077265	5.3691
16.2b	64.032650	-24.068659	2.0955	33a	64.032017	-24.084230	5.9730
16.2c	64.032413	-24.068414	2.0955	33b	64.030821	-24.083697	5.9730
17.1a	64.040496	-24.078397	3.9680	34b	64.027632	-24.082609	3.9246
17.1b	64.035108	-24.073855	3.9680	34c	64.023731	-24.078477	3.9246
17.1c (*)	64.027163	-24.068238	3.9680	35a	64.033729	-24.085702	5.6417
18a	64.040177	-24.079872	3.8734	35b	64.028662	-24.084216	5.6417
18b	64.033937	-24.074565	3.8734	35c	64.022125	-24.077279	5.6417
19a	64.040129	-24.080313	4.1030	36a	64.031614	-24.085762	1.9626
19b	64.033667	-24.074766	4.1030	36b	64.028339	-24.084553	1.9626
19c	64.026596	-24.070494	4.1030	36c	64.024074	-24.080895	1.9626
20.1a	64.040350	-24.081474	3.2190	37a	64.029809	-24.086363	2.2196
20.1b	64.032162	-24.075098	3.2190	37b	64.028610	-24.085973	2.2196
20.1c	64.027571	-24.072671	3.2190	37c	64.023345	-24.081580	2.2196
20.3a	64.040325	-24.081228	3.2190	101a	64.048082	-24.074314	4.3029
20.3c	64.027454	-24.072209	3.2190	101b	64.039685	-24.064269	4.3029
21b	64.030775	-24.074169	5.1093	101c	64.036549	-24.063271	4.3029
21c	64.029292	-24.073327	5.1093	102a	64.048412	-24.073606	6.0680
23a	64.035668	-24.079920	2.5435	102b	64.040998	-24.064084	6.0680
23b	64.032638	-24.078508	2.5435	102c	64.036405	-24.062218	6.0680
24a	64.035833	-24.081321	1.6341	103a	64.048181	-24.070890	4.1169
24b	64.031039	-24.078953	1.6341	103b	64.042892	-24.063898	4.1169
24c	64.026239	-24.074337	1.6341	103c	64.037669	-24.061026	4.1169
25a	64.038073	-24.082404	3.1127	104a	64.043922	-24.075066	4.0730
25b	64.030366	-24.079015	3.1127	104b	64.037232	-24.069674	4.0730
25c	64.025446	-24.073648	3.1127	105a	64.046427	-24.076733	4.0735
26a	64.037722	-24.082388	3.0786	105b	64.035986	-24.067871	4.0735
26b	64.030484	-24.079222	3.0786	105c	64.033727	-24.065794	4.0735
26c	64.025186	-24.073575	3.0786	106a	64.047744	-24.068648	4.1162
27a	64.037469	-24.083657	3.4920	106b	64.045866	-24.065809	4.1162
27b	64.029409	-24.079889	3.4920	106c	64.037746	-24.059831	4.1162
27c	64.024946	-24.075021	3.4920	107a	64.046032	-24.068796	2.9209
28a	64.038350	-24.084126	3.2542	107b	64.044766	-24.066694	2.9209
28b	64.028322	-24.079004	3.2542	107c	64.036203	-24.060649	2.9209
28c	64.026330	-24.076705	3.2542	108a	64.046513	-24.076163	4.6100
29.1a	64.036696	-24.083910	2.2980	108b	64.036659	-24.068027	4.6100
29.1b	64.028408	-24.079743	2.2980	108c	64.033508	-24.065017	4.6100
29.1c	64.026054	-24.077252	2.2980	109a	64.043756	-24.073669	2.9912
30a	64.033628	-24.083185	3.4426	109b	64.037761	-24.068837	2.9912
30b	64.031251	-24.081904	3.4426	110a	64.042733	-24.072187	4.3008
30c	64.022699	-24.074595	3.4426	110b	64.039160	-24.069769	4.3008
31a	64.035486	-24.084679	4.1246	112a	64.049288	-24.070949	6.1487
31b	64.029234	-24.081813	4.1246	112b	64.043300	-24.062949	6.1487
31c	64.023412	-24.076125	4.1246	112c	64.038892	-24.060640	6.1487
32a	64.035054	-24.085504	5.3691	113a	64.045972	-24.074033	5.9990
32b	64.028403	-24.082993	5.3691	113b	64.039850	-24.066907	5.9990

Table A.2. Full VLT/MUSE spectroscopic catalog on HFF J0416.

ID	RA	Dec	Redshift	QF (*)	ID-name
-29	64.032157	-24.075108	3.2175	3	MUSE_20b
-56	64.033936	-24.074583	3.8710	9	MUSE_1327
-59	64.027763	-24.073143	3.2175	9	MUSE_1426
-66	64.028374	-24.082983	5.3650	9	MUSE_643

Notes. This is a portion of the full catalog that is available at the CDS. The columns from left to right are: ID, RA, Dec (J2000), redshift, quality of the redshift measurement (QF) and the internal ID (ID-name). (*)QF = 2, likely; QF = 3, secure; QF = 9 single-line.

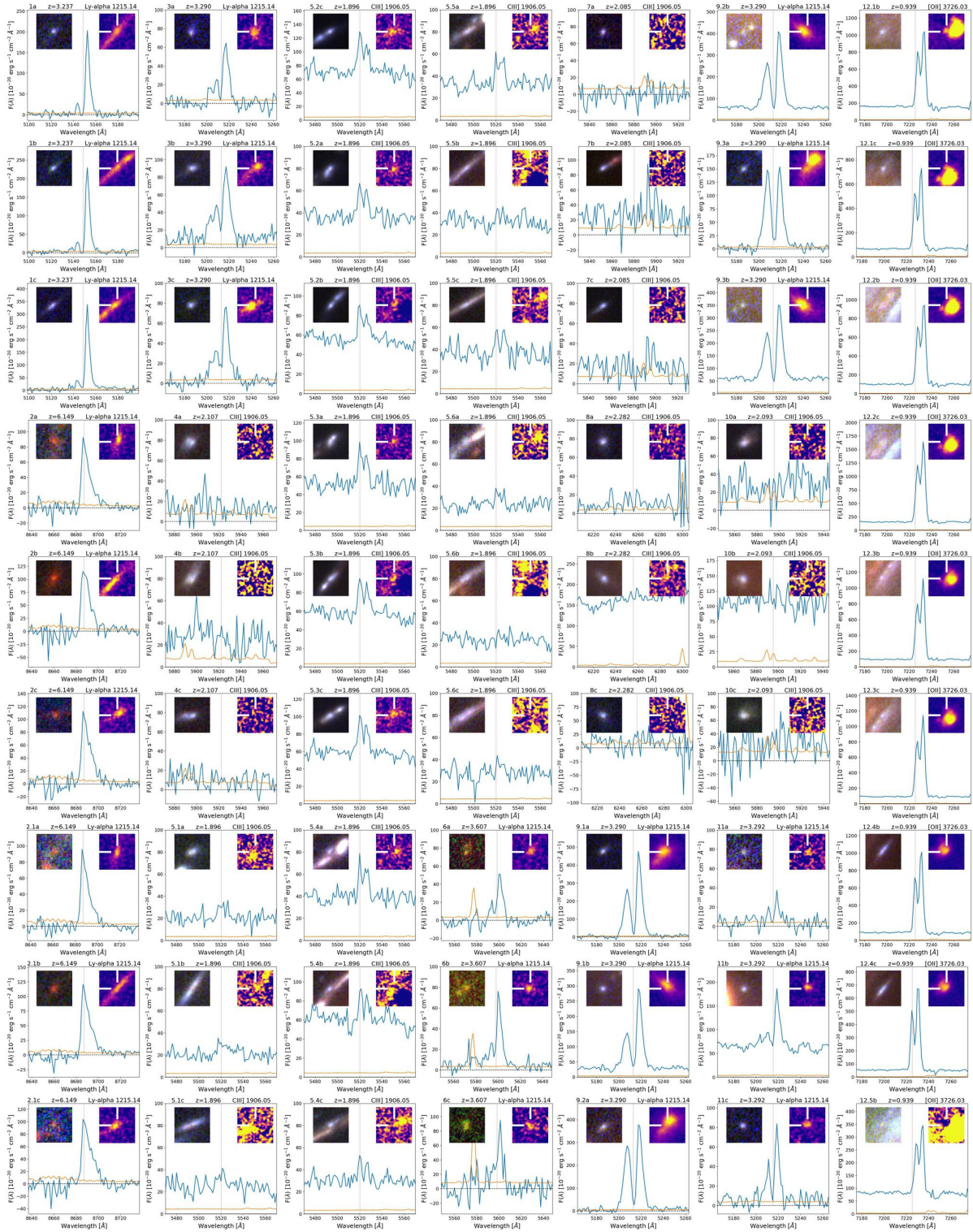


Fig. A.1. One-dimensional MUSE spectrum (blue) for the 182 multiple images used to build the lens model. Spectra are centered over the two most relevant atomic transitions: Ly α or CIII] λ 1907, 1909, depending on redshift. The orange line is the error spectrum, and the red vertical line at the center of each cutout marks the wavelength of Ly α (or CIII] λ 1907) at the given redshift. The spectra have been extracted from circular apertures with 0''.8 diameter. Each thumbnail reports in the *top*, from left to right, the ID, redshift and the line transition. In each cutout, the inset on the top-left shows the HST RGB image corresponding to red = F814W, green = F606W, blue = F435W bands if $z < 5.2$, or red = F105W, green = F814W, blue = F606W bands if $z > 5.2$. The inset on the top-right is the continuum subtracted MUSE image of the same object, collapsed along the wavelength direction over 10(20) Å for CIII] (Ly α) line.

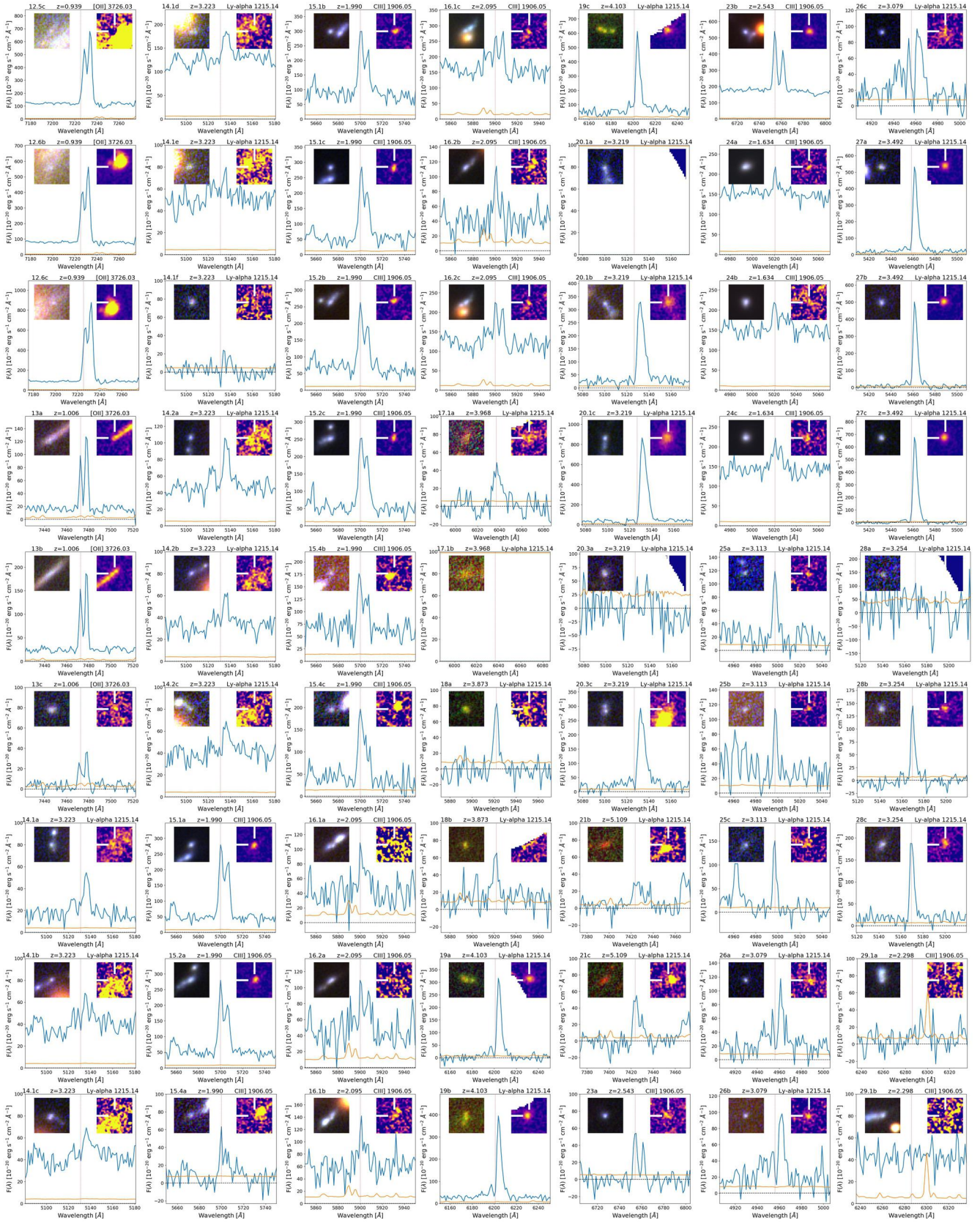


Fig. A.1. continued.

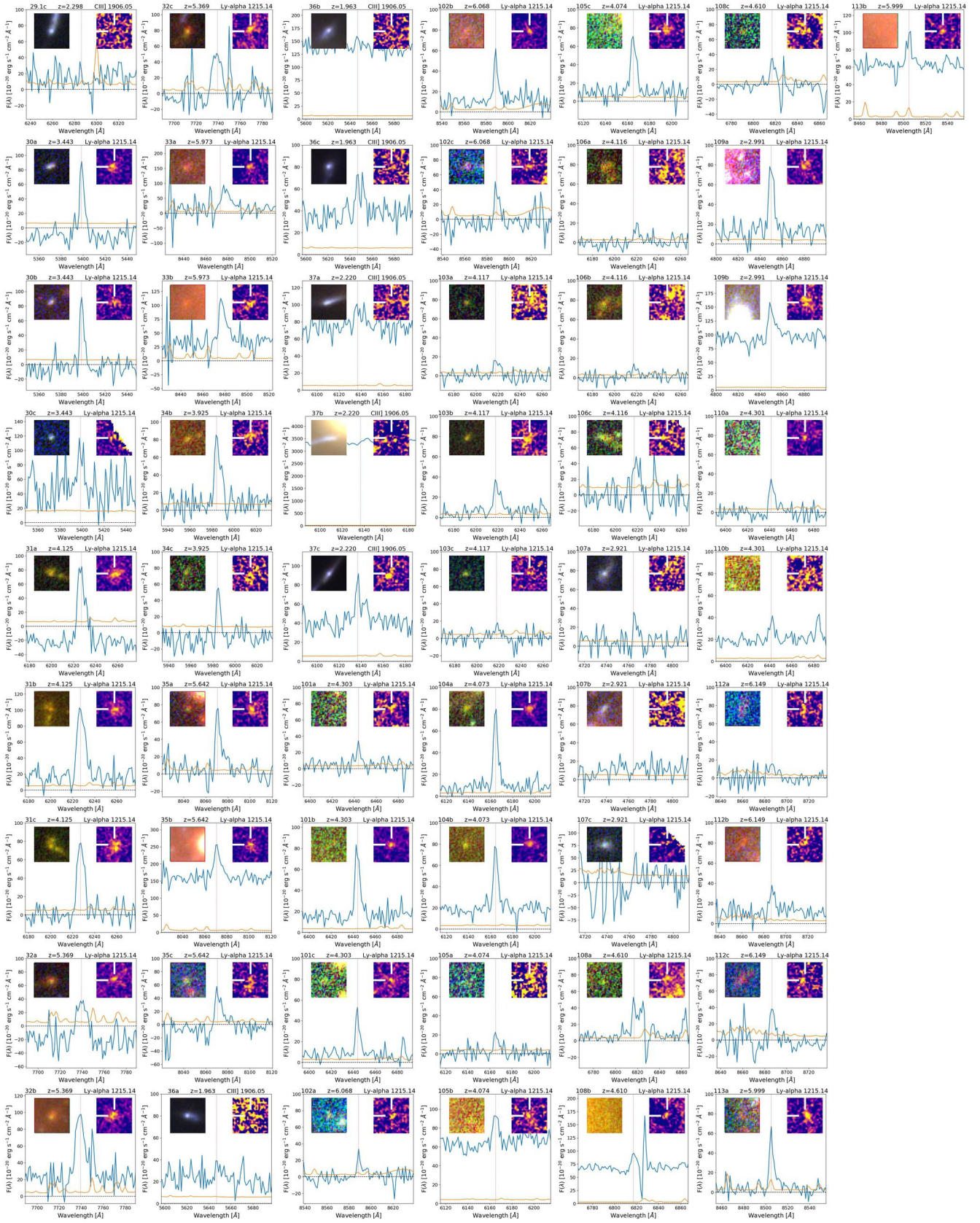


Fig. A.1. continued.

Appendix B: High- z clumps in the MDLF

The identification of clumps or sub-structures on confirmed and most magnified high- z galaxies (those producing multiple images, see Appendix A) has been visually performed by looking at HST images and their composite RGB color version. Indeed, the search for clumps or sub-structures in lensed high- z galaxies is currently better performed via visual inspection. An example is shown in Fig. 9, in which the identification of clumps on source 20c is supported by the identification of a very similar mirrored image on the other side of the galaxy cluster (20a), a task which would have been very difficult to accomplish with automatic tools.

It is worth noting that even though some of the clumps have inconclusive redshift measurements due to, for instance, the faintness, then the redshift inferred from the brighter parts of the system coupled with the mirroring introduced by strong lensing guarantees that all the clumps belong to the same physical region. In the example above, without the mirrored image, clump 20.0c would have been identified as isolated and hardly ascribable to the main system, given its different color. Another evident example is shown in Fig. B.1, where image 21b and 21c on opposite sides of the critical line show the tiny mirrored knots with observed magnitudes fainter than 28.5 (21.3b \leftrightarrow 21.3c and

21.4b \leftrightarrow 21.4c). In particular, 21.3c would have been out of reach also for the MDLF, being the Ly α emission of the whole system mainly arising from clump 21.4b (or 21.4c). All high- z multiple images have been visually inspected following this approach, assuring that the consistency among multiple images is guaranteed (where present), and ultimately validated by the lens model (Bergamini et al. 2021).

Figures B.1 and B.2 show all 116 individual clumps or tiny sources identified following the procedure described above. For each clump, the HST cutout in the $F814W(F105W)$ band at $z < 5.2(z > 5.2)$ is shown with reported the ID and other relevant quantities, such as the total magnification, redshift, absolute magnitude and the physical scale along the maximum stretch (parsec pix^{-1}). A rough guess of the de-lensed stellar mass and star formation rate are also reported by assuming an instantaneous burst and fixed age of 10 Myr, based on starburst99 models (Leitherer et al. 2014). We defer the reader to a dedicated work on this subject. Together with each cutout, the one-dimensional MUSE spectra zoomed on the most relevant atomic transitions are shown, extracted from circular apertures of $0''.8$ diameter. The inset within each of them shows the continuum-subtracted MUSE narrow-band images of the same relevant line, collapsed over 20 \AA for Ly α and 10 \AA for the other lines.

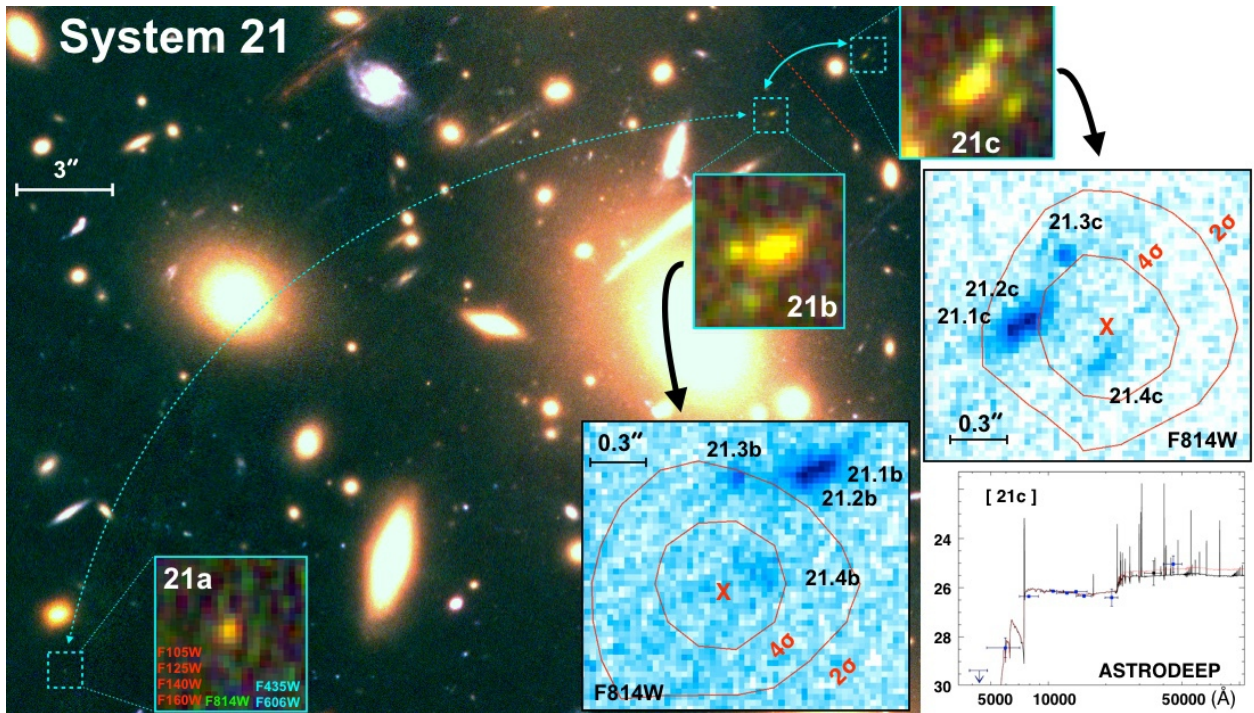


Fig. B.1. Three images (a,b,c) of source 21 are shown over the color image of the cluster. The insets show the deep RGB composite ($F105W + F125W + F140W + F160W$, $F814W$, $F435W + F606W$) of the multiple images. Image 21a is currently not covered by spectroscopy, however, we rely on the fact it is the only source with photometric redshift ($z_{\text{phot}} = 5.36$), which is consistent with the spectroscopic one ($z = 5.109$) within an area of $10'' \times 10''$ from the predicted position provided by the lens model ($1.2''$ away from the source 21a ($\text{ID}(\text{ASTRODEEP}) = 678$)). On the right, the $F814W$ images (negative blue) with superimposed Ly α contours (red) at 2 and 4σ are shown with the SED-fitting performed with ASTRODEEP photometry. The peak of the Ly α emission is nearly located on top of clump 21.4b and 21.4c.

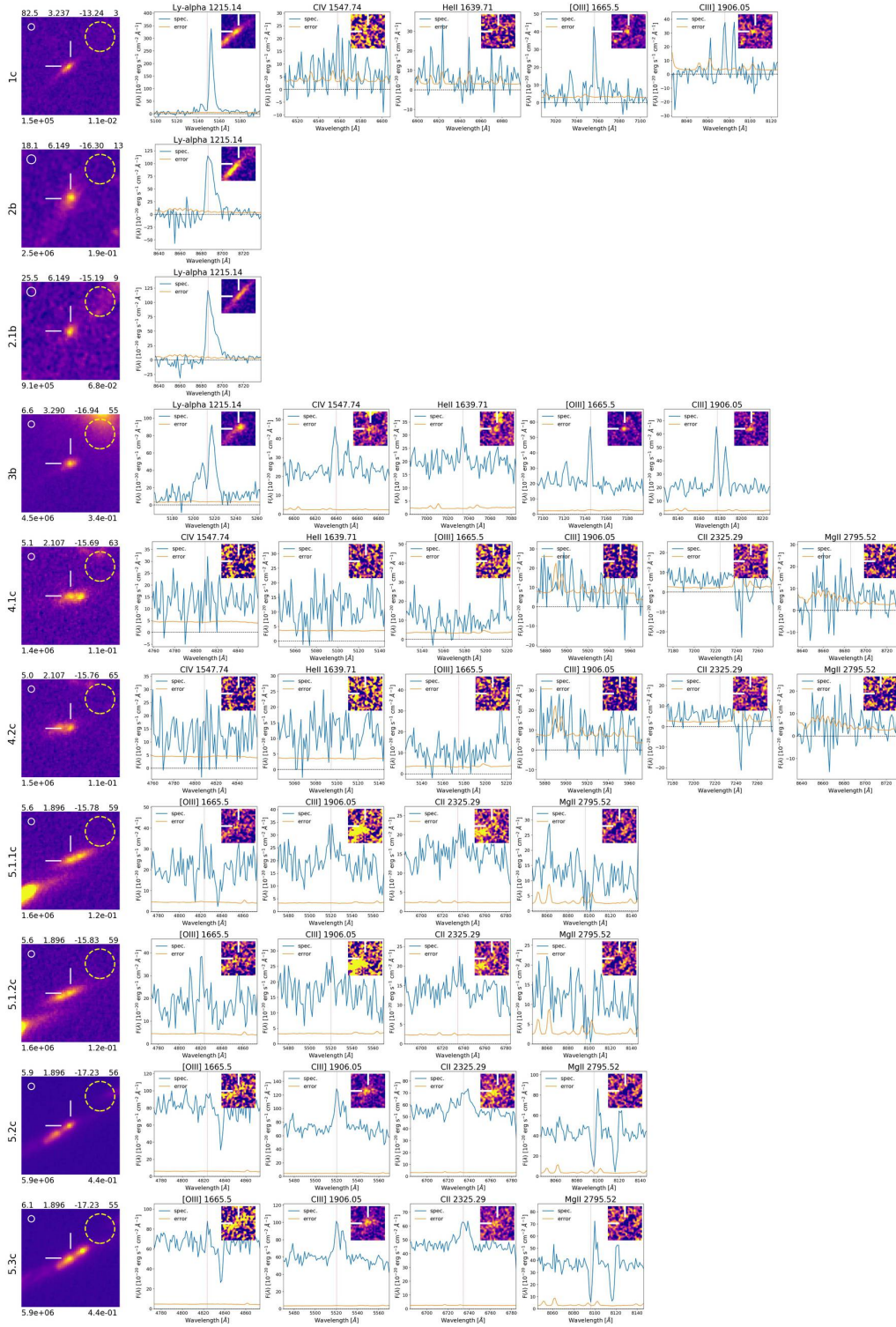


Fig. B.2. Summary of the individual star-forming clumps identified among the multiple images. Each row reports *from left to right* the square HST cutout of $1''$ size and the extracted one-dimensional spectra zoomed at the positions of the most relevant atomic transitions probed by MUSE. The HST cutout shows the clump ID on the left, and clockwise, the magnification, redshift, absolute magnitude, parsec per 30 milliarcsecond (1 HST pix), the SFR (in units of $M_{\odot} \text{ yr}^{-1}$), and the stellar mass $M (M_{\odot})$ (see text for details about the calculation of SFR and M). The circle in the top-right reports the $F814W(F105W)$ PSF in case of $z < 5.2 (> 5.2)$, while the yellow dashed indicates the MUSE PSF. MUSE spectra (blue) and error (orange) are shown for the most relevant lines depending on redshift. The insets are the corresponding MUSE NB images of the lines (as described in Fig. A.1).

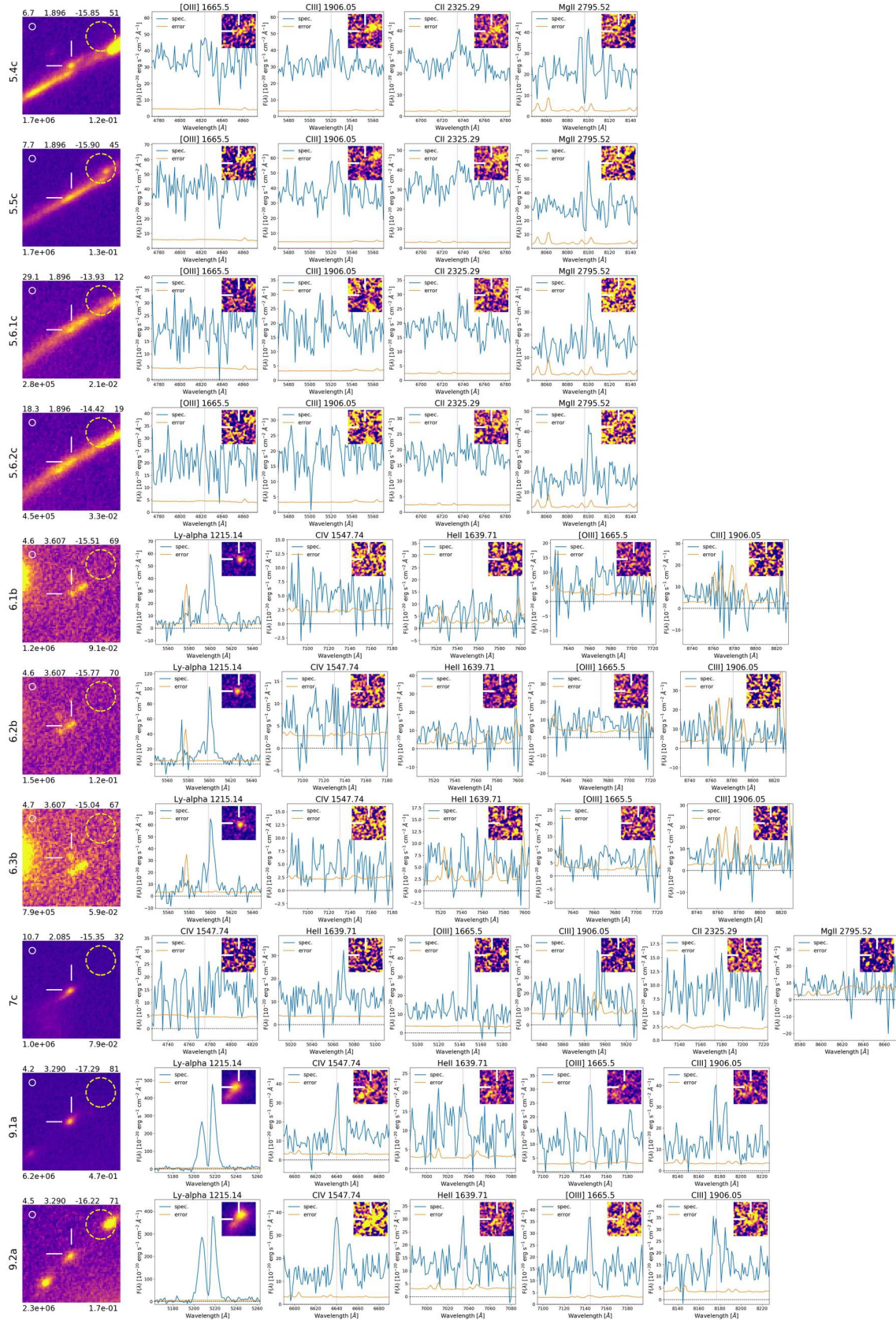


Fig. B.2. continued.