



Publication Year	2019
Acceptance in OA	2021-01-20T12:21:11Z
Title	On the slow solar wind with high Alfvénicity: from composition and microphysics to spectral properties
Authors	D'AMICIS, RAFFAELLA, MATTEINI, LORENZO, BRUNO, Roberto
Publisher's version (DOI)	10.1093/mnras/sty3329
Handle	http://hdl.handle.net/20.500.12386/29869
Journal	MONTHLY NOTICES OF THE ROYAL ASTRONOMICAL SOCIETY
Volume	483

On slow solar wind with high Alfvénicity: from composition and microphysics to spectral properties

Raffaella D’Amicis,^{1,2*} Lorenzo Matteini,³ and Roberto Bruno²

¹*National Institute for Astrophysics (INAF), Institute for Space Astrophysics and Planetology (IAPS), Via del Fosso del Cavaliere 100, 00133 Roma*

²*Serco S.p.A, Via Sciadonna 24, 00044, Frascati, Italy*

³*LESIA, Observatoire de Paris, Université PSL, CNRS, Sorbonne Université, Univ. Paris Diderot, Sorbonne Paris Cité, 5 place Jules Janssen, 92*

Accepted 04 December 2018. Received 29 November; in original form 06 September 2018

ABSTRACT

Alfvénic fluctuations are very common features in the solar wind and are found especially within the main portion of fast wind streams while the slow wind usually is less Alfvénic and more variable. In general, fast and slow wind show many differences which span from the large scale structure to small scale phenomena including also a different turbulent behaviour. Recent studies, however, have shown that even slow wind can be sometimes highly Alfvénic with fluctuations as large as those of the fast wind. The present study is devoted to present many facets of this Alfvénic slow solar wind including for example the study of the source regions and their connection to coronal structures, large-scale properties and micro-scale phenomena and also impact on the spectral features. This study will be conducted performing a comparative analysis with the typical slow wind and with the fast wind. It has been found that the fast wind and the Alfvénic slow wind share common characteristics, probably attributable to their similar solar origin, i.e. coronal-hole solar wind. Given these similarities, it is suggested that in the Alfvénic slow wind a major role is played by the super-radial expansion responsible for the lower velocity. Relevant implications of these new findings for the upcoming Solar Orbiter and Solar Probe Plus missions, and more in general for turbulence measurements close to the Sun, will be discussed.

Key words: solar wind – methods: data analysis – turbulence

1 INTRODUCTION

The solar wind comes mainly into two distinct flavors: fast and slow speed solar wind (e.g. [Belcher & Davis 1971](#)), showing differences which extend well beyond their speeds. The fast solar wind, typically associated with speeds exceeding 600 km/s, originates primarily from coronal holes. It is also characterized by ion temperatures that far exceed electron temperatures in the inner corona, at least out to 10 R_S from the Sun. On the other hand, the near-ecliptic slow solar wind has characteristics that are distinct from the fast wind: its speed is typically < 500 km s⁻¹, and the ion temperature tends to be lower than the electron temperature. The properties of the slow solar wind are far more dynamic and variable than those of the fast solar wind. The slow solar wind is generally found in the vicinity of the heliospheric current sheet ([Smith et al. 1978](#)) emanating from streamers at the Sun, especially at the time of solar minimum. However, the sources for this slow solar wind have not been clearly established and are still debated (e.g. [Abbo et al. 2016](#); [Antiochos et al.](#)

[2011](#); [Antonucci et al. 2005](#); [Ofman 2000](#); [Noci et al. 1997](#); [Wang & Shiley 1990](#)). Near solar maximum, the slow solar wind may not even be spatially limited to the heliospheric current sheet.

The composition in the two wind types is clearly different: in slow speed wind, elements having low first ionization potential (FIP ≤ 10 eV - i.e. low-FIP elements) are enhanced by a factor of 3 - 4 relative to the photosphere being more representative of closed magnetic structures in the corona, while in the fast speed their abundances are nearly photospheric ([Geiss et al. 1995](#); [Von Steiger et al. 2000](#); [Zurbuchen et al. 1999](#)). Additionally, in the slow solar wind the freeze-in temperature from carbon charge-states is of the order of $1.4 - 1.6 \times 10^6$ K and in the fast wind it is 8×10^5 K.

Fast and slow wind also differs in terms of the local microphysics. This concerns the thermodynamic state of all main species that compose the plasma (electrons, protons and alpha particles), as well as their relative streaming. Different electron populations (core, halo, strahl) have different properties in the two regimes, and display different temperature anisotropies with respect to the magnetic field direction (e.g., [Štverák et al. 2008](#)), especially due to the different col-

* E-mail: raffaella.damicis@inaf.it

lisionality of the lighter and hotter fast wind, and the denser and cooler slow one. Such differences are even more apparent for ions: alpha particles are typically hotter than protons in the fast wind, where they also stream faster than the proton bulk velocity by approximately the Alfvén speed (Marsch et al. 1982a; Neugebauer et al. 1996), unlike typical slow wind where the two populations often display same temperature and no differential speed (Kasper et al. 2008; Maruca et al. 2012). In particular, ions show strong temperature anisotropies with respect to the local magnetic field direction (Marsch et al. 1982b; Kasper et al. 2002). While protons in fast streams are characterised by large anisotropies with $T_{\perp} > T_{\parallel}$ and the presence of a secondary beam population, typical slow wind plasma show $T_{\perp} \sim T_{\parallel}$ and no relevant beams (Hellinger et al. 2006; Matteini et al. 2013; Marsch et al. 1982b).

Solar wind plasma and magnetic field power density spectra extend over several frequency decades, reflecting the large extension of typical solar wind timescales, and are characterized by different frequency regimes. Solar wind fluctuations, either generated within fast or slow wind streams, show a typical Kolmogorov-like power law in the inertial range. Fast wind shows a k^{-1} scaling at low frequencies which is typical of the large-scale energy containing eddies. A frequency break separates the $k^{-5/3}$ from the k^{-1} scaling. This break corresponds to the correlation length and moves to ever larger scales as the wind expands in accordance with an increase of the correlation length when moving away from the Sun (see Bruno & Carbone 2013, for related literature). This spectral break has been interpreted as evidence that non-linear processes are at work and govern the evolution of solar wind fluctuations (Tu & Marsch 1992). The origin of this k^{-1} scaling is still debated (e.g. Matthaeus & Goldstein 1986; Dmitruk & Matthaeus 2007; Verdini et al. 2012; Tsurutani et al. 2018; Matteini et al. 2018, submitted). Conversely, slow wind shows a $k^{-5/3}$ scaling extending over several frequency decades and, up to recent findings (Bruno 2017), there was no evidence of the existence of the k^{-1} regime. Moreover, no radial evolution is observed. This is an indication that slow wind turbulence is already fully developed close to the Sun (Marsch et al. 1982b).

This behaviour is widely considered to result from the energy cascade process caused by the nonlinear interaction between the inward and outward propagating Alfvén waves although the nature and existence of the inward modes are still matter of debate. Some evidence of their existence has been provided by Roberts et al. (1987a,b); Bavassano & Bruno (1989); He et al. (2015) although Tsurutani et al. (2018) suggest caution when interpreting the results derived from Elsässer variable analysis. There are also many clues which would suggest that these fluctuations, in some cases, might have a non-Alfvénic nature. Several studies on this topic (see the reviews by Tu & Marsch 1995; Bruno & Carbone 2013) in the low frequency range suggested that non propagating structures probably advected by the wind or locally generated could well act as inward propagating modes. Unfortunately, one-single point measurements do not allow to separate temporal from spatial phenomena and this ambiguity remains unsolved.

Even if it is out of the scope of this paper to review the theory on the origin of solar wind turbulence, it is worth mentioning other mechanisms causing solar wind turbulence

as suggested for example by Tsurutani et al. (2018). According to these authors the turbulence spectrum observed by Ulysses in the fast wind could have been generated by a series of stepped Alfvén waves, which, similarly to what happens for stepped magnetosonic waves at comets, are able to generate the low and high frequency tail observed in the spectra.

Alfvénic correlations are ubiquitous in the solar wind and these correlations are much stronger and have larger fluctuations amplitude, at lower and lower frequencies as the heliocentric distances become shorter and shorter. Actually, Belcher & Davis (1971) and Belcher & Solodyna (1975) showed that, in about 25 days of data from Mariner 5, out of the 160 days of the whole mission, a strong correlation exists between velocity and magnetic field fluctuations interpreted as outward propagating (with respect to the Sun) Alfvénic fluctuations. Moreover, in the regions where this correlation is verified to a high degree, the magnetic field magnitude and number density is almost constant. Alfvénic correlations are much stronger within the main portion of fast streams, while they are weak in intervals of slow wind (Belcher & Davis 1971; Belcher & Solodyna 1975). Several authors have found results supporting the idea of an older turbulence in the slow wind and an Alfvénic younger turbulence in the fast wind (e.g. Tu & Marsch 1995). The degree of Alfvénic correlations, however, unavoidably fades away with increasing heliocentric distance. It must be reported however that there are cases when the absence of strong velocity shears and compressive phenomena favour a high Alfvénic correlation up to very large distances from the Sun (Roberts et al. 1987a).

The turbulent dynamics transfers energy from larger to smaller scales to be eventually dissipated at kinetic scales. As a matter of fact, around the proton scales, another spectral break is found beyond which the spectrum generally steepens even if fast and slow wind are characterized by different slopes in the kinetic regime. This part of the spectrum is commonly called the “dissipation range”, in analogy to hydrodynamics, although the nature of this high-frequency part of the interplanetary fluctuations is still largely debated (e.g. Alexandrova et al. 2013; Bruno & Carbone 2013).

Along with this standard classification in fast and slow solar wind, another type of solar wind was found by D’Amicis et al. (2011), followed by a first attempt to characterize it by D’Amicis & Bruno (2015). Actually these authors performed a statistical study to characterize the state of solar wind turbulence at different phases of the solar cycle 23. Using the invariants for the ideal equations of motion, in terms of the normalized cross-helicity, σ_C and residual energy σ_R , it was found that, while at solar minimum the solar wind structure is bimodal with fast wind being more Alfvénic (higher σ_C values) than slow wind, at solar maximum the expected predominance of slow wind was associated to a population unexpectedly characterized by a high degree of Alfvénicity in contrast with Belcher & Davis (1971) and Belcher & Solodyna (1975). This Alfvénic slow solar wind found during maximum of solar cycle 23 will be the focus of the present study.

The existence of a slow wind showing a high degree of Alfvénicity was pointed out first by Marsch et al. (1981). They highlighted the presence of an Alfvénic slow solar wind during the perihelion passage of Helios 2 from April to May

in 1978, in the ascending phase of the solar cycle. During that time interval, no pronounced recurrent high speed streams were observed, such as typically occurred during the period of solar activity minimum in 1974-1976. On the other hand, the low speed wind in 1978 showed highly irregular speed and temperature profiles with numerous short-lived, marked velocity fluctuations (as have usually been observed in the body of fast streams) indicating that this slow wind was basically different from the slow solar wind at solar activity minimum. Moreover proton velocity distribution functions of this kind of slow wind were found to have signatures similar to typical high-speed proton distributions detected during solar activity minimum (Feldman et al. 1973, 1974; Marsch et al. 1982b).

Marsch et al. (1981), however, did not perform a comprehensive characterization of this slow wind. Their findings were derived from measurements quite close to the Sun (around 0.28 AU). On the contrary, the results by D’Amicis et al. (2011) and D’Amicis & Bruno (2015) were found at 1 AU where we expect a degradation of the v-b correlation. These arguments motivated a further characterization of this kind of slow wind which will be the aim of the present paper.

In particular, section 2 will be dedicated to the description of a case study given as an example and chosen as representative with particular emphasis on some basic plasma parameters and discussion on the origin of the different solar wind regimes. In section 3 a further characterization of this time interval will follow using derived quantities such as magnetic field compressibility, collisional age, thermal and Alfvén speed (and plasma β). In sections 4 and 5 some differences in the microphysics will be highlighted studying in particular the relationship between $\beta_{p\parallel}$ and T_{\perp}/T_{\parallel} and between Θ_{BR} and V_{SW} . In Section 6 a study of the spectral features of magnetic field fluctuations will be performed while section 7 will focus in particular on a study of the location of the spectral break between fluid and kinetic regimes. Summary and conclusions are reported in section 8.

2 DATA SELECTION AND MAIN CHARACTERISTICS

The present analysis is based on data detected during maximum of solar cycle 23 spanning the time window from DoY 1/2000 to 181/2002. We use 24 s moments of the proton velocity distribution function sampled by the experiment Three-Dimensional Plasma and Energetic Particle Investigation (3DP) (Lin et al. 1995) from the WIND s/c which also includes magnetic field measurements calculated from 3-sec Magnetic Field Investigation (MFI) experiment (Leping et al. 1995) on board WIND s/c and averaged over plasma measurements.

Figure 1 shows a case study corresponding to a time interval ranging from DoY 25 to DoY 42 of 2002. This time window was chosen as representative being a good example of three distinct solar wind regimes: a fast wind stream and two slow wind periods. The two slow wind intervals are found to be substantially different from one another from many points of view as we will see in this paper.

From the first solar wind observations (e.g. Schwenn 1990), it was found that basic differences exist between fast and slow solar wind. As mentioned in the introduction, the

high-speed wind is characterized by a high proton temperature, a low density, and a low mass flux, while the low-speed wind is cooler, denser, and has a larger mass flux. Other differences, such as e.g. composition, anisotropies in proton and electron temperatures, have also been observed between slow and fast solar winds. Another relevant difference is found in the Alfvénic content with fast wind more Alfvénic than slow wind (Bruno & Carbone 2013).

D’Amicis & Bruno (2015) and D’Amicis et al. (2016) identified the two slow wind periods as typical (or standard) and Alfvénic slow, respectively, indicated also as 1st type and 2nd type, respectively characterized by different features.

Figure 1 shows, for the selected time interval, from top to bottom: solar wind bulk speed, V_{sw} (in km s^{-1}), magnetic field magnitude, B (in nT), number density, n_p (in cm^{-3}), proton and electron temperatures, T_p and T_e (in K).

The Alfvénic slow wind has similar bulk speed values respect to the typical slow wind but with larger fluctuations. This is due to the presence of Alfvénic fluctuations. Actually, Alfvénic periods are usually well detectable also by looking at velocity fluctuations which are enhanced respect to periods of low Alfvénic correlations.

The two Alfvénic periods (fast and slow) are characterized by low compression in both number density and magnetic field magnitude as expected. Conversely, the typical slow wind is more variable and high compressions are the main feature of this intervals.

Another important plasma parameter is the proton temperature, T_p . Fast wind has higher proton temperature than the slow wind. When looking at the Alfvénic slow wind, it is important to notice that the temperature value is midway between that of the typical slow wind (lowest) and that of the fast wind (highest). These two characteristics could be justified supposing a larger expansion rate with respect to the typical Alfvénic fast wind. Moreover, we show also electron temperature, T_e , for reference showing that, as introduced in section 1, in fast wind, ion temperatures exceed electron temperatures while in slow wind the ion temperature are lower than the electron temperature. In the Alfvénic slow wind we observe basically similarities with the fast wind even if the trend is not clear along the whole time interval.

The bottom panel of Figure 1 shows oxygen ratio ($\text{O}^{7+}/\text{O}^{6+}$) (black line) and carbon ratio ($\text{C}^{6+}/\text{C}^{5+}$) (purple line) as derived from 1 hr measurements of the Solar Wind Ionic Composition Spectrometer (SWICS) (Gloeckler et al. 1998) instrument on board ACE s/c.

Composition observations are particularly useful for identifying the source of solar wind plasma streams. Several studies (e.g. Geiss et al. 1995, and reference therein) suggest a different solar origin for the different solar wind regimes, which has a role in their successive evolution. As a matter of fact, plasma composition is determined close to the Sun by plasma processes occurring in the upper chromosphere near the transition region, and by the temperature history of the plasma between the transition region and 3 solar radii. These plasma processes near the source differ remarkably between the fast and the slow solar wind.

During the expansion process from the coronal source, the ionic charge state adapts to the environment until the recombination and ionization time-scale of a certain ionic charge state becomes large compared to the expansion time-

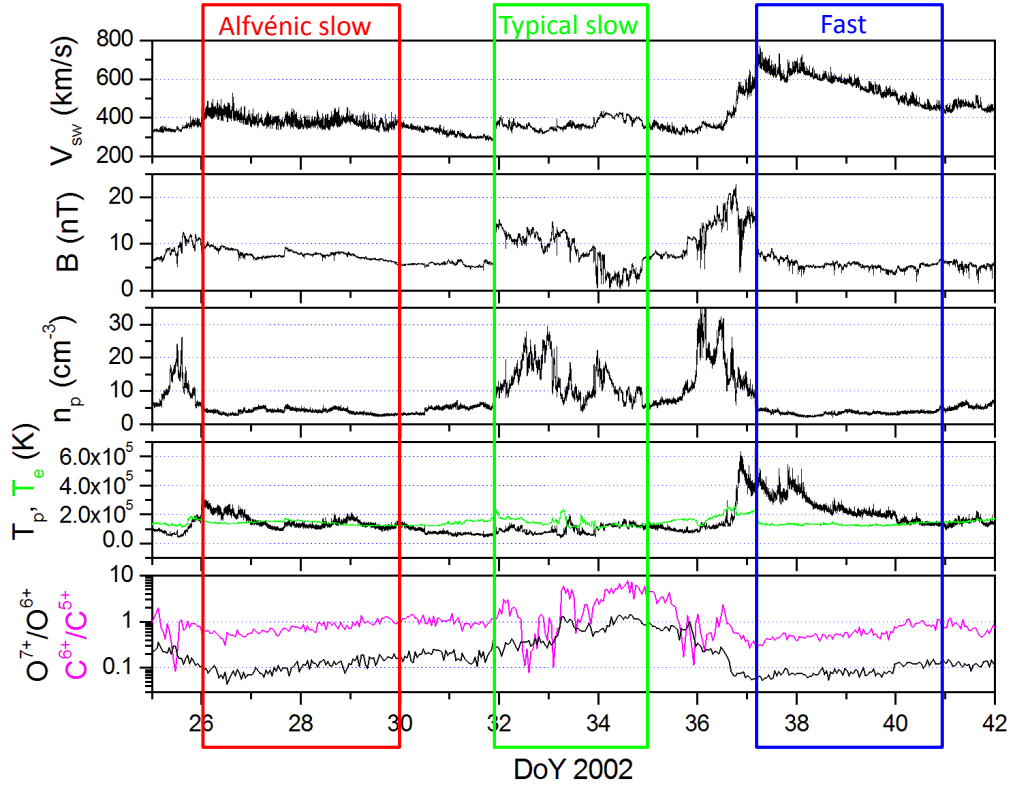


Figure 1. From top to bottom: solar wind bulk speed, V_{sw} (in km s^{-1}), magnetic field magnitude, B (in nT), number density, n_p (in cm^{-3}) and proton (black line) and electron (green line) temperature, T_p and T_e (in K), obtained from the 3DP instrument on board WIND s/c. Lower panel: oxygen ratio ($\text{O}^{7+}/\text{O}^{6+}$) (black line) and carbon ratio ($\text{C}^{6+}/\text{C}^{5+}$) (purple line) as derived from 1 hr measurements of SWICS instrument on board ACE s/c. Typical slow, fast and Alfvénic slow intervals are indicated with green, blue and red boxes, respectively.

scale. At this point, the respective charge state freezes in as well as the information on the solar wind source region and the expansion properties close to the Sun (see e.g. Bürgi & Geiss 1986). For a given speed, temperature and density profile each ionic charge state has its own specific freeze-in point which may vary quite considerably from one ion species to another. It turns out that $\text{O}^{7+}/\text{O}^{6+}$, as well as $\text{C}^{6+}/\text{C}^{5+}$ freeze in rather close to the solar wind source region, and therefore show the most variability. Some authors (Geiss et al. 1995; Von Steiger et al. 1997, 2000) have pointed out that the charge state composition clearly distinguishes coronal hole associated solar wind from streamer-associated slow solar wind. Furthermore, clear variations within low-speed solar wind also separate different sources of low-speed solar wind (Zurbuchen et al. 2000).

Results from the present study show unambiguously that the Alfvénic time intervals are characterized by lower $\text{O}^{7+}/\text{O}^{6+}$ and $\text{C}^{6+}/\text{C}^{5+}$. Von Steiger (2008), using Ulysses data, found a well defined clusterization of these two quantities depending on the solar wind regime observed, with typical slow wind characterized by higher $\text{O}^{7+}/\text{O}^{6+}$ and $\text{C}^{6+}/\text{C}^{5+}$ respect to the fast wind. Our study confirms basically previous findings as shown in Figure 2. Interesting enough is the superposition we observe of the two Alfvénic winds, either fast or slow, clearly demonstrating a similar solar origin of the two plasma flows.

The different values of the $\text{O}^{7+}/\text{O}^{6+}$ and $\text{C}^{6+}/\text{C}^{5+}$ ra-

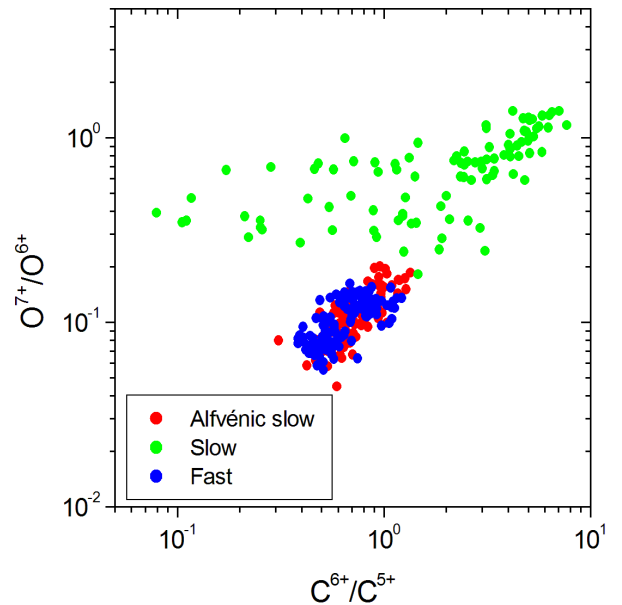


Figure 2. Scatter plot of oxygen ratio ($\text{O}^{7+}/\text{O}^{6+}$) and carbon ratio ($\text{C}^{6+}/\text{C}^{5+}$) for typical slow (green dots), fast (blue dots) and Alfvénic slow (red dots) solar wind.

tios indicate plasma coming from different source regions that can be identified by mapping back the measurements on a synoptic map as in [D’Amicis & Bruno \(2015\)](#) and [D’Amicis et al. \(2016\)](#). They pointed out that the different solar wind regimes come from different source regions, finding in particular that fast and Alfvénic slow streams come from the meridional extensions of the polar coronal holes characterized by open field line regions while the typical slow wind comes from a source region, limited in extension and characterized by a more complex field line topology. These findings all support results by [Antonucci et al. \(2005\)](#) who, using UVCS observations, found evidence for the existence of two kinds of slow solar wind typically originating from different source regions, coronal streamers, and coronal holes’ boundaries or from small coronal holes, respectively. It is interesting to notice that the Alfvénic slow wind shows plasma features quite similar to those pertaining to the fast wind.

It is worth stressing that this solar rotation is not peculiar and does not represent an isolated case since [D’Amicis & Bruno \(2015\)](#) examined all the synoptic maps from Carrington rotations 1958 – 1991 (during maximum of solar cycle 23) and found very stable magnetic configurations during successive solar rotations. A previous study by [Platten et al. \(2014\)](#) found a remarkable number of localized coronal holes at all latitudes during the maximum of cycle 23, supporting the findings by [D’Amicis & Bruno \(2015\)](#) on a statistical basis. This is also in accordance with [Wang \(1994\)](#) who identified the origin of the slow wind at solar maximum with small, isolated holes scattered over a wide range of latitudes.

3 ADDITIONAL PROPERTIES

Within this context, the idea is to analyse other solar wind features and extend previous studies on the differences between fast and (typical) slow solar wind to the Alfvénic slow wind.

Figure 3 shows from top to bottom: solar wind speed profile, V_{sw} (inserted again for clarity), the correlation coefficient between the z components of magnetic field (b_z) and velocity (v_z), R_{vb} , magnetic field compressibility C_{b_i} , the collisional age, A_C , the thermal speed, V_{th} (km/s) and the Alfvén speed, V_A (km s⁻¹), and also the plasma β . These quantities were chosen since they allow a better characterization of the differences between the different solar wind regimes under study.

R_{vb} was computed at 1 hr scale using a sliding window since solar wind fluctuations show a strong Alfvénic character at this scale ([Tu & Marsch 1995](#)). R_{vb} quantifies the degree of Alfvénicity. The long lasting high R_{vb} values (absolute value close to 0.9) are found in correspondence of the main portion of the fast wind for DoY 37-42 and for DoY 26-30 corresponding to the Alfvénic slow wind. There are also other small and limited intervals of the time series showing very good Alfvénic correlations, even if less pure (smaller R_{vb}) than the ones characterizing the previous time periods. The typical slow wind on the contrary is characterized by a low degree of Alfvénicity and usually the correlation coefficient shows abrupt oscillations from negative to positive values as for example during DoY 32-35.

[Bruno & Bavassano \(1991\)](#) suggested that compressible phenomena play an important role in determining the

Alfvénicity of solar wind fluctuations. They studied separately the behaviour of inward and outward modes and found that the depletion of v-b correlations is related to the presence of compressive fluctuations: fluctuations in field intensity produce a depletion of the outward modes while fluctuations in density reinforce the inward mode. In the same study, the authors recommended also caution in defining inward modes simply as inwards Alfvén waves since they might be representative of plasmas structures convected by the solar wind rather than propagating waves. The nature of these compressible phenomena was investigated for example by [Marsch & Tu \(1993\)](#); [Tu & Marsch \(1994\)](#) who found that compressive fluctuations are a complex superposition of magnetoacoustic fluctuations and pressure balance structures ([Yao et al. 2011](#)) whose origin might be local, due to stream dynamical interaction, or of coronal origin related to the flow tube structure. However, there is little evidence of the presence of magnetosonic waves in the solar wind and in fact, [Tsurutani et al. \(2018\)](#) found that magnetic decreases (MDs), produced by the steepening of the kinetic Alfvén waves, rather than by magnetosonic waves, dominate the compressibility of the interplanetary medium. The reader interested in a more detailed description of this topic can refer to the bibliographic references above and the review by [Bruno & Carbone \(2013\)](#) and references therein.

To better characterize the different solar wind regimes, we computed fluctuations magnetic field compressibility, C_{b_i} as defined in [Bruno & Bavassano \(1991\)](#) as: σ_B/σ_{b_i} with σ_B and σ_{b_i} the variance of magnetic field magnitude and fluctuations (with $i = x, y, z$), respectively. A lower compressibility is observed during the Alfvénic periods. This is in agreement with the results found by [D’Amicis & Bruno \(2015\)](#). Actually, those authors showed that the highest Alfvénicity values, quantified by high values of the normalized cross-helicity, are coupled to the lowest values of field compressibility. This statistical study shows that solar wind fluctuations during the maximum of cycle 23 were less affected by compressive phenomena and, as a consequence, the maximum of this cycle was more Alfvénic than its corresponding minimum.

The Coulomb collisional age (A_C) is a measure of the efficacy of Coulomb collisions, estimating the number of binary collisions in each plasma parcel during transit from the Sun to the spacecraft. The collisional age for protons was estimated according to [Kasper et al. \(2008\)](#) as: $A_C = \nu_{pp}R/V_{sw}$ with $\nu_{pp} \propto n_p T^{-3/2}$ where ν_{pp} is the proton-proton collision frequency while R/V_{sw} is the transit time from the Sun to the s/c. A larger A_C means that the plasma has undergone more Coulomb collisions, while low values of A_C are associated with plasmas that experienced fewer Coulomb collisions and thus can be expected to better preserve any signatures of processes experienced in the inner corona. Figure 3 shows that the highest A_C values correspond to the typical slow wind, oscillating around 10^{-1} . The two Alfvénic winds on the contrary are less collisional even if they are not characterized by the same average A_C values. Actually, the Alfvénic slow wind is on average slightly higher than 10^{-2} while the fast wind values are well below that value.

Thermal speed, $V_{th} = (2k_B T_p/m_p)^{1/2}$, and Alfvén speed, $V_A = B/(\mu_0 n_p m_p)^{1/2}$, are displayed Figure 3 as well. The bottom panel displays the plasma beta, β obtained as

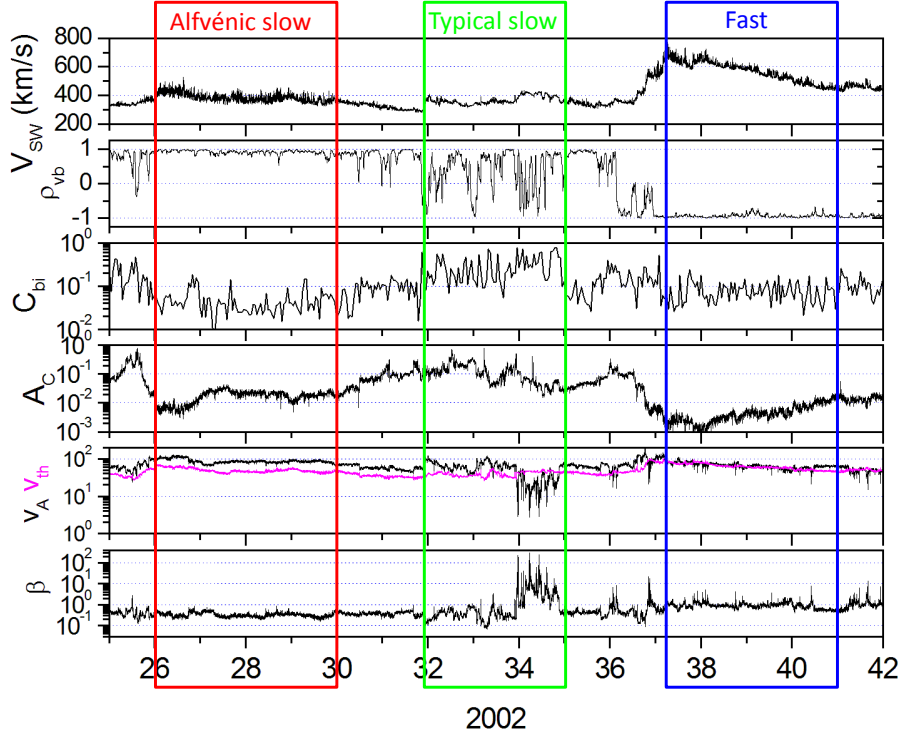


Figure 3. From top to bottom: solar wind speed profile V_{sw} , correlation coefficient between the z components of magnetic field b and velocity v , R_{vb} , magnetic field compressibility, C_{bi} , collisional age, A_C , thermal speed, V_{th} (km/s) (purple line) and Alfvén speed, V_A (km s⁻¹) (black line), plasma β . Typical slow, fast and Alfvénic slow intervals are indicated with green, blue and red boxes, respectively.

V_{th}^2/V_A^2 . Most of the time interval under study is characterized by a higher thermal speed than the Alfvén speed especially within the Alfvénic slow solar wind. The typical slow wind shows a similar behaviour even if a large decrease of the Alfvén speed is observed in correspondence of the decrease in the B magnitude observed in Figure 1, most likely linked to the presence of a magnetic hole, term introduced by Turner et al. (1977) and later better defined as magnetic decreases (Tsurutani et al. 2002a,b, 2011a), occurred during most of the day 34 (see for example also Winterhalter et al. 1995; Fränz et al. 2000). Actually, in the Alfvénic slow wind, V_A is always larger than V_{th} determining a β always less than one. During the typical slow wind, in some small intervals these two quantities are almost equal determining a β close to 1. In the fast wind case this behaviour is even clearer, with V_{th} typically equal to V_A and a consequent β around 1 during the entire fast stream.

4 MICROPHYSICS

To address the properties of particle microphysics, it is useful to use a parameter space which combines the (parallel) plasma beta of a given species to its temperature anisotropy (e.g. Gary et al. 2002). In this parameter space, the thermodynamical state of the plasma can be tested against kinetic instabilities, such as mirror and ion-cyclotron (generated when $T_{\perp} > T_{\parallel}$) and fire hoses ($T_{\perp} < T_{\parallel}$) (e.g. Hellinger et al. 2006; Bale et al. 2009). Typical fast and slow wind plasma

display different distributions in this parameter space. Moreover, Marsch et al. (2004) have revealed the presence of a linear relation between the parallel proton beta β_{\parallel} and the core temperature anisotropy T_{\perp}/T_{\parallel} in fast streams. Further studies have confirmed such a relation for total temperatures and Matteini et al. (2007) have interpreted this behavior as an evolutionary path of the plasma with radial distance, starting with $T_{\perp} > T_{\parallel}$ and low proton beta close to the Sun, and then progressively approaching the fire hose unstable region at larger distances (higher β). The same path/relation with radial distance is not observed in typical slow wind intervals, where the distribution of the observational counts appears to be bounded by the thresholds of kinetic instabilities at all distances. It is then interesting to test the properties of the Alfvénic slow plasma in the $(\beta_{\parallel}, T_{\perp}/T_{\parallel})$ space, to check whether its similarities with fast streams extends also to the microphysics.

Figure 4 shows the distribution of the proton anisotropy as a function of $\beta_{p\parallel}$ for the case study already presented in the previous sections representing different solar wind regimes. The top panel shows fast wind distribution which is well-centered around β_{\parallel} and T_{\perp}/T_{\parallel} . Moreover it follows quite well the relationship $T_{\perp}/T_{\parallel} \sim 1.16\beta_{p\parallel}^{-0.55}$ found by Marsch et al. (2004). The middle panel displays a typical slow wind distribution. It is characterized by spread values in β_{\parallel} while anisotropy values are centered around 1. The bottom panel represents the case for the Alfvénic slow wind. It must be noted in this case that although an anti-correlation still exists between anisotropy and β , this distribution does

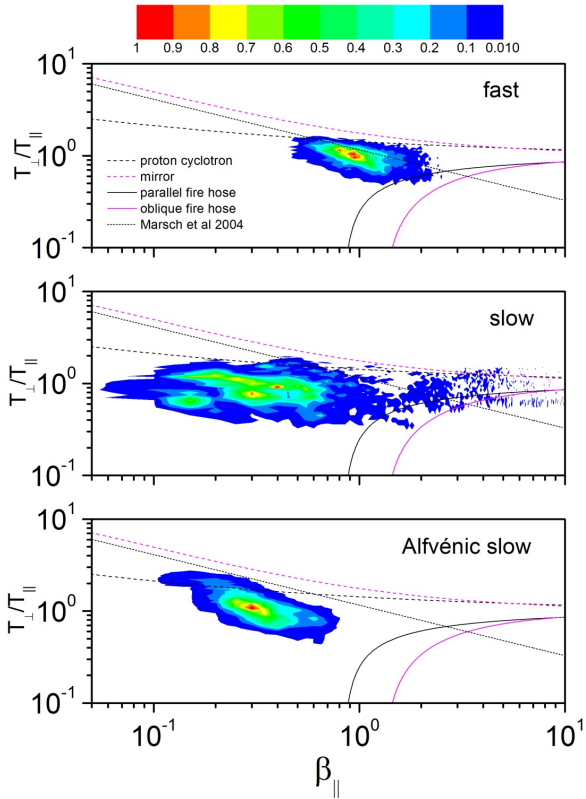


Figure 4. Contour plots showing the relationship between β_{\parallel} and anisotropy (T_{\perp}/T_{\parallel}) for the three solar wind regimes. In each plot the main plasma instability threshold are displayed: proton cyclotron (black dashes), mirror (red dashes), parallel fire hose (black line), oblique fire hose (red line), relation by Marsch et al. (2004) (black dots).

not follow very closely the relationship by Marsch et al. (2004) rather it is found to be almost parallel to it since it has lower β values and larger anisotropy values (at least for the maximum values).

It is quite clear from these plots that also in terms of the proton microphysics (level of anisotropy, correlation with $\beta_{p\parallel}$, and relation with kinetic instabilities) the Alfvénic slow wind is very close to fast wind observations, and shows a different thermodynamical state with respect to the typical slow wind, whose anisotropy is weakly correlated with beta.

5 θ_{BR} - V_{SW} RELATIONSHIP

As mentioned throughout this paper, fast streams are characterized by a high level of Alfvénicity, namely the high degree of correlation between velocity and magnetic field fluctuations. Related to this state is also the constancy of magnetic and plasma pressures, keeping the fast wind in a regime of low compressibility.

On the other hand, the typical slow wind, is much more irregular and display large variations of magnetic, gas, and total pressures, together with a much weaker Alfvénic correlation. It has been recently shown (Matteini et al. 2014,

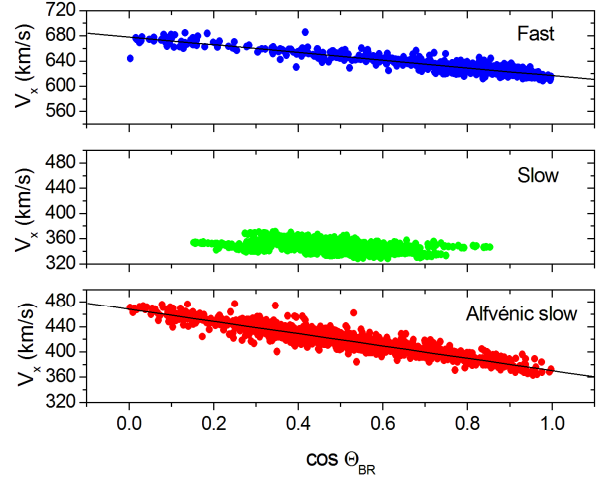


Figure 5. Relationship between θ_{BR} and V_{sw} for fast and Alfvénic slow solar wind.

2015) that a consequence of the high-Alfvénicity state of the fast solar wind is the modulation of the flow bulk speed by the direction of the local magnetic field. In other words, there is a well-defined correlation between the proton speed and the cosine of angle Θ_{BV} between the instantaneous magnetic field and the solar wind velocity (Matteini et al. 2014). The top panel of Figure 5 shows such a correlation for the fast wind interval. As expected, data align along a straight line, whose slope approximately corresponds to the phase velocity of the Alfvénic fluctuations which can be inferred by inspection of the correlation between magnetic and velocity fluctuations. It is known that the empirical phase velocity can deviate slightly from the nominal Alfvén speed due to the presence of residual energy in the plasma (i.e. excess of magnetic to kinetic fluctuating energy). Matteini et al. (2014) derived the empirical relation:

$$V_p \sim V_0 + v_{ph}[1 - \cos(\theta_{BR})] \quad (1)$$

where V_0 the minimum speed within the interval and v_{ph} takes into account the observed residual energy R_A , or Alfvén ratio, so that $v_{ph} = V_A \sqrt{R_A}$. For the sample of fast wind r_A is 0.61 and $V_A = 71 \text{ km s}^{-1}$ giving a value of 56 km s^{-1} which should be compared with the slope of the fit which corresponds 61 km s^{-1} .

For the typical slow wind a linear correlation is not expected, since not Alfvénic, and indeed the central panel shows that the speed has not a clear dependence on the angle Θ_{BV} . On the contrary the Alfvénic slow wind interval, displayed in the bottom panel, does show the same correlation as the fast wind, and again, this is very well reproduced by relation 1. In this case r_A is 0.89 and $V_A = 111 \text{ km s}^{-1}$ giving a value of 104 km s^{-1} which should be compared with the slope of the fit which corresponds 98 km s^{-1} .

This additional test of the fluid behavior of the Alfvénic slow wind highlights further how its properties are very similar to the fast wind from coronal holes, and that the broad phenomenology characterising fast streams is fully recovered also on slower streams that are equally Alfvénic.

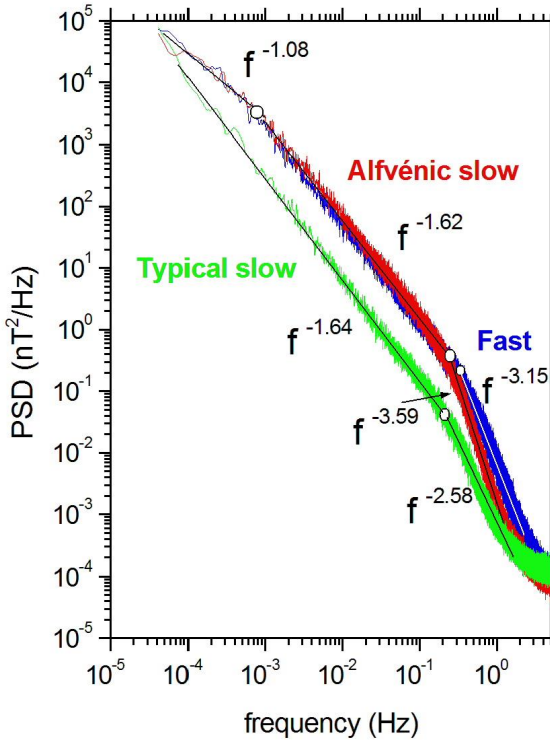


Figure 6. Trace of the power spectral density of magnetic field fluctuations up to the sub-ion range for typical slow (green), Alfvénic slow (red) and fast (blue) wind, respectively. Superimposed to the power spectra the fit in each frequency range are shown along with the position of the spectral breaks separating the different frequency domains.

6 SPECTRAL PROPERTIES

The characteristics described in the previous sections clearly show similarities between the Alfvénic slow wind and the fast wind. This has implication on the spectral features as well.

Solar wind fluctuations show a typical Kolmogorov-like power law in the inertial range. In particular, in fast wind, at low frequencies, a k^{-1} scaling is clearly present. The origin of this k^{-1} scaling is still highly debated (e.g. Matthaeus & Goldstein 1986; Dmitruk & Matthaeus 2007; Verdini et al. 2012; Tsurutani et al. 2018; Matteini et al. 2018, submitted). A frequency break separates the $k^{-5/3}$ from the k^{-1} scaling. This break corresponds to the correlation length.

At kinetic scales energy is eventually dissipated. As a matter of fact, around the proton scales, another spectral break is found beyond which the spectrum generally steepens, with different slopes for fast and slow wind (Bruno et al. 2014; Smith et al. 2006; Sarahoui et al. 2010).

Figure 6 shows an example of power spectral density of magnetic field fluctuations for the three solar wind regimes under study from small to large frequencies, using data from the MFI experiment on board WIND (Lepping et al. 1995) at 92 ms resolution.

This part of the analysis is based on the study of eight intervals for each solar wind regimes introduced throughout the paper chosen with the following criteria and as indicated in table 1. Fast wind and typical slow wind were chosen

during minimum of solar activity, during years 1995 and 2005, since in this phase of the solar cycle the fast streams usually are recurrent streams, within which the main portion of the fast stream and the rarefaction region can be easily identified. However, the characteristics highlighted in the first part of this paper are found also in fast and typical slow wind at minimum of solar activity. The eight intervals of Alfvénic slow wind instead were selected during maximum of solar cycle 23. Table 1 contains the main average parameters that characterize these time intervals and in particular: solar wind bulk speed, Alfvén speed, thermal speed, number density, magnetic field magnitude.

When moving from fast to typical slow wind one observes a different power level, higher in the fast wind rather than in the typical slow wind indicating the presence of larger magnetic field fluctuations. Interesting enough is that the same power characterizes also the Alfvénic slow wind. Moreover, a spectral break separating the inertial range from the injection range, identifying the correlation length, is located at the same frequency at about 30 min, which is a timescale typical of Alfvénic fluctuations. This corresponds to a spatial scale of about $0.8 \cdot 10^6$ km and of $1.2 \cdot 10^6$ km, for Alfvénic slow and fast wind respectively, being in accordance with previous studies (e.g. Matthaeus & Goldstein 1982; Bruno & Dobrowolny 1986; Matthaeus et al. 2005, etc.).

The typical slow wind, on the contrary, is generally characterized by a Kolmogorov scaling extending to much lower frequencies as recently reported (Bruno 2017). However, a detailed discussion on the low frequency part of the spectrum is out of the scope of our paper so that the interested reader can refer to the above bibliographic references for further reading.

Besides the differences at low frequencies, there are also clear differences at proton kinetic scales. Bruno et al. (2014), investigating the behavior of the spectral slope at proton scales, up to frequencies of a few Hz, beyond the high-frequency break separating fluid from kinetic scales, recorded a remarkable variability of the spectral index (Bruno et al. 2014; Smith et al. 2006; Sarahoui et al. 2010) within the following frequency decade or so. The steepest spectra correspond to the main portion of fast streams while the flattest ones were found within the subsequent slow wind regions (Bruno et al. 2014). This is confirmed by our findings shown in Figure 6. In addition, our analysis clearly shows that the kinetic break of the typical slow wind is located at lower frequencies than the two Alfvénic winds. It must be noted, however that, although the behaviour of the Alfvénic slow wind is similar to the fast wind, its kinetic break is a bit shifted towards lower frequencies.

Bruno et al. (2014) found also a strong dependence of the observed spectral slope at ion scales and the power characterizing the fluctuations within the inertial range: the higher the power, the steeper the slope. This parameter shows the steepest spectra within the main portion of the fast streams, where the speed is higher, and the lowest values within the subsequent slow wind, following a gradual transition between these two states. The dependence of the spectral slopes in the dissipation range on the power level in the corresponding inertial range is rather robust since the same kind of relationship applies equally well to data points belonging to different time intervals.

Table 1. Time intervals referring to fast (F), typical slow (TS) and Alfvénic slow (AS) solar wind observed with WIND showing the following parameters: solar wind bulk speed (V_{sw}), Alfvén speed (V_A), thermal speed (V_{th}), proton number density (n_p), magnetic field magnitude (B), cyclotron frequency (Ω_p), frequency break (f_b), angle between magnetic field and radial direction (θ_{BR}), plasma beta (β). The other characteristics lengths can be derived accordingly.

#	Year	Time interval DoY:hh	V_{sw} km s ⁻¹	V_A km s ⁻¹	V_{th} km s ⁻¹	n_p cm ⁻³	B nT	Ω_p Hz	f_b Hz	θ_{BR} deg	β
1F	1995	003:20 - 004:16	686.6	68.7	78.6	3.51	5.90	0.090	0.39	51.0	1.31
2F	1995	030:12 - 031:12	708.6	74.9	81.3	2.70	5.64	0.086	0.36	13.8	1.18
3F	1995	098:00 - 099:00	666.1	64.3	74.9	3.24	5.31	0.081	0.35	41.5	1.35
4F	1995	126:00 - 127:00	726.2	63.5	80.9	2.83	4.90	0.074	0.41	12.8	1.62
5F	2005	067:00 - 068:00	744.7	75.5	83.2	2.62	5.60	0.085	0.35	33.2	1.22
6F	2005	282:00 - 283:00	655.2	77.4	75.4	1.85	4.83	0.073	0.28	43.0	0.95
7F	2005	308:12 - 309:12	716.6	90.3	81.4	1.44	4.97	0.076	0.31	46.3	0.81
8F	2005	335:00 - 336:00	736.5	96.5	85.3	2.00	6.26	0.095	0.35	41.7	0.78
1TS	1995	009:00 - 010:00	469.3	49.9	47.3	3.96	4.42	0.067	0.26	21.0	1.10
2TS	1995	036:01 - 036:08	477.1	50.2	47.8	2.81	3.83	0.058	0.26	39.4	0.98
3TS	1995	104:04 - 105:04	444.8	36.4	43.7	4.08	3.34	0.051	0.20	37.9	1.78
4TS	1995	130:12 - 131:12	428.7	41.1	43.8	4.84	4.08	0.062	0.28	5.1	1.90
5TS	2005	071:00 - 072:00	410.6	38.5	38.9	2.42	2.71	0.041	0.15	23.2	1.25
6TS	2005	287:04 - 287:18	366.8	42.2	34.6	3.71	3.61	0.055	0.20	30.9	0.78
7TS	2005	313:16 - 314:00	440.6	54.2	44.0	1.73	3.21	0.049	0.21	44.8	0.97
8TS	2005	341:12 - 342:00	374.1	48.8	34.1	1.60	2.81	0.043	0.23	17.7	0.52
1AS	2000	351:12 - 352:12	368.4	48.4	43.8	7.24	5.96	0.091	0.24	54.1	0.82
2AS	2001	040:00 - 041:00	426.8	54.8	47.9	4.49	5.32	0.081	0.25	57.9	0.76
3AS	2001	067:00 - 068:00	469.3	57.9	48.9	3.71	5.12	0.078	0.28	47.6	0.71
4AS	2001	327:00 - 328:00	462.8	73.1	62.9	3.87	6.59	0.100	0.26	27.3	0.74
5AS	2001	340:00 - 341:00	441.9	58.4	52.0	5.82	6.46	0.098	0.26	35.8	0.79
6AS	2001	352:00 - 353:00	472.5	67.7	51.9	2.83	5.22	0.079	0.23	44.4	0.59
7AS	2002	026:00 - 027:00	416.5	100.	60.1	3.64	8.77	0.133	0.26	55.8	0.36
8AS	2002	056:00 - 057:00	337.0	54.5	36.3	6.84	6.53	0.099	0.20	46.4	0.44

Figure 7 shows the dependence of the spectral index in the dissipation range (q_{diss}) in the sub-ion range on the power associated with the fluctuations within the inertial range (w/w_0), where w_0 is normalized to the lowest power spectrum for the present study. The power associated to the inertial range was computed as the integral of the PSD in a frequency range chosen within the inertial range in the same range as in Bruno et al. (2014), namely from 7×10^{-3} to 10^{-1} Hz. We normalized the values of the integrated PSD to the lowest power (w_0) in the inertial range which corresponds to a typical low-speed wind interval in order to have a dimensionless parameter on the X axis.

The spectral slopes in the dissipation range were obtained through a fitting procedure, taking care to exclude regions too close to the break point or at higher frequencies where the spectrum flattens (e.g. Bruno & Trenchi 2014). The best fit $q = (-4.86 \pm 1.28) + (2.83 \pm 1.21)(w/w_0)^{(0.18 \pm 0.13)}$ was obtained using a power-law fit, shown by a dashed black line where q is the spectral index and w/w_0 indicates the normalization process performed within the inertial range. It is interesting to note that this fit is quite in agreement with the one found in Bruno et al. (2014). The latter is shown for reference and it is found to be in good accordance with the data of the present analysis. The two fits overlap with error bars with 95% confidence level.

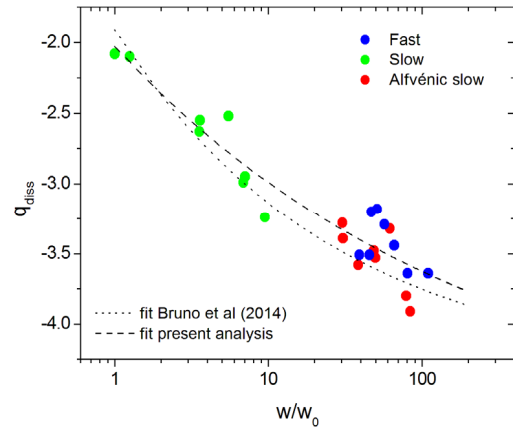


Figure 7. Dependence of the spectral index in the dissipation range (q_{diss}) in the sub-ion range on the power associated with the fluctuations within the inertial range (w/w_0), where w_0 is normalized to the lowest power spectrum. The best fit is shown in comparison to the one by Bruno et al. (2014). The two fits overlap with error bars with 95% confidence level.

7 LOCATION OF THE KINETIC BREAK

In the previous section we have discussed the general behaviour of the power spectra in terms of power level and slope in the different frequency regimes with a quick look at the break separating the $k^{-5/3}$ from the k^{-1} scaling.

Another important issue is found in the location of the spectral break at kinetic scales addressed by several authors (see reviews by [Alexandrova et al. 2013](#); [Bruno & Carbone 2013](#)) but still highly debated.

At these scales, protons are continuously heated during the wind expansion ([Marsch 2012](#)). One possible source of proton heating is represented by some form of dissipation, at the proton kinetic scale, of the energy transferred along the inertial range. This would change the scaling exponent. There are different relevant lengths which can be associated with this phenomenon, depending on the particular dissipation mechanism we consider as widely discussed in [Bruno & Trenchi \(2014\)](#); [Sarahoui et al. \(2010\)](#); [Leamon et al. \(1998\)](#); [Markovskii et al. \(2008\)](#); [Marsch \(2006\)](#); [Gary \(1993\)](#); [Chen et al. \(2014\)](#) so different characteristic lengths indicate a different dissipation mechanism invoked to explain the observed local heating of the solar wind plasma.

The characteristic scales which might correspond to the observed spectral break are the proton inertial length $\lambda_i = c/\omega_p$ and the proton Larmor radius $\lambda_L = v_{th}/\Omega_p$, expressed in cgs units. $\omega_p = (4\pi n_p q^2/m_p)^{1/2}$ and $\Omega_p = qB/(m_p c)$ are the plasma and cyclotron frequencies, respectively, where q is the proton electric charge, n_p the proton number density, B the local magnetic field intensity, m_p the proton rest mass, and c the speed of light. Since $c/\omega_p = v_A/\Omega_p$, the proton inertial length can also be expressed as $\lambda_i = v_A/\Omega_p$, where v_A is the Alfvén speed.

Although turbulence phenomenology would limit the role played by parallel wavevectors k_{\parallel} , [Bruno & Trenchi \(2014\)](#) firstly found that the cyclotron resonant wavenumber showed the best agreement with the location of the break compared to results obtained for the ion inertial length and the Larmor radius, result confirmed also by findings in [Teloni et al. \(2015\)](#).

[Chen et al. \(2014\)](#) investigated extremely low β (about 10^{-2}) and extremely high β (about 20) intervals finding that the ion inertial length scale plays a role in the location of the high-frequency break for low beta plasma while the ion gyroradius for high plasma beta. On the other hand, although these authors observed also that the cyclotron resonant wave number does fit the observations at both high and low β within errors, they did not consider a possible role of k_{\parallel} because it was not consistent with the observed anisotropy of turbulence ([Horbury et al. 2008](#)).

In clear support to the resonance condition hypothesis, a recent study by [Woodham et al. \(2018\)](#) found that the high-frequency spectral steepening is best associated with the cyclotron resonance scale, both in fast and slow wind streams, as well as periods where $\beta \sim 1$ where the agreement is strongest.

The two groups with different and extreme plasma β described in [Chen et al. \(2014\)](#) have been harmonized by a recent study by [Wang et al. \(2018\)](#) who investigated ion-scale spectral break frequencies over a full-range plasma beta. They found results in support of the cyclotron resonance condition playing a vital role in the dissipation process at the spectral break at all beta. By analyzing the normalized frequency breaks, they found that the average value of f_b/f_R (frequency break normalized to the frequency corresponding to the resonance condition) in each β bin seems to be nearly a constant and not dependent on β . It was also found that the ratio between f_b and f_R is statistically close to 1. For

intermediate β , f_b/f_R is much closer to 1 than both f_b/f_i (frequency break normalized to the frequency corresponding to ion inertial length) and f_b/f_L (frequency break normalized to frequency corresponding to ion gyroradius). But when $\beta \ll 1$ ($\beta \gg 1$), f_b/f_i (f_b/f_L) is also nearly unity.

In the present study the kinetic break was obtained in the frequency domain as the intersection between the fits computed within the inertial range and the kinetic range. For each frequency range a fitting procedure was applied, taking care to exclude regions too close to the break point. The frequency break f_b was then transformed in wavenumber k_b taking into account that $k_b = 2\pi f_b/V_{sw}$ with V_{sw} the solar wind bulk speed. Also the quantities λ_L and λ_i were computed in terms of wavenumber k as $k_L = \Omega_p/V_{th}$ and $k_i = \Omega_p/V_A$ while the resonant condition can be expressed as $k_R = \Omega_p/(V_A + V_{th})$. For sake of completeness, we considered also $k_C = 2\pi\Omega_p/V_{sw}$ associated to the cyclotron frequency Ω_p as a reference. All these characteristic lengths can be derived from the parameters shown in Table 1.

We then computed for each solar wind regime under study the characteristic lengths along with the position of the break normalized to $\cos\theta_{BR}$ (indicated for each interval in Table 1) to take into account that k is along the direction of the local mean field while we are sampling along the radial direction at an angle Θ_{BR} . Our results are displayed in Figure 8 in a similar way to what performed by [Bruno & Trenchi \(2014\)](#).

Our study confirms that the best agreement for each solar wind regime is found for the wavenumber k_R corresponding to the resonance condition for parallel propagating Alfvén waves. k_i and k_L are always much larger than k_R while k_C is always lower. Regarding the comparison of the position of the break, k_b is found at larger values for the Alfvénic slow solar wind (scales around 140-220 km), at intermediate values for the typical slow solar wind (scales around 250 km), at small-intermediate values for the fast wind (scales around 220-330 km).

Table 1 contains also the kinetic frequency break and the plasma β for the selected time intervals studied. Our study shows that k_R fits better all beta although for the selected intervals this parameter ranges between 0.36 and 1.78.

8 SUMMARY AND CONCLUSIONS

This study shows that the standard classification of the solar wind in two categories according to their speeds should be revised as suggested also by e.g. [Von Steiger \(2008\)](#); [Zhao et al. \(2009\)](#); [Stakhiv et al. \(2015\)](#); [Xu & Borovsky \(2015\)](#); [Camporeale et al. \(2017\)](#); [Ko et al. \(2018\)](#); [Stansby et al. \(2018\)](#). For instance, the Alfvénic content of solar wind fluctuations is different when moving from fast to slow streams with fast wind more Alfvénic than slow wind. However, a recent result has shown that also the slow solar wind can sometimes show a high degree of Alfvénicity ([D’Amicis & Bruno 2015](#); [D’Amicis et al. 2016](#)) in contrast with previous findings. Although the existence of this kind of slow wind was first pointed out in the 80s but close to the Sun, a detailed characterization was not developed at that time. The added value of the present paper is threefold: it gives a comprehensive characterization of this kind of slow solar wind;

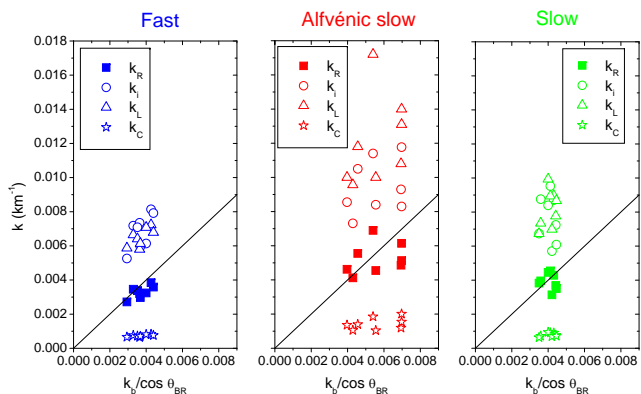


Figure 8. Location of the spectral break, in terms of wavenumbers, normalized to $\cos \theta_{BR}$ vs some plasma characteristic lengths: resonance condition k_R (full squares), inertial length k_i (empty circles), Larmor radius k_L (empty triangles), k_C associated to the cyclotron frequency (empty stars). The color code corresponds to the different solar wind regimes: green (typical slow), blue (fast), red (Alfvénic slow).

it uses measurements at 1 AU where we expect a depletion of Alfvénic correlations; this kind of solar wind was found on a statistical basis at maximum of solar cycle 23. These are strong arguments which prompt our study. This Alfvénic slow solar wind is thus the focus on the present study.

To compare the different solar wind regimes, in the first part of this paper, we show a limited but representative time interval of about 20 days. The investigation we carried out takes into account different aspects of the physics of the interplanetary medium but every aspect demonstrates that the Alfvénic slow wind resembles the fast wind rather than the typical slow wind. Here is a summary of the main findings.

The Alfvénic slow wind has a bulk speed comparable to the typical slow wind. However, it is characterized by larger fluctuations in both velocity and magnetic field components (not shown here) typical of the presence of Alfvénic fluctuations. Actually, Alfvénic periods are usually well detectable also by looking at the velocity profile where fluctuations are enhanced respect to periods of low Alfvénic correlations. Overall the bulk parameters show a clear similarity with the fast wind features. For instance constant magnetic field magnitude and number density indicate low compressibility typical of this kind of fluctuations. However, the bulk speed, besides being lower, is almost constant and does not show a profile typical of the fast wind stream (i.e. presence of main portion of the stream and a rarefaction region).

Regarding temperature, the Alfvénic slow wind is hotter than the typical slow wind but colder than the fast wind, following the well-known temperature-speed relation.

Related to the previous point, a lower compressibility, as defined in Bruno & Bavassano (1991), is observed during Alfvénic periods thus supporting the idea that compressible phenomena may act in destroying the Alfvénicity of solar wind fluctuations. This is also in agreement with the results by D’Amicis & Bruno (2015) who found that lowest values of field compressibility characterize the maximum of solar cycle 23 and were then coupled with a higher Alfvénic content than its corresponding minimum.

The Alfvénic intervals are characterized by lower O^{7+}/O^{6+} and C^{6+}/C^{5+} respect to the typical slow wind. Actually, the Alfvénic populations fill the same region in a scatter plot O^{7+}/O^{6+} vs C^{6+}/C^{5+} and are distinct from the typical slow wind. This finding supports the idea of a common solar origin of the two kinds of Alfvénic winds, hypothesis supported by recent findings by D’Amicis & Bruno (2015).

The two Alfvénic winds show lower values of A_C , associated with plasmas that experienced fewer Coulomb collisions and thus expected to better preserve any signatures of processes experienced in the inner corona.

A very interesting difference is the behaviour of β in the different solar wind regimes under study. We performed a study, not shown here graphically, in which we studied the dependence of β from thermal and Alfvén speed and found that the Alfvénic slow wind is characterized by a higher Alfvén speed respect to the thermal speed and it is then always characterized by β less than 1. In the intervals of fast and typical slow wind wind, on the contrary, thermal and Alfvén speed are comparable so that β is on average around 1. In general, however, V_A and V_{th} are lower in the Alfvénic slow rather than in the fast wind.

We studied also the properties of the solar wind plasma in the $(\beta_{\parallel}, T_{\perp}/T_{\parallel})$ space, comparing the different solar wind regimes. We found that the similarities between fast streams extend also to the microphysics. Actually, the fast wind distribution follows quite well the relationship by Marsch et al. (2004). The Alfvénic slow wind shows similar behavior but it is found at lower β values and larger anisotropy values (at least for the maximum values).

This study also confirms previous papers by Matteini et al. (2014, 2015) finding, for the Alfvénic winds, a well-defined correlation between the proton speed and the cosine of angle Θ_{BV} between the instantaneous magnetic field and the solar wind velocity, further supporting the idea that the high-Alfvénicity state of the fast solar wind determines the modulation of the flow bulk speed by the direction of the local magnetic field.

In the second part of this paper dedicated to the study of the spectral features, we performed a more quantitative analysis considering different intervals for each solar wind regime.

The comparison between the power spectra shows that the two Alfvénic winds are characterized by higher power related to a larger amplitude of the magnetic field fluctuations which are typical of the presence of Alfvénic fluctuations. The lower frequencies are characterized also by a break separating the inertial range from the larger scales with a typical scale of tenths of minutes. The presence of this break might be related to the turbulent age of fluctuations at a given scale: the faster is the wind or the stronger is the Alfvénic correlation than the younger is the turbulence. Since the coronal spectrum is supposed to be rather flat (at least in the fast solar wind), smaller spectral indices correspond to less evolved spectra. According to this interpretation, one would expect spectral slope to change with distance as the turbulence ages, while observations report fairly stable spectral slopes. Although we performed a preliminary analysis on this relationship, we will postpone a detailed investigation to a future paper.

This study further confirms that the slope of the spec-

trum in the dissipation range in the sub-ion range depends on the power of the fluctuations in the inertial range: a steeper spectrum corresponds to a higher power in agreement with Bruno et al. (2014). With this respect, the two Alfvénic winds are characterized by similar power and slopes and have larger values respect to the typical slow wind. This has been done considering several time interval to better support our findings.

A highly debated topic is the location of the kinetic break which can help in identifying the dissipation mechanism responsible for the local heating of the solar wind plasma. Bruno & Trenchi (2014) first found the best agreement of the resonant wavenumber with the location of the kinetic break rather than with the ion inertial length and the Larmor radius. This result is then strongly supported also by more recent papers (Woodham et al. 2018; Wang et al. 2018) and by our study. Actually, Figure 8 shows that k associated with the resonance condition fits better the kinetic break rather than other characteristic lengths. Also Chen et al. (2014) found the same evidence but they excluded this solution since they assumed that $k_{\perp} \gg k_{\parallel}$ at ion-kinetic scales. However, other studies show that the k_{\parallel} component of the turbulence, while small compared to k_{\perp} , increases around ion-kinetic scales (e.g. Bieber et al. 1996; Leamon et al. 1998b; Dasso et al. 2005; Hamilton et al. 2008; Roberts & Li 2015). In addition, Woodham et al. (2018) suggested that this small k_{\parallel} component is damped from the cascade, which leads to the observed spectral steepening at these scales. Thus, although observational evidence has been given in favour of the role played by the resonance condition, this problem still deserves a theoretical explanation.

The fact that k_R fits better the kinetic break (at least for the cases studied) does not non exclude however that non-resonant dissipative phenomena could be present, as already stated by Bruno & Trenchi (2014).

A scaling consistent with the observations has also been found in the numerical hybrid simulations of Franci et al. (2016). In this work, the authors find that the break length scale l_b can be described at all betas by a combination of λ_i and λ_L (taking here into account a 2π difference in the normalisation used in the simulations): $l_b \sim 2(\lambda_L + \lambda_i - \sqrt{\lambda_L \lambda_i}/2)$, leading then to the largest of the two scales at extreme values of β , as observed by Chen et al. (2014), and to $l_b > \lambda_L, \lambda_i$ for $\beta \sim 1$, consistent with Figure 8. Although such a scaling is also very similar to k_R , it was recovered in 2D simulations with highly oblique k-vectors (main field out-of-plane), so in a condition where cyclotron resonances are not expected to play a significant role. This might suggest that other processes, related to perpendicular structures, like e.g. magnetic reconnection, could also contribute to the shaping of the spectral transition between MHD and sub-ion scales (Franci et al. 2017).

It is interesting to note that while most of the aspects discussed here (e.g. composition, spectra, microphysics) are well organised by the Alfvénicity, suggesting a common solar origin for fast and Alfvénic slow streams, this is not the case for the location of the ion-scale spectral break, which on the contrary depends mostly on the plasma beta. This suggests that the evolution of the turbulent cascade at kinetic scales does not depend only on the source properties, but also on the local plasma state and its variation during expansion. As a consequence we find different values of the ion-break in

the fast and Alfvénic slow regimes, as they are characterized by slightly different beta ranges.

It is worth stressing, within this context, the importance of the role which will be played by future space missions which will investigate the inner heliosphere, i.e. Parker Solar Probe and Solar Orbiter. The former in particular will be extremely useful to study turbulence of this kind of slow wind at an early stage and especially inside the Alfvén radius. Actually, following Cranmer (2007, 2009) the Alfvén radius has a different estimate depending on the solar latitude we are exploring, 20 and 10 solar radii respectively for equatorial regions and poles.

For a flux tube that passes through a given point (R_s, λ, ϕ) on the source surface, the expansion factor Wang et al. (1997) can be calculated. This is the factor by which the flux tube expands in solid angle between its footpoint location $(R_{\odot}, \lambda_0, \phi_0)$ and the source surface. The expansion factor f_s equals unity if the bundle of open field lines diverges as r^2 but exceeds unity if (as is usually the case) the flux diverges more rapidly than r^2 . In this case it is called a super radial expansion.

At the borders of coronal holes the Alfvén radius is larger than in the fast wind case because of the super-radial expansion. As a matter of fact, Parker Solar Probe will have the possibility to go inside the critical Alfvén radius, investigating the Alfvénic slow wind, thus giving the opportunity to observe both z^+ and z^- and studying the origin of the inward modes. We can take advantage also of possible alignments between Solar Orbiter and Parker Solar Probe in order to analyze the same plasma region across the Alfvén radius.

The idea supported by this paper is that this Alfvénic slow solar wind would come from low-latitude small coronal holes which are an ubiquitous feature of maximum of solar cycle 23. The results from this study show that the fast wind and the Alfvénic slow wind share common characteristics which span from the macrostructure to the microphysics and spectral properties, likely attributable to their similar solar origin i.e. coronal-hole solar wind. It is suggested that in the Alfvénic slow wind a major role is played by the super-radial expansion responsible for the lower velocity. In any case, the kind of slow wind which is the main focus of this paper has not only a very high Alfvénicity, comparable to that of fast streams (R_{vb} around 0.9 in both cases), but also the amplitude of the fluctuations is very high and comparable to that of fast wind (db/B about 1 in both cases). Remarkably, this seems not to fit well with the typical observations performed at the boundary of coronal holes, when both the Alfvénicity and the amplitude of the fluctuations decrease together with the speed (e.g. Tsurutani et al. 2011b), suggesting then a possible different scenario for the wind regime observed here. Finally, it should be mentioned that some isolated cases of this Alfvénic slow wind display a speed profile very similar to that of the fast wind, being characterized by a relatively faster main portion of the stream, followed by a sort of slower rarefaction region. These aspects however need to be investigated further and will benefit from future observations of the inner Heliosphere (e.g. Parker Solar Probe and Solar Orbiter data).

ACKNOWLEDGEMENTS

We acknowledge very useful discussions with Daniele Teloni and Marco Velli. The authors are grateful to the following people and organizations for data provision: R. Lin (UC Berkeley) and R. P. Lepping (NASA/GSFC) for WIND/3DP and WIND/MFI data, respectively, and G. Gloeckler (University of Maryland) for ACE/SWICS data. All these data are available in the NASA-CDAWeb website: <https://cdaweb.sci.gsfc.nasa.gov/index.html>.

This research was partially supported by the Agenzia Spaziale Italiana under contracts I/013/12/1 and by the Programme National PNST of CNRS/INSU co-funded by CNES.

REFERENCES

- Abbo L., Ofman L., Antiochos S. K., et al., 2016, *Space Sci. Rev.*, 201, 55, doi:10.1007/s11214-016-0264-1, 2016.
- Alexandrova O., Bale S. D. & Lacombe C., 2013, *Phys. Rev. Lett.*, 111, 149001
- Antiochos S. K., Mikic Z., Titov V. S. et al., 2011, *ApJ*, 731, 112, doi:10.1088/0004-637X/731/2/112
- Antonucci E., Abbo L. & Doderio M. A., 2005, *A&A*, 435, 699
- Bale S. D., Kasper J. C., Howes G. G., et al., 2009, *Phys. Rev. Lett.*, 103, 211101
- Belcher J. W. & Davis L., 1971, *J. Geophys. Res.*, 76, 3534
- Belcher J. W. & Solodyna C. V., 1975, *J. Geophys. Res.*, 80, 181
- Bieber J. W., Wanner W., & Matthaeus W. H., 1996, *J. Geophys. Res.*, 101, 2511
- Bavassano B. & Bruno R. 1989, *J. Geophys. Res.*, 94, 977
- Bruno R. & Bavassano B., 1991, *J. Geophys. Res.*, 96, 7841
- Bruno R., 1992, in *Proc. 3rd COSPAR Colloq., Solar Wind Seven*, ed. E. Marsch & R. Schwenn (Oxford: Pergamon Press), 423
- Bruno R., & Carbone V., 2013, *LRSP*, 10, 2
- Bruno R., & Dobrowolny M., 1986, *AnGeo*, 4, 17
- Bruno R. & Trenchi L. 2014, *ApJ*, 787, L24
- Bruno R., Trenchi L., & Telloni D., 2014, *ApJ*, 793, L15
- Bruno R., Telloni D., De Iure D., Pietropaolo E., 2017, *MNRAS*, 472, 1052
- Bruno R., 2017, *Parker Solar Probe - Solar Orbiter Joint Meeting*, https://sppgway.jhuapl.edu/psp_SWG_Oct_2017_Mtg
- Bürgi A., & Geiss J., 1986, *Sol. Phys.*, 103, 347
- Camporeale, E., Caré, A., & Borovsky, J. E. 2017, *JGRA*, 122, 10910
- Chen C. H. K., Leung L., Boldyrev S., et al., 2014, *Geophys. Res. Lett.*, 41, 8081
- Cranmer S. R., 2007, in *Turbulence and Nonlinear Processes in Astrophysical Plasmas*, Proceedings of the 6th Annual International Astrophysics Conference, Oahu, Hawaii, 16 – 22 March 2007, (Eds.) Shaikh, D., Zank, G.P., vol. 932 of AIP Conference Proceedings, pp. 327–332, American Institute of Physics, Melville, NY
- Cranmer S. R., 2009, *LRSP*, 6, 3
- Dasso S., Milano L. J., Matthaeus W. H., & Smith C. W., 2005, *ApJ*, 635, L181
- D’Amicis R., Bruno R., & Bavassano B., 2011, *JASTP*, 73, 653
- D’Amicis R. & Bruno R., 2015, *ApJ*, 805, 84:1
- D’Amicis R., Bruno R. & Matteini L., 2016, in *Proceedings of the 14th Solar Wind Conference*, AIP Conference Proceedings, edited by L. H. Wang, R. Bruno, E. Moebius, A. Vourlidis, and G. Zank (American Institute of Physics, Melville, NY, 2016)
- Dmitruk P., & Matthaeus W. H., 2007, *Phys. Rev. E*, 76, 036305
- Feldman W. C., Asbridge J. R., Bame S. J. & Montgomery M. D., 1973, *J. Geophys. Res.*, 28, 6451
- Feldman, W. C., Asbridge, J. R., Bame, S. J. & Montgomery, M.D. 1974, *RvGSP*, 4, 715
- Franci L., Landi S., Matteini L. et al., 2016, *ApJ*, 883, 91
- Franci L., Cerri S. S., Califano F. et al., 2017, *ApJ*, 850, L16
- Fränz, M., Burgess, D. & Horbury, T. S. 2000, *JGRA*, 105, 12725
- Gary, S. P. 1993, in *Theory of Space Plasma Microinstabilities* (Cambridge: Cambridge Univ. Press), 193
- Gary, S. P., Goldstein, B. E., & Neugebauer, M. 2002, *JGRA*, 107, 4
- Geiss, J., Gloeckler, G., & von Steiger, R. 1995, *SSRv*, 72, 49
- Gloeckler, G., Cain, J., & Ipavich, F. M. 1998, *SSRv*, 86, 497
- Grappin, R., Velli, M., & Mangeney, A. 1991, *AnGeo*, 9, 416
- Hamilton, K., Smith, C. W., Vasquez, B. J., & Leamon, R. J. 2008, *JGRA*, 113, A01106
- He, J., Pei, Z., Wang, L. et al. 2015, *ApJ*, 805, 176
- Hellinger, P., Trávníček, P., Kasper, J. C. & et al. 2006, *GeoRL*, 33, L09101, doi:10.1029/2006GL025925
- Hellinger, P., Matteini, L., Štverák, S. et al. 2011, *JGRA*, 116, 9105
- Hellinger, P., Trávníček, P., Štverák, S. et al. 2013, *JGRA*, 118, 1351
- Hellinger, P. & Trávníček, P. 2014, *ApJ*, 784, L15
- Horbury, T. S., Forman, M., & Oughton, S. 2008, *PRL*, 101, 175005
- Kasper, J. C., Lazarus, A. J. & Gary, S. P. 2002, *GeoRL*, 29, 1839
- Kasper, J. C., Lazarus, A. J. & Gary, S. P. 2008, *PhRvL*, 101, 261103
- Ko, Y.-K., Roberts, D. A., & Lepri, S.T. 2018, *ApJ*, 864, 139
- Leamon, R. J., Matthaeus, W. H., Smith, C. W., & Wong, H. K. 1998, *ApJ*, 507, L181
- Leamon, R. J., Smith, C. W., Ness, N. F., Matthaeus, W. H., & Wong, H. K. 1998b, *JGRA*, 103, 4775
- Lepping, R. P., Acuña, M. H., Burlaga, L. F., et al. 1995, *SSRv*, 71, 207
- Lin, R. P., Anderson, K. A., Ashford, S., et al. 1995, *SSRv*, 71, 125
- Markovskii, S. A., Vasquez, B. J., & Smith, C. W. 2008, *ApJ*, 675, 1576
- Marsch, E., Rosenbauer, H., Schwenn, R., et al. 1981, *JGR*, 86, 9199
- Marsch, E., Rosenbauer, H., Schwenn, R., et al. 1982a, *JGRA*, 87, 35
- Marsch, E., Schwenn, R., Rosenbauer, H., et al. 1982b, *JGRA*, 87, 52
- Marsch, E., & Tu, C.-Y. 1990, *JGR*, 95, 8211
- Marsch, E., Ao, X.-Z. & Tu, C.-Y. 2004, *JGRA*, 109, A04102, doi:10.1029/2003JA010330
- Marsch, E. 2006, *LRSP*, 3, 1
- Marsch, E. 2012, *SSRv*, 172, 23
- Marsch, E. & Tu, C.-Y., 1993, *JGR*, 98, 21045
- Maruca, B. A., Kasper, J. C., & Gary, S. P. 2012, *ApJ*, 748, 137
- Matteini, L., Landi, S. Hellinger, P., et al. 2007, *GeoRL*, 34, L20105, doi:10.1029/2007GL030920
- Matteini, L., Hellinger, P., Goldstein, B. E., et al. 2013, *JGRA*, 118, 2771
- Matteini, L., Horbury, T. S., Neugebauer, M. & Goldstein, B. E. 2014, *GeoRL*, 41, 259
- Matteini, L. and Horbury, T. S. and Pantellini, F. et al. 2015, *ApJ*, 802, 11
- Matteini, L., Stansby, D., Horbury, T.S. and Chen, C.H.K. 2018, *ApJ*, submitted
- Matthaeus, W. H., & Goldstein, M. L. 1982, *JGRA*, 87, 6011
- Matthaeus, W. H., & Goldstein, M. L. 1986, *PhRvL*, 57, 495
- Matthaeus, W. H., Dasso, S., Weygand, J. M., et al. 2005, *PhRvL*, 95, 1101
- Neugebauer, M., Goldstein, B. E., Smith, E. J., Feldman, W. C. 1996, *JGRA*, 101, 17047
- Noci, G., Kohl, J. L., Antonucci, E. et al. 1997, *ESA SP-404*, 75

- Ofman, L. 2000, *GeoRL*, 27, 2885
- Platten, S. J., Parnell, C. E., Haynes, A. L., et al. 2014, *A&A*, 565, A44
- Roberts, D. A., Klein, L. W., Goldstein, M. L., & Matthaeus, W. H. 1987, *JGRA*, 92, 11021
- Roberts, D. A., Goldstein, M.L., Klein, L.W. & Matthaeus, W.H. 1987, *JGR*, 92, 12023
- Roberts, O. W., & Li, X. 2015, *ApJ*, 802, 1
- Sahraoui, F., Goldstein, M. L., Belmont, G., et al. 2010, *PhRvL*, 105, 131101
- Schwenn, R. 1990, "Large-scale structure of the interplanetary medium" in *Physics of the Inner Heliosphere Vol I: Large scale phenomena*, Eds Schwenn R., Marsch E., vol. 20 of *Physics and Chemistry in Space*, Springer, Berlin; New York
- Smith, E. J., Tsurutani, B.T., & Rosenberg, R. L. 1978, *JGR*, 83, 717
- Smith, C. W., Hamilton, K., Vasquez, B. J., & Leamon, R. J. 2006, *ApJL*, 645, L85
- Stakhiv, M., Landi, E., Lepri, S.T., et al. 2015, *ApJ*, 801, 100
- Stansby, D., Horbury, T.S., Matteini, L., *MNRAS*, accepted
- Štverák, Š., Trávníček, P., Maksimovic, M., et al. 2008, *JGRA*, 113, A03103
- Telloni, D., Bruno, R., & Trenchi, L. 2015, *ApJ*, 805, 46
- Tsurutani, B. T., Galvan, C., Arballo, J. K. et al. 2002, *GRL*, 29, 11, 1528, doi:10.1029GL013623
- Tsurutani, B. T., dasgupta, B., Galvan, C. et al. 2002, *GRL*, 29, 24, 2233, doi:10.1029/2002GL015652
- Tsurutani, B. T., Lakhina, G. S., Verkhoglyadova, O. P. et al. 2011, *JGRA* 116, A02103, doi:10.1029/2010JA015913
- Tsurutani, B. T., Echer E. & Gonzalez W. D. 2011, *AnnGeo*, 29, 839
- Tsurutani, B. T., Lakhina, G. S., Sen, A., et al. 2018, *JGR*, 123, 2458, doi.org/10.1002/2017JA024203
- Tu, C.-Y., & Marsch, E. 1992, in *Proc. 3rd COSPAR Colloq., Solar Wind Seven*, ed. E. Marsch & R. Schween (Oxford: Pergamon Press), 549
- Tu, C.-Y. & Marsch, E. 1994, *JGR*, 99, 21481
- Tu, C.-Y., & Marsch, E. 1995, *SSRv*, 73, 1
- Turner, J. M., Burlaga, L. F., Ness, N. F., Lemaire, J. F. 1977, *JGRA*, 82, 1921
- Verdini, A., Grappin, R., Pinto, R., & Velli, M. 2012, *ApJ*, 750, L33
- von Steiger, R., J. Geiss, & G. Gloeckler 1997, in *Cosmic Winds and the Heliosphere*, edited by J. R. Jokipii, C. P. Sonett, and M. S. Giampapa, pp. 581-616, Univ. of Ariz. Press, Tucson
- von Steiger, R., Schwadron, N. A., Fisk, L. A., et al. 2000, *JGRA*, 105, 27217
- von Steiger, R. 2008, in *The Heliosphere Through the Solar Activity Cycle*, edited by A. Balogh, L. J. Lanzerotti, and S. T. Suess, chap. 3, pp. 41-78, doi:10.1007/978-3-540-74302-63, Springer Praxis, Chichester, U. K.
- Wang, Y.-M. 1994, *ApJL*, 437, L67
- Wang, Y.-M., Sheeley, N. R., Jr., Phillips, J. L. & Goldstein, B. E. 1997, *ApJL*, 488, L51
- Wang, Y.-M., & Sheeley, N. R. 1990, *ApJ*, 365, 372
- Wang, X., Tu, C., He, J., & Wang, L. 2018, *ApJ*, 857, 136
- Winterhalter, D., Neugebauer, M., Goldstein, B. E. 1995, *SSR*, 72, 201
- Woodham, L. D., Wicks, R. T., Verscharen, D., & Owen, C. J. 2018, *ApJ*, 856, 49
- Xu, F., & Borovsky, J. E. 2015, *JGR*, 120, 70, doi:10.1002/2014JA020412
- Yao, S., He, J.-S., Marsch, E. et al, 2011, *ApJ*, 728, 146
- Zhao, L., Zurbuchen, T.H. & Fisk, L.A. 2009, *GRL*, 36, L14104
- Zurbuchen, T. H., Hefti, S., Fisk, L. A., et al. 1999, *SSRv*, 87, 353
- Zurbuchen, T. H., Hefti, S., Fisk, L. A., et al. 2000, *JGRA*, 105, 18327

This paper has been typeset from a $\text{\TeX}/\text{\LaTeX}$ file prepared by the author.