



Publication Year	2018
Acceptance in OA	2020-11-09T16:23:12Z
Title	VLT observations of the magnetar CXO J164710.2-455216 and the detection of a candidate infrared counterpart
Authors	TESTA, Vincenzo, MIGNANI, Roberto, Hummel, W., Rea, N., ISRAEL, Gian Luca
Publisher's version (DOI)	10.1093/mnras/stx2574
Handle	http://hdl.handle.net/20.500.12386/28243
Journal	MONTHLY NOTICES OF THE ROYAL ASTRONOMICAL SOCIETY
Volume	473

VLT observations of the magnetar CXO J164710.2–455216 and the detection of a candidate infrared counterpart^{*}

V. Testa^{1,†}, R. P. Mignani^{2,3}, W. Hummel⁴, N. Rea^{5,6}, G. L. Israel¹

¹ INAF - Osservatorio Astronomico di Roma, via Frascati 33, 00078, Monte Porzio Catone, Italy

² INAF - Istituto di Astrofisica Spaziale e Fisica Cosmica Milano, via E. Bassini 15, 20133, Milano, Italy

³ Janusz Gil Institute of Astronomy, University of Zielona Góra, Lubuska 2, 65-265, Zielona Góra, Poland

⁴ European Southern Observatory, Karl Schwarzschild-Str. 2, D-85748, Garching, Germany

⁵ Institute of Space Sciences (IEEC–CSIC), Carrer de Can Magrans s/n, E-08193 Barcelona, Spain

⁶ Anton Pannekoek Institute for Astronomy, University of Amsterdam, Postbus 94249, NL-1090-GE Amsterdam, The Netherlands

Accepted 2017 September 29. Received 2017 September 29; in original form 2017 August 4

ABSTRACT

We present deep observations of the field of the magnetar CXO J164710.2–455216 in the star cluster Westerlund 1, obtained in the near-infrared with the adaptive optics camera NACO@VLT. We detected a possible candidate counterpart at the *Chandra* position of the magnetar, of magnitudes $J = 23.5 \pm 0.2$, $H = 21.0 \pm 0.1$, and $K_S = 20.4 \pm 0.1$. The K_S -band measurements available for two epochs (2006 and 2013) do not show significant signs of variability but only a marginal indication that the flux varied (at the 2σ level), consistent with the fact that the observations were taken when CXO J164710.2–455216 was in quiescence. At the same time, we also present colour–magnitude and colour–colour diagrams in the J, H, and K_S bands from the 2006 epoch only, the only one with observations in all three bands, showing that the candidate counterpart lies in the main bulk of objects describing a relatively well–defined sequence. Therefore, based on its colours and lack of variability, we cannot yet associate the candidate counterpart to CXO J164710.2–455216. Future near-infrared observations of the field, following-up a source outburst, would be crucial to confirm the association from the detection of near-infrared variability and colour evolution.

Key words: stars: neutron – pulsars: individual:

1 INTRODUCTION

The *Chandra* X-ray source CXO J164710.2–455216 was discovered in the massive star cluster Westerlund 1 (Muno et al. 2006) as a bright X-ray source, modulated at a period of 10.6 s identified as the spin period P_s of an isolated neutron star (INS), as suggested by the lack of a bright infrared counterpart. The period value is typical of that of a peculiar class of INSs, the magnetars, of which about 30 are known to date, as listed in the Mc Gill Magnetar Catalogue (Olausen & Kaspi 2014)¹. Magnetars are thought to be INSs with enormous magnetic fields in excess of 10^{14} G, hence the name, which are powered by magnetic energy instead of the star rotation (see Kaspi & Beloborodov 2017, for a recent review). The blackbody (BB) X-ray spectrum ($kT = 0.61$ keV) of CXO J164710.2–455216, the size of the emitting radius ($r_{\text{BB}} \sim 0.3$ km), the X-ray luminosity ($L_X \sim 3 \times 10^{33}$ erg s^{−1}), in excess of the

pulsar rotational energy loss $\dot{E} \sim 3 \times 10^{31}$ erg s^{−1}, as inferred from the period derivative \dot{P}_s (Israel et al. 2007; Rodriguez Castillo et al. 2014), the inferred dipolar magnetic field of $\sim 10^{14}$ G, are also typical of magnetars. The detection of a bright X-ray outburst (Krimm et al. 2006) is also in line with the classical magnetar behaviour. The outburst decay has been followed through the years with all X-ray observing facilities (Israel et al. 2007; Naik et al. 2008; Woods et al. 2011; An et al. 2013) and is consistent with trends observed in other magnetars. The association of CXO J164710.2–455216 with Westerlund 1 has suggested that the magnetar progenitor was an extremely massive star of mass $\gtrsim 50M_\odot$ (Muno et al. 2006; Belczynski & Taam 2008), more massive than expected according to INS formation theories that predict progenitors of mass $\approx 10M_\odot$. It has also been suggested that CXO J164710.2–455216 possibly formed in a binary system, now disrupted after the progenitor star went supernova, with the star Wd1-5 being the pre-supernova companion (Clark et al. 2014).

Very little is known about the optical and infrared (IR) emission properties of magnetars and the underlying emission mechanisms (e.g., Mignani 2011; Mereghetti 2011). Indeed, magnetars are elusive targets in the optical/IR, owing to their usually

^{*} Based on observations collected at the European Organisation for Astronomical Research in the Southern Hemisphere under ESO programme 091.D-0071(B).

[†] E-mail: vincenzo.testa@oa-roma.inaf.it

¹ <http://www.physics.mcgill.ca/~pulsar/magnetar/main.html>

large distances and interstellar extinction, and only nine of them have been identified in the optical and/or near-IR out of the 30 currently known (Olausen & Kaspi 2014) with a flux measurement in at least one filter. Their magnetar IR emission is probably non-thermal in origin with an higher emission efficiency with respect to rotation-powered pulsars, possibly related to their much higher magnetic fields (Mignani et al. 2007). Emission from a debris disc might explain the magnetar emission in the mid-IR (Wang et al. 2006a). No optical/IR counterpart has been detected for CXO J164710.2–455216 from observations carried out soon after the magnetar discovery (Muno et al. 2006; Wang et al. 2006b). No other IR observations of this magnetar have been reported ever since.

Here, we present the results of near-IR observations of the magnetar carried out in two different epochs with the Very Large Telescope (VLT). This manuscript is structured as follows: observations and data analysis are presented in Sectn. 2, whereas the results are presented in Sectn. 3 and 4, respectively.

2 OBSERVATIONS, REDUCTIONS AND CALIBRATIONS

The data-set consists of two-epoch observations of the field of CXO J164710.2–455216 obtained with the VLT@ the ESO–Paranal Observatory (Chile), equipped with the NAOS–CONICA Adaptive Optics (AO) camera (NACO; Lenzen et al. 2003; Rousset et al. 2003). In both epochs, the NACO S27 camera was used, with a field-of-view of $27'' \times 27''$ and a scale of $0''.027/\text{pixel}$. We retrieved the first epoch data from the public ESO archive², while the second epoch data were obtained via a dedicated proposal submitted by our group (Programme ID: 091.D-0071(B), PI Mignani). For the first epoch – June 26 and 27, 2006, images were taken in the three wide bandpass J, H, K_S filters, while in the second epoch – August 16, 2013, only the K_S filter was used. Images were taken using the Double-Related read-out mode with several single dithered frames (DIT) repeated n-times (NDIT) and stacked together along each node of the dithering pattern. The choice of DIT and NDIT depends on the used filter and the epoch. In particular, DIT is usually shorter in the long wavelength filters because of the higher background level. For the first epoch data-set a total of 2520, 2070 and 1870 s of integration time was obtained for the J, H, and K_S filters, respectively, while for the second epoch one a total of 7425 s of integration time in the K_S was secured. For each epoch, and each filter, single images were pre-reduced (flat fielding, sky subtraction, exposure map correction) and co-added through the NACO pipeline obtaining a master image. The full width half maximum (FWHM) of a point source computed on each master image is $0''.123$, $0''.106$ and $0''.110$ for the J, H and K_S filters of the first epoch, and $0''.116$ for the K_S of the second epoch.

Object photometry was performed by means of the widely-used package DAOPHOT-II (Stetson 1994) that we used to obtain multi-band catalogues of all objects found in the NACO images down to a detection limit of $\sim 5\sigma$ over the background. We calibrated our object catalogues via comparison with the 2MASS Point Source Catalogue (Skrutskie et al. 2006), that was also used to compute the astrometric solution for the NACO images. This last process presented some difficulties because it may happen that a single 2MASS star is actually resolved in a multiple object on

the almost diffraction-limited NACO images, so that the astrometric calibration has to be performed carefully to prevent systematics. Moreover, in a field-of-view as small as that of NACO, only very few 2MASS stars are present, and generally affected by strong saturation and/or non-linearity problems. In order to by-pass this problem, we computed the astrometric calibration via a two-step process using an archival K-band image of the field taken with the Son Of Isaac (SOFI) infrared Camera at the ESO New Technology Telescope (NTT). As a first step we calibrated the astrometry of the SOFI image, of area $\approx 4' \times 4'$, by using the 2MASS and UCAC4 (Zacharias et al. 2013) catalogs. Then, we used a catalog of secondary stars detected on the SOFI image, fainter than the 2MASS stars and with many more matches on the NACO images, to derive their final astrometric solution. In this way, we obtained an astrometric solution with an overall uncertainty of about 87 mas, coming from the error propagation on the differences in position in the sense (found-reference) to which the high-end of the overall precision figure of the 2MASS survey (80 mas^3) has been added in quadrature. Analogously, photometric calibration via 2MASS shows the same potential problem, and in case a 2MASS star is resolved in a multiple object, a correct calibration is obtained by summing up the fluxes of all the stars that appear as a single blended object in the 2MASS catalogue. In order to circumvent this problem, and considering also that the bright 2MASS stars are in general non-linear in the NACO images, we adopted the two-step calibration via SOFI images also for the photometric calibration. At the end of the process, the obtained zero points have an uncertainty of ~ 0.1 magnitudes in all three filters and two epochs.

Since we are interested in detecting a possible variability of the candidate counterpart(s) to CXO J164710.2–455216, which is traditionally considered a marker of the identification of a magnetar counterpart, e.g., Tam et al. 2004, particular attention has been devoted to relative calibration of one data-set against the other in the only filter for which we had two-epochs data, the K_S one. In this way, glitches and systematics possibly affecting the absolute photometric calibration process are strongly reduced. We remind, however, that the lack of infrared variability, correlated or not with variations in the X-ray flux (see, e.g., Durant & van Kerkwijk 2006), does not necessarily argue against a potential counterpart identification. For instance, in the case of the infrared counterpart to the magnetar XTE J1810–197 variations of the infrared flux do not follow the same trend observed in the X-ray (Testa et al. 2008).

3 NEAR-INFRARED CANDIDATE COUNTERPART

Figure 1 shows a $\sim 3'' \times 3''$ map of an area centred on the nominal coordinates of CXO J164710.2–455216. The different depth due to the much longer exposure time of the second-epoch image can be appreciated by eye. In both maps, circles are drawn at the nominal CXO J164710.2–455216 position, with radius corresponding to the 90% positional uncertainty of the X-ray source. This has been calculated by adding in quadrature the uncertainty on the primary astrometric calibrators (2MASS, 80mas - we adopt the higher end of the range given for the catalog), the internal r.m.s. of the astrometric fit, which is considerably smaller ($0.4 \text{ pixels} = 0''.011$ or 11 mas), and the uncertainty on the CXO J164710.2–455216 position. We computed the coordinates of CXO J164710.2–455216 from the available *Chandra* observations of the field. In particular,

² www.eso.org/archive

³ www.ipac.caltech.edu/2mass/releases/allsky/doc/sec2_2.html

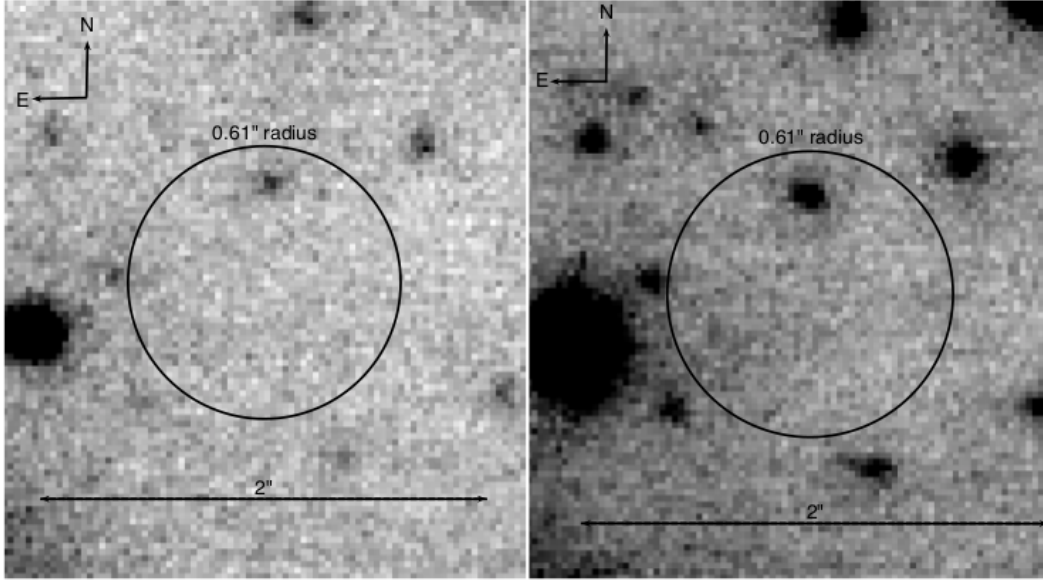


Figure 1. Zoom of the CXO J164710.2–455216 field around its *Chandra* position taken in the K_s -band at two different epochs. Left: June 2006, right: August 2013. The circle is drawn at the *Chandra* position of CXO J164710.2–455216 and has radius equal to the overall 90% confidence level position uncertainty ($0''.61$).

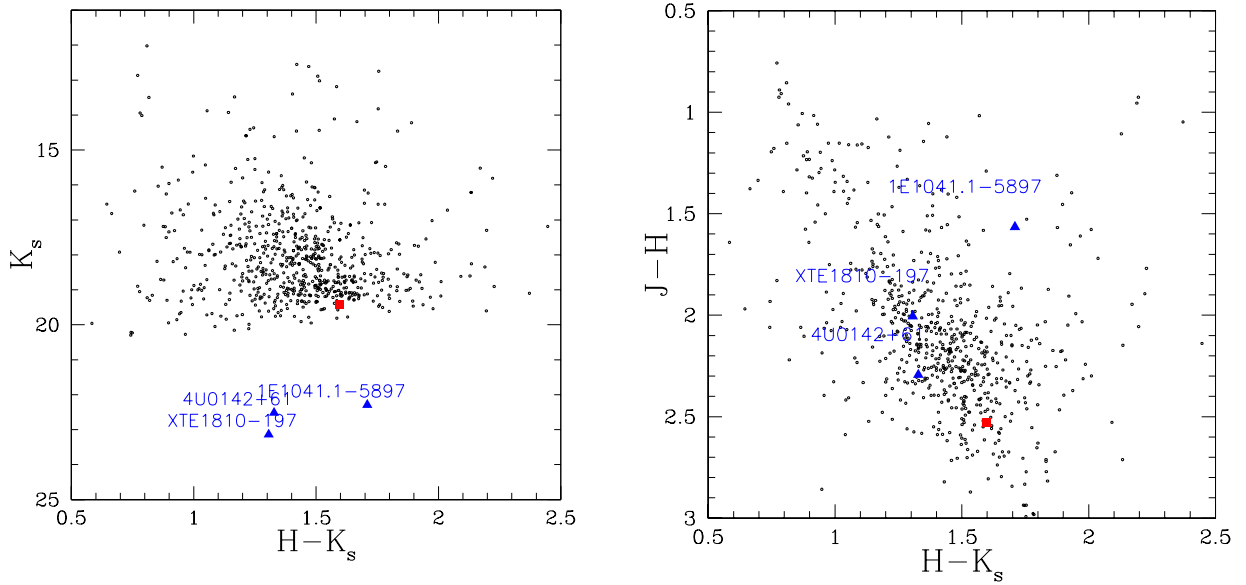


Figure 2. Colour-magnitude (left) and colour-colour (right) diagrams for all sources in the CXO J164710.2–455216 NACO field-of-view. The candidate counterpart is marked with a red square dot. The blue triangles correspond to magnetars with magnitudes in all the three near-IR filters, plotted as a reference. Their observed fluxes have been scaled according to the nominal reddening and distance values. All values are from the Mc Gill Magnetar Catalogue and refs. therein.

we used three ACIS-S observations (Obs Id.: 5411, 6283, 14360) taken in imaging mode where the pulsar has always been observed on axis and located on the back-illuminated chip S3, which is optimised for source positioning. We derived average coordinates of $\alpha = 16^{\text{h}}47^{\text{m}}10^{\text{s}}.21$; $\delta = -45^{\circ}52'17''.06$, where the statistical error on the position is negligible with respect to the systematic uncertainty on the absolute *Chandra* astrometry, which is $0''.6$ at the 90% confidence level⁴. An attempt was made to improve the accuracy of the *Chandra* astrometry and to reduce the uncertainty on the position of our target by using other sources detected in the ACIS-S chip 3 field of view. We found several X-ray sources in the *Chandra* images of CXO J164710.2–455216. However, the aim point of these images is the core of the Westerlund 1 cluster, where the high density of objects makes it extremely difficult to associate an X-ray source with a high-confidence candidate counterpart, even at the *Chandra* spatial resolution. Indeed, all our attempts resulted in a large scatter around the best-fit match between the X-ray coordinates and the optical/infrared ones, comparable to (or larger than) the nominal 90% *Chandra* absolute astrometry accuracy. Therefore, a conservative approach was adopted and the above value was used. We note that the overall uncertainty of our astrometry is much larger than any reasonable figure of the positional uncertainty due to an unknown proper motion of the source. For instance, assuming an average neutron star velocity of 400 km s^{-1} (Hobbs et al. 2005) and a distance of 5 kpc would give a figure of $0''.016 \text{ yr}^{-1}$.

As can be seen from the map(s) in Figure 1, one object clearly falls within the error circle. There are other faint fluctuations visible within the error circle, but those have marginal significance, around or below 1σ and are undetected by the source detection algorithm of DAOPHOT, even when pushed to very faint detection limits, and we regard them as background fluctuations, although they might deserve further attention should any deeper observation ever be carried out in the future. As far as our results show, we assume the object in the error circle as the candidate IR counterpart of CXO J164710.2–455216. Its magnitudes are $K_S = 20.4 \pm 0.1$ and $K_S = 20.0 \pm 0.1$ in the 2013 and 2006 images, respectively. For the J and H filters, available as we said for the first epoch only, we find: $J = 23.5 \pm 0.2$ and $H = 21.0 \pm 0.1$. No other object has been detected down to 3σ magnitude limits of 23.6, 22.3, 21.1 in J, H, K_S , respectively (first epoch), whereas the K_S -band limit for the second epoch is deeper, namely $K_S = 21.9$.

Given the large number of stars in the crowded Westerlund 1 field the chance coincidence probability to find an object within a radius of $0''.61$ is quite high. The probability $P = 1 - \exp(-\pi\rho r^2) \sim 90\%$, where $r = 0''.61$ and $\rho \sim 2 \text{ arcsec}^{-2}$ is the number density of objects in the NACO field-of-view measured in the K_S -band image. However, we cannot rule out a priori that this object is, indeed, associated with CXO J164710.2–455216.

Our candidate might be one of the "two very faint objects" found near the X-ray source position in observations obtained on May 17, 2006 with PANIC (Persson's Auxilliary Nasmyth Infrared Camera) at the 6.5 m Magellan-Baade telescope (Las Campanas) by Wang et al. (2006b), when the source was in quiescence. These "two very faint objects" were not detected in PANIC follow-up observations of the CXO J164710.2–455216 X-ray outburst (Krimm et al. 2006) taken on September 29, 2006 (Wang et al. 2006b). This suggested that neither of them could have been the magnetar counterpart, for which a brightening of ~ 4.6 magnitudes would have been expected if the infrared flux of the magnetar scales exactly

as the X-ray flux (e.g. Tam et al. 2004). In this case, the ratio between the observed X-ray flux in outburst and in quiescence (Muno et al. 2006) would translate into the expected variation of 4.6 magnitudes in the infrared flux (Wang et al. 2006b). However, Wang et al. (2006b) did provide neither a finding chart nor a reference magnitude, so that we cannot tell if our candidate counterpart is one of their "two very faint objects" and any comparison with their results would be, at this point, just speculative. Our limits are slightly fainter than those obtained by Wang et al. (2006b, $K_S \sim 21$) for the 2006 data and one magnitude fainter for the 2013 ones. Figure 2 shows the colour–magnitude (CMD) and colour–colour (CCD) diagrams of the catalog of objects in common between the two epochs. The position of the CXO J164710.2–455216 candidate counterpart is highlighted with a larger, red square dot. The candidate has magnitudes and colours of the bulk of stars redder than the main sequence that might belong to the field population (see Kudryavtseva et al., 2012 for an analysis of the cluster population), despite what would be expected if it was the actual counterpart of CXO J164710.2–455216. For comparison, Figure 2 also shows the observed colours for a sample of magnetars with detections in the J, H, and K_S bands, where the flux values have been taken from the Mc Gill Magnetar catalogue. As seen, at variance with the CXO J164710.2–455216 candidate counterpart, the colours of the magnetars counterparts are quite bluer than those of a field stellar population, not to mention the fact that the magnitudes of known magnetars, scaled to the distance and reddening of Westerlund 1 are fainter than our candidate. However, very little is still known on the magnetars's near-IR spectra and on their evolution with the source state, which means that assuming magnetar colours derived from flux measurements that might have been obtained at different epochs as a template has to be done with due caution. Indeed, our first-epoch NACO observations were taken within one day from each other and when the source was in quiescence (see below). Moreover, magnetars' luminosities in the near-IR can differ by three orders of magnitude (e.g., Mignani et al. 2007), so that none of them can be assumed as a 'standard candle'.

It is interesting to note that both NACO observations were carried out while the source was in quiescence, since the first epoch (June 2006) falls before the outburst detected in September 2006 (Krimm et al. 2006), and the second epoch one (August 2013) falls after another less intense burst that has been registered in November 2011. No other outbursts have been registered ever since (see Rodriguez Castillo et al. 2014, and refs. therein for details), till the very recent one occurred on May 16, 2017 (D'Ai et al. 2017). Figure 3 shows a comparison plot of the 2013 vs 2006 K_S -band magnitudes for a number of objects in a restricted area around the position of CXO J164710.2–455216, aimed at studying the variability of its candidate counterpart. The plot shows signs of variation of the candidate counterpart, but they are well within the uncertainties at about a 2σ level, consistent with the hypothesis that the source did not vary its IR flux from the first to the second of the two epochs. This is not surprising if one takes into account the quiescence of the magnetar at both epochs. If the object that we detected in the *Chandra* error circle of CXO J164710.2–455216 was its actual counterpart it would have a K_S -band luminosity of $\sim 1.12 \times 10^{31} \text{ erg s}^{-1}$, at the Westerlund 1 distance of 5 kpc and assuming the K_S -band interstellar extinction from the Mc Gill Magnetars' catalogue ($A_K = 1.4$). This luminosity would be about 37% of the pulsar rotational energy loss, a quite high fraction but still comparable to those of other magnetars and in line with the CXO J164710.2–455216 magnetic field of 10^{14} G (Mignani et al. 2007). The observed K_S -band-to-X-ray flux ratio would be $\sim 6.1 \times 10^{-3}$,

⁴ <http://cxc.harvard.edu/ciao/ahelp/coords.html>

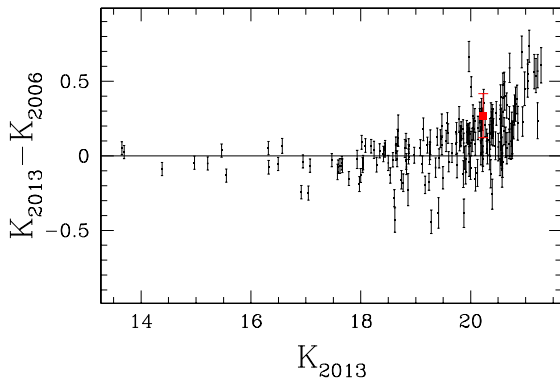


Figure 3. Difference between the K_S -band magnitudes of the CXO J164710.2–455216 candidate counterpart as measured in the first (June 2006) and second (August 2013) epochs of the NACO observations. The red point corresponds to the candidate counterpart, whereas the black dots corresponds to field stars selected in the object vicinity within 300 pixels and with good photometry.

where the X-ray flux in quiescence has been measured in the 1–10 keV energy band, still in the range typical of magnetars (Rea et al. 2010). Therefore, at least according to its expected near-IR luminosity and near-IR/X-ray emission, the source that we detected in the CXO J164710.2–455216 error circle would still be a plausible candidate counterpart.

4 SUMMARY AND CONCLUSIONS

In this study we present an attempt to identify the near-IR counterpart to the magnetar CXO J164710.2–455216 by means of AO observations obtained in two epochs, the first one before the outburst of 2006 (Krimm et al. 2006) and the second one well after the second outburst in 2011. We identify a main candidate within the 90% confidence level error circle around the nominal position of CXO J164710.2–455216. About the candidate, it shows no obvious variability between the two epochs, but this is an expected result since the X-ray source was in a quiescent state at both epochs. Moreover, the candidate has the characteristics of a main sequence star showing no particular colours, which would be expected for a magnetar. Monitoring the evolution of the source brightness in the near-IR, following outburst activities in the X-ray, would be crucial to determine whether this source is the actual counterpart to CXO J164710.2–455216. Nevertheless, new deeper observations with AO-equipped large telescopes, e.g. the forthcoming ELTs, are needed to confirm if the candidate is really the magnetar counterpart and, in case of success, determine its nature.

ACKNOWLEDGEMENTS

We thank the anonymous referee for his/her considerate and constructive review of our manuscript. RPM acknowledges financial support from an “Occhialini Fellowship”.

REFERENCES

- An H., Kaspi V. M., Archibald R., Cumming A., 2013, *ApJ*, 763, 82
 Belczynski K., Taam R. E., 2008, *ApJ*, 685, 400
 Clark J. S., Ritchie B. W., Najjaro F., Langer N., Negueruela I., 2014, *A&A*, 565, 90
 D’Ai, A., Evans, P. A., Krimm, H. A., Kuin, N. P. M., Lien, A. Y., Page, K. L., 2017, *GCN*, 21095
 Durant M., van Kerkwijk M., 2006, *ApJ*, 652, 576
 Hobbs G., Lorimer D. R., Lyne A. G., Kramer M., 2005, *MNRAS*, 360, 974
 Israel G. L., Campana S., Dall’Osso S., Muno M. P., Cummings J., Perna R., Stella, L., 2007, *ApJ*, 664, 448
 Kaspi V. M., Beloborodov A., Annual Review of Astronomy and Astrophysics, in press, arXiv:1703.00068
 Krimm H., Barthelmy S., Campana S., Cummings J., Israel G., Palmer D., Parsons A., 2006, *GCN*, 5581
 Kudryavtseva N., Brandner W., Gennaro M., Rochau B., Stolte A., Andersen M., Da Rio N., Henning T., TOgnelli E., Hogg D., Clark S., Waters R., 2012, *ApJL*, 750, L44
 Lenzen R. et al., 2003, *SPIE*, 4841, 944
 Mereghetti S., 2011, *ASpR*, 47, 1317
 Mignani R. P., Perna R., Rea N., Israel G. L., Mereghetti S., Lo Curto G., 2007, *A&A*, 471, 265
 Mignani R. P., 2011, *ASpR*, 47, 1281
 Muno, M. P., et al., 2006, *ApJ*, 636, L41
 Naik S., et al., 2008, *PASJ*, 60, 237
 Olausen S. A., Kaspi V. M., 2014, *ApJS*, 212, 60
 Rodriguez Castillo G. A., et al., 2014, *MNRAS*, 441, 1305
 Rea N., et al., 2010, *MNRAS*, 407, 1887
 Rousset G. et al., 2003, *SPIE*, 4839, 140
 Skrutskie M. F., Cutri R. M., Stiening R., et al. 2006, *AJ*, 131, 1163
 Stetson P.B., 1994, *PASP*, 106, 250
 Tam C. R., Kaspi V. M., van Kerkwijk M. H., Durant M., 2004, *ApJ*, 617, L53
 Testa V., et al., 2008, *A&A* 482, 607
 Woods P. M., Kaspi, V. M., Gavriil F. P., Airhart C., 2011, *ApJ*, 726, 37
 Wang Z., Chakrabarty D., Kaplan D. L., 2006a, *Nature*, 440, 772
 Wang Z., Kaspi V. M., Osip D., Morrel N., Kaplan D. L., Chakrabarty D., 2006b, *ATel*, 910
 Zacharias N., Finch C. T., Girard T. M., Henden A., Bartlett J. L., Monet D. G., Zacharias M. I., 2013, *AJ*, 145, 44