



Publication Year	2018
Acceptance in OA	2020-10-09T13:25:16Z
Title	The NuSTAR Extragalactic Surveys: Source Catalog and the Compton-thick Fraction in the UDS Field
Authors	Masini, A., Civano, F., COMASTRI, Andrea, Fornasini, F., Ballantyne, D. R., Lansbury, G. B., Treister, E., Alexander, D. M., Boorman, P. G., Brandt, W. N., Farrah, D., Gandhi, P., Harrison, F. A., Hickox, R. C., Kocevski, D. D., Lanz, L., MARCHESI, STEFANO, Puccetti, S., Ricci, C., Saez, C., Stern, D., Zappacosta, L.
Publisher's version (DOI)	10.3847/1538-4365/aaa83d
Handle	http://hdl.handle.net/20.500.12386/27687
Journal	THE ASTROPHYSICAL JOURNAL
Volume	235



The *NuSTAR* Extragalactic Surveys: Source Catalog and the Compton-thick Fraction in the UDS Field

A. Masini^{1,2,3}, F. Civano^{3,4}, A. Comastri¹, F. Fornasini³, D. R. Ballantyne⁵, G. B. Lansbury⁶, E. Treister⁷,
D. M. Alexander⁸, P. G. Boorman⁹, W. N. Brandt^{10,11,12}, D. Farrah¹³, P. Gandhi⁹, F. A. Harrison¹⁴,
R. C. Hickox¹⁵, D. D. Kocevski¹⁶, L. Lanz¹⁵, S. Marchesi¹⁷, S. Puccetti¹⁸, C. Ricci^{7,19,20}, C. Saez²¹, D. Stern²², and
L. Zappacosta²³

¹ INAF-Osservatorio Astronomico di Bologna, via Gobetti 93/3, I-40129 Bologna, Italy

² Dipartimento di Fisica e Astronomia (DIFA), Università di Bologna, via Gobetti 93/2, I-40129 Bologna, Italy

³ Harvard-Smithsonian Center for Astrophysics, 60 Garden Street, Cambridge, MA 02138, USA

⁴ Yale Center for Astronomy and Astrophysics, 260 Whitney Avenue, New Haven, CT 06520, USA

⁵ Center for Relativistic Astrophysics, School of Physics, Georgia Institute of Technology, 837 State Street, Atlanta, GA 30332-0430, USA

⁶ Institute of Astronomy, University of Cambridge, Madingley Road, Cambridge, CB3 0HA, UK

⁷ Instituto de Astrofísica, Facultad de Física, Pontificia Universidad Católica de Chile, Casilla 306, Santiago 22, Chile

⁸ Centre for Extragalactic Astronomy, Department of Physics, Durham University, South Road, Durham, DH1 3LE, UK

⁹ Department of Physics & Astronomy, Faculty of Physical Sciences and Engineering, University of Southampton, Southampton, SO17 1BJ, UK

¹⁰ Department of Astronomy and Astrophysics, 525 Davey Lab, The Pennsylvania State University, University Park, PA 16802, USA

¹¹ Institute for Gravitation and the Cosmos, The Pennsylvania State University, University Park, PA 16802, USA

¹² Department of Physics, 104 Davey Laboratory, The Pennsylvania State University, University Park, PA 16802, USA

¹³ Department of Physics, Virginia Tech, Blacksburg, VA 24061, USA

¹⁴ Cahill Center for Astrophysics, 1216 East California Boulevard, California Institute of Technology, Pasadena, CA 91125, USA

¹⁵ Department of Physics and Astronomy, Dartmouth College, 6127 Wilder Laboratory, Hanover, NH 03755, USA

¹⁶ Department of Physics and Astronomy, Colby College, Waterville, ME 04961, USA

¹⁷ Department of Physics & Astronomy, Clemson University, Clemson, SC 29634, USA

¹⁸ Agenzia Spaziale Italiana-Unità di Ricerca Scientifica, Via del Politecnico, I-00133 Roma, Italy

¹⁹ EMBIGGEN Anillo, Concepcion, Chile

²⁰ Kavli Institute for Astronomy and Astrophysics, Peking University, Beijing 100871, People's Republic of China

²¹ Observatorio Astronómico Cerro Calán, Departamento de Astronomía, Universidad de Chile, Casilla 36-D, Santiago, Chile

²² Jet Propulsion Laboratory, California Institute of Technology, 4800 Oak Grove Drive, Mail Stop 169-221, Pasadena, CA 91109, USA

²³ INAF-Osservatorio Astronomico di Roma, via Frascati 33, I-00078 Monte Porzio Catone (RM), Italy

Received 2017 September 13; revised 2018 January 4; accepted 2018 January 4; published 2018 March 8

Abstract

We present the results and the source catalog of the *NuSTAR* survey in the UKIDSS Ultra Deep Survey (UDS) field, bridging the gap in depth and area between *NuSTAR*'s ECDFS and COSMOS surveys. The survey covers a ~ 0.6 deg² area of the field for a total observing time of ~ 1.75 Ms, to a half-area depth of ~ 155 ks corrected for vignetting at 3–24 keV, and reaching sensitivity limits at half-area in the full (3–24 keV), soft (3–8 keV), and hard (8–24 keV) bands of 2.2×10^{-14} erg cm⁻² s⁻¹, 1.0×10^{-14} erg cm⁻² s⁻¹, and 2.7×10^{-14} erg cm⁻² s⁻¹, respectively. A total of 67 sources are detected in at least one of the three bands, 56 of which have a robust optical redshift with a median of $\langle z \rangle \sim 1.1$. Through a broadband (0.5–24 keV) spectral analysis of the whole sample combined with the *NuSTAR* hardness ratios, we compute the observed Compton-thick (CT; $N_{\text{H}} > 10^{24}$ cm⁻²) fraction. Taking into account the uncertainties on each N_{H} measurement, the final number of CT sources is 6.8 ± 1.2 . This corresponds to an observed CT fraction of $11.5\% \pm 2.0\%$, providing a robust lower limit to the intrinsic fraction of CT active galactic nuclei and placing constraints on cosmic X-ray background synthesis models.

Key words: galaxies: active – galaxies: evolution – X-rays: general

Supporting material: machine-readable table

1. Introduction

Supermassive black holes accreting matter in the centers of galaxies radiate across the electromagnetic spectrum as active galactic nuclei (AGNs). Due to a combination of their high luminosities at X-ray wavelengths ($L_{\text{X}} \gtrsim 10^{42}$ erg s⁻¹) and low dilution from their host galaxies, AGNs are effectively detected, traced, and studied by X-ray surveys (Brandt & Alexander 2015). Indeed, in the past decades, the advent of *XMM-Newton* and *Chandra* was a breakthrough in AGN research, and dozens of X-ray surveys covered a wide range in the flux–area plane (see Figure 16 of Civano et al. 2016), exploring a large range in redshift and luminosity. These works allowed the luminosity function of AGN to be measured up to $z \sim 5$, for both unobscured ($N_{\text{H}} < 10^{22}$ cm⁻²) and obscured

($N_{\text{H}} > 10^{22}$ cm⁻²) sources (e.g., Ueda et al. 2003; La Franca et al. 2005; Polletta et al. 2006; Vito et al. 2014; Marchesi et al. 2016).

However, these surveys were biased against the detection of AGNs obscured by large columns of gas ($N_{\text{H}} > 10^{24}$ cm⁻²), called Compton-thick (CT) AGNs, mainly in the local universe, up to $z \lesssim 1$. This class of heavily obscured AGNs is difficult to study owing to the heavy suppression of the spectrum (see, e.g., Teng et al. 2015), but it plays a crucial role both in evolutionary models (Sanders et al. 1988; Alexander & Hickox 2012; Ricci et al. 2017) and in population synthesis models aiming to explain the shape and intensity of the cosmic X-ray background (CXB; Gilli et al. 2007), of which AGNs are the major contributors (Comastri et al. 1995). Indeed, the integrated emission of a large population of CT AGNs would produce a bulk reflection

spectrum with a characteristic peak at 20–30 keV in the overall CXB spectrum, consistently reproducing its peak of emission (Madau et al. 1994; Gilli et al. 2001; Treister & Urry 2005).

The fraction of CT AGNs is then a key observable for X-ray surveys, but its determination suffers degeneracies and observational biases. In particular, high observed energies (>10 keV) are required to detect CT AGNs, at least for redshift $z < 1$. Such X-ray surveys with nonfocusing X-ray observatories (e.g., *Swift*/BAT and *INTEGRAL*) have detected a sizable number of CT AGNs (Burlon et al. 2011; Ricci et al. 2015). However, they directly resolved only a small fraction ($\sim 1\%$ – 2%) of the CXB peak into individual AGNs (Krivonos et al. 2007; Ajello et al. 2008; Bottacini et al. 2012), the majority of which lie in the local universe ($z < 0.1$), which may not be representative of the whole population.

NuSTAR is the first focusing hard X-ray telescope in orbit and is composed of two focal plane modules (FPMs), referred to as FPMA and FPMB. With the advent of *NuSTAR* (Harrison et al. 2013), sensitive hard X-ray surveys above 10 keV started to be feasible and allowed pushing the search for CT AGNs beyond the local universe, directly resolving 35% of the CXB in the 8–24 keV band (Harrison et al. 2016).

A wedding-cake strategy for the *NuSTAR* surveys was adopted: a shallow, wide-area survey of the Cosmic Evolution Survey field (COSMOS; Civano et al. 2015, hereafter C15), a deep, pencil-beam survey of the Extended *Chandra* Deep Field–South (ECDFS; Mullaney et al. 2015), and a Serendipitous survey (Alexander et al. 2013; Lansbury et al. 2017b) were the first steps of a comprehensive survey program, which is now complemented by the observations of the Extended Groth Strip (J. Aird et al. 2018, in preparation), *Chandra* Deep Field–North (CDFN; A. Del Moro et al. 2018, in preparation), and Ultra Deep Survey (UDS) fields.

In this paper, we report on the *NuSTAR* survey of the UDS field. This field is the deepest component of the UKIRT Infrared Deep Sky Survey (UKIDSS; Almaini et al. 2007; Lawrence et al. 2007) and has an extensive multiwavelength coverage. In the radio band, there is Very Large Array (VLA) coverage at 1.4 GHz (Simpson et al. 2006). Submillimeter coverage comes from the SCUBA Half-Degree Extragalactic Survey (SHADES) survey of the central region of the UDS field (Coppin et al. 2006). The infrared (IR) band is the most covered, with both ground-based and in-orbit facilities: *Herschel* observed the UDS field as part of the HerMES program (Oliver et al. 2012), while *Spitzer* observed UDS within the SWIRE survey (Lonsdale et al. 2003) and, more recently, within the SpUDS *Spitzer* Legacy Survey (PI: Dunlop). Ground-based IR facilities observed the field, primarily the UKIRT WFCAM (Casali et al. 2007) and VISTA, as part of the VIDEO survey (Jarvis et al. 2013). *Hubble Space Telescope* (*HST*) WFC3 coverage is also available (Galamez et al. 2013), together with deep optical Subaru Suprime-cam imaging data (Furusawa et al. 2008). Coverage in the *U* band is provided by the CFHT Megacam (PIs: Almaini, Foucaud). In the X-ray band, the *NuSTAR* coverage is centered on the coordinates (J2000) R.A. = 34.4 deg and decl. = -5.1 deg, and it overlaps with the Subaru *XMM-Newton* Deep Survey (SXDS; Ueda et al. 2008) and *Chandra* UDS survey (Kocevski et al. 2018) fields. The different X-ray coverages are shown in Figure 1.

We assume a flat Λ CDM cosmology ($H_0 = 70$ km s $^{-1}$ Mpc $^{-1}$, $\Omega_M = 0.3$, $\Omega_\Lambda = 0.7$) throughout the paper, which is

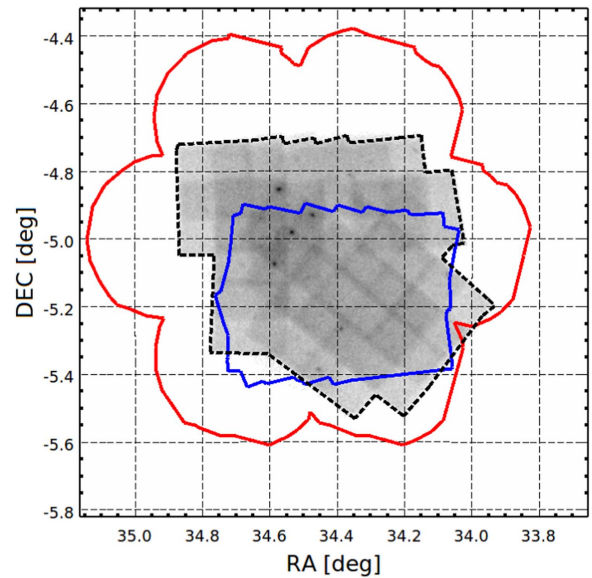


Figure 1. Coverage of the UDS field in the X-ray band. The *NuSTAR* coverage (dashed black) is compared with the flower-shaped *XMM-Newton* (red) and the *Chandra* (blue) coverages.

organized as follows. In Section 2 the data reduction of all the observations making up the survey is presented. Section 3 presents the simulations performed to explore the detection parameter space; the results of the source detection in the UDS field are presented in Section 4 and compared with *XMM-Newton* and *Chandra* catalogs in Section 5. The obscuration properties of the sample are presented in Section 6.2, while the measured CT fraction is discussed in Section 7. Final remarks are given in Section 8, while the Appendix shows the catalog description. Uncertainties are quoted at 1σ confidence level throughout the paper, unless otherwise stated (e.g., when referring to spectral analysis results).

2. Data Reduction

The *NuSTAR* UDS survey consists of 35 observations, completed during two different passes, tiled with a half-field-of-view (FOV) shift strategy to provide a relatively uniform coverage, despite the roll angle changing significantly between the two passes. The first pass on the field (20 pointings) was performed between 2016 January and February, while the second pass (15 pointings) was completed in 2016 October–November, for a total observing time of ~ 1.75 Ms. A summary of the observations is presented in Table 1.

2.1. Flaring Episodes

The raw event files are processed using the nupipeline task available in the *NuSTAR* Data Analysis Software (NuSTARDAS²⁴). Following C15, full-field light curves in the 3.5–9.5 keV energy band with a bin size of 500 s are produced in order to look for high-background time intervals. Sixteen ObsIDs are affected by background flares (i.e., with a count rate more than a factor of ~ 2 higher than the average, quiescent state) after the analysis of the light curves; they are labeled with an asterisk in Table 1. After cleaning for good time intervals (GTIs), the time loss is 39 ks for each FPM, 2.2%

²⁴ https://heasarc.gsfc.nasa.gov/docs/nustar/analysis/nustar_swguide.pdf

Table 1
Details of the Individual UDS Observations

ObsID	Date	R.A.	Decl.	Roll Angle	t_{exp}
(1)	(2)	(deg)	(deg)	(deg)	(ks)
60111001002*	2016 Jan 24	34.0911	-5.1991	319.3	45.8
60111002002	2016 Jan 25	34.1591	-5.2775	319.3	49.9
60111003002	2016 Jan 28	34.1613	-5.137	319.3	49.5
60111004001	2016 Jan 29	34.1838	-4.9979	319.3	50.1
60111005002	2016 Feb 03	34.2129	-5.3638	319.2	51.6
60111006001*	2016 Feb 04	34.2336	-5.2305	319.1	49.8
60111007002	2016 Feb 06	34.2434	-5.0723	319.2	48.2
60111008001*	2016 Feb 07	34.2905	-5.2937	319.3	45.4
60111009002	2016 Feb 08	34.3116	-5.1499	319.3	48.1
60111010001	2016 Feb 09	34.3165	-5.0071	319.2	48.0
60111011002*	2016 Feb 11	34.3548	-5.3761	319.2	46.5
60111012001*	2016 Feb 13	34.3691	-5.2269	319.2	43.3
60111013002*	2016 Feb 16	34.384	-5.0892	319.3	44.3
60111014001*	2016 Feb 17	34.3973	-4.9459	319.3	43.8
60111015002*	2016 Feb 21	34.44	-5.3067	324.2	51.0
60111016001*	2016 Feb 22	34.4424	-5.1637	324.2	55.7
60111017002	2016 Feb 24	34.4632	-5.0225	324.3	51.0
60111018001	2016 Feb 26	34.5089	-5.2441	324.3	49.8
60111019002*	2016 Feb 27	34.5231	-5.0892	324.3	48.9
60111020001	2016 Feb 29	34.5345	-4.9615	324.3	50.5
60111031002*	2016 Oct 01	34.6363	-5.2345	175.5	51.9
60111032002*	2016 Oct 02	34.6439	-5.1313	177.5	48.4
60111033002	2016 Oct 03	34.6426	-5.0273	179.5	48.8
60111034002	2016 Oct 05	34.5369	-5.0254	179.4	50.5
60111035001*	2016 Oct 06	34.5345	-4.9285	179.4	50.1
60111036002	2016 Oct 08	34.6373	-4.9261	180.5	51.2
60111037001	2016 Oct 09	34.7387	-4.9268	182.5	50.3
60111038001	2016 Oct 10	34.7404	-4.8277	184.4	51.2
60111039001*	2016 Oct 12	34.6419	-4.8248	187.4	50.7
60111040001*	2016 Oct 13	34.5355	-4.8189	190.3	49.9
60111041001	2016 Oct 14	34.4367	-4.8301	194.4	51.2
60111042002*	2016 Nov 14	34.3471	-4.804	273.9	50.0
60111043001	2016 Nov 15	34.249	-4.8016	275.9	51.3
60111044001	2016 Nov 17	34.2525	-4.9036	277.4	51.7
60111045001	2016 Nov 18	34.1518	-4.9055	278.9	52.1

Note. ObsIDs marked with an asterisk are those affected by high-background flares. Column (1): observation ID. Column (2): observation's start date. Columns (3)–(5): coordinates and roll angle for each pointing. Column (6): exposure time for FPMA, corrected for flaring episodes.

of the total time, resulting in a total cleaned observing time of 1.730 and 1.726 Ms for FPMA and FPMB, respectively.

2.2. Data, Exposure, and Background Mosaics

After cleaning for flaring background episodes, we run again `nupipeline` taking into account the GTI in order to have the final list of cleaned event files. For each observation, we produce images in the 3–24 keV, 3–8 keV, 8–24 keV, 8–16 keV, 16–24 keV, and 35–55 keV energy bands. We will refer to these bands as full (F), soft (S), hard (H), hard-one (H1), hard-two (H2), and very hard (VH) bands, respectively. The motivation in splitting the H band into two sub-bands comes from multiple sides. On one side, the background contribution is limited in the H1 band, allowing some sources to be more significantly detected narrowing the band; on the other hand, selecting sources at ~ 15 –20 keV in the H2 band helps us select directly those AGNs contributing the most to the peak of the CXB. Given their importance, it is worth exploring

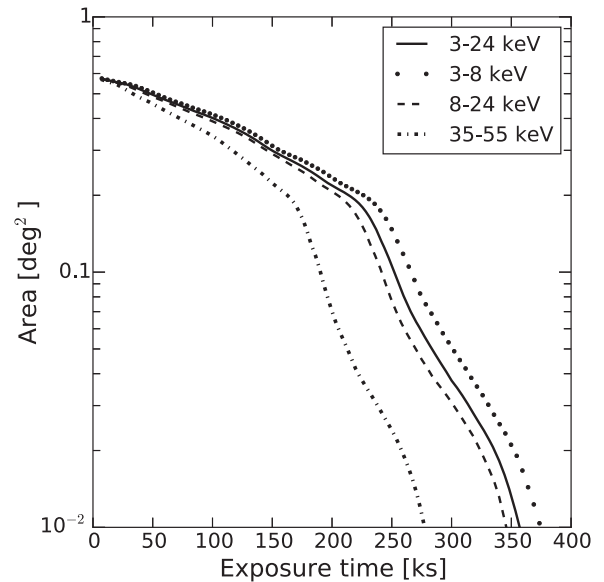


Figure 2. Cumulative survey area as a function of exposure depth (FPMA +FPMB), for different energy bands. The total area is 0.58 deg², and the depth at half-area is ~ 155 ks in the full (3–24 keV) band.

the feasibility of detecting them with *NuSTAR*, despite such sources being difficult to firmly detect, as will be discussed later on (see Section 4).

Since the effective area is a continuous function of energy, and producing an exposure map at every energy is extremely time-consuming, we weight the exposure map in every band with an average energy, obtained by convolving the *NuSTAR* instrumental response with a power law of photon index $\Gamma = 1.8$ (i.e., the typical photon index value measured in local AGNs;²⁵ see Burlon et al. 2011). Exposure maps are created in the F, S, H, and VH energy bands with the `nuexpomap` task. Adopting the H exposure map for the H1 and H2 bands results in an underestimation of the exposure of at most 3% and overestimation of the exposure of at most 12%, respectively. A plot of the survey area as a function of vignetting-corrected exposure time is shown in Figure 2.

Following the general strategy adopted for all the contiguous *NuSTAR* surveys, we use the `nuskybgd` software (Wik et al. 2014) to model the background in each energy band. As explained in Wik et al. (2014), the *NuSTAR* background is the sum of different components: below 20 keV, its signal is dominated by photons that are not focused by the mirrors and leak through the open structure of the telescope, producing a spatially dependent pattern (i.e., aperture background). There are also solar photons, a neutron background, and a minor contribution from the focused, but unresolved, sources of the CXB (i.e., `fCXB`). Above ~ 20 keV, the background is predominantly instrumental and is composed of a nearly flat power law ($\Gamma \approx 0$) with a forest of activation lines, most notably between ~ 25 and 35 keV. This is the reason why the usual *NuSTAR* surveys are performed in the 3–24 keV band. We further decide to explore the energy range from the end of

²⁵ It is still unclear whether CT AGNs follow the same Γ distribution as less obscured ones. *NuSTAR* observations of a small sample of local CT AGNs present an average $\bar{\Gamma} = 1.95$ with a dispersion of $\sigma = 0.25$; considering only those sources with a constrained column density, these values become $\bar{\Gamma} = 1.89$ and $\sigma = 0.19$ (Brightman et al. 2016; Masini et al. 2016). We therefore assume that $\Gamma = 1.8$ is suitable to represent the whole population of AGNs.

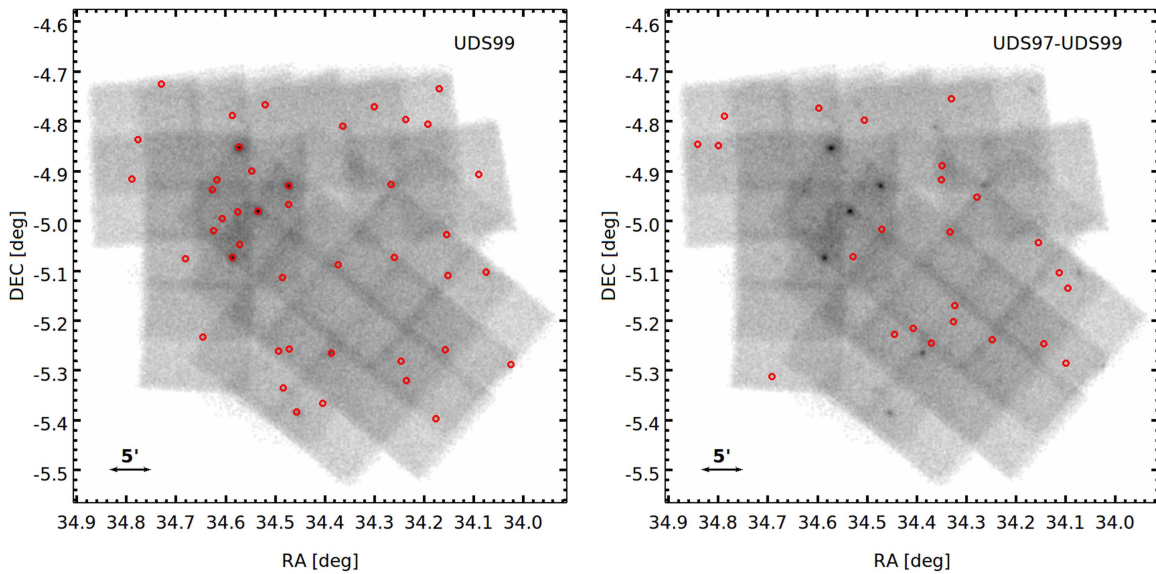


Figure 3. Left: *NuSTAR* 3–24 keV band mosaic with the 43 sources detected in at least one of the three bands F, S, or H (red circles). Right: same as the left panel, but for the 24 additional sources detected in the 97% reliability catalog, where we detect 67 sources in total. See Section 4 for details.

the strong instrumental lines, at 35 keV, up to 55 keV, where the *NuSTAR* effective area starts to decrease substantially.

We extract background spectra from four $160''$ -radius circular regions, one for each quadrant, avoiding chip gaps. Once the user-defined regions are provided, the `nuskybgd` software extracts and fits their spectra in XSPEC (ver. 12.9.1; Arnaud 1996) with the appropriate model and saves the best-fit parameters. These parameters can be used to extrapolate and produce a background spectrum in a particular region of the FOV, or to produce a background image of the entire FOV.

Following C15, we thaw all the relevant parameters except the normalization of the fCXB, which is kept frozen to its nominal value (Boldt 1987). We then fit all the parameters using the Cash statistic (Cash 1979) and ultimately fit for the fCXB normalization. While this procedure gave very good results in C15 (giving a $<1\%$ discrepancy in counts between data and background) and in other *NuSTAR* surveys (e.g., Mullaney et al. 2015), it underestimates the background counts by 3%–4% in the UDS field, which cannot be explained by bright sources, possibly due to a fluctuation of the CXB. After an extensive number of tests, we decide to keep the normalization of the fCXB frozen to its default value (Boldt 1987) in our fits. This recipe, which obviously gives slightly suboptimal fits in the S band, reconciles our background maps with the data mosaics with a maximum count discrepancy of $\sim 1\%$. Data, exposure, and background mosaics are produced with the FTOOLS task XIMAGE. Data mosaics in the F band, with sources detected above the 99% and 97% thresholds of reliability (see the following sections), are shown in Figure 3.

3. Simulations

In order to define detection parameters, an extensive set (following C15, 400 for each energy band) of simulations is run, following the same strategy adopted by C15, which we briefly summarize here.

3.1. Initial Setup

A first run of simulations is performed in each band, distributing sources randomly throughout the FOV, assigning

source fluxes from an assumed number count distribution in the 3–24 keV band (Treister et al. 2009), to a minimum flux that is ~ 10 times fainter than the expected survey limit, and placing them on a background without the fCXB component. This is done in order to prevent the simulations from having too many counts, since the fake, unresolved sources make up a part of the fCXB itself. As a result, after the first run of simulations, only a certain fraction of the fCXB contribution is missing. The fraction of fCXB that has to be added to the background depends on the (band-dependent) input limiting flux and ranges from 61% in the S band to 94% in the H2 one. Since between 35 and 55 keV the background is predominantly instrumental, no correction is applied in the VH band. The conversion factors between count rates and fluxes, as well as the scaling factors from one band to another, adopted throughout this paper, are shown in Table 2.

After rescaling and adding a certain fraction of the fCXB component to the background maps, we run the simulations again, and we verify that, on average, our simulations optimally represent our data mosaics. The comparison between observed data and simulated counts in each band is shown in Table 3.

3.2. Reliability, Completeness, and Sensitivity

Once the simulations are completed, we have a set of 2400 simulations (400 for each band) that on average accurately represent our real observations. This large set of simulations is used to maximize the efficiency of our detection procedure.

Following C15, we smooth every simulation (and the background mosaic) with $10''$ and $20''$ radius circular top-hat functions in order to separate close sources with the first scale and to detect faint sources with the second one. Then, we convert the resulting smoothed maps into probability maps, using the `igamma` function (i.e., incomplete Γ function) in IDL, which returns the probability of having a certain number of counts C_{im} in the data mosaic given C_{bkg} background counts

Table 2

Conversion Factors from Count Rates to Fluxes Used in the Paper, from WebPIMMS^a, and Flux Scaling Factors with Respect to the F-band Flux, Obtained Assuming a Power-law Spectrum with $\Gamma = 1.8$

Band	Conversion Factor (erg cm^{-2})	Scale Factor
3–24 keV	4.86×10^{-11}	1.
3–8 keV	3.39×10^{-11}	0.42
8–24 keV	7.08×10^{-11}	0.58
8–16 keV	5.17×10^{-11}	0.35
16–24 keV	1.62×10^{-10}	0.23
35–55 keV	1.07×10^{-9}	0.30

Note.

^a <https://heasarc.gsfc.nasa.gov/cgi-bin/Tools/w3pimms/w3pimms.pl>.

Table 3

Comparison between Observed Counts and Average of Simulations, after the Second Run

Band	Data	(Sim)	$(D - \langle \text{Sim} \rangle)/D$ (%)
3–24 keV	873931	874376	-0.05
3–8 keV	392794	392723	+0.02
8–24 keV	481137	481356	-0.05
8–16 keV	291663	291646	+0.006
16–24 keV	189474	189513	-0.02
35–55 keV ^a	357133	358531	-0.4

Note.

^a We do not rescale the fCXB component for the VH band, since the background is predominantly instrumental.

in the background mosaic at the same position:

$$P = \text{igamma}(C_{\text{im}}, C_{\text{bkg}}). \quad (1)$$

In every point of our probability maps, the numerical value is then given by $\log 1/P$. We use the SExtractor software (Bertin & Arnouts 1996) on the probability maps (both $10''$ and $20''$ smoothed) to detect sources in our simulations. The two lists of sources are merged together; as discussed in C15, using two different smoothing radii increases the number of detections. Every source is then evaluated calculating its Poisson probability of being a spurious fluctuation of the background. Every source is assigned a DET_ML number, which is simply $\text{DET_ML} = -\ln P$. The higher the DET_ML, the higher the probability of the source being real, and the higher its significance. In the case where the same source is found in both the $10''$ - and $20''$ -smoothed maps, the more significant one (i.e., the one with the highest DET_ML) is retained. Duplicates are assessed cross-correlating the catalogs with a matching radius of $30''$, which is found by C15 to better take into account the tail of faint sources matched to their counterparts (see Figure 4 of Civano et al. 2015). Following Mullaney et al. (2015), a deblending algorithm for counts of the detected sources is run, in order to take into account the possible contaminations induced by objects closer than $90''$. A deblended DET_ML is then recalculated using deblended source and background counts to assess the post-deblending significance of every source.

After these steps, we end up with a catalog of sources for every simulation. Comparing the final list of sources, detected

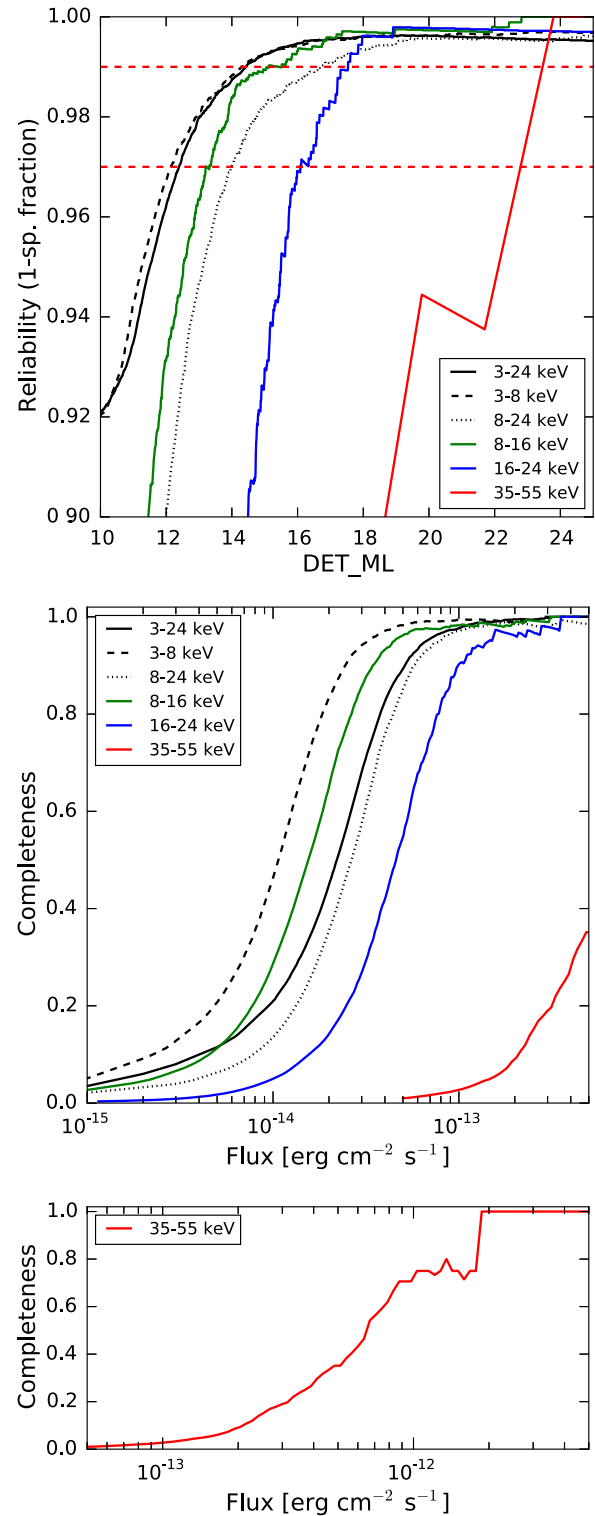


Figure 4. Top: cumulative reliability as a function of DET_ML. The two red dashed horizontal lines show the 99% and 97% reliability thresholds. In black, the three canonical bands are shown as solid (F), dashed (S), and dotted (H) lines. In green, blue, and red solid lines we show the H1, H2, and VH bands, respectively. We note that the harder the band, the noisier the curve, due to low statistics. Middle: cumulative completeness as a function of input flux, at 97% reliability. Colors and line styles are the same as in the left panel. The completeness curve for the VH band is barely shown because it lies out of scale, which is chosen to emphasize the differences between the canonical bands instead. Bottom: same as the middle panel, but for the VH band.

and matched, with the ones input to the simulations allows the calculation of the sample reliability, i.e., the ratio between the cumulative distribution of matched sources and the cumulative distribution of detected sources, as a function of their significance:

$$\text{Rel}(\text{DET_ML}) = \frac{\text{Matched}}{\text{Detected}}. \quad (2)$$

Highly significant sources are also correctly matched to their input counterparts, and the reliability curve is unity at high values of DET_ML. It then falls steeply at lower significance, where the number of spurious detections starts to increase. We can set a DET_ML threshold where the reliability falls to 99% or 97% of its maximum value; at these thresholds, we expect to have a spurious fraction of 1% and 3%, respectively. As an example, in the full 3–24 keV band, these thresholds (DET_ML = 14.42 and DET_ML = 12.39) correspond to a probability $P \sim 5.5 \times 10^{-7}$ and $P \sim 4.1 \times 10^{-6}$, respectively, of a source being spurious. The top panel of Figure 4 shows the cumulative distribution of reliability for all our bands.

Once the DET_ML threshold is fixed at a given reliability, comparing how many sources are detected above the chosen threshold and matched to the input ones as a function of input flux gives the catalog completeness:

$$\text{Compl}(F_{\text{Input}}) = \frac{\text{Detected above thr \& Matched}}{\text{Input}}. \quad (3)$$

The middle panel of Figure 4 shows the sample completeness at 97% reliability for all bands but the VH one, for which the curve is partially shown because it lies off-scale. The completeness curve for the VH band is instead shown in the bottom panel of Figure 4. Table 4 shows different values of completeness for each band. Rescaling the completeness curve for the maximal area of the survey in a given energy band results in a sky coverage, or sensitivity plot. The sensitivities of our survey are shown in Figure 5, while Table 5 summarizes the results of the detection on simulations. Table 5 shows that the simulations predict nondetection in the VH band, while on average only one to two sources are expected in the H2 band, and the H1 band returns a number of sources larger than, or comparable to, the H band. We also note that combining the detection catalogs coming from differently smoothed maps is advantageous only in the hard bands. This is probably due to the fact that the longer-scale smoothing improves the sensitivity to faint sources in the hard bands more than in the soft and full ones.

Finally, we note that, given our assumption of a single photon index of $\Gamma = 1.8$ for the whole AGN population (see Section 2.2), the completeness estimates to recover an *intrinsic* CT fraction may be biased. However, we are going to focus on the *observed* CT fraction throughout this paper.

We perform aperture photometry, on the unsmoothed simulations, of detected and matched sources, extracting counts in $20''$ circular apertures with standard tools, such as the CIAO task `dmextract`, and converting the count rates to fluxes with an appropriate, band-dependent, conversion factor (see Table 2). We further apply an aperture correction, to get the total flux in each band, such that $F_{\text{corr}} = F/0.32$ (see C15 for further details). A direct comparison with the fluxes input to the

simulations for the F band is shown in the top panel of Figure 6, where a good agreement between output and input fluxes is recovered to $F_{\text{in}} \sim 5 \times 10^{-14} \text{ erg cm}^{-2} \text{ s}^{-1}$, where the Eddington bias (Eddington 1913; Wang 2004) makes the relation flatten below $F_{\text{in}} \sim (3\text{--}4) \times 10^{-14} \text{ erg cm}^{-2} \text{ s}^{-1}$, corresponding to the flux limit of the survey at $\sim 80\%$ of completeness (see Table 4). A small deviation from the 1:1 relation is present also at higher fluxes. This is due to the fixed aperture used to extract *NuSTAR* counts, from which underestimated fluxes are then computed. In particular, from the simulations we calculate that fluxes above $F_{\text{in}} \gtrsim 1.5 \times 10^{-12} \text{ erg cm}^{-2} \text{ s}^{-1}$ will be underestimated by $\gtrsim 10\%$. Only $\sim 0.1\%$ of the simulated sources fall above this flux threshold, and therefore we do not correct for this bias in our photometry. On the other hand, at an input flux of $F_{\text{in}} \sim 10^{-13} \text{ erg cm}^{-2} \text{ s}^{-1}$ the output flux is on average overestimated by $\sim 13\%$ owing to the rising Eddington bias. This is evident in the bottom panel of Figure 6, where the ratio of output/input flux is shown as a function of the input flux. The yellow filled circles are the binned averages of the distribution and help to guide the eye.

4. Source Detection

We repeat the same procedure of source detection on the data mosaics. After deblending the list of potential sources, we detect 43 unique sources above the threshold of 99% reliability in at least one of the ‘‘canonical’’ F, S, and H bands. When considering the 97% reliability threshold, we detect 67 sources. We will refer to these catalogs as UDS99 and UDS97, respectively, and the detailed numbers for each band are reported in the last two rows of Table 5. We note that the numbers of detections agree very well (within 1σ of the distributions; see Figure 7) with the simulation expectations. To maximize the statistics, we will focus on UDS97 henceforth, keeping in mind that the spurious fraction of this catalog is 3%.²⁶ For homogeneity with the other *NuSTAR* surveys, and given the few detections in the H1, H2, and VH bands, we will also consider only the 67 sources detected in the canonical bands (of which two are expected to be spurious), while discussing the results in the new bands elsewhere (A. Masini et al. 2018, in preparation). Table 6 shows how these 67 sources are distributed within the F, S, and H bands.

4.1. Catalog Creation

We create a catalog of the 67 sources detected in the three canonical bands of UDS97. Following the same strategy adopted for the simulations, we use `dmextract` to get total and background counts from circles of $20''$ radius, from the data and background mosaics, respectively. Similarly, we extract the exposures from the exposure map mosaic in order to compute the count rates for each source and each band, which are then aperture-corrected and converted into fluxes with the appropriate conversion factors. If a source is detected below the threshold, or undetected, in a given band, 3σ upper limits are provided extracting counts at its position. For detections, 1σ uncertainties are obtained using Equations (9) and (12) of Gehrels (1986) with $S = 1$, while for nondetections we use Equation (10) of Gehrels (1986) with $S = 3$. The distributions of net counts and fluxes for our sources are shown in Figure 8.

²⁶ Details about this catalog can be found in the Appendix.

Table 4
Completeness as a Function of Flux, 97% Reliability Catalog

Completeness	$F(3-24 \text{ keV})$	$F(3-8 \text{ keV})$	$F(8-24 \text{ keV})$	$F(8-16 \text{ keV})$	$F(16-24 \text{ keV})$	$F(35-55 \text{ keV})$
90%	5.1×10^{-14}	2.5×10^{-14}	5.7×10^{-14}	3.5×10^{-14}	9.8×10^{-14}	1.8×10^{-12}
80%	3.8×10^{-14}	1.9×10^{-14}	4.4×10^{-14}	2.6×10^{-14}	7.7×10^{-14}	1.3×10^{-12}
50%	2.2×10^{-14}	1.0×10^{-14}	2.7×10^{-14}	1.5×10^{-14}	4.6×10^{-14}	6.3×10^{-13}
20%	9.5×10^{-15}	5.0×10^{-15}	1.4×10^{-14}	7.5×10^{-15}	2.5×10^{-14}	3.1×10^{-13}

Note. Fluxes are in units of $\text{erg cm}^{-2} \text{s}^{-1}$.

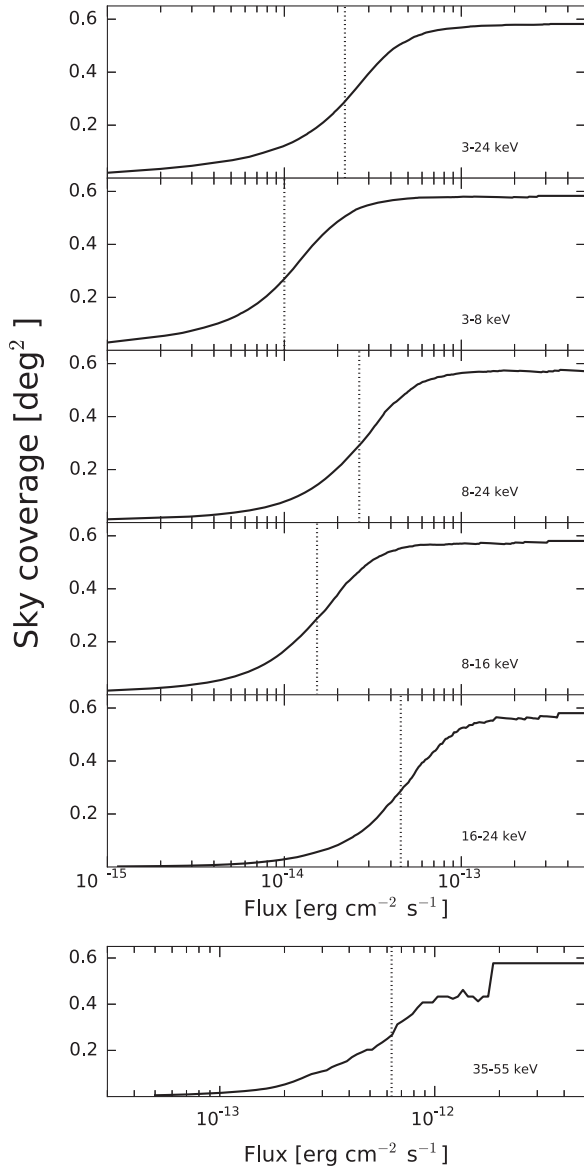


Figure 5. Sky coverage as a function of input flux for all the bands (from top to bottom: F, S, H, H1, H2, VH). In each panel, the dotted vertical line marks the half-area flux. Notice the different scale for the VH band in the bottom plot. No area is seen in the VH band at fluxes of $F_{35-55} < 10^{-13} \text{ erg cm}^{-2} \text{ s}^{-1}$; very bright sources are needed in order to be detectable in this band. Furthermore, the curve is very noisy owing to scarce statistics. Increasing the number of simulations would increase accordingly the number of significantly detected sources and the smoothness of the curve.

5. Match with *XMM-Newton* and *Chandra* Catalogs

The 67 *NuSTAR*-detected sources are cross-matched with the Subaru *XMM-Newton* Deep Survey catalog of Ueda et al. (2008)

and *Chandra* catalog of Kocevski et al. (2018), with a matching radius of $30''$. A flux cut was applied to both catalogs, excluding counterparts with a 3–8 keV flux more than a factor of three lower than the *NuSTAR* flux limit at the 50% completeness in the 3–8 keV band (i.e., $F_{\text{cut}} \sim 3 \times 10^{-15} \text{ erg cm}^{-2} \text{ s}^{-1}$). Any other soft X-ray counterpart below this flux cut is at least at 2.7σ and 1.9σ from the *NuSTAR* flux for *XMM-Newton* and *Chandra*, respectively.

5.1. *Newton*

We directly match 88% of our sources (59/67) with *XMM-Newton* sources in the SXDS catalog. We further find a counterpart at a distance of $4''$ for uds7, which falls in the tiny fraction of *NuSTAR* area not covered by the SXDS survey (see Figure 1), in the 3XMM–DR6 catalog (Rosen et al. 2016), so that the final fraction of *XMM-Newton*-matched sources is 60 out of 67 (90%). Of the seven sources not matched, uds59 is detected above the 97% threshold in the F, S, and H bands. It is also above the threshold in the H1 band and is detected above the 99% reliability threshold in the F, H, and H1 bands. More details on this source are provided in Section 5.1.1. Two other sources have an *XMM-Newton* counterpart, albeit undetected by *XMM-Newton* in the 4.5–10 keV band from which the 3–8 keV flux is computed, while one is a blending of two SXDS sources with the same 3–8 keV flux, thus slightly lower than the chosen threshold, and is then excluded by our cut. Even if included, this last source would have been considered as a blending and therefore excluded from the following analysis. The remaining three unassociated sources could be the spurious ones expected from our chosen reliability threshold. Out of 60 matched sources, 4 have two possible *XMM-Newton* counterparts, and 1 has triple counterparts within $30''$. We have then 55 sources with unique *XMM-Newton* counterparts. To properly deal with multiple counterparts, we adopt the following strategy: if the closest of the counterparts within $30''$ also has the highest “hard” (i.e., 3–8 keV) flux, it is considered as the primary counterpart of the *NuSTAR* source. Otherwise, it is considered blended and is then excluded from the following analysis. With this prescription, we add two sources (uds2 and uds18) in which the closest *XMM-Newton* counterpart is also the brightest, providing a total of 57 matches. The flux ratios between the primary and secondary counterpart in these two cases are 1.2 for uds2 and 4.3 for uds18.

5.1.1. The Case of uds59

As previously mentioned (Section 5), uds59 is detected by *NuSTAR* above the 97% reliability thresholds in four out of six bands (F, S, H, and H1). We note that it is present also in the UDS99 catalog, although it is below the threshold in the S band. Detected with 82 net counts in the F band, uds59 is

Table 5
Summary of Detections on Simulations and Real Data

Simulations	Bands					
	3–24 keV	3–8 keV	8–24 keV	8–16 keV	16–24 keV	35–55 keV
10'' smoothed maps	115	97	68	64	33	29
20'' smoothed maps	100	84	57	54	22	15
Combined, no duplicates	115	96	76	70	43	37
Matched to input	90 (78%)	76 (79%)	48 (63%)	45 (64%)	14 (33%)	7 (19%)
DET_ML(99%) thr.	14.42	14.28	16.69	15.13	17.54	23.55
DET_ML(97%) thr.	12.39	12.15	14.00	13.23	16.09	23.00
DET_ML > DET_ML(99%)	42	34	13	15	1	0
DET_ML > DET_ML(97%)	55	45	19	19	2	0
Real data						
DET_ML > DET_ML(99%)	40	28	15	16	1	0
DET_ML > DET_ML(97%)	61	44	19	21	1	0

Note. The first (second) row is the average number of sources detected in the 10'' (20'') smoothed maps. The third row is the average number of sources in the merged catalog, cleaned from duplicates. The fourth row is the average number of sources detected and matched (after deblending) to input sources. The fifth and sixth rows display the DET_ML thresholds at 99% and 97% reliability, respectively. The seventh and eighth rows show the average number of sources expected to be above the 99% and 97% reliability thresholds, respectively, from the simulations. The last two rows report the effective number of sources detected above the 99% and 97% reliability thresholds, respectively.

located in a part of the mosaic where only *XMM-Newton* coverage is available, but it is not matched to any SXDS source. At its position, Sloan Digital Sky Survey maps show the presence of a group of galaxies, which is indeed detected as a galaxy cluster in the CFHTLS 4 Wide Fields Galaxy Clusters catalog (Durret et al. 2011) at $z_{\text{phot}} \sim 0.45$. Moreover, two galaxies of the group are detected by *WISE* (Wright et al. 2010) and are 4''7 and 11''5 away from the *NuSTAR* position.

Since uds59 is then a strong candidate to be a newly discovered source, we extract its *NuSTAR* X-ray spectrum, assuming the redshift of the group ($z_{\text{phot}} = 0.45$), and we fit the spectrum with a simple Galactic-absorbed power law. The returned photon index is quite flat, implying that the source is obscured ($\Gamma = 0.68^{+0.53}_{-0.54}$), consistent with the nondetection by *XMM-Newton*. Adding a screen along the line of sight (through a *zwabs* model) and fixing $\Gamma = 1.8$, we get a good fit (CSTAT/DOF = 200/235), with the source being heavily obscured ($N_{\text{H}} = 7.4^{+5.8}_{-4.1} \times 10^{23} \text{ cm}^{-2}$). A very similar result is obtained using a MYTorus model (Murphy & Yaqoob 2009; CSTAT/DOF = 202/235, $N_{\text{H}} = 6.5^{+5.3}_{-3.7} \times 10^{23} \text{ cm}^{-2}$). We can also use these models to calculate the flux in the three canonical bands, and we have

$$\begin{aligned}
 F_{3-24} &= 1.2^{+0.3}_{-0.3} \times 10^{-13} \text{ erg cm}^{-2} \text{ s}^{-1}, \\
 F_{3-8} &= 2.3^{+1.0}_{-0.8} \times 10^{-14} \text{ erg cm}^{-2} \text{ s}^{-1}, \\
 F_{8-24} &= 9.7^{+2.9}_{-4.7} \times 10^{-14} \text{ erg cm}^{-2} \text{ s}^{-1}.
 \end{aligned}$$

We can compare the soft-band flux with the upper limit obtained from the 0.2–12 keV *XMM-Newton* mosaic. Extracting the total number of counts in a circular region of 20'' radius and using the average vignetting-corrected exposure at the same position, we get a count rate of $1.16 \times 10^{-2} \text{ counts s}^{-1}$ for the PN, which translates into a predicted $F_{3-8} \sim 9.2 \times 10^{-15} \text{ erg cm}^{-2} \text{ s}^{-1}$. A combination of intrinsic obscuration and low-exposure coverage (the effective exposure time at the position of the source is only 9.8 ks for the PN) is likely responsible for the nondetection by *XMM-Newton*.

5.2. Chandra

As $\sim 30\%$ of the *NuSTAR* UDS field is not covered by *Chandra*, only 41 sources have *Chandra* coverage, and 40 of them are matched. Notably, uds45, the only one missing a *Chandra* counterpart, is not matched in the *XMM-Newton* catalog either and hence is a strong candidate to be one of the two expected spurious sources in the catalog. Out of 40 *Chandra*-matched sources, 5 have a double counterpart and 2 have a triplet in the *Chandra* catalog. As done for *XMM-Newton*, each case is evaluated, and we add another four counterparts to the 33 unique matches, for a total of 37 matches. The flux ratios between the primary and secondary/tertiary counterpart range between ~ 1.5 and 3.4.

The distribution of separations between our *NuSTAR* sources and their low-energy counterparts and its cumulative are shown in Figure 9 (left panel); 60% of the sources are matched within 10'', while 80%–90% are matched within 20''. We note that the distribution peaks are consistent with the simulated source distribution in the 3–8 keV band. These fractions are comparable to the ones found by C15 taking into account the secondary counterparts, while slightly lower than the separations with the primary counterparts, but considering a higher reliability sample. In the right panel of Figure 9 we also compare *NuSTAR*, *XMM-Newton*, and *Chandra* fluxes in the 3–8 keV band, converting the *XMM-Newton* 4.5–10 keV count rates and the 2–10 keV *Chandra* fluxes to 3–8 keV fluxes assuming a $\Gamma = 1.8$ power law. As can be seen from the right panel of Figure 9, there is some scatter between the fluxes measured by *NuSTAR* and soft X-ray instrument fluxes, although the *NuSTAR* fluxes have large uncertainties (1σ uncertainties for detections, 3σ upper limits for nondetections). This scatter, which is increased by the Eddington bias at the lowest fluxes, while being always less than a factor of two at the brightest fluxes (i.e., at $F \gtrsim 5 \times 10^{-14} \text{ erg cm}^{-2} \text{ s}^{-1}$), can be explained in part by X-ray variability, which is a common property of AGNs (e.g., Paolillo et al. 2017), and in part by cross-calibration uncertainties.

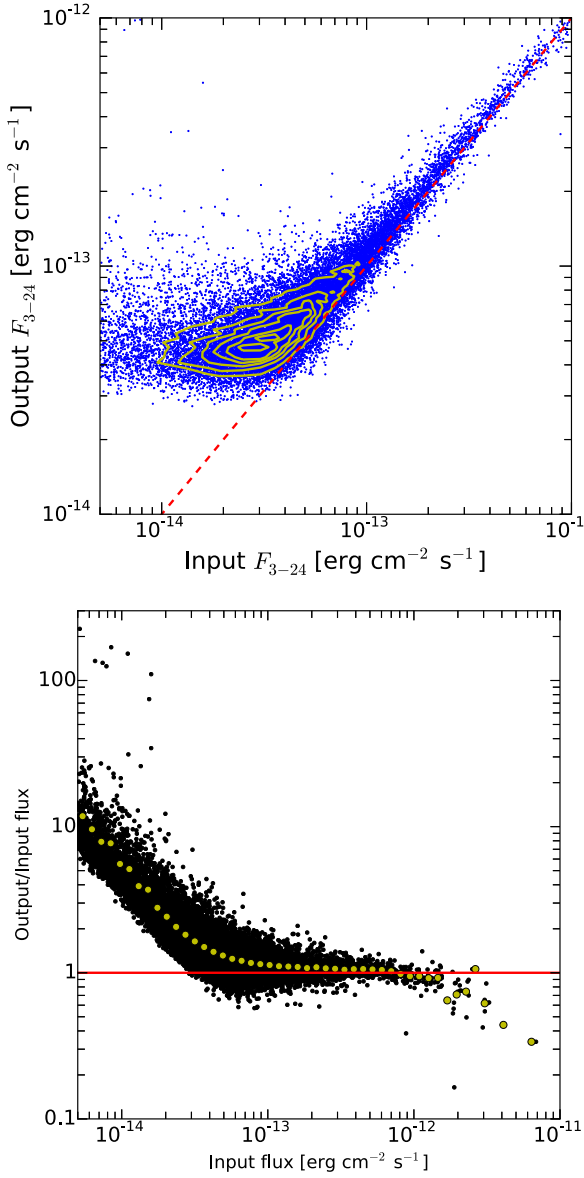


Figure 6. Top: results of aperture photometry on simulations, in the full band. Sources detected above the 97% reliability threshold and matched to their input counterparts are plotted as blue circles. The red dashed line is the 1:1 relation, while the yellow contours indicate where most of the points lie. The Eddington bias flattening is clearly visible for input fluxes $F_{\text{in}} \lesssim 5 \times 10^{-14} \text{ erg cm}^{-2} \text{ s}^{-1}$. Bottom: ratio between the output and input flux as a function of the input flux for the simulations performed. The yellow filled circles are averages computed in bins of input flux, while the red horizontal line marks the 1:1 relation.

5.3. Optical Counterparts

Akiyama et al. (2015) provide optical counterparts for a large fraction of the SXDS catalog of Ueda et al. (2008), and an optical spectrum is also available for the counterpart of uds7, from the BOSS survey (Dawson et al. 2013). We have redshifts for 56 sources (84%), of which 48 are spectroscopic and 8 are photometric. We split these 56 redshifts into broad-line AGNs (BLAGNs) and narrow-line AGNs (NLAGNs). The category is directly defined in the Akiyama et al. (2015) catalog for spectroscopic redshifts based on an FWHM threshold of 1000 km s^{-1} , while for photometric redshifts only the “QSO” or “GAL” templates are specified. We then consider objects best fitted by a “QSO” template as BLAGNs and objects best

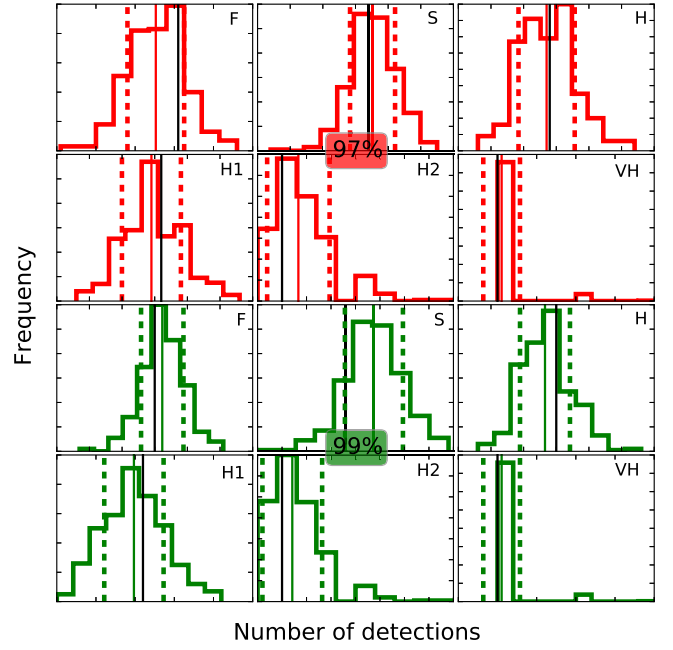


Figure 7. Distribution of detections within the simulations. The six upper panels, in red, refer to the six bands at the 97% reliability threshold. The six lower panels, in green, refer to six bands at the 99% reliability threshold. From top left to bottom right, the bands are F, S, H, H1, H2, and VH. In each panel, the dashed lines mark the $\pm 1\sigma$ interval from the average, while the black solid line marks the position of the detections in the data mosaic, which are always within $\pm 1\sigma$ from the mean of the simulations, shown by the solid red or green line. Numerical values for the average number of detections in the simulations in each band and the number of detections in the data mosaics are explicitly addressed in the last four rows of Table 5.

Table 6
Summary of Detection, UDS97

Bands	Number of Sources
F+S+H	14 (21%)
F+S+h	10 (15%)
F+s+H	1 (2%)
F+S	15 (22%)
F+s	3 (4%)
f+S	4 (6%)
F+H	3 (4%)
F+h	8 (12%)
f+H	1 (2%)
F	7 (10%)
S	1 (2%)

Note. Capital letters are for sources above the threshold, while lowercase letters refer to sources detected but below the threshold.

fitted by a “GAL” template as NLAGNs. Out of 56 redshifts, we have 28 BLAGNs and 28 NLAGNs. The median redshift of our sample is $\langle z \rangle = 1.092$, while $\langle z_{\text{BLAGN}} \rangle = 1.272$ and $\langle z_{\text{NLAGN}} \rangle = 1.003$. In the left panel of Figure 10 we show the redshift distribution of the sample, while in the right panel we show how our sources compare with other *NuSTAR* Extragalactic Surveys like the COSMOS, ECDFS, and Serendipitous ones in the $L_{10-40}-z$ plane. This luminosity is computed from the F-band flux without correcting for absorption. We notice that while the *NuSTAR* Serendipitous survey (Lansbury et al. 2017b) reaches slightly higher redshifts, we detect the

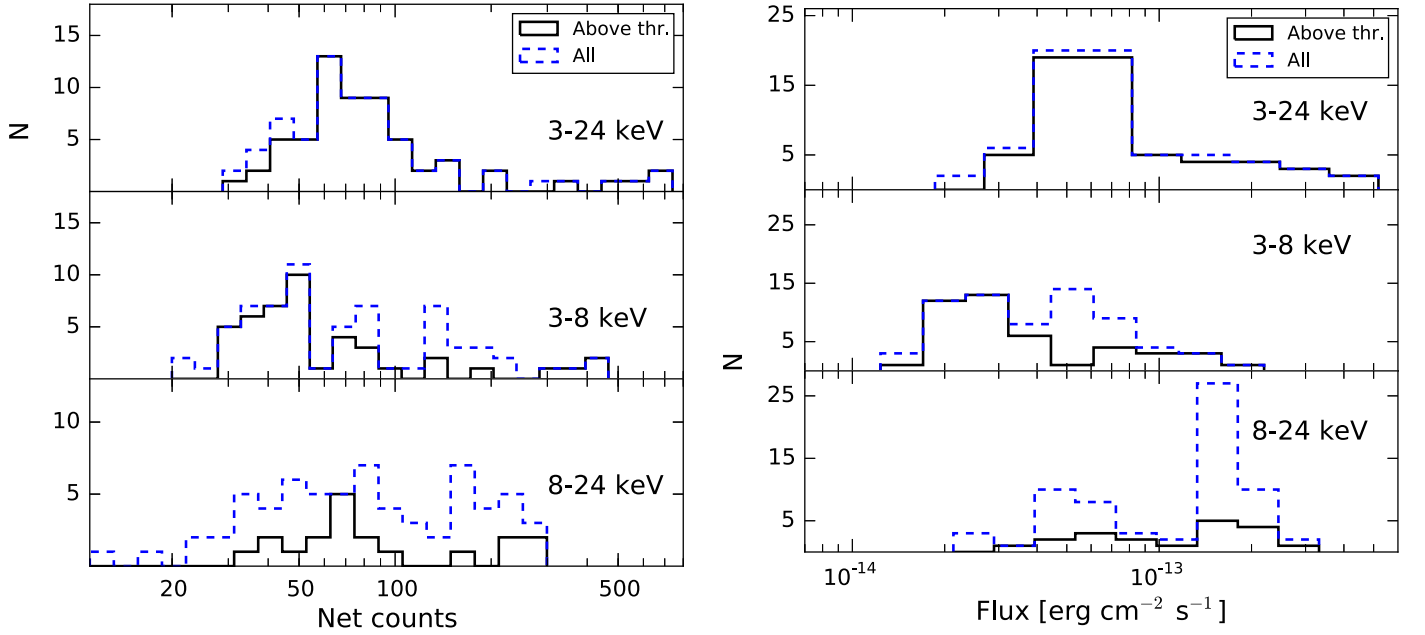


Figure 8. Left: counts distribution in the F band (top panel), S band (middle panel), and H band (bottom panel) for all the sources (blue dashed histogram) and for sources above the threshold only (black solid histogram). Note that the “All” histograms (blue dashed lines) include upper limits. Right: same as the left panel, but for the fluxes.

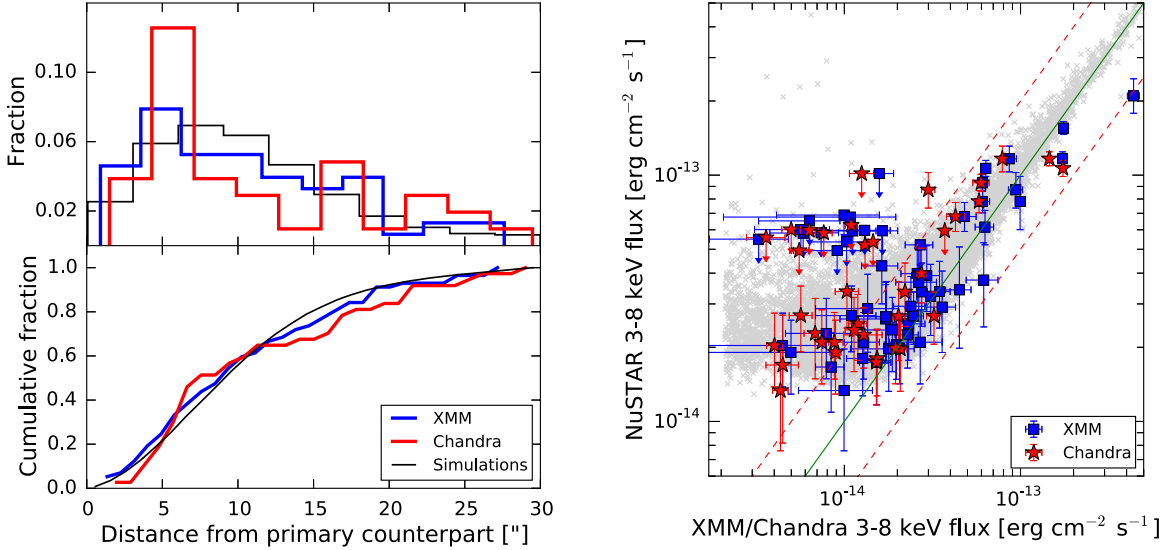


Figure 9. Top left: distribution of separation between our *NuSTAR* sources and *XMM-Newton* (blue solid line) and *Chandra* (red solid line) counterparts, compared with the simulations in the S band. Bottom left: cumulatives of the distributions shown in the top panel. More than 50% of our sources are matched within $10''$, and 80% within $20''$. Colors are the same as in the top panel. Right: *NuSTAR* 3–8 keV fluxes as a function of *XMM-Newton* (blue squares) and *Chandra* (red stars) 3–8 keV fluxes. Upper limits at the 3σ confidence level on *NuSTAR* fluxes are represented as downward-pointing arrows. The green solid line is the 1:1 relation, while the red dashed lines are a factor of two displaced from it. At low fluxes, the Eddington bias makes the points deviate from the 1:1 relation, while the displaced point close to the right corner of the plot (uds7) may have an underestimated *NuSTAR* flux owing to its position, on the very edge of the mosaic. The gray crosses on the background are the expectations from the simulations in the 3–8 keV band (see Figure 6).

highest-redshift source among tiered *NuSTAR* deep surveys (uds67 at $z_{\text{spec}} = 3.128$). This may be due to the chosen reliability threshold, which allows fainter sources to be detected. Moreover, the fact that only one source with an optical counterpart is detected at or below the 50% completeness is likely due to the chosen flux cut in matching the *NuSTAR* sources with the SXDS catalog. This flux cut is a factor of three lower than the flux limit at the 50% completeness.

6. Obscuration Properties of the *NuSTAR* UDS97 Sample

We exploit the available redshift information performing a broadband (0.5–24 keV) X-ray spectral analysis of all 56 sources in our UDS97 catalog with an optical counterpart.

6.1. Extraction of X-Ray Spectra

We extract FPMA and FPMB spectra with the *NuSTAR*DAS task `nuproducts`, while *NuSTAR* background spectra are

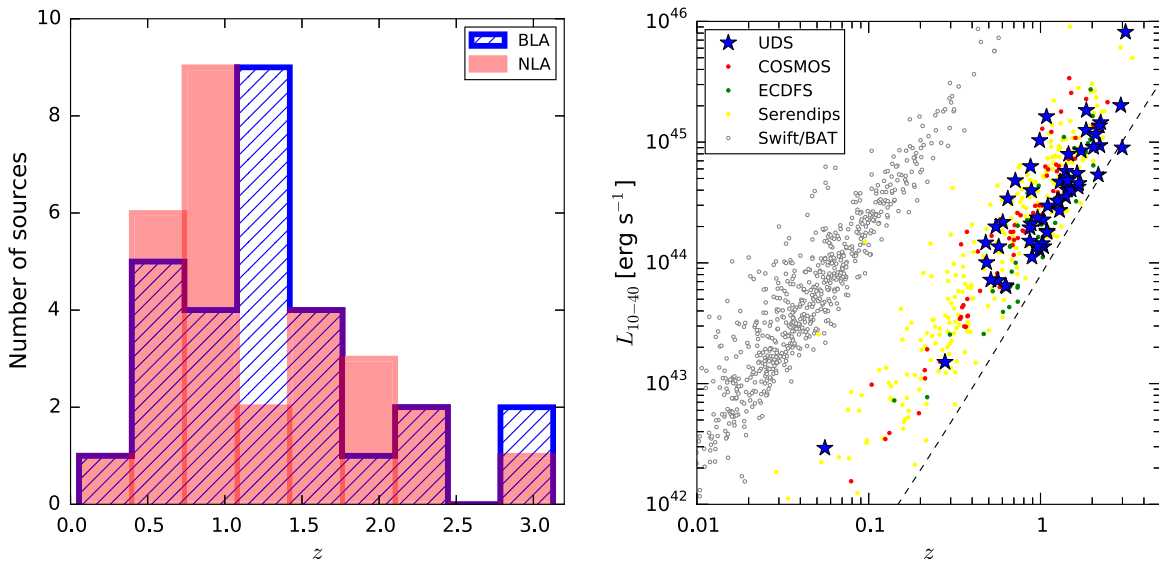


Figure 10. Left: redshift distribution for the 56 sources with an optical counterpart, divided into BLAGNs (blue hatched histogram) and NLAGNs (red histogram). Right: 10–40 keV luminosity (not corrected for absorption, although we expect the role of obscuration to be negligible at these energies) as a function of redshift for the *NuSTAR* surveys. Blue stars are the UDS97 sources. Red dots indicate the *NuSTAR* COSMOS sample (Civano et al. 2015), green dots the *NuSTAR* ECDFS catalog (Mullaney et al. 2015), yellow dots the 40-month *NuSTAR* Serendipitous sample (Lansbury et al. 2017b), and gray dots the 70-month *Swift*/BAT catalog (Baumgartner et al. 2013). The dashed line is the flux limit of the UDS survey at 50% completeness.

produced using the `nuskybgd` software. Following the methodology of Zappacosta et al. (2018), for any source and pointing in which it is found, we extract the number of counts, background counts, and average exposure in the F band for a range of extraction radii. This allows us to get a signal-to-noise ratio (S/N) profile as a function of extraction radius for each pointing and each FPM; the single S/N(r) profiles are then averaged together, weighted with the exposure time at the position of the source in every observation. Finally, the extraction radius for FPMA and FPMB is chosen as the radius where both the weighted S/N and the net count profiles are approximately peaking. Single data products are summed together using standard tools like `mathpha`, `addarf`, and `addrmf`, where the ARFs and RMFs are weighted using the fraction of total counts their respective observation is contributing.

Chandra observations of the UDS field are downloaded from the public archive and reduced through the standard pipeline, using the `chandra_repro`, `specextract`, and `combine_spectra` tasks within the CIAO software (version 4.9, CALDB version 4.7.3). Circular extraction regions with a radius of 2'' are used, while we employ annuli centered on the source position with an internal radius of 3'' and external radius of 10'' to extract background spectra.

The *XMM-Newton* observations of the UDS field are downloaded and reduced using the Science Analysis Sub-system (SAS; version 16.0.0) tasks `epproc/emproc` and filtering every event file for high-background time intervals. PN data are always preferred to MOS data when available (i.e., when the source is not falling on a PN gap), while MOS1 and MOS2 spectra are summed together. We use the SAS `evselect` task to define optimized extraction radii for sources, while background spectra are extracted from nearby circular regions on the same chips as the sources. Finally, we use the SAS task `epicspeccombine` to produce summed sources and background spectra, ancillary, and response files. Final spectral products are grouped to a minimum of 3 counts bin⁻¹ with the `grppha` tool for each telescope.

6.2. Broadband Spectral Fitting

We fit the *NuSTAR* spectra jointly with the *XMM-Newton* and, when available, *Chandra* ones, adopting the Cash statistic (Cash 1979). The adopted spectral model is composed of a primary power-law emission with a fixed photon index $\Gamma = 1.8$, taking into account the possible photoelectric absorption and Compton scattering (i.e., a `plcabs` model), plus allowing for up to a few percent of the primary power law to be scattered into the line of sight. The whole nuclear emission is then absorbed by a Galactic column density ($N_{\text{H}}^{\text{gal}} = 2.08 \times 10^{20} \text{ cm}^{-2}$; Kalberla et al. 2005), and cross-calibration between instruments is accounted for using a multiplicative factor and solving for it for each source. In XSPEC notation, our baseline model is given by `const*pha*(plcabs+const*zpow)`. Examples of typical unobscured ($N_{\text{H}} < 10^{22} \text{ cm}^{-2}$), mildly obscured ($10^{22} < N_{\text{H}} < 10^{24} \text{ cm}^{-2}$), and heavily obscured spectra ($N_{\text{H}} > 10^{24} \text{ cm}^{-2}$) are shown in Figure 11. A good way to estimate the goodness of fit when using the Cash statistic is running simulations. This is well implemented in XSPEC through the `goodness` command, which runs a set of N simulated spectra drawn from the best-fitting parameters and fits them again. For each faked spectrum, the comparison with the fitting model is done with a Kolmogorov–Smirnov (K-S) test, and the final distribution of K-S values is compared with the observed K-S. The goodness G is defined as the fraction of simulations resulting in a K-S value less than the one observed. The lower the G value, the better the fit. Here, we run 1000 simulations for each source. The resulting distribution of G values and its cumulative distribution are shown in the left panel of Figure 12, as the yellow histogram and line. As can be seen in the figure, the distribution peaks at low G values, and $\sim 50\%$ of the sources have a G value less than 20, meaning that 80% of their simulated spectra had a worse fit with respect to the one performed on real data. However, some sources have $G > 80$. In particular, some of them are bright, unobscured AGNs for which the baseline model is not accurate enough to properly model the soft excess. We then add to these sources an `apec` component, in order to model the residuals seen

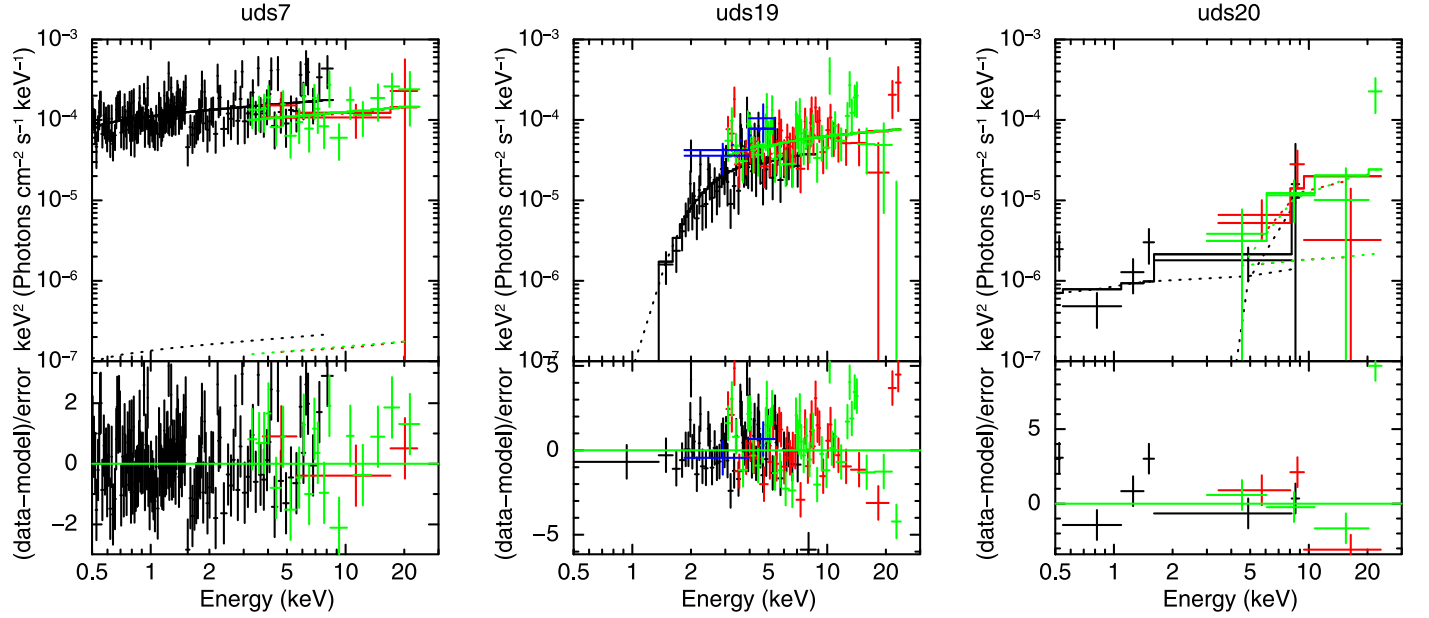


Figure 11. Three examples of spectra from the *NuSTAR* UDS97 sample, showing different levels of obscuration. From left to right, an unobscured, a mildly obscured ($N_{\text{H}} \sim 10^{23} \text{ cm}^{-2}$), and a CT AGN are shown. Each panel shows the 0.5–24 keV νF_{ν} spectrum unfolded with the best-fit model (the different components of the model are labeled with dotted lines) and its residuals. Black points are *XMM-Newton* data, while red and green are from *NuSTAR* FPMA and FPMB, respectively. Where also *Chandra* data are available (middle panel), they are labeled in blue.

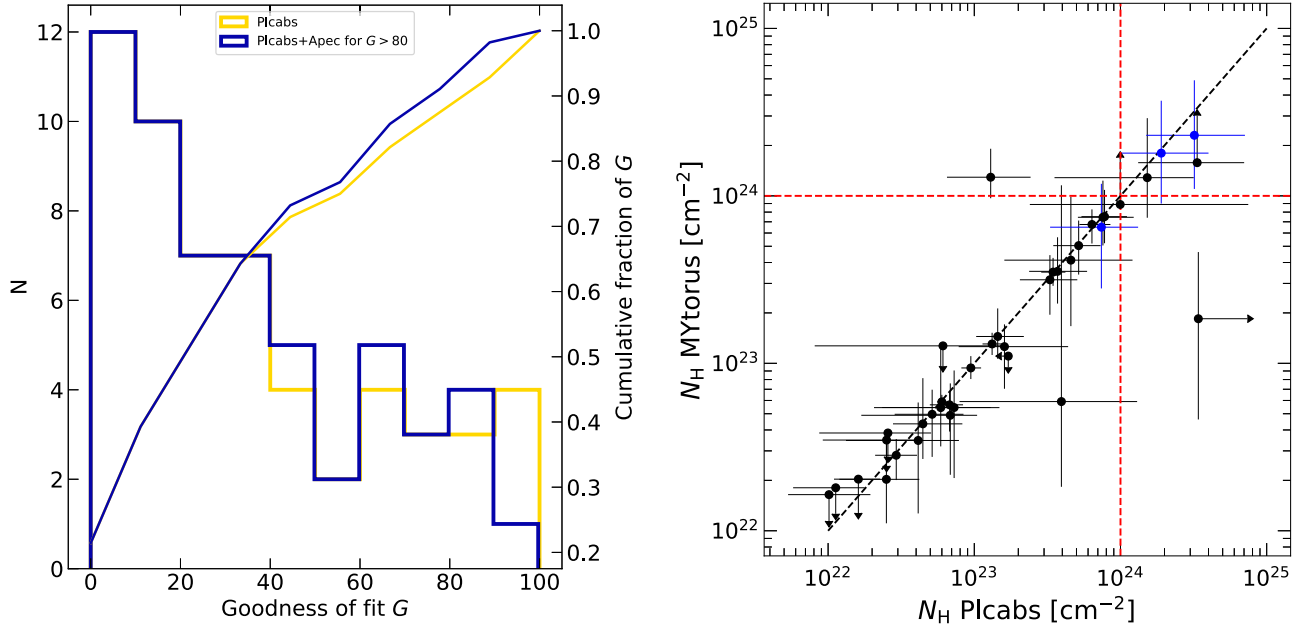


Figure 12. Left: goodness parameter G distribution for the 56 sources with an optical counterpart, fitted with the baseline model (yellow histogram) and with a baseline model plus an *apec* component for those sources with $G > 80$ (dark-blue histogram), respectively. About 50% of the sources have that 80% of the simulations run in XSPEC resulted in a worse fit. Right: column density as measured with the baseline model and the MYTorus model. Uncertainties are at the 90% confidence level. The dashed black line is not a fit to the data and marks the 1:1 relation. The dashed red lines mark the CT threshold for both models. Sources marked with blue points are obscured added to the sample with the HR analysis, for which some assumptions on the redshift are needed (see Sections 5.1.1 and 6.3).

in their spectra at $E < 1 \text{ keV}$, and present the aggregated results as the dark-blue histogram and cumulative. In this way, $< 10\%$ of the sources have $G > 80$. The tail of the distribution toward high G values is due to poor counting statistics and cross-calibration uncertainties.

We further check the robustness of the N_{H} values derived with the baseline model, adopting a more realistic model like MYTorus (Murphy & Yaqoob 2009). This model is more appropriate than *plcabs* when dealing with high column densities ($N_{\text{H}} \sim 10^{24} \text{ cm}^{-2}$), since it self-consistently takes into

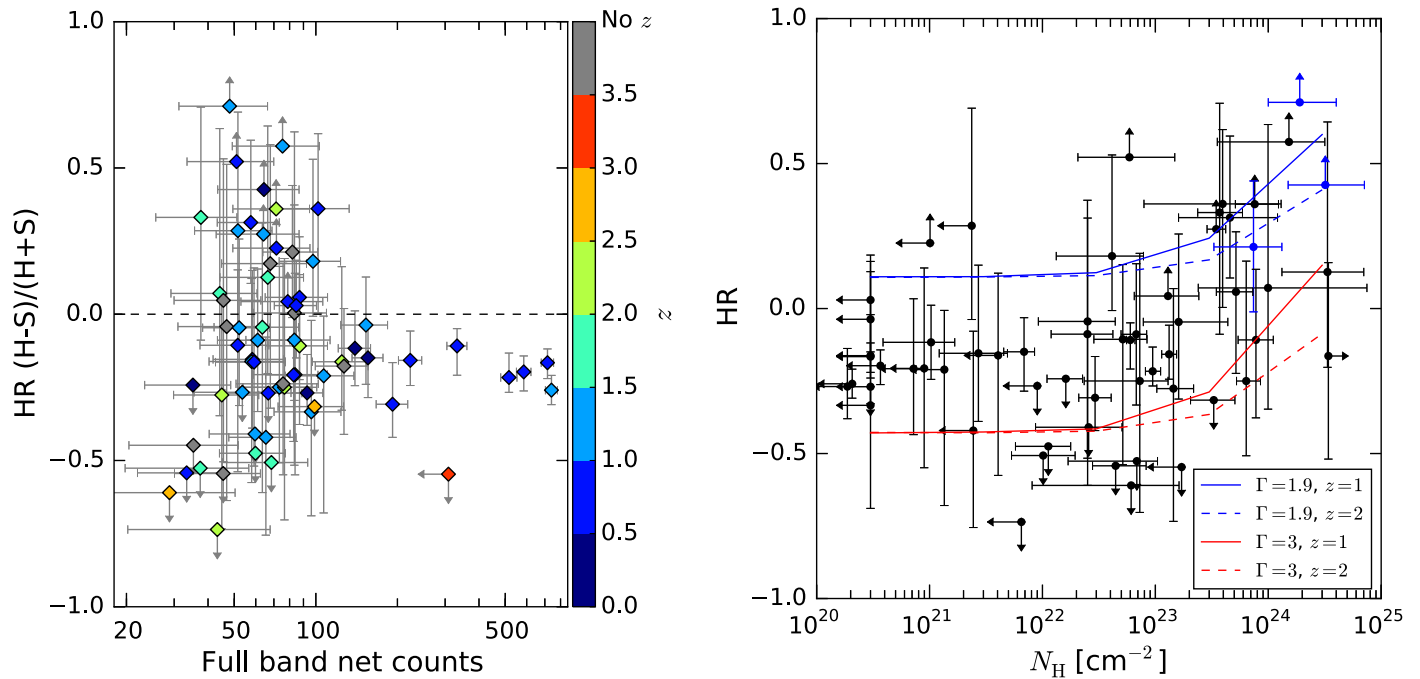


Figure 13. Left: *NuSTAR* hardness ratio of the whole UDS97 sample as a function of full-band (3–24 keV) net counts. Points are color-coded with their redshift, where gray points are those without a secure redshift association. A tail of very bright sources at $z < 1$ is seen with soft HR, while no clear trend is evident at low counts. The dashed horizontal line marks $HR = 0$. Right: hardness ratio as a function of obscuring column density, as measured by our baseline model with `plcabs` (uncertainties at 1σ) for the UDS97 sample, compared with the trend expected from a `plcabs` model with $\Gamma = 1.9$ (blue lines) or an unrealistic $\Gamma = 3$ (red lines), at both $z = 1$ (solid) and $z = 2$ (dashed). The models predict, at a fixed Γ , the relation to be flat until $N_H \sim 10^{23} \text{ cm}^{-2}$, and an increasing HR for increasing N_H at higher column densities. The two blue points mark the N_H measured for uds47 and uds63, adopting a `plcabs` model.

account Compton scattering and line fluorescence. In this second broadband spectral analysis, we employ a “default” MYTorus model, with the line-of-sight angle set to 90° , plus a scattered power law, similarly to what was done with the baseline model. In XSPEC notation, the model is `const*pha*(zpow*MYTZ+MYTS+MYTL+const*zpow)`, where the different components of the MYTorus model stand for the absorption, scattering, and line fluorescence ones, respectively. Unfortunately, a direct comparison of the column densities derived from the baseline model and from MYTorus is possible only for those sources having $N_H > 10^{22} \text{ cm}^{-2}$, since MYTorus is designed to deal with CT absorbers and does not allow N_H to be lower than 10^{22} cm^{-2} . A comparison of the column densities derived by the two models is presented in the right panel of Figure 12. An excellent concordance between the two models is seen, except for two sources, uds46 and uds66, which are significantly displaced from the 1:1 relation, marked by the black dashed line.

Looking at the fitting of these two sources in detail, we find that for uds46 the baseline model allows a CT solution that is perfectly consistent with the one found with the MYTorus model and is the absolute minimum of the Cash parameter space, while the Compton-thin solution is a relatively deep local minimum. Regarding uds66, the baseline model returns, together with an extremely high column density, also a suspiciously high cross-calibration constant $FPMA/EPIC\text{-}PN \sim 22$, which encapsulates both the possible source variability and the cross-calibration uncertainties. When fitted with MYTorus, this solution is disfavored against a Compton-thin solution ($N_H \sim 2 \times 10^{23} \text{ cm}^{-2}$), with a more reasonable cross-calibration constant of $FPMA/EPIC\text{-}PN = 2.2_{-1.3}^{+4.5}$. In addition to this, a Compton-thin solution (with a lower CSTAT value with respect to the CT solution with the same model) can be found also with the

baseline model. We also verified that this source is the only one returning such an unphysical value for the multiplicative constant. In both cases, the results from MYTorus can be reproduced with the baseline model by applying some fine-tuning, and these results provide a better fit to the data.

6.3. Adding the Hardness Ratio (HR) Information

Additional constraints on the obscuration properties of our sample come from the analysis of the HR, defined as

$$HR = \frac{H - S}{H + S}. \quad (4)$$

We then calculate the HR for the whole UDS97 sample using the Bayesian Estimator for Hardness Ratios (BEHR; Park et al. 2006), which uses the counts in the S and H *NuSTAR* bands and compares the results with the ones coming from the broadband spectral analysis. At fixed N_H , the HR changes with redshift, and as such it is not possible to infer a unique estimate on N_H without a redshift. Nonetheless, sources that show a very hard spectrum ($HR \sim 1$) are good candidates to be highly obscured objects, independently of their redshift (Lansbury et al. 2014, 2015).

We first test whether the low number of net counts could bias our HR measurements. In the left panel of Figure 13 the HR is plotted against the *NuSTAR* full-band net counts. While a tail of very bright sources seems to show soft HR, there is no clear trend between the number of counts and the spectral shape, indicating that the HR analysis is not biased toward, or against, a particular level of obscuration when dealing with very few (\sim tens) counts.

Second, we test whether the HR is effectively tracing the obscuration of our sample, plotting the HR coming from BEHR

as a function of the column density N_{H} as measured with our baseline model. As can be seen from the right panel of Figure 13, there is a qualitative concordance between our sample and the trend expected from models, since higher column densities are generally measured for objects with higher HR; moreover, the HR becomes sensitive to a column density change only for $N_{\text{H}} > 10^{23} \text{ cm}^{-2}$.

Eight sources in our sample have a lower limit (at 1σ confidence level) on the HR: uds13, uds30, uds42, uds46, uds47, uds48, uds58, and uds63. We note that uds47 and uds63 lack robust redshift associations, and as such they have not been included in the broadband spectral analysis of Section 6.2, but have a best-fit HR = 1, indicating high obscuration.

In particular, the *Chandra* spectrum of uds47 shows a prominent line feature. Assuming that the line is due to the neutral iron $K\alpha$ transition, a redshift of $z = 0.45^{+0.17}_{-0.11}$ is obtained with the MYTorus model. Applying an ad hoc model like `zwabs*zpow+zgauss`, the redshift can be constrained to be $z = 0.47^{+0.06}_{-0.08}$. Assuming this redshift, the spectrum of uds47 is then fitted with the baseline and toroidal models, being CT according to both.

Like uds47, uds63 does not have a secure redshift, in this case because it is associated with three *XMM-Newton* sources within $30''$. The farthest one is also the faintest at 4.5–10 keV, while the other two are formally a blend, as described in the text (see Section 5.1), lying at $z_1 = 1.5$ (photometric) and $z_2 = 0.568$ (spectroscopic). Since we are not able to decide which of the two is contributing most to the *NuSTAR* flux, we extracted both spectra and fitted them separately with the *NuSTAR* data. In both cases the fit returned a CT column density, and in this analysis we chose to fit the counterpart closest to the *NuSTAR* centroid, which provides also the best fit, adopting the redshift $z_1 = 1.5$. Assuming this photometric redshift, the source is CT according to both the baseline and MYTorus models. These two sources, together with uds59 (see Section 5.1.1), are marked in the right panel of Figure 12 and in the right panel of Figure 13 as the blue points.

The majority of the eight lower limits identified by the BEHR have $N_{\text{H}} \gtrsim 10^{23} \text{ cm}^{-2}$ based on the spectral fitting. All of them are present in the right panel of Figure 12, but one, uds48, is found completely unobscured by the baseline model. A closer look at this source reveals that the *Chandra* and *XMM-Newton* spectra are fit by pure power laws without any sign of obscuration aside from the Galactic one, along the line of sight. Two formally indistinguishable scenarios are possible: one in which the source is totally unobscured, and one in which *NuSTAR* captures the Compton reflection hump while *XMM-Newton* and *Chandra* detect only the scattered power-law emission. We show, in this case, how the CSTAT varies as a function of column density parameter in Figure 14. From the figure, the CT solution seems to be preferred by the data, since the two scenarios have the same number of spectral bins, degrees of freedom, and free parameters in the fit. From this, it follows that also the Akaike information criterion (AIC; Akaike 1974) prefers the CT solution. We note that this plot has been obtained adopting the baseline model, since MYTorus does not allow $N_{\text{H}} < 10^{22} \text{ cm}^{-2}$.

In summary, adding the HR information allows us to identify two additional sources as candidates CT AGNs (uds47 and uds63), while doubts remain on the nature of uds48, with a slight preference for a CT scenario as well.

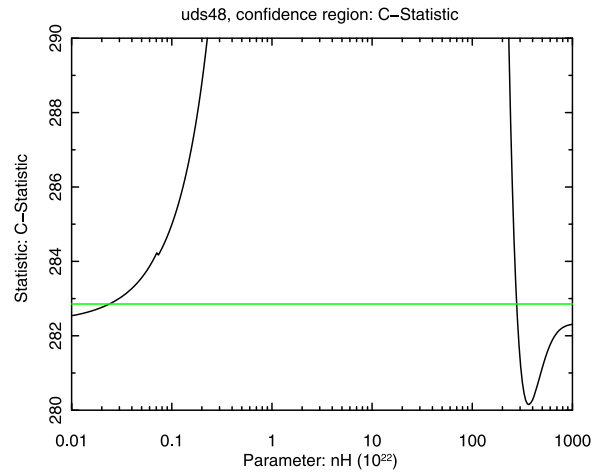


Figure 14. C-Statistic parameter as a function of the column density for uds48, fitting *NuSTAR* + *XMM-Newton* + *Chandra* data. The green horizontal line is the limiting CSTAT for the 90% confidence level uncertainty. Statistically acceptable solutions are those with a CSTAT parameter below the green line. The model adopted is `plcabs`, because MYTorus does not allow $N_{\text{H}} < 10^{22} \text{ cm}^{-2}$. An unobscured solution is statistically indistinguishable from a CT one; the best fit, however, is obtained with $N_{\text{H}} \gtrsim 3.5 \times 10^{24} \text{ cm}^{-2}$, and we assume this source to be a CT source.

6.4. The Observed CT Fraction

Given the above results, we can now compute the CT fraction of the *NuSTAR* UDS97 sample taking into account the uncertainties on the column density estimates for each source. We adopt the column densities coming from the baseline model for $N_{\text{H}} < 10^{23} \text{ cm}^{-2}$ and those coming from MYTorus for more obscured sources. This implies that we do not consider uds48 as obscured in the following analysis, despite there being an indication that it could be a CT candidate as well.

The N_{H} measurement for a source can be constrained, a lower limit, an upper limit, or unconstrained. In the first case, we adopt the uncertainties coming from the spectral analysis and assume a skewed Gaussian distribution for its probability density function (pdf) of the N_{H} , taking into account the asymmetry in the upper and lower uncertainties. In the second case, we truncate the Gaussian, peaked on the observed value, at the 90% confidence lower limit.²⁷ In the third case, upper limits are all obtained for unobscured sources. Since the fits are not sensitive to low values of N_{H} (i.e., column densities $N_{\text{H}} < 10^{20} \text{ cm}^{-2}$ are statistically indistinguishable²⁸), we adopt a uniform probability distribution between $N_{\text{H}} = 10^{20} \text{ cm}^{-2}$ and the 90% confidence upper limit, which goes usually up to $N_{\text{H}} \sim \text{few} \times 10^{21} \text{ cm}^{-2}$. In the last case, similar to the previous one, some sources are totally unobscured, and the fit is completely insensitive to the N_{H} parameter in both directions. In this case, we adopt for simplicity a very narrow half-Gaussian peaked at $N_{\text{H}} = 10^{20} \text{ cm}^{-2}$.

²⁷ We define the σ of the Gaussian to be $\sigma = (N_{\text{H,obs}} - N_{\text{H,LL}})/2.706$. When a random value for N_{H} is drawn from the distribution, it is rejected if it is below the lower limit. Adopting a flat pdf between the lower limit and the usually adopted limit of $N_{\text{H}} = 10^{25} \text{ cm}^{-2}$ gives the same results on the CT fraction within the uncertainties.

²⁸ Since the Galactic N_{H} is $N_{\text{H,Gal}} = 2.08 \times 10^{20} \text{ cm}^{-2}$ (see Section 6.2), unobscured sources show column densities that can be orders of magnitude below the Galactic one. As commonly done in many other previous works, all unobscured AGNs with $N_{\text{H}} < 10^{20} \text{ cm}^{-2}$ are put at $N_{\text{H}} = 10^{20} \text{ cm}^{-2}$.

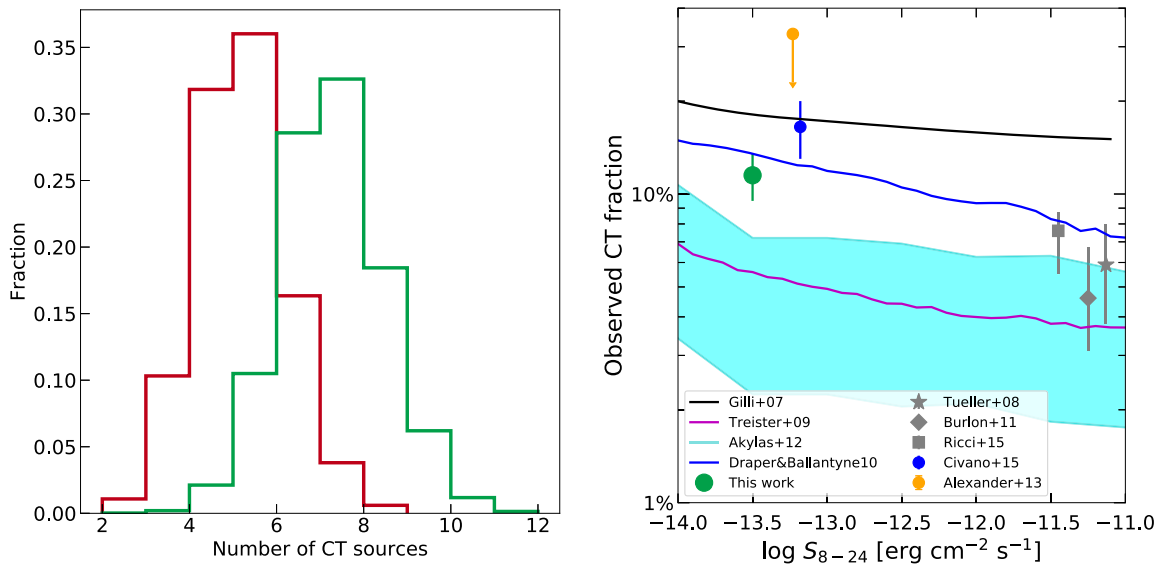


Figure 15. Left: distribution of the number of CT sources for 500 iterations taking into account uncertainties on the single column densities N_{H} . The red histogram is obtained considering the UDS97 sample of 56 sources, while the green one is obtained adding to the analysis three heavily obscured sources discussed in the text (uds47, uds59, uds63), for a total sample of 59 sources. Right: CT fraction as a function of 8–24 keV flux as measured by *NuSTAR* in the UDS field in the redshift range $0 < z < 3$ (green circle, which refers to the green histogram in the left panel of this figure, at a 50% completeness flux limit in the 8–24 keV band). The gray star, diamond, and square represent the measurements of *Swift*/BAT by Tueller et al. (2008), Burlon et al. (2011), and Ricci et al. (2015), respectively. We note that in Ricci et al. (2015) the observed CT fraction in the 10–40 keV band agrees with the Treister et al. (2009) model, while the 8–24 keV band adopted here suffers more from absorption, lowering the number of CT sources predicted by the model. The orange point refers to results from the *NuSTAR* Serendipitous survey (Alexander et al. 2013), while the blue point is the measurement from Civano et al. (2015). Black, blue, and magenta solid lines refer to the Gilli et al. (2007), Draper & Ballantyne (2010), and Treister et al. (2009) models, respectively, while the cyan area refers to the Akylas et al. (2012) model with a range of intrinsic CT fractions between 15% and 50%.

With these prescriptions, we run a set of 5000 iterations in which, for each source, we draw an N_{H} value following the underlying assumed pdf. For each iteration, a CT fraction is computed based on the number of sources having $N_{\text{H}} > 10^{24} \text{ cm}^{-2}$. The distribution of the number of CT sources in each iteration is shown in the left panel of Figure 15 as the red histogram. The average number of CT sources is $\text{CT} = 4.7$ with a standard deviation $\sigma = 1.1$, which translates to a CT fraction of $f_{\text{CT}} = 8.4\% \pm 2.0\%$ (1σ) given the sample size of 56 sources. If we add those obscured sources coming from both the HR analysis (uds47, uds63; see Section 6.3) and the nondetection by *XMM-Newton* (uds59; see Section 5.1.1), increasing the sample to 59 sources, the green histogram in the left panel of Figure 15 is obtained, having an average of 6.8 CT sources with a standard deviation $\sigma = 1.2$, which translates into an $f_{\text{CT}} = 11.5\% \pm 2.0\%$ (1σ). Consistent results are obtained also in the approximation of adopting symmetric errors (i.e., standard Gaussian distributions for the pdf's).

7. Discussion on the CT Fraction

Since we have taken into account the uncertainties on the column density for each source, we are not focusing on a well-defined sample of CT sources, but rather on an average number of sources that are more likely to be CT. On average, for the extended UDS97 sample (i.e., the sample of 56 sources plus the three obscured sources for which we derived or assumed a redshift in different ways), a number of roughly 67 sources are on average found to be CT.

Interestingly, the CT fraction would have been dramatically lower (i.e., $\sim 3\% \pm 2\%$) in the more conservative sample,

UDS99, since on average only one or two of the spectroscopically confirmed CT sources would have been detected. On the other hand, the CT fraction is unlikely to be much higher than $\sim 11\%–12\%$, although a few sources may have an HR consistent with a CT obscuration and have not been selected by our criteria, mainly because they are blended, or missing an optical counterpart.

The CT fraction obtained in the UDS field is in agreement with the tentative estimate of C15 based on the HR distribution of the *NuSTAR* COSMOS sample, which is 13%–20%, with only one source being confirmed CT from the spectral analysis. It is interesting to note that, if focusing on the UDS99 sample with 43 sources (39 with optical counterpart) and exploiting the HR– z plane as a first-order diagnostic tool to get an estimate of the CT fraction, we would get a fraction of $\sim 15\%$ (i.e., 6 out of 39 sources with an HR consistent with having $N_{\text{H}} > 10^{24} \text{ cm}^{-2}$), although on average only one of our spectroscopically confirmed CT sources would have been detected in the UDS99 sample. This number, even if remarkably consistent with the spectral analysis result, shows how a robust spectral analysis is required to draw firmer conclusions on the CT fraction, while the use of the HR alone would have yielded uncertain conclusions owing to the smaller number of sources.

A comparison of the observed CT fraction measured by *NuSTAR* in the UDS field with some models (Figure 15, right panel) shows a broad agreement of our result with the predictions of different population synthesis models of the CXB (Gilli et al. 2007; Treister et al. 2009; Draper & Ballantyne 2010; Akylas et al. 2012). We again emphasize that here we focus on the observed CT fraction, while a careful estimate of the intrinsic CT fraction is beyond the scope of the paper. Together with the results reported in the figure, we note

that the UDS and Serendipitous surveys seem to be probing two different, but complementary, regimes of parameter space with their two different samples. Indeed, Lansbury et al. (2017a) find that the low-redshift ($z < 0.07$) CT fraction is unexpectedly high ($\sim 30\%$) compared to model predictions, while the UDS sample covers much higher redshifts, since our CT candidates are almost all between $1 < z < 2$, and broadly agrees with model predictions (for $0 < z < 3$). On the other hand, Zappacosta et al. (2018) present a thorough and homogeneous broadband (0.5–24 keV) spectral analysis of 63 *NuSTAR*-detected sources with $S_{8-24} > 7 \times 10^{-14}$ erg cm $^{-2}$ s $^{-1}$ and $\langle z \rangle = 0.58$, finding a CT fraction between 1% and 8%, which is consistent with our result. However, the right panel of Figure 8 shows that roughly half of our sources reliably detected in the full band have F-band fluxes lower than their H-band cut, implying an even lower H-band flux for our sources (a factor of 7–10 with respect to the sources selected in Zappacosta et al. 2018). This is also confirmed by the spectral analysis performed. In this respect, we are probing, also in this case, two different, and possibly complementary, redshift and flux ranges.

8. Conclusions

In this paper, we presented the *NuSTAR* survey of the UDS field, consisting of 35 observations performed in two separate passes on the field. The total observing time is 1.75 Ms, over an area of 0.58 deg 2 . The main results can be summarized as follows:

1. We detected 43 sources above the 99% reliability threshold (i.e., UDS99) and 67 sources above the 97% reliability threshold (i.e., UDS97). We have explored, for the first time, the feasibility of a detection in three new bands, splitting the hard 8–24 keV band into two narrower bands (H1, 8–16 keV; H2, 16–24 keV), and exploiting the broadband capabilities of *NuSTAR* looking for sources in the very hard (VH, 35–55 keV) band. Very few sources are found in the H2 bands, and no sources are detected in the VH band. This is in agreement with the simulations performed, which require larger areas to collect more sources and draw firmer results. Applying this analysis to all the *NuSTAR* Extragalactic Surveys fields seems a natural follow-up of the work presented here and will be the subject of a future publication. Therefore, the catalog is restricted to the canonical F, S, and H bands for homogeneity with the previous *NuSTAR* Extragalactic Surveys, and we focused on the UDS97 catalog, where the expected spurious fraction is 3%.
2. We identify one *NuSTAR* source undetected in lower-energy data (uds59, discussed in 5.1.1), which is likely heavily obscured. A combination of heavy obscuration and low EPIC exposure at its position may be enough to explain its nondetection by *XMM-Newton*.
3. In order to have a precise view of the obscuration properties of our sample, we combined all the available information coming from a broadband spectral analysis and HR diagnostic to include all the heavily obscured candidates. We then computed an accurate observed CT fraction taking into account the uncertainties on each N_{H} value and running

5000 iterations of the column density distribution. The final CT fraction is $f_{\text{CT}} = 11.5\% \pm 2.0\%$, considering a sample of 59 sources. This fraction is in agreement with findings from other *NuSTAR* surveys and in broad agreement with population synthesis models of the CXB.

4. If we adopted the more conservative UDS99 sample, the HR– z plane diagnostics alone would yield a CT fraction of $\sim 15\%$. On the other hand, on average only one of our spectroscopically confirmed CT sources would have been detected in the UDS99 sample, dramatically lowering the observed CT fraction. A robust spectral analysis is key to strengthening the results obtained with the HR alone.

We thank the anonymous referee for providing helpful comments, which significantly improved the clarity and robustness of the paper.

This work was supported under NASA contract NNG08FD60C and made use of data from the *NuSTAR* mission, a project led by the California Institute of Technology, managed by the Jet Propulsion Laboratory, and funded by the National Aeronautics and Space Administration. We thank the *NuSTAR* Operations, Software, and Calibration teams for support with the execution and analysis of these observations. This research made use of the *NuSTAR* Data Analysis Software (*NuSTARDAS*) jointly developed by the ASI Science Data Center (ASDC, Italy) and the California Institute of Technology (USA).

This research has also made use of data obtained from the Chandra Data Archive and the Chandra Source Catalog, software provided by the Chandra X-ray Center (CXC), and observations obtained with *XMM-Newton*, an ESA science mission with instruments and contributions directly funded by ESA Member States and NASA, together with data obtained from the 3XMM *XMM-Newton* serendipitous source catalog compiled by the 10 institutes of the *XMM-Newton* Survey Science Centre selected by ESA.

A.M. and A.C. acknowledge support from the ASI/INAF grant I/037/12/0011/13. W.N.B. acknowledges Caltech *NuSTAR* subcontract 44A-1092750. L.Z. acknowledges financial support under ASI/INAF contract I/037/12/0. G.B.L. acknowledges support from a Herchel Smith Fellowship of the University of Cambridge. E.T. acknowledges support from CONICYT-Chile grants Basal-CATA PFB-06/2007 and FONDECYT Regular 1160999. R.C.H. acknowledges support from NASA through grant no. NNX15AP24G.

Facilities: *NuSTAR*, *Chandra*, *XMM-Newton*.

Software: *NuSTARDAS*, XSPEC (v 12.9.1 Arnaud 1996), FTOOLS, SExtractor (Bertin & Arnouts 1996), CIAO (Fruscione et al. 2006), Astropy (Astropy Collaboration et al. 2013), IDL.

Appendix Catalog Description

The electronic version of the catalog contains the following information. The electronic version of the catalog contains the information described in Table 7. An extract of the first two rows and 36 columns of the catalog is presented in Table 8.

Table 7
Details on the Catalog Content

Col. Number (1)	Description (2)
1	<i>NuSTAR</i> source name, following the standard IAU convention, with the prefix “ <i>NuSTAR</i> .”
2	Source ID.
3	R.A. of the source, in the J2000 coordinate system.
4	Decl. of the source, in the J2000 coordinate system.
5	3–24 keV band deblended DET_ML (0 if undetected).
6	3–24 keV band vignetting-corrected exposure time at the position of the source.
7	3–24 keV band total counts in a 20''-radius circular aperture.
8	3–24 keV band deblended background counts in a 20''-radius circular aperture.
9	3–24 keV band net counts (3σ upper limit if undetected).
10	3–24 keV band positive count error computed using Gehrels statistic (0 if undetected).
11	3–24 keV band negative count error computed using Gehrels statistic (0 if undetected).
12	3–24 keV band count rate in a 20''-radius circular aperture (3σ upper limit if undetected).
13	3–24 keV band aperture-corrected flux (3σ upper limit if undetected).
14	3–24 keV band positive flux error (–99 if undetected).
15	3–24 keV band negative flux error (–99 if undetected).
16	3–8 keV band deblended DET_ML (0 if undetected).
17	3–8 keV band vignetting-corrected exposure time at the position of the source.
18	3–8 keV band total counts in a 20''-radius circular aperture.
19	3–8 keV band deblended background counts in a 20''-radius circular aperture.
20	3–8 keV band net counts (3σ upper limit if undetected).
21	3–8 keV band positive count error computed using Gehrels statistic (0 if undetected).
22	3–8 keV band negative count error computed using Gehrels statistic (0 if undetected).
23	3–8 keV band count rate in a 20''-radius circular aperture (3σ upper limit if undetected).
24	3–8 keV band aperture-corrected flux (3σ upper limit if undetected).
25	3–8 keV band positive flux error (–99 if undetected).
26	3–8 keV band negative flux error (–99 if undetected).
27	8–24 keV band deblended DET_ML (0 if undetected).
28	8–24 keV band vignetting-corrected exposure time at the position of the source.
29	8–24 keV band total counts in a 20''-radius circular aperture.
30	8–24 keV band deblended background counts in a 20''-radius circular aperture.
31	8–24 keV band net counts (3σ upper limit if undetected).
32	8–24 keV band positive count error computed using Gehrels statistic (0 if undetected).
33	8–24 keV band negative count error computed using Gehrels statistic (0 if undetected).
34	8–24 keV band count rate in a 20''-radius circular aperture (3σ upper limit if undetected).
35	8–24 keV band aperture-corrected flux (3σ upper limit if undetected).
36	8–24 keV band positive flux error (–99 if undetected).
37	8–24 keV band negative flux error (–99 if undetected).
38	Hardness ratio computed with BEHR (Park et al. 2006).
39	Hardness ratio lower bound.
40	Hardness ratio upper bound.
41	<i>XMM-Newton</i> primary counterpart in 30'' from the SXDS catalog (Ueda et al. 2008) (–99 if no counterpart is found).
42	R.A. of the <i>XMM-Newton</i> counterpart, J2000 coordinate system (–99 if no counterpart is found).
43	Decl. of the <i>XMM-Newton</i> counterpart, J2000 coordinate system (–99 if no counterpart is found).
44	<i>XMM-Newton</i> ultrasoft-band (0.3–0.5 keV) count rate (–99 if no counterpart is found).
45	<i>XMM-Newton</i> ultrasoft-band (0.3–0.5 keV) count rate uncertainty (1σ) (–99 if no counterpart is found).
46	<i>XMM-Newton</i> soft-band (0.5–2.0 keV) count rate (–99 if no counterpart is found).
47	<i>XMM-Newton</i> soft-band (0.5–2.0 keV) count rate uncertainty (1σ) (–99 if no counterpart is found).
48	<i>XMM-Newton</i> medium-band (2.0–4.5 keV) count rate (–99 if no counterpart is found).
49	<i>XMM-Newton</i> medium-band (2.0–4.5 keV) count rate uncertainty (1σ) (–99 if no counterpart is found).
50	<i>XMM-Newton</i> ultrahard-band (4.5–10.0 keV) count rate (–99 if no counterpart is found).
51	<i>XMM-Newton</i> ultrahard-band (4.5–10.0 keV) count rate uncertainty (1σ) (–99 if no counterpart is found).
52	Distance between the <i>NuSTAR</i> source and <i>XMM-Newton</i> primary counterpart (–99 if no counterpart is found).
53	Number of <i>XMM-Newton</i> counterparts found within 30''.
54	<i>Chandra</i> primary counterpart in 30'' from the XUDS catalog (Kocevski et al. 2018) (–99 if no counterpart is found).
55	Distance between the <i>NuSTAR</i> source and <i>Chandra</i> primary counterpart (–99 if no counterpart is found).
56	Number of <i>Chandra</i> counterparts found within 30''.
57	R.A. of optical counterpart, from Akiyama et al. (2015) (–99 if no counterpart is found).
58	Decl. of optical counterpart, from Akiyama et al. (2015) (–99 if no counterpart is found).
59	Spec-z of optical counterparts (Akiyama et al. 2015) (–99 if no counterpart is found, 9.999 if no spectroscopic redshift is available).
60	Spectroscopic classification of optical counterpart (–99 if no counterpart is found).
61	Photo-z of optical counterparts (Akiyama et al. 2015) (–99 if no counterpart is found).
62	Photometric classification of optical counterpart (–99 if no counterpart is found).

(This table is available in its entirety in machine-readable form.)

Table 8
An Extract from the UDS Catalog

Name	Number	R.A. (deg)	Decl. (deg)	DET_ML _F	E_F (ks)	T_F	B_F	N_F	$\sigma_F^{+,N}$	$\sigma_F^{-,N}$	CR _F (s ⁻¹)
(1)	(2)	(3)	(4)	(5)	(6)	(7)	(8)	(9)	(10)	(11)	(12)
J340916-050237.5	1	34.1547	-5.0438	8.186	157.5	175.0	137.57	37.43	19.13	17.66	0.000238
J341921-051012.4	2	34.3226	-5.1701	5.720	223.5	216.0	187.18	28.82	21.52	20.06	0.000129
Flux _F (cgs)	$\sigma_F^{+,Flux}$ (cgs)	$\sigma_F^{-,Flux}$ (cgs)	DET_ML _S	E_S (ks)	T_S	B_S	N_S	$\sigma_S^{+,N}$	$\sigma_S^{-,N}$	CR _S (s ⁻¹)	Flux _S (cgs)
(13)	(14)	(15)	(16)	(17)	(18)	(19)	(20)	(21)	(22)	(23)	(24)
3.6×10^{-14}	1.8×10^{-14}	1.7×10^{-14}	12.314	169.5	98.0	61.6	36.4	14.09	12.60	0.000215	2.3×10^{-14}
2.0×10^{-14}	1.5×10^{-14}	1.4×10^{-14}	13.877	237.2	130.0	84.46	45.54	16.09	14.62	0.000192	2.0×10^{-14}
$\sigma_S^{+,Flux}$ (cgs)	$\sigma_S^{-,Flux}$ (cgs)	DET_ML _H	E_H (ks)	T_H	B_H	N_H	$\sigma_H^{+,N}$	$\sigma_H^{-,N}$	CR ^H (s ⁻¹)	Flux ^H (cgs)	$\sigma_H^{+,Flux}$ (cgs)
(25)	(26)	(27)	(28)	(29)	(30)	(31)	(32)	(33)	(34)	(35)	(36)
8.8×10^{-15}	7.9×10^{-15}	0	146.4	83.0	76.16	107.85	0	0	0.000737	1.6×10^{-13}	-99
7.2×10^{-15}	6.5×10^{-15}	0	212.8	107.0	103.18	138.18	0	0	0.000649	1.4×10^{-13}	-99

ORCID iDs

A. Masini  <https://orcid.org/0000-0002-7100-9366>
 A. Comastri  <https://orcid.org/0000-0003-3451-9970>
 F. Fornasini  <https://orcid.org/0000-0002-9286-9963>
 D. R. Ballantyne  <https://orcid.org/0000-0001-8128-6976>
 G. B. Lansbury  <https://orcid.org/0000-0002-5328-9827>
 E. Treister  <https://orcid.org/0000-0001-7568-6412>
 D. M. Alexander  <https://orcid.org/0000-0002-5896-6313>
 P. G. Boorman  <https://orcid.org/0000-0001-9379-4716>
 W. N. Brandt  <https://orcid.org/0000-0002-0167-2453>
 D. Farrah  <https://orcid.org/0000-0003-1748-2010>
 P. Gandhi  <https://orcid.org/0000-0003-3105-2615>
 F. A. Harrison  <https://orcid.org/0000-0003-2992-8024>
 R. C. Hickox  <https://orcid.org/0000-0003-1468-9526>
 L. Lanz  <https://orcid.org/0000-0002-3249-8224>
 S. Marchesi  <https://orcid.org/0000-0001-5544-0749>
 S. Puccetti  <https://orcid.org/0000-0002-2734-7835>
 C. Ricci  <https://orcid.org/0000-0001-5231-2645>
 D. Stern  <https://orcid.org/0000-0003-2686-9241>

References

- Ajello, M., Greiner, J., Sato, G., et al. 2008, *ApJ*, 689, 666
 Akaike, H. 1974, *ITAC*, 19, 716
 Akiyama, M., Ueda, Y., Watson, M. G., et al. 2015, *PASJ*, 67, 82
 Akylas, A., Georgakakis, A., Georgantopoulos, I., Brightman, M., & Nandra, K. 2012, *A&A*, 546, A98
 Alexander, D. M., & Hickox, R. C. 2012, *NewAR*, 56, 93
 Alexander, D. M., Stern, D., Del Moro, A., et al. 2013, *ApJ*, 773, 125
 Almaini, O., Foucaud, S., Lane, K., et al. 2007, in *ASP Conf. Ser. 379, Cosmic Frontiers*, ed. N. Metcalfe & T. Shanks (San Francisco, CA: ASP), 163
 Arnaud, K. A. 1996, in *ASP Conf. Ser. 101, Astronomical Data Analysis Software and Systems V*, ed. G. H. Jacoby & J. Barnes (San Francisco, CA: ASP), 17
 Astropy Collaboration, Robitaille, T. P., Tollerud, E. J., et al. 2013, *A&A*, 558, A33
 Baumgartner, W. H., Tueller, J., Markwardt, C. B., et al. 2013, *ApJS*, 207, 19
 Bertin, E., & Arnouts, S. 1996, *A&AS*, 117, 393
 Boldt, E. 1987, *PhR*, 146, 215
 Bottacini, E., Ajello, M., & Greiner, J. 2012, *ApJS*, 201, 34
 Brandt, W. N., & Alexander, D. M. 2015, *A&ARv*, 23, 1
 Brightman, M., Masini, A., Ballantyne, D. R., et al. 2016, *ApJ*, 826, 93
 Burlon, D., Ajello, M., Greiner, J., et al. 2011, *ApJ*, 728, 58
 Casali, M., Adamson, A., Alves de Oliveira, C., et al. 2007, *A&A*, 467, 777
 Cash, W. 1979, *ApJ*, 228, 939
 Civano, F., Hickox, R. C., Puccetti, S., et al. 2015, *ApJ*, 808, 185
 Civano, F., Marchesi, S., Comastri, A., et al. 2016, *ApJ*, 819, 62
 Comastri, A., Setti, G., Zamorani, G., & Hasinger, G. 1995, *A&A*, 296, 1
 Coppin, K., Chapin, E. L., Mortier, A. M. J., et al. 2006, *MNRAS*, 372, 1621
 Dawson, K. S., Schlegel, D. J., Ahn, C. P., et al. 2013, *AJ*, 145, 10
 Draper, A. R., & Ballantyne, D. R. 2010, *ApJL*, 715, L99
 Durret, F., Adami, C., Cappi, A., et al. 2011, *A&A*, 535, A65
 Eddington, A. S. 1913, *MNRAS*, 73, 359
 Fruscione, A., McDowell, J. C., Allen, G. E., et al. 2006, *Proc. SPIE*, 6270, 62701V
 Furusawa, H., Kosugi, G., Akiyama, M., et al. 2008, *ApJS*, 176, 1
 Galametz, A., Grazian, A., Fontana, A., et al. 2013, *ApJS*, 206, 10
 Gehrels, N. 1986, *ApJ*, 303, 336
 Gilli, R., Comastri, A., & Hasinger, G. 2007, *A&A*, 463, 79
 Gilli, R., Salvati, M., & Hasinger, G. 2001, *A&A*, 366, 407
 Harrison, F. A., Aird, J., Civano, F., et al. 2016, *ApJ*, 831, 185
 Harrison, F. A., Craig, W. W., Christensen, F. E., et al. 2013, *ApJ*, 770, 103
 Jarvis, M. J., Bonfield, D. G., Bruce, V. A., et al. 2013, *MNRAS*, 428, 1281
 Kalberla, P. M. W., Burton, W. B., Hartmann, D., et al. 2005, *A&A*, 440, 775
 Kocevski, D. D., Hasinger, G., Brightman, M., et al. 2018, *ApJS*, in press
 Krivonos, R., Revnivtsev, M., Lutovinov, A., et al. 2007, *A&A*, 475, 775
 La Franca, F., Fiore, F., Comastri, A., et al. 2005, *ApJ*, 635, 864
 Lansbury, G. B., Alexander, D. M., Aird, J., et al. 2017a, arXiv:1707.06651
 Lansbury, G. B., Alexander, D. M., Del Moro, A., et al. 2014, *ApJ*, 785, 17
 Lansbury, G. B., Gandhi, P., Alexander, D. M., et al. 2015, *ApJ*, 809, 115
 Lansbury, G. B., Stern, D., Aird, J., et al. 2017b, *ApJ*, 836, 99
 Lawrence, A., Warren, S. J., Almaini, O., et al. 2007, *MNRAS*, 379, 1599
 Lonsdale, C. J., Smith, H. E., Rowan-Robinson, M., et al. 2003, *PASP*, 115, 897
 Madau, P., Ghisellini, G., & Fabian, A. C. 1994, *MNRAS*, 270, L17
 Marchesi, S., Civano, F., Salvato, M., et al. 2016, *ApJ*, 827, 150
 Masini, A., Comastri, A., Baloković, M., et al. 2016, *A&A*, 589, A59
 Mullaney, J. R., Del-Moro, A., Aird, J., et al. 2015, *ApJ*, 808, 184
 Murphy, K. D., & Yaqoob, T. 2009, *MNRAS*, 397, 1549
 Oliver, S. J., Bock, J., Altieri, B., et al. 2012, *MNRAS*, 424, 1614
 Paolillo, M., Papadakis, I., Brandt, W. N., et al. 2017, *MNRAS*, 471, 4398
 Park, T., Kashyap, V. L., Siemiginowska, A., et al. 2006, *ApJ*, 652, 610
 Polletta, M. d. C., Wilkes, B. J., Siana, B., et al. 2006, *ApJ*, 642, 673
 Ricci, C., Bauer, F. E., Treister, E., et al. 2017, *MNRAS*, 468, 1273
 Ricci, C., Ueda, Y., Koss, M. J., et al. 2015, *ApJL*, 815, L13
 Rosen, S. R., Webb, N. A., Watson, M. G., et al. 2016, *A&A*, 590, A1
 Sanders, D. B., Soifer, B. T., Elias, J. H., Neugebauer, G., & Matthews, K. 1988, *ApJL*, 328, L35
 Simpson, C., Martínez-Sansigre, A., Rawlings, S., et al. 2006, *MNRAS*, 372, 741
 Teng, S. H., Rigby, J. R., Stern, D., et al. 2015, *ApJ*, 814, 56
 Treister, E., & Urry, C. M. 2005, *ApJ*, 630, 115
 Treister, E., Urry, C. M., & Virani, S. 2009, *ApJ*, 696, 110
 Tueller, J., Mushotzky, R. F., Barthelmy, S., et al. 2008, *ApJ*, 681, 113
 Ueda, Y., Akiyama, M., Ohta, K., & Miyaji, T. 2003, *ApJ*, 598, 886
 Ueda, Y., Watson, M. G., Stewart, I. M., et al. 2008, *ApJS*, 179, 124
 Vito, F., Gilli, R., Vignali, C., et al. 2014, *MNRAS*, 445, 3557
 Wang, Q. D. 2004, *ApJ*, 612, 159
 Wik, D. R., Hornstrup, A., Molendi, S., et al. 2014, *ApJ*, 792, 48
 Wright, E. L., Eisenhardt, P. R. M., Mainzer, A. K., et al. 2010, *AJ*, 140, 1868
 Zappacosta, L., Comastri, A., Civano, F., et al. 2018, *ApJ*, 854, 33