



Publication Year	2017
Acceptance in OA	2020-07-21T06:25:12Z
Title	Testing the variability of the proton-to-electron mass ratio from observations of methanol in the dark cloud core L1498
Authors	Daprà, M., Henkel, C., Levshakov, S. A., Menten, K. M., Muller, S., Bethlem, H. L., Leurini, Silvia, Lapinov, A. V., Ubachs, W.
Publisher's version (DOI)	10.1093/mnras/stx2308
Handle	http://hdl.handle.net/20.500.12386/26536
Journal	MONTHLY NOTICES OF THE ROYAL ASTRONOMICAL SOCIETY
Volume	472

Testing the variability of the proton-to-electron mass ratio from observations of methanol in the dark cloud core L1498

M. Daprà,^{1★} C. Henkel,^{2,3} S. A. Levshakov,^{4,5,6} K. M. Menten,² S. Müller,⁷ H. L. Bethlem,¹ S. Leurini,^{2,8} A. V. Lapinov⁹ and W. Ubachs^{1★}

¹Department of Physics and Astronomy, LaserLab, Vrije Universiteit, De Boelelaan 1081, NL-1081 HV Amsterdam, the Netherlands

²Max-Planck-Institut für Radioastronomie, Auf dem Hügel 69, D-53121 Bonn, Germany

³Astronomy Department, King Abdulaziz University, PO Box 80203, 21589 Jeddah, Saudi Arabia

⁴A.F. Ioffe Physical – Technical Institute, 194021 St. Petersburg, Russia

⁵Electrotechnical University ‘LETI’, 197376 St. Petersburg, Russia

⁶ITMO University, 191002 St. Petersburg, Russia

⁷Department of Space, Earth and Environment, Chalmers University of Technology, Onsala Space Observatory, SE-43992 Onsala, Sweden

⁸INAF – Osservatorio Astronomico di Cagliari, Via della Scienza 5, I-09047 Selargius (CA), Italy

⁹Institute for Applied Physics, Uljanov Str. 46, 603950 Nizhny Novgorod, Russia

Accepted 2017 September 4. Received 2017 September 1; in original form 2017 June 23

ABSTRACT

The dependence of the proton-to-electron mass ratio, μ , on the local matter density was investigated using methanol emission in the dense dark cloud core L1498. Towards two different positions in L1498, five methanol transitions were detected and an extra line was tentatively detected at a lower confidence level in one of the positions. The observed centroid frequencies were then compared with their rest-frame frequencies derived from least-squares fitting to a large data set. Systematic effects, as the underlying methanol hyperfine structure and the Doppler tracking of the telescope, were investigated and their effects were included in the total error budget. The comparison between the observations and the rest-frame frequencies constrains potential μ variation at the level of $\Delta\mu/\mu < 6 \times 10^{-8}$, at a 3σ confidence level. For the dark cloud, we determine a total CH₃OH (A+E) beam averaged column density of $\sim 3\text{--}4 \times 10^{12} \text{ cm}^{-2}$ (within roughly a factor of two), an E- to A-type methanol column density ratio of $N(\text{A-CH}_3\text{OH})/N(\text{E-CH}_3\text{OH}) \sim 1.00 \pm 0.15$, a density of $n(\text{H}_2) = 3 \times 10^5 \text{ cm}^{-3}$ (again within a factor of two) and a kinetic temperature of $T_{\text{kin}} = 6 \pm 1 \text{ K}$. In a kinetic model including the line intensities observed for the methanol lines, the $n(\text{H}_2)$ density is higher and the temperature is lower than that derived in previous studies based on different molecular species; the intensity of the $1_0 \rightarrow 1_{-1}$ E line strength is not well reproduced.

Key words: elementary particles – techniques: radial velocities – ISM: abundances – ISM: clouds – radio lines: ISM.

1 INTRODUCTION

Theories postulating the space–time dependence of fundamental constants, all implying some form of a violation of the Einstein equivalence principle (Uzan 2011), typically invoke additional quantum fields, beyond those of the Standard Model of particle physics, which then couple to the matter or energy density (e.g. Bekenstein 1982; Barrow, Sandvik & Magueijo 2002; Sandvik, Barrow & Magueijo 2002). Such theoretical frameworks may be subdivided into two classes, one connecting to the cosmological

scenario of a growing dark energy density and the other connecting to local environmental effects.

A similar division holds for the observational perspective as well. Variation of fundamental constants, such as the fine structure constant, $\alpha = e^2/4\pi\epsilon_0\hbar c$, and the proton-to-electron mass ratio, $\mu = M_p/m_e$, on a cosmological time-scale is probed by spectroscopy in the early Universe, either via measurements of metal ions (Savedoff 1956; Levshakov 1994; Dzuba, Flambaum & Webb 1999; Webb et al. 1999; Evans et al. 2014), molecular hydrogen (Thompson 1975; Varshalovich & Levshakov 1993; Ubachs et al. 2016), ammonia molecules (Flambaum & Kozlov 2007; Murphy et al. 2008; Henkel et al. 2009; Kanekar 2011) or methanol molecules (Bagdonaite et al. 2013a,b; Kanekar et al. 2015). On the other hand, the so-called chameleon scenario (Khoury & Weltman

* E-mail: dapra.mario@gmail.com (MD); w.m.g.ubachs@vu.nl (WU)

2004; Brax et al. 2004) assumes the existence of light scalar fields that acquire effective potential and mass because of their coupling to matter. This phenomenon depends on the local matter density and therefore can be probed through comparisons of different local environments (Brax 2014). As an example, the dependency of the fundamental constants on the gravitational field was investigated via atomic (Berengut et al. 2013) and molecular spectra (Bagdonaite et al. 2014) in the photosphere of white dwarfs. Another example is the coupling of light scalar fields to the local matter density (Olive & Pospelov 2008). Such dependency can be investigated by comparing the measurements of physical properties in the high-density terrestrial environment, $n_{\text{Earth}} \geq 10^{19} \text{ cm}^{-3}$, and in the comparatively very low-density interstellar clouds, where densities are ≥ 14 orders of magnitude lower than on Earth.

As in most studies targeting variation of fundamental constants, molecules and their spectra are ideal test grounds. Levshakov et al. (2010a,b) used the ammonia method, i.e. they compared ammonia, NH_3 , inversion transitions with rotational transitions of molecules that were considered to be co-spatial with ammonia, to investigate the relative difference between the observed proton-to-electron mass ratio, μ_{obs} , and the reference laboratory value μ_{lab} :

$$\frac{\Delta\mu}{\mu} = \frac{\mu_{\text{obs}} - \mu_{\text{lab}}}{\mu_{\text{lab}}}. \quad (1)$$

They derived an upper limit of $|\Delta\mu/\mu| \leq 3 \times 10^{-8}$ at a level of confidence of 3σ by observing 41 cold cores in the Galaxy (Levshakov et al. 2010a). More recently, Levshakov et al. (2013) tested this upper limit against potential instrumental errors by employing spectrometers with different spectral resolution. By re-observing nine cores with the Medicina 32-m and the Effelsberg 100-m telescopes, they derived a constraint of $|\Delta\mu/\mu| < 2 \times 10^{-8}$ at a 3σ confidence level.

As already mentioned, the ammonia method relies on the assumption that the emission regions of the considered molecules are co-spatial. This may introduce systematic effects affecting the $\Delta\mu/\mu$ value due to chemical segregation. This particularly holds when – as it is commonly being done – NH_3 line frequencies are coupled to HC_3N line frequencies. HC_3N is a molecule representing young, early time chemistry of a molecular cloud, while NH_3 stands for late time chemistry (Suzuki et al. 1992). The relevant time-scales range from several 10^5 to $\sim 10^6$ yr.

Methanol, CH_3OH , is another molecule sensitive to a variation in μ and it is abundantly present in the Universe, with more than 1000 lines detected in our Galaxy (Lovas 2004). It represents a better target than ammonia for a μ variation analysis for two main reasons: (i) it has several transitions showing higher sensitivities to a varying μ (Jansen et al. 2011a,b; Levshakov, Kozlov & Reimers 2011; Jansen, Bethlem & Ubachs 2014), and (ii) methanol transitions have different intrinsic sensitivities, therefore it is possible to derive a value for $\Delta\mu/\mu$ based only on its transitions, avoiding the assumption of co-spatiality between different molecules as for the ammonia method.

L1498 is a dense core in the Taurus-Auriga complex and represents an example of the simplest environment in which stars form. Its dense gas content was first studied by Myers, Linke & Benson (1983) and it is considered a starless core, since it is not associated with IRAS (Beichman et al. 1986) or 1.2 mm point sources (Tafalla et al. 2002). L1498 was identified as a chemically differentiated system by Kuiper, Langer & Velusamy (1996, for extra details about its chemical structure, see also Wolkovitch et al. 1997; Willacy, Langer & Velusamy 1998). Tafalla et al. (2002) presented line and continuum observations, finding a systematic pattern of chemical

differentiation. In a later study, Tafalla et al. (2004) characterized its physical structure and chemical composition, finding that the density distribution of L1498 traced by the 1.2 mm dust continuum emission is very close to that of an isothermal sphere, with a central density of $n \sim 10^5 \text{ cm}^{-3}$. They also reported that the gas temperature distribution in the core is consistent with a constant value of $T_{\text{kin}} = 10 \pm 1 \text{ K}$ and that lines have a constant, non-thermal full width at half-maximum, FWHM, of $\Delta V \sim 0.125 \text{ km s}^{-1}$ in the inner core. More recently, Tafalla et al. (2006) investigated the molecular emission of 13 species, including methanol, in L1498. They found that the abundance profiles of most species suffer from a significant drop towards the core centre (see fig. 1 of Tafalla et al. 2006), resulting in a ring-like distribution around the central dust peak indicating depletion of these molecules on to icy dust grain mantles (‘freeze out’). They showed that methanol emission forms a ring with two discrete peaks, one to the south-east (SE; hereafter L1498-1) and one to the north-west (NW; hereafter L1498-2) of the dust peak. It is noted that the NW methanol peak is dimmer, with a peak intensity of ~ 80 per cent of the SE peak intensity.

In view of its low T_{kin} and low degree of turbulence (non-thermal FWHM $\simeq 0.12 \text{ km s}^{-1}$, Tafalla et al. 2004), L1498 shows narrow emission lines and therefore it is an ideal target for measuring a μ -variation. This dense core was already included in the sample studied by Levshakov et al. (2010a,b, 2013). In the following, the detection of five methanol lines in L1498-1 and L1498-2 using the Institut de Radio Astronomie Millimétrique, IRAM, 30-m telescope¹ is presented and it is used to derive a value for $\Delta\mu/\mu$ to test the chameleon scenario and to constrain physical parameters of the cloud. The observations are described in Section 2, and their results in Section 3. The physical parameters of L1498 are derived in Section 4, while the laboratory rest frequencies used in this work are discussed in Section 5. Finally, the measurement of $\Delta\mu/\mu$ is presented in Section 6, and the results obtained are summarized in Section 7.

2 OBSERVATIONS

The IRAM 30-m observations of L1498 were carried out on 2014 July 20 and 21 using the Eight MIXer Receiver (EMIR, Carter et al. 2012). Two EMIR setups were used throughout the observations to target the methanol transitions. The 3-mm E090 band was used to measure methanol lines in the range 96.7–109 GHz, while lines in the range 145–157.3 GHz were observed using the 2-mm E150 band. For both setups, the EMIR lower and upper inner sidebands, LI and UI, respectively, were used in dual-polarization mode. The data were recorded using the VERSatile SPectrometer Array (VESPA) with its 3 kHz channel width, corresponding to velocity channels of ~ 10 and 7 m s^{-1} for the E090 and E150 bands, respectively.

The observations were performed using the position switching mode with offsets of ± 600 , ± 900 or ± 1800 arcsec in azimuth. Alternating between western and eastern offsets helped to provide flat spectral baselines. Comparing data with different offset positions did not reveal any significant differences, thus ensuring that emission from the offset positions did not affect the resulting spectra. A single scan’s duration was ~ 6 min, divided into two parts. The first half involved integration in the off-source position and the second

¹ Based on observations carried out under project number 014-14 with the IRAM 30-m Telescope. IRAM is supported by INSU/CNRS (France), MPG (Germany) and IGN (Spain).

half was devoted to the on-source integration. Sky frequencies were updated at the beginning of each scan (see Section 6.2). Pointing was checked frequently and was found to be stable within 3 arcsec. Calibration was obtained every 12 min using standard hot/cold-load absorber measurements. The data reduction was performed using the GILDAS software's CLASS package.² Only linear baselines were subtracted from the individual spectra. The raw frequencies were Doppler shifted in order to correct for Earth motion relative to L1498 during the observations ($v_{\text{LSR}} = 7.8 \text{ km s}^{-1}$, Tafalla et al. 2004). The same value of v_{LSR} was used for the two observed positions.

The IRAM 30-m telescope adopts the optical definition of radial velocity, while the radio definition is implemented in CLASS. The optical radial velocity is defined as

$$\frac{v_{\text{LSR}}^{\text{opt}}}{c} = \frac{v_{\text{rest}}}{v_{\text{obs}}} - 1, \quad (2)$$

where v_{obs} is the observed frequency and v_{rest} is the reference frequency in the rest frame. In contrast, the radio definition of the radial velocity is given by

$$\frac{v_{\text{LSR}}^{\text{rad}}}{c} = 1 - \frac{v_{\text{obs}}}{v_{\text{rest}}}, \quad (3)$$

using the same symbols as in equation (2). As a consequence, the radial velocities returned by the two definitions are different, $v_{\text{opt}} \neq v_{\text{rad}}$. For L1498, which has $v_{\text{LSR}} = 7.8 \text{ km s}^{-1}$, the discrepancy between the two definitions is of the order of $\sim 10^{-8} \text{ km s}^{-1}$ and hence is considered negligible.

The observation time was divided unevenly between the two peaks, resulting in $\sim 14 \text{ h}$ of integration on L1498-1 and $\sim 4 \text{ h}$ on L1498-2. This was done in order to reach a good signal-to-noise ratio, S/N, for the source with the brighter emission (the SE peak L1498-1, see Tafalla et al. 2006).

3 RESULTS

Several methanol transitions were detected at a $>10\sigma$ confidence level in L1498-1 and L1498-2, respectively. All the detected lines are well described by a single Gaussian profile, as shown in Fig. 1, which has three fitting parameters: the line intensity, expressed in terms of the main beam brightness temperature T_{mb} , the line width FWHM and the transition frequency ν_{obs} , which is corrected for the shift introduced by the radial velocity of L1498 ($v_{\text{LSR}} \sim 7.8 \text{ km s}^{-1}$, Tafalla et al. 2006). The line parameters related to each detected transition in L1498-1 and L1498-2 are listed in Table 1. All the detected methanol transitions turn out to be optically thin.

The weak transition $2_0 \rightarrow 1_0 \text{ E}$ (at a rest-frame frequency of $\nu_{\text{rest}} \simeq 96.744\,545 \text{ GHz}$) was detected at a confidence level of 5σ in the brighter position L1498-1 only. Although weak, it is well described by a single Gaussian profile, as shown in Fig. 1, whose parameters are included in Table 1. An extra line, the $2_0 \rightarrow 2_{-1} \text{ E}$ transition ($\nu_{\text{rest}} \simeq 157.276\,023 \text{ GHz}$), may have also been detected with a confidence level of 3σ in L1498-1. However, the detection is tentative. The line may be broadened by the noise and is hence not considered further in this work.

4 CLOUD PROPERTIES

As already briefly mentioned in Section 1, Tafalla et al. (2004) determined physical and chemical characteristics of the dark cloud

L1498, based on measurements of NH_3 , N_2H^+ , CS , C^{34}S , C^{18}O and C^{17}O . Our CH_3OH line data can be used to complement their results. To simulate the measured line parameters, we applied the RADEX non-local thermodynamic equilibrium (non-LTE) code model (Schöier et al. 2005; van der Tak et al. 2007), which is based on collision rates with H_2 reported by Rabli & Flower (2010), using kinetic temperature, density, and E- or A-type methanol column density as variables. The code calculates line intensities for a uniform sphere, which is justified because of the overall shape of the cloud and the radial profile derived from ammonia for the kinetic temperature (Tafalla et al. 2004), which resulted in a constant value. For the background temperature, we adopted 2.73 K, and for the line width, being relevant for the methanol column density, an average value derived from Table 1 ($\Delta V = 0.165 \text{ km s}^{-1}$; note that this is slightly larger than the value taken from the literature and given in Section 1). Since the line width is known to a far higher accuracy than the column density (the latter is only known to a factor of roughly two), the specific choice of ΔV is not critical. With this model, most line intensities are well reproduced. This also includes our non-detection of the $2_0 \rightarrow 2_{-1} \text{ E}$ transition, with the model mostly indicating absorption at line intensities below our sensitivity limit. Nevertheless, none of the fits is perfect because we do not obtain good simulations of the $1_0 \rightarrow 1_{-1} \text{ E}$ transition. For this transition, the modelled intensities are too low by factors of $\sim 2\text{--}3$.

To find the best solution(s), we used RADEX to create a grid in T_{kin} and $n(\text{H}_2)$, optimizing for each $[T_{\text{kin}}, n(\text{H}_2)]$ pair the column density by calculating reduced χ^2 values. With six (L1498-1) and five (L1498-2) transitions and three free parameters (kinetic temperature, density and column density), there are three and two degrees of freedom, respectively. Because of the above-mentioned $1_0 \rightarrow 1_{-1} \text{ E}$ line, reduced χ^2 values, i.e. the sum of the squared differences between observed and modelled line intensities, divided by the square of the uncertainty in the measured parameter (10 per cent of the line temperature and standard deviation of the Gaussian amplitude, added in quadrature), never get close to unity. Nevertheless, Fig. 2 provides resulting values for L1498-1 and L1498-2 in the two-dimensional (2D) $[T_{\text{kin}}, n(\text{H}_2)]$ space with background shading and contours reflecting the reduced χ^2 values. For L1498-1, the source with best determined line intensities, the best solution yields a column density of the order of $N(\text{E+A methanol}) \sim 3 \times 10^{12} \text{ cm}^{-2}$, $T_{\text{kin}} \sim 6 \text{ K}$ and $n(\text{H}_2) \sim 3 \times 10^5 \text{ cm}^{-3}$. For position L1498-2, the optimal solution returns a similar density, a lower value for T_{kin} of $\sim 5 \text{ K}$ and a methanol column density of $N(\text{E+A methanol}) \sim 4 \times 10^{12} \text{ cm}^{-2}$. In other words, the gas traced by methanol appears to be cooler and denser than that analysed by Tafalla et al. (2004), but the temperatures are close to the value of $7.1 \pm 0.5 \text{ K}$ reported by Levshakov et al. (2010b). The results returned by the RADEX code are presented in Column 6 of Table 1.

This kinetic temperature is lower than the lower limit reported by Goldsmith & Langer (1978), who claimed that there is no equilibrium solution for $T_{\text{kin}} < 8 \text{ K}$ in their model of thermal balance in dark clouds. Assuming that cosmic rays are the only heating source of the dark cloud, their model returns gas temperatures in the range 8–12 K. A similar result was obtained by Goldsmith (2001), who used an LVG model for radiative transfer including the effect of the gas–dust coupling at different depletions of the major molecular coolants.

While a reduced χ^2 value of the order of 10, mainly due to the $1_0 \rightarrow 1_{-1} \text{ E}$ line, in L1498-1 and of the order of 3 in L1498-2 may raise doubts about the above-mentioned results, it is nevertheless a result worth to be presented and to be confirmed

² <http://www.iram.fr/IRAMFR/GILDAS/>

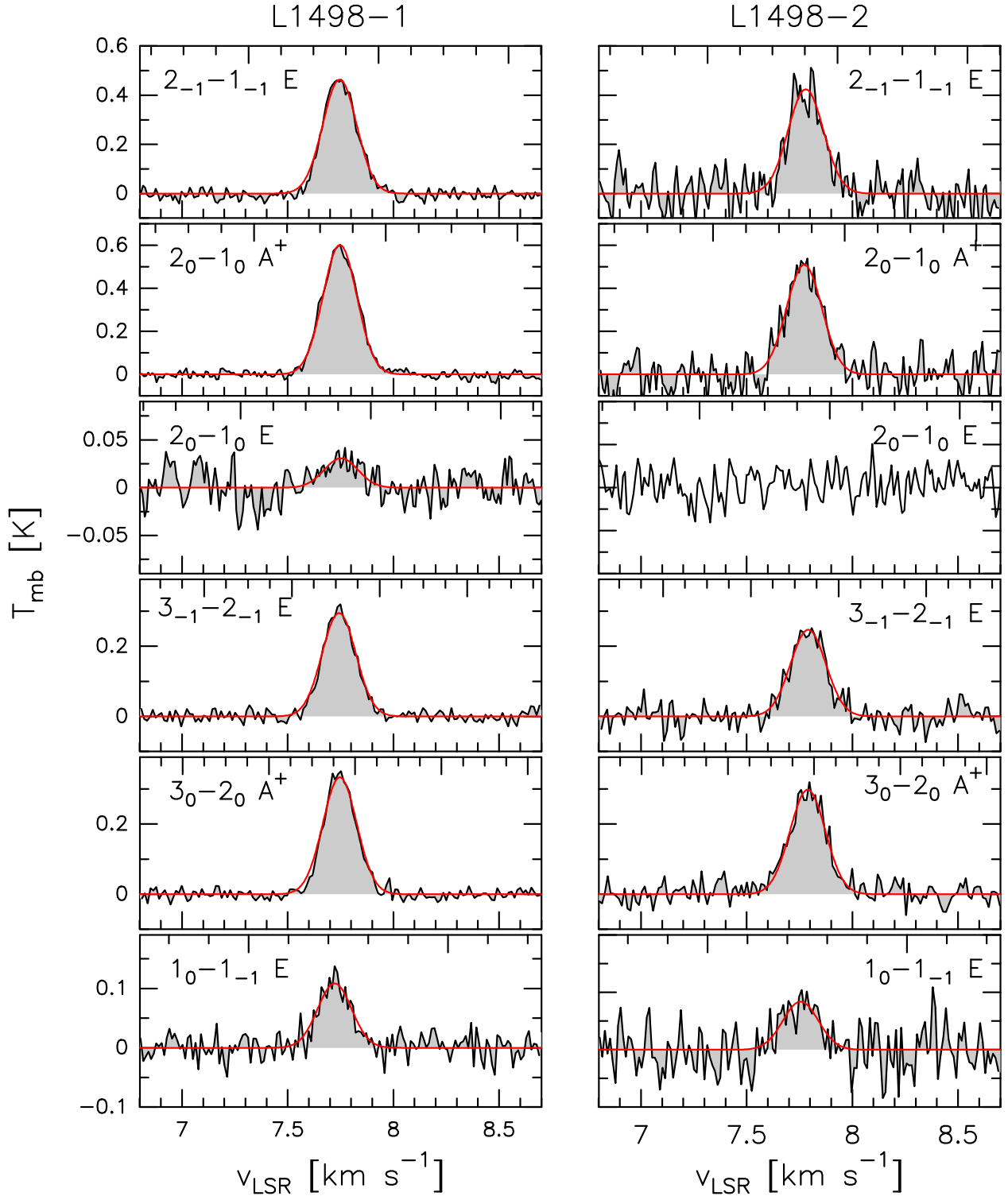


Figure 1. Spectra of the detected methanol transitions in L1498-1 (left-hand panels; $\alpha_{J2000} = 04^{\text{h}} 10^{\text{m}} 56^{\text{s}}.6$, $\delta_{J2000} = +25^{\circ} 09' 08''$) and L1498-2 (right-hand panels; $\alpha_{J2000} = 04^{\text{h}} 10^{\text{m}} 47^{\text{s}}.0$, $\delta_{J2000} = +25^{\circ} 10' 18''$). The (red) solid lines show the Gaussian fits. The transition $3_{-1} \rightarrow 2_{-1}$ E fell near the edge of the sideband, hence the background is not provided beyond radial velocities of ~ 8.8 km s^{-1} . The $2_0 - 1_0$ E transition was not detected towards the L1498-2 position.

(or rejected) by other methanol transitions as well as by lines from other molecular species. A possible explanation for the high values of the reduced χ^2 may lie in the uncertainties in the collisional rates used in RADEX and in our limited knowledge on cloud geometry

and 3D velocity field. However, testing this is beyond the goal of this work. Another remarkable result is that $N(\text{E-CH}_3\text{OH}) \sim N(\text{A-CH}_3\text{OH})$, with an accuracy of ~ 15 per cent. Here, we should consider that the lowest E-state, the 1_{-1} E level, is 7.9 K above the

Table 1. Details of the methanol transitions observed in L1498. Columns 3 and 4 show the measured frequencies and line widths. Columns 5 and 6 present the measured and modelled (main beam) brightness temperatures, the latter for the solution with the lowest reduced χ^2 value. The optical depths τ_ν , calculated with the LVG code, are listed in Column 7. Columns 8 and 9 present the energies of the upper and lower states above the ground state. Column 10 shows the sensitivities of the transitions to a varying proton-to-electron mass ratio and Column 11 presents the EMIR band in which the transitions were observed. The LVG simulations were performed assuming a molecular hydrogen density of $n(\text{H}_2) = 3 \times 10^5 \text{ cm}^{-3}$, a kinetic temperature of $T_{\text{kin}} = 6 \text{ K}$ and an E- and A-type methanol column density of $N_E = N_A = 3.3 \times 10^{12} \text{ cm}^{-2}$ for L1498-1. For simulating the methanol transitions in L1498-2, a molecular hydrogen density of $n(\text{H}_2) = 3 \times 10^5 \text{ cm}^{-3}$, a kinetic temperature of $T_{\text{kin}} = 5 \text{ K}$, and an E- and A-type methanol column density of $N_E = N_A = 4.3 \times 10^{12} \text{ cm}^{-2}$ were assumed.

Source	Transition	Observed frequencies ^a (MHz)	FWHM (MHz)	T_{mb} (mK)	T_{RADEX} (mK)	τ_ν	E_{up} (K)	E_{low} (K)	Sensitivity coefficients	Band
L1498-1	$2_{-1} \rightarrow 1_{-1} \text{ E}$	$96\,739.376 \pm 0.001$	0.046 ± 0.003	556 ± 15	524	0.23	12.2	7.7	-1.0	E090
$\alpha = 04: 10: 56.6$	$2_0 \rightarrow 1_0 \text{ A}^+$	$96\,741.388 \pm 0.001$	0.049 ± 0.003	716 ± 15	620	0.27	6.8	2.3	-1.0	
$\delta = +25: 09: 08.0$	$2_0 \rightarrow 1_0 \text{ E}$	$96\,744.560 \pm 0.007$	0.055 ± 0.003	32 ± 17	60	0.03	19.5	15.0	-1.0	
	$3_{-1} \rightarrow 2_{-1} \text{ E}$	$145\,097.464 \pm 0.001$	0.085 ± 0.001	374 ± 14	412	0.23	19.0	12.2	-1.0	E150
	$3_0 \rightarrow 2_0 \text{ A}^+$	$145\,103.212 \pm 0.001$	0.077 ± 0.001	426 ± 12	423	0.23	13.6	6.8	-1.0	
	$1_0 \rightarrow 1_{-1} \text{ E}$	$157\,270.877 \pm 0.003$	0.079 ± 0.005	137 ± 19	94	0.44	15.0	7.7	-3.5	
	$2_0 \rightarrow 2_{-1} \text{ E}$	Not detected			52	0.32	19.5	12.2	-3.5	
L1498-2	$2_{-1} \rightarrow 1_{-1} \text{ E}$	$96\,739.365 \pm 0.002$	0.048 ± 0.003	508 ± 75	545	0.37	12.2	7.7	-1.0	E090
$\alpha = 04: 10: 47.0$	$2_0 \rightarrow 1_0 \text{ A}^+$	$96\,741.380 \pm 0.001$	0.054 ± 0.003	608 ± 69	619	0.42	6.8	2.3	-1.0	
$\delta = +25: 10: 18.0$	$2_0 \rightarrow 1_0 \text{ E}$	Not detected			60	0.04	19.5	15.0	-1.0	
	$3_{-1} \rightarrow 2_{-1} \text{ E}$	$145\,097.440 \pm 0.001$	0.097 ± 0.005	325 ± 29	360	0.36	19.0	12.2	-1.0	E150
	$3_0 \rightarrow 2_0 \text{ A}^+$	$145\,103.191 \pm 0.002$	0.091 ± 0.003	372 ± 26	357	0.30	13.6	6.8	-1.0	
	$1_0 \rightarrow 1_{-1} \text{ E}$	$157\,270.858 \pm 0.010$	0.100 ± 0.013	115 ± 38	88	0.66	15.0	7.7	-3.5	
	$2_0 \rightarrow 2_{-1} \text{ E}$	Not detected			41	0.41	19.5	12.2	-3.5	

Note. ^acorrected for the radial velocity of L1498

lowest (0_0) A-state. Following Friberg et al. (1988), the E/A abundance ratio for a thermalization temperature of 10 K becomes 0.69, which is as far from unity as our calculations may (barely) permit. For a thermalization at 6 K, our determined E/A abundance ratios would then clearly be too large. Perhaps, the bulk of the methanol has been formed prior to the occurrence of highly obscured deeply shielded regions with kinetic temperatures below 10 K.

5 REST FREQUENCIES

The methanol lines detected in L1498 are very narrow, with a width of less than $\sim 0.2 \text{ km s}^{-1}$ corresponding to $\sim 50 \text{ kHz}$ for the lines observed at 96 GHz and $\sim 80 \text{ kHz}$ for the lines observed near 150 GHz (see Table 1). In order to derive a tight constraint on a varying proton-to-electron mass ratio, the astrophysical data need to be compared with the most accurate values for the rest frequencies. In the following, a concise review on the laboratory frequencies is provided.

The main body of laboratory frequencies for methanol lines stems from the study of Lees & Baker (1968) and the subsequently published data base (Lees 1973). The lines presently observed in L1498 are all contained in that list and are reproduced in Table 2. The estimated uncertainty for these laboratory measurements is about 50 kHz for all transitions. Later, transition frequencies at a much higher accuracy were measured for a limited number of lines by beam-maser spectroscopy (Radford 1972; Heuvel & Dymanus 1973; Gaines, Casleton & Kukolich 1974) and by microwave Fourier-transform spectroscopy (Mehrotra, Dreizler & Mäder 1985). None of these measurements refer to the transitions considered in this work.

Hougen, Kleiner & Godefroid (1994) developed the BELGI code, which is a program to calculate and fit transitions of molecules containing an internally hindered rotation. This program was employed by Xu & Lovas (1997) to produce a fit of 6655 molecular lines delivering the values of 64 molecular constants describing the

rotational structure of methanol. Based on these molecular parameters, the transition frequencies can be recalculated with a higher accuracy, assuming that the fitting procedure averages out the statistical uncertainties in the experimental data.

In 2004, Müller et al. (2004) published a study focusing on the laboratory measurements of methanol lines that can be observed either in masers or in dark clouds. In their studies, they used the Cologne spectrometer, in the range 60–119 GHz, and the Kiel spectrometer, in the range 8–26 GHz. The three lines at 96 GHz, presently observed in L1498, were measured with an estimated accuracy of 5 kHz. Müller et al. (2004) also listed transition frequencies for four lines at 145 and 157 GHz, which were previously measured with a claimed accuracy of 10 kHz by Tsunekawa et al. (1995). These most accurate experimental values for the presently observed lines are also listed in Table 2.

More recently, Xu et al. (2008) improved the theoretical analysis based on an extended version of the BELGI program, with the inclusion of a large number of torsion-rotation interaction terms to the Hamiltonian, and by fitting a huge data set, including ~ 5600 frequency measurements in the microwave, sub-millimetre wave and terahertz regimes, as well as a set of 19 000 Fourier transform far-infrared wavenumber measurements to 119 molecular parameters. By replacing some older measurements, which exhibit larger residuals, with more accurate frequency measurements obtained since 1968, they derived an improved set of rest frequencies,³ which is included in the last column of Table 2.

An inspection of Table 2 shows that a unique and consistent data set of rest-frame frequencies does not exist for the six lines of relevance to our observations. Moreover, it is clear that the observations in the cold L1498 core are more accurate than most experimental data from the laboratory, and for most lines, the observations are also more accurate than the results from the least-squares fitting treatment based on the BELGI model. For the three lines at 96 GHz,

³ <https://spec.jpl.nasa.gov/ftp/pub/catalog/catdir.html>

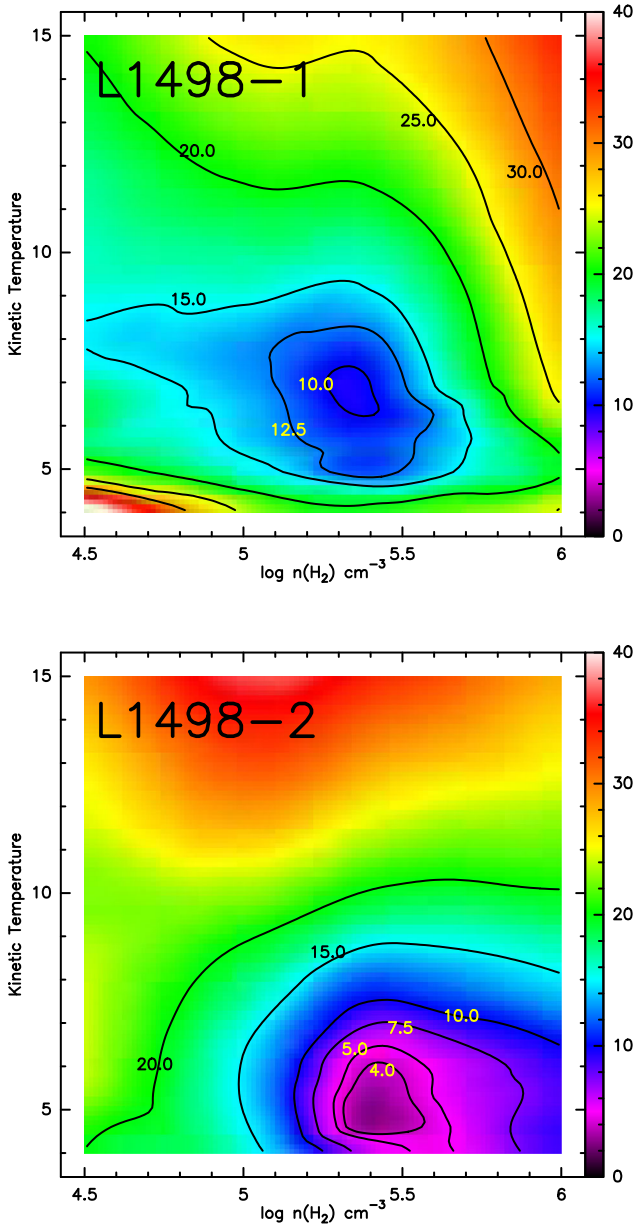


Figure 2. Map of the reduced χ^2 value as function of density and kinetic temperature values used to simulate the E- and A-type main beam brightness temperatures in L1498-1 (upper panel) and L1498-2 (lower panel).

Table 2. List of rest-frame frequencies derived from laboratory data and numerical calculations.

Transition	Measured frequency (MHz)		Calculated frequency (MHz)
$2_{-1} \rightarrow 1_{-1}$ E	96 739.390(50) ^a	96 739.362(5) ^b	96 739.358(2) ^d
$2_0 \rightarrow 1_0$ A ⁺	96 741.420(50) ^a	96 741.375(5) ^b	96 741.371(2) ^d
$2_0 \rightarrow 1_0$ E	96 744.580(50) ^a	96 744.550(5) ^b	96 744.545(2) ^d
$3_{-1} \rightarrow 2_{-1}$ E	145 097.470(50) ^a	145 097.370(10) ^c	145 097.435(3) ^d
$3_0 \rightarrow 2_0$ A ⁺	145 103.230(50) ^a	145 103.152(10) ^c	145 103.185(3) ^d
$1_0 \rightarrow 1_{-1}$ E	157 270.700(50) ^a	157 270.851(10) ^c	157 270.832(12) ^d

Notes. ^afrom Lees & Baker (1968).

^bfrom Müller, Menten & Mäder (2004).

^cfrom Tsunekawa et al. (1995).

^dfrom Xu et al. (2008).

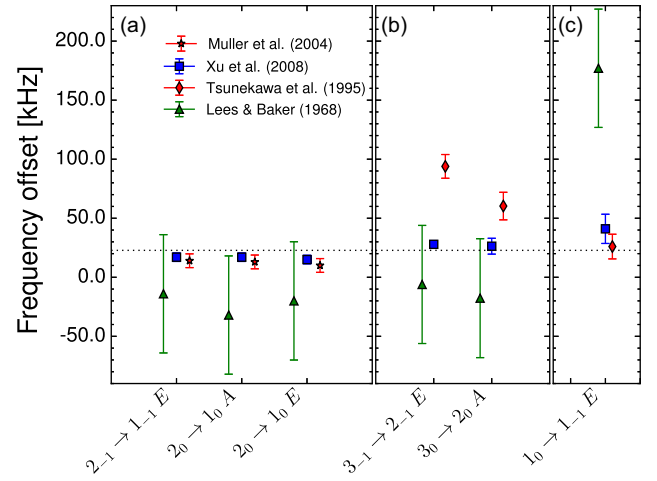


Figure 3. Frequency offsets between the observed, velocity corrected (see Section 5) frequencies and the rest-frame frequencies for the methanol transitions detected in L1498-1 at ~ 96 GHz (Panel a), ~ 145 GHz (Panel b) and ~ 157 GHz (Panel c). The (blue) squares show the comparison with the frequencies reported by Xu et al. (2008), the (green) triangles show the frequencies measured by Lees & Baker (1968), the (red) stars and the (red) diamonds show the frequencies reported by Müller et al. (2004) and Tsunekawa et al. (1995), respectively. The dotted line at ~ 22 kHz shows the average deviation of the preferred rest frequency data from the observations.

the laboratory measurements performed with the Köln spectrometer (Müller et al. 2004), with an estimated uncertainty of 5 kHz, agree very well with the data resulting from the extended BELGI analysis that have an estimated uncertainty of 2 kHz (Xu et al. 2008). The deviations between the data sets are ≤ 5 kHz. The frequencies of these lines are some 40–50 kHz lower than in the old measurements of Lees & Baker (1968), but in that study, the accuracy was estimated at 50 kHz, so that the older data agree with the more recent and more accurate data within 1σ . From this, we conclude that for the 96 GHz lines we have a consistent set of rest-frame frequencies to an accuracy well below our already rather narrow channel spacing of 10 kHz. Therefore, the most accurate set represented by the values from the extended BELGI analysis of Xu et al. (2008) was chosen as reference.

For the two higher frequency transitions at 145 GHz, the situation is less clear. Experimental laboratory data stem from the Toyama atlas (Tsunekawa et al. 1995) for which a measurement uncertainty of 10 kHz was claimed. These data deviate with 65 and 33 kHz from the extended BELGI analysis. In a 2008 updated least-squares analysis, an uncertainty of 3 kHz is specified. In comparison to the older measurements of Lees & Baker (1968), the calculated values (Xu et al. 2008) are at the limit of 1σ deviation while the deviation from the Toyama data amounts to 2σ .

For the line at 157 GHz, the Toyama value agrees well within combined error margins with the calculated value. However, both values for this line deviate by 3σ from the older value measured by Lees & Baker (1968). In view of the fact that for the other five lines the theoretical value is expected to be most accurate; for consistency, we will also include the extended BELGI analysis of Xu et al. (2008) for the 157 GHz line in the rest-frame set.

From the above evaluation and the graphical comparison of data sets presented in Fig. 3, we decide that the results from the comprehensive least-squares fitting treatment (Xu et al. 2008) provide the best and most consistent set of rest frequencies, in agreement with the accurate data from Müller et al. (2004), the 157 GHz line

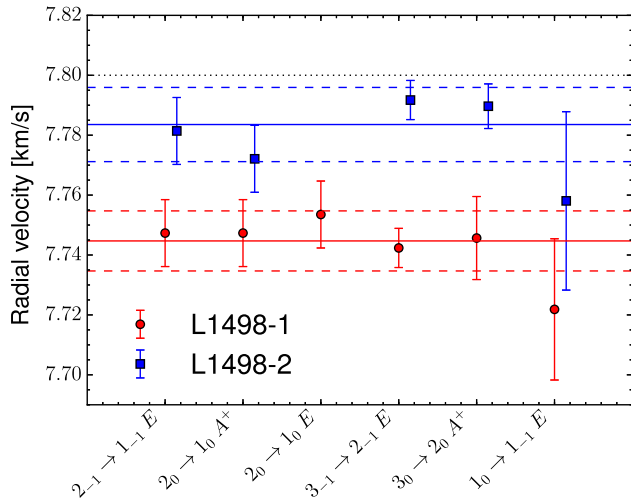


Figure 4. Radial LSR velocities for positions L1498-1 (red circles) and L1498-2 (blue squares) derived by the comparison of the observed frequencies with those calculated using the extended version of the BELGI program (Xu et al. 2008). The solid line represent the radial velocity of the two positions, while the dashed lines show their $\pm 1\sigma$ boundaries. The (black) dotted line shows the v_{LSR} reported by Tafalla et al. (2004).

measured by Tsunekawa et al. (1995), and with the older measurements reported by Lees & Baker (1968). Future improved laboratory measurements may decide on the validity of this choice.

The weighted average of the deviations between the observed and the BELGI frequencies returns values of $\Delta v_1 = v_{\text{obs}} - v_{\text{lab}} = 22 \pm 9$ and $\Delta v_2 = 7 \pm 6$ kHz for L1498-1 and L1498-2, respectively. These deviations were translated into radial velocities using the radio definition, as in equation (3), delivering $v_{\text{LSR1}} = 7.745 \pm 0.010$ and $v_{\text{LSR2}} = 7.784 \pm 0.012$ km s $^{-1}$ for position L1498-1 and L1498-2, respectively, as shown in Fig. 4. We deduce from this that the two positions L1498-1 and L1498-2 have different radial velocities.

As will be discussed in the next section, the analysis of the presently observed highly accurate astronomical data, exhibiting an accuracy of 5 kHz or better (see Table 1), will provide a consistency check on the choice of the preferable, most accurate rest-frame data set.

6 CONSTRAINING $\Delta\mu/\mu$

The variation of the proton-to-electron mass ratio was investigated using the methanol transitions that were detected in the two emission peaks of the dark cloud L1498. The observed frequencies of the selected transitions were compared with the rest-frame frequencies reported by Xu et al. (2008), as discussed in Section 5, and were subsequently interrelated via

$$\frac{\Delta v_i}{v} = K_i \frac{\Delta\mu}{\mu}, \quad (4)$$

where $\Delta v_i/v = (v_{\text{obs}} - v_{\text{lab}})/v_{\text{lab}}$ is the relative difference between the observed and the calculated frequency of the i th transition, K_i is its sensitivity coefficient and $\Delta\mu/\mu$ is the relative difference between the proton-to-electron mass ratio in the dark cloud and on Earth.

The velocity corrected frequencies of the detected methanol transitions were subsequently compared to the rest-frame frequencies via equation (4). The comparison with the preferred rest-frame frequencies as obtained from the BELGI fit (Xu et al. 2008) returned values of $\Delta\mu/\mu_1 = (-3.2 \pm 2.0_{\text{stat}}) \times 10^{-8}$ and

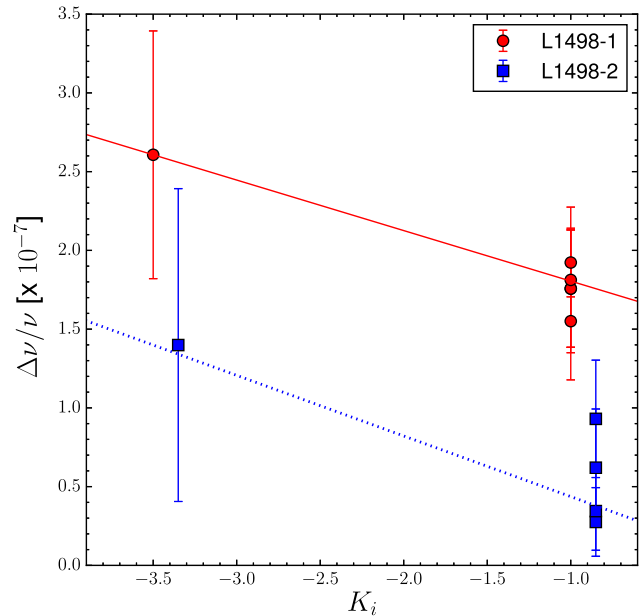


Figure 5. The relative shifts between the observed, after applying the velocity correction (see Section 5), and the calculated frequencies from Xu et al. (2008) of the methanol transitions observed in L1498-1 (red circles) and in L1498-2 (blue squares) are plotted against their sensitivity coefficients. The solid (red) and dotted (blue) lines show the linear fit to the data set of L1498-1 and L1498-2, respectively, and their slopes represent the two values of $\Delta\mu/\mu$ delivered. For clarity, a constant offset of +0.15 was applied to the measurements relative to L1498-2 on the x-axis.

$\Delta\mu/\mu_2 = (-3.8 \pm 6.6_{\text{stat}}) \times 10^{-8}$ for positions L1498-1 and L1498-2, respectively, as shown in Fig. 5. The larger uncertainty in the $\Delta\mu/\mu$ value derived from L1498-2 reflects the spread in the observed frequencies of the lines with $K_i = -1$, which includes the shorter integration time spent on that position. Assuming that the physical conditions of the core are the same in L1498-1 and L1498-2 (see Section 4), the weighted average of these two values yields to $\Delta\mu/\mu = (-3.3 \pm 1.9_{\text{stat}}) \times 10^{-8}$, hereafter the fiducial value of $\Delta\mu/\mu$.

The comparison with the measured laboratory frequencies (Tsunekawa et al. 1995; Müller et al. 2004) delivered the values of $\Delta\mu/\mu_1 = (3.6 \pm 14.5_{\text{stat}}) \times 10^{-8}$ and $\Delta\mu/\mu_2 = (5.6 \pm 21.4_{\text{stat}}) \times 10^{-8}$ for positions L1498-1 and L1498-2, respectively. The large statistical uncertainties on these values are due to the spread in the frequencies of the lines with $K_i = -1$, i.e. the 96 and the 145 GHz lines, which reflects the inconsistencies between the experimental data sets.

6.1 Hyperfine structure

In the past 2 yr, the hyperfine structure in the microwave spectrum of methanol has attracted much attention (Coudert et al. 2015; Belov et al. 2016; Lankhaar, Groenenboom & van der Avoird 2016), for a part connected to the importance of methanol as the most sensitive probe for varying constants. The underlying hyperfine structure of microwave transitions will cause an asymmetrical line shape, depending on the spread of the hyperfine components within the Doppler profile. However, the presently observed lines in L1498 do not display any asymmetry (see Fig. 1) and they can be very well reproduced by a single Gaussian shaped profile.

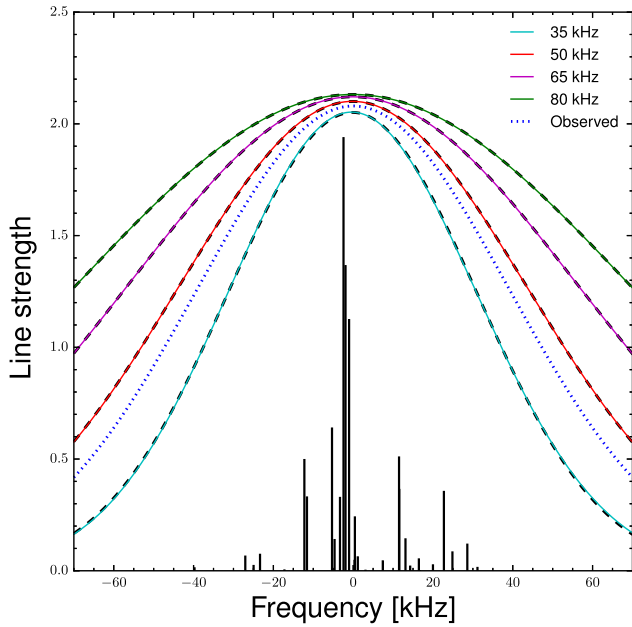


Figure 6. Comparison of the line shape derived from the hyperfine structure and calculated by BELGI for the $2_0 \rightarrow 1_0 A^+$ transition at $\nu_{\text{rest}} = 96.741$ GHz. The solid lines represent the convolution of the Gaussian profiles relative to the hyperfine components, while the dashed line represents the fit to the observed line profile centred on the calculated transition frequency. The dotted (blue) line corresponds to the fit to the observed line profile in L1498-1. The vertical bars indicate the individual hyperfine transitions with a length proportional to their intensity in the optically thin case under conditions of local thermodynamical equilibrium.

In addition, unresolved hyperfine structure may cause a shift of the centre-of-gravity determined by the hyperfine-less rotational Hamiltonian. The hyperfine coupling involves three contributions: the magnetic dipole interactions between nuclei with spin $I > 0$, the coupling between the nuclear spins and the rotation, and the coupling between the nuclear spins and the torsion. While the spin-torsion interaction is represented by a vector, hence an irreducible tensor of rank 1, the contributions by the magnetic dipole interactions are described by rank 2 tensors. The dipole-dipole interaction is represented by a traceless irreducible tensor of rank 2 that retains the centre-of-gravity of the line, i.e. when weighting the intensity contributions of all hyperfine components. The spin-rotation coupling comprises also an irreducible tensor of rank 2, but in addition a scalar contribution (tensor of rank 0) giving rise to a trace that may shift the centre-of-gravity. This effect is quantified here based on the hyperfine calculations by Lankhaar et al. (2016).

The calculated intensities for the individual hyperfine components of a transition (Lankhaar et al. 2016) were convoluted using Gaussian profiles with $\text{FWHM} = 35\text{--}80$ kHz, as shown in Fig. 6 for the $2_0 \rightarrow 1_0 A^+$ transition, thus creating a line shape profile for each transition. This profile was subsequently compared and fitted to a Gaussian function and its computed line centre was compared with the position of the hyperfine-less zero-point. This procedure was followed for all transitions listed in Table 2, resulting in small (<1 kHz) frequency shifts of the rotational lines. It is noted that this shift comes in addition to the rotational structure and is not contained in the Hamiltonian underlying the BELGI model, although some of the effects of hyperfine shift may, in principle, be covered by adapting the molecular parameters in the fitting procedure.

However, since the shift introduced by the underlying hyperfine structure is below the kHz level, it is not expected to affect significantly the fiducial $\Delta\mu/\mu$ values presented in this analysis. To estimate its impact on a varying μ and to account for possible moderate but not quantifiable deviations from the local thermodynamical equilibrium, an artificial shift of ± 1 kHz, which is a conservative estimate, was introduced in the rest-frame frequency sets and new values for $\Delta\mu/\mu$ were calculated using equation (4). The difference with the fiducial values was $\delta_{\text{HFS}}^{\Delta\mu/\mu} = 0.1 \times 10^{-8}$ at most, and this was added to the systematic error budget.

6.2 Doppler tracking

The motion of the Earth around the Sun and Earth's rotation axis introduces Doppler shifts in the observed frequencies. The IRAM 30-m telescope automatically corrects the observed frequencies, i.e. the band centre, for the velocity of the observatory with respect to the Solar system barycentre. It is noted that correcting the band centre introduces small frequency shifts to the positions of lines observed simultaneously at different frequencies, which are automatically corrected for in CLASS (see Section 2).

The sky frequencies were adjusted at the beginning of each scan, with a Doppler correction defined as

$$D = \frac{1}{1 + \frac{v^{\text{tel}}}{c}}, \quad (5)$$

where v^{tel} is the Doppler velocity of the telescope relative to the LSR, which is calculated using equation (2). As already outlined in Section 2, each scan consisted of an integration time of 3-min off-source followed by 3 min of integration on L1498. Thus, the methanol lines were measured starting ~ 3 min after the Doppler adjustment. It is noted that, while relative velocity shifts among the spectral lines introduce an effect that mimics a non-zero $\Delta\mu/\mu$, a constant velocity shift does not have any impact on the fiducial value of $\Delta\mu/\mu$, although it affects the v_{LSR} value.

L1498 was observed on two consecutive days in 2014 July, when its latitude in the ecliptic system was $\sim 4^\circ$. This implies that the Earth was approaching the cloud with a very small acceleration, with respect to its orbit, and hence with its almost maximal angular speed of $\sim 10^{-5}$ deg s^{-1} . The motion of the Earth around the Sun causes, in a time interval of $\Delta t = 3$ min, a change in the velocity of the telescope relative to the LSR of $\Delta v^{\text{tel}} \sim 1$ m s^{-1} corresponding to a frequency shift of, at most, 0.6 kHz. The variation of v^{tel} during the off-source integration was not considered in the systematic error budget, as it affects all the methanol lines in the same way, while the Δv^{tel} introduced during the integration on L1498 causes differential shifts of the methanol lines. Since the observations were performed at the same time in two consecutive days, these shifts were assumed to be in common for all scans. To quantify the impact of the Doppler tracking on the fiducial values, the observed frequencies were shifted by ± 0.6 kHz and new $\Delta\mu/\mu$ values were derived and compared with the fiducial ones. The largest offset from the fiducial values returned by this comparison is $\delta_{\text{orbit}}^{\Delta\mu/\mu} \leq 0.1 \times 10^{-8}$, which was added to the systematic error budget.

The Earth's rotation, the velocity of which is $\sim 4.2 \times 10^{-3}$ deg s^{-1} , was estimated in a similar way. Throughout the observing run, the elevation of L1498 changed from a minimal value of 30° to a maximal value of 78° . The changes in the target's elevation result in velocity shifts in the range from 1.3 to 2.5 m s^{-1} for scans taken at the minimal and the maximal elevation value, respectively, during an integration time of 3 min. Since both the off- and the on-source

integrations deliver different velocity shifts, their effects were included in the systematic error budget. The total integration time of 6 min delivered a spread of $\sim 2.4 \text{ m s}^{-1}$ in the telescope velocities due to the rotation of the Earth, which translates in a shift of, at most, $\sim 1.2 \text{ kHz}$ in the observed frequencies, which corresponds to a contribution to the systematic error budget of $\delta_{\text{rotation}}^{\Delta\mu/\mu} = 0.1 \times 10^{-8}$.

6.3 Total systematic uncertainty

The total systematic uncertainty on the fiducial values was derived by adding in quadrature the contributions from the Doppler tracking and the underlying methanol hyperfine structure. This returned an error of $\sim 0.2 \times 10^{-8}$. Therefore, the final fiducial value of $\Delta\mu/\mu$ obtained from the comparison of the observed frequencies with rest-frame frequencies by Xu et al. (2008) is $\Delta\mu/\mu = (-3.3 \pm 1.9_{\text{stat}} \pm 0.2_{\text{sys}}) \times 10^{-8}$.

7 CONCLUSION

Methanol (CH_3OH) emission in the cold core L1498 was investigated in order to constrain the dependence of the proton-to-electron mass ratio on matter density, thereby testing the chameleon scenario for theories beyond the Standard Model of physics (Khoury & Weltman 2004; Brax et al. 2004). The result presented in this study is derived through the methanol method, which involves observations of methanol transitions only, thereby avoiding assumptions of co-spatiality among different molecules. This work strengthens the results previously obtained from radio astronomical searches (Levshakov et al. 2010a,b, 2013) by adding robustness against systematic effects such as chemical segregation. The methanol method provides future prospects for improved constraints on varying constants in the chameleon framework, if additional low-frequency lines can be detected.

In addition to this fundamental physics quest, the astrophysical properties of the L1498 cloud and its methanol A and E column densities were studied with large velocity gradient radiative transfer calculations. The two spatially resolved methanol emission peaks (SE and NW) reported by Tafalla et al. (2006) were targeted for ~ 18 h using the IRAM 30-m telescope. Six methanol transitions were detected in the brighter methanol emission peak, L1498-1, and five in the other position, L1498-2.

All the lines were modelled using a single Gaussian profile and their observed frequencies were compared to rest-frame frequencies in order to derive a value for $\Delta\mu/\mu$. Two sets of rest-frame frequencies were considered: one including some high precision measurements (Tsunekawa et al. 1995; Müller et al. 2004) and one including calculated frequencies using the BELGI code (Xu & Lovas 1997; Xu et al. 2008). These two sets are in good agreement, except for the frequencies of the transitions at $\sim 145 \text{ GHz}$ (Tsunekawa et al. 1995), which show offsets $> 30 \text{ kHz}$ between the measured and the calculated frequencies. In view of such an offset, the BELGI outputs were preferred as the reference rest-frame frequencies.

By comparing the accurate observed frequencies with the reference rest-frame values reported by Xu et al. (2008), a value of $\Delta\mu/\mu$ was derived for each methanol emission peak. The weighted average of these values returned $\Delta\mu/\mu = (-3.3 \pm 1.9_{\text{stat}} \pm 0.2_{\text{sys}}) \times 10^{-8}$, which is consistent with no variation at a level of 6×10^{-8} (3σ). This result is delivered by the analysis of emission lines belonging to a single molecular species; hence, it is not depending on assumptions on the spatial distribution of the considered molecules. While E- and A-type methanol may be regarded as two different species, previous

methanol observations in this system (Tafalla et al. 2006) did not find evidence of chemical segregation between the two methanol types and our radiative transfer calculations indicate that they trace gas with similar physical properties. The $\Delta\mu/\mu$ constraint is three times less stringent than that found by Levshakov et al. (2013), which represents the most stringent constraint at the present day, but our limit is based on data from a single molecule and is therefore not affected by potential caveats caused by astrochemical processes.

The RADEX non-LTE model was used to derive the physical characteristics of the cloud. RADEX was used to find the best solution by optimizing the E- and A-type methanol column densities as functions of the kinetic temperature and the molecular hydrogen density. The best-fitting solutions for both L1498-1 and L1498-2 return molecular hydrogen densities of the order of $n(\text{H}_2) \sim 3 \times 10^5 \text{ cm}^{-3}$, kinetic temperatures of $T_{\text{kin}} \sim 6 \text{ K}$ and total methanol column densities of several 10^{12} cm^{-2} . E- and A-type methanol abundance ratios appear to be close to unity.

The $\Delta\mu/\mu$ value presented in this work can be improved by further observing methanol emission in cold cores. The $\Delta\mu/\mu$ value presented here relies predominantly on the $1_0 - 1_{-1}$ E transition at $\sim 157.270 \text{ GHz}$, which is the only one with a sensitivity coefficient $K_i \neq -1$ in the considered sample. Observing extra lines with different sensitivities in L1498 will improve the ΔK_i and thereby the accuracy on $\Delta\mu/\mu$. For example, observing the $2_0 \rightarrow 3_{-1}$ E transition at $\nu_{\text{rest}} = 12.178 \text{ GHz}$ (sensitivity coefficient of $K_i = -32.5$) will enhance the ΔK_i used to derive the $\Delta\mu/\mu$ constraint, thereby improving it by one order of magnitude. This line has actually been observed in enhanced absorption against the cosmic microwave background radiation in the cold dark clouds TMC 1 and L 183 (Walmsley et al. 1988). Further observations of low frequency methanol transitions with larger sensitivity coefficients are planned with the Effelsberg 100-m telescope and will improve the current constraint. Future observations of methanol lines in different cores showing low degrees of turbulence (e.g. L1517B, Tafalla et al. 2004; Tafalla et al. 2006) will provide independent constraints on the dependence of μ from matter density.

ACKNOWLEDGEMENTS

The authors MD, HLB, and WU thank the Netherlands Foundation for Fundamental Research of Matter (FOM) for financial support. WU acknowledges the European Research Council for an ERC-Advanced grant under the European Union's Horizon 2020 research and innovation programme (grant agreement No 670168). AL is supported by the Russian Science Foundation (project 17-12-01256). This work was partially carried out within the Collaborative Research Council 956, subproject A6, funded by the Deutsche Forschungsgemeinschaft (DFG). We thank L. H. Xu (University of New Brunswick) for useful discussions about the calculated methanol rest-frame frequencies. We thank A. v.d Avoird (Radboud University Nijmegen) and B. Lankhaar (Chalmers University Göteborg) for elucidating discussions and for making available the data on calculations of splittings and relative intensities of the hyperfine components for the six lines listed in Table 2. We thank the staff of the IRAM 30 m telescope for support during the observations.

REFERENCES

- Bagdonaitė J., Daprà M., Jansen P., Bethlem H. L., Ubachs W., Müller S., Henkel C., Menten K. M., 2013a, *Phys. Rev. Lett.*, 111, 231101

- Bagdonaite J., Jansen P., Henkel C., Bethlem H. L., Menten K. M., Ubachs W., 2013b, *Science*, 339, 46
- Bagdonaite J., Salumbides E. J., Preval S. P., Barstow M. A., Barrow J. D., Murphy M. T., Ubachs W., 2014, *Phys. Rev. Lett.*, 113, 123002
- Barrow J. D., Sandvik H. B., Magueijo J., 2002, *Phys. Rev. D*, 65, 123501
- Beichman C. A., Myers P. C., Emerson J. P., Harris S., Mathieu R., Benson P. J., Jennings R. E., 1986, *ApJ*, 307, 337
- Bekenstein J. D., 1982, *Phys. Rev. D*, 25, 1527
- Belov S. P., Golubiatnikov G. Y., Lapinov A. V., Ilyushin V. V., Alekseev E. A., Mescheryakov A. A., Hougén J. T., Xu L.-H., 2016, *J. Chem. Phys.*, 145, 024307
- Berengut J. C., Flambaum V. V., Ong A., Webb J. K., Barrow J. D., Barstow M. A., Preval S. P., Holberg J. B., 2013, *Phys. Rev. Lett.*, 111, 010801
- Brax P., 2014, *Phys. Rev. D*, 90, 023505
- Brax P., van de Bruck C., Davis A.-C., Khoury J., Weltman A., 2004, *Phys. Rev. D*, 70, 123518
- Carter M. et al., 2012, *A&A*, 538, A89
- Coudert L. H., Gutlé C., Huet T. R., Grabow J.-U., Levshakov S. A., 2015, *J. Chem. Phys.*, 143, 044304
- Dzuba V. A., Flambaum V. V., Webb J. K., 1999, *Phys. Rev. Lett.*, 82, 888
- Evans T. M. et al., 2014, *MNRAS*, 445, 128
- Flambaum V. V., Kozlov M. G., 2007, *Phys. Rev. Lett.*, 98, 240801
- Friberg P., Hjalmarson A., Madden S. C., Irvine W. M., 1988, *A&A*, 195, 281
- Gaines L., Casleton K. H., Kukolich S. G., 1974, *ApJ*, 191, L99
- Goldsmith P. F., 2001, *ApJ*, 557, 736
- Goldsmith P. F., Langer W. D., 1978, *ApJ*, 222, 881
- Henkel C. et al., 2009, *A&A*, 500, 725
- Heuvel J. E. M., Dymanus A., 1973, *J. Mol. Spectrosc.*, 45, 282
- Hougén J. T., Kleiner I., Godefroid M., 1994, *J. Mol. Spectrosc.*, 163, 559
- Jansen P., Kleiner I., Xu L.-H., Ubachs W., Bethlem H. L., 2011a, *Phys. Rev. A*, 84, 062505
- Jansen P., Xu L.-H., Kleiner I., Ubachs W., Bethlem H. L., 2011b, *Phys. Rev. Lett.*, 106, 100801
- Jansen P., Bethlem H. L., Ubachs W., 2014, *J. Chem. Phys.*, 140, 010901
- Kanekar N., 2011, *ApJ*, 728, L12
- Kanekar N. et al., 2015, *MNRAS*, 448, L104
- Khoury J., Weltman A., 2004, *Phys. Rev. Lett.*, 93, 171104
- Kuiper T. B. H., Langer W. D., Velusamy T., 1996, *ApJ*, 468, 761
- Lankhaar B., Groenenboom G. C., van der Avoird A., 2016, *J. Chem. Phys.*, 145, 244301
- Lees R. M., 1973, *ApJ*, 184, 763
- Lees R. M., Baker J. G., 1968, *J. Chem. Phys.*, 48, 5299
- Levshakov S. A., 1994, *MNRAS*, 269, 339
- Levshakov S. A., Molaro P., Lapinov A. V., Reimers D., Henkel C., Sakai T., 2010a, *A&A*, 512, A44
- Levshakov S. A., Lapinov A. V., Henkel C., Molaro P., Reimers D., Kozlov M. G., Agafonova I. I., 2010b, *A&A*, 524, A32
- Levshakov S. A., Kozlov M. G., Reimers D., 2011, *ApJ*, 738, 26
- Levshakov S. A., Reimers D., Henkel C., Winkel B., Mignano A., Centurión M., Molaro P., 2013, *A&A*, 559, A91
- Lovas F. J., 2004, *J. Phys. Chem. Ref. Data*, 33, 177
- Mehrotra S. C., Dreizler H., Mäder H., 1985, *Z. Nat.forsch.*, 40a, 683
- Müller H. S. P., Menten K. M., Mäder H., 2004, *A&A*, 428, 1019
- Murphy M. T., Flambaum V. V., Muller S., Henkel C., 2008, *Science*, 320, 1611
- Myers P. C., Linke R. A., Benson P. J., 1983, *ApJ*, 264, 517
- Olive K. A., Pospelov M., 2008, *Phys. Rev. D*, 77, 043524
- Rabli D., Flower D. R., 2010, *MNRAS*, 406, 95
- Radford H. E., 1972, *ApJ*, 174, 207
- Sandvik H. B., Barrow J. D., Magueijo J., 2002, *Phys. Rev. Lett.*, 88, 031302
- Savedoff M. P., 1956, *Nature*, 178, 688
- Schöier F. L., van der Tak F. F. S., van Dishoeck E. F., Black J. H., 2005, *A&A*, 432, 369
- Suzuki H., Yamamoto S., Ohishi M., Kaifu N., Ishikawa S.-I., Hirahara Y., Takano S., 1992, *ApJ*, 392, 551
- Tafalla M., Myers P. C., Caselli P., Walmsley C. M., Comito C., 2002, *ApJ*, 569, 815
- Tafalla M., Myers P. C., Caselli P., Walmsley C. M., 2004, *A&A*, 416, 191
- Tafalla M., Santiago-García J., Myers P. C., Caselli P., Walmsley C. M., Crapsi A., 2006, *A&A*, 455, 577
- Thompson R. I., 1975, *Astrophys. Lett.*, 16, 3
- Tsunekawa S., Ukai T., Toyama A., Takagi K., 1995, Toyama Univ., Japan
- Ubachs W., Bagdonaite J., Salumbides E. J., Murphy M. T., Kaper L., 2016, *Rev. Mod. Phys.*, 88, 021003
- Uzan J.-P., 2011, *Living Rev. Relativ.*, 14, 2
- van der Tak F. F. S., Black J. H., Schöier F. L., Jansen D. J., van Dishoeck E. F., 2007, *A&A*, 468, 627
- Varshalovich D. A., Levshakov S. A., 1993, *Sov. J. Exp. Theor. Phys.*, 58, 237
- Walmsley C. M., Batrla W., Matthews H. E., Menten K. M., 1988, *A&A*, 197, 271
- Webb J. K., Flambaum V. V., Churchill C. W., Drinkwater M. J., Barrow J. D., 1999, *Phys. Rev. Lett.*, 82, 884
- Willacy K., Langer W. D., Velusamy T., 1998, *ApJ*, 507, L171
- Wolkovitch D., Langer W. D., Goldsmith P. F., Heyer M., 1997, *ApJ*, 477, 241
- Xu L.-H., Lovas F. J., 1997, *J. Phys. Chem. Ref. Data*, 26, 17
- Xu L.-H. et al., 2008, *J. Mol. Spectrosc.*, 251, 305

This paper has been typeset from a $\text{\TeX}/\text{\LaTeX}$ file prepared by the author.