



Publication Year	2018
Acceptance in OA	2021-04-29T14:12:10Z
Title	The outflow structure of GW170817 from late-time broad-band observations
Authors	Troja, E., PIRO, LUIGI, Ryan, G., van Eerten, H., RICCI, ROBERTO, Wieringa, M. H., LOTTI, Simone, Sakamoto, T., Cenko, S. B.
Publisher's version (DOI)	10.1093/mnrasl/sly061
Handle	http://hdl.handle.net/20.500.12386/30946
Journal	MONTHLY NOTICES OF THE ROYAL ASTRONOMICAL SOCIETY. LETTERS
Volume	478

The outflow structure of GW170817 from late-time broad-band observations

E. Troja,^{1,2★} L. Piro,³ G. Ryan,¹ H. van Eerten,⁴ R. Ricci,⁵ M. H. Wieringa,⁶ S. Lotti,³ T. Sakamoto⁷ and S. B. Cenko²

¹Department of Astronomy, University of Maryland, College Park, MD 20742-4111, USA

²Astrophysics Science Division, NASA Goddard Space Flight Center, 8800 Greenbelt Road, Greenbelt, MD 20771, USA

³INAF, Istituto di Astrofisica e Planetologia Spaziali, via Fosso del Cavaliere 100, I-00133 Rome, Italy

⁴Department of Physics, University of Bath, Claverton Down, Bath BA2 7AY, UK

⁵INAF-Istituto di Radioastronomia, Via Gobetti 101, Bologna, I-40129, Italy

⁶CSIRO Astronomy and Space Science, PO Box 76, Epping, NSW 1710, Australia

⁷Aoyama Gakuin University, 5-10-1 Fuchinobe, Chuoku, Sagamiharashi, Kanagawa 252-5258, Japan

Accepted 2018 April 4. Received 2018 March 19; in original form 2018 January 18

ABSTRACT

We present our broad-band study of GW170817 from radio to hard X-rays, including *NuSTAR* and *Chandra* observations up to 165 d after the merger, and a multimessenger analysis including LIGO constraints. The data are compared with predictions from a wide range of models, providing the first detailed comparison between non-trivial cocoon and jet models. Homogeneous and power-law shaped jets, as well as simple cocoon models are ruled out by the data, while both a Gaussian shaped jet and a cocoon with energy injection can describe the current data set for a reasonable range of physical parameters, consistent with the typical values derived from short GRB afterglows. We propose that these models can be unambiguously discriminated by future observations measuring the post-peak behaviour, with $F_\nu \propto t^{-1.0}$ for the cocoon and $F_\nu \propto t^{-2.5}$ for the jet model.

Key words: gravitational waves – gamma-ray burst: general – gamma-ray burst.

1 INTRODUCTION

The discovery of GW170817 and its electromagnetic counterparts (GRB170817A and AT2017gfo; Abbott et al. 2017a; Coulter et al. 2017; Goldstein et al. 2017) ushered in a new era of multimessenger astrophysics, in which both gravitational waves and photons provide complementary views of the same source. While observations at optical and infrared wavelengths unveiled the onset and evolution of a radioactive-powered transient, known as kilonova, observations at X-rays and, later, radio wavelengths probed a different component of emission, likely originated by a relativistic outflow launched by the merger remnant. Troja et al. (2017) explained the observed X-ray and radio data as the onset of a standard short GRB (sGRB) afterglow viewed at an angle (off-axis). However, as already noted in Troja et al. (2017) and Kasliwal et al. (2017), a standard top-hat jet model could explain the afterglow data set collected at early times, but failed to account for the observed gamma-ray emission. Based on this evidence, Troja et al. (2017) suggested that a structured jet model (e.g. Zhang et al. 2004; Kathirgamaraju, Barniol Duran & Giannios 2018) provided a coherent description of the entire broad-band data set. Within this framework, the peculiar properties

of GRB170817A/AT2017gfo could be explained, at least in part, by its viewing angle (see also Lamb & Kobayashi 2017; Lazzati et al. 2017). An alternative set of models invoked the ejection of a mildly relativistic wide-angle outflow, either a jet-less fireball (Salafia, Ghisellini & Ghirlanda 2018) or a cocoon (Nagakura et al. 2014; Hallinan et al. 2017). In the latter scenario, the jet might be choked by the merger ejecta (Mooley et al. 2017), and the observed gamma-rays and broad-band afterglow emission are produced by the expanding cocoon. The cocoon may be energized throughout its expansion by continuous energy injection. In this paper detailed models of structured jet and cocoon, from its simplest to more elaborate version, are compared with the latest radio to X-ray data. Predictions on the late-time evolution are derived, and an unambiguous measurement capable of disentangling the outflow geometry, jet versus cocoon, is presented.

2 OBSERVATIONS

2.1 X-rays

The *Chandra* X-ray Observatory and the Nuclear Spectroscopic Telescope ARray (*NuSTAR*) re-observed the field of GW170817 soon after the target came out of sunblock. *Chandra* data were

* E-mail: eleonora@umd.edu; eleonora.troja@nasa.gov

Table 1. X-ray and radio observations of GW170817. The quoted uncertainties are at the 68 per cent confidence level.

$T-T_0$ (d)	Exposure	β	Flux ^a	Energy
8.9	49.4 ks	-0.1 ± 0.5	4.0 ± 1.1	0.3–10 keV
15.2	46.7 ks	0.6 ± 0.4	5.0 ± 1.0	0.3–10 keV
103	70.7 ks	0.6	$<25^b$	3–10 keV
		0.6	$<60^b$	10–30 keV
107.5	74.1 ks	0.6 ± 0.2	26 ± 3	0.3–10 keV
110.9	24.7 ks	0.9 ± 0.4	23 ± 4	0.3–10 keV
158.5	104.9 ks	0.67 ± 0.12	26 ± 2	0.3–10 keV
75	12 h	–	50 ± 8	5.5 GHz
			31 ± 5	9 GHz
92	9 h	–	49 ± 8	5.5 GHz
			21 ± 7	9 GHz
107	12 h	–	65 ± 8	5.5 GHz
			52 ± 7	9 GHz

^aUnits are 10^{-15} erg cm⁻² s⁻¹ for X-ray fluxes, and μ Jy for radio fluxes.

^bNuSTAR 3σ upper limit.

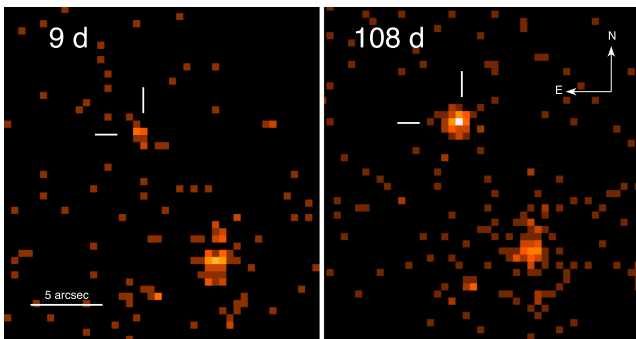


Figure 1. Exposure corrected X-ray images of the field of GW 170817 taken at 9 d (left; Troja et al. 2017) and 108 d (right) after the merger. The X-ray counterpart, marked by the crossed lines, significantly brightened between the two epochs.

reduced and analysed in a standard fashion using CIAO v. 4.9 and CALDB 4.7.6. The NuSTAR data were reduced using standard settings of the pipeline within the latest version of NuSTAR Data Analysis Software. Spectral fits were performed with XSPEC by minimizing the Cash statistics. A log of observations and their results is reported in Table 1.

We found that the X-ray flux at 108 d is ≈ 5 times brighter than earlier measurements taken in August 2017 (Fig. 1), thus confirming our previous findings of a slowly rising X-ray afterglow (Troja et al. 2017). By describing the temporal behaviour with a simple power-law function, we derive an index $\alpha \approx 0.8$, consistent with the constraints from radio observations (Mooley et al. 2017). During each observations, no significant temporal variability is detected on time-scales of ≈ 1 d or shorter.

In order to probe any possible spectral evolution we computed the hardness ratio (Park et al. 2006), defined as $HR = H - S / H + S$, where H are the net source counts in the hard band (2.0–7.0 keV) and S are the net source counts in the soft band (0.5–2.0 keV). This revealed a possible softening of the spectrum, with $HR \approx -0.1$ for the earlier observations ($\lesssim 15$ d) and $HR \approx -0.5$ for the latest observations (> 100 d). However, the large statistical uncertainties prevent any firm conclusion.

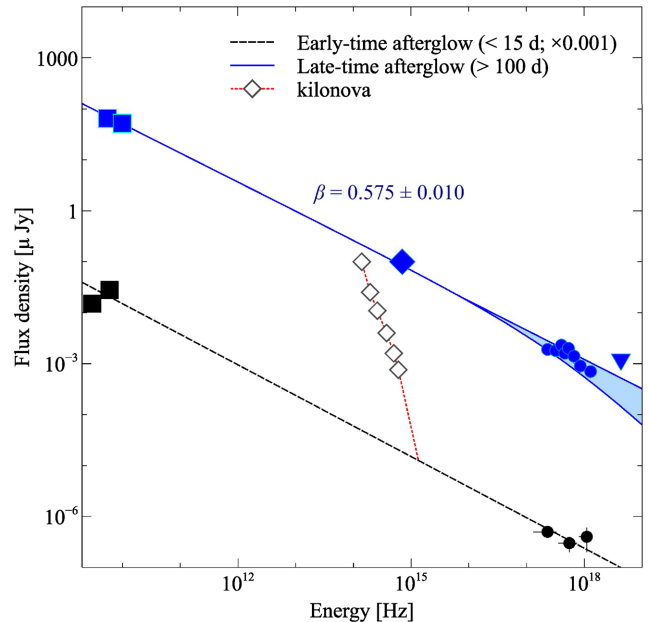


Figure 2. Spectral energy distribution of GW170817 at early (black) and late (blue) times. Optical data are from Troja et al. (2017), Lyman et al. (2018), early radio data are from Hallinan et al. (2017).

2.2 Radio

The target GW170817 was observed with the Australia Telescope Compact Array in three further epochs after 2017 September. Observations were carried out at the centre frequencies of 5.5 and 9 GHz with a bandwidth of 2 GHz. For these runs the bandpass calibrator was 0823-500, the flux density absolute scale was determined using 1934-638 and the source 1245-197 was used as phase calibrator. Standard MIRIAD procedures were used for loading, inspecting, flagging, calibrating, and imaging the data. The target was clearly detected at all epochs, our measurements are reported in Table 1.

The broad-band spectrum, from radio to optical (Lyman et al. 2018) to hard X-rays (Fig. 2), can be fit with a simple power-law model with spectral index $\beta = 0.575 \pm 0.010$ and no intrinsic absorption. A fit with a realistic afterglow spectrum (Granot & Sari 2002) constrains the cooling break to $\nu_c \gtrsim 1$ keV (90 per cent confidence level).

3 EJECTA AND AFTERGLOW MODELLING

3.1 Jet and cocoon

The standard model for sGRB afterglows describes these in terms of synchrotron emission from a decelerating and decollimating relativistic jet. More recent studies have argued for the additional presence of a slower moving cocoon (e.g. Nagakura et al. 2014; Lazzati et al. 2017; Mooley et al. 2017) also in the case of sGRBs. Numerical studies of jet breakouts have revealed a range of possibilities for jet velocities and initial angular structure. In the case of jetted outflow seen from a substantial angle θ_v (i.e. larger than the opening angle θ_c of a top-hat flow, or in the wings of a jet with energy dropping as a function of angle), relativistic beaming effects will delay the observed rise time of the jet emission.

The dynamics of the jet component can be treated semi-analytically at various levels of detail (e.g. Rossi, Lazzati & Rees

2002; D’Alessio, Piro & Rossi 2006), depending on additional assumptions for the angular structure of the jet. Early X-ray and radio observations already rule out (Troja et al. 2017) the universal jet structure (i.e. a power-law drop in energy at larger angles), and we will not discuss this option further here. For the Gaussian structured jet, we assume energy drops according to $E(\theta) = E_0 \exp[-\theta^2/2\theta_c^2]$, up to a truncating angle θ_w . We approximate the radial jet structure by a thin homogeneous shell behind the shock front. Top hat and Gaussian jet spreading are approximated following the semi-analytical model from Van Eerten, Zhang & MacFadyen (2010), with the Gaussian jet implemented as a series of concentric top-hat jets. This spreading approximation was tuned to simulation output (Van Eerten, Zhang & MacFadyen 2010) that starts from top-hat initial conditions but develops a more complex angular structure overtime. Since the off-axis jet emission will fully come into view after deceleration, deceleration radius, and initial Lorentz factor value no longer impact the emission and are not included in the model.

The cocoon is similarly treated using a decelerating shell model, now assuming sphericity and including pre-deceleration stage. For a direct comparison to Mooley et al. (2017), we have added a mass profile that accounts for velocity stratification in the ejecta and thereby provides for ongoing energy injection. The total amount of energy in the slower ejecta above a particular four-velocity is assumed to be a power law $E_{>u}(u) = E_{\text{inj}}u^{-k}$ for $u \in [u_{\text{min}}, u_{\text{max}}]$ (note that for relativistic flow $u \rightarrow \gamma$). The energy from a slower shell is added to the forward shock once this reaches the same velocity. The total cocoon energy (and therefore light curve turnover time) is thus dictated by u_{min} . We assume an initial cocoon mass of M_{ej} . Both jet and cocoon emerge into a homogeneous environment with number density n .

We estimate the emission of the ejecta using a synchrotron model (Sari, Piran & Narayan 1998). Electrons are assumed to be accelerated to a power-law distribution in energy of slope $-p$, containing a fraction ϵ_e of the post-shock internal energy. A further fraction ϵ_B is estimated to reside in shock-generated magnetic field energy. We integrate over emission angles to compute the observed flux for an observer at luminosity distance d_L and redshift z .

The key distinguishing features of the various models are their rise slope, peak time, and decay slope. Above synchrotron injection break v_m , a cocoon will show a steeply rising flux $F_\nu \propto t^{-3}$. A top-hat jet will show a steeper rise while a Gaussian energy profile will show a more gradual rise than a top-hat jet (see Extended fig. 3 of Troja et al. 2017). Gaussian and top-hat jets will have peak times following (Troja et al. 2017):

$$t_{\text{peak}} \propto \left(\frac{E_{0,50}}{n_{-3}} \right)^{1/3} (\theta_v - \theta_c)^{2.5} \text{ d}, \quad (\text{jet}) \quad (1)$$

while a cocoon outflow whose energy is dominated by the slow ejecta will peak at a time according to

$$t_{\text{peak}} \approx 81 \left(\frac{kE_{50}}{n_{-3} u_{\text{min}}^8} \right)^{1/3} \text{ d}. \quad (\text{cocoon}) \quad (2)$$

Here $E_{0,50}$ is the on-axis equivalent isotropic energy in units of 10^{50} erg, E_{50} the total cocoon energy following energy injection in the same units, and n_{-3} circumburst density in units of 10^{-3} cm^{-3} .

Cocoon and jet models differ in their expected post-peak downturn slopes. For the cocoon, $\sim t^{-1.0}$ (a decelerating spherical fireball) is expected, while for jet models $\sim t^{-2.5}$ is expected due to a combination of jet spreading dynamics and the entire jet having come into view (Fig. 3). A jet plus cocoon might yield an intermediate slope value, while still confirming the collimated nature of the sGRB.

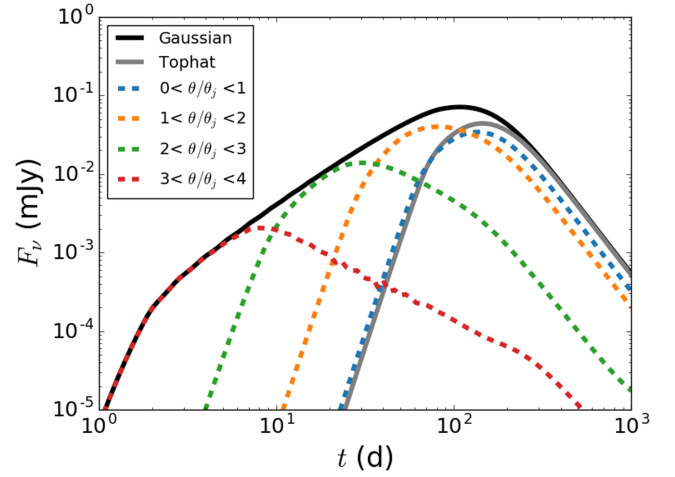


Figure 3. Emission at 6 GHz from Gaussian (solid black) and top-hat (solid grey) jets viewed off-axis. The emission from the Gaussian is further divided by the polar angle from which the emission originated (dashed coloured), separated by multiples of θ_c . Emission from the ‘wings’ ($\theta \gg \theta_c$) rises first and dominated the early emission. Inner regions dominate progressively later, leading to a slow rise in observed emission. Once the entire jet is in view emission peaks and decays following a top-hat profile.

3.2 Bayesian model fit including LIGO/VIRGO constraints

We perform a Bayesian Markov-Chain Monte Carlo (MCMC) model fit to data from synthetic detections generated from our semi-analytical cocoon and jet models. At fixed distance, the off-axis structured jet models considered here are fully determined by the set of eight parameters $\Theta_{\text{jet}} = \{\theta_v, E_0, \theta_c, \theta_w, n, p, \epsilon_e, \epsilon_B\}$. The isotropic cocoon with a power-law velocity distribution, on the other hand, requires nine parameters $\Theta_{\text{cocoon}} = \{u_{\text{max}}, u_{\text{min}}, E_{\text{inj}}, k, M_{\text{ej}}, n, p, \epsilon_e, \epsilon_B\}$. We generate samples of the posterior for both models using the affine-invariant ensemble MCMC sampler implemented in the EMCEE package (Goodman & Weare 2010; Foreman-Mackey et al. 2013). For both the cocoon and jet models we initialize the MCMC walkers in a small ball near the maximum of the posterior, calculated through trial runs. We run each model with 300 walkers for 128 000 steps, dropping the first 36 000 steps as an initial burn-in phase, generating $\sim 3 \times 10^7$ posterior samples.

We assign independent priors for each parameter, uniform for θ_c , θ_w , k , and p , and log-uniform for E_0 , u_{max} , u_{min} , E_{inj} , M_{ej} , n , ϵ_e , and ϵ_B . The viewing angle θ_v is given a prior $p(\theta_v) \propto \sin \theta_v$. This is proportional to the solid angle subtended at this viewing angle and is the expected measured distribution of randomly oriented sources in the sky if observational biases resulting from jet dynamics and beaming are not accounted for. Parameters are given wide bounds so as to ensure the parameter space is fully explored. The era of multimessenger astronomy allows us to directly link the observational constraints from the different channels. The upper bound on the viewing angle is therefore chosen to include the 95 per cent confidence interval from the LIGO analysis of GW170817A assuming either value (CMB or SNe) of the Hubble constant (Abbott et al. 2017b).

The LIGO/VIRGO analysis of GW170817A includes the inclination i , the angle between the total angular momentum vector of the binary neutron star system and the line of sight (Abbott et al. 2017a, b). Assuming this angle to be identical to the viewing angle θ_v , we can incorporate their posterior distributions $p_{\text{CGW}}(\theta_v)$ into our own analysis of the Gaussian structured jet. We do this by applying

a weighting factor $p_{\text{GW}}(\theta_v)/p(\theta_v)$, where $p(\theta_v)$ is our prior, to the MCMC samples. This is valid so long as the MCMC adequately samples the region of parameter space favoured by p_{GW} , which we confirmed for our analysis.

LIGO/VIRGO report three distributions p_{GW} , one using only the gravitational wave data and two incorporating the known redshift of host galaxy NGC 4993, utilizing the value of the Hubble constant reported by either the Planck collaboration or the SHoES collaboration (Planck Collaboration XIII 2016; Riess et al. 2016; Abbott et al. 2017b). We incorporate the latter two distributions into our analysis. The reported distribution functions (fig. 3 of Abbott et al. 2017a, b) were digitized and found to be very well described by Gaussian distributions in $\cos \theta_v$. We take the distributions to be

$$p_{\text{GW}}(\theta_v) \propto \exp \left[-\frac{1}{2} \left(\frac{\cos \theta_v - \mu_0}{\sigma} \right)^2 \right], \quad (3)$$

where for the Planck H_0 $\mu_0 = 0.985$ and $\sigma = 0.070$ and for the SHoES H_0 $\mu_0 = 0.909$ and $\sigma = 0.068$. The overall normalization of p_{GW} need not be specified in this approach.

4 RESULTS AND DISCUSSION

4.1 Constraints to jet and cocoon models

The slow rise $\propto t^{0.8}$ observed in the radio and X-ray data is inconsistent with the steep rise predicted by the basic cocoon model without energy injection (Hallinan et al. 2017). The top-hat jet model is also characterized by a steep rise and a narrow plateau around the peak, as the result of the jet energy being limited to a narrow core. This is a well defined property of this model, rather independent of the other afterglow parameters, and the late-time observations of GW170817 allow us to robustly reject it.

Some degree of structure in the GRB outflow is therefore implied by the late-time observations. The universal jet model is too broad and overpredicts the early time X-ray flux (Troja et al. 2017). As discussed in the next section, our models of Gaussian jet and cocoon with energy injection provide equally good fits to the current data set, and are basically indistinguishable until the peak time. However, as discussed in Section 3, the post-peak slopes are expected to differ, with $F_\nu \propto t^{-1.0}$ for the cocoon and $F_\nu \propto t^{-2.5}$, and intermediate values indicating a combination of directed outflow plus cocoon. Future observations will be critical to distinguish the nature of the outflow (collimated versus isotropic).

4.2 Bayesian analysis results

The MCMC fit results for the Gaussian jet and cocoon models are summarized in Table 2. Both models are consistent with current data and have similar quality of fit with χ^2 per degree of freedom near unity. Corner plots showing the 1D marginalized posterior distributions for each parameter and the 2D marginalized posterior distributions for each pair of parameters are included in the on-line materials (Figs 5 and 6).

The Gaussian jet model prefers a narrow core ($\theta_c \sim 5$ deg) with wings truncated at several times the width of the core. The viewing angle is significant ($\theta_v \sim 30$ deg) but degenerate with θ_c , E_0 , and n_0 . The large uncertainties on individual parameters are partially a result of these degeneracies within the model. The viewing angle correlates strongly with θ_c and n_0 and anticorrelates with E_0 . Fig. 4 (left-hand panel) shows the range of possible X-ray and radio light curves of the Gaussian structured jet, pulled from the top 68 per cent

of the posterior. There is still significant freedom within the model, which will be better constrained once the emission peaks.

Incorporating constraints on θ_v from LIGO/VIRGO tightens the constraints on θ_c , E_0 , and n_0 due to the correlations between these parameters. Using either the Planck or SHoES H_0 decreases the likely θ_v and θ_c significantly, with comparatively small adjustments to E_0 and n_0 .

The cocoon model strongly favours an outflow of initial maximum four-velocity $u \in [3.7, 18.6]$ whose energy is dominated by a distribution of slower ejecta. The mass of the fast ejecta M_{ej} and the low-velocity cut-off u_{min} are very poorly constrained. The total energy of the outflow is strongly dependent on u_{min} , which can only be determined by observing the time at which the emission peaks. Fig. 4 (right-hand panel) shows the range of possible X-ray and radio light curves of the cocoon model.

The posterior distributions of ϵ_e and ϵ_B under both models are consistent with theoretical expectations, with the cocoon model providing weaker constraints than the jet. Both models very tightly constrain $p = 2.156 \pm 0.015$, a consequence of simultaneous radio and X-ray observations, and place the cooling frequency above the X-ray band. The cocoon model tends to prefer a larger total energy and smaller circumburst density than the Gaussian jet, although the posterior distributions of both quantities are broad.

4.3 Implications for the prompt γ -ray emission

In the case of a Gaussian jet, it is natural to consider the question whether the sGRB and its afterglow would have been classified as typical, had the event been observed on-axis. The afterglow values for E_0 , θ_c , and θ_w are indeed consistent with this notion. As discussed previously by Troja et al. (2017), we expect the observed γ -ray isotropic equivalent energy release $E_{\gamma,\text{obs}} \sim 5 \times 10^{46}$ erg to scale up to a typical value of $E_{\gamma,\text{OA}} \sim 2 \times 10^{51}$ erg, once the orientation of the jet is accounted for. This implies a ratio $\theta_v/\theta_c = \sqrt{2 \ln[E_{\gamma,\text{OA}}/E_{\gamma,\text{obs}}]} \approx 4.6$. From our afterglow analysis we infer a value of 5.6 ± 0.9 (95 per cent uncertainty) for this ratio, accounting for the correlation between the two angles shown by our fit results. Our inferred range of θ_v/θ_c lies marginally above the typical value, but remains consistent with expected range of sGRB energetics.

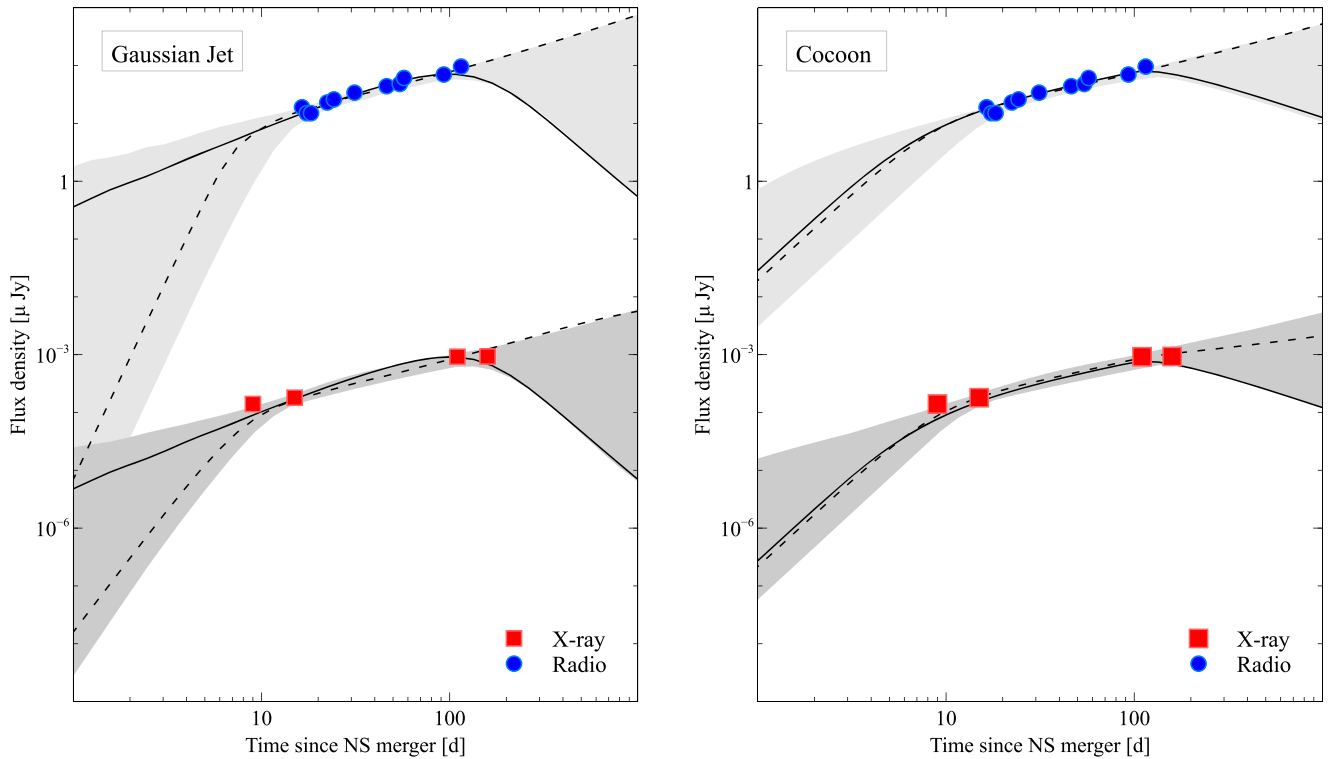
While the structured jet model implies that GRB 170817A would have been observed to be a typical sGRB when seen on-axis, the cocoon model implies that it belongs to a new class of underluminous gamma-ray transients. In the former case, the origin of standard sGRBs as due to neutron star mergers can be considered confirmed, with the added benefit of being able to combine multimessenger information about jet orientation into a single comprehensive model fit to the data (Table 2). In the latter case, the future detection rate of multimessenger events is potentially higher and dominated by these failed sGRBs. Continued monitoring at X-ray, optical, and radio wavelengths is important to discriminate between these two different scenarios.

5 CONCLUSIONS

Our modelling of the latest broad-band data confirms that a jetted outflow seen off-axis is consistent with the data (Troja et al. 2017). The late-time data favour a Gaussian shaped jet profile, while homogeneous and power-law jets are ruled out. A simple spherical cocoon model also fails to reproduce the observed behaviour and, to be successful, a cocoon with energy injection from earlier shells catching up with the shock is required. Both models can describe the data for a reasonable range of physical parameters, within the observed

Table 2. Constraints on the Gaussian jet and Cocoon model parameters. Reported are the median values of each parameter's posterior distribution with symmetric 68 per cent uncertainties (i.e. the 16 per cent and 84 per cent quantiles).

Parameter	Jet Med.	Jet + GW + Planck Med.	Jet + GW + SHoES Med.	Parameter	Cocoon Med.
θ_v	$0.51^{+0.20}_{-0.22}$	$0.32^{+0.13}_{-0.13}$	$0.43^{+0.13}_{-0.15}$	$\log_{10} \mu_{\max}$	$0.93^{+0.34}_{-0.36}$
$\log_{10} E_0$	$52.50^{+1.6}_{-0.79}$	$52.73^{+1.30}_{-0.75}$	$52.52^{+1.4}_{-0.71}$	$\log_{10} \mu_{\min}$	$-2.2^{+1.9}_{-1.9}$
θ_c	$0.091^{+0.037}_{-0.040}$	$0.057^{+0.025}_{-0.023}$	$0.076^{+0.026}_{-0.027}$	$\log_{10} E_{\text{inj}}$	$54.7^{+1.6}_{-2.7}$
θ_w	$0.55^{+0.65}_{-0.22}$	$0.62^{+0.65}_{-0.37}$	$0.53^{+0.70}_{-0.24}$	k	$5.62^{+0.93}_{-1.1}$
$\log_{10} n_0$	$-3.1^{+1.0}_{-1.4}$	$-3.8^{+1.0}_{-1.3}$	$-3.24^{+0.91}_{-1.3}$	$\log_{10} M_{\text{ej}}$	$-7.6^{+2.1}_{-1.7}$
p	$2.155^{+0.015}_{-0.014}$	$2.155^{+0.015}_{-0.014}$	$2.155^{+0.015}_{-0.014}$	$\log_{10} n_0$	$-5.2^{+2.2}_{-2.0}$
$\log_{10} \epsilon_e$	$-1.22^{+0.45}_{-0.80}$	$-1.51^{+0.53}_{-0.89}$	$-1.31^{+0.46}_{-0.78}$	p	$2.156^{+0.014}_{-0.014}$
$\log_{10} \epsilon_B$	$-3.38^{+0.81}_{-0.45}$	$-3.20^{+0.92}_{-0.58}$	$-3.33^{+0.82}_{-0.49}$	$\log_{10} \epsilon_e$	$-1.33^{+0.93}_{-1.3}$
$\log_{10} E_{\text{tot}}$	$50.26^{+1.7}_{-0.69}$	$50.16^{+1.1}_{-0.67}$	$50.19^{+1.41}_{-0.65}$	$\log_{10} \epsilon_B$	$-2.5^{+1.5}_{-1.1}$
				$\log_{10} E_{\text{tot}}^*$	$52.84^{+0.97}_{-1.3}$

**Figure 4.** Left-hand panel: The Gaussian structured jet light curve at 3 GHz (upper curves) and 5 keV (lower curves). Right-hand panel: The cocoon light curve at 3 GHz and 5 keV. The range of possible flux values attained by models in the top 68 per cent of the posterior is shaded grey. Of this set, the light curves with the earliest and the latest peak time are shown by the solid and dashed lines, respectively.

range of sGRB afterglows. A Gaussian jet and a re-energized cocoon are presently indistinguishable but we predict a different behaviour in their post-break evolution once the broad-band signal begins to decay, with $F_\nu \propto t^{-1.0}$ for the cocoon and $F_\nu \propto t^{-2.5}$, and intermediate values indicating a combination of directed outflow plus cocoon. While the cocoon model invoke a new class of previously unobserved phenomena, the Gaussian jet provides a self-consistent model for both the afterglow and the prompt emission and explains the observed properties of GW170817 with a rather normal sGRB seen off-axis.

SUPPORTING INFORMATION

Supplementary data are available at [MNRASL](https://www.mnrasl.org/) online.

Figure 5. Fit result for the jet model.

Figure 6. Fit result for the cocoon model.

Please note: Oxford University Press is not responsible for the content or functionality of any supporting materials supplied by the authors. Any queries (other than missing material) should be directed to the corresponding author for the article.

ACKNOWLEDGEMENTS

For their support to these observations we thank B. Wilkes and the Chandra staff, J. Stevens and the CSIRO staff. Support for this work was partially provided by the National Aeronautics and Space Administration through grants issued by the Chandra X-ray Observatory Center and by the Space Telescope Science Institute. This work was partially supported by the European Union Horizon 2020 Programme under the AHEAD project.

REFERENCES

- Abbott B. P. et al., 2017a, *ApJ*, 848, L12
 Abbott B. P. et al., 2017b, *Nature*, 551, 85
 Coulter D. A. et al., 2017, *Science*, 358, 1556
 D’Alessio V., Piro L., Rossi E., 2006, *A&A*, 460, 653
 Foreman-Mackey D., Hogg D. W., Lang D., Goodman J., 2013, *PASP*, 125, 306
 Goldstein A. et al., 2017, *ApJ*, 848, L14
 Goodman J., Weare J., 2010, *Appl. Math. Comput. Sci.*, 5, 65
 Granot J., Sari R., 2002, *ApJ*, 568, 820
 Hallinan G. et al., 2017, *Science*, 358, 1579
 Kasliwal M. et al., 2017, *Science*, 358, 1559
 Kathirgamaraju A., Barniol Duran R., Giannios D., 2018, *MNRAS*, 473, L121
 Lamb G., Kobayashi S., 2017, *MNRAS*, 472, 4953
 Lazzati D., Perna R., Morsony B. J., López-Cámara D., Cantiello M., Ciolfi R., giacomazzo B., Workman J. C., 2017, preprint ([arXiv:1712.03237](https://arxiv.org/abs/1712.03237))
 Lyman J. D. et al., 2018, preprint ([arXiv:1801.02669](https://arxiv.org/abs/1801.02669))
 Mooley K. P. et al., 2017, *Nature*, 554, 207
 Nagakura H., Hotokezaka K., Sekiguchi Y., Shibata M., Ioka K., 2014, *ApJ*, 784, L28
 Park T., Kashyap V. L., Siemiginowska A., van Dyk D. A., Zezas A., Heinke C., Wargelin B. J., 2006, *ApJ*, 652, 610
 Planck Collaboration XIII, 2016, *A&A*, 594, A13
 Riess A. G. et al., 2016, *ApJ*, 826, 56
 Rossi E., Lazzati D., Rees M. J., 2002, *MNRAS*, 332, 945
 Salafia O. S., Ghisellini G., Ghirlanda G., 2018, *MNRAS*, 474, L7
 Sari R., Piran T., Narayan R., 1998, *ApJ*, 497, L17
 Troja E. et al., 2017, *Nature*, 551, 71
 van Eerten H. J., Zhang W., MacFadyen A. I., 2010, *ApJ*, 722, 235
 Zhang B., Dai X., Lloyd-Ronning N. M., Mészáros P., 2004, *ApJ*, 601, L119

This paper has been typeset from a $\text{\TeX}/\text{\LaTeX}$ file prepared by the author.