



Publication Year	2015
Acceptance in OA	2020-04-23T07:20:53Z
Title	Modeling Dust in the Magellanic Clouds
Authors	Zonca, Alberto, CASU, Silvia, MULAS, Giacomo, ARESU, Giambattista, CECCHI PESTELLINI, Cesare
Publisher's version (DOI)	10.1088/0004-637X/810/1/70
Handle	http://hdl.handle.net/20.500.12386/24180
Journal	THE ASTROPHYSICAL JOURNAL
Volume	810

MODELING DUST IN THE MAGELLANIC CLOUDS

ALBERTO ZONCA¹, SILVIA CASU¹, GIACOMO MULAS¹, GIAMBATTISTA ARESU¹, AND CESARE CECCHI-PESTELLINI²

¹ INAF—Osservatorio Astronomico di Cagliari, Via della Scienza 5, I-09047 Selargius, Italy; azonca@oa-cagliari.inaf.it, silvia@oa-cagliari.inaf.it, gmulas@oa-cagliari.inaf.it, garesu@oa-cagliari.inaf.it

² INAF—Osservatorio Astronomico di Palermo, P.za Parlamento 1, I-90134 Palermo, Italy; cecchi-pestellini@astropa.inaf.it

Received 2015 May 15; accepted 2015 July 24; published 2015 September 1

ABSTRACT

We model the extinction profiles observed in the Small and Large Magellanic clouds with a synthetic population of dust grains consisting of core-mantle particles and a collection of free-flying polycyclic aromatic hydrocarbons (PAHs). All different flavors of the extinction curves observed in the Magellanic Clouds (MCs) can be described by the present model, which has been previously (successfully) applied to a large sample of diffuse and translucent lines of sight in the Milky Way. We find that in the MCs the extinction produced by classical grains is generally larger than absorption by PAHs. Within this model, the nonlinear far-UV rise is accounted for by PAHs, whose presence in turn is always associated with a gap in the size distribution of classical particles. This hints either at a physical connection between (e.g., a common cause for) PAHs and the absence of middle-sized dust particles or the need for an additional component in the model that can account for the nonlinear far-UV rise without contributing to the UV bump at ~ 217 nm such as, e.g., nanodiamonds.

Key words: astrochemistry – dust, extinction – evolution – galaxies: ISM – Magellanic Clouds – ultraviolet: ISM

1. INTRODUCTION

Interstellar extinction curves (ISECs) are now available for many lines of sight in the Milky Way Galaxy (MWG), in the Small and Large Magellanic Clouds (SMC, LMC), in M31, in nearby galaxies, and increasingly in objects at high redshift. The ISECs have a great variety of shapes. This evidence may seem to suggest that grain models must be complex, allowing for different carriers for each of the different components of the ISECs. However, all the measured extinction profiles are clearly members of the same family, and in fact, ISECs can be phenomenologically described by means of a very limited number of empirical parameters (Cardelli et al. 1989; Valencic et al. 2004; Fitzpatrick & Massa 2007). Such a smooth topological transition among extinction profiles may be naturally interpreted as the response of dust to the local physics.

Dust grains are composed mainly of silicates and carbons, as made clear by spectroscopic evidence and depletion data (e.g., Draine 2003). They are formed in the envelopes of cool stars and in novae and supernovae, and are destroyed in shocks, but with different efficiencies, silicates being more resistant than carbons (Zhukovska & Henning 2013; Bocchio et al. 2014). Even if the silicates and carbons can be produced as separate populations, the destruction of solid carbons to atoms and small molecules will lead to carbon deposition on silicate cores. According to the scenario originally envisaged by Jones et al. (1990), gaseous carbon in diffuse clouds is gradually deposited on silicate cores in hydrogen rich sp^3 form, and is eventually annealed and darkened to graphitic (H-poor) sp^2 kind by the interstellar radiation field. In other words, dust is not immutable and is expected to evolve in time (e.g., Cecchi-Pestellini et al. 2010).

Such dust formation and evolution scenario has been implemented in a model—the [CM]² model (Cecchi-Pestellini et al. 2008)—successfully applied to a sample of 329 galactic lines of sights (Fitzpatrick & Massa 2007) by Mulas et al. (2013).

Subsequently, the carbon evolution prescriptions of this scenario were condensed in a set of time-dependent equations, describing carbon deposition onto the silicate cores and its following photo-darkening, and matched to the observationally based inferences of dust physical parameters (Cecchi-Pestellini et al. 2014), closing the circle. Most of the ISECs in the Fitzpatrick & Massa (2007) sample correspond to dust mantles that restarted growing after being almost completely removed, with the leftover fully rehydrogenated, by, e.g., occasional shocks.

A natural extension of this work is its application to (and test with) environments markedly different from the interstellar medium of the solar neighborhood, in which the life cycle of the interstellar medium is known to be very different either globally, e.g., much more frequent shocks as in starburst galaxies, or locally, because of independent observational constraints on individual lines of sight. In this paper we shall apply the [CM]² model to a number of lines of sight in the Magellanic Clouds (MCs), whose data have been provided by Gordon et al. (2003) and Cartledge et al. (2005). These two irregular dwarf galaxies are nearby (~ 50 kpc), gas-rich, actively star-forming, and have sub-solar metallicities (e.g., Howarth 2011). The SMC average ISEC presents a featureless profile with no 217.5 nm bump and a steep far-ultraviolet rise, while the LMC one shows a hint of the bump and a firm far-ultraviolet rise, stronger than in the MWG but less sharp than in the SMC.

We describe the specific lines of sight, their known physical properties, and how they are modeled in Section 2, the resulting characterization of dust grains along such extinction paths in Section 3; Section 4 contains our discussion and the last section summarizes our conclusions.

2. EXTINCTION OBSERVED AND MODELED

Gordon et al. (2003) and Cartledge et al. (2005) exploited a collection of newly taken and archive data to obtain individual extinction curves for a total of 24 lines of sight: 19 for LMC and 5 for SMC. The list of sight lines reported in Table 1

Table 1
Relevant Properties of the Lines of Sight toward
the Magellanic Clouds in our Sample

LOS	A_V (mag)	R_V	N_H/E_{B-V} ($\times 10^{21} \text{ cm}^{-2} \text{ mag}^{-1}$)
SMC Bar Sample			
AzV18	0.49 ^a	2.90 ^a	67.19 ^{c, d}
AzV23	0.48 ^b	2.65 ^b	49.29 ^{c, e}
AzV214	0.35 ^b	2.40 ^b	41.03 ^{c, e}
AzV398	0.68 ^b	3.14 ^b	55.63 ^{c, e}
<i>SMC Bar</i>	...	2.74 ^b	24.55 ^g
SMC Wing Sample			
AzV456	0.57 ^a	2.19 ^a	10.39 ^{c, d}
LMC Average Sample			
Sk-66 19	0.86 ^b	3.44 ^b	29.59 ^{c, d}
Sk-66 88	1.03 ^b	3.67 ^b	20.71 ^{c, e}
Sk-67 2	0.56 ^a	3.75 ^a	18.55 ^{c, d}
Sk-68 23	1.04 ^b	3.35 ^b	6.03 ^{c, e}
Sk-68 26	0.64 ^a	3.45 ^a	20.77 ^{c, d}
Sk-68 129	0.57 ^a	3.37 ^a	32.73 ^{c, d}
Sk-69 108	0.98 ^b	3.15 ^b	10.88 ^{c, e}
Sk-69 206	0.96 ^b	3.68 ^b	35.33 ^{c, e}
Sk-69 210	1.36 ^b	3.32 ^b	25.75 ^{c, e}
Sk-69 213	0.63 ^b	3.96 ^b	22.55 ^{c, e}
<i>LMC</i>	...	3.41 ^b	12.88 ^g
LMC2 Ss Sample			
Sk-68 140	0.67 ^a	3.34 ^a	28.77 ^{c, d}
Sk-68 155	0.56 ^a	2.81 ^a	21.82 ^{c, d}
Sk-69 228	0.53 ^a	3.54 ^a	28.50 ^{c, d}
Sk-69 256	0.11 ^b	0.64 ^b	15.67 ^{c, e}
Sk-69 265	0.32 ^b	1.68 ^b	24.43 ^{c, e}
Sk-69 270	0.44 ^b	2.34 ^b	18.99 ^{c, d}
Sk-69 279	0.75 ^a	3.54 ^a	21.80 ^{d, f}
Sk-69 280	0.56 ^b	3.12 ^b	23.03 ^{c, e}
Sk-70 116	0.65 ^b	3.41 ^b	16.82 ^{c, e}
<i>LMC2 Ss</i>	...	2.76 ^b	21.88 ^g

Notes. The average ISECs are in italics.

^a Cartledge et al. (2005).

^b Gordon et al. (2003).

^c Atomic hydrogen from Ly α .

^d Molecular hydrogen from FUSE.

^e Molecular hydrogen estimate (see text).

^f Atomic hydrogen from 21 cm.

^g Welty et al. (2012).

also contains their absolute visual magnitude, A_V , the ratio of total to selective extinction, R_V , and the gas to dust ratio expressed as $N_H/E_{B-V} \text{ cm}^{-2} \text{ mag}^{-1}$. This quantity has been constructed for specific lines of sight using data taken from Welty et al. (2012) and references therein: the atomic hydrogen column density is derived from absorption Ly α profiles in all cases but Sk-69 279, for which we used data from the hydrogen 21 cm emission; the molecular hydrogen column density is obtained from FUSE H₂ absorption measurements when available, or otherwise from exploiting the relation linking N_{H_2}/E_{B-V} to E_{B-V} , as found by Welty et al. (2012) for the MWG. In addition to individual lines of sight, we also considered the “average” extinction curves given by Gordon et al. (2003) for the SMC bar, the LMC 2 Supershell (Ss), and

the overall LMC average. These average extinction curves were treated exactly as the individual ones, to see if this resulted in a sensible description of representative dust properties for the areas they refer to.

The dust model consists of a distribution of core-mantle grains and a mixture of polycyclic aromatic hydrocarbons (PAHs). Classical grains are constructed assembling four concentric components: a cavity, whose volume is in fixed proportion f_v for all core sizes; the silicate shell of radius a ; the sp^2 layer of thickness $f_{sp^2} w$, w being the mantle thickness; and the sp^3 layer of thickness $f_{sp^3} w = (1 - f_{sp^2})w$. We consider a size distribution for the silicate cores, given by a power law $(a + w)^{-q}$. Such distribution allows for a gap in particle sizes, so that two populations of dust grains, big and small ones, may be present, each characterized by lower (a_- , b_-) and upper size (a_+ , b_+) limits in the distribution. The molecular component is represented by a mixture of 54 PAHs in the size range 10–66 C atoms, in the charge states 0, ± 1 , and $+2$ (Mallocci et al. 2007). The equations describing the model have been reported in several papers (e.g., Cecchi-Pestellini et al. 2008; Zonca et al. 2011), and are not repeated here. The model produces a theoretical extinction curve as a function of its parameters. A least-squares procedure (Levenberg 1944; Markwardt 2009) yields the best-fitting model parameter values for each line of sight. The variance-covariance matrix for the best-fitting parameters, measuring how tightly they are constrained by the fit, is obtained by synthetic statistics, by repeating the fit multiple times on data perturbed according to their errors. The details of this procedure, and the modifications in the MPFIT³ Levenberg–Marquardt implementation to cope with the under-determination of some parameters, are described in Mulas et al. (2013).

The evolutionary model of carbon mantles is detailed in Cecchi-Pestellini et al. (2014). The carbon cycle in and out of dust is described by a set of ordinary differential equations that follow the evolution in time of the available gas-phase carbon, the deposited polymeric sp^3 carbon, and its radiation-annealed sp^2 counterpart. The main free parameters are the photo-darkening time—the timescale for graphitization (e.g., Cecchi-Pestellini et al. 2010)—and the initial conditions. The differential equations thus constitute a one-parameter system: solutions starting from the same initial conditions, but with different photo-darkening times, have no other points in common but the starting point and the asymptotic limit. Of course, the evolutionary model also has a parametric dependence on the assumed environmental conditions, i.e., the elemental abundances and so on. However, this dependence is rather mild, and the solutions of the model retain their overall behavior with minor differences for any sensible environmental conditions (Cecchi-Pestellini et al. 2014).

3. RESULTS

Fitted ISECs are shown in Figures 1 (SMC) and 2 (LMC), while the inferred dust parameters are reported in Tables 2 (classical dust) and 3 (PAHs). In the same tables we also show the results for the average extinction profiles.

As described in Mulas et al. (2013), the fit is severely underconstrained, mainly due to the degeneracy in how many different PAH mixtures can add up to very nearly the same cumulative cross section. As a result, only some of the

³ <http://purl.com/net/mpfit>

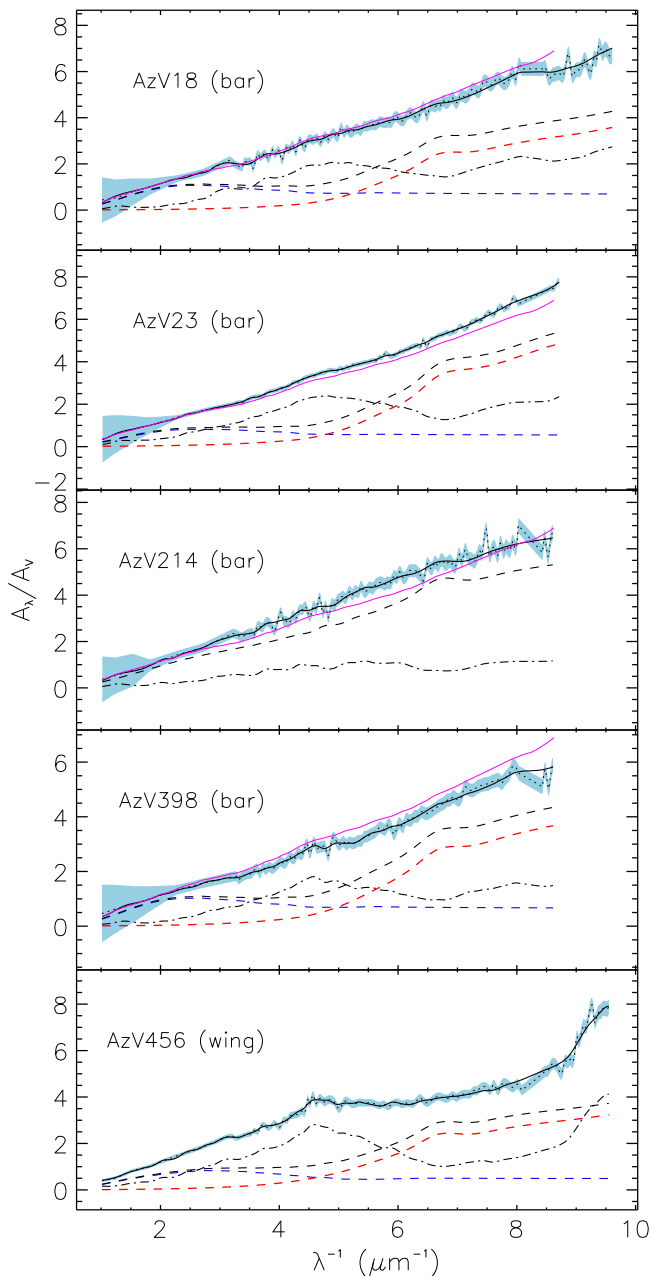


Figure 1. Fits to the normalized extinction curves for five lines of sight in the Small Magellanic Cloud. Solid black lines: global fit. Dashed lines: classical dust contribution; in blue the contribution of “large” dust grains, in red “small” dust grains, in black their sum; only the black curve is shown when the gap is very small or nonexistent. Dotted–dashed lines: PAHs. For lines of sight in the SMC bar, we also show, with the solid purple line, the “average” extinction curve for the SMC bar (Gordon et al. 2003). The lightly shaded areas are the observational error ranges (see text).

parameters are well determined by the fit, namely the ones defining the classical dust, and some collective properties of the PAH mixture. Generally, the respective contributions of classical dust and PAHs to the modeled ISECs (as shown in Figures 1 and 2) are very well constrained. This was the case for all ISECs we fitted in the MWG and for all but two exceptions in the MCs, i.e., AzV23 and Sk-69 256. In the latter two exceptions, to add insult to injury, there is more than one acceptable solution, with qualitatively different shapes of the classical dust and PAH contributions that produce almost the

same profile. These degenerate fits are shown in Figure 3, and parameters for both solutions are given in Tables 2, 4, and 5. This reflects an actual physical degeneracy in the possible ways to account for the observed shapes of these specific extinction curves, which could be broken by using additional information (e.g., abundance constraints or observations of aromatic features in emission). AzV23 has an extremely weak bump, if any, and a correspondingly weak nonlinear far-UV rise. This can be achieved by a plain monomodal distribution of classical dust with negligible PAHs (red curve in Figure 1); alternatively the same ISEC results from opening a gap in the grain distribution, thereby creating a broad break in the classical dust extinction which almost perfectly cancels with the bump due to PAH absorption. To make evident the effect on the extinction curve of a gap in the size distribution of classical dust grains, in the top panel of Figure 4 we show the ISEC toward Sk-67 2, the best-fitting extinction curve (which has a gap) and its components in black, with the extinction curve that would result from exactly the same extinction model but with no gap superimposed in blue. In the case of Sk-69 256 there is a hint of a bump, but due also to the low signal-to-noise ratio a similar degeneracy of acceptable solutions occurs, i.e., PAHs may or may not be present. The remaining ISECs in the MC sample do not appear to suffer from such degeneracy, as their fits unambiguously and consistently converge to the same solutions regardless of the starting point of the iterative fitting procedure.

The well-defined PAH collective properties we identify (see Mulas et al. 2013 for details) are the total column density of carbon atoms locked in PAHs per unit visual magnitude, N_C^{PAH}/A_V (or given the gas to dust ratio N_C^{PAH}/N_H), and the fractions in each charge state summarized as an average charge per carbon atom, $\langle Q \rangle/[C] = \sum_i N_i q_i / \sum_i N_i N_C^i$, where N_i , q_i , and N_C^i are column density, charge, and number of carbon atoms for the i th PAH molecule, respectively. In Table 3 we also report the charge dispersion, $\sigma_Q/[C]$, a measure of the homogeneity of the charging within the PAH distribution. The total absolute column density of carbon locked in PAHs is not an outcome of the fit, since we are dealing with normalized extinction, but it can be derived through the absolute extinction (see Table 1).

The statistics of the MC sample are relatively small (24 lines of sight in total). Nevertheless, some trends are already clear. The fitting results presented in Table 2 occupy a slightly larger volume of the parameter space with respect to the corresponding galactic values. In particular, while for the MWG lines of sight the size distribution of classical grains is always bimodal with no exceptions (see Table 1 in Mulas et al. 2013), with a gap in size $\Delta a = b_- - a_+$ between ~ 30 and 200 nm, there are a few MC lines of sight for which the size distribution shows a negligible gap (i.e., AzV214, Sk-69 228, and one of the degenerate solutions for AzV23). In general, while there is considerable scatter in both, median values of Δa are smaller in the MCs with respect to those we previously found for the MWG. The same can be seen if one compares the fits for the average MWG ISEC to the average ISECs for the MCs.

Another important difference between the two samples resides in the predominant presence of sp^3 carbon mantles in the MCs. The sp^2 fraction is different from zero only in four cases, namely, Sk-68 26, Sk-69 256, Sk-69 210, and AzV23 (see Table 2), while in the MWG carbonaceous mantles tend to be overwhelmingly aromatic. This is particularly significant as

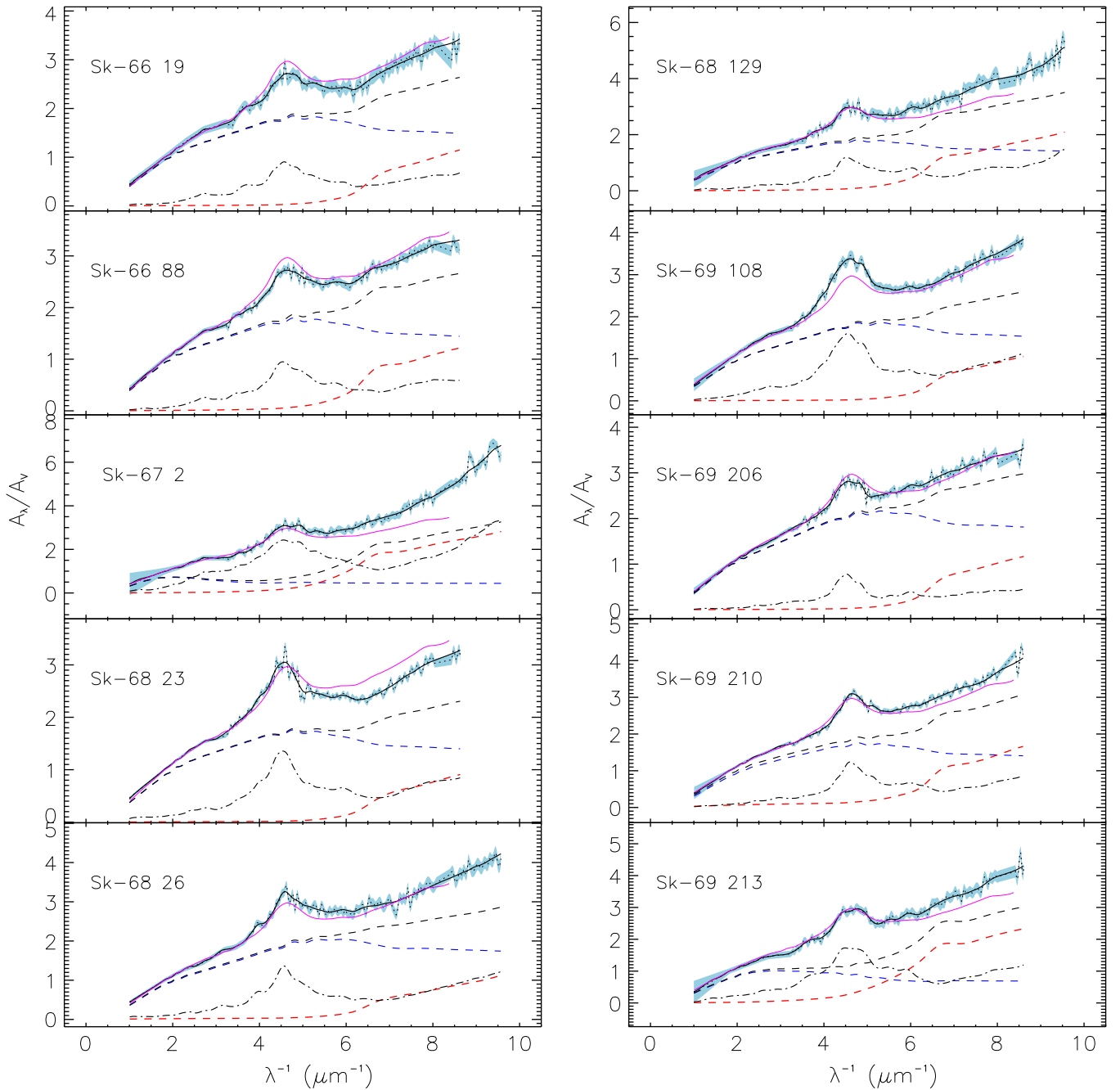


Figure 2. Fits to the normalized extinction curves for lines of sight in the Large Magellanic Cloud. Solid black lines: global fit. Dashed lines: classical dust contribution; in blue the contribution of “large” dust grains, in red “small” dust grains, in black their sum; only the black curve is shown when the gap is very small or nonexistent. Dotted–dashed lines: PAHs. Solid purple line, the “average” extinction curve for the LMC (Gordon et al. 2003). Dotted–dashed lines: PAHs. The lightly shaded areas are the observational error ranges (see text). Fits to the normalized extinction curves for lines of sight in the Large Magellanic Cloud LMC2 Ss. Solid black lines: global fit. Dashed lines: classical dust contribution; in blue the contribution of “large” dust grains, in red “small” dust grains, in black their sum; only the black curve is shown when the gap is very small or nonexistent. Dotted–dashed lines: PAHs. Solid purple line, the “average” extinction curve for the LMC (Gordon et al. 2003). Dotted–dashed lines: PAHs. The lightly shaded areas are the observational error ranges (see text).

MCs have generally stronger radiation fields than the MWG (up to ten times higher; Israel et al. 1993).

From Figures 1 and 2, it is evident that classical dust dominates the extinction profile, with some exceptions in the bump spectral region. In only one ISEC (Sk-69 256), PAHs may be dominant in the whole range, depending on which of the formally acceptable solutions is the real one.

The PAH charge dispersion decreases with increasing PAH charge (Figure 5) suggesting that when the mixture charge is

not negligible all molecular species tend to assume the same charge value, as characteristic during, e.g., photoionization (modulo the differences in the photo-absorption cross-sections). On the other side, large charge dispersions are expected when a superposition of different environments, with different physical conditions, are crossed by a line of sight. In this case the average charges of individual regions merge to a median, close to zero, value, but with a large spread around it.

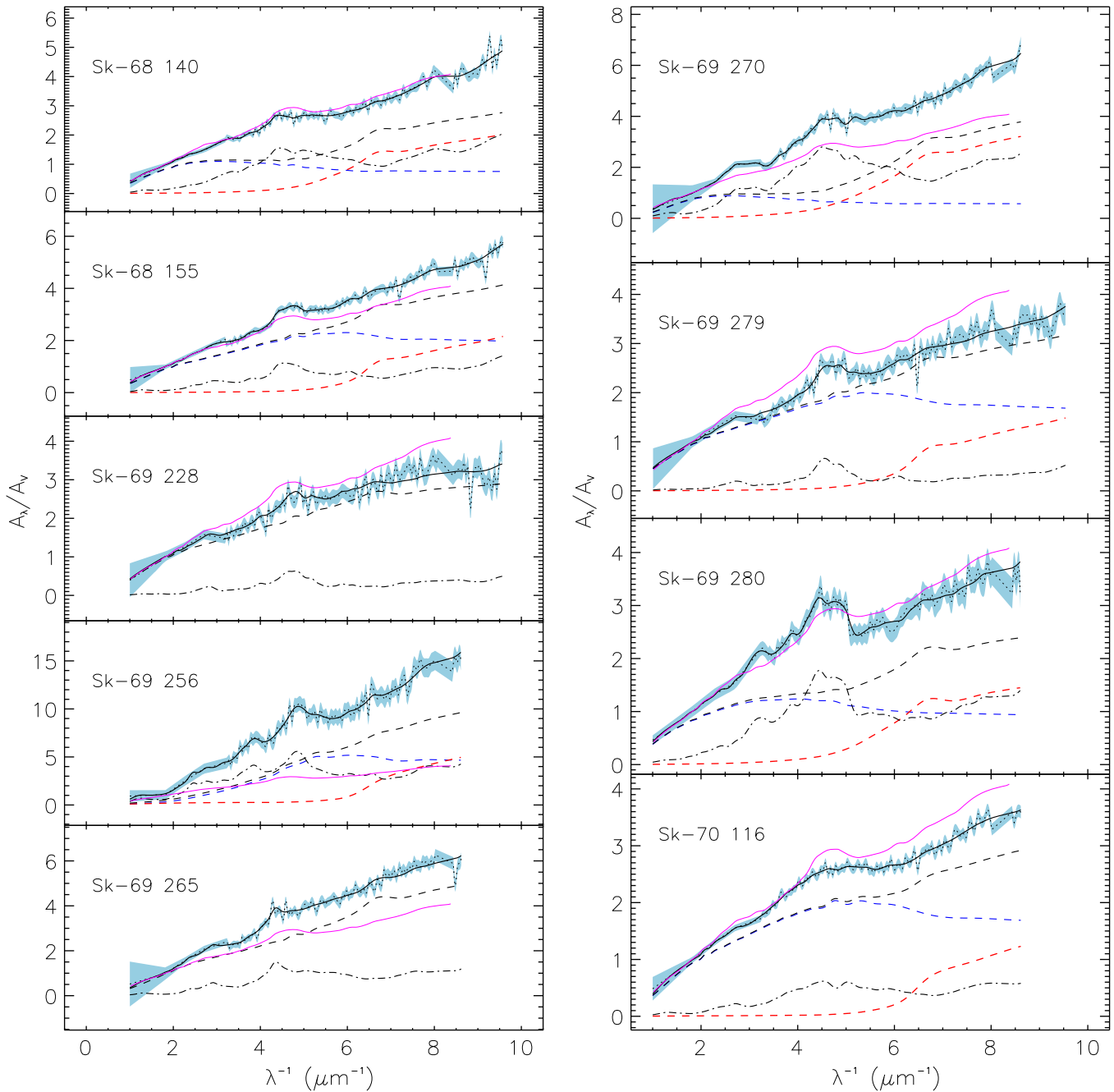


Figure 2. (Continued.)

4. DISCUSSION

Figure 6 shows in graphical form the total abundances of C and Si locked in dust and PAHs that we obtained in this work for the sightlines to the MCs examined here, also listed in Table 4, compared with the corresponding values we previously obtained for the MWG (Mulas et al. 2013) and with some reference values for the total elemental abundances. The level of compatibility of the amounts of Si and C locked in dust in the MCs with abundance constraints is at least as good as that for the MWG, with a similar fraction of data points mildly exceeding the nominal (average) budget of available Si, C constraints are almost always respected, one spectacular

failure for LMC, one for the SMC, and one for the MWG (not visible, because it falls out of the plot). This can be interpreted as a validation of the $[CM]^2$ model for the MCs.

Table 5 reports the column mass densities derived from our fits of the individual extinction curves, while Figure 7 shows the correlation of the total dust mass column densities versus total hydrogen mass column density. They can be compared with the results of Roman-Duval et al. (2014), obtained by fitting a dust emission model to *Herschel* data. While of course our data points are very sparse, compared to all the pixels in the maps of the MCs, as used by Roman-Duval et al. (2014), they do fall in the same area of the $\Sigma_{\text{dust}}-\Sigma(H_{\text{tot}})$ plane covered by their data and are therefore fully consistent with them. This is

Table 2
Classical Dust Component Parameters and Carbon Column Density Locked in PAHs for Each Line of Sight

LOS	N_d	f_v	w	f_{sp^2}	a_-	a_+	b_-	b_+	$\delta a (b_- - a_+)$	q	$N_C^{\text{PAH}} \times 10^{15} (\text{cm}^{-2})$
SMC Bar Sample											
AzV18	1.80 (0.14)	0.00 ($<\varepsilon_2$)	2.0 (0.9)	0.00 ($<\varepsilon_2$)	7 (3)	42 (3)	130 (18)	282 (110)	87 (19) 3.51 (0.04)	137 (18)	...
AzV23 ^a	3.336 (0.003)	0.67 ($<\varepsilon_2$)	4.70 (0.02)	0.77 ($<\varepsilon_2$)	5.00 ($<\varepsilon_2$)	136.0 (0.7)	0.0 ($<\varepsilon_2$)	3.3199 (0.0007)	0.0 (0.0)
AzV23 ^b	3.87 (0.13)	0.00 ($<\varepsilon_2$)	0.3 (0.5)	0.6 (0.4)	5.07 (0.22)	45.7 (2.6)	118 (17)	339 (200)	72 (18)	3.760 (0.016)	178 10
AzV214	1.79 (0.12)	0.55 (0.06)	0.64 (0.14)	0.00 ($<\varepsilon_2$)	5.00 ($<\varepsilon_2$)	607 (240)	0.0 ($<\varepsilon_2$)	3.527 (0.015)	68 (13)
AzV398	1.83 (0.12)	0.01 (0.02)	1.7 (0.7)	0.00 ($<\varepsilon_2$)	5.1 (0.4)	44.0 (2.3)	153 (50)	345 (160)	109 (50)	3.52 0.03	179 21
SMC Bar	2.10 (0.06)	0.00 ($<\varepsilon_2$)	0.6 (0.3)	0.00 ($<\varepsilon_2$)	5.00 ($<\varepsilon_2$)	44 (4)	130 (8)	269 (16)	86 (10)	3.583 (0.016)	...
SMC Wing Sample											
AzV456	1.21 (0.11)	0.39 (0.05)	1.5 (0.7)	0.00($<\varepsilon_2$)	6.2 (1.6)	66 (4)	195 (26)	410 (15)	129 (28)	3.458 (0.021)	251 (11)
LMC Average Sample											
Sk-66 19	1.00 (0.04)	0.24 (0.03)	1.5 (0.6)	0.00 ($<\varepsilon_2$)	5.00 ($<\varepsilon_2$)	26 (4)	60 (8)	530 (30)	34 (5)	3.489 (0.007)	(97) (14)
Sk-66 88	1.026 (0.022)	0.29 (0.02)	2.7 (0.4)	0.00 ($<\varepsilon_2$)	5.4 (1.5)	34 (5)	62 (15)	542 (29)	28 (10)	3.487 (0.007)	109 (19)
Sk-67 2	1.0706 (0.0027)	0.00 ($<\varepsilon_2$)	1.09 (0.05)	0.00 ($<\varepsilon_2$)	5.00 ($<\varepsilon_2$)	37.54 (0.01)	152.6 (0.4)	337 (12)	115.1 (0.4)	3.4891 ($<\varepsilon_3$)	192.3 (2.5)
Sk-68 23	0.966 (0.008)	0.26 (0.01)	1.1 (0.4)	0.00 ($<\varepsilon_2$)	5.00 ($<\varepsilon_2$)	19.2 (1.9)	62.0 (2.6)	538 (9)	42.8 (1.8)	3.4896 (0.0021)	145 (8)
Sk-68 26	0.966 (0.029)	0.40 (0.03)	1.7 (0.5)	0.27 (0.17)	5.00 ($<\varepsilon_2$)	24 (4)	47.9 (1.8)	610 (16)	24 (6)	3.479 (0.004)	88 (7)
Sk-68 129	1.00 (0.08)	0.29 (0.09)	1.5 (0.9)	0.00 ($<\varepsilon_2$)	5.00 ($<\varepsilon_2$)	43 (10)	83 (26)	544 (80)	40 (17)	3.481 (0.015)	89 (19)
Sk-69 108	0.97 (0.04)	0.34 (0.04)	1.3 (0.4)	0.00 (0.01)	5.05 (0.21)	26 (4)	59 (6)	539 (50)	34 (3)	3.480 (0.006)	168 (22)
Sk-69 206	1.093 (0.021)	0.48 (0.02)	1.64 (0.27)	0.00 ($<\varepsilon_2$)	5.00 ($<\varepsilon_2$)	27.3 (2.4)	64.4 (2.0)	589 (40)	37.2 (2.4)	3.452 (0.005)	72 (9)
Sk-69 210	1.038 (0.009)	0.43 (0.01)	0.56 (0.09)	0.58 (0.09)	5.00 ($<\varepsilon_2$)	33.3 (1.1)	74.4 (1.6)	545 (40)	41.1 (1.6)	3.474 (0.004)	185 (12)
Sk-69 213	1.01 (0.05)	0.25 (0.09)	1.15 (0.25)	0.00 ($<\varepsilon_2$)	5.00 ($<\varepsilon_2$)	53 (4)	137 (16)	485 (60)	84 (16)	3.492 (0.009)	153 (16)
LMC	1.14 (0.20)	0.25 (0.13)	3.5 (1.5)	0.01 (0.02)	10 (6)	47 (6)	158 (70)	435 (60)	112 (70)	3.46 (0.04)	...
LMC2 Ss Sample											
Sk-68 140	1.08 (0.11)	0.16 (0.09)	3.2 (1.1)	0.00 ($<\varepsilon_2$)	5.5 (1.2)	45 (4)	122 (13)	413 (90)	77 (13)	3.473 (0.020)	146 (12)
Sk-68 155	1.12(0.05)	0.39 (0.08)	0.88 (0.15)	0.00 ($<\varepsilon_2$)	5.00 ($<\varepsilon_2$)	40 (5)	51 (3)	684 (210)	11 (5)	3.493 (0.014)	80 (9)
Sk-69 228	0.910 (0.025)	0.25 (0.08)	4.7 (0.3)	0.00 ($<\varepsilon_2$)	5.2 (0.6)	35.1 (1.5)	36.9 (1.9)	574 (90)	1.3 (1.1)	3.461 (0.008)	28 (3)
Sk-69 ^c	15.62 (0.12)	0.67 ($<\varepsilon_2$)	1.7 (1.3)	0.27 (0.22)	7 (5)	13 (8)	96 (22)	109 (26)	82 (21)	3.28 (0.03)	104 (20)
Sk-69 ^d	16.8 (1.2)	0.611 (0.014)	1.10 (0.04)	0.45 (0.19)	5.00 ($<\varepsilon_2$)	11.3 (1.1)	120 (5)	162 (7)	109 (6)	3.35 (0.04)	0.0 (0.0)
Sk-69 265	1.20 (0.04)	0.42 (0.05)	0.68 (0.10)	0.00 ($<\varepsilon_2$)	5.00 ($<\varepsilon_2$)	56 (5)	62 (8)	497 (120)	4 (5)	3.454 (0.009)	56 (11)
Sk-69 270	1.19 (0.04)	0.01 (0.02)	1.03 (0.28)	0.00 ($<\varepsilon_2$)	5.00 ($<\varepsilon_2$)	47.2 (2.3)	131 (15)	296 (100)	83 (15)	3.476 (0.010)	179 (11)
Sk-69 279	0.92 (0.06)	0.17 (0.09)	2.3 (0.5)	0.00 ($<\varepsilon_2$)	5.5 (2.4)	39 (11)	52 (22)	630 (160)	13 (14)	3.488 (0.012)	48 (13)
Sk-69 280	0.91 (0.04)	0.05 (0.04)	1.0 (0.5)	0.00 ($<\varepsilon_2$)	13.0 (2.3)	40.7 (2.9)	81 (8)	425 (50)	41 (9)	3.493 (0.012)	125 (13)
Sk-70 116	1.124 (0.017)	0.51 (0.03)	0.95 (0.17)	0.00 ($<\varepsilon_2$)	5.00 ($<\varepsilon_2$)	25.2 (1.8)	71.3 (2.8)	692 (160)	46.1 (2.8)	3.464 (0.007)	61.1 (6.7)
LMC2 Ss	1.09 (0.19)	0.21 (0.14)	2.2 (1.6)	0.00 ($<\varepsilon_2$)	8 (4)	52 (8)	149 (60)	415 (80)	98 (60)	3.45 (0.04)	...

Notes. We adopt $\varepsilon_1 = 0.000001$, $\varepsilon_2 = 0.01$, $\varepsilon_3 = 0.0001$.

^a Fit solution for AzV23 without PAHs.

^b Fit solution for AzV23 including PAHs.

^c Fit solution for Sk-69 256 with similar contributions by classical dust and PAHs.

^d Fit solution for Sk-69 256 without PAHs.

Table 3
Mean Properties of the PAH Mixture

LOS	N_C^{PAH}/A_V 10^{17} ($\text{cm}^{-2} \text{mag}^{-1}$)	$\langle Q \rangle/[C]$ (e^-)	$\sigma_Q/[C]$ (e^-)
SMC Bar Sample			
AzV18	2.8 (0.4)	-0.053 (0.012)	0.051 (0.013)
AzV214	1.9 (0.4)	-0.007 (0.021)	0.073 (0.010)
AzV23 ^a	3.72 (0.21)	0.007 (0.012)	0.075 (0.004)
AzV398	2.6 (0.3)	-0.010 (0.017)	0.068 (0.004)
<i>SMC Bar</i>	3.4 (0.3)	0.006 (0.022)	0.072 (0.010)
SMC Wing Sample			
AzV456	4.40 (0.19)	0.060 (0.008)	0.045 (0.008)
LMC Average Sample			
Sk-66 19	1.13 (0.17)	0.015 (0.020)	0.063 (0.011)
Sk-66 88	1.06 (0.19)	-0.003 (0.013)	0.064 (0.006)
Sk-67 2	3.43 (0.04)	0.025 (0.001)	0.051 (0.001)
Sk-68 129	1.6 (0.3)	-0.012 (0.011)	0.071 (0.005)
Sk-68 23	1.40 (0.08)	-0.001 (0.009)	0.063 (0.005)
Sk-68 26	1.38 (0.10)	0.000 (0.010)	0.056 (0.006)
Sk-69 108	1.72 (0.22)	0.004 (0.016)	0.055 (0.009)
Sk-69 206	0.75 (0.09)	0.015 (0.008)	0.056 (0.007)
Sk-69 210	1.36 (0.09)	0.026 (0.006)	0.050 (0.006)
Sk-69 213	2.43 (0.26)	0.034 (0.010)	0.065 (0.006)
<i>LMC</i>	2.6 (0.6)	0.019 (0.022)	0.068 (0.010)
LMC2 Ss Sample			
Sk-68 140	2.18 (0.17)	-0.030 (0.010)	0.066 (0.007)
Sk-68 155	1.43 (0.16)	-0.009 (0.013)	0.076 (0.005)
Sk-69 228	0.53 (0.06)	-0.013 (0.021)	0.069 (0.012)
Sk-69 ^b	9.5 (1.8)	0.05 (0.06)	0.07 (0.03)
Sk-69 265	1.8 (0.4)	-0.005 (0.007)	0.061 (0.007)
Sk-69 270	4.06 (0.26)	0.007 (0.009)	0.073 (0.007)
Sk-69 279	0.64 (0.17)	0.010 (0.018)	0.065 (0.006)
Sk-69 280	2.24 (0.23)	-0.003 (0.010)	0.055 (0.007)
Sk-70 116	0.94 (0.10)	-0.006 (0.016)	0.074 (0.007)
<i>LMC2 Ss</i>	2.7 (0.6)	0.008 (0.020)	0.068 (0.010)

Notes. We adopt $\varepsilon_1 = 0.001$, $\varepsilon_2 = 0.1$. The average ISECs are in italics.

^a Fit solution for AzV23 including PAHs.

^b Fit solution for Sk-69 256 with similar contributions by classical dust and PAHs.

rather interesting, since the two data sets were obtained using completely different observations (emission versus absorption) and dust models.

In Cecchi-Pestellini et al. (2014) we outlined a self-consistent evolutionary scenario for dust in the diffuse ISM (DISM) in the MWG. In such model, silicate grain particles, being relatively long-lived, progressively accrete C atoms in a H-rich environment (the DISM), thereby forming aliphatic carbonaceous mantles. The older layers of these mantles are progressively photoprocessed to aromatic, while new aliphatic material simultaneously continue to deposit on top of them. The deposition of carbon is assumed to be proportional to the rate of collisions of C atoms onto dust grains, with a sticking factor calibrated to match observational constraints on CO abundances. Since dust evolution is modeled in diffuse and translucent clouds, which are rich in atomic H, all freshly deposited carbonaceous material is assumed to be highly hydrogenated, i.e., aliphatic. Upon UV irradiation,

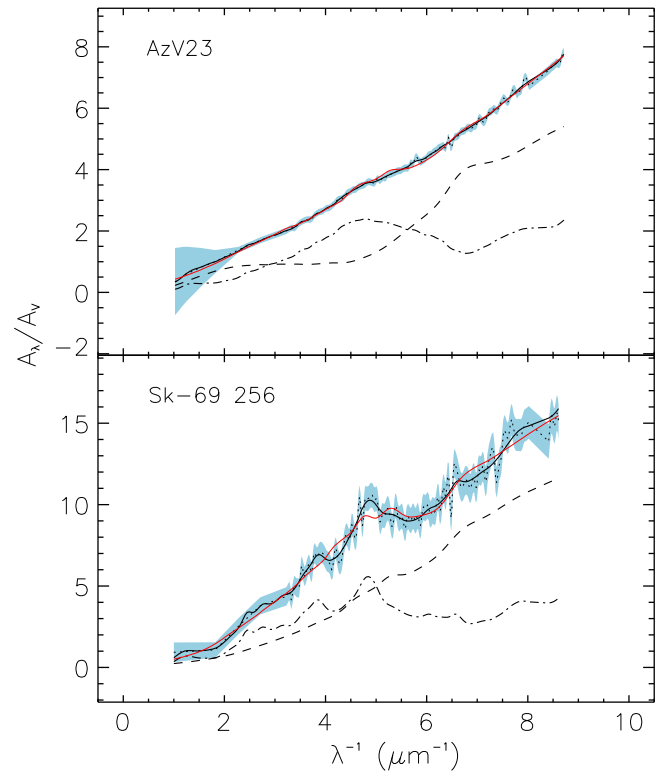


Figure 3. Alternative (degenerate) acceptable fits for the ISECs toward AzV23 and Sk-69 256. Black solid lines: absolute best fit. Red solid lines: alternative fit without PAHs. Dashed black lines: classical dust contribution for the best fit. Dotted-dashed lines: PAHs for the best fit. The lightly shaded areas are the observational error ranges (see the text).

carbonaceous material is assumed to be dehydrogenated, becoming more and more aromatic. To simplify the model, carbonaceous material, instead of having a continuous, smooth transition between deeper, older, and thus more aromatic material, and freshly deposited aliphatic material, is represented as just two layers, the deeper one completely aromatic, the other completely aliphatic. Occasionally, shocks peel away most of this material, restarting the cycle and ejecting the fragments of carbonaceous mantles into the gas, where they can possibly be a source of PAHs. Shocks are not explicitly included in the set of differential equations giving the time evolution of the grain mantles, but are taken into account in terms of “instantaneous” episodes, removing most of the carbonaceous mantles, rehydrogenating the small leftover, and putting back into the gas phase the resulting carbon; the time evolution, according to the differential equations of the model, is then resumed from these new initial conditions.

Upon trying to use this kind of evolutionary scenario to interpret the ISECs observed in the MCs, as shown in Figure 8, it is apparent that the annealing timescale must be almost always much longer than the average time between mantle-shattering events. The annealing scale is defined by the competition between energetic processing by UV radiation (and cosmic rays) and re-hydrogenation by hot H atomic gas, turning aromatic carbonaceous material back into aliphatic. In the MWG, re-hydrogenation was deemed to be by and large negligible, but this may not be the case in the MCs. From the fit results, carbonaceous mantles in the MCs are almost always completely aliphatic, with only a few exceptions. This points to significantly higher star formation activities, and associated

Table 4
Total Si and C Abundances for the Lines of Sight Plotted in Figures 1 and 2

LOS	Si/H (ppM)		C/H (ppM)		Si/C
		Mantle	PAH	Total	
SMC Bar Sample					
AzV18	4.8 (1.0)	2.7 (1.3)	12.1 (1.6)	14.8 (1.6)	0.3 (0.1)
AzV214	7.6 (1.2)	2.0 (0.4)	11.3 (2.2)	13.3 (2.5)	0.6 (0.2)
AzV23 ^a	6.8 (< ϵ)	65.0 (0.3)	...	65.0 (0.3)	0.3 (0.1)
AzV23 ^b	6.9 (1.4)	0.7 (1.2)	20.0 (1.1)	20.7 (1.2)	0.1 (< ϵ)
AzV398	7.1 (1.7)	3.5 (1.5)	14.9 (1.8)	18.4 (2.4)	0.4 (0.1)
SMC Wing Sample					
AzV456	17.8 (1.1)	9 (5)	93 (4)	102 (7)	0.2 (< ϵ)
LMC Average Sample					
Sk-66 19	13.8 (0.6)	4.0 (1.5)	13.1 (1.9)	17.1 (2.9)	0.8 (0.1)
Sk-66 88	20.5 (0.8)	10.7 (1.2)	19 (3)	29 (4)	0.7 (0.1)
Sk-67 2	18.1 (0.7)	5.4 (0.2)	69.4 (0.9)	74.8 (1.1)	0.2 (< ϵ)
Sk-68 129	12.0 (1.4)	4.0 (2.3)	16 (3)	20 (5)	0.6 (0.2)
Sk-68 23	61.5 (0.8)	14 (4)	78 (4)	91 (8)	0.7 (0.1)
Sk-68 26	18.1 (0.6)	10 (4)	22.8 (1.7)	33 (5)	0.6 (0.1)
Sk-69 108	31.0 (1.1)	9.2 (2.1)	50 (6)	59 (8)	0.5 (0.1)
Sk-69 206	12.0 (0.3)	5.0 (0.8)	7.9 (1.0)	12.9 (1.3)	0.9 (0.1)
Sk-69 210	13.5 (0.5)	4.7 (0.7)	17.6 (1.1)	22.3 (1.0)	0.6 (< ϵ)
Sk-69 213	17.4 (1.9)	5.3 (1.3)	43 (5)	48 (4)	0.4 (0.1)
LMC2 Ss sample					
Sk-68 140	11.5 (1.3)	7.8 (2.7)	25.3 (2.0)	33 (4)	0.4 (0.1)
Sk-68 155	17.2 (2.4)	3.9 (0.7)	18.4 (2.0)	22.2 (1.9)	0.8 (0.1)
Sk-69 228	16.1 (2.2)	12.7(1.1)	6.5 (0.7)	19.3 (1.5)	0.9 (0.2)
Sk-69 ^c	5.0 (1.0)	18 (10)	39 (7)	57 (13)	0.1 (< ϵ)
Sk-69 ^d	10.4 (0.4)	21(5)	...	21 (5)	0.5 (0.2)
Sk-69 265	10.0 (1.4)	2.0 (0.3)	12.1 (2.4)	14.2 (2.4)	0.7 (0.2)
Sk-69 270	13.2 (2.7)	3.9 (1.1)	50 (3)	53.9 (2.9)	0.3 (0.1)
Sk-69 279	23 (4)	8.7 (1.9)	10.4 (2.8)	19 (3)	1.2 (0.3)
Sk-69 280	14.7 (1.1)	2.0 (1.2)	30 (3)	32 (3)	0.5 (0.1)
Sk-70 116	23.3 (1.7)	5.9 (1.0)	19.0 (2.1)	25.0 (2.2)	0.9 (0.1)

Notes. We adopt $\epsilon = 0.1$. All abundances are expressed in ppM.

^a Fit solution for AzV23 obtained with classical dust only (no PAHs).

^b Fit solution for AzV23 including PAHs.

^c Fit solution for Sk-69 256 with similar contributions by classical dust and PAHs.

^d Fit solution for Sk-69 256 obtained with classical dust only (no PAHs).

supernova rates, and/or much longer photoprocessing time-scales, possibly due to more effective re-hydrogenation. This is in agreement with the current star formation rates in the MCs (~ 0.04 in the SMC, Bolatto et al. 2011, and $\sim 0.4 M_{\odot} \text{ yr}^{-1}$ in the LMC, Harris & Zaritsky 2009), which, per unit area are an order of magnitude higher than in the MWG ($\sim 1 M_{\odot} \text{ yr}^{-1}$, Robitaille & Whitney 2010). In general, observations of stellar populations in dwarf galaxies suggest that the star formation bursts are sporadic, separated by millions to billions of years even in isolated systems (e.g., Weisz et al. 2008). According to their star formation histories (Harris & Zaritsky 2004, 2009; Rezaei et al. 2014), the MCs appear to be typical members of this class of galaxies. MC-type ISECs may be then prototypical of low metallicity dwarf galaxies, with high gas content (see e.g., Cecchi-Pestellini et al. 2014).

In the MWG DISM the photo-darkening time is $\tau_{\text{pd}} \sim 10^5 / \chi \text{ yr}$ (Iida et al. 1984; Mennella et al. 2001), χ being local fluctuations around the average intensity of the interstellar UV radiation field. Such time should be compared with lifetime of

carbon mantles against sputtering (whose estimate is not a trivial task). Assuming a plausible shock frequency of $\sim 2 \times 10^{-7} \text{ yr}^{-1}$ (Draine 1987), we derive that dust mantles in the MWG DISM have enough time to be converted in aromatic structure. Cecchi-Pestellini et al. (2014) show that the evolutionary age of ISECs peaks at times of few Myr (assuming typical diffuse interstellar conditions) comparable to the probable average age of diffuse clouds. Translating these considerations to the DISM in the MCs, we may conclude that the carbon recycling time must be much shorter than the local photo-darkening time, $\tau_{\text{pd}} \lesssim 10^4 \text{ yr}$ ($\chi = 10$, Israel et al. 1993). However, such a result should be taken with care, as many effects are concurring in dust destruction and formation processes. For instance, small grains are more susceptible to destruction by sputtering in shock waves than large grains (Slavin et al. 2004), because larger grains decouple from the gas and are therefore less exposed to ions. In strong shocks, grain-grain interaction may lead to shattering and thus to the creation of smaller grains (Asano et al. 2013), which are then

Table 5
Mass Column Densities of Silicates, Carbonaceous Grain Mantles in Classical Dust, and PAHs, in $M_{\odot} \text{pc}^{-2}$,
as Inferred from our Fits of Individual Extinction Curves

LOS	$\Sigma(\text{Silicates})$	$\Sigma(\text{sp}^2 \text{ Carbon})$	$\Sigma(\text{sp}^3 \text{ Carbon})$	$\Sigma(\text{PAHs})$
SMC Bar Sample				
AzV18	0.075 (0.023)	0 (0.0)	0.0034 (0.0020)	0.014 (0.004)
AzV214	0.063 (0.013)	0 (0.0)	0.0013 (0.0004)	0.0068 (0.0016)
AzV23 ^a	0.083 (0.005)	0.049 (0.003)	0.0071 (0.0005)	0 (0.0)
AzV23 ^b	0.084 (0.018)	0 (0.0)	0.0007 (0.0012)	0.0180 (0.0015)
AzV398	0.12 (0.03)	0.000003 (0.000016)	0.0047 (0.0021)	0.018 (0.004)
SMC Wing Sample				
AzV456	0.066 (0.010)	0 (0.0)	0.0028 (0.0015)	0.025 (0.004)
LMC Average Sample				
Sk-66 19	0.140 (0.019)	0.00001 (0.00003)	0.0033 (0.0013)	0.0097 (0.0019)
Sk-66 88	0.163 (0.020)	0.000001 (0.000004)	0.0070 (0.0011)	0.0109 (0.0023)
Sk-67 2	0.069 (0.028)	0 (0.0)	0.0017 (0.0007)	0.019 (0.008)
Sk-68 129	0.09 (0.04)	0.00000 (0.0000011)	0.0025 (0.0017)	0.009 (0.004)
Sk-68 23	0.158 (0.012)	0.000002 (0.000005)	0.0028 (0.0008)	0.0146 (0.0014)
Sk-68 26	0.095 (0.024)	0.0019 (0.0016)	0.0022 (0.0009)	0.0088 (0.0023)
Sk-69 108	0.144 (0.015)	0.00002 (0.00010)	0.0034 (0.0008)	0.0169 (0.0028)
Sk-69 206	0.151 (0.019)	0.000002 (0.000008)	0.0052 (0.0010)	0.0073 (0.0013)
Sk-69 210	0.196 (0.017)	0.0038 (0.0008)	0.0012 (0.0003)	0.0187 (0.0019)
Sk-69 213	0.086 (0.019)	0.000005 (0.000022)	0.0021 (0.0006)	0.015 (0.003)
LMC2 Ss Sample				
Sk-68 140	0.09 (0.03)	0.00000 (0.0000015)	0.0050 (0.0024)	0.015 (0.005)
Sk-68 155	0.10 (0.04)	0.0000 (0.0000008)	0.0019 (0.0007)	0.0081 (0.0027)
Sk-69 228	0.09 (0.04)	0 (0.0)	0.0061 (0.0027)	0.0028 (0.0013)
Sk-69 256 ^c	0.018 (0.008)	0.0024 (0.0028)	0.0026 (0.0016)	0.010 (0.004)
Sk-69 256 ^d	0.038 (0.014)	0.0037 (0.0022)	0.0019 (0.0009)	0 (0.0)
Sk-69 265	0.064 (0.015)	0 (0.0)	0.00107 (0.00024)	0.0057 (0.0015)
Sk-69 270	0.065 (0.018)	0.00001 (0.00004)	0.0015 (0.0005)	0.018 (0.004)
Sk-69 279	0.14 (0.05)	0 (0.0)	0.0045 (0.0017)	0.0048 (0.0020)
Sk-69 280	0.084 (0.016)	0 (0.0)	0.0009 (0.0006)	0.0126 (0.0026)
Sk-70 116	0.102 (0.019)	0.000001 (0.000003)	0.0021 (0.0005)	0.0062 (0.0012)

Notes.^a Fit solution for AzV23 obtained with classical dust only (no PAHs).^b Fit solution for AzV23 including PAHs.^c Fit solution for Sk-69 256 with similar contributions by classical dust and PAHs.^d Fit solution for Sk-69 256 obtained with classical dust only (no PAHs).

more likely to be sputtered away. Hence, the timescale of dust destruction may be inversely proportional to the abundance of dust, since the rate of collisions is proportional to the grain number density (e.g., Dwek et al. 2014; Mattsson et al. 2014).

Although PAHs are clearly less abundant in the MCs than in the MWG (see Table 3), a potential problem in our description of the carbon cycle in galaxies is posed by the sharp decline of the source of aromatic material in the DISM, since most dust mantles are destroyed before they experience substantial annealing. PAH formation rates in the cold, carbon-rich winds of evolved stars are too slow, the injection time being approximately 2 Gyr. Recent *Spitzer* surveys in SMC also revised down the contribution of AGB stars to dust production (e.g., Boyer et al. 2012). Without a net positive contribution from supernovae to the dust budget, this suggests that dust must grow in the DISM or be formed by another yet unknown mechanism (see Matsuura et al. 2011 and McKee 2011). Recent *Herschel* photometric and spectroscopic observations of

the supernova 1987A by Matsuura et al. (2015) may suggest that supernovae can be an important source of dust in the interstellar medium, from local to high-redshift galaxies. However, the point is controversial as it depends on the efficiency of supernova remnants in destroying interstellar grains. Temim et al. (2015) determined dust lifetimes in the MCs by exploiting the available data of supernova remnants for these galaxies. These authors inferred dust lifetimes in the MCs significantly shorter than in the MWG, as the cumulative dust production rates by AGB stars and supernovae are one order of magnitude lower than dust destruction in interstellar shocks produced by the expansion of supernova remnants

Conversely, we are left with the puzzle of what becomes of the aliphatic fragments released into the DISM of the MCs by the shattering events. Duley & Williams (1984) proposed that they should be rapidly evaporated into polyyines, and thereafter quickly photodissociated under DISM conditions. They would therefore have a negligible effect on the extinction. If instead a

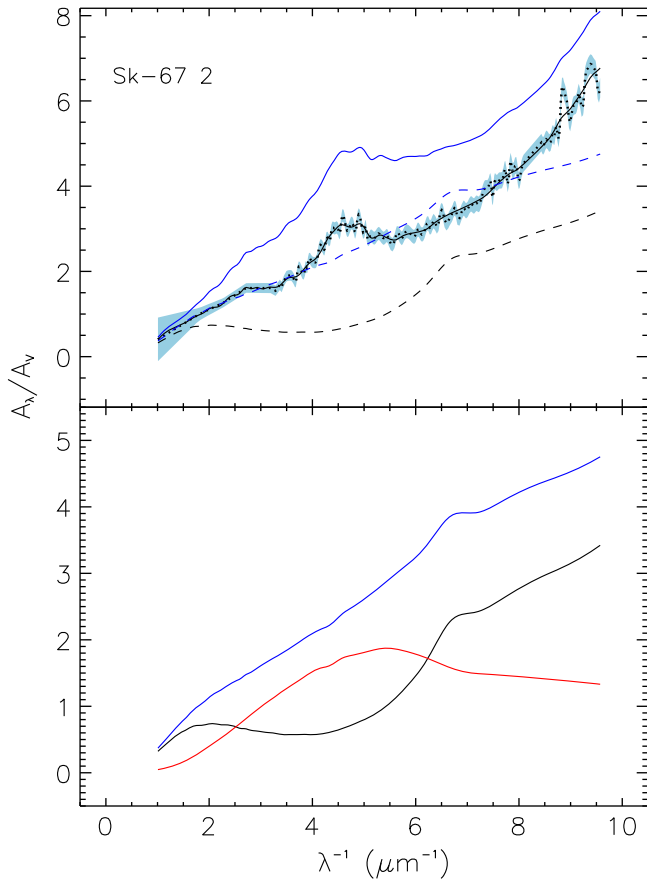


Figure 4. Effect on the extinction curve of the presence (or absence) of a gap in the size distribution of classical dust grains in the $[CM]^2$ model. Top panel: observed (shaded area) and fitted (solid black curve) ISEC toward Sk-67 2; the dashed line shows the contribution of classical grains to the extinction. In blue, the total extinction (solid) and the contribution of classical dust grains (dashed line) resulting from exactly the same $[CM]^2$ model with the only difference of artificially removing the gap in the size distribution. Bottom panel: extinction produced by classical dust grains in the best-fitting $[CM]^2$ model (black), in the same model with the size gap artificially removed (blue), and the contribution of dust grains with sizes in the gap (red).

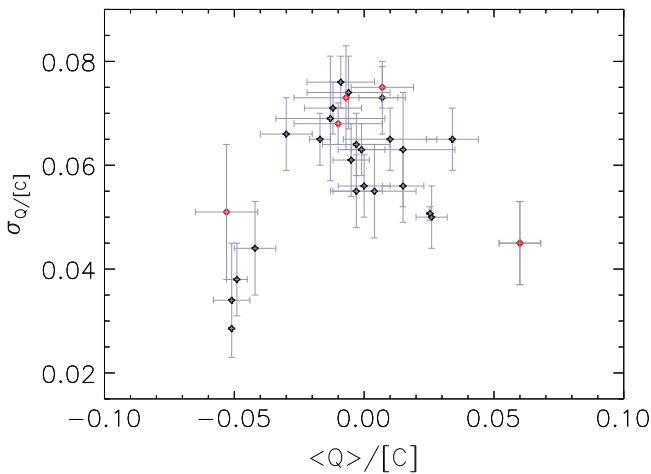


Figure 5. The relation between the mean charge of the PAH collection and its dispersion for each line of sight.

significant population of aliphatic carbonaceous nanoparticles were able to survive for a significant time, thereby achieving non-negligible abundances, they should be visible both in extinction, exhibiting $\sigma^* \leftarrow \sigma$ features contributing mainly to

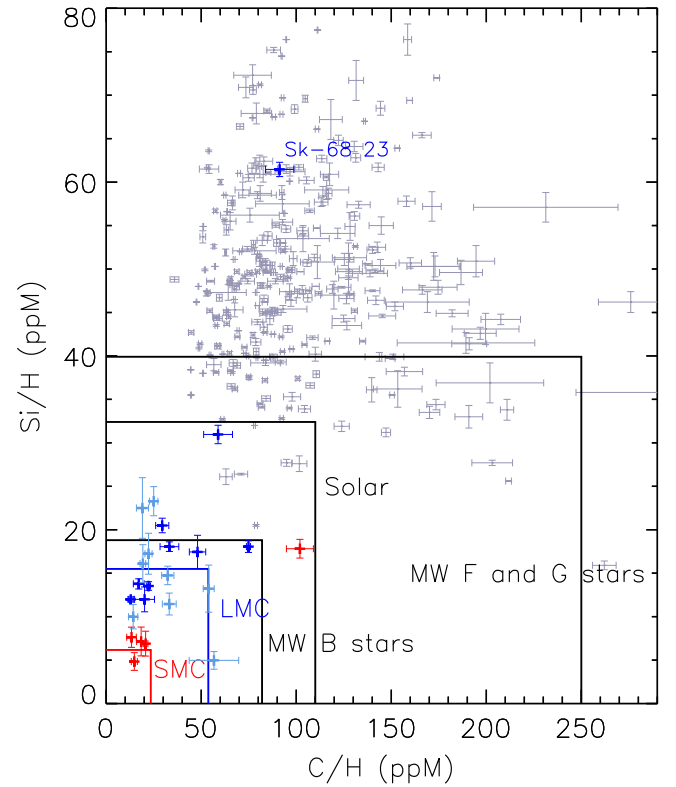


Figure 6. Total abundances of Si and C locked in dust and PAHs in ppM. The circle represents the average MWG ISEC. The boxes refer to observational constraints, values consistent with them being the ones inside each box: solar taken in Asplund et al. (2009) and Mathis (2000); B, F, and G MWG stars from Zubko et al. (2004); and SMC and LMC from Howarth (2011). Gray points are derived for ISECs in the MWG (Mulas et al. 2013), dark blue points are ISECs in the LMC “average” sample, light blue points are in the LMC2 Ss, and red points are in the SMC.

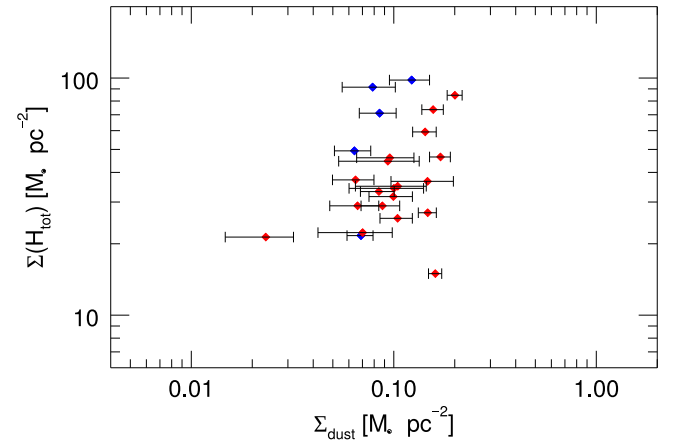


Figure 7. Correlation plot of the mass column densities of classical dust (i.e., excluding PAHs) as inferred from our fits of individual extinction curves, vs. the total mass density of H (atomic and molecular, in all charge states) along the same individual lines of sight. Blue dots are SMC lines of sight, red dots LMC ones.

the nonlinear far-UV rise, and given their small sizes possibly producing aliphatic C–H emission. Indeed, some emission in the aliphatic C–H stretch at $3.4 \mu\text{m}$ is detected toward the MCs (Boulanger et al. 2011; Mori et al. 2012).

Classical dust extinction is generally larger than PAH extinction with a few exceptions. In these latter cases, the PAH contribution dominates only in the bump region. In all

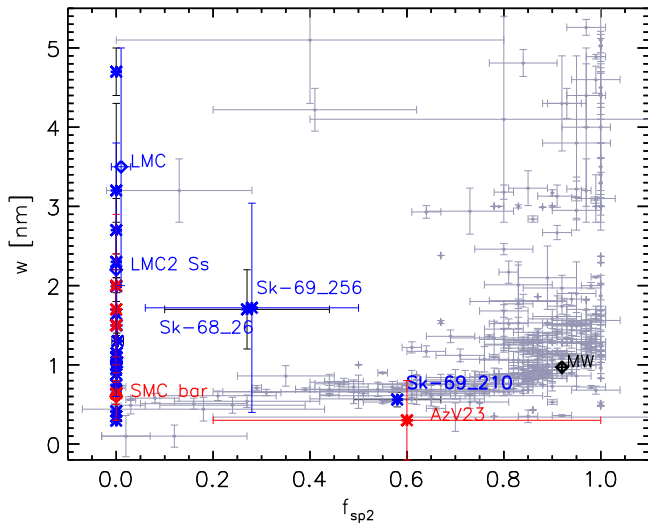


Figure 8. Observationally derived distribution of mantle thickness w and normalized sp^2 mantle carbon fraction, with relative errors for the SMC (red asterisks), the LMC (blue asterisks), and the MWG (pale gray symbols). The black symbol marked “MW” represents the values corresponding to the average galactic ISEC. Values corresponding to average ISECs in the MCs are also indicated. MWG data are taken from Mulas et al. (2013).

these relatively “PAH-rich” cases, the classical size distribution is strongly bimodal, with a gap ranging from 40 to 130 nm, with a tendency to increase the nonlinearity of the far-UV rise with increasing size breaks. All the remaining ISECs are reproduced with classical grain size distributions that tend to have markedly lower gaps (see Table 2).

In Mulas et al. (2013) we concluded that in the framework of the $[CM]^2$ model bumpless extinction curves are not necessarily lines of sight devoid of PAHs, but rather that the $\pi^* \leftarrow \pi$ PAH absorption can be very effectively masked by a large gap between the maximum size limit of small dust grains and the minimum size limit of large ones. MWG data were not conclusive since MC-type ISECs are rare in our Galaxy. The present results suggest a different interpretation based on the fact that some ISECs show a more or less weak nonlinear far-UV rise without showing an appreciable bump. This is particularly evident in the SMC subsample. In the LMC the most evident trends are small bumps with linear far-UV rises. Within the current model dust populations, for the SMC-type ISEC the only possibility is the introduction of PAHs that, through $\sigma^* \leftarrow \sigma$ absorptions, may produce such rise. However, as a by-product, PAH molecules exhibit $\pi^* \leftarrow \pi$ transitions that generate the bump. Thus, the only viable solution, for bumpless ISECs, is the removal of mid-size grains, whose extinction power falls in the bump region, from the grain size distribution.

This may be interpreted in two alternative ways. The first one is that we must be missing an sp^3 -dominated carbon component, whose sizes are intermediate between small solids and macromolecules. This is also hinted at by the numerical tendency, during the fitting procedure, to go below the lowest limit of 5 nm in particle size, which is systematic for all the lines of sight in the MWG and in the MCs. Such small particles might be carbon mantle fragments, possibly produced during some destructive events (as discussed in the previous paragraph), such as, e.g., nanodiamonds (Rai & Rastogi 2010, 2012; Rai & Botet 2014).

The second interpretation is instead that in our model we are missing no important component contributing to extinction, and hence the fact that PAHs are abundant only if mid-sized dust grains are absent is real, and must have a sound physical explanation. One might argue that if an interstellar cloud and the dust therein underwent some shocks in its history, they may have shattered mid-sized grains, producing fragments (small grains) and releasing PAHs from the disrupted carbonaceous mantles. This would be a consistent explanation for the MWG, where carbonaceous mantles are almost entirely aromatic, so that their disruption would indeed produce PAH-like fragments. But in the MCs carbonaceous mantles are almost entirely aliphatic, so their destruction can hardly be a viable source of PAHs.

In the case of LMC-type ISECs the results of the fitting procedure are more straightforward than for the SMC-type, bumpless ones: in this galaxy PAHs are present but are a minor component, their presence being only evident in the bump spectral region. The possible extra aliphatic “mesoscopic” component is marginal in this case. Conversely, the problem of a lack of a suitable source of aromatic material is therefore more pressing for LMC than SMC.

5. CONCLUSIONS

We here concisely summarize the main conclusions of this work.

1. The $[CM]^2$ dust model can very precisely match all the ISECs observed in the MCs, yielding estimates for the total dust mass column density versus total hydrogen column density that are fully consistent with those obtained by Roman-Duval et al. (2014) in a completely different, independent way.
2. Abundance of elements locked up in $[CM]^2$ models fitting the ISECs in the MCs are at least as compatible with abundance constraints as those for the MWG (Mulas et al. 2013).
3. When ISECs have a vanishingly weak bump and far-UV nonlinear rise, they can be equally well fitted either by classical dust alone or by classical dust *and* PAHs. In such cases models without PAHs use much more Si and C atoms, which may put them at odds with abundance constraints.
4. Carbonaceous mantles in the MCs resulting from the $[CM]^2$ model fits are overwhelmingly aliphatic, whereas those in the MWG are predominantly aromatic. Together with the observational constraint that radiation fields in MCs are typically 10 times stronger than the average in the MWG (Israel et al. 1993), in the $[CM]^2$ model this implies that mantle-shattering events must be $\gg 10$ times more frequent in the MCs than in the MWG, and/or much more efficient. Desorption from such mantles cannot be a significant source of PAHs in the MCs.
5. Bumpless ISECs with large nonlinear far-UV rises can be fitted within the $[CM]^2$ model, but this requires a finely tuned match of the gap in the size distribution of classical dust grains, resulting in a dip in the extinction they produce that precisely cancels with the bump. Either there is some hitherto not understood physical relation connecting the population of PAHs with the size distribution of silicate grains in the diffuse interstellar medium, or this hints that the $[CM]^2$ model must be

missing some component different from PAHs that can produce a nonlinear far-UV rise without simultaneously contributing to the bump.

We thank the referee for the constructive criticism that helped us to improve this work. We acknowledge the support of the Autonomous Region of Sardinia, Project CRP 26666 (Regional Law 7/2007, Call 2010).

REFERENCES

- Asano, R., Takeuchi, T. T., Hirashita, H., & Nozawa, T. 2013, *MNRAS*, **432**, 637
- Asplund, M., Grevesse, N., Sauval, A. J., & Scott, P. 2009, *ARA&A*, **47**, 481
- Bocchio, M., Jones, A. P., & Slavin, J. D. 2014, *A&A*, **570**, A32
- Bolato, A. D., Leroy, A. K., Jameson, K., et al. 2011, *ApJ*, **741**, 12
- Boulanger, F., Onaka, T., Pilleri, P., & Joblin, C. 2011, in *EAS Publications Ser.*, 46, PAHs and the Universe: A Symposium to Celebrate the 25th Anniversary of the PAH Hypothesis, ed. C. Joblin & A. G. G. M. Tielens (London: EDP Sciences), 399
- Boyer, M. L., Srinivasan, S., Riebel, D., et al. 2012, *ApJ*, **748**, 40
- Cardelli, J. A., Clayton, G. C., & Mathis, J. S. 1989, *ApJ*, **345**, 245
- Cartledge, S. I. B., Clayton, G. C., Gordon, K. D., et al. 2005, *ApJ*, **630**, 355
- Cecchi-Pestellini, C., Cacciola, A., Iatì, M. A., et al. 2010, *MNRAS*, **408**, 535
- Cecchi-Pestellini, C., Casu, S., Mulas, G., & Zonca, A. 2014, *ApJ*, **785**, 41
- Cecchi-Pestellini, C., Mallocci, G., Mulas, G., Joblin, C., & Williams, D. A. 2008, *A&A*, **486**, L25
- Cecchi-Pestellini, C., Viti, S., & Williams, D. A. 2014, *ApJ*, **788**, 100
- Draine, B. T. 1987, in *Physical Processes in Interstellar Clouds*, ed. G. E. Morfill & M. Scholer (Dordrecht: Reidel), 423
- Draine, B. T. 2003, *ARA&A*, **41**, 241
- Duley, W. W., & Williams, D. A. 1984, *MNRAS*, **211**, 97
- Dwek, E., Staghun, J., Arendt, R. G., et al. 2014, *ApJL*, **788**, L30
- Fitzpatrick, E. L., & Massa, D. 2007, *ApJ*, **663**, 320
- Gordon, K. D., Clayton, G. C., Misselt, K. A., Landolt, A. U., & Wolff, M. J. 2003, *ApJ*, **594**, 279
- Harris, J., & Zaritsky, D. 2004, *AJ*, **127**, 1531
- Harris, J., & Zaritsky, D. 2009, *AJ*, **138**, 1243
- Howarth, I. D. 2011, *MNRAS*, **413**, 1515
- Iida, S., Ohtaki, T., & Seki, T. 1984, in *AIP Conf. Proc.* 120, Optical Effects in Amorphous Semiconductors, ed. P. C. Taylor & S. G. Bishop (New York: AIP), 258
- Israel, F. P., Johansson, L. E. B., Lequeux, J., et al. 1993, *A&A*, **276**, 25
- Jones, A. P., Duley, W. W., & Williams, D. A. 1990, *QJRAS*, **31**, 567
- Levenberg, K. 1944, *QApMa*, **2**, 164
- Mallocci, G., Joblin, C., & Mulas, G. 2007, *CP*, **332**, 353
- Markwardt, C. B. 2009, *adass XVIII*, **411**, 251
- Mathis, J. S. 2000, *JGR*, **105**, 10269
- Matsuura, M., Dwek, E., Barlow, M. J., et al. 2015, *ApJ*, **800**, 50
- Matsuura, M., Dwek, E., Meixner, M., et al. 2011, *Sci*, **333**, 1258
- Mattsson, L., De Cia, A., Andersen, A. C., & Zafar, T. 2014, *MNRAS*, **440**, L562
- McKee, C. F. 2011, *Sci*, **333**, 1227
- Mennella, V., Muñoz Caro, G. M., Ruitkamp, R., et al. 2001, *A&A*, **367**, 355
- Mori, T. I., Sakon, I., Onaka, T., et al. 2012, *ApJ*, **744**, 68
- Mulas, G., Zonca, A., Casu, S., & Cecchi-Pestellini, C. 2013, *ApJS*, **207**, 7
- Rai, R., & Rastogi, S. 2010, *MNRAS*, **410**, 2722
- Rai, R., & Rastogi, S. 2012, *MNRAS*, **423**, 2941
- Rai, R. K., & Botet, R. S. 2014, *MNRAS*, **444**, 303
- Rezaei, S., Javadi, A., Khosroshahi, H., & van Loon, J.-Th. 2014, arXiv:1409.0790v1
- Robitaille, T. P., & Whitney, B. A. 2010, *ApJL*, **710**, L11
- Roman-Duval, J., Gordon, K. D., Meixner, M., et al. 2014, *ApJ*, **797**, 86
- Slavin, J. D., Jones, A. P., & Tielens, A. G. G. M. 2004, *ApJ*, **614**, 796
- Temim, T., Dwek, E., Tchernyshyov, K., et al. 2015, *ApJ*, **799**, 158
- Valencic, L. A., Clayton, G. C., & Gordon, K. D. 2004, *ApJ*, **616**, 912
- Weisz, D. R., Skillman, E. D., Cannon, J. M., et al. 2008, *ApJ*, **689**, 160
- Welty, D. E., Xue, R., & Wong, T. 2012, *ApJ*, **745**, 173
- Zhukovska, S., & Henning, T. 2013, in *The Life Cycle of Dust in the Universe: Observations, Theory, and Laboratory Experiments*, ed. A. Andersen et al. (Trieste: SISSA), 16
- Zonca, A., Cecchi-Pestellini, C., Mulas, G., & Mallocci, G. 2011, *MNRAS*, **410**, 1932
- Zubko, V., Dwek, E., & Arendt, G. 2004, *ApJS*, **152**, 211