



Publication Year	2018
Acceptance in OA	2021-04-22T17:09:07Z
Title	Extended Main-sequence Turnoff as a Common Feature of Milky Way Open Clusters
Authors	Cordoni, G., Milone, A. P., Marino, A. F., DI CRISCIENZO, Marcella, D'Antona, F., Dotter, A., Lagioia, E. P., Tailo, M.
Publisher's version (DOI)	10.3847/1538-4357/aaedc1
Handle	http://hdl.handle.net/20.500.12386/30862
Journal	THE ASTROPHYSICAL JOURNAL
Volume	869

EXTENDED MAIN SEQUENCE TURNOFF AS A COMMON FEATURE OF MILKY WAY OPEN CLUSTERS

G. CORDONI,¹ A. P. MILONE,¹ A. F. MARINO,^{1,2} M. DI CRISCIENZO,³ F. D'ANTONA,³ A. DOTTER,⁴ E. P. LAGIOIA,¹ AND M. TAILO¹

¹*Dipartimento di Fisica e Astronomia "Galileo Galilei" - Univ. di Padova, Vicolo dell'Osservatorio 3, Padova, IT-35122*

²*Research School of Astronomy & Astrophysics, Australian National University, Canberra, ACT 2611, Australia*

³*Istituto Nazionale di Astrofisica - Osservatorio Astronomico di Roma, Via Frascati 33, I-00040 Monteporzio Catone, Roma, Italy*

⁴*Harvard-Smithsonian Center for Astrophysics, 60 Garden Street, Cambridge, MA 02138, USA*

(Accepted 31/10/2018)

Submitted to ApJ

ABSTRACT

We present photometric analysis of twelve Galactic open clusters and show that the same multiple-population phenomenon observed in Magellanic Clouds (MCs) is present in nearby open clusters. Nearly all the clusters younger than ~ 2.5 Gyr of both MCs exhibit extended main-sequence turnoffs (eMSTOs) and all the cluster younger than ~ 700 Myr show broadened/split main sequences (MSs). High-resolution spectroscopy has revealed that these clusters host stars with a large spread in the observed projected rotations.

In addition to rotation, internal age variation is indicated as a possible responsible for the eMSTOs, making these systems the possible young counterparts of globular clusters with multiple populations. Recent work has shown that the eMSTO+broadened MSs are not a peculiarity of MCs clusters. Similar photometric features have been discovered in a few Galactic open clusters, challenging the idea that the color-magnitude diagrams (CMDs) of these systems are similar to single isochrones and opening new windows to explore the eMSTO phenomenon. We exploit photometry+proper motions from Gaia DR2 to investigate the CMDs of open clusters younger than ~ 1.5 Gyr.

Our analysis suggests that: (i) twelve open clusters show eMSTOs and/or broadened MSs, that cannot be due neither to field contamination, nor binaries; (ii) split/broadened MSs are observed in clusters younger than ~ 700 Myr, while older objects display only an eMSTO, similarly to MCs clusters; (iii) the eMSTO, if interpreted as a pure age spread, increases with age, following the relation observed in MCs clusters and demonstrating that rotation is the responsible for this phenomenon.

Keywords: globular clusters: general, stars: population II, stars: abundances, techniques: photometry.

1. INTRODUCTION

In the past years, work based on high-precision *Hubble Space Telescope* (*HST*) photometry discovered that the color-magnitude diagrams (CMDs) of most star clusters younger than ~ 2.5 Gyr in the Large and Small Magellanic Cloud (LMC and SMC) are not consistent with simple stellar populations. Specifically, most, if not all, of them exhibit extended main-sequence turnoffs (eMSTOs, e.g. Mackey & Broby Nielsen 2007; Glatt et al. 2008; Milone et al. 2009), and clusters younger than ~ 700 Myr display both eMSTOs and split main sequences (MSs, e.g. Milone et al. 2013; 2015; 2018; Li et al. 2017; Correnti et al. 2017).

The comparison between the observed and synthetic CMDs from the Geneva database (e.g. Georgy et al. 2014) suggests that split MSs are consistent with two stellar populations with different rotation rates. A group of stars with rotation close to the breakout value ($\omega \sim 0.9\omega_{\text{cr}}$), which corresponds to the red MS and includes about two thirds of the total number of MS stars, and a population of slow rotators with $\omega \sim 0$, which populate the blue MS (e.g. D'Antona et al. 2015; Milone et al. 2016). On the turn-off region, rapidly and slowly rotating stars distribute on brighter and fainter magnitudes, respectively. Measurements of rotational velocities in MS stars of the LMC cluster NGC 1818 from high-resolution spectra collected with the Very Large

Telescope (VLT) has recently provided direct evidence that the red-MS and the blue-MS stars exhibit different rotation rates (Marino et al. 2018a). Similarly, high-resolution Magellan spectra confirm that the bright and the faint MSTO of NGC 1866 are mostly populated by slow and fast rotators, respectively (Dupree et al. 2017).

Although it is now widely accepted that rotation is one of the main driver for the photometric features appearing on the CMDs of young and intermediate-age MC clusters, it might not be able to entirely reproduce the observations. Indeed, as noticed by Milone et al. (2017), a fraction of eMSTO are consistent with being younger than the bulk of cluster stars. It has been suggested that some clusters have experienced a prolonged star formation, and that age variation, together with rotation is responsible for the eMSTOs (e.g. Goudfrooij et al. 2014; 2017). In this case, the MC clusters could represent the younger counterparts of the old globular clusters with multiple populations (e.g. Conroy et al. 2011; Keller et al. 2011). As an alternative, D’Antona et al. (2017) suggested that the evolution of braked rapidly-rotating stars can mimic an age spread and contribute to the eMSTO.

The recent discovery of eMSTOs in four open clusters, namely NGC 2099, NGC 2360, NGC 2818, and NGC 6705 has challenged the text-book concept that the CMDs of open clusters are proxy of single isochrone and have demonstrated that the eMSTO is not a peculiarity of Magellanic Cloud clusters (Marino et al. 2018b). Spectroscopy of MS stars in NGC 6705 shows that the blue and the red MS are populated by slow and fast rotators, respectively (Marino et al. 2018b). Similarly, the color and magnitude of eMSTO stars of NGC 2818 and NGC 6705 are connected with their rotational velocity (Bastian et al. 2018; Marino et al. 2018b). These results suggest that rotation plays an important role in shaping eMSTOs and broadened or split MSs in Galactic open clusters, resembling Magellanic Cloud clusters.

In this work we exploit the Gaia data release 2 (DR2, Gaia collaboration et al. 2018) to analyze photometry, parallaxes, and proper motions of a large sample of Galactic open clusters younger than ~ 2 Gyr to investigate the occurrence of the eMSTO in their CMDs. The paper is organized as follows. In Section 2 we describe the dataset and the data analysis. The CMDs and the investigation of the presence of eMSTO and broadened MSs are discussed in Section 3. Section 4 presents a comparison of the data with theoretical models; while Section 5 is a summary and brief discussion of our results.

2. DATA AND DATA ANALYSIS

To unambiguously identify multiple populations along the CMD, if present, we need densely-populated clusters with low differential reddening and negligible contamination from field stars. To do this, we selected all the Galactic open clusters of the new general (NGC), Index (IC), Melotte, and Collinder catalogs that, according to Dias et al. (2002), have $E(B-V) < 0.35$ and host more than 400 cluster members. Moreover, we restrict our analysis to clusters older than 2.5 Gyr, as there is no evidence of eMSTO and split MS in Magellanic Cloud clusters with similar ages. Our sample also includes NGC 6705 (M_{11} , $E(B-V)=0.43$), which exceeds our reddening constraint, because previous evidence of eMSTOs and broadened MS has been reported for this cluster (Marino et al. 2018b).

We downloaded Gaia DR2 astrometry, photometry, parallaxes and proper motions of stars within a radial distance from the center of each cluster smaller than 2.5 times the cluster radius provided by Dias et al. (2002) and identified a sample of cluster members by using the following iterative procedure, which is illustrated in Fig. 1 for NGC 2099.

- We first analyze the vector-point diagram (VPD) of stellar proper motions, and find that NGC 2099 cluster members are clearly clustered around $(\mu_\alpha \cos \delta : \mu_\delta) \sim (1.9; -5.6)$. Hence we draw by eye a circle in the VPD that encloses most cluster members. The stars within the circle are selected to calculate the median values of $\mu_\alpha \cos \delta$ and μ_δ ($\langle \mu_\alpha \cos \delta \rangle$ and $\langle \mu_\delta \rangle$) and to derive the quantity $\mu_R = \sqrt{(\mu_\alpha \cos \delta - \langle \mu_\alpha \cos \delta \rangle)^2 + (\mu_\delta - \langle \mu_\delta \rangle)^2}$.
- We plotted G_{RP} as a function of μ_R for the selected stars and divided the analyzed magnitude interval with $10.0 < G_{RP} < 17.5$ into bins of 0.5 mag each. For each bin we iteratively calculated the median value of μ_R ($\mu_{R,med}$) and the corresponding rms (σ) by rejecting all the stars with $\mu_R > \mu_{R,med} + 4 \cdot \sigma$. The mean magnitudes of each bin are associated to the quantities $\mu_{R,med} + 4 \cdot \sigma$ and these points are linearly interpolated to derive the orange line plotted in the upper-left panel of Fig. 1. Stars with deviations from $\mu_{R,med}$ larger than $4 \cdot \sigma$ are excluded from the sample of probable cluster members.
- We plotted G_{RP} as a function of the parallax, π , for the probable cluster members and calculated, for each bin of magnitude defined above, the median parallax π_{med} and the corresponding rms, σ , by using the same procedure described for proper motions. The orange lines plotted in the central-upper panel of Fig. 1 are derived by adding $\pm 4 \cdot \sigma$ to π_{med} and all the stars that lie outside these two lines are excluded from the sample of probable cluster members.
- The selected stars are used to derive improved estimates of $\langle \mu_\alpha \cos \delta \rangle$ and $\langle \mu_\delta \rangle$. This ends one iteration. The procedure required three or four iterations to reach the convergence.

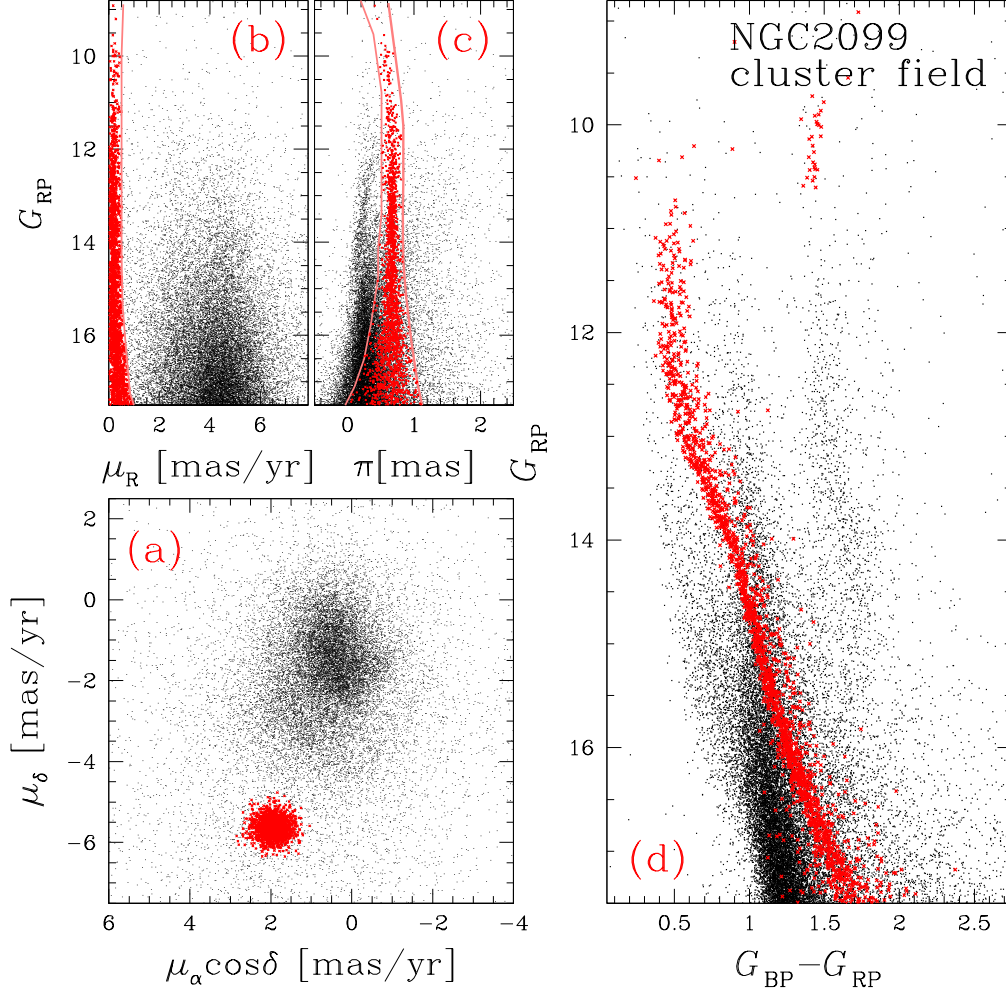


Figure 1. This figure illustrates the procedure that we used to select probable members of NGC 2099. The VPD of proper motions for stars in the cluster field is plotted in panel a, while panels b and c show G_{RP} against proper motions and parallaxes, respectively. The red lines are used to separate NGC 2099 members from field stars. The G_{RP} vs. $G_{BP} - G_{RP}$ CMD is illustrated in panel d. Selected cluster members are represented with red symbols. See text for details.

Photometry of cluster members has been corrected for differential reddening by using the method described by Milone et al. (2012, see their Sect. 1) and illustrated in Fig. 2. Briefly, we first defined the reddening direction by using the absorption coefficients in the G_{BP} and G_{RP} bands provided by Casagrande & Vandenberg (2018). Then, we derived the fiducial of MS stars and calculated the color residuals from this fiducial. To estimate the differential reddening suffered by each star in the analyzed field of view, we selected a sample of 35 neighbours formed by bright MS cluster members that are not evident binaries. Our best differential-reddening estimate corresponds to the median of the color residuals, calculated along the reddening line. To derive the corresponding error, we subtracted the median from the residual of each star and calculated the 68.27th percentile of the distribution of the corresponding absolute values (σ). We considered the quantity $1.253 \cdot \sigma / \sqrt{35}$ as the uncertainty associated to the differential-reddening.

As an example, we compare in Fig. 2 the original CMD of NGC 2099 cluster members (upper-left panel) with the CMD corrected for differential reddening (upper-right panel). We also plot the differential-reddening map for a circular region with radius of 40 arcmin centered on NGC 2099 (bottom left). The bottom-right panel shows the reddening variation as a function of the relative right-ascension distance from the cluster center for stars in six declination intervals.

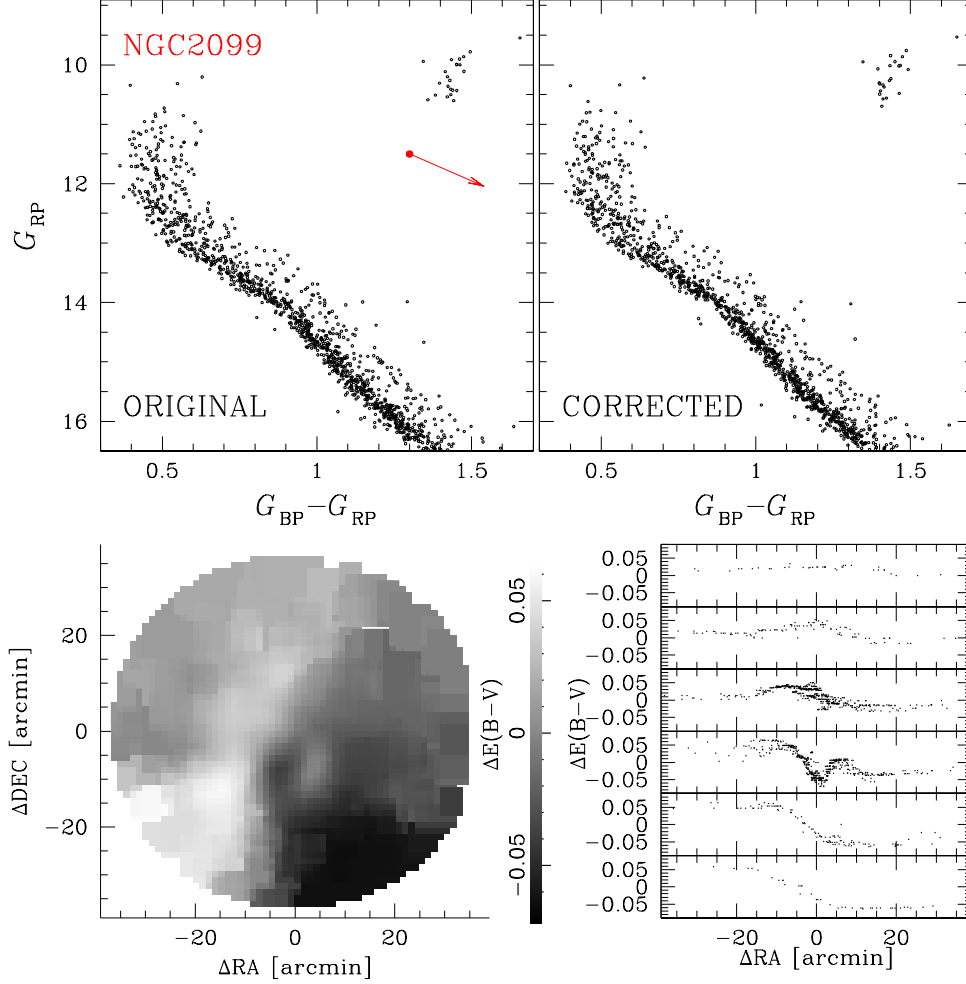


Figure 2. *Upper panels.* Comparison of the original CMD of selected cluster members of NGC 2099 (left) with the CMD of the same stars corrected for differential reddening (right). The arrow plotted in the left-panel CMD indicates the reddening vector and corresponds to $\Delta E(B-V)=0.3$ mag. *Lower panels.* Map of differential reddening, centered on NGC 2099. The levels of gray correspond to different $E(B-V)$ values as indicated by the scale on the middle (left). Right panels show $E(B-V)$ as a function of the right-ascension distance from the cluster center for stars in six slices of declination.

A visual inspection of the differential-reddening corrected CMDs reveals that at least twelve open clusters, namely IC 2714, Melotte 71, NGC 1245, NGC 1817, NGC 2099, NGC 2360, NGC 2818, NGC 3114, NGC 3532, NGC 5822, and NGC 6705, clearly exhibit multiple sequences in their CMDs. Their CMDs are presented and analyzed in the next section.

3. MULTIPLE POPULATIONS ALONG THE COLOR-MAGNITUDE DIAGRAMS

The final CMDs, corrected for differential reddening, of the selected cluster members are plotted in Figs. 3–4, where we also represent with red error bars the typical observational uncertainties for stars with different luminosities. A visual inspection of these figures clearly reveals that IC 2714, Melotte 71, NGC 1245, NGC 1817, NGC 2099, NGC 2360, NGC 2818, NGC 3114, NGC 3532, NGC 5822, and NGC 6705 exhibit the eMSTO. Noticeably, the upper MS of NGC 2099, NGC 2287 (M41), NGC 3114, NGC 3532, and NGC 6705 is broadened, in contrast with the faint MS, which is narrow and well defined. Similarly to what previously observed in MCs clusters, the broadened MS seems to disappear at the luminosity of the MS kink at $T_{\text{eff}} \sim 7000$ K, which is a feature of the CMDs that indicates the onset on envelope convection due to the lowering of the adiabatic gradient in the region of partial hydrogen ionization (e.g. D’Antona et al. 2002).

The eMSTOs and the broadened bright MSs are highlighted in the insets of Figs. 3–4. In the following we demonstrate that they are intrinsic features of the cluster CMDs. To this aim, we investigate the impact of observational uncertainties, residual field-stars contamination and binaries on the appearance of eMSTOs and the broadened MSs on the CMDs.

Specifically, in Sect. 3.1 we describe the method used to statistically subtract field stars with cluster-like parallaxes and proper motions from the CMDs of candidate cluster members; in Sect. 3.2 we estimate the fraction of binaries in each cluster; and in Sect. 3.3 we compare the observations with simulated CMDs that account for both binaries and observational errors.

3.1. Field stars

The CMDs shown in Figs. 3–4 are mostly populated by cluster members that have been selected on the basis of their parallaxes and proper motions as described in Sect. 2. To estimate the contamination from those field stars that have proper motions and distances similar to those of cluster members, we applied the procedure illustrated in Fig. 5 for NGC 2099.

All the stars plotted in Fig. 5 are located in the “reference field”, which is a circular annulus with the same area as the cluster field, centered on the cluster and with internal radius corresponding to three times the cluster radius provided by Dias et al. (2002). The VPD of proper motions for stars in the reference field is plotted in Fig. 5a; panels b and c show the G_{RP} magnitude as a function of parallax and proper motions, respectively. We plot in each panel the orange lines derived in Fig. 1 that are now used to select field stars with cluster-like proper motions and parallaxes, in close analogy with what we did for candidate cluster members. The stars with cluster-like proper motions have been selected according to their position in the diagrams plotted in panels b and c and are represented with aqua crosses in all the panels of 5.

To statistically subtract the selected field stars from the cluster-field CMD we adopted the same procedure used in our previous papers (e.g. Milone et al. 2009). In a nutshell, we calculated for each selected star (i) in the reference field a distance in the CMD

$$d_i = \sqrt{k((G_{BP,rf}^i - G_{RP,rf}^i) - (G_{BP,cf} - G_{RP,cf}))^2 + (G_{RP,rf}^i - G_{RP,cf})^2}$$

where $G_{BP,rf(cf)}$ and $G_{RP,rf(cf)}$ are the magnitudes of the selected stars in the reference (cluster) field, and $k = 7$ is a constant that accounts for the fact that the color of a star is better constrained than its magnitude (Gallard et al. 2003; Marino et al. 2014). We finally subtracted the stars in the cluster-field CMD with the smallest distance.

3.2. Binaries

Unresolved binaries formed by pairs of MS stars are redder and brighter than single MS stars with similar masses while binaries formed by a MSTO star and a MS or a MSTO star are brighter than the corresponding single MSTO stars. In the following, we measure the fraction of MS-MS binary systems of each cluster to estimate the contribution of binaries to the eMSTO and the broadened MS.

To estimate the fraction of unresolved binaries with $q > 0.7$ we used the procedure illustrated in Fig. 6 for NGC 2099, which is based on the method by Milone et al. (2012, 2016) to characterize binaries in Galactic GCs. We first identified two points along the MS with magnitudes G_{RP}^{bright} and G_{RP}^{faint} , that delimit the MS region where the high-mass binaries are clearly separated from the remaining MS stars and there is no evidence for broadened or split sequences. We then defined two regions in the CMD, namely A and B, that correspond to the gray shaded areas in the CMDs of Fig. 6: region A includes all the single stars with $G_{RP}^{\text{bright}} < G_{RP} < G_{RP}^{\text{faint}}$ and all the binaries with a primary component in the same magnitude interval; region B is the sub-region of A that is populated by binaries with $q > 0.7$ and is represented with dark-gray colors in Fig. 6. The reddest line plotted in Fig. 6 is the fiducial of equal-mass binaries shifted by four times the observational error in color to the red and the bluest line is the MS fiducial line shifted by four times the error in color to the blue. The fiducial of binaries with $q = 0.7$ is represented by the blue continuous line and is derived by using the mass-luminosity relation inferred from the best-fit isochrone from Marigo et al. (2017). For each cluster, we assumed the metallicity provided by Paunzen et al. (2010), while the adopted values of ages, reddening and distance modulus are those providing the best match between the data and the isochrones and are listed in Table 1.

The fraction of binaries is calculated as

$$f_{\text{bin}}^{q>0.7} = \frac{N_{\text{cl}}^{\text{B}} - N_{\text{fi}}^{\text{B}}}{N_{\text{cl}}^{\text{A}} - N_{\text{fi}}^{\text{A}}} - \frac{N_{\text{sim}}^{\text{B}}}{N_{\text{sim}}^{\text{A}}} \quad (1)$$

where $N_{\text{cl}}^{\text{A(B)}}$ is the number of cluster members in the region A (B) of the CMD, $N_{\text{fi}}^{\text{A(B)}}$ and $N_{\text{sim}}^{\text{A(B)}}$ are the corresponding numbers of field stars with cluster-like proper motions and parallaxes and the number of simulated stars, respectively.

The measured fraction of binaries with $q > 0.7$, $f_{\text{bin}}^{q>0.7}$ is used to extrapolate the total fraction of binaries, $f_{\text{bin}}^{\text{TOT}}$. Specifically, by assuming a flat mass-ratio distribution, as observed among binaries with $q > 0.5$ of Galactic GCs (Milone et al. 2012, 2016), we infer $f_{\text{bin}}^{\text{TOT}} \sim 3.3 f_{\text{bin}}^{q>0.7}$. The total fraction binaries is typically around 0.30 and ranges from ~ 0.11 for NGC 2287 to ~ 0.51 for NGC 6705 and is similar to that observed in LMC clusters with similar ages (Milone et al. 2009, see their Table 2). We thus

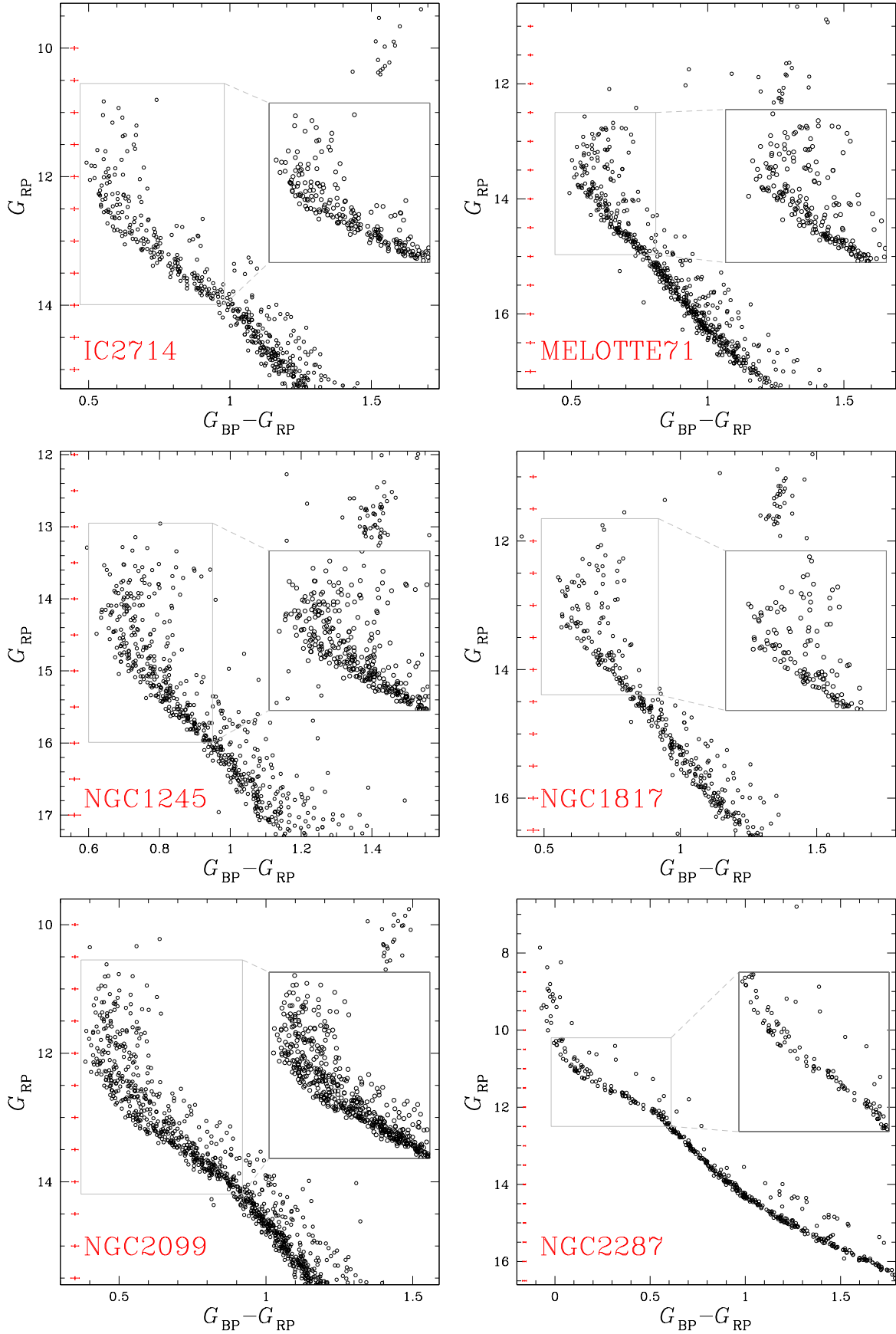


Figure 3. G_{RP} vs. $G_{BP} - G_{RP}$ CMDs, corrected for differential reddening, of cluster members for IC 2714, Melotte 71, NGC 1245, NGC 1817, NGC 2099, and NGC 2287. The insets highlight the eMSTO or the broadened MS. Red bars represent typical observational uncertainties.

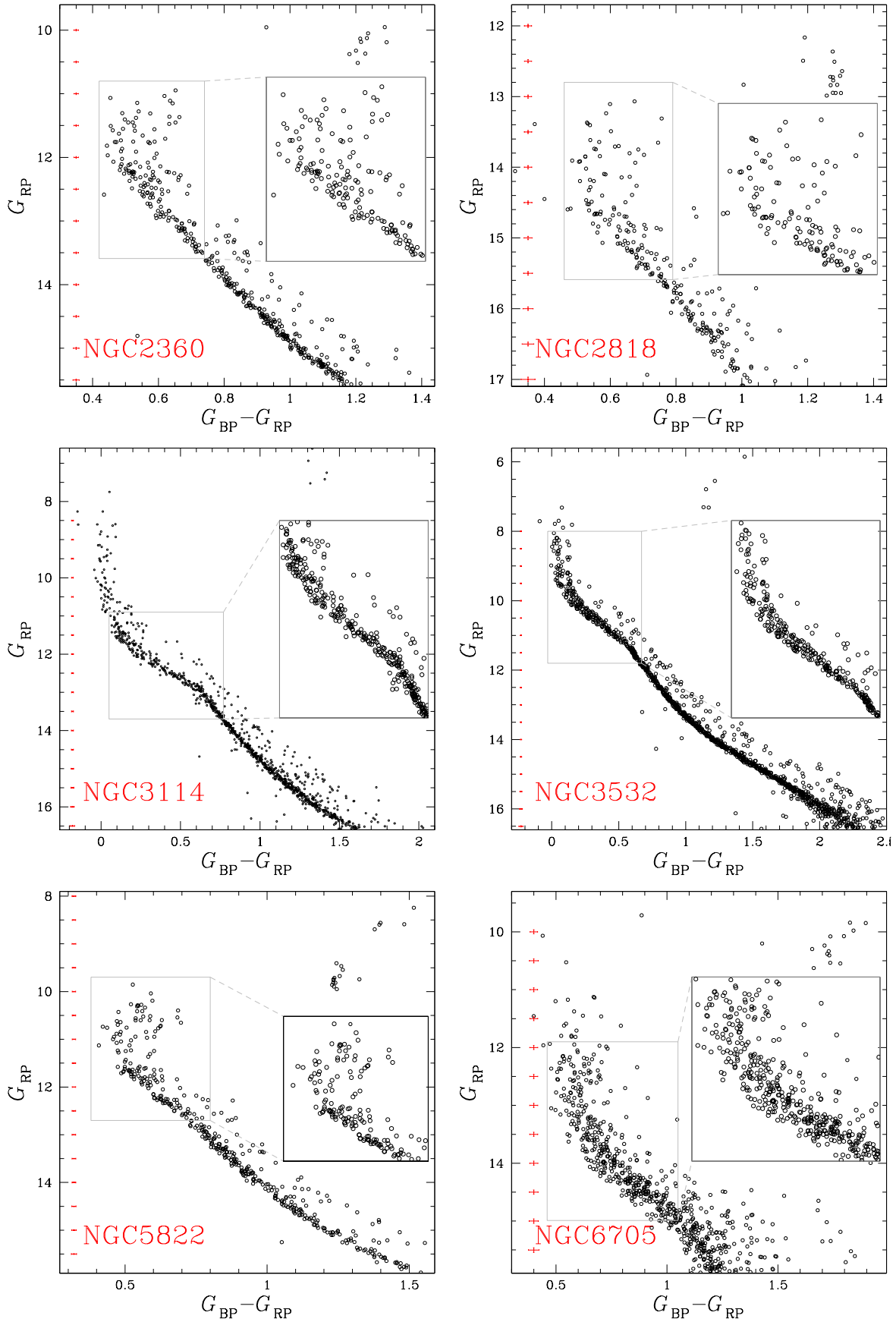


Figure 4. As in fig. 3 but for NGC 2360, NGC 2818, NGC 3114, NGC 3532, NGC 5822, and NGC 6705.

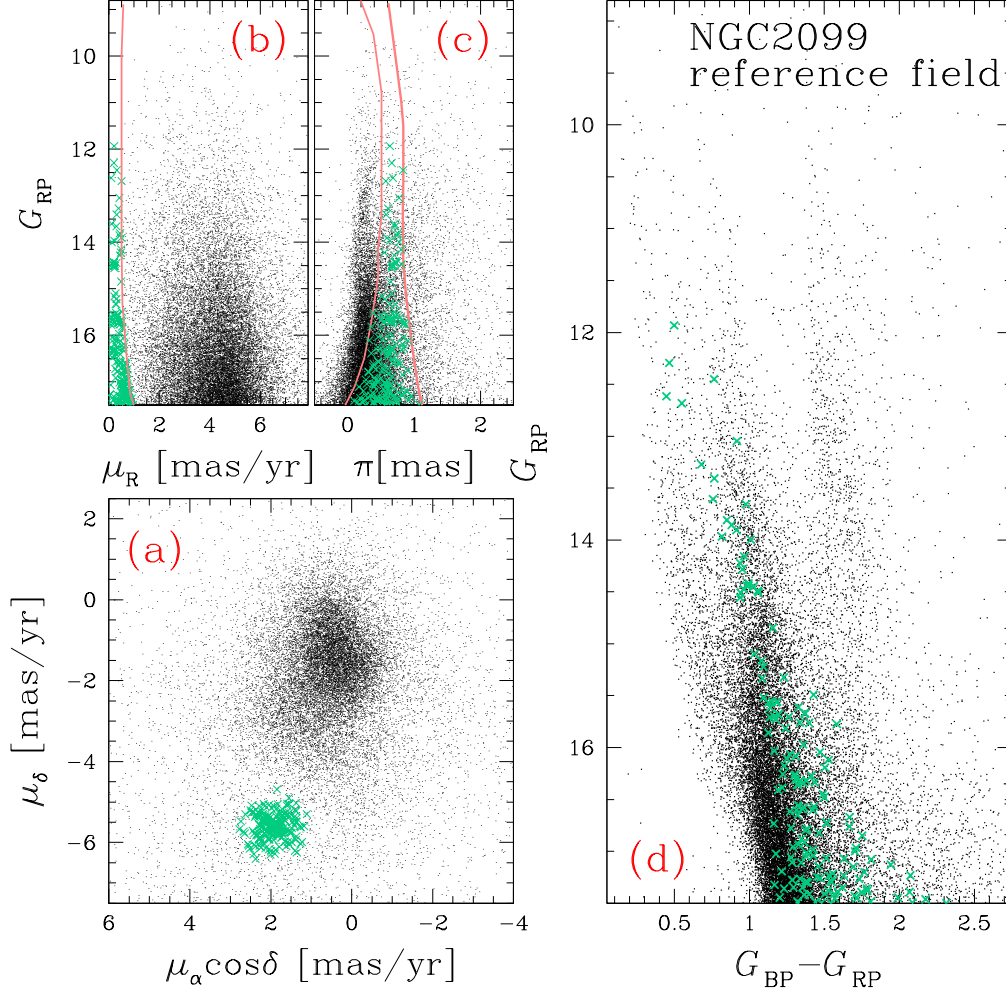


Figure 5. This figure illustrates the procedure that we used to identify field stars with similar proper motions and parallaxes as NGC 2099 cluster members. The VPD of proper motions of stars in the “reference field” is plotted in panel a, while panels b and c show G_{RP} as a function of stellar proper motions and parallaxes, respectively. The orange lines defined in Fig. 1 are overlaid to the diagrams of panels b and c. The G_{RP} vs. $G_{BP} - G_{RP}$ CMD is illustrated in panel d. Selected field stars are marked with aqua crosses. See text for details.

confirm previous findings that open clusters typically host larger binary fraction than Galactic Globular Clusters (e.g. Sollima et al. 2010).

3.3. Simulated CMDs

The obtained total binary fractions, listed in Table 1, are used to simulate the CMD of a simple stellar population with the same observational errors, age, metallicity, distance modulus and reddening as inferred from the observations. To do this, we first associated to each star in the observed CMD of cluster member a synthetic star with the same magnitude and the color of the fiducial line. We selected a fraction of single stars equal to $f_{\text{bin}}^{\text{TOT}}$ and estimated the mass \mathcal{M} of each of them by using the mass-luminosity relation by Marigo et al. (2017). We associated to each selected star a secondary star with a mass $\mathcal{M}_2 = q \cdot \mathcal{M}$ and derived its G_{RP} magnitude from the relations by Marigo and collaborators. The corresponding color has been inferred from the fiducial line. Finally, we summed up the G_{BP} and G_{RP} fluxes of the two components, derived the corresponding magnitudes replaced the original star in the CMD with this binary system, and summed up the observational errors to all the stars of the CMD.

Results are illustrated in Figs. 7–9, where we compare for each cluster the CMD of selected cluster members (first column of panels), the CMD with cluster-like proper motions and parallaxes of stars in the reference field (second column), the decontami-

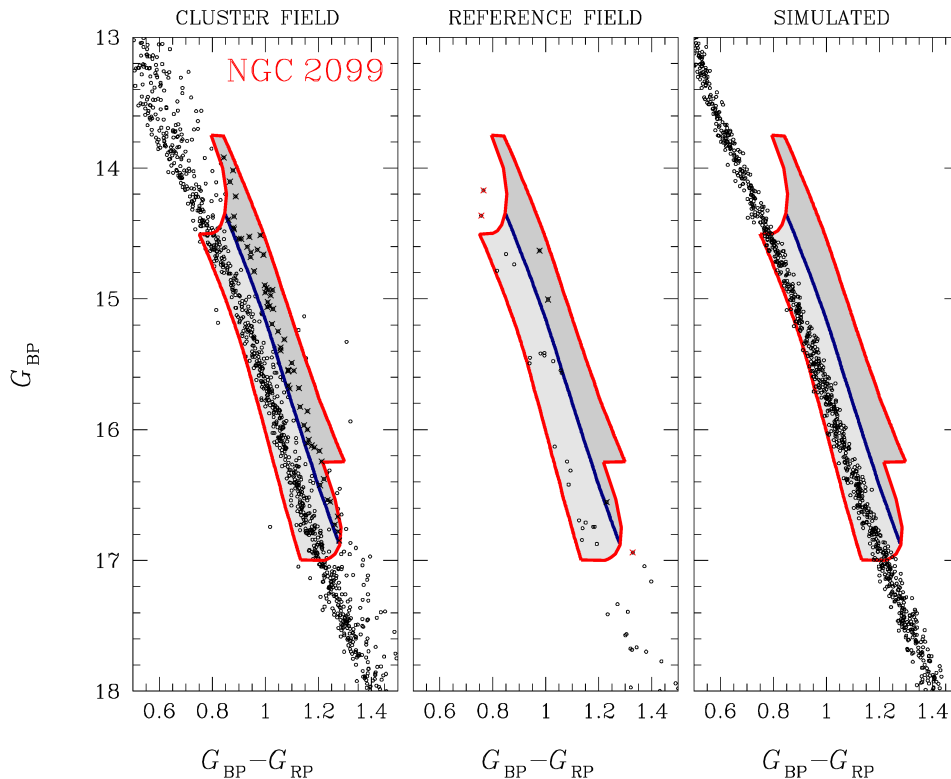


Figure 6. G_{BP} vs. $G_{BP} - G_{RP}$ CMD of selected NGC 2099 cluster members in the cluster field (left panel) and CMD of stars with cluster-like proper motions and parallaxes in the reference field (middle panel). Right panel shows the simulated CMD. The shaded areas indicate the region A of the CMD, which is populated single MS stars and by MS-MS binary pairs with a primary component in the mass interval between 1.06 and 1.63 solar masses. The blue lines represent the fiducial lines of binaries with mass ratio, $q = 0.7$. The region B of the CMD, which is populated by binaries with $q \geq 0.7$ (black crosses), is colored dark-gray. See text for details.

nated CMD (third column), and the simulated CMDs. A visual inspection of these figures clearly demonstrates that the eMSTOs and the broadened MSs are not due neither to unresolved binaries nor to residual field-star contamination.

4. COMPARISON WITH THEORY

The eMSTOs of Magellanic-Cloud clusters has been interpreted either as the signature of stellar populations with different ages (e.g. Mackey et al. 2008; Goudfrooij et al. 2011) or as the effect of stellar rotation on a single stellar population (e.g. Bastian & De Mink 2009; Yang et al. 2013; D’Antona et al. 2016; Marino et al. 2018). To disentangle between these two possibilities, in this section we compare the observed CMDs with isochrones of different ages and with simulated CMDs of stars with different rotation rates.

To estimate the age spread, in the hypothesis that the eMSTO is entirely due to a prolonged star formation, we compared the observed CMDs with isochrones by Marigo et al. (2017). The procedure exploited to derive accurate age distributions is illustrated in Fig. 10 for NGC 2099, and is similar to what we have used in previous work (e.g. Milone et al. 2015).

In a nutshell, we first derived by hand the parallelepiped plotted in Fig. 10 with the criterion of selecting the region around the turn off where the color and magnitude spread due to age variation are clearly distinguishable. Only stars within the parallelepiped are used to infer the age distribution. Then, we overimposed on the CMD a grid of isochrones with the same metallicity and $[\alpha/Fe]$ and ages between 380 and 700 Myr in steps of 10 Myr (grey lines in Fig. 10) and derived isochrones separated by 1 Myr by linearly interpolating among these isochrones. We associated to each star the age of the closest isochrone and derived the age distribution shown in the right panel of Fig. 10. Finally, we calculated the median age and the absolute value of the difference between the age of each star and the median. We considered the 68.27th percentile of the distribution of these absolute values as indicative of the observed age spread, $\sigma_{AGE,obs}$. To estimate the contribution of observational errors on the inferred age spread, we applied the procedure described above to the simulated CMD of a simple population and derived the corresponding age

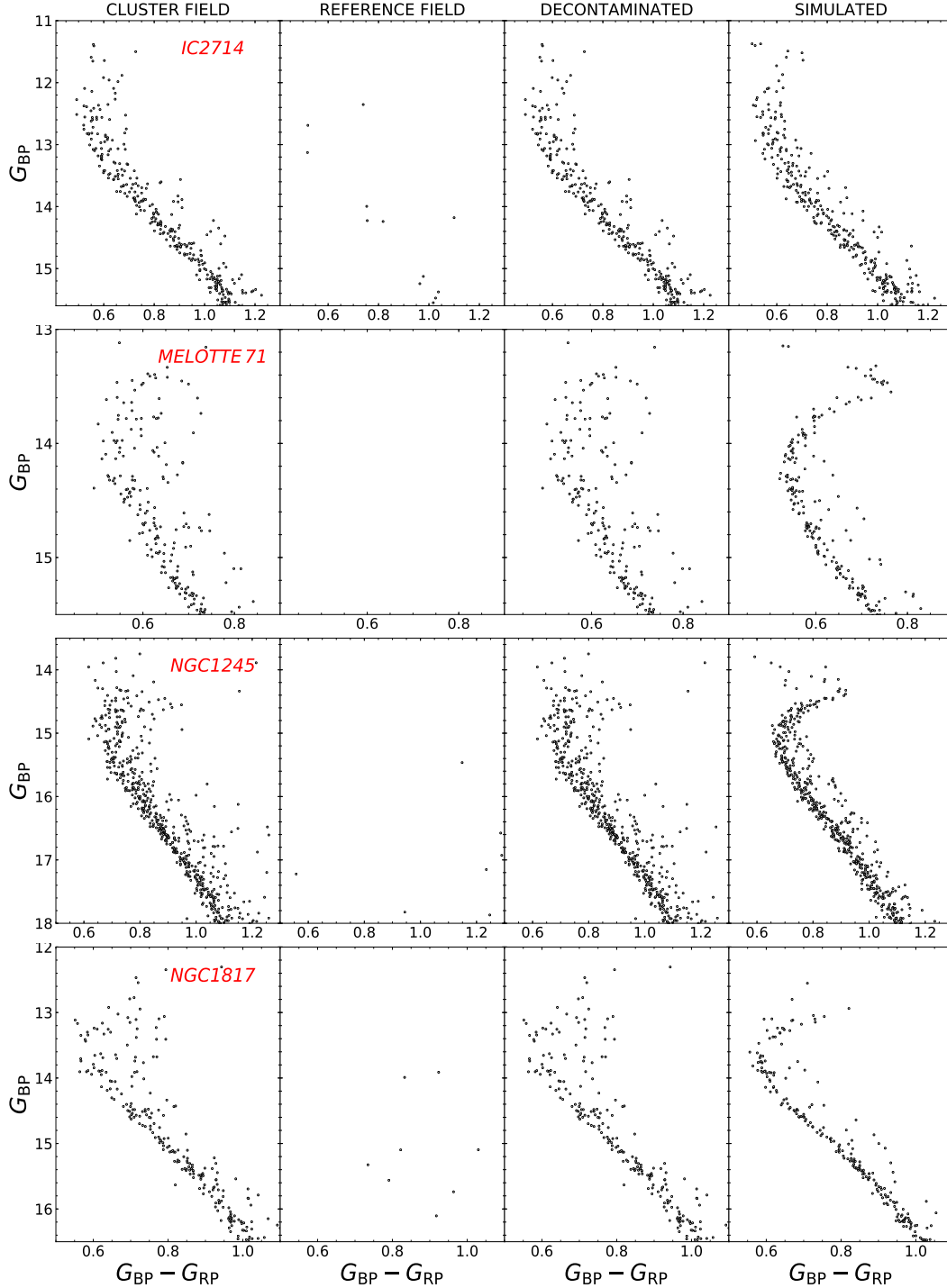


Figure 7. From the left to the right. CMD of the selected cluster members in the cluster field for IC 2714, Melotte 71, NGC 1245, and NGC 1817 (first column), CMD of reference-field stars with cluster-like parallaxes and proper motions (second column), CMD of cluster members after the statistical subtraction of field stars with cluster-like parallaxes and proper motions (third column). Simulated CMD (forth column).

spread, $\sigma_{\text{AGE},\text{sim}}$. The intrinsic age spread is estimated as $\sigma_{\text{AGE}} = \sqrt{\sigma_{\text{AGE},\text{obs}}^2 - \sigma_{\text{AGE},\text{sim}}^2}$. Uncertainties on σ_{AGE} are derived by bootstrapping with replacements performed 1,000 times on both the observed and the simulated age distributions.

Our results are summarized in Table 1 where we provide the full width half maximum of the age distribution, $\text{FWHM} = 2.355 \cdot \sigma_{\text{AGE}}$, for each cluster. We find that the FWHM ranges from ~ 70 for NGC 3114 to ~ 260 Myr for NGC 5822 and correlates with

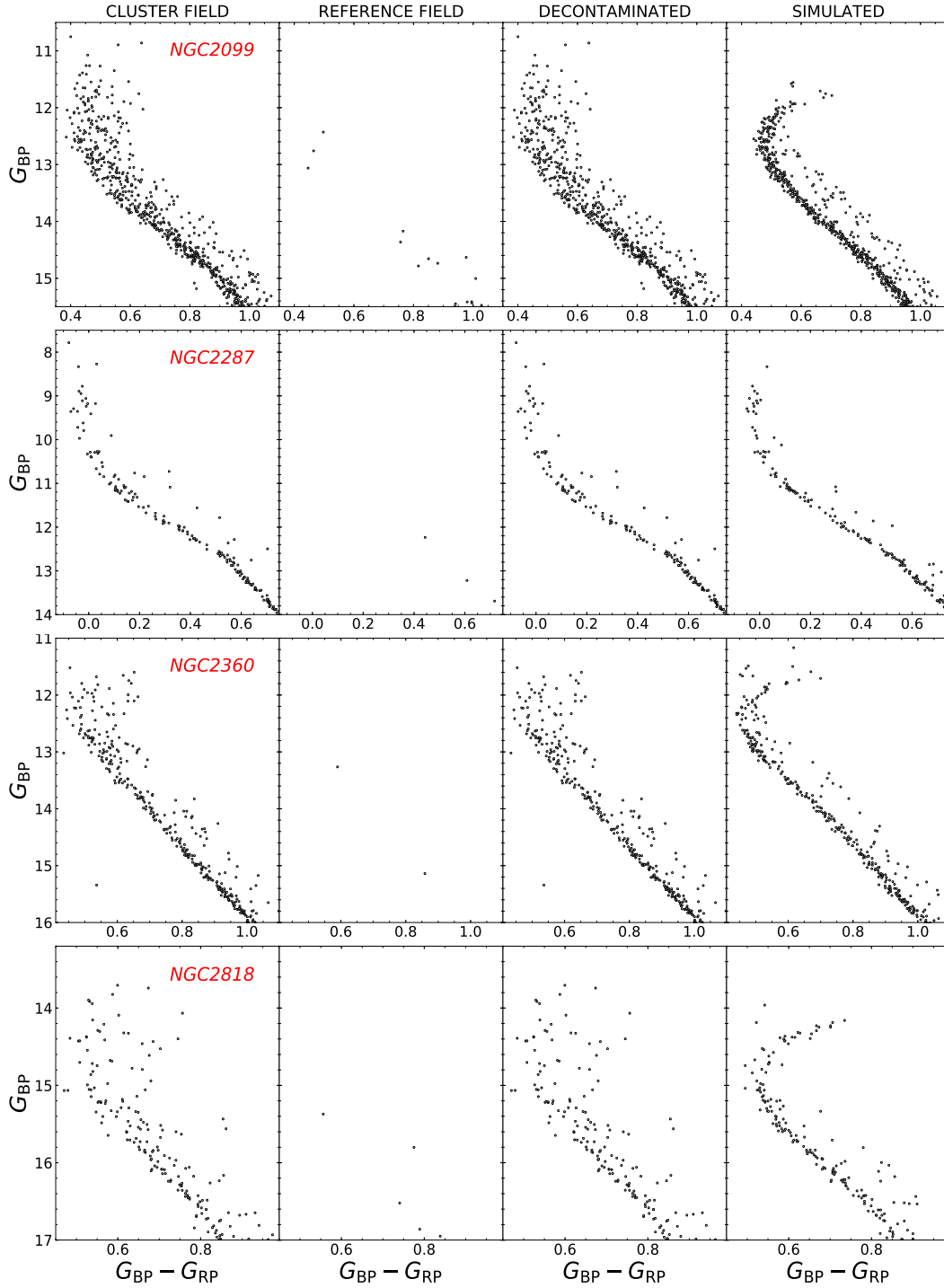


Figure 8. As in Fig. 7 but for NGC 2099, NGC 2287, NGC 2360 and NGC 2818.

the cluster age as shown in Fig. 11, with old clusters having, on average, larger age spread than younger clusters. A similar trend between the age spread inferred from the eMSTO and the cluster age is also present among Magellanic Cloud clusters and is interpreted as the signature of stellar rotation. Indeed, since rotating stars have longer MS lifetime than non-rotating stars with the same age and mass, they would appear younger than coeval non-rotating stars within the same cluster. In this case, if the resulting eMSTO is interpreted as an age spread, the resulting age spread would correlate with the cluster age (Niederhofer et

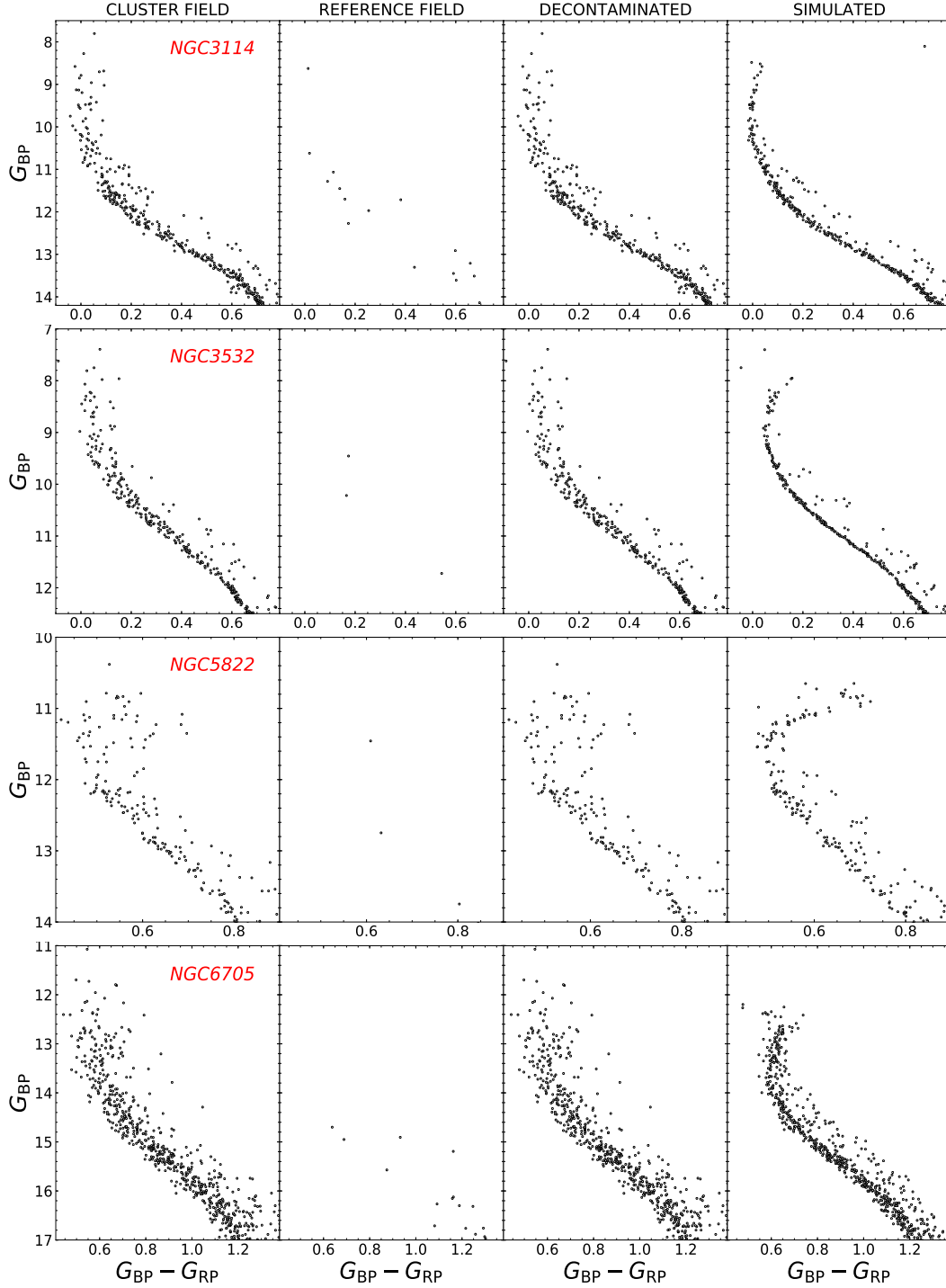


Figure 9. As in Fig. 7 but for NGC 3114, NGC 3532, NGC 5822 and NGC 6705.

al. 2015; Bastian et al. 2018). On the other hand, in the case of a true age spread we would expect that the amount of age spread does not depend on cluster age, and therefore a correlation would be very unlikely.

To further investigate the effect of rotation on the observed CMDs, we extended the method by Niederhofer and collaborators to Galactic open clusters, and compared the observations with simulated CMDs of coeval stellar populations with different rotation rates based on stellar models from the Geneva database with $Z=0.014$ and various ages (Mowlavi et al. 2012; Ekström et al. 2013; Georgy et al. 2014). To simulate the CMDs we first retrieved the synthetic photometry corresponding to the best-fit non-rotating

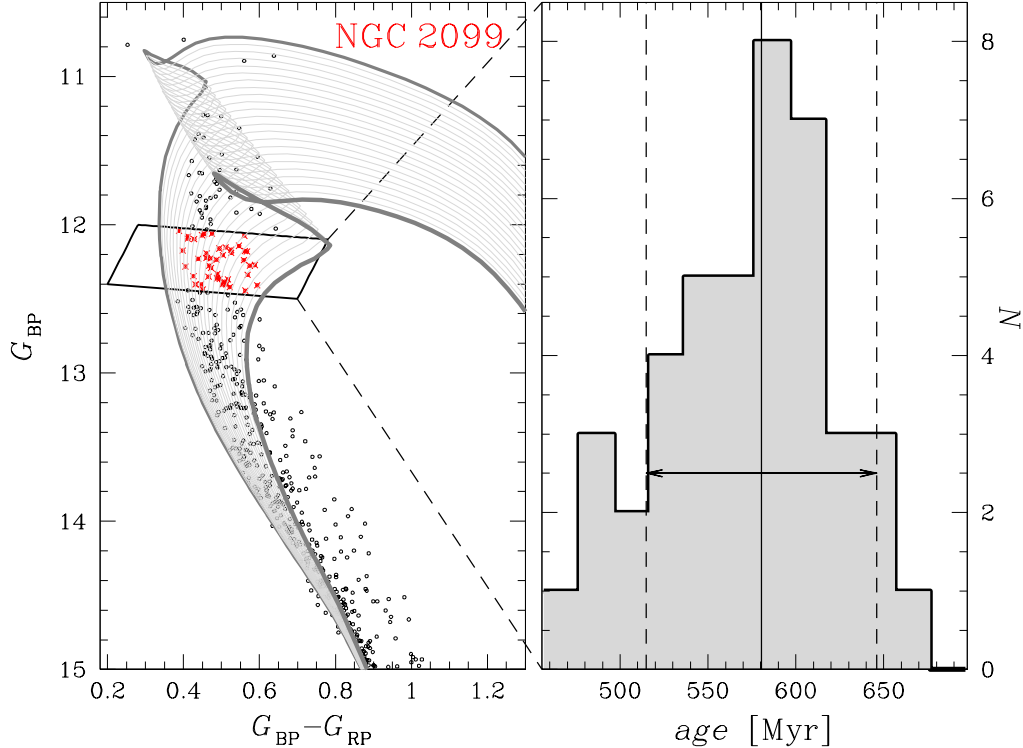


Figure 10. *Left Panel.* Grid of isochrones from Marigo et al. (2017) overlaid on the CMD of NGC 2099. The two isochrones represented with dark-tick lines have ages of 380 and 700 Myr, while the thin isochrones are spaced by 10 Myr in age. *Right panel.* Histogram age distribution of the eMSTO stars plotted with red crosses in the left-panel CMD. The median age of these stars is marked with a vertical continuous line, while the two dashed lines have distances of $\pm\sigma$ from the median value.

isochrones, and for the isochrones with rotation equal to 0.9 times the breakout value ($\omega = 0.9\omega_{\text{cr}}$). These data account for the limb-darkening effect as in Claret (2000), adopt the gravity-darkening model by Espinosa Lara & Rieutord (2011) and assume random distribution for the viewing angle. We transformed the synthetic photometry into the observational plane by adopting the model atmospheres by Castelli & Kurucz (2003) and the transmission curves of the G_{BP} and G_{RP} filters of Gaia. We assumed that one third of stars in the simulated CMD do not rotate, while two thirds of stars have $\omega = 0.9\omega_{\text{cr}}$, in close analogy with what is observed in Magellanic Clouds open clusters (e.g. Milone et al. 2018).

We first applied the procedure above to each synthetic CMD, by assuming that the eMSTO is due to age spread, and derived the FWHM of the age distribution. Results are represented with grey dots in Fig. 11. As expected, the age spread increases with the cluster age, in close analogy with what was previously found by Niederhofer et al. (2015) in Magellanic Clouds clusters. The fact that the FWHM values derived for synthetic CMDs and for Galactic open clusters follow similar trends against the cluster age suggests that rotation is the main responsible for the observed eMSTOs.

Finally, we compare in Fig. 12- 13 the CMDs of cluster members (left panels) with simulated CMDs (right panels). Synthetic CMDs are derived from the Geneva database (Georgy et al. 2014) and have metallicity, $Z=0.014$, and similar age, distance modulus and reddening as those listed in Table 1. Unfortunately, rotating models are not available for stars less massive than $\sim 1.7 M_{\odot}$. Note that, while in young clusters like NGC 2287 and NGC 2099 both fast rotators and slow-rotator stars are needed to reproduce the broad MS, the eMSTO of old clusters seems consistent with fast rotators alone. The poor quality of the fit could be due to the modeling of several second-order parameters that characterize the end of the core hydrogen burning phase, including the parametrization of the inclination angle, which strongly affects the stellar luminosity and effective temperature (see DAntona et al. 2015 for details). Nevertheless, the comparison between data and simulations corroborates the conclusion that stellar rotation is the main responsible for the observed eMSTOs and the broadened MSs.

5. SUMMARY AND DISCUSSION

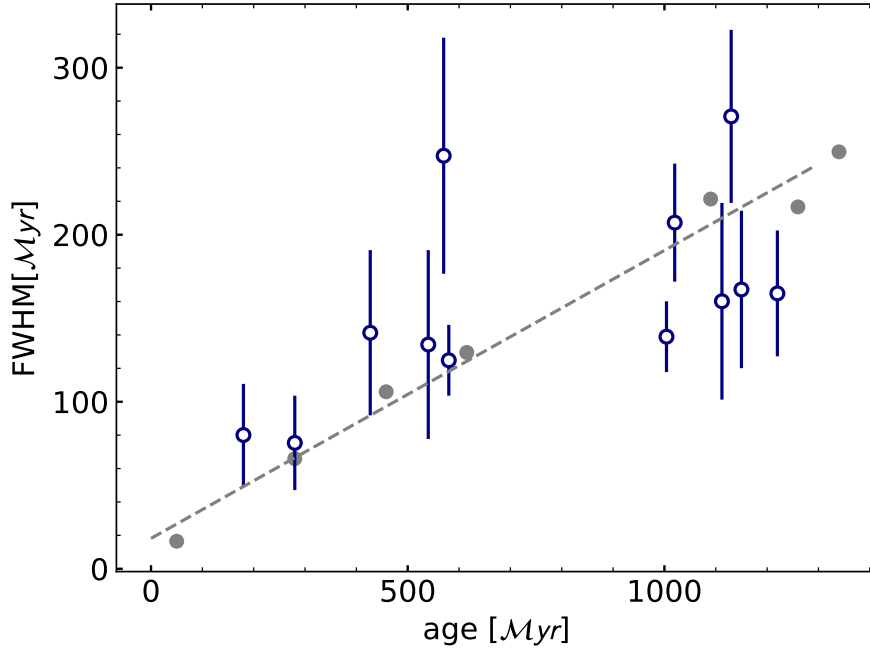


Figure 11. Full width half maximum of the age distribution as a function of cluster age. Blue dots with error bars refer to the analyzed clusters. Grey dots are derived from synthetic CMDs of coeval stellar population with different rotation rates. The dashed line is the least-squares best-fit straight line for the gray dots. See text for details.

We have presented the first analysis of twelve open clusters in the Milky Way in the context of multiple stellar populations. Our results suggest that the multiple photometric sequences observed by Gaia in the CMDs of these nearby objects belong to the same phenomenon present in Magellanic Clouds clusters, and interpreted as due to stellar rotation and/or age spreads.

Since the early discoveries, the eMSTOs have been considered a common feature of the CMDs of LMC and SMC clusters younger than ~ 2.5 Gyr whereas the CMDs of Galactic open clusters were thought to be similar to simple isochrones. This picture has been challenged by the recent findings of eMSTOs in four Galactic open clusters younger than ~ 1 Gyr, namely NGC 2099, NGC 2360, NGC 2818, NGC 6705 (Marino et al. 2018; Bastian et al. 2018).

We exploited the Gaia DR2 to analyze the CMDs of twelve Galactic open clusters younger than ~ 1.5 Gyr. We carefully separated cluster stars from field stars by using proper motions and parallaxes from Gaia DR2 and corrected the photometry of clusters members for differential reddening. We find that all the analyzed clusters show the eMSTO. In addition, all the clusters younger than ~ 700 Myr exhibit a broadened upper MS, whereas the bottom of the MS is narrow and well defined. The appearance of certain photometric features depending on age, is similar to that observed in Magellanic Clouds clusters.

We statistically subtracted field stars with cluster-like proper motions and parallaxes from the CMD of candidate cluster stars thus demonstrating that eMSTOs and broadened MSs are not due to residual contamination from field stars. We calculated for each cluster the synthetic photometry of a simple population of stars with the same age, metallicity, binary fraction, and observational errors. The comparison between the observations and the simulated CMDs reveals that the eMSTOs and the broadened MSs are due neither to observational uncertainties nor to unresolved binaries. These facts demonstrate that eMSTOs and broadened MSs are intrinsic features of the CMDs of the analyzed open clusters.

To investigate the physical mechanisms that are responsible for the eMSTO we first compared the CMDs of cluster members with isochrones with different ages. The eMSTOs of the analyzed open clusters are consistent with stellar populations with different ages in close analogy with what has been observed in Magellanic Cloud clusters with similar ages. The FWHM of the age spread ranges from about 70 Myr in the ~ 150 -Myr old cluster NGC 3114 to ~ 260 Myr in ~ 1.1 -Gyr old NGC 5822. Interestingly, the derived age spread correlates with the cluster age, with old clusters having on average larger age spread than young clusters. A similar trend between the FWHM of the age distribution and the cluster age is present among Magellanic-Cloud clusters and is interpreted as an evidence that rotation is the main responsible of the eMSTO. Indeed, in a simple stellar population, fast rotators appear younger than coeval non-rotating stars with the same age.

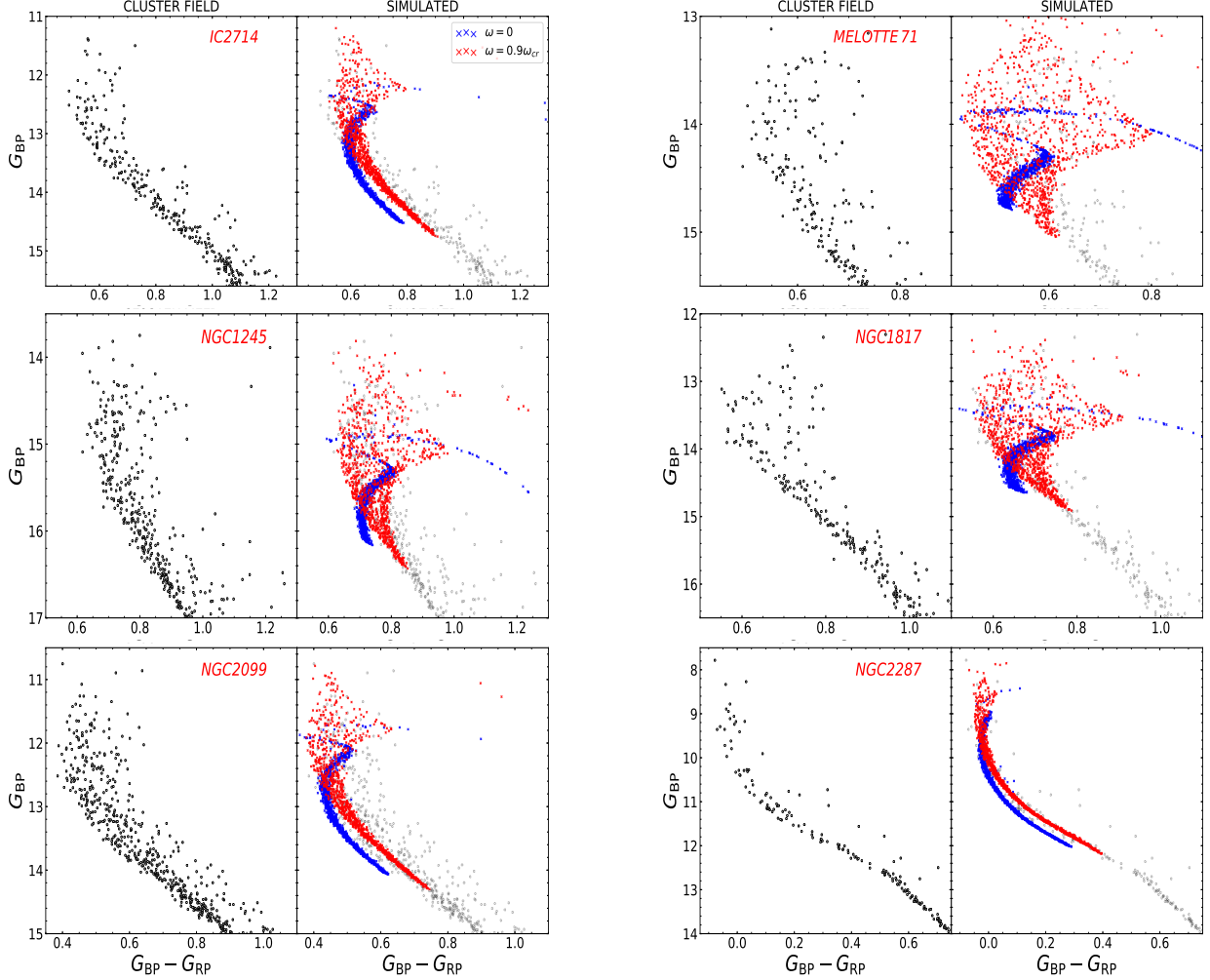


Figure 12. *Left panels.* reproduction of the observed CMDs of cluster members of IC 2714, Melotte 71, NGC 1245, NGC 1817, NGC 2099 and NGC 2287. *Right panels.* Comparison of the observed CMDs plotted in the left panels (grey dots) and simulated CMDs of a non rotating stellar population (blue) and of a stellar population with rotation $\omega = 0.9\omega_{cr}$ (red).

We compared the CMDs of cluster members with synthetic diagrams derived from Geneva models and find that the eMSTOs and the broadened MSs are consistent with coeval stellar populations with different rotation rates. These findings suggest that rotation is the main responsible for the eMSTOs and the broadened MSs observed in Galactic clusters and corroborate direct spectroscopic evidence that stars with different rotation rates populate the eMSTOs of NGC 6705 and NGC 2818 (Marino et al. 2018b; Bastian et al. 2018) and that the blue and the red MS of NGC 6705 are populated by slow rotators and fast rotators, respectively (Marino et al. 2018b).

Our investigation of 12 Galactic open clusters demonstrates that the eMSTO and the broadened MS are not a peculiarity of Magellanic Cloud star clusters but are common features of Galactic open clusters. Coeval stellar populations with different rotation rates are likely the responsible for the eMSTO and the broadened MS of the analyzed clusters.

ACKNOWLEDGMENTS

We thank the anonymous referee for several comments that improved the quality of this manuscript. This work has received funding from the European Research Council (ERC) under the European Union’s Horizon 2020 research innovation programme (Grant Agreement ERC-StG 2016, No 716082 ‘GALFOR’, PI: Milone), and the European Union’s Horizon 2020 research and innovation programme under the Marie Skłodowska-Curie (Grant Agreement No 797100, beneficiary: Marino). APM acknowledges support from MIUR through the the FARE project

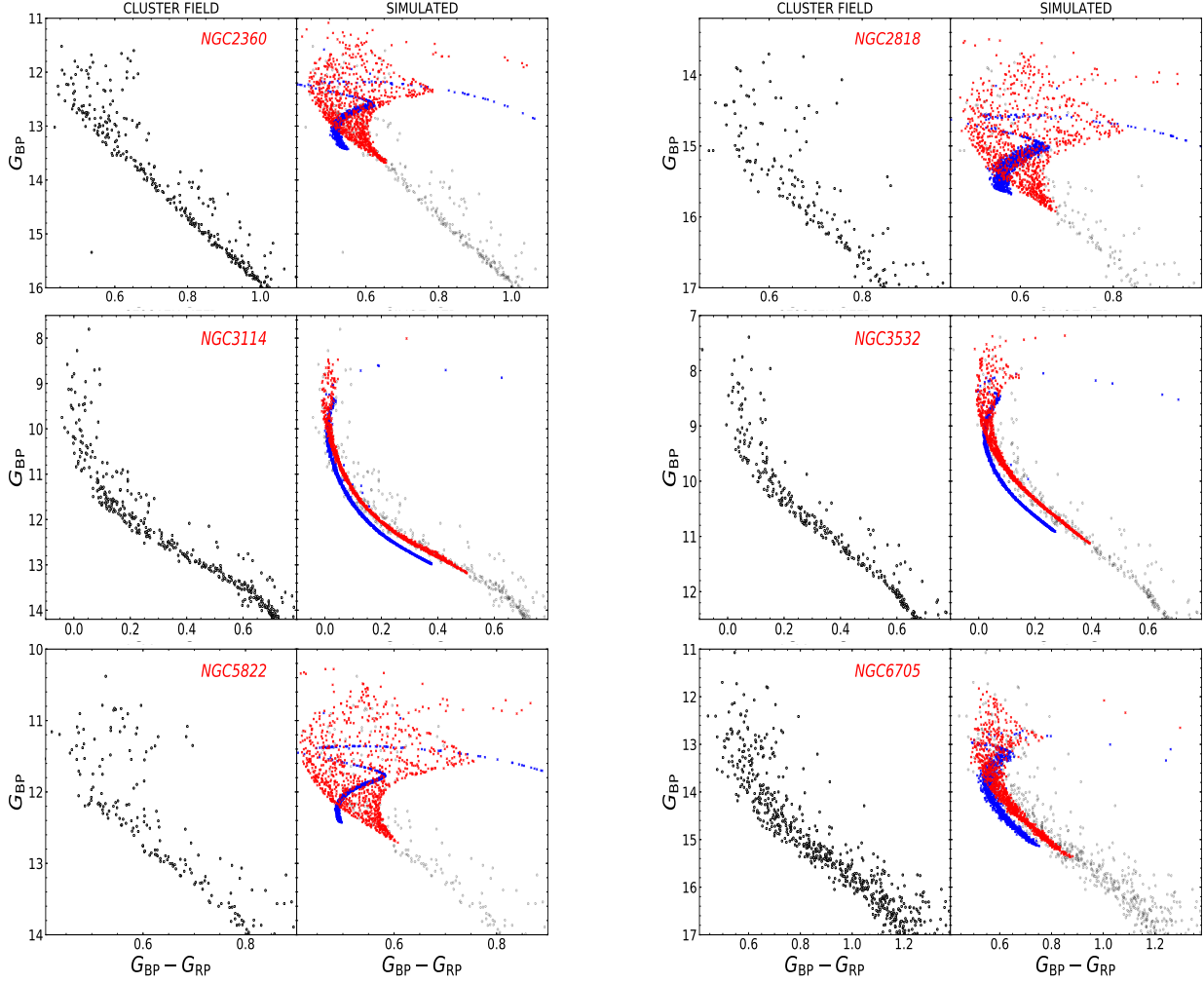


Figure 13. As in Fig 12 but for NGC 2360, NGC 2818, NGC 3114, NGC 3532, NGC 5822 and NGC 6705

Cluster	$(m - M)_0$	E(B-V)	Z	Age [Myr]	FWHM [Myr]	$f_{\text{bin}}^{q>0.7}$	$f_{\text{bin}}^{\text{tot}}$
IC 2714	10.60	0.38	0.0205	540	134 ± 57	0.105	0.350
MELOTTE 71	11.60	0.22	0.0095	1220	165 ± 38	0.085	0.283
NGC 1245	12.45	0.29	0.0183	1000	139 ± 21	0.119	0.397
NGC 1817	11.00	0.26	0.0100	1030	165 ± 47	0.083	0.277
NGC 2099	10.90	0.26	0.0300	580	125 ± 21	0.085	0.283
NGC 2287	9.40	0.04	0.0219	280	76 ± 28	0.034	0.113
NGC 2360	10.23	0.16	0.0140	1020	210 ± 35	0.087	0.290
NGC 2818	12.35	0.22	0.0100	1110	160 ± 59	0.088	0.293
NGC 3114	10.05	0.12	0.0209	180	75 ± 31	0.068	0.227
NGC 3532	8.30	0.06	0.0160	430	140 ± 50	0.074	0.247
NGC 5822	9.40	0.11	0.0170	1130	270 ± 52	0.131	0.437
NGC 6705	11.10	0.46	0.0083	570	245 ± 71	0.153	0.510

Table 1. Distance modulus, reddening, age, FWHM of the age distribution, fraction of binaries with mass-ratio, $q > 0.7$, and total fraction of binaries inferred in this paper. Cluster metallicities are from Paunzen et al. (2010).

R164RM93XW SEMPLICE; AFM has been supported by the Australian Research Council through Discovery Early Career Researcher Award DE160100851.

REFERENCES

- Bastian, N., & de Mink, S. E. 2009, *MNRAS*, 398, L11
- Bastian, N., Kamann, S., Cabrera-Ziri, I., et al. 2018, *MNRAS*, 480, 3739
- Casagrande, L., & VandenBerg, D. A. 2018, *MNRAS*, 479, L102
- Claret A., 2000, *A&A*, 363, 1081
- Correnti, M., Goudfrooij, P., Bellini, A., Kalirai, J. S., & Puzia, T. H. 2017, *MNRAS*, 467, 3628
- D'Antona, F., Montalbán, J., Kupka, F., & Heiter, U. 2002, *ApJL*, 564, L93
- D'Antona, F., Di Criscienzo, M., Decressin, T., et al. 2015, *MNRAS*, 453, 2637
- D'Antona, F., Milone, A. P., Tailo, M., et al. 2017, *Nature Astronomy*, 1, 0186
- Dias, W. S., Alessi, B. S., Moitinho, A., & Lépine, J. R. D. 2002, *A&A*, 389, 871
- Dupree, A. K., Dotter, A., Johnson, C. I., et al. 2017, *ApJL*, 846, L1
- Ekström, S., Georgy, C., Eggenberger, P., et al. 2012, *A&A*, 537, A146
- Espinosa Lara F. & Rieutord M., 2011, *A&A*, 533, A43
- Gaia Collaboration, Brown, A. G. A., Vallenari, A., et al. 2016, *A&A*, 595, A2
- Gallart, C., Zoccali, M., Bertelli, G., et al. 2003, *AJ*, 125, 742
- Georgy, C., Granada, A., Ekström, S., et al. 2014, *A&A*, 566, A21
- Glatt, K., Grebel, E. K., Sabbi, E., et al. 2008, *AJ*, 136, 1703
- Goudfrooij, P., Puzia, T. H., Kozhurina-Platais, V., & Chandar, R. 2011, *ApJ*, 737, 3
- Goudfrooij, P., Girardi, L., Kozhurina-Platais, V., et al. 2014, *ApJ*, 797, 35
- Goudfrooij, P., Girardi, L., & Correnti, M. 2017, *ApJ*, 846, 22
- Li, C., de Grijs, R., Deng, L., & Milone, A. P. 2017, *ApJ*, 844, 119
- Keller, S. C., Mackey, A. D., & Da Costa, G. S. 2011, *ApJ*, 731, 22
- Mackey, A. D., & Broby Nielsen, P. 2007, *MNRAS*, 379, 151
- Mackey, A. D., Broby Nielsen, P., Ferguson, A. M. N., & Richardson, J. C. 2008, *ApJL*, 681, L17
- Marigo, P., Girardi, L., Bressan, A., et al. 2017, *ApJ*, 835, 77
- Marino, A. F., Milone, A. P., Yong, D., et al. 2014, *MNRAS*, 442, 3044
- Marino, A. F., Milone, A. P., Casagrande, L., et al. 2018, *ApJL*, 863, L33
- Marino, A. F., Przybilla, N., Milone, A. P., et al. 2018, *AJ*, 156, 116
- Milone, A. P., Bedin, L. R., Piotto, G., & Anderson, J. 2009, *A&A*, 497, 755
- Milone, A. P., Piotto, G., Bedin, L. R., et al. 2012, *A&A*, 540, A16
- Milone, A. P., Bedin, L. R., Cassisi, S., et al. 2013, *A&A*, 555, A143
- Milone, A. P., Marino, A. F., D'Antona, F., et al. 2016, *MNRAS*, 458, 4368
- Milone, A. P., Marino, A. F., Bedin, L. R., et al. 2016, *MNRAS*, 455, 3009
- Milone, A. P., Marino, A. F., Di Criscienzo, M., et al. 2018, *MNRAS*, 477, 2640
- Mowlavi, N., Eggenberger, P., Meynet, G., et al. 2012, *A&A*, 541, A41
- Niederhofer, F., Georgy, C., Bastian, N., & Ekström, S. 2015, *MNRAS*, 453, 2070
- Paunzen, E., Heiter, U., Netopil, M., & Soubiran, C. 2010, *A&A*, 517, A32
- Sollima, A., Carballo-Bello, J. A., Beccari, G., et al. 2010, *MNRAS*, 401, 577
- Yang, W., Bi, S., Meng, X., & Liu, Z. 2013, *ApJ*, 776, 112