



Publication Year	2021
Acceptance in OA	2022-03-29T09:35:22Z
Title	Redshift identification of X-ray selected active galactic nuclei in the J1030 field: searching for large-scale structures and high-redshift sources
Authors	MARCHESI, STEFANO, MIGNOLI, Marco, GILLI, Roberto, PECA, ALESSANDRO, BOLZONELLA, MICOL, NANNI, RICCARDO, Marianna Annunziatella, BALMAVERDE, Barbara, Brusa, Marcella, CALURA, Francesco, CASSARA, LETIZIA PASQUA, Marco Chiaberge, COMASTRI, Andrea, CUSANO, FELICE, Quirino D'Amato, Kazushi Iwasawa, LANZUISI, Giorgio, Danilo Marchesini, Takahiro Morishita, PRANDONI, ISABELLA, ROSSI, Andrea, TOZZI, Paolo, VIGNALI, CRISTIAN, Vito, Fabio, ZAMORANI, Giovanni, Colin Norman
Publisher's version (DOI)	10.1051/0004-6361/202141416
Handle	http://hdl.handle.net/20.500.12386/31996
Journal	ASTRONOMY & ASTROPHYSICS
Volume	656

Redshift identification of X-ray-selected active galactic nuclei in the J1030 field: searching for large-scale structures and high-redshift sources[★]

S. Marchesi^{1,2}, M. Mignoli¹, R. Gilli¹, A. Peca³, M. Bolzonella¹, R. Nanni⁴, M. Annunziatella⁵, B. Balmaverde⁶, M. Brusa^{7,1}, F. Calura¹, L. P. Cassarà⁸, M. Chiaberge^{9,10}, A. Comastri¹, F. Cusano¹, Q. D’Amato^{11,7}, K. Iwasawa^{12,13}, G. Lanzuisi¹, D. Marchesini^{14,15}, T. Morishita¹⁶, I. Prandoni¹¹, A. Rossi¹, P. Tozzi¹⁷, C. Vignali^{7,1}, F. Vito¹⁸, G. Zamorani¹, and C. Norman¹⁶

¹ INAF – Osservatorio di Astrofisica e Scienza dello Spazio di Bologna, Via Piero Gobetti, 93/3, 40129 Bologna, Italy
e-mail: stefano.marchesi@inaf.it

² Department of Physics and Astronomy, Clemson University, Kinard Lab of Physics, Clemson, SC 29634, USA

³ Department of Physics, University of Miami, Coral Gables, FL 33124, USA

⁴ Department of Physics, University of California, Santa Barbara, CA 93106-9530, USA

⁵ Centro de Astrobiología (CSIC-INTA), Ctra de Torrejón a Ajalvir, km 4, 28850 Torrejón de Ardoz, Madrid, Spain

⁶ INAF – Osservatorio Astrofisico di Torino, Via Osservatorio 20, 10025 Pino Torinese, Italy

⁷ Dipartimento di Fisica e Astronomia, Università degli Studi di Bologna, via Gobetti 93/2, 40129 Bologna, Italy

⁸ INAF – Istituto di Astrofisica Spaziale e Fisica Cosmica, Via Alfonso Corti 12, 20133 Milan, Italy

⁹ AURA for the European Space Agency (ESA), ESA Office, Space Telescope Science Institute, 3700 San Martin Drive, Baltimore, MD 21218, USA

¹⁰ Johns Hopkins University – Center for Astrophysical Sciences, 3400 N. Charles Street, Baltimore, MD 21218, USA

¹¹ INAF – Istituto di Radioastronomia, Via P. Gobetti 101, 40129 Bologna, Italy

¹² Institut de Ciències del Cosmos (ICCUB), Universitat de Barcelona (IEEC-UB), Martí i Franquès, 1, 08028 Barcelona, Spain

¹³ ICREA, Pg. Luís Companys 23, 08010 Barcelona, Spain

¹⁴ Department of Physics and Astronomy, Tufts University, Medford, MA 02155, USA

¹⁵ International Research Fellow of Japan Society for the Promotion of Science (Invitational Fellowships for Research in Japan – Short-term), Tokyo, Japan

¹⁶ Space Telescope Science Institute, 3700 San Martin Drive, Baltimore, MD 21218, USA

¹⁷ INAF – Osservatorio Astrofisico di Arcetri, Largo E. Fermi, 50125 Firenze, Italy

¹⁸ Scuola Normale Superiore, Piazza dei Cavalieri 9, Pisa, Italy

Received 28 May 2021 / Accepted 15 September 2021

ABSTRACT

We publicly release the spectroscopic and photometric redshift catalog of the sources detected with *Chandra* in the field of the $z = 6.3$ quasar SDSS J1030+0525. This is currently the fifth-deepest extragalactic X-ray field, and reaches a 0.5–2 keV flux limit of $f_{0.5-2} = 6 \times 10^{-17} \text{ erg s}^{-1} \text{ cm}^{-2}$. Using two independent methods, we measure a photometric redshift for 243 objects, while 123 (51%) sources also have a spectroscopic redshift, 110 of which come from an INAF-Large Binocular Telescope (LBT) Strategic Program. We use the spectroscopic redshifts to determine the quality of the photometric ones, and find it to be in agreement with that of other X-ray surveys which used a similar number of photometric data points. In particular, we measure a sample normalized median absolute deviation of $\sigma_{\text{NMAD}} = 1.48 \times \text{median}(|z_{\text{phot}} - z_{\text{spec}}| / (1 + z_{\text{spec}})) = 0.065$. We use these new spectroscopic and photometric redshifts to study the properties of the *Chandra* J1030 field. We observe several peaks in our spectroscopic redshift distribution between $z = 0.15$ and $z = 1.5$, and find that the sources in each peak are often distributed across the whole *Chandra* field of view. This confirms that X-ray-selected AGNs can efficiently track large-scale structures over physical scales of several megaparsecs. Finally, we computed the *Chandra* J1030 $z > 3$ number counts: while the spectroscopic completeness of our sample is limited at high redshift, our results point towards a potential source excess at $z \geq 4$, which we plan to either confirm or reject in the near future with dedicated spectroscopic campaigns.

Key words. galaxies: Seyfert – large-scale structure of Universe – galaxies: high-redshift – quasars: supermassive black holes – X-rays: galaxies

1. Introduction

It is now well established that the star formation (SF) in galaxies and black hole accretion in an “active galactic nucleus” (AGN) phase peak at redshifts of $z \sim 2 - 3$ (e.g., Madau & Dickinson 2014; Ueda et al. 2014; Ananna et al. 2019), hinting at a co-evolutionary supermassive black hole (SMBH)-host

growth scenario. However, the origin and physical causes of this scenario are still debated (e.g., Alexander & Hickox 2012; Fiore et al. 2017; Izumi et al. 2019)

To fully understand this co-evolutionary process, one needs large samples of accreting supermassive black holes, with excellent multi-wavelength coverage. In particular, X-ray surveys are among the most efficient methods to track the mass growth of SMBHs in the AGN phase over a wide range of redshifts and accretion efficiencies. Indeed, X-rays are significantly less contaminated by non-AGN emission processes than optical and

[★] A copy of the spectra and SEDs is available at the CDS via anonymous ftp to cdsarc.u-strasbg.fr (130.79.128.5) or via <http://cdsarc.u-strasbg.fr/viz-bin/cat/J/A+A/656/A117>

infrared surveys, and even in the deepest X-ray surveys the non-AGN population is subdominant, if not fully negligible (e.g., Donley et al. 2008, 2012; Lehmer et al. 2012; Marchesi et al. 2016a; Luo et al. 2017). This highlights the fact that X-rays are one of the best ways to detect intrinsically faint AGNs, whose optical emission is dominated by non-nuclear processes and whose spectral energy distribution (SED) can therefore be fitted with a host galaxy template with no AGN contribution (see, e.g., Marchesi et al. 2016a). Even more importantly, X-ray surveys can detect a significant population of obscured and even Compton thick (i.e., with column density $N_{\text{H}} \geq 10^{24} \text{ cm}^{-2}$) AGNs up to redshift $z \sim 2\text{--}3$ (e.g., Comastri et al. 2011; Georgantopoulos et al. 2013; Lanzuisi et al. 2015, 2018), which are missed by optical surveys, where the SED is once again dominated by non-AGN related processes. Notably, obscured AGNs are expected to dominate the census of SMBHs at cosmic dawn, where the vast majority of SMBHs were highly efficiently accreting in a dense environment (e.g., Lanzuisi et al. 2018; Vito et al. 2018; Matsuoka et al. 2019). Indeed, deep X-ray surveys have shown that the incidence of obscuration in AGNs increases towards early cosmic times, likely because of the dense ISM measured in their hosts (Lanzuisi et al. 2018; Vito et al. 2018; Circosta et al. 2019; D’Amato et al. 2020). For example, the fraction of obscured quasars (QSOs) with $L_{\text{bol}} \geq 10^{46} \text{ erg s}^{-1}$ rises from 10–20% in the local Universe to 80–90% at $z \sim 4$ (Vito et al. 2018). Simulations support this increase, and further predict that the obscured QSO fraction may exceed 99% at $z \geq 6$ (Ni et al. 2020).

Among the different X-ray facilities currently available, the *Chandra* X-ray telescope, with its excellent subarcsecond resolution, is the ideal instrument for deep surveys hoping to characterize the intrinsically faint and/or heavily obscured AGN population, as shown in several works in the past ten years. Examples of deep, pencil-beam (i.e., covering an area $< 0.5 \text{ deg}^2$) surveys are the 2 Ms *Chandra* Deep Field-North (CDF-N Xue et al. 2016), the 7 Ms *Chandra* Deep Field-South (CDF-S Luo et al. 2017), AEGIS-XD (Nandra et al. 2015), the *Chandra* UKIDSS Ultra Deep Survey (X-UDS Kocevski et al. 2018), and the SSA22 Survey (Lehmer et al. 2009). On a larger area, comparable depths have been achieved by the *Chandra* COSMOS-Legacy survey (Civano et al. 2016; Marchesi et al. 2016a).

However, to fully exploit their efficiency in identifying a population of sources that would be missed by other facilities, X-ray surveys need to be complemented by extensive multi-wavelength information. In particular, the redshift completeness of the X-ray samples should ideally be as close as possible to 100%. To do so, optically bright sources are targeted with spectroscopic campaigns (see, e.g., Lilly et al. 2007, 2009; Kriek et al. 2015, for the CANDELS/COSMOS field). For the remaining part of the sample, which usually consists of those sources that are too faint to obtain a reliable spectroscopic redshift, photometric redshifts are computed, taking advantage of extensive imaging campaigns in the optical and near-infrared (see, e.g., Hsu et al. 2014, for the *Chandra* Deep Field South; Ilbert et al. 2009; Salvato et al. 2011; Laigle et al. 2016; Marchesi et al. 2016a for the COSMOS field; Ananna et al. 2017 for the Stripe 82X field).

Recently, *Chandra* targeted a 335 arcmin^2 region centered on the $z = 6.31$ quasar SDSS J1030+0525 with a deep, ~ 0.5 Ms observation. SDSS J1030+0525 is one of the first quasars detected at $z > 6$ by the Sloan Digital Sky Survey (SDSS Fan et al. 2001). This field is known to be highly biased because it hosts both a galaxy overdensity at $z = 6.3$, around the SDSS J1030+0525 (Morselli et al. 2014; Balmaverde et al. 2017; Mignoli et al. 2020), and another overdensity at $z = 1.7$, around

a Fanaroff–Riley type II (FR II) radio galaxy (Nanni et al. 2018; Gilli et al. 2019; D’Amato et al. 2020). The flux limit achieved by the *Chandra* J1030 survey (Nanni et al. 2020) makes this the fifth-deepest X-ray field to date: the survey contains 256 sources detected down to a 0.5–2 keV flux limit of $f_{0.5-2} = 6 \times 10^{-17} \text{ erg s}^{-1} \text{ cm}^{-2}$.

In this work, we present the spectroscopic and photometric redshift information for the *Chandra* J1030 catalog (Nanni et al. 2020). The paper is organized as follows: in Sect. 2 we describe the *Chandra* J1030 sample, its X-ray properties, and the optical and infrared counterparts identified in previous works. In Sect. 3 we report the results of the spectroscopic campaigns designed to increase the redshift completeness of the sample, while in Sect. 4 we present the method we use to compute the photometric redshifts of the X-ray sources, and assess their quality using the spectroscopic redshifts as a reference. In Sect. 5 we present the *Chandra* J1030 redshift catalog that we make available to the public. In Sect. 6 we present the main properties of the sample and discuss the presence of large-scale structures in the J1030 field, while in Sect. 7 we focus on the $z > 3$ subsample and report the *Chandra* J1030 high- z number counts. Finally, we summarize the results of this paper in Sect. 8.

Through the rest of the work, we assume a flat Λ CDM cosmology with $H_0 = 69.6 \text{ km s}^{-1} \text{ Mpc}^{-1}$, $\Omega_{\text{m}} = 0.29$ and $\Omega_{\Lambda} = 0.71$ (Bennett et al. 2014). Errors are quoted at the 90% confidence level, unless otherwise stated.

2. The *Chandra* J1030 field

2.1. X-ray data

Nanni et al. (2020) reported the results of a ~ 479 ks *Chandra* observation over an area of 335 arcmin^2 in the J1030 field. This field is centered on the $z = 6.31$ quasar SDSS J1030+0525, which is one of the most massive ($M_{\text{BH}} > 10^9 M_{\odot}$; Kurk et al. 2007; De Rosa et al. 2011) QSOs detected at $z > 6$ by the SDSS, and the first one to reside in a spectroscopically confirmed overdensity at $z > 6$ (Mignoli et al. 2020).

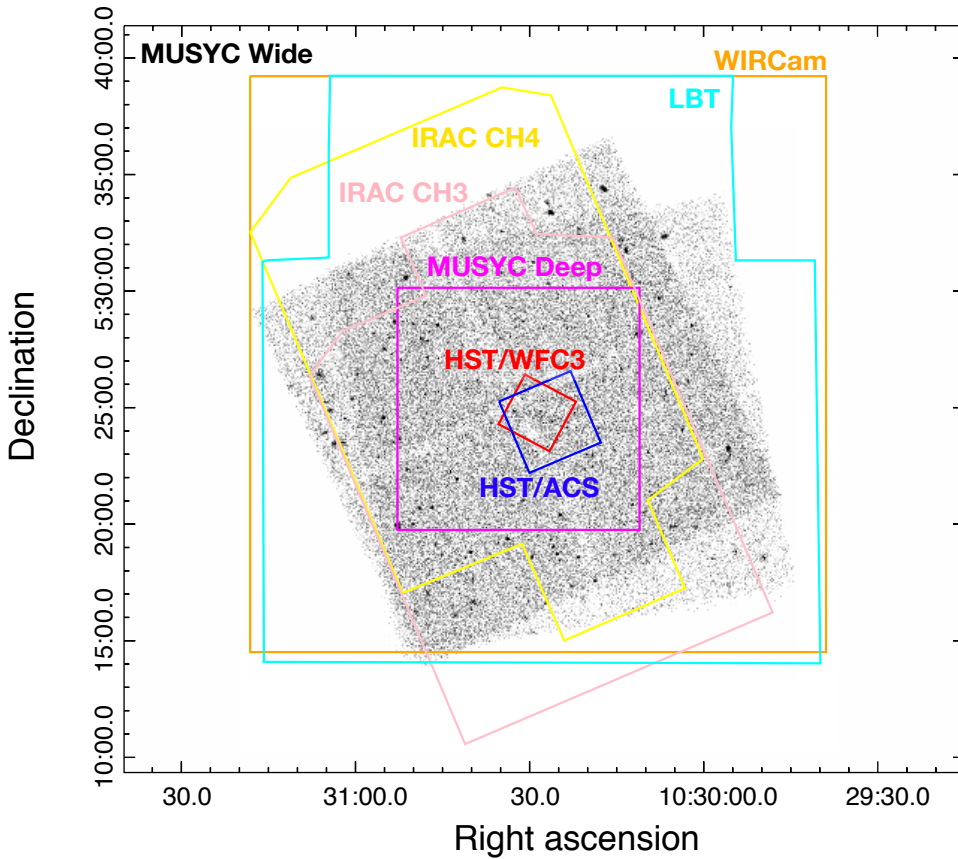
The *Chandra* catalog contains 256 sources, which are detected down to a 0.5–2 keV flux limit of $f_{0.5-2} = 6 \times 10^{-17} \text{ erg s}^{-1} \text{ cm}^{-2}$. Such a deep flux limit makes J1030 an ideal region to search for intrinsically faint and/or heavily obscured AGNs. Optical and near-infrared (NIR) counterparts selected in the r , z , J , and $4.5 \mu\text{m}$ were associated with the X-ray sources using standard likelihood–ratio matching techniques. Of 256 X-ray sources, 7 are stars, while 6 lack an optical or NIR counterpart. We note that the reliability of the *Chandra* J1030 catalog is $\sim 96\%$, which means that we expect to have approximately 10 or 11 spurious sources in the catalog. As shown in previous X-ray surveys, these spurious detections are more likely to be found among the objects with no optical or NIR counterpart (Luo et al. 2017). On the other hand, it is also possible that some of these objects are very high-redshift, faint AGNs that are detected only in the X-rays. We further explore this possibility in Sect. 7. For our analysis, we mostly focus on the 243 *Chandra* J1030 extragalactic sources for which Nanni et al. (2020) reported a counterpart.

2.2. Multi-wavelength coverage

We report in Table 1 the optical and NIR surveys from which we obtained the photometric information used to compute our photometric redshifts. The regions covered by these surveys are shown in Fig. 1 on top of the *Chandra* J1030 0.5–7 keV image.

Table 1. Properties of the photometric catalogs used in this work.

Catalog	Filters	Area	5σ Depth m_{AB}	Reference
MUSYC BVR	<i>UBVRIz</i>	$30' \times 30'$	26, 26, 26, 25.8, 24.7, 23.6	Gawiser et al. (2006)
LBT/LBC	<i>riz</i>	$23' \times 25'$	27.5, 26, 25	Morselli et al. (2014)
HST/ACS	<i>F775W</i>	$3.3' \times 3.3'$	27.5	Stiavelli et al. (2005)
HST/ACS	<i>F850LP</i>	$3.3' \times 3.3'$	27.5	Kim et al. (2009)
WIRCAM/CFHT	<i>YJ</i>	$24' \times 24'$	23.8, 23.75	Balmaverde et al. (2017)
HST/WFC3	<i>F160W</i>	$2' \times 2'$	27.5	D'Amato et al. (2020)
MUSYC <i>K</i> Deep	<i>UBVRIzJHK</i>	$10' \times 10'$	25.6, 25.9, 25.9, 25.8, 25.8, 23.8, 23.4, 23.6, 23.2	Quadri et al. (2007)
MUSYC <i>K</i> Wide	<i>UBVRIzK</i>	$30' \times 30'$	25.6, 25.9, 25.9, 25.8, 25.8, 23.8, 21.9	Blanc et al. (2008)
<i>Spitzer</i> /IRAC	<i>CH1-2</i>	$35' \times 35'$	22.7, 22.4	Annunziatella et al. (2018)
<i>Spitzer</i> /IRAC	<i>CH3-4</i>	$22' \times 15'$	22.1, 21.8	IRSA Archive


Fig. 1. Smoothed 0.5–7 keV *Chandra* ACIS-I image of the SDSS J1030+0524 field. The regions covered by the photometric catalogs used in this work are also shown in different colors. The whole J1030 field has also been imaged in the mid-infrared IRAC channels 1 and 2.

The J1030 field was originally observed as part of the Multi-wavelength Survey by Yale-Chile (MUSYC), and three photometric catalogs were made available. One (hereafter, MUSYC BVR) was obtained by detecting sources in a $30' \times 30'$, stacked BVR image, down to a 5σ AB magnitude of ~ 26 in the *B* and *V* bands (Gawiser et al. 2006), and contains photometric information in the *U*, *B*, *V*, *R*, *i*, and *z* bands. The remaining two MUSYC catalogs were obtained by detecting sources in the *K* band: the *K* Deep catalog (Quadri et al. 2007) covers the central $10' \times 10'$ area down to a 5σ $K_{AB} = 23$, while the *K* Wide one (Blanc et al. 2008) covers the same $30' \times 30'$ area analyzed in MUSYC BVR, and reaches a 5σ magnitude $K_{AB} = 21$. Both *K*-band catalogs contain photometric information in the *U*, *B*, *V*, *R*, *i*, *z* and *K* bands; the *K* Deep catalog also contains *J* and *H*

magnitude information. We include all the data points in the *U*, *B*, *V*, *R*, *i*, *z*, *J*, *H*, and *K* MUSYC bands in our SED.

In 2012, our group performed a deep photometric campaign with the Large Binocular Telescope using the Large Binocular Camera (LBT/LBC). This campaign covered a $23' \times 25'$ region in the *r*, *i*, and *z* bands, reaching 5σ AB magnitude limits of $r_{AB} = 27.5$, $i_{AB} = 26.5$, and $z_{AB} = 25.2$ (Morselli et al. 2014). In 2015, a $24' \times 24'$ area was covered in the *Y* and *J* bands using the WIRCAM NIR mosaic imager mounted on the Canada France Hawaii Telescope (CFHT/WIRCAM): the results of this campaign are reported in Balmaverde et al. (2017). The 5σ AB magnitude limits of this survey are $Y_{AB} = 23.8$ and $J_{AB} = 23.75$.

We used the LBC *z*-band image – which had the best seeing ($0.64''$ full width at half maximum, FWHM) – to perform

a morphological classification of our sources. In particular, we classified as “point-like” all those objects brighter than $z_{AB} = 24$ and with CLASS_STAR (a parameter derived using SExtractor and used to separate star-shaped and extended sources, Bertin & Arnouts 1996) greater than 0.9 (see Morselli et al. 2014).

A small part of the field has also been targeted with the Hubble Space Telescope (HST). Specifically, a $3.3' \times 3.3'$ region was observed with the Advanced Camera for Surveys (ACS) in the i_{F775W} and z_{F850LP} bands (Stiavelli et al. 2005; Kim et al. 2009) down to an AB magnitude limit of 27.5. An even smaller region of $2' \times 2'$ was imaged with the Wide Field Camera 3 (WFC3) in the H_{F160W} band down to an AB magnitude limit of 27.5 (D’Amato et al. 2020; T. Morishita et al., in prep.). Of the 256 Chandra J1030 sources, 21 have an HST/ACS counterpart and 12 of these 21 also have an HST/WFC3 counterpart. All the Chandra J1030 sources within the area covered by the two HST surveys have an HST counterpart.

Finally, we included in our SED analysis mid-infrared (MIR) information from the Spitzer Infrared Array Camera (IRAC). The whole J1030 field has been imaged in the IRAC channels 1 and 2 at $3.6\mu\text{m}$ and $4.5\mu\text{m}$, respectively, down to AB magnitude limits of $m_{AB,CH1} = 22.7$ and $m_{AB,CH2} = 22.4$ ¹ (Annunziatella et al. 2018). We also performed aperture photometry at the position of the X-ray sources to obtain MIR magnitude measurements for the whole Chandra J1030 sample (Nanni et al. 2020). We then used IRSA archival data² to extend our MIR photometric coverage to the IRAC channels 3 and 4 (5.8 and $8\mu\text{m}$, respectively) down to AB magnitude limits of $m_{AB,CH3} = 22.1$ and $m_{AB,CH4} = 21.8$. These bands are particularly useful to better constrain high-redshift and/or heavily obscured sources.

3. Spectroscopic coverage of the Chandra J1030 field

In the past few years, our group led an extensive campaign to spectroscopically follow-up the X-ray-selected J1030 sources using several multi-object spectrographs: the Multi-Object Dual Spectrograph (MODS, Pogge et al. 2010) at the LBT, the FOcal Reducer and Spectrograph (FOR2, Appenzeller et al. 1998) and the Multi Unit Spectroscopic Explorer (MUSE, Bacon et al. 2010), both mounted on the Very Large Telescopes (VLTs) at ESO, and, finally, the DEep Imaging Multi-Object Spectrograph (DEIMOS) on the 10m Keck II telescope (Faber et al. 2003). Data reduction was performed with different software packages: standard IRAF procedures were used for the FOR2 and DEIMOS spectroscopic data, while the MODS data were reduced by the INAF–LBT Spectroscopic Reduction Center³ in Milan, where the LBT spectroscopic pipeline was developed (Garilli et al. 2012).

3.1. The INAF–LBT strategic program

The vast majority ($\sim 95\%$) of the spectroscopic redshifts presented in this work were obtained through a 52 h INAF–LBT Strategic Program that was granted to our group in 2017 (Program ID 2017/2018 #18). The observations were performed between February 2018 and May 2019, and include 36 h of multi-object optical spectroscopy with MODS (9 masks, 4 h

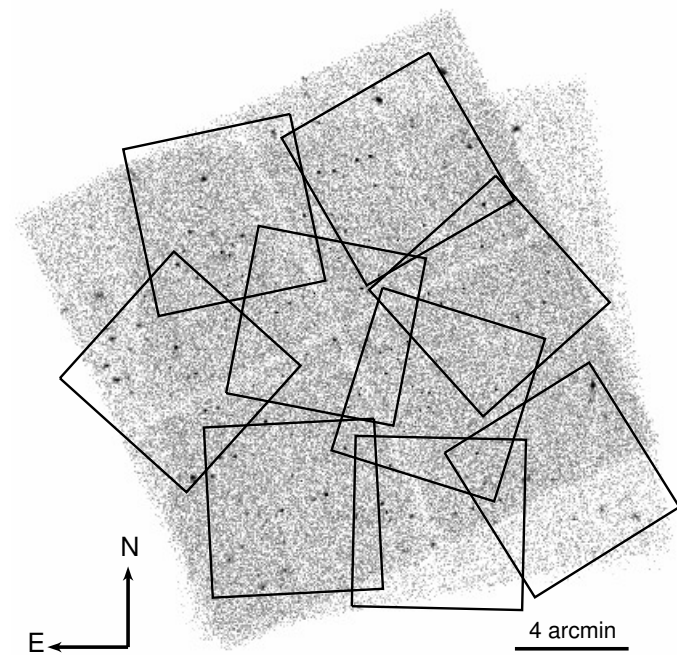


Fig. 2. Smoothed 0.5–7 keV Chandra ACIS-I image of the SDSS J1030+0524 field. The position of the nine LBT/MODS masks used to obtain spectroscopic redshifts of a sample of Chandra J1030 sources are shown with black boxes.

each), and 16 h of long-slit NIR spectroscopy with the LBT Utility Camera in the Infrared (LUCI; 4 slits, 4 h each). The LBT is made of two telescope units of 8.4 m diameter, each equipped with similar instrumentation. In particular, nearly identical optical spectrographs MODS1 and MODS2 and NIR spectrographs LUCI1 and LUCI2 are mounted on the two telescopes. When the LBT is used in binocular mode with the same instrument pair, the total night time on target is then halved. We observed most of the MODS masks and LUCI slits in binocular mode using the same instrument configuration on the two telescopes. The layout of the MODS masks (see Fig. 2) was designed to include as many X-ray source counterparts as possible in the slits, while simultaneously avoiding overcrowding, which could compromise the spectral extraction and analysis process. Each mask includes a variable number (from 14 to 24 slits) of X-ray counterparts depending on the geometry: a total of 159 optical counterparts of X-ray sources were included in the slits. When possible, nonX-ray targets were also included in the masks: we further mention these targets in Sect. 6.2. MODS spectra were obtained using both the blue G400L (3200–5900 Å) and the red G670L (5400–10 000 Å) gratings on the blue and red channels in dichroic mode. The wide spectral range provided by the adopted configuration has proved extremely useful in determining the redshift and spectral classification of the observed objects, despite the instrument sensitivity drops in the overlapping spectral region of the dichroic. MODS observations allowed us to obtain a redshift measurement for 107 out of 159 observed X-ray sources (including two Galactic stars); the remaining 52 sources have low signal-to-noise ratio and do not show any clear feature that can be identified. The efficiency in the redshift measurement is almost 100% up to magnitude $r_{AB} = 23.5$, and then progressively decreases. Only a few targets with extremely intense emission lines are indeed spectroscopically identified at magnitudes $r_{AB} \gtrsim 25$.

¹ We point out that the IRAC maps show strong sensitivity gradients, and therefore these limits do not necessarily apply to the whole field.

² <https://irsa.ipac.caltech.edu/>

³ <http://www.iasf-milano.inaf.it/software>

A few more redshifts were obtained through NIR long-slit spectroscopy with LUCI. We adopted 4-arcmin-long slits and choose their position angle so as to include two X-ray source counterparts per slit. LUCI targets were primarily selected to be faint in the optical ($r_{AB} > 25$) but relatively bright in the NIR ($J < 23$), that is, they were candidate obscured, high- z sources beyond the reach of MODS but promising for NIR spectroscopy. We targeted seven X-ray red counterparts (plus one radio source) in four LUCI pointings, and measured the redshift for three of them through the detection of the $H\alpha + [N II]$ emission lines complex. One of these three objects, XID 189, is indeed a heavily obscured, type-2 AGN at $z = 1.7$ at the center of the protocluster described in Gilli et al. (2019).

3.2. Other follow-up programs

Additional redshifts were acquired as part of spectroscopic follow-ups primarily aimed at confirming the galaxy overdensity around the $z = 6.31$ J1030 QSO (Morselli et al. 2014; Balmaverde et al. 2017). In particular we used spare slits during follow-ups of color-selected $z \sim 6$ candidates with the FORS2/VLT and DEIMOS/Keck multi-object spectrographs. Moreover, the central $1' \times 1'$ region of the J1030 field was observed in 2016 by MUSE for a total of 6.4 h of exposure time. We retrieved and analyzed the archival observation (Gilli et al. 2019) and obtained redshifts for the three X-ray sources in the MUSE field. Together, these observations allowed us to spectroscopically identify seven further X-ray sources. Finally, the counterparts of ten X-ray sources (excluding the $z = 6.31$ quasar SDSS J1030+0524 itself) had already been observed as part of the SDSS (Ahumada et al. 2020). In total, 174 out of 243 extragalactic X-ray sources with an optical and/or NIR counterpart have been targeted at least once in our spectroscopic campaigns or had archival SDSS spectra.

3.3. Redshift measurements and spectral classification of the X-ray source counterparts

We determined a spectroscopic redshift and classification for 123 out of the 174 *Chandra* J1030 sources for which we have an available spectrum. The redshifts measurement was done by means of automatic software (IRAF: rvidlines and xcsao) and checked through visual inspection of the 1D and 2D spectra. The spectral analysis was performed using the IRAF interactive package `splot` and, according to the measured features, the X-ray source counterparts were grouped into four classes: (i) broad-line AGNs (BL-AGNs), i.e., objects with spectra showing broad ($FWHM > 1500 \text{ km s}^{-1}$) emission lines; (ii) narrow-line AGNs (NL-AGNs), i.e., objects with spectra showing narrow ($FWHM < 1500 \text{ km s}^{-1}$) high-ionization emission lines⁴; (iii) emission line galaxies (ELGs), i.e., sources whose spectra do not show any detectable AGN features, but a flat or bluish continuum and low-ionization emission lines that are compatible with typical star formation activity; and (iv) early-type galaxies (ETGs), i.e., sources whose spectra are dominated by a red continuum with pronounced absorption lines suggestive of an evolved stellar population and no or very faint emission lines. We stress that the spectral classification does not always describe the nature of the source, but it simply reflects the presence of spectral features that may or may not be traced back to the presence of an AGN. In particular, the NL-AGN classification is often connected to the

Table 2. Number of sources by spectral classification, and number of objects per spectral class where the spectroscopic and photometric redshifts are in agreement, i.e., where $\Delta z = |z_{\text{phot}} - z_{\text{spec}}| < 0.15 (1 + z_{\text{spec}})$.

Class	N_{src}	Agree
BL-AGN	43	28 (65%)
NL-AGN	20	14 (70%)
ELG	28	25 (89%)
ETG (with hybrids)	32 (31)	30 (97%)
Overall	123 (122)	97 (80%)

Notes. We note that XID 143 is an ETG located nearby a bright source for which no reliable photometry (and consequently no photometric redshift) could be estimated.

presence or detectability in the observed spectral range of high-ionization emission lines which can be directly linked to nuclear activity. It is worth noting that more than half of the sources classified as ELGs lie at $z \sim 1$, where the brightest high-ionization lines are out of the optical range.

Table 2 shows the number of sources for each spectral class: 63 sources are classified as AGNs, either broad-line (43 objects) or narrow-line (20 sources). A further 60 sources have spectra dominated by the host galaxy emission: 28 are ELGs, while 32 are ETGs. Among the ETGs, the majority (21, 66%) also show faint emission lines perhaps indicative of obscured and/or low-efficiency supermassive black hole (SMBH) accretion. We report an example of a spectrum for each class of sources in Fig. 3. All spectra are available online⁵ and at the CDS.

In Fig. 4 we plot the r_{AB} magnitude against the spectroscopic redshift for the 123 identified *Chandra* sources, with different symbols according to their spectral class: as expected, the unobscured (broad-line) AGNs stand out as the most luminous objects at all redshifts, whereas obscured (narrow-line) AGNs occupy the same loci as host-galaxy-dominated sources. We use the spectroscopic information to assess the reliability of our photometric redshifts in Sect. 4.2.

4. Photometric redshift of the *Chandra* J1030 sources

4.1. Spectral energy distribution fitting procedure

In Sect. 2.2, we present the multi-year effort which allowed us to image the J1030 field with a large variety of facilities in the optical and NIR. Overall, the *Chandra* J1030 field was observed in up to 21 different bands: while only four objects were detected in all 21 bands, 154 out of 243 objects (63% of the sources with a photometric redshift) have a detection in at least 14 bands. We report in Fig. 5 the cumulative distribution function of the number of bands in which the sources were detected.

We use the Hyperz code (Bolzonella et al. 2000) to fit our SEDs. The code fits a range of SED models to the data points and determines the best-fit parameters through a standard minimum χ^2 approach. Specifically, the best-fit solution is the one where,

$$\chi^2(z) = \sum_{i=1}^{N_{\text{data}}} \frac{(F_{\text{obs},i} - k \times F_{\text{temp},i}(z))^2}{\sigma_i^2}, \quad (1)$$

is minimized. The redshift value varies within the range $z = [0-7]$, in steps of $\Delta z = 0.02$. N_{data} is the number of SED data

⁴ E.g., [OIII] λ 5007; [NeV] λ 3427; HeII λ 1640; and CIV λ 1549.

⁵ http://j1030-field.oas.inaf.it/xray_redshift_J1030.html

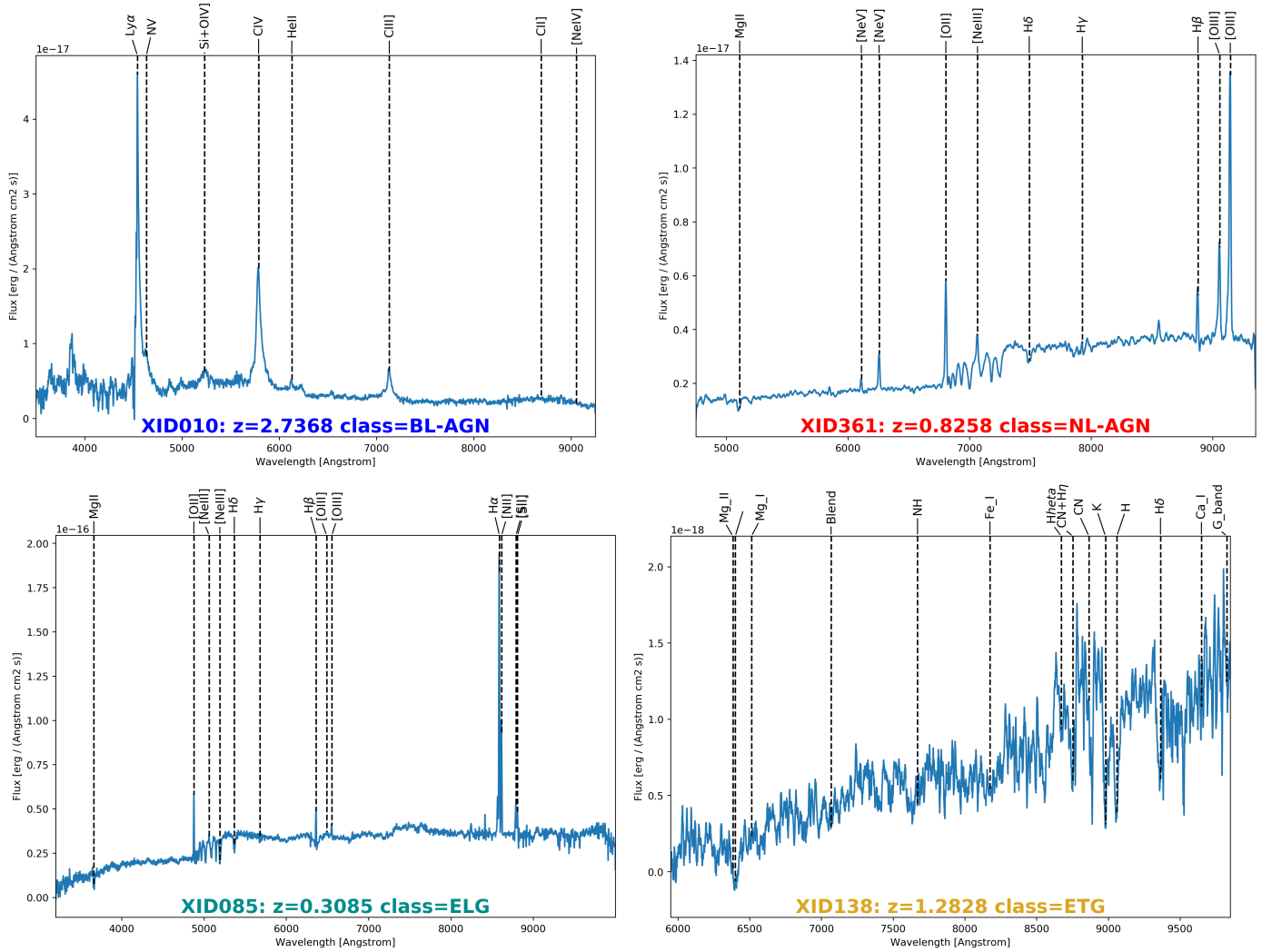


Fig. 3. Example of MODS spectra of four *Chandra* J1030 optical counterparts: all the spectra were obtained with the LBT strategic program. From the top left, moving clockwise: XID-10 (BL-AGN); XID-361 (NL-AGN); XID-138 (ETG); XID-85 (ELG).

points, $F_{\text{obs},i}$ is the observed flux for a given data point in a certain band, $F_{\text{temp},i}(z)$ is the expected model flux in the same band, σ_i is the observed flux uncertainty, and k is a normalization constant. If a source is not detected in a given band, we assume $F_{\text{obs},i} = \sigma_i = m_{\text{UL},i}/2$, where $m_{\text{UL},i}$ is the upper limit on the magnitude in the i -th band.

The SED fitting procedure is performed twice for each object; in all cases, we adopt the Calzetti et al. (2000) extinction law to take reddening into account. First we use 75 templates dominated by stellar emission, following the work by Ilbert et al. (2013). More specifically, 19 out of 75 are empirical templates from the SWIRE template library (Polletta et al. 2007): 7 for elliptical galaxies, 12 for different classes of spiral galaxies (S0, Sa, Sb, Sc, Sd and Sdm). A further 12 templates describe the SED of starburst galaxies, although no emission lines are included in the template. Finally, the remaining 44 templates are based on the Bruzual & Charlot (2003) stellar population synthesis models, and were first introduced in Ilbert et al. (2009, 2013). We allowed the absolute, nonabsorption-corrected magnitude of the sources to vary in the range $r_{\text{abs,AB}} = [-30 : -16]$: we note that this range is fairly conservative, particularly at the high-luminosity end. For each source, we therefore obtain a “galaxy” best-fit photometric redshift, $z_{\text{phot,gal}}$ with an associ-

ated χ^2_{gal} (i.e., the minimum $\chi^2(z)$ value among those computed by means of Eq. (1)).

We then fit our SEDs using the 30 templates originally reported in Salvato et al. (2009, see their Table 2 for a complete description). In most of these templates, the AGN contribution is taken into account: in some cases the AGN is fully dominant, while in many others the template is a hybrid where both the AGN and the host contribute to the overall SED, with the relative contribution of the two components varying in the range 10–90%. These fractions are computed between 5000 and 5200 Å for templates of an unobscured Type 1 AGN, and between 0.9 and 1 μm for templates of an obscured Type 2 AGN. As can be seen from the SEDs plotted in Fig. 3 of Salvato et al. (2009), the ratios computed in the above-mentioned bandwidths are a good approximation of the bolometric ones.

We allowed the absolute, nonabsorption-corrected magnitude of the sources to vary in the range $r_{\text{abs}} = [-30 : -21]$. We chose a narrower magnitude range with respect to the one we used for the Ilbert et al. (2009) templates, because when comparing our photometric redshifts with the spectroscopic ones (see Sect. 4.2) we find that allowing for fainter luminosities can lead to several erroneous low- z solutions, particularly for those sources where the SED is AGN-dominated, with implausibly

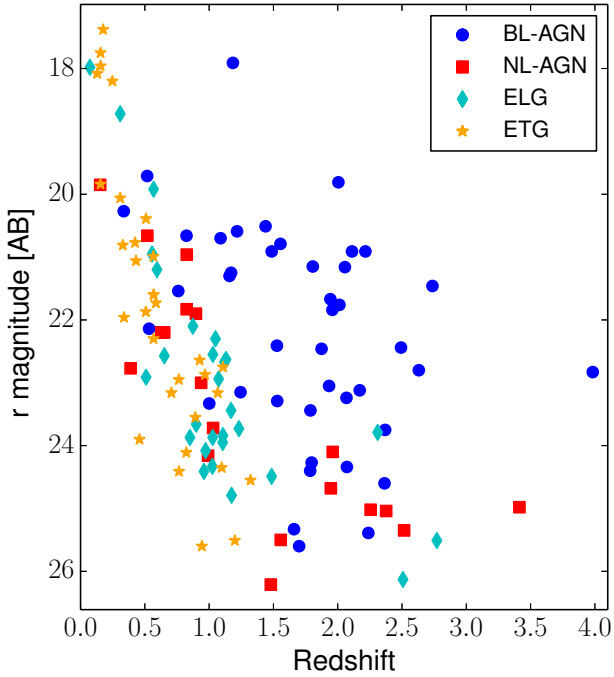


Fig. 4. Total AB magnitude in the r band from Nanni et al. (2020) as a function of spectroscopic redshift for 122 *Chandra* J1030 sources with z_{spec} : we do not include the $z = 6.3$ QSO SDSSJ1030+0525 in this plot, which is not detected in the r -band. BL-AGNs are plotted as blue circles, NL-AGN as red squares, ELGs as cyan diamonds, and ETGs as orange stars.

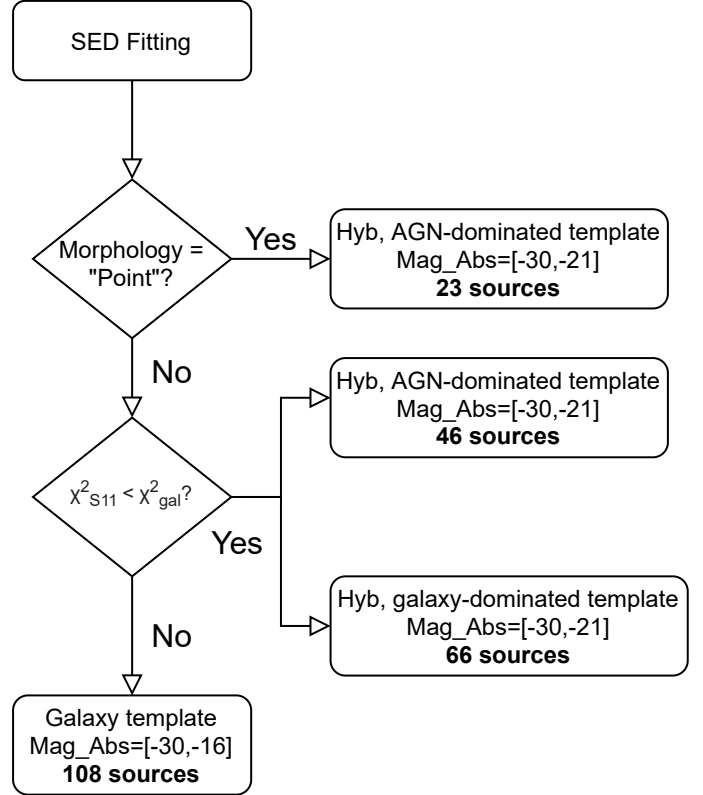


Fig. 6. Flow chart of the procedure we adopted to choose the best-fit SED template.

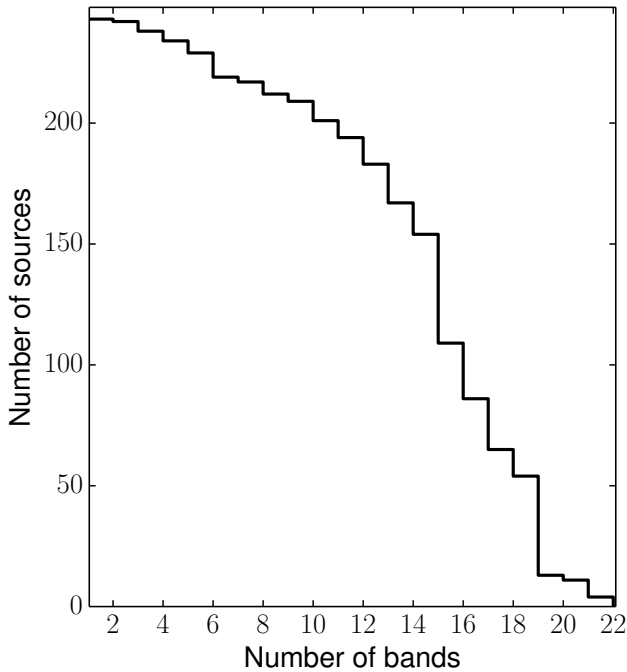


Fig. 5. Cumulative distribution function of the number of bands in which sources were detected.

low AGN luminosities. By means of the quantity χ_{Hyb}^2 , defined as in Eq. (1), we compute a hybrid (hereafter “Hyb”) best-fit photometric redshift, $z_{\text{phot,Hyb}}$.

We then use the flow chart reported in Fig. 6 to determine which of the two photometric redshifts should be chosen as the

best-fit $z_{\text{phot,best}}$. The first criterion we adopt is based on the optical morphology of the source, because it has been shown that using the morphological information can help to significantly improve the reliability of the photometric redshifts (e.g., Salvato et al. 2009, 2011; Ananna et al. 2017). Specifically, following the approach discussed in Ananna et al. (2017), if an object is classified as point-like we choose a Hyb AGN-dominated template solution (i.e., one where the AGN contribution is greater than or equal to 50%) even in those cases where the galaxy χ^2 is smaller than the Hyb one. We then assign an “AGN” SED to these objects. Based on the STAR_CLASS parameter mentioned above, there are 23 point-like sources among the 243 *Chandra* J1030 extragalactic objects, and 9 of them have $\chi_{\text{Hyb}}^2 > \chi_{\text{gal}}^2$ (which means that the “galaxy” solution would have been statistically favored).

For the remaining 220 objects, which are morphologically classified as “extended”, we compare the two best-fit χ^2 values: the number of degrees of freedom is the same for both families of templates, being $\text{d.o.f.} = N_{\text{filt}} - 1$, where N_{filt} is the number of photometric data points in the SED. Therefore, using χ^2 is fully equivalent to using the reduced χ^2 . For the 108 sources with $\chi_{\text{gal}}^2 < \chi_{\text{Hyb}}^2$, we take $z_{\text{phot,best}} = z_{\text{phot,gal}}$, and the SED of these objects is classified as “galaxy”. Finally, there are 112 sources where $\chi_{\text{Hyb}}^2 < \chi_{\text{gal}}^2$: here we take $z_{\text{phot,best}} = z_{\text{phot,Hyb}}$. Among these 112 objects, we assign an “AGN” SED to the 46 sources whose SED is fitted with a template where the AGN contribution to the overall emission is greater than or equal to 50%. The remaining 66 sources, where the AGN contribution is subdominant, are associated with a “galaxy” SED.

In summary, 69 out of 243 sources (i.e., 28% of the *Chandra* J1030 extragalactic sample) have an AGN-dominated SED.

Such a fraction is in close agreement with those measured in other deep X-ray surveys, such as, e.g., COSMOS (33% [Marchesi et al. 2016a](#), ; this fraction was obtained taking into account both the spectroscopic information, when available, and the best-fit SED template one). We note that this classification is purely based on the optical and near infrared SED fitting: based on their X-ray emission, we expect almost all of the *Chandra* J1030 sources to host an AGN.

For all sources, we also computed a redshift probability distribution function (PDZ) which allows us to reliably estimate how well constrained the photometric redshifts are. The PDZs have a bin $\Delta z = 0.02$, and we computed them following the approach presented in [Vito et al. \(2018\)](#), see also, e.g., [Ilbert et al. 2009](#)). For each redshift bin, $\text{PDZ}(z) \propto e^{-\chi^2(z)/2}$, where χ^2 is the χ^2 value at redshift z of the SED fitting computed by [Hyperz](#). The $\text{PDZ}(z)$ values obtained this way are then normalized to the unit integral in the considered redshift range. For each source, we assign a PDZ value only to those redshifts whose absolute magnitude is within the permitted range we use in the SED fitting (i.e., $r_{\text{abs}} = [-30 : -21]$ for sources best fitted with an AGN template, and $r_{\text{abs}} = [-30 : -16]$ for sources best fitted with a galaxy template).

It has been shown (e.g., [Yang et al. 2014](#)) that the PDZs derived directly from χ^2 are usually too narrow, possibly due to a systematic underestimation of the photometric uncertainties. To quantify this effect, we computed the fraction of *Chandra* J1030 sources where the spectroscopic redshift falls within the 68% confidence region of the photometric redshift (i.e., within the narrowest redshift interval for which the integrated PDZ is equal to 0.68). For the PDZ to properly represent the photometric redshift uncertainties, this fraction should be exactly 68%; however, we find that in our sample the actual fraction is just 18% (22 out of 122 objects with z_{spec}).

To fix this discrepancy, we therefore searched for a constant a that multiplies the uncertainties on the photometric measurements so that $\sigma_{\text{corr}} = a\sigma$ and consequently $\text{PDZ}(z_{\text{corr}}) \propto e^{-\chi_{\text{corr}}^2(z)/2}$, where,

$$\chi_{\text{corr}}^2(z) = \sum_{i=1}^{N_{\text{data}}} \frac{(F_{\text{obs},i} - k \times F_{\text{temp},i}(z))^2}{a^2 \sigma_i^2}. \quad (2)$$

We note that the correction factor a is the same for all redshifts, and it therefore does not affect the redshift best-fit value. We find that we need a correction factor of $a = 3.7$ to have 68% of our sources with a spectroscopic redshift ending up in the photometric redshifts 68% confidence region. As a reference, [Vito et al. \(2018\)](#) computed $a = 2.1$, 2.1, and 1.2 for the photometric redshifts measured in the CANDELS/*Chandra* Deep Field-South by [Hsu et al. \(2014\)](#), [Skelton et al. \(2014\)](#), and [Straatman et al. \(2016\)](#), respectively. We note that all these works made use of narrow- and/or intermediate-band photometry, which significantly improve the accuracy of the photometric redshifts, as we further discuss in Sect. 4.3. Furthermore, we note that the a value we obtain is driven by the presence in our spectroscopic sample of a large population of BL-AGNs (43 out of 123, 35%), a population of sources for which computation of the photometric redshift is more complex on average (see Sect. 4.2). Indeed, if we compute a for the non BL-AGN population we obtain $a = 2.8$, which is closer to the values obtained in the CANDELS field.

In the remainder of this work, and particularly when analyzing the *Chandra* J1030 high-redshift sample (Sect. 7), we use the corrected redshift probability distribution function, $\text{PDZ}(z)_{\text{corr}}$, when using the photometric redshifts. As for the spectra, all the

SEDs and PDZs are made available online⁶; SEDs and PDZs are available both in png and in ASCII format. A copy is also available at the CDS.

4.2. Comparison with spectroscopic redshifts

As mentioned in Sect. 3, our spectroscopic follow-up campaign allowed us to obtain a spectroscopic redshift and a spectroscopic classification for 123 out of 243 *Chandra* J1030 extragalactic sources.

We find that 97 out of 122 sources with z_{spec} ⁷ have their best-fit photometric redshift in agreement with the spectroscopic one: we assume that the two redshifts are in agreement if $\|z_{\text{phot}} - z_{\text{spec}}\|/(1 + z_{\text{spec}}) < 0.15$ (see, e.g., [Marchesi et al. 2016a](#)). To further quantify the reliability of our photometric redshifts and their agreement with the spectroscopic ones, we compute the normalized median absolute deviation $\sigma_{\text{NMAD}} = 1.48 \times \text{median}(\|z_{\text{phot}} - z_{\text{spec}}\|/(1 + z_{\text{spec}}))$ ([Hoaglin et al. 1983](#)). The whole sample of 122 sources with spectroscopic redshift has $\sigma_{\text{NMAD,All}} = 0.065$; as mentioned above, the fraction of outliers is $\eta_{\text{All}} = 1 - (97/122) = 20.5\%$.

As this outlier fraction is somewhat higher than those measured in other works (see Sect. 4.3), we break our spectroscopic sample down into different subsamples, with the goal being to determine for which types of objects there is a higher probability of computing an incorrect photometric redshift. We find two main indicators of a large outlier probability.

1. Out of 43 spectroscopically classified BL-AGNs, there are 16 photometric outliers ($\eta_{\text{BL}} = 35\%$): this means that 65% of the outliers in our sample are BL-AGNs. This result is not unexpected, because the SEDs of luminous, unobscured AGNs are known to be more difficult to model. This is particularly true for SEDs based on broadband photometry only (e.g., [Salvato et al. 2011](#); [Ananna et al. 2017](#)), like the ones analyzed in this work.
2. Out of 20 morphologically classified point-like sources with a spectroscopic redshift (three point-like sources only have a photometric redshift), there are 8 photometric outliers ($\eta_{\text{Point}} = 40\%$). As for BL-AGNs, photometric redshifts for point-like sources are known to be more difficult to compute than those of extended objects, and indeed 18 out of 20 point-like sources are spectroscopically classified as BL-AGNs. This high fraction of outliers in point-like sources is due to the fact that they are, for the most part, objects where the emission is AGN-dominated and SED templates are less accurate, especially when fitting SEDs lacking narrow-band photometry information. We also note that the morphological criterion described in Sect. 4.1 allowed us to recover three photometric redshifts that would have otherwise been outliers based on the $\chi_{\text{gal}}^2 < \chi_{\text{AGN}}^2$ classification alone.

In Fig. 7 we show the distribution of the photometric redshifts as a function of the spectroscopic ones (left) and the distribution of $\Delta z/(1 + z_{\text{spec}})$ (right): in the top panels, we use different markers for each of the four spectroscopic classes we introduced in Sect. 3.3, while in the bottom panels we highlight in pink the point-like sources. A visual comparison between the left panels clearly underlines how most point-like sources are BL-AGNs. As can be seen in the top panels, if we remove the

⁶ http://j1030-field.oas.inaf.it/xray_redshift_J1030.html

⁷ We do not include XID-143 ($z_{\text{spec}} = 0.3282$) in our comparison because its photometry is contaminated by a much brighter nearby object, which prevented us from obtaining a reliable photometric redshift.

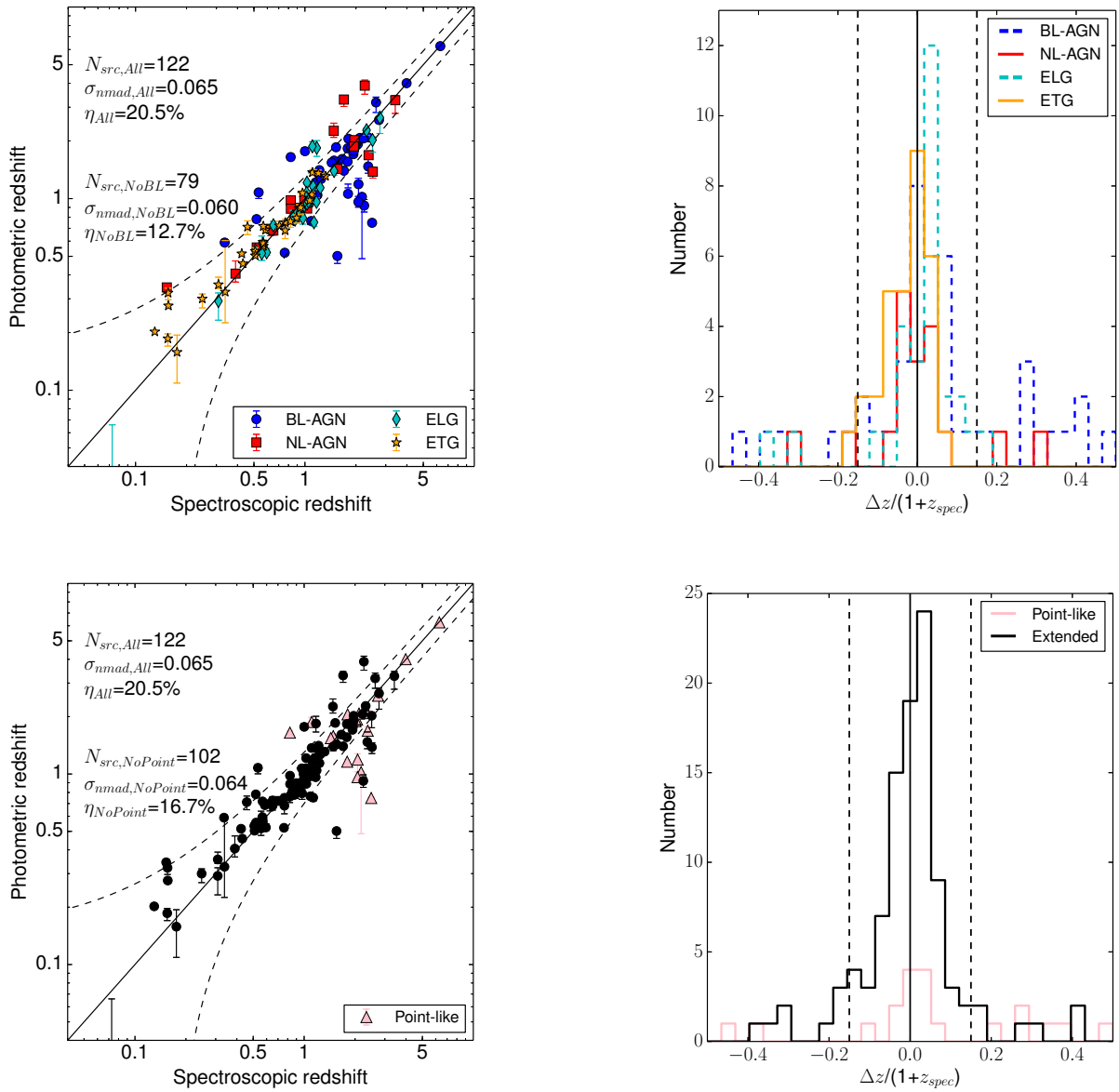


Fig. 7. *Left:* photometric redshift as a function of the spectroscopic one for the 122 J1030 sources with an available spectroscopic redshift. The black solid line marks the $z_{\text{spec}} = z_{\text{phot}}$ relation, while the dashed lines contain the $z_{\text{phot}} = z_{\text{spec}} \pm 0.15(1 + z_{\text{spec}})$ region. Sources within this region are deemed to have a reliable photometric redshift. In the two panels, we highlight different classes of sources which are more likely to have a large fraction of outliers: spectroscopically classified BL-AGNs (blue circles, *top*); morphologically classified point-like sources (pink triangles, *bottom*). *Right:* distribution of $\Delta z/(1 + z_{\text{spec}})$ for the sources reported in the *left panel*. The color code in the *right panels* matches that in the *left panels*.

BL-AGN population from our sample, we significantly improve both the accuracy, $\sigma_{\text{NMAD,NoBL}} = 0.060$, and the outlier fraction, $\eta_{\text{NoBL}} = 12.7\%$.

It is worth noting that the sample of 120 objects without a spectroscopic redshift includes only three point-like sources, and more importantly it is unlikely that it includes a significant number of BL-AGNs. As shown in Fig. 8, BL-AGNs are, on average, significantly brighter than the sources with no spectroscopic redshift. Specifically, the average r_{AB} magnitude for BL-AGNs is $\langle r_{\text{AB,BL}} \rangle = 22.1$, and only one out of 43 BL-AGNs, the $z = 6.3$ QSO SDSSJ1030+0525, is not detected with LBT/LBC in the r band. Among the 120 sources without z_{spec} , instead, 21 (18%) do not have a r -band detection, and the average r_{AB} magnitude of the remaining 100 sources is $\langle r_{\text{AB,no-spec}} \rangle = 24.9$. We visually inspect the objects lacking r -band detection, and find

that the lack of r_{AB} magnitude is not caused by artifacts or by issues in measuring the source flux. Therefore, these objects are highly likely to be intrinsically faint, heavily obscured, or at high redshift, or indeed a combination of the three.

4.3. Comparison with previous surveys

Table 3 shows the statistical properties of the photometric redshifts computed in several X-ray surveys. It can be seen that both σ_{NMAD} and the fraction of outliers, η , strongly depend on the number of photometric data points used to perform the SED fitting. Consequently, surveys such as COSMOS, AEGIS-X, or CANDELS/GOODS-S strongly benefit from years of multi-wavelength imaging campaigns, and have smaller σ_{NMAD} and η than our sample. Notably, all these surveys also have

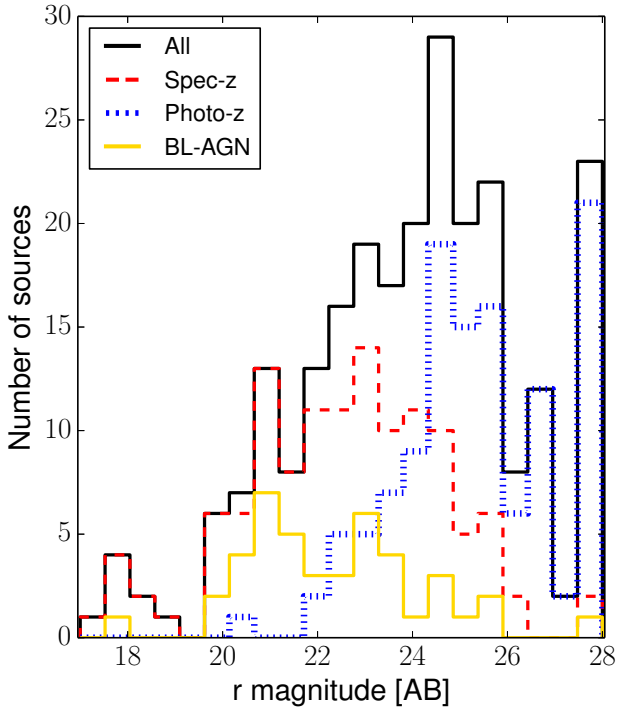


Fig. 8. AB magnitude in the r band of all the 243 extragalactic sources in the *Chandra* J1030 sample with an optical and/or NIR counterpart (solid black line), the 123 sources with spectroscopic redshift (dashed red line), the 120 sources with only photometric redshift (dotted blue line) and the 43 BL-AGNs (solid yellow line). We assign to the 24 sources with no r -band detection a magnitude $r_{\text{AB}} = 27.5$, which is their upper limit. The BL-AGN with an r -band upper limit at $r_{\text{AB}} = 27.5$ is the $z = 6.3$ QSO SDSSJ1030+0525.

narrow- or intermediate-band magnitude information, which is key to properly measuring the photometric redshift of unobscured, BL-AGNs (e.g., Ananna et al. 2017).

The σ_{NMAD} and outlier fraction we obtain for J1030 are instead in good agreement with those obtained for the Stripe 82X wide-area survey ($\sigma_{\text{NMAD}} = 0.061$, $\eta = 13.7\%$ LaMassa et al. 2013; Ananna et al. 2017) and those of the Lockman Hole survey ($\sigma_{\text{NMAD}} = 0.069$, $\eta = 18.3\%$ Fotopoulou et al. 2012). Both surveys use a number of similar filters to those used here (14 filters in the Stripe 82X survey and 21 in the Lockman Hole one), and lack narrow- or intermediate-band information.

4.4. Comparison with Peca et al. (2021)

A subsample of sources analyzed in the present work was studied in a recent paper by our group (Peca et al. 2021). That work was based on the analysis of 54 obscured AGN candidates selected through their X-ray hardness ratio ($\text{HR} > -0.1$, where $\text{HR} = \frac{H-S}{H+S}$, and H and S are the net count rates in the 2–7 keV and 0.5–2 keV, respectively). These objects also had more than 30 net counts detected in the 0.5–7 keV band, thus making it possible to perform an X-ray spectral fit. Peca et al. (2021) estimated both a photometric redshift (in 46 objects) and an X-ray redshift (38 objects) for the majority of the sources in the sample.

In Peca et al. (2021), the photometric redshifts were computed using Hyperz, as we do in this work. However, neither the IRAC CH3 and CH4 nor the HST data points were included in the SEDs. Furthermore, the objects in the Peca et al. (2021) sample were all obscured AGN candidates, where the opti-

cal emission is usually dominated by the host galaxy. For this reason, only the 75 “galaxy” templates were used to perform the SED fitting, without including any “AGN” template in the analysis.

Out of 46 Peca et al. (2021) sources with a photometric redshift, 31 (67%) are in agreement with those computed in the present work. The agreement is assessed by following the same criterion we used to measure the agreement between spectroscopic and photometric redshifts in Sect. 4.2 (i.e., $\|z_{\text{phot},M21} - z_{\text{phot},P21}\|/(1 + z_{\text{phot},M21}) < 0.15$, where $z_{\text{phot},M21}$ is the photometric redshift computed in this work and $z_{\text{phot},P21}$ is the one derived in Peca et al. 2021). The remaining 15 sources are “outliers”; notably, 10 of them are best-fitted with an AGN SED template, which is also the most likely cause of the discrepancy between the two photometric redshifts. It is also worth noting that 5 out of the 15 outliers also have a spectroscopic redshift: in 4 out of 5 cases, the agreement between photometric and spectroscopic redshift improves using the photometric redshifts presented in this paper.

To get an overall understanding of the accuracy of the photometric redshifts in the two works, we selected the 23 out of 46 sources that also have a spectroscopic redshift. For this subsample, our photometric redshifts have $\sigma_{\text{NMAD},M21} = 1.48 \times \text{median}(\|z_{\text{phot}} - z_{\text{spec}}\|/(1 + z_{\text{spec}})) = 0.062$, while for the same objects Peca et al. (2021) have $\sigma_{\text{NMAD},P21,\text{phot}} = 0.090$. The better accuracy of the photometric redshifts reported in this work can be explained with both the additional AGN templates used in our analysis and the small number of photometric data points used in Peca et al. (2021).

Finally, we measured the agreement between our spectroscopic redshifts and the X-ray redshifts computed in Peca et al. (2021): out of 19 objects with both z_{spec} and z_X , 13 have $\Delta z/(1 + z_{\text{spec}}) < 0.15$. The sample has $\sigma_{\text{NMAD},P21,X} = 0.150$. We also note that for three out of six outliers the X-ray redshift is in agreement with the spectroscopic one within its 90% confidence uncertainty: as already discussed in Peca et al. (2021), these results confirm that in obscured AGNs lacking a spectroscopic redshift, X-ray redshifts can provide a reliable estimate of their distances.

4.5. Comparison with EAZY

To perform a consistency check on the quality of our photometric redshifts, we recomputed them using the EAZY code (Brammer et al. 2008). We followed the same procedure we used with Hyperz and presented in Sect. 4.1: specifically, we fitted each SED twice, first with galaxy-only templates, then with hybrids that include an AGN contribution. We then chose between the two best-fit solutions using the same flowchart reported in Fig. 6. We also used the K -band prior described in Brammer et al. (2008).

Out of the 243 *Chandra* J1030 extragalactic sources, 190 have photometric redshifts in agreement between the two codes, where the agreement is assessed using the criterion $\Delta z/(1 + z_{\text{Hyperz}}) < 0.15$. The fraction of agreeing photometric redshifts is therefore $\sim 78\%$, with $\sigma_{\text{NMAD}} = 0.067$. These results suggest that the Hyperz – computed photometric redshifts are reliable: as a reference, in a recent work on the eROSITA Final Equatorial-Depth Survey (Salvato et al. 2021), photometric redshifts were computed using both LePHARE and the machine learning-based method DNNz, and the outlier fraction was 38.4%.

Furthermore, in our work, the subsample with photometric redshifts in disagreement is significantly populated by sources

Table 3. Normalized median absolute deviation ($\sigma_{\text{NMAD}} = 1.48 \times \text{median}(\|z_{\text{phot}} - z_{\text{spec}}\|/(1 + z_{\text{spec}}))$) and fraction of photometric outliers η (i.e., fraction of sources with $\|z_{\text{phot}} - z_{\text{spec}}\|/(1 + z_{\text{spec}}) > 0.15$ with respect to the overall number of sources with spectroscopic redshift) in different X-ray surveys.

Survey	Reference	Area deg ²	N_{Band} (Narrow)	Accuracy σ_{NMAD}	Outliers η
J1030	This work	0.09	21 (0)	0.065	20.5%
J1030	This work, no BL-AGN	0.09	21 (0)	0.060	12.7%
Lockman Hole	Fotopoulou et al. (2012)	0.13	21 (0)	0.069	18.3%
Stripe 82X	Ananna et al. (2017)	31.3	14 (0)	0.061	13.7%
AEGIS-XD	Nandra et al. (2015)	0.29	35 (18)	0.040	5.1%
CDF-S	Hsu et al. (2014)	0.13	36 (18)	0.014	6.7%
ECDF-S	Hsu et al. (2014)	0.3	36 (18)	0.016	10.1%
Chandra COSMOS-Legacy	Marchesi et al. (2016a)	2.2	38 (18)	0.015	6.0%

Notes. We also report the number of filters used to compute the photometric redshifts and, in parentheses, the number of narrow-band filters used in the computation.

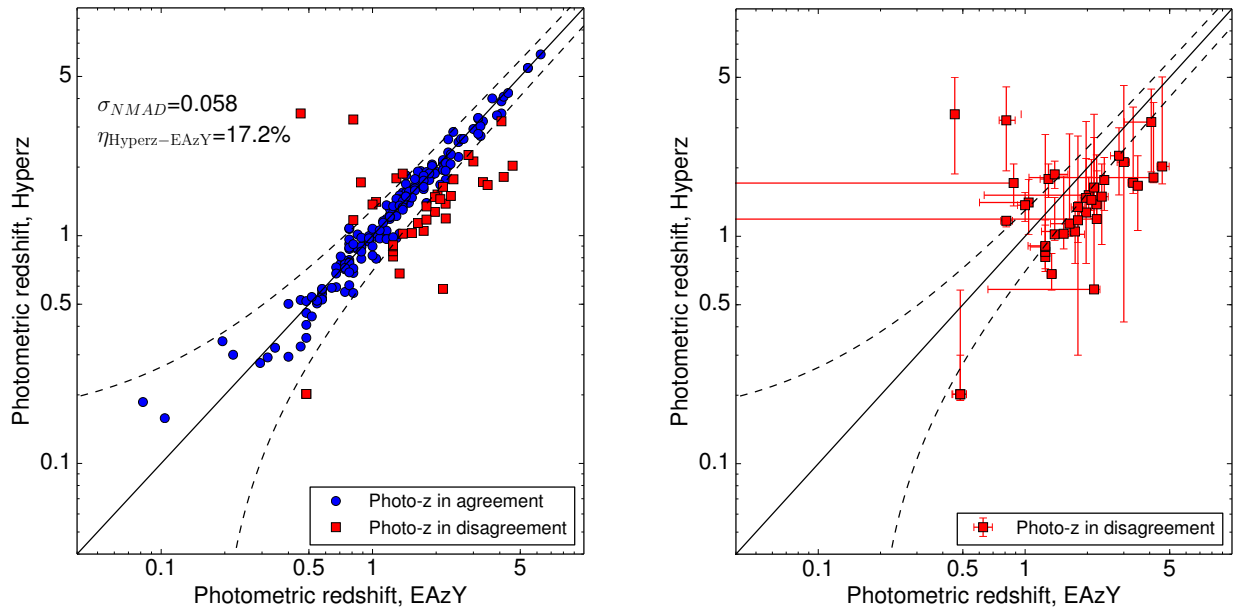


Fig. 9. *Left:* photometric redshifts computed with Hyperz as a function of those computed with EAZY. The black solid line marks the $z_{\text{EAZY}} = z_{\text{Hyperz}}$ relation, while the dashed lines contain the $z_{\text{EAZY}} = z_{\text{Hyperz}} \pm 0.15(1 + z_{\text{Hyperz}})$ region. Sources where $\Delta z/(1 + z_{\text{Hyperz}}) < 0.15$ are plotted as blue circles, while sources where $\Delta z/(1 + z_{\text{Hyperz}}) > 0.15$ are plotted as red squares. *Right:* same as *left*, but with only the sources where $\Delta z/(1 + z_{\text{Hyperz}}) > 0.15$ and their 68% uncertainties.

that are detected only in the K , IRAC, or HST bands, and therefore these have very large uncertainties and a generally flat PDZ. When excluding these 21 sources from the computation, the fraction of objects with photometric redshifts in disagreement between Hyperz and EAZY drops to 17% (38 outliers out of 222 sources), with $\sigma_{\text{NMAD}} = 0.058$. Figure 9 shows the photometric redshifts computed with Hyperz as a function of those computed with EAZY, excluding the 21 sources with low data quality mentioned above. As can be seen, most of the outliers are just outside the $\Delta z/(1 + z) = 0.15$ threshold (left panel), and many sources have photometric redshifts in agreement within the 68% uncertainties (right panel). We note that here no a correction is applied to the EAZY PDZs, and therefore the x -axis errors should be treated as conservative lower limits.

Finally, we also tested the “multi-template” option available within EAZY, which allows one to fit a combination of two or more templates among those available in the template library. We did not find any significant improvement in our photometric redshifts (i.e., we did not find an improvement either in the fraction of photometric redshifts in agreement with the spectroscopic ones, or in the fraction of EAZY photometric redshifts in agreement with the Hyperz ones). This result is not unexpected, given that many of the templates we use in this work are already of a combination of a galaxy and an AGN, and therefore it was likely that the need for further combinations of templates would have been marginal.

In summary, the results we obtained with EAZY strengthen the reliability of the Hyperz photometric redshifts. In the rest of the paper, we therefore make use of the Hyperz – computed photo- z .

5. The *Chandra* J1030 multi-wavelength catalog

The *Chandra* J1030 multi-wavelength catalog is available online⁸, in fits format. Here we describe the catalog columns.

- *Column 1.* X-ray source ID, from Nanni et al. (2020).
- *Columns 2–3.* X-ray coordinates of the source, from Nanni et al. (2020).
- *Column 4.* ID from the z -detected LBC catalog (Morselli et al. 2014). Sources detected in the r -deep catalog only are flagged with a r , and sources detected only in the IRAC band are identified as “IRAC NNN”, where NNN is a numerical ID.
- *Columns 5–6.* Coordinates of the source identified as the counterpart of the X-ray source in Nanni et al. (2020).
- *Columns 7–10:* Counterpart magnitude AUTO in the r , z , J , and $4.5\mu\text{m}$ bands, respectively, as reported in Nanni et al. (2020).
- *Column 11.* Redshift of the source. If a spectroscopic redshift is available, we select it as the source redshift; otherwise, the photometric redshift is reported.
- *Column 12.* Spectroscopic redshift of the source, z_{spec} . Sources with a spectrum lacking clearly identifiable features are flagged with -9.99 ; sources with no detection in a slit are flagged with -8.88 ; and sources for which no spectroscopic observations were performed are flagged with -99 .
- *Column 13.* Spectral quality flag. 0 – Sources without z_{spec} ; 1 – Sources with uncertain redshift; 2 – Sources with secure redshift.
- *Column 14.* Spectral type.
- *Column 15.* Spectral origin. D–DEIMOS on Keck II; F–FORS2 on VLT; L–LUCI on LBT; M–MODS on LBT; Mu–MUSE on VLT; S–SDSS.
- *Column 16.* Photometric redshift.
- *Columns 17–18.* 68% confidence level lower and upper boundaries of the photometric redshift, computed after applying the σ_{corr} correction presented in Sect. 4.1.
- *Column 19.* Reduced χ^2 of the photometric redshift.
- *Column 20.* Template class of the photometric redshift (AGN or galaxy).
- *Column 21.* Source morphology (point-like or extended), determined using the LBC z -band image.
- *Column 22.* Number of photometric points in the SED of the source. Upper limits are not included.
- *Columns 23–24.* Observed 0.5–2 keV and 2–7 keV fluxes, from Nanni et al. (2020).
- *Columns 25–27.* Hardness ratio ($\text{HR} = \frac{H-S}{H+S}$, where H and S are the net count rates in the 2–7 keV and 0.5–2 keV, respectively) and corresponding 1σ lower and upper boundaries, as reported in Nanni et al. (2020). In sources where the lower and upper boundaries are equal to the best-fit value, the HR is reported as the 3σ upper (lower) limit.
- *Column 28.* Neutral hydrogen column density (N_{H}) derived using the source hardness ratio and redshift (see, e.g., Appendix B in Peca et al. 2021, for a detailed description of this approach), assuming a photon index $\Gamma = 1.8$, as typically seen in AGN X-ray spectra (Marchesi et al. 2016c).
- *Columns 29–30.* Neutral hydrogen column density (N_{H}) 1σ lower and upper boundaries, derived using the source redshift, and the HR 1σ lower and upper boundaries, assuming a power-law photon index $\Gamma = 1.8$. In sources where the lower and upper boundaries are equal to the best-fit value, the column density is a 3σ upper limit.

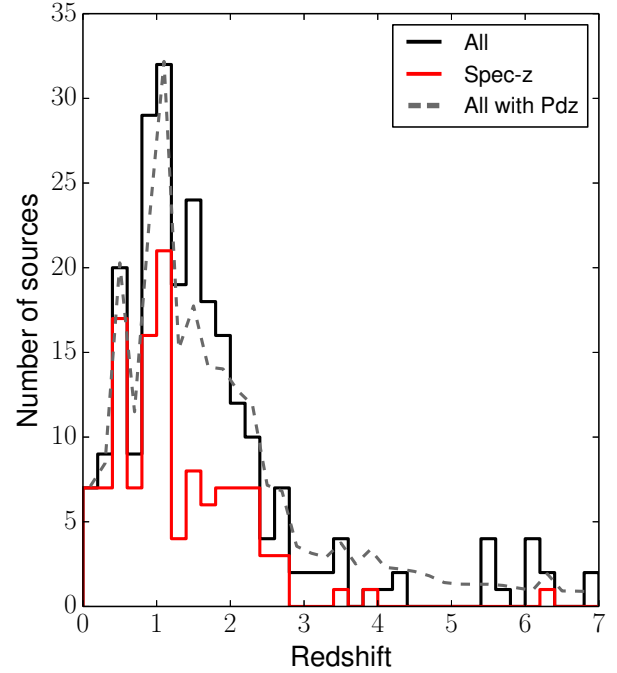


Fig. 10. Redshift distribution of the 243 *Chandra* J1030 sources with an optical and/or IR counterpart. The black solid line shows the overall distribution computed using the best-fit redshift value, while the gray dashed line shows the distribution obtained by summing all the redshift probability distribution function values (for photometric redshifts; spectroscopic redshifts are assumed to have PDZ = 1 at their z_{spec} value). The spectroscopic redshift distribution is shown as a red solid line.

- *Columns 31–32.* Rest-frame, absorption-corrected 0.5–2 keV and 2–7 keV luminosities, obtained using the 0.5–2 keV and 2–7 keV observed fluxes and the column density N_{H} , and assuming a power-law photon index $\Gamma = 1.8$.
- *Columns 33–34.* Detection flag in the 0.5–2 keV and 2–7 keV. “1” means that the source is detected in a given band; “–1” signifies that the source is not detected. If a source is not detected in a given band, the reported flux and luminosity values in the same band are 3σ upper limits.

6. Main properties of the J1030 extragalactic population

6.1. Redshift and luminosity distribution

In Fig. 10 we report the redshift distribution of the *Chandra* J1030 extragalactic sample. The black solid line plots the distribution of the “best” redshifts, which are the spectroscopic redshifts for the 123 sources with z_{spec} , and the photometric redshifts for the remaining 120. We instead use a gray dashed line to plot the sum of the redshift probability distribution functions: if a source has a spectroscopic redshift, we assume PDZ = 1 at the z_{spec} value. Finally, the spectroscopic redshift distribution is shown as a red solid line. As can be seen, in the redshift range $z = [0-3]$ there is good agreement between the overall distribution computed using the spectroscopic redshifts (when available) and the best-fit z_{phot} values and the one obtained using z_{spec} (when available) and the PDZs. This is because the spectroscopic completeness is larger at low redshift and because the photometric redshifts up to $z \sim 3$ have narrower PDZs than high- z sources on average.

⁸ http://j1030-field.oas.inaf.it/chandra_1030

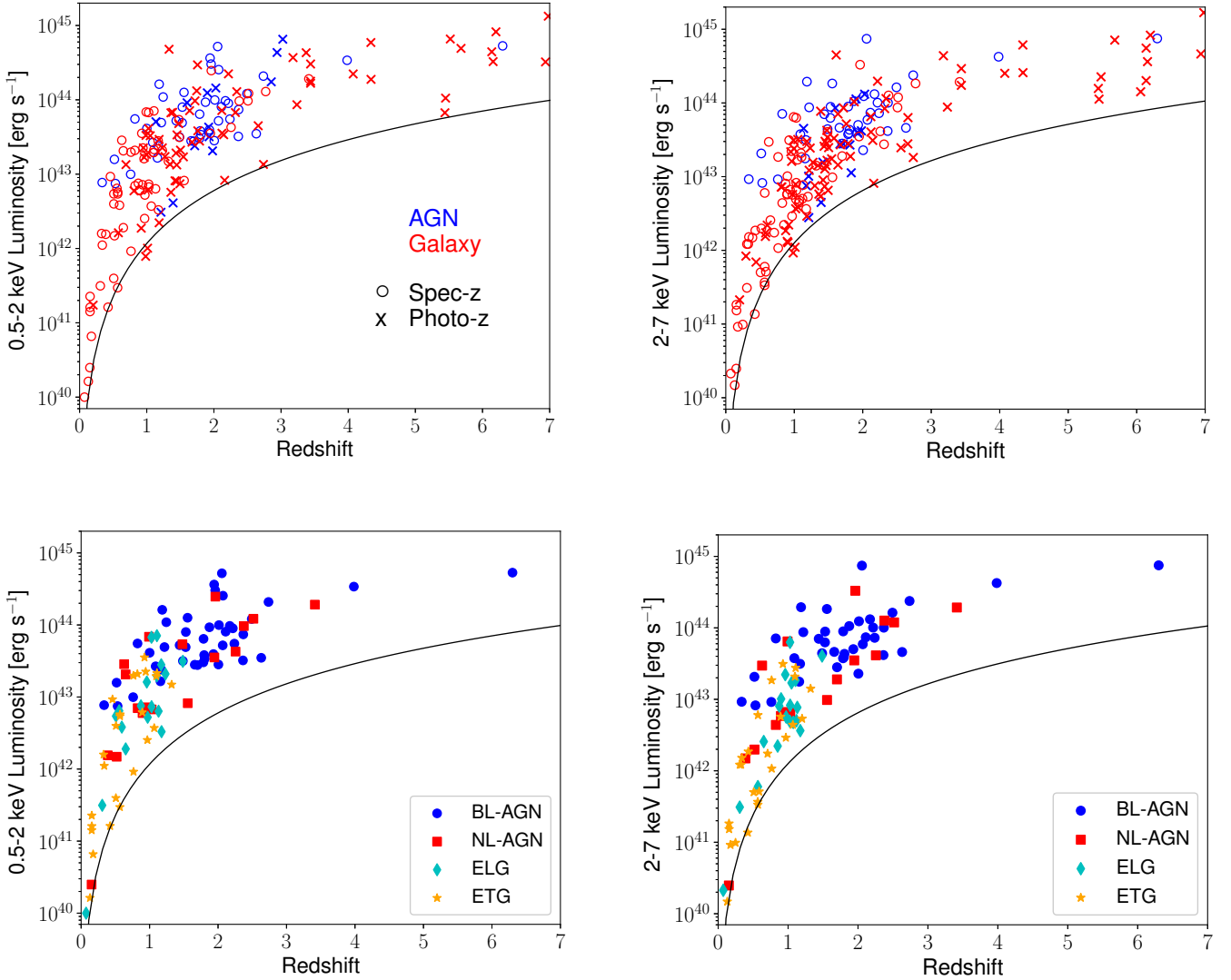


Fig. 11. *Top:* intrinsic, absorption-corrected luminosity in the 0.5–2 keV (*left*) and 2–7 keV (*right*) band as a function of redshift. Sources with a spectroscopic redshift are plotted with circles, while sources with only a photometric redshift are plotted with crosses. Sources with a BL–AGN or NL–AGN spectrum or with a SED best-fitted with an AGN template are plotted in blue, while sources with a ETG or ELG spectrum, or with a SED best-fitted with a galaxy template are plotted in red. We also plot, as a black solid line, the luminosity corresponding to the flux at which 10% of the field is covered. *Bottom:* same as above, but for the spectroscopic subsample alone. BL–AGNs are plotted as blue circles, NL–AGNs as red squares, emission line galaxies as cyan diamonds, and early-type galaxies as orange stars.

In Fig. 11 we report the intrinsic, absorption-corrected 0.5–2 keV (*left* panel) and 2–7 keV (*right* panel) luminosities as a function of redshift for the sources in our sample. We compute an estimate of the absorbing column density (N_{H}) using the hardness ratio (HR) value reported in Nanni et al. (2020) and the redshift information following the approach discussed for example in Marchesi et al. (2016a). In this computation, we assume a typical AGN power-law photon index of $\Gamma = 1.8$ (see, e.g., Marchesi et al. 2016c). We then use N_{H} to derive an absorption correction factor which we apply to the observed luminosity computed using the X-ray fluxes reported in Nanni et al. (2020).

As expected, AGN-dominated sources (plotted in blue in Fig. 11, top panels) are more luminous and observed at higher redshifts than galaxy-dominated objects (plotted in red in the same figure). More specifically, among the sources with a spectroscopic redshift BL–AGNs and NL–AGNs have median

redshift $\mu_{z-sp,AGN} = 1.79$ and median intrinsic 2–7 keV luminosity $\log(\mu_{L-2-7,sp,AGN}) = 43.8$, while ELGs and ETGs have $\mu_{z-sp,Gal} = 0.93$ and $\log(\mu_{L-2-7,sp,Gal}) = 42.8$. This is further highlighted in the bottom panels of Fig. 11, where we plot the 0.5–2 keV and 2–7 keV luminosities as a function of redshift for the subsample of sources with spectroscopic redshift: the different colors identify the different spectral classes presented in Sect. 3.3.

The difference between AGN- and galaxy-dominated sources is less significant for the subsample of sources that only have a photometric redshift: here, sources best-fitted with an AGN template have median redshift $\mu_{z-ph,AGN} = 1.62$ and median intrinsic 2–7 keV luminosity $\log(\mu_{L-2-7,ph,AGN}) = 43.4$, while sources best-fitted with a galaxy template have $\mu_{z-ph,gel} = 1.49$ and median intrinsic 2–7 keV luminosity $\log(\mu_{L-2-7,ph,gel}) = 43.4$.

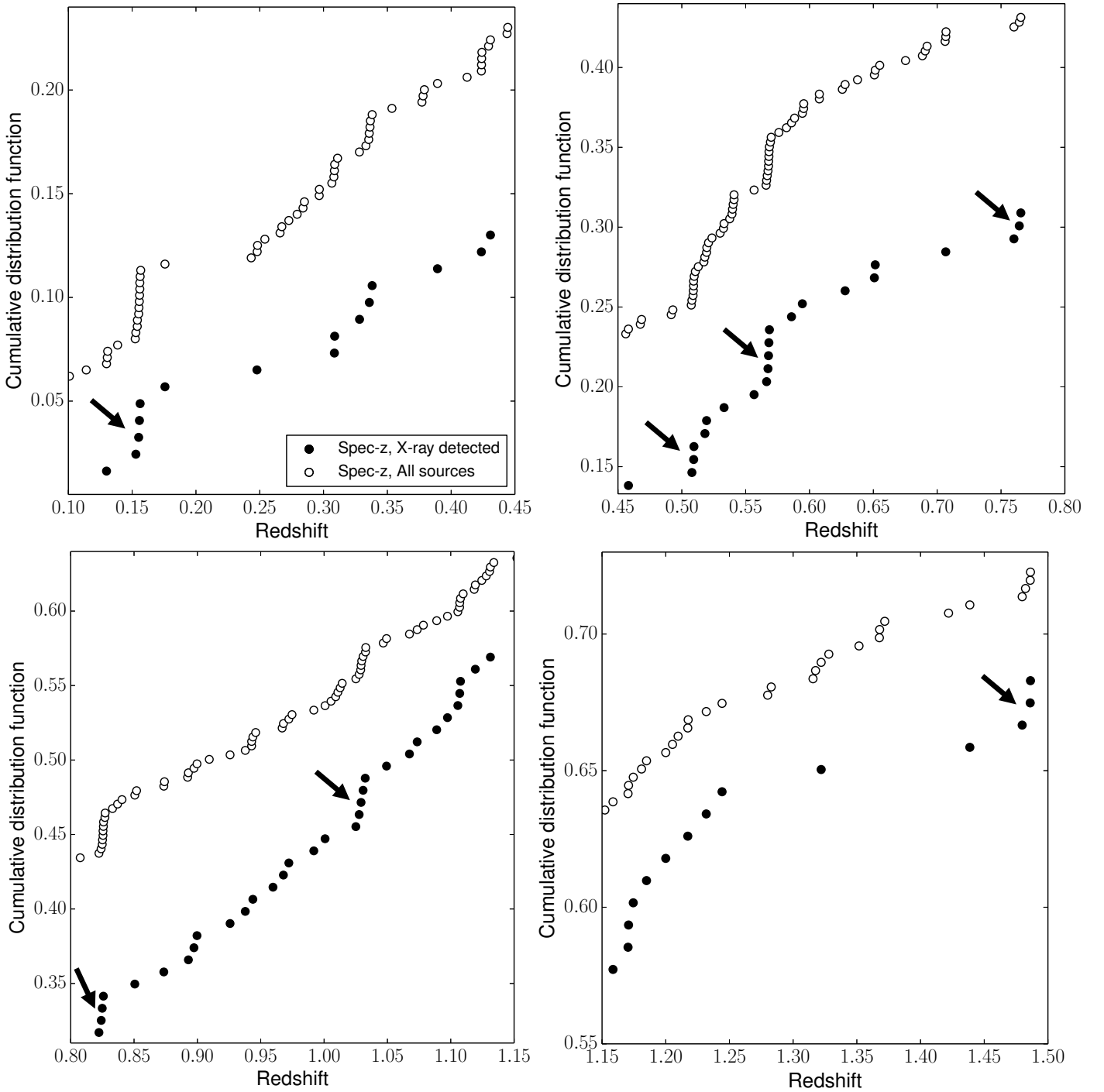


Fig. 12. Cumulative distribution function for the *Chandra* J1030 sources with a spectroscopic redshift (full markers), and for all the J1030 sources with a spectroscopic redshift, including the nonX-ray detected ones (empty markers). The overall CDF is shifted by 0.05 for visualization purposes. The structures identified within the *Chandra* J1030 population are marked with arrows: as can be seen, the X-ray sources effectively track the overall population.

6.2. X-ray sources as an efficient tracer of large-scale structures

Following Iwasawa et al. (2020), we plot in Fig. 12 the cumulative distribution function (CDF) of *Chandra* J1030 spectroscopic redshifts up to $z=1.5$. Such a representation provides a good visualization of candidate redshift structures in the field, which readily appear as sharp CDF rises, and is free of binning issues. Similarly to what is commonly seen

in deep spectroscopic surveys, several redshift structures are observed.

To assess the significance of these structures, we followed the same procedure adopted by Gilli et al. (2003) to identify redshift structures as traced by X-ray sources in the 1 Ms *Chandra* Deep Field South. Sources were distributed in velocity space $V = c \ln(1+z)$ rather than in redshift space, because dV corresponds to local velocity variations relative to the Hubble expansion. The signal velocity distribution was then smoothed

Table 4. Peaks detected in the X-ray-detected sources spectroscopic redshift distribution, sorted by increasing redshift.

Redshift	S_X	$P_{\text{Poiss}(N \geq N_{\text{obj},X})}$	S_{All}	$P_{\text{Poiss}(N \geq N_{\text{obj},\text{All}})}$
0.156	4	2.9×10^{-4}	11	6.2×10^{-9}
0.509	3	3.2×10^{-2}	9	6.4×10^{-4}
0.568	5	9.9×10^{-4}	11	2.8×10^{-5}
0.764	3	2.2×10^{-2}	3	1.3×10^{-1}
0.826	4	6.9×10^{-3}	10	3.3×10^{-6}
1.029	4	2.5×10^{-2}	7	5.5×10^{-3}
1.486	3	6.8×10^{-3}	4	1.5×10^{-2}

Notes. The signal and background distributions are smoothed with $\sigma_S = 300 \text{ km s}^{-1}$ and $\sigma_B = 1.5 \times 10^4 \text{ km s}^{-1}$, respectively. “Redshift” is the central redshift of each peak, S is the number of sources in a peak, $P_{\text{Poiss}(N \geq N_{\text{obj}})}$ is the Poissonian probability of observing at least N_{obj} sources given the background value. Values marked with X are derived using the X-ray-detected sources only, while values marked with All are derived using both the X-ray sources and nonX-ray targets with a spectroscopic redshift.

with a Gaussian with $\sigma_S = 300 \text{ km s}^{-1}$ to match the typical velocity dispersion observed in galaxy structures (e.g., Cohen et al. 1999; Gilli et al. 2003). The background velocity distribution was instead smoothed with a broader Gaussian with $\sigma_B = 1.5 \times 10^4 \text{ km s}^{-1}$. We searched for candidate peaks in the signal distribution by computing their signal-to-noise ratio $S/N = (S - B) / \sqrt{B}$, where S is the number of sources within $\Delta V = \pm 1000 \text{ km s}^{-1}$ around the center of each peak candidate, and B is the number of background sources in the same interval. The value of ΔV was chosen to optimize the S/N values of poorly populated peaks.

Adopting the thresholds $S \geq 3$ (i.e., a peak must contain at least three sources to be statistically significant) and $S/N > 3.8$, we find seven peaks in the signal velocity distribution. By means of detailed simulations, by analyzing the 1 Ms CDF-S sample Gilli et al. (2003) demonstrated that the chosen detection thresholds ensure a fraction of spurious peak detections below 10%. This is also a reasonable estimate of the spurious peak fraction for our sample, given that the number and distribution of the spectroscopic redshifts for the X-ray sources in J1030 are both very similar to those of the 1 Ms CDF-S X-ray sources. The corresponding redshifts of the peaks detected by our procedure are listed in Table 4, where we also list the number of objects S detected in each peak and the Poisson probability of observing S sources given the estimated background value B .

Similarly to what was observed in the CDF-S, in J1030 the AGNs in the redshift peaks are distributed over the entire *Chandra* field of view on physical scales ranging from 2–3 Mpc at $z = 0.15$ to 5–8 Mpc at $z = 1.5$ (see Fig. 13, left panel). In the CDF-S, most of the redshift structures traced with only a few AGNs were later confirmed with much larger statistical significance through spectroscopic surveys targeting nonactive galaxies (e.g., Popesso et al. 2009; Balestra et al. 2010). The same appears to be true for J1030: as shown in Fig. 12, many of the structures detected in the X-rays can also be recognized in the redshift distribution that includes both the X-ray-selected AGNs and normal galaxies in the field for which we derived a spectroscopic redshift by compiling a list of literature redshifts and adding all the filler targets from our spectroscopic programs. As can be seen in Table 4, in five out of seven cases the signifi-

cance of the structure increases when adding to the sample the nonX-ray-detected sources. We caution the reader that this second sample is built in a nonuniform and nonsystematic way, which prevents us from exploring the “X-ray and nonX-ray” structures in greater detail.

While many sources are distributed over the whole *Chandra* field of view, several galaxy members of the identified structures are well localized on the sky, and form groups and clusters on smaller scales. An example is shown in Fig. 13, right panel, where we plot a tri-color (*riz*) LBT/LBC image of a $\sim 350'' \times 550''$ region of the J1030 field. Several objects at $z \sim 0.156$, both detected and undetected in X-rays, are found at angular distances of $\lesssim 8'$, i.e., at a physical distance of $d_L \lesssim 1.3 \text{ Mpc}$.

In summary, similarly to what was already observed in the CDF-S (e.g., Gilli et al. 2003; Silverman et al. 2010), we confirm that AGNs are excellent tracers of large-scale structures on scales of several megaparsecs. In particular, the large-scale sheets and filaments of matter that intersect at galaxy clusters and groups can be discovered effectively even through observations of a small number of X-ray-selected AGNs.

Besides the structures discussed above, we also searched for any redshift excess at $z = 1.7$, which is the redshift of the Compton-thick Fanaroff–Riley type II (FR II) radio galaxy around which a galaxy overdensity ($d \sim 800 \text{ kpc}$) was recently discovered by our group by combining LBT/LUCI, VLT/MUSE, and ALMA observations (Gilli et al. 2019; D’Amato et al. 2020). We found another spectroscopically confirmed X-ray source at $z = 1.7$ (the BL-AGN XID 16), but the statistical significance of a two-source peak is indeed limited ($P = 7 \times 10^{-2}$). Furthermore, there are 18 (12) sources that lack a spectroscopic redshift and have photometric redshift in the range $z_{\text{phot}} = [1.5-1.9]$ ($[1.6-1.8]$). These are all promising candidates for future spectroscopic campaigns aimed at tracking the large-scale structure over a scale of $\sim 8 \times 8 \text{ Mpc}^2$ (i.e., the physical scale of the *Chandra* J1030 field at $z = 1.7$).

7. The *Chandra* J1030 high-redshift sample

Out of 243 *Chandra* J1030 extragalactic sources, 25 have a redshift $z_{\text{best}} > 3$. As the spectroscopic campaign initially prioritized optically bright sources, only three of them have a z_{spec} , one of which is the $z = 6.3$ QSO at the center of the J1030 field. For this reason, in the remainder of this section, we do not use the photometric redshift nominal values, but rather their probability distribution functions, following an approach adopted in other works on high- z AGNs in X-ray surveys (e.g., Marchesi et al. 2016b; Vito et al. 2018). This approach implies that we include in our analysis not only those sources with PDZ peaking at $z > 3$, but also objects with a nominal photometric redshift $z_{\text{phot}} < 3$ but with a fraction of PDZ > 0 at $z > 3$.

Following the approach discussed in for example Marchesi et al. (2016b), we decided to use a conservative approach when analyzing the *Chandra* J1030 high-redshift sample. Consequently, we defined a “lower reliability” class of sources, which includes (i) seven sources that only have a detection in the NIR IRAC bands; (ii) eight sources that only have a detection in both the IRAC bands and in the K -band; (iii) five sources that have a detection only in the IRAC bands and in the LBT r -Deep catalog; and (iv) one object that has a detection only in the IRAC bands and in the HST H -band. Overall, this “lower reliability sample” contains 21 sources, 13 of which have a nominal photometric redshift value $z_{\text{phot}} > 3$. We note that all these objects have a flat, very poorly constrained

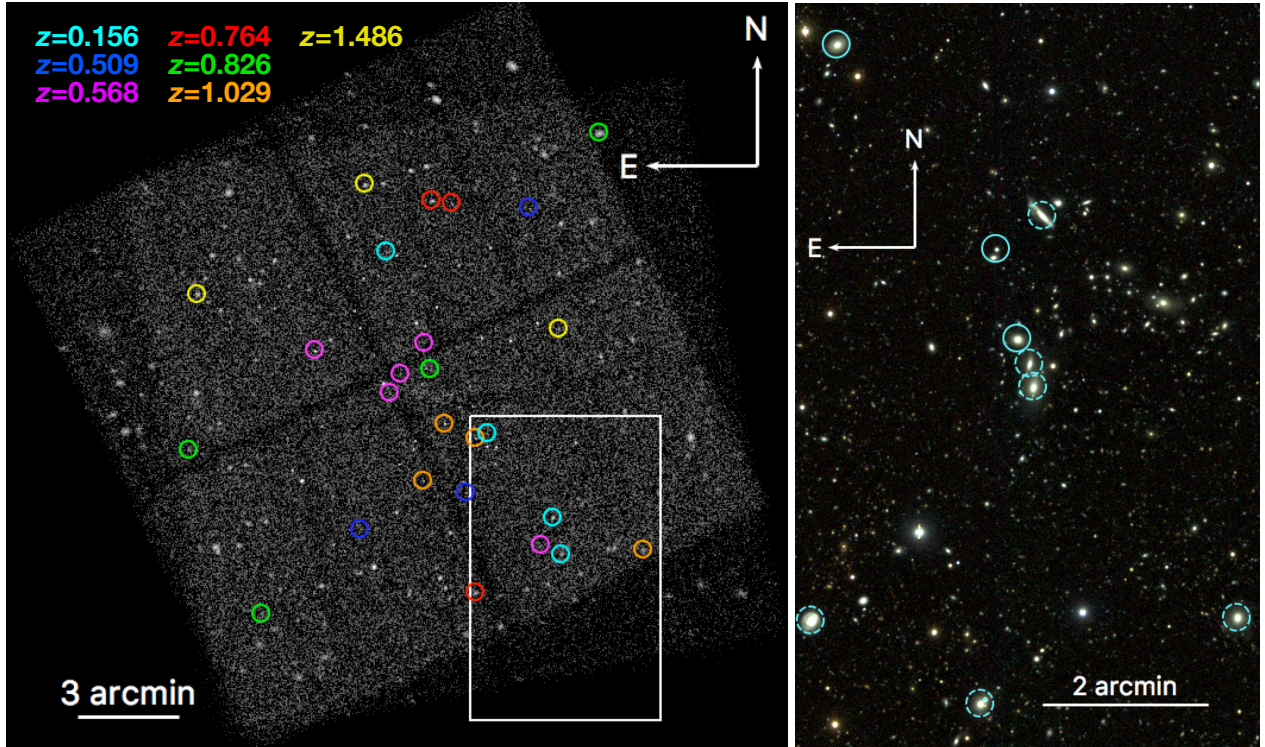


Fig. 13. *Left:* smoothed 0.5–7 keV *Chandra* ACIS-I image of the SDSS J1030+0524 field. The X-ray-detected sources which are part of the statistically significant large-scale structures reported in Table 4 are plotted as circles of 15'' radius: each color corresponds to a different redshift. *Right:* tricolor (red: z ; green: i ; blue: r ; all LBT/LBC magnitudes) zoom-in of the $\sim 340'' \times 540''$ region of the J1030 field highlighted with a box in the *left panel* and centered on a $z = 0.156$ excess. The X-ray-detected (undetected) sources are plotted with a solid (dashed) cyan circle.

PDZ. If these sources are not included in the computation, the overall $z > 3$ ($z > 4$) *Chandra* J1030 sample contains 22.6 (10.6) sources.

In Fig. 14 we report the $z > 3$ (left panel) and $z > 4$ cumulative number counts in the observed 0.5–2 keV band for the *Chandra* J1030 sources computed using the standard equation,

$$N(> S) = \sum_{i=1}^{N_S} \frac{w_i}{\Omega_i} [\text{deg}^{-2}], \quad (3)$$

where $N(> S)$ is the number of sources with flux larger than a given flux S , Ω_i is the sky coverage associated with the flux of the i th source, N_S is the number of sources above flux S , and w_i is the weight linked to the PDZ contribution in the range $z_{\text{low}} - z_{\text{up}}$, $w_i = \frac{\sum_{z_{\text{low}}}^{\text{up}} \text{PDZ}(z)}{\sum_0^{\text{up}} \text{PDZ}(z)}$, where $z_{\text{low}} = 3, 4$ and $z_{\text{up}} = 7$. Sources with a spectroscopic redshift have $w_i = 1$.

The *Chandra* J1030 “clean” number counts reported in Fig. 14 as red circles are obtained by removing the 21 above-mentioned “low reliability” sources from the sample. These low-reliability sources are instead accounted for by computing the upper boundary of the red shaded area: in the computation of this upper boundary we also include the two (out of six) sources lacking a counterpart that are detected in the 0.5–2 keV band, namely XID 96 and XID 187. For these two sources, we assume a $\text{PDZ}(z)$ equal to zero at $z < 3$, and equal to 5×10^{-3} at $z \geq 3$ (so that the sum of all $\text{PDZ}(z)$ values is equal to 1), working under the strong assumption that the two sources are both at $z > 3$. We note that the contribution of these objects to the boundary is nonetheless fairly marginal, and our results would not significantly change if XID 96 and XID 187 were not included in the computation. The upper boundary of the shaded area is therefore obtained by adding to the “clean” number counts those of

the “low reliability” and “no-counterpart” subsamples, and further adding the 1σ Poissonian uncertainty.

Finally, to compute the lower boundary of the shaded area we assume that the PDZ of our sources can vary over the whole redshift range, without applying any absolute magnitude cut (see Sect. 4.1). This approach affects almost exclusively those objects best fitted with an AGN template, and as a result produces number counts that are $\sim 30\%$ lower than those obtained with the magnitude correction. In the figures, the lower boundary is computed by subtracting from these new number counts their 1σ Poissonian uncertainty.

As a comparison, we also report the high- z AGN counts obtained in the deepest X-ray surveys currently available (the CDF-S 7 Ms and the CDF-N 2 Ms, see Vito et al. 2018) and in the *Chandra* COSMOS Legacy Survey (Marchesi et al. 2016b). The number counts derived using the Gilli et al. (2007) AGN population synthesis model, as well as those from the AGN X-ray luminosity functions by Ueda et al. (2014) and Vito et al. (2014) are also shown for comparison. As can be seen, the *Chandra* J1030 number counts lie slightly above the others at $z > 3$, and the excess with respect to both the predictions of the models and previous observational results becomes even larger (a factor ~ 4 –5) at $z > 4$.

To further investigate the origin of this excess, we divide the *Chandra* J1030 number counts into three different redshift bins, $z = [3-4]$, $z = [4-5]$, and $z = [5-6]$, which we report in Fig. 15. We note that in doing so we remove the contribution of the $z = 6.3$ QSO, whose presence creates, by selection, a strong overdensity at $z > 5$: indeed, at the 0.5–2 keV flux of SDSS J1030+0525 one would expect to have approximately one such source per square degree (see, e.g., Fig. 8 in Marchesi et al. 2016b) at $z \geq 5$, while the J1030 contribution is $N = 12.9$ sources deg^{-2} .

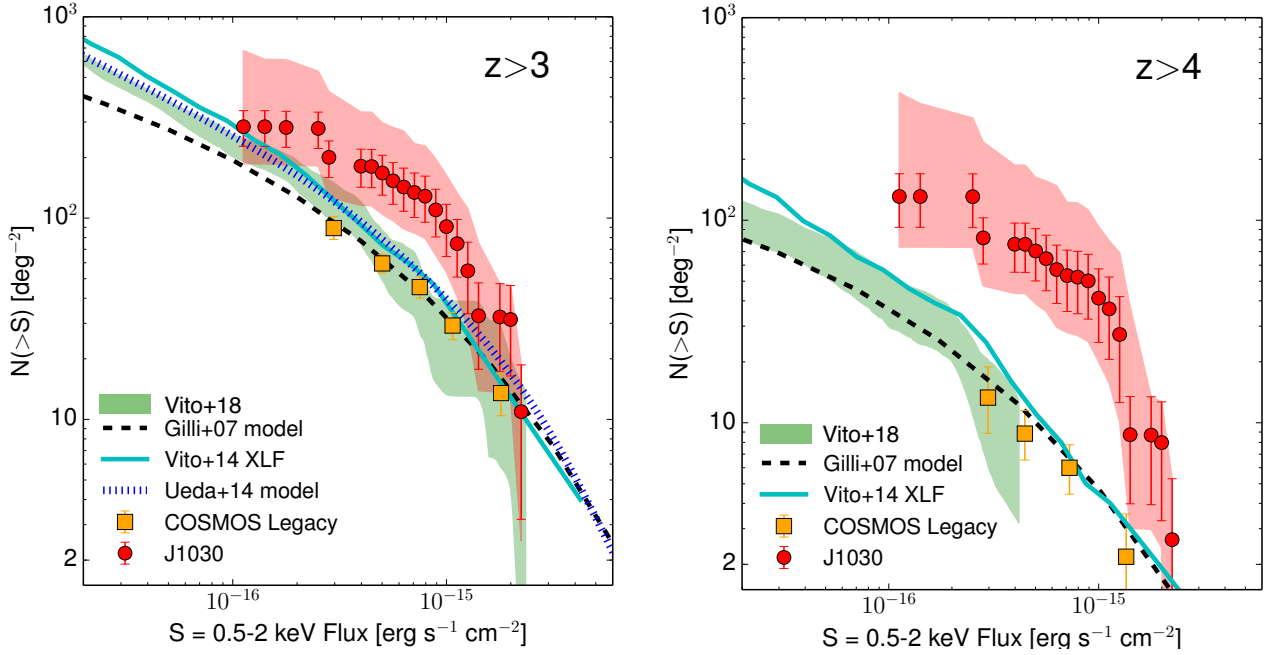


Fig. 14. $z > 3$ (left) and $z > 4$ (right) number counts for *Chandra* J1030 (red circles): the error bars are the Poissonian uncertainties. The upper boundary of the shaded area is obtained by including in the computation 21 “low-reliability” sources, which are those objects with only a *K*-band and/or an IRAC-band detection, as well as two objects with no counterpart. The lower boundary is computed assuming a conservative PDZ shape (see the main text for more details). The number counts obtained in the same redshift range in the *Chandra* COSMOS-Legacy survey (orange squares, Marchesi et al. 2016b) and in the CDF-S and CDF-N surveys (green area Vito et al. 2018) are also shown for comparison, together with the predictions from the Vito et al. (2014, cyan solid line) and Ueda et al. (2014, blue dotted line) X-ray luminosity functions, and those of the Gilli et al. (2007) AGN population synthesis model.

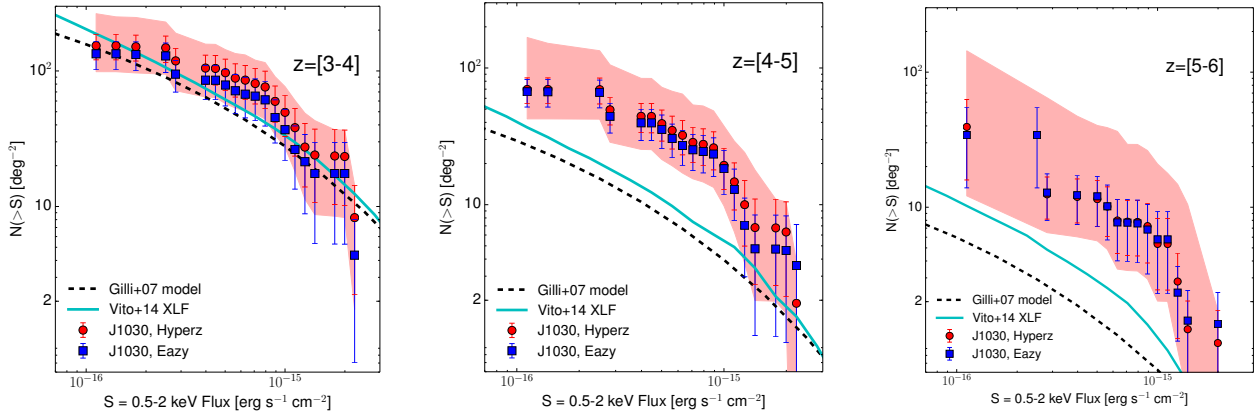


Fig. 15. *Chandra* J1030 0.5–2 keV number counts computed using the Hyperz photometric redshifts (red circles in the redshift bins $z = [3-4]$ (left), $z = [4-5]$ (center), and $z = [5-6]$ (right)). The upper boundary of the shaded area is computed including the “low-reliability” sources defined in the text and two objects lacking a counterpart. The lower boundary is computed assuming a conservative PDZ shape (see the text for more details). The number counts derived using the EAZY photometric redshifts (blue squares) are also plotted for comparison. The number counts in the same redshift ranges derived using the Gilli et al. (2007) AGN population synthesis model (black dashed line) and the Vito et al. (2014) XLF (cyan solid line) are also shown for comparison.

In the redshift range $z = [3-4]$, we observe a mild excess, which is nonetheless consistent within the uncertainties with the Vito et al. (2014) model predictions, and a $\sim 50\%$ excess with respect to the predictions of the Gilli et al. (2007) model. We note that this $z = [3-4]$ excess contributes to most of the excess observed at $z > 3$. In the redshift range $z = [4-5]$, we instead measure a factor $\sim 3^{+3}_{-1.5}$ excess with respect to the predictions of the Vito et al. (2014) model⁹, and a factor $\sim 4^{+4}_{-2}$ excess with respect to those of the Gilli et al. (2007) one. Such an excess is

⁹ The upper and lower uncertainties on the ratio are computed using the upper and lower boundaries of the shaded area shown in Fig. 15.

the main cause of the one observed in the $z > 4$ number counts. Finally, in the redshift range $z = [5-6]$, our data show an excess by a factor of $\sim 3.5^{+14}_{-2}$ with respect to the Vito et al. (2014) model predictions, and by a factor of $\sim 6^{+23}_{-4}$ with respect to the Gilli et al. (2007) model ones. In Fig. 15 we also plot the *Chandra* J1030 number counts computed using the EAZY photometric redshifts and PDZs (corrected by $a = 3.7$, like the Hyperz ones, as discussed in Sect. 4.1). As can be seen, we find excellent agreement between the two number count estimates in the redshift ranges $z = [4-5]$ and $z = [5-6]$. This shows that the detection of the $z > 4$ excess is code-independent. In the redshift range

$z = [3-4]$, the EAZy number counts are instead slightly (20%) smaller than the Hyperz ones, which is evidence that partially reduces the significance of the excess.

To better quantify the significance of the observed high- z excess, we convolve the Gilli et al. 2007 (Vito et al. 2014) number count predictions by the *Chandra* J1030 sky coverage and we find an expected number of 7, 1.2, and 0.2 (8, 1.3, 0.2) AGN detections in the redshift bins $z = [3-4]$, $z = [4-5]$, and $z = [5-6]$, respectively. In the same redshift bins, the integrated number of *Chandra* J1030 sources (without taking into account the “lower reliability” ones) is 12.0, 6.2, and 2.6. These numbers show that the excess we measured, although numerically large, might in principle be caused by a small number of objects.

The intriguing excess we measure in our number counts at $z > 4$ might hint at the existence of an AGN overdensity in the same redshift range. However, we point out that at the moment the *Chandra* J1030 sample in the $z = [4-6]$ is made only of sources with a photometric redshift. For this reason, our results need to be validated with an extensive spectroscopic campaign in the optical and NIR aimed at significantly increasing the $z > 3$ spectroscopic completeness of our sample (which is currently $f_{\text{spec}} = 3/25 = 12\%$).

8. Summary and conclusions

In this work, we present the spectroscopic and photometric redshift catalog for the *Chandra* J1030 survey, the fifth-deepest X-ray survey currently available. We report here the main results of our analysis.

1. The *Chandra* J1030 sample contains 243 extragalactic sources for which we measured a redshift. Seven sources are X-ray-emitting stars, while another six sources lack a counterpart in any band and therefore a redshift: these latter objects are either spurious X-ray detections, or candidate high-redshift sources.
2. We measured a spectroscopic redshift for 123 out of 256 *Chandra* J1030 objects. The vast majority (~95%) of these spectroscopic redshifts were obtained through a 52-h INAF-LBT Strategic Program that was granted to our group in 2017.
3. Out of 123 sources with a spectroscopic redshift, 63 are classified as AGNs (43 BL-AGNs; 20 NL-AGNs), while 60 have spectra dominated by the host galaxy emission. More specifically, 28 sources are ELGs, while 32 are ETGs, a significant fraction of which show faint emission lines, likely linked to obscured and/or weak SMBH accretion.
4. Taking advantage of the excellent optical-to-NIR coverage of the J1030 field, we computed a photometric redshift for 243 extragalactic sources. We used the spectroscopic subsample to estimate the reliability of the photometric redshifts: we achieved a median accuracy $\sigma_{\text{NMAD}} = 1.48 \times \text{median}(\|z_{\text{phot}} - z_{\text{spec}}\| / (1 + z_{\text{spec}})) = 0.065$, with a fraction of outliers $\eta = 20.5\%$. Both values are in good agreement with those obtained in other X-ray surveys which computed photometric redshifts using only broad-band photometry data points (e.g., Stripe 82X, Ananna et al. 2017, Lockman Hole, Fotopoulou et al. 2012). Notably, when excluding the BL-AGN population from the sample, whose SED is on average more difficult to characterize, the outlier fraction drops to 12.7%. The quality of the photometric redshifts was further validated by computing them with two independent codes, Hyperz and EAZy, and good agreement was obtained (outlier fraction <20%).

5. Following the approach presented in Gilli et al. (2003), we searched for potential large-scale structures in the *Chandra* J1030 sample. We find seven different structures in the redshift range $z_{\text{spec}} = [0.15-1.5]$, with the three most prominent ones being at $z = 0.156$, $z = 0.568$, and $z = 0.826$.
6. All the seven structures detected in the *Chandra* J1030 sample were confirmed when adding nonX-ray galaxies from the literature or filler targets of our spectroscopic programs to the spectroscopic sample. In five out of seven cases, the structure significance increased when including the nonX-ray sources in the sample. This result highlights how X-ray-selected AGNs are highly efficient tracers of large-scale structures.
7. Using our photometric redshifts in a probabilistic way (i.e., assigning a weight to each source based on the fraction of its PDZ in a certain redshift range), we studied the *Chandra* J1030 high-redshift sample. We find potential evidence of an overdensity at $z > 4$: in the redshift range $z = [4-5]$ ($z = [5-6]$) we measure a factor ~ 3 (~ 3.5) excess with respect to the predictions of the Vito et al. (2014) model.

While the count excess we find at $z > 4$ would be an intriguing discovery, we point out that our results need to be validated by increasing the *Chandra* J1030 spectroscopic completeness at $z > 3$: currently only 3 out of 25 $z > 3$ sources have z_{spec} , one being the $z = 6.3$ QSO itself. For this reason, we aim to target a significant fraction of our $z > 3$ population with optical and NIR spectrographs at 8–10 m class telescopes in the near future.

Acknowledgements. We thank the anonymous referee for their helpful report, which helped us in significantly improving the paper. We thank Francesca Civano and Eros Vanzella for the useful suggestions. We acknowledge the support from the LBT-Italian Coordination Facility for the execution of observations, data distribution and reduction. The LBT is an international collaboration among institutions in the United States, Italy and Germany. LBT Corporation partners are the University of Arizona on behalf of the Arizona university system; Istituto Nazionale di Astrofisica, Italy; LBT Beteiligungsgesellschaft, Germany, representing the Max-Planck Society, the Astrophysical Institute Potsdam, and Heidelberg University; The Ohio State University, and The Research Corporation, on behalf of The University of Notre Dame, University of Minnesota and University of Virginia. The scientific results reported in this article are partly based on observations made by the *Chandra* X-ray Observatory. This work made use of data taken under the ESO program ID 095.A0714(A). We acknowledge financial contribution from the agreement ASI-INAF n. 2017-14-H.O. KI acknowledges support by the Spanish MICINN under grant Proyecto/AEI/10.13039/501100011033 and “Unit of excellence María de Maeztu 2020-2023” awarded to ICCUB (CEX2019-000918-M). TM acknowledges the support provided by NASA through grant Nos. HST-GO-15702.002 and HST-AR-15804.002-A from the Space Telescope Science Institute, which is operated by AURA, Inc., under NASA contract NAS 5-26555. We acknowledge support from the National Aeronautics and Space Administration (NASA) under award number NNX16AN49G, issued through the NNH15ZDA001N Astrophysics Data Analysis Program (ADAP).

References

- Ahumada, R., Prieto, C. A., Almeida, A., et al. 2020, *ApJS*, 249, 3
 Alexander, D. M., & Hickox, R. C. 2012, *New Astron. Rev.*, 56, 93
 Ananna, T. T., Salvato, M., LaMassa, S., et al. 2017, *ApJ*, 850, 66
 Ananna, T. T., Treister, E., Urry, C. M., et al. 2019, *ApJ*, 871, 240
 Annunziatella, M., Marchesini, D., Stefanon, M., et al. 2018, *PASP*, 130, 124501
 Appenzeller, I., Fricke, K., Fürtig, W., et al. 1998, *Messenger*, 94, 1
 Bacon, R., Accardo, M., Adjali, L., et al. 2010, in *Ground-based and Airborne Instrumentation for Astronomy III*, eds. I. S. McLean, S. K. Ramsay, & H. Takami, *SPIE Conf. Ser.*, 7735, 773508
 Balestra, I., Mainieri, V., Popesso, P., et al. 2010, *A&A*, 512, A12
 Balmaverde, B., Gilli, R., Mignoli, M., et al. 2017, *A&A*, 606, A23
 Bennett, C. L., Larson, D., Weiland, J. L., & Hinshaw, G. 2014, *ApJ*, 794, 135
 Bertin, E., & Arnouts, S. 1996, *A&AS*, 117, 393
 Blanc, G. A., Lira, P., Barrientos, L. F., et al. 2008, *ApJ*, 681, 1099
 Bolzonella, M., Miralles, J. M., & Pelló, R. 2000, *A&A*, 363, 476
 Brammer, G. B., van Dokkum, P. G., & Coppi, P. 2008, *ApJ*, 686, 1503

- Bruzual, G., & Charlot, S. 2003, *MNRAS*, **344**, 1000
- Calzetti, D., Armus, L., Bohlin, R. C., et al. 2000, *ApJ*, **533**, 682
- Circosta, C., Vignali, C., Gilli, R., et al. 2019, *A&A*, **623**, A172
- Civano, F., Marchesi, S., Comastri, A., et al. 2016, *ApJ*, **819**, 62
- Cohen, J. G., Blandford, R., Hogg, D. W., Pahre, M. A., & Shopbell, P. L. 1999, *ApJ*, **512**, 30
- Comastri, A., Ranalli, P., Iwasawa, K., et al. 2011, *A&A*, **526**, L9
- D'Amato, Q., Gilli, R., Vignali, C., et al. 2020, *A&A*, **636**, A37
- De Rosa, G., Decarli, R., Walter, F., et al. 2011, *ApJ*, **739**, 56
- Donley, J. L., Rieke, G. H., Pérez-González, P. G., & Barro, G. 2008, *ApJ*, **687**, 111
- Donley, J. L., Koekemoer, A. M., Brusa, M., et al. 2012, *ApJ*, **748**, 142
- Faber, S. M., Phillips, A. C., Kibrick, R. I., et al. 2003, in *Instrument Design and Performance for Optical/Infrared Ground-based Telescopes*, eds. M. Iye, & A. F. M. Moorwood, *SPIE Conf. Ser.*, **4841**, 1657
- Fan, X., Narayanan, V. K., Lupton, R. H., et al. 2001, *AJ*, **122**, 2833
- Fiore, F., Feruglio, C., Shankar, F., et al. 2017, *A&A*, **601**, A143
- Fotopoulou, S., Salvato, M., Hasinger, G., et al. 2012, *ApJS*, **198**, 1
- Garilli, B., Paioro, L., Scodreggio, M., et al. 2012, *PASP*, **124**, 1232
- Gawiser, E., van Dokkum, P. G., Herrera, D., et al. 2006, *ApJS*, **162**, 1
- Georgantopoulos, I., Comastri, A., Vignali, C., et al. 2013, *A&A*, **555**, A43
- Gilli, R., Cimatti, A., Daddi, E., et al. 2003, *ApJ*, **592**, 721
- Gilli, R., Comastri, A., & Hasinger, G. 2007, *A&A*, **463**, 79
- Gilli, R., Mignoli, M., Peca, A., et al. 2019, *A&A*, **632**, A26
- Hoaglin, D. C., Mosteller, F., & Tukey, J. W. 1983, *Understanding Robust and Exploratory Data Analysis* (Wiley)
- Hsu, L.-T., Salvato, M., Nandra, K., et al. 2014, *ApJ*, **796**, 60
- Ilbert, O., Capak, P., Salvato, M., et al. 2009, *ApJ*, **690**, 1236
- Ilbert, O., McCracken, H. J., Le Fèvre, O., et al. 2013, *A&A*, **556**, A55
- Iwasawa, K., Comastri, A., Vignali, C., et al. 2020, *A&A*, **639**, A51
- Izumi, T., Onoue, M., Matsuoka, Y., et al. 2019, *PASJ*, **71**, 111
- Kim, S., Stiavelli, M., Trenti, M., et al. 2009, *ApJ*, **695**, 809
- Kocevski, D. D., Hasinger, G., Brightman, M., et al. 2018, *ApJS*, **236**, 48
- Kriek, M., Shapley, A. E., Reddy, N. A., et al. 2015, *ApJS*, **218**, 15
- Kurk, J. D., Walter, F., Fan, X., et al. 2007, *ApJ*, **669**, 32
- Laigle, C., McCracken, H. J., Ilbert, O., et al. 2016, *ApJS*, **224**, 24
- LaMassa, S. M., Urry, C. M., Glikman, E., et al. 2013, *MNRAS*, **432**, 1351
- Lanzuisi, G., Ranalli, P., Georgantopoulos, I., et al. 2015, *A&A*, **573**, A137
- Lanzuisi, G., Civano, F., Marchesi, S., et al. 2018, *MNRAS*, **480**, 2578
- Lehmer, B. D., Alexander, D. M., Chapman, S. C., et al. 2009, *MNRAS*, **400**, 299
- Lehmer, B. D., Xue, Y. Q., Brandt, W. N., et al. 2012, *ApJ*, **752**, 46
- Lilly, S. J., Le Fèvre, O., Renzini, A., et al. 2007, *ApJS*, **172**, 70
- Lilly, S. J., Le Brun, V., Maier, C., et al. 2009, *ApJS*, **184**, 218
- Luo, B., Brandt, W. N., Xue, Y. Q., et al. 2017, *ApJS*, **228**, 2
- Madau, P., & Dickinson, M. 2014, *ARA&A*, **52**, 415
- Marchesi, S., Civano, F., Elvis, M., et al. 2016a, *ApJ*, **817**, 34
- Marchesi, S., Civano, F., Salvato, M., et al. 2016b, *ApJ*, **827**, 150
- Marchesi, S., Lanzuisi, G., Civano, F., et al. 2016c, *ApJ*, **830**, 100
- Matsuoka, Y., Iwasawa, K., Onoue, M., et al. 2019, *ApJ*, **883**, 183
- Mignoli, M., Gilli, R., Decarli, R., et al. 2020, *A&A*, **642**, L1
- Morselli, L., Mignoli, M., Gilli, R., et al. 2014, *A&A*, **568**, A1
- Nandra, K., Laird, E. S., Aird, J. A., et al. 2015, *ApJS*, **220**, 10
- Nanni, R., Gilli, R., Vignali, C., et al. 2018, *A&A*, **614**, A121
- Nanni, R., Gilli, R., Vignali, C., et al. 2020, *A&A*, **637**, A52
- Ni, Y., Matteo, T. D., Gilli, R., et al. 2020, *MNRAS*, **495**, 2135
- Peca, A., Vignali, C., Gilli, R., et al. 2021, *ApJ*, **906**, 90
- Pogge, R. W., Atwood, B., Brewer, D. F., et al. 2010, in *Ground-based and Airborne Instrumentation for Astronomy III*, eds. I. S. McLean, S. K. Ramsay, & H. Takami, *SPIE Conf. Ser.*, **7735**, 77350A
- Polletta, M., Tajer, M., Maraschi, L., et al. 2007, *ApJ*, **663**, 81
- Popesso, P., Dickinson, M., Nonino, M., et al. 2009, *A&A*, **494**, 443
- Quadri, R., Marchesini, D., van Dokkum, P., et al. 2007, *AJ*, **134**, 1103
- Salvato, M., Hasinger, G., Ilbert, O., et al. 2009, *ApJ*, **690**, 1250
- Salvato, M., Ilbert, O., Hasinger, G., et al. 2011, *ApJ*, **742**, 61
- Salvato, M., Wolf, J., & Dwelly, T. 2021, *A&A*, submitted [arXiv:2106.14520]
- Silverman, J. D., Mainieri, V., Salvato, M., et al. 2010, *ApJS*, **191**, 124
- Skelton, R. E., Whitaker, K. E., Momcheva, I. G., et al. 2014, *ApJS*, **214**, 24
- Stiavelli, M., Djorgovski, S. G., Pavlovsky, C., et al. 2005, *ApJ*, **622**, L1
- Straatman, C. M. S., Spitler, L. R., Quadri, R. F., et al. 2016, *ApJ*, **830**, 51
- Ueda, Y., Akiyama, M., Hasinger, G., Miyaji, T., & Watson, M. G. 2014, *ApJ*, **786**, 104
- Vito, F., Gilli, R., Vignali, C., et al. 2014, *MNRAS*, **445**, 3557
- Vito, F., Brandt, W. N., Yang, G., et al. 2018, *MNRAS*, **473**, 2378
- Xue, Y. Q., Luo, B., Brandt, W. N., et al. 2016, *ApJS*, **224**, 15
- Yang, G., Xue, Y. Q., Luo, B., et al. 2014, *ApJS*, **215**, 27