



Publication Year	2015
Acceptance in OA	2020-03-30T12:25:43Z
Title	The XMM Deep Survey in the CDF-S. VII. UV catalogue of the Optical Monitor observations
Authors	Antonucci, M., Talavera, A., Vagnetti, F., Trevese, D., COMASTRI, Andrea, Paolillo, M., Ranalli, P., Vignali, C.
Publisher's version (DOI)	10.1051/0004-6361/201425010
Handle	http://hdl.handle.net/20.500.12386/23688
Journal	ASTRONOMY & ASTROPHYSICS
Volume	574

The XMM Deep Survey in the CDF-S

VII. UV catalogue of the Optical Monitor observations[★]

M. Antonucci¹, A. Talavera², F. Vagnetti¹, D. Trevese³, A. Comastri⁴, M. Paolillo⁵, P. Ranalli^{6,4}, and C. Vignali^{7,4}

¹ Dipartimento di Fisica, Università di Roma “Tor Vergata”, via della Ricerca Scientifica 1, 00133 Roma, Italy
e-mail: marco.antonucci@roma2.infn.it

² XMM-Newton Science Operation Centre, ESA, Villafranca del Castillo, Apartado 78, 28691 Villanueva de la Cañada, Spain

³ Dipartimento di Fisica, Università di Roma “La Sapienza”, Piazzale Aldo Moro 2, 00185 Roma, Italy

⁴ INAF-Osservatorio Astronomico di Bologna, via Ranzani 1, 40127 Bologna, Italy

⁵ Dipartimento di Scienze Fisiche, Università di Napoli Federico II, via Cinthia 9, 80126 Napoli, Italy

⁶ Institute of Astronomy, Astrophysics, Space Applications, and Remote Sensing, National Observatory of Athens, Palaia Penteli, 15236 Athens, Greece

⁷ Dipartimento di Fisica e Astronomia, Università di Bologna, via Bertini Pichat 6/2, 40127 Bologna, Italy

Received 17 September 2014 / Accepted 31 October 2014

ABSTRACT

Context. The *XMM-Newton* X-ray observatory has repeatedly observed the *Chandra* Deep Field-South (CDF-S) in 33 epochs (2001–2010) through the XMM-CDFS Deep Survey. During the X-ray observations, XMM-OM targeted the central 17×17 arcmin² region of the X-ray field of view, providing simultaneous optical/UV coverage of the CDF-S. The resulting set of data can be used to build an XMM-OM catalogue of the CDF-S, filling the UV spectral coverage between the optical surveys and GALEX observations.

Aims. We present the UV catalogue of the XMM-CDFS Deep Survey. Its main purpose is to provide complementary UV average photometric measurements of known optical/UV sources in the CDF-S, taking advantage of the unique characteristics of the survey (UV and X-ray simultaneous data, time monitoring ~ 8.5 years, multi-wavelength photometry). The data reduction is also intended to improve the standard source detection on individual observations by cataloguing faint sources by stacking their exposure images.

Methods. We re-processed the XMM-OM data of the survey and stacked the exposures from consecutive observations using the standard Science Analysis System (SAS) tools to process the data obtained during single observations. Average measurements of detections with SAS good quality flags from individual observations and from stacked images were joined to compile the catalogue. Sources were validated through the cross-identification within the ESO Imaging survey (Arnouts et al. 2001) and the COMBO-17 survey (Wolf et al. 2004).

Results. Photometric data of 1129 CDF-S sources are provided in the catalogue, and optical/UV/X-ray photometric and spectroscopic information from other surveys are also included. The stacking extends the detection limits by ~ 1 mag in the three UV bands, contributing $\sim 30\%$ of the catalogued UV sources. The comparison with the available measurements in similar spectral bands confirms the validity of the XMM-OM calibration. The combined COMBO-17/X-ray classification of the “intermediate” sources (e.g. optically diluted and/or X-ray absorbed AGN) is also discussed.

Key words. catalogs – surveys – ultraviolet: galaxies – ultraviolet: general – galaxies: active

1. Introduction

The XMM-CDFS Deep Survey was conceived to investigate the X-ray spectral properties of the highly obscured and Compton-thick active galaxies (Comastri et al. 2011). The repeated, long-exposure time observations of the *Chandra* Deep Field-South (CDF-S) performed by *XMM-Newton* made it possible to collect the X-ray photons emitted by the heavily obscured sources, notwithstanding the strong absorption due to the obscuring dust. The foremost goal of the survey is to constrain the contribution of such obscured objects to the X-ray unresolved background (e.g. Gilli et al. 2007; Treister et al. 2009; Akylas et al. 2012), and the star formation and accretion processes in the early phases of the AGN evolution (e.g. Page et al. 2004; Menci et al. 2008). The first results in the analysis of the data

were provided by the colour selection (Iwasawa et al. 2012) and spectroscopic selection (Comastri et al. 2011; Georgantopoulos et al. 2013) of the moderate-to-high redshift samples of highly obscured active galactic nuclei (AGN). Analysis of the iron K_{α} line of the average AGN spectra in the *XMM-Newton* CDF-S observations was carried out (Falocco et al. 2013). The efficiency of IR power-law spectra, which is the selection criterion for finding obscured X-ray sources, was also studied (Castelló-Mor et al. 2013). *XMM-Newton* point-source catalogues in the hard bands 2–10 keV and 5–10 keV, with the respective number counts, were published by Ranalli et al. (2013) and contain 339 (flux limit 6.6×10^{-16} erg/s/cm²) and 137 objects (flux limit 9.5×10^{-16} erg/s/cm²). In particular, the XMM-CDFS represents the deepest *XMM-Newton* survey currently published in the 5–10 keV band.

During the X-ray observations of the XMM-CDFS Deep Survey, the optical/UV telescope onboard the *XMM-Newton* observatory (Optical Monitor, XMM-OM, Mason et al. 2001),

[★] Tables 7 and 8 are only available at the CDS via anonymous ftp to cdsarc.u-strasbg.fr (130.79.128.5) or via <http://cdsarc.u-strasbg.fr/viz-bin/qcat?J/A+A/574/A49>

Table 1. XMM-OM XMM-CDFS Deep Survey.

Group	OBSID	Time	RA	Dec	PA	<i>UVW2</i>	<i>UVM2</i>	<i>UVW1</i>	<i>U</i>	<i>B</i>	<i>V</i>
			Degrees			ks					
B1	0108060401	2001-07-27	53.1064	-27.8127	58	14.4	8.0				
B1	0108060501	2001-07-27	53.1173	-27.8178	58	13.1	8.2	8.2	4.1	4.1	
B2	0108060601	2002-01-13	53.1198	-27.8051	237	15.0	5.0	5.0	4.6	3.0	
B2	0108060701	2002-01-14	53.1147	-27.8018	237	20.0	20.0	10.0	5.0	5.0	
B2	0108061801	2002-01-16	53.1192	-27.7994	237	11.9	5.0	5.0	2.0	2.0	
B2	0108061901	2002-01-17	53.1197	-27.7935	237	10.0	5.0	5.0	2.0	2.0	
B2	0108062101	2002-01-20	53.1252	-27.7967	237	9.1	7.6	5.0	2.0	2.0	
B2	0108062301	2002-01-23	53.1206	-27.7949	237	5.0	5.0	5.0	2.0	2.0	
C1	0555780101	2008-07-05	53.1719	-27.7590	60		31.5	44.0	44.0		
C1	0555780201	2008-07-07	53.1729	-27.7680	60		31.8	44.0	44.0		
C1	0555780301	2008-07-09	53.1630	-27.7669	60		30.7	42.5	37.0		
C1	0555780401	2008-07-11	53.1629	-27.7594	60		30.3	40.0	39.0		
C2	0555780501	2009-01-06	53.1071	-27.8149	240	24.0	16.0	4.0	4.0	8.0	4.0
C2	0555780601	2009-01-10	53.1089	-27.8220	240	30.5	12.0	4.0	4.0	8.0	8.0
C2	0555780701	2009-01-12	53.1069	-27.8330	240	34.5	12.0	4.0	4.0	8.0	4.0
C2	0555780801	2009-01-16	53.0979	-27.8140	240	32.0	10.0	4.0	4.0	8.0	8.0
C2	0555780901	2009-01-18	53.0977	-27.8229	240	30.7	12.0	4.0	4.0	8.0	8.0
C2	0555781001	2009-01-22	53.0977	-27.8310	240	34.1	12.0	3.5	3.5	7.5	7.5
C2	0555782301	2009-01-24	53.0978	-27.8313	240	34.0	12.0	3.5	3.5	7.5	3.5
C3	0604960301	2009-07-05	53.1737	-27.7774	61	18.8		50.0	38.1		
C3	0604960201	2009-07-17	53.1645	-27.7672	61	23.5		35.6	50.0		
C3	0604960101	2009-07-27	53.1734	-27.7670	61	21.1		50.0	50.0		
C3	0604960401	2009-07-29	53.1640	-27.7766	61	16.1		35.0	50.0		
C4	0604961101	2010-01-04	53.1078	-27.8060	244	5.6		50.0	50.0		
C4	0604961201	2010-01-08	53.0961	-27.8060	244	31.9		25.0	50.0		
C4	0604960701	2010-01-12	53.0989	-27.8156	244	5.6		45.0	50.0		
C4	0604960501	2010-01-18	53.1076	-27.8151	244				39.9		
C4	0604961301	2010-01-19	53.1077	-27.8145	244			13.0	5.0		
C4	0604960601	2010-01-26	53.1079	-27.8232	244	18.8		50.0	37.9		
C4	0604960801	2010-02-05	53.1079	-27.8336	244	21.5		40.5	45.0		
C4	0604960901	2010-02-11	53.0985	-27.8338	244	8.6		45.0	36.0		
C4	0604961001	2010-02-13	53.0980	-27.8240	244	21.5		45.0	36.0		
C4	0604961801	2010-02-17	53.0983	-27.8240	244	22.1		45.0	45.0		

Notes. The table reports the groups to which the observations belong (Group), the observation identification numbers (OBSID), the dates (Time), the pointing sky coordinates (RA and Dec), the position angle (PA), and the actual exposure times for each filter (the last six columns).

co-aligned to the X-ray mirrors, simultaneously targeted the CDF-S with various filter-selection and exposure-time criteria (see Table 1). The complementarity of the optical/UV and X-ray observations and the wide time sampling of the survey enables multi-wavelength variability analyses. It is possible, for instance, to study the individual and combined variability of the AGN X-ray/UV ratio by extracting a sample of sources of known redshift (Vagnetti et al., in prep.; see also Vagnetti et al. 2010, 2013). The resulting set of XMM-OM data, however, can also be used to build a catalogue of the CDF-S sources in the optical and UV domains, taking advantage of the wavelength coverage provided by the six filters (three UV and three optical filters, with an overall range 180–590 nm), the full width at half-maximum (FWHM) of the point spread function (PSF) that is smaller than 2 arcsec for each filter, and the 17×17 arcmin² field of view (see Page et al. 2012).

Several optical/near-UV surveys have targeted the CDF-S and its flanking fields, with the main purpose of photometrically and spectroscopically calculating the redshifts of the detectable sources. In the context of the ESO imaging survey (EIS, Arnouts et al. 2001) project, multi-colour

(six broad band filters, $U'UBVRI$) photometric measurements of about 75 000 sources have been provided to observe the Extended-CDF-S (E-CDF-S) through the Wide Field Imager (WFI, Baade et al. 1998, 1999) at the MPG/ESO 2.2 m telescope on La Silla. By means of the same telescope and instrument, a nearly coincident area of 31.5×30 arcmin² has been observed in 17 passbands (350–930 nm) within the COMBO-17 survey, obtaining a catalogue of more than 60 000 objects including astrometry, classification, and photometric redshifts, with around 10 000 galaxies identified at $R_{\text{Vega}} < 24$ (Wolf et al. 2004, 2008). Another optical and near-IR multi-wavelength survey has been developed by Cardamone et al. (2010) as part of the Multi-Wavelength Survey by Yale-Chile (MUSYC, Gawiser et al. 2006), combining the Subaru 18-bands imaging (400–900 nm) to 14 other available ground-based and *Spitzer* images: about 80 000 galaxies are catalogued at $R \leq 27$, and about 30 000 redshifts are computed. The Great Observatories Origins Deep Survey (GOODS, Giavalisco et al. 2004), instead, covers a 320 arcmin² region in the CDF-S (GOODS-S) by using the *Hubble* Space Telescope (HST) Advanced Camera for Surveys (ACS, Ford et al. 2003), through

the filters *F435W*, *F606W*, *F775W*, and *F850LP*; it catalogued about 29 600 objects, at $m \leq 27$. Moreover, an 11 arcmin² region within the GOODS-S (*Hubble* Ultra Deep Field, UDF, Beckwith et al. 2006) has been deeply observed by the ACS in the same bands, reaching a uniform limiting magnitude $m \sim 29$ for point sources. Voyer et al. (2009) also presented the *U*-band observations of the same area, achieved through the HST Wide-Field Planetary Camera 2 (WFPC2)/*F300W* filter ($\lambda_{\max} \sim 300$ nm) and providing a catalogue of 96 objects. The Arizona CDFS Environment Survey (ACES, Cooper et al. 2012) spectroscopically targeted the E-CDF-S by means of the Inamori-Magellan Areal Camera and Spectrograph on the Magellan-Baade telescope (565–920 nm), yielding more than 5000 redshifts for $R \leq 24.1$ sources; it widens therefore previous sets of spectroscopic redshift estimates of CDF-S sources (e.g. Szokoly et al. 2004; Le Fèvre et al. 2005; Ravikumar et al. 2007; Popesso et al. 2009; Balestra et al. 2010; Silverman et al. 2010), for a total of about 1300 ACES objects with comparison published redshifts. All the publicly available spectroscopic redshift estimates in the CDF-S have been compiled in the ESO CDF-S Master Catalogue, version 3.0¹.

Looking more specifically at the UV domain, the Galaxy Evolution Explorer (GALEX, Martin et al. 2005) has been surveying the sky in two UV broad bands (far-UV, FUV, 134–179 nm; near-UV, NUV, 177–283 nm), reaching limiting magnitudes of about 20–21 mag (in the FUV and NUV passbands, respectively) through the All-Sky Imaging Survey (AIS, $\sim 22\,000$ deg²), and about 22.7 mag through the Medium-depth Imaging Survey (MIS, ~ 2250 deg²), which were published by Bianchi et al. (2014). The GALEX observations of the CDF-S, instead, mainly refer to the Deep Imaging Survey (DIS, ~ 80 deg²), whose observation integration time is typically 30 ks: within a ~ 2830 arcmin² region, UV photometric measurements of more than 36 000 sources are collected, at $m \lesssim 26.5$ in both bands. The CDF-S GALEX data are available on GalexView². We also notice that a ~ 7 deg² area centred on the CDF-S is part of the GALEX Time Domain Survey (TDS, ~ 40 deg²), which has been planned to systematically study the UV variability on timescales of days to years (Gezari et al. 2013): about 250 TDS variable sources are selected in the region including the CDF-S.

Regarding the CDF-S coverage in the other spectral ranges, we limit ourselves to mentioning the deep *Chandra* surveys in the X-ray band (1, 2, and 4 Ms source catalogues respectively described in Giacconi et al. 2002; Luo et al. 2008; Xue et al. 2011). The 4 Ms survey is characterised by a total solid angle coverage of about 465 arcmin², and its main catalogue includes 740 objects with up to three standard X-ray band measurements (0.5–8 keV, 0.5–2 keV, 2–8 keV). A combined classification of the sources, based on X-ray features and complementary optical spectroscopic information, is also provided: more than 75% of them are likely AGN. Comparison between the 4 Ms *Chandra* survey and the XMM-CDFS Deep Survey is described by Ranalli et al. (2013). Notwithstanding the deeper sensitivity of the *Chandra* surveys, the point-source catalogues by Ranalli et al. (2013) include 15 sources not detected by *Chandra* (5 of which are within the *Chandra* field of view).

Despite the deep, multi-wavelength sampling of the CDF-S performed in recent years, it appears to be of general interest to develop an XMM-OM catalogue of the XMM-CDFS Deep

Survey. As previously mentioned, the XMM-OM characteristics offer a powerful survey capability (Kuntz et al. 2008; Page et al. 2012), particularly in the UV domain, representing an effective compromise between the possibility of targeting extended fields – as, for instance, in the case of GALEX or the large ground-based telescopes – and the advantage of a finer spatial sampling with respect to GALEX (Page et al. 2012). Furthermore, the repeated observations of the field within the XMM-CDFS Deep Survey make it possible to stack the exposures of different observations, in order to improve the source detection and therefore the depth of the survey itself, allowing fainter sources to emerge above the significance threshold. The stacking procedure adopted for adding the exposure images uses the tools of the XMM standard Science Analysis System³ (SAS) to process the data obtained during single XMM-OM observations. The main purpose of the catalogue is to provide complementary UV photometric measurements of known optical/UV sources in the CDF-S; moreover, by comparing the XMM-OM data with the available measures in overlapped, nearly coincident wavelength bands, it is possible to test the XMM-OM calibration.

This paper is structured as follows. The data processing and the construction of the catalogue, which we call XMMOMCDFS, are described in Sect. 2. In Sect. 3 we present the statistical description of the catalogue and cross-correlations and comparisons with other surveys in the field and discuss the available classifications of the sources. Section 4 summarises the results and the future developments in analysis of the XMM-OM CDFS data.

Throughout the paper, we adopt the cosmology $H_0 = 70$ km s⁻¹ Mpc, $\Omega_m = 0.3$, and $\Omega_\Lambda = 0.7$.

2. Observations and data reduction

2.1. The XMM-CDFS Deep Survey XMM-OM data

The XMM-CDFS Deep Survey is composed of six groups of observations, performed at intervals of about six months, with a longer time gap between the first two groups (thereafter B1 and B2, July 2001–January 2002, 8 observations, P.I.: J. Bergeron) and the other ones (C1, C2, C3, and C4, July 2008–February 2010, 25 observations, P.I.: A. Comastri). The XMM-OM data have been obtained adopting different combinations of filters and observational strategies. In two of the groups of observations (B2 and C2), the full XMM-OM field of view is covered simultaneously (“full frame” configuration), while in the other cases it is targeted by a series of consecutive single exposure frames in which it can be divided (“OM image” configuration), covering 92% of its extension; details of the imaging configurations are reported in the *XMM-Newton* Users Handbook⁴. Both configurations refer to the “image mode”: events are spatially recorded, and therefore the coordinates in the bidimensional arrays of data correspond to their detector positions (Mason et al. 2001). We refer to Page et al. (2012, Table 1 and Fig. 1) for the effective transmission curves and the other properties of the XMM-OM filter passbands. The exposure times per filter are summarised in Table 1, together with the pointing coordinates and the position angles of the observations.

³ <http://xmm.esac.esa.int/sas/>

⁴ Issue 2.12, 2014 (ESA: *XMM-Newton* SOC), Sect. 3.5.9.2, http://xmm.esac.esa.int/external/xmm_user_support/documentation/uhb/index.html

¹ <http://www.eso.org/sci/activities/garching/projects/goods/MasterSpectroscopy.html>

² <http://galex.stsci.edu/GalexView/>

Table 2. Detections and sources from individual observations and stacked images, and final contents of the catalogue.

	UVW2	UVM2	UVW1	U	B	V	Tot.
a) Total detections from individual observations	1125	1408	7437	13 468	5975	3182	18 519
b) QF0 detections from individual observations	832	1164	6134	9434	4225	2163	
c) Sources with QF0 detections from individual observations	205	260	1060	1708	1166	683	
d) Sources with QF0 detections from stacking	159	284	1325	2041	1186	415	
e) Subset of d), without counterparts in the omcat-catalogue	80	138	561	863	645	205	
f) Total sources before validation of the catalogue	285	398	1621	2571	1811	888	4478
g) UV sources before validation of the catalogue	285	398	1621	1075	692	433	1844
h) UV sources in the XMMOMCDFS catalogue	157	301	1121	954	632	403	1129
i) XMMOMCDFS sources from stacking	46	113	348	66	119	78	

Notes. a) and b) respectively refer to the total detections and the detections without bad quality flags (QF0) obtained by the standard data processing of the XMM-OM observations that compose the XMM-CDFS Deep Survey. c) the number of individual objects for each filter with at least one QF0 detection from individual observations (omcat-catalogue sources). d) and e) individual objects detected without bad quality flags from stacked images and subsets of these sources that are not included in the omcat-catalogue. f) total number of sources for each filter before the validation of the catalogue (Sect. 2.3) and before selecting the objects with UV measurements; f) equals c) + e). g) is the subset of f), containing the sources with at least one UV measurement. h) refers to the final contents of the XMMOMCDFS catalogue, after the validation process. i) indicates the number of XMMOMCDFS sources for each filter contributed by stacking and without counterparts from individual observations. The last column is empty for b)–e), and i), because the selections of QF0 detections and of sources from stacking without individual observation counterparts have been performed separately for each filter.

The archival XMM-OM data, available from the XMM-Newton Science Archive⁵ (XSA) and from the NASA High Energy Astrophysics Science Archive Research Center⁶ (Heasarc), have been re-processed through the standard SAS fixed runs of interlinked tasks described by Page et al. (2012)⁷, with constant values of significance and sigma⁸. The total source list of an XMM-OM observation is composed of i) the detections from its individual exposures; and ii) the detections from the sky-image built by mosaicking and stacking the exposure frames for each of the filters, without detections from individual exposures. The new detections from the stacked sky-image are not corrected by SAS for coincidence loss; however, since they are very faint, the correction would be negligible. During the SAS data processing, possible spurious detections can be caused by scattered-light artefacts (smoke rings, diffraction spikes, etc.), and the photometry estimates of true detections may be affected by contaminations, such as the presence of bad pixels. All the dubious detections are automatically marked by specific bad quality flags (QF, Page et al. 2012), which are summarised for each object (and for each filter) by an integer number; QF = 0 for detections whose photometry is to be considered accurate (thereafter we use the acronym “QF0” for these detections).

Matching the total source lists of each XMM-CDFS Deep Survey observation through the SAS package *omcat*, which identifies multiple detections of individual objects within 2 arcsec (or three times the position uncertainty), a data set

of 18 519 measurements is achieved for a total of 4365 sources. It includes all the standard detections obtained for each of the XMM-OM observations that compose the survey. The total and QF0 detections for each XMM-OM band are reported in Table 2 (rows “a”, “b”, and “c”); the incidence of bad quality flags (QF > 0) ranges between 17% and 31%.

2.2. Data processing and stacking

Starting from the original catalogue of detections from individual observations, we discarded the QF > 0 data for each filter to eliminate potentially spurious or inaccurate photometric measurements. Then, we computed the standard, unweighted average astrometry and photometry of individual objects, matching the possible multiple detections within a maximum separation of 1.5 arcsec, also considering the position uncertainties (*Sky with errors* match criterion), by means of the Virtual Observatory application TOPCAT⁹. This cross-correlation criterion (with 1.5 arcsec maximum separation) is very similar to the internal match algorithm developed within the SAS packages (with a 2 arcsec maximum separation), and used before for identifying multiple detections of each source in joining the individual observation source lists with *omcat* (Sect. 2.1). Thereafter, these catalogues of QF0 detections and average measurements for each filter are indicated as a whole as the “omcat-catalogue”.

To let fainter sources emerge from the background above the significance threshold, we carried out the stacking of the exposures, per filter, for each of the groups of consecutive observations, by running the *ommosaic* package. Subsequently, we ran the sequence of *omdetect*, *ommag*, *omqualitymap*, and *omsrclistcomb* tasks for performing the source detection (again adopting the standard sigma and significance thresholds) and the astrometry correction, which is automatically carried out by SAS by comparing the XMM-OM coordinates with the USNO-B1.0 source catalogue (Monet et al. 2003). We did not stack all the available exposures as a whole, because the random background fluctuations can be magnified and overtake the cumulative source counts. By adding the image frames of each group separately, instead, it is possible to detect faint sources

⁵ <http://xmm.esac.esa.int/xsa/>

⁶ <http://heasarc.gsfc.nasa.gov/db-perl/W3Browse/w3browse.pl>

⁷ Unlike the XSA and Heasarc pipeline data, however, the photometric uncertainties are computed by applying a binomial distribution, because, as demonstrated by Kuin & Rosen (2008), these are the correct statistics for the detectors of XMM-OM (microchannel plate intensified CCDs, Fordham et al. 2000).

⁸ The significance is defined as the ratio between the source counts and the respective root mean square background fluctuations, while the parameter sigma controls the minimum detection threshold (all the pixels with values greater than or equal to background value + sigma × background noise are considered part of a possible source). The standard values are minimum significance = 3 and sigma = 2.

⁹ <http://www.star.bris.ac.uk/~mbt/topcat>

with accurate photometry: the position angle does not change, and the scattered-light artefacts are confined to limited regions of the field of view. Furthermore, cataloguing all the sources directly from the stacked images is not feasible: no coincidence loss corrections can be performed on stacked frames, and the photometry of brighter objects cannot be considered reliable in the subsequent detection process.

For integrating the omcat-catalogue with the deeper detections from the stacked images, we extracted the QF0 measurements separately for each filter, and we computed the average astrometry and photometry (row “d”) of Table 2). Then, for each of the filters, we matched the stacked image source lists with the corresponding omcat list of QF0 detections. We carried out the match again through the TOPCAT *Sky with errors* criterion, with a match radius of 1.5 arcsec, and in this way we selected the new detections from the stacked images without individual observation counterparts (row “e”) of Table 2). We averaged their coordinates and photometric estimates. (A few objects are detected twice within two or more stacked images of the same filter.) The source-lists that resulted from the concatenation of the omcat sets of individual sources and the new detections from stacking represent the corresponding deep catalogues of XMM-OM in the CDF-S (row “f”) in Table 2). Matching them by coordinates, and finally selecting the objects detected in at least one of the UV bands (either in individual observations and/or stacked images), we obtained a source list of 1844 UV objects (row “g”) of Table 2). It is important to note that some of the new detections from stacking in one or more of the filters correspond to objects already included in the omcat-catalogue, because detected in other bands. Therefore, the stacking partly provides detections of new sources without counterparts from individual observations, and partly contributes additional photometric measurements of omcat-catalogue objects. After validating the catalogue (see Sect. 2.3), with reference to the three UV filters, the contribution of the stacking will amount to $\sim 31\%$ of new sources without counterparts from individual observations, while providing additional photometry for another $\sim 12\%$ of sources.

2.3. Validation of the catalogue

Despite the selection of QF0 measurements – both from the source lists of individual observations and from stacking – the catalogue still contains potentially false detections. This contamination is pointed out by the subsequent clues: i) a considerable number of sources (367 out of 1844, about 20%) are detected in only one observation and in a single UV band, even though their magnitudes appear to be relatively bright, revealing the possibility of coincident events among the detections (e.g. cosmic rays, which show a typical square structure of 2×2 very bright pixels); ii) the spatial distribution of the detections partly reflects the distribution of the main artefacts in the images, such as the readout streaks due to a bright star within the area covered by the XMM-OM observations (see Fig. 1). In other words, while some of the detections marked by bad QFs ($QF > 0$) could be considered reliable and their photometric measurements only marginally inaccurate (Page et al. 2012), the SAS algorithms of validation do not prevent completely spurious detections to be recognised as true, so included in the catalogue. This occurs especially if, within individual exposure frames, the artificial background fluctuations related to extended artefacts (smoke rings, readout streaks, the central enhanced region of the images) appear to be rarefied, and incidentally present well-defined source-like brighter pixel clusters.

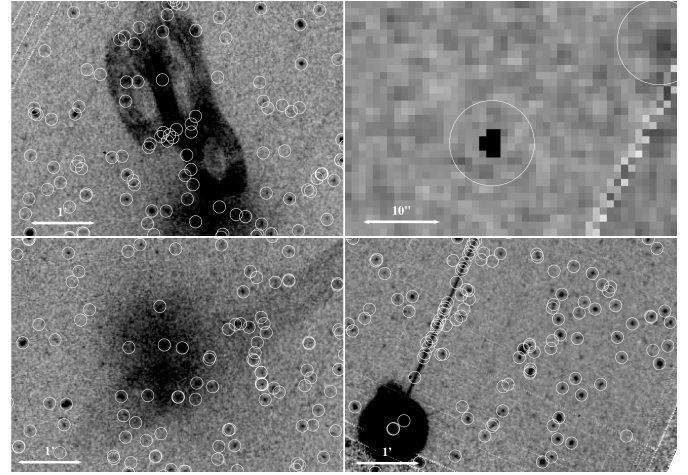


Fig. 1. Examples of artefacts into the XMM-OM images. *Top left panel:* internal reflections within the telescope; *top right panel:* cosmic ray; *bottom left panel:* central enhanced region; *bottom right panel:* readout streak. White circles refer to the detections before validating the catalogue. All the images are extracted from *UVWI* exposures. Bright stars have not been masked.

To validate the detections, the cross-identification with sources catalogued by given reference surveys of the CDF-S becomes necessary. For this purpose, we chose the ESO imaging survey (Arnouts et al. 2001) and the COMBO-17 survey (Wolf et al. 2004, 2008), because they are supposed to be complete at the limiting magnitudes that can be reached by XMM-OM in the optical (and UV) bands. In fact, before validating the catalogue, the detection limits in the most sensitive XMM-OM bands (*UVWI* and *U*) are $m = 24.7$ (see also Fig. 2 for the *UV* magnitude distributions after the validation of the catalogue). Moreover, the EIS and COMBO-17 surveys are characterised by a very good astrometric precision better than 0.10 and 0.15 arcsec, respectively. The COMBO-17 catalogue also provides useful photometric classifications (and redshift estimates) by fitting the low resolution spectral energy distributions (SEDs) with specific templates for AGN, galaxies, and stars. We note that this validation process does not account for possible sources whose emission peaks in the far-UV domain, without counterparts in the EIS/COMBO-17 surveys. We estimate that, validating our catalogue with the GALEX observations in the CDF-S, some tens up to one hundred sources without optical cross-identifications (depending on detailed validation after visual inspection on the images) would be added. We chose to only refer to the EIS/COMBO-17 surveys for validating the XMM-OM detections, to take advantage of the classifications provided by the reference optical surveys. We also notice that the validation procedure can lose some possible transient sources not present at the epochs of the reference ground-based surveys.

The cross-correlation procedure adopted for the validation of the catalogue – and for identifying the sources within other CDF-S surveys, see Sect. 3.1 – is very standard. After matching the catalogue with the given reference source-list by coordinates, we repeat the cross-correlation with a set of false coordinates, which were obtained by adding an offset of 30 arcsec to the coordinates of the reference survey. Then, by comparing the histograms of the separations, we choose the best match radius for minimising the rate of false matches without losing too many true counterparts: this is determined to be 1 arcsec for the EIS and COMBO-17 surveys. The probability of false matches is estimated through the ratio between false and true

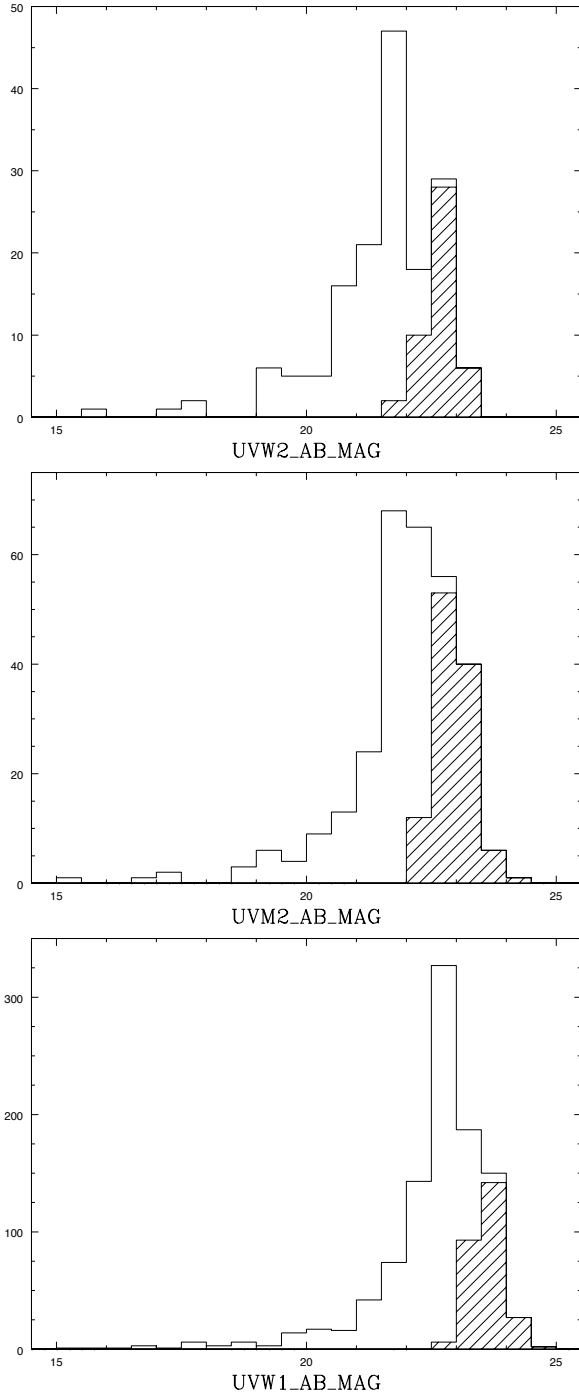


Fig. 2. Magnitude distributions for the good subsample (empty histograms): *upper, middle, and lower panels* refer to *UVW2, UVM2, and UVW1* bands, respectively. The shaded histograms represent the contribution of the stacking.

cross-identifications within the match radius; the possible offset in the distribution of separations of the true counterparts, instead, indicates a possible bias in the astrometry of the catalogues. The possible incompleteness is estimated as the ratio between the residual matches within the tail of the distribution, beyond the chosen radius, and the total number including such matches.

After selecting the best match radius, the cross-correlation is repeated in the *all matches* mode, for determining possible

double or multiple counterparts. The choice of the most likely cross-identifications has been generally performed by selecting the counterparts at the lower distance. However, matching the XMM-OM source-list with the EIS and COMBO-17 surveys, visual inspections of the images and photometric considerations have been also carried out. We define a system of cross-identification flags (CIF), reported in Table 3, to account for the reliability of the identifications.

By applying the procedure described above, the sources farther than 1 arcsec from the EIS or COMBO-17 counterparts are discarded, and a total of 1210 EIS and 1251 COMBO-17 counterparts are identified in the *all matches* mode. The probabilities of false matches correspond to 4.1% and 5.5%, respectively, while the maximum incompleteness is estimated at 6.1% and 2.7%, respectively. The cases of double or multiple XMM-OM cross-identifications of given EIS/COMBO-17 objects are 73; among them, 35 counterparts are clearly recognisable (CIF = 1), because the other detections are spurious events (cosmic rays), while 38 are the ambiguous identifications. Only one of the counterparts is included in the main catalogue for each of these sources – the most likely in terms of angular distance – and is marked with CIF = 3. The discarded counterparts are, however, listed in the supplementary catalogue, described in Sect. 3.3, together with the main catalogue. Four XMM-OM sources, instead, have two EIS/COMBO-17 counterparts: again, the most reliable of them is selected, but these identifications have to be considered ambiguous – the astrometric precision of the USNO-B1.0 source catalogue, used in SAS for the astrometry correction, is of about 0.2 arcsec, and the systematics in the distortion map currently turn out to be about 0.7 arcsec rms (Talavera 2011) – and they are marked by CIF = 4. A note on the discarded identification is reported in the main catalogue (see Sect. 3.3).

Visual checks of the images, intended to confirm potentially dubious detections, were also carried out. Spurious detections can be hidden in objects detected in the *UVW2* and/or *UVM2* bands without measurements in the *UVW1* and *U* filters, and *UVW1* sources without *U* counterparts, because the *U* sensitivity is higher with respect to the UV filters, and the *UVW1* filter is more sensitive than the higher frequency bands. However, the *U* and *UVW1* detections can be missing because of the selection by filter of QF0 measurements: 8 out of 17 *UVW2/UVM2* detections without *UVW1/U* counterparts are real (CIF = 2); similarly, 169 out of 239 *UVW1* detections without *U* measurements are real. *UVW1* sources that turned out to be clearly spurious (false events, residual detections on scattered-light artefacts) were discarded from the catalogue, while some dubious cases were marked with CIF = 5.

We also checked the cross-identifications that present suspiciously faint photometric measurements ($R > 24$, $U' > 25$; the R mag are provided by both the EIS and the COMBO-17 survey, and U' is the EIS U350/60 WFI filter) or uncommon colours. Very faint optical magnitudes from the EIS/COMBO-17 counterparts, or strong differences in the XMM-OM and EIS/COMBO-17 photometric measurements between nearly coincident wavelength bands may indicate potentially wrong cross-identifications, but also possible physical reasons can account for such measurements (e.g. variability); consequently, the ambiguous identifications are visually checked and flagged with CIF = 5 if deemed suspect, without being discarded.

The final catalogue is composed of 1129 UV sources. Among them, 1031 objects constitute the subset of verified detections, with reliable EIS/COMBO-17 cross-identifications (CIF ≤ 2 , thereafter “good subsample”), while 98 objects

Table 3. Cross-identification flags (CIF).

CIF	Definition of the flag	<i>N</i>
0	Confirmed XMM-OM detection with unique EIS/COMBO-17 cross-identification	988
1	Reliable XMM-OM counterpart of an EIS/COMBO-17 source with multiple XMM-OM cross-identifications	35
2	Confirmed UVW2/UVM2 detection without UVW1 and <i>U</i> counterparts	8
3	Ambiguous XMM-OM counterpart of an EIS/COMBO-17 source with multiple XMM-OM cross-identifications	38
4	Ambiguous EIS/COMBO-17 counterpart of an XMM-OM source with multiple EIS/COMBO-17 cross-identifications	4
5	Dubious UVW1 detection without <i>U</i> counterpart or potentially wrong cross-identification in the EIS and/or COMBO-17 survey	56

(CIF ≥ 3) have to be considered dubious at least in terms of their identifications in the reference optical surveys. In the next section, magnitude distributions, colour–colour diagrams, and photometry comparisons generally refer to the good subsample. We note that the present catalogue is not to be considered complete, owing to the complex selection that includes photometric and cross-identification flags, which produce an incompleteness mainly for the brighter sources, which are more affected by photometric artefacts. Towards the fainter magnitudes, we estimate the approximate magnitude completeness limits as $UVW2 \approx 21.9$, $UVM2 \approx 22.1$, and $UVW1 \approx 22.8$.

3. Presentation of the catalogue

3.1. Statistics and complementary information from cross-correlations

The XMMOMCDFS catalogue, as resulted from the data processing described in the previous section, contains the average astrometry and photometry of the sources detected in at least one of the three UV filters and with quality flag QF = 0, confirmed by cross-correlating the EIS and the COMBO-17 surveys and through partial visual screening of the images. The good subsample is defined by the additional requirement CIF ≤ 2 . The photometry is computed as the unweighted average of the measurements from individual observations or from the stacked images. The XMM-OM optical average data and the information from the reference surveys (source identifications, COMBO-17 and X-ray classifications, spectroscopic redshifts) are also included. A total of 1121 out of 1129 sources have been detected in the UVW1 band, while the UVM2 and UVW2 photometry is available for 301 and 157 objects, respectively.

Figure 2 shows the magnitude distributions of the good subsample in the UVW2 (upper panel), UVM2 (middle panel), and UVW1 (lower panel) bands, including the contribution by the stacking (shaded parts of the histograms). If compared to the analogous distributions presented by Kuntz et al. (2008) for the OMCat or to the normalised distributions of the XMM-SUSS sources obtained by Page et al. (2012), fainter magnitudes are reached both in terms of peaks of the distribution and limiting magnitudes (equal to 23.3, 24.0, and 24.7 for the UVW2, UVM2, and UVW1 bands, corresponding to flux densities of 1.1×10^{-17} , 4.9×10^{-18} , and 1.6×10^{-18} erg/s/cm²/Å, respectively), because the exposure times of the XMM-CDFS Deep Survey images are generally longer, and the stacking allows detection of faint sources, increasing the detection limit of each UV band by ~ 1 mag. The source detection on stacked images contributes the 29.3% of the UVW2, the 37.5% of the UVM2, and the 31.0% of the UVW1 measurements.

Figures 3 and 4 represent the UVM2–UVW1 versus UVW2–UVM2 and the *U–B* versus *B–V* colour plots, respectively. Only the sources detected in all the XMM-OM UV bands (Fig. 3) and/or optical bands (Fig. 4) are shown. No

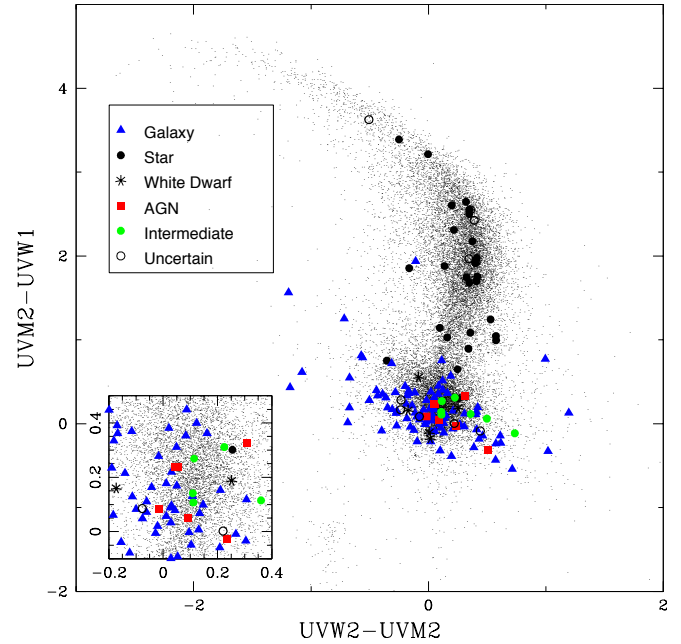


Fig. 3. $UVM2-UVW1$ versus $UVW2-UVM2$ diagram. The colours of the circles refer to the adopted classification of the objects, based on combining the photometric classifications provided by the COMBO-17 survey and the *Chandra* 4 Ms source catalogue (see Sect. 3.2). Blue triangles indicate the galaxies, stars are represented as black filled circles, white dwarfs as asterisks, red filled squares indicate the AGN, while green filled circles represent the intermediate objects as defined in Sect. 3.2 (e.g. faint AGN optically diluted by the host galaxy starlight). Black empty circles refer to the sources whose classification is uncertain or unclassified. Symbols are also reported in a legend. The background black dot distribution is the whole XMM-SUSS diagram of Page et al. (2012). The most crowded region in the centre of the colour–colour plot is magnified in the small inset.

corrections for dust extinction or cosmological redshift were applied to produce the colour–colour diagrams. The distributions are presented as functions of the adopted classifications, obtained combining the COMBO-17 photometric classifications and the available estimates of likely source types given by Xue et al. (2011) – see Table 5 and Sect. 3.2 – and are compared with the colours of the XMM-SUSS sources (Page et al. 2012). Figure 5, instead, is obtained by defining the colours through the UVW1 and the EIS *B* and *I* bands, as done for instance by Bianchi et al. (2007), combining GALEX and Sloan Digital Sky Survey (SDSS) photometric measurements in the *NUV – g* versus *g – i* diagrams. In all the colour–colour plots, stellar and galactic loci are clearly distinguishable, even if partly overlapped, and are located in the corresponding colour regions of the comparison distributions and of the models depending on age and temperature (for galaxies and stars, respectively: see

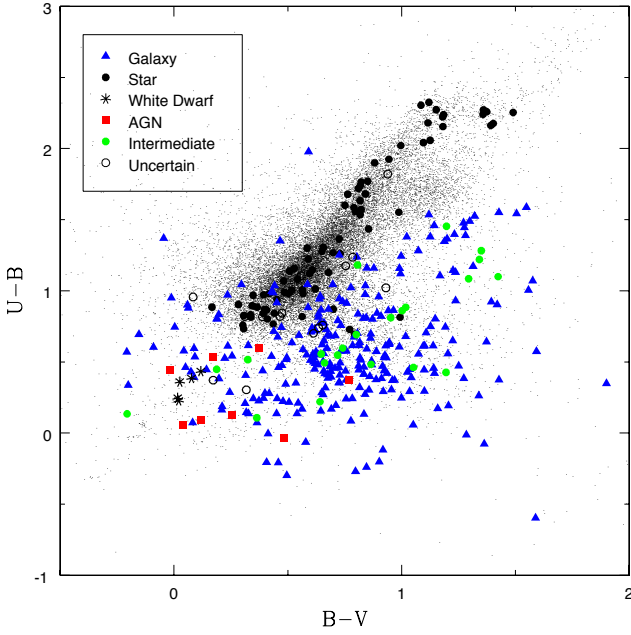


Fig. 4. $U-B$ versus $B-V$ diagram. Symbols and colours are defined as in Fig. 3 and shown in the legend. Small black dots represent the whole XMM-SUSS diagram of (Page et al. 2012).

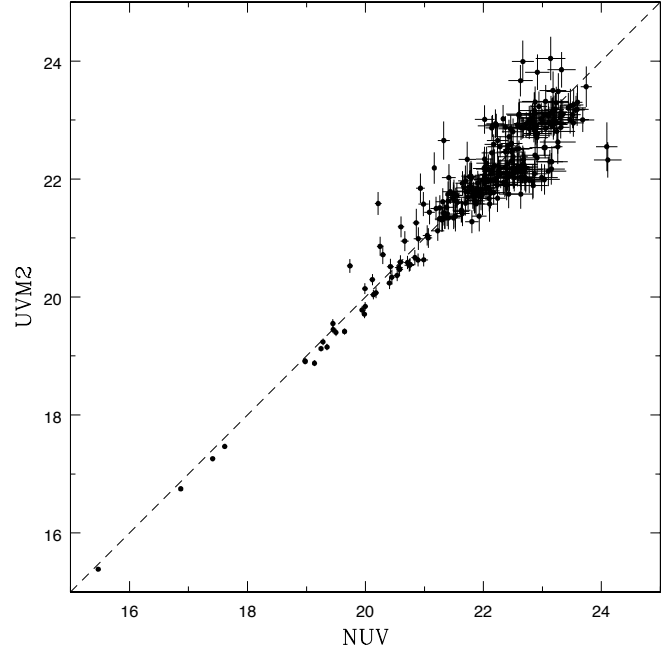


Fig. 6. XMM-OM $UVM2$ magnitudes versus GALEX NUV magnitudes diagram. The dashed line indicates the equality of the two magnitudes. Error bars represent one standard-deviation photometric uncertainty.

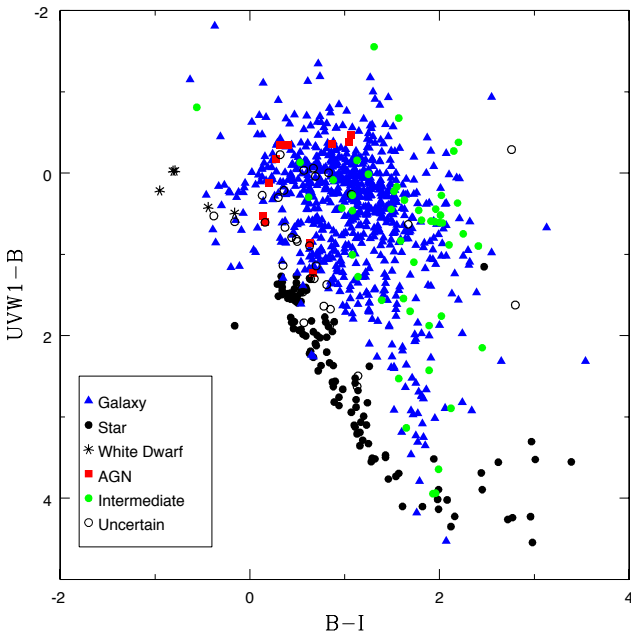


Fig. 5. $UVW1-B$ versus $B-I$ diagram, in comparison with similar colour-colour plot by Bianchi et al. (2007), their Fig. 5. Symbols and colours are defined as in Fig. 3 and reported in the legend.

Bianchi et al. 2007, 2011; Page et al. 2012, and the references therein). The subset of “intermediate” sources (e.g. optically diluted AGN) is distributed within the entire galactic locus: besides the redshift dependence, this is also due to the optical contamination of the host galaxies (see Sect. 3.2).

Subsidiary information about the sources were derived by matching the catalogue with other CDF-S surveys, following the cross-correlation procedure of Sect. 2.3. The GALEX observations provide 957 counterparts within a maximum distance

of 2.5 arcsec (877 good sample cross-identifications). The incidence of false matches is estimated to be about 8.9%, while the incompleteness corresponding to the possible sources farther than the cross-correlation radius is $\leq 5.4\%$. There are 13 XMM-OM or GALEX sources with two cross-identifications, and the most likely was attributed for each of them. However, we added a reference to the alternative identification in the main catalogue. We notice that, while it could be expected that all the sources detected by XMM-OM are also found by GALEX, owing to the wider field of view and deeper detection limit, $\sim 15\%$ of them are missing in the cross-correlation. This could be due to the GALEX photometry in crowded regions, where nearby sources could be interpreted as a merged one with the attribution of wrong coordinates. Examples are reported in Simons et al. (2014) or Bianchi (2014). This cross-correlation is useful both for integrating the UV spectral coverage of the sources and for comparing the XMM-OM photometry to the GALEX measurements, in order to examine the calibration of the instrument (see Talavera 2011). Regarding the latter purpose, the most suitable comparison can be made by plotting the XMM-OM $UVM2$ average photometric measurements as a function of the GALEX NUV photometry (Fig. 6), because the effective wavelength and the wavelength range of these filters are nearly coincident, even though the two filters have very different shapes. The dispersion in the $NUV - UVM2$ distribution is partly to be attributed to the relatively high XMM-OM photometry uncertainties at fainter magnitudes, while the possible contamination of false cross-identifications may account for the presence of outliers. As a whole, the $UVM2$ and NUV photometric estimates are in good agreement, confirming the validity of the XMM-OM calibration.

Similar trends are found by comparing the XMM-OM U , B , and V measurements with the EIS photometry in the corresponding bands (Fig. 7), which are characterised by almost equal wavelength ranges and effective wavelengths (Arnouts et al. 2001). At bright magnitudes, the U and B bands

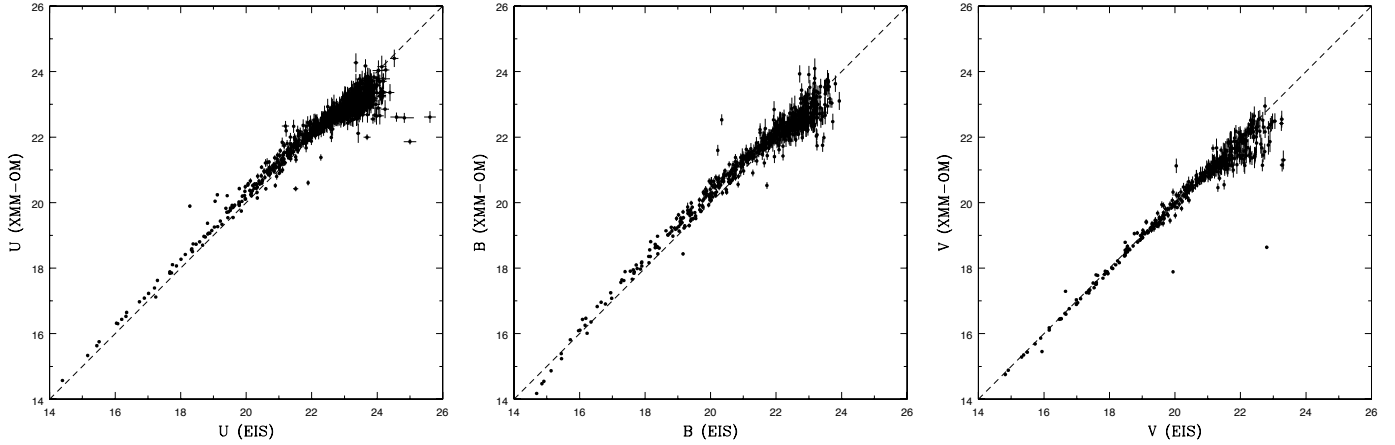


Fig. 7. U , B , V comparison of the XMM-OM magnitudes with the corresponding EIS magnitudes. The dashed lines indicate equality of the magnitudes. Error bars represent one standard deviation photometric uncertainties.

Table 4. Cross-identifications of the XMM-OM sources in the reference catalogues.

Survey	Radius	Cross-id	Good	Prob
GALEX	2.5	957	877	8.9
ACES	1.0	751	694	1.2
Master Catalogue	1.0	191	173	2.5
<i>Chandra</i> 4 Ms	2.0	164	158	4.1
<i>XMM-Newton</i>	3.5	33	31	12.1

Notes. Radius: match radius of the cross-correlation in arcsec. Cross-ID: total number of cross-identifications. Good: cross-identifications of good subsample sources. Prob: probability of false matches.

show small systematics, probably because of the differences in the effective wavelengths and shape of the filters.

While the COMBO-17 survey provides useful photometric estimates of z , it is possible to attribute spectroscopic redshifts to the sources of the catalogue by cross-correlating the Arizona CDFS Environment Survey. We obtained 751 ACES counterparts with secure¹⁰ redshift estimate (only one double cross-identification), 694 of which referred to the good subsample, within a maximum distance of 1 arcsec. The possible contamination of spurious matches is 1.2%, while the maximum incompleteness is estimated to be 4.9%. The spectroscopic estimates of z for other 191 sources (173 good sample objects) have been extracted from the ESO CDF-S Master Catalogue, version 3.0, considering only the best match for each source. Similar to the ACES counterparts, we considered only the reliable determinations, selecting them by means of the quality flags attributed in each of the references that make up the ESO CDF-S Master Catalogue. The probability of false identifications is 2.5%. The overall redshift distribution of the extragalactic sources in the good subsample is shown in Fig. 8. The double peak in the redshift distribution is also present in the ACES survey (Cooper et al. 2012, their Fig. 5), and is partially to be attributed to a large-scale structure in the CDF-S. In fact, Trevese et al. (2007a) and Salimbeni et al. (2009) found evidence of an over-density at redshift ~ 0.7 , which corresponds to one of our peaks. Figure 9

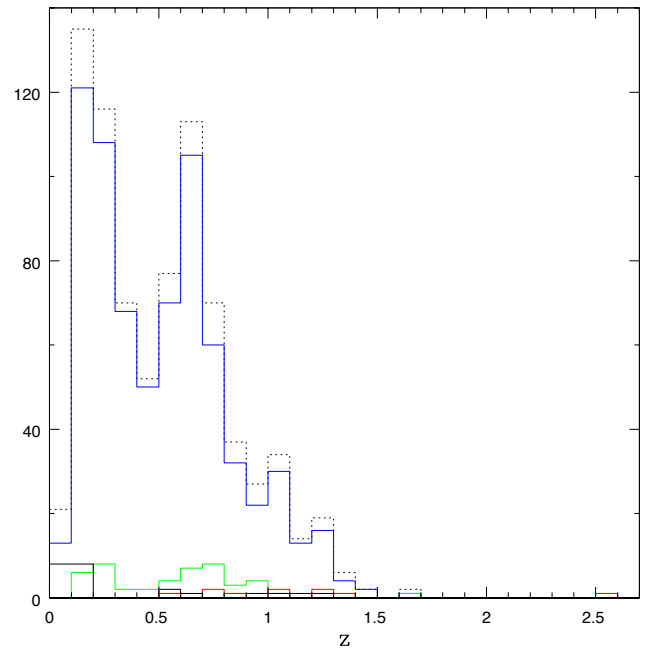


Fig. 8. Spectroscopic redshift distribution of the extragalactic sources in the good subsample. The dashed histogram refers to the complete subset. Continuous histograms refer to galaxies (blue), AGN (red), intermediate sources (green), and uncertain/unclassified objects (black).

represents the redshift as a function of the specific UV luminosity at 250 nm. In this case, only the sources whose SEDs include at least one measure in the interval $15.00 < \log \nu < 15.16$ have been considered, because the uncertainty in extrapolating the specific luminosity at 250 nm ($\log \nu = 15.08$) can be considered negligible (see Sect. 3.2). Figures 8 and 9 refer to extragalactic sources. No unclassified objects have redshifts in the range $0 < z < 0.01$, avoiding possible contaminations from stellar radial motions.

Finally, we cross-correlated the XMM-OM catalogue with the *Chandra* 4 Ms source catalogue and the 2–10 keV point-source catalogue of *XMM-Newton* in the CDF-S for identifying the X-ray counterparts of the UV sources. Selecting a match radius of 2 arcsec, we found 164 *Chandra* cross-identifications, with a 4.1% probability of false matches,

¹⁰ We only referred to the estimates denoted by ACES quality code Q equal to -1 (stellar source), 3 (reliable at $>90\%$), or 4 (reliable at $>95\%$).

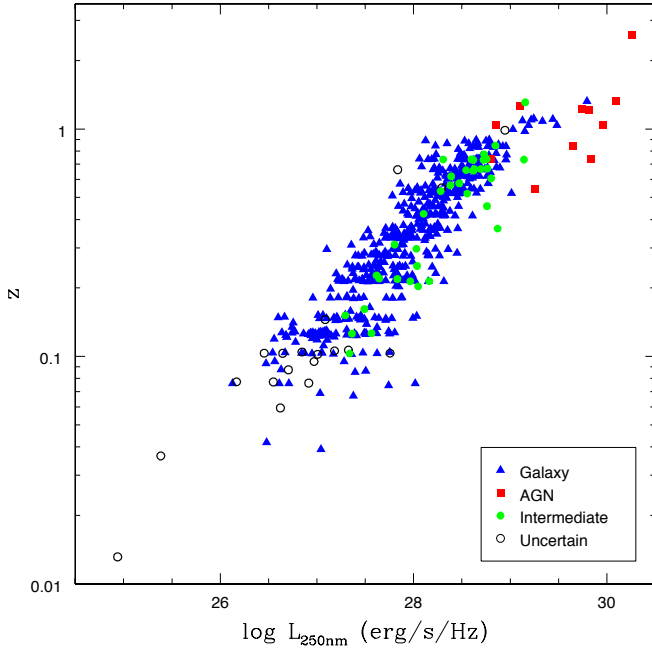


Fig. 9. $L_{250\text{ nm}}-z$ plane for the extragalactic objects. Symbols and colours are defined as in Fig. 3 and reported in the legend.

and incompleteness $\leq 4.1\%$. The good subsample counterparts are 158. Instead, the cross-correlation with the 2–10 keV point-source catalogue by [Ranalli et al. \(2013\)](#) with a match radius of 3.5 arcsec only yields 33 X-ray counterparts (31 for the good subsample) with a 12.1% probability of false matches and an estimated incompleteness $\leq 13.2\%$. The sources detected both by *Chandra* and *XMM-Newton* are 27. We notice that, notwithstanding the simultaneity of the X-ray and XMM-OM observations, only 33 out of 339 X-ray sources catalogued by *XMM-Newton* have UV counterparts in the catalogue. This is expected, because the catalogues by [Ranalli et al. \(2013\)](#) refer to the hard X-ray bands (2–10 keV, 5–10 keV), which are well suited to AGN and obscured objects, but less interesting for normal and star-forming galaxies, which constitute the large majority of our catalogue (see Sect. 3.2 and Table 5). Once we take the *Chandra* 4 Ms catalogue data into account, for instance, 158 sources are detected in the soft-band, 93 of which are galaxies ($\sim 59\%$), while only 60 sources are detected in the hard band with only 14 galaxies ($\sim 23\%$). Moreover, the small overlap between the XMMOMCDFS and 2–10 keV point-source catalogues is also partly due to the different size of the fields of view (about 140 X-ray sources fall outside the region covered by the XMM-OM observations), and partly has to be attributed to possible biases introduced by the data processing (selecting the QF0 detections and discarding the optical sources without UV measurements, which cause the loss of 35 cross-identifications).

The total statistics of the cross-correlations with the reference CDF-S surveys is summarised in Table 4.

3.2. Combined classification of the sources. X-ray/UV ratio

The *Chandra* 4 Ms source catalogue provides an estimate of the likely source types of the objects, based on revealing possible X-ray emission properties ($L_{0.5-8\text{ keV}} \geq 3 \times 10^{42}$ erg/s;

Table 5. Combined classification of the good subsample sources.

	COMBO-17	<i>Chandra</i>	a.c.
Galaxies	862	91 ^a	814
AGN	11	61 ^b	11
Intermediate			50
Stars (and WDs ^c)	118	6 ^d	119
Uncertain/unclassified	40		37
Total	1031	158	1031

Notes. ^(a) two sources with dubious classification – “Galaxy (Uncl!)” – in the COMBO-17 survey. ^(b) 50 sources classified as galaxies in the COMBO-17 survey. ^(c) White dwarfs (WDs) are classified separately only in the COMBO-17 survey. ^(d) One absent source among the COMBO-17 counterparts. The last column (a.c.) refers to the classification adopted in producing Figs. 3–5, 8–11 and contained in Col. 96 of the catalogue (see Sect. 3.3). Intermediate sources are the objects classified as AGN in the *Chandra* 4 Ms source catalogue and as galaxies in the COMBO-17 survey. Objects with dubious classifications – “Galaxy (Uncl!)”, “Galaxy (Star?)”, “QSO (Gal?)”, “Strange Object” – or absent in the COMBO-17 survey are indicated as uncertain.

photon index ≤ 1.0 ; $\log(f_X/f_R) > -1^{11}$; X-ray emission at least three times higher than the level corresponding to pure star formation¹²) and optical spectroscopic features (e.g. broad emission lines) that characterise the active galactic nuclei ([Xue et al. 2011](#)). Among 158 sources of the good subsample with *Chandra* X-ray counterparts, 61 are classified as AGN, even if 50 of them are photometrically estimated to be galaxies within the COMBO-17 survey (see Table 5). This disagreeing classification likely refers to faint AGN whose optical/UV emission is photometrically diluted by the host galaxy starlight, as suggested by some remarks: e.g. i) most of the sources are optically extended, presenting both EIS and COMBO-17 stellarity indexes ~ 0 (the COMBO-17 stellarity indexes of 39 objects are 0); ii) the 0.5–8 keV luminosity is $< 10^{42}$ erg/s for 23 objects, and in another 7 cases is $< 3 \times 10^{42}$ erg/s. Moreover, the available spectroscopic analyses from the literature confirm the double COMBO-17/*Chandra* classification. Eleven out of 17 cross-identifications in [Szokoly et al. \(2004\)](#) are optically classified as “LEX”, which are galaxies that show unresolved emission lines that are consistent with HII region-type spectra, in which the possible presence of the AGN cannot be optically proved, while their X-ray luminosities have to be attributed to the AGN emission (“QSO-1”, “AGN-1”, “AGN-2”); analogously. Seven out of 11 counterparts from [Treister et al. \(2009\)](#) are classified as emission line galaxies (“ELG”), absorption line galaxies (“ALG”), or unknown objects (“UNK”). The dilution of the nuclear emission lines by the host galaxy continuum indeed accounts for the considerable number of relatively faint X-ray sources that are classified as galaxies in the optical follow-up observations ([Moran et al. 2002](#); [Cardamone et al. 2007](#); [Treister et al. 2009](#)).

To quantify the X-ray/UV ratio of the objects with X-ray *Chandra* counterparts, we computed the X-ray-to-optical index, $\alpha_{\text{ox}} = \log(L_{2\text{ keV}}/L_{250\text{ nm}})/\log(\nu_{2\text{ keV}}/\nu_{250\text{ nm}})$, as a function of

¹¹ f_X refers to the flux in one of the 0.5–8 keV, 0.5–2 keV, and 2–8 keV bands.

¹² The X-ray emission attributed to starburst galaxies amounts to $8.9 \times 10^{17} L_R$, where L_R represents the rest-frame 1.4 GHz monochromatic luminosity in units of W/Hz ([Alexander et al. 2005](#); [Xue et al. 2011](#)).

the logarithmic UV specific luminosity at 250 nm, as is usually done when analysing samples of AGN (e.g. [Strateva et al. 2005](#); [Just et al. 2007](#); [Gibson et al. 2008](#); [Grupe et al. 2010](#); [Lusso et al. 2010](#); [Vagnetti et al. 2010, 2013](#)). To estimate the nuclear contribution of the luminosity at 250 nm, we adopted a two-component fit of the XMM-OM rest-frame SEDs for AGN and part of the intermediate sources. The fitting SED includes a host galaxy starlight component $\propto \nu^{-3}$, added to an AGN component shaped as the average SED of [Richards et al. \(2006\)](#). The details are described in [Vagnetti et al. \(2013](#); see also a similar procedure in [Lusso et al. 2010](#)). For galaxies, intermediate sources whose nuclear emission is found to be totally negligible through the two-component fit, and for uncertain objects, $\log L_{250 \text{ nm}}$ is computed by interpolating or extrapolating the SEDs through a power law of the same slope as the one between the lowest frequency rest-frame luminosity measures. Only the SEDs that include data within the interval $15.00 < \log \nu < 15.16$ have been considered in estimating the specific luminosity at 250 nm, to reduce the uncertainty related to the extrapolation method.

The X-ray specific luminosities at 2 keV were computed from the *Chandra* 2–8 keV fluxes, by also applying a standard power-law k-correction (the values of the photon indexes are provided by the *Chandra* 4 Ms source catalogue). If the 2–8 keV fluxes are given as upper limits, the corresponding estimates of the X-ray-to-optical index are upper limits, too¹³.

Figure 10 shows the α_{ox} versus $\log L_{250 \text{ nm}}$ of AGN, galaxies, intermediate sources, and uncertain objects. As a reference, we show the best-fit relations for AGN by [Just et al. \(2007\)](#) and [Lusso et al. \(2010](#); not corrected for the host galaxy contribution). We note that i) the distributions of AGN and galaxies are completely separated: the galaxy α_{ox} estimates are on average \sim one unit lower than the AGN reference relations, corresponding to X-ray luminosities $\sim 10^2$ – 10^3 times lower than the average levels expected for active galactic nuclei; ii) most of the uncertain objects are low-luminosity sources and are close to the galaxy locus; iii) the intermediate sources are distributed on a wide region between the AGN and galaxy loci, partly overlapping them. This appears to be due to the different ratios between the AGN and host galaxy optical/UV continua of the sources. The host galaxy contamination on the average $\alpha_{\text{ox}} - \log L_{250 \text{ nm}}$ anti-correlation slope is discussed in [Vagnetti et al. \(2013\)](#). We point out that the estimates of $\log L_{250 \text{ nm}}$ and α_{ox} correspond to the nuclear emission for the AGN and some of the intermediate objects (Fig. 10), derived by the two-component fit of the SEDs, while are referred to the total UV luminosity for the other sources.

Also after the subtraction of the optical/UV galaxy contribution, part of the intermediate sources are still far from the AGN locus. This can be due, at least in part, to X-ray obscuration for type-2 sources. For a few sources it has been possible, on the basis of the available spectra from the XMM-CDFS Deep Survey, to compute de-absorbed X-ray luminosities and corresponding α_{ox} estimates, which are indicated in the plot by arrows from the absorbed to the corrected values. This correction gives X-ray-to-optical index values close to the reference $\alpha_{\text{ox}} - L_{250 \text{ nm}}$ relations. The intermediate sources can therefore be considered as AGN that are optically diluted by the host galaxy starlight

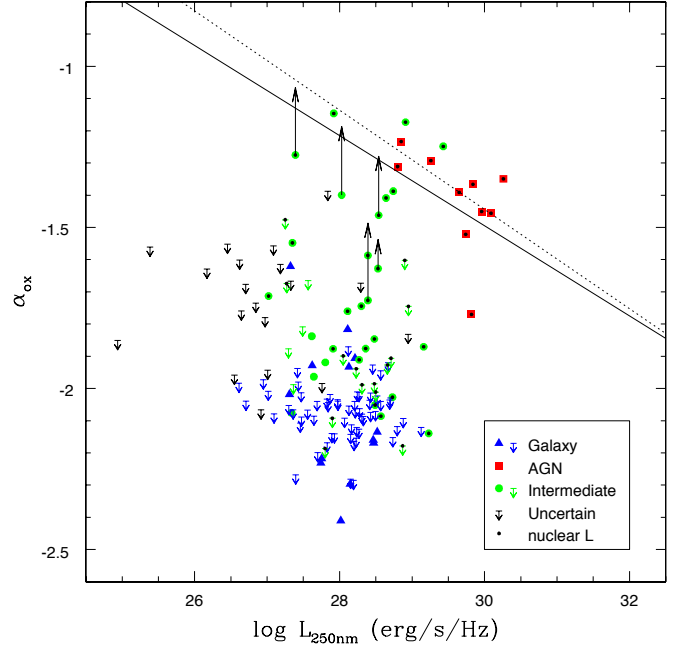


Fig. 10. α_{ox} versus $L_{250 \text{ nm}}$ diagram. Blue triangles and upper limits represent galaxies, red squares indicate AGN, green circles and upper limits refer to intermediate sources, and black downward arrows represent the upper limits of the *Chandra* undetected sources. AGN and intermediate sources are marked by small black circles when referring to their nuclear luminosities. All these symbols are also shown in the legend. Green symbols without the black circles refer to the total luminosities of intermediate sources for which it was not possible to determine the nuclear components; a correction performed as in [Vagnetti et al. \(2013\)](#) would shift such sources in the upper left direction with slope ~ 0.38 . For some of the intermediate sources, black upward vertical arrows indicate the correction for the X-ray absorption based on the available X-ray spectra from the XMM-CDFS Deep Survey. The straight lines refer to the best fit $\alpha_{\text{ox}} - L_{250 \text{ nm}}$ relations by [Just et al. \(2007](#); continuous) and [Lusso et al. \(2010](#); dotted) for AGN, as reference.

and/or X-ray absorbed objects, and these effects can explain their low X-ray/UV ratio.

The distributions of the different classes of objects can also be shown in a $\log L_{\text{R}}$ versus $\log L_{2-8 \text{ keV}}$ plot (Fig. 11). The *R*-band luminosities are derived from the EIS magnitudes, while the X-ray luminosities are computed from the *Chandra* 2–8 keV fluxes. As expected (e.g. [Alexander et al. 2002](#); [Xue et al. 2011](#)), the AGN are concentrated in the $-1 < \log(X/R) < +1$ region, and the galaxies present lower X-ray/optical ratios. The intermediate objects are distributed both in the $-1 < \log(X/R) < +1$ stripe and outside $-\log(X/R) < -1$, which is more typical of normal or star-forming galaxies – as a consequence of the different level of optical dilution due to the host galaxy starlight. No attempt has been made to evaluate their *R*-band nuclear component.

The possibility of selecting low-luminosity AGN candidates within the galaxy locus by means of optical variability analyses has been discussed by [Trevese et al. \(2007b, 2008a\)](#). After spectroscopic confirmation, such variable candidates are typically found to display ambiguous spectra between star-forming galaxies and low-luminosity AGN (narrow emission line galaxies, NELG, [Trevese et al. 2008b](#); [Boutsia et al. 2009](#)). However, their variable character is an additional clue to their AGN nature. Several of our intermediate sources show ambiguous spectra as well, as referred to before (e.g. LEX, ELG,

¹³ The specific luminosities at 2 keV of the uncertain objects without X-ray counterparts have been computed using specific 2–8 keV flux upper limits, evaluated as a function of their position within the *Chandra* field of view (see Fig. 25 by [Xue et al. 2011](#)); we only considered the sources whose specific UV luminosities are computable.

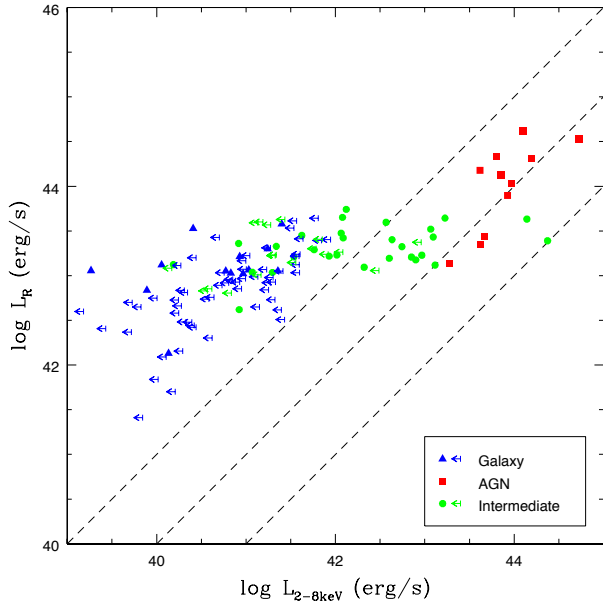


Fig. 11. L_R versus $L_{2-8\text{ keV}}$ diagram. Dashed lines indicate, from left to right, the ratios $\log(X/R) = -1$, $\log(X/R) = 0$, and $\log(X/R) = +1$. Red, green, and blue symbols are defined as in Fig. 10, and reported in the legend. All the intermediate source L_R estimates refer to their total luminosities.

Szokoly et al. 2004; Treister et al. 2009). A UV variability analysis for these sources would improve their characterisation. We carried out a preliminary analysis limited to those sources that have at least four measurements (including stacking determinations) in the *UVWI* filter. Adopting a procedure similar to the one described in Trevese et al. (2008a), we estimate 12 variable candidates out of 453 objects in the magnitude interval $18.5 \leq UVWI \leq 23.5$, corresponding to a 2.6% fraction, which is comparable to the result by Trevese et al. (2008a), who selected 132 variable sources out of a reference sample of 7267 objects ($\approx 2\%$). A more complete assessment of the variability will be done elsewhere.

To characterise the intermediate objects better and reinforce the indications of an AGN nature, it is also possible to use a diagnostic tool based on an IR colour–colour plot proposed by Lacy et al. (2004) and refined by Donley et al. (2012), shown in Fig. 12. The distribution of the XMMOMCDFS sources is compared to the data from the SWIRE (Vaccari et al. 2010, Vaccari et al., in prep.) survey. The reference diagram shows two branches, a nearly-vertical one mainly occupied by normal and star-forming galaxies, while most AGN are usually found in the inclined branch to the right. In fact, the QSOs in our catalogue are located in that region, but so are some of the intermediate sources. In the figure, we have also marked some sources that have been found to be X-ray variable according to the analysis by Paolillo et al. (2004; and updated in Paolillo et al., in prep.): this constitutes an additional clue to their AGN nature, which we will investigate in more detail elsewhere. Moreover, we notice that the X-ray variability is also present for a few galaxies that possibly host low-luminosity AGN.

3.3. Contents of the catalogue

In this section, we briefly present the columns that compose the UV main catalogue of the XMM-CDFS Deep Survey (Table 7), and the supplementary catalogue concerning the alternative

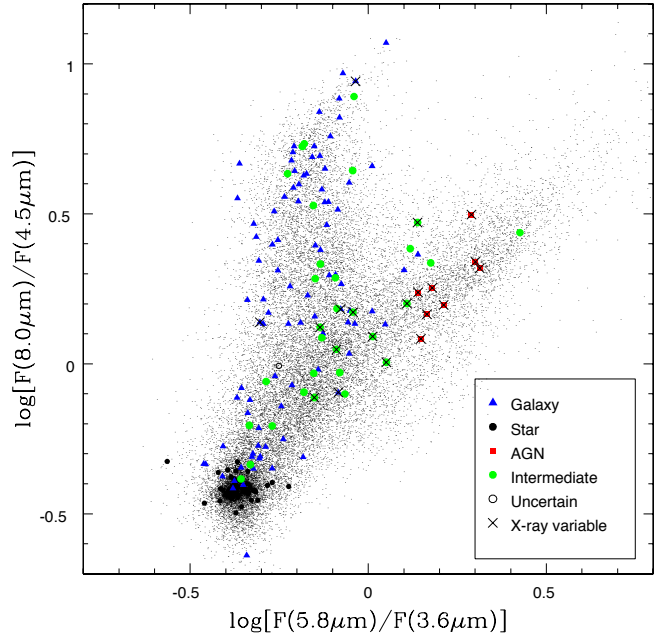


Fig. 12. The 8.0/4.5 μm flux ratio versus the 5.8/3.6 μm flux ratio. The small black dots refer to the SWIRE sample analysed by Vaccari et al. (2010, and in prep.). The largest symbols represent the XMMOMCDFS sources with available IR data from the previous sample, with the same meaning as the symbols in Fig. 3. In addition, the crosses indicate X-ray variable sources according to Paolillo et al. (2004, and in prep.). Symbols are also reported in the legend.

identifications for CIF = 3 sources (Table 8). The two tables are available in electronic form at the CDS. The columns of the main catalogue are listed in Table 6, while the supplementary catalogue contains a subset of them, specified at the end of the section.

Column 1 is a reference sequential source number, arbitrarily assigned to the object (Cat_srcnum). Column 2 contains the name of the source (Cat_srcname). Columns 3, 4 are the right ascension and declination of the object in decimal degrees, computed by averaging the mean coordinates of the detections in each UV band (Tot_UV_RA, Tot_UV_Dec). Columns 5–76 provide the average astrometry, detection significance, and photometry of the measurements in each filter (f); in particular, $f_OBS/STACK$ states whether the source has been detected on individual observations (o) or stacked images (s); f_RA and f_Dec refer to the average coordinates of the detections in decimal degrees; f_POSERR is the 1σ mean position uncertainty in arcsecs; f_SIGNIF gives the average significance of the detections; f_CR and f_CR_ERR represent the mean count rate and the corresponding uncertainty; f_AB_FLUX and $f_AB_FLUX_ERR$ are the mean flux density (corresponding to the effective wavelength of the f band) and its uncertainty; f_AB_MAG and $f_AB_MAG_ERR$ give the average AB magnitude and its uncertainty; $f_GroupSize$ refers to the number of individual observations (or stacked images) in which the source has been detected (without bad quality flags).

Columns 77, 78 refer to the name of the EIS cross-identification in the shortest wavelength available band (objID_EIS) and the name of the corresponding filter (EIS_filter).

Table 6. Column names in the XMMOMCDFs catalogue.

Number	Name	Number	Name	Number	Name
1	Cat_srcnum	34	UVW1_CR	67	V_Dec
2	Cat_srcname	35	UVW1_CR_ERR	68	V_POSERR
3	Tot_UV_RA	36	UVW1_AB_FLUX	69	V_SIGNIF
4	Tot_UV_Dec	37	UVW1_AB_FLUX_ERR	70	V_CR
5	UVW2_OBS/STACK	38	UVW1_AB_MAG	71	V_CR_ERR
6	UVW2_RA	39	UVW1_AB_MAG_ERR	72	V_AB_FLUX
7	UVW2_Dec	40	UVW1_GroupSize	73	V_AB_FLUX_ERR
8	UVW2_POSERR	41	U_OBS/STACK	74	V_AB_MAG
9	UVW2_SIGNIF	42	U_RA	75	V_AB_MAG_ERR
10	UVW2_CR	43	U_Dec	76	V_GroupSize
11	UVW2_CR_ERR	44	U_POSERR	77	objID_EIS
12	UVW2_AB_FLUX	45	U_SIGNIF	78	EIS_filter
13	UVW2_AB_FLUX_ERR	46	U_CR	79	objID_COMBO
14	UVW2_AB_MAG	47	U_CR_ERR	80	Class_COMBO
15	UVW2_AB_MAG_ERR	48	U_AB_FLUX	81	CIF
16	UVW2_GroupSize	49	U_AB_FLUX_ERR	82	objID_GALEX
17	UVM2_OBS/STACK	50	U_AB_MAG	83	objID_Chandra
18	UVM2_RA	51	U_AB_MAG_ERR	84	Full_FLUX_Chandra
19	UVM2_Dec	52	U_GroupSize	85	Soft_FLUX_Chandra
20	UVM2_POSERR	53	B_OBS/STACK	86	Hard_FLUX_Chandra
21	UVM2_SIGNIF	54	B_RA	87	Pind_Chandra
22	UVM2_CR	55	B_Dec	88	Class_Chandra
23	UVM2_CR_ERR	56	B_POSERR	89	objID_XMM
24	UVM2_AB_FLUX	57	B_SIGNIF	90	FLUX_XMM
25	UVM2_AB_FLUX_ERR	58	B_CR	91	z_spect
26	UVM2_AB_MAG	59	B_CR_ERR	92	z_spect_ref
27	UVM2_AB_MAG_ERR	60	B_AB_FLUX	93	logL250nm
28	UVM2_GroupSize	61	B_AB_FLUX_ERR	94	logL2keV
29	UVW1_OBS/STACK	62	B_AB_MAG	95	X-ray-to-optical-index
30	UVW1_RA	63	B_AB_MAG_ERR	96	Adopted_Class
31	UVW1_Dec	64	B_GroupSize	97	Notes
32	UVW1_POSERR	65	V_OBS/STACK		
33	UVW1_SIGNIF	66	V_RA		

Columns 79, 80 give the sequential number of the COMBO-17 cross-identification (objID_COMBO) and the corresponding photometric classification¹⁴ (Class_COMBO).

CIF (Col. 81) is defined in Sect. 2.3 and refers to the reliability of the identification within the EIS and the COMBO-17 survey¹⁵.

Column 82 gives the GALEX source-number (objID_GALEX).

Columns 83–88 refer to the *Chandra* 4 Ms source catalogue counterpart: objID_Chandra is the source identification; Full_FLUX_Chandra, Soft_FLUX_Chandra, and Hard_FLUX_Chandra are the observed frame fluxes¹⁶ in the 0.5–8 keV, 0.5–2 keV, and 2–8 keV bands, in units of erg/s/cm²; Pind_Chandra is the effective photon index; Class_Chandra is the combined X-ray/optical classification of the source¹⁷ (see Sect. 3.2).

Columns 89, 90 are the entry numbers of the *XMM-Newton* 2–10 keV point-source catalogue counterpart (objID_XMM) and the 2–10 keV flux (FLUX_XMM) in units of erg/s/cm².

Column 91 gives a spectroscopic estimate of redshift (z_spect) obtained from the Arizona CDFS Environment Survey or the ESO CDF-S Master Catalogue; Col. 92 (z_spect_ref) flags the reference from which the redshift estimate is derived¹⁸.

Columns 93–95 are the log of the specific luminosity at 250 nm (logL250 nm), the log of the specific luminosity at 2 keV (logL2 keV), and the α_{ox} estimate (X-ray-to-optical index) of the UV source with X-ray counterpart from the *Chandra* 4 Ms source catalogue. Columns 93 and 95 refer to the total emission of the source, without extracting the nuclear component.

Column 96 gives the combined classification¹⁹ (Adopted_Class).

Finally, ambiguous COMBO-17, GALEX, *Chandra*, *XMM-Newton*, or ACES cross-identifications are noted in Col. 97 (Notes). The sequential number of the alternative, discarded identification is reported in parentheses. We notice that ACES adopts the same sequential numbers as COMBO-17.

Concerning the supplementary catalogue (Table 8), its first two columns are the sequential number and name of the sources already described for the main catalogue, but both include an

¹⁴ G: Galaxy; S: Star; WD: White Dwarf; Q: AGN; G/U: Galaxy (Uncl!); G/S: Galaxy (Star?); Q/G: QSO (Gal?); S.O.: Strange Object.

¹⁵ The values 1, 3, and 4 indicate the sources with no unique cross-identification, analogously to the notes related to the cross-correlations with the other CDF-S surveys (Col. 97).

¹⁶ Negative values indicate upper limits of the corresponding fluxes.

¹⁷ G: Galaxy; S: Star; A: AGN.

¹⁸ A: ACES (Cooper et al. 2012). For the ESO CDF-S Master Catalogue we refer to the specific surveys: L (Le Fèvre et al. 2005), M (Mignoli et al. 2005), P (Popesso et al. 2009; Balestra et al. 2010), Si (Silverman et al. 2010), Sz (Szokoly et al. 2004), V (Vanzella et al. 2008).

¹⁹ G: Galaxy; S: Star; WD: White Dwarf; Q: AGN; I: Intermediate; U: Uncertain/unclassified.

additional letter that indicates the alternative XMM-OM identification(s) associated with the same EIS/COMBO-17 source (CIF = 3). None of these alternative identifications have *UVW2* measurements; however, the corresponding columns are also reported in the supplementary catalogue to maintain the same numbering. This catalogue contains 44 alternative identifications for 38 EIS/COMBO-17 sources in total and is limited to the Cols. 1–76, with the same meaning as in the main catalogue.

4. Discussion

The XMMOMCDFS catalogue was compiled to provide complementary UV photometry of known sources in the *Chandra* Deep Field-South. These observations have the advantage of a better spatial resolution compared to GALEX and a wider field of view with respect to HST. The comparison of XMM-OM with GALEX and EIS magnitudes in similar bands confirms the validity of the XMM-OM calibration. The XMM-OM data allow a better characterisation of the SED of the sources in the UV domain, at wavelengths between the GALEX bands and the visible region, also complementing multi-wavelength studies of the SEDs from the IR to the X-ray bands.

The catalogue contributes to the detection of fainter sources than those already present in the archival source lists corresponding to the individual observations, through the stacking of exposure images from groups of consecutive observations. The additional sources detected through the stacking are ~31% of the total number in each UV band, corresponding to an increase of ~45% with respect to the sources detected and validated within the individual observations.

The catalogue includes 1129 sources, 1031 of which compose the subset of reliable cross-identifications (“good subsample”): ~79% of the sources in the good subsample are galaxies, while ~6% are classified as AGN or intermediate sources. The latter are optically classified as galaxies by the COMBO-17 survey, while showing AGN-like X-ray properties. The analysis of their optical/UV SED allowed us to distinguish galactic and nuclear components for many of these sources. They appear to be AGN that are optically diluted by the dominant host galaxy starlight. Moreover, the available optical spectra provided by the spectroscopic surveys show ambiguous characteristics, i.e. narrow and weak emission lines, which could be attributed to low-luminosity AGN or star formation activity. Part of the intermediate sources are also to be considered as obscured AGN, and for a few of them it has been possible to evaluate their corrected nuclear X-ray fluxes, so estimating standard X-ray/UV ratios. Further confirmation of the AGN nature of these objects and/or the selection of variable candidates among the galaxy population may be obtained through a UV variability analysis, which could provide additional evidence of AGN activity for some of the sources and a characterisation of the properties of the UV variability itself through the use of the structure function. A preliminary analysis limited to the *UVW1* band yields 12 variable candidates. In a future work, we will more completely analyse the UV (and optical) variability of our sources on the basis of the 33 available XMM-OM observations. This will allow us to select AGN candidates by means of their variability, analogously to previous (Trevese et al. 2008a; Gezari et al. 2013) and ongoing (De Cicco et al. 2015; Falocco et al. 2015) works. In particular, the efficiency of variability observations has been discussed for selecting AGN candidates with extended images (as could be for many of our intermediate sources), which would not be selected by colour or other criteria (Bershady et al. 1998; Trevese et al. 2008a). The time sampling of the light curves of many of

the catalogued sources is well suited to investigating their possible variable character. We will complement this with other variability information already present in the CDF-S from optical (Trevese et al. 2008a), UV (Gezari et al. 2013), or X-ray (Young et al. 2012) observations. The variability of the sources will also be examined in terms of the X-ray/UV ratio in a companion paper devoted to the structure function analysis of the X-ray-to-optical index for a subsample of AGN and intermediate sources.

Acknowledgements. We acknowledge funding from PRIN/MIUR-2010 award 2010NHBSBE. We acknowledge support from the Italian Space Agency under the contract ASI/INAF/009/10/0/1 and by the Italian National Institute for Astrophysics (INAF) through PRIN-INAF 2011 (“Black hole growth and AGN feedback through the cosmic time”). M.A. acknowledges the hospitality by the European Space Astronomy Centre during Autumn 2013, while part of this work was being done. We thank Luciana Bianchi for useful advice and discussion about the GALEX data. We also thank the referee for valuable remarks and comments. This research has made use of data and/or software provided by the High Energy Astrophysics Science Archive Research Center (HEASARC), which is a service of the Astrophysics Science Division at NASA/GSFC and the High Energy Astrophysics Division of the Smithsonian Astrophysical Observatory.

References

- Akylas, A., Georgakakis, A., Georgantopoulos, I., Brightman, M., & Nandra, K. 2012, *A&A*, 546, A98
- Alexander, D. M., Aussel, H., Bauer, F. E., et al. 2002, *ApJ*, 568, L85
- Alexander, D. M., Bauer, F. E., Chapman, S. C., et al. 2005, *ApJ*, 632, 736
- Arnouts, S., Vandame, B., Benoist, C., et al. 2001, *A&A*, 379, 740
- Baade, D., Meisenheimer, K., Iwert, O., et al. 1998, *The Messenger*, 93, 13
- Baade, D., Meisenheimer, K., Iwert, O., et al. 1999, *The Messenger*, 95, 15
- Balestra, I., Mainieri, V., Popesso, P., et al. 2010, *A&A*, 512, A12
- Beckwith, S. V. W., Stiavelli, M., Koekemoer, A. M., et al. 2006, *AJ*, 132, 1729
- Bershady, M. A., Trevese, D., & Kron, R. G. 1998, *ApJ*, 496, 103
- Bianchi, L. 2014, *Ap&SS*, 354, 103
- Bianchi, L., Rodriguez-Merino, L., Viton, M., et al. 2007, *ApJS*, 173, 659
- Bianchi, L., Efremova, B., Herald, J., et al. 2011, *MNRAS*, 411, 2770
- Bianchi, L., Conti, A., & Shiao, B. 2014, *Adv. Space Res.*, 53, 900
- Boutsia, K., Leibundgut, B., Trevese, D., & Vagnetti, F. 2009, *A&A*, 497, 81
- Cardamone, C. N., Moran, E. C., & Kay, L. E. 2007, *AJ*, 134, 1263
- Cardamone, C. N., van Dokkum, P. G., Urry, C. M., et al. 2010, *ApJS*, 189, 270
- Castelló-Mor, N., Carrera, F. J., Alonso-Herrero, A., et al. 2013, *A&A*, 556, A114
- Comastri, A., Ranalli, P., Iwasawa, K., et al. 2011, *A&A*, 526, L9
- Cooper, M. C., Yan, R., Dickinson, M., et al. 2012, *MNRAS*, 425, 2116
- De Cicco, D., Paolillo, M., Covone, G., et al. 2015, *A&A*, in press
DOI: [10.1051/0004-6361/201424906](https://doi.org/10.1051/0004-6361/201424906)
- Donley, J. L., Koekemoer, A. M., Brusa, M., et al. 2012, *ApJ*, 748, 142
- Falocco, S., Carrera, F. J., Corral, A., et al. 2013, *A&A*, 555, A79
- Falocco, S., Paolillo, M., Covone, G., et al. 2015, *A&A*, submitted
- Ford, H. C., Clampin, M., Hartig, G. F., et al. 2003, in *Future EUV/UV and Visible Space Astrophysics Missions and Instrumentation*, eds. J. C. Blades, & O. H. W. Siegmund, *SPIE Conf. Ser.*, 4854, 81
- Fordham, J. L. A., Moorhead, C. F., & Galbraith, R. F. 2000, *MNRAS*, 312, 83
- Gawiser, E., van Dokkum, P. G., Herrera, D., et al. 2006, *ApJS*, 162, 1
- Georgantopoulos, I., Comastri, A., Vignali, C., et al. 2013, *A&A*, 555, A43
- Gezari, S., Martin, D. C., Forster, K., et al. 2013, *ApJ*, 766, 60
- Giacconi, R., Zirm, A., Wang, J., et al. 2002, *ApJS*, 139, 369
- Gialalisco, M., Ferguson, H. C., Koekemoer, A. M., et al. 2004, *ApJ*, 600, L93
- Gibson, R. R., Brandt, W. N., & Schneider, D. P. 2008, *ApJ*, 685, 773
- Gilli, R., Comastri, A., & Hasinger, G. 2007, *A&A*, 463, 79
- Grupe, D., Komossa, S., Leighly, K. M., & Page, K. L. 2010, *ApJS*, 187, 64
- Iwasawa, K., Gilli, R., Vignali, C., et al. 2012, *A&A*, 546, A84
- Just, D. W., Brandt, W. N., Shemmer, O., et al. 2007, *ApJ*, 665, 1004
- Kuin, N. P. M., & Rosen, S. R. 2008, *MNRAS*, 383, 383
- Kuntz, K. D., Harrus, I., McGlynn, T. A., Mushotzky, R. F., & Snowden, S. L. 2008, *PASP*, 120, 740
- Lacy, M., Storrie-Lombardi, L. J., Sajina, A., et al. 2004, *ApJS*, 154, 166
- Le Fèvre, O., Vettolani, G., Garilli, B., et al. 2005, *A&A*, 439, 845
- Luo, B., Bauer, F. E., Brandt, W. N., et al. 2008, *ApJS*, 179, 19
- Lusso, E., Comastri, A., Vignali, C., et al. 2010, *A&A*, 512, A34
- Martin, D. C., Fanson, J., Schiminovich, D., et al. 2005, *ApJ*, 619, L1
- Mason, K. O., Breeveld, A., Much, R., et al. 2001, *A&A*, 365, L36
- Menci, N., Fiore, F., Puccetti, S., & Cavaliere, A. 2008, *ApJ*, 686, 219
- Mignoli, M., Cimatti, A., Zamorani, G., et al. 2005, *A&A*, 437, 883

- Monet, D. G., Levine, S. E., Canzian, B., et al. 2003, *AJ*, 125, 984
- Moran, E. C., Filippenko, A. V., & Chornock, R. 2002, *ApJ*, 579, L71
- Page, M. J., Stevens, J. A., Ivison, R. J., & Carrera, F. J. 2004, *ApJ*, 611, L85
- Page, M. J., Brindle, C., Talavera, A., et al. 2012, *MNRAS*, 426, 903
- Paolillo, M., Schreier, E. J., Giacconi, R., Koekemoer, A. M., & Grogin, N. A. 2004, *ApJ*, 611, 93
- Popesso, P., Dickinson, M., Nonino, M., et al. 2009, *A&A*, 494, 443
- Ranalli, P., Comastri, A., Vignali, C., et al. 2013, *A&A*, 555, A42
- Ravikumar, C. D., Puech, M., Flores, H., et al. 2007, *A&A*, 465, 1099
- Richards, G. T., Lacy, M., Storrie-Lombardi, L. J., et al. 2006, *ApJS*, 166, 470
- Salimbeni, S., Castellano, M., Pentericci, L., et al. 2009, *A&A*, 501, 865
- Silverman, J. D., Mainieri, V., Salvato, M., et al. 2010, *ApJS*, 191, 124
- Simons, R., Thilker, D., Bianchi, L., & Wyder, T. 2014, *Adv. Space Res.*, 53, 939
- Strateva, I. V., Brandt, W. N., Schneider, D. P., Vanden Berk, D. G., & Vignali, C. 2005, *AJ*, 130, 387
- Szokoly, G. P., Bergeron, J., Hasinger, G., et al. 2004, *ApJS*, 155, 271
- Talavera, A. 2011, *Ap&SS*, 335, 291
- Treister, E., Urry, C. M., & Virani, S. 2009, *ApJ*, 696, 110
- Trevese, D., Castellano, M., Fontana, A., & Giallongo, E. 2007a, *A&A*, 463, 853
- Trevese, D., Vagnetti, F., Puccetti, S., et al. 2007b, *A&A*, 469, 1211
- Trevese, D., Boutsia, K., Vagnetti, F., Cappellaro, E., & Puccetti, S. 2008a, *A&A*, 488, 73
- Trevese, D., Zitelli, V., Vagnetti, F., Boutsia, K., & Stirpe, G. M. 2008b, *A&A*, 477, 473
- Vaccari, M., Marchetti, L., Franceschini, A., et al. 2010, *A&A*, 518, L20
- Vagnetti, F., Turriziani, S., Trevese, D., & Antonucci, M. 2010, *A&A*, 519, A17
- Vagnetti, F., Antonucci, M., & Trevese, D. 2013, *A&A*, 550, A71
- Vanzella, E., Cristiani, S., Dickinson, M., et al. 2008, *A&A*, 478, 83
- Voyer, E. N., de Mello, D. F., Siana, B., et al. 2009, *AJ*, 138, 598
- Wolf, C., Meisenheimer, K., Kleinheinrich, M., et al. 2004, *A&A*, 421, 913
- Wolf, C., Hildebrandt, H., Taylor, E. N., & Meisenheimer, K. 2008, *A&A*, 492, 933
- Xue, Y. Q., Luo, B., Brandt, W. N., et al. 2011, *ApJS*, 195, 10
- Young, M., Brandt, W. N., Xue, Y. Q., et al. 2012, *ApJ*, 748, 124