



Publication Year	2017
Acceptance in OA	2021-02-03T10:46:07Z
Title	Results from a calibration of XENON100 using a source of dissolved radon-220
Authors	Aprile, E., Aalbers, J., Agostini, F., Alfonsi, M., Amaro, F. D., Anthony, M., Arneodo, F., Barrow, P., Baudis, L., Bauermeister, B., Benabderrahmane, M. L., Berger, T., Breur, P. A., Brown, A., Brown, E., Bruenner, S., Bruno, G., Budnik, R., Bütikofer, L., Calvén, J., Cardoso, J. M. R., Cervantes, M., Cichon, D., Coderre, D., Colijn, A. P., Conrad, J., Cussonneau, J. P., Decowski, M. P., de Perio, P., di Gangi, P., di Giovanni, A., Diglio, S., Duchovni, E., Eurin, G., Fei, J., Ferella, A. D., Fieguth, A., Franco, D., Fulgione, W., Gallo Rosso, A., Galloway, M., Gao, F., Garbini, M., Geis, C., Goetzke, L. W., Grandi, L., Greene, Z., Grignon, C., Hasterok, C., Hogenbirk, E., Itay, R., Kaminsky, B., Kessler, G., Kish, A., Landsman, H., Lang, R. F., Lellouch, D., Levinson, L., Le Calloch, M., Lin, Q., Lindemann, S., Lindner, M., Lopes, J. A. M., Manfredini, A., Maris, I., Marrodán Undagoitia, T., Masbou, J., Massoli, F. V., Masson, D., Mayani, D., Meng, Y., Messina, M., Micheneau, K., Miguez, B., Molinario, A., Murra, M., Naganoma, J., Ni, K., Oberlack, U., Orrigo, S. E. A., Pakarha, P., Pelssers, B., Persiani, R., Piastra, F., Pienaar, J., Piro, M. -C., Plante, G., Priel, N., Rauch, L., Reichard, S., Reuter, C., Rizzo, A., Rosendahl, S., Rupp, N., Saldanha, R., Dos Santos, J. M. F., Sartorelli, G., Scheibelhut, M., Schindler, S., Schreiner, J., Schumann, M., Scotto Lavina, L., Selvi, M., Shagin, P., Shockley, E., Silva, M., Simgen, H., Sivers, M. V., Stein, A., Thers, D., Tiseni, A., TRINCHERO, GIAN CARLO, Tunnell, C., Upole, N., Wang, H., Wei, Y., Weinheimer, C., Wulf, J., Ye, J., Zhang, Y., Xenon Collaboration
Publisher's version (DOI)	10.1103/PhysRevD.95.072008
Handle	http://hdl.handle.net/20.500.12386/30192
Journal	PHYSICAL REVIEW D
Volume	95

Results from a Calibration of XENON100 Using a Source of Dissolved Radon-220

E. Aprile,¹ J. Aalbers,² F. Agostini,^{3,4} M. Alfonsi,⁵ F. D. Amaro,⁶ M. Anthony,¹ F. Arneodo,⁷ P. Barrow,⁸ L. Baudis,⁸ B. Bauermeister,^{9,5} M. L. Benabderrahmane,⁷ T. Berger,¹⁰ P. A. Breur,² A. Brown,² E. Brown,¹⁰ S. Bruenner,¹¹ G. Bruno,³ R. Budnik,¹² L. Bütikofer,¹³ J. Calvén,⁹ J. M. R. Cardoso,⁶ M. Cervantes,¹⁴ D. Cichon,¹¹ D. Coderre,¹³ A. P. Colijn,² J. Conrad,^{9,*} J. P. Cussonneau,¹⁵ M. P. Decowski,² P. de Perio,¹ P. Di Gangi,⁴ A. Di Giovanni,⁷ S. Diglio,¹⁵ E. Duchovni,¹² G. Eurin,¹¹ J. Fei,¹⁶ A. D. Ferella,⁹ A. Fieguth,¹⁷ D. Franco,⁸ W. Fulgione,^{3,18} A. Gallo Rosso,³ M. Galloway,⁸ F. Gao,¹ M. Garbini,⁴ C. Geis,⁵ L. W. Goetzke,¹ L. Grandi,¹⁹ Z. Greene,¹ C. Grignon,⁵ C. Hasterok,¹¹ E. Hogenbirk,² R. Itay,¹² B. Kaminsky,¹³ G. Kessler,⁸ A. Kish,⁸ H. Landsman,¹² R. F. Lang,^{14,†} D. Lellouch,¹² L. Levinson,¹² M. Le Calloch,¹⁵ Q. Lin,¹ S. Lindemann,¹¹ M. Lindner,¹¹ J. A. M. Lopes,^{6,‡} A. Manfredini,¹² I. Maris,⁷ T. Marrodán Undagoitia,¹¹ J. Masbou,¹⁵ F. V. Massoli,⁴ D. Masson,¹⁴ D. Mayani,⁸ Y. Meng,²⁰ M. Messina,¹ K. Micheneau,¹⁵ B. Míguez,¹⁸ A. Molinaro,³ M. Murra,¹⁷ J. Naganoma,²¹ K. Ni,¹⁶ U. Oberlack,⁵ S. E. A. Orrigo,^{6,§} P. Pakarha,⁸ B. Pelsers,⁹ R. Persiani,¹⁵ F. Piastra,⁸ J. Pienaar,¹⁴ M.-C. Piro,¹⁰ G. Plante,¹ N. Priel,¹² L. Rauch,¹¹ S. Reichard,^{14,¶} C. Reuter,¹⁴ A. Rizzo,¹ S. Rosendahl,¹⁷ N. Rupp,¹¹ R. Saldanha,¹⁹ J. M. F. dos Santos,⁶ G. Sartorelli,⁴ M. Scheibelhut,⁵ S. Schindler,⁵ J. Schreiner,¹¹ M. Schumann,^{13,**} L. Scotto Lavina,¹⁵ M. Selvi,⁴ P. Shagin,²¹ E. Shockley,¹⁹ M. Silva,⁶ H. Simgen,¹¹ M. v. Sivers,¹³ A. Stein,²⁰ D. Thers,¹⁵ A. Tiseni,² G. Trincherio,¹⁸ C. Tunnell,² N. Upole,¹⁹ H. Wang,²⁰ Y. Wei,⁸ C. Weinheimer,¹⁷ J. Wulf,⁸ J. Ye,¹⁶ and Y. Zhang.¹

(XENON Collaboration)^{††}

¹Physics Department, Columbia University, New York, NY, USA

²Nikhef and the University of Amsterdam, Science Park, Amsterdam, Netherlands

³INFN-Laboratori Nazionali del Gran Sasso and Gran Sasso Science Institute, L'Aquila, Italy

⁴Department of Physics and Astrophysics, University of Bologna and INFN-Bologna, Bologna, Italy

⁵Institut für Physik & Exzellenzcluster PRISMA, Johannes Gutenberg-Universität Mainz, Mainz, Germany

⁶Department of Physics, University of Coimbra, Coimbra, Portugal

⁷New York University Abu Dhabi, Abu Dhabi, United Arab Emirates

⁸Physik-Institut, University of Zurich, Zurich, Switzerland

⁹Oskar Klein Centre, Department of Physics, Stockholm University, AlbaNova, Stockholm, Sweden

¹⁰Department of Physics, Applied Physics and Astronomy, Rensselaer Polytechnic Institute, Troy, NY, USA

¹¹Max-Planck-Institut für Kernphysik, Heidelberg, Germany

¹²Department of Particle Physics and Astrophysics, Weizmann Institute of Science, Rehovot, Israel

¹³Albert Einstein Center for Fundamental Physics, University of Bern, Bern, Switzerland

¹⁴Department of Physics and Astronomy, Purdue University, West Lafayette, IN, USA

¹⁵SUBATECH, Ecole des Mines de Nantes, CNRS/In2p3, Université de Nantes, Nantes, France

¹⁶Department of Physics, University of California, San Diego, CA, USA

¹⁷Institut für Kernphysik, Wilhelms-Universität Münster, Münster, Germany

¹⁸INFN-Torino and Osservatorio Astrofisico di Torino, Torino, Italy

¹⁹Department of Physics & Kavli Institute of Cosmological Physics, University of Chicago, Chicago, IL, USA

²⁰Physics & Astronomy Department, University of California, Los Angeles, CA, USA

²¹Department of Physics and Astronomy, Rice University, Houston, TX, USA

A ²²⁰Rn source is deployed on the XENON100 dark matter detector in order to address the challenges in calibration of tonne-scale liquid noble element detectors. We show that the ²¹²Pb beta emission can be used for low-energy electronic recoil calibration in searches for dark matter. The isotope spreads throughout the entire active region of the detector, and its activity naturally decays below background level within a week after the source is closed. We find no increase in the activity of the troublesome ²²²Rn background after calibration. Alpha emitters are also distributed throughout the detector and facilitate calibration of its response to ²²²Rn. Using the delayed coincidence of ²²⁰Rn-²¹⁶Po, we map for the first time the convective motion of particles in the XENON100 detector. Additionally, we make a competitive measurement of the half-life of ²¹²Po, $t_{1/2} = (293.9 \pm (1.0)_{\text{stat}} \pm (0.6)_{\text{sys}})$ ns.

* Wallenberg Academy Fellow

† rafa@purdue.edu

‡ Also with Coimbra Engineering Institute, Coimbra, Portugal

§ Now at IFIC, CSIC-Universidad de Valencia, Valencia, Spain

¶ sreicar@purdue.edu

** Now at Physikalisches Institut, Universität Freiburg, Freiburg, Germany

†† xenon@lngs.infn.it

I. INTRODUCTION

Significant experimental progress in particle physics continues to be made in searches for rare events such as neutrinoless double-beta decay [1] or scattering of dark matter particles [2]. Experiments that use the liquid noble elements xenon or argon are at the forefront of these searches [3–8]. As these detectors are scaled up to improve their sensitivity, the self-shielding of external radioactive sources yields lower backgrounds and thus further improvement in detector sensitivity. However, this feature renders calibration with external sources impractical and necessitates the development of novel strategies.

Several aspects of the detector sensitivity need to be calibrated. The position-dependent energy response to both signal and background events and a detector’s ability to discriminate between electronic and nuclear recoil events are required. The former requires mono-energetic lines, whereas the latter requires a broad energy spectrum of events. Any additional information that can be extracted from calibration could prove useful to improve the understanding of an existing detector and to develop future experiments.

Radioactive calibration sources that can be directly mixed into the liquid target promise to provide an alternative method to external sources for calibration of current and future detectors. A dissolved ^{83m}Kr source was proposed in [9–11] and employed in dark matter detectors [5, 12] for calibration of the electronic recoil energy scale at low energies. Tritiated methane was also employed in LUX [13] in order to exploit the beta decays that fall within the low energy range of interest for dark matter investigations.

Here, we use the XENON100 dark matter experiment [14] to characterize a radioactive source of dissolved ^{220}Rn [15] for use in current and future low-background experiments. The source is well suited to calibrate the low-energy electronic recoil background, $[(2 - 30)\text{keV}]$. In addition, the isotopes in the ^{220}Rn decay chain provide alpha and beta radiation that improve our understanding of intrinsic ^{222}Rn [16, 17], which is a dominant source of background in dark matter experiments [18–21], such that we can tag the daughter ^{214}Pb beta event. Finally, given the short decay time of the whole decay chain, all introduced activity vanishes within one week, independent of a detector’s volume or purification speed. **[In this way, ^{220}Rn starkly contrasts tritiated methane, which must be proactively extracted from a detector with a high-temperature zirconium gas purifier in a xenon purification loop [5] and, thereby, necessitates greater efforts to fully circulate and purify a detector of greater volume.]**

II. THE XENON100 DETECTOR

The XENON100 detector, described in detail in [14], is a cylindrical liquid/gas time projection chamber (TPC)

that is 30 cm in height and diameter and uses 62 kg of high-purity liquid xenon as a dark matter target and detection medium. An energy deposition in the TPC produces scintillation photons and ionization electrons. The photons provide the prompt scintillation signal ($S1$). For the measurements presented here, the cathode, which is biased at -12 kV and positioned at the bottom of the TPC ($Z = -300\text{ mm}$), is combined with a grounded gate and an anode, biased at 4.4 kV and placed near the liquid-gas interface ($Z = 0\text{ mm}$), to define an electric field of 400 V/cm in the liquid volume. This field drifts the electrons from the interaction site to the liquid-gas interface, where a 8.8 kV/cm field extracts the electrons into the gas phase. Then, a second signal ($S2$) is generated through proportional scintillation. Both $S1$ and $S2$, measured in photoelectrons (PE), are observed by two arrays of photo-multiplier tubes (PMTs), one in liquid xenon at the bottom of the TPC below the cathode and the other in the gaseous xenon above the anode. The TPC is surrounded by a veto region containing 99 kg of liquid xenon. For the data reported here, this volume was not instrumented and thus only serves as a passive volume.

A diving bell is used to keep the liquid level constant between the gate and anode meshes. Gaseous xenon is continuously recirculated at 2.6 s.l.m. through a purification loop. The returning gas pressurizes the diving bell to approximately 2.1 atm , with most of the gas pressure being relieved in the veto through a pipe that is used to define the height of the liquid level. In a separate loop, gaseous xenon is liquefied and returned to the top of the detector. This open design results in a vertical temperature gradient of 0.8 K over the height of the TPC.

III. ^{220}Rn DECAY CHAIN AND OBSERVED TIME EVOLUTION

We present the results from a calibration campaign using a 33.6 kBq ^{220}Rn source. The suitability of this source for its employment under low-background conditions was previously reported in [15]. The source contains ^{228}Th electrolytically deposited on a stainless steel disc 30 mm in diameter and housed in a standard vacuum vessel that is connected to the xenon gas purification system using $1/4\text{''}$ VCR piping. The ^{220}Rn atoms emanate from the source and are flushed into the TPC through the xenon gas stream. With approximately 20 m of piping and a $(40 \pm 10)\%$ source emanation efficiency, we estimate that we acquire $(1.8 \pm 0.5) \times 10^9$ ^{220}Rn atoms in the **[entire detector]** while the source is open for 1.7 days. A total of 1.7×10^7 decays are observed in the active region during the full calibration run **[, while the remainder goes into the veto region]**.

The relevant portion of the ^{220}Rn decay chain is shown in Figure 1. We first address the overall viability of this calibration source and defer the description of the respective event selection criteria to the following sections,

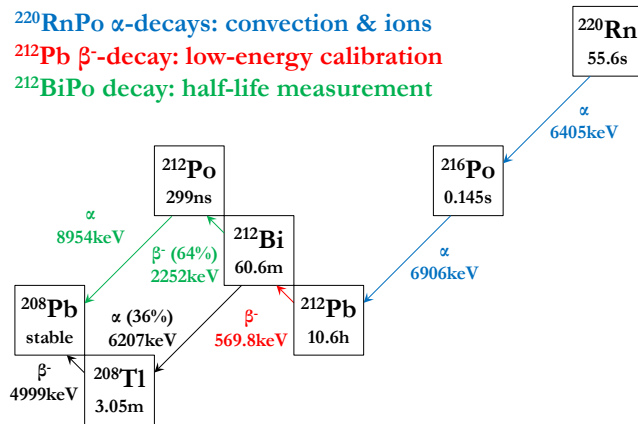


FIG. 1. The decay chain of ^{220}Rn , following its emanation from a ^{228}Th source. The three main analyses presented in this paper are labeled in color. Q -values are taken from [22], and half-lives and branching ratios from [23].

149 which also detail the physics that can be extracted from
 150 each of the steps in the decay chain. Figure 2 shows the
 151 isotopic temporal evolution as observed in XENON100.
 152 These rates are corrected for deadtime effects, which arise
 153 from significant DAQ saturation due to a trigger rate of
 154 $\mathcal{O}(100)$ Hz while the source is open. **[Deadtime infor-**
 155 **mation is recorded once per minute.]**

156 The short-lived isotopes, ^{220}Rn ($t_{1/2} = 55.6$ s) and
 157 ^{216}Po ($t_{1/2} = 0.145$ s), grow into the active region of the
 158 detector within minutes after opening the source, and
 159 they quickly decay once the source is closed. Delayed
 160 coincidence of ^{220}Rn and ^{216}Po provide the means to de-
 161 tail fluid dynamics within the detector volume. The flow
 162 **[pattern]** of particles is particularly interesting because
 163 it has the potential to improve the efficiency of purifica-
 164 tion systems **[through the identification of dead re-**
 165 **gions. Furthermore, the pattern]** may inspire new
 166 methods to identify and reduce the ^{222}Rn background
 167 **[by capitalizing on the sequence of the ^{220}Rn**
 168 **decay chain. Due to the one-minute intervals in**
 169 **which deadtime information is recorded, no fea-**
 170 **tures are visible in the rise of ^{220}Rn or ^{216}Po**
 171 **activity.]**

172 The primary utility of a ^{220}Rn calibration source comes
 173 from the ground-state beta decay of ^{212}Pb with a Q -value
 174 of 569.8 keV and a branching ratio of 11.9%. This decay
 175 results in low-energy electronic recoils (2 – 30) keV that
 176 can be used for background calibration in dark matter
 177 searches. As we show here, the isotope’s long half-life,
 178 10.6 hours, gives it ample time to spread throughout the
 179 entire detector volume while being sufficiently short to
 180 allow the activity to decay within a week. We find that
 181 3 in every 10^4 decays are useful for low-energy electronic
 182 recoil calibration. For comparison, this ratio is two or-
 183 ders of magnitude higher than that of typical external
 184 gamma sources in XENON100, and it is expected to re-

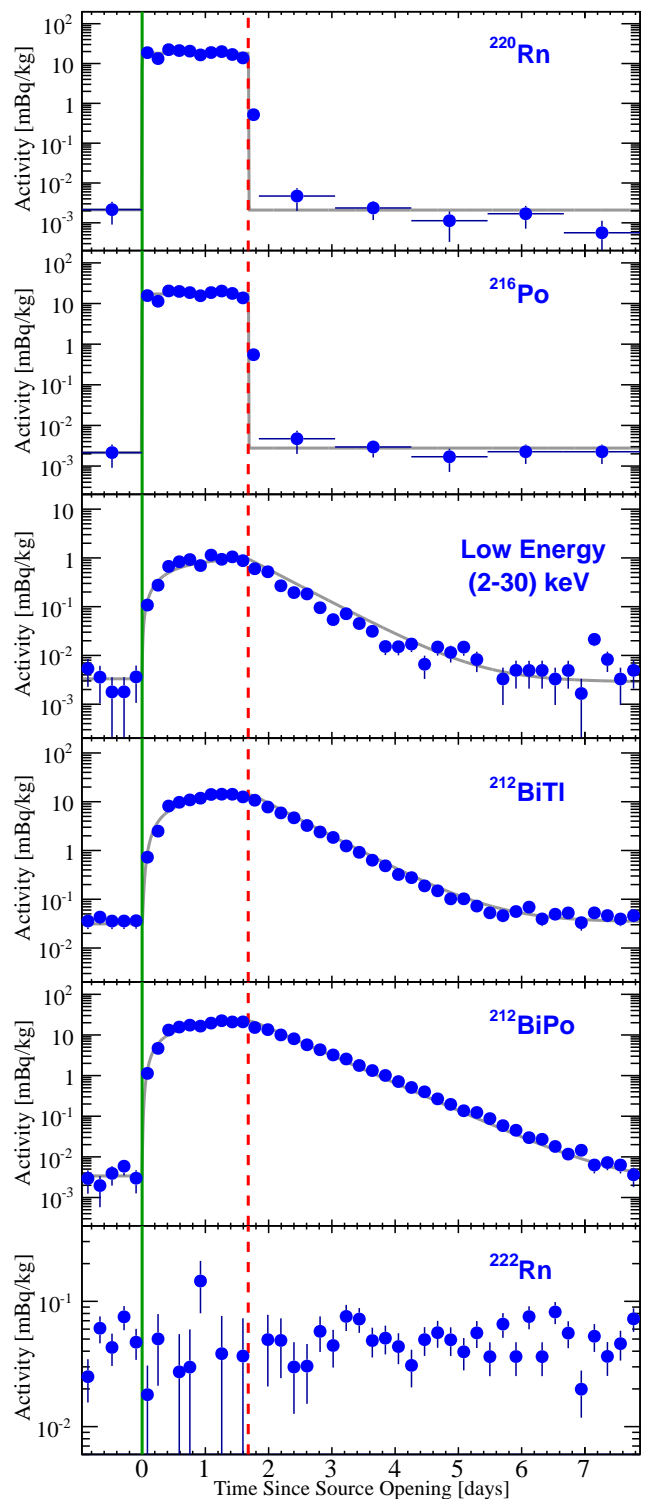


FIG. 2. Time evolution of isotopes in the ^{220}Rn decay chain and the ^{222}Rn background. Times at which the source was opened and closed are indicated by the solid green and the dashed red lines. The opening of the source is defined as time $t = 0$. Gray curves show the numerical model of the growth and decay of each isotope, scaled to the observed rate. Binning for ^{220}Rn and ^{216}Po is adjusted for times of low activity.

185 main constant as detectors become larger.

186 The beta decays of ^{212}Bi may be selected with high pu-
 187 rity due to their delayed coincidence with the alpha de-
 188 cays of ^{212}Po , occurring shortly afterward ($t_{1/2} = 299$ ns).
 189 These BiPo events provide the means to confirm that the
 190 introduced activity indeed spreads throughout the entire
 191 TPC (see Figure 6). Additionally, they yield the most
 192 accurate measurement of the introduced activity's dissi-
 193 pation time of ~ 7 days, as seen in Figure 2.

194 Further utility of this source comes from the 2.6-MeV
 195 gamma decay of ^{208}Tl , which is close to the 2.5-MeV
 196 double-beta decay of the ^{136}Xe . Due to other low-energy
 197 gammas that accompany it, multiple steps are created
 198 in the energy spectrum and can be exploited in calibra-
 199 tion. The alpha decays of ^{220}Rn , ^{216}Po , and ^{212}Bi can
 200 be used to calibrate position-dependent light and charge
 201 collection efficiencies [at high energies] (see Figure 3).

202 Figure 2 also shows the expected behavior of the vari-
 203 ous isotopes based on a simple calculation of the exponen-
 204 tial decay chain. This treatment effectively assumes in-
 205 stantaneous and complete mixing of all isotopes. As can
 206 be seen, this model provides an excellent description of
 207 the observed time evolution. A comparison of the short-
 208 and long-lived portions of the decay chain suggests that
 209 there are [more] low-energy events [than expected]
 210 from long-lived isotopes.

211 Gas routing in XENON100 causes most of the activity
 212 to be pumped and retained in the veto. [A GEANT4
 213 Monte Carlo simulation of the XENON100 detec-
 214 tor geometry demonstrates that the probability a
 215 gamma decay of ^{212}Pb (^{212}Bi ; ^{208}Tl) in the veto
 216 region induces a low-energy single scatter event
 217 in the 34 kg fiducial volume used in [24] is 6×10^{-6}
 218 (3×10^{-5} ; 2×10^{-4}). We estimate that there are 1000
 219 of these decays in the veto for every true ^{212}Pb de-
 220 cay in the 34 kg fiducial volume. It then follows
 221 that for every 0.012 true low-energy ^{212}Pb decays
 222 there are 0.236 events that result from the gamma
 223 decays of long-lived isotopes in the veto. There-
 224 fore, we conclude that 5% of the low-energy events
 225 that fall with the fiducial volume are truly caused
 226 by the low-energy beta decays of ^{212}Pb . By com-
 227 parison, the number of $^{212}\text{BiPo}$ events (1.6×10^5),
 228 which is $\sim 2/13$ of the total activity of the decay
 229 chain, shows that only 6% (1.0×10^6) of the total
 230 number of observed events actually originate in
 231 the TPC.]

232 IV. ALPHA SPECTROSCOPY

233 The interactions of alpha particles in liquid xenon are
 234 easily identifiable because they produce tracks with a
 235 large ionization density, which results in small $S2$'s and
 236 large $S1$'s compared to electronic and nuclear recoils.
 237 This difference is due to a higher probability of recom-
 238 bination and allows the alphas to be selected based on
 239 their $S1$ yield, thereby rejecting backgrounds from beta

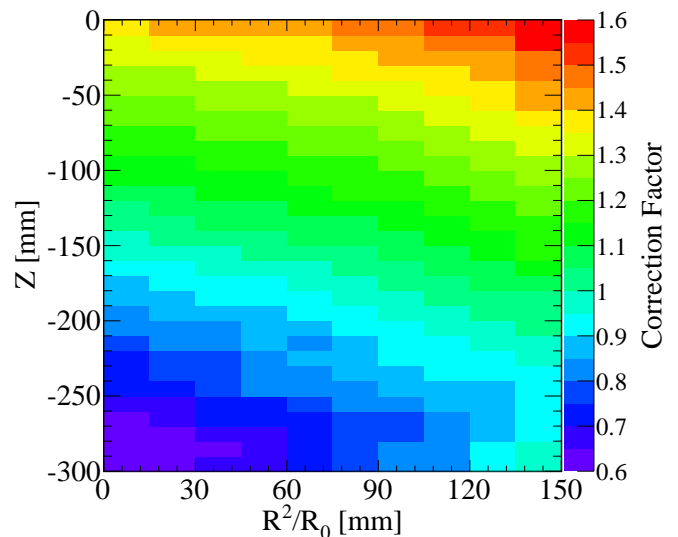


FIG. 3. Light correction map of XENON100 for high-energy alpha events, generated from ^{220}Rn and ^{216}Po decays. The radial parameter is defined according to the detector's radius, $R_0 = 153$ mm. Events at low (high) Z and low (high) radius R have the highest (lowest) light collection and thus a correction factor less (greater) than unity.

240 or gamma sources.

241 We derive a correction factor to account for variations
 242 in light collection efficiency across the TPC [14]. As the
 243 PMT bases in XENON100 have been optimized for low-
 244 energy events in the search for dark matter, a dedicated
 245 correction map is required to account for nonlinearity in
 246 the response of PMTs to high-energy events [18]. For
 247 each spatial bin [shown in Figure 3], the arithmetic
 248 average of the [two] observed mean scintillation val-
 249 ues of the 6.4- and 6.9-MeV alpha decays of ^{220}Rn and
 250 ^{216}Po is calculated. Then, these values are scaled by the
 251 volume-averaged value to obtain a relative correction fac-
 252 tor, shown in Figure 3. The radial parameter R^2/R_0 is
 253 defined according to the detector's radius, $R_0 = 153$ mm.
 254 Events at low (high) Z and low (high) R have the highest
 255 (lowest) light collection and thus a correction factor less
 256 (greater) than unity.

257 The energy spectrum of the alpha decays of ^{222}Rn ,
 258 ^{212}Bi , ^{220}Rn , and ^{216}Po is shown in Figure 4, after ap-
 259 plying the alpha light correction map. The population
 260 of alphas is split into periods during which the source is
 261 open (red) and after the source is closed (blue). These
 262 events have been selected in the fiducial volume defined
 263 by $R \leq 100$ mm and -200 mm $\leq Z \leq -5$ mm in order to
 264 [avoid the degradation in energy resolution near
 265 the cathode and thereby] optimize the identification
 266 of different isotopes. The energy, mean scintillation sig-
 267 nal, and light yield (LY) are listed for each isotope in
 268 Table I. The light yield is constant in this energy range
 269 to within 0.3%. Our ability to identify and characterize
 270 the various alpha particles is the foundation of the mul-
 271 tiple modes of delayed coincidence that are discussed in

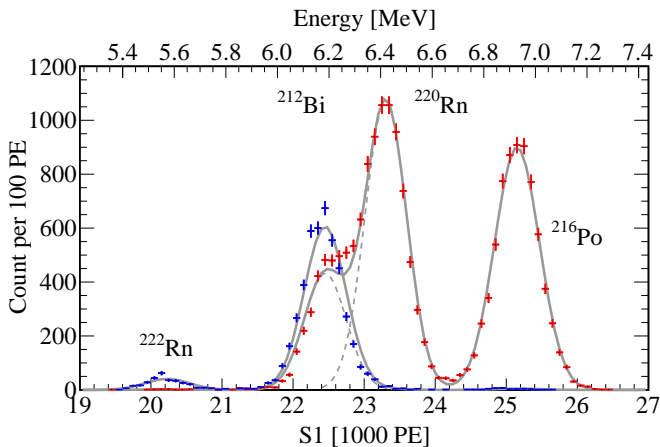


FIG. 4. The alpha spectrum of the ^{220}Rn decay chain is shown integrated over times during which the source is open (40.3 hours, red) and after (148.7 hours, blue) the source is closed. The constant background of ^{222}Rn (Figure 2) is visible only over the longer time period.

subsequent sections.

Isotope	Q [MeV]	S1 [PE]	σ [PE]	LY [PE/keV]
^{222}Rn	5.590	20231 ± 17	315	3.62
^{212}Bi	6.207	22451 ± 3	296	3.62
^{220}Rn	6.405	23306 ± 3	291	3.64
^{216}Po	6.906	25152 ± 4	316	3.64

TABLE I. Q -values, scintillation values (means and widths at 400 V/cm), and calculated light yields of each alpha decay in Figure 4.

V. ^{220}Rn - ^{216}Po COINCIDENCE AND CONVECTION

The combination of spatial and temporal information permits us to match ^{216}Po with its parent ^{220}Rn . As a result, we measure the position resolution at high energies, map the fluid dynamics, and calculate a lower limit on the drift speed of ^{216}Po ions in the XENON100 TPC.

We select ^{220}Rn - ^{216}Po (RnPo) pairs within 3σ of the respective scintillation peaks (see Figure 4) with the requirement that a candidate ^{216}Po decay occur within 1 s and 8 mm of a candidate ^{220}Rn parent. The time condition selects 99% of all pairs, and the spatial condition prevents the formation of pairs in which the polonium is too distant to be causally related to radon. Under these conditions, less than 0.3% of the ^{220}Rn candidates have more than one possible ^{216}Po partner, and consequently they are removed from the analysis. A total of 45441 RnPo pairs is found in multiple calibrations between June and November 2015.

Each RnPo pair provides differential position values in the vertical (ΔZ) and the horizontal ($\sqrt{(\Delta X)^2 + (\Delta Y)^2}$)

directions. The resultant distributions yield upper limits on the position resolutions at high energies: $\sigma_Z = 0.2$ mm and $\sigma_{XY} = 0.7$ mm. These resolution limits are better than the resolutions reported at low energies in [14] ($\sigma_Z = 0.3$ mm, $\sigma_{XY} = 3$ mm) due to the much larger signals.

Moreover, we study fluid dynamics of the liquid xenon using RnPo pairs. **[To fully appreciate the features of bulk atomic motion in the XENON100 TPC, we scan the full range of azimuthal and vertical angles, ultimately selecting a rotated view of the cylindrical TPC from the side at $\phi = -45^\circ$, $\theta = 90^\circ$, with appropriate coordinate transformations].** In a projection of all events on a (Cartesian) cross sectional (i.e. the YZ -plane), the density of events appears distorted. We therefore introduce the parameter \tilde{Y} , derived in the Appendix, which preserves uniformity in number density in a projection of the cylindrical TPC onto a plane containing its central axis:

$$\tilde{Y} = R_0 \left[\frac{2}{\pi} \left(\theta - \frac{1}{2} \sin(2\theta) \right) - 1 \right], \quad (1)$$

where

$$\theta = \arccos \left(-\frac{Y'}{R_0} \right), \quad (2)$$

[$Y' = X \sin(\phi) + Y \cos(\phi)$ is the relevant rotated coordinate,] and $R_0 = 153$ mm is the radius of the TPC.

In Figure 5 (top), the number density of RnPo pairs is shown as previously selected. The pairs tend to concentrate along the outer surface near $\tilde{Y} = 153$ mm. A large gradient in the number density exists because the half-lives of both ^{220}Rn and ^{216}Po are much shorter than the time it takes an atom to fully traverse the TPC.

Moreover, we show in Figure 5 (bottom) the average z -velocities of the ^{216}Po daughter, $v_Z = \Delta Z / \Delta t$, as a function of position, where Δt is the time the ^{216}Po atom takes to decay. For $\tilde{Y} > 0$ ($\tilde{Y} < 0$), particles move downward (upward) at speeds up to 7.2 mm/s (4.8 mm/s). Ergo, the TPC of XENON100 is a single convection cell whose net angular momentum lies along $\sim 135^\circ$. This pattern is observed to be unchanged between two separate calibration campaigns taken five months apart.

Such convective motion, which is most likely driven by the xenon recirculation flow, holds significant implications for the deployment of calibration sources and for the development of techniques for background mitigation in future experiments. The ^{214}Pb daughter is the main contributor to the low-energy electronic recoil background that arises from the ^{222}Rn decay chain. A known convection pattern can be used to track this ^{214}Pb ($t_{1/2} = 27.1$ min) from the site of its parent ^{218}Po 's alpha decay ($t_{1/2} = 3.1$ min) or to track its daughter ^{214}Bi ($t_{1/2} = 19.9$ min). Consequently, a low-energy ^{214}Pb decay could be tagged, effectively reducing the electronic recoil background.

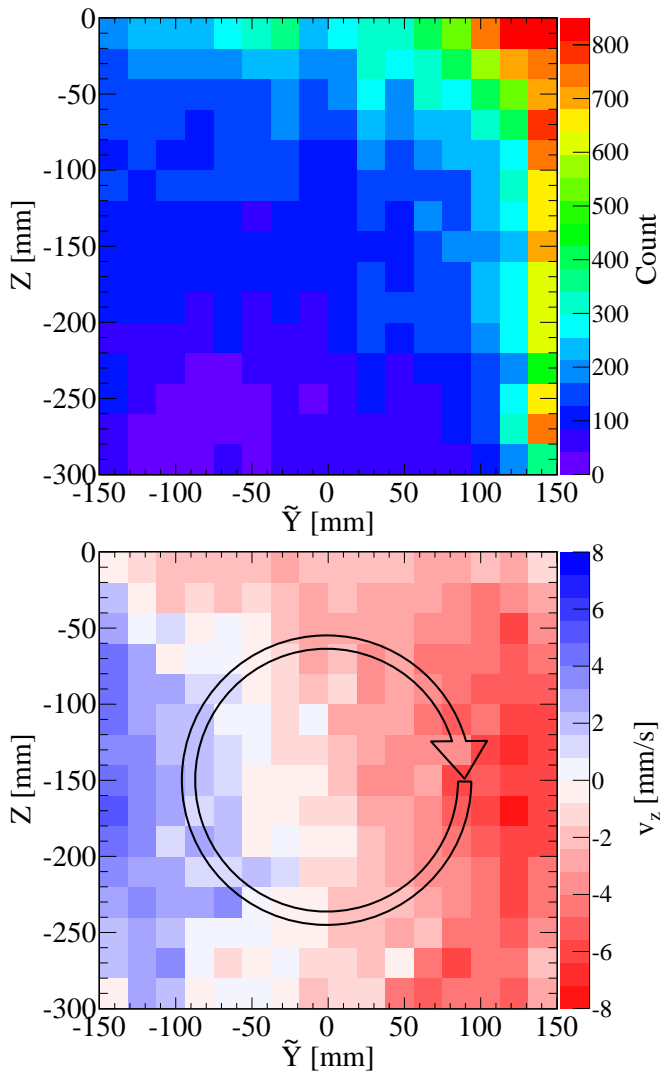


FIG. 5. (Top) Number density of $^{220}\text{Rn}^{216}\text{Po}$ pairs across the TPC. Due to the short half-lives at the beginning of the decay chain, these events are still concentrated near the top of the TPC around $\tilde{Y} = 150$ mm. (Bottom) Delayed coincidence of these pairs is used to map the average z -component of atomic velocity as a function of position. As indicated by the arrow, atomic motion in XENON100 is primarily a result of a single convection cell, viewed here along the direction of its angular momentum vector.

Finally, due to the difference between the minimum and maximum velocities in Figure 5, we conclude that there is a subdominant contribution to the total particle motion that results from the electric field (400 V/cm) applied to ^{216}Po ions. **[As stated previously, Figure 5 shows a concentration of RnPo pairs in the region of downward velocities because the atoms decay on time scales shorter than the time required to traverse the TPC. Simply averaging the pairs' position-dependent velocities over the full TPC volume would inevitably introduce a downward bias in any measurement of ion drift.]** We thus avoid

this subtle bias by taking two distinct sets **[, one]** of upward and **[one of]** downward atoms, in $|\tilde{Y}| > 100$ mm to calculate the variance-weighted mean velocities, \bar{v}_{up} and \bar{v}_{down} , on either side of the TPC for each of ten equal Z bins in the range $[-200, -100]$ mm. The two velocities must be determined separately because of their unequal number densities. Then, the velocity offset within each Z bin is found by averaging the two components: $v_{\text{offset}} = (\bar{v}_{\text{up}} + \bar{v}_{\text{down}})/2$. Consequently, the mean offset over all ten bins is found to be $\bar{v}_{\text{offset}} = (0.9 \pm 0.3)$ mm/s toward the cathode. This offset constitutes a lower limit on the ion drift speed of ^{216}Po , corresponding to a completely (positively) ionized population. Our limit is consistent with the distribution of ion drift speeds presented by EXO-200 for ^{218}Po at 380 V/cm [16].

Delayed coincidence of ^{212}Bi and ^{208}Tl (BiTl) is also attempted following a methodology similar to that of RnPo. With atomic speeds up to ~ 7 mm/s in XENON100, the ^{208}Tl atom can travel up to ~ 140 cm during its 3 minute half-life. This distance is much larger than the 30 cm dimension of XENON100, making it impossible to accurately match BiTl pairs. However, BiTl coincidence may be a useful component of this calibration source for meter-scale detectors such as XENON1T or single-phase detectors such as EXO-200.

VI. THE HALF-LIFE OF ^{212}Po

The beta decay of ^{212}Bi and the alpha decay of ^{212}Po are easy to identify because they occur in quick succession within a single acquisition time window. The selection of these BiPo events is made within the range $20 \text{ PE} < S1_{\beta} < 7000 \text{ PE}$, $10000 \text{ PE} < S1_{\alpha} < 55000 \text{ PE}$, and with the requirement that the $S1_{\beta}$ appear in the waveform before the $S1_{\alpha}$. The S2 signals from the two decays overlap in time and thus are not used in the analysis. Figure 6 shows that the BiPo events are distributed throughout the active region, with significant clustering at the cathode.

To ensure that the S1 of the alpha decay is identified by the peak finder, it must come before the S2 of the beta decay. Hence, the drift time of the ionization electrons from the beta decay of ^{212}Bi must exceed the decay time of the ^{212}Po alpha decay. We consequently exclude events within 5 mm of the liquid surface. Figure 7 shows the resulting distribution of time differences of the selected alpha and beta decays, **[calculated from the differences of their respective S1 peaks.]** We infer from this distribution that this BiPo sample is $> 99.75\%$ pure.

The distribution of ^{212}Po decay times is fitted with an exponential model of the event rate, $N(\Delta t) = N_0 e^{-\Delta t/\tau} + B$, where N_0 is the event rate at small time differences, τ is the lifetime, and B is the background rate. Fitting over the range $[0.72, 10] \mu\text{s}$, we find a half-life $t_{1/2} = \tau \ln(2) = (293.9 \pm (1.0)_{\text{stat}})$ ns. The residuals of this fit are shown in the bottom panel of Figure 7.

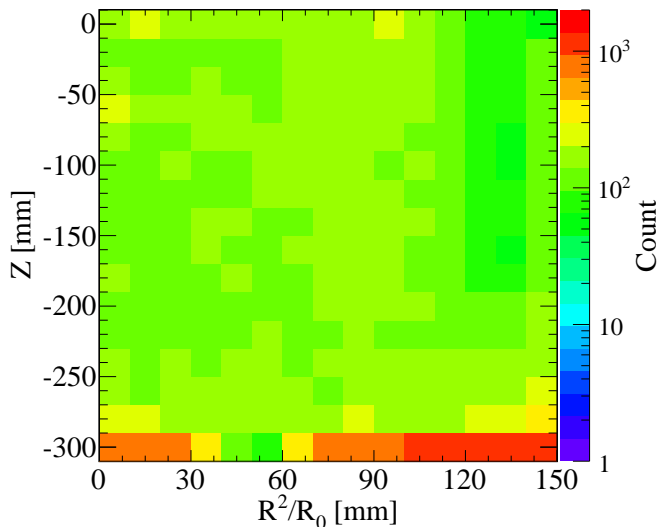


FIG. 6. The spatial distribution of low-energy $^{212}\text{BiPo}$ decays. The events permeate the entire active region of the TPC.

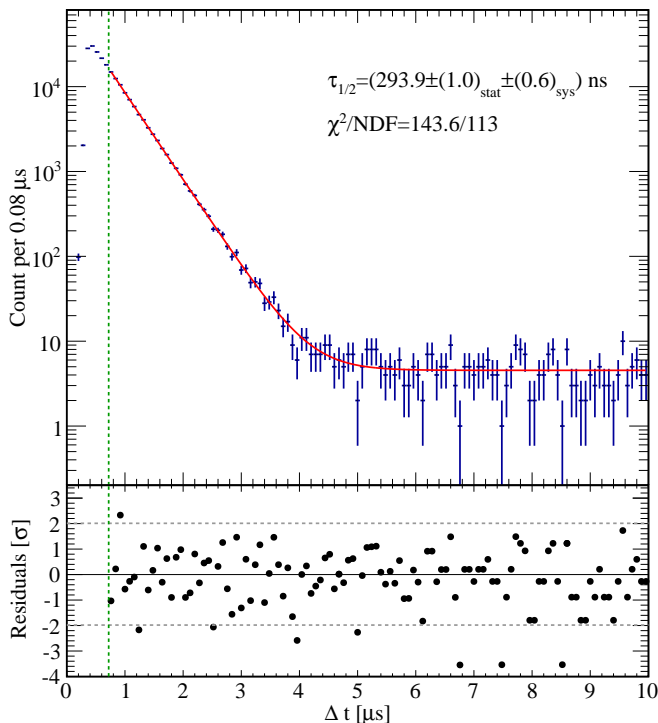


FIG. 7. (Top) Time difference of BiPo coincidence events together with a fit of the half-life of ^{212}Po . The lower bound of the fit is set at 720 ns to optimize the combined statistical and systematic uncertainty. (Bottom) The residuals of the fit in the top panel.

398 Various systematic effects are considered for the uncer-
 399 tainty of this half-life measurement. The minimum time
 400 difference for the fit, $0.72\text{ }\mu\text{s}$, is chosen to minimize the
 401 combined statistical and systematic uncertainty. Figure 8
 402 shows the fitted half-life as a function of this minimum

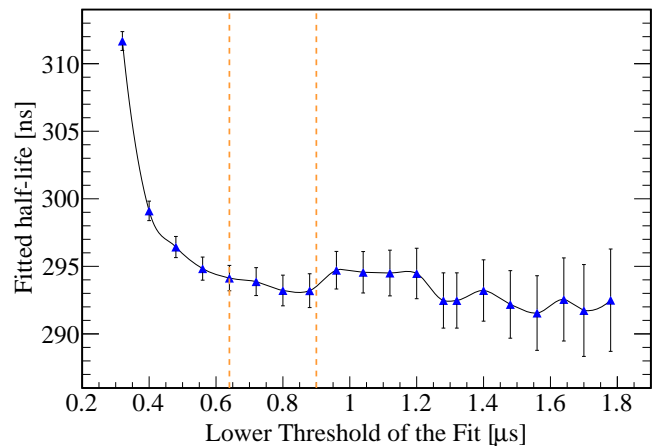


FIG. 8. The fitted half-life of ^{212}Po as a function of the minimum time difference that is considered. The lower bound of the half-life measurement is set at $0.72\text{ }\mu\text{s}$. Based on the range $[0.64, 0.90]\text{ }\mu\text{s}$, we estimate a 0.5-ns contribution to the total systematic uncertainty that results from the lower threshold of the time difference.

403 time difference. The RMS value of the four points in the
 404 range $[0.64, 0.90]\text{ }\mu\text{s}$, 0.5 ns , is taken as the systematic un-
 405 certainty resulting from the fit range. The clock of the
 406 digitizer contributes less than 0.3 ns to the systematic un-
 407 certainty. We repeat the measurement **[while varying**
 408 **the]** lower energy thresholds of our selection of $S1_\alpha$ and
 409 $S1_\beta$ **[in their respective ranges $[6000, 12000]\text{ PE}$ and**
 410 **$[20, 500]\text{ PE}$. From these variations, we estimate]** a
 411 0.1 ns contribution to the uncertainty. **[Furthermore,**
 412 **we]** find that the result is independent of temporal reso-
 413 lution and the choice of binning. Jitter from finite ADC
 414 sampling, $S1$ scintillation properties, and other effects
 415 that modify the time stamp of individual $S1$ peaks av-
 416 erage out. Ultimately, we measure the half-life of ^{212}Po
 417 to be $t_{1/2} = (293.9 \pm (1.0)_{\text{stat}} \pm (0.6)_{\text{sys}})\text{ ns}$. This mea-
 418 surement agrees with **[a]** recent half-life measurement
 419 from Borexino, $t_{1/2} = (294.7 \pm (0.6)_{\text{stat}} \pm (0.8)_{\text{sys}})\text{ ns}$
 420 **[25] [but is slightly smaller than the most re-**
 421 **cent measurement from DAMA/LIBRA, $t_{1/2} =$**
 422 **$(298.8 \pm (0.8)_{\text{stat}} \pm (1.4)_{\text{sys}})\text{ ns}$ [26]].**

423 VII. LOW-ENERGY CALIBRATION

424 The decay of ^{212}Pb emits beta particles that are effec-
 425 tive for the calibration of liquid noble gas detectors in the
 426 search for dark matter. The direct decay of ^{212}Pb to the
 427 ground state of ^{212}Bi , occurring with a branching ratio
 428 of 11.9% , is the relevant decay for low-energy electronic
 429 recoil calibration. Specifically, 10% of these direct decays
 430 fall within the low-energy range of interest, $(2 - 30)\text{ keV}$.
 431 The source is viable in this capacity as long as the activ-
 432 ity of ^{212}Pb spreads throughout the entire active region
 433 of the TPC.

434 In order to identify low-energy decays with high effi-

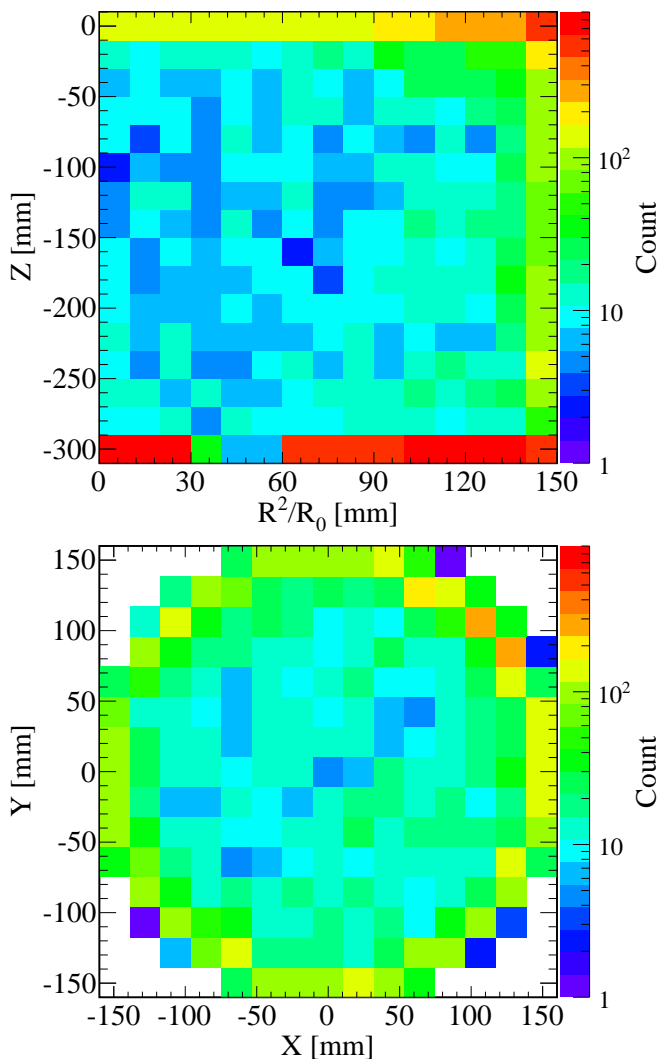


FIG. 9. The spatial distribution of low-energy events is shown in two different perspectives. Since some clustering near the electrodes is apparent (top), events within 5 mm of either electrode have been rejected to display the XY -distribution (bottom).

ciency, three types of selection cuts are applied following previous XENON100 dark matter analyses of electronic recoils [27–29]. The first type includes cuts that remove events with excessive levels of electronic noise, ensuring that we choose actual particle interactions. The second type checks for consistency between the drift time and the width of the S2. Finally, we select the relevant low-energy beta decays by applying a cut on the scintillation signal, $3 \text{ PE} < S1 < 60 \text{ PE}$, which corresponds to the energy range (2–30) keV [27, 28]. However, as discussed in Section III, [95%] of these events are induced by gammas that travel into the TPC from decays in the veto region. [Only single scatter events are observed.] The spatial distribution of these low-energy events is shown in Figure 9. Significant clustering near the electrodes is apparent. The cluster near the anode re-

sults from the de-excitation gammas that travel from the veto; whereas [low-energy events of ionized ^{212}Pb populate] the cluster at the cathode. For the XY distribution, an additional cut was thus applied to exclude events within 5 mm of either the cathode or the anode. As one can see, the low-energy activity is present throughout the TPC. Despite the fact that low-energy ^{212}Pb events cannot be disentangled from Compton scatters originating in the veto, the distribution of BiPo events in Figure 6 indicates that the low-energy ^{212}Pb events reach the center of the active region. The convection pattern observed with the short-lived alpha decays slightly biases this event population toward regions with downward motion. We find 5300 low-energy decays within the central 34 kg fiducial region used in [24]. The aforementioned simulation tells us that 5% (300) of these events are actually ground-state ^{212}Pb beta decays, whereas the remainder originates from the veto. Thus, 300 in every 10^6 events will be useful for low-energy ER calibration of tonne-scale dark matter detectors. This measurement validates the ^{220}Rn source as a low-energy electronic recoil calibration source for noble element detectors.

Since the full decay chain has a collective decay time less than 12 hours, the introduced activity decays within a week. Unlike calibration with tritiated methane, this time scale is independent of the purification speed or efficiency, making this source useful for the largest detectors envisioned [30].

We observe no activity attributable to either ^{224}Ra (the parent of ^{220}Rn) or ^{222}Rn after the source is closed and thus place upper limits on the inadvertent introduction of these isotopes. In the case of ^{224}Ra , the rate of ^{220}Rn events is compared for periods before and after the source is deployed, resulting in a ^{224}Ra activity $< 1.0 \mu\text{Bq/kg}$ at 90% confidence. The bottom panel of Figure 2 shows that the rate of ^{222}Rn remains constant over the period during which the calibration source is deployed, resulting in a ^{222}Rn activity of $< 13 \mu\text{Bq/kg}$ at 90% confidence.

VIII. CONCLUSION

We have presented a novel calibration method for liquid noble element detectors using a source of dissolved ^{220}Rn . The ^{220}Rn decay chain provides several isotopes that allow for a variety of different calibrations, including the response to low-energy beta decays, high-energy alpha lines, and the important ^{222}Rn background. The activity enters the active volume as soon as the source is opened to the gas purification system. No contamination is observed from long-lived isotopes, and the introduced activity naturally decays within a week after the source is closed. Since this dissipation time is independent of the size of the detector, calibration with ^{220}Rn is particularly appealing for future large-scale detectors [6, 18, 19, 30, 31].

The primary utility of the source is the beta decay of ^{212}Pb , which can be employed to calibrate a detector's response to low-energy electronic recoil backgrounds in the search for dark matter. The ^{212}Pb atoms permeate the entire active region, including the center which is beyond the reach of traditional calibrations with external Compton sources.

Furthermore, the high-energy alpha decays of ^{220}Rn and ^{216}Po provide the means by which to map atomic motion. We observed a single convection cell in XENON100 at speeds up to ~ 7 mm/s as well as subdominant ion drift in the electric field of the TPC. Such an improved understanding of fluid dynamics within a detector promises to motivate analytic techniques for background mitigation.

Beyond the development of calibration techniques, we have used the beta decay of ^{212}Bi and the alpha decay of ^{212}Po to make a high-purity, high-statistics measurement of the half-life of ^{212}Po : $t_{1/2} = (293.9 \pm (1.0)_{\text{stat}} \pm (0.6)_{\text{sys}})$ ns.

ACKNOWLEDGEMENTS

We gratefully acknowledge support from the National Science Foundation, Swiss National Science Foundation, Deutsche Forschungsgemeinschaft, Max Planck Gesellschaft, Foundation for Fundamental Research on Matter, Weizmann Institute of Science, I-CORE, Initial Training Network Invisibles (Marie Curie Actions, PITNGA-2011-289442), Fundacao para a Ciencia e a Tecnologia, Region des Pays de la Loire, Knut and Alice Wallenberg Foundation, and Istituto Nazionale di Fisica Nucleare. We are grateful to Laboratori Nazionali del Gran Sasso for hosting and supporting the XENON project.

APPENDIX

The challenge we face when viewing the convection cell through the lateral surface of the cylindrical TPC is that we see larger subvolumes of the detector closer to the central axis. These unequal volumes could potentially introduce a bias in our measurement of atomic motion. A given subvolume is represented by its projection onto a circle of radius R_0 and centered at the origin in the XY plane. The projection is at the position Y :

$$dA = 2\sqrt{R_0^2 - Y^2} dY. \quad (3)$$

We aim to convert $A(Y)$ into a function $A(\tilde{Y})$ such that $dA/d\tilde{Y} = \text{constant}$. To this end, we first apply a substitution $Y \equiv -R_0 \cos u$, which yields $dA = 2R_0^2 \sin^2 u du$. Then, we set

$$\frac{d\tilde{Y}}{du} = \sin^2 u = \frac{1}{2}(1 - \cos 2u) \quad (4)$$

which gives

$$\tilde{Y}(u) = \frac{1}{2} \left(u - \frac{1}{2} \sin 2u \right) + C. \quad (5)$$

To preserve the symmetry around $Y = 0$, we require $\tilde{Y}(u(0)) = 0$ and, thereby, define $C = -\frac{\pi}{4}$. Furthermore, we scale by $4R_0/\pi$,

$$\tilde{Y}(u) = R_0 \left[\frac{2}{\pi} \left(u - \frac{1}{2} \sin 2u \right) - 1 \right], \quad (6)$$

so that \tilde{Y} is defined on $[-R_0, R_0]$.

-
- [1] I. Ostrovskiy and K. O'Sullivan, *Mod. Phys. Lett.* **A31**, 1630017 (2016), 1605.00631.
- [2] T. Marrodán Undagoitia and L. Rauch, *J. Phys.* **G43**, 013001 (2016), 1509.08767.
- [3] J. B. Albert et al. (EXO-200), *Nature* **510**, 229 (2014), 1402.6956.
- [4] E. Aprile et al. (XENON100), *Phys. Rev. Lett.* **111**, 021301 (2013).
- [5] D. S. Akerib et al. (LUX), *Phys. Rev. Lett.* **116**, 161301 (2016), 1512.03506.
- [6] P. A. Amaudruz et al. (DEAP), in *Proceedings, 37th International Conference on High Energy Physics (ICHEP 2014)* (2016), vol. 273-275, pp. 340–346, 1410.7673.
- [7] P. Agnes et al. (DarkSide), *Phys. Rev.* **D93**, 081101 (2016), 1510.00702.
- [8] A. Tan et al. (PandaX-II), *Phys. Rev. Lett.* **117**, 121303 (2016), 1607.07400.
- [9] V. Hannen et al., *JINST* **6**, P10013 (2011), 1109.4270.
- [10] A. Manalaysay et al., *Review of Scientific Instruments* **81**, 073303 (2010), 0908.0616.
- [11] L. W. Kastens, S. Bedikian, S. B. Cahn, A. Manzur, and D. N. McKinsey, *JINST* **5**, P05006 (2010), 0912.2337.
- [12] P. Agnes et al. (DarkSide), *Phys. Lett.* **B743**, 456 (2015), 1410.0653.
- [13] D. S. Akerib et al. (LUX), *Phys. Rev.* **D93**, 072009 (2016), 1512.03133.
- [14] E. Aprile et al. (XENON100), *Astropart. Phys.* **35**, 573 (2012).
- [15] R. F. Lang et al. *JINST* **11**, P04004 (2016), 1602.01138.
- [16] J. B. Albert et al. (EXO-200), *Phys. Rev.* **C92**, 045504 (2015), 1506.00317.
- [17] M. Weber, Ph.D. thesis, Ruprecht-Karls-Universität, Heidelberg (2013), www.ub.uni-heidelberg.de/archiv/15155.
- [18] E. Aprile et al. (XENON), *JCAP* **1604**, 027 (2016), 1512.07501.

- 593 [19] D. S. Akerib et al. (LZ) (2015), 1509.02910.
- 594 [20] P. A. Amaudruz et al., *Astropart. Phys.* **62**, 178 (2015),
595 1211.0909.
- 596 [21] H. M. Araujo et al., *Astropart. Phys.* **35**, 495 (2012),
597 1104.3538.
- 598 [22] *Atomic mass data center* M. Wang et al. Chi-
599 nese Phys. C **36**, 1287 and 1603 (2012), access via
600 <http://amdc.impcas.ac.cn/evaluation/data2012/ame.html>.
601 [23] Brookhaven National Laboratory, *national nuclear data*
602 *center*, <http://www.nndc.bnl.gov/> (2015).
- 603 [24] E. Aprile et al. (XENON100), *Phys. Rev. Lett.* **109**,
604 181301 (2012), 1207.5988.
- 605 [25] G. Bellini et al. (Borexino), *Eur. Phys. J.* **A49**, 92 (2013),
606 1212.1332.
- 607 [26] P. Belli et al., *The European Physical Journal A* **50**, 134
608 (2014), ISSN 1434-601X.
- 609 [27] E. Aprile et al. (XENON100), *Phys. Rev.* **D90**, 062009
610 (2014), 1404.1455.
- 611 [28] E. Aprile et al. (XENON100), *Science* **349**, 851 (2015),
612 1507.07747.
- 613 [29] E. Aprile et al. (XENON100), *Phys. Rev. Lett.* **115**,
614 091302 (2015), 1507.07748.
- 615 [30] J. Aalbers et al. (DARWIN) (2016), 1606.07001.
- 616 [31] I. Ostrovskiy et al., *IEEE Trans. Nucl. Sci.* **62**, 1825
617 (2015), 1502.07837.