



Publication Year	2016
Acceptance in OA	2020-05-15T15:01:29Z
Title	Combining strong lensing and dynamics in galaxy clusters: integrating MAMPOSSt within LENSTOOL. I. Application on SL2S J02140-0535
Authors	Verdugo, T., Limousin, M., Motta, V., Mamon, G. A., Foëx, G., GASTALDELLO, FABIO, Jullo, E., BIVIANO, ANDREA, Rojas, K., Muñoz, R. P., Cabanac, R., Magaña, J., Fernández-Trincado, J. G., Adame, L., De Leo, M. A.
Publisher's version (DOI)	10.1051/0004-6361/201628629
Handle	http://hdl.handle.net/20.500.12386/24885
Journal	ASTRONOMY & ASTROPHYSICS
Volume	595

Combining Strong Lensing and Dynamics in Galaxy Clusters: integrating MAMPOSSt within LENSTOOL I. Application on SL2S J02140-0535 \star , $\star\star$

T. Verdugo^{1,2}, M. Limousin³, V. Motta², G. A. Mamon⁴, G. Foëx⁵, F. Gastaldello⁶, E. Jullo³, A. Biviano⁷, K. Rojas², R. P. Muñoz⁸, R. Cabanac⁹, J. Magaña², J. G. Fernández-Trincado¹⁰, L. Adame¹¹, M. A. De Leo¹²

¹ Instituto de Astronomía, Universidad Nacional Autónoma de México, Apdo. Postal 106, Ensenada, B.C. 22860, México

² Instituto de Física y Astronomía, Universidad de Valparaíso, Avenida Gran Bretaña 1111, Valparaíso, Chile

³ Laboratoire d'Astrophysique de Marseille, Université de Provence, CNRS, 38 rue Frédéric Joliot-Curie, F-13388 Marseille Cedex 13, France

⁴ Institut d'Astrophysique de Paris (UMR 7095: CNRS & UPMC), 98 bis Bd Arago, F-75014 Paris, France

⁵ Max Planck Institute for Extraterrestrial Physics, Giessenbachstrasse, 85748 Garching, Germany

⁶ INAF-IASF Milano, via E. Bassini 15, I-20133 Milano, Italy

⁷ INAF-Osservatorio Astronomico di Trieste, via G.B. Tiepolo 11, 34143 Trieste, Italy

⁸ Instituto de Astrofísica, Facultad de Física, Pontificia Universidad Católica de Chile, Av. Vicuña Mackenna 4860, 7820436 Macul, Santiago, Chile

⁹ Laboratoire d'Astrophysique de Toulouse-Tarbes, Université de Toulouse, CNRS, 57 Avenue d'Azereix, 65 000 Tarbes, France

¹⁰ Institut Utinam, CNRS UMR 6213, Université de Franche-Comté, OSU THETA Franche-Comté-Bourgogne, Observatoire de Besançon, BP 1615, 25010 Besançon Cedex, France

¹¹ Facultad de Ciencias Físico-Matemáticas, Universidad Autónoma de Nuevo León, San Nicolás de los Garza, México

¹² Department of Physics and Astronomy, University of California, Riverside, CA 92521, USA

Preprint online version:

ABSTRACT

Context. The mass distribution in both galaxy clusters and groups is an important cosmological probe. It has become clear in the last years that mass profiles are best recovered when combining complementary probes of the gravitational potential. Strong lensing (SL) is very accurate in the inner regions, but other probes are required to constrain the mass distribution in the outer regions, such as weak lensing or dynamics studies.

Aims. We constrain the mass distribution of a cluster showing gravitational arcs by combining a strong lensing method with a dynamical method using the velocities of its 24 member galaxies.

Methods. We present a new framework where we simultaneously fit SL and dynamical data. The SL analysis is based on the LENSTOOL software, and the dynamical analysis uses the MAMPOSSt code, which we have integrated into LENSTOOL. After describing the implementation of this new tool, we apply it on the galaxy group SL2S J02140-0535 ($z_{\text{spec}} = 0.44$), which we have already studied in the past. We use new VLT/FORS2 spectroscopy of multiple images and group members, as well as shallow X-ray data from *XMM*.

Results. We confirm that the observed lensing features in SL2S J02140-0535 belong to different background sources. One of this sources is located at $z_{\text{spec}} = 1.017 \pm 0.001$, whereas the other source is located at $z_{\text{spec}} = 1.628 \pm 0.001$. With the analysis of our new and our previously reported spectroscopic data, we find 24 secure members for SL2S J02140-0535. Both data sets are well reproduced by a single NFW mass profile: the dark matter halo coincides with the peak of the light distribution, with scale radius, concentration, and mass equal to $r_s = 82_{-17}^{+44}$ kpc, $c_{200} = 10.0_{-2.5}^{+1.7}$, and $M_{200} = 1.0_{-0.2}^{+0.5} \times 10^{14} M_{\odot}$ respectively. These parameters are better constrained when we fit simultaneously SL and dynamical information. The mass contours of our best model agrees with the direction defined by the luminosity contours and the X-ray emission of SL2S J02140-0535. The simultaneous fit lowers the error in the mass estimate by 0.34 dex, when compared to the SL model, and in 0.15 dex when compared to the dynamical method.

Conclusions. The combination of SL and dynamics tools yields a more accurate probe of the mass profile of SL2S J02140-0535 up to r_{200} . However, there is tension between the best elliptical SL model and the best spherical dynamical model. The similarities in shape and alignment of the centroids of the total mass, light, and intracluster gas distributions add to the picture of a non disturbed system.

Key words. gravitational lensing: strong – galaxies: groups: general – galaxies: groups: individual: SL2S J02140-0535

1. Introduction

The Universe has evolved into the filamentary and clumpy structures (dubbed the cosmic web, Bond et al. 1996) that are ob-

the University of Hawaii. This work is based in part on data products produced at Terapix available at the Canadian Astronomy Data Centre as part of the Canada-France-Hawaii Telescope Legacy Survey, a collaborative project of NRC and CNRS. Also based on *Hubble Space Telescope* (HST) data, VLT (FORS 2) data, and *XMM* data.

Send offprint requests to: tomasv@astrosen.unam.mx

* SL2S: Strong Lensing Legacy Survey

** Based on observations obtained with MegaPrime/MegaCam, a joint project of CFHT and CEA/IRFU, at the Canada-France-Hawaii Telescope (CFHT) which is operated by the National Research Council (NRC) of Canada, the Institut National des Sciences de l'Univers of the Centre National de la Recherche Scientifique (CNRS) of France, and

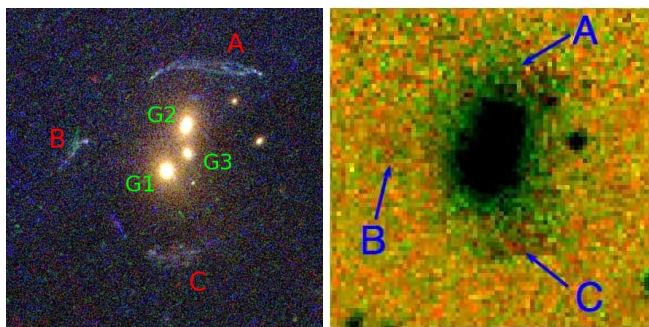


Fig. 1: Images of the group SL2S J02140-0535 at $z_{\text{spec}} = 0.44$. *Left*: composite HST/ACS F814, F606, F475 color image ($22'' \times 22'' = 125 \times 125 \text{ kpc}^2$) showing the central region of the group (from VMM11). *Right*: composite WIRCam J, K_s color image ($22'' \times 22''$).

served in large redshift surveys (e.g., Colless et al. 2001). Massive and rich galaxy clusters are located at the nodes of this cosmic web, being fed by accretion of individual galaxies and groups (e.g., Frenk et al. 1996; Springel et al. 2005; Jauzac et al. 2012). Galaxy clusters are the most massive gravitationally bound systems in the Universe, thus constituting one of the most important and crucial astrophysical objects to constrain cosmological parameters (see for example Allen et al. 2011). Furthermore, they provide information about galaxy evolution (e.g., Postman et al. 2005). Also, galaxy groups are important cosmological probes (e.g., Mulchaey 2000; Eke et al. 2004b) because they are tracers of the large-scale structure of the Universe, but also because they are probes of the environmental dependence of the galaxy properties, the galactic content of dark matter haloes, and the clustering of galaxies (Eke et al. 2004a). Although there is no clear boundary in mass between groups of galaxies and clusters of galaxies (e.g., Tully 2014), it is commonly assumed that groups of galaxies lie in the intermediate mass range between large elliptical galaxies and galaxy clusters (i.e., masses between $\sim 10^{13}M_{\odot}$ to $\sim 10^{14}M_{\odot}$).

The mass distribution in both galaxy groups and clusters has been studied extensively using different methods, such as the radial distribution of the gas through X-ray emission (e.g., Sun 2012; Etori et al. 2013, and references therein), the analysis of galaxy-based techniques that employs the positions, velocities and colors of the galaxies (see Old et al. 2014, 2015, for a comparison of the accuracies of dynamical methods in measuring M_{200}), or through gravitational lensing (e.g., Limousin et al. 2009, 2010; Kneib & Natarajan 2011, and references therein). Each probe has its own limitations and biases, which in turn impact the mass distribution measurements. Strong lensing (hereafter SL) analysis provides the total amount of mass and its distribution with no assumptions on neither the dynamical state nor the nature of the matter producing the lensing effect. Nevertheless, the analysis has its own weakness; for example, it can solely constrain the two dimensional projected mass density, and it is limited to small projected radii. On the other hand, the analysis of galaxy kinematics do not has such limitations, but assumes local dynamical equilibrium (i.e., negligible rotation and streaming motions) and spherical symmetry.

In this paper, we put forward a new method to overcome one of the limitations of the SL analysis, namely, the impossibility to constrain large-scale properties of the mass profile. Our method combines SL (in a parametric fashion, see Sect. 2) with

the dynamics of the group or the cluster galaxy members, fitting simultaneously both data sets. Strong lensing and dynamics are both well recognized probes, the former providing an estimate of the projected two dimensional mass distribution within the core (typically a few dozens of arcsecs at most), whereas the latter is able to study the density profile at larger radii, using galaxies as test particles to probe the host potential.

There are several methods to constrain the mass profiles of galaxy clusters from galaxy kinematics. One can fit the 2^{nd} and 4^{th} moments of the line-of-sight velocities, in bins of projected radii (Łokas & Mamon 2003). One can assume a profile for the velocity anisotropy, and apply mass inversion techniques (e.g., Mamon & Boué 2010; Wolf et al. 2010; Sarli et al. 2014). Both methods require binning of the data. An alternative is to fit the observed distribution of galaxies in projected phase space (projected radii and line-of-sight velocities), which does not involve binning the data. This can be performed by assuming six-dimensional distribution functions (DFs), expressed as function of energy and angular momentum (e.g., Wojtak et al. 2009, who used DFs derived by Wojtak et al. 2008 for Λ CDM halos), but the method is very slow, as it involves triple integrals for every galaxy and every point in parameter space. An accurate and efficient alternative is to assume a shape of the velocity DF as in the MAMPOSSt method of Mamon et al. (2013), which has been used to study the radial profiles of mass and velocity anisotropy of clusters (Biviano et al. 2013; Munari et al. 2014; Guennou et al. 2014; Biviano et al. 2016). MAMPOSSt is ideal for the aims of the present study as: 1.- it is accurate for a dynamical model and very rapid¹; 2.- it produces a likelihood as does the LENSTOOL code used here for SL (see Sect. 2); 3.- can run with the same parametric form of the mass profile as used in LENSTOOL.

The idea of combining lensing and dynamics is not new. So far, dynamics have been used to probe the very centre of the gravitational potential, through the measurement of the velocity dispersion profile of the central brightest cluster galaxy (Sand et al. 2002, 2004; Newman et al. 2009, 2013). However, the use of dynamical information at large scale (velocities of the galaxy members in a cluster or a group), together with SL analysis has not been fully explored. Through this approach, Thanjavur et al. (2010) showed that it is possible to characterize the mass distribution and the mass-to-light ratio of galaxy groups. Biviano et al. (2013) analyzed the cluster MACS J1206.2-0847, constraining its mass, velocity-anisotropy, and pseudo-phase-space density profiles, finding a good agreement between the results obtained from cluster kinematics and those derived from lensing. Similarly, Guennou et al. (2014) compared the mass profile inferred from lensing with different profiles obtained from three methods based on kinematics, showing that they are consistent among themselves.

This work follows the analysis of Verdugo et al. (2011), hereafter VMM11, where we combined SL and dynamics in the galaxy group SL2S J02140-0535. In VMM11, dynamics were used to constrain the scale radius of a NFW mass profile, a quantity that is not accessible to SL constraints alone. These constraints were used as a prior in the SL analysis, allowing to probe the mass distribution from the centre to the virial radius of the galaxy group. However, the fit was not simultaneous. In this work we propose a framework aimed at fitting simultaneously

¹ A valuable asset, since lensing modeling has become time demanding. See for example the discussion in Jauzac et al. (2014) about the computing resources when modeling a SL cluster with many constraints.

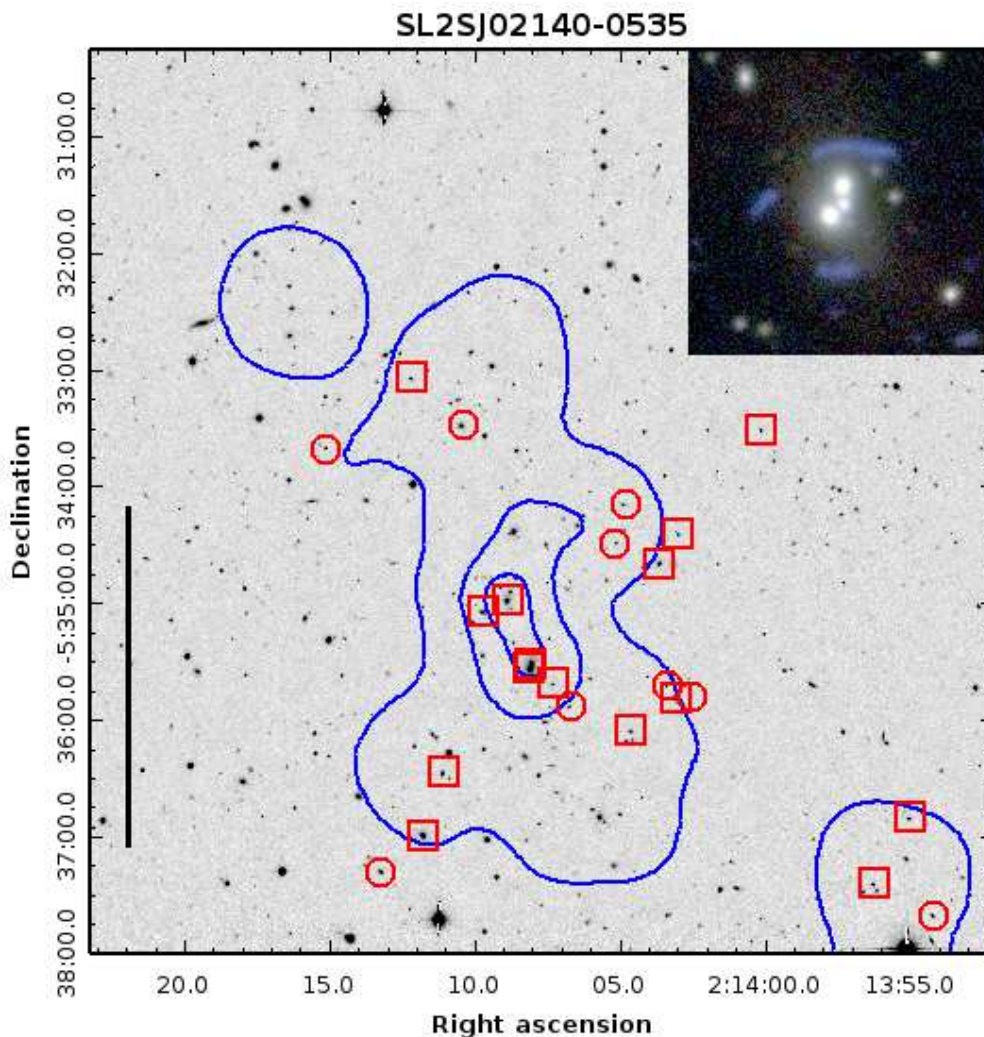


Fig. 2: CFHTLS *i*-band image with the luminosity density contours for SL2SJ02140-0535. They represent 1×10^6 , 5×10^6 , and $1.0 \times 10^7 L_{\odot} \text{ kpc}^{-2}$ from outermost to innermost contour, respectively. The red squares and circles show the location of the 24 confirmed members of the group, the squares represent the galaxies previously reported by Muñoz et al. (2013), and the circles the new observations. The black vertical line on the left represents 1 Mpc at the group rest-frame. The inset in the top-right corner shows a $30'' \times 30''$ CFHTLS false color image of the system.

SL and dynamics, combining the likelihoods obtained from both techniques in a consistent way. Our paper is arranged as follows: In Sect. 2 the methodology is explained. In Sect. 3 and Sect. 4 we present the observational data images, spectroscopy, and the application of the method to the galaxy group SL2SJ02140-0535. We summarize and discuss our results in Sect. 5. Finally in Sect. 6, we present the conclusions. All our results are scaled to a flat, Λ CDM cosmology with $\Omega_M = 0.3$, $\Omega_{\Lambda} = 0.7$ and a Hubble constant $H_0 = 70 \text{ km s}^{-1} \text{ Mpc}^{-1}$. All images are aligned with WCS coordinates, i.e., North is up, East is left. Magnitudes are given in the AB system.

2. Methodology

In this section we explain how the SL and dynamical likelihoods are computed in our models.

2.1. Strong lensing

The figure-of-merit-function, χ^2 , that quantifies the goodness of the fit for each trial of the lens model, has been introduced in several works (e.g., Verdugo et al. 2007; Limousin et al. 2007; Jullo et al. 2007), therefore, we summarize the method here. Consider a model whose parameters are θ , with N sources, and n_i the number of multiple images for source i . We compute, for every system i , the position in the image plane $x^j(\theta)$ of image j , using the lens equation. Therefore, the contribution to the overall χ^2 from multiple image system i is

$$\chi_i^2 = \sum_{j=1}^{n_i} \frac{[x_{obs}^j - x^j(\theta)]^2}{\sigma_{ij}^2}, \quad (1)$$

where σ_{ij} is the error on the position of image j , and x_{obs}^j is the observed position. Thus, we can write the likelihood as

$$\mathcal{L}_{\text{Lens}} = \prod_i^N \frac{1}{\prod_j \sigma_{ij} \sqrt{2\pi}} e^{-\chi_i^2/2}, \quad (2)$$

where it is assumed that the noise associated to the measurement of each image position is Gaussian and uncorrelated (Jullo et al. 2007). This is not true in the case of images that are very close to each other, but it is a reasonable approximation for SL2S J02140-0535. In this work we assume that the error in the image position is $\sigma_{ij} = 0.5''$, which is slightly greater than the value adopted in VMM11, but is half the value that has been suggested by other authors in order to take into account systematic errors in lensing modeling (e.g., Jullo et al. 2010; D'Aloisio & Natarajan 2011; Host 2012; Zitrin et al. 2015).

2.2. Dynamics

MAMPOSSt (Mamon et al. 2013) is a method that performs a maximum likelihood fit of the distribution of observed tracers in projected phase space (projected radii and line-of-sight velocity, hereafter PPS). We refer the interested reader to Mamon et al. (2013) for a detailed description, here we present a summary. MAMPOSSt assumes parameterized radial profiles of mass and velocity anisotropy, as well as a shape for the three-dimensional velocity distribution (a Gaussian 3D velocity distribution). MAMPOSSt fits the distribution of observed tracers in PPS. The method has been tested in cosmological simulations, showing the possibility to recover the virial radius, the tracer scale radius, and the dark matter scale radius when using 100 to 500 tracers (Mamon et al. 2013). Moreover, Old et al. (2015) found that the mass normalization M_{200} is recovered with 0.3 dex accuracy for as few as ~ 30 tracers.

The velocity anisotropy is defined through the expression

$$\beta(r) = 1 - \frac{\sigma_\theta^2(r) + \sigma_\phi^2(r)}{2\sigma_r^2(r)}, \quad (3)$$

where, in spherical symmetry, $\sigma_\phi(r) = \sigma_\theta(r)$. In the present work we adopt a constant anisotropy model with $\sigma_r/\sigma_\theta = (1 - \beta)^{-1/2}$, assuming spherical symmetry (see Sect. 4).

The 3D velocity distribution is assumed to be Gaussian:

$$f_v = \frac{1}{(2\pi)^{3/2} \sigma_r \sigma_\theta^2} \exp\left[-\frac{v_r^2}{2\sigma_r^2} - \frac{v_\theta^2 + v_\phi^2}{2\sigma_\theta^2}\right], \quad (4)$$

where v_r , v_θ , and v_ϕ are the velocities in a spherical coordinate system. This Gaussian distribution assumes no rotation or radial streaming, which is a good assumption inside the virial radius, as has been shown by numerical simulations (Prada et al. 2006; Cuesta et al. 2008). The Gaussian 3D velocity model is a first-order approximation, which can be improved (see Beraldo e Silva et al. 2015).

Thereby, MAMPOSSt fits the parameters using maximum likelihood estimation, i.e. by minimizing

$$-\ln \mathcal{L}_{\text{Dyn}} = -\sum_{i=1}^n \frac{\ln q(R_i, v_{z,i} | \bar{\theta})}{C(R_i)}, \quad (5)$$

where q is the probability density of observing an object at projected radius R , with line-of-sight (hereafter LOS) velocity v_z , for a N -parameter vector $\bar{\theta}$. $C(R_i)$ is the completeness of the data set (see section 3.2).

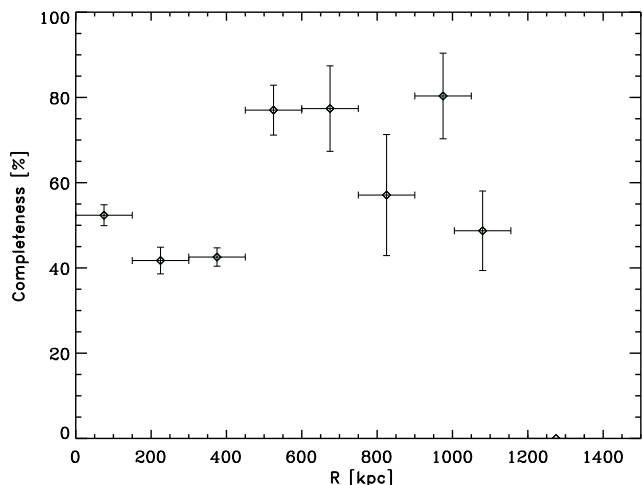


Fig. 3: Completeness as a function of the radius in SL2S J02140-0535. $C \sim 60\%$ roughly constant up to 1 Mpc.

2.3. Combining likelihoods

In order to combine SL and dynamical constraints, we compute their respective likelihoods. The SL likelihood is computed via LENSTOOL² code. This software implements a Bayesian Monte Carlo Markov chain (MCMC) method to search for the most likely parameters in the modeling. It has been used in a large number of clusters studies, and characterized in Jullo et al. (2007). The likelihood coming from dynamics of cluster members is computed using the MAMPOSSt code (Mamon et al. 2013), which has been tested and characterized on simulations. Technically, we have incorporated the MAMPOSSt likelihood routine into LENSTOOL.

Note that the SL likelihood (see Eq. 2) depends on the image positions of the arcs and their respective errors. On the other hand, the MAMPOSSt likelihood is calculated through the projected radii and line-of-sight velocity (Eq. 5). The errors on the inputs for the strong lensing on one hand and MAMPOSSt on the other should not be correlated (in other words the joint lensing-dynamics covariance matrix should be diagonal). So, we can write:

$$\mathcal{L}_T = \mathcal{L}_{\text{Lens}} \times \mathcal{L}_{\text{Dyn}}, \quad (6)$$

where \mathcal{L}_{Dyn} is given by Eq. 5 and $\mathcal{L}_{\text{Lens}}$ is calculated through Eq. 2. This definition of a total likelihood, where the two techniques (lensing and dynamics) are considered independent, is not new, and has been used previously at different scale by other authors (e.g., Sand et al. 2002, 2004), here we are using the dynamics to obtain constraints in the outer regions³. In this sense, the main difference with previous works, as for example Biviano et al. (2013), Guennou et al. (2014) or VMM11, is that in this work we do a joint analysis, searching for a solution consistent with both methods, maximizing a total likelihood.

² Publicly available at: <http://www.oamp.fr/cosmology/LENSTOOL/>

³ Note that here we are assuming the same weight of the SL and dynamics on the total likelihood. However this can not be the case, for example when combining SL and weak lensing (see the discussion in Umetsu et al. 2015)

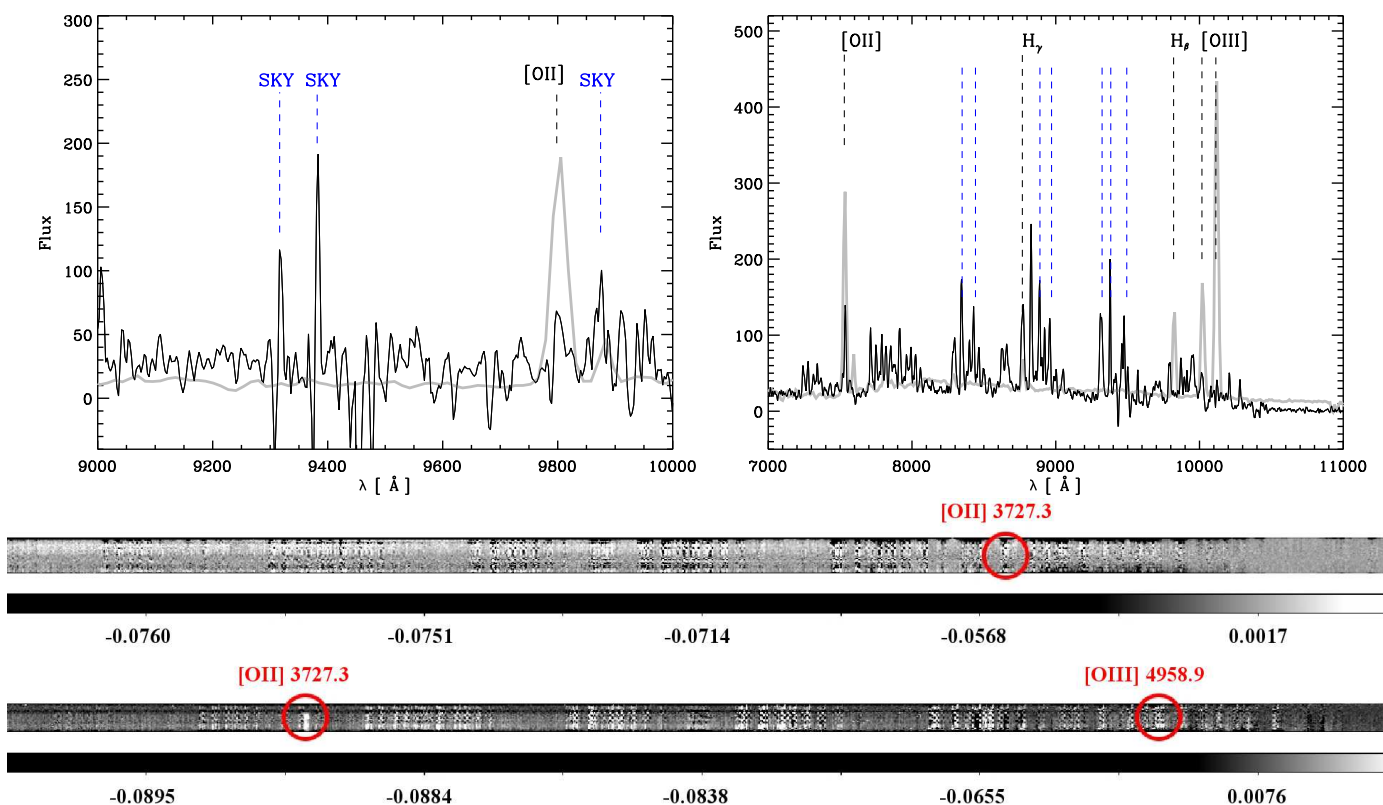


Fig. 4: *Top panel.* As mentioned in section Sect. 3.3, the slit length was limited by the position of the arcs, hence producing poor sky subtraction. *Left.* Observed spectrum of arc A (black continuous line). In gray we depict a starburst template from Kinney et al. (1996) shifted at $z = 1.628$. We marked a possible [OII] λ 3727 emission line, and some sky lines in blue (see Sect. 3.3). *Right.* Observed spectrum of arc C (black continuous line), as before we depicted in gray the starburst template from Kinney et al. (1996), but shifted at $z = 1.02$. We marked some characteristic emission lines, along with the sky lines in blue, but we omit for clarity the labels of the last ones. *Bottom panel.* Two-dimensional spectra of arc A (with a color bar in arbitrary units). Note the [OII] λ 3727 emission line. Below, the two-dimensional spectra of arc C, with two emission lines clearly identified: [OII] λ 3727, and [OIII] λ 4958.9.

2.4. NFW mass profile

We adopt the NFW mass density profile that has been predicted in cosmological N -body simulations (Navarro et al. 1996, 1997), given by

$$\rho(r) = \frac{\rho_s}{(r/r_s)(1 + r/r_s)^2}, \quad (7)$$

where r_s is the radius that corresponds to the region where the logarithmic slope of the density equals the isothermal value, and ρ_s is a characteristic density. The scale radius is related to the virial radius r_{200} through the expression $c_{200} = r_{200}/r_s$, which is the so-called concentration⁴. The mass contained within a radius r of the NFW halo is given by

$$M(r) = 4\pi r_s^3 \rho_s \left[\ln(1 + r/r_s) - \frac{r/r_s}{1 + r/r_s} \right]. \quad (8)$$

Although other mass models (e.g., Hernquist or Burkert density profiles) have been studied within the MAMPOSSt formalism (see Mamon et al. 2013), and LENSTOOL allows to probe different profiles, we adopt the NFW profile in order to compare our

⁴ r_{200} is the radius of a spherical volume inside of which the mean density is 200 times the critical density at the given redshift z , $M_{200} = 200 \times (4\pi/3)r_{200}^3 \rho_{crit} = 100H^2 r_{200}^3 / G$.

results with those obtained in VMM11. Note that the NFW profile is a spherical density profile, and MAMPOSSt's formalism can only model spherical systems. However, with LENSTOOL the initial profile is spherical, but is transformed into a pseudo-elliptical NFW (see Golse & Kneib 2002), as is explained in Jullo et al. (2007), in order to perform the lensing calculations. Although the simultaneous modeling share the same spherical parameters, the difference between the pseudo-elliptical and the spherical framework could influence our methodology (see Sect. 4.3).

3. Data

In this section, we present the group SL2S J02140-0535, reviewing briefly our old data sets. Also, we present new data that we have obtained since VMM11. From space, the lens was followed-up with *XMM* Newton Space Telescope. Additionally, a new spectroscopic follow-up of the arcs and group members have been carried out with the Very Large Telescope (VLT).

3.1. SL2S J02140-0535

This group, located at $z_{\text{spec}} = 0.44$, is populated by three central galaxies. We label them as G1 (the brightest group galaxy, BGG), G2, and G3 (see left panel of Fig. 1). The lensed images consist of three arcs surrounding these three galaxies: arc A, sit-

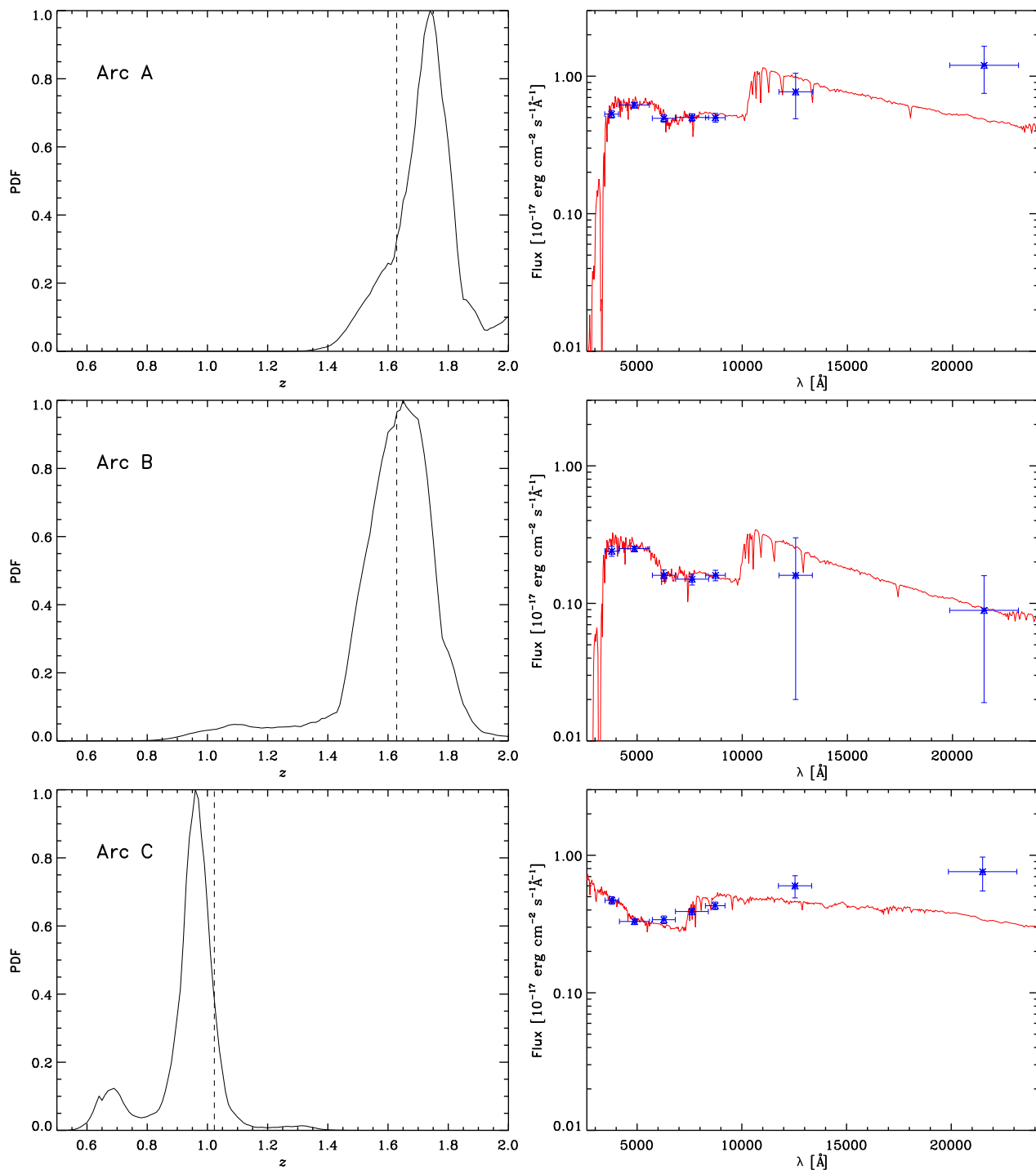


Fig. 5: *Left column.* Photometric redshift PDF for the selected arcs (see text). The dashed vertical lines corresponds to the spectroscopic value. *Right column.* Best fit spectral energy distribution. Points represent the observed CFHTLS broad band magnitudes, and J and K_s from WIRCam. Vertical and horizontal error bars correspond to photometric error and wavelength range of each filter, respectively.

uated north of the deflector, composed by two merging images; a second arc in the east direction (arc *B*), which is associated to arc *A*, whereas a third arc, arc *C*, situated in the south, is singly imaged. SL2S J02140-0535 (first reported by Cabanac et al. 2007) has been studied previously using strong lensing by Alard (2009) and both strong and weak lensing by Limousin et al. (2009), and also kinematically by Muñoz et al. (2013).

SL2S J02140-0535 was observed in five filters (u^* , g' , r' , i' , z') as part of the CFHTLS (Canada-France-Hawaii Telescope Legacy Survey)⁵ using the wide field imager MEGAPRIME (Gwyn 2011), and in the infrared using WIRCam (Wide-field InfraRed Camera, the near infrared mosaic imager at CFHT) as part of the proposal 07BF15 (P.I. G. Soucail), see Verdugo et al. (2014) for

⁵ <http://www.cfht.hawaii.edu/Science/CFHLS/>

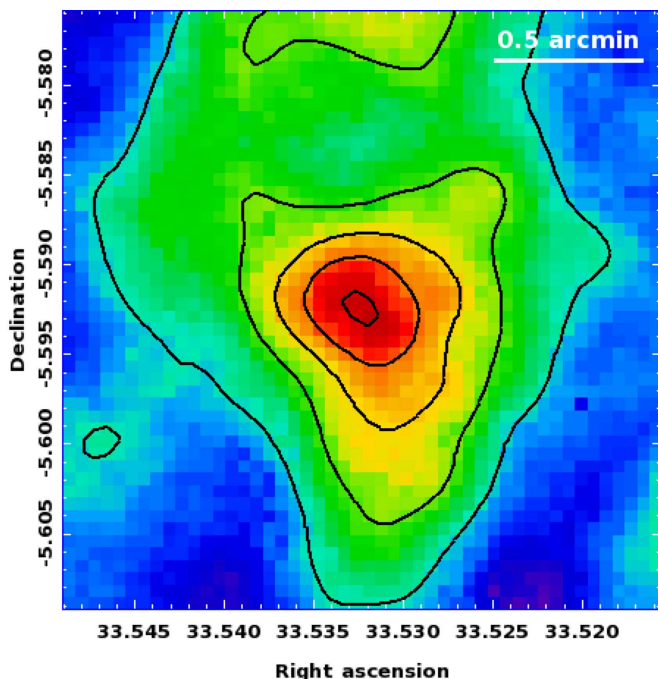


Fig. 6: The adaptively smoothed image of SL2S J02140-0535 in the 0.5-2.0 keV band. The X-ray contours in black are linearly spaced from 5 to 20 cts/s/deg².

more information. In the right panel of Fig. 1 we show a false-color image of SL2S J02140-0535, combining the two bands J and K_s . Note that arcs A and C appear mixed with the diffuse light of the central galaxies, and arc B is barely visible in the image. SL2S J02140-0535 was also followed up spectroscopically using FORS 2 at VLT (VMM11).

From space, the lens was observed with the *Hubble Space Telescope* (HST) in snapshot mode (C 15, P.I. Kneib) using three bands with the ACS camera (F814, F606, and F475).

3.2. New spectroscopic data

Selecting members. - We used FORS 2 on VLT with a medium resolution grism (GRIS 600RI; 080.A-0610; P.I. V. Motta) to target the group members (see Muñoz et al. 2013) and a low resolution grism (GIRS 300I; 086.A-0412; P.I. V. Motta) to observe the strongly lensed features. In the later observation, we use one mask with 2×1300 s on-target exposure time. Targets (other than strongly lensed features) were selected by a two-step process. First, we use the T0005 release of the CFHTLS survey (November, 2008) to obtain a photometric redshift-selected catalog which include galaxies within ± 0.01 of the redshift of the main lens galaxy. The selected galaxies in this catalog have colors within $(g - i)_{lens} - 0.15 < g - i < (g - i)_{lens} + 0.15$, where $(g - i)_{lens}$ is the color of the brightest galaxy within the Einstein radius. From this sample, we selected those candidates that were not observed previously. More details will be presented in a forthcoming publication (Motta et al., in prep.).

The spectroscopic redshifts of the galaxies were determined using the Radial Velocity SAO package (Kurtz & Mink 1998) within the IRAF software⁶. By visual inspection of the spec-

tra, we identify several emission and absorption lines. Then, we determine the redshifts (typical errors are discussed in Muñoz et al. 2013) by doing a cross-correlation between a spectrum and template spectra of known velocities. To determine the group membership of SL2S J02140-0535, we follow the method presented in Muñoz et al. (2013), which in turn adopt the formalism of Wilman et al. (2005). The group members are identified as follows: we assume initially that the group is located at the redshift of the main bright lens galaxy, z_{lens} , with an initial observed-frame velocity dispersion of $\sigma_{obs} = 500(1+z_{lens})$ km s⁻¹. After computing the required redshift range for group membership (see Muñoz et al. 2013), and applying a biweight estimator (Beers et al. 1990), the iterative process reached a stable membership solution with 24 secure members and a velocity dispersion of $\sigma = 562 \pm 60$ km s⁻¹. These galaxies are shown with red squares and circles in Fig. 2, and their respective redshifts are presented in Table A.1. The squares in Fig. 2 represent the galaxies previously reported by Muñoz et al. (2013). Fig. 2 also shows the luminosity contours calculated according to Foëx et al. (2013). Fitting ellipses to the luminosity map, using the task *ellipse* in IRAF, we find that the luminosity contours have position angles equal to $99^\circ \pm 9^\circ$, $102^\circ \pm 2^\circ$, and $109^\circ \pm 2^\circ$, from outermost to innermost contour respectively.

Completeness. - Muñoz et al. (2013) presented the dynamical analysis of seven SL2S galaxy groups, including SL2S J02140-0535. They estimate the completeness within 1 Mpc of radius from the centre of the group to be 30%. In the present work, as we increased the number of observed galaxies in the field of SL2S J02140-0535, and thus increasing the number of confirmed members (hereafter gal_{spec}), a new calculation is carried out to estimate the completeness as a function of the radius. We first define the color-magnitude cuts to be applied to the photometric catalog of the group, i.e. $0.7 < (r - i) < 0.92$ and $21.44 < m_i < 21.47$. These values correspond to the photometric properties of the gal_{spec} . Note that we exclude one galaxy because of its color $(r - i) = 0.45$. Then, we select all the galaxies falling within the photometric ranges (hereafter gal_{phot}), and we estimate the density of field galaxies within the $15' \times 15'$ square arcminutes after excluding a central region of radius 1.3 Mpc (which is the largest distance from the center of the group of gal_{spec}). This density is then converted into an estimated total number of galaxies N_{field} over the full field of view.

Given gal_{spec} , we bin the data and define $N_{spec}(r_i)$ as the number of confirmed members in the i th radial bin. Thus, the radial profile of the completeness is given by

$$C(r_i) \equiv \frac{N_{spec}(r_i)}{N_t(r_i) - N_{field,r}(r_i)}, \quad (9)$$

where $N_{field,r}(r_i)$ is the number of field galaxies in the i th bin, and $N_t(r_i)$ is the total number of gal_{phot} present in the i th bin, i.e., its value is the sum of the number of group members and field galaxies. To estimate $N_{field,r}(r_i)$, a Monte Carlo approach is adopted: we randomly draw the positions of the N_{field} galaxies over the whole field of view, and then count the corresponding number of galaxies $N_{field,r}(r_i)$ falling in each bin. Thus, each Monte Carlo realization leads to an estimate of the completeness. Finally, we average the $C(r_i)$, after excluding the realizations for which we obtain $N_t(r_i) < N_r(r_i)$ or $C(r_i) > 1$. In Fig. 3 we present the resulting profile and its estimated 1σ deviation, showing a completeness $C \sim 60\%$ consistent with a constant profile up to 1 Mpc.

⁶ IRAF is distributed by the National Optical Astronomy Observatory, which is operated by the Association of Universities for Research in As-

tronomy (AURA) under cooperative agreement with the National Science Foundation.

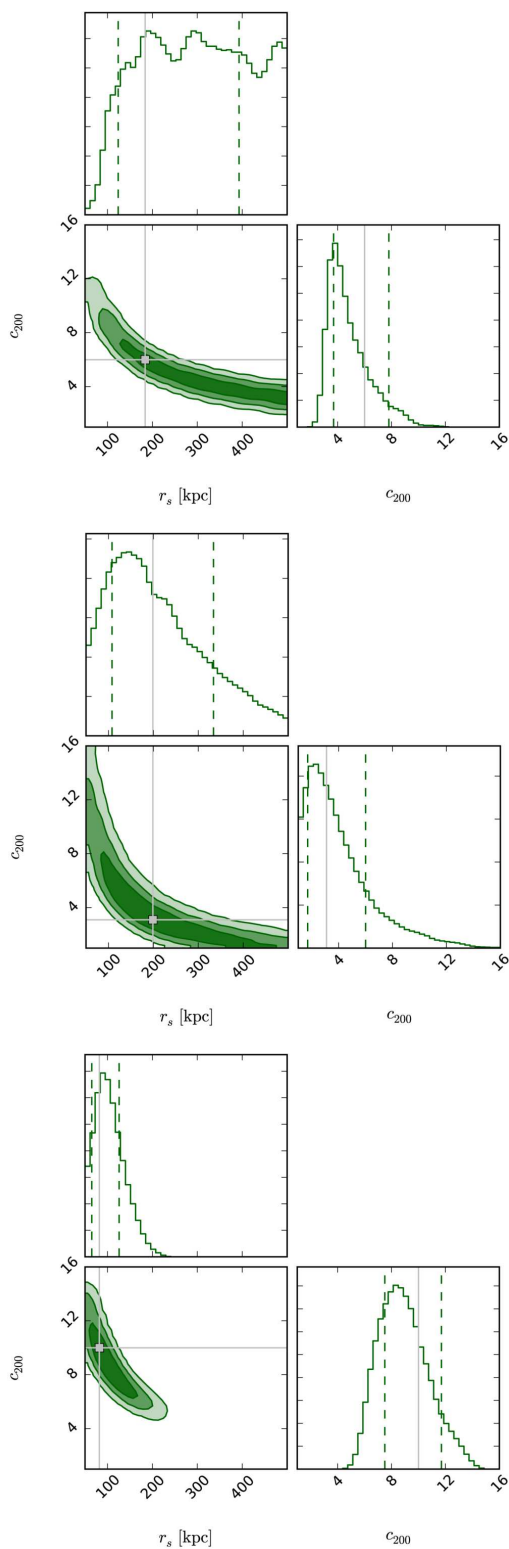


Fig. 7: PDFs and contours of the parameters c_{200} and r_s . The three contours stand for the 68%, 95%, and 99% confidence levels. The values obtained for our best-fit model are marked by a gray square, and with vertical lines in the 1D histograms (the asymmetric errors are presented in Table 1). *Top panel.*- Results from the SL Model. *Middle panel.*- Results from the Dyn Model. *Bottom panel.*- Results from the SL+Dyn Model.

3.3. Multiple images: confirming two different sources

Spectroscopic redshifts.- In VMM11 we reported a strong emission line at 7538.4 \AA in the spectra of arc C, that we associated to $[\text{OII}]\lambda 3727$ at $z_{\text{spec}} = 1.023 \pm 0.001$. We obtained new 2D spectra for the arcs consisting in two exposures of 1300s each. Due to the closeness of the components (inside a radius of $\sim 8''$), the slit length is limited by the relative position of the arcs, making sky-subtraction difficult (see bottom panel of Fig. 4). Most of the 2D spectra show a poor sky subtraction compared to which we would have obtained using longer slits. However, our new 2D spectra also shows the presence of $[\text{OII}]\lambda 3727$ spectral feature, and additionally another emission line appears in the spectrum, $[\text{OIII}]\lambda 4958.9$. In the same Fig. 4 (top-right panel) we show the spectrum and marked some characteristic emission lines, along with a few sky lines. We compare it with a template of a starburst galaxy from Kinney et al. (1996), shifted at $z = 1.02$. After performing a template fitting using RVSAO we obtain $z_{\text{spec}} = 1.017 \pm 0.001$, confirming our previously reported value.

On the other hand, in our previous work, we did not find any spectroscopic features in the arcs A and B due to the poor signal-to-noise. In the top-left panel of Fig. 4 we show the new obtained spectrum of arc A. It reveals a weak (but still visible) emission line at 9795.3 \AA . This line probably corresponds to $[\text{OII}]\lambda 3727$ at $z \sim 1.6$. However, we do not claim a clear detection (this region of the spectrum is affected by sky emission lines), as we discuss below, but is worth to note that the photometric redshift estimate supports this detection (see Fig. 5). Assuming emission from $[\text{OII}]\lambda 3727$ and applying a Gaussian fitting, we obtain $z_{\text{spec}} = 1.628 \pm 0.001$. This feature is not present in the spectrum of arc B, since arc B is almost one magnitude fainter than arc A. Furthermore, this line is not present in the spectrum of arc C, which confirms the previous finding of VMM11, i.e. system AB and arc C do come from two different sources.

Photometric redshifts.- As a complementary test, and to extend the analysis presented in VMM11, we calculate the photometric redshifts of arcs A, B, and C using the HyperZ software (Bolzonella et al. 2000), adding the J and K_s bands to the original ones (u^* , g' , r' , i' , z'). The photometry in J and K_s bands was performed with the IRAF package *apphot*. We employed polygonal apertures to obtain a more accurate flux measurement of the arcs. For each arc, the vertices of the polygons were determined using the IRAF task *polymark*, and the magnitudes inside these apertures were computed by the IRAF task *polyphot*. The results are presented in Table A.2.

It is evident in the right panel of Fig. 1 that the gravitational arcs are contaminated by the light of the central galaxies. In order to quantify the error in our photometric measurements in both J and K_s bands we proceed as follows: we subtract the central galaxies of the group, and follow the procedure described in McLeod et al. (1998), that is, we fit a galaxy profile model convolved with a PSF (de Vaucouleurs profiles were fitted to the galaxies with synthetic PSFs). After the subtraction, we run again the IRAF task *polyphot*. The errors associated to the fluxes are defined as the quadratic sum of the errors on both measurements.

The photometric redshifts for the arcs were estimated from the magnitudes reported in Table A.2, as well as those reported in VMM11. We present the output probability distribution function (PDF) from HyperZ in Fig. 5. We note in the same figure that the K_s band data do not match with the best-fit spectral energy distribution, this is probably related to the fact that the photometry of the arcs is contaminated by the light of the central galaxies.

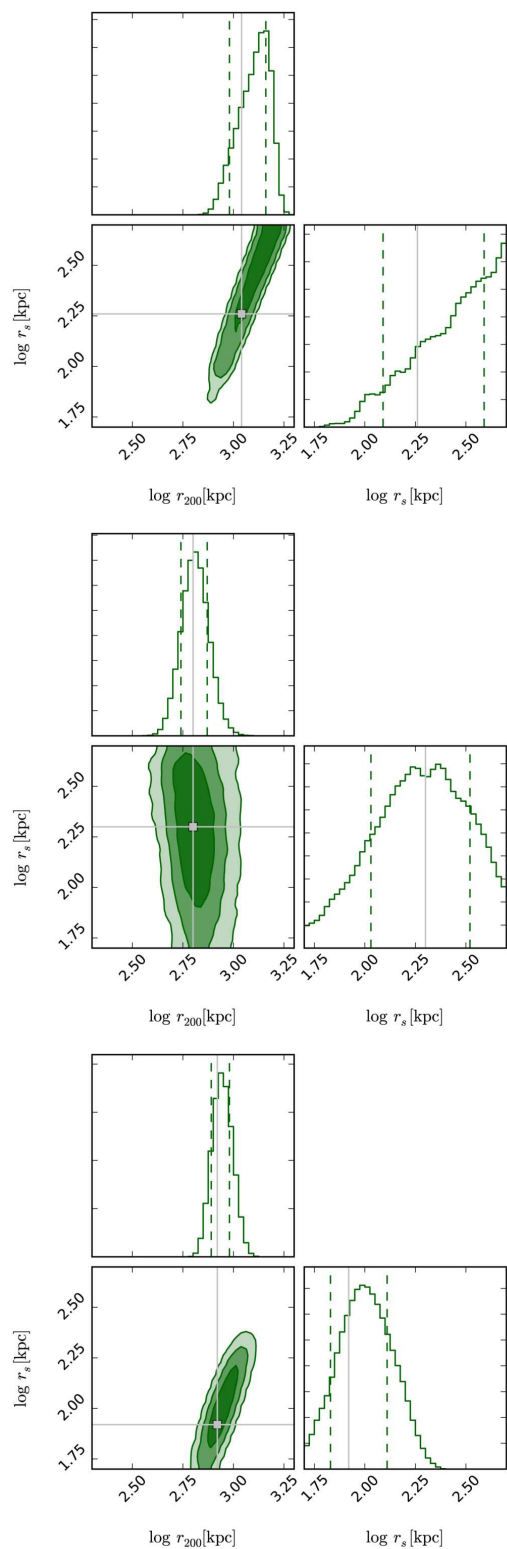


Fig. 8: PDFs and contours of the parameters $\log r_s$ and $\log r_{200}$. The three contours stand for the 68%, 95%, and 99% confidence levels. The values obtained for our best-fit model are marked by a gray square, and with vertical lines in the 1D histograms (the asymmetric errors are presented in Table 1). *Top panel.*- Results from the SL Model. *Middle panel.*- Results from the Dyn Model. *Bottom panel.*- Results from the SL+Dyn Model.

Arc C is constrained to be at $z_{\text{phot}} = 0.96 \pm 0.07$, which is in good agreement with the $z_{\text{spec}} = 1.017 \pm 0.001$ reported above. The multiple imaged system constituted by arcs A and B have $z_{\text{phot}} = 1.7 \pm 0.1$ and $z_{\text{phot}} = 1.6 \pm 0.2$, respectively. The photometric redshift of arc A is in agreement with the identification of the emission line as $[\text{OII}]\lambda 3727$ at $z_{\text{spec}} = 1.628 \pm 0.001$.

To summarize, both the spectroscopic and photometric data confirm the results of VMM11, namely, the system formed by arcs A and B, and the single arc C, originate from two different sources, the former at $z_{\text{spec}} = 1.628$, and the latter at $z_{\text{spec}} = 1.017$.

3.4. X-ray data

We observed SL2S J02140-0535 with *XMM* as part of an X-ray follow-up program of the SL2S groups to obtain an X-ray detection of these strong-lensing selected systems and to measure the X-ray luminosity and temperature (Gastaldello et al., in prep.). SL2S J02140-0535 was observed by *XMM* for 19 ks with the MOS detector and for 13 ks with the pn detector. The data were reduced with SAS v14.0.0, using the tasks *emchain* and *epchain*. We considered only event patterns 0-12 for MOS and 0-4 for pn, and the data were cleaned using the standard procedures for bright pixels, hot columns removal, and pn out-of-time correction. Periods of high backgrounds due to soft protons were filtered out leaving an effective exposure time of 11 ks for MOS and 8 ks for pn.

For each detector, we create images with point sources in the 0.5-2 keV band. The point sources were detected with the task *edetect_chain*, and masked using circular regions of 25'' radius centered at the source position. The images were exposure-corrected and background-subtracted using the XMM-Extended Source Analysis Software (ESAS). The *XMM* image in the 0.5-2 keV band of the field of SL2S J02140-0535 is shown in Fig. 6.

The X-ray peak is spatially coincident with the bright galaxies inside the arcs, and the X-ray isophotes are elongated in the same direction as the optical contours (see discussion in Sect. 5). The quality of the X-ray snapshot data is not sufficient for a detailed mass analysis assuming hydrostatic equilibrium (e.g., Gastaldello et al. 2007). In this case, the mass can only be obtained adopting a scaling relation, such as a mass-temperature relation (e.g., Gastaldello et al. 2014). Therefore this mass determination is not of the same quality as the obtained with our lensing and dynamical information. And, as we will discuss in Sect. 5, we need to be very cautious when assuming scaling relations for strong lensing clusters. We will only make use of the morphological information provided by the X-ray data hereinafter.

4. Results

In this Section, we apply the formalism outlined in Sect. 2 on SL2S J02140-0535, using the data presented in Sect. 3. In the subsequent analysis, SL Model refers to the SL modeling, Dyn Model to the dynamical analysis, and SL+Dyn Model to the combination of both methods.

4.1. SL Model

As we discussed in VMM11, the system AB show multiple sub-components (surface brightness peaks) that can be conjugated as different multiple image systems, increasing the number of constraints as well as the degrees of freedom (for a fixed number of free parameters). Thus, AB system is transformed in four dif-

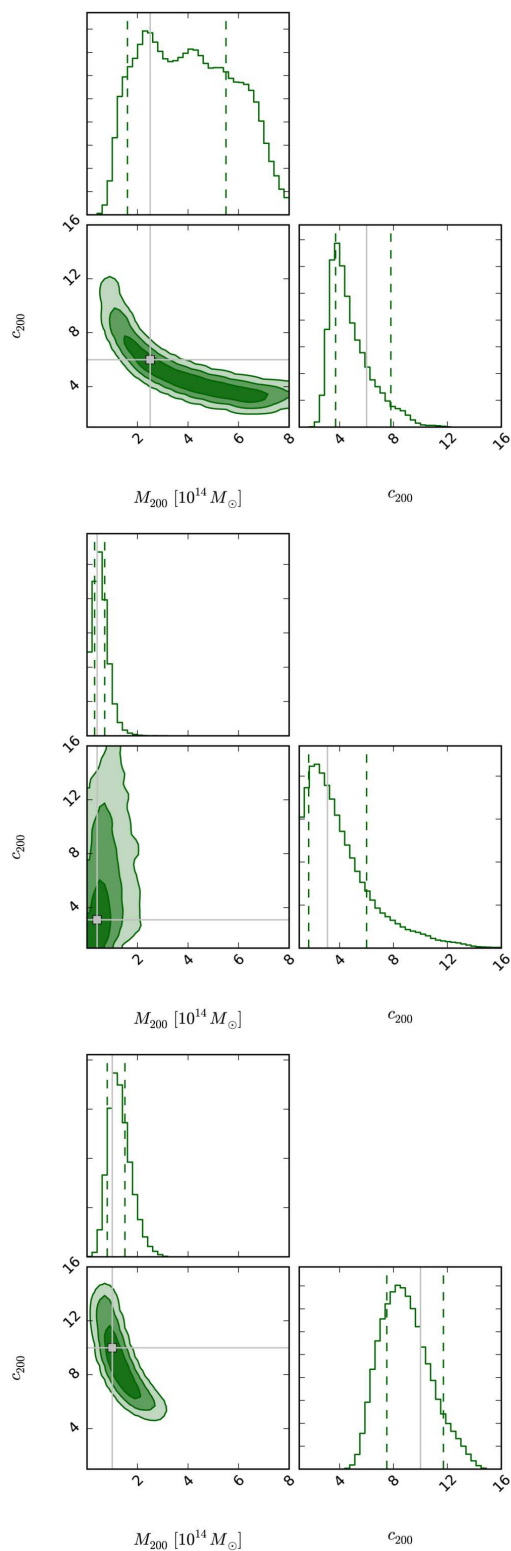


Fig. 9: PDFs and contours of the parameters c_{200} and M_{200} . The three contours stand for the 68%, 95%, and 99% confidence levels. The values obtained for our best-fit model are marked by a gray square, and with vertical lines in the 1D histograms (the asymmetric errors are presented in Table 1). *Top panel.*- Results from the SL analysis. *Middle panel.*- Results from the Dyn Model. *Bottom panel.*- Results from the SL+Dyn Model.

ferent systems, conserving C as a single-image arc (see Fig. 4 in VMM11). In this way, our model have five different arc systems in the optimization procedure, leading to 16 observational constraints. Based on the geometry of the multiple images, the absence of structure in velocity space, and the X-ray data, we model SL2S J02140-0535 using a single large-scale mass clump accounting for the dark matter component. This smooth component is modeled with a NFW mass density profile, characterized by its position, projected ellipticity, position angle, scale radius, and concentration parameter. The position, (X, Y) ranges from $-5''$ and $5''$, the ellipticity from $0 < \epsilon < 0.7$, and the position angle from 0 to 180 degrees. The parameters r_s and c_{200} are free to range between $50 \text{ kpc} \leq r_s \leq 500 \text{ kpc}$, and $1 \leq c_{200} \leq 30$, respectively.

Additionally, we add three smaller-scale clumps that are associated with the galaxies at the center of SL2S J02140-0535. We model them as follows: as in VMM11, we assume that the stellar mass distribution in these galaxies follows a pseudo isothermal elliptical mass distribution (PIEMD). A clump modeled with this profile is characterized by the seven following parameters: the center position, (X, Y) , the ellipticity ϵ , the position angle θ , and the parameters, σ_0 , r_{core} , and r_{cut} (see Limousin et al. 2005; Elíasdóttir et al. 2007, for a detailed discussion of the properties of this mass profile). The center of the profiles, ellipticity, and position angle are assumed to be the same as for the luminous components. The remaining parameters in the small-scale clumps, namely, σ_0 , r_{core} , and r_{cut} , are scaled as a function of their galaxy luminosities (Limousin et al. 2007), using as a scaling factor the luminosity L^* associated with the g -band magnitude of galaxy G1 (see Fig. 1),

$$\begin{aligned} r_{\text{core}} &= r_{\text{core}}^* \left(\frac{L}{L^*} \right)^{1/2}, \\ r_{\text{cut}} &= r_{\text{cut}}^* \left(\frac{L}{L^*} \right)^{1/2}, \\ \sigma_0 &= \sigma_0^* \left(\frac{L}{L^*} \right)^{1/4}, \end{aligned} \quad (10)$$

setting r_{core}^* and σ_0^* to be 0.15 kpc and 253 km s^{-1} , respectively. This velocity dispersion is obtained from the LOS velocity dispersion of galaxy G1, with the use of the relation reported by Elíasdóttir et al. (2007). This LOS velocity dispersion has a value of $\sigma_{\text{los}}^* = 215 \pm 34 \text{ km s}^{-1}$, computed from the G-band absorption line profile (see VMM11). The last parameter, r_{cut}^* , is constrained from the possible stellar masses for galaxy G1 (VMM11), which in turn produce an interval of 1 - 6 kpc.

Our model is computed and optimized in the image plane with the seven free parameters discussed above, namely $\{X, Y, \epsilon, \theta, r_s, c_{200}, r_{\text{cut}}^*\}$. The first six parameters characterize the NFW profile, and the last parameter is related to the profile of the central galaxies. All the parameters are allowed to vary with uniform priors. We show the results (the PDF) of the SL analysis *only* in top-panel of Fig. 7, and the best fit parameters are given in Table 1. Additionally, in Fig. 8 we show the plots of r_s vs r_{200} , since they provide with a better understanding of how unconstrained is the lens model at large scale (see next section), and also to be consistent with the form in which the plots are presented in Mamon et al. (2013). Figure 9 shows the results for the concentration and M_{200} , from which we can gain insight for the mass constraint.

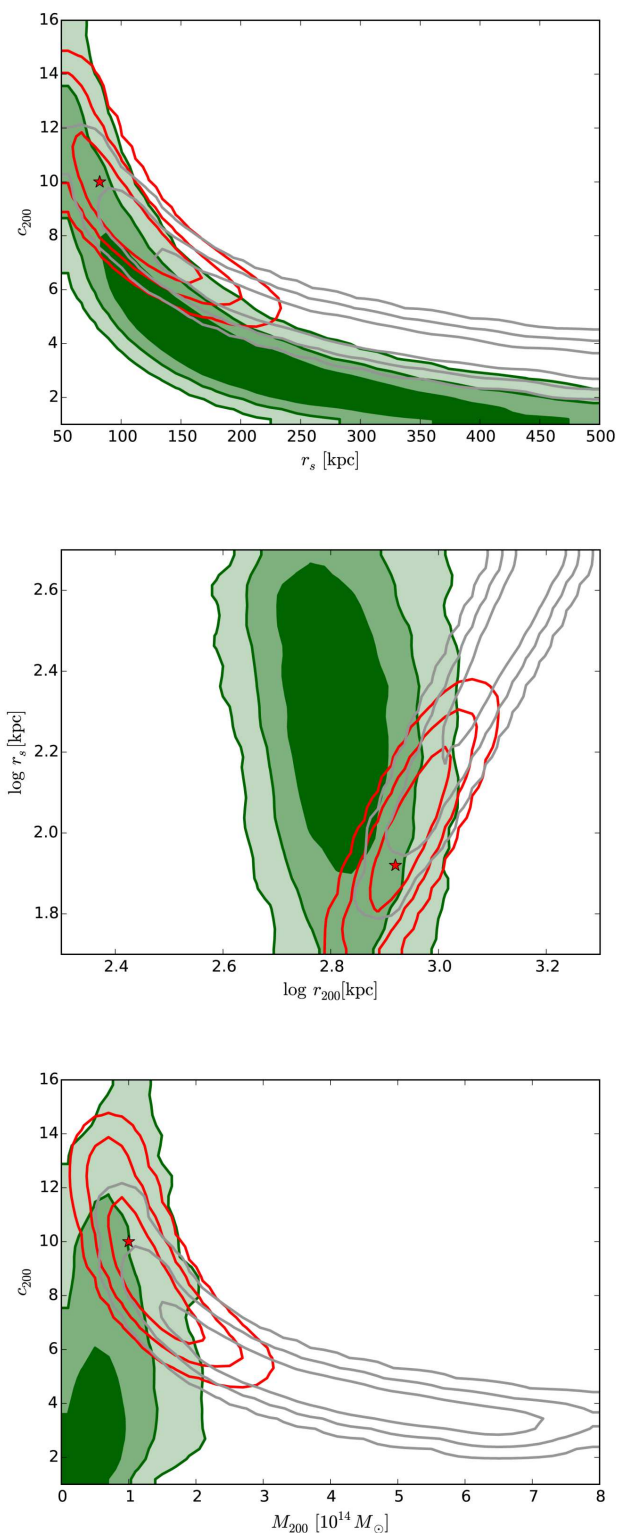


Fig. 10: Joint distributions. *Top panel.* - Scale radius and concentration *Middle panel.* - $\log r_s$ and $\log r_{200}$. *Bottom panel.* - concentration and M_{200} . Green-filled contours are 1, 2 and 3- σ regions from the DynModel. Grey contours stand for the 68, 95, and 99% confidence levels for the SL Model. Red contours is the result of the SL+Dyn Model, with the best solution depicted with a red star.

4.2. Dyn Model

Since we only have 24 group members, we assume that the group has an isotropic velocity dispersion (i.e., $\beta = 0$ in Eq. 3). This parameter β might influence the parameters of the density profile (r_s and c_{200}), however, it is not possible to constrain β with only 24 galaxies, besides it is beyond the scope of this work to analyze its effect over the parameters. We defer this analysis to a forthcoming paper, in which we apply the method to a galaxy cluster with a greater number of members.

The Jeans equation of dynamical equilibrium, as implemented in MAMPOSSt, is only valid for values of $r \lesssim 2r_{\text{vir}} \approx 2.7r_{200}$ (Falco et al. 2013). Thus, before running MAMPOSSt, we estimate the virial radius, r_{200} , of SL2S J02140-0535. From the scale radius and the concentration values reported in VMM11 we find the virial radius to be $r_{200} = 1 \pm 0.2$ Mpc. This value is considerably smaller than the previously reported value of 1.42 Mpc by Lieu et al. (2015)⁷. Table A.1 shows that there are 3 galaxies with $1 \text{ Mpc} < R < 1.4 \text{ Mpc}$, i.e. within $1.4r_{200}$, which seems sufficiently small to keep in our analysis. The galaxy members lie between 7.9 kpc to 1392.3 kpc (with a mean distance of 650 kpc from the center). Given the scarce number of members in SL2S J02140-0535 we keep this galaxy in our calculations.

To further simplify our analysis, we assume that the completeness, as a function of the radius, is a constant (see Sect. 3.2). Also, we assume that both the tracer scale radius (r_s , in Mamon et al. 2013) and the dark matter scale radius r_s are the same, that is, the total mass density profile is forced to be proportional to the galaxy number density profile: *we assume that mass follows light*. As we will see in the next section, this is not a bad assumption. Therefore our model has only two free parameters, namely, the scale radius r_s , and the concentration c_{200} . These parameters have broad priors, with $50 \text{ kpc} \leq r_s \leq 500 \text{ kpc}$, and $1 \leq c_{200} \leq 30$. The middle panels of Fig. 7, Fig. 8, and Fig. 9 show the PDF for this model; the best values of the fit are presented in Table 1.

4.3. SL+Dyn Model

The main difference of our work, when compared to previous works (e.g., Biviano et al. 2013; Guennou et al. 2014) is that we apply a joint analysis, seeking a solution consistent with both the SL and the dynamical methods, maximizing the total likelihood. In the bottom-panels of Fig. 7, Fig. 8, and Fig. 9 we show the PDF of this combined model. The best-fit values are presented in Table 1.

From the figures it is clear that exists tension between the results from the SL Model and the Dyn Model, the models are in disagreement at 1- σ level. The discrepancy is related to the oversimplified assumption of the spherical Dyn Model. Although in some cases it is expected to recover a spherical mass distribution at large scale (e.g., Gavazzi 2005), at smaller scale, i.e. at strong lensing scales, the mass distribution tends to be aspherical. In order to investigate such tension between the results, we construct a strong lensing spherical model, with the same constrains as before. In the left panel of Fig. B.1 we show the results. It is clear that in this case the model is not well constrained, a natural result given the lensing images in SL2S J02140-0535. However, the comparison between the joint distributions in the top panel of Fig. 10 and the one in the right panel of Fig. B.1 shows that the change in the contours is small, which indicates that the assump-

⁷ SL2S J02140-0535 is identified as XLSSC 110 in the XXL Survey.

Table 1: Best-fit model parameters.

Parameter	SL Model		Dyn Model		SL+Dyn Model	
	Group	L^*	Group	L^*	Group	L^*
X^\dagger ["]	$1.2^{+0.2}_{-0.4}$	–	–	–	0.9 ± 0.2	–
Y^\dagger ["]	$0.7^{+0.9}_{-0.4}$	–	–	–	$1.5^{+0.4}_{-0.3}$	–
$\epsilon^{\dagger\dagger}$	$0.23^{+0.04}_{-0.05}$	–	–	–	$0.298^{+0.002}_{-0.045}$	–
θ [°]	$111.2^{+1.6}_{-1.3}$	–	–	–	$111.1^{+1.4}_{-1.3}$	–
r_s [kpc]	184^{+209}_{-60}	–	199^{+135}_{-91}	–	82^{+44}_{-17}	–
$\log r_{200}$ [kpc]	$3.04^{+0.12}_{-0.06}$	–	$2.80^{+0.07}_{-0.06}$	–	$2.92^{+0.06}_{-0.03}$	–
c_{200}	$6.0^{+1.8}_{-2.3}$	–	$3.1^{+2.9}_{-1.4}$	–	$10.0^{+1.7}_{-2.5}$	–
M_{200} [$10^{14} M_\odot$]	$2.5^{+3.0}_{-0.9}$	–	$0.4^{+0.3}_{-0.1}$	–	$1.0^{+0.5}_{-0.2}$	–
r_{core} [kpc]	–	[0.15]	–	–	–	[0.15]
r_{cut} [kpc]	–	$2.6^{+2.1}_{-1.1}$	–	–	–	$2.4^{+2.1}_{-1.0}$
σ_0 [km s ⁻¹]	–	[253]	–	–	–	[253]
χ^2_{DOF}	–	0.1	–	–	–	0.9

Notes. (†): The position in arc seconds relative to the BGG.

(††): The ellipticity is defined as $\epsilon = (a^2 - b^2)/(a^2 + b^2)$, where a and b are the semimajor and semiminor axis, respectively, of the elliptical shape. The first column identifies the model parameters. In columns 2-10 we provide the results for each model, using square brackets for those values which are not optimized. Columns L^* indicate the parameters associated to the small-scale clumps. Asymmetric errors are calculated following Andrae (2010) and Barlow (1989).

tion of spherical symmetry has little impact in the final result⁸. Note also that the combined model has a bimodal distribution (see right panel of Fig. B.1), with higher values of concentration inherited from the lensing constraints.

A possible way to shed more light on the systematics errors of our method is to test it with simulations. For example, comparing between spherical and non-spherical halos, or quantifying the bias when a given mass distribution is assumed and the underlying one is different. Such kind of analysis is out of the scope of the present work, however it could be performed in the near future since the state-of-the-art simulations on lensing galaxy clusters has reached an incredible quality (e.g., Meneghetti et al. 2016).

⁸ Note that the agreement between contours is related to the the shallow distribution from LENSTOOL, which produce a joint distribution that follows the top edge of the narrower MAMPOSSt distribution.

5. Discussion

5.1. Lensing and dynamics as complementary probes

From Fig. 7 and Fig. 8, it is clear that SL Model is not able to constrain the NFW mass profile. This result is expected since SL constraints are available in the very central part of SL2S J02140-0535, whereas the scale radius is generally several times the SL region. The degeneracy between c_{200} and r_s (or r_s and r_{200}), which is related to the mathematical definition of the gravitational potential, was previously discussed in VMM11. This degeneracy occurs commonly in lensing modeling (e.g., Jullo et al. 2007). From SL Model we obtain the following values: $r_s = 184^{+209}_{-60}$ kpc, and $c_{200} = 6.0^{+1.8}_{-2.3}$. Thus, the model is not well constrained (similarly, we obtain for the virial radius a value of $\log r_{200} = 3.04^{+0.12}_{-0.06}$ kpc). Moreover, the mass M_{200} is not constrained in the SL Model (see Fig. 9).

The same conclusion holds when considering dynamics only, i.e., Dyn Model: the constraints are so broad that both parameters (r_s and c) can be considered as unconstrained (see medium-panel of Fig. 7 and medium-panel of Fig. 8). In this case we obtained a scale radius of $r_s = 199^{+135}_{-91}$ kpc, and a concentra-

tion of $c_{200} = 3.1^{+2.9}_{-1.4}$. However, in this case the scale radius is slightly more constrained when compared to the value obtained with the SL Model. This is due to employing the distribution of the galaxies to estimate the value when using MAMPOSSt. Furthermore, the viral radius r_{200} is even more constrained, with $\log r_{200} = 2.80^{+0.07}_{-0.06}$ kpc. Note that these weak constraints are related to the small number of galaxy members (24) in the group. Nonetheless, even with the low number of galaxies the error in our mass M_{200} (see Table 1 and Fig. 9) is approximately a factor of two, i.e., ~ 0.3 dex, consistent with the analysis of Old et al. (2015).

Interestingly, when combining both probes, SL+Dyn Model, it is possible to constrain both the scale radius and the concentration parameter. SL is sensitive to the mass distribution at inner radii (within $10''$), whereas the dynamics provide constraints at larger radius (see bottom-panels of Fig. 7 and Fig. 8). For this model, we find the values $r_s = 82^{+44}_{-17}$ kpc, $c_{200} = 10.0^{+1.7}_{-2.5}$, and $M_{200} = 1.0^{+0.5}_{-0.2} \times 10^{14} M_{\odot}$. The errors in the mass, although big, are smaller when compared to the two previous models, by a factor of 2.2 (0.34 dex) and by a factor of 1.4 (0.15 dex), for SL Model and Dyn Model, respectively.

To highlight how the combined SL+Dyn Model is better constrained than both the SL Model and the Dyn Model, we show in Fig. 10 the 2D contours for $c_{200} - r_s$, $\log r_s - \log r_{200}$, and $c_{200} - M_{200}$, for the three models discussed in this work. We note the overlap of the solutions of the SL Model and the Dyn Model, as well as the stronger constraints of the SL+Dyn Model. The shift in the solutions for SL+Dyn Model that it is seen in Fig. 7, i.e., r_s is much lower (greater c_{200}) than the values for the SL Model and the Dyn Model, can be understood in the light of the discussion presented in Sect. 4.3, and additionally explained with the analysis of Fig. 10. On one hand, the tension between both results (lack of agreement between solutions at 1σ) is the result of assuming a spherical mass distribution in the Dyn Model. On the other hand, the joint solution of SL+Dyn Model (red contours) is consistent with the region where both the SL Model and the Dyn Model overlap.

5.2. Mass, light & gas

We find that the centre of the mass distribution coincides with that of the light (see Fig. 11). In VMM11 we showed that the position angle of the halo was consistent with the orientation of the luminosity contours and the spatial distribution of the group-galaxy members. In the present work we confirm these results. The measured position angles of the luminosity contours presented in Fig. 2 and Fig. 11 (the values are equal to $109^{\circ} \pm 2^{\circ}$, $102^{\circ} \pm 2^{\circ}$, and $99^{\circ} \pm 9^{\circ}$, from innermost to outermost contour), agree with the orientation of the position angle of $111.1^{+1.4}_{-1.3}$ degrees of the halo.

In addition to the distribution of mass and light, Fig. 11 shows the distribution of the gas component of SL2S J02140-0535, which was obtained from our X-ray analysis. The agreement between these independent observational tracers of the three group constituents (dark matter, gas, and galaxies) is remarkable. This supports a scenario where the mass is traced by light, and argues in favor of a non disturbed structure, i.e., the opposite to a disturbed one, where the different tracers are separated, such as in the Bullet Group (Gastaldello et al. 2014) or as in the more extreme cluster mergers (e.g., Bradač et al. 2008; Randall et al. 2008; Menanteau et al. 2012).

5.3. Comparison with our previous work

In VMM11 we analyzed SL2S J02140-0535 using the dynamical information to constrain and build a reliable SL model for this galaxy group. However, it is not expected to have a perfect agreement between the best value of the parameters computed in the former work and the values reported in the present paper, mainly because the difference in methodologies, and also due to the new spectroscopic number of members reported in this work. For example, in VMM11 we found the values $c_{200} = 6.0 \pm 0.6$, and $r_s = 170 \pm 18$ kpc, whereas for our SL+Dyn Model, we find the values $c_{200} = 10.0^{+1.7}_{-2.5}$, and $r_s = 82^{+44}_{-17}$ kpc. However, it is important to note that the latter values lie within the range predicted by VMM11 with dynamics (cf. $2 < c_{200} < 8$, and $50 \text{ kpc} < r_s < 200 \text{ kpc}$). Furthermore, those ranges need to be corrected by using the new velocity dispersion. This correction will shift the confidence interval to larger values in c , and smaller values in r_s , thus improving the agreement between both works.

Additionally, as presented in Sect. 3, we found the velocity dispersion to be $\sigma = 562 \pm 60 \text{ km s}^{-1}$ with the 24 confirmed members. This velocity dispersion is in good agreement with the velocity reported in VMM11, $\sigma = 630 \pm 107 \text{ km s}^{-1}$, which was computed with only 16 members⁹. It is also in agreement with the value obtained from weak lensing analysis ($\sigma = 638^{+101}_{-152} \text{ km s}^{-1}$, Foëx et al. 2013).

5.4. An over-concentrated galaxy group?

The concentration value of SL2S J02140-0535 is clearly higher than the expected from Λ CDM numerical simulations. Assuming a dark matter halo at $z = 0.44$ with $M_{200} \approx 1 \times 10^{14} M_{\odot}$ the concentration is $c_{200} \approx 4.0$ (computed with the procedures of Duffy et al. 2008). SL2S J02140-0535 has also been studied by Foëx et al. (2014), who were able to constrain the scale radius and the concentration parameters of galaxy groups using stacking techniques. SL2S J02140-0535, with an Einstein radius of $\sim 7''$, belong to their stack "R3", which was characterized to have $c_{200} \sim 10$ and $M_{200} \sim 10^{14} M_{\odot}$. Those values are in agreement with our computed values. As discussed thoroughly in Foëx et al. (2014), this over-concentration seems to be due to an alignment of the major axis with the line of sight. Even in the case a cluster displays mass contours elongated in the plane of the sky, the major axis could be near to the line of sight (see for example Limousin et al. 2007, 2013).

Finally, figure 12 shows the comparison between the mass obtained from our SL+Dyn Model with the weak lensing mass previously obtained by VMM11. Both models overlap up to ~ 1 Mpc; this is consistent with the scarce number of galaxies located at radii larger than 1 Mpc. Therefore, the dynamic constraints are not strong, also it is worth to note that the weak lensing mass estimate can be slightly overestimated at large radii, since the mass is calculated assuming a singular isothermal sphere. The red triangles in Fig. 12 show two estimates (at 0.5 and 1 Mpc) of the weak lensing mass, calculated using the values reported in Foëx et al. (2013). Those values are also consistent with the above mentioned measurements. For comparison, we show in black diamonds the predicted mass (at 0.5 and 1 Mpc) derived from Lieu et al. (2015). The discrepancy between

⁹ The projected viral radius, $\tilde{R}_v = 0.9 \pm 0.3$ Mpc (the projected harmonic mean radius, e.g., Irgens et al. 2002), is also consistent with the value reported in our previous work, $\tilde{R}_v = 0.8 \pm 0.3$ Mpc, which is worth to note as it was used in VMM11 to estimate the priors in the SL modeling.

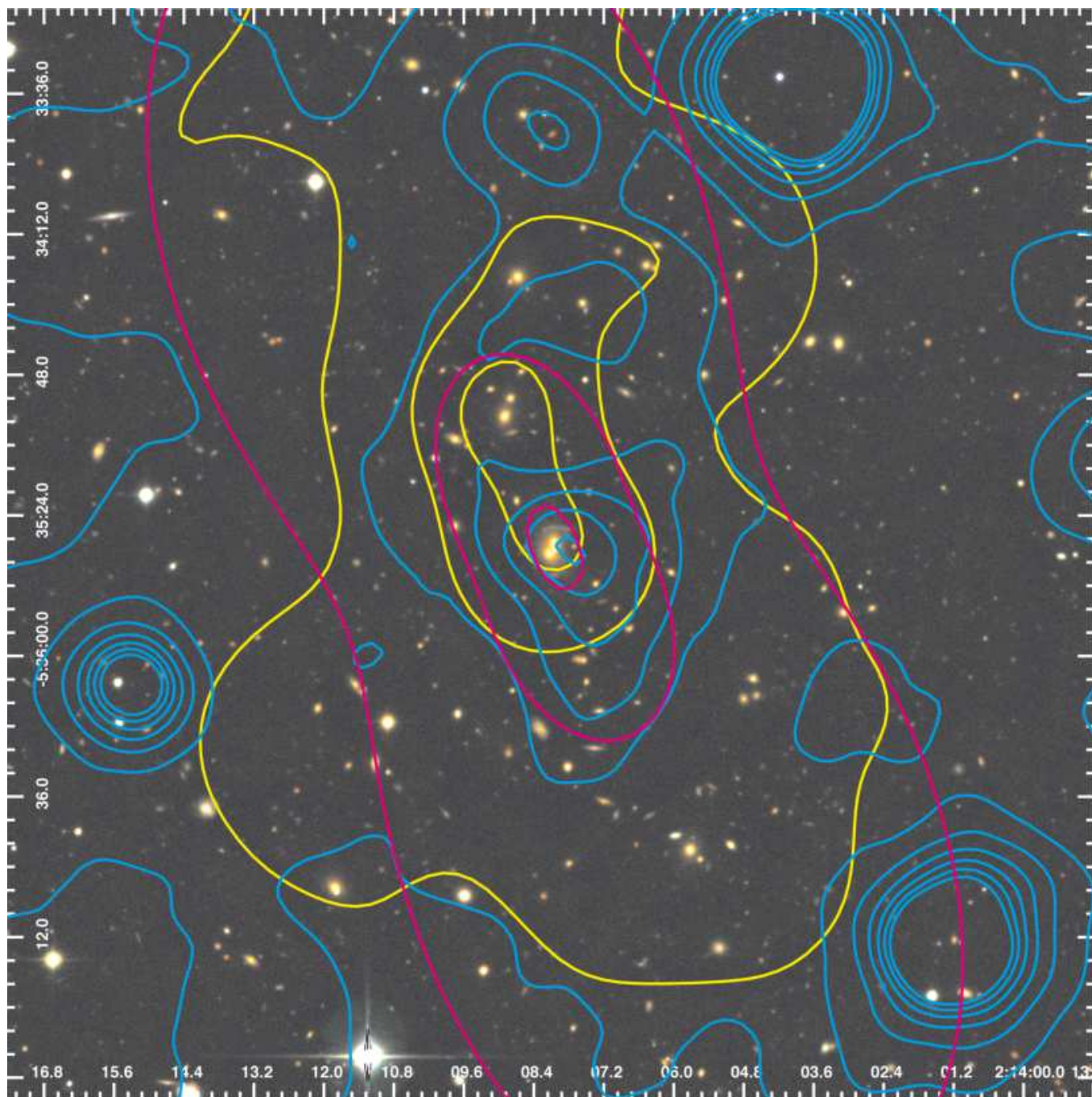


Fig. 11: The distribution of mass, gas and galaxies in SL2S J02140-0535, as reflected by the total mass derived from the combined lensing and dynamics analysis (magenta), the adaptively smoothed *i*-band luminosity of group galaxies (yellow) and the surface brightness from *XMM* observations (blue). The lensing mass contours (magenta lines) correspond to projected surface densities of 0.2×10^9 , 1.2×10^9 , and 7.4×10^9 M_{\odot} arcsec $^{-2}$. The size of the image is 1.5×1.5 Mpc.

these values and our values calculated from lensing arises from the fact that Lieu et al. (2015) set the cluster concentration from a mass-concentration relation derived from N-body simulations, thus obtaining the values $c_{200} = 2.7$ and $r_s = 0.52$ Mpc. To prove this assertion, we perform a simple test. We use the values of M_{200} and c_{200} from Lieu et al. (2015), and then we generate a shear profile with their same radial range and number of bins. We fitted their data seeking the best M_{200} value, assuming a concentration value of $c_{200} = 10$. The projected mass from this estimate is shown as cyan symbols in Fig. 12. This change in concentration not only solves the difference in mass estimates, but

also explains why SL2S J02140-0535 (XLSSC 110) is an outlier in the sample of Lieu et al. (2015). This highlights the risk of assuming a c - M relation for some particular objects, such as strong lensing clusters. The discussion of the bias and the effect on the M - T scaling relation will be discussed in a forthcoming publication (Foëx et al. in prep.).

6. Conclusions

We have presented a framework that allows to fit simultaneously strong lensing and dynamics. We apply our method

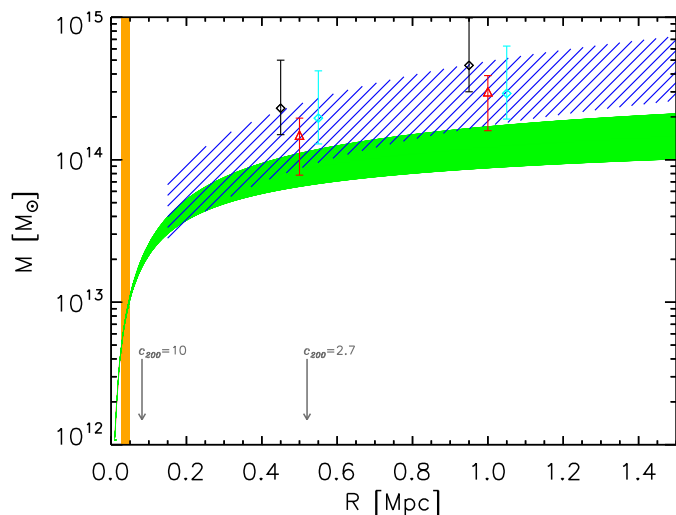


Fig. 12: 2D projected mass as a function of the radius measured from the BGG. The green and blue shaded areas corresponds to the mass profile within $1\text{-}\sigma$ errors for the SL model (SL+Dyn Model) and the weak lensing model reported in VMM11, respectively. The orange-shaded region shows the area where the arc systems lie. The two red triangles with error bars, show two estimates (at 0.5 and 1 Mpc) of the weak lensing mass from Foëx et al. (2013). Black diamonds (shifted in $r-0.05$ for clarity) show the predicted mass calculated from the work of Lieu et al. (2015). Cyan diamonds (shifted in $r+0.05$ for clarity) are the masses calculated from Lieu et al. (2015) data but assuming $c_{200} = 10$ (see text). We also depict with two arrows, our best r_s (for $c_{200} = 10$) and the r_s (for $c_{200} = 2.7$) reported in Lieu et al. (2015).

to probe the gravitational potential of the lens galaxy group SL2S J02140-0535 on a large radial range, by combining two well known codes, namely MAMPOSSt (Mamon et al. 2013) and LENSTOOL (Jullo et al. 2007). We performed a fit adopting a NFW profile and three galaxy-scale mass components as perturbations to the group potential, as previously done by VMM11, but now including the dynamical information in a new consistent way. The number of galaxies increased to 24, when new VLT (FORIS2) spectra were analyzed. This new information was included to perform the combined strong lensing and dynamics analysis. Moreover, we studied the gas distribution within the group from X-ray data obtained with *XMM*.

We list below our results:

1. Our new observational data set confirms the results presented previously in VMM11. We also present supporting X-ray analysis.
 - Spectroscopic analysis confirms that the arcs AB and the arc C of SL2S J02140-0535 belong to different sources, the former at $z_{\text{spec}} = 1.017 \pm 0.001$, and the latter at $z_{\text{spec}} = 1.628 \pm 0.001$. These redshift values are consistent with the photometric redshift estimation.
 - We find 24 secure members of SL2S J02140-0535, from the analysis of our new and previously reported spectroscopic data. The completeness $C \sim 60\%$ is roughly constant up to 1 Mpc. We also computed the velocity dispersion, obtaining $\sigma = 562 \pm 60 \text{ km s}^{-1}$, a value comparable to the previous estimate of VMM11.
 - The X-ray contours show an elongated shape consistent with the spatial distribution of the confirmed members.

This argues in favor of an unimodal structure, since the X-ray emission is unimodal and centered on the lens.

2. Our method fits simultaneously strong lensing and dynamics, allowing to probe the mass distribution from the centre of the group up to its virial radius. However, there is a tension between the results of the Dyn Model and the SL Model, related to the assumed spherical symmetry of the former. While our result shows that deviation from spherical symmetry can in some cases induce a bias in the MAMPOSSt solution for the cluster $M(r)$, this does not need to be the rule. In another massive cluster at $z = 0.44$, Biviano et al. (2013) found good agreement between the spherical MAMPOSSt solution and the non-spherical solution from strong lensing. In addition, MAMPOSSt has been shown to provide unbiased results for the mass profiles of cluster-sized halos extracted from cosmological simulations (Mamon et al. 2013).

- Models relying solely on either lensing (SL Model) or dynamical information (Dyn Model) are not able to constrain the scale radius of the NFW profile. We obtain for the best SL Model a scale radius of $r_s = 184^{+209}_{-60}$ kpc, whereas for the best Dyn Model model we obtain a value of $r_s = 199^{+135}_{-91}$ kpc. We find that the concentration parameter is unconstrained as well.
- However, it is possible to constrain both the scale radius and the concentration parameter when combining both lensing and dynamics analysis (as previously discussed in VMM11). We find a scale radius of $r_s = 82^{+44}_{-17}$ kpc, and a concentration value of $c_{200} = 10.0^{+1.7}_{-2.5}$. The SL+Dyn Model reduces the error in the mass estimation in 0.34 dex (a factor of 2.2), when compared to the SL Model, and in 0.15 dex (a factor of 1.4), compared to the Dyn Model.
- Our joint SL+Dyn Model allows to probe, in a reliable fashion, the mass profile of the group SL2S J02140-0535 at large scale. We find a good agreement between the luminosity contours, the mass contours, and the X-ray emission. This result confirms that the mass is traced by light.

The joint lensing-dynamical analysis presented in this paper, applied to the lens galaxy group SL2S J02140-0535, is aimed to show a consistent method to probe the mass density profile of groups and clusters of galaxies. This is the first paper in a series in which we extend our methodology to the galaxy clusters, for which the number of constraints is larger both in lensing images and in galaxy members. Therefore, we should be able to probe with our new method more parameters, such as the anisotropy parameter and the tracer radius (Verdugo et al. in preparation).

Acknowledgements. The authors thank the anonymous referee for invaluable remarks and suggestions. T. V. thanks the staff of the Instituto de Física y Astronomía de la Universidad de Valparaíso. ML acknowledges the Centre National de la Recherche Scientifique (CNRS) for its support. V. Motta gratefully acknowledges support from FONDECYT through grant 1120741, ECOS-CONICYT through grant C12U02, and Centro de Astrofísica de Valparaíso. M.L. and E.J. also acknowledge support from ECOS-CONICYT C12U02. A.B. acknowledges partial financial support from the PRIN INAF 2014: "Glittering kaleidoscopes in the sky: the multifaceted nature and role of galaxy clusters" P.I.: M. Nonino. K. Rojas acknowledges support from Doctoral scholarship FIB-UV/2015 and ECOS-CONICYT C12 U02. J.M. acknowledges support from FONDECYT through grant 3160674. J.G.F-T is currently supported by Centre National d'Etudes Spatiales (CNES) through PhD grant 0101973 and the Région de Franche-Comté and by the French Programme National de Cosmologie et Galaxies (PNCG). M. A. De Leo would like to thank the NASA-funded FIELDS program, in partnership with JPL on a MUREP project, for their support.

References

- Alard, C. 2009, *A&A*, 506, 609
- Allen, S. W., Evrard, A. E., & Mantz, A. B. 2011, *ARA&A*, 49, 409
- Andrae, R. 2010, ArXiv e-prints [arXiv:1009.2755]
- Barlow, R. 1989, *Statistics. A guide to the use of statistical methods in the physical sciences*
- Beers, T. C., Flynn, K., & Gebhardt, K. 1990, *AJ*, 100, 32
- Beraldo e Silva, L., Mamon, G. A., Duarte, M., et al. 2015, *MNRAS*, 452, 944
- Biviano, A., Rosati, P., Balestra, I., et al. 2013, *A&A*, 558, A1
- Biviano, A., van der Burg, R. F. J., Muzzin, A., et al. 2016, ArXiv e-prints [arXiv:1605.06510]
- Bolzonella, M., Miralles, J.-M., & Pelló, R. 2000, *A&A*, 363, 476
- Bond, J. R., Kofman, L., & Pogosyan, D. 1996, *Nature*, 380, 603
- Bradač, M., Allen, S. W., Treu, T., et al. 2008, *ApJ*, 687, 959
- Cabanac, R. A., Alard, C., Dantel-Fort, M., et al. 2007, *A&A*, 461, 813
- Colless, M., Dalton, G., Maddox, S., et al. 2001, *MNRAS*, 328, 1039
- Cuesta, A. J., Prada, F., Klypin, A., & Moles, M. 2008, *MNRAS*, 389, 385
- D'Aloisio, A. & Natarajan, P. 2011, *MNRAS*, 411, 1628
- Duffy, A. R., Schaye, J., Kay, S. T., & Dalla Vecchia, C. 2008, *MNRAS*, 390, L64
- Eke, V. R., Baugh, C. M., Cole, S., et al. 2004a, *MNRAS*, 348, 866
- Eke, V. R., Frenk, C. S., Baugh, C. M., et al. 2004b, *MNRAS*, 355, 769
- Elíasdóttir, A., Limousin, M., Richard, J., et al. 2007, ArXiv e-prints, 710 [0710.5636]
- Ettori, S., Donnarumma, A., Pointecouteau, E., et al. 2013, *Space Sci. Rev.*, 177, 119
- Falco, M., Mamon, G. A., Wojtak, R., Hansen, S. H., & Gottlöber, S. 2013, *MNRAS*, 436, 2639
- Foëx, G., Motta, V., Jullo, E., Limousin, M., & Verdugo, T. 2014, *A&A*, 572, A19
- Foëx, G., Motta, V., Limousin, M., et al. 2013, *A&A*, 559, A105
- Frenk, C. S., Evrard, A. E., White, S. D. M., & Summers, F. J. 1996, *ApJ*, 472, 460
- Gastaldello, F., Buote, D. A., Humphrey, P. J., et al. 2007, *ApJ*, 669, 158
- Gastaldello, F., Limousin, M., Foëx, G., et al. 2014, *MNRAS*, 442, L76
- Gavazzi, R. 2005, *A&A*, 443, 793
- Golse, G. & Kneib, J.-P. 2002, *A&A*, 390, 821
- Guennou, L., Biviano, A., Adami, C., et al. 2014, *A&A*, 566, A149
- Gwyn, S. D. J. 2011, ArXiv e-prints [arXiv:1101.1084]
- Host, O. 2012, *MNRAS*, 420, L18
- Irgens, R. J., Lilje, P. B., Dahle, H., & Maddox, S. J. 2002, *ApJ*, 579, 227
- Jauzac, M., Clément, B., Limousin, M., et al. 2014, *MNRAS*, 443, 1549
- Jauzac, M., Jullo, E., Kneib, J.-P., et al. 2012, *MNRAS*, 426, 3369
- Jullo, E., Kneib, J.-P., Limousin, M., et al. 2007, *New Journal of Physics*, 9, 447
- Jullo, E., Natarajan, P., Kneib, J.-P., et al. 2010, *Science*, 329, 924
- Kinney, A. L., Calzetti, D., Bohlin, R. C., et al. 1996, *ApJ*, 467, 38
- Kneib, J.-P. & Natarajan, P. 2011, *A&A Rev.*, 19, 47
- Kurtz, M. J. & Mink, D. J. 1998, *PASP*, 110, 934
- Lieu, M., Smith, G. P., Giles, P. A., et al. 2015, ArXiv e-prints [arXiv:1512.03857]
- Limousin, M., Cabanac, R., Gavazzi, R., et al. 2009, *A&A*, 502, 445
- Limousin, M., Jullo, E., Richard, J., et al. 2010, *A&A*, 524, A95
- Limousin, M., Kneib, J.-P., & Natarajan, P. 2005, *MNRAS*, 356, 309
- Limousin, M., Morandi, A., Sereno, M., et al. 2013, *Space Sci. Rev.*, 177, 155
- Limousin, M., Richard, J., Jullo, E., et al. 2007, *ApJ*, 668, 643
- Łokas, E. L. & Mamon, G. A. 2003, *MNRAS*, 343, 401
- Mamon, G. A., Biviano, A., & Boué, G. 2013, *MNRAS*, 429, 3079
- Mamon, G. A. & Boué, G. 2010, *MNRAS*, 401, 2433
- Menanteau, F., Hughes, J. P., Sifón, C., et al. 2012, *ApJ*, 748, 7
- Meneghetti, M., Natarajan, P., Coe, D., et al. 2016, ArXiv e-prints [arXiv:1606.04548]
- Muñoz, R. P., Motta, V., Verdugo, T., et al. 2013, *A&A*, 552, A80
- Mulchaey, J. S. 2000, *ARA&A*, 38, 289
- Munari, E., Biviano, A., & Mamon, G. A. 2014, *A&A*, 566, A68
- Navarro, J. F., Frenk, C. S., & White, S. D. M. 1996, *ApJ*, 462, 563
- Navarro, J. F., Frenk, C. S., & White, S. D. M. 1997, *ApJ*, 490, 493
- Newman, A. B., Treu, T., Ellis, R. S., et al. 2013, *ApJ*, 765, 24
- Newman, A. B., Treu, T., Ellis, R. S., et al. 2009, *ApJ*, 706, 1078
- Old, L., Skibba, R. A., Pearce, F. R., et al. 2014, *MNRAS*, 441, 1513
- Old, L., Wojtak, R., Mamon, G. A., et al. 2015, *MNRAS*, 449, 1897
- Postman, M., Franx, M., Cross, N. J. G., et al. 2005, *ApJ*, 623, 721
- Prada, F., Klypin, A. A., Simonneau, E., et al. 2006, *ApJ*, 645, 1001
- Randall, S. W., Markevitch, M., Clowe, D., Gonzalez, A. H., & Bradač, M. 2008, *ApJ*, 679, 1173
- Sand, D. J., Treu, T., & Ellis, R. S. 2002, *ApJ*, 574, L129
- Sand, D. J., Treu, T., Smith, G. P., & Ellis, R. S. 2004, *ApJ*, 604, 88
- Sarli, E., Meyer, S., Meneghetti, M., et al. 2014, *A&A*, 570, A9
- Springel, V., White, S. D. M., Jenkins, A., et al. 2005, *Nature*, 435, 629
- Sun, M. 2012, *New Journal of Physics*, 14, 045004
- Thanjavur, K., Crampton, D., & Willis, J. 2010, *ApJ*, 714, 1355
- Tully, R. B. 2014, ArXiv e-prints [arXiv:1411.1511]
- Umetsu, K., Sereno, M., Medezinski, E., et al. 2015, *ApJ*, 806, 207
- Verdugo, T., de Diego, J. A., & Limousin, M. 2007, *ApJ*, 664, 702
- Verdugo, T., Motta, V., Foëx, G., et al. 2014, *A&A*, 571, A65
- Verdugo, T., Motta, V., Muñoz, R. P., et al. 2011, *A&A*, 527, A124
- Wilman, D. J., Balogh, M. L., Bower, R. G., et al. 2005, *MNRAS*, 358, 71
- Wojtak, R., Łokas, E. L., Mamon, G. A., & Gottlöber, S. 2009, *MNRAS*, 399, 812
- Wojtak, R., Łokas, E. L., Mamon, G. A., et al. 2008, *MNRAS*, 388, 815
- Wolf, J., Martinez, G. D., Bullock, J. S., et al. 2010, *MNRAS*, 406, 1220
- Zitrin, A., Fabris, A., Merten, J., et al. 2015, *ApJ*, 801, 44

Appendix A: Spectroscopic and photometric data

Table A.1: Spectroscopic data of the confirmed members of the group.

RA	DEC	z_{spec}	R [kpc]
33.533779	-5.592632	0.4446 [†]	–
33.533501	-5.591930	0.4449 [†]	7.9
33.530430	-5.594814	0.4474 [†]	79.8
33.527908	-5.597961	0.4443	161.0
33.536942	-5.582868	0.4430 [†]	204.3
33.540424	-5.584474	0.4427 [†]	210.7
33.519188	-5.601521	0.4459 [†]	349.6
33.546135	-5.607511	0.4436 [†]	398.0
33.514061	-5.595108	0.4455	405.4
33.521729	-5.574636	0.4462	439.8
33.512676	-5.596797	0.4473 [†]	440.5
33.510559	-5.596503	0.4442	480.4
33.515137	-5.577593	0.4442 [†]	486.3
33.519920	-5.569031	0.4449	556.8
33.548912	-5.616460	0.4426 [†]	580.2
33.512367	-5.573329	0.4440 [†]	586.5
33.543442	-5.557844	0.4424	735.2
33.555248	-5.621617	0.4471	745.7
33.563099	-5.561144	0.4465	883.5
33.550777	-5.551144	0.4438 [†]	916.6
33.500538	-5.558484	0.4459 [†]	976.6
33.484375	-5.623324	0.4436 [†]	1194.2
33.479259	-5.613928	0.4435 [†]	1201.0
33.475819	-5.627750	0.4438	1392.3

Notes. (†): Previously reported in Muñoz et al. (2013)

Column (1) and (2): Right ascension and declination. Column (3): Redshift. Column (4): The projected radius measured with respect to the BGG.

Table A.2: Results from photometry in arc A.

ID	J	K_s	z_{phot}	z_{spec}
<i>A</i>	19.9 ± 0.4	18.2 ± 0.4	1.7 ± 0.1	1.628 ± 0.001
<i>B</i>	21.6 ± 1.0	21.1 ± 0.9	1.6 ± 0.2	–
<i>C</i>	20.2 ± 0.2	18.7 ± 0.3	0.96 ± 0.07	1.017 ± 0.001

Notes. Column 1 lists the identification for each object as in Fig. 1. Cols. 2 and 3 are the WIRCam magnitudes. Columns 4 and 5 list the photometric and spectroscopic redshifts, respectively.

Appendix B: Spherical lensing model

To compare the spherical Dyn Model with a spherical lensing model, we construct an additional model using LENSTOOL. We set the ellipticity and the position angle equal to zero, and we use the same constraints than those used in the elliptical case. Since lensing spherical models tend to be poorly constrained, the parameter c_{200} is free to range between $1 \leq c_{200} \leq 16$, avoiding large unphysical values and reducing the possible solutions in the r_s - c_{200} parameter space. Finally we also set $\sigma_{ij} = 3''$, in order to obtain a reduced χ^2 near unity. We show the result in Fig. B.1. For clarity, the colors are reversed with respect to the plots in the main text, grey-filled contours depict the result of the spherical SL Model, and green contours the result of the Dyn Model.

To highlight further the result of the comparison between models, we present in Fig. B.2 the solutions in the $\log c_{200}$ - $\log r_{200}$ space. Note that exists a clear tendency to greater values of concentration in the SL model, with a bimodal distribution in r_{200} . The $\log c_{200}$ - $\log r_{200}$ parameter space also makes evident the existence of a possible bimodal solution in the combined model, which is consistent with the result depicted in the right panel of Fig. B.1.

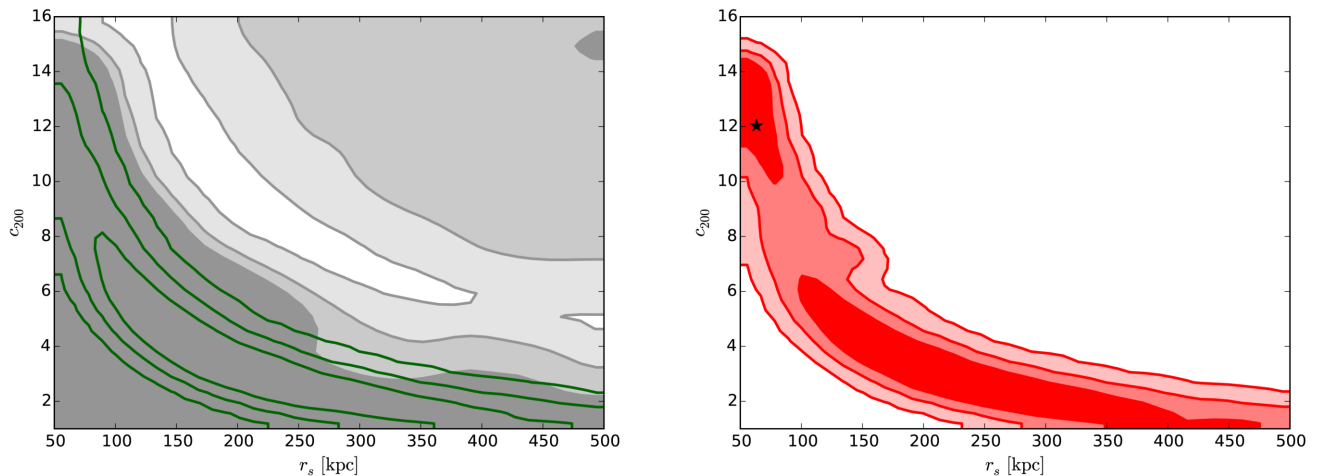


Fig. B.1: Joint distributions (scale radius and concentration) for the spherical model. *Left panel.*- From dark to white grey-filled contours are 1, 2 and 3- σ regions from the SL Model, and green contours stand for the 68, 95, and 99% confidence levels for the Dyn Model. *Right panel.*- Red-filled contours is the result of the SL+Dyn Model, with the best solution depicted with a black star.

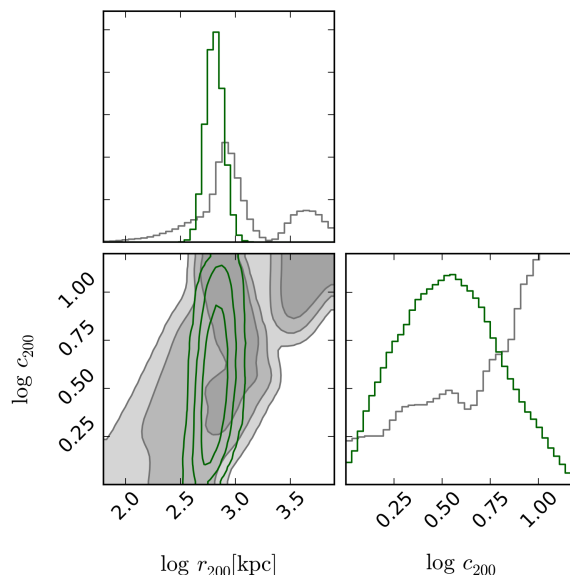


Fig. B.2: PDFs and contours of the parameters $\log c_{200}$ and $\log r_{200}$. From dark to white grey-filled contours are 1, 2 and 3- σ regions from the SL Model, and green contours stand for the 68, 95, and 99% confidence levels for the Dyn Model.