



Publication Year	2019
Acceptance in OA	2020-12-29T10:40:24Z
Title	Growth and disruption in the Lyra complex
Authors	CLAVICO, SARA, DE GRANDI, Sabrina, GHIZZARDI, SIMONA, ROSSETTI, MARIACHIARA, MOLENDI, SILVANO, GASTALDELLO, FABIO, Girardi, M., Boschini, W., BOTTEON, Andrea, CASSANO, Rossella, Brügger, M., BRUNETTI, GIANFRANCO, Dallacasa, Daniele, Eckert, D., ETTORI, STEFANO, GASPARI, MASSIMO, Sereno, Mauro, Shimwell, T., van Weeren, R. J.
Publisher's version (DOI)	10.1051/0004-6361/201936467
Handle	http://hdl.handle.net/20.500.12386/29261
Journal	ASTRONOMY & ASTROPHYSICS
Volume	632

Growth and disruption in the Lyra complex

S. Clavico^{1,2}, S. De Grandi¹, S. Ghizzardi³, M. Rossetti³, S. Molendi³, F. Gastaldello³, M. Girardi^{4,5}, W. Boschin^{6,7},
A. Botteon^{8,9,10}, R. Cassano⁹, M. Brüggen¹¹, G. Brunetti⁹, D. Dallacasa^{8,9}, D. Eckert¹², S. Ettori^{13,14},
M. Gaspari^{15,*}, M. Sereno^{13,14}, T. Shimwell^{10,16}, and R. J. van Weeren¹⁰

¹ INAF – Osservatorio Astronomico di Brera, Via E. Bianchi 46, 23807 Merate, Italy
e-mail: sara.clavico@inaf.it, sabrina.degrandi@inaf.it

² Università degli Studi di Milano-Bicocca, Piazza della Scienza, 3, 20126 Milano, Italy

³ INAF – IASF-Milano, Via E. Bassini 15, 20133 Milano, Italy

⁴ Dipartimento di Fisica dell'Università degli Studi di Trieste, Italy

⁵ INAF – Osservatorio Astronomico di Trieste, Via Tiepolo 11, 34143 Trieste, Italy

⁶ Fundación Galileo Galilei – INAF (Telescopio Nazionale Galileo), Rambla José Ana Fernández Perez 7, 38712 Breña Baja, La Palma, Canary Islands, Spain

⁷ Instituto de Astrofísica de Canarias, C/Vía Láctea s/n, 38205 La Laguna, Tenerife, Canary Islands, Spain

⁸ Dipartimento di Fisica e Astronomia, Università di Bologna, Via P. Gobetti 93/2, 40129 Bologna, Italy

⁹ INAF – IRA, Via P. Gobetti 101, 40129 Bologna, Italy

¹⁰ Leiden Observatory, Leiden University, PO Box 9513, 2300 RA Leiden, The Netherlands

¹¹ Hamburger Sternwarte, Universität Hamburg, Gojenbergsweg 112, 21029 Hamburg, Germany

¹² Department of Astronomy, University of Geneva, ch. d'Ecogia 16, 1290 Versoix, Switzerland

¹³ INAF, Osservatorio di Astrofisica e Scienza dello Spazio, Via Pietro Gobetti 93/3, 40129 Bologna, Italy

¹⁴ INFN, Sezione di Bologna, Viale Berti Pichat 6/2, 40127 Bologna, Italy

¹⁵ Department of Astrophysical Sciences, Princeton University, 4 Ivy Lane, Princeton, NJ 08544-1001, USA

¹⁶ ASTRON, the Netherlands Institute for Radio Astronomy, Postbus 2, 7990 AA Dwingeloo, The Netherlands

Received 1 August 2019 / Accepted 2 October 2019

ABSTRACT

Context. Nearby clusters of galaxies, $z \lesssim 0.1$, are cosmic structures still under formation. Understanding the thermodynamic properties of merging clusters can provide crucial information on how they grow in the local universe.

Aims. A detailed study of the intra-cluster medium (ICM) properties of un-relaxed systems is essential to understand the fate of infalling structures and, more generally, the virialization process.

Methods. We analyzed a mosaic of *XMM-Newton* observations (240 ks) of the Lyra system ($z \sim 0.067$) that shows a complex dynamical state.

Results. We find the main cluster RXC J1825.3+3026 to be in a late merger phase, whereas its companion CIZA J1824.1+3029 is a relaxed cool-core cluster. We estimate a mass ratio of $\sim 1:2$ for the pair. No diffuse X-ray emission is found in the region between them, indicating that these clusters are in a pre-merger phase. We found evidence of a galaxy group infalling on RXC J1825.3+3026 in an advanced state of disruption. The SG, one of the brightest galaxies in the Lyra complex, was very likely at the center of the infalling group. This galaxy has a gaseous “corona” indicating that it was able to retain some of its gas after the ram-pressure stripping of the intra-group medium. In this scenario the diffuse emission excess observed southwest of RXC J1825.3+3026 could be due to gas once belonging to the group and/or to cluster ICM dislocated by the passage of the group. Finally, we identified three high-velocity galaxies aligned between RXC J1825.3+3026 and the SG, two of these showing evidence of gas stripped from them during infall. We estimate them to be currently falling onto the main cluster at an infall velocity of $\sim 3000 \text{ km s}^{-1}$.

Conclusions. Our study of the Lyra complex provides important clues about the processes presiding over the virialization of massive clusters in the local Universe.

Key words. X-rays: galaxies: clusters – X-rays: individuals: RXC J1825.3+3016 – galaxies: clusters: intracluster medium – X-rays: individuals: CIZA J1824.1+3029 – galaxies: clusters: general

1. Introduction

The currently favored cosmological model predicts that structure formation proceeds hierarchically with the more massive dark matter halos growing by the accretion of smaller halos driven by gravity. Galaxy clusters are the most massive gravitationally bound objects found at the present epoch and have been forming relatively recently, doubling their mass on average since $z \sim 0.5$ (Boylan-Kolchin et al. 2009; Gao et al. 2012). They are formed at the nodes of the filamentary network which constitutes the

cosmic web, the structure of the Universe on the largest scales as described in the Λ cold dark matter (CDM) model (for a review see Kravtsov & Borgani 2012).

Although major mergers of equal-size halos can be the most spectacular and energetic events since the Big Bang and leave substantial imprints on the observational appearance of clusters, they are rare events (e.g., Berrier et al. 2009; McGee et al. 2009; Fakhouri et al. 2010). A continuous and more gentle accretion of group-scale systems is the other important contributor to the growth of clusters. Observations show that accretion of group-size systems is responsible for at least half of the accreted cluster

* Lyman Spitzer Jr. fellow.

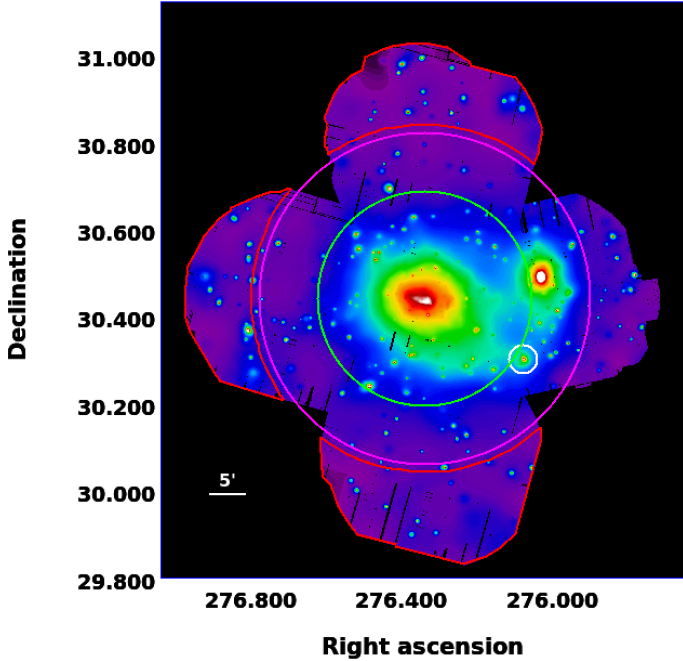


Fig. 1. *XMM-Newton* mosaic image of the Lyra cluster complex in units of counts pixel⁻¹ in the [0.7–1.2] keV energy band. The cluster RXCJ1825 is in the center of the image with the green and magenta circles representing the location of its R_{500} and R_{200} , respectively. The cluster CIZAJ1824 is west of RXCJ1825, whereas the white circle is centered on the Southern Galaxy (SG). The image is corrected for the particle background (NXB). The red regions are the ones chosen for the estimate of the local sky background (see Sect. 2).

mass from $z \sim 0.2$ to the present day, whereas the other half is likely derived from smooth accretion of unbound matter within halos (e.g., Haines et al. 2018). Recent mergers have left an imprint on the distribution of the intra-cluster medium (ICM), which constitutes most of the baryonic mass of clusters and emits via bremsstrahlung in the soft X-ray band. Indeed, X-ray observations find that a high fraction (>40%) of the clusters in a representative sample of the nearby Universe ($z < 0.5$) display clear disturbance (e.g., Rossetti et al. 2016; Lovisari et al. 2017).

Large-scale cosmological hydrodynamic simulations show that an important region for studying the mechanisms of the growth of substructures in clusters is found between their R_{500}^1 and R_{200} (e.g., Walker et al. 2019). In fact, in this region it is possible to observe the connections of the cosmic filaments with the innermost and already virialized part of the cluster (e.g., Eckert et al. 2015).

In addition to information on the mass growth of clusters, the study of accreting sub-structures at large radii provides an opportunity to study the physical properties of the ICM in the outskirts. During the infall of groups in clusters, the ram pressure applied by the ambient ICM is responsible for stripping their gas and heating it up, leading to the virialization of the gas in the main dark-matter halo. The dynamical scales involved in this process indicate that the thermal conductivity of the gas must be highly suppressed at these large distances from the cluster core (e.g., Eckert et al. 2014, 2017a; De Grandi et al. 2016).

In this work, we study the very special case of a system showing several substructures in different dynamical states (both pre- and post-merger) and different mass scales, at

¹ For a given over-density Δ , R_Δ is the radius for which $M_\Delta/(4/3\pi R_\Delta^3) = \Delta\rho_c$.

about R_{500} of the main cluster. This is the Lyra complex formed by the galaxy clusters pair RXCJ1825.3+3026 and CIZAJ1824.1+3029 (Fig. 1). RXCJ1825.3+3026 (RXCJ1825 hereafter) was discovered by ROSAT in the X-rays ($z = 0.065$, Ebeling et al. 2002). Because of its relatively low galactic latitude of $b = 18.5^\circ$, it has been almost ignored until recently, when it was found to be one of the strongest ($S/N > 12$) sources of Sunyaev–Zeldovich (SZ) signal in the *Planck* all-sky cluster survey (Planck Collaboration XXIX 2014) and became part of the *XMM-Newton* Cluster Outskirts Project (X-COP), an SZ-selected sample of 13 massive clusters observed in the X-rays by *XMM-Newton* up to the virial radius (Eckert et al. 2017b). RXCJ1825 is a massive cluster with a total mass of $\sim 6 \times 10^{14} M_\odot$ within R_{200} (Ettori et al. 2019), and an irregular west-east X-ray morphology that suggests an un-relaxed dynamical status. Interestingly, its X-ray morphology shows also a clear extension to the southwest culminating in a bright elliptical galaxy (called the Southern Galaxy (SG)). At ~ 16 arcmin northwest of RXCJ1825, there is another, smaller cluster: CIZAJ1824.1+3029 (also known as NPM1G+30.0, and named CIZAJ1824 hereafter). Unlike RXCJ1825, CIZAJ1824 appears very regular in the X-rays. The only optical observation available in the literature for this cluster is the redshift of its brightest cluster galaxy (BCG) $z = 0.072$ (Kocevski et al. 2007). Recently, Girardi et al. (2019) presented spectroscopic observations of the Lyra complex confirming that the two clusters and the SG are very close in the redshifts space. These latter authors performed a dynamical analysis of the system and found that all these objects are likely to be gravitationally bound at a mean redshift of $z = 0.067$ and that their redshift differences are of kinematic nature. Their new estimates for the redshifts of RXCJ1825 and CIZAJ1824 are $z = 0.0645$ and $z = 0.0708$, respectively. Here we focus our study on the analysis of the X-COP *XMM-Newton* mosaic centered on RXCJ1825 (240 ks in total) to determine the thermodynamic properties and the dynamic state of the whole Lyra system.

This paper is structured as follows: in Sect. 2 we describe our *XMM-Newton* mosaic observations together with their respective data reduction, imaging (Sect. 2.1), and spectral analysis (Sect. 2.2) techniques. In Sect. 3, we report the results for the whole Lyra system obtained from our data analysis, first focusing on its X-ray surface brightness features (Sect. 3.1), then on the thermodynamic profiles of the two clusters RXCJ1825 and CIZAJ1824 (Sect. 3.2), and finally on the 2D analysis of the spectral properties of several interesting regions (Sect. 3.3). In Sect. 4, we interpret and discuss our results. We summarize our main results in Sect. 5.

Throughout the paper, we assume a Λ CDM cosmology with $H_0 = 70 \text{ km s}^{-1}$, $\Omega_m = 0.3$ and $\Omega_\Lambda = 0.7$. At the redshift of the Lyra complex, $z = 0.067$ (Girardi et al. 2019), 1 arcmin corresponds to ~ 77.5 kpc. Metal abundances are in units of $[X/H]$ normalized by the solar abundances of Asplund et al. (2009). All the quoted errors hereafter are at the 1σ confidence level.

2. Observations and data reduction

The Lyra complex was observed by *XMM-Newton* in 2014 with a mosaic of two central and four offset pointings. We did not consider one of the two central observations (Obs.ID. 0744414101) as we found that it was highly contaminated by quiescent soft protons (see Sect. 2.2).

Table 1 contains information regarding the observations, such as the observation ID, the total and clean exposure times (after applying the ESAS tasks *mos-filter* and *pn-filter*) and the

Table 1. *XMM-Newton* observations of the Lyra complex (RXCJ1825–CIZAJ1824) complex.

Pointing	Obs.ID.	RA Dec (J2000) [deg]	Nominal [ksec]	MOS1 [ksec]	MOS2 [ksec]	pn [ksec]	IN/OUT
Center1	0744413501	276.3450, +30.4422	52.0	47.3	47.6	34.4	1.265
Center2	0744414101	276.3450, +30.4422	32.9	20.6	21.7	9.4	2.568
East	0744413901	276.7014, +30.4422	44.3	31.7	32.0	14.2	1.307
North	0744413601	276.3385, +30.7921	32.3	19.7	19.9	12.4	1.273
West	0744413701	275.9885, +30.4422	43.9	40.9	40.3	31.7	1.130
South	0744414801	276.3385, +30.0923	34.6	25.1	29.2	10.8	1.291

Notes. Columns are: field name, archival observation identification number, pointing position, total nominal exposure time and effective exposure time after soft-protons cleaning of the three EPIC detectors and ratio of the events IN and OUT of the MOS1 field of view.

level of soft-proton contamination obtained by comparing the measured count rate in a hard spectral band (10–12 keV) in the exposed and unexposed part of the field of view (IN/OUT, [Leccardi & Molendi 2008](#)). The analysis of the five remaining observations allowed us to explore the entire azimuth of the cluster out to $\sim R_{500}$ and its close companion CIZAJ1824. The data were processed using the *XMM-Newton* Scientific Analysis System (XMM-SAS) v.16.1.

2.1. Imaging

We produced an image in the [0.7–1.2] keV band for all three EPIC detectors (MOS1, MOS2, and pn) using the Extended Source Analysis Software package (ESAS, [Snowden et al. 2008](#)). We used this band as it maximizes the source-to-background ratio for galaxy clusters ([Ettori et al. 2010](#); [Ettori & Molendi 2011](#)), while maintaining a large effective area of the *XMM-Newton* telescopes. We obtained the count rate map for each EPIC instrument by dividing the raw count image by the exposure maps (tool *eexmap*), accounting for vignetting. The total image, which is shown in Fig. 1, was subtracted by the nonX-ray background (NXB) image produced by ESAS (tools *mos-spectra*, *pn-spectra*, *mos-back* and *pn-back*), and by the soft-proton contribution as measured within X-COP ([Ghirardini et al. 2018](#)). Point sources were detected down to a fixed flux threshold with the XMM-SAS tool *ewavelet* and excluded using the ESAS task *cheese*. The detailed imaging procedure is described in [Ghirardini et al. \(2019\)](#).

2.2. Spectral analysis

We performed a spectral analysis of the interesting regions following the procedure developed for the X-COP clusters and described in [Ghirardini et al. \(2019\)](#). Here we report the main steps.

Spectra and response files for each region were extracted using the ESAS tasks *mos-spectra* and *pn-spectra* and were fitted using XSPEC v12.9.1 after grouping to ensure a minimum of 20 counts per spectral channel in the energy band [0.5–10] keV. Point sources detected in the field were always removed before the extraction of the spectra.

We used a detailed modeling of all the various background components to obtain reliable measurements of the physical parameters in regions where the surface brightness barely exceeds the background level. The spectral components for the background are the following: (1) the NXB was estimated for each region from closed-filter observations following the procedure given by [Snowden et al. \(2008\)](#). We left the normalization of the NXB component and those of the prominent background lines free to vary during the fitting procedure, which allows for possible

systematic variations of the NXB level. Since all five useful observations were very weakly contaminated by soft proton flares (IN over OUT ratio always ≤ 1.3), we did not include any component to model residual soft protons. (2) *The sky background and foreground components*: we considered the sum of an absorbed power law with a photon index fixed to 1.46, which describes the residual cosmic X-ray background (CXB; [De Luca & Molendi 2004](#)), an absorbed APEC thermal plasma model with a temperature allowed to vary in the range [0.15–0.6] keV, which models the Galactic halo emission ([McCammon et al. 2002](#)), and an unabsorbed APEC model with a temperature fixed to 0.11 keV, which represents the local hot bubble. To estimate the parameters of these sky background components we used a joint analysis of the spectra extracted from the North, East, and South observations, in regions at radii larger than R_{200} (~ 1.7 Mpc) from the emission peak of RXCJ1825. These regions are shown in red in Fig. 1. (3) Finally, the source is modeled using the thin-plasma emission code *apec* ([Smith et al. 2001](#)), with temperature, metal abundance, and normalization as free parameters, and fixed redshift and Galactic column density absorption NH (*phabs* model). We discuss the NH variation in the field of view in Sect. 3.2.1.

In the particular case of the detailed spectral study of the temperature and abundance maps in the core regions of RXCJ1825 (Sect. 3.3), we subtracted the background using stacked blank-sky fields following the procedure given in [Ghizzardi et al. \(2014\)](#), and then we extracted the total (source plus background) spectra starting from the soft photon cleaned files produced with ESAS. We preferred to use this method since in this case we decided to extract spectra from polygonal regions (which is not possible with the ESAS software), to better follow the surface brightness fluctuations present in the core of RXCJ1825. This procedure is fully justified as in the core regions the source is dominant over the background.

3. X-Ray analysis

In this section we present the results of the X-ray analysis of the extended sources detected in the mosaic image centered on RXCJ1825, including a study of the surface brightness features, temperature and abundance profiles, as well as quantities derived from these profiles. Maps of various thermodynamic quantities for the core of RXCJ1825 and the SG region are also presented.

3.1. X-ray surface brightness

3.1.1. Radial profiles in sectors

We first calculated the vignetting-corrected NXB subtracted surface brightness profiles of RXCJ1825 and CIZAJ1824 with the

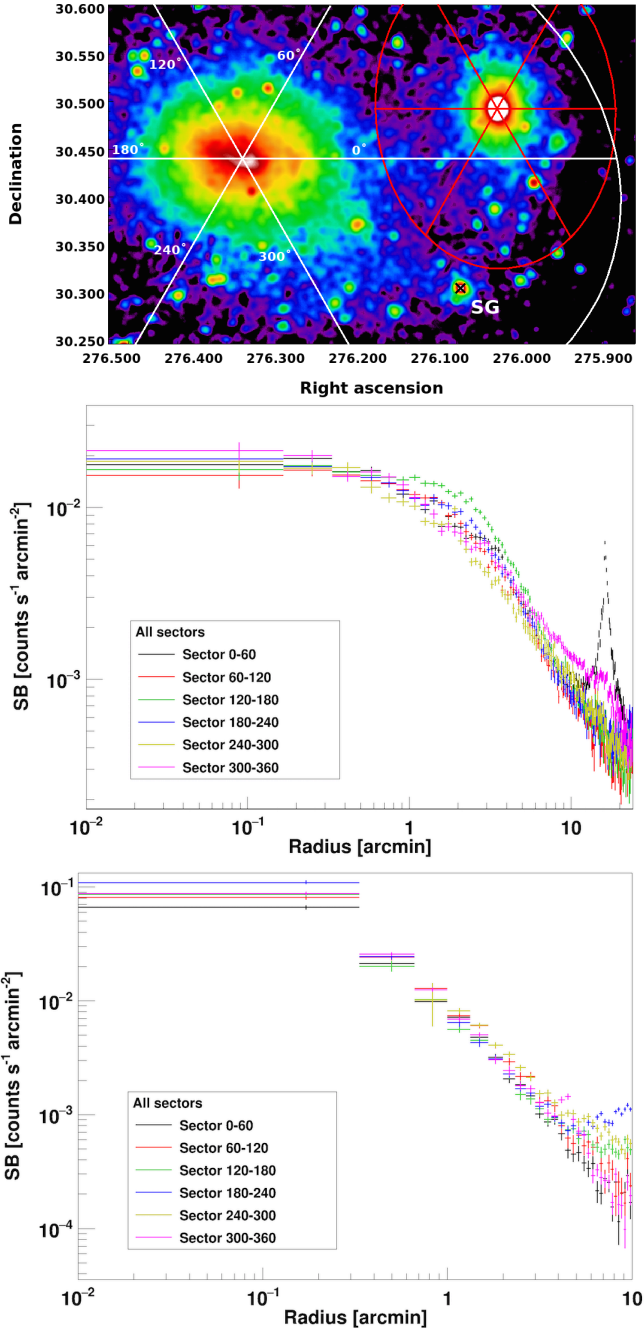


Fig. 2. *Top panel:* elliptical sectors (60° wide) used for the extraction of surface brightness profiles, overplotted on the *XMM-Newton* mosaic image (Fig. 1). The orientation angle is calculated counterclockwise from the Right Ascension axis. *Middle and bottom panels:* elliptical surface brightness profiles of RXCJ1825 and CIZAJ1824 extracted in the sectors, respectively. In the x -axis we plot the distances along the major axis of the ellipses. Point-like sources are removed. The black cross shows the position of the SG. The features seen in the profiles are described in Sect. 3.1.1.

Proffit v.1.5 software (Eckert 2016). We extracted the profiles from a series of concentric elliptical annuli in bins of 10 arcsec (~ 12.5 kpc) along the minor axis, centered on the centroid of the clusters (RA = 18h:25m:21.8, Dec = +30d:26m:25.34 J2000.0 for RXCJ1825, RA = 18h:24m:7.1, Dec = +30d:29m:34.7 for CIZAJ1824). The centroids were determined by the shape of the isophotes on large scales (7 arcmin and 5 arcmin aperture for RXCJ1825 and CIZAJ1824, respectively). Point-like sources

detected in the field were always removed before the extraction of the profiles.

Figure 2 shows the surface brightness profiles extracted in six sectors, corresponding to an opening angle of 60° (with position angle calculated counterclockwise from the RA axis), overplotted on top of each other.

The profiles of RXCJ1825 (Fig. 2, middle panel) show large differences between one another; most notably there is an excess surface brightness in the sector with position angle $120\text{--}180^\circ$ (green data points), corresponding to a clear asymmetry in the northeast direction for radii smaller than 6 arcmin, whereas sectors $240\text{--}300^\circ$ (yellow data) and $300\text{--}360^\circ$ (magenta data) show a clear excess beyond 6 arcmin towards south and southwest, in particular where the SG is located. The surface brightness peak due to CIZAJ1824 is clearly visible in sectors $0\text{--}60^\circ$ (black data) and partially in sectors $300\text{--}360^\circ$.

Conversely, the profiles of CIZAJ1824 (Fig. 2, bottom panel) are remarkably similar up to $\sim 4\text{--}5$ arcmin. Beyond this radius the scatter increases showing an excess in the three sectors towards RXCJ1825, that is, sectors $120\text{--}180^\circ$ (green), $180\text{--}240^\circ$ (blue), and $240\text{--}300^\circ$ (yellow). We note that in the $300\text{--}360^\circ$ sector (magenta data) there is a peak at ~ 4 arcmin due to a small extended source close to CIZAJ1824 that is further discussed in Sect. 4.3.

3.1.2. Residual and unsharp-mask images

We extracted also the azimuthally averaged ($0\text{--}360^\circ$) surface brightness profile for both clusters using concentric elliptical annuli: position angle and ellipticity (i.e., major over minor axis ratio) for the two clusters were determined using the *proffit - ellipticity* command at $R < 7$ arcmin for RXCJ1825 and $R < 5$ arcmin for CIZA (PA = 165° , $\epsilon = 0.25$ for RXCJ1825, and PA = 94° , $\epsilon = 0.24$ for CIZAJ1824). To avoid contamination by emission due to the companion cluster, when extracting the profile of one cluster we appropriately masked the other. Each profile was then fitted with a single- β model profile (Cavaliere & Fusco-Femiano 1976):

$$S(r) = S_0 \left[1 + (r/r_c)^2 \right]^{(-3\beta+0.5)} + \text{const}, \quad (1)$$

with free parameters normalization S_0 , β , core radius r_c , and constant sky background level. A double- β model did not significantly improve the fit (based on an F-test) in either cluster. The profiles with their best-fit models overlapped and the best-fit parameters are shown in Appendix A. We used these best-fit profiles to produce a surface brightness model image of the two clusters that we subtracted pixel-by-pixel from the observed image to obtain a residual map (in units of σ , as we also divide by the poissonian error on each pixel). Both images are shown in Fig. 3.

The residual image is a useful tool to look for regions where there are significant gradients in the surface brightness: a candidate excess south and southwest of RXCJ1825 towards the SG is clearly visible in the image. Moreover, a complex structure emerges in the core of RXCJ1825, with another excess to the northeast along the direction traced by the position of the two BCGs (BCG-E and BCG-W in Fig. 3).

Another way to investigate the presence of features such as sharp discontinuities in the surface brightness map is through the unsharp-masking method. Unsharp-masked images are the ratio between the difference of two Gaussian-smoothed images (having different smoothing lengths) and their sum. Different choices of smoothing lengths can highlight features on different scales. In Fig. 4 we show the unsharp-masks for the Lyra complex obtained with Gaussian smoothing lengths $\sigma = 20$ and 800 arcsec (left) and

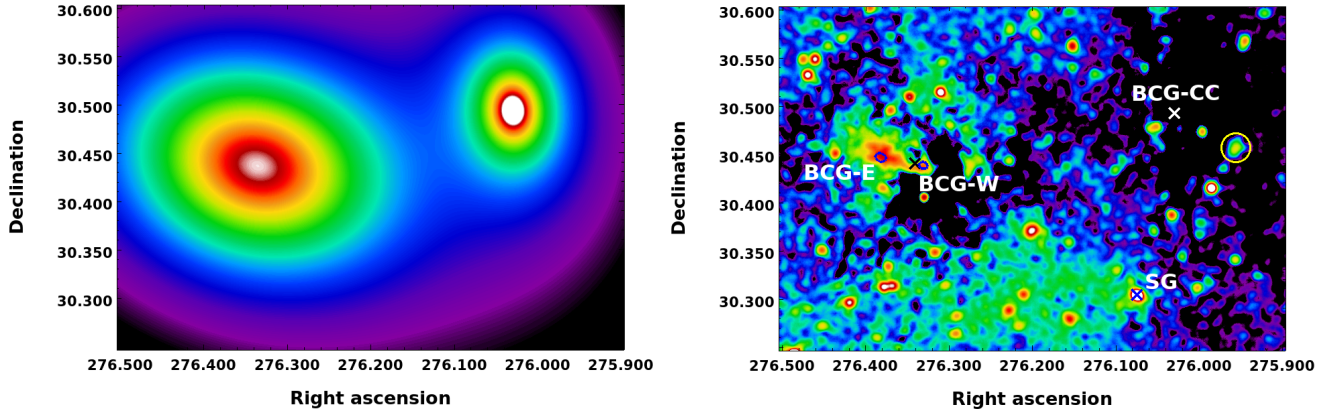


Fig. 3. *Left panel:* surface brightness model that includes both elliptical single β -models of RXCJ1825 and CIZAJ1824 clusters. *Right panel:* residual image after subtracting the model from the X-ray image. Blue small ellipses show the position of the two BCGs of RXCJ1825, labeled BCG-W and BCG-E, and the black cross is the X-ray centroid of the cluster. The white and blue crosses show the position of the BCG of CIZAJ1825, BCG-CC, and of the SG, respectively.

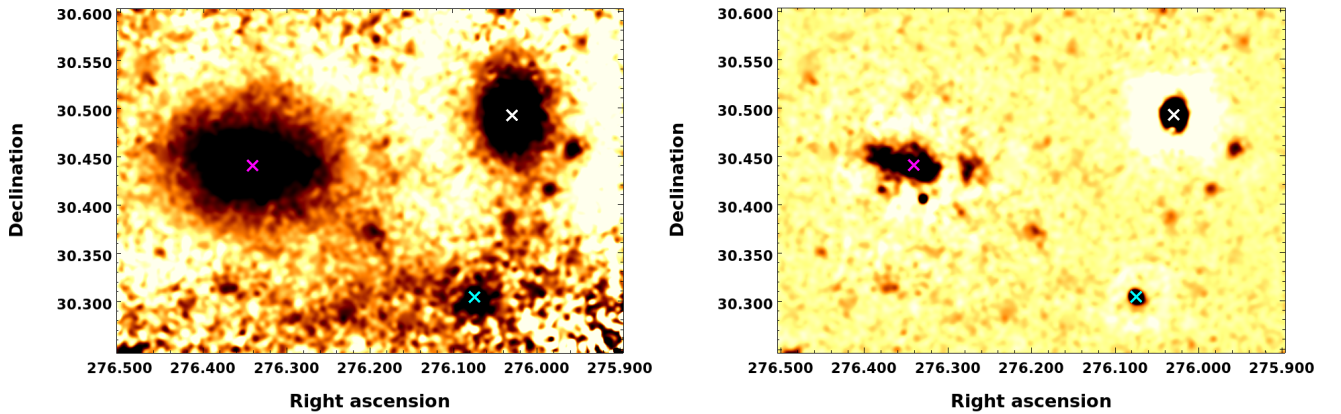


Fig. 4. *Left panel:* unsharp-mask image using a 20σ and a 800σ Gaussian to enlighten large-scale, low-surface brightness features. Point-like sources were removed. Crosses show the position of the X-ray centroid of RXCJ1824 (magenta), BCG-CC (white), and SG (cyan). *Right panel:* unsharp-mask image using 20σ and a 240σ Gaussian to search for small-scale features.

with Gaussian smoothing lengths $\sigma = 20$ and 240 arcsec (right), chosen as they maximize the contrast at the large and small scales, respectively. Point sources were removed before smoothing and were replaced with an average value computed from nearby surrounding pixels. The image in the left panel is more sensitive to large-scale features and highlights the presence of a patchy bridge of surface brightness between RXCJ1825 and the SG at RA = 18h:24m:17.7, Dec = +30d:18m:15s (J2000.0), with clear traces of extended emission around the SG position. No sharp discontinuities are visible in this image. On the contrary, the image in the right panel reveals structures on small scales in the core region of RXCJ1825. The image shows a long structure connecting the two BCGs of RXCJ1825, BCG-E and BCG-W, that is sharper in the south and less defined in the north. Another structure, with a triangular shape, is clearly visible west of the BCG-W. Small-scale emission is also present in the core of CIZAJ1824 and at the position of the SG. These features are discussed further in Sect. 4.

3.1.3. Search for surface brightness excesses and density discontinuities

We compared the surface brightness profiles of RXCJ1825 with the surface brightness of the model image in the six sectors of Fig. 2. The profiles are shown in Fig. 5. We find a statistically significant (at $\sim 3\sigma$) excess at radii smaller than 6 arcmin in

sector 120–180 deg only; this excess corresponds to the elongated emission between the two BCGs and extends beyond in the northeast direction. At larger radii (>6 arcmin), excesses are present in the 240–300 deg and 300–360 deg sectors toward the direction of the SG.

We also looked for statistically significant surface brightness excesses in other directions using profiles extracted in ad-hoc boxes. We chose the boxes guided by the candidate excesses visible in the residual map. An example of interesting regions and boxes is shown in Fig. 6, and the profiles extracted from the respective boxes are shown in Fig. 7. We found that the surface brightness profile between RXCJ1825 and CIZAJ1824 (box C in Fig. 7) does not show any excess from the model (the same is true for a box directly connecting the centers of the two clusters, not reported here, and in the 0–60 deg sector in Fig. 5); indeed the emission is consistent with being produced only by the overlap of the two cluster halos. No excess in the surface brightness is present from CIZAJ1824 towards the SG (box D in Fig. 7); some diffuse emission occurs at the SG position. Conversely, we found that the extended excess south and southwest of RXCJ1825 towards the SG (A and B boxes in Fig. 7) is statistically significant (at more than 3σ), suggesting some physical connection between RXCJ1825 and the SG. We note that the excess emission in the two boxes A and B is rather irregular, suggesting the presence of gas inhomogeneities.

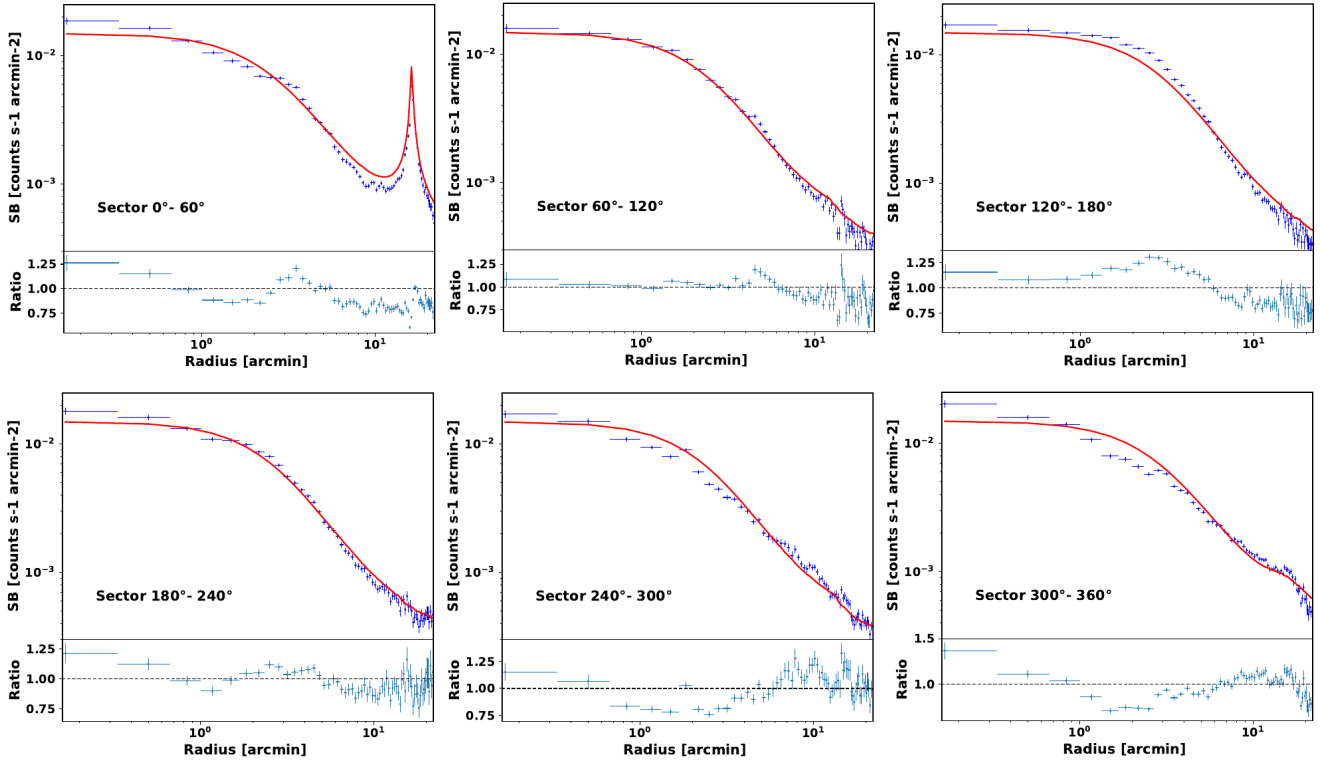


Fig. 5. Surface brightness profiles of RXCJ1825 (in blue) extracted in sectors of 60 deg starting from the RA axis and moving counterclockwise. Point-like sources were removed from the image. The red lines show the model profiles extracted in the same sectors as in Fig. 2. *Bottom panels* report the data over model ratio.

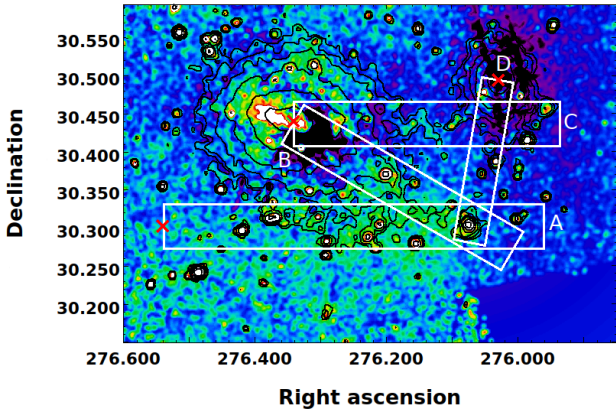


Fig. 6. Regions used for the extractions of the surface brightness profiles shown in Fig. 7 plotted on the residual map. Each region is identified by a letter, and the zero point along the length is indicated by a red cross. In black are the surface brightness contours.

From visual inspection of the two unsharp-mask images (Fig. 4) and the radial profiles in Fig. 5, we find no significant discontinuities in the surface brightness that could be indicators of cold fronts or shocks. We tried to verify the presence of surface brightness jumps in various regions of the cluster, not shown here for clarity, without finding any trace. This is somewhat surprising as RXCJ1825 shows strong evidences of recent interactions and is discussed in Sect. 4.

3.1.4. The Southern Galaxy

Investigation of the right panel of Fig. 4 shows evidence of an excess coincident with the position of the SG on small

scales. We extracted the surface brightness profile of the X-ray source corresponding to the SG using RA = 18h:24m:17.7 Dec = +30d:18m:15s (J2000.0) as central coordinates and 3 arcsec for the bin width. The profile is shown in black in Fig. 8: it decreases rapidly from the center up to about 20 arcsec, then smoothly to reach a constant background level at radii >100 arcsec. To assess if the source we detected is extended or point-like, we compared its surface brightness profile with a similar profile extracted from a nearby point source (276.02003, 30.34340) located at the same distance from the RXCJ1825 cluster center as the SG. We used this profile to estimate an “effective” point-spread function (PSF) close to the location of the SG, since this effect cannot be estimated in a more precise way given the mosaicing of multiple observations in the X-COP observation strategy. The profile of the nearby point source is also shown in Fig. 8. The shape of the profile in the central part of the SG ($r < 20$ arcsec) is consistent with the profile of the point source, suggesting the presence of a source not spatially resolved by *XMM-Newton*. The fit of the central part of the SG profile with a Gaussian returns $\sigma = 9.3 \pm 0.7$ arcsec, indicating that the central source must be smaller than $\sim 12\text{--}13$ kpc in physical units. The behavior of the profiles differs in the external regions: while the point source immediately reaches the background level at $r > 20$ arcsec, the source corresponding to the SG is embedded in a diffuse emission (see Fig. 4 left).

3.2. Temperature and metal abundance profiles

We measured the radial profiles of the temperature and metal abundance of RXCJ1825 and CIZAJ1824 from the X-ray centroid up to their respective R_{500} (i.e., ~ 1100 kpc for RXCJ1825 and ~ 900 kpc for CIZAJ1824, Sects. 3.2.1 and 3.2.2). For RXCJ1825 we selected circular annuli up to 5 arcmin and sectors

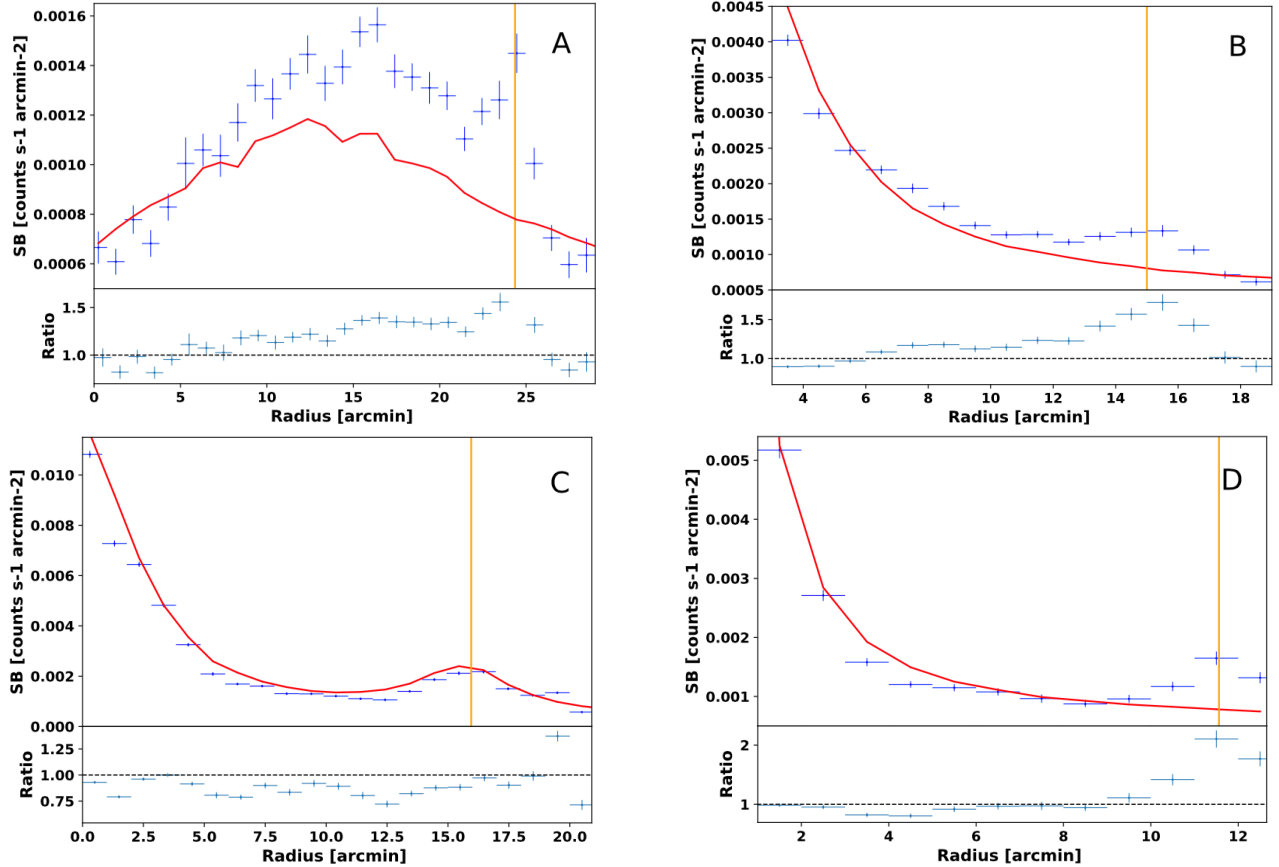


Fig. 7. Surface brightness profiles extracted from the boxes shown in Fig. 6. Data are plotted in blue and the model in red. Point-like sources are always excluded (the point-like source associated to the SG is also excluded; see the discussion in Sect. 4.4). *Bottom panels* report the data over model ratio. Orange vertical lines show the position of the SG (boxes A, B and D) and of CIZAJ1824 (box C).

from 5 to 14 arcmin to avoid contamination from CIZAJ1824 (we excluded the sector within 300–390 deg). In the case of CIZAJ1824 we extracted spectra from circular annuli up to 5 arcmin and excluded the contribution of RXCJ1825 selecting sectors of above 5 arcmin up to 10 arcmin (the excluded sector is in this case 130–270 deg).

3.2.1. Profiles of RXCJ1825

We fitted the spectra twice: the first time we fixed the redshift and the Galactic gas column density, NH, to the value of the 21 cm measurement (Kalberla et al. 2005), and the second time we left NH free to vary. The resulting temperature, metal abundance, and NH profiles of RXCJ1825 are shown in Fig. 9. We find that leaving NH free to vary has a significant impact on both temperature and metal abundance profiles, especially in the outer regions ($r \gtrsim 500$ kpc) where the temperature profile decreases and the metal abundance profile becomes flatter. Indeed, the overall value of NH changes significantly with the distance from the center, varying from a central value consistent with the pure neutral hydrogen estimate ($\text{NH} = 9.43 \times 10^{20} \text{ cm}^{-2}$) to a larger value, which is consistent with the estimate of the column density corrected for the contribution of molecular hydrogen ($\text{NH} = 1.33 \times 10^{21} \text{ cm}^{-2}$, Willingale et al. 2013).

Our results point towards a variation of the Galactic absorption in the field of the Lyra complex. To test the robustness of our NH estimates, we looked at the IR emission of the Galactic dust in the same field of view by considering the IRAS 100 μm cleaned map of Schlegel et al. (1998), and

computed the expected NH using the conversion from IR flux into total (hydrogen + molecular) NH given by Boulanger et al. (1996, see their Table 1). We found that the expected NH ranges between $\sim 1.2\text{--}1.6 \times 10^{21} \text{ cm}^{-2}$ in good agreement with our values. The IRAS map also shows a radial variation of the dust emission, lower in the center of RXCJ1825 and gradually higher towards the outside, again in good agreement with the results of our spectral fits.

The resulting mean temperature and metal abundance within R_{500} of RXCJ1825 are $4.86 \pm 0.05 \text{ keV}$ and 0.22 ± 0.01 , respectively.

We deprojected the temperature and the surface brightness profiles of this cluster to derive the gas density and deprojected temperature profiles. After a slight smoothing of the data in order to reduce nonphysical fluctuations that would be further enhanced by the deprojection process, we adopted the standard onion-skin technique to deproject data (Kriss et al. 1983; Ettori et al. 2002). We included a correction factor to account for the emission of the cluster beyond the outermost bin (see Ghizzardi et al. 2004 for details). Total and gas masses were then computed under the hypothesis of hydrostatic equilibrium and, by assuming a power-law behaviour for the mass in the outskirts to extrapolate the mass profile at larger radii, we estimated $M_{500} = 3.47^{+0.61}_{-0.56} \times 10^{14} M_{\odot}$ within $R_{500} = 1047^{+56}_{-59} \text{ kpc}$ and $M_{200} = 7.32^{+1.99}_{-1.90} \times 10^{14} M_{\odot}$ within $R_{200} = 1822^{+156}_{-173} \text{ kpc}$. Our value derived for M_{200} agrees within 1σ c.l. with that reported in Ettori et al. (2019), $M_{200} = 6.15 \pm 0.56 \times 10^{14} M_{\odot}$. The uncertainties in the gravitating mass given by Ettori et al. (2019) are

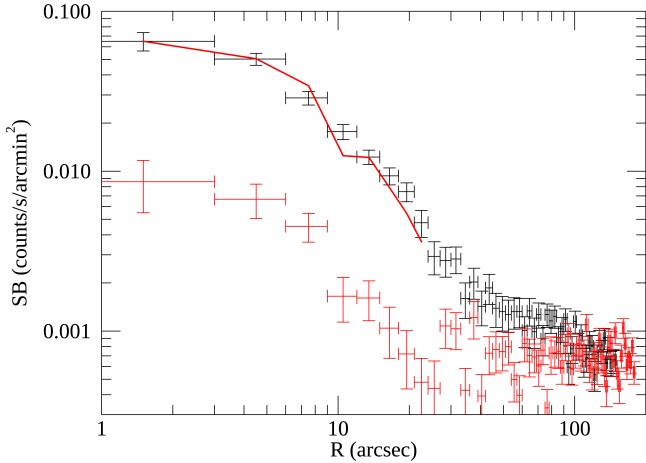


Fig. 8. *XMM-Newton* surface brightness profile of the SG (black crosses) as compared to the profile of the nearby comparison point source (red crosses). The red continuous profile shows the surface brightness profile of the point source rescaled to match the intensity of the SG to simplify the comparison.

smaller because their measurement relies on the X-ray temperature only in the cluster center while for large radii they used temperatures derived from the Sunyaev-Zel'dovich pressure profile (details are given in [Ghirardini et al. 2019](#)). Finally, we estimated the luminosity $L_{500} = 2.42^{+0.02}_{-0.02} \times 10^{44}$ erg s⁻¹ within R_{500} .

3.2.2. Profiles of CIZAJ1824

We applied the first two spectral models described in the previous section to CIZAJ1824 and we show our results in Fig. 10. Leaving NH free has a smaller effect than in RXCJ1825, but the effect is qualitatively similar. In the core we find a temperature decrease and a metal abundance enhancement which are the hallmark of cool-core clusters. In the central bin ($r \lesssim 21$ kpc) the entropy is 16.1 ± 0.3 keV cm², which is also in line with cool-core cluster central values ([Cavagnolo et al. 2009](#)).

Further out we observe a temperature decline and a metal abundance flattening which are typical of most clusters. By excising the central 100 kpc containing the cool-core we find a mean temperature of 2.14 ± 0.05 keV and a mean metal abundance of 0.28 ± 0.03 .

Following the same procedure described in the previous section, for CIZAJ1824 we estimated a total mass of $M_{500} = 2.46^{+0.70}_{-0.56} \times 10^{14} M_{\odot}$ and a luminosity of $L_{500} = 7.43^{+0.15}_{-0.15} \times 10^{43}$ erg s⁻¹ within $R_{500} = 932^{+80}_{-78}$ kpc and a total mass of $M_{200} = 4.18^{+1.71}_{-1.38} \times 10^{14} M_{\odot}$ within $R_{200} = 1512^{+186}_{-189}$ kpc.

3.3. Thermodynamic maps

We selected the regions for the 2D spectral analysis of the central part of RXCJ1825 using the Weighted Voronoi Tessellation (WVT) adaptive binning algorithm by [Diehl & Statler \(2006\)](#). We set a minimum value of 20 for the signal-to-noise ratio (S/N) applied to the background subtracted MOS2 image computed in the 0.4–2 keV energy band. The extraction regions of the spectra overlapped to the X-ray residual map and the sampled core region of RXCJ1825 in the optical band are shown in the left and right panels of Fig. 11, respectively. As already discussed in Sect. 2.2, we limit this analysis to the central regions of RXCJ1825 where the cluster emission outshines the background.

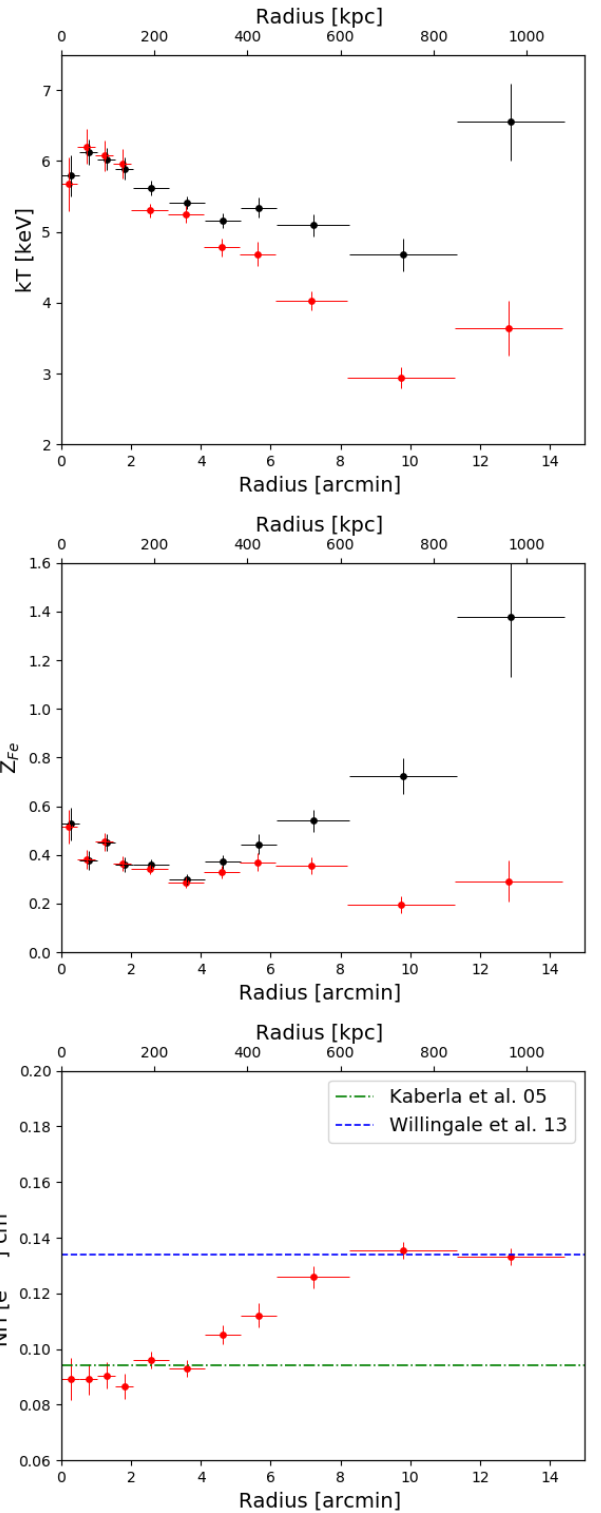


Fig. 9. Temperature (*upper panel*) and metal abundance (*middle panel*) profiles of RXCJ1825. Black points show the results from the standard analysis with NH fixed to the LAB value and energy band [0.5–10] keV. Red points show the results with NH left free to vary in the fit (the points in each bin have been shifted slightly for visual clarity). *Lower panel*: galactic hydrogen column density profile of RXCJ1825. The green dot-dashed line is the NH LAB value ([Kalberla et al. 2005](#)), and the blue dashed line is the total NH (NHI + NHII) value taken from [Willingale et al. \(2013\)](#).

As is conventional in X-ray astronomy, we quantified the pressure assuming that the ICM is an ideal gas and the entropy

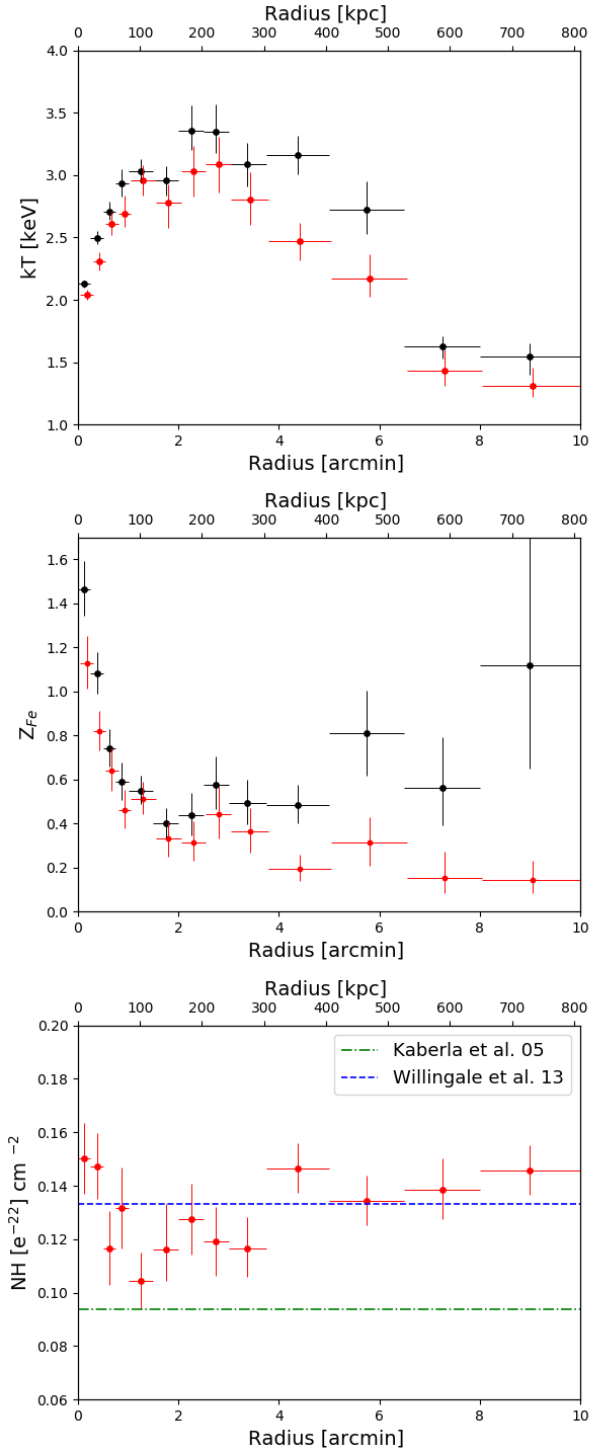


Fig. 10. Radial temperature (*upper panel*) and metal abundance (*middle panel*) profiles of CIZAJ1824. Black points show the results from the standard analysis with NH fixed to the LAB value and energy band [0.5–10] keV and red points show the results with NH left free to vary in the fit (the points of each bin have been shifted slightly for visual clarity). *Lower panel*: galactic hydrogen column density profile of CIZAJ1824. The green dot-dashed line is the NH LAB value (Kaberla et al. 2005), and the blue dashed line is the total NH (NHI + NHII) value taken from Willingale et al. (2013).

using the adiabatic constant $K = kTn^{-2/3}$ (T and n being the gas temperature and density, and k the Boltzmann constant). We computed the pressure and the entropy of the ICM in the cluster

core in physical units without a proper deprojection of the data. We simply assumed that the volume, V , from which the emission is produced is related to the area, A , from which we observe it through the equation: $V \propto A^{3/2}$. This is a rather crude way of estimating physical quantities; however in the central regions of RXCJ1825 where the gas distribution is far from being spherically symmetric, it is probably not much less accurate than more traditional methods. This approximation is adequate to estimate the order of magnitude of the physical quantities at the center of the cluster.

The analysis is done with NH fixed at the (Willingale et al. 2013) value and we checked that leaving NH free did not produce appreciable differences in the maps.

Figure 12 shows the derived maps for temperature, pressure, entropy, and cooling time in the core of RXCJ1825. The uncertainties on the thermodynamic parameters shown in the maps can be seen in Fig. 13, where we plot their profiles as a function of distance from the X-ray centroid of the cluster. We also produced a metal abundance map; however the large uncertainties on this quantity did not allow us to draw statistically significant information on the variations of this quantity.

3.4. The Southern Galaxy

We analyzed the spectra extracted from ad-hoc selected regions around the SG, shown in Fig. 14, with the X-COP pipeline described in Sect. 2.2. Gas temperature, iron abundance, and normalization of the *apec* model are free parameters in the spectral fit, whereas the redshift is fixed at the optical value of the SG ($z = 0.0708$, Girardi et al. 2019) and the gas column density is fixed at the value of Willingale et al. (2013). Figure 14 shows the temperature distribution in these regions.

Region 2 centered on the bright elliptical galaxy is the coolest one with a temperature of 1.21 ± 0.04 keV measured with very small uncertainties. Indeed its spectrum (Fig. 15) shows a noticeable iron L-shell line blend and is undoubtedly thermal. No such feature is found in the spectra of the other regions indicating that in all likelihood this component is associated to the point source coincident with the SG and discussed in Sect. 3.1.4. To better discriminate the emission from the point source from that of the ambient gas we described the source emission with a two-temperature model, where we fixed the temperature, iron abundance, and normalization of the first component to those of the surrounding regions (e.g., Regions 1 and 3 in Fig. 14). The best fit returns a temperature of 1.12 ± 0.05 keV and an metal abundance of 0.54 ± 0.21 . Verification of these values using the spectral analysis of a spectrum extracted from a 30 arcsec radius circle on the SG position shows that they agree to within 1σ .

In the regions surrounding Region 2 (i.e., Regions 1 and 3 in Fig. 14), the temperature is ~ 2 keV, which is consistent with the temperature of gas that once belonged to a group around the elliptical galaxy and is now spread out by the gravitational interaction with RXCJ1825, and also with the value of the temperature of RXCJ1825 at this distance (see Fig. 9). We therefore cannot decipher the origin of this gas with our data.

4. Discussion

In this section we discuss the results of our X-ray analysis and their implications on the dynamical history of the structures in the Lyra complex. We complement our results by comparing them with those from recent work in the optical (Girardi et al. 2019) and radio (Botteon et al. 2019) bands on this system.

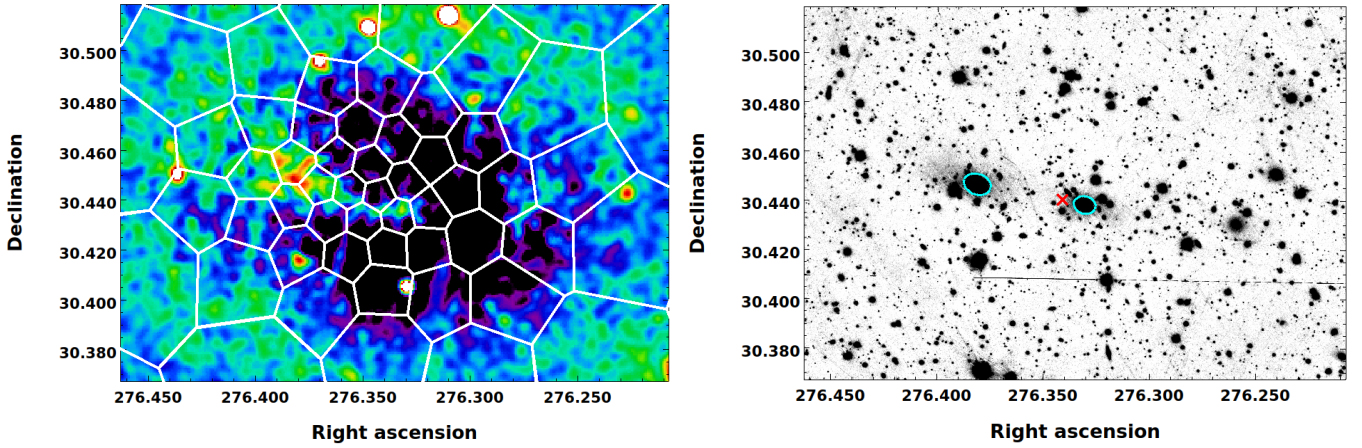


Fig. 11. *Left panel:* residual map of the central regions of RXCJ1825. The regions chosen to perform the spectral analysis, selected using a $S/N > 20$ with source-to-background ratio $I > 0.6$ (Leccardi & Molendi 2008), are shown in white. *Right panel:* Pan-STARRs r -band image of the core of RXCJ1825.

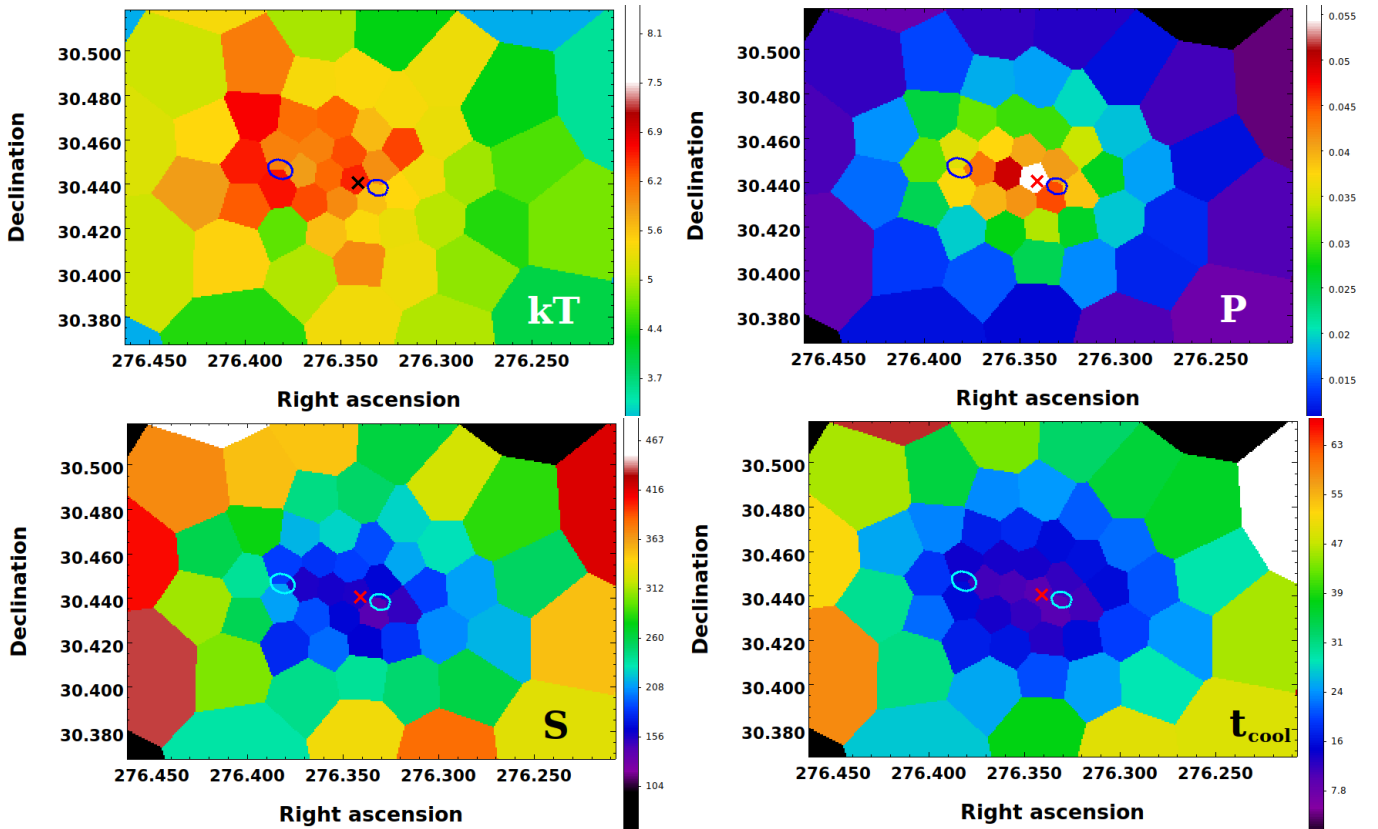


Fig. 12. Temperature (keV), pressure (keV cm^{-3}), entropy (keV cm^2), and cooling time (Gyr) maps of the center of RXCJ1825. For the uncertainties on the physical quantities see Fig. 13. Small ellipses show the position of the two BCGs, the cross shows the position of the cluster centroid determined by the shape of the isophotes on large scales.

4.1. The overall picture of the Lyra complex

The *XMM-Newton* image shown in Fig. 1 reveals that the Lyra complex environment is exceptional in many respects. The main structure, namely cluster RXCJ1825, is clearly far from being dynamically relaxed: the distribution of the surface brightness emission is irregular with a flat core, elongated in the east-west direction, the same direction that connects its two BCGs. This is a characteristic often observed in unrelaxed clusters such as the Coma cluster. The other prominent structure in the field northwest of RXCJ1825 is CIZAJ1824, which shows all the X-ray

characteristics typically observed in a relaxed and unperturbed cool-core cluster. In the southwest regions of RXCJ1825, there are patchy, diffuse X-ray, low-surface-brightness structures that indicate the presence of gas which could be connected to the main cluster or to in-falling substructures at different destruction (or post-merger) stages.

The dynamical analysis of the galaxies in the Lyra complex (Girardi et al. 2019) confirms that all these structures are very close in redshift space, that is, that the whole system discussed here is gravitationally connected and bound. Figure 16

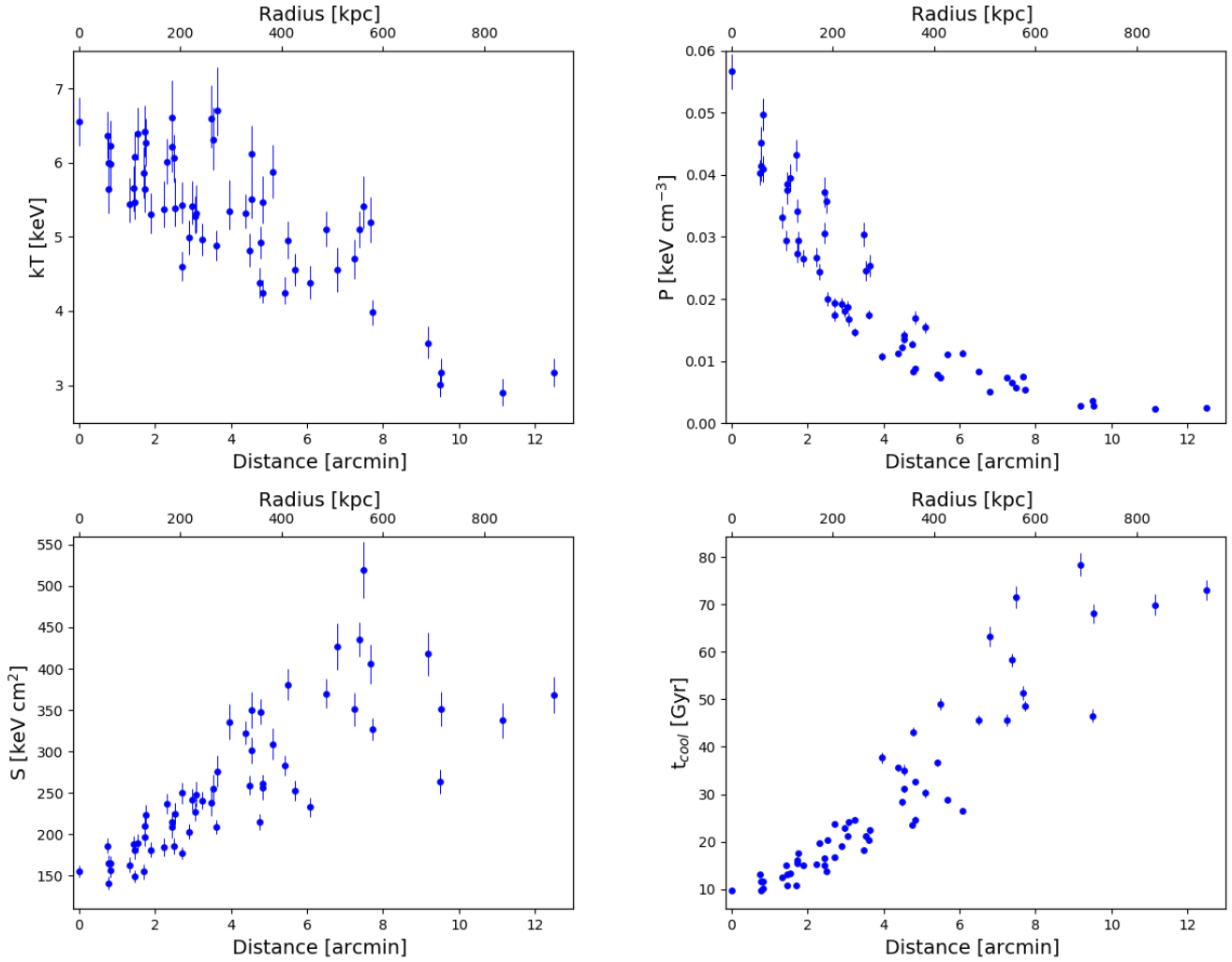


Fig. 13. Temperature (keV), pressure (keV cm^{-3}), entropy (keV cm^2), and cooling time (Gyr) shown in Fig. 12, plotted as a function of the distances from the RXCJ1825 centroid.

shows the optical Pan-STARRs r -band image (Flewelling et al. 2016) of the whole Lyra system with the X-ray contours taken from Fig. 1. In the figure, the prominent and brightest cluster galaxies are labeled. The dynamical analysis of the member galaxies (Girardi et al. 2019) confirms the unrelaxed nature of RXCJ1825, as well as the membership of the SG ($z = 0.0746$, Girardi et al. 2019) to the Lyra system.

Intriguingly, we do not find any evidence of jumps in the surface brightness, which are typically observed in merging systems like the Lyra complex. One possibility is that these are transient features which have already disappeared in an advanced merger. This could be supported by the fact that on a large scale RXCJ1825 appears regular (apart from the southwest region). Another possibility is that such features are below the *XMM-Newton* spatial resolution or that they are at unfavorable projection angles. This last option is discussed further in Sect. 4.5. In the following we take into consideration the prominent structures of the Lyra system individually.

4.2. The central regions of RXCJ1825

The center of RXCJ1825 is a particularly complex region, where we clearly find evidence for an ongoing merger. The main features in the core are the east-west elongation of the X-ray

morphology on the same line connecting the two BCGs, and the high temperatures (>5.5 keV) measured everywhere with no signs of decrements typical of cool-cores (Figs. 12 and 13).

The merger scenario is also strongly supported by recent observations of this cluster at optical and radio wavelengths. The dynamical analysis of the member galaxies in Girardi et al. (2019) shows that the two BCGs (i.e., BCG-W and BCG-E) are close to being coplanar on the sky plane (their velocities are coincident within the errors, Girardi et al. 2019) and aligned, together with their intra-cluster light (ICL) envelopes, elongated in the same direction as the X-ray emission. Moreover, Botteon et al. (2019) discovered a $1.0 \text{ Mpc} \times 0.8 \text{ Mpc}$ radio halo in RXCJ1825. Giant radio halos like this are observed only in merging systems (e.g., van Weeren et al. 2019).

The maps of the thermodynamic properties of the ICM shown in Fig. 12 can provide some indications to unravel the state of the merger. Inspecting the pressure map (Fig. 13), we find that its peak and the centroid of the X-ray emission (determined by the shape of the isophotes on large scales) are coincident. They can both be considered indicators of the bottom of the potential well of the system and the fact that they coincide supports this inference. The pressure map also shows an area of general maximum in the region that connects the two BCGs and hence indicates that the potential well is elongated in that direction.

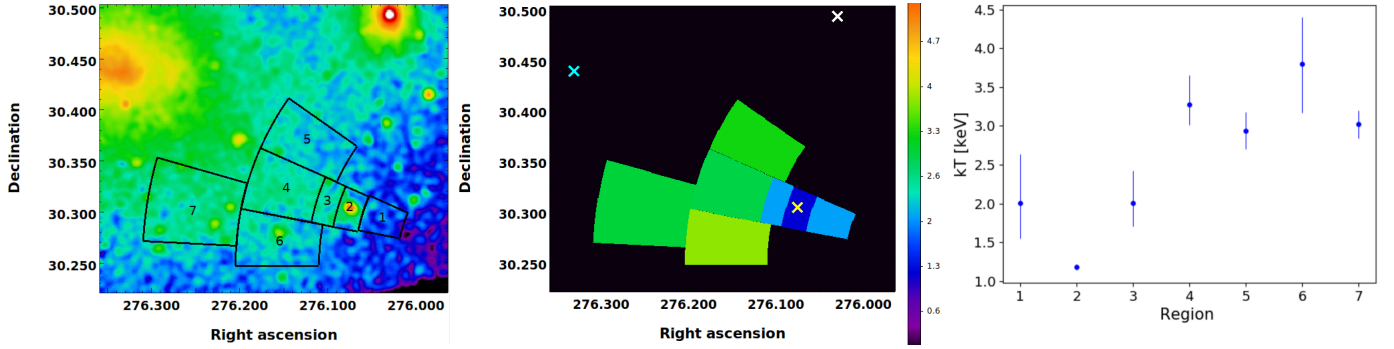


Fig. 14. *Left panel:* regions chosen to perform the spectral analysis around the SG and along the emission bridge towards RXCJ1825. *Middle panel:* temperature map in keV. The yellow, cyan, and white crosses are the positions of the SG, the X-ray centroid of RXCJ1825, and the BCG-CC, respectively. *Right panel:* temperature of the regions, with their uncertainties.

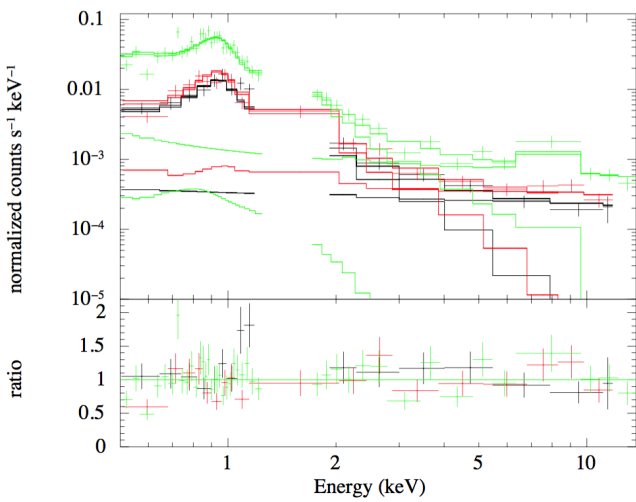


Fig. 15. Spectrum of Region 2 in Fig. 14 that contains the SG (re-binned for clarity). Crosses are the EPIC data, continuous lines the best fit models (see Ghirardini et al. 2019). The L-shell blend at $\sim 0.8\text{--}1.0$ keV is evident and the shape of the 1-T thermal spectrum is well determined with a reduced $\chi^2 = 1.1$.

If the cluster were dynamically relaxed, we would expect a situation in which the gas would be stratified around the center of the potential well, with the lower entropy coinciding with the pressure peak. Instead, we observe in Fig. 11 that the surface brightness peak and the lowest gas entropy coincide with the BCG-W, ~ 40 kpc west of the pressure peak. This tells us that the gas is not relaxed and that it is likely still moving, but it also suggests that the motions involved are slow, otherwise the collisional gas would have decoupled from the BCG-W.

Similar considerations can be applied to the other brightest galaxy, BCG-E, which is ~ 150 kpc from the X-ray centroid, albeit with less compelling evidence. Also in this case BCG-E is close to a small surface brightness peak (see the residual map in Fig. 3) in a region where the entropy is still low, indicating denser gas still retained by the galaxy and suggesting relatively slow motions.

The two BCGs have very similar radial velocities, suggesting that they are almost at rest with respect to each other very close to the plane of the sky (high tangential components of the velocity tend to be excluded by the absence of indications of shocks and other features in the ICM; see Sect. 3.1.3). This suggests that they are in the final stages of the merger, where the virialization process is already in an advanced state.

Typically, in the centers of cool-core clusters the entropy of the gas is less than $\sim 20\text{--}30$ keV cm², while in interacting systems it exceeds several 100 keV cm² (e.g., Cavagnolo et al. 2009). Our entropy map (Fig. 12) shows values of 140–180 keV cm² in a region of ~ 100 kpc radius around the centroid, typical of intermediate systems (see Fig. 1 in Pratt et al. 2010), that is, neither relaxed cool cores nor mergers. This suggests that the core of RXCJ1825 could be in a late or post-merger phase during which the entropy stratification found in the relaxed system is in the process of being reconstituted.

4.3. CIZAJ1824

The picture emerging from our X-ray analysis of the CIZAJ1824 cluster is clearly that of a very relaxed structure consistent with a typical cool core (Fig. 10). Temperature and abundance azimuthally averaged profiles in Fig. 10 show the usual temperature decrements in the core associated to an increasing metal abundance, always observed in cool-core clusters (e.g., De Grandi et al. 2004).

The relaxed dynamical state of the ICM is evident from the regular peaked surface brightness profile (Fig. 2), and from the residual and unsharp-mask maps (Figs. 3 and 4) that show no signs of interactions, such as a sloshing spiral, or distortions, such as strong deviation from the radial symmetry or emission bridges towards RXCJ1825 or the SG (see also boxes C and D in Fig. 7).

The analysis of the galaxy distribution and dynamics in Girardi et al. (2019) suggests that the pair RXCJ1825–CIZAJ1824 is bound (probability $\sim 80\%$), with the two clusters well detected and separated. A simple bimodal dynamical model shows that CIZAJ1825 is most likely located in front of RXCJ1825, moving towards it with a projection angle between the plane of the sky and the collision axis of 30–70 deg. This geometry implies that the physical distance between the two clusters could be anywhere between 1.5 Mpc ($\alpha = 30$ deg) and 3.8 Mpc ($\alpha = 70$ deg). In the first case the two systems are within their respective R_{500} , while in the latter they lie outside their respective R_{200} . The absence of any evidence of perturbation in CIZAJ1824 favors a large value for the physical distance ($\gtrsim 2$ Mpc) and therefore for the angle ($\gtrsim 50$ deg).

From the gravitational masses measured by our analysis within R_{200} of both clusters (Sects. 3.2.1 and 3.2.2), $\sim 7 \times 10^{14} M_{\odot}$ for RXCJ1825 and $\sim 4 \times 10^{14} M_{\odot}$ for CIZAJ1824, we can infer that a future merger of this cluster pair would have a mass ratio of about 1:2.

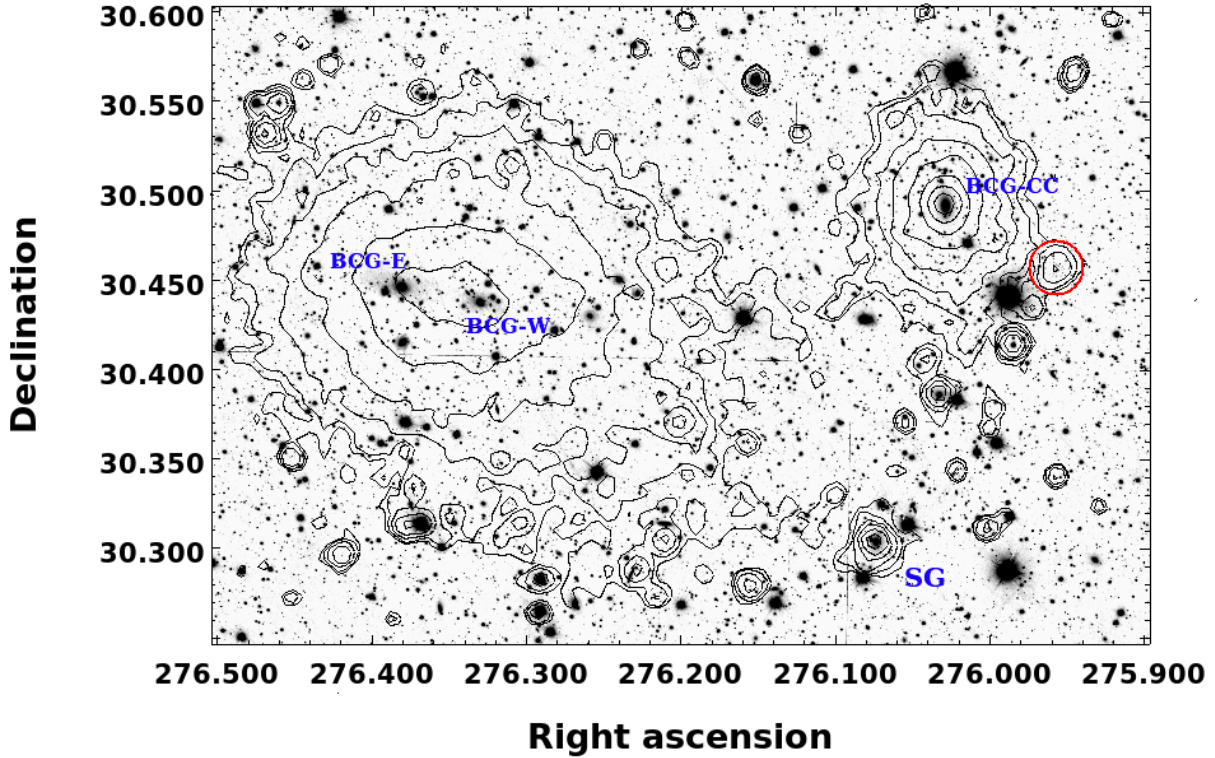


Fig. 16. Pan-STARRs r -band image of RXCJ1825 and CIZAJ1824 complex with the contour levels of the XMM X-ray emission superimposed. The red circle is an unidentified extended source discussed in Sect. 4.3. In the figure, north is at the top and east to the left.

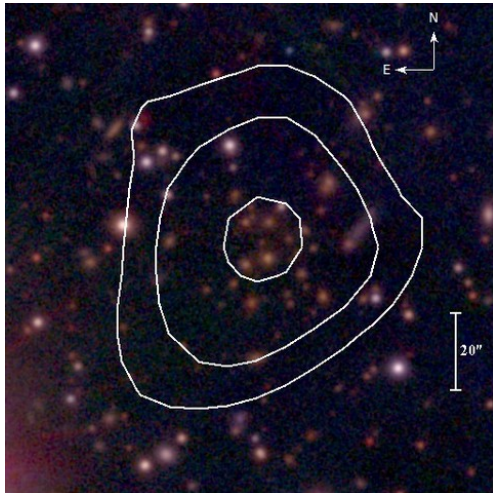


Fig. 17. Pan-STARRs r -band image of the extended X-ray source SW of CIZAJ1824 (red circle in Fig. 16). X-ray contours are overplotted in white.

We conclude this section by noting that ~ 4.5 arcmin (~ 350 kpc) southwest of the central galaxy BCG-CC of CIZAJ1824 there is a small extended source (~ 1 – 2 arcmin radius) at RA = 18h:23m:49 $^{\circ}$.4 Dec = +30d:27m:23 $^{\circ}$.4 (J2000.0); see red circle in Fig. 16. The Pan-STARRs r -band image at this position (Fig. 17) suggests the presence of a group of galaxies. We find that the colors of the brightest galaxies ($r_{PS} \lesssim +21$) on the line of sight of this source are consistent with a redshift of ~ 0.2 – 0.3 and therefore we conclude that this system is a probable background galaxy group, unrelated to the Lyra complex.

4.4. The Southern Galaxy

Both the surface brightness image in Fig. 1 and the residual map in Fig. 3 show that south and southwest of the main RXCJ1825 there is a wide region with weak and diffuse X-ray emission. The shape of this emission is wider close to RXCJ1825 and then becomes narrower and elongated towards a bright elliptical galaxy that is the brightest object in this region, the SG (see also Fig. 3).

In Sect. 3.1.4 we showed that the emission associated to the SG is point-like (implying that its extension must be smaller than ~ 12 – 13 kpc), and that it is embedded in diffuse emission. From spectral analysis (Sect. 3.4) we found that the point-like source is cooler (~ 1 keV) and metal richer ($Z_{Fe} \sim 0.5$) than the ambient gas ($kT \sim 2$ keV, $Z_{Fe} \sim 0.2$, see also Figs. 14–15). The SG is among the five brightest ellipticals in the Lyra complex suggesting that it was once at the center of a galaxy group. We interpret the cool emission around this galaxy as a remnant of the gaseous atmosphere once surrounding it. As expected, this gas is highly enriched in metals (e.g., Sato et al. 2009, and references therein). Moreover, since this remnant has not evaporated through contact with the ambient medium, thermal conduction must be inhibited. Such objects have been reported in the literature by several authors, who refer to them as galactic “coronae” (Sun et al. 2009). The discovery of a corona associated to the SG supports the idea that it once was the central galaxy of a group. If the scenario we describe here is accurate, the diffuse surface brightness excess seen southwest of RXCJ1825 could be due to gas stripped from the group and/or to cluster gas displaced by the passage of the group. The same processes are likely responsible for the low-surface-brightness extension of the radio halo towards the SG detected by Botteon et al. (2019) with LOFAR.

4.5. Hunting for infalling substructures

Girardi et al. (2019) identified a high-velocity region south of CIZAJ1824 most likely not associated to either RXCJ1825 or CIZAJ1824 (see their Sect. 4.4 and Fig. 11), whose brightest galaxy is the SG. In order to detect possible group members, the authors selected galaxies with velocities larger than that of the SG, finding three galaxies aligned between RXCJ1825 and the SG (ID074, ID113, and ID143 in their Table 6). To search for possible X-ray counterparts of these galaxies we overlaid their positions on the unsharp-mask image which is more sensitive to small-scale structures (Fig. 18, black crosses). Remarkably, we find that two of the three high-velocity galaxies have associated excesses (ID143 and ID113). Even more remarkably, the emission is offset from the galaxies in the same direction that connects all these high-velocity galaxies with the SG, suggesting that this alignment is not coincidental. Finally, from a spectral analysis of the excess emission associated to ID113, we find a temperature of $kT = 2.0^{+0.5}_{-0.3}$ keV, lower at the $\sim 3\sigma$ c.l. than that of the surrounding ICM, $kT = 4.0 \pm 0.2$ keV.

From the optical analysis we know that these galaxies are moving away from us at a greater velocity than that of RXCJ1825. We interpret the X-ray excesses we observe as stripped gas from the high-velocity galaxies. This is supported by our finding that one of the two excesses features a substantially lower temperature than the surrounding ICM. Ram pressure stripping typically occurs during infall, as it is proportional to ρv^2 and both ICM density and velocity increase towards the cluster center, suggesting that the galaxies are currently falling onto RXCJ1825. While the displacement of the excesses with respect to two of these high-velocity systems in a specific direction strongly argues for a velocity component on the plane of the sky, the lack of elongation of the excesses along the presumed direction of motion, as typically seen in ram-pressure-stripped galaxies and groups (e.g., Jachym et al. 2019; Eckert et al. 2014, and references therein), suggests that the velocity component on the plane of the sky is much smaller than the one on the line of sight. As part of this hypothesis, the difference in measured redshift between the galaxies and RXCJ can be taken as a reasonable estimate of the infall velocities. By performing the computation we derive infall velocities, $v_i = \Delta v / (1 + z)$, of 2942 ± 76 , 3196 ± 125 , 2891 ± 48 , and 2830 ± 73 km s⁻¹ respectively for ID143, ID113, ID074 and SG. We note in passing that a high line-of-sight to plane-of-the-sky velocity ratio may also explain the remarkable lack of jumps in the surface brightness (see Sect. 3.1.3). The large projected distance between ID143 and SG together with the small velocity on the plane of the sky suggests that these galaxies were not originally part of the same group; however the alignment amongst themselves and the X-ray excesses suggests at least a common origin, perhaps a filament or, more likely, a plane roughly orthogonal to that of the sky.

5. Summary

We have presented results from the X-COP mosaic observation of the Lyra complex whose main structure is the galaxy clusters pair RXCJ1825–CIZAJ1824. While RXCJ1825 is dynamically disturbed, with evidence of an undergoing main merger in the east-west direction, CIZAJ1824 appears as a very regular undisturbed cluster. The recent discovery of a giant radio halo, filling the same volume of the thermal plasma in the center of RXCJ1825, supports the merger hypothesis in this cluster. Southwest of RXCJ1825 there is a bright elliptical galaxy, the SG, located at the very end of an elongated diffuse X-ray

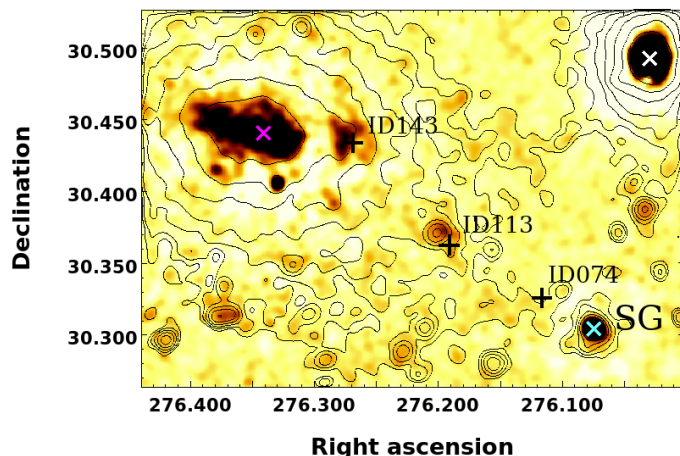


Fig. 18. Unsharp-mask image of the Lyra complex with the high-velocity galaxies selected by Girardi et al. (2019) shown as black crosses (ID143, ID113, and ID074 in Table 6 of Girardi et al. 2019). The magenta, white, and cyan crosses are the X-ray centroid of RXCJ1825, the BCG-CC, and the SG, respectively. Black contours are the surface brightness levels.

emission joining the main cluster and this galaxy, suggesting a physical connection between the two systems. The optical study of the velocity field of the Lyra complex shows that the clusters pair and the SG are gravitationally bound at a mean redshift of $z = 0.067$.

In the following we provide a summary of our main findings.

- RXCJ1825 is the largest structure in the Lyra complex with a total mass within R_{200} (1.82 ± 0.17 Mpc) of $M_{200} = 7.3 \pm 1.9 M_{\odot}$ and an eastwest elongated emission in the same line connecting its two BCGs. From the analysis of the ICM entropy and pressure distributions we infer that the gas is not at rest at the bottom of the cluster potential well but is still moving, although with relatively slow motions since no shocks or density jumps have been detected anywhere, and it is tending towards complete virialization. This late stage or post-merger scenario in RXCJ1825 is also strongly supported by recent optical and radio observations.
- CIZAJ1824, the companion cluster west of RXCJ1825, is a cool-core cluster with a relaxed X-ray morphology which suggests an equally relaxed dynamic state. The estimated gravitational mass within $R_{200} = 1.51 \pm 0.18$ Mpc is $M_{200} = 4.2 \pm 1.5 M_{\odot}$.
- No surface-brightness bridges are found between the pair RXCJ1825–CIZAJ1824, suggesting that CIZAJ1824 is in a pre-merger state with RXCJ1825. A future merger of this cluster pair would have a mass ratio of about 1:2.
- The SG hosts an X-ray-emitting gaseous corona with extension smaller than ~ 13 kpc, unresolved by our *XMM-Newton* observation, with a temperature of ~ 1 keV and a metal abundance of $\sim 0.5 Z_{\odot}$. The discovery of the corona associated to the SG supports the idea that it once was the central galaxy of a group now almost completely destroyed by interaction with RXCJ1825.
- In this scenario the diffuse surface-brightness excess seen southwest of RXCJ1825 could be due to gas stripped from the group and/or to cluster gas dislocated by the passage of the group.
- We identified three high-velocity galaxies that are aligned between RXCJ1825 and the SG and that show (2 out of 3) associated X-ray excesses. The spectral analysis of one of

these emission excesses shows the presence (at $\sim 3\sigma$ c.l.) of gas at a lower temperature than that of the surrounding ambient ICM. We interpret these X-ray excesses as stripped gas from the high-velocity galaxies and, since stripping typically occurs during infall, we infer that the galaxies are currently falling onto RXCJ1825 with infall velocities of $\sim 3000 \text{ km s}^{-1}$.

Finally, we would like to highlight the successful observational strategy of the X-COP project for the detection and characterization of infalling galaxy groups on clusters. Thanks to the off-axis mosaicing, the careful technical analysis of cluster outskirts, and last but not least the optical follow up work, we have been able to discover and study various stages of the virialization process of groups during their infall onto the main cluster. In the case of the Hydra-A/A780 cluster (De Grandi et al. 2016) we detected a long gas tail, half of which has been ram pressure stripped while the other half is still gravitationally bound to the group. In A2142 (Eckert et al. 2014, 2017a), we found a group almost entirely stripped of its gas (only $\sim 10\%$ of it still retained). In the last case, studied here, we find evidence of a BCG with a corona but no group surrounding it, as well as two galaxies being stripped of their gas as they fall at high velocity onto RXCJ1825.

Acknowledgements. We acknowledge financial contribution from the contracts ASI 2015-046-R.0 and ASI-INAf n.2017-14-H.0. M. G. is supported by the Lyman Spitzer Jr. fellowship (Princeton University) and by NASA *Chandra* grants GO7-18121X and GO8-19104X. This research is based on observations obtained with *XMM-Newton*, an ESA science mission with instruments and contributions directly funded by ESA Member States and the USA (NASA).

References

- Asplund, M., Grevesse, N., Sauval, A. J., & Scott, P. 2009, *ARA&A*, 47, 481
- Berrier, J. C., Stewart, K. R., Bullock, J. S., et al. 2009, *ApJ*, 690, 1292
- Botteon, A., Cassano, R., Eckert, D., et al. 2019, *A&A*, 630, A77
- Boulanger, F., Abergel, A., Bernard, J.-P., et al. 1996, *A&A*, 312, 256
- Boylan-Kolchin, M., Springel, V., White, S. D. M., Jenkins, A., & Lemson, G. 2009, *MNRAS*, 398, 1150
- Cavagnolo, K. W., Donahue, M., Voit, G. M., & Sun, M. 2009, *ApJS*, 182, 12
- Cavaliere, A., & Fusco-Femiano, R. 1976, *A&A*, 49, 137
- De Grandi, S., Ettori, S., Longhetti, M., & Molendi, S. 2004, *A&A*, 419, 7
- De Grandi, S., Eckert, D., Molendi, S., et al. 2016, *A&A*, 592, A154
- De Luca, A., & Molendi, S. 2004, *A&A*, 419, 837
- Diehl, S., & Statler, T. S. 2006, *MNRAS*, 368, 497
- Ebeling, H., Mullis, C. R., & Tully, R. B. 2002, *ApJ*, 580, 774
- Eckert, D. 2016, Astrophysics Source Code Library [record ascl:1608.011]
- Eckert, D., Molendi, S., Owers, M., et al. 2014, *A&A*, 570, A119
- Eckert, D., Jauzac, M., Shan, H., et al. 2015, *Nature*, 528, 105
- Eckert, D., Gaspari, M., Owers, M. S., et al. 2017a, *A&A*, 605, A25
- Eckert, D., Ettori, S., Pointecouteau, E., et al. 2017b, *Astron. Nachr.*, 338, 293
- Ettori, S., & Molendi, S. 2011, *Mem. Soc. Astron. It. Suppl.*, 17, 47
- Ettori, S., Fabian, A. C., Allen, S. W., & Johnstone, R. M. 2002, *MNRAS*, 331, 635
- Ettori, S., Gastaldello, F., Leccardi, A., et al. 2010, *A&A*, 524, A68
- Ettori, S., Ghirardini, V., Eckert, D., et al. 2019, *A&A*, 621, A39
- Fakhouri, O., Ma, C.-P., & Boylan-Kolchin, M. 2010, *MNRAS*, 406, 2267
- Flewellling, H. A., Magnier, E. A., Chambers, K. C., et al. 2016, ArXiv e-prints [arXiv:1612.05243]
- Gao, L., Navarro, J. F., Frenk, C. S., et al. 2012, *MNRAS*, 425, 2169
- Ghizzardi, S., Molendi, S., Pizzolato, F., & De Grandi, S. 2004, *ApJ*, 609, 638
- Ghizzardi, S., De Grandi, S., & Molendi, S. 2014, *A&A*, 570, A117
- Ghirardini, V., Ettori, S., Eckert, D., et al. 2018, *A&A*, 614, A7
- Ghirardini, V., Eckert, D., Ettori, S., et al. 2019, *A&A*, 621, A41
- Girardi, M., Boschini, W., De Grandi, S., et al. 2019, *A&A*, in press, <https://doi.org/10.1051/0004-6361/201936466>
- Haines, C. P., Finoguenov, A., Smith, G. P., et al. 2018, *MNRAS*, 477, 4931
- Jachym, P., Kenney, J. D. P., Sun, M., et al. 2019, *ApJ*, 883, 145
- Kalberla, P. M. W., Burton, W. B., Hartmann, D., et al. 2005, *A&A*, 440, 775
- Kocevski, D. D., Ebeling, H., Mullis, C. R., & Tully, R. B. 2007, *ApJ*, 662, 224
- Kravtsov, A. V., & Borgani, S. 2012, *ARA&A*, 50, 353
- Kriss, G. A., Cioffi, D. F., & Canizares, C. R. 1983, *ApJ*, 272, 439
- Leccardi, A., & Molendi, S. 2008, *A&A*, 486, 359
- Lovisari, L., Forman, W. R., Jones, C., et al. 2017, *ApJ*, 846, 51
- McCammon, D., Almy, R., Apodaca, E., et al. 2002, *ApJ*, 576, 188
- McGee, S. L., Balogh, M. L., Bower, R. G., Font, A. S., & McCarthy, I. G. 2009, *MNRAS*, 400, 937
- Planck Collaboration XXIX. 2014, *A&A*, 571, A29
- Pratt, G. W., Arnaud, M., Piffaretti, R., et al. 2010, *A&A*, 511, A85
- Rossetti, M., Gastaldello, F., Ferioli, G., et al. 2016, *MNRAS*, 457, 4515
- Sato, K., Matsushita, K., & Gastaldello, F. 2009, *PASJ*, 61, 365
- Schlegel, D. J., Finkbeiner, D. P., & Davis, M. 1998, *ApJ*, 500, 525
- Smith, R. K., Brickhouse, N. S., Liedahl, D. A., & Raymond, J. C. 2001, *ApJ*, 556, L91
- Snowden, S. L., Mushotzky, R. F., Kuntz, K. D., & Davis, D. S. 2008, *A&A*, 478, 615
- Sun, M., Voit, G. M., Donahue, M., et al. 2009, *ApJ*, 693, 1142
- van Weeren, R. J., de Gasperin, F., Akamatsu, H., et al. 2019, *Space Sci. Rev.*, 215, 16
- Walker, S., Simionescu, A., Nagai, D., et al. 2019, *Space Sci. Rev.*, 215, 7
- Willingale, R., Starling, R. L. C., Beardmore, A. P., Tanvir, N. R., & O'Brien, P. T. 2013, *MNRAS*, 431, 394

Appendix A: Additional table and figure

Table A.1. Best-fit β -model parameters for RXCJ1825 and CIZAJ1824 clusters.

Cluster	RA Dec (J2000)	β	r_c	S_0	const	χ^2	d.o.f.
RXCJ1825	18:25:21.77, +30:26:25.3	0.562 ± 0.008	3.08 ± 0.06	0.0146 ± 0.0002	1.9 ± 0.1	318.4	140
CIZAJ1824	18:24:07.11, +30:29:34.7	0.445 ± 0.003	0.18 ± 0.01	0.2082 ± 0.0078	1.5 ± 0.2	126.5	56

Notes. Columns are: cluster name, X-ray centroid coordinates in degrees [J2000], beta parameter, core radius in arcmin, central surface brightness in $\text{cts s}^{-1} \text{arcmin}^{-2}$, constant sky background in units of $10^{-4} \text{cts s}^{-1} \text{arcmin}^{-2}$, chi-square and degrees of freedom. Neither RXCJ1825 nor CIZAJ1824 show a significant best-fit improvement with a double- β model, as evident from the F-test.

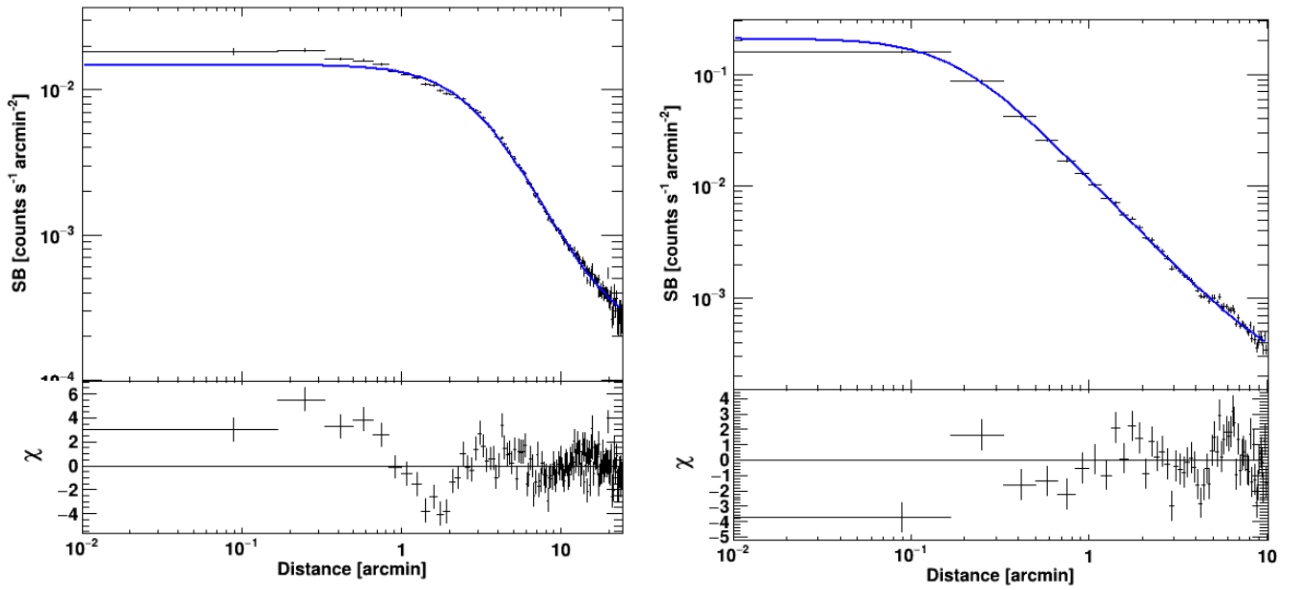


Fig. A.1. Surface brightness profile and best-fit β -model (blue line) of RXCJ1825 (*left panel*) and CIZAJ1824 (*right panel*). The profiles are centered on the cluster centroid, the elliptical annuli have ellipticity and PA of 0.25 and 165 deg for RXCJ1825, and 0.24 and 94 deg for CIZAJ1824. The distance is computed along the major axis.