



Publication Year	2016
Acceptance in OA	2020-07-06T18:07:26Z
Title	The Chandra COSMOS-Legacy Survey: Source X-Ray Spectral Properties
Authors	MARCHESI, STEFANO, LANZUISI, Giorgio, Civano, F., Iwasawa, K., Suh, H., COMASTRI, Andrea, Zamorani, G., Allevato, V., Griffiths, R., Miyaji, T., Ranalli, P., Salvato, M., Schawinski, K., Silverman, J., Treister, E., Urry, C. M., Vignali, C.
Publisher's version (DOI)	10.3847/0004-637X/830/2/100
Handle	http://hdl.handle.net/20.500.12386/26350
Journal	THE ASTROPHYSICAL JOURNAL
Volume	830



THE *CHANDRA* COSMOS-LEGACY SURVEY: SOURCE X-RAY SPECTRAL PROPERTIES

S. MARCHESI^{1,2}, G. LANZUISI^{2,3}, F. CIVANO⁴, K. IWASAWA⁵, H. SUH⁶, A. COMASTRI², G. ZAMORANI², V. ALLEVATO⁷, R. GRIFFITHS⁸, T. MIYAJI⁹, P. RANALLI¹⁰, M. SALVATO¹¹, K. SCHAWINSKI¹², J. SILVERMAN¹³, E. TREISTER^{14,15}, C. M. URRY¹⁶, AND C. VIGNALI^{2,3}

¹ Department of Physics and Astronomy, Clemson University, Clemson, SC 29634, USA

² INAF—Osservatorio Astronomico di Bologna, via Ranzani 1, I-40127 Bologna, Italy

³ Dipartimento di Fisica e Astronomia, Università di Bologna, viale Berti Pichat 6/2, I-40127 Bologna, Italy

⁴ Harvard-Smithsonian Center for Astrophysics, 60 Garden Street, Cambridge, MA 02138, USA

⁵ ICREA and Institut de Ciències del Cosmos (ICC), Universitat de Barcelona (IEEC-UB), Martí y Franquès 1, E-08028 Barcelona, Spain

⁶ Institute for Astronomy, 2680 Woodlawn Drive, University of Hawaii, Honolulu, HI 96822, USA

⁷ Department of Physics, University of Helsinki, Gustaf Hällströmin katu 2a, FI-00014 Helsinki, Finland

⁸ Physics and Astronomy Department, Natural Sciences Division, University of Hawaii at Hilo, 200 W. Kawili St., Hilo, HI 96720, USA

⁹ Instituto de Astronomía sede Ensenada, Universidad Nacional Autónoma de México, Km. 103, Carret. Tijuana-Ensenada, Ensenada, BC, Mexico

¹⁰ Lund Observatory, P.O. Box 43, SE-22100 Lund, Sweden

¹¹ Max-Planck-Institut für extraterrestrische Physik, Giessenbachstrasse 1, D-85748 Garching bei München, Germany

¹² Institute for Astronomy, Department of Physics, ETH Zurich, Wolfgang-Pauli-Strasse 27, CH-8093 Zurich, Switzerland

¹³ Kavli Institute for the Physics and Mathematics of the Universe (WPI), The University of Tokyo Institutes for Advanced Study,

The University of Tokyo, Kashiwa, Chiba 277-8583, Japan

¹⁴ Universidad de Concepción, Departamento de Astronomía, Casilla 160-C, Concepción, Chile

¹⁵ Pontificia Universidad Católica de Chile, Instituto de Astrofísica, Casilla 306, Santiago 22, Chile

¹⁶ Yale Center for Astronomy and Astrophysics, 260 Whitney Avenue, New Haven, CT 06520, USA

Received 2016 July 10; revised 2016 July 29; accepted 2016 August 9; published 2016 October 17

ABSTRACT

We present the X-ray spectral analysis of the 1855 extragalactic sources in the *Chandra* COSMOS-Legacy survey catalog having more than 30 net counts in the 0.5–7 keV band. A total of 38% of the sources are optically classified type 1 active galactic nuclei (AGNs), 60% are type 2 AGNs, and 2% are passive, low-redshift galaxies. We study the distribution of AGN photon index Γ and of the intrinsic absorption $N_{\text{H},z}$ based on the sources' optical classification: type 1 AGNs have a slightly steeper mean photon index Γ than type 2 AGNs, which, on the other hand, have average $N_{\text{H},z} \sim 3$ times higher than type 1 AGNs. We find that $\sim 15\%$ of type 1 AGNs have $N_{\text{H},z} > 10^{22} \text{ cm}^{-2}$, i.e., are obscured according to the X-ray spectral fitting; the vast majority of these sources have $L_{2-10 \text{ keV}} > 10^{44} \text{ erg s}^{-1}$. The existence of these objects suggests that optical and X-ray obscuration can be caused by different phenomena, the X-ray obscuration being, for example, caused by dust-free material surrounding the inner part of the nuclei. Approximately 18% of type 2 AGNs have $N_{\text{H},z} < 10^{22} \text{ cm}^{-2}$, and most of these sources have low X-ray luminosities ($L_{2-10 \text{ keV}} < 10^{43} \text{ erg s}^{-1}$). We expect a part of these sources to be low-accretion, unobscured AGNs lacking broad emission lines. Finally, we also find a direct proportional trend between $N_{\text{H},z}$ and host-galaxy mass and star formation rate, although part of this trend is due to a redshift selection effect.

Key words: galaxies: active – galaxies: nuclei – X-rays: galaxies

1. INTRODUCTION

A proper understanding of the properties of the supermassive black holes (SMBHs) in the center of galaxies, and of their evolution across cosmic time, requires unbiased samples of active galactic nuclei (AGNs), both obscured and unobscured (i.e., sources with hydrogen column density $N_{\text{H},z}$ below and above the 10^{22} cm^{-2} threshold conventionally adopted to separate unobscured and obscured sources, respectively), over a wide range of redshifts and luminosities. Multiwavelength data are also required to avoid selection effects. Mapping the typical AGN population, i.e., those moderate-luminosity sources that produce a significant fraction of the X-ray background emission (see, e.g., Gilli et al. 2007; Treister et al. 2009), is possible only with surveys that combine depth, to detect AGNs up to $z \sim 6$, and area, to find statistically significant numbers of sources at any redshift.

X-ray data are strategic in the AGN selection process, for several reasons. First, at X-ray energies the contamination from non-nuclear emission, mainly due to star formation processes, is far less significant than in optical and infrared wavelengths (Donley et al. 2008; Lehmer et al. 2012; Stern et al. 2012). Moreover, *Chandra* and *XMM-Newton* can select both

unobscured and obscured AGNs and can also detect a fraction of Compton-thick AGNs, i.e., sources with hydrogen column densities $N_{\text{H}} \geq 10^{24} \text{ cm}^{-2}$ up to redshift $z \sim 2-3$ (Comastri et al. 2011; Iwasawa et al. 2012; Georgantopoulos et al. 2013; Buchner et al. 2015; Lanzuisi et al. 2015). Therefore, combining X-ray and optical/near-IR observations of AGNs allows one to study simultaneously the properties of the accreting SMBHs and their host galaxies.

The proper characterization of AGN X-ray spectra requires observations with high signal-to-noise ratio (S/N) to properly model many spectral features, such as the so-called “soft excess,” warm absorbers, emission and absorption lines different from the iron $K\alpha$ line at 6.4 keV, and a reflection component (see, e.g., Risaliti & Elvis 2004, for a review of these features). However, AGN spectra with low S/N can be modeled in the 0.5–10 keV band with an absorbed power law, where the intrinsic absorption is caused by the gas and dust surrounding the SMBH, or by the host galaxy itself. The iron $K\alpha$ line at 6.4 keV can also be properly modeled in low-S/N AGN spectra. Therefore, the X-ray spectroscopy of large numbers of AGNs, combined with extended multiwavelength coverage, makes it possible to study the distribution of parameters such as the intrinsic absorption ($N_{\text{H},z}$), the iron

$K\alpha$ equivalent width (EW), and the power-law photon index (Γ) and to look for trends between these quantities and redshift or intrinsic X-ray luminosity.

The primary power-law component of the AGN X-ray spectra is caused by inverse Compton scattering emissions of UV photons. These photons are first emitted by the disk and then upscattered by the hot corona electrons that surround the disk (Haardt & Maraschi 1991; Siemiginowska et al. 2007). The power law produced by this process has typical photon index $\Gamma = 1.9$, with dispersion $\sigma = 0.2$ (Nandra & Pounds 1994; Picconcelli et al. 2005; Tozzi et al. 2006; Mainieri et al. 2007; Lanzuisi et al. 2013). Moreover, Γ seems to be independent of different SMBH physical parameters, such as BH mass and spin, while a directly proportional trend between Γ and the SMBH Eddington ratio ($\lambda_{\text{Edd}} = L_{\text{bol}}/L_{\text{Edd}}$, with $L_{\text{Edd}} = 1.2 \times 10^{38} (M_{\text{BH}}/M_{\odot}) \text{ erg s}^{-1}$) has been reported in several works (e.g., Wang et al. 2004; Shemmer et al. 2008; Risaliti et al. 2009; Jin et al. 2012).

A proper analysis of the different X-ray spectral parameters requires large data sets, with both good X-ray statistics and complete multiwavelength characterization. Since developing these types of data sets is not trivial, even the dependences of the photon index and the intrinsic absorption from other quantities (e.g., redshift, X-ray or bolometric luminosity) are still debated, as are the X-ray spectral properties of optically classified type 1 and type 2 AGNs (see, e.g., Mateos et al. 2005; Page et al. 2005; Shemmer et al. 2006; Sobolewska & Papadakis 2009; Young et al. 2009; Lusso et al. 2012; Lanzuisi et al. 2013; Fotopoulou et al. 2016).

The *Chandra* COSMOS-Legacy survey (Civano et al. 2016), with its relatively deep average coverage of ~ 160 ks over 2.15 deg^2 , for a total of 4.6 Ms, provides an unprecedented data set to study the X-ray properties of AGNs over a wide range of redshifts and luminosities. Moreover, the COSMOS field (Scoville et al. 2007) has been covered with extended multiwavelength photometric (Capak et al. 2007; Koekemoer et al. 2007; Sanders et al. 2007; Schinnerer et al. 2007; Taniguchi et al. 2007; Zamojski et al. 2007; Ilbert et al. 2009; McCracken et al. 2010; Laigle et al. 2016) and spectroscopic (Lilly et al. 2007, 2009; Trump et al. 2007) observations, thus enabling us to identify and characterize $\sim 97\%$ of the X-ray sources (Marchesi et al. 2016a). Therefore, a complete analysis of the X-ray spectral parameters for different classes of optical sources is possible in *Chandra* COSMOS-Legacy. In this work, we present the X-ray spectral analysis of the 1855 extragalactic sources with more than 30 net counts in the 0.5–7 keV band in *Chandra* COSMOS-Legacy. In Section 2 we describe the *Chandra* COSMOS-Legacy survey, the X-ray catalog, and the optical/IR properties of the X-ray sources. In Section 3 we present the spectral extraction procedure, while in Section 4 we describe the different fitting models we used and the results of the fitting. In Section 5 we discuss the fit parameter distribution. Finally, in Section 6 we discuss the properties of the $z > 3$ subsample, and in Section 7 we summarize the results of this work. Throughout the paper, we assume a cosmology with $H_0 = 71 \text{ km s}^{-1} \text{ Mpc}^{-1}$, $\Omega_M = 0.3$, and $\Omega_{\Lambda} = 0.7$. Errors are at 90% confidence if not otherwise stated.

2. THE CHANDRA COSMOS-LEGACY SURVEY

2.1. The X-Ray Catalog

The *Chandra* COSMOS-Legacy X-ray catalog is described in Civano et al. (2016). The catalog is the result of 4.6 Ms of

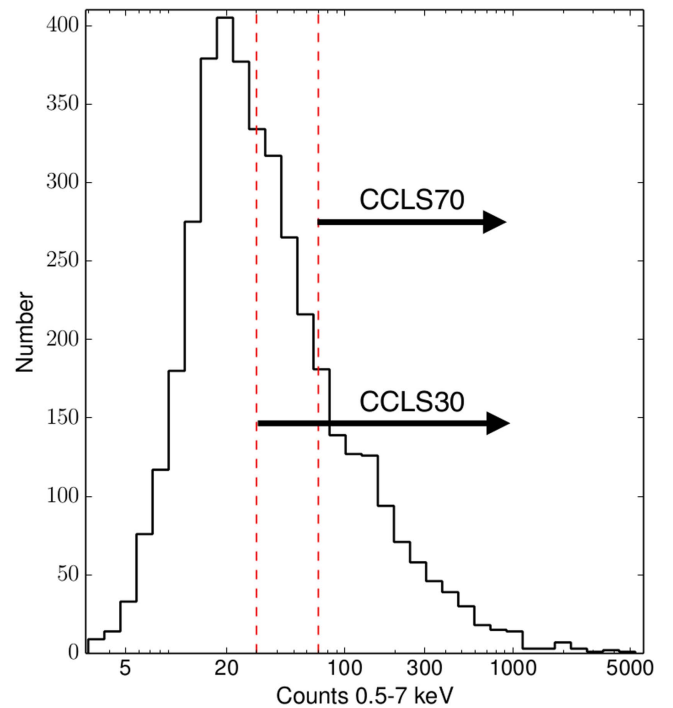


Figure 1. Distribution of 0.5–7 keV net counts for the whole *Chandra* COSMOS-Legacy survey. Red dashed lines mark the two different thresholds adopted in the X-ray spectral analysis, i.e., 30 and 70 net counts.

observations with *Chandra* on the 2.2 deg^2 of the COSMOS field. The final catalog includes 4016 sources, detected in at least one of the following three bands: full (F; 0.5–7 keV), soft (S; 0.5–2 keV), and hard (H; 2–7 keV). Each source was detected in at least one band with a maximum likelihood detection value $\text{DET_ML} > 10.8$, i.e., with probability of being a spurious detection $P < 2 \times 10^{-5}$. The survey flux limit in each of the three bands is $f = 1.2 \times 10^{-15} \text{ erg s}^{-1} \text{ cm}^{-2}$ in the 0.5–10 keV band, $f = 2.8 \times 10^{-16} \text{ erg s}^{-1} \text{ cm}^{-2}$ in the 0.5–2 keV band, and $f = 1.9 \times 10^{-15} \text{ erg s}^{-1} \text{ cm}^{-2}$ in the 2–10 keV band. Fluxes have been computed assuming as a model a power law with no intrinsic absorption and photon¹⁷ index $\Gamma = 1.4$. Fluxes in the full (hard) band are computed over the 0.5–10 keV (2–10 keV) energy range, instead of over the 0.5–7 keV (2–7 keV) one, for an easy comparison with other works in the literature. In Figure 1 we show the 0.5–7 keV net count distribution for the 4016 *Chandra* COSMOS-Legacy sources. Of these, 1949 sources have more than 30 net counts and 923 sources have more than 70 net counts. These two count thresholds are based on previous X-ray spectral analysis (see, e.g., Lanzuisi et al. 2013, 2015): in spectra with more than ~ 70 net counts, we can perform a fit leaving the two main fit parameters (the power-law photon index Γ and the intrinsic absorption $N_{\text{H,z}}$; see Section 4.1 for further details) free to vary, recovering uncertainties $< 30\%$ for the vast majority of the sources (see Section 4.2). We instead choose the threshold of ~ 30 net counts as a limit for which only one of the two parameters can be constrained, with the other one fixed. In the following sections, we will describe the X-ray spectral properties of the 1855 extragalactic sources (i.e., excluding the 64 stars and the 30

¹⁷ This is the slope of the cosmic X-ray background (see, e.g., Hickox & Markevitch 2006) and well represents a distribution of both obscured and unobscured AGNs at the fluxes covered by *Chandra* COSMOS-Legacy.

sources with no redshift available) with more than 30 net counts in the 0.5–7 keV band: from now on, we will refer to this sample as the CCLS30 sample. We will also refer to the sample of 887 extragalactic sources with more than 70 net counts in the 0.5–7 keV band as the CCLS70 sample.

2.2. *Chandra* COSMOS-Legacy Optical/IR Counterparts

The optical/IR counterparts of the whole *Chandra* COSMOS-Legacy sample are described in Marchesi et al. (2016a). A total of 1273 sources out of 1855 in CCLS30 (68.6%) have a z_{spec} ; the remaining 582 have a z_{phot} , obtained using the spectral energy distribution (SED) fitting procedure described in Salvato et al. (2011) and based on χ^2 minimization, using the publicly available code LePhare (Arnouts et al. 1999; Ilbert et al. 2006). The spectroscopic completeness is significantly higher in CCLS70, where 732 out of 887 sources (82.5%) have a z_{spec} . In our analysis, we classify the sources in the CCLS30 on the basis of the optical spectroscopic classification, when available; otherwise, we use the best-fitting template derived in the SED-fitting procedure adopted to estimate the photometric redshifts. The sources are divided as follows:

1. The 696 type 1, unobscured AGNs: broad-line AGNs (BLAGNs) on the basis of their spectral classification, i.e., sources with lines having FWHM $\geq 2000 \text{ km s}^{-1}$, or sources with no spectral information, and SED best fitted by an unobscured AGN template.
2. The 1111 type 2, obscured AGNs: objects with rest-frame, absorption-corrected 2–10 luminosity $L_{2-10 \text{ keV}} \geq 10^{42} \text{ erg s}^{-1}$, no broad lines in their spectra (non-BLAGNs), or sources with no spectral type and SED best fitted by an obscured AGN template (and any $L_{2-10 \text{ keV}}$) or a galaxy template (and $L_{2-10 \text{ keV}} \geq 10^{42} \text{ erg s}^{-1}$).
3. The 37 galaxies: objects with rest-frame, absorption-corrected 2–10 luminosity $L_{2-10 \text{ keV}} < 10^{42} \text{ erg s}^{-1}$, no broad lines in their spectra (non-BLAGNs), or sources with no spectral type and SED best fitted by a galaxy template. Nine of these sources are part of a sample of 50 dwarf galaxies (i.e., having mass $10^7 < M_* < 10^9$), candidate type 2 AGNs that are being analyzed in a separate paper (M. Mezcuca et al. 2016, in preparation), while the other 10 are part of a sample of 69 early-type galaxies analyzed in Civano et al. (2014). In the remaining part of our analysis, we do not show the properties of these 37 sources.
4. Eleven sources have a low-quality spectroscopic redshift, from which it was possible to estimate only the z value, with no information on the spectral type, and a lack of SED template best-fitting information. Therefore, for these 11 sources no type information is provided.

We point out that there is an excellent agreement between the spectral and the SED template best-fitting classification, while they are both available. A total of 86% of the BLAGNs also have SED best fitted with an unobscured AGN template, and 96% of the non-BLAGNs have SED best fitted with an obscured AGN or a galaxy template. The lower agreement for BLAGNs is not surprising, given that BLAGN SEDs, especially those of low-luminosity AGNs, can be contaminated by stellar light (Luo et al. 2010; Elvis et al. 2012; Hao et al. 2014). A summary of the average redshift and X-ray properties of the three subsamples is shown in Table 1.

3. SPECTRA EXTRACTION

We first extract a spectrum in each of the fields where a source was observed, using the CIAO (Fruscione et al. 2006) tool `specextract`. We used CIAO 4.7 and CALDB 4.6.9. The `specextract` tool creates a source and background spectrum for each input position, together with the respective response matrices, ARF and RMF. For the source spectral extraction we use a circular region with radius r_{90} , i.e., the radius that contains 90% of the point-spread function in the 0.5–7 keV band; r_{90} was computed using the CIAO tool `psfsize_srcs`, for each source in each observation where the source has been observed (1–16 observations¹⁸). The most common number of observations per source is four (463 sources, 25%), and 331 sources (18%) have been observed in eight or more fields.

To extract the background spectrum, we use event files where the detected sources have been previously removed, to avoid source contamination to the background. The background spectra have been extracted from an annular region centered on the source position and with inner radius $r_{90} + 2''.5$ and outer radius $r_{90} + 20''$. These radii were chosen to avoid contamination from the source emission and to have enough counts to obtain a reliable background spectrum. As a result, the mean (median) number of background counts in the 0.5–7 keV band is 149.1 (154.7), and only 78 sources (i.e., $\sim 4\%$ of the CCLS30 sample) have less than 50 background counts in the 0.5–7 keV band. These 78 sources are mainly located in low-exposure pointings.

All the spectra obtained for a single source have finally been combined in a single spectrum, using the CIAO tool `combine_spectra`. We set the `bscale` method parameter, i.e., the parameter that determines how the background counts are combined, to “counts,” because this algorithm is the suggested one to have background counts and `backscale` values properly weighted when the background is going to be modeled rather than subtracted.¹⁹

4. SPECTRAL FITTING

The spectral fitting was performed using the CIAO modeling and fitting package SHERPA (Freeman et al. 2001). All the fits were performed using the Cstat statistics, which is based on the Cash statistics (Cash 1979) and is usually adopted for low-count spectral fitting, since in principle it does not require count binning to work. The main difference between Cstat and the original Cash statistics is that the change in Cstat statistics adding or subtracting a parameter to a model (ΔC) is distributed similarly to $\Delta\chi^2$. Therefore, it is possible to use the reduced Cstat, $Cstat_\nu = Cstat/\text{dof}$, where `dof` is the number of degrees of freedom of the fit, as an estimator of the fit goodness; a good fit should have $Cstat \sim 1$. It is also worth mentioning that $Cstat_\nu$ is a good estimator of the fit goodness only if the fitted spectra have more than 1 count per bin, avoiding empty channels: we binned our spectra with 3 counts per bin for an easier visual inspection of the fits. Cstat does not work with background-subtracted data, being a maximum likelihood function and assuming a purely Poissonian count error. For this reason, our analysis requires a proper modeling of the background, to find the best fit, which is then included in

¹⁸ A total of 23 *Chandra* COSMOS-Legacy fields have been observed in two or three separate observations, due to instrumental constraints.

¹⁹ <http://cxc.harvard.edu/ciao/ahelp/combinespectra.html>

Table 1
Distribution of CCLS30 Sources in Different Classes, Based on Optical Classification, and Their Redshift and X-Ray Average Properties

Class (1)	Number (2)	Fraction (3)	z_{\min}, z_{\max} (4)	f_{spec} (5)	$\langle z_{\text{spec}} \rangle, \langle z_{\text{phot}} \rangle$ (6)	$\langle N_{\text{cts}} \rangle$ (7)	$\langle f_{2-10 \text{ keV}} \rangle$ (8)	$\langle L_{2-10 \text{ keV}} \rangle$ (9)
Type 1	696	37.7	0.103–5.31	83.0	1.71, 1.92	217.2	1.7×10^{-14}	3.2×10^{44}
Type 2	1111	60.3	0.066–4.45	58.8	1.05, 1.58	102.2	1.4×10^{-14}	1.7×10^{44}
Galaxies	37	2.0	0.029–0.363	84.6	0.18, 0.15	72.1	6.4×10^{-15}	4.0×10^{41}

Note. (1) Source class; (2) number of sources; (3) fraction of CCLS30 sample (stars and sources without redshift excluded) in each class; (4) minimum and maximum redshift; (5) fraction of spectroscopic redshift; (6) average of the spectroscopic and photometric redshifts; (7) average 0.5–7 keV net counts; (8) average 2–10 keV flux; (9) average 2–10 keV rest-frame, absorption-corrected luminosity.

the final model of the source+background spectrum. We describe the model we adopted to fit the *Chandra* ACIS-I background in the [Appendix](#).

4.1. Source Modeling

We now describe the procedure we adopted to find the best-fitting model for each source in our sample. We started from a basic model, an absorbed power law, and then we added further components, looking for a statistically significant improvement in the fit, such as $\Delta\text{Cstat} = \text{Cstat}_{\text{old}} - \text{Cstat}_{\text{new}} > 2.71$ (see, e.g., Tozzi et al. 2006; Brightman et al. 2014, which validated this value with extended simulations), where $\text{Cstat}_{\text{old}}$ is the Cstat value of the best fit of the original model, while $\text{Cstat}_{\text{new}}$ is the Cstat value of the best fit of the model with the additional component. It is worth noticing that $\Delta\text{Cstat} = 2.71$ corresponds to a fit improvement with 90% confidence only if $\text{Cstat}_{\nu} \sim 1$ (Brightman et al. 2014), which is a true statement for the majority of our fits (Figure 3).

For all fits, we fixed the Galactic absorption to the average value observed in the direction of the COSMOS field ($N_{\text{H,gal}} = 2.5 \times 10^{20} \text{ cm}^{-2}$; Kalberla et al. 2005).

1. For the 968 sources with $30 < \text{counts} < 70$, we fitted an absorbed power law with fixed photon index $\Gamma_1 = 1.9$, keeping the rest-frame absorbed column, $N_{\text{H,z}}$, free to vary.
2. We then fitted all the 1855 sources with an absorbed power-law with Γ_1 and $N_{\text{H,z}}$ free to vary. A total of 296 of the 967 sources with <70 net counts have a best fit significantly improved with respect to the fit with $\Gamma_1 = 1.9$.
3. For a subsample of sources, all of which are obscured AGNs with $N_{\text{H,z}} > 10^{22} \text{ cm}^{-2}$, we found an improvement to the fit adding to the model a second power law, with $\Gamma_2 = \Gamma_1$, no intrinsic obscuration, and normalization free to vary. This second power law models the AGN emission unabsorbed by the torus and/or a scattered component, i.e., light deflected without being absorbed by the dust and gas. This second normalization, $norm_2$, is always significantly smaller than the first one, $norm_1$, with the ratio $norm_2/norm_1$ ranging between 3×10^{-2} and 0.15. A total of 57 sources have best fits significantly improved with respect to the model with a single power law, 29 of which have fixed $\Gamma = 1.9$, while the other 28 have Γ free to vary.
4. A fraction of spectra are expected to have an excess in the single power-law fit residuals around 6–7 keV (rest frame), this excess being due to the iron $K\alpha$ emission line at 6.4 keV. For this reason, we added to our absorbed power-law fit an emission line at 6.4 keV, modeled with a

Gaussian having line width $\sigma = 0.1 \text{ keV}$, and we refitted the spectra of all 1855 sources in CCLS30. We froze the redshift value of the line for those sources with a spectroscopic redshift, while we left the redshift free to vary within $z + \Delta z$, with $\Delta z = 0.5$, for the photometric redshifts. More than 90% of the sources with only a photo- z in CCLS30 have $\Delta z < 0.5$, so we choose this value as a conservative threshold. We find that 130 (82) sources have best fits significantly improved with respect to the single power-law fit in CCLS30 (CCLS70). Moreover, 10 (6) of the sources in the >30 (>70) counts sample are best fitted by a double power law with emission-line model. We discuss how the iron $K\alpha$ line EW correlates with the best-fit photon index Γ and $N_{\text{H,z}}$ in Section 5.6.

In Figure 2 we show an example of each type of best fit. In Table 2 we report the number of sources for each class of best fit, for the CCLS30 and the CCLS70 samples, and for the sample of sources with more than 30 and less than 70 net counts in the 0.5–7 keV band. In Table 3 we show the same best-fit division, for type 1 and type 2 sources, and for galaxies.

In the left panel of Figure 3 we show the distribution of the reduced Cstat, $\text{Cstat}_{\nu} = \text{Cstat}/\text{dof}$, as a function of the 0.5–7 keV net counts, for the 1855 sources in the CCLS30 sample. The distribution is peaked around $\text{Cstat}_{\nu} = 1$, with mean (median) $\text{Cstat}_{\nu} = 1.05$ (1.01) and standard deviation $\sigma = 0.31$. The dispersion is even smaller for the CCLS70 sample, for which $\sigma = 0.23$; the same subsample has mean (median) $\text{Cstat}_{\nu} = 1.01$ (0.98).

In the right panel of Figure 3 we show the distribution of Cstat versus dof for the sources in CCLS30. The red solid line indicates the case $\text{Cstat}_{\nu} = 1$, i.e., $\text{Cstat} = \text{dof}$, while the red dashed lines show the Cstat value, at a given dof, above (below) which there is 1% probability to find such a high (low) value if the model is correct. More than 98% of the sources in our sample lie within the two dashed lines, therefore suggesting that most of the fits are acceptable. Indeed, there are 16 sources (0.9% of the whole sample) below and 21 sources (1.1%) above the dashed lines, a fraction consistent with random noise fluctuations.

4.2. Modeling Results

In Figure 4 we show the distribution of two main spectral parameters, Γ and $N_{\text{H,z}}$, for both the CCLS30 (left) and the CCLS70 (right) samples, for all the sources for which we left both parameters free to vary. It is worth noticing that the observed dispersion on Γ is significantly smaller for those sources with $N_{\text{H,z}} < 10^{22} \text{ cm}^{-2}$, i.e., classified as unobscured ($\sigma_{>30} = 0.47$, $\sigma_{>70} = 0.31$), with respect to those sources with

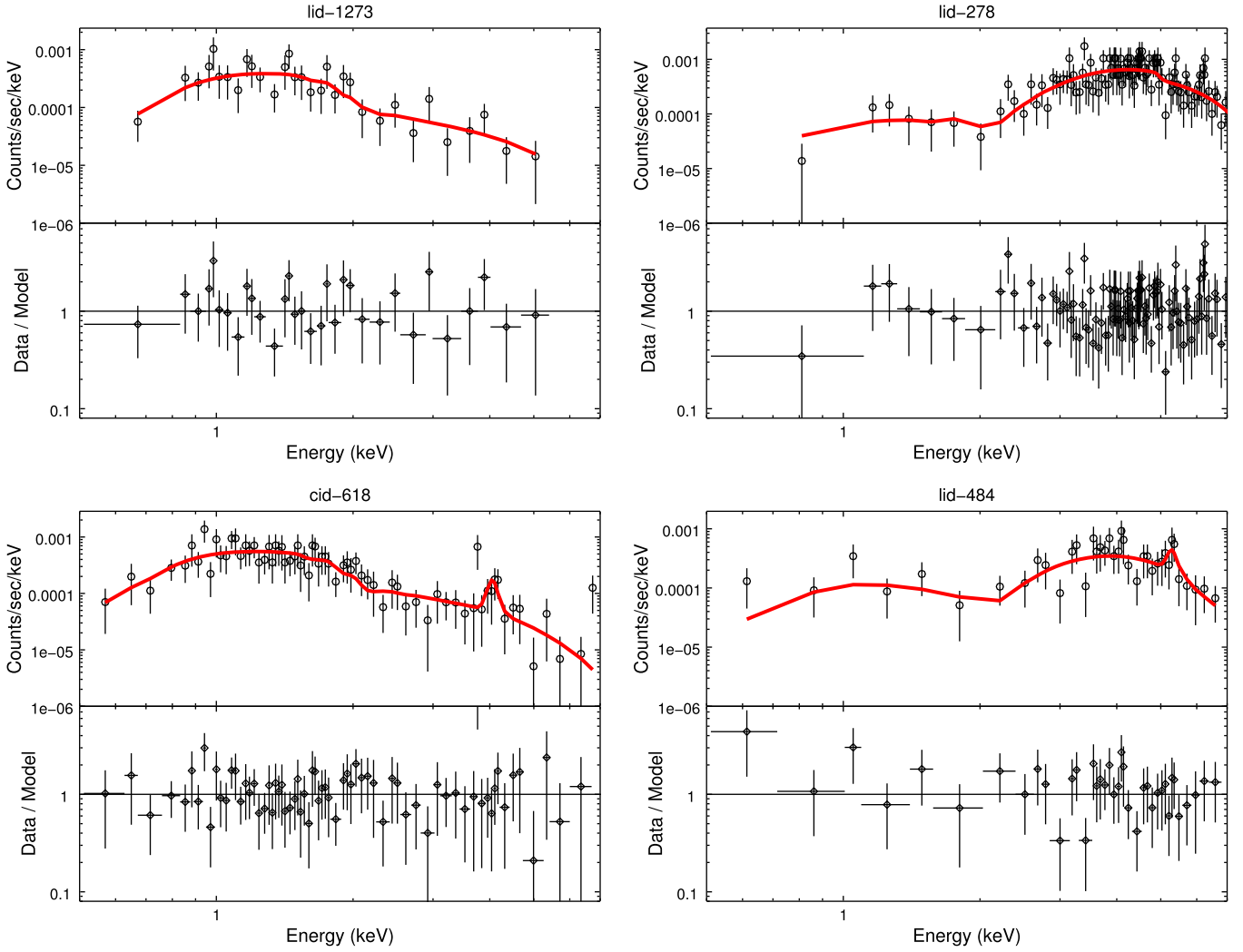


Figure 2. Examples of different best fits. Top left: absorbed power law. Top right: double power law. Bottom left: absorbed power law with iron $K\alpha$ emission line. Bottom right: double power law with iron $K\alpha$ emission line.

Table 2

Number of Sources for Each Class of Best Fit, for Sources with More Than 30, More Than 30 and Less Than 70, and More Than 70 Net Counts in the 0.5–7 keV Band

Fit	n_{CCLS30}	n_{30-70}	n_{CCLS70}
$\Gamma = 1.9$	609	609	0
Γ free	1048	272	776
Double PL	57	35	22
Fe $K\alpha$	131	48	83
2PL+Fe $K\alpha$	10	4	6
Total	1855	968	887

nominal or upper limit at $N_{\text{H},z} > 10^{22} \text{ cm}^{-2}$ ($\sigma_{>30} = 0.83$, $\sigma_{>70} = 0.47$). Moreover, at $N_{\text{H},z} > 10^{22} \text{ cm}^{-2}$ the errors on Γ are larger, since constraining Γ becomes more difficult for sources with larger column density. This discrepancy is mainly due to the fact that obscured sources have on average less net counts than unobscured ones, and therefore their best-fit parameters are less constrained. In CCLS30, sources with $N_{\text{H},z} > 10^{22} \text{ cm}^{-2}$ have mean (median) net counts in the 0.5–7 keV band $\langle \text{cts} \rangle = 124.7$ (90.2), while sources with $N_{\text{H},z} < 10^{22} \text{ cm}^{-2}$ have $\langle \text{cts} \rangle = 293.4$ (153.4).

In the left panel of Figure 5 we show the distribution of the photon index Γ as a function of the number of 0.5–7 keV net counts for sources in CCLS70. The black solid line shows the mean Γ value for the 877 sources in the CCLS70 sample, $\langle \Gamma \rangle = 1.68$. The mean Γ of the whole CCLS30 population, i.e., taking into account also the 609 sources with $\Gamma = 1.9$ and the 345 sources with less than 70 net counts and Γ free to vary, which we do not plot in Figure 5, is $\langle \Gamma \rangle = 1.66$. Sources with peculiar Γ values (i.e., $\Gamma > 3$ or $\Gamma < 1$), which mainly contribute to the Γ distribution dispersion, have for the most part less than 70 net counts, and therefore their best-fit estimates are expected to be affected by larger uncertainties than those of brighter sources. A significant fraction of objects with less than 70 net counts (162 out of 967, $\sim 17\%$) have flat spectra (i.e., $\Gamma < 1$). Sources with such a photon index are candidate reflection-dominated, Compton-thick (CT) AGNs. However, these objects also have, on average, larger uncertainties on Γ . Therefore, an extensive analysis of these objects, including a fit with a more complex model than those used in this work, is required to determine how many of them are actual CT AGNs, and will be performed in G. Lanzuisi et al. (2016, in preparation).

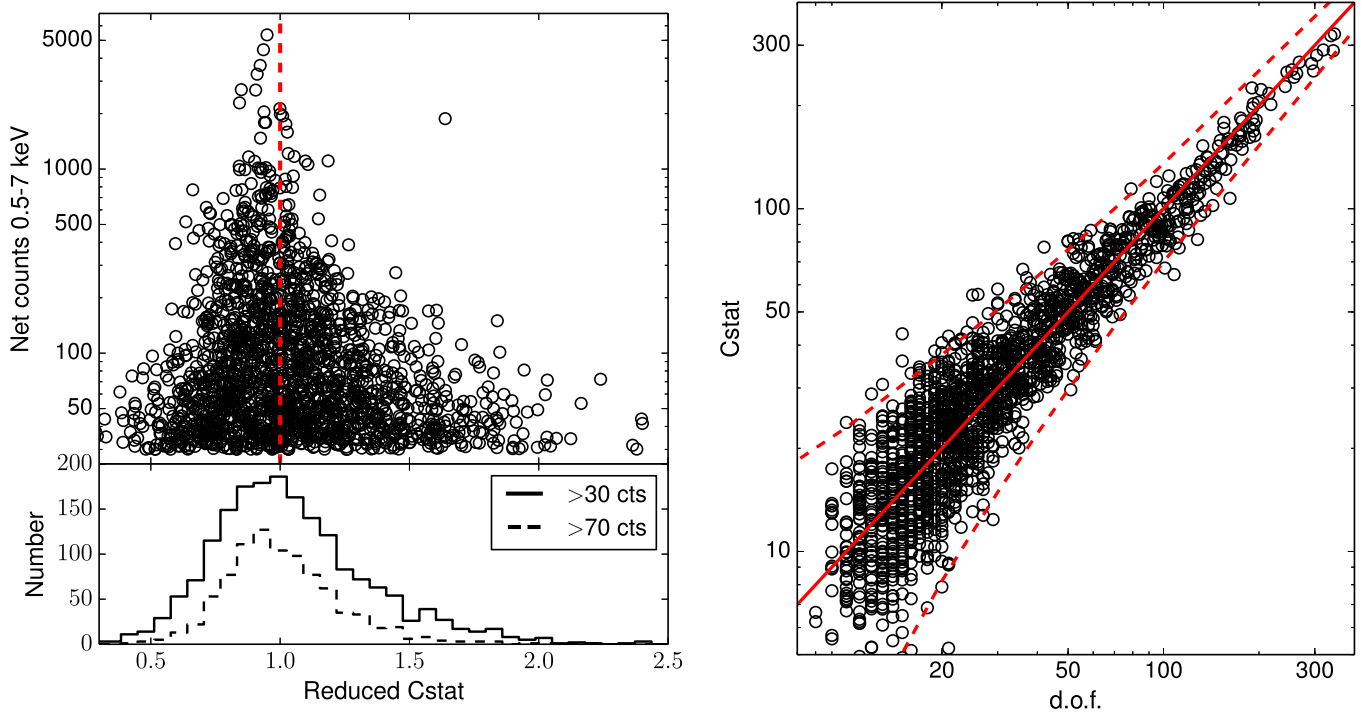


Figure 3. Left: reduced Cstat ($C_{\text{stat},r}$) vs. 0.5–7 keV net counts (top panel) and $C_{\text{stat},r}$ distribution (bottom), for the CCLS30 (solid line in the bottom panel) and the CCLS70 (dashed line) samples. Right: Cstat vs. dof for each source. The red solid line represents the $C_{\text{stat}} = \text{dof}$ trend (i.e., the ideal $C_{\text{stat},r} = 1$), while the dashed lines indicate, at any dof, the Cstat above (below) which a 1% probability to find such high (low) Cstat values is expected.

Table 3
Number of Sources for Each Class of Best Fit, for Sources with More Than 30, More Than 30 and Less Than 70, and More Than 70 Net Counts in the 0.5–7 keV Band

Fit	Type 1			Type 2			Galaxies		
	n_{CCLS30}	n_{30-70}	n_{CCLS70}	n_{CCLS30}	n_{30-70}	n_{CCLS70}	n_{CCLS30}	n_{30-70}	n_{CCLS70}
$\Gamma = 1.9$	177	177	0	412	412	0	20	20	0
Γ free	460	66	394	566	199	367	12	5	7
Double PL	11	6	5	45	28	17	1	1	0
Fe $K\alpha$	46	9	37	80	37	43	4	2	2
2PL+Fe $K\alpha$	2	1	1	8	3	5	0	0	0

The relation between number of counts and error on Γ can be seen in the right panel of Figure 5. The fraction of sources with relative error, $\Delta_{\text{err}} = \text{err}_{\Gamma}/\Gamma$, larger than 30% is $\sim 22\%$ for sources with >30 counts, but significantly drops to $\sim 8\%$ ($\sim 4\%$) for sources with >70 (>100) counts.

5. FITTED PARAMETER DISTRIBUTION

5.1. Intrinsic Absorption Column Density, $N_{\text{H},z}$

In Figure 6 we show the $N_{\text{H},z}$ distribution, for both type 1 (blue) and type 2 (red) AGNs. Nominal values are shown with solid lines, while the 90% confidence upper limit distributions are plotted with dashed lines.

We computed the Kaplan–Meier estimators of the mean values of $N_{\text{H},z}$ for type 1 and type 2 sources in CCLS30 and CCLS70, using the ASURV tool Rev 1.2 (Isobe & Feigelson 1990; Lavalley et al. 1992), which implements the methods presented in Feigelson & Nelson (1985), to properly take into account 90% confidence upper limits. We report these mean values in Table 4.

Type 1 AGNs are significantly less obscured than type 2 sources. In CCLS70, 45 type 1 AGNs (10.3% of the whole type 1 AGN population) have a 90% confidence intrinsic absorption value $N_{\text{H},z} > 10^{22} \text{ cm}^{-2}$ (i.e., above the threshold usually adopted to distinguish between obscured and unobscured sources), while 165 type 2 AGNs (38.3%) have $N_{\text{H},z} > 10^{22} \text{ cm}^{-2}$ at a 90% confidence level, and the other 35 have $N_{\text{H},z} > 10^{22} \text{ cm}^{-2}$ within 1σ . In CCLS30 the fraction of obscured sources slightly increases in both type 1 (106 sources, 15.2%) and type 2 sources (460 sources, 41.4%). The fractions do not change significantly if we take into account only sources with spectroscopic classification, therefore ruling out a pure SED-fitting template misclassification. We summarize the number of obscured sources per AGN type in Table 5.

Finally, in Table 6 we report the fraction of sources with only an upper limit on $N_{\text{H},z}$: as expected, the fraction of upper limits in type 1 sources (83.8% in CCLS30, 88.3% in CCLS70) is significantly higher than in type 2 sources (56.8% in CCLS30, 58.9% in CCLS70), at any count threshold. We also point out that the large fraction of upper limits on $N_{\text{H},z}$ is mainly due to the low count statistics of the majority of the

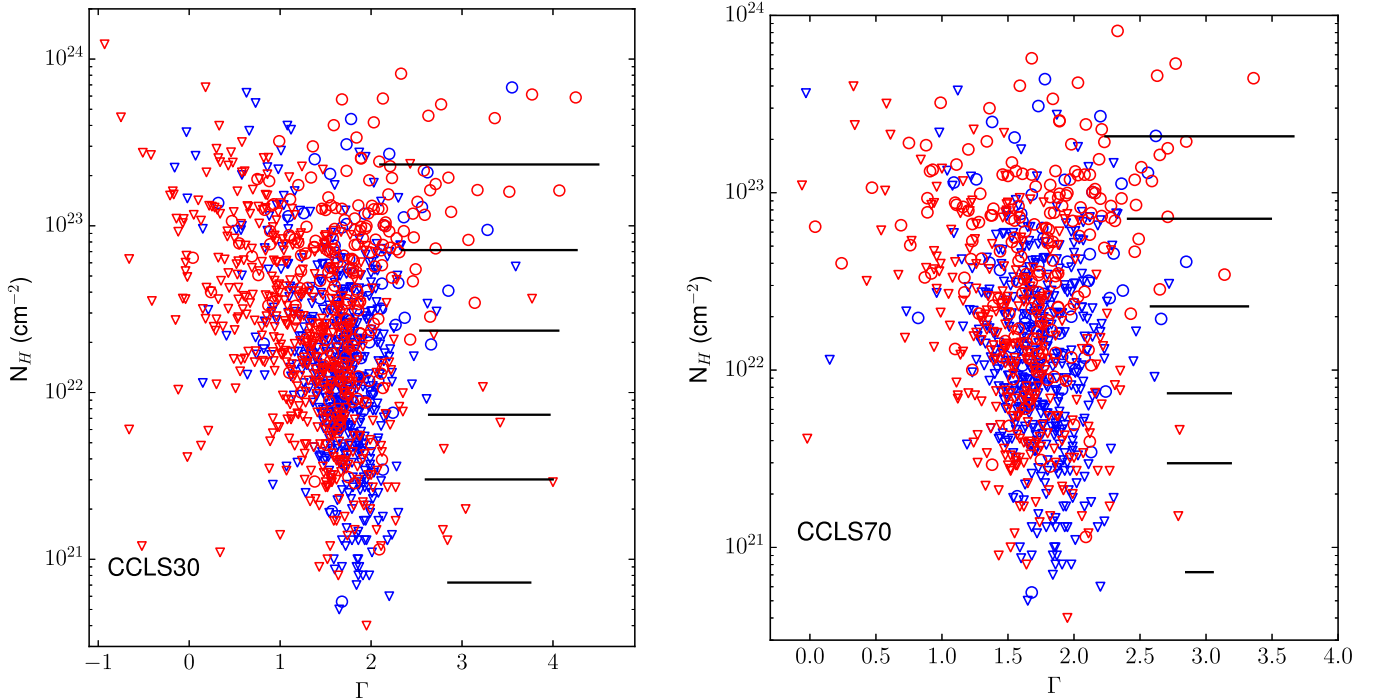


Figure 4. Γ vs. $N_{\text{H},z}$ for type 1 (blue) and type 2 (red) sources in the CCLS30 (left) and CCLS70 sample (right). The 90% confidence upper limits on $N_{\text{H},z}$ are plotted as triangles. Mean errors on Γ in different bins of $N_{\text{H},z}$ are also shown as black horizontal lines.

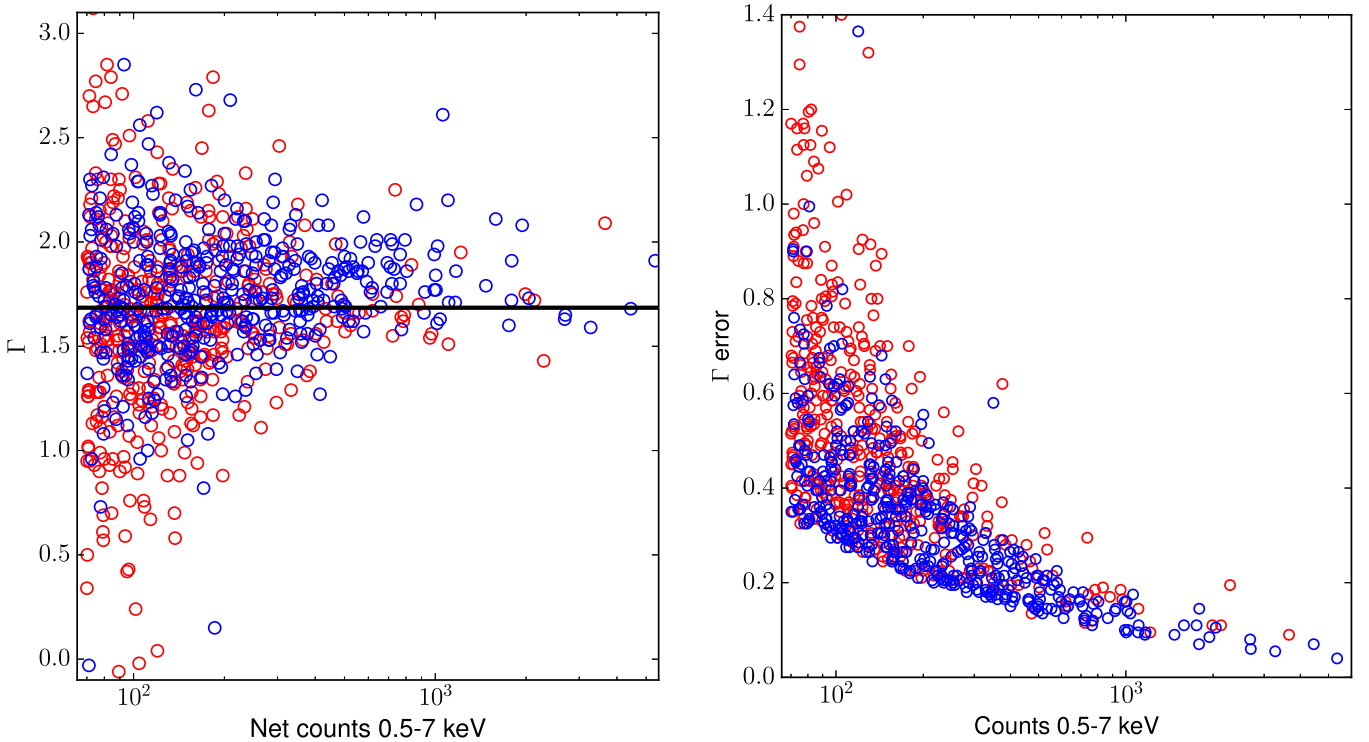


Figure 5. Γ vs. 0.5–7 keV net counts (left) and error on Γ vs. 0.5–7 keV net counts (right), for type 1 (blue) and type 2 (red) sources in CCLS70. The horizontal black solid line in the left panel shows the mean photon index $\langle \Gamma \rangle = 1.68$ for the CCLS70 sample.

objects in CCLS30 and cannot be related to intrinsically low values of $N_{\text{H},z}$. This is particularly true for type 2 AGNs, where 157 CCLS30 sources (14%) have an upper limit on $N_{\text{H},z}$ larger than $5 \times 10^{22} \text{ cm}^{-2}$, i.e., well above the 10^{22} cm^{-2} threshold.

5.2. Photon Index, Γ

In Figure 7 we show the distribution of Γ for the CCLS70 sample, for type 1 (blue dashed line) and type 2 (red solid line) sources. We do not plot the CCLS30 histogram because for a

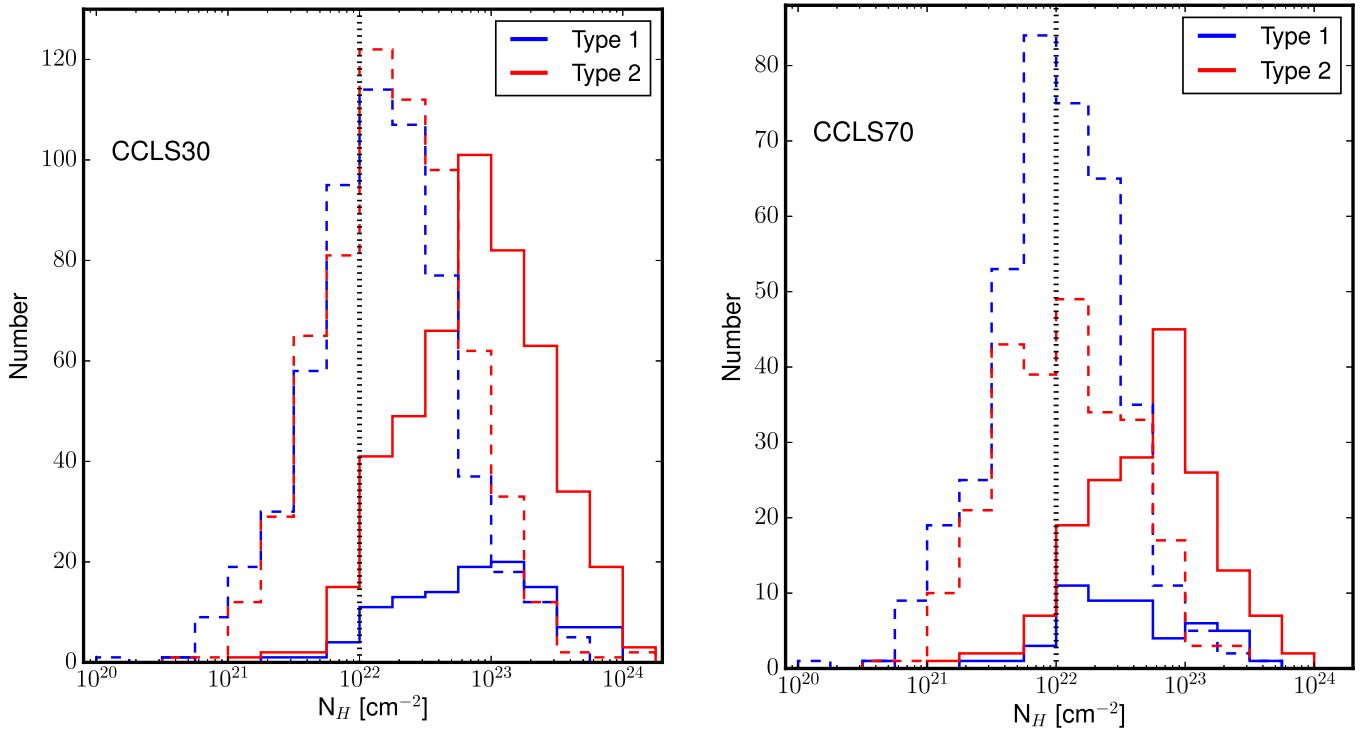


Figure 6. $N_{H,z}$ distribution for type 1 (blue) and type 2 (red) AGNs, for sources in CCLS30 (left) and CCLS70 (right). Nominal values are plotted with solid lines, while upper limits are plotted with dashed lines. The black dotted line at $N_{H,z} = 10^{22} \text{ cm}^{-2}$ marks the conventional threshold between unobscured and obscured sources.

Table 4

$N_{H,z}$ Mean Value for Type 1 and Type 2 AGNs, for Sources in CCLS30 and CCLS70, Computed with the ASURV Tool to Take into Account the 90% Confidence Upper Limits

Type	CCLS30	CCLS70
Type 1	2.57 ± 0.36	0.88 ± 0.18
Type 2	6.53 ± 0.40	4.02 ± 0.41

Note. All values are in units of 10^{22} cm^{-2} .

significant fraction of sources in the 30–70 net count sample we fixed $\Gamma = 1.9$ (see Table 2).

The mean and σ of the Γ distribution for type 1 and type 2 AGNs in CCLS70 are the following:

1. Type 1: the mean (median) Γ is 1.75 ± 0.02 (1.74), with dispersion $\sigma = 0.31$.
2. Type 2: the mean (median) Γ is 1.61 ± 0.02 (1.62), with dispersion $\sigma = 0.47$.

The error on the mean is computed as $\text{err} = \sigma/N$, where σ is the distribution dispersion and N is the number of sources in each sample.

The probability that the two distributions are drawn from the same population, on the basis of a Kolmogorov–Smirnov (K-S) test, is $P = 1.9 \times 10^{-9}$. Therefore, assuming that we are properly constraining Γ (which might be not true for sources with high $N_{H,z}$; see Figure 4), we find that type 2 sources have flatter photon index than type 1 sources, a result already found in Lanzuisi et al. (2013).

To better understand whether the difference in Γ between type 1 and type 2 AGNs may be caused by extreme objects, we compute the mean and σ on Γ of the type 1 and type 2 samples

taking into account only those sources with $1 < \Gamma < 3$. To this end, we exclude from our analysis very soft objects and candidate highly obscured, reflection-dominated sources. In this subsample, type 1 AGNs have mean (median) photon index $\langle \Gamma \rangle = 1.77 \pm 0.01$ (1.75), with dispersion $\sigma = 0.28$, while type 2 AGNs have mean (median) photon index $\langle \Gamma \rangle = 1.70 \pm 0.02$ (1.66), with dispersion $\sigma = 0.34$. The difference between the two samples is now smaller, mainly because the type 2 sample does not contain anymore the candidate CT AGNs, which caused both a flattening of the average Γ and an increasing in the dispersion. However, the K-S test still excludes that the two distributions are drawn from the same population, with probability $P = 2.2 \times 10^{-6}$.

Finally, we point out that a fraction of type 2 AGNs are expected to be unobscured, low Eddington ratio sources lacking broad emission lines (see, e.g., Trump et al. 2011; Marinucci et al. 2012), and sources with low Eddington ratio are also expected to have flatter photon index (see, e.g., Shemmer et al. 2008; Risaliti et al. 2009). To verify whether this is the case for CCLS70, we divide the type 2 sources into obscured or unobscured using the $N_{H,z} = 10^{22} \text{ cm}^{-2}$ threshold, selecting only sources with $1 < \Gamma < 3$ to reduce the number of sources where $N_{H,z}$ is most likely poorly constrained. We find that this obscured type 2 AGN subsample contains 185 sources and has $\langle \Gamma \rangle = 1.76 \pm 0.03$, with dispersion $\sigma = 0.39$, while the unobscured one contains 115 sources and has $\langle \Gamma \rangle = 1.71 \pm 0.03$, with dispersion $\sigma = 0.28$. Therefore, at least part of the observed discrepancy between type 1 and type 2 AGN photon index distributions may be driven by the Γ – λ_{Edd} relation. However, such a result needs to be confirmed using the actual λ_{Edd} , since Γ measurements may be biased in obscured objects.

Table 5
Number and Fraction of Objects with $N_{\text{H},z} > 10^{22} \text{ cm}^{-2}$, for Type 1 and Type 2 AGNs, for Sources in CCLS30 and CCLS70

Type	$n_{>1E22}$ CCLS30, all	$f_{>1E22}$	$n_{>1E22}$ CCLS30, spec	$f_{>1E22}$	$n_{>1E22}$ CCLS70, all	$f_{>1E22}$	$n_{>1E22}$ CCLS70, spec	$f_{>1E22}$
1	106	15.2%	72	13.5%	45	10.3%	41	10.8%
2	460	41.4%	206	38.6%	165	38.3%	93	35.6%

Note. We also computed numbers and fractions for sources with reliable spectral type only. The fraction is computed on the total number of sources of the same type.

Table 6

Ratio between Sources with an Upper Limit on $N_{\text{H},z}$ and Total Number of Sources, and Fraction of Sources with a 90% Confidence Upper Limit on $N_{\text{H},z}$, for Type 1 and Type 2 AGNs, and for All Sources with Optical Classification

Type	$n_{\text{up}}/n_{\text{tot}}$ CCLS30	f_{up}	$n_{\text{up}}/n_{\text{tot}}$ CCLS70	f_{up}
All	1214/1807	67.2%	640/868	73.7%
type 1	583/696	83.8%	386/437	88.3%
type 2	631/1111	56.8%	254/431	58.9%

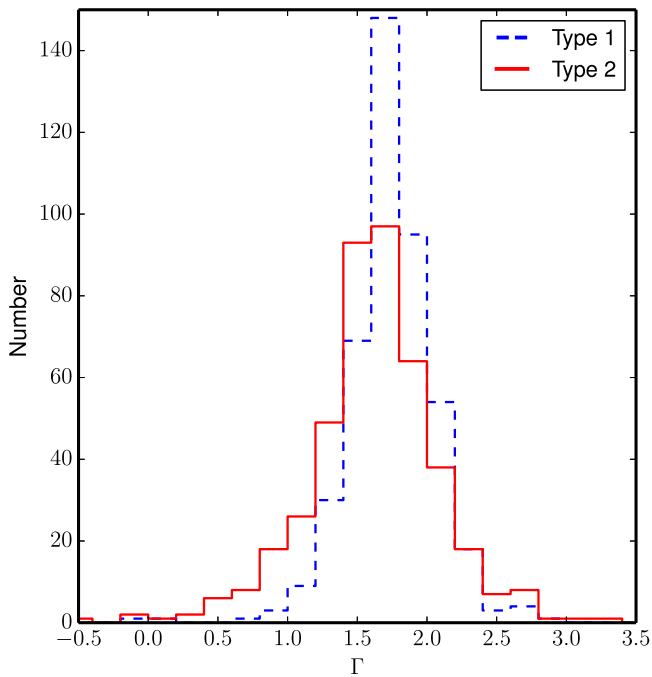


Figure 7. Photon Index Γ distribution for type 1 (blue dashed line) and type 2 (red solid line) AGNs, for sources in CCLS70.

Table 7

Logarithm of the 2–10 keV Flux Distribution Mean and Standard Deviation σ , for Type 1 and Type 2 AGNs, for Sources in CCLS30 and CCLS70

Type	$\langle \text{CCLS30} \rangle$	$\langle \text{CCLS30}_\sigma \rangle$	$\langle \text{CCLS70} \rangle$	$\langle \text{CCLS70}_\sigma \rangle$
1	-13.97	0.39	-13.80	0.35
2	-14.04	0.37	-13.81	0.33

Note. All values are in $\text{erg s}^{-1} \text{ cm}^{-2}$.

5.3. Flux and Luminosity

We report in Table 7 the mean and σ values of the 2–10 keV flux distribution of type 1 and type 2 sources. The two distributions are similar, but the hypothesis that the two populations are drawn from the same parent population is

Table 8

Logarithm of the 2–10 keV Intrinsic, Absorption-corrected Luminosity Distribution Mean and Standard Deviation σ , for Type 1 and Type 2 AGNs, for Sources in CCLS30 and CCLS70

Type	$\langle \text{CCLS30} \rangle$	$\langle \text{CCLS30}_\sigma \rangle$	$\langle \text{CCLS70} \rangle$	$\langle \text{CCLS70}_\sigma \rangle$
1	44.13	0.49	44.20	0.48
2	43.67	0.61	43.80	0.60

Note. All values are in erg s^{-1} .

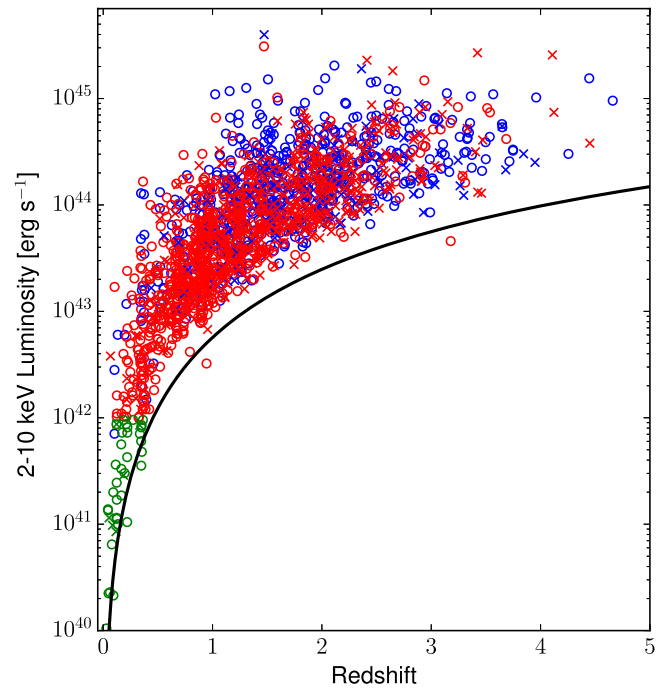


Figure 8. 2–10 keV rest-frame, absorption-corrected luminosity as a function of redshift for the sources in CCLS30. Type 1 AGNs are plotted in blue, type 2 AGNs are plotted in red, and galaxies are plotted in green. Sources with spectroscopic (photometric) redshift are plotted with a circle (cross). The solid line represents the sensitivity limit of the *Chandra* COSMOS-Legacy survey. The four sources below the sensitivity limit have less than 40 net counts in the 0.5–7 keV band, and their parameters are likely poorly constrained (e.g., $N_{\text{H},z}$ may be underestimated and consequently the rest-frame luminosity would be underestimated too).

rejected for CCLS30 (p -value = 6.3×10^{-4}), even though it is worth mentioning that the K-S test does not take into account the uncertainties on the flux measurement, which can be significant for the sources with low count statistics in CCLS30.

We report the mean and σ values of the type 1 and type 2 AGN 2–10 keV, absorption-corrected luminosity distributions in Table 8. Type 1 AGNs are on average more luminous than type 2 AGNs, for both the net count thresholds we adopted. The difference between the two distributions is mainly due to

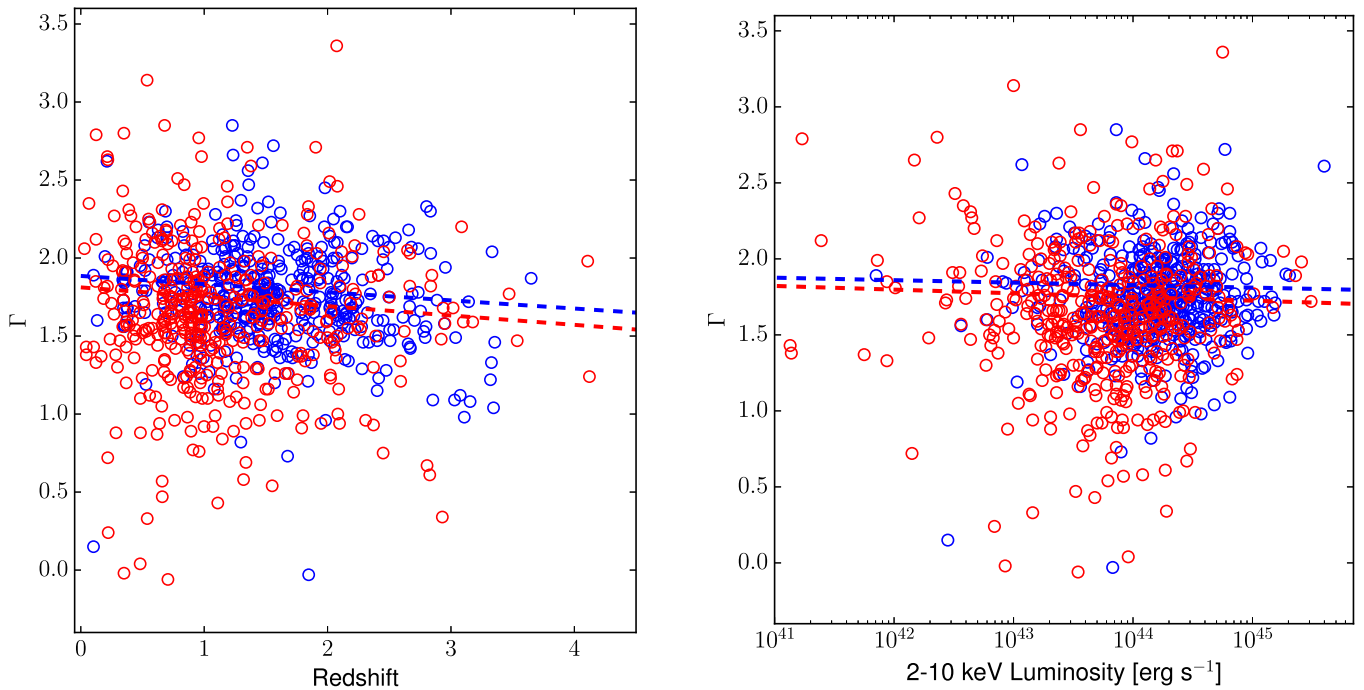


Figure 9. Γ as a function of redshift (left) and as a function of 2–10 keV absorption-corrected luminosity (right), for all sources in CCLS70. Blue circles are type 1 AGNs; red circles are type 2 AGNs. Linear best fits to the type 1 and type 2 samples are also plotted as dashed lines.

the fact that, as can be seen in Figure 8, type 1 AGNs are on average at higher redshifts ($\langle z \rangle = 1.74$ for CCLS30, $\langle z \rangle = 1.57$ for CCLS70) than type 2 AGNs ($\langle z \rangle = 1.23$ for CCLS30, $\langle z \rangle = 1.15$ for CCLS70), and our sample is flux limited, i.e., sources at higher redshifts also have higher luminosities. Nonetheless, the difference between the two distributions is also an indication of a trend with 2–10 keV luminosity of the fraction of type 1 to type 2 AGNs: in any sample complete in both z and L_X , the fraction of type 2 AGNs decreases for increasing luminosities, at any redshift, as already observed in several works (e.g., Lawrence & Elvis 1982; Ueda et al. 2003; Hasinger 2008; Buchner et al. 2015; Marchesi et al. 2016a).

5.4. Photon Index Dependences

We searched for a potential correlation between the photon index and the redshift or the X-ray luminosity. In the left panel of Figure 9 we show the distribution of Γ as a function of redshift, for the CCLS70 sample. Type 1 sources show a weak anticorrelation between z and Γ , with Spearman correlation coefficient $\rho = -0.15$ and p -value $p = 2.3 \times 10^{-3}$ for the hypothesis that the two quantities are unrelated. In type 2 sources, instead, the correlation coefficient is smaller, $\rho = -0.07$, and the p -value $p = 0.12$ does not allow us to rule out the hypothesis of no correlation.

The results obtained for the whole CCLS70 sample do not change significantly if we exclude from the computation sources with peculiar photon index (i.e., taking into account only objects with $1 < \Gamma < 3$), for both type 1 ($\rho = -0.14$ and p -value $p = 3.8 \times 10^{-3}$) and type 2 AGNs ($\rho = -0.08$ and p -value $p = 0.10$).

In the right panel of Figure 9 we show the distribution of Γ as a function of the intrinsic, absorption-corrected 2–10 keV luminosity, for the CCLS70 sample. We do not find any evidence of correlation in both type 1 (blue; $\rho = 0.01$ and p -value $p = 0.78$) and type 2 (red; $\rho = 0.01$ and p -value

$p = 0.90$) objects, and the lack of correlation remains also in the $1 < \Gamma < 3$ subsample.

5.5. Column Density Dependences

5.5.1. Trend with Redshift

In the left panel of Figure 10 we show the distribution of $N_{H,z}$ as a function of redshift for sources in CCLS30. As can be seen, the $N_{H,z}$ minimum value significantly increases at increasing redshifts. Such a result was already observed, by Civano et al. (2005), Tozzi et al. (2006), and Lanzuisi et al. (2013), among others, and is due to the fact that moving toward high redshifts, the photoelectric absorption cutoff moves outside the limit of the observing band, 0.5 keV. Consequently, the measure of low $N_{H,z}$ values becomes more difficult.

5.5.2. Trend with 2–10 keV Luminosity

In the right panel of Figure 10 we show the distribution of $N_{H,z}$ as a function of 2–10 keV rest-frame absorption-corrected luminosity. As can be seen, and as already discussed in previous sections, type 2 AGNs are dominant in the region of the plot with $N_{H,z} > 10^{22} \text{ cm}^{-2}$ and $L_{2-10 \text{ keV}} < 10^{44} \text{ erg s}^{-1}$, while type 1 sources are dominant in the region with $N_{H,z} < 10^{22} \text{ cm}^{-2}$ and $L_{2-10 \text{ keV}} > 10^{44} \text{ erg s}^{-1}$.

In CCLS30, 268 out of 1844 sources ($\sim 15\%$) lie in the obscured quasar region, i.e., have 2–10 keV luminosity $L_{2-10 \text{ keV}} > 10^{44} \text{ erg s}^{-1}$ and 90% confidence significant intrinsic absorption $N_{H,z} > 10^{22} \text{ cm}^{-2}$. Of these 268 sources, 83 ($\sim 31\%$) are classified as type 1 AGNs, and 61 of these 83 type 1 sources have optical spectroscopy available. The mean redshift of these 61 objects is $\langle z \rangle = 2.03$. A significant fraction of obscured type 1 AGNs ($\sim 15\%$ of the whole population at $L_{2-10 \text{ keV}} > 10^{44} \text{ erg s}^{-1}$) were also found by Merloni et al. (2014) in XMM-COSMOS. We further discuss these obscured type 1 AGNs in the next section.

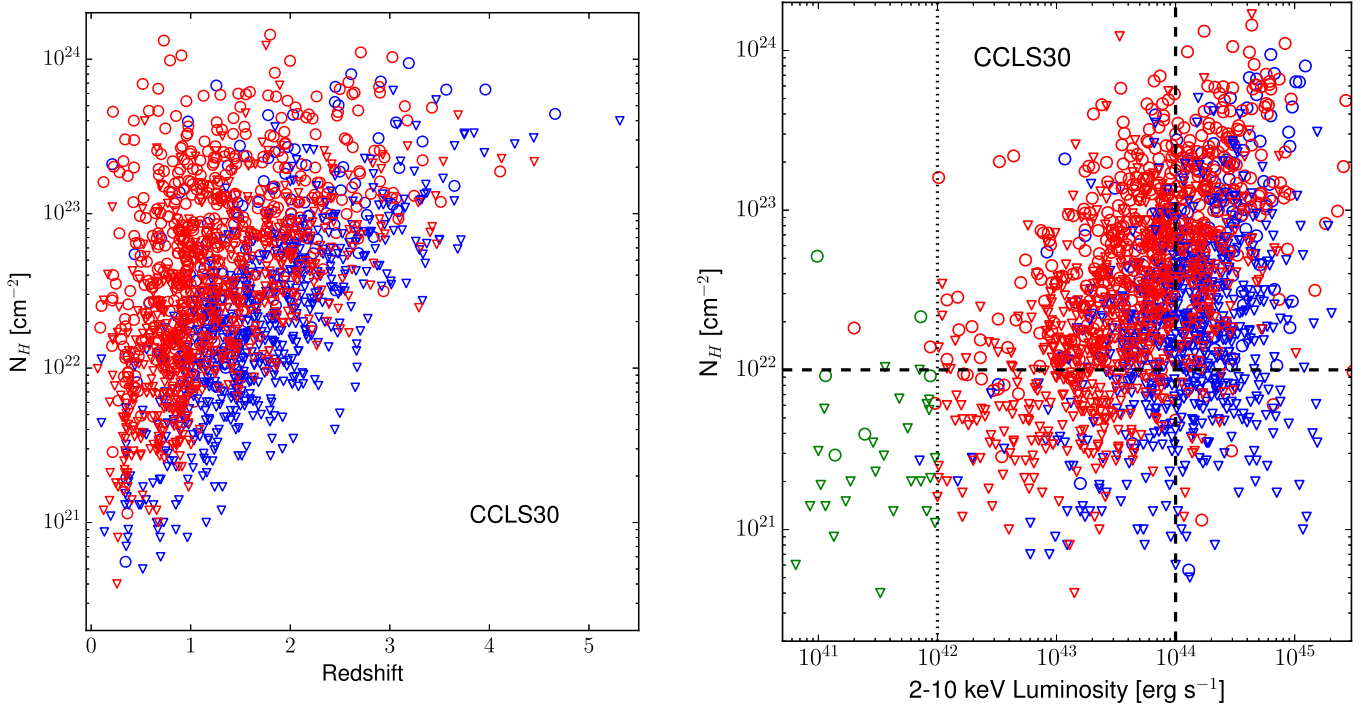


Figure 10. Left: $N_{\text{H},z}$ as a function of redshift, for all sources in CCLS30, for type 1 (blue) and type 2 (red) sources. $N_{\text{H},z}$ 90% confidence upper limits are plotted as triangles. Right: $N_{\text{H},z}$ as a function of 2–10 keV absorption-corrected luminosity, for all sources in CCLS30, for type 1 (blue) and type 2 (red) AGNs, and for galaxies (green). $N_{\text{H},z}$ 90% confidence upper limits are plotted as triangles. The horizontal black dashed line marks the threshold ($N_{\text{H},z} = 10^{22} \text{ cm}^{-2}$) usually adopted to divide unobscured and obscured sources. The vertical black dotted line marks the luminosity threshold, $L_{2-10 \text{ keV}} = 10^{42} \text{ erg s}^{-1}$, used to divide AGNs from star-forming galaxies, while the vertical black dashed line marks the threshold usually adopted to separate quasars from Seyfert galaxies, $L_{2-10 \text{ keV}} = 10^{44} \text{ erg s}^{-1}$.

A total of 265 out of 1855 CCLS30 sources (14.3%) lie in the $L_{2-10 \text{ keV}} = 10^{42}-10^{44} \text{ erg s}^{-1}$, $N_{\text{H},z} < 10^{22} \text{ cm}^{-2}$ area, i.e., have unobscured AGN spectral properties. Of these sources, 172 (64.9%) are optically classified type 2 AGNs. The fraction is similar if we take into account only objects with a spectral type: 127 out of 203 sources (62.6%) in the area are non-BLAGNs.

In CCLS30, a total of 199 out of 1111 (17.9%) type 2 AGNs have $N_{\text{H},z} < 10^{22} \text{ cm}^{-2}$, i.e., consistent with being unobscured AGNs on the basis of their X-ray spectrum. The fraction of unobscured type 2 AGNs is a matter of extended debate in literature, varying from only a few percent (<5%) in Risaliti et al. (1999), Malizia et al. (2009), and Davies et al. (2015) to 30% (Merloni et al. 2014) and up to 66% (Garcet et al. 2007). The first scenario suggests that optical and X-ray obscuration tends to occur at the same time, while the second points to a stronger independence between the obscuration processes in the two different energy ranges. The fraction we obtain is in an intermediate regime between the two scenarios, in good agreement with the results of Panessa & Bassani (2002), Akylas & Georgantopoulos (2009) and Koulouridis et al. (2016). We discuss the implications of this result further in the next section.

5.5.3. Trend with 2–10 keV Luminosity of the AGN Obscured Fraction

In Figure 11 we show the distribution of $N_{\text{H},z}$ as a function of 2–10 keV absorption-corrected luminosity, in bins of 0.5 dex in both $N_{\text{H},z}$ and luminosity. The color of each bin identifies the fraction of type 2 sources $f_2 = N_2/N_{\text{all}}$, where N_2 is the number of type 2 sources and N_{all} is the total number of sources in each bin. In the left panel we show the results for the whole sample (i.e., taking into account both the spectroscopic and the

photometric type), while in the right panel only sources with optical spectroscopic classification are taken into account. It is worth noticing that there is a general good agreement between the combined classification and the one spectroscopically based; therefore, all the following discussion cannot be related to a bad SED-fitting classification.

In the previous section, we mentioned that 106 out of 696 type 1 AGNs (~15%) have $N_{\text{H},z} > 10^{22} \text{ cm}^{-2}$ at a 90% confidence level. The fraction of obscured type 1 AGNs is strongly luminosity dependent: there is only one obscured type 1 AGN with $\log(L_{2-10 \text{ keV}}) = 42-43$ (3.2% of the obscured sources in this luminosity range), 21 with $\log(L_{2-10 \text{ keV}}) = 43-44$ (8.2%), and 83 in the quasar regime, i.e., with $\log(L_{2-10 \text{ keV}}) > 44$ (31.2%).

We expect a fraction of optically classified type 1 sources with X-ray properties consistent with those of obscured quasars to be broad absorption line (BAL) quasars, with broad, blueshifted absorption lines in their optical/UV spectra. Of the candidate BAL quasars with optical spectrum available, 41 out of 61 have $z > 1.5$, i.e., high enough to observe the UV features (e.g., C IV at 1549 Å) in optical spectra. However, the analysis of these objects is beyond the purpose of this work, and these aspects will be investigated in a forthcoming paper (S. Marchesi et al. 2016, in preparation). Moreover, a fraction of these obscured type 1 sources may not be BAL quasars, being instead sources with dust-free gas surrounding the inner part of the nuclei, therefore causing obscuration in the X-rays and not in the optical band (Risaliti et al. 2002; Maiolino et al. 2010; Fiore et al. 2012; Merloni et al. 2014).

In the previous section, we showed that 199 (~18%) of the 1111 CCLS30 type 2 sources have $N_{\text{H},z} < 10^{22} \text{ cm}^{-2}$, i.e., consistent with being unobscured AGNs. In Figure 11 we can

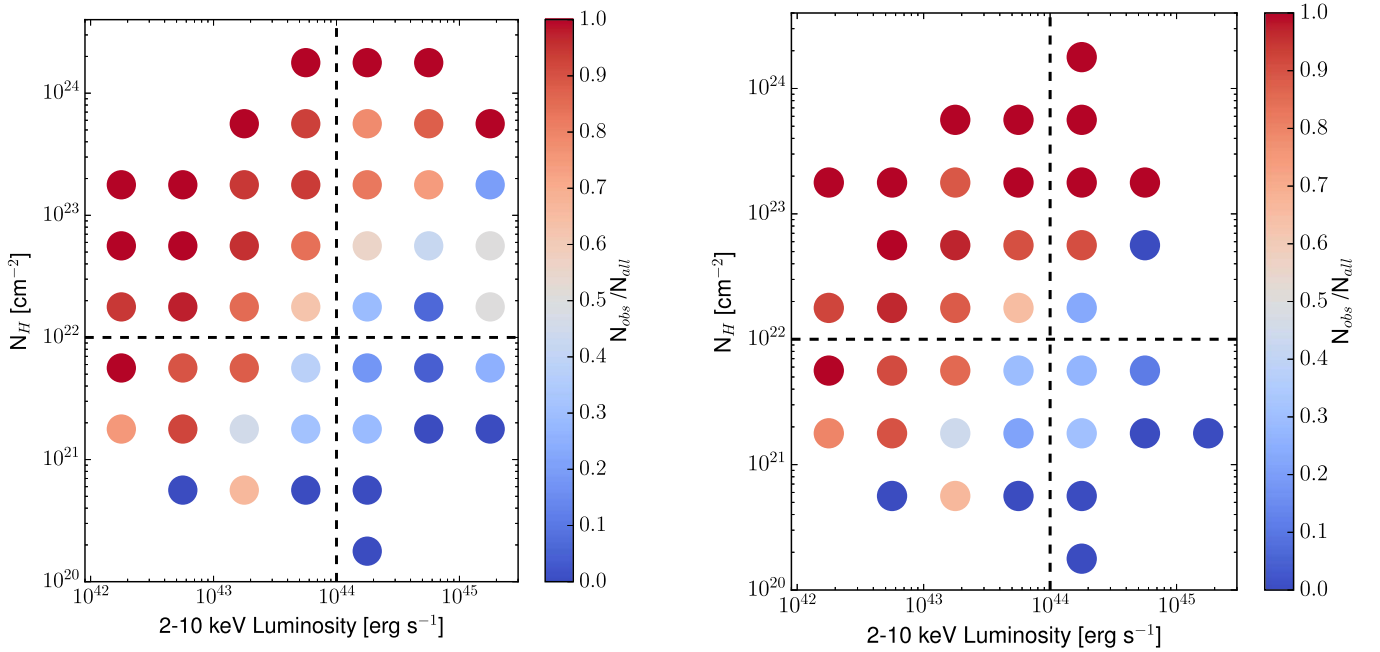


Figure 11. $N_{\text{H},z}$ as a function of 2–10 keV absorption-corrected luminosity. The color map shows the ratio between the number of type 2 sources (N_2) against all sources (N_{all}), in each bin of $N_{\text{H},z}$ and luminosity. $N_2/N_{\text{all}} = 1$ is plotted in red, $N_2/N_{\text{all}} = 0$ in blue. In the left panel we show the results for the whole sample (i.e., taking into account both the spectroscopic and the photometric type), while in the right panel only the spectroscopic type is taken into account.

see how the distribution of these objects is strongly dependent on their X-ray luminosity, i.e., the fraction of type 2 AGNs with respect to the total number of sources in a bin is higher at $\log(L_{2-10 \text{ keV}}) = 42-43$ (75%–90%) and drops at $L_{2-10 \text{ keV}} > 10^{44} \text{ erg s}^{-1}$ (<15%), where there are only 19 unobserved type 2 AGNs (9.5% of the whole type 2 AGN sample). A similar result was found by Merloni et al. (2014) in the XMM-COSMOS survey, where $\sim 40\%$ of the sources with $\log(L_{2-10 \text{ keV}}) = 42.75-43.25$ are unobscured type 2 AGNs, while the fraction of unobscured type 2 AGNs is <10% at $L_{2-10 \text{ keV}} < 10^{44} \text{ erg s}^{-1}$. This result is expected, since the XMM-COSMOS sample is a “bright” subsample of the *Chandra* COSMOS-Legacy one, since XMM-COSMOS has a flux limit ~ 3 times higher than *Chandra* COSMOS-Legacy, so there is a significant overlap between the sample used by Merloni et al. (2014) and CCLS30.

We point out that, according to our classification, a fraction of type 2 sources are expected to be narrow-line Seyfert 1 (NLSy1) galaxies (Osterbrock & Pogge 1985; Goodrich 1989), i.e., AGNs with the properties of Seyfert 1 galaxies, but with only narrow, rather than broad, H I emission lines. These objects are by definition unobscured, although lacking broad lines. However, NLSy1 galaxies usually have very steep photon indices (see, e.g., Brandt et al. 1997), and only 16 out of 199 (8.4%) unobscured type 2 AGNs in CCLS30 have $\Gamma > 2$, and only one source has $\Gamma > 2.5$. Therefore, we expect that not more than 10% of the unobscured type 2 AGNs in CCLS30 are NLSy1 galaxies.

Besides NLSy1 galaxies, there are at least two possible reasons to explain the relatively high fraction of unobscured type 2 AGNs at low luminosities: (1) it is possible that a fraction of low-luminosity sources is wrongly classified. A similar effect was described in Oh et al. (2015), who analyzed the spectra of galaxies at $z < 0.2$ in the Sloan Digital Sky Survey Data Release 7 (SDSS DR7) and found a significant fraction of previously misclassified BLAGNs, i.e., sources with

a stellar spectral continuum and a broad H α emission line. With this new classification, the number of type 1 AGNs in SDSS DR7 increased by 49%. However, we point out that Oh et al. (2015) analyzed low-luminosity AGNs at $z < 0.2$, i.e., a sample significantly different from CCLS30, where only 39 sources out of 1855 (2.1%) have $z < 0.2$. (2) AGNs with low Eddington ratio, and therefore low luminosity, lack broad emission lines, even if they are intrinsically unobscured (see, e.g., Trump et al. 2011; Marinucci et al. 2012). If this is the case, the drop in BLAGNs at $N_{\text{H},z} < 10^{22} \text{ cm}^{-2}$ and $L_{2-10 \text{ keV}} < 10^{44} \text{ erg s}^{-1}$ would imply an Eddington ratio threshold of $\lambda_{\text{Edd}} \sim 10^{-3} - 10^{-2}$, assuming average BH masses $M_{\text{BH}} = 10^8 - 10^9 M_{\odot}$. This would have strong consequences for the unification scheme.

5.6. Iron $K\alpha$ Equivalent Width Dependences

A total of 141 CCLS30 sources are best fitted with a model that includes an iron $K\alpha$ emission line at 6.4 keV. For each source, we compute the emission-line EW, a measure of the line intensity, as follows:

$$\text{EW} = \int \frac{F_l(E) - F_c(E)}{F_c(E)} dE, \quad (1)$$

where $F_l(E)$ is the flux of the emission line at the energy E , and $F_c(E)$ is the intensity of the spectral continuum at the same energy. The mean (median) EW of the 141 CCLS30 sources is $\text{EW} = 0.49 \pm 0.03$ (0.41) keV, with dispersion $\sigma = 0.39$. We also checked how much the assumption we made on the line width, which we fixed to $\sigma = 0.1$, affected the mean EW value. To do so, we refitted the 141 spectra using $\sigma = 0$, i.e., the scenario where the line shows no relativistic broadening. We find that in this case the iron $K\alpha$ mean (median) EW only slightly decreases, being $\text{EW} = 0.44 \pm 0.03$ (0.36) keV, with dispersion $\sigma = 0.34$.

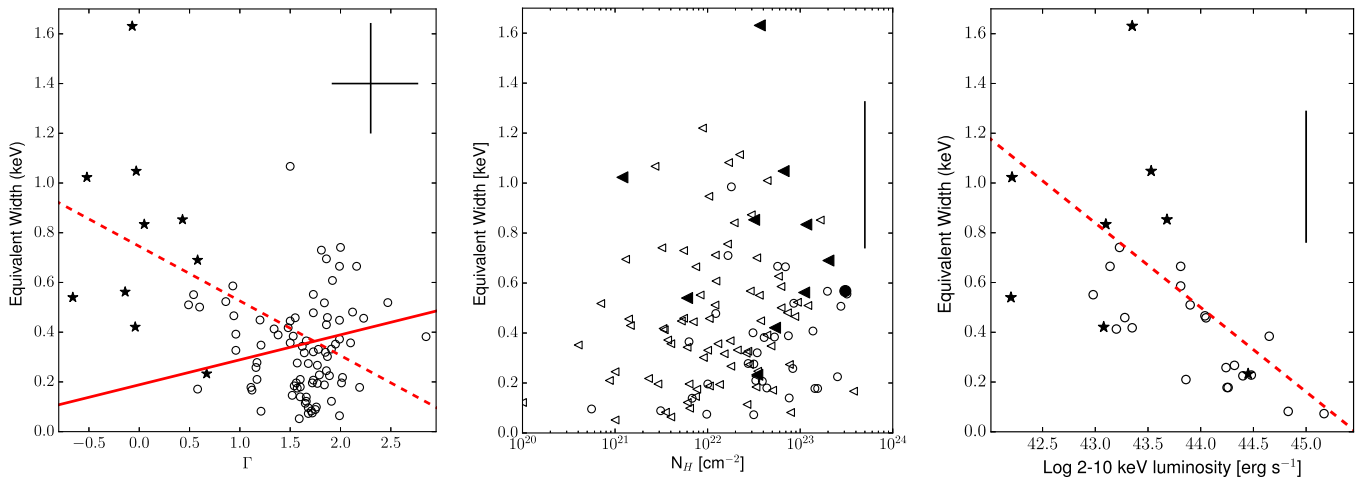


Figure 12. Iron $K\alpha$ EW (in keV) as a function of best-fit photon index (Γ , left), intrinsic absorption ($N_{H,z}$, middle), and 2–10 keV luminosity (right). In the left and right panels, the linear best fit to the data is plotted as a red dashed line; candidate highly obscured AGNs on the basis of the fit with complex torus models are plotted as stars. The linear best fit to the data without the candidate CT AGN is plotted in the left panel as a red solid line. In the middle panel, nominal $N_{H,z}$ values are plotted as circles, and upper limits are plotted as triangles; candidate highly obscured AGNs on the basis of the fit with the complex torus model are plotted with filled markers. Mean errors on EW and Γ (left) and on EW (middle and right) are also plotted.

Table 9

Spearman Correlation Coefficient ρ and p -value for the Photon Index Γ in Relation to M_* or SFR, for Sources with Spectroscopic Classification, Sources with Only Best-fit SED Template, and for the Whole CCLS70 Type 2 Sample

Sample	ρ_{M_*}	p -value $_{M_*}$	ρ_{SFR}	p -value $_{\text{SFR}}$
Spec	-0.12	0.06	-0.14	0.03
SED	0.03	0.73	0.04	0.66
All	-0.06	0.24	-0.07	0.16

In the left panel of Figure 12 we show the EW distribution as a function of the photon index Γ for the 101 sources for which we compute Γ (i.e., excluding those sources for which we fixed $\Gamma = 1.9$). If we fit the data with a linear model (red dashed line), $\text{EW} = a\Gamma + b$, we found evidence of a significant inverse correlation, with $a = -0.22 \pm 0.05$.

However, a fraction of sources with prominent iron $K\alpha$ emission line are expected to be CT AGNs. A proper characterization of these objects requires fitting models more complicated than those used in this work, to properly take into account Compton scattering processes. For this reason, we are performing an extended analysis of the CCLS30 sample using more appropriate torus models and an MCMC analysis to estimate the probability of a source with a certain $N_{H,z}$ value (G. Lanzuisi et al. 2016, in preparation). As a preliminary result, we find that 12 out of the 141 CCLS30 sources with significant iron $K\alpha$ emission line have a significant probability of being CT AGNs or heavily obscured sources (i.e., with $\log(N_{H,z}) > 23.5$). We plot these sources as black stars in the left panel of Figure 12. If we refit the sample without these sources, which are likely to have a wrongly computed Γ using our basic models, the correlation between EW and Γ disappears ($a = 0.10 \pm 0.08$; red solid line in Figure 12). This result is due to the fact that heavily obscured AGNs are poorly fitted by basic models like those used in this work, which try to mimic the flat spectra of obscured sources with a flat photon index and no obscuration.

In the middle panel of Figure 12 we show the EW distribution as a function of $N_{H,z}$. A total of 99 sources (7%)

have only an upper limit on $N_{H,z}$, while the remaining 30% have an $N_{H,z}$ value significant at a 90% confidence level. We do not find any significant correlation between EW and $N_{H,z}$. We remark that a similar result is not unexpected, since a trend between EW and $N_{H,z}$ is observed only at $N_{H,z} > 10^{23} \text{ cm}^{-2}$ (see, e.g., Makishima 1986), and only 12% of the sources analyzed in this section have intrinsic absorption values above this threshold. Finally, candidate CT AGNs (plotted with filled markers) have on average low $N_{H,z}$ values, a further indication that a standard spectral fitting procedure does not work properly with these extreme sources.

5.6.1. The X-Ray Baldwin Effect

We select the 33 type 1 AGNs in CCLS30 best fitted with a model containing an iron $K\alpha$ line to check for the presence of the so-called ‘‘X-ray Baldwin’’ effect, i.e., the existence of an anticorrelation between the iron $K\alpha$ line EW and the AGN 2–10 keV luminosity (Iwasawa & Taniguchi 1993).

The existence of this anticorrelation is confirmed by our data, as can be seen in the right panel of Figure 12; the Spearman correlation coefficient is $\rho = -0.72$, with p -value $p = 9.9 \times 10^{-6}$, for the hypothesis that the two quantities are unrelated. The best fit to our data is expressed by the relation $\text{EW}(K\alpha) \propto L_X(2-10 \text{ keV})^{-0.34 \pm 0.07}$, in fair agreement with the result obtained by Iwasawa & Taniguchi (1993), which measured a trend expressed by the relation $\text{EW}(K\alpha) \propto L_X(2-10 \text{ keV})^{-0.20 \pm 0.03}$.

5.7. Host-galaxy Mass and Star Formation Rate Dependences for Type 2 AGNs

H. Suh et al. (2016, in preparation) computed host-galaxy properties such as mass (M_*) and star formation rate (SFR) for type 2 AGNs in *Chandra* COSMOS-Legacy. These quantities have been computed using SED-fitting techniques: the host-galaxy properties are derived using a three-component SED-fitting decomposition method, which combines a nuclear dust torus model (Silva et al. 2004), a galaxy model (Bruzual & Charlot 2003), and starburst templates (Chary & Elbaz 2001; Dale & Helou 2002). The SFR is then estimated by combining

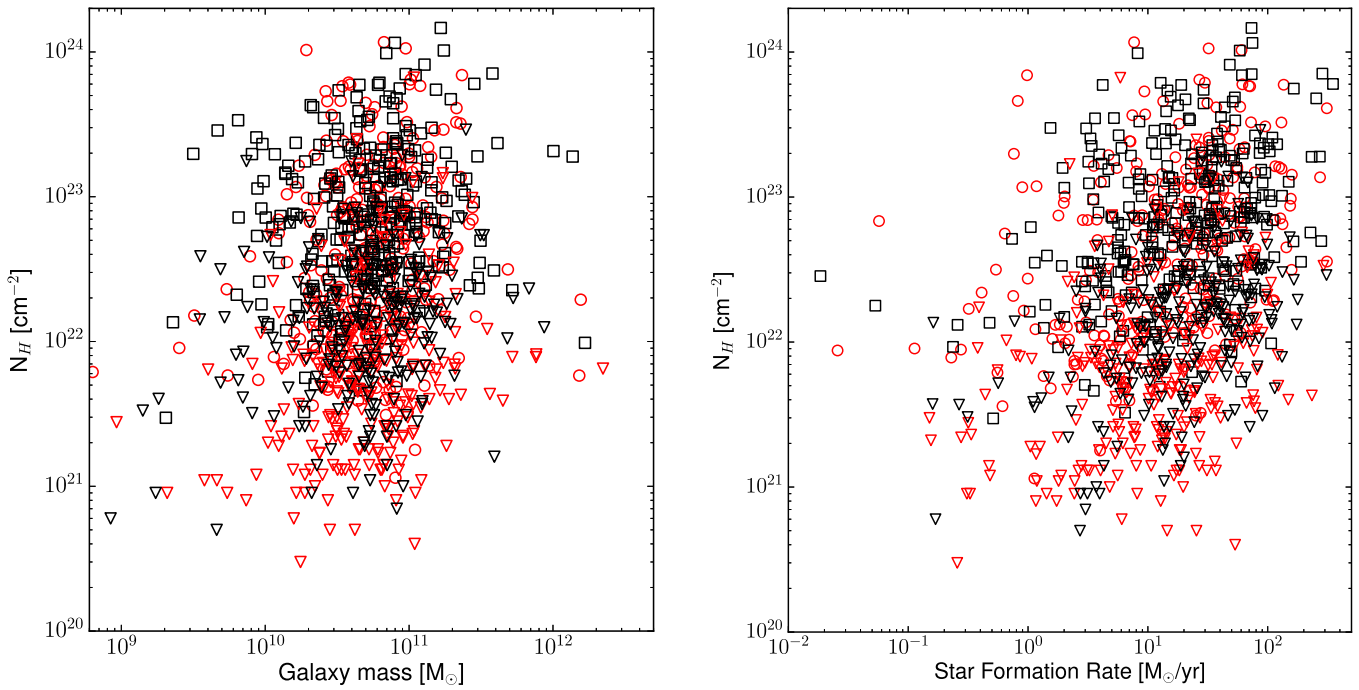


Figure 13. Intrinsic absorption $N_{\text{H},z}$ as a function of host-galaxy mass (left) and SFR (right), for all type 2 AGNs in CCLS30. Sources spectroscopically classified are plotted as red circles, while sources with only SED template best-fitting information are plotted as black squares. Upper limits on $N_{\text{H},z}$ are plotted as triangles.

Table 10

Spearman Correlation Coefficient ρ and p -value for the Intrinsic Absorption $N_{\text{H},z}$ in Relation to M_* or SFR, for Sources with Spectroscopic Classification, Sources with Only Best-fit SED Template, and for the Whole CCLS70 Type 2 Sample

Sample	ρ_{M_*}	$p\text{-value}_{M_*}$	ρ_{SFR}	$p\text{-value}_{\text{SFR}}$
Spec	0.17	3×10^{-4}	0.29	0
SED	0.13	3×10^{-3}	0.19	0
All	0.14	0	0.24	0

the contributions from UV and total host-galaxy IR luminosity computed with the SED fitting ($L_{8-1000 \mu\text{m}}$).

We first study the trend of the photon index Γ as a function of M_* and SFR for type 2 objects in CCLS70; we also perform a separate analysis on sources spectroscopically classified as non-BLAGN sources and on sources with only SED template best-fitting classification. We performed a Spearman correlation test for each of the subsamples we described: we report the results in Table 9. In the case of M_* , we find no evidence of correlation in the SED template best-fitting subsample and in the whole type 2 sample, and weak evidence of anticorrelation in the spectroscopic sample, although the hypothesis that the two quantities are uncorrelated cannot be ruled out (p -value = 0.06). We obtain a similar result while correlating Γ and SFR: in this case, the hypothesis that Γ and SFR are uncorrelated in the spectroscopic sample is ruled out with 97% confidence. The SED template best fitting and the whole type 2 sample do not show evidence of correlation.

In Figure 13 we show the distribution of the intrinsic absorption $N_{\text{H},z}$ as a function of M_* (left) and SFR (right), for the 1011 type 2 objects in CCLS30. Sources spectroscopically classified as type 2 AGNs are plotted as red circles, while sources with only SED template best-fitting classification are

plotted with black squares. Upper limits on $N_{\text{H},z}$ are plotted with triangles. We studied the existence of a correlation between $N_{\text{H},z}$ and M_* or SFR computing the Spearman correlation coefficient using the ASURV tool Rev 1.2 (Isobe & Feigelson 1990; Lavalley et al. 1992), which implements the methods presented in Isobe et al. (1986), to properly take into account the 565 sources having only a 90% confidence upper limit on $N_{\text{H},z}$. We report the results of the fit in Table 10: we find a significant correlation between $N_{\text{H},z}$ and both M_* and SFR, i.e., the objects with higher $N_{\text{H},z}$ values are also those with higher M_* and SFR. We obtain the same result fitting separately only the 533 sources with spectral type and the 478 with SED template best-fitting type. We point out that SFR and M_* are correlated, i.e., more massive galaxies have higher SFR; therefore, the correlation with $N_{\text{H},z}$ can be intrinsic only for one of the two parameters, more likely SFR. Finally, we performed a partial correlation analysis to understand how much of the observed correlation between $N_{\text{H},z}$ and M_* (or SFR) is driven by a redshift selection effect, i.e., if the observed correlation is due to the fact that at high redshifts we observe only sources with significant $N_{\text{H},z}$ values (as shown in Figure 10, left panel), and with high values of M_* and SFR. To do so, we compute the partial Spearman correlation coefficient between $N_{\text{H},z}$ and M_* (or SFR), conditioned by the distance z , using the equation

$$\rho(a, b, c) = \frac{\rho_{ab} - \rho_{ac}\rho_{bc}}{\sqrt{(1 - \rho_{ac}^2)(1 - \rho_{bc}^2)}} \quad (2)$$

(Conover 1980). The partial correlation coefficients we obtain are $\rho(a, b, c)_{M_*} = 0.06$ and $\rho(a, b, c)_{\text{SFR}} = 0.11$. Following Equation (6) of Macklin (1982), these values correspond to confidence levels of $\sigma_{M_*} = 1.58$ and $\sigma_{\text{SFR}} = 2.68$. Therefore, the observed relation between M_* and $N_{\text{H},z}$ seems to be mainly driven by a redshift selection effect, while the relation between SFR and $N_{\text{H},z}$ remains significant, although at $<3\sigma$, even taking into account the redshift contribution.

Table 11
Summary of the X-Ray Spectral Fitting with an Absorbed Power Law for the 20 *Chandra* COSMOS-Legacy Sources with $z \geq 3$ and More Than 70 Net Counts in the 0.5–7 keV Band

ID	z	Spec	Type	cts	Power Law			Pexrav		
					Γ	$N_{\text{H},z}$	Cstat/dof	Γ	$N_{\text{H},z}$	Cstat/dof
cid_407	3.471	N	2	70	$1.77^{+0.51}_{-0.39}$	<6.33	21.0/23	$1.86^{+0.50}_{-0.37}$	<6.68	20.8/23
cid_1118	3.65	Y	1	75	$1.87^{+0.82}_{-0.65}$	<27.51	12.5/29	$1.98^{+0.76}_{-0.61}$	<27.11	12.5/29
lid_1577	3.176	Y	2	77	$1.59^{+1.19}_{-0.81}$	$40.14^{+62.35}_{-31.23}$	29.9/23	$1.84^{+1.10}_{-0.81}$	$45.35^{+62.17}_{-32.02}$	30.0/23
cid_472	3.155	Y	1	79	$1.08^{+0.57}_{-0.37}$	<10.95	48.5/30	$1.21^{+0.54}_{-0.34}$	<10.17	47.6/30
lid_1519	3.32	Y	1	80	$1.22^{+0.53}_{-0.34}$	<12.33	17.8/25	$1.32^{+0.52}_{-0.32}$	<12.40	17.7/25
cid_325	3.086	Y	2	86	$2.20^{+0.69}_{-0.59}$	$9.26^{+11.67}_{-8.38}$	31.1/27	$2.30^{+0.67}_{-0.56}$	$10.02^{+12.22}_{-8.00}$	30.7/27
cid_83	3.075	N	1	95	$1.12^{+0.77}_{-0.62}$	<37.69	34.2/31	$1.34^{+0.74}_{-0.60}$	$14.61^{+25.36}_{-14.55}$	33.9/31
cid_113	3.333	Y	1	97	$2.04^{+0.55}_{-0.36}$	<5.46	36.3/33	$2.10^{+0.52}_{-0.35}$	<5.38	35.9/33
lid_1865	4.122	N	2	107	$1.24^{+0.52}_{-0.30}$	<22.70	27.8/33	$1.41^{+0.48}_{-0.32}$	<18.42	28.7/33
cid_529	3.017	Y	2	107	$1.68^{+0.65}_{-0.56}$	$12.66^{+15.74}_{-10.33}$	29.4/36	$1.86^{+0.66}_{-0.55}$	$14.48^{+16.69}_{-10.34}$	30.5/36
lid_721	3.108	Y	1	111	$0.98^{+0.52}_{-0.42}$	<21.82	63.1/37	$1.18^{+0.50}_{-0.42}$	<23.65	62.2/37
cid_64	3.328	Y	1	134	$1.33^{+0.25}_{-0.24}$	<2.73	60.4/46	$1.45^{+0.29}_{-0.23}$	<2.18	59.0/46
lid_476	3.038	Y	1	142	$1.49^{+0.39}_{-0.28}$	<7.76	50.4/44	$1.63^{+0.38}_{-0.31}$	<9.72	50.4/44
lid_205	3.355	Y	1	149	$1.46^{+0.30}_{-0.25}$	<4.76	42.2/47	$1.58^{+0.29}_{-0.24}$	<4.70	41.4/47
cid_413	3.345	Y	1	151	$1.04^{+0.38}_{-0.34}$	<13.31	33.0/46	$1.23^{+0.38}_{-0.32}$	<14.92	33.0/46
cid_75	3.029	Y	1	176	$1.09^{+0.41}_{-0.37}$	$11.42^{+12.06}_{-8.76}$	62.2/61	$1.29^{+0.40}_{-0.35}$	$13.66^{+7.20}_{-5.95}$	62.4/61
cid_1269	3.537	Y	2	185	$1.47^{+0.43}_{-0.38}$	<21.74	41.0/61	$1.65^{+0.42}_{-0.35}$	$9.53^{+12.76}_{-8.63}$	40.5/61
cid_558	3.1	N	2	195	$1.59^{+0.34}_{-0.32}$	<9.34	54.7/57	$1.74^{+0.34}_{-0.31}$	$4.71^{+5.94}_{-4.15}$	56.2/57
lid_460	3.143	Y	1	204	$1.72^{+0.37}_{-0.33}$	<12.36	62.7/59	$1.84^{+0.36}_{-0.31}$	<12.35	61.4/59
cid_507	4.108	N	2	242	$1.98^{+0.38}_{-0.34}$	$18.76^{+13.49}_{-10.55}$	66.2/67	$2.12^{+0.38}_{-0.32}$	$19.82^{+13.82}_{-9.60}$	67.5/67

Note. “Spec” indicates whether the redshift is spectroscopic (Y) or photometric (N).

6. HIGH-REDSHIFT SAMPLE

In this section, we summarize the results of the spectral fitting of the 20 *Chandra* COSMOS-Legacy sources at $z \geq 3$ in CCLS70. Fifteen of these sources have z_{spec} ; the remaining five have z_{phot} . An extended analysis of the *Chandra* COSMOS-Legacy $z \geq 3$ sample, which contains 174 sources, is reported in Marchesi et al. (2016b).

We first fitted our spectra with the best-fit model obtained with the procedure described in Section 4.1. For 19 out of 20 sources the best fit is an absorbed power-law model, while for cid_83 an Fe $K\alpha$ emission line is also required. For each source, we estimate the spectral slope Γ and the intrinsic absorption $N_{\text{H},z}$. We report the results of this fit in Table 11. The mean (median) photon index is $\Gamma = 1.50 \pm 0.08$ (1.49), with dispersion $\sigma = 0.35$.

Fifteen out of the 20 sources only have an upper limit on $N_{\text{H},z}$, while the other five have a significant $N_{\text{H},z}$ value at a 90% confidence level.

We then repeated the fit, this time using the pexrav model, which takes into account the presence of a reflection component caused by cold material close to the BH accretion disk. We do so because at $z > 3$ the reflection component, which contributes to the spectral emission at energies greater than 30 keV in the rest frame, is observed in the 2–10 keV band. Therefore, a lack of the reflection component in the fit produces an artificial flattening in the photon index estimate. We fix the reflection parameter to 1: since $R = \Omega/2\pi$, where Ω is the solid angle of the cold material visible from the hot corona, $R = 1$ is the case where the reflection is caused by an infinite slab illuminated by the isotropic corona emission. The results of this second fit are reported in Table 11: the presence of a reflection component implies a general steepening of the spectral slope, which now has

mean (median) value $\Gamma = 1.65 \pm 0.07$ (1.65), with dispersion $\sigma = 0.32$.

Twelve out of the 20 sources have only an upper limit on $N_{\text{H},z}$ fitting the spectra with the pexrav model. Two sources, lid_1577 and cid_507, have $N_{\text{H},z} > 10^{23} \text{ cm}^{-2}$ even if the 90% confidence error is taken into account.

In Figure 14 we show the evolution with redshift of the X-ray spectral slope Γ , both without (red circles) and with (blue squares) the contribution of a reflection component: the photon index distribution has a large spread, and no clear trend with redshift is observed.

6.1. Stacking of Low Statistics Spectra

To complete our analysis of the $z \geq 3$ sample, we perform a fit stacking the spectra of the 154 sources with less than 70 net counts in the 0.5–7 keV band. Each spectrum was corrected for background, detector response, and Galactic absorption in the same way as done in Iwasawa et al. (2012), and rebinned into 1 keV intervals in the 3–23 keV band in the galaxy rest frame. The spectral stacking is then a straight sum of these individual spectra. As for the sources in CCLS70, we first fit the data with an absorbed power law and then with a pexrav model with reflection parameter $R = 1$. We report the results of the fits in Table 12, for the whole sample and for different subsamples based on the optical classification of the sources. The stacked spectrum obtained combining all 154 sources contains 3583 net counts in the 3–23 keV rest-frame band, has $\Gamma = 1.44^{+0.16}_{-0.14}$ and $N_{\text{H},z} = 5.22^{+4.41}_{-3.23} \times 10^{22} \text{ cm}^{-2}$ while fitting the data with an absorbed power law, and has $\Gamma = 1.63^{+0.16}_{-0.13}$ and $N_{\text{H},z} = 7.02^{+4.57}_{-3.32} \times 10^{22} \text{ cm}^{-2}$ while fitting with a pexrav model. The indication of a flattening in the spectral slope, with respect to a typical value $\Gamma = 1.9$, is confirmed even if we

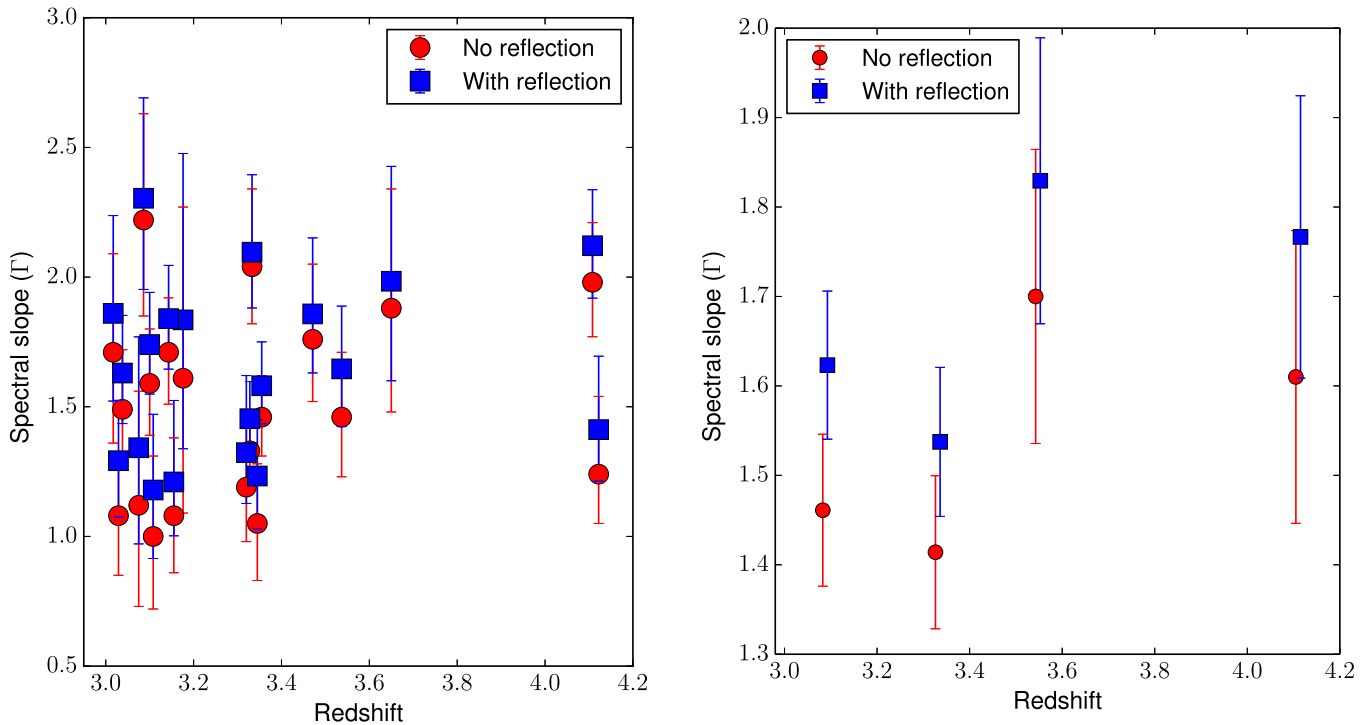


Figure 14. Left: evolution with redshift of the photon index Γ , without (red circles) or with (blue squares) the contribution of a reflection component, for the 20 *Chandra* COSMOS-Legacy sources with $z \geq 3$ and more than 70 net counts in the 0.5–7 keV band. Right: same as in the left panel, but binned in four different bins of redshift. Note that the y-axis ranges are different in the two panels.

Table 12
Spectral Parameters Obtained Fitting the Stacked Spectra of AGNs at $z \geq 3$ and with Less Than 70 Net Counts in the 0.5–7 keV Band

Type	n_{src}	Counts	$\langle z \rangle$	χ^2/dof	Γ Power Law	$N_{\text{H,z}}$	χ^2/dof	Γ Pexrav	$N_{\text{H,z}}$
All	154	3586	3.58	22.3/17	$1.44^{+0.16}_{-0.14}$	$5.22^{+4.41}_{-3.23}$	27.3/17	$1.63^{+0.16}_{-0.13}$	$7.02^{+4.57}_{-3.32}$
1 spec, all	40	1341	3.52	12.7/17	$1.50^{+0.24}_{-0.23}$	<5.90	10.6/17	$1.70^{+0.24}_{-0.21}$	$4.29^{+5.76}_{-4.23}$
1 spec, 10-45 cts	31	899	3.56	21.5/17	$1.68^{+0.35}_{-0.31}$	<12.02	19.6/17	$1.83^{+0.31}_{-0.29}$	<12.83
1 phot, all	33	699	3.55	16.6/17	$1.48^{+0.35}_{-0.29}$	<11.01	18.0/17	$1.67^{+0.33}_{-0.27}$	<16.74
1 phot, 10-45 cts	25	564	3.34	16.9/17	$1.53^{+0.33}_{-0.24}$	$4.48^{+3.99}_{-2.90}$	18.0/17	$1.69^{+0.31}_{-0.27}$	$5.66^{+7.46}_{-5.64}$
2 spec, all	22	518	3.52	15.4/17	$1.50^{+0.43}_{-0.27}$	$8.67^{+12.29}_{-7.16}$	16.8/17	$1.70^{+0.42}_{-0.27}$	$10.78^{+13.04}_{-4.25}$
2 spec, 10-45 cts	18	385	3.54	17.2/17	$1.85^{+0.62}_{-0.31}$	$13.90^{+19.90}_{-10.47}$	18.3/17	$2.05^{+0.59}_{-0.31}$	$16.53^{+21.04}_{-5.42}$
2 phot all	59	1028	3.66	29.4/17	$1.36^{+0.38}_{-0.27}$	$9.05^{+13.67}_{-4.32}$	33.0/17	$1.56^{+0.38}_{-0.27}$	$11.46^{+15.02}_{-4.21}$
2 phot, 10-45 cts	39	763	3.70	22.0/17	$1.19^{+0.24}_{-0.18}$	<5.93	24.1/17	$1.33^{+0.29}_{-0.16}$	<7.67

Note. $N_{\text{H,z}}$ is in units of 10^{22} cm^{-2} . “Spec” and “phot” indicate sources with spectroscopic redshift available and with only photometric redshift, respectively. “10–45 cts” indicates that we stacked only sources having between 10 and 45 net counts in the 3–23 keV rest-frame band. The source net counts are computed in the 3–23 keV rest-frame band.

stack separately the spectra on the basis of their optical classification, taking into account both the classification in type 1 and type 2 AGNs and the presence or absence of a spectroscopic redshift.

To study how much the low-count population affects the stacking results, we refitted the data removing from the stacking those sources with less than 10 counts in the 3–23 keV rest-frame band: the difference with respect to the fit to the whole sample is completely negligible.

Finally, we repeat the fit after removing from the stacking also those sources having more than 45 counts in the 3–23 keV rest-frame band, to estimate how much the brightest sources affect the fitting. We find a good agreement, at a 90% confidence level,

between the spectral parameters Γ and $N_{\text{H,z}}$ computed with and without the faintest and brightest sources in the sample.

7. CONCLUSIONS

We analyzed the X-ray spectra of the 1855 *Chandra* COSMOS-Legacy extragalactic sources with more than 30 net counts in the 0.5–7 keV band (CCLS30); 1273 out of 1855 sources ($\sim 69\%$) have a spectroscopic redshift, while the remaining 582 have a photometric redshift.

A total of 90% of the sources are well fitted with a basic power-law model, while the remaining 10% showed a statistically significant improvement while adding to the basic model further components, such as an iron $K\alpha$ line at 6.4 keV

and/or a second power law. The source spectra have been fitted together with the background spectra, which we reproduced with a complex multicomponent model, described in the [Appendix](#).

We now summarize the main results we obtained.

1. A total of 37.7% of the CCLS30 sources are classified as type 1 AGNs, and 60.3% are classified as type 2 AGNs, on the basis of either their spectroscopic or their SED template best-fitting classification. Finally, 2.0% sources are classified as low-redshift, passive galaxies.
2. The majority of sources in CCLS30 (67.2%) have only a 90% confidence upper limit on $N_{\text{H},z}$ (see Figure 6, left panel). Type 2 AGNs are also significantly more obscured than type 1 AGNs. A total of 41.4% of type 2 AGNs are obscured (i.e., with $N_{\text{H},z} > 10^{22} \text{ cm}^{-2}$ at a 90% confidence level) in CCLS30, while only 15.2% of type 1 AGNs are obscured.
3. The majority of sources in CCLS30 with less than 70 net counts (672 out of 968, 69.4%) have been fitted with a typical AGN photon index $\Gamma = 1.9$, to better constrain $N_{\text{H},z}$. In CCLS70 (Figure 7), the mean Γ of type 1 sources is $\langle \Gamma \rangle = 1.75 \pm 0.02$ (1.74), with dispersion $\sigma = 0.31$, while type 2 sources have on average flatter photon indices, with $\langle \Gamma \rangle = 1.61 \pm 0.02$ (1.62), with dispersion $\sigma = 0.47$. While this difference may be intrinsic, it is worth noticing that type 1 and type 2 AGNs have significantly closer $\langle \Gamma \rangle$ values if we take into account only sources with $1 < \Gamma < 3$, i.e., we remove from the computation very soft objects and candidate highly obscured, reflection-dominated sources, for which a flat Γ is trying to fit an obscured spectrum. Using this subsample of sources, type 1 AGNs have mean photon index $\langle \Gamma \rangle = 1.77 \pm 0.01$, with $\sigma = 0.28$, while type 2 AGNs have $\langle \Gamma \rangle = 1.70 \pm 0.02$, with $\sigma = 0.34$.
4. Type 1 AGNs have on average higher 2–10 keV intrinsic, absorption-corrected luminosity values than type 2 AGNs. The median luminosity of type 1 AGNs is $2.3 \times 10^{44} \text{ erg s}^{-1}$, and $\sim 64\%$ of type 1 AGNs have $L_{\text{X}} > 10^{44} \text{ erg s}^{-1}$, i.e., in the quasar regime. The majority ($\sim 71\%$) of type 2 sources have instead L_{X} below the quasar threshold and are mainly Seyfert galaxies. However, this is not an intrinsic difference, but is caused by having a flux-limited sample, i.e., sources at higher redshifts also have higher luminosities, and by the fact that type 1 AGNs are on average at higher redshifts ($\langle z \rangle = 1.74$ for CCLS30) than type 2 AGNs ($\langle z \rangle = 1.23$). Nonetheless, the difference between the two distributions may also suggest a trend with 2–10 keV luminosity of the fraction of type 1 to type 2 AGNs, type 2 AGNs being more numerous at lower luminosities.
5. We studied the distribution of $N_{\text{H},z}$ as a function of 2–10 keV rest-frame absorption-corrected luminosity (Figure 10, right panel). In CCLS30, 268 sources out of 1844 ($\sim 15\%$) lie in the obscured quasar region (i.e., $L_{2-10 \text{ keV}} = 10^{44} \text{ erg s}^{-1}$ and $N_{\text{H},z} > 10^{22} \text{ cm}^{-2}$). A total of 83 out of these 268 sources ($\sim 31\%$) are optically classified type 1 AGNs, and a fraction of these 83 sources are expected to be BAL quasars.
6. A significant fraction of optical type 2 sources lie in the $L_{2-10 \text{ keV}} = 10^{42} - 10^{44} \text{ erg s}^{-1}$, $N_{\text{H},z} < 10^{22} \text{ cm}^{-2}$ area, i.e., these sources have unobscured AGN X-ray properties. In CCLS30, 172 type 2 AGNs lie in the unobscured

AGN area (15.5% of the whole type 2 AGN population), while the fraction slightly increases (24.0%) if we take into account only objects with a spectral type. The fraction of unobscured type 2 AGNs strongly decreases with increasing 2–10 keV luminosity (Figure 11) and can be explained by a misclassification of low-luminosity BLAGNs and/or by the lack of broad emission lines in intrinsically unobscured, low-accretion AGNs.

7. For the 141 CCLS30 sources best fitted with a model that includes an iron $\text{K}\alpha$ emission line at 6.4 keV, we computed the emission-line EW. The mean (median) EW of the 141 CCLS30 sources is $\text{EW} = 0.49 \pm 0.38$ (0.39) keV. Fitting the EW distribution as a function of Γ with a linear model ($\text{EW} = a\Gamma + b$), we find a significant anticorrelation, with $a = -0.22 \pm 0.05$ (Figure 12, left panel). However, the correlation between EW and Γ disappears if we exclude from the sample the 12 candidate CT AGNs we obtained on the basis of more complex fitting models, which include proper characterization of the dusty torus surrounding the SMBH. This implies that basic models may fail in fitting heavily obscured sources, fitting the flat spectra of these objects with flat, unphysical photon indices and no $N_{\text{H},z}$.
8. We searched for a correlation between Γ and $N_{\text{H},z}$ and the host-galaxy mass (M_*) and SFR for type 2 AGNs. M_* and SFR have been computed using SED-fitting techniques (Suh et al. 2016, in preparation). We do not find any significant correlation between Γ and either M_* or SFR. We instead find a significant correlation between $N_{\text{H},z}$ and both M_* and SFR: objects with higher $N_{\text{H},z}$ values also have higher M_* and SFR (Figure 13). However, a partial correlation test showed that these relations are partially driven by a redshift selection effect.
9. We studied the properties of the 20 CCLS70 sources at $z \geq 3$. The mean (median) slope of these 20 sources is $\Gamma = 1.50 \pm 0.08$ (1.49). Fifteen out of the 20 sources have only an upper limit on $N_{\text{H},z}$. Two sources have $N_{\text{H},z} > 10^{23} \text{ cm}^{-2}$. We also repeated the fitting using the `pexrav` model, to take into account the potential presence of a reflection component close to the BH accretion disk. The reflection component affects the spectrum at energies greater than 30 keV in the rest frame, i.e., inside the observed 0.5–7 keV energy range we use in our fitting. The presence of a reflection component implies a general steepening of Γ , with $\langle \Gamma \rangle = 1.65 \pm 0.07$. The evidence for a photon index flatter than the standard value in our $z \geq 3$ sample is confirmed by a fit of the stacked spectra of the 154 sources not in CCLS70, which have $\Gamma = 1.44_{-0.14}^{+0.16}$, while fitting the data with a power law and $\Gamma = 1.63_{-0.13}^{+0.16}$ adding a reflection component to the model.

This work is the first step toward a large sample of sources at high redshift ($z > 0.5$) and medium to low luminosities ($L_{2-10 \text{ keV}} = 10^{42} - 10^{43} \text{ erg s}^{-1}$), where X-ray spectral properties can be constrained. The next generation of X-ray missions, such as *Athena+* (Nandra et al. 2013) or *X-ray Surveyor* (Vikhlinin et al. 2012), will provide even larger samples of such sources, significantly reducing selection biases and allowing statistical studies for column densities and SFR, searching for correlation between the central engine and the galaxy properties. Moreover, the improved statistics will allow us to detect iron emission lines in the high- z universe

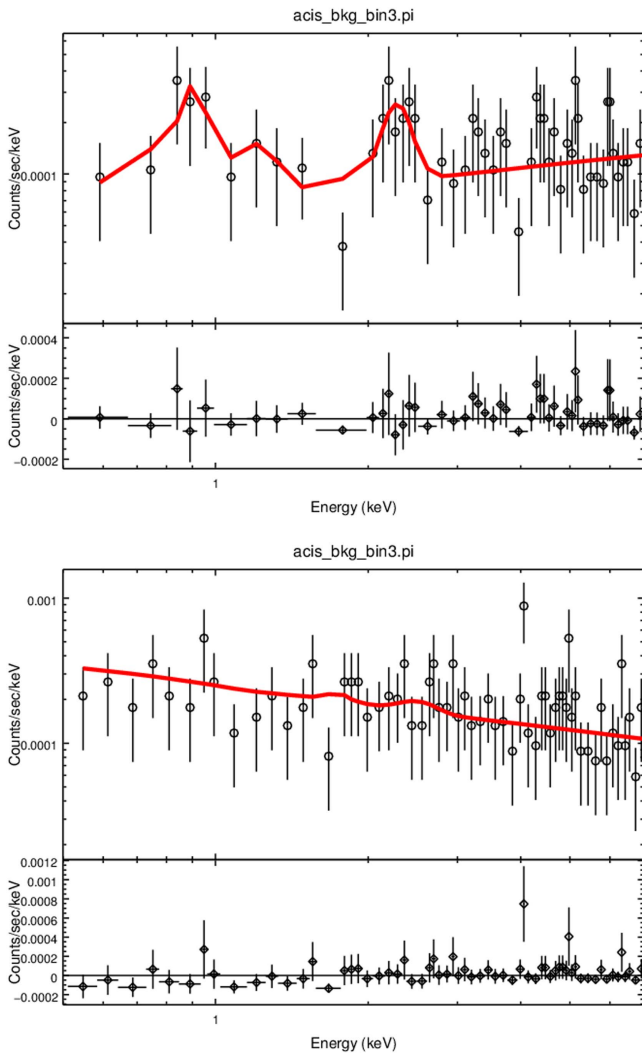


Figure 15. Example of two background spectral fittings, for sources cid_29 (top) and cid_33 (bottom).

(Georgakakis et al. 2013) and even measure redshifts from X-ray features (Comastri et al. 2004).

We thank the anonymous referee for suggestions which helped to improve this paper. This research has made use of data obtained from the *Chandra* Data Archive and software provided by the Chandra X-ray Center (CXC) in the CIAO application package.

This work was supported in part by NASA *Chandra* grant number GO3-14150C and also GO3-14150B (F.C., V.A., M. E.); PRIN-INAF 2014 “Windy Black Holes Combing Galaxy Evolution” (A.C., M.B., G.L., and C.V.); the FP7 Career Integration Grant “eEASy”: “Supermassive Black Holes through Cosmic Time: From Current Surveys to eROSITA-Euclid Synergies” (CIG 321913; M.B. and G.L.); the Spanish MINECO under grant AYA2013-47447-C3-2-P and MDM-2014-0369 of ICCUB (Unidad de Excelencia “María de Maeztu”; K.I.); UNAM-DGAPA Grant PAPIIT IN104216 and CONACyT Grant Científica Básica #179662 (T.M.); the Swiss National Science Foundation Grant PP00P2_138979/1 (K.S.); and the Center of Excellence in Astrophysics and Associated Technologies (PFB 06), by the FONDECYT

regular grant 1120061 and by the CONICYT Anillo project ACT1101 (E.T.).

APPENDIX

A.1. APPENDIX BACKGROUND MODELING

In Figure 15 we show an example of *Chandra* ACIS-I background in the 0.5–7 keV band for two sources in our sample. As can be seen, the background is rather flat and shows different emission features. The background is formed by different components, both astrophysical and instrumental, which we fit with different models:

1. The cosmic background, which we fit with an absorbed *apec* component, i.e., a thermal plasma emission model, mainly caused by the local “superbubble.” The temperature kT of this thermal component is left free to vary between 0 and 2 keV.
2. The instrumental particle background, which we fit with a power law and two emission lines: one between 1 and 1.8 keV, to fit the Al and Si emission features, and one between 1.8 and 2.5 keV, to fit the Au emission feature. Since these are instrumental components, we did not convolve this part of the model through the ARF.

Once we find the background best fit, we freeze all the background fit parameters and then refit the combined source and background spectrum.

A.2. COMPARISON WITH XMM-Newton

The COSMOS field has been observed with *XMM-Newton* to a flux limit of 7×10^{-16} erg s $^{-1}$ cm $^{-2}$ in the 0.5–2 keV band (Hasinger et al. 2007). The point-source catalog development procedure is described in Cappelluti et al. (2007), while the spectral analysis of the X-ray bright sample is reported in Mainieri et al. (2007) and Lanzuisi et al. (2015). The spectral extraction procedure for XMM-COSMOS sources has been the same used for CCLS30, i.e., the spectra were extracted from each observation and the combined, weighting the response matrices ARF and RMF by the contribution of each spectrum. The spectral fitting was performed as in CCLS30, using the Cstat minimization technique and modeling rather than subtracting the background component. The fits were performed in the 0.5–7 keV band to be fully consistent with the *Chandra* procedure, even if in principle *XMM-Newton* is sensitive up to ~ 10 keV.

A total of 1010 CCLS30 sources ($\sim 52\%$) have a counterpart with more than 30 net counts in the 0.5–7 keV band in the XMM-COSMOS catalog. In the following sections we study how Γ and $N_{\text{H},z}$ computed with *Chandra* and *XMM-Newton* correlate.

A.2.1. Photon Index

A total of 720 out of 1010 sources have less than 150 net counts in the 0.5–7 keV band in XMM-COSMOS. For these sources, we fix $\Gamma = 1.9$, due to lack of good statistics. Of these sources, 190 have $\Gamma = 1.9$ also in CCLS30.

For the remaining 290 sources with Γ free to vary in XMM-COSMOS, we show in Figure 16 (left panel) the trend of the photon index from the *XMM-Newton* best-fit Γ_{XMM} as a function of the photon index in CCLS30, Γ_{Cha} . In the same

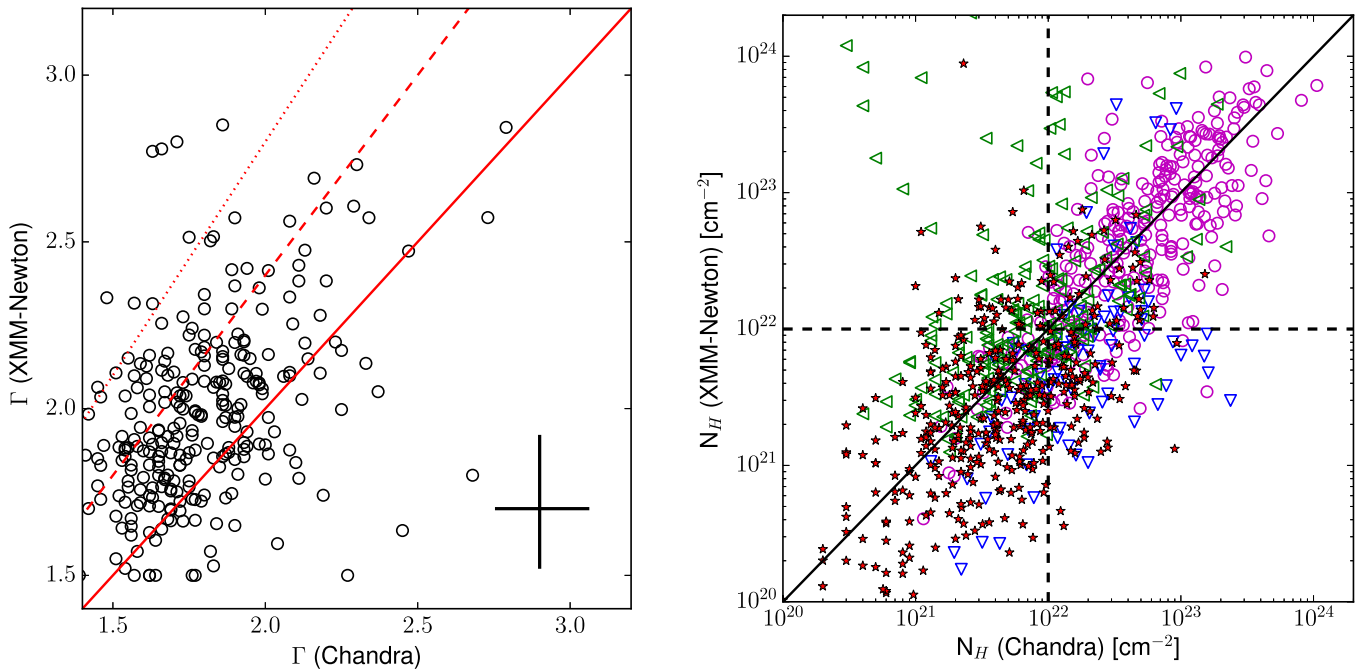


Figure 16. Left: photon index Γ obtained fitting the *XMM-Newton* spectra as a function of Γ computed for CCLS70, for the 287 sources with Γ left free to vary in the spectral fitting. The 1:1 relation is plotted with a red solid line; the $y = x \times 1.2$ ($y = x \times 1.4$) relation is plotted with a red dashed (dotted) line. Right: intrinsic absorption $N_{H,z}$ obtained fitting the *XMM-Newton* spectra as a function of $N_{H,z}$ computed for CCLS30, for the 1010 sources in CCLS30 with XMM-COSMOS counterparts. Sources with $N_{H,z}$ significant value significant at 1σ are plotted as magenta circles, sources with upper limit in *XMM-Newton* and significant detection in *Chandra* are plotted as blue downward-pointing triangles, sources with upper limit in *Chandra* and significant detection in *XMM-Newton* are plotted as green leftward-pointing triangles, and sources with upper limits on $N_{H,z}$ in both samples are shown as red stars. The 1:1 relation is plotted as a black solid line, and the standard threshold adopted to divide unobscured from obscured sources ($N_{H,z} = 10^{22} \text{ cm}^{-2}$) is plotted as black dashed lines.

figure, we plot the 1:1 relation with a red solid line, and the $y = x \times 1.2$ ($y = x \times 1.4$) relation with a red dashed (dotted) line. As can be seen, Γ_{XMM} is on average steeper than Γ_{Cha} ; in fact, the mean and standard deviation of the XMM-COSMOS sample are $\langle \Gamma_{\text{XMM}} \rangle = 1.98$ and $\sigma_{\text{XMM}} = 0.29$, while the mean and standard deviation for the CCLS30 counterparts are $\langle \Gamma_{\text{Cha}} \rangle = 1.76$ and $\sigma_{\text{Cha}} = 0.28$.

A similar result was already found in Lanzuisi et al. (2013), and it is independent from the number of net counts in both spectra. Moreover, Lanzuisi et al. (2013) showed that the same discrepancy between Γ_{XMM} and Γ_{Cha} is found using the XMM-COSMOS photon indices computed by Mainieri et al. (2007), which used a different fitting technique with respect to the one used in our work, based on background subtraction and χ^2 minimization.

A.2.2. Column Density

In the right panel of Figure 16 we show the intrinsic absorption $N_{H,z}$ obtained fitting the *XMM-Newton* spectra as a function of $N_{H,z}$ computed for CCLS30, for the 1010 sources in CCLS30 with XMM-COSMOS counterparts. Sources with 1σ significant $N_{H,z}$ are plotted as magenta circles, sources with upper limit in *XMM-Newton* but not in *Chandra* are plotted as blue downward-pointing triangles, and sources with upper limit in *Chandra* but not in *XMM-Newton* are plotted as green leftward-pointing triangles. Finally, upper limits on $N_{H,z}$ in both samples are shown as red stars. We also plot the 1:1 relation as a black solid line and the standard threshold adopted to divide unobscured from obscured sources ($N_{H,z} = 10^{22} \text{ cm}^{-2}$) as black dashed lines.

A total of 304 out of 1010 sources (30%) have an $N_{H,z}$ value significant at 1σ in both *Chandra* and *XMM-Newton*. For these sources, there is a general good agreement in the $N_{H,z}$ estimates, at any range of values. A total of 417 sources (41%) have instead an upper limit on $N_{H,z}$ in both *Chandra* and *XMM-Newton*.

The fraction of sources with a significant $N_{H,z}$ value in *XMM-Newton* and an upper limit in *Chandra* (205, 20%) is higher than the fraction of sources with a significant value in *Chandra* and upper limit in *XMM-Newton* (88, 8%). Moreover, 108 sources are classified as obscured in *XMM-Newton* while having only an upper limit on $N_{H,z}$ in *Chandra*, and 59 sources are obscured in *Chandra* and have an upper limit in *XMM-Newton*. In the whole sample, 351 sources (35%) are obscured according to the *XMM-Newton* spectral information, in reasonable agreement with the *Chandra* results, where 329 sources (33%) have $N_{H,z} > 10^{22} \text{ cm}^{-2}$.

In conclusion, there is a general good agreement between the measures on $N_{H,z}$ obtained with *Chandra* and *XMM-Newton*. While 15%–20% of the sources have significantly different $N_{H,z}$ values from the two different telescopes, this discrepancy can be explained by instrumental effects, as observed in the photon index measurements, or by a lack of statistics.

REFERENCES

- Akylas, A., & Georgantopoulos, I. 2009, *A&A*, 500, 999
 Arnouts, S., Cristiani, S., Moscardini, L., et al. 1999, *MNRAS*, 310, 540
 Brandt, W. N., Mathur, S., & Elvis, M. 1997, *MNRAS*, 285, L25
 Brightman, M., Nandra, K., Salvato, M., et al. 2014, *MNRAS*, 443, 1999
 Bruzual, G., & Charlot, S. 2003, *MNRAS*, 344, 1000
 Buchner, J., Georgakakis, A., Nandra, K., et al. 2015, *ApJ*, 802, 89
 Capak, P., Aussel, H., Ajiki, M., et al. 2007, *ApJS*, 172, 99

- Cappelluti, N., Hasinger, G., Brusa, M., et al. 2007, *ApJS*, 172, 341
- Cash, W. 1979, *ApJ*, 228, 939
- Chary, R., & Elbaz, D. 2001, *ApJ*, 556, 562
- Civano, F., Comastri, A., & Brusa, M. 2005, *MNRAS*, 358, 693
- Civano, F., Fabbiano, G., Pellegrini, S., et al. 2014, *ApJ*, 790, 16
- Civano, F., Marchesi, S., Comastri, A., et al. 2016, *ApJ*, 819, 62
- Comastri, A., Brusa, M., & Civano, F. 2004, *MNRAS*, 351, L9
- Comastri, A., Ranalli, P., Iwasawa, K., et al. 2011, *A&A*, 526, L9
- Conover, W. J. 1980, *Practical Nonparametric Statistics* (New York: Wiley)
- Dale, D. A., & Helou, G. 2002, *ApJ*, 576, 159
- Davies, R. I., Burtscher, L., Rosario, D., et al. 2015, *ApJ*, 806, 127
- Donley, J. L., Rieke, G. H., Pérez-González, P. G., & Barro, G. 2008, *ApJ*, 687, 111
- Elvis, M., Hao, H., Civano, F., et al. 2012, *ApJ*, 759, 6
- Feigelson, E. D., & Nelson, P. I. 1985, *ApJ*, 293, 192
- Fiore, F., Puccetti, S., Grazian, A., et al. 2012, *A&A*, 537, A16
- Fotopoulou, S., Pacaud, F., Paltani, S., et al. 2016, *A&A*, 592, A5
- Freeman, P., Doe, S., & Siemiginowska, A. 2001, *Proc. SPIE*, 4477, 76
- Fruscione, A., McDowell, J.-C., Allen, G. E., et al. 2006, *Proc. SPIE*, 6270, 62701V
- Garcet, O., Gandhi, P., Gosset, E., et al. 2007, *A&A*, 474, 473
- Georgakakis, A., Carrera, F., Lanzuisi, G., et al. 2013, arXiv:1306.2328
- Georgantopoulos, I., Comastri, A., Vignali, C., et al. 2013, *A&A*, 555, A43
- Gilli, R., Comastri, A., & Hasinger, G. 2007, *A&A*, 463, 79
- Goodrich, R. W. 1989, *ApJ*, 342, 224
- Haardt, F., & Maraschi, L. 1991, *ApJL*, 380, L51
- Hao, H., Elvis, M., Civano, F., et al. 2014, *MNRAS*, 438, 1288
- Hasinger, G. 2008, *A&A*, 490, 905
- Hasinger, G., Cappelluti, N., Brunner, H., et al. 2007, *ApJS*, 172, 29
- Hickox, R. C., & Markevitch, M. 2006, *ApJ*, 645, 95
- Ilbert, O., Arnouts, S., McCracken, H. J., et al. 2006, *A&A*, 457, 841
- Ilbert, O., Capak, P., Salvato, M., et al. 2009, *ApJ*, 690, 1236
- Isobe, T., & Feigelson, E. D. 1990, *BAAS*, 22, 917
- Isobe, T., Feigelson, E. D., & Nelson, P. I. 1986, *ApJ*, 306, 490
- Iwasawa, K., Mainieri, V., Brusa, M., et al. 2012, *A&A*, 537, A86
- Iwasawa, K., & Taniguchi, Y. 1993, *ApJL*, 413, L15
- Jin, C., Ward, M., & Done, C. 2012, *MNRAS*, 425, 907
- Kalberla, P. M. W., Burton, W. B., Hartmann, D., et al. 2005, *A&A*, 440, 775
- Koekemoer, A. M., Aussel, H., Calzetti, D., et al. 2007, *ApJS*, 172, 196
- Koulouridis, E., Georgantopoulos, I., Loukaidou, G., et al. 2016, *A&A*, 586, A3
- Laigle, C., McCracken, H. J., Ilbert, O., et al. 2016, arXiv:1604.02350
- Lanzuisi, G., Civano, F., Elvis, M., et al. 2013, *MNRAS*, 431, 978
- Lanzuisi, G., Ranalli, P., Georgantopoulos, I., et al. 2015, *A&A*, 573, A137
- Lavalley, M. P., Isobe, T., & Feigelson, E. D. 1992, *BAAS*, 24, 839
- Lawrence, A., & Elvis, M. 1982, *ApJ*, 256, 410
- Lehmer, B. D., Xue, Y. Q., Brandt, W. N., et al. 2012, *ApJ*, 752, 46
- Lilly, S. J., Le Brun, V., Maier, C., et al. 2009, *ApJS*, 184, 218
- Lilly, S. J., Le Fèvre, O., Renzini, A., et al. 2007, *ApJS*, 172, 70
- Luo, B., Brandt, W. N., Xue, Y. Q., et al. 2010, *ApJS*, 187, 560
- Lusso, E., Comastri, A., Simmons, B. D., et al. 2012, *MNRAS*, 425, 623
- Macklin, J. T. 1982, *MNRAS*, 199, 1119
- Mainieri, V., Hasinger, G., Cappelluti, N., et al. 2007, *ApJS*, 172, 368
- Maiolino, R., Risaliti, G., Salvati, M., et al. 2010, *A&A*, 517, A47
- Makishima, K. 1986, in *The Physics of Accretion onto Compact Objects*, Vol. 266, ed. K. O. Mason, M. G. Watson, & N. E. White (Berlin: Springer), 249
- Malizia, A., Stephen, J. B., Bassani, L., et al. 2009, *MNRAS*, 399, 944
- Marchesi, S., Civano, F., Elvis, M., et al. 2016a, *ApJ*, 817, 34
- Marchesi, S., Civano, F., Salvato, M., et al. 2016b, arXiv:1606.06813
- Marinucci, A., Bianchi, S., Nicastro, F., Matt, G., & Goulding, A. D. 2012, *ApJ*, 748, 130
- Mateos, S., Barcons, X., Carrera, F. J., et al. 2005, *A&A*, 444, 79
- McCracken, H. J., Capak, P., Salvato, M., et al. 2010, *ApJ*, 708, 202
- Merloni, A., Bongiorno, A., Brusa, M., et al. 2014, *MNRAS*, 437, 3550
- Nandra, K., Barret, D., Barcons, X., et al. 2013, arXiv:1306.2307
- Nandra, K., & Pounds, K. A. 1994, *MNRAS*, 268, 405
- Oh, K., Yi, S. K., Schawinski, K., et al. 2015, *ApJS*, 219, 1
- Osterbrock, D. E., & Pogge, R. W. 1985, *ApJ*, 297, 166
- Page, K. L., Reeves, J. N., O'Brien, P. T., & Turner, M. J. L. 2005, *MNRAS*, 364, 195
- Panessa, F., & Bassani, L. 2002, *A&A*, 394, 435
- Piconcelli, E., Jimenez-Bailón, E., Guainazzi, M., et al. 2005, *A&A*, 432, 15
- Risaliti, G., & Elvis, M. 2004, in *Supermassive Black Holes in the Distant Universe*, ed. A. J. Barger (Dordrecht: Kluwer), 187
- Risaliti, G., Elvis, M., & Nicastro, F. 2002, *ApJ*, 571, 234
- Risaliti, G., Maiolino, R., & Salvati, M. 1999, *ApJ*, 522, 157
- Risaliti, G., Young, M., & Elvis, M. 2009, *ApJL*, 700, L6
- Salvato, M., Ilbert, O., Hasinger, G., et al. 2011, *ApJ*, 742, 61
- Sanders, D. B., Salvato, M., Aussel, H., et al. 2007, *ApJS*, 172, 86
- Schinnerer, E., Smolčić, V., Carilli, C. L., et al. 2007, *ApJS*, 172, 46
- Scoville, N., Aussel, H., Brusa, M., et al. 2007, *ApJS*, 172, 1
- Shemmer, O., Brandt, W. N., Netzer, H., Maiolino, R., & Kaspi, S. 2006, *ApJL*, 646, L29
- Shemmer, O., Brandt, W. N., Netzer, H., Maiolino, R., & Kaspi, S. 2008, *ApJ*, 682, 81
- Siemiginowska, A., Stawarz, Ł., Cheung, C. C., et al. 2007, *ApJ*, 657, 145
- Silva, L., Maiolino, R., & Granato, G. L. 2004, *MNRAS*, 355, 973
- Sobolewska, M. A., & Papadakis, I. E. 2009, *MNRAS*, 399, 1597
- Stern, D., Assef, R. J., Benford, D. J., et al. 2012, *ApJ*, 753, 30
- Taniguchi, Y., Scoville, N., Murayama, T., et al. 2007, *ApJS*, 172, 9
- Tozzi, P., Gilli, R., Mainieri, V., et al. 2006, *A&A*, 451, 457
- Treister, E., Cardamone, C. N., Schawinski, K., et al. 2009, *ApJ*, 706, 535
- Trump, J. R., Impey, C. D., Kelly, B. C., et al. 2011, *ApJ*, 733, 60
- Trump, J. R., Impey, C. D., McCarthy, P. J., et al. 2007, *ApJS*, 172, 383
- Ueda, Y., Akiyama, M., Ohta, K., & Miyaji, T. 2003, *ApJ*, 598, 886
- Vikhlinin, A., Reid, P., Tananbaum, H., et al. 2012, *Proc. SPIE*, 8443, 844316
- Yang, J.-M., Watarai, K.-Y., & Mineshige, S. 2004, *ApJL*, 607, L107
- Young, M., Elvis, M., & Risaliti, G. 2009, *ApJS*, 183, 17
- Zamojski, M. A., Schiminovich, D., Rich, R. M., et al. 2007, *ApJS*, 172, 468