



Publication Year	2020
Acceptance in OA	2023-10-04T14:46:57Z
Title	Collimated outflows from long-lived binary neutron star merger remnants
Authors	CIOLFI, RICCARDO
Publisher's version (DOI)	10.1093/mnrasl/slaa062
Handle	http://hdl.handle.net/20.500.12386/34429
Journal	MONTHLY NOTICES OF THE ROYAL ASTRONOMICAL SOCIETY. LETTERS
Volume	495

Collimated outflows from long-lived binary neutron star merger remnants

Riccardo Ciolfi  ^{1,2}★

¹INAF, Osservatorio Astronomico di Padova, Vicolo dell'Osservatorio 5, I-35122 Padova, Italy

²INFN, Sezione di Padova, Via Francesco Marzolo 8, I-35131 Padova, Italy

Accepted 2020 April 7. Received 2020 April 7; in original form 2020 March 12

ABSTRACT

The connection between short gamma-ray bursts (SGRBs) and binary neutron star (BNS) mergers was recently confirmed by the association of GRB 170817A with the merger event GW170817. However, no conclusive indications were obtained on whether the merger remnant that powered the SGRB jet was an accreting black hole (BH) or a long-lived massive neutron star (NS). Here, we explore the latter case via BNS merger simulations covering up to 250 ms after merger. We report, for the first time in a full merger simulation, the formation of a magnetically driven collimated outflow along the spin axis of the NS remnant. For the system at hand, the properties of such an outflow are found largely incompatible with an SGRB jet. With due consideration of the limitations and caveats of our present investigation, our results favour a BH origin for GRB 170817A and SGRBs in general. Even though this conclusion needs to be confirmed by exploring a larger variety of physical conditions, we briefly discuss possible consequences of all SGRB jets being powered by accreting BHs.

Key words: gravitational waves – MHD – gamma-ray burst: general – stars: neutron; neutron star mergers.

1 INTRODUCTION

The coincident detection of gravitational waves (GWs) from the binary neutron star (BNS) merger event GW170817 and the short gamma-ray burst (SGRB) named GRB 170817A provided what is widely considered the long awaited compelling evidence that BNS mergers can power SGRBs (Abbott et al. 2017a, b, c; Goldstein et al. 2017; Hallinan et al. 2017; Savchenko et al. 2017; Troja et al. 2017; Lazzati et al. 2018; Lyman et al. 2018; Mooley et al. 2018a, b; Ghirlanda et al. 2019). The combined analysis of the prompt gamma-ray signal and the subsequent X-ray, optical/IR, and radio afterglows ultimately confirmed that GRB 170817A was powered by a relativistic jet, in accordance with the accepted paradigm (e.g. Piran 2004; Kumar & Zhang 2015). Moreover, the jet properties were found consistent with the known class of SGRBs, even though this event was the first to be observed off-axis by 15–30° (Mooley et al. 2018b; Ghirlanda et al. 2019 and refs. therein).

This breakthrough discovery left behind a crucial open question on the nature of the central engine producing the jet. The most likely outcome of the merger was a metastable hypermassive or supramassive neutron star (NS), which eventually collapsed to a black hole (BH). However, it was not possible to firmly establish whether the collapse occurred before or after the SGRB jet was launched. Therefore, an accreting BH ('BH-disc' scenario, Eichler et al. 1989; Narayan, Paczynski & Piran 1992; Mochkovitch et al.

1993) or a rapidly spinning and strongly magnetized NS ('magnetar' scenario, Zhang & Mészáros 2001; Gao & Fan 2006; Metzger, Quataert & Thompson 2008) both represent viable central engines for GRB 170817A (see e.g. Ciolfi 2018 for a recent review).

Numerical relativity simulations represent the prime tool to investigate how BNS mergers could power SGRB jets. Recent results showed that magnetic fields are most likely the dominant driver of jet formation (e.g. Just et al. 2016; Ruiz et al. 2016) and thus a proper study of the associated physical mechanisms requires general relativistic magnetohydrodynamic (GRMHD) simulations. So far, most simulations of this kind focused on the BH-disc scenario (e.g. Kiuchi et al. 2014; Kawamura et al. 2016; Ruiz et al. 2016), for which encouraging indications were obtained. In particular, Ruiz et al. (2016) reported the emergence of a mildly relativistic outflow along the BH spin axis, with properties potentially compatible with a nascent SGRB jet. The alternative scenario, based on a long-lived NS remnant as SGRB central engine, remained instead largely unexplored until Ciolfi et al. (2017) started a first systematic investigation. Along the same line, a new simulation extending up to ~100 ms after merger was recently presented in Ciolfi et al. (2019). Neither signs of jet formation were found, nor favourable indications that a jet would be launched at later times. Although not conclusive, this result reinforced the idea that jet formation might be very challenging without a BH.

In this Letter, we present new GRMHD simulations of BNS mergers aimed at exploring the prospects of jet formation from long-lived NS remnants. Covering up to more than 250 ms after merger, these simulations are to date the longest of their kind.

* E-mail: riccardo.ciolfi@inaf.it

We show, for the first time in a full BNS merger simulation, the formation of a magnetically driven and collimated outflow in such a system, identifying the launching mechanism and evaluating the associated energetics. The BNS model at hand, consistent with the inferred properties of the GW170817 system, offers also an opportunity to directly test the long-lived NS central engine hypothesis by assessing whether such an outflow could lead to an SGRB jet compatible with GRB 170817A. Our findings reveal a combination of outflow energy, collimation, and Lorentz factor for which producing an SGRB jet appears virtually impossible, thus pointing in favour of a BH origin for GRB 170817A and SGRBs in general. We discuss possible consequences that would apply if the above indication is confirmed, as well as caveats and limitations of our current investigation.

2 PHYSICAL MODEL AND NUMERICAL SETUP

Our initial data reproduce a BNS system with the same chirp mass as estimated for GW170817 (Abbott et al. 2019) and a mass ratio of $q \simeq 0.9$ (individual masses $\simeq 1.44, 1.29 M_{\odot}$). As equation of state (EOS) for NS matter, we adopt a piecewise-polytropic approximation of the APR4 EOS (Akmal, Pandharipande & Ravenhall 1998) as implemented in Endrizzi et al. (2016). This choice leads to a merger remnant that does not collapse to a BH within the simulation time span. As in previous studies (e.g. Ciolfi et al. 2019 and refs. therein), the two NSs are endowed with initial dipolar magnetic fields confined to their interior. We perform two different simulations, which only differ for the initial magnetic energy, namely $E_{\text{mag}} \simeq 4 \times 10^{47}$ and $E_{\text{mag}} \simeq 1.6 \times 10^{46}$ erg, corresponding to initial maximum field strengths of 5×10^{15} and 10^{15} G, respectively (models ‘B5e15’ and ‘B1e15’). As we discuss in more detail in the next section, these very high field strengths are chosen to reproduce the magnetization levels expected after merger despite the fact that magnetic field amplification mechanisms are not fully resolved.

Numerical codes, methods, and setup are the same adopted in Ciolfi et al. (2017, 2019), with the following exceptions. First, we extended the computational domain up to ≈ 3400 km along all axes. Then, we lowered by two orders of magnitude, the level of the artificial floor density ($\rho^* \simeq 6.3 \times 10^4$ g/cm³), which now corresponds to a mass of $\simeq 3.5 \times 10^{-3} M_{\odot}$ within a sphere of radius 3000 km. This ensures that the artificial floor has only a minor impact on the ejecta dynamics. Finally, we employ a resolution with finest grid spacing of $\Delta x \approx 250$ m.

3 EVOLUTION AND EMERGENCE OF COLLIMATED OUTFLOW

Among the two models considered, only the one with higher initial magnetic energy leads to the formation of a collimated outflow (Fig. 1), while the other one does not show any sign of it. The overall merger and post-merger dynamics appear however rather similar up to ~ 100 ms after merger.

The evolution of magnetic energy is shown in Fig. 2 for both models. At merger, magnetic fields are amplified via the Kelvin–Helmoltz (KH) instability (e.g. Kiuchi et al. 2015, 2018), developing in the shear layer separating the two NS cores. After few ms, the magnetorotational instability (MRI; Balbus & Hawley 1991; Duez et al. 2006; Siegel et al. 2013) takes over as the dominant source of amplification within the differentially rotating supramassive NS remnant. The magnetic energy growth saturates at $E_{\text{mag}} \sim 10^{51}$ erg, after that a slow and steady decline begins. Higher initial

field strength leads to higher maximum E_{mag} , but the evolution path is qualitatively different, with E_{mag} becoming even higher in the ‘B1e15’ case between ~ 20 and ~ 50 ms after merger. This qualitative difference is indicative of a complex dependence that makes the outcome of other initial magnetizations hard to predict.

We stress that our resolution is not sufficient to fully account for the early small-scale magnetic field amplification (in particular via the KH instability, Kiuchi et al. 2015, 2018) and therefore, in order to reach the very high magnetization levels expected in the post-merger phase ($E_{\text{mag}} \sim 10^{51}$ erg), we imposed initial magnetic energies that are much higher than those of typical merging BNS systems. We note, however, that starting from ~ 40 ms after merger the dominant amplification mechanism (i.e. the MRI) is well resolved, giving us confidence that the following magnetohydrodynamic evolution is not severely affected by the lack of resolution and that our results are, at least qualitatively, reliable (see analogous case discussed in Ciolfi et al. 2019).

An important aspect common to both models is the absence of an accretion disc around the massive NS remnant. As previously reported in Ciolfi et al. (2019) and confirmed here, if the remnant is strongly magnetized (as expected in real systems), the surrounding matter distribution becomes nearly isotropic within few tens of ms after merger.

In the following, we consider the evolution beyond 100 ms after merger, focussing entirely on the ‘B5e15’ case. The first signs that a faster outflow is forming along the remnant spin axis appear soon at ~ 600 km distance (left-hand panel of Fig. 1). At this time, the baryon mass contained between 100 and 600 km radial distance from the central object is $\simeq 0.21 M_{\odot}$, while above 600 km, we have $\simeq 0.02 M_{\odot}$. The main front of the post-merger magnetized baryon wind is at ~ 1500 km. About 20 ms later, the faster material along the axis starts breaking out at ~ 1700 km, paving the way for a more collimated and even faster incoming outflow. Within another ~ 50 ms, the final collimated outflow has emerged, gradually stabilizing towards a conical structure sharply separated from the surrounding much slower baryon wind and entirely contained within a half-opening angle of 15° (central and right-hand panels of Fig. 1). The radial velocity inside this outflow is $0.2\text{--}0.3 c$. Finally, towards the end of the simulation (~ 250 ms after merger), we observe a significant decline of the outflow power, indicating that the corresponding energy reservoir has been consumed.

In Fig. 3, we show the magnetic field structure between 150 and 250 ms after merger, together with representative isodensity surfaces (see Kawamura et al. 2016; Ciolfi et al. 2019 for details on magnetic field line visualization). Along the spin axis, a jet-like helical structure emerges from the dense environment surrounding the massive NS remnant. As seen for accreting BH systems (e.g. Ruiz et al. 2016), this is precisely the type of magnetic field geometry that can accelerate a collimated outflow. At the same time, the isodensity surfaces show an isotropic matter distribution around the central object, with no accretion disc.

We now turn to discuss the energetics of the collimated outflow. In the top panel of Fig. 4, we report the time evolution of the energy contained within 15° from the z -axis and for radial distances larger than 800 km, named $E_{15^{\circ}}$, given by the sum of radial kinetic energy, magnetic energy, and internal energy. Since at ~ 160 ms after merger, the outflow reaches the outer boundary of our computational domain, we also compute the corresponding energy flux and include this contribution in $E_{15^{\circ}}$. The total energy of the collimated outflow, for which $E_{15^{\circ}}$ represents a very good estimate, grows rapidly up to $\simeq 3 \times 10^{49}$ erg and then flattens with no significant change over the last ~ 100 ms. This saturation indicates that the energy input from the central engine has significantly declined.

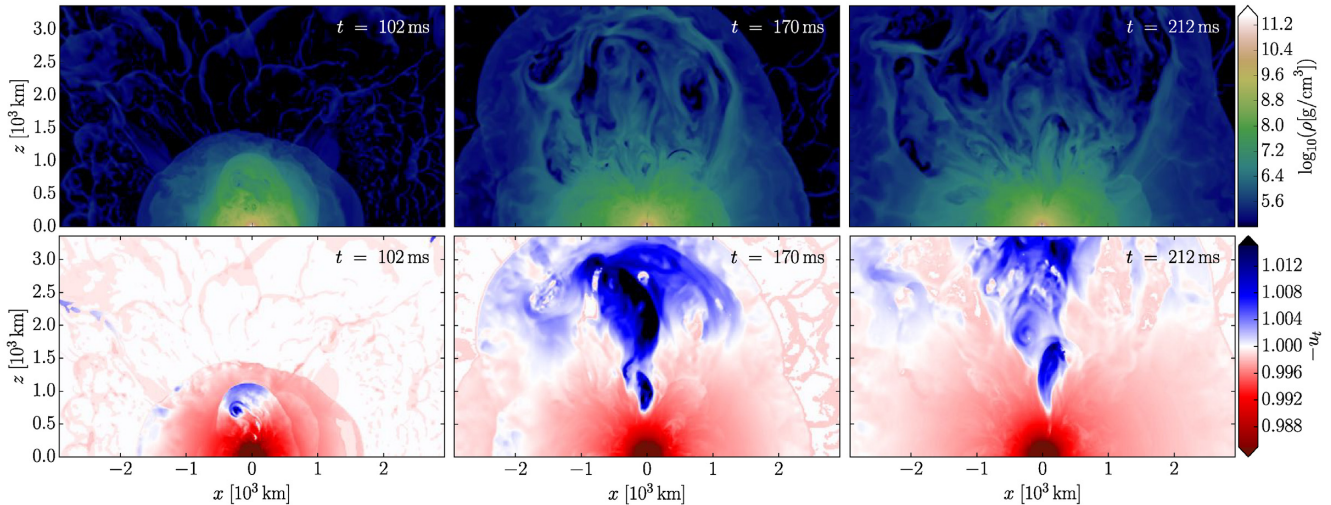


Figure 1. Meridional view of rest-mass density (top) and $-u_t$ (bottom) at 102, 170, and 212 ms after merger for model ‘B5e15’. Blue (red) colour in the bottom row corresponds to fluid elements that are unbound (bound) according to the geodesic criterion (see e.g. Hotokezaka et al. 2013 for u_t definition).

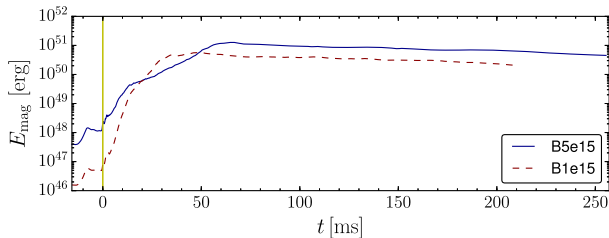


Figure 2. Evolution of total magnetic energy for the two models discussed in this work. Vertical line marks the time of merger.

The total rotational energy of the system is shown in the bottom panel of Fig. 4. The time evolution reveals a drastic change around 170 ms after merger, switching from rapid decrease (consistent with an exponential damping) to much slower linear decline ($\dot{E}_{\text{rot}} \simeq 5 \times 10^{52} \text{ erg s}^{-1}$). This change perfectly matches the transition from differential to uniform rotation in the core of the remnant NS (cf. inset of the same panel). Combined with the flattening of the energy in the collimated outflow, this result provides a strong indication that the energy reservoir powering the latter is given by differential rotation. The efficiency in converting rotational energy into outflow energy reaches a maximum of $\eta \equiv |\dot{E}_{15^\circ} / \dot{E}_{\text{rot}}| \sim 2.5 \times 10^{-3}$ at 130 ms after merger and then it drops rapidly ($< 10^{-3}$ after 150 ms).

Our findings demonstrate that *long-lived BNS merger remnants can generate collimated outflows*. These are launched via a magnetorotational mechanism, where the energy reservoir is given by differential rotation within the remnant NS and part of this energy ($\lesssim 0.1$ per cent for the case at hand) is channelled along the spin axis by a strong helical-structured magnetic field. The acceleration is mainly provided by the radial gradient of magnetic pressure, which is sustained by differential rotation and, in particular along the spin axis, is strong enough to overcome the gravitational pull. Differently from incipient jets in BH-disc systems, the present outflow is not powered by accretion (no accretion disc is present).

The above launching mechanism was previously illustrated in GRMHD simulations of idealized, differentially rotating hypermassive or supramassive NSs endowed with an initial poloidal magnetic field imposed by hand (e.g. Shibata et al. 2011; Kiuchi, Kyutoku &

Shibata 2012; Siegel, Ciolfi & Rezzolla 2014). It was shown that the combination of a poloidal magnetic field along the NS spin axis and the differential rotation of the NS itself, without a baryon-polluted surrounding environment, would produce a collimated outflow. Our present simulations reveal that such a mechanism can be successful in actual BNS mergers.

The absence of a collimated outflow in the ‘B1e15’ case shows, however, that not all systems produce a similar outcome. Besides, the need for a sufficiently high magnetization, the conditions to form a collimated outflow likely depend on a complex balance between the magnetically driven baryon wind and the emergence of a helical magnetic field structure piercing through it, which are both controlled by the details of magnetic field amplification. This aspect remains poorly understood and requires further investigation.

4 COMPATIBILITY WITH THE JET OF GRB 170817A

The jet core energy of GRB 170817A as estimated in Ghirlanda et al. (2019) lies in the range $\simeq (0.4\text{--}29.5) \times 10^{49} \text{ erg}$, with central value $\simeq 4.4 \times 10^{49} \text{ erg}$. Within the optimistic assumption that all the energy in the emerging collimated outflow ($E_{15^\circ} \simeq 3 \times 10^{49} \text{ erg}$) will eventually turn into jet core energy, the latter would result compatible with the lower end of the above range. Nevertheless, if we consider the isotropic equivalent energy, the estimate for the jet core of GRB 170817A stands between one and two orders of magnitude above. This is due to the much higher collimation (half-opening angle $\lesssim 5^\circ$, Mooley et al. 2018b; Ghirlanda et al. 2019), corresponding to $\gtrsim 10$ times smaller solid angle. Further collimation of the latter along its propagation might be possible (e.g. via magnetic fields), but reconciling our result with the inferred energy of GRB 170817A would be in the best case extremely challenging and for most of the allowed range simply impossible.

The discrepancy in Lorentz factor is, however, what poses the strongest challenge. The outflow velocity 3400 km away from the remnant is $\lesssim 0.3c$, corresponding to a Lorentz factor $\Gamma \lesssim 1.05$, while an SGRB jet (including the case of GRB 170817A, Mooley et al. 2018b; Ghirlanda et al. 2019) would require $\Gamma \gtrsim 10$ or a velocity $\gtrsim 0.995c$. In principle, the outflow could still accelerate while propagating at larger distances. Nevertheless, the energy-to-

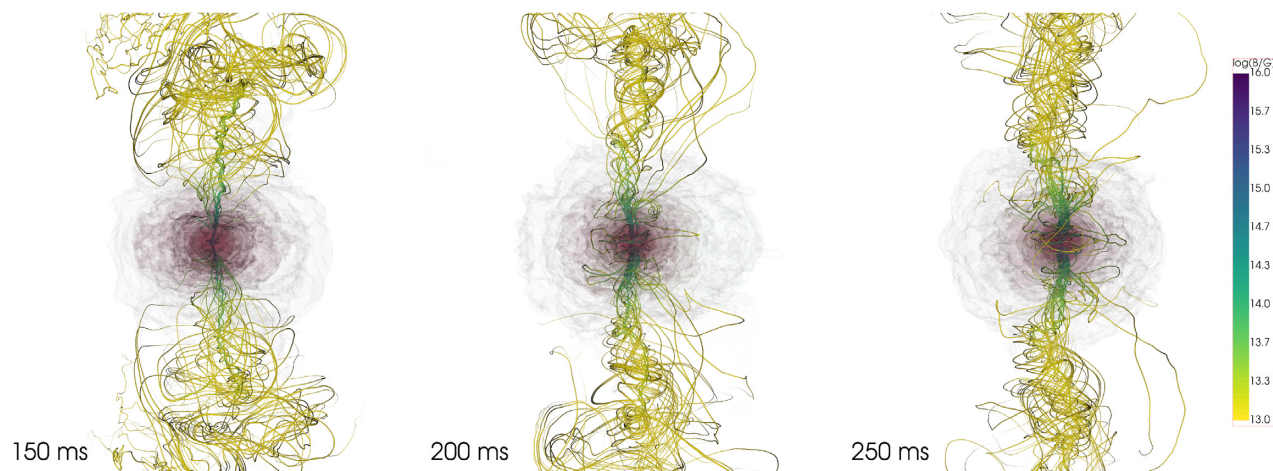


Figure 3. Magnetic field structure 150, 200, and 250 ms after merger for model ‘B5e15’, with colour coded magnetic field strength. The vertical scale covers ± 2700 km along the z -axis. Several semitransparent isodensity surfaces are also shown for ρ between 6×10^6 and 4×10^9 g cm^{-3} (from light grey to red).

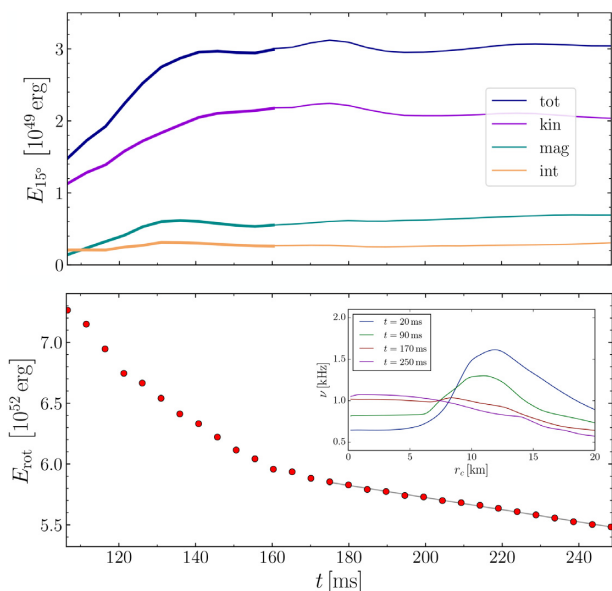


Figure 4. Top: Evolution of the energy contained within 15° from the z -axis and for radial distances larger than 800 km, given by the sum of radial kinetic energy, magnetic energy, and internal energy. From 160 ms after merger (thinner line), we include the contribution from the integrated energy flux across the outer boundary of our computational domain. Bottom: Evolution of total rotational energy (red circles), with linear fit for $t \geq 175$ ms after merger (grey line). The inset shows the rotation rate versus proper circumferential radius at different times.

mass flux ratio is much smaller than unity (< 0.01) and this excludes any possibility to reach significantly larger Lorentz factors. In other words, the outflow is by far (at least a factor of 10^3) too heavy to be accelerated to $\Gamma \sim 10$ or more. We conclude that *the system under consideration cannot produce an SGRB jet compatible with GRB 170817A.*

5 CONSEQUENCES FOR GRB 170817A AND SGRBS IN GENERAL

While we consider here a single combination of EOS and mass ratio, quantitative differences may be expected for other combinations

among those compatible with GW170817 and a long-lived NS remnant. We note, however, that these differences may not be sufficient to fill the huge gap between the outflow properties we found and those required to explain GRB 170817A. With due caveats (see below), our current results suggest that a scenario in which the jet of GRB 170817A was powered by a long-lived NS remnant is unlikely, favouring instead a BH-disc central engine as the leading alternative.

A direct consequence of the above conclusion, if confirmed, would be that the massive NS remnant collapsed to a BH in less than ≈ 1.74 s, i.e. the estimated time separation between merger and onset of gamma-ray emission (Abbott et al. 2017c). This would further limit the range of remnant properties consistent with the event and may help in placing additional constraints on the NS EOS (e.g. Abbott et al. 2019; Kastaun & Ohme 2019).

Indications disfavouring a long-lived NS remnant as the central engine for GRB 170817A also cast doubts on the viability of such a scenario for SGRBs in general, or at least for those having comparable or higher jet core energies. This ‘magnetar’ scenario is often invoked as the leading explanation for SGRBs accompanied by long-lasting X-ray plateaus (Rowlinson et al. 2010, 2013; Lü et al. 2015), since the sustained energy injection from long-lived NS remnants can naturally power these features. Conversely, if all known SGRBs are powered by BH-disc systems, an alternative scenario to explain the X-ray plateaus would become necessary (e.g. the ‘time-reversal’ scenario, Ciolfi & Siegel 2015; Ciolfi 2018; see also Oganessian et al. 2019 and refs. therein).

We also note that the overall dynamics found in our simulations would still be relevant within a paradigm, where SGRB jets are always launched after BH formation. In this case, the emergence of a collimated outflow like the one discussed here might often precede the actual SGRB jet production, with potential impact on the final jet properties (e.g. the angular structure). Moreover, the presence of such an outflow could lead to detectable precursor signals (Troja, Rosswog & Gehrels 2010) produced, e.g., when it breaks out of the nearly isotropic baryon-loaded wind.

6 CAVEATS

A main caveat accompanying our results is given by the fact that the early magnetohydrodynamic evolution (at least up to ~ 40 ms after merger) cannot be properly resolved with current computational

resources (e.g. Kiuchi et al. 2015, 2018; see discussion in Fig. 2). A much higher resolution would allow the system to reach similar magnetization levels starting from much lower (and more realistic) pre-merger field strengths. At the same time, it would have a quantitative impact on both the magnetically driven baryon wind and the development of a jet-like helical structure along the remnant spin axis. There is no secure way to predict whether this would make the emergence of a collimated outflow easier or more challenging for a given set of initial models. However, for those systems where such an outflow is produced, the latter might still be too baryon loaded to have any chance of evolving into an SGRB jet.

More general initial magnetic field geometries with poloidal components extending outside the two NSs could also have an impact, possibly facilitating the formation of strong helical fields in the post-merger phase (e.g. Ruiz et al. 2016). Whether this could significantly alter our general conclusions remain to be investigated.

Next, we note that we are neglecting neutrino radiation. Besides modifying the composition (i.e. the electron fraction) of the post-merger baryon wind, neutrino emission, and reabsorption could further enhance mass ejection, resulting in a larger baryon pollution opposing to the propagation of a collimated outflow. Based on this, we could argue that even including neutrino radiation, the difficulties in launching SGRB jets without a BH would persist. Nevertheless, this needs to be confirmed with actual simulations combining together magnetic and neutrino effects.

Finally, the introduction of realistic NS spins before merger could affect the remnant rotational profile (e.g. Ruiz et al. 2019). While this might have quantitative effects on the results, we expect that the qualitative outcome (and related conclusions) would most likely remain unchanged.

7 CONCLUDING REMARKS

Our results show that long-lived BNS merger remnants can produce collimated outflows, launched via a magnetorotational mechanism, where differential rotation represents the main energy reservoir. Furthermore, our study reveals outflow properties that cannot be reconciled with an SGRB jet, due to the high baryon content and, consequently, rather low maximum Lorentz factor achievable. These indications favour a BH origin for SGRB jets. However, we also point out possible caveats and additional effects that might alter such a conclusion.

If collimated outflows like the one discussed here cannot lead to an SGRB, they could still produce potentially detectable transients that manifest themselves as SGRB precursors or, in a fraction of BNS merger events, as independent signals. We therefore encourage future investigation to establish the bulk properties that such transients would have and possible links to other known transient populations.

ACKNOWLEDGEMENTS

We thank B. Giacomazzo and W. Kastaun for useful discussions. Numerical simulations were performed on the cluster MARCONI at CINECA (Bologna, Italy). We acknowledge a CINECA award under the MoU INAF-CINECA initiative (Grant INA17_C3A23), for the availability of high performance computing resources and support. In addition, part of the numerical calculations have been made possible through a CINECA-INFN agreement, providing access to further resources (allocation INF19_teongrav).

REFERENCES

- Abbott B. P. et al., 2017a, *Phys. Rev. Lett.*, 119, 161101
 Abbott B. P. et al., 2017b, *ApJ*, 848, L12
 Abbott B. P. et al., 2017c, *ApJ*, 848, L13
 Abbott B. P. et al., 2019, *Phys. Rev. X*, 9, 011001
 Akmal A., Pandharipande V. R., Ravenhall D. G., 1998, *Phys. Rev. C*, 58, 1804
 Balbus S. A., Hawley J. F., 1991, *ApJ*, 376, 214
 Ciolfi R., 2018, *Int. J. Mod. Phys. D*, 27, 1842004
 Ciolfi R., Siegel D. M., 2015, *ApJ*, 798, L36
 Ciolfi R., Kastaun W., Giacomazzo B., Endrizzi A., Siegel D. M., Perna R., 2017, *Phys. Rev. D*, 95, 063016
 Ciolfi R., Kastaun W., Kalinani J. V., Giacomazzo B., 2019, *Phys. Rev. D*, 100, 023005
 Duez M. D., Liu Y. T., Shapiro S. L., Shibata M., Stephens B. C., 2006, *Phys. Rev. Lett.*, 96, 031101
 Eichler D., Livio M., Piran T., Schramm D. N., 1989, *Nature*, 340, 126
 Endrizzi A., Ciolfi R., Giacomazzo B., Kastaun W., Kawamura T., 2016, *Class. Quantum Gravity*, 33, 164001
 Gao W.-H., Fan Y.-Z., 2006, *Chinese J. Astron. Astrophys.*, 6, 513
 Ghirlanda G. et al., 2019, *Science*, 363, 968
 Goldstein A. et al., 2017, *ApJ*, 848, L14
 Hallinan G. et al., 2017, *Science*, 358, 1579
 Hotokezaka K., Kiuchi K., Kyutoku K., Okawa H., Sekiguchi Y.-i., Shibata M., Taniguchi K., 2013, *Phys. Rev. D*, 87, 024001
 Just O., Obergaulinger M., Janka H.-T., Bauswein A., Schwarz N., 2016, *ApJ*, 816, L30
 Kastaun W., Ohme F., 2019, *Phys. Rev. D*, 100, 103023
 Kawamura T., Giacomazzo B., Kastaun W., Ciolfi R., Endrizzi A., Baiotti L., Perna R., 2016, *Phys. Rev. D*, 94, 064012
 Kiuchi K., Kyutoku K., Shibata M., 2012, *Phys. Rev. D*, 86, 064008
 Kiuchi K., Kyutoku K., Sekiguchi Y., Shibata M., Wada T., 2014, *Phys. Rev. D*, 90, 041502
 Kiuchi K., Cerdá-Durán P., Kyutoku K., Sekiguchi Y., Shibata M., 2015, *Phys. Rev. D*, 92, 124034
 Kiuchi K., Kyutoku K., Sekiguchi Y., Shibata M., 2018, *Phys. Rev. D*, 97, 124039
 Kumar P., Zhang B., 2015, *Phys. Rep.*, 561, 1
 Lazzati D., Perna R., Morsony B. J., Lopez-Camara D., Cantiello M., Ciolfi R., Giacomazzo B., Workman J. C., 2018, *Phys. Rev. Lett.*, 120, 241103
 Lü H.-J., Zhang B., Lei W.-H., Li Y., Lasky P. D., 2015, *ApJ*, 805, 89
 Lyman J. D. et al., 2018, *Nat. Astron.*, 2, 751
 Metzger B. D., Quataert E., Thompson T. A., 2008, *MNRAS*, 385, 1455
 Mochkovitch R., Hernanz M., Isern J., Martin X., 1993, *Nature*, 361, 236
 Mooley K. P. et al., 2018a, *Nature*, 554, 207
 Mooley K. P. et al., 2018b, *Nature*, 561, 355
 Narayan R., Paczynski B., Piran T., 1992, *ApJ*, 395, L83
 Oganessian G., Ascenzi S., Branchesi M., Sharan Salafia O., Dall’Osso S., Ghirlanda G., 2019, *ApJ*, preprint (arXiv:1904.08786)
 Piran T., 2004, *Rev. Mod. Phys.*, 76, 1143
 Rowlinson A. et al., 2010, *MNRAS*, 409, 531
 Rowlinson A., O’Brien P. T., Metzger B. D., Tanvir N. R., Levan A. J., 2013, *MNRAS*, 430, 1061
 Ruiz M., Lang R. N., Paschalidis V., Shapiro S. L., 2016, *ApJ*, 824, L6
 Ruiz M., Tsokaros A., Paschalidis V., Shapiro S. L., 2019, *Phys. Rev. D*, 99, 084032
 Savchenko V. et al., 2017, *ApJ*, 848, L15
 Shibata M., Suwa Y., Kiuchi K., Ioka K., 2011, *ApJ*, 734, L36
 Siegel D. M., Ciolfi R., Harte A. I., Rezzolla L., 2013, *Phys. Rev. D(R)*, 87, 121302
 Siegel D. M., Ciolfi R., Rezzolla L., 2014, *ApJ*, 785, L6
 Troja E. et al., 2017, *Nature*, 551, 71
 Troja E., Rosswog S., Gehrels N., 2010, *ApJ*, 723, 1711
 Zhang B., Mészáros P., 2001, *ApJ*, 552, L35

This paper has been typeset from a $\text{\TeX}/\text{\LaTeX}$ file prepared by the author.