



Publication Year	2017
Acceptance in OA	2020-09-07T14:31:17Z
Title	Chemical characterisation of the globular cluster NGC 5634 associated to the Sagittarius dwarf spheroidal galaxy
Authors	CARRETTA, Eugenio, BRAGAGLIA, Angela, LUCATELLO, Sara, D'Orazi, V., GRATTON, Raffaele, Donati, P., SOLLIMA, ANTONIO LUIGI, Sneden, C.
Publisher's version (DOI)	10.1051/0004-6361/201630004
Handle	http://hdl.handle.net/20.500.12386/27185
Journal	ASTRONOMY & ASTROPHYSICS
Volume	600

Chemical characterisation of the globular cluster NGC 5634 associated to the Sagittarius dwarf spheroidal galaxy^{★,★★}

E. Carretta¹, A. Bragaglia¹, S. Lucatello², V. D'Orazi^{2,3,4}, R. G. Gratton², P. Donati^{1,5}, A. Sollima¹, and C. Sneden⁶

¹ INAF–Osservatorio Astronomico di Bologna, via Ranzani 1, 40127 Bologna, Italy
e-mail: eugenio.carretta@oabo.inaf.it

² INAF–Osservatorio Astronomico di Padova, Vicolo dell'Osservatorio 5, 35122 Padova, Italy

³ Department of Physics and Astronomy, Macquarie University, Sydney, NSW 2109, Australia

⁴ Monash Centre for Astrophysics, School of Physics and Astronomy, Monash University, Melbourne, VIC 3800, Australia

⁵ Dipartimento di Fisica e Astronomia, Università di Bologna, viale Berti Pichat 6, 40127 Bologna, Italy

⁶ Department of Astronomy and McDonald Observatory, The University of Texas, Austin, TX 78712, USA

Received 3 November 2016 / Accepted 4 January 2017

ABSTRACT

As part of our on-going project on the homogeneous chemical characterisation of multiple stellar populations in globular clusters (GCs), we studied NGC 5634, associated to the Sagittarius dwarf spheroidal galaxy, using high-resolution spectroscopy of red giant stars collected with VLT/FLAMES. We present here the radial velocity distribution of the 45 observed stars, 43 of which are cluster members, the detailed chemical abundance of 22 species for the seven stars observed with UVES-FLAMES, and the abundance of six elements for stars observed with GIRAFFE. On our homogeneous UVES metallicity scale, we derived a low-metallicity $[Fe/H] = -1.867 \pm 0.019 \pm 0.065$ dex (\pm statistical \pm systematic error) with $\sigma = 0.050$ dex (7 stars). We found the normal anticorrelations between light elements (Na and O, Mg and Al), a signature of multiple populations typical of massive and old GCs. We confirm the associations of NGC 5634 to the Sgr dSph, from which the cluster was lost a few Gyr ago, on the basis of its velocity and position, and the abundance ratios of α and neutron capture elements.

Key words. stars: abundances – stars: atmospheres – stars: Population II – globular clusters: general – globular clusters: individual: NGC 5634

1. Introduction

Once considered good examples of simple stellar populations, Galactic globular clusters (GCs) are currently thought to have formed in a complex chain of events, which left a fossil record in their chemical composition (see the review by Gratton et al. 2012). Our homogeneous FLAMES survey of more than 25 GCs (see updated references in Carretta 2015; and Bragaglia et al. 2015) combined with literature data, demonstrated that most, or perhaps all, GCs host multiple stellar populations that can be traced by the anti-correlated variations of Na and O abundances discovered by the Lick-Texas group (as reviewed by Kraft 1994; and Sneden 2000). Photometrically, GCs exhibit spread, split and even multiple sequences, especially when the right combination of filters is used. These variations can be explained in large part by different chemical compositions among cluster stars, in particular of light elements such as He, C, N and O (e.g. Sbordone et al. 2011; Milone et al. 2012).

Our large and homogeneous database allowed us, for the first time, to quantitatively study the Na-O anti-correlation. In all the analysed GCs, we found approximately one third of stars of primordial composition, similar to that of field stars of similar metallicity (only showing a trace of type II Supernovae

nucleosynthesis, i.e. low Na and high O). According to the most widely accepted paradigm of GC formation (e.g. D'Ercole et al. 2008), these stars are believed to be the long-lived part of the first generation (FG) of stars formed in the cluster. The other two thirds have a modified composition (increased Na, depleted O) and belong to the second generation (SG) of stars, polluted by the most massive stars of the FG (Gratton et al. 2001) with ejecta from H burning at high temperature (Denisenkov & Denisenkova 1989; Langer et al. 1993). Unfortunately, the identification of the FG stars that produced the gas of modified composition is still unknown; we refer to Ventura et al. (2001), Decressin et al. (2007), de Mink et al. (2009), Maccarone & Zureck (2012), Denissenkov & Hartwick (2014), and Bastian et al. (2015) for example.

We found that the extension of the Na-O anticorrelation tends to be larger for higher-mass GCs and that, apparently, there is an observed minimum cluster mass for appearance of the Na-O anticorrelation (Carretta et al. 2010a). This is another important constraint for cluster-formation mechanisms because it indicates the mass at which we expect that a cluster is able to retain part of the ejecta of the FG and hence show the Na-O signature (the masses of the original clusters are expected to be much higher than the present ones, since the SG has to be formed by the ejecta of only part of the FG). It is important to understand if this limit is real or is due to the small statistics (fewer low-mass clusters have been studied, and only a few stars in each were observed). After studying the high-mass clusters, we began a systematic study of low-mass GCs and high-mass and old open

* Based on observations collected at ESO telescopes under programme 093.B-0583.

** Table 2 is only available at the CDS via anonymous ftp to cdsarc.u-strasbg.fr (130.79.128.5) or via <http://cdsarc.u-strasbg.fr/viz-bin/qcat?J/A+A/600/A118>

clusters (OCs) to empirically find the mass limit for the appearance of the Na-O anticorrelation and to understand if there are differences between high-mass and low-mass cluster properties, for example in the relative fraction of FG and SG stars (Bragaglia et al. 2012, 2014; Carretta et al. 2014a).

For a better understanding of multiple stellar populations in GCs, it is also fundamental to study clusters in other galaxies, a challenging task. While a promising approach seems to use abundance-sensitive colour indexes (see Larsen et al. 2014, for GCs in Fornax), only a few GCs (in Fornax and in the Magellanic Clouds) have their abundances derived using high-resolution spectroscopy (of course this does not include the known clusters associated with the Sgr dSph and now physically within the Milky Way). These GCs also seem to host two populations (Letarte et al. 2006, for Fornax; Johnson et al. 2006; and Mucciarelli et al. 2009, for old GCs in LMC) but the fractions of FG and SG stars in Fornax and LMC GCs seem to be different with respect to clusters of similar mass in the Milky Way (MW). Whether this is again a problem of low statistics or the galactic environment (a dwarf spheroidal and a dwarf irregular vs. a large spiral) influencing the GC formation mechanism remains to be seen.

To gain a deeper insight into this problem, we also included in our sample GCs commonly associated to the disrupting Sagittarius dwarf spheroidal to understand if there is a significant difference amongst GCs formed in different environments (the MW and dwarf galaxies). In fact, GCs born in a dSph may have retained a larger fraction of their original mass. After the very massive GCs, M54 (Carretta et al. 2010b) and NGC4590 (M 68: Carretta et al. 2009a,b; although this latter is not universally accepted as a member of the Sgr family), another Sgr GC of our project is Terzan 8. In this cluster we see some indication of a SG, at variance with other low-mass Sgr GCs (Ter7, Sbordone et al. 2007; Pal12, Cohen 2004). However, the SG seems to represent a small minority, contrary to what happens for high-mass GCs (Carretta et al. 2014a). In the present paper we focus on the chemical characterisation of NGC 5634, a poorly studied cluster considered to be associated to the Sgr dSph (Bellazzini et al. 2002, hereinafter B02). NGC 5634 is a relatively massive and metal-poor GC ($M_V = -7.69$, $[\text{Fe}/\text{H}] = -1.88$; both values come from the 2010 web update of the Galactic GC catalogue, Harris 1996).

The paper is organised as follows: in Sect. 2, we present literature information on the cluster, in Sect. 3, we describe the photometric data, the spectroscopic observations and the derivation of atmospheric parameters. The abundance analysis is presented and discussed in Sect. 4, the connection with Sgr dSph is considered in Sect. 5 and a summary is presented in Sect. 6.

2. NGC 5634 in the literature

The main studies on NGC 5634 were essentially focussed on verifying whether or not this GC is associated to the Sagittarius galaxy, using either photometry (B02) or spectroscopy (Sbordone et al. 2015, hereinafter S15). NGC 5634 is also part of the study by Dias et al. (2016); they obtained VLT/FORS2 spectra of 51 MW GCs and determined metallicity and alpha elements (Mg, in particular) on a homogeneous scale.

B02 observed this cluster with broadband V, I Johnson filters, and, using the luminosity difference of the turnoff point with respect to the horizontal branch level, they concluded that NGC 5634 is as old as M 68 and Ter 8. The latter is still enclosed in the main body of Sgr and is considered one of the five confirmed GCs belonging with high probability to this dwarf

galaxy (see e.g. Bellazzini et al. 2003; Law & Majewski 2010a). From the literature radial velocity and Galactocentric position, B02 suggested that NGC 5634 is a former member of the Sgr galaxy that became unbound more than 4 Gyr ago. This deduction stems from the large distance (151 kpc) from the main body of Sgr, a lag along the stream that implies a rather large interval since physical association.

Very recently, S15 analysed high resolution spectra of two cool giants in NGC 5634 taken with the HDS spectrograph at the Subaru telescope (Noguchi et al. 2002), obtaining the detailed abundances of approximately 20 species. They suggested the existence of multiple populations in the cluster from the anticorrelated abundances of O and Na in the two stars, since the observed differences exceed any spread due to the uncertainties associated to the abundance analysis. At the low metallicity they derived for NGC 5634 (approximately $[\text{Fe}/\text{H}] = -1.98$ dex), the overall chemical pattern of stars in dwarf galaxies is not so different from that of the field stars of the Milky Way at the same metallicity; the largest differences occurring at higher metallicity. Therefore, S15 were not able to provide a clear-cut chemical association of NGC 5634 to Sgr dSph, although they concluded that an origin of this cluster in the Sgr system is favoured by their data.

Finally, Dias et al. (2016) analysed spectra of nine stars in the wavelength range 4560–5860 Å, at a resolution approximately 2000. They measured radial velocities (RV) and found that eight of the stars are members of the cluster; they also determined atmospheric parameters, iron and Mg (or alpha) abundance ratios using a comparison with stellar libraries. They found an average RV of approximately -30 km s^{-1} , with a large dispersion (rms 39 km s^{-1}), average metallicity $[\text{Fe}/\text{H}] = -1.75$ dex (rms = 0.13 dex), average $[\text{Mg}/\text{Fe}] = 0.43$ dex (rms = 0.02 dex) and average $[\alpha/\text{Fe}] = 0.20$ dex (rms = 0.04) dex. They did not comment on anything peculiar for the cluster; they simply used it as part of their homogeneous sample.

3. Observations and analysis

We used the photometry by B02 to select our targets for FLAMES; the $V, V - I$ CMD is shown in Fig. 1, lower panel. We converted the x, y positions given in the catalogue to RA and Dec using stars in the Two Micron All Sky Survey (2MASS, Skrutskie et al. 2006) for the astrometric conversion and the code CATAXCORR, developed by Paolo Montegriffo at the INAF - Osservatorio Astronomico di Bologna¹. We then selected stars on the red giant branch (RGB) and asymptotic giant branch (AGB) and allocated targets using the ESO positioner FPOSS. Given the crowded field and the limitations of the instrument, only 45 targets were observed; they are indicated on a cluster map in Fig. 1, upper panel.

3.1. FLAMES spectra

NGC 5634 was observed with the multi-object spectrograph VLT/FLAMES (Pasquini et al. 2002) in the ESO program 093.B-0583 (PI A. Bragaglia). The observations, in priority B, were performed in service mode; a log is presented in Table 1. Unfortunately, only less than half of the planned observations were actually completed. We only have four exposures (out of the six requested) taken with the GIRAFFE high-resolution setup HR11 ($R = 24\,200$), containing the 5682–88 Å Na I doublet; no exposures with the HR13 setup, containing the forbidden [O I]

¹ See <http://www.bo.astro.it/~paolo/Main/CataPack.htm>

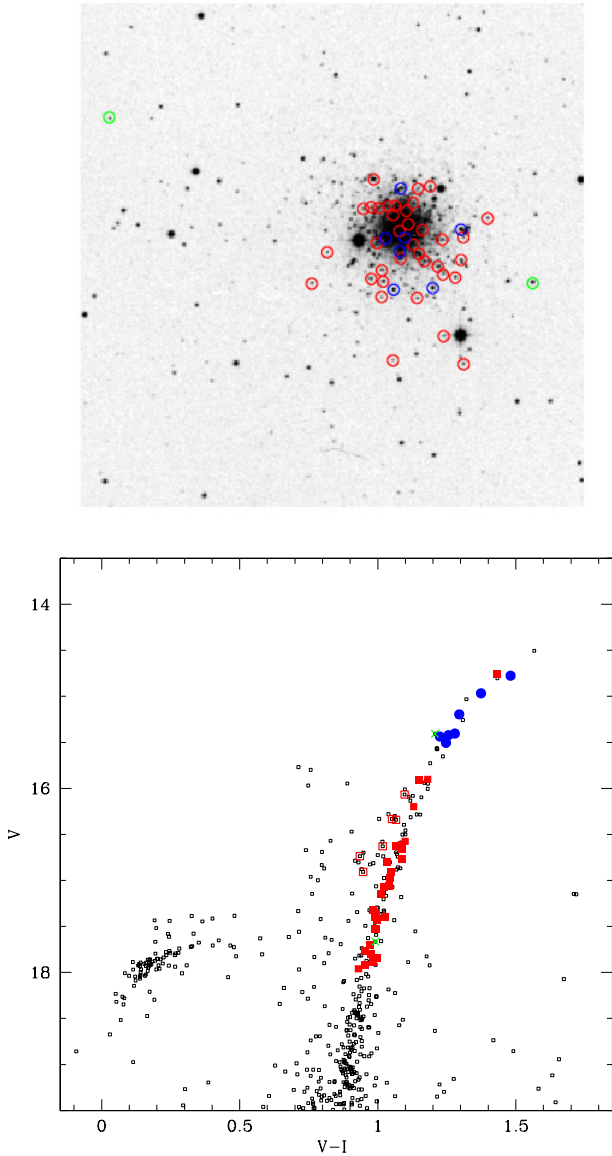


Fig. 1. *Upper panel:* a $15' \times 15'$ DSS map of NGC 5634 with north up and east left. Our targets are colour-coded as observed with GIRAFFE (in red) and UVES (in blue). Non member stars are indicated in green. *Lower panel:* $V, V-I$ CMD (from B02) with FLAMES targets indicated by larger, coloured symbols (subsample UVES: filled blue dots and subsample GIRAFFE filled and open red squares for RGB and AGB stars, respectively). Green crosses represent non member stars.

Table 1. Log of FLAMES observations.

Setup	UT Date (yyyy-mm-dd)	UT _{init} (hh:mm:ss)	Exptime (s)	Airmass	Seeing (arcsec)
HR11	2014-07-21	01:44:19.162	3600	1.302	0.74
HR11	2014-07-28	23:50:50.195	3600	1.096	0.77
HR11	2014-07-29	00:57:20.020	3600	1.244	0.65
HR11	2014-08-29	00:13:15.317	3600	1.581	0.71

lines, are available. The GIRAFFE observations of 38 stars were coupled with the spectra of seven stars obtained with the high-resolution ($R = 47\,000$) UVES (Dekker et al. 2000) 580 nm setup ($\lambda \approx 4800\text{--}6800$ Å). Information on the 45 stars (ID, coordinates, magnitudes and RVs) is given in Table 2.

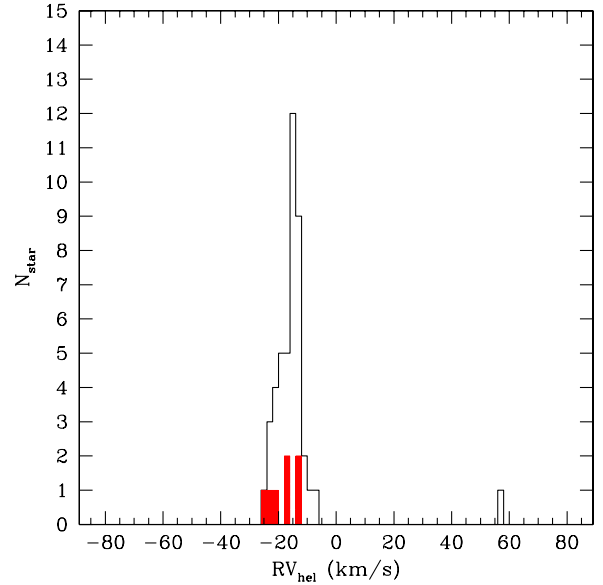


Fig. 2. Histogram of heliocentric RVs (the filled red histogram indicates the seven UVES stars). The cluster stars are easily identified, with RV near -16 km s⁻¹.

The reduced GIRAFFE spectra were obtained from the ESO archive (request 168 411) as part of the Advanced Data Products (ADP). The UVES spectra were reduced by us using the ESO pipeline for UVES-FIBRE data, which takes care of bias and flat field correction, order tracing, extraction, fibre transmission, scattered light, and wavelength calibration. We then used IRAF² routines on the 1d, wavelength-calibrated individual spectra to subtract the (average) sky, measure the heliocentric RV, shift to zero RV and combine all the exposures for each star.

In Fig. 2, we show the histogram of the RVs; the cluster signature is evident and we identified 43 of the 45 observed targets as cluster members on the basis of their RV. One star has no measured RV and one has a discrepant RV and was labelled as a non-cluster member. Star 151, initially considered a member of the cluster due to its RV, was afterwards classified a non-member following the abundance analysis and then disregarded. The average, heliocentric RV for each star is given in Table 2, together with its rms. For member stars, we found an average RV of -16.07 km s⁻¹ (with $\sigma = 3.98$). This value is in excellent agreement with the average RV (-16.7 km s⁻¹, $\sigma = 5.5$) found by S15 from two stars, but not with the older literature value (-45.1 km s⁻¹) listed in Harris (1996, 2010 web update), as already discussed in S15, or with the value of -29.6 ($\sigma = 39.1$) km s⁻¹ in Dias et al. (2016), that was however obtained on much-lower-resolution spectra.

3.2. Atmospheric parameters

We retrieved the 2MASS magnitudes (Skrutskie et al. 2006) of the 43 RV-member stars; K magnitudes, 2MASS identification and quality flag are given in Table 2. Following our well tested procedure (for a detailed description, see Carretta et al. 2009a,b), effective temperatures T_{eff} were derived using an average relation between apparent magnitudes and first-pass temperatures from $V - K$ colours and the calibrations of Alonso et al. (1999, 2001). This method allowed us to decrease the star-to-star errors

² IRAF is distributed by the National Optical Astronomical Observatory, which are operated by the Association of Universities for Research in Astronomy, under contract with the National Science Foundation.

in abundances due to uncertainties in temperature. The adopted reddening $E(B-V) = 0.05$, distance modulus $(m-M)_V = 17.16$, and input metallicity $[\text{Fe}/\text{H}] = -1.88$ are taken from Harris (1996, 2010 web update). Gravities were obtained from apparent magnitudes and distance modulus, assuming the bolometric corrections from Alonso et al. (1999). We adopted a mass of $0.85 M_\odot$ for all stars and $M_{\text{bol},\odot} = 4.75$ as the bolometric magnitude for the Sun, as in our previous studies.

Since only one of the two requested GIRAFFE setups was done, only a limited number of Fe transitions from our homogeneous line list (from Gratton et al. 2003) were available for stars with GIRAFFE spectra, and this affected the abundance analysis. Fortunately, the seven stars with spectra taken with UVES were chosen among those in the brightest magnitude range, close to the RGB tip (see Fig. 1) and did not suffer excessively for the lack of all planned observations. The S/N values per pixel range from 90 to 40 from the brightest down to the faintest of our UVES sample stars. The median S/N for the 35 member stars with GIRAFFE spectra is 58 at $\lambda \sim 5600 \text{ \AA}$. Literature high-resolution spectra are available only for two stars in this cluster (S15), therefore even such a small sample represents a significant improvement.

We measured the equivalent widths (EW) of iron and other elements using the code ROSA (Gratton 1988) as described in detail in Bragaglia et al. (2001). We employed spectrum synthesis for a number of elements (see Sect. 4.3). For the UVES spectra, we eliminated trends in the relation between abundances from Fe I lines and expected line strength (Magain 1984) to obtain values of the microturbulent velocity v_t . However, for the 35 member stars with GIRAFFE HR11 spectra too few Fe lines were available and we generally adopted a relation with the star's gravity: $v_t = -0.31 \log g + 2.19$, derived from our previous analyses, apart from a few cases. Finally, we interpolated within the Kurucz (1993) grid of model atmospheres (with overshooting on) to derive the final abundances, adopting, for each star, the model with the appropriate atmospheric parameters and whose abundances matched those derived from Fe I lines. The adopted atmospheric parameters (T_{eff} , $\log g$, $[A/\text{H}]$, and v_t) are listed in Table 3 together with iron abundances. Figure 3 shows the run of $[\text{Fe}/\text{H}]$ from neutral and ionised transitions as a function of the effective temperature; no trend is visible in either case. We find, for NGC 5634, an average metallicity $[\text{Fe}/\text{H}] = -1.867 \pm 0.019 \text{ dex}$ (rms = 0.050 dex) and $-1.903 \pm 0.009 \text{ dex}$ (rms = 0.025 dex) from the seven stars with UVES spectra for neutral and ionised lines, respectively. The average difference $-0.036 \pm 0.015 \text{ dex}$ (rms = 0.040) dex is not significant.

The average value is in very good agreement with the mean metallicity that we derived from the analysis of the 35 stars with GIRAFFE spectra: $[\text{Fe}/\text{H}] = -1.869 \pm 0.016 \text{ dex}$ ($\sigma = 0.093 \text{ dex}$). The larger dispersion is ultimately mostly due to the limited number of Fe lines available in the spectral range of the HR11 setup, hampering a better derivation of the parameters (see also Sect. 4).

4. Abundances

Besides Fe, we present here abundances of O, Na, Mg, Al, Si, Ca, Sc, Ti (both from neutral and singly ionised transitions), V, Cr (from both Cr I and Cr II lines), Mn, Co, Ni, Zn, Cu, Y, Zr, Ba, La, Ce, Nd and Eu obtained from UVES spectra. For stars in the GIRAFFE sample, we only derived abundances of one proton-capture element (Na), three α -capture elements (Mg, Si, and Ca), and three elements of the iron-group (Sc, V, and Ni). The abundances were derived using EWs for all species except Cu and

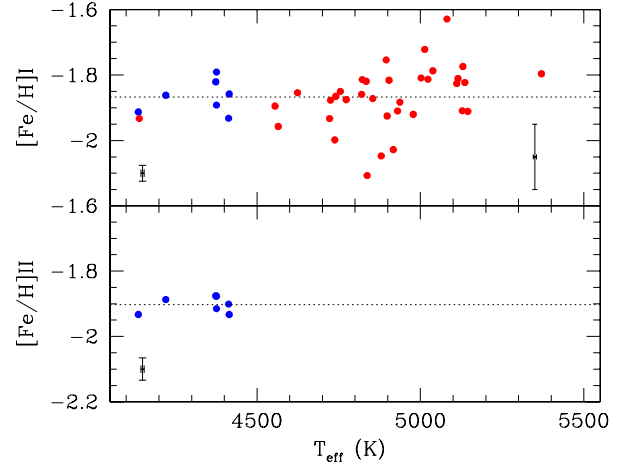


Fig. 3. Run of the iron abundances as a function of the effective temperature for the seven UVES stars (blue circles) and stars with GIRAFFE spectra (red circles). Abundances from singly ionised Fe lines are shown in the lower panel for UVES stars only. Internal error bars are also displayed (for the UVES sample on the left corner, for the GIRAFFE sample in the right corner). The dotted line is the average abundance derived from the UVES spectra.

neutron-capture elements. The atomic data for the lines and the solar reference values come from Gratton et al. (2003). The Na abundances were corrected for departure from local thermodynamical equilibrium according to Gratton et al. (1999), as in all the other papers of our FLAMES survey. Corrections to account for the hyperfine structure were applied to Sc, V, Mn (references are in Gratton et al. 2003) and Y.

To estimate the error budget, we closely followed the procedure described in Carretta et al. (2009a,b). Table 4 provides the sensitivities of abundance ratios to uncertainties in atmospheric parameters and EWs, and the internal and systematic errors relative to the abundances from UVES spectra. The same quantities are listed in Table 5 for abundances from GIRAFFE spectra. In this second case, to have a conservative estimate of the internal error in v_t , we adopted the quadratic sum of the GIRAFFE internal errors for the metal-poor GCs in our FLAMES survey: NGC 4590, NGC 6397, NGC 6805, NGC 7078, NGC 7099 (Carretta et al. 2009a), NGC 6093 (Carretta et al. 2015) and NGC 4833 (Carretta et al. 2014b).

The sensitivities were obtained by repeating the abundance analysis for all stars, while changing one atmospheric parameter at a time, then taking the average. The amount of variation in the input parameters used in the sensitivity computations is given in the table headers.

On our UVES metallicity scale (see Carretta et al. 2009c), the average metal abundance for NGC 5634 is therefore $[\text{Fe}/\text{H}] = -1.867 \pm 0.019 \pm 0.065 \text{ dex}$ ($\sigma = 0.050 \text{ dex}$, 7 stars), where the first and second error bars refer to statistical and systematic errors, respectively.

The abundance ratios for proton-capture elements are given in Table 6 for UVES spectra, together with the number of lines used and rms scatter. All O abundances are detections; no measure of O abundance in star 5634-13 was possible because the forbidden line $[\text{O I}] 6300.31 \text{ \AA}$ was affected by sky contamination. For stars 5634-2 and 5634-9, only upper limits could be measured for Al.

Abundances of α -capture, iron-peak and neutron-capture elements for the individual stars are listed in Tables 7, and 8, and 9, respectively, for the seven stars with UVES spectra. Except

Table 3. Adopted atmospheric parameters and derived metallicity.

ID	T_{eff} (K)	$\log g$ (dex)	[A/H] (dex)	v_t (km s ⁻¹)	no.	[Fe/H]I (dex)	rms	no.	[Fe/H]II (dex)	rms
UVES sample										
2	4137	0.61	-1.91	2.11	80	-1.913	0.126	15	-1.933	0.077
5	4221	0.76	-1.86	2.10	73	-1.862	0.095	12	-1.887	0.100
7	4376	1.06	-1.89	1.84	73	-1.892	0.130	18	-1.915	0.104
9	4376	1.04	-1.79	2.00	78	-1.791	0.101	14	-1.877	0.069
10	4374	1.04	-1.82	1.88	73	-1.821	0.110	12	-1.876	0.075
12	4413	1.12	-1.93	1.66	55	-1.932	0.112	14	-1.901	0.087
13	4415	1.11	-1.86	1.91	60	-1.858	0.167	6	-1.933	0.090
GIRAFFE sample										
100	4854	1.89	-1.87	1.60	11	-1.872	0.184			
103	4904	2.01	-1.82	1.57	8	-1.816	0.163			
113	4898	1.98	-1.93	1.38	8	-1.925	0.131			
125	4930	2.06	-1.91	1.55	5	-1.910	0.041			
132	5023	2.24	-1.81	1.50	5	-1.813	0.172			
135	5013	2.21	-1.71	1.50	4	-1.722	0.091			
142	5002	2.18	-1.81	1.90	6	-1.809	0.135			
146	5038	2.26	-1.79	1.49	3	-1.787	0.259			
152	4978	2.14	-1.92	1.53	5	-1.920	0.151			
163	5081	2.33	-1.63	1.47	5	-1.629	0.047			
167	5111	2.38	-1.83	1.45	4	-1.826	0.127			
169	5130	2.42	-1.77	1.81	4	-1.774	0.048			
173	5115	2.39	-1.81	1.76	5	-1.811	0.142			
182	5128	2.41	-1.91	1.44	3	-1.909	0.407			
189	5136	2.43	-1.82	1.44	4	-1.823	0.120			
194	5145	2.45	-1.91	1.43	4	-1.911	0.129			
19	4555	1.37	-1.90	1.77	8	-1.895	0.098			
22	4565	1.39	-1.96	1.76	7	-1.957	0.103			
30	4820	1.62	-1.86	1.69	5	-1.859	0.204			
35	4624	1.49	-1.85	1.73	9	-1.854	0.145			
3	4140	0.62	-1.93	2.00	10	-1.933	0.098			
45	4725	1.68	-1.88	1.67	6	-1.877	0.115			
46	4722	1.67	-1.93	1.67	8	-1.933	0.207			
54	4741	1.70	-1.87	1.66	6	-1.865	0.119			
58	4755	1.73	-1.85	1.65	6	-1.850	0.099			
60	4738	1.69	-2.00	1.67	4	-1.998	0.110			
62	4773	1.76	-1.87	1.64	6	-1.875	0.147			
64	4937	1.90	-1.88	1.60	7	-1.883	0.177			
70	4834	1.89	-1.82	1.60	5	-1.819	0.128			
72	4880	1.96	-2.05	1.23	4	-2.047	0.018			
78	4837	1.88	-2.11	0.37	6	-2.107	0.188			
82	4917	1.93	-2.03	0.83	3	-2.028	0.018			
87	4822	1.84	-1.81	1.62	6	-1.814	0.157			
93	4895	2.00	-1.88	1.57	5	-1.754	0.132			
97	5370	2.21	-1.80	1.50	4	-1.796	0.117			

for iron, all the abundances derived for stars observed with GIRAFFE are listed in Table 10. For these 35 stars, all the element ratios are in reference to the average iron abundance $[\text{Fe}/\text{H}] = -1.87$ dex. Finally, in Table 11, the mean abundances in NGC 5634 are summarised.

We cross-matched our stars with the nine objects in Dias et al. (2016) and found only three in common. Stars # 9, 54, and 87 in our sample are within 1'' of stars # 11, 8 and 7 in their list and have reasonably similar V magnitudes (theirs are instrumental values) and atmospheric parameters. We do not dwell on the comparison since their results are based on lower-resolution spectra. However, their cluster average metallicity agrees with ours within the error bars and their Mg abundance and $[\alpha/\text{Fe}]$ are in very good agreement.

We also have three stars in common with the APOGEE survey (Holtzman et al. 2015); however parameters were presented only for two of the stars in DR12. Furthermore, a straightforward comparison is difficult because of different model atmospheres, spectral ranges and line list, and adopted methods.

Limiting the comparison to the optical range, ours is the second high-resolution optical spectroscopic study of this cluster. S15 used a full spectroscopic parameter determination for the two stars they analysed in NGC 5634. Had we used their atmospheric parameters for star 5634-2, in common with that study and observed with similar resolution and wavelength coverage, we would have obtained, on average, higher abundances by 0.003 ± 0.016 dex ($\sigma = 0.060$ dex) from 14 neutral species and lower by -0.049 ± 0.022 dex ($\sigma = 0.058$ dex) from 7

Table 4. Sensitivities of abundance ratios to variations in the atmospheric parameters and to errors in the equivalent widths, and errors in abundances for stars of NGC 5634 observed with UVES.

Element	Average no. lines	T_{eff} (K)	$\log g$ (dex)	[A/H] (dex)	v_t kms ⁻¹	EWs (dex)	Total Internal	Total Systematic
Variation		50	0.20	0.10	0.10			
Internal		5	0.04	0.05	0.07	0.01		
Systematic		42	0.06	0.07	0.03			
[Fe/H]I	70	+0.074	-0.013	-0.015	-0.023	0.014	0.024	0.065
[Fe/H]II	13	-0.029	+0.003	+0.001	+0.006	0.033	0.034	0.026
[O/Fe]I	2	-0.055	+0.088	+0.042	+0.020	0.085	0.091	0.077
[Na/Fe]I	2	-0.035	-0.039	-0.015	+0.019	0.085	0.087	0.107
[Mg/Fe]I	2	-0.021	-0.018	-0.004	-0.002	0.085	0.085	0.023
[Al/Fe]I	1	-0.006	+0.015	+0.021	+0.040	0.120	0.124	0.132
[Si/Fe]I	4	-0.060	+0.027	+0.015	+0.019	0.060	0.062	0.053
[Ca/Fe]I	19	-0.008	-0.013	-0.007	-0.002	0.028	0.028	0.013
[Sc/Fe]II	6	+0.028	-0.004	+0.004	+0.003	0.049	0.049	0.027
[Ti/Fe]I	23	+0.037	-0.012	-0.013	+0.000	0.025	0.026	0.032
[Ti/Fe]II	9	+0.022	-0.015	-0.003	-0.008	0.040	0.041	0.021
[V/Fe]I	9	+0.030	-0.016	-0.008	+0.017	0.040	0.042	0.028
[Cr/Fe]I	12	+0.022	-0.015	-0.013	-0.007	0.035	0.036	0.022
[Cr/Fe]II	5	+0.000	-0.014	-0.011	+0.006	0.054	0.054	0.020
[Mn/Fe]I	6	+0.016	-0.010	-0.007	+0.005	0.049	0.049	0.015
[Co/Fe]I	3	-0.016	-0.001	+0.003	+0.019	0.069	0.071	0.017
[Ni/Fe]I	18	-0.007	+0.011	+0.006	+0.009	0.028	0.029	0.011
[Cu/Fe]I	1	+0.012	+0.005	+0.001	+0.003	0.120	0.120	0.041
[Zn/Fe]I	1	-0.093	+0.048	+0.022	+0.005	0.120	0.121	0.081
[Y/Fe]II	1	+0.035	-0.014	-0.001	-0.007	0.120	0.120	0.054
[Zr/Fe]II	1	+0.129	+0.090	+0.100	+0.109	0.120	0.152	0.128
[Ba/Fe]II	3	+0.047	-0.006	+0.002	-0.071	0.069	0.085	0.089
[La/Fe]II	1	+0.046	-0.006	+0.005	+0.009	0.085	0.085	0.046
[Nd/Fe]II	4	+0.046	-0.010	+0.003	+0.003	0.060	0.060	0.045
[Eu/Fe]II	2	+0.031	-0.001	+0.007	+0.007	0.085	0.085	0.054

Table 5. Sensitivities of abundance ratios to variations in the atmospheric parameters and to errors in the equivalent widths, and errors in abundances for stars of NGC 5634 observed with GIRAFFE.

Element	Average no. lines	T_{eff} (K)	$\log g$ (dex)	[A/H] (dex)	v_t km s ⁻¹	EWs (dex)	Total internal	Total systematic
Variation		50	0.20	0.10	0.10			
Internal		5	0.04	0.09	0.83	0.06		
Systematic		61	0.06	0.06	0.14			
[Fe/H]I	6	+0.044	-0.008	-0.008	-0.010	0.055	0.100	0.058
[Na/Fe]I	2	-0.022	-0.018	+0.002	+0.007	0.095	0.112	0.056
[Mg/Fe]I	1	-0.016	+0.002	+0.002	+0.005	0.135	0.141	0.023
[Si/Fe]I	3	-0.026	+0.017	+0.007	+0.008	0.078	0.103	0.035
[Ca/Fe]I	1	-0.010	-0.002	+0.001	-0.003	0.135	0.137	0.017
[Sc/Fe]II	5	-0.036	+0.081	+0.023	+0.002	0.060	0.068	0.051
[V/Fe]I	2	+0.027	-0.007	-0.004	+0.007	0.095	0.112	0.038
[Ni/Fe]I	2	+0.015	+0.005	+0.003	+0.001	0.095	0.096	0.021

Table 6. Light element abundances.

Star	No.	[O/Fe]I	rms	No.	[Na/Fe]I	rms	No.	[Mg/Fe]I	rms	No.	[Al/Fe]I	rms
2	2	0.281	0.029	3	0.196	0.057	3	0.527	0.052	1	<0.208	
5	2	0.170	0.080	3	0.582	0.060	2	0.538	0.066	1	0.768	
7	2	0.490	0.035	2	0.072	0.013	2	0.476	0.182	2	0.491	0.025
9	1	0.397		2	-0.152	0.061	3	0.504	0.061	1	<0.328	
10	1	0.137		2	0.475	0.046	3	0.517	0.120	2	0.797	0.002
12	1	0.277		1	-0.050		2	0.581	0.022			
13				1	0.052		2	0.487	0.071			

Table 7. α element abundances.

Star	No.	[Si/Fe]I	rms	No.	[Ca/Fe]I	rms	No.	[Ti/Fe]I	rms	No.	[Ti/Fe]II	rms
2	4	0.288	0.138	18	0.329	0.143	25	0.153	0.166	9	0.147	0.090
5	4	0.318	0.074	19	0.303	0.115	25	0.162	0.140	9	0.190	0.083
7	3	0.247	0.130	19	0.272	0.085	25	0.147	0.106	11	0.197	0.151
9	5	0.268	0.047	20	0.290	0.085	24	0.127	0.111	11	0.139	0.159
10	4	0.280	0.059	19	0.325	0.084	25	0.160	0.094	9	0.183	0.144
12	3	0.327	0.105	19	0.261	0.116	19	0.120	0.140	8	0.150	0.176
13	2	0.340	0.135	20	0.315	0.167	18	0.152	0.137	9	0.171	0.164

Table 8. Iron-peak abundances.

Star	No.	[Sc/Fe]II	rms	No.	[V/Fe]I	rms	No.	[Cr/Fe]I	rms	No.	[Cr/Fe]II	rms	No.	[Mn/Fe]I	rms	No.	[Co/Fe]I	rms	No.	[Ni/Fe]I	rms	No.	[Cu/Fe]I	rms	No.	[Zn/Fe]I	rms
2	5	-0.053	0.137	11	-0.131	0.113	13	-0.250	0.098	6	-0.009	0.137	6	-0.486	0.189	3	-0.038	0.058	21	-0.097	0.119	1	-0.597		1	0.016	
5	6	-0.127	0.116	12	-0.100	0.096	14	-0.179	0.123	5	0.046	0.174	7	-0.495	0.210	3	0.000	0.128	22	-0.076	0.119	1	-0.498		1	0.015	
7	7	-0.109	0.115	8	-0.158	0.085	10	-0.203	0.061	6	0.082	0.122	7	-0.523	0.163	3	-0.014	0.218	18	-0.116	0.100	1	-0.498		1	-0.063	
9	8	-0.058	0.132	11	-0.159	0.080	13	-0.221	0.082	6	-0.022	0.094	7	-0.478	0.217	3	0.012	0.063	21	-0.077	0.100	1	-0.599		1	-0.002	
10	8	-0.078	0.101	11	-0.146	0.136	12	-0.170	0.071	3	-0.080	0.109	7	-0.520	0.181	3	-0.027	0.071	20	-0.121	0.102	1	-0.609		1	0.030	
12	6	-0.132	0.069	7	-0.098	0.121	10	-0.235	0.131	3	-0.001	0.041	4	-0.488	0.195	2	0.030	0.095	11	-0.131	0.094	1	-0.798		1	0.099	
13	5	-0.062	0.145	3	-0.113	0.091	9	-0.219	0.102	3	0.000	0.060	4	-0.500	0.138	1	-0.013		13	-0.125	0.113	1	-0.502		1	-0.005	

Table 9. Neutron-capture abundances.

Star	No.	[Y/Fe]II	rms	No.	[Zr/Fe]II	rms	No.	[Ba/Fe]II	rms	No.	[La/Fe]II	rms	No.	[Nd/Fe]II	rms	No.	[Eu/Fe]II	rms
2	1	-0.077		1	<0.153		3	-0.081	0.026	2	+0.223	0.030	4	+0.384	0.084	2	+0.633	0.071
5	1	-0.123		1	+0.227		3	-0.056	0.081	2	+0.027	0.030	4	+0.456	0.058	1	+0.487	
7	1	-0.125		1	+0.125		3	-0.043	0.057	2	+0.125	0.030	4	+0.518	0.078	2	+0.660	0.035
9	1	-0.163		1	+0.087		3	-0.208	0.055	2	+0.087	0.030	4	+0.380	0.069	1	+0.447	
10	1	-0.084		1	+0.046		3	-0.059	0.099	2	+0.146	0.030	4	+0.432	0.047	2	+0.456	0.071
12	1	-0.179		1	+0.071		3	-0.041	0.082	2	+0.071	0.030	4	+0.450	0.076	2	+0.631	0.141
13	1	+0.173		1	+0.473		3	-0.037	0.111	2	+0.073	0.030	4	+0.532	0.055	2	+0.783	0.212

singly ionised species, once our solar reference abundances from Gratton et al. (2003) are homogeneously adopted.

NGC 5634 seems to be a homogeneous cluster, as far as most elements are concerned. By comparing the expected observational uncertainty due to errors affecting the analysis (the internal errors in Table 4) with the observed dispersion (the standard deviation about the mean values in Table 11), we can evaluate whether or not there is an intrinsic or cosmic scatter for a given element among stars in NGC 5634. This exercise was made using the more accurate abundances from UVES spectra; it is essentially equivalent to compute the “spread ratio” introduced by Cohen (2004) and shows that there is only evidence for an intrinsic spread for O, Na, and Al, while Fe, Y, and Eu show only a “possible” spread.

However, we do not consider the spread in Fe to be real, since in this case the observational uncertainty is very small due to the large number of measured lines in UVES spectra. On the other extreme, when the abundance of a given species is based on a very limited number of lines, the spread ratio may be high due to bias (see Cohen 2004, for a discussion), as in the case of Y and Eu. Moreover, all five determinations of Eu abundances from the line at 6437 Å are upper limits. Had we considered only the detections (from the Eu 6645 Å line), the spread ratio would be <1, implying no intrinsic spread for Eu in NGC 5634.

In conclusion, the overall pattern of the chemical composition shows that NGC 5634 is a normal GC, where most elements do not present any intrinsic star-to-star variation, except for those involved in proton-capture reactions in H burning at a high temperature, such as O, Na, and Al, and as commonly observed in GCs (see Gratton et al. 2012).

4.1. The light elements

The relations among proton-capture elements in stars of NGC 5634 are summarised in Fig. 4 for the UVES sample. Abundances of Na are also anticorrelated with O abundances in NGC 5634 (upper left panel), confirming the findings by S15 with a sample three times larger. This cluster shares the typical Na-O anticorrelation, the widespread chemical signature of multiple stellar populations in MW GCs. Within the important limitations of small number statistics, two stars have distinctly larger Na content and lower O abundance than the other four stars.

According to the homogeneous criteria used by our group to define stellar generations in GCs (see Carretta et al. 2009a), the two stars with the highest Na abundance would be second generation stars of the intermediate I component, while the other four giants belong to the first generation in NGC 5634 and reflect the primordial P fraction, with the typical pure nucleosynthesis by type II SNe (the average abundances for these stars are [Na/Fe] = 0.017 dex, σ = 0.151 dex and [O/Fe] = 0.361 dex, σ = 0.102 dex). The star with only a Na abundance would also be classified as a first generation star, due to its low ratio [Na/Fe] = +0.052 dex.

We note that the two stars analysed by S15 show (anticorrelated) spreads in O and Na exceeding the estimated observational uncertainties; evidence that prompted the authors to claim a Na-O anticorrelation in NGC 5634. Nevertheless, both stars would fall among our first generation stars, either if the original abundances or those corrected for different solar abundances are adopted. In our data, the observed spread in O for the stars of the P component is comparable with the expected uncertainty due to the analysis, whereas the spread in Na formally corresponds to 1.7σ . We cannot totally exclude a certain amount of

Table 10. Abundances from GIRAFFE spectra.

Star	No.	[Na/Fe]I	rms	No.	[Mg/Fe]I	rms	No.	[Si/Fe]II	rms	No.	[Ca/Fe]I	rms	No.	[Sc/Fe]II	rms	No.	[V/Fe]I	rms	No.	[Ni/Fe]I	rms
100	2	0.178	0.055	1	0.464		2	0.377	0.022	1	0.345		5	0.064	0.064				2	-0.203	0.120
103	2	0.532	0.091	1	0.445		1	0.290		1	0.539		5	0.057	0.096				2	-0.189	0.002
113	2	0.011	0.036	1	0.523		2	0.438	0.069	1	0.385		5	-0.046	0.081	1	-0.005		2	-0.071	0.139
125	1	0.121		1	0.571		4	0.446	0.149	1	0.340		6	-0.102	0.154				2	-0.095	0.037
132	2	-0.056	0.085	1	0.643		4	0.407	0.134	1	0.465		5	0.044	0.090				2	-0.084	0.133
135	2	-0.030	0.061	1	0.498		1	0.284		1	0.389		3	-0.011	0.274				2	-0.123	0.258
142	1	0.434		1	0.477		2	0.413	0.006	1	0.330		5	-0.087	0.102				2	-0.120	0.153
146	1	0.168		1	0.507		4	0.456	0.149	1	0.357		4	-0.095	0.258				1	-0.136	
152	1	0.120		1	0.623		2	0.414	0.042	1	0.408		4	-0.078	0.048				2	-0.142	0.069
163	1	-0.122		1	0.520		2	0.383	0.022	1	0.320		3	-0.024	0.189				2	-0.079	0.027
167	1	0.387		1	0.579					1	0.301		5	0.000	0.123						
169	1	0.607		1	0.483		3	0.410	0.091	1	0.314		5	-0.022	0.133				2	-0.039	0.157
173	2	0.232	0.055	1	0.562		1	0.430		1	0.405		4	-0.038	0.181				2	-0.151	0.028
182	1	0.738		1	0.474					1	0.405		3	0.006	0.193						
189	2	0.728	0.046	1	0.561					1	0.399		4	0.035	0.051						
194	2	0.269	0.024	1	0.512					1	0.524		4	-0.010	0.161						
19	2	-0.057	0.030	1	0.509		6	0.402	0.137	1	0.309		5	-0.026	0.040	4	-0.148	0.151	3	-0.120	0.003
22	2	-0.083	0.086	1	0.421		3	0.359	0.093	1	0.268		5	-0.014	0.081	1	-0.121		2	0.018	0.011
30	2	0.350	0.021	1	0.490		3	0.445	0.248	1	0.337		5	0.026	0.082	2	-0.121	0.099	3	-0.170	0.208
35	2	0.476	0.017	1	0.465		5	0.435	0.129	1	0.269		5	0.011	0.075	2	-0.140	0.044	2	-0.127	0.393
3	2	0.608	0.043	1	0.523		7	0.407	0.070	1	0.335		5	0.022	0.038	4	-0.061	0.079	2	-0.152	0.024
45	2	0.083	0.058	1	0.410		5	0.467	0.152	1	0.279		5	-0.035	0.078				2	-0.058	0.015
46	2	0.427	0.080	1	0.323		4	0.446	0.254	1	0.285		6	-0.070	0.115				2	-0.167	0.049
54	2	0.334	0.062	1	0.498		4	0.374	0.119	1	0.308		5	0.038	0.071	3	-0.150	0.141	2	-0.134	0.155
58	2	0.764	0.056	1	0.559		5	0.350	0.112	1	0.409		5	0.030	0.093	1	-0.165		3	-0.172	0.132
60	2	0.184	0.081	1	0.540		2	0.449	0.126	1	0.334		6	-0.061	0.247				2	-0.149	0.168
62	2	0.340	0.081	1	0.536		4	0.379	0.172	1	0.420		5	0.058	0.080				2	-0.049	0.131
64	2	-0.180	0.030	1	0.432		4	0.438	0.185	1	0.373		5	0.058	0.093				2	-0.143	0.134
70	2	0.472	0.033	1	0.539		5	0.419	0.198	1	0.424		5	0.006	0.067				2	-0.138	0.177
72	2	-0.020	0.167	1	0.478		3	0.391	0.206	1	0.397		6	-0.102	0.096				2	-0.157	0.202
78	2	-0.214	0.019	1	0.474		4	0.389	0.091	1	0.355		4	-0.113	0.219	1	-0.104		2	-0.157	0.077
82	1	-0.147		1	0.388		4	0.408	0.224	1	0.267								1	-0.185	
87	2	0.488	0.041	1	0.424		4	0.385	0.150	1	0.334		5	0.009	0.184				2	-0.139	0.273
93	2	0.618	0.040	1	0.500		4	0.449	0.239	1	0.415		5	0.055	0.096				2	0.080	0.026
97	1	0.044		1	0.489		1	0.413		1	0.440		5	0.045	0.089				1	-0.058	

intrinsic spread among proton-capture elements in the first generation stars in NGC 5634, supporting previous findings by S15 based on the Na abundances of their two stars, photometrically very similar.

The impression is supported by the upper-right and lower-left panels in Fig. 4: no significant star-to-star variation is observed for Mg, while the Al abundances cover a relatively large range, which is only a lower limit since for two P stars, only upper limits to the Al abundances could be measured.

The lack of any extreme abundance variation in Mg is strongly confirmed by the lower-right panel, where we compare abundances of Ca and Mg in NGC 5634 with the values found in our homogeneous survey of 25 GCs. The stars analysed in NGC 5634 follow the trend of cluster stars with no extreme Mg depletion (see also S15).

To gain a more robust estimate of the fraction of first and second generation stars in NGC 5634, we may resort to the large statistics provided by Na abundances of the combined UVES+GIRAFFE sample. We cannot distinguish between second generation stars with intermediate and extreme composition (this would require knowledge of O abundances also), but the definition of the primordial P fraction in a GC simply rests on Na abundances (Carretta et al. 2009a).

Using the total sample and separating at $[\text{Na}/\text{Fe}]_{\text{min}}+0.3$ dex, the fraction of P stars in NGC 5634 is $38 \pm 10\%$, while the fraction of the second generation stars is $62 \pm 12\%$, where the associated errors are due to Poisson statistics. These fractions are

not very different from the average of what is found in most GCs (see e.g. Carretta et al. 2009a, 2010a).

4.2. Elements up to iron peak

In Fig. 6, we summarise the chemical composition of NGC 5634 as far as α -elements and iron-peak elements are concerned, using the individual values derived for stars with UVES spectra, as a function of the metallicity. As a comparison, we also plot the average value relative to the Sgr nucleus ($[\text{Fe}/\text{H}] = -0.74$ dex, Carretta et al. 2010b) and to the five GCs confirmed members of the Sgr dwarf galaxy: M 54 ($[\text{Fe}/\text{H}] = -1.51$ dex, Carretta et al. 2010b), Terzan 8 ($[\text{Fe}/\text{H}] = -2.27$ dex, Carretta et al. 2014a), Arp 2 ($[\text{Fe}/\text{H}] = -1.80$ dex, Mottini et al. 2008), Pal 12 ($[\text{Fe}/\text{H}] = -0.82$ dex, Cohen 2004) and Terzan 7 ($[\text{Fe}/\text{H}] = -0.61$ dex, Sbordone et al. 2007). In the last three cases, the values were corrected to the scale of solar abundances presently used (Gratton et al. 2003).

Abundances of stars in NGC 5634 seem to be in good agreement with the metal-poor GCs associated to Sgr. Of course, by itself, this is not clear-cut proof of the membership of NGC 5634 to Sgr rather than to the Milky Way, since at this low metal abundance, the overall chemical pattern of the α - and iron-peak elements simply reflects the typical floor of elemental abundances established by the interplay of core-collapse and type Ia supernovae (see e.g. Wheeler et al. 1989). This pattern is also

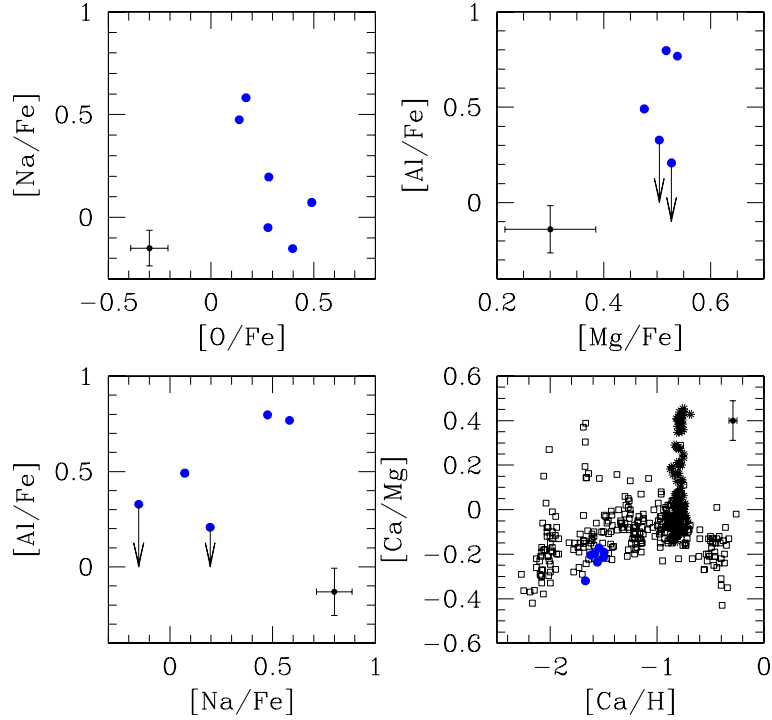


Fig. 4. Relations among proton-capture elements in stars of NGC 5634 observed with UVES (filled blue circles). Empty squares in the *lower-right panel* are stars in 24 GCs from Carretta et al. (2009a,b, 2010b,c, 2011, 2013, 2014b, 2015), and asterisks are stars in NGC 2808 from Carretta (2015). In each panel the error bars represent internal errors.

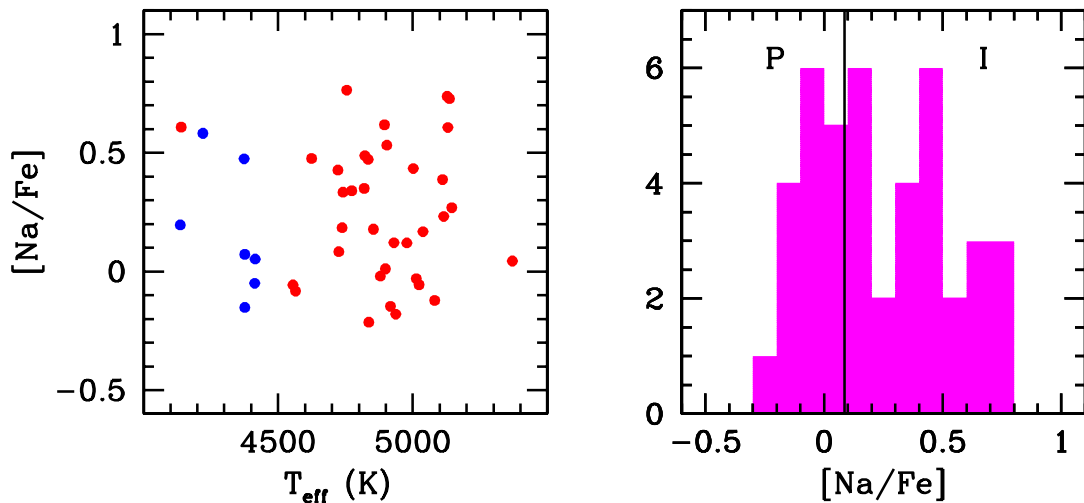


Fig. 5. *Left-hand panel:* $[\text{Na}/\text{Fe}]$ ratios as a function of the temperature in stars observed with UVES (blue squares) and GIRAFFE (red circles). *Right-hand panel:* histogram of the $[\text{Na}/\text{Fe}]$ ratios, where the line indicates the division between P and I stars, based on our usual separation at $[\text{Na}/\text{Fe}]_{\text{min}} + 0.3$.

supported by the abundances derived from GIRAFFE spectra (Table 11). In Sect. 5, we discuss further elements to support the connection with Sgr dSph.

4.3. Neutron-capture elements

Abundances for six neutron-capture elements in the UVES sample are listed in Table 9 and their cluster means are in Table 11. Ba II and Nd II lines could be treated as single unblended absorbers, so they were treated with EW analyses. Transitions of the other four neutron-capture elements had complications due to blending, hyperfine, or isotopic substructure and so were

subjected to synthetic spectrum analyses. The elemental means appear to be straightforward: the light n -capture elements Y and Zr are slightly under- and over-abundant, respectively, with respect to Fe, the traditional s -process rare-earth elements Ba and La have solar abundances, the r -process dominant Eu is overabundant by approximately a factor of four and the r - s -transition element Nd is overabundant by almost a factor of three. Here, we comment on a number of aspects of our derived n -capture abundances.

Our derived Ba and Eu abundances are in reasonable agreement with those reported by S15. Barium is not the optimal element to assess the abundances of the low- Z end of the rare

Table 11. Mean abundances in NGC 5634.

Element	Stars	UVES		Note	Stars	GIRAFFE	
		Mean	rms			Mean	rms
[O/Fe]I	6	+0.292	0.134	EW			
[Na/Fe]I	7	+0.168	0.271	EW	35	+0.252	0.287
[Mg/Fe]I	7	+0.519	0.035	EW	35	+0.498	0.064
[Al/Fe]I	5	+0.498	0.293	EW			
[Si/Fe]I	7	+0.295	0.034	EW	31	+0.405	0.043
[Ca/Fe]I	7	+0.299	0.026	EW	35	+0.365	0.067
[Sc/Fe]II	7	-0.088	0.034	EW	34	-0.011	0.053
[Ti/Fe]I	7	+0.146	0.016	EW			
[Ti/Fe]II	7	+0.168	0.023	EW			
[V/Fe]I	7	-0.129	0.026	EW	9	-0.113	0.051
[Cr/Fe]I	7	-0.211	0.029	EW			
[Cr/Fe]II	7	+0.002	0.051	EW			
[Mn/Fe]I	7	-0.499	0.017	EW			
[Fe/H]I	7	-1.867	0.050	EW	35	-1.869	0.093
[Fe/H]II	7	-1.903	0.025	EW			
[Co/Fe]I	7	-0.007	0.023	EW			
[Ni/Fe]I	7	-0.106	0.023	EW	31	-0.116	0.062
[Cu/Fe]I	7	-0.586	0.107	synt			
[Zn/Fe]I	7	+0.013	0.048	EW			
[Y/Fe]II	7	-0.083	0.119	synt			
[Zr/Fe]II	7	+0.169	0.147	synt			
[Ba/Fe]II	7	-0.063	0.075	EW			
[La/Fe]II	7	+0.107	0.064	synt			
[Nd/Fe]II	7	+0.450	0.059	EW			
[Eu/Fe]II	7	+0.585	0.126	synt			

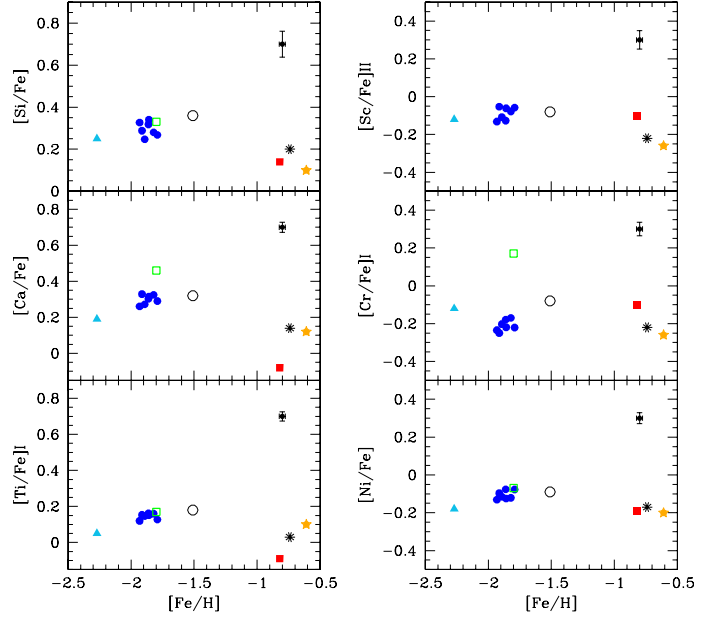


Fig. 6. Abundance ratios of α - and iron-peak elements derived from UVES spectra in NGC 5634 as a function of the metallicity (filled blue circles). Also plotted are the average values from Table 11 of Carretta et al. (2014a) relative to the Sgr nucleus (black asterisk, Carretta et al. 2010b), to M 54 (black empty circle, Carretta et al. 2010b), to Pal 12 (red filled square, Cohen 2004), to Terzan 7 (orange filled star, Sbordone et al. 2007), to Terzan 8 (filled light-blue triangle, Carretta et al. 2014a) and to Arp 2 (green empty square, Mottini et al. 2008). Internal error bars refer to our UVES sample.

earths because all Ba II lines are strong and thus less sensitive to abundance than are weaker lines. Fortunately, abundances derived from weak La II transitions are not in severe disagreement with the Ba values.

We determined Y abundances for our UVES sample from the Y II line at 5200.4 Å, for homogeneity with what we did for Ter 8 and other GCs in our sample (e.g. Carretta et al. 2014a). The cluster mean abundance from this transition is $[Y/Fe] = -0.083$ ($\sigma = 0.119$, 7 stars; see Table 9). The star-to-star scatter is relatively large, but almost all stars have $[Y/Fe] \lesssim 0$. Sbordone et al. (2015) reported much lower Y abundance in NGC 5634: $[Y/Fe] = -0.40$ from Star 2 and -0.33 from Star 3.

Star 2 in our study yielded $[Y/Fe] = -0.077$ from the synthesis of the 5200 Å line. To investigate this +0.32 dex offset in $[Y/Fe]$ with respect to S15, we synthesised other Y II lines in Star 2 with the line analysis code MOOG (Snedden 1973). Using the transition probabilities of Hannaford et al. (1982) and Biémont et al. (2011), we used ten Y II lines to derive $\langle [\log \epsilon(Y)] \rangle = +0.25 \pm 0.03$ ($\sigma = 0.08$ dex). Adopting $\log \epsilon(Y)_\odot = 2.21$ (Asplund et al. 2009) leads to a mean value of $[Y/H] = -1.96$ or $[Y/Fe] = -0.09$ (with the cluster mean $[Fe/H] = -1.87$), in good agreement with the value derived from the 5200 Å line alone.

For Star 2, we display our synthetic/observed spectrum match in Fig. 7. From this line, our best estimate is $\log \epsilon(Y) = +0.30$. We conclude that the spectrum synthesis of the line 5200 Å alone allows us to derive a relatively good estimate of the Y content. In general, we do not find substantial Y deficiencies for any of our UVES samples in NGC 5634.

As suggested by the referee, we used the line profile for each synthesised line of Y II published by S15 for star 2 and fitted them with our code and linelist. We obtained very consistent

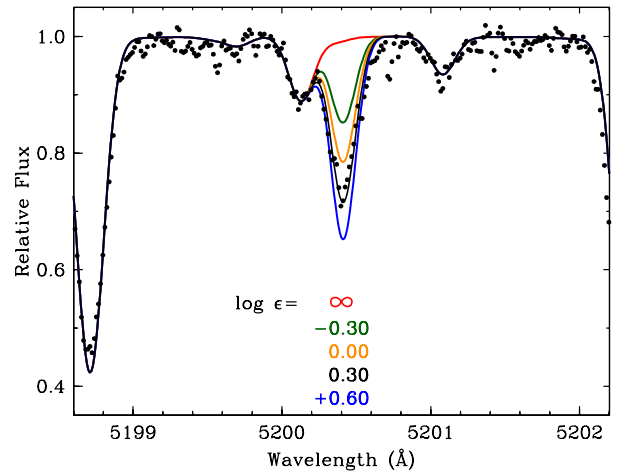


Fig. 7. Synthetic spectra for the Y II line 5200.4 Å. Filled circles indicate the observed spectrum of star 5634-2.

abundances from these four lines ($\log \epsilon = +0.21 \pm 0.04$ dex, $\sigma = 0.09$ dex and $\log \epsilon = +0.28 \pm 0.03$ dex, $\sigma = 0.06$ dex, with and without continuum scattering). This exercise would give an offset 0.43–0.50 dex with respect to the value of S15. At present, we cannot provide an explanation for the difference.

Derived Ba and Y abundances in NGC 5634 are in good agreement with the trend defined by Galactic field stars of similar (low) metal abundances, as shown in Fig. 8. Again, the metal-rich GCs associated to the Sgr dwarf stand out with respect to the Galactic field stars, while NGC 5634 cannot be distinguished from its chemical composition alone, as also occurs for Terzan 8, the classical metal-poor globular cluster of the family of GCs in Sgr.

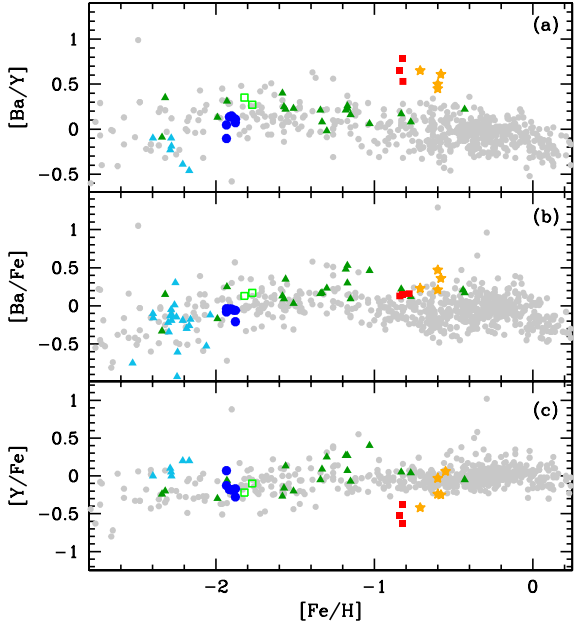


Fig. 8. Abundance ratios of neutron-capture elements Y and Ba as a function of metallicity. Grey filled circles are Galactic field stars from the compilation by Venn et al. (2004). The other symbols are as in Fig. 6: Pal 12 (red filled squares, Cohen 2004), Terzan 7 (orange filled stars, Sbordone et al. 2007), Terzan 8 (filled light-blue triangles, Carretta et al. 2014a) and Arp 2 (green empty squares, Mottini et al. 2008).

Here we are comparing our NGC 5634 abundance ratios with those of other Sgr clusters. In the following section we consider the kinematics of this cluster in order to more firmly establish its membership in the Sgr family.

5. Connection with the Sagittarius dSph and internal kinematics

As introduced in Sect. 1, NGC 5634 is suggested to have formed in the Sgr dSph and then accreted by the Milky Way during the subsequent tidal disruption of its host galaxy (Bellazzini et al. 2002; Law & Majewski 2010a). In this scenario, this GC is expected to follow an orbit similar to that of its parent galaxy and to be embedded in its stream. We checked this hypothesis by comparing the position and systemic motion of NGC 5634 with the prediction of the Sagittarius model by Law & Majewski (2010b). Among the three models presented in that paper, we used the one assuming a prolate ($q = 1.25$) Galactic halo, which provides a better fit to the observational constraints on the location and kinematics of the Sagittarius stream stars. The distribution in the heliocentric distance-radial velocity plane of particles within 5 deg from the present-day position of NGC 5634 is shown in Fig. 9. It is apparent that in this diagram, NGC 5634 lies well within a clump of Sagittarius particles. These particles belong to the trailing arm of its stream and have been lost by the satellite between 3 and 7 Gyr ago. This is consistent with what was found by B02 and Law & Majewski (2010a), even if they used a slightly different systemic radial velocity for this cluster (-44.4 km s^{-1}).

5.1. Internal kinematics

The present data represent the most extensive set of radial velocities for NGC 5634 and could be useful for studying the internal

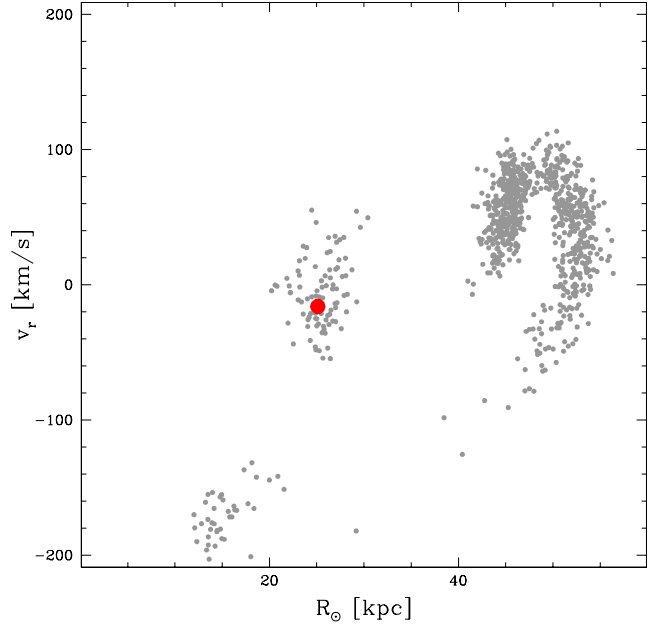


Fig. 9. Position and velocity of NGC 5634 (large filled red dot) compared to a Sgr model (see text for details).

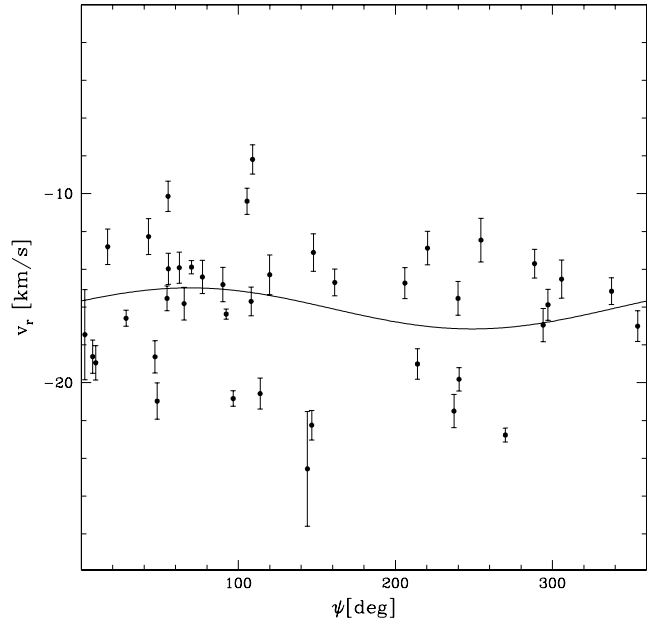


Fig. 10. Systemic rotation of NGC 5634: the best-fit solution is compatible with negligible rotation.

kinematics of this cluster. As a first step, we test the presence of systemic rotation. For this purpose, in Fig. 10, the RVs of the 42 bona fide members are plotted against their position angles. The best-fit sinusoidal curve indicates a rotation amplitude of $A_{\text{rot}} \sin i = 1.08 \pm 1.34 \text{ km s}^{-1}$, compatible with no significant rotation.

We then used our RV dataset to estimate the dynamical mass of the system. For this purpose, we fitted the distribution of RVs with a set of single and multimass King-Michie models (King 1966; Gunn & Griffin 1979). In particular, for each model, we tuned the model mass to maximize the log-likelihood

$$L = - \sum_{i=1}^N \left(\frac{(v_i - \langle v \rangle)^2}{(\sigma_i^2 + \epsilon_i^2)} + \ln(\sigma_i^2 + \epsilon_i^2) \right), \quad (1)$$

where $N(=42)$ is the number of available RVs, v_i and ϵ_i are the radial velocity of the i th star and its associated uncertainty and σ_i is the line-of-sight velocity dispersion predicted by the model at the distance from the cluster centre of the i th star. The best-fit single mass model provides a total mass of $1.64 \times 10^5 M_\odot$. This quantity, however, needs to be considered a lower limit to the actual total mass because of the effect of two-body relaxation affecting this estimate. Indeed, RGB stars (i.e. those for which RVs are available) are, on average, more massive than typical cluster stars and are therefore expected to become kinematically colder and more concentrated than the latter after a timescale comparable to the half-mass relaxation time. To account for this effect, we performed the same analysis adopting a set of multimass models with various choices of the present-day mass function. In particular, we adopted a power-law mass function with indices ranging from -2.35 (i.e. Salpeter 1955) to 0. We adopted the prescriptions for dark remnants and binaries of Sollima et al. (2012) assuming a binary fraction of 10% and a flat distribution of mass-ratios. The derived masses turn out to be 1.72, 1.82, 2.04 and $1.93 \times 10^5 M_\odot$ for mass function slopes of $\alpha = 0, -1, -2$ and -2.35 , respectively, with a typical uncertainty of $\sim 4.5 \times 10^4 M_\odot$. By assuming the absolute magnitude $M_V = -7.69$ listed for this cluster in the Harris catalog (1996, 2010 edition), the corresponding M/L ratios are 1.68, 1.79, 2.01 and 1.90, respectively. Significantly larger M/L ratios (by a factor 1.24) are instead obtained if the integrated magnitude by McLaughlin & van der Marel (2005) is adopted.

6. Summary and conclusions

As part of our homogeneous study of GCs, we obtained FLAMES spectra of 42 member stars in the cluster NGC 5634, associated to the Sgr dSph, in particular to one of the arms of the Sgr stream. We measured elemental abundances for many elements in the UVES spectra of seven RGB stars and of several elements in the GIRAFFE spectra of 35 (mainly) RGB and AGB stars (see Fig. 1).

We found clear evidence of multiple stellar populations in this cluster, indicated by the classical (anti)correlations between light elements (O, Na; Mg and Al). Although we could not completely characterise these anticorrelations due to a lack of oxygen abundance for all GIRAFFE targets, we can divide the observed stars into primordial P and Intermediate I fractions (Carretta et al. 2009a,b) simply using their Na abundance. Apparently, for this Sgr cluster, the fraction of first and second generation stars is not dramatically different from typical values found in MW GCs from spectroscopy (e.g. Carretta et al. 2009a, 2010a; Johnson & Pilachowski 2012).

We support the connection between NGC 5634 and the Sgr dSph (B02, Law & Majewski 2010a) both on the basis of the cluster RV and position and on the chemical abundances. The second piece of evidence is not, however, clearcut, since NGC 5634 resembles both MW and low-metallicity Sgr GCs in α and neutron-capture elements. We do not confirm the very low Y II abundance found by S15.

This study adds yet another confirmation of the ubiquitous presence of light-element anticorrelations, that is, multiple populations, among old and massive GCs, independent of their formation place. Metal-poor GCs apparently formed following the same chain of events regardless of their birth environment was the central Galaxy (Milky Way) or its most prominent disrupting dwarf satellite (Sgr).

Acknowledgements. We thank P. Montegriffo for his software CataPack, Michele Bellazzini for useful comments, and the referee Luca Sbordone for his thoughtful review. Support for this work has come in part from the US NSF grant AST-1211585. This research has made use of VizieR and SIMBAD, operated at CDS, Strasbourg, France, and NASA's Astrophysical Data System. The Guide Star Catalogue-II is a joint project of the Space Telescope Science Institute and the Osservatorio Astronomico di Torino. Space Telescope Science Institute is operated by the Association of Universities for Research in Astronomy, for the National Aeronautics and Space Administration under contract NAS5-26555. The participation of the Osservatorio Astronomico di Torino is supported by the Italian Council for Research in Astronomy. Additional support is provided by European Southern Observatory, Space Telescope European Coordinating Facility, the International GEMINI project and the European Space Agency Astrophysics Division. This publication makes use of data products from the Two Micron All Sky Survey, which is a joint project of the University of Massachusetts and the Infrared Processing and Analysis Center/California Institute of Technology, funded by the National Aeronautics and Space Administration and the National Science Foundation.

References

- Alonso, A., Arribas, S., & Martínez-Roger, C. 1999, *A&AS*, 140, 261
 Alonso, A., Arribas, S., & Martínez-Roger, C. 2001, *A&A*, 376, 1039
 Asplund, M., Grevesse, N., Sauval, A. J., & Scott, P. 2009, *ARA&A*, 47, 481
 Bastian, N., Cabrera-Ziri, I., & Salaris, M. 2015, *MNRAS*, 449, 3333
 Bellazzini, M., Ferraro, F. R., & Ibata, R. 2002, *AJ*, 124, 915 (B02)
 Bellazzini, M., Ferraro, F. R., & Ibata, R. 2003, *AJ*, 125, 188
 Biémont, É., Blagoev, K., Engström, L., et al. 2011, *MNRAS*, 414, 3350
 Bragaglia, A., Carretta, E., Gratton, R. G., et al. 2001, *AJ*, 121, 327
 Bragaglia, A., Gratton, R. G., Carretta, E., et al. 2012, *A&A*, 548, A122
 Bragaglia, A., Seden, C., Carretta, E., et al. 2014, *ApJ*, 796, 68
 Bragaglia, A., Carretta, E., Sollima, A., et al. 2015, *A&A*, 583, A69
 Carretta, E. 2015, *ApJ*, 810, 148
 Carretta, E., Bragaglia, A., Gratton, R. G., et al. 2009a, *A&A*, 505, 117
 Carretta, E., Bragaglia, A., Gratton, R. G., & Lucatello, S. 2009b, *A&A*, 505, 139
 Carretta, E., Bragaglia, A., Gratton, R. G., D'Orazi, V., & Lucatello, S. 2009c, *A&A*, 508, 695
 Carretta, E., Bragaglia, A., Gratton, R. G., et al. 2010a, *A&A*, 516, 55
 Carretta, E., Bragaglia, A., Gratton, R. G., et al. 2010b, *A&A*, 520, 95
 Carretta, E., Gratton, R. G., Lucatello, S., et al. 2010c, *ApJ*, 722, L1
 Carretta, E., Lucatello, S., Gratton, R. G., Bragaglia, A., & D'Orazi, V. 2011, *A&A*, 533, 69
 Carretta, E., Bragaglia, A., Gratton, R. G., et al. 2013, *A&A*, 557, A138
 Carretta, E., Bragaglia, A., Gratton, R. G., et al. 2014a, *A&A*, 561, A87
 Carretta, E., Bragaglia, A., Gratton, R. G., et al. 2014b, *A&A*, 564, A60
 Carretta, E., Bragaglia, A., Gratton, R. G., et al. 2015, *A&A*, 578, A116
 Cohen, J. G. 2004, *AJ*, 127, 1545
 Decressin, T., Meynet, G., Charbonnel, C., Prantzos, N., & Ekstrom, S. 2007, *A&A*, 464, 1029
 Dekker, H., D'Odorico, S., Kaufer, A., Delabre, B., & Kotzłowski, H. 2000, *Proc. SPIE*, 4008, 534
 de Mink, S. E., Pols, O. R., Langer, N., & Izzard, R. G. 2009, *A&A*, 507, L1
 Denisenkov, P. A., & Denisenkova, S. N. 1989, *Astron. Tsirkulyar*, 1538, 11
 Denisenkov, P. A., & Hartwick, F. D. A. 2014, *MNRAS*, 437, L21
 Dias, B., Barbuy, B., Saviane, I., et al. 2016, *A&A*, 590, A9
 Gratton, R. G. 1988, Rome Obs. Preprint Ser., 29
 Gratton, R. G., Carretta, E., Eriksson, K., & Gustafsson, B. 1999, *A&A*, 350, 95
 Gratton, R. G., Bonifacio, P., Bragaglia, A., et al. 2001, *A&A*, 369, 87
 Gratton, R. G., Carretta, E., Claudi, R., Lucatello, S., & Barbieri, M. 2003, *A&A*, 404, 187
 Gratton, R. G., Carretta, E., & Bragaglia, A. 2012, *A&ARv*, 20, 50
 Gunn, J. E., & Griffin, R. F. 1979, *AJ*, 84, 752
 Hannaford, P., Lowe, R. M., Grevesse, N., Biémont, E., & Whaling, W. 1982, *ApJ*, 261, 736
 Harris, W. E. 1996, *AJ*, 112, 1487
 Holtzman, J. A., Shetrone, M., Johnson, J. A., et al. 2015, *AJ*, 150, 148
 Johnson, C. I., & Pilachowski, C. A. 2012, *ApJ*, 754, L38
 Johnson, J. A., Ivans, I. I., & Stetson, P. B. 2006, *ApJ*, 640, 801
 Kraft, R. P. 1994, *PASP*, 106, 553
 King, I. R. 1966, *AJ*, 71, 64
 Kurucz, R. L. 1993, CD-ROM 13, Smithsonian Astrophysical Observatory, Cambridge
 Langer, G. E., Hoffman, R., & Seden, C. 1993, *PASP*, 105, 301
 Larsen, S. S., Brodie, J. P., Grundahl, F., & Strader, J. 2014, *ApJ*, 797, 15

- Law, D. R., & Majewski, S. R. 2010a, [ApJ](#), **718**, 1128
- Law, D. R., & Majewski, S. R. 2010b, [ApJ](#), **714**, 229
- Letarte, B., Hill, V., Jablonka, P., et al. 2006, [A&A](#), **453**, 547
- Maccarone, T. J., & Zurek, D. R. 2012, [MNRAS](#), **423**, 2
- Magain, P. 1984, [A&A](#), **134**, 189
- McLaughlin, D. E., & van der Marel, R. P. 2005, [ApJS](#), **161**, 304
- Milone, A., Piotto, G., Bedin, L., et al. 2012, [ApJ](#), **744**, 58
- Mottini, M., Wallerstein, G., & McWilliam, A. 2008, [AJ](#), **136**, 614
- Mucciarelli, A., Origlia, L., Ferraro, F. R., & Pancino, E. 2009, [ApJ](#), **695**, L134
- Noguchi, K., Aoki, W., Kawanomoto, S., et al. 2002, [PASJ](#), **54**, 855
- Pasquini, L., Avila, G., Blecha, A., et al. 2002, [The Messenger](#), **110**, 1
- Prantzos, N., Charbonnel, C., & Iliadis, C. 2007, [A&A](#), **470**, 179
- Salpeter, E. E. 1955, [ApJ](#), **121**, 161
- Sbordone, L., Bonifacio, P., Buonanno, R., et al. 2007, [A&A](#), **465**, 815
- Sbordone, L., Salaris, M., Weiss, A., & Cassisi, S. 2011, [A&A](#), **534**, A9
- Sbordone, L., Monaco, L., Moni Bidin, C., et al. 2015, [A&A](#), **579**, A104 (S15)
- Skrutskie, M. F., et al. 2006, [AJ](#), **131**, 1163
- Snedden, C. 1973, [ApJ](#), **184**, 839
- Snedden, C. 2000, in *The Galactic Halo: From Globular Cluster to Field Stars*, Proc. 35th Liege Int. Astrophys. Colloquium, 1999, eds. A. Noels, P. Magain, D. Caro, et al., Liege, Belgium, 159
- Sollima, A., Bellazzini, M., & Lee, J.-W. 2012, [ApJ](#), **755**, 156
- Venn, K. A., Irwin, M., Shetrone, M. D., et al. 2004, [AJ](#), **128**, 1177
- Ventura, P., D'Antona, F., Mazzitelli, I., & Gratton, R. 2001, [ApJ](#), **550**, L65
- Wheeler, J. C., Snedden, C., & Truran, J. W. Jr 1989, [ARA&A](#), **27**, 279