



Publication Year	2019
Acceptance in OA	2020-12-09T16:21:17Z
Title	A giant impact as the likely origin of different twins in the Kepler-107 exoplanet system
Authors	BONOMO, ALDO STEFANO, Zeng, Li, Damasso, Mario, Leinhardt, Zoë M., Justesen, Anders B., Lopez, Eric, Lund, Mikkel N., Malavolta, Luca, Silva Aguirre, Victor, Buchhave, Lars A., CORSARO, ENRICO MARIA NICOLA, Denman, Thomas, Lopez-Morales, Mercedes, Mills, Sean M., Mortier, Annelies, Rice, Ken, SOZZETTI, Alessandro, Vanderburg, Andrew, AFFER, Laura, Arentoft, Torben, Benbakoura, Mansour, Bouchy, François, Christensen-Dalsgaard, Jørgen, Collier Cameron, Andrew, COSENTINO, Rosario, Dressing, Courtney D., Dumusque, Xavier, Figueira, Pedro, Fiorenzano, Aldo F. M., García, Rafael A., Handberg, Rasmus, HARUTYUNYAN, AVET, Johnson, John A., Kjeldsen, Hans, Latham, David W., Lovis, Christophe, Lundkvist, Mia S., Mathur Savita, Mayor, Michel, MICELA, Giuseppina, MOLINARI, Emilio Carlo, Motalebi, Fatemeh, NASCIMBENI, VALERIO, Nava, Chantanelle, Pepe, Francesco, Phillips, David F., Piotto, Giampaolo, PORETTI, Ennio, Sasselov, Dimitar, Ségransan, Damien, Udry, Stéphane, Watson, Chris
Publisher's version (DOI)	10.1038/s41550-018-0684-9
Handle	http://hdl.handle.net/20.500.12386/28766
Journal	NATURE ASTRONOMY
Volume	3

A giant impact as the likely origin of different twins in the Kepler-107 exoplanet system

Aldo S. Bonomo^{1*}, Li Zeng², Mario Damasso¹, Zoë M. Leinhardt³, Anders B. Justesen⁴, Eric Lopez⁵, Mikkel N. Lund⁴, Luca Malavolta^{6,7}, Victor Silva Aguirre⁴, Lars A. Buchhave⁸, Enrico Corsaro⁹, Thomas Denman³, Mercedes Lopez-Morales¹⁰, Sean M. Mills¹¹, Annelies Mortier¹², Ken Rice¹³, Alessandro Sozzetti¹, Andrew Vanderburg^{10,14}, Laura Affer¹⁵, Torben Arentoft⁴, Mansour Benbakoura^{16,17}, François Bouchy¹⁸, Jørgen Christensen-Dalsgaard⁴, Andrew Collier Cameron¹², Rosario Cosentino¹⁹, Courtney D. Dressing²⁰, Xavier Dumusque¹⁸, Pedro Figueira^{21,22}, Aldo F. M. Fiorenzano¹⁹, Rafael A. García^{16,17}, Rasmus Handberg⁴, Avet Harutyunyan¹⁹, John A. Johnson¹⁰, Hans Kjeldsen⁴, David W. Latham¹⁰, Christophe Lovis¹⁸, Mia S. Lundkvist^{4,23}, Savita Mathur^{24,25}, Michel Mayor¹⁸, Giusi Micela¹⁵, Emilio Molinari²⁶, Fatemeh Motalebi¹⁸, Valerio Nascimbeni^{6,7}, Chantanelle Nava¹⁰, Francesco Pepe¹⁸, David F. Phillips¹⁰, Giampaolo Piotto^{6,7}, Ennio Poretti^{19,27}, Dimitar Sasselov¹⁰, Damien Ségransan¹⁸, Stéphane Udry¹⁸ and Chris Watson²⁸

Measures of exoplanet bulk densities indicate that small exoplanets with radius less than 3 Earth radii (R_{\oplus}) range from low-density sub-Neptunes containing volatile elements¹ to higher-density rocky planets with Earth-like² or iron-rich³ (Mercury-like) compositions. Such astonishing diversity in observed small exoplanet compositions may be the product of different initial conditions of the planet-formation process or different evolutionary paths that altered the planetary properties after formation⁴. Planet evolution may be especially affected by either photoevaporative mass loss induced by high stellar X-ray and extreme ultraviolet (XUV) flux⁵ or giant impacts⁶. Although there is some evidence for the former^{7,8}, there are no unambiguous findings so far about the occurrence of giant impacts in an exoplanet system. Here, we characterize the two innermost planets of the compact and near-resonant system Kepler-107 (ref. ⁹). We show that they have nearly identical radii (about 1.5–1.6 R_{\oplus}), but the outer planet Kepler-107 c is more than twice as dense (about 12.6 g cm^{-3}) as the innermost Kepler-107 b (about 5.3 g cm^{-3}).

In consequence, Kepler-107 c must have a larger iron core fraction than Kepler-107 b. This imbalance cannot be explained by the stellar XUV irradiation, which would conversely make the more-irradiated and less-massive planet Kepler-107 b denser than Kepler-107 c. Instead, the dissimilar densities are consistent with a giant impact event on Kepler-107 c that would have stripped off part of its silicate mantle. This hypothesis is supported by theoretical predictions from collisional mantle stripping¹⁰, which match the mass and radius of Kepler-107 c.

The Kepler space telescope discovered the four sub-Neptune-sized planets Kepler-107 b, c, d and e (ref. ⁹), which transit (that is, pass in front of) their host star and have orbital periods (P) of 3.180, 4.901, 7.958 and 14.749 d, respectively. The four planets form a compact near-resonant system with period ratios close or almost equal to ratios of small integers, specifically $P_c/P_b = 1.541$ ($\sim 3:2$), $P_d/P_c = 3.009$ ($\sim 3:1$), $P_d/P_b = 2.503$ ($\sim 5:2$). The near resonances imply that the Kepler-107 planets likely formed further out and then migrated inward getting trapped into resonances during

¹INAF—Osservatorio Astrofisico di Torino, Pino Torinese, Italy. ²Department of Earth and Planetary Sciences, Harvard University, Cambridge, MA, USA.

³School of Physics, University of Bristol, HH Willis Physics Laboratory, Bristol, UK. ⁴Stellar Astrophysics Centre, Department of Physics and Astronomy, Aarhus University, Aarhus C, Denmark. ⁵NASA Goddard Space Flight Center, Greenbelt, MD, USA. ⁶Dipartimento di Fisica e Astronomia “Galileo Galilei”, Università di Padova, Padova, Italy. ⁷INAF—Osservatorio Astronomico di Padova, Padova, Italy. ⁸DTU Space, National Space Institute, Technical University of Denmark, Kongens Lyngby, Denmark. ⁹INAF - Osservatorio Astrofisico di Catania, Catania, Italy. ¹⁰Harvard-Smithsonian Center for Astrophysics, Cambridge, MA, USA. ¹¹The Department of Astronomy, The California Institute of Technology, Pasadena, CA, USA. ¹²Centre for Exoplanet Science, SUPA, School of Physics and Astronomy, University of St Andrews, St Andrews, UK. ¹³SUPA, Institute for Astronomy, University of Edinburgh, Royal Observatory, Blackford Hill, Edinburgh, UK. ¹⁴Department of Astronomy, The University of Texas at Austin, Austin, TX, USA. ¹⁵INAF—Osservatorio Astronomico di Palermo, Palermo, Italy. ¹⁶IRFU, CEA, Université Paris-Saclay, Gif-sur-Yvette, France. ¹⁷Université Paris Diderot, AIM, Sorbonne Paris Cité, CEA, CNRS, Gif-sur-Yvette, France. ¹⁸Observatoire Astronomique de l’Université de Genève, Versoix, Switzerland. ¹⁹INAF—Fundación Galileo Galilei, Breña Baja, Spain.

²⁰Astronomy Department, University of California Berkeley, Berkeley, CA, USA. ²¹European Southern Observatory, Vitacura, Chile. ²²Instituto de Astrofísica e Ciências do Espaço, Universidade do Porto, CAUP, Porto, Portugal. ²³Zentrum für Astronomie der Universität Heidelberg, Heidelberg, Germany.

²⁴Departamento de Astrofísica, Universidad de La Laguna, Tenerife, Spain. ²⁵Instituto de Astrofísica de Canarias, La Laguna, Tenerife, Spain. ²⁶INAF—Osservatorio Astronomico di Cagliari, Selargius, Italy. ²⁷INAF - Osservatorio Astronomico di Brera, Merate, Italy. ²⁸Astrophysics Research Centre, School of Mathematics and Physics, Queen’s University Belfast, Belfast, UK. *e-mail: aldo.bonomo@inaf.it

Table 1 | Properties of the Kepler-107 planetary system.

Parameter	Value and 68.3% credible interval				
Host star	Kepler-107, KIC-10875245, KOI-117, 2MASS 19480677 + 4812309				
Magnitudes ^a	$B=13.34, V=12.70, J=11.39, K=11.06$				
Distance ^b (pc)	525.5 ± 5.5				
Systemic radial velocity V_r (km/s)	$5.64423 \pm 4.5 \times 10^{-4}$				
Effective Temperature, T_{eff} (K)	5854 ± 61				
Metallicity [Fe/H] (dex)	0.321 ± 0.065				
Spectroscopic surface gravity $\log g$ (cgs)	4.28 ± 0.10				
Asteroseismic surface gravity $\log g$ (cgs)	4.210 ± 0.013				
Rotational velocity $V \sin i$ (km s ⁻¹)	3.6 ± 0.5				
Mass M_* (M_\odot)	1.238 ± 0.029				
Radius R_* (R_\odot)	1.447 ± 0.014				
Density ρ_* (g cm ⁻³)	0.574 ± 0.029				
Age, t (Gyr)	$4.29^{+0.70}_{-0.56}$				
Limb-darkening coefficients	$u_1 = 0.26 \pm 0.08, u_2 = 0.56 \pm 0.12$				
Planets	b	c	d	e	
Orbital period, P (d)	$3.1800218 \pm 2.9 \times 10^{-6}$	$4.901452 \pm 1.0 \times 10^{-5}$	$7.95839 \pm 1.2 \times 10^{-4}$	$14.749143 \pm 1.9 \times 10^{-5}$	
Transit epoch, $T_c - 2,450,000$ (BJD _{TDB})	$5701.08414 \pm 3.7 \times 10^{-4}$	$5697.01829 \pm 7.9 \times 10^{-4}$	5702.9547 ± 0.0060	$5694.48550 \pm 4.6 \times 10^{-4}$	
Transit duration (h)	3.633 ± 0.021	4.269 ± 0.037	4.18 ± 0.36	6.117 ± 0.031	
Radius ratio R_p/R_*	$0.00973 \pm 1.3 \times 10^{-4}$	$0.01012 \pm 1.3 \times 10^{-4}$	$0.00544 \pm 3.6 \times 10^{-4}$	$0.01839 \pm 1.4 \times 10^{-4}$	
Inclination, i (deg)	89.05 ± 0.67	$89.49^{+0.34}_{-0.44}$	$87.55^{+0.64}_{-0.48}$	89.67 ± 0.22	
Impact parameter, b	0.11 ± 0.08	$0.08^{+0.07}_{-0.05}$	$0.53^{+0.10}_{-0.14}$	0.11 ± 0.07	
Eccentricity, e	0 (fixed)	0 (fixed)	0 (fixed)	0 (fixed)	
Radial-velocity semi-amplitude, K (m s ⁻¹)	1.32 ± 0.57	3.06 ± 0.57	< 1.06	1.95 ± 0.82	
Radius, R_p (R_\oplus)	1.536 ± 0.025	1.597 ± 0.026	0.86 ± 0.06	2.903 ± 0.035	
Mass, M_p (M_\oplus)	3.51 ± 1.52	9.39 ± 1.77	< 3.8	8.6 ± 3.6	
Density, ρ_p (g cm ⁻³)	5.3 ± 2.3	12.65 ± 2.45	< 33.1	2.00 ± 0.82	
Semi-major axis, a (AU)	$0.04544 \pm 3.5 \times 10^{-4}$	$0.06064 \pm 4.7 \times 10^{-4}$	$0.08377 \pm 6.5 \times 10^{-4}$	$0.12639 \pm 9.9 \times 10^{-4}$	
Equilibrium temperature ^c (K)	1593 ± 19	1379 ± 17	1173 ± 14	955 ± 12	

^a B and V Johnson magnitudes from the Howell Everett Survey; J and K magnitudes from 2MASS. ^bFrom the second release Gaia data³⁰. ^cBlackbody equilibrium temperature assuming a null Bond albedo and uniform heat redistribution to the night side.

the migration process¹¹. The orbital eccentricities of all four planets were determined to be low, consistent with zero¹², as expected from both dynamical stability criteria and orbit circularization times for Kepler-107b and c (see Methods). Despite the proximity to resonances, no significant transit timing variations from gravitational planet–planet interactions could be detected for any planet¹³, preventing the direct determination of planetary masses from the Kepler light curve alone.

To determine the planet masses, and hence their bulk densities, we observed Kepler-107 from 2014 June 21 to 2017 April 22 with the fibre-fed high-resolution ($R=115,000$) HARPS-N spectrograph¹⁴ at the Telescopio Nazionale Galileo in La Palma. Our time series with 114 radial velocities has a scatter of 6 m s^{-1} and shows two significant periodicities at 4.9 d and at about 14 d (see Methods and Supplementary Figs. 5 and 6). The former is straightforwardly attributed to the Doppler signal induced on the star by the second inner planet Kepler-107c; the latter is likely related to stellar magnetic activity variations though at low level, as shown by the low amplitude of Kepler flux variations (see Methods and Supplementary Fig. 2).

From the 114 HARPS-N spectra we determined the stellar atmospheric parameters (see Table 1 and Methods). Even though the

parent star is richer in iron than most of the stars that are known to host low-mass planets¹⁵, it does not present an overabundance of iron relative to Si and Mg having solar-like Fe/Si and Mg/Si photospheric ratios (see Methods and Supplementary Table 3). To determine the stellar fundamental parameters (radius, mass and age), we performed a detailed asteroseismic analysis with all the available Kepler short-cadence data. We extracted the frequencies for individual modes of stellar oscillations from the power density spectrum of the Kepler light curve (see Methods and Supplementary Fig. 4). We modelled them with the Bayesian Stellar Algorithm¹⁶ and found $M_* = 1.238 \pm 0.029 M_\odot$, $R_* = 1.1447 \pm 0.014 R_\odot$, $\rho_* = 0.574 \pm 0.029 \text{ g cm}^{-3}$, $\log g = 4.210 \pm 0.013$ (cgs), in agreement with the spectroscopic value within 1σ , and an age $t = 4.29^{+0.70}_{-0.56}$ Gyr (see Methods). These parameters are consistent with those that were previously determined¹⁷ but are more precise and accurate.

By using the constraint on the stellar density as provided by our asteroseismic analysis, we modelled the transits of the four Kepler-107 planets (Supplementary Fig. 1) and derived their radii and associated uncertainties by employing a differential evolution Markov chain Monte Carlo Bayesian technique¹⁸ (see Table 1 and Methods). We confirm the absence of significant transit timing variations (see Methods and Supplementary Fig. 8).

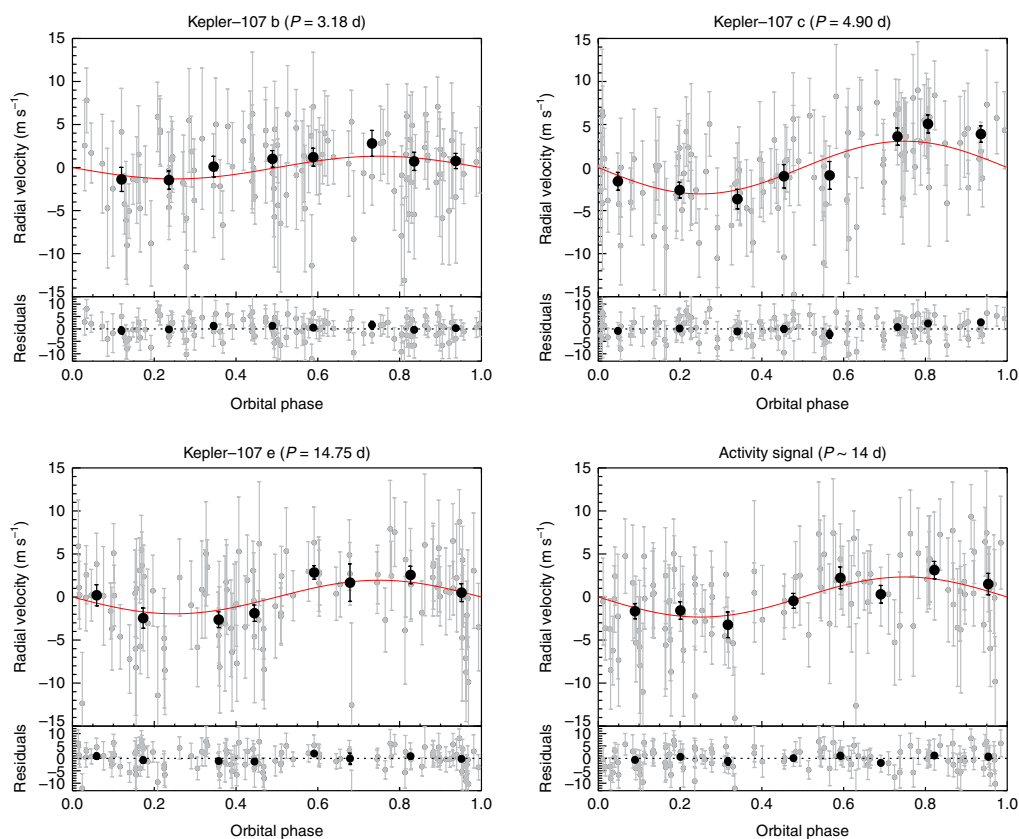


Fig. 1 | Radial velocity measurements of Kepler-107 with HARPS-N. Unbinned (grey dots) and binned (black circles) radial velocities with associated 1σ error bars are shown as a function of orbital phase for the planets Kepler-107 b, c and e (top left, top right, and bottom left panels). The residuals after subtracting the Keplerian models (red solid lines) are also displayed. The radial velocities of Kepler-107 d are not shown because they exhibit no variations. The additional signal with $P \sim 14$ d, which we attribute to stellar activity, is shown on the bottom right panel.

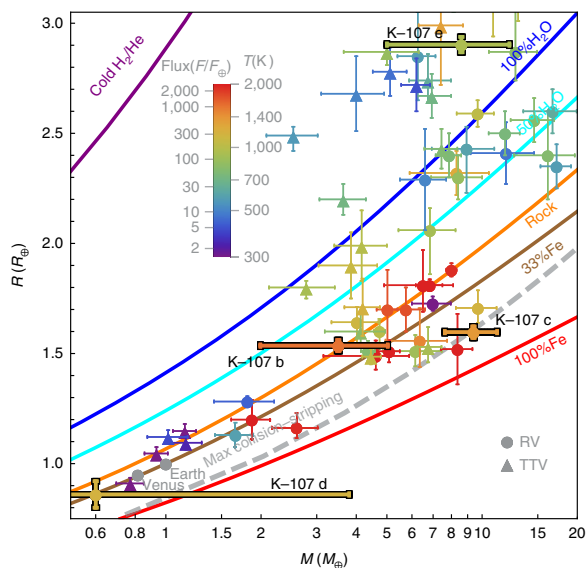


Fig. 2 | Mass-radius diagram of exoplanets smaller than $3R_{\oplus}$. Only known planets with bulk densities measured to better than 33% precision through radial velocities (RV, circles) and transit timing variations (TTV, triangles) are shown. Error bars represent 1σ confidence intervals. Colours of symbols are a function of the planet irradiation level (or equilibrium temperature) assuming an Earth-like albedo. The solid lines are theoretical mass-radius curves²⁰ for planets with different compositions as specified in the figure (see also Methods). The grey dashed line displays the minimum radius predicted from collisional stripping models as a function of planetary mass¹⁰.

In the same Bayesian framework, we modelled the HARPS-N radial velocities with four Keplerians by using the updated ephemerides from the transit fitting, and an additional sinusoid to account for the activity signal at ~ 14 d (see Fig. 1 and Methods). More sophisticated models to take the activity-induced correlated noise into account¹⁹ provided very consistent results (see Methods and Supplementary Table 2). The radial velocity semi-amplitudes and derived planetary masses are listed in Table 1. Only an upper limit could be established for the mass of Kepler-107 d because its Doppler signal is undetected owing to its expected low mass and its orbital period longer than planets b and c.

The positions of the Kepler-107 planets in the radius–mass diagram of small planets with a bulk density measured better than 3σ are shown in Fig. 2 along with iso-composition²⁰ curves. The two innermost planets Kepler-107 b and c have nearly equal radii, that is, $R_{p,b} = 1.536 \pm 0.025 R_{\oplus}$ and $R_{p,c} = 1.597 \pm 0.026 R_{\oplus}$, but dissimilar masses: $M_{p,b} = 3.51 \pm 1.52 M_{\oplus}$ and $M_{p,c} = 9.39 \pm 1.77 M_{\oplus}$. This means that they have different bulk densities with $\rho_{p,b} = 5.3 \pm 2.3 \text{ g cm}^{-3}$ and $\rho_{p,c} = 12.6 \pm 2.4 \text{ g cm}^{-3}$ (Table 1). According to theoretical models of planetary interiors²⁰, both Kepler-107 b and c are consistent with a rocky composition. However, Kepler-107 c appears Mercury-like in composition and has an iron fraction that is at least a factor of two greater than that of Kepler-107 b. Kepler-107 c’s iron core makes up $\sim 70\%$ of its mass, with the silicate mantle making up $\sim 30\%$ (see Methods). Kepler-107 d could also be rocky, while Kepler-107 e is a mini-Neptune containing a significant fraction of volatiles in the form of a thin H/He envelope and/or water ice (see Fig. 2 and Methods).

Unlike the pair of Kepler-36 neighbouring planets²¹, the difference in planetary density between Kepler-107 b and c cannot be

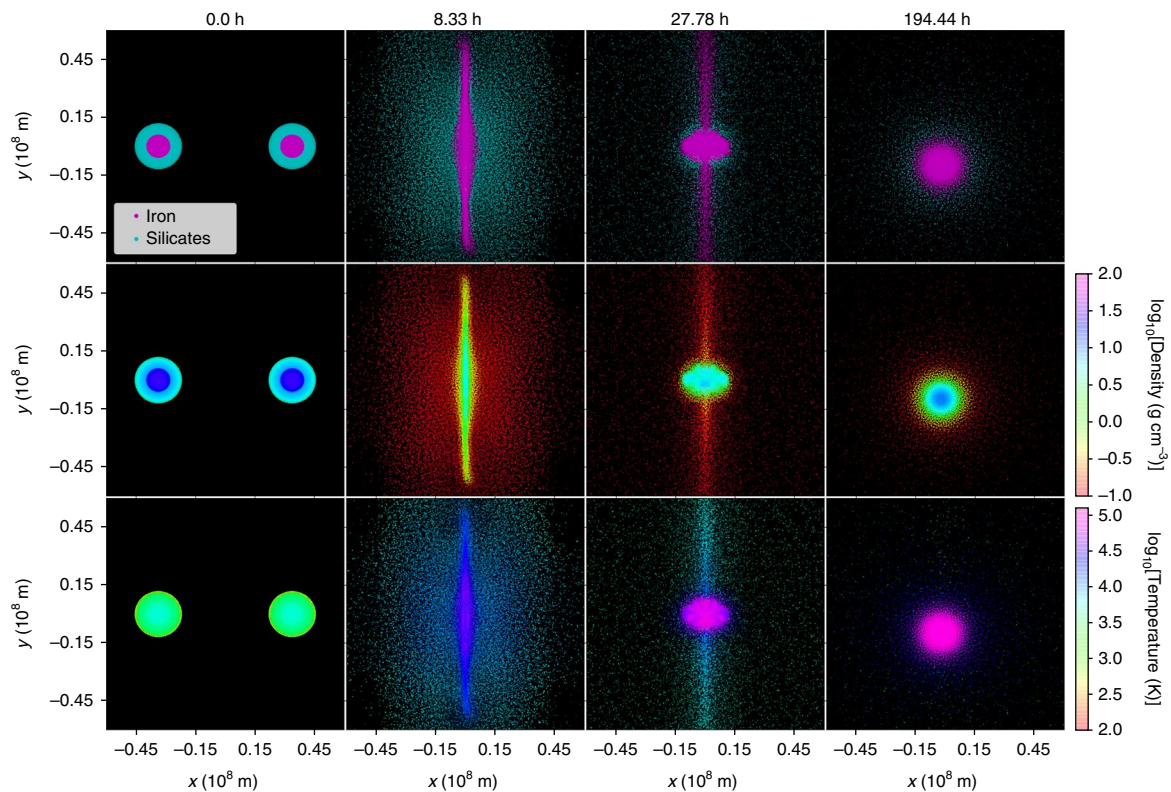


Fig. 3 | Smoothed particle hydrodynamical collision simulation. Hemispheric cross-sectional images of a high-speed (62.5 km s^{-1}) head-on equal-mass ($10.5M_{\oplus}$, $1.8R_{\oplus}$) simulation (see Methods) are shown at four snapshots in time perpendicular to the impact plane. The strips display composition (top), density (middle) and temperature (bottom). The impactors have identical initial composition consisting of 70% forsterite mantle and 30% iron core by mass. The middle two frames show a cross-sectional cut through the pancake structure created by the impact. Most of the material is vaporized during the impact. The largest post-collision remnant has a bound mass of $8.2M_{\oplus}$ with a material composition of 36% forsterite and 64% iron, which is consistent with both Kepler-107c mass and composition within 1σ . The post-collision remnant is significantly inflated and still cooling at the end of the simulation (last frame).

explained by atmospheric escape (or photoevaporation) caused by the high XUV stellar irradiation. This irradiation may partially or totally strip the gaseous H/He envelopes of mini-Neptunes at close distances from the star and thus may yield a diversity in exoplanet bulk densities⁷. However, it cannot be responsible for the observed dissimilar densities of Kepler-107b and c because it would have led to a higher density for Kepler-107b than for Kepler-107c (see Methods), which is at odds with our results.

Alternatively, the difference in density of the two inner planets can be explained by a giant impact on Kepler-107c that removed part of its mantle, significantly reducing its fraction of silicates with respect to an Earth-like composition²². The radius and mass of Kepler-107c, indeed, lie on the empirically derived collisional stripping curve for differentiated rocky/iron planets^{10,23} (grey dashed line in Fig. 2). Smoothed particle hydrodynamics simulations show that a head-on high-speed giant impact between two $\sim 10M_{\oplus}$ exoplanets in the disruption regime would result in a planet-like Kepler-107c with approximately the same mass and interior composition (see Fig. 3 and Methods). Such an impact may destabilize the current resonant configuration of Kepler-107 and thus it likely occurred before the system reached resonance. Multiple less-energetic collisions may also lead to a similar outcome²⁴.

Other planets with a Mercury-like composition such as K2-106b (ref. ²⁵) and K2-229b (ref. ³) have been recently discovered. However, they are all the innermost planets in their systems and thus alternative mechanisms to the giant impact scenario may have given rise to their high iron content, for instance mantle evaporation for the hottest planets³ or photophoresis and disc aerodynamic fractionation yielding a depletion of silicates in the inner regions of the

protoplanetary disc²⁶. These other processes cannot explain the dissimilar densities of Kepler-107b and c (see Methods). An alternative explanation might be that planet c formed closer to the parent star than planet b and afterwards crossed its orbit; if so, the iron-rich composition of Kepler-107c might actually be related to formation in the silicate-poor inner region of the protoplanetary disc²⁶ with no need to invoke a giant collision. However, this orbit crossing should have occurred before the dispersal of the disc, so that the resulting eccentricities could have been damped. Given the relatively large mass of planet c, it seems unlikely that there would have been sufficient time for such a scenario to operate, or that it may have occurred without the eccentricities of the lower-mass planets becoming large enough to destabilize the system.

Giant impacts are thought to have occurred in our Solar System and have been invoked to explain the composition of Mercury²⁷, the origin of the Earth–Moon system²⁸ and the high orbital obliquity of Uranus²⁹. We have shown that they likely occurred in the exoplanetary system Kepler-107 and shaped the compositional properties of its two inner planets. If catastrophic disruption impacts occur frequently, we predict a clustering of small exoplanets along the maximum-collisional stripping curve¹⁰ in the mass–radius diagram, as an increasing number of exoplanets are characterized with precise radius and mass determinations.

Methods

Kepler light curve, transit detection and stellar variability. We downloaded the Kepler light curves extracted by both the Simple Aperture Photometry (SAP) and Pre-search Data Conditioning (PDC) pipelines with long-cadence (29.42 min) and short-cadence (58.8 s) sampling³¹. Photometric data were gathered over 4 years, from 2009 May 2 to 2013 May 11, in Kepler quarters (that is, three-monthly

intervals) 0–6, 8–10, 12–14, 16–17 in long cadence and, starting from quarter 3, in short cadence as well. We performed a low-pass filter of the PDC short-cadence light curve and searched for transits following ref. ³²; we could thus confirm the previously detected transit signals⁹ and found no additional transiting companions.

The long-cadence PDC light curve with transits removed shows a peak-to-peak amplitude of ~0.1%, with a maximum of ~0.2% between 1100 and 1300 BJD_{TDB} – 2,454,900 (Supplementary Fig. 2). We performed a weighted autocorrelation function of this light curve finding the highest, though low-amplitude, peak at ~14 d (Supplementary Fig. 3). This peak might be the stellar rotation period P_{rot} , which would be consistent with the upper limit given by the projected rotational velocity $V \sin i$ (Table 1) assuming an edge-on stellar equator, that is, $P_{\text{rot}} < 20 \cdot 3_{-2.5}^{+3.3}$ d ($P_{\text{rot}} < 20 \cdot 3_{-6.0}^{+14.5}$ d) at 1σ (3σ). No additional information on P_{rot} could be extracted from the stellar activity indicators (see below).

Asteroseismic analysis of Kepler data. To perform the asteroseismic analysis on all the available short-cadence Kepler data, we first corrected them using the KASOC³³ and KADACS³⁴ filter pipelines. We then computed the power density spectrum from a weighted least-squares sine wave fitting, which was single-sided calibrated, normalized according to Parseval's theorem, and converted to power density by dividing by the integral of the spectral window³⁵.

We performed a Bayesian peak-bagging analysis to extract the frequencies for individual modes of oscillation, following the methodologies outlined in refs. ^{36–38}. To define the priors for the mode frequencies, we derived initial guesses by hand from smoothed versions of the power density spectrum using the estimated value for the large frequency spacing ($\Delta\nu$), together with an approximate value for the dimensionless offset (ϵ) for a proper mode identification³⁹. Given the low signal-to-noise ratio (S/N) of the oscillation power, we imposed Gaussian priors on the oscillation mode linewidths based on the empirical relation for linewidth as a function of frequency given in ref. ³⁹; if uninformative priors are used at the S/N observed for this star, one simply risks fitting noise spikes near the initial guess for the mode frequency. Following the procedure described in ref. ⁴⁰, we calculated for each fitted mode a metric for the quality of the fit that was adopted in the stellar modelling efforts to decide on the number of modes to include in the analysis. Supplementary Figure 4 shows the power density spectrum of Kepler-107 together with the best fitting model spectrum from the peak bagging.

Stellar parameters. Our HARPS-N spectra were reduced with the online Data Reduction Software and used to determine the stellar atmospheric parameters, that is T_{eff} , $\log g$, [Fe/H], with two different techniques: the first one relies on the measure of the equivalent widths of a set of iron lines⁴¹, while the second one compares the observed spectra with a library grid of synthetic template spectra⁴⁵. The two methods provided fully consistent parameters and we took the averages of their values and error bars as the final parameters and uncertainties (Table 1). The latter technique also allowed us to estimate the stellar projected rotational velocity $V \sin i = 3.6 \pm 0.5 \text{ km s}^{-1}$. Moreover, we derived the stellar abundances relative to the Sun (Supplementary Table 3) by using the same method as in ref. ⁴² and the solar abundances in ref. ⁴³.

We determined the host star physical parameters, that is, density, radius, mass and age (Table 1), by fitting the peak-bagged oscillation frequencies to asteroseismic predictions from stellar evolution models with the BAYesian STellar Algorithm⁴⁶. Briefly, we constructed a fine grid of stellar tracks using the GARChing STellar Evolution Code⁴⁴ and computed the associated theoretical frequencies of oscillation with the Aarhus adiabatic oscillation package⁴⁵. The adopted input physics includes microscopic diffusion of helium and heavy elements following prescription and overshooting given in ref. ⁴⁶ and based on the model by ref. ⁴⁷. To avoid the influence of the so-called surface effect in our calculations⁴⁸, we chose to reproduce ratios of oscillation frequencies that have been shown to minimize the influence of the outermost stellar layers (see, for example, ref. ⁴⁹ and references therein). The derived stellar radius, $R_* = 1.447 \pm 0.014 R_{\odot}$, agrees within 1σ with that determined from the Gaia parallax³⁰, that is $R_* = 1.45 \pm 0.06 R_{\odot}$, but is significantly more precise.

Radial velocity observations and modelling. In total we gathered 120 HARPS-N spectra by using typical exposure times of 30 min. The radial velocities (RVs) were extracted from the HARPS-N spectra by performing a weighted cross correlation with a numerical spectral mask of a G2V star⁵⁰ and have a median uncertainty of 4.5 m s^{-1} . Twenty-two RVs were contaminated by moonlight and were corrected with the method described in ref. ⁵¹. Four measurements were discarded because of low S/N, which yields RV uncertainties larger than 10 m s^{-1} ; two more RV points were identified as outliers on the basis of Chauvenet's criterion and also excluded. Our RV time series thus contains 114 RV measurements that passed these criteria, and is shown in Supplementary Fig. 5. The RVs, their epochs and uncertainties are listed in Supplementary Table 4 along with the measurements of activity indicators such as the full-width at half-maximum (FWHM) and the bisector (BIS) of the averaged line profile⁵², which were computed from the cross-correlation function, and the logarithm of the R'_{HK} parameter defined as the ratio of the chromospheric emission in the cores of the Ca II H and K lines to the stellar bolometric emission⁵³.

We searched for periodic signals in the RV and activity indicator time series by using generalized Lomb–Scargle (GLS) periodograms⁵⁴ and taking the

measurement uncertainties into account. The obtained power spectra along with the false alarm probabilities⁵⁴ and the spectral window are shown in Supplementary Fig. 6. In the RV time series the most significant periodicities are found at $4.899 \pm 0.003 \text{ d}$ and $13.79 \pm 0.03 \text{ d}$. The peak at 4.9 d corresponds to the orbital period of Kepler-107 c as determined from the observation of its transits in the Kepler light curve, and this RV signal is indeed in phase with the orbital ephemeris of Kepler-107 c (see top-right panel in Fig. 1) as we expect if it is planetary in origin. The peak at 13.8 d is accompanied by a close peak at $14.30 \pm 0.03 \text{ d}$ that falls at the secondary peak of the spectral window; therefore, one of the two close peaks is the alias of the other. Regardless of the ambiguity, this periodicity at ~14 d is likely related to stellar activity because it does not correspond to any of the transit periods and is compatible with the highest peak in the autocorrelation function of the Kepler light curve (Supplementary Fig. 3). Other peaks that are just above the significance threshold in Supplementary Fig. 6 (top panel) disappear as soon as the 4.9 d and 13.8 d signals are removed from the original dataset and are thus aliases as well. No significant periodicities are found in the activity indicator measurements at the RV peaks (Supplementary Fig. 6) and there are no significant correlations between activity indices and RVs. In general, the host star is not active with a median value of $\log(R'_{\text{HK}})$ equal to $-5.08 \pm 0.14 \text{ dex}$.

To determine the RV semi-amplitudes of the four Kepler planets and hence their masses, we modelled the RVs with four non-interacting Keplerians, an additional sinusoid to take the activity signal at ~14 d into account, the systemic RV, and an RV uncorrelated jitter term to account for extra noise as in ref. ⁵⁵. We first adopted circular orbits for all the four planets; indeed, the orbit circularization times of the innermost planets Kepler-107 b and Kepler-107 c due to tidal dissipation inside the planets⁵⁶ are shorter than the system age, $t = 4.29_{-0.56}^{+0.70} \text{ Gyr}$. Specifically, by assuming an Earth-like modified tidal quality factor $Q'_p \approx 1,500$ (ref. ⁵⁷), which is reasonable for rocky planets (and likely overestimated for Mercury-like planets), we find circularization times of ~0.13 Gyr and ~1.7 Gyr for planets b and c, respectively. We also adopted circular orbits for Kepler-107 d and Kepler-107 e in the absence of any useful constraint on the orbital eccentricity from RVs, given the non-detection of the Kepler-107 d Doppler signal and the low amplitude of that of Kepler-107 e. This is a reasonable assumption given that N -body dynamical simulations we ran for 10 Myr, using the Mercury6 code⁵⁸ with the masses shown in Table 1, indicate that the eccentricities of planets d and e must be lower than 0.15 to achieve dynamical stability. Eccentricities consistent with zero for all four planets were also found from Kepler photometry uniquely¹².

The posterior distributions of the 17 free parameters were obtained in a Bayesian framework by employing a differential evolution Markov chain Monte Carlo tool (DE-MCMC), following the prescriptions given in refs. ^{18,59} and, in particular, running 34 chains (twice the number of free parameters). Uninformative priors with reasonably large bounds were imposed on all the parameters except for the transit mid-times and periods of the four planets for which Gaussian priors were set from Kepler photometry (Supplementary Table 1). The medians and the 15.86% and 84.14% quantiles of the posterior distributions were taken as the best values and 1σ uncertainties, and are reported in Table 1 and Supplementary Table 2. Very consistent results on orbital parameters and planetary masses are achieved when including the six discarded RVs and/or without performing the moonlight correction.

We also fitted the RVs by employing a Gaussian process (GP) regression⁶⁰ with a quasi-periodic kernel to model the contribution due to the stellar variability following ref. ¹⁹. We used the MultiNest v3.10 Bayesian inference tool⁶¹ with the same implementation as in ref. ⁶² to sample the parameter space and derive the posterior distributions for the 18 model parameters. The latter are the orbital parameters (period, transit time, RV semi-amplitude) of the four Kepler-107 planets, the systemic RV, the uncorrelated jitter term and the four GP covariance hyper-parameters, that is, the amplitude h of the correlations, the periodicity θ that can be related to the stellar rotation period, the length scale w of the periodic component and the correlation decay timescale λ , which can be associated with the lifetime of active regions (see equation 1 in ref. ¹⁹). The adopted prior distributions for each fitted parameter are listed in Supplementary Table 1. We used 800 random walkers (live points) and set the sampling efficiency parameter to 0.5. The RV semi-amplitudes and their 1σ uncertainties obtained with both the GP analysis and the sinusoidal-activity model are fully consistent (Supplementary Table 2). However, some of the GP hyper-parameters, such as the λ , w and, to a lesser extent, h parameters are not well constrained. Nonetheless, we note that the θ parameter is quite well confined, close to the expected ~14 d activity signal periodicity, even if the used uniform prior interval was large enough, that is [12,16] d.

Bayesian model comparison between the sinusoidal-activity model and that employing GP regression was performed using MultiNest⁶¹ and the same priors as for the latter model (third column in Supplementary Table 1). The obtained Bayes' factor of ~3.4 in favour of the sinusoidal-activity model does not support the choice of the more complex GP model⁶³.

To evaluate the possible effects of low but non-zero eccentricities on the recovered RV semi-amplitudes and hence on the planetary masses, we re-did the DE-MCMC orbital fit by letting the eccentricity of the four planets vary, though with reasonable priors. Specifically, we imposed Gaussian priors with zero mean and standard deviation $\sigma_e = 0.05$ on the eccentricities of Kepler-107 b and c, and Rayleigh priors with $\sigma_e = 0.04$ for the two outer planets⁶⁴. The derived RV

semi-amplitudes $K_b = 1.32 \pm 0.57 \text{ m s}^{-1}$, $K_c = 3.08 \pm 0.58 \text{ m s}^{-1}$, $K_d < 1.08 \text{ m s}^{-1}$ and $K_e = 1.89 \pm 0.83 \text{ m s}^{-1}$ are indistinguishable from those obtained with circular orbits (Table 1).

As a further investigation, we checked that the use of non-interacting Keplerians is accurate enough. To this end, we compared the planetary Doppler signals computed with both non-interacting and interacting Keplerians using the TRADES code⁶⁵. The maximum difference between the two models is about 5 cm s^{-1} and is thus completely negligible.

The mass of Kepler-107 c, $M_{p,c}$, has been determined with a relative uncertainty of 19% (better than 5σ), while that of Kepler-107 b ($M_{p,b}$) with an uncertainty of 43% given that photon-noise RV error bars are on average ~ 3.5 times higher than the RV semi-amplitude of planet b. According to these uncertainties, the probability that $M_{p,b}$ and $M_{p,c}$ would differ by chance is 0.6% and 0.1% for the sinusoidal-activity and GP models, respectively. To further show that $M_{p,b}$ must be considerably lower than $M_{p,c}$ despite its low precision, we simulated artificial RV time series by (1) injecting at the observation epochs the Doppler signal of Kepler-107 b for three different mass values: $M_{p,b} = M_{p,c}$ ($9.4M_{\oplus}$), $M_{p,b} = 0.5M_{p,c}$ ($4.7M_{\oplus}$) and $M_{p,b} = 0.33M_{p,c}$ ($3.1M_{\oplus}$); (2) adding the Doppler signals of planets c and e as well as the 13.8 d activity signal with their semi-amplitudes as reported in Table 1 and Supplementary Table 2; and (3) shifting each RV point generated from the previous steps, following a normal distribution with mean and standard deviation equal to the RV value and its 1σ error bar. In this way, for every mass value of Kepler-107 b we simulated 500 RV time series with different noise realizations and computed their GLS periodogram. The averaged periodograms for each simulated $M_{p,b}$ value are displayed in Supplementary Fig. 7. These artificial periodograms clearly show that $M_{p,b}$ is lower than $M_{p,c}$ by at least a factor of ~ 2 , as found by the Bayesian analyses, otherwise the power at P_c would have been greater than observed (top panel), and even higher than the peak at P_c for $M_{p,b} = M_{p,c}$ (second top panel).

Transit fitting and planetary parameters. To perform the transit fitting, we treated the SAP short-cadence light curve as in ref. ⁶⁶ and used the transit model of ref. ⁶⁷. For each planet we fitted for the transit epoch, the orbital period, the transit duration, the radius ratio R_p/R_* , the orbital inclination, and the limb-darkening coefficients $q_1 = (u_1 + u_2)^2$ and $q_2 = 0.5u_1 / (u_1 + u_2)$ ⁶⁸, where u_1 and u_2 are the coefficients of the limb-darkening quadratic law⁶⁹. We used circular orbits for all the planets as for the RV modelling. We imposed a Gaussian prior on the stellar density following, for example, ref. ⁷⁰, by taking advantage of the very precise and accurate value derived from the asteroseismic analysis of Kepler data ($\rho_* = 0.574 \pm 0.029 \text{ g cm}^{-3}$). No bounds were set on the transit parameters except for the q_1 and q_2 parameters for which intervals of $[0, 1]$ were adopted⁶⁸.

The posterior distributions of the free parameters were obtained with the same DE-MCMC technique as above and were used to derive the medians and 1σ confidence intervals, which are reported in Table 1 except for q_1 and q_2 that were found to be 0.67 ± 0.10 and 0.56 ± 0.12 , respectively. The derived radii of planets b, c and e are fully consistent (within 1σ) with those that were previously determined in ref. ¹²; for planet d we found a slightly smaller radius. The planetary orbital and physical parameters were determined by combining the posterior distributions of the stellar, RV and transit parameters, and are also listed in Table 1.

Moreover, we computed the transit timing variations (TTVs) for each planet with the short-cadence data in the same Bayesian framework. Because of the low S/N of the individual transits, in particular for planets b, c and d, we fitted to each transit the model obtained with the whole light curve by letting only the mid-transit time vary. The Observed-Calculated (O-C) transit times of planets b, c and e showing no significant variations from a constant ephemeris are displayed in Supplementary Fig. 8. Those of planet d could not be determined because of the very low S/N of the individual transits (see Supplementary Fig. 1, bottom-left panel), preventing the DE-MCMC chains from achieving proper convergence in a single transit fitting, and are not shown.

Our non-detection of TTVs is in agreement with the results of ref. ¹³. Using the formalism from ref. ⁷¹, one can estimate the expected TTV amplitudes due to neighbouring planets with $e \approx 0$. Planet b's TTV amplitude is expected to be ~ 3 min due to planet c; the TTV amplitude of planet c is ~ 2 min from planet b and also ~ 2 min from planet d, using the RV measured (or upper limit) masses. The interior planets have average TTV uncertainties of 25 min and hence the non-detection of TTVs is not surprising. We also ran a photodynamic MCMC⁷² to determine the upper limits of the masses allowed with the observed transit data. We find upper limits of $22M_{\oplus}$, $24M_{\oplus}$, $8.6M_{\oplus}$ and $22M_{\oplus}$ for planets b, c, d and e at the 1σ level, which are all significantly higher than the masses and upper limits measured via RVs (Table 1).

Planetary composition. The equation-of-state data allow calculations of planet average densities under self-gravitational compression and further constrain planet bulk compositions and internal structures following the methods in ref. ²⁰. The Earth-like composition is assumed to be 32.5 wt% (weight per cent) Fe/Ni metal plus 67.5 wt% MgSiO₃ rock, fully differentiated into a bilayer core-mantle structure. 32.5% of Fe/Ni metal by mass is consistent with both the general cosmic element abundance (number) ratio of Mg:Si:Fe being close to 1:1:1 and the Fe/Si and Mg/Si ratios derived from the host star abundances (Supplementary Table 3),

that is, $\text{Fe/Si} = 0.89^{+0.20}_{-0.17}$ and $\text{Mg/Si} = 1.22^{+0.25}_{-0.21}$, which can be considered as a proxy for the protoplanetary disk composition. According to these ratios, the iron-rich composition of Kepler-107 c cannot be primordial⁷³. Moreover, Fe/Ni metal and Mg silicates have similar volatility and condensation temperatures⁷⁴ in nebula; therefore, it is rather difficult to alter these ratios in the planet composition through merely temperature effects in the protoplanetary disc, and in particular for the Kepler-107 system where the outer planet (c) is denser than the inner one (b). A special scenario such as a giant impact must be invoked to account for that.

Together, Fe/Ni metal and Mg silicates comprise about half a per cent of the nebula mass in a solar-metallicity nebula. Differentiation is expected to occur on all rocky objects during their formation due to melting or partial melting from the energy of early radioactive elements and accretion heat. H₂O is assumed to be in solid form along the melting curve (liquid-solid phase boundary). The 50% H₂O curve in Fig. 2 corresponds to an Earth-like composition with exactly equal mass of H₂O on top. The ices that condensed out of the nebula are expected to be a mixture of H₂O-NH₃-CH₄. The condensation of ices is expected to occur near icelines. If all H₂O ice condenses out of the gas phase, it is about equal mass as Fe/Ni metal plus Mg silicates, that is, another half a per cent of the uncondensed nebula by mass. And if NH₃-CH₄-clathrate ices all condense out, it is yet another half a per cent of the uncondensed nebula by mass. The mass-radius curve of H₂O-NH₃-CH₄ mixture is expected to be very similar to that of pure H₂O. The H₂-He gaseous content is assumed to be a cosmic mixture of 75% H₂ and 25% He by mass. Changing the metallicity of the host star and thus of the nebula, given that the star Kepler-107 is metal-rich, will change the total amount of condensed materials with respect to the H₂-He gas, but it will not change the relative mass ratio of Fe metal versus Mg silicates, H₂O ice, NH₃-CH₄-clathrate-ices, as this ratio is ultimately dictated by the cosmic nuclear synthesis processes occurring in giant star interiors and supernovae over the history of our Milky Way galaxy.

Planetary evolution and escape simulations. Planetary evolution models were run using the coupled structure, thermal evolution and photoevaporation model of ref. ⁷⁵. As the inner planets in the system are all consistent with bare rocky compositions, while the mass and radius of planet e require that it has a significant gaseous envelope, for our simulations we assumed that these planets initially formed with solar composition hydrogen and helium envelopes atop rock and iron cores. We then calculated the mass, radius and composition evolution of each planet due to thermal cooling and atmospheric escape from XUV-driven photoevaporative escape.

For a given planet composition and a given star, a planet's vulnerability to photoevaporative escape scales roughly as $F_p M_{\text{core}}^{-2}$ (ref. ²¹), where F_p is the incident bolometric flux that a planet receives from its parent star and M_{core} is the planet core mass. As a result, the relatively low masses and high irradiations of planets b and d mean that they are the most vulnerable to atmospheric escape, followed by planet c. At $\sim 8.6M_{\oplus}$ and 14.75 d, however, planet e is massive enough and far enough out that it is not nearly as vulnerable to photoevaporation, consistent with the fact that it appears to have retained a gaseous envelope. Assuming an Earth-like core, we estimate that Kepler-107 e should have $\sim 3\%$ of its mass in a gaseous H/He envelope today and that only had $\sim 5\%$ when it initially formed. On the other hand, due to its higher irradiation Kepler-107 c could have easily lost an $\sim 5\%$ envelope in its first Gyr and planets b and d significantly more than that.

While photoevaporation may explain the overall density contrast between the inner three planets and planet e, it cannot explain the contrast between planets b and c. Planet b is more than an order of magnitude more vulnerable to photoevaporation than c, mostly because of its lower mass, and yet it is planet c that appears to be denser and much more iron-rich. Additionally, we note that at just $\sim 1,400 \text{ K}$, Kepler-107 c is below the vaporization temperature of most silicate species⁷⁶, suggesting that vaporization and escape of the silicate mantle is unlikely to be responsible either. Indeed, silicate atmospheres do not experience any significant escape until they reach temperatures $> 2,000 \text{ K}$ (ref. ⁷⁷), hotter than any of the planets in this system. Moreover, while the exact scaling may be different for other processes such as outgassing and escape from silicate atmospheres⁷⁷ or minor impact erosion^{78,79}, all escape processes should be more effective for planet b than c, as it is both more irradiated and less gravitationally bound. This qualitative fact alone suggests that the high density of planet c is unlikely to be due to a gradual escape process that affected all planets in the system consistently and must instead be due to a stochastic mechanism such as a giant impact.

Giant impact simulations. A range of smoothed particle hydrodynamical simulations were run at various impact speeds using a modified version of GADGET²⁰. We focused on head-on and nearly head-on equal-mass disruptive events because these are generally the most efficient at stripping outer layers²². The thermodynamic properties of the different materials were calculated at each step from a tabulated equation of state^{23,81}, and the initial thermodynamic profiles were determined following ref. ⁸². Each initial impactor had a resolution of 10^5 particles. The post-collision bound mass was calculated by taking the particle closest to the potential minimum as a seed, then iteratively calculating which additional particles were gravitationally bound to the current set. This process continued until the mass difference between iterations was below a 10^{-7} set tolerance⁸³. We find that we can significantly change the mantle-core ratio of the target as a result of a

single high-energy impact, an example of which is shown in Fig. 3. Such an impact could take a planet that originally was dominated in mass by mantle (something like planet b) and convert it into a planet dominated in mass by core (similar to planet c). Multiple energetic collisions may yield a similar outcome²⁴, but, given the large variety of possible configurations, their simulation goes beyond the scope of the present work.

Data availability

The RV data that support the findings of this study and have been used to produce some of the plots are available in the Supplementary Information. Kepler data are available at the Mikulski Archive for Space Telescopes (<https://archive.stsci.edu/kepler/>).

Received: 19 July 2018; Accepted: 13 December 2018;

Published online: 04 February 2019

References

- Lissauer, J. J. et al. All six planets known to orbit Kepler-11 have low densities. *Astrophys. J.* **770**, 131 (2013).
- Dressing, C. D. et al. The mass of Kepler-93b and the composition of terrestrial planets. *Astrophys. J.* **800**, 135 (2015).
- Santerne, A. et al. An Earth-sized planet with a Mercury-like composition. *Nat. Astron.* **2**, 393–400 (2018).
- Schlichting, H. E. in *Handbook of Exoplanets* (eds Deeg, H. & Belmonte, J.) 2345–2364 (Springer, Cham, 2018).
- Lopez, E. D., Fortney, J. J. & Miller, N. How thermal evolution and mass-loss sculpt populations of super-Earths and sub-Neptunes: application to the Kepler-11 system and beyond. *Astrophys. J.* **761**, 59 (2012).
- Liu, S.-F., Hori, S., Lin, D. N. C. & Asphaug, E. Giant impact: an efficient mechanism for devolatilization of super-Earths. *Astrophys. J.* **812**, 164 (2015).
- Lopez, E. & Fortney, J. J. Understanding the mass-radius relation for sub-Neptunes: radius as a proxy for composition. *Astrophys. J.* **792**, 17 (2014).
- Lundkvist, M. S. et al. Hot super-Earths stripped by their host stars. *Nat. Commun.* **7**, 11201 (2016).
- Rowe, J. F. et al. Validation of Kepler's multiple planet candidates. III. Light curve analysis and announcement of hundreds of new multi-planet systems. *Astrophys. J.* **784**, 45 (2014).
- Marcus, R. A., Sasselov, D., Hernquist, L. & Stewart, S. T. Minimum radii of super-Earths: constraints from giant impacts. *Astrophys. J. Lett.* **712**, L73–L76 (2010).
- Terquem, C. & Papaloizou, J. C. B. Migration and the formation of systems of hot super-Earths and Neptunes. *Astrophys. J.* **654**, 1110–1120 (2007).
- Van Eylen, V. & Albrecht, S. Eccentricity from transit photometry: small planets in Kepler multi-planet systems have low eccentricities. *Astrophys. J.* **808**, 126 (2015).
- Holczer, T. et al. Transit timing observations from Kepler. IX. Catalog of the full long-cadence data set. *Astrophys. J. Suppl. Ser.* **225**, 9 (2016).
- Cosentino, R. et al. HARPS-N: the new planet hunter at TNG. *Proc. SPIE* **8446**, 84461V (2012).
- Buchhave, L. A. et al. An abundance of small planets around stars with a wide range of metallicities. *Nature* **486**, 375–377 (2012).
- Silva Aguirre, V. et al. Ages and fundamental properties of Kepler exoplanet host stars from asteroseismology. *Mon. Not. R. Astron. Soc.* **452**, 2127–2148 (2015).
- Huber, D. et al. Fundamental properties of Kepler planet-candidate host stars using asteroseismology. *Astrophys. J.* **767**, 127 (2013).
- Bonomo, A. S. et al. Characterization of the planetary system Kepler-101 with HARPS-N. A hot super-Neptune with an Earth-sized low-mass companion. *Astron. Astrophys.* **572**, A2 (2014).
- Damasso, M. et al. Eyes on K2-3: a system of three likely sub-Neptunes characterized with HARPS-N and HARPS. *Astron. Astrophys.* **615**, A69 (2018).
- Zeng, L. & Sasselov, D. A detailed model grid for solid planets from 0.1 to 100 Earth masses. *Publ. Astron. Soc. Pac.* **125**, 227 (2013).
- Lopez, E. & Fortney, J. J. The role of core mass in controlling evaporation: the Kepler radius distribution and the Kepler-36 density dichotomy. *Astrophys. J.* **776**, 2 (2013).
- Leinhardt, Z. M. & Stewart, S. T. Collisions between gravity-dominated bodies. I. Outcome regimes and scaling laws. *Astrophys. J.* **745**, 79 (2012).
- Marcus, R. A., Stewart, S. T., Sasselov, D. & Hernquist, L. Collisional stripping and disruption of super-Earths. *Astrophys. J. Lett.* **700**, L118–L122 (2009).
- Chau, A., Reinhardt, C., Helled, R. & Stadel, J. Forming Mercury by giant impacts. *Astrophys. J.* **865**, 35 (2018).
- Guenther, E. W. et al. K2-106, a system containing a metal-rich planet and a planet of lower density. *Astron. Astrophys.* **608**, A93 (2017).
- Ebel, D. S. & Stewart, S. T. in *Mercury: The View After MESSENGER* (eds Solomon, S. C., Nittler, L. R. & Anderson, B. J.) 497–515 (Cambridge Univ. Press, Cambridge, 2018).
- Benz, W., Anic, A., Horner, J. & Whitney, J. A. in *Mercury* (eds Balogh, A. et al.) *Space Sciences Series of ISSI* Vol. 26, 7–20 (Springer, New York, 2008).
- Lock, S. J. et al. The origin of the Moon within a terrestrial synestia. *J. Geophys. Res.* **123**, 910–951 (2018).
- Safronov, V. S. Sizes of the largest bodies falling onto the planets during their formation. *Sov. Astron.* **9**, 987–991 (1966).
- Berger, T. A. et al. Revised radii of Kepler stars and planets using Gaia Data Release 2. *Astrophys. J.* **866**, 99 (2018).
- Jenkins, J. M. et al. Overview of the Kepler Science Processing Pipeline. *Astrophys. J. Lett.* **713**, L87–L91 (2010).
- Bonomo, A. S. et al. Detection of Neptune-size planetary candidates with CoRoT data. Comparison with the planet occurrence rate derived from Kepler. *Astron. Astrophys.* **547**, A110 (2012).
- Handberg, R. & Lund, M. N. Automated preparation of Kepler time series of planet hosts for asteroseismic analysis. *Mon. Not. R. Astron. Soc.* **445**, 2698–2709 (2014).
- García, R. A. et al. Preparation of Kepler light curves for asteroseismic analyses. *Mon. Not. R. Astron. Soc.* **414**, L6–L10 (2011).
- Kjeldsen, H. & Frandsen, S. High-precision time-resolved CCD photometry. *Publ. Astron. Soc. Pacif.* **104**, 413–434 (1992).
- Handberg, R. & Campante, T. L. Bayesian peak-bagging of solar-like oscillators using MCMC: a comprehensive guide. *Astron. Astrophys.* **527**, A56 (2011).
- Lund, M. N. et al. Standing on the shoulders of dwarfs: the Kepler Asteroseismic LEGACY Sample. I. Oscillation mode parameters. *Astrophys. J.* **835**, 172 (2017).
- Corsaro, E. & De Ridder, J. DIAMONDS: a new Bayesian nested sampling tool. Application to peak bagging of solar-like oscillations. *Astron. Astrophys.* **571**, A71 (2014).
- White, T. R. et al. Asteroseismic diagrams from a survey of solar-like oscillations with Kepler. *Astrophys. J. Lett.* **742**, L3 (2011).
- Davies, G. R. et al. Oscillation frequencies for 35 Kepler solar-type planet-hosting stars using Bayesian techniques and machine learning. *Mon. Not. R. Astron. Soc.* **456**, 2183–2195 (2016).
- Mortier, A. et al. Correcting the spectroscopic surface gravity using transits and asteroseismology. No significant effect on temperatures or metallicities with ARES and MOOG in local thermodynamic equilibrium. *Astron. Astrophys.* **572**, A95 (2014).
- Mortier, A. et al. New and updated stellar parameters for 90 transit hosts. The effect of the surface gravity. *Astron. Astrophys.* **558**, A106 (2013).
- Asplund, M., Grevesse, N., Sauval, A. J. & Scott, P. The chemical composition of the Sun. *Annu. Rev. Astron. Astrophys.* **47**, 481–522 (2009).
- Weiss, A. & Schlattl, H. GARSTEC—the Garching Stellar Evolution Code. The direct descendant of the legendary Kippenhahn code. *Astrophys. Space Sci.* **316**, 99–106 (2008).
- Christensen-Dalsgaard, J. ADIPLS—the Aarhus adiabatic oscillation package. *Astrophys. Space Sci.* **316**, 113–120 (2008).
- Thoul, A. A., Bahcall, J. N. & Loeb, A. Element diffusion in the solar interior. *Astrophys. J.* **421**, 828–842 (1994).
- Freitag, B., Ludwig, H.-G. & Steffen, M. Hydrodynamical models of stellar convection. The role of overshoot in DA white dwarfs, A-type stars, and the Sun. *Astron. Astrophys.* **313**, 497–516 (1996).
- Kjeldsen, H., Bedding, T. R. & Christensen-Dalsgaard, J. Correcting stellar oscillation frequencies for near-surface effects. *Astrophys. J. Lett.* **683**, L175 (2008).
- Silva Aguirre, V. et al. Stellar ages and convective cores in field main-sequence stars: first asteroseismic application to two Kepler targets. *Astrophys. J.* **769**, 141 (2013).
- Pepe, F. et al. The CORALIE survey for southern extra-solar planets VII. Two short-period Saturnian companions to HD 108147 and HD 168746. *Astron. Astrophys.* **388**, 632–638 (2002).
- Malavolta, L. et al. The Kepler-19 system: a thick-envelope super-Earth with two Neptune-mass companions characterized using radial velocities and transit timing variations. *Astron. J.* **153**, 224 (2017).
- Boisse, I. et al. Disentangling between stellar activity and planetary transits. *Astron. Astrophys.* **528**, A4 (2011).
- Noyes, R. W., Hartmann, L. W., Baliunas, S. L., Duncan, D. K. & Vaughan, A. H. Rotation, convection, and magnetic activity in lower main-sequence stars. *Astrophys. J.* **279**, 763–777 (1984).
- Zechmeister, M. & Kürster, M. The generalised Lomb-Scargle periodogram. A new formalism for the floating-mean and Keplerian periodograms. *Astron. Astrophys.* **496**, 577–584 (2009).
- Gregory, P. C. A Bayesian analysis of extrasolar planet data for HD 73526. *Astrophys. J.* **631**, 1198–1214 (2005).
- Matsumura, S., Takeda, G. & Rasio, F. A. On the origins of eccentric close-in planets. *Astrophys. J. Lett.* **686**, L29 (2008).
- Lainey, V. Quantification of tidal parameters from Solar System data. *Celest. Mech. Dyn. Astr.* **126**, 145–156 (2016).
- Chambers, J. E. A hybrid symplectic integrator that permits close encounters between massive bodies. *Mon. Not. R. Astron. Soc.* **304**, 793–799 (1999).

59. Eastman, J., Gaudi, B. S. & Agol, E. EXOFAST: a fast exoplanetary fitting suite in IDL. *Publ. Astron. Soc. Pacif.* **125**, 83 (2013).
60. Haywood, R. et al. Planets and stellar activity: hide and seek in the CoRoT-7 system. *Mon. Not. R. Astron. Soc.* **443**, 2517–2531 (2014).
61. Feroz, F., Hobson, M. P., Cameron, E. & Pettitt, A. N. Importance nested sampling and the MultiNest algorithm. Preprint at <https://arxiv.org/abs/1306.2144> (2014).
62. Buchner, J. et al. X-ray spectral modelling of the AGN obscuring region in the CDFS: Bayesian model selection and catalogue. *Astron. Astrophys.* **564**, A125 (2014).
63. Kass, R. E. & Raftery, A. E. Bayes factors. *J. Am. Stat. Assoc.* **90**, 773–795 (1995).
64. Xie, J.-W. et al. Exoplanet orbital eccentricities derived from LAMOST-Kepler analysis. *Proc. Natl Acad. Sci. USA* **113**, 11431–11435 (2016).
65. Borsato, L. et al. TRADES: a new software to derive orbital parameters from observed transit times and radial velocities. Revisiting Kepler-11 and Kepler-9. *Astron. Astrophys.* **571**, A38 (2014).
66. Bonomo, A. S. et al. Improved parameters of seven Kepler giant companions characterized with SOPHIE and HARPS-N. *Astron. Astrophys.* **575**, A85 (2015).
67. Mandel, K. & Agol, E. Analytic light curves for planetary transit searches. *Astrophys. J.* **580**, L171–L175 (2002).
68. Kipping, D. Efficient, uninformative sampling of limb darkening coefficients for two-parameter laws. *Mon. Not. R. Astron. Soc.* **435**, 2152–2160 (2013).
69. Claret, A. Testing the limb-darkening coefficients measured from eclipsing binaries. *Astron. Astrophys.* **482**, 259–266 (2008).
70. Fogtman-Schulz, A. et al. Accurate parameters of the oldest known rocky-exoplanet hosting system: Kepler-10 revisited. *Astrophys. J.* **781**, 67 (2014).
71. Lithwick, Y., Xie, J. & Wu, Y. Extracting planet mass and eccentricity from TTV data. *Astrophys. J.* **761**, 122 (2012).
72. Mills, S. M. et al. A resonant chain of four transiting, sub-Neptune planets. *Nature* **533**, 509–512 (2016).
73. Brugger, B., Mousis, O., Deleuil, M. & Deschamps, F. Constraints on super-Earth interiors from stellar abundances. *Astrophys. J.* **850**, 93 (2017).
74. Grossman, L. Condensation in the primitive solar nebula. *Geochim. Cosmochim. Acta* **36**, 597–619 (1972).
75. Lopez, E. D. Born dry in the photoevaporation desert: Kepler's ultra-short-period planets formed water-poor. *Mon. Not. R. Astron. Soc.* **472**, 245–253 (2011).
76. Miguel, Y., Kaltenegger, L., Fegley, B. & Schaefer, L. Compositions of hot super-Earth atmospheres: exploring Kepler candidates. *Astrophys. J. Lett.* **742**, L19 (2011).
77. Kite, E. S., Fegley, B. Jr, Schaefer, L. & Gaidos, E. Atmosphere-interior exchange on hot, rocky exoplanets. *Astrophys. J.* **828**, 80 (2016).
78. Schlichting, H. E., Sari, R. & Yalinewich, A. Atmospheric mass loss during planet formation: the importance of planetesimal impacts. *Icarus* **247**, 81–94 (2015).
79. Zahnle, K. J. & Catling, D. C. The cosmic shoreline: the evidence that escape determines which planets have atmospheres, and what this may mean for Proxima Centauri B. *Astrophys. J.* **828**, 80 (2017).
80. Springel, V. The cosmological simulation code GADGET-2. *Mon. Not. R. Astron. Soc.* **364**, 1105–1134 (2005).
81. Čuk, M. & Stewart, S. T. Making the moon from a fast-spinning Earth: a giant impact followed by resonant despinning. *Science* **338**, 1047–1052 (2012).
82. Valencia, D., O'Connell, R. J. & Sasselov, D. Internal structure of massive terrestrial planets. *Icarus* **181**, 545–555 (2006).
83. Benz, W. & Asphaug, E. Catastrophic disruptions revisited. *Icarus* **142**, 5–20 (1999).

Acknowledgements

The authors wish to thank R. D. Haywood, R. Silvotti and D. Charbonneau for useful discussions. The HARPS-N project was funded by the Prodex Program of the Swiss

Space Office (SSO), the Harvard-University Origin of Life Initiative (HUOLI), the Scottish Universities Physics Alliance (SUPA), the University of Geneva, the Smithsonian Astrophysical Observatory (SAO), the Italian National Astrophysical Institute (INAF), University of St. Andrews, Queen's University Belfast and University of Edinburgh. The present work is based on observations made with the Italian Telescopio Nazionale Galileo (TNG) operated on the island of La Palma by the Fundación Galileo Galilei of the INAF (Istituto Nazionale di Astrofisica) at the Spanish Observatorio del Roque de los Muchachos of the Instituto de Astrofísica de Canarias. This paper exploited data collected by the Kepler mission; funding for the Kepler mission is provided by the NASA (National Aeronautics and Space Administration) Science Mission directorate. The research leading to these results received funding from the European Union Seventh Framework Programme (FP7/2007–2013) under grant agreement number 313014 (ETA-EARTH). L.Z. acknowledges support from the Simons Foundation (SCOL (award no. 337090)). M.D. acknowledges financial support from Progetto Premiale 2015 FRONTIERA funding scheme of the Italian Ministry of Education, University, and Research. Funding for the Stellar Astrophysics Centre is provided by The Danish National Research Foundation (grant agreement no. DNRF106). V.S.A. acknowledges support from VILLUM FONDEN (research grant 10118). E.C. is funded by the European Union's Horizon 2020 research and innovation program under the Marie Skłodowska-Curie grant agreement no. 664931. T.D. is supported by a STFC PhD studentship. R.A.G. acknowledges support from CNES. This work has been carried out in the frame of the National Centre for Competence in Research PlanetS supported by the Swiss National Science Foundation (SNSF). C.L., F.B., F.P. and S.U. acknowledge the financial support of the SNSF. M.S.L. is supported by The Independent Research Fund Denmark's Sapere Aude program (grant agreement no. DFF-5051-00130). S.M. acknowledges support from the Ramon y Cajal fellowship number RYC-2015-17697.

Author contributions

The underlying radial-velocity observation programme was conceived and organized by F.P., A.C.C., D.W.L., C.L., D.Ségransan, S.U. and E.M. Observations with HARPS-N were carried out by L.A., A.C.C., A.M., C.D.D., M.D., X.D., R.C., A.F.M.F., P.F., A.H., F.M., M.L.-M., L.M., C.N., V.N., K.R. and A.V. C.L. maintained and updated the reduction pipeline, L.M. implemented the correction of radial velocities for moonlight contamination, and X.D. computed the values of the $\log(R'_{\text{HK}})$ activity indicator. A.S.B., M.D. and K.R. analysed and modelled the radial velocities. L.M. simulated and compared the radial velocities using both non-interacting and interacting Keplerians. A.S.B. also performed the transit fitting and S.M.M. worked on the analysis of transit timing variations. A.S.B. and A.V. analysed the Kepler light curve in search of the stellar rotational modulation signal. L.B. and A.M. determined the stellar atmospheric parameters from the HARPS-N spectra; A.M. also derived the stellar chemical abundances. T.A., M.B., E.C., J.C.-D., R.A.G., R.H., A.B.J., H.K., M.N.L., M.S.L., S.M. and V.S.A. carried out the asteroseismic analysis of the Kepler light curve and determined the stellar parameters from which A.S.B. and M.D. derived the planetary orbital and physical parameters. L.Z. deduced the planet interior compositions and E.L. estimated the planet atmospheric escapes. K.R. carried out dynamical simulations of the planetary system, and Z.M.L. and T.D. conducted the simulations of giant impact events. A.S.B. was the primary author of the manuscript and received important contributions by L.Z., Z.M.L., M.D., E.L., M.N.L., V.S.A., A.S., A.M. and M.L.-M. All authors have contributed to the interpretation of the data and the results.

Competing interests

The authors declare no competing interests.

Additional information

Supplementary information is available for this paper at <https://doi.org/10.1038/s41550-018-0684-9>.

Reprints and permissions information is available at www.nature.com/reprints.

Correspondence and requests for materials should be addressed to A.S.B.

Publisher's note: Springer Nature remains neutral with regard to jurisdictional claims in published maps and institutional affiliations.

© The Author(s), under exclusive licence to Springer Nature Limited 2019