



Publication Year	2017
Acceptance in OA	2020-11-20T10:47:48Z
Title	The VLT/NaCo large program to probe the occurrence of exoplanets and brown dwarfs at wide orbits. IV. Gravitational instability rarely forms wide, giant planets
Authors	Vigan, A., Bonavita, M., Biller, B., Forgan, D., Rice, K., Chauvin, G., DESIDERA, Silvano, Meunier, J. -C., Delorme, P., Schlieder, J. E., Bonnefoy, M., Carson, J., COVINO, Elvira, Hagelberg, J., Henning, T., Janson, M., Lagrange, A. -M., Quanz, S. P., Zurlo, A., Beuzit, J. -L., Boccaletti, A., Buenzli, E., Feldt, M., Girard, J. H. V., GRATTON, Raffaele, Kasper, M., Le Coroller, H., MESA, DINO, MESSINA, Sergio, Meyer, M., Montagnier, G., Mordasini, C., Mouillet, D., Moutou, C., Reggiani, M., Segransan, D., Thalmann, C.
Publisher's version (DOI)	10.1051/0004-6361/201630133
Handle	http://hdl.handle.net/20.500.12386/28466
Journal	ASTRONOMY & ASTROPHYSICS
Volume	603

The VLT/NaCo large program to probe the occurrence of exoplanets and brown dwarfs at wide orbits

IV. Gravitational instability rarely forms wide, giant planets[★]

A. Vigan¹, M. Bonavita^{2,3}, B. Biller^{2,4}, D. Forgan^{5,6}, K. Rice², G. Chauvin^{7,8}, S. Desidera³, J.-C. Meunier¹, P. Delorme^{7,8}, J. E. Schlieder^{9,4}, M. Bonnefoy^{7,8}, J. Carson^{10,4}, E. Covino¹¹, J. Hagelberg^{7,8}, T. Henning⁴, M. Janson^{12,4}, A.-M. Lagrange^{7,8}, S. P. Quanz¹³, A. Zurlo^{14,15,1}, J.-L. Beuzit^{7,8}, A. Boccaletti¹⁶, E. Buenzli¹³, M. Feldt⁴, J. H. V. Girard¹⁷, R. Gratton³, M. Kasper¹⁸, H. Le Coroller¹, D. Mesa³, S. Messina¹⁹, M. Meyer¹³, G. Montagnier²⁰, C. Mordasini²¹, D. Mouillet^{7,8}, C. Moutou^{22,1}, M. Reggiani¹³, D. Segransan²³, and C. Thalmann¹³

¹ Aix Marseille Univ, CNRS, LAM, Laboratoire d'Astrophysique de Marseille, 13013 Marseille, France
e-mail: arthur.vigan@lam.fr

² SUPA, Institute for Astronomy, The University of Edinburgh, Royal Observatory, Blackford Hill, Edinburgh, EH9 3HJ, UK

³ INAF - Osservatorio Astronomico di Padova, Vicolo dell'Osservatorio 5, 35122, Padova, Italy

⁴ Max-Planck Institute for Astronomy, Königstuhl 17, 69117 Heidelberg, Germany

⁵ SUPA, School of Physics and Astronomy, University of St Andrews, North Haugh, St. Andrews KY16 9SS, UK

⁶ St. Andrews Centre for Exoplanet Science, UK

⁷ Université Grenoble Alpes, IPAG, 38000 Grenoble, France

⁸ CNRS, IPAG, 38000 Grenoble, France

⁹ NASA Exoplanet Science Institute, California Institute of Technology, 770 S. Wilson Ave., Pasadena, CA, USA

¹⁰ Department of Physics and Astronomy, College of Charleston, Charleston, SC 29424, USA

¹¹ INAF Osservatorio Astronomico di Capodimonte via Moiarello 16, 80131 Napoli, Italy

¹² Department of Astronomy, Stockholm University, AlbaNova University Center, 106 91 Stockholm, Sweden

¹³ Institute for Astronomy, ETH Zurich, Wolfgang-Pauli-Strasse 27, 8093 Zurich, Switzerland

¹⁴ Núcleo de Astronomía, Facultad de Ingeniería, Universidad Diego Portales, Av. Ejército 441, Santiago, Chile

¹⁵ Millennium Nucleus "Protoplanetary Disk", Departamento de Astronomía, Universidad de Chile, Casilla 36-D Santiago, Chile

¹⁶ LESIA, Observatoire de Paris, CNRS, Université Paris Diderot, Université Pierre et Marie Curie, 5 place Jules Janssen, 92190 Meudon, France

¹⁷ European Southern Observatory, 3107 Alonso de Cordova, Vitacura, Santiago, Chile

¹⁸ European Southern Observatory, Karl-Schwarzschild-Str. 2, 85748 Garching, Germany

¹⁹ INAF – Catania Astrophysical Observatory, via S. Sofia 78, 95123 Catania, Italy

²⁰ Observatoire de Haute-Provence, CNRS, Université d'Aix-Marseille, 04870 Saint-Michel-l'Observatoire, France

²¹ Physikalisches Institut, University of Bern, Sidlerstrasse 5, 3012 Bern, Switzerland

²² CNRS, CFHT, 65-1238 Mamalahoa Hwy, Kamuela HI, USA

²³ Observatoire Astronomique de l'Université de Genève, Chemin des Maillettes 51, 1290 Sauverny, Switzerland

Received 25 November 2016 / Accepted 6 March 2017

ABSTRACT

Understanding the formation and evolution of giant planets ($\geq 1 M_{\text{Jup}}$) at wide orbital separation (≥ 5 AU) is one of the goals of direct imaging. Over the past 15 yr, many surveys have placed strong constraints on the occurrence rate of wide-orbit giants, mostly based on non-detections, but very few have tried to make a direct link with planet formation theories. In the present work, we combine the results of our previously published VLT/NaCo large program with the results of 12 past imaging surveys to constitute a statistical sample of 199 FGK stars within 100 pc, including three stars with sub-stellar companions. Using Monte Carlo simulations and assuming linear flat distributions for the mass and semi-major axis of planets, we estimate the sub-stellar companion frequency to be within 0.75–5.70% at the 68% confidence level (CL) within 20–300 AU and 0.5–75 M_{Jup} , which is compatible with previously published results. We also compare our results with the predictions of state-of-the-art population synthesis models based on the gravitational instability (GI) formation scenario with and without scattering. We estimate that in both the scattered and non-scattered populations, we would be able to detect more than 30% of companions in the 1–75 M_{Jup} range (95% CL). With the three sub-stellar detections in our sample, we estimate the fraction of stars that host a planetary system formed by GI to be within 1.0–8.6% (95% CL). We also conclude that even though GI is not common, it predicts a mass distribution of wide-orbit massive companions that is much closer to what is observed than what the core accretion scenario predicts. Finally, we associate the present paper with the release of the Direct Imaging Virtual Archive (DIVA), a public database that aims at gathering the results of past, present, and future direct imaging surveys.

Key words. techniques: high angular resolution – methods: statistical – infrared: planetary systems – planetary systems – planets and satellites: formation

* Based on observations collected at the European Southern Observatory, Chile (ESO Large Program 184.C-0157 and Open Time 089.C-0137A and 090.C-0252A).

1. Introduction

Among the various exoplanet detection methods, direct imaging is the best suited to look for sub-stellar companions orbiting at large orbital separation (>10 AU) around nearby stars (<100 pc). Over the past 15 yr, multiple surveys targeting a variety of stars with different spectral type, distance, age, or metallicity have been successful at placing tight constraints on the frequency of giant planets and brown dwarfs in the 50–1000 AU range (see [Bowler 2016](#), for a recent review). Despite the development of optimized observing strategies and data analysis methods, only a limited number of sub-stellar companions have been detected, leading to the conclusion that the frequency of these objects is very low (typically $\lesssim 5\%$; [Galicher et al. 2016](#)). At closer orbital separations, in the 5–50 AU range, the question remains largely unanswered, although initial results ([Macintosh et al. 2015](#); [Wagner et al. 2016](#)) from on-going large-scale direct imaging surveys with the new generation of high-contrast imagers and spectrographs ([Beuzit et al. 2008](#); [Macintosh et al. 2014](#); [Guyon et al. 2010](#)) suggest that the frequency of young giant planets is within a few percent.

The few known directly imaged giant planets as well as the overall paucity of this type of object at large separations raise the question of planetary formation. The two competing mainstream scenarios are core accretion (CA) and gravitational instability¹ (GI). In the CA model, giant planets are formed in a multi-stage process entailing the buildup of a 10–15 M_{\oplus} core followed by rapid accretion of gas from the protoplanetary disk ([Pollack et al. 1996](#); [Alibert et al. 2004](#)). This model has been very powerful in explaining a lot of the properties of the exoplanet population detected within 5 AU, but it faces major difficulties in explaining the formation of giant planets farther out than ~ 20 AU because of the timescales involved ([Alibert et al. 2005](#); [Kennedy & Kenyon 2008](#)). Pebble accretion has been proposed as a potential solution to this issue ([Lambrechts & Johansen 2012](#); [Levison et al. 2015](#)), but the most recent simulations show that this mechanism does not really form giant planets (several M_{Jup}) at large orbital distances ([Bitsch et al. 2015](#), their Figs. 4 and 5).

In the GI model, the planets are the result of gravitational fragmentation and collapse of clumps in the disk ([Boss 1998](#); [Vorobyov 2013](#)). This model could more readily explain the existence of gas giants very far from their star, but the conditions that can lead to disk fragmentation are still not fully understood ([Meru & Bate 2011](#); [Paardekooper 2012](#); [Rice et al. 2012, 2014](#); [Young & Clarke 2016](#)). In any case, disk-planet interactions ([Kley & Nelson 2012](#)) or planet-planet scattering ([Veras et al. 2009](#); [Dawson & Murray-Clay 2013](#)) will likely impact on the original semi-major axis distribution of planets, resulting in exoplanets covering a wide range of possible masses, sizes, locations, and compositions.

Observational constraints are crucial in validating or invalidating planetary formation models, and in investigating the migration processes at play during the early evolution of planetary systems. In this regard, planet population synthesis is an interesting approach to statistically compare observations with theory and detect potential shortcomings in the modeling (see the review by [Benz et al. 2014](#)). One of the important early successes of planet population synthesis has been to be able to provide a consistent picture of the mass versus semi-major axis diagram for planets up to a few AUs ([Ida & Lin 2004](#); [Mordasini et al. 2009](#)).

For directly imaged planets, population synthesis has so far mainly been used for comparison with individual objects, like

the giant planet around β Pictoris ([Bonnefoy et al. 2013](#)), or as an illustration of the potential for future exoplanet imagers ([Rameau et al. 2013](#)). One of the reasons is that population synthesis developments have been primarily based on the CA model, which forms very few massive planets at large separations, therefore making any comparison with results from past direct imaging surveys pointless. Although planet-planet scattering can send planets much farther out in the systems and allow their direct detection, population synthesis models based on CA only recently started to incorporate several planet embryos per disk and their subsequent dynamical evolution ([Alibert et al. 2013](#); [Ida et al. 2013](#)). Predictions are currently too premature for comparison with past direct imaging surveys, but will be a key aspect for the forthcoming analysis of the large surveys on-going with VLT/SPHERE (Spectro-Polarimetric High contrast Exoplanet REsearch; [Beuzit et al. 2008](#)) and Gemini/GPI (Gemini Planet Imager; [Macintosh et al. 2014](#)).

Comparison between direct imaging observations and predictions of the GI theory has only been explored statistically in two surveys ([Janson et al. 2011, 2012](#); [Rameau et al. 2013](#)). They used physical considerations to define the domains in the (mass, semi-major axis) parameter space where formation by GI would be allowed, and used the non-detection in their surveys to set upper limits on the giant planet frequency. These studies, however, do not consider the subsequent evolution of a population that may form via GI. Planet population synthesis based on the GI theory has taken much longer than CA to mature, and only lately has a consistent model including multi-object systems been formulated ([Forgan & Rice 2013](#); [Forgan et al. 2015](#)). This model predicts the formation of a wide range of sub-stellar objects, a large portion of which could be detected by direct imaging with conventional or extreme adaptive optics systems.

In the present paper, we put the [Forgan & Rice \(2013\)](#) population synthesis model to the test by comparing its outcome to direct imaging results obtained around 200 young, solar-type (FGK) stars. In Sect. 2 we describe our full statistical sample based on 13 previously published direct imaging surveys spanning more than ten years. In Sect. 3, we discuss the detection limits and we present the Direct Imaging Virtual Archive (DIVA), a public database associated with this paper. In Sect. 5 we detail the population synthesis and evolutionary models considered in our analysis and then in Sect. 6 we present our statistical analysis based on outputs of population synthesis. Finally, we discuss our results and present our conclusions in Sect. 7.

2. Sample description

The current work was started in the context of the VLT/NaCo large program to probe the occurrence of exoplanets and brown dwarfs at wide orbits (ESO program 184.C-0157, P.I. J.-L. Beuzit), hereafter NaCo-LP. The general philosophy of the NaCo-LP sample selection has previously been described in [Desidera et al. \(2015\)](#) and [Chauvin et al. \(2015\)](#), but we summarize here the details that led to the definition of the final sample used in our work.

The target selection was originally based on a large compilation of ~ 1000 young nearby stars that were selected in preparation of the VLT/SPHERE SpHERE INfrared survey for Exoplanets (SHINE; Chauvin et al., in prep.) survey. The age determination was based on various youth indicators including lithium content, Ca II H and K line chromospheric emission, $H\alpha$ emission, X-ray activity, rotation rate, and kinematics. From this initial compilation, we selected solar-type stars (FGK; $0.4 \text{ mag} \leq B - V \leq 1.2 \text{ mag}$) within a distance horizon

¹ Sometimes also referred to as disk instability.

Table 1. Surveys considered for the construction of the NACO-LP archive sample.

Name	Telescope	Instrument	Techniques ^a	Band	N_{survey}^b	$N_{\text{NaCo-LP}}$	Reference
M05	VLT	NaCo	DI	<i>H, K</i>	18	5	Masciadri et al. (2005)
L05	HST	NICMOS	COR	<i>H</i>	45	17	Lowrance et al. (2005)
S06	HST	NICMOS	ADI	<i>H</i>	116	47	Song et al. (unpublished) ^c
K07	VLT	NaCo	ADI, RDI	<i>L</i>	22	6	Kasper et al. (2007)
B07	VLT	NaCo	SDI	<i>H</i>	45	24	Biller et al. (2007)
L07	Gemini	NIRI	ADI	<i>H</i>	85	50	Lafrenière et al. (2007)
C10	VLT	NaCo	DI	<i>H, K</i>	91	29	Chauvin et al. (2010)
H10	MMT	Clio	ADI	<i>L, M</i>	54	27	Heinze et al. (2010)
V12	Gemini, VLT	NIRI, NaCo	ADI	<i>H, K</i>	42	4	Vigan et al. (2012)
R13	VLT	NaCo	ADI	<i>L</i>	59	21	Rameau et al. (2013)
B13	Gemini	NICI	ASDI	<i>H</i>	80	22	Biller et al. (2013)
B14	Subaru	HiCIAO	ADI	<i>H</i>	63	29	Brandt et al. (2014)
C15	VLT	NaCo	ADI	<i>H</i>	85	47	Chauvin et al. (2015)

Notes. ^(a) Techniques: ADI = angular differential imaging, usually coupled with saturated imaging; ASDI = angular and spectral differential imaging; COR = coronagraphy; DI = direct imaging (saturated); RDI = reference differential imaging; SDI = spectral differential imaging. ^(b) The sum of N_{survey} for all surveys is larger than 199, the total number of stars considered in our analysis, because some stars were observed by several surveys. ^(c) HST, cycle 13, GO10176.

of 100 pc and with an age ≤ 200 Myr, in order to be sensitive to planetary-mass objects in the 50–1000 AU range. An additional cutoff at $R \leq 9.5$ was applied, corresponding to the limit for full-performance of the visible wavefront sensor of VLT/SPHERE expected at that time (Fusco et al. 2006). Known spectroscopic and visual binaries ($\leq 6''$) were also removed to have a sample as free as possible from dynamical perturbations to planets in wide orbits (see Sect. 5), as well as to avoid any decrease in performance of the adaptive optics system related to the presence of a stellar companion. Although spectroscopic binaries do not pose technical difficulties for wavefront sensing, they were discarded to focus the study on single stars and stars in extremely wide binary systems. The frequency of circumbinary giant planets has recently been the subject of a dedicated study (Bonavita et al. 2016).

The list was then cross-correlated to the targets observed in previous high-contrast imaging surveys with sensitivities similar to the expected NaCo-LP sensitivity (Masciadri et al. 2005; Lowrance et al. 2005; Kasper et al. 2007; Biller et al. 2007; Lafrenière et al. 2007; Chauvin et al. 2010), resulting in a selection of 110 targets observable from the VLT and that were never previously observed at high-contrast. From this final selection, 85 were observed with VLT/NaCo from 2009 to 2013, while the other 24 could not be observed due to weather or technical losses. The results of the observations and a first statistical analysis of the NaCo-LP observed sample are presented in Chauvin et al. (2015) and Reggiani et al. (2016).

For the final analysis that we present in this work, the observed sample was combined with the results from direct imaging surveys published prior to the start of the NaCo-LP, as well as surveys subsequently published (Heinze et al. 2010; Vigan et al. 2012; Rameau et al. 2013; Biller et al. 2013; Brandt et al. 2014). We also added the results of an unpublished HST/NICMOS survey² by Song and collaborators and for which we performed a dedicated analysis. The candidates' identification and follow-up of this program was performed with VLT/NaCo (Chauvin et al. 2010; Song, Farihi priv. com.). Only surveys targeting solar-type stars were included, and we did not include surveys targeting

only stars with debris disks (Apai et al. 2008; Wahhaj et al. 2013b) to avoid any significant astrophysical bias. However this selection criterion does not mean that we do not have debris disk targets in our sample. We simply included only surveys that did not use the presence of a known debris disk as their primary selection criterion. The color, R -mag, and distance criteria were also applied to the archival data, but we did not apply the age criterion so as to increase the number of targets in the sample. Table 1 presents a summary of these surveys including the telescope and instrument, the band of the observations, the number of targets in their respective sample (N_{survey}), and the number that we use in the current work ($N_{\text{NaCo-LP}}$). From here on, we refer to the combination of the observed and archive samples as the full NaCo-LP sample, which comprises a total of 199 stars, some of which were observed in several surveys.

Ages and other stellar parameters for the literature surveys were rederived in an homogeneous way following the procedures described in Desidera et al. (2015) for the NaCo sample. However, the ages of some young moving groups were updated, following the recent results by Bell et al. (2015) and correspondingly the ages of stars based on indirect methods (e.g., lithium) taking as reference moving groups members were also updated. Further details on the adopted ages for individual groups are described in Bonavita et al. (2016). The ages of the targets from Desidera et al. (2015) were also revised following the above procedure. The properties of the sample are summarized in Fig. 1, and all the values are detailed in Appendix A.

From Fig. 1 we notice that the metallicity of the sample is quite narrowly distributed around solar value. This is the result of the fact that young stars in solar vicinity have typically metallicity close to the solar values (see, e.g., Santos et al. 2008; D'Orazi et al. 2009; Biazzo et al. 2012). Furthermore, the few stars with metallicity significantly above or below solar are typically among the oldest in the sample, and therefore carry limited information in the statistical analysis. This metallicity distribution and in particular the lack of super-metal-rich young stars should be taken into account in the interpretation of the statistical results of imaging surveys and in the comparison with the samples observed with other techniques like radial velocity, characterized by a broader metallicity distribution.

² HST, cycle 13, PI Inseok Song, GO10176: "Coronagraphic Survey for Giant Planets Around Nearby Young Stars".

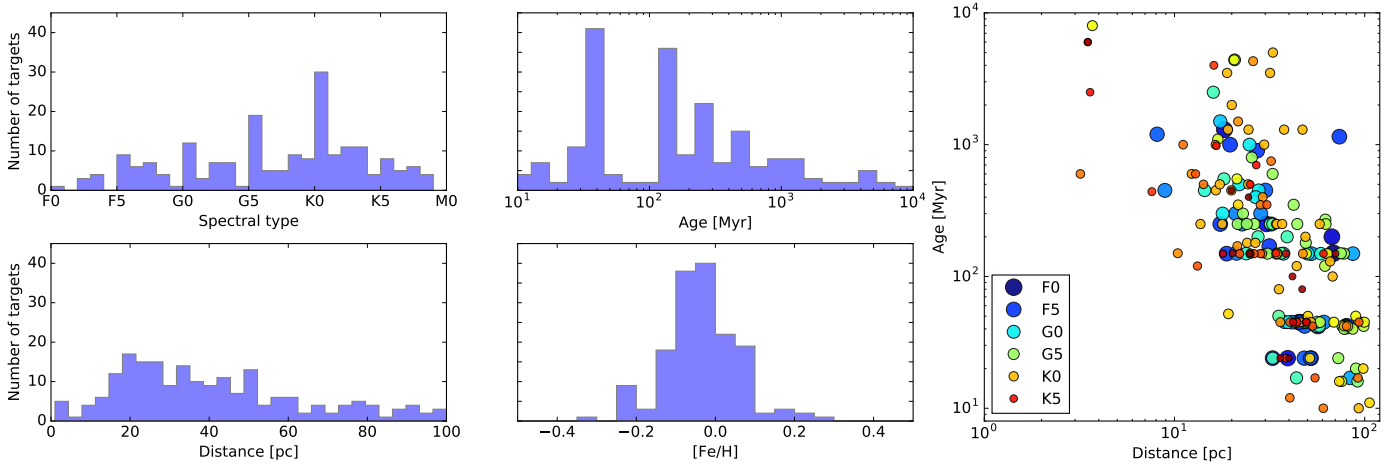


Fig. 1. Histograms summarising the properties of all the targets considered in the final sample: spectral type, age, distance, and metallicity (from left to right). The complete sample includes 199 individual targets. All the properties are detailed in Appendix A.

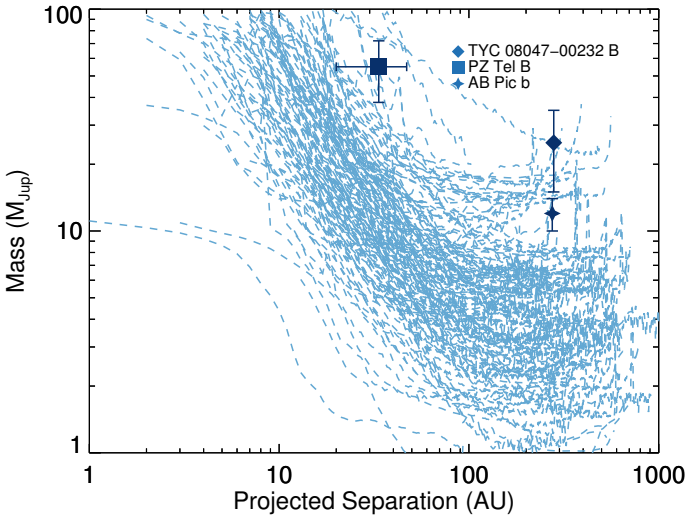


Fig. 2. Summary plot of all the mass detection limits considered in this work (blue dashed lines). The big dot points correspond to the detections of sub-stellar companions that have been considered in the analysis (see Sect. 4). With an estimated mass of $0.1095 \pm 0.0022 M_{\odot}$, HD 130948 BC lies outside the considered mass range, and it is therefore not shown.

3. Detection limits

Detection limits for the various surveys were collected from their respective authors. The challenges of defining a reliable detection limit in high-contrast imaging have already been underlined by several authors in the case of angular differential imaging (Marois et al. 2008; Mawet et al. 2014) or its combination with spectral differential imaging (Rameau et al. 2015; Vigan et al. 2015). To simplify the combination of many different detection limits from various surveys in our work, we adopt the commonly used 5σ threshold for all detection limits. Although this may not be completely accurate, there is no simple alternative when considering many surveys, unless one has the capability of reprocessing all the corresponding data in a consistent manner. The only exception to this 5σ threshold is the Biller et al. (2013) survey, where the detection limit is given by a 95% completeness curve, which represents the delta magnitude limit above which 95% of all objects in the field should be detected at a given separation. Wahhaj et al. (2013a), who defined this metric, showed

that in most cases it agrees well (at the $\sim 10\%$ – 30% level) with the nominal 5σ contrast curves.

While collecting all these detection limits, we realized that there is currently no public database that gathers all the results of past direct imaging surveys. In particular, the position and status of all companion candidates in the field is not always reported or easily accessible in machine-readable format. The availability of such data is of prime importance for the large imaging surveys being performed with VLT/SPHERE and Gemini/GPI, but also for the surveys that will be performed in the future. To remedy this lack, we associate the current paper with the release of DIVA³, a public database designed to contain results from published direct imaging surveys: images, detection limits, signal-to-noise ratio maps, position, and status (when available) of detected companion candidates. To simplify and standardize these heterogeneous data, all the relevant information is packaged into HCI-FITS files, a standard for high-contrast imaging data recently proposed by Choquet et al. (2014b) in the context of the ALICE⁴ (Archival Legacy Investigations of Circumstellar Environments) project (Choquet et al. 2014a; Soummer et al. 2014).

All the 5σ detection limits and detection maps calibrated in contrast were then converted into companion mass using the AMES-COND2003 evolutionary models (Baraffe et al. 2003) specifically calculated in the filters of the observations (Fig. 2). The post-formation luminosity of giant planets is likely to be the result of the way the material is accreted onto the protoplanetary core, resulting in a broad range of possible luminosities for a similar mass (Fortney et al. 2008; Spiegel & Burrows 2012; Mordasini 2013). However, comparisons of the luminosity of some giant planets with sets of evolutionary tracks or formation models (e.g., Janson et al. 2011; Bonnefoy et al. 2013) tend to show that they do not appear to be compatible with very low initial entropy models (“cold-start”) but instead with intermediate or high initial entropy models (“warm-start” or “hot-start”). For the mass conversion we therefore use the AMES-COND2003 models which correspond to the highest possible initial entropy, but keeping in mind that it is the most favorable scenario. Future studies will need to address the initial entropy problem in large direct imaging surveys more specifically.

³ <http://cesam.lam.fr/diva/>

⁴ <https://archive.stsci.edu/prepds/alice/>

4. Sub-stellar companion detections

During the course of the NaCo-LP, we detected twelve previously unknown binaries (Chauvin et al. 2015) and one white dwarf (Zurlo et al. 2013), but no new sub-stellar companions. However, our full statistical sample includes four known companions discovered by other surveys and that must be considered in the analysis. We summarize below the main properties of these companions:

- GSC 08047-00232 B (TYC 8047-0232 B) is a $25 \pm 10 M_{\text{Jup}}$ BD with a derived spectral type of $M9.5 \pm 1$ (Chauvin et al. 2005a) at a projected separation of ~ 280 AU. It is a probable member of the Tucana-Horologium association, with an age of 10–50 Myr. While the age indicators of GSC 08047-00232 are consistent with other K-type members of Tuc-Hor, its available kinematics are not a strong match to the bulk of the association. For the purpose of this paper we keep this star as a member of Tucana-Horologium;
- AB Pic b (HIP 30034 b) is a $10\text{--}14 M_{\text{Jup}}$ object at a projected separation of 275 AU (Chauvin et al. 2005b; Bonnefoy et al. 2010). The object AB Pic b could alternatively be a member of the similarly aged, but less well defined, Carina association (Malo et al. 2013). This has no impact because the ages of Tuc-Hor and Carina are the same within uncertainties;
- PZ Tel B (HIP 92680 B) is a $50^{+13}_{-8} M_{\text{Jup}}$ BD companion (Biller et al. 2010; Maire et al. 2016) orbiting on a very eccentric orbit ($e > 0.66$) at 49–77 AU. It is a member of the β Pictoris moving group.
- HD 130948 BC (HIP 72567 BC) is a BD binary discovered by Potter et al. (2002), with a total mass estimated at $0.1095 \pm 0.0022 M_{\odot}$ (Dupuy & Liu 2011) and orbiting at a projected separation of ~ 50 AU from the Sun-like star HD 130948 A. As this is a hierarchical triple system, it is considered in our sample as a binary with masses M_A and M_{BC} . As the secondary has a mass outside the mass ranges of interest of this study, we will not consider this as a detection in our analysis.

5. Planet population synthesis models

The standard planet formation scenario is typically referred to as the core accretion model (Safronov 1972). This involves the growth of micron-sized dust grains to form kilometre-sized planetesimals that then collide and grow to form planetary-mass bodies (Wetherill 1990; Kokubo & Ida 1998). If these become sufficiently massive prior to the dispersal of the disk gas, they may accrete a gaseous envelope (Mizuno 1980) to become a gas giant planet (Pollack et al. 1996). If not, they remain as rocky and icy planets with masses similar to that of the Earth (Chambers & Wetherill 1998).

The detection of giant planets on wide orbits, however, provides a challenge to the standard core accretion scenario, as the growth time for cores at these radii should far exceed the gas disk lifetime (Levison & Stewart 2001). The accretion of centimeter-sized pebbles has been proposed as a possible way of rapidly forming gas giant cores (Lambrechts & Johansen 2012), but this model is relatively young so further exploration of this mechanism is still necessary. An alternative scenario involves direct gravitational collapse in massive, self-gravitating protostellar disks (Kuiper 1951; Boss 1998). The basic idea is that if a protostellar disk is both massive and cold, it becomes susceptible to the growth of gravitational instability (Toomre 1964). If these disks can cool rapidly (Gammie 2001; Rice et al. 2003), or

maintain sufficiently high accretion rates while remaining quasi-isothermal (Kratter & Murray-Clay 2011), then this can lead to fragmentation to form bound objects that may then collapse to form planetary-mass bodies, brown dwarfs, or low-mass stars (Stamatellos & Whitworth 2009a).

Furthermore, it has been suggested (Nayakshin 2010a) that within these fragments, dust grains may grow and sediment to form cores, and that the fragments may rapidly migrate into the inner disk. If the contraction of the fragment is slow enough, and the migration and sedimentation fast enough, then the fragment may be stripped of gas by tidal interactions with the host star and this process could in principle form both close-in, and wide orbit, planets (Nayakshin 2017).

It is therefore possible to generate a synthetic population of planets – or brown dwarfs – that form via disk fragmentation, undergo grain sedimentation, and evolve via migration in the protostellar disks and, potentially, via tidal interactions with the host star. We briefly describe the main parameters of the models below, but the reader is encouraged to read Forgan & Rice (2013) and Forgan et al. (2015) for a complete description. The models combine:

1. semi-analytic self-gravitating disk models with photoevaporation (Rice & Armitage 2009; Owen et al. 2011);
2. analytic fragmentation criteria which measure the local Jeans mass inside a spiral perturbation (Forgan & Rice 2011);
3. a system of fragment evolution equations which follow the evolution of the fragment’s dust and gas components (Nayakshin 2010a,b, 2011);
4. equations that describe the orbital evolution of the protoplanet via disk migration (Kley & Nelson 2012; Baruteau & Masset 2013); and
5. equations describing the tidal disruption of the planetary embryo if it exceeds its Hill radius (Faber et al. 2005).

Once fragmentation has occurred, the embryos continue to collapse in a manner analogous to protostellar collapse, while their internal dust population grows and begins to sediment towards the pressure maximum at the center. This sedimentation is suppressed partially by gas turbulence and high-velocity collisional destruction, and eventually by evaporation as the gas temperature continues to increase. The embryo migrates radially inward according to the local disk properties, and can be tidally disrupted as it overflows its own Roche lobe. Indeed, almost half of all embryos are destroyed during this process.

In this work, we assume a disk with maximum radius of 100 AU, with a surface density profile $\Sigma \propto r^{-1}$, and with solar metallicity. The stellar mass and disk mass are varied for each iteration of the model, as is the X-ray luminosity of the star, which affects the timescale for disk photoevaporation and hence sets a time limit on the fragments’ evolution. The resulting population generated is described in detail in Sect. 3.1 of Forgan & Rice (2013).

The population synthesis model yields (mainly) relatively massive gas giants and brown dwarfs, with the majority of these objects residing at semi-major axes above 30 AU. As this model does not consider the dynamical evolution of these bodies after the protostellar disk has dispersed, the systems for which more than two embryos have formed are evolved for 10^6 yr using n -body simulations to ascertain the effect of object-object scattering on the planetary orbital parameters (Forgan et al. 2015). Although each system is evolved for a time that is smaller than the observed ages of objects which we would like to compare to disk fragment models, this relatively low simulation time was

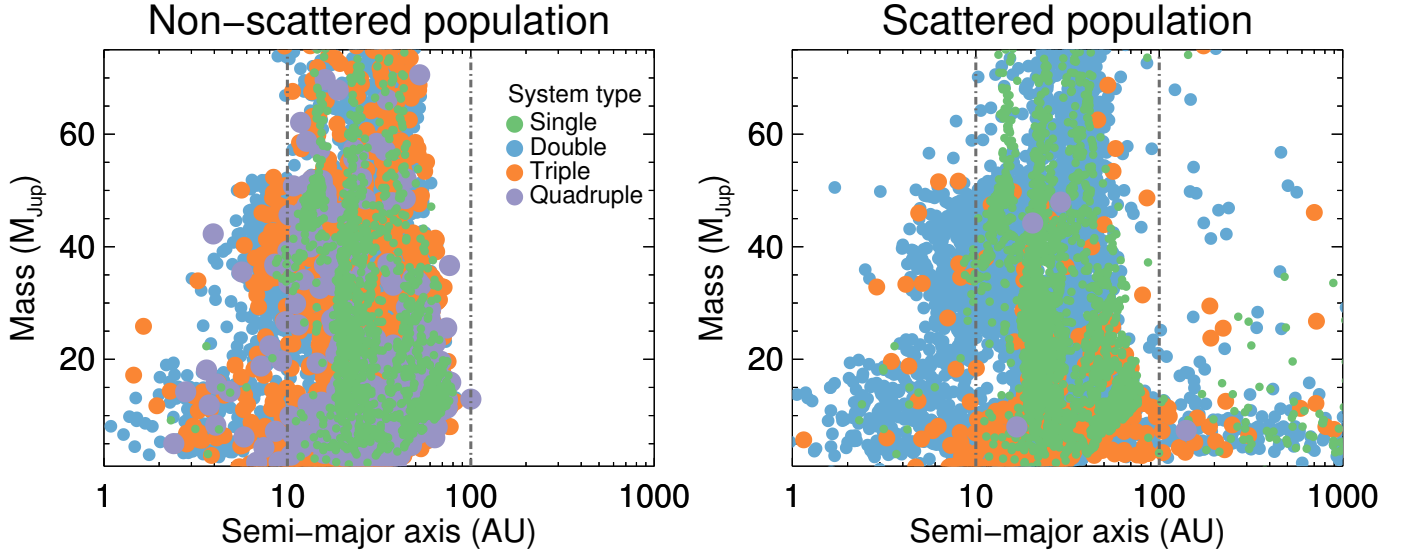


Fig. 3. Mass (M_{Jup}) versus physical separation (AU) for all the companions in the synthetic planet populations generated as described in Sect. 5. *Left panel:* non-scattered population (Forgan & Rice 2013). *Right panel:* same population including scattering (Forgan et al. 2015). Different colors are used for single (green), double (blue), triple (orange), and quadruple (purple) systems. The size of the symbols increases from single to quadruple systems to make the plots easier to read.

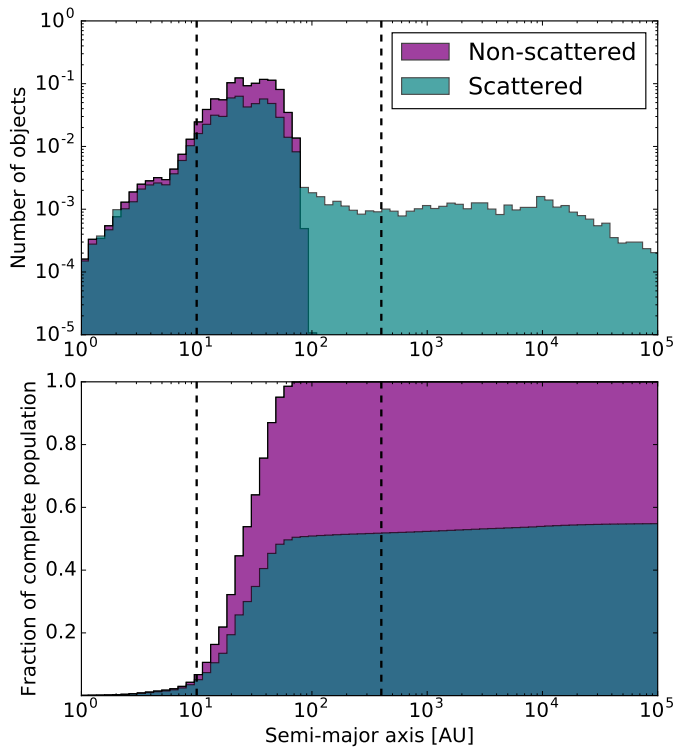


Fig. 4. Histogram (*top*) and cumulative histogram (*bottom*) of the population before and after scattering as a function of semi-major axis, normalized with respect to the total number of planets in the population. Only objects below $75 M_{\text{Jup}}$ are considered. Approximately 50% of the planets are ejected from the systems during the scattering, resulting in a much smaller total number of planets in the scattered population. The vertical dashed lines at 10 and 400 AU mark the semi-major axis range where the average detection probability of our observations is $\sim 50\%$ or more for massive companions.

used partly to reduce computational expense and partly because systems that produce scattering events express this instability within a few tens of thousands of years (Chambers et al. 1996; Chatterjee et al. 2008). As such, the results should reasonably

reflect the likely outcome of fragment-fragment interactions. Having said this, we must note that secular evolution of these systems may occur over timescales greater than 10^6 yr (e.g., Veras et al. 2009). As a result, we may underestimate the number of bodies ejected from their host star systems, and we may also underestimate the final semimajor axis of the bodies that do remain bound.

This procedure therefore gives two data sets to consider: the first is the output of the population synthesis model (hereafter non-scattered population; Forgan & Rice 2013), and the second is the dynamically evolved, post-disk dispersal population (hereafter scattered population; Forgan et al. 2015).

Figure 3 shows the output of the population synthesis models for both the scattered (left panel) and non-scattered (right panel) population. We can see that for both before and after scattering, the majority of the population resides at semi-major axes >20 AU, with masses of the order of one Jupiter mass (M_{Jup}) and larger. This is despite the model’s ability to tidally downsize the bodies into the Neptune and Earth mass regime, which some authors predict (Nayakshin 2010a), but we find such events are statistically rare enough not to occur, despite synthesizing a total of one million disk fragments. Crucially, whatever subsequent modification occurs to the bodies after fragmentation, the process preferentially generates large populations of bodies with masses above $1 M_{\text{Jup}}$ and semi-major axes above 20 AU, well within the sweet spot of direct imaging observation sensitivity reported in the present work.

Figures 4 and 5 show the evolution of the two populations in terms of semi-major axis distribution and repartition of the number of planets in the systems. For the semi-major axis, the scattering creates a tail of planets that go much beyond 100 AU, but the population remains largely dominated by a large peak in the 10–100 AU range. However, the cumulative histogram shows that $\sim 50\%$ of the planets are ejected from the systems during the scattering. This process affects mainly systems with three or more planets (Fig. 5), which are sometimes transformed into systems with one or two planets, but which more generally end up with not planets at all.

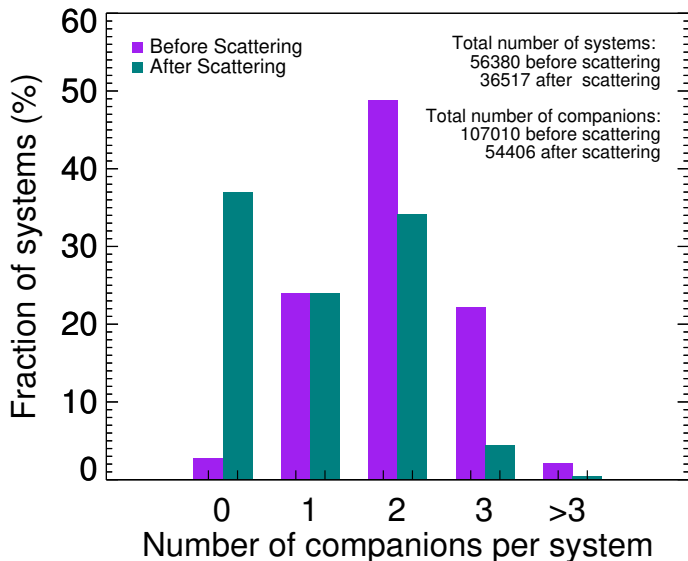


Fig. 5. Fraction of systems in the scattered and non-scattered populations as a function of the number of planets in the system. The total number of systems and planets before and after scattering is displayed in the top-right corner of the plot. The bins are normalized to the total number of systems in each of the two populations independently. The $\sim 2\%$ of systems with zero planets before scattering correspond only to cases where all the companions in the systems have masses above $75 M_{\text{Jup}}$, while for the scattered case it also includes systems where all the companions were ejected as a result of the scattering process.

We should note of course that the population synthesis models of [Forgan & Rice \(2013\)](#) are the first steps towards a complete description of disk fragmentation and the tidal downsizing process. The post-processing of the model’s output by [Forgan et al. \(2015\)](#) highlights the importance of fragment-fragment interactions in setting the distribution of orbital parameters (especially eccentricity). However, these interactions only occur after the disk dissipates – interactions between fragments while still embedded in the disk are neglected. Simulations of fragmenting disks demonstrate that these early fragment interactions can determine whether a fragment survives tidal downsizing to become a detectable sub-stellar object ([Stamatellos & Whitworth 2009a,b](#); [Hall et al. 2017](#)).

The model does not permit accretion of further gas from the disk by the fragment, and therefore the masses derived by the model are lower limits. Mass accretion can encourage the opening of gaps in the disk and reduce the migration speed, which allows more massive objects to remain at larger semi-major axis. That being said, [Baruteau et al. \(2011\)](#) and [Zhu et al. \(2012\)](#) show that migration rates in self-gravitating disks are rapid compared to theoretical calculations based on low-mass disks, and [Malik et al. \(2015\)](#) show that this can frustrate gap opening even for high fragment masses. If fragments do survive the tidal downsizing process, these results suggest such objects are likely to be more massive, and hence easier to detect than the [Forgan & Rice \(2013\)](#) model currently predicts.

The accretion of solid material (e.g., [Helled et al. 2006](#)) is also not modeled, which in turn affects the microphysics of dust settling in the fragment ([Nayakshin 2016](#)). As this is responsible for the formation of solid cores in the GI formalism, this affects the survival rates of disk fragments. The physics of fragment evolution is at its heart the study of dust-gas interactions in a collapsing environment, a process that is challenging to describe semi-analytically. The interested reader should consult

[Nayakshin \(2017\)](#) for a review of the multiple physical processes at play.

Finally, it is still somewhat unclear as to how stellar companions might influence the evolution of self-gravitating protostellar disks, which is one of the reasons why visual binaries with separations below $6''$ have been removed from the sample. Much of the early work in this area investigated the role of stellar encounters, which indicate how the impulse induced by a companion can promote or inhibit fragmentation. [Boffin et al. \(1998\)](#) suggested that encounters might promote disk fragmentation, while more recent work has suggested that they will typically inhibit fragmentation ([Lodato et al. 2007](#); [Forgan & Rice 2009](#)). This latter work, however, considered disks that were initially sufficiently compact that fragmentation in isolation was unlikely. If disks can be sufficiently extended that they become irradiation dominated, then encounters may well trigger fragmentation in the outer regions of these disks ([Thies et al. 2010](#)). It is, however, still unclear as to whether or not such extended disks actually exist at such early times ([Maury et al. 2010](#)).

More recent studies now consider the secular evolution of self-gravitating protostellar disks by companions on closed orbits. For example, [Fu et al. \(2017\)](#) demonstrated for isothermal disks that if the companion’s orbit is sufficiently tilted compared to the disk plane, Kozai-Lidov oscillations can induce fragmentation even when the disk has a Toomre parameter $Q > 2$. Further work is required to fully ascertain the role of binary companions in disk fragmentation, with particular attention needing to be paid to disk thermodynamics and sweeping the relatively large parameter space of both binary and disk configurations.

6. Statistical analysis

6.1. Giant planet and brown dwarf frequency estimation

The statistical analysis of the survey results has been done using the MESS code (Multi-purpose Exoplanet Simulation System, see [Bonavita et al. 2012](#)) and its QMESS evolution ([Bonavita et al. 2013](#)). The code allows a high level of flexibility in terms of possible assumptions on the synthetic planet population to be used for the determination of the detection probability. For consistency with previous work (see, e.g., [Lafrenière et al. 2007](#); [Vigan et al. 2012](#); [Rameau et al. 2013](#)) and to allow a straightforward comparison of the results, we started our analysis by generating a population of planets using a given set of assumptions on the planet parameter distributions, and comparing the detectability of this population of planets with our detection limits to obtain a mean probability of detection map. We assumed flat distributions in linear space for the mass and semi-major axis respectively, in the $1\text{--}75 M_{\text{Jup}}$ range by steps of $1 M_{\text{Jup}}$ and in the $1\text{--}1000$ AU range by steps of 1 AU. Following [Hogg et al. \(2010\)](#), we adopt a Gaussian eccentricity distribution with $\mu = 0$ and $\sigma = 0.3$. The implications of choosing this distribution over a flat eccentricity distribution are discussed in [Bonavita et al. \(2013\)](#). The mean sensitivity map that we obtain, plotted in Fig. 6 for the optimal stellar ages of the sample, illustrates the high sensitivity of the full NaCo-LP sample of brown dwarfs and massive planets down to $\sim 10 M_{\text{Jup}}$ in the $50\text{--}300$ AU range.

Following [Lafrenière et al. \(2007\)](#) and [Vigan et al. \(2012\)](#), we can estimate the fraction of stars that host at least one brown dwarf or giant planet, F_{ps} , using the detection probability maps of individual targets and the confirmed detections in our sample (see Sect. 4). Since we have no a priori information on F_{ps} , we assume a flat prior. The probability density function (PDF)

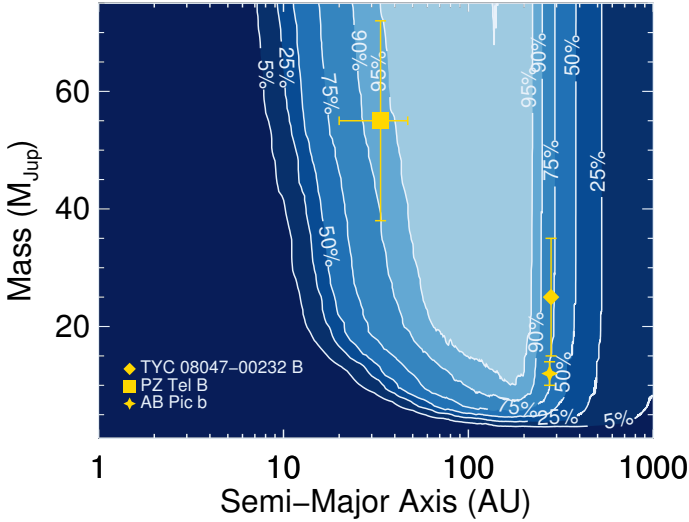


Fig. 6. Mean detection probability map for the complete sample of 199 stars as a function of mass and semi-major axis. In this plot we adopt the best estimate for the stellar ages. The four detections of the sample are over-plotted. The probability map assumes flat distributions of planets in mass and semi-major axis.

of F_{ps} in different semi-major axis and mass intervals is plotted in Fig. 7, and the results are summarized for the best stellar ages in Table 2 (results for the extreme ages are provided in Appendix B). As mentioned in Sect. 4, HD 130948 BC is considered in our sample as a binary and is therefore not used in this analysis. The frequency values are in agreement with the results presented by Galicher et al. (2016) for a sample of a similar size to ours. They support a frequency between 1–2% and 3–4% for planetary-mass and brown dwarfs around FGK stars within 100 pc.

To remain as unbiased as possible when deriving the PDF of F_{ps} , this analysis assumes flat distributions in mass and semi-major axis (i.e., linear-flat priors). A more realistic approach would be to consider log-uniform priors, which would favor less massive, closer-in planets compared to distant giant planets. The main qualitative effect on our results would be to increase the number of planets that we cannot detect, and would therefore broaden significantly the PDFs showed in Fig. 7. Instead of relying on these modified priors, which are more realistic but still disconnected from the physics of planetary formation, we propose to use population synthesis models to constrain the planetary system frequency.

6.2. Analysis based on population synthesis models

One of the goals of our work is to test the predictions of the Forgan & Rice (2013) population synthesis model based on the GI formation mechanism and described in Sect. 5. The output of the GI models provides mass, physical separation, and eccentricity for all the planets in the population. We use this information to compare the non-scattered and scattered populations with the detection limits of the survey presented in Fig. 2. Qualitatively, it appears that if a large population of planets formed by GI exists, it should be detectable from these observations.

To try to quantify this statement, we use the MESS code to assess the detectability of this GI population for our survey. The masses, semi-major axes, and eccentricities are taken directly from the generated population, and the code takes care of randomly generating all the missing orbital parameters needed to

Table 2. Fraction of stars that host a planetary system, assuming linear flat mass and semi-major axis distributions.

SMA (AU)	Mass (M_{Jup})	N_{det}^a	F_{best}^b (%)	$[F_{min}, F_{max}]^c$ CL = 68%	CL = 95%
5–500	5–75	3	2.45	[1.70, 4.70]	[0.90, 6.95]
5–500	5–14	1	1.00	[0.75, 3.30]	[0.25, 5.55]
20–300	0.5–75	3	2.10	[1.50, 4.05]	[0.80, 5.95]
20–300	0.5–14	1	1.15	[0.85, 3.65]	[0.30, 6.20]

Notes. Numbers are provided for the best stellar ages. Values for the minimum and maximum ages are provided in Appendix B. ^(a) Number of detections in the considered mass and semi-major axis (SMA) range. ^(b) Best value of the planet frequency compatible with the observations. ^(c) Minimum and maximum values of the frequency compatible with the results, for a given confidence level (CL).

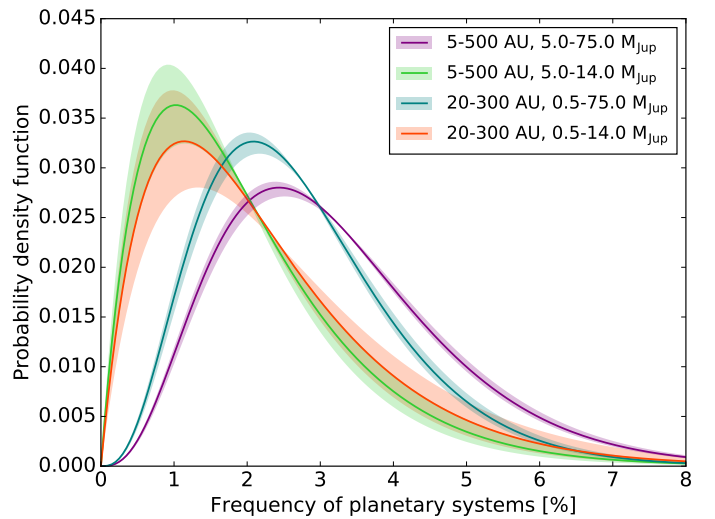


Fig. 7. Probability distribution of the frequency of stars with at least one giant planet in the mass and semi-major axes ranges indicated in the top-right of the plot. The results are summarized in Table 2. The plain lines represent the probability density function obtained when considering the best age estimate for all the stars in the sample, and the colored envelopes represent the variations when considering the minimum and maximum ages.

project the planetary orbit and evaluate the projected separation at the time of the observation. The detectability of the full population is then tested against the detection limits described in Sect. 3, individually for all the stars in the sample.

This process allows us to estimate the probability of detection of each companion in the population⁵. Figure 9 summarizes the result of the analysis: for each panel the fraction of companions with average detection probability greater than 68%, 90%, and 95% are shown as a function of the companion mass (top) or separation (bottom) for both the scattered and non-scattered populations. The fraction of companions detected in each bin is of course highly correlated to the planets distribution in the original populations (Fig. 4). The apparent inconsistency between Figs. 8 and 9 is caused by the fact that Fig. 8 compares the populations to the mean probability, which is pessimistic in the case of stars with poor detection limits (see Fig. 2), whereas Fig. 9 is based on

⁵ In this analysis, we ignore companions more massive than $75 M_{Jup}$ in the population because close stellar binaries were removed from the statistical sample around each star in the sample.

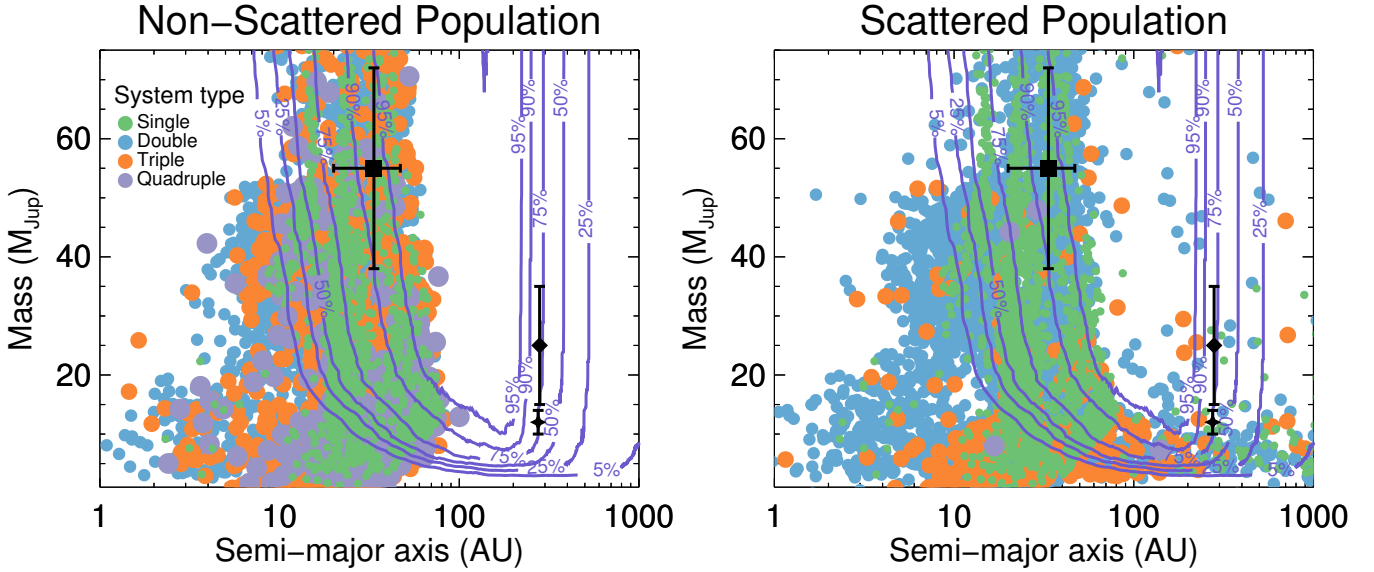


Fig. 8. Comparison of the non-scattered (*left*) and scattered (*right*) GI populations (Forgan & Rice 2013; Forgan et al. 2015) with the mean detection probabilities of the observations (best age estimate). A significant fraction of the GI population could potentially be detected, even in the non-scattered case. The colors and symbols for the populations and the known companions are the same as in Figs. 3 and 6.

a per-star analysis which is then combined together to produce the figure.

The plots as a function of semi-major axis in Fig. 9 show that more than 30% of companions with masses in the 1–75 M_{Jup} range and separations in the 70–200 AU range would be detected in 95% of the simulated surveys, for both the scattered and non-scattered scenarios. This number even goes above 50% when considering 68% of the simulated surveys. In the plots as a function of mass, there is a significant loss of sensitivity towards small masses ($<10 M_{\text{Jup}}$) because the population contains a large fraction of 1–20 M_{Jup} planets to which we are not very sensitive. Nevertheless, the population also contains a significant fraction of 20–50 M_{Jup} objects to which we are highly sensitive, both in the scattered and non-scattered scenarios. In other words, this analysis shows that under the hypothesis of the model, a population of GI-formed planets would have a great chance of being detected by our survey, even if scattering is negligible.

The MESS code provided us with a probability of detecting each companion belonging to the GI populations around each star in our sample, taking into account the observed detection limits and the projection effects (see above). Such results can be used to constrain the value of the frequency companions compatible with our survey results, in a similar fashion to what is described in Sect. 6.1. Most companions in the populations are part of multiple systems (both in the non-scattered and scattered case, see Fig. 5). We therefore decided that a more meaningful way to interpret our results would be to consider the probability of detecting a system with one or more companions, instead of considering each companion singularly. We therefore considered a synthetic system detected if at least one of its components had a detection probability greater than zero. In cases where more than one component satisfied such a requirement, then the highest value of the detection probability among the components was adopted as the detection probability of that system. Instead of limiting our analysis to a specific mass and semi-major axis range, we considered all the systems in the populations with companions up to 75 M_{Jup} . Once the detection probability of each synthetic system was obtained for all the stars in the sample, the average over all the systems was adopted as the detection

probability for each star. This allowed us to estimate the fraction of stars hosting at least one system consisting of one or more companions formed via GI, compatible with our observations. The results are shown in Fig. 10 and summarized in Table 3 for both the non-scattered and scattered case.

All but one companion (AB Pic b) detected in our survey have estimated masses considerably higher than 14 M_{Jup} , therefore they are more properly characterized as brown dwarfs than planets. Thus, we have calculated limits on F_{ps} both for planets and higher mass companions as well as for the planets only case (in this case, defining “planet” as anything with mass $\leq 14 M_{\text{Jup}}$). When considering all companions (three detections), we estimate $F_{\text{ps}}^{\text{ns}} = 2.65^{+4.85}_{-1.00}\%$ at the 95% confidence level for the non-scattered population and $F_{\text{ps}}^{\text{ws}} = 3.00^{+5.60}_{-1.90}\%$ for the scattered case. For companions with masses $\leq 14 M_{\text{Jup}}$ (one detection), these estimations drop to $F_{\text{ps}}^{\text{ns}} = 1.60^{+7.10}_{-1.20}\%$ and $F_{\text{ps}}^{\text{ws}} = 1.95^{+8.50}_{-1.45}\%$ respectively.

It is interesting to note that the best estimates of F_{ps} are very similar in the scattered and non-scattered case. This is likely the result of the shape of the semi-major axis distribution of the population: in Fig. 4 we see that although the scattering sends many objects at very large orbital separations, the overall shape of the distribution remains dominated by a large peak in the 10–100 AU range where our observations are the most sensitive. The effect of the tail of the population that is scattered in the 100–400 AU range is almost negligible and has little influence on the F_{ps} estimation. The main consequence is that if we assume that all the detected companions are the result of a GI-like formation scenario, then our observations cannot distinguish between the scattered and non-scattered scenarios: both scenarios appear equally likely when compared to the observations.

7. Discussion and conclusions

The dearth of detections of massive bodies at large radii challenges the gravitational instability theory of planet formation. This theory proposes that giant planets and brown dwarfs may be formed via disk fragmentation, which is predicted to occur at semi-major axes of at least 30–50 AU and larger.

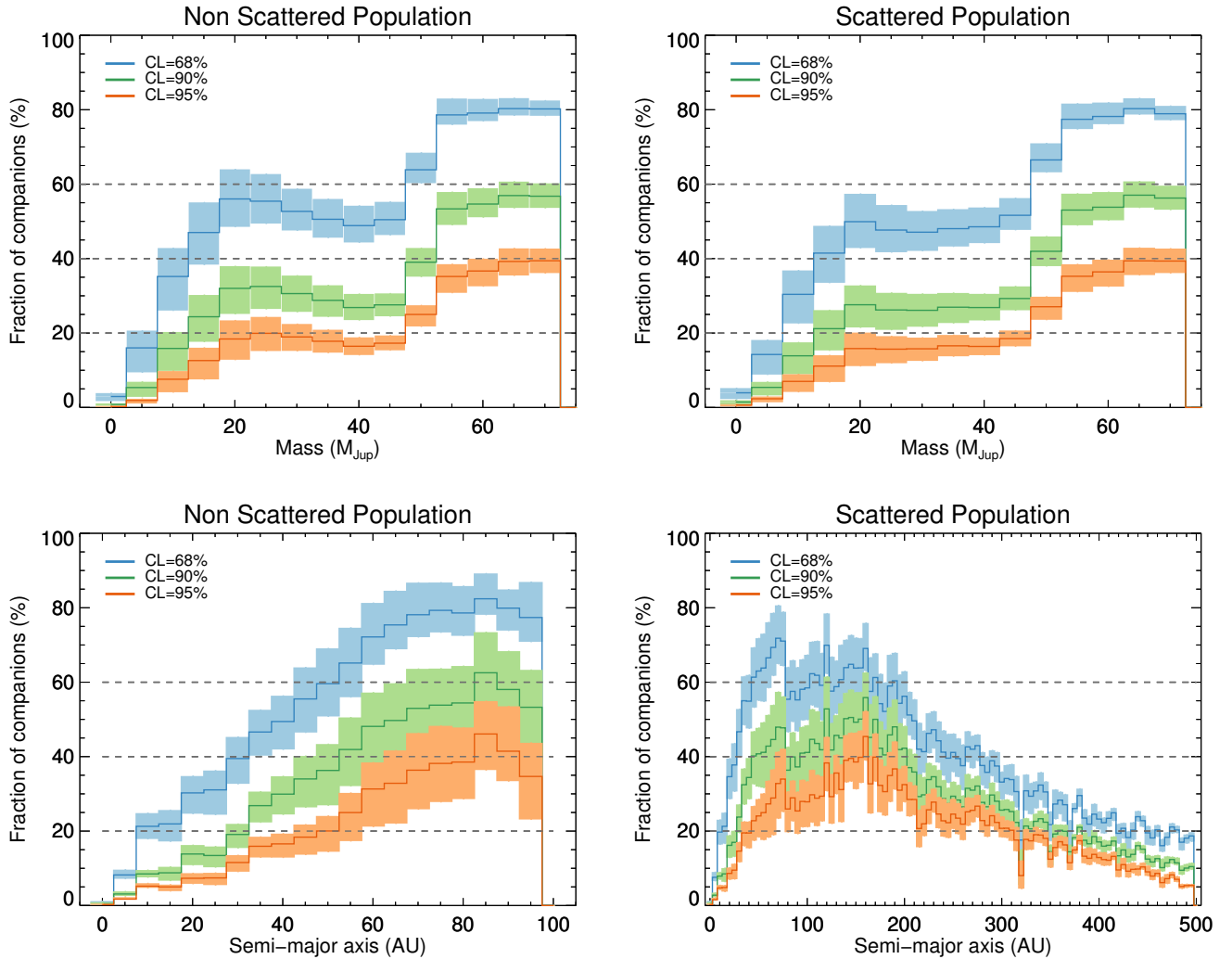


Fig. 9. Histogram of the mass and separation of companions detectable at various confidence levels, for the scattered (*right panels*) and non-scattered (*left panels*) population. Similarly to Fig. 7, the plain lines represent the values for the best age estimate of the stars, and the colored envelopes show the variations observed when considering the minimum and maximum ages. The fraction of detected companions is smaller for the maximum ages and larger for the minimum ages. For the histograms in mass, semi-major axes from 1 to $75 M_{\text{Jup}}$ are considered, and for the histograms in semi-major axis, masses from 1 to $75 M_{\text{Jup}}$ are considered. A confidence level of 95% means that for a given bin, the height of the bin represents the fraction of companions in that bin that have been detected in 95% (or more) of the simulated surveys. The small drop at 330 AU in the scattered population is numerical.

In a previous attempt at constraining the GI formation mechanism using the Gemini Deep Planet Survey sample (Lafrenière et al. 2007), Janson et al. (2012) used a toy model (Klahr et al., unpublished) to define the range of mass and semi-major axis where formation by GI would in principle be allowed around FGKM-type stars. In their approach, they consider that two criteria need to be satisfied simultaneously to form a planet by GI: the Toomre parameter (Toomre 1964) needs to be small enough for an instability to occur, which translates into a minimum mass of the resulting planet, and the cooling timescale of the disk needs to be short enough for fragmentation to occur (Gammie 2001), which translates into a minimum semi-major axis of the resulting planet. The upper limit of $F_{\text{ps}} < 10\%$ with 98% confidence derived by Janson et al. (2012) is in very good agreement with our findings for the non-scattered population, based on a much more realistic model. We also note that Rameau et al. (2013) reached similar conclusions as Janson et al. (2012) regarding the rarity of planets formed by GI around A-stars using the same toy model approach.

Our study goes one step further and considers for the first time a more complete formation model based on GI that includes the scattering of the planets. The semi-major axis distribution of GI objects can be significantly modified by orbital migration (Baruteau et al. 2011; Zhu et al. 2012), dynamical interactions with neighboring GI objects, and nearby stellar systems (Forgan et al. 2015). The masses of these bodies can also be reduced by Roche lobe overflow as they migrate inwards, drawing them into the parameter space more associated with core accretion (Nayakshin 2010a). That being said, it is equally true that statistical studies of these processes produce populations with properties that do overlap with core accretion, but they necessarily produce a large fraction of objects which remain at large semi-major axis and with masses greater than a few Jupiter masses.

The fact that this high mass component, easily detectable, is not present in most of the observations presented here places strong constraints on how frequently disk fragmentation occurs. With only three detections in the brown-dwarf and

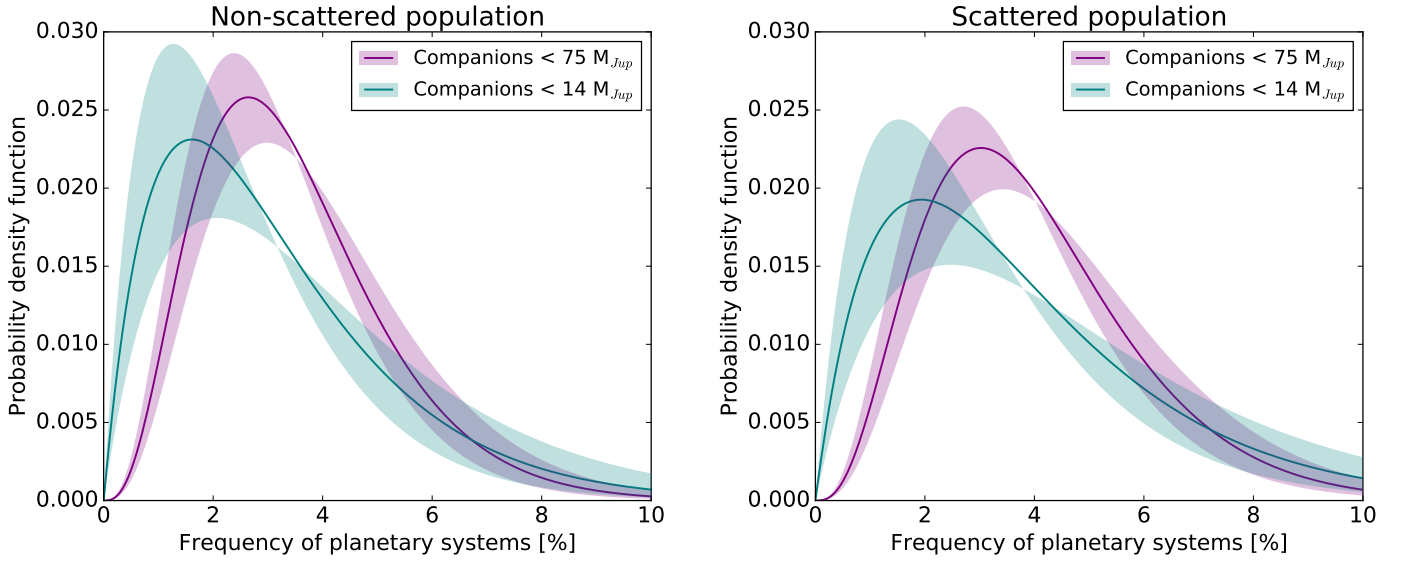


Fig. 10. Probability distribution of the frequency of stars hosting at least one planetary system, based on the non-scattered (*left*) and scattered (*right*) populations described in Sect. 5. Similarly to Figs. 7 and 9, the plain lines represent the probability density function obtained when considering the best age estimate, and the shaded areas show the variations obtained when considering the full age range. The results are summarized in Table 3.

Table 3. Fraction of stars that host a planetary system based on the GI populations described in Sect. 5.

Mass (M_{Jup})	N_{det}^a	F_{best}^b (%)	$[F_{\text{min}}, F_{\text{max}}]^c$	
			CL = 68%	CL = 95%
Non-scattered population				
≤ 75	3	2.65	[1.85, 5.10]	[1.00, 7.50]
≤ 14	1	1.60	[1.15, 5.20]	[0.40, 8.70]
Scattered population				
≤ 75	3	3.00	[2.15, 5.85]	[1.10, 8.60]
≤ 14	1	1.95	[1.40, 6.20]	[0.50, 10.45]

Notes. Numbers are provided for the best stellar ages. Values for the minimum and maximum ages are provided in Appendix B. ^(a) Number of detections in the considered mass range. ^(b) Best value of the planet frequency compatible with the observations. ^(c) Minimum and maximum values of the frequency compatible with the results for a given confidence level (CL).

planetary-mass regime, our analysis suggests that if GI is the predominant formation scenario for these objects then it is rare (<5%). This result holds whether or not scattering is considered. We note that even though our observations are not sensitive to the very widest separations over which outward-scattered planets reside in the GI population, the *Spitzer*/IRAC direct imaging survey by Durkan et al. (2016) has placed a frequency upper limit of 9% for planets in the 0.5–13 M_{Jup} and 100–1000 AU ranges, which is compatible with our results closer in.

Our conclusion that GI is rare is also consistent with an analysis by Rice et al. (2015), who considered the scattering and then tidal evolution of a population of planetary-mass bodies initially on wide orbits. Their analysis suggested that if GI were common, there should be a large population of “hot”, or proto-“hot”, Jupiters that formed via GI on wide orbits, were scattered onto eccentric orbits by more distant stellar companions, and were then tidally circularized by interactions with their host star. That the population of known “hot”, and proto-“hot”, Jupiters

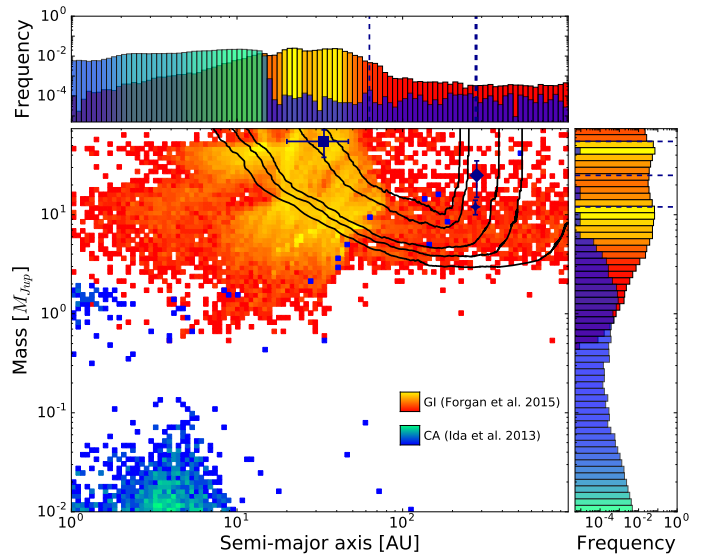


Fig. 11. Density plots representing scattered populations based on GI (Forgan & Rice 2013; Forgan et al. 2015) and CA (Ida et al. 2013) compared to the detections in our sample and to the mean detection probabilities of the observations (contour lines are at 5%, 25%, 50%, 90%, and 95%). Density colors go from dark blue (low occurrence) to cyan (high occurrence) for the CA population, and from red (low occurrence) to yellow (high occurrence) for the GI population. The *histograms on top and on the right* represent the relative frequency in each bin of semi-major axis and planetary mass respectively. The histograms take into account the whole population, including the planets that are outside of the visibility window of the main plot. The semi-major axis and mass of the known companions are represented with dashed lines in the histograms.

is inconsistent with this origin suggests that the formation of planetary-mass bodies by GI is rare.

Even though GI cannot be common, it is predicting a mass distribution of wide-orbit sub-stellar companions that is much closer to what is observed than what CA scenarios predict. To illustrate this, we compare in Fig. 11 two populations that include scattering: one based on the GI scenario, produced by the

model of [Forgan et al. \(2015\)](#), and the other based on the CA scenario, produced by the model of [Ida et al. \(2013\)](#). While the bulk of the CA population is dominated by sub-Jupiter mass planets within ~ 10 AU, there is an overlap with the GI population in the $1\text{--}10 M_{\text{Jup}}$ range within 10 AU. However, the mass histogram clearly shows that GI dominates when considering masses above $5 M_{\text{Jup}}$ and separations above 20 AU, similar to those of the imaged companions. CA cannot form massive brown dwarfs such as PZ Tel B, and even if extreme cases of scattered CA could form objects similar to TYC 8047-0232 B and AB Pic B, observing two cases of very large separation (>200 AU) massive companions while not observing the more common and easily detectable population that is predicted in the $50\text{--}200$ AU range appears extremely improbable. Using a simple Monte Carlo simulation based on the mass and semi-major axis distributions of the two populations, and on the average detection probability map of the survey (Fig. 6), we estimate that it is $\sim 600\,000$ times more likely to obtain three detections from the GI population than from the CA population. It seems therefore extremely unlikely for CA to be the preferential mechanism that explains the formation of the three imaged companions in the full NaCo-LP sample. This is of course even more the case when scattering is not included, since in that case the CA model produces no planets at separations wider than $20\text{--}30$ AU.

We cannot completely rule out the formation of some of the observed companions by gravo-turbulent fragmentation ([Hopkins 2013](#)), that is, following a binary star-like formation scenario. [Reggiani et al. \(2016\)](#) have showed that the NaCo-LP observations are compatible with a sub-stellar companion mass function constituted by a superposition of the stellar mass-ratio distribution and a planet mass function extrapolated from radial velocity detections. In that framework, our conclusions would still be valid because their model shows that to be compatible with the observations, they need to apply a cutoff of the RV extrapolation well below 100 AU, that is, typically in the range where CA still manages to produce a large fraction of planets. This value of the cutoff is actually supported by many previous direct imaging surveys (e.g., [Lafrenière et al. 2007](#); [Kasper et al. 2007](#); [Chauvin et al. 2010](#)).

Our analysis of the planet frequency in Sect. 6.1 assumes a linear flat distribution for the planet's mass and semi-major axis to derive the young giant planet frequency at large orbital separation. It can be argued that this approach, which does not rely on unknown or improperly modeled physics, is less prone to bias the estimation of the planet frequency. However, it puts an equal statistical weight on planets at all masses and separations, which is in contradiction with all models of planet formation, either based on CA ([Mordasini et al. 2009](#); [Ida & Lin 2004](#); [Ida et al. 2013](#)) or GI ([Forgan & Rice 2013](#); [Forgan et al. 2015](#); [Nayakshin 2017](#)), which all agree that the formation of very massive companions at large orbital separation occurs much less frequently than less massive, closer-in planets. Although based on models, this information is important to take into account prior to the analysis. Despite the limitations highlighted at the end of Sect. 5, the models of [Forgan & Rice \(2013\)](#) constitute state-of-the-art models of formation by GI. It is important to be cautious in deriving quantitative estimations based on these models, but the fact that our frequency estimations in Sect. 6.1 are compatible with the ones derived from the population synthesis models is a good sanity check.

It is also an essential first step for on-going large scale surveys with new-generation high-contrast imagers. These surveys, which are sensitive to lower masses at smaller orbital separations, are exploring the regime where CA and GI could have

similar chances to form giant planets. In that context, statistical analysis work based on the outcomes of these surveys will need to make a stronger link between the observations and planet formation theories. This means focusing not only on deriving the occurrence rate of giant companions, but more importantly on deriving the properties of their underlying mass, separation, and eccentricity distributions. We have tried to initiate a first step in this direction using population synthesis models, and we hope that more work will soon follow.

Acknowledgements. The authors warmly thank B. Biller, T. Brandt, G. Chauvin, A. Heinze, M. Kasper, D. Lafrenière, P. Lowrance, E. Masciadri, T. Meshkat, J. Rameau, I. Song and A. Vigan for providing the detection limits and candidates information for their surveys. We are also extremely grateful to S. Ida for providing planetary populations. Finally, AV is extremely grateful to Élodie Choquet, Rémi Soummer, Laurent Pueyo and Brendan Hagan for fruitful discussions on the definition of a standard file format for high-contrast imaging surveys. J.L.B., M.B., G.C., P.D., J.H., A.M.L., C.M., A.V. and A.Z. acknowledge support in France from the French National Research Agency (ANR) through project grants ANR10-BLANC0504-01 (GUEPARD) and ANR-14-CE33-0018 (GIPSE). DHF gratefully acknowledges support from the ECOGAL project, grant agreement 291227, funded by the European Research Council under ERC-2011-ADG. M.B., S.D., E.C., R.G., D.M. and S.M. acknowledge support from PRIN-INAF “Planetary systems at young ages and the interactions with their active host stars” and from the “Progetti Premiali” funding scheme of the Italian Ministry of Education, University, and Research. BB gratefully acknowledges support from STFC grant ST/M001229/1. J.C. was supported by the U.S. National Science Foundation under award no. 1009203. C.M. acknowledges the support from the Swiss National Science Foundation under grant BSSGI0_155816 “Planets In Time”. The research leading to these results has received funding from the European Union Seventh Framework Programme (FP7/2007-2013) under grant Agreement No. 313014 (ETA-EARTH).

References

- Alibert, Y., Mordasini, C., & Benz, W. 2004, *A&A*, 417, L25
 Alibert, Y., Mordasini, C., Benz, W., & Winisdoerffer, C. 2005, *A&A*, 434, 343
 Alibert, Y., Carron, F., Fortier, A., et al. 2013, *A&A*, 558, A109
 Apai, D., Janson, M., Moro-Martín, A., et al. 2008, *ApJ*, 672, 1196
 Baraffe, I., Chabrier, G., Barman, T. S., Allard, F., & Hauschildt, P. H. 2003, *A&A*, 402, 701
 Baruteau, C., & Masset, F. 2013, in *Lect. Notes Phys.*, 861, eds. J. Souchay, S. Mathis, & T. Tokieda (Berlin: Springer Verlag), 201
 Baruteau, C., Meru, F., & Paardekooper, S.-J. 2011, *MNRAS*, 416, 1971
 Bell, C. P. M., Mamajek, E. E., & Naylor, T. 2015, *MNRAS*, 454, 593
 Benz, W., Ida, S., Alibert, Y., Lin, D., & Mordasini, C. 2014, in *Protostars and Planets VI* (University of Arizona Press), 691
 Beuzit, J.-L., Feldt, M., Dohlen, K., et al. 2008, in *Ground-based and Airborne Instrumentation for Astronomy II*, Proc. SPIE, 7014, 701418
 Biazzo, K., D’Orazi, V., Desidera, S., et al. 2012, *MNRAS*, 427, 2905
 Biller, B. A., Close, L. M., Masciadri, E., et al. 2007, *ApJS*, 173, 143
 Biller, B. A., Liu, M. C., Wahhaj, Z., et al. 2010, *ApJ*, 720, L82
 Biller, B. A., Liu, M. C., Wahhaj, Z., et al. 2013, *ApJ*, 777, 160
 Bitsch, B., Lambrechts, M., & Johansen, A. 2015, *A&A*, 582, A112
 Boffin, H. M. J., Watkins, S. J., Bhattal, A. S., Francis, N., & Whitworth, A. P. 1998, *MNRAS*, 300, 1189
 Bonavita, M., Chauvin, G., Desidera, S., et al. 2012, *A&A*, 537, A67
 Bonavita, M., de Mooij, E. J. W., & Jayawardhana, R. 2013, *PASP*, 125, 849
 Bonavita, M., Desidera, S., Thalmann, C., et al. 2016, *A&A*, 593, A38
 Bonnefoy, M., Chauvin, G., Rojo, P., et al. 2010, *A&A*, 512, A52
 Bonnefoy, M., Boccaletti, A., Lagrange, A.-M., et al. 2013, *A&A*, 555, A107
 Boss, A. P. 1998, *ApJ*, 503, 923
 Bowler, B. P. 2016, *PASP*, 128, 102001
 Brandt, T. D., Kuzuhara, M., McElwain, M. W., et al. 2014, *ApJ*, 786, 1
 Chambers, J. E., & Wetherill, G. W. 1998, *Icarus*, 136, 304
 Chambers, J. E., Wetherill, G. W., & Boss, A. P. 1996, *Icarus*, 119, 261
 Chatterjee, S., Ford, E. B., Matsumura, S., & Rasio, F. A. 2008, *ApJ*, 686, 580
 Chauvin, G., Lagrange, A.-M., Lacombe, F., et al. 2005a, *A&A*, 430, 1027
 Chauvin, G., Lagrange, A.-M., Zuckerman, B., et al. 2005b, *A&A*, 438, L29
 Chauvin, G., Lagrange, A.-M., Bonavita, M., et al. 2010, *A&A*, 509, A52
 Chauvin, G., Vigan, A., Bonnefoy, M., et al. 2015, *A&A*, 573, A127
 Choquet, É., Pueyo, L., Hagan, J. B., et al. 2014a, in *Space Telescopes and Instrumentation 2014: Optical, Infrared, and Millimeter Wave*, Proc. SPIE, 9143, 914357

- Choquet, É., Vigan, A., Soummer, R., et al. 2014b, in *Ground-based and Airborne Instrumentation for Astronomy V*, Proc. SPIE, 9147, 914751
- Dawson, R. I., & Murray-Clay, R. A. 2013, *ApJ*, **767**, L24
- Desidera, S., Covino, E., Messina, S., et al. 2015, *A&A*, **573**, A126
- D’Orazi, V., Randich, S., Flaccomio, E., et al. 2009, *A&A*, **501**, 973
- Dupuy, T. J., & Liu, M. C. 2011, *ApJ*, **733**, 122
- Durkan, S., Janson, M., & Carson, J. C. 2016, *ApJ*, **824**, 58
- Faber, J. A., Rasio, F. A., & Willems, B. 2005, *Icarus*, **175**, 248
- Forgan, D., & Rice, K. 2009, *MNRAS*, **400**, 2022
- Forgan, D., & Rice, K. 2011, *MNRAS*, **417**, 1928
- Forgan, D., & Rice, K. 2013, *MNRAS*, **432**, 3168
- Forgan, D., Parker, R. J., & Rice, K. 2015, *MNRAS*, **447**, 836
- Fortney, J. J., Marley, M. S., Saumon, D., & Lodders, K. 2008, *ApJ*, **683**, 1104
- Fu, W., Lubow, S. H., & Martin, R. G. 2017, *ApJ*, **835**, L29
- Fusco, T., Rousset, G., Sauvage, J.-F., et al. 2006, *Optics Express*, **14**, 7515
- Galicher, R., Marois, C., Macintosh, B., et al. 2016, *A&A*, **594**, A63
- Gammie, C. F. 2001, *ApJ*, **553**, 174
- Guyon, O., Martinache, F., Garrel, V., et al. 2010, in *Adaptive Optics Systems II*, Proc. SPIE, 7736, 773624
- Hall, C., Forgan, D., & Rice, K. 2017, *MNRAS*, submitted
- Heinze, A. N., Hinz, P. M., Sivanandam, S., et al. 2010, *ApJ*, **714**, 1551
- Helled, R., Podolak, M., & Kovetz, A. 2006, *Icarus*, **185**, 64
- Hogg, D. W., Myers, A. D., & Bovy, J. 2010, *ApJ*, **725**, 2166
- Hopkins, P. F. 2013, *MNRAS*, **430**, 1653
- Ida, S., & Lin, D. N. C. 2004, *ApJ*, **604**, 388
- Ida, S., Lin, D. N. C., & Nagasawa, M. 2013, *ApJ*, **775**, 42
- Janson, M., Bonavita, M., Klahr, H., et al. 2011, *ApJ*, **736**, 89
- Janson, M., Bonavita, M., Klahr, H., & Lafrenière, D. 2012, *ApJ*, **745**, 4
- Kasper, M., Apai, D., Janson, M., & Brandner, W. 2007, *A&A*, **472**, 321
- Kennedy, G. M., & Kenyon, S. J. 2008, *ApJ*, **673**, 502
- Kley, W., & Nelson, R. P. 2012, *ARA&A*, **50**, 211
- Kokubo, E., & Ida, S. 1998, *Icarus*, **131**, 171
- Kratter, K. M., & Murray-Clay, R. A. 2011, *ApJ*, **740**, 1
- Kuiper, G. P. 1951, in *50th Anniversary of the Yerkes Observatory and Half a Century of Progress in Astrophysics*, ed. J. A. Hynek (New York: McGraw-Hill), 357
- Lafrenière, D., Doyon, R., Marois, C., et al. 2007, *ApJ*, **670**, 1367
- Lambrechts, M., & Johansen, A. 2012, *A&A*, **544**, A32
- Levison, H. F., & Stewart, G. R. 2001, *Icarus*, **153**, 224
- Levison, H. F., Kretke, K. A., & Duncan, M. J. 2015, *Nature*, **524**, 322
- Lodato, G., Meru, F., Clarke, C. J., & Rice, W. K. M. 2007, *MNRAS*, **374**, 590
- Lowrance, P. J., Becklin, E. E., Schneider, G., et al. 2005, *AJ*, **130**, 1845
- Macintosh, B., Graham, J. R., Ingraham, P., et al. 2014, *Proc. Nat. Acad. Sci.*, **111**, 12661
- Macintosh, B., Graham, J. R., Barman, T., et al. 2015, *Science*, **350**, 64
- Maire, A.-L., Bonnefoy, M., Ginski, C., et al. 2016, *A&A*, **587**, A56
- Malik, M., Meru, F., Mayer, L., & Meyer, M. 2015, *ApJ*, **802**, 56
- Malo, L., Doyon, R., Lafrenière, D., et al. 2013, *ApJ*, **762**, 88
- Marois, C., Lafrenière, D., Macintosh, B., & Doyon, R. 2008, *ApJ*, **673**, 647
- Masciadri, E., Mundt, R., Henning, T., Alvarez, C., & Barrado y Navascués, D. 2005, *ApJ*, **625**, 1004
- Maury, A. J., André, P., Hennebelle, P., et al. 2010, *A&A*, **512**, A40
- Mawet, D., Milli, J., Wahhaj, Z., et al. 2014, *ApJ*, **792**, 97
- Meru, F., & Bate, M. R. 2011, *MNRAS*, **411**, L1
- Mizuno, H. 1980, *Prog. Theor. Phys.*, **64**, 544
- Mordasini, C. 2013, *A&A*, **558**, A113
- Mordasini, C., Alibert, Y., Benz, W., & Naef, D. 2009, *A&A*, **501**, 1161
- Nayakshin, S. 2010a, *MNRAS*, **408**, L36
- Nayakshin, S. 2010b, *MNRAS*, **408**, 2381
- Nayakshin, S. 2011, *MNRAS*, **413**, 1462
- Nayakshin, S. 2016, *MNRAS*, **461**, 3194
- Nayakshin, S. 2017, *PASA*, **34**, e002
- Owen, J. E., Ercolano, B., & Clarke, C. J. 2011, *MNRAS*, **412**, 13
- Paardekooper, S.-J. 2012, *MNRAS*, **421**, 3286
- Pollack, J. B., Hubickyj, O., Bodenheimer, P., et al. 1996, *Icarus*, **124**, 62
- Potter, D., Martín, E. L., Cushing, M. C., et al. 2002, *ApJ*, **567**, L133
- Rameau, J., Chauvin, G., Lagrange, A.-M., et al. 2013, *A&A*, **553**, A60
- Rameau, J., Chauvin, G., Lagrange, A.-M., et al. 2015, *A&A*, **581**, A80
- Reggiani, M., Meyer, M. R., Chauvin, G., et al. 2016, *A&A*, **586**, A147
- Rice, K., Lopez, E., Forgan, D., & Biller, B. 2015, *MNRAS*, **454**, 1940
- Rice, W. K. M., & Armitage, P. J. 2009, *MNRAS*, **396**, 2228
- Rice, W. K. M., Armitage, P. J., Bate, M. R., & Bonnell, I. A. 2003, *MNRAS*, **339**, 1025
- Rice, W. K. M., Forgan, D. H., & Armitage, P. J. 2012, *MNRAS*, **420**, 1640
- Rice, W. K. M., Paardekooper, S.-J., Forgan, D. H., & Armitage, P. J. 2014, *MNRAS*, **438**, 1593
- Safronov, V. S. 1972, *Evolution of the protoplanetary cloud and formation of the earth and planets*, Translated from Russian. Jerusalem (Israel): Israel Program for Scientific Translations (Keter Publishing House)
- Santos, N. C., Melo, C., James, D. J., et al. 2008, *A&A*, **480**, 889
- Soummer, R., Perrin, M. D., Pueyo, L., et al. 2014, *ApJ*, **786**, L23
- Spiegel, D. S., & Burrows, A. 2012, *ApJ*, **745**, 174
- Stamatellos, D., & Whitworth, A. P. 2009a, *MNRAS*, **392**, 413
- Stamatellos, D., & Whitworth, A. P. 2009b, *MNRAS*, **400**, 1563
- Thies, I., Kroupa, P., Goodwin, S. P., Stamatellos, D., & Whitworth, A. P. 2010, *ApJ*, **717**, 577
- Toomre, A. 1964, *ApJ*, **139**, 1217
- Veras, D., Crepp, J. R., & Ford, E. B. 2009, *ApJ*, **696**, 1600
- Vigan, A., Patience, J., Marois, C., et al. 2012, *A&A*, **544**, A9
- Vigan, A., Gry, C., Salter, G., et al. 2015, *MNRAS*, **454**, 129
- Vorobyov, E. I. 2013, *A&A*, **552**, A129
- Wagner, K., Apai, D., Kasper, M., et al. 2016, *Science*, **353**, 673
- Wahhaj, Z., Liu, M. C., Biller, B. A., et al. 2013a, *ApJ*, **779**, 80
- Wahhaj, Z., Liu, M. C., Nielsen, E. L., et al. 2013b, *ApJ*, **773**, 179
- Wetherill, G. W. 1990, *Annual Rev. Earth Planet. Sci.*, **18**, 205
- Young, M. D., & Clarke, C. J. 2016, *MNRAS*, **455**, 1438
- Zhu, Z., Hartmann, L., Nelson, R. P., & Gammie, C. F. 2012, *ApJ*, **746**, 110
- Zurlo, A., Vigan, A., Hagelberg, J., et al. 2013, *A&A*, **554**, A21

Appendix A: Full sample

The names and properties of the targets considered in the full NaCo-LP sample are detailed in Table A.1. Different properties of the sample are plotted in Fig. 1.

Table A.1. Full NaCo-LP sample (observed + archive).

Target	α (J2000.0)	δ (J2000.0)	SpT	Survey ^a	MG ^b	Age (Myr)	Age min (Myr)	Age max (Myr)	Distance (pc)	Fe/H	Mass (M_{\odot})
HIP 490	00 05 52.50	-41 45 11.00	G0V	L05	Tuc/Hor	45	35	50	39.4	-0.06	1.1
HIP 544	00 06 36.78	+29 01 17.41	K0V	L07, H10, R13, B14	Hery/Lyr	250	200	300	13.7	0.00	1.0
HIP 560	00 06 50.10	-23 06 27.00	F3V	S06, B13	Beta Pic	24	19	29	39.4	-0.13	1.4
HIP 682	00 08 25.75	+06 37 00.50	G2V	R13		200	120	350	39.1	0.11	1.1
HIP 919	00 11 22.44	+30 26 58.47	K0V	L07	Car?	250	200	300	34.2	0.20	1.0
HIP 1113	00 13 53.00	-74 41 18.00	G8V	K07, C10, S06	Tuc/Hor	45	35	50	44.4	-0.06	0.9
HIP 1134	00 14 10.25	-07 11 56.85	F5	S06, R13, B14	Col	42	35	50	47.1	-0.05	1.2
PW And	00 18 20.89	+30 57 22.23	K2V	L05, L07, H10	AB Dor	149	100	180	29.0	-0.01	0.8
HIP 1481	00 18 26.10	-63 28 39.00	F8V	K07, B07, C10, S06, B13	Tuc/Hor	45	35	50	41.5	-0.06	1.2
HIP 2729	00 34 51.20	-61 54 58.00	K4Ve	M05, K07, S06, B13	Tuc/Hor	45	35	50	43.9	-0.06	0.9
QT And	00 41 17.34	+34 25 16.85	K7Ve	L05		80	50	150	46.9	...	0.8
TYC 9351-1110-1	00 42 20.30	-77 47 40.00	K3Ve	C10	Tuc/Hor	45	35	50	49.4	-0.06	0.8
HIP 3589	00 45 50.89	+54 58 40.18	F8V	S06, B14	AB Dor	149	100	180	52.5	-0.01	1.2
HIP 4907	01 02 57.22	+69 13 37.42	G5	L07		800	500	1200	25.5	-0.14	0.9
HIP 5191	01 06 26.15	-14 17 47.11	K1V	C10, S06, B13	AB Dor	149	100	180	47.3	-0.01	0.8
HIP 6276	01 20 32.27	-11 28 03.74	G9V	S06, R13	AB Dor	149	100	180	34.4	-0.01	0.9
HIP 6485	01 23 21.30	-57 28 51.00	G7V	B07, C10, S06	Tuc/Hor	45	35	50	49.5	-0.06	1.0
HIP 6856	01 28 08.70	-52 38 19.00	K1V	B07, C10, S06	Tuc/Hor	45	35	50	36.0	-0.06	0.8
HIP 7235	01 33 15.81	-24 10 40.66	K0V	L07		1300	1000	1600	19.1	-0.08	0.9
TYC 1752-0063-1	01 37 23.23	+26 57 12.09	K5Ve	B14	AB Dor?	149	100	180	60.7	-0.01	0.7
HIP 7576	01 37 35.47	-06 45 37.52	G5	L07, R13	Hery/Lyr	250	200	300	24.0	0.00	0.8
HIP 7805	01 40 24.07	-60 59 56.63	F2IV/V	C10, R13	LA?	200	30	1500	67.2	-0.18	1.3
HIP 7978	01 42 29.32	-53 44 27.00	F9	R13		1500	700	2500	17.4	0.00	1.1
HIP 8102	01 44 04.08	-15 56 14.93	G8V	H10		8000	7000	10000	3.7	-0.52	0.8
TYC 8047-0232-1	01 52 14.60	-52 19 33.00	K2V(e)	C10	Tuc/Hor	42	35	50	80.3	-0.05	0.8
TYC 8489-1155-1	02 07 32.20	-59 40 21.00	K5Ve	S06	Tuc/Hor	45	35	50	44.2	-0.06	0.7
HIP 10679	02 17 24.75	+28 44 30.44	G2V	S06, B14, B13	Beta Pic	24	19	29	32.8	-0.13	1.0
HIP 10680	02 17 25.29	+28 44 42.16	F5V	S06	Beta Pic	24	19	29	32.8	-0.13	1.1
HIP 11360	02 26 16.20	+06 17 33.00	F2	C15, V12, R13, B13	Tuc/Hor	45	35	50	45.2	...	1.4
HIP 11437	02 27 29.25	+30 58 24.61	K8	S06, B14	Beta Pic	24	19	29	40.0	-0.13	0.8
CD-53 544	02 41 46.83	-52 59 52.36	K6V	B13	Tuc/Hor	45	35	50	42.0	...	0.6
HIP 12926	02 46 15.21	+25 38 59.64	K1IV	L07		4300	2000	7000	25.9	-0.10	0.9
HIP 13402	02 52 32.13	-12 46 10.97	K1V	L05, M05, B07, L07, H10		1500	70	300	10.4	0.06	0.9
TYC 8862-0019-1	02 58 04.00	-62 41 14.00	K3Ve	C10	Car?	45	10	55	93.3	-0.07	0.8
HIP 14150	03 02 26.03	+26 36 33.26	G8V	L07		4400	2000	8000	20.6	0.09	1.0
HIP 14684	03 09 42.29	-09 34 46.59	G0	B13, C15	AB Dor	149	100	180	37.4	-0.01	0.9
HIP 15323	03 17 40.05	+31 07 37.37	G0	L07		400	250	650	26.7	0.08	1.2
2E 759	03 20 49.50	-19 16 10.00	K7V	L07		100	40	150	41.7	...	0.7
TYC 8060-1673-1	03 30 49.10	-45 55 57.00	K3V	C15	Tuc/Hor	45	35	50	40.4	-0.06	0.8

Notes. ^(a) M05: Masciadri et al. (2005), L05: Lowrance et al. (2005), S06: Song et al. (unpublished), K07: Kasper et al. (2007), B07: Biller et al. (2007), L07: Lafrenière et al. (2007), C10: Chauvin et al. (2010), H10: Heinze et al. (2010), V12: Vigan et al. (2012), R13: Rameau et al. (2013), B13: Biller et al. (2013), B14: Brandt et al. (2014), C15: Chauvin et al. (2015). ^(b) AB Dor: AB Doradus, Arg: Argus, Beta Pic: Beta Pictoris, Car: Carina, Cas: Castor, Col: Columba, Hery/Lyr: Hercules/Lyrae, LA: Local association, LCC: Lower Centaurus Crux, Tuc/Hor: Tucana/Horologium, UCL: Upper Centaurus Lupus, UMa: Ursa Major, US: Upper Scorpion.

Table A.1. continued.

Target	α (J2000.0)	δ (J2000.0)	SpT	Survey ^d	MG ^b	Age (Myr)	Age min (Myr)	Age max (Myr)	Distance (pc)	Fe/H	Mass (M_{\odot})
HIP 16537	03 32 55.84	-09 27 29.74	K2V	B07, L07, H10		600	400	800	3.2	-0.11	0.8
HIP 16563	03 33 13.49	+46 15 26.54	G5	B07, S06	AB Dor	149	100	180	34.4	-0.01	1.0
HD 25284	04 00 03.78	-29 02 16.40	K6V	C10, S06	Tuc/Hor	45	35	50	49.3	...	0.8
TYC 5882-1169-1	04 02 16.50	-15 21 30.00	K3/4	S06	Col	42	35	50	53.2	-0.05	0.8
HIP 18859	04 02 36.74	+00 16 08.12	F5V	S06, L07, H10, B13	AB Dor	149	100	180	18.8	-0.01	1.2
HIP 19335	04 08 36.62	+38 02 23.05	F7V	S06		300	200	500	21.0	0.06	1.3
HIP 19775	04 14 22.60	-38 19 02.00	G3V	C15	Col	42	35	50	80.5	-0.05	1.1
HIP 21632	04 38 43.90	-27 02 02.00	G3V	S06	Tuc/Hor	45	35	50	56.2	-0.06	1.0
HIP 21818	04 41 18.86	+20 54 05.44	K3V	L05, B07	UMa?	120	50	200	13.2	0.01	0.7
HIP 22152	04 46 00.58	+76 36 39.76	F7V	S06		250	125	400	32.3	-0.14	1.2
HIP 22226	04 46 49.50	-26 18 00.00	F3V	V12, R13	Col	42	35	50	80.3	-0.05	1.4
HIP 22295	04 48 05.18	-80 46 45.30	F7V	R13	Tuc/Hor	45	35	50	61.0	-0.06	1.2
HIP 22449	04 49 50.41	+06 57 40.59	F6V	L07		1200	500	2000	8.1	0.00	1.3
HIP 22844	04 54 53.04	-58 32 51.55	F3V	S06		250	100	800	30.4	-0.13	1.3
HIP 23316	05 00 51.90	-41 01 07.00	G5V	C15	Col	42	35	50	76.3	-0.05	1.0
HD 32981	05 06 27.70	-15 49 30.00	F8V	C15	AB Dor	149	100	180	86.7	-0.01	1.1
BD -09 1108	05 15 36.50	-09 30 51.00	G5	C15		45	35	50	93.6	-0.06	1.0
HIP 24947	05 20 38.00	-39 45 18.00	F6V	S06, B13	Tuc/Hor	42	35	50	48.3	-0.05	1.3
HIP 25283	05 24 30.17	-38 58 10.76	K6V	S06, C10, B13	AB Dor	149	100	180	18.0	-0.01	0.7
HIP 25434	05 26 22.98	-43 22 36.38	G0	C15	Col	42	35	50	79.1	...	1.2
TYC 9162-0698-1	05 29 27.10	-68 52 05.00	G6V	C15	Col?	42	35	50	98.7	...	1.1
HD 36869	05 34 09.16	-15 17 03.18	G2V	B14	Col	42	35	50	57.7	-0.05	1.0
HIP 26369	05 36 55.07	-47 57 47.99	K6Ve	S06, C10, B13	AB Dor	149	100	180	25.1	-0.01	0.7
HIP 26373	05 36 56.85	-47 57 52.87	K0V	B07, C10, S06, B13	AB Dor	149	100	180	25.1	-0.01	0.9
HIP 26453	05 37 39.63	-28 37 34.66	F3V	L05, R13	Col	42	35	50	56.8	-0.05	1.4
TYC 5346-132-1	05 38 35.00	-08 56 04.00	G7	C15	Col	42	35	50	81.2	-0.05	1.0
HIP 26779	05 41 20.34	+53 28 51.81	K1V	H10		600	400	800	12.3	0.16	0.9
HIP 26990	05 43 35.81	-39 55 24.72	G0V	S06	Col	42	35	50	55.4	-0.05	1.1
HIP 27072	05 44 27.79	-22 26 54.18	F7V	H10	UMa	450	380	550	8.9	-0.03	1.3
HIP 29067	06 07 55.25	+67 58 36.55	K8V	B14	Cas	400	200	1000	24.5	0.00	0.7
HIP 29964	06 18 28.20	-72 02 41.00	K4Ve	M05, B07, K07, B13	Beta Pic	24	19	29	38.6	-0.13	0.8
HIP 30030	06 19 08.10	-03 26 20.00	G0	B07, S06, R13, B14	Tuc/Hor	45	35	50	49.2	-0.06	1.1
HIP 30034	06 19 12.90	-58 03 16.00	K1V(e)	B07, C10, R13, B13	Car	45	35	55	46.1	-0.07	0.9
HIP 30261	06 21 57.30	-34 30 44.00	G6V	C15		120	70	200	61.8	...	1.0
HIP 30314	06 22 30.94	-60 13 07.15	G1V	B07, C10, R13, S06	AB Dor	149	100	180	23.8	-0.01	1.1
TYC 7617-0549-1	06 26 06.90	-41 02 54.00	K0V	C15	Col	42	35	50	77.8	-0.05	0.9
HIP 32235	06 43 46.20	-71 58 35.00	G6V	C15	CAR	45	35	55	58.2	-0.07	1.0
TYC 1355-214-1	07 23 43.60	+20 24 59.00	K3	L05, H10, B14	AB Dor	149	100	180	28.3	-0.01	0.7
TYC 8128-1946-1	07 28 22.00	-49 08 38.00	G8V	C15	Arg	50	40	70	89.7	-0.03	0.9
HIP 36948	07 35 47.46	-32 12 14.04	G3/G5V	C15	Arg	50	40	70	35.3	-0.03	1.0
HIP 37349	07 39 59.33	-03 35 51.03	K2V	H10		500	250	700	14.2	0.07	0.8
HIP 37563	07 42 36.06	-59 17 50.80	G3V	C15	Car-Near	250	200	300	32.8	0.08	1.1

Table A.1. continued.

Target	α (J2000.0)	δ (J2000.0)	SpT	Survey ^a	MG ^b	Age (Myr)	Age min (Myr)	Age max (Myr)	Distance (pc)	Fe/H	Mass (M_{\odot})
HIP 37923	07 46 16.97	-59 48 34.20	K0V	C15	Car-Near	250	200	300	36.8	0.08	1.0
HIP 40774	08 19 19.05	+01 20 19.91	G5	B14	Car-Near?	300	200	500	22.9	-0.22	0.8
BD +02 1951	08 22 49.95	+01 51 33.55	G6V	L05	Her/Lyr	250	200	300	62.4	0.00	1.1
HIP 41889	08 32 30.53	+15 49 26.19	K5V	S06		150	50	200	34.2	...	0.7
HIP 42438	08 39 11.70	+65 01 15.26	G1.5Vb	L05, B07, L07, H10	UMa	450	380	550	14.4	-0.03	1.0
HIP 43410	08 50 32.22	+33 17 06.19	F7Vn	L07		300	200	450	28.4	0.05	1.3
HIP 44526	09 04 20.69	-15 54 51.40	K2V	B14	Cas	350	200	500	28.3	0.00	0.8
HD 78141	09 07 18.08	+22 52 21.57	K0	L07, H10		180	120	300	24.1	...	0.8
HIP 46580	09 29 54.82	+05 39 18.48	K3V	H10		600	400	800	12.9	-0.04	0.8
HIP 46634	09 30 35.00	+10 35 59.83	G5	C15		350	150	600	42.3	-0.01	0.9
HIP 46843	09 32 43.76	+26 59 18.71	K0	L05, B07, L07, H10, B13, B14		250	100	300	17.8	-0.03	0.9
HIP 47646	09 42 50.81	-22 57 55.77	F5V	C15	Her/Lyr?	1150	100	4000	73.6	0.04	1.3
TWA 21	10 13 14.80	-52 30 54.00	K3Ve	C15		17	8	50	54.8	...	1.0
HIP 50660	10 20 45.92	+32 23 54.31	K0V	B14		1300	700	3000	47.1	...	0.9
TYC 6069-1214-1	10 27 37.30	-20 27 11.00	K0V	C15		100	45	150	67.8	...	0.9
HIP 51386	10 29 42.23	+01 29 28.02	F5	L07, C10, S06		170	100	350	31.5	0.03	1.2
TYC 7722-0207-1	10 32 43.90	-44 40 56.00	K0V	C15		130	70	200	65.8	...	0.9
HIP 51931	10 36 30.79	-13 50 35.82	K2V	L07		750	500	1000	32.2	-0.09	0.8
HIP 52462	10 43 28.27	-29 03 51.43	K1V	B07, L07, B13		170	100	300	21.4	0.03	0.9
HIP 52787	10 47 31.16	-22 20 52.93	K0V	L07		250	100	400	34.5	-0.11	0.9
HIP 53486	10 56 30.80	+07 23 18.60	K0	B14	Cas	500	300	700	17.3	0.00	0.9
HIP 54155	11 04 41.47	-04 13 15.92	G5	L07, H10, B14	Her/Lyr?	250	200	400	26.3	-0.01	0.9
HIP 54745	11 12 32.35	+35 48 50.69	G0V	L07, B07		500	300	750	21.9	0.08	1.1
HIP 56445	11 34 21.95	+03 03 36.60	F5V	S06		900	600	1500	27.2	-0.01	1.3
HIP 57370	11 45 42.29	+02 49 17.34	K0	L07		1000	600	1500	29.6	0.05	0.9
TWA 19A	11 47 24.54	-49 53 03.00	G4V	C10	LCC	16	10	22	91.7	-0.06	1.2
HIP 58240	11 56 42.31	-32 16 05.40	G3V	C15	Car-Near	250	200	300	31.8	0.08	1.0
HIP 59280	12 09 37.26	+40 15 07.40	K0V	L07, B14		1300	1000	1600	24.5	0.14	1.0
HIP 60074	12 19 06.50	+16 32 53.87	G2V	L07		200	120	300	27.5	-0.05	1.1
TYC 8238-1462-1	12 21 55.70	-49 46 12.00	G9V	C10	LCC?	16	10	50	73.5	...	0.9
TYC 8979-1683-1	12 28 25.40	-63 20 59.00	G7V	C15	LCC?	16	6	30	75.6	...	1.2
HD 108767B	12 29 50.91	-16 31 14.99	K0V	L07		180	100	350	26.6	-0.01	0.8
HIP 61174	12 32 04.23	-16 11 45.63	F2V	L07		1300	900	1800	18.3	-0.02	1.4
TYC 8992-0605-1	12 36 39.00	-63 44 43.00	K2V	C10	LCC?	10	5	20	60.6	...	1.0
BD +60 1417	12 43 33.27	+60 00 52.66	K0	L07, H10		200	100	350	48.8	...	0.9
HIP 62523	12 48 47.05	+24 50 24.81	G7V	L07		1100	700	1700	16.9	0.06	1.0
TYC 9245-0617-1	12 58 25.60	-70 28 49.00	K0Ve	C15	Cha	10	4	20	93.0	0.01	1.2
HIP 63317	12 58 31.97	+38 16 43.55	G5V	B14		250	150	450	44.2	...	1.0
HIP 63862	13 05 16.81	-50 51 23.82	G5V	C15		180	120	250	49.0	...	1.1
HIP 64408	13 12 03.20	-37 48 11.00	G3V	B07		4400	3300	5400	20.7	0.19	1.3
HIP 64797	13 16 51.05	+17 01 01.86	K2V	H10		1000	500	1500	11.1	-0.22	0.8
HIP 65515	13 25 45.53	+56 58 13.78	G9IV-V	L07	LA?	350	250	500	21.6	0.08	0.9

Table A.1. continued.

Target	α (J2000.0)	δ (J2000.0)	SpT	Survey ^a	MG ^b	Age (Myr)	Age min (Myr)	Age max (Myr)	Distance (pc)	Fe/H	Mass (M_{\odot})
TYC 3460-0416-1	13 27 12.11	+45 58 26.36	K7	B14	AB Dor?	149	100	200	70.2	-0.01	0.7
TYC 7796-2110-1	13 34 31.90	-42 09 31.00	K2IVe	C15	LCC?	17	6	60	92.1	...	0.9
HIP 66252	13 34 43.21	-08 20 31.33	K7V	L05, L07, B14		150	100	200	20.2	-0.17	0.7
HIP 67412	13 48 58.19	-01 35 34.64	K0	B14		1300	800	2500	37.7	0.03	0.9
HIP 69357	14 11 46.17	-12 36 42.36	K1V	L07		1500	500	2000	21.6	-0.17	0.8
HIP 69713B	14 16 12.18	+51 22 34.56	K1V	L07		400	250	550	29.1	...	0.9
HIP 71395	14 36 00.56	+09 44 47.47	K0	K07, B07, H10	UMa?	450	350	550	16.5	0.01	0.8
SAO 252852	14 42 28.61	-64 58 41.40	K5V	M05		980	800	1160	16.6	-0.12	0.7
HIP 71933	14 42 43.60	-48 47 59.00	F8V	C15	UCL?	17	6	100	83.9	...	1.3
HIP 72146	14 45 24.18	+13 50 46.73	K0	L07		3500	2000	6000	18.9	-0.24	0.7
HIP 72339	14 47 32.73	+00 16 53.31	K0III	L07		3500	1500	6000	31.8	-0.02	0.9
HIP 72567	14 50 15.81	+23 54 42.64	G2V	L07, H10		550	400	800	18.2	0.00	1.1
HIP 73996	15 07 18.07	+24 52 09.10	F5V	B14		1000	400	1700	19.6	0.05	1.3
HIP 74405	15 12 23.40	-75 15 16.00	G9V	C10	Arg	50	40	70	50.3	-0.03	0.9
HIP 75829	15 29 23.59	+80 27 00.96	G5	L07, H10	Her/Lyr?	250	150	350	21.5	0.09	0.9
HIP 76829	15 41 11.38	-44 39 40.34	F5IV-V	B13, C15	Her/Lyr	250	200	1000	17.4	0.00	1.4
TYC 6781-0415-1	15 41 31.20	-25 20 36.00	G9IVe	C15	US?	11	4	15	106.0	...	1.6
HIP 77199	15 45 47.60	-30 20 55.74	K2V	B07, S06		12	6	20	40.4	...	0.9
HIP 77408	15 48 09.46	+01 34 18.26	G8V	L07		550	300	1000	21.3	-0.06	0.9
TYC 7846-1538-1	15 53 27.30	-42 16 01.00	G2	C10, S06	UCL?	17	10	50	43.8	...	1.1
TYC 6209-0769-1	16 14 13.80	-19 39 36.00	K0IV	C15		120	50	200	43.9	...	0.8
HIP 80758	16 29 20.20	-30 57 40.00	G9V(e)	C15		20	10	50	98.2	...	1.1
HIP 83988	17 10 10.51	+54 29 39.81	K0	H10	UMa?	450	380	700	19.9	-0.20	0.7
HIP 83996	17 10 12.36	+54 29 24.50	K8	H10	UMa?	450	380	700	19.9	-0.20	0.7
TYC 7362-0724-1	17 16 58.00	-31 09 04.00	G5V	C15		20	10	60	90.0	...	1.0
BD-13 4687	17 37 46.47	-13 14 46.64	K3	S06	AB Dor	149	100	180	26.2	-0.01	0.1
HIP 86672	17 42 30.40	-28 44 56.00	G5V	C15		40	20	80	78.0	...	1.1
HIP 87579	17 53 29.94	+21 19 31.04	K0	B14	Cas?	500	350	700	24.4	-0.22	0.8
HIP 87768	17 55 44.90	+18 30 01.41	K5V	B14		500	250	800	25.0	0.23	0.8
HIP 88399	18 03 03.40	-51 38 56.00	F6V	C10, S06, R13	Beta Pic	24	19	29	48.1	-0.13	1.3
HIP 88945	18 09 21.38	+29 57 06.16	G0	B07	Cas?	1000	100	2000	24.8	0.01	1.0
HIP 89829	18 19 52.20	-29 16 33.00	G5V	C15	Beta Pic	24	19	29	72.6	-0.13	1.2
HIP 91043	18 34 20.10	+18 41 24.23	G0V	B14		45	20	80	38.0	0.01	1.1
HIP 92680	18 53 05.90	-50 10 50.00	G9IV	M05, C10, S06, B13	Beta Pic	24	19	29	51.5	-0.13	1.2
HIP 93375	19 01 06.00	-28 42 50.00	G1V	C15	AB Dor	149	100	180	58.8	-0.01	1.1
HIP 95270	19 22 58.90	-54 32 17.00	F6V	C10, R13, B13	Beta Pic	24	19	29	51.8	-0.13	1.3
HIP 96334	19 35 09.72	-69 58 32.09	G3V	C10, S06		150	70	220	36.4	0.06	1.0
TYC 5736-0649-1	19 45 36.00	-14 27 54.00	G6V	C15		40	10	100	86.4	...	1.0
HIP 97438	19 48 15.45	+59 25 22.45	G0	L07	Cas?	450	250	700	27.7	0.08	1.2
HD 189285	19 59 24.10	-04 32 06.00	G5	C15	AB Dor	149	100	180	77.8	-0.01	1.0
HIP 98470	20 00 20.25	-33 42 12.43	F7V	C15	Her-Lyr?	150	100	300	21.2	...	1.2

Table A.1. continued.

Target	α (J2000.0)	δ (J2000.0)	SpT	Survey ^d	MG ^b	Age (Myr)	Age min (Myr)	Age max (Myr)	Distance (pc)	Fe/H	Mass (M_{\odot})
HIP 99273	20 09 05.22	-26 13 26.63	F5V	C15, V12, R13, B13	Beta Pic	24	19	29	52.2	-0.13	1.3
HIP 101262	20 31 32.07	+33 46 33.13	K5	L07		700	400	1500	26.9	0.19	0.8
HIP 102626	20 47 45.02	-36 35 40.83	K0V	L05, C10	Tuc?	45	10	100	52.2	...	1.0
HIP 104214	21 06 53.94	+38 44 57.89	K5V	B07, H10		6000	2000	7000	3.5	-0.23	0.7
HIP 104217	21 06 55.26	+38 44 31.40	K7V	H10		6000	2000	7000	3.5	-0.23	0.7
HIP 104225	21 06 56.39	+69 40 28.55	K0	L07		5000	3000	8000	32.9	-0.30	0.8
TYC 6351-0286-1	21 13 05.30	-17 29 13.00	K6Ve	B14	AB Dor	149	100	200	38.5	-0.01	0.7
HIP 105038	21 16 32.47	+09 23 37.77	K2	L07		1000	400	2500	16.4	-0.10	0.8
HIP 105388	21 20 50.00	-53 02 03.00	G7V	L05	Tuc/Hor	45	35	50	43.0	-0.06	0.9
HIP 105612	21 23 27.14	-75 29 37.75	G5V	C15		600	300	1300	32.8	...	1.0
HIP 106231	21 31 01.71	+23 20 07.37	K8	L05, L07	AB Dor	149	100	180	24.8	-0.01	0.7
HIP 107350	21 44 31.33	+14 46 18.98	G0V	L07, S06, B14	Her/Lyr?	300	200	1000	17.9	0.00	1.1
HIP 107649	21 48 15.75	-47 18 13.01	G2V	K07		2500	1500	5000	16.0	0.00	1.0
HIP 107947	21 52 09.70	-62 03 08.00	F6V	C10, S06, R13	Tuc/Hor	45	35	50	45.3	-0.06	1.2
HIP 108156	21 54 45.04	+32 19 42.85	K0	L07		2000	1000	4000	20.0	-0.08	0.8
HIP 108809	22 02 32.96	-32 08 01.49	F6/F7V	L05, R13	UMA?	450	350	550	30.1	-0.02	1.2
HIP 108870	22 03 21.70	-56 47 10.00	K5V	B07		2500	1500	4000	3.6	-0.20	0.7
V383 Lac	22 20 07.03	+49 30 11.76	K0	L07, H10, S06		80	40	160	35.4	0.28	0.9
HIP 110996	22 29 15.23	-30 01 06.27	K4V	B07		4000	2000	8000	16.1	0.08	0.8
HIP 111449	22 34 41.64	-20 42 29.56	F7V	L07, B14	Her/Lyr	250	200	1000	22.7	0.08	1.4
CP -72 2713	22 42 48.92	-71 42 21.26	K7V	B13	Beta Pic	24	19	29	36.0	...	0.6
TYC 8004-0083-1	22 46 33.50	-39 28 45.00	G5V	C15		150	80	200	74.9	...	1.0
HIP 113283	22 56 24.05	-31 33 56.00	K4V	L05, H10	Cas	440	400	480	7.6	0.00	0.7
HIP 113579	23 00 19.29	-26 09 13.50	G5V	C10, S06	AB Dor	149	100	180	30.8	-0.01	1.0
HIP 114530	23 11 52.05	-45 08 10.63	G8V	S06	AB Dor	149	100	180	49.4	-0.01	1.0
HD 219498	23 16 05.02	+22 10 34.82	G5	R13		270	150	400	62.1	...	1.0
HIP 115147	23 19 26.63	+79 00 12.67	G9V	L05, L07, H10		52	30	80	19.2	-0.03	0.8
HIP 115162	23 19 39.56	+42 15 09.82	G0	S06, B14	AB Dor	149	100	180	50.2	-0.01	1.0
FTYC 9338-2016-1	23 21 52.50	-69 42 12.00	G8V	C15		45	30	100	99.6	...	1.0
TYC 9529-0340-1	23 27 49.40	-86 13 19.00	G8IV	C15	Tuc/Hor	45	35	50	68.8	-0.06	1.0
TYC 9339-2158-1	23 31 00.80	-69 05 11.00	K3V	C15		350	200	500	30.6	...	0.8
TYC 6406-0180-1	23 33 06.10	-17 54 42.00	K0V	C15		250	150	4000	58.0	...	0.9
HIP 116431	23 35 36.15	+08 22 57.43	F0	V12, R13		150	50	2000	68.4	-0.09	1.4
HIP 116910	23 41 54.30	-35 58 40.00	G8V	C15	AB Dor	149	100	180	63.7	-0.01	1.0
HIP 118008	23 56 10.67	-39 03 08.40	K3V	B07, C10, S06	AB Dor	149	100	180	22.0	-0.01	0.8

Appendix B: Impact of stellar ages on the frequency estimation

The values of the probability density function of f in Tables 2 and 3 are provided for the best age estimates of the stars. In Tables B.1 and B.2 we also provide the values for the minimum and maximum stellar ages. The assumptions are the same as detailed in Sect. 6.1 and Sect. 6.2 respectively.

Table B.1. Fraction of stars that host a planetary system, assuming linear flat mass and semi-major axis distributions.

SMA (AU)	Mass (M_{Jup})	N_{det}^a	F_{best}^b (%)	$[F_{\text{min}}, F_{\text{max}}]^c$	
				CL = 68%	CL = 95%
Minimum age					
5–500	5–75	3	2.40	[1.70, 4.60]	[0.90, 6.80]
5–500	5–14	1	0.90	[0.70, 2.95]	[0.25, 5.00]
20–300	0.5–75	3	2.05	[1.45, 3.90]	[0.75, 5.80]
20–300	0.5–14	1	1.00	[0.70, 3.15]	[0.25, 5.35]
Best age					
5–500	5–75	3	2.45	[1.70, 4.70]	[0.90, 6.95]
5–500	5–14	1	1.00	[0.75, 3.30]	[0.25, 5.55]
20–300	0.5–75	3	2.10	[1.50, 4.05]	[0.80, 5.95]
20–300	0.5–14	1	1.15	[0.85, 3.65]	[0.30, 6.20]
Maximum age					
5–500	5–75	3	2.50	[1.75, 4.85]	[0.95, 7.15]
5–500	5–14	1	1.15	[0.85, 3.70]	[0.30, 6.20]
20–300	0.5–75	3	2.15	[1.55, 4.20]	[0.80, 6.20]
20–300	0.5–14	1	1.35	[0.95, 4.25]	[0.35, 7.20]

Notes. ^(a) Number of detections in the considered mass and semi-major axis (SMA) range. ^(b) Best value of the planet frequency compatible with the observations. ^(c) Minimum and maximum values of the frequency compatible with the results for a given confidence level (CL).

Table B.2. Fraction of stars that host a planetary system based on the GI populations described in Sect. 5.

Mass (M_{Jup})	Scattering	N_{det}^a	F_{best}^b (%)	$[F_{\text{min}}, F_{\text{max}}]^c$	
				CL = 68%	CL = 95%
Minimum age					
≤75	No	3	2.40	[1.70, 4.60]	[0.90 6.80]
≤14	No	1	1.25	[0.95, 4.10]	[0.35 6.90]
≤75	Yes	3	2.70	[1.90, 5.20]	[1.00 7.70]
≤14	Yes	1	1.50	[1.10, 4.90]	[0.40 8.25]
Best age					
≤75	No	3	2.65	[1.85, 5.10]	[1.00, 7.50]
≤14	No	1	1.60	[1.15, 5.20]	[0.40, 8.70]
≤75	Yes	3	3.00	[2.15, 5.85]	[1.10, 8.60]
≤14	Yes	1	1.95	[1.40, 6.20]	[0.50, 10.45]
Maximum age					
≤75	No	3	3.00	[2.10, 5.75]	[1.10 8.50]
≤14	No	1	2.05	[1.50, 6.60]	[0.50 11.10]
≤75	Yes	3	3.45	[2.40, 6.60]	[1.25 9.75]
≤14	Yes	1	2.45	[1.75, 7.95]	[0.60 13.30]

Notes. ^(a) Number of detections in the considered mass range. ^(b) Best value of the planet frequency compatible with the observations. ^(c) Minimum and maximum values of the frequency compatible with the results for a given confidence level (CL).