



Publication Year	2018
Acceptance in OA	2020-12-28T14:59:04Z
Title	M13 multiple stellar populations seen with the eyes of Strömgren photometry
Authors	Savino, A., MASSARI, DAVIDE, BRAGAGLIA, Angela, Dalessandro, Emanuele, Tolstoy, E.
Publisher's version (DOI)	10.1093/mnras/stx3093
Handle	http://hdl.handle.net/20.500.12386/29216
Journal	MONTHLY NOTICES OF THE ROYAL ASTRONOMICAL SOCIETY
Volume	474

M13 multiple stellar populations seen with the eyes of Strömgren photometry

A. Savino,^{1,2★} D. Massari,^{2,3} A. Bragaglia,⁴ E. Dalessandro⁴ and E. Tolstoy²

¹*Astrophysics Research Institute, Liverpool John Moores University, IC2, Liverpool Science Park, 146 Brownlow Hill, L3 5RF Liverpool, UK*

²*Kapteyn Astronomical Institute, University of Groningen, Postbus 800, NL-9700 AV Groningen, the Netherlands*

³*University of Leiden, Leiden Observatory, NL-2300 RA Leiden, the Netherlands*

⁴*INAF – Osservatorio Astronomico di Bologna, via Gobetti 93/3, I-40129 Bologna, Italy*

Accepted 2017 November 27. Received 2017 November 4; in original form 2017 July 14

ABSTRACT

We present a photometric study of M13 multiple stellar populations over a wide field of view, covering approximately 6.5 half-light radii, using archival Isaac Newton Telescope observations to build an accurate multiband Strömgren catalogue. The use of the Strömgren index c_y permits us to separate the multiple populations of M13 on the basis of their position on the red giant branch. The comparison with medium and high resolution spectroscopic analysis confirms the robustness of our selection criterion. To determine the radial distribution of stars in M13, we complemented our data set with *Hubble Space Telescope* observations of the cluster core, to compensate for the effect of incompleteness affecting the most crowded regions. From the analysis of the radial distributions, we do not find any significant evidence of spatial segregation. Some residuals may be present in the external regions where we observe only a small number of stars. This finding is compatible with the short dynamical time-scale of M13 and represents, to date, one of the few examples of fully spatially mixed multiple populations in a massive globular cluster.

Key words: techniques: photometric–Hertzsprung–Russell and colour–magnitude diagrams – stars: Population II – galaxies: star clusters: individual: NGC6205.

1 INTRODUCTION

Once thought to be the quintessential simple stellar populations (Renzini & Buzzoni 1986), globular clusters (GCs) have revealed a degree of complexity in their properties that is now challenging our understanding of these celestial objects.

Over the past few decades, a growing body of spectroscopic and photometric evidence has shown the presence of multiple stellar populations in nearly all the Galactic GCs (e.g. Carretta et al. 2010; Piotto et al. 2015), and also in those of nearby galaxies (e.g. Letarte et al. 2006; Mucciarelli et al. 2009; Larsen et al. 2014; Dalessandro et al. 2016). Such stellar populations are characterized by marked differences in the chemical abundance of light elemental species. A fraction of stars in GCs present a chemical abundance pattern that is compatible with that of halo stars of the same metallicity. This group of stars is called first, or primordial, population. However, a significant fraction of GC stars show enhancement or depletion of certain light elements (like C, N, O, Na, Mg, Al) in the form of very clear correlations and anticorrelations. These stars, even when belonging to several subgroups, are collectively known as the second,

or enriched, population. These light element abundance ‘anomalies’ appear to be linked to an enhancement of the helium content in the chemical mixture from which these stars originated (reviews for photometry and spectroscopy can be found in Piotto 2009; Gratton, Carretta & Bragaglia 2012).

Many theoretical models have been put forward to try to explain the multiple population phenomenon (e.g. Ventura et al. 2001; Decressin et al. 2007; de Mink et al. 2009; Bastian et al. 2013; Denissenkov & Hartwick 2014). Most of them require the material of second population stars to be first processed by a class of objects called polluters, which are capable of sustaining high temperature CNO cycle reactions. Multiple episodes of star formation are required by some of these scenarios. The precise nature of these polluters is scenario-dependent and it remains a matter of debate. Although each model is able to reproduce some of the GC observed properties, each one of them has its own specific limitations (e.g. Gratton et al. 2012; Bastian, Cabrera-Ziri & Salaris 2015; Renzini et al. 2015).

A crucial piece of information is thought to reside in the spatial distribution of multiple populations within a cluster. Differences in their radial distribution are expected for most scenarios where multiple star formation events are present. This prediction is complicated by the collisional nature of GCs. Over time, dynamical evolution

* E-mail: A.savino@rug.nl

naturally erases any difference in the initial conditions of the two populations. This effect is faster in the central regions of a cluster, where dynamical time-scales are shorter. However, it has been shown by means of numerical simulations (Vesperini et al. 2013) that GCs can retain some memory of their primordial configuration, in particular in the external regions.

An ideal data set to assess this problem would consist of chemical information for a large sample of stars over a wide field of view. Although modern multiobject spectrographs have substantially increased the number of spectra, the stellar samples for which we have high resolution elemental abundances are still too small to trace radial distributions in a reliable way.

Photometric studies, on the other hand, have the advantage to efficiently include a much higher number of stars, provided that there is a way to distinguish the different populations. Since the work of Marino et al. (2008) and Yong et al. (2008) it has become clear that appropriate combination of ultraviolet and optical photometric filters can reveal light element abundance spreads on the red giant branch (RGB). The most powerful tool to perform this kind of analysis is probably represented by the WFC3/UVIS camera because it offers a filter combination covering features of C, N, and O (the last not accessible from the ground – Milone et al. 2012), on board of the *Hubble Space Telescope* (hereafter *HST*). Unfortunately, the size of the *HST* field of view is small and rarely covers more than one half-light radius for nearby GCs. Fortunately, there are other filter combinations, involving the ultraviolet, which can be efficiently used, in particular narrow and medium-band filters (see, e.g. Lee 2017, for a thorough study of M5 using a very effective choice of photometric filters).

In this paper, we present the analysis of the multiple populations in the cluster NGC6205 (M13). M13 is a northern GC with a metallicity of $[Fe/H] \simeq -1.55$ dex (Snedden et al. 2004; Carretta et al. 2009) that exhibits strong light element variations (Snedden et al. 2004; Cohen & Meléndez 2005; Johnson & Pilachowski 2012). In addition, Dalessandro et al. (2013), by means of synthetic horizontal branch modelling, derived a helium spread of $\Delta Y \simeq 0.05$.

To study multiple populations of M13, we make use of Strömgren photometry, probing the cluster out to a distance of 6.5 half-light radii. The power of medium band Strömgren filters to identify GC multiple populations has been first recognized by Yong et al. (2008). As demonstrated by Carretta et al. (2011) and Massari et al. (2016), in this analysis, we exploit the efficiency of the c_y index in maximizing the effect of carbon and nitrogen abundance variations, to identify the cluster multiple populations and to investigate their spatial distribution. In Section 2, we describe the data set employed for this analysis, in Section 3, we present our final photometric catalogue, whereas Section 4 shows the multiple population identification and characterization. We discuss our results and conclusions in Section 5.

2 DATA REDUCTION

Our primary data set consists of archival images, acquired with the Isaac Newton Telescope-Wide Field Camera (INT-WFC). The INT-WFC has four chips, each covering a field of view of 12.1×23.1 arcmin², with a pixel scale of 0.33arcsec. The data for this analysis come only from chip four. Using a single chip prevents any problem related to relative calibration between different detectors, allowing for more precise photometry. This choice is possible as chip four covers most of the extent of M13 (~ 6.5 half-light radii),

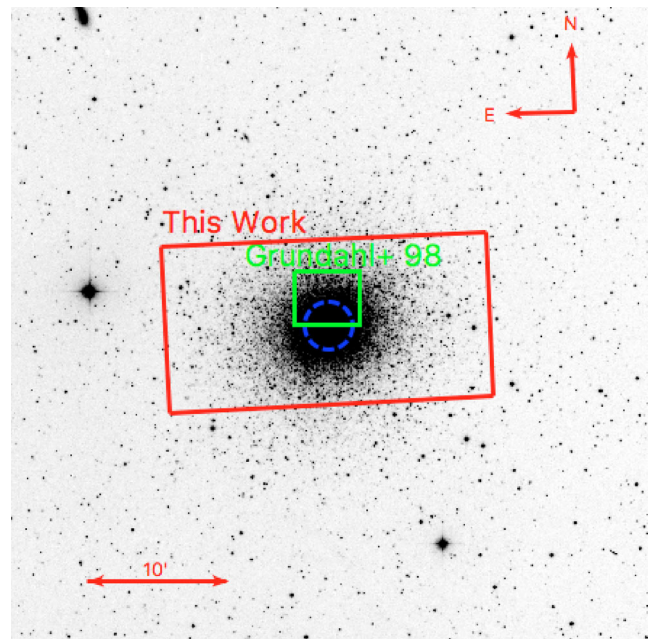


Figure 1. Archival image of M13 from Sloan Digital Sky Survey. The solid red box is the field of view of our data set for WFC chip four. The solid green box is the field of view of NOT observations from Grundahl et al. (1998). The dashed blue circle marks M13 half-light radius.

Table 1. Exposure times, number of frames, and average seeing of our data set.

Filter	t_{exp} (s)	n_{exp}	seeing (arcsec)
u	60	3	1.0
	120	4	1.2
v	45	2	1.1
	60	3	1.2
b	120	2	1.2
	30	2	1.2
y	60	3	1.1
	80	2	1.4
	30	2	1.2
y	60	3	1.1
	80	2	1.3

which is sufficient for our goal. The analysed field of view is shown in Fig. 1.

The images have been acquired using the Strömgren $uvby$ filters, and they come from different observational campaigns, covering different nights from 2004 June 19 to 2013 June 14. A summary of the employed exposures can be found in Table 1.

The image pre-reduction has been carried out using the IRAF package.¹ For each night, we used ten biases and between five and ten flat-fields per filter. We computed 3σ clipped median biases and flat-fields using the *zerocombine* and *flatcombine* IRAF tasks. These images have been used to correct the raw images by means of the *ccdproc* IRAF task.

¹ IRAF is distributed by the National Optical Astronomy Observatory, which is operated by the Association of Universities for Research in Astronomy, Inc., under cooperative agreement with the National Science Foundation.

The photometric reduction of the scientific images has been carried out using `DAOPHOT` and `ALLSTAR` (Stetson 1987) to analyse individual exposures. For each of them, we modelled the point spread function as a Moffat function (with $\beta = 2.5$; Moffat 1969), using 80 bright, isolated, and unsaturated stars. We allowed a linear variation of the model parameters across the field of view. These models were used to build a stellar catalogue for each image. The catalogues were combined using `DAOMATCH-DAOMASTER` to estimate mean magnitudes and related uncertainties in each filter. Any zero-point offset caused by different exposure times was corrected by the software, which took into account every star detected in at least two exposures. This choice accounts for pointing differences, maximizing our final field of view.

Among these catalogues, the u filter had the highest number of detections so we used it as a reference to refine the analysis of all our images with `ALLFRAME` (Stetson 1994). We then used `DAOMATCH-DAOMASTER` to create our final multiband photometric catalogue. Since we want to analyse a combination of different filters, we included only those stars that were detected in all filters.

Stellar positions were transformed on to the equatorial reference by using the 2MASS astrometric system (Skrutskie et al. 2006). In order to do so, and for every other cross-match required by our analysis, we used the software `CATAPACK`,² developed by P. Montegriffo. For each filter, the magnitudes have been calibrated on to the Strömgren photometric system using the M13 catalogue from Grundahl, VandenBerg & Andersen (1998), made public at <http://www.oa-roma.inaf.it/spress/gclusters.html> (Calamida et al. 2007). The observations had been obtained with the Nordic Optical Telescope (NOT) on a small field of view of about 4×4 arcmin² (see Fig. 1), with median seeing and pixel size of 0.6 and 0.175 arcsec, respectively. The zero-points were estimated using bright stars in common between the two data sets, adopting a 3σ -clipping procedure to exclude outliers. We verified the absence of possible colour correction terms between the two data sets. Fig. 2 shows the stars used for the calibration, and the correspondent estimated zero-points for each filter. The complete catalogue will be made available through the CDS.

3 COLOUR-MAGNITUDE DIAGRAM

Our goal is to characterize M13 multiple populations on a photometric basis, and thus precise and reliable magnitudes are essential. For this reason, we applied a quality selection to our catalogue, to exclude stars with bad magnitude estimates, as well as non-stellar objects (background galaxies, cosmic rays, bad pixels, etc.) that were not identified properly during the photometric reduction.

We first applied a selection on the basis of `DAOPHOT` `sharp` parameter. This parameter is defined to be zero for point-like sources. A large positive `sharp` value typically means that the source is extended. A large negative `sharp` value means that the object is much smaller than the point spread function width, so it is likely to be an artefact. With that in mind, we excluded all the sources with $|\text{sharp}| \geq 0.3$.

Fig. 3 shows the photometric error distribution as a function of magnitude, after the cut in `sharp`. We use this distribution to clean our sample further. We include only those stars that, in all four filters, are within three standard deviation from the mean photometric uncertainty at a given magnitude. The stars that do not satisfy this criterion are marked as black points in Fig. 3.

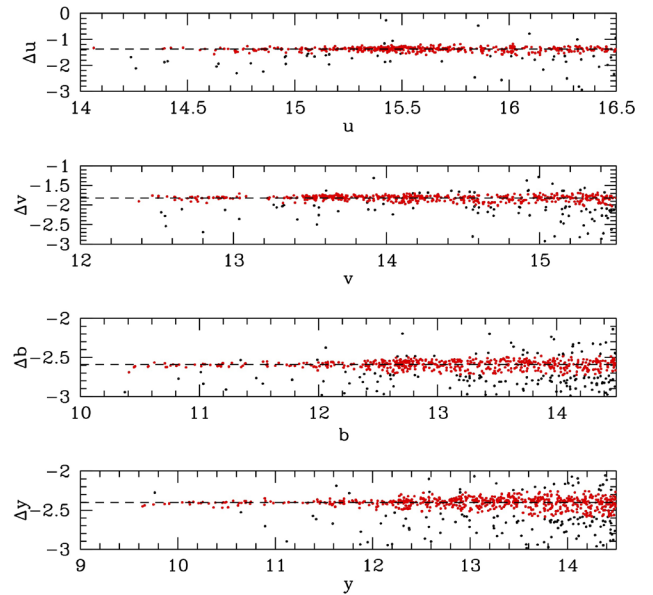


Figure 2. The magnitude difference as a function of magnitude for the bright stars in common between our catalogue and Grundahl et al. (1998). The four panels show the photometric filters used in this work. The red points are the stars used to calibrate the magnitudes of our data set. The dashed black lines are the zero-point corrections estimated for our photometry.

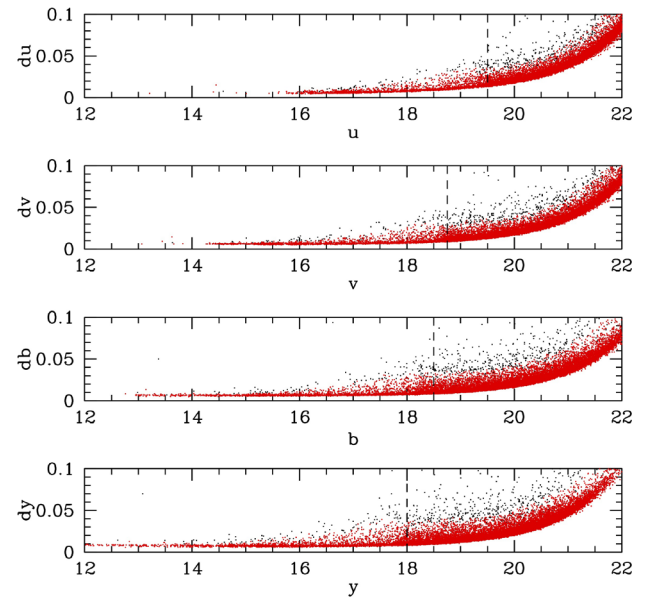


Figure 3. The photometric uncertainty as a function of magnitude for all stars with $|\text{sharp}| < 0.3$. The red points are the stars selected by our photometric error cut. The dashed vertical lines mark the position of the main-sequence turn-off.

Fig. 4 shows the resulting $(v - y)$ versus y colour-magnitude diagram (CMD) before and after the selection. Our cleaning criteria are able to exclude most of stars scattered across the CMD, eliminating most of the potential contaminants. The cleaned sample makes each evolutionary phase more defined, as it can be seen by the thinness of the RGB.

Despite the absence of exposures shorter than 30 s in our data set, we are able to recover the magnitude of bright giants up to $y \sim 12$.

² www.bo.astro.it/~paolo/Main/CataPack.html.

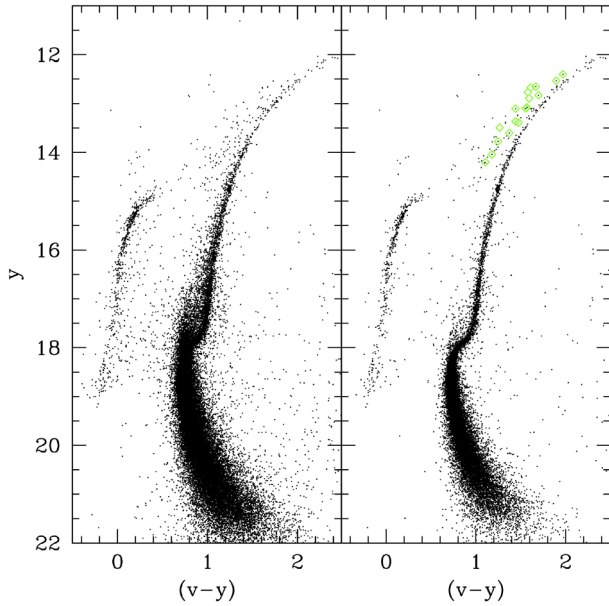


Figure 4. M13 $(v - y)$ versus y CMD. Left-hand panel: the entire photometric catalogue. Right-hand panel: only the stars selected by our cleaning criteria. Green diamonds are AGB stars with spectroscopic measurements (see Section 4.1 for details).

On the faint end, we are able to detect stars ~ 4 magnitudes fainter than the main-sequence turn-off.

4 M13 MULTIPLE POPULATIONS

As it has been demonstrated by numerous studies (e.g. Yong et al. 2008; Carretta et al. 2011; Roh et al. 2011; Sbordone et al. 2011; Massari et al. 2016), Strömgren photometry is a powerful tool to characterize the chemical abundance of GC red giant stars. The small width of Strömgren filters, together with their characteristic wavelength, makes them sensitive to the strength of wide molecular features, such as the CN, CH, and NH bands (see e.g. fig. 12 in Carretta et al. 2011).

In particular, the c_y index, defined by Yong et al. (2008),³ has the advantage of being less sensitive to temperature than the commonly used c_1 index, and it strongly correlates with the nitrogen abundance. Fig. 5 shows the c_y versus y CMD of M13. The RGB clearly splits in two sequences, and the average spread is not compatible with the photometric uncertainties.

4.1 Spectroscopic confirmation

Given the correlation between the c_y index and the nitrogen abundance, we expect M13 multiple populations to reside in different regions of the RGB in Fig. 5. In particular, we expect N-poor stars to be located on the left-hand side of the c_y versus y RGB, whereas the N-rich giants should occupy the right-hand side. As M13 is a well-studied GC, we can confirm this, extending the work done by Carretta et al. (2011) on the original NOT data, and trace the c_y boundary between different populations, by comparing the results from our catalogue with other independent analyses.

³ $c_y = c_1 - (b - y)$, with $c_1 = (u - v) - (v - b)$.

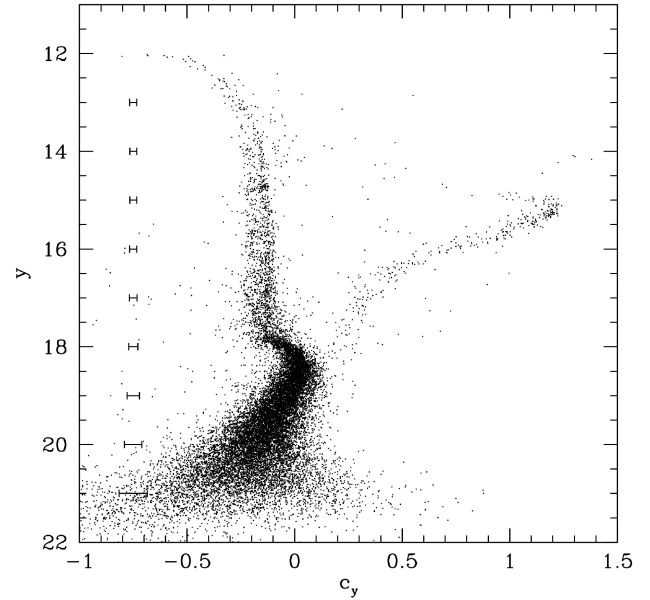


Figure 5. M13 CMD in the c_y index versus the y magnitude, extracted from our final catalogue. Average error bars in c_y are plotted to permit an easy comparison with the width of the RGB.

We examine RGB stars for which light element abundances are available. We cross-match our photometric catalogue with three different spectroscopic samples, taken from Sneden et al. (2004), Cohen & Meléndez (2005), and Johnson & Pilachowski (2012). Across our field of view, we detect 31, 22, and 106 stars, belonging, respectively, to these data sets.

We use these elemental abundances to separate the different populations, with the criterion introduced in Carretta et al. (2009). We classify our stars into primordial (P), intermediate (I), and extreme (E) populations, based on their $[O/Fe]$ and $[Na/Fe]$ abundances. We call P population those stars with a $[Na/Fe]$ abundance between the minimum measured value $[Na/Fe]_{\min}$ (estimated excluding obvious outliers) and $[Na/Fe]_{\min} + 0.3$. The I and E populations are defined as the non-P stars with $[O/Na] > -0.9$ dex and $[O/Na] < -0.9$, respectively.

Given the intrinsic differences among the three spectroscopic analyses, such as the spectral resolution and the choice of NLTE corrections, we prefer to apply this criterion separately for each sample, rather than consider all the abundance determinations together. In this way, we avoid the problem of possible zero-point offsets between the different elemental abundance samples. Table 2 lists the basic parameters of these spectroscopic data sets.

An additional advantage of treating the samples individually is the presence of stars in common among them, which can be used to check the consistency of the different abundance scales. We have a total of 29 stars with multiple elemental abundance determinations. The catalogues from Sneden et al. (2004) and Johnson & Pilachowski (2012) have 26 stars in common, of which four are also present in Cohen & Meléndez (2005). The common targets between Cohen & Meléndez (2005) and Johnson & Pilachowski (2012) are seven.

The classification of these stars is in excellent agreement, with only three stars having discordant classifications. Visual inspection reveals that these stars are located near the boundaries, in the parameter space, used to define the different populations. Thus, in principle, these different classifications are compatible with the

Table 2. Main quantities for the spectroscopic targets in our data set. Where more than one elemental abundance is present, they are listed in additional rows. The full table is available in the electronic version of the paper.

ID	RA (J2000)	Dec. (J2000)	<i>u</i> mag	<i>v</i> mag	<i>b</i> mag	<i>y</i> mag	[O/Fe] dex	[Na/Fe] dex	Reference ^a	Class ^b
22037	250.4272919	36.4489632	16.546	14.553	12.951	11.951	−0.06 −0.13	0.20 0.27	JP12 S04	I
22414	250.4247742	36.4477196	16.866	14.785	13.088	12.018	0.09	−0.14	JP12	P
14695	250.3833466	36.4749908	16.435	14.541	13.000	12.041	−0.41 −0.47	0.36 0.37	JP12 S04	I
7188	250.3480682	36.5047874	16.900	14.881	13.068	12.060	−1.00 −1.00 −1.14	0.33 0.42 0.32	JP12 S04 CM05	E
17699	250.4570923	36.4635773	16.332	14.481	12.965	12.062	−0.56 −0.57	0.17 0.32	JP12 S04	I
26659	250.4459076	36.4326668	16.378	14.524	12.959	12.077	−0.66 −0.70	0.40 0.46	JP12 S04	E
31813	250.3855743	36.4118576	16.212	14.402	12.949	12.109	0.10 −0.10	0.20 0.39	JP12 S04	I
12557	250.4622040	36.4818115	16.796	14.928	13.189	12.132	−1.05 −0.78	0.27 0.45	JP12 S04	E
17099	250.3948212	36.4665298	16.251	14.439	13.041	12.153	0.00 0.00	0.06 0.22	JP12 S04	I
14609	250.4476471	36.4745712	16.239	14.434	13.051	12.166	0.01 −0.01	0.20 0.35	JP12 S04	I

^aReference for the spectroscopic data: JP12 – Johnson & Pilachowski (2012); S04 – Sneden et al. (2004); CM05 – Cohen & Meléndez (2005).

^bClassification according to Carretta et al. (2009) criterion: P – primordial; I – intermediate; E – extreme.

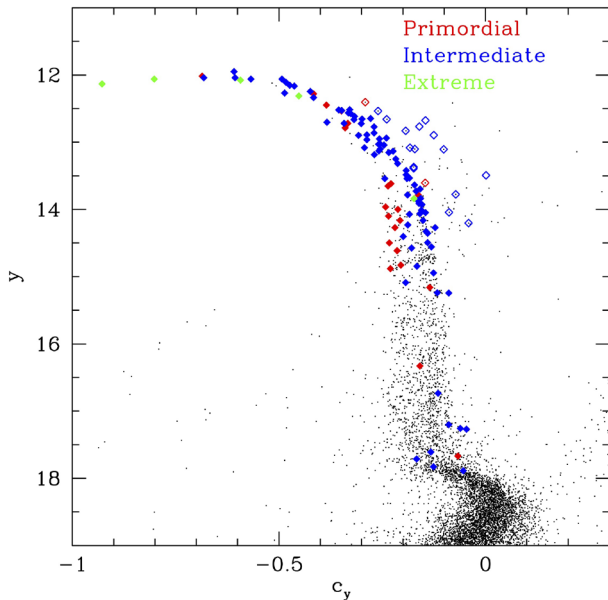


Figure 6. M13 c_y versus y CMD (black dots). The diamonds are the stars for which we have spectroscopic data, divided into primordial (red), intermediate (blue), and extreme (green) populations. The empty diamonds are stars that we identify as AGBs.

spectroscopic errors. Given this classification issue, we removed these three stars from our sample.

Fig. 6 shows the spectroscopic targets, colour coded by population, superimposed to our c_y versus y CMD. Unfortunately, most of the elemental abundances are available only for very bright stars, where the pseudo-colour c_y is unable to separate the populations. None the less, we reach magnitudes as faint as that of the RGB bump, where a clear separation is seen between the primordial and the enriched populations. It has already been shown (Carretta et al. 2011)

that the optimal separation in c_y is obtained for stars at the level of the RGB bump and below. The result shown in Fig. 6 confirms our ability to use photometry to distinguish between primordial and enriched populations. The mostly clean segregation of the two populations in c_y allows us to define a photometric criterion to classify M13 stars based on their position on the RGB. As our spectroscopic sample is only representative of stars with $y < 15$, the classification of fainter RGB stars unavoidably requires an extrapolation of the trend we observe.

It is interesting that the stars with extreme chemical enrichment are mainly found near the tip of the RGB. This behaviour has already been mentioned by the authors of the three spectroscopic studies (note that the different number of E stars between our work and Johnson & Pilachowski 2012 is due to different classification criteria. There is only one E star that falls in the magnitude range where the c_y spread is significant. As this is not enough to distinguish I and E stars on a photometric basis, in the rest of the analysis, we will collectively refer to the I and E stars as the enriched population.

It should be noted that M13 has for long time been the prototype of a GC with very high O depletion, before the analysis of more extreme clusters, in particular NGC2808 (Carretta et al. 2006). Such clusters, however, do not show an excess of extreme stars near the RGB tip. In the case of NGC2808, this can be seen in the analysis of Carretta (2015). In spite of tentative explanations (such as the presence of extra mixing in bright stars, suggested by D’Antona & Ventura 2007), the unique behaviour of very O-depleted stars in M13 still has to be understood properly. In addition, the presence of kinematic peculiarities in the extreme stars (Cordero et al. 2017) makes this population a very interesting subject for further investigation.

As a final remark, we have elemental abundances for a large sample of asymptotic giant branch (AGB) stars (empty symbols in Fig. 6). The AGB nature of these stars is more easily seen in Fig. 4 (green diamonds), where they clearly separated from the RGB. Many of the AGB show [O/Fe] and [Na/Fe] ratios typical of the

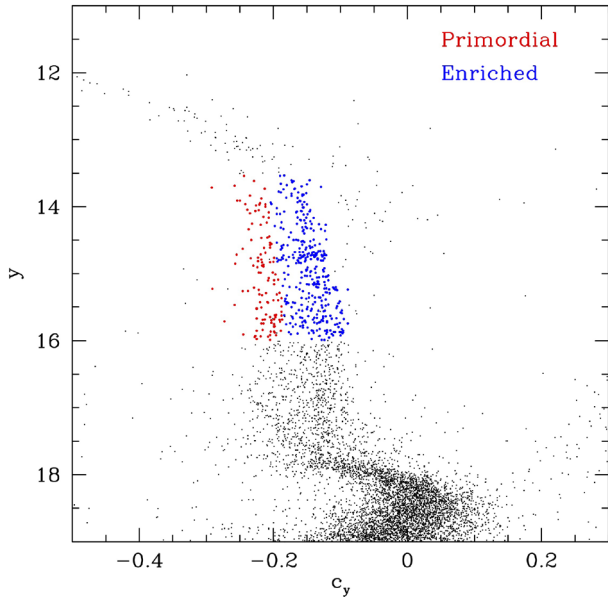


Figure 7. M13 c_y versus y CMD (black dots). The red and blue dots represent, respectively, the primordial and enriched population as selected by our photometric criterion. The upper and lower magnitude range for our selection have been obtained by comparison with *HST* data. See the text for more details.

enriched population. In particular, we classify 15 AGB stars to be part of the enriched population while only two AGB show elemental abundances compatible with the primordial population. Although the fraction of enriched stars on the AGB ($88.2^{+4.7}_{-23.2}$ per cent) is somewhat higher than that observed on the RGB (see Section 4.2), the uncertainties coming from the small sample size fully account for this difference.

This detection is interesting in the light of the recent controversy on the presence of second population stars on the AGB of GCs (see, e.g. Campbell et al. 2013; Lapenna et al. 2016; MacLean et al. 2016; Massari et al. 2016; Lardo et al. 2017; Gruyters et al. 2017). Stellar evolution theory predicts a fraction of enriched stars on the AGB of GCs, comparable or lower than what observed on the RGB depending on the horizontal branch morphology. However, the presence of these stars is currently debated, with different studies that yield contrasting results. It should be noted that a scenario where second population stars skip the AGB altogether is hard to reconcile with standard stellar evolution, even when invoking extreme mass-loss (Cassisi et al. 2014). Our detection in M13 favours enriched stars to ascend the AGB phase, as predicted by stellar population models.

4.2 Radial profiles

The photometric criterion we derived from our comparison with spectroscopy allows us to assign a population membership to RGB stars based solely on their position in the c_y versus y CMD (Fig. 7), where we have already applied the refined classification from a comparison with *HST* data (see below, Fig. 8). In order to avoid foreground contamination, we apply the procedure described in Frank et al. (2015), to select genuine RGB stars on the basis of their position in the $(b - y)$ versus c_1 and $(b - y)$ versus m_1 planes.

According to this distinction, the fraction of enriched stars in M13 is $74.5^{+1.9}_{-2.2}$ per cent. For comparison, the fraction estimated from

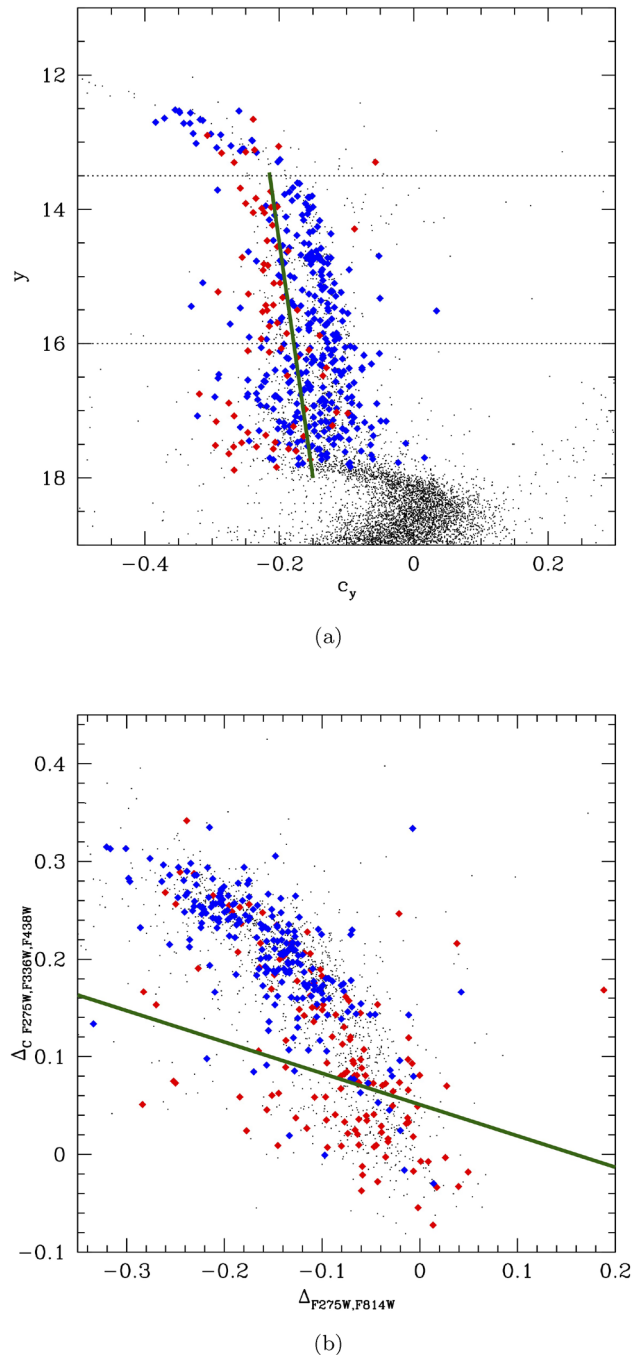


Figure 8. (a) M13 c_y versus y CMD from the INT catalogue (black dots). The diamonds are the stars in common with the *HST* catalogue, divided into primordial (red) and enriched (blue) on the basis of the *HST* chromosome map criterion. The solid green line shows the photometric criterion defined by equation 1. The dotted black lines mark the magnitude range that we use for our analysis. (b) Chromosome map built from the *HST* data set (black dots). The diamonds are the stars in common with the INT catalogue, divided into primordial (red) and enriched (blue) on the basis of the INT photometric criterion. The solid green line shows the criterion used to separate multiple populations, corresponding to the mean ridge line for the lower sequence, shifted by three times the photometric uncertainty.

the spectroscopic sample is $79.8^{+3.2}_{-4.7}$ per cent. Before we proceed to the spatial characterization of these populations, some preliminary considerations need to be made regarding the completeness of our stellar catalogue.

For dense stellar systems such as Galactic GCs, the completeness level of post-main-sequence stars is driven mainly by crowding. Completeness varies with the radius of the GC, with stars preferentially lost in the centre of the cluster rather than in the outskirts. The observed radial distribution is therefore less concentrated than the intrinsic one. For completely mixed populations, this effect is irrelevant, as stars are lost in the same way in the different populations. If one of the stellar populations is more concentrated than the others, it is affected more by incompleteness, and the net effect is a softening in the radial distribution difference.

This observational bias can be potentially important for INT observations. Although the large field of view makes this telescope a great tool to study the external regions of the cluster, the typical seeing of our images makes it quite sensitive to the crowding of the cluster core.

To assess this issue, we make use of *HST* observations from the ACS Globular Cluster Survey (Sarajedini et al. 2007). We compare our catalogue with *HST* data in the inner 90 arcsec of the cluster to estimate the difference in the number of detected RGB stars. Even though this comparison only permits us to derive only a relative completeness fraction, the performance of *HST* in crowded fields is such that nearly all the bright evolved stars are detected, even in the densest region of the cluster.

This instructive comparison allows us to determine that, over the central 90 arcsec of the cluster, the level of completeness of our catalogue is approximately 35 per cent. Such a low fraction of detected stars is mainly the consequence of our very conservative selection criteria. The cuts in sharp and photometric error described in Section 3, while necessary to ensure an accurate characterization of the RGB in terms of c_y index, reject a large number of stars with poorly determined magnitudes. This is verified by looking at the completeness level of the catalogue prior to any cleaning selection, and this is nearly 100 per cent.

The low completeness level in the cluster centre makes it very difficult to assess the presence of different radial concentration with the INT observations of this region. For this reason, we decided to use our catalogue to study the external regions of M13, whereas in the centre, we make use of more accurate *HST* observations. As previously demonstrated, (e.g. Milone et al. 2012), *HST* is a very powerful instrument to study the multiple populations of GCs. We thus make use of data from the preliminary data release of the UV Legacy Survey of Galactic Globular Clusters (Piotto et al. 2015; Soto et al. 2017). We follow the procedure described in Milone et al. (2017) to distinguish primordial and enriched populations on the basis of M13 ‘chromosome map’ (see fig. 5 of Milone et al. 2017). Chromosome mapping is a technique that exploits the position of stars on the RGB, using different filter combinations, to distinguish between primordial and enriched populations. In particular, the two indices used are sensitive to light element and helium variations, respectively. The fraction of enriched stars recovered with this method is $80.4^{+0.9}_{-1.0}$ per cent.

Before analysing the multiple population distribution in M13, it is important to assess the consistency of the results obtained with different instruments. Because of the different photometric filters of INT and *HST*, as well as the different methodologies employed to separate the two populations, we need to verify that the primordial and enriched populations as recovered by *HST* are consistent with those in our INT data. We cross-match the two catalogues and assess how the *HST*-defined multiple populations distribute in the c_y versus y CMD, and vice versa (Fig. 8). We found that stars labelled as primordial or enriched on the basis of the *HST* chromosome map tend to separate in the c_y distribution. The agreement with the

criterion we defined using spectroscopic data is good, at least for the bright RGB, where INT photometric errors are small enough to permit an accurate classification. We make use of this comparison for a further calibration of our photometric criterion and to avoid extrapolation for stars with $y < 15$. In this way, the division between primordial and enriched population is given by

$$c_y = 0.014 \cdot y + 0.407, \quad (1)$$

which is applied for $13.5 < y < 16$ and $-0.3 < c_y < 0.07$. The magnitude range is the one for which the *HST* and INT multiple populations are in good agreement. We note that there are stars for which the two classification criteria do not match. In the colour and magnitude range specified above, the fraction of these stars is around 15 per cent.

The radial distribution of the two populations that we find with *HST* is shown in Fig. 9. The two radial profiles are almost indistinguishable, suggesting a complete spatial mixing of the two populations. A Kolmogorov–Smirnov (KS) test gives us a probability of 94.9 per cent that the two distributions are drawn from the same parent population. As mentioned before, the field of view of *HST* allows us to cover only the inner 90 arcsec of the cluster, which correspond to slightly less than one half-light radius. The complete mixing of the two populations is thus unsurprising, as the dynamical time-scales in this region are very short.

The occurrence of complete mixing in the cluster centre simplifies the study of outer spatial distributions. By definition, the shape of a cumulative distribution is influenced by the global properties of the sample. Making a separate cumulative distribution for the outer regions could, in principle, have led to a biased comparison, as the central properties were not taken into account. However, the high level of mixing in M13 core reassures us that any difference in the global spatial distribution of M13 multiple populations would be driven by the stars in the outer regions. In this context, a comparison of the outer regions alone is relatively safe.

As it can be seen from Fig. 10, the trend observed in the centre seems to continue also in the outskirts of cluster. The KS probability that the primordial and enriched radial distributions are representations of the same parent population is 65.2 per cent. Although this test does not allow us to conclusively exclude the presence of some radial gradients between the multiple populations of M13, it is fair to conclude that they should be only minor and limited to the most external regions where we only have a small sample of stars.

5 DISCUSSION AND CONCLUSIONS

In this work, we analysed a photometric data set in Strömgren *ubvy* filters to characterize the multiple stellar populations of the Galactic GC NGC6205 (M13). The use of the c_y photometric index revealed the presence of a spread on the RGB, consistent with the chemical inhomogeneity within the cluster.

The comparison with several spectroscopic studies confirmed that the c_y index is a very efficient tracer of the light element abundance in RGB stars, and allows us to distinguish enriched and primordial populations on the basis of their position on the CMD.

Our analysis concluded that around 80 per cent of M13 giant stars belong to the enriched population. This high fraction is in line with the trend of enriched population fraction versus cluster absolute magnitude found by Milone et al. (2017).

To study the radial distribution of M13 multiple populations, we complemented our data set with *HST* observations from the UV Legacy Survey of Galactic Globular Clusters. The analysis of the radial profiles over a wide field of view revealed no significant

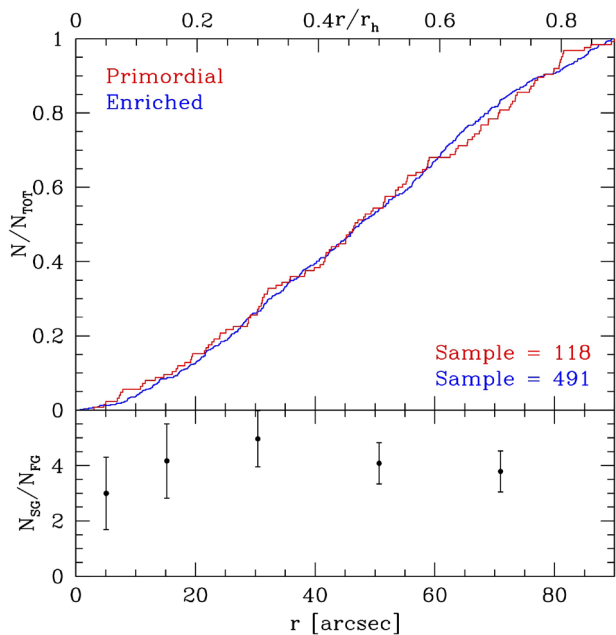


Figure 9. Upper panel: the cumulative distributions for the primordial (red) and enriched (blue) populations in the central regions of M13, obtained using *HST* data from the UV Legacy Survey of Galactic Globular Clusters. Lower panel: the number ratio of enriched stars to primordial stars in different radial bins.

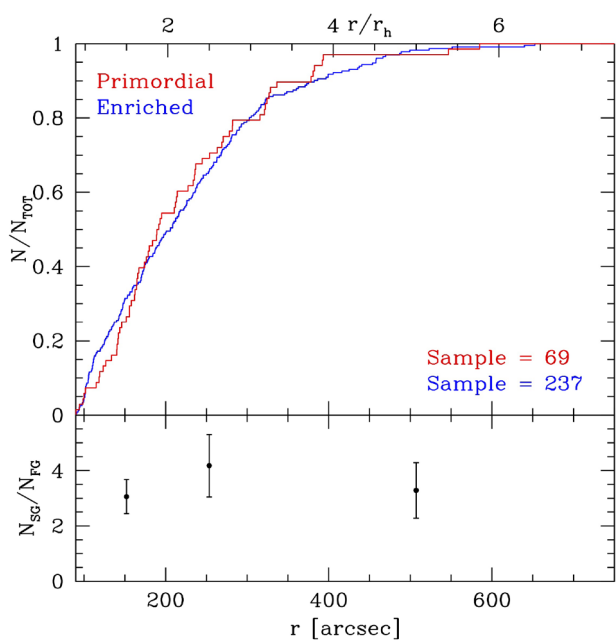


Figure 10. As for Fig. 9 but for the outer regions of M13. These distributions have been obtained using our INT catalogue.

evidence for spatial dishomogeneities between the primordial and the enriched population, neither in the inner nor the outer regions of the cluster.

This result is at odds with what was found by Lardo et al. (2011), who detected a radial gradient in the multiple population distribution of many clusters, including M13. The causes for these discordant results are difficult to assess. However, we note that Strömgren filters have a significantly smaller bandwidth and are more sensitive to light element abundances compared to the Sloan passbands used

in Lardo et al. (2011). The photometric accuracy of our data set is also better. Finally, we stress that the classification criteria of both studies have been defined empirically.

To date, only a few GCs have been observed to have fully spatially mixed multiple populations (Dalessandro et al. 2014; Nardiello et al. 2015). In this light, such a finding for M13 stars is very interesting, especially given that M13 is the most massive cluster in which this phenomenon has been observed.

An interesting comparison can be drawn with NGC5272 (M3). These two clusters are very similar in terms of mass, age, and metallicity, and are a classical horizontal branch second parameter problem pair (e.g. Dalessandro et al. 2013). In contrast to M13, M3 multiple populations have been found to be mixed only out to ~ 0.6 half-light radii, whereas at larger distance from the cluster centre, the enriched population is significantly more concentrated (Massari et al. 2016).

We suggest that this difference can be understood when considering the dynamical properties of the two clusters. M13's relaxation time at the half-light radius is of the order of 2 Gyr, which is about three times shorter than that of M3 (Harris 1996, 2010 version) and similar to that of the completely mixed NGC6362 (Dalessandro et al. 2014). As the dynamical time-scale increases in the less dense regions of a stellar cluster, M3 has achieved a full spatial mixing only in its central part, whereas the more efficient M13 has also managed to become mixed in its outskirts. Following this argument, we expect that completely mixed stellar populations should be observed in clusters with similar, or shorter, relaxation times (e.g. M71, M30, or NGC 6218).

ACKNOWLEDGEMENTS

The Strömgren photometry we employed in this analysis has been obtained from the Isaac Newton Group Archive, which is maintained as part of the CASU Astronomical Data Centre at the Institute of Astronomy, Cambridge. Some of the data presented in this paper were obtained from the Mikulski Archive for Space Telescopes (MAST). STScI is operated by the Association of Universities for Research in Astronomy, Inc., under NASA contract NAS5-26555. Support for MAST for non-*HST* data is provided by the NASA Office of Space Science via grant NNX09AF08G and by other grants and contracts. This research made use of the SIMBAD data base, operated at CDS, Strasbourg, France, and of NASA's Astrophysical Data System. ET thanks INAF-OABO for hospitality.

REFERENCES

- Bastian N., Lamers H. J. G. L. M., de Mink S. E., Longmore S. N., Goodwin S. P., Gieles M., 2013, *MNRAS*, 436, 2398
- Bastian N., Cabrera-Ziri I., Salaris M., 2015, *MNRAS*, 449, 3333
- Calamida A. et al., 2007, *ApJ*, 670, 400
- Campbell S. W. et al., 2013, *Nature*, 498, 198
- Carretta E., 2015, *ApJ*, 810, 148
- Carretta E., Bragaglia A., Gratton R. G., Leone F., Recio-Blanco A., Lucatello S., 2006, *A&A*, 450, 523
- Carretta E. et al., 2009, *A&A*, 505, 117
- Carretta E., Bragaglia A., Gratton R. G., Recio-Blanco A., Lucatello S., D'Orazi V., Cassisi S., 2010, *A&A*, 516, A55
- Carretta E., Bragaglia A., Gratton R., D'Orazi V., Lucatello S., 2011, *A&A*, 535, A121
- Cassisi S., Salaris M., Pietrinferni A., Vink J. S., Monelli M., 2014, *A&A*, 571, A81
- Cohen J. G., Meléndez J., 2005, *AJ*, 129, 303

- Cordero M. J., Hénault-Brunet V., Pilachowski C. A., Balbinot E., Johnson C. I., Varri A. L., 2017, *MNRAS*, 465, 3515
- D'Antona F., Ventura P., 2007, *MNRAS*, 379, 1431
- Dalessandro E., Salaris M., Ferraro F. R., Mucciarelli A., Cassisi S., 2013, *MNRAS*, 430, 459
- Dalessandro E. et al., 2014, *ApJ*, 791, L4
- Dalessandro E., Lapenna E., Mucciarelli A., Origlia L., Ferraro F. R., Lanzoni B., 2016, *ApJ*, 829, 77
- de Mink S. E., Pols O. R., Langer N., Izzard R. G., 2009, *A&A*, 507, L1
- Decressin T., Meynet G., Charbonnel C., Prantzos N., Ekström S., 2007, *A&A*, 464, 1029
- Denissenkov P. A., Hartwick F. D. A., 2014, *MNRAS*, 437, L21
- Frank M. J., Koch A., Feltzing S., Kacharov N., Wilkinson M. I., Irwin M., 2015, *A&A*, 581, A72
- Gratton R. G., Carretta E., Bragaglia A., 2012, *A&AR*, 20, 50
- Grundahl F., VandenBerg D. A., Andersen M. I., 1998, *ApJ*, 500, L179
- Gruyters P., Casagrande L., Milone A. P., Hodgkin S. T., Serenelli A., Feltzing S., 2017, *A&A*, 603, A37
- Harris W. E., 1996, *AJ*, 112, 1487
- Johnson C. I., Pilachowski C. A., 2012, *ApJ*, 754, L38
- Lapenna E. et al., 2016, *ApJ*, 826, L1
- Lardo C., Bellazzini M., Pancino E., Carretta E., Bragaglia A., Dalessandro E., 2011, *A&A*, 525, A114
- Lardo C., Salaris M., Savino A., Donati P., Stetson P. B., Cassisi S., 2017, *MNRAS*, 466, 3507
- Larsen S. S., Brodie J. P., Grundahl F., Strader J., 2014, *ApJ*, 797, 15
- Lee J.-W., 2017, *ApJ*, 844, 77
- Letarte B., Hill V., Jablonka P., Tolstoy E., François P., Meylan G., 2006, *A&A*, 453, 547
- MacLean B. T., Campbell S. W., De Silva G. M., Lattanzio J., D'Orazi V., Simpson J. D., Momany Y., 2016, *MNRAS*, 460, L69
- Marino A. F., Villanova S., Piotto G., Milone A. P., Momany Y., Bedin L. R., Medling A. M., 2008, *A&A*, 490, 625
- Massari D., Lapenna E., Bragaglia A., Dalessandro E., Contreras Ramos R., Amigo P., 2016, *MNRAS*, 458, 4162
- Milone A. P. et al., 2012, *ApJ*, 744, 58
- Milone A. P. et al., 2017, *MNRAS*, 464, 3636
- Moffat A. F. J., 1969, *A&A*, 3, 455
- Mucciarelli A., Origlia L., Ferraro F. R., Pancino E., 2009, *ApJ*, 695, L134
- Nardiello D., Milone A. P., Piotto G., Marino A. F., Bellini A., Cassisi S., 2015, *A&A*, 573, A70
- Piotto G., 2009, in Mamajek E. E., Soderblom D. R., Wyse R. F. G., eds, *IAU Symposium Vol. 258, The Ages of Stars*. Cambridge Univ. Press, Cambridge, p. 233
- Piotto G. et al., 2015, *AJ*, 149, 91
- Renzini A., Buzzoni A., 1986, in Chiosi C., Renzini A., eds, *Astrophysics and Space Science Library, Vol. 122, Spectral Evolution of Galaxies*. Reidel, Dordrecht, p. 195
- Renzini A. et al., 2015, *MNRAS*, 454, 4197
- Roh D.-G., Lee Y.-W., Joo S.-J., Han S.-I., Sohn Y.-J., Lee J.-W., 2011, *ApJ*, 733, L45
- Sarajedini A. et al., 2007, *AJ*, 133, 1658
- Sbordone L., Salaris M., Weiss A., Cassisi S., 2011, *A&A*, 534, A9
- Skrutskie M. F. et al., 2006, *AJ*, 131, 1163
- Snedden C., Kraft R. P., Guhathakurta P., Peterson R. C., Fulbright J. P., 2004, *AJ*, 127, 2162
- Soto M. et al., 2017, *AJ*, 153, 19
- Stetson P. B., 1987, *PASP*, 99, 191
- Stetson P. B., 1994, *PASP*, 106, 250
- Ventura P., D'Antona F., Mazzitelli I., Gratton R., 2001, *ApJ*, 550, L65
- Vesperini E., McMillan S. L. W., D'Antona F., D'Ercole A., 2013, *MNRAS*, 429, 1913
- Yong D., Grundahl F., Johnson J. A., Asplund M., 2008, *ApJ*, 684, 1159

SUPPORTING INFORMATION

Supplementary data are available at [MNRAS](https://academic.oup.com/mnras/article/474/4/4438/4683255) online.

Please note: Oxford University Press is not responsible for the content or functionality of any supporting materials supplied by the authors. Any queries (other than missing material) should be directed to the corresponding author for the article.

This paper has been typeset from a $\text{\TeX}/\text{\LaTeX}$ file prepared by the author.