



Publication Year	2021
Acceptance in OA	2023-09-22T10:04:01Z
Title	Agilepy: A Python framework for scientific analysis of AGILE data Analysis
Authors	BULGARELLI, ANDREA, Baroncelli, L., Addis, A., PARMIGGIANI, Nicolo', Aboudan, A., Di Piano, A., FIORETTI, Valentina, TAVANI, Marco, PITTORI, Carlotta, LUCARELLI, Fabrizio, VERRECCHIA, Francesco
Publisher's version (DOI)	10.48550/arXiv.2105.08474
Handle	http://hdl.handle.net/20.500.12386/34400
Serie	ASTRONOMICAL SOCIETY OF THE PACIFIC CONFERENCE SERIES

Agilepy: A Python Framework for AGILE Data Analysis

A. Bulgarelli,¹ L. Baroncelli,¹ A. Addis,¹ N. Parmiggiani,^{1,2} A. Aboudan,³
A. Di Piano,¹ V. Fioretti,¹ M. Tavani,⁴ C. Pittori,^{5,6} F. Lucarelli,^{5,6} and F. Verrecchia^{5,6}

¹*INAF/OAS Bologna, Via P. Gobetti 93/3, 40129 Bologna, Italy.*
andrea.bulgarelli@inaf.it

²*Università degli Studi di Modena e Reggio Emilia, DIEF - Via Pietro Vivarelli 10,*
41125 Modena, Italy

²*CISAS G. Colombo University of Padua, Italy*

⁴*INAF/IAPS Roma, via del Fosso del Cavaliere 100, I-00133 Roma, Italy*

⁵*ASI Space Science Data Center (SSDC), Via del Politecnico snc, 00133 Roma, Italy*

⁶*INAF/OAR, via Frascati 33, I-00078 Monte Porzio Catone (RM), Italy*

Abstract. The Italian AGILE space mission, with its Gamma-Ray Imaging Detector (GRID) instrument sensitive in the 30 MeV–50 GeV γ -ray energy band, has been operating since 2007. Agilepy is an open-source Python package to analyse AGILE/GRID data. The package is built on top of the command-line version of the AGILE Science Tools, developed by the AGILE Team, publicly available and released by ASI/SSDC. The primary purpose of the package is to provide an easy to use high-level interface to analyse AGILE/GRID data by simplifying the configuration of the tasks and ensuring straightforward access to the data. The current features are the generation and display of sky maps and light curves, the access to γ -ray sources catalogues, the analysis to perform spectral model and position fitting, the wavelet analysis. Agilepy also includes an interface tool providing the time evolution of the AGILE off-axis viewing angle for a chosen sky region. The Flare Advocate team also uses the tool to analyse the data during the daily monitoring of the γ -ray sky. Agilepy (and its dependencies) can be easily installed using Anaconda.

1. The AGILE Observatory

AGILE (Astrorivelatore Gamma ad Immagini LEggero) is an astrophysics mission of the Italian Space Agency (ASI) operating since April 2007 (Tavani et al. 2008, 2009) devoted to γ -ray and X-ray astrophysics. It carries two instruments observing at hard X-rays between 18 and 60 keV (Super-AGILE, (Feroci et al. 2007)) and in the γ -ray band between 30 MeV and 50 GeV (Silicon Tracker, (Barbiellini et al. 2002; Prest et al. 2003; Bulgarelli et al. 2010; Cattaneo et al. 2011)). The payload: a calorimeter (MCAL) sensitive in the 0.4–100 MeV range (Labanti et al. 2009) and an anticoincidence (AC) system (Perotti et al. 2006). The combination of the Silicon Tracker, MCAL, and AC forms the Gamma-Ray Imaging Detector (GRID).

2. AGILE Science Tools

The AGILE/GRID Science Tools developed by the AGILE Team are used to analyse γ -ray data starting from spacecraft files (called LOG), and the acquired events (EVT files or event list). They provide a way to generate γ -ray counts, exposure and diffuse emission maps that are

used as input for the binned maximum likelihood estimator (MLE). The analysis depends on the isotropic and Galactic diffuse emission, the γ -ray photon statistics, and on the instrument response functions (IRFs). IRFs are matrices that characterise the effective area (Aeff), the point spread function (PSF), and the energy dispersion probability (EDP), that depend on the direction of the incoming γ -ray in instrument coordinates, its energy and on the on-ground event filter. The result of the MLE is an evaluation of the presence of one or more point-like or extended sources in the sky maps: this is the essential step for the scientific results of AGILE. A full description and characterisation of the last release of the Science Tools is available in (Bulgarelli et al. 2019). Science Tools, IRFs and Galactic emission model are publicly available from the AGILE website at SSDC (Pittori 2019) (<http://agile.ssdc.asi.it>).

Agilepy (<https://agilepy.readthedocs.io>) is an open-source Python package to analyse AGILE/GRID data built on top of the command-line version of the AGILE/GRID Science Tools. Agilepy is similar to Fermipy (Wood et al. 2017) (<https://fermipy.readthedocs.io>) and gammapy (<https://docs.gammapy.org>) tools, providing a common way to analyse γ -ray data.

The main purpose of the package is to provide an easy to use high-level Python interface to analyse AGILE/GRID data by simplifying the configuration of the tasks and ensuring straightforward access to the data. The current features are the generation and display of sky maps and light curves, the access to γ -ray sources catalogues, the analysis to perform spectral model and position fitting including the background evaluation, the aperture photometry analysis, and the wavelet analysis. In addition, Agilepy provides an engineering interface to analyse the time evolution of the AGILE off-axis viewing angle for a chosen sky region, comparing them with Fermi/LAT off-axis evolution.

Agilepy provides the last version of the available Science Tools (BUILD25), the H0025 instrument response functions (IRFs), and the latest version of the diffuse Galactic emission model.

Agilepy (and its dependencies) can be easily installed using Anaconda (<https://www.anaconda.com>).

3. Scientific analysis

Many γ -ray analyses can be done with few lines of configuration and code. For each functionality, a Jupyter notebook is provided with the Agilepy package to help the user in performing standard analysis by adapting the working examples.

To analyse AGILE/GRID data, first it is necessary to download data from SSDC archive (<https://www.ssdc.asi.it/mnia/index.php?mission=agilemmia>) and prepare two index files that list EVT and LOG files. The second step is to prepare a YAML configuration file or to use the utility method `AGAnalysis.getConfiguration()`, and then to use the `AGAnalysis` class to perform the data analysis starting from spacecraft file, event lists and IRFs. Finally, an MLE, an aperture photometry or a wavelet analysis can be performed.

The basic steps to generate maps are listed in the following example, where (glon, glat) is the centre of the region of interest (ROI) in Galactic coordinates:

```
from agilepy.api.AGAnalysis import AGAnalysis
# Creating a configuration file
confFilePath = "./agilepyConf.yaml"
AGAnalysis.getConfiguration(
    confFilePath = confFilePath, userName = "myname",
    sourceName = "3C454.3",
    tmin = 55510.0, tmax = 55530.0, timetype = "MJD",
    glon = 86.11, glat = -38.18,
    outputDir = "$HOME/agilepyAnalysis",
    verboselvl = 1,
    evtfile='$HOME/agilepyAnalysis/EVT.index',
    logfile='$HOME/agilepyAnalysis/LOG.index'
```

```

)
# Obtaining the AGAnalysis object
ag = AGAnalysis(confFilePath)
# Generate counts, exposure and diffuse emission model binned maps
maplistfile = ag.generateMaps()
# Display counts map
ag.displayCtsSkyMaps()

```

To perform an MLE analysis, the second step is to prepare the list of sources to be analysed and fit the sky maps, either individually, or in a joint likelihood analysis. Some basic steps are:

```

# Select all 2AGL source within 5 degree from the centre of the ROI
sources = ag.loadSourcesFromCatalog("2AGL", rangeDist = (0, 5))
# Free the flux parameter of 3C 454.3 (2AGL J2254+1609) source
ag.freeSources('name == "2AGLJ2254+1609"', "flux", True)
# Perform a mle analysis to fit the sky maps with
# the prepared list of sources and standard background models
ag.mle()
# Print results with significance > 0
ag.selectSources("sqrtTS > 0")

```

It is possible to specify how `mle()` method works using the `mle` section of the YAML configuration file. It is also possible to evaluate and fix the isotropic and diffuse emission models. The preparation of a light curve using MLE or aperture photometry methods is straightforward. An example for the MLE method would be the following:

```
ag.lightCurveMLE("2AGLJ2254+1609", binsize=86400)
```

The result is shown in Figure 2.

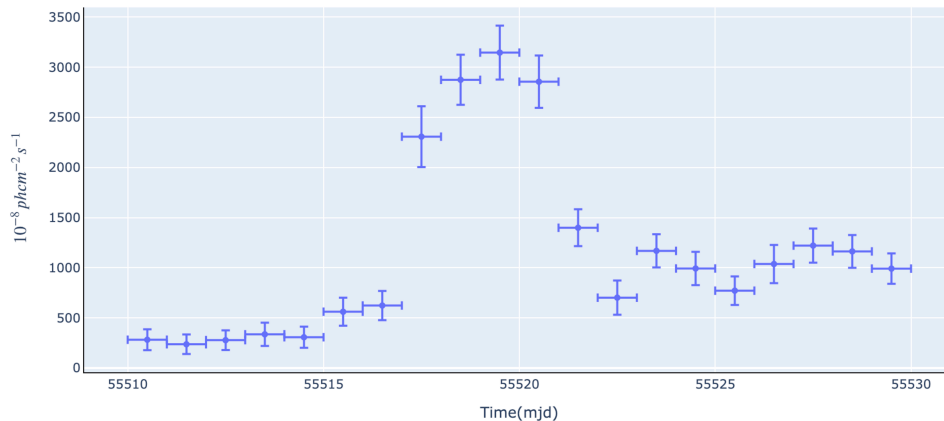


Figure 1. The light curve of 3C454.3 source generated with Agilepy.

4. Conclusions

The main purpose of Agilepy is to facilitate the use of the AGILE/GRID Science Tools providing an easy to use high-level Python interface to analyse AGILE/GRID data. The Flare Advocate team uses Agilepy to analyse the data during the daily monitoring of the γ -ray sky. New features are planned for future releases.

Acknowledgments. The AGILE Mission is funded by the Italian Space Agency (ASI) with scientific and programmatic participation by the Italian Institute of Astrophysics (INAF) and the Italian Institute of Nuclear Physics (INFN). Investigation supported by the ASI grants I/089/06/2, I/028/12/5 and I/028/12/6. We thank the ASI management for unfailing support during AGILE operations. We acknowledge the effort of ASI and industry personnel in operating the ASI ground station in Malindi (Kenya), and the data processing done at the ASI/SSDC in Rome: the success of AGILE scientific operations depends on the effectiveness of the data flow from Kenya to SSCD and INAF/OAS Bologna and the data analysis and software management.

References

- Barbiellini, G., et al. 2002, AIP Conference Proceedings, 587, 754
Bulgarelli, A., et al. 2010, Nuclear Instruments and Methods in Physics Research A, 614, 213
Bulgarelli, A., et al. 2019, A&A, 627, A13. 1903.06957
Cattaneo, P., et al. 2011, Nuclear Instruments and Methods in Physics Research A, 630, 251
Feroci, M., et al. 2007, Nuclear Instruments and Methods in Physics Research A, 581, 728
Labanti, C., et al. 2009, Nuclear Instruments and Methods in Physics Research A, 598, 470
Perotti, F., Fiorini, M., Incorvaia, S., Mattaini, E., & Sant’Ambrogio, E. 2006, Nuclear Instruments and Methods in Physics Research A, 556, 228
Pittori, C. 2019, Rendiconti Lincei. Scienze Fisiche e Naturali, 30, 217
Prest, M., et al. 2003, Nuclear Instruments and Methods in Physics Research A, 501, 280
Tavani, M., et al. 2008, Nuclear Instruments and Methods in Physics Research A, 588, 52
— 2009, A&A, 502, 995. 0807.4254
Wood, M., Caputo, R., Charles, E., Di Mauro, M., Magill, J., & Perkins, J. 2017. 1707.09551