



Publication Year	2017
Acceptance in OA	2021-03-15T12:35:15Z
Title	Ionized gas outflows from the MAGNUM survey: NGC 1365 and NGC 4945
Authors	VENTURI, GIACOMO, Marconi, Alessandro, MINGOZZI, MATILDE, Carniani, Stefano, CRESCI, GIOVANNI, RISALITI, Guido, MANNUCCI, FILIPPO
Publisher's version (DOI)	10.3389/fspas.2017.00046
Handle	http://hdl.handle.net/20.500.12386/30707
Journal	FRONTIERS IN ASTRONOMY AND SPACE SCIENCES
Volume	4



Ionized Gas Outflows from the MAGNUM Survey: NGC 1365 and NGC 4945

Giacomo Venturi^{1,2*}, Alessandro Marconi^{1,2}, Matilde Mingozi^{2,3}, Stefano Carniani^{4,5}, Giovanni Cresci², Guido Risaliti^{1,2} and Filippo Mannucci²

¹ Dipartimento di Fisica e Astronomia, Università degli Studi di Firenze, Sesto Fiorentino, Italy, ² Osservatorio Astrofisico di Arcetri (INAF), Firenze, Italy, ³ Dipartimento di Fisica e Astronomia, Università di Bologna, Bologna, Italy, ⁴ Cavendish Laboratory, Department of Physics, University of Cambridge, Cambridge, United Kingdom, ⁵ Kavli Institute for Cosmology, University of Cambridge, Cambridge, United Kingdom

OPEN ACCESS

Edited by:

Paola Marziani,
Osservatorio Astronomico di Padova
(INAF), Italy

Reviewed by:

Giovanna Maria Stirpe,
Osservatorio astronomico di Bologna
(INAF), Italy
Begoña García-Lorenzo,
Instituto de Astrofísica de Canarias,
Spain

*Correspondence:

Giacomo Venturi
gventuri@arcetri.astro.it

Specialty section:

This article was submitted to
Milky Way and Galaxies,
a section of the journal
Frontiers in Astronomy and Space
Sciences

Received: 16 September 2017

Accepted: 02 November 2017

Published: 24 November 2017

Citation:

Venturi G, Marconi A, Mingozi M,
Carniani S, Cresci G, Risaliti G and
Mannucci F (2017) Ionized Gas
Outflows from the MAGNUM Survey:
NGC 1365 and NGC 4945.
Front. Astron. Space Sci. 4:46.
doi: 10.3389/fspas.2017.00046

AGN feedback, acting through strong outflows accelerated in the nuclear region of AGN hosts, is invoked as a key ingredient for galaxy evolution by many models to explain the observed BH-galaxy scaling relations. Recently, some direct observational evidence of radiative mode feedback in action has been finally found in quasars at $z > 1.5$. However, it is not possible to study outflows in quasars at those redshifts on small scales ($\lesssim 100$ pc), as spatial information is limited by angular resolution. This is instead feasible in nearby active galaxies, which are ideal laboratories to explore outflow structure and properties, as well as the effects of AGN on their host galaxies. In this proceeding we present preliminary results from the MAGNUM survey, which comprises nearby Seyfert galaxies observed with the integral field spectrograph VLT/MUSE. We focus on two sources, NGC 1365 and NGC 4945, that exhibit double conical outflows extending on distances > 1 kpc. We disentangle the dominant contributions to ionization of the various gas components observed in the central ~ 5.3 kpc of NGC 1365. An attempt to infer outflow 3D structure in NGC 4945 is made via simple kinematic modeling, suggesting a hollow cone geometry.

Keywords: active galactic nuclei, galaxies, outflows, NGC 1365, NGC 4945, imaging spectroscopy

1. INTRODUCTION

AGN are believed to have a strong influence on their host galaxies, accelerating fast outflows able to quench star formation (negative feedback). Many models invoke AGN feedback as a key ingredient for galaxy evolution (e.g., Springel et al., 2005; Hopkins et al., 2006; Ciotti et al., 2010; Scannapieco et al., 2012), shaping galaxy properties and giving rise to the observed black hole-host galaxy relations ($M_{\text{BH}} - \sigma_{\text{bulge}}$, $M_{\text{BH}} - L_{\text{bulge}}$, $M_{\text{BH}} - M_{\text{bulge}}$; e.g., Ferrarese and Merritt, 2000; Gebhardt et al., 2000; Marconi and Hunt, 2003; Kormendy and Ho, 2013; McConnell and Ma, 2013). According to radiative (or wind) mode feedback models, AGN at the Eddington limit can sweep away surrounding gas by radiation pressure, driving fast outflows which overcome the gravitational potential of the galaxy. Momentum balance in radiative mode gives a $M_{\text{BH}} - \sigma_{\text{bulge}}$ relation which is in agreement with the observed one (e.g., Fabian, 1999; King, 2003, 2005; Murray et al., 2005).

Luminous AGN are the best candidates to detect ongoing star formation being quenched by AGN feedback, as indeed found in recent works (e.g., Cano-Díaz et al., 2012; Brusa et al., 2015; Cresci et al., 2015a; Carniani et al., 2016, 2017). However, it is not possible to study high- z quasar

outflows on small spatial scales ($\lesssim 100$ pc), due to their large distances (e.g., even with adaptive optics Williams et al., 2017 achieve a spatial resolution of ~ 1 kpc at $z = 2.4$). On the contrary, nearby active galaxies are ideal laboratories to explore in detail outflow properties, their formation and acceleration mechanisms, as well as the effects of AGN activity on host galaxies (e.g., García-Burillo et al., 2014; Cresci et al., 2015b; Storchi-Bergmann, 2015; Davies et al., 2016). Here we present preliminary results from our MAGNUM survey (Measuring Active Galactic Nuclei Under MUSE Microscope), which aims at investigating the properties of outflows in nearby AGN, the physical conditions of the ionized gas and the interplay between nuclear activity and star formation in the host galaxy, thanks to the unprecedented combination of spatial and spectral coverage provided by the integral field spectrograph MUSE at VLT ($1' \times 1'$ FOV with $0.2''$ per spaxel and 4750–9300 Å spectral coverage; Bacon et al., 2010). The first result from the MAGNUM survey is presented in Cresci et al. (2015b), where tentative evidence of star formation induced by the AGN outflow (positive feedback; e.g., Silk, 2013) is found in the nearby Seyfert galaxy NGC 5643. Here two young ($\sim 10^7$ yr) isolated star-forming clumps are observed in the direction of the AGN-ionized outflow, where this impacts the dense material at the edge of the dust lane, suggesting a case of occurring positive feedback.

2. MAGNUM SURVEY: OVERVIEW

2.1. Sample Selection

MAGNUM galaxies have been picked out from the optically-selected samples of Maiolino and Rieke (1995) and Risaliti et al. (1999) (MR95 and R99, respectively, from now on) and from Swift-BAT 70-month Hard X-ray Survey (Baumgartner et al., 2013; hereafter SB-70m). The latter includes optically-obscured AGN which are excluded by the constraints given in MR95 and R99. On the other hand, a hard-X ray selection, as it is SB-70m, misses Compton-thick AGN, embraced instead by a selection based on optical emission lines (like MR95 and R99), which are spatially extended and not confined to the nuclear spot as the hard X-ray emission. We chose only those sources which are observable from Paranal Observatory ($-70^\circ < \delta < 20^\circ$) and have a distance < 50 Mpc, ending up with a total of 73 objects.

So far, we have analyzed MUSE data of 10 galaxies belonging to the MAGNUM sample, comprising Centaurus A, Circinus, IC 5063, NGC 1068, NGC 1365, NGC 1386, NGC 2992, NGC 4945, NGC 5643, and NGC 6810.

2.2. Data Analysis

We have fitted and subtracted the stellar continuum, after having Voronoi-binned (Cappellari and Copin, 2003) the data cube so as to get an average signal-to-noise ratio per wavelength channel (1.25 Å/channel) on the stellar continuum of at least 50 in each bin. We made use of a linear combination of Vazdekis et al. (2010) synthetic spectral energy distributions (SEDs) for single-age, single-metallicity stellar populations (SSPs), employing pPXF code (Penalized Pixel-Fitting; Cappellari and Emsellem, 2004) to convolve the linearly combined stellar templates with a Gaussian profile so as to reproduce the systemic velocity and the velocity

dispersion of the stellar absorption lines. The resulting star-subtracted cube has then been spatially smoothed with a 1σ -px Gaussian kernel. All the main emission lines have been fitted, spaxel-by-spaxel, with 1, 2, or 3 Gaussian components to best reproduce the total line profiles. The number of components in the best fits is set by the value of the reduced χ^2 with the aim of providing the best fit with the minimum number of free parameters. The same number of components is used for all emission lines imposing the same velocity and width to each component.

All the details about the MAGNUM sample selection and the data analysis will be given in Venturi et al. (2018, in preparation).

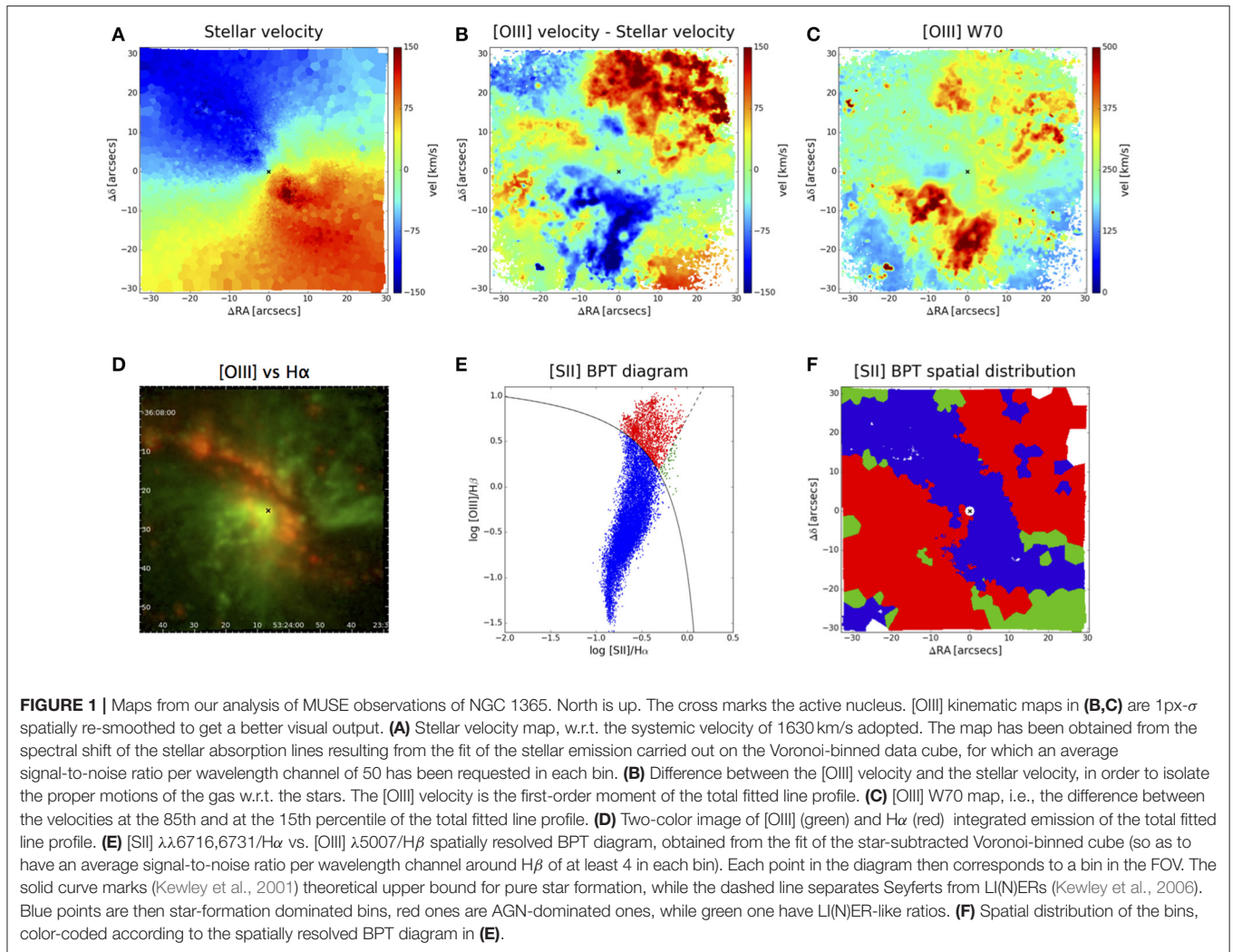
3. MUSE MAPS

Ionized outflows are observed in all the galaxies of our sample, with a more or less defined conical shape and a complex kinematics. In the following, we present the representative cases of NGC 1365 and NGC 4945. The former was observed with MUSE on October 12, 2014, for a total exposure time of ~ 4000 s, the latter on January 17, 2015, for a total of ~ 2000 s. NGC 1365 was studied in the ionized gas in many articles, e.g., Storchi-Bergmann and Bonatto (1991); Veilleux et al. (2003); Sharp and Bland-Hawthorn (2010). Lindblad (1999) gives a comprehensive review about the early work on this galaxy. An analysis of the ionized gas in NGC 4945 is reported (e.g., in Marconi et al., 2000; Rossa and Dettmar, 2003).

3.1. NGC 1365

NGC 1365 is a barred spiral Seyfert galaxy at $z = 0.00546$, extending for $11.2' \times 6.2'$, so that the $\sim 1' \times 1'$ FOV of MUSE covers the central $\sim 5.3 \times 5.3$ kpc² of the galaxy. In **Figures 1A–C** we show the stellar velocity field, the average velocity of the [OIII] $\lambda 5007$ line ([OIII] hereafter) subtracted, spaxel-by-spaxel, by the stellar velocity and the map of [OIII] line width W70 (i.e., the difference between the velocities at the 85th and at the 15th percentile of the total fitted profile; see Harrison et al., 2014), respectively. The first one exhibits the rotational motion of the stars (approaching to the NE, receding to the SW), which has a twisted shape probably associated with the presence of the bar. We subtract the average [OIII] velocity by the stellar one so as to isolate gas motions deviating from stellar rotation. The two kinematic maps of [OIII] reveal a double conical outflow with a clumpy morphology, oriented in the direction SE-NW, where [OIII] velocity deviates most from stellar one (by over 150 km/s) and total line profile is broader compared to the rest of the FOV, giving rise to W70 values greater than 500 km/s. The broadening is due to the fact that in each spaxel all the kinematic components in the line of sight, the one from the outflow and the one from the disk, sum up giving a complex line profile. Double-peaked line profiles are indeed ubiquitous in the regions having higher W70. As shown by the velocity map the SE cone is approaching to the observer, while the NW one is receding.

The outflow is part of the [OIII]-emitting cone, which can be seen in **Figure 1D** in green, where H α , tracing star formation in the disk, is instead reported in red. Both represent



the integrated flux of the total fitted line profile. The spatial distribution of the two emission lines is clearly different, with the H α being dominant in the direction NE-SW (along the galactic bar), almost perpendicular to the [OIII] double cone. BPT diagnostic diagrams (Baldwin et al., 1981; Veilleux and Osterbrock, 1987) give a quantitative assessment regarding the dominant ionizing source. In **Figure 1E** we report the spatially resolved [SII] $\lambda\lambda 6716,6731/\text{H}\alpha$ BPT diagram of NGC 1365, generated, differently from the other maps, from the fit of another data cube, produced by performing a Voronoi binning on the star-subtracted one, so as to get an average signal-to-noise ratio per wavelength channel around H β of at least 4 in each bin. This allows to get more reliable line ratios for the diagnostic diagram. Each point in the BPT corresponds to a single bin in the FOV and they are color-coded in the following way: blue points mark star-forming dominated bins, standing below (Kewley et al., 2001) upper limit for pure star formation (solid curve), while red ones indicate AGN-dominated bins, separated by Kewley et al. (2006) dashed line from the green ones having LI(N)ER-like line ratios. The spatial distribution of the bins in the FOV

is presented in **Figure 1F**, using the same color coding adopted in the diagram. The diagonal lane in the direction NE-SW is dominated by ionization from OB stars in star-forming regions, while the almost perpendicular [OIII]-emitting cone is AGN-dominated, indicating that the ionized outflow is AGN-driven. Besides the diagonal lane, some isolated bins far from the center, emerging from the cone, have star-forming ratios as well and correspond to the strong red H α blobs standing out against the green [OIII] in **Figure 1C**. A circular area surrounding the nucleus has been masked due to the presence of BLR lines disturbing the fit and giving highly deviant values of the line ratios.

The maps in **Figure 1** then suggest that the SE lobe of the AGN-ionized cones is the nearest to the observer and stands above the disk while the NW one is the furthest and resides behind the disk, as the former shows approaching velocities and the strongest flux between the two, especially going closer to the center, while the latter recedes and is fainter and overcome by the dusty star-forming regions near the center.

3.2. NGC 4945

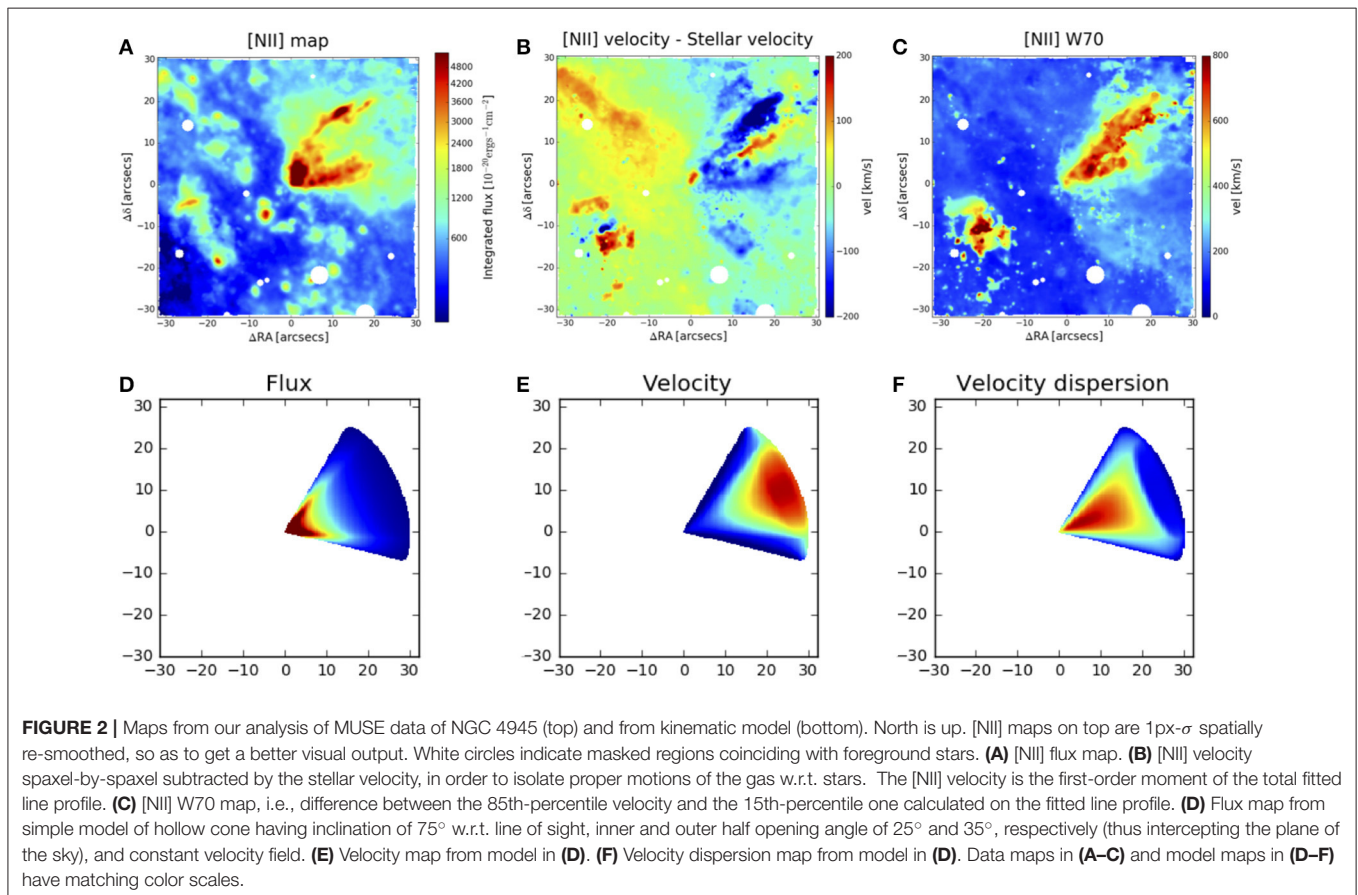
A double conical outflow is observed in another source belonging to our MAGNUM survey, i.e., NGC 4945, an almost perfectly edge-on galaxy at $z = 0.00188$. [NII] total integrated flux, average velocity (spaxel-by-spaxel subtracted by the stellar velocity) and W70 maps of this galaxy obtained from the star-subtracted spatially-smoothed data cube are presented in **Figures 2A–C**, respectively. The side of the FOV corresponds to ~ 3.5 kpc. The presence of the outflow is clear in W70 map, where a NW lobe and a SE one can be observed, the former being more extended than the latter, reaching a distance of ~ 1.8 kpc from the center. In the flux map too the NW lobe is much stronger and more extended than the SE one. The galaxy is nearly edge on and dusty, in fact, and so it is plausible that the galactic plane resides behind the NW lobe w.r.t. the observer, while the SE one stands behind the disk and is obscured by dust close to the center but emerges from it at a certain point. The velocity map of [NII] shows the kinematic structure of the two cones, the NW one having approaching velocities at its edges and receding ones around its axis, the SE lobe having an opposite behavior, i.e., receding velocities at its edges and approaching ones around its axis. As in the case of NGC 1365, double-peaked and complicated line profiles are ubiquitous along the outflow.

The aspect of the velocity map of the NW cone could be explained thinking to a hollow cone which has an axis inclination w.r.t. the l.o.s. $< 90^\circ$ and a sufficient aperture such that the far part

of the cone intercepts the plane of the sky (the same holds for the SE lobe, but with opposite geometry). Another feature supporting this scenario is the flux enhancement at the edges of [NII] cone in **Figure 2A**, compatible with an effect of limb brightening in a hollow cone. To test this hypothesis a simple kinematic model has been realized. The model features a hollow cone having inclination w.r.t. line of sight of 75° , inner and outer half opening angle of 25° and 35° , respectively, and constant velocity field. The resulting maps of flux, velocity and velocity dispersion are reported in **Figures 2D–F**, respectively. The velocity map of the model resembles the observed one, with approaching velocities at the edges of the cone and receding ones in the middle, and also the velocity dispersion spatial distribution seems to reproduce well the observed one. Although this simple model does not take into account the clumpiness of the ionized gas, it seems to be a fairly good representation of the observed maps, and thus a hollow cone intercepting the plane of the sky appears to be a promising way to explain the complex kinematics that we observe in NGC 4945. We are developing a more detailed and sophisticated kinematic model to actually reconstruct outflow 3D shape and intrinsic properties.

4. CONCLUSIONS

We presented a study of ionized outflows in nearby AGN in the field of our MAGNUM survey, which takes advantage of the



unprecedented capabilities of MUSE at VLT to study in detail outflows, photoionization and the interplay between AGN and host galaxies. We first gave a brief overview of the MAGNUM survey, describing the sample selection and the standard data analysis carried out on the 10 targets we studied up to now. We then presented preliminary maps and results obtained for two targets of the MAGNUM survey, NGC 1365 and NGC 4945.

MUSE observations of NGC 1365 reveal a clumpy double conical outflow, propagating from the center in the SE-NW direction, the brighter SE lobe approaching, the fainter NW one receding. The outflow is almost perpendicular to the stellar rotational field and is part of the [OIII]-emitting double cone, whose ionization is dominated by the AGN continuum, as established by [SII] $\lambda\lambda 6716, 6731/H\alpha$ vs. [OIII] $\lambda 5007/H\beta$ spatially resolved BPT diagram. The BPT also shows that the diagonal elongated area of the galaxy following the bar direction, nearly perpendicular to the AGN-ionized double cone, is instead dominated by ionization in star-forming regions. The fact that the SE cone is approaching and is brighter w.r.t. the NW receding one, in particular near the center where the star formation is dominant, suggests that the NW cone is partially hidden behind the galaxy disk, especially near the central dusty region, while the SE one points toward the observer above the disk.

REFERENCES

- Bacon, R., Accardo, M., Adjali, L., Anwand, H., Bauer, S., Biswas, I., et al. (2010). "The MUSE second-generation VLT instrument," in *Society of Photo-Optical Instrumentation Engineers (SPIE) Conference Series*, Vol. 7735, *Society of Photo-Optical Instrumentation Engineers (SPIE) Conference Series* (San Diego, CA), 773508.
- Baldwin, J. A., Phillips, M. M., and Terlevich, R. (1981). Classification parameters for the emission-line spectra of extragalactic objects. *Publ. ASP* 93, 5–19. doi: 10.1086/130766
- Baumgartner, W. H., Tueller, J., Markwardt, C. B., Skinner, G. K., Barthelmy, S., Mushotzky, R. F., et al. (2013). The 70 month swift-BAT all-sky hard X-ray survey. *Astrophys. J. Suppl.* 207:19. doi: 10.1088/0067-0049/207/2/19
- Brusa, M., Feruglio, C., Cresci, G., Mainieri, V., Sargent, M. T., Perna, M., et al. (2015). Evidence for feedback in action from the molecular gas content in the $z \sim 1.6$ outflowing QSO XID2028. *Astron. Astrophys.* 578:A11. doi: 10.1051/0004-6361/201425491
- Cano-Díaz, M., Maiolino, R., Marconi, A., Netzer, H., Shemmer, O., and Cresci, G. (2012). Observational evidence of quasar feedback quenching star formation at high redshift. *Astron. Astrophys.* 537:L8. doi: 10.1051/0004-6361/201118358
- Cappellari, M., and Copin, Y. (2003). Adaptive spatial binning of integral-field spectroscopic data using Voronoi tessellations. *Month. Notices RAS* 342, 345–354. doi: 10.1046/j.1365-8711.2003.06541.x
- Cappellari, M., and Emsellem, E. (2004). Parametric recovery of line-of-sight velocity distributions from absorption-line spectra of galaxies via penalized likelihood. *Publ. ASP* 116, 138–147. doi: 10.1086/381875
- Carniani, S., Marconi, A., Maiolino, R., Balmaverde, B., Brusa, M., Cano-Díaz, M., et al. (2016). Fast outflows and star formation quenching in quasar host galaxies. *Astron. Astrophys.* 591:A28. doi: 10.1051/0004-6361/201528037
- Carniani, S., Marconi, A., Maiolino, R., Feruglio, C., Brusa, M., Cresci, G., et al. (2017). AGN feedback on molecular gas reservoirs in quasars at $z \sim 2.4$. *ArXiv e-prints*.
- Ciotti, L., Ostriker, J. P., and Proga, D. (2010). Feedback from central black holes in elliptical galaxies. III. models with both radiative and mechanical feedback. *Astrophys. J.* 717, 708–723. doi: 10.1088/0004-637X/717/2/708
- NGC 4945 shows a double conical outflow as well, the NW lobe being much brighter than the SE one, which appears only at $\sim 15''$ from the center, likely being completely dust-obscured at smaller radius, as the galaxy is almost edge-on. The kinematic structure of the NW cone reveals approaching velocities at the edges of the cone and receding ones along its axis. A simple kinematic model of a hollow cone pointing toward the observer's side but intercepting the plane of the sky accounts for this observed field. Consistently, the SE lobe shows an opposite behavior, with receding velocities at the edges of the cone and approaching ones along its axis.

AUTHOR CONTRIBUTIONS

GV wrote the article and performed the data reduction using both the ESO pipeline. Python scripts written by SC and AM wrote the first version of the python scripts for data analysis. GV and MM tested and implemented the scripts and performed the analysis of the sources, finally producing the maps. All the co-authors provided a critical review to the article.

FUNDING

SC acknowledges financial support from the Science and Technology Facilities Council (STFC).

- Cresci, G., Mainieri, V., Brusa, M., Marconi, A., Perna, M., Mannucci, F., et al. (2015a). Blowin' in the wind: both "negative" and "positive" feedback in an obscured high- z quasar. *Astrophys. J.* 799:82. doi: 10.1088/0004-637X/799/1/82
- Cresci, G., Marconi, A., Zibetti, S., Risaliti, G., Carniani, S., Mannucci, F., et al. (2015b). The MAGNUM survey: positive feedback in the nuclear region of NGC 5643 suggested by MUSE. *Astron. Astrophys.* 582:A63. doi: 10.1051/0004-6361/201526581
- Davies, R. L., Dopita, M. A., Kewley, L., Groves, B., Sutherland, R., Hampton, E. J., et al. (2016). The role of radiation pressure in the narrow line regions of Seyfert host galaxies. *Astrophys. J.* 824:50. doi: 10.3847/0004-637X/824/1/50
- Fabian, A. C. (1999). The obscured growth of massive black holes. *Month. Notices RAS* 308, L39–L43.
- Ferrarese, L., and Merritt, D. (2000). A fundamental relation between supermassive black holes and their host galaxies. *Astrophys. J. Lett.* 539, L9–L12. doi: 10.1086/312838
- García-Burillo, S., Combes, F., Usero, A., Aalto, S., Krips, M., Viti, S., et al. (2014). Molecular line emission in NGC 1068 imaged with ALMA. I. An AGN-driven outflow in the dense molecular gas. *Astron. Astrophys.* 567:A125. doi: 10.1051/0004-6361/201423843
- Gebhardt, K., Bender, R., Bower, G., Dressler, A., Faber, S. M., Filippenko, A. V., et al. (2000). A relationship between nuclear black hole mass and galaxy velocity dispersion. *Astrophys. J. Lett.* 539, L13–L16. doi: 10.1086/312840
- Harrison, C. M., Alexander, D. M., Mullaney, J. R., and Swinbank, A. M. (2014). Kiloparsec-scale outflows are prevalent among luminous AGN: outflows and feedback in the context of the overall AGN population. *Month. Notices RAS* 441, 3306–3347. doi: 10.1093/mnras/stu515
- Hopkins, P. F., Hernquist, L., Cox, T. J., Di Matteo, T., Robertson, B., and Springel, V. (2006). A unified, merger-driven model of the origin of starbursts, quasars, the cosmic X-ray background, supermassive black holes, and galaxy spheroids. *Astrophys. J. Suppl.* 163, 1–49. doi: 10.1086/499298
- Kewley, L. J., Dopita, M. A., Sutherland, R. S., Heisler, C. A., and Trevena, J. (2001). Theoretical modeling of starburst galaxies. *Astrophys. J.* 556, 121–140. doi: 10.1086/321545

- Kewley, L. J., Groves, B., Kauffmann, G., and Heckman, T. (2006). The host galaxies and classification of active galactic nuclei. *Month. Notices RAS* 372, 961–976. doi: 10.1111/j.1365-2966.2006.10859.x
- King, A. (2003). Black holes, galaxy formation, and the $M_{\text{BH}}-\sigma$ relation. *Astrophys. J. Lett.* 596, L27–L29. doi: 10.1086/379143
- King, A. (2005). The AGN-starburst connection, galactic superwinds, and $M_{\text{BH}}-\sigma$. *Astrophys. J. Lett.* 635, L121–L123. doi: 10.1086/499430
- Kormendy, J., and Ho, L. C. (2013). Coevolution (or not) of supermassive black holes and host galaxies. *Annual Rev. Astron. Astrophys.* 51, 511–653. doi: 10.1146/annurev-astro-082708-101811
- Lindblad, P. O. (1999). NGC 1365. *Astron. Astrophys. Rev.* 9, 221–271. doi: 10.1007/s001590050018
- Maiolino, R., and Rieke, G. H. (1995). Low-luminosity and obscured seyfert nuclei in nearby galaxies. *Astrophys. J.* 454:95. doi: 10.1086/176468
- Marconi, A., and Hunt, L. K. (2003). The relation between black hole mass, bulge mass, and near-infrared luminosity. *Astrophys. J. Lett.* 589, L21–L24. doi: 10.1086/375804
- Marconi, A., Oliva, E., van der Werf, P. P., Maiolino, R., Schreier, E. J., Macchetto, F., et al. (2000). The elusive active nucleus of NGC 4945. *Astron. Astrophys.* 357, 24–36. Available online at: <http://aa.springer.de/bibs/0357001/2300024/small.htm>
- McConnell, N. J., and Ma, C.-P. (2013). Revisiting the scaling relations of black hole masses and host galaxy properties. *Astrophys. J.* 764:184. doi: 10.1088/0004-637X/764/2/184
- Murray, N., Quataert, E., and Thompson, T. A. (2005). On the maximum luminosity of galaxies and their central black holes: feedback from momentum-driven winds. *Astrophys. J.* 618, 569–585. doi: 10.1086/426067
- Risaliti, G., Maiolino, R., and Salvati, M. (1999). The distribution of absorbing column densities among Seyfert 2 galaxies. *Astrophys. J.* 522, 157–164. doi: 10.1086/307623
- Rossa, J., and Dettmar, R.-J. (2003). An $H\alpha$ survey aiming at the detection of extraplanar diffuse ionized gas in halos of edge-on spiral galaxies. II. The $H\alpha$ survey atlas and catalog. *Astron. Astrophys.* 406, 505–525. doi: 10.1051/0004-6361:20030698
- Scannapieco, C., Wadepuhl, M., Parry, O. H., Navarro, J. F., Jenkins, A., Springel, V., et al. (2012). The Aquila comparison project: the effects of feedback and numerical methods on simulations of galaxy formation. *Month. Notices RAS* 423, 1726–1749. doi: 10.1111/j.1365-2966.2012.20993.x
- Sharp, R. G., and Bland-Hawthorn, J. (2010). Three-dimensional integral field observations of 10 galactic winds. I. Extended phase (gsim10 Myr) of mass/energy injection before the wind blows. *Astrophys. J.* 711, 818–852. doi: 10.1088/0004-637X/711/2/818
- Silk, J. (2013). Unleashing positive feedback: linking the rates of star formation, supermassive black hole accretion, and outflows in distant galaxies. *Astrophys. J.* 772:112. doi: 10.1088/0004-637X/772/2/112
- Springel, V., Di Matteo, T., and Hernquist, L. (2005). Modelling feedback from stars and black holes in galaxy mergers. *Month. Notices RAS* 361, 776–794. doi: 10.1111/j.1365-2966.2005.09238.x
- Storchi-Bergmann, T. (2015). “The Narrow Line Region in 3D: mapping AGN feeding and feedback,” in *Galaxies in 3D Across the Universe, Vol. 309, IAU Symposium*, eds B. L. Ziegler, F. Combes, H. Dannerbauer, and M. Verdugo (Vienna), 190–195.
- Storchi-Bergmann, T., and Bonatto, C. J. (1991). Detection of a forbidden O III 5007- α radiation cone in the nuclei of NGC 1365 and 7582. *Month. Notices RAS* 250, 138–143. doi: 10.1093/mnras/250.1.138
- Vazdekis, A., Sánchez-Blázquez, P., Falcón-Barroso, J., Cenarro, A. J., Beasley, M. A., Cardiel, N., et al. (2010). Evolutionary stellar population synthesis with MILES - I. The base models and a new line index system. *Month. Notices RAS* 404, 1639–1671. doi: 10.1111/j.1365-2966.2010.16407.x
- Veilleux, S., and Osterbrock, D. E. (1987). Spectral classification of emission-line galaxies. *Astrophys. J. Suppl.* 63, 295–310. doi: 10.1086/191166
- Veilleux, S., Shopbell, P. L., Rupke, D. S., Bland-Hawthorn, J., and Cecil, G. (2003). A Search for very extended ionized gas in nearby starburst and active galaxies. *Astron. J.* 126, 2185–2208. doi: 10.1086/379000
- Williams, R. J., Maiolino, R., Krongold, Y., Carniani, S., Cresci, G., Mannucci, F., and Marconi, A. (2017). An ultra-dense fast outflow in a quasar at $z = 2.4$. *Month. Notices RAS* 467, 3399–3412. doi: 10.1093/mnras/stx311

Conflict of Interest Statement: The authors declare that the research was conducted in the absence of any commercial or financial relationships that could be construed as a potential conflict of interest.

Copyright © 2017 Venturi, Marconi, Mingozi, Carniani, Cresci, Risaliti and Mannucci. This is an open-access article distributed under the terms of the Creative Commons Attribution License (CC BY). The use, distribution or reproduction in other forums is permitted, provided the original author(s) or licensor are credited and that the original publication in this journal is cited, in accordance with accepted academic practice. No use, distribution or reproduction is permitted which does not comply with these terms.