



<b>Publication Year</b>	2023
<b>Acceptance in OA</b>	2025-02-17T10:44:00Z
<b>Title</b>	MeerKAT's View of the Bullet Cluster 1E 0657-55.8
<b>Authors</b>	Sikhosana, S. P., Knowles, K., Hilton, M., Moodley, K., MURGIA, MATTEO
<b>Publisher's version (DOI)</b>	10.1093/mnras/stac3370
<b>Handle</b>	<a href="http://hdl.handle.net/20.500.12386/35992">http://hdl.handle.net/20.500.12386/35992</a>
<b>Journal</b>	MONTHLY NOTICES OF THE ROYAL ASTRONOMICAL SOCIETY
<b>Volume</b>	518

# MeerKAT's view of the bullet cluster 1E 0657-55.8

S. P. Sikhosana<sup>1,2</sup>★, K. Knowles<sup>3,4</sup>, M. Hilton<sup>1,2,5</sup>, K. Moodley<sup>1,2</sup> and M. Murgia<sup>6</sup>

<sup>1</sup>*Astrophysics Research Centre, University of KwaZulu-Natal, Durban 3696, South Africa*

<sup>2</sup>*School of Mathematics, Statistics and Computer Science, University of KwaZulu-Natal, Westville Campus, Durban 4041, South Africa*

<sup>3</sup>*Department of Physics and Electronics, Rhodes University, PO Box 94, Makhanda 6140, South Africa*

<sup>4</sup>*South African Radio Astronomy Observatory, 2 Fir Street, Observatory, Cape Town 7405, South Africa*

<sup>5</sup>*Wits Centre for Astrophysics, School of Physics, University of the Witwatersrand, Private Bag 3, Johannesburg 2050, South Africa*

<sup>6</sup>*INAF-Osservatorio Astronomico di Cagliari, Via della Scienza 5, I-09047 Selargius, Italy*

Accepted 2022 November 14. Received 2022 November 14; in original form 2022 July 8

## ABSTRACT

The Bullet cluster (1E 0657-55.8) is a massive merging system at redshift  $z = 0.296$ , known to host a powerful radio halo and a relic. Here we present high fidelity MeerKAT  $L$ -band (0.9–1.7 GHz) observations of the Bullet cluster, where we trace a larger extent of both the halo and relic in comparison to previous studies. The size of the recovered halo is  $1.6 \text{ Mpc} \times 1.3 \text{ Mpc}$  and the largest linear size of the relic is  $\sim 988 \text{ kpc}$ . We detect a new decrement feature on the southern outskirts of the halo emission, where a region appears to have a lower surface brightness in comparison to its surroundings. The larger extension on the outskirts of the halo is faint, which suggests lower relativistic electron density or a weaker magnetic field. An in-band spectral index map of the halo reveals radial steepening towards the edges, likely due to synchrotron electron ageing. The integrated spectral index of the radio halo is  $1.1 \pm 0.2$ . We perform a radio–X-ray surface brightness point-to-point analysis, which reveals a linear correlation for the radio halo. This indicates that the halo emission is produced by primary re-acceleration mechanisms. Finally, we derive a radio Mach number of  $\mathcal{M}_R = 4.6 \pm 0.9$  for the relic shock region, which is higher than the Mach number inferred by earlier analyses based on X-ray data. Discrepancies between radio and X-ray Mach numbers have been observed for multiple systems, studies suggest that this is due to various factors, including relic orientation.

**Key words:** galaxies: clusters: intracluster medium – radio continuum: galaxies – X-rays: galaxies: clusters.

## 1 INTRODUCTION

Radio observations of galaxy clusters reveal cluster-scale diffuse synchrotron emission that is not associated with individual galaxies, but rather with the intracluster medium (ICM). The formation of these radio sources is linked to major merger activity in the ICM (Brunetti & Jones 2014). Hence, studying the properties of these diffuse radio sources gives insight into astrophysical processes such as cosmic ray transportation and particle (re)acceleration in the ICM. The extended diffuse radio sources can be categorized into radio haloes (RHs) and radio relics based on their size, morphology, and location (for reviews Feretti et al. 2012; van Weeren et al. 2019).

Giant radio haloes (GRHs) which are  $\sim \text{Mpc}$  in size, located in central regions of clusters, and with low polarization percentages, have two main formation theories. The first is the secondary ‘hadronic’ model, in which electrons originate from hadronic collisions between the long-living relativistic protons in the ICM and thermal ions (e.g. Dennison 1980; Pfrommer, Enßlin & Springel 2008; Keshet 2010; Enßlin et al. 2011). This formation theory has not been widely accepted due to the lack of observational evidence of gamma rays in clusters, which are a by-product of the hadronic processes (Reimer et al. 2003; Ackermann et al. 2010, 2018). The second model is the primary ‘re-acceleration’ model. According to this

model, a pool of pre-existing electrons (Pinzke, Oh & Pfrommer 2017) is re-accelerated through second-order Fermi mechanism by ICM turbulence developing during cluster mergers (Brunetti et al. 2001; Cassano & Brunetti 2005; Feretti et al. 2012; Donnert & Brunetti 2014). Observational studies have linked GRHs to host clusters with high mass ( $M_{500} > 4 \times 10^{14} M_{\odot}$ ) and X-ray and/or optical merger signatures (Markevitch et al. 2005; Cassano et al. 2013; Lindner et al. 2014; Shimwell et al. 2014; Kale et al. 2015; Knowles et al. 2019; Raja et al. 2021). Studies of large populations of radio haloes show that these sources are not ubiquitous (Hanisch 1982; Kempner & Sarazin 2001). Their radio power is correlated with their X-ray properties (Liang 2000; Yuan, Han & Wen 2015), the largest linear size (LLS; Giovannini et al. 2009), and the integrated inverse-Compton parameter (Basu 2012). Studies of samples derived from Sunyaev-Zel’dovich (SZ; Sunyaev & Zeldovich 1972) surveys have shown that there is a higher occurrence rate of radio haloes compared to the rate predicted by previous studies of X-ray selected samples (Basu 2012; Sommer & Basu 2014; Cuciti et al. 2015; Botteon et al. 2022). Although the re-acceleration theory is accepted as the primary mechanism, there are still a few aspects that need further investigation. The main open question is the source of the pre-existing population of electrons. The suggested sources include electrons deposited in the ICM by active galactic nuclei (AGNs) activity, thermal protons pre-accelerated by cluster merger shocks, and the hadronic secondary electrons (Brunetti & Blasi 2005;

\* E-mail: [sneprec@gmail.com](mailto:sneprec@gmail.com), [sikhosanas@ukzn.ac.za](mailto:sikhosanas@ukzn.ac.za)

Shimwell et al. 2016; de Gasperin et al. 2017). Another mystery is the presence of radio haloes in clusters that show no trace of merger activity (Venturi et al. 2017; Kale, Shende & Parekh 2019). Other models, such as magnetic re-connection, attempt to resolve such constraints by proposing hybrid models (Brunetti & Lazarian 2016). Various observational phenomena can be used to distinguish formation theories, one such example is the radio-X-ray point-to-point correlation study (Govoni et al. 2001; Cova et al. 2019; Botteon et al. 2020b; Rajpurohit et al. 2021).

Relics are arc-shaped,  $\sim$ Mpc scale, highly polarized sources ( $\gtrsim 20$  per cent) that are located at clusters' peripheral regions. Observations by Jaffe & Rudnick (1979), Bonafede et al. (2012), Botteon et al. (2016) and Locatelli et al. (2020) show that their origin is linked to shock waves generated in the ICM by merger events (Enßlin et al. 1998; Roettiger, Burns & Stone 1999). However, the underlying particle acceleration mechanism is still under debate (Stuardi et al. 2019). In the mechanism of first-order diffusive shock acceleration (DSA; Bell 1978; Drury 1983; Jones & Ellison 1991), cosmic ray protons and electrons are assumed to be accelerated from the thermal pool up to relativistic energies at the cluster merger shocks. Although this mechanism can explain the general properties of relic emission, several observational features remain unexplained (Stuardi et al. 2019), such as the non-detection of gamma-rays in clusters that host relics (Vazza & Brüggén 2014), and the low Mach numbers observed in shocks (Brunetti & Jones 2014; Botteon et al. 2020a). The second mechanism proposes the re-acceleration of fossil relativistic electrons via DSA at the cluster shocks (Markevitch et al. 2005; Hoeft & Brüggén 2007; Pinzke, Oh & Frommer 2013; Kang, Ryu & Jones 2017). This mechanism reproduces the observed spectrum (de Gasperin et al. 2014; Shimwell et al. 2015; van Weeren et al. 2017a) and does not require shocks to have large Mach numbers, as the pre-existing electrons have enough energy to be re-accelerated to relativistic speeds (Brunetti & Jones 2014). However, this mechanism also presents challenges as there are expected phenomena that are yet to be observed (Stuardi et al. 2019). For example, the connection between AGNs (candidate seed electron source) and radio relics could be established only in few cases (Bonafede et al. 2014; van Weeren et al. 2017b).

The Bullet cluster (1E 0657-55.8) is a massive ( $11.4^{+2.2}_{-1.8} \times 10^{14} M_{\odot}$ ) galaxy cluster at redshift  $z = 0.296$  which is known to host both a GRH and a relic (Liang et al. 2000; Shimwell et al. 2015). The cluster is reported to have recently experienced a major merger (Markevitch et al. 2002; Markevitch 2006). The observed collision is approximately perpendicular to the line of sight, which makes this cluster an intriguing case study for various wavelengths. At radio wavelengths, MeerKAT (Jonas 2009) is an excellent instrument for observing this cluster because the densely populated core increases sensitivity to large scale diffuse emission. MeerKAT is a precursor of the Square Kilometre Array. It is one of the most sensitive radio arrays in the pre-SKA era (Camilo et al. 2018; Mauch et al. 2020). The full MeerKAT array consists of 64 antennas, with 70 per cent of the dishes located at the core ( $<400$  m) of the array. The minimum baseline for the array is 29 m and the maximum baseline is 7.7 km. The array configuration makes MeerKAT an excellent instrument for studying faint extended diffuse emission in galaxy clusters. Extracting the extended emission requires short baselines, while long baselines are needed to disentangle compact source emission. Both the requirements are simultaneously available with MeerKAT's full array observations. Additionally, MeerKAT's high sensitivity significantly reduces the integration time required to detect faint diffuse emission. As a result of superior sensitivity, particularly in the core, shorter observations from MeerKAT detect

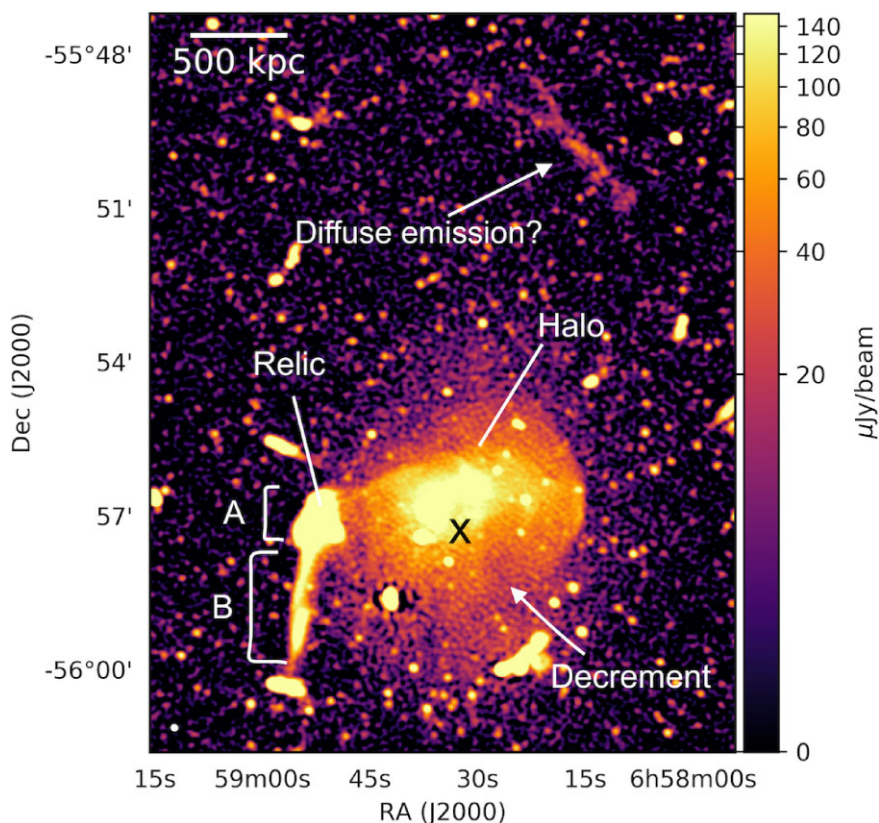
faint features in the diffuse emission that similar instruments require significantly longer integration times to reproduce. The Bullet cluster was observed by MeerKAT as part of its Galaxy Cluster Legacy Survey (MGCLS; Knowles et al. 2022), which observed 115 clusters at  $L$ -band during the science verification and early science exploitation of MeerKAT. We independently reduced the data and present the results.

The paper is organized as follows. In Section 2 we summarize previous multiwavelength studies of the Bullet cluster. We outline our MeerKAT observations and data reduction in Section 3. In Section 4 we present the MeerKAT results, and in Section 5 we discuss the radio versus X-ray surface brightness correlation and radio Mach number of the relic. We adopt a  $\Lambda$ CDM flat cosmology with  $H_0 = 70 \text{ km s}^{-1} \text{ Mpc}^{-1}$ ,  $\Omega_m = 0.3$ , and  $\Omega_{\Lambda} = 0.7$ . At the redshift of the Bullet cluster ( $z = 0.296$ ), the luminosity distance is 1529 Mpc and 1 arcsec corresponds to 4.413 kpc.

## 2 MULTIWAVELENGTH OBSERVATIONS OF 1E 0657-55.8

Tucker, Tananbaum & Remillard (1995), Tucker et al. (1998) were the first to detect the Bullet cluster using the *ROSAT* satellite (Voges 1992), the Advanced Satellite for Cosmology and Astrophysics (Tanaka, Inoue & Holt 1994), and the Einstein IPC instrument (Giacconi et al. 1979). Tucker et al. (1998) also measured that the Bullet cluster has a spectroscopic redshift of  $z = 0.296$ . There have since been numerous multiwavelength follow-ups of this cluster (Liang et al. 2000; Markevitch et al. 2002; Clowe, Gonzalez & Markevitch 2004). Barrena et al. (2002) used spectroscopic data from the ESO New Technology Telescope (Tarenghi & Wilson 1989) to study the dynamical state of the cluster. Their results showed that the system has a sub-cluster which is offset from the main cluster position by 0.7 Mpc in the western direction. They found that the sub-cluster had a virial mass of  $1.3 \times 10^{13} M_{\odot}$  and the main cluster had virial mass of  $1.3 \times 10^{15} M_{\odot}$ . They concluded that the mass of the sub-cluster was significantly larger at the pre-merger stage. Hence, they concluded that the Bullet cluster has recently (within the past 0.15 Gyr) experienced a major merger. Clowe et al. (2004) used Very Large Telescope (VLT FORS1) data to reconstruct weak lensing maps of the Bullet cluster. Their weak lensing and X-ray comparison studies revealed that the X-ray centroid peak and reconstructed cluster mass were misaligned, hence showing that the total mass of the system does not trace the baryonic mass. This result indicated that dark matter is collision-less. Other weak lensing studies have further solidified these findings (Bradač et al. 2006; Clowe et al. 2006; Paraficz et al. 2016).

*Chandra* X-ray studies by Markevitch et al. (2002) and Markevitch (2006) showed that the merger was a 'textbook' example of a bow shock merger. They measured the Mach number of the bow shock to be  $\mathcal{M}_X = 3.0 \pm 0.4$ . The velocity of the cluster was found to be 3000–4000  $\text{km s}^{-1}$ . Their observations also indicate that the sub-cluster traversed the main cluster 0.1–0.2 Gyr ago and is in its final stage of being destroyed by dynamic gas instabilities. They studied the temperature profile across the shock and found that the electrons are fast heated at the bow shock front. Di Mascolo et al. (2019) used Atacama Large Millimeter/submillimeter Array and Atacama Compact Array SZ observations to study the bow shock in the cluster. They found an SZ-derived Mach number of  $\mathcal{M}_{SZ} = 2.53^{+0.33}_{-0.25}$ , in agreement with their X-ray-derived value of  $\mathcal{M}_X = 2.57 \pm 0.23$ , obtained after reprocessing archival *Chandra* data.



**Figure 1.** Full resolution MeerKAT 1.3 GHz image of the Bullet cluster. The rms of the image is  $\sigma = 8.5 \mu\text{Jy beam}^{-1}$ . The synthesized beam of the image is  $6.4 \text{ arcsec} \times 5.9 \text{ arcsec}$ ,  $61.7^\circ \text{p.a.}$ , it is indicated by the filled white ellipse in the lower left-hand corner of the image. We label the radio halo, relic, newly detected diffuse emission, and decrement region within the halo. The black cross indicates the SZ cluster centre.

Liang et al. (2000) were the first to report the detection of a radio halo hosted by the Bullet cluster. They observed the cluster using the Australia Telescope Compact Array (ATCA) at 1.3, 2.4, 4.9, 5.9, and 8.8 GHz. There have since been follow-up studies of the radio emission using deeper, and higher frequency, ATCA observations (Shimwell et al. 2014, 2015; Malu, Datta & Sandhu 2016). The first detection of a luminous ‘toothbrush’ relic was reported by Shimwell et al. (2015). They measured an integrated flux density of  $77.8 \pm 3.1$  and  $4.8 \pm 0.6 \text{ mJy}$ ,  $\alpha^1$  was  $-1.07 \pm 0.03$  and  $-1.66 \pm 0.14$  for regions A and B, respectively (see Fig. 1), and  $P_{1.4\text{GHz}} = (2.3 \pm 0.1) \times 10^{25} \text{ WHz}^{-1}$ . Their X-ray analysis revealed that the relic coincides with a shock opposite the western bow shock. The Mach number of the shock was measured to be  $\mathcal{M}_X = 2.5^{+1.8}_{-0.8}$ . The multiwavelength properties of the Bullet cluster are summarized in Table 1.

### 3 MEERKAT OBSERVATIONS AND DATA REDUCTION

The presence of a radio halo and relic in the Bullet cluster (Liang et al. 2000; Shimwell et al. 2014, 2015; Malu et al. 2016) made it an excellent science verification target for MeerKAT. The Bullet cluster was observed on 2018 June 24 using 61 antennas. The data were recorded at *L*-band, which has a total bandwidth of 856 MHz divided into 4096 channels, and the integration time was set to 8 s. The full observation was  $\sim 11$  h, including the overheads. For the observations, the primary flux calibrators were J0408–6545 and

**Table 1.** Multiwavelength properties of 1E 0657–55.8. SZ values are from the ACT DR5 catalogue (Hilton et al. 2021). The X-ray properties are from Menanteau et al. (2010).

R.A. <sub>J2000</sub> (hh:mm:ss.s)	06:58:32.7
Dec. <sub>J2000</sub> (dd:mm:ss.s)	−55:57:19.0
redshift	0.296
$Y_{500,\text{SZ}}$ ( $10^{-4} \text{ arcmin}^2$ )	$13.3 \pm 0.4$
$M_{500,\text{SZ}}$ ( $10^{14} M_\odot$ )	$11.4^{+2.2}_{-1.8}$
$L_{500,\text{X}}$ ( $10^{44} \text{ erg s}^{-1}$ )	$20.69 \pm 0.05$
$T_X$ (keV)	$13.56 \pm 0.14$
$Z_X$ ( $Z_\odot$ )	$0.36 \pm 0.02$

J1331+3030. J0408–6545 was observed for 10 min after every 1-h scan of the target and gain calibrator, and J1331+3030 was observed for 10 min for the last hour scans. The secondary gain calibrators were J0825–5010 and PKS 0647–475. The gain calibrators were each observed for 2 min after every 20-min target scan. The observation details are summarized in Table 2. The raw data were provided to us by the Observatory in 2018 as part of a PhD project. This observation was later included in the MGCLS’s first data release (Knowles et al. 2022). However, for this analysis, we reduced this data independently of the MGCLS. The MGCLS DR1 only provides image products, we needed to further process the data by removing the compact sources in the visibility plane and re-image at low resolution. Our independent processing also allows for sanity checking and comparison against the Orbit processing used in MGCLS DR1. The details of the data reduction are discussed below.

<sup>1</sup> $S_\nu \propto \nu^\alpha$

**Table 2.** Summary of the MeerKAT observations and the full resolution image properties.

Central frequency (MHz)	1283
$\Delta\nu$ (MHz)	856
No. of antennas	61
Observing date (Y-M-D)	2018-06-24
Amplitude calibrators	J0408–6545 & J1331+3030
Phase calibrators	J0825–5010 & PKS 0647–475
On-source time (h)	7.7
$t_{\text{int}}$ (s)	8
Flagged (per cent)	50.2
$\theta_{\text{synth}}$ , p.a. (arcsec $\times$ arcsec, °)	6.4 $\times$ 5.9, 61.7
$\sigma_{\text{rms}}$ ( $\mu\text{Jy beam}^{-1}$ )	8.5

### 3.1 Data reduction

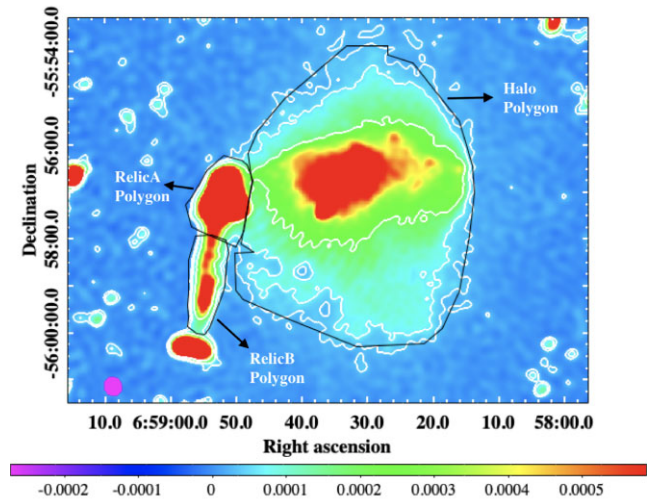
The data were reduced using OXKAT v1.0<sup>2</sup> software (Heywood 2020). OXKAT is a set of Python-based scripts that perform the traditional first-generation calibration (1GC), flagging, and second-generation calibration (2GC) using astronomy tools such as CASA v5.6 (McMullin et al. 2007) and WSCLEAN v3<sup>3</sup> (Offringa et al. 2014). The target field did not have any problematic bright sources, hence we did not perform third-generation calibration (3GC), which includes correcting for direction-dependent effects.

To compress the data and increase the processing speed, the data were averaged from 4096 channels to 1024 channels. We then proceeded to 1GC, where all the steps were performed using CASA. We started with flagging the known RFI bands manually by specifying the frequency bands. We then applied automated flagging using CASA tasks such as RFLAG and TFCROP. The primary and secondary calibrator models were used to calibrate the target field, and the calibrators and target were split into separate Measurements Sets (MS).

After applying the 1GC calibration solutions to the target field, the data were flagged using TRICOLOUR v0.1.7<sup>4</sup> (Hugo et al. 2022). The final flagged percentage of the target data is 50.2 per cent. The target was imaged using WSCLEAN with an auto-mask threshold, a Briggs robust weighting (Briggs 1995) of  $-0.3$ , and eight sub-band channels. The data were e-imaged in WSCLEAN using the blind mask, with the final 1GC image then used to predict the sky model for the target field. This model was then used for self-calibration. The final step of the data reduction was 2GC, where one cycle of phase and amplitude self-calibration was performed using CASA before a 2GC image was made. This final image’s central frequency is 1.3 GHz, and it has an rms of  $8.5 \mu\text{Jy beam}^{-1}$  near the cluster centre. The synthesized beam is  $6.4 \text{ arcsec} \times 5.9 \text{ arcsec}$ , with a position angle of  $61.7$  degrees. The full field of view is shown in Fig. A1, with a zoom-in on the cluster region in Fig. 1.

### 3.2 Compact source subtraction

Prior to measuring the flux densities of the diffuse emission, we subtracted compact emission from all sources brighter than  $25 \mu\text{Jy}$  in a fixed region with a radius of 5 arcmin centred at the cluster’s SZ centre, which covered the extent of the diffuse emission. The compact



**Figure 2.** MeerKAT’s low resolution image of the diffuse emission. The rms of the image is  $10.1 \mu\text{Jy beam}^{-1}$ . The beam, indicated by the magenta ellipse, has a size of  $13.1 \text{ arcsec} \times 11.7 \text{ arcsec}$  and the position angle of the beam is  $120.6^\circ$ . The black polygons indicate the regions that were used to calculate the flux density of the diffuse emission. The contour levels are  $[3, 6, 20] \times \sigma$  where  $\sigma = 10.1 \mu\text{Jy beam}^{-1}$ .

source subtraction, which was applied in the uv-plane, was done to ensure that the flux density measurements for the diffuse emission had no contamination from the embedded compact emission. We also remove compact sources to ensure that they do not blend with the extended emission when we produce low resolution maps. The source subtraction was implemented using CRYSTALBALL v0.3.1<sup>5</sup> and MSUTILS v1.2.0.<sup>6</sup> CRYSTALBALL uses a source list from WSCLEAN to create a model column, in the MS file, that only contains the tagged compact sources. MSUTILS then subtracts the newly created column from the column that contains the calibrated data and creates a new column containing the compact-source-subtracted visibilities. We then used the resulting visibilities to produce the low resolution map.

### 3.3 Low resolution maps

We produce a low resolution map to enhance the surface brightness of the fainter regions of the large-scale diffuse emission. We imaged the target field using a uv-range  $\leq 13 \text{ k}\lambda$  which corresponds to a projected size of  $\sim 119 \text{ kpc}$  at the cluster redshift, and a Briggs weighting robust parameter of 0. The diffuse emission in this cluster is extremely bright, and the flux density of the brightest regions is also captured in longer baselines. Hence, we used a higher uv-cut to ensure that we capture all the flux. We use the resulting image to measure flux densities of the diffuse radio sources. We use polygon regions guided by the  $3\sigma$  contours to create regions in which we measure the flux densities of the radio halo and relic. These regions are indicated by black polygons in Fig. 2. We then use DS9’s RADIOFLUX v1.2<sup>7</sup> plugin to measure the flux densities. The uncertainty on the measured flux densities is given by  $\Delta S = \sqrt{(\delta S \times S)^2 + N\sigma^2}$ , where  $S$  is the measured flux density,  $\delta S$  is the flux calibration uncertainty which we assume to be 5 per cent for MeerKAT (Knowles et al. 2022),  $N$

<sup>2</sup><https://github.com/IanHeywood/oxkat>

<sup>3</sup><https://sourceforge.net/p/wscclean/wiki/Home/>

<sup>4</sup><https://github.com/ska-sa/tricolour>

<sup>5</sup><https://github.com/paoloserra/crystalball>

<sup>6</sup><https://github.com/SpheMakh/msutils>

<sup>7</sup><https://github.com/mhardcastle/radioflux>

is the number of beams within the region that the flux density was measured, and  $\sigma$  is the local rms noise of the image.

### 3.4 Spectral index map

MeerKAT's sensitivity and wide bandwidth enables us to produce in-band spectral index maps from the single observation. To perform spectral index studies of the radio halo and relic in the Bullet cluster, we divided the compact source subtracted MS into two sub-bands with a bandwidth of  $\sim 384$  MHz each. The central frequencies of the lower and upper sub-bands are 1.1 and 1.5 GHz, respectively. We imaged each band using the multifrequency mode in WSCLEAN (Offringa & Smirnov 2017) and uv-matched both sub-bands to an inner and outer cut of  $0.1 < uv < 35$  k $\lambda$ . The synthesized beam of the upper sub-band image was set to be the same as the synthesized beam of the lower sub-band image. Each image was primary beam corrected using KATBEAM v0.1.<sup>8</sup> We use the sub-band images to calculate the in-band integrated spectral index. We calculate the corresponding uncertainties using the error propagation method. The spectral index maps were produced using Broadband Radio Astronomy Tools (BRATS; Harwood et al. 2013; Harwood, Hardcastle & Croston 2015) v2.6.3. To generate the spectral index maps, BRATS<sup>9</sup> uses the power law in the form of  $S_\nu \propto \nu^{-\alpha}$  to produce the spectral index map values. This is performed using a pixel-by-pixel weighted least-squares method, where the weights are the inverse variance. BRATS has an inbuilt flux density measurement function which requires the user to input the percentage calibration errors for the flux density uncertainty approximations, in our case we used 5 per cent.

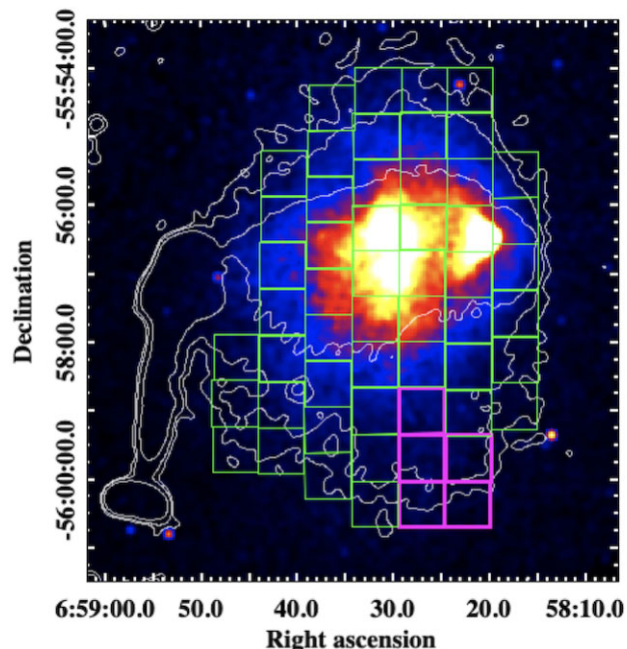
To produce the spectral index map along with the uncertainty map, we load the sub-band maps into BRATS. We then load a DS9 region file encompassing the extended diffuse emission along with an off-source background region (for details of the region definitions, see Section 3.3). BRATS uses the background region to calculate the rms noise of the low resolution maps. We set the source detection limit to be five times the rms noise. To produce spectral index maps, BRATS uses adaptive regions. These regions are set by a function written to group pixels into regions based on a specified set of parameters. We set the signal-to-noise parameter to be 6 and use the default settings for the rest of the parameters. In our analysis, we found that increasing the signal-to-noise parameter lowered the uncertainties associated with the spectral index map, resulting in a more robust map.

## 4 RESULTS

We detect both the known radio halo and relic and a new diffuse radio source in the MeerKAT *L*-band image of the Bullet cluster. We detect fainter larger scale diffuse emission compared to the ATCA observations (Liang et al. 2000; Shimwell et al. 2014, 2015; Malu et al. 2016). We discuss our findings below.

### 4.1 Radio halo

The full-resolution MeerKAT *L*-band image of the Bullet cluster and labels of the diffuse radio sources is presented in Fig. 1. We extracted the diffuse emission properties from the low-resolution image, indicated by the contours in Fig. 3. The radio halo emission



**Figure 3.** X-ray image of the Bullet cluster obtained from archival *Chandra* ACIS-I observations by Markevitch (2006). The overlaid contours are from MeerKAT's low resolution image. The contour levels are  $[3, 6, 20] \times \sigma$  where  $\sigma = 10.1 \mu\text{Jy beam}^{-1}$ . The beam size of the low resolution image is  $13.1 \text{ arcsec} \times 11.7 \text{ arcsec}$  and the position angle of the beam is  $120.6^\circ$ . The grid shows the region which was used to perform the point-to-point analysis. All the cells were used for the MeerKAT analysis, while the magenta cells were excluded for the ATCA analysis.

is connected to the relic, hence we use the region where the relic's spectral index flattens ( $\sim 0.6$ ) as the halo boundary. The detected radio halo has an integrated flux density of  $100.7 \pm 5.0 \text{ mJy}$ . The corresponding halo radio power is  $(34.4 \pm 1.1) \times 10^{24} \text{ WHz}^{-1}$ , which makes it one of the most powerful radio haloes known to date. The largest angular size (LAS) of the halo is  $6.2 \text{ arcmin} \times 4.7 \text{ arcmin}$  which corresponds to a largest linear size (LLS) of  $1.6 \text{ Mpc} \times 1.3 \text{ Mpc}$ . MeerKAT's dense short baselines and sensitivity enables us to detect a larger North–South extent of the radio halo in comparison to previous observations (Liang et al. 2000; Shimwell et al. 2014). The observational properties of the structures are summarized in Table 3.

Previous ATCA observations detect the brightest region of the radio halo, which overlaps with the  $6\sigma$  contours of the low resolution image (see Fig. 3). In these observations, the radio halo is elongated in the East–West direction, which is along the merger axis. MeerKAT detects a fainter region of the radio halo, which results in the halo having a spherical morphology. However, the western region of the radio halo is still enclosed within the pronounced X-ray ‘bow-shock’ envelope, as Shimwell et al. (2014) found in their paper for the ATCA observations. This shape indicates that X-ray shocks influence the shape of the diffuse radio emission. The extended faint halo emission appears to have a decrement below the bow shock region, as labelled in Fig. 1. This faint emission, including the decrement, traces the X-ray surface brightness (see Fig. 3). The decrement pattern has been observed in clusters where the halo has substructures, such as in the Toothbrush cluster (van Weeren et al. 2016; Rajpurohit et al. 2021). This region is at the periphery of the protruding subcluster, and may be an indication of low electron density. However, comprehensive dynamical studies are required to determine if the fainter emission

<sup>8</sup><https://github.com/ska-sa/katbeam>

<sup>9</sup><http://www.askanastronomer.co.uk/brats/>

**Table 3.** Summary of radio analysis of all the diffuse radio sources in the Bullet cluster. The columns are as follows. (1) Name of the diffuse radio source, (2) Integrated flux density, (3) Integrated in-band spectral index, (4) Radio power at 1.4 GHz, (5) Largest Angular Size, and (6) Largest Linear Size.

Source	Integrated flux density (mJy)	$\alpha_{1.5\text{GHz}}^{1.1\text{GHz}}$	$P_{1.4\text{GHz}}$ ( $10^{24}\text{ WHz}^{-1}$ )	LAS (arcmin)	LLS (kpc)
Halo	$100.7 \pm 5.0$	$1.1 \pm 0.2$	$34.4 \pm 1.1$	$6.2 \times 4.7$	$1632 \times 1250$
Relic region A	$98.6 \pm 4.9$	$1.1 \pm 0.1$	$40.0 \pm 1.3$	1.6	432
Relic region B	$8.2 \pm 0.4$	$1.2 \pm 0.2$	$3.3 \pm 0.5$	2.1	556
Relic	$107.0 \pm 5.4$	$1.1 \pm 0.2$	$43.5 \pm 1.4$	3.7	988
Candidate relic	$1.8 \pm 0.1$	$1.6 \pm 0.9$	$0.6 \pm 0.01$	3.4	895

and decrement relate to any merger activity in the peripheral region of the cluster.

#### 4.2 Radio relics

As detected in Shimwell et al. (2015), the morphology of the radio relic resembles a ‘toothbrush’ which connects to the radio halo (see Fig. 1). MeerKAT’s sensitivity once again allows us to trace a slightly extended length compared to the previous report. The radio relic has an LAS of 3.7 arcmin, corresponding to an LLS of 988 kpc. The integrated flux of the radio relic is  $107.0 \pm 5.4$  mJy. The corresponding relic radio power is  $(43.5 \pm 0.5) \times 10^{24}\text{ WHz}^{-1}$ , which also makes the relic one of the most powerful relics known. The relic properties are summarized in Table 3. Similar to Shimwell et al. (2015), we observe that region A of the radio relic is much brighter than region B. This varying brightness hints that region A might be connected to the remnants of a radio galaxy. This scenario supports the re-acceleration theory, which postulates that the cosmic ray electrons in radio relics come from a pre-existing pool of relativistic electrons.

We report a new detection of diffuse emission that is 2 Mpc away from the SZ cluster centre, indicated in Fig. 3. We searched for optical counterparts of the source in the Digitized Sky Survey-II (DSS-II; McLean et al. 2000) image, since the region is not covered by archival *Hubble Space Telescope* observations. The detected source has no optical counterpart and is not connected to an individual radio galaxy. We measured the integrated flux density of the source to be  $1.8 \pm 0.1$  mJy. It has an elongated morphology with a folk like structure on one end. It has an LAS of 3.4 arcmin, corresponding to an LLS of 0.9 Mpc. The Bullet cluster is not paired with any neighbouring cluster, hence this reduces the chances of this source being associated with filaments. The detected source is  $\approx 2$  Mpc away from the cluster’s SZ centre. Hence, based on its properties, we propose that this could be a faint radio relic. Cosmological simulations (Ha, Ryu & Kang 2018) predict ‘equatorial shocks’ that are generated by shock waves in the equatorial plane as a result of initial collision during a cluster merger. These shocks are formed much earlier than the shocks in the direction of the merger (axial shocks), hence the distance between equatorial shocks and the cluster centre is expected to be further than that for axial shocks. Equatorial shocks are rare and have been only observed at X-ray wavelength in one cluster (Gu et al. 2019). We propose that if this source is a relic, then it could be a candidate of a radio counterpart of an equatorial shock.

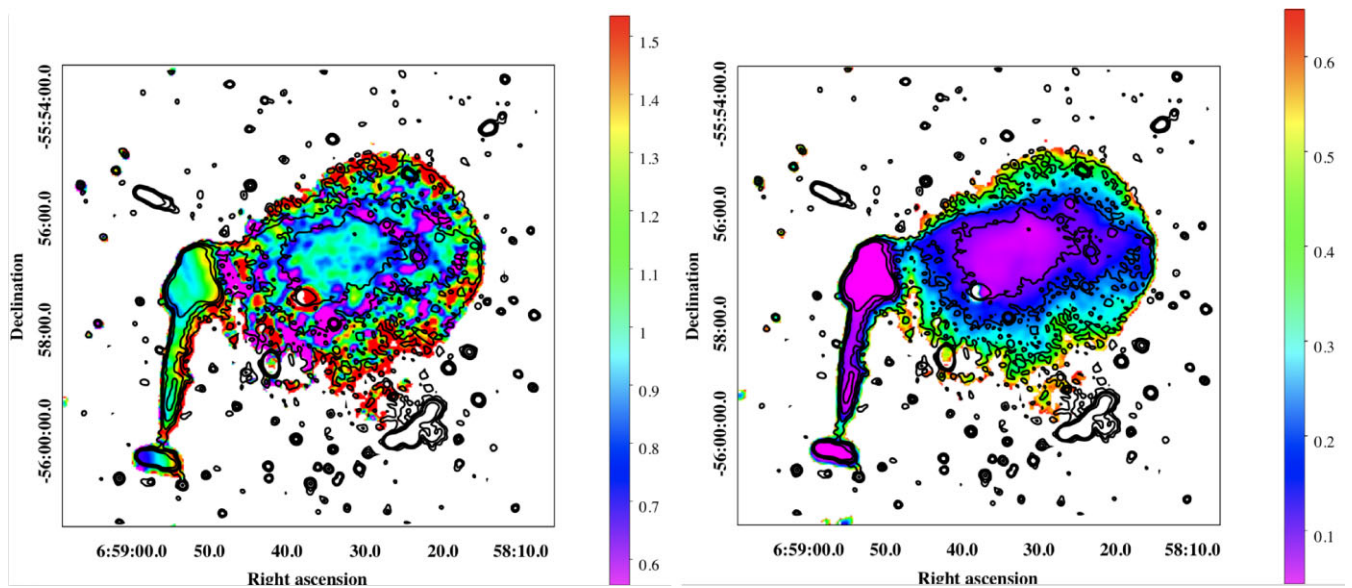
#### 4.3 Spectral index properties of the radio halo and relic

MeerKAT’s wide bandwidth (856 MHz) enabled us to perform in-band spectral index studies of the radio halo and the relic. We

used sub-band images centred at 1.1 and 1.5 GHz to calculate the integrated spectral indices of the radio halo, the full relic, and the newly detected source. We only divide the bandwidth to two sub-bands because this allows us to get sufficient signal-to-noise per sub-band for the fainter regions of the diffuse emission. The integrated spectral indices of the halo, relic, and diffuse source are  $1.1 \pm 0.2$ ,  $1.1 \pm 0.2$ , and  $1.6 \pm 0.9$ , respectively. The integrated spectral index of the radio halo is in agreement with measurements from Shimwell et al. (2014). For region A and B of the relic, we measure the integrated spectral index values to be  $1.06 \pm 0.05$  and  $1.21 \pm 0.17$ , respectively. The integrated spectral index value for region A is in agreement with the measurement in Shimwell et al. (2015) ( $\alpha_{1.1}^{3.1} = 1.07 \pm 0.03$ ), while region B has a shallower integrated spectral index than in Shimwell et al. (2015) ( $\alpha_{1.1}^{3.1} = 1.66 \pm 0.14$ ). This indicates that the integrated spectral index of region B, which is fainter than region A, steepens at higher frequencies.

The spectral index map obtained from the 1.1 and 1.5 GHz sub-band images is shown in Fig. 4. We were unable to produce a spectral index map of the newly detected emission region due to its faint surface brightness. The spectral index maps we obtain have a higher spatial resolution compared to those derived by Shimwell et al. (2014, 2015). The spectral index map of the radio halo also extends to the faint regions in the outskirts, which were previously not detected in ATCA observations. The brightest region of the halo, which in the central region, has a flatter spectrum with a minimal variation ( $\alpha \approx 0.9$ –1.0). We start to see more variation beyond the halo core ( $\alpha \approx 0.6$ –1.5), with the steepest part of the halo ( $\alpha \approx 1.5$ ) being at the edges. The flatter spectrum core region indicates the presence of more energetic radiating particles, and/or of a larger value of the local magnetic field strength (Feretti et al. 2004; Rajpurohit et al. 2021). The radial steepening pattern has been previously reported for radio haloes hosted by the Coma cluster, Abell 665, and Abell 2163 (Giovannini et al. 1993; Feretti et al. 2004). In some instances, the steepening is observed due to unmatched uv coverage of the sub-band images. We ensured that we matched the sub-band uv coverage prior to creating the spectral index maps. Hence, it is unlikely that this pattern is due to data discrepancies. In the study of the Coma cluster Brunetti et al. (2013) ruled out the possibility that the SZ effect causes the observed steepening. The steepened spectrum coincides with the extended region where the radio halo emission is faint. This radial steepening pattern is predicted by primary models as a result of local magnetic field strength variation and/or varying relativistic electron’s re-acceleration efficiencies.

The spectral index map of the relic resembles that of a ‘toothbrush’ relic (Rajpurohit et al. 2020b). The relic’s spectral index map indicates a spectral steepening in the E–W direction, towards the cluster centre. The spectral steepening feature is observed in most relics (Clarke & Ensslin 2006; Shimwell et al. 2015; Rajpurohit et al. 2020a). This is caused by radiative losses in the downstream region.



**Figure 4.** Left-hand panel: In-band spectral index map of the radio halo and relic in the Bullet cluster. The map is produced from two sub-band full resolution images centred at 1.1 GHz and 1.5 GHz. The contours trace the diffuse emission from the full resolution ( $6.4 \text{ arcsec} \times 5.9 \text{ arcsec}$ ) radio image, with levels of  $[3, 6, 12, \dots] \times \sigma$  where  $\sigma = 8.5 \mu\text{Jy beam}^{-1}$ . Right-hand panel: The corresponding spectral index uncertainty map.

## 5 DISCUSSION

In Fig. 3, it is evident that the larger halo region is tightly correlated with the overall shape of the X-ray surface brightness distribution. The low-resolution radio contours show that the radio halo's extension is larger in the North–South direction in comparison to the East–West direction, whereas previous studies by Liang et al. (2000) and Shimwell et al. (2014) reported that the radio halo was elongated along the E–W direction. The recovered halo's morphology traces the thermal X-ray emission. In our radio image, the extension along the E–W direction is 4.7 arcmin, while the North–South extension is 6.2 arcmin. Simulations of a ‘bullet-like’ clusters by Donnert et al. (2013) showed radio halo emission elongated in the E–W direction even 0.22 Gyr after the first core passage. Although the core passage of the bullet occurred 0.1–0.2 Gyr ago (Markevitch 2006), our detection of the extended faint emission shows that there is efficient re-acceleration of electrons even at outskirts of the cluster along the N–S direction.

### 5.1 Radio halo versus X-ray brightness distribution

The primary turbulent re-acceleration model predicts a connection between radio haloes and thermal X-ray emission (Brunetti & Jones 2014; Ignesti et al. 2020). In this model, the merger induced turbulence is generated in the thermal background plasma and cosmic ray particles are re-accelerated and transported in that turbulence. This connection then gives rise to a spatial correlation between the radio and X-ray surface brightness. Correlation studies give insight to the interplay between non-thermal and thermal particles in the ICM, and further constrain existing radio halo formation theories. Govoni et al. (2001) were the first to investigate the relationship between X-ray and radio brightness. They used a subset of radio haloes to quantify the linear correlation between radio and X-ray brightness in individual galaxy clusters. This linear relation is achieved under the assumption that the magnetic field strength and the energy density of the cosmic ray electrons are proportional to the thermal energy density.

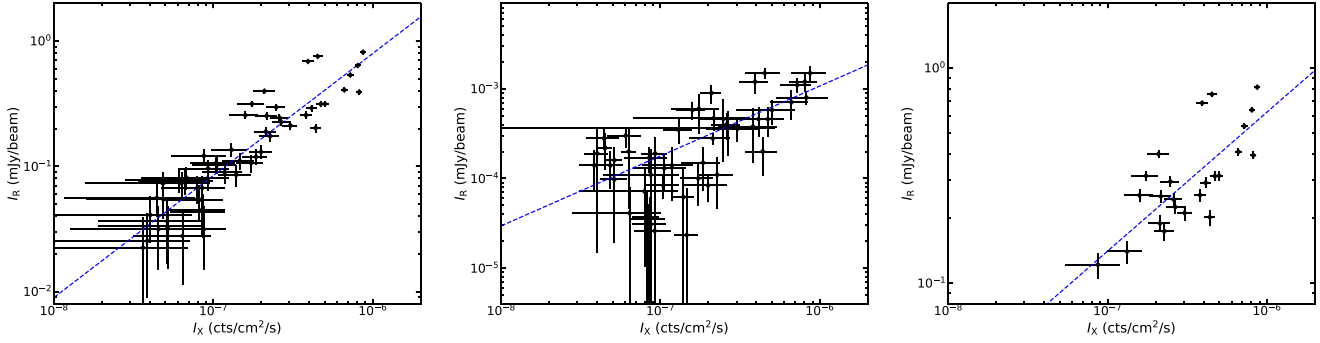
The radio and X-ray brightness relationship described by the power law, given by

$$\log I_{\text{radio}} = a + b \log I_{X\text{-ray}}. \quad (1)$$

The correlation probes the source of the cosmic ray particles (Dolag & Enßlin 2000; Govoni et al. 2001; Brunetti et al. 2004; ZuHone et al. 2015), where the slope of the best-fitting line ( $b$ ) indicates whether the magnetic field strength and cosmic ray energy density decline faster ( $b > 1$ ) or slower ( $b < 1$ ) than the thermal energy density. Turbulent re-acceleration models are able to produce both sublinear and linear relations, while hadronic models only predict a superlinear correlation (Brunetti & Jones 2014). Previous studies have reported a sublinear to linear relation for radio haloes (Feretti et al. 2001; Cova et al. 2019; Botteon et al. 2020b; Rajpurohit et al. 2021).

To investigate the X-ray/radio correlation in the Bullet cluster, we use the archival X-ray image from the *Chandra* ACIS-I observations (PI: Maxim Markevitch) and the MeerKAT low-resolution image. We first smoothed the X-ray image and re-gridded it to have the same number of pixels and resolution as the low-resolution radio image. We then created a gridded composite region of 55 cells with a dimension of  $40 \text{ arcsec} \times 40 \text{ arcsec}$ , indicated by green and magenta cells in Fig. 3. The cell size was chosen to obtain a good compromise between high signal-to-noise ratio (within the cell) and good resolution. The size of the grid was guided by  $3\sigma$  contours of the low resolution radio image. We use the SYNAGE+ package (Murgia et al. 2011) to calculate the point-to-point correlations in the region covered by the grid. The ‘point’ values are obtained from the individual cells. The uncertainties associated with each data point are calculated as the rms within the cells. The left-hand panel of Fig. 5 shows the resulting correlation plot for the MeerKAT and *Chandra* images. We use the PYTHON implementation of the LINMIX v0.1.0.dev1<sup>10</sup> package to determine the best-fitting parameter values for the correlation (Kelly 2007). LINMIX implements a Bayesian

<sup>10</sup><https://github.com/jmeyers314/linmix>



**Figure 5.** Radio-X-ray correlation plots for MeerKAT and ATCA images. Each point indicates the correlation for individual cells, as produced by the SYNAGE++ package. The best-fitting line is obtained using the MCMC method within LINMIX. To enhance the visibility of the error bars, the radio and X-ray error bars in the plots generated from the MeerKAT image were scaled by a factor of 5 and 10, respectively. Left-hand panel: The correlation plot produced using the low-resolution point-source-subtracted MeerKAT image with a central frequency of 1.3 GHz. Middle: The correlation plot produced using the ATCA 1.1–3.1 GHz image (Shimwell et al. 2014). Right-hand panel: Radio-X-ray correlation plot using the brightest halo core in the MeerKAT image.

**Table 4.** Radio halo and X-ray brightness correlation  $b$  is the slope of the best-fitting line,  $r_s$  is the Spearman correlation coefficient, and  $r_p$  is the Pearson correlation coefficient.

Radio image	Central frequency (GHz)	$b$	$r_s$	$r_p$
MeerKAT full scale	1.3	$0.97 \pm 0.06$	0.92	0.84
ATCA	2.1	$0.78 \pm 0.12$	0.66	0.79
MeerKAT core	1.3	$0.88 \pm 0.19$	0.66	0.68

linear regression while accounting for intrinsic scatter, measurement uncertainties on both input variables, and derives an upper limit for the y-variable if it is not detected. Using the Markov Chain Monte Carlo (MCMC; Hastings 1970) method performed within LINMIX, we take the mean of the posterior distribution as the best-fitting slope. We use the FITSCALINGRELATION<sup>11</sup> [2022 July] package to plot the resulting correlation plots, each point represents the correlation per grid cell. The slope ( $b_{1.3\text{GHz}}$ ) of the best-fitting line is  $0.97 \pm 0.06$ . We calculate the strength of the correlation using the Spearman and Pearson correlation coefficients ( $r_s$ ,  $r_p$ ). We obtain a Spearman and Pearson correlation coefficient of  $r_s = 0.92$  and  $r_p = 0.84$ , respectively. We summarize our findings in Table 4.

Our results indicate that there exists a linear correlation ( $b \sim 1$ ) between the radio and X-ray brightness. This outcome is contrary to that of Shimwell et al. (2014) who reported that they discovered no correlation and a low Spearman correlation strength of 0.4. To investigate this discrepancy, we use LINMIX to obtain best-fitting values for the ATCA image (image obtained from Timothy Shimwell). We first used a grid the same size as in Shimwell et al. (2014) to reproduce their results, which indeed show no correlation. We then use the same grid we used for the MeerKAT correlation plot, excluding the magenta cells which overlap with the discrete sources that were not subtracted in the ATCA image. The resulting correlation plot for the ATCA and *Chandra* images is shown in the middle panel of Fig. 5. In this case, we find a correlation of  $b = 0.78 \pm 0.12$ , with a Spearman and Pearson correlation coefficient of  $r_s = 0.66$  and  $r_p = 0.79$ , respectively. This indicates an increased correlation strength than previously reported. We probe whether the co-existence of different correlations is intrinsic or as a result of data

quality. We use a smaller grid with 24 cells, covering the bright core, to re-calculate the best-fitting value of the slope in the MeerKAT image. The correlation plot for the core region is shown in the right-hand panel of Fig. 5. The resulting slope has a best-fitting value of  $0.88 \pm 0.19$ , although flatter than the full-size radio halo fit, it is still consistent with the linear correlation and within the lower bound error bar. The Spearman and Pearson correlation coefficients for the core region are  $r_s = 0.66$  and  $r_p = 0.68$ , respectively. Recent studies by Biava et al. (2021), Rajpurohit et al. (2021), Bonafede et al. (2022) have reported disparities in correlation strengths of the halo core and the outskirts. Such a trend might be hinting that some regions of radio haloes have a contribution from both hadronic re-acceleration mechanisms, as predicted by the hybrid models (Brunetti & Jones 2014). Bonafede et al. (2022) cited that sublinear regions have negligible contributions from the hadronic mechanisms. Studies of point-to-point analysis in larger samples of radio haloes would be key to investigate if this trend exists in the majority of radio haloes.

## 5.2 Radio mach number

The ‘bow’ shock in the western region of the radio halo is well studied and constrained at X-ray wavelengths (Markevitch et al. 2002). However, Shimwell et al. (2015) were the first to report a tentative shock in the region of the radio relic. They used archival *Chandra* data to search for a surface brightness and temperature jump in the relic region. They discovered a clear surface brightness jump, but the temperature jump was not as distinct. They found the resulting Mach number to be  $\mathcal{M}_X \approx 2.5_{-0.8}^{+1.3}$ .

Radio relics are often associated with shock fronts and hence can be used as tracers of these shock regions. Considering the case where relics form through the DSA mechanism, the radio Mach number can be derived from the integrated spectral index with the assumption of stationary shock conditions in the ICM. The radio Mach number is then given by

$$\mathcal{M}_R = \left( \frac{2\alpha_{\text{inj}} + 3}{2\alpha_{\text{inj}} - 1} \right)^{1/2}, \quad (2)$$

where  $\alpha_{\text{inj}}$  is the injection spectral index (Kardashev 1962; Blandford & Eichler 1987). It can be related to the integrated spectral index in the following manner

$$\alpha_{\text{int}} = 0.5 + \alpha_{\text{inj}}. \quad (3)$$

<sup>11</sup><https://github.com/mattyow/fitScalingRelation>

In Section 4.3, we calculated the integrated spectral index of the radio relic to be  $\alpha_{\text{int}} = 1.1 \pm 0.2$ . From this value, we obtain a radio Mach number of  $\mathcal{M}_R = 4.6 \pm 0.9$ . The radio Mach number is higher than the estimated X-ray Mach number, as observed by multiple studies (van Weeren et al. 2016; Hoang et al. 2018; Stuardi et al. 2019). X-ray Mach numbers are usually lower because they trace the average Mach number distribution while radio Mach numbers are sensitive to higher Mach numbers constrained in a small region of the shock's surface. Wittor et al. (2021) used simulations to investigate the discrepancies between the radio and X-ray Mach numbers. They concluded that radio Mach numbers are more robust as they are not affected by the orientation of the relic. Based on these findings, it would mean that the shock associated with the relic in the Bullet cluster is associated with the class of rare high Mach number ( $\mathcal{M}_R > 3$ ) shocks.

## 6 CONCLUSIONS

In this paper, we studied the radio halo and relic in the Bullet cluster using MeerKAT *L*-band observations. After subtracting point sources, we were able to produce low resolution images that were significantly more sensitive than the previously reported observations. We detect a new diffuse radio source located north–west of the cluster centre, and  $\approx 2$  Mpc away from the cluster's SZ centre. Due to the morphology of the source, we label it as a candidate relic. We also detect a decrement feature on the southern outskirts of the radio halo. The decrement feature and the radio halos 'bow-shock' edge coincide with the X-ray surface brightness distribution. The sensitivity of MeerKAT enabled us to study the morphology of the halo and relic and produce their spectral index maps. The summary of our findings is as follows.

(i) The integrated 1.3 GHz flux density of the radio halo and relic was determined to be  $100.7 \pm 5.0$  and  $107.0 \pm 5.4$  mJy, respectively. We recovered a larger extent of both the radio halo and relic; hence, the recovered flux densities are significantly larger in comparison to the values quoted in Liang et al. (2000) and Shimwell et al. (2014, 2015).

(ii) We detected a fainter extension of the radio halo emission, which suggests lower relativistic electron density or a weaker magnetic field at the outskirts of the halo.

(iii) The radio halo versus X-ray brightness correlation analysis shows a linear relation for the full extent of the halo. The slope of the best-fitting line is  $0.97 \pm 0.06$  and a Spearman and Pearson correlation coefficient of  $r_s = 0.92$  and  $r_p = 0.84$ , respectively.

(iv) The relic's morphology resembles a 'toothbrush' relic. Similar to Shimwell et al. (2015), we found that the radio relic has a brighter 'bulb' region, which is attached to a fainter tail. This indicates that the brighter region might have a remnant radio galaxy embedded. This radio galaxy could be the source of fossil electrons that seed the relic's formation.

(v) Using sub-band images, we calculated the integrated spectral indices of the radio halo and relic to be  $1.1 \pm 0.2$  and  $1.1 \pm 0.2$ , respectively. These spectral index values are in agreement with those reported by Shimwell et al. (2014), Shimwell et al. (2015). Using the spectral indices, we calculated the radio power of the halo and the relic to be  $(34.4 \pm 1.1) \times 10^{24}$  WHz<sup>-1</sup> and  $(43.5 \pm 0.5) \times 10^{24}$  WHz<sup>-1</sup>, respectively.

(vi) The spatial spectral index distribution of the radio halo indicates a radial steepening. The spectral index map of the relic indicates an E–W steepening pattern.

(vii) There exists a linear correlation between the X-ray and radio brightness of the radio halo. However, the correlation strength decreases when considering only the bright inner core of the halo.

(viii) The powerful relic is associated with a shock that has a high radio Mach number of  $\mathcal{M}_R = 4.6 \pm 0.9$ .

Currently, *L*-band observations are the lowest frequency observations of the Bullet cluster. In future, UHF-band and lower frequency observations, could give insight on the full extent of the diffuse emission. This data would also allow us to produce a spectral index map of the newly detected radio source, which would confirm if it is indeed a radio relic associated with the cluster.

## ACKNOWLEDGEMENTS

The MeerKAT telescope is operated by the South African Radio Astronomy Observatory, which is a facility of the National Research Foundation, an agency of the Department of Science and Innovation. We acknowledge the assistance of the South African Radio Astronomy Observatory (SARAO) science commissioning and operations team (led by Sharmila Goedhart). We thank Maxim Markevitch for kindly sharing the X-ray surface brightness image. We also thank Timothy Shimwell for sharing the ATCA radio image and for the valuable input. We acknowledge the financial assistance of the SARAO towards this research. KM acknowledges support from the National Research Foundation of South Africa.

## DATA AVAILABILITY

The raw visibilities of the MeerKAT 1.3 GHz observation of the Bullet cluster is accessible online from the MeerKAT Galaxy Clusters Legacy Surveys (MGCLS) data archive<sup>12</sup> under the proposal ID SSV-20180624-FC-01 (Knowles et al. 2022). The data derived in this study are available upon reasonable request from the corresponding author.

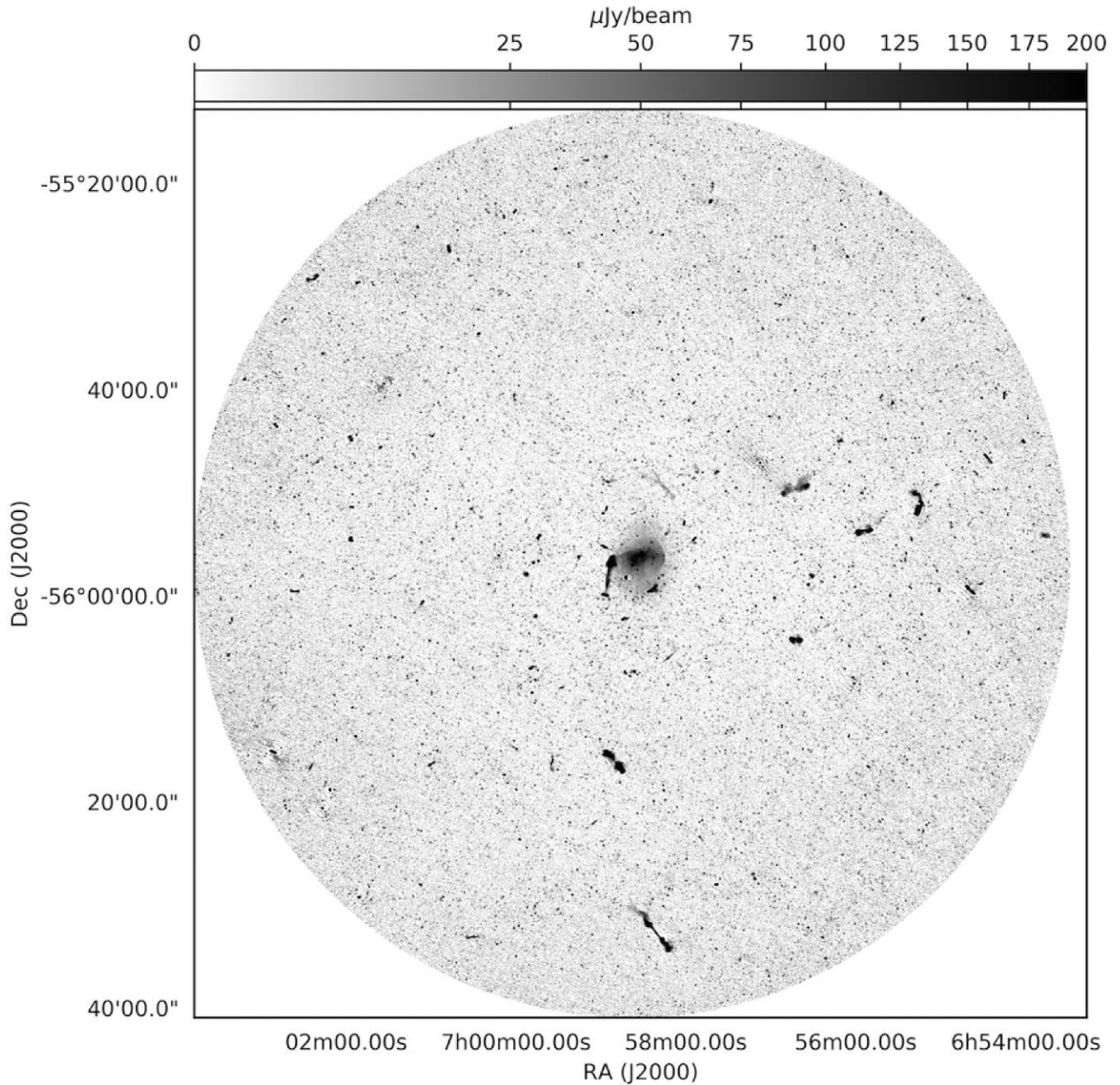
## REFERENCES

- Ackermann M., Ajello M., Atwood W. B., Baldini L., Ballet F., 2010, *Phys. Rev. D*, 82, 092004
- Ackermann M., Ajello M., Albert A., Atwood W. B., Fermi-LAT Collaboration, 2018, *ApJ*, 860, 85
- Barena R., Biviano A., Ramella M., Falco E. E., Seitz S., 2002, *A&A*, 386, 816
- Basu K., 2012, *MNRAS*, 421, L112
- Bell A. R., 1978, *MNRAS*, 182, 443
- Biava N. et al., 2021, *MNRAS*, 508, 3995
- Blandford R., Eichler D., 1987, *Phys. Rep.*, 154, 1
- Bonafede A. et al., 2012, *MNRAS*, 426, 40
- Bonafede A., Intema H. T., Brügger M., Girardi M., Nonino M., Kantharia N., van Weeren R. J., Röttgering H. J. A., 2014, *ApJ*, 785, 1
- Bonafede A. et al., 2022, *ApJ*, 933, 218
- Botteon A., Gastaldello F., Brunetti G., Dallacasa D., 2016, *MNRAS*, 460, L84
- Botteon A., Brunetti G., Ryu D., Roh S., 2020a, *A&A*, 634, A64
- Botteon A. et al., 2020b, *ApJ*, 897, 93
- Botteon A. et al., 2022, *A&A*, 660, A78
- Bradač M. et al., 2006, *ApJ*, 652, 937
- Briggs D. S., 1995, PhD thesis, New Mexico Institute of Mining and Technology
- Brunetti G., Blasi P., 2005, *MNRAS*, 363, 1173
- Brunetti G., Jones T. W., 2014, *Int. J. Mod. Phys. D*, 23, 1430007
- Brunetti G., Lazarian A., 2016, *MNRAS*, 458, 2584

<sup>12</sup><https://archive.sarao.ac.za/proposalid/SSV-20180624-FC-01/>

- Brunetti G., Setti G., Feretti L., Giovannini G., 2001, *MNRAS*, 320, 365
- Brunetti G., Blasi P., Cassano R., Gabici S., 2004, *MNRAS*, 350, 1174
- Brunetti G., Rudnick L., Cassano R., Mazzotta P., Donnert J., Dolag K., 2013, *A&A*, 558, A52
- Camilo F. et al., 2018, *ApJ*, 856, 180
- Cassano R., Brunetti G., 2005, *MNRAS*, 357, 1313
- Cassano R. et al., 2013, *ApJ*, 777, 141
- Clarke T. E., Ensslin T. A., 2006, *AJ*, 131, 2900
- Clowe D., Gonzalez A., Markevitch M., 2004, *ApJ*, 604, 596
- Clowe D., Bradač M., Gonzalez A. H., Markevitch M., Randall S. W., Jones C., Zaritsky D., 2006, *ApJ*, 648, L109
- Cova F. et al., 2019, *A&A*, 628, A83
- Cuciti V., Cassano R., Brunetti G., Dallacasa D., Kale R., Ettori S., Venturi T., 2015, *A&A*, 580, A97
- de Gasperin F., van Weeren R. J., Brügggen M., Vazza F., Bonafede A., Intema H. T., 2014, *MNRAS*, 444, 3130
- de Gasperin F. et al., 2017, *Sci. Adv.*, 3, e1701634
- Dennison B., 1980, *Bull. Am. Astron. Soc.*, 12, 471
- Di Mascolo L. et al., 2019, *A&A*, 628, A100
- Dolag K., Enßlin T. A., 2000, *A&A*, 362, 151
- Donnert J., Brunetti G., 2014, *MNRAS*, 443, 3564
- Donnert J., Dolag K., Brunetti G., Cassano R., 2013, *MNRAS*, 429, 3564
- Drury L. O., 1983, *Rep. Prog. Phys.*, 46, 973
- Enßlin T. A., Biermann P. L., Klein U., Kohle S., 1998, *A&A*, 332, 395
- Enßlin T., Pfrommer C., Miniati F., Subramanian K., 2011, *A&A*, 527, A99
- Feretti L., Fusco-Femiano R., Giovannini G., Govoni F., 2001, *A&A*, 373, 106
- Feretti L., Brunetti G., Giovannini G., Kassim N., Orrú E., Setti G., 2004, *J. Korean Astron. Soc.*, 37, 315
- Feretti L., Giovannini G., Govoni F., Murgia M., 2012, *A&AR*, 20, 54
- Giacconi R. et al., 1979, *ApJ*, 230, 540
- Giovannini G., Feretti L., Venturi T., Kim K. T., Kronberg P. P., 1993, *ApJ*, 406, 399
- Giovannini G., Bonafede A., Feretti L., Govoni F., Murgia M., Ferrari F., Monti G., 2009, *A&A*, 507, 1257
- Govoni F., Enßlin T. A., Feretti L., Giovannini G., 2001, *A&A*, 369, 441
- Gu L. et al., 2019, *Nat. Astron.*, 3, 838
- Ha J.-H., Ryu D., Kang H., 2018, *ApJ*, 857, 26
- Hanisch R. J., 1982, *A&A*, 116, 137
- Harwood J. J., Hardcastle M. J., Croston J. H., Goodger J. L., 2013, *MNRAS*, 435, 3353
- Harwood J. J., Hardcastle M. J., Croston J. H., 2015, *MNRAS*, 454, 3403
- Hastings W. K., 1970, *Biometrika*, 57, 97
- Heywood I., 2020, *oxkat: Semi-Automated Imaging of MeerKAT Observations*, record ascl:2009.003
- Hilton M. et al., 2021, *ApJS*, 253, 3
- Hoang D. N. et al., 2018, *MNRAS*, 478, 2218
- Hoefl M., Brügggen M., 2007, *MNRAS*, 375, 77
- Hugo B. V., Perkins S., Merry B., Mauch T., Smirnov O. M., 2022, in Ruiz J. E., Pierfederici F., Teuben P., eds, *ASP Conf. Ser. Vol. 532, Astronomical Data Analysis Software and Systems XXX*. Astron. Soc. Pac., San Francisco, p. 541
- Ignesti A., Brunetti G., Gitti M., Giacintucci S., 2020, *A&A*, 640, A37
- Jaffe W. J., Rudnick L., 1979, *ApJ*, 233, 453
- Jonas J. L., 2009, *IEEE Proc.*, 97, 1522
- Jones F. C., Ellison D. C., 1991, *Space Sci. Rev.*, 58, 259
- Kale R. et al., 2015, *A&A*, 579, A92
- Kale R., Shende K. M., Parekh V., 2019, *MNRAS*, 486, L80
- Kang H., Ryu D., Jones T. W., 2017, *ApJ*, 840, 42
- Kardashev N. S., 1962, *Sov. Astron.*, 6, 317
- Kelly B. C., 2007, *ApJ*, 665, 1489
- Kempner J. C., Sarazin C. L., 2001, *ApJ*, 548, 639
- Keshet U., Loeb A., 2010, *ApJ*, 722, 737
- Knowles K. et al., 2019, *MNRAS*, 486, 1332
- Knowles K. et al., 2022, *A&A*, 657, A56
- Liang H., 2000, preprint ([arXiv:astro-ph/0012166](https://arxiv.org/abs/astro-ph/0012166))
- Liang H., Hunstead R. W., Birkinshaw M., Andreani P., 2000, *ApJ*, 544, 686
- Lindner R. R. et al., 2014, *ApJ*, 786, 49
- Locatelli N. T. et al., 2020, *MNRAS*, 496, L48
- Malu S., Datta A., Sandhu P., 2016, *Ap&SS*, 361, 255
- Markevitch M., 2006, in Wilson A., ed., *The X-ray Universe 2005*, Vol. 604, ESA Special Publication. ESA Publications Division, Noordwijk, the Netherlands, p. 723
- Markevitch M., Gonzalez A. H., David L., Vikhlinin A., Murray S., Forman W., Jones C., Tucker W., 2002, *ApJ*, 567, L27
- Markevitch M., Govoni F., Brunetti G., Jerius D., 2005, *ApJ*, 627, 733
- Mauch T. et al., 2020, *ApJ*, 888, 61
- McLean B. J., Greene G. R., Lattanzi M. G., Pirenne B., 2000, in Manset N., Veillet C., Crabtree D., eds, *ASP Conf. Ser. Vol. 216, Astronomical Data Analysis Software and Systems IX*. Astron. Soc. Pac., San Francisco, p. 145
- McMullin J. P., Waters B., Schiebel D., Young W., Golap K., 2007, in Shaw R. A., Hill F., Bell D. J., eds, *ASP Conf. Ser. Vol. 376, Astronomical Data Analysis Software and Systems XVI*. Astron. Soc. Pac., San Francisco, p. 127
- Menanteau F. et al., 2010, *ApJ*, 723, 1523
- Murgia M. et al., 2011, *A&A*, 526, A148
- Offringa A. R., Smirnov O., 2017, *MNRAS*, 471, 301
- Offringa A. R. et al., 2014, *MNRAS*, 444, 606
- Paraficz D., Kneib J. P., Richard J., Morandi A., Limousin M., Jullo E., Martinez J., 2016, *A&A*, 594, A121
- Pfrommer C., Enßlin T. A., Springel V., 2008, *MNRAS*, 385, 1211
- Pinzke A., Oh S. P., Pfrommer C., 2013, *MNRAS*, 435, 1061
- Pinzke A., Oh S. P., Pfrommer C., 2017, *MNRAS*, 465, 4800
- Raja R., Rahaman M., Datta A., van Weeren R. J., Intema H. T., Paul S., 2021, *MNRAS*, 500, 2236
- Rajpurohit K. et al., 2020a, *A&A*, 636, A30
- Rajpurohit K. et al., 2020b, *A&A*, 642, L13
- Rajpurohit K. et al., 2021, *A&A*, 646, A135
- Rajpurohit K. et al., 2021, *A&A*, 654, A41
- Reimer O., Pohl M., Sreekumar P., Mattox J. R., 2003, *ApJ*, 588, 155
- Roettiger K., Burns J. O., Stone J. M., 1999, *ApJ*, 518, 603
- Shimwell T. W., Brown S., Feain I. J., Feretti L., Gaensler B. M., Lage C., 2014, *MNRAS*, 440, 2901
- Shimwell T. W., Markevitch M., Brown S., Feretti L., Gaensler B. M., Johnston-Hollitt M., Lage C., Srinivasan R., 2015, *MNRAS*, 449, 1486
- Shimwell T. W. et al., 2016, *MNRAS*, 459, 277
- Sommer M. W., Basu K., 2014, *MNRAS*, 437, 2163
- Stuardi C. et al., 2019, *MNRAS*, 489, 3905
- Sunyaev R. A., Zeldovich Y. B., 1972, *Comments Astrophys. Space Phys.*, 4, 173
- Tanaka Y., Inoue H., Holt S. S., 1994, *PASJ*, 46, L37
- Tarenghi M., Wilson R. N., 1989, in Roddier F. J., ed., *Proc. SPIE Conf. Ser. Vol. 1114, Active Telescope Systems*. SPIE, Bellingham, p. 302
- Tucker W. H., Tananbaum H., Remillard R. A., 1995, *ApJ*, 444, 532
- Tucker W. et al., 1998, *ApJ*, 496, L5
- van Weeren R. J. et al., 2016, *ApJ*, 818, 204
- van Weeren R. J. et al., 2017a, *Nat. Astron.*, 1, 0005
- van Weeren R. J. et al., 2017b, *ApJ*, 835, 197
- van Weeren R. J., de Gasperin F., Akamatsu H., Brügggen M., Feretti L., Kang H., Stroe A., Zandanel F., 2019, *Space Sci. Rev.*, 215, 16
- Vazza F., Brügggen M., 2014, *MNRAS*, 437, 2291
- Venturi T. et al., 2017, *A&A*, 603, A125
- Voges W., 1992, In ESA, *Environment Observation and Climate Modelling Through International Space Projects. Space Sciences with Particular Emphasis on High-Energy Astrophysics*. p. 9
- Wittor D., Ettori S., Vazza F., Rajpurohit K., Hoefl M., Domínguez-Fernández P., 2021, *MNRAS*, 506, 396
- Yuan Z. S., Han J. L., Wen Z. L., 2015, *ApJ*, 813, 77
- ZuHone J. A., Brunetti G., Giacintucci S., Markevitch M., 2015, *ApJ*, 801, 146

**APPENDIX: FULL FIELD OF VIEW AND LOW  
RESOLUTION IMAGES OF THE BULLET  
CLUSTER**



**Figure A1.** The MeerKAT *L*-band primary beam corrected, full field of view image of the Bullet cluster. The rms noise of the image is  $8.5 \mu\text{Jy beam}^{-1}$ .

This paper has been typeset from a  $\text{\TeX}/\text{\LaTeX}$  file prepared by the author.