



<b>Publication Year</b>	2019
<b>Acceptance in OA</b>	2024-01-30T17:49:08Z
<b>Title</b>	Tycho's Supernova: The View from Gaia
<b>Authors</b>	Ruiz-Lapuente, Pilar, González Hernández, Jonay I., Mor, Roger, Romero-Gómez, Mercè, Miret-Roig, Núria, Figueras, Francesca, BEDIN, Luigi, Canal, Ramon, Méndez, Javier
<b>Publisher's version (DOI)</b>	10.3847/1538-4357/aaf1c1
<b>Handle</b>	<a href="http://hdl.handle.net/20.500.12386/34678">http://hdl.handle.net/20.500.12386/34678</a>
<b>Journal</b>	THE ASTROPHYSICAL JOURNAL
<b>Volume</b>	870



# Tycho's Supernova: The View from *Gaia*

Pilar Ruiz-Lapuente<sup>1,2</sup>, Jonay I. González Hernández<sup>3,4</sup>, Roger Mor<sup>2</sup>, Mercè Romero-Gómez<sup>2</sup>, Núria Miret-Roig<sup>2,5</sup>,  
Francesca Figueras<sup>2</sup>, Luigi R. Bedin<sup>6</sup>, Ramon Canal<sup>2</sup>, and Javier Méndez<sup>7</sup>

<sup>1</sup> Instituto de Física Fundamental, Consejo Superior de Investigaciones Científicas, c/. Serrano 121, E-28006, Madrid, Spain

<sup>2</sup> Institut de Ciències del Cosmos (UB-IEEC), c/. Martí i Franques 1, E-08028 Barcelona, Spain

<sup>3</sup> Instituto de Astrofísica de Canarias, E-38206 La Laguna, Tenerife, Spain

<sup>4</sup> Universidad de la Laguna, Departamento de Astrofísica. E-38206, La Laguna, Tenerife, Spain

<sup>5</sup> Laboratoire d'Astrophysique de Bordeaux, Université de Bordeaux, CNRS, B18N, Allée Geoffroy Saint-Hilaire, F-33615 Pessac, France

<sup>6</sup> INAF, Osservatorio Astronomico di Padova, Via dell' Osservatorio 3, I-35122 Padova, Italy

<sup>7</sup> Isaac Newton Group of Telescopes, P.O. Box 321, E-38700 Santa Cruz de La Palma, Spain

Received 2018 July 9; revised 2018 October 26; accepted 2018 November 15; published 2019 January 16

## Abstract

SN 1572 (Tycho Brahe's supernova) clearly belongs to the Ia (thermonuclear) type. It was produced by the explosion of a white dwarf (WD) in a binary system. Its remnant has been the first of this type to be explored in search of a possible surviving companion, the mass donor that brought the WD to the point of explosion. A high peculiar motion with respect to the stars at the same location in the Galaxy, mainly due to the orbital velocity at the time of the explosion, is a basic criterion for the detection of such companions. Radial velocities from the spectra of the stars close to the geometrical center of Tycho's supernova remnant, plus proper motions of the same stars, obtained by astrometry with the *Hubble Space Telescope* (*HST*), have been used so far. In addition, a detailed chemical analysis of the atmospheres of a sample of candidate stars had been made. However, the distances to the stars remained uncertain. Now, the Second *Gaia* Data Release (DR2) provides unprecedented accurate distances, and new proper motions for the stars can be compared with those obtained from the *HST*. We consider the Galactic orbits that the candidate stars to the SN companion would have in the future. We do this to explore any kinematic peculiarity. We also locate a representative sample of candidate stars in the Toomre diagram. Using the new data, we re-evaluate the status of the candidates suggested thus far, as well as the larger sample of the stars seen in the central region of the remnant.

*Key words:* supernovae: general – supernovae: individual (SN 1572)

## 1. Introduction

Type Ia supernovae (SNe Ia) are the calibrated standard candles used in the discovery of the accelerated expansion of the universe (Riess et al. 1998; Perlmutter et al. 1999) and they remain a powerful tool in exploring the nature of dark energy. Although a lot of progress has been made in disentangling the nature of the explosions, there are still many points to be addressed concerning the progenitors (see, e.g., the reviews by Wang & Han 2012; Maoz et al. 2014; Ruiz-Lapuente 2014). They appear to be thermonuclear explosions of white dwarfs (WDs) made of C+O, and accretion of material by the WD from a companion in a close binary system should be the basic mechanism to induce the explosion, but here the consensus stops. The companion could either be a still thermonuclearly active star in any stage of its evolution (the single-degenerate, SD channel) or another WD (the double-degenerate, DD channel). The explosion could also result from the merging of a WD with the electron-degenerate core of an asymptotic giant branch star. The mode of the accretion could range from steady accretion to violent merger, and the explosion either arise from central ignition of C, when the WD grows close to the Chandrasekhar mass, or be induced by detonation of a He layer near the surface, the mass of the WD being smaller in this case. Observed different SNe Ia may have different origins.

No binary system has ever been discovered in which an SN Ia has later taken place, but some binary systems are considered to be excellent candidates for SN Ia progenitors, such as U Sco, which contains a WD already close to the Chandrasekhar mass. A general prediction for the SD channel is that the companion

star of the WD should survive the explosion and present revealing characteristics.

There are supernova remnants (SNRs) of the explosions of SNe Ia, close and recent enough that their exploration can either detect the presence of a surviving companion or confirm its absence (Ruiz-Lapuente 1997). This has been done for several SNRs of the Ia type, in our own Galaxy and in the Large Magellanic Cloud (Ruiz-Lapuente et al. 2004 (hereafter RL04), 2018; González Hernández et al. 2009 (hereafter GH09), 2012; Kerzendorf et al. 2009, 2012, 2013 (hereafter K13), 2014, 2018; Edwards et al. 2012; Schaefer & Pagnotta 2012; Bedin et al. 2014 (hereafter B14); Pagnotta & Schaefer 2015).

The remnant of SN 1572 (Tycho Brahe's SN) was the first to be explored (RL04), and the findings there were later the subject of several studies (GH09; K13; B14).

Now the *Gaia* Data Release 2 is providing an unprecedented view of the kinematics of the Galactic disk (Brown et al. 2018). It not only gives the 3D location of a very large sample of stars in the Galaxy, but also full velocity information (proper motion and radial velocity) for 7.2 million stars brighter than  $G_{RVS} = 12$  mag, and transverse velocity for an unprecedentedly large number of stars. *Gaia* DR2 provides astrometric parameters (positions, parallaxes, and proper motions) for 1.3 billion sources. The median uncertainty for sources brighter than  $G = 14$  mag is 0.03 mas for the parallax and 0.07 mas yr<sup>-1</sup> for the proper motions. The reference frame is aligned with the International Celestial Reference System (ICRS) and non-rotating with respect to the quasars to within 0.1 mas yr<sup>-1</sup>. The systematics are below 0.1 mas and the

parallax zeropoint uncertainty is small, about 0.03 mas (Brown et al. 2018).

Previously, the distances to the stars could only be estimated from comparison of the absolute magnitudes deduced from their spectral types and luminosity classes with their photometry, assuming some interstellar extinction in the direction of the SNR. That left considerable uncertainty in many cases (see RL04 and B14). It is here where the *Gaia* DR2 is most useful.

The situation was better concerning proper motions, where *Hubble Space Telescope* (*HST*) astrometry, based on images taken at different epochs, had allowed high precision (see B14). *HST* proper motions are always relative to a local frame, whereas *Gaia* DR2 proper motions are absolute, referred to the ICRS. Moreover, *Gaia* DR2 allows us to calculate the Galactic orbits of the stars. In addition, without a precise knowledge of the distances, the conversion of proper motions into tangential velocities remained uncertain and so was the reconstruction of the total velocities.

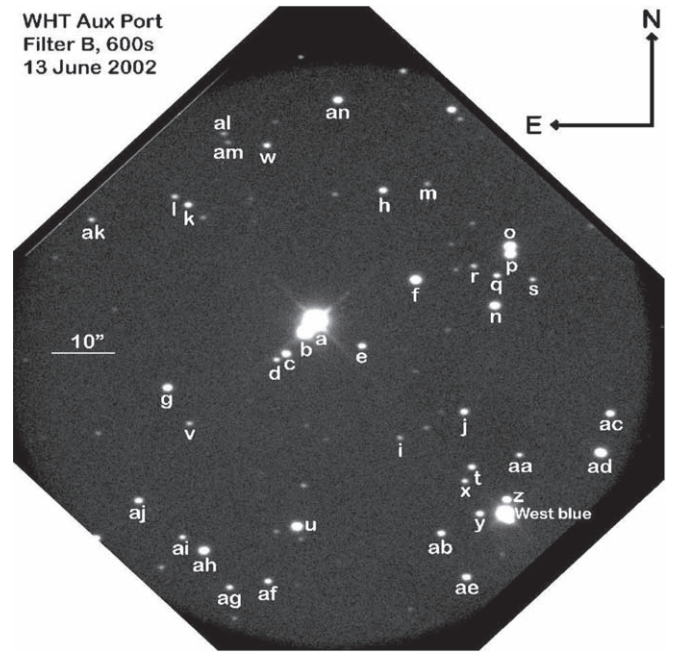
The paper is organized as follows. First we describe the characteristics of Tycho’s SNR. In Section 3, we examine the distances given by the parallaxes from *Gaia*, for the surveyed stars, and we compare them with previous estimates. In Section 4, the proper motions from *Gaia* are compared with those from the *HST*. Section 5 discusses the position in the Toomre diagram of possible companion stars to SN 1572, as compared with a large sample. In Section 6, we calculate the Galactic orbits of four representative stars and discuss their characteristics. In Section 7 our whole sample is discussed. Section 8 compares the observations with the predictions of models of the evolution of SN Ia companions. Finally, Section 9 gives a summary and conclusions.

## 2. Tycho’s SNR

Tycho’s SNR lies close to the Galactic plane ( $b = 1^\circ.4$ , which means 59–78 pc above the Galactic plane). The remnant has an angular radius of 4 arcmin. In RL04 a search was performed covering the innermost 0.65 arcmin radius centered on the *Chandra X-ray Observatory* center of the SN, up to an apparent visual magnitude of 22. Presently we will discuss more stars, roughly doubling the radius of the searched area (see Figure 1). The coordinates of the *Chandra* geometrical center of the remnant are: R.A. =  $00^{\text{h}}25^{\text{m}}19^{\text{s}}.9$ , decl. =  $64^\circ08'18''.2$  (J2000). This is the preferred center, which practically coincides with that of *ROSAT* (Hughes 2000), which differs by only 6.5 arcsec. The centroid in radio, from the Very Large Array (Reynoso et al. 1997), is also nearby. The stars closest to the center are A, B, C, D, E, F, and G. These are therefore the preferred candidates.

The distance to SN 1572 has been studied using different methods. The estimated value is converging into a value in the middle of the range from 2 to 4 kpc. Chevalier et al. (1980), using the expansion of the filaments in the remnant and the shock velocity, obtained a distance of  $2.3 \pm 0.5$  kpc. A similar distance was obtained by Albinson et al. (1986) through the observation of neutral hydrogen toward the supernova. They place the distance in the range of 1.7–3.7 kpc. Just one year later, Kirshner et al. (1987) revisited the distance through the expansion of the filaments of the remnant and found it to be between 2.0 and 2.8 kpc.

RL04 attempted a different approach. By assembling the records of the historical observations of this supernova in 1572–1574 and evaluating the uncertainties, it was possible to



**Figure 1.** *B*-band image, taken with the 4.2 m William Herschel Telescope, showing all the stars referred to in this paper.

reconstruct the light curve of the SN and the color. After applying the stretch factor fitting of light curves of SNe, it was possible to classify this SN within the family of SNe Ia. The derived absolute magnitude was found to be consistent with a distance of  $2.8 \pm 0.4$  kpc for the scale of  $H_0 \sim 65 \text{ km s}^{-1} \text{ Mpc}^{-1}$ . In this determination, the extinction toward the supernova was derived from the reddening as shown in the color curve of the SN. Given that current estimates of  $H_0$  are  $67 \text{ km s}^{-1} \text{ Mpc}^{-1}$ , this impacts into a somehow smaller value around 2.7 kpc.

With the acknowledgement of those uncertainties, we take a range of possible distances, in this paper, between 1.7 and 3.7 kpc ( $2.7 \pm 1$  kpc) and study all the stars within this distance range as derived by *Gaia* as potential candidates. We discuss the distance to the stars in the next section and come back to it when talking about candidate stars. We now see a difference in the distances toward some stars, and compare with those published previously.

## 3. Parallaxes and *Gaia* Distances

Distances to stars targeted as possible surviving companions of SN 1572 had first been estimated by RL04 (see their Table 1), for 13 of them. Those estimates were made by fitting synthetic spectra (under the assumption of local thermodynamic equilibrium) to the observed ones. The grids of model atmospheres and the atomic data from Kurucz (1993), in combination with the Uppsala Synthetic Spectrum Package (1975), were used in the spectrum synthesis. The atmospheric parameters—effective temperature  $T_{\text{eff}}$  and surface gravity  $g$ —were thus determined. Intrinsic colors and absolute visual magnitudes were then deduced from the relationships between spectral type and color and spectral type and absolute magnitude for the different luminosity classes (Schmidt-Kaler 1982). Comparison with *BVR* photometry obtained with the 2.5 m Isaac Newton Telescope in La Palma yielded the reddening  $E(B - V)$ , from which the visual extinction  $A_V$  and the corrected apparent visual magnitude



**Table 1**  
*Gaia* IDs, Parallaxes, Proper Motions, and *G* Magnitudes of the Sample of Stars from the *Gaia* DR2

Star	<i>Gaia</i> ID	$\varpi$ (mas)	$\mu_\alpha \cos \delta$ (mas yr <sup>-1</sup> )	$\mu_\delta$ (mas yr <sup>-1</sup> )	<i>G</i> (mag)
(1)	(2)	(3)	(4)	(5)	(6)
A	431160565571641856	1.031 ± 0.052	-5.321 ± 0.076	-3.517 ± 0.065	12.404 ± 0.001
B	431160569875463936	0.491 ± 0.051	-4.505 ± 0.063	-0.507 ± 0.049	15.113 ± 0.001
C1	431160359417132800	5.310 ± 0.483	-2.415 ± 0.735	-0.206 ± 0.576	18.027 ± 0.006
D	431160363709280768	1.623 ± 0.318	-4.566 ± 0.636	-2.248 ± 0.376	19.371 ± 0.003
E	431160565573859584	0.138 ± 0.220	0.232 ± 0.377	-0.699 ± 0.265	18.970 ± 0.002
F	431160569875460096	0.466 ± 0.079	-5.739 ± 0.130	-0.292 ± 0.097	17.036 ± 0.001
G	431160359413315328	0.512 ± 0.021	-4.417 ± 0.191	-4.064 ± 0.143	17.988 ± 0.001
H	431160599931508480	0.620 ± 0.203	-4.839 ± 0.341	-0.577 ± 0.248	18.895 ± 0.002
I	431160569867713152	-0.014 ± 0.566	-1.479 ± 0.970	-0.855 ± 0.761	20.351 ± 0.006
J	431160565571749760	0.134 ± 0.240	-3.900 ± 0.373	-1.054 ± 0.292	18.965 ± 0.002
K	431160393780294144	-0.266 ± 0.290	-1.735 ± 0.601	-0.815 ± 0.350	19.313 ± 0.003
L	431160398076768896	0.689 ± 0.457	-2.471 ± 0.876	0.514 ± 0.578	20.072 ± 0.005
M	431160604230502400	-2.282 ± 1.316	3.472 ± 1.943	-1.624 ± 2.070	20.900 ± 0.011
N	431160565571767552	0.246 ± 0.096	0.092 ± 0.148	0.134 ± 0.121	17.612 ± 0.001
O	431160569875457792	1.169 ± 0.063	2.607 ± 0.098	2.108 ± 0.076	16.542 ± 0.001
P	431160565571767424	0.168 ± 0.092	-0.889 ± 0.139	-0.389 ± 0.106	16.998 ± 0.001
Q	431160565575562240	0.663 ± 0.334	0.438 ± 0.643	1.409 ± 0.404	19.496 ± 0.004
S	431160565573859840	1.235 ± 0.417	2.091 ± 0.771	-0.437 ± 0.491	19.568 ± 0.003
T	431159088102994432	0.565 ± 0.289	-5.177 ± 0.563	0.004 ± 0.353	19.320 ± 0.003
U	431159092406721280	0.504 ± 0.070	-1.877 ± 0.113	-5.096 ± 0.083	17.064 ± 0.001
V	431160359413311616	0.059 ± 1.023	-2.201 ± 1.184	1.645 ± 1.279	20.235 ± 0.007
W	431160393773079808	0.193 ± 0.283	-2.760 ± 0.600	0.163 ± 0.343	19.312 ± 0.003
X	431159092398964992	0.192 ± 0.427	-1.187 ± 0.812	-0.836 ± 0.511	19.812 ± 0.004
Y	431159092406717568	0.631 ± 0.223	0.144 ± 0.347	-2.261 ± 0.290	18.923 ± 0.002
Z	431159092398966400	0.176 ± 0.146	-1.498 ± 0.233	-0.294 ± 0.193	18.082 ± 0.002
AA	431159088102995968	0.957 ± 0.467	-2.277 ± 0.977	-1.184 ± 0.595	19.973 ± 0.005
AB	431159088102989056	-0.090 ± 0.267	-2.011 ± 0.445	-1.600 ± 0.316	19.046 ± 0.002
AC	431159088103003520	0.490 ± 0.160	-2.376 ± 0.249	-1.445 ± 0.195	18.399 ± 0.001
AE	431159088102986880	0.279 ± 0.173	-0.907 ± 0.268	-0.241 ± 0.227	18.559 ± 0.002
AF	431158881944551424	1.323 ± 0.324	-2.381 ± 0.644	0.489 ± 0.400	19.399 ± 0.003
AG	431158881944550272	0.703 ± 0.382	-2.412 ± 0.779	0.626 ± 0.453	19.768 ± 0.004
AH	431158881944553216	0.206 ± 0.087	-0.704 ± 0.139	-0.579 ± 0.107	17.486 ± 0.001
AI/HP1	431160359417132928	2.831 ± 0.273	71.558 ± 0.530	-3.030 ± 0.322	19.159 ± 0.003
AJ	431160359413306368	0.187 ± 0.206	-1.102 ± 0.333	0.222 ± 0.249	18.883 ± 0.002
AK	431160393773068032	-0.476 ± 0.447	-1.306 ± 0.938	-0.142 ± 0.518	20.008 ± 0.005
AL	431160398072078592	0.383 ± 0.618	-2.827 ± 1.199	0.727 ± 0.789	20.461 ± 0.006
AM	431160398073281792	0.752 ± 0.825	0.303 ± 1.636	-2.940 ± 1.114	20.605 ± 0.008
AN	431160599931516288	0.605 ± 0.138	-4.560 ± 0.221	-1.330 ± 0.168	18.284 ± 0.001

needed to detect or discard the presence of possible companions. Until the advent of *Gaia*, this was only possible with *HST* astrometry. Radial velocities obtained from high-resolution spectra give complementary information on the velocity along the line of sight.

A first set of measurements of the proper motions of the stars around the centroid of Tycho's SNR was made in RL04. It included 26 stars, labeled from A to W (see their Figure 1). Images from the WFPC2 aboard the *HST*, taken two months apart (within Cycle 12), were used. It was found that star G was at compatible distance to the supernova (the distance estimate for Tycho G, the most widely named star G, was  $3.0_{-0.5}^{+1}$  kpc and its motion was mostly perpendicular to the Galactic plane, with  $\mu_b = 6.11 \pm 1.34$  mas yr<sup>-1</sup> ( $\mu_l = -2.6 \pm 1.34$  mas yr<sup>-1</sup> only). That meant a heliocentric tangential velocity  $v_t \sim 94$  km s<sup>-1</sup> which, combined with a high measured radial velocity of  $-87.4 \pm 0.5$  km s<sup>-1</sup>, gave a total heliocentric velocity  $v_{\text{tot}} \sim 128$  km s<sup>-1</sup>  $\pm 9$  km s<sup>-1</sup>, making star G a likely candidate to have been the companion star of SN 1572.

In B14, proper motions  $\mu_\alpha \cos \delta = -2.63 \pm 0.18$  mas yr<sup>-1</sup> and  $\mu_\delta = -3.98 \pm 0.10$  mas yr<sup>-1</sup> were measured. That, for a distance of  $2.83 \pm 0.79$  kpc, taken as the SN distance, give a heliocentric tangential velocity  $v_t = 64 \pm 11$  km s<sup>-1</sup>. Given the heliocentric radial velocity,  $v_r = -87.4 \pm 0.5$ , the total velocity is  $v_{\text{tot}} = 108 \pm 9$  km s<sup>-1</sup>.

Now, from the *Gaia* DR2,  $\mu_\alpha \cos \delta = -4.417 \pm 0.191$  mas yr<sup>-1</sup> and  $\mu_\delta = -4.064 \pm 0.143$  mas yr<sup>-1</sup>. The parallax being  $\varpi = 0.512 \pm 0.021$ , we have  $v_\alpha \cos \delta = -40.88 \pm 2.44$  km s<sup>-1</sup>,  $v_\delta = -37.61 \pm 2.03$  km s<sup>-1</sup>, and  $v_t = 55.55 \pm 2.26$  km s<sup>-1</sup> (heliocentric).

For the corresponding  $v_r$ , it results in  $v_{\text{tot}} = 103.69 \pm 7.52$  km s<sup>-1</sup>. We thus see that, as compared with B14, there is no significant change with the new results. As in B14, they can be interpreted in the framework of a binary model similar to that for U Sco. The excess velocity of star G with respect to the average of the stars at the same location in the Galaxy could come from the orbital velocity it had when the binary was disrupted by the SN explosion.

**Table 2**  
BVR Photometry, Distances, and Proper Motions of Stars A–W from B14, Compared with the Distances and Proper Motions from *Gaia* DR2

Star	<i>B</i> (mag)	<i>V</i> (mag)	<i>R</i> (mag)	<i>d</i> (B14) (kpc)	<i>d</i> (kpc)	$\mu_\alpha \cos \delta$ (mas yr <sup>-1</sup> )	$\mu_\alpha \cos \delta$ (B14) (mas yr <sup>-1</sup> )	$\mu_\delta$ (mas yr <sup>-1</sup> )	$\mu_\delta$ (B14) (mas yr <sup>-1</sup> )
(1)	(2)	(3)	(4)	(5)	(6)	(7)	(8)	(9)	(10)
A	14.82 ± 0.03	13.29 ± 0.03	12.24 ± 0.03	1.1 ± 0.3	0.97 <sup>+0.05</sup> <sub>-0.04</sub>	-3.63 ± 0.08	...	-3.06 ± 0.07	...
B	16.35 ± 0.03	15.41 ± 0.03	...	2.6 ± 0.5	2.03 <sup>+0.19</sup> <sub>-0.15</sub>	-2.90 ± 0.06	-1.67 ± 0.06	-0.09 ± 0.05	0.59 ± 0.08
C1	21.06 ± 0.12	19.06 ± 0.05	17.77 ± 0.03	0.75 ± 0.5	0.18 <sup>+0.03</sup> <sub>-0.01</sub>	-0.82 ± 0.73	-1.98 ± 0.07	0.39 ± 0.58	-1.09 ± 0.06
C2	22.91 ± 0.20	20.53 ± 0.15	...	~40	...	...	-1.75 ± 0.07	...	-1.07 ± 0.07
C3	...	...	...	...	...	...	0.08 ± 0.11	...	-0.14 ± 0.10
D	22.97 ± 0.28	20.70 ± 0.10	19.38 ± 0.06	0.8 ± 0.2	0.62 <sup>+0.15</sup> <sub>-0.11</sub>	-2.97 ± 0.64	-2.03 ± 0.09	-1.65 ± 0.38	-1.28 ± 0.07
E	21.24 ± 0.13	19.79 ± 0.07	18.84 ± 0.05	>20	7.22 <sup>+xxx</sup> <sub>-4.43</sub>	1.83 ± 0.38	1.74 ± 0.05	-0.10 ± 0.26	0.28 ± 0.05
F	19.02 ± 0.05	17.73 ± 0.03	16.94 ± 0.03	1.5 ± 0.5	2.15 <sup>+0.44</sup> <sub>-0.32</sub>	-4.14 ± 0.13	-3.31 ± 0.15	0.31 ± 0.10	0.25 ± 0.07
G	20.09 ± 0.08	18.71 ± 0.04	17.83 ± 0.03	2.5–5.0	1.95 <sup>+0.60</sup> <sub>-0.35</sub>	-2.82 ± 0.19	-2.63 ± 0.06	-3.46 ± 0.14	-3.98 ± 0.04
H	21.39 ± 0.14	19.80 ± 0.07	18.78 ± 0.05	≈1.8/~24	1.61 <sup>+0.79</sup> <sub>-0.40</sub>	-3.24 ± 0.34	-3.13 ± 0.07	-0.02 ± 0.25	-0.84 ± 0.03
I	...	21.75 ± 0.16	20.36 ± 0.09	≈4	≥1.81	0.12 ± 0.97	0.69 ± 0.06	-0.25 ± 0.76	-0.20 ± 0.06
J	21.15 ± 0.12	19.74 ± 0.07	18.84 ± 0.05	≈9	7.46 <sup>+xxx</sup> <sub>-4.77</sub>	-2.30 ± 0.37	-2.35 ± 0.06	-0.45 ± 0.29	-0.28 ± 0.03
K	21.64 ± 0.15	20.11 ± 0.08	19.15 ± 0.05	≈2.4/~27	≥41.67	-0.14 ± 0.60	0.24 ± 0.12	-0.21 ± 0.35	0.03 ± 0.07
L	22.77 ± 0.26	21.08 ± 0.12	20.00 ± 0.07	≈4	1.45 <sup>+2.87</sup> <sub>-0.58</sub>	-0.87 ± 0.88	0.36 ± 0.12	1.11 ± 0.58	-0.08 ± 0.04
M	23.49 ± 0.36	21.82 ± 0.16	20.72 ± 0.10	≈4	...	5.07 ± 1.94	-0.61 ± 0.12	-1.02 ± 2.07	0.44 ± 0.08
N	19.59 ± 0.06	18.29 ± 0.04	17.47 ± 0.03	≈1.5–2	4.06 <sup>+2.57</sup> <sub>-1.14</sub>	1.69 ± 0.15	2.64 ± 0.13	0.74 ± 0.12	0.96 ± 0.04
O	18.62 ± 0.04	17.23 ± 0.03	16.37 ± 0.03	<1	0.85 <sup>+0.54</sup> <sub>-0.22</sub>	4.21 ± 0.10	5.13 ± 0.20	2.71 ± 0.08	2.85 ± 0.14
P1	...	17.61 ± 0.03	16.78 ± 0.03	≈1	5.96 <sup>+7.23</sup> <sub>-2.11</sub>	...	1.39 ± 0.36	...	0.20 ± 0.09
P2	...	...	...	...	...	...	-0.27 ± 0.20	...	-1.64 ± 0.21
Q	22.35 ± 0.21	20.59 ± 0.09	19.41 ± 0.06	≈2	1.51 <sup>+1.53</sup> <sub>-0.51</sub>	2.04 ± 0.64	1.34 ± 0.09	2.71 ± 0.40	2.38 ± 0.04
R	22.91 ± 0.28	21.38 ± 0.13	20.26 ± 0.08	3.3 ± 0.2	...	...	-0.18 ± 0.10	...	0.25 ± 0.05
S	...	21.30 ± 0.13	19.74 ± 0.07	1.3 ± 0.1	0.81 <sup>+0.41</sup> <sub>-0.20</sub>	3.69 ± 0.77	3.68 ± 0.09	0.16 ± 0.49	0.93 ± 0.05
T	21.82 ± 0.17	20.23 ± 0.08	19.20 ± 0.05	≈2/~30	1.77 <sup>+1.86</sup> <sub>-0.60</sub>	-3.58 ± 0.56	-2.96 ± 0.04	0.61 ± 0.35	-0.53 ± 0.05
U	19.03 ± 0.05	17.73 ± 0.03	16.95 ± 0.03	≈1	1.98 <sup>+0.32</sup> <sub>-0.24</sub>	-0.28 ± 0.11	0.39 ± 0.10	-4.49 ± 0.08	-4.31 ± 0.07
V	23.32 ± 0.33	21.41 ± 0.13	20.20 ± 0.08	≈3	16.81 <sup>+xxx</sup> <sub>-15.89</sub>	-1.16 ± 1.18	-0.67 ± 0.08	2.25 ± 1.28	0.49 ± 0.08
W	22.13 ± 0.19	20.44 ± 0.09	19.27 ± 0.05	≈2	5.17 <sup>+xxx</sup> <sub>-3.07</sub>	-1.16 ± 0.60	-0.31 ± 0.09	0.76 ± 0.34	0.09 ± 0.04

**Note.** Here the *Gaia* proper motions have been transformed to the system used in B14; see the text and, for the *Gaia* original values, Table 1. There are stars that have no upper limit for the *Gaia* distances. This corresponds to negative parallaxes. They have been marked with xxx. There are other stars (I, K, and AB in Table 3) with negative central value of the parallax, but adding the errors gives positive limits. This corresponds to a lower limit for the distance, therefore they show a ≥ sign.

Taking as a reference the Besançon model of the Galaxy (Robin et al. 2003), the average heliocentric tangential velocity of disk stars, at the position and distance of star G, is almost negligible, while the average radial velocity is  $\langle v_r \rangle \approx -31 \pm 28 \text{ km s}^{-1}$ . Then, attributing the excess over average in radial velocity ( $\approx -56 \pm 28 \text{ km s}^{-1}$ ) to orbital motion and the full tangential velocity ( $\approx 55 \pm 2 \text{ km s}^{-1}$ ) to it, we obtain that  $v_{\text{orb}} \approx 78 \pm 20 \text{ km s}^{-1}$  (the inclination of the plane of the orbit with respect to the line of sight would thus be  $i = 44^\circ$ ).

The evolutionary path giving rise to SN 1572 might have started from a WD with a mass  $\sim 0.8 M_\odot$  plus a somewhat evolved companion of  $\sim 2.0\text{--}2.5 M_\odot$  filling its Roche lobe (RL04), the system ending up as a WD with Chandrasekhar mass  $\sim 1.4 M_\odot$ , plus a companion of  $\sim 1 M_\odot$ . Using Kepler's law, that  $P^2 = a^3/(M_1+M_2)$  (with  $P$  in years,  $a$  in astronomical units,  $M_1$  and  $M_2$  in solar masses), and since  $P = 2\pi a/v$ , we find a separation  $a \approx 25 R_\odot$ , the period being  $P \approx 9$  days. Using Eggleton's (1983) formula

$$R_L = a \left[ \frac{0.49}{0.6 + q^{-2/3} \ln(1 + q^{1/3})} \right]$$

( $q$  being the mass ratio  $M_2/M_1$ ) for the effective Roche lobe radius of the companion just before the explosion, it would thus have been  $\approx 9 R_\odot$ . At present, the radius of the star is only  $1\text{--}2 R_\odot$  (GH09), and would have resulted from the combination

of mass stripping and shock heating by the impact of the SN ejecta, plus subsequent fast cooling of the outer layers up to the present time.

However, an alternative to this hypothesis is discussed later in the paper.

In B14, the proper motions of 872 stars were measured from *HST* astrometry, using images taken in up to four different epochs and spanning a total of 8 yr. Much higher precision than in RL04 was achieved. The results for 45 of them (all the stars with names in Figure 1) are given in Tables 2 and 3 of B14. The full version was provided as supplementary electronic material.

When comparing the proper motions given by the *Gaia* DR2 with those obtained by B14 from the astrometry done with the *HST*, one must take into account that the former are *absolute* measurements, in the ICRS system, while the latter are *relative* measurements. This means that the local frame used for the *HST* astrometry should, in general, move with respect to the ICRS frame. Such a systematic effect is actually seen when we make the comparison. In Tables 2 and 3, the *Gaia* proper motions have been transformed to the *HST* frame.

Including only the stars with proper motion errors smaller than  $0.25 \text{ mas yr}^{-1}$  in B14, we find that, on average,  $\mu_\alpha \cos \delta$  (*Gaia*) =  $\mu_\alpha \cos \delta$  (B14) -  $1.599 \pm 0.729 \text{ mas yr}^{-1}$  and  $\mu_\delta$  (*Gaia*) =  $\mu_\delta$  (B14) -  $0.601 \pm 0.585 \text{ mas yr}^{-1}$ .

**Table 3**  
*G* Magnitudes, Distances, and Proper Motions of Stars X–AN from B14, with Comparison of the Proper Motions from B14 and From *Gaia* DR2

Star	<i>G</i> (mag)	<i>d</i> (kpc)	$\mu_\alpha \cos \delta$ (mas yr <sup>-1</sup> )	$\mu_\alpha \cos \delta$ (B14) (mas yr <sup>-1</sup> )	$\mu_\delta$ (mas yr <sup>-1</sup> )	$\mu_\delta$ (B14) (mas yr <sup>-1</sup> )
(1)	(2)	(3)	(4)	(5)	(6)	(7)
X	19.81	5.20 <sup>+xxx</sup> <sub>-3.59</sub>	0.41 ± 0.81	1.32 ± 0.06	-0.24 ± 0.51	-0.26 ± 0.06
Y	18.92	1.58 <sup>+0.87</sup> <sub>-0.41</sub>	1.74 ± 0.35	2.52 ± 0.03	-1.66 ± 0.29	-1.75 ± 0.07
Z	18.08	5.68 <sup>+2.72</sup> <sub>-2.57</sub>	0.10 ± 0.23	0.78 ± 0.04	0.31 ± 0.19	0.06 ± 0.07
AA	19.97	1.04 <sup>+1.00</sup> <sub>-0.33</sub>	-0.68 ± 1.00	-3.19 ± 0.07	-0.58 ± 0.60	-1.42 ± 0.04
AB	19.05	≥5.65	-0.41 ± 0.45	-0.37 ± 0.03	-1.00 ± 0.32	-1.01 ± 0.06
AC	18.40	2.04 <sup>+0.99</sup> <sub>-0.50</sub>	-0.78 ± 0.25	-1.09 ± 0.07	-0.84 ± 0.20	-0.87 ± 0.04
AD1	17.22	1.04 <sup>+0.84</sup> <sub>-0.32</sub>	0.85 ± 0.59	-1.24 ± 0.14	...	-1.58 ± 0.16
AD2	...	...	...	-1.12 ± 0.04	...	-2.25 ± 0.07
AE	19.05	3.58 <sup>+5.84</sup> <sub>-1.37</sub>	0.69 ± 0.27	1.07 ± 0.06	0.36 ± 0.23	-0.05 ± 0.06
AF	19.40	0.76 <sup>+0.24</sup> <sub>-0.15</sub>	-0.78 ± 0.64	-0.38 ± 0.04	1.09 ± 0.40	0.01 ± 0.07
AG	19.77	1.42 <sup>+1.69</sup> <sub>-0.50</sub>	-0.81 ± 0.78	-1.11 ± 0.06	1.23 ± 0.45	0.93 ± 0.08
AH	17.49	4.85 <sup>+3.55</sup> <sub>-1.44</sub>	0.89 ± 0.14	1.26 ± 0.20	0.02 ± 0.11	-0.20 ± 0.26
AII/HP-1	19.16	0.35 <sup>+0.04</sup> <sub>-0.03</sub>	73.16 ± 0.53	73.07 ± 0.09	-2.43 ± 0.32	-2.82 ± 0.07
AI2	...	...	...	1.76 ± 0.28	...	0.16 ± 0.21
AJ	18.88	5.35 <sup>+xxx</sup> <sub>-2.81</sub>	0.50 ± 0.33	0.18 ± 0.05	0.82 ± 0.25	0.73 ± 0.07
AK	20.01	...	0.29 ± 0.94	-0.25 ± 0.09	0.46 ± 0.52	0.95 ± 0.08
AL	20.46	2.61 <sup>+xxx</sup> <sub>-1.61</sub>	-1.23 ± 1.20	-0.14 ± 0.09	1.33 ± 0.73	-0.35 ± 0.09
AM	20.61	1.33 <sup>+xxx</sup> <sub>-0.70</sub>	1.90 ± 1.64	-1.36 ± 0.10	-2.34 ± 1.11	-0.60 ± 0.10
AN	18.28	1.65 <sup>+0.49</sup> <sub>-0.30</sub>	-2.96 ± 0.22	-2.83 ± 0.11	-0.73 ± 0.17	-0.96 ± 0.05

**Note.** Here the *Gaia* proper motions have been transformed to the system used in B14; for the *Gaia* original values, see Table 1. These stars have not been assigned a distance in B14 or in any other paper. The sign xxx for the upper limit in distance to some stars corresponds to negative upper limit parallax, as in Table 2.

In Table 2 (columns 7 and 9) and Table 3 (columns 4 and 6), we have transformed the *Gaia* proper motions to the B14 *HST* frame according to these relations. For our purposes, the local, relative proper motions are most meaningful, since we are interested in the motions of the stars with respect to the average motions of those around their positions. After applying these zero-point shifts, there still are residual differences between the two proper motion sets. On average,  $\Delta\mu_\alpha \cos \delta = -0.017 \pm 0.788 \text{ mas yr}^{-1}$  and  $\Delta\mu_\delta = 0.005 \pm 0.630 \text{ mas yr}^{-1}$ . The whole set is included here, the dispersion being mainly due to stars which have substantial errors in their *Gaia* proper motions (see columns 7 and 9 in Table 2 and columns 4 and 6 in Table 3, as well as columns 5 and 6 in Table 4).

### 5. Toomre Diagram

*Gaia* provides a five-parameter astrometric solution and, for some stars, line-of-sight velocities ( $\alpha$ ,  $\delta$ ,  $\varpi$ ,  $\mu_\alpha^*$ ,  $\mu_\delta$ ,  $V_r$ ), together with their associated uncertainties and correlations between the astrometric quantities. For the 13 stars for which we also know their radial velocities, the total space velocities can be derived. It is most useful to see their components in the Galactic coordinate system:  $U$  (positive in the direction of the Galactic center),  $V$  (positive in the direction of Galactic rotation) and  $W$  (positive in the direction of the north Galactic pole) in the Local Standard of Rest (LSR). In Table 4 we give the  $U$ ,  $V$ , and  $W$  components of the space velocities, as well as the total velocities on the Galactic meridian plane, in the LSR, of these 13 stars, based on the *Gaia* DR2 parallaxes and proper motions and on the radial velocities from B14 (save for star A, which has a quite precise radial velocity from *Gaia*). For the transformation of the motions from heliocentric to the LSR, we have adopted, as the peculiar velocity of the Sun with

respect to the LSR,  $(U_\odot, V_\odot, W_\odot) = (11.1, 12.24, 7.25) \text{ km s}^{-1}$  (Schönrich et al. 2010).

The Toomre diagram shows the distribution of  $U$ ,  $V$ ,  $W$  velocities in the LSR. This diagram combines quadratically  $U$  and  $W$  versus  $V$  and allows us to distinguish between stars belonging to different Galactic stellar components (thin disk, transition thin-thick, thick disk, and halo). The Adibekyan et al. (2012) sample, with very high quality spectroscopic data from the HARPS exoplanet search program, is used as a reference in Figure 3. The data have very high precision on radial velocities, stellar parameters, and metallicities. Therefore, the Toomre diagram obtained from this sample combines kinematics information such as orbital motion together with the information derived from the spectroscopic analysis on element abundances. The sample covers a wide range of metallicities [Fe/H] from -1.2 to 0.4.

The sample in the upper left panel of Figure 3 has no imposed boundaries on metallicity, while those in the lower left and right panels include only stars with metallicities equal to or higher than that of star G minus the  $1\sigma$  uncertainty, i.e., for [Fe/H] > -0.14. One sees there (with the exception of star J, whose kinematics is very unreliable, with large errors in the *Gaia* DR2 data), that no other star in our sample moves as fast as star G.

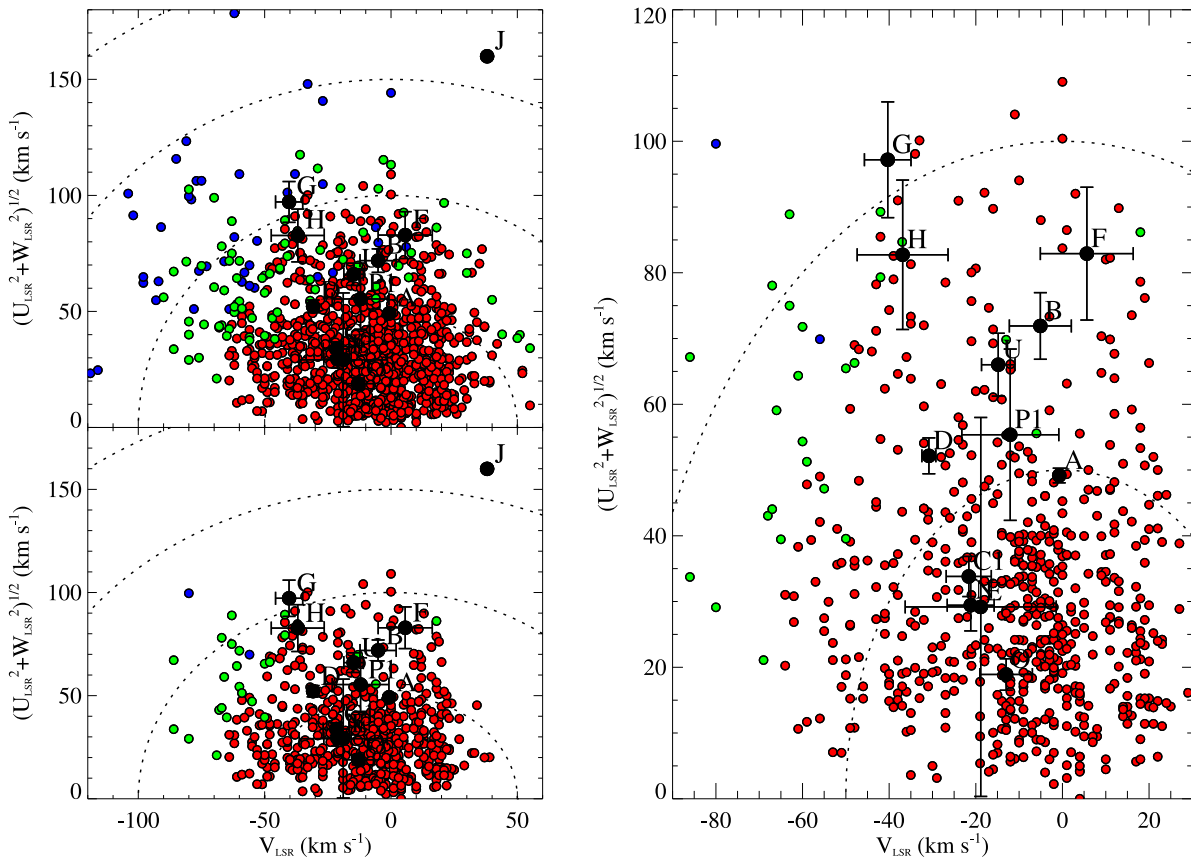
The *Gaia* DR2 data place star G above the region where most thin disk stars are. The kinematics of star G would locate it among the thick disk stars but its metallicity is that of a thin disk star, while at its location, only 48 pc above the Galactic plane, the density of thick disk stars is very low. Using the Adibekyan et al. (2012) sample, the probability that star G belonged to the thick disk, given its metallicity, is only 2%.

There are some thin disk stars, however, that move fast on the Galactic meridian plane, and thus star G might belong to

**Table 4**  
Parallaxes, Heliocentric Radial Velocities, Proper Motions, Galactic  $U$ ,  $V$ ,  $W$  Velocity Components, and Total Velocities on the Galactic Meridian Plane (Referred to the Local Standard of Rest) of the Stars with Both Radial Velocities from B14 and Parallaxes from *Gaia* DR2

Star	DR2 number (4311...)	$\varpi$ (mas)	$v_r$ (km s <sup>-1</sup> )	$\mu_\alpha \cos \delta$ (mas yr <sup>-1</sup> )	$\mu_\delta$ (mas yr <sup>-1</sup> )	$U$ (km s <sup>-1</sup> )	$V$ (km s <sup>-1</sup> )	$W$ (km s <sup>-1</sup> )	$(U^2+W^2)^{1/2}$ (km s <sup>-1</sup> )
(1)	(2)	(3)	(4)	(5)	(6)	(7)	(8)	(9)	(10)
A	60565571641856	1.03 ± 0.05	-30 ± 1	-5.321 ± 0.076	-3.518 ± 0.065	48.65 ± 1.12	-0.74 ± 0.74	-7.12 ± 0.82	49.17 ± 1.11
B	60569875463936	0.49 ± 0.04	-45 ± 8	-4.505 ± 0.063	-0.507 ± 0.049	71.69 ± 5.08	-5.10 ± 7.15	5.72 ± 0.53	71.91 ± 5.07
C1	60359417132800	5.31 ± 0.48	-40 ± 6	-2.415 ± 0.735	-0.206 ± 0.576	33.22 ± 3.06	-23.00 ± 5.20	6.29 ± 0.54	33.81 ± 3.05
D	60363709280768	1.62 ± 0.32	-58 ± 0.8	-4.566 ± 0.636	-2.248 ± 0.376	52.16 ± 2.73	-30.83 ± 1.61	0.64 ± 1.68	52.16 ± 2.73
E	60565573859584	0.14 ± 0.22	-33 ± 18	0.232 ± 0.377	-0.699 ± 0.265	22.80 ± 17.45	-18.87 ± 17.43	-18.20 ± 42.45	29.18 ± 28.82
F	60569875460096	0.47 ± 0.08	-41 ± 11	-5.739 ± 0.130	-0.292 ± 0.097	82.40 ± 10.16	5.63 ± 10.72	9.19 ± 1.02	82.91 ± 10.10
G	60359413315328	0.51 ± 0.12	-87 ± 0.5	-4.417 ± 0.191	-4.064 ± 0.143	93.01 ± 8.85	-40.33 ± 5.37	-28.20 ± 8.28	97.19 ± 8.80
H	60599931508480	0.62 ± 0.20	-78 ± 10	-4.839 ± 0.341	-0.577 ± 0.248	82.61 ± 11.38	-36.89 ± 10.49	4.67 ± 2.02	82.74 ± 11.36
J	60565571749760	0.13 ± 0.24	-52 ± 6	-3.900 ± 0.373	-1.054 ± 0.292	159.03 ± 214.99	38.04 ± 125.88	-17.10 ± 45.78	159.94 ± 213.81
N	60565571767552	0.25 ± 0.10	-37 ± 6	0.092 ± 0.148	0.134 ± 0.121	28.12 ± 4.02	-21.18 ± 5.41	8.71 ± 2.25	29.44 ± 3.90
O	60569875457792	1.17 ± 0.05	-22 ± 7	2.607 ± 0.098	2.108 ± 0.076	12.57 ± 3.57	-13.00 ± 6.07	14.12 ± 0.47	18.90 ± 2.40
P1	60565571767424	0.17 ± 0.09	-43 ± 10	-0.889 ± 0.139	-0.389 ± 0.106	55.13 ± 13.04	-11.71 ± 11.20	-2.17 ± 6.32	55.17 ± 13.03
U	59092406721280	0.50 ± 0.07	-45 ± 4	-1.877 ± 0.113	-5.096 ± 0.083	52.70 ± 3.32	-14.82 ± 3.86	-39.77 ± 6.62	66.02 ± 4.78

**Note.** The proper motions here are in the *Gaia* system.



**Figure 3.** Left upper panel: Toomre diagram for a sample of thin disk, thick disk, and transition thin-thick disk stars, covering a wide range of metallicities, with our stars (from Table 4) superimposed (red dots correspond to thin disk stars, green to transition, and blue to thick disk stars). Left lower panel: same as the upper panel, keeping only stars with metallicities equal to or higher than that of star G. Right panel: detail of the lower left panel, leaving out star J. The sample is taken from Adibekyan et al. (2012).

this group although, as we will see, it includes only a small fraction of the thin disk stars.

Quantitatively, in the sample from Adibekyan et al. (2012), of 1111 FGK dwarf stars, there are 601 thin disk stars with metallicities  $[\text{Fe}/\text{H}] > -0.14$ . A total of 446 of them (74.2%) are inside the circle  $V^2 + (U^2 + W^2)^{1/2} < 50 \text{ km s}^{-1}$ , and 596 are inside the  $< 100 \text{ km s}^{-1}$  circle. Only five (0.8%) have velocities higher than  $100 \text{ km s}^{-1}$ . That, therefore, is the probability (0.8%), from kinematics alone, that star G is just a fast-moving thin disk star.

In Section 6 the orbits of the stars are discussed and the question of the detailed chemical abundances of star G addressed.

## 6. Stars' Orbits

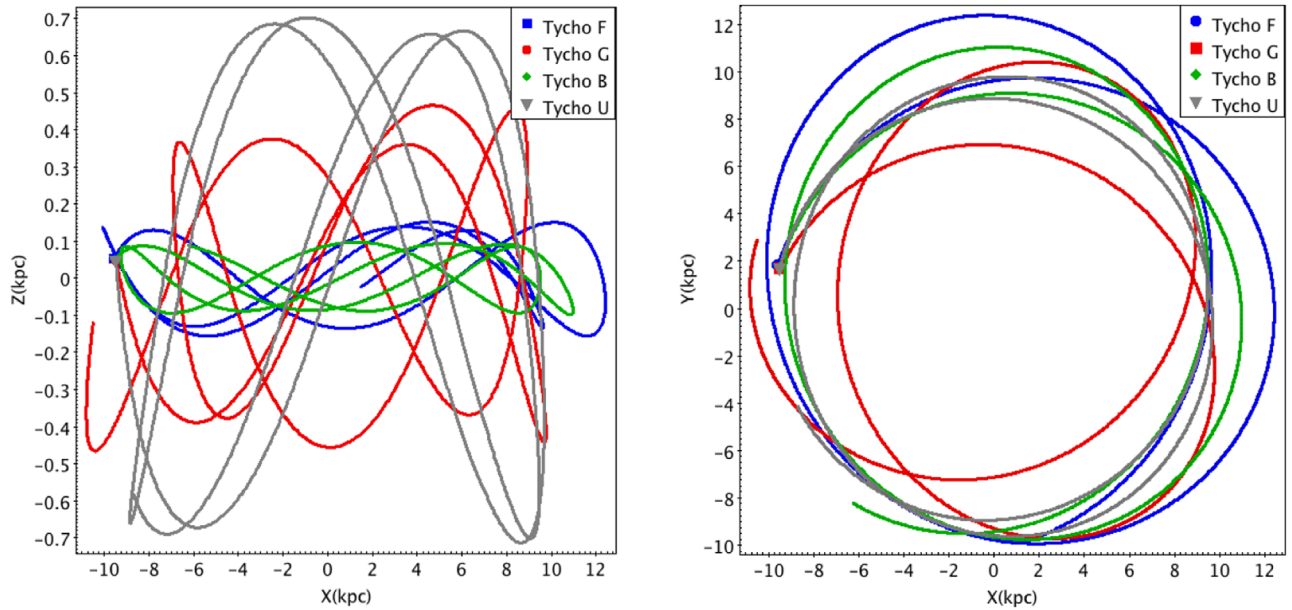
Using the *Gaia* DR2 data system, we can calculate the orbits of the stars in the Galaxy. With known distances, proper motions can be translated into tangential velocities. From these and from the radial velocities already obtained, the total velocities of the targeted stars are reconstructed and their orbits as they move across the Galaxy can then be calculated.

The stellar orbits are obtained by integration of the equations of motion. A 3D potential of the Galaxy is required for this. Here we use an axisymmetric potential consisting of a spherical central bulge, a disk, and a massive spherical halo, developed by Allen & Santillán (1991). This is an analytic potential that allows an efficient and accurate numerical computation of the

orbits. In the present case, the total mass of the Galaxy is assumed to be  $9 \times 10^{11} M_{\odot}$ . We take the Sun to be at 8.5 kpc from the Galactic center and moving circularly with a frequency  $\omega_{\odot} = 25.88 \text{ km s}^{-1} \text{ kpc}^{-1}$ . We do not consider a Galactic bar or a spiral arms potential.

In Figure 4 we show the orbits of stars B, G, F, and U. We see that only stars G and U reach large distances above and below the Galactic plane, while the other two stars, in contrast, do not appreciably leave it. We also note, in the motion parallel to the Galactic plane, the large eccentricity of the orbit of star G.

The figure is meant to show how far from the Galactic plane the stars with significant proper motions in  $\mu_{\alpha}$  and  $\mu_{\delta}$  reach. We take four stars with distance compatible with that of the SN. We see that star G will reach up to 500 pc and star U up to almost 700 pc above the Galactic plane within the next 500 Myr. In contrast, B and F (which have an insignificant  $\mu_{\delta}$ ) do not reach 200 pc in their orbits in any lapse of time. We have shown B and F because those have  $\mu_{\alpha} \sim 4 \text{ mas yr}^{-1}$  but negligible  $\mu_{\delta}$ . Their orbits do not look peculiar. These are example of the many stars in a similar situation, which can be seen in our tables. They will be thin disk stars (as seen in the Toomre diagram). The case of star U is unique, in the sense that it has a slightly larger  $\mu_{\delta}$  than G. Star U has a negligible  $\mu_{\alpha}$ , which makes its orbit very circular. Star G has about the same proper motions in  $\mu_{\alpha}$  and in  $\mu_{\delta}$ . This is why it reaches 500 pc above the Galactic plane but, at the same time, unlike star U, its orbit is eccentric.



**Figure 4.** Orbits of stars B (green), G (red), F (blue), and U (gray), projected on the Galactic meridian plane (left) and on the Galactic plane (right), computed forward in time for the next 500 Myr. The common starting point is marked with a blue square. In the left panel we see that star U reaches the largest distance from the Galactic plane, followed by star G (which corresponds to the respective values of the W component of their velocities in Table 4), while stars B and F scarcely depart from the plane. The behavior of the latter stars is typical of the rest of the sample considered here. In the right panel we see that the orbit of star G on the Galactic plane is highly eccentric (which corresponds to the high value of the U component of its velocity in Table 4), while the other stars (including star U) have orbits close to circular. Also here, the behavior of stars B and F is representative of the whole sample.

The total velocity of star G is larger than that of star U. This can already be seen from the orbit and more explicitly in the Toomre diagram. When we add the radial velocity vector to obtain the total velocity for star G, we have a  $v_r = -87.40 \text{ km s}^{-1}$  (heliocentric), which is larger than that of star U ( $-45.40 \text{ km s}^{-1}$ ). Thus the total velocity for star G is  $103.69 \text{ km s}^{-1}$  while for U it is only  $68.63 \text{ km s}^{-1}$ .

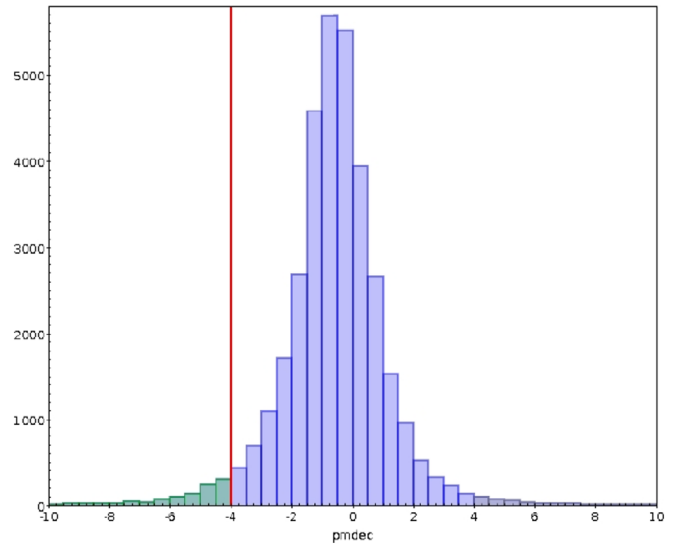
In Figure 5, we have made a histogram of the proper motions in decl. of the stars at distances between  $1.7 < d < 3.7$  within  $1^\circ$  from the geometrical center of the SN. We see there that the position of star G is anomalous. We also see that around  $1^\circ$  in the SN position the proper motions in decl. are small.

In Figure 6 we show the position of the stars compatible with the distance of SN 1572 in proper motions in R.A. and decl. All stars are those from the *Gaia* DR2 within  $1^\circ$  from the SN 1572 center and  $1.7 < d < 3.7 \text{ kpc}$ . It is worth noting the logarithmic scale. Basically within  $1^\circ$  of the center of SN 1572 and those distances the large majority of stars have very low proper motions.

One might ask what happens with the stars, in the full sample of Tables 2 and 3, that do not have measured heliocentric radial velocities because they were far from the 15% of the radius of the remnant explored in RL04. The *Gaia* DR2 data show no significant proper motions for any of them.

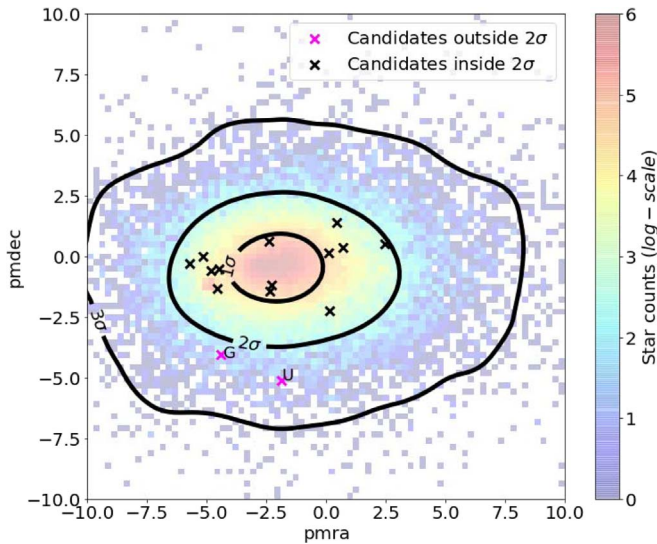
## 7. Candidate Stars

In order to evaluate the likelihood that a given star is the companion of the SN, we look at the distances provided by *Gaia* parallaxes and to the proper motions. For some of the stars, we also have radial velocities, obtained from high-resolution spectra. Parallaxes and proper motions allow us to discern whether a given star has received extra momentum from the disruption of the binary system to which it belonged.



**Figure 5.** Histogram of the distribution in  $\mu_\delta$  (in  $\text{mas yr}^{-1}$ ) of the stars within  $1^\circ$  of the geometrical center of Tycho's SNR in the range of distance compatible with SN 1572 ( $1.7 < d < 3.7 \text{ kpc}$ ). The data are obtained from *Gaia* DR2. The red vertical line shows the  $\mu_\delta$  of star G.

Such extra momentum (relative to the motion of the center of mass of the binary) mostly comes from the orbital motion of the star when the system was disrupted by the SN explosion. There is also some kick due to the impact of the SN ejecta on the companion, but it is comparatively small and depends on orbital separation and on how compact the companion is. In the hydrodynamic simulations of Marietta et al. (2000), the momentum gained from the kick ranges from 12% to 50% of the momentum the star had before explosion, for main-sequence and subgiant companions, the kick being much



**Figure 6.** Proper motions of the candidate stars (see the first column of Table 5) to companion of SN 1572 plotted over the distribution of all the stars with distance compatible with that of the SNR ( $1.7 < d < 3.7$  kpc) and included within a radius of  $1^\circ$  of the remnant.

smaller in the case of red giants. Similar values are found by Pan et al. (2014).

We examine first the stars closest to the geometrical center of the remnant.

#### Stars A to G.

Star A is the closest to the geometrical center of the SNR. From its stellar atmosphere parameters, this star is at the foreground of the SN. The *Gaia* parallax places it at  $0.97^{+0.05}_{-0.04}$  kpc. By comparison of the absolute magnitude corresponding to the stellar parameters with the photometric data, we had derived  $d = 1.1 \pm 0.3$  kpc (RL04, B14).

Star B has recently been thought to be a foreground star (Kerzendorf et al. 2018). It is a hot star close to the geometrical center of the remnant. *Gaia* DR2 places this star at a distance compatible with that of the SNR.  $d = 2.03^{+0.19}_{-0.15}$  kpc, is now compatible with the SN distance. We already pointed out, in RL04 and B14, that the star likely was at a distance compatible with that of the SNR. We can discard star B, however, on the basis of having no peculiar proper motions nor radial velocity. We have made a reconstruction of the orbit of star B and it moves on the Galactic plane without any disturbance toward upper or lower Galactic latitudes.

Stars C1, C2, and C3 have been observed by the *HST*. *Gaia* could only observe C1, and has determined it to be a very nearby star, at a distance of  $0.18^{+0.03}_{-0.01}$  kpc. From the stellar parameters, a distance of  $0.75 \pm 0.5$  kpc was estimated. For C2 and C3, RL04, and B14 could not estimate any distance, due to their faint magnitudes. The proper motion values for these three stars obtained from *HST* images in B14 show that they are moving close to the Galactic plane.

Star D is also very nearby. It is at a distance of  $0.62^{+0.15}_{-0.11}$  kpc according to *Gaia*. We had calculated a distance of  $d = 0.8 \pm 0.2$  kpc. Most of the targeted stars close to the geometrical center of the SNR are at distances below 1.5 kpc.

Star E, though, is at a very large distance. *Gaia* indicates a  $d = 7.22^{+xx}_{-4.43}$  kpc (the upper limit corresponds to a negative parallax). Star E was suggested as the SN companion by Ihara et al. (2007). The authors detected absorption lines in the blue

side, of the spectrum, at  $3720 \text{ \AA}$ , consistent with Fe absorption from Tycho's SNR. They concluded that this might either be due to the Fe I in the SN ejecta or to a peculiarity of the star. In GH09 it was pointed out that it is likely a very distant star. In fact, both its distance and its kinematics exclude it as a possible companion of the SN.

Star F is compatible with the distance to Tycho's SN. *Gaia* measures a distance of  $d = 2.15^{+0.44}_{-0.32}$  kpc. We had calculated a distance  $d = 1.5 \pm 0.5$  kpc. It is not moving at high radial velocity, nor does it have a high proper motion perpendicular to the Galactic plane. Its orbit does not depart from the Galactic plane.

Star G can also be considered among those close the center of the SNR. *Gaia* has measured a distance  $d = 1.95^{+0.6}_{-0.35}$  kpc, which is within the range of distances suggested for the Tycho SN. This star has been a proposed companion in RL04, GH09, and B14. Its kinematics corresponds to that of a thick disk star, but it has a thin disk composition. An enhanced [Ni/Fe] was found in GH09 and questioned in K13. A new calculation was done by B14, which still shows a value [Ni/Fe] larger than solar. We leave this point aside and refer only to the agreed solar metallicity of the star.

All the previous stars have measured  $v_r$ . They have been placed in the Toomre diagram (Figure 3 and Table 4).

#### Proposed stars at the NW of the geometrical center.

Xue & Schaefer (2015) place the site of the explosion of Tycho's SN at the NW of the geometrical center of the SNR. They base their claim, in part, on a reconstruction of the historical center using observations of astronomers that wrote records on SN 1572 in the year of its discovery. Their position is at odds with a previous historically based reconstruction of the location in the sky of SN 1572 from Stephenson & Clark (1977). On the other hand, Xue & Schaefer (2015) use a substitute of a 2D hydrodynamical simulation which, as noted by Williams et al. (2016), would only be valid for perfectly spherical remnants.

Xue & Schaefer (2015) give as the position of the explosion site R.A. =  $00^h25^m15^s.36$  and decl. =  $64^\circ08'40''.2$ . From this, they suggest that the companion star should be in a small circle around stars O and R. In their Figure 2 they point to stars O, Q, S, and R. From the *Gaia* DR2 data, we see that stars O, Q, and S are at too short distances, incompatible with the distance to Tycho's SN. Star O is at a distance of  $0.85^{+0.54}_{-0.22}$  kpc. Star Q is at a distance of  $1.51^{+1.53}_{-0.51}$  kpc, only the upper limit being compatible with the distance to the SNR, but it has no high proper motions. Star S is also at a small distance of  $0.81^{+0.41}_{-0.20}$  kpc. Star R has no distance measurement or proper motions in the *Gaia* DR2. However, we have proper motions measured with the *HST* (B14) and they are small. Star P is, as seen in the images of the *HST*, two stars P1 and P2. In the *Gaia* DR2 we have only the P1 parallax, though not very well determined but no proper motions are given. In B14, though, we have the proper motions of the stars and they are relatively small. P1 has a  $v_r$  of  $-43 \pm 10$  and it is possible to place it in the Toomre diagram (Figure 3 and Table 4) where it shows no kinematic peculiarity. Star N is in the same area of the sky as stars O, P1 and P2, Q, R, and S. It has small proper motions and it is possible to place it in the Toomre diagram, where it lies in the region of low kinematical values. In that corner of the sky, as suggested by Xue & Schaefer (2015), there is no star looking like a companion of Tycho's SN in any way.

### The NE proposed center.

In a recent paper by Williams et al. (2016), the expansion center of the remnant is suggested to be at the northeast of the geometrical center. These authors use an extrapolation of the trajectories of different regions of the SNR, but also a 2D hydrodynamical simulation of the expansion of the ejecta in an inhomogeneous medium. They also assume cylindrical symmetry in the initial ejection of the supernova material. However, Krause et al. (2008), from the spectrum of the light echo of SN 1572, suggest that the explosion was aspherical and thus not cylindrically symmetric.

Their suggested center is at R.A. =  $00^{\text{h}}25^{\text{m}}22^{\text{s}}.6$  and decl. =  $64^{\circ}08'32''.7$ . This would be close to stars L and K. Star L is at a distance  $d = 1.45_{-0.58}^{+2.87}$  kpc, but with small proper motions. Star K has no distance determined by *Gaia*. In B14 we suggest it to be around 4 Kpc. The kinematics of the star, with small proper motions, makes it a non-suitable companion of Tycho’s SN. In the northeast center there are other stars like W, AK, AL, and AM. These stars do not have accurate parallaxes in the *Gaia* DR2 release. They have upper limits in distance with negative parallaxes. We have looked at their kinematics and they have moderate and low proper motions.

Therefore, given the various candidates proposed, the best approach is to look for those that are within the range of possible distances to Tycho’s SN, show a peculiar kinematics, and are within the region of the sky already explored.

We show in Table 5 the different stars and evaluated their viability as possible companions.

## 8. Luminosities and Models

There are significant differences in the predictions of the characteristics of the surviving companions of the supernova explosion. Podsiadlowski (2003) found that, for a subgiant companion, the object  $\sim 400$  yr after the explosion might be either significantly overluminous or underluminous, relative to its pre-SN luminosity, depending on the amount of heating and the amount of mass stripped by the impact of the SN ejecta. More recently Shappee et al. (2013) have also followed the evolution of luminosity for years after the impact of the ejecta on a main-sequence companion. The models first rise in temperature and luminosity, peaking at  $10^4 L_{\odot}$  to start cooling and dimming down to  $10 L_{\odot}$  some  $10^4$  yr after the explosion. Around 500 days after explosion the companion luminosity would be  $10^3 L_{\odot}$ . Pan et al. (2012a, 2012b, 2014) criticize the two preceding approaches for the arbitrariness of the initial models. Starting from their hydrodynamic 3D models, they find lower luminosities for the companions than the previous authors. They find luminosities of the order of only  $10 L_{\odot}$  for the companions, several hundred days after the explosion.

Now, knowing the distances from *Gaia*, we can derive the luminosities of the stars compatible with being inside the SNR. We take the distance to the SNR from various reliable measurements, which means a value  $1.7 < d < 3.7$  kpc. We have 15 candidates compatible with that distance. We already had *UBV* photometry for some of them and now *Gaia* photometry for all. From these we find that there is no clearly overluminous candidate.

It has been suggested that, within the double-degenerate channel to produce SNe Ia, the explosion can be triggered just at the beginning of the coalescence process of the two WDs, by detonation of a thin helium layer coming from the surface of the less massive one. That would induce a second detonation in

the core of the more massive WD. This hypothetical process has been dubbed the “dynamically driven, double-degenerate, double-detonation scenario” (see Shen et al. 2018 and references therein). In this case, the less massive WD would survive the SN explosion and be ejected at the very high orbital velocity ( $>1000 \text{ km s}^{-1}$ ) it had at the moment of the explosion. Those would be seen as “hypervelocity WDs” (Shen et al. 2018). The number of hypervelocity WDs detectable by *Gaia* depends on the assumed luminosity of these objects. Shen et al. (2018) conclude that, taking into account tidal heating undergone by the WD before the explosion, a typical object would have, after subsequently cooling for  $\sim 10^6$  yr, a luminosity  $\geq 0.1 L_{\odot}$ , and thus be detectable by *Gaia* up to a distance of 1 kpc. Based on that, they predict that  $\sim 30$  potentially detectable hypervelocity WDs should be found within 1 kpc from the Sun. They have actually found, from *Gaia* DR2, three objects which, after having been followed up with ground-based telescopes, although not looking like typical WDs, might be the result of heating and bloating of a SN Ia WD companion.

In the case of Tycho’s SN, the cooling time of a possible surviving WD companion is only  $\sim 450$  yr, and thus the luminosity should be significantly higher than the  $0.1 L_{\odot}$  adopted by Shen et al. (2018) for a typical companion having cooled for  $\sim 10^6$  yr.

In order to look for a possible hypervelocity WD companion to Tycho, we must considerably enlarge the search area around the center of the SNR. Taking as an upper limit a velocity perpendicular to the line of sight of  $4000 \text{ km s}^{-1}$ , the maximum distance traveled in 450 yr,  $5.7 \times 10^{13}$  km, translates, at a distance of the SNR, into an angular displacement of 2.1 arcmin (slightly more than 50% of the average radius of the SNR, which is about 4 arcmin).

We have checked that there is no object with unusually high proper motion in the *Gaia* DR2 data release, within the searched area and up to a *G* magnitude of 20.7 ( $V \sim 22$ ). For an extinction  $A_V = 2.4$  mag (GH09), and at the distance of Tycho, that means a luminosity  $L \sim 0.3 L_{\odot}$ , similar to the lower limit adopted by Shen et al. (2018). That does not take into account the capture of radioactive material by the companion WD predicted by Shen & Schwab (2017). Objects such as the three candidates for hypervelocity former SN Ia companions found by Shen et al. (2018), with *G* magnitudes  $\sim 17$ –18 mag, would be clearly seen.

## 9. Summary and Conclusions

We have reexamined the distances and proper motions of stars close to the center of Tycho’s SNR, using data provided by *Gaia* DR2. Previously, the distances were only known from determination of the stellar atmosphere parameters and comparison of the corresponding luminosities with the observed apparent magnitudes, with only an approximate knowledge of the extinction and uncertainty about the luminosity classes in a number of cases. More accurate were the proper motions, coming from astrometry made with the *HST*, but the DR2 has allowed a cross-check here. Besides, only a precise knowledge of the distances allows us to reliably convert proper motions into tangential velocities. *Gaia* now provides the last word on the distances and kinematics of the previously proposed companions of Tycho’s SN.

A good agreement between the distances from *Gaia* DR2 and those reported in B14 has been found in many cases, but with a general trend to shorter *Gaia* distances as compared with B14, which can be attributed to an underestimate of

**Table 5**  
Criteria Satisfied by the Stars in Table 1

Star (1)	1.7 kpc $\leq d \leq$ 3.7 kpc (2)	High Velocity (3)	High $v_b$ (4)
A	No ( $d = 0.97^{+0.05}_{-0.04}$ kpc)	...	...
B	Yes ( $d = 2.03^{+0.19}_{-0.15}$ kpc)	No ( $v = 72 \pm 5$ km s $^{-1}$ )	No ( $v_b = -0.5 \pm 0.6$ km s $^{-1}$ )
C1	No ( $d = 0.18^{+0.03}_{-0.01}$ kpc)	...	...
D	No ( $d = 0.62^{+0.15}_{-0.11}$ kpc)	...	...
E	No ( $d = 7.22^{+xx}_{-4.43}$ kpc)	...	...
F	Yes ( $d = 2.15^{+0.44}_{-0.32}$ kpc)	Yes ( $v = 83 \pm 10$ km s $^{-1}$ )	No ( $v_b = 3 \pm 1$ km s $^{-1}$ )
G	Yes ( $d = 1.95^{+0.60}_{-0.35}$ kpc)	Yes ( $v = 103 \pm 7$ km s $^{-1}$ )	Yes ( $v_b = -33 \pm 9$ km s $^{-1}$ )
H	Yes ( $d = 1.61^{+0.79}_{-0.40}$ kpc)	Yes ( $v = 91 \pm 11$ km s $^{-1}$ )	No ( $v_b = -0.5 \pm 2.5$ km s $^{-1}$ )
I	...	...	...
J	No ( $d = 7.46^{+xx}_{-4.77}$ kpc)	...	...
K	...	...	...
L	Yes ( $d = 1.45^{+2.87}_{-0.58}$ kpc)	No ( $v_t = 10^{+20}_{-6}$ km s $^{-1}$ )	No ( $v_b = -2 \pm 8$ km s $^{-1}$ )
M	...	...	...
N	Yes ( $d = 4.06^{+2.57}_{-1.14}$ kpc)	No ( $v = 36 \pm 4$ km s $^{-1}$ )	No ( $v_b = 2 \pm 3$ km s $^{-1}$ )
O	No ( $d = 0.85^{+0.54}_{-0.22}$ kpc)	...	...
P1	No ( $d = 5.96^{+7.23}_{-2.11}$ kpc)	...	...
Q	Yes ( $d = 1.51^{+1.53}_{-0.51}$ kpc)	No ( $v_t = 24^{+24}_{-8}$ km s $^{-1}$ )	No ( $v_b = 10 \pm 10$ km s $^{-1}$ )
R	...	...	...
S	No ( $d = 0.81^{+0.41}_{-0.20}$ kpc)	...	...
T	Yes ( $d = 1.77^{+1.86}_{-0.60}$ kpc)	No ( $v_t = 30^{+32}_{-10}$ km s $^{-1}$ )	No ( $v_b = 4 \pm 3$ km s $^{-1}$ )
U	Yes ( $d = 1.98^{+0.32}_{-0.24}$ kpc)	No ( $v = 68 \pm 5$ km s $^{-1}$ )	Yes ( $v_b = -46 \pm 8$ km s $^{-1}$ )
V	No ( $d = 16.81^{+xx}_{-15.89}$ kpc)	...	...
W	No ( $d = 5.17^{+xx}_{-3.07}$ kpc)	...	...
X	No ( $d = 5.20^{+xx}_{-3.59}$ kpc)	...	...
Y	Yes ( $d = 1.58^{+0.87}_{-0.41}$ kpc)	No ( $v_t = 18^{+10}_{-5}$ km s $^{-1}$ )	No ( $v_b = -17 \pm 9$ km s $^{-1}$ )
Z	No ( $d = 5.68^{+2.72}_{-2.57}$ kpc)	...	...
AA	Yes ( $d = 1.04^{+1.00}_{-0.33}$ kpc)	No ( $v_t = 4^{+8}_{-7}$ km s $^{-1}$ )	No ( $v_b = -5 \pm 6$ km s $^{-1}$ )
AB	...	...	...
AC	Yes ( $d = 2.04^{+0.99}_{-0.50}$ kpc)	No ( $v_t = 11^{+6}_{-4}$ km s $^{-1}$ )	No ( $v_b = -12 \pm 7$ km s $^{-1}$ )
AE	Yes ( $d = 3.58^{+5.84}_{-1.57}$ kpc)	No ( $v_t = 16^{+13}_{-5}$ km s $^{-1}$ )	No ( $v_b = 6^{+20}_{-1}$ km s $^{-1}$ )
AF	No ( $d = 0.76^{+0.24}_{-0.13}$ kpc)	...	...
AG	Yes ( $d = 1.42^{+1.69}_{-0.50}$ kpc)	No ( $v_t = 10^{+12}_{-5}$ km s $^{-1}$ )	No ( $v_b = -6 \pm 6$ km s $^{-1}$ )
AH	No ( $d = 4.85^{+3.55}_{-1.44}$ kpc)	...	...
A11/HP-1	No ( $d = 0.35^{+0.04}_{-0.03}$ kpc)	...	...
A12	...	...	...
AJ	No ( $d = 5.35^{+xx}_{-2.81}$ kpc)	...	...
AK	...	...	...
AL	No ( $d = 2.61^{+xx}_{-1.61}$ kpc)	...	...
AM	No ( $d = 1.33^{+xx}_{-0.70}$ kpc)	...	...
AN	Yes ( $d = 1.65^{+0.49}_{-0.30}$ kpc)	No ( $v_t = 24^{+7}_{-4}$ km s $^{-1}$ )	No ( $v_b = -7 \pm 3$ km s $^{-1}$ )

**Note.**  $v$  refers to the total velocity,  $v_t$  to the tangential velocity, and  $v_b$  to the velocity perpendicular to the Galactic plane.

extinction in the direction of the remnant in B14. In a few cases, however, the discrepancies are large.

Concerning proper motions, the agreement is very good once due account is made of the systematic effect of the motion of the local frame to which the *HST* measurements are referred with respect to *Gaia*'s absolute frame.

We find that, within the remaining uncertainties, up to 15 stars are at distances compatible with that of the SNR. The case for Tycho G is that in samples such as the one shown in Figure 3, this star has a thick disk kinematics, but has thin disk metallicity. There is only 0.8% of the stars having similar characteristics. We have inspected the proper motions of all the stars visible up to limit of *Gaia* DR2 in magnitude, and we have found none with the same peculiar total velocity. We have presented a scenario in which Tycho G could be the companion

of SN 1572. There is, however, the possibility that, after performing several orbits around the Galactic center, and encountering globular clusters and spiral arms, the star orbit becomes eccentric and migrates toward higher Galactic latitudes. This is a suggested explanation for the characteristics of Tycho G. A counterargument is why the other stars that could also have performed several Galactic orbits, at close locations, would not have migrated.

We agree with Kerzendorf et al. (2018) that Tycho B is not a good candidate for a companion of the explosion. We can also exclude, in view of the *Gaia* DR2 data, that star E could be a companion, since it lies very far away.

In the case that Tycho G were not the companion star, the double-degenerate scenario or the core degenerate scenario are favored, since we have gone well below solar luminosities.

With *Gaia* DR2, we have also looked for the hypervelocity stars predicted by some scenarios, but within the magnitudes reached by *Gaia* we have found none.

This work has made use of data from the European Space Agency (ESA) mission *Gaia* (<https://www.cosmos.esa.int/gaia>), processed by the *Gaia* Data Processing and Analysis Consortium (DPAC, <https://www.cosmos.esa.int/web/gaia/dpac/consortium>). Funding for the DPAC has been provided by national institutions, in particular the institutions participating in the *Gaia* Multilateral Agreement. P.R.-L. is supported by AYA2015-67854-P from the Ministry of Industry, Science and Innovation of Spain and the FEDER funds. J.I.G.H. acknowledges financial support from the Spanish MINECO (Ministry of Economy of Spain) under the 2013 Ramón y Cajal program MINECO RyC-2013-14875, also from the MINECO AYA2014-56359-P and AYA2017-86389-P. This work was supported as well by the MINECO through grant ESP2016-80079-C2-1-R (MINECO/FEDER, UE) and ESP2014-55996-C2-1-R (MINECO/FEDER, UE) and MDM-2014-0369 of ICCUB (Unidad de Excelencia 'Maria de Maeztu).

### ORCID iDs

Pilar Ruiz-Lapuente  <https://orcid.org/0000-0002-0615-4030>

### References

- Adibekyan, V. Zh., Sousa, S. G., Santos, N. C., et al. 2012, *A&A*, **545**, A32
- Albinson, J. S., Tuffs, R. J., Swinban, K. E., & Gull, S. F. 1986, *MNRAS*, **219**, 427
- Allen, C., & Santillán, A. 1991, *RMxA&A*, **22**, 255
- Bedin, L. R., Ruiz-Lapuente, P., González Hernández, J. I., et al. 2014, *MNRAS*, **439**, 354 (B14)
- Brown, A. G. A., Vallenari, A., Prusti, T., et al. 2018, *A&A*, **616**, A1
- Chevalier, R. A., Kirshner, R. P., & Raymond, J. C. 1980, *ApJ*, **235**, 186
- Edwards, Z. I., Pagnotta, A., & Schaefer, B. E. 2012, *ApJL*, **747**, L19
- Eggleton, P. P. 1983, *ApJ*, **268**, 368
- González Hernández, J. I., Ruiz-Lapuente, P., Filippenko, A. V., et al. 2009, *ApJ*, **691**, 1 (GH09)
- González Hernández, J. I., Ruiz-Lapuente, P., Tabernero, H. M., et al. 2012, *Natur*, **489**, 533
- Hughes, J. P. 2000, *ApJL*, **55**, L53
- Ihara, Y., Ozaki, J., Doi, M., et al. 2007, *PASJ*, **59**, 811
- Kerzendorf, W., Childress, M., Scharwächter, J., Do, T., & Schmidt, B. P. 2014, *ApJ*, **782**, 27
- Kerzendorf, W. E., Long, K. S., Winkler, P. F., & Do, T. 2018, *MNRAS*, **479**, 5696
- Kerzendorf, W. E., Schmidt, B. P., Asplund, M., et al. 2009, *ApJ*, **701**, 1665
- Kerzendorf, W. E., Schmidt, B. P., Laird, J. B., Podsiadlowski, P., & Bessell, M. S. 2012, *ApJ*, **759**, 7
- Kerzendorf, W. E., Yong, D., Schmidt, B. P., et al. 2013, *ApJ*, **774**, 99 (K13)
- Kirshner, R. P., Winkler, P. F., & Chevalier, R. A. 1987, *ApJL*, **315**, L135
- Krause, O., Tanaka, M., Usuda, T., et al. 2008, *Natur*, **456**, 617
- Kurucz, R. L. 1993, *ATLAS9 Stellar Atmospheres Programs, Grids of Model Atmospheres and Line Data [CD-ROM]* (Cambridge, MA: Smithsonian Astrophysical Observatory)
- Lejeune, Th., Cuisinier, F., & Buser, R. 1997, *A&AS*, **125**, 229
- Maoz, D., Mannucci, F., & Nelemans, G. 2014, *ARA&A*, **52**, 107
- Marietta, E., Burrows, A., & Fryxell, B. 2000, *ApJS*, **128**, 615
- Pagnotta, A., & Schaefer, B. E. 2015, *ApJ*, **799**, 101
- Pan, K.-C., Ricker, P. M., & Taam, R. E. 2012a, *ApJ*, **750**, 151
- Pan, K.-C., Ricker, P. M., & Taam, R. E. 2012b, *ApJ*, **760**, 21
- Pan, K.-C., Ricker, P. M., & Taam, R. E. 2014, *ApJ*, **792**, 71
- Perlmutter, S., Aldering, G., Goldhaber, G., et al. 1999, *ApJ*, **517**, 565
- Podsiadlowski, P. 2003, arXiv:astro-ph/0303660
- Reynoso, E. M., Moffett, D. A., Goss, W. M., et al. 1997, *ApJ*, **491**, 816
- Riess, A. G., Filippenko, A. V., Challis, P., et al. 1998, *AJ*, **116**, 1009
- Robin, A. C., Reylé, C., Derrière, S., et al. 2003, *A&A*, **409**, 523
- Ruiz-Lapuente, P. 1997, *Sci*, **276**, 1813
- Ruiz-Lapuente, P. 2004, *ApJ*, **612**, 357
- Ruiz-Lapuente, P. 2014, *NewAR*, **62**, 15
- Ruiz-Lapuente, P., Comerón, F., Méndez, J., et al. 2004, *Natur*, **431**, 1069 (RL04)
- Ruiz-Lapuente, P., Damiani, F., Bedin, L. R., et al. 2018, *ApJ*, **862**, 124
- Schaefer, B. E., & Pagnotta, A. 2012, *Natur*, **481**, 164
- Schmidt-Kaler, Th. 1982, in Landolt-Börnstein, New Ser. VI, Vol. 2b, ed. K.-H. Hellwege (Berlin: Springer), 1
- Schönrich, R., Binney, J., & Dehnen, W. 2010, *MNRAS*, **403**, 1829
- Shappee, B. J., Kochanek, C. S., & Stanek, K. Z. 2013, *ApJ*, **765**, 150
- Shen, K. J., Boubert, D., Gänsicke, B. T., et al. 2018, *ApJ*, **865**, 15
- Shen, K. J., & Schwab, J. 2017, *ApJ*, **834**, 180
- Stephenson, F. R., & Clark, D. H. 1997, *QJRAS*, **18**, 340
- Wang, B., & Han, Zh. 2012, *NewAR*, **56**, 122
- Williams, B. J., Chomiuk, L., Hewitt, J. W., et al. 2016, *ApJL*, **823**, L32
- Xue, Zh., & Schaefer, B. E. 2015, *ApJ*, **809**, 183