



Publication Year	2015
Acceptance in OA	2020-04-07T14:43:31Z
Title	SN 2009ip at late times - an interacting transient at +2 years
Authors	Fraser, Morgan, Kotak, Rubina, PASTORELLO, Andrea, Jerkstrand, Anders, Smartt, Stephen J., Chen, Ting-Wan, Childress, Michael, Gilmore, Gerard, Inserra, Cosimo, Kankare, Erkki, Margheim, Steve, Mattila, Seppo, Valenti, Stefano, Ashall, Christopher, BENETTI, Stefano, BOTTICELLA, MARIA TERESA, Bauer, Franz Erik, Campbell, Heather, ELIAS DE LA ROSA, NANCY DEL CARMEN, Fleury, Mathilde, Gal-Yam, Avishay, Hachinger, Stephan, Howell, D. Andrew, Le Guillou, Laurent, Léget, Pierre-François, Morales-Garoffolo, Antonia, Polshaw, Joe, Spiro, Susanna, Sullivan, Mark, Taubenberger, Stefan, TURATTO, Massimo, Walker, Emma S., Young, David R., Zhang, Bonnie
Publisher's version (DOI)	10.1093/mnras/stv1919
Handle	http://hdl.handle.net/20.500.12386/23896
Journal	MONTHLY NOTICES OF THE ROYAL ASTRONOMICAL SOCIETY
Volume	453

SN 2009ip at late times – an interacting transient at +2 years

Morgan Fraser,^{1★} Rubina Kotak,² Andrea Pastorello,³ Anders Jerkstrand,²
 Stephen J. Smartt,² Ting-Wan Chen,² Michael Childress,^{4,5} Gerard Gilmore,¹
 Cosimo Inserra,² Erkki Kankare,² Steve Margheim,⁶ Seppo Mattila,^{7,8}
 Stefano Valenti,^{9,10} Christopher Ashall,¹¹ Stefano Benetti,³ Maria Teresa Botticella,¹²
 Franz Erik Bauer,^{13,14,15} Heather Campbell,¹ Nancy Elias-Rosa,³ Mathilde Fleury,¹⁶
 Avishay Gal-Yam,¹⁷ Stephan Hachinger,¹⁸ D. Andrew Howell,^{9,10}
 Laurent Le Guillou,^{19,16} Pierre-François Léget,²⁰ Antonia Morales-Garoffolo,²¹
 Joe Polshaw,² Susanna Spiro,²² Mark Sullivan,²³ Stefan Taubenberger,^{24,25}
 Massimo Turatto,³ Emma S. Walker,²⁶ David R. Young² and Bonnie Zhang^{4,5}

Affiliations are listed at the end of the paper

Accepted 2015 August 18. Received 2015 August 17; in original form 2015 February 16

ABSTRACT

We present photometric and spectroscopic observations of the interacting transient SN 2009ip taken during the 2013 and 2014 observing seasons. We characterize the photometric evolution as a steady and smooth decline in all bands, with a decline rate that is slower than expected for a solely ⁵⁶Co-powered supernova at late phases. No further outbursts or eruptions were seen over a two year period from 2012 December until 2014 December. SN 2009ip remains brighter than its historic minimum from pre-discovery images. Spectroscopically, SN 2009ip continues to be dominated by strong, narrow ($\lesssim 2000 \text{ km s}^{-1}$) emission lines of H, He, Ca, and Fe. While we make tenuous detections of [Fe II] $\lambda 7155$ and [O I] $\lambda \lambda 6300, 6364$ lines at the end of 2013 June and the start of 2013 October, respectively, we see no strong broad nebular emission lines that could point to a core-collapse origin. In general, the lines appear relatively symmetric, with the exception of our final spectrum in 2014 May, when we observe the appearance of a redshifted shoulder of emission at $+550 \text{ km s}^{-1}$. The lines are not blueshifted, and we see no significant near- or mid-infrared excess. From the spectroscopic and photometric evolution of SN 2009ip until 820 d after the start of the 2012a event, we still see no conclusive evidence for core-collapse, although whether any such signs could be masked by ongoing interaction is unclear.

Key words: stars: massive – stars: mass loss – supernovae: general – supernovae: individual: (SN2009ip).

1 INTRODUCTION

The physical distinction between Type II_n supernovae (SNe) and SN impostors is clear: Type II_n SNe arise from massive stars¹ undergoing core-collapse within a dense circumstellar medium (CSM), while SN impostors are eruptions or outbursts from massive stars which do *not* undergo core-collapse (Van Dyk et al. 2000, and references therein). Making this distinction from an observational basis

is more difficult, as for both Type II_n SNe and SN impostors, the evolution and properties are influenced by the interaction of fast ejecta with the CSM, with similar characteristic narrow-line emission in the observed spectra (e.g. Maund et al. 2006; Smith et al. 2011).

One of the best studied and most controversial SN impostors to date is SN 2009ip. First identified in 2009 by Maza et al. (2009), and initially given an SN designation,² it was re-classified as an impostor

* E-mail: mf@ast.cam.ac.uk

¹ While some interacting transients have been linked to thermonuclear explosions (Hamuy et al. 2003), we will not discuss these here.

² In this paper, we use the designation ‘SN 2009ip’ to refer to the object in question’s outburst in 2009, the subsequent period of variability, and the 2012a and 2012b events.

on the basis of its narrow emission lines, low absolute magnitude ($V \sim -14$) and previous variability (Berger, Foley & Ivans 2009; Miller et al. 2009). Pre-explosion images of NGC 7259 taken with the *Hubble Space Telescope* (HST) revealed the progenitor of SN 2009ip to be a luminous ($V \sim -10.3$) star with an estimated zero-age main-sequence mass of $\sim 60 M_{\odot}$ (Smith et al. 2010; Foley et al. 2011). SN 2009ip exhibited sporadic variability over 3 yr after discovery, with multiple outbursts reaching absolute magnitudes between $R = -12$ and -14 mag (Pastorello et al. 2013). During this period, the spectra were dominated by ~ 700 – 1300 km s^{-1} emission lines of H, along with He, Ca, Na, and Fe (Smith et al. 2010; Foley et al. 2011; Pastorello et al. 2013). Intriguingly, there was also absorption at velocities of up to $12\,500 \text{ km s}^{-1}$ as early as 2011 September (Pastorello et al. 2013), implying that at least *some* material had been ejected at velocities more usually associated with core-collapse SNe (CCSNe).

In late 2012 July–August, SN 2009ip underwent a new eruption lasting ~ 40 d, which was first detected on July 24 (Drake et al. 2012), and reached an absolute magnitude of $R = -15$ mag (Mauerhan et al. 2013; Pastorello et al. 2013; Prieto et al. 2013; Graham et al. 2014; Margutti et al. 2014). This eruption was followed by a second outburst ~ 40 d later, which peaked at an absolute magnitude of $R = -18$ mag. These two re-brightenings of SN 2009ip were termed the ‘2012a’ and ‘2012b’ events, respectively. The 2012a event showed an ~ 20 d rise in all optical bands, followed by a decline on a similar time-scale. Broad ($\sim 8000 \text{ km s}^{-1}$ minima) P Cygni lines were seen in H, He, and Na, together with strong, narrow emission lines above a blue continuum. Immediately after the 2012a event, SN 2009ip re-brightened dramatically during the 2012b event, increasing by nearly 4 mag in two weeks (Prieto et al. 2013). The broad absorptions in the spectra of SN 2009ip disappeared at the start of the 2012b event, leaving a blue continuum with narrow, Lorentzian profile lines. Following the maximum of the 2012b event, SN 2009ip underwent a slower decline, which was accompanied by the reappearance of broad absorptions with complex line profiles and multiple absorption components (Fraser et al. 2013a; Pastorello et al. 2013; Margutti et al. 2014). Fraser et al. and Margutti et al. used the magnitude of SN 2009ip at the end of the 2012b event to place a limit of $\lesssim 0.02 M_{\odot}$ on the mass of any radioactive ^{56}Ni synthesized by SN 2009ip.

The CSM surrounding SN 2009ip clearly plays a significant role in the evolution of the transient, and has been studied in detail by multiple groups (Ofek et al. 2013b; Margutti et al. 2014; Fox et al. 2015). Ofek et al. (2013b) reviewed all the available mass-loss diagnostics for SN 2009ip, including X-rays, radio, and the narrow Balmer lines, and concluded that the average mass-loss rate for the progenitor over the years prior to explosion was between 10^{-2} and $10^{-3} M_{\odot} \text{ yr}^{-1}$. This value was lower than the mass-loss inferred from the $H \alpha$ luminosity of SN 2009ip (Fraser et al. 2013a; Ofek et al. 2013b), but according to the authors, could be reconciled with it by assuming a non-spherical distribution of CSM. From a detailed study of the Balmer decrement in SN 2009ip, Levesque et al. (2014) argued that the CSM was likely aspherical, and possibly involved a disc-like structure; while spectropolarimetric observations presented by Mauerhan et al. (2014) also indicated a complex geometry for SN 2009ip. Mauerhan et al. suggested that the narrow emission for SN 2009ip arose from an inclined disc, while the broad components came from a distinct, and perpendicular emitting region.

After the 2012a and 2012b events, SN 2009ip appears to be continuing to fade in all bands. The decline rate of SN 2009ip slowed from that initially observed after the peak of the 2012b

event, and as of mid-2013 appeared to be approximately half that expected from the decay of radioactive ^{56}Co (Graham et al. 2014). There have been no further reported outbursts or re-brightenings (Graham et al.), however, the magnitude of SN 2009ip still remains brighter than that of the presumed progenitor (Smith et al. 2010; Foley et al. 2011). The late-time (post-2012b) spectra of SN 2009ip reveal relatively narrow (~ 1 – $2 \times 10^3 \text{ km s}^{-1}$) emission from H, He, Na, Ca, and Fe (Graham et al. 2014; Margutti et al. 2014; Smith, Mauerhan & Prieto 2014), albeit without any of the strong nebular lines typically associated with CCSNe. We note, however, that Fox et al. (2015) found evidence for very weak [O I] emission in a spectrum obtained at late phases.

Despite the rich observational data set obtained for SN 2009ip across an exceptionally wide range of wavelengths (Margutti et al. 2014), the interpretation of the events of late 2012 remains uncertain. During the 2012a and 2012b events, ejecta were seen at velocities of over 10^4 km s^{-1} which together with the unprecedented luminosity, was suggested by Mauerhan et al. (2013) to be evidence that SN 2009ip had undergone core-collapse and was now a genuine Type IIIn SN. Smith et al. (2014) expanded on this scenario, and proposed that the 2012a event was the core-collapse of a blue supergiant, while the 2012b event was powered by the subsequent collision of the ejecta from this event with the surrounding CSM. In contrast, Pastorello et al. (2013), Fraser et al. (2013a) and Margutti et al. (2014) remained open as to the final fate of SN 2009ip. Pastorello et al. argued that as high-velocity absorption had already been observed in 2011, this could not be taken as proof positive of core-collapse during either of the 2012a or 2012b events. The absence of emission lines associated with nucleosynthesized elements, and the relatively restrictive limit to the ejected ^{56}Ni mass could also point to a non-terminal eruption. If not powered by a core-collapse, Fraser et al. and Margutti et al. suggested that the luminosity of the 2012b event might be explained by the efficient conversion of the kinetic energy of a relatively small eruption as it collided with the CSM. An alternative explanation for SN 2009ip was explored by Soker & Kashi (2013), Kashi, Soker & Moskovitz (2013), and Tsebrenko & Soker (2013), who proposed that SN 2009ip may be a ‘mergerburst’ resulting from two massive stars in a binary system. In such a scenario, the secondary may either merge completely with the primary, or accrete a significant fraction of its mass on to the primary during periastron (Kashi et al. 2013). The high-velocity material seen in SN 2009ip could then be formed by the interaction of a fast jet of material, launched during the merger, with a circumbinary envelope (Tsebrenko & Soker 2013).

Regardless of whether the 2012a or 2012b events of SN 2009ip were terminal or non-terminal events, the mechanism behind the outbursts seen prior to and including late 2012 remain unknown. There have been several theoretical proposals for increased mass-loss shortly before core-collapse caused by vigorous convection during C and later burning stages (Quataert & Shiode 2012; Smith & Arnett 2014). Another candidate mechanism is the ‘pulsational pair instability’ (Woosley, Blinnikov & Heger 2007), which can lead to the release of a large amount of energy, and the ejection of several solar masses of material without destroying the progenitor star. Alternatively, Soker & Kashi (2013) proposed that SN 2009ip could be explained by a mergerburst, where an $\sim 60 M_{\odot}$ primary and a lower mass main-sequence secondary merged. In this scenario, the previous outbursts of SN 2009ip during the period 2009–2012 July may have been triggered by close periastron passages before the final merger event.

The Public ESO Spectroscopic Survey for Transient Objects (PESSSTO; Smartt et al. 2015) observation campaign for SN 2009ip

concluded in late 2012 December. In 2013 April, SN 2009ip was visible again from La Silla (Fraser et al. 2013c); this paper presents observations of SN 2009ip taken during the 2013 observing season until 2013 December, along with observations taken between 2014 April and December. In particular, we address the questions of whether there is new evidence for core-collapse, if there are signatures of dust formation in the ejecta or shocked CSM gas, and crucially, whether SN 2009ip has survived the events of late 2012. The true fate of SN 2009ip is of considerable interest, especially given the recent identification of pre-explosion outbursts in several SNe (e.g. Pastorello et al. 2007; Fraser et al. 2013b; Ofek et al. 2013a, 2014). SN 2009ip is also one of the best monitored SNe of any type, with five years of data since its discovery, and as such represents a unique window into the lives of massive stars.

In all of the following we adopt a distance modulus of 31.55 mag, and a foreground extinction of $A_R = 0.051$ mag towards SN 2009ip, consistent with that used by Smith et al. (2010), Pastorello et al. (2013), and Fraser et al. (2013a). We also adopt 2012 September 23 (MJD 56193) as the start of the 2012b event, all phases quoted in the paper are with respect to this date.

2 OBSERVATIONS AND DATA REDUCTION

2.1 Imaging

Optical imaging of SN 2009ip was obtained with the 3.6 m New Technology Telescope (NTT) + ESO Faint Object Spectrograph and Camera 2 (EFOSC2), the 1.3 m Small and Moderate Aperture Research Telescope System (SMARTS) telescope + ANDICAM (operated by the SMARTS Consortium), the 2 m Faulkes South telescope + Spectral imager (FS03) and the 2 m Liverpool Telescope + Infrared-Optical:Optical (IO:O) camera. The EFOSC2 images were reduced using the PESSTO pipeline, as described in Smartt et al. (2015), while the ANDICAM, FS03 and IO:O images were automatically reduced with their associated instrument pipelines. In addition to these, we used the filtered acquisition images taken before our Very Large Telescope (VLT) + XShooter and Gemini South + Gemini Multi-Object Spectrograph (GMOS) spectra. The XShooter acquisition image is taken with a separate acquisition camera to the main instrument, for which biases and flat-fields are not available. However, the image did not show a strong gradient in the background, and so we assume the flat-field correction is small. The *Gemini* images were reduced using the tasks in the *GEMINI* package within IRAF. The ANDICAM, IO:O, FS03 and EFOSC2 images were processed with LACOSMIC to remove cosmic rays, before consecutive exposures taken with the same instrument and filter were co-added. As only single, short exposures were taken with GMOS and the XShooter acquisition camera, these data were not co-added or processed with LACOSMIC.

For all images, point spread function (PSF) fitting photometry was carried out using SNOOPY, a custom IRAF package based on DAOPHOT. The PSF was modelled using point sources on each frame, and was fit simultaneously to both SN 2009ip and the nearby foreground star at (~ 5 arcsec to the NE at $22^{\text{h}}23^{\text{m}}5^{\text{s}}.51 - 28^{\circ}56'47''.9$) to account for any additional flux from the latter. The fit was iterated to minimize the residual, while artificial star tests at the SN position were used to estimate the uncertainty in magnitude. The zero-point for each frame was determined using aperture photometry of the tertiary sequence stars listed by Pastorello et al. (2013), with the uncertainty in the zero-point taken to be the standard deviation of the values calculated from each of the individual sequence stars. Aperture corrections were also measured from the sequence stars,

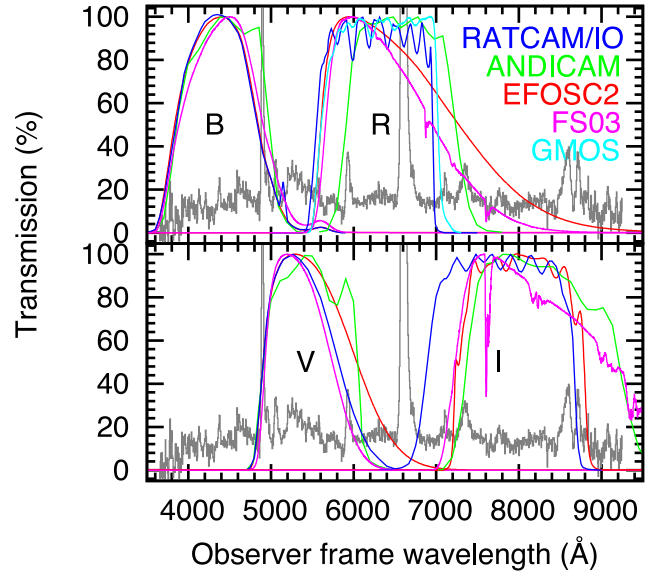


Figure 1. Filter functions for the filters used for the followup of SN 2009ip; for FS03 these are transmission functions which also include the contribution of the Earth’s atmosphere. All transmission filters have been normalized to 100 per cent transmission at their peak. For comparison, an observer frame spectrum of SN 2009ip from 2013 April is shown in grey.

and where necessary applied to the photometry of SN 2009ip, and colour terms were applied to the measured magnitudes as in Fraser et al. (2013a).

At these late epochs, the spectrum of SN 2009ip is dominated by line rather than continuum emission. As a consequence of this, the photometry of SN 2009ip is sensitive to the precise transmission of each filter used. As shown in Fig. 1, the Bessell and Sloan filters from the various instruments used for observations of SN 2009ip have somewhat different transmissions. These differences result in flux from various lines being included or excluded from a particular passband – for example the EFOSC2 *i* filter includes flux from the $\lambda 8662$ line of the Ca II NIR triplet, while the IO:O *i* filter does not. As a check on the significance of the flux present in line emission at this epoch, we took the GMOS spectrum from August 12 and set the flux in the region of H α to the continuum level. Synthetic Bessell *R*-band photometry performed with IRAF SYNPHOT on both the original and H α -free spectra gives a magnitude for the latter which is 1.3 mag fainter, demonstrating line flux can have a significant effect on our measured photometry.

It is possible to ameliorate this to some extent using synthetic photometry of spectra (‘S-correction’; e.g. Stritzinger et al. 2002); however, this is dependent on the availability of carefully measured total transmission functions (i.e. telescope optics, filter and CCD), which were unavailable for several of the instruments we have used. Hence we have not performed a full S-correction for all filters, but rather have applied a simple correction using the available filter functions, for the instruments and filters where there was the greatest disagreement. We have also taken the EFOSC2 filters as our reference filter system, rather than the standard Bessell (1990) filter curves, with the motivation of both reducing the number of corrections which we make to our data (i.e. the EFOSC2 data do not have to be corrected), and also to ensure consistency with the data presented in Fraser et al. (2013a). Average colour terms to convert EFOSC2 photometry to other systems are available in Smartt et al. (2015).

For each photometric point to be corrected, we have taken the closest available spectrum of SN 2009ip, and with `SYNPHOT`, measured the difference in synthetic magnitude when using the specific filter function for that instrument, and when using the corresponding EFOSC2 filter ($\Delta M_{\text{INS-EFOSC2}}^{\text{SN}}$). This difference cannot be applied directly to the SN 2009ip magnitudes, as some fraction of it will already be accounted for by the applied colour term. To estimate the portion of this difference which is accounted for by the colour term, we first estimated the effective temperature of the SN, using a blackbody fit to the spectrum (excluding the regions around $H\alpha$ and $H\beta$). We then took a Kurucz model at a similar temperature, and appropriate to a solar metallicity dwarf, on which we also measured the difference in synthetic magnitude ($\Delta M_{\text{INS-EFOSC2}}^*$) using the filter functions for the instrument in question, and the filter function for EFOSC2. This difference is what one would expect for a continuum-dominated source, such as those stars from which the applied colour terms are derived. Finally, we can calculate $(\Delta M_{\text{INS-EFOSC2}}^{\text{SN}}) - (\Delta M_{\text{INS-EFOSC2}}^*)$, which is the additional correction to the measured photometry of the SN at that epoch (in addition to the colour term). The final calibrated magnitudes for SN 2009ip in the EFOSC2 (\sim Landolt) system, together with the total uncertainty (comprised of the error in SN magnitude and zero-point, added in quadrature) are reported in Table 1. For the LT+IO:O images which were taken in Sloan-like r and i filters, we were unable to homogenize the measured photometry with the data from other telescopes, even after applying the correction from synthetic photometry. We have hence excluded these images from our analysis. With the exception of the LT ri images, the measured magnitudes for SN 2009ip using different telescopes on the same night are consistent to within the uncertainties.

We also took near-infrared (NIR) imaging of SN 2009ip in $JHKs$ filters using both the NTT + Son of ISAAC (SOFI) and the 2.6 m Nordic Optical Telescope + NOTCam. The SOFI data were reduced using the PESSTO pipeline (Smartt et al. 2015), while the NOTCam images were reduced using the external `NOTCAM` package (version 2.5) within `IRAF`. In both cases, the images were flat-fielded, and sky-subtracted using a sky frame constructed from median combined on-source dithers. PSF-fitting photometry was performed on the SN using the same procedure as for the optical imaging, although the zero-point was determined directly from catalogued Two Micron All-Sky Survey sources in the field, and no colour terms were applied. The calibrated magnitudes are reported in Table 2. For epochs where SN 2009ip could not be seen in these images, a limiting magnitude was estimated from artificial star tests at the expected position of the transient.

Mid-infrared (MIR) imaging was taken of SN 2009ip at multiple epochs in 2013 with the *Spitzer Space Telescope* + Infrared Array Camera (IRAC), as listed in Table 2. As *Spitzer* is now in its warm mission phase, SN 2009ip was observed only in Channel 1 ($3.6\ \mu\text{m}$) and Channel 2 ($4.5\ \mu\text{m}$). Images from the *Spitzer* archive taken in 2009 and 2010 were also examined, but the position of the transient lies off the edge of the detector in these data, and hence these were not considered any further. Photometry was performed on the post-Basic Calibrated Data images using the `MOPEX` package (Makovoz & Marleau 2005). A mosaic of the field was created (an example of which is shown in Fig. 2), and sources were identified on this image, before point response function fitting photometry was performed on the individual frames. Measured fluxes were then corrected for normalization as per the IRAC Instrument Handbook. No array-position-dependent colour correction was made to the data, although as the SN is not particularly blue at these late epochs, the effect of

this should be negligible. The measured fluxes for SN 2009ip are listed in Table 2.

2.2 Spectroscopy

We obtained a series of intermediate resolution optical spectra of SN 2009ip between 2013 April and December, together with a subsequent set of spectra from the 2014 observing season covering the period 2014 April to September, as listed in Table 3. Longslit spectra were taken with the NTT+EFOSC2 (as part of the PESSTO project³), the 8.2 m VLT + FOCal Reducer and Spectrograph 2 (FOR2), the 8.1 m Gemini South telescope + GMOS2, and the 10 m Keck II telescope + the DEep Imaging Multi-Object Spectrograph (DEIMOS; Faber et al. 2003). Higher resolution echelle spectra were taken with VLT+ XShooter (Vernet et al. 2011); the XShooter spectra cover a broad wavelength range from the atmospheric cut-off in the blue, to $2.5\ \mu\text{m}$. We also obtained three spectra with the Australian National University (ANU) 2.3 m telescope + Wide-Field Spectrograph (WiFeS), these had low S/N even after rebinning to a lower resolution, but are shown for completeness along with the rest of the spectra in Figs 3 and 4.

All EFOSC2 spectra were reduced using the PESSTO pipeline (Smartt et al. 2015), while the FOR2 and GMOS spectra were reduced within `IRAF` using the `LONGSLIT` and `GEMINI GMOS` packages, respectively. In all cases, the data were reduced in the standard fashion: extracted, wavelength and flux calibrated, and in the case of the EFOSC2 spectra corrected for telluric absorption. The WiFeS spectra were reduced using the `PYWIFES` pipeline (Childress et al. 2014); as WiFeS is an integral field unit spectrograph, one-dimensional spectra were extracted from the data cube using a PSF-weighted fit. The XShooter spectra were reduced with the `ESOREX` recipes run under the `REFLEX` environment. For all XShooter spectra, a solar analogue was observed at comparable airmass to SN 2009ip and was used to correct for the regions of low atmospheric transmission in the NIR. In the final XShooter spectrum obtained of SN 2009ip in 2014 August, no flux from SN 2009ip was detected in the NIR arm.

NIR spectroscopy was obtained with NTT+SOFI. The SOFI spectrum was taken with the Blue Grism (BG) and reduced using the PESSTO pipeline; the steps involved were flat-fielding, sky-subtraction using pairs of dithered observations and wavelength calibration. Water vapour absorption was identified and corrected for in the spectrum using a telluric standard (a solar analogue) which was observed immediately after the spectrum of SN 2009ip, and at a similar airmass. An approximate flux calibration of the spectrum was also made using the telluric standard. We discuss the NIR spectra obtained for SN 2009ip in Section 4.2.

3 PHOTOMETRIC EVOLUTION

The late-time light curve of SN 2009ip is shown in Fig. 5. SN 2009ip appears to be slowly declining in magnitude, with no further outbursts or re-brightenings over the two years following the 2012a and 2012b events. Extrapolating the light curve back to 2012 December, we find that the slow decline is consistent with the last photometry taken at the end of 2012 December. Most notably, the decline rate

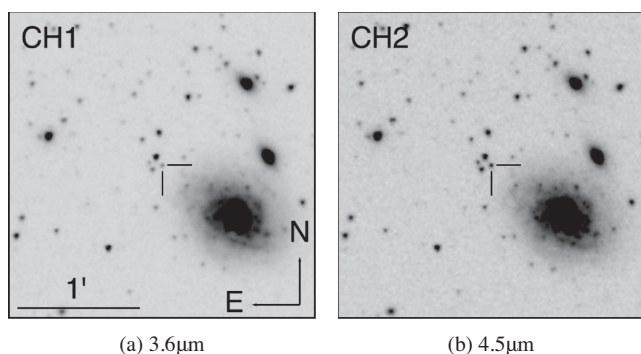
³ PESSTO data taken up to 2014 April 30 are available from the ESO archive as Phase III products (within the Spectroscopic Survey Data Release 1; SDDR1), and the remainder of the data will be released in 2015 as SDDR2. Detailed instructions on obtaining PESSTO data are available on the PESSTO website, www.pessto.org.

Table 1. Calibrated optical magnitudes of SN 2009ip in the Landolt system, with associated uncertainties in parentheses. Phase is with respect to the start of the 2012a event (MJD 56193).

Phase (d)	Date	MJD	<i>B</i> (mag)	<i>V</i> (mag)	<i>R</i> (mag)	<i>I</i> (mag)	Instrument
192	2013-04-03.40	56385.40	–	19.23 (0.06)	18.24 (0.06)	–	EFOSC2
193	2013-04-04.38	56386.38	–	19.25 (0.05)	–	–	EFOSC2
195	2013-04-06.41	56388.41	19.95 (0.10)	–	–	–	EFOSC2
197	2013-04-08.40	56390.40	–	19.26 (0.10)	18.32 (0.07)	18.86 (0.08)	ANDICAM
201	2013-04-12.39	56394.39	–	19.43 (0.07)	18.42 (0.08)	18.76 (0.10)	ANDICAM
202	2013-04-13.37	56395.37	–	19.25 (0.06)	–	–	EFOSC2
203	2013-04-14.37	56396.37	–	19.34 (0.07)	–	–	EFOSC2
205	2013-04-15.90	56397.90	–	19.34 (0.11)	18.29 (0.06)	18.80 (0.09)	ANDICAM
209	2013-04-20.37	56402.37	–	19.38 (0.05)	–	–	EFOSC2
219	2013-04-29.85	56411.85	–	–	18.47 (0.05)	–	ANDICAM
222	2013-05-03.37	56415.37	–	–	18.46 (0.12)	–	GMOS
225	2013-05-06.33	56418.33	–	–	18.42 (0.06)	–	XShooter
239	2013-05-20.34	56432.34	–	–	18.55 (0.06)	–	GMOS
242	2013-05-23.40	56435.40	–	–	18.59 (0.05)	–	GMOS
245	2013-05-25.78	56437.78	20.48 (0.09)	19.89 (0.06)	18.53 (0.05)	18.96 (0.08)	FS03
248	2013-05-28.79	56440.79	–	19.93 (0.11)	18.61 (0.07)	–	FS03
254	2013-06-03.69	56446.69	20.55 (0.05)	20.02 (0.07)	18.62 (0.04)	19.12 (0.08)	FS03
254	2013-06-04.34	56447.34	–	–	18.67 (0.03)	–	GMOS
264	2013-06-14.35	56457.35	–	–	18.77 (0.05)	–	GMOS
269	2013-06-18.82	56461.82	20.34 (0.05)	20.08 (0.05)	18.70 (0.04)	19.22 (0.04)	FS03
280	2013-06-30.40	56473.40	–	–	18.82 (0.03)	–	GMOS
293	2013-07-12.81	56485.81	20.73 (0.04)	20.17 (0.07)	18.76 (0.04)	19.34 (0.08)	FS03
303	2013-07-23.33	56496.33	–	–	18.85 (0.05)	–	GMOS
306	2013-07-26.11	56499.11	20.83 (0.23)	20.02 (0.10)	–	–	IO:O
308	2013-07-27.70	56500.70	20.67 (0.07)	20.12 (0.06)	18.82 (0.04)	–	FS03
308	2013-07-28.34	56501.34	20.68 (0.08)	20.06 (0.05)	18.97 (0.06)	19.27 (0.05)	EFOSC2
311	2013-07-30.70	56503.70	20.91 (0.11)	20.36 (0.10)	18.89 (0.06)	19.58 (0.13)	FS03
316	2013-08-05.20	56509.20	20.71 (0.06)	20.08 (0.05)	19.01 (0.06)	19.45 (0.06)	EFOSC2
317	2013-08-05.79	56509.79	20.70 (0.05)	20.14 (0.08)	18.82 (0.04)	19.44 (0.10)	FS03
319	2013-08-08.02	56512.02	20.67 (0.09)	20.02 (0.09)	–	–	IO:O
323	2013-08-11.62	56515.62	20.78 (0.08)	20.27 (0.07)	18.90 (0.04)	–	FS03
323	2013-08-12.15	56516.15	–	–	18.93 (0.12)	–	GMOS
326	2013-08-15.13	56519.13	20.82 (0.04)	20.20 (0.05)	19.03 (0.07)	19.52 (0.05)	EFOSC2
327	2013-08-16.07	56520.07	20.88 (0.12)	20.06 (0.05)	–	–	IO:O
329	2013-08-17.59	56521.59	20.88 (0.09)	20.39 (0.05)	18.96 (0.03)	19.59 (0.10)	FS03
338	2013-08-26.63	56530.63	–	20.20 (0.19)	18.99 (0.12)	–	FS03
338	2013-08-27.10	56531.10	20.88 (0.06)	20.27 (0.06)	19.14 (0.06)	19.61 (0.09)	EFOSC2
341	2013-08-29.62	56533.62	–	–	19.01 (0.08)	–	FS03
341	2013-08-30.01	56534.01	20.96 (0.12)	20.09 (0.07)	–	–	IO:O
351	2013-09-09.04	56544.04	–	20.17 (0.07)	–	–	IO:O
354	2013-09-12.20	56547.20	20.75 (0.05)	20.14 (0.04)	19.12 (0.05)	19.66 (0.08)	EFOSC2
361	2013-09-18.95	56553.95	–	20.24 (0.23)	–	–	IO:O
369	2013-09-26.95	56561.95	20.77 (0.08)	20.26 (0.07)	–	–	IO:O
376	2013-10-04.05	56569.05	20.99 (0.06)	20.39 (0.10)	19.23 (0.04)	19.77 (0.07)	EFOSC2
388	2013-10-16.18	56581.18	20.86 (0.13)	20.46 (0.15)	19.30 (0.06)	19.82 (0.08)	EFOSC2
397	2013-10-25.14	56590.14	21.07 (0.10)	20.52 (0.11)	19.34 (0.08)	19.96 (0.24)	EFOSC2
409	2013-11-05.83	56601.83	–	20.41 (0.32)	–	–	IO:O
427	2013-11-23.87	56619.87	21.24 (0.09)	20.51 (0.07)	–	–	IO:O
430	2013-11-26.82	56622.82	21.25 (0.13)	20.50 (0.07)	–	–	IO:O
434	2013-12-01.05	56627.05	21.19 (0.06)	20.67 (0.05)	19.43 (0.04)	19.98 (0.09)	EFOSC2
457	2013-12-24.05	56650.05	21.25 (0.07)	20.71 (0.04)	19.45 (0.05)	20.13 (0.05)	EFOSC2
575	2014-04-20.32	56768.32	–	21.05 (0.05)	19.80 (0.07)	20.40 (0.27)	EFOSC2
577	2014-04-22.36	56770.36	21.62 (0.10)	–	–	–	EFOSC2
578	2014-04-23.40	56771.40	–	21.17 (0.06)	19.84 (0.05)	20.65 (0.10)	EFOSC2
583	2014-04-28.38	56776.38	–	21.03 (0.18)	19.80 (0.11)	20.52 (0.21)	EFOSC2
589	2014-05-04.37	56782.37	21.61 (0.61)	21.10 (0.09)	19.90 (0.08)	20.83 (0.29)	EFOSC2
692	2014-08-16.12	56885.12	21.92 (0.08)	21.45 (0.05)	20.21 (0.04)	20.89 (0.08)	EFOSC2
723	2014-09-16.20	56916.20	–	–	19.90 (0.08)	–	EFOSC2
731	2014-09-24.02	56924.02	21.79 (0.13)	21.45 (0.05)	20.27 (0.06)	–	EFOSC2
736	2014-09-29.21	56929.21	21.94 (0.10)	21.54 (0.07)	20.28 (0.05)	–	EFOSC2
782	2014-11-14.06	56975.06	21.99 (0.09)	21.61 (0.09)	20.44 (0.06)	21.21 (0.08)	EFOSC2
821	2014-12-23.06	57014.06	22.00 (0.07)	21.73 (0.07)	20.55 (0.07)	21.45 (0.31)	EFOSC2

Table 2. Calibrated NIR magnitudes and MIR fluxes for SN 2009ip.

Phase (d)	Date	MJD	<i>J</i> (mag)	<i>H</i> (mag)	<i>K</i> (mag)	3.6 μm (mJy)	4.5 μm (mJy)	Instrument
130	2013-01-31.01	56323.01	–	–	–	0.1331 (0.0013)	0.1628 (0.0012)	IRAC
201	2013-04-11.37	56394.37	17.94 (0.06)	17.92 (0.16)	17.83 (0.11)	–	–	SOFI
303	2013-07-23.16	56496.16	18.84 (0.18)	18.99 (0.20)	18.12 (0.17)	–	–	NOTCam
306	2013-07-25.95	56498.95	–	–	–	0.0311 (0.0012)	0.0460 (0.0009)	IRAC
326	2013-08-14.55	56518.55	–	–	–	0.0286 (0.0011)	0.0464 (0.0008)	IRAC
339	2013-08-27.74	56531.74	–	–	–	0.0255 (0.0011)	0.0474 (0.0008)	IRAC
341	2013-08-30.02	56534.02	19.05 (0.16)	19.41 (0.26)	18.53 (0.24)	–	–	NOTCam
364	2013-09-21.98	56556.98	19.44 (0.19)	19.36 (0.26)	<18.41	–	–	NOTCam
376	2013-10-03.22	56569.22	19.18 (0.12)	–	–	–	–	SOFI
428	2013-11-24.77	56620.77	19.68 (0.23)	<18.84	–	–	–	NOTCam
711	2014-09-03.07	56904.07	20.67 (0.29)	<20.5	<18.8	–	–	SOFI
730	2014-09-22.09	56923.09	20.78 (0.21)	–	–	–	–	SOFI

**Figure 2.** MIR images of SN 2009ip, taken with the *Spitzer Space Telescope* + IRAC on 2013 July 25.

is significantly slower than the 0.98 mag per 100 d which is typical of the late-time ^{56}Co -powered tail of an SN. From a linear fit to the *R*-band light curve in the period +200–450 d (relative to the start of the 2012a event), we measure a decline rate of 0.34 mag per 100 d, while the *V* band yields a decline rate of 0.46 mag per 100 d. During the 2014 observing season, the decline rate is even slower, at 0.27 mag per 100 d in *V* and 0.30 mag per 100 d in *R*.

The MIR photometry available for SN 2009ip is quite limited, as can be seen in Fig. 5. From 2013 February until 2013 August, the decline in the 3.6 and 4.5 μm bands appears consistent with that seen in the NIR, and only slightly slower than that seen at optical wavelengths. Over the period 2013 July 25 to August 27, three epochs of MIR photometry were obtained; over this short period we observe a decline at 3.6 μm , but an apparently constant flux at 4.5 μm . It is possible that this is caused by contamination of

Table 3. Log of spectroscopic observations of SN 2009ip.

Phase (d)	Date	MJD ^a	Telescope	Instrument	Grism	Range (\AA)
193	2013-04-04.39	56386.39	NTT	EFOSC2	Gr13	3650–9246
201	2013-04-12.00	56394.00	ANU 2.3 m	WiFeS	B3000+R7000	4171–7021
202	2013-04-13.40	56395.40	NTT	EFOSC2	Gr11	3346–7466
203	2013-04-14.39	56396.39	NTT	EFOSC2	Gr16	5995–9990
207	2013-04-18.39	56400.39	NTT	SOFI	BG	9277–16 345
209	2013-04-20.39	56402.39	NTT	EFOSC2	Gr11	3347–7467
222	2013-05-03.40	56415.40	<i>Gemini-S</i>	GMOS	R400	4208–8439
226	2013-05-06.35	56418.35	VLT	XShooter	UVB+VIS+NIR	3000–24 800
239	2013-05-20.35	56432.35	<i>Gemini-S</i>	GMOS	R400	4207–8439
242	2013-05-23.43	56435.43	<i>Gemini-S</i>	GMOS	B600	3191–6076
245	2013-05-26.00	56438.00	ANU 2.3 m	WiFeS	B3000+R7000	3500–7023
264	2013-06-14.36	56457.36	<i>Gemini-S</i>	GMOS	R400	4208–8437
272	2013-06-22.00	56465.00	ANU 2.3 m	WiFeS	B3000+R7000	4169–7023
280	2013-06-30.43	56473.43	<i>Gemini-S</i>	GMOS	R400	4210–8441
303	2013-07-23.38	56496.38	<i>Gemini-S</i>	GMOS	R400	4207–8440
323	2013-08-12.19	56516.19	<i>Gemini-S</i>	GMOS	R400	4208–8439
353	2013-09-12.05	56547.05	NTT	EFOSC2	Gr11+Gr16	3343–9986
374	2013-10-03.14	56568.14	VLT	FORS2	300V	4226–9639
428	2013-11-26.08	56622.08	NTT	EFOSC2	Gr11	3365–7478
434	2013-12-02.06	56628.06	VLT	FORS2	300V	4224–9632
575	2014-04-22.37	56769.37	NTT	EFOSC2	Gr13	3650–9246
589	2014-05-06.36	56783.36	NTT	EFOSC2	Gr11	3365–7478
590	2014-05-07.33	56784.33	NTT	EFOSC2	Gr16	5995–9990
590	2014-05-07.39	56784.39	VLT	XShooter	UVB+VIS+NIR	3000–24 800
693/5	2014-08-17/19	56887.16	VLT	XShooter	UVB+VIS+NIR	3000–24 800
726	2014-09-20.36	56920.36	Keck	DEIMOS	600ZD	4200–7640

Note. ^amid-point of exposure.

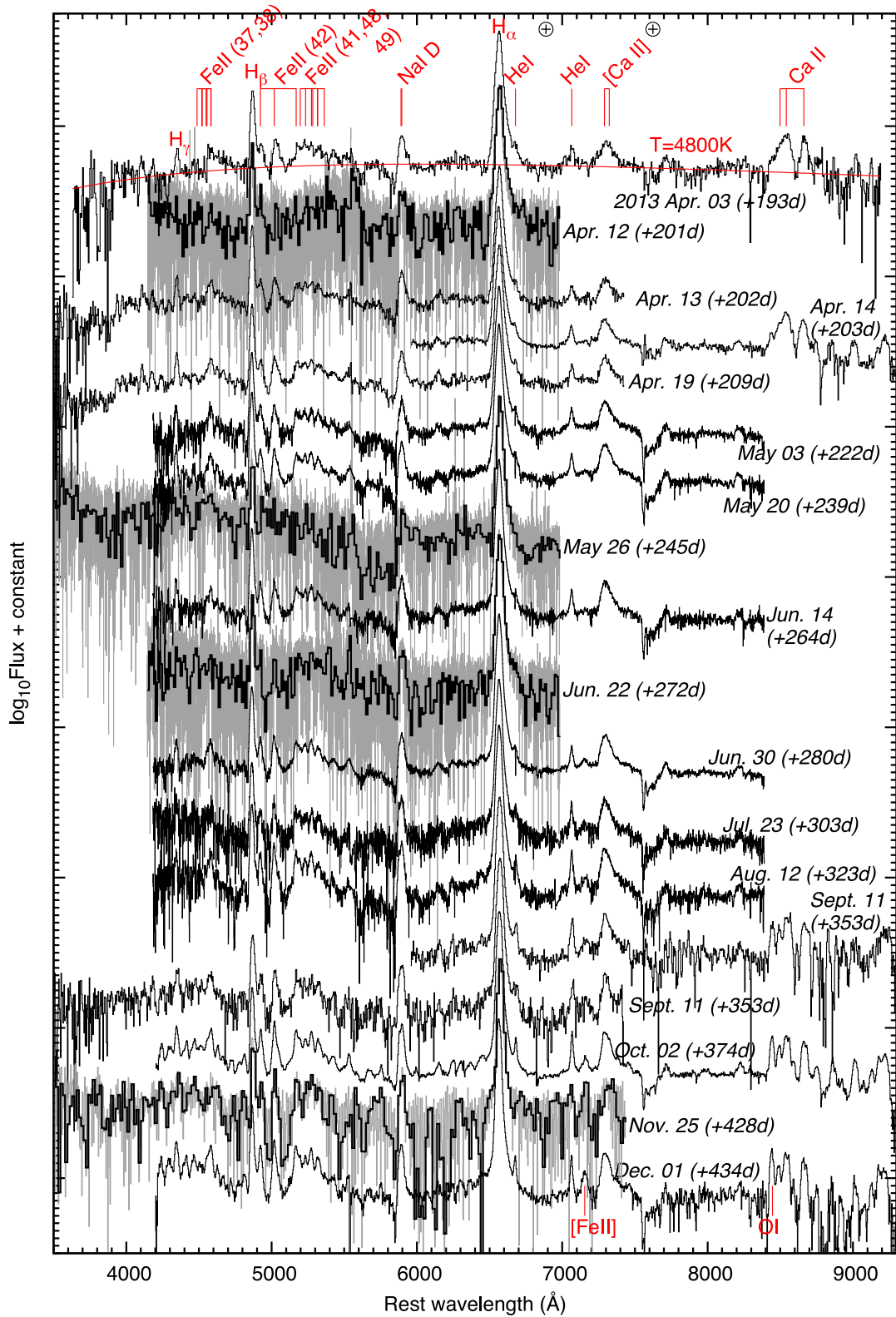


Figure 3. Sequence of optical spectra of SN 2009ip taken between 2013 April and December, with phases relative to MJD 56193 in parentheses. All spectra are shown in the rest frame, the wavelengths of key features are marked, while the positions of the strong telluric absorptions are shown with a \oplus symbol. The WiFeS spectra and the EFOOSC2 spectrum from November 25 are shown in light grey, with a binned version of the spectrum overplotted in black. A 4800 K blackbody fit to the 2013 April 3 spectrum is shown in red. The higher resolution spectra taken during this period are shown in more detail in Fig. 10.

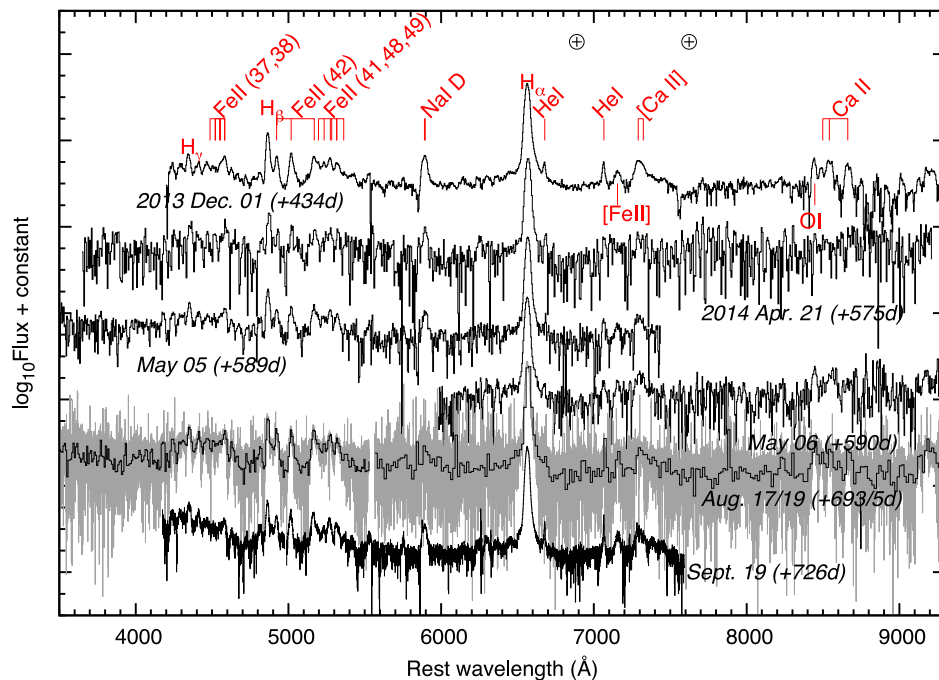


Figure 4. Sequence of optical spectra of SN 2009ip taken between 2014 April and September, with phases relative to MJD 56193 in parentheses. All spectra are shown in the rest frame, the wavelengths of key features are marked, while the position of the strong telluric absorptions are shown with a \oplus symbol. The EFOOSC2 spectrum from August 17/19 is shown in light grey, with a binned version of the spectrum overplotted in black. For comparison, the last spectrum taken of SN 2009ip in 2013 December (i.e. the final spectrum in Fig. 3) is also shown. The higher resolution spectra taken during this period are shown in more detail in Fig. 10.

the photometry of SN 2009ip by flux from a nearby source; as can be seen in Fig. 2, there are two bright sources close to SN 2009ip which are much brighter in the MIR than at optical wavelengths. Alternatively, if the constant 4.5 μm flux is due to SN 2009ip, then it may be caused by the formation of CO, which has its fundamental emission in this band.

The colour of evolution of SN 2009ip is shown in Fig. 6. We find that in $V-R$, SN 2009ip has a roughly constant colour over the period from 300 to 800 d after the start of the 2012a event. In contrast, the $B-V$ colour becomes slightly bluer over time. This is likely caused by the presence of emission from Fe group lines in the spectral region covered by the B -band filter. The $V-H$ colour of SN 2009ip can be measured until ~ 400 d, after this SN 2009ip is not detected in H band, and we can only set upper limits to the NIR colour. The fact that SN 2009ip does not appear to become significantly redder after ~ 400 d would indicate that dust formation is not significant at this phase.

We constructed a pseudo-bolometric $BVRJHKs$ light curve for SN 2009ip using the same technique as in Fraser et al. (2013a), which is shown in Fig. 7. As expected, given the steady decline of the individual photometric bands, the bolometric light curve shows a smooth decline. A comparison to the well-studied Type IIP SN 2004et shows that the decline rate of SN 2009ip between $\sim +250$ and $+500$ d from the start of the 2012a event is slower than typical for a CCSN at a comparable epoch. The degree to which radioactive Co contributes to the energy source of SN 2009ip during this late phase is, however, uncertain. As discussed later, the presence of strong and narrow $H\alpha$ at this epoch suggests that CSM interaction is ongoing, and so one may expect any Co-powered tail to be supplemented by additional flux from the continuing conversion

of kinetic energy. The strongest constraint on the Ni mass comes from the light curve in late 2012 December; from a comparison of the bolometric light curves of SNe 2009ip and 2004et at this epoch, we confirm the upper limit to the ejected Ni mass of the former of $M_{\text{Ni}} < 0.02 M_{\odot}$ which was set by Fraser et al. (2013a).

We also calculated bolometric light curves using the optical ($BVRI$), NIR (JHK), and MIR (LM) bands separately. The *Spitzer* 3.6 and 4.5 μm fluxes were calibrated to the L and M bands using the zero-points in Campins, Rieke & Lebofsky (1985). For the period where there were MIR observations (2013 January–August), the contribution at these wavelengths to the total optical-MIR luminosity of SN 2009ip was only ~ 10 per cent. The NIR contributed a further ~ 30 – 35 per cent of the luminosity, while the remainder of the flux emerged at optical wavelengths as shown in Fig. 8. We see that after 2013 September, the fraction of flux in the NIR relative to the optical appears to decrease by about 5 per cent. It is possible that this is due to a large amount of the flux in SN 2009ip emerging in line emission, much of which is at optical wavelengths.

Martin et al. (2015) and Margutti et al. (2014) put forward the intriguing suggestion that there was a periodic component of the light curve of SN 2009ip. With a view to testing this in the late time data, we took the R -band light curve of SN 2009ip between 2013 April 3 and December 24, and made a least-squares linear fit to the data. To remove the overall decline from the light curve, a ‘residual light curve’ was constructed, consisting of the measured magnitude at each epoch minus the interpolated magnitude from the linear fit. The R -band data were used for this as this was the filter which had the most data points (36 epochs). We then used the Lomb–Scargle algorithm (Lomb 1976; Scargle 1982) to derive a periodogram from the residual light curve. The resulting periodogram is shown in

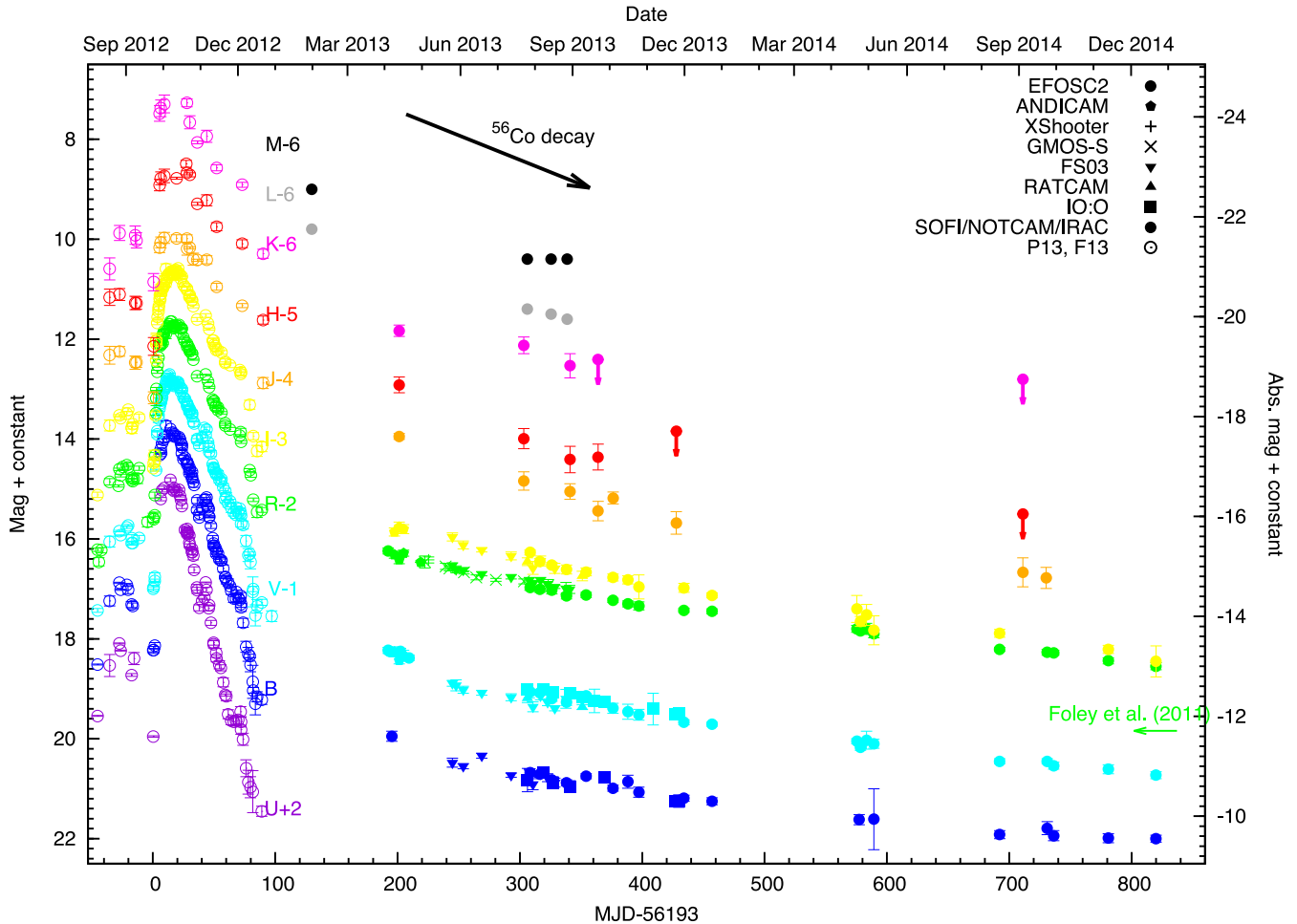


Figure 5. Optical and infrared light curves for SN 2009ip. The data from Pastorello et al. (2013) and Fraser et al. (2013a) covering the 2012a and 2012b events are shown with open points. The black line shows the typical 0.98 mag per 100 d decline expected during the radioactively powered tail phase of a CCSN. Upper limits where SN 2009ip was not detected are indicated with arrows; the green horizontal arrow at the lower right indicates the presumed quiescent $F606W$ ($\sim R$ band) magnitude measured from archival *HST* images by Foley et al. (2011), scaled by -2 mag to match the R -band light curve. The absolute magnitude (uncorrected for extinction) is shown on the second y-axis, the source of each point in the optical light curve is indicated by the key.

Fig. 9, but as expected from visual inspection of the light curve, we see no significant peaks in the power spectrum that would suggest a periodic signal. The absence of any periodic component to the R -band light curve may indicate that the region of CSM which the ejecta is now interacting with has a different density profile, or was formed through a different mass-loss process to that which formed the CSM closer to SN 2009ip. The progenitor candidate identified by Foley et al. (2011) for SN 2009ip had a magnitude of 21.84 ± 0.17 mag in $F606W$ -band images taken in 1999 June. On 2014 December 23, the measured magnitudes of SN 2009ip were $V = 21.73 \pm 0.17$ and $R = 20.55 \pm 0.07$ mag. In V band, SN 2009ip reached a similar magnitude to the purported progenitor in late 2014. However, as the *HST* images used by Foley et al. were taken with the $F606W$ filter, they include the wavelength of $H\alpha$. As the $H\alpha$ emission seen in SN 2009ip is strong, even during quiescent periods (Pastorello et al. 2013), it is likely that $H\alpha$ emission is contributing to the flux here also. Hence the most appropriate filter to make a comparison to the pre-discovery *HST* images is R band, which similarly includes $H\alpha$. SN 2009ip is still ~ 1.3 mag brighter than the progenitor candidate in R band, and assuming a constant decline rate of ~ 0.3 mag per 100 d, will only reach a comparable magnitude around 2016 March.

4 SPECTROSCOPIC EVOLUTION

4.1 Optical spectra

As is evident from Figs 3 and 4, SN 2009ip does not undergo any dramatic spectral evolution between 2013 April and 2014 September. From the first spectrum of 2013, which was taken on April 3, until June 22, we do not observe the emergence of any new lines or significant changes in velocity or line profile shape. In the following, we describe the 2013 April 3 spectrum as representative of SN 2009ip over the subsequent three months. We note that the five highest resolution and signal-to-noise spectra are shown in more detail in Fig. 10. All of the reduced spectra presented in this paper will be placed in the WiseRep archive⁴ (Yaron & Gal-Yam 2012).

As shown in Fig. 3, the spectrum from April 3 has a relatively flat continuum. The most prominent feature in the spectrum is $H\alpha$ emission, which is well fitted with a Lorentzian profile of full width at half-maximum (FWHM) 1450 ± 100 km s⁻¹. $H\alpha$ appears to be slightly asymmetric, as shown in Fig. 11, with a deficit of flux in the

⁴ <http://www.weizmann.ac.il/astrophysics/wiserep/>

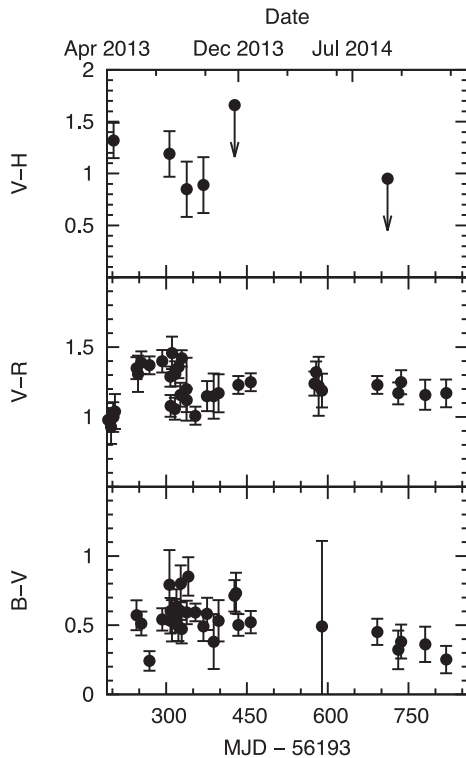


Figure 6. The $B-V$, $V-R$, and $V-H$ colour evolution of SN 2009ip between 2013 April and 2014 December. Limits on the colour of SN 2009ip, from epochs where it was only detected in a single filter, are indicated with arrows. The colour curves have been corrected for foreground extinction.

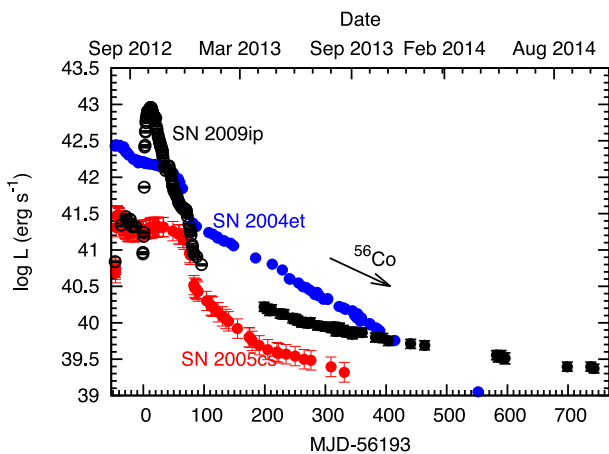


Figure 7. $BVRJHK$ pseudo-bolometric light curve of SN 2009ip (open points; Pastorello et al. 2013; Fraser et al. 2013a), plus the additional late-time data presented in this paper (solid points). For comparison, we show the CCSNe 2005cs (Pastorello et al. 2009) and 2004et (Maguire et al. 2010) shifted so that their explosion epoch matches the start of the 2012a event.

blue wing. We also see $H\beta$ with a similar velocity and line profile, and a weak $H\gamma$ line. While the line profile of $H\alpha$ appears to narrow slowly over the course of our monitoring campaign, for the first three months this evolution is hard to discern. The Balmer decrement ($L_{H\alpha}/L_{H\beta}$) can be used to constrain the physical environment of SN 2009ip (Fraser et al. 2013a; Levesque et al. 2014), and in the April spectrum of SN 2009ip, we measure a Balmer decrement of ~ 12 . This is much higher than in 2012, and could indicate Case C recombination, where $H\alpha$ is optically thick (Xu et al. 1992).

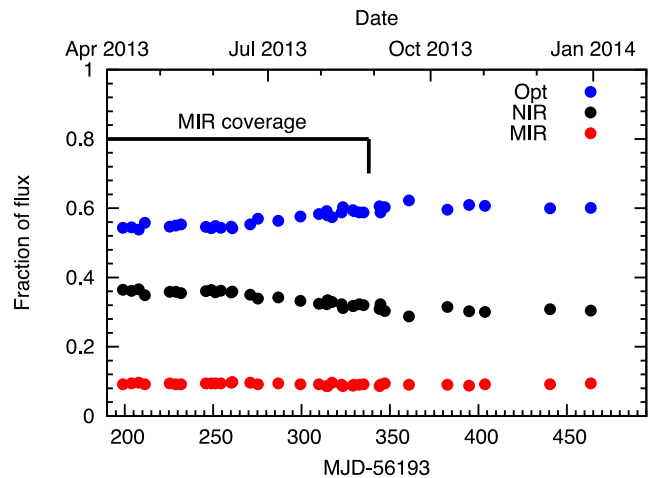


Figure 8. The fraction of flux in optical (BVR), NIR (JHK), and MIR (*Spitzer*) bands for SN 2009ip during the tail phase. Epochs later than 2013 December have scant NIR coverage (SN 2009ip is detected in J band only) and hence are not shown; the time period covered by *Spitzer* MIR observations is also indicated.

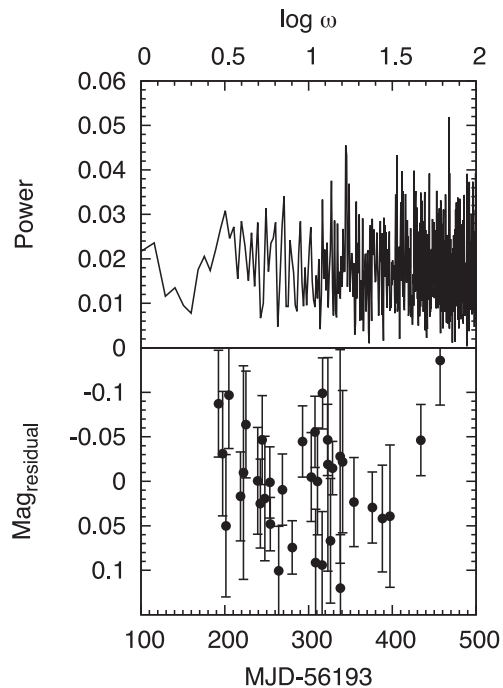


Figure 9. Lower panel: R -band light curve of SN 2009ip between 2013 April and December, after the subtraction of a linear least-squares fit to the data points. Upper panel: Lomb–Scargle periodogram of the same, where ω is the angular frequency in radians per day, and power is in arbitrary units.

However, the lack of any clear absorption in the Balmer lines would disfavour this scenario. Alternatively, if $H\alpha$ is optically thin, a lower electron temperature and a higher density than at peak could perhaps give rise to the observed decrement (Drake & Ulrich 1980).⁵

⁵ In Fraser et al. (2013a), we did not use the results of Drake & Ulrich, as the high luminosity of the 2012b event requires the inclusion of the radiation field when computing line fluxes. Here, as SN 2009ip is much fainter, the assumption of Drake & Ulrich that the radiation field is weak is more appropriate.

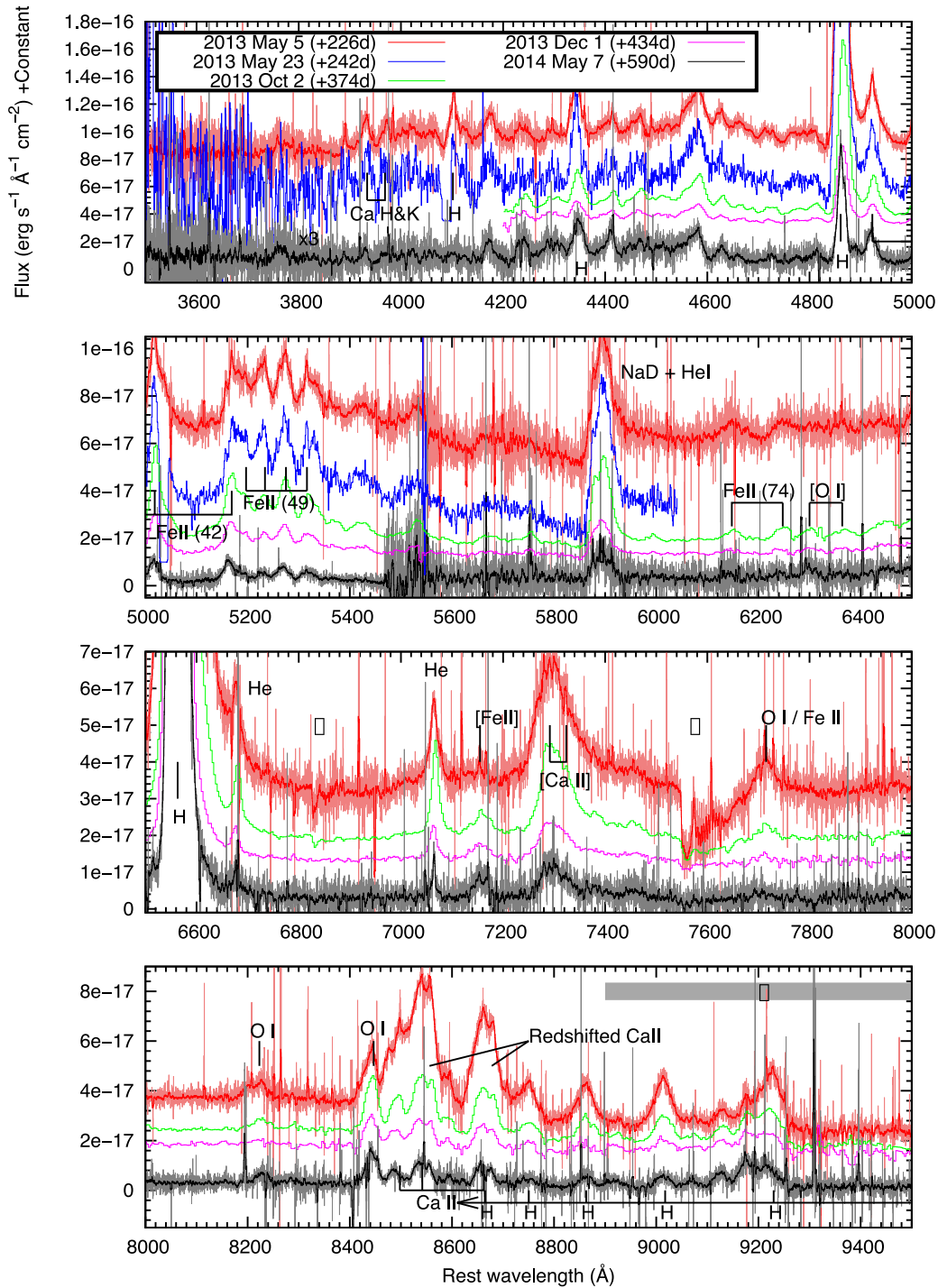


Figure 10. Rest frame high resolution VLT+XShooter, VLT+FORs and Gemini+GMOS spectra of SN 2009ip, taken between 2013 May and 2014 May. In the top panel, the VLT+XShooter spectrum from 2014 May 7 has been multiplied by 3 for clarity, all other spectra have been offset in flux as necessary. The 2013 May 6 and 2014 May 7 XShooter spectra have also been boxcar smoothed using a 15 pixel window (red and black lines) to emphasize the weaker features. The telluric A and B bands, and the region of atmospheric absorption between 8900 and 9900 Å are marked with a \oplus symbol.

The higher density could be explained as the photosphere recedes inwards through material ejected in a wind or mass-loss with a $\propto R^{-2}$ dependence, although it is unclear whether such a simple scenario would necessarily be appropriate to SN 2009ip. The strong H α line is also interesting in the context of the low photospheric temperature. As the spectral energy distribution (SED) of SN 2009ip

shifts to cooler temperatures than at peak, there are no longer the UV photons necessary to produce recombination lines. It is likely that X-rays from shocks in the interaction region are now supplying the necessary energy to excite H α , and perhaps also help maintain the relatively constant blue colour of SN 2009ip (Fig. 6). In the red part of the spectrum, we identify some of the higher order Paschen

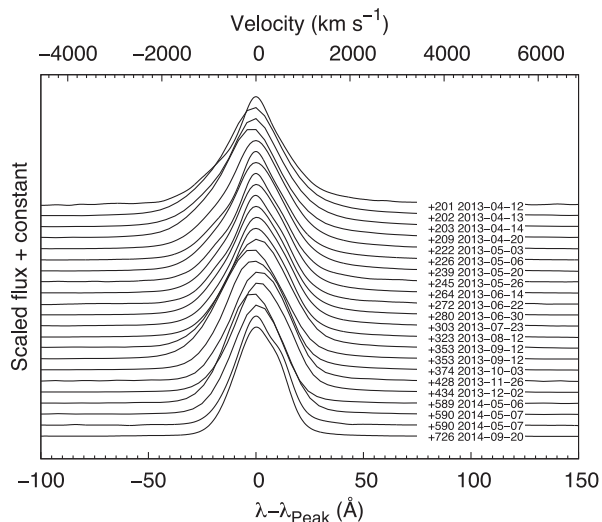


Figure 11. Evolution of the H α line profile over time. The sequence contains all optical spectra from Table 3 which cover the wavelength of H α , with the exception of the EFOOSC Gr#13 spectra which were of lower resolution. The date of each spectrum is indicated, as is the phase relative to the start of the 2012b event, MJD = 56 193. All spectra have been convolved with a Gaussian to degrade them to a common resolution of $R = 1000$, have been normalized to the peak of H α , and have been shifted so that the peak of H α is at 0 \AA . The emergence of a red shoulder in H α at the end of 2014 is apparent in the final two spectra.

lines. These can be seen more clearly in the spectrum from April 13, where Pa lines as high as the 12 \rightarrow 3 transition at $\lambda 8750$ can be seen close to the Ca II NIR triplet.

To estimate the temperature of SN 2009ip in 2013 April, we fitted a blackbody function to the spectra obtained in 2013 April, with the exception of the WiFeS data. The regions of the spectrum around H α and H β were excluded from the fit in all cases. We measure an effective temperature of 4800 K at this epoch ($\sim +200$ d). Subsequent spectra show a slight increase in flux to the blue of ~ 5500 \AA , but this is likely caused by a relative increase in the strength of the Fe II multiplets between 5000 and 5500 \AA . We observe a similar effect in the $B-V$ colour. At later epochs, a clear continuum arising from a photosphere cannot be discerned, and so we cannot measure a physically meaningful effective temperature.

In addition to H, we see He, Na, Ca, and Fe in the spectrum of SN 2009ip in 2013 April. Weak He I $\lambda 7065$ is also present in emission. The other transitions of He in the optical are unfortunately blended with other lines; He I $\lambda 5876$ is blended with Na I D, while both the $\lambda\lambda 4922$ and 5015 He I lines lie in the region of strong emission from Multiplet 42 of Fe. We also tentatively detect He I $\lambda 6678$ which was seen at earlier epochs (Fraser et al. 2013a). The He I $\lambda 7065$ line is not particularly clear in the April 3 spectrum, and so we instead measure its FWHM in the April 14 spectrum taken with EFOOSC + Gr#16, where we find it to have an FWHM of only ~ 1000 km s^{-1} , which is significantly slower than H α . The O I $\lambda 8446$ line can also be seen to emerge in the April 13 spectrum, with an FWHM of ~ 1250 km s^{-1} . This feature was possibly present in the earliest spectrum taken on April 3, albeit blended with the blue wing of Ca II $\lambda 8498$. There is perhaps some contribution to the line from the 18 \rightarrow 3 transition of H ($\lambda 8438$), although the intensity of the feature in comparison to the other Pa lines suggests that H is not the dominant element contributing to any blend. Furthermore, the feature grows in strength over the following six months, consistent with the line being formed primarily by O. O I $\lambda 8446$ emission

in Type II SNe typically arises via Ly β pumping in O I $\lambda 1026$ (e.g. Oliva 1993). The strength of this line in Type II SNe has been interpreted as radiative cross-talk between H and O zones (Oliva 1993; Jerkstrand et al. 2012), although unless it is very strong, the $\lambda 8446$ line (and O I 1.129 μm) can be produced Ly β scattering in primordial material.

The only line with a clear absorption component is Na I D, which has a P Cygni profile with a minimum at -3000 km s^{-1} . The peak of the emission is at 5896 \AA , indicating that the emission is definitely caused by Na, although we caution that the absorption may be contaminated by He I $\lambda 5876$. There is also a tenuous detection of a second absorption component in Na at ~ 15000 km s^{-1} , which would match to the two component absorption seen in earlier epochs (Fraser et al. 2013a). Na I D tends to remain optically thick for a long time, as it is a resonance line from the ground state, and so it is unsurprising that we continue to see absorption. [Ca II] $\lambda\lambda 7291, 7324$ is present, as is the Ca II NIR triplet in pure emission. [Ca II] appears broader than other features, which is due to the blending of the two components in a doublet, and possibly due to some contamination from He I $\lambda 7281$. We measure an FWHM of 1700 km s^{-1} for the $\lambda 8662$ line in the Ca II NIR triplet, similar to the H and He velocities. Aside from these lines, the only other features present are from Fe, where we see several permitted multiplets in Fe II, the strongest of which is Multiplet 42 (Moore 1945); although there is undoubtedly contamination from He I $\lambda\lambda 4922$ and 5015. We also see a possible weak feature at ~ 7720 \AA , although this region is affected by telluric absorption. The feature is offset by -2000 km s^{-1} from the rest wavelength of O I $\lambda 7774$, and an alternative identification could be Fe I $\lambda 7710$. The permitted Fe and Na, and the permitted and forbidden Ca can all likely be accounted for by primordial metals in the envelope of the star (Li & McCray 1993; Jerkstrand et al. 2012; Maguire et al. 2012);⁶ we stress that these elements were all seen at comparable velocities by Pastorello et al. (2013) in spectra of SN 2009ip taken two years prior to the 2012a and 2012b events, and hence cannot be unambiguously associated with the products of SN nucleosynthesis. The similar velocities measured for H, He, and Ca are also consistent with these lines forming in the same location. We also note that whatever the identification of the ~ 7720 \AA feature, both Fe I $\lambda 7710$ and O I $\lambda 7774$ were seen in the September 2009 spectra (Pastorello et al. 2013). The only ambiguous feature in the spectra of SN 2009ip in 2013 April is a line around ~ 4580 \AA , which could possibly be identified with Mg I $\lambda 4571$. The feature is centred 600 km s^{-1} to the red of the rest wavelength of Mg. As discussed later, we do not see the Mg I 1.5 μm line in the NIR spectra taken around this epoch, although the NIR line is a recombination rather than a cooling line.

In the XShooter and GMOS spectra obtained in 2013 May, we observe the first evolution in the spectra of SN 2009ip, with the strengthening of the $\lambda 8446$ O I line (Fig. 10), which was only marginally detected in 2013 April. By 2013 September, the line has grown in strength to be comparable with the components of the close by Ca II NIR triplet. In the June 30 spectrum, we see the emergence of [Fe II] $\lambda 7155$. The feature is quite weak, but continues to grow in strength until our latest spectrum in December. Interestingly, the $\lambda 7155$ feature was not seen in the spectra covering the pre-2012

⁶ Although Maguire et al. (2012) and Jerkstrand et al. (2012) presented models for the lower mass red supergiant progenitor of a Type IIP SN, the conclusion that much of the line emission seen at late times arises from the envelope should also apply here.

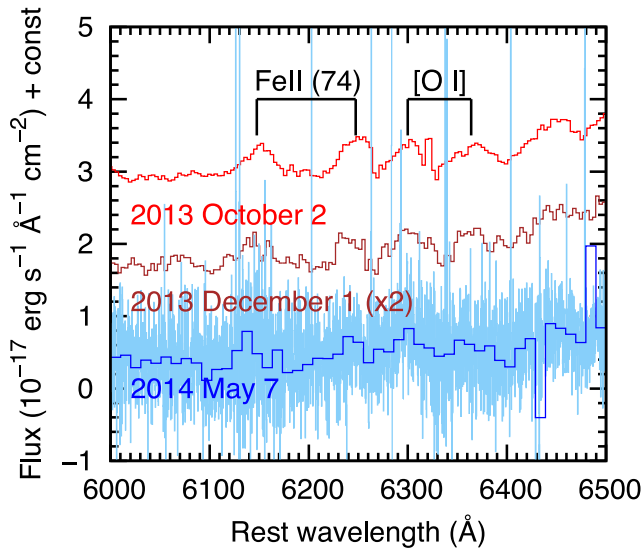


Figure 12. The region of the presumed [O I] $\lambda\lambda 6300, 6364$ doublet in two late time spectra of SN 2009ip, taken in 2013 October and December. The rest wavelengths of the two components of the doublet, along with those of the nearby Fe II Multiplet 74 are indicated. The 2014 May 7 spectrum is also shown in light blue, but even after binning (dark blue line) the [O I] doublet is not visible at this epoch.

evolution of SN 2009ip (Pastorello et al. 2013), while the line is often seen during the nebular phase of CCSNe.

The final significant change in the spectrum of SN 2009ip in late 2013 is the emergence of what appears to be weak [O I] $\lambda\lambda 6300, 6364$ in the VLT+FORs spectrum taken on October 2. Emission lines consistent with both components of the doublet are seen, an appear to have approximately the same intensity. These lines were also seen by Fox et al. (2015) in their spectrum of SN 2009ip from 2014 June. The lines are quite weak but clearly real; they are detected in two separate spectra, most clearly on October 2, where the spectrum has a S/N in the continuum of ~ 25 . The lines are also comparable in strength to the nearby Multiplet 74 of Fe II, as can be seen in Fig. 12. As an alternative identification, the presumed O lines could be associated with Fe II, however we were unable to find a consistent match to any of the common multiplets (Moore 1945). Multiplet 40 has a line at 6369 \AA which is a reasonable match, however there should also be stronger emission from the same multiplet at 6432 \AA (which is possibly blended with the line at 6445 \AA), and at 6516 \AA (which may be lost in the blue wing of H α). Multiplet 200 has a component at 6305 \AA , but again this should be accompanied by a line of approximately the same strength at 6175 \AA which we do not observe. In the October 2 spectrum, we fitted Lorentzian profiles to the two components of the O doublet and measured an average FWHM of 1400 km s^{-1} while in the December 1 spectrum we measured 1200 and 1400 km s^{-1} for the $\lambda\lambda 6300$ and 6364 lines, respectively. This velocity is similar to that seen in the nearby Fe Multiplet 74 at 1400 km s^{-1} , and consistent with that of H α .

A ratio of 1:1 between the intensity of the two components of [O I] $\lambda\lambda 6300, 6364$ would suggest optically thick conditions where the lines are forming; if the lines are forming in the ejecta, then the line ratio would be expected to increase to 3:1 over time as the ejecta expands and the density decreases (e.g. Chugai 1992). Primordial [O I] $\lambda\lambda 6300, 6364$ is always observed in the 3:1 ratio, and hence an observed ratio of $\sim 1:1$ is suggestive of synthesized oxygen which has a higher density. However, as can be seen in Fig. 12, its also

quite possible that there is contamination of the $\lambda 6364$ line by the many iron-group lines in this region. Furthermore, in CCSN spectra the [O I] lines are much stronger than these surrounding Fe lines; and so if this is synthesized oxygen its mass must be very small. In later subsequent spectra taken in 2014, these lines are not detected, as can be seen in Fig. 12.

The XShooter and GMOS spectra obtained in 2013 October also reveal some structure in the Ca lines. As can be seen in Fig. 10, all three lines of the Ca II NIR triplet show an additional emission component, offset by $\sim 550 \text{ km s}^{-1}$ to the red. This feature is real, as it can be seen in multiple spectra at different epochs and from different instruments. It is unclear whether the redshifted components are also present in the [Ca II] $\lambda\lambda 7291, 7324$ lines; as these lines are only separated by $\sim 30 \text{ \AA}$, they appear blended together and any additional component would be hard to disentangle. A similar redshifted emission component is not seen in any of the other elements, with H, He, and Fe all showing relatively symmetric profiles. The lines of O are weak, while Na I D is blended with He, making it difficult to assess their profiles, however neither of these lines shows an obvious emission shoulder either.

SN 2009ip was behind the Sun during the period from 2014 January to March. When SN 2009ip was first observed again in 2014 April, it appeared to be relatively unchanged from the previous spectrum in 2013 December (Fig. 4). Interestingly, and contrary to naive expectations if SN 2009ip had undergone core-collapse, the [O I] $\lambda\lambda 6300, 6364$ feature had not strengthened relative to the total power input since its first appearance in 2013 October. In fact, only the $\lambda 6300$ component of the doublet was detected in the XShooter spectrum from 2014 May. Whether the naive expectation that [O I] would continue to strengthen is, of course, uncertain; the models of Jerkstrand et al. (2014) only cover the period up to ~ 450 d after core-collapse, by which point the [O I] lines appear to have reached their maximum strength.

The subsequent spectrum we obtained of SN 2009ip using VLT+XShooter in 2014 May also revealed an additional emission component in the red wing of the Balmer lines. The feature is seen to be offset by $+500 \text{ km s}^{-1}$ from the rest wavelength of H α , and is also seen as a faint shoulder in H β . Graham et al. (2014) also saw a slight excess of flux in the red wing of H α in as early as 2013 June, although at this stage the asymmetry was less clear than the distinct shoulder seen in our data from 2014 May. The velocity of the red emission feature in H α is similar to that seen in the second component of the Ca II NIR triplet in 2014 October; we note that the redshifted Ca emission is also still present at this epoch. We also note that the He emission lines in the 2014 May XShooter spectrum are extremely narrow, with He I $\lambda 7065$ having a velocity of only $\sim 180 \text{ km s}^{-1}$ as measured from the FWHM of a Lorentzian fit to the line. This is marked contrast to the velocity of 750 km s^{-1} measured in the same line in the XShooter spectrum taken a year earlier in 2014 May. It is also significantly lower than the velocities seen in the Balmer lines, which have FWHM of around 1000 km s^{-1} in 2014. We also see similarly low velocities in the line at 5016 \AA suggesting that this is dominated by He I $\lambda 5016$ at this stage, rather than by Fe II Multiplet 42.

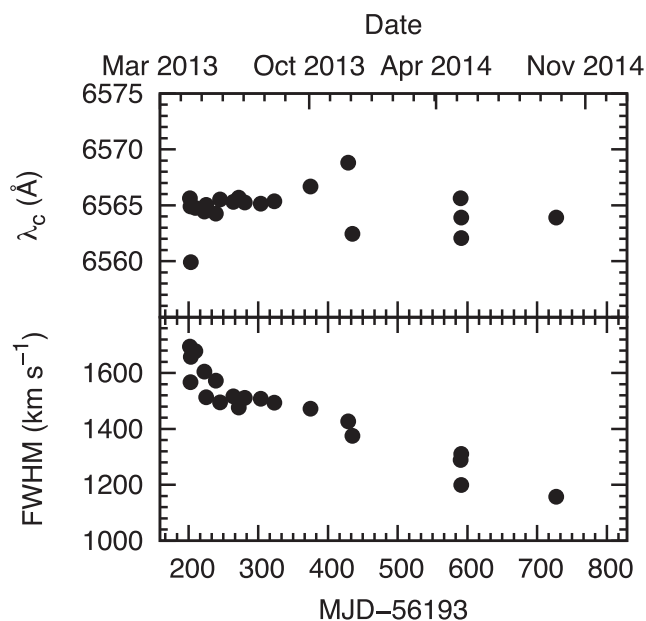
Our final spectrum of SN 2009ip was obtained on 2014 September 19, and is similar to those from 2014 April and May. The spectrum has an excess of flux in the blue, which we attribute to a pseudo-continuum formed of many weak Fe-group lines. H α and H β are still present, with narrow ($\sim 1000 \text{ km s}^{-1}$) Lorentzian profiles. [Ca II] is present, while it is unclear whether Na is still detected due to the He emission at 5876 \AA which could mask the presence of Na I D. Finally, the He lines are extremely narrow, with velocities

Table 4. Measurements of the FWHM of H α in SN 2009ip, as found from a Gaussian fit to the emission.

Phase (d)	Date	FWHM (\AA)
202	2013-04-12	34.3
201	2013-04-13	37.1
203	2013-04-14	36.3
209	2013-04-20	36.7
222	2013-05-03	35.1
226	2013-05-06	33.1
239	2013-05-20	34.4
245	2013-05-26	32.7
264	2013-06-14	33.2
272	2013-06-22	32.3
280	2013-06-30	33.0
303	2013-07-23	33.0
323	2013-08-12	32.7
374	2013-10-03	32.2
428	2013-11-26	31.2
434	2013-12-02	30.1
589	2014-05-06	28.2
590	2014-05-07	28.7
590	2014-05-07	26.2
726	2014-09-20	25.3

of only $\sim 200 \text{ km s}^{-1}$. The lower velocities for the He lines when compared to H suggest that these may arise from different regions. Such relative strength of the He lines may also point to a CSM which is richer in He than a typical Type II SN.

We measured the FWHM and central wavelength of H α in all the spectra obtained of SN 2009ip; these measurements are listed in Table 4. Each spectrum was convolved to a common resolution, and a Gaussian was fit to H α , allowing the central wavelength, FWHM and a normalization constant to vary as free parameters. We see no systematic shift in the position of H α over time, suggesting that substantial dust formation is not occurring. The measured values for the FWHM of H α are plotted in Fig. 13. From Fig. 13, the decrease in FWHM of H α over time, from $\sim 1600 \text{ km s}^{-1}$ in 2013 April, to $\sim 1100 \text{ km s}^{-1}$ in 2014 September, is clear.

**Figure 13.** The central wavelength and FWHM of H α . These values were measured for all spectra via a Gaussian fit to the line.

While Smith et al. (2013) suggested that dust formed in the material lost by SN 2009ip during previous eruptions, we find no evidence for dust formation since the peak of the 2012b event. In the spectra obtained for SN 2009ip between 2013 April and 2014 September, H α appears to be centred on its rest wavelength, with no systematic blueshift which would be indicative of dust. Furthermore, we see no sign of a deficit of flux in the red wing of H α . We also do not observe any shifts or deficit in the red wing of any of the other lines. The $H-K$ colour is positive, while $J-H$ is negative, and the $V-K$ colour is only 1.5, providing ambiguous evidence for a K -band excess. Furthermore, as the flux in the continuum of SN 2009ip is relatively weak compared to the strong line emission, it is possible that broad-band photometry does not provide a good estimate of the shape of the underlying SED.

4.2 NIR spectra

The NIR spectra of SN 2009ip are shown in Fig. 14, while in Fig. 15 we show a zoomed-in region of the 2013 May XShooter spectrum, covering the location of the first overtone of CO. The spectrum taken with the NIR arm of XShooter in 2014 May suffers from extremely low S/N, and hence is not discussed here. The two spectra from 2013 were taken less than a month apart (with no apparent evolution between them), and are dominated by H, and to a lesser extent He. We see the Pa lines, including Pa α which is of sufficient strength to be recovered even with the strong high atmospheric absorption between 1.8 and 2.0 μm . Lines from the Brackett series are visible in the XShooter spectrum. We also observe the two strongest He I lines at 1.08 and 2.05 μm .

The Mg I line at 1.5 μm is not observed in either of the NIR spectra, although we note that the S/N per pixel in the continuum is ~ 3 for the 2013 May 6 spectrum. We take the measured flux of $2.5 \times 10^{-17} \text{ erg s}^{-1} \text{ cm}^{-2}$ in the weakly detected (and nearby) 14 \rightarrow 4 Brackett line as a conservative upper limit to the flux in the Mg line. The measured flux of the possible Mg I] $\lambda 4571$ line at this epoch is $1.6 \times 10^{-15} \text{ erg s}^{-1} \text{ cm}^{-2}$ implying that the latter is at least ~ 60 times stronger. This implies that the formation of Mg I] $\lambda 4571$ and Mg I 1.5 μm are different, with the former a cooling line from primordial gas, while the latter is a recombination line with no strong contribution from primordial Mg.

The extreme red part of the XShooter spectrum shows an increase in flux at around 2.25 μm and beyond. Fig. 15 shows a comparison of this to the Pfund series in the limit of $5 \rightarrow \infty$, also shown are the bandheads from molecular CO emission. The observed increase in flux is roughly consistent with the position of these, and while the flux calibration of the observational data is least reliable at the edges of spectra, it seems plausible that CO has begun to form by ~ 280 d after the start of the 2012a event. If this is the case, then the measured 4.5 μm fluxes from *Spitzer* + IRAC presented in Section 2 should be regarded as upper limits to the continuum flux, as the filter covers the wavelength of the fundamental emission from CO. We note that CO band heads have been seen in before in cool, evolved stars (Biegging, Rieke & Rieke 2002); while CO has also been seen in Eta Car, where it is believed to have formed in CNO-processed material (Loinard et al. 2012). From this, the possible presence of CO emission here cannot be taken as evidence either for or against a core-collapse.

5 DISCUSSION AND CONCLUSIONS

Despite the fact that SN 2009ip is one of the best monitored extragalactic transients to date, even five years after its initial discovery

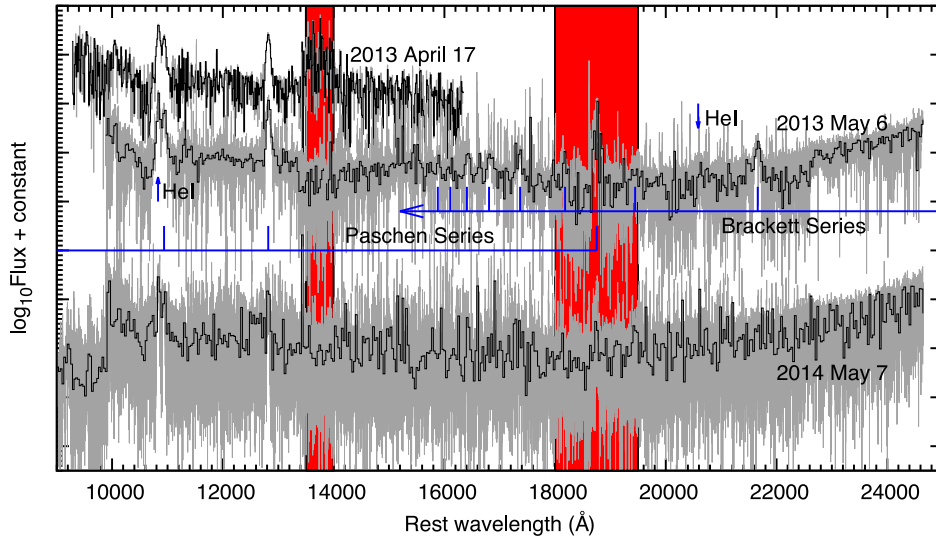


Figure 14. NIR spectra of SN 2009ip. To aid in the identification of lines, a binned version of each spectrum is shown in black, while the unbinned spectra are in grey. The red shaded areas correspond to low atmospheric transmission. The final XShooter spectrum taken in 2014 May contains essentially no flux in the NIR from SN 2009ip, with the possible exception of some line emission from He 1.08 μm .

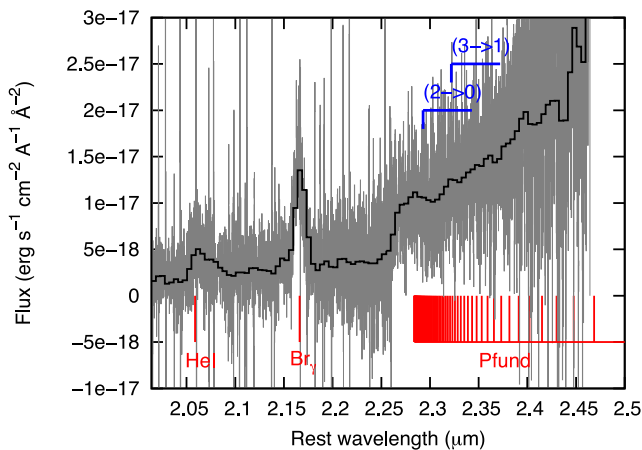


Figure 15. *K*-band region of the XShooter spectrum from 2013 May 6 (in grey) showing the increasing flux at red wavelengths, along with a smothered, binned version of the same spectrum shown with a black line. The positions of the CO $3 \rightarrow 2$ and $2 \rightarrow 0$ band heads are also shown, along with the Pfund series and Br γ and He I 2.06 μm .

it continues to present a puzzle. Perhaps the most significant among these questions is whether SN 2009ip has indeed exploded as a CCSN.

5.1 The energetics of SN 2009ip

The light curve of the 2012a event appears to follow a steady rise to peak, followed by a symmetric decline. This is reminiscent of the diffusion peak seen in Type I SNe. In fact, in the scenario proposed by Mauerhan et al. (2013) for SN 2009ip, the 2012a event was in fact the weak explosion of SN 2009ip as a CCSN (while the 2012b event was caused by the ejecta from this event hitting the CSM).

We took the putative first detection of the 2012a event on July 24 from the Catalina Real-Time Transient Survey (CRTS) SN Hunt (Drake et al. 2012), and measured the magnitude of SN 2009ip using PSF fitting photometry. CRTS is an unfiltered survey, and so we calibrated to both the *V*-band magnitudes of our local sequence,

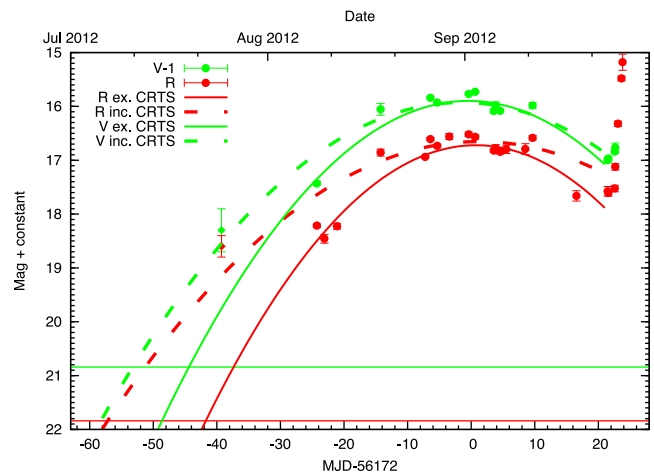


Figure 16. Second order polynomial fit to the *V*- and *R*-band light curves of the 2012a event. The *V* band has been offset by -1 magnitude for clarity. Solid lines show the best fit excluding the CRTS detection of SN 2009ip on July 24, while the dashed lines show the fit when including this data point. The green and red horizontal lines show the progenitor magnitude from Foley et al. (2011) for *V* and *R*, respectively.

which gives a magnitude of 19.3 ± 0.4 for SN 2009ip, and to *R* band, which gives 18.6 ± 0.2 mag. In both cases the source is fainter than the nearby foreground star to the northeast, which has a magnitude $R = 18.1$ mag (Pastorello et al. 2013).

We fit a second-order polynomial to the 2012a light curve, as shown in Fig. 16. We tested the effects of both including and excluding the CRTS detection of July 24, and found that the inclusion of this worsens the fit for both *V* and *R* band. If the CRTS data point is excluded from the fit, then SN 2009ip appears to be markedly brighter at this epoch would be expected from the polynomial fit. This could suggest that the July 24 detection is not actually part of the 2012a event, but rather a distinct outburst, although we are cautious of drawing too strong a conclusion from a single, low S/N datum. The rise time of the 2012a event depends on the initial magnitude we assume for SN 2009ip; for this we adopt $R = 20.5$ mag,

based on the typical magnitude observed for SN 2009ip during quiescence over the period prior to 2012 July (Pastorello et al. 2013). Using this, and the fitted peak of the 2012a event (found to be MJD ~ 56172 for all fits), we find a rise time of 36 d for the 2012a event (i.e. $t_0 = \text{MJD } 56136$). This estimate is of course dependent on the assumption that the rise is smooth, an assumption that may well be invalid if the 2012a event is an outburst rather than a SN.

Following Arnett (1996), the diffusion time-scale for a homogeneously expanding, spherical body of uniform density can be shown to be approximately

$$t_d = \left(\frac{3\kappa M_{\text{ej}}}{4\pi c v_{\text{ej}}} \right)^{1/2}, \quad (1)$$

where M_{ej} and v_{ej} are the ejecta mass and velocity, respectively, κ is the opacity of the ejecta, and c is the speed of light. If we take the ~ 40 d rise of the 2012a event as being characteristic of the diffusion time (this is a reasonable approximation, as shown by Nicholl et al. 2013), and a velocity of 8500 km s^{-1} (from the minima of the P Cygni absorptions in the Balmer lines; Pastorello et al. 2013), and assume an opacity $\kappa = 0.34 \text{ cm}^2 \text{ g}^{-1}$ (assuming e^- scattering dominates in the H-rich ejecta; Rybicki & Lightman 1979),⁷ the ejecta mass of the 2012a event is $\sim 1.8 M_{\odot}$.

We note that there are two caveats to this estimate, namely whether such a simplistic estimate is appropriate here, and whether the absence of photometric coverage in the UV bands during the rise of 2012a event has a significant influence on the bolometric light curve. The optical flux after maximum in the 2012a event was a factor of ~ 6 greater than the UV flux (Fraser et al. 2013a), and while the effective temperature prior to the 2012a event maximum was higher, it did not reach the 17 000 K seen in the 2012b event when the UV flux contribution *did* dominate prior to maximum light (Fraser et al.). All in all, we consider it unlikely that the shape of the 2012a event light curve would be drastically different with wider wavelength coverage.

Whether such a simplistic estimate of the light curve is suitable in the case of SN 2009ip is less certain. In particular, the Arnett model assumes a centrally located power source for a transient, while in the case of SN 2009ip, this may be supplemented by additional energy from interaction with a CSM. Non-spherical geometry may also significantly affect the behaviour of SN 2009ip. In the case of SN 2009ip, there is evidence for asphericity from the spectropolarimetry (Mauerhan et al. 2014), although the line profiles at late time appear to be relatively symmetric, with the exception of the red shoulder which emerges in our later spectra. Mauerhan et al. (2014) argued that spherically symmetric models will underestimate the explosion energy, as much of the ejecta will not impact the CSM. This is indeed a possibility, however, if there are significant amounts of SN ejecta which escape then one might also expect to see nebular SN features (Section 5.2). We also stress again that the simple toy modelling presented here is predicated on the assumption that the 2012a event was a genuine SN.

Smith et al. (2014) also estimate an ejecta mass for SN 2009ip, but based on slightly different reasoning. Smith et al. require the ejecta to be optically thick for $\gtrsim 60$ d, in order to see broad P Cygni absorptions at this phase. From this, they infer an ejecta mass of $4\text{--}6 M_{\odot}$. In contrast, we estimate an ejecta mass based on the assumption that the diffusion time-scale is approximately equal to the rise time for the 2012a event, giving an ejecta mass of $\lesssim 2 M_{\odot}$.

⁷ An opacity $\kappa = 0.2 \text{ cm}^2 \text{ g}^{-1}$, which would be appropriate for H-free ejecta would increase the ejecta mass by a factor of ~ 2 .

It is unclear which estimate is more appropriate for SN 2009ip. It could be argued that the 2012a event is not associated directly with an SN diffusion peak, but rather is associated with the cooling of the shock-heated envelope of the progenitor star, in which case the time-scale of the 2012a event may be determined largely by the radius rather than the mass of the progenitor. Equally, one could argue that determining how long a given ejecta mass will remain optically thick for requires a treatment of recombination and of the photon flux, making simple estimates unreliable. In either case, we note that both the ejecta mass estimated here ($\sim 1.8 M_{\odot}$) and that found by Smith et al. (2014) are less than what was lost by Eta Car in the Great Eruption of 1845 (Smith et al. 2003), although again with the caveat that both outbursts and indeed genuine CCSNe can also eject much less than this. None the less, Eta Car demonstrates that it is at least *possible* that a massive star can eject several solar masses of material without a terminal core-collapse.

If we assume that $1.8 M_{\odot}$ was ejected at $\sim 8500 \text{ km s}^{-1}$ at the start of the 2012a event, and that the 2012b event was powered by the kinetic energy of this material, then the ~ 60 d until the start of the 2012b event would imply the inner edge of the CSM lies at $4.4 \times 10^{15} \text{ cm}$ (300 au) from the progenitor.

Toy models have been used to estimate the ejecta and CSM characteristics of interacting SNe (e.g. Chevalier & Fransson 1994; Chugai & Danziger 1994; Moriya et al. 2013). From Moriya et al. (2013), we see that in the case of steady mass-loss ($\rho \propto R^{-2}$), the late-time luminosity decline should follow $\propto t^{-1.5}$ (equation 29). In the case of SN 2009ip, we measure a decline with a time dependence $\propto t^{-1.74}$, as shown in Fig. 17. The disagreement with the expected slope for steady mass-loss is unsurprising, given the observed eruptive behaviour of SN 2009ip prior to the 2012a and 2012b events.

The emergence of the red shoulder seen in the H α line at late times (shown in more detail in Fig. 18) is evidence that there is still structure in the CSM around SN 2009ip at this epoch. A possible formation mechanism for the feature could be interaction between ejecta and CSM on the far side of SN 2009ip, where the energy from X-rays created at the shock interface is absorbed locally; i.e. the emergence of a new kinematical component. In this case, the absence of a corresponding feature in the blue wing of H α indicates

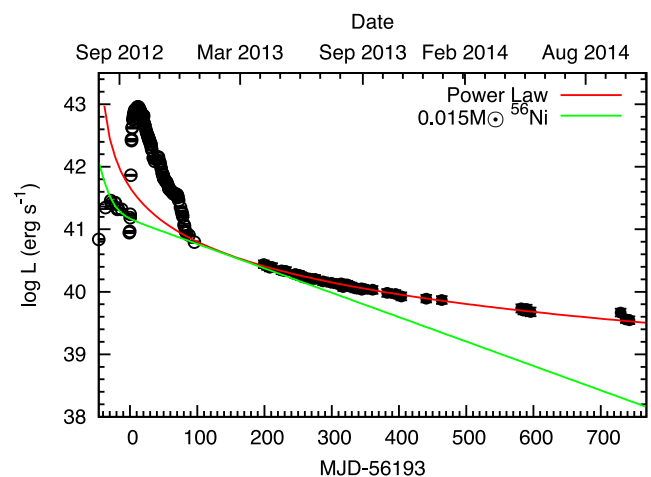


Figure 17. Bolometric light curve of SN 2009ip, compared to the energy from the decay of $0.015 M_{\odot}$ of ^{56}Co (based on the upper limit to the mass of ^{56}Co ejected by SN 2009ip from Fraser et al. (2013a); assuming full trapping of γ -rays in the ejecta, and to a power-law fit to the late-time light curve with exponent -1.74).

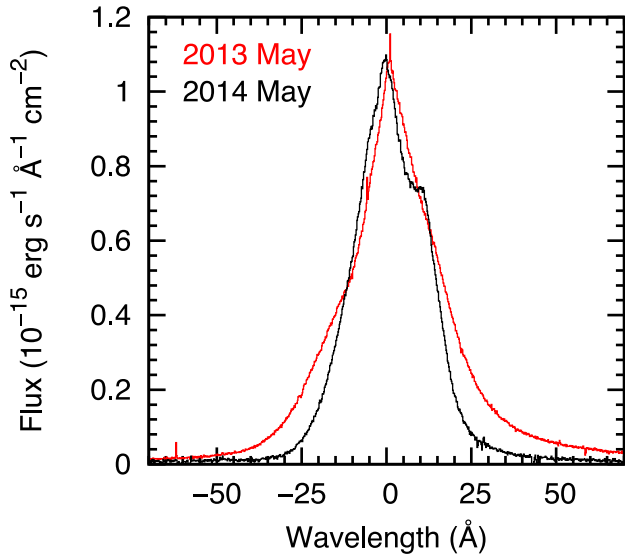


Figure 18. The profile of H α as seen in the XShooter spectrum obtained on 2014 May 7 (black), compared to the line profile observed for H α one year earlier on 2013 May 6 (red). The wavelength scale is shown relative to the rest wavelength of the line, the red emission shoulder discussed in the text is clearly visible at +550 km s⁻¹.

asymmetry about SN 2009ip along the line of sight (consistent with the findings of Mauerhan et al. 2014 from spectropolarimetry). We note that a similar line profile was seen for some Type II In SNe, including SN 1995N (Pastorello et al. 2011). The decrease in prominence of the wings of H α over time is indicative of reduced electron scattering. This is consistent with the decreasing energy input, giving rise to lower ionization.

5.2 Possible nucleosynthesis in SN 2009ip

The presence of strong, broad O in late-time, nebular spectra is a classical signature of a CCSN. [O I] $\lambda\lambda 6300, 6364$ is formed from both primordial O in the envelope, and synthesized O from the core of the progenitor, and the doublet is seen to be stronger for more massive progenitors (which contain more massive cores; e.g. Jerkstrand et al. 2014). The appearance of weak [O I] in the spectrum of SN 2009ip approximately a year after the 2012a event could hence be seen as evidence that SN 2009ip did indeed become a genuine SN. However, if this were the case, then we would expect [O I] to become progressively more prominent over time, as the density of the line emitting region in the SN core decreases (e.g. Jerkstrand et al. 2012). In contrast, we see that the [O I], and indeed the other lines which are plausibly associated with a CCSN such as [Fe II] $\lambda 7155$, remain weak.

We also note that even without nucleosynthesized material from either an SN explosion or stellar evolution prior to collapse, radiative transfer models of nebular Type II SN spectra can show emission from metals solely arising from primordial material which was present in the stellar envelope. In Fig. 19, we plot the emission from the inner H zone at 400 d, from the CCSN model of Jerkstrand et al. (2012). This model shows a reasonable similarity to the observed 2013 October 2 spectrum of SN 2009ip, which was taken at a similar epoch relative to the start of the 2012a event.

The [O I] $\lambda\lambda 6300, 6364$ lines are present in the Jerkstrand et al. (2012) model, and are actually stronger than those observed in SN 2009ip. In this model, cooling of the H gas occurs through metal lines such as [Ca II] $\lambda\lambda 7291, 7323$, the Ca II NIR triplet, [Fe II] $\lambda 7155$, [O I] $\lambda\lambda 6300, 6364$, and Mg I $\lambda 4571$, while recombination gives rise to lines from H, He, and some of the metals. The presence of these lines emphasizes the need for detailed modelling to distinguish a spectrum arising from H gas with metals at solar abundances (as in

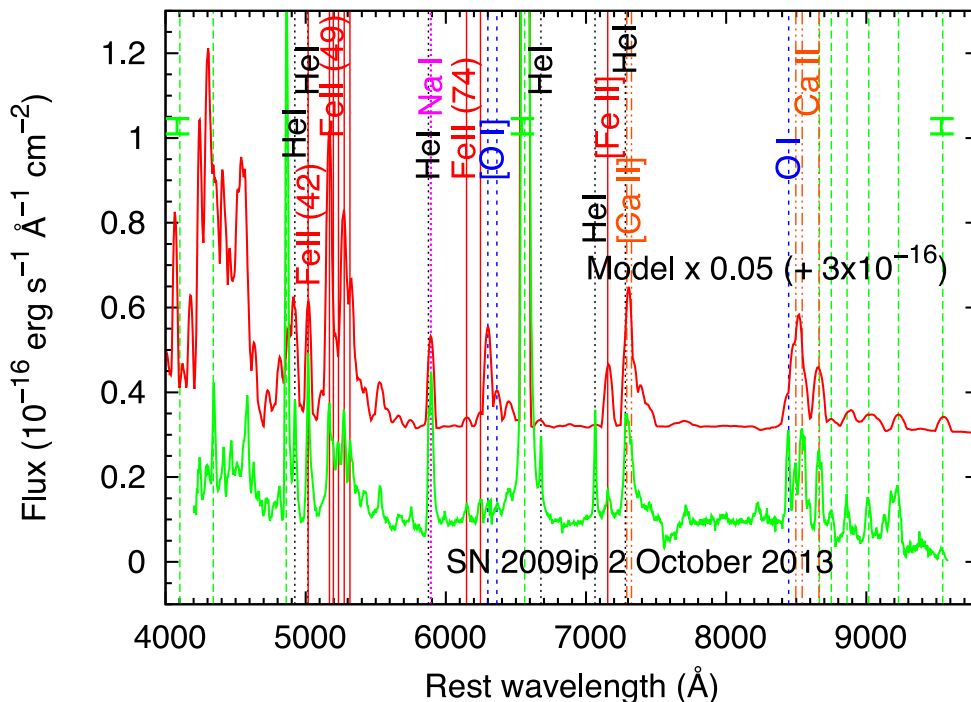


Figure 19. The computed emission flux from a model of the inner H zone of a CCSN, showing only line flux arising from material present in the envelope of the pre-explosion progenitor, based on the model of Jerkstrand et al. (2012) at +400 d. Also shown is the spectrum of SN 2009ip obtained on 2014 October 2, approximately 400 d after the start of the 2012a event. Although physical conditions in this model are different than in 2009ip, the comparison illustrates that many of the metal lines seen in 2009ip can be created in models of primordial composition. The coloured lines indicate different elements in the model.

a wind or non-terminal outburst) and that of such gas plus additional metals (as in a CCSN).

From Groh et al. (2014), a $60 M_{\odot}$ star (as inferred by Foley et al. 2011 for the progenitor of SN 2009ip from pre-explosion images) will have a final mass of $12 M_{\odot}$ at the point of explosion. Such a star will produce a few solar masses of O during hydrostatic burning before it undergoes core-collapse (Woosley & Heger 2007), which is on the order of the ejected O mass in SN 1987A (Li & McCray 1992). If we assume that the density in SN 2009ip with respect to SN 1987A will scale according to the inverse cube of their relative ejecta velocities at late times, then the O density in SN 2009ip would be a factor of ~ 10 higher than the latter. As optical depth evolves with τ^{-2} , one would have to wait $\sqrt{10}$ (~ 3) times longer for the transition to optically thin conditions in SN 2009ip. As this transition occurs after a few hundred days in most CCSNe, it may take several years in SN 2009ip. Our latest spectrum of SN 2009ip was taken at ~ 2 yr after its possible core-collapse in 2012 August, so the appearance of [O I] lines would not be implausible at this epoch.

Another possible scenario for weak [O I] could be an unusually high ionization state. We consider this less likely than the density effect; CCSNe have low ionization in the nebular phase (e.g. Kozma & Fransson 1998; Dessart & Hillier 2011; Jerkstrand et al. 2012) and to change the dominant state from neutral to singly ionized would require one to two orders of magnitude higher energy input, which would be reflected in an order of magnitude higher luminosity than in normal CCSNe at corresponding phases. The transition from [O I] to [O II] would also produce strong [O II] cooling lines ($\lambda\lambda 3730$ and 7320) which are not seen, and in fact [O I] $\lambda\lambda 6300, 6364$ would still be relatively bright as most recombinations pass through $2p4(1D)$.

The weak [O I] lines could also be explained by a contrast effect, namely that there are actually strong nebular SN lines, but they are ‘washed out’ by the flux from interaction (Leloudas et al. 2015). To test this, we used a nebular spectrum of SN 2005cs (Pastorello et al. 2009), taken 226 d after explosion. If we assume that SN 2009ip exploded as a CCSN at the start of the 2012a event, then at a comparable epoch its bolometric luminosity was a factor of ~ 4 brighter than that of SN 2005cs. We added a blackbody spectrum to the observed spectrum of SN 2005cs; the blackbody was scaled so that the blackbody plus SN 2005cs spectrum matched the observed luminosity of SN 2009ip in the V band. We also added realistic noise to the blackbody, to approximate the S/N of our observed spectra of SN 2009ip. In Fig. 20, we show the resulting spectrum. The [O I] lines at $\lambda\lambda 6300, 6364$ Å are still visible as a broad component in the spectrum, suggesting that if there was an underlying SN with nebular phase emission comparable to SN 2005cs, then we would observe it in our data. However, if the overall luminosity of any underlying SN was substantially fainter than SN 2005cs, then we would likely not observe it.

While [O I] is usually associated with CCSNe, there is a precedent for a stellar object displaying these lines, in the case of the B supergiant CPD-52°9243 (Swings 1981; Winkler & Wolf 1989). Interestingly, CPD-52°9243 is classified as a B[e] star; a class of massive stars which show evidence for a circumstellar disc, reminiscent of the torus around SN 2009ip inferred from spectropolarimetry (Mauerhan et al. 2014). We also note that the appearance of [O I] $\lambda\lambda 6300, 6364$ is not ubiquitous in purported SNe – for example, no strong [O I] was seen in the Type II SN 1995G at ~ 2 yr from explosion (Pastorello et al. 2002), while in contrast these lines were clearly seen for SN 1995N (Fransson et al. 2002). The reason for the absence of the lines in some SNe is unclear; in some cases it may indicate that these are not genuine CCSNe but are rather SN impostors,

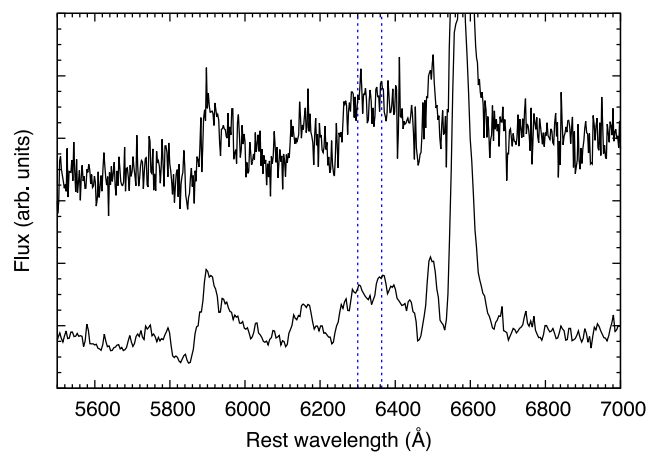


Figure 20. The spectrum of SN 2005cs at +226 d after explosion. The lower spectrum is that observed for SN 2005cs, the upper spectrum is the same spectrum with an additional blackbody component plus noise so that it matches the luminosity of SN 2009ip at a comparable epoch. The dashed vertical lines mark the position of the [O I] $\lambda\lambda 6300, 6364$ lines.

tors, while in other cases (such as the bright, and slowly declining SN 1995G) it may simply reflect higher densities.

The ejected ^{56}Ni mass from SN 2009ip is another poorly constrained parameter. While energy from CSM interaction contributes to an unknown fraction of the flux in the late-time light curve, it is only possible to set an upper limit of the Ni mass. Still, the limit derived ($M_{\text{Ni}} < 0.02 M_{\odot}$) is much less than would be expected for an $\sim 60 M_{\odot}$ progenitor (Nomoto et al. 2006) without fallback.

6 CONCLUSIONS

Questions remain as to if, how, and why SN 2009ip exploded. There is now evidence that some very massive stars can explode as Type II SN during a luminous blue variable (LBV) phase (e.g. Trundle et al. 2008; Gal-Yam & Leonard 2009). According to stellar evolutionary theory, such massive stars are not expected to explode as H-rich LBVs, but rather are believed to lose their envelopes to become Wolf–Rayet stars, before exploding as Type Ibc SNe. Groh et al. (2013, 2014) have recently used models of massive stars, coupled with a model atmosphere code, to predict the appearance of massive stars shortly prior to collapse. From detailed modelling of a rotating $60 M_{\odot}$ star (similar to the progenitor proposed for SN 2009ip by Foley et al. 2011), they find that it will undergo an LBV phase between the end of core H-burning and the start of core He-burning. The star will ultimately evolve to a WO star, and explode an H-poor SN. While the peripheral location of SN 2009ip within NGC 7259 is suggestive of a low-metallicity progenitor, it is unclear whether this could reduce the mass-loss rate by enough for a $60 M_{\odot}$ star to retain its H envelope to the point of core-collapse. Heger et al. (2003) find that while their non-rotating models above $\sim 40 M_{\odot}$ result in an H-free SN, at lower metallicities the star will collapse directly to form a black hole, with no accompanying optical display.

Neither the core-collapse nor the non-core-collapse scenarios can be entirely excluded yet for SN 2009ip. The energetics and ejecta velocities seen during the 2012a and 2012b events are closer to those of a CCSN than an SN impostor. On the other hand, broad (albeit much weaker) lines were seen in absorption in SN 2009ip as early as 2011 (Pastorello et al. 2013). Furthermore, the low-ejected Ni mass is difficult to reconcile with the collapse of an $\sim 60 M_{\odot}$

star, unless fallback is invoked. However, even fallback presents problems, as one would presumably have to fine-tune a model to hide nearly all the Ni and core ejecta from SN 2009ip, but still obtain ejecta velocities of $\sim 8500 \text{ km s}^{-1}$ as seen during the 2012a event. It could also be argued that the apparent absence of broad nebular SN lines is evidence against core-collapse, however the density in the ejecta may still be too high for their formation.

Finally, the physical mechanism powering the outbursts of SN 2009ip prior to 2012 remains unknown. As discussed in Fraser et al. (2013b) for SN 2011ht, and in Smith et al. (2014) for SN 2009ip, the timing of the late-time eruptions so soon before a possible core-collapse may suggest a link between the two. The availability of well-sampled pre-discovery light curves for a large sample of SNe can help shed light on the ubiquity of these eruptions (Ofek et al. 2014), and help distinguish between some of the proposed explanations (e.g. Woosley et al. 2007; Quataert & Shiode 2012) for the mass-loss. Of course, if SN 2009ip can be conclusively demonstrated to have *not* undergone core-collapse (for example, if it is seen to undergo a new outburst), then the classification and interpretation of observationally similar transients such as SN 2010mc (Ofek et al. 2013a) will necessarily need to be revisited.

Continuing observations of SN 2009ip are required to monitor the photometric and spectroscopic evolution of SN 2009ip; and in particular to check if it fades significantly below the magnitude of the progenitor candidate. Alongside this, detailed spectral and hydrodynamic modelling is required to interpret the wealth of observational data obtained so far, to securely identify the lines seen in SN 2009ip, and to form a clearer picture of the true nature of SN 2009ip.

ACKNOWLEDGEMENTS

We thank the referee for a careful reading of the manuscript and helpful comments.

Based on observations collected at the European Organization for Astronomical Research in the Southern hemisphere, Chile as part of ESO programmes 291.D-5010 and 092.D-0586, and as part of PESSTO, (the Public ESO Spectroscopic Survey for Transient Objects Survey), ESO program 188.D-3003/191.D-0935. This work is based in part on observations made with the *Spitzer Space Telescope*, which is operated by the Jet Propulsion Laboratory, California Institute of Technology under a contract with NASA (Proposal ID 90255). Based on observations (GS-2013A-DD-3 and GS-2012B-Q-86) obtained at the Gemini Observatory, which is operated by the Association of Universities for Research in Astronomy, Inc., under a cooperative agreement with the NSF on behalf of the Gemini partnership: the National Science Foundation (United States), the National Research Council (Canada), CONICYT (Chile), the Australian Research Council (Australia), Ministério da Ciência, Tecnologia e Inovação (Brazil) and Ministerio de Ciencia, Tecnología e Innovación Productiva (Argentina). The Liverpool Telescope is operated on the island of La Palma by Liverpool John Moores University in the Spanish Observatorio del Roque de los Muchachos of the Instituto de Astrofísica de Canarias with financial support from the UK Science and Technology Facilities Council. This work makes use of observations from the LCOGT network. Some of the data presented herein were obtained at the W.M. Keck Observatory, which is operated as a scientific partnership among the California Institute of Technology, the University of California and the National Aeronautics and Space Administration. The Observatory was made possible by the generous financial support of the W.M. Keck Foundation. We wish to recognize and acknowledge the very sig-

nificant cultural role and reverence that the summit of Mauna Kea has always had within the indigenous Hawaiian community. We are most fortunate to have the opportunity to conduct observations from this mountain.

We thank the directors of the Gemini Observatory and ESO for their crucial allocations of discretionary time to this project. We thank Emma Reilly, Jon Mauerhan, Nathan Smith, Ori Fox and Raffaella Margutti for helpful discussions at the CAASTRO ‘Supernova 2014’ workshop.

This work was partly supported by the European Union FP7 programme through ERC grant number 320360. RK acknowledges funding from STFC (ST/L000709/1). Part of this research was conducted by the Australian Research Council Centre of Excellence for All-sky Astrophysics (CAASTRO), through project number CE110001020. SJS acknowledges funding from the European Research Council under the European Union’s Seventh Framework Programme (FP7/2007-2013)/ERC Grant agreement no. [291222] and STFC grants ST/I001123/1 and ST/L000709/1. AMG acknowledges financial support by the Spanish Ministerio de Economía y competitividad (MINECO) grant ESP2013-41268-R. AG-Y is supported by an EU/FP7-ERC grant no. [307260], ‘The Quantum Universe’ I-Core program by the Israeli Committee for planning and budgeting and the ISF, GIF, Minerva, ISF and Weizmann-UK grants, and the Kimmel award. FEB acknowledges support from CONICYT-Chile (Basal-CATA PFB-06/2007, FONDECYT 1141218, PCCI 130074) and Project IC120009 ‘Millennium Institute of Astrophysics (MAS)’ funded by the Iniciativa Científica Milenio del Ministerio de Economía, Fomento y Turismo. SH is funded from a Minerva ARCHES award of the German Ministry of Education and Research (BMBF). AP and SB are partially supported by the PRIN-INAF 2011 with the project ‘Transient Universe: from ESO Large to PESSTO’. NER acknowledges the support from the European Union Seventh Framework Programme (FP7/2007-2013) under grant agreement no. 267251 ‘Astronomy Fellowships in Italy’ (AstroFIIt).

REFERENCES

- Arnett D., 1996, *Supernovae and Nucleosynthesis: An Investigation of the History of Matter, from the Big Bang to the Present*. Princeton University Press, Princeton, NJ
- Berger E., Foley R., Ivans I., 2009, *Astron. Telegram*, 2184, 1
- Bessell M. S., 1990, *PASP*, 102, 1181
- Biegging J. H., Rieke M. J., Rieke G. H., 2002, *A&A*, 384, 965
- Campins H., Rieke G. H., Lebofsky M. J., 1985, *AJ*, 90, 896
- Chevalier R. A., Fransson C., 1994, *ApJ*, 420, 268
- Childress M. J., Vogt F. P. A., Nielsen J., Sharp R. G., 2014, *Ap&SS*, 349, 617
- Chugai N. N., 1992, *SvA*, 18, L239
- Chugai N. N., Danziger I. J., 1994, *MNRAS*, 268, 173
- Dessart L., Hillier D. J., 2011, *MNRAS*, 410, 1739
- Drake S. A., Ulrich R. K., 1980, *ApJS*, 42, 351
- Drake A. J. et al., 2012, *Astron. Telegram*, 4334, 1
- Faber S. M. et al., 2003, in Iye M., Moorwood A. F. M., eds, *Proc. SPIE Conf. Ser. Vol. 4841, Instrument Design and Performance for Optical/Infrared Ground-based Telescopes*. SPIE, Bellingham, p. 1657
- Foley R. J., Berger E., Fox O., Levesque E. M., Challis P. J., Ivans I. I., Rhoads J. E., Soderberg A. M., 2011, *ApJ*, 732, 32
- Fox O. D. et al., 2015, *MNRAS*, 447, 772
- Fransson C. et al., 2002, *ApJ*, 572, 350
- Fraser M. et al., 2013a, *MNRAS*, 433, 1312
- Fraser M. et al., 2013b, *ApJ*, 779, L8
- Fraser M. et al., 2013c, *Astron. Telegram*, 4953, 1
- Gal-Yam A., Leonard D. C., 2009, *Nature*, 458, 865

- Graham M. L. et al., 2014, *ApJ*, 787, 163
- Groh J. H., Meynet G., Georgy C., Ekström S., 2013, *A&A*, 558, AA131
- Groh J. H., Meynet G., Ekström S., Georgy C., 2014, *A&A*, 564, AA30
- Hamuy M. et al., 2003, *Nature*, 424, 651
- Heger A., Fryer C. L., Woosley S. E., Langer N., Hartmann D. H., 2003, *ApJ*, 591, 288
- Jerkstrand A., Fransson C., Maguire K., Smartt S., Ergon M., Spyromilio J., 2012, *A&A*, 546, A28
- Jerkstrand A., Smartt S. J., Fraser M., Fransson C., Sollerman J., Taddia F., Kotak R., 2014, *MNRAS*, 439, 3694
- Kashi A., Soker N., Moskovitz N., 2013, *MNRAS*, 436, 2484
- Kozma C., Fransson C., 1998, *ApJ*, 496, 946
- Leloudas G. et al., 2015, *A&A*, 574, A61
- Levesque E. M., Stringfellow G. S., Ginsburg A. G., Bally J., Keeney B. A., 2014, *AJ*, 147, 23
- Li H., McCray R., 1992, *ApJ*, 387, 309
- Li H., McCray R., 1993, *ApJ*, 405, 730
- Loinard L., Menten K. M., Güsten R., Zapata L. A., Rodríguez L. F., 2012, *ApJ*, 749, LL4
- Lomb N. R., 1976, *Ap&SS*, 39, 447
- Maguire K. et al., 2010, *MNRAS*, 404, 981
- Maguire K. et al., 2012, *MNRAS*, 420, 3451
- Makovoz D., Marleau F. R., 2005, *PASP*, 117, 1113
- Margutti R. et al., 2014, *ApJ*, 780, 21
- Martin J. C., Hamsch F.-J., Margutti R., Tan T. G., Curtis I., Soderberg A., 2015, *AJ*, 149, 9
- Mauerhan J. C. et al., 2013, 430, 1801
- Mauerhan J. et al., 2014, *MNRAS*, 442, 1166
- Maund J. R. et al., 2006, *MNRAS*, 369, 390
- Maza J. et al., 2009, *Cent. Bur. Electron. Telegrams*, 1928, 1
- Miller A. A., Li W., Nugent P. E., Bloom J. S., Filippenko A. V., Merritt A. T., 2009, *Astron. Telegram*, 2183, 1
- Moore C. E., 1945, *Contrib. Princeton Univ. Obs.*, 20, 1
- Moriya T. J., Maeda K., Taddia F., Sollerman J., Blinnikov S. I., Sorokina E. I., 2013, *MNRAS*, 435, 1520
- Nicholl M. et al., 2013, *Nature*, 502, 346
- Nomoto K., Tominaga N., Umeda H., Kobayashi C., Maeda K., 2006, *Nuclear Phys. A*, 777, 424
- Ofek E. O. et al., 2013a, *Nature*, 494, 65
- Ofek E. O., Lin L., Kouveliotou C., Kouveliotou C., Younes G., Göğüs E., Kasliwal M. M., Cao Y., 2013b, *ApJ*, 768, 47
- Ofek E. O. et al., 2014, *ApJ*, 789, 104
- Oliva E., 1993, *A&A*, 276, 415
- Pastorello A. et al., 2002, *MNRAS*, 333, 27
- Pastorello A. et al., 2007, *Nature*, 447, 829
- Pastorello A. et al., 2009, *MNRAS*, 394, 2266
- Pastorello A., Benetti S., Bufano F., Kankare E., Mattila S., Turatto M., Cupani G., 2011, *AN*, 332, 266
- Pastorello A. et al., 2013, *ApJ*, 767, 1
- Prieto J. L., Brimacombe J., Drake A. J., Howerton S., 2013, *ApJ*, 763, L27
- Quataert E., Shiode J., 2012, *MNRAS*, 423, L92
- Rybicki G. B., Lightman A. P., 1979, *Radiative Processes in Astrophysics*. Wiley-Interscience, New York
- Scargle J. D., 1982, *ApJ*, 263, 835
- Smartt S. J. et al., 2015, *A&A*, 579, A40
- Smith N., Arnett W. D., 2014, *ApJ*, 785, 82
- Smith N., Gehrz R. D., Hinz P. M., Hoffmann W. F., Hora J. L., Mamajek E. E., Meyer M. R., 2003, *AJ*, 125, 1458
- Smith N. et al., 2010, *AJ*, 139, 1451
- Smith N., Li W., Silverman J. M., Ganeshalingam M., Filippenko A. V., 2011, *MNRAS*, 415, 773
- Smith N., Mauerhan J. C., Kasliwal M. M., Burgasser A. J., 2013, *MNRAS*, 434, 2721
- Smith N., Mauerhan J. C., Prieto J. L., 2014, *MNRAS*, 438, 1191
- Soker N., Kashi A., 2013, *ApJ*, 764, L6
- Stritzinger M. et al., 2002, *AJ*, 124, 2100
- Swings J. P., 1981, *A&A*, 98, 112
- Trundle C., Kotak R., Vink J. S., Meikle W. P. S., 2008, *A&A*, 483, L47
- Tsebrenko D., Soker N., 2013, *ApJ*, 777, L35
- Van Dyk S. D., Peng C. Y., King J. Y., Filippenko A. V., Treffers R. R., Li W., Richmond M. W., 2000, *PASP*, 112, 1532
- Vernet J. et al., 2011, *A&A*, 536, A105
- Winkler H., Wolf B., 1989, *A&A*, 219, 151
- Woosley S. E., Heger A., 2007, *Phys. Rep.*, 442, 269
- Woosley S. E., Blinnikov S., Heger A., 2007, *Nature*, 450, 390
- Xu Y., McCray R., Oliva E., Randich S., 1992, *ApJ*, 386, 181
- Yaron O., Gal-Yam A., 2012, *PASP*, 124, 668
- ¹*Institute of Astronomy, University of Cambridge, Madingley Rd., Cambridge, CB3 0HA, UK*
- ²*Astrophysics Research Centre, School of Mathematics and Physics, Queen's University Belfast, Belfast, BT7 1NN, UK*
- ³*INAF-Osservatorio Astronomico di Padova, Vicolo dell'Osservatorio 5, 35122 Padova, Italy*
- ⁴*Research School of Astronomy and Astrophysics, The Australian National University, Canberra, ACT 2611, Australia*
- ⁵*ARC Centre of Excellence for All-sky Astrophysics (CAASTRO), Canberra, ACT 2611, Australia*
- ⁶*Gemini Observatory, Southern Operations Center, Casilla 603, La Serena, Chile*
- ⁷*Finnish Centre for Astronomy with ESO (FINCA), University of Turku, Väisäläntie 20, FI-21500 Piikkiö, Finland*
- ⁸*Tuorla Observatory, Department of Physics and Astronomy, University of Turku, Väisäläntie 20, FI-21500 Piikkiö, Finland*
- ⁹*Las Cumbres Observatory Global Telescope Network, 6740 Cortona Dr., Suite 102, Goleta, CA 93117, USA*
- ¹⁰*Department of Physics, University of California, Santa Barbara, Broida Hall, Mail Code 9530, Santa Barbara, CA 93106-9530, USA*
- ¹¹*Astrophysics Research Institute, Liverpool John Moores University, IC2, Liverpool Science Park, 146 Brownlow Hill, Liverpool L3 5RF*
- ¹²*INAF-Osservatorio Astronomico di Capodimonte, Salita Moiarello 16 80131 Napoli Italy*
- ¹³*Instituto de Astrofísica, Facultad de Física, Pontificia Universidad Católica de Chile, 306, Santiago 22, Chile*
- ¹⁴*Millennium Institute of Astrophysics, Vicuña Mackenna 4860, 7820436 Macul, Santiago, Chile*
- ¹⁵*Space Science Institute, 4750 Walnut Street, Suite 205, Boulder, Colorado 80301*
- ¹⁶*CNRS, UMR 7585, Laboratoire de Physique Nucleaire et des Hautes Energies, 4 place Jussieu, 75005 Paris, France*
- ¹⁷*Ben-Ziyo Center for Astrophysics, Weizmann Institute of Science, 76100 Rehovot, Israel*
- ¹⁸*Institut für Theoretische Physik und Astrophysik, Universität Würzburg, Emil-Fischer-Str. 31, 97074 Würzburg, Germany*
- ¹⁹*Sorbonne Universités, UPMC Univ. Paris 06, UMR 7585, LPNHE, F-75005 Paris, France*
- ²⁰*Clermont Université, Université Blaise Pascal, CNRS/IN2P3, Laboratoire de Physique Corpusculaire, BP 10448, F-63000 CLERMONT-FERRAND, France*
- ²¹*Institut de Ciències de l'Espai (CSIC-IEEC), Campus UAB, Camí de Can Magrans S/N, 08193 Barcelona, Spain*
- ²²*Department of Physics (Astrophysics), University of Oxford, DWB, Keble Road, Oxford OX1 3RH, UK*
- ²³*School of Physics and Astronomy, University of Southampton, Southampton, SO17 1BJ, UK*
- ²⁴*European Southern Observatory, Karl-Schwarzschild-Str. 2, 85748 Garching, Germany*
- ²⁵*Max-Planck-Institut für Astrophysik, Karl-Schwarzschild-Str. 1, 85741 Garching bei München, Germany*
- ²⁶*Department of Physics, Yale University, PO Box 208120, New Haven, CT 06520-8120, USA*

This paper has been typeset from a $\text{\TeX}/\text{\LaTeX}$ file prepared by the author.