



Publication Year	2015
Acceptance in OA	2020-05-27T09:46:42Z
Title	On the modulation of low-frequency quasi-periodic oscillations in black hole transients
Authors	Pawar, Devraj D., Motta, Sara, Shanthi, K., Bhattacharya, Dipankar, BELLONI, Tomaso Maria Melchiorre
Publisher's version (DOI)	10.1093/mnras/stv024
Handle	http://hdl.handle.net/20.500.12386/25215
Journal	MONTHLY NOTICES OF THE ROYAL ASTRONOMICAL SOCIETY
Volume	448

On the modulation of low-frequency quasi-periodic oscillations in black hole transients

Devraj D. Pawar,¹★ Sara Motta,² K. Shanthi,³ Dipankar Bhattacharya⁴
and Tomaso Belloni⁵

¹*R. J. College, Mumbai 400086, India*

²*ESAC, European Space Astronomy Centre, Villanueva de la Cañada, E-28692 Madrid, Spain,*

³*UGC Academic Staff College, University of Mumbai, Mumbai 400098, India*

⁴*Inter University Centre for Astronomy and Astrophysics, Pune 411007, India,*

⁵*INAF–Osservatorio Astronomico di Brera, via E. Bianchi 46, I-23807 Merate, Italy*

Accepted 2015 January 6. Received 2015 January 6; in original form 2014 January 22

ABSTRACT

We studied the properties of the low-frequency quasi-periodic oscillations detected in a sample of six black hole candidates (XTE J1550–564, H 1743–322, XTE J1859+226, 4U 1630–47, GX 339–4, XTE J1650–500) observed by the *Rossi XTE* satellite. We analysed the relation between the full width at half-maximum and the frequency of all the narrow peaks detected in power density spectra where a type-C QPO is observed. Our goal was to understand the nature of the modulation of the signal by comparing the properties of different harmonic peaks in the power density spectrum. We find that for the sources in our sample the width of the fundamental and of the first harmonic are compatible with a frequency modulation, while that of the sub-harmonic is independent of frequency, possibly indicating the presence of an additional modulation in amplitude. We compare our results with those obtained earlier from GRS 1915+105 and XTE J1550–564.

Key words: accretion, accretion discs–stars: oscillations–stars: black holes–X-rays: binaries.

1 INTRODUCTION

The study of the variable X-ray emission from X-ray binaries has matured very rapidly in the last decades with the launch of several X-ray satellites in the 1990s, which led to a clear observational picture of black hole candidates in X-ray binaries (BHBs). In particular, a rich phenomenology of fast X-ray variability has been observed. Since their discovery, black hole X-ray binaries (BHB) have been known to display variability on various time-scales (Elvis et al. 1975) and low-frequency quasi periodic modulation of the light curves (known as quasi-periodic oscillations, QPO) from these systems were already found in several sources observed by the Japanese satellite *Ginga*. Sixteen years of operation of the *Rossi X-ray Timing Explorer (RXTE)*, 1995 December 30 to 2012 January 3) satellite have contributed immensely to the understanding of these systems and led to an extraordinary progress in the knowledge of the variability properties of BHBs (see e.g. Remillard & McClintock 2006; van der Klis 2006; Belloni 2010).

The typical power density spectrum (PDS) from a BHB is composed by a variable band-limited noise continuum and by a number

of QPOs observed both at low (mHz to few tens of Hz) and high (tens to hundreds Hz) frequencies (van der Klis 2006). QPOs are thought to originate in the innermost regions of the accretion flows around stellar-mass black holes and the study of their properties can provide important clues on the physics of accretion on to BHBs and on the behaviour of the matter in presence of strong gravitational fields. Various models have been proposed in order to explain the quasi periodic variability and the noise continuum (see van der Klis 2006 for a review and Ingram & Done 2011 for a more recent model), but none of them, at the present time, can give a comprehensive explanation of all the observed phenomena.

In black hole binaries, low-frequency QPOs (LFQPOs) are detected in the frequency range ~ 0.1 –30 Hz; they are classified as type A, B and C QPOs (see Casella, Belloni & Stella 2005; Motta et al. 2011). Here we focus on the type-C LFQPOs; for a complete classification of QPO types in black hole binaries, see Casella et al. (2005), Motta et al. (2011, 2012) and Belloni, Motta & Muñoz-Darias (2011, for a review). Type-C QPOs are observed in the hard and hard intermediate state (HIMS) of BHBs in outburst as strong, narrow peaks in the power density spectra with centroid frequency between ~ 0.1 and ~ 30 Hz (see Motta et al. 2011, and references therein). LFQPOs usually appear as a complex structure composed by a primary peak (whose frequency is usually associated with the

* E-mail: devrajdp@gmail.com

fundamental frequency of oscillation) and by a number of additional peaks whose frequency is in harmonic relation with that of the primary peak (therefore associated with harmonics and sub-harmonics of the fundamental frequency). These secondary peaks are commonly interpreted as the result of the Fourier decomposition of the non-sinusoidal quasi-periodic signal responsible of the appearance of the LFQPOs. However, questions whether there exists a harmonic relation between different QPO peaks and on the identification of the fundamental peak have been raised in recent works (see Rao et al. 2010; Rodriguez & Varnière 2011; Ratti, Belloni & Motta 2012).

Here we investigate the relation between the properties of the fundamental peak and of the harmonic content component of the type-C LFQPOs detected in a sample of six BHBs observed by *RXTE*: XTE J1550–564, H 1743–322, XTE J1859+226, 4U 1630–47, GX 339–4, XTE J1650–500; see reviews by Remillard & McClintock (2006), Belloni et al. (2011) and van der Klis (2006) for details of these sources.

2 OBSERVATIONS

From the *RXTE* archive we select a sample of six BHBs where clear type-C QPOs have been reported in the hard and HIMS. We analysed 97 *RXTE* Proportional Counter Array (PCA; Zhang et al. 1993; Jahoda et al. 2006) observations of black hole candidates XTE J1550–564 (Rao et al. 2010), H 1743–322 (Homan et al. 2005), XTE J1859+226 (Markwardt 2001), 4U 1630–47 (Tomsick & Kaaret 2000; Trudolyubov et al. 2001), GX 339–4 (Motta et al. 2011) and XTE J1650–500 (Homan et al. 2003). The references report the detection and analysis of the QPOs in these sources. Table 2 summarizes the details of the observations that we considered. We selected only the observations where the sources were either in the low hard state (LHS, see Belloni et al. 2011) or in the HIMS, where LFQPOs are detected (Casella et al. 2004, 2005; Motta et al. 2011). Then we selected only those observations whose PDS showed at least two peaks that appeared to be integer multiples of each other. We kept only those observations showing type-C QPOs (classified according to Casella et al. 2004; Motta et al. 2011, 2012); type-C QPOs are observed over a large frequency range (~ 0.1 –30 Hz, variable depending on the source), while type-B and -A QPOs only show very small variations in frequency (see Motta et al. 2011); type-C QPOs almost always show harmonic peaks and type-B are also usually accompanied by a harmonic, while such harmonics are not usually seen for type-A QPOs. A sample of type-C QPOs is suitable for our purpose to study the behaviour of the multiple QPOs in the same PDS as a function of their frequency as they span a relatively larger frequency range compared to other types of LFQPOs.

For our work, it is important to identify the peak corresponding to the fundamental frequency. Usually, the strongest peak is the fundamental, but there can be exceptions. We checked all PDS and derived the identification of the fundamental from works in the literature: XTE J1550–564 – Remillard et al. (2002); H 1743–322 – McClintock et al. (2009); XTE J1859+226 – Casella et al. (2004); 4U 1630–47 – (Tomsick et al. 2005); XTE J1650–500 – Homan et al. (2003); GX 339–4 – Motta et al. (2012).

2.1 Fourier timing analysis and PDS modelling

We used high time resolution mode *RXTE*/PCA data for our timing analysis (Zhang et al. 1993; Jahoda et al. 2006). For each observation we chose the data modes in order to have the maximum possible

time resolution and the energy range we are interested in. We rebinned the light curves to obtain a Nyquist frequency of 2048 Hz and we selected events in the channels 0–35; these channels correspond to energy range ~ 2 –13 keV for the observations of year 1998–1999 and ~ 2 –14 keV for later observations in Table 2, see Jahoda et al. (2006) for details of *RXTE*/PCA. We used the `GHATS`¹ package under `GDL` to produce PDS for continuous 32-s-long data segments (leading to a minimum frequency of $1/32$ s = 0.031 25 Hz) and we averaged them to obtain one single PDS per observation. PDS were normalized according to Leahy et al. (1983) and converted to square fractional rms (see Belloni & Hasinger 1990). The component due to the Poissonian noise was computed from the deadtime value, the average source count rate and the Very Large Event (VLE) count rate (see Zhang et al. 1995; Boutloukos et al. 2006, for more details).

PDS fitting was carried out with the standard `XSPEC` fitting package by using a one-to-one energy-frequency conversion and a unit response. Following Belloni, Psaltis & van der Klis (2002), we fitted the noise components with a variable number of broad Lorentzian shapes. The QPOs were fitted with a number of Lorentzians depending on the presence of harmonic peaks. For each Lorentzian component we calculated the characteristic frequency, given by $\nu_{\max} = \sqrt{\nu_0^2 + (FWHM/2)^2} = \nu_0 \sqrt{1 + 1/(4Q^2)}$ (Belloni et al. 2002). We fitted the PDS to obtain reduced $\chi^2 \approx 1$ and reported QPOs with significance $N/\sigma_N > 3\sigma$, where N is the normalization and σ_N is its 1σ uncertainty on N obtained with the chi-squared minimization.

In most of the cases, one single Lorentzian is sufficient to fit each peak in the PDS. However, in some cases, more than one Lorentzian component is necessary, usually when the QPO frequency changes on time-scales shorter than the observation time (see Markwardt, Swank & Taam 1999, and references within for details). For those cases, following Ratti et al. (2012), we report the frequency of the Lorentzian with higher rms as the QPO frequency. In these cases, the FWHM is estimated as the FWHM of the sum of the two Lorentzians and errors on FWHM are calculated as quadratic errors of the individual components. In Fig. 1, we show a typical PDS (observation 30191-01-28-00 of XTE J1550–564), fitted with a model of multiple Lorentzians. One or more zero centred Lorentzians are required to fit the low-frequency noise. We refer to the Lorentzians used to fit QPOs as $L_{1/2}$, L_1 and L_2 , respectively, where L_1 is the primary peak associated with the fundamental frequency, and $L_{1/2}$ and L_2 are associated with the sub-harmonic and the second harmonic of the fundamental, respectively. The frequencies of the narrow peaks are in the ratio $L_{1/2}:L_1:L_2 \simeq 1:2:4$ within the errors and the rms of L_1 is always greater than $L_{1/2}$ and L_2 .

3 RESULTS

In Fig. 2, we plot the centroid frequencies of $L_{1/2}$, L_1 and L_2 QPOs as a function of the centroid frequency of the fundamental (L_1) for GX 339–4, XTE J1550–564, XTE J1859+226, H 1743–322, XTE J1650–500, represented as circles, squares, diamonds, empty triangles and stars, respectively. The symbols are filled black, grey and empty for L_1 , L_2 and $L_{1/2}$, respectively. The dashed lines correspond to slopes 0.5, 1 and 2; $L_{1/2}$ and L_2 QPOs lie around lines with slopes 0.5 and 2, respectively, with a small but significant scatter. We detected $L_{1/2}$ or L_2 or both simultaneously with L_1 in the power

¹GHATS, available at http://www.brera.inaf.it/utenti/belloni/GHATS_Package/Home.html.

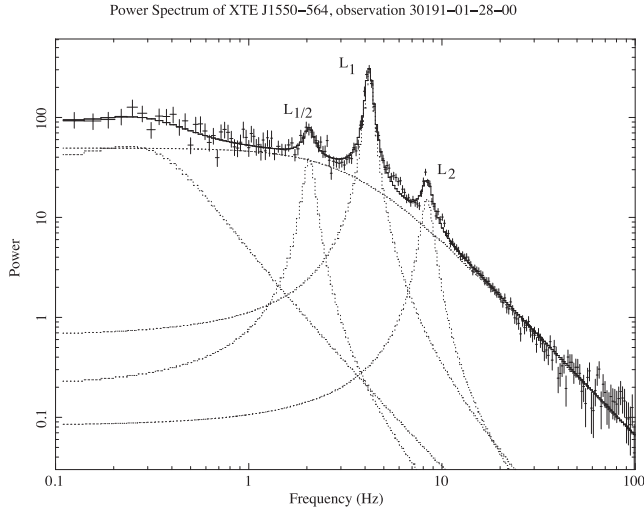


Figure 1. Typical PDS (Observation 30191-01-28-00 of XTE J1550–564) and model used to fit it. The model is constituted by a broad component centred at zero Hz (sometimes more than one broad component is used to properly describe the noise) and three different narrow Lorentzians, dubbed $L_{1/2}$, L_1 and L_2 , where the frequencies are related according to the following relations: $L_{1/2} \approx 0.5L_1$ and $L_2 \approx 2L_1$ within errors.

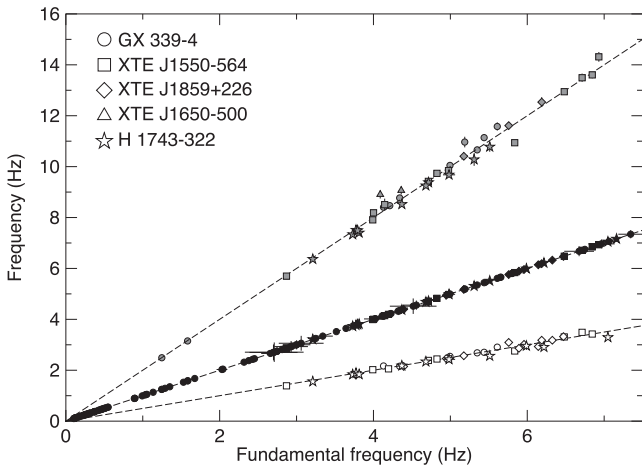


Figure 2. The harmonic relation of the QPOs detected in the sample of BHs in Table 2. QPOs for sources GX 339–4, XTE J1550–564, XTE J1859+226, H 1743–322 and XTE J1650–500 are represented as circles, squares, diamonds, triangles and stars, respectively. The symbols are filled black, grey and are empty for L_1 , L_2 and $L_{1/2}$, respectively, and the dashed lines correspond to slopes 0.5, 1 and 2.

spectra of 69 observations (#1 to 72, except #37, 59, 60) of the total 97 observations in our sample (see Table 2 for details).

In Fig. 3, we show the FWHM of the fundamental peak and its harmonics plotted as a function of the centroid frequency of each peak. In both panels we overplot dashed lines corresponding to $Q = 3, 5$ and 10 , where Q is the *quality factor* and it is defined as $Q = \nu_0/\text{FWHM}$. It gives a measure of the coherence of a peak. The symbols do not distinguish between the sources. This is done with the purpose to make the general trend of the points clearer. In the top panel of Fig. 3, we plot the points from observations, that have at least $L_{1/2}$ or L_2 in addition to L_1 in the same PDS (Table 2). $L_{1/2}$, L_1 and L_2 peaks are represented as stars, filled circles and empty triangles, respectively. The frequency range covered is ~ 2 –16 Hz.

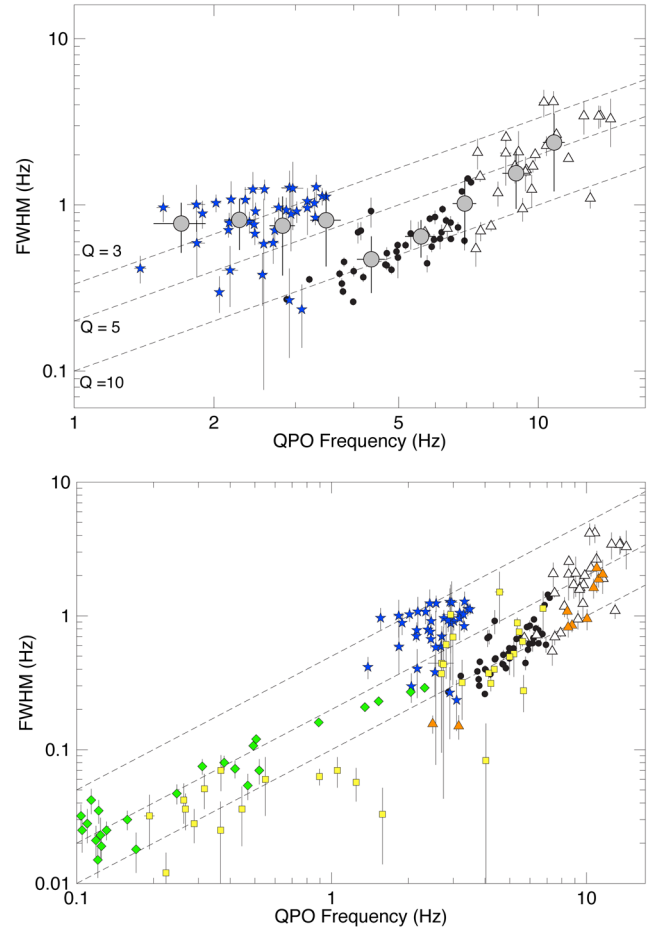


Figure 3. Top panel: the FWHM as a function of centroid frequency of type-C QPOs detected in the power spectra of black holes in our sample such that, either $L_{1/2}$ or L_2 , or both $L_{1/2}$ and L_2 are simultaneously detected with L_1 (observations 1 to 72 in Table 2). Stars, filled circles, empty triangles, respectively, represent $L_{1/2}$, L_1 , L_2 QPOs. The dashed lines correspond to constant Q . The large grey filled circles are the result of a rebinning of all points into broad logarithmic bins in frequency. Bottom panel: stars, filled circles, triangles, respectively, represent $L_{1/2}$, L_1 , L_2 such that, either $L_{1/2}$ or L_2 , or both are simultaneously detected with L_1 . Diamonds represent type-C QPOs detected in GX 339–4, where no harmonics were detected (Motta et al. 2011) and squares, filled triangles, respectively, represent the fundamental, harmonic of the type-C QPOs detected in GRO J1655–40, (Motta et al. 2012). In both panels the dashed lines correspond to lines of constant $Q = 3, 5, 10$.

The large grey filled circles are the result of a rebinning of all points into broad logarithmic bins in frequency. Each point has a frequency equal to the mean of all the points included in a single bin, while the error bars represent the scatter as the square root of the variance in frequency. In the lower panel of Fig. 3, we show the same data of the upper panel, but we also include the remaining QPOs of GX 339–4 (Motta et al. 2011), 73 to 98 in Table 2, and QPOs detected in GRO J1655–40 reported in Motta et al. (2012). The additional points from GX 339–4 (filled diamonds) extend the frequency down to 0.1 Hz. Since they occur as single peaks, i.e. without second, third and sub-harmonics, they cannot be classified as $L_{1/2}$, L_1 or L_2 . The GRO J1655–40 peaks are detected in the frequency range ~ 0.2 to 15 Hz and the L_1 and L_2 components are respectively represented as filled squares and filled triangles.

Table 1. Parameters to test whether the frequency–FWHM relation is linear or constant. $L_1 + L_2$ is the data of fundamental and harmonic considered together since they seem to have the same nature in the frequency–FWHM plot (Fig. 3).

QPO	χ^2		dof	Pearson’s coefficient
	Linear	Constant		
L_1	1933	4106	85	0.61
L_2	706	2051	63	0.55
$L_{1/2}$	258	338	52	0.44
$L_1 + L_2$	4830	23 660	148	0.78

From the frequency–FWHM correlation in Fig. 3 one sees that, although there is significant scatter, the fundamental follows an upward trend which is extended by the harmonics points and is steeper than the lines of constant Q , indicating lower Q at higher QPO frequencies, while the sub-harmonic points do not show a visible trend. We have performed constant and linear fits to the data, but the large scatter prevents a statistical analysis of the relative goodness of the models. We investigated whether the frequency–FWHM correlation is linear ($\text{FWHM} = A \cdot \nu_0 + B$) or constant for $L_{1/2}$, L_1 , L_2 . Since the L_1 and L_2 seem to have the same frequency–FWHM correlation (Fig. 3), we also investigate the linear and constant fit for both together ($L_1 + L_2$). The χ^2 for the fits indicate that the linear fit is more appropriate for L_1 , L_2 , ($L_1 + L_2$) and the constant for $L_{1/2}$. However, the scatter renders the fits statistically not-significant (see Table 1 for details).

4 DISCUSSION

We analysed 97 archival *RXTE* observations of six BHBs in the hard and HIMS and studied the FWHM–frequency relation of the type-C QPOs detected in these sources. In 69 observations we detect more than one peak superimposed to a broad-band flat-top noise (see Table 2 for details of the QPOs). The secondary peaks $L_{1/2}$, L_2 have centroid frequencies consistent with ~ 0.5 , ~ 2 times the frequency of the fundamental L_1 . In Fig. 2, we see more clearly that $L_{1/2}$, L_1 and L_2 have frequencies in the ratio 0.5:1:2; therefore, they form a harmonic series in frequency. The presence of harmonically related peaks in a PDS might be the result of the Fourier decomposition of the signal. However, a scenario where such peaks are independent signals, cannot be ruled out.

From the top panel of Fig. 3, we observe that the FWHM of L_1 and L_2 increases with frequency of the QPO. The FWHM of $L_{1/2}$ however has a weak dependence on frequency. These trends are seen more clearly after rebinning the points in frequency (large grey points in Fig. 3). The resulting large grey points indicate a monotonically increasing trend of the FWHM with frequency for L_1 , L_2 and also that the FWHM of $L_{1/2}$ QPOs has a very weak or no dependence on frequency. The QPOs in this plot cover the frequency range ~ 2 –16 Hz. In order to test whether the same relation extends to lower frequencies, we include type-C QPOs (from Motta et al. 2011, 2012) which extend frequency down to ~ 0.1 Hz, (bottom panel in Fig. 3). Adding points for L_1 and L_2 at lower QPO frequencies from Motta et al. (2011, 2012) we show that the FWHM–frequency relation for these two components extends down to ~ 0.1 Hz. The lower frequency QPOs (~ 0.1 Hz) correspond to harder energy spectra, when the noise level is high and the QPO is not as well resolved from the continuum as in the softer states. In such cases the QPO parameters are less constrained (especially the FWHM), and this may be the cause of the scatter observed in the FWHM of QPOs with frequency around ~ 0.1 Hz.

The coherence of a QPO is quantified by the quality factor Q . The width of a quasi-periodic signal can be ascribed to either amplitude modulation (AM) or frequency modulation (FM) or a combination of the two. The often-considered case of finite time of the oscillation is a special case of AM. If only a single peak is seen in the PDS, it is not possible to establish whether the broadening of the peak is due to amplitude or FM. However, if a harmonic is also present, then a constant FWHM of the peaks indicates AM and a constant Q indicates FM. We observe that L_1 and L_2 are almost along the line of constant Q (top panel of Fig. 3). If they were exactly along the constant Q line, we could conclude that they are frequency modulated. However, they are broader at higher frequencies. One possibility is that this is due to an additional AM, although different combinations of FM and AM cannot be excluded. The sub-harmonics ($L_{1/2}$) have a constant FWHM and are broader, indicating that the sub-harmonic must be subject to an additional AM, as the FWHM of these points show a large scatter, it is however still possible that an underlying FM is present.

A similar approach to the one we follow in this paper was presented by Rao et al. (2010) and Ratti et al. (2012) for the type-C QPOs detected in XTE J1550–564 and GRS 1915+105, respectively. They discuss the FWHM frequency relation between peaks, flat topped noise and peaked noise detected in the PDS. In our paper, we consider only the $L_{1/2}$, L_1 , L_2 peaks detected in the sample of BHBs listed in Table 2. Rao et al. (2010) in their study of QPOs detected in the BHB XTE J1550–564, find that the five features L_{ft} , L_{s} , L_{F} , L_{pn} , L_{h} form a harmonic series in frequency (where L_{s} , L_{F} , L_{h} correspond to $L_{1/2}$, L_1 , L_2 , respectively, in this paper; L_{ft} is the flat topped noise and L_{pn} is the peaked noise component, see fig. 1 in Rao et al. (2010) for details and Belloni et al. (2002), van der Klis (2006) for terminology and classification of features detected in PDS of BHBs). Rao et al. (2010) conclude that not all the features in the harmonic series follow the same FWHM frequency relation. L_1 and L_2 have same evolution in FWHM with frequency, where as $L_{1/2}$ does not follow the same trend. Based on this difference and other analysis of the rms, energy spectra in frequency, they suggest that $L_{1/2}$ is not an harmonic artefact, but is an oscillation which has additional modulations than that of L_1 and L_2 . Our result agrees with this interpretation.

In the case of LFQPOs in GRS 1915+105, Ratti et al. (2012) conclude that for L_1 and L_2 , the coherence decreases as frequency increases, which suggests FM of these components. While L_1 and L_2 are indistinguishable in their dependence of coherence on frequency, $L_{1/2}$ has a much lower coherence than it would, had it followed the same coherence–frequency relation. The constant width of $L_{1/2}$ indicates AM, which is large enough to overwhelm any possible frequency dependence. We have a similar conclusion for QPOs across our sample of BHBs, see the top panel of Fig. 3. From the lower panel of Fig. 3, it is clear that only the $L_{1/2}$ components are amplitude modulated, while the coherence of the fundamental and its harmonic is frequency dependent even at lower frequencies.

Comparing our results with Rao et al. (2010) and Ratti et al. (2012) we find that the FWHM–frequency relations of type-C QPOs reported by them are also seen across the sample of sources which we have analysed. The sub-harmonic and second harmonic components are amplitude modulated, which reduces their quality factor much more than the fundamental one, which is frequency modulated. Moreover, the sub-harmonic has a much larger AM compared to the other QPOs in the harmonic series and this effect is seen across a sample of black hole binaries.

Over the dependence of FWHM and frequency of $L_{1/2}$, L_1 and L_2 , we detect a scatter in the FWHM. This scatter is not related to any observational effects such as observation duration as we detect no correlation in the FWHM and observation duration in case of QPOs which are nearly equal in frequency. The investigation of the

scatter which can have a significant impact on the interpretation of the data is beyond the scope of this paper and will be done in the future on the basis of a larger data base of QPOs.

Whatever the nature of the observed frequencies and the physical origin of the variability, the modulation which gives rise to the

Table 2. Details of observations used in our analysis. These observations were obtained over a number of years in different campaigns of the *RXTE* mission. We report frequency (ν_1) and full width at half-maximum (Δ) for the Fundamental (L_1), harmonic (L_2) and sub-harmonic ($L_{1/2}$). The errors are quadratic means of the 1σ errors obtained in XSPEC. A feature which is not significantly detected is indicated by ‘–’.

	Observation	Date (yyyy-mm-dd)	Fundamental		Harmonic		Subharmonic	
			ν_0 (Hz)	Δ (Hz)	ν_0 (Hz)	Δ (Hz)	ν_0 (Hz)	Δ (Hz)
XTE J1550–564								
1	30 188-06-11-00	1998-09-16	3.99 ± 0.01	0.26 ± 0.01	7.91 ± 0.02	0.75 ± 0.05	2.02 ± 0.05	1.03 ± 0.12
2	30 191-01-01-00	1998-09-18	5.84 ± 0.02	0.83 ± 0.04	10.94 ± 0.09	2.66 ± 0.20	2.76 ± 0.10	0.96 ± 0.14
3	30 191-01-03-00	1998-09-20	6.88 ± 0.03	1.42 ± 0.05	–	–	3.84 ± 0.08	1.27 ± 0.22
4	30 191-01-06-00	1998-09-21	7.35 ± 0.09	1.34 ± 0.16	–	–	3.26 ± 0.11	2.86 ± 0.21
5	30 191-01-07-00	1998-09-21	5.76 ± 0.01	0.64 ± 0.03	11.16 ± 0.09	2.12 ± 0.30	2.59 ± 0.08	1.17 ± 0.22
6	30 191-01-15-00	1998-09-29	4.07 ± 0.01	0.32 ± 0.03	8.14 ± 0.01	0.87 ± 0.06	2.06 ± 0.04	0.78 ± 0.11
7	30 191-01-16-00	1998-09-29	3.16 ± 0.03	0.54 ± 0.04	5.98 ± 0.03	1.75 ± 0.18	1.53 ± 0.03	0.58 ± 0.12
8	30 191-01-16-01	1998-09-29	2.87 ± 0.01	0.27 ± 0.02	5.70 ± 0.02	0.68 ± 0.06	1.39 ± 0.04	0.41 ± 0.08
9	30 191-01-27-00	1998-10-10	5.79 ± 0.05	0.32 ± 0.07	9.96 ± 0.06	0.57 ± 0.23	2.68 ± 0.03	1.04 ± 0.14
10	30 191-01-27-01	1998-10-09	4.47 ± 0.01	0.31 ± 0.03	8.97 ± 0.04	1.48 ± 0.24	2.24 ± 0.04	0.63 ± 0.12
11	30 191-01-28-00	1998-10-11	4.20 ± 0.01	0.37 ± 0.02	8.39 ± 0.04	1.24 ± 0.18	2.06 ± 0.02	0.30 ± 0.07
12	30 191-01-28-01	1998-10-11	4.71 ± 0.01	0.43 ± 0.03	9.42 ± 0.04	1.62 ± 0.15	2.39 ± 0.03	0.79 ± 0.12
13	30 191-01-28-02	1998-10-12	4.83 ± 0.01	0.41 ± 0.02	9.93 ± 0.06	1.98 ± 0.25	2.40 ± 0.03	0.71 ± 0.11
14	30 191-01-29-00	1998-10-13	4.98 ± 0.01	0.57 ± 0.03	9.74 ± 0.04	1.71 ± 0.14	2.44 ± 0.03	0.76 ± 0.10
15	30 191-01-29-01	1998-10-13	6.48 ± 0.01	0.62 ± 0.02	9.85 ± 0.05	2.01 ± 0.18	2.45 ± 0.03	0.67 ± 0.10
16	30 191-01-30-00	1998-10-14	6.85 ± 0.02	1.21 ± 0.06	12.94 ± 0.04	1.10 ± 0.14	3.31 ± 0.02	0.84 ± 0.08
17	30 191-01-31-00	1998-10-15	6.71 ± 0.02	0.73 ± 0.05	13.60 ± 0.14	3.43 ± 0.50	3.42 ± 0.04	1.13 ± 0.14
18	30 191-01-31-01	1998-10-15	6.71 ± 0.01	0.73 ± 0.06	13.49 ± 0.16	3.42 ± 0.54	3.49 ± 0.04	1.12 ± 0.10
19	40 401-01-57-00	1999-03-13	6.73 ± 0.04	1.11 ± 0.08	13.54 ± 0.18	3.73 ± 0.40	3.40 ± 0.04	1.11 ± 0.08
20	50 134-01-04-00	2000-05-12	6.93 ± 0.03	0.61 ± 0.08	14.31 ± 0.19	3.29 ± 1.06	–	–
21	50 134-01-05-00	2000-05-14	4.46 ± 0.02	0.62 ± 0.06	9.21 ± 0.15	2.65 ± 0.66	–	–
22	50 134-02-01-01	2000-04-26	4.04 ± 0.01	0.40 ± 0.03	8.19 ± 0.06	1.18 ± 0.20	–	–
23	50 135-01-01-00	2000-05-16	4.15 ± 0.03	0.70 ± 0.09	8.51 ± 0.24	2.05 ± 0.74	–	–
XTE J1650–500								
24	60 113-01-12-00	2001-09-18	4.09 ± 0.03	0.68 ± 0.10	8.91 ± 0.16	1.71 ± 0.37	–	–
25	60 113-01-12-01	2001-09-18	4.36 ± 0.03	0.92 ± 0.19	9.07 ± 0.16	2.08 ± 0.69	–	–
26	60 113-01-12-02	2001-09-18	4.84 ± 0.03	0.81 ± 0.03	9.77 ± 1.63	1.09 ± 0.14	–	–
27	60 113-01-12-03	2001-09-18	4.63 ± 0.06	1.48 ± 0.40	9.03 ± 0.71	7.95 ± 1.75	–	–
28	60 113-01-12-04	2001-09-18	5.17 ± 0.05	0.91 ± 0.25	10.51 ± 0.13	1.96 ± 0.43	–	–
29	60 113-01-13-00	2001-09-19	5.90 ± 0.26	0.90 ± 0.31	11.53 ± 0.16	1.41 ± 1.05	–	–
30	60 113-01-13-01	2001-09-19	6.34 ± 0.06	1.67 ± 0.28	12.20 ± 0.08	0.28 ± 0.38	–	–
31	60 113-01-13-02	2001-09-19	6.84 ± 0.08	1.52 ± 0.50	14.21 ± 0.25	3.28 ± 0.93	–	–
H 1743–322								
32	80138-01-04-00G	2003-04-06	3.73 ± 0.01	0.39 ± 0.02	7.34 ± 0.03	0.54 ± 0.12	1.83 ± 0.08	1.06 ± 0.32
33	80138-01-06-00	2003-04-10	3.21 ± 0.01	0.36 ± 0.02	6.37 ± 0.03	0.72 ± 0.10	1.56 ± 0.05	0.97 ± 0.18
34	80138-01-07-00	2003-04-12	7.16 ± 0.02	1.37 ± 0.07	–	–	–	–
35	80146-01-02-00	2003-04-15	5.50 ± 0.02	0.68 ± 0.06	10.80 ± 0.17	2.22 ± 0.35	–	–
36	80146-01-03-00	2003-04-17	4.72 ± 0.01	0.51 ± 0.04	9.38 ± 0.12	1.58 ± 0.37	–	–
37	80146-01-03-01	2003-04-18	7.18 ± 0.03	1.39 ± 0.03	–	–	–	–
38	80146-01-29-00	2003-05-07	5.51 ± 0.02	0.68 ± 0.11	10.78 ± 0.19	4.17 ± 0.66	2.56 ± 0.07	0.58 ± 0.51
39	80146-01-30-00	2003-05-08	4.37 ± 0.01	0.47 ± 0.03	8.52 ± 0.04	2.55 ± 0.14	2.18 ± 0.04	1.08 ± 0.31
40	80146-01-31-00	2003-05-09	5.31 ± 0.04	0.67 ± 0.13	10.28 ± 0.25	4.15 ± 0.78	–	–
41	80146-01-32-00	2003-05-10	4.98 ± 0.08	0.48 ± 0.12	9.68 ± 0.07	1.24 ± 0.28	2.43 ± 0.10	1.24 ± 0.34
42	80146-01-33-00	2003-05-11	6.22 ± 0.02	0.94 ± 0.05	–	–	2.91 ± 0.12	1.27 ± 0.33
43	80146-01-33-01	2003-05-11	5.99 ± 0.02	0.85 ± 0.08	–	–	2.96 ± 0.16	1.26 ± 0.55
44	80146-01-43-00	2003-05-20	3.77 ± 0.01	0.34 ± 0.03	7.51 ± 0.03	0.70 ± 0.09	1.89 ± 0.04	0.89 ± 0.17
45	80146-01-43-01	2003-05-20	3.81 ± 0.01	0.45 ± 0.03	7.40 ± 0.09	2.07 ± 0.43	1.84 ± 0.08	0.59 ± 0.22
46	80146-01-44-00	2003-05-21	3.79 ± 0.01	0.30 ± 0.02	7.49 ± 0.04	1.48 ± 0.11	1.90 ± 0.04	0.68 ± 0.09
47	80146-01-46-00	2003-05-23	4.68 ± 0.01	0.44 ± 0.02	9.25 ± 0.05	0.95 ± 0.15	2.34 ± 0.06	1.07 ± 0.21

Table 2 – continued

	Observation	Date (yyyy-mm-dd)	Fundamental		Harmonic		Subharmonic	
			ν_0 (Hz)	Δ (Hz)	ν_0 (Hz)	Δ (Hz)	ν_0 (Hz)	Δ (Hz)
48	80146-01-47-00	2003-05-24	7.05 ± 0.02	1.44 ± 0.05	–	–	3.29 ± 0.07	1.03 ± 0.17
XTE J1859+226								
49	40 124-01-08-00	1999-10-14	4.39 ± 0.01	0.48 ± 0.02	8.80 ± 0.04	1.94 ± 0.11	2.15 ± 0.04	0.71 ± 0.07
50	40 124-01-09-00	1999-10-14	4.95 ± 0.01	0.52 ± 0.03	9.87 ± 0.05	0.86 ± 0.19	2.46 ± 0.04	0.92 ± 0.12
51	40 124-01-10-00	1999-10-14	5.76 ± 0.02	0.45 ± 0.05	11.61 ± 0.09	1.90 ± 0.01	3.09 ± 0.05	0.24 ± 0.10
52	40 124-01-11-00	1999-10-15	5.96 ± 0.02	0.62 ± 0.05	12.07 ± 0.10	1.36 ± 0.33	3.02 ± 0.06	0.91 ± 0.14
53	40 124-01-15-00	1999-10-22	6.14 ± 0.03	0.63 ± 0.09	12.21 ± 0.12	1.11 ± 0.46	2.93 ± 0.08	0.88 ± 0.36
54	40 124-01-18-00	1999-10-20	5.89 ± 0.01	0.56 ± 0.04	11.82 ± 0.12	1.54 ± 0.40	2.86 ± 0.05	0.93 ± 0.17
55	40 124-01-19-00	1999-10-20	5.18 ± 0.01	0.57 ± 0.03	10.41 ± 0.07	2.28 ± 0.31	2.57 ± 0.05	1.24 ± 0.18
56	40 124-01-20-00	1999-10-20	6.47 ± 0.02	0.78 ± 0.07	13.02 ± 0.20	2.59 ± 0.75	3.32 ± 0.08	1.28 ± 0.24
57	40 124-01-21-00	1999-10-21	6.33 ± 0.02	0.81 ± 0.05	12.98 ± 0.14	2.28 ± 0.57	3.18 ± 0.05	1.05 ± 0.15
58	40 124-01-25-00	1999-10-23	6.19 ± 0.02	0.68 ± 0.08	12.54 ± 0.19	3.43 ± 0.78	3.18 ± 0.10	0.96 ± 0.30
4U 1630–47								
59	80 117-01-21-01	2004-03-04	5.11 ± 0.03	0.27 ± 0.08	–	–	–	–
60	80 117-01-22-00	2004-03-05	4.02 ± 0.02	0.17 ± 0.04	–	–	–	–
GX 339–4								
61	60 705-01-70-00	2004-08-13	4.10 ± 0.18	0.31 ± 0.07	8.86 ± 0.37	1.02 ± 0.39	2.40 ± 0.11	0.66 ± 0.22
62	70 109-04-01-00	2002-05-11	5.44 ± 0.01	0.76 ± 0.04	11.14 ± 0.07	1.88 ± 0.25	2.71 ± 0.04	0.70 ± 0.14
63	70 109-04-01-01	2002-05-11	5.39 ± 0.01	0.70 ± 0.05	10.90 ± 0.04	2.64 ± 0.55	2.63 ± 0.03	0.98 ± 0.13
64	70 109-04-01-02	2002-05-12	5.35 ± 0.03	0.89 ± 0.08	10.66 ± 0.10	1.62 ± 0.27	2.68 ± 0.08	0.59 ± 0.15
65	70 110-01-11-00	2002-05-12	5.75 ± 0.04	0.65 ± 0.21	11.69 ± 0.20	2.99 ± 1.01	3.03 ± 0.11	1.30 ± 0.50
66	90 110-02-01-01	2004-08-15	5.09 ± 0.06	0.97 ± 0.73	10.79 ± 0.33	2.95 ± 1.59	2.76 ± 0.17	1.05 ± 0.86
67	90 110-02-01-02	2004-08-15	5.18 ± 0.11	0.51 ± 0.21	10.97 ± 0.34	2.36 ± 0.17	3.39 ± 0.35	1.68 ± 0.21
68	92 428-01-04-00	2007-02-12	4.34 ± 0.01	0.40 ± 0.02	8.77 ± 0.04	0.85 ± 0.09	2.16 ± 0.05	0.78 ± 0.11
69	92 428-01-04-01	2007-02-12	4.21 ± 0.02	0.31 ± 0.04	8.47 ± 0.05	0.82 ± 0.13	–	–
70	92 428-01-04-02	2007-02-13	4.13 ± 0.01	0.37 ± 0.03	8.40 ± 0.06	1.08 ± 0.13	2.17 ± 0.09	0.40 ± 0.16
71	92 428-01-04-03	2007-02-13	5.05 ± 0.02	0.50 ± 0.04	10.05 ± 0.06	0.95 ± 0.17	2.54 ± 0.06	0.38 ± 0.13
72	92 428-01-04-04	2007-02-14	5.61 ± 0.02	0.64 ± 0.05	11.58 ± 0.16	2.05 ± 0.58	2.91 ± 0.04	0.27 ± 0.15
73	92 035-01-02-01	2007-02-02	0.26 ± 0.01	0.04 ± 0.01	–	–	–	–
74	92 035-01-02-07	2007-02-07	0.90 ± 0.01	0.06 ± 0.01	–	–	–	–
75	92 035-01-02-08	2007-02-06	0.55 ± 0.01	0.06 ± 0.03	–	–	–	–
76	92 704-03-11-00	2007-05-14	4.03 ± 0.02	0.08 ± 0.07	–	–	–	–
77	92 704-03-11-01	2007-05-15	3.25 ± 0.09	0.32 ± 0.15	–	–	–	–
78	92 704-03-12-00	2007-05-16	2.70 ± 0.31	0.44 ± 0.30	–	–	–	–
79	92 704-03-12-01	2007-05-17	2.70 ± 0.05	0.37 ± 0.28	–	–	–	–
80	92 704-04-01-01	2007-05-16	2.99 ± 0.09	0.70 ± 0.39	–	–	–	–
81	92 704-04-01-02	2007-05-16	2.75 ± 0.12	0.43 ± 0.39	–	–	–	–
82	92 704-04-01-04	2007-05-17	2.81 ± 0.09	0.61 ± 0.27	–	–	–	–
83	92704-04-01-05	2007-05-17	2.93 ± 0.22	1.02 ± 0.69	–	–	–	–
84	95409-01-12-04	2010-03-31	0.19 ± 0.01	0.03 ± 0.01	–	–	–	–
85	95409-01-13-00	2010-04-03	0.27 ± 0.01	0.04 ± 0.01	–	–	–	–
86	95409-01-13-01	2010-04-07	0.37 ± 0.01	0.07 ± 0.02	–	–	–	–
87	95409-01-13-02	2010-04-05	0.32 ± 0.01	0.05 ± 0.02	–	–	–	–
88	95409-01-13-03	2010-04-02	0.22 ± 0.01	0.01 ± 0.01	–	–	–	–
89	95409-01-13-04	2010-04-04	0.29 ± 0.01	0.03 ± 0.01	–	–	–	–
90	95409-01-13-05	2010-04-06	0.37 ± 0.01	0.03 ± 0.02	–	–	–	–
91	95409-01-13-06	2010-04-08	0.45 ± 0.01	0.04 ± 0.02	–	–	–	–
92	95409-01-14-01	2010-04-10	1.05 ± 0.01	0.07 ± 0.02	–	–	–	–
93	95409-01-14-02	2010-04-11	2.49 ± 0.01	0.16 ± 0.02	–	–	–	–
94	95409-01-14-03	2010-04-12	1.58 ± 0.01	0.03 ± 0.02	3.15 ± 0.02	0.15 ± 0.03	–	–
95	95409-01-15-01	2010-04-17	5.66 ± 0.02	0.28 ± 0.09	–	–	–	–
96	95409-01-17-02	2010-05-02	6.75 ± 0.11	1.14 ± 0.39	–	–	–	–
97	96409-01-06-01	2011-02-06	4.56 ± 0.18	1.51 ± 0.63	–	–	–	–

width of the peaks detected in the PDS appears to be complex. Both amplitude and FM seem to be at work on separate harmonics of the signal, yielding a complex pattern which can be tested against theoretical models.

ACKNOWLEDGEMENTS

DP and KS thank IUCAA, Pune, India and INAF–OAB, Merate, Italia for their support and thank Ranjeev Misra and Gulab Dewangan for discussions during their visits to IUCAA. SM thanks the ESA fellowship programme. TB acknowledges support from INAF PRIN 2012-6.

This research has made use of the General High-energy Aperiodic Timing Software (GHATS) package developed by T. M. Belloni at INAF – Osservatorio Astronomico di Brera.

This project is supported by the Department of Science and Technology (DST), India, and Ministry of External Affairs, Italy under the Joint Indo-Italian project, grant order number INT/ItalyP-3/2012 (ER).

This research has made use of NASA’s Astrophysics Data System. This research has made use of data obtained through the High Energy Astrophysics Science Archive Research Centre Online Service, provided by the NASA/Goddard Space Flight Center.

We thank the anonymous referee for his or her comments and suggestions.

REFERENCES

- Belloni T. M., 2010, in Belloni T., ed., *Lecture Notes in Physics*, Vol. 794, The Jet Paradigm. Springer-Verlag Berlin, p. 53
- Belloni T., Hasinger G., 1990, *A&A*, 227, L33
- Belloni T., Psaltis D., van der Klis M., 2002, *ApJ*, 572, 392
- Belloni T. M., Motta S. E., Muñoz-Darias T., 2011, *Bull. Astron. Soc. India*, 39, 409
- Boutloukos S., van der Klis M., Altamirano D., Klein-Wolt M., Wijnands R., Jonker P. G., Fender R. P., 2006, *ApJ*, 653, 1435
- Casella P., Belloni T., Homan J., Stella L., 2004, *A&A*, 426, 587
- Casella P., Belloni T., Stella L., 2005, *ApJ*, 629, 403
- Elvis M., Page C. G., Pounds K. A., Ricketts M. J., Turner M. J. L., 1975, *Nature*, 257, 656
- Homan J., Klein-Wolt M., Rossi S., Miller J. M., Wijnands R., Belloni T., van der Klis M., Lewin W. H. G., 2003, *ApJ*, 586, 1262
- Homan J., Miller J. M., Wijnands R., van der Klis M., Belloni T., Steeghs D., Lewin W. H. G., 2005, *ApJ*, 623, 383
- Ingram A., Done C., 2011, *MNRAS*, 415, 2323
- Jahoda K., Markwardt C. B., Radeva Y., Rots A. H., Stark M. J., Swank J. H., Strohmayer T. E., Zhang W., 2006, *ApJS*, 163, 401
- Leahy D. A., Darbro W., Elsner R. F., Weisskopf M. C., Kahn S., Sutherland P. G., Grindlay J. E., 1983, *ApJ*, 266, 160
- McClintock J. E., Remillard R. A., Rupen M. P., Torres M. A. P., Steeghs D., Levine A. M., Orosz J. A., 2009, *ApJ*, 698, 1398
- Markwardt C., 2001, *Ap&SS*, 276, 209
- Markwardt C. B., Swank J. H., Taam R. E., 1999, *ApJ*, 513, L37
- Motta S., Muñoz-Darias T., Casella P., Belloni T., Homan J., 2011, *MNRAS*, 418, 2292
- Motta S., Homan J., Muñoz Darias T., Casella P., Belloni T. M., Hiemstra B., Méndez M., 2012, *MNRAS*, 427, 595
- Rao F., Belloni T., Stella L., Zhang S. N., Li T., 2010, *ApJ*, 714, 1065
- Ratti E. M., Belloni T. M., Motta S. E., 2012, *MNRAS*, 423, 694
- Remillard R. A., McClintock J. E., 2006, *ARA&A*, 44, 49
- Remillard R. A., Sobczak G. J., Muno M. P., McClintock J. E., 2002, *ApJ*, 564, 962
- Rodriguez J., Varnière P., 2011, *ApJ*, 735, 79
- Tomsick J. A., Kaaret P., 2000, *ApJ*, 537, 448
- Tomsick J. A., Corbel S., Goldwurm A., Kaaret P., 2005, *ApJ*, 630, 413
- Trudolyubov S. P., Borozdin K. N., Priedhorsky W. C., 2001, *MNRAS*, 322, 309
- van der Klis M., 2006, in Lewin W. H. G., van der Klis M., eds, *Compact Stellar X-Ray Sources*. Cambridge Univ. Press, Cambridge, pp. 39–112
- Zhang W., Giles A. B., Jahoda K., Soong Y., Swank J. H., Morgan E. H., 1993, in Siegmund O., ed., *Proc. SPIE Conf. Ser.*, Vol. 2006, EUV, X-Ray, and Gamma-Ray Instrumentation for Astronomy IV. p. 324
- Zhang W., Jahoda K., Swank J. H., Morgan E. H., Giles A. B., 1995, *ApJ*, 449, 930

This paper has been typeset from a $\text{\TeX}/\text{\LaTeX}$ file prepared by the author.