



<b>Publication Year</b>	2019
<b>Acceptance in OA</b>	2021-02-15T12:59:58Z
<b>Title</b>	A massive cluster at $z = 0.288$ caught in the process of formation: The case of Abell 959
<b>Authors</b>	Birzan, L., Rafferty, D. A., CASSANO, Rossella, BRUNETTI, Gianfranco, van Weeren, R. J., Brüggén, M., Intema, H. T., De Gasperin, F., Andrade-Santos, F., BOTTEON, Andrea, Röttgering, H. J. A., Shimwell, T. W.
<b>Publisher's version (DOI)</b>	10.1093/mnras/stz1456
<b>Handle</b>	<a href="http://hdl.handle.net/20.500.12386/30396">http://hdl.handle.net/20.500.12386/30396</a>
<b>Journal</b>	MONTHLY NOTICES OF THE ROYAL ASTRONOMICAL SOCIETY
<b>Volume</b>	487

# A massive cluster at $z = 0.288$ caught in the process of formation: The case of Abell 959

L. Bîrzan,<sup>1\*</sup> D. A. Rafferty,<sup>1</sup> R. Cassano,<sup>2</sup> G. Brunetti,<sup>2</sup> R. J. van Weeren,<sup>3</sup>  
 M. Brüggen,<sup>1</sup> H. T. Intema<sup>1b</sup>,<sup>3,4</sup> F. de Gasperin<sup>1b</sup>,<sup>1</sup> F. Andrade-Santos,<sup>5</sup> A. Botteon<sup>1b</sup>,<sup>2,6</sup>  
 H. J. A. Röttgering<sup>3</sup> and T. W. Shimwell<sup>7</sup>

<sup>1</sup>Hamburger Sternwarte, Universität Hamburg, Gojenbergsweg 112, D-21029 Hamburg, Germany

<sup>2</sup>INAF-Istituto di Radioastronomia, via P. Gobetti, 101, I-40129 Bologna, Italy

<sup>3</sup>Leiden Observatory, Leiden University, Oort Gebouw, PO Box 9513, NL-2300 RA Leiden, the Netherlands

<sup>4</sup>International Centre for Radio Astronomy Research – Curtin University, GPO Box U1987, Perth, WA 6845, Australia

<sup>5</sup>Harvard-Smithsonian Center for Astrophysics, 60 Garden Street, Cambridge, MA 02138, USA

<sup>6</sup>Dipartimento di Fisica e Astronomia, Università di Bologna, via P. Gobetti 93/2, I-40129 Bologna, Italy

<sup>7</sup>Netherlands Institute for Radio Astronomy (ASTRON), PO Box 2, NL-7990 AA Dwingeloo, the Netherlands

Accepted 2019 May 20. Received 2019 April 26; in original form 2018 September 24

## ABSTRACT

The largest galaxy clusters are observed still to be forming through major cluster–cluster mergers, often showing observational signatures such as radio relics and giant radio haloes. Using LOFAR Two-meter Sky Survey data, we present new detections of both a radio halo (with a spectral index of  $\alpha_{143}^{1400} = 1.48_{-0.23}^{+0.06}$ ) and a likely radio relic in Abell 959, a massive cluster at a redshift of  $z = 0.288$ . Using a sample of clusters with giant radio haloes from the literature (80 in total), we show that the radio halo in A959 lies reasonably well on the scaling relations between the thermal and non-thermal power of the system. Additionally, we find evidence that steep-spectrum haloes tend to reside in clusters with high X-ray luminosities relative to those expected from cluster *luminosity–mass* (*LM*) scaling relations, indicating that such systems may preferentially lie at an earlier stage of the merger, consistent with the theory that some steep-spectrum haloes result from low-turbulence mergers. Lastly, we find that halo systems containing radio relics tend to lie at lower X-ray luminosities, relative to those expected from cluster *LM* scaling relations, for a given halo radio power than those without relics, suggesting that the presence of relics indicates a later stage of the merger, in line with simulations.

**Key words:** galaxies: clusters: individual: A959 – galaxies: clusters: intracluster medium – large-scale structure of Universe – radio continuum: galaxies – X-rays: galaxies: clusters.

## 1 INTRODUCTION

In the present-day Universe, many clusters are still forming through hierarchical processes and major merger events with neighbouring clusters (e.g. Press & Schechter 1974; Springel, Frenk & White 2006; Kravtsov & Borgani 2012). On smaller scales, non-gravitational processes, such as radiative cooling, supernova heating, and feedback from active galactic nuclei (AGN), are also important (Benson et al. 2003; Bîrzan et al. 2004; Scannapieco & Oh 2004; Voit, Kay & Bryan 2005; McNamara & Nulsen 2007; Alexander & Hickox 2012; Fabian 2012). As such, clusters of galaxies have wide-ranging astrophysical applications. For example, they can be used to constrain the cosmological parameters (Allen, Evrard &

Mantz 2011) and to provide constraints on the properties of dark matter (Clowe, Gonzalez & Markevitch 2004; Markevitch et al. 2004; Clowe et al. 2006; Harvey et al. 2015).

All of the processes important to the formation of clusters dissipate energy into the intracluster medium (ICM) through shocks: e.g. accretion shocks, merger shocks, AGN-related shocks, or ICM bulk motion shocks (see the reviews of Brüggen et al. 2012; Brunetti & Jones 2014). Observationally, merger shocks have been detected in *Chandra* X-ray and *XMM-Newton* observations of a small number of merging clusters (e.g. Bullet Cluster, A520, A521, A2146, A3667, A754, El Gordo, A665, A2219, and A2744; Markevitch et al. 2002; Markevitch et al. 2005; Giacintucci et al. 2008; Finoguenov et al. 2010; Russell et al. 2010; Macario et al. 2011; Bourdin et al. 2013; Shimwell et al. 2015; Botteon et al. 2016; Dasadia et al. 2016; Eckert et al. 2016; Sarazin et al. 2016;

\* E-mail: lbirzan@hs.uni-hamburg.de

Canning et al. 2017; Pearce et al. 2017) with modest Mach numbers of  $M = 1.5\text{--}3$  and, in radio images, in the form of large-scale, diffuse emission associated with the shocks (e.g. Giacintucci et al. 2008; Shimwell et al. 2014; Vacca et al. 2014; Botteon et al. 2016; Golovich et al. 2018). Such radio structures, known as *radio relics* (or radio shocks, see the review of van Weeren et al. 2019), have polarized emission resulting from ordered magnetic fields aligned by the shock. The favoured mechanism for the relic creation is the acceleration of electrons by diffuse shock acceleration, where the electrons can either come from the thermal pool (e.g. Ensslin et al. 1998; Pfrommer, Enßlin & Springel 2008) or be mildly relativistic cosmic rays (CRE; e.g. fossil electrons from previous AGN or merger activity; Markevitch et al. 2005; Kang, Ryu & Jones 2012; Pinzke, Oh & Pfrommer 2013; van Weeren et al. 2017a).

In addition to radio relics, a number of luminous X-ray clusters show diffuse, cluster-scale radio emission known as *giant radio haloes* (RHs; Venturi et al. 2007, 2008; Kale et al. 2013, 2015). The giant RHs are thought to form from the post-merger turbulence of seed suprathermal CRE (e.g. turbulent re-acceleration model; Brunetti et al. 2001; Petrosian 2001; Cassano, Brunetti & Setti 2006; Cassano et al. 2007; Brunetti et al. 2009; Cassano et al. 2010a; Brunetti & Lazarian 2011; Donnert et al. 2013; Brunetti & Lazarian 2016; Brunetti, Zimmer & Zandanel 2017; Eckert et al. 2017; Pinzke, Oh & Pfrommer 2017). In support of this scenario, there exists a connection between the presence of a halo and the presence of merging activity, with the radio luminosity of the halo ( $P_{1.4\text{GHz}}$ ) correlating with the X-ray luminosity of the cluster ( $L_X$ ), the mass of the cluster ( $M$ ), or the Sunyaev–Zel’dovich signal ( $Y_{\text{SZ}}$ ), albeit with large scatter (Brunetti et al. 2007, 2009; Cassano et al. 2007; Cassano et al. 2010b; Basu 2012; Cassano et al. 2013; Kale et al. 2015).

Giant RHs are generally observed in clusters whose X-ray gas has a long central cooling time,  $t_{\text{cool}} > 10^9$  yr. These clusters are known as non-cooling flow (NCF) clusters, whereas those with shorter cooling times are known as cooling flow (CF) or cool-core clusters. In NCFs, the radio power of the central radio source is typically below  $L_{1.4\text{GHz}} < 2.5 \times 10^{30} \text{ erg s}^{-1} \text{ Hz}^{-1}$  (Bîrzan et al. 2012). However, there are a few systems known to have a short central cooling time and to possess a giant RH (e.g. EL Gordo, H1821 + 643; Russell et al. 2010; Bonafede et al. 2014a; Lindner et al. 2014; Bîrzan et al. 2017). There are also systems that are seen to have an intermediate (or large) cooling time and a two-component RH: an RH plus a radio mini-halo (e.g. RXJ1347.5-1145, A2319, A2142, RXJ1720.1+2638, PSZ1G139.61 + 24; Ferrari et al. 2011; Storm, Jeltama & Rudnick 2015; Venturi et al. 2017; Savini et al. 2018, 2019). The details of how CF and NCF systems form and relate to each other are still not fully understood (e.g. Burns et al. 2008; Poole et al. 2008; Parrish, Quataert & Sharma 2010; Pfrommer, Chang & Broderick 2012; Rasia et al. 2015; Hahn et al. 2017; Medezinski et al. 2017), and the observational bias of X-ray selected samples complicates the issue (Andrade-Santos et al. 2017; Rossetti et al. 2017).

Giant RHs and radio relics are found in a significant percentage of massive clusters [e.g.  $\sim 23$  per cent for Extended Giant Meterwave Radio Telescope -GMRT- RH Survey (EGRHS); Kale et al. 2013]. Therefore, to date, most radio campaigns searching for such RHs have focused on luminous X-ray clusters ( $L_X > 5 \times 10^{44} \text{ erg s}^{-1}$ ), typically between redshifts of 0.2 and 0.4 (e.g. the EGRHS; Venturi et al. 2007, 2008, 2013; Kale et al. 2013, 2015). However, semi-analytical models and cosmological simulations have predicted that sensitive low-frequency radio observations, such as those made with LOFAR at  $\sim 150$  MHz, should commonly find haloes in less massive

systems (Cassano et al. 2006, 2010a, 2012; Zandanel, Pfrommer & Prada 2014) as well as thousands of more radio relics (Hoeft et al. 2011; Nuza et al. 2012).

Abell 959 (hereafter A959), the subject of this study, is situated at a redshift of  $z = 0.288$ , has a mass of  $M_{\text{SZ500}} = (5.08 \pm 0.47) \times 10^{15} M_{\odot}$  (Planck Collaboration XXIX 2014) and multiple galaxy concentrations (Boschin, Barrena & Girardi 2009). Multiple mass concentrations in A959 were identified from a weak gravitational lensing analysis (Dahle et al. 2002, 2003). Among these concentrations is a putative dark mass clump (WL 1017.3 + 5931) that is not associated with a known galaxy concentration or X-ray gas clump. Furthermore, Boschin et al. (2009), using spectroscopic observations, found a redshift of  $z = 0.288$ , lower than the value of  $z = 0.353$  used previously in the literature (see also Irgens et al. 2002). They concluded that the cluster is in an early, dynamical stage of formation and might be forming along two main directions of mass accretion. Diffuse radio emission in A959 was reported in Cooray et al. (1998) and Owen, Morrison & Voges (1999), and the latter found a flux density at 1.4 GHz of 3 mJy and a size of 0.8 Mpc. However, A959 has not been studied at lower frequencies or in detail in X-rays up to now.

In this paper, we present the results of a multiwavelength study of A959. We use LOFAR data to study the radio emission and X-ray data from the *XMM-Newton* and *Chandra* X-ray observatories to measure the cluster properties and to place constraints on gas mass fraction of the putative dark mass clump (WL 1017.3 + 5931). Using a large sample drawn from the literature, we place A959 in context with other RH systems and we investigate the evolution of the X-ray and radio properties of RH clusters. We adopt  $H_0 = 70 \text{ km s}^{-1} \text{ Mpc}^{-1}$ ,  $\Omega_{\Lambda} = 0.7$ , and  $\Omega_{\text{M}} = 0.3$  throughout.

## 2 DATA ANALYSIS

### 2.1 LOFAR data

A959 was observed with the High-Band Array (HBA) of LOFAR at frequencies of 120–170 MHz on 2015 April 25 for 8 h as part of observing program LC3-008 (taken as part of LoTSS, the LOFAR Two-meter Sky Survey; Shimwell et al. 2017). A 10-min observation of a calibrator, 3C196, was made immediately preceding the A959 observation and is used to set the overall flux (Scaife & Heald 2012) and to remove instrumental phase effects from the visibility data. Pre-processing of the data from both observations included flagging of radio-frequency interference and averaging in time and frequency (to reduce the raw visibility data to a manageable size). These pre-processed data were obtained from the LOFAR long-term archive and further processed using the PREFACTOR<sup>1</sup> and FACTOR pipelines<sup>2</sup> to calibrate and image the data using the facet-calibration scheme described in van Weeren et al. (2016a). Version 2.0.2 of PREFACTOR and version 1.3 of FACTOR were used.

The PREFACTOR pipeline first derives the bandpass calibration and corrects for instrumental phase effects using the 3C196 calibrator observation. For each station, amplitude and phase corrections, plus an additional term that tracks the rotation angle between the XX and YY phases, were solved for each of the XX and YY polarizations every 4 s and 48.8 kHz. The model of 3C196 of XX was used for the calibration. For each time slot and station, the phase solutions are

<sup>1</sup> Available at <https://github.com/lofar-astron/prefactor>.

<sup>2</sup> Available at <https://github.com/lofar-astron/factor>.

then fit with a model that is comprised of a clock term that scales with the frequency,  $\nu$ , a differential total electron content term that scales as  $\nu^{-1}$ , and an offset term that is constant in frequency. The clock and offset solutions are then transferred, along with the amplitudes, to the target data. In this way, the direction-independent instrumental effects are corrected for.

Next, the PREFACTOR pipeline groups the data into bands of  $\approx 2$  MHz each, the maximum bandwidth over which frequency-dependent effects can be largely ignored (and therefore fit with a single solution in frequency). Each of these bands is then phase calibrated using a model of the field obtained from the TIFR GMRT Sky Survey catalog (TGSS; Intema et al. 2017) and imaged. The imaging is done in two passes, with the purpose of modelling the sources in the field out to the second null of the primary beam. To this end, two images are made of each band: one at a resolution of  $\sim 25$  arcsec, used to detect and model the compact emission, and one at a resolution of  $\sim 75$  arcsec, used to model any diffuse, extended emission not picked up in the higher resolution image. The lower resolution image is made of the residual visibilities, after subtraction of the higher resolution clean components. Components from both images are then subtracted from the uv-data to produce ‘source-free’ data sets suitable for use in FACTOR.

After PREFACTOR was run, FACTOR was used to correct for direction-dependent effects. The main direction-dependent effects in HBA LOFAR data are due to phase delays induced by the ionosphere and amplitude errors that occur due to inaccuracies in the LOFAR beam model. FACTOR corrects for these effects by faceting the field and solving for a single set of corrections for each facet. The field was divided into 45 facets, of which 12 were processed. The processed facets were those that contained very bright sources and those that neighbored on (or included) A959 (the 33 unprocessed facets contain only fainter, more distant sources that do not affect the Abell 959 facet). FACTOR was run with the default parameters. The full bandwidth was used in the imaging, resulting in an image with a frequency of 143.7 MHz and an rms noise of  $103 \mu\text{Jy beam}^{-1}$  at the field centre.

The global flux scale was checked by extracting the LOFAR flux densities of the 41 brightest unresolved sources in the processed facets and comparing them to the TGSS flux densities. We found the average ratio of LOFAR-to-TGSS flux density to be 1.05, approximately the ratio expected given the slightly different frequencies of the images (143.7 MHz for LOFAR and 150 MHz for the TGSS) and the average spectral index of radio sources ( $\approx -0.8$ ). We adopt a conservative systematic uncertainty of 15 per cent on all LOFAR flux densities throughout our analysis, as done in previous LOFAR HBA works.

Fig. 1 shows two images at 143.7 MHz: a high-resolution image, with a restoring beam with an FWHM of  $4.9 \text{ arcsec} \times 8.3 \text{ arcsec}$ , and a low-resolution residual image, made after subtracting compact emission, with a restoring beam of  $55 \text{ arcsec} \times 60 \text{ arcsec}$ . The compact emission was modelled by imaging with a uv minimum of  $4 \text{ k}\lambda$ , a cut that results in emission on scales of  $\gtrsim 60$  arcsec being excluded (see Fig. 1). The resulting clean components were then subtracted from the visibilities (using the FT and UVSUB tasks in CASA v4.7.1) and the low-resolution residual image made by tapering the uv-data with a Gaussian taper to achieve a resolution of  $\approx 40$  arcsec.

In the full-resolution image, a number of features are apparent: a source (source A) that is associated with the brightest cluster galaxy (BCG), with two lobes oriented approximately N–S; a source (source B) that is located to the north of the BCG and appears to be a head–tail radio galaxy; and a linear, relic-like feature (Source C)

that does not appear to be clearly associated with any optical galaxy. In the low-resolution residual image, diffuse emission is seen that fills most of the region between the BCG and the relic-like source C. We will discuss these features in detail in Section 3.

## 2.2 GMRT data

GMRT 325 MHz observations of A959 were obtained on 06-03-2017 (project ID 31\_009; PI de Gasperin). Visibilities were recorded over 33.3 MHz of bandwidth, starting with 20 min on calibrator 3C147, then 213 min on A959, and finally 16 min on 3C147 again. The data were processed using the SPAM pipeline (Intema et al. 2017) in the default mode, and calibrated using 3C147 while adopting the flux scale from Scaife & Heald (2012). This resulted in a final image with a central frequency of 322.7 MHz and an rms noise of  $84 \mu\text{Jy beam}^{-1}$  at the field centre.

The resulting 322.7 MHz GMRT image is shown in Fig. 2, with the sources identified in the high-resolution LOFAR image labelled. As with the LOFAR data, we searched for diffuse emission by modelling and subtracting the compact emission and imaging the residual data at lower resolution, but we did not detect any such emission. However, sources A and B are clearly detected in the GMRT image with very similar morphologies to those in the LOFAR image. Source C, the putative relic, is not detected (there is a hint of emission at its location, but its significance is low and may be a sidelobe of the bright source nearby).

## 2.3 Chandra data

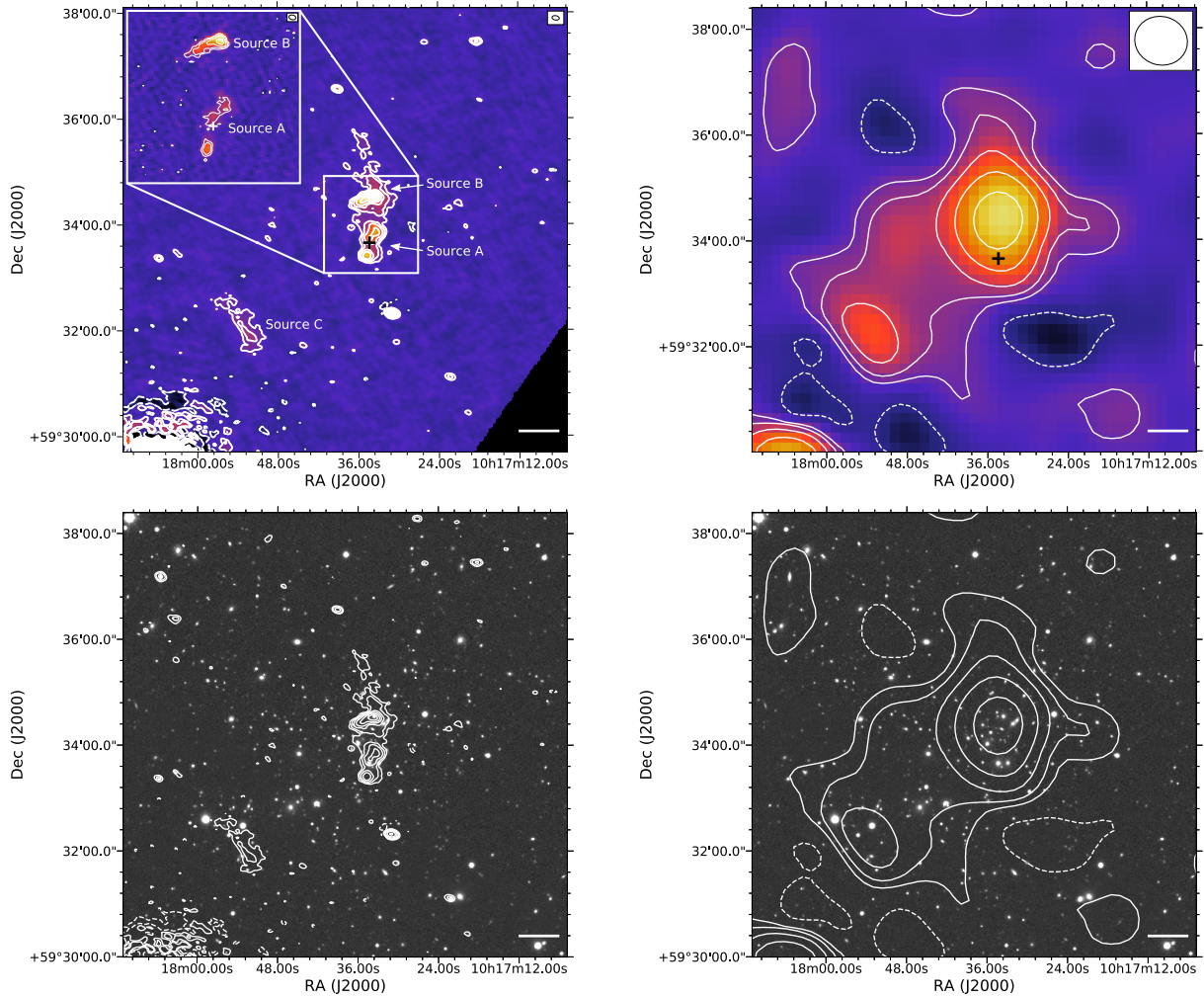
A959 was observed by the *Chandra* X-ray Observatory on 2016 February 1 for 7.6 ks (ObsID 17161, VFAINT mode) with the ACIS-I instrument. The data were obtained from the *Chandra* data archive and were reprocessed with CIAO 4.8<sup>3</sup> using CALDB 4.7.3.<sup>4</sup> The data were corrected for known time-dependent gain and charge transfer inefficiency problems, and the events files were filtered for flares using the CIAO script *lc\_clean* to match the filtering used during the construction of the blank-sky background files used for background subtraction.<sup>5</sup> A total of 7.1 ks remained after filtering. The background file was normalized to the count rate of the source image in the 10–12 keV band (after filtering). Lastly, point sources detected using the CIAO tool WAVDETECT were removed.

Spectra were extracted in annuli constructed to contain at least 500 counts each using the CIAO script *specextract*. For each spectrum, weighted responses were made, and a background spectrum was extracted in the same region of the CCD from the associated blank-sky background file. For the spectral fitting, XSPEC (Arnaud 1996) version 12.7.1 was used. Gas temperatures and densities were found by deprojecting these spectra using the direct spectral deprojection method of Sanders & Fabian (2007). The deprojected spectrum in each annulus was then fit in XSPEC with a single-temperature plasma model (MEKAL) absorbed by foreground absorption model (WABS), between the energies of 0.5 and 7.0 keV. In this fitting, the redshift was fixed to  $z = 0.288$  (Boschin et al. 2009), and the foreground hydrogen column density was fixed to  $N_{\text{H}} = 8.78 \times 10^{19} \text{ cm}^{-2}$ , the weighted-average Galactic value from Dickey & Lockman (1990).

<sup>3</sup>See [cxc.harvard.edu/ciao/index.html](http://cxc.harvard.edu/ciao/index.html).

<sup>4</sup>See [cxc.harvard.edu/caldb/index.html](http://cxc.harvard.edu/caldb/index.html).

<sup>5</sup>See <http://asc.harvard.edu/contrib/maxim/acisbg/>.



**Figure 1.** *Top row:* LOFAR images at 143.7 MHz at high resolution (*left*) and low resolution (*right*) after subtraction of the compact emission. The compact emission that was subtracted is shown in the inset image in the left-hand panel (see text for details). The restoring beam is indicated by the white ellipse in the upper right-hand corner, and the scale bar represents 200 kpc at the redshift of A959. Contours begin at three times the rms noise of 118.5 and 426.7  $\mu\text{Jy beam}^{-1}$  for the high- and low-resolutions images, respectively, and increase by a factor of 2. The first negative contour (at  $-3$  times the rms noise) is also plotted and is denoted by the dashed lines. The cross marks the location of the BCG. *Bottom row:* SDSS optical *r*-band image with the contours from the high-resolution (*left*) and low-resolution (*right*) LOFAR images overlaid. In *top left-hand panel*: Source A is the central radio source associated with the BCG (see Section 3.2); source B is a tailed radio galaxy and has a flux  $S_{143.7\text{MHz}} = 45.3$  mJy, and Source C is the candidate radio relic (see Section 3.6).

The density was calculated from the normalization of the MEKAL component, assuming  $n_e = 1.2n_H$  (for a fully ionized gas with hydrogen and helium mass fractions of  $X = 0.7$  and  $Y = 0.28$ ). The pressure in each annulus was calculated as  $P = nkT$ , where we have assumed an ideal gas taking  $n = 2n_e$ . The entropy is taken as  $S = kTn_e^{-2/3}$ . The cooling time was derived from the temperature, metallicity, and density using the cooling curves of Smith et al. (2001).

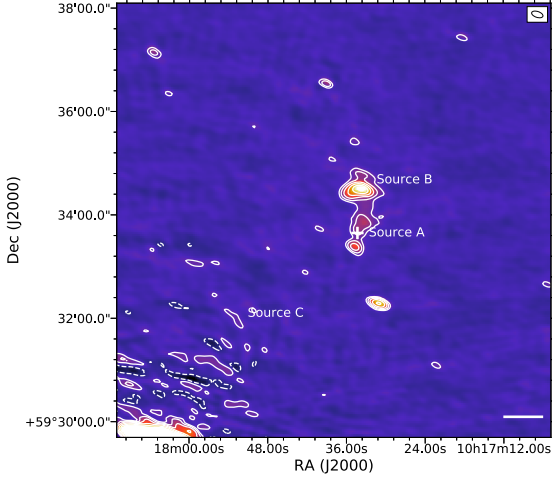
We also derived the X-ray luminosity and emission-weighted temperature inside the  $R_{500}$  region, defined as the region at which the mean mass density is 500 times the critical density at the cluster redshift (see Pratt et al. 2009).<sup>6</sup> We found  $R_{500} = 1100$  kpc using the mass  $M_{500} = (5.08 \pm 0.47) \times 10^{14} M_\odot$ , derived from the SZ signal  $Y_{\text{SZ}}$  (Planck Collaboration 2015).

<sup>6</sup>  $R_{500} = \left(\frac{M_{500}}{500\rho_c(z)4\pi/3}\right)^{1/3}$ , with  $\rho_c(z) = \frac{E(z)^2 3H_0^2}{8\pi G}$  and  $E(z)^2 = \Omega_M(1+z)^3 + \Omega_\Lambda$ .

We fit a spectrum extracted from this region between 0.5 and 7.0 keV in XSPEC (model  $wabs*flux*mekal$ ) with the abundance fixed at  $Z = 0.3Z_\odot$  (Mernier et al. 2017). We found a global temperature of  $kT = 6.05 \pm 1.13$  keV and an X-ray luminosity within  $R_{500}$  of  $L_{X500} = (4.51 \pm 0.33) \times 10^{44}$  erg s $^{-1}$  in the 0.5–7.0 keV band and  $L_{X500} = (2.36 \pm 0.17) \times 10^{44}$  erg s $^{-1}$  in 0.5–2.4 keV band. In the 0.1–2.4 keV band (the ROSAT X-ray band), we found a X-ray luminosity within  $R_{500}$  of  $L_{X500} = (2.77 \pm 0.18) \times 10^{44}$  erg s $^{-1}$ .

## 2.4 XMM-Newton data

A959 was observed by the XMM-Newton X-ray Observatory on 2007 April 12 for 41.5 ks (Obs. ID 0406630201). The data were obtained from the XMM-Newton archive and were processed with the EPCHAIN and EMCHAIN tasks in XMMAS version 16.0.0. Periods of background flaring were identified as times for which the total count rate exceeded 0.35 and 0.4 count s $^{-1}$  for the MOS



**Figure 2.** GMRT image at 322.7 MHz. Contours begin at three times the rms noise of  $130.6 \mu\text{Jy beam}^{-1}$ . The restoring beam is  $6.9 \text{ arcsec} \times 13.7 \text{ arcsec}$ . The scale bar, symbols, and annotations are the same as in Fig. 1, left.

and PN detectors, respectively. Unfortunately,  $\sim 90$  per cent of the data was affected by a strong flare: after filtering periods of high background, only 9.785 ks for the MOS detectors and 4.999 ks for the PN detector remained.

Exposure-corrected images were made with the EVSELECT and EEXPMAP tasks from the cleaned event lists between the energies of 0.5 and 2.5 keV, where the signal to noise of the soft thermal cluster emission is greatest. These images were then used to constrain the emissivity of the dark clump to the south of the main cluster (see Section 3.7). The background in the region of the dark clump is dominated by the cluster emission. For this region, we use as the background count rate the mean count rate in an annulus, centred on the cluster, with inner and outer radii that match those of the dark clump (see Fig. 3).

We also extracted a spectrum within the  $R_{500}$  region ( $R_{500} = 1099 \text{ kpc}$ ) using the MOS1 data and a local background region that is free of any cluster emission. We fitted the above spectrum in

XSPEC with a fixed  $N_{\text{H}}$ , fixed redshift and fixed abundance  $Z = 0.3 Z_{\odot}$ , and found a temperature of  $kT = 8.55 \pm 2.30 \text{ keV}$  and an X-ray luminosity within  $R_{500}$  region of  $L_{X500} = (4.97 \pm 0.35) \times 10^{44} \text{ erg s}^{-1}$  in the 0.5–7.0 keV band and  $L_{X500} = (3.24 \pm 0.46) \times 10^{44} \text{ erg s}^{-1}$  in the 0.1–2.4 keV band. Therefore, the *Chandra* and *XMM-Newton* values for luminosity and temperature agree within the  $1\sigma$  errors. For convenience, we will use the luminosity derived from the *XMM-Newton* data in further calculations.

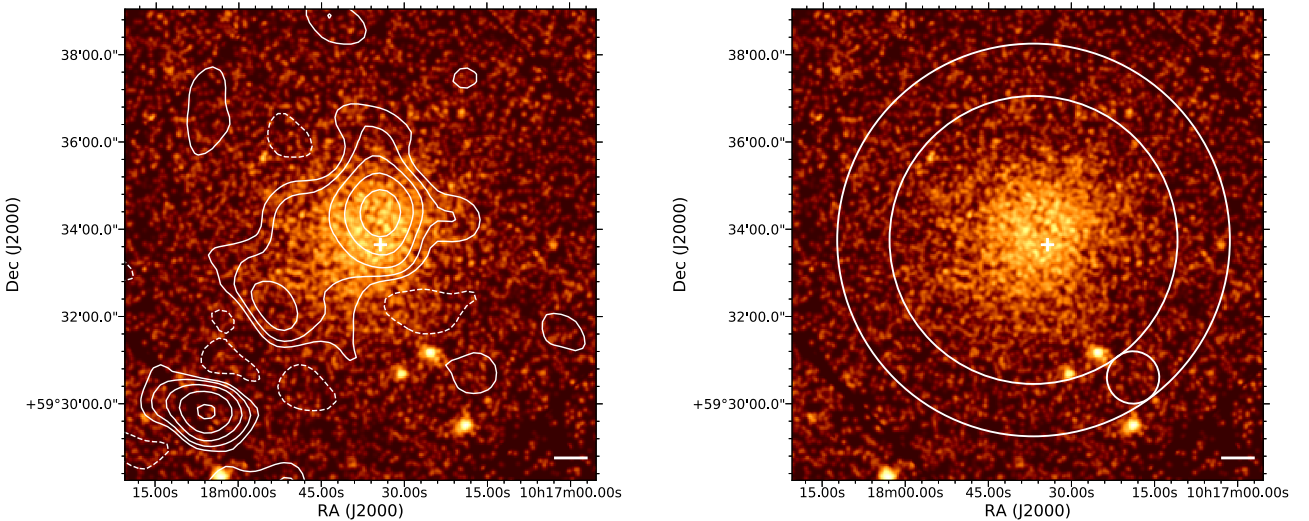
### 3 RESULTS AND DISCUSSION

#### 3.1 X-ray properties

The appearance of the ICM of A959 is fairly smooth, with no cuspy core or other bright substructures (excluding the X-ray point sources, see Fig. 3). A number of faint, associated galaxy groups (or subclusters) have been identified previously in *ROSAT* observations (see Dahle et al. 2003; Boschin et al. 2009).

The spectral analysis of the X-ray data (see Sections 2.3 and 2.4) indicates that the temperature of the ICM is  $kT \approx 6\text{--}7 \text{ keV}$ . There is no evidence of cooler gas in the core. The central density is  $n_e \approx 2 \times 10^{-3} \text{ cm}^{-2}$  and the central cooling time is  $t_{\text{cool}} \approx 3 \times 10^{10} \text{ yr}$ . A959 is therefore a typical massive NCF cluster. It shows no evidence for possessing a cool corona associated with the BCG, as seen in some NCFs such as the Coma cluster (Sun 2009).

The X-ray luminosity within the  $R_{500}$  region in the 0.1–2.4 keV band derived using *Chandra* and *XMM-Newton* data (see Sections 2.3 and 2.4) is a factor of 3 less than the MCXC value from Piffaretti et al. (2011) of  $L_{X500} = 8.37 \times 10^{44} \text{ erg s}^{-1}$  (after correcting for the revised redshift). This factor of three is too large to be due only to the difference in  $R_{500}$  used in MCXC catalog ( $R_{500} = 1260 \text{ kpc}$  after correcting for redshift; Piffaretti et al. 2011). Instead, the difference might be a result of uncertainties in the modelling that was used for the *ROSAT* data to correct from aperture flux to  $L_{X500}$ . In support of this possibility, we find a bolometric luminosity within  $R_{500}$  from the *XMM-Newton* data of  $L_{X,\text{bol},500} = 7.1 \times 10^{44} \text{ erg s}^{-1}$ , similar to the value derived by Mahdavi et al. (2013), using the same *XMM-Newton* data, of  $L_{X,\text{bol},500} = 5.8 \times 10^{44} \text{ erg s}^{-1}$ , a difference of only  $\approx 20$  per cent (see also Connor et al. 2014).



**Figure 3.** Combined MOS + PN *XMM-Newton* X-ray image, with the contours from the low-resolution residual LOFAR image (left) and the regions used in the dark-clump analysis (right) overlaid. The image has been smoothed by a Gaussian with  $\text{FWHM} = 5$  pixels. The scale bars and symbols are the same as in Fig. 1.

### 3.2 The central radio source

The full-resolution LOFAR image, shown in Fig. 1, reveals that the BCG in the cluster core is a radio galaxy with a bright core (centred on the BCG) and lobes that extend  $\sim 100$  kpc to the north and south. The total flux density at 143.7 MHz, measured from the high-resolution LOFAR image, is  $S_{143.7\text{ MHz}} = 22.9 \pm 2.3$  mJy, corresponding to a luminosity of  $P_{143.7\text{ MHz}} = (5.8 \pm 0.6) \times 10^{24}$  W Hz $^{-1}$ . The source is also detected in the 322.7 MHz GMRT image, with a flux density of  $S_{322.7\text{ MHz}} = 9.1 \pm 1.1$  mJy, implying a spectral index ( $\alpha$ , where  $S_\nu \propto \nu^{-\alpha}$ ) between 143.7 and 322.7 MHz of  $\alpha_{143}^{322} = 1.14 \pm 0.25$ .

Adopting a power-law spectrum with this spectral index, we find a luminosity for the central radio source at 1.4 GHz of  $P_{1400\text{ MHz}} = (4.3 \pm 0.5) \times 10^{23}$  W Hz $^{-1}$ . This luminosity is above the value of the threshold between NCF and CF clusters seen in the B55 and HIFLUGCS cluster samples (Bîrzan et al. 2012).

The interaction between the lobes of the central radio source and the ICM should create X-ray cavities that will rise buoyantly into the ICM. As they are inflated and evolve, they do work on the surrounding ICM. This work is one component of AGN feedback, the *maintenance* or *radio-mode* AGN feedback (for reviews, see McNamara & Nulsen 2007; Fabian 2012). Such feedback is rare in NCF systems, although evidence for cavities in a NCF system was recently found in the SPT sample (e.g. SPT-CL J2031-4037; Bîrzan et al. 2017). Therefore, the prevalence and importance of AGN feedback in NCF systems is not well established, but there might often be radio activity and AGN feedback at a low level in such systems. Deeper *Chandra* data are required to identify any cavities in the ICM of A959.

### 3.3 The giant radio halo

There is clear evidence for diffuse emission to the east of the X-ray core in the low-resolution LOFAR image, shown in Fig. 1. This emission extends from the central BCG to the relic, with a largest linear size of  $\sim 5$  arcmin = 1.3 Mpc, although it does not uniformly fill this region. The total flux density of the halo, excluding the candidate relic (see Section 3.6) and the compact emission from the BCG and the head–tail source to the north of the BCG, is  $S_{143\text{ MHz}} = 94 \pm 14$  mJy, corresponding to a luminosity of  $P_{143\text{ MHz}} = (2.08 \pm 0.32) \times 10^{25}$  W Hz $^{-1}$ . Using the 1400 MHz flux density of the diffuse emission measured by Owen et al. (1999) of  $S_{1400\text{ MHz}} = 3 \times 10^{-3}$  Jy, we find a luminosity of  $P_{1.4\text{ GHz}} = 0.68 \times 10^{24}$  W Hz $^{-1}$  and a spectral index of  $\alpha_{143}^{1400} = 1.48_{-0.23}^{+0.06}$ , where the error includes an estimate for the error in the subtraction, adopted to be 50 per cent of the subtracted flux.<sup>7</sup> The halo in A959 has a somewhat steeper spectrum than that of the average giant RH ( $\langle \alpha \rangle \approx 1.3$ ; Cassano et al. 2013), but we note that our value of  $\alpha_{143}^{1400}$  should be treated with caution, as we do not know exactly how the 1400 MHz image of Owen et al. (1999) differs in sensitivity to diffuse emission from our 143 MHz image (e.g. due to different sampling of the uv plane). Also, we do not know if any embedded discrete sources in the 1.4 GHz image were completely subtracted or whether the regions used for the flux–density measurement are identical.

Diffuse radio emission in the form of a giant RH is often interpreted as evidence of recent, energetic merging activity (Cassano et al. 2013). Such activity is expected in higher redshift systems

<sup>7</sup>This spectral index is consistent with the lack of a detection in the residual 322.7 MHz GMRT image, given the noise in this image and the expected flux density of the halo at 322.7 MHz.

of X-ray flux-limited samples (e.g. GRHS, EGRHS; Venturi et al. 2007; Kale et al. 2015), such as the one to which A959 belongs (see NORAS; Böhringer et al. 2000). Next, we compare A959 with other systems that possess giant RHs.

### 3.4 Scaling relations for radio haloes

To date, there are approximately 80 systems with detected RHs (Feretti et al. 2012; van Weeren et al. 2019). For these systems, the radio luminosity of the RH is known to scale with a number of cluster properties, the most commonly used of which are the cluster mass, the cluster SZ signal ( $Y_{\text{SZ}}$ ), and the X-ray luminosity (see Cassano et al. 2013; Martínez Aviles et al. 2016).<sup>8</sup> These relations were derived using a sample of  $\approx 25$  systems in Cassano et al. (2013) and 41 systems in Martínez Aviles et al. (2016) drawn from the literature, 11 of which are from the GRHS/EGRHS sample (see Venturi et al. 2007, 2008, 2013; Kale et al. 2013, 2015). These RH samples are comprised of systems with a wide range of redshift, mostly between  $0.05 < z < 0.55$ , with the notable exceptions of Coma at  $z = 0.023$  and El Gordo at  $z = 0.87$ .

Additionally, there are a number of RHs known from other studies of single systems and smaller samples that are not present in the above samples (e.g. A399, A401, A2218, A2061, A2065, A2069, PLCKG287.0 + 32.9, MACS J0416.1-2403 etc.; Giovannini & Feretti 2000; Rudnick & Lemmerman 2009; Feretti et al. 2012; Farnsworth et al. 2013; Bonafede et al. 2014b; Ogrea et al. 2015). Also, some systems from the GRHS or EGRHS are not present in the above samples (e.g. A1682, A2261, RXCJ1314.4-2515, ZwCL5247). Lastly, in the last 2 yr, there has been a rapid increase in studies of individual or small samples of RH systems (see Bernardi et al. 2016; Girardi et al. 2016; Knowles et al. 2016; Duchesne et al. 2017; Hoang et al. 2017; Parekh et al. 2017; Venturi et al. 2017; Cuciti et al. 2018; Hlavacek-Larrondo et al. 2018; Wilber et al. 2018; Savini et al. 2019). We have collected measurements from these studies to form a larger sample of RHs. The systems that are not present in Cassano et al. (2013) or Martínez Aviles et al. (2016) samples are listed in Table 1, with nine of these also present in the Yuan, Han & Wen (2015) sample (A399, A2061, A2069, A2218, A3562, ZwCL5247, CL0217+70, H1821 + 643, and the ‘Toothbrush’ cluster). Table 2 lists the X-ray luminosities; for systems in the Cassano et al. (2013) and Martínez Aviles et al. (2016) samples the cluster masses and the RH powers are listed in the above papers.

We note that the halo powers in this larger sample have not been derived in a homogeneous way. For example, in some cases the contribution of compact radio sources could not be fully isolated from the RH emission (e.g. A2065 and A2069; Farnsworth et al. 2013).<sup>9</sup> Also, the cluster X-ray luminosities were not derived in a homogeneous way: We used the values from Cassano et al. (2013) where available, otherwise we used other samples with derived X-ray luminosities (e.g. O’Hara et al. 2006; Mantz et al. 2010; Giles et al. 2017; Yuan et al. 2015), or individual papers in some cases when available (e.g. A1132, ACT-CL J0256.5+0006, CIZA J2242.8 + 5301; Knowles et al. 2016; Hoang et al. 2017; Wilber

<sup>8</sup>X-ray luminosity, cluster mass, and SZ signal are calculated within  $R_{500}$ , and the X-ray luminosity is measured in the 0.1–2.4 keV band.

<sup>9</sup>We did not include A2390 from Sommer et al. (2017), as it was not confirmed by LOFAR observations (Savini et al. 2019), and A1914 and A2146 since they have only putative RH emission in recent LOFAR observations (Hoang et al. 2019b; Mandal et al. 2019).

**Table 1.** Radio halo properties for the additional systems.

System <sup>a,b</sup>	$z$	$M_{SZ500}$ ( $10^{14} M_{\odot}$ )	Freq. (MHz)	Flux density (mJy)	$\alpha^c$	$P_{1.4\text{GHz}}^d$ ( $10^{24} \text{ W Hz}^{-1}$ )
A959	0.288	$5.08 \pm 0.47$ (2)	143.7	$94 \pm 14$ (6)	1.48 (6)	0.68 (31)
A141 <sup>U</sup>	0.23	$4.48 \pm 0.7$ (5)	168	$110 \pm 11$ (17)	$>2.1$ (17)	$<0.5$
A399	0.0718	$5.29 \pm 0.34$ (5)	1400	$16 \pm 2$ (29)	...	$0.21 \pm 0.03$
A401	0.0737	$6.84 \pm 0.32$ (4)	1400	$17 \pm 1$ (8)	...	$0.23 \pm 0.01$
A523	0.104	...	1400	$72 \pm 3$ (23)	...	$2.04 \pm 0.08$
A800	0.2223	...	1400	10.6 (24)	...	1.64
A851*	0.4069	...	1400	$3.7 \pm 0.3$ (21)	...	$2.41 \pm 0.20$
A1132 <sup>U</sup>	0.1369	$5.87 \pm 0.22$ (4)	145	...	1.75 (41)	$0.17 \pm 0.08$ (41)
A1451	0.199	$7.16 \pm 0.32$ (3)	1500	$5.0 \pm 0.6$ (14)	$>1.3$ (14)	$<0.66 \pm 0.07$
A1550	0.254	$5.55 \pm 0.54$ (5)	1400	7.7 (24)	...	1.62
A1682 <sup>U</sup>	0.226	$5.70 \pm 0.35$ (4)	240	$46 \pm 4$ (39)	1.7 (28)	$0.40 \pm 0.05$
A2061	0.0777	$3.32 \pm 0.27$ (5)	300	$270 \pm 2$ (33)	...	$0.55 \pm 0.01$
A2065	0.073	$4.30 \pm 0.26$ (5)	1400	$32.9 \pm 11$ (18)	...	$0.48 \pm 0.02$
A2069	0.116	$5.45 \pm 0.37$ (5)	1400	$28.8 \pm 7.2$ (18)	0.93 (16)	$1.00 \pm 0.02$
A2142	0.089	$8.77 \pm 0.21$ (4)	1400	$23 \pm 2$ (40)	...	$0.47 \pm 0.04$
A2218	0.1756	$6.59 \pm 0.164$ (4)	1400	4.7 (20)	...	0.43
A2261 <sup>U</sup>	0.224	$7.78 \pm 0.30$ (4)	1400	$4.37 \pm 0.35$ (35)	1.7 (34)	$0.75 \pm 0.06$
A2811 <sup>U</sup>	0.1079	$3.65 \pm 0.24$ (4)	168	$80.7 \pm 16.5$ (17)	$>1.5$ (17)	$<0.11 \pm 0.06$
A3562 <sup>U</sup>	0.049	2.3 (3)	1400	20 (37)	1.56 (19,37)	0.12
ACT-CLJ0256.5 + 0006	0.363	$5.0 \pm 1.2$ (1)	610	$5.6 \pm 1.4$ (27)	...	$0.94 \pm 0.23$
AS1121*	0.358	$7.19 \pm 0.45$ (4)	168	$154 \pm 48$ (17)	...	$4.66 \pm 2.75$
CIZA J0638.1 + 4747	0.174	$6.65 \pm 0.34$ (3)	1500	$3.3 \pm 0.2$ (14)	$>1.3$ (14)	$<0.32 \pm 0.02$
CIZA J2242.8 + 5301*	0.192	...	145	$346 \pm 64$ (25)	1.03 (25)	$3.1 \pm 1.0$
CL0217 + 70	0.0655	...	1400	$58.6 \pm 0.9$ (12)	...	$0.61 \pm 0.09$
CL1446 + 26*	0.370	...	1400	7.7 (24)	...	3.57
H1821 + 643	0.332	$6.78 \pm 0.27$ (4)	1665	$19.9 \pm 0.5$ (11)	1.1 (11)	$4.07 \pm 0.17$
MACS J0416.1-2403 <sup>U</sup>	0.393	...	1500	$1.58 \pm 0.13$ (30)	1.6 (30)	$1.16 \pm 0.09$
MACS J0417.5-1154 <sup>U</sup>	0.443	$12.25 \pm 0.55$ (4)	1575	$10.6 \pm 1.0$ (32)	1.72 (32)	$12.15 \pm 1.15$
MACS J2243.3-0935	0.44	$9.99 \pm 0.44$ (1)	610	$10.0 \pm 2.0$ (13,32)	...	$2.41 \pm 0.28$
PLCKG004.5-19.5	0.516	$9.42 \pm 0.94$ (5)	610	$1.2 \pm 0.5$ (7)	$1.2 \pm 0.4$ (7)	$0.5 \pm 0.2$
PLCKG287.0 + 32.9	0.39	14 (2)	150	314 (10)	1.28 (10)	10.5
PSZ1G018.75 + 23.57	0.089	$3.97 \pm 0.30$ (4)	1860	$48.3 \pm 2.5$ (9)	...	$1.42 \pm 0.07$
PSZ1G108.18-11.53	0.335	$7.74 \pm 0.60$ (4)	1380	$6.8 \pm 0.2$ (15)	$1.4 \pm 0.1$	$2.8 \pm 0.1$
PSZ1G139.61 + 24.20 <sup>U</sup>	0.27	$7.09 \pm 0.60$ (5)	144	...	$>1.7$ (34)	$<0.22$ (34)
RXC J0142.0 + 2131 <sup>U</sup>	0.28	$5.98 \pm 0.60$ (4)	144	$32 \pm 6$ (34)	$>1.6$ (34)	$<0.24$
RX J0603.3 + 4214*	0.225	$10.72 \pm 0.49$ (4)	1500	$46 \pm 5$ (36)	1.08 (36)	$7.00 \pm 0.76$
RXC J1314.4-2515	0.228	$6.15 \pm 0.7$ (3)	610	$10.3 \pm 0.3$ (38)	...	$0.67 \pm 0.03$
RXJ1720.1 + 2638 <sup>U</sup>	0.164	$5.90 \pm 0.34$ (4)	144	...	$>1.5$ (34)	$<0.264$ (34)
Triangulum Aus.	0.051	$7.94 \pm 0.15$ (4)	1330	$92 \pm 5$ (9)	...	$0.54 \pm 0.03$
ZwCL2341.1 + 0000	0.27	$5.18 \pm 0.44$ (4)	1400	10 (22)	...	0.16
ZwCL5247* <sup>U</sup>	0.229	$5.88 \pm 0.40$ (4)	1400	$2.0 \pm 0.3$ (26)	1.7 (26)	$0.35 \pm 0.05$

*Notes.* References: SZ References: (1) Hasselfield et al. (2013); (2) Planck Collaboration XXIX (2014); (3) Planck Collaboration (2015); (4) Planck Collaboration XXVII (2016); (5) SZ-Cluster Database (see <http://szcluster-db.ias.u-psud.fr>). Radio References: (6) this work; (7) Albert et al. (2017); (8) Bacchi et al. (2003); (9) Bernardi et al. (2016); (10) Bonafede et al. (2014b); (11) Bonafede et al. (2014a); (12) Brown, Duesterhoeft & Rudnick (2011); (13) Cantwell et al. (2016); (14) Cuciti et al. (2018); (15) de Gasperin et al. (2015); (16) Drabent et al. in press; (17) Duchesne et al. (2017); (18) Farnsworth et al. (2013); (19) Giacintucci et al. (2005); (20) Giovannini & Feretti (2000); (21) Giovannini et al. (2009); (22) Giovannini et al. (2010); (23) Girardi et al. (2016); (24) Govoni et al. (2012); (25) Hoang et al. (2017); (26) Kale et al. (2015); (27) Knowles et al. (2016); (28) Macario et al. (2013); (29) Murgia et al. (2010); (30) Ogcrean et al. (2015); (31) Owen et al. (1999); (32) Parekh et al. (2017); (33) Rudnick & Lemmerman (2009); (34) Savini et al. (2019); (35) Sommer et al. (2017); (36) van Weeren et al. (2016b); (37) Venturi et al. (2003); (38) Venturi et al. (2007); (39) Venturi et al. (2013); (40) Venturi et al. (2017); (41) Wilber et al. (2018).

<sup>a</sup>The radio halo systems (taken from the literature) that are not present in the Cassano et al. (2013) and Martinez Aviles et al. (2016) samples. The asterisk marks systems with alternative names: A851 (CL0939+47); AS1121 (SPT-CL J2325-4111); CL1446+26 (ZwCL1447+2619); CIZA J2242.8+5301 (the ‘Sausage’ cluster), ZwCL5247 (RXC J1234.2+0947), RXC J0603.3 + 4214 (the ‘Toothbrush’ cluster). The ‘U’ marks the systems with steep-spectrum RHs ( $\alpha > 1.5$ ).

<sup>b</sup>However, there are some candidate haloes that are not present here, e.g. A2680, A2693, AS84, RXC J2351.0-1954, GMBCG J357.91841-08.97978 (Duchesne et al. 2017); A2552, ZwCL1953 (Kale et al. 2015).

<sup>c</sup>Spectral index from the literature.

<sup>d</sup>Radio luminosity at 1.4 GHz using the spectral indices from the literature when available and adopting  $\alpha = 1.3$  otherwise.

**Table 2.** X-ray luminosity values for the total sample.

System <sup>a</sup>	<i>z</i>	$L_{X500}[0.1-2.4\text{ keV}]^b$ ( $10^{44}\text{ erg s}^{-1}$ )	$L_{X\text{pred}}^M{}^c$ ( $10^{44}\text{ erg s}^{-1}$ )	$L_{X\text{pred}}^G{}^d$ ( $10^{44}\text{ erg s}^{-1}$ )	Relics <sup>e</sup>
A959	0.288	3.24 ± 0.46 (1)	3.80 ± 1.02	1.69 ± 0.55	(1)
A141 <sup>U</sup>	0.23	6.82 ± 0.27 (5)	3.01 ± 1.06	1.25 ± 0.56	...
A399	0.0718	1.82 ± 0.042 (18)	3.12 ± 0.73	1.47 ± 0.40	...
A401	0.0737	3.85 ± 0.05 (11)	4.33 ± 0.90	2.39 ± 0.56	...
A523	0.104	0.91 (12)	...	...	...
A800	0.2223	2.72 (12)	...	...	...
A851*	0.4069	4.91 (12)	...	...	...
A1132 <sup>U</sup>	0.1369	4.4 ± 0.1 (16)	3.83 ± 0.76	1.91 ± 0.42	...
A1451	0.199	6.61 (12)	5.3 ± 1.10	2.98 ± 0.70	(26)
A1550	0.254	3.32 (12)	4.09 ± 1.13	1.94 ± 0.65	...
A1682 <sup>U</sup>	0.226	4.36 ± 0.11 (6)	4.09 ± 0.94	1.98 ± 0.53	(51)
A2061	0.0777	1.86 ± 0.30 (18)	1.72 ± 0.44	0.61 ± 0.18	...
A2065	0.073	1.82 (14)	2.40 ± 0.55	0.99 ± 0.27	...
A2069	0.116	4.27 ± 0.69 (18)	3.34 ± 0.70	1.58 ± 0.38	...
A2142	0.089	6.65 ± 0.05 (11)	6.11 ± 1.10	3.95 ± 0.77	...
A2218	0.1756	5.1 ± 0.5 (9)	4.62 ± 0.84	2.47 ± 0.49	...
A2261 <sup>U</sup>	0.224	11.38 ± 0.13 (6)	6.09 ± 1.21	3.58 ± 0.80	...
A2811 <sup>U</sup>	0.1079	2.73 (13)	2.01 ± 0.47	0.75 ± 0.21	...
A3562 <sup>U</sup>	0.049	0.997 ± 0.032 (11)	1.04 ± 0.16	0.29 ± 0.04	...
ACT-CLJ0256.5 + 0006	0.363	3.01 ± 0.36 (8)	4.08 ± 1.87	1.78 ± 1.09	...
AS1121*	0.358	6.14 ± 0.37 (3)	6.48 ± 1.49	3.56 ± 0.96	...
CIZA J0638.1 + 4747	0.174	4.72 (12)	4.69 ± 1.01	2.52 ± 0.63	...
CIZA J2242.8 + 5301*	0.192	7.7 ± 0.1 (7)	...	...	(7,43)
CL0217 + 70	0.0655	0.575 ± 0.202 (18)	...	...	...
CL1446 + 26*	0.370	3.42 (16)	...	...	...
H1821 + 643	0.332	13.18 ± 0.03 (18)	5.81 ± 1.17	3.08 ± 0.70	...
MACS J0416.1-2403 <sup>U</sup>	0.393	9.14 ± 0.10 (10)	...	...	...
MACS J0417.5-1154 <sup>U</sup>	0.443	29.1 (12)	14.34 ± 2.98	10.86 ± 2.57	...
MACS J2243.3-0935	0.44	15.2 ± 0.8 (9)	10.98 ± 2.27	7.32 ± 1.72	(24)
PLCKG004.5-19.5	0.516	9.2 ± 1.4 (2)	11.23 ± 3.13	7.13 ± 2.43	(2)
PLCKG287.0 + 32.9	0.39	17.2 ± 0.11 (13)	15.92 ± 2.39	13.23 ± 1.98	(20,21)
PSZ1G018.75 + 23.57	0.089	...	2.20 ± 0.54	0.86 ± 0.26	...
PSZ1G108.18-11.53	0.335	5.52 ± 0.23 (1)*	6.92 ± 1.73	3.99 ± 1.19	(27)
PSZ1G139.61 + 24.20 <sup>U</sup>	0.27	9.22 ± 0.23 (1)*	5.71 ± 1.46	3.15 ± 0.97	...
RXC J0142.0 + 2131 <sup>U</sup>	0.28	6.0 ± 0.1 (5)	4.63 ± 1.30	2.29 ± 0.79	...
RX J0603.3 + 4214*	0.225	9.12 ± 1.90 (17)	9.21 ± 1.93	6.64 ± 1.58	(45,48)
RXC J1314.4-2515	0.228	9.89 (12)	4.60 ± 1.37	2.33 ± 0.86	(50)
RXJ1720.1 + 2638 <sup>U</sup>	0.164	9.69 ± 0.10 (6)	3.98 ± 0.89	1.99 ± 0.52	...
Triangulum Aus.	0.051	3.97 ± 0.08 (11)	5.14 ± 0.77	3.13 ± 0.47	...
ZwCL2341.1 + 0000	0.27	2.32 ± 0.06 (1)*	3.81 ± 0.99	1.72 ± 0.54	(42)
ZwCL5247* <sup>U</sup>	0.229	4.3 ± 0.3 (9)	4.26 ± 1.01	2.10 ± 0.59	...
The systems from Cassano et al. (2013) sample					
A2744	0.307	14.73 ± 0.24 (5)	8.76 ± 1.84	5.80 ± 1.38	(31,36)
A209	0.206	7.62 ± 0.48 (5)	6.31 ± 1.32	3.83 ± 0.91	...
A2163	0.203	21.95 ± 0.33 (5)	15.78 ± 2.84	15.03 ± 2.92	(28)
RXCJ2003.5-2323	0.317	9.17 ± 0.09 (5)	6.40 ± 1.72	3.60 ± 1.18	...
A520	0.203	7.81 ± 0.21 (5)	5.26 ± 1.28	2.93 ± 0.96	...
A773	0.217	7.30 ± 0.57 (5)	5.35 ± 1.28	2.97 ± 0.84	...
A1758N <sup>f</sup>	0.280	8.80 ± 0.16 (5)	6.68 ± 1.60	3.96 ± 1.12	...
A2219	0.228	14.78 ± 0.19 (5)	9.52 ± 1.71	6.97 ± 1.35	...
A521 <sup>U</sup>	0.248	8.28 ± 0.07 (5)	5.22 ± 1.41	2.81 ± 0.92	(29,30)
A697 <sup>U</sup>	0.282	13.04 ± 0.61 (5)	10.78 ± 2.26	8.04 ± 1.92	...
A1300 <sup>U</sup>	0.308	11.47 ± 0.37 (5)	8.02 ± 1.92	5.08 ± 1.44	(51)
CL0016 + 16	0.541	15.54 ± 0.28 (4)	10.49 ± 2.82	6.31 ± 2.06	...
A665	0.182	8.30 ± 0.07 (5)	6.32 ± 1.32	3.91 ± 0.93	...
A545	0.154	6.31 ± 0.09 (5)	2.67 ± 0.88	1.10 ± 0.46	...
Coma	0.023	3.39 ± 0.03 (11)	2.94 ± 0.62	1.39 ± 0.33	(19,41)
A2256 <sup>U</sup>	0.058	4.44 ± 0.02 (5)	3.87 ± 0.70	2.04 ± 0.40	(23,25,35,46)
Bullet*	0.296	22.54 ± 0.52 (5)	11.98 ± 2.51	9.32 ± 2.22	(38,39)
A2255 <sup>U</sup>	0.081	3.31 ± 0.03 (5)	3.03 ± 0.64	1.40 ± 0.33	(32,37)
A2319	0.056	7.87 ± 0.08 (5)	5.68 ± 1.02	3.63 ± 0.70	...
MACSJ0717.5 + 3745	0.548	24.05 ± 0.22 (5)	14.68 ± 3.51	10.34 ± 2.92	(22,49)
A1995	0.319	6.03 ± 0.08 (5)	3.99 ± 1.07	1.78 ± 0.58	...

Table 2 – continued

System <sup>a</sup>	$z$	$L_{X500}[0.1-2.4\text{ keV}]^b$ ( $10^{44}\text{ erg s}^{-1}$ )	$L_{X\text{pred}}^M{}^c$ ( $10^{44}\text{ erg s}^{-1}$ )	$L_{X\text{pred}}^G{}^d$ ( $10^{44}\text{ erg s}^{-1}$ )	Relics <sup>e</sup>
MACSJ1149.5 + 2223 <sup>U</sup>	0.544	15.50 ± 0.29 (5)	10.23 ± 2.75	6.06 ± 1.98	(4)
PLCKG171.9-40.7 <sup>U</sup>	0.270	11.28 ± 0.02 (13)	10.31 ± 2.16	7.60 ± 1.81	...
A754 <sup>U</sup>	0.054	4.75 ± 0.033 (5)	4.09 ± 0.73	2.22 ± 0.43	(34)
The extra systems from Martinez Aviles et al. (2016) sample					
A746	0.2323	3.39 ± 1.19 (18)	3.78 ± 0.93	1.75 ± 0.52	(44)
A1351	0.322	5.24 (12)	5.84 ± 1.29	3.13 ± 0.80	...
A1689	0.1832	13.6 ± 1.2 (9)	6.77 ± 1.35	4.33 ± 0.97	...
A2034 <sup>U</sup>	0.113	4.0 ± 0.4 (9)	3.72 ± 0.75	1.86 ± 0.42	(40)
A2254	0.178	4.79 (12)	3.76 ± 0.88	1.81 ± 0.50	...
A2294	0.178	4.05 (12)	4.11 ± 0.94	2.05 ± 0.55	...
A3411	0.1687	2.8 ± 0.1 (15)	4.60 ± 0.96	2.47 ± 0.59	(47)
A3888	0.151	6.38 ± 0.25 (12)	5.06 ± 0.10	2.86 ± 0.63	...
CIZAJ1938.3 + 5409	0.26	7.96 (12)	6.06 ± 1.33	3.47 ± 0.88	...
El Gordo*	0.87	35.48 ± 1.63 (18)	21.30 ± 4.40	13.84 ± 3.24	(33)
MACSJ0553.4-3342	0.431	17 (4)	9.18 ± 1.98	5.64 ± 1.40	...
MACSJ1752.0 + 4440	0.366	8.0 (4)	6.03 ± 1.42	3.18 ± 0.89	(4)
PLCKG285.0-23.7	0.39	16.91 ± 0.27 (13)	8.22 ± 1.23	4.95 ± 0.74	...
RXCJ0107.7 + 5408	0.1066	2.80 (12)	3.69 ± 0.80	1.85 ± 0.46	(44)
RXCJ0949.8 + 1708	0.38	11.3 ± 2.3 (9)	7.89 ± 1.93	4.69 ± 1.36	...
RXCJ1514.9-1523 <sup>U</sup>	0.226	6.43 (12)	7.19 ± 1.56	4.60 ± 1.15	...
The upper limits systems from Cassano et al. (2013) and Kale et al. (2015)					
A267	0.230	5.94 ± 0.44 (5)	3.51 ± 1.04	1.57 ± 0.58	...
A781	0.298	5.44 ± 0.14 (5)	4.90 ± 1.24	2.45 ± 0.74	...
A1423	0.213	4.76 ± 0.38 (5)	4.38 ± 1.12	2.21 ± 0.68	...
A1576	0.30	6.38 ± 0.14 (5)	4.75 ± 1.20	2.34 ± 0.71	...
A1722	0.327	6.15 (12)	3.02 ± 0.87	1.17 ± 0.41	...
A2485	0.247	3.07 ± 0.07 (5)	3.19 ± 0.92	1.34 ± 0.48	...
A2537	0.297	4.54 ± 0.07 (5)	4.27 ± 1.15	2.00 ± 0.65	...
A2631	0.278	8.62 ± 0.70 (5)	6.01 ± 1.32	3.38 ± 0.85	...
A2645	0.251	4.13 ± 0.4 (5)	2.76 ± 0.88	1.08 ± 0.44	...
A2697	0.232	7.29 ± 0.41 (5)	4.35 ± 1.00	2.17 ± 0.58	...
RXCJ0439.0 + 0715	0.244	7.69 ± 0.58 (5)	4.49 ± 1.31	2.25 ± 0.81	...
RXJ2228.6 + 2037	0.418	11.71 ± 0.20 (5)	8.36 ± 1.84	4.96 ± 1.26	...
ZwCL7215	0.2917	5.00 ± 0.19 (6)	3.82 ± 1.15	1.71 ± 0.64	...

Notes. References: X-ray References: (1) this work; (2) Albert et al. (2017); (3) Birzan et al. (2017); (4) Bonafede et al. (2012); (5) Cassano et al. (2013); (6) Giles et al. (2017); (7) Hoang et al. (2017); (8) Knowles et al. (2016); (9) Mantz et al. (2010); (10) Ogrean et al. (2015); (11) O’Hara et al. (2006); (12) Piffaretti et al. (2011); (13) Planck Collaboration IX (2011); (14) Vikhlinin et al. (2009) (15) van Weeren et al. (2013) (16) Wilber et al. (2018); (17) Wu, Xue & Fang (1999); (18) Yuan et al. (2015). Relics references: (19) Andernach, Feretti & Giovannini (1984); (20) Bagchi et al. (2011); (21) Bonafede et al. (2014a); (22) Bonafede et al. (2018); (23) Brentjens (2008); (24) Cantwell et al. (2016); (25) Clarke & Ensslin (2006); (26) Cuciti et al. (2018); (27) de Gasperin et al. (2015); (28) Feretti et al. (2001); (29) Giacintucci et al. (2006); (30) Giacintucci et al. (2008); (31) Govoni et al. (2001); (32) Govoni et al. (2005); (33) Lindner et al. (2014); (34) Macario et al. (2011); (35) Owen et al. (2014); (36) Pearce et al. (2017); (37) Pizzo & de Bruyn (2009); (38) Shimwell et al. (2014); (39) Shimwell et al. (2015); (40) Shimwell et al. (2016); (41) Thierbach, Klein & Wielebinski (2003); (42) van Weeren et al. (2009); (43) van Weeren et al. (2010); (44) van Weeren et al. (2011); (45) van Weeren et al. (2012b); (46) van Weeren et al. (2012a); (47) van Weeren et al. (2013); (48) van Weeren et al. (2016b); (49) van Weeren et al. (2017b); (50) Venturi et al. (2007); (51) Venturi et al. (2013).

<sup>a</sup>Radio halo systems taken from the literature including those in the Cassano et al. (2013) and Martinez Aviles et al. (2016) samples, and the systems with upper limits. The asterisk marks systems with alternative names: Bullet (1E 0657-56), El Gordo (ACT-CL J0102-4915), with the others listed in Table 1. And, as in Table 1. The ‘U’ marks the systems with steep-spectrum RHs ( $\alpha > 1.5$ ).

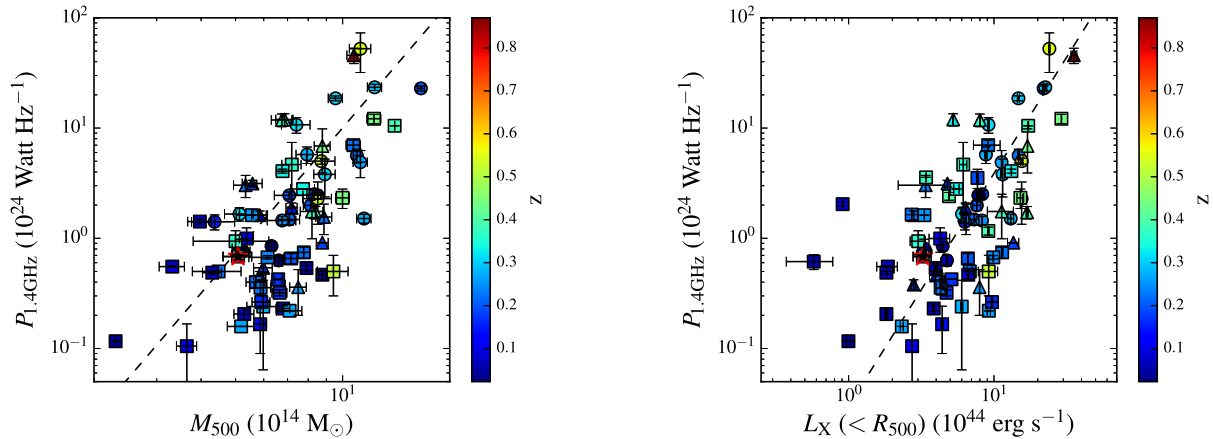
<sup>b</sup>X-ray luminosity between 0.1 and 2.4 keV within  $R_{500}$ , except for CL1446 + 26, where only the bolometric X-ray luminosity was available in the literature (Wu et al. 1999); and for the systems from O’Hara et al. (2006) and Vikhlinin et al. (2009), where the 0.5–2.0 keV energy band was used. For the systems marked with asterisk, since there were no available X-ray luminosities in the literature, we reduced the *Chandra* X-ray data (ObsIDs 15139, 17490, 17213) ourselves, following the same reduction scheme described in Section 2.3.

<sup>c</sup>The predicted X-ray luminosity between 0.1 and 2.4 keV within  $R_{500}$  using the *LM* scaling relations of Mantz et al. (2010).

<sup>d</sup>The predicted X-ray luminosity between 0.1 and 2.4 keV within  $R_{500}$  using the *LM* scaling relations of Giles et al. (2017).

<sup>e</sup>The presence of relics (radio shocks) from literature.

<sup>f</sup>There is also an RH in A1758S (Botteon et al. 2018).



**Figure 4.** The monochromatic 1.4 GHz radio power versus the SZ-derived cluster mass  $M_{500}$  (*left-hand* panel) and versus the X-ray luminosity in the 0.1–2.4 keV band  $L_X(< R_{500})$  (*right-hand* panel), both derived within  $R_{500}$ . Except for A959 (denoted by the red star), the values for the systems are taken from the literature (see Tables 1 and 2). However, for El Gordo we used the radio halo power from Lindner et al. (2014). The circles denote the systems from the Cassano et al. (2013) sample, the triangles denote the extra 16 systems from Martinez Aviles et al. (2016) sample and the squares denote the systems from Table 1. The dashed lines show the best-fitting relations of Cassano et al. (2013). Some systems do not appear in the left-hand panel since there are no available SZ-derived masses, while others do not appear in the right-hand panel since there are no published X-ray luminosities (e.g. PSZ1G018.75 + 23.57).

et al. 2018).<sup>10</sup> Otherwise, we used the values from Piffaretti et al. (2011) and even bolometric X-ray luminosity in some cases (e.g. CL1446 + 26).<sup>11</sup> Due to these inhomogeneities, we do not attempt to derive new scaling relations; rather, our goal here is to collect a sample of RHs in order to search for more general trends.

In Fig. 4, we plot the halo radio power versus the cluster X-ray luminosity between 0.1 and 2.4 keV within  $R_{500}$  (see Table 1) and cluster mass within  $R_{500}$  derived from SZ observations (see Table 2) for the larger sample of 80 systems described above (A959 plus the literature systems). However, some systems in this sample do not have X-ray luminosities available in the literature (e.g. PSZ1G018.75 + 23.57), and hence they do not appear in the right-hand panel of Fig. 4. Additionally, others do not have SZ-derived masses available in the literature (e.g. A523, A800, A851, MACS J0416.1-2403, CIZA J2243.8+5301, CL0217+70, CL1446 + 26) and thus do not appear in the left-hand panel of Fig. 4.

Fig. 4 shows that there is a large scatter about the above scaling relations (for a discussion, see Brunetti et al. 2009; Basu 2012; Cassano et al. 2013; Cuciti et al. 2018). Some of the scatter in the radio power versus X-ray luminosity plot is likely intrinsic due to, for example, different systems being caught in different stages of the merger. Significant changes in the X-ray luminosity are expected to occur during and after the merger event (e.g.; Ricker & Sarazin 2001; Ritchie & Thomas 2002; Randall, Sarazin & Ricker 2002; Donnert et al. 2013). In addition, the radio properties of RHs are predicted to depend on the details of the merger (e.g. mass ratio and energetics) and will evolve during the merger, thus introducing additional scatter (see Cassano et al. 2013; Martinez Aviles et al. 2016; Cuciti et al. 2018).

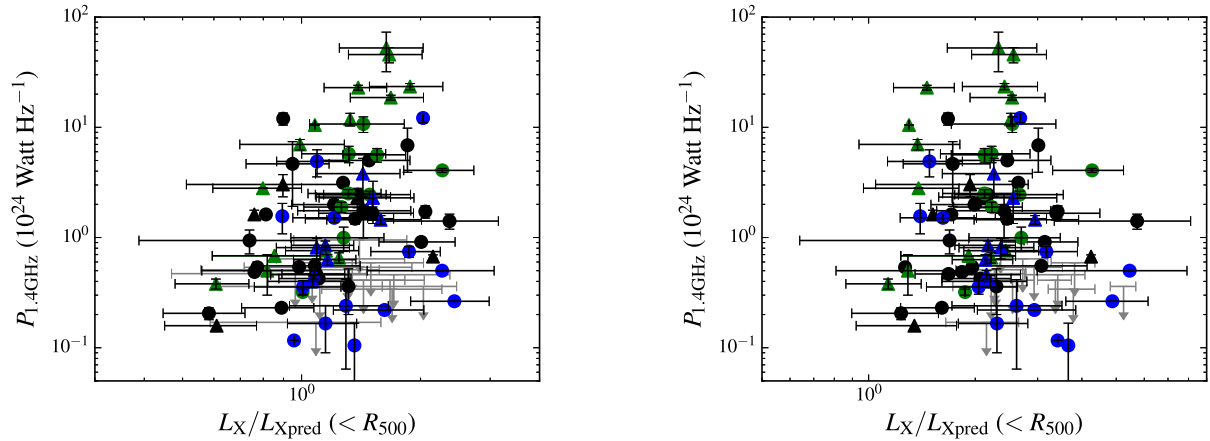
### 3.5 The relation of cluster properties to the merger state

To investigate the origins of the scatter seen in Fig. 4 further, we can search for relations between the properties of the RH and the degree to which the X-ray luminosity has been boosted (or suppressed). To this end, we calculate the ratio between the measured X-ray luminosity,  $L_X(R < 500)$ , and the X-ray luminosity predicted from the SZ-derived mass,  $L_{X\text{pred}}(R < 500)$ . To calculate the latter, we use the well-known scaling between the cluster luminosity and cluster mass. There is a large literature on the cluster luminosity–mass ( $LM$ ) scaling relation and its form (e.g. Reiprich & Böhringer 2002; Allen et al. 2003; Pratt et al. 2009; Vikhlinin et al. 2009; Mantz et al. 2010; Giles et al. 2017), with the slope of the relation varying across studies from  $\sim 1.3$  (Allen et al. 2003; Mantz et al. 2010) to  $\sim 1.6$  and above (Pratt et al. 2009; Vikhlinin et al. 2009; Mantz et al. 2016; Giles et al. 2017). We use two recent determinations to calculate  $L_{X\text{pred}}$ : the relation of Mantz et al. (2010), which has an  $LM$  normalization of  $0.82 \pm 0.11$  and an  $LM$  slope of  $1.29 \pm 0.07$  (see table 7 of Mantz et al. 2010), and the relation of Giles et al. (2017), which has a slope of  $1.92 \pm 0.24$  (see tables 4 and B1 of Giles et al. 2017). Both of these relations include corrections for sample biases that account for the tendency of X-ray selected samples to preferentially include clusters that have higher luminosities than typical for a given mass (for a discussion, see Giles et al. 2017). We plot the halo radio power versus the ratio between the measured X-ray luminosity and that calculated using these scaling relations in Fig. 5.

We find that the measured X-ray luminosity is higher on average by a factor of  $\sim 1.5$ – $2$  than that predicted by the  $LM$  relations, implying that clusters with RHs tend to be overluminous for a given mass relative to the average over all clusters. One explanation for this overluminosity is that clusters with RHs are preferentially caught in a state soon after a major merger has occurred, when the X-ray luminosity is expected to be boosted (e.g. Donnert et al. 2013). An alternative explanation is that our sample is biased towards overluminous systems, for example due to selection effects. Our sample is largely based on X-ray selected samples, so a sample bias of this kind is possible. Samples of RH systems selected on other properties, such as the cluster mass, would be very useful in understanding whether the overluminosity we observe is an intrinsic property of RH systems or not (Cuciti et al. 2015; Kale 2018).

<sup>10</sup>For PLZ1G139.61+24.20, PLZ1G108.18-11.53, and ZwCL2341.1 + 0000, we derived the X-ray luminosity using the archived *Chandra* data (Obs IDs = 15139, 17312, 17490).

<sup>11</sup>Some systems are present in more than one of the above studies (O’Hara et al. 2006; Mantz et al. 2010; Piffaretti et al. 2011; Cassano et al. 2013; Giles et al. 2017). In general, the X-ray luminosities between studies are consistent, with a few exceptions where there is a factor of 2 or more difference between studies, e.g. A2142, A2261, A141, and A1689.



**Figure 5.** The monochromatic 1.4GHz radio power versus the ratio between the measured X-ray luminosity and the predicted X-ray luminosity from the SZ-derived cluster mass using the  $LM$  scaling relations of Mantz et al. (2010; left-hand panel) and Giles et al. (2017; right-hand panel). The green symbols denote the systems with flatter-spectrum ( $\alpha < 1.5$ ) haloes, the blue symbols denote the steeper-spectrum ( $\alpha > 1.5$ ) haloes, and the black symbols denote the systems that lack spectral information in the literature. The triangle symbols denote the RHs plus relic (radio shock) systems, and the circle symbols denote the systems that do not have relic emission. In grey, we overplot the upper limits from the merging systems without detected RH emission (Cassano et al. 2013; Kale et al. 2015).

We note that the values of  $L_{X\text{pred}}(R < 500)$  calculated using the scaling relation of Mantz et al. (2010) are  $\sim 1.5$  times higher than those calculated using that of Giles et al. (2017) for our sample. This difference is mainly due to the differing slopes between the two relations and the fact that our sample is comprised mostly of clusters with masses below  $\sim 10^{15} M_{\odot}$ , where this difference in slope has the greatest effect. There is also an additional smaller systematic offset of  $\approx 1.1$  between the luminosities used in Mantz et al. (2010) and Giles et al. (2017) that we do not correct for (for details see Giles et al. 2017). One consequence of this difference is that, for the Mantz et al. (2010) scaling relation, the ratio  $L_X/L_{X\text{pred}}$  falls below unity for a number of systems. Such ratios are not expected in simulations until late in the merging process (e.g. Donnert et al. 2013), well after the RH should have faded away. Therefore, the low ratios could be interpreted as indirect support for the higher slope of the  $LM$  relation of Giles et al. (2017) (which does not result in such low ratios). However, the low ratios could also occur as a consequence of the intrinsic scatter about the  $LM$  relation.

To investigate how the measured-to-predicted luminosity ratio relates to the spectral properties of the RH, we separated the full sample into two categories: systems with steeper spectral indices ( $\alpha > 1.5$ )<sup>12</sup> and systems with flatter spectral indices ( $\alpha < 1.5$ ).<sup>13</sup> These two subsamples are indicated by the different colours in Fig. 5.

We find that  $P_{1.4\text{GHz}}$  appears to be correlated with  $L_X/L_{X\text{pred}}$  in the flatter halo subsample when using the Mantz et al. (2010) scaling

relation. To quantify the strength of this trend, we calculated the Spearman’s rank correlation coefficient. We find that the correlation is significant, with a correlation coefficient of 0.70 and a probability that the two quantities are unrelated of  $1 \times 10^{-4}$ . However, there is no such correlation when the relation of Giles et al. (2017) is used. If present, such a correlation would imply that systems with powerful RHs are those for which the X-ray luminosity is most affected (relative to the mass).

However, a difference between the two subsamples is evident in both panels of Fig. 5: flatter systems tend to have lower ratios of measured-to-predicted luminosity and higher radio powers than steeper systems (albeit with considerable overlap). It has been proposed that a category of the steep-spectrum haloes may be formed in low-turbulence mergers (Cassano et al. 2006). Since the radio power of the halo decreases as the merger evolves, at a given radio power steep systems will tend to be observed at an earlier stage of the merger than flatter ones. This expectation is consistent with the observed distribution of steep haloes in Fig. 5, as systems observed at an earlier stage are also expected to have a higher ratio of measured-to-predicted X-ray luminosity than those observed at later stages, when the X-ray luminosity has decreased. Therefore, the tendency for steep-spectrum, low-power halo systems to have high ratios of measured-to-predicted X-ray luminosity is broadly consistent with this scenario.

In support of this interpretation, the steep systems with the lowest RH power in our sample are A3562 and A2811, which are also the lowest mass systems in the sample. As a result, mergers in these systems are expected to be less turbulent than in high-mass systems (Cassano et al. 2006). Other low-power, steep-spectrum RHs in the plot are the recently identified RHs A1132, RXC J0142.0+2131, RXJ1720.1+2638 and PSZ1G139.61 + 24.20 (Wilber et al. 2018; Savini et al. 2019), located in the lower right-hand corner. These RHs were interpreted as likely having been created in lower turbulence merger events. They all have high ratios of measured-to-predicted X-ray luminosity, suggesting they were caught in a stage that is fairly close to the core passage.

Therefore, the combination of the ratio of measured-to-predicted X-ray luminosity and the spectral properties of the halo appears to be a general indicator of the merger stage. Further support for this

<sup>12</sup>The values of  $\alpha$  are listed in Table 1 and otherwise were taken from Cassano et al. (2013), plus A2256 (1.6, Brentjens 2008), A2255 (1.6, Pizzo & de Bruyn 2009), RXC J1514.9-1523 (1.6, Giacintucci et al. 2011), and A2034 (1.7, Shimwell et al. 2016).

<sup>13</sup>The values of  $\alpha$  are listed in Table 1 and otherwise are as follows: A2744 (1.43, Pearce et al. 2017), A2163 (1.18, Feretti et al. 2004), RXC J2003.5-2223 (1.3, Giacintucci et al. 2009), A520 (1.12, Vacca et al. 2014; Hoang et al. 2019a), A1758N (1.2, Botteon et al. 2018), A2219 (0.9, Orrú et al. 2007), A665 (1.04, Feretti et al. 2004), Coma (1.34, Kim et al. 1990), the Bullet cluster (1.5, Shimwell et al. 2014), MACS J0717.5 + 3745 (1.4, Bonafede et al. 2018), El Gordo (1.2, Lindner et al. 2014), MACS J1752.5 + 4440 (1.33, Bonafede et al. 2012), and A3888 (1.48, Shakouri, Johnston-Hollitt & Pratt 2016).

interpretation comes from the location of halo systems with radio relics in the plot. We indicate such systems in Fig. 5 (the triangles): it is clear that systems with relics tend to have low ratios of measured-to-predicted X-ray luminosity at a given halo radio power, especially relative to other systems of the same spectral class (i.e. flat or steep). This tendency is in line with merger simulations (e.g. Vazza et al. 2012; Ha, Ryu & Kang 2018) that posit that relics are generally found at a late stage of the merger ( $\sim 1$  Gyr after core passage), when the shock has propagated to large enough radii ( $\sim 1$  Mpc) that the Mach number is sufficiently high to efficiently create the relics. At these later stages, the X-ray luminosity and halo radio power have decreased, and the relic systems therefore tend to lie to the left of younger (non-relic) systems in Fig. 5.

Lastly, in Fig. 5 (*right-hand* panel), we plot the RH upper limits from Cassano et al. (2013) and Kale et al. (2015). There are 20 such systems in Cassano et al. (2013) and two more systems in Kale et al. (2015) that have masses derived from SZ observations. However, in 4 of the 20 upper limits systems from Cassano et al. (2013) have been detected RH emission (e.g. A141, A2146, A2261, and RXCJ0142.0 + 2131, see Table 1 for references), and as a result, they do not belong to the upper limits class category. Furthermore, we did not include in the RH upper limit sample the strong CF systems without signs of merging activity (e.g. AS780, A3088, RXCJ1115.8 + 0129). As a result, we have a sample for the RH upper limits of 13 systems (see Table 2). Fig. 5 shows that systems with upper limits share the same region of the plot as the steep-spectrum RHs, in line with steep-spectrum RH formation models (e.g. Brunetti et al. 2009; Cassano et al. 2010a) that posit that some of these systems may have faint, steep-spectrum haloes that remain undetected in current observations.

### 3.6 The candidate radio relic

One of the most prominent diffuse features in both the low- and high-resolution LOFAR images of A959 is the linear feature,  $\sim 400$  kpc in length and  $\sim 125$  kpc in width, located  $\sim 800$  kpc to the south-east of the cluster core. The location, orientation, and elongated, linear morphology of this feature strongly resembles those of cluster radio relics. In support of this scenario, there are no obvious optical counterparts that could explain the emission as being associated with a radio galaxy.

As discussed in the introduction, radio relics are thought to be created in merging systems, when electrons are accelerated or re-accelerated by the merger shocks. There are a number of halo systems that show evidence of X-ray shocks associated with the radio relic emission (e.g. A521, Bullet, A754, El Gordo, A2146; Giacintucci et al. 2006, 2008; Russell et al. 2010; Macario et al. 2011; Shimwell et al. 2015; Botteon et al. 2016; Hlavacek-Larrondo et al. 2018). Such shocks, thought to be generated during the merger, are typically found to lie roughly perpendicular to the merger axis, often at the outskirts of the cluster. The complex distribution of mass and galaxies in A959 makes it difficult to determine the merger axis, but there is an elongation in the weak-lensing maps in the direction of the relic that could indicate that the merger axis is along this line (Dahle et al. 2003; Boschin et al. 2009). In this case, the putative relic meets many of the characteristics of known relics: it lies  $\sim 1$  Mpc from the cluster centre, and thus at the cluster outskirts; it is located roughly along the merger axis; and its long axis is oriented perpendicular to the merger axis. However, confirmation that it is a relic requires radio data at higher frequencies to confirm that the spectral and polarization properties are that of a relic.

We measure the luminosity of the putative relic to be  $P_{142\text{MHz}} = (2.85 \pm 0.32) \times 10^{24} \text{ W Hz}^{-1}$ . We do not detect the relic in a lower resolution 322.7 MHz GMRT image (with a restoring beam of  $39 \text{ arcsec} \times 50 \text{ arcsec}$ ), implying a lower limit on the spectral index of  $\alpha > 0.7$ . There is no evidence in either the *Chandra* or *XMM-Newton* images of a surface-brightness edge in the region of the relic that would be indicative of a shock associated with it. However, both exposures have few counts ( $\lesssim 0.2$  counts pixel $^{-1}$ , where 1 pixel = 0.4919 arcsec on a side for *Chandra* and 1.1 arcsec on a side for *XMM-Newton*) at this location, and any edge produced by a typical shock would not be visible. Therefore, deeper X-ray data are needed to confirm the presence of a shock at this location.

### 3.7 The dark clump

Dahle et al. (2003) identified a possible dark mass clump in their weak-lensing map of A959. The clump, designated WL 1017.3 + 5931, lies to the south-west of the cluster centre and has little-to-no associated X-ray emission or galaxy overdensity (Boschin et al. 2009). We can place limits on the X-ray gas mass fraction in the clump using the *XMM-Newton* data (we do not use the *Chandra* data for this purpose as they are shallower and therefore any limits derived from them would be less constraining).

To this end, we measured the count rates in the exposure-corrected *XMM-Newton* images discussed in Section 2.4 in the dark-clump and background regions shown in Fig. 3. The dark-clump region was chosen to encompass the majority of the mass peak found by Dahle et al. (2003) while excluding the nearby X-ray point source and has a radius of  $r = 156$  kpc at the redshift of A959. For the background emission in the region of the dark clump, which is comprised of the local background emission from the main cluster and the instrumental background, we used the mean count rate in an annulus centred on the cluster with inner and outer radii that match those of the dark-clump region (see Fig. 3).

In the dark-clump region, we measure an upper limit on the background-subtracted count rate, summed over all three detectors, of  $(1.6 \pm 5.4) \times 10^{-6} \text{ count s}^{-1} \text{ pixel}^{-1}$ . Therefore, we do not detect significant excess emission from the dark clump. To place limits on the density of X-ray gas in the clump, we obtained predicted count rates from PIMMS (the Portable, Interactive Multi-Mission Simulator<sup>14</sup>), using the APEC thermal plasma model with a temperature of 3 keV and an abundance of 0.3 times the solar abundance. We adjusted the normalization of the APEC model to match the upper limit on the count rate in the dark-clump region, accounting for the encircled-energy fraction of the point spread function for this region ( $\approx 0.8$ ).<sup>15</sup> The upper limit is defined as three times the uncertainty of the background count rate in the region (i.e. the  $3\sigma$  upper limit,  $1.6 \times 10^{-5} \text{ count s}^{-1} \text{ pixel}^{-1}$ ).

From the resulting normalization, and assuming the gas fills a sphere with uniform density, we find the limit on the electron density in the dark clump of  $n_e < 3 \times 10^{-4} \text{ cm}^{-2}$ . This density implies a total gas mass of  $M_{\text{gas}} < 1.2 \times 10^{11} M_{\odot}$  (assuming  $n = 2n_e$ ). Dahle et al. (2003) report a total mass for the dark clump of  $M_{\text{tot}} = 1.2 \times 10^{14} M_{\odot}$  within a radius of  $r = 230$  kpc (adjusted to our adopted cosmological parameters). Again, assuming spherical geometry and a uniform density to adjust for the slightly different radii ( $r = 230$  kpc for the total mass and  $r = 156$  kpc for the gas mass), we find the upper limit on the gas mass fraction within  $r = 156$  kpc

<sup>14</sup>See <https://heasarc.gsfc.nasa.gov/cgi-bin/Tools/w3pimms/w3pimms.pl>.

<sup>15</sup>See <https://heasarc.gsfc.nasa.gov/docs/xmm/uhb/offaxisxraypsf.html>.

to be  $f_{\text{gas}} < 1.7 \times 10^{-3}$ . However, the total mass estimate should be treated with caution since only weak lensing data were used (see A2744; Jauzac et al. 2016). Nevertheless, the low gas mass fraction implies the clump, if real, was efficiently stripped of its X-ray gas, similar to other, X-ray gas-poor mass concentrations (e.g. Jee et al. 2014; Jee et al. 2016; Wang, Markevitch & Giacintucci 2016).

In addition to A959, there are a number of other systems in which a dark clump has been reported, e.g. A2744 and A520 (see also the review of Wittman, Golovich & Dawson 2018). However, for A2744 the dark clump reported in Merten et al. (2011) was not confirmed by Jauzac et al. (2016), who used both weak- and strong-lensing data. For A520, the results are also controversial, with some works detecting a dark clump (Mahdavi et al. 2007; Okabe & Umetsu 2008; Jee et al. 2012, 2014) and others finding no significant detection (Clowe et al. 2012; Peel, Lanusse & Starck 2017).

#### 4 SUMMARY

Using LoTSS data, we have identified an RH and likely radio relic in A959. The RH has a flux at 144 MHz of  $S_{143.7\text{MHz}} = 0.094 \pm 0.014$  Jy. Using the measured flux at 1400 MHz for all diffuse emission from Owen et al. (1999), we found a spectral index for the RH of  $1.48_{-0.23}^{+0.06}$ . Additionally, we report the detection of a likely radio relic in A959,  $\sim 400$  kpc in length and  $\sim 125$  kpc in width, located  $\sim 800$  kpc to the south-east of the cluster core. There is no indication of a surface brightness edge in the actual *Chandra* and *XMM-Newton* data, but both have very few counts at the relic location ( $\lesssim 0.2$  counts pixel $^{-1}$ ). Deeper X-ray data will be required to search for shocks in the ICM at the relic location.

We also examined the putative dark clump WL 1017.3 + 5931 for which no associated galaxy concentration has been identified (Dahle et al. 2003). Using the *XMM* X-ray data and the total mass from Dahle et al. (2002), we placed limits on the X-ray gas mass fraction in the clump. We find the upper limit on the gas mass fraction within  $r = 156$  kpc to be  $f_{\text{gas}} < 1.7 \times 10^{-3}$ , implying efficient stripping of the gas. However, this value (and the existence of the clump itself) should be treated with caution since only weak-lensing data were used to measure the mass distribution, which consequently could have significant uncertainties (see e.g. A2744 and A520; Clowe et al. 2012; Jauzac et al. 2016; Peel et al. 2017).

To place the diffuse radio emission in A959 in context, we collected all known RH detections from the literature (80 systems in total) and added A959 to plots between the non-thermal and thermal power (e.g. Cassano et al. 2013; Martinez Aviles et al. 2016) of this full RH sample. We find that the RH of A959 falls close to the scaling relations of Cassano et al. (2013). As previously reported (Brunetti et al. 2009; Basu 2012; Cassano et al. 2013; Kale et al. 2015; Cuciti et al. 2018), there is a large scatter in these scaling relations. This scatter may be partly explained as being due to evolution in the radio and X-ray luminosities during the merger (e.g. Ricker & Sarazin 2001; Ritchie & Thomas 2002; Randall et al. 2002; Donnert et al. 2013).

To investigate such evolution, we examined how the halo radio power relates to the ratio between the measured X-ray luminosity and that predicted from the SZ cluster mass using the cluster *LM* scaling relations of Mantz et al. (2010) and Giles et al. (2017), and we summarize the results next:

(i) *We find evidence that the flat-spectrum haloes occur in systems with lower X-ray luminosity ratios and higher halo radio powers, while the steep-spectrum haloes tend to occur in systems with higher X-ray luminosity ratios and lower radio powers.* We argue that this

result is consistent with the expectations of turbulent re-acceleration models of halo formation (e.g. Brunetti et al. 2009; Cassano et al. 2010a), where the halo spectral steepness is strongly influenced by the level of turbulence generated by the merger. Specifically, in these models, steep-spectrum haloes are expected to be created preferentially in low-turbulence mergers (Cassano et al. 2006), where the expected lifetime of the halo is short. The short lifetimes imply that such systems (e.g. RXJ1720.1 + 2638; Savini et al. 2019) are more likely to be observed at an earlier stage of the merger than the systems with longer lived, flatter haloes.

(ii) *We also find evidence that the RH systems with radio relics have lower measured-to-predicted X-ray luminosities than similar non-relic systems.* This finding is consistent with simulations of relics (e.g. Vazza et al. 2012; Ha et al. 2018), which find that relics tend to be observed in the cluster outskirts at the later stages of the merger, when the X-ray luminosity is expected to have decreased significantly.

We therefore posit that the combination of measured-to-predicted X-ray luminosity and the spectral properties of the RH is a general indicator of the merger stage, in line with simulations (Ritchie & Thomas 2002; Donnert et al. 2013).

#### ACKNOWLEDGEMENTS

The scientific results reported in this article are based on data obtained with the International LOFAR Telescope (ILT), and archive data from *Chandra* Data Archive and *XMM-Newton* archive. LOFAR (van Haarlem et al. 2013) is the Low Frequency Array designed and constructed by ASTRON. It has observing, data processing, and data storage facilities in several countries, which are owned by various parties (each with their own funding sources), and that are collectively operated by the ILT foundation under a joint scientific policy. The ILT resources have benefitted from the following recent major funding sources: CNRS-INSU, Observatoire de Paris and Universit  d'Orlans, France; BMBF, MIWF-NRW, MPG, Germany; Science Foundation Ireland (SFI), Department of Business, Enterprise and Innovation (DBEI), Ireland; NWO, The Netherlands; The Science and Technology Facilities Council, UK.

The LOFAR reduction was done using PREFACTOR and FACTOR packages, and the X-ray data reduction has made using CIAO package provided by *Chandra* X-ray Center (CXC), and SAS package for *XMM-Newton* data. The LOFAR group in Leiden is supported by the ERC Advanced Investigator program New-Clusters 321271. The authors thank the referee for the constructive comments, which improve the paper significantly.

#### REFERENCES

- Albert J. G., Sif n C., Stroe A., Mernier F., Intema H. T., R ttgering H. J. A., Brunetti G., 2017, *A&A*, 607, A4  
 Alexander D. M., Hickox R. C., 2012, *New Astron. Rev.*, 56, 93  
 Allen S. W., Schmidt R. W., Fabian A. C., Ebeling H., 2003, *MNRAS*, 342, 287  
 Allen S. W., Evrard A. E., Mantz A. B., 2011, *ARA&A*, 49, 409  
 Andernach H., Feretti L., Giovannini G., 1984, *A&A*, 133, 252  
 Andrade-Santos F. et al., 2017, *ApJ*, 843, 76  
 Arnaud K. A., 1996, in Jacoby G. H., Barnes J., eds, ASP Conf. Ser. Vol. 101, *Astronomical Data Analysis Software and Systems V*. Astron. Soc. Pac., San Francisco, p. 17  
 Bacchi M., Feretti L., Giovannini G., Govoni F., 2003, *A&A*, 400, 465  
 Bagchi J. et al., 2011, *ApJ*, 736, L8  
 Basu K., 2012, *MNRAS*, 421, L112

- Benson A. J., Bower R. G., Frenk C. S., Lacey C. G., Baugh C. M., Cole S., 2003, *ApJ*, 599, 38
- Bernardi G. et al., 2016, *MNRAS*, 456, 1259
- Bîrzan L., Rafferty D. A., McNamara B. R., Wise M. W., Nulsen P. E. J., 2004, *ApJ*, 607, 800
- Bîrzan L., Rafferty D. A., Nulsen P. E. J., McNamara B. R., Röttgering H. J. A., Wise M. W., Mittal R., 2012, *MNRAS*, 427, 3468
- Bîrzan L., Rafferty D. A., Brügger M., Intema H. T., 2017, *MNRAS*, 471, 1766
- Böhringer H. et al., 2000, *ApJS*, 129, 435
- Bonafede A. et al., 2012, *MNRAS*, 426, 40
- Bonafede A. et al., 2014a, *MNRAS*, 444, L44
- Bonafede A., Intema H. T., Brügger M., Girardi M., Nonino M., Kantharia N., van Weeren R. J., Röttgering H. J. A., 2014b, *ApJ*, 785, 1
- Bonafede A. et al., 2018, *MNRAS*, 478, 2927
- Boschin W., Barrena R., Girardi M., 2009, *A&A*, 495, 15
- Botteon A., Gastaldello F., Brunetti G., Kale R., 2016, *MNRAS*, 463, 1534
- Botteon A. et al., 2018, *MNRAS*, 478, 885
- Bourdin H., Mazzotta P., Markevitch M., Giacintucci S., Brunetti G., 2013, *ApJ*, 764, 82
- Brentjens M. A., 2008, *A&A*, 489, 69
- Brown S., Duisterhoef J., Rudnick L., 2011, *ApJ*, 727, L25
- Brügger M., Bykov A., Ryu D., Röttgering H., 2012, *Space Sci. Rev.*, 166, 187
- Brunetti G., Jones T. W., 2014, *Int. J. Mod. Phys. D*, 23, 1430007
- Brunetti G., Lazarian A., 2011, *MNRAS*, 412, 817
- Brunetti G., Lazarian A., 2016, *MNRAS*, 458, 2584
- Brunetti G., Setti G., Feretti L., Giovannini G., 2001, *MNRAS*, 320, 365
- Brunetti G., Venturi T., Dallacasa D., Cassano R., Dolag K., Giacintucci S., Setti G., 2007, *ApJ*, 670, L5
- Brunetti G., Cassano R., Dolag K., Setti G., 2009, *A&A*, 507, 661
- Brunetti G., Zimmer S., Zandanel F., 2017, *MNRAS*, 472, 1506
- Burns J. O., Hallman E. J., Gantner B., Motl P. M., Norman M. L., 2008, *ApJ*, 675, 1125
- Canning R. E. A. et al., 2017, *MNRAS*, 464, 2896
- Cantwell T. M., Scaife A. M. M., Oozeer N., Wen Z. L., Han J. L., 2016, *MNRAS*, 458, 1803
- Cassano R., Brunetti G., Setti G., 2006, *MNRAS*, 369, 1577
- Cassano R., Brunetti G., Setti G., Govoni F., Dolag K., 2007, *MNRAS*, 378, 1565
- Cassano R., Brunetti G., Röttgering H. J. A., Brügger M., 2010a, *A&A*, 509, A68
- Cassano R., Etori S., Giacintucci S., Brunetti G., Markevitch M., Venturi T., Gitti M., 2010b, *ApJ*, 721, L82
- Cassano R., Brunetti G., Norris R. P., Röttgering H. J. A., Johnston-Hollitt M., Trasatti M., 2012, *A&A*, 548, A100
- Cassano R. et al., 2013, *ApJ*, 777, 141
- Clarke T. E., Ensslin T. A., 2006, *AJ*, 131, 2900
- Clowe D., Gonzalez A., Markevitch M., 2004, *ApJ*, 604, 596
- Clowe D., Bradač M., Gonzalez A. H., Markevitch M., Randall S. W., Jones C., Zaritsky D., 2006, *ApJ*, 648, L109
- Clowe D., Markevitch M., Bradač M., Gonzalez A. H., Chung S. M., Massey R., Zaritsky D., 2012, *ApJ*, 758, 128
- Connor T., Donahue M., Sun M., Hoekstra H., Mahdavi A., Conselice C. J., McNamara B., 2014, *ApJ*, 794, 48
- Cooray A. R., Grego L., Holzapfel W. L., Joy M., Carlstrom J. E., 1998, *AJ*, 115, 1388
- Cuciti V., Cassano R., Brunetti G., Dallacasa D., Kale R., Etori S., Venturi T., 2015, *A&A*, 580, A97
- Cuciti V., Brunetti G., van Weeren R., Bonafede A., Dallacasa D., Cassano R., Venturi T., Kale R., 2018, *A&A*, 609, A61
- Dahle H., Kaiser N., Irgens R. J., Lilje P. B., Maddox S. J., 2002, *ApJS*, 139, 313
- Dahle H., Pedersen K., Lilje P. B., Maddox S. J., Kaiser N., 2003, *ApJ*, 591, 662
- Dasadia S. et al., 2016, *ApJ*, 820, L20
- de Gasperin F., Intema H. T., van Weeren R. J., Dawson W. A., Golovich N., Wittman D., Bonafede A., Brügger M., 2015, *MNRAS*, 453, 3483
- Dickey J. M., Lockman F. J., 1990, *ARA&A*, 28, 215
- Donnert J., Dolag K., Brunetti G., Cassano R., 2013, *MNRAS*, 429, 3564
- Duchesne S. W., Johnston-Hollitt M., Offringa A. R., Pratt G. W., Zheng Q., Dehghan S., 2017, preprint ([arXiv:1707.03517](https://arxiv.org/abs/1707.03517))
- Eckert D., Jauzac M., Vazza F., Owers M. S., Kneib J.-P., Tchernin C., Intema H., Knowles K., 2016, *MNRAS*, 461, 1302
- Eckert D., Gaspari M., Vazza F., Gastaldello F., Tramacere A., Zimmer S., Etori S., Paltani S., 2017, *ApJ*, 843, L29
- Ensslin T. A., Biermann P. L., Klein U., Kohle S., 1998, *A&A*, 332, 395
- Fabian A. C., 2012, *ARA&A*, 50, 455
- Farnsworth D., Rudnick L., Brown S., Brunetti G., 2013, *ApJ*, 779, 189
- Feretti L., Fusco-Femiano R., Giovannini G., Govoni F., 2001, *A&A*, 373, 106
- Feretti L., Orrù E., Brunetti G., Giovannini G., Kassim N., Setti G., 2004, *A&A*, 423, 111
- Feretti L., Giovannini G., Govoni F., Murgia M., 2012, *A&AR*, 20, 54
- Ferrari C. et al., 2011, *A&A*, 534, L12
- Finoguenov A., Sarazin C. L., Nakazawa K., Wik D. R., Clarke T. E., 2010, *ApJ*, 715, 1143
- Giacintucci S. et al., 2005, *A&A*, 440, 867
- Giacintucci S., Venturi T., Bardelli S., Brunetti G., Cassano R., Dallacasa D., 2006, *New Astron.*, 11, 437
- Giacintucci S. et al., 2008, *A&A*, 486, 347
- Giacintucci S., Venturi T., Brunetti G., Dallacasa D., Mazzotta P., Cassano R., Bardelli S., Zucca E., 2009, *A&A*, 505, 45
- Giacintucci S., Dallacasa D., Venturi T., Brunetti G., Cassano R., Markevitch M., Athreya R. M., 2011, *A&A*, 534, A57
- Giles P. A. et al., 2017, *MNRAS*, 465, 858
- Giovannini G., Feretti L., 2000, *New Astron.*, 5, 335
- Giovannini G., Bonafede A., Feretti L., Govoni F., Murgia M., Ferrari F., Monti G., 2009, *A&A*, 507, 1257
- Giovannini G., Bonafede A., Feretti L., Govoni F., Murgia M., 2010, *A&A*, 511, L5
- Girardi M. et al., 2016, *MNRAS*, 456, 2829
- Golovich N. et al., 2018, preprint ([arXiv:1806.10619](https://arxiv.org/abs/1806.10619))
- Govoni F., Enßlin T. A., Feretti L., Giovannini G., 2001, *A&A*, 369, 441
- Govoni F., Murgia M., Feretti L., Giovannini G., Dallacasa D., Taylor G. B., 2005, *A&A*, 430, L5
- Govoni F., Ferrari C., Feretti L., Vacca V., Murgia M., Giovannini G., Perley R., Benoist C., 2012, *A&A*, 545, A74
- Hahn O., Martizzi D., Wu H.-Y., Evrard A. E., Teyssier R., Wechsler R. H., 2017, *MNRAS*, 470, 166
- Ha J.-H., Ryu D., Kang H., 2018, *ApJ*, 857, 26
- Harvey D., Massey R., Kitching T., Taylor A., Tittley E., 2015, *Science*, 347, 1462
- Hasselfield M. et al., 2013, *J. Cosmol. Astropart. Phys.*, 7, 008
- Hlavacek-Larrondo J. et al., 2018, *MNRAS*, 475, 2743
- Hoang D. N. et al., 2017, *MNRAS*, 471, 1107
- Hoang D. N. et al., 2019a, *A&A*, 622, A20
- Hoang D. N. et al., 2019b, *A&A*, 622, A21
- Hoefl M., Nuza S. E., Gottlöber S., van Weeren R. J., Röttgering H. J. A., Brügger M., 2011, *J. Astrophys. Astron.*, 32, 509
- Intema H. T., Jagannathan P., Mooley K. P., Fraile D. A., 2017, *A&A*, 598, A78
- Irgens R. J., Lilje P. B., Dahle H., Maddox S. J., 2002, *ApJ*, 579, 227
- Jauzac M. et al., 2016, *MNRAS*, 463, 3876
- Jee M. J., Mahdavi A., Hoekstra H., Babul A., Dalcanton J. J., Carroll P., Capak P., 2012, *ApJ*, 747, 96
- Jee M. J., Hughes J. P., Menanteau F., Sifón C., Mandelbaum R., Barrientos L. F., Infante L., Ng K. Y., 2014, *ApJ*, 785, 20
- Jee M. J., Dawson W. A., Stroe A., Wittman D., van Weeren R. J., Brügger M., Bradač M., Röttgering H., 2016, *ApJ*, 817, 179
- Kale R., 2018, preprint ([arXiv:1808.09140](https://arxiv.org/abs/1808.09140))
- Kale R., Venturi T., Giacintucci S., Dallacasa D., Cassano R., Brunetti G., Macario G., Athreya R., 2013, *A&A*, 557, A99
- Kale R., Venturi T., Cassano R., Giacintucci S., Bardelli S., Dallacasa D., Zucca E., 2015, *A&A*, 581, A23
- Kang H., Ryu D., Jones T. W., 2012, *ApJ*, 756, 97

- Kim K.-T., Kronberg P. P., Dewdney P. E., Landecker T. L., 1990, *ApJ*, 355, 29
- Knowles K. et al., 2016, *MNRAS*, 459, 4240
- Kravtsov A. V., Borgani S., 2012, *ARA&A*, 50, 353
- Lindner R. R. et al., 2014, *ApJ*, 786, 49
- Macario G., Markevitch M., Giacintucci S., Brunetti G., Venturi T., Murray S. S., 2011, *ApJ*, 728, 82
- Macario G. et al., 2013, *A&A*, 551, A141
- Mahdavi A., Hoekstra H., Babul A., Balam D. D., Capak P. L., 2007, *ApJ*, 668, 806
- Mahdavi A., Hoekstra H., Babul A., Bildfell C., Jeltema T., Henry J. P., 2013, *ApJ*, 767, 116
- Mandal S. et al., 2019, *A&A*, 622, A22
- Mantz A., Allen S. W., Ebeling H., Rapetti D., Drlica-Wagner A., 2010, *MNRAS*, 406, 1773
- Mantz A. B., Allen S. W., Morris R. G., Schmidt R. W., 2016, *MNRAS*, 456, 4020
- Markevitch M., Gonzalez A. H., David L., Vikhlinin A., Murray S., Forman W., Jones C., Tucker W., 2002, *ApJ*, 567, L27
- Markevitch M., Gonzalez A. H., Clowe D., Vikhlinin A., Forman W., Jones C., Murray S., Tucker W., 2004, *ApJ*, 606, 819
- Markevitch M., Govoni F., Brunetti G., Jerius D., 2005, *ApJ*, 627, 733
- Martinez Aviles G. et al., 2016, *A&A*, 595, A116
- McNamara B. R., Nulsen P. E. J., 2007, *ARA&A*, 45, 117
- Medezinski E., Battaglia N., Coupon J., Cen R., Gaspari M., Strauss M. A., Spergel D. N., 2017, *ApJ*, 836, 54
- Mernier F. et al., 2017, *A&A*, 603, A80
- Merten J. et al., 2011, *MNRAS*, 417, 333
- Murgia M., Govoni F., Feretti L., Giovannini G., 2010, *A&A*, 509, A86
- Nuza S. E., Hoefl M., van Weeren R. J., Gottlöber S., Yepes G., 2012, *MNRAS*, 420, 2006
- Ogrea G. A. et al., 2015, *ApJ*, 812, 153
- O'Hara T. B., Mohr J. J., Bialek J. J., Evrard A. E., 2006, *ApJ*, 639, 64
- Okabe N., Umetsu K., 2008, *PASJ*, 60, 345
- Orrù E., Murgia M., Feretti L., Govoni F., Brunetti G., Giovannini G., Girardi M., Setti G., 2007, *A&A*, 467, 943
- Owen F., Morrison G., Voges W., 1999, in Boehringer H., Feretti L., Schuecker P., eds, *Diffuse Thermal and Relativistic Plasma in Galaxy Clusters*. Max-Planck-Institut für Extraterrestrische Physik, Garching, Germany, p. 9
- Owen F. N., Rudnick L., Eilek J., Rau U., Bhatnagar S., Kogan L., 2014, *ApJ*, 794, 24
- Parekh V., Dwarakanath K. S., Kale R., Intema H., 2017, *MNRAS*, 464, 2752
- Parrish I. J., Quataert E., Sharma P., 2010, *ApJ*, 712, L194
- Pearce C. J. J. et al., 2017, *ApJ*, 845, 81
- Peel A., Lanusse F., Starck J.-L., 2017, *ApJ*, 847, 23
- Petrosian V., 2001, *ApJ*, 557, 560
- Pfrommer C., Enßlin T. A., Springel V., 2008, *MNRAS*, 385, 1211
- Pfrommer C., Chang P., Broderick A. E., 2012, *ApJ*, 752, 24
- Piffaretti R., Arnaud M., Pratt G. W., Pointecouteau E., Melin J.-B., 2011, *A&A*, 534, A109
- Pinzke A., Oh S. P., Pfrommer C., 2013, *MNRAS*, 435, 1061
- Pinzke A., Oh S. P., Pfrommer C., 2017, *MNRAS*, 465, 4800
- Pizzo R. F., de Bruyn A. G., 2009, *A&A*, 507, 639
- Planck Collaboration IX, 2011, *A&A*, 536, A9
- Planck Collaboration XXIX, 2014, *A&A*, 571, 29
- Planck Collaboration, 2015, *A&A*, 581, A14
- Planck Collaboration XXVII, 2016, *A&A*, 594, A27
- Poole G. B., Babul A., McCarthy I. G., Sanderson A. J. R., Fardal M. A., 2008, *MNRAS*, 391, 1163
- Pratt G. W., Croston J. H., Arnaud M., Böhringer H., 2009, *A&A*, 498, 361
- Press W. H., Schechter P., 1974, *ApJ*, 187, 425
- Randall S. W., Sarazin C. L., Ricker P. M., 2002, *ApJ*, 577, 579
- Rasia E. et al., 2015, *ApJ*, 813, L17
- Reiprich T. H., Böhringer H., 2002, *ApJ*, 567, 716
- Ricker P. M., Sarazin C. L., 2001, *ApJ*, 561, 621
- Ritchie B. W., Thomas P. A., 2002, *MNRAS*, 329, 675
- Rossetti M., Gastaldello F., Eckert D., Della Torre M., Pantiri G., Cazzoletti P., Molendi S., 2017, *MNRAS*, 468, 1917
- Rudnick L., Lemmerman J. A., 2009, *ApJ*, 697, 1341
- Russell H. R., Fabian A. C., Sanders J. S., Johnstone R. M., Blundell K. M., Brandt W. N., Crawford C. S., 2010, *MNRAS*, 402, 1561
- Sanders J. S., Fabian A. C., 2007, *MNRAS*, 381, 1381
- Sarazin C. L., Finoguenov A., Wik D. R., Clarke T. E., 2016, preprint (arXiv:1606.07433)
- Savini F. et al., 2018, *MNRAS*, 478, 2234
- Savini F. et al., 2019, *A&A*, 622, A24
- Scaife A. M. M., Heald G. H., 2012, *MNRAS*, 423, L30
- Scannapieco E., Oh S. P., 2004, *ApJ*, 608, 62
- Shakouri S., Johnston-Hollitt M., Pratt G. W., 2016, *MNRAS*, 459, 2525
- Shimwell T. W., Brown S., Feain I. J., Feretti L., Gaensler B. M., Lage C., 2014, *MNRAS*, 440, 2901
- Shimwell T. W., Markevitch M., Brown S., Feretti L., Gaensler B. M., Johnston-Hollitt M., Lage C., Srinivasan R., 2015, *MNRAS*, 449, 1486
- Shimwell T. W. et al., 2016, *MNRAS*, 459, 277
- Shimwell T. W. et al., 2017, *A&A*, 598, A104
- Smith R. K., Brickhouse N. S., Liedahl D. A., Raymond J. C., 2001, *ApJ*, 556, L91
- Sommer M. W., Basu K., Intema H., Pacaud F., Bonafede A., Babul A., Bertoldi F., 2017, *MNRAS*, 466, 996
- Springel V., Frenk C. S., White S. D. M., 2006, *Nature*, 440, 1137
- Storm E., Jeltema T. E., Rudnick L., 2015, *MNRAS*, 448, 2495
- Sun M., 2009, *ApJ*, 704, 1586
- Thierbach M., Klein U., Wielebinski R., 2003, *A&A*, 397, 53
- Vacca V., Feretti L., Giovannini G., Govoni F., Murgia M., Perley R. A., Clarke T. E., 2014, *A&A*, 561, A52
- van Haarlem M. P. et al., 2013, *A&A*, 556, A2
- van Weeren R. J. et al., 2009, *A&A*, 506, 1083
- van Weeren R. J., Röttgering H. J. A., Brügger M., Hoefl M., 2010, *Science*, 330, 347
- van Weeren R. J., Brügger M., Röttgering H. J. A., Hoefl M., Nuza S. E., Intema H. T., 2011, *A&A*, 533, A35
- van Weeren R. J. et al., 2012a, *A&A*, 543, A43
- van Weeren R. J., Röttgering H. J. A., Intema H. T., Rudnick L., Brügger M., Hoefl M., Oonk J. B. R., 2012b, *A&A*, 546, A124
- van Weeren R. J. et al., 2013, *ApJ*, 769, 101
- van Weeren R. J. et al., 2016a, *ApJS*, 223, 2
- van Weeren R. J. et al., 2016b, *ApJ*, 818, 204
- van Weeren R. J. et al., 2017a, *Nat. Astron.*, 1, 0005
- van Weeren R. J. et al., 2017b, *ApJ*, 835, 197
- van Weeren R. J., de Gasperin F., Akamatsu H., Brügger M., Feretti L., Kang H., Stroe A., Zandanel F., 2019, *Space Sci. Rev.*, 215, 16
- Vazza F., Brügger M., Gheller C., Brunetti G., 2012, *MNRAS*, 421, 3375
- Venturi T., Bardelli S., Dallacasa D., Brunetti G., Giacintucci S., Hunstead R. W., Morganti R., 2003, *A&A*, 402, 913
- Venturi T., Giacintucci S., Brunetti G., Cassano R., Bardelli S., Dallacasa D., Setti G., 2007, *A&A*, 463, 937
- Venturi T., Giacintucci S., Dallacasa D., Cassano R., Brunetti G., Bardelli S., Setti G., 2008, *A&A*, 484, 327
- Venturi T., Giacintucci S., Dallacasa D., Cassano R., Brunetti G., Macario G., Athreya R., 2013, *A&A*, 551, A24
- Venturi T. et al., 2017, *A&A*, 603, A125
- Vikhlinin A. et al., 2009, *ApJ*, 692, 1033
- Voit G. M., Kay S. T., Bryan G. L., 2005, *MNRAS*, 364, 909
- Wang Q. H. S., Markevitch M., Giacintucci S., 2016, *ApJ*, 833, 99
- Wilber A. et al., 2018, *MNRAS*, 473, 3536
- Wittman D., Golovich N., Dawson W. A., 2018, *ApJ*, 869, 104
- Wu X.-P., Xue Y.-J., Fang L.-Z., 1999, *ApJ*, 524, 22
- Yuan Z. S., Han J. L., Wen Z. L., 2015, *ApJ*, 813, 77
- Zandanel F., Pfrommer C., Prada F., 2014, *MNRAS*, 438, 124

This paper has been typeset from a  $\text{\TeX}/\text{\LaTeX}$  file prepared by the author.