



Publication Year	2018
Acceptance in OA	2020-11-19T10:40:12Z
Title	The Kormendy relation of galaxies in the Frontier Fields clusters: Abell S1063 and MACS J1149.5+2223
Authors	Tortorelli, Luca, MERCURIO, AMATA, Paolillo, Maurizio, Rosati, Piero, GARGIULO, ADRIANA, Gobat, Raphael, Balestra, Italo, Caminha, G. B., Annunziatella, Marianna, GRILLO, CLAUDIO, Lombardi, Marco, NONINO, Mario, Rettura, Alessandro, Sartoris, Barbara, STRAZZULLO, VERONICA
Publisher's version (DOI)	10.1093/mnras/sty617
Handle	http://hdl.handle.net/20.500.12386/28438
Journal	MONTHLY NOTICES OF THE ROYAL ASTRONOMICAL SOCIETY
Volume	477

The Kormendy relation of galaxies in the Frontier Fields clusters: Abell S1063 and MACS J1149.5+2223

Luca Tortorelli,^{1,2★} Amata Mercurio,^{2★} Maurizio Paolillo,^{3,4} Piero Rosati,⁵
Adriana Gargiulo,⁶ Raphael Gobat,⁷ Italo Balestra,⁸ G. B. Caminha,^{5,9}
Marianna Annunziatella,¹⁰ Claudio Grillo,^{11,12} Marco Lombardi,¹² Mario Nonino,¹³
Alessandro Rettura,¹⁴ Barbara Sartoris^{10,13} and Veronica Strazzullo¹⁵

¹Institute for Particle Physics and Astrophysics, ETH Zürich, Wolfgang-Pauli-Str. 27, CH-8093 Zürich, Switzerland

²INAF-Osservatorio Astronomico di Capodimonte, Salita Moiariello 16, I-80131 Napoli, Italy

³Dipartimento di Fisica ‘Ettore Pancini’, Università degli Studi di Napoli ‘Federico II’, via Cinthia 21, I-80126 Napoli, Italy

⁴INFN - Unità di Napoli, via Cintia, I-80126 Napoli, Italy

⁵Dipartimento di Fisica e Scienze della Terra, Università di Ferrara, via Saragat 1, I-44122, Ferrara, Italy

⁶INAF - Istituto di Astrofisica Spaziale e Fisica Cosmica Milano, via Bassini 15, I-20133 Milano, Italy

⁷School of Physics, Korea Institute for Advanced Study, Hoegiro 85, Dongdaemun-gu, 02455 Seoul, Republic of Korea

⁸University Observatory Munich, Scheinerstrasse 1, D-81679 Munich, Germany

⁹Kapteyn Astronomical Institute, University of Groningen, PO Box 800, NL-9700 AV, Groningen, the Netherlands

¹⁰Dipartimento di Fisica - Sezione di Astronomia, Università di Trieste, via Tiepolo 11, I-34131 Trieste, Italy

¹¹Dark Cosmology Centre, Niels Bohr Institute, University of Copenhagen, Juliane Maries Vej 30, DK-2100 Copenhagen, Denmark

¹²Dipartimento di Fisica, Università di Milano, via Celoria 16, I-20133 Milan, Italy

¹³INAF - Osservatorio Astronomico di Trieste, via G. B. Tiepolo 11, I-34143 Trieste, Italy

¹⁴IPAC, Caltech, KS 314-6, 1200 E. California Blvd, Pasadena, CA 91125, USA

¹⁵Department of Physics, Ludwig-Maximilians-Universität, Scheinerstr. 1, D-81679 München, Germany

Accepted 2018 March 5. Received 2018 February 19; in original form 2017 November 7

ABSTRACT

We analyse the Kormendy relations (KRs) of the two Frontier Fields clusters, Abell S1063, at $z = 0.348$, and MACS J1149.5+2223, at $z = 0.542$, exploiting very deep *Hubble Space Telescope* photometry and Very Large Telescope (VLT)/Multi Unit Spectroscopic Explorer (MUSE) integral field spectroscopy. With this novel data set, we are able to investigate how the KR parameters depend on the cluster galaxy sample selection and how this affects studies of galaxy evolution based on the KR. We define and compare four different galaxy samples according to (a) Sérsic indices: early-type (‘ETG’), (b) visual inspection: ‘ellipticals’, (c) colours: ‘red’, (d) spectral properties: ‘passive’. The classification is performed for a complete sample of galaxies with $m_{F814W} \leq 22.5$ ABmag ($M_* \gtrsim 10^{10.0} M_{\odot}$). To derive robust galaxy structural parameters, we use two methods: (1) an iterative estimate of structural parameters using images of increasing size, in order to deal with closely separated galaxies and (2) different background estimations, to deal with the intracluster light contamination. The comparison between the KRs obtained from the different samples suggests that the sample selection could affect the estimate of the best-fitting KR parameters. The KR built with ETGs is fully consistent with the one obtained for ellipticals and passive. On the other hand, the KR slope built on the red sample is only marginally consistent with those obtained with the other samples. We also release the photometric catalogue with structural parameters for the galaxies included in the present analysis.

Key words: methods: data analysis – catalogues – galaxies: clusters: general – galaxies: clusters: individual: Abell S1063, MACSJ1149.5+2223 – galaxies: evolution – galaxies: stellar content.

* E-mail: torluca@phys.ethz.ch (LT); mercurio@na.astro.it (AM)

1 INTRODUCTION

Galaxies are characterized by a wide range of masses, sizes, and morphologies, but their physical parameters, such as total luminosity, effective radius, and central stellar velocity dispersion, are correlated. The study of the relation among such properties, and their variation as a function of redshift, leads to a better understanding of the physical processes that underlie the formation and evolution of galaxies themselves.

Observations show the existence of a correlation between the effective radius R_e of an early-type galaxy (ETG) and the mean surface brightness within that radius $\langle\mu\rangle_e$, $\langle\mu\rangle_e = \alpha + \beta \log R_e$, known as the Kormendy relation (hereafter KR; Kormendy 1977), stating that more luminous ellipticals are larger and have a lower characteristic surface brightness. This relation provides information on the distribution of the light profiles and the sizes of ETGs, thus it can be used as a proxy to investigate their present and past evolution, in particular their size-evolution over cosmic time.

It is still a matter of debate whether the size of ETGs increases with the cosmic time. Several authors found that high- z ($z \gtrsim 1.4$) massive galaxies are more compact, i.e. they have a smaller effective radius, than local ETGs (Daddi et al. 2005; Trujillo et al. 2006; Longhetti et al. 2007). This size evolution is also present at moderate redshifts: the effective radius of ETGs should increase at least by a factor of ~ 1.5 – 2 since $z \sim 1.2$ to explain the discrepancy of the evolution of $\langle\mu\rangle_e$ as a function of redshifts in the KR, assuming a pure luminosity evolution (e.g. Longhetti et al. 2007; Rettura et al. 2010; Trujillo, Ferreras & de La Rosa 2011). However, other studies provide contrasting results when samples of ETGs are strictly selected on the basis of their morphology (e.g. Mancini et al. 2010; Saracco, Longhetti & Gargiulo 2010; Stott et al. 2011; Jørgensen & Chiboucas 2013; Andreon et al. 2016) and when the number density and stellar population properties of compact ETGs at high and low redshifts are taken into account (e.g. Saglia et al. 2010; Poggianti et al. 2013; Belli, Newman & Ellis 2014; Fagioli et al. 2016). This seems to imply that the sample selection plays an important role in disentangling between the two scenarios. Since the KR can be used to study the size evolution over cosmic time, understanding whether there is a bias in the determination of its parameters due to the sample selection becomes crucial.

The KR applies to ETGs defined according to their light profiles. However, since ETGs are expected to be also red in photometric colours and passive in terms of occurring star formation, often, in literature, this relation has been obtained using a sample of galaxies selected according to their colours and/or their spectra. This is especially true at high- z or with low-resolution data, where a proper morphological classification is hard to determine. In order to investigate possible biases due to the different definitions of the galaxies on which the KR is measured, it is useful to select and compare four different samples: early-type, ellipticals, red, and passive galaxies. Indeed, one would not expect perfect overlap between these four classes even in principle. For example, it is well known that dusty star-forming galaxies can have red-sequence-like colours, and passive discs can be expected to stay discy for quite some time after quenching.

This work aims at investigating how the KR changes as a function of the sample selection using two Frontier Fields (FF) clusters: Abell S1063 (hereafter AS1063) and MACSJ1149.5+2223 (hereafter M1149), spanning the redshift range of 0.35–0.54. These redshifts witness significant evolution in the cluster galaxy population (Poggianti et al. 2006; Desai et al. 2007). In fact, $z \sim 0.4$ represents the peak of the infall rate of field galaxies into a cluster

(Kauffmann 1995) and of the transformation of these infalling field galaxies from star-forming disc-dominated galaxies into passively evolving spheroids, through, e.g., ram-pressure stripping when infalling through a cluster core. Therefore, they constitute the perfect environments in which one can conduct this study, since one deals with galaxies with mixed colours and/or morphologies that may bias the classification (e.g. a spiral entering the cluster and losing gas through ram-pressure stripping appears passive, but still it has a disc-like morphology). In order to do that, exquisite photometric and spectroscopic data have to be used, such as the FF clusters, which are those with the deepest *Hubble Space Telescope* (*HST*) photometry currently available, and Multi Unit Spectroscopic Explorer (MUSE) integral field spectroscopic data.

AS1063 is a massive cluster (total mass $M \sim 2.42 \times 10^{15} M_\odot$, Caminha et al. 2016) at $z = 0.348 \pm 0.001$ (Karman et al. 2015) with a large velocity dispersion (1380 ± 32) km s $^{-1}$ (Caminha et al. 2016) and it is the southern-most FF (Section 2) cluster, while M1149 at $z = 0.542 \pm 0.001$ (Grillo et al. 2016), with an estimated total mass of $\sim 2.5 \times 10^{15} M_\odot$ (Zheng et al. 2012), was discovered as part of the MACS survey (Ebeling, Edge & Henry 2000).

In Section 2, we describe the data set and the membership of cluster galaxies whose surface photometry analysis is detailed in Section 3. Section 4 is devoted to the definition of the samples of early-type, elliptical, red and passive galaxies and to their comparison. In Section 5, we discuss the results on the analysis of the KR and we compare them with other results in literature in Section 6. Finally, in Section 7, we summarize our results and present our conclusions.

Unless otherwise stated, we give errors at the 68 per cent confidence level (hereafter CL) and we report circularized effective radii. Throughout this paper, we use $H_0 = 70$ km s $^{-1}$ Mpc $^{-1}$ in a flat cosmology with $\Omega_M = 0.3$ and $\Omega_\Lambda = 0.7$. In the adopted cosmology, 1 arcmin corresponds to 0.295 Mpc at $z = 0.348$ and 0.373 Mpc at $z = 0.542$.

2 DATASET AND MEMBERSHIP

The two clusters AS1063 and M1149 are part of the FF programme¹ (PI: Lotz, Lotz et al. 2017), aiming at combining the power of *HST* and *Spitzer* with the natural gravitational telescope effect of massive high-magnification clusters of galaxies to produce the deepest observations of clusters and background lensed galaxies ever obtained. Each cluster is imaged for a total of 140 orbits, divided over seven optical/near-infrared bands (*F435W*, *F606W*, *F814W*, *F105W*, *F125W*, *F140W*, *F160W*).

We analyse the public *HST* photometric data available at the STScI MAST Archive.² We use the v1.0 release of Epoch 1 images from the *HST* FF ID 14037 for the cluster AS1063 and the v1.0 release, Epoch 2 images from the *HST* FF ID 13504 for the cluster M1149. The mosaics have been processed with the new ‘self-calibration’ approach (Anderson 2014) to reduce low-level dark current artefacts across the detector. In order to derive structural parameters (i.e. effective radius and surface brightness), we choose the *F814W* filter that corresponds to the rest-frame *R* band for AS1063 and to the rest-frame *V* band for M1149.

AS1063 and M1149 have a wealth of spectroscopic observations. AS1063 was observed with the Visible MultiObject Spectrograph (VIMOS) at the European Southern Observatory/Very

¹ <http://www.stsci.edu/hst/campaigns/frontier-fields/HST-Survey>

² <https://archive.stsci.edu/prepds/frontier/>

Large Telescope (ESO/VLT), as a part of the ESO Large Programme 186.A-0798 ‘Dark Matter Mass Distributions of Hubble Treasury Clusters and the Foundations of Λ cold dark matter (Λ CDM) Structure Formation Models’ (PI: Piero Rosati, Rosati et al. 2014, hereafter CLASH-VLT), with GMOS-S at Gemini by Gómez et al. (2012), with the Magellan telescope (Kelson private communication), with the MUSE integral field spectrograph (Karman et al. 2015; Caminha et al. 2016) as part of ESO Programme IDs 60.A-9345(A) and 095.A-0653(A) and with the WFC3-IR-GRISM of *HST*, as part of the Grism Lens-Amplified Survey from Space (hereafter GLASS, GO-13459, PI: Treu, Treu et al. 2016). M1149 has been observed with WFC3-IR-GRISM, as a part of GLASS (Treu et al. 2016), and with the MUSE integral field spectrograph as part of ESO Programme ID 294.A-5032(A). The total sample consists of 3850 spectra for AS1063 and 429 spectra for M1149, of which 175 (Karman et al. 2015, 2017) and 117 (Grillo et al. 2016) have been observed by MUSE, respectively. MUSE data include two pointings of the cluster core of AS1063, a north-eastern (NE) one and a south-western (SW) one, with respect to the position of the brightest cluster galaxy (BCG; Karman et al. 2017) and one pointing for the cluster core of M1149 (Grillo et al. 2016, see fig. 1 in Karman et al. 2015 and fig. 2 in Grillo et al. 2016, respectively). Differently from other spectroscopic data sets, the cluster members for which MUSE integral field unit (IFU) spectra are available allow us to be fully complete down to magnitude 22.5 in the *F814W* waveband (Caminha et al. 2016). This limit corresponds roughly to a stellar mass value of $M_* \sim 10^{9.8} M_\odot$ and $M_* \sim 10^{10.0} M_\odot$ for Abell S1063 and MACS J1149.5+2223, respectively, for the typical spectral energy distribution (SED) of the sources we are interested in and considering a Salpeter initial mass function (IMF; Salpeter 1955). For this reason, we use only galaxies in MUSE pointings with magnitudes below this threshold to derive the KR for both clusters. In the following, we refer to the *HST* images of those regions as *HST*-MUSE pointings.

In order to define the membership for these two clusters, we analyse the 1D velocity distribution (e.g. fig. 1 in Grillo et al. 2016 for M1149) of the total sample of spectra. Spectroscopically confirmed cluster members, for which MUSE IFU spectra are available, are 95 for AS1063 ($z = 0.348$), having redshifts in the range of $0.335 \leq z \leq 0.361$ (Karman et al. 2015), and 68 with redshifts $0.52 \leq z \leq 0.57$ (Grillo et al. 2016) for M1149 ($z = 0.542$). 60 out of 95 and 42 out of 68 galaxies have magnitudes brighter than the completeness limit we adopted in *F814W* waveband for AS1063 and M1149, respectively. These galaxies constitute our starting sample on which we apply the different selection criteria.

3 DATA ANALYSIS

In order to build the KR, we derive the structural parameters of the spectroscopically confirmed member galaxies, performing a parametric fit of the light distribution using a single Sérsic profile, since it gives us the versatility of fitting both spheroids and discs. Since what we observe is the light profile convolved with the point spread function (PSF), in order to recover the intrinsic light profiles, an accurate modelling of the real PSF is mandatory. Furthermore, the central region of a galaxy cluster has two other complications: it is a crowded environment and it is characterized by the presence of the intracluster light (ICL). The latter constitutes a contribution in flux that is added on top of the sky background, while the former makes the determination of galaxy light profiles highly dependent on the simultaneous fit of the nearest neighbours. These reasons lead us to design a new methodology to estimate the structural parameters

based on an iterative approach that analyse images of increasing size (to deal with nearest neighbours) and on multiple background estimation (to deal with the ICL contamination in flux).

In detail, the data analysis is performed in three steps (Fig. 1): in the first one, we derive accurate PSFs using both direct (from the data themselves) and indirect (from external libraries) empirical templates (Section 3.1). The second one is the estimate of the sky background. The last step is the optimization of the surface brightness profile fit. This step starts with an automatic fit on small stamps containing only a few galaxies (SEXTRACTOR, Bertin & Arnouts 1996, and GALAPAGOS, Barden et al. 2012) and ends with a simultaneous fit of all the galaxies in the image performed with GALFIT (Peng et al. 2011). The outputs of GALAPAGOS are used, in turn, as guesses for the inputs of the last run. The last step is repeated using different realizations of the PSFs and sky estimates (Section 3.2). The final estimates of the structural parameters are the average over all the different realizations (Section 3.3).

3.1 PSF measurement

The direct PSF is measured extracting and combining observed stars from the scientific images. This method has the advantage of obtaining a PSF directly from stars observed in exactly the same conditions of the analysed galaxies.

First, we run SEXTRACTOR on the whole images of the two clusters in order to select point-like sources in the field. Sources are classified as stars if the CLASS_STAR parameter from SEXTRACTOR is greater than 0.9. From this sample, we reject saturated stars and select isolated ones through a visual inspection. Finally, we refine our sample considering only signal-to-noise ratio (S/N) > 100 sources in the Advanced Camera for Surveys (ACS) field. We average these and perform a Gaussian fit of the resulting PSF to check if the effective full width at half-maximum (FWHM) ($\text{FWHM}_{\text{eff}} = 0.105$ arcsec) is close to the nominal one of *HST*/ACS (0.1 arcsec).

The indirect PSF is obtained by adding stars extracted from the Anderson library of empirical PSFs (Anderson & King 2006) on raw images in different detector positions, following the same reduction procedure of real data to account for the spatial distortion of ACS, as detailed below.

The Multiking *HST*/ACS simulator³ (Paolillo et al. 2011; Goudfrooij 2012; Puzia et al. 2014) is used to add empirical Anderson PSFs to *HST*/ACS observations, simulating the effect of dithering on the final drizzled and stacked image. Anderson empirical PSFs are designed to be added to original images that have been bias subtracted and flat-fielded, but not resampled or drizzled (hereafter, *flt*). We first align the original *flt* images and then we run the Multiking tool in order to add the PSFs on each individual aligned *flt* image and, finally, combine them. The procedure sets the ASTRODRIZZLE (Gonzaga et al. 2012) parameters in order to reproduce the dithering and projection pattern used in real data, in particular those of the FF images. Thanks to the possibility of generating PSFs on different positions on the detector, we are able to investigate how different in terms of FWHM and degree of symmetry are the generated PSFs across the field (Fig. 2). We find that differences are of the order of few per cents. We then tested the effect of such differences on some of the brightest galaxies in the *HST*-MUSE pointings, performing a fit of the galaxy surface brightness using PSFs generated by Multiking at different positions on the detector. We find differences of the order of ~ 5 per cent

³ <http://people.na.infn.it/paolillo/MyWebSite/Software.html>

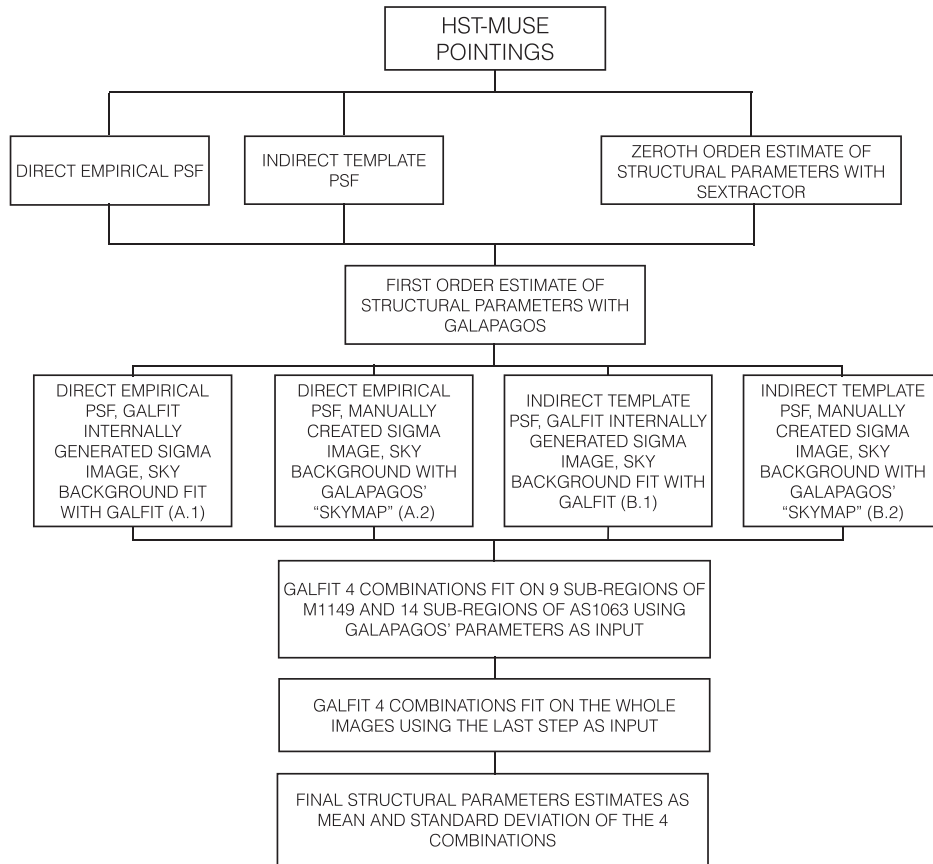


Figure 1. Flowchart describing each step of the measurement of the structural parameters in each *HST*-MUSE pointing is shown. The data analysis is performed in three steps: derivation of accurate PSFs, estimation of the sky background, and optimization of the surface brightness profile fit.

in the estimate of structural parameters when using PSFs within the *HST*-MUSE pointings. On the contrary, using PSFs generated outside or at the edges of the *HST*-MUSE pointings leads to bigger differences (~ 10 – 15 per cent). So the use of the *Multiking HST/ACS simulator* is necessary in order to take into account the spatial distortion of the PSF due to the effect of detector plus reduction procedures and to estimate the degree of precision with which one derives the structural parameters. Moreover, the tool is fundamental if it is not possible to find stars in the field suitable to measure the PSF.

3.2 Background estimates and fit optimization

GALFIT and *GALAPAGOS* request seven guess parameters (x , y positions, position angle, axis ratio, major axis effective radius, Sérsic index, and total magnitude) to initialize the fit of the Sérsic profile. Those initial values are obtained from *SEXTRACTOR* runs on each *HST*-MUSE pointing of the two clusters separately. Furthermore, *GALFIT* uses a ‘bad pixel map’ to select pixels belonging to sources that one wants to include in the fit. Therefore, also *SEXTRACTOR* ‘Segmentation maps’ are provided to the latter, so that spectroscopically confirmed cluster members and their neighbours are fitted. The quality of the Segmentation map depends on the choice of *SEXTRACTOR* input parameters. Their determination is crucial since, in both fields, we deal with small galaxies embedded in the halo of larger and brighter sources, and this is especially true if we consider the contribution of the ICL. Indeed, we use the ‘hot’ and ‘cold’ mode of *SEXTRACTOR* (see Barden et al. 2012) and perform dif-

ferent runs to assess which is the best combination that produces reliable output structural parameters, following also the prescriptions highlighted in Annunziatella et al. (2013, 2016).

SEXTRACTOR parameters are then used by *GALAPAGOS* as starting guesses for the light profile fitting. *GALAPAGOS* cuts the science images into smaller sections centred on the individual sources in order to significantly reduce the total fitting time. *GALAPAGOS* does not allow a free fit of the sky background in each stamp, but it estimates a value before the fitting. To do this, *GALAPAGOS* creates a ‘skymap’, i.e. a copy of the input images where the pixel values indicate the nature of the measured flux. In the skymap, a pixel value of 0 stands for blank background sky, while positive numbers indicate the presence of a source. The extension of each object is then estimated using a flux growth method (see Barden et al. 2012 for more details).

In our approach, *GALAPAGOS* parameters constitute a first-order approximation of reliable structural parameters for the sample of galaxies. We refer to Section 3.3 for a comparison between the final structural parameters we use to build the KR and *GALAPAGOS* estimates of them.

Continuing the approach of increasing images size, we perform a fit of the light profile of the sample of galaxies with *GALFIT*, using parameters provided by *GALAPAGOS* as starting point, enlarging step by step the image sizes and thus the number of galaxies simultaneously fitted (typically 15–20 sources versus 3–4 in *GALAPAGOS*). We cut stamps of each *HST*-MUSE pointing and relative Segmentation map, whose dimensions are chosen to contain the number of sources mentioned above and paying attention to consider

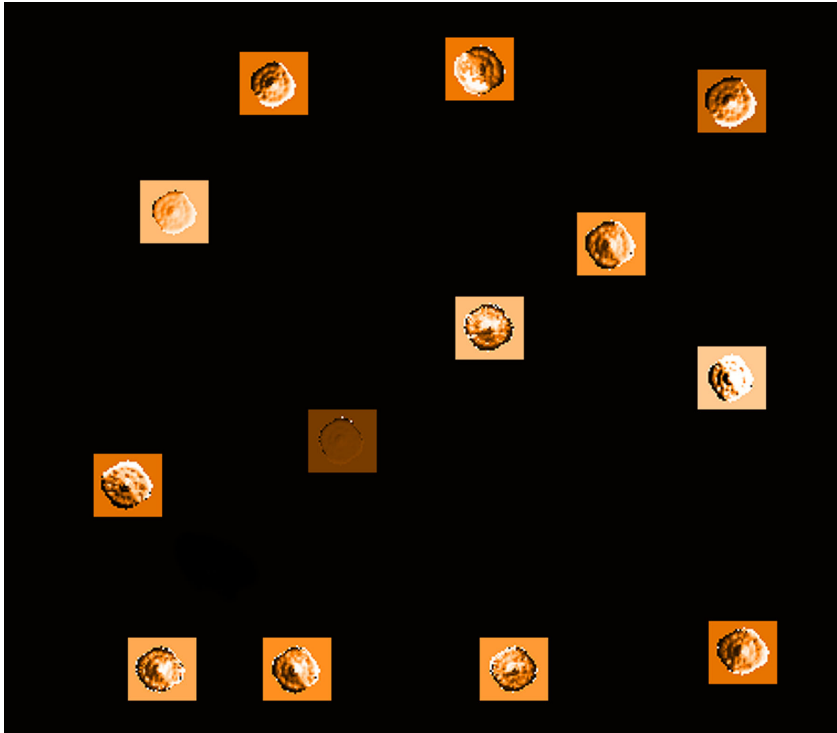


Figure 2. Relative residuals between the PSF at the centre of the field and the PSFs in other positions superimposed on a blank ACS field are shown. The PSFs are simulated in different positions in order to sample the entire ACS field of view. In the adopted linear colour scale, black and white pixels represent negative and positive residuals, respectively, while brown represents the zero level. As we can see, moving towards the edges of the detector leads to more asymmetric residuals due to the ACS spatial distortion. Differences are of the order of few per cent in terms of FWHM and degree of symmetry.

regions in which the sky background has a quite homogeneous value. We divide the *HST*-MUSE pointing of M1149 in nine sub-regions and the NE and SW pointings of AS1063 in seven sub-regions each. The typical area on the sky spanned by each sub-region is 25×25 arcsec².

To optimize the fitting method, both on stamps and later on the whole images, and to account for systematics, we perform four sub-analysis by using different combinations of PSFs, Sigma images (see e.g. Peng et al. 2011 for a definition) and sky background values. The structural parameters obtained through the different combinations are then compared and used to estimate systematic errors (Section 3.3). The combinations of PSFs, Sigma images, and sky background estimates used are as follows:

(i) Direct empirical PSF, Sigma image internally generated by GALFIT, sky background value as free parameter in galaxy fitting. Hereafter, we refer to this combination as A.1.

(ii) Direct empirical PSF, Sigma image generated through inverse variance map of FF images, fixed sky background value estimated from GALAPAGOS skymap. Hereafter, A.2.

(iii) Indirect template PSF, Sigma image internally generated by GALFIT, sky background value as free parameter in galaxy fitting. Hereafter, B.1.

(iv) Indirect template PSF, Sigma image generated through inverse variance map of FF images, fixed sky background value estimated from GALAPAGOS skymap. Hereafter, B.2.

For the sky background value estimate, we follow two approaches:

(i) We mask all sources in each pointing using SExtractor Segmentation map and we fit the sky background value with GALFIT,

using as starting point for the fit the mean value of the SExtractor background output parameter. The resulting value, in turn, is used as a starting point for the sky-free parameter in combinations A.1 and B.1.

(ii) We use GALAPAGOS skymap. In correspondence of the regions where the skymap is blank (pixel value is zero), we cut stamps of the original image, sampling the whole pointing as much as we can. Using the task `imstat` in IRAF, we calculate the mean of pixel values in each stamps, obtaining an estimate of the sky background suitable for the whole *HST*-MUSE pointing. The estimated value of the sky background is held fixed in combinations A.2 and B.2.

The Sigma image used in GALFIT can be provided by the user or internally generated by the program. We perform galaxy fitting considering both cases:

(i) We let GALFIT internally generate the Sigma image. In order to do that, we transform the units of the images from electrons/s to ADU, using the exposure time and the GAIN of the detector (in units of #electrons ADU⁻¹), read from the headers of the FF images, according to the following:

$$[\text{ADU}] = \frac{[\text{electrons s}^{-1}]}{[\text{GAIN}]} [\text{EXPTIME}]. \quad (1)$$

This transformation is required since GALFIT can perfectly deal with the Sigma image only if $[\text{GAIN}] \times [\text{ADU}] = \text{total electrons collected at each pixel}$. This Sigma image is used in combinations A.1 and B.1.

(ii) We generate our own Sigma image following the prescription in the GALFIT's User Manual.⁴ The flux variance of the data $f_{\text{data}}(x, y)$ at each pixel is obtained from the flux of the drizzled science image (drz), the mean value of the sky ($\langle \text{sky}_{\text{estim}} \rangle$) is that estimated with the GALAPAGOS skymap, the GAIN is actually an effective GAIN equal to the exposure time EXPTIME (if we are using the science images in electrons s^{-1}) read from the image header, and the sky rms is given by the pixel-per-pixel value of the inverse variance weight image (wht), which contains all of the noise sources in each exposure, including read-noise, dark current, sky background, and Poisson noise:

$$\sigma = \sqrt{(\text{drz} - \langle \text{sky}_{\text{estim}} \rangle) / \text{EXPTIME} + 1 / \text{wht}} \quad (2)$$

This Sigma image is used in combination A.2 and B.2.

The last step we perform in order to optimize the structural parameters of galaxies is the simultaneous fit of sources on the whole *HST*-MUSE pointings. In particular, the fit is performed only on spectroscopically selected cluster members and their nearby sources (defined as sources for which the elliptical aperture, within which we measure the Kron magnitude, overlaps with that of spectroscopically selected members), masking the remaining ones in order not to increase the number of free parameters in the fit. In order not to affect the fit by a different choice of the mask, we use the same Segmentation maps that we have previously cut in stamps. For this last step, we use the same combination of PSFs, sky background values, and Sigma Images of the stamps fitting. This is done in order to discuss (Section 3.3) the systematic errors of the structural parameters on the basis of the four different methods used.

3.3 Final estimates of the structural parameters

For every individual galaxy, we have four different measurements of the structural parameters. Due to the small number statistics, we use the classical standard deviation as the most reliable scale estimator (Beers, Flynn & Gebhardt 1990). Following this approach, we use the mean of the total magnitude m_{tot} in the *F814W* band, of the mean surface brightness $\langle \mu \rangle_e$, of the effective radius in kpc (R_e) and of the Sérsic index n , for each spectroscopically confirmed cluster galaxy, as best estimates of the structural parameters. The errors on the latter, instead, are estimated using the standard deviation, since the formal errors computed by GALFIT account only for statistical uncertainties in the flux (Peng et al. 2011). We report in Tables A1 and A2 in Appendix A the final structural parameters for all the spectroscopically confirmed members of both clusters (both below and above 22.5 ABmag in the *F814W* waveband).

We also visually inspect the residuals of the fit after subtracting the model galaxy. We find that two galaxies (ID 64 in AS1063 and ID 25 in M1149) show very complex morphologies (they are spatially overlapping with a combination of gravitational arcs) and that the Sérsic fit does not converge for one galaxy (ID 16 in AS1063). We also find that these three galaxies are also those which have relative errors greater than 30 per cent in effective radius. So, we exclude them from the final sample analysis. For the remaining sample, the average relative uncertainties for R_e are below 15 per cent for 95 (84) per cent of AS1063 (M1149) cluster members, while, for $\langle \mu \rangle_e$, all galaxies have uncertainties below 15 per cent in both clusters. The typical error on the effective radius R_e (for galaxies with average relative uncertainties below 15 per cent) is 0.09 kpc for AS1063 and

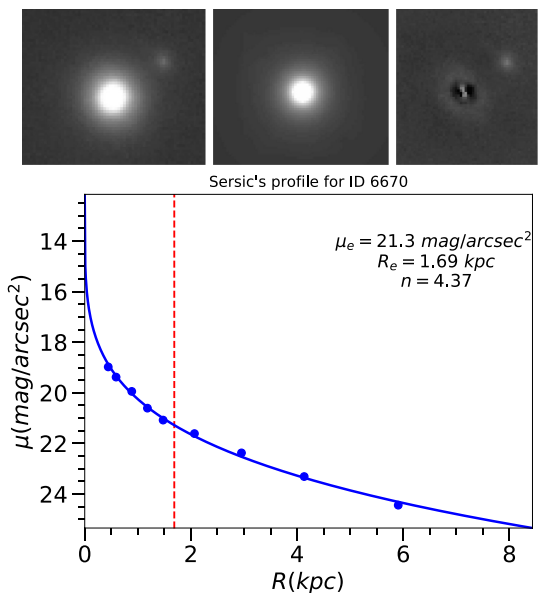


Figure 3. Observed image (top left-hand panel), model generated by GALFIT (top central panel), residuals of the fit (top right-hand panel), and Sérsic profile (bottom panel) of a spectrophotometrically selected ETG (see Section 4 for sample definitions) are shown. The fitted Sérsic profile and the surface brightnesses obtained with aperture magnitudes (blue points in the central panel) are not corrected for the cosmological dimming effect. The structures visible in the residual image are negligible in terms of flux with respect to the real and the model image, although they seem enhanced due to the scale choice. Indeed, the ratio between the residuals and the same regions in the real and model image is ~ 1 per cent.

0.27 kpc for M1149, while, on the surface brightness within R_e , $\langle \mu \rangle_e$, they are 0.19 and 0.26 mag arcsec^{-2} for AS1063 and M1149, respectively. These values and the relative uncertainties for galaxies up to the completeness magnitude limit are used to derive the KR (Section 5).

We show in Fig. 3 a typical example of a spectrophotometrically selected ETG (*HST* image in the top left-hand panel). The model of the galaxy (top central panel) is accurate as demonstrated by the residual image (top right-hand panel). The structural parameters are reported in the central panel: aperture magnitudes centred on the galaxy are very well fitted by the mean Sérsic profile computed with the best-fitting structural parameters.

In Fig. 4, we compare the estimates of R_e and $\langle \mu \rangle_e$ for both clusters, obtained from our procedure, with those obtained with a blind run of GALAPAGOS, as a function of the distance from the BCGs. GALAPAGOS errors refer to those computed with its internal GALFIT run, while errors on the other axis are the ones described above. We show the best-fitting linear relations between GALAPAGOS and the best estimates of the structural parameters as dashed lines, colour-coded according to the distance from the BCG.

In Fig. 4, we observe a different behaviour between the two clusters. The left-hand panels show that in AS1063 the largest scatter can be found for sources having projected distance from the BCG between 10 and 20 arcsec (red up triangles). This could be due to the fact that GALAPAGOS fit in small stamps is strongly dependent on the different radial contributions of the BCG diffuse component. Indeed, for sources close to the BCG (< 10 arcsec, green points), the background is dominated by its diffuse component, which uniformly covers the stamp without any significant gradient. Therefore, GALAPAGOS is able to correctly determine the size of the object. From

⁴ users.obs.carnegiescience.edu/peng/work/galfit/README.pdf

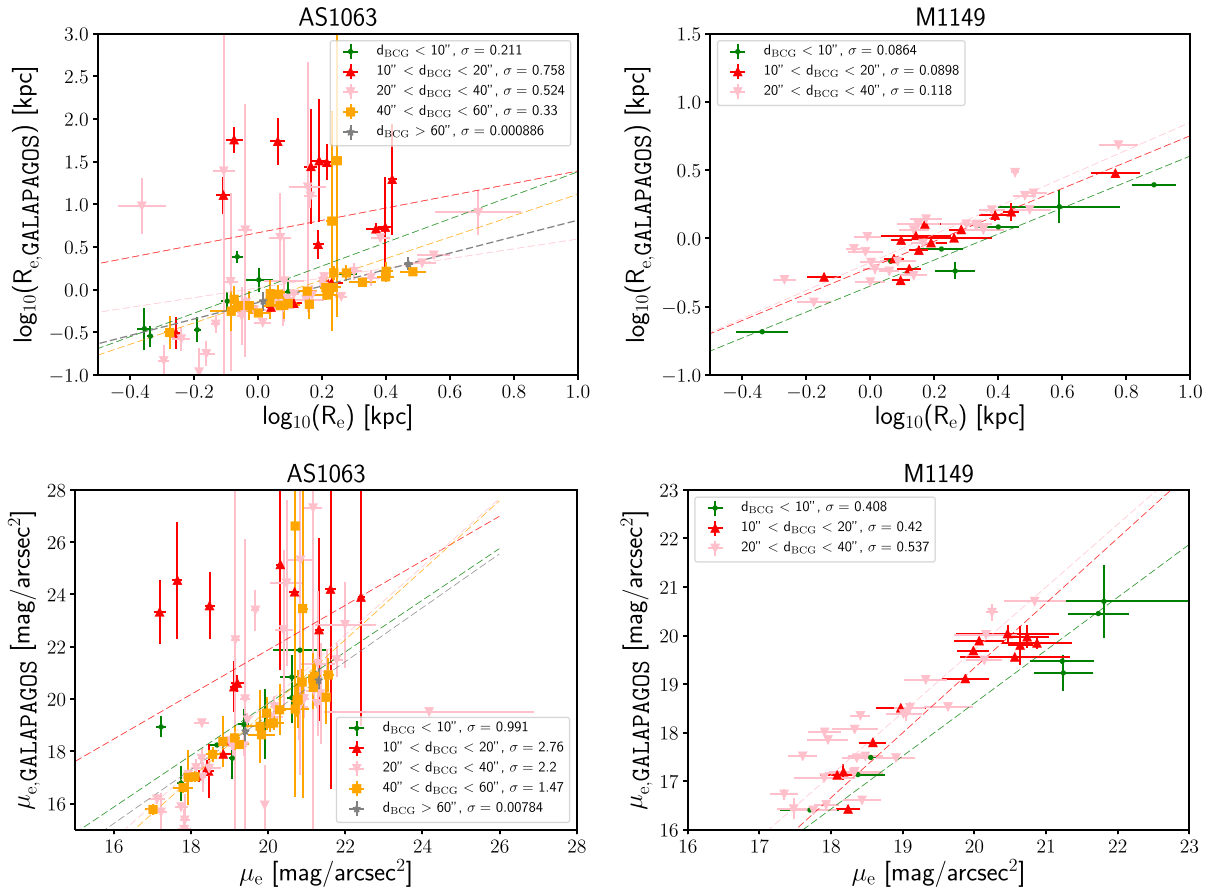


Figure 4. Comparisons of R_e and $\langle \mu_e \rangle$ between a GALAPAGOS blind run and one with our new methodology are shown. Left-hand panels refer to AS1063, while right-hand panels to M1149. Green circles, red up triangles, pink down triangles, orange squares, and grey stars refer to galaxies having different projected distances (see legend), from less than 10 arcsec from the BCGs to more than 60 arcsec from the BCGs. Dashed lines represent the best-fitting linear relations between the two parameters, colour-coded by the distance from the BCG. Plot legends show also the scatter of the points from each corresponding best-fitting linear relation.

10 arcsec on, the contribution of the BCG diffuse component starts to radially decrease. Therefore, the background value is not uniform throughout the stamp. This has the effect of artificially enlarge the effective radius of the fitted galaxy. The latter effect tends to decrease for sources farther than 20 arcsec from the BCG (pink down triangles, orange squares, and grey points). The right-hand panels show that in M1149 the scatter is lower in absolute value with respect to AS1063, but similar in each projected distance range. Indeed, in this cluster, the contamination from the diffuse component of the BCG is less dramatic with respect to AS1063. This suggests that contamination may vary from cluster to cluster and so, in turns, the performance of GALAPAGOS in crowded environments.

We show in Fig. 5 an example of the comparison between the best-fitting Sérsic profiles obtained with the final measurements (blue solid lines) and the GALAPAGOS run (red solid lines). The six panels refer to the six galaxies (red triangles in the top left-hand panel of Fig. 4) that show the highest scatter with respect to the best-fitting linear relations (the dashed lines in Fig. 4). The observed surface brightness profiles (blue points) are very well fitted by the best-fitting Sérsic profiles obtained with the final measurements. On the contrary, GALAPAGOS light profiles do not agree with the blue points, showing a large discrepancy of the best-fitting parameters with those obtained with our methodology.

Other than that, the GALAPAGOS run provides a converging fit only for 91 out of 95 and 50 out of 68 galaxies (see Section 2) in AS1063

and M1149, respectively. We also try to enlarge the dimension of the stamps defined by GALAPAGOS to try to improve the fit. Nonetheless, we were not able to obtain reliable results on structural parameters, in particular close to the BCG, thus suggesting that the fit with GALAPAGOS could be tricky in very crowded fields.

4 GALAXY SAMPLES

As previously mentioned, the KR defines an observational correlation between effective radius and surface brightness of ETGs. The latter are classified in many different ways: through morphologies, colours, spectra, Sérsic indices. We analyse four of them, the ones that are more versatile and robust for the widest range in redshift. In this section, we define and compare samples selected according to different galaxy properties, in order to investigate the impact of the sample selection on the KR (Section 5).

4.1 Samples classification

We define the KR for four different samples of spectroscopically confirmed cluster members, which have magnitudes brighter than the adopted completeness limit. We select galaxies according to their surface brightness profiles, visual inspection, their positions on the colour–magnitude (CM) diagram, and their spectra:

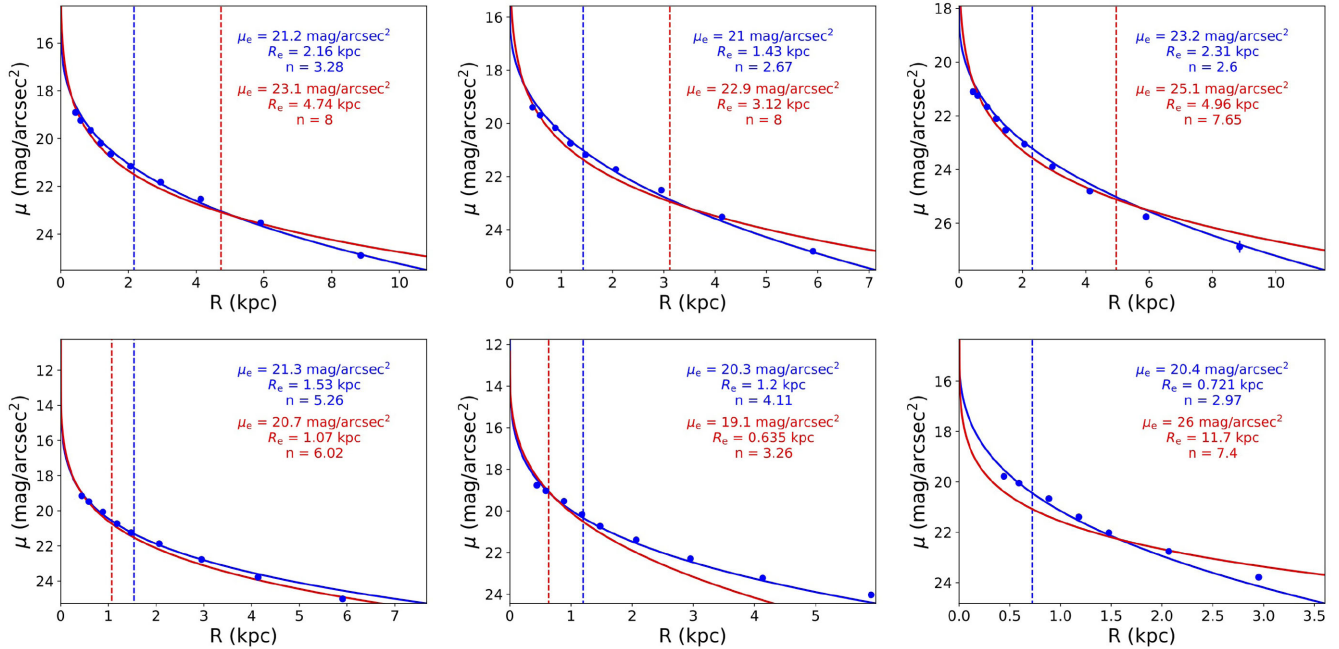


Figure 5. Sérsic profiles of the six galaxies showing the highest scatter with respect to the best-fitting linear relations in Fig. 4 are shown. Blue solid lines are the Sérsic profiles built with the best-fitting parameters we estimate in Section 3.3. Red solid lines are the Sérsic profiles built with the GALAPAGOS run best-fitting parameters. Blue points are aperture magnitudes in the *F814W* waveband. Colour-coded dashed lines mark the estimated effective radii. On the top right of each plot, the best-fitting parameters colour-coded by the method are shown.

Table 1. We report the number of cluster members in the sample of early-type (column 2), ellipticals (column 3), red at 1σ (column 4) and 3σ (column 5) from the best-fitting CM relation, and passive (column 6), with $m \leq 22.5$ ABmag in the *F814W* waveband. The total number of galaxies of each sample is reported in parenthesis.

Cluster	Early-type	Ellipticals	Red galaxies (at 1σ)	Red galaxies (at 3σ)	Passive
Abell S1063	37 (41)	35 (39)	41 (50)	46 (57)	37 (42)
MACSJ1149.5+2223	36 (51)	32 (47)	32 (45)	39 (57)	29 (29)

(i) *ETG*: We fit the light profile of each galaxy with a Sérsic law. We define as ETGs, those galaxies that have Sérsic indices $n \geq 2.5$ (e.g. Blanton et al. 2003; Bell et al. 2004; McIntosh et al. 2005). 37 galaxies are selected as ETGs for AS1063, while 36 for M1149 (column 2 of Table 1).

(ii) *Ellipticals*: We perform a morphological classification based on the visual inspection of the galaxy images and the residuals after the best-fitting model subtraction, in fact, as demonstrated in literature (e.g. Mei et al. 2012; Tamburri et al. 2014), genuine morphologically selected ellipticals can show Sérsic indices $n < 2.5$. 35 galaxies are morphologically selected ellipticals for AS1063, while 32 for M1149 (column 3 of Table 1).

(iii) *Red*: We use the CM relation to separate red and blue cluster members. The Kron magnitudes in the *F814W* band are used as estimates of the total galaxy magnitudes, while aperture magnitudes in the *F606W* and *F814W* bands are used to derive colours. The CM relation is built with all the spectroscopically confirmed member galaxies for which we have photometric information, both with and without MUSE spectra. We show in Fig. 6 the CM diagram for AS1063 (left-hand panel) and M1149 (right-hand panel). The fit to the relation is obtained using the least-trimmed squares (LTS) technique implemented by Cappellari et al. (2013). Fig. 6 shows the red sequence with measured scatter of 0.043 ± 0.003 for AS1063 and 0.080 ± 0.006 for M1149. We consider two samples of red galaxies: one containing those that are redder than the best-fitting

CM relation minus 1σ (hereafter, red at 1σ ; orange points in Fig. 6) and another one containing those that are redder than the best-fitting CM relation minus 3σ (hereafter, red at 3σ ; green+orange points in Fig. 6), where the 1σ band from the best-fitting relation encloses 68 per cent of the values for a Gaussian distribution (Cappellari et al. 2013). 41 and 32 galaxies are selected as red at 1σ for AS1063 and M1149, respectively, while 46 and 39 as red at 3σ (columns 4 and 5 of Table 1).

(iv) *Passive*: An useful tool to classify passively evolving galaxies is the analysis of the presence of emission lines in their spectra plus the investigation of the equivalent width of the H δ absorption line [EW(H δ), e.g. Worthey et al. 1994]. To select passive galaxies, we perform a two-step analysis: first, we run a full spectral fitting of MUSE spectra with the PPF code (Cappellari & Emsellem 2004; Cappellari 2017) using MILES stellar population library (Vazdekis et al. 2010). We check the residuals and we select, for the next step, only those galaxies in which the residuals of the emission lines are lower than the variance of the spectrum (the dashed black lines in Fig. 7). In the second step, we measure the EW of the H δ absorption line among the galaxies selected in the previous step. Thus, we define as passive those galaxies with no detectable emission lines and $\text{EW}(\text{H}\delta) < 3 \text{ \AA}$ (Mercurio et al. 2004). These criteria are chosen to select galaxies without signs of ongoing or recent star formation. The adopted criteria also allows us to exclude the presence of bright active galactic nuclei (AGNs) that would modify the nuclear

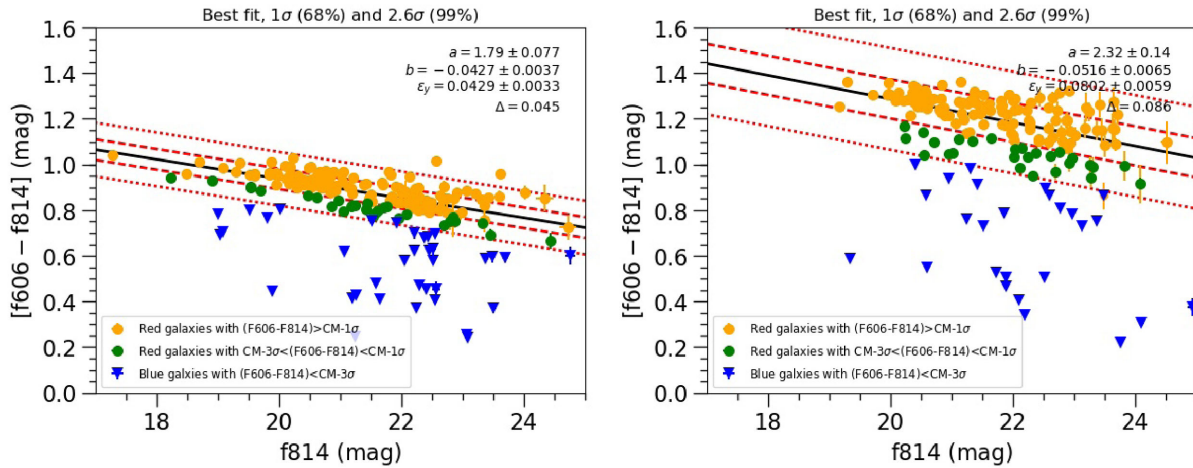


Figure 6. The CM diagram and the best-fitting relation for the clusters AS1063 (left-hand panel) and M1149 (right-hand panel) are shown. The coefficients of the best-fitting CM relation (b for the slope, a for the zero-point) and the corresponding observed scatter Δ in y are reported at the top left of the plots. The two red dashed and dotted lines mark the 1σ bands (enclosing 68 per cent of the values for a Gaussian distribution) and 2.6σ (99 per cent), respectively. Orange points represent red galaxies with colour $F606W - F814W$ greater than the best-fitting CM minus 1σ from the relation, green points represent red galaxies with colour between the best-fitting CM minus 1σ and 3σ from the relation and blue points represent blue galaxies, i.e. with colour lower than the best-fitting CM minus 3σ from the relation. Galaxies shown in these figures are all the spectroscopically confirmed members in *HST* images for which we have photometric informations, both with and without MUSE spectra.

profile. Very low luminosity or obscured AGNs could still be present in our sample, but those will not contribute significantly to the galaxy light. 37 and 29 galaxies are classified as passive for AS1063 and M1149, respectively (column 6 of Table 1).

Sometimes in literature the passivity criterion, which distinguishes between star-forming and passive galaxies, is based also on the specific star formation rate (SFR), i.e. the SFR per unit stellar mass, $sSFR = SFR/M_*$. In order to compare our selection method with that based on $sSFR$ only, we run the SED-fitting code MAGPHYS (da Cunha, Charlot & Elbaz 2008) using the 16 Cluster Lensing And Supernova survey with Hubble (CLASH) *HST* wavebands available for the cluster members. We measure the total magnitudes using the SExtractor code. For two galaxies in AS1063, we are not able to measure their $F225W$, $F275W$, $F336W$, and $F390W$ magnitudes, so we do not fit these galaxies. The MAGPHYS procedure provides a measurement of the $sSFR$. Following Annunziatella et al. (2014) (and references therein), we can use the value $sSFR = 10^{-10} \text{ yr}^{-1}$ to identify the population of passive galaxies. We find that all the galaxies selected as passive using spectra are also passive according to the $sSFR$ criterion. Only one passive galaxy in M1149 has $\log(sSFR) = -9.675 \pm 0.05 \text{ yr}^{-1}$, which could be related to the presence of a close blue arc (see Section 4.2) that can contaminate the magnitude measurement. We also find one galaxy in each cluster that, despite having $sSFR < 10^{-10} \text{ yr}^{-1}$, shows signs of emission lines in its spectrum.

We report in Fig. 7, as an example, the spectrum of the same galaxy shown in Fig. 3. The spectrum shows no emission lines, except at $\sim 4750 \text{ \AA}$ where residuals from the sky emission lines subtraction in the observed frame are visible (this region is excluded from the fit as highlighted by blue points in the lower panel of Fig. 7), and it shows the 4000 \AA break, with a weak $H\delta$ absorption line ($EW(H\delta) < 3 \text{ \AA}$). The S/N of the spectrum is 18.8 and the measured stellar velocity dispersion is $\sigma_* = (192 \pm 9) \text{ km s}^{-1}$.

Considering the whole sample of 37 and 36 ETGs for AS1063 and M1149, 27 and 24 are also selected as ellipticals, red (at 1σ) and passive, respectively. We discuss in the next section the effects

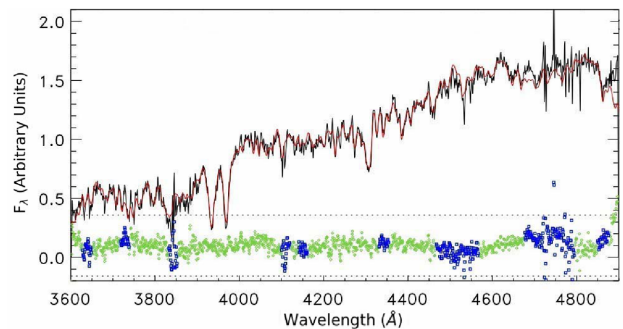


Figure 7. Rest-frame spectrum of the spectrophotometrically selected ETG of Fig. 3 is shown. Green points are the residuals between the observed spectrum (black solid line) and the model (red solid line) obtained using MILES stellar population library (Vazdekis et al. 2010). Blue points are regions excluded from the fit due to the contribution of sky lines in the observed spectrum.

of these differences in the sample selection on the derivation of the KR.

4.2 Sample comparison

Here, we compare the samples of galaxies classified according to their light profiles, morphologies, colour and spectral properties, as described in Section 4.1.

First, we compare the sample of galaxies classified as ETGs and ellipticals. 31 and 32 galaxies are classified both as ETGs and ellipticals for AS1063 and M1149, respectively. Furthermore, four galaxies having Sérsic index $n < 2.5$ show an elliptical morphology in the inspection of residuals in AS1063, while all the galaxies classified as ellipticals in M1149 have also Sérsic index $n \geq 2.5$. The remaining 6 and 4 ETGs, which are not classified as ellipticals in AS1063 and M1149, respectively, show late-type morphology in the inspection of residuals after the best-fitting model subtraction.

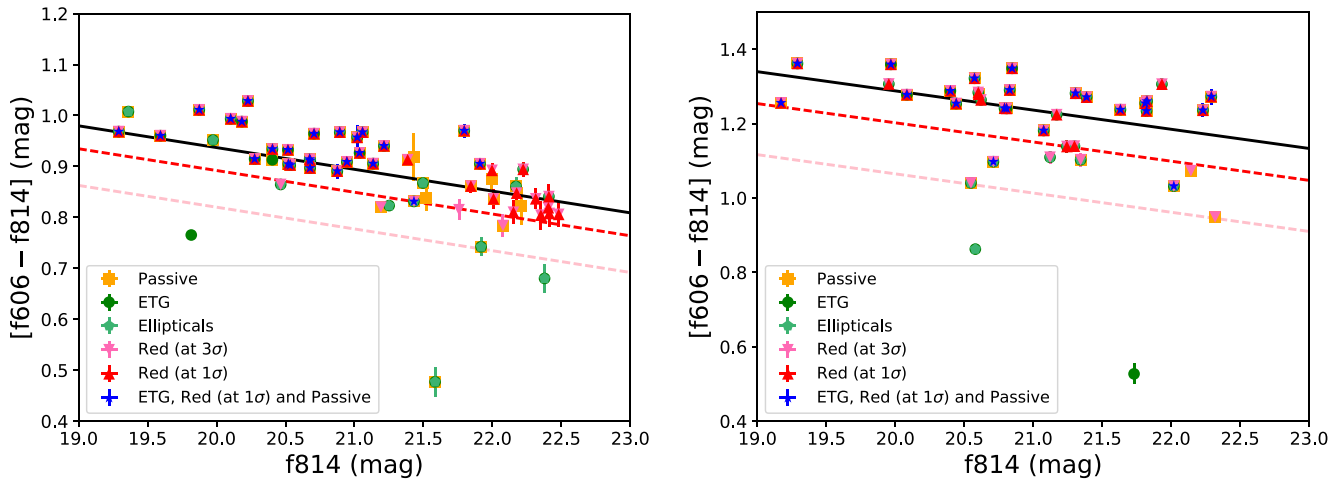


Figure 8. The CM diagram and the best-fitting relation for the clusters AS1063 (left-hand panel) and M1149 (right-hand panel) for all samples are shown. The black solid lines are the best-fitting CM relations shown in Fig. 6. The red and pink dashed lines mark the 1σ and 3σ thresholds, respectively. Green circles, sea green pentagons, pink down triangles, red up triangles, orange squares, and blue stars are ETG, ellipticals, red (at 3σ), red (at 1σ), passive, and spectrophotometrically selected samples, respectively.

This suggests that there is a 10 per cent difference between the visual and the Sérsic index classification, although this number varies from cluster to cluster.

Then, we compare the sample of galaxies classified both as ETG and red. Only 29 and 31 ETGs in AS1063 are classified also as red galaxies at 1σ and at 3σ from the best-fitting CM relation, respectively, while, in M1149, they are 30 and 35. Thus, 93 and 89 per cent of the sample of red at 1σ and at 3σ are also ETG for M1149, while, for AS1063, they are the 70 and 67 per cent (Fig. 8). A visual inspection of the residuals of the fit reveals that, in both clusters, the ETGs having blue colours could be contaminated either by gravitational arcs or by nearby blue galaxies, which are visible only after subtracting the model galaxy, while red galaxies, which are not ETGs, show a late-type morphology, suggesting that they could have had their star formation truncated by environmental effects or they could appear red due to dust reddening.

The comparison of the passively evolving sample with the ETG sample shows the presence of six and seven ETGs, which are not classified as passive, and five and three passively evolving galaxies, which are not classified as ETGs, in AS1063 and M1149, respectively. As for the first sub-sample, two galaxies for each cluster show emission lines in their spectra, which could be due to a recent burst in their star-formation activity. For four galaxies in AS1063 and two galaxies in M1149, we could have missed weak emission lines, since the S/N of the spectrum is ~ 5 . For the remaining three in M1149, these are excluded from the passive sample, since the fit of the spectrum with `PPXF` does not converge due to its low S/N. The second sub-sample is constituted by passive galaxies with Sérsic index $n < 2.5$. From the visual inspection of the residuals of the surface brightness fit for these sources, they seem to be, indeed, late-type galaxies, so they could be ‘dusty’ spirals or late-type galaxies in which the star formation has been quenched recently.

Both for the passively evolving and the ETG sample, from Fig. 8, it is clear how the colour selection misses few ETGs and passive galaxies. More interestingly, it is evident the presence of a number of red galaxies (both at 1σ and at 3σ) that are classified neither as ETGs nor as passives. This suggest how a selection based only on the CM relation may contaminate the sample from which one derives the KR.

Considering the four classifications, 28 galaxies are classified simultaneously as early, ellipticals, red at 1σ and passively evolving in AS1063, while 30 in M1149.

5 THE KORMENDY RELATION AS A FUNCTION OF SAMPLES

In this section, we discuss the analysis of the KR, $\langle \mu \rangle_e = \alpha + \beta \log R_e$, for the two clusters AS1063 and M1149, considering the four samples defined in the previous section. In particular, we compare the KRs as a function of the different samples, while, in the next section, we compare the KRs of the present work with the literature. As discussed in Section 2, we limit our analysis to galaxies brighter than the completeness limit ($m_{F814W} \leq 22.5$ ABmag). The linear regression analysis is carried out using the method of the Bivariate Correlated Errors and intrinsic Scatter estimator (BCES) described in Akritas & Bershady (1996). The BCES is a direct extension of the ordinary least square fitting. It has the advantage that it allows to consider the case in which both variables are affected by errors and in which the errors on the two variables are not independent. From now on, the scatter we refer to is the combination of the intrinsic scatter of the relation plus the photometric errors. All the results presented in this section are in physical units, i.e. $\langle \mu \rangle_e$ in mag arcsec $^{-2}$ and R_e in kpc. We correct the surface brightness for cosmological dimming effect.

In Fig. 9, the KRs for the ETG samples of AS1063 (left-hand panel) and M1149 (right-hand panel) are shown. The slopes of the two KRs (the first row in Table 2) are consistent within errors.

In Fig. 10, we show the KRs for the elliptical samples of AS1063 (left-hand panel) and M1149 (right-hand panel). The slopes of the two KRs (the second row in Table 2) are consistent within errors between themselves and with those obtained with the ETG sample.

In Fig. 11, the KRs for the sample of red galaxies at 1σ (upper panels) and at 3σ (lower panels) from the best-fitting CM relation of AS1063 (left-hand panels) and M1149 (right-hand panels) are shown. The two fits for AS1063 show larger scatters ($\sigma = 1.10$) than those obtained for ETGs ($\sigma = 0.76$) and for ellipticals ($\sigma = 0.77$) and the best-fitting slopes have higher values with the respect to the ETG and the ellipticals sample (the first three best-fitting parameter

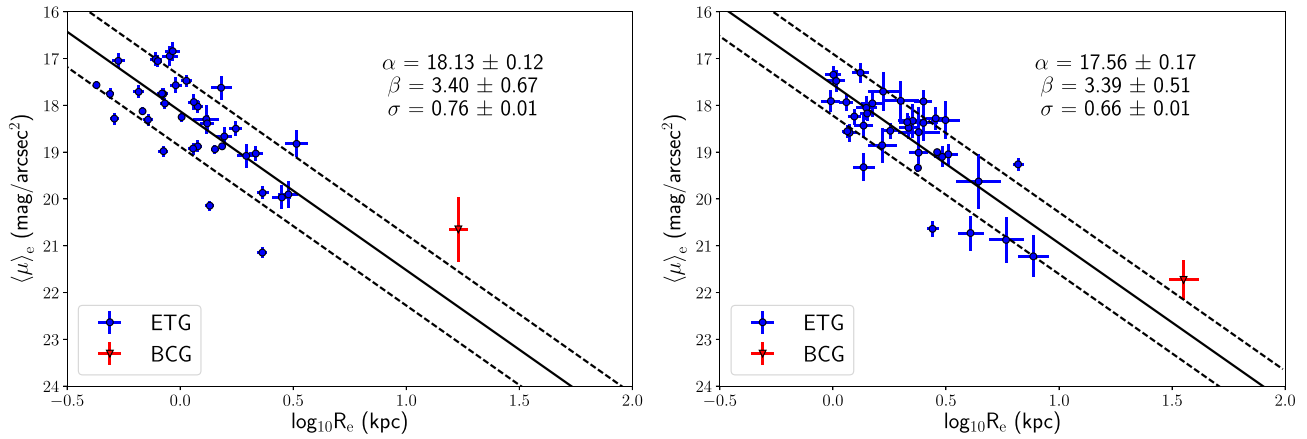


Figure 9. The KRs obtained with the ETG samples for AS1063 (left-hand panel) and M1149 (right-hand panel) are shown. The coefficients of the best-fitting relation (β for the slope, α for the zero-point) and the corresponding observed scatter σ are shown at the top right of the plot. The solid black line represents the best-fitting KR. The two black dashed lines are the 1σ limits of the relation. Blue points represent galaxies brighter than the adopted completeness limit ($m_{F814W} \leq 22.5$ ABmag), while the red triangle is the BCG of each cluster. This fit and the following ones with the other samples are performed without taking into account the BCGs, since it is difficult to determine their global light profile, being characterized by a diffuse and faint envelope.

Table 2. We report the coefficients of the best-fitting KR for the samples defined in Section 4. Column 1 shows the sample used to derive the KR, while columns 2, 3, 4 and 5, 6, 7 are the zero-points, slopes, and scatters of the relations for AS1063 and M1149, respectively.

	AS1063			M1149		
	α	β	σ	α	β	σ
ETG	18.13 ± 0.12	3.40 ± 0.67	0.76 ± 0.01	17.56 ± 0.17	3.39 ± 0.51	0.66 ± 0.01
Ellipticals	18.21 ± 0.13	3.29 ± 0.76	0.77 ± 0.01	17.67 ± 0.16	3.36 ± 0.53	0.65 ± 0.01
Red (at 1σ)	18.37 ± 0.14	4.10 ± 1.00	1.10 ± 0.01	17.70 ± 0.12	2.53 ± 0.28	0.49 ± 0.01
Red (at 3σ)	18.40 ± 0.13	4.16 ± 0.89	1.10 ± 0.01	17.67 ± 0.13	3.07 ± 0.41	0.60 ± 0.01
Passive	18.09 ± 0.11	3.16 ± 0.61	0.66 ± 0.01	17.58 ± 0.16	3.19 ± 0.47	0.61 ± 0.01
ETG, red, and passive	17.90 ± 0.11	3.07 ± 0.68	0.55 ± 0.01	17.51 ± 0.18	3.16 ± 0.59	0.60 ± 0.01

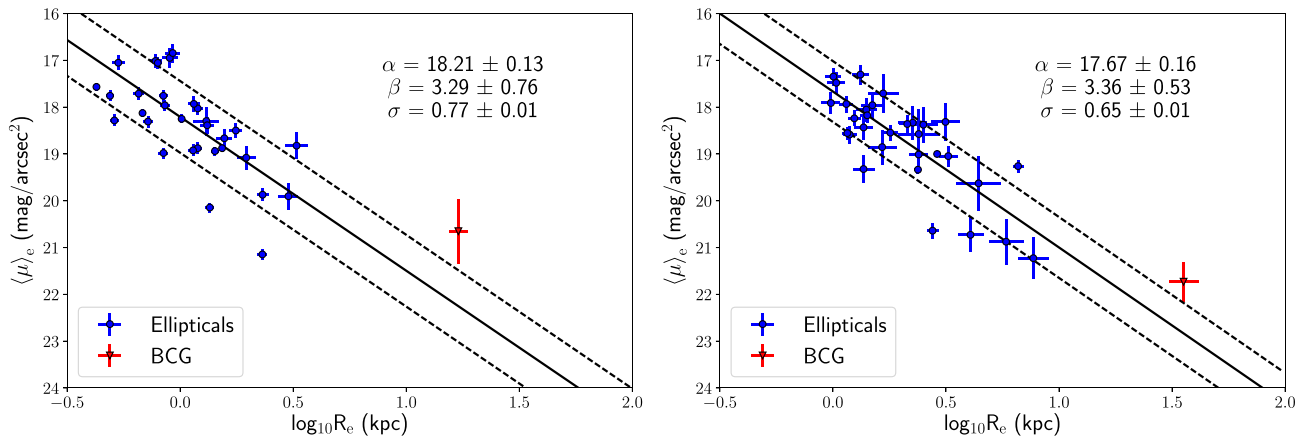


Figure 10. The KRs obtained with the elliptical samples for AS1063 (left-hand panel) and M1149 (right-hand panel) are shown. The coefficients of the best-fitting relation (β for the slope, α for the zero-point) and the corresponding observed scatter σ are shown at the top right of the plot. The solid black line represents the best-fitting KR. The two black dashed lines are the 1σ limits of the relation. Blue points represent galaxies with $m_{F814W} \leq 22.5$ ABmag, while the red triangle is the BCG of each cluster.

columns of rows 1, 2, 3, and 4 in Table 2). Although the slopes are consistent with those of the ETG and the elliptical samples, the large scatter combined with the large error on the slope (~ 25 percent relative error) suggests that this sample could be contaminated by galaxies that are not ETGs. As for M1149, instead, the scatter of the relation is lower than that found for the ETGs and the ellipticals and it grows from the 1σ to the 3σ sample, as we expect from the

less stringent colour selection going from 1σ to 3σ . The slopes of the KRs for the 1σ and 3σ sample of M1149 are consistent with each other, but only the red at 3σ sample is also consistent with the one obtained for AS1063 (the third and fourth rows in Table 2). Furthermore, the slope of the red at 1σ sample of M1149 is not consistent, within errors, neither with the one of the same sample in AS1063, nor with the slope obtained with the ETG and the ellipticals

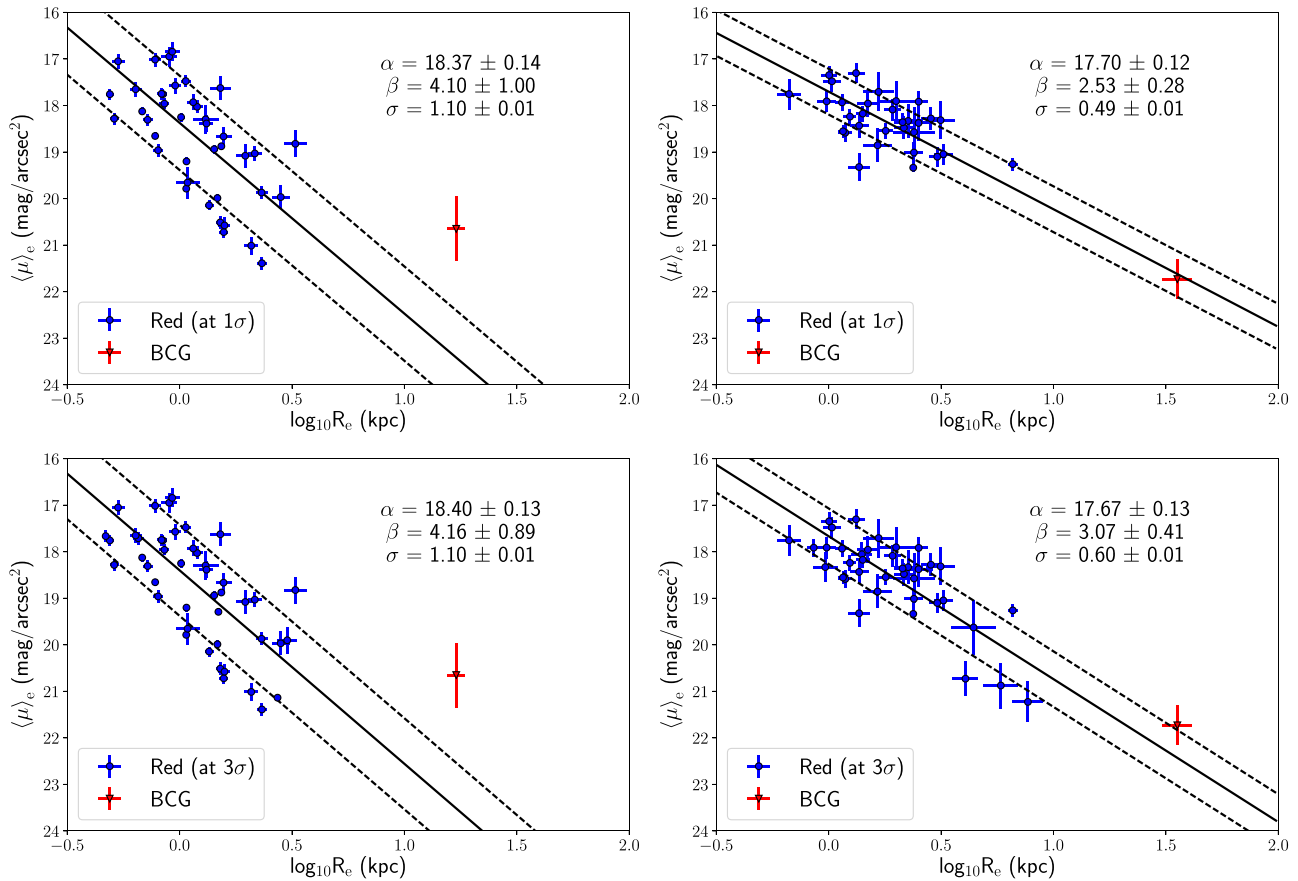


Figure 11. The best-fitting KRs of the red samples for AS1063 (left-hand panels) and M1149 (right-hand panels) are shown. Upper panels are those relative to red galaxies at 1σ from the best-fitting CM relation, while lower panels are those relative to red galaxies at 3σ . The coefficients of the best-fitting KR (β for the slope, α for the zero-point) and the corresponding observed scatter σ are shown at the top right of the plot. The two black dashed lines are the 1σ limits of the relation. Blue points represent galaxies with $m_{F814W} \leq 22.5$ ABmag, while the red triangle is the BCG of each cluster.

sample in M1149. The discrepancies in the KRs parameters obtained with the two samples could be due to the presence of galaxies that appear red in colours, but lack an early-type morphology, as highlighted in Section 4.

The KRs for passive galaxies are shown in Fig. 12. The slopes of the KRs for the two clusters are consistent within the errors (the fifth row in Table 2). Furthermore, they are consistent with those obtained with the ETG and elliptical samples. Also in this case, there is marginal consistency within errors of the passive sample slope with the red sample ones in AS1063, and with the red at 1σ sample slope in M1149. This indicates that there is a better overlap between the samples of ETGs, ellipticals, and passively evolving galaxies, rather than between ETGs, ellipticals, and red galaxies (Table 2).

Considering galaxies that are ETGs, ellipticals, red and passive (labelled ETG, red (at 1σ), and passive in plots and tables), the KRs for these spectrophotometrically selected samples are shown in Fig. 13. This selection produces KRs which have slopes that are consistent within errors with those of the ETG, elliptical, and passive samples of both clusters (the last row in Table 2). Furthermore, as for the passive and ETG samples, there is only marginal consistency with the red at 1σ sample of M1149. The scatter of the KRs is also the lowest for AS1063 and as low as the others for M1149.

The comparison of the zero-points between samples leads to conclusions similar to those highlighted above. At fixed cluster, the KRs zero-points of ETG, passive, and spectrophotometrically

selected samples are consistent within errors, while they are only marginally consistent with both the red (at 1σ) and red (at 3σ) samples (the first and fourth rows of Table 2).

In Fig. 14, we show the best-fitting KRs for the different samples on the same plot. For AS1063, all samples span the same range in R_e , but there is a clear difference in $\langle \mu \rangle_e$ between them. At fixed R_e , red galaxies are systematically fainter (higher surface brightness) than ETG, elliptical, passive and spectrophotometrically selected samples, and the trend is even more marked going towards larger galaxies (increasing R_e). This is consistent with the steeper KR obtained from the red sample. Furthermore, the ETG, ellipticals and passive samples have remarkably similar slope and intercept of their KRs, suggesting that they constitute an homogeneous population. The classification according to the colour leads also to a more scattered relation. In M1149, the samples seem to be more homogeneous, indeed the best-fitting KRs are remarkably similar, but for that of the red (at 1σ) sample that is characterized by more compact galaxies, lacking those with $\log_{10} R_e > 0.50$ kpc.

6 LITERATURE COMPARISON

The KR has been investigated by different authors in various photometric bands, with different sample selections and for clusters spanning a large range in redshift, from $z \sim 0$ to $z \gtrsim 1$. This section is devoted to the comparison of the slope and zero-point of

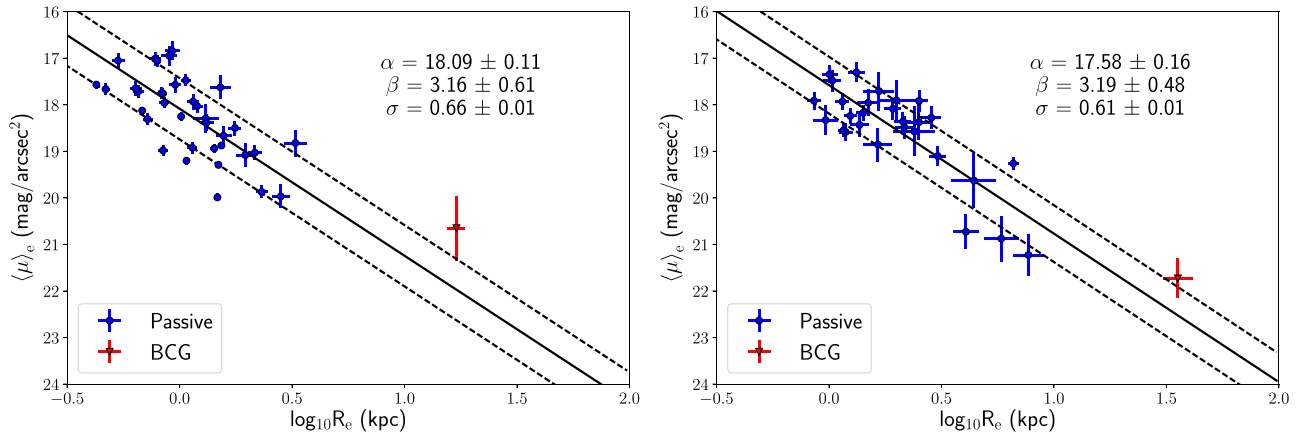


Figure 12. The best-fitting KRs of the samples of passively evolving galaxies for AS1063 (left-hand panel) and M1149 (right-hand panel) are shown. The coefficients of the best-fitting KR (β for the slope, α for the zero-point) and the corresponding observed scatter σ are shown at the top right of the plot. The two black dashed lines mark the 1σ band. Blue points represent galaxies with $m_{F814W} \leq 22.5$ ABmag, while the red triangle is the BCG of each cluster. All galaxies classified as passively evolving have magnitudes brighter than the adopted completeness limit in the $F814W$ waveband in M1149.

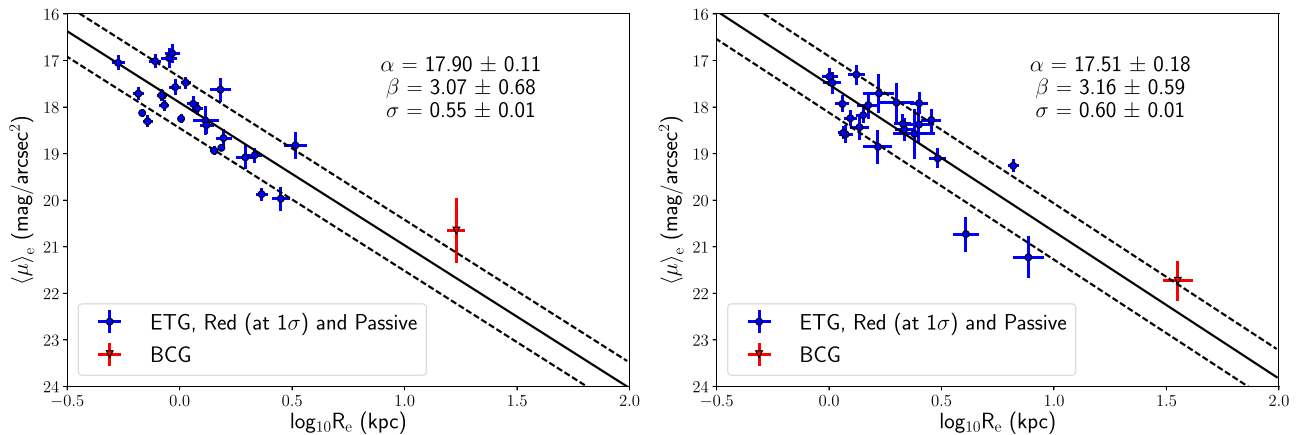


Figure 13. The best-fitting KRs of the spectrophotometrically selected samples for AS1063 (left-hand panel) and M1149 (right-hand panel) are shown. The coefficients of the best-fitting KR (β for the slope, α for the zero-point) and the corresponding observed scatter σ are shown at the top right of the plot. The two black dashed lines mark the 1σ band. Blue points represent galaxies with $m_{F814W} \leq 22.5$ ABmag, while the red triangle represents the BCG of each cluster. All galaxies spectrophotometrically selected have magnitudes brighter than the adopted completeness limit in the $F814W$ band for both clusters.

the KR with those obtained from studies conducted both at similar redshifts and at higher redshifts, by using the same sample selection.

La Barbera et al. (2003) investigated the KR for a sample of four clusters at $z \sim 0, 0.21, 0.31, 0.64$, for a total of $N = 228$ spheroidal galaxies. They selected their sample according to the Sérsic index, thus we compare this work with our results obtained with the ETG sample. They found a value of the slope that does not change from $z = 0.64$ to the present epoch and ranges between 2.74 and 3.04, with a typical uncertainty of 0.2 (1σ standard interval). In particular, the $z = 0.31$ cluster has a slope of $\beta = 2.74 \pm 0.16$, while the $z = 0.64$ cluster has $\beta = 3.04 \pm 0.13$. Comparing the latter with M1149 and the former with AS1063 ETG samples, we find consistency within errors for the values of the slopes. Same conclusions apply to the elliptical, passive, and spectrophotometrically selected samples. In the case of the red samples, only the KR of galaxies red at 3σ for M1149 has slope consistent within errors with that of La Barbera et al. (2003) for the $z = 0.64$ cluster. M1149 red at 1σ sample and AS1063 red at 1 and 3σ sample KRs have instead slopes that are not consistent within errors with that of the $z = 0.64$ and $z = 0.31$

clusters, respectively. This confirms that the comparison between KR parameters obtained using different selection criteria could be biased and this seems to be true in particular for the selection based on colours. La Barbera et al. (2003) found an observed scatter of 0.60 at $z \sim 0.31$ and 0.42 at $z \sim 0.64$, while our ETG samples show higher dispersions at comparable redshifts.

Rettura et al. (2010) and Saracco et al. (2014, 2017) carried out studies of the KR at $z \gtrsim 1$. The first work studied a sample of 27 massive ETGs in the RDCS1252.9-2927 cluster at $z = 1.237$. The sample was selected with a similar approach to that of this work, i.e. through morphologies, colours, and spectra. In Rettura et al. (2010), they do not calculate the KR, but they just compare the location of their data in the plane of the KR found by La Barbera et al. (2003) at $z = 0$. Following the same approach, we compared the location of the Rettura et al. (2010) data (the blue points in Fig. 17) with our rest-frame B -band ETGs data points (the red and pink points in Fig. 17). We find agreement in the location of our points with respect to Rettura et al. (2010) data, although, as expected, there is a difference in the zero-points of the relations (see below).

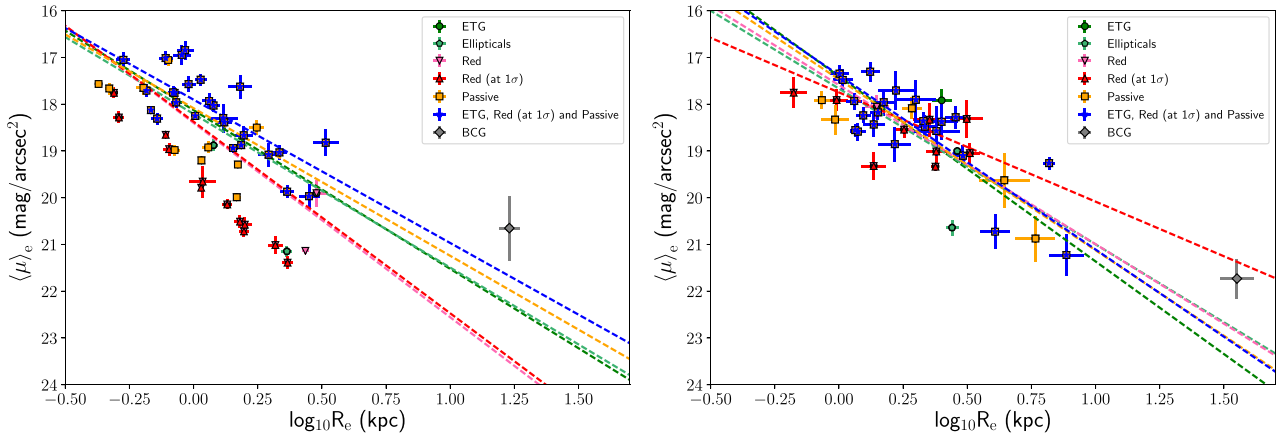


Figure 14. The best-fitting KRs of all analysed samples with $m \leq 22.5$ in the $F814W$ waveband are shown for the two clusters AS1063 and M1149 (left-hand and right-hand panels, respectively). Green circles, sea green pentagons, pink down triangles, red up triangles, orange squares, and blue stars are ETG, ellipticals, red (at 3σ), red (at 1σ), passive and spectrophotometrically selected samples, respectively. Grey diamond is the BCG. Dashed lines are the best-fitting KRs colour-coded according to the sample. It is worth noticing how, for both clusters, the best-fitting KRs for the ETG, ellipticals, passive and spectrophotometrically selected samples show the same behaviour, while for the red samples not.

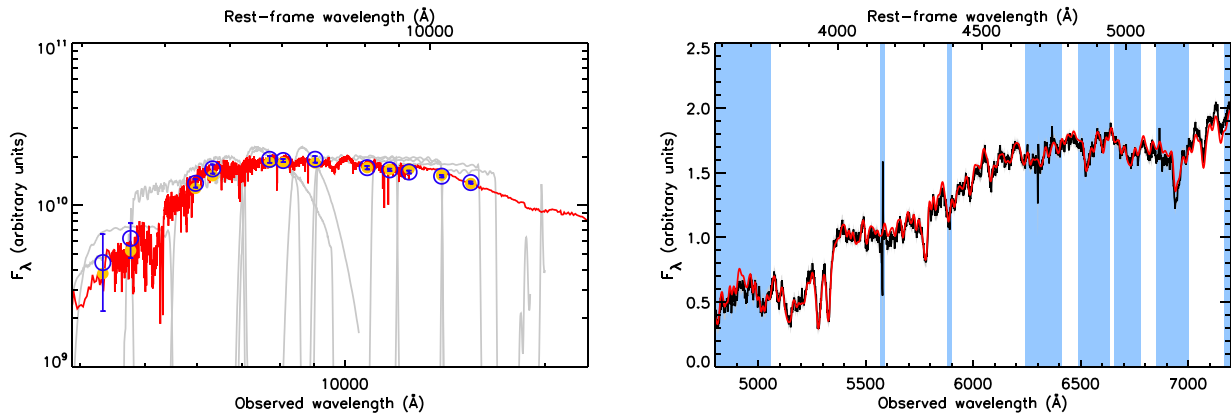


Figure 15. Simultaneous fit of SED and spectrum is shown. Left-hand panel: best-fitting composite stellar population model Bruzual & Charlot (2003) of the 12 HST photometric band observed by CLASH (Postman et al. 2012), with the filter transmission curves in light grey. Observed fluxes with 1σ errors are represented with blue empty circles and bars, model-predicted fluxes are shown as orange filled circles. Right-hand panel: best-fitting composite stellar population model (in red) of the observed spectrum (in black). Light blue regions highlight the masked regions, where we expect residual of sky subtraction emission lines or sky absorptions. In both panels, the best-fitting model is in red.

Saracco et al. (2014) investigated the KR for a sample of 16 morphologically selected elliptical galaxies belonging to the cluster RDCSJ0848+4453 at $z \sim 1.27$. They found a slope of $\beta_B = 3.2 \pm 0.5$ in the rest-frame B band and $\beta_R = 2.6 \pm 0.7$ in the rest-frame R band. Both are consistent within errors with the KR slope of the ellipticals sample of AS1063 and M1149. (Saracco et al. 2017) analysed 56 cluster ellipticals in three clusters in the redshift range of $1.2 < z < 1.4$, selected according to their morphologies. They found $\beta = 3.0 \pm 0.2$, which is consistent within errors with the ellipticals samples of both clusters we analysed.

Despite the fact that the study of the evolution of the KR zero-points with redshift is beyond the scope of this paper; for the sake of completeness, we compare our zero-points with those at $z \sim 0$ and at high redshifts in the rest-frame B and R bands.

In order to consistently compare the zero-points of both clusters with themselves and with the literature, we have to derive the KRs in the same rest-frame wavebands. To do that, we model the multicolour photometry, composed by 12 HST bands (optical-NIR)

observed by CLASH (Postman et al. 2012), plus the spectra, observed by MUSE, of the member galaxies, to obtain mainly the rest-frame photometry and the stellar mass of these objects. We consider composite stellar populations (CSP) based on Bruzual & Charlot (2003) models with $Z \in [0.5, 1.5] Z_\odot$, with a Salpeter stellar IMF (Salpeter 1955), delayed exponential star formation histories and no reddening. In Fig. 15, we show a typical example of the SED (right-hand panel) plus spectral fitting (left-hand panel) of an ETG galaxy. In the left-hand panel, the blue empty circles and the bars are the observed magnitudes with 1σ errors. Orange filled circles are the magnitudes measured on the best-fitting model (in red), using the filter transmission curves (in light grey). In the right-hand panel, the best-fitting CSP model (in red) is shown, superimposed on the observed spectrum (in black). From those best-fitting models, we compute the rest-frame B - and R -band magnitudes for all the galaxies in our samples. We reserve the study of the physical properties of those sources to a future work.

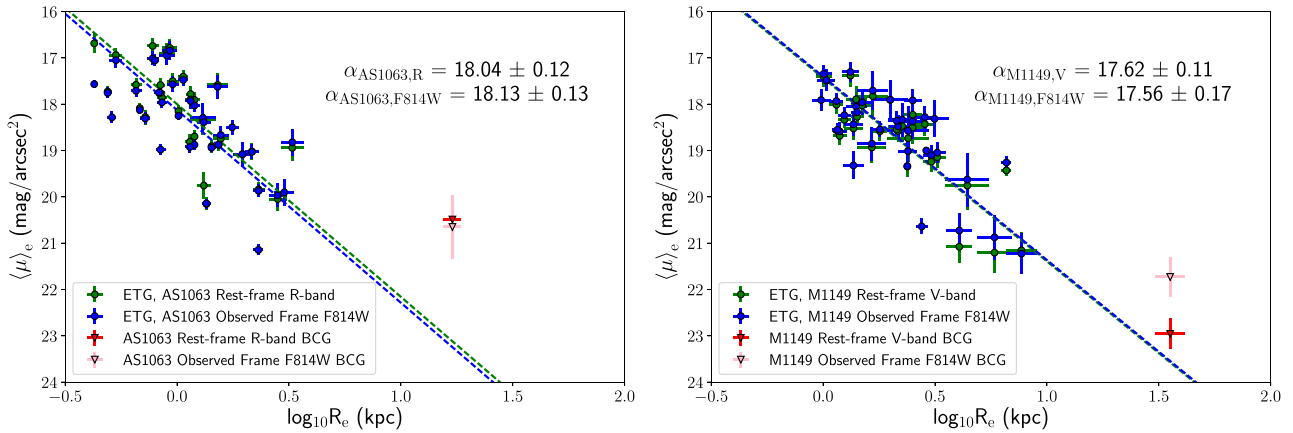


Figure 16. The KR obtained in the rest frame and in the observed frame bands with the ETG samples for AS1063 (left-hand panel) and M1149 (right-hand panel) are shown. Left-hand panel shows the comparison of the zero-points of the KR for observed frame *F814W* band and the corresponding rest-frame *R* band of AS1063, while the right-hand panel shows the same, but for the rest-frame *V* band of M1149. The coefficients of the best-fitting zero-points α are shown at the top right of the plots. The dashed lines represent the best-fitting KR colour-coded by the bands. Red and pink down triangles are the BCGs of each cluster, but in different bands.

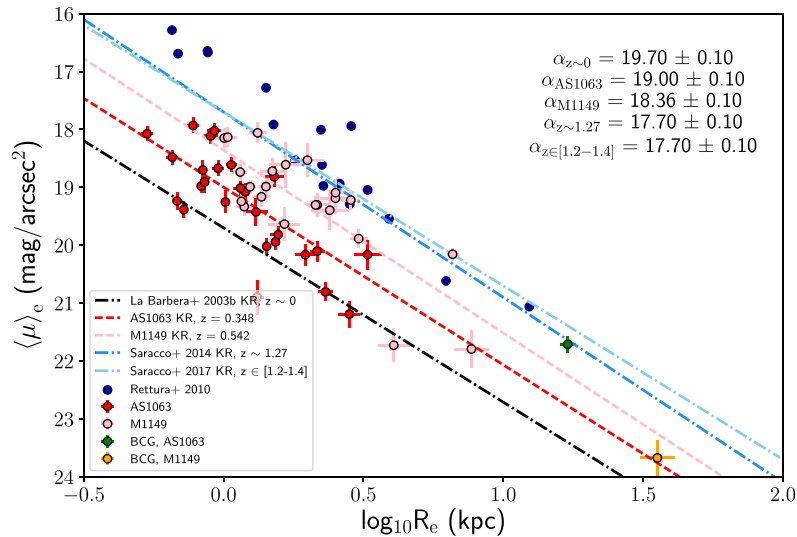


Figure 17. The comparisons between the KR of Rettura et al. (2010), Saracco et al. (2014, 2017), and ours in the rest-frame *B* band are shown. Red, pink, and navy blue points represent ETGs in AS1063, M1149, and RDCSJ0848+4453, respectively, while the green and the orange point represents the BCG of the first two clusters. Red and pink dashed lines refer to AS1063 and M1149 best-fitting KR, respectively. The latter are computed fixing the slope to the Coma value obtained in La Barbera et al. (2003). Black, navy blue, skyblue, and dodger blue dash-dotted lines refer to the $z \sim 0$ (La Barbera et al. 2003), $z \sim 1.24$ (Rettura et al. 2010), $z \sim 1.27$ (Saracco et al. 2014), and $z \in [1.2-1.4]$ (Saracco et al. 2017) KR, respectively. In the upper right part of the plot, the best-fitting zero-points are reported.

To further check the robustness of our SED plus spectral fitting, we compare the observed frame KR with those obtained with the corresponding rest-frame bands for both clusters. In Fig. 16, the rest-frame *R* and *V* bands are compared to the observed frame *F814W* band (blue points) for AS1063 (left-hand panel) and M1149 (right-hand panel), respectively. By fixing the slope of the rest-frame KR to that of the observed frame KR, we find agreement of the zero-points within errors for both clusters. The small difference of the values is due to the different shape of the observed and rest-frame filters, confirming what we already highlighted in Section 2.

In Fig. 17, we compare the rest-frame *B*-band zero-points of our KR with those of Rettura et al. (2010) and Saracco et al. (2014, 2017). The zero-points of both AS1063 and M1149, as expected,

are fainter than those of the $z = 1.237$ (Rettura et al. 2010), $z \sim 1.27$ (Saracco et al. 2014), and $z \in [1.2-1.4]$ (Saracco et al. 2017) clusters, but brighter than the $z \sim 0$ Coma cluster in La Barbera et al. (2003) *K*-corrected to the *B* band.

Fig. 18 shows the comparison between Saracco et al. (2014) KR and ours in the rest-frame *R* band. Also in this case, our zero-points lie in between the $z \sim 0$ and the high-redshift ones.

The fact that our results lie between the high redshift and the local Universe ones confirm the evolution with redshift of the KR zero-point already highlighted by the mentioned works. However, we notice that in the rest-frame *B* and *R* bands the differences in zero-point between AS1063 and M1149 are $\Delta\alpha_B = 0.60 \pm 0.02$ ABmag and $\Delta\alpha_R = 0.59 \pm 0.03$ ABmag, respectively. This suggests that the difference in zero-points between the two redshifts cannot be fully

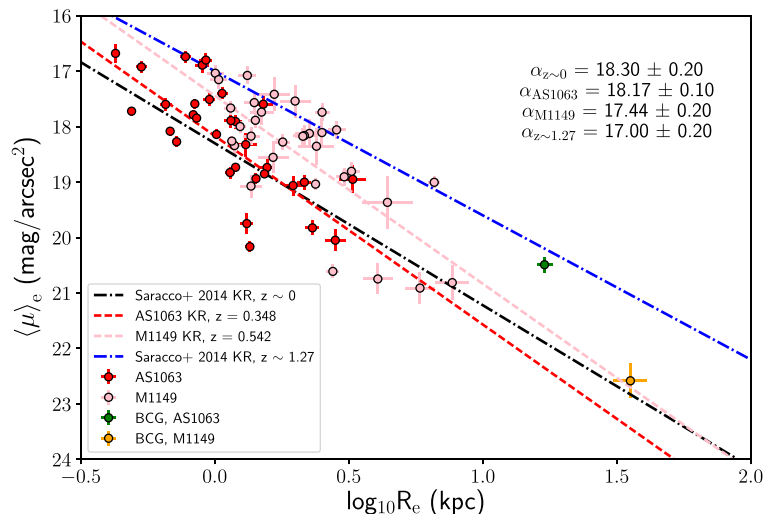


Figure 18. The comparison between the KRs of Saracco et al. (2014) and ours in the rest-frame R -band is shown. Red and pink points represent ETGs in AS1063 and M1149, respectively, while the green and the orange point represents the BCG of each cluster. Red and pink dashed lines refer to AS1063 and M1149 best-fitting KRs, respectively. The latter are computed fixing the slope to the R band $z \sim 0$ value obtained in Saracco et al. (2014). Black and blue dash-dotted lines refer to the $z \sim 0$ and $z \sim 1.27$ (Saracco et al. 2014) KRs, respectively. In the upper right part of the plots, the best-fitting zero-points in the rest-frame R band are reported.

explained by passive evolution only, since the latter accounts only for nearly half of that. However, we reserve the detailed analysis of these zero-points differences to a future work.

7 SUMMARY AND CONCLUSIONS

In this paper, we investigate the variation of the KR as a function of the sample selection and the influence of this variation on the studies of the KR parameter evolution. We analyse spectroscopically confirmed cluster galaxies of two *HST* FF clusters, Abell S1063 ($z = 0.348$) and MACSJ1149.5+2223 ($z = 0.542$) in the *F814W* photometric band.

We propose a new methodology for the estimate of structural parameters of galaxies in crowded environments, such as that of a cluster. This methodology consists of an iterative approach that analyse images of increasing size to deal with closely separated galaxies and consists of different background estimations to deal with the ICL contamination in flux.

At high redshift, an accurate classification based only on structural parameters and/or spectral features by themselves is challenging. Therefore, the sample of galaxies for which we measure the KR is selected using both photometric and spectroscopic methods. We perform a cut in magnitude, selecting only those galaxies with $m \leq 22.5$ ABmag in the *F814W* waveband to be fully complete in magnitude in both clusters. According to the best-fitting model templates, this limit roughly corresponds to a stellar mass of $M_* \sim 10^{9.8} M_\odot$ and $M_* \sim 10^{10.0} M_\odot$ for AS1063 and M1149, respectively, for the typical SED we are interested in and considering a Salpeter IMF.

We classify as ETGs those galaxies having Sérsic index $n \geq 2.5$ (37 in AS1063 and 36 in M1149), as ellipticals those galaxies showing elliptical morphologies according to the visual inspection of galaxy images and residuals after the best-fitting model subtraction (35 in AS1063 and 32 in M1149), as red galaxies those that are redder than the best-fitting CM relation of the cluster minus 1 and 3 standard deviation (41 and 46 in AS1063 and 32 and 39 in M1149) and as passively evolving galaxies those whose MUSE spectra present no emission lines and weak $H\delta$ absorption (37 in

AS1063 and 29 in M1149). Galaxies which are classified as ETG, ellipticals, red at 1σ and passive, simultaneously, constitute the spectrophotometrically selected sample (27 in AS1063 and 24 in M1149).

We build the KR for each of the samples described above, both for AS1063 and M1149. From the analysis of the KR as a function of samples, we find the following:

- (i) ETG, elliptical and passive galaxies have KRs with remarkably similar slope and intercept (at fixed wavebands) in both clusters, suggesting that they constitute an homogeneous population.
- (ii) Using the CM diagram (Fig. 8), the marginal consistency between the red samples and the others is due to the presence of a large number of red galaxies that are not classified also as ETGs, ellipticals, or passives. Therefore, a sample based on colour selection is contaminated by late-type galaxies.
- (iii) On the other hand, ETG, elliptical, and passive galaxies have similar distributions on the CM diagram and very few ETGs are not classified as passive objects and vice versa. Furthermore, the distribution of ETGs, ellipticals, and passives is also very similar in Fig. 14, where we compare the KRs of all samples.
- (iv) For AS1063, the KRs of the red samples show larger scatters ($\sigma = 1.10$) than those obtained for ETGs ($\sigma = 0.76$) and ellipticals ($\sigma = 0.77$). Moreover, although the slopes are consistent, the large scatter combined with the large error on the slope (~ 25 per cent relative error) suggests that the red sample could be contaminated by galaxies that are not ETGs. For M1149, the slope of the KR for the red at 1σ sample is not consistent within errors with the ETG or elliptical samples. This highlights the fact that, on cluster-to-cluster basis, different selection criteria can have significant impact on the KR parameters. As a consequence, the sample selection has a crucial relevance on all of the studies aiming at constraining the galaxy evolution through the analysis of the KR at different redshifts. In fact, a not homogeneous selection over cosmic time can bias the conclusions on the luminosity and size evolution. For example, considering a fixed surface brightness $\langle \mu \rangle_e = 18.5$ mag arcsec $^{-2}$, according to the KR in M1149 we expect an effective

radius $R_e \sim 1.89$ kpc for ETGs, while, considering the red at 1σ sample, we obtain $R_e \sim 2.07$ kpc, resulting in a size 10 per cent larger than that of ETGs.

(v) Comparing our KRs with those of other authors, by using the same sample definition and the same rest-frame waveband, we find that AS1063 and M1149 slopes are consistent with literature. Furthermore, our zero-points lie between the high redshift and the local Universe ones.

ACKNOWLEDGEMENTS

The authors thank the anonymous referee for its useful and constructive comments that helped to improve the quality of this paper. We also thank Dr. Peng and Dr. Cappellari for their precious advices on how to properly manage GALFIT and PPF, respectively, and Elisabete da Cunha for providing us with a non-public library of models for the MAGPHYS SED-fitting procedure. We acknowledge financial support from the Progetti di ricerca INAF di rilevante interesse nazionale (PRIN-INAF) 2014 1.05.01.94.02 (PI: M. Nonino). A.M. acknowledges funding from the INAF PRIN-SKA 2017 programme 1.05.01.88.04. M.P. acknowledges support from the PRIN-INAF 2014 ‘Fornax Cluster Imaging and Spectroscopic Deep Survey’. The CLASH Multi-Cycle Treasury Programme is based on observations made with the National Aeronautics and Space Administration (NASA)/European Space Agency (ESA) *HST*. Some of the data presented in this paper were obtained from the Mikulski Archive for Space Telescopes (MAST). The Space Telescope Science Institute (STScI) is operated by the Association of Universities for Research in Astronomy, Inc., under NASA contract NAS 5-26555. Based on observations made with the ESO/VLT at Cerro Paranal under programme IDs 60.A-9345(A), 095.A-0653(A), 294.A-5032(A), and 186.A-0798(A).

REFERENCES

- Akritas M. G., Bershadsky M. A., 1996, *ApJ*, 470, 706
 Anderson J., 2014, in American Astronomical Society Meeting Abstracts #224, p. 122.05
 Anderson J., King I. R., 2006, Technical report, PSFs, Photometry, and Astronomy for the ACS/WFC
 Andreon S., Dong H., Raichoor A., 2016, *A&A*, 593, A2
 Annunziatella M., Mercurio A., Brescia M., Cavuoti S., Longo G., 2013, *PASP*, 125, 68
 Annunziatella M. et al., 2014, *A&A*, 571, A80
 Annunziatella M. et al., 2016, *A&A*, 585, A160
 Barden M., Häußler B., Peng C. Y., McIntosh D. H., Guo Y., 2012, *MNRAS*, 422, 449
 Beers T. C., Flynn K., Gebhardt K., 1990, *AJ*, 100, 32
 Bell E. F. et al., 2004, *ApJ*, 600, L11
 Belli S., Newman A. B., Ellis R. S., 2014, *ApJ*, 783, 117
 Bertin E., Arnouts S., 1996, *A&AS*, 117, 393
 Blanton M. R. et al., 2003, *ApJ*, 594, 186
 Bruzual G., Charlot S., 2003, *MNRAS*, 344, 1000
 Cappellari M., 2017, *MNRAS*, 466, 798
 Caminha G. B. et al., 2016, *A&A*, 587, A80
 Cappellari M., Emsellem E., 2004, *PASP*, 116, 138
 Cappellari M. et al., 2013, *MNRAS*, 432, 1709
 da Cunha E., Charlot S., Elbaz D., 2008, *MNRAS*, 388, 1595
 Daddi E. et al., 2005, *ApJ*, 626, 680
 Desai V. et al., 2007, *ApJ*, 660, 1151
 Ebeling H., Edge A. C., Henry J. P., 2000, in AAS/High Energy Astrophysics Division #5. p. 1209
 Fagioli M., Carollo C. M., Renzini A., Lilly S. J., Onodera M., Tacchella S., 2016, *ApJ*, 831, 173
 Gómez P. L. et al., 2012, *AJ*, 144, 79
 Gonzaga S., Hack W., Fruchter A., Mack J., 2012, The DrizzlePac Handbook
 Goudfrooij P., 2012, *ApJ*, 750, 140
 Grillo C. et al., 2016, *ApJ*, 822, 78
 Jørgensen I., Chiboucas K., 2013, *AJ*, 145, 77
 Karman W. et al., 2015, *A&A*, 574, A11
 Karman W. et al., 2017, *A&A*, 599, A28
 Kauffmann G., 1995, *MNRAS*, 274, 161
 Kormendy J., 1977, *ApJ*, 218, 333
 La Barbera F., Busarello G., Merluzzi P., Massarotti M., Capaccioli M., 2003, *ApJ*, 595, 127
 Longhetti M. et al., 2007, *MNRAS*, 374, 614
 Lotz J. M. et al., 2017, *ApJ*, 837, 97
 Mancini C. et al., 2010, *MNRAS*, 401, 933
 McIntosh D. H. et al., 2005, *ApJ*, 632, 191
 Mei S. et al., 2012, *ApJ*, 754, 141
 Mercurio A., Busarello G., Merluzzi P., La Barbera F., Girardi M., Haines C. P., 2004, *A&A*, 424, 79
 Paolillo M., Puzia T. H., Goudfrooij P., Zepf S. E., Maccarone T. J., Kundu A., Fabbiano G., Angelini L., 2011, *ApJ*, 736, 90
 Peng C. Y., Ho L. C., Impey C. D., Rix H.-W., 2011, Astrophysics Source Code Library, record ascl:1104.010
 Poggianti B. M. et al., 2006, *ApJ*, 642, 188
 Poggianti B. M. et al., 2013, *ApJ*, 762, 77
 Postman M. et al., 2012, *ApJS*, 199, 25
 Puzia T. H., Paolillo M., Goudfrooij P., Maccarone T. J., Fabbiano G., Angelini L., 2014, *ApJ*, 786, 78
 Rettura A. et al., 2010, *ApJ*, 709, 512
 Rosati P. et al., 2014, *The Messenger*, 158, 48
 Saglia R. P. et al., 2010, *A&A*, 524, A6
 Salpeter E. E., 1955, *ApJ*, 121, 161
 Saracco P., Longhetti M., Gargiulo A., 2010, *MNRAS*, 408, L21
 Saracco P. et al., 2014, *A&A*, 567, A94
 Saracco P., Gargiulo A., Ciocca F., Marchesini D., 2017, *A&A*, 597, A122
 Stott J. P., Collins C. A., Burke C., Hamilton-Morris V., Smith G. P., 2011, *MNRAS*, 414, 445
 Tamburri S., Saracco P., Longhetti M., Gargiulo A., Lonoce I., Ciocca F., 2014, *A&A*, 570, A102
 Treu T. et al., 2016, *ApJ*, 817, 60
 Trujillo I. et al., 2006, *MNRAS*, 373, L36
 Trujillo I., Ferreras I., de La Rosa I. G., 2011, *MNRAS*, 415, 3903
 Vazdekis A., Sánchez-Blázquez P., Falcón-Barroso J., Cenarro A. J., Beasley M. A., Cardiel N., Gorgas J., Peletier R. F., 2010, *MNRAS*, 404, 1639
 Worthey G., Faber S. M., Gonzalez J. J., Burstein D., 1994, *ApJS*, 94, 687
 Zheng W. et al., 2012, *Nature*, 489, 406

SUPPORTING INFORMATION

Supplementary data are available at [MNRAS](#) online.

M1149_muse_published_param.dat
AS1063_muse_published_param.dat

Please note: Oxford University Press is not responsible for the content or functionality of any supporting materials supplied by the authors. Any queries (other than missing material) should be directed to the corresponding author for the article.

APPENDIX: TABLES OF STRUCTURAL PARAMETERS

We report the tables containing the structural parameters and their errors for AS1063 (Table A1) and M1149 (Table A2). Total magnitude refers to that in the *F814W* waveband, while R_e and $\langle\mu\rangle_e$ are in units of kpc and mag arcsec⁻², respectively. The last column of the tables contains the classification of spectroscopically confirmed cluster members.

Table A1. Parameters for the spectroscopically confirmed cluster members of AS1063: ID in serial order (column 1), RA in degrees (column 2), Dec. in degrees (column 3), total magnitude in the *F814W* band and its error (column 4), circularized effective radius in kpc and its error (column 5), averaged surface brightness at the effective radius in mag arcsec⁻² and its error (column 6), Sérsic index and its error (column 7), and classification of the galaxy as described in Section 4 (column 8).

ID	RA	Dec.	m_{tot}	R_e (kpc)	$(\mu)_e$ (mag arcsec ⁻²)	n	Classification
1	342.16045	-44.53893	22.09 ± 0.02	0.96 ± 0.03	19.24 ± 0.07	1.1 ± 0.1	
2	342.16273	-44.53816	22.32 ± 0.03	2.32 ± 0.11	21.39 ± 0.13	1.9 ± 0.1	Red (3σ), red (1σ)
3	342.16661	-44.53482	21.39 ± 0.02	0.66 ± 0.04	17.71 ± 0.13	3.9 ± 0.2	ETG, elliptical, red (3σ), red (1σ), passive
4	342.16825	-44.53655	22.07 ± 0.03	0.49 ± 0.02	17.76 ± 0.12	3.5 ± 0.2	ETG, elliptical, red (3σ), red (1σ)
5	342.16903	-44.54034	22.87 ± 0.01	1.51 ± 0.06	21.00 ± 0.09	2.1 ± 0.1	Red (3σ), red (1σ)
6	342.16985	-44.53554	20.48 ± 0.02	1.31 ± 0.17	18.30 ± 0.31	4.4 ± 0.4	ETG, elliptical, red (3σ), red (1σ), passive
7	342.17079	-44.53583	23.03 ± 0.04	1.85 ± 0.10	21.60 ± 0.15	1.3 ± 0.1	
8	342.17160	-44.53951	22.40 ± 0.02	1.07 ± 0.01	19.79 ± 0.05	1.4 ± 0.1	Red (3σ), red (1σ)
9	342.17176	-44.54054	20.48 ± 0.05	2.82 ± 0.26	19.97 ± 0.25	4.0 ± 0.4	ETG, red (3σ), red (1σ), passive
10	342.17217	-44.54313	23.19 ± 0.04	0.87 ± 0.04	20.12 ± 0.15	1.8 ± 0.1	Red (3σ), red (1σ)
11	342.17368	-44.53277	21.61 ± 0.01	1.35 ± 0.06	19.50 ± 0.10	2.1 ± 0.1	
12	342.17443	-44.54622	22.29 ± 0.02	0.74 ± 0.02	18.88 ± 0.07	1.1 ± 0.1	
13	342.17450	-44.52900	22.07 ± 0.04	0.47 ± 0.02	17.66 ± 0.12	2.0 ± 0.1	Red (3σ), passive
14	342.17465	-44.53693	23.63 ± 0.14	1.12 ± 0.16	21.11 ± 0.45	1.3 ± 0.3	
15	342.17492	-44.53413	21.39 ± 0.03	0.64 ± 0.04	17.65 ± 0.16	2.4 ± 0.1	Red (3σ), red (1σ), passive
16	342.17546	-44.53538	18.71 ± 0.72	40.80 ± 37.00	24.00 ± 2.70	6.5 ± 3.0	Failed fit
17	342.17646	-44.53366	20.89 ± 0.02	0.84 ± 0.04	17.76 ± 0.12	2.6 ± 0.1	ETG, elliptical, red (3σ), red (1σ), passive
18	342.17686	-44.53753	21.25 ± 0.04	1.20 ± 0.04	18.88 ± 0.12	4.3 ± 0.1	ETG, elliptical
19	342.17703	-44.53694	19.13 ± 0.04	2.23 ± 0.15	18.11 ± 0.19	2.3 ± 0.2	
20	342.17726	-44.52501	23.26 ± 0.03	1.48 ± 0.05	21.35 ± 0.10	1.5 ± 0.1	
21	342.17793	-44.53239	20.98 ± 0.02	1.02 ± 0.03	18.25 ± 0.10	2.6 ± 0.2	ETG, elliptical, red (3σ), red (1σ), passive
22	342.17795	-44.52406	21.19 ± 0.01	1.49 ± 0.04	19.29 ± 0.07	1.5 ± 0.1	Red (3σ), passive
23	342.17863	-44.54655	22.20 ± 0.03	0.80 ± 0.04	18.96 ± 0.14	2.2 ± 0.1	Red (3σ), red (1σ)
24	342.17891	-44.52472	21.81 ± 0.02	1.07 ± 0.03	19.20 ± 0.08	1.9 ± 0.1	Red (3σ), red (1σ), passive
25	342.17903	-44.53278	20.32 ± 0.02	0.78 ± 0.05	17.01 ± 0.15	3.0 ± 0.1	ETG, elliptical, red (3σ), red (1σ), passive
26	342.17961	-44.52304	21.22 ± 0.02	0.85 ± 0.02	18.10 ± 0.08	1.0 ± 0.1	
27	342.17967	-44.52853	23.07 ± 0.02	2.43 ± 0.07	22.23 ± 0.09	1.5 ± 0.1	Red (3σ)
28	342.17999	-44.53568	23.42 ± 0.03	1.44 ± 0.07	21.44 ± 0.14	1.5 ± 0.1	
29	342.18109	-44.52920	22.61 ± 0.04	0.74 ± 0.03	19.20 ± 0.14	2.1 ± 0.1	Passive
30	342.18200	-44.53857	22.81 ± 0.06	1.09 ± 0.08	20.23 ± 0.22	2.1 ± 0.2	Red (3σ)
31	342.18205	-44.54034	21.40 ± 0.01	1.14 ± 0.06	18.92 ± 0.12	3.3 ± 0.1	ETG, elliptical, passive
32	342.18254	-44.52687	21.78 ± 0.01	0.72 ± 0.04	18.31 ± 0.12	3.0 ± 0.1	ETG, elliptical, red (3σ), red (1σ), passive
33	342.18293	-44.53046	20.31 ± 0.04	0.80 ± 0.03	17.05 ± 0.12	3.4 ± 0.2	ETG, elliptical, passive
34	342.18294	-44.52492	22.82 ± 0.06	1.32 ± 0.17	20.66 ± 0.34	3.2 ± 0.4	ETG, elliptical
35	342.18307	-44.53310	22.18 ± 0.04	0.43 ± 0.01	17.57 ± 0.08	2.6 ± 0.2	ETG, elliptical, passive
36	342.18320	-44.54385	22.58 ± 0.04	1.75 ± 0.09	21.03 ± 0.16	1.8 ± 0.1	
37	342.18328	-44.53083	17.26 ± 0.49	17.00 ± 1.60	20.65 ± 0.69	1.4 ± 0.4	BCG
38	342.18353	-44.53007	20.03 ± 0.02	1.76 ± 0.11	18.50 ± 0.16	3.2 ± 0.2	ETG, elliptical, passive
39	342.18406	-44.52692	20.45 ± 0.02	1.57 ± 0.13	18.67 ± 0.20	3.3 ± 0.2	ETG, elliptical, red (3σ), red (1σ), passive
40	342.18419	-44.52028	22.18 ± 0.04	2.08 ± 0.14	21.01 ± 0.19	1.4 ± 0.1	Red (3σ), red (1σ)
41	342.18438	-44.53619	20.12 ± 0.01	2.16 ± 0.15	19.03 ± 0.16	3.3 ± 0.2	ETG, red (3σ), red (1σ), passive
42	342.18449	-44.54318	20.81 ± 0.01	2.32 ± 0.14	19.87 ± 0.14	4.6 ± 0.1	ETG, elliptical, red (3σ), red (1σ), passive
43	342.18453	-44.52930	24.46 ± 0.07	0.41 ± 0.02	19.75 ± 0.17	1.2 ± 0.1	Passive
44	342.18487	-44.54063	23.17 ± 0.05	1.11 ± 0.08	20.63 ± 0.21	2.3 ± 0.2	Red (3σ), red (1σ)
45	342.18542	-44.51863	19.48 ± 0.02	1.52 ± 0.16	17.62 ± 0.25	5.5 ± 0.3	ETG, red (3σ), red (1σ), passive
46	342.18555	-44.53319	22.50 ± 0.02	0.51 ± 0.02	18.28 ± 0.12	3.8 ± 0.4	ETG, elliptical, red (3σ), red (1σ)
47	342.18565	-44.53125	23.36 ± 0.08	0.93 ± 0.09	20.44 ± 0.30	1.8 ± 0.2	Passive
48	342.18568	-44.53050	22.90 ± 0.01	1.15 ± 0.06	20.44 ± 0.12	2.9 ± 0.3	ETG, elliptical, passive
49	342.18570	-44.52601	22.25 ± 0.01	1.35 ± 0.06	20.14 ± 0.10	3.6 ± 0.1	ETG, elliptical, red (3σ), red (1σ)
50	342.18663	-44.53108	22.78 ± 0.03	0.60 ± 0.01	18.90 ± 0.08	1.7 ± 0.1	Passive
51	342.18665	-44.52247	20.91 ± 0.02	0.83 ± 0.04	17.75 ± 0.13	3.9 ± 0.1	ETG, red (3σ), red (1σ), passive
52	342.18666	-44.54076	21.06 ± 0.01	0.86 ± 0.04	17.96 ± 0.12	3.2 ± 0.1	ETG, elliptical, red (3σ), red (1σ), passive
53	342.18667	-44.52058	23.85 ± 0.15	1.53 ± 0.24	22.01 ± 0.50	1.2 ± 0.2	Red (3σ), red (1σ)
54	342.18678	-44.52781	20.71 ± 0.01	1.53 ± 0.05	18.88 ± 0.07	5.3 ± 0.1	ETG, elliptical, red (3σ), red (1σ), passive
55	342.18686	-44.53390	22.09 ± 0.01	2.31 ± 0.11	21.15 ± 0.11	2.6 ± 0.1	ETG, elliptical
56	342.18693	-44.53537	20.93 ± 0.01	1.43 ± 0.05	18.94 ± 0.09	2.7 ± 0.1	ETG, elliptical, red (3σ), red (1σ), passive
57	342.18811	-44.53280	22.37 ± 0.03	1.52 ± 0.07	20.51 ± 0.13	1.7 ± 0.1	Elliptical, red (3σ), Red (1σ)
58	342.18813	-44.52595	19.94 ± 0.03	0.90 ± 0.07	16.95 ± 0.20	4.1 ± 0.3	ETG, elliptical, red (3σ), red (1σ), passive
59	342.18814	-44.52972	20.10 ± 0.02	1.07 ± 0.05	17.48 ± 0.13	3.0 ± 0.2	ETG, red (3σ), red (1σ), passive
60	342.18844	-44.51774	23.06 ± 0.10	1.11 ± 0.13	20.53 ± 0.36	1.2 ± 0.1	

Table A1 – *Continued*

ID	RA	Dec.	m_{tot}	R_e (kpc)	$\langle\mu\rangle_e$ (mag arcsec $^{-2}$)	n	Classification
61	342.18856	-44.52670	25.05 ± 0.05	0.40 ± 0.07	20.30 ± 0.42	0.9 ± 0.2	
62	342.18893	-44.54039	20.27 ± 0.07	3.01 ± 0.30	19.90 ± 0.29	3.2 ± 0.3	ETG, elliptical, red (3 σ)
63	342.18901	-44.51923	22.52 ± 0.09	1.32 ± 0.13	20.36 ± 0.30	1.4 ± 0.1	
64	342.18901	-44.52469	21.31 ± 0.12	4.51 ± 1.40	21.82 ± 0.79	11.0 ± 1.6	ETG, passive
65	342.18907	-44.52643	24.46 ± 0.06	0.72 ± 0.06	20.99 ± 0.23	1.3 ± 0.1	
66	342.18916	-44.52367	23.59 ± 0.02	0.61 ± 0.01	19.74 ± 0.05	2.2 ± 0.1	
67	342.18916	-44.52953	20.40 ± 0.01	1.20 ± 0.07	18.03 ± 0.13	4.1 ± 0.2	ETG, elliptical, red (3 σ), red (1 σ), passive
68	342.18934	-44.53692	21.91 ± 0.01	1.47 ± 0.05	19.99 ± 0.08	1.8 ± 0.1	red (3 σ), red (1 σ), passive
69	342.19002	-44.52411	22.59 ± 0.02	0.76 ± 0.04	19.23 ± 0.13	4.5 ± 0.2	ETG, elliptical, red (3 σ), red (1 σ)
70	342.19019	-44.51651	24.84 ± 0.04	0.55 ± 0.02	20.77 ± 0.13	0.7 ± 0.1	
71	342.19134	-44.53432	21.18 ± 0.02	0.53 ± 0.03	17.05 ± 0.15	3.0 ± 0.2	ETG, elliptical, red (3 σ), red (1 σ), passive
72	342.19156	-44.53334	21.72 ± 0.02	0.68 ± 0.02	18.13 ± 0.08	2.9 ± 0.1	ETG, elliptical, red (3 σ), red (1 σ), passive
73	342.19186	-44.52965	22.11 ± 0.01	0.84 ± 0.04	18.98 ± 0.11	2.5 ± 0.2	ETG, elliptical, passive
74	342.19269	-44.51977	22.97 ± 0.11	0.76 ± 0.12	19.62 ± 0.44	2.2 ± 0.4	
75	342.19281	-44.51495	21.72 ± 0.01	2.73 ± 0.08	21.14 ± 0.06	2.3 ± 0.1	Red (3 σ)
76	342.19293	-44.52205	22.22 ± 0.02	1.64 ± 0.01	20.53 ± 0.03	0.7 ± 0.1	
77	342.19326	-44.52412	24.37 ± 0.03	0.82 ± 0.02	21.18 ± 0.09	1.5 ± 0.1	
78	342.19330	-44.51782	19.77 ± 0.04	0.93 ± 0.07	16.84 ± 0.20	4.2 ± 0.2	ETG, elliptical, red (3 σ), red (1 σ), passive
79	342.19330	-44.52643	20.43 ± 0.03	0.96 ± 0.06	17.57 ± 0.16	2.8 ± 0.2	ETG, red (3 σ), red (1 σ), passive
80	342.19368	-44.51851	22.24 ± 0.08	1.08 ± 0.13	19.66 ± 0.34	2.3 ± 0.2	Red (3 σ), red (1 σ)
81	342.19420	-44.52210	22.46 ± 0.02	1.59 ± 0.03	20.71 ± 0.06	0.7 ± 0.1	
82	342.19461	-44.53227	23.38 ± 0.03	0.42 ± 0.01	18.72 ± 0.06	1.2 ± 0.1	Red (3 σ), red (1 σ)
83	342.19530	-44.53490	22.72 ± 0.01	1.68 ± 0.07	21.09 ± 0.10	2.6 ± 0.1	ETG, elliptical, red (3 σ), red (1 σ)
84	342.19543	-44.53245	22.53 ± 0.02	1.52 ± 0.07	20.68 ± 0.13	2.1 ± 0.1	Red (3 σ), red (1 σ)
85	342.19552	-44.52599	19.01 ± 0.03	3.27 ± 0.38	18.82 ± 0.29	6.3 ± 0.4	ETG, elliptical, red (3 σ), red (1 σ), passive
86	342.19669	-44.52909	22.85 ± 0.02	1.36 ± 0.06	20.76 ± 0.11	2.0 ± 0.1	
87	342.19727	-44.52327	20.39 ± 0.04	1.15 ± 0.07	17.93 ± 0.17	3.9 ± 0.3	ETG, elliptical, red (3 σ), red (1 σ), passive
88	342.19821	-44.52740	22.50 ± 0.03	1.57 ± 0.07	20.72 ± 0.12	2.0 ± 0.1	Elliptical, red (3 σ), red (1 σ)
89	342.20017	-44.52722	22.34 ± 0.04	1.58 ± 0.09	20.58 ± 0.17	2.3 ± 0.2	Red (3 σ), red (1 σ)
90	342.20029	-44.52520	20.38 ± 0.05	1.96 ± 0.18	19.08 ± 0.25	3.0 ± 0.3	ETG, elliptical, red (3 σ), red (1 σ), passive
91	342.20084	-44.52722	23.72 ± 0.02	1.01 ± 0.01	20.98 ± 0.04	1.1 ± 0.1	
92	342.20123	-44.52405	23.35 ± 0.04	1.01 ± 0.03	20.60 ± 0.09	1.9 ± 0.1	Red (3 σ), red (1 σ)
93	342.20137	-44.52076	21.96 ± 0.02	0.78 ± 0.02	18.65 ± 0.07	2.3 ± 0.1	Elliptical, red (3 σ), red (1 σ)
94	342.20418	-44.52524	20.55 ± 0.03	1.32 ± 0.09	18.39 ± 0.17	3.0 ± 0.2	ETG, elliptical, red (3 σ), red (1 σ), passive
95	342.20490	-44.52587	23.46 ± 0.02	1.34 ± 0.04	21.33 ± 0.08	1.9 ± 0.2	

Table A2. Parameters for the spectroscopically confirmed cluster members of M1149: ID in serial order (column 1), RA in degrees (column 2), Dec. in degrees (column 3), total magnitude in the *F814W* band and its error (column 4), circularized effective radius in kpc and its error (column 5), averaged surface brightness at the effective radius in mag arcsec⁻² and its error (column 6), Sérsic index and its error (column 7), and classification of the galaxy as described in Section 4 (column 8).

ID	RA	Dec.	m_{tot}	R_e (kpc)	$\langle\mu\rangle_e$ (mag arcsec ⁻²)	n	Classification
1	177.38945	22.39391	19.68 ± 0.08	3.15 ± 0.46	18.32 ± 0.40	4.8 ± 0.4	ETG, elliptical, red (3σ), red (1σ)
2	177.38970	22.39271	20.35 ± 0.02	3.24 ± 0.30	19.05 ± 0.22	3.7 ± 0.2	ETG, elliptical, red (3σ), red (1σ)
3	177.39015	22.40389	21.81 ± 0.02	0.98 ± 0.09	17.91 ± 0.23	4.4 ± 0.3	ETG, elliptical, red (3σ), red (1σ)
4	177.39097	22.40168	20.94 ± 0.03	1.49 ± 0.17	17.96 ± 0.28	4.8 ± 0.4	ETG, elliptical, red (3σ), red (1σ), passive
5	177.39110	22.40491	20.42 ± 0.04	2.26 ± 0.33	18.33 ± 0.36	6.5 ± 0.5	ETG, elliptical, red (3σ), red (1σ)
6	177.39120	22.39271	20.82 ± 0.12	5.96 ± 0.83	20.84 ± 0.43	1.3 ± 0.3	
7	177.39138	22.40107	22.49 ± 0.06	0.67 ± 0.08	17.75 ± 0.33	2.4 ± 0.3	Red (3σ), red (1σ)
8	177.39168	22.39062	20.54 ± 0.03	3.04 ± 0.25	19.10 ± 0.21	2.8 ± 0.2	ETG, red (3σ), red (1σ), passive
9	177.39183	22.40529	21.19 ± 0.01	1.01 ± 0.08	17.35 ± 0.19	3.7 ± 0.4	ETG, elliptical, red (3σ), red (1σ), passive
10	177.39217	22.40128	22.80 ± 0.02	0.54 ± 0.04	17.60 ± 0.20	2.6 ± 0.5	ETG, elliptical, red (3σ), red (1σ)
11	177.39266	22.39273	20.26 ± 0.03	1.99 ± 0.36	17.90 ± 0.42	2.9 ± 0.3	ETG, red (3σ), red (1σ), passive
12	177.39269	22.39436	21.61 ± 0.05	1.37 ± 0.13	18.43 ± 0.26	3.4 ± 0.2	ETG, elliptical, red (3σ), red (1σ), passive
13	177.39278	22.39810	20.52 ± 0.04	1.92 ± 0.17	18.09 ± 0.23	2.3 ± 0.2	Red (3σ), red (1σ), passive
14	177.39288	22.39710	21.13 ± 0.01	1.79 ± 0.13	18.54 ± 0.17	3.7 ± 0.2	ETG, elliptical, red (3σ), red (1σ)
15	177.39381	22.40231	22.66 ± 0.06	1.27 ± 0.12	19.33 ± 0.25	4.0 ± 0.3	ETG, elliptical, red (3σ), red (1σ)
16	177.39416	22.39503	23.61 ± 0.18	1.39 ± 0.34	20.46 ± 0.72	2.3 ± 0.6	Red (3σ), red (1σ)
17	177.39453	22.40063	22.29 ± 0.04	2.76 ± 0.16	20.64 ± 0.17	3.1 ± 0.1	ETG, elliptical
18	177.39484	22.39292	23.06 ± 0.06	1.22 ± 0.16	19.63 ± 0.34	3.6 ± 0.5	ETG, elliptical, red (3σ), red (1σ)
19	177.39503	22.39602	22.62 ± 0.09	1.10 ± 0.15	18.97 ± 0.39	2.0 ± 0.1	Red (3σ), red (1σ)
20	177.39507	22.38985	22.77 ± 0.29	0.77 ± 0.48	18.36 ± 1.60	6.0 ± 3.8	ETG, elliptical, red (3σ), red (1σ)
21	177.39527	22.40105	22.07 ± 0.03	1.19 ± 0.08	18.58 ± 0.18	3.6 ± 0.2	ETG, elliptical, red (3σ), red (1σ), passive
22	177.39584	22.39350	21.31 ± 0.01	2.38 ± 0.08	19.34 ± 0.08	7.0 ± 0.1	ETG, elliptical, red (3σ), red (1σ)
23	177.39688	22.39231	22.53 ± 0.12	3.14 ± 0.30	21.16 ± 0.33	4.5 ± 0.4	ETG, elliptical
24	177.39694	22.39297	20.55 ± 0.01	2.89 ± 0.07	19.00 ± 0.06	4.2 ± 0.1	ETG, elliptical
25	177.39726	22.40029	22.71 ± 0.45	3.90 ± 1.70	21.81 ± 1.40	2.5 ± 0.8	ETG, elliptical
26	177.39752	22.39953	20.65 ± 0.10	7.70 ± 1.20	21.23 ± 0.44	6.8 ± 0.7	ETG, elliptical, red (3σ), passive
27	177.39762	22.40288	22.78 ± 0.07	1.55 ± 0.18	19.87 ± 0.32	2.2 ± 0.3	Red (3σ)
28	177.39779	22.39545	20.53 ± 0.06	2.40 ± 0.51	18.57 ± 0.53	3.5 ± 0.4	ETG, elliptical, red (3σ), red (1σ), passive
29	177.39792	22.40394	23.07 ± 0.07	1.48 ± 0.19	20.07 ± 0.35	1.6 ± 0.2	Red (3σ)
30	177.39795	22.40105	20.23 ± 0.06	2.51 ± 0.37	18.38 ± 0.38	4.4 ± 0.4	ETG, elliptical, red (3σ), red (1σ), passive
31	177.39846	22.40536	22.50 ± 0.06	1.37 ± 0.15	19.32 ± 0.30	2.7 ± 0.4	ETG, elliptical, red (3σ), red (1σ)
32	177.39855	22.38979	22.10 ± 0.03	0.86 ± 0.06	17.91 ± 0.19	1.6 ± 0.2	Red (3σ), passive
33	177.39860	22.39808	21.54 ± 0.08	4.06 ± 0.53	20.73 ± 0.37	7.1 ± 0.6	ETG, elliptical, red (3σ), passive
34	177.39869	22.39230	21.17 ± 0.03	1.40 ± 0.15	18.05 ± 0.25	3.1 ± 0.3	ETG, elliptical, red (3σ)
35	177.39874	22.39853	17.83 ± 0.10	35.60 ± 5.30	21.73 ± 0.42	3.4 ± 0.2	BCG
36	177.39886	22.40181	21.62 ± 0.02	1.24 ± 0.08	18.24 ± 0.16	3.6 ± 0.1	ETG, elliptical, red (3σ), red (1σ), passive
37	177.39919	22.40090	23.77 ± 0.10	1.84 ± 0.26	21.24 ± 0.41	3.4 ± 0.2	ETG, elliptical, red (3σ)
38	177.39965	22.39961	22.09 ± 0.02	1.16 ± 0.06	18.55 ± 0.13	2.7 ± 0.2	ETG, elliptical, red (3σ), red (1σ), passive
39	177.39982	22.39726	20.26 ± 0.09	4.41 ± 1.00	19.63 ± 0.58	5.8 ± 0.6	ETG, elliptical, red (3σ), passive
40	177.40020	22.39441	23.11 ± 0.17	1.83 ± 0.50	20.56 ± 0.76	2.9 ± 0.8	ETG, elliptical
41	177.40040	22.39821	22.63 ± 0.10	0.46 ± 0.09	17.09 ± 0.50	3.8 ± 1.5	ETG, elliptical, red (3σ), red (1σ)
42	177.40078	22.39625	22.75 ± 0.08	0.68 ± 0.09	18.06 ± 0.37	2.6 ± 0.6	ETG, elliptical, red (3σ), red (1σ)
43	177.40080	22.39377	23.55 ± 0.08	0.72 ± 0.09	18.97 ± 0.35	1.9 ± 0.5	Red (3σ), red (1σ)
44	177.40103	22.39788	20.45 ± 0.07	1.67 ± 0.26	17.71 ± 0.41	5.0 ± 0.7	ETG, elliptical, red (3σ), red (1σ), passive
45	177.40121	22.40033	20.55 ± 0.02	1.32 ± 0.11	17.30 ± 0.21	4.2 ± 0.4	ETG, elliptical, red (3σ), red (1σ), passive
46	177.40173	22.39880	22.72 ± 0.06	0.60 ± 0.07	17.76 ± 0.30	3.1 ± 0.6	ETG, elliptical, red (3σ), red (1σ)
47	177.40225	22.39975	21.27 ± 0.02	1.42 ± 0.09	18.17 ± 0.16	2.7 ± 0.2	ETG, elliptical, red (3σ), red (1σ), passive
48	177.40239	22.39803	23.36 ± 0.06	1.25 ± 0.09	19.99 ± 0.22	1.5 ± 0.2	
49	177.40262	22.39618	20.90 ± 0.10	5.83 ± 1.00	20.87 ± 0.49	5.9 ± 0.9	ETG, elliptical, red (3σ), passive
50	177.40288	22.40201	22.64 ± 0.05	2.46 ± 0.28	20.74 ± 0.30	4.1 ± 0.3	ETG, elliptical, red (3σ)
51	177.40306	22.40439	21.49 ± 0.02	1.15 ± 0.08	17.93 ± 0.17	3.8 ± 0.3	ETG, elliptical, red (3σ), red (1σ), passive
52	177.40358	22.39638	19.86 ± 0.02	2.85 ± 0.28	18.28 ± 0.24	3.0 ± 0.2	ETG, red (3σ), red (1σ), passive
53	177.40366	22.39194	21.26 ± 0.04	1.03 ± 0.09	17.48 ± 0.23	3.8 ± 0.5	ETG, elliptical, red (3σ), red (1σ), passive
54	177.40369	22.38911	20.97 ± 0.03	2.39 ± 0.22	19.01 ± 0.24	3.9 ± 0.3	ETG, elliptical, red (3σ), red (1σ)
55	177.40372	22.40458	20.66 ± 0.03	2.16 ± 0.21	18.48 ± 0.24	3.9 ± 0.3	ETG, red (3σ), red (1σ), passive
56	177.40401	22.40213	22.80 ± 0.05	1.93 ± 0.18	20.38 ± 0.26	4.2 ± 0.3	ETG, elliptical, red (3σ)
57	177.40403	22.40302	21.84 ± 0.02	2.83 ± 0.08	20.25 ± 0.08	0.9 ± 0.1	
58	177.40516	22.39977	22.76 ± 0.03	1.00 ± 0.11	18.91 ± 0.27	2.9 ± 0.4	ETG, elliptical, red (3σ), red (1σ)
59	177.40536	22.39165	23.17 ± 0.05	1.46 ± 0.13	20.14 ± 0.24	2.8 ± 0.3	ETG, elliptical, red (3σ), red (1σ)
60	177.40544	22.39787	20.57 ± 0.01	2.13 ± 0.18	18.36 ± 0.20	4.4 ± 0.2	ETG, elliptical, red (3σ), red (1σ), passive

Table A2 – *Continued*

ID	RA	Dec.	m_{tot}	R_e (kpc)	$\langle\mu\rangle_e$ (mag arcsec $^{-2}$)	n	Classification
61	177.40629	22.40540	22.52 ± 0.02	0.89 ± 0.04	18.41 ± 0.14	0.6 ± 0.1	
62	177.40646	22.38958	19.02 ± 0.02	6.59 ± 0.34	19.26 ± 0.13	3.4 ± 0.1	ETG, elliptical, red (3σ), red (1σ), passive
63	177.40663	22.39555	22.26 ± 0.05	0.97 ± 0.12	18.33 ± 0.32	1.8 ± 0.3	red (3σ), passive
64	177.40690	22.39582	21.62 ± 0.05	1.65 ± 0.24	18.85 ± 0.37	2.9 ± 0.4	ETG, elliptical, red (3σ), red (1σ), passive
65	177.40726	22.39144	23.27 ± 0.11	1.41 ± 0.21	20.16 ± 0.44	2.4 ± 0.5	red (3σ), red (1σ)
66	177.40738	22.39479	23.71 ± 0.14	1.40 ± 0.19	20.58 ± 0.43	0.9 ± 0.5	
67	177.40747	22.39912	23.00 ± 0.03	1.19 ± 0.13	19.53 ± 0.26	1.9 ± 0.3	
68	177.40752	22.40305	19.77 ± 0.03	2.51 ± 0.22	17.92 ± 0.23	4.4 ± 0.2	ETG, red (3σ), red (1σ), passive

This paper has been typeset from a \LaTeX file prepared by the author.