



Publication Year	2018
Acceptance in OA	2020-10-29T12:56:55Z
Title	Molecular gas in two companion cluster galaxies at $z = 1.2$ (Corrigendum)
Authors	Castignani, G., Combes, F., Salomé, P., ANDREON, Stefano, Pannella, M., Heywood, I., TRINCHIERI, Ginevra, CICONE, CLAUDIA, Davies, L. J. M., Owen, F. N., Raichoor, A.
Publisher's version (DOI)	10.1051/0004-6361/201832887e
Handle	http://hdl.handle.net/20.500.12386/28081
Journal	ASTRONOMY & ASTROPHYSICS
Volume	620

Molecular gas in two companion cluster galaxies at $z = 1.2$ (Corrigendum)

G. Castignani^{1,2}, F. Combes^{1,2}, P. Salomé¹, S. Andreon³, M. Pannella⁴, I. Heywood^{5,6}, G. Trinchieri³,
C. Cicone³, L. J. M. Davies⁷, F. N. Owen⁸, and A. Raichoor⁹

¹ Sorbonne Université, Observatoire de Paris, Université PSL, CNRS, LERMA, 75014 Paris, France
e-mail: gianluca.castignani@obspm.fr

² Collège de France, 11 Place Marcelin Berthelot, 75231 Paris, France

³ INAF-Osservatorio Astronomico di Brera, via Brera 28, 20121 Milano, Italy

⁴ Department of Physics, Ludwig-Maximilians-Universität, Scheinerstr. 1, 81679 München, Germany

⁵ Astrophysics, Department of Physics, University of Oxford, Keble Road, Oxford OX1 3RH, UK

⁶ Department of Physics and Electronics, Rhodes University, PO Box 94, Grahamstown, 6140, South Africa

⁷ International Centre for Radio Astronomy Research, University of Western Australia M468, 35 Stirling Highway, Crawley, WA 6009, Australia

⁸ National Radio Astronomy Observatory, PO Box O, Socorro, NM 87801, USA

⁹ Institute of Physics, Laboratory of Astrophysics, Ecole Polytechnique Fédérale de Lausanne (EPFL), Observatoire de Sauverny, 1290 Versoix, Switzerland

A&A, 617, A103 (2018), <https://doi.org/10.1051/0004-6361/201832887>

Key words. galaxies: clusters: individual: ISCS J1426.5+3339 – galaxies: clusters: general – galaxies: star formation – molecular data – errata, addenda

In Fig. 1 (bottom) and Fig. 2 (left) of Castignani et al. (2018) we report the contour plot and the density map, respectively, associated with the NOEMA detection of CO(2-1) from two cluster galaxies at $z = 1.2$, unresolved by the NOEMA observations. However, the projected space coordinates of both the contour plot and the density map are transposed. We report in Fig. 1 the corrected figures. Since the detection is coincident with the phase center of the observation, that is invariant under coordinate transposition in the figures, all other results presented in the original manuscript are unchanged.

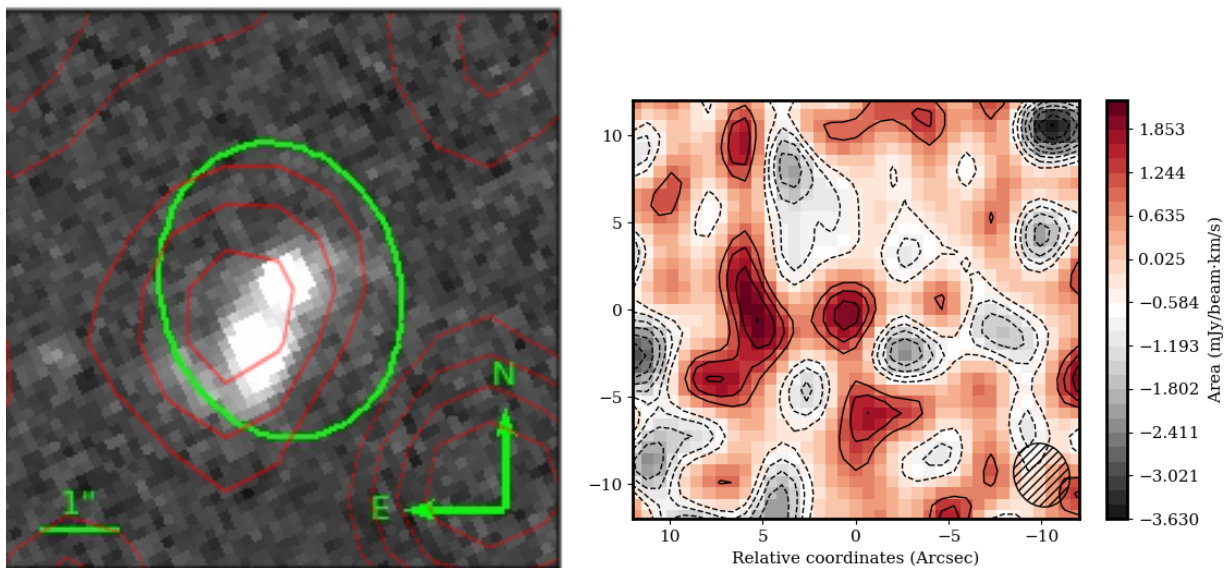


Fig. 1. *Left* and *right panels* correspond to Fig. 1 (bottom) and Fig. 2 (left) of Castignani et al. (2018), respectively. The original figures are corrected for the mistake in the coordinates, as described in the text.

References

Castignani, G., Combes, F., Salomé, P., et al. 2018, *A&A*, 617, A103