



Publication Year	2016
Acceptance in OA	2021-01-11T16:28:34Z
Title	Ultra-deep KS-band Imaging of the Hubble Frontier Fields
Authors	Brammer, Gabriel B., Marchesini, Danilo, Labbé, Ivo, Spitler, Lee, Lange-Vagle, Daniel, Barker, Elizabeth A., Tanaka, Masayuki, FONTANA, Adriano, Galametz, Audrey, Ferré-Mateu, Anna, Kodama, Tadayuki, Lundgren, Britt, Martis, Nicholas, Muzzin, Adam, Stefanon, Mauro, Toft, Sune, VAN DER WEL, ARJEN, Vulcani, Benedetta, Whitaker, Katherine E.
Publisher's version (DOI)	10.3847/0067-0049/226/1/6
Handle	http://hdl.handle.net/20.500.12386/29669
Journal	THE ASTROPHYSICAL JOURNAL SUPPLEMENT SERIES
Volume	226

ULTRA-DEEP K_s -BAND IMAGING OF THE *HUBBLE* FRONTIER FIELDS

GABRIEL B. BRAMMER¹, DANILO MARCHESINI², IVO LABBÉ³, LEE SPITLER^{4,5}, DANIEL LANGE-VAGLE^{1,2}, ELIZBETH A. BARKER¹, MASAYUKI TANAKA⁶, ADRIANO FONTANA⁷, AUDREY GALAMETZ⁸, ANNA FERRÉ-MATEU⁹, TADAYUKI KODAMA⁶, BRITT LUNDGREN¹⁰, NICHOLAS MARTIS², ADAM MUZZIN^{11,16}, MAURO STEFANON³, SUNE TOFT¹², ARJEN VAN DER WEL¹³, BENEDETTA VULCANI¹⁴, AND KATHERINE E. WHITAKER^{15,17}

¹ Space Telescope Science Institute, 3700 San Martin Drive, Baltimore, MD 21218, USA; brammer@stsci.edu

² Physics and Astronomy Department, Tufts University, Medford, MA 02155, USA

³ Leiden Observatory, Leiden University, NL-2300 RA Leiden, The Netherlands

⁴ Department of Physics & Astronomy, Macquarie University, Sydney, NSW 2109, Australia

⁵ Australian Astronomical Observatories, P.O. Box 915 North Ryde NSW 1670, Australia

⁶ National Astronomical Observatory of Japan 2-21-1 Osawa, Mitaka, Tokyo 181-8588, Japan

⁷ INAF, Osservatorio Astronomico di Roma, Via Frascati 33, I-00040, Monteporzio, Italy

⁸ Max-Planck-Institut für extraterrestrische Physik (MPE), Giessenbachstr. 1, D-85748 Garching, Germany

⁹ Subaru Telescope, 650 N. Aohoku Pl, 96720 Hilo, HI, USA

¹⁰ Department of Astronomy, University of Wisconsin, Madison, WI 53706, USA

¹¹ Kavli Institute for Cosmology, Cambridge University, Madingley Road, Cambridge, CB3 0HA, UK

¹² Dark Cosmology Centre, Niels Bohr Institute, University of Copenhagen, Juliane Maries Vej 30, DK-2100 Copenhagen, Denmark

¹³ Max Planck Institute for Astronomy (MPIA), Königstuhl 17, D-69117, Heidelberg, Germany

¹⁴ School of Physics, Tin Alley, University of Melbourne VIC 3010, Australia

¹⁵ Department of Astronomy, University of Massachusetts Amherst, Amherst, MA 01003, USA

¹⁶ Institute of Astronomy, Cambridge University, Madingley Road, Cambridge, CB3 0HA, UK

Received 2016 April 29; revised 2016 June 22; accepted 2016 July 16; published 2016 September 2

ABSTRACT

We present an overview of the “KIFF” project, which provides ultra-deep K_s -band imaging of all six of the *Hubble* Frontier Fields clusters, Abell 2744, MACS-0416, Abell S1063, Abell 370, MACS-0717, and MACS-1149. All of these fields have recently been observed with large allocations of Directors’ Discretionary Time with the *Hubble* and *Spitzer* telescopes, covering $0.4 < \lambda < 1.6 \mu\text{m}$ and $3.6\text{--}4.5 \mu\text{m}$, respectively. *VLT/HAWK-I* integrations of the first four fields reach 5σ limiting depths of $K_s \sim 26.0$ (AB, point sources) and have excellent image quality (FWHM $\sim 0''.4$). The MACS-0717 and MACS-1149 fields are observable from the northern hemisphere, and shorter Keck/MOSFIRE integrations on those fields reach limiting depths of $K_s = 25.5$ and 25.1 , with a seeing FWHM of $\sim 0''.4$ and $0''.5$. In all cases the K_s -band mosaics cover the primary cluster and parallel *HST/ACS* +WFC3 fields. The total area of the K_s -band coverage is 490 arcmin^2 . The K_s -band at $2.2 \mu\text{m}$ crucially fills the gap between the reddest *HST* filter ($1.6 \mu\text{m} \sim H$ band) and the IRAC $3.6 \mu\text{m}$ passband. While reaching the full depths of the space-based imaging is not currently feasible from the ground, the deep K_s -band images provide important constraints on both the redshifts and the stellar population properties of galaxies extending well below the characteristic stellar mass across most of the age of the universe, down to and including the redshifts of the targeted galaxy clusters ($z \lesssim 0.5$). Reduced, aligned mosaics of all six survey fields are provided.

Key words: galaxies: evolution – galaxies: high-redshift – surveys

1. INTRODUCTION

During the last two decades, near-infrared (NIR) imaging has become dominant in studies of galaxy formation and evolution, enabling transformational advances in our understanding of galaxy populations at early cosmic times.

The detection of galaxies in the K -band ($\lambda_{\text{eff}} \sim 2.2 \mu\text{m}$) provided the first opportunity to construct a comprehensive picture of the population of galaxies in the early universe, as it enabled the discovery of galaxies at $z > 2$ that are faint at observed optical (rest-frame ultraviolet) wavelengths due to evolved stellar populations and/or significant amounts of dust extinction (e.g., Franx et al. 2003; Labbé et al. 2003; Förster Schreiber et al. 2004; Minowa et al. 2005; Kajisawa et al. 2006; Brammer & van Dokkum 2007; Taylor et al. 2009a). In fact, these galaxies, which dominate the high-mass end of the high- z galaxy population, were previously missed by rest-frame UV selection techniques (e.g., U -dropout galaxies; e.g., van Dokkum et al. 2006). Imaging in the K -band allows for the

direct sampling of rest-frame wavelengths that are longer than the Balmer break, out to $z \approx 5$. Sampling the rest-frame optical wavelength regime is critical for high- z studies, as it is significantly less affected by dust obscuration and is a better probe of the galaxy stellar mass compared to the rest-frame UV, which is more sensitive to unobscured star formation (e.g., Fontana et al. 2006; Marchesini et al. 2009).

While imaging at even longer wavelengths ($\lambda > 3 \mu\text{m}$) is needed to probe the rest-frame optical emission of galaxies in the first billion years of cosmic history, deep sub-arcsecond resolution imaging at these wavelengths will not be available until the launch of the *James Webb Space Telescope*. Deep K -band data with good (i.e., FWHM $< 1''$) image quality have been fundamental to fully exploiting *Spitzer*-IRAC imaging data that is characterized by much poorer spatial resolution, allowing for the mitigation of the resulting blending of sources in IRAC images (e.g., Labbé et al. 2005). Finally, for space-based studies, the K -band fills the gap between the reddest *Hubble Space Telescope* (*HST*) filter (i.e., F160W, with $\lambda \sim 1.6 \mu\text{m}$) and the IRAC $3.6 \mu\text{m}$ passband, greatly improving the constraints on both the

¹⁷ Hubble Fellow.

photometric redshifts and the inferred stellar-population properties of galaxies in the survey areas.

It is not surprising that, given the aforementioned reasons, all of the successful extragalactic surveys performed in the last 15 years to investigate galaxy populations in the early universe invested significant resources in obtaining deep NIR imaging data with good image quality, especially in the K -band. Indeed, our understanding of galaxy formation and evolution in the last couple of decades has impressively proceeded forward mostly driven by progressively deeper, wider, and better image quality, NIR surveys, such as FIRES (Labbé et al. 2003), Subaru Super Deep Field (AO; Minowa et al. 2005), MUSYC (Quadri et al. 2007b; Taylor et al. 2009b), FIREWORKS (Wuyts et al. 2008), MODS (Kajisawa et al. 2011), NMBS (Whitaker et al. 2011), UltraVISTA (McCracken et al. 2012), TENIS (Hsieh et al. 2012), WIRDS (Bielby et al. 2012), ZFOURGE (Spitler et al. 2012), and HUGS (Fontana et al. 2014).

The latest effort to further our knowledge of galaxy formation and evolution is represented by the *Hubble Space Telescope* (*HST*) Frontier Fields (HFF) program (Lotz et al. 2016). The HFF program is a multi-cycle *Hubble* program consisting of 840 orbits of Director’s Discretionary (DD) time that is imaging six deep fields centered on strong lensing galaxy clusters in parallel with six deep blank fields. The primary science goals of the 12 HFF fields are to (1) reveal the population of galaxies at $z = 5 - 10$ that are 10–50 times fainter intrinsically than any presently known, (2) solidify our understanding of the stellar masses and star formation histories of faint galaxies, (3) provide the first statistically meaningful morphological characterization of star-forming galaxies at $z > 5$, and (4) find $z > 8$ galaxies magnified by the cluster lensing, with some bright enough to make them accessible to spectroscopic follow-up. Along with *HST*, the *Spitzer Space Telescope* has devoted 1000 hr of DD time to image the HFF fields at $3.6 \mu\text{m}$ and $4.5 \mu\text{m}$ with IRAC (P. Capak et al. 2016, in preparation).

The Frontier Fields initiative is complemented by a number of separate supporting general observer programs, such as deep *HST* ultraviolet imaging (B. Siana et al. 2016, in preparation) and grism spectroscopy (GLASS, Treu et al. 2015), and deep far-infrared imaging with *Herschel* (Rawle et al. 2016). Whereas the main goal of the HFF is to explore the galaxy population in the first billion years of cosmic history, this data set is also unique for its combination of surveyed area, multiwavelength coverage, and depth for studies of galaxy evolution across most of the age of the universe, down to and including the redshifts of the targeted galaxy clusters ($z \approx 0.3-0.5$).

The space-based HFF data alone, however, are not sufficient to robustly characterize red galaxies at $z \gtrsim 3$ because the WFC3/IR H_{160} band lies on the UV side of the rest-frame optical Balmer/4000 Å break at these redshifts, resulting in sub-optimal accuracies in the photometric redshifts and stellar population properties (e.g., stellar mass and rest-frame optical color; Muzzin et al. 2009). Very deep K -band imaging is required to significantly improve the precision of both photometric redshifts and derived stellar population properties (see Section 4). Moreover, at $z > 8-9$, the K -band data help constrain the Lyman-break redshifts (e.g., Bouwens et al. 2013) and increase the wavelength lever arm for measuring the redshift evolution of the rest-frame UV slopes (i.e., dust content

and/or metallicity) of the first galaxies (Bouwens et al. 2012; Bouwens et al. 2013).

To resolve this issue, i.e., the lack of K -band data over the HFF, we executed a program—“KIFF”: “ K -band Imaging of the Frontier Fields”—to image all twelve HFF pointings in the K_s band down to a comparable depth of the *HST* data using the instruments HAWK-I (mounted on the *VLT*) and MOSFIRE (mounted on the Keck I telescope). This paper describes the observations and analysis of K_s band data obtained by the KIFF program and is accompanied by the first full public release of the reduced full-depth K_s band imaging mosaics. This paper is structured as follows. The observations and data reduction are presented in Section 2, while Section 3 features the drizzled K_s mosaics, along with the quantification of the image quality, the noise properties and depth, and the completeness. Finally, Section 4 concludes our study by showing a few crucial improvements that were enabled by the deep K_s data in concert with the space-based *HST* and *Spitzer* Frontier Fields imaging. AB magnitudes are used throughout, with $m_{K,AB} - m_{K,Vega} = 1.826$ and 1.821 and pivot wavelengths (Tokunaga & Vacca 2005) of $2.152 \mu\text{m}$ and $2.147 \mu\text{m}$ for the HAWK-I and MOSFIRE K_s filter bandpasses, respectively.

2. OBSERVATIONS AND DATA REDUCTION

Table 1 provides a summary of the survey fields and the characteristics of the K_s -band observational program. Additional details on the observing strategy and image reduction procedures are provided in the subsections below.

2.1. Observation Log

K_s -band observations of the Abell 2744 and MACS-0416 fields were obtained between 2013 October and 2014 February with the High Acuity Wide-field K -band Imager (HAWK-I; Pirard et al. 2004; Kissler-Patig et al. 2008) on the 8.2 m UT4 telescope at the ESO Very Large Telescope (ESO program 092. A-0472). HAWK-I K_s -band observations of the Abell S1063 and Abell 370 fields were obtained between 2015 July and 2016 January from a subsequent program (095.A-0533). HAWK-I is composed of four chips with 2048×2048 0.106 pixels, and the full 7.5×7.5 HAWK-I field of view is perfectly suited for covering both the primary and parallel *HST* ACS optical and WFC3 IR fields simultaneously in a single pointing (see Figure 1).

The HAWK-I observations were divided into individual service mode Observation Blocks (OBs); typically one or two OBs of a given field were observed per night as conditions allowed, and occasionally multiple fields were observed on the same night. The execution of each OB lasted either 60 or 90 minutes, depending on how many exposures were obtained in the block. The exposures were roughly one minute each, with multiple coadds of shorter reads making up the exposure (NDIT \times DIT = $4 \times 15 \text{ s} = 60 \text{ s}$ for Abell 2744, $7 \times 8 \text{ s} = 56 \text{ s}$ for MACS-0416, $8 \times 12 \text{ s} = 96 \text{ s}$ for Abell S1063 and $8 \times 12 \text{ s} = 96 \text{ s}$ for Abell 370).¹⁸ The telescope was offset with random dithers between each exposure to facilitate sky subtraction; observations taken before 2013 November 4 were dithered within a $20''$ box, which was subsequently increased to $40''$ to improve sky subtraction in

¹⁸ Longer DITs are preferable to reduce instrument overheads; the shorter DITs on the MACS-0416 field were done to accommodate *VLT* service mode restrictions on bright source saturation, which have been eased since ESO Period 93.

Table 1
Field Summary

Field	z^a	R.A.	Decl.	Instrument	Epoch	<i>HST</i> ^b	t , hours	Depth ^c	FWHM
Abell 2744	0.31	00:14:21.2	-30:23:50	<i>VLT</i> / <i>HAWK-I</i>	2013 Oct 24–2013 Dec 24	C+P	29.3	26.0	0".39
MACS-0416	0.40	04:16:08.9	-24:04:28	<i>VLT</i> / <i>HAWK-I</i>	2013 Oct 25–2014 Feb 23	C+P	25.8	26.0	0".36
Abell S1063	0.35	22:49:01.1	-44:32:13	<i>VLT</i> / <i>HAWK-I</i>	2015 Jul 8–Sep 22	C+P	27.9	26.0	0".39
Abell 370	0.38	02:40:03.3	-01:36:23	<i>VLT</i> / <i>HAWK-I</i>	2015 Jul 26–2016 Jan 28	C+P	28.3	26.0	0".35
MACS-0717	0.55	07:17:34.0	+37:44:49	Keck/ <i>MOSFIRE</i>	2015 Jan 26/27, 2016 Jan 21/22	C	4.3	25.3	0".42
						P	3.8	25.5	0".49
MACS-1149	0.54	11:49:36.3	+22:23:58	Keck/ <i>MOSFIRE</i>	2015 Feb 24, 2016 Jan 21/22	C	5.5	25.2	0".53
						P	4.8	25.1	0".54
				<i>VLT</i> / <i>HAWK-I</i> ^d	2013 Mar 21–2014 Jun 9	C	5.3	25.0	0".41

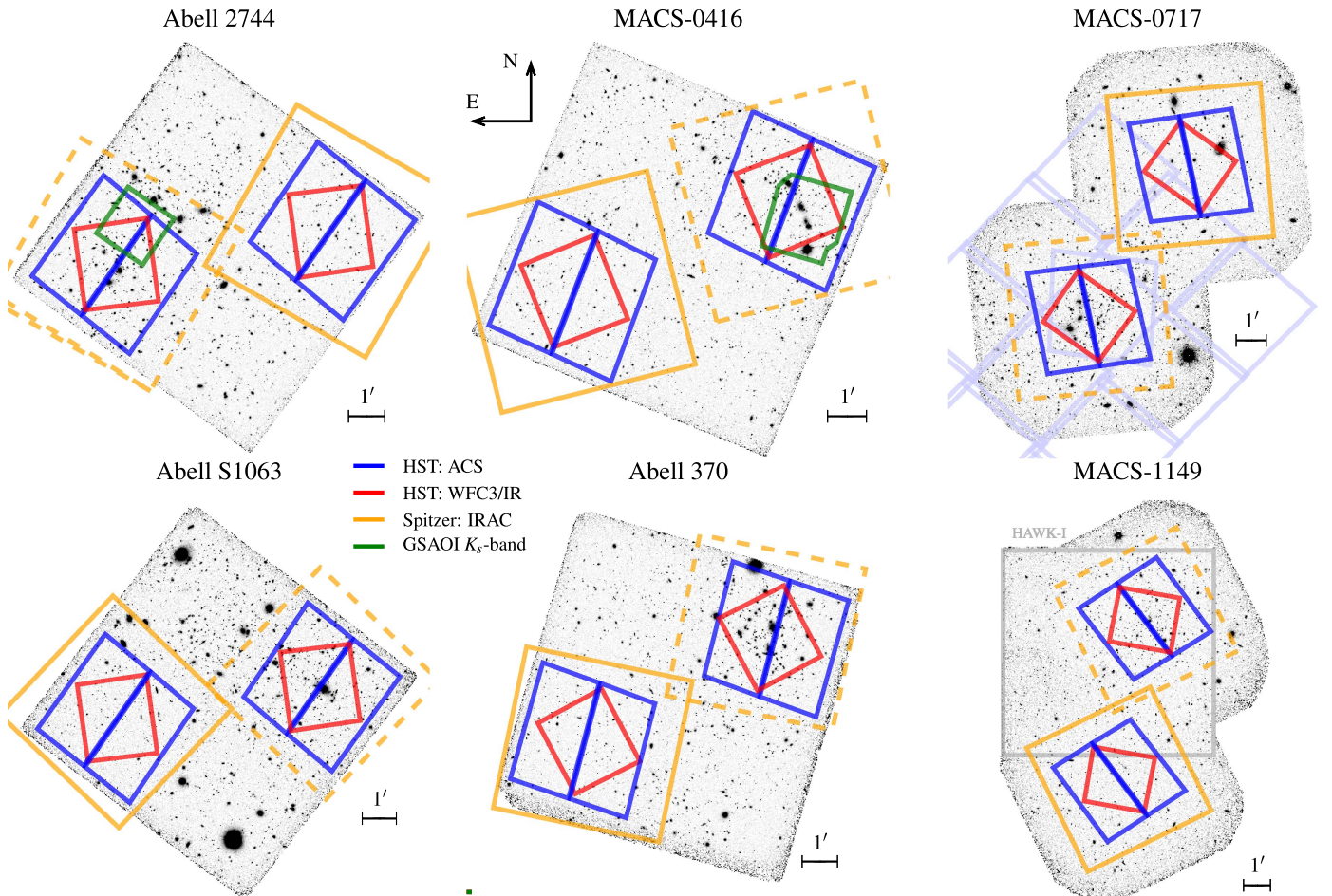
Notes.^a Cluster redshift.^b Coverage of *Hubble* survey fields: *C* = Cluster, *P* = Parallel. Most *HAWK-I* pointings cover the two *HST* fields simultaneously (C+P; Figure 1). The *MOSFIRE* observations of MACS-0717 and MACS-1149 require two separate pointings of the instrument to cover the cluster and parallel *HST* fields, which have different characteristics, as indicated.^c Depth is defined as the 5σ limiting magnitude for point sources, measured in $D = 0".6$ apertures (Section 3.2).^d Archival observations from ESO program 090.A-0458(PI: Infante).

Figure 1. Layout of the Frontier Fields K_s -band mosaics. The positions of the *HST* cluster and parallel fields are shown in the blue (ACS optical) and red (WFC3 IR) polygons. The light blue polygons in the MACS-0717 field show additional wide-field ACS imaging coverage from programs GO-9722 and GO-10420 (PI: Ebeling; Ma & Ebeling 2011). The area covered by deep imaging in the *Spitzer*/*IRAC* 3.6 and 4.5 μm channels is shown in orange, with the cluster fields indicated by the dashed lines. The *HAWK-I* field of view is perfectly suited (Abell 2744, MACS-0416, Abell S1063 and Abell 370) for simultaneous imaging of the cluster+parallel field pairs, which require two separate pointings with *MOSFIRE* (MACS-0717 and MACS-1149). The footprints of the AO-assisted GSAOI K_s -band imaging of the Abell 2744 and MACS-0416 fields (Schirmer et al. 2015) are shown in green and the footprint of additional archival *HAWK-I* coverage of the MACS-1149 field is indicated by the gray square in the lower right panel.

the cluster cores crowded with bright galaxies and intra-cluster light. The total on-sky integration times for the Abell 2744, MACS-0416, Abell S1063, and Abell 370 fields are 29.3, 25.8, 27.9, and 28.3 hr, respectively. This includes some time taken with unfavorable image quality or transparency conditions in service mode; all on-sky exposures are included in the final mosaics, with relative weighting designed to favor the optimal observing conditions (see Section 3 and Equation (1)).

Imaging observations of the MACS-0717 and MACS-1149 fields in the K_s filter were obtained on 2015 January 26/27 and 2015 February 24 (program N097M), respectively, and both fields again on 2016 January 21/22 (program N135M), with the Multi-Object Spectrometer For Infra-Red Exploration (MOSFIRE; McLean et al. 2012) on the 10 m Keck I telescope. The MOSFIRE detector consists of $2048 \times 2048 0''.1798$ pixels; the resulting $6'.1 \times 6'.1$ field of view is unfortunately slightly too small to cover both *HST* fields simultaneously and therefore requires two pointings to cover the entire deep *HST* Frontier Fields imaging area (Figure 1). MOSFIRE exposures were obtained in a 3×3 “Box9” dither pattern spaced roughly $40''$ between offset positions. The total integration times on the MOSFIRE survey fields are summarized in Table 1. The individual detector integration times (DIT) were adjusted on the fly during the observing run to keep the total counts within the linear regime of the detector, while maintaining $\text{NDIT} \times \text{DIT} \sim 40$ s.

Additional archival HAWK-I imaging of the MACS-1149 fields was obtained from the program 090.A-0458. These data were obtained with one HAWK-I chip centered on the $z = 9.7$ candidate from Zheng et al. (2012); they largely cover the HFF cluster field, but the pointing was not optimized to also include the parallel field whose location was defined later (see Figure 1). The MACS-1149 HAWK-I observations were obtained in Service Mode at the ESO/VLT in between 2013 March 21 and 2014 June 9. The 20×15 s = 300 s exposures were taken at nine dithered positions offset within a $30''$ box; the on-source exposure time of the final MACS-1149 HAWK-I mosaic is 5.3 hr.

2.2. Image Processing

The HAWK-I and MOSFIRE observations were reduced with a pipeline that has been developed for previous surveys with the NEWFIRM (NMBS; Whitaker et al. 2011) and FOURSTAR (ZFOURGE; Spitler et al. 2012; Straatman et al, submitted) infrared imaging instruments. Treating each detector individually, the pipeline is easily modified for the different instrument configurations of the four HAWK-I and single MOSFIRE chips. The primary task of the pipeline is removing the bright, time-variable sky background from the individual exposures, which is often some 10^4 times brighter than the distant galaxies of interest in the field. With such a bright background, we first determine an empirical “sky flat” that is a median of all of the *science* exposures in a HAWK-I OB or MOSFIRE group, after rejecting the brightest 12 exposures at each pixel position to remove the contribution of bright objects. We find these empirical flats to be preferable to external twilight or dome flats, given the difficulty of obtaining a truly flat illumination pattern over such large detector fields of view.

After dividing by the flat, the background of each exposure is determined in a first pass from the simple median of the four exposures that came both immediately before and after it. The first-pass background-subtracted exposures are combined into a mosaic, and objects are identified as pixels with values greater

than five times the robust standard deviation (Beers et al. 1990) of the combined image. A buffer with a radius of 3 pixels is grown around each “object” pixel that satisfies this 5σ criterion. The final refined background of each exposure is determined in a second “mask pass” from a median again from the four exposures before and after it but now masking all pixels that contain flux from the detected objects.

As the archival HAWK-I images of the MACS-1149 field were obtained with longer individual exposures and with fewer exposures per sequence, the mask pass technique described above did not produce satisfactory results. In this case, for each raw exposure we divide by the empirical sky flat and then subtract a third-order polynomial fit to the background.

2.3. Photometric Calibration

For the HAWK-I observations, a single 90 minute Service Mode OB was obtained in each of the fields requiring photometric transparency conditions, and these OBs were followed immediately by an observation of a photometric standard star at a similar airmass, with single exposures on each of the four chips. The standard star exposures were processed with empirical sky flats derived from the science exposures as described above, and the observed fluxes of the standard stars yield absolute photometric zeropoints for each chip. Correction factors were then computed to scale the OBs obtained at varying transparency levels to the calibrated photometric OB; the additional service mode OBs were obtained under generally satisfactory (i.e., “clear”) weather conditions and the scale factors typically differ from unity by only a few percent. The photometric calibration of the MOSFIRE observations was determined from standard star observations taken the same night as the science exposures, again with the standard exposures reduced in the same way as the science exposures.

The 2-Micron All Sky Survey (2MASS; Skrutskie et al. 2006) provides an additional check on the photometric calibration, though the comparison is limited due to relatively little brightness overlap between the faint end of reliable 2MASS photometry and the bright end where stars are in the linear regime of the detectors on the 8–10 m telescopes. A comparison of the observed photometry in the four survey fields to the 2MASS catalog magnitudes is shown in Figure 2. The stellar photometry on the deep K_s -band mosaics is measured within $1''$ apertures corrected to infinity with the curves of growth described below. The error bars on the points in Figure 2 come from the 2MASS catalog; the photometric uncertainties are negligible for such bright stars in the deep images ($S/N > 100$). The 2MASS comparison suggests a systematic zeropoint offset of -0.09 mag for the Abell S1063 field. However, the exposure time for that field was similar to those of the additional deep HAWK-I fields and the derived depths of *all* deep HAWK-I fields are nearly identical (Table 1). Therefore, we do not apply this offset to the S1063 zeropoint, since if it is real it should be reflected in the derived depth of that field, as compared to the others. Given the overall good agreement with the 2MASS photometry, we estimate that the systematic uncertainty of the absolute photometric calibration is $\sigma_{\text{sys}} \leq 0.05$ mag.

Similar to Fontana et al. (2014), we do not apply any correction for nonlinearity effects of the HAWK-I or MOSFIRE detectors. For the case of HAWK-I the user manual suggests that the detector is linear at the 1% level up to 30 000 detector counts (ADUs). For a 2MASS star in the Abell 2744 field with $K = 17.3$, the brightest pixel reaches ~ 31 000 ADUs, including

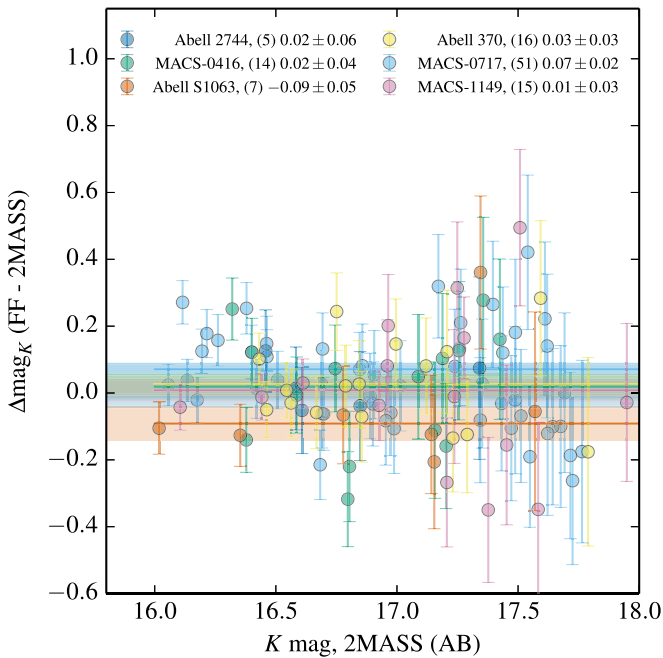


Figure 2. Comparison of bright-star photometry to the 2MASS public catalog. The photometric calibrations of the K_s -band images were determined from standard star observations taken concurrently with the science exposures. The uncertainties shown are taken from the 2MASS catalog; these stars are measured at very high S/N in the deep K_s -band mosaics. The solid lines and shaded regions show the weighted average and standard deviation of the photometric offsets for each field, with the quantitative values indicated in the labels at the top of the figure.

the bright sky background. Therefore, there could be a linearity correction of up to a few percent between the bright 2MASS stars used for the photometric comparison and galaxies in the field some 8–9 magnitudes fainter, though the stars in Figure 2 do not show any significant slope in the 2MASS magnitude residuals across ~ 1.5 mag of dynamic range. For the fainter galaxies, empirical “zeropoint corrections” are often computed as part of the photometric redshift analysis (e.g., Skelton et al. 2014), and these would compensate for relatively small linearity effects.

2.4. Astrometric Alignment

In order to simplify measurements from the K_s -band images in concert with space-based *HST* and *Spitzer* mosaics, the astrometry of the ground-based mosaics must be refined. Absolute astrometric reference catalogs were generated from *HST* images when available (i.e., the chips overlapping the cluster and parallel *HST* fields) and public *Subaru* Suprime-Cam r_c -band images otherwise.¹⁹ Next, object catalogs were generated with the SExtractor software (Bertin & Arnouts 1996) for each individual background-subtracted exposure and transformations to the reference frame (shift, rotation, and scale) were computed with the `stsci.stimage.xyxy-match` and `scikit-image.transform`²⁰ Python software tools. For the HAWK-I exposures, we fit a third-order polynomial to the geometric distortion model determined by Libralato et al. (2014) and specified the polynomial terms as “Simple Imaging Polynomial” (SIP) coefficients (Shupe

et al. 2005) in the individual exposure FITS files. The SIP FITS header that is generally applicable for HAWK-I is provided in the Appendix. We note that the HAWK-I distortion is generally small, reaching ~ 2 pixels ($0''.2$) at the image corners, but that the distortion corrections are necessary, in particular, given the excellent overall image quality of the observations.

3. DRIZZLED K_s -BAND MOSAICS

A crucial innovation of the image processing of the present analysis compared to previous works is that we combine all of the individual background-subtracted raw images (e.g., 7040 files for 1760 exposures \times 4 detectors for the Abell 2744 field) into the final output mosaic with the “drizzle” algorithm (Fruchter & Hook 2002, as implemented in the DrizzlePac/AstroDrizzle package; Gonzaga et al. 2012). The benefits of the drizzle algorithm preserving robust noise properties of the output mosaics will be discussed in detail below in Section 3.2. Here we simply indicate that the drizzle implementation provides additional benefits in (1) trivial application of relative weights of the input images in creating the final mosaics, (2) providing infrastructure to apply the astrometric alignment and geometric distortion stored in the FITS headers, and (3) allowing the definition of an arbitrary output pixel grid without any additional image resampling.

Final mosaics of each field with $0''.1$ pixels are drizzled from the input exposures with weights (following Whitaker et al. 2011)

$$w^{-1} = F^2 \cdot B \cdot \text{FWHM}^\alpha / \sqrt{1 - e^2}, \quad (1)$$

where F is the factor to scale the exposure to the photometric system ($F \equiv 1$ for the average of exposures in the OB taken under photometric conditions, $F \gtrsim 1$ otherwise), B is the measured background, FWHM is the full width at half maximum of stars identified in the field, and e is the ellipticity of the stellar point-spread function (PSF). The parameter α allows for optimizing of the image quality of the final mosaic. Increasing α puts larger weight on the exposures with the best image quality while effectively ignoring data with poorer seeing; we adopt $\alpha = 2$ for a compromise between the image quality and effective exposure time of the final mosaic.

Finally, we subtract a cell-based background from the final mosaics using an algorithm based on that used by SExtractor and SWarp, but that provides more aggressive masking of flux in the outer isophotes of bright galaxies. The mosaics are shown in Figure 1, along with the position of the deep Frontier Fields *HST* imaging fields. We also compute the robust NMAD scatter (Brammer et al. 2008) of empty sky pixels within the same cells to empirically calibrate the inverse variance maps that are shown in Figure 3 (see also Section 3.2). The final science and inverse variance mosaics of all six fields are provided as ESO Phase 3 data products.²¹ The released images are all scaled to a common zeropoint of 26.0 (AB mag), which gives pixel values of order unity faint galaxies near the detection threshold. In the sections below we describe the characteristics of the mosaics in more detail.

¹⁹ <http://archive.stsci.edu/pub/hlsp/clash/>

²⁰ <http://scikit-image.org>

²¹ <http://www.eso.org/sci/observing/phase3/news.html#kiff>

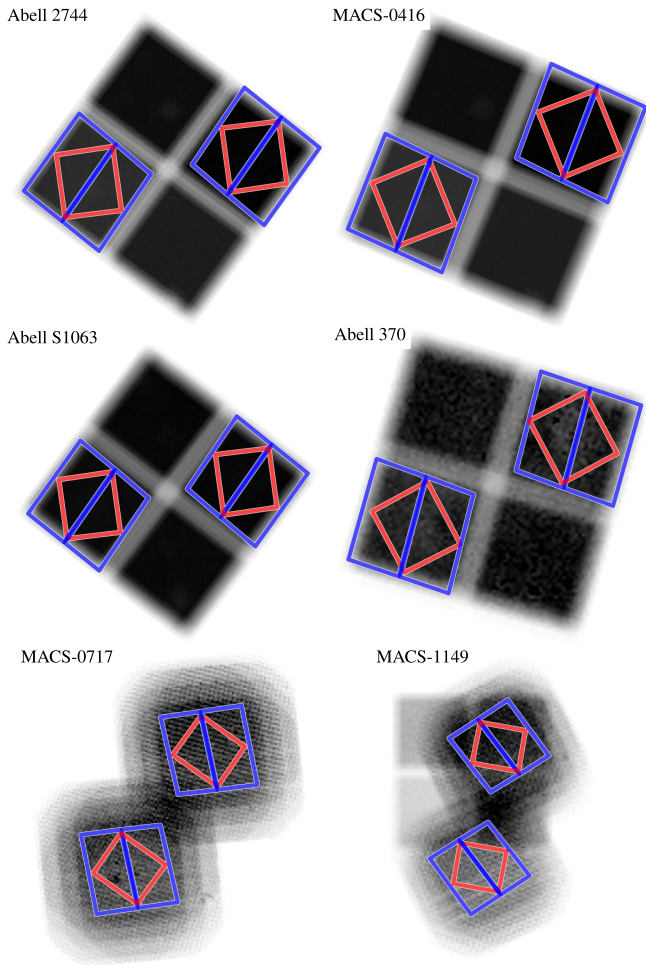


Figure 3. Inverse variance maps of the K_s -band mosaics. The orientation of the fields is the same as that shown in Figure 1. The four HAWK-I chips and two MOSFIRE pointings are clearly visible for the first four and last two fields, respectively.

3.1. Image Quality

Figure 4 shows the curves of growth for stars identified by the tight relationship between their brightness and half-light radii (see, e.g., Figure 13 of Skelton et al. 2014). The image quality of the K_s -band mosaics is excellent with stellar FWHM $\lesssim 0''.4$ for the deep HAWK-I fields, thanks in large part to the execution of the HAWK-I observations in service mode, ensuring optimal and uniform image quality across the many hours of integration on the survey fields. The classical scheduling of the MOSFIRE observations does not allow such control over the seeing conditions. The result is that the image quality of the MACS-0717 and MACS-1149 fields is somewhat degraded in comparison, at $0''.42$ – $0''.54$, and the image quality differs measurably between the two MOSFIRE pointings in the MACS-0717 field. Despite the compact cores of the stellar PSFs, the curves of growth shown in Figure 4 deviate from Gaussian profiles with significantly higher flux in the outer wings, with a shape more consistent with a Moffat profile (Trujillo et al. 2001) with $\beta \sim 2$. We caution that these extended profiles will yield significantly shallower final image depths than would be predicted with Exposure Time Calculators that may assume Gaussian profiles. Nevertheless, the deep K_s mosaics have excellent image quality that is much closer to the resolution of the *HST* IR imaging and the typical apparent

size of distant galaxies (median $r_c \sim 0''.1$ – $0''.2$ at $z > 4$; Shibuya et al. 2015) than the redder *Spitzer* IRAC bands (PSF FWHM $\sim 1''.7$ – $2''$).

The image quality obtained here with HAWK-I demonstrates the excellent natural seeing conditions of the *VLT* site at Cerro Paranal. We note here that HAWK-I will soon be upgraded with a ground layer adaptive optics module (GRAAL; Pauflique et al. 2010) that will improve the image quality by factors of 1.5–2 over the natural seeing over the wide HAWK-I field of view. Schirmer et al. (2015) recently presented deep AO-corrected K_s -band imaging of the MACS-0416 cluster field obtained with the Gemini South Adaptive Optics Imager (GSAOI; Carrasco et al. 2012). Thanks to the availability of a bright guide star near the center of the cluster field, GSAOI provided exquisite image quality (FWHM $\sim 0''.09$) better than even that of *HST* WFC3/IR. Though somewhat shallower ($K_s \sim 25.6$, 5σ) and covering a smaller field of view ($1'.7 \times 1'.8$, Figure 1) than the HAWK-I mosaics, the GSAOI images provide an auspicious demonstration of the power of wide-field AO-corrected imaging for deep extragalactic science.

3.2. Noise Properties and Depth

Along with practical benefits mentioned above, the most dramatic benefit of using the drizzle algorithm comes from the fact that the raw detector pixels are only resampled once in the process of generating the output mosaic. Furthermore, with a large number of dithered raw images we can use drizzle to shrink the raw input pixels by a factor of 10 before dropping them into the output grid,²² and the result is dramatically reduced correlations between neighboring pixels, particularly for output pixel sizes that are somewhat smaller than the native HAWK-I or MOSFIRE detector pixels.

A comparison of the final combined images created with output $0''.1$ and $0''.06$ pixel grids using the drizzle implementation, to versions created with the SWarp software (Bertin et al. 2002), is shown in Figure 5. In the later case, the raw pixels are resampled twice before making the final mosaic, once combining the raw exposures in each OB and a second time combining the separate OBs into the final stack with an arbitrary pixel grid. One could avoid the second resampling and combine all of the raw exposures at once, though SWarp is still limited to dropping the original pixels into the output mosaic preserving the input native pixel grid and therefore a single input pixel maps onto multiple (perhaps many) output pixels.

The fact that the drizzle-combined images in Figure 5 (panels (a) and (b)) appear to the eye to be noisier than their SWarped counterparts (panels (c) and (d)) is simply the result of a smoothing of the pixel noise in the latter case rather than reflecting true underlying differences in their pixel-to-pixel variance. Casertano et al. (2000) discuss how the noise properties of correlated output pixels are affected by the relative sizes of the input and output pixel grids and the adopted drizzle parameters. With the drizzle algorithm and a small pixfrac, a given input pixel will map to only a single output pixel and therefore correlations between the output pixels should be minimal.²³

²² The pixels are shrunk by adopting $\text{pixfrac} = 0.1$, as defined by Fruchter & Hook (2002).

²³ Inter-pixel capacitance and other forms of crosstalk intrinsic to the IR detectors place a lower limit on the correlations between adjacent pixels (Finger et al. 2005; Hilbert & McCullough 2011).

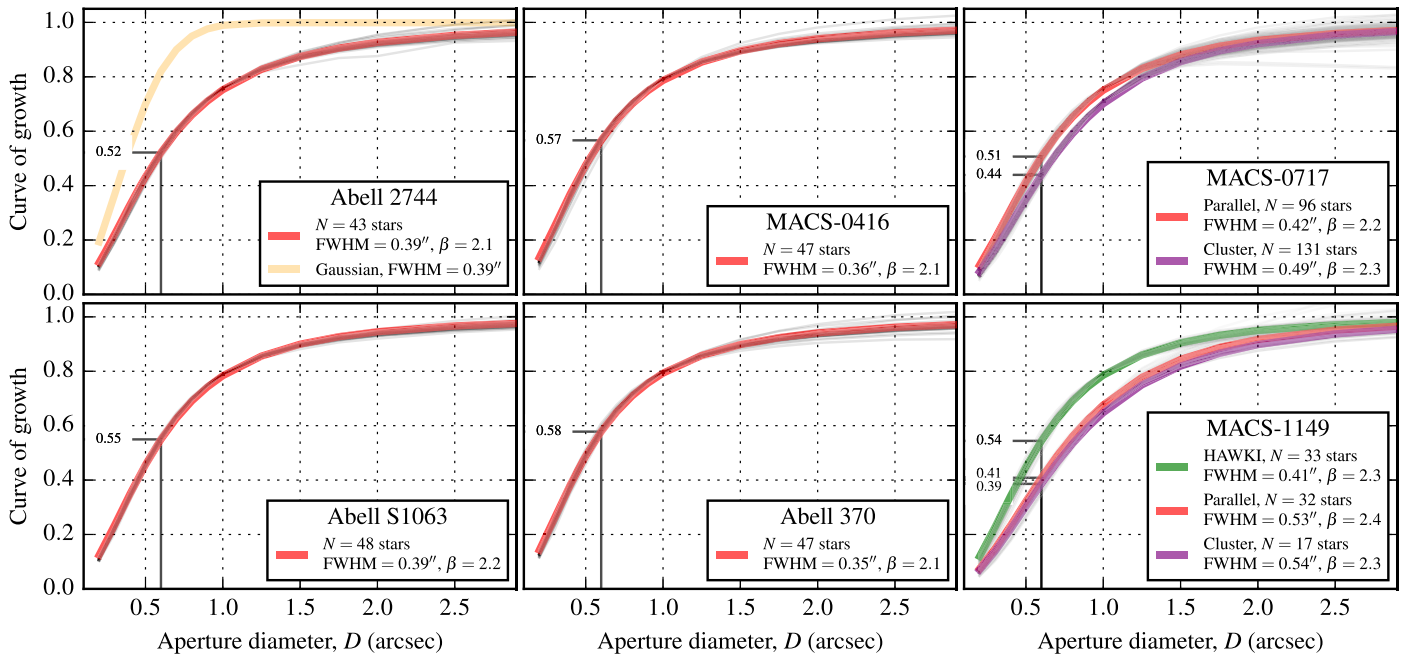


Figure 4. Curves of growth of stellar profiles in the Frontier Fields K_s -band mosaics. The HAWKI fields include point sources across the full mosaics that cover both *HST* cluster and parallel fields, while separate curves are given for the cluster and parallel areas of the northern MOSFIRE fields, which required two independent pointings of that instrument (Figure 1). The inverse aperture corrections for point sources in $D = 0''.4$ apertures are indicated in each panel with the small labels. The profiles of stars are well-fit by Moffat profiles with $\text{FWHM} \sim 0''.4$ in most cases and $\beta \sim 2.1$. These extended Moffat profiles appear to be characteristic of deep K_s -band images and they have substantially more flux at large radii ($r > \text{FWHM}/2$) than Gaussian profiles with the same FWHM, as shown by the orange curve in the upper left panel).

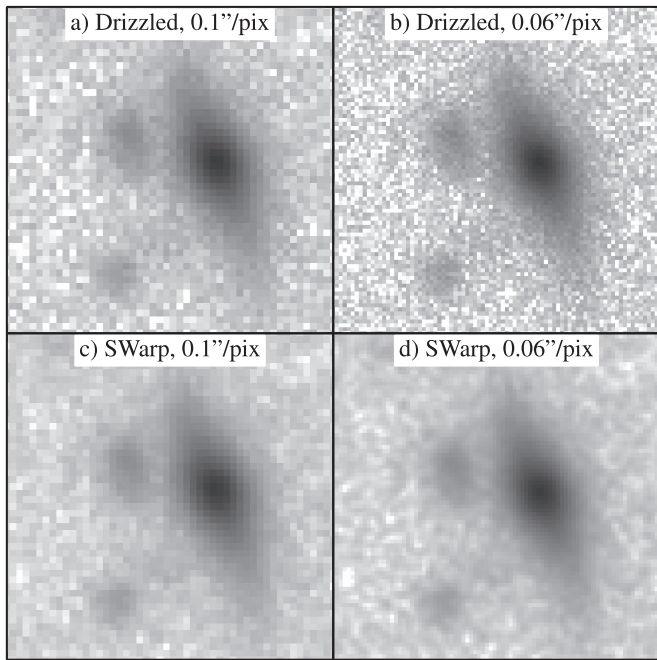


Figure 5. Comparison of small regions of the final MACS-0416 mosaics with two output pixel sizes for images combined with the drizzle algorithm (top panels) and with the SWarp software (bottom panels). With drizzle we can decrease the size of the input pixels before dropping them into the output grid, which significantly reduces the correlations between neighboring pixels. Combining images with simple shift-and-add resampling such as with SWarp results in an effective smoothing of the pixel-to-pixel noise in the final combined image.

We explore these correlations between the output pixels in Figure 6. For the black and red curves in each panel, we measure value differences between random pairs of pixels sorted by the separation between the pixels for the drizzled and SWarped images, respectively. For perfectly uncorrelated

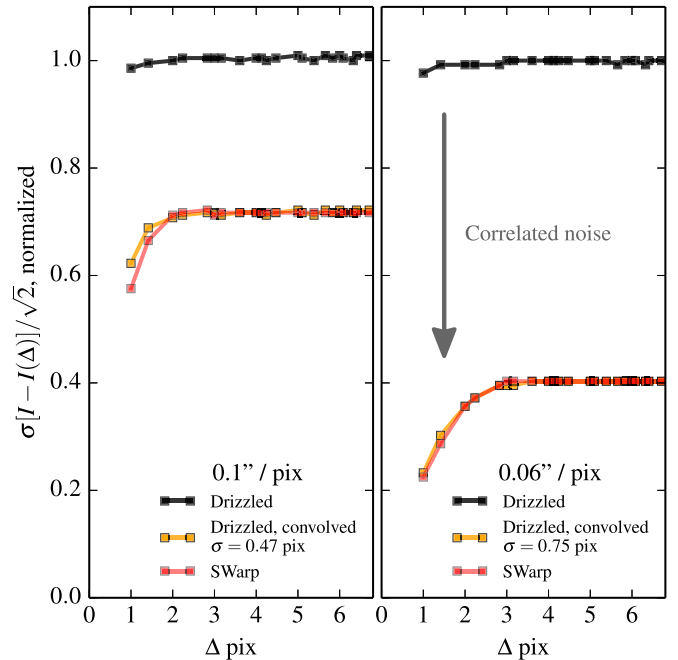


Figure 6. The standard deviation of the pairwise pixel differences, sorted by pixel separation, provides a quantitative measure of the correlations between pixels. The black curves determined from the drizzled images show very little variation with pixel separation, suggesting minimal correlations between adjacent pixels, as expected. In contrast, the statistics of the SWarped images show a depression at small separations, indicative of correlated pixels. The magnitude and shape of the depression are reproduced exactly by the orange curves, which show the pairwise differences for the drizzled images convolved with small Gaussian kernels. The effect is larger in the right panel, where the ratio of the input and output pixel sizes is larger by almost a factor of two.

pixels, these curves will be flat and will reflect the intrinsic noise of the image pixels. In the presence of correlations between adjacent pixels, however, the curves will show a

depression at small separations. As expected, the SWarp-combined images show exactly such a depression for pairs of pixels 1–2 pixels apart. The yellow curves in Figure 6 show the same pairwise differences for the drizzled images now convolved by small Gaussian kernels as indicated, which agree very well with the curves for the images with correlated pixels.

In terms of understanding the noise properties of the images, a key point here is not only that depression at small separations indicates the presence of correlations between adjacent pixels but also the fact that correlations cause the apparent overall rms to be decreased at all separations. That the pixel variances cannot be used directly in the presence of such correlations (Casertano et al. 2000) is the primary reason why significant effort has been devoted to placing random “empty apertures” across images in order to characterize their noise properties (e.g., Labbé et al. 2003; Förster Schreiber et al. 2006; Quadri et al. 2007a; Whitaker et al. 2011; Skelton et al. 2014). Now by eliminating the pixel correlations with the drizzle image combination technique (with a small pixfrac) we have shown that the pixel statistics are robust and it is now trivial to compute the expected variance within an arbitrary photometric aperture, for example:

$$\sigma_{\text{aper},D}^2 = \sigma_{\text{pix}}^2 \cdot \pi/4 \cdot D^2, \quad (2)$$

for circular apertures with diameter, D , in pixels, and where σ_{pix}^2 is the per-pixel variance determined from an analysis such as that in Figure 6.

The product of Equation (2) and the inverse of the curves of growth shown in Figure 4 (i.e., aperture corrections) defines an optimal photometric aperture size where this product is minimized (Whitaker et al. 2011). For our K_s -band mosaics, this optimal aperture has $D \sim 0''.6$, just larger than the FWHM of point-source profiles. The 5σ limiting magnitudes (AB) within $0''.6$ diameter apertures are indicated in Figure 7 and listed in Table 1. Reaching 26th magnitude (AB), the HAWK-I images presented here are among the deepest K_s -band images ever obtained and will provide an important complement to the deep *HST* and *Spitzer* imaging of the Frontier Fields.

We conclude here with a brief comment on the “HUGS” ultra-deep HAWK-I images of the CANDELS GOODS-S and UDS survey fields. Fontana et al. (2014) report a final depth of 26.5 AB for point sources within $D = 0''.4$ apertures for their deepest field, “GOODS-D1.” This field has an exposure time of 31.5 hr, similar to the deep HAWK-I fields summarized in Table 1. Fontana et al. (2014) assume ideal noise properties that likely suffer some residual correlation between adjacent pixels, such as that indicated by the red curves in Figure 6, where we found that the drizzled rms was some 40% higher than that measured in the presence of the pixel correlations for $0''.1$ pixel mosaics. This effect (~ 0.4 mag) along with the relative exposure time difference (~ 0.1 mag) can account for much of the difference between the reported depths of the deepest HUGS pointings and the *Hubble* Frontier Fields HAWK-I images described here. The comparison must be made because any additional half magnitude increase depth is exponentially more expensive to obtain!

3.3. Source Detection and Completeness

We compute source detection completeness curves as a function of source brightness following the techniques described by Whitaker et al. (2011) and Muzzin et al. (2013). Briefly, we insert artificial sources in blank regions of the

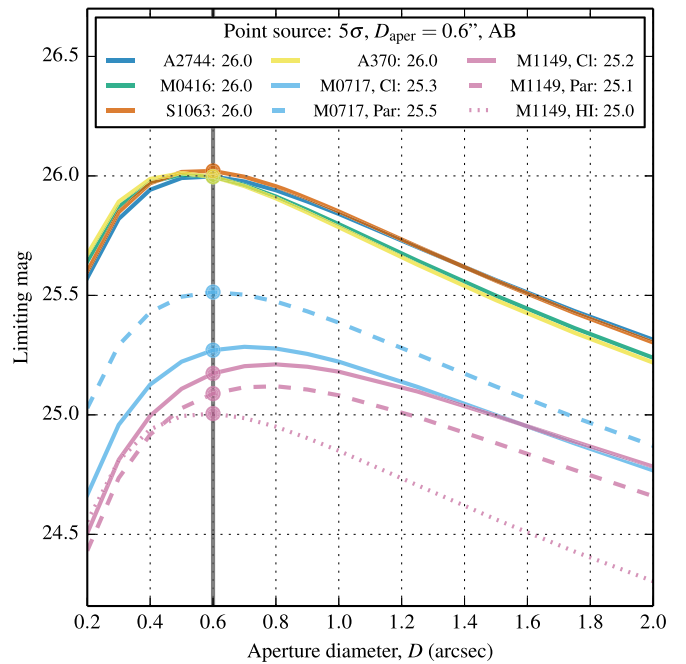


Figure 7. The product of the inverse curves-of-growth (Figure 4) and the predicted variance within a photometric aperture (Equation (2)) gives the point-source sensitivity as a function of aperture size. The S/N is maximized with an aperture somewhat larger than the FWHM; depths evaluated at $D = 0''.6$ near the maxima are indicated.

portions of the images covering the *HST* “parallel” fields and compute the fraction of sources recovered with SExtractor as a function of the source magnitude. The resulting completeness curves are shown in Figure 8. As in the sensitivity analysis above, we find that the detection completeness curves are nearly identical for the deep HAWK-I fields, with 50% (90%) source completeness at $K_s \sim 25.9$ (25.7) AB. The completeness thresholds for the shallower northern MACS-1149 and MACS-0717 fields are ~ 0.75 mag brighter.

We perform this completeness analysis to provide a general characterization of the K_s -band image mosaics and to provide a point of comparison for earlier surveys, such as UltraVISTA (Muzzin et al. 2013). However, in the case of the Frontier Fields cluster and parallel fields with much deeper photometry available from *HST* (c.f. 28.7 AB in H_{160}), the K_s -band images can be more effectively exploited for most applications by detecting objects in the deeper *HST* images and performing forced K_s -band photometry at the positions of the *HST* sources. Merlin et al. (2016) present multiwavelength catalogs of the Abell 2744 and MACS-0416 fields constructed in this way, including incorporating an early version of the HAWK-I K_s -band mosaics. The generation of these catalogs is beyond the scope of the present work and will be presented in further detail by H. Shipley et al. (2016, in preparation).

4. DISCUSSION AND CONCLUSIONS

We have presented the observations and reduction for a collection of extremely deep K_s -band images covering the lensing clusters observed as part of the *Hubble* and *Spitzer* Frontier Fields program (Lotz et al. 2016; P. Capak et al. 2016, in preparation). Service mode scheduling of >25 hr HAWK-I integrations on the southern hemisphere clusters visible from the ESO/*VLT* results in remarkably uniform, high-quality

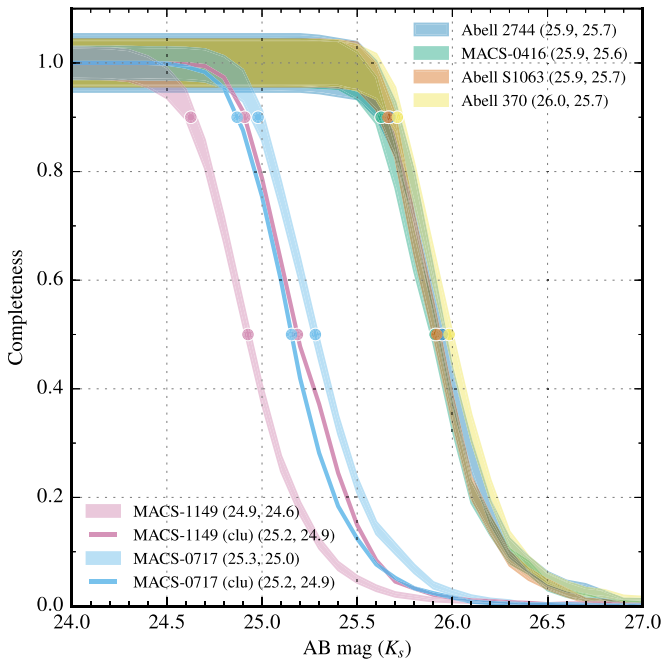


Figure 8. K_s -band detection completeness in the six Frontier Fields survey fields. The four deep HAWK-I fields are remarkably uniform, with 50% detection completeness at $K_s = 25.9$ – 26.0 AB. The shallower northern MACS-1149 and MACS-0717 fields are 50% complete at $K_s = 24.9$ and 25.3 , respectively. Separate curves are shown for the cluster and parallel areas in the MACS-0717 and MACS-1149 fields, which required two separate pointings with the MOSFIRE instrument; the completeness curves in the cluster areas of the four HAWK-I fields differ from the curves shown by $\lesssim 0.1$ mag and are omitted for clarity.

mosaics across the separate survey fields, with superb image quality ($0''.4$ FWHM) and photometric depths reaching $AB = 26.0$ mag (5σ). The K_s band mosaics fill the gap in the infrared wavelength coverage between the WFC3/IR and IRAC instruments at depths commensurate with the deep space-based imaging and with image quality that suffers significantly less from source crowding and blending than the redder IRAC bands.

A comparison of the K_s -band and space-based Frontier Fields imaging is shown in Figure 9, showing just a small cutout of the MACS-0416 “parallel” field. The deep optical and NIR *Hubble* imaging provides spectacular multiwavelength spatially resolved information on physical scales of just ~ 1 kpc (Figure 9(a)). However, there are many red galaxies in the indicated areas, predominantly at redshifts $z \gtrsim 2$. At $z > 3$ even the reddest WFC3/IR filter, H_{160} (Figure 9(b)), only probes rest-frame ultraviolet wavelengths < 4000 Å and is therefore most sensitive to young, UV-bright star-forming galaxies. Sampling of more evolved stellar populations at $z > 3$ with redder colors requires deep imaging at longer wavelengths. This can be obtained with imaging in the *Spitzer* IRAC bands (e.g., Marchesini et al. 2010; Stefanon et al. 2013, 2015), though at the cost of low spatial resolution ($\sim 1''.6$, Figure 9(d)). This resolution is insufficient for spatially resolving the distant galaxies and is prone to blending of faint sources, particularly in the crowded Frontier Fields clusters where the surface density of both foreground cluster galaxies and faint background galaxies is high at the depths of interest. The deep HAWK-I imaging described here (Figure 9(c)) is able

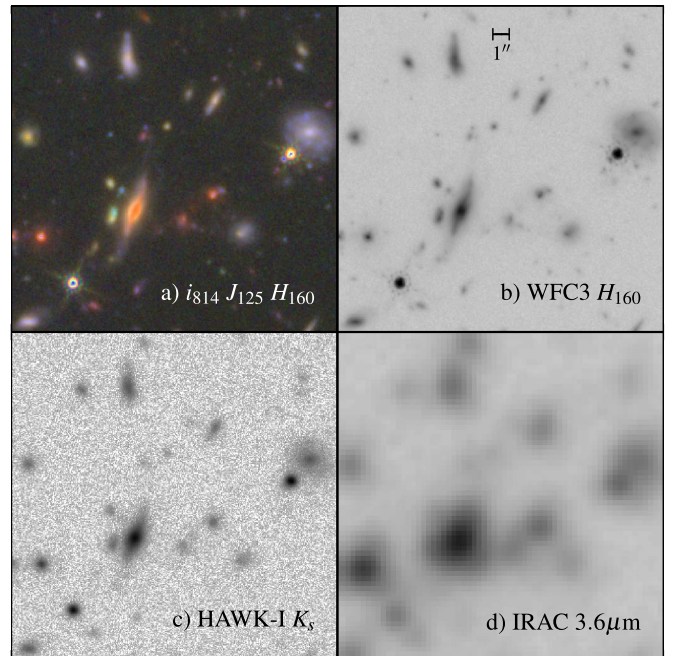


Figure 9. Image cutouts of the MACS-0416 parallel field. The *RGB* and monochrome panels come from the sources as indicated; the cutouts are all $20''$ on a side.

to bridge this gap, clearly detecting and resolving all but the faintest blue galaxies seen in the deep *Hubble* images.

Here we explore the quantitative constraints provided by the deep K_s band imaging in terms of the photometric redshifts and derived intrinsic properties of galaxies in the survey field. We construct preliminary PSF-matched photometric catalogs of the *HST* imaging and deblended photometry from the IRAC bands following the methodology described by Skelton et al. (2014). We then combine the space-based catalogs with aperture photometry matched directly from K_s -detected catalogs derived from the completeness simulations described above.²⁴ We then compute photometric redshifts with EAZY (Brammer et al. 2008) for the catalogs with and without the K_s -band photometry included. The left panel of Figure 10 shows the difference in the rest-frame $U - V$ color derived from the photometric redshift fit, which probes the strength of the Balmer/4000 Å break and is a proxy for the age and mass-to-light ratio of the underlying stellar population.

The scatter in the $U - V$ colors with and without including the K_s -band information is low at $z < 2$, where fit is constrained predominantly by the deep *HST* photometry. At $z > 2$, however, as the rest-frame V band is redshifted beyond the red H_{160} filter, the scatter increases dramatically, reaching $\sigma > 0.1$ mag at $z \sim 3$. This is much larger than the photometric uncertainties in the adjacent space-based photometric bands would suggest, as all of these galaxies at $H \lesssim 26$ are detected in the deep WFC3 and IRAC images at $\gg 10\sigma$. Therefore, the large scatter is likely dominated by systematic differences in the photometric redshifts and therefore also in the derived intrinsic properties of galaxies in the survey.

The right two panels of Figure 10 show a single galaxy that illustrates how these systematic effects are not trivial and will

²⁴ Full robust *HST*+ K +IRAC catalogs will be presented by H. Shipley et al. (2016, in preparation).

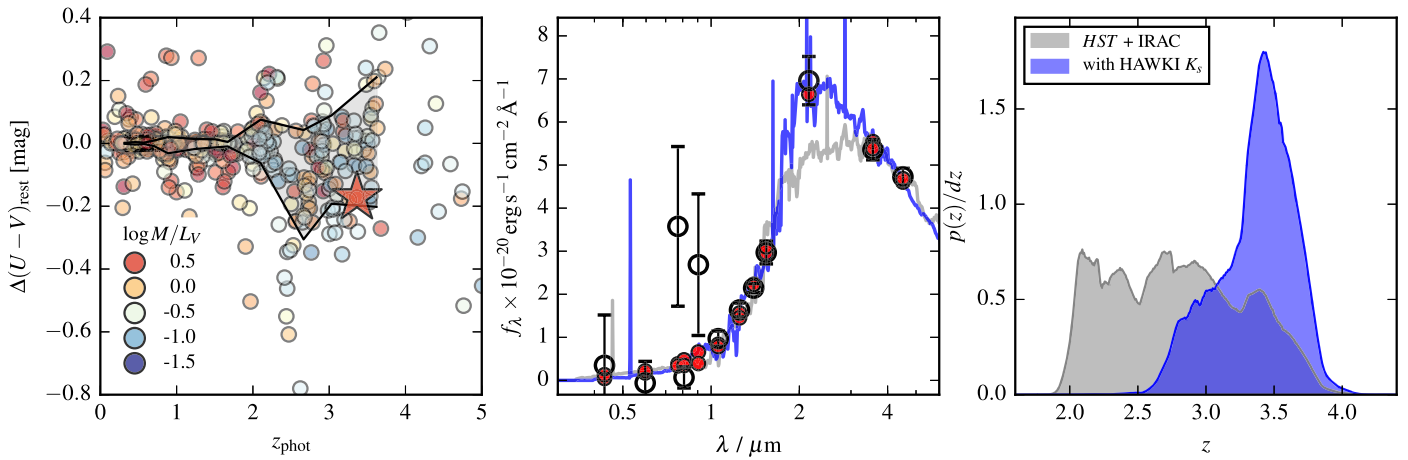


Figure 10. Left: difference in the derived rest-frame $U - V$ colors as a function of photometric redshift for galaxies in the MACS-0416 parallel field, before and after including K_s photometry along with the *HST* and *Spitzer* measurements. The scatter in the derived $U - V$ colors (solid black lines) is large at $z > 2.5$ (~ 0.2 mag), where the Balmer/4000 Å break is in the gap between *HST* H_{160} and the *Spitzer* IRAC 3.6 μm bands, which is then well constrained by including K_s . This large scatter translates directly into large scatter on other quantities of interest, such as the stellar mass-to-light ratio and the age of the stellar populations. The center and right panels show a dramatic example of a galaxy with a strong break between the *HST* and IRAC bands. Its photometric redshift and $\Delta(U - V)$ color are indicated with the large red star in the left panel. The SED fits (center panel) and derived photometric redshift probability densities (right panel) before and after including the K_s -band photometry are shown with gray and blue curves, respectively. The addition of the K_s band pinpoints the location of the break and shrinks the photometric redshift uncertainties by a factor of two and suggesting $z_{\text{phot}} > 3$ (right panel).

likely result in biases in the interpretation of the galaxy population properties derived from the *HST* and IRAC observations alone. The spectral energy distribution (SED) shown is steadily rising through the reddest WFC3/IR bands, and then shows a sharp break with bright detections in the IRAC bands. The K_s -band measurement at 2.1 μm reduces the range of allowed photometric redshifts by a factor of two by pinpointing a strong Balmer break at $z \sim 3.4$. Even though the measured $H_{160} - K_s$ color is redder than that inferred from the *HST* + IRAC photometry alone, the final rest-frame $U - V$ color is actually *bluer* as a result of the higher preferred redshift. Evolved galaxies at $z > 3$, such as the one shown in Figure 10, indicate an intriguing population that deserves detailed study in its own right, and the combined Frontier Fields *Hubble*+ K_s +IRAC data set is ideally suited for this purpose.

Our ultra-deep K_s -band mosaics will complement the *HST* and *Spitzer* data of the HFF, ensuring estimation of the most accurate photometric redshifts, rest-frame colors, and luminosities, and stellar population properties (e.g., stellar mass and dust extinction) for galaxies at $z > 2$, enormously enhancing the scientific impact of the *Hubble* Frontier Fields program. For example, they will allow for the investigation of the SED of $z \approx 4$ galaxies or the evolution of the stellar mass function of galaxies at high redshift. Finally, we stress that our mosaics more than double the total area of the sky imaged in the K_s band down to these extreme depths.

We gratefully acknowledge funding support from the STScI Director’s Discretionary Research Fund. D.M. acknowledges the support of the Research Corporation for Science Advancement’s Cottrell Scholarship, and of the National Science Foundation under grant No. 1513473. D.M. and D.L.-V. acknowledge support from program *HST*-AR-14302, and K.E.W. gratefully acknowledges support by NASA through Hubble Fellowship grant #HF2-51368, both of which are provided by NASA through a grant from the Space Telescope Science Institute, which is operated by the Association of Universities for Research in

Astronomy, Incorporated, under NASA contract NAS5-26555. B.V. acknowledges support from an Australian Research Council Discovery Early Career Researcher Award (PD0028506). M.T. acknowledges support by JSPS KAKENHI grant Number JP15K17617. This work was supported by NASA Keck PI Data Awards, administered by the NASA Exoplanet Science Institute. Some of the data presented in this study were obtained at the W. M. Keck Observatory from telescope time allocated to NASA through the agency’s scientific partnership with the California Institute of Technology and the University of California. The Observatory was made possible by the generous financial support of the W. M. Keck Foundation. The authors wish to recognize and acknowledge the very significant cultural role and reverence that the summit of Mauna Kea has always had within the indigenous Hawaiian community. We are most fortunate to have the opportunity to conduct observations from this mountain. This research made use of Astropy, a community-developed core Python package for Astronomy (Astropy Collaboration et al. 2013), open-source Python modules Numpy, Scipy, Matplotlib, and scikit-image, and NASA’s Astrophysics Data System (ADS).

This work is based on observations collected at the European Organisation for Astronomical Research in the Southern Hemisphere under ESO programmes 090.A-0458, 092.A-0472, and 095.A-0533.

Facilities: VLT:Yepun (HAWK-I), Keck:I (MOSFIRE).

APPENDIX SIP KEYWORDS FOR HAWK-I GEOMETRIC DISTORTION

The HAWK-I instrument has small but non-negligible geometric distortion, resulting in astrometric shifts of the order of 2 pixels at the corners of the detector relative to the center. Libralato et al. (2014) provide a precise determination of this distortion based on observations of star clusters. They present a full pixel map for the distortions in x and y across each of the detectors. To use this distortion model with the DRIZZLE

Table 2
HAWK-I SIP Header Keywords

Keyword	Chip #1 ^a	Chip #2	Chip #3	Chip #4
A_ORDER		3		
B_ORDER		3		
CTYPE1		RA—TAN-SIP		
CTYPE2		DEC—TAN-SIP		
CRPIX1		1024 ^b		
CRPIX2		1024 ^b		
A_0_0	1.751e-02	8.098e-03	9.104e-04	9.096e-03
B_0_0	-2.649e-02	-9.338e-03	4.709e-03	1.043e-02
A_1_0	-3.924e-04	-4.964e-05	-1.035e-04	-6.559e-05
B_1_0	-9.546e-04	9.804e-04	1.228e-03	-7.145e-04
A_2_0	8.676e-07	-7.943e-07	8.461e-07	-8.579e-07
B_2_0	2.026e-07	2.347e-07	-1.896e-07	-2.628e-07
A_3_0	-2.059e-10	-3.724e-10	-2.350e-10	-3.941e-10
B_3_0	-6.040e-11	4.753e-11	1.045e-12	-1.550e-11
A_0_1	-4.413e-05	6.173e-05	1.025e-04	-5.038e-05
B_0_1	-4.422e-04	-5.841e-04	-1.974e-04	-4.552e-04
A_0_2	2.978e-07	-3.050e-07	3.071e-07	-2.771e-07
B_0_2	7.265e-07	7.453e-07	-6.841e-07	-7.129e-07
A_0_3	-1.277e-11	3.299e-11	-4.466e-13	-1.834e-11
B_0_3	-2.177e-10	-2.529e-10	-2.448e-10	-2.646e-10
A_1_1	6.053e-07	6.554e-07	-3.966e-07	-6.455e-07
B_1_1	5.875e-07	-4.337e-07	5.017e-07	-4.399e-07
A_1_2	-2.199e-10	-2.919e-10	-1.881e-10	-3.229e-10
B_1_2	9.213e-12	7.527e-11	3.588e-11	-4.918e-11
A_2_1	-4.114e-11	7.218e-11	-2.636e-11	-6.355e-11
B_2_1	-2.118e-10	-2.506e-10	-1.433e-10	-2.753e-10

Notes.

^a We adopt the Libralato et al. (2014) definition of the HAWK-I chips; see the text.

^b The SIP distortion polynomial is defined relative to the reference pixel CRPIX, which we set to be the center of each detector. This is different from the default reference pixel in the raw images, so the CRVAL values also have to be shifted accordingly.

software, we fit the pixel offsets from Libralato et al. (2014) with a third-order two-dimensional polynomial. The polynomial coefficients and additional header keywords needed to create a SIP FITS distortion model (Shupe et al. 2005) for the four HAWK-I detectors are provided in Table 2. We adopt the Libralato et al. (2014) definition of the HAWK-I chips, with the chip numbers set by the order they are found in the multi-extension FITS files. That is, “Chip #1” is the first image extension of the raw FITS files provided by the ESO archive, with EXTNAME = CHIP1.INT1. The EXTNAME values for chips 2, 3, and 4 are CHIP2.INT1, CHIP4.INT1, and CHIP3.INT1, respectively; note the switched names of the last two chips.

REFERENCES

Astropy Collaboration, Robitaille, T. P., Tollerud, E. J., et al. 2013, *A&A*, 558, A33
 Beers, T. C., Flynn, K., & Gebhardt, K. 1990, *AJ*, 100, 32
 Bertin, E., & Arnouts, S. 1996, *A&AS*, 117, 393
 Bertin, E., Mellier, Y., Radovich, M., et al. 2002, ASP Conf. Ser. 281, Astronomical Data Analysis Software and Systems XI, ed. D. A. Bohlender, D. Durand, & T. H. Handley, (San Francisco, CA: ASP), 228

Bielby, R., Hudelot, P., McCracken, H. J., et al. 2012, *A&A*, 545, A23
 Bouwens, R. J., Illingworth, G. D., Oesch, P. A., et al. 2012, *ApJ*, 754, 83
 Bouwens, R. J., Oesch, P. A., Illingworth, G. D., et al. 2013, *ApJL*, 765, L16
 Brammer, G. B., & van Dokkum, P. G. 2007, *ApJL*, 654, L107
 Brammer, G. B., van Dokkum, P. G., & Coppi, P. 2008, *ApJ*, 686, 1503
 Carrasco, E. R., Edwards, M. L., McGregor, P. J., et al. 2012, *Proc. SPIE*, 8447, 84470N
 Casertano, S., de Mello, D., Dickinson, M., et al. 2000, *AJ*, 120, 2747
 Finger, G., Beletic, J. W., Dorn, R., et al. 2005, *ExA*, 19, 135
 Fontana, A., Dunlop, J. S., Paris, D., et al. 2014, *A&A*, 570, A11
 Fontana, A., Salimbeni, S., Grazian, A., et al. 2006, *A&A*, 459, 745
 Förster Schreiber, N. M., Franx, M., Labbé, I., et al. 2006, *AJ*, 131, 1891
 Förster Schreiber, N. M., van Dokkum, P. G., Franx, M., et al. 2004, *ApJ*, 616, 40
 Franx, M., Labbé, I., Rudnick, G., et al. 2003, *ApJL*, 587, L79
 Fruchter, A. S., & Hook, R. N. 2002, *PASP*, 114, 144
 Gonzaga, S., Hack, W., Fruchter, A., & Mack, J. 2012, The DrizzlePac Handbook (Baltimore, MD: STScI)
 Hilbert, B., & McCullough, P. 2011, Interpixel Capacitance in the IR Channel: Measurements Made On Orbit, Tech. Rep
 Hsieh, B.-C., Wang, W.-H., Hsieh, C.-C., et al. 2012, *ApJS*, 203, 23
 Kajisawa, M., Ichikawa, T., Tanaka, I., et al. 2011, *PASJ*, 63, 379
 Kajisawa, M., Konishi, M., Suzuki, R., et al. 2006, *PASJ*, 58, 951
 Kissler-Patig, M., Pirard, J.-F., Casali, M., et al. 2008, *A&A*, 491, 941
 Labbé, I., Franx, M., Rudnick, G., et al. 2003, *AJ*, 125, 1107
 Labbé, I., Huang, J., Franx, M., et al. 2005, *ApJL*, 624, L81
 Libralato, M., Bellini, A., Bedin, L. R., et al. 2014, *A&A*, 563, A80
 Lotz, J. M., Koekemoer, A., Coe, D., et al. 2016, *ApJ*, in press (arXiv:1605.06567)
 Ma, C.-J., & Ebeling, H. 2011, *MNRAS*, 410, 2593
 Marchesini, D., van Dokkum, P. G., Förster Schreiber, N. M., et al. 2009, *ApJ*, 701, 1765
 Marchesini, D., Whitaker, K. E., Brammer, G. B., et al. 2010, *ApJ*, 725, 1277
 McCracken, H. J., Milvang-Jensen, B., Dunlop, J., et al. 2012, *A&A*, 544, A156
 McLean, I. S., Steidel, C. C., Epps, H. W., et al. 2012, *Proc. SPIE*, 8446, 0
 Merlin, E., Amorin, R., Castellano, M., et al. 2016, *A&A*, 590, 30
 Minowa, Y., Kobayashi, N., Yoshii, Y., et al. 2005, *ApJ*, 629, 29
 Muzzin, A., Marchesini, D., Stefanon, M., et al. 2013, *ApJS*, 206, 8
 Muzzin, A., Marchesini, D., van Dokkum, P. G., et al. 2009, *ApJ*, 701, 1839
 Paufigue, J., Bruton, A., Glindemann, A., et al. 2010, *Proc. SPIE*, 7736, 77361P
 Pirard, J.-F., Kissler-Patig, M., Moorwood, A., et al. 2004, *Proc. SPIE*, 5492, 1763
 Quadri, R., Marchesini, D., van Dokkum, P., et al. 2007a, *AJ*, 134, 1103
 Quadri, R., van Dokkum, P., Gawiser, E., et al. 2007b, *ApJ*, 654, 138
 Rawle, T. D., Altieri, B., Egami, E., et al. 2016, *MNRAS*, 459, 1626
 Schirmer, M., Carrasco, E. R., Pessev, P., et al. 2015, *ApJS*, 217, 33
 Shibuya, T., Ouchi, M., & Harikane, Y. 2015, *ApJS*, 219, 15
 Shupe, D. L., Moshir, M., Li, J., et al. 2005, in ASP Conf. Ser. 347, Astronomical Data Analysis Software and Systems XIV, ed. P. Shopbell, M. Britton, & R. Ebert, (San Francisco, CA: ASP), 491
 Skelton, R. E., Whitaker, K. E., Momcheva, I. G., et al. 2014, *ApJS*, 214, 24
 Skrutskie, M. F., Cutri, R. M., Stiening, R., et al. 2006, *AJ*, 131, 1163
 Spitler, L. R., Labbé, I., Glazebrook, K., et al. 2012, *ApJL*, 748, L21
 Stefanon, M., Marchesini, D., Muzzin, A., et al. 2015, *ApJ*, 803, 11
 Stefanon, M., Marchesini, D., Rudnick, G. H., et al. 2013, *ApJ*, 768, 92
 Taylor, E. N., Franx, M., van Dokkum, P. G., et al. 2009a, *ApJ*, 694, 1171
 Taylor, E. N., Franx, M., van Dokkum, P. G., et al. 2009b, *ApJS*, 183, 295
 Tokunaga, A. T., & Vacca, W. D. 2005, *PASP*, 117, 421
 Treu, T., Schmidt, K. B., Brammer, G. B., et al. 2015, *ApJ*, 812, 114
 Trujillo, I., Aguerri, J. A. L., Cepa, J., et al. 2001, *MNRAS*, 328, 977
 van Dokkum, P. G., Quadri, R., Marchesini, D., et al. 2006, *ApJL*, 638, L59
 Whitaker, K. E., Labbé, I., van Dokkum, P. G., et al. 2011, *ApJ*, 735, 86
 Wuyts, S., Labbé, I., Schreiber, N. M. F., et al. 2008, *ApJ*, 682, 985
 Zheng, W., Postman, M., Zitrin, A., et al. 2012, *Natur*, 489, 406