



Publication Year	2018
Acceptance in OA	2020-10-28T17:13:29Z
Title	Baryon content in a sample of 91 galaxy clusters selected by the South Pole Telescope at $0.2 < z < 1.25$
Authors	Chiu, I., Mohr, J. J., McDonald, M., Bocquet, S., Desai, S., Klein, M., Israel, H., Ashby, M. L. N., Stanford, A., Benson, B. A., Brodwin, M., Abbott, T. M. C., Abdalla, F. B., Allam, S., Annis, J., Bayliss, M., Benoit-Lévy, A., Bertin, E., Bleem, L., Brooks, D., Buckley-Geer, E., Bulbul, E., CAPASSO, RAFFAELLA, Carlstrom, J. E., Rosell, A. Carnero, Carretero, J., Castander, F. J., Cunha, C. E., D'Andrea, C. B., da Costa, L. N., Davis, C., Diehl, H. T., Dietrich, J. P., Doel, P., Drlica-Wagner, A., Eifler, T. F., Evrard, A. E., Flaugher, B., García-Bellido, J., Garmire, G., Gaztanaga, E., Gerdes, D. W., Gonzalez, A., Gruen, D., Gruendl, R. A., Gschwend, J., Gupta, N., Gutierrez, G., Hlavacek-L, J., Honscheid, K., James, D. J., Jeltema, T., Kraft, R., Krause, E., Kuehn, K., Kuhlmann, S., Kuropatkin, N., Lahav, O., Lima, M., Maia, M. A. G., Marshall, J. L., Melchior, P., Menanteau, F., Miquel, R., Murray, S., Nord, B., Ogando, R. L. C., Plazas, A. A., Rapetti, D., Reichardt, C. L., Romer, A. K., Roodman, A., Sanchez, E., SARO, ALEXANDRO, Scarpine, V., Schindler, R., Schubnell, M., Sharon, K., Smith, R. C., Smith, M., Soares-Santos, M., Sobreira, F., Stalder, B., Stern, C., STRAZZULLO, VERONICA, Suchyta, E., Swanson, M. E. C., Tarle, G., Vikram, V., Walker, A. R., Weller, J., Zhang, Y.
Publisher's version (DOI)	10.1093/mnras/sty1284
Handle	http://hdl.handle.net/20.500.12386/28052
Journal	MONTHLY NOTICES OF THE ROYAL ASTRONOMICAL SOCIETY
Volume	478

Baryon Content in a Sample of 91 Galaxy Clusters Selected by the South Pole Telescope at $0.2 < z < 1.25$

I. Chiu^{1,2,3}, J. J. Mohr^{2,3,4}, M. McDonald⁵, S. Bocquet⁶, S. Desai⁷, M. Klein^{2,4}, H. Israel², M. L. N. Ashby⁸, A. Stanford⁹, B. A. Benson^{10,11,12}, M. Brodwin¹³, T. M. C. Abbott¹⁴, F. B. Abdalla^{15,16}, S. Allam¹⁷, J. Annis¹⁷, M. Bayliss¹⁸, A. Benoit-Lévy^{19,16,20}, E. Bertin^{20,19}, L. Bleem^{21,22}, D. Brooks¹⁶, E. Buckley-Geer¹⁷, E. Bulbul¹⁸, R. Capasso^{23,24}, J. E. Carlstrom^{25,22}, A. Carnero Rosell^{26,27}, J. Carretero²⁸, F. J. Castander²⁹, C. E. Cunha³⁰, C. B. D’Andrea³¹, L. N. da Costa^{27,26}, C. Davis³⁰, H. T. Diehl¹⁷, J. P. Dietrich^{24,23}, P. Doel¹⁶, A. Drlica-Wagner¹⁷, T. F. Eifler^{32,33}, A. E. Evrard^{34,35}, B. Flaugher¹⁷, J. García-Bellido³⁶, G. Garmire³⁷, E. Gaztanaga²⁹, D. W. Gerdes^{34,35}, A. Gonzalez³⁸, D. Gruen^{30,39}, R. A. Gruendl^{40,41}, J. Gschwend^{27,26}, N. Gupta^{23,24,42}, G. Gutierrez¹⁷, J. Hlavacek-L. ⁴³, K. Honscheid^{44,45}, D. J. James⁴⁶, T. Jeltema⁴⁷, R. Kraft⁴⁸, E. Krause³⁰, K. Kuehn⁴⁹, S. Kuhlmann⁵⁰, N. Kuropatkin¹⁷, O. Lahav¹⁶, M. Lima^{27,51}, M. A. G. Maia^{26,27}, J. L. Marshall⁵², P. Melchior⁵³, F. Menanteau^{40,41}, R. Miquel^{28,54}, S. Murray⁴⁸, B. Nord¹⁷, R. L. C. Ogando^{26,27}, A. A. Plazas³³, D. Rapetti^{55,56,23,24}, C. L. Reichardt⁵⁷, A. K. Romer⁵⁸, A. Roodman^{39,30}, E. Sanchez⁵⁹, A. Saro²⁴, V. Scarpine¹⁷, R. Schindler³⁹, M. Schubnell³⁵, K. Sharon⁶⁰, R. C. Smith¹⁴, M. Smith⁶¹, M. Soares-Santos¹⁷, F. Sobreira^{27,62}, B. Stalder⁶³, C. Stern^{24,23}, V. Strazzullo²⁴, E. Suchyta⁶⁴, M. E. C. Swanson⁴¹, G. Tarle³⁵, V. Vikram⁵⁰, A. R. Walker¹⁴, J. Weller^{42,23,65}, Y. Zhang¹⁷

Affiliations are shown in the end of this paper.

25 May 2018

ABSTRACT

We estimate total mass (M_{500}), intracluster medium (ICM) mass (M_{ICM}) and stellar mass (M_*) in a Sunyaev-Zel’dovich effect (SZE) selected sample of 91 galaxy clusters with masses $M_{500} \gtrsim 2.5 \times 10^{14} M_{\odot}$ and redshift $0.2 < z < 1.25$ from the 2500 deg² South Pole Telescope SPT-SZ survey. The total masses M_{500} are estimated from the SZE observable, the ICM masses M_{ICM} are obtained from the analysis of *Chandra* X-ray observations, and the stellar masses M_* are derived by fitting spectral energy distribution templates to Dark Energy Survey (DES) *griz* optical photometry and *WISE* or *Spitzer* near-infrared photometry. We study trends in the stellar mass, the ICM mass, the total baryonic mass and the cold baryonic fraction with cluster halo mass and redshift. We find significant departures from self-similarity in the mass scaling for all quantities, while the redshift trends are all statistically consistent with zero, indicating that the baryon content of clusters at fixed mass has changed remarkably little over the past ≈ 9 Gyr. We compare our results to the mean baryon fraction (and the stellar mass fraction) in the field, finding that these values lie above (below) those in cluster virial regions in all but the most massive clusters at low redshift. Using a simple model of the matter assembly of clusters from infalling groups with lower masses and from infalling material from the low density environment or field surrounding the parent halos, we show that the measured mass trends without strong redshift trends in the stellar mass scaling relation could be explained by a mass and redshift dependent fractional contribution from field material. Similar analyses of the ICM and baryon mass scaling relations provide evidence for the so-called “missing baryons” outside cluster virial regions.

Key words: galaxies: clusters: stellar masses: ICM masses: baryon fraction: scaling relations

1 INTRODUCTION

Galaxy clusters originate from the peaks of primordial fluctuations of the density field in the early Universe, and their growth contains a wealth of information about structure formation. Of particular interest are scaling relations—the relation between cluster halo mass and other physical properties of the cluster—because these relations enable a link between the cluster observables and the underlying true halo mass. This link then enables the use of galaxy cluster samples for the measurement of cosmological parameters and studies of the cosmic acceleration and of structure formation (Haiman et al. 2001; Holder et al. 2001; Carlstrom et al. 2002). In addition, energy feedback from star formation, Active Galactic Nuclei or other sources during cluster formation can leave an imprint on these scaling relations, affecting their mass or redshift dependence and providing an observational handle to inform studies of cluster astrophysics.

Over the last few decades, the scaling relations of galaxy clusters have been intensively studied using X-ray observables (Mohr & Evrard 1997; Mohr et al. 1999; Arnaud & Evrard 1999; Reiprich & Böhringer 2002; O’Hara et al. 2006; Arnaud et al. 2007; Sun et al. 2009; Vikhlinin et al. 2009; Pratt et al. 2009; Mantz et al. 2016b), populations of cluster galaxies (Lin et al. 2003, 2004; Rozo et al. 2009; Saro et al. 2013; Mulroy et al. 2014), or a combination of them (Zhang et al. 2011a; Lin et al. 2012; Rozo et al. 2014); in addition, scaling relations have been studied using hydrodynamical simulations (e.g., Evrard 1997; Bryan & Norman 1998; Nagai et al. 2007; Stanek et al. 2010; Truong et al. 2018; Barnes et al. 2017; Pillepich et al. 2018).

Observations indicate that the ensemble properties of the baryonic components of galaxy clusters correlate well with the halo mass. For example, the detailed way in which the mass of intra-cluster medium (ICM) systematically trends with total cluster mass, and the scatter about that mean behavior, shed light on the thermodynamic history of massive cosmic halos (e.g., Ponman et al. 1999; Mohr et al. 1999; Pratt et al. 2010; Young et al. 2011). To date, the bulk of observational results have been obtained using cluster samples selected at low redshift ($z \leq 0.6$). Studying scaling relations at high redshift remains difficult due to the lack of sizable cluster samples and/or the adequately deep datasets to extract physical properties from the clusters.

Enabled by the Sunyaev-Zel’dovich Effect (SZE; Sunyaev & Zel’dovich 1970, 1972)—a signature on the Cosmic Microwave Background (CMB) that is caused by the inverse Compton scattering between the CMB photons and hot ICM—teams of scientists have developed novel instrumentation and have used it to search for galaxy clusters out to a redshift $z \approx 1.8$. These large SZE surveys, carried out with the South Pole Telescope (SPT; Carlstrom et al. 2011), the Atacama Cosmology Telescope (Fowler et al. 2007), and the *Planck* mission (The Planck Collaboration 2006), have delivered large cluster samples and enabled studies of meaningful ensembles of clusters to high redshift (High et al. 2010; Menanteau et al. 2010; Andersson et al. 2011; Planck Collaboration et al. 2011; Semler et al. 2012; Sifón et al. 2013; McDonald et al. 2013, 2016). Further breakthroughs in the area of wide-and-deep optical and NIR surveys, such as the Blanco Cosmology Survey (Desai et al. 2012), the *Spitzer* South Pole Telescope Deep Field (Ashby et al. 2013), the Hyper Suprime-Cam survey (Miyazaki et al. 2012; Aihara et al. 2018), and the Dark Energy Survey (DES; DES Collaboration 2005, 2016) have helped in delivering the needed optical data to study the galaxy populations of these SZE selected samples.

Recent studies of the baryon content of galaxy clusters or

groups show strong mass trends of the observable to halo mass scaling relations but no significant redshift trends out to $z \approx 1.3$ (Chiu et al. 2016b,c). That is, the stellar and ICM mass fractions vary rapidly with cluster mass but have similar values at fixed mass, regardless of cosmic time. The combination of strong mass trends and weak redshift trends in the context of hierarchical structure formation implies that halos must accrete a significant amount of material that lies outside the dense virial regions of halos and that has values of the stellar mass fraction or IGM fraction that are closer to the cosmic mean. A mixture of infall from lower mass halos and material outside the dense virial regions would then allow for the stellar and ICM mass fractions to vary weakly over cosmic time. However, it is important to note that current constraints on the redshift trends of scaling relations suffer from significant systematics introduced by comparing heterogeneous cluster samples analyzed in different ways (Chiu et al. 2016b). To overcome these systematic uncertainties, one needs to use a large sample with a well-understood selection function and—most importantly—employ an unbiased method on homogeneous datasets to determine the masses consistently across the mass and redshift range of interest.

In this study, we aim to analyze the baryon content of massive galaxy clusters selected by their SZE signatures in the 2500 deg² South Pole Telescope SZE (SPT-SZ) survey. We have focused on a sample of 91 galaxy clusters that have X-ray observations from *Chandra*, optical imaging from DES, and near-infrared (NIR) data from *Spitzer* and *WISE*. This sample is selected to lie above a detection significance $\xi > 6.8$ and spans a broad redshift range $0.25 \lesssim z \lesssim 1.25$. This sample is currently the largest, approximately mass-limited sample of galaxy clusters extending to high redshift with the required uniform, multi-wavelength datasets needed to carry out this analysis. Moreover, we adopt self-consistent methodologies to estimate the ICM, stellar and total masses of each galaxy cluster in our sample; this dramatically minimizes the potential systematics that could bias the observed mass and redshift trends in the scaling relations.

This paper is organized as follows. The cluster sample and data are described in Section 2, while the determinations of cluster mass M_{500} , ICM mass M_{ICM} and the stellar mass M_* are given in Section 3. We describe our fitting procedure and the method for estimating both statistical and systematic uncertainties on the scaling relation parameters in Section 4, and we present the results of power law fits to the observed scaling relations in Section 5. We then discuss our results and quantify the potential systematics in Section 6. Conclusions are given in Section 7. Throughout this paper, we adopt the flat Λ CDM cosmology with the fiducial cosmological parameters $(\Omega_M, H_0) = (0.304, 68 \text{ km s}^{-1} \text{ Mpc}^{-1})$, which constitute the most recent cosmological constraints from the SPT collaboration (de Haan et al. 2016). Unless otherwise stated, the uncertainties indicate the 1σ confidence regions, the cluster halo mass M_{500} is estimated at the overdensity of 500 with respect to the critical density ρ_{crit} at the cluster redshift z_d , the cluster radius R_{500} is calculated using M_{500}^1 , and the photometry is in the AB magnitude system.

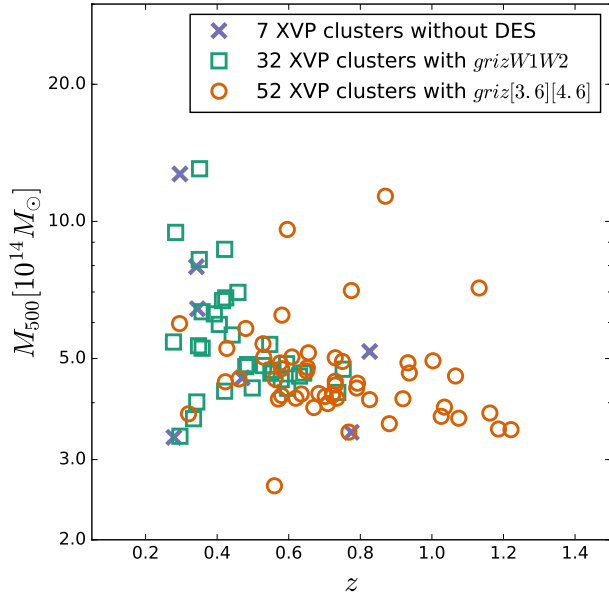


Figure 1. The SZE selected sample of galaxy clusters from the SPT-SZ survey that we use in this work is plotted in mass and redshift. The subset of 32 clusters with combined DES *griz* and *WISE* W1W2 photometry is shown with green squares, and the subset of 52 clusters with combined DES *griz* and *Spitzer* [3.6][4.5] photometry is shown with red circles. The sample of 7 clusters currently without DES *griz* photometry is marked with blue crosses. These systems are excluded from the stellar mass analysis.

2 CLUSTER SAMPLE AND DATA

2.1 Cluster sample

The cluster sample used in this work is selected from the SPT-SZ 2500 deg² survey (Bleem et al. 2015). A subset of 80 SPT-selected clusters at $z > 0.4$ with SZE detection significance $\xi > 6.8$ has been followed up by the *Chandra* X-ray Observatory through an X-ray Visionary Project (hereafter XVP, PI Benson). We extend this 80 cluster sample by including other SPT selected clusters at redshift $z > 0.2$ that have also been observed by *Chandra* through previous proposals from SPT, the Atacama Cosmology Telescope (Marriage et al. 2011) collaboration or the *Planck* (The Planck Collaboration 2006) consortium. The final sample consists of 91 galaxy clusters at redshifts $0.25 < z < 1.25$, all SPT-SZ systems with an associated SZE significance ξ that allows us to estimate the cluster masses with an uncertainty of ≈ 20 percent (Bocquet et al. 2015).

The redshifts of a subset of 61 clusters in our sample have been determined spectroscopically (Ruel et al. 2014; Bayliss et al. 2016). For the rest, we adopt photometric redshifts that are estimated by using the Composite Stellar Population (hereafter CSP) of the Bruzual and Charlot (BC03; Bruzual & Charlot 2003) model with formation redshift $z_f = 3$ and an exponentially-decaying star formation rate with the e -folding timescale $\tau = 0.4$ Gyr. This CSP model is built by running EzGal (Mancone & Gonzalez 2012) and is calibrated using the red sequence of the Coma cluster and by using six different metallicities associated with different luminosities (see more details in Song et al. 2012a). The resulting CSP model has been demonstrated to provide accurate and precise measurements of the photometric redshifts of galaxy clusters with an accuracy of $\Delta z / (1+z) \lesssim 0.025$ through comparison with spectroscopic

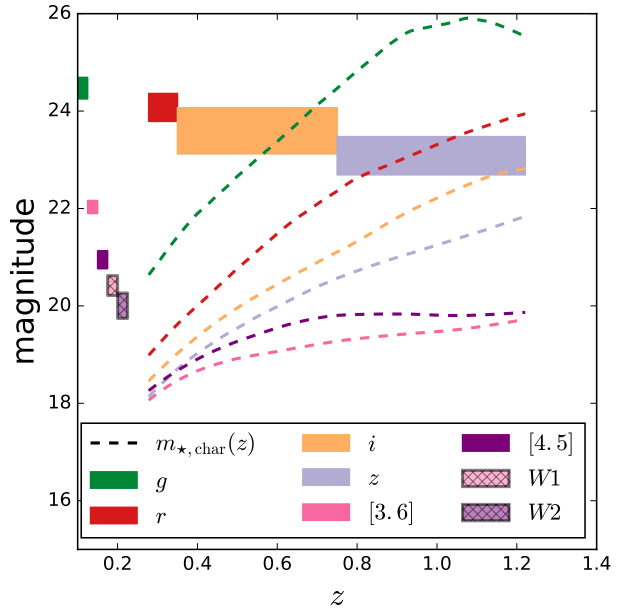


Figure 2. A comparison of photometric depths (bars of constant magnitude) and the redshift variation of the characteristic magnitude $m_{*,\text{char}}$ (dashed lines) over the relevant redshift range. The median and the 1σ variation of the 50% completeness for the DES *griz* bands are shown with green, red, orange and purple bars, respectively. The 10σ depth of [3.6] and W1 ([4.5] and W2) are shown in pink (dark purple), where the *WISE* passbands are marked with black boundaries. The redshift ranges of the *riz* bands stand for the redshift ranges over which we use those bands to apply the magnitude cut (see Section 3.3.2), while the limits in the other bands (i.e., $g[3.6][4.5]W1W2$) all appear on the left.

redshifts (Song et al. 2012a,b; Liu et al. 2015a; Bleem et al. 2015). This CSP model is also used to estimate the cluster characteristic magnitude $m_{*,\text{char}}$ that will be used to define the magnitude cut of each cluster in a consistent manner across the wide redshift range (see Section 3.3.2). The characteristic magnitude $m_{*,\text{char}}$ is a parameter in the Schechter luminosity function that marks the transition magnitude between the exponential cutoff and the power-law components of the galaxy luminosity function. In the following work we neglect these uncertainties in photo- z . Fig. 1 contains a plot of the mass and redshift distribution of the sample, and the basic properties of each cluster are listed in Table 1.

2.2 X-ray data

All the clusters in our sample have been observed with the *Chandra* X-ray Observatory. The X-ray data were largely motivated by the need to determine an X-ray mass proxy to support the cosmological analysis (Andersson et al. 2011; Benson et al. 2013; Bocquet et al. 2015; de Haan et al. 2016); observing times were tuned to obtain ≈ 2000 source photons per cluster. With these X-ray data, we are able to estimate the total luminosity L_X , temperature T_X and ICM masses M_{ICM} as well as the mass proxy $Y_X \equiv T_X M_{\text{ICM}}$ for each cluster. These cluster parameters have been used in several previous works (Benson et al. 2013; McDonald et al. 2013, 2014; Bocquet et al. 2015; de Haan et al. 2016; Chiu et al. 2016b). In this work, we use only the M_{ICM} measurement (see Section 3.2), while the total cluster masses are estimated from the SPT observables (see Section 3.1). Following Chiu et al. (2016b), we adopt the X-ray center as the cluster center for our analysis (see Table 1). More details of the X-ray data acquisition, reduction and analysis

¹ $R_{500} = (M_{500} / (\frac{4\pi}{3} \rho_{\text{crit}}(z_d) 500))^{1/3}$

Table 1. For the full sample, we list the cluster name, the redshift, the Right Ascension (α_X) and Declination (δ_X) inferred from the X-ray imaging, the Right Ascension (α_{BCG}) and Declination (δ_{BCG}) of the BCG, and the optical/NIR datasets used in the SED fitting (see Section 2.3).

Name	z	α_X	δ_X	α_{BCG}	δ_{BCG}	Optical + NIR datasets
SPT-CL J0000–5748	0.702	0.2518	–57.8094	0.2501	–57.8093	<i>griz</i> [3.6 4.5]
SPT-CL J0013–4906	0.406	3.3309	–49.1160	3.3306	–49.1099	<i>griz</i> W1W2
SPT-CL J0014–4952	0.752	3.6912	–49.8800	3.7041	–49.8851	<i>griz</i> W1W2
SPT-CL J0033–6326	0.597	8.4720	–63.4429	8.4710	–63.4449	<i>griz</i> W1W2
SPT-CL J0037–5047	1.026	9.4476	–50.7876	9.4478	–50.7890	<i>griz</i> [3.6 4.5]
SPT-CL J0040–4407	0.350	10.2085	–44.1340	10.2080	–44.1307	<i>griz</i> W1W2
SPT-CL J0058–6145	0.826	14.5829	–61.7693	14.5842	–61.7669	<i>griz</i> [3.6 4.5]
SPT-CL J0102–4603	0.722	15.6737	–46.0652	15.6779	–46.0710	<i>griz</i> [3.6 4.5]
SPT-CL J0102–4915	0.870	15.7350	–49.2667	15.7407	–49.2720	<i>griz</i> [3.6 4.5]
SPT-CL J0123–4821	0.620	20.7931	–48.3567	20.7956	–48.3563	<i>griz</i> [3.6 4.5]
SPT-CL J0142–5032	0.730	25.5464	–50.5403	25.5401	–50.5410	<i>griz</i> [3.6 4.5]
SPT-CL J0151–5954	1.035	27.8584	–59.9076	27.8540	–59.9123	<i>griz</i> [3.6 4.5]
SPT-CL J0156–5541	1.221	29.0405	–55.6976	29.0381	–55.7029	<i>griz</i> [3.6 4.5]
SPT-CL J0200–4852	0.498	30.1403	–48.8752	30.1421	–48.8712	<i>griz</i> W1W2
SPT-CL J0212–4657	0.655	33.1094	–46.9495	33.0986	–46.9537	<i>griz</i> [3.6 4.5]
SPT-CL J0217–5245	0.343	34.2947	–52.7514	34.3122	–52.7604	<i>griz</i> W1W2
SPT-CL J0232–5257	0.556	38.1977	–52.9556	38.2058	–52.9531	<i>griz</i> W1W2
SPT-CL J0234–5831	0.415	38.6777	–58.5240	38.6761	–58.5236	<i>griz</i> W1W2
SPT-CL J0236–4938	0.334	39.2495	–49.6343	39.2569	–49.6360	<i>griz</i> W1W2
SPT-CL J0243–5930	0.635	40.8638	–59.5166	40.8628	–59.5172	<i>griz</i> [3.6 4.5]
SPT-CL J0252–4824	0.421	43.1946	–48.4136	43.2083	–48.4162	<i>griz</i> [3.6 4.5]
SPT-CL J0256–5617	0.580	44.1044	–56.2977	44.1056	–56.2978	<i>griz</i> [3.6 4.5]
SPT-CL J0304–4401	0.458	46.0659	–44.0329	46.0701	–44.0255	<i>griz</i> W1W2
SPT-CL J0304–4921	0.392	46.0664	–49.3570	46.0673	–49.3571	<i>griz</i> W1W2
SPT-CL J0307–5042	0.550	46.9603	–50.7045	46.9605	–50.7012	<i>griz</i> W1W2
SPT-CL J0307–6225	0.579	46.8275	–62.4352	46.8195	–62.4465	<i>griz</i> W1W2
SPT-CL J0310–4647	0.709	47.6343	–46.7847	47.6354	–46.7856	<i>griz</i> [3.6 4.5]
SPT-CL J0324–6236	0.730	51.0488	–62.5984	51.0511	–62.5988	<i>griz</i> [3.6 4.5]
SPT-CL J0330–5228	0.442	52.7226	–52.4737	52.7374	–52.4704	<i>griz</i> W1W2
SPT-CL J0334–4659	0.485	53.5551	–46.9966	53.5457	–46.9958	<i>griz</i> W1W2
SPT-CL J0346–5439	0.530	56.7320	–54.6477	56.7308	–54.6487	<i>griz</i> W1W2
SPT-CL J0348–4515	0.358	57.0701	–45.2507	57.0712	–45.2498	<i>griz</i> W1W2
SPT-CL J0352–5647	0.670	58.2403	–56.7985	58.2397	–56.7977	<i>griz</i> [3.6 4.5]
SPT-CL J0406–4805	0.737	61.7270	–48.0853	61.7302	–48.0826	<i>griz</i> W1W2
SPT-CL J0411–4819	0.424	62.8100	–48.3214	62.7957	–48.3277	<i>griz</i> W1W2
SPT-CL J0417–4748	0.581	64.3458	–47.8140	64.3461	–47.8132	<i>griz</i> [3.6 4.5]
SPT-CL J0426–5455	0.630	66.5207	–54.9173	66.5171	–54.9253	<i>griz</i> W1W2
SPT-CL J0438–5419	0.421	69.5775	–54.3202	69.5734	–54.3224	<i>griz</i> W1W2
SPT-CL J0441–4855	0.790	70.4503	–48.9220	70.4497	–48.9233	<i>griz</i> [3.6 4.5]
SPT-CL J0446–5849	1.186	71.5170	–58.8294	71.5157	–58.8304	<i>griz</i> [3.6 4.5]
SPT-CL J0449–4901	0.792	72.2741	–49.0242	72.2819	–49.0214	<i>griz</i> [3.6 4.5]
SPT-CL J0456–5116	0.562	74.1201	–51.2777	74.1171	–51.2764	<i>griz</i> [3.6 4.5]
SPT-CL J0509–5342	0.461	77.3383	–53.7032	77.3393	–53.7035	<i>griz</i> [3.6 4.5]
SPT-CL J0528–5300	0.768	82.0188	–52.9961	82.0222	–52.9981	<i>griz</i> [3.6 4.5]
SPT-CL J0533–5005	0.881	83.4018	–50.0969	83.4033	–50.0958	<i>griz</i> [3.6 4.5]
SPT-CL J0542–4100	0.642	85.7111	–41.0019	85.7085	–41.0001	<i>griz</i> W1W2
SPT-CL J0546–5345	1.066	86.6532	–53.7604	86.6568	–53.7586	<i>griz</i> [3.6 4.5]
SPT-CL J0551–5709	0.423	87.8954	–57.1484	87.8931	–57.1451	<i>griz</i> [3.6 4.5]
SPT-CL J0555–6406	0.345	88.8660	–64.1058	88.8731	–64.1068	---
SPT-CL J0559–5249	0.609	89.9357	–52.8253	89.9301	–52.8242	<i>griz</i> [3.6 4.5]
SPT-CL J0616–5227	0.684	94.1466	–52.4555	94.1420	–52.4525	<i>griz</i> [3.6 4.5]
SPT-CL J0655–5234	0.470	103.9721	–52.5687	103.9760	–52.5674	---
SPT-CL J2031–4037	0.342	307.9648	–40.6220	307.9720	–40.6252	---
SPT-CL J2034–5936	0.919	308.5371	–59.6039	308.5390	–59.6042	<i>griz</i> [3.6 4.5]
SPT-CL J2035–5251	0.528	308.7927	–52.8554	308.7950	–52.8564	<i>griz</i> [3.6 4.5]
SPT-CL J2043–5035	0.723	310.8243	–50.5930	310.8230	–50.5923	<i>griz</i> [3.6 4.5]
SPT-CL J2106–5844	1.132	316.5174	–58.7426	316.5190	–58.7411	<i>griz</i> [3.6 4.5]
SPT-CL J2135–5726	0.427	323.9111	–57.4390	323.9060	–57.4418	<i>griz</i> [3.6 4.5]
SPT-CL J2145–5644	0.480	326.4686	–56.7470	326.4660	–56.7482	<i>griz</i> [3.6 4.5]
SPT-CL J2146–4633	0.933	326.6456	–46.5489	326.6470	–46.5505	<i>griz</i> [3.6 4.5]
SPT-CL J2148–6116	0.571	327.1804	–61.2788	327.1780	–61.2795	<i>griz</i> [3.6 4.5]
SPT-CL J2218–4519	0.650	334.7461	–45.3158	334.7470	–45.3145	<i>griz</i> [3.6 4.5]
SPT-CL J2222–4834	0.652	335.7136	–48.5770	335.7110	–48.5764	<i>griz</i> [3.6 4.5]
SPT-CL J2232–5959	0.594	338.1428	–59.9990	338.1410	–59.9980	<i>griz</i> W1W2
SPT-CL J2233–5339	0.480	338.3233	–53.6544	338.3150	–53.6526	<i>griz</i> W1W2
SPT-CL J2236–4555	1.162	339.2196	–45.9270	339.2230	–45.9312	<i>griz</i> [3.6 4.5]
SPT-CL J2245–6206	0.580	341.2577	–62.1185	341.2590	–62.1272	<i>griz</i> [3.6 4.5]
SPT-CL J2248–4431	0.351	342.1875	–44.5287	342.1830	–44.5308	<i>griz</i> W1W2
SPT-CL J2258–4044	0.826	344.7062	–40.7396	344.7010	–40.7418	---
SPT-CL J2259–6057	0.750	344.7509	–60.9590	344.7540	–60.9595	<i>griz</i> [3.6 4.5]
SPT-CL J2301–4023	0.730	345.4692	–40.3895	345.4700	–40.3868	<i>griz</i> [3.6 4.5]
SPT-CL J2306–6505	0.530	346.7260	–65.0902	346.7230	–65.0882	<i>griz</i> [3.6 4.5]
SPT-CL J2325–4111	0.358	351.3023	–41.1959	351.2990	–41.2037	<i>griz</i> W1W2
SPT-CL J2331–5051	0.576	352.9610	–50.8631	352.9630	–50.8650	<i>griz</i> [3.6 4.5]
SPT-CL J2335–4544	0.547	353.7854	–45.7396	353.7850	–45.7391	<i>griz</i> W1W2
SPT-CL J2337–5942	0.775	354.3516	–59.7061	354.3370	–59.7109	<i>griz</i> [3.6 4.5]
SPT-CL J2341–5119	1.003	355.3009	–51.3285	355.3010	–51.3291	<i>griz</i> [3.6 4.5]
SPT-CL J2342–5411	1.075	355.6904	–54.1838	355.6910	–54.1847	<i>griz</i> [3.6 4.5]
SPT-CL J2344–4243	0.596	356.1839	–42.7205	356.1830	–42.7201	<i>griz</i> [3.6 4.5]
SPT-CL J2345–6405	0.937	356.2491	–64.1001	356.2510	–64.0927	<i>griz</i> [3.6 4.5]
SPT-CL J2352–4657	0.734	358.0684	–46.9603	358.0680	–46.9602	<i>griz</i> [3.6 4.5]
SPT-CL J2355–5055	0.320	358.9502	–50.9283	358.9480	–50.9277	<i>griz</i> [3.6 4.5]
SPT-CL J2359–5009	0.775	359.9321	–50.1697	359.9280	–50.1672	---
SPT-CL J0106–5943	0.348	16.6141	–59.7200	16.6197	–59.7201	<i>griz</i> W1W2
SPT-CL J2332–5053	0.560	353.0343	–50.8911	353.0249	–50.8849	<i>griz</i> [3.6 4.5]
SPT-CL J0232–4421	0.284	38.0711	–44.3513	38.0773	–44.3467	<i>griz</i> W1W2
SPT-CL J0235–5121	0.278	38.9345	–51.3585	38.9387	–51.3512	<i>griz</i> W1W2
SPT-CL J0516–5430	0.295	79.1479	–54.5126	79.1556	–54.5004	<i>griz</i> [3.6 4.5]
SPT-CL J0522–4818	0.296	80.5682	–48.3039	80.5648	–48.3049	<i>griz</i> [3.6 4.5]
SPT-CL J0658–5556	0.296	104.6180	–55.9448	104.6470	–55.9491	---
SPT-CL J2011–5725	0.279	302.8611	–57.4200	302.8620	–57.4196	---

are described elsewhere (Andersson et al. 2011; Benson et al. 2013; McDonald et al. 2013).

2.3 Optical and NIR data

To estimate the stellar mass of each cluster galaxy in our sample, we use optical photometry in the *griz* bands observed by the Dark Energy Survey (DES Collaboration 2005, 2016) together with near-infrared (NIR) photometry obtained with either the Wide-field Infrared Survey Explorer (*WISE*; Wright et al. 2010a) or the Infrared Array Camera (IRAC, Fazio et al. 2004) of the *Spitzer* telescope. The combination of DES, *WISE*, and *Spitzer* datasets enables us to estimate the stellar masses of cluster galaxies by constraining their Spectral Energy Distributions (SED; see Section 3.3).

The *Spitzer* observations originate from an SPT follow-up program (see Section 2.3.2) that was designed to aid in the cluster confirmation at high redshift ($z \gtrsim 0.4$). These data are much deeper than the *WISE* observations, which we have acquired from the public archive (see Section 2.3.3). The field of view of our *Spitzer* imaging is small and can only sufficiently cover the angular area out to R_{500} for clusters at $z \gtrsim 0.4$, while we specifically re-process the *WISE* data such that each resulting coadd image is centered on the cluster with coverage of $\approx 40' \times 40'$ (see Section 2.3.3). In addition, the *Spitzer* imaging has better angular resolution, making it more appropriate for galaxy studies in crowded environments—especially cluster cores—at higher redshift. Thus, when we combine the optical data from DES with the additional NIR datasets, we choose to use *Spitzer* observations whenever available. These shallower *WISE* observations are used only for the lower redshift clusters.

There are 84 out of the 91 clusters covered by the footprints of the Science Verification, Year One and Year Two of the DES datasets, and the remaining 7 clusters are or will be imaged by the continuing efforts from the DES. Therefore, we do not have the stellar mass measurements for the 7 clusters in our sample. In Fig. 1 the sample is shown, color coded according to whether *WISE* or *Spitzer* imaging was used. We describe the details of each dataset in Sections 2.3.1 to 2.3.3, and then we present the procedure for combining these datasets in Section 2.3.4.

2.3.1 Optical dataset

For the optical data, the Science Verification, Year One and Year Two of the DES datasets (Diehl et al. 2016) are used to obtain the *griz* photometry. For each cluster, we build Point Spread Function (PSF)-homogenized coadd images for the *griz* bands with the field of view of $\approx 1 \text{ deg}^2$ centered on the cluster; this avoids the edge effects that are typically seen in wide field surveys. The optical imaging is processed by the CosmoDM pipeline (Mohr et al. 2012), and the full description of data reduction, source extraction and photometric calibration is given elsewhere (Desai et al. 2012; Liu et al. 2015a; Hennig et al. 2017). These DES catalogs and images have been specifically processed for studying the SPT clusters, and the excellent photometric quality has been presented elsewhere (Hennig et al. 2017; Klein et al. 2017). We increase the flux uncertainties by a factor of 2 based on tests of photometric repeatability on faint sources, which crudely accounts for contributions to the photometric noise from sources that are not tracked in the image weight maps. These include, for example, cataloging noise and uncertainties in photometric calibration. Through these efforts the catalogs of *griz* photometry are available for 84 of the 91 clusters.

Following the procedures of previous studies (Zenteno et al. 2011; Chiu et al. 2016a; Hennig et al. 2017), we estimate the completeness of the photometric catalogs by comparing the observed number counts to those estimated from the deeper COSMOS field (Capak et al. 2007; Ilbert et al. 2009; Laigle et al. 2016), where the source catalogs are complete down to $\gtrsim 25.5$ mag in the *griz* bands. Specifically, we first estimate the logarithmic slope of the source count–magnitude relation of the COSMOS field over a range of magnitudes, assuming that it follows a power law. We then compare the histogram of the source counts—which are observed in the cluster field and are away from the cluster center at projected separations $> 3R_{500}$ —to the derived power law model with the slope fixed to the best-fit value of the COSMOS and the normalization that is fitted to the source counts observed between 19.5 mag and 21 mag in the cluster field. Finally, we fit an error function to the ratio of DES galaxy counts to those predicted by the power law model from COSMOS to obtain the completeness function.

The procedure above is carried out for each cluster, and the resulting 50 percent completeness depths are shown in Fig. 2, where the median and root mean square variation of the completeness are plotted with horizontal bars. For clarity, we only show the results of the *riz* bands where we will perform the magnitude cut on our galaxy samples in the following analysis (see Section 3.3.2); the median 50% completeness of the *g* band is 24.51 ± 0.02 mag. In Fig. 2, we also plot the characteristic magnitude $m_{*,\text{char}}(z)$ as a function of redshift for the *griz* bands as predicted by the CSP model (see Section 2.1). Overall, the 50% completeness of the *griz* bands is deeper than $m_{*,\text{char}}(z)$ by > 2 mag (≈ 1.5 mag for $z \gtrsim 1.1$). This suggests that the depth of DES optical data is sufficiently deep to detect the cluster galaxies that are dominating the stellar content of our sample, allowing us to estimate the total stellar mass of each cluster. The incompleteness corrections applied in the following analysis (see Section 3.3.3) are based on these derived completeness functions.

2.3.2 Spitzer dataset

The *Spitzer* observations are obtained in IRAC channels 3.6 μm and 4.5 μm with the Program IDs (PI Brodwin) 60099, 70053 and 80012, resulting in photometry of [3.6] and [4.5], respectively. The data acquisition, processing and photometric calibration of the *Spitzer* observations are fully described in Ashby et al. (2013), to which we defer the reader for more details. By design, the depths of IRAC observations are sufficient to image the cluster galaxies, which are brighter than $m_{*,\text{char}}(z) + 1$ mag in [3.6] and [4.5], as predicted by the CSP model (see Section 2.1) out to redshift $z \approx 1.5$ with more than 90% completeness. The 10σ depth of [3.6] and [4.5] are 22.00 and 20.92 mag with 1σ variation of 0.13 and 0.18 mag, respectively, as shown in Fig. 2. The field of view of the *Spitzer* mosaics is $\approx 7' \times 7'$ (and is $\approx 5' \times 5'$ for the full depth), which as already mentioned is sufficient to cover the R_{500} region of the clusters in our sample at redshift $z \gtrsim 0.4$. Among the 84 clusters imaged by DES in this work, there are 52 clusters that are also imaged by the *Spitzer* telescope. For these systems we use the photometry of *griz*[3.6][4.5] (see Section 2.3.4 for SED fitting).

2.3.3 WISE dataset

For each cluster, we acquire the NIR imaging observed by the *Wide-field Infrared Survey Explorer* (*WISE*) through the *WISE* all-sky survey and the project of Near-Earth Object Wide-field Infrared

Survey Explorer (NEOWISE; Mainzer et al. 2014). The NEOWISE project is part of the primary *WISE* survey, which started in 2009 with the goal of imaging the full sky in four bands (3.4, 4.6, 12 and 22 μm , denoted by *W1*, *W2*, *W3* and *W4*, respectively). The main mission was followed by the NEOWISE Reactivation Mission—beginning in 2013—with the goal of continuing to find and characterize near-Earth objects using passbands *W1* and *W2*. The data taken by the primary *WISE* survey, the NEOWISE project and its Reactivation Mission have been regularly released since 2011, providing a valuable legacy dataset to the community.

In this work, we collect the imaging of the 91 galaxy clusters in our sample in the passbands of *W1* and *W2* from the ALLWISE data release combined with the release from the NEOWISE Reactivation Mission through 2016, which enables us to detect fainter sources than the official catalogs from the ALLWISE data release. After acquiring the single-exposure images centered on each cluster, we coadd them with the area weighting by the Image Coaddition with Optional Resolution Enhancement (ICORE; Masci & Fowler 2009) in the WISE/NEOWISE Coadd². The photometric zeropoint is calibrated on the basis of each single-exposure image using the measurements of a network of calibration standard stars near the ecliptic poles (see more details in Wright et al. 2010a; Jarrett et al. 2011), and we properly calculate the final zero point of the coadd image in the reduction process. The 10σ depth of *W1* and *W2* are 20.39 and 19.98 mag with 1σ variation of 0.20 and 0.26 mag, respectively, as shown in Fig. 2. We create the coadd images with footprints of $40' \times 40'$ centered on each cluster, allowing us to completely cover a region extending to $\gtrsim 4R_{500}$ in our cluster sample.

2.3.4 Combining DES and NIR datasets

Our goal is to construct a photometric catalog (either *grizW1W2* or *griz*[3.6][4.5]) for each cluster. However, one of the greatest challenges in combining these multi-wavelength datasets is that the source blending varies from band to band due to the variation in the PSF size. Many methods have been proposed to solve or alleviate the blending problem (e.g., Laidler et al. 2007; De Santis et al. 2007; Mancone et al. 2013; Joseph et al. 2016; Laigle et al. 2016), and good performance has been demonstrated when one adopts priors based on the images with better resolution.

In this work, we use the T-PHOT package (Merlin et al. 2015)—a state-of-the-art PSF-matching technique—to deblend the NIR fluxes on the NIR images observed by either the *WISE* or *Spitzer* telescope based on priors from the DES optical imaging. The coadd images are used in the following procedures. Here we list the steps.

(i) We first prepare the NIR images in the native pixel scale (0.263'') of the DECam using SWarp (Bertin et al. 2002).

(ii) We then run SExtractor (Bertin & Arnouts 1996) on these swarped images to produce the background-subtracted images. The background-subtracted DES images will be used to construct the “real 2-d profiles” (see details in Merlin et al. 2015) as the inputs of T-PHOT.

(iii) The PSFs of the NIR and optical images are then derived by stacking a few tens of stars that are selected in the DES catalog. Specifically, these stars are selected in *i*-band to have (1) $\|\text{spread_mode1}\| \leq 0.002$, (2) $17 \text{ mag} < \text{mag_auto} < 22 \text{ mag}$, (3)

² <http://irsa.ipac.caltech.edu/applications/ICORE/docs/instructions.html>

FLAGS = 0 in SExtractor flags indicating no blending, and then these stars are subjected to 3σ iterative clipping in FLUX_RADIUS to exclude any outliers.

(iv) Once the PSFs of NIR and optical images are obtained, the kernel connecting them is derived by a method similar to that used in Galametz et al. (2013), where a low passband filter is applied to suppress the high-frequency noise in the Fourier space.

(v) We run T-PHOT on each source in the optical catalog using the priors of “real 2-d profiles”, convolving them with the derived kernel, and obtaining the best-fit fluxes of the corresponding sources observed on the NIR images. The *i*-band images are good as optical priors because they are deep and have good seeing.

(vi) The second round of T-PHOT is run with locally registered kernels to account for small offsets in astrometry and/or position-dependent variation of the kernel. The final deblended NIR fluxes are obtained.

Following this process for each cluster with available *Spitzer* or *WISE* data, we extract PSF-matched NIR photometry ([3.6][4.5] or *W1W2*) for each source in the DES *griz* catalogs. As previously stated, we use the *griz*[3.6][4.5] catalogs whenever available. An implication is that all sources in our photometric catalogs are constructed based on optical detection. Although the wavelength coverage of [3.6][4.5] and *W1W2* is similar, we observe a small systematic offset in stellar masses extracted using the two sets of photometry: *grizW1W2* and *griz*[3.6][4.5]. We quantify this systematic in Section 3.3.1, apply a correction to the stellar masses in Section 3.3.4.

3 CLUSTER MASS ESTIMATION

In the subsections below we describe in turn how the total cluster masses, ICM masses and stellar masses are measured. The estimates of the ICM masses and stellar masses assume spherical symmetry for the galaxy clusters.

3.1 Halo masses

We use the latest SZE scaling relation from the SPT collaboration (i.e., Table 3 in de Haan et al. 2016) to estimate the halo mass or total mass M_{500} for each cluster. The best fit scaling relation parameters were determined using the number counts of the SPT galaxy clusters together with external information from big-bang nucleosynthesis (BBN) calculations (Cooke et al. 2014), direct measurement of the Hubble parameter (Riess et al. 2011), and Y_X measurements for a subset of the clusters. The resulting M_{500} of each cluster is listed in the Table 2.

The details of the mass determination are given in Bocquet et al. (2015), to which we refer the readers for more details. We briefly describe the method as follows. For each cluster with the SZE signal to noise ξ observed in the SPT-SZ survey, we estimate the cluster total mass M_{500} using the ζ -mass relation,

$$\zeta = A_{\text{SZ}} \left(\frac{M_{500}}{3 \times 10^{14} h^{-1} M_{\odot}} \right)^{B_{\text{SZ}}} \left(\frac{E(z)}{E(z=0.6)} \right)^{C_{\text{SZ}}} \quad (1)$$

with log-normal intrinsic scatter $D_{\text{SZ}} \equiv \sigma_{\ln \zeta | M_{500}}$, where we connect the observable ξ —a biased estimator of the cluster SZE signature—to the unbiased SZE observable ζ by its ensemble behavior that can be described by a normal distribution with unit width,

$$\langle \xi \rangle = \sqrt{\zeta^2 + 3}. \quad (2)$$

Table 2. Cluster parameters include, from left to right, the cluster name, the cluster radius, the halo mass, the ICM mass, the stellar mass, the total baryon mass and the cold baryon fraction.

Name	R_{500} [arcmin]	M_{500} [$10^{14} M_{\odot}$]	M_{ICM} [$10^{13} M_{\odot}$]	M_{\star} [$10^{12} M_{\odot}$]	M_{b} [$10^{13} M_{\odot}$]	f_{c}
SPT-CL J0000–5748	2.07	4.13±0.59	3.99±0.23	3.34±0.51	4.33±0.24	0.077±0.012
SPT-CL J0013–4906	3.46	5.94±0.78	6.77±0.19	3.37±0.58	7.11±0.20	0.047±0.008
SPT-CL J0014–4952	2.07	4.74±0.66	6.69±0.15	4.76±0.74	7.17±0.17	0.066±0.010
SPT-CL J0033–6326	2.35	4.30±0.64	4.88±0.16	4.44±0.78	5.32±0.18	0.083±0.014
SPT-CL J0037–5047	1.56	3.73±0.59	2.35±0.19	2.74±0.61	2.62±0.20	0.104±0.022
SPT-CL J0040–4407	4.33	8.25±1.00	8.34±0.26	4.69±0.63	8.81±0.26	0.053±0.007
SPT-CL J0058–6145	1.85	4.06±0.61	4.42±0.15	3.08±0.58	4.73±0.16	0.065±0.012
SPT-CL J0102–4603	2.04	4.16±0.64	4.04±0.14	4.82±0.56	4.52±0.15	0.107±0.012
SPT-CL J0102–4915	2.52	11.36±1.34	22.50±0.21	9.80±1.01	23.48±0.24	0.042±0.004
SPT-CL J0123–4821	2.25	4.09±0.65	4.58±0.09	4.50±0.58	5.03±0.11	0.090±0.011
SPT-CL J0142–5032	2.15	5.02±0.68	5.55±0.27	3.64±0.62	5.92±0.28	0.061±0.010
SPT-CL J0151–5954	1.58	3.91±0.59	5.07±0.14	4.58±0.73	5.52±0.16	0.083±0.012
SPT-CL J0156–5541	1.38	3.49±0.55	4.17±0.15	2.01±0.36	4.37±0.16	0.046±0.008
SPT-CL J0200–4852	2.67	4.31±0.65	5.00±0.17	4.39±0.61	5.44±0.18	0.081±0.011
SPT-CL J0212–4657	2.33	5.15±0.69	6.43±0.22	3.37±0.62	6.77±0.23	0.050±0.009
SPT-CL J0217–5245	3.46	4.01±0.66	4.99±0.13	4.49±0.85	5.44±0.16	0.083±0.014
SPT-CL J0232–5257	2.54	4.71±0.67	5.91±0.21	3.80±0.57	6.29±0.22	0.060±0.009
SPT-CL J0234–5831	3.54	6.70±0.83	7.23±0.20	3.60±0.56	7.59±0.21	0.047±0.007
SPT-CL J0236–4938	3.44	3.69±0.67	3.84±0.07	3.15±0.57	4.15±0.09	0.066±0.013
SPT-CL J0243–5930	2.23	4.18±0.62	5.27±0.16	3.83±0.61	5.66±0.17	0.068±0.010
SPT-CL J0252–4824	3.01	4.24±0.66	4.67±0.14	2.28±0.42	4.89±0.14	0.047±0.008
SPT-CL J0256–5617	2.36	4.15±0.62	5.43±0.13	3.96±0.60	5.83±0.15	0.068±0.010
SPT-CL J0304–4401	3.34	6.99±0.87	9.77±0.24	5.59±0.73	10.33±0.25	0.054±0.007
SPT-CL J0304–4921	3.62	6.26±0.81	7.06±0.14	3.49±0.49	7.41±0.15	0.047±0.006
SPT-CL J0307–5042	2.55	4.64±0.66	5.37±0.14	5.50±0.76	5.92±0.16	0.093±0.012
SPT-CL J0307–6225	2.43	4.49±0.64	5.74±0.20	2.81±0.48	6.02±0.20	0.047±0.008
SPT-CL J0310–4647	2.03	3.98±0.62	4.19±0.23	3.04±0.54	4.49±0.24	0.068±0.012
SPT-CL J0324–6236	2.07	4.46±0.63	4.94±0.13	5.13±0.74	5.45±0.15	0.094±0.012
SPT-CL J0330–5228	3.19	5.63±0.74	11.29±0.18	3.48±0.56	11.64±0.19	0.030±0.005
SPT-CL J0334–4659	2.83	4.85±0.67	5.57±0.14	2.10±0.41	5.78±0.15	0.036±0.007
SPT-CL J0346–5439	2.65	4.82±0.66	5.87±0.14	4.29±0.65	6.30±0.16	0.068±0.010
SPT-CL J0348–4515	3.66	5.27±0.71	5.08±0.17	4.39±0.66	5.52±0.19	0.079±0.011
SPT-CL J0352–5647	2.10	3.90±0.61	4.65±0.16	3.11±0.51	4.96±0.17	0.063±0.010
SPT-CL J0406–4805	2.02	4.21±0.61	5.22±0.17	4.60±0.79	5.08±0.18	0.081±0.013
SPT-CL J0411–4819	3.50	6.79±0.84	9.02±0.13	5.54±0.75	9.58±0.15	0.058±0.007
SPT-CL J0417–4748	2.70	6.23±0.78	7.44±0.20	4.53±0.69	7.89±0.21	0.057±0.008
SPT-CL J0426–5455	2.31	4.58±0.64	5.41±0.14	4.71±0.71	5.88±0.16	0.080±0.011
SPT-CL J0438–5419	3.82	8.68±1.04	11.27±0.22	5.96±0.67	11.87±0.23	0.050±0.005
SPT-CL J0441–4855	1.94	4.31±0.61	4.88±0.12	5.01±0.77	5.38±0.14	0.093±0.013
SPT-CL J0446–5849	1.40	3.50±0.54	2.87±0.31	4.22±0.77	3.29±0.32	0.128±0.024
SPT-CL J0449–4901	1.95	4.41±0.62	4.96±0.16	4.24±0.69	5.39±0.18	0.079±0.012
SPT-CL J0456–5116	2.49	4.51±0.64	5.17±0.09	3.64±0.60	5.53±0.11	0.066±0.010
SPT-CL J0509–5342	2.87	4.51±0.64	5.48±0.16	1.70±0.34	5.65±0.16	0.030±0.006
SPT-CL J0528–5300	1.83	3.45±0.57	2.99±0.10	3.82±0.62	3.37±0.11	0.113±0.017
SPT-CL J0533–5005	1.70	3.60±0.56	2.43±0.15	2.43±0.56	2.67±0.16	0.091±0.020
SPT-CL J0542–4100	2.29	4.65±0.68	5.62±0.13	3.78±0.56	6.00±0.14	0.063±0.009
SPT-CL J0546–5345	1.64	4.58±0.60	6.20±0.15	7.23±0.94	6.92±0.18	0.104±0.012
SPT-CL J0551–5709	3.05	4.45±0.64	6.09±0.11	3.86±0.53	6.47±0.12	0.060±0.008
SPT-CL J0555–6406	4.03	6.43±0.82	8.56±0.19	—	—	—
SPT-CL J0559–5249	2.44	5.04±0.67	6.99±0.09	5.84±0.79	7.57±0.12	0.077±0.010
SPT-CL J0616–5227	2.06	4.19±0.47	5.02±0.18	6.24±1.26	5.65±0.22	0.111±0.020
SPT-CL J0655–5234	2.83	4.53±0.67	4.42±0.22	—	—	—
SPT-CL J2031–4037	4.36	7.95±0.97	10.31±0.18	—	—	—
SPT-CL J2034–5936	1.73	4.08±0.58	5.54±0.13	3.33±0.57	5.87±0.14	0.057±0.009
SPT-CL J2035–5251	2.76	5.39±0.73	5.90±0.19	8.53±0.86	6.76±0.21	0.126±0.012
SPT-CL J2043–5035	2.03	4.17±0.64	5.72±0.10	4.01±0.66	6.12±0.12	0.066±0.010
SPT-CL J2106–5844	1.83	7.14±0.85	10.56±0.21	8.53±1.04	11.41±0.23	0.075±0.009
SPT-CL J2135–5726	3.20	5.26±0.70	5.29±0.19	5.09±0.59	5.80±0.20	0.088±0.010
SPT-CL J2145–5644	3.03	5.82±0.75	8.28±0.17	4.17±0.62	8.70±0.18	0.048±0.007
SPT-CL J2146–4633	1.82	4.89±0.66	5.94±0.13	4.22±0.71	6.36±0.15	0.066±0.011
SPT-CL J2148–6116	2.38	4.07±0.61	5.33±0.12	4.88±1.53	5.82±0.20	0.084±0.024
SPT-CL J2218–4519	2.28	4.70±0.66	5.60±0.13	5.35±0.73	6.14±0.15	0.087±0.011
SPT-CL J2222–4834	2.28	4.77±0.66	5.12±0.15	3.07±0.54	5.42±0.16	0.057±0.009
SPT-CL J2232–5959	2.45	4.87±0.69	5.35±0.16	6.82±1.05	6.04±0.19	0.113±0.016
SPT-CL J2233–5339	2.85	4.80±0.69	6.13±0.23	4.21±0.60	6.55±0.23	0.064±0.009
SPT-CL J2236–4555	1.46	3.80±0.56	3.88±0.13	4.28±0.61	4.30±0.15	0.099±0.013
SPT-CL J2245–6206	2.47	4.75±0.67	7.40±0.16	7.87±1.21	8.18±0.20	0.096±0.013
SPT-CL J2248–4431	5.04	13.05±1.54	21.15±0.22	8.62±0.88	22.01±0.24	0.039±0.004
SPT-CL J2258–4044	2.00	5.18±0.68	5.47±0.19	—	—	—
SPT-CL J2259–6057	2.10	4.93±0.67	5.65±0.11	4.11±0.57	6.06±0.13	0.068±0.009
SPT-CL J2301–4023	2.05	4.37±0.63	2.81±0.13	2.49±0.56	3.06±0.14	0.081±0.017
SPT-CL J2306–6505	2.69	5.04±0.69	6.70±0.17	5.16±0.64	7.21±0.18	0.072±0.008
SPT-CL J2325–4111	3.90	6.33±0.81	8.57±0.24	8.64±1.04	9.44±0.26	0.092±0.010
SPT-CL J2331–5051	2.51	4.89±0.65	5.38±0.16	4.68±0.63	5.85±0.17	0.080±0.010
SPT-CL J2335–4544	2.69	5.37±0.71	7.64±0.19	6.25±0.85	8.26±0.21	0.076±0.010
SPT-CL J2337–5942	2.31	7.05±0.85	8.22±0.34	6.51±0.92	8.87±0.35	0.073±0.010
SPT-CL J2341–5119	1.74	4.94±0.63	5.77±0.15	5.05±0.82	6.27±0.17	0.081±0.012
SPT-CL J2342–5411	1.51	3.70±0.53	2.76±0.10	3.08±0.68	3.07±0.12	0.100±0.020
SPT-CL J2344–4243	3.07	9.60±1.14	13.82±0.14	7.56±1.03	14.58±0.18	0.052±0.007
SPT-CL J2345–6405	1.78	4.65±0.63	4.87±0.24	5.06±0.91	5.38±0.25	0.094±0.016
SPT-CL J2352–4657	2.00	4.09±0.62	3.66±0.14	5.63±0.85	4.23±0.16	0.133±0.018
SPT-CL J2355–5055	3.58	3.78±0.61	4.06±0.08	2.75±0.58	4.33±0.10	0.063±0.013
SPT-CL J2359–5009	1.82	3.44±0.55	3.11±0.09	—	—	—
SPT-CL J0106–5943	3.76	5.33±0.73	5.67±0.13	4.68±1.49	6.13±0.20	0.076±0.022
SPT-CL J2352–5053	2.08	2.63±0.58	2.38±0.20	4.35±0.81	2.82±0.22	0.154±0.027
SPT-CL J0232–4421	5.35	9.46±1.13	12.88±0.17	6.88±0.90	13.57±0.19	0.051±0.006
SPT-CL J0235–5121	4.53	5.44±0.74	6.95±0.15	4.38±0.65	7.39±0.17	0.059±0.008
SPT-CL J0516–5430	4.45	5.97±0.76	10.90±0.13	6.43±0.97	11.54±0.17	0.056±0.008
SPT-CL J0522–4818	3.67	3.38±0.73	3.67±0.08	3.30±0.57	4.00±0.10	0.083±0.013
SPT-CL J0658–5556	5.71	12.71±1.51	22.69±0.17	—	—	—
SPT-CL J2011–5725	3.85	3.36±0.65	3.61±0.07	—	—	—

The biases in ξ arise because there are three degrees of freedom adopted in the cluster detection: the cluster coordinates on the sky and the scale or core radius of the matched filter employed in the detection. For the mass estimates used here we adopt for these scaling relation parameters

$$\begin{aligned} r_{\text{SZ}} &\equiv (A_{\text{SZ}}, B_{\text{SZ}}, C_{\text{SZ}}, D_{\text{SZ}}) \\ &= (4.84, 1.66, 0.55, 0.20) \end{aligned} \quad (3)$$

along with their associated uncertainties (de Haan et al. 2016). When we calculate the SZE-derived masses M_{500} , we account for the Malmquist bias, which arises from the intrinsic scatter and measurement uncertainty coupling with the selection function in the SPT-SZ survey, and the Eddington bias, which comes from the intrinsic scatter and measurement uncertainties together with the steeply falling behavior of the mass function on the high-mass end.

Our mass measurements are inferred from the SZE observable ξ using the parameters of the SZE observable to mass relation that have been calibrated self-consistently using information from (1) the X-ray mass proxy Y_X that is externally calibrated through weak lensing information, and (2) the observed distribution of the SPT-SZ cluster sample in ξ and z , which is connected to the underlying mass function through the observable to mass relation. The mass calibration information coming from the mass function itself is substantial—especially when external cosmological constraints are adopted as priors (see Section 4.2 for more discussions of systematics in mass estimation). With these external constraints within a flat Λ CDM context, the cosmological parameters are already so well constrained that there is very little freedom in the underlying halo mass function. Thus, the observable to mass relation that describes the mapping to the observed cluster distribution in ξ and z is tightly constrained.

Note that the mass calibration obtained in de Haan et al. (2016) and used in our analysis is statistically consistent with the direct mass calibration through weak lensing using 32 SPT-SZ clusters (Dietrich et al. 2017) and dynamical analyses of 110 SPT-SZ clusters (Capasso et al. 2017). The equivalent mass offset measurement relative to de Haan et al. (2016) is $(-9 \pm 21)\%$ in the former analyses and $(+12 \pm 12)\%$ in the latter analysis. These analyses involve clusters over the full redshift range of interest to our analysis $0.2 \lesssim z \lesssim 1.2$.

We stress that in this analysis we account for both statistical and systematic halo mass uncertainties. We consider the intrinsic scatter in ζ at fixed mass together with the measurement noise in ξ as a representation of the underlying ζ as statistical components of the uncertainties, because they are independent from cluster to cluster. The impact of this statistical component of the uncertainty on the results we present here can be reduced by enlarging the sample we study. We consider the uncertainties in the ζ -mass scaling relation parameters r_{SZ} to be systematic uncertainties, because a shift in one of those parameters, for example the normalization parameter A_{SZ} , systematically shifts the halo masses of the entire cluster ensemble. Moreover, these systematic uncertainties can only be reduced through an improved mass calibration of the sample.

To account for both statistical and systematic halo mass uncertainties, we adopt a two step process. We first fix the cosmological parameters and scaling relation parameters r_{SZ} rather than marginalizing over the full posterior parameter distributions from de Haan et al. (2016) when we estimate the total cluster mass M_{500} . In this first step, the uncertainties of the cluster masses only reflect the measurement uncertainties and intrinsic scatter in our SZE halo masses, but do not include the systematic uncertainties due to the uncertainties in the cosmological and SZE ζ -mass scaling

relation parameters. Characteristically, these statistical mass uncertainties are at the level of ≈ 20 percent for a $\xi = 5$ cluster. In a second step, described in Section 4.2, we quantify the impact of the systematic uncertainties on the best fit baryonic scaling relation parameters that arise due to the uncertainties on the SZE ζ -mass scaling relation parameters r_{SZ} presented in de Haan et al. (2016). Marginalizing over the uncertainties in the scaling relation parameters r_{SZ} corresponds characteristically to a ≈ 15 percent systematic uncertainty on the cluster halo mass for our sample. Adding these two components in quadrature leads to a ≈ 25 percent total characteristic uncertainty on a single cluster halo mass.

Unless otherwise stated, the baryonic scaling relation parameter uncertainties presented in the paper are the quadrature sum of the statistical and systematic uncertainties. Note that both statistical and systematic uncertainties are presented separately in Table 3.

3.2 ICM masses

We estimate the ICM mass M_{ICM} of each cluster by fitting the X-ray surface brightness profile. The resulting M_{ICM} of each cluster is listed in the Table 2. We briefly summarize the procedures below, and we defer the readers to McDonald et al. (2013) for more details.

After the reduction of the *Chandra* X-ray data, the surface brightness profile is extracted in the energy range of 0.7 – 2.0 keV out to $1.5R_{500}$. The surface brightness profile is further corrected for the spatial variation of the ICM properties (e.g., temperature) as well as the telescope effective area. We then project the modified β -model (Vikhlinin et al. 2006) along the line of sight to fit the observed surface brightness profile. In the end, the ICM mass M_{ICM} is obtained by integrating the best-fit modified β -model to the radius of R_{500} , which comes directly from the SZE based halo mass.

We stress that the clusters used in this work have been imaged uniformly by the *Chandra* X-ray telescope in the XVP program with the goal of obtaining ≈ 2000 source counts, which is sufficient signal to allow us to measure M_{ICM} with an uncertainty $\lesssim 5\%$ for each cluster.

3.3 Stellar masses

To estimate the stellar mass M_* of each cluster, we carry out SED fitting of individual galaxies using six band photometry—either *griz*[3.6][4.5] or *grizW1W2* (see Section 2.3 for more information of constructing the photometric catalogs). In this work, we have made no attempt to measure the intra cluster light because of the limiting depth of the available imaging. We describe the procedure of deriving stellar mass in the following subsections.

3.3.1 SED fitting

After constructing the catalogs (see Section 2.3.4), we use Le Phare (Arnouts et al. 1999; Ilbert et al. 2006) to perform the χ^2 -based SED fitting on the galaxies that lie in each cluster field. We first compile a template library using the BC03 code with various input parameters. The parameters and their ranges include (1) metallicities $Z = 0.02, 0.008$, (2) star formation rates that are exponentially decaying with e-folding timescales of $\tau = 1.0, 2.0, 3.0, 5.0, 10.0, 15.0, 30.0$ Gyr, (3) 40 ages logarithmically increasing from 0.01 Gyr to 13.5 Gyr, (4) redshift ranging from 0 to 3.0 with a step of 0.02 and (4) the Calzetti et al. (2000) extinction law with reddening $E(B - V) = 0.0, 0.1, 0.2, 0.3$. This template library is constructed with the goal of sampling the wide

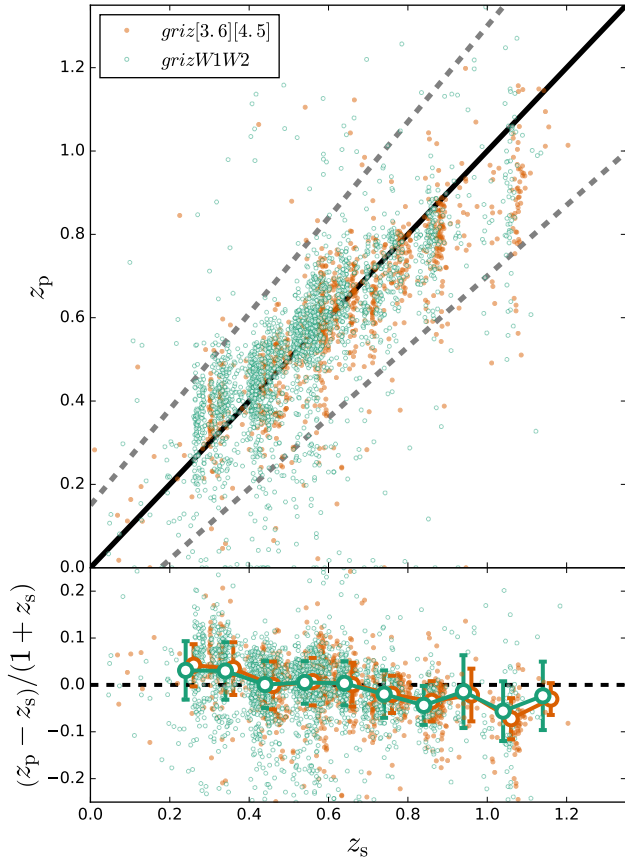


Figure 3. The plot of photo- z versus spec- z (top) and of photo- z mean error and RMS scatter (bottom) for the galaxy sample. Photo- z 's are measured using SED fitting with either *griz*[3.6][4.5] (red) or *griz*W1W2 (green) photometry. The dashed lines in the upper panel bracket the region with $|\Delta z|/(1+z) < 0.15$. For clarity, these two samples are plotted with an offset of 0.02 on the x-axis.

range of physical characteristics expected for stellar populations in galaxies in and near clusters. The [Chabrier \(2003\)](#) initial mass function is used in constructing the library. Then, we run *Le Phare* on each galaxy that lies within the observed footprint to estimate the stellar mass and photometric redshift (photo- z or z_p) simultaneously. During the fitting, we interpolate the templates among the redshift steps. The SED fitting is performed by comparing predicted and observed fluxes in each of the six bands.

For estimating the stellar mass $M_{*,\text{BCG}}$ of the Brightest Cluster Galaxy (BCG), we run the same SED fitting pipeline on the BCG of each cluster with its redshift fixed to the cluster redshift. The BCGs have been visually identified and studied in [McDonald et al. \(2015\)](#), and their sky coordinates are listed in [Table 1](#). When calculating the stellar masses of non-BCG galaxies, we use the stellar masses estimated based on the photo- z , regardless of whether there is a spec- z available, in the interest of uniformity.

We use the sample of galaxies with spectroscopic redshifts (spec- z or z_s) to gauge the accuracy of our photo- z , and also to quantify the systematics in deriving the stellar masses. In the following comparison, we discard stars (see star/galaxy separation discussion in [Section 3.3.2](#)). The measurements of spec- z are taken from the previous SPT spectroscopic follow-up programs ([Ruel et al. 2014](#); [Bayliss et al. 2016](#)), where a subset of ≈ 100 SPT selected clusters is targeted with the goal of obtaining $\approx 25 - 35$ spectra of galax-

ies per cluster for the purposes of cluster mass calibration ([Saro et al. 2013](#); [Bocquet et al. 2015](#)). It is worth mentioning that we include all galaxies with spec- z measurements in the comparison even if they are in the fore- or background of the clusters. The spec- z galaxies are selected to sample the cluster red sequence, and we expect this strategy to provide an excellent sample for the purposes of this work, given that the member galaxies of our clusters are indeed dominated by passively evolving populations ([Hennig et al. 2017](#)). We also note that we re-process the *WISE* datasets for the full sample (including the ones with *Spitzer* follow-up observations); therefore, we are able to (1) increase the statistics in our study of the SED fitting performance on *griz*W1W2 and (2) cross-compare the results obtained between *griz*[3.6][4.5] and *griz*W1W2 for those 52 clusters with both *WISE* and *Spitzer* data. In the cluster fields there are 2,149 galaxies in total with spec- z measurements for the clusters with *griz*W1W2 photometry; for the clusters with the IRAC photometry there are 999 galaxies.

A comparison between the photo- z 's and the spectroscopic redshifts (spec- z or z_s) for this sample is contained in [Fig. 3](#). When using the estimator Z_{BEST}^3 for the photo- z , we measure the mean bias $\Delta z \equiv (z_p - z_s)/(1 + z_s)$ and the root-mean-square variation about the mean as a function of redshift for the sample (bottom panel). These values are in good agreement, regardless of which NIR photometry is used (*griz*[3.6][4.5] in red and *griz*W1W2 in green). Although the mean bias of the photo- z 's is statistically consistent with no bias at each redshift bin separately, we do observe mild differences between the photo- z 's and spec- z 's, and these translate into systematics in our stellar mass estimation. In at least one previous work ([van der Burg et al. 2015](#)), a photo- z correction was applied to reduce this systematic. In this work we account for the uncertainties of the photo- z 's by employing the information from the full probability distribution of the photo- z (instead of only using a photo- z point estimator).

To quantify any resulting systematics in the derived stellar masses that arise from the accuracy of the photo- z 's, we compare the derived stellar masses using the same SED fitting on each galaxy when adopting the photo- z and the spec- z . The results are shown in [Fig. 4](#). We find that the stellar masses m_* of galaxies show a mild bias as a function of redshift if photo- z 's are used: the derived m_* is biased high by $\approx 0.05 - 0.07$ dex at low redshift and trends to a bias of ≈ -0.07 dex as the redshift increases to ≈ 1.2 . This fractional bias in stellar mass—denoted as $\delta(z)$ —is present for both photometric datasets. To correct for this bias, we fit a linear function $\delta_*(z)$ to the observed $\delta(z)$, and we use this model to correct the derived stellar masses of each cluster.

We repeat the exercise while using spectroscopic redshifts z_s with the two different sets of photometry. The results are shown by the blue diamonds in [Fig. 4](#). This comparison reveals any systematic offsets between the stellar masses when using the different datasets, and this appears to be well described by a redshift independent factor. Namely, the stellar masses estimated with *griz*W1W2 are systematically lower than those obtained with *griz*[3.6][4.5] by ≈ 0.031 dex ($\approx 7\%$). We apply the correction $\epsilon \equiv \log(m_{*,\text{grizW1W2}}) - \log(m_{*,\text{griz}[3.6][4.5]}) = -0.031$ dex to the stellar masses estimated from *griz*W1W2 to bring them into consistency with those obtained using *griz*[3.6][4.5] (see [Section 3.3.3](#)). In summary, the correction ϵ accounts for the redshift-independent offset in results from the two datasets, while the correction $\delta_*(z)$

³ The best estimate of photometric redshift from the maximum likelihood estimation.

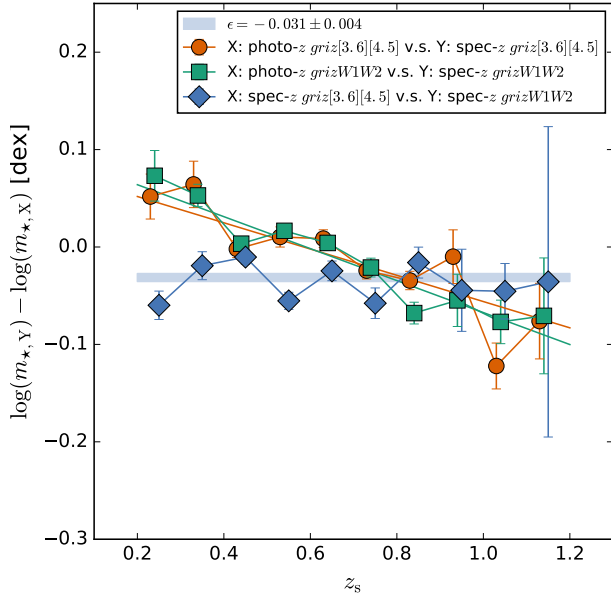


Figure 4. The comparison of derived stellar masses m_* among the cases of using photo- z , spec- z , and photometric catalogs. These comparisons are made based on the galaxies with available spec- z measurements (see Section 3.3.1). The comparison of stellar masses m_* estimated with photometry of $griz[3.6][4.5]$ between photo- z and spec- z are in red circles, while the same comparison but with photometry of $grizW1W2$ is marked by the green squares. Additionally, the comparison using the spec- z between the photometry of $griz[3.6][4.5]$ and $grizW1W2$ is shown by the blue diamonds. For clarity, these samples are plotted with an offset 0.02 in the x-axis.

accounts for the redshift-dependent discrepancy in the derived stellar masses introduced by using photo- z 's.

3.3.2 Selection of cluster galaxies

After the SED fitting, we select the galaxies that are used in this work by carrying out (1) the star/galaxy separation, (2) the photo- z selection, and (3) the magnitude cut.

For the star/galaxy separation, the parameter `spread_model` provides a robust identification of stars down to i -band magnitude of ≈ 22 mag in the DES data (Hennig et al. 2017); therefore we exclude the stars in i band exhibiting $\|\text{spread_model}\| \leq 2 \times 10^{-3}$ with magnitudes brighter than 22 mag. We also discard any objects with $\text{spread_model} \leq -2 \times 10^{-3}$; these consist mainly of defects or unreliable detections. The remaining faint stars ($i \geq 22$ mag) are excluded by the statistical fore/background subtraction as described below.

After discarding the stars, we reject the galaxies (1) whose photo- z probability distributions are inconsistent with the cluster redshift z_d at the 3σ or greater level, and (2) whose photo- z point estimators satisfy $\|(z_p - z_d) / (1 + z_d)\| \geq 0.15$. Note that for the photo- z point estimator we use a conservative threshold (i.e., 0.15) that is $\gtrsim 3$ times the RMS scatter of $\|(z_p - z_d) / (1 + z_d)\|$ we observed in the z_p - z_s relation. The purpose of the photo- z selection is to remove the galaxies that are certainly outside the cluster, obtaining a highly complete sample of cluster members with lower purity as a trade-off. We ultimately remove the contamination from fore/background galaxies leaking into our sample by conducting a statistical background subtraction (see Section 3.3.3).

In the end, we apply a magnitude cut to select the galaxies brighter than $m_{*,\text{char}} + 2$ mag in the band that is just redder than the 4000 Å break in the observed frame. Specifically, we only select galaxies with $\text{MAG_AUTO} \leq m_{*,\text{char}} + 2$ in the $r(i, z)$ band for clusters at $z \leq 0.35$ ($0.35 < z \leq 0.75$, $z > 0.75$), where the $m_{*,\text{char}}$ is predicted by the CSP model at the cluster redshift z_d (see Section 2.1). By employing the selections above, we ensure that we study and select the galaxy populations in a consistent manner across the whole redshift range of the cluster sample.

3.3.3 Statistical background subtraction

To eliminate the contamination of (1) faint stars that are not discarded by the cut in `spread_model` and (2) non-cluster galaxies due to the photo- z scatter, we perform statistical background subtraction. Specifically, we select the footprint with the field of view of $\approx 1 \text{ deg}^2$ located at the center of the COSMOS field (Capak et al. 2007; Ilbert et al. 2009) as the background field, because this region is also observed by DES and lies within the *Spitzer* Large Area Survey with Hyper-Suprime-Cam (SPLASH, Capak et al. 2012), with the same wavelength coverage as our cluster fields. In the COSMOS field, we only use the passbands $griz[3.6][4.5]$ to ensure the uniformity between the optical and NIR datasets available for the SPT clusters. Moreover, we stress that (1) this region is free from any cluster that is as massive as the SPT clusters, (2) we specifically build this background field by coadding the single exposures observed by the DES to reach comparable depth in the $griz$ bands as we have in the cluster fields, even though the combined DES data in the COSMOS field would be much deeper, and (3) the photometric catalogs of the $griz$ bands are also processed and cataloged using the CosmoDM system. For the photometry of [3.6] and [4.5] used in the background field, we match our optical catalog to the COSMOS2015 catalog released in Laigle et al. (2016), using a matching radius of $1''$ to obtain the magnitudes and fluxes observed by the SPLASH survey. We note that the photometry of [3.6] and [4.5] in the COSMOS2015 catalog has been properly deblended; therefore, the number of ambiguous pairs in matching is negligible.

In this way, the photometric catalog of the background field is constructed using the CosmoDM system and is based on the optical detections in the same manner as the cluster fields. After constructing the photometric catalog of the background field, we perform the same SED fitting and galaxy selection (e.g., the spread model, photo- z and magnitude cuts) to obtain the background properties for each cluster. In other words, we have the stellar mass estimates of the galaxy populations selected and analyzed in the same way on each cluster field and in a corresponding background field. We randomly draw multiple background apertures with the same size as the cluster R_{500} (typically ≈ 20 independent apertures, depending on cluster size), and then adopt the ensemble behavior of the stellar masses among these apertures for use as the background model of the stellar masses toward each galaxy cluster (see Section 3.3.4).

3.3.4 Modelling stellar mass functions

We obtain the stellar mass of each cluster by integrating the stellar mass function (SMF). In the process of modelling the SMF, we exclude the BCG because the luminosity function of the BCGs appears to follow a Gaussian function separately from the satellite galaxies (e.g., Hansen et al. 2005, 2009). The details of modelling stellar mass function are described as follows.

First, we create the histograms of stellar mass $\mathcal{M}_* \equiv \log(m_*)$

after performing the galaxy selection (see Section 3.3.2) for both cluster and background fields using stellar mass binning between 9 dex and 13 dex with an equal step of 0.2 dex. We use the R_{500} for each cluster to define the region of interest in the cluster and background fields. If there are non-observed portions of the R_{500} region in the cluster field, then we modify the radii of the background apertures such that their areas match those of the cluster field.

Second, we model the stellar mass function using a Schechter (1976) function,

$$\phi(\mathcal{M}_*) = \phi_* 10^{(\mathcal{M}_* - m_{\text{char}})(\alpha + 1)} e^{(-10^{(\mathcal{M}_* - m_{\text{char}})})},$$

for each cluster where ϕ_* is the normalization, m_{char} is the characteristic mass scale denoting the transition between the exponential cutoff and the power-law components of the SMF, and α is the faint end slope. We employ Cash (1979) statistics to properly deal with observations in the Poisson regime. Namely, we maximize the log-likelihood

$$\ln(L_{\text{cstat}}) = -\sum_i (M_i - D_i + D_i(\ln(D_i) - \ln(M_i))), \quad (4)$$

where i runs over the stellar mass bins, D_i is the observed number of galaxies in the i -th bin of the stellar mass histogram observed on the cluster field (which includes the cluster members and background), and M_i is the value of the model stellar mass function in the i -th bin. We construct the model M_i as

$$M_i = f_{\text{incmp,clu}}(m_{*i})\phi(m_{*i}) + f_{\text{incmp,bkg}}(m_{*i})B_i,$$

where B_i is the mean number of galaxies in the i -th bin of the stellar mass histograms among the apertures that are randomly drawn from the COSMOS field, and the uncertainty of the mean serves as the background uncertainty. The incompleteness at the low-mass end is accounted for by boosting the number of sources—for both cluster and background fields (denoted by $f_{\text{incmp,clu}}$ and $f_{\text{incmp,bkg}}$, respectively)—based on the completeness functions in magnitude (see Section 2.3) derived in the band used for the magnitude cut (see Section 3.3.2). Specifically, we bin the galaxies in magnitude space and randomly draw galaxies in each magnitude bin to meet the number count required by the measured completeness function (i.e., the original number multiplied by a factor of $1/f_{\text{incmp}}(m)$). In this way, we use the completeness function in magnitude to derive a completeness correction for each stellar mass bin.

Finally, we use emcee (Foreman-Mackey et al. 2013) to explore the likelihood space of $(\phi_*, m_{\text{char}}, \alpha)$. We begin with flat and largely uninformative priors on these three parameters, and we find that they are ill-constrained on a single cluster basis. The mean values of m_{char} and α among the cluster sample are 10.89 dex and -0.47 , respectively, both with scatter of 0.25. Moreover, the ensemble behavior of m_{char} and α show no trends with cluster mass M_{500} or redshift. Motivated by the data, we therefore apply a Gaussian prior with mean of 10.89 dex and width of 0.25 (mean of -0.47 and width of 0.25) on m_{char} (α) for modelling the stellar mass function of each cluster. The main impact of this informative prior is a reduction in the uncertainty of the cluster stellar masses; specifically, a return to the flat priors would increase the stellar mass uncertainties by $\approx (5 \pm 20)\%$ over the cluster sample. Once the parameter constraints are in hand for each cluster, we derive the integrated stellar mass $M_{*,\text{sat}}$ of each cluster by integrating over the stellar mass function from a lower mass limit of $\log(m_*/M_\odot) = 10$, where we are $\gtrsim 80\%$ complete for all but seven clusters. Extrapolating our best-fit stellar mass function to lower stellar masses increases the cluster stellar mass by $\approx 3.5\%$. We assess the uncertainty due to the cosmic variance in our background estimation that

cannot be captured by the solid angle COSMOS survey. Specifically, we use the analytic function derived in Driver & Robotham (2010) to calculate the cosmic variance of the galaxy population in the COSMOS field at the cluster redshift z_d with the line-of-sight length enclosed by the redshifts⁴ of $z_d - 0.3$ and $z_d + 0.3$; the resulting uncertainties due to cosmic variance are 11%, 8.7%, 7.8% and 7.5% at $z_d = 0.3, 0.6, 0.9$ and 1.2, respectively. We do not include the cosmic variance in the error budget of the stellar mass estimation.

There are three corrections that we need to apply to the integrated stellar mass—the masking correction, the correction for systematics of the SED fit and a deprojection correction. First, due to the insufficient field of view of the *Spitzer* follow-up observations, we apply the masking correction f_{mask} to the integrated stellar mass estimates. The masking correction f_{mask} is obtained by calculating the weighted ratio of geometric areas of the cluster footprint (πR_{500}^2) to the observed footprint. The weighting factor is derived based on a projected NFW profile $\Sigma(r)$ with concentration of $C_{500} = 2$ (Lin et al. 2004; van der Burg et al. 2014; Chiu et al. 2016a; Hennig et al. 2017) to account for the radial distribution of the cluster galaxies (e.g., the number densities of galaxies drop significantly at large radii). For example, the weighting factor for the area A is derived as $\int_0^{r_{\text{eff}}} \Sigma(x) dx$, where r_{eff} is the effective radius such that $A = \pi r_{\text{eff}}^2$. By construction, $f_{\text{mask}} = 1$ for the case of using *grizWISE* photometry because our *WISE* imaging is wide enough to cover the whole cluster footprint.

Second, we apply the correction to account for the systematics in the SED fitting (see Section 3.3.1). We apply the correction to account for the systematics caused by the use of photometric redshifts and a correction to take into account the systematic differences in stellar masses when measured using the two different NIR datasets (*grizW1W2* and *griz[3.6][4.5]*). We explicitly express the stellar mass estimate M_* within R_{500} of each cluster as follows.

$$M_* = 10^{-\varepsilon} \times (M_{*,\text{BCG}} + D_{\text{dpj}} f_{\text{mask}} \delta_*(z) M_{*,\text{sat}}), \quad (5)$$

where $M_{*,\text{sat}}$ is the integrated stellar masses of non-BCG cluster galaxies that lie within the cluster R_{500} ; $\delta_*(z)$ is the linear model as a function of cluster redshift z taking the photo- z bias into account (see Section 3.3.1); f_{mask} is the masking correction due to the unobserved area in the footprint; $D_{\text{dpj}} = 0.71$ is the deprojection factor (Lin et al. 2003) converting the galaxy distribution from the volume of a cylinder to a sphere by assuming a NFW model with concentration $C_{500} = 2$; $\varepsilon = -0.031$ is the correction for the systematic between different NIR datasets (see Section 3.3.1); we apply the correction $10^{-\varepsilon}$ to bring the stellar masses from the basis of *grizW1W2* to *griz[3.6][4.5]*—therefore—by definition, $\varepsilon = 0$ for the case of using *Spitzer* datasets. Using a higher concentration $C_{500} = 3.2$, which would be correct if the galaxy populations in clusters were completely dominated by passively evolving galaxies (Hennig et al. 2017), would result in a higher deprojection factor of $D_{\text{dpj}} = 0.76$. Therefore, we estimate that there is an associated deprojection systematic in the stellar mass estimates that is at the level of $\approx 5\%$. The resulting M_* of each cluster is listed in the Table 2.

4 SCALING RELATION FORM AND FITTING METHOD

In this work, we use the following functional form to describe the scaling relation between the observable \mathcal{X} , the halo mass and the

⁴ We use half bin width of 0.3 because it is our typical photo- z uncertainty for individual galaxies.

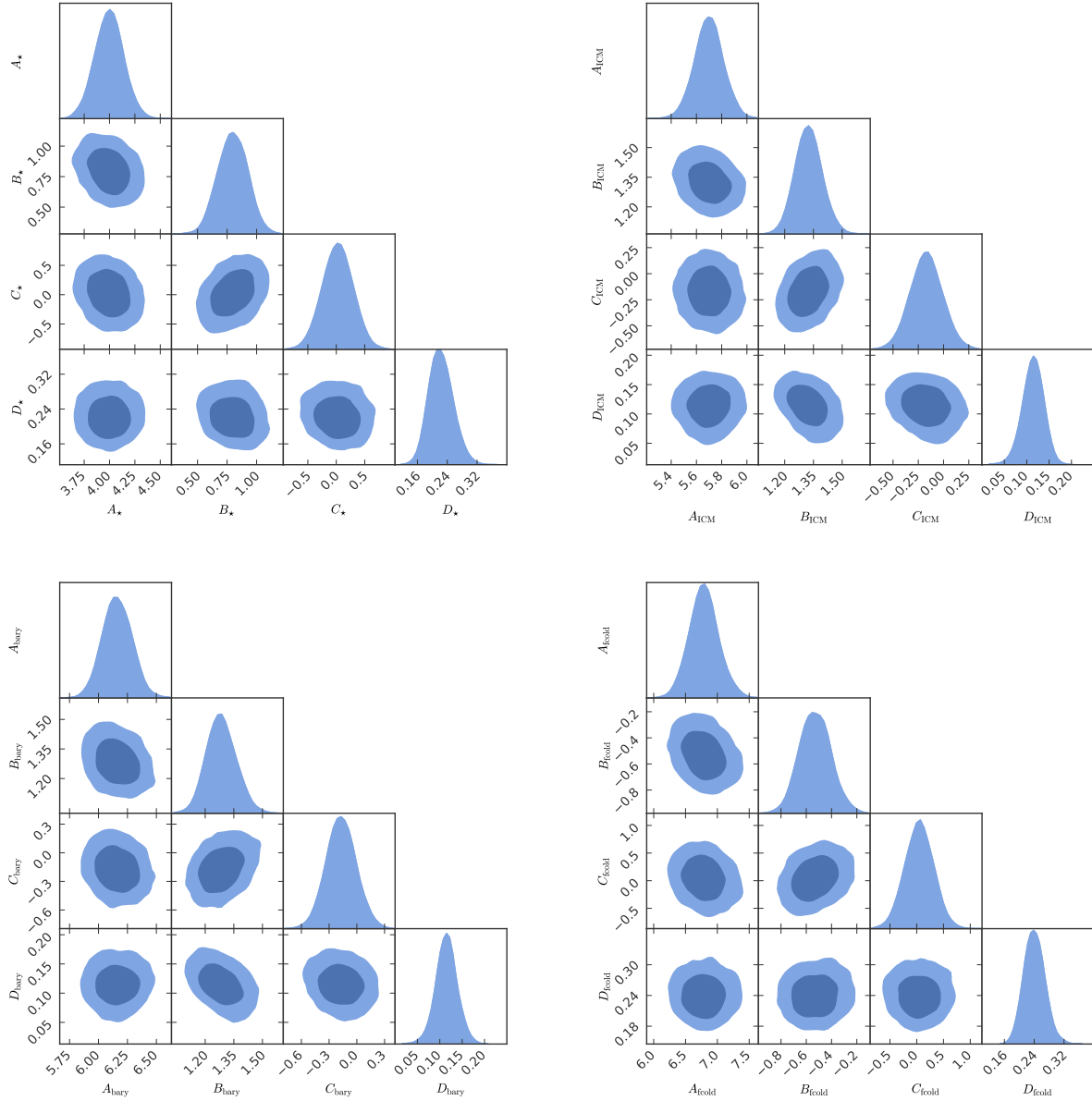


Figure 5. The single and joint parameter posterior likelihood distributions for the scaling relations stellar mass to halo mass (the upper-left panel), ICM mass to halo mass (the upper-right panel), baryonic mass to halo mass (the lower-left panel), and cold baryon fraction to halo mass (the lower-right panel). The normalizations A_* , A_{ICM} , A_b and A_c are in the units of $10^{12}M_\odot$, $10^{13}M_\odot$, $10^{13}M_\odot$ and 10^{-2} , respectively. These plots are generated using the `pygtc` package (Bocquet & Carter 2016).

redshift:

$$\mathcal{X} = A_{\mathcal{X}} \left(\frac{M_{500}}{M_{\text{piv}}} \right)^{B_{\mathcal{X}}} \left(\frac{f_z(z)}{f_z(z_{\text{piv}})} \right)^{C_{\mathcal{X}}} \quad (6)$$

with log-normal intrinsic scatter in observable at fixed mass $D_{\mathcal{X}} \equiv \sigma_{\ln \mathcal{X} | M_{500}}$, where $A_{\mathcal{X}}$ is the normalization at the pivot mass M_{piv} and redshift z_{piv} , $B_{\mathcal{X}}$ and $C_{\mathcal{X}}$ are the power law indices of the mass and redshift trends, respectively, and the notation \mathcal{X} runs over M_* , M_{ICM} , M_b and f_c . The function f_z describes the functional form of the redshift trend. We use two functional forms for f_z in each scaling relation: the first one is $f_z \equiv E(z)$, which is conventionally used in the community of X-ray cluster cosmology and implies that the redshift evolution of the observable at fixed mass is cosmology

dependent. The second form is $f_z \equiv (1+z)$, which is a direct observable and has no cosmological sensitivity. In addition, we adopt the pivot mass and redshift $M_{\text{piv}} = 4.8 \times 10^{14} M_\odot$ and $z_{\text{piv}} = 0.6$ throughout this work, because they are the median values of mass and redshift for our cluster sample.

4.1 Fitting procedure

We fit the scaling relations in a Bayesian framework, which accounts for the Eddington bias, Malmquist bias and the selection function of our cluster sample. The likelihood adopted in this work has also been used in several previous studies (Liu et al. 2015b; Chiu et al. 2016c, Bulbul et. al. in preparation) and has been tested

using large mocks, demonstrating that this likelihood can recover unbiased input parameters. We defer the reader to the earlier references for more detail, and provide here only a brief description of the likelihood.

This likelihood is specifically designed to obtain the targeted observable \mathcal{X} to halo mass relation (e.g., equation 6) of a sample of clusters selected using another observable (e.g., the SZE observable ξ used in this work). In this likelihood, we explore the parameter space of the targeted scaling relation $r_{\mathcal{X}}$ while fixing the cosmological parameters and the scaling relation r_{SZ} that is used to infer cluster halo masses.

We explicitly write down the likelihood as follows. We first evaluate—for the i -th cluster at redshift z_i —the probability $\mathcal{L}_i(r_{\mathcal{X}})$ of observing the observable \mathcal{X}_i given the scaling relations ($r_{\mathcal{X}}$ and r_{SZ}) and the selection observable ξ_i that is used for inferred cluster mass (see equation (1) and equation (2)), i.e.,

$$\begin{aligned} \mathcal{L}_i(r_{\mathcal{X}}) &= P(\mathcal{X}_i | \xi_i, z_i, r_{\mathcal{X}}, r_{\text{SZ}}) \\ &= \frac{\int dM_{500} P(\mathcal{X}_i, \xi_i | z_i, r_{\mathcal{X}}, r_{\text{SZ}}) n(M_{500}, z_i)}{\int dM_{500} P(\xi_i | z_i, r_{\mathcal{X}}, r_{\text{SZ}}) n(M_{500}, z_i)}, \end{aligned} \quad (7)$$

where $n(M_{500}, z_i)$ is the mass function, for which the shape is fixed because we do not vary the cosmological parameters. The [Tinker et al. \(2008\)](#) mass function is used for calculating $n(M_{500}, z_i)$, but for the mass range in this SPT cluster sample, using the more accurate mass functions extracted from hydrodynamical simulations would have no observable impact ([Bocquet et al. 2016](#)). The best-fit scaling relation parameters $r_{\mathcal{X}}$ are then obtained by maximizing the sum of the log-likelihoods of the N_{cl} clusters,

$$\ln \mathcal{L}(r_{\mathcal{X}}) = \sum_{i=1}^{N_{\text{cl}}} \ln \mathcal{L}_i(r_{\mathcal{X}}). \quad (8)$$

We note that our scaling relation analysis does not include correlated scatter between SZE based halo masses and the ICM and stellar mass measurements. In other recent analyses of the SPT cluster sample, no evidence for correlated scatter has emerged, and therefore adding an additional correlation coefficient would not impact our results. Specifically, in [de Haan et al. \(2016\)](#) a correlation coefficient $\rho_{\text{SZ}, Y}$ is included in the analysis but not well constrained by the data and has a value consistent with zero. In Figure 7 of [Dietrich et al. \(2017\)](#) the correlation coefficients describing the correlated scatter among the SZE, X-ray and weak lensing mass proxies all have large uncertainties and values that are consistent with zero. This is not to say that there is no correlated scatter among these observables, but it is proof that with this sample any correlated scatter that is present is too weak to be measured or to have an impact on our fit parameters. Concretely, the extracted ICM mass scatter at fixed halo mass from the [Dietrich et al. \(2017\)](#) analysis is measured to be $0.106_{-0.020}^{+0.041}$, fully consistent with the results from our analysis that we present in Table 3.

We use the python package `emcee` ([Foreman-Mackey et al. 2013](#)) to explore the parameter space of $r_{\mathcal{X}}$. The intrinsic scatter and measurement uncertainties of ξ_i for each cluster are taken into account while evaluating equation (8). We apply flat priors for $r_{\mathcal{X}}$ during the likelihood maximization. Precisely speaking, we adopt the flat priors of $B_{\mathcal{X}}$ in the range (0.1, 3.5), $C_{\mathcal{X}}$ in (−4, 4), and $D_{\mathcal{X}}$ in $(10^{-3}, 1.5)$ for all scaling relations (i.e., \mathcal{X} runs over M_* , M_{ICM} , M_{b} and f_c) except that we use the flat prior of (−1.5, 0.0) for the mass trend of f_c . For the normalization $A_{\mathcal{X}}$, we apply a flat prior of $\mathcal{U}(10^{11}, 10^{13}) \times M_{\odot}$, $\mathcal{U}(10^{12}, 10^{14}) \times M_{\odot}$, $\mathcal{U}(10^{12}, 10^{14}) \times M_{\odot}$, and $\mathcal{U}(10^{-2}, 10^{-1})$ for the observable \mathcal{X} as M_* , M_{ICM} , M_{b} and f_c , respectively, where the notation of \mathcal{U} denotes a uniform interval.

All measurement uncertainties of M_* , M_{ICM} , M_{b} , and f_c are taken to be Gaussian.

4.2 Cluster halo mass M_{500} systematic uncertainties

The uniformity of our sizable sample of galaxy clusters that have been selected through their SZE signatures over a wide redshift range of $0.25 \lesssim z \lesssim 1.25$ represents one of the major strengths of this work. Moreover, we analyze the multi-wavelength datasets in the same manner for every system, and in doing so we further avoid systematic uncertainties that can creep in with different treatments by a variety of codes and authors. These two elements of our current analysis enable a reduction in systematic uncertainties in comparison to many previous studies. Nevertheless, halo mass related systematics remain.

We quantify the impact of systematic uncertainties due to remaining uncertainties in the SZE observable to mass scaling relation (i.e., equation (3)). These systematic uncertainties correspond to the variation of the best-fit SZE observable to mass relation that are impacted by the number count constraints in the full likelihood analysis including the variation of the cosmological parameters. As quantified in [de Haan et al. \(2016\)](#), the 1σ uncertainties of the parameters (A_{SZ} , B_{SZ} , C_{SZ} , D_{SZ}), which are fully marginalized over other nuisance parameters when performing a full likelihood analysis, are (0.91, 0.08, 0.32, 0.07).

We separately vary the best-fit parameters of A_{SZ} , B_{SZ} , C_{SZ} and D_{SZ} by their corresponding $+1\sigma$ and -1σ uncertainties, and then re-run the likelihood fitting code to calculate the resulting difference in the best-fit parameters quoted in Table 3. Given the lack of evidence for covariance among the parameters of the SZE–mass relation, we ignore the correlation among A_{SZ} , B_{SZ} , C_{SZ} and D_{SZ} . That is, the resulting difference of A_{M_*} , for instance, is calculated as $0.5 \times |A_{M_*}|_{(A_{\text{SZ}}+\sigma_{A_{\text{SZ}}})} - A_{M_*}|_{(A_{\text{SZ}}-\sigma_{A_{\text{SZ}}})}|$, and this is the same for other parameters and observable–mass relations. These differences serve as the systematic uncertainties that appear in Table 3. The resulting systematic uncertainties are smaller than or comparable with the statistical uncertainties except in the case of the normalization parameter $A_{\mathcal{X}}$. As will be shown, including the systematic uncertainties increases the total error budget of A_{M_*} , $A_{M_{\text{ICM}}}$, $A_{M_{\text{b}}}$ and A_{f_c} by a factor of ≈ 2 , ≈ 5.6 , ≈ 5.1 and ≈ 1.6 , respectively. On the other hand, the systematic uncertainties are subdominant for mass and redshift trends, and thus do not change the overall interpretation that significant infall from surrounding environments must be taking place.

We present the resulting best fit parameters followed by their statistical uncertainties and estimated systematic uncertainties for each scaling relations in Table 3. In the discussion of the results in the text we combine the statistical and systematic uncertainties in quadrature and present only this combined estimate of the total uncertainty.

5 RESULTS

In this section, we aim to derive the scaling relations of galaxy clusters describing the quantitative relationship between the baryon content in its various forms and the cluster halo mass and redshift. Specifically, we focus on (1) the stellar mass to halo mass and redshift relation M_*-M_{500-z} , (2) the ICM mass to halo mass and redshift relation $M_{\text{ICM}}-M_{500-z}$, (3) the baryonic mass to halo mass and

Table 3. The best-fit parameters of the observable \mathcal{X} to halo mass and redshift scaling relations (equation 6). Columns $A_{\mathcal{X}}$, $B_{\mathcal{X}}$, $C_{\mathcal{X}}$ and $D_{\mathcal{X}}$ are, respectively, the normalization, the power law index of the mass trends and redshift trends, and the log-normal intrinsic scatter of the observable at fixed mass and redshift. \mathcal{X} is used to represent M_* , M_{ICM} , M_b and f_c . The units of the normalization $A_{\mathcal{X}}$ are in $10^{12}M_{\odot}$, $10^{13}M_{\odot}$, $10^{13}M_{\odot}$ and 10^{-2} for \mathcal{X} of M_* , M_{ICM} , M_b and f_c , respectively. Along with the best-fit value, we present the statistical and systematic uncertainties in that order. The systematic uncertainties reflect the underlying uncertainties on the SZE mass–observable relation as described in detail in Section 4.2. When quoting parameter uncertainties in the text we combine these statistical and systematic uncertainties in quadrature. The case of $f_z \equiv (1+z)$ is in the first tier of the table, followed by the case of $f_z \equiv E(z)$.

\mathcal{X}	$A_{\mathcal{X}}$	$B_{\mathcal{X}}$	$C_{\mathcal{X}}$	$D_{\mathcal{X}}$
$f_z \equiv (1+z)$ in equation (6)				
M_*	$4.00 \pm 0.13 \pm 0.25$	$0.80 \pm 0.12 \pm 0.03$	$0.05 \pm 0.25 \pm 0.11$	$0.22 \pm 0.03 \pm 0.01$
M_{ICM}	$5.69 \pm 0.11 \pm 0.61$	$1.33 \pm 0.07 \pm 0.05$	$-0.15 \pm 0.14 \pm 0.17$	$0.11 \pm 0.02 \pm 0.03$
M_b	$6.17 \pm 0.12 \pm 0.61$	$1.29 \pm 0.07 \pm 0.05$	$-0.16 \pm 0.15 \pm 0.17$	$0.12 \pm 0.02 \pm 0.03$
f_c	$6.78 \pm 0.22 \pm 0.28$	$-0.51 \pm 0.12 \pm 0.02$	$0.08 \pm 0.24 \pm 0.05$	$0.24 \pm 0.03 \pm 0.01$
$f_z \equiv E(z)$ in equation (6)				
M_*	$4.00 \pm 0.13 \pm 0.25$	$0.80 \pm 0.12 \pm 0.03$	$0.03 \pm 0.26 \pm 0.11$	$0.22 \pm 0.03 \pm 0.01$
M_{ICM}	$5.70 \pm 0.11 \pm 0.61$	$1.32 \pm 0.07 \pm 0.05$	$-0.17 \pm 0.15 \pm 0.17$	$0.12 \pm 0.02 \pm 0.03$
M_b	$6.16 \pm 0.12 \pm 0.61$	$1.28 \pm 0.08 \pm 0.05$	$-0.17 \pm 0.16 \pm 0.17$	$0.12 \pm 0.02 \pm 0.03$
f_c	$6.79 \pm 0.22 \pm 0.28$	$-0.53 \pm 0.12 \pm 0.02$	$0.05 \pm 0.27 \pm 0.05$	$0.24 \pm 0.03 \pm 0.01$

redshift relation M_b – M_{500} – z , and (4) the fraction of cold collapsed baryons to halo mass and redshift relation f_c – M_{500} – z .

We estimate the halo masses M_{500} and the ICM masses M_{ICM} of the 91 SPT clusters using their SZE observables and uniform *Chandra* X-ray followup imaging, respectively. A subset of 84 clusters out of the full sample is imaged in the optical as part of DES and in the NIR with *Spitzer* and *WISE*, enabling us to obtain the stellar masses M_* of these 84 systems. As a result, the scaling relations we present contain only 84 SZE-selected clusters except in the case of the ICM mass to halo mass relation, where we are able to use the full sample.

In the following subsections, we present our results.

5.1 Stellar mass to halo mass relation

In this work, we obtain the stellar mass to halo mass scaling relation based on the 84 clusters selected by the SPT at $0.25 \lesssim z \lesssim 1.25$. The resulting scaling relation is

$$M_* = (4.00 \pm 0.28) \times 10^{12} M_{\odot} \times \left(\frac{M_{500}}{4.8 \times 10^{14} M_{\odot}} \right)^{0.80 \pm 0.12} \left(\frac{1+z}{1+0.6} \right)^{0.05 \pm 0.27} \quad (9)$$

with the log-normal intrinsic scatter of 0.22 ± 0.03 . Full results with both forms of the redshift evolution are shown in Table 3. The fully marginalized posteriors and covariance of these parameters appear in Fig. 5.

The best-fit scaling relation and the derived M_* are shown in Fig. 6, where we also show the stellar mass fraction defined by

$$f_* \equiv \frac{M_*}{M_{500}}.$$

In Fig. 6, we present M_* and f_* as functions of cluster mass M_{500} and redshift z . Because the constraints of two kinds of the scaling relations are very similar, we only show the case for $f_z = E(z)$ in this figure. The mass trends of M_* (the lower panel) and f_* (the upper panel) with respect to the pivot z_{piv} are contained in

the left panel, while their redshift trends at the pivot mass M_{piv} are shown in the right panel. To present the mass trends at the characteristic redshift $z_{\text{piv}} = 0.6$, we normalize M_* and f_* to the pivot redshift z_{piv} (i.e., dividing them by the best-fit redshift trend $(E(z)/E(z_{\text{piv}}))^{C_*}$). Similarly, we remove the mass trends to highlight the redshift trends by dividing the M_* and f_* by an appropriate factor (i.e. $(M_{500}/4.8 \times 10^{14} M_{\odot})^{B_*}$ for M_*).

The derived scaling relation suggests a strong mass trend $B_* = 0.80 \pm 0.12$, while the redshift trend is statistically consistent with zero ($C_* = 0.05 \pm 0.27$) with a large uncertainty. The normalization $A_* = (4.00 \pm 0.28) \times 10^{12} M_{\odot}$ implies a stellar mass fraction f_* of $(0.83 \pm 0.06)\%$ at the pivot mass $M_{\text{piv}} = 4.8 \times 10^{14} M_{\odot}$ and the pivot redshift $z_{\text{piv}} = 0.6$. Our results, based on an approximately mass-limited sample of clusters, suggest that the stellar mass content is well-established and not evolving in massive clusters with $M_{500} \gtrsim 4 \times 10^{14} M_{\odot}$ at $0.25 \lesssim z \lesssim 1.25$. Switching from $f_z \equiv E(z)$ to $f_z \equiv (1+z)$ provides a similar scenario.

We compare our SPT results to the previous work, as also shown in Fig. 6. The comparison samples are (1) Lin et al. (2003, L03), where they measured the M_{ICM} and M_* of 27 nearby clusters at $z \lesssim 0.1$, (2) Zhang et al. (2011b, Z11), where a sample of 19 clusters selected by their X-ray fluxes was studied, (3) Lin et al. (2012, L12), where a census of baryon content using 94 clusters at $0 < z < 0.6$ was conducted, (4) Gonzalez et al. (2013, GZZ13), where they studied baryon fractions of 12 clusters at $z \approx 0.1$, (5) Hilton et al. (2013, H13), where the stellar content of a sample of 14 SZE-selected clusters was measured, (6) van der Burg et al. (2014, vdB14), where they measured the stellar masses of a sample of 10 low-mass clusters selected in NIR at high redshift ($z \approx 1$), (7) the XMM-BCS sample from Chiu et al. (2016c), where they used uniform NIR imaging deriving the stellar masses of 46 X-ray selected galaxy groups, and (8) the latest results from XXL100—the 100 brightest galaxy clusters or groups selected by the XXL survey (Eckert et al. 2016), for which we only use a subset of 34 clusters with available measurements of the ICM and stellar masses (see their Table 1).

For a fair comparison, we need to account for various systematic differences among the comparison samples. For example, a different initial mass function (e.g., the Salpeter (1955) model) of stellar population synthesis used in inferring stellar masses results in a factor ≈ 2 higher estimations than the ones derived using the Chabrier (2003) mass function, which we use here. Also, it has been demonstrated and quantified in Bocquet et al. (2015) that the cluster masses inferred by X-ray—usually based on the assumption of hydrostatic equilibrium in the state of ICM—are biased low by $\approx 12\%$ as compared to our SZE derived masses. Additionally, the cluster masses inferred from cluster velocity dispersions are $\approx 4\%$ higher than the SZE derived masses. Therefore, we apply the corrections to the comparison samples. Specifically, we multiply 0.76 (0.58) to the stellar mass fractions of the samples in L03, L12 and GZZ13 (Z11 and H13) to bring their stellar masses into the mass floor determined by the Chabrier (2003) initial mass function. To account for the systematic shifts in cluster masses, we also multiply a factor of 1.12 (0.96) to the M_{500} estimates in L03, L12, GZZ13 and the XMM-BCS samples (Z11, H13 and vdB14), resulting in another correction of a factor 1.04 (0.98) to the M_* estimation due to the changing R_{500} due to the updated M_{500} . For the XXL100 sample, we also multiply a factor of 0.96 (0.98) to the M_{500} (M_*)

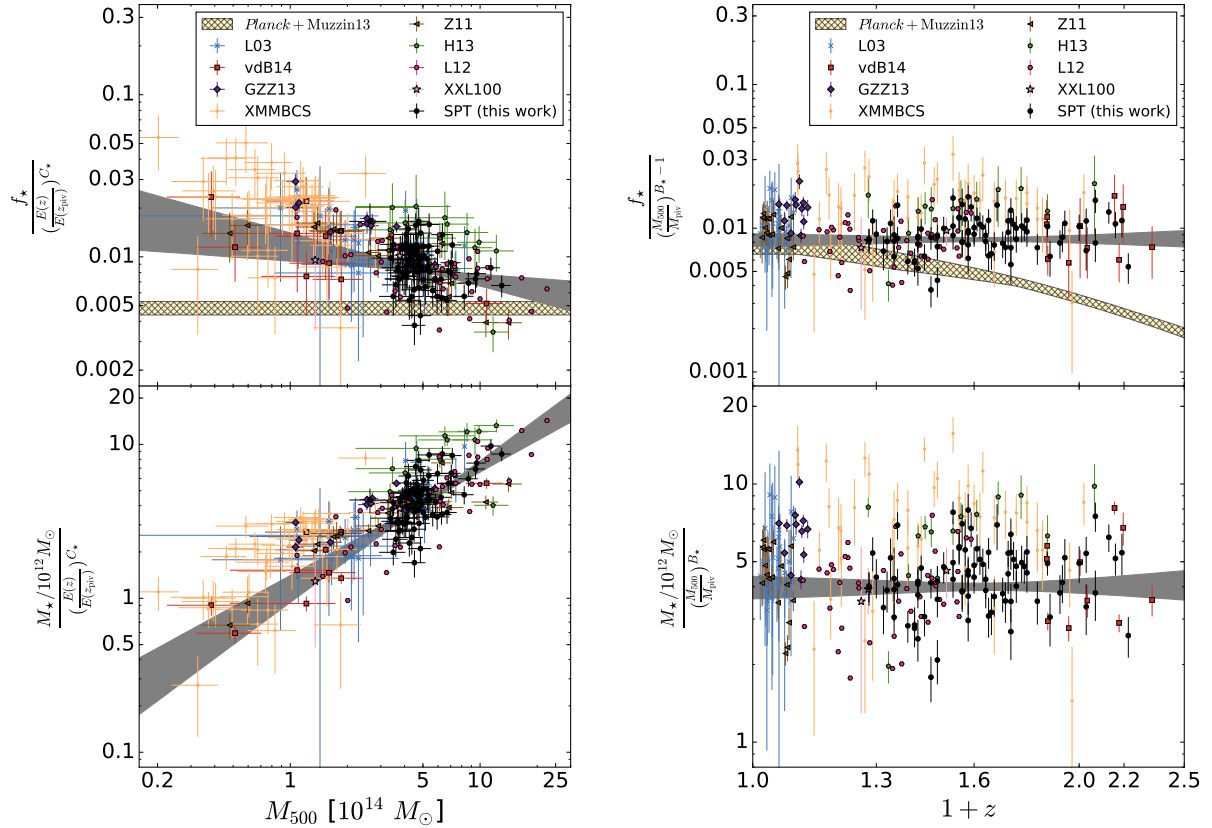


Figure 6. The scaling relations of stellar mass M_* (lower half) and stellar mass fraction f_* (upper half) based on 84 SPT clusters. The left and right panels show the mass and redshift trends with respect to the pivot mass $M_{\text{piv}} = 4.8 \times 10^{14} M_{\odot}$ and redshift $z_{\text{piv}} = 0.6$, respectively. The black points are the measurements of the SPT clusters, while the comparison samples are color-coded as shown in the legend. The cosmic value of the stellar mass fraction, derived from the combination of the field stellar mass density (Muzzin et al. 2013; Cole et al. 2001; Bell et al. 2003; Baldry et al. 2012) and the CMB cosmological constraints (Planck Collaboration et al. 2016), is indicated by the yellow bar. The grey areas indicate the fully marginalized 1σ confidence regions of the best-fit scaling relation extracted from the SPT clusters only.

estimates based on their reported systematics in mass⁵. We stress that the best-fit (grey) region is the fit only to the SPT sample and is extrapolating to the mass and redshift ranges sampled by the comparison samples.

As seen in Fig. 6, the SPT clusters are consistent with all the comparison samples in the context of mass and redshift trends—showing that (1) higher mass clusters have lower stellar mass fractions, with the stellar mass fraction f_* decreasing from $\approx 3\%$ at $M_{500} \approx 5 \times 10^{13} M_{\odot}$ to $\approx 0.5\%$ at $M_{500} \approx 2 \times 10^{15} M_{\odot}$ as $M_{500}^{-0.20 \pm 0.12}$, and (2) the stellar mass at the typical cluster mass $4.8 \times 10^{14} M_{\odot}$ does not vary with redshift to within the uncertainties such that the stellar mass fraction f_* is $\approx 0.8\%$ out to redshift $z \approx 1.3$. The mass slope ($B_* = 0.80 \pm 0.12$) of the SPT clusters is statistically consistent with L03 (0.74 ± 0.09), Z11 (0.61 ± 0.09), L12 (0.71 ± 0.04), H13 (1.11 ± 0.4), GZZ13 (0.52 ± 0.04) and the XMM-BCS sample (0.69 ± 0.15). It is worth mentioning that our sample of SPT clusters uniformly samples the high-mass end in a wide redshift range $0.25 \lesssim z \lesssim 1.25$, providing a direct constraint on the redshift trends out to $z \approx 1.25$, for which the best-fit redshift trend ($C_* = 0.05 \pm 0.27$) is in good agreement with L12 (-0.06 ± 0.22) and the XMM-BCS sample (-0.04 ± 0.47) at the low-mass end. We note that there are residual systematics in the

normalization of M_* on the order of $\lesssim 40\%$ depending on the comparison samples. However, this does not change the qualitative picture significantly, given the large intrinsic scatter and measurement uncertainties, which are comparable to the systematic uncertainties here. Therefore, we conclude that the stellar mass shows a strong correlation with cluster mass as $\approx M_{500}^{0.80 \pm 0.12}$ and no statistically significant redshift trend out to $z \approx 1.3$.

We compare the stellar mass fraction f_* in the environment of galaxy clusters to the cosmic stellar mass fraction, which is inferred from the ratio of the stellar mass density in the field to the mean matter density. Specifically, we use the evolution of the stellar mass densities (in comoving volume with the unit of M_{\odot}/Mpc^3) measured from the COSMOS/UltraVISTA survey (Muzzin et al. 2013) at $0.2 < z < 1.5$ together with the ones estimated at $z < 0.2$ (from Cole et al. 2001; Bell et al. 2003; Baldry et al. 2012), and convert them into stellar mass fraction as a function of redshift by dividing by the matter density estimated by the cosmological parameters determined by Planck (Planck Collaboration et al. 2016). Note that we linearly interpolate the stellar mass densities between the measurements at the adjacent redshift bins in Cole et al. (2001), Bell et al. (2003), Baldry et al. (2012) and Muzzin et al. (2013). We show the cosmic stellar mass fraction with yellow bars in Fig. 6, where the mass trend of the cosmic stellar mass fraction (in the left panel) is normalized at redshift $z_{\text{piv}} = 0.6$ (same as the clusters), and the redshift trend (in the right panel) shows the evolution of the stellar mass fraction in the field. As seen in the upper-left panel of Fig. 6,

⁵ In Eckert et al. (2016), the ratio of the weak lensing mass to the one inferred by SZE is ≈ 0.96 based on their reported values.

the stellar mass per unit halo mass in the cluster environment is significantly higher than the cosmic value at the characteristic redshift $z_{\text{piv}} = 0.6$. In the upper-right panel, the stellar mass fraction f_* in the environment of galaxy clusters remains approximately constant with redshift, while the stellar mass per unit total matter in the field grows significantly by about an order of magnitude since redshift $z \approx 1.5$. This clearly suggests that, based on the decreasing mass trend of the stellar mass fraction to halo mass relation without a significant redshift trend, massive clusters cannot form by simply accreting clusters with lower masses. In such a scenario the stellar mass fraction f_* of high mass clusters would be indistinguishable from low mass clusters. Instead, a significant amount of infall from the lower density surrounding structures, which have substantially lower stellar mass fractions, must contribute to the matter assembly of galaxy clusters such that the stellar mass fraction f_* remains roughly constant at fixed mass over cosmic time. That is, the infall from the surrounding environments must be in balance with the matter accretion from low mass galaxy clusters or groups to maintain the approximately constant stellar mass per hosting mass in the environment of clusters. We return to this discussion in Section 6.1.

5.2 ICM mass to halo mass relation

The ICM mass to halo mass scaling relation is obtained using the full sample of 91 clusters at redshift $0.25 \lesssim z \lesssim 1.25$. The best-fit parameters are shown in Table 3, and the parameter covariances can be seen in Fig. 5. We present the best-fit scaling relations and our measurements of M_{ICM} in Fig. 7, where we also show the results for the ICM mass fraction f_{ICM} defined by

$$f_{\text{ICM}} \equiv \frac{M_{\text{ICM}}}{M_{500}}.$$

In Fig. 7, we normalize M_{ICM} and f_{ICM} in the same way as in Section 5.1 to allow a clear picture of the mass and redshift trends.

The best-fit scaling relation is

$$M_{\text{ICM}} = (5.69 \pm 0.62) \times 10^{13} M_{\odot} \times \left(\frac{M_{500}}{4.8 \times 10^{14} M_{\odot}} \right)^{1.33 \pm 0.09} \left(\frac{1+z}{1+0.6} \right)^{-0.15 \pm 0.22} \quad (10)$$

with log-normal intrinsic scatter of 0.11 ± 0.04 . The resulting mass and redshift trend parameters are $B_{\text{ICM}} = 1.33 \pm 0.09$ and $C_{\text{ICM}} = -0.15 \pm 0.22$, respectively, indicating a highly significant mass trend but a redshift trend that is statistically consistent with zero out to redshift $z \approx 1.25$. The best-fit normalization A_{ICM} is $(5.69 \pm 0.62) \times 10^{13} M_{\odot}$, implying that the typical ICM mass fraction f_{ICM} is $(12 \pm 1.3)\%$ at the pivot mass $M_{\text{piv}} \equiv 4.8 \times 10^{14} M_{\odot}$ and redshift $z_{\text{piv}} \equiv 0.6$.

Similar to the stellar mass to halo mass scaling relation, we compare our results to those from previous studies. We include Vikhlinin et al. (2006, V06)—where they studied the X-ray scaling relations of 13 relaxed clusters at low redshift $z \lesssim 0.3$ —in this comparison. To remove the known systematics raised from deriving cluster masses M_{500} in different ways, we again multiply the halo masses by a factor of 1.12 (0.96) in the samples of L03, V06, L12 and GZZ13 (Z11, XXL100), and this correspondingly results in a factor of 1.04 (0.98) change to the M_{ICM} estimates due to the change in R_{500} . It has been demonstrated that the ICM mass determination is more robust as compared to other X-ray observables (e.g., temperature), and no strong systematics exist between values obtained using different X-ray telescopes (e.g., Martino et al. 2014; Schellenberger et al. 2015)—therefore, we do not apply observa-

tory based systematic corrections to the ICM mass estimations in the comparison samples.

We show the comparison samples in Fig. 7. The mass trend parameter ($B_{\text{ICM}} = 1.32 \pm 0.07$) for the SPT clusters is statistically consistent with most comparison samples—Z11 (1.38 ± 0.36), L12 (1.13 ± 0.03), GZZ13 (1.26 ± 0.03), and XXL100 ($1.21^{+0.11}_{-0.10}$) but is in some tension with another sample WtG16 (1.04 ± 0.05) (Mantz et al. 2016a). As clearly seen in the left panel, the ICM mass M_{ICM} is a strong function of cluster mass M_{500} increasing as $\propto M_{500}^{1.33 \pm 0.09}$, which implies that the f_{ICM} increases as $\propto M_{500}^{0.33 \pm 0.07}$ from $\approx 7\%$ at $M_{500} \approx 10^{14} M_{\odot}$ to $\approx 15\%$ at $M_{500} \approx 10^{15} M_{\odot}$. The departure of the mass trend parameter for our SPT cluster sample from 1 (i.e. no mass trend, the self-similar expectation) is statistically significant at the $\gtrsim 4.5\sigma$ level. This mass-dependent ICM mass fraction f_{ICM} was first noted in a homogeneous analysis of a large, local cluster sample by Mohr et al. (1999), and was also observed later in various sizable samples (e.g., Vikhlinin et al. 2006, 2009). Under the assumption that the temperature to mass relation is approximately self-similar ($T_X \approx M_{500}^{2/3}$), the constraints on the mass trend parameter of the f_{ICM} to mass relation would be $f_{\text{ICM}} \propto M_{500}^{0.32 \pm 0.08}$ (Mohr et al. 1999) and $f_{\text{ICM}} \propto M_{500}^{0.15 \pm 0.02}$ (Vikhlinin et al. 2009)⁶. Both of these studies show inconsistency with the self-similar expectation (i.e. constant gas fraction) at $\gtrsim 4\sigma$ significance. A mass dependent f_{ICM} has long been suggested as the underlying cause of the non-self similar slopes of the luminosity–temperature (David et al. 1993; Mushotzky & Scharf 1997) and the X-ray isophotal size–temperature relations (Mohr & Evrard 1997).

Interestingly, as can be seen in the right panel, the ICM mass at the typical mass $M_{\text{piv}} = 4.8 \times 10^{14} M_{\odot}$ is $\approx (5.69 \pm 0.62) \times 10^{13} M_{\odot}$, and it shows no statistically significant redshift trend ($\propto (1+z)^{-0.15 \pm 0.22}$) out to $z \approx 1.3$. Our results obtained from the SPT clusters together with the comparison samples suggest that (1) the ICM mass inside the massive clusters shows strong mass-dependent behavior with the ICM mass fraction f_{ICM} increasing with cluster mass (trend significant at $\gtrsim 4.5\sigma$ level in current analysis), and (2) the ICM content of galaxy clusters (with $M_{500} \gtrsim 10^{14} M_{\odot}$) has not changed significantly within R_{500} since redshift $z \approx 1.25$.

Similarly to Section 5.1, we also compare the ICM mass fraction f_{ICM} of galaxy clusters to the cosmic value. To derive the cosmic value, we calculate the total baryon fraction (the baryonic mass per total mass) from the cosmological parameters determined by Planck (Planck Collaboration et al. 2016), and then subtract the cosmic stellar mass fraction (see Section 5.1). We show the cosmic value by the yellow bars in Fig. 7 in the same manner as in Fig. 6. As seen in Fig. 7, the ICM mass per total mass in galaxy clusters is a strong function of halo mass and is all significantly lower than the cosmic value (≈ 0.15) for all but the most massive clusters over the full redshift range probed. To have f_{ICM} remain roughly constant with redshift, the balance between the infall from the surrounding environments and accretion of cluster and group scale subhalos must exist during cluster formation, which is qualitatively consistent with the picture implied by the stellar mass fraction (see Section 5.1). We will discuss this scenario in detail in Section 6.1.

⁶ Note that we re-fit the data using the functional form of $f_{\text{ICM}} \approx M_{500}^B$ instead of quoting the original value obtained with the functional form of $f_{\text{ICM}} \approx B \log(M_{500})$ used in Vikhlinin et al. (2009). In addition, we confirm that we can recover their mass slope using their functional form.

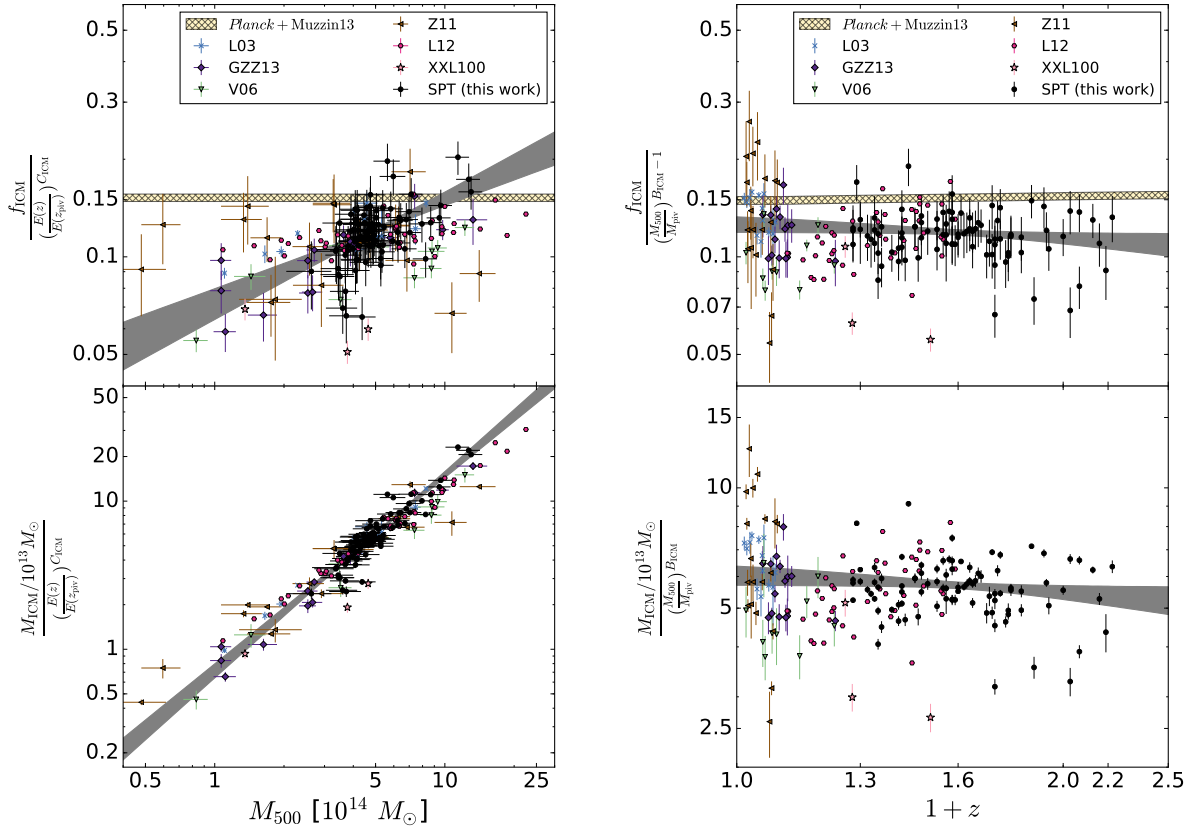


Figure 7. The scaling relations of the ICM mass M_{ICM} (below) and ICM mass fraction f_{ICM} (above) to halo mass are based on 91 SPT clusters. The SPT clusters and the comparison samples are plotted in the same manner as in Fig. 6, while the cosmic value, derived from the combination of the field stellar mass density (Muzzin et al. 2013; Cole et al. 2001; Bell et al. 2003; Baldry et al. 2012) and the CMB cosmological constraints (Planck Collaboration et al. 2016), is indicated by the yellow bar. Note that the yellow bars represent the cosmic mean gas fraction rather than the ICM fraction we expect within clusters. The grey areas indicate the fully marginalized 1σ confidence regions of the best-fit scaling relation extracted from the SPT clusters only.

5.3 Baryonic mass to halo mass relation

The total baryonic mass M_b is estimated as the sum of the ICM and stellar masses ($M_b \equiv M_{\text{ICM}} + M_\star$). The baryonic mass to halo mass scaling relation is obtained using the subsample of 84 clusters with M_\star measurements at redshift $0.25 \lesssim z \lesssim 1.25$. The best-fit parameters and their joint confidence constraints are in Table 3 and Fig. 5, respectively. We present the best-fit scaling relation and our measurements of baryonic mass M_b and baryon fraction f_b ,

$$f_b \equiv \frac{M_b}{M_{500}},$$

in Fig. 8, where we normalize M_{ICM} and f_{ICM} in the same way as in Section 5.1 to disentangle the mass and redshift trends.

The best-fit scaling relation is

$$M_b = (6.17 \pm 0.62) \times 10^{13} M_\odot \times \left(\frac{M_{500}}{4.8 \times 10^{14} M_\odot} \right)^{1.29 \pm 0.09} \left(\frac{1+z}{1+0.6} \right)^{-0.16 \pm 0.23} \quad (11)$$

with log-normal intrinsic scatter of 0.12 ± 0.04 . The resulting mass and redshift trend parameters are $B_b = 1.29 \pm 0.09$ and $C_b = -0.16 \pm 0.23$, respectively. The best-fit normalization A_b is $(6.17 \pm 0.62) \times 10^{13} M_\odot$, suggesting that the typical total baryonic mass fraction f_b is about $(12.8 \pm 1.29)\%$ at the pivot mass $M_{\text{piv}} \equiv 4.8 \times 10^{14} M_\odot$ and redshift $z_{\text{piv}} \equiv 0.6$. The general picture is the same as for the ICM mass to halo mass relation (see Section 5.2): adding the stellar mass to the ICM mass flattens the mass

trend by $\approx 0.5\sigma$ (from $B_{\text{ICM}} \approx 1.32$ to $B_b \approx 1.29$) and results in an increase in the normalization of $\approx 9\%$ (from $A_{\text{ICM}} \approx 5.7 \times 10^{13} M_\odot$ to $A_b \approx 6.2 \times 10^{13} M_\odot$).

After applying the corrections to remove the known systematics (see Section 5.1 and Section 5.2), we also compare our results to previous work (L03, Z11, L12, GZZ13). The mass slope B_b of the SPT clusters is 1.29 ± 0.09 , which is statistically consistent with L03 (1.148 ± 0.04), Z11 (1.22 ± 0.57) and GZZ13 (1.16 ± 0.04). Again, no significant redshift trend is observed ($C_b = -0.16 \pm 0.23$, see the right panel in Fig. 8). We stress that our SPT sample provides unique access to the baryon content of galaxy clusters out to redshift $z \approx 1.25$ and therefore constrains the redshift trends directly for the first time based on a uniformly selected, approximately mass-limited sample with homogeneously estimated masses.

We compare the baryon fractions of galaxy clusters to the cosmic baryon fraction,

$$\frac{\Omega_b}{\Omega_M} \approx 0.157 \pm 0.004, \quad (12)$$

determined by the cosmological parameters estimated by *Planck* (Planck Collaboration et al. 2016) in Fig. 8. The baryon fraction provides a cleaner measure in the context of matter accretion than stellar or ICM mass fractions, because the total mass of baryons per unit mass is expected to be invariant over cosmic time and is less subject to ICM cooling and star formation, which result in the interchange between cold and hot baryonic components. We

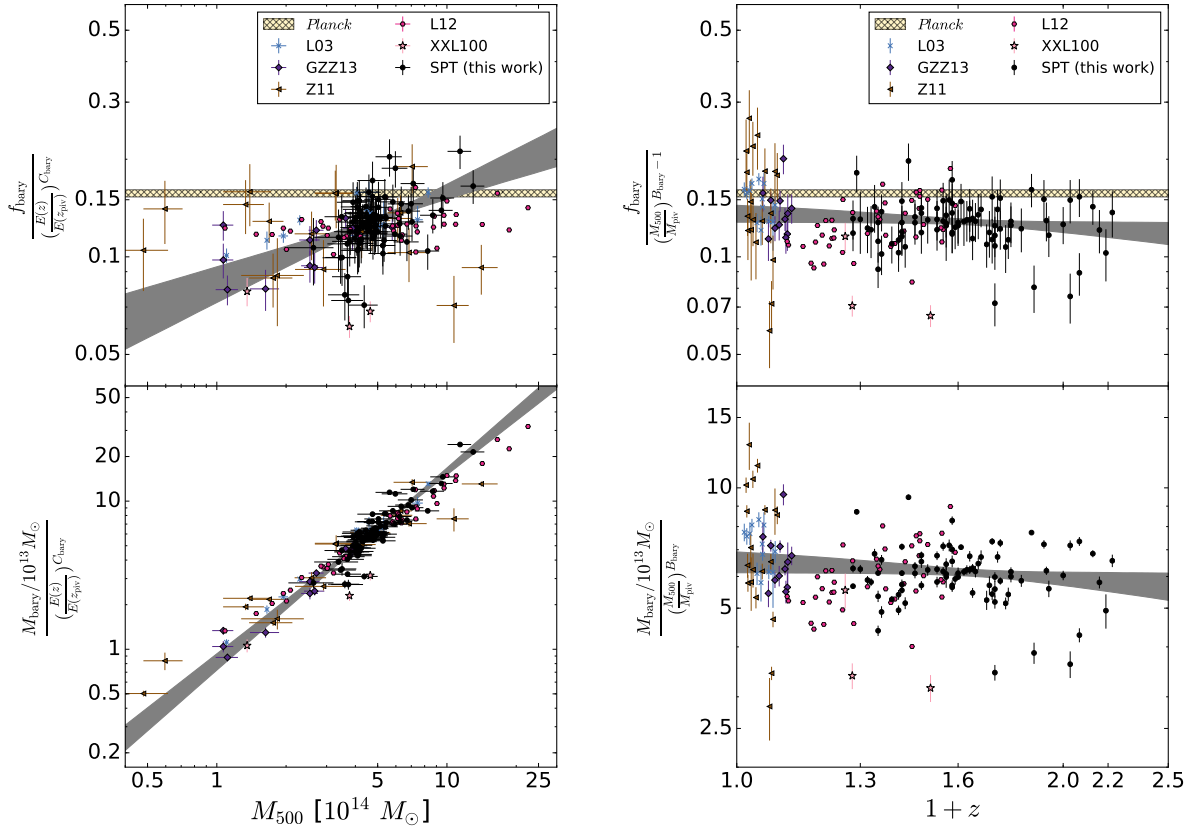


Figure 8. The scaling relations of the baryonic mass M_b (below) and baryonic mass fraction f_b (above) to halo mass are based on 84 SPT clusters. The SPT clusters and the comparison samples are plotted in the same manner as in Fig. 6, while the cosmic value of the baryon fraction, derived from the CMB cosmological constraints (Planck Collaboration et al. 2016), is indicated by the yellow bar. The grey areas indicate the fully marginalized 1σ confidence regions of the best-fit scaling relation extracted from the SPT clusters only.

show the cosmic baryon fraction with the yellow bars in Fig. 8 in the same manner as in previous subsections. At the typical mass scale of $M_{\text{piv}} = 4.8 \times 10^{14} M_\odot$ (see the upper-right panel of Fig. 8), the baryon fraction of clusters is constantly lower than the cosmic baryon fraction since the highest redshifts probed here $z \approx 1.25$. On this mass scale, the baryon depletion factor is

$$\mathcal{D} \equiv 1 - \frac{f_b}{\Omega_b/\Omega_M} = 0.18 \pm 0.02. \quad (13)$$

over the full redshift range we probe. We return to a discussion of the depletion factor in Section 4.2.

A clear mass trend of total baryon fraction in galaxy clusters that is significantly lower than the cosmic fraction since redshift $z \approx 1.25$ again reinforces the picture that the infall from lower density regions outside collapsed halos must be in rough balance with the infall from material within the virial regions of lower mass galaxy clusters and groups. We will return to this discussion in Section 6.1.

5.4 Cold collapsed baryonic fraction to halo mass relation

The cold collapsed baryonic fraction (or cold fraction),

$$f_c \equiv \frac{M_\star}{M_b} = \frac{M_\star}{M_{\text{ICM}} + M_\star},$$

is a particularly interesting measurement because it involves only the ICM and stellar mass estimations, and is expected to be less subject to any systematics that impact the cluster halo mass M_{500} . Moreover, the cold fraction is defined as the fraction of baryonic

mass in stars, which could also serve as a constraint on the integrated star formation rate inside galaxy clusters. The cold baryonic fraction to halo mass scaling relation is obtained based on the subsample of 84 clusters at redshift $0.25 \lesssim z \lesssim 1.25$ with M_\star measurements. The best-fit parameters, the joint parameter constraints and the measurements are presented in Table 3, Fig. 5 and Fig. 9, respectively. Again, we normalize f_c in Fig. 9 in the same way as in Section 5.1 to present the mass and redshift trends independently.

The resulting scaling relation is

$$f_c \times 100 = (6.78 \pm 0.36)\% \left(\frac{M_{500}}{4.8 \times 10^{14} M_\odot} \right)^{-0.51 \pm 0.12} \left(\frac{1+z}{1+0.6} \right)^{0.08 \pm 0.26} \quad (14)$$

with the log-normal intrinsic scatter 0.24 ± 0.03 . The best-fit mass and redshift trend parameters are $B_c = -0.51 \pm 0.12$ and $C_c = 0.08 \pm 0.26$, respectively. The normalization A_c indicates that the fraction of baryonic mass in stars is $(6.78 \pm 0.36)\%$ at the pivot mass $4.8 \times 10^{14} M_\odot$ and redshift $z_{\text{piv}} = 0.6$. The cold fraction is a strong function of mass, falling with $\approx 4.5\sigma$ statistical significance such that at the pivot redshift $z_{\text{piv}} = 0.6$, f_c decreases from $\approx 10\%$ to $\lesssim 3\%$ as the cluster halo mass increases by a factor of ≈ 10 from $M_{500} \approx 2 \times 10^{14} M_\odot$ to $M_{500} \gtrsim 2 \times 10^{15} M_\odot$. The cold fraction shows no statistically significant evidence of a redshift trend.

We compare our results to previous work in Fig. 9. The results of the SPT clusters are in good agreement with previous

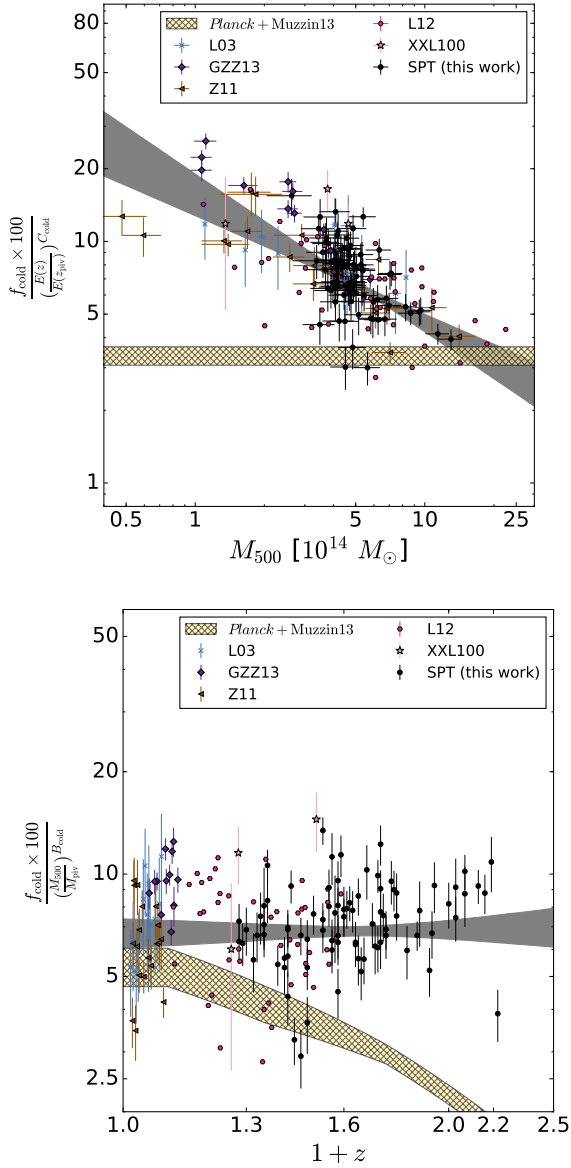


Figure 9. The scaling relation of the cold baryonic fraction f_c to halo mass is based on 84 SPT clusters. The SPT clusters and the comparison samples are plotted in the same manner as in Fig. 6, while the cosmic value of the cold baryon fraction, derived from the combination of the field stellar mass density (Muzzin et al. 2013; Cole et al. 2001; Bell et al. 2003; Baldry et al. 2012) and the CMB cosmological constraints (Planck Collaboration et al. 2016), is indicated by the yellow bar. The grey areas indicate the fully marginalized 1σ confidence regions of the best-fit scaling relation extracted from the SPT clusters only.

work⁷: the mass slope ($B_c = -0.51 \pm 0.12$) is statistically consistent with L03 and L12 (-0.41 ± 0.10), Z11 (-0.61 ± 0.58) and GZZ13 (-0.64 ± 0.06). As seen in Fig. 9, f_c for the SPT clusters behaves in a manner that is consistent with the comparison samples that extend to lower mass. That is, the cold fraction decreases from $\approx 20\%$ at $M_{500} \approx 10^{14} M_\odot$ to $\lesssim 3\%$ at $M_{500} \gtrsim 2 \times 10^{15} M_\odot$. In addition, this cold fraction has little dependence on cluster redshift.

⁷ We derive the mass slopes of the comparison samples based on their reported mass slopes of B_b and B_* (i.e., $B_c \approx B_* - B_b$)

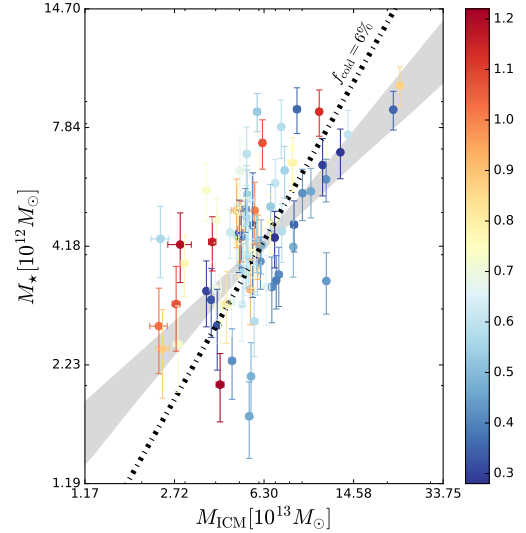


Figure 10. The relation between the stellar mass M_* and the ICM mass M_{ICM} among the 84 clusters. This relation is approximated as $M_* = 4 \times 10^{12} M_\odot \times \left(\frac{M_{\text{ICM}}}{5.7 \times 10^{13} M_\odot} \right)^{0.60}$ by assuming no redshift trends for M_* -to- M_{500} and M_{ICM} -to- M_{500} relations. Each cluster is color-coded by the redshift, while the confidence levels (grey area) of the M_* -to- M_{ICM} relation are fully marginalized and extracted from the MCMC chains of the M_* -to- M_{500} and M_{ICM} -to- M_{500} relations. The dashed line indicates the cold baryon fraction of 6% at the pivot mass and redshift.

This suggests that cold fractions of galaxy clusters have been well-established since redshift $z \approx 1.25$ and are determined primarily by the host halo mass. In addition, the integrated star formation rates for the components that make up massive galaxy clusters are significantly suppressed relative to those for the components of lower mass galaxy clusters.

This picture is further illustrated in Fig. 10, where we show the stellar mass as a function of ICM mass. In addition, we also show the constant cold baryon fraction at 6% as the dashed line in Fig 10. We derive the stellar mass to ICM mass relation directly from equations (9) and (10), assuming that there is no redshift trend. This relation can be approximated as

$$M_* = 4 \times 10^{12} M_\odot \times \left(\frac{M_{\text{ICM}}}{5.7 \times 10^{13} M_\odot} \right)^{0.60 \pm 0.10} \quad (15)$$

We also further extract the fully marginalized 1σ confidence region for equation (15) directly from the MCMC chains from fitting the stellar mass to halo mass (equation (9)) and ICM mass to halo mass (equation (10)) relations; this is indicated as the grey area in Fig. 10. The tilt of the stellar mass to ICM mass relation from a constant cold baryon fraction reflects the presence of the mass-dependent integrated star formation rate. It is worth mentioning that this result may be an indication that stellar mass growth is strongly affected by merger-triggered star formation in clusters of galaxies, resulting in an inverse halo mass dependence (e.g., Brodwin et al. 2013).

We also compare the cold fraction of galaxy clusters to the cosmic value inferred from the stellar mass and the total baryon fraction of the field. We obtain the cosmic cold fraction by dividing the stellar mass fraction obtained from the field luminosity function by the total baryon fraction for the Universe. This is shown with the yellow bars in Fig. 9. In the upper panel, the cosmic cold fraction is at $\approx 3.8 \pm 0.7\%$ at the characteristic redshift $z_{\text{piv}} = 0.6$, which is significantly lower than the cold fraction of galaxy clusters across

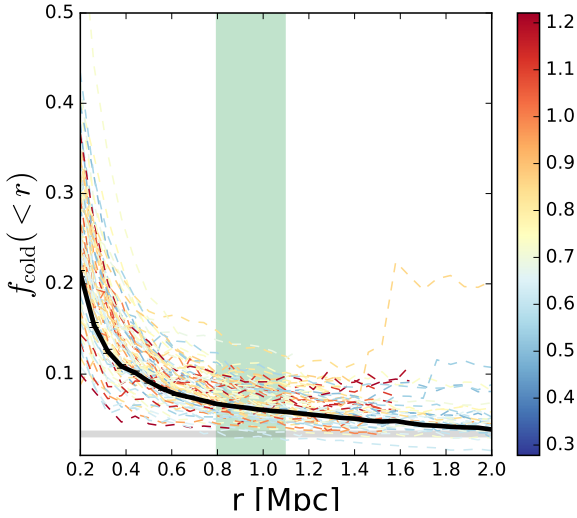


Figure 11. The average cold baryon fraction $f_c(<r)$ within a radius r . Individual systems are shown with dashed-lines that are color-coded by the redshift according to the color bar on the right, while the mean of these clusters is shown in black. The average cold baryon fraction $f_c(<r)$ falls with increasing radius, but shows no redshift dependence. The mean R_{500} (with the RMS of the sample) is plotted as the green area, centered at ≈ 0.9 Mpc. The grey, horizontal bar indicates the cosmic value of the cold baryon fraction at the pivot redshift $z_{\text{piv}} = 0.6$.

the mass range ($M_{500} \lesssim 10^{15} M_{\odot}$). In the lower panel, the cosmic cold fraction grows significantly from $\lesssim 1\%$ at $z \gtrsim 0.7$ to $\approx 5.5\%$ at $z \approx 0$, which follows from the significant growth of the cosmic stellar mass fraction seen as the yellow bar in the upper-right panel of Fig. 6. Therefore, the same scenario where there is significant infall from the field for massive clusters is also supported by the results from the cold baryon fraction analysis.

Another interesting measurement is the cold fraction as a function of radius within the cluster, because it is less subject to the systematics associated with the overall halo mass scale. To make this measurement, we repeat the analysis in Sections 3.2 and 3.3, i.e. the determination of ICM and stellar masses, for radii between 0.2 Mpc and 2 Mpc with a step of 50 kpc. The enclosed cold fraction $f_c(<r)$ as a function radius appears in Fig. 11. In Fig. 11, individual cluster profiles are color-coded according to their redshift, and we only use measurements with the masking correction $f_{\text{mask}} < 1.2$. The stacked $f_c(<r)$ profile of all clusters is shown as the black line, while the typical R_{500} with its standard deviation is independently plotted as the green region. We can see that the f_c is clearly a function of radius that monotonically decreases from $\approx 20\%$ in the central regions ($r < 0.2$ Mpc) to the $\lesssim 6\%$ beyond ≈ 1 Mpc, which is typically the scale of R_{500} for the SPT clusters.

6 DISCUSSION

In this section we discuss a toy model that provides a scenario by which the behavior we have presented could emerge from hierarchical structure formation. Thereafter, we explore the impact of adopting a Planck CMB anisotropy based cosmology prior.

6.1 Sources of Accretion onto Halos

In Section 5, we have presented the baryon content of galaxy clusters from a large, approximately mass-limited cluster sample

($M_{500} \gtrsim 4 \times 10^{14} M_{\odot}$) and the variations of these baryonic quantities with halo mass and redshift. Extrapolations of the halo mass trends from our sample to lower masses appear to be in good agreement with results from previous studies that have focused on clusters and groups at lower mass scales ($M_{500} \gtrsim 5 \times 10^{13} M_{\odot}$). The emerging trends are that all baryonic components of clusters show strong, non-self similar dependences on cluster halo mass but that there is no statistically significant evidence of redshift trends. The models we fit to the current dataset assume redshift and mass trends are separable, and indeed our data provide no evidence of tension with this model.

This result is quite remarkable. Within the radius R_{500} the observations we present suggest that the stellar and ICM mass components of galaxy clusters scale as a simple power law with the halo mass M_{500} , and this scaling has not changed significantly since redshift $z \approx 1.25$. Given that our halo, ICM and stellar masses are measured homogeneously over the full redshift range, this result cannot easily be attributed to systematic differences in the measurements at low and high redshift. We caution that we can only constrain the redshift trends to within the stated measurement uncertainties, which are still considerable; with large, future samples the redshift and mass trends can be constrained more precisely, and presumably we will be able to resolve any underlying redshift trends in these baryonic quantities.

As is clear in Fig. 7, the universal ICM mass fraction is higher than that of all but the most massive clusters. That implies an increasing ICM mass fraction as one moves outside the virial regions of these systems and into their infall regions. The rough constancy of ICM mass fraction at fixed mass with cosmic time (as seen in the upper-right panel of Fig. 7) can then be used to provide a constraint on the combination of (1) entropy injection from AGN, star formation and other sources together with (2) the mix of material falling in from subclusters and that falling in from the low density regions surrounding the parent halo

The same picture of mass trends and weak redshift trends is also suggested by the stellar mass fraction f_* , although in this case the trends with mass are in the opposite sense: the stellar mass fraction falls with halo mass on cluster scales. One cannot construct massive clusters through the accretion of lower mass subclusters in this case, because as the main cluster grows in mass the stellar mass fraction must fall, and it is not possible to effect this change with lower mass subclusters that have larger stellar mass fractions. In the case of the stellar mass fraction, entropy injection doesn't impact the mass or redshift trend. Thus, we can conclude that material accreted from the lower density infall regions surrounding the parent cluster is having a balancing effect that keeps the stellar mass fraction roughly constant over cosmic time.

Similar arguments can be made for the baryon fraction f_b and the cold baryon fraction f_c , although in both those cases the ICM plays a major role, and so entropy injection and infall from surrounding regions can both contribute to the observed mass and redshift trends.

We have discussed the impact of infall from the low density regions or “field” for structure formation on cluster scales already in Chiu et al. (2016b) in a study of 14 SPT clusters in combination with a heterogeneous set of results from the literature, and a similar picture emerged in Chiu et al. (2016c) where we studied the stellar mass fractions of a larger sample of 46 low mass galaxy groups uniformly selected in the XMM-BCS X-ray survey (Šuhada et al. 2012; Desai et al. 2012) at redshifts $0.1 \lesssim z \lesssim 1$. The significant improvements of our current analysis are that—for the first time—(1) we conduct a study of an approximately “mass-limited” sample

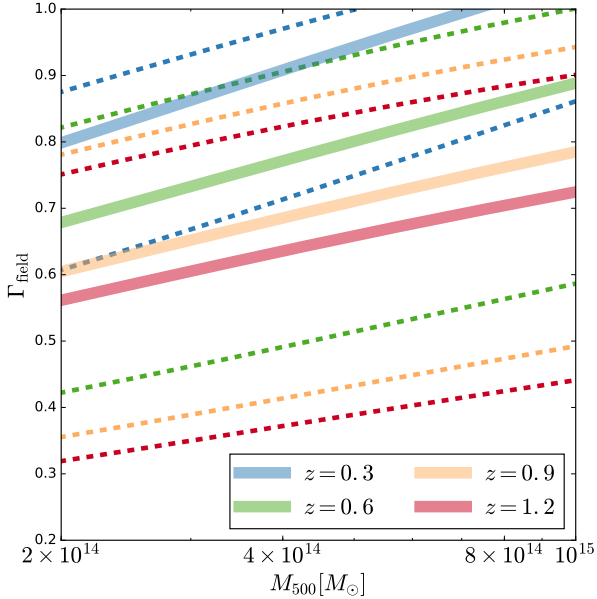


Figure 12. Estimates of the fraction Γ_{fld} of the cluster halo mass contributed by material outside the radius R_{500} or in halos of mass $M_{500} < 10^{13} M_{\odot}$ as a function of the cluster mass. Results are shown for redshifts $z = 0, 0.3, 0.6, 1.2$, which are color-coded as shown in the lower-right corner. The associated 1σ lower and upper bounds are presented by the dashed lines. These field infall fractions are estimated from the mass and redshift trends of the stellar mass to halo mass scaling relation together with a simple infall model discussed in Section 6.1 and Appendix A.

with a much larger size (91 clusters) that has been uniformly selected by the SZE signatures of the clusters over a wide redshift range $0.25 \lesssim z \lesssim 1.25$, (2) for each cluster, we study the full baryonic mass (the ICM and stellar content) and the halo mass M_{500} using consistent methods on uniform multi-wavelength datasets (optical, NIR, X-ray and mm-wavelength), which dramatically reduces the systematic uncertainties that were present in the previous work, and (3) we derive the scaling relations in a Bayesian framework that fully accounts for various selection biases, especially those associated with the intrinsic scatter of the SZE ζ to mass relation that we use to infer cluster mass M_{500} . With increased statistical power and reduced systematic uncertainties, we are in a position to more quantitatively constrain the contributions to cluster growth from lower density regions that lie outside the virial region, a region that is often referred to as the field.

We construct a toy model to help us explore the infall of a variety of components with different properties in the Appendix A. In short, assuming that the stellar mass to halo mass and redshift relation provides a good description for the stellar mass inside the dense virial regions of halos (within R_{500}), the mass trend parameter B_{\star} of the stellar mass to halo mass relation provides a constraint on the fractional contributions of infalling galaxies from different sources. As an example, if we adopt a model where there is infall from only two sources—the low density surrounding infall region of the parent halo and the high density virial regions of infalling subhalos of mass M_{sub} , denoted by subscripts fld and sub, respectively—we have

$$B_{\star} = \Gamma_{\text{fld}} \frac{f_{\text{fld}}(z)}{f_{\star}(M_{500}, z)} + (1 - \Gamma_{\text{fld}}) \frac{f_{\text{sub}}(M_{\text{sub}}, z)}{f_{\star}(M_{500}, z)}, \quad (16)$$

where $\Gamma_{\text{fld}} = \Gamma_{\text{fld}}(M_{500}, z)$ is the fraction of the total infall from the low density region with the stellar mass fraction f_{fld} , the subhalos

make up the rest of the infall with stellar mass fraction f_{sub} , and the cluster being accreted upon has the stellar mass fraction $f_{\star}(M_{500}, z)$ which we have measured as a function of mass and redshift.

For a given redshift z , we can approximate the characteristic stellar mass fraction ($\langle f_{\text{sub}}(< M_{500}, z) \rangle$) of the subhalos that fall into a cluster of mass M_{500} by integrating the stellar mass fraction to mass relation over the mass function of halos $n(M_{\text{sub}}, z)$ with masses less than the mass of the target halo:

$$\langle f_{\text{sub}}(< M_{500}, z) \rangle = \frac{\int dM_{\text{sub}} f_{\star}(M_{\text{sub}}, z) M_{\text{sub}} n(M_{\text{sub}}, z)}{\int dM_{\text{sub}} M_{\text{sub}} n(M_{\text{sub}}, z)}. \quad (17)$$

In equation (17), we integrate M_{sub} from $10^{13} M_{\odot}$ to half the mass of the parent halo $M_{500}/2$ and use our measured stellar mass to halo mass relation over this whole range. This gives mean stellar mass fractions of $\langle f_{\text{sub}}(< M_{500}, z) \rangle \approx 1.4\%$ for a cluster with $M_{500} = 6 \times 10^{14} M_{\odot}$ over the redshift range of interest. With $f_{\text{fld}}(z)$ and $\langle f_{\text{sub}}(< M_{500}, z) \rangle$, we can constrain the fraction of the material Γ_{fld} in a halo of mass M_{500} that originated outside the virial regions of halos with masses $10^{13} M_{\odot}$ and greater:

$$\Gamma_{\text{fld}}(M_{500}, z) = \frac{f_{\star}(M_{500}, z) B_{\star} - \langle f_{\text{sub}}(< M_{500}, z) \rangle}{f_{\text{fld}}(z) - \langle f_{\text{sub}}(< M_{500}, z) \rangle}. \quad (18)$$

This toy model ignores the timescale over which a cluster forms, using the measured stellar mass fractions for the subhalos and the field at redshift z to estimate Γ_{fld} . In Fig. 12 we plot the behavior of the low density infall fraction as a function of mass for clusters at four different redshifts. The character of the solution is as expected—that the fraction of mass contributed from the low density regions surrounding a cluster grows with cluster mass. At $z = 0$ the low density infall fraction Γ_{fld} reaches 100%. At this mass and redshift, the cluster stellar mass fraction falls below the field stellar mass fraction, and within the toy model it is no longer possible to form clusters of such low stellar mass fraction. Accounting for the timescale over which clusters form, including an estimate of the intracluster light fraction (ICL) that could vary with mass and allowing for uncertainties both in our cluster stellar mass fractions and the field stellar mass fractions would all provide flexibility to explain the low stellar mass fractions of the highest mass clusters at redshift $z = 0$. It is also worth mentioning that we assume no in-situ star formation in clusters in this simple toy model. A more accurate exploration of this scenario would require hydrodynamical simulations that include star formation and AGN feedback at resolutions adequate to form and maintain galaxy populations.

It is interesting to mention the recent result from Lin et al. (2017), where they studied the growth of stellar mass in galaxy clusters by pairing the progenitors and descendants from $z \approx 1$ to $z \approx 0.3$. They found a redshift-independent correlation of $M_{\star} \propto M_{500}^{0.7}$ that is in good agreement with our results, suggesting that the scaling derived in this work is also a good description for the evolution of baryon content from progenitors to descendants of galaxy clusters.

To conclude, our measured mass trend parameter in the stellar mass to halo mass relation together with a lack of strong redshift evolution implies a cluster mass and redshift dependent infall from the regions outside the R_{500} regions of massive halos during cluster formation. This trend is qualitatively similar to that noted in simulations by McGee et al. (2009). Moreover, if we use the ICM mass or baryon mass to halo mass and redshift relations within this simple model we infer a much steeper mass dependence in the infall fraction Γ_{fld} than in the case of the stellar mass. This is as expected, because a strong trend of increasing ICM mass fraction (or baryon fraction) with mass could also be impacted by entropy injection

by AGN, star formation or other sources. Therefore, the departures from self-similarity in the ICM mass (and baryon mass) to halo mass relation is presumably due to a combination of entropy injection and the mass dependent infall fraction from the lower density areas surrounding the clusters. Thus, the measured mass trends without strong redshift scaling in, for example, the baryon fraction, stellar mass fraction or ICM mass fraction provides evidence for the presence of the so-called “missing” baryonic mass in the Universe.

6.2 Impact of Adopting a *Planck* CMB Cosmology Prior

As described in Section 3.1, we estimate the cluster mass M_{500} using the SZE observable ξ and redshift together with the best fit SZE observable to mass scaling relation from a previous analysis (de Haan et al. 2016) that used the SPT cluster counts together with Y_X measurements and an externally calibrated Y_X to mass scaling relation. As noted in Bocquet et al. (2015), the SZE observable to mass scaling relation parameters can shift when including the cosmology priors from the *Planck* CMB anisotropy dataset. As quantified in de Haan et al. (2016), analysis of the *Planck* CMB measurements and the SPT cluster dataset within a flat Λ CDM cosmology gives SZE observable to mass scaling relation parameters:

$$r_{\text{SZ}} = (3.53, 1.66, 0.73, 0.20).$$

These parameters imply cluster masses M_{500} that are typically 22% larger in comparison to the default masses used in this work.

To quantify the impact from the *Planck* CMB priors on our cluster halo mass calibration, we redo the analysis with these new halo masses, because M_{500} determines R_{500} (22% in mass corresponds to 7% in radius), which is the radius within which we must extract the ICM and stellar masses. The resulting scaling relations with new masses suggest that the normalizations at $M_{500} = 4.8 \times 10^{14} M_{\odot}$ of A_* , A_{ICM} and A_b decrease by $\approx 12\%$, $\approx 23\%$ and $\approx 23\%$, respectively—therefore—resulting in an increase of A_c by $\approx 12\%$. Apart from the normalization, the mass trend, redshift trend and intrinsic scatter are all consistent with the previous results within the quoted uncertainties and are therefore not sensitive to the 22% shift in halo mass.

Interestingly, the baryon fraction of galaxy clusters with the new M_{500} estimates at the median mass and redshift becomes $f_b \approx (10.8 \pm 0.2)\%$. That is, after including the *Planck* CMB constraints in the cluster mass calibration, the depletion factor of our sample (at their median mass M_{piv}) is shifted from 0.18 ± 0.02 to

$$\mathcal{D} = 0.30 \pm 0.03.$$

This shift is statistically significant and is strongly driven by the change of the absolute mass scale of M_{500} due to the inclusion of the *Planck* CMB constraints. Various simulation based studies indicate that the depletion factor within R_{500} ranges from $\approx 10\%$ to $\approx 20\%$ (e.g., McCarthy et al. 2011; Planelles et al. 2013; Barnes et al. 2017), which is in good agreement with our baseline result $\mathcal{D} = 0.18 \pm 0.02$, but is strongly inconsistent with our result when including the *Planck* CMB based cosmology prior. This result implies that the cosmological framework anchored by the *Planck* CMB constraints predicts cluster masses that are too high to be consistent with simulations. As already mentioned, we disfavor the adoption of the *Planck* cosmology prior, because directly measured weak gravitational lensing (Gruen et al. 2014; de Haan et al. 2016; Dietrich et al. 2017; Stern et al. 2018) and dynamical mass measurements (Bocquet et al. 2015; Capasso et al. 2017) are in better agreement with the masses emerging from the standard SPT cluster analysis results from de Haan et al. (2016) employed in this paper.

7 CONCLUSIONS

We estimate the halo mass M_{500} and the ICM mass M_{ICM} using the SZE observable and X-ray observations, respectively, of 91 SZE selected galaxy clusters from the SPT-SZ survey. In addition, we derive the stellar mass M_* of 84 of those clusters using SED fitting of the galaxies with *griz* optical imaging from DES combined with NIR photometry either from *WISE* (*W1W2*) or from *Spitzer* ([3.6][4.5]). This sample spans a mass range from $\approx 2.5 \times 10^{14} M_{\odot}$ to $\approx 1.3 \times 10^{15} M_{\odot}$ (with median of $4.8 \times 10^{14} M_{\odot}$) and a redshift range from $z = 0.278$ to $z = 1.22$ (median $z = 0.58$). The well understood selection, the sample size and uniform analysis applied over a wide redshift range combine to allow us to study the baryon content of galaxy clusters and trends with mass and redshift with lower systematic uncertainties than previous work. All measurements are extracted at a consistent radius R_{500} , allowing us to self-consistently compare the baryon components within the same portion of the virial region, regardless of cluster mass or redshift.

We use these measurements to study four different observable–halo mass–redshift scaling relations, where the four observables are the stellar mass, the ICM mass, the baryonic mass and the cold baryon fraction. Our fits are carried out using a Bayesian framework that includes selection effects and accounts for both measurement uncertainties and intrinsic scatter. Fitting for these scaling relations allows us to constrain the variation of the stellar mass fraction, ICM mass fraction and baryonic fraction as a function of halo mass and redshift.

Our results indicate that the baryon content within R_{500} strongly depends on the cluster halo mass such that the stellar mass, ICM mass, baryonic mass and the cold fraction scale with M_{500} as $M_{500}^{0.80 \pm 0.12}$, $M_{500}^{1.33 \pm 0.09}$, $M_{500}^{1.29 \pm 0.09}$ and $M_{500}^{-0.51 \pm 0.12}$, respectively. On the other hand, we do not observe significant redshift trends in any of these scaling relations, where if the observable at a fixed mass scales as $(1+z)^\gamma$ we measure $\gamma = 0.05 \pm 0.27$, -0.15 ± 0.22 , -0.16 ± 0.23 and 0.08 ± 0.26 for stars, ICM, baryons and cold fractions, respectively.

Our observations imply that at the typical mass $M_{\text{piv}} = 4.8 \times 10^{14} M_{\odot}$ and redshift $z_{\text{piv}} = 0.6$ of our sample, the stellar mass fraction, ICM mass fraction, baryonic mass fraction and the cold baryon fraction are $f_* = (0.83 \pm 0.06)\%$, $f_{\text{ICM}} = (12.0 \pm 1.3)\%$, $f_b = (12.8 \pm 1.29)\%$ and $f_c = (6.78 \pm 0.36)\%$. The logarithmic intrinsic scatters in these observables at fixed mass are found to be 0.22 ± 0.03 , 0.11 ± 0.04 , 0.12 ± 0.04 and 0.24 ± 0.03 , respectively. We carefully quantify the systematic uncertainties associated with the determination of the halo masses and find that these are too small to affect our mass or redshift trends in an important way.

Our measurements are in good agreement with previous work in the mass and redshift ranges where they overlap. The extrapolation of our measured scaling relations to lower mass is broadly consistent with measurements available in the literature. Our results demonstrate that the baryon content of galaxy clusters is determined by the halo mass and has not changed much in the past 9 Gyr of cosmic evolution.

We also compare our results to the cosmic values estimated from the cosmological parameters (Planck Collaboration et al. 2016) and the analysis of the stellar mass function in the field from the COSMOS/UltraVISTA survey (Muzzin et al. 2013). We find that the baryon content of clusters deviates significantly from these cosmic values, with stellar mass fractions (ICM mass fractions) being larger than (smaller than) the cosmic values for all but the most massive galaxy clusters ($\gtrsim 8 \times 10^{14} M_{\odot}$).

The strong mass trends and weak redshift trends of these bary-

onic fractions of the clusters provide an indication that galaxy clusters cannot grow solely in a self-similar fashion. Specifically, while ICM mass fractions that increase with halo mass can also be introduced through entropy injection from AGN feedback, star formation or other sources (e.g. [Ponman et al. 1999](#)), this entropy injection would not impact the stellar mass fraction decrease with halo mass that we observe. Thus, our measurements suggest that higher mass cluster halos contain a larger fraction of material that has been accreted from regions outside the high density, virial regions of clusters and groups. In these surrounding low density regions the characteristic stellar mass fractions (or baryon fractions) lie below (above) the mass dependent fractions we measure in the virial regions ($r < R_{500}$ in our analysis). Furthermore, the infall from the surrounding low density regions must be in balance with the infall from the lower mass halos such that the baryon content of galaxy clusters remains approximately the same at a fixed mass scale since redshift $z \approx 1.25$ ([Chiu et al. 2016b](#)). Our results provide a direct indication of the presence and the impact of the so-called “missing baryons” in our Universe. If the baryons were not present at the expected densities outside collapsed halos, then there would be no way of explaining in a hierarchical structure formation model how baryonic scaling relations vary steeply with mass and still remain roughly constant in time.

To explore this ansatz, we construct a toy model that we use to estimate the fraction of material that has been accreted from the field (i.e. outside the virial regions or in halos with masses $M_{500} < 10^{13}M_{\odot}$) based on the derived scaling relations together with the cosmic values in the field. Results from our toy model suggest that the fraction of infalling material from low density regions increases with cluster halo mass, varying from $\approx 60\%$ at $M_{500} = 10^{14}M_{\odot}$ to $\gtrsim 75\%$ at $M_{500} = 8 \times 10^{14}M_{\odot}$ at intermediate redshift. Interestingly, recent structure formation simulations that include AGN feedback produce high mass halo populations that exhibit strong mass scaling and weak redshift evolution in ICM mass and stellar mass scaling relations ([Wu et al. 2015](#); [Truong et al. 2018](#); [Barnes et al. 2017](#); [Le Brun et al. 2017](#)) that are qualitatively consistent with the behavior we find in the SPT selected sample. With further hydrodynamical simulations of the high mass cluster population, we expect to be able to carry out a detailed analysis of the physical implications of observed and predicted scaling relations and their redshift trends since $z \approx 1$.

We emphasize that, as stated explicitly above, the uncertainties on the redshift and mass trends of the baryonic scaling relations are still considerable even with our large sample; therefore, even larger samples (e.g., including the galaxy clusters identified in DES, SPT-3G and eROSITA surveys at the low mass end) will be needed in future studies to resolve the precise scale of the variations in baryonic content of galaxy clusters over cosmic time.

ACKNOWLEDGEMENTS

I-Non Chiu thanks Chien-Ho Lin, Keiichi Umetsu, Yen-Ting Lin and James Chan for support and useful discussions during this work. We thank the anonymous referee for the constructive comments that lead to the improvement of this paper. We acknowledge the support by the DFG Cluster of Excellence “Origin and Structure of the Universe”, the DLR award 50 OR 1205 that supported I. Chiu during his PhD project, and the Transregio program TR33 “The Dark Universe”. The data processing has been carried out on the computing facilities of the Computational Center for Particle

and Astrophysics (C2PAP), located at the Leibniz Supercomputer Center (LRZ) in Garching.

The South Pole Telescope is supported by the National Science Foundation through grant PLR-1248097. Partial support is also provided by the NSF Physics Frontier Center grant PHY-1125897 to the Kavli Institute of Cosmological Physics at the University of Chicago, the Kavli Foundation and the Gordon and Betty Moore Foundation grant GBMF 947.

This paper has gone through internal review by the DES collaboration. Funding for the DES Projects has been provided by the U.S. Department of Energy, the U.S. National Science Foundation, the Ministry of Science and Education of Spain, the Science and Technology Facilities Council of the United Kingdom, the Higher Education Funding Council for England, the National Center for Supercomputing Applications at the University of Illinois at Urbana-Champaign, the Kavli Institute of Cosmological Physics at the University of Chicago, the Center for Cosmology and Astrophysics at the Ohio State University, the Mitchell Institute for Fundamental Physics and Astronomy at Texas A&M University, Financiadora de Estudos e Projetos, Fundação Carlos Chagas Filho de Amparo à Pesquisa do Estado do Rio de Janeiro, Conselho Nacional de Desenvolvimento Científico e Tecnológico and the Ministério da Ciência, Tecnologia e Inovação, the Deutsche Forschungsgemeinschaft and the Collaborating Institutions in the Dark Energy Survey.

The Collaborating Institutions are Argonne National Laboratory, the University of California at Santa Cruz, the University of Cambridge, Centro de Investigaciones Energéticas, Medioambientales y Tecnológicas-Madrid, the University of Chicago, University College London, the DES-Brazil Consortium, the University of Edinburgh, the Eidgenössische Technische Hochschule (ETH) Zürich, Fermi National Accelerator Laboratory, the University of Illinois at Urbana-Champaign, the Institut de Ciències de l’Espai (IEEC/CSIC), the Institut de Física d’Altes Energies, Lawrence Berkeley National Laboratory, the Ludwig-Maximilians Universität München and the associated Excellence Cluster Universe, the University of Michigan, the National Optical Astronomy Observatory, the University of Nottingham, The Ohio State University, the University of Pennsylvania, the University of Portsmouth, SLAC National Accelerator Laboratory, Stanford University, the University of Sussex, Texas A&M University, and the OzDES Membership Consortium.

The DES data management system is supported by the National Science Foundation under Grant Number AST-1138766. The DES participants from Spanish institutions are partially supported by MINECO under grants AYA2012-39559, ESP2013-48274, FPA2013-47986, and Centro de Excelencia Severo Ochoa SEV-2012-0234. Research leading to these results has received funding from the European Research Council under the European Union’s Seventh Framework Programme (FP7/2007-2013) including ERC grant agreements 240672, 291329, and 306478.

This work is based in part on archival data obtained with the *Spitzer* Space Telescope, which is operated by the Jet Propulsion Laboratory, California Institute of Technology under a contract with NASA. This publication makes use of data products from the Wide-field Infrared Survey Explorer ([Wright et al. 2010b](#)), which is a joint project of the University of California, Los Angeles, and the Jet Propulsion Laboratory/California Institute of Technology, funded by the National Aeronautics and Space Administration. This publication also makes use of data products from NEOWISE, which is a project of the Jet Propulsion Laboratory/California Institute of Technology, funded by the Planetary Science Division of

the National Aeronautics and Space Administration. This research has made use of data obtained from the Chandra Data Archive and the Chandra Source Catalog, and software provided by the Chandra X-ray Center (CXC) in the application packages CIAO, ChIPS, and Sherpa. This research made use of ds9, a tool for data visualization supported by the Chandra X-ray Science Center (CXC) and the High Energy Astrophysics Science Archive Center (HEASARC) with support from the JWST Mission office at the Space Telescope Science Institute for 3D visualization. This paper includes data gathered with the Blanco 4 m telescope, located at the Cerro Tololo Inter-American Observatory in Chile, which is part of the U.S. National Optical Astronomy Observatory, which is operated by the Association of Universities for Research in Astronomy (AURA), under contract with the NSF. This work includes data products from observations made with ESO Telescopes at the La Silla Paranal Observatory under ESO programme ID 179.A-2005 and data products produced by TERAPIX and the Cambridge Astronomy Survey Unit on behalf of the UltraVISTA consortium. This work made use of the IPython package (Pérez & Granger 2007), SciPy (Jones et al. 2001), TOPCAT, an interactive graphical viewer and editor for tabular data (Taylor 2005), matplotlib, a Python library for publication quality graphics (Hunter 2007), Astropy, a community-developed core Python package for Astronomy (Astropy Collaboration et al. 2013), Sherpa (Freeman et al. 2001), XSPEC (Arnaud 1996), NumPy (Van Der Walt et al. 2011).

REFERENCES

- Aihara H. et al., 2018, PASJ, 70, S8
 Andersson K. et al., 2011, ApJ, 738, 48
 Arnaud K. A., 1996, in *Astronomical Society of the Pacific Conference Series*, Vol. 101, *Astronomical Data Analysis Software and Systems V*, Jacoby G. H., Barnes J., eds., p. 17
 Arnaud M., Evrard A. E., 1999, MNRAS, 305, 631
 Arnaud M., Pointecouteau E., Pratt G. W., 2007, A&A, 474, L37
 Arnouts S., Cristiani S., Moscardini L., Matarrese S., Lucchin F., Fontana A., Giallongo E., 1999, MNRAS, 310, 540
 Ashby M. L. N. et al., 2013, ApJS, 209, 22
 Astropy Collaboration et al., 2013, A&A, 558, A33
 Baldry I. K. et al., 2012, MNRAS, 421, 621
 Barnes D. J. et al., 2017, MNRAS, 471, 1088
 Bayliss M. B. et al., 2016, ApJS, 227, 3
 Bell E. F., McIntosh D. H., Katz N., Weinberg M. D., 2003, ApJS, 149, 289
 Benson B. A. et al., 2013, ApJ, 763, 147
 Bertin E., Arnouts S., 1996, AAPS, 117, 393
 Bertin E., Mellier Y., Radovich M., Missonnier G., Didelon P., Morin B., 2002, in *Astronomical Society of the Pacific Conference Series*, Vol. 281, *Astronomical Data Analysis Software and Systems XI*, D. A. Bohlender, D. Durand, & T. H. Handley, ed., pp. 228–
 Bleem L. E. et al., 2015, ApJS, 216, 27
 Bocquet S., Carter F. W., 2016, *The Journal of Open Source Software*, 1
 Bocquet S., Saro A., Dolag K., Mohr J. J., 2016, MNRAS, 456, 2361
 Bocquet S. et al., 2015, ApJ, 799, 214
 Brodwin M. et al., 2013, ApJ, 779, 138
 Bruzual G., Charlot S., 2003, MNRAS, 344, 1000
 Bryan G., Norman M., 1998, ApJ, 495, 80
 Calzetti D., Armus L., Bohlin R. C., Kinney A. L., Koornneef J., Storchi-Bergmann T., 2000, ApJ, 533, 682
 Capak P. et al., 2007, ApJS, 172, 99
 Capak P. et al., 2012, SPLASH: Spitzer Large Area Survey with Hyper-Suprime-Cam. Spitzer Proposal
 Capasso R. et al., 2017, ArXiv e-prints 1711.09903
 Carlstrom J. E. et al., 2011, PASP, 123, 568
 Carlstrom J. E., Holder G. P., Reese E. D., 2002, ARAA, 40, 643
 Cash W., 1979, ApJ, 228, 939
 Chabrier G., 2003, PASP, 115, 763
 Chiu I. et al., 2016a, MNRAS, 457, 3050
 Chiu I. et al., 2016b, MNRAS, 455, 258
 Chiu I. et al., 2016c, MNRAS, 458, 379
 Cole S. et al., 2001, MNRAS, 326, 255
 Cooke R. J., Pettini M., Jorgenson R. A., Murphy M. T., Steidel C. C., 2014, ApJ, 781, 31
 David L. P., Slyz A., Jones C., Forman W., Vrtilek S. D., Arnaud K. A., 1993, ApJ, 412, 479
 de Haan T. et al., 2016, ApJ, 832, 95
 De Santis C., Grazian A., Fontana A., Santini P., 2007, *New Astronomy*, 12, 271
 DES Collaboration, 2005, ArXiv Astrophysics e-prints
 DES Collaboration, 2016, MNRAS, 460, 1270
 Desai S. et al., 2012, ApJ, 757, 83
 Diehl H. T. et al., 2016, in *Proc. SPIE*, Vol. 9910, *Observatory Operations: Strategies, Processes, and Systems VI*, p. 99101D
 Dietrich J. P. et al., 2017, ArXiv e-prints 1711.05344
 Driver S. P., Robotham A. S. G., 2010, MNRAS, 407, 2131
 Eckert D. et al., 2016, A&A, 592, A12
 Evrard A., 1997, MNRAS, 292, 289
 Fazio G. G. et al., 2004, ApJS, 154, 10
 Foreman-Mackey D., Hogg D. W., Lang D., Goodman J., 2013, PASP, 125, 306
 Fowler J. W. et al., 2007, *Applied Optics*, 46, 3444
 Freeman P., Doe S., Siemiginowska A., 2001, in *Society of Photo-Optical Instrumentation Engineers (SPIE) Conference Series*, Vol. 4477, *Astronomical Data Analysis*, Starck J.-L., Murtagh F. D., eds., pp. 76–87
 Galametz A. et al., 2013, ApJS, 206, 10
 Gonzalez A. H., Sivanandam S., Zabludoff A. I., Zaritsky D., 2013, ApJ, 778, 14
 Gruen D. et al., 2014, MNRAS, 442, 1507
 Haiman Z., Mohr J. J., Holder G. P., 2001, ApJ, 553, 545
 Hansen S. M., McKay T. A., Wechsler R. H., Annis J., Sheldon E. S., Kimball A., 2005, ApJ, 633, 122
 Hansen S. M., Sheldon E. S., Wechsler R. H., Koester B. P., 2009, ApJ, 699, 1333
 Hennig C. et al., 2017, MNRAS, 467, 4015
 High F. W. et al., 2010, ApJ, 723, 1736
 Hilton M. et al., 2013, MNRAS, 435, 3469
 Holder G., Haiman Z., Mohr J. J., 2001, ApJ, 560, L111
 Hunter J. D., 2007, *Computing In Science & Engineering*, 9, 90
 Ilbert O. et al., 2006, A&A, 457, 841
 Ilbert O. et al., 2009, ApJ, 690, 1236
 Jarrett T. H. et al., 2011, ApJ, 735, 112
 Jones E., Oliphant T., Peterson P., et al., 2001, *SciPy: Open source scientific tools for python*
 Joseph R., Courbin F., Starck J.-L., 2016, A&A, 589, A2
 Klein M. et al., 2017, ArXiv e-prints 1706.06577
 Laidler V. G. et al., 2007, PASP, 119, 1325
 Laigle C. et al., 2016, ApJS, 224, 24

- Le Brun A. M. C., McCarthy I. G., Schaye J., Ponman T. J., 2017, *MNRAS*, 466, 4442
- Lin Y., Mohr J. J., Stanford S. A., 2003, *ApJ*, 591, 749
- Lin Y., Mohr J. J., Stanford S. A., 2004, *ApJ*, 610, 745
- Lin Y.-T. et al., 2017, *ApJ*, 851, 139
- Lin Y.-T., Stanford S. A., Eisenhardt P. R. M., Vikhlinin A., Maughan B. J., Kravtsov A., 2012, *ApJ*, 745, L3
- Liu J. et al., 2015a, *MNRAS*, 449, 3370
- Liu J. et al., 2015b, *MNRAS*, 448, 2085
- Mainzer A. et al., 2014, *ApJ*, 792, 30
- Mancone C. L., Gonzalez A. H., 2012, *PASP*, 124, 606
- Mancone C. L., Gonzalez A. H., Moustakas L. A., Price A., 2013, *PASP*, 125, 1514
- Mantz A. B., Allen S. W., Morris R. G., Schmidt R. W., 2016a, *MNRAS*, 456, 4020
- Mantz A. B. et al., 2016b, *MNRAS*, 463, 3582
- Marriage T. A. et al., 2011, *ApJ*, 737, 61
- Martino R., Mazzotta P., Bourdin H., Smith G. P., Bartalucci I., Marrone D. P., Finoguenov A., Okabe N., 2014, *MNRAS*, 443, 2342
- Masci F. J., Fowler J. W., 2009, in *Astronomical Society of the Pacific Conference Series*, Vol. 411, *Astronomical Data Analysis Software and Systems XVIII*, Bohlender D. A., Durand D., Dowler P., eds., p. 67
- McCarthy I. G., Schaye J., Bower R. G., Ponman T. J., Booth C. M., Dalla Vecchia C., Springel V., 2011, *MNRAS*, 412, 1965
- McDonald M. et al., 2014, *ApJ*, 794, 67
- McDonald M. et al., 2013, *ApJ*, 774, 23
- McDonald M. et al., 2016, *ApJ*, 826, 124
- McDonald M. et al., 2015, *ApJ*, 811, 111
- McGee S. L., Balogh M. L., Bower R. G., Font A. S., McCarthy I. G., 2009, *MNRAS*, 400, 937
- Menanteau F. et al., 2010, *ApJ*, 723, 1523
- Merlin E. et al., 2015, *A&A*, 582, A15
- Miyazaki S. et al., 2012, in *Society of Photo-Optical Instrumentation Engineers (SPIE) Conference Series*, Vol. 8446, *Society of Photo-Optical Instrumentation Engineers (SPIE) Conference Series*
- Mohr J., Evrard A., 1997, *ApJ*, 491, 38
- Mohr J. J. et al., 2012, in *Proc. SPIE*, Vol. 8451, *Software and Cyberinfrastructure for Astronomy II*, p. 84510D
- Mohr J. J., Mathiesen B., Evrard A. E., 1999, *ApJ*, 517, 627
- Mulroy S. L. et al., 2014, *MNRAS*, 443, 3309
- Mushotzky R. F., Scharf C. A., 1997, *ApJ*, 482, L13
- Muzzin A. et al., 2013, *ApJ*, 777, 18
- Nagai D., Kravtsov A. V., Vikhlinin A., 2007, *ApJ*, 668, 1
- O'Hara T. B., Mohr J. J., Bialek J. J., Evrard A. E., 2006, *ApJ*, 639, 64
- Pérez F., Granger B. E., 2007, *Computing in Science and Engineering*, 9, 21
- Pillepich A. et al., 2018, *MNRAS*, 475, 648
- Planck Collaboration et al., 2016, *A&A*, 594, A13
- Planck Collaboration et al., 2011, *A&A*, 536, A10
- Planelles S., Borgani S., Dolag K., Ettori S., Fabjan D., Murante G., Tornatore L., 2013, *MNRAS*, 431, 1487
- Ponman T. J., Cannon D. B., Navarro J. F., 1999, *Nature*, 397, 135
- Pratt G. W. et al., 2010, *A&A*, 511, A85
- Pratt G. W., Croston J. H., Arnaud M., Böhringer H., 2009, *A&A*, 498, 361
- Reiprich T. H., Böhringer H., 2002, *ApJ*, 567, 716
- Riess A. G. et al., 2011, *ApJ*, 730, 119
- Rozo E., Bartlett J. G., Evrard A. E., Rykoff E. S., 2014, *MNRAS*, 438, 78
- Rozo E. et al., 2009, *ApJ*, 699, 768
- Ruel J. et al., 2014, *ApJ*, 792, 45
- Salpeter E. E., 1955, *ApJ*, 121, 161
- Saro A., Mohr J. J., Bazin G., Dolag K., 2013, *ApJ*, 772, 47
- Schechter P., 1976, *ApJ*, 203, 297
- Schellenberger G., Reiprich T. H., Lovisari L., Nevalainen J., David L., 2015, *A&A*, 575, A30
- Semler D. R. et al., 2012, *ApJ*, 761, 183
- Sifón C. et al., 2013, *ApJ*, 772, 25
- Song J., Mohr J. J., Barkhouse W. A., Warren M. S., Rude C., 2012a, *ApJ*, 747, 58
- Song J. et al., 2012b, *ApJ*, 761, 22
- Stanek R., Rasia E., Evrard A. E., Pearce F., Gazzola L., 2010, *ApJ*, 715, 1508
- Stern C. et al., 2018, *ArXiv e-prints* 1802.04533
- Sun M., Voit G. M., Donahue M., Jones C., Forman W., Vikhlinin A., 2009, *ApJ*, 693, 1142
- Sunyaev R. A., Zel'dovich Y. B., 1970, *Ap&SS*, 7, 3
- Sunyaev R. A., Zel'dovich Y. B., 1972, *Comments on Astrophysics and Space Physics*, 4, 173
- Taylor M. B., 2005, in *Astronomical Society of the Pacific Conference Series*, Vol. 347, *Astronomical Data Analysis Software and Systems XIV*, Shopbell P., Britton M., Ebert R., eds., p. 29
- The Planck Collaboration, 2006, *ArXiv:astro-ph/0604069*
- Tinker J., Kravtsov A. V., Klypin A., Abazajian K., Warren M., Yepes G., Gottlöber S., Holz D. E., 2008, *ApJ*, 688, 709
- Truong N. et al., 2018, *MNRAS*, 474, 4089
- Suhada R. et al., 2012, *A&A*, 537, A39
- van der Burg R. F. J., Hoekstra H., Muzzin A., Sifón C., Balogh M. L., McGee S. L., 2015, *A&A*, 577, A19
- van der Burg R. F. J., Muzzin A., Hoekstra H., Wilson G., Lidman C., Yee H. K. C., 2014, *A&A*, 561, A79
- Van Der Walt S., Colbert S. C., Varoquaux G., 2011, *Computing in Science & Engineering*, 13, 22
- Vikhlinin A. et al., 2009, *ApJ*, 692, 1033
- Vikhlinin A., Kravtsov A., Forman W., Jones C., Markevitch M., Murray S. S., Van Speybroeck L., 2006, *ApJ*, 640, 691
- Wright E. L. et al., 2010a, *AJ*, 140, 1868
- Wright E. L. et al., 2010b, *AJ*, 140, 1868
- Wu H.-Y., Evrard A. E., Hahn O., Martizzi D., Teyssier R., Wechsler R. H., 2015, *MNRAS*, 452, 1982
- Young O. E., Thomas P. A., Short C. J., Pearce F., 2011, *MNRAS*, 413, 691
- Zenteno A. et al., 2011, *ApJ*, 734, 3
- Zhang Y.-Y., Andernach H., Caretta C. A., Reiprich T. H., Böhringer H., Puchwein E., Sijacki D., Girardi M., 2011a, *A&A*, 526, A105
- Zhang Y.-Y., Laganá T. F., Pierini D., Puchwein E., Schneider P., Reiprich T. H., 2011b, *A&A*, 535, A78

APPENDIX A: TOY MODEL FOR ACCRETION

We provide the derivation of equation (16) for the toy model that describes the connection of the mass slope of the scaling relation to the materials that fall into the main halo. For simplicity, we consider the stellar mass M_* to halo mass scaling relation here.

For a halo of mass M_h and stellar mass M_* at redshift z , the process of accretion or infall onto the halo will increase the halo and stellar masses by dM_h and dM_* , respectively, over a period dz

in the formation history. Then, the stellar mass fraction f_* after the accretion of matter could be written as follows.

$$f_*(M_h + dM_h, z + dz) = \frac{M_* + dM_*}{M_h + dM_h}. \quad (\text{A1})$$

In the limit of small changes in mass, equation (A1) could be approximated as

$$f_*(M_h + dM_h, z + dz) \approx f_*(M_h, z) \left(1 + \frac{dM_*}{M_*} - \frac{dM_h}{M_h} \right). \quad (\text{A2})$$

This accretion of surrounding material could consist of other halos of a given mass and even the material outside the virial regions of these halos. We can express dM_* by summing the stellar mass infall from each of these components i with the stellar fraction of $f_{*,i}$, where each component contributes a fraction $\Gamma_i(M_h, z)$ of the infalling halo mass dM_h :

$$dM_* = dM_h \sum_{i \in \text{infall}} \Gamma_i(M_h, z) f_{*,i}(z), \quad (\text{A3})$$

where the fractions sum to unity

$$\sum_{i \in \text{infall}} \Gamma_i(M_h, z) = 1. \quad (\text{A4})$$

Substituting equation (A3) and $f_*(M_h, z) = \frac{M_*}{M_h}$ in equation (A2), we have

$$\begin{aligned} \frac{f_*(M_h + dM_h, z + dz)}{f_*(M_h, z)} &= 1 + \frac{dM_h \sum_{i \in \text{infall}} \Gamma_i(M_h, z) f_{*,i}(z)}{M_h f_*(M_h, z)} - \frac{dM_h}{M_h} \\ &= 1 + \frac{dM_h}{M_h} \left(\frac{\sum_{i \in \text{infall}} \Gamma_i(M_h, z) f_{*,i}(z)}{f_*(M_h, z)} - 1 \right) \end{aligned} \quad (\text{A5})$$

This expression can be further rewritten as

$$\begin{aligned} \frac{M_h}{dM_h} \left(\frac{f_*(M_h + dM_h, z + dz) - f_*(M_h, z)}{f_*(M_h, z)} \right) + 1 \\ = \sum_{i \in \text{infall}} \Gamma_i(M_h, z) \frac{f_{*,i}(z)}{f_*(M_h, z)}. \end{aligned} \quad (\text{A6})$$

The first term on the left side of equation (A6) is simply the logarithmic derivative, and so we can write

$$\frac{d \ln f_*(M_h, z)}{d \ln M_h} + 1 = \sum_{i \in \text{infall}} \Gamma_i(M_h, z) \frac{f_{*,i}(z)}{f_*(M_h, z)}. \quad (\text{A7})$$

Note that the left hand side of equation (A7) is just the power law index B_* of the mass trend in the stellar mass to halo mass relation. That is,

$$B_* = \sum_{i \in \text{infall}} \Gamma_i(M_h, z) \frac{f_{*,i}(z)}{f_*(M_h, z)}. \quad (\text{A8})$$

Thus, the slope parameter B_* of the mass trend of the stellar mass to halo mass relation reflects the stellar mass fractions of the components that are accreted onto the halo. If one can quantify (1) the mass trend parameter B_* of the stellar mass to halo mass relation, and (2) the stellar mass fractions $f_{*,i}(z)$ of the infalling components i and of the main halo $f_*(M_h, z)$, then—based on Equation A8—the fraction $\Gamma_i(M_h, z)$ of the infalling mass from the various components i could be determined.

Consider a particularly simple case where there are only two components that fall into clusters—material within the virial regions of subhalos and material outside the virial regions of halos, which we refer to as the field. Denoting these using sub and fld, respectively, we can write equation (A8) as

$$B_* = \Gamma_{\text{fld}}(M_h, z) \frac{f_{\text{fld}}(z)}{f_*(M_h, z)} + (1 - \Gamma_{\text{fld}}(M_h, z)) \frac{f_{\text{sub}}(z)}{f_*(M_h, z)}. \quad (\text{A9})$$

In the extreme case that stellar mass fraction is constant in halos regardless of hosting mass (i.e., $B_* = 1$ and $f_{\text{sub}}(z) = f_*(M_h, z)$), then equation (A8) becomes

$$\Gamma_{\text{fld}}(M_h, z) \left(\frac{f_{\text{fld}}(z)}{f_*(M_h, z)} - 1 \right) = 0,$$

which must imply no infall from the field (i.e., $\Gamma_{\text{fld}}(M_h, z) = 0$) if the field stellar mass fraction is different from the halo stellar mass fraction $f_{\text{fld}}(z) \neq f_*(M_h, z)$. Because we have measured the stellar mass fractions as a function of mass and redshift on the cluster mass scale out to $z \approx 1.25$, we can estimate the contribution from infalling subhalos at any redshift by adopting the halo mass function at that redshift $\frac{dn}{dM}(M_h, z)$. This together with the field stellar mass fraction, which can serve as a reference for the mean stellar fraction outside halo virial regions, then allows us to estimate the fraction of accreted mass coming from virial regions of subhalos and the fraction coming from the lower density regions that lie outside virial regions—a region that is often referred to as the field.

Affiliations: ¹ Academia Sinica Institute of Astronomy and Astrophysics (ASIAA), 11F of

AS/NTU Astronomy-Mathematics Building, No.1, Sec. 4, Roosevelt Rd, Taipei 10617, Taiwan

² Faculty of Physics, Ludwig-Maximilians-Universität, Scheinerstr. 1, 81679 Munich, Germany

³ Excellence Cluster Universe, Boltzmannstr. 2, 85748 Garching, Germany

⁴ Max Planck Institute for Extraterrestrial Physics, Giessenbachstrasse, 85748 Garching, Germany

⁵ Kavli Institute for Astrophysics and Space Research, Massachusetts Institute of Technology, 77

Massachusetts Avenue, Cambridge, MA 02139

⁶ Argonne National Laboratory, High-Energy Physics Division, 9700 S. Cass Avenue, Argonne, IL,

USA 60439

⁷ Department of Physics, IIT Hyderabad, Kandi, Telangana 502285, India

⁸ Harvard-Smithsonian Center for Astrophysics, 60 Garden Street, Cambridge, MA 02138

⁹ Physics Department, University of California, Davis, CA 95616

¹⁰ Fermi National Accelerator Laboratory, Batavia, IL 60510-0500

¹¹ Department of Astronomy and Astrophysics, University of Chicago, 5640 South Ellis Avenue,

Chicago, IL 60637

¹² Kavli Institute for Cosmological Physics, University of Chicago, 5640 South Ellis Avenue,

Chicago, IL 60637

¹³ Department of Physics and Astronomy, University of Missouri, 5110 Rockhill Road, Kansas

City, MO 64110

¹⁴ Cerro Tololo Inter-American Observatory, National Optical Astronomy Observatory, Casilla 603,

La Serena, Chile

¹⁵ Department of Physics and Electronics, Rhodes University, PO Box 94, Grahamstown, 6140,

South Africa

¹⁶ Department of Physics & Astronomy, University College London, Gower Street, London, WC1E

6BT, UK

¹⁷ Fermi National Accelerator Laboratory, P. O. Box 500, Batavia, IL 60510, USA

¹⁸ Kavli Institute for Astrophysics and Space Research, Massachusetts Institute of Technology, 77

Massachusetts Avenue, Cambridge, MA 02139

¹⁹ Sorbonne Universités, UPMC Univ Paris 06, UMR 7095, Institut d'Astrophysique de Paris,

F-75014, Paris, France

²⁰ CNRS, UMR 7095, Institut d'Astrophysique de Paris, F-75014, Paris, France

²¹ Argonne National Laboratory, High-Energy Physics Division, 9700 S. Cass Avenue, Argonne,

IL, USA 60439

²² Kavli Institute for Cosmological Physics, University of Chicago, 5640 South Ellis Avenue,

Chicago, IL 60637

²³ Excellence Cluster Universe, Boltzmannstr. 2, 85748 Garching, Germany

²⁴ Faculty of Physics, Ludwig-Maximilians-Universität, Scheinerstr. 1, 81679 Munich, Germany

²⁵ Department of Astronomy and Astrophysics, University of Chicago, 5640 South Ellis Avenue,

Chicago, IL 60637

²⁶ Observatório Nacional, Rua Gal. José Cristino 77, Rio de Janeiro, RJ - 20921-400, Brazil

²⁷ Laboratório Interinstitucional de e-Astronomia - LInEA, Rua Gal. José Cristino 77, Rio de

Janeiro, RJ - 20921-400, Brazil

²⁸ Institut de Física d'Altes Energies (IFAE), The Barcelona Institute of Science and Technology,

Campus UAB, 08193 Bellaterra (Barcelona) Spain

²⁹ Institute of Space Sciences, IEEC-CSIC, Campus UAB, Carrer de Can Magrans, s/n, 08193

Barcelona, Spain

³⁰ Kavli Institute for Particle Astrophysics & Cosmology, P. O. Box 2450, Stanford University,

Stanford, CA 94305, USA

³¹ Department of Physics and Astronomy, University of Pennsylvania, Philadelphia, PA 19104,

USA

³² Department of Physics, California Institute of Technology, Pasadena, CA 91125, USA

³³ Jet Propulsion Laboratory, California Institute of Technology, 4800 Oak Grove Dr., Pasadena,

CA 91109, USA

³⁴ Department of Astronomy, University of Michigan, Ann Arbor, MI 48109, USA

³⁵ Department of Physics, University of Michigan, Ann Arbor, MI 48109, USA

³⁶ Instituto de Física Teórica UAM/CSIC, Universidad Autónoma de Madrid, 28049 Madrid, Spain

³⁷ Department of Astronomy and Astrophysics, The Pennsylvania State University, 201 Old Main,

University Park, Pennsylvania 16802

³⁸ Department of Astronomy, University of Florida, Gainesville, FL 32611

- ³⁹ SLAC National Accelerator Laboratory, Menlo Park, CA 94025, USA
⁴⁰ Department of Astronomy, University of Illinois, 1002 W. Green Street, Urbana, IL 61801, USA
⁴¹ National Center for Supercomputing Applications, 1205 West Clark St., Urbana, IL 61801, USA
⁴² Universitäts-Sternwarte, Fakultät für Physik, Ludwig-Maximilians Universität München, Scheinerstr. 1, 81679 München, Germany
⁴³ Department of Physics, University of Montreal, Montreal, QC H3C 3J7, Canada
⁴⁴ Department of Physics, The Ohio State University, Columbus, OH 43210, USA
⁴⁵ Center for Cosmology and Astro-Particle Physics, The Ohio State University, Columbus, OH 43210, USA
⁴⁶ Astronomy Department, University of Washington, Box 351580, Seattle, WA 98195, USA
⁴⁷ Santa Cruz Institute for Particle Physics, Santa Cruz, CA 95064, USA
⁴⁸ Harvard-Smithsonian Center for Astrophysics, 60 Garden Street, Cambridge, MA 02138, USA
⁴⁹ Australian Astronomical Observatory, North Ryde, NSW 2113, Australia
⁵⁰ Argonne National Laboratory, 9700 South Cass Avenue, Lemont, IL 60439, USA
⁵¹ Departamento de Física Matemática, Instituto de Física, Universidade de São Paulo, CP 66318, São Paulo, SP, 05314-970, Brazil
⁵² George P. and Cynthia Woods Mitchell Institute for Fundamental Physics and Astronomy, and Department of Physics and Astronomy, Texas A&M University, College Station, TX 77843, USA
⁵³ Department of Astrophysical Sciences, Princeton University, Peyton Hall, Princeton, NJ 08544, USA
⁵⁴ Institució Catalana de Recerca i Estudis Avançats, E-08010 Barcelona, Spain
⁵⁵ Center for Astrophysics and Space Astronomy, Department of Astrophysical and Planetary Science, University of Colorado, Boulder, CO 80309, USA
⁵⁶ NASA Postdoctoral Program Senior Fellow, NASA Ames Research Center, Moffett Field, CA 94035, USA
⁵⁷ School of Physics, University of Melbourne, Parkville, VIC 3010, Australia
⁵⁸ Department of Physics and Astronomy, Pevensey Building, University of Sussex, Brighton, BN1 9QH, UK
⁵⁹ Centro de Investigaciones Energéticas, Medioambientales y Tecnológicas (CIEMAT), Madrid, Spain
⁶⁰ Department of Astronomy, University of Michigan, 1085 S. University Ave., Ann Arbor, MI
⁶¹ School of Physics and Astronomy, University of Southampton, Southampton, SO17 1BJ, UK
⁶² Instituto de Física Gleb Wataghin, Universidade Estadual de Campinas, 13083-859, Campinas, SP, Brazil
⁶³ LSST, 950 North Cherry Avenue, Tucson, AZ 85719
⁶⁴ Computer Science and Mathematics Division, Oak Ridge National Laboratory, Oak Ridge, TN 37831
⁶⁵ Max Planck Institute for Extraterrestrial Physics, Giessenbachstrasse, 85748 Garching, Germany