



Publication Year	2019
Acceptance in OA	2020-12-17T12:10:40Z
Title	Mass modelling globular clusters in the Gaia era: a method comparison using mock data from an N-body simulation of M 4
Authors	Hénault-Brunet, V., Gieles, M., SOLLIMA, ANTONIO LUIGI, Watkins, L. L., Zocchi, A., Claydon, I., PANCINO, ELENA, Baumgardt, H.
Publisher's version (DOI)	10.1093/mnras/sty3187
Handle	http://hdl.handle.net/20.500.12386/28923
Journal	MONTHLY NOTICES OF THE ROYAL ASTRONOMICAL SOCIETY
Volume	483

Mass modelling globular clusters in the *Gaia* era: a method comparison using mock data from an N -body simulation of M 4

V. Hénault-Brunet^{1,2★}, M. Gieles^{3,4,5}, A. Sollima⁶, L. L. Watkins⁷, A. Zocchi^{8,9},
I. Claydon³, E. Pancino^{10,11} and H. Baumgardt¹²

¹National Research Council, Herzberg Astronomy & Astrophysics, 5071 West Saanich Road, Victoria, BC V9E 2E7, Canada

²Department of Astrophysics/IMAPP, Radboud University, PO Box 9010, NL-6500 GL, Nijmegen, the Netherlands

³Department of Physics, Faculty of Engineering and Physical Sciences, University of Surrey, Guildford GU2 7XH, UK

⁴Institut de Ciències del Cosmos (ICCUB), Universitat de Barcelona, Martí i Franquès 1, E-08028 Barcelona, Spain

⁵ICREA, Pg. Lluís Companys 23, E-08010 Barcelona, Spain

⁶INAF, Osservatorio di Astrofisica e Scienza dello Spazio di Bologna, via Gobetti 93/3, Bologna, I-40129, Italy

⁷Space Telescope Science Institute, 3700 San Martin Drive, Baltimore, MD 21218, USA

⁸European Space Research and Technology Centre (ESA/ESTEC), Keplerlaan 1, NL-2201 AZ Noordwijk, the Netherlands

⁹Dipartimento di Fisica e Astronomia, Università degli Studi di Bologna, viale Berti Pichat 6/2, I-40127, Bologna, Italy

¹⁰INAF-Osservatorio Astrofisico di Arcetri, Largo Enrico Fermi 5, I-50125, Firenze, Italy

¹¹Space Science Data Center - Agenzia Spaziale Italiana, via del Politecnico, s.n.c., I-00133, Roma, Italy

¹²School of Mathematics and Physics, University of Queensland, St. Lucia, QLD 4072, Australia

Accepted 2018 November 22. Received 2018 November 20; in original form 2018 October 10

ABSTRACT

As we enter a golden age for studies of internal kinematics and dynamics of Galactic globular clusters (GCs), it is timely to assess the performance of modelling techniques in recovering the mass, mass profile, and other dynamical properties of GCs. Here, we compare different mass-modelling techniques (distribution function (DF)-based models, Jeans models, and a grid of N -body models) by applying them to mock observations from a star-by-star N -body simulation of the GC M 4 by Heggie. The mocks mimic existing and anticipated data for GCs: surface brightness or number density profiles, local stellar mass functions, line-of-sight velocities, and *Hubble Space Telescope*- and *Gaia*-like proper motions. We discuss the successes and limitations of the methods. We find that multimass DF-based models, Jeans, and N -body models provide more accurate mass profiles compared to single-mass DF-based models. We highlight complications in fitting the kinematics in the outskirts due to energetically unbound stars associated with the cluster (‘potential escapers’, captured neither by truncated DF models nor by N -body models of clusters in isolation), which can be avoided with DF-based models including potential escapers, or with Jeans models. We discuss ways to account for mass segregation. For example, three-component DF-based models with freedom in their mass function are a simple alternative to avoid the biases of single-mass models (which systematically underestimate the total mass, half-mass radius, and central density), while more realistic multimass DF-based models with freedom in the remnant content represent a promising avenue to infer the total mass and the mass function of remnants.

Key words: galaxies: star clusters: general – globular clusters: general – stars: kinematics and dynamics.

1 INTRODUCTION

Since the half-mass relaxation time of globular clusters (GCs) is typically shorter than their age, two-body relaxation has modified the phase-space distribution of their stars during their lifetime, re-

sulting in an approximately Maxwellian velocity distribution and a tendency toward kinetic energy equipartition and mass segregation. Dynamical models capturing the internal kinematics of GCs come in two main flavours: (1) static (equilibrium) models and (2) evolutionary models. The first category includes approaches like Jeans modelling and distribution function (DF)-based models (see below) as well as Schwarzschild’s orbit superposition method (e.g. Gunn & Griffin 1979; Leonard, Richer & Fahlman 1992; van de

* E-mail: Vincent.Henault-Brunet@nrc-cnrc.gc.ca

Ven et al. 2006, respectively), while the second category includes N -body, Monte Carlo, Fokker-Planck, and gas models (for reviews, see e.g. Meylan & Heggie 1997; Portegies Zwart, McMillan & Gieles 2010).

Being generally much faster to compute and allowing to efficiently explore phase-space configurations of GCs without needing to specify their initial conditions, equilibrium models (in particular DF-based and Jeans models) are well suited to tackle mass-modelling problems, i.e. to infer the present-day total mass and mass distribution within a cluster from observables such as surface brightness or number density profiles (e.g. Trager, King & Djorgovski 1995), line-of-sight (LOS) velocities (e.g. Meylan & Mayor 1986), proper motions (PMs, e.g. van de Ven et al. 2006), deep stellar luminosity/mass functions (e.g. Pasquali et al. 2004), and pulsar accelerations (e.g. Phinney 1993). They can be used, for example, to estimate mass-to-light ratios, to infer global mass functions from local mass functions, to estimate the total mass in faint/dark populations that cannot be directly observed (low-mass stars, white dwarfs, neutron stars, black holes), and to measure cluster distances by comparing LOS velocities and PMs. Knowledge of the present-day mass profiles of GCs can also tell us about their dynamical evolution since GC structure and evolution are closely related (Hénon 1961), but note that clusters with different initial conditions may at the present day look very similar. Finally, equilibrium mass-modelling analyses can provide boundary conditions and inform more detailed evolutionary models for which initial conditions must be specified, for example to infer the initial mass function (IMF) from the present-day mass function and correct for preferential escape of low-mass stars, which is particularly important for GCs with low mass and near the Galactic centre but would also affect massive tidally filling clusters (e.g. Baumgardt & Makino 2003). With improvements in the speed of computers and the sophistication of codes, detailed evolutionary models have however become a possible option on their own for mass-modelling applications of individual GCs. Simulations of GCs with up to 10^6 stars are now possible through either direct N -body (Heggie 2014; Wang et al. 2016) or Monte Carlo simulations (Giersz & Heggie 2011; Askar et al. 2017). Star-by-star N -body simulations with a million particles are still computationally too intensive to run a large number of models of massive GCs, but computing an extensive grid of (scaled) models with $\sim 10^5$ particles is now feasible (e.g. Baumgardt 2017).

With the amount and quality of internal kinematic data (both LOS velocities and PMs) of Milky Way GCs steadily increasing in recent years, and with the advent of *Gaia*, we are entering a golden age for studies of the kinematics and dynamics of these systems (e.g. Kimmig et al. 2015; Watkins et al. 2015a; Baumgardt 2017; Baumgardt & Hilker 2018; Kamann et al. 2018; Libralato et al. 2018). *Gaia* Data Release 2 (DR2; Gaia Collaboration 2018a) has provided parallaxes and PMs for more than a billion stars over an ~ 2 -yr baseline. These PMs have proven good enough to analyse mean motions – i.e. bulk motions of the clusters (Gaia Collaboration 2018b; Posti & Helmi 2018; Vasiliev 2018; Watkins et al. 2018) and their internal rotations (Bianchini et al. 2018; Milone et al. 2018) – but are not yet good enough for studies of GC internal velocity dispersions, which limits the analyses of the internal kinematics that can be done. However, future data releases will increase the PM baseline to ~ 5 yr and include a sophisticated crowding treatment (particularly necessary in GC fields), which will enable kinematic studies with internal PMs for nearby GCs. For more distant objects, membership information will greatly facilitate efficient target selection for follow-up spectroscopic observations (Pancino et al.

2017), especially in the low-density outskirts where genuine cluster members are usually the needle in a haystack due to contamination by Milky Way stars.

Given these recent and upcoming observational advances, it is timely to assess the successes, strengths, limitations, and biases of various mass-modelling techniques in recovering the mass and other structural and dynamical properties of GCs. This is particularly important as these methods have not yet been confronted to data (or even mock data) that extends out to a significant fraction of the Jacobi radius of GCs, nor have they been systematically compared with each other. The kinematics in the outskirts of GCs hide important information about the interplay between internal cluster dynamics, Galactic tides, and potentially a small dark matter halo, but these outer parts have been so far poorly explored, and velocity measurements are typically confined within central regions that represent a small fraction of the Jacobi volume (see Claydon, Gieles & Zocchi 2017, fig. 16). An additional motivation for testing mass-modelling methods is to examine how they perform at inferring the mass-to-light ratio profiles and dark stellar remnant content of GCs. With the recent detections of gravitational waves (e.g. Abbott et al. 2016b) from merging stellar-mass black holes (BHs), there has been a renewed interest in the dark content of GCs because dynamical formation of BH–BH binaries in the dense cores of GCs and subsequent mergers has been proposed as one of the formation channels for these events (Abbott et al. 2016a; Antonini & Rasio 2016; Rodriguez, Chatterjee & Rasio 2016).

The first class of models that we consider in this work are DF-based models, which are equilibrium models satisfying the collisionless Boltzmann equation and described by a parametric form for the phase-space distribution (mass, position, and velocity) of stars capturing a few key physically motivated ingredients (e.g. Michie 1963; King 1966; Gunn & Griffin 1979). From the DF, the potential is obtained from solving Poisson’s equation self-consistently, and spatial density and velocity distributions can be computed, projected on the plane of the sky, and compared to data to constrain the free parameters of the assumed DF. Despite their relative simplicity, such DF-based models have been extensively and successfully applied to GC observations for decades. This is due to the fact that (i) they are typically fast to compute, (ii) they do not require knowledge of poorly constrained input like orbits and tidal effects that are complex to account for, (iii) they still capture (approximately) basic physical ingredients such as two-body relaxation effects and tidal truncation, and (iv) they can be easily extended to include additional ingredients such as a mass spectrum (Da Costa & Freeman 1976; Gunn & Griffin 1979) or anisotropy in the distribution of velocities (Michie 1963). Here we consider more specifically several flavours DF-based models from the LIMEPY¹ family (Gieles & Zocchi 2015) and from the Spherical Potential Escapers Stitched models family (SPES; Claydon et al. 2018), as well as multimass Michie–King models (Michie 1963; King 1966; Gunn & Griffin 1979).

The second class of models that we consider here are Jeans models, which also provide a static description of the cluster and are based on solving the Jeans equations to derive the global mass profile from the density and velocity dispersion profiles of a tracer population. These models can include both anisotropy and rotation (e.g. Cappellari 2008), and allow for radially varying mass-to-light ratios, which encompass underlying differences in the spatial distributions of different mass populations, although they do not (yet)

¹The LIMEPY (Lowered Isothermal Model Explorer in PYthon) code is available from <https://github.com/mgieles/limepy>.

include an explicit mass function. They are typically fast to run and have proved to be useful tools for understanding a variety of stellar systems including the Milky Way disc (Büdenbender, van de Ven & Watkins 2015), GCs (Watkins et al. 2013), dwarf galaxies (Zhu et al. 2016a), and giant elliptical galaxies (Zhu et al. 2016b). They are also commonly used to provide initial insights for more sophisticated, albeit slower, alternatives such as Schwarzschild models. They have the advantage that no functional form needs to be assumed for the underlying DF, leaving significant freedom in determining the mass, anisotropy, and rotation profiles. This freedom however comes at the cost that such a method can lead to unphysical and/or unstable results, especially when the data are noisy (see Section 5 and references therein).

The third class of models that we consider are N -body models, specifically a mass-modelling approach based on comparing a grid of N -body models to kinematic, structural, and stellar mass function data as recently applied to real data of Milky Way GCs (Baumgardt 2017; Baumgardt & Sollima 2017; Baumgardt & Hilker 2018). While these are not as flexible as the equilibrium models introduced above, they have the advantage of being self-consistent, of including the effects of collisional dynamics from first principles and of offering a way to constrain the initial conditions of GCs.

We apply these different mass-modelling techniques to realistic mock data from a star-by-star N -body simulation of the GC M 4 by Heggie (2014) and compare their performance using a number of metrics. We include PMs in the mock data similar to those that would be provided by the *Hubble Space Telescope* (*HST*) in the central regions of GCs and, most importantly, the expected (end-of-mission) performance of the data from *Gaia* in the outskirts (out to twice the Jacobi radius). We restrict ourselves to non-rotating models and do not consider putative intermediate-mass black holes (IMBH) since the mock data that we use refer to a cluster with no significant rotation and no IMBH. That said, extending this kind of work to consider these additional ingredients in the future would be a worthwhile exercise.

We describe the mock data² in Section 2 and then present the different methods (labelled as models A–H) and modelling results in the following sections: single-mass models without and with potential escapers (Section 3), multimass models (Section 4), Jeans models (Section 5), and a grid of N -body models (Section 6). A comparison of the enclosed mass and mass-to-light ratio profiles from the various methods is presented in Section 7, a discussion of their pros and cons can be found in Section 8, and concluding remarks summarizing our results are presented in Section 9.

2 MOCK DATA

Our mock data are extracted from a snapshot of the star-by-star N -body model of the GC M 4 by Heggie (2014), which included a full mass spectrum, primordial binaries, the effects of stellar evolution, and the tidal field of a point-mass galaxy. Data for all particles (mass, 3D position, 3D velocity, stellar type, stellar radius, luminosity, V -band magnitude, $B - V$ colour) are available at more than 300 instants throughout the lifetime of the cluster.³

²Data are available to download on the *Gaia Challenge* workshops wiki: http://astrowiki.ph.surrey.ac.uk/dokuwiki/doku.php?id=tests:collision:mock_data:challenge.4.

³The raw snapshots are available here: <https://datashare.is.ed.ac.uk/handle/10283/618>

We selected the snapshot at $t = 12\,023.9$ Myr (comparable to the current age of GCs), at which point the cluster is dynamically evolved and has lost ~ 80 per cent of its initial mass due to stellar mass loss and dynamical evolution. The main cluster properties for the selected snapshot are total cluster mass $M = 69\,144.5 M_{\odot}$, total V -band luminosity $L_V = 35\,547 L_{V,\odot}$, mass-to-light ratio $\Upsilon_V = 1.95 M_{\odot}/L_{V,\odot}$, and half-mass radius $r_h = 3.14$ pc. The Jacobi radius (r_J) of the model at the selected time is 20.3 pc. The distance to the real M 4 is $D = 1862.1$ pc (Braga et al. 2015), which corresponds to a distance modulus of 11.35 mag. We adopt this distance here to transform projected positions into angular distances and transverse velocities into PMs, and conversely it is this distance we will seek to recover from our modelling when LOS velocities and PMs are used. In the N -body model the Galactic centre is along the x -axis and the orbit is in the xy -plane. We assume the observer views the cluster along the z -axis, which is not the best representation of the way we view the real M 4. Because the tidal potential is triaxial at large distances from the GC centre, certain properties of the mock data depend on the viewing angle. However, we compared the dispersion profiles at large radii for different viewing angles and found that they are similar.

From the N -body model snapshot we extract photometric and kinematic information that generally is (or will be) available to observers: surface brightness and number density profiles, LOS velocities, *HST*-like PMs, and *Gaia*-like PMs. In each case, we mimic as closely as possible the size, quality, and spatial distribution of real observations, as we describe below.

Different mass-modelling methods use either the number density profile or the surface brightness profile as the main observational constraint on the structural properties of a GC, so we construct both from the mock data. We build a projected number density profile for all the stars brighter than an apparent magnitude of $V = 17$ (at the adopted distance of M 4). We also extract a V -band surface brightness profile from the positions and apparent V magnitudes of all the stars in the snapshot (with no magnitude cut).

We assume that LOS velocities are available for the subset of red giant branch stars brighter than $V = 15$ (the main sequence turn-off is around $V = 16.5$, corresponding to a turnoff mass of $\sim 0.85 M_{\odot}$), for a total of $N = 635$ stars. An uncertainty of 1 km s^{-1} is assumed on the LOS velocities of all these stars. This mimics the type of measurements available or achievable with spectrographs on ground-based telescopes. For methods that fit on the dispersion profile (as opposed to discrete velocities), we build an LOS velocity dispersion profile with 70 stars per radial bin (and any additional leftover stars included in the last bin).

We extract two PM catalogues, the first designed to mimic the kind of kinematic data enabled by *HST* (e.g. Bellini et al. 2014). We restrict this sample to stars in the inner 100 arcsec of the cluster centre in projection [comparable to the field of view of the Advanced Camera for Surveys (ACS) on-board *HST*] and magnitudes in the range $16 < V < 17.5$, for a total of 2567 stars with a mean mass of $0.76 M_{\odot}$. We assume a typical uncertainty of 0.1 mas yr^{-1} on the PM of all these stars. We build PM dispersion profiles for the radial and tangential components in the plane of the sky with 120 stars per radial bin (and any additional leftover stars included in the last bin).

The second PM catalogue is obtained by using the method by Pancino et al. (2017) to transform the N -body model snapshot into *Gaia*-like observables and extract internal PMs for cluster members that would be recovered by *Gaia*. The simulated cluster was projected, at the adopted distance of M 4, on a $2^{\circ} \times 2^{\circ}$ field population simulated with the Galaxy models by Robin et al. (2003)

and representing the actual position of M4 ($\alpha = 245.89675^\circ$, $\delta = -26.52575^\circ$, with a field population of approximately 100 000 stars per square degree).

We adopted the bulk proper motion for M4 from Bedin et al. (2003). The simulations were complemented with *Gaia*-integrated magnitudes using the prescriptions by Jordi et al. (2010). Errors were simulated using the post-launch *Gaia* science performances (Gaia Collaboration 2016), worsened by an appropriate amount to take into account stellar crowding effects, based on the current deblending pipeline simulations and assuming end-of-mission (i.e. 5 yr nominal duration) performances, as described in detail by Pancino et al. (2017). From these simulated *Gaia* end-of-mission data, we retain only recovered cluster members that are not significantly affected by blending or contamination (we assume perfect membership selection due to the very different proper motion of the cluster and background). Specifically, we discard classic blends (stars closer than *Gaia*'s point spread function – PSF – of 0.177 arcsec) that will not always be deblended by *Gaia* and we also discard binaries. With real *Gaia* data, these contaminants could be identified from the various quality flags and binary modeling provided with the final *Gaia* catalogue. We also discard *Gaia* blends and contaminants (for definitions, see Pancino et al. 2017) blended or contaminated by at least 1 per cent of their flux. We finally only retain stars above $0.7 M_\odot$ ($V \lesssim 17$) since fainter lower-mass stars are not expected to have precise enough *Gaia* PMs for the purpose of this study. These stars have a mean mass of $0.8 M_\odot$. From this final sample we build PM dispersion profiles for the radial and tangential components in the plane of the sky with 400 stars per radial bin (and any additional leftover stars included in the last bin).

Note that, in order to test the effects of the background on the membership selection, we also considered other field populations, namely a nearly empty halo field at $\alpha = 186.5^\circ$ and $\delta = 36.0^\circ$, containing approximately 1000 stars per square degree, as well as an extremely crowded bulge field at $\alpha = 264.5^\circ$ and $\delta = -22^\circ$, containing approximately 1 million stars per square degree. We found that the number of selected members with no or limited contamination depends only weakly on the adopted field population, unlike in Pancino et al. (2017), because M4 is closer – thus more spread out on the sky – and the simulated field populations are also less crowded than the cases considered by Pancino et al. (2017). Thus, in the remainder of this work we present results based on the mock *Gaia* data with the M4 background (7083 ‘clean’ recovered member stars with *Gaia* PMs). One should however bear in mind that this should be seen as a best-case scenario and we caution that field contamination would be more critical for more distant/crowded clusters in real data.

Finally, we also extract a mock local stellar mass function of main-sequence stars as an additional constraint for methods that aim to infer the global stellar mass function of the cluster. This mock stellar mass function is built for stars between about 0.2 and $0.75 M_\odot$ (mimicking the depth typically achieved by *HST* observations of nearby GCs; e.g. Sollima & Baumgardt 2017) in an annular region between 250 and 350 arcsec in projection from the cluster centre (around the half-mass radius). Actual measurements of the stellar luminosity function (and thus mass function) are limited to a restricted portion of GCs, usually close to the cluster core (e.g. Sarajedini et al. 2007; Sollima & Baumgardt 2017) or sometimes near the half-mass radius (e.g. Paresce & De Marchi 2000). For the location of the reference region of our mock local stellar mass function, we chose a field close to the half-mass radius, as is often done because there the local mass function most resembles the global

mass function (Pryor, Smith & McClure 1986; Vesperini & Heggie 1997; Baumgardt & Makino 2003).⁴

We compare the performance of the different mass-modelling methods applied to the mock data in three cases:

- (1) fits to the surface brightness profile (or number density profile) and LOS velocities (mimicking widely available ground-based data);
- (2) fits to the data from step 1 and additionally including *HST*-like PMs (currently available for a subset of ~ 20 Milky Way GCs);
- (3) fits to all the above and additionally *Gaia*-like internal PMs (available in the near future for nearby GCs).

We fix the distance to its known value in step 1, but we leave it as a free parameter when PMs are used. Distance determination via dynamical modelling indeed requires both PMs and LOS velocities (e.g. Watkins et al. 2015b) and is not possible with LOS velocities only. It is usual for studies of real clusters with only LOS velocities available to fix the distance to the value estimated via an alternative method. Note that *Gaia* end-of-mission data will allow to secure distances to better than 1 per cent for the majority of Milky Way GCs (Pancino et al. 2017).

By fitting these data, we compare how well the different methods recover the following quantities and observables: total cluster mass, half-mass radius, global mass-to-light ratio, mass-to-light ratio profile, global stellar mass function, and mass in dark remnants (when applicable). We also assess the general quality of the fit to the LOS velocity and PM dispersion profiles, surface brightness, or number density profile. In the next sections, we summarize each method in turn and we present its results and performance when fitting the three subsets of mock data introduced above.

3 SINGLE-MASS MODELS

3.1 Single-mass LIMEPY DF

We first consider the family of LIMEPY dynamical models, defined from a lowered-isothermal DF as described in Gieles & Zocchi (2015). In the single-mass variant of the LIMEPY models, stars of different masses are implicitly assumed to have the same dynamics. This implies that the mass-to-light ratio of the cluster is assumed to be independent of the distance from the centre and that the effect of mass segregation is ignored.

To compute a model in the LIMEPY family, it is necessary to specify the values of three parameters. The concentration parameter W_0 represents the central dimensionless potential, and is used as a boundary condition to solve the Poisson equation. The truncation parameter g sets the sharpness of the truncation: models with larger values of g are more extended and have a less abrupt truncation. For $g = 1$ the well-known King (1966) models are recovered. The anisotropy radius r_a sets the amount of velocity anisotropy in the system: models with a small r_a are more radially anisotropic, and when r_a is large with respect to the truncation radius (r_t), the velocity distribution is everywhere isotropic. Moreover, to match a particular cluster, the models need to be scaled, by using the value of the desired total mass, M , and half-mass radius, r_h .

We compute the projected mass density profile and the projected velocity dispersion components (along the LOS and on the plane of

⁴The effect on the inferred global mass function of a non-optimal location of the measured luminosity function has been explored by Sollima et al. (2015) by comparing multimass Michie-King models to mock data.

the sky) for the models, and we compare them with the mock binned profiles described in Section 2 to determine the best-fitting parameters. The fitting procedure we follow is similar to the one presented by Zocchi, Gieles & Hénault-Brunet (2017) in their section 4.2. We adopt a log-likelihood function of the form $\sum_{i=1}^n (\mathcal{O}_i - \mathcal{M}_i)^2 / \mathcal{E}_i^2$, where n is the number of bins, \mathcal{O}_i are the mock data values, \mathcal{E}_i are the errors on the data, and \mathcal{M}_i are the model values at the same radial position as the data. The fitting parameters we consider are the three model parameters W_0 , g , r_a , the two scales M and r_h , and the mass-to-light ratio $\Upsilon_V = M/L_V$ needed to convert the model projected mass density profile to a surface brightness profile for comparison with the observations. A nuisance parameter is included as a fitting parameter to capture the unknown uncertainty in the surface brightness profile values (e.g. due to stochastic sampling of the stellar luminosity function). For the surface brightness data points, the log-likelihood function above thus takes the form $\sum_{i=1}^n (\mathcal{O}_i - \mathcal{M}_i)^2 / \sigma_\mu^2$, where σ_μ^2 is now a fitting parameter. The fits are performed by using EMCEE (Foreman-Mackey et al. 2013) and adopting uniform priors on all parameters apart from r_a for which the prior is uniform in $\log(r_a)$.

Fig. 1 shows the best-fitting models together with the profiles from the snapshot of the M4 simulation for the three combinations of mock data considered. The figure shows that the best-fitting models for the three cases similarly reproduce the surface brightness profile, but some differences are found when comparing their kinematic profiles. When considering the models that include the PM data and the distance as a fitting parameter, we see that the central part of the PM dispersion profiles are very similar, while some differences are seen beyond the extent of the *HST*-like sample: only when including the *Gaia*-like PM data do the best-fitting single-mass models satisfyingly reproduce the PM dispersion profiles at large radii.

The best-fitting values and $\pm 1\sigma$ uncertainties on the parameters of the LIMEPY single-mass models (obtained from their marginalized posterior probability distributions) are listed in Table 1. We present the value of the anisotropy radius in relation to the truncation radius to make it clear that the anisotropy radius obtained is very large, and the models are therefore isotropic. In Table 2 we present the best-fitting values obtained for the mass, half-mass radius, mass-to-light ratio, and distance of the cluster for the three cases considered. PM data sampling the entire extent of the cluster clearly improves the performance of single-mass models. Only when considering all the PM data it is possible to accurately recover the true value of the mass and a value of the half-mass radius that is consistent with the real one within 2σ .

It is important to point out that when considering *Gaia*-like data in this subsection, we did not include the outermost point of each of the PM dispersion profiles in the fit, where these profiles flatten in a way that cannot be reproduced by truncated models. We did this because, due to their small associated errors, these points would drive the fit towards models with an unrealistically large mass and half-mass radius, with the resulting best-fitting surface brightness profile heavily underestimating the mock data in the centre and overestimating it in the outer parts, with a very large discrepancy. This illustrates a limitation of these models in the outskirts of stellar clusters significantly affected by Galactic tides, which can be overcome with the SPES models described in Section 3.2.

3.2 Single-mass SPES DF (with potential escapers)

We can also consider single-mass models that include the effects of energetically unbound stars, such as the SPES models (Claydon

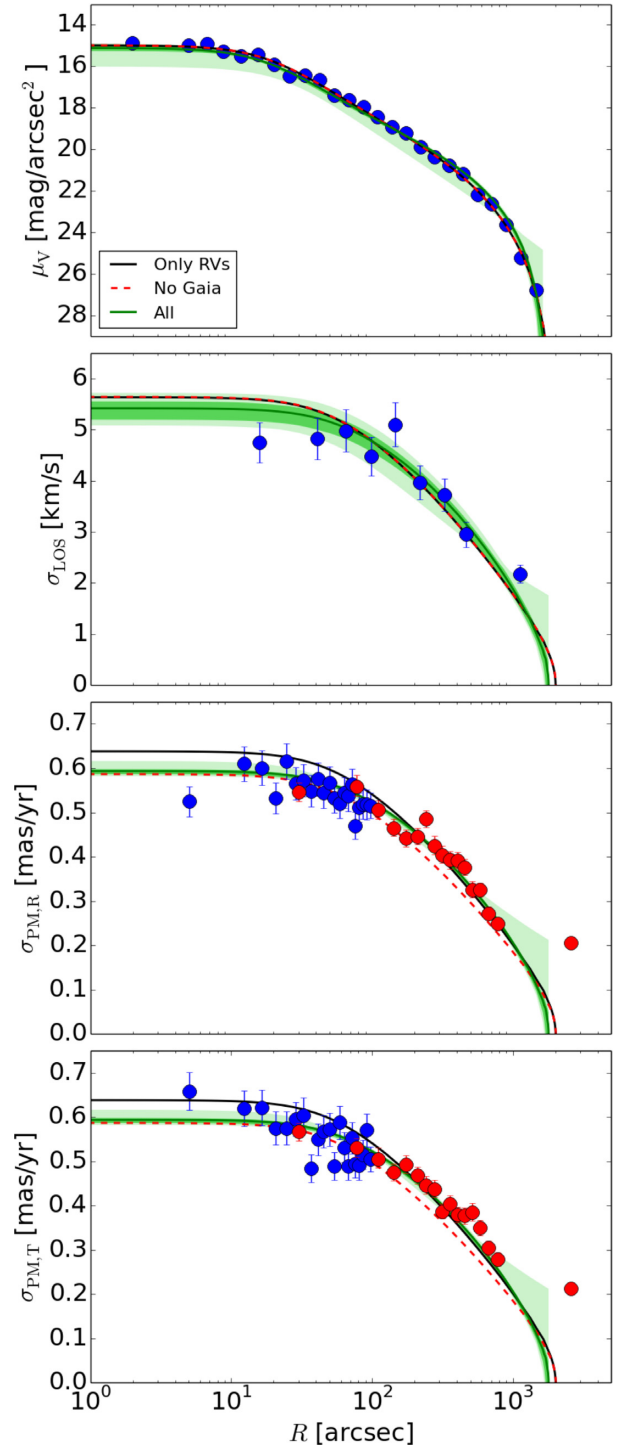


Figure 1. Fit of the single-mass LIMEPY models from Section 3.1 to the data sets of cases 1, 2, and 3. From top to bottom: surface brightness profile, LOS velocity dispersion profile, and radial and tangential PM dispersion profiles. In each panel, the black solid line represents the result of the fit carried out only on the surface brightness profile and LOS velocity dispersion (case 1), the dashed red line the fit when also using *HST* PMs (case 2), and the green line the profile obtained when fitting also on *Gaia*-like PMs (case 3). The 1σ and 2σ contours for the model obtained when fitting on all the data are indicated as dark and light green-shaded areas. The mock data are represented by blue-filled circles, with the exception of *Gaia*-like PMs shown with red-filled circles. The most distant *Gaia* PM data point at ~ 3000 arcsec was not included in the fit.

Table 1. Results of LIMEPY single-mass model fits to different data set combinations. The fitting parameters M , r_h , Υ_V , and D are given in Table 2.

Data	W_0	g	r_a/r_t
(1) Only LOS	$8.70^{+0.17}_{-0.16}$	$0.93^{+0.07}_{-0.08}$	$12.30^{+45.24}_{-10.78}$
(2) No <i>Gaia</i>	$8.70^{+0.17}_{-0.16}$	$0.94^{+0.07}_{-0.08}$	$7.64^{+36.71}_{-6.28}$
(3) All	$9.18^{+0.18}_{-0.21}$	$0.56^{+0.08}_{-0.07}$	$14.01^{+43.15}_{-10.90}$

et al. 2018). It has been shown that due to the interplay of the internal cluster potential and the Galactic tidal potential, there is a geometric condition for escape (Fukushige & Heggie 2000; Baumgardt 2001), which causes stars with energies above the escape energy to remain associated with the cluster. These stars are known as potential escapers (hereafter PEs) and can stay trapped within the cluster for many crossing times, which causes an elevation in the velocity dispersion profile at large radii and an extension of the surface brightness/density profiles (Küpper et al. 2010; Claydon et al. 2017; Daniel, Heggie & Varri 2017). The fraction of PEs in a cluster depends on its mass, how dynamically evolved the GC is, its orbital properties and the properties of the host galaxy (Claydon et al. 2017). In the context of the present study, their inclusion in a DF-based model provides a way of dealing with the last bin of the mock *Gaia* PM dispersion profiles for which the LIMEPY models do not have a prescription.

Similarly to LIMEPY, SPES models have a parameter for the central potential W_0 and a truncation parameter B , which varies the sharpness of the truncation but with a non-zero density at the critical energy (for $B > 0$), allowing the unbound population to be included continuously. SPES models are isotropic and therefore have no anisotropy parameter, but there is a third parameter η , which sets the width of the energy distribution of the unbound stars and therefore the ratio of the velocity dispersion at the edge of the model to (approximately) the dispersion in the centre. We also fit on a mass scale M and a radial scale. Because the model can be solved beyond r_t , we use r_t as the radial scale and as a fitting parameter and solve the model until the last data point, which for this N -body snapshot corresponds to $2r_j$.

We project the model in the same way as detailed in Gieles & Zocchi (2015), and when fitting on the surface brightness profile we also fit on the mass-to-light ratio $\Upsilon_V = M/L_V$ and a nuisance parameter that captures the uncertainty in the surface brightness σ_μ . The fitting procedure is performed using the binned data and using EMCEE (Foreman-Mackey et al. 2013), and uniform priors are adopted for all parameters.

Results for the best-fitting model parameters and the properties of the PEs are given in Table 3, including r_t and the inferred fraction of mass in PEs, f_{PE} . The fact that the recovered f_{PE} is about half the true value is most likely a systematic problem in the model rather than an observational bias: f_{PE} is also a factor 2 or 3 too low when the model is compared to N -body data without observational uncertainties (Claydon et al. 2018). This is likely due to the assumption of spherical symmetry and the absence of a detailed treatment of the Galactic tidal potential in the model (Claydon et al. 2018). Table 2 shows the best-fitting values of M , r_h , Υ_V , and D (when applicable) for the three different data set combinations considered. Fig. 2 shows the best-fitting model compared to the mock data profiles for case 3. The recovered values for M and r_h for the different data sets are similar to the results of the single-mass LIMEPY models discussed in Section 3.1. The accuracy of the inferred cluster mass M improves when adding PMs, and the best-fitting value is consistent with the

true one within 1σ only when including *Gaia* PMs. The recovered value of r_h is also improved when adding PMs, but it is still underestimated, even with *Gaia* PMs, which is probably a systematic bias as a result of the fact that mass segregation is not included in the SPES models. The Υ_V and D are better fitted when including *Gaia* PMs as opposed to just *HST*, but Υ_V is underestimated and D is overestimated by 2σ (case 2) or 1σ (case 3). These deviations from the real values may be due to a fundamental limitation of isotropic, single-mass models.

Note that if we were to fix $r_t = r_j$ the model would struggle to simultaneously fit the low density and flat velocity dispersion near r_j , whereas with the smaller $r_t \simeq 0.6r_j$ value reached by the best-fitting model a low density can be obtained while keeping the velocity dispersion profile flat in the outer regions. This may be further improved with a multimass version of this model, in which the giant stars would have a higher central density (relative to the density at r_t) and a lower central velocity dispersion (relative to the dispersion at r_t) because of mass segregation. That said, the model tested in this section remains the only DF-based model able to successfully match the outermost *Gaia* data. However, an equally good representation of the kinematics in the cluster outskirts is also provided by Jeans models (see Section 5.2).

4 MULTIMASS MODELS

4.1 3-component LIMEPY DF

In this section, we explore simple DF-based three-component models. The DF is that of an isotropic, lowered isothermal model, as implemented in LIMEPY (Gieles & Zocchi 2015), and we approximate the cluster by three components: (1) (dark) low-mass stars; (2) (visible) stars; and (3) (dark) remnants. The j -th component (with $j = 1, 2$, or 3) is specified by a mean mass m_j and a total mass M_j . The masses m_j are internally expressed in units of the global mean mass of the cluster⁵ and M_j is internally converted to a normalized mass fraction. The velocity scale of each component s_j relates to m_j as $s_j \propto m_j^{-1/2}$ to include the effect of (partial) equipartition (for details, see Da Costa & Freeman 1976; Gieles & Zocchi 2015). Although more mass components are required to accurately describe the mass function of GCs, the general dynamical behaviour of a mass segregated cluster should be captured by a simple three-component model. In these models, there are five free parameters associated with the mass function, the three m_j values, and any two of the M_j values. (Note that without the total mass M as a fitting parameter, there are six parameters needed to fully specify the mass function). We exclude the most distant data point of the binned *Gaia* mock velocity dispersion profile from the fit, because we encountered a similar issue as with the single-mass models discussed in Section 3.1. Although this issue is not as severe as for the single-mass models, we found that including this outermost data point led to best-fitting models that significantly overestimate the radial extent of the cluster and provide a poor fit to the outer surface brightness profile. As in Section 3, the fitting procedure is performed using the binned data and using the EMCEE MCMC code (Foreman-Mackey et al. 2013), with a nuisance parameter σ_μ for the unknown uncertainty in the surface brightness values, and adopting uniform priors for all parameters.

⁵The way the mean mass is defined affects some of the model parameters. See the discussion in Section 2 of Peuten et al. (2017).

Table 2. Recovered quantities for different mass-modelling methods and combinations of mock data sets. For the ‘Case’ column: 1 = surface brightness profile (or number density) + LOS velocities; 2 = surface brightness profile (or number density) + LOS velocities + *HST* PMs; 3 = surface brightness profile (or number density) + LOS velocities + *HST* PMs + *Gaia* PMs. The local stellar mass function around the half-mass radius was used as an additional observational constraint when the data set is marked by *.

Modelling method	Case	Recovered quantities				
		$M [M_{\odot}]$	r_h [pc]	$\Upsilon_V [M_{\odot}/L_{V, \odot}]$	M_{dark}/M	D [kpc]
	True values →	69 144.5	3.14	1.95	0.393	1.862
A Single-mass LIMEPY DF (Section 3.1)	1	$57\,424^{+3679}_{-3509}$	$2.16^{+0.12}_{-0.11}$	$1.63^{+0.12}_{-0.11}$...	1.862 (fixed)
	2	$62\,618^{+5795}_{-5298}$	$2.35^{+0.15}_{-0.14}$	$1.50^{+0.08}_{-0.07}$...	$2.028^{+0.063}_{-0.061}$
	3	$68\,998^{+7911}_{-6073}$	$2.93^{+0.18}_{-0.15}$	$1.71^{+0.11}_{-0.09}$...	$1.925^{+0.063}_{-0.066}$
B Single-mass SPES DF (with PEs) (Section 3.2)	1	$57\,707^{+3918}_{-3687}$	$2.26^{+0.13}_{-0.10}$	$1.63^{+0.13}_{-0.12}$...	1.862 (fixed)
	2	$62\,240^{+5461}_{-5856}$	$2.42^{+0.16}_{-0.15}$	$1.53^{+0.08}_{-0.07}$...	$2.007^{+0.062}_{-0.069}$
	3	$66\,444^{+6223}_{-5945}$	$2.80^{+0.16}_{-0.16}$	$1.62^{+0.10}_{-0.09}$...	$1.917^{+0.057}_{-0.058}$
C 3-component LIMEPY DF (Section 4.1)	1	$84\,215^{+10230}_{-9645}$	$3.35^{+0.35}_{-0.35}$	$2.36^{+0.31}_{-0.28}$	$0.26^{+0.09}_{-0.07}$	1.862 (fixed)
	2	$77\,583^{+7833}_{-7789}$	$3.06^{+0.21}_{-0.21}$	$2.02^{+0.23}_{-0.20}$	$0.32^{+0.10}_{-0.08}$	$1.927^{+0.066}_{-0.070}$
	3	$78\,336^{+6865}_{-6535}$	$3.12^{+0.14}_{-0.13}$	$2.08^{+0.12}_{-0.10}$	$0.31^{+0.08}_{-0.06}$	$1.906^{+0.055}_{-0.053}$
D Multimass LIMEPY DF (Section 4.2)	1*	$79\,195^{+7318}_{-6665}$	$3.05^{+0.35}_{-0.34}$	$2.27^{+0.35}_{-0.29}$	$0.46^{+0.05}_{-0.07}$	1.862 (fixed)
	2*	$75\,662^{+7625}_{-6706}$	$2.79^{+0.25}_{-0.23}$	$2.09^{+0.30}_{-0.24}$	$0.42^{+0.07}_{-0.07}$	$1.904^{+0.070}_{-0.065}$
	3*	$75\,643^{+6721}_{-6193}$	$2.78^{+0.14}_{-0.13}$	$2.08^{+0.23}_{-0.20}$	$0.44^{+0.05}_{-0.06}$	$1.904^{+0.053}_{-0.054}$
E Multimass King DF (Section 4.3)	1*	$70\,560 \pm 5013$	2.87 ± 0.12	1.97 ± 0.14	0.36 ± 0.01	1.862 (fixed)
	2*	$70\,560 \pm 3305$	2.87 ± 0.12	1.97 ± 0.10	0.36 ± 0.01	1.861 ± 0.056
	3*	$68\,890 \pm 3130$	2.87 ± 0.12	1.92 ± 0.10	0.35 ± 0.01	1.861 ± 0.056
F Variable M/L Jeans (Sollima) (Section 5.1)	1	$83\,345 \pm 23850$	3.71 ± 2.55	2.32 ± 0.66	...	1.862 (fixed)
	2	$58\,757 \pm 17417$	2.33 ± 1.37	1.66 ± 0.49	...	1.861 ± 0.056
	3	$65\,991 \pm 13676$	2.59 ± 0.71	1.84 ± 0.38	...	1.861 ± 0.056
G Variable M/L Jeans (JAM) (Section 5.2)	1	$64\,269^{+15635}_{-12389}$	$2.31^{+1.17}_{-0.60}$	$1.88^{+0.46}_{-0.35}$...	1.862 (fixed)
	2	$65\,924^{+16438}_{-12218}$	$2.37^{+1.05}_{-0.47}$	$1.89^{+0.50}_{-0.36}$...	$1.878^{+0.090}_{-0.081}$
	3	$71\,856^{+8119}_{-7815}$	$2.97^{+0.48}_{-0.36}$	$2.08^{+0.15}_{-0.15}$...	$1.869^{+0.059}_{-0.056}$
H <i>N</i> -body grid (Section 6)	1*	$68\,159 \pm 3820$	2.72 ± 0.18	1.91 ± 0.11	0.36 ± 0.05	1.862 (fixed)
	2*	$70\,000 \pm 1300$	2.84 ± 0.11	1.82 ± 0.03	0.38 ± 0.05	1.935 ± 0.055
	3*	$70\,540 \pm 1020$	2.82 ± 0.11	1.87 ± 0.03	0.37 ± 0.05	1.914 ± 0.055

Table 3. Results of the SPES models (with PEs) fitted to different data set combinations. The values in the last two columns should be compared to $r_{J, \text{true}} = 20.3$ pc and $f_{\text{PE}, \text{true}} = 0.08$. The fitting parameters M , r_h , Υ_V , and D are given in Table 2.

Data	W_0	B	η	r_t [pc]	f_{PE}
(1) Only LOS	$9.32^{+0.39}_{-0.36}$	$0.75^{+0.09}_{-0.15}$	$0.339^{+0.035}_{-0.035}$	$13.8^{+4.87}_{-3.05}$	$0.040^{+0.100}_{-0.008}$
(2) No <i>Gaia</i>	$9.17^{+0.28}_{-0.26}$	$0.80^{+0.07}_{-0.08}$	$0.321^{+0.028}_{-0.036}$	$13.0^{+1.62}_{-1.42}$	$0.037^{+0.011}_{-0.100}$
(3) All	$10.18^{+0.37}_{-0.31}$	$0.52^{+0.12}_{-0.15}$	$0.370^{+0.019}_{-0.019}$	$12.2^{+0.8}_{-0.6}$	$0.043^{+0.007}_{-0.070}$

4.1.1 Model A from Gunn & Griffin (1979)

As a first attempt, we use model A from Gunn & Griffin (1979). Informed by a stellar IMF, they propose a three-component model of the form $m_j = [0.5, 1, 1.5]$ and $M_j = [5, 1, 0.1]$. With the mass

function fully defined, and using King (1966) models (i.e. $g = 1$ in LIMEPY), the model has one free parameter, namely the dimensionless central potential W_0 . In addition to W_0 , we fit on two physical scales (the total mass M and the half-mass radius r_h) and on the dis-

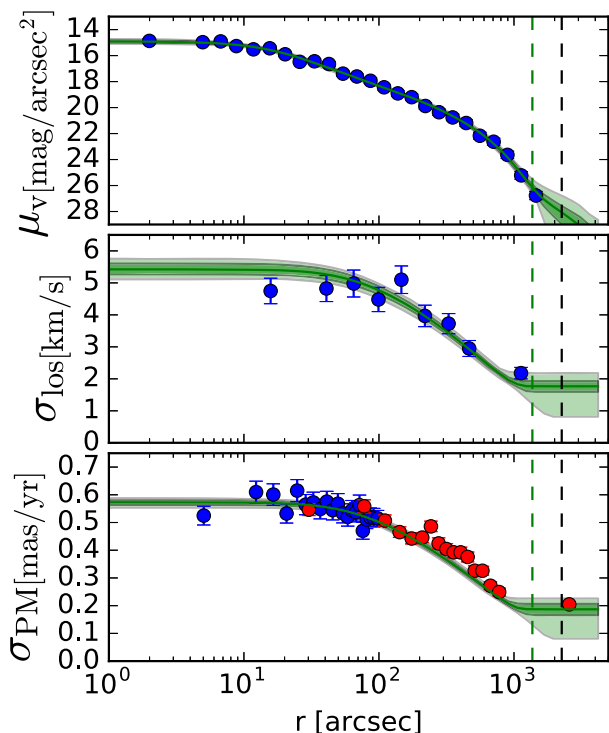


Figure 2. Fit of the model with PEs (Section 3.2) to the data set of case 3 (fitting to surface brightness, radial velocities, *HST*, and *Gaia*-like PMs). The mock data for the surface brightness profile (top panel), LOS velocity dispersion profile (middle panel), and PM dispersion profile (bottom panel), are shown with blue-filled circles, except the *Gaia* mock data shown in red. The green curve is the 50th percentile of the best-fitting model with PEs and the shaded dark green region shows the 1σ contours and the light green region shows the 2σ contours. The dashed black line is the r_1 and the dashed green line is r_2 .

tance D . We fit the surface density of the second mass component to the surface brightness profile, where we use the mass-to-light ratio $\Upsilon_V = M/L_V$ as an additional fitting parameter, and a nuisance parameter σ_μ for the uncertainty in the surface brightness profile, bringing the total of fitting parameters to 6. We use the LOS velocities, *HST*-like, and *Gaia*-like PMs. The resulting physical scales are $M \simeq (8.6 \pm 0.7) \times 10^4 M_\odot$ (and $\Upsilon_V \simeq 2.3 \pm 0.3$) and $r_h \simeq 2.9 \pm 0.1$ pc. Hence, despite giving precise results (approximately 8 per cent error in M), M is systematically overestimated ($\sim 2.5\sigma$). We also find that the surface brightness profile is not well described by this model, reflected by a large $\sigma_\mu = 0.8$ mag. This is likely because the mass function is not a good representation of the real mass function of this particular cluster. By having only a small amount of mass in the dark remnants, the visible stars in the model are too much segregated to the centre with respect to low-mass stars, leading to an inflated total mass and radius. Comparing these results to the single-mass model fits of the previous section, we see that using the wrong mass function can give systematic biases of similar magnitude to those found with the single-component models. A multicomponent model is therefore not necessarily a better model.

4.1.2 Three-component model with two mass function parameters

In this section we consider a three-component model with freedom to adjust the mass function, guided by the data. We fix $m_1 = 0.3$

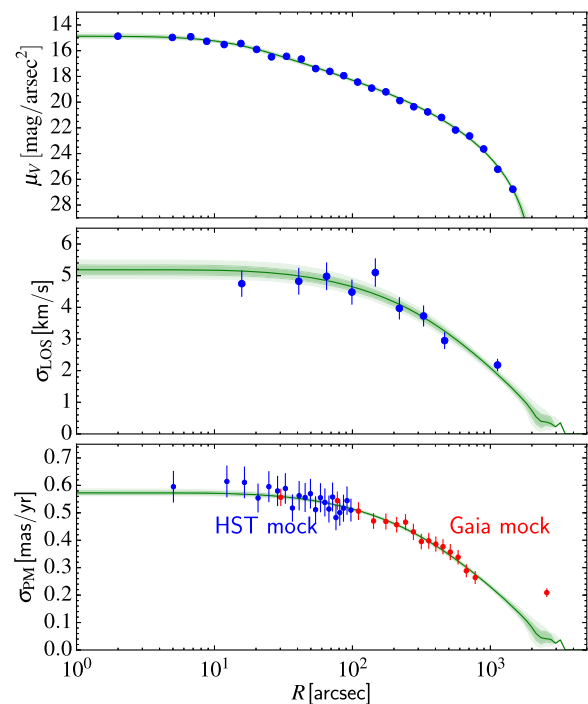


Figure 3. Fit of the three-component model from Section 4.1 to the data set of case 3 (fitting to surface brightness, LOS velocities, *HST*, and *Gaia*-like PMs). The mock data for the surface brightness profile (top panel), LOS velocity dispersion profile (middle panel), and PM dispersion profile (bottom panel) are shown with blue-filled circles, except the *Gaia* mock data shown in red. The most distant *Gaia* PM data point at ~ 3000 arcsec was not included in the fit. Median values at each R are shown with green lines, and the 1σ and 2σ contours are shown with dark and light green-shaded regions, respectively.

(low-mass stars) and $m_2 = 0.8$ (visible stars), appropriate values for an old GC, and we assume that the visible stars are tracers in the potential, and set their mass fraction to 1 per cent (i.e. $f_2 = M_2/M = 0.01$), which is a reasonable assumption because the tracer stars dominating the light (evolved stars and upper main sequence stars) indeed make a negligible fraction of the total cluster mass. The motivation to treat them as tracers is also to reduce the number of model parameters. This model has two remaining free parameters with which the mass function is fully defined: the mass of the remnants (i.e. m_3) and the mass fraction in the remnants (f_3). Apart from W_0 , we also leave the truncation parameter g as a free parameter and again fit on Υ_V by comparing the projected mass density profile of the second component to the surface brightness profile.

The results of this model fitted to the full data set (case 3) are shown in Fig. 3 (the results are very similar for cases 1 and 2, so we do not show them here). Despite its relative simplicity, the model does a good job at describing the various mock profiles. The true M and r_h are retrieved within 1σ (see Table 2) when PMs are included. When using only LOS kinematics, the median M is 1.5σ away from the true mass of the cluster.

Results for model shape parameters and the properties of the third (dark remnant) component are given in Table 4. From this we see that in the best-fitting model, about 30 per cent of the mass is in the dark remnant component, which have a mass slightly higher ($\sim 0.9 M_\odot$) than that of visible stars ($0.8 M_\odot$). The mass in the third component is lower than the mass fraction in remnants in the N -

Table 4. Results of three-component model fits to different data set combinations. The fitting parameters M , r_h , Υ_V , and D are given in Table 2.

Data	W_0	g	m_3	f_3
(1) Only LOS	$4.95^{+0.22}_{-0.19}$	$1.20^{+0.17}_{-0.17}$	$0.92^{+0.05}_{-0.04}$	$0.26^{+0.12}_{-0.09}$
(2) No <i>Gaia</i>	$4.88^{+0.24}_{-0.23}$	$1.32^{+0.16}_{-0.15}$	$0.94^{+0.05}_{-0.04}$	$0.32^{+0.10}_{-0.08}$
(3) All	$4.85^{+0.31}_{-0.20}$	$1.29^{+0.16}_{-0.17}$	$0.94^{+0.05}_{-0.05}$	$0.31^{+0.08}_{-0.06}$

body snapshot (~ 39 per cent), which is probably due to the fact that m_3 is higher than the typical remnant mass ($0.67 M_\odot$; dominated by white dwarfs).

A smaller value of W_0 is obtained for the three-component model compared, for example, to single-mass models of Section 3 and the multimass models of Section 4.2. As we noted above, the global mean mass is chosen as a reference mass to compute the LIMEPY models. W_0 represents the value of the dimensionless central potential for the mean mass group. The mean mass in the three-component model is $\sim 0.38 M_\odot$, smaller than in the N -body snapshot and multimass models of Section 4.2, where it is $0.5 M_\odot$. Since lower-mass stars are less centrally concentrated, a smaller value of W_0 for the three-component model is thus expected. We note that the W_0 of the second component (i.e. the visible stars) is ~ 10 for these models, very similar to the single-mass models, again as expected.

4.2 Multimass LIMEPY DF

In this subsection and the following, we consider multicomponent lowered isothermal models, as introduced in Section 4.1, but now including many more mass components to accurately describe the stellar mass function within GCs. In this case, we use as an additional observational constraint the mock stellar mass function of main sequence stars around the half-mass radius of the cluster (see Section 2). We want to determine whether these models can provide an improvement over simpler three-component models, and also to what extent they can recover information about the dark mass (low-mass stars and dark remnants) even if the kinematic and structural observational constraints are dominated by the bright visible stars. We examine two different approaches: the first one relies on the multicomponent models implemented in LIMEPY (Gieles & Zocchi 2015) assuming power-law functional forms for the mass functions of visible stars and remnants, while the second approach in the next subsection uses the Gunn & Griffin (1979) multimass DF, a flexible mass function for the visible component but a fixed prescription for the mass function of remnants (as used, for example, by Sollima, Bellazzini & Lee 2012).

Here we consider more realistic LIMEPY models including more numerous mass bins. In addition to the five free parameters specifying the structural properties, anisotropy, and scales of the cluster (W_0 , g , r_a , M , r_h , defined as in previous sections), we adopt additional free parameters associated with the mass function. The mass function of visible stars is defined by a power law ($dN/dm \propto m^{-\alpha}$) with index $\alpha = \alpha_1$ for stars with $m < 0.5 M_\odot$ and index $\alpha = \alpha_2$ for stars with $m > 0.5 M_\odot$, with the second power law truncated at the turn-off mass ($0.85 M_\odot$). The mass function of dark remnants is specified by a power law with index $\alpha = \alpha_{\text{rem}}$ spanning the mass range between the mass of the lowest-mass white dwarf and the mass of the most massive black hole predicted by the single-star evolution (SSE) package (Hurley, Pols & Tout 2000) at the age and metallicity of the cluster (~ 12 Gyr, $[\text{Fe}/\text{H}] \sim -1$), corresponding

to a range of $0.52\text{--}20.85 M_\odot$ for an IMF extending to $100 M_\odot$. Combined with the total cluster mass M , the four additional free parameters (power-law exponents α_1 , α_2 , α_{rem} , and the fraction of mass in dark remnants M_{dark}/M) fully define the mass function, thus specifying all values of m_j and M_j needed to build the multimass model. We considered 10 linearly spaced mass bins⁶ for main sequence and evolved stars covering the range from $0.1 M_\odot$ to the main-sequence turn-off mass. For the remnants, we define the edges of the mass bins such that we have eight remnant mass bins, three linearly spaced bins corresponding to white dwarfs, one bin for neutron stars, and four logarithmically spaced bins for black holes of different masses. The edges of the mass bins between the different types of stellar remnants are adopted as the masses at which SSE predicts a transition between white dwarfs and neutron stars, and between neutron stars and black holes. The values of M_j (total mass in each bin) are computed according to the power law adopted for the mass function, assuming a continuous mass spectrum. Note that these are all related through the adopted single power-law mass function for the remnants, so the remnant mass bins are not independent of each other.

Part of the motivation for leaving freedom in the total mass fraction and mass distribution of dark remnants is that these are not known a priori and very uncertain, which can lead to large systematic uncertainties in the inferred cluster mass and mass profile (e.g. Sollima et al. 2012). We also want to explore how, with limited assumptions, the mass fraction and distribution of remnants can itself be constrained by multimass models.

We compare the multimass models introduced in this section to our mock data in a similar way to what was done with the models considered previously. However, the conversion of density profiles for different mass species to surface brightness profiles that can be compared to observations requires some extra attention because several mass components (with different spatial distributions) can contribute to the observed light and we need to specify their relative mass-to-light ratios. Here we couple our multimass models to predictions from the flexible stellar population synthesis (FSPS) models (Conroy, Gunn & White 2009; Conroy & Gunn 2010) based on Padova stellar isochrones (Girardi et al. 2000; Marigo & Girardi 2007; Marigo et al. 2008) to obtain the mass-to-light ratios as a function of age, metallicity, stellar mass, and evolutionary stage, which we would need to compare our models with real observations. We fit on the shape of the surface brightness profile only (not its absolute values) so that the inferred total mass is controlled by the kinematics and not influenced by systematic differences between the absolute values of the mass-to-light ratios in the FSPS models and the N -body simulation used to generate mock data. The global mass-to-light ratio Υ_V is thus another free parameter. The kinematic mock data are compared to the model velocity dispersion values for tracer stars with the same mean mass as those of a given kinematic sample.

As in previous sections, the fitting procedure is performed on the binned data using the EMCEE MCMC code (Foreman-Mackey et al. 2013), with a nuisance parameter for the unknown uncertainty in the surface brightness values, and adopting uniform priors for all parameters (uniform in $\log r_a$ for the anisotropy). We found that including the outermost data point of the *Gaia* PM dispersion profiles led to similar biases as those discussed in Section 4.1 and we thus ignored these data in the fit.

⁶See Peuten et al. (2017) for a discussion of the choice and minimum number of mass bins to ensure fast but stable solutions.

The results from fitting these multimass LIMEPY models to the full data set (case 3) are shown in Fig. 4 (the results are similar for cases 1 and 2, so we do not show the other fits). Again, the various mock profiles are well reproduced by the models, although the outermost data point on the *Gaia* PM dispersion profile cannot be matched by these DF-based models.

The true M , Υ_V , and r_h are typically retrieved within 1σ – 1.5σ (see Table 2), but we notice some small systematic effects. These models tend to slightly overestimate the total mass (and thereby mass-to-light ratio), underestimate the half-mass radius, and overestimate the fraction of mass in dark remnants (although this last recovered quantity is always consistent with the true value within 1σ). The systematic underestimation of the half-mass radius may be due to underestimating the mass in low-mass stars at large radius.

Results for the model parameters, global mass function, and mass distribution of dark remnants are given in Table 5. We note that isotropic models are favoured (the best-fitting anisotropy radius is much larger than the Jacobi radius of the model), as found for the single-mass models. It is interesting to see that our simple power-law parametrization for the mass function of dark remnants yields a successful recovery of the fraction of the total mass in remnants and a good approximation of their mass function, as can be seen from the top left-hand panel of Fig. 5, where we overplot the inferred mass function on the true mass function from the N -body snapshot. In the bottom left-hand panel of the same figure, we show that the global mass function of stars is also well recovered within uncertainties, except perhaps for a slight discrepancy at the very low-mass end (which comprises a very small fraction of the total cluster mass). The broken power law we adopted is a good representation of the global mass function of the cluster.

4.3 Multimass King DF

We now turn to the multimass modelling method used by Sollima et al. (2012). In the present case, the DF is given by the sum of the contributions of 12 different evenly spaced mass groups from 0.1 to $1.3 M_\odot$ each described by a Michie–King DF (Michie 1963; King 1966):

$$f(E, L) = \sum_{j=1}^{12} f_j = \sum_{j=1}^{12} k_j \exp\left(\frac{A_j L^2}{\sigma_K^2 r_a^2}\right) \exp\left(\frac{A_j E}{\sigma_K^2} - 1\right), \quad (1)$$

where E and L are the energy and angular momentum per unit mass, respectively, r_a is the radius at which orbits start to be radially biased, σ_K is a normalization term, the coefficients $A_j \propto m_j$ define the degree of mass segregation, and the coefficients k_j determine the MF. We refer to Appendix A for the equations used to integrate the DF to obtain the density (ρ_j) and velocity dispersion profiles in both the radial and tangential components ($\sigma_{r,j}$, $\sigma_{t,j}$) of all mass species and projected on the plane of the sky (Σ , σ_{LOS} , σ_{R} , σ_{T}).

The free parameters of this family of models are the central potential $W_0 \equiv \Phi_0/\sigma_K^2$, the scale (core) radius $r_c \equiv \sqrt{9\sigma_K^2/4\pi G\rho_0}$, and the coefficients k_j which determine the MF (see also King 1966; Gunn & Griffin 1979). Unlike the method described in Section 4.2, where the global mass function is parametrized by a broken power law, the shape of the mass function is free to vary in each of the eight bins corresponding to visible stars, according to the values of the coefficients k_j . A population of remnants has also been simulated by passively evolving a Kroupa (2001) IMF defined between $0.1 M_\odot$ and $8 M_\odot$ using the prescriptions of Kruijssen (2009) and then

retaining a number of remnants in each bin defined by

$$N_{\text{remn},j} = N_{\text{remn},j}^{\text{ev}} \frac{N_j^{\text{mod}}}{N_j^{\text{IMF}}} \quad (2)$$

where N_j^{mod} and N_j^{IMF} are the number of visible stars adopted in the j -th mass bin by the model and that predicted by the Kroupa (2001) IMF, and $N_{\text{remn},j}^{\text{ev}}$ is the number of remnants after passive evolution in the same j -th mass bin. The upper limit of the adopted IMF assumes that the entire population of remnants is constituted by only white dwarfs. This simplification was initially motivated by the large natal kicks expected for neutron stars and the relatively rapid ejection of black holes expected from dynamical evolution. We note that there is recent theoretical and indirect observational evidence pointing to the possible retention of significant numbers of stellar-mass black holes to the present day in GCs (e.g. Breen & Heggie 2013; Morscher et al. 2015; Peuten et al. 2016; Arca Sedda, Askar & Giersz 2018; Askar, Arca Sedda & Giersz 2018), but an evolved cluster (given its present-day mass and mass function) like M4 modelled here is not expected to have retained a significant population of black holes. Indeed, only two black holes are still present in the snapshot studied, although the cluster has retained 130 neutron stars. The neutron stars make $\lesssim 0.3$ per cent of the total cluster mass and their mean mass is only slightly larger than that of the most massive white dwarfs, so we do not expect that including them would result in a noticeable improvement of the fits.

The best-fitting model has been calculated following the iterative procedure described in Sollima et al. (2012). Briefly, a first guess of the k_j coefficients has been chosen and the values of W_0 and r_c providing the best fit to the number density profile have been searched. As a first guess, the coefficients corresponding to a Kroupa (2001) mass function have been adopted. The local mass function at the same projected radius as the mock observations has then been calculated and used to adjust the k_j coefficients

$$k_j^{\text{new}} = k_j^{\text{old}} \left(\frac{N_{\text{obs},j}}{N_{\text{mod},j}} \right)^\eta \quad (3)$$

where $N_{\text{mod},j}$ and $N_{\text{obs},j}$ are the predicted and observed number of particles (remnants excluded) in the j -th mass bin, respectively, and η is a dampening factor set to 0.5 to avoid divergence. The above procedure is repeated until the parameters W_0 , r_c and the coefficients k_j start to fluctuate around equilibrium values. The mass of the model is then normalized using a maximum-likelihood technique (see equation 11). Note that since the shape of the mass profile (governed by the parameters W_0 , r_c and by the mass function) is chosen using only the density profile and the mass function near the half-light radius, the derived half-mass radius does not depend on the adopted set of kinematical constraints with this method. Different values of r_a have also been tested to account for different degrees of radial anisotropy. However, the isotropic model ($r_a = \infty$) always provided the best fit to the data, as was found with the models of the previous sections.

Unlike what is done with LIMEPY models, where the distance is left as a free parameter throughout the fitting procedure, in the technique described here the distance was estimated (for cases 2 and 3) for any choice of r_a/r_c at the end of each iteration cycle before normalization (the last step to derive the mass). For this purpose, the distance providing the proportion of dispersions in the three directions (LOS, radial and tangential; see equations 6, 7, and 8) predicted by the considered anisotropy profile is chosen (e.g. in the case of the best-fitting isotropic model, the distance providing the same dispersions in all projections was chosen).

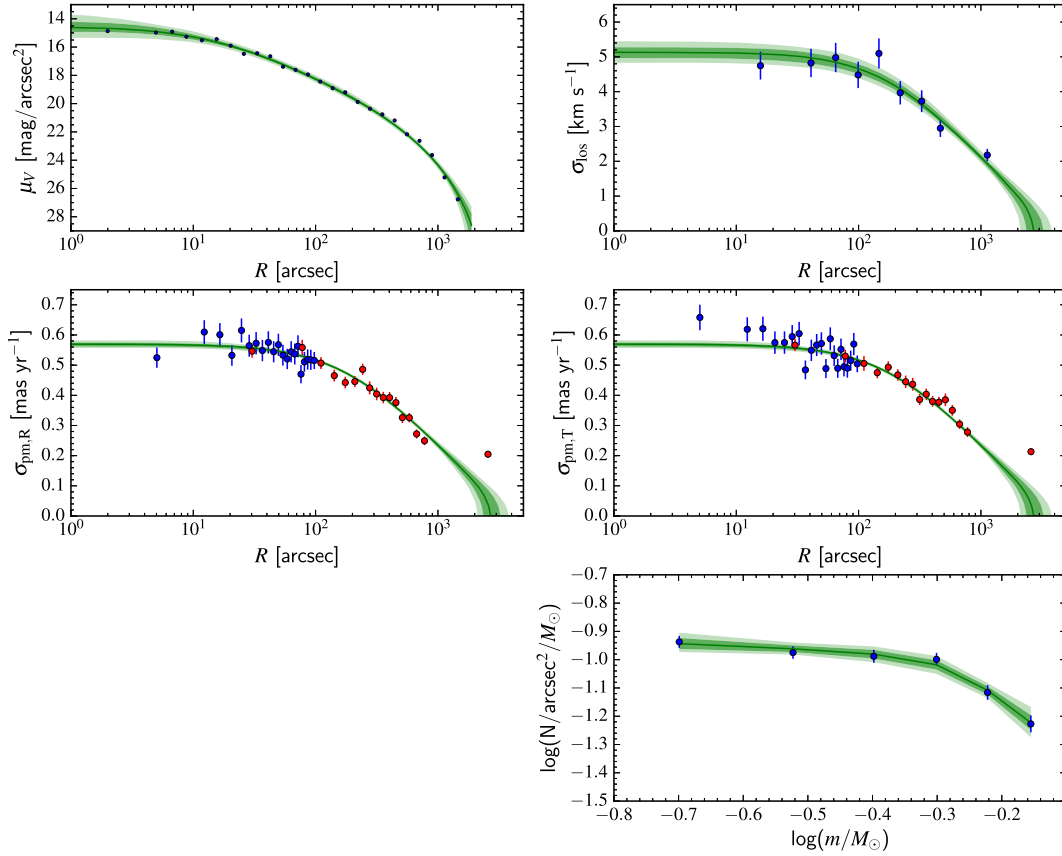


Figure 4. Fit of the multimass LIMPEPY model from Section 4.2 to the data set of case 3 (fitting to surface brightness, LOS velocities, *HST* and *Gaia*-like PMs, and mass function in an annular region between 250 and 350 arcsec). The mock data for the surface brightness profile (upper left), LOS velocity dispersion profile (upper right), PM dispersion profiles (radial component in middle left, tangential component in middle right panel), and local stellar mass function near the half-mass radius (lower right panel) are shown with blue-filled circles, except the *Gaia* mock data shown in red. The 1σ and 2σ contours on the best-fitting model are shown with dark and light green-shaded regions, respectively, and the median values are shown with green lines.

Table 5. Results of multimass LIMPEPY model fits to different data set combinations, all including the mock local stellar mass function measurement. The fitting parameters M , r_h , Υ_V , and D are given in Table 2. Note that when describing the global mass function of main-sequence stars in the N -body snapshot by a broken power law, it has values of $\alpha_1 = 0.19$ and $\alpha_2 = 1.17$.

Data	W_0	g	$\log(r_a/\text{pc})$	α_1	α_2	α_{rem}
(1) Only LOS (+ MF)	$7.00^{+1.09}_{-0.61}$	$1.13^{+0.30}_{-0.32}$	$3.63^{+0.95}_{-1.17}$	$0.09^{+0.08}_{-0.08}$	$1.15^{+0.27}_{-0.25}$	$6.35^{+0.71}_{-0.54}$
(2) No <i>Gaia</i> (+ MF)	$6.84^{+0.77}_{-0.53}$	$1.43^{+0.25}_{-0.28}$	$3.63^{+0.94}_{-1.05}$	$0.07^{+0.08}_{-0.08}$	$1.16^{+0.26}_{-0.27}$	$5.90^{+0.50}_{-0.44}$
(3) All (+ MF)	$6.91^{+0.75}_{-0.49}$	$1.34^{+0.16}_{-0.15}$	$3.86^{+0.79}_{-0.95}$	$0.06^{+0.08}_{-0.08}$	$1.12^{+0.26}_{-0.25}$	$5.93^{+0.35}_{-0.31}$

The best-fitting model to the mock data from case 3 (number density profile, LOS velocities, *HST* and *Gaia*-like PMs, with the addition of the mass function) is shown in Fig. 6. The results are similar for the other cases considered and thus are not shown here. The various observables are once again well reproduced by the models, and as in the previous sections the outermost data point in the *Gaia* PM dispersion profile cannot be matched by these models.

As shown in Table 2, the true M and Υ_V are recovered within 1σ in all cases, and r_h is systematically slightly underestimated (although within $\sim 2\sigma$), as was found with the other flavour of multimass models in Section 4.2. The lower right-hand panel of Fig. 5 shows that the global mass function of stars is well recovered with this method. The upper right panel of that figure displays the adopted remnant mass function overplotted on the true remnant mass function. In the white dwarf regime, the adopted prescription

for the mass function of remnants is a good match to the prescription used in the N -body model. The multimass models presented in this subsection however ignore the contribution of neutron stars and black holes, and they slightly underestimate the total mass in remnants.

5 JEANS MODELLING

Another mass-modelling approach is the use of the Jeans equation to derive the global mass profile $M(< r)$ from the density ν and velocity dispersion σ_r profiles of a tracer population:

$$\frac{1}{\nu} \frac{d\nu\sigma_r^2}{dr} + 2\beta \frac{\sigma_r^2}{r} = -\frac{GM(< r)}{r^2}, \quad (4)$$

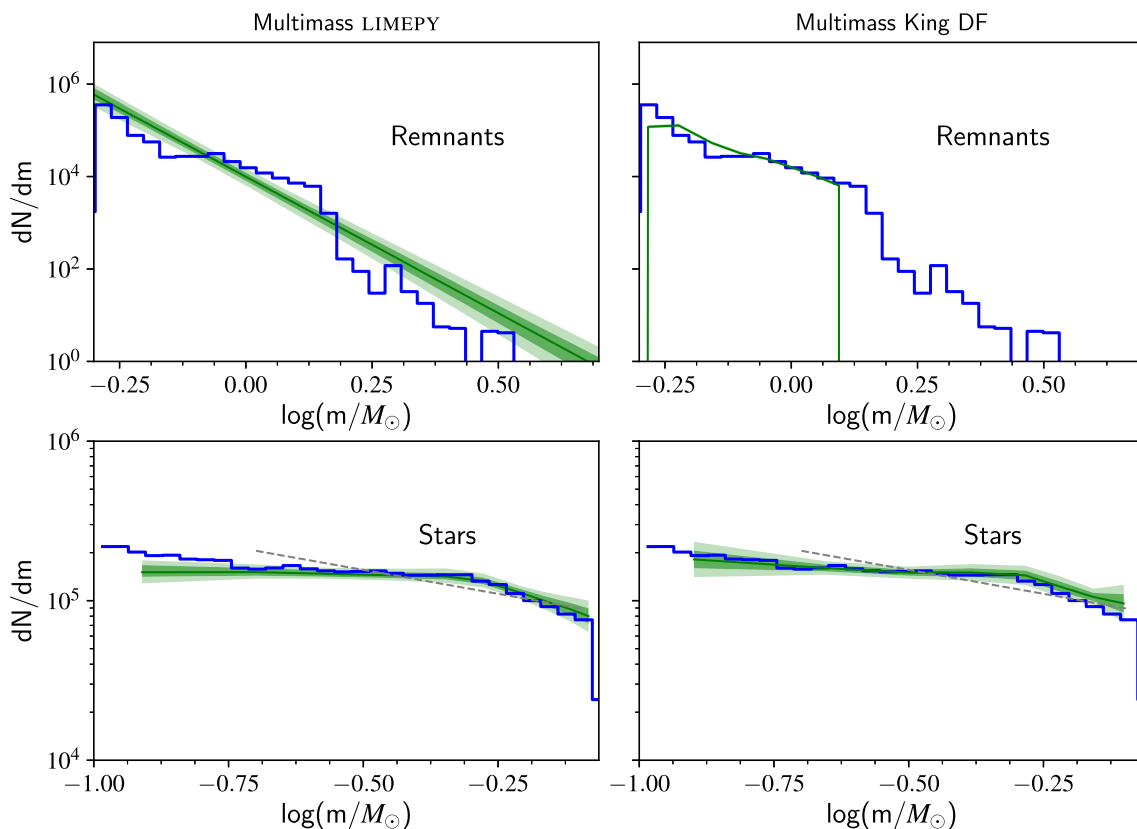


Figure 5. Inferred global mass function of dark remnants (upper panels) and visible stars (lower panels) from multimass model fits to the mock data from case 3. The results for the multimass LIMEPY models (Section 4.2) are shown in the left-hand panels, while those from the multimass models of Section 4.3 are shown in the right-hand panels. The 1σ and 2σ contours are shown with dark and light green-shaded regions, respectively, and the median values are shown with green lines. The true mass functions are shown with blue histograms. For comparison, we also show with a grey dashed line the best-fitting global mass function (when describing the global mass function as single power law in the range $0.2 < m < 0.8 M_{\odot}$) from the method of Section 6 based on a grid of N -body models.

where

$$\beta \equiv 1 - \frac{\sigma_t^2}{2\sigma_r^2} \quad (5)$$

is the anisotropy profile.

The advantage of the above equation is that it links two observable quantities (density and velocity dispersion profiles) of an arbitrary sample population to a global quantity (the mass profile generating the gravitational potential) without any a priori assumption on the underlying DF. On the other hand, errors on the observational profiles are enhanced in the derivative calculation often leading to noisy and/or unphysical results. In the last decades this approach has been used by several authors on both GCs and dwarf galaxies (e.g. Gebhardt & Fischer 1995; Ibata et al. 2013; Lützgendorf et al. 2013) using different techniques to minimize the noise in the derivatives involved in equation (4).

Here, we describe the results of two different Jeans-modelling approaches.

5.1 Variable M/L Jeans (Sollima)

In this section we apply the technique described in Sollima et al. (2016). In particular, the stars brighter than the main-sequence turn-off (with $V < 17$) have been used as the tracer population. For these stars, both LOS velocities and PMs are obtainable with current observational facilities and with *Gaia*. The projected number density

profile of this stellar population has been fitted with a sum of 27 Gaussian functions with different variances⁷ (see also Section 5.2):

$$\Sigma = \sqrt{2\pi} \sum_i v_i s_i \exp\left(-\frac{r^2}{2s_i^2}\right). \quad (6)$$

The coefficients v_i are used to compute the 3D density profile of the tracer population:

$$\nu = \sum_i v_i \exp\left(-\frac{r^2}{2s_i^2}\right). \quad (7)$$

The variances s_i have been chosen to increase in logarithmic steps of 0.1 in the range $-1.6 < \log(r/\text{pc}) < 1$. A global density profile (ρ_t) is iteratively updated by choosing appropriate coefficients v_i in equation (6), and equation (4) has been solved for σ_r^2 :

$$\sigma_r^2 = \frac{G(B_{\infty} - B_r)}{\nu \exp\left(2 \int \frac{\beta}{r'} dr'\right)}, \quad (8)$$

where

$$B_r = \int_0^r \frac{M \nu \exp\left(2 \int \frac{\beta}{r''} dr''\right)}{r'^2} dr'. \quad (9)$$

⁷Note that according to equation (6), in this formalism the Gaussian functions are defined as a function of the 3D radius (r) and projected into the plane of the sky to be compared with the observed profile.

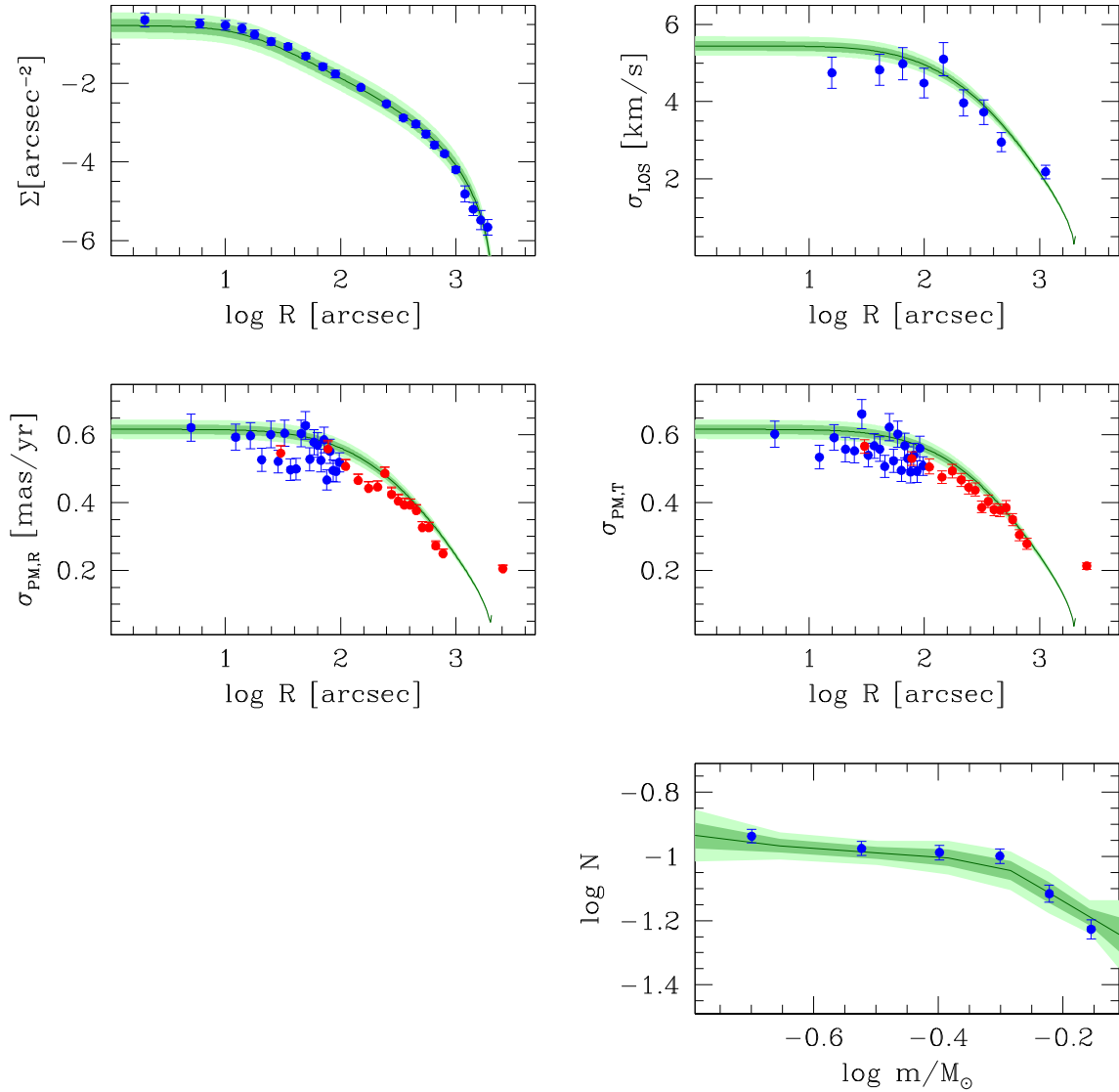


Figure 6. Fit of the multimass King DF model from Section 4.3 to the data set of case 3 (projected number density, LOS velocities, *HST* and *Gaia*-like PM dispersion profiles, and mass function in an annular region between 250 and 350 arcsec). The mock data for the projected number density profile (upper left), LOS velocity dispersion profile (upper right), PM dispersion profiles (radial component in middle left, tangential component in middle right panel), and local stellar mass function near the half-mass radius (lower right panel) are shown with blue-filled circles, except the *Gaia* mock data shown in red. The 1σ and 2σ confidence regions for the best-fitting model are indicated by the green-shaded area in all panels, and the median values are shown with green lines.

For simplicity, the Osipkov–Merritt (Osipkov 1979; Merritt 1985) anisotropy profile

$$\beta(r) = \frac{(r/r_a)^2}{1 + (r/r_a)^2} \quad (10)$$

has been adopted, where r_a is the radius beyond which orbits become significantly radially biased. The corresponding projections of the velocity moments onto the plane of the sky (σ_{LOS} , σ_{R} , and σ_{T}) can then be computed (see Section B).

The best-fitting coefficients v_i have been chosen by maximizing the log-likelihood

$$\ln \mathcal{L} = -\frac{1}{2} \sum_j \sum_{k=\text{LOS,R,T}} \left(\frac{(v_{k,j} - \bar{v}_k)^2}{\sigma_k^2 + \delta v_{k,j}^2} + \ln(\sigma_k^2 + \delta v_{k,j}^2) \right) \quad (11)$$

using a Markov Chain Monte Carlo algorithm. In the above equation the terms $\delta v_{k,j}^2$ are the uncertainties in the k -th velocity component

of the j -th star. Only positive coefficients have been chosen to ensure a monotonically decreasing profile. The positivity of the DF across the energy domain has been tested using the Eddington (1916) formula (see Sollima et al. 2016).

To convert the velocities in the plane of the sky from physical units into angular ones, we adopted the true cluster distance in case 1, while for cases 2 and 3 we adopted the distance providing the same scaling factor between σ_{LOS} , σ_{R} , and σ_{T} in models and mock observations.

The surface brightness profile has been interpolated using equation 6 providing a 3D luminosity density profile. Errors have been calculated using a Monte Carlo algorithm in which, for each mock measurement (either LOS velocity or PM), a synthetic velocity has been simulated at the distance of the observed stars from the cluster centre with velocities randomly extracted from Gaussian functions with dispersions given by the convolution of the local intrinsic dispersion and the individual velocity error of the selected star. The

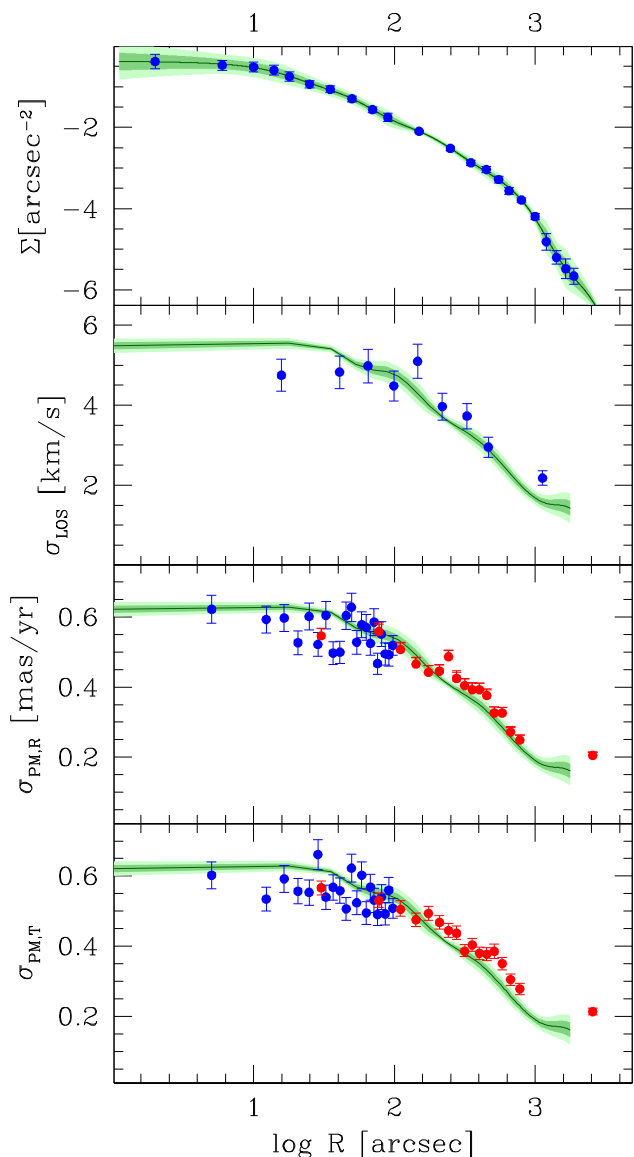


Figure 7. Best-fitting Jeans model (using the technique by Sollima et al. 2016; Section 5.1) to the projected number density, LOS velocity, projected radial and tangential PM dispersion profiles (from top to bottom, respectively) to the data set from case 3. The 1σ confidence level is indicated by the green-shaded area in all panels.

same algorithm applied to the observations has then been applied to the 100 synthetic samples, thus estimating the uncertainties on all inferred quantities. For all three considered sets of constraints, the best fit has been obtained by assuming very large values of r_a , corresponding to isotropic models.

The best-fitting model to the full data set (case 3) is shown in Fig. 7. Again, all the mock profiles are well reproduced by the model. The Jeans model, which unlike the truncated DF-based models presented in the previous sections, does not impose a priori restrictions on the shape of the outer profiles, is better capturing the flattening of the velocity dispersion profile seen in the *Gaia*-like PMs. The M , Υ_V , and r_h of the cluster (Table 2) are all recovered within 1σ . Note however that the uncertainties on these quantities are large and much more conservative than was found with DF-

based models. This can be attributed to the flexibility of the Jeans model and to the scarcity of data tracing the mass in the outermost parts of the cluster. With the mass distribution in the outskirts poorly constrained by the data and not constrained or restricted by an imposed DF, global quantities like M and r_h become less precisely constrained. In that sense, the recovered cumulative mass or mass-to-light ratio profiles (Section 7) are perhaps a fairer way to assess the performance of Jeans models than these global quantities.

5.2 Variable M/L Jeans (JAM)

In this section, we use the spherical Jeans Anisotropy Multi-Gaussian Expansion (JAM, MGE) models developed in Cappellari (2008) and extended in Cappellari (2015). These models assume that the cluster is spherically symmetric and not rotating,⁸ which preliminary analysis of the available mock data suggests is reasonable for this cluster, but do allow for velocity anisotropy.

Many aspects of the method presented in this section are similar to the Jeans modelling approach presented in Section 5.1. We thus refer to Appendix C for details of how the JAM models are computed and fitted to data, and simply summarize here some of the key differences and assumptions with this method.

The tracer density profile $\nu(r)$ and mass density $\rho(r)$ of the cluster are again both provided in the form of a Multi-Gaussian Expansion (MGE), but unlike the models of Section 5.1, we use only 6 Gaussians for the JAM models. Instead of assuming an Osipkov–Merritt anisotropy profile, anisotropy is provided here per Gaussian component of the tracer MGE and allowed to vary non-parametrically throughout the cluster. To capture the effect of the Galactic tidal field, we further include a contaminant population that is dominant at large radii from the cluster centre (see Appendix C). The models are also fitted to the data discretely, not using the binned profiles.

The surface brightness, velocity dispersion, and anisotropy fits for case 3 are shown in Fig. 8. We draw 1000 samples from the final posterior distribution of the fit parameters and then use these parameters to calculate the corresponding profiles. The dark green lines show the medians of the profiles, the darker shaded regions encompass the 15.9 through 84.1 percentiles (effectively the 1σ confidence regions) and the lighter shaded regions encompass the 2.3 through 97.7 percentiles (effectively the 2σ confidence regions). In the upper panel, the blue points show the surface brightness profile calculated from the simulated data, to which we fit directly. In the middle three panels, the blue and red points show the binned dispersion profiles calculated from the simulated data; however, note that we fit to the measurements for the individual stars and not to these binned dispersion profiles. The binned dispersion profiles are shown here for comparison purposes only.

The utility in the discrete fits is apparent with our inclusion here of a contaminant population. Most other methods were forced to remove the outermost point in the binned PM dispersion profile as the models were not able to fit this flattening in the profile. Our discrete approach allows us to include a contaminant population to capture these outer stars instead of removing them entirely, and furthermore, allows the models themselves to determine which stars are more likely to be cluster members and which are more likely to be contaminants rather than us having to decide at the outset which stars to keep or exclude.

⁸For cylindrically symmetric models that can optionally include rotation, we would turn to the axisymmetric JAM models (Cappellari 2008; Cappellari 2012; Watkins et al. 2013).

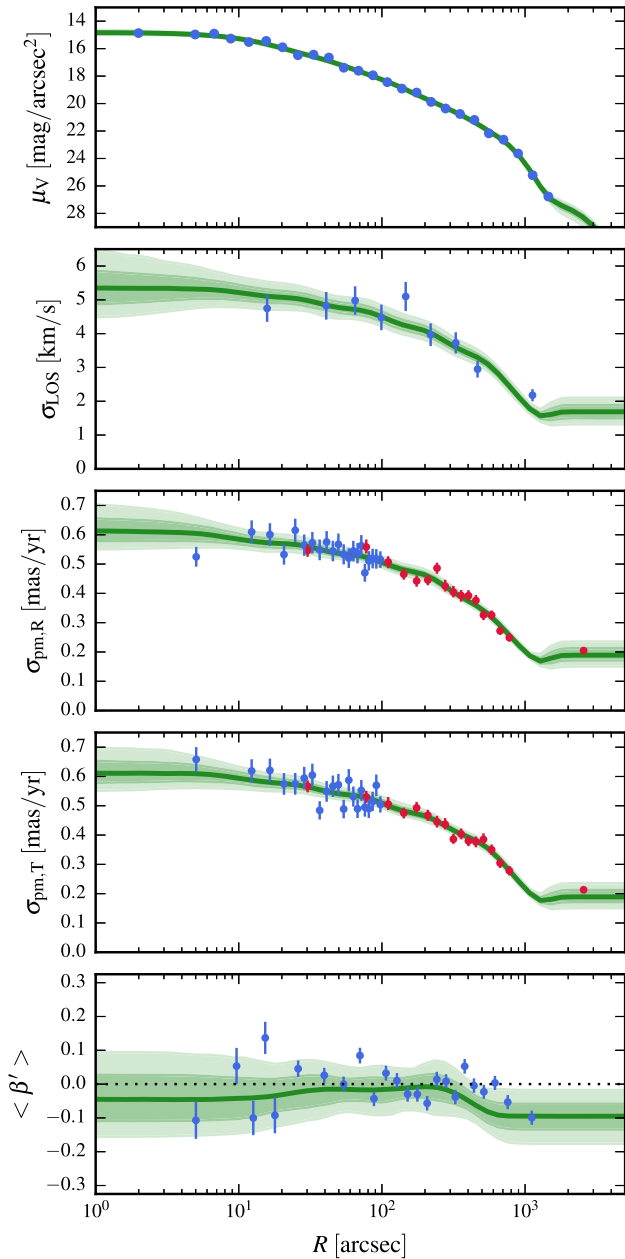


Figure 8. From top to bottom: model fits to the surface brightness, projected LOS velocity dispersion, projected radial PM dispersion, projected tangential PM dispersion, and anisotropy profiles for case 3 using the Discrete JAM method (Section 5.2). The dark green lines show the medians of the profiles, the darker shaded regions encompass the 1σ confidence limits, and the lighter shaded regions encompass the 2σ confidence limits. The blue and red points show the profiles calculated from the simulated data. The inclusion of a contaminant population is seen as the outer bump in the surface brightness profile and the flattening of the velocity dispersion profiles at large radii.

The contaminant population is seen as the flattening of the velocity dispersion profiles at large radii, which nicely fits the outermost data point. It also gives the outer bump in the surface brightness profile.⁹

⁹This outer shape is somewhat arbitrary; the contaminant density enters primarily via the probability of cluster membership calculated in equation C10

Another feature of these models is the anisotropy profile that we were able to recover from the fits, as shown in the lower panel of Fig. 8, where isotropy $\beta' = 0$ (see equation C4) is marked as the dotted line. To calculate the ‘true’ anisotropy profile for this comparison, we selected all stars in the snapshot brighter than 17.5 mag (the adopted faint limit for our *HST* mock proper motion data) but with no radial limit; these were then binned in radius and the spherical anisotropy was calculated using equation 5, where $\sigma_t^2 = \frac{1}{2}(\sigma_\theta^2 + \sigma_\phi^2)$. Again, we did not fit directly to these binned data points; they are shown for comparison only.

We see that the cluster is close to isotropic, so in this case assuming isotropy would not be disastrous, as can be seen by the successful fits from other methods that assume isotropy. Nevertheless, we do see some mild deviations from isotropy, particularly in the outer regions of the cluster that our models are able to capture. Tangential anisotropy is not captured by any of the models of the previous sections, which all allow only for radially biased anisotropy or isotropy.

The inferred M , Υ_v , and r_h (Table 2) are all recovered well within 1σ with this method. The uncertainties on these values are rather conservative, especially when compared to the DF-based models, for the same reasons as mentioned in Section 5.1 for the other flavour of Jeans models.

6 GRID OF N-BODY MODELS

In the approach presented in this section, the cluster properties and best-fitting profiles were determined by comparing the mock data (dispersion profiles, surface brightness profile, stellar mass function) to a grid of ~ 1000 scaled N -body simulations, as described in Baumgardt (2017) and Baumgardt & Hilker (2018). These are N -body simulations of isolated star clusters containing $N = 10^5$ stars initially and ran with the GPU-enabled version of the collisional N -body code NBODY6 (Aarseth 1999; Nitadori & Aarseth 2012).

The clusters initially follow a King (1962) density profile, with concentrations spanning the range $0.2 \leq c \leq 2.5$ and initial half-mass radii in the range $2 \leq r_h \leq 35$ pc. The simulations were run up to an age of 13.5 Gyr, but the cluster models considered in this work were calculated from snapshots centered around the age of the mock M 4 ($\simeq 12$ Gyr). To account for the preferential removal of low-mass stars, simulations were run with a Kroupa IMF as well as IMFs depleted in low-mass stars in order to be able to match the mock mass function and more accurately estimate the cluster parameters. The adopted IMFs are defined as a combination of five connected power laws between 0.1 and $15 M_\odot$ with breaks at $0.2, 0.5, 0.8,$ and $1.0 M_\odot$. We considered six different sets of parameters defining the power-law slopes in different mass regimes and their mass limits (for details, see table 1 of Baumgardt & Hilker 2018). The parameters are chosen to describe a time sequence of the mass function of a star cluster starting with a Kroupa IMF in different stages of its dissolution. Due to the fact that the simulated clusters are isolated, the chosen IMFs remain more or less unchanged throughout the evolution, apart from the high-mass end where stellar evolution has turned stars into remnants. In the simulations, a 10 per cent retention fraction was assumed for the black holes and neutron stars. The remaining 90 per cent received kick velocities large enough that

and so for large radii $P_{\text{cluster}} = 0$ (i.e. $P_{\text{contam}} = 1$ for constant background density ν_{contam} and any Gaussian width s_{contam}). This motivated our choice to fix the width of the contaminant Gaussian.

they immediately left the clusters. The clusters did not contain primordial binaries.

For each model, 10 snapshots in time spaced by 50 Myr were combined. The combined N -body snapshots were then scaled in radius to match the half-light radius of the mock cluster. During the scaling the mass of the cluster was increased such that the relaxation time of the cluster was constant. The velocities are also scaled following equation (2) from Baumgardt (2017). Best-fitting models are obtained by linearly interpolating the grid of N -body simulations with varying initial cluster concentration, half-mass radius, and IMF to find the set of parameters that simultaneously provides the best match to all the mock data considered. To compare with the mock stellar mass function, the model clusters were projected onto the plane of the sky and stars were selected in the same area as the mock data.

The results from fitting the grid of N -body models to the mock data (case 3) are shown in Fig. 9 (similar results were obtained for cases 1 and 2, so we do not show the other fits). The mock profiles are generally well reproduced by the models. The best-fitting local mass function is not a perfect match to the mock data, which can be attributed to the limited flexibility of the current grid of N -body models regarding the choice of IMF, which is only varied along a single dissolution sequence.

From the values reported in Table 2, we see that the true M is recovered within 1σ for cases 1 and 2, and $\sim 1.5\sigma$ away from the true value for case 3 ($\sim 1500 M_{\odot}$ off). The method tends to systematically underestimate r_h (with a 2σ – 3σ difference between the recovered value and the true value). Υ_v is also underestimated, although only in case 2 is the bias in the recovered Υ_v significantly larger than the statistical uncertainties. The dark remnant fraction is also recovered well, within uncertainties for all cases. Note that mass function uncertainties are not accounted for in the quoted uncertainties, but as mentioned above the current grid can vary the mass function only along a single sequence. This may explain some of the systematic differences noted above.

We find best-fitting global mass functions with a power-law index $\alpha = -0.54$, $\alpha = -0.58$, and $\alpha = -0.65$ (when describing the global mass function as single power law in the range $0.2 < m < 0.8 M_{\odot}$), respectively, for cases 1, 2, and 3. Comparing this with the observed global mass function of stars and the best-fitting broken power law for the multimass models (see Fig. 5), we conclude that the N -body method also recovers the global mass function reasonably well.

We note that the fits in this section were performed by considering only the stars (in the models and observations) within 2000 arcsec in projection from the cluster centre, i.e. roughly within the Jacobi radius of the cluster. Because the method currently relies on a grid of isolated N -body models, it does not allow to capture the effect of tides on the dynamics of stars near the Jacobi radius and beyond. We indeed see from Fig. 9 that the best-fitting model does not match the outermost PM data point. In practice, with real data, one could adopt a similar approach by estimating the Jacobi radius with an initial estimate of the cluster orbit (thanks to *Gaia*) and cluster mass.

7 COMPARISON OF THE ENCLOSED MASS AND MASS-TO-LIGHT RATIO PROFILES

The strengths, limitations, and general performance of the different methods considered in this work are already becoming apparent from the previous sections and Table 2, but here we push the comparison further by directly comparing the inferred enclosed mass and mass-to-light ratio profiles.

For all methods, Fig. 10 displays for the case 1 data set the ratio of the inferred cumulative mass profile to the true cumulative mass profile (in 3D; left-hand panel), and the inferred 3D mass-to-light ratio profile (right-hand panel). Figs 11 and 12 display the same quantities but for the case 2 and case 3 data sets, respectively. Unsurprisingly, including the *HST*-like PMs usually improves the recovered profiles in the central regions compared to the fits with LOS velocities alone, and including the *Gaia*-like PMs then improves the outer profiles. As expected, the error bars on the recovered mass and mass-to-light ratio profiles generally shrink in the radial range of the additional kinematic data considered.

The obvious limitations of single-mass DF-based are readily apparent from looking at these figures, regardless of the richness of the kinematic data available. These models always systematically underestimate the mass in the very central region and then overestimate the cumulative mass at intermediate distances from the centre, but slightly underestimate the total mass (unless kinematic data covers the external regions of the cluster). The cumulative mass profile comparison shows that mass is clearly missing from these models in the inner and outer regions, most likely due to the inability of the single-mass DF-based models to account for the presence and different spatial distribution of heavy dark remnants (concentrated in the inner regions) and faint low-mass stars (preferentially located in the external parts of the cluster). The way for the model to mitigate these limitations while still providing a satisfying fit to the mock data appears to overpredict the amount of mass in the intermediate regions (within and around the half-mass radius). So not only can single-mass models underestimate the total mass (e.g. Shanahan & Gieles 2015; Sollima et al. 2015), they may also lead to an overestimate of the gravitational acceleration in the most commonly studied regions of clusters. This has potentially important consequences for the interpretation of pulsar timing data and inferred accelerations (used to probe the gravitational potential of GCs) when based on simple dynamical models in which mass follows light (e.g. Freire et al. 2017; Prager et al. 2017). We note that single-mass DF-based models with potential escapers yield similar results, but they allow to trace the mass profile further out by including the population of potential escapers at large radii.

Multimass DF-based models provide a better description of the cumulative mass profile. Both the three-component model (Section 4.1) and the multimass model from Section 4.3 (based on Gunn & Griffin 1979) however underestimate the mass in the core (although only within a region corresponding to ~ 3 per cent of the half-mass radius), possibly because they slightly underestimate the total mass fraction in remnants and ignore the contribution of heavier remnants such as neutron stars. The multimass LIMEPY models from Section 4.2, which allowed more freedom in the total mass and mass function of remnants, recover the inner mass profile within the uncertainties even though these uncertainties are large in the innermost region. All multimass models very slightly overestimate the mass at intermediate radii.

The Jeans models (the flavours from both Section 5.1 and Section 5.2) are able to reproduce the enclosed mass profiles well overall, typically as well as the best of the DF-based models; this is because they are able (indirectly) to account for the presence of different mass populations and account for their different spatial distributions, although they do not produce a mass function or directly quantify the degree of mass segregation as the multimass models are able to do. Global quantities, like M and r_h , are accurately but not as precisely determined by Jeans models (larger error bars than other methods), however the models do provide the most conservative and realistic error bars on the recovered cumulative

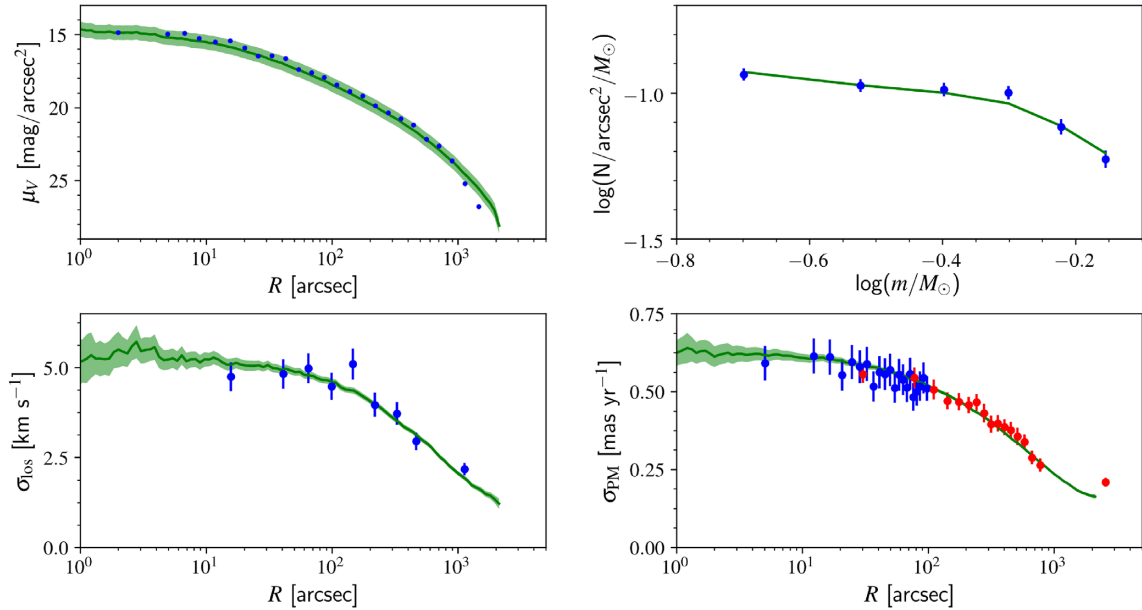


Figure 9. Fit of the grid of N -body models from Section 6 to the data set of case 3 (surface brightness, LOS velocities, *HST* and *Gaia*-like PM dispersion profiles, and mass function in an annular region between 250 and 350 arcsec). The mock data for the surface brightness profile (upper left), local stellar mass function (upper right panel), LOS velocity dispersion profile (lower left), and PM dispersion profile (lower right; $\sigma_{\text{PM}} = (\sigma_{\text{PM,R}} + \sigma_{\text{PM,T}})/2$) are shown with blue-filled circles, except the *Gaia* mock data shown in red. The 1σ confidence regions for the best-fitting model are indicated (when available) by the green-shaded area, and the median values are shown with green lines.

mass profile (the true profile is generally recovered within the uncertainties), with no significant bias in a particular direction. This is where the strength associated with the flexibility of these models becomes apparent.

For the method based on a grid of N -body models (Section 6), for which the effect of mass segregation is built in from first principles, the cumulative mass profile is generally well recovered. The enclosed mass is only slightly overestimated (but within ~ 20 per cent or better from the true value) for most of the radial extent of the cluster. Only in the inner 0.1 pc is the enclosed mass more significantly overestimated (a factor ~ 1.5 – 2 larger than the true value). This discrepancy in the centre could be related to the fact that the N -body models have no or too few binaries to heat the cluster core. Note that in its current implementation, the method does not yield uncertainties on the recovered mass and mass-to-light ratio profiles.

Apart from the single-mass DF-based models that have the obvious limitation of assuming a constant mass-to-light ratio profile, all other models considered satisfyingly reproduce the mass-to-light ratio profile, regardless of the combination of kinematic data sets used. Again, Jeans models provide the most conservative and realistic error bars on the mass-to-light ratio profiles, especially in the outskirts of the cluster. Multimass DF-based models however still have the advantage that the variation of the mass-to-light ratio with radius can easily be connected with mass segregation and the relative contribution of different mass species at different distances from the centre. This can be useful, for example, to establish if white dwarfs, neutron stars, or stellar-mass black holes are dominating the inferred increase in the mass-to-light ratio towards the cluster centre (e.g. Illingworth & King 1977; Gieles et al. 2018). In the case of the M4 N -body snapshot studied here, the increase in the mass-to-light ratio towards the centre is caused by white dwarfs dominating the mass density in the inner regions, a piece of information that is straightforward to extract from the best-fitting multimass models.

The inferred enclosed mass and mass-to-light ratio profiles for the Jeans models display fluctuations (especially in the outer regions) that have no physical basis. Both types of Jeans models treat the densities as a sum of Gaussians, and there is a delicate balance to choosing the number of Gaussians for a fit: when using too few of them, the model does not accurately represent the cluster,¹⁰ but when using too many there is the risk of overfitting the data. The models in Section 5.1 use 27 Gaussians, with widths evenly spaced in log radius at fixed values, chosen so as to sample the density everywhere; whereas the models in Section 5.2 use just 6 Gaussians and allow the widths to vary so as to position themselves where they need to be to get the best fit. Clearly both approaches are successful and are able to provide a good fit to the cluster overall. The larger fluctuations in the models from Section 5.1 are likely because of the large number of Gaussians used that are able to fit any fluctuations in the data at the location where that Gaussian dominates, physical or not. In principle, one could try to improve this aspect of the Jeans modelling by tuning the number of Gaussians used to fit the profiles and/or by adopting specific priors, but with real data for which the underlying mass profile is not known, this is not necessarily practical.

8 DISCUSSION

We compared different mass-modelling methods against mock data from an N -body simulation of M4 and found that all the models considered generally provide a satisfying fit to the data. However, depending on one’s scientific goal and available data, differences between the approaches and models mean that different techniques

¹⁰The models in Section 5.2 were also run with 5 Gaussians but the quality of the fits was significantly worse.

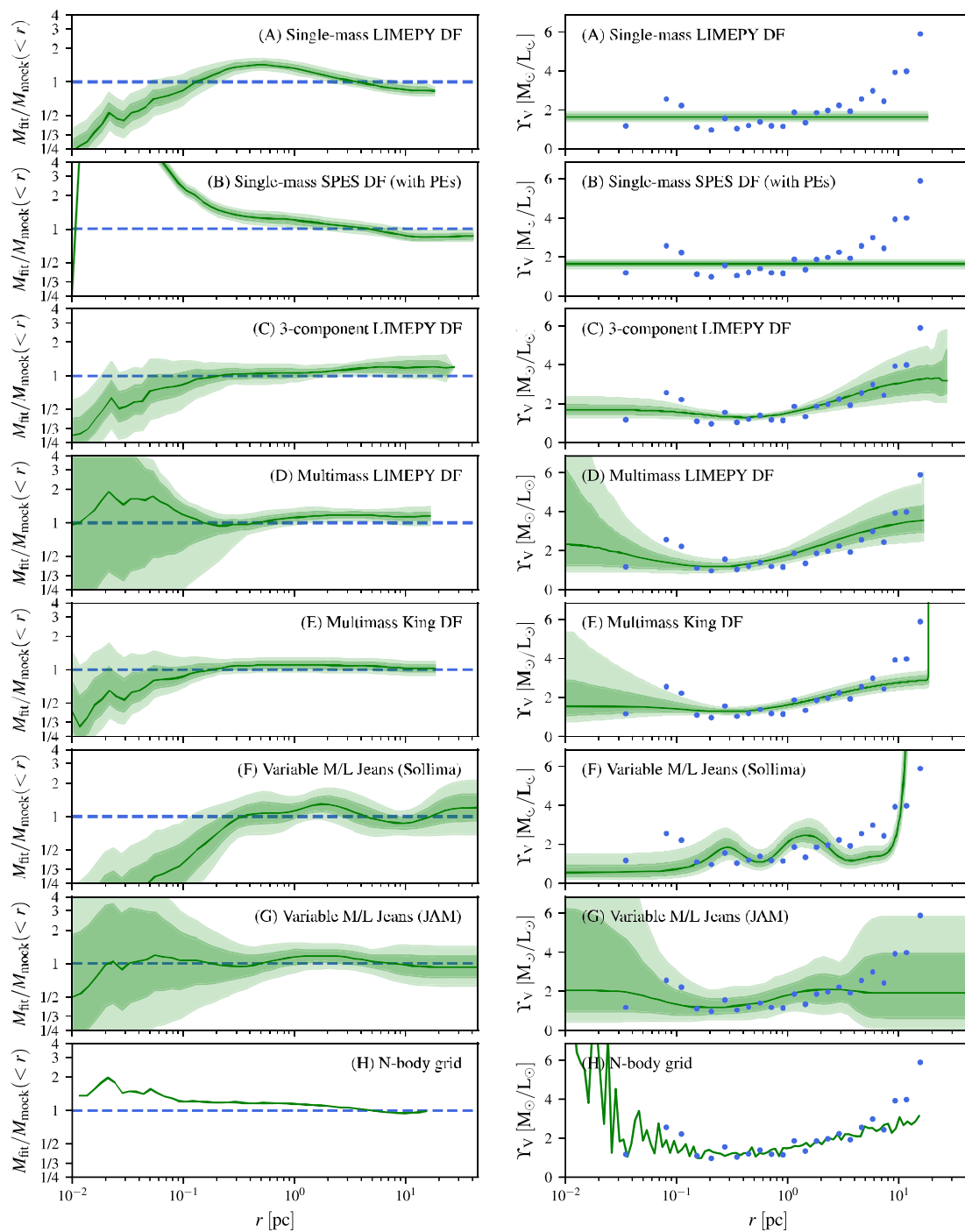


Figure 10. *Left:* Comparison of the inferred enclosed mass profiles in 3D (divided by the true enclosed mass profile) from the different methods for the mock data set of case 1. *Right:* Comparison of the inferred 3D V -band mass-to-light profiles from the different methods for the mock data set of case 1. The true mass-to-light ratio profile computed from the N -body model snapshot is represented by blue-filled circles. Solid lines indicate the median, dark shaded green regions the 1σ contours, and light shaded green regions the 2σ contours (when available).

can be more efficient, suitable, or biased. That dynamical models are able to fit the data well is perhaps not so surprising, given the number of free parameters in some of these models. The fact that a mass model provides a good fit to structural and kinematic data of a GC however does not necessarily imply that this model is a faithful representation of the mass distribution within the cluster. This is why, we also compared other quantities such as global properties (M , r_h , Υ_V , etc.) and cumulative mass or mass-to-light ratio profiles

that are predicted by the best-fitting mass models but not directly involved in the fitting procedure (and not available when fitting real data).

Single-mass DF-based models are still a possible way to obtain a first-order estimate of the global properties of a stellar cluster, such as its total mass and half-mass radius. Note however that if the kinematic tracers (generally bright stars more massive than the mean cluster star) are concentrated in the inner regions of the

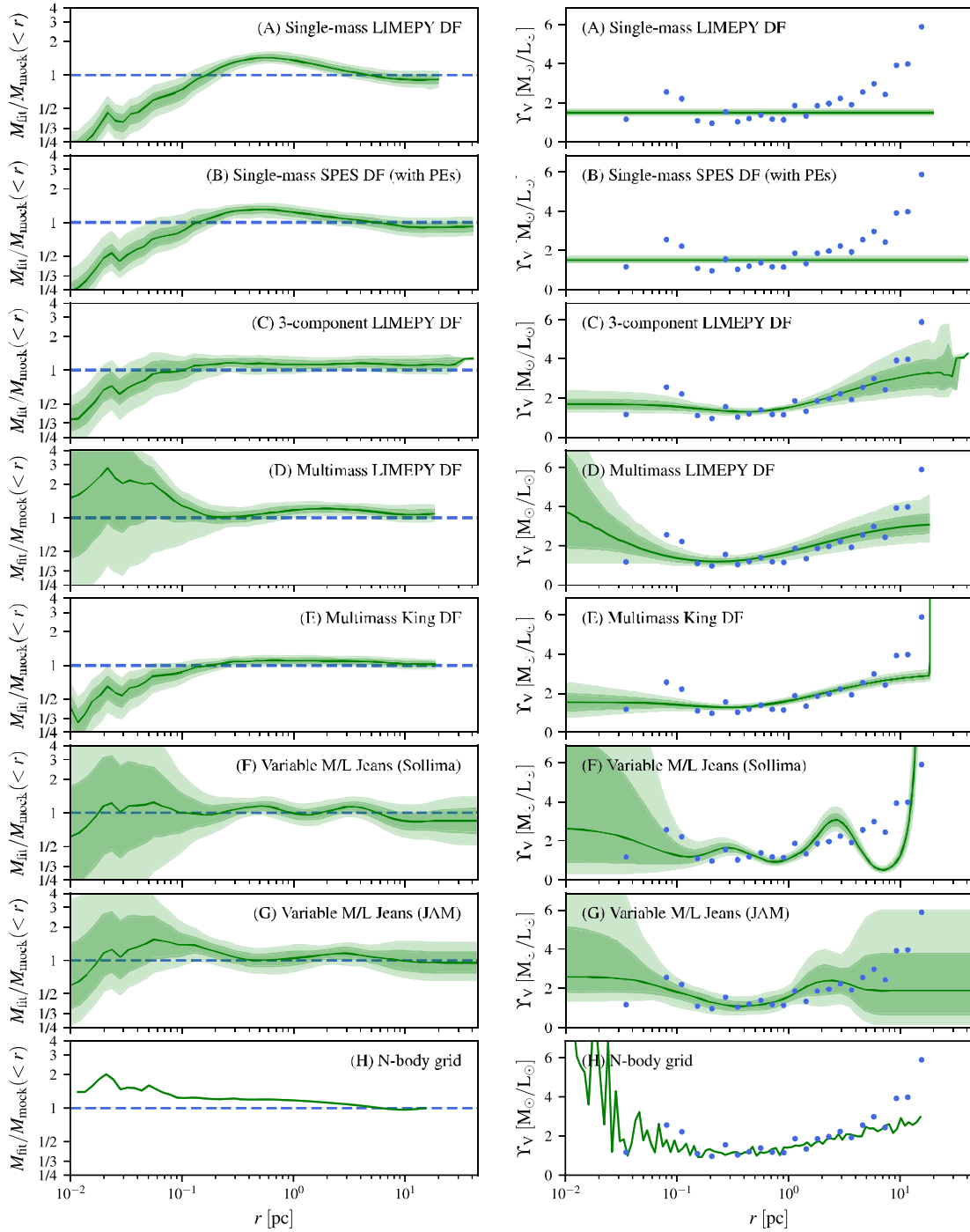


Figure 11. Same as Fig. 10 but for the mock data set of case 2.

cluster and do not cover the full radial extent, these models will tend to significantly underestimate the total mass and half-mass radius, while also overestimating the amount of mass at intermediate radii. When the kinematic data cover a significant extent of the cluster (e.g. including *Gaia* proper motions in the outer parts), the single-mass models perform better as the kinematics of the tracer stars in the outer parts is much more similar to the kinematics of the average cluster star.

However, as data further and further out are included, and the velocity dispersion profile starts to flatten due to potential esca-

pers, the inability of lowered isothermal models to account for the outermost kinematic data can drive the fits towards models with largely overestimated masses and half-mass radii, and poor fits to the surface brightness profile (this caveat also applies to multimass lowered isothermal models). In this case the outermost data points would have to be ignored in a fitting procedure to provide a satisfying description of the cluster closer in. Since the region where potential escapers affect the observed kinematics is generally poorly constrained, unknown biases may creep in the analysis when blindly fitting truncated models to data covering the outskirts of clusters.

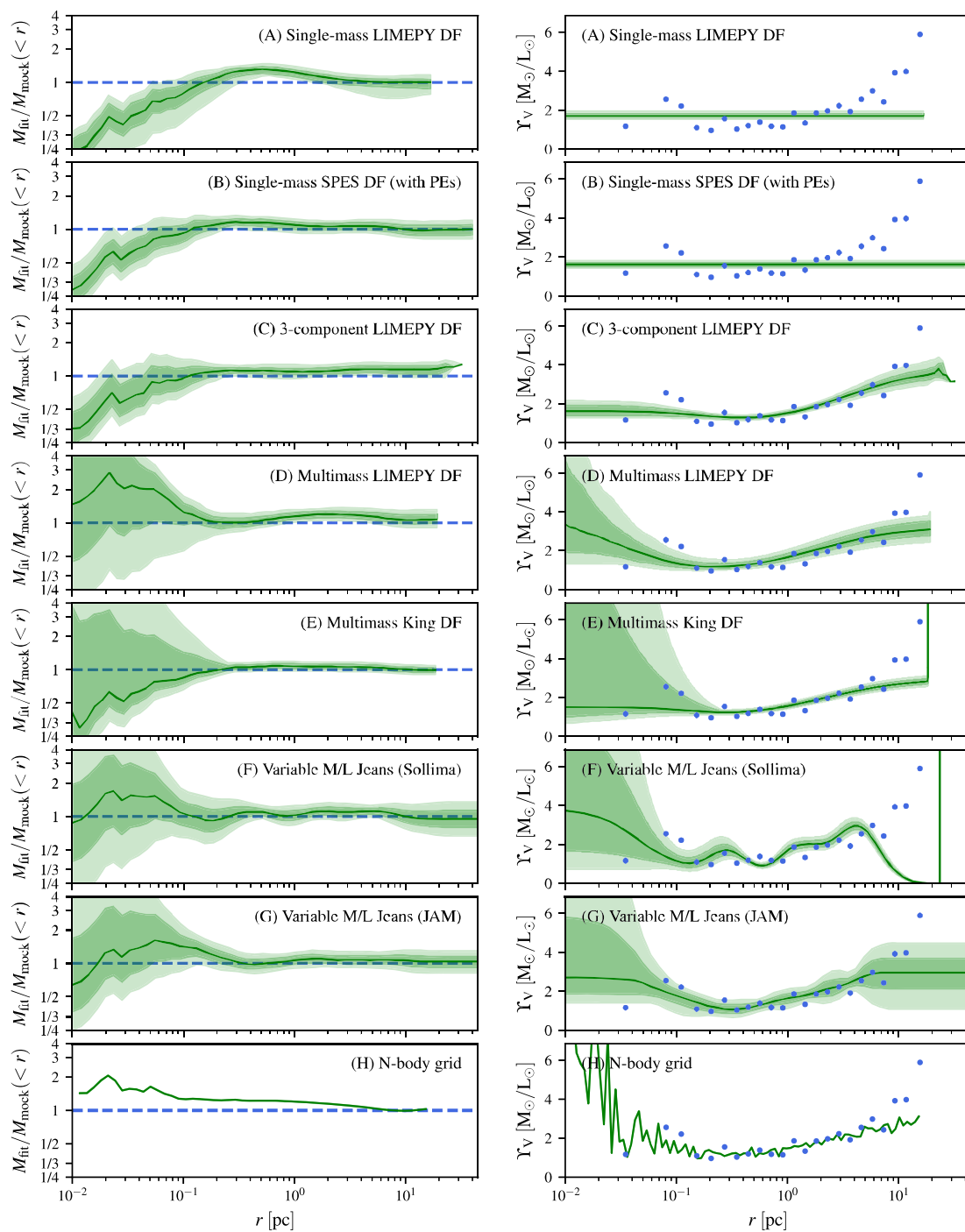


Figure 12. Same as Fig. 10 but for the mock data set of case 3.

Similar care is recommended when fitting a grid of isolated N -body models (as in Section 6) because these will not capture the flattening of the velocity dispersion profile due to tides. We have shown that DF-based models including potential escapers are a promising way to avoid possible biases caused by the outermost data points. At the moment, however, only a single-mass version of these models has been developed, and so these models are still subject to biases due to ignoring the effect of mass segregation. We have also shown that by including a simple population of ‘contaminants’ that is dominant at large radii, Jeans models can in principle account for the outermost

data points without fine-tuning. The extremely simple contaminant model used here does not offer the same physical insight about tidal effects that is provided by DF-based models with potential escapers, although a more sophisticated model that encompasses the nature of the contaminants could be included.

We have considered three-component DF-based models as the simplest way to improve on single-mass DF models by approximately including the effect of a mass spectrum and mass segregation without a measurement of the stellar mass function inside the cluster. We note that multimass models are not necessarily better (see

Section 4.1.1 for details) in that using a wrong or ill-informed mass function that is not representative of the mass function of the cluster can give systematic biases of similar magnitude as the single-mass models (an overestimate of the total mass and half-mass radius in the case studied here). However, when leaving some freedom to adjust the stellar mass function of the models guided by the kinematic and structural data, we found that three-component models can perform very well and properly capture the effect of mass segregation. This was done by fitting on the mean mass of dark remnants and the fraction of mass in remnants, adopting standard assumptions for the mean mass of the other mass bins (low-mass stars and bright visible stars) and assuming that visible stars are tracers with negligible contribution to the total cluster mass. These models would be particularly well-suited to apply to partially resolved clusters or resolved clusters with limited data available (e.g. no stellar mass function measurement), for example to infer dynamical masses and avoid biases due to neglecting mass segregation.

When a measurement of the local stellar mass function within the cluster is available, multimass DF-based models with a full mass spectrum (i.e. a large number of mass bins) and fitting a grid of N -body models are reliable ways to infer the global mass function and global parameters such as the total mass, half-mass radius, mass-to-light ratio, and fraction of cluster mass in remnants. They also satisfyingly recover the cumulative mass and mass-to-light ratio profiles. However, given the limited variety of IMFs that can be considered in the grid of N -body models, this method has less flexibility and may not recover the global/stellar mass functions as precisely as the multimass models. It also makes it more challenging to quantify uncertainties on the mass function.

In addition to testing a previously used version of multimass DF-based models with a prescription for the mass function of remnants, we introduced and tested a variant with the total mass in remnants and remnant mass function free to vary. The success of this type of model in recovering the total mass in remnants and estimating their mass function (while only using information from visible stars) opens up exciting possibilities to weigh populations of heavy remnants in GCs with fast and flexible DF-based models. More testing will be needed on mock data and models with different remnant mass functions (e.g. with a larger population of black holes), but ultimately it will be interesting to compare such an approach with other methods trying to infer populations of black holes in GCs based on their present-day structural and internal kinematic properties, usually based on a sparse grid and limited number of evolutionary models (Arca Sedda et al. 2018; Askar et al. 2018; Peuten et al. 2016; Kremer et al. 2018; Weatherford et al. 2018). The size of present-day black hole populations in Milky Way GCs is an important ingredient to understand the formation of binary black holes generating gravitational wave signals.

If one is not concerned with inferring the global mass function and directly modelling the dynamics of different mass components, then Jeans modelling is another efficient way to constrain the non-constant mass-to-light ratio profile caused by mass segregation. We found that the flexibility of Jeans models tends to lead to more conservative and realistic errors bars (free of systematic biases) on the global cluster properties and on the recovered cumulative mass and mass-to-light ratio profiles, even though global quantities like the total mass and half-mass radius are not precisely measured due to the lack of constraints in the outer parts of the cluster (both from scarcity of data and from the absence of restrictions in the model). One could envisage situations where Jeans modelling is first used to constrain the underlying mass profile, which is then used as a prior for a different mass-modelling technique, for example a

multimass DF-based model with which further insight is obtained on the mass function and distribution of different mass components. Jeans modelling also offers another way to infer the fraction of cluster mass in dark remnants by determining the mass profile (using kinematics) and subtracting the stellar mass from star counts (if deep enough photometry is available) to obtain the fraction of remnants as a function of distance from the cluster centre (Sollima et al. 2016).

9 SUMMARY AND CONCLUSIONS

We summarize our findings with the few take-home messages below, as well as a list of pros, cons, and minimal recommended data for the different methods in Table 6. These can serve as a starting point for choosing the most appropriate mass-modelling method for a given problem.

(i) Single-mass DF-based models (Section 3) can be used to estimate the global properties of a cluster but they are prone to biases because they do not capture the effect of mass segregation. They tend to significantly underestimate the total mass and half-mass radius, although this can be mitigated by including kinematic data covering a wide extent of the cluster.

(ii) Three-component DF-based models (Section 4.1), leaving freedom to adjust the mass function, represent a simple way to overcome the biases of single-mass models. They would be well-suited to cases where data are limited (e.g. no stellar mass function) but a more accurate estimate of the dynamical mass or half-mass radius is needed (compared to single-mass models).

(iii) The use of multimass DF-based models with a more realistic mass spectrum (Sections 4.2 and 4.3) or a grid of N -body models are indicated to infer the present-day global stellar mass function of a cluster from knowledge of its local stellar mass function, kinematics, and structural properties.

(iv) Multimass DF-based models (including the three-component flavour), a grid of N -body models, and Jeans models are all suitable options to recover the radially-varying mass-to-light ratio profile of GCs, with the first two allowing to estimate the contribution of different types of stars to this profile. On the other hand, Jeans models, because of their flexibility can lead to unrealistic fluctuations.

(v) Methods based on Jeans models (in combination with deep enough photometry to estimate the mass in stars), a grid of N -body models and multimass models can all be used to infer the fraction of cluster mass in dark remnants. The latter have the advantage that the effect of different remnant mass functions on the cluster dynamics can be explored, and by leaving it free to vary this remnant mass function can potentially be constrained (see Section 4.2).

(vi) Multimass DF-based models, Jeans models, and fitting a grid of N -body models can all reliably recover the mass profile of a mass segregated cluster, as opposed to single-mass DF-based models that systematically underestimate the mass in the very central region and overestimate the mass at intermediate radii (Section 7).

(vii) Jeans models tend to provide the most conservative and reasonable uncertainties on the recovered mass profile, with no significant bias (Section 7). However, because the outer parts of these models are less constrained, global quantities such as the total mass and half-mass radius tend to be less precisely determined (although with good accuracy, i.e. within the errors).

(viii) An important caveat to the points above is that when including kinematic data in the very outskirts of a cluster (as *Gaia* will enable), the use of lowered isothermal DF-based models (single-mass and multimass) or of a grid of isolated N -body model reach a

Table 6. Summary of the mass-modelling methods compared in this work.

Modelling method	Pros	Cons	Minimal recommended data
A. Single-mass LIMEPY DF (Section 3.1)	* Fast and simple way to estimate global cluster properties.	* Prone to biases: underestimates the total mass and half-mass radius. * Effect of PEs not included, kinematics in cluster outskirts should be ignored for good fit. * Assumes constant M/L profile. * Systematically underestimates the mass in the very central region and overestimates the mass at intermediate radii.	* Velocity dispersion profile. * Surface density or brightness profile.
B. Single-mass SPES DF (with PEs) (Section 3.2)	* Only DF model to capture the effect of PEs and the kinematics in cluster outskirts.	* Effect of mass segregation not captured, so prone to same biases as method A. * Systematically underestimates the mass in the very central region and overestimates the mass at intermediate radii. * Assumes constant M/L profile. * Two additional free parameters.	* Velocity dispersion profile. * Surface density or brightness profile. * Good kinematics and star counts needed in the outer parts to constrain the two additional parameters.
C. 3-component LIMEPY DF (Section 4.1)	* Simplest DF model to capture the effect of mass segregation, the variation of M/L with radius, and to estimate cluster ‘dark’ mass. * No mass local mass function measurement required.	* Effect of PEs not included, kinematics in cluster outskirts should be ignored for good fit.	* Velocity dispersion profile. * Surface density or brightness profile.
D. Multimass LIMEPY DF (Section 4.2)	* Allows to infer present-day global stellar mass function, and fraction of mass in dark remnants. * Captures variation of M/L with radius. * Freedom in remnants can be used to constrain remnant mass function.	* Effect of PEs not included, kinematics in cluster outskirts should be ignored for good fit.	* Velocity dispersion. * Surface density or brightness profile. * Local stellar mass function(s) or density profile for several mass components.
E. Multimass King DF (Section 4.3)	* Allows to infer present-day global stellar mass function, and fraction of mass in dark remnants. * Captures variation of M/L with radius.	* Effect of PEs not included. * No freedom in remnant mass function (fixed prescription used).	* Velocity dispersion. * Surface density or brightness profile. * Local stellar mass function(s) or density profile for several mass components.
F. Variable M/L Jeans (Sollima) (Section 5.1)	* Captures variation of M/L with radius. * More conservative and realistic uncertainties on enclosed mass profile (no bias).	* Flexibility (the number of Gaussians to fit the tracer density profile) can lead to unrealistic or unphysical fluctuations in the inferred mass and mass-to-light ratio profiles. * Outer parts of models less constrained, so larger uncertainties on global quantities like total mass and half-mass radius.	* Velocity dispersion. * Surface density profile. * Optional: deep photometry (to estimate stellar mass from star counts and subtract it from total mass to estimate fraction of remnants).
G. Variable M/L Jeans (JAM) (Section 5.2)	* Captures variation of M/L with radius. * More conservative and realistic uncertainties on enclosed mass profile (no bias). * Kinematics in the cluster outskirts can be captured by including a population of contaminants dominant at large radii. * More flexibility with anisotropy.	* Outer parts of models less constrained, so larger uncertainties on global quantities like total mass and half-mass radius.	* Velocity dispersion. * Surface density or brightness profile. * Optional: deep photometry (to estimate stellar mass from star counts and subtract it from total mass to estimate fraction of remnants).
H. <i>N</i> -body grid (Section 6)	* Allows to infer present-day global stellar mass function, and fraction of mass in dark remnants. * Captures variation of M/L with radius.	* Effects of PEs and flattening of the velocity dispersion profile due to tides not captured by grid of isolated <i>N</i> -body models. * Less flexibility: limited IMF variety in current grid of models, global mass function may not be recovered as precisely as multimass models and uncertainties on global mass function more challenging to estimate.	* Velocity dispersion. * Surface density or brightness profile. * Local stellar mass function(s) or density profile for several mass components.

fundamental limitation. These models cannot reproduce the flattening in the outer velocity dispersion profile due to potential escapers. Unless these kinematic data in the cluster outskirts are ignored when fitting the models, this can lead to overestimating the cluster mass and radial extent.

(ix) DF-based models including potential escapers (Section 3.2) are necessary to capture the kinematics in the cluster outskirts and overcome the limitations of lowered isothermal models. This can also be achieved with Jeans models (Section 5) by including a population of contaminants that is dominant at large distances from the cluster centre.

Our study is limited to one snapshot from a specific N -body simulation, so we have to be careful not to overgeneralize our results, and we caution that some of the remarks above may not apply to certain situations. We also note that we analyzed mock data corresponding to the most nearby GC and optimistic conditions. With lower-quality or limited kinematic or mass function data, some of the applications discussed above (like constraining the mass function of remnants) may prove challenging and would warrant further testing. Nevertheless, our comparison provides initial guidelines for the choice and applicability of different mass-modelling approaches. We also hope that it serves as a template and example to follow for future tests of dynamical modelling methods on mock data before these are applied to real data to draw conclusions.

ACKNOWLEDGEMENTS

We thank the anonymous referee for their useful comments and constructive feedback. We thank Douglas Heggie for making the output of his N -body simulation of M4 publicly available. This work was done as part of the *Gaia Challenge*,¹¹ and we would like to thank all the other participants of the Collisional Systems working group for insightful discussions, in particular Adriano Agnello, Emanuele Dalessandro, Miklos Peuten, and Anna Lisa Varri. We thank the organizers of the *Gaia Challenge* Workshop in Stockholm (2016) during which this specific study was initiated. We also thank the International Space Science Institute (ISSI, Bern, CH) for welcoming the activities of the Team 407 ‘Globular Clusters in the *Gaia* Era’ (team leaders VHB & MG), during which part of this work was conducted. VHB acknowledges support from the NRC-Canada Plaskett Fellowship and from the Radboud Excellence Initiative. MG acknowledges financial support from the Royal Society (University Research Fellowship) and MG and IC thank the European Research Council (ERC StG-335936, CLUSTERS) for financial support. LLW acknowledges support provided by NASA through *HST* grants AR-14322 (PI: Watkins) and AR-15055 (PI: Watkins), from the Space Telescope Science Institute, which is operated by the Association of Universities for Research in Astronomy, Inc., under NASA contract NAS 5-26555. AZ is supported by the ESA Research Fellowship, and acknowledges the Royal Society for financial support through the Newton International Fellowship Follow-up Funding.

This research has made use of Astropy,¹² a community-developed core PYTHON package for Astronomy (Astropy Collaboration et al. 2013). This research made use of the R programming language (<https://www.R-project.org/>), its DATA.TABLE package, and the Rstudio environment (<https://www.rstudio.com/>). This research has made use of NASA’s Astrophysics Data System.

¹¹<http://astrowiki.ph.surrey.ac.uk/dokuwiki/doku.php?id=start>

¹²<http://www.astropy.org>

REFERENCES

- Aarseth S. J., 1999, *PASP*, 111, 1333
 Abbott B. P. et al., 2016a, *ApJL*, 818, L22
 Abbott B. P. et al., 2016b, *Phys. Rev. Lett.*, 116, 061102
 Antonini F., Rasio F. A., 2016, *ApJS*, 831, 187
 Arca Sedda M., Askar A., Giersz M., 2018, *MNRAS*, 479, 4652
 Askar A., Szkudlarek M., Gondek-Rosińska D., Giersz M., Bulik T., 2017, *MNRAS*, 464, L36
 Askar A., Arca Sedda M., Giersz M., 2018, *MNRAS*, 478, 1844
 Astropy Collaboration, 2013, *A&A*, 558, A33
 Baumgardt H., 2001, *MNRAS*, 325, 1323
 Baumgardt H., 2017, *MNRAS*, 464, 2174
 Baumgardt H., Hilker M., 2018, *MNRAS*, 478, 1520
 Baumgardt H., Makino J., 2003, *MNRAS*, 340, 227
 Baumgardt H., Sollima S., 2017, *MNRAS*, 472, 744
 Bedin L. R., Piotto G., King I. R., Anderson J., 2003, *AJ*, 126, 247
 Bellini A. et al., 2014, *ApJS*, 797, 115
 Bianchini P., van der Marel R. P., del Pino A., Watkins L. L., Bellini A., Fardal M. A., Libralato M., Sills A., 2018, *MNRAS*, 481, 2125
 Braga V. F. et al., 2015, *ApJS*, 799, 165
 Breen P. G., Heggie D. C., 2013, *MNRAS*, 432, 2779
 Büdenbender A., van de Ven G., Watkins L. L., 2015, *MNRAS*, 452, 956
 Cappellari M., 2008, *MNRAS*, 390, 71
 Cappellari M., 2012, preprint ([arXiv:1211.7009](https://arxiv.org/abs/1211.7009))
 Cappellari M., 2015, preprint ([arXiv:1504.05533](https://arxiv.org/abs/1504.05533))
 Claydon I., Gieles M., Zocchi A., 2017, *MNRAS*, 466, 3937
 Claydon I., Gieles M., Varri A. L., Heggie D. C., Zocchi A., 2018, *MNRAS*, to be submitted
 Conroy C., Gunn J. E., 2010, *ApJS*, 712, 833
 Conroy C., Gunn J. E., White M., 2009, *ApJS*, 699, 486
 Da Costa G. S., Freeman K. C., 1976, *ApJS*, 206, 128
 Daniel K. J., Heggie D. C., Varri A. L., 2017, *MNRAS*, 468, 1453
 Eddington A. S., 1916, *MNRAS*, 76, 572
 Foreman-Mackey D., Hogg D. W., Lang D., Goodman J., 2013, *PASP*, 125, 306
 Freire P. C. C. et al., 2017, *MNRAS*, 471, 857
 Fukushige T., Heggie D. C., 2000, *MNRAS*, 318, 753
 Gaia Collaboration, 2016, *A&A*, 595, A1
 Gaia Collaboration, 2018a, *A&A*, 616, A1
 Gaia Collaboration, 2018b, *A&A*, 616, A12
 Gebhardt K., Fischer P., 1995, *AJ*, 109, 209
 Gieles M., Zocchi A., 2015, *MNRAS*, 454, 576
 Gieles M., Balbinot E., Yaaqib R. I. S. M., Hénault-Brunet V., Zocchi A., Peuten M., Jonker P. G., 2018, *MNRAS*, 473, 4832
 Giersz M., Heggie D. C., 2011, *MNRAS*, 410, 2698
 Girardi L., Bressan A., Bertelli G., Chiosi C., 2000, *A&AS*, 141, 371
 Gunn J. E., Griffin R. F., 1979, *AJ*, 84, 752
 Heggie D. C., 2014, *MNRAS*, 445, 3435
 Hénon M., 1961, *Ann. Astrophys.*, 24, 369
 Hurley J. R., Pols O. R., Tout C. A., 2000, *MNRAS*, 315, 543
 Ibata R., Nipoti C., Sollima A., Bellazzini M., Chapman S. C., Dalessandro E., 2013, *MNRAS*, 428, 3648
 Illingworth G., King I. R., 1977, *ApJL*, 218, L109
 Jordi C. et al., 2010, *A&A*, 523, A48
 Kamann S. et al., 2018, *MNRAS*, 473, 5591
 Kimmig B., Seth A., Ivans I. I., Strader J., Caldwell N., Anderton T., Gregersen D., 2015, *AJ*, 149, 53
 King I., 1962, *AJ*, 67, 471
 King I. R., 1966, *AJ*, 71, 64
 Kremer K., Ye C. S., Chatterjee S., Rodriguez C. L., Rasio F. A., 2018, *ApJL*, 855, L15
 Kroupa P., 2001, *MNRAS*, 322, 231
 Kruijssen J. M. D., 2009, *A&A*, 507, 1409
 Küpper A. H. W., Kroupa P., Baumgardt H., Heggie D. C., 2010, *MNRAS*, 407, 2241
 Leonard P. J. T., Richer H. B., Fahlman G. G., 1992, *AJ*, 104, 2104
 Libralato M. et al., 2018, *ApJS*, 861, 99

Lützgendorf N. et al., 2013, *A&A*, 552, A49
 Marigo P., Girardi L., 2007, *A&A*, 469, 239
 Marigo P., Girardi L., Bressan A., Groenewegen M. A. T., Silva L., Granato G. L., 2008, *A&A*, 482, 883
 Merritt D., 1985, *AJ*, 90, 1027
 Meylan G., Heggie D. C., 1997, *A&A Rev.*, 8, 1
 Meylan G., Mayor M., 1986, *A&A*, 166, 122
 Michie R. W., 1963, *MNRAS*, 125, 127
 Milone A. P., Marino A. F., Mastrobuono-Battisti A., Lagioia E. P., 2018, *MNRAS*, 479, 5005
 Morscher M., Pattabiraman B., Rodriguez C., Rasio F. A., Umbreit S., 2015, *ApJS*, 800, 9
 Nitadori K., Aarseth S. J., 2012, *MNRAS*, 424, 545
 Osipkov L. P., 1979, *Pisma v Astronomicheskii Zhurnal*, 5, 77
 Pancino E., Bellazzini M., Giuffrida G., Marinoni S., 2017, *MNRAS*, 467, 412
 Paresce F., De Marchi G., 2000, *ApJS*, 534, 870
 Pasquali A., De Marchi G., Pulone L., Brigas M. S., 2004, *A&A*, 428, 469
 Peuten M., Zocchi A., Gieles M., Gualandris A., Hénault-Brunet V., 2016, *MNRAS*, 462, 2333
 Peuten M., Zocchi A., Gieles M., Hénault-Brunet V., 2017, *MNRAS*, 470, 2736
 Phinney E. S., 1993, in Djorgovski S. G., Meylan G., eds, *ASP Conf. Ser.*, Vol. 50, *Structure and Dynamics of Globular Clusters*, Astron. Soc. Pac., San Francisco, p. 141
 Portegies Zwart S. F., McMillan S. L. W., Gieles M., 2010, *ARA&A*, 48, 431
 Posti L., Helmi A., 2018, preprint ([arXiv:1805.01408](https://arxiv.org/abs/1805.01408))
 Prager B. J., Ransom S. M., Freire P. C. C., Hessels J. W. T., Stairs I. H., Arras P., Cadelano M., 2017, *ApJS*, 845, 148
 Pryor C., Smith G. H., McClure R. D., 1986, *AJ*, 92, 1358
 Read J. I., Wilkinson M. I., Evans N. W., Gilmore G., Kleya J. T., 2006, *MNRAS*, 367, 387
 Robin A. C., Reylé C., Derrière S., Picaud S., 2003, *A&A*, 409, 523
 Rodriguez C. L., Chatterjee S., Rasio F. A., 2016, *Phys. Rev. D*, 93, 084029
 Sarajedini A. et al., 2007, *AJ*, 133, 1658
 Shanahan R. L., Gieles M., 2015, *MNRAS*, 448, L94
 Sollima A. et al., 2016, *MNRAS*, 462, 1937
 Sollima A., Baumgardt H., 2017, *MNRAS*, 471, 3668
 Sollima A., Bellazzini M., Lee J.-W., 2012, *ApJS*, 755, 156
 Sollima A., Baumgardt H., Zocchi A., Balbinot E., Gieles M., Hénault-Brunet V., Varri A. L., 2015, *MNRAS*, 451, 2185
 Trager S. C., King I. R., Djorgovski S., 1995, *AJ*, 109, 218
 van de Ven G., van den Bosch R. C. E., Verolme E. K., de Zeeuw P. T., 2006, *A&A*, 445, 513
 Vasiliev E., 2018, preprint ([arXiv:1807.09775](https://arxiv.org/abs/1807.09775))
 Vesperini E., Heggie D. C., 1997, *MNRAS*, 289, 898
 Wang L. et al., 2016, *MNRAS*, 458, 1450
 Watkins L. L., van de Ven G., den Brok M., van den Bosch R. C. E., 2013, *MNRAS*, 436, 2598
 Watkins L. L., van der Marel R. P., Bellini A., Anderson J., 2015a, *ApJS*, 803, 29
 Watkins L. L., van der Marel R. P., Bellini A., Anderson J., 2015b, *ApJS*, 812, 149
 Watkins L. L., van der Marel R. P., Sohn S. T., Evans N. W., 2018, preprint ([arXiv:1804.11348](https://arxiv.org/abs/1804.11348))
 Weatherford N. C., Chatterjee S., Rodriguez C. L., Rasio F. A., 2018, *ApJS*, 864, 13
 Zhu L. et al., 2016a, *MNRAS*, 462, 4001
 Zhu L., van de Ven G., Watkins L. L., Posti L., 2016b, *MNRAS*, 463, 1117
 Zocchi A., Gieles M., Hénault-Brunet V., 2017, *MNRAS*, 468, 4429

APPENDIX A: MULTIMASS KING DF

The DF defined in equation (1) is integrated in the velocity domain at each radius to obtain the density (ρ_j) and velocity dispersion profiles in both the radial and tangential components ($\sigma_{r,j}$, $\sigma_{t,j}$) of

all mass species and projected on the plane of the sky (Σ , σ_{LOS} , σ_{R} , σ_{T}):

$$\rho_j(r) = 4\pi \int_0^{\sqrt{-2\phi}} \int_0^{\sqrt{-2\phi-v_r^2}} v_t f_j(r, v_r, v_t) dv_t dv_r \quad (\text{A1})$$

$$\sigma_{r,j}^2(r) = \frac{4\pi}{\rho_j(r)} \int_0^{\sqrt{-2\phi}} v_r^2 \int_0^{\sqrt{-2\phi-v_r^2}} v_t f_j(r, v_r, v_t) dv_t dv_r \quad (\text{A2})$$

$$\sigma_{t,j}^2(r) = \frac{4\pi}{\rho_j(r)} \int_0^{\sqrt{-2\phi}} \int_0^{\sqrt{-2\phi-v_r^2}} v_t^3 f_j(r, v_r, v_t) dv_t dv_r. \quad (\text{A3})$$

$$\Sigma_j(R) = 2 \int_0^R \frac{r \rho_j}{\sqrt{r^2 - R^2}} dr \quad (\text{A4})$$

$$\sigma_{\text{LOS},j}^2(R) = \frac{1}{\Sigma_j(R)} \int_0^R \frac{\rho_j [2\sigma_{r,j}^2(r^2 - R^2) + \sigma_{t,j}^2 R^2]}{r \sqrt{r^2 - R^2}} dr \quad (\text{A5})$$

$$\sigma_{\text{R},j}^2(R) = \frac{1}{\Sigma_j(R)} \int_0^R \frac{\rho_j [2\sigma_{r,j}^2 R^2 + \sigma_{t,j}^2(r^2 - R^2)]}{r \sqrt{r^2 - R^2}} dr \quad (\text{A6})$$

$$\sigma_{\text{T},j}^2(R) = \frac{1}{\Sigma_j(R)} \int_0^R \frac{r \rho_j \sigma_{t,j}^2}{\sqrt{r^2 - R^2}} dr \quad (\text{A7})$$

APPENDIX B: VARIABLE M/L JEANS MODELS (SOLLIMA)

With the tracer density profile and the velocity dispersion profile determined as indicated in Section 5.1, the projections of the velocity moments onto the plane of the sky (σ_{LOS} , σ_{R} , and σ_{T}) as a function of projected radius R for the tracer population are derived through the following relations:

$$\sigma_{\text{LOS}}^2(R) = \frac{1}{\Sigma} \int_R^{+\infty} \frac{v r \sigma_r^2 \left(1 - \beta \frac{R^2}{r^2}\right)}{\sqrt{r^2 - R^2}} dr$$

$$\sigma_{\text{R}}^2(R) = \frac{1}{\Sigma} \int_R^{+\infty} \frac{v r \sigma_r^2 \left(1 - \beta + \beta \frac{R^2}{r^2}\right)}{\sqrt{r^2 - R^2}} dr$$

$$\sigma_{\text{T}}^2(R) = \frac{1}{\Sigma} \int_R^{+\infty} \frac{v r \sigma_r^2 (1 - \beta)}{\sqrt{r^2 - R^2}} dr$$

APPENDIX C: VARIABLE M/L JEANS (JAM) MODELS

C1 JAM models

A key feature of the JAM models is that both the tracer density profile $v(r)$ and mass density $\rho(r)$ of the cluster are provided in the form of a Multi-Gaussian Expansion (MGE). Under the assumption of spherical symmetry, each Gaussian component j of the tracer MGE and k of the mass MGE is defined by two parameters: a central density (v_j or ρ_k) and a width (s_j or s_k). Then the tracer density profile is

$$v(r) = \sum_{j=1}^{N_{\text{TD}}} v_j \exp\left(-\frac{r^2}{2s_j}\right), \quad (\text{C1})$$

and the mass density profile is

$$\rho(r) = \sum_{k=1}^{N_{\text{MD}}} \rho_k \exp\left(-\frac{r^2}{2s_k}\right), \quad (\text{C2})$$

where N_{TD} is the total number of tracer density Gaussian components and N_{MD} is the total number of mass density Gaussian components.¹³ Parameterizing the profiles in this form makes them extremely easy to project onto the plane of the sky (or, conversely, to deproject surface density profiles) and the projected profiles are themselves MGEs. This is particularly useful as, in practice, we can typically only measure the surface tracer density profile from observations, so we fit to the projected profile and then deproject it to get the 3D profile.

It is typical for analyses of real clusters to use the luminosity density profile $\mu(r)$ as a proxy for the tracer density profile – that is, $\nu(r) = C\mu(r)$ for some constant C – so we adopt this approach here.¹⁴ In fact, for the JAM models, we need only the shape of the tracer density profile and not its normalization, so it is more accurate to say that we use the shape of the luminosity density profile as a proxy for the shape of the tracer density profile; we do not need to know or even assume anything about the relative normalizations of the two profiles and can assume that $C = 1$.

Using the mass density and luminosity density profiles, we can also calculate the mass-to-light profile $\Upsilon(r)$ of the cluster as

$$\Upsilon(r) = \frac{\rho(r)}{\mu(r)}. \quad (\text{C3})$$

Here, we assume that the MGEs have the same number of Gaussian components ($N_{\text{TD}} = N_{\text{MD}}$), and that the Gaussian widths are the same $\{s_j\} = \{s_k\}$; the widths themselves are free parameters. The central densities ρ_k and ν_k are also left free and are independent of each other, which allows us to fit the light and mass density profiles non-parametrically, and allows the mass-to-light ratio to vary throughout the cluster. In this way, the models account for the different spatial distributions of different mass populations, albeit without explicitly identifying the underlying mass function.

Anisotropy is provided per Gaussian component of the tracer MGE. We wish to allow the anisotropy to vary non-parametrically through the cluster, so assign each component k an anisotropy β_k . As defined, anisotropy (equation 5) lies between 1 (radial anisotropy) and $-\infty$ (tangential anisotropy), with isotropy at $\beta = 0$. The high antisymmetry in β and the infinite lower limit on β both make it a hard parameter to fit for, so instead we follow Read et al. (2006) and use a modified anisotropy parameter

$$\beta' = \frac{\beta}{2 - \beta} \quad (\text{C4})$$

for which $\beta' = 0$ still indicates isotropy, positive β' values still indicate radial anisotropy, and negative β' values still indicate tangential anisotropy, but which has the pleasing properties of being symmetric about isotropy and finite, restricted to the range $[-1, 1]$.

¹³This approach is similar to that in Section 5.1, though it is not standard for all flavours of Jeans models.

¹⁴The two profiles can, in fact, be very different owing to the internal processes that have shaped the cluster. However, in this case, the assumption is fortunately quite reasonable.

Overall, the cluster models have $4N$ free parameters: $\{\nu_k, \rho_k, s_k, \beta_k\}$. We choose to use $N = 6$ here, so we have 24 free parameters for the cluster.¹⁵

The simulated cluster was evolved in a tidal field and so was affected by the interaction with the Galactic tidal field. Some tidally stripped stars or potential escapers remain in the simulated data set, so we further include a contaminant population that is dominant at large radii to correctly fit these stars. We model the contaminant density as an extra Gaussian with surface brightness ν_{contam} and width s_{contam} . In practice, ν_{contam} and s_{contam} are degenerate, so we choose to allow ν_{contam} to be free and fix s_{contam} to be the value of the outermost data point in the surface brightness profile. We assume that the velocity dispersion of the contaminant population is isotropic and equal to σ_{contam} , which is also left free. This introduces a further two free parameters: $\{\nu_{\text{contam}}, \sigma_{\text{contam}}\}$.

Both the JAM models for the cluster and our model for the contaminant population make predictions for the velocity dispersions in physical units. To compare with the mocks, we convert the velocities (v_R, v_T) into PMs (μ_R, μ_T) using the distance D to the cluster. This adds another free parameter (apart from case 1 where the distance is fixed to the true distance because only LOS velocities are used). In total, we thus have 27 (26 for case 1) free parameters for our models.

C2 Model fitting

We fit the JAM models to the surface brightness profile and the velocity dispersion profiles simultaneously. To recover the surface brightness profile, we fit to the binned profile calculated from the simulated data. We compute the likelihood of each data point i at location r_i with value $\mu_{V,i} \pm \delta_{V,i}$ given the model prediction $\mu_{\text{model}}(r_i)$,

$$\mathcal{L}_{\text{SB}} = \prod_i^{N_{\text{SB}}} \frac{1}{\sqrt{2\pi}\delta_{V,i}} \exp\left(-\frac{(\mu_{\text{model}}(r_i) - \mu_{V,i})^2}{2\delta_{V,i}^2}\right), \quad (\text{C5})$$

where N_{SB} is the number of points in the surface brightness profile, and the uncertainties $\delta_{V,i}$ are assumed to be 10 per cent of the surface brightness values $\mu_{V,i}$.¹⁶

The models make predictions about the velocity dispersion profiles for the cluster and the contaminant population. To assess how well a model dispersion profile fits a given data set, we use the discrete approach described in Watkins et al. (2013) whereby we compute the likelihood \mathcal{L}_i of observing a star i at projected distance R_i from the cluster centre with velocity ($v_{R,i} \pm \delta_{R,i}, v_{T,i} \pm \delta_{T,i}, v_{\text{LOS},i} \pm \delta_{\text{LOS},i}$) given the model prediction for the velocity distribution at R_i , which we assume to be Gaussian with velocity dispersions ($\sigma_{R,i}, \sigma_{T,i}, \sigma_{\text{LOS},i}$). As the models are non-rotating, the mean velocity is everywhere 0, and the dispersions are uncorrelated, that is, the cross-terms in the velocity ellipsoid tensor are 0. In this case, the likelihood of each velocity component can be considered

¹⁵On the one hand, we want as few Gaussians as possible to limit the number of free parameters, and on the other hand we need a sufficient number of Gaussians to adequately describe the cluster. We ran models with $N = 5$ and found that these did not perform well at the centre. Using $N = 6$ improved the central fits. Using $N = 7$ did not make a significant difference compared to the $N = 6$ models.

¹⁶We adopted ~ 10 per cent uncertainties on the surface brightness profile as rough error estimates based on bootstrapping experiments with mock cluster data, but in any case the uncertainties on the overall fits are dominated by the uncertainties on the kinematics, so the models are insensitive to this choice.

independently. The projected radial velocity likelihood $\mathcal{L}_{R,i}$ for star i is then

$$\mathcal{L}_{R,i} = \frac{1}{\sqrt{2\pi} (\delta_{R,i}^2 + \sigma_{R,i}^2)} \exp\left(\frac{-v_{R,i}^2}{2(\delta_{R,i}^2 + \sigma_{R,i}^2)}\right), \quad (\text{C6})$$

and similarly for the projected tangential velocity likelihood $\mathcal{L}_{T,i}$ and the LOS velocity likelihood $\mathcal{L}_{\text{LOS},i}$.¹⁷ The likelihood of the model given all the line-of-sight velocity measurements is then

$$\mathcal{L}_{\text{RV}} = \prod_{i=1}^{N_{\text{RV}}} \mathcal{L}_{\text{LOS},i}, \quad (\text{C7})$$

where N_{RV} is the size of the LOS velocity data set, and the likelihood of the model given all PM measurements is

$$\mathcal{L}_{\text{PM}} = \prod_{i=1}^{N_{\text{PM}}} \mathcal{L}_{R,i} \mathcal{L}_{T,i}, \quad (\text{C8})$$

where N_{PM} is the size of the PM data set. Note that in all of these calculations we have assumed that PMs (μ_R, μ_T) have been converted to velocities (v_R, v_T) using the distance D to the cluster. When we have only LOS velocities (case 1), the total likelihood from the kinematics for a given population is $\mathcal{L}_{\text{kin, pop}} = \mathcal{L}_{\text{RV}}$. When we have both LOS velocity and PM data sets (cases 2 and 3), the total likelihood from the kinematics is $\mathcal{L}_{\text{kin, pop}} = \mathcal{L}_{\text{RV}} \mathcal{L}_{\text{PM}}$.

For each star, we assess the likelihood of the observed kinematics given the cluster model $\mathcal{L}_{\text{kin, cluster}}$ and the likelihood of the observed kinematics given the contaminant model $\mathcal{L}_{\text{kin, contam}}$. To calculate the total likelihood from the kinematics, we combine the likelihoods from the two populations via

$$\mathcal{L}_{\text{kin}} = P_{\text{cluster}} \mathcal{L}_{\text{kin, cluster}} + (1 - P_{\text{cluster}}) \mathcal{L}_{\text{kin, contam}}, \quad (\text{C9})$$

where P_{cluster} is the probability of the star being a cluster member and not a contaminant, which is derived from the densities of the two populations via

$$P_{\text{cluster}} = \frac{v_{\text{cluster}}(r)}{v_{\text{cluster}}(r) + v_{\text{contam}}(r)}. \quad (\text{C10})$$

Finally, the total likelihood is given by

$$\mathcal{L} = \mathcal{L}_{\text{SB}} \mathcal{L}_{\text{kin}}. \quad (\text{C11})$$

We restrict the range of certain parameters using priors. To avoid having components with negative light or negative mass, we force the ν_k and ρ_k parameters to be positive, but otherwise use a flat prior for these values. Similarly, we require the distance D to be positive, but otherwise use a flat prior on the distance. For the Gaussian widths s_k , we require that $s_k < s_{k+1}$ and restrict the extent of the innermost and outermost Gaussians by insisting that $s_1 > R_{\text{min}}$ and $s_6 < R_{\text{max}}/\sqrt{3}$, where R_{min} and R_{max} are the minimum and maximum radial points of the mock surface brightness profile,

respectively. The factor $\sqrt{3}$ in the latter restriction forces the profiles to have an outer slope of 3 or larger, and thus to be finite.

As discussed, β' ranges between $[-1, 1]$, so in theory all we need is a flat prior in this range. However, anisotropy characterization requires at least two orthogonal velocity components, so with LOS velocities only we are unable to fit for the anisotropy and, thus, break the degeneracy between anisotropy and mass. This is a problem for case 1 where we have LOS velocities only, but also for the outer regions of the cluster in case 2 as the *HST*-like PMs only cover

¹⁷This is the same approach adopted in Section 5.1, see equation (11).

the central regions. We could further assume that the cluster is isotropic (i.e. $\beta'_k = 0$) in the regions where we lack PM data, as is usual for studies of real clusters in the absence of prior anisotropy information, however as the Gaussian widths are left free, it is not possible to set a priori which Gaussians cover the range of the PM data (where the anisotropy can be left free) and which are outside (where we may wish to assume a value). Instead, here we choose to leave the anisotropy free everywhere but to provide a strong prior on the β'_k values:

$$P(\beta'_k) = \begin{cases} 1, & \beta'_k \leq \mu_{\beta'} \\ \frac{1}{\sqrt{2\pi} \sigma_{\beta'}} \exp\left(-\frac{(\beta'_k - \mu_{\beta'})^2}{2\sigma_{\beta'}^2}\right), & \beta'_k > \mu_{\beta'} \end{cases}$$

This imposes a flat prior for β' in $[-\mu_{\beta'}, \mu_{\beta'}]$ and then uses a Gaussian fall off for β'_k values outside this range. As we do not expect the anisotropy to be extreme in either direction, we choose $\mu_{\beta'} = 0.2$ and $\sigma_{\beta'} = 0.02$. Essentially, we are assuming that the system is near isotropic but acknowledge that it may not be exactly isotropic and so we let it explore some mildly-anisotropic options. Further, the anisotropy for each Gaussian is affected by the anisotropy of the neighbouring Gaussians, so by leaving them all some freedom, they can respond to the neighbouring values where there may be better constraints. For the RV-only case, we could simply assume isotropy, but preferred to treat all cases the same.

Finally, we calculate the posterior probability by multiplying together the likelihood and the priors. To determine the best-fitting family of models, we wish to find the region of parameter space for which the posterior is maximized. To efficiently explore our parameter space and determine the region where the best-fitting models are located, we use the affine-invariant Markov Chain Monte Carlo (MCMC) ensemble sampler EMCEE (Foreman-Mackey et al. 2013). Our MCMC runs each use 1000 walkers and we run for 10 000 steps.

This paper has been typeset from a $\text{\TeX}/\text{\LaTeX}$ file prepared by the author.