



Publication Year	2019
Acceptance in OA	2020-12-02T11:38:15Z
Title	Testing the blast-wave AGN feedback scenario in MCG-03-58-007
Authors	Sirressi, M., CICONE, CLAUDIA, SEVERGNINI, Paola, BRAITO, Valentina, Dotti, M., DELLA CECA, Roberto, Reeves, J. N., Matzeu, G. A., Vignali, C., Ballo, L.
Publisher's version (DOI)	10.1093/mnras/stz2249
Handle	http://hdl.handle.net/20.500.12386/28624
Journal	MONTHLY NOTICES OF THE ROYAL ASTRONOMICAL SOCIETY
Volume	489

Testing the blast-wave AGN feedback scenario in MCG-03-58-007

M. Sirressi^{1,2*}, C. Cicone², P. Severgnini², V. Braito^{3,4}, M. Dotti¹, R. Della Ceca², J.N. Reeves⁴, G.A. Matzeu^{3,5}, C. Vignali^{6,7}, L. Ballo⁵

¹ *Università degli Studi di Milano-Bicocca, Dip. di Fisica G. Occhialini, Piazza della Scienza 3, 20126 Milano, Italy*

² *INAF - Osservatorio Astronomico di Brera, Via Brera 28, I-20121, Milano, Italy*

³ *INAF - Osservatorio Astronomico di Brera, Via Bianchi 46, I-23807 Merate (LC), Italy*

⁴ *Center for Space Science and Technology, University of Maryland Baltimore County, 1000 Hilltop Circle, Baltimore, MD 21250, USA*

⁵ *European Space Astronomy Centre (ESA/ESAC), E-28691 Villanueva de la Canada, Madrid, Spain*

⁶ *Dipartimento di Fisica e Astronomia, Università di Bologna, via Gobetti 93/2, I-40129 Bologna, Italy*

⁷ *INAF - Osservatorio di Astrofisica e Scienza dello Spazio di Bologna, via Gobetti 93/3, I-40129 Bologna, Italy*

Accepted XXX. Received YYY; in original form ZZZ

ABSTRACT

We report the first Atacama large millimeter/submillimeter array observations of MCG-03-58-007, a local ($z = 0.03236 \pm 0.00002$, this work) AGN ($L_{AGN} \sim 10^{45} \text{ erg s}^{-1}$), hosting a powerful X-ray ultra-fast ($v = 0.1c$) outflow (UFO). The CO(1-0) line emission is observed across ~ 18 kpc scales with a resolution of ~ 1 kpc. About 78% of the CO(1-0) luminosity traces a galaxy-size rotating disk. However, after subtracting the emission due to such rotating disk, we detect with a S/N=20 a residual emission in the central ~ 4 kpc. Such residuals may trace a low velocity ($v_{LOS} = 170 \text{ km s}^{-1}$) outflow. We compare the momentum rate (\dot{P}) and kinetic power (\dot{E}) of such putative molecular outflow with that of the X-ray UFO and find $\dot{P}_{mol}/\dot{P}_{UFO} \sim 0.4$ and $\dot{E}_{mol}/\dot{E}_{UFO} \sim 4 \cdot 10^{-3}$. This result is at odds with the energy-conserving scenario suggested by the large momentum boosts measured in some other molecular outflows. An alternative interpretation of the residual CO emission would be a compact rotating structure, distinct from the main disk, which would be a factor of $\sim 10 - 100$ more extended and massive than typical circumnuclear disks revealed in Seyferts. In conclusion, in both scenarios, our results rule out the hypothesis of a momentum-boosted molecular outflow in this AGN, despite the presence of a powerful X-ray UFO.

Key words: galaxies: evolution – galaxies: active – galaxies: individual (MCG-03-58-007)

1 INTRODUCTION

In the context of galaxy formation and evolution studies, it is crucial to understand the physics of the feedback processes from Active Galactic Nucleus (AGN) and Star Formation (SF) activity, which can manifest through powerful galactic outflows (Silk & Rees 1998; Sijacki et al. 2007). AGN feedback processes may have produced the $M_{BH} - \sigma_*$ relation (Kormendy & Ho 2013) through a mechanical interaction between the AGN and the host galaxy. Such an interaction can be provided by powerful and fast winds that develop from the accretion disk and can affect the properties of the inter-

stellar medium (ISM), transporting energy and momentum up to the kpc scales (blast-wave AGN feedback models, e.g. Silk & Rees 1998; King 2010). Furthermore, feedback mechanisms, from both AGN and SF activity, are often invoked to justify additional observational properties of galaxies: the shape of the baryonic mass function of galaxies (Papastergis et al. 2012), the SF quenching of massive galaxies as indicated by the galaxy colour bimodality (Di Matteo et al. 2005; Schawinski et al. 2014), and the $[\alpha/Fe]$ -enhancement in massive spheroids (Fontanot et al. 2009).

X-ray high signal-to-noise observations led to the discovery of ultra-fast ($v > 0.1c$) outflows (UFO) in 40% of the bright nearby local AGN population (Gofford et al. 2015). The X-ray spectra of these sources show one or more deep absorption lines that are best identified with the transitions

* E-mail: m.sirressi@campus.unimib.it

of highly ionised Iron (Reeves et al. 2003; Tombesi et al. 2010; Gofford et al. 2015). These transitions, modelled with photoionisation models, are blue-shifted with velocities from a few thousand km s^{-1} up to tens of thousands of km s^{-1} and therefore provide strong evidence for the presence of fast outflowing absorbers at sub-pc scales. Often classified as disk-winds, due to their connection with the accretion disk, X-ray UFOs are a direct manifestation of AGN feedback mechanisms in action.

Another revolution in the study of feedback processes in galaxies has been the recent discovery of massive, galaxy-size, cold molecular outflows with velocities in the range between a few hundreds and a few thousands km s^{-1} (Feruglio et al. 2010; Fischer et al. 2010). Less massive, multi-phase galactic winds were known since the 1980's including ionised, neutral and molecular gas components (Nakai et al. 1987). However, the massive molecular outflows discovered in the recent decade are estimated to embed up to $M_{\text{mol}} \sim 10^{10} M_{\odot}$ of H_2 gas (Cicone et al. 2018). Their signature has been found in far infrared (FIR) spectra featuring prominent OH and H_2O P-Cygni profiles (Sturm et al. 2011; Veilleux et al. 2013; Spoon et al. 2013; González-Alfonso et al. 2017) as well as in mm-interferometric observations of molecular emission lines (CO, HCN, HCO^+) showing high velocity blue- and red-shifted components clearly deviating from the disk rotation (e.g. Alatalo et al. 2011; Aalto et al. 2012; Cicone et al. 2012; Combes et al. 2013; Cicone et al. 2014; García-Burillo et al. 2014a).

Among the theoretical models of AGN-driven outflows that have been proposed, the blast-wave feedback scenario aims to understand the dynamics of both nuclear disk-winds and galactic-scale outflows (Silk & Rees 1998; King 2010; Faucher-Giguère & Quataert 2012). According to this class of models, a nuclear wind interacts with the ISM, producing a reverse shocked wind and at the same time sweeping up the shocked ambient medium, thus originating a large-scale outflow. One open question regarding this model is whether the outflow is energy-driven (i.e. energy-conserving) or momentum-driven. From a theoretical perspective, there is not a well established agreement on which outflow regime is favoured in nature. If the cooling of the shocked nuclear wind is efficient, the blast-wave models predict a momentum-driven large-scale outflow whose momentum rate is by definition the same as that of the nuclear wind, i.e. $\dot{P}_{\text{out}} \simeq \dot{P}_{\text{wind}} \simeq L_{\text{AGN}}/c$ (King 2010). If the Compton cooling of the shock is instead inefficient, the energy-driven large-scale outflow should show a momentum boost of $\dot{P}_{\text{out}} \gtrsim 10 \cdot \dot{P}_{\text{wind}}$ (Faucher-Giguère & Quataert 2012). Some of the galaxy-scale molecular outflows detected so far in ultra luminous infrared galaxies (ULIRGs) have a momentum rate that exceeds by an average factor of 20 the momentum flux of the AGN photons (Cicone et al. 2014; Fiore et al. 2017), which would favour a blast-wave energy-driven scenario. For example, in Mrk 231 (Feruglio et al. 2015) and IRAS F11119+3257 (Tombesi et al. 2015), the momentum rate of the molecular outflow appears to exceed that of the X-ray wind by a factor of several. However, such measurements are highly uncertain. Indeed, in IRAS F11119+3257 the molecular outflow energetics revisited using new ALMA data appears more consistent with the momentum conserving scenario (Veilleux et al. 2017). Another notable recent counter example is the quasar PDS 456,

where energy-conserving feedback seems to have been ruled out (Bischetti et al. 2019). Increased sample sizes are delivering a much broader range of momentum-boost values (García-Burillo et al. 2015; Pereira-Santaella et al. 2018; Fluetsch et al. 2019).

Another mechanism that can drive galactic outflows, without necessarily requiring the presence of a fast nuclear wind, is based on the AGN radiation pressure acting on the dust that is dynamically coupled at least to the cold phase of the ISM (Costa et al. 2018b). In the multi-scattering regime, which requires the dust to be optically thick at IR wavelengths, the momentum rate of the large-scale outflow triggered with such mechanism can exceed the photon momentum (Ishibashi & Fabian 2015; Bieri et al. 2017; Costa et al. 2018b). Both analytically (Ishibashi et al. 2018) and through hydrodynamical simulations (Costa et al. 2018b), it has been shown that AGN radiative feedback models in luminous quasars ($L_{\text{AGN}} \sim 10^{45-47} \text{ erg s}^{-1}$) can explain the observed molecular outflows with a moderate momentum boost. However, the ability of radiation pressure to significantly accelerate gas-shells is limited to small ($< 1 \text{ kpc}$) scales where the gas is optically thick in the IR (Costa et al. 2018a). When compared to thermal feedback models, IR radiation pressure can more efficiently eject gas from the bulge and hence regulate SF, but only as long as the gas density is high enough: when a large fraction of gas is blown away, the ISM becomes optically thin and the radiation pressure inefficient (Costa et al. 2018b).

So far, most molecular outflow studies have focused on ULIRGs, whose high infrared luminosity is produced by a combination of AGN and SF activity. In such extreme objects, the intense SF activity, with $\text{SFR} \gtrsim 100 M_{\odot} \text{ yr}^{-1}$, is responsible for an important contribution to the feedback processes that is difficult to disentangle from the AGN feedback processes (Cicone et al. 2014). To partially overcome this limitation, in this work we study MCG-03-58-007, which is a local ($z=0.03$) Seyfert 2, classified as LIRG. The source has a moderate SFR of $20 M_{\odot} \text{ yr}^{-1}$ (Gruppioni et al. 2016), and at the same time hosts a powerful X-ray UFO (Braito et al. 2018), hence we expect AGN feedback processes to dominate over SF feedback. Indeed, the kinetic power of the X-ray wind ($\dot{E}_k = 8\% L_{\text{AGN}}$) exceeds the theoretical threshold required to have feedback from an AGN (Hopkins & Elvis 2010). Such properties make MCG-03-58-007 one of the best candidates for isolating the AGN feedback from the SF contribution with the aim of testing the blast-wave feedback models.

The paper is organised as follows. In Section 2.1 we describe the target galaxy and summarise the properties of the X-ray UFO. In Section 2.2 we present the ALMA observations focusing on the CO(1-0) line. The analysis of the data is presented in Section 3, where we describe the rotating disk model constructed with the software 3D BAROLO. In Section 4 we discuss the interpretation of the results and test the AGN feedback models. In Section 5 we summarise our findings and their implications for the current understanding of the feedback mechanisms at work in galaxies.

Throughout this work, a $H_0 = 70 \text{ km s}^{-1} \text{ Mpc}^{-1}$, $\Omega_{\Lambda_0} = 0.73$ and $\Omega_m = 0.27$ Cosmology is adopted. At the source redshift ($z = 0.03236$) $1''$ corresponds to 0.67 kpc . Errors are given at 1σ confidence level unless otherwise specified, i.e. Section 3.3 and Table 4.

2.1 The target galaxy: MCG-03-58-007

MCG-03-58-007 is a nearby ($z = 0.03236$, redshift measurement refined in this work, see section 3.1) Seyfert type 2 galaxy ($L_{AGN} \sim 3 \cdot 10^{45} \text{ erg s}^{-1}$ ⁽¹⁾), for details see Braito et al. (2018) and LIRG ($L_{IR} = 2.3 \cdot 10^{11} L_{\odot}$, Gruppioni et al. 2016). A star formation rate of $\text{SFR} = 20.1 \pm 0.9 M_{\odot} \text{ yr}^{-1}$ was estimated by Gruppioni et al. (2016), by using the Kennicutt (1998) relation converted to a Chabrier IMF.

Direct evidence for AGN feedback in this source was found with the discovery of an X-ray highly ionized UFO with $v \gtrsim 0.1c$ and $\log(\xi/\text{erg cm s}^{-1}) \sim 5.5$ ⁽²⁾ in the Suzaku spectrum in 2010 (Braito et al. 2018; Matzeu et al. 2019). Two deep absorption troughs at $E = 7.4 \text{ keV}$ and $E = 8.5 \text{ keV}$, which can be associated with the blue-shifted transitions of Fe XXV and Fe XXVI, strongly indicate the presence of two highly ionized, high column density and fast outflowing absorbers with velocities of $v_1 \sim 0.1c$ and $v_2 \sim 0.2c$. Follow-up XMM-Newton and NuSTAR observations in 2015 confirmed the presence of the $v_1 = 0.1c$ zone of the wind and possibly of an even faster zone (Braito et al. 2018). These observations also showed an occultation event consistent with an increase of the disk-wind opacity.

Braito et al. (2018) compared the energetics of the nuclear wind to the bolometric luminosity of the AGN. They considered only the wind component moving at $v_1 \sim 0.1c$, being the only one persistent over time. The mass of the central black hole expected from the $M_{BH} - \sigma_*$ relation is $M_{BH} \sim 10^8 M_{\odot}$. The mass-loss rate of the X-ray wind ($\dot{M} \sim 1.5 M_{\odot} \text{ yr}^{-1}$) was calculated assuming a biconical geometry for the flow. The kinetic power of the persistent component of the wind is $\dot{E}_{k1} \sim 2.4 \cdot 10^{44} \text{ erg s}^{-1}$ ($8\% L_{AGN}$) and the momentum rate is $\dot{p}_1 \sim 2 \cdot 10^{35} \text{ g cm s}^{-2}$, which is of the same order of L_{AGN}/c . Since the covering factor and the launching radius of the wind are difficult to determine, the uncertainties of the momentum rate and kinetic power are at least 40 – 50%.

Besides hosting a stable X-ray UFO, MCG-03-58-007 also hosts an ionised outflow with $v_{ion} \sim 500 \text{ km s}^{-1}$, indicated by the broad blue-shifted wings of the [OIII]4959Å and [OIII]5007Å lines visible in the optical spectrum as mentioned by Braito et al. (2018).

2.2 ALMA observations

We observed MCG-03-58-007 with ALMA Band 3 during Cycle 4 (Project code: 2016.1.00694.S, PI: P. Severgnini). We used a compact configuration of 40 12-m antennas, in a single pointing with field of view of $75''$ (FWHM), which fully covered the target galaxy, as shown in Figure 1. The observations were carried out on 11 March 2017 with an on-source time of 7.4 min.

We arranged a spectral setup consisting of 2 spectral

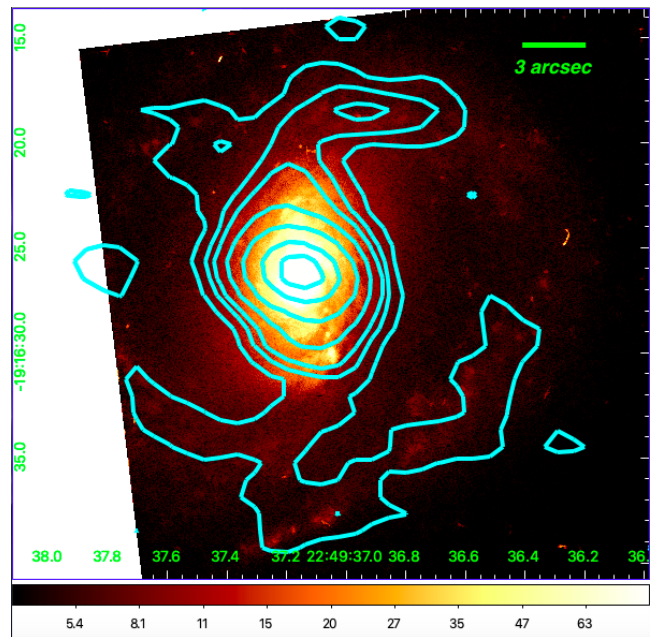


Figure 1. ALMA CO(1-0) emission map (cyan contours) superimposed to the Hubble Space Telescope (HST) optical image (F606W filter) of MCG-03-58-007. The horizontal and vertical axes display the Right Ascension (RA) and Declination (Dec) respectively, in sexagesimal units. The CO(1-0) contours levels correspond to 1-3-5-10-20-40-60 σ , with $\sigma = 0.6 \text{ mJy}$. The optical image is scaled with the inverse hyperbolic sine function (asinh). The extension of the galaxy optical emission coincides with the CO(1-0) line emission and is about $25''$ in diameter. The synthesized beam size of the ALMA data is $3.3'' \times 2.0''$.

windows in each sideband. In the upper sideband we placed one spectral window centred at $\nu_{obs} = 111.682 \text{ GHz}$ for detecting the CO J=1-0 (hereafter CO(1-0)) line, and another spectral window centred at $\nu_{obs} = 109.952 \text{ GHz}$ to sample the CN (N=1-0, J=3/2-1/2, J=1/2-1/2) line doublet, which will be analysed in a separate publication. Both spectral windows in the upper sideband have a width of 1.875 GHz and a resolution of 1.95 MHz. In the lower sideband we placed two spectral windows of 2 GHz width and 15.6 MHz resolution centred at $\nu_{obs} = 97.952 \text{ GHz}$ and $\nu_{obs} = 99.807 \text{ GHz}$, to study the 3-mm continuum emission. Table 1 lists the main parameters of the ALMA CO(1-0) observations. Three calibrators (J2258-2758, Uranus, J2236-1433) were used for fixing the flux density scale, for determining the bandpass response, and for calibrating amplitude and phase of the visibilities of the science target. The calibration pipeline was launched with CASA version 4.7, to produce the visibility files. The data reduction and analysis were performed with CASA version 5.4.

The CO(1-0) line emission image was deconvolved using the TCLEAN task with Briggs weighting (robust = 0.0). We investigated different masking procedures: in order to create a different mask for every channel, we ultimately used the AUTOMASK parameter. The latter automatically provides a different mask for each channel and minimizes the residual negative sidelobes. The cleaning procedure was carried out over the spectral range corresponding to velocities of $v \in (-1000, +1000) \text{ km s}^{-1}$, on the basis of a preliminary

¹ Throughout this work, L_{AGN} is the bolometric luminosity of the AGN

² The ionisation parameter is defined as $\xi = \frac{L_{ion}}{n_e R^2}$, where L_{ion} is the ionising luminosity in the 1-1000 Rydberg range, R is the distance to the ionising source and n_e is the electron density. The units of ξ are erg cm s^{-1} . $1 \text{ Ry} = 13.6 \text{ eV}$.

Table 1. ALMA CO(1-0) observation log

Target line CO(1-0)	
ν_{obs}	111.675 GHz
Date	11 March 2017
Array configuration	C40-1
On-source time	6.70 min
Channel width	5.2 km s ⁻¹
Spectral window's width	4992 km s ⁻¹
Rms sensitivity	2.2 mJy/beam/5.2 km s ⁻¹
Synthesized beam	3.3" x 2.0"

quick imaging that shows no line emission at higher velocities (see also Section 3). We adopted the native spectral resolution of 5 km s⁻¹ wide channels. Frequencies were converted to velocities using the optical convention and using the corrected redshift value measured in this work (see Section 3.1). We chose a cleaning threshold equal to the rms per channel (2.5 mJy) and a pixel size of 0.2". The primary beam correction was included in the cleaning task to account for the dependence of the sensitivity on the direction within the field of view. The final synthesized beam has an average size of 3.3" x 2.0" which corresponds to a physical spatial resolution of 2.2 kpc x 1.3 kpc. The achieved rms sensitivity is 2.2 mJy/beam/5.2 km s⁻¹, as measured from channels free of line emission.

3 ANALYSIS AND RESULTS

3.1 Continuum subtraction and redshift correction

The 3-mm continuum emission was subtracted using the task UVCNTSUB from the *uv* visibilities. For the purpose of continuum subtraction, we estimated the continuum level from the channels adjacent to the CO(1-0) line corresponding to velocities (-2500, -500) km s⁻¹ and (500, 2500) km s⁻¹. However, the 3-mm continuum emission is overall faint compared to the line emission. We measure a continuum flux density of 0.60 ± 0.10 mJy at $\nu_{obs} = 99$ GHz. A map is shown in Figure 2.

Figure 3 shows the continuum-subtracted spectrum of the CO(1-0) line, which is centred at the observed frequency $\nu_{obs} = 111.658$ GHz. This frequency is slightly different from that reported in Table 1 ($\nu_{obs} = 111.675$ GHz), which was our input CO(1-0) central frequency inferred from the CO(1-0) and CO(2-1) observations carried out with the Swedish European Southern Observatory (ESO) Submillimetre Telescope (SEST) and reported by Strong et al. (2004). These older millimetre data have a spectral resolution of $\Delta\nu = 30$ km s⁻¹, which is a factor of six larger than that of our ALMA data.

In order to refine the redshift measurement, we used the CO(1-0) position velocity diagram extracted along an axis with a Position Angle (PA) of 42° (see Section 3.3), shown in Figure 4. From this plot we identified the centroid velocity of the rotation curve, which is offset by $v = 47 \pm 7$ km s⁻¹ with respect to the older redshift of $z = 0.03220$ measured by Strong et al. (2004). By setting the centroid of the CO(1-0) rotation curve equal to the systemic velocity of the galaxy, we obtain a new redshift estimate of $z = 0.03236 \pm 0.00002$ for MCG-03-58-007.

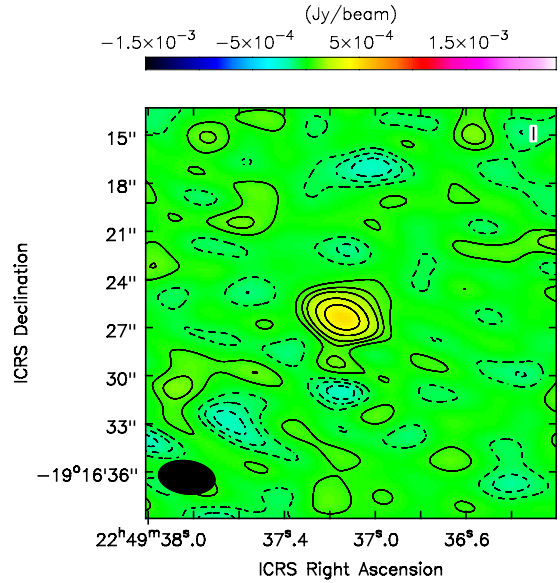


Figure 2. Continuum emission of MCG-03-58-007 at an average $\nu_{obs} = 99$ GHz. Two spectral windows, placed on the central frequencies $\nu_{obs} = 98$ GHz and $\nu_{obs} = 100$ GHz, free of lines emission, were merged and cleaned for producing this map. The emission is centred on the coordinates of the target, the synthesized beam is represented by the black ellipse in the bottom-left corner of the figure. The black contours levels correspond to 1,2,3,5,7 σ_{rms} with $\sigma_{rms} = 0.065$ mJy. Symmetric negative contours are plotted with dashed lines.

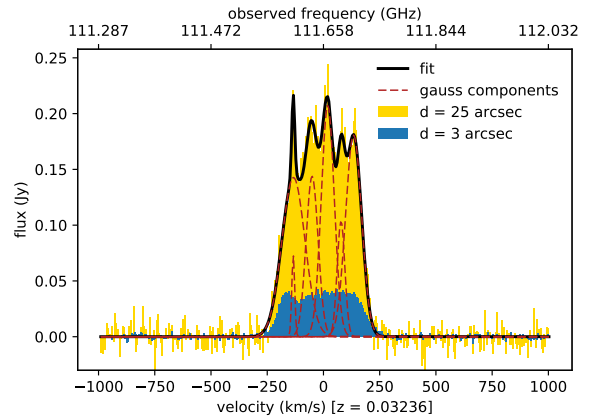


Figure 3. Continuum-subtracted spectrum of the CO(1-0) line in MCG-03-58-007, extracted from circular apertures of 3" and of 25" (blue and yellow areas, respectively). The smaller aperture corresponds to the size of synthesized beam, the larger aperture covers the full galaxy extension and is the aperture that maximises the CO flux. The black solid line is the best fit of the total spectrum obtained with multiple Gaussian components (red dashed lines). The observed frequency (upper x-axis) has been converted to velocity (lower x-axis) using the redshift value refined in this work, $z = 0.03236 \pm 0.00002$.

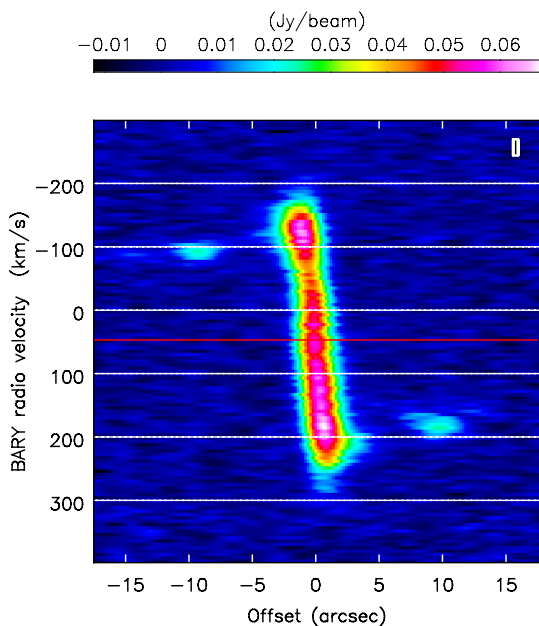


Figure 4. Position-velocity diagram extracted from a beam-wide slit with PA = 42°. The red horizontal line marks the centroid velocity of the rotation curve, which is offset by $47 \pm 7 \text{ km s}^{-1}$ with respect to the input redshift of $z = 0.03220$. Our new redshift estimate is therefore $z = 0.03236 \pm 0.00002$.

3.2 Morphology of the CO line emission

The CO(1-0) line spectrum extracted from a circular aperture of 25'' shows a complex profile characterised by multiple components (Figure 3). For this reason we modelled the spectrum with multiple Gaussian functions to measure the total flux and luminosity of the CO(1-0) line. In Table 2 we report the best-fit parameters for each of the Gaussian components and the values of the CO(1-0) total flux, luminosity and total molecular gas mass. We derived a molecular gas mass of $M_{H_2} \simeq (9 \pm 6) \frac{\alpha_{CO}}{3.1} \cdot 10^9 M_{\odot}$ using the formula given by Solomon & Vanden Bout (2005) with a CO-to-H₂ conversion factor of $\alpha_{CO} = 3.1 \pm 2.1 M_{\odot}(\text{K km s}^{-1} \text{ pc}^2)^{-1}$. Such conversion factor is the average of the values calculated in nearby star-forming galaxies by Sandstrom et al. (2013) and its uncertainty corresponds to the standard deviation of the sample.

In Figure 5 we show the collapsed map of the CO(1-0) line emission, obtained by selecting the channels in the range (-238, 213) km s^{-1} , which excludes the CO(1-0) emission lower than 3σ . The bulk of the emission is produced in a central circular region of the galaxy of radius 2 kpc and it is detected with a significance of $\sim 50\sigma$. Some fainter clumps detected at $2 - 5\sigma$ are located at larger distances, up to 8 kpc away from the centre.

In Figure 6 we show the CO(1-0) channel maps, obtained with $\Delta v = 50 \text{ km s}^{-1}$. As shown in Figure 6, the redshifted emission arises from the half portion of the galaxy oriented N-W, while the blue-shifted emission comes from the other half oriented S-E. This is the typical pattern of

Table 2. Results of a multi-Gaussian fit to the total CO(1-0) spectrum

Gaussian comp.	μ_v [km s^{-1}]	S_{peak} [Jy]	σ_v [km s^{-1}]
1	-133 ± 7	0.143 ± 0.008	73 ± 6
2	-134 ± 1	0.073 ± 0.010	9.2 ± 1.6
3	-50 ± 5	0.14 ± 0.03	38 ± 8
4	19 ± 3	0.207 ± 0.008	41 ± 8
5	78 ± 3	0.10 ± 0.03	24 ± 4
6	134 ± 3	0.181 ± 0.005	50 ± 3
Total spectrum	S_{CO} [Jy km s^{-1}]	L'_{CO} [$\text{K km s}^{-1} \text{ pc}^2$]	M_{H_2} [M_{\odot}]
	65 ± 4	$(2.9 \pm 0.5) \cdot 10^9$	$(9 \pm 6) \frac{\alpha_{CO}}{3.1} \cdot 10^9$

Upper panel: best-fit parameters of the Gaussian model components showed in Figure 3: central velocity (μ_v), flux amplitude (S_{peak}), and velocity dispersion (σ_v). Lower panel: total CO(1-0) line flux (S_{CO}), total CO(1-0) line luminosity (L'_{CO}) and molecular gas mass (M_{H_2}). Although the amplitude of components 2 and 5 is about half of that of the other components, they are significant at a level $\gtrsim 30\sigma_{rms}$. The errors on the Gaussian parameters are given at one standard deviation. The uncertainty on the total flux is dominated by the ALMA calibration error of 6%. The error on the luminosity depends also on the error of the Hubble constant: we used $70 \pm 5 \text{ km s}^{-1} \text{ Mpc}^{-1}$. The molecular gas mass has the largest uncertainty due to the conversion factor which has a precision of 68%.

an emitting source that is rotating on a disk, inclined with respect to the line of sight.

At the sensitivity of our data, we did not detect any significant CO(1-0) emission at velocities $|v| > 250 \text{ km s}^{-1}$, i.e. higher than the maximum rotation velocity (see also Figure 3 and 4). However, we cannot exclude the presence of a low-velocity outflow whose emission is blended with that of the rotating disk. Therefore in the next Section, we model the emission from the rotating gas, subtract it from the ALMA data-cube and study the morphology and kinematics of any residual CO emission.

3.3 Modelling of the main rotating disk

The CO(1-0) line emission is dominated by the rotation of the gas in the molecular disk, whose axis is inclined with respect to the line of sight. The typical pattern of such emitting disk (Fraternali et al. 2002) is clearly visible in the PV diagram of Figure 4 and in the channel maps in Figure 6. Before modelling the rotating molecular disk, we inferred its geometrical parameters from the intensity (0th moment) and velocity (1st moment) maps of the CO(1-0) emission, shown in Figure 7 (left panels). The coordinates of the centre of the disk are determined by performing a Gaussian fit of the central part (3 kpc) of the intensity map. The peak emission is located at RA = 22h 49m 37.16s \pm 0.07 s, Dec = $-19^{\circ}16'26.4'' \pm 1.0''$, with errors given by the semi-minor axis of the synthesized beam. The inclination angle of the disk has been estimated by measuring the ratio between the minor and major axes of the molecular disk on the velocity map, which features a velocity gradient in the south-west to north-east direction. The inclination angle is defined as the angle between the disk axis and the line of sight (a face-on disk has $i = 0^{\circ}$, an edge-on disk has $i = 90^{\circ}$). We derived a value of $i = 37 \pm 10 \text{ deg}$, consistent with the broad range of values inferred using the same method for the optical and IR

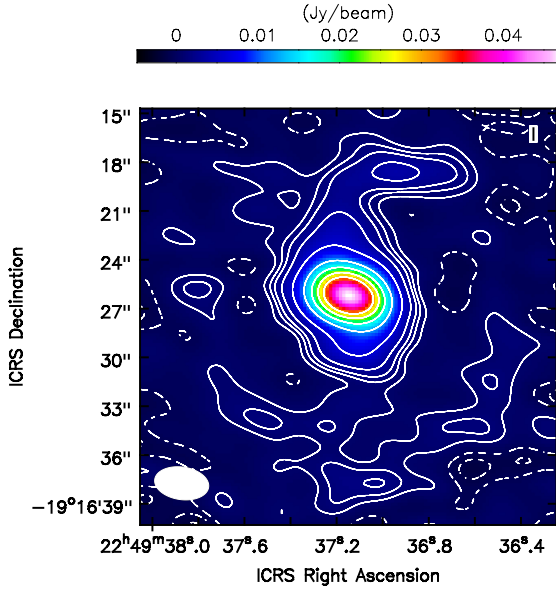


Figure 5. Collapsed map of the CO(1-0) emission: the flux is summed over the spectral range $(-238, 213)$ km s^{-1} . The white solid lines are the contours level at 1-2-3-5-10-20-30-40-50 σ , with $\sigma = 0.6\text{mJy}$. Negative contours are also displayed with white dashed lines. The synthesized beam is plotted in the lower left corner in white.

imaging (Jones et al. 2009). The position angle of the major axis of the disk is also derived from the velocity map: we find a value of $PA = 42^\circ$, measured clockwise starting from the north direction.

We used the software 3D-Based Analysis of Rotating Object via Line Observations (3D BAROLO), developed by Di Teodoro & Fraternali (2015), for constructing a disk model and fitting its emission to the ALMA data. The main assumption of this model is that all the emitting material of the galaxy is confined to a geometrically thin disk and its kinematics is dominated by pure rotational motion. The typical approach, until recent years, for studying the gas kinematics in a galaxy consisted of fitting the 2D-velocity map with an analytical function for the line of sight velocity. Instead, in the 3D approach, the fitting technique is based on a Monte Carlo extraction of the positions and velocities of the gas clouds. This permits to generate the disk one ring at a time and, after the convolution of the disk model with the observational Point Spread Function (PSF), to perform the minimization on all the maps (channels) comprising the data-cube.

The input data-cube was obtained by cropping the cleaned, continuum-subtracted ALMA CO(1-0) data-cube (size = $35'' \times 35''$, velocity range = $(-264, 258)$ km s^{-1}) using the CASA task IMSUBIMAGE. In order to construct the model disk, we used 8 rings of 1.34 kpc width, which is comparable with the angular resolution scale of the ALMA data. With such configuration we covered a region of 21.4 kpc in diameter, which includes the fainter distant clumps shown in Figure 6. The input and output parameters of 3D BAROLO are reported in Table 3.

The fitting was performed considering only pixels with a

Table 3. Parameters of the 3D BAROLO model

Fixed parameters			
i	PA	RA(J2000)	Dec(J2000)
37°	42°	22h49m37.16s	$-19^\circ 16' 26.4''$
Output parameters			
Ring	R [kpc]	v_{los} [km s^{-1}]	v_{rot} [km s^{-1}]
1	0.67	169^{+8}_{-9}	280^{+14}_{-15}
2	2.01	164^{+17}_{-17}	273^{+28}_{-28}
3	3.35	134^{+18}_{-12}	223^{+29}_{-20}
4	4.69	130^{+9}_{-7}	217^{+10}_{-12}
5	6.03	94^{+10}_{-11}	156^{+17}_{-19}
6	7.37	134^{+5}_{-6}	222^{+9}_{-10}
7	8.71	95^{+7}_{-6}	157^{+12}_{-10}
8	10.05	127^{+7}_{-8}	211^{+12}_{-14}
CO flux and H_2 mass of the modelled disk			
	S_{CO} [Jy km s^{-1}]	L'_{CO} [$\text{K km s}^{-1} \text{pc}^2$]	M_{H_2} [M_\odot]
	50 ± 3	$(2.3 \pm 0.4) \cdot 10^9$	$(7 \pm 5) \frac{\alpha_{\text{CO}}}{3.1} \cdot 10^9$

Upper table: values of the input (fixed) parameters of the disk model, (inclination angle i , position angle of the major axis PA , coordinates of the centre of the disk). Middle table: best-fit rotation parameters for each ring. We report its deprojected radial distance (R), the line of sight velocity (v_{los}), and the true rotation velocity (v_{rot}). Lower table: total CO(1-0) flux (S_{CO}), CO(1-0) luminosity (L'_{CO}) and molecular gas mass of the rotating disk (M_{H_2}).

$S/N \gtrsim 3$. In order to estimate the uncertainties on the best-fit values of the rotation velocities, we employed a Monte Carlo method. After the minimization, the algorithm oversamples the neighborhood of the minimum in the parameter space, by slightly changing the values of the fitting parameters. The error on each parameter is taken as the variation that produces an increase of 5% in the residuals function. The variation of 5% is the default value chosen by the authors of the software Barolo 3D (Di Teodoro & Fraternali 2015). In other words, all the possible values of a fitting parameter within its uncertainty guarantee an error of $<5\%$ on the minimum residual function, and therefore on the best-fit model.³

Figure 7 shows the comparison between the data (left-column panels) and the best-fit model (right-column panels) through the moment (0th, 1st and 2nd) maps.

In Figure 8 we show the PV diagrams extracted from the slits along the major and minor axes of the disk (top and bottom panels respectively). In the top panel we superimpose the LOS rotation velocity of each ring of the model disk. Using the best-fit model, we estimate a total CO(1-0) flux for the rotating molecular disk of $S_{\text{CO}}^{\text{disk}} = 50 \pm 3 \text{ Jy km s}^{-1}$, from which we derive the CO luminosity of the disk $L'_{\text{CO}} = (2.3 \pm 0.4) \cdot 10^9 \text{ K km s}^{-1} \text{ pc}^2$ and the mass of the molecular disk $M_{\text{H}_2} = (7 \pm 5) \frac{\alpha_{\text{CO}}}{3.1} \cdot 10^9 M_\odot$ (values reported in Table 3). This corresponds to 78% of the total molecular gas traced by the CO(1-0) emission detected by ALMA.

³ As explicitly stated also in Di Teodoro (2015), there is no direct way in the 3D approach to calculate the errors of the fitted parameters. Albeit this “5% increase” procedure is not optimal and slightly computationally expensive, it returns errors which are in good agreement with those obtained with more standard methods used for the 2D modelling.

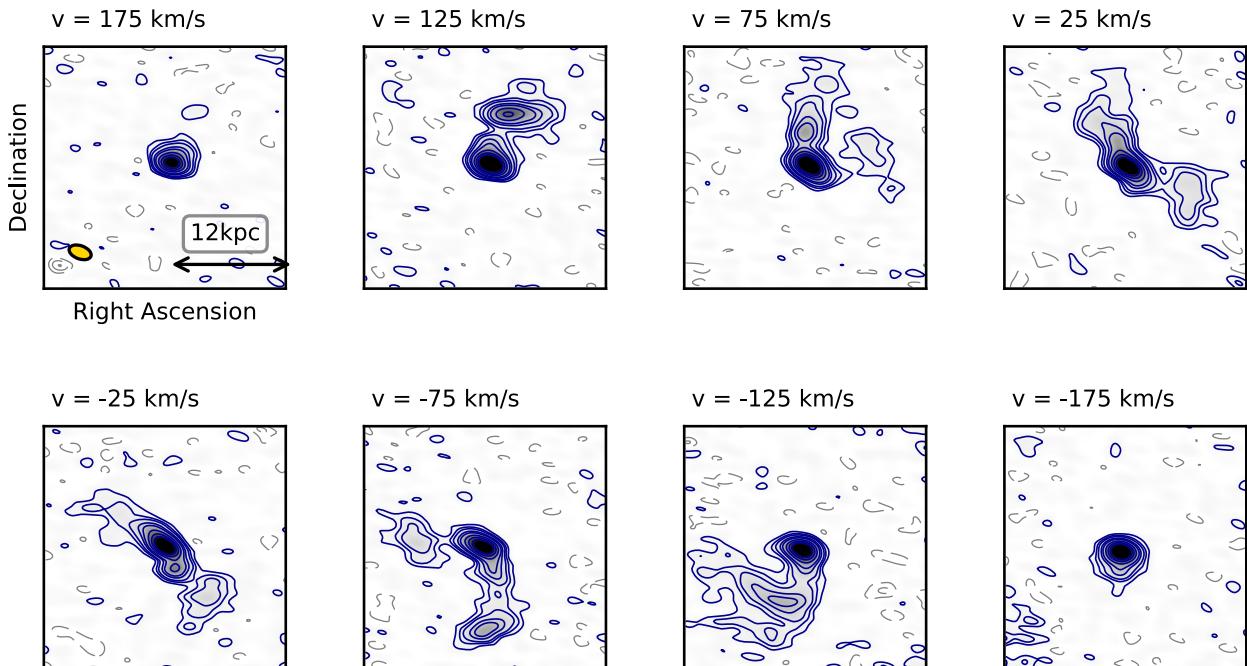


Figure 6. Channel maps of the CO(1-0) emission, with contours at 3-6-9-15-20-30-40-50 σ_{rms} , $\sigma_{rms} = 0.7$ mJy (solid blue lines). Negative contours are plotted with grey dashed lines. Channels have a width of 50 km s^{-1} and their central velocity is displayed in the upper right corner of each image. The synthesized beam is plotted in yellow in the first panel where we also show the physical scale. Each panel is $35'' \times 35''$ ($23.4 \text{ kpc} \times 23.4 \text{ kpc}$). North and East directions correspond to top and left-hand sides of the panels, as in Figure 5.

3.4 The CO(1-0) residual emission

The output of the 3D BAROLO software is a model-cube of the disk rotation, which we subtracted from the ALMA CO(1-0) line datacube. In Figure 9 we compare data, model, and residuals using channel maps of 50 km s^{-1} wide channels.

In both the receding and approaching velocities, the residuals show a spatially extended emission detected at the 3σ level, which is consistent with low-level residual rotation that is not accounted for by the fit. In addition, in the two symmetric channels at higher velocities (-175 km s^{-1} and $+175 \text{ km s}^{-1}$), we detect a compact two-fold structure at much higher significance ($S/N=20$). In Figure 10 we show a contour map of such compact residual structure, obtained by integrating the residual flux over the spectral ranges $(-222, -148) \text{ km s}^{-1}$ and $(121, 195) \text{ km s}^{-1}$.

The blue- and red-shifted portions of such structure can fit inside a rectangle of sides $3.3 \text{ kpc} \times 4.7 \text{ kpc}$. The centroids of these two regions are $\sim 2.5''$ (1.7 kpc) offset from the centre of the galaxy. From these two regions we separately extracted the spectra shown in Figure 11. We modelled both spectra with a Gaussian and computed the fluxes in Table 4, where we report also the respective luminosities and physical sizes. In Section 4 we discuss two possible interpretations for such residual compact emission that is not accounted for by the modelling of the main large-scale molecular disk.

4 DISCUSSION

Our ALMA CO(1-0) observations of MCG-03-58-007 revealed a rotating galaxy-size molecular disk, whose emission contributes to $\sim 78\%$ of the total CO(1-0) flux, in addition to a more compact ($R \lesssim 2 \text{ kpc}$) emission that is not consistent with the modelled rotation. This residual emission, which shows a double-lobe blue-shifted southern component and a symmetrical, double-lobe red-shifted northern component (see corresponding map and spectrum shown in Figures 10 and 11), may trace a low-velocity outflow ($v \sim 170 \text{ km s}^{-1}$). Alternatively, this emission may be due to a rotating structure that is decoupled from the main disk fitted by 3D BAROLO, possibly because it has a different inclination angle or alignment compared to the large-scale rotation. In the next sections we discuss these two possible interpretations.

4.1 Case I: a low-velocity compact outflow

We discuss here the hypothesis that the structure in Fig. 10 traces a molecular outflow. This interpretation is supported not only by the detection of a powerful X-ray nuclear UFO in this source (as discussed in Sections 1 and 2.1), but also by the presence of an ionised outflow on scales comparable to the CO residual emission (Braitto et al. 2018). In particular, the 6dF optical spectrum (Jones et al. 2009) of MCG-03-58-007 shows blue-shifted wings in both the [OIII]4959 λ and [OIII]5007 λ emission lines, shifted by about 500 km s^{-1} . We

Table 4. Properties of the residual CO(1-0) emission shown in Figure 10 and 11 obtained from the spectral fit.

Gaussian	v (km s ⁻¹)	S_{CO} (Jy km s ⁻¹)	L'_{CO} (K km s ⁻¹ pc ²)	R (kpc)
Red	157 ± 5	2.39 ± 0.14	$(1.09 \pm 0.17) \cdot 10^8$	1.7 ± 0.7
Blue	-182 ± 5	3.07 ± 0.18	$(1.40 \pm 0.22) \cdot 10^8$	1.7 ± 0.7

We report the velocity (v), the CO flux (S_{CO}), the CO luminosity (L'_{CO}) and the projected size (R) for the two components of the residual emission (red and blue). The projected sizes are defined to be the distance of the centroid to the centre of the galaxy and their errors are given by the semi-minor axis of the synthesized beam. For the uncertainties of other parameters, see caption of Table 2.

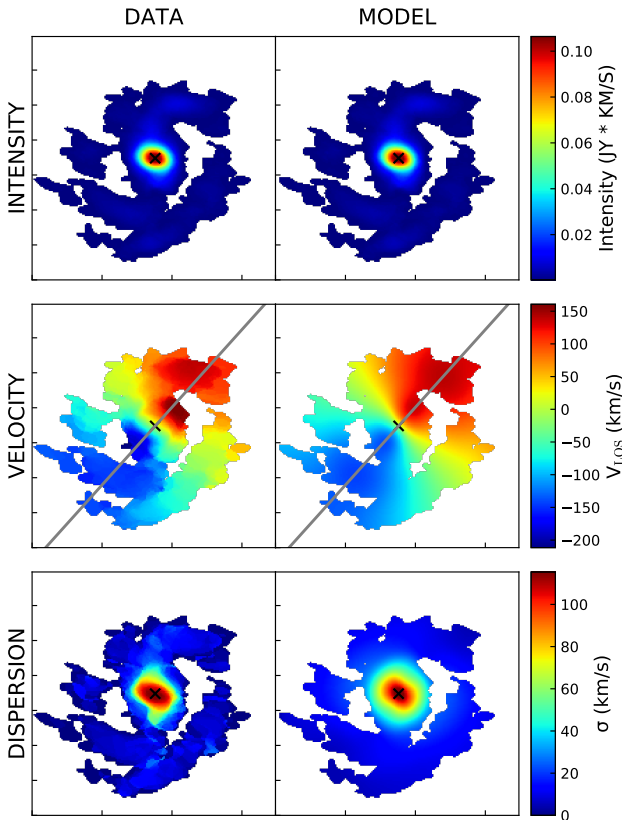


Figure 7. Moment maps of order 0, 1, and 2 (intensity, velocity and velocity dispersion maps, respectively) of the ALMA CO(1-0) data (left panels) and of the best-fit model constructed with 3D BAROLO (right panels). A black cross marks the centre of the galaxy. The major axis of the molecular disk is shown by a grey solid line in the velocity map. The white pixels are those with an intensity lower than a threshold of $3\sigma_{rms}$.

note that the 6dF optical spectrum was extracted using a fibre aperture of $6.7''$ (4.5 kpc), which coincides with the region where we detect significant CO residuals (Figure 10). However, we cannot exclude that the ionised wind extends further up to the kpc scales, outside the fibre coverage.

In the hypothesis that the residual emission shown in Figure 10 traces a low-velocity ($v < 200$ km s⁻¹) molecular outflow, we assume a simple biconical model to account for both the blue-shifted and red-shifted emissions that are symmetric with respect to the AGN location (Figure 10). We derive all the quantities that characterise the outflow sepa-

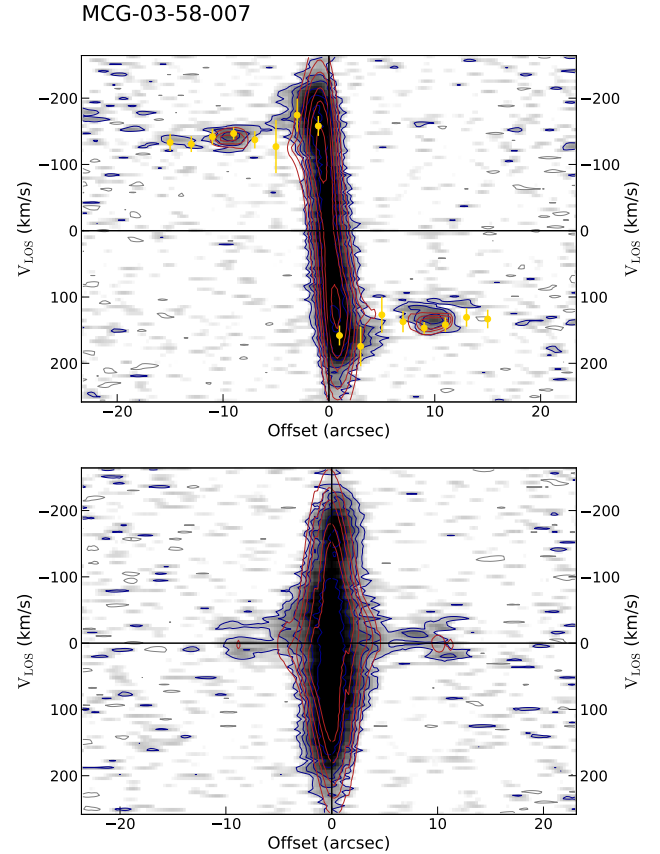


Figure 8. PV diagrams extracted from the data-cube (blue solid contours) and model-cube (red solid contours) using one slit along the major axis (top panel) and another one along the minor axis (bottom panel). The contours level of both the data and the model are at 3-6-9-15-20-30-40-50 σ . The rotation velocity of each ring of the disk model is plotted with yellow solid dots in the top panel along with the error bars.

rately for the approaching and the receding gas, with the following methods. The outflowing velocities (i.e. v_{out}^{blue} and v_{out}^{red}) are estimated from the peaks positions of the best-fit Gaussians of Figure 11, reported in Table 4. We estimated the size of the outflow components (R) as the the projected extensions of the single residual components (red and blue), also reported in Table 4. The dynamical time of the outflow is calculated as $\tau_{dyn} = R/v_{out}$, assuming for simplicity that the axes of the model cones form an angle of 45° with the line of sight. This is equivalent to assuming that the ratio

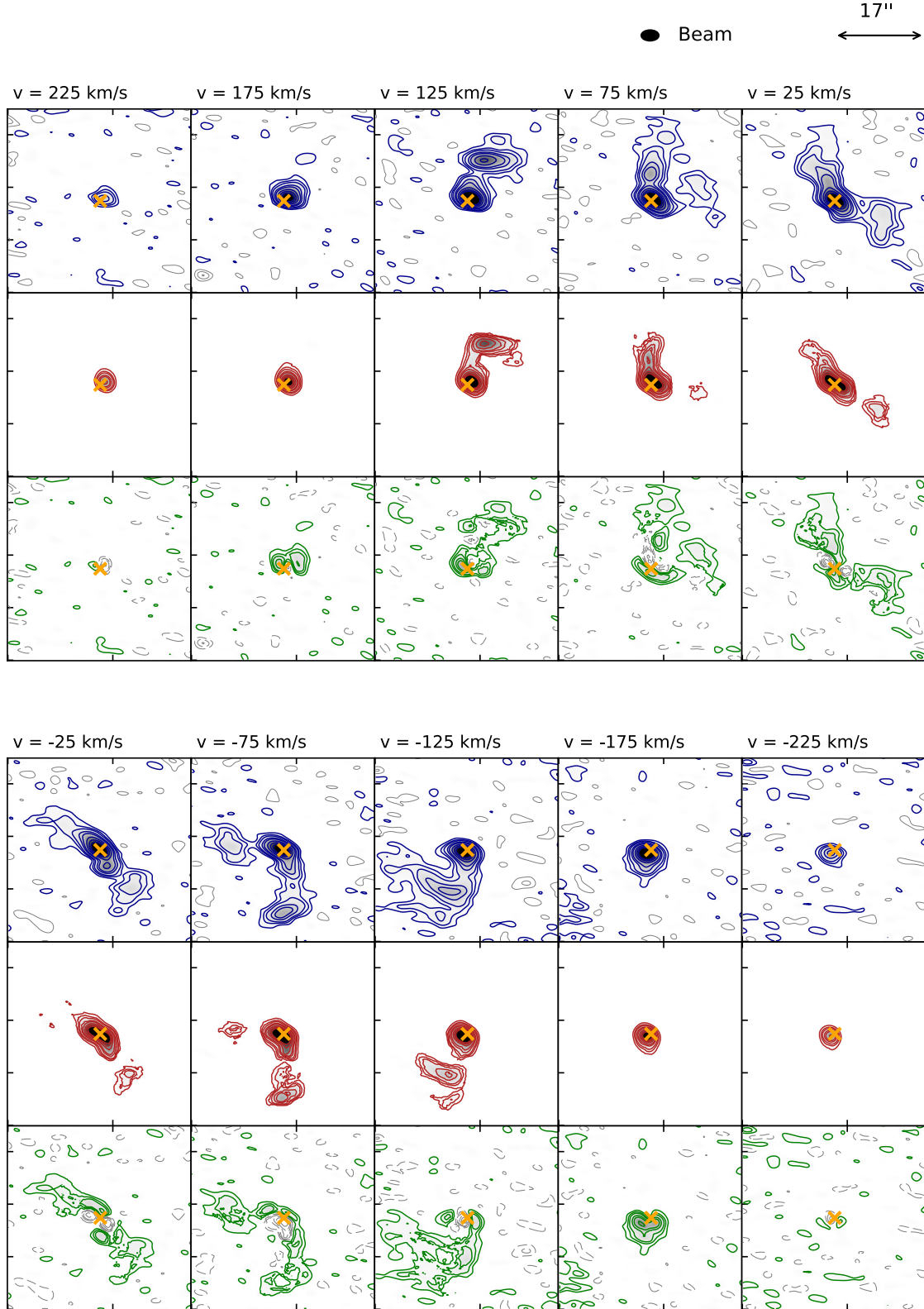


Figure 9. CO(1-0) 50km/s-wide channel maps. From top to bottom rows: data, rotating disk best-fit model, and residuals (blue, red and green solid contours respectively). Contours levels correspond to 3,6,9,15,20,30,40,50 σ_{rms} with $\sigma_{\text{rms}} = 0.7$ mJy. Symmetric negative contours are also displayed with dashed grey lines. The yellow cross in each panel marks the centre of the disk. Each panel is $35'' \times 35''$ (23.4×23.4 kpc²). North and East correspond to the upper and left-hand sides of the panels.

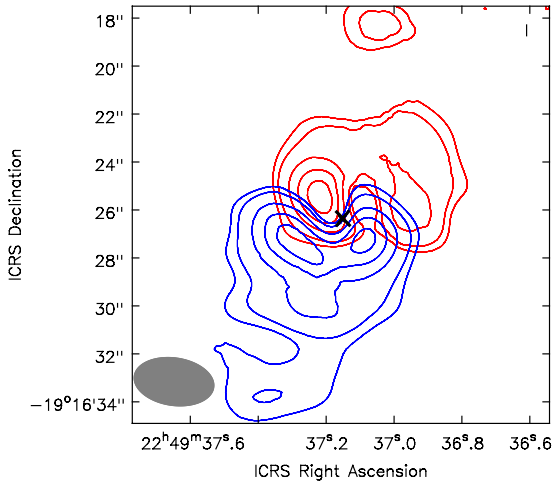


Figure 10. Intensity maps of the blue-shifted (blue solid contours) and red-shifted residual emission (red solid contours) after subtracting the main disk model. The CO emission was integrated respectively over $v \in (-148, -222)$ km s^{-1} and $v \in (121, 195)$ km s^{-1} . Contour levels correspond to 3-5-10-15-20 σ . The centre of the galaxy is marked with a black cross. The synthesized beam is plotted in grey at the bottom left corner of the panel.

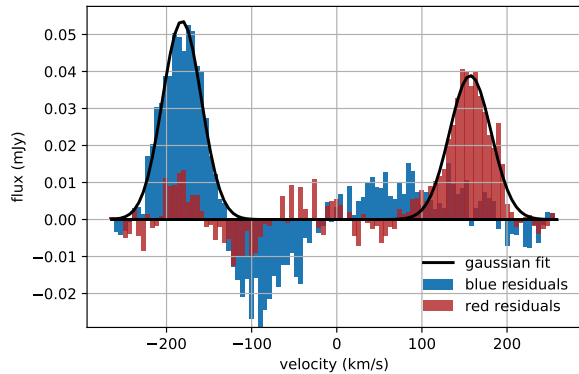


Figure 11. CO spectra extracted from the regions of the blue- and red-shifted emission shown in Figure 10. Both spectra were extracted from a polygon area whose perimeter coincides with the contour line at 5σ in Figure 10. The black solid lines show the two best-fit Gaussian functions.

R/v_{out} (projected and line-of-sight component for the extension and the velocity, respectively) represents the ratio between the true extension and velocity of the outflow. Realistic deviations of such angle ($\delta\theta \lesssim 15^\circ$) do not affect the outflow properties beyond their margins of error.

The masses are derived from the residual CO(1-0) luminosities of Table 4 assuming a CO-to- H_2 conversion factor of $\alpha_{CO}^{out} = 2.1 M_\odot (\text{K km s}^{-1} \text{pc}^2)^{-1}$, which is the value calculated by [Cicone et al. \(2018\)](#) for the molecular outflow of NGC

6240⁴. We cannot quote a formal statistical error for the α_{CO}^{out} parameter in MCG-03-58-007's putative outflow (and so all the quantities depending on it). However, based on the few observational constraints available for other molecular outflows in galaxies with similar ISM properties and star formation activity as our target (e.g. [Cicone et al. 2018](#); [Leroy et al. 2015](#); [Zschaechner et al. 2018](#)), we expect the α_{CO}^{out} parameter to be within $\alpha_{CO}^{out} \in [0.8, 3.4] M_\odot (\text{K km s}^{-1} \text{pc}^2)^{-1}$. We note that there is another source, IC5063, for which observations suggest a lower value of $\alpha_{CO}^{out} = 0.3 M_\odot (\text{K km s}^{-1} \text{pc}^2)^{-1}$ ([Oosterloo et al. 2017](#)). However, IC5063 is a Seyfert 2 hosted by an early type galaxy, hence its ISM conditions are very different from our target.

The mass-loss rate in this model is given by $\dot{M}_{out} = M_{out}/\tau_{dyn}$. The momentum rate and the kinetic power of the outflow are defined as $\dot{P}_{out} = \dot{M}_{out} v_{out}$ and $\dot{E}_{out} = \frac{1}{2} \dot{M}_{out} v_{out}^2$ respectively. Their estimates are corrected for the line-of-sight effects on the velocity, consistently with the assumption of a bi-cone inclination of 45° . All the derived quantities of the total molecular outflow are reported in Table 5, along with the same parameters derived for the nuclear wind detected in the X-ray spectrum ([Braitto et al. 2018](#)). The velocity, radius and dynamical time of the outflowing molecular gas are the values averaged between the approaching and receding components.

4.1.1 Testing the AGN feedback scenario

The mass loading factor $\eta \equiv \dot{M}_{out}/SFR \sim 3$ indicates that such putative molecular outflow is potentially able to quench the star-formation in MCG-03-58-007. The mass loading factor also suggests that SF alone may not be sufficient at driving such outflow, hence requiring the additional energy from the AGN, as expected from a blast-wave feedback mechanism initiated by the X-ray wind (see also Section 4.1.2). Therefore, MCG-03-58-007 is a good laboratory to test AGN feedback models, which can be done by comparing the energetics of the putative molecular outflow to the energetics of the stable component of the X-ray UFO.

The ratio between the momentum rates of the two outflows is $\dot{P}_{mol}/\dot{P}_{UFO} \sim 0.4$. Although this ratio has been obtained following a series of assumptions used to estimate the energetics of the two outflows, it allows us to rule out the presence of a momentum-boosted molecular outflow in our target. Furthermore, it is also possible - we note - that a non-negligible fraction of the initial momentum is transferred to the ionised outflow. However, with the current, spatially unresolved, optical data it is not possible to constrain the energetics of the ionised outflow (and, in any case, it is very difficult to constrain the masses and energetics of ionised outflows in absence of an estimate of the electron density, see considerations in e.g. [Harrison et al. \(2018\)](#)). Instead the kinetic power of the molecular outflow is three orders of magnitude lower than that of the X-ray wind. Remarkably, this is at tension with a classic energy-conserving

⁴ In NGC 6240 the α_{CO}^{out} estimated for the outflow is lower than the α_{CO} estimated for the non-outflowing H_2 gas reservoir, as expected if the large σ_v of the clouds in outflow partially decrease the optical depth of its global low-J CO emission ([Cicone et al. 2018](#))

Table 5. Comparison between the molecular outflow and X-ray UFO properties

Type	v	R	τ_{dyn}	M_{out}	\dot{M}_{out}	\dot{P}_{out}	\dot{E}_{out}
(1)	(2)	[pc]	[10^7 yr]	[$10^8 M_{\odot}$]	[$M_{\odot} \text{ yr}^{-1}$]	[g cm s^{-2}]	[erg s^{-1}]
(1)	(2)	(3)	(4)	(5)	(6)	(7)	(8)
H ₂ outflow (*)	$(170 \pm 4) \text{ km s}^{-1}$	$(1.7 \pm 0.7) \cdot 10^3$	1.0	$5.2 \frac{\alpha_{CO}^{out}}{2.1}$	$54 \frac{\alpha_{CO}^{out}}{2.1}$	$8 \cdot 10^{34}$	$1.0 \cdot 10^{42}$
X-ray UFO	$0.075c$	$1.7 \cdot 10^{-3}$	-	-	1.5	$2 \cdot 10^{35}$	$2.4 \cdot 10^{44}$

(1) Outflow type; (2) outflow velocity (LOS component); (3) projected extension of the outflow; (4) dynamic time of the outflow; (5) outflowing mass; (6) mass-loss rate; (7) momentum rate; (8) kinetic power.

(*) The H₂ outflow energetics depends on the α_{CO}^{out} conversion factor, which we assumed equal to $2.1 M_{\odot} (\text{K km s}^{-1} \text{ pc}^2)^{-1}$. As explained in Section 4, based on the few observational constraints available for α_{CO}^{out} in outflow, we expect this value to be comprised within $\alpha_{CO}^{out} \in [0.8, 3.4] M_{\odot} (\text{K km s}^{-1} \text{ pc}^2)^{-1}$.

blast-wave feedback scenario which predicts not only the kinetic power to be conserved but also the momentum rate of the large scale outflow to be boosted (Faucher-Giguère & Quataert 2012). The efficiency factor, which we define as the ratio between the kinetic power of the molecular outflow to the X-ray wind, is $\dot{E}_{mol}/\dot{E}_{UFO} \sim 4 \cdot 10^{-3}$, lower than the range found by Mizumoto et al. (2019) for a sample of six Seyfert galaxies, i.e. from $\sim 7 \cdot 10^{-3}$ to ~ 1 . Our results are consistent with the model of a momentum-conserving outflow where the nuclear wind is able to dissipate the energy via a radiative shock (King 2010). We note that, using the non-relativistic Compton cooling in their hydro-chemical simulations, Richings & Faucher-Giguère (2018) found that AGN energy-driven outflows can lose the thermalized mechanical energy through efficient cooling and in-situ formation of molecular gas within the outflow, which would imply momentum conservation and energy dissipation similar to what we found for MCG-03-58-007.

Alternatively, the energetics of the molecular outflow might be unrelated to the nuclear X-ray wind. This can be the case if the radiation pressure on the dust of the ISM is the driving mechanism of the large scale outflow (Ishibashi et al. 2018; Costa et al. 2018b). However, this coupling mechanism is most efficient at $L_{AGN} \gtrsim 10^{47} \text{ erg s}^{-1}$ whereas the L_{AGN} of MCG-03-58-007 is only $\sim 10^{45} \text{ erg s}^{-1}$. Furthermore, the presence of a nuclear X-ray UFO favours an interpretation in the framework of blast-wave feedback models.

Another possibility, which we cannot test with the current data, is that this putative molecular outflow is driven by a hidden kpc-scale radio jet (e.g. see Wagner et al. (2012) for a theoretical framework, and Morganti et al. (2015) for observational evidence). A similar case was recently identified by Husemann et al. (2019) in HE-1353-1917, where the multiphase outflow, including a CO component, extends by ~ 1 kpc and has a velocity of $\sim 200 \text{ km s}^{-1}$, similar to MCG-03-58-007.

In any case, our results appear to rule out the hypothesis of a momentum-boosted molecular outflow in MCG-03-58-007, despite the presence of a powerful X-ray wind. We note that a similar result, which is at odds with energy conserving models, has been recently obtained for the most luminous local AGN, PDS 456. In this source, Bischetti et al. (2019) detected a large-scale molecular outflow with a momentum rate of the same order of that of the X-ray wind. Furthermore, in IRAS F11119+3257, new ALMA data allowed to revise the estimate of the momentum rate of the molecular outflow, finding that this source may be more consistent with the momentum-conserving feedback scenario, contrary to previous claims (see Veilleux et al. 2017). Finally,

Mizumoto et al. (2019) measured a wide range of values for the ratios between the kinetic powers of molecular outflows to the X-ray UFOs, studying a sample of six ULIRGs and quasar-hosts where both an X-ray wind and a molecular outflow have been detected. These findings, together with our new results, point out that the relation (if any) between the disk-wind and the large-scale ISM is more complex than commonly assumed.

4.1.2 The role of SF feedback

When comparing the putative molecular outflow energetics with the AGN luminosity and the nuclear wind energetics, we implicitly assumed that all the feedback processes occurring in MCG-03-58-007 are due to the AGN activity. In order to test this assumption, we need to verify that the kinetic power output due to star formation activity - stellar radiation and SuperNovae (SNe) explosions - is not sufficient to power the putative molecular outflow. The latter extends up to $R_{OF} \sim 2$ kpc (Table 5). Since we have only a measurement of the total SFR throughout the entire extent of the galaxy, we need to scale down the total SFR to take into account that the putative molecular outflow is much less extended than the molecular disk ($R_{gal} \sim 9$ kpc). To do so, we use the $L_{CO} - SFR$ correlation computed for a sample of local SF galaxies (Cicone et al. 2017), which is a direct result of the Schmidt-Kennicutt empirical law (Kennicutt 1998). From the L_{CO} measured in the nuclear region at $r < (2 \pm 1) \text{ kpc}$, we infer $SFR(r < 2 \text{ kpc}) = 10 \pm 5 M_{\odot} \text{ yr}^{-1}$. Using the theoretical predictions of the stellar winds and SNe output in the ISM (Veilleux et al. 2005), which combine stellar evolutionary models, atmospheric models and empirical spectral data, we find that SF activity can trigger a mass-loss rate of $\dot{M}_{SF} = 2.7 M_{\odot} \text{ yr}^{-1}$ within a radius of 2 kpc. This is a factor of 20 lower than what we measured for the putative outflow. The expected kinetic power injected into the ISM by SNe is $\dot{E}_{SN} = 7.3 \cdot 10^{42} \text{ erg s}^{-1}$, which can explain the kinetic energy of the molecular outflow only by assuming a coupling efficiency of 14%. Such efficiency value is at the high end of the range allowed by theoretical models. Hence, the energetics of the putative outflow would be hard to reconcile with a purely star formation-driven feedback process.

4.2 Case II: a kpc-scale rotating structure

An alternative interpretation for the CO(1-0) residuals shown in Fig. 10 would be the presence of a compact structure that is rotating possibly with a different geometry and

kinematics with respect to the rotation of the larger molecular disk modelled with 3D BAROLO. The compact CO(1-0) emission shown in Figure 10 resembles the shape of a doughnut, which may trace a ring with a radius of $R \simeq 1.7$ kpc, rotating with LOS velocities of about $v_{\text{los}} \simeq 170$ km s⁻¹ and having a molecular mass of $M_{\text{H}_2}^{\text{ring}} \simeq 8 \frac{\alpha_{\text{CO}}}{3.1} \cdot 10^8 M_{\odot}$. However, it is difficult to infer the inclination and position angle of such putative ring, for the following reasons:

- (i) The limited spatial resolution of the ALMA data does not allow us to constrain the geometry of this structure;
- (ii) The CO residual emission in Fig. 10, especially the components that are aligned along the major axis of the main molecular disk fitted by 3D Barolo (NW-SE direction), might still include a contamination from such rotation;
- (iii) The kinematics of the CO residuals (Figure 11) is likely more complex than a pure rotation pattern and we can provide only a zeroth order description.

Compact rotating structures have been detected at smaller scales ($\sim 10 - 100$ pc) in a few Seyfert 2 galaxies and are often denominated circumnuclear disks (CNDs). A closed asymmetrical elliptical ring has been detected in NGC 1068 using maps of CO(3-2) line emission (García-Burillo et al. 2014b) and C₂H (García-Burillo et al. 2017); this CND has a radius of $r \sim 200$ pc and is off-centered relative to the location of the AGN. Izumi et al. (2018) found a 74×34 pc CND with a molecular mass of $M_{\text{H}_2} \sim 3 \cdot 10^6 M_{\odot}$ in Circinus, the nearest type 2 Seyfert galaxy. Combes et al. (2019) have recently detected six CNDs in a sample of seven local galaxies, with radii ranging from 6 to 27 pc and masses from $0.7 \cdot 10^7$ to $3.9 \cdot 10^7 M_{\odot}$. All six structures show an orientation along the line of sight that is unaligned to that of the host galaxy and, except in one case, they are off-centred with respect to the AGN (Combes et al. 2019). We note however that the structure detected in MCG-03-58-007 is a factor of $\sim 10 - 100$ larger in size and H₂ mass, compared to typical CNDs detected so far. Based on the comparison with previously detected CNDs, we favour the outflow interpretation for the compact residual CO emission in MCG-03-58-007, but a rotating structure cannot be ruled out based on the current ALMA data.

5 SUMMARY AND CONCLUSIONS

In this work we reported the ALMA CO(1-0) observations of MCG-03-58-007 ($z_{\text{CO}} = 0.03236 \pm 0.00002$, this work), a Seyfert 2 galaxy that we selected as a suitable candidate for investigating AGN feedback mechanisms because of the presence of an extremely powerful X-ray disk-wind (Braitto et al. 2018; Matzeu et al. 2019). The target galaxy has a moderate SFR of $20.1 \pm 0.9 M_{\odot} \text{ yr}^{-1}$, which makes it one of the few sources in this more typical SF regime where the blast-wave AGN feedback scenario has been tested, and so where the possible contamination from SF feedback processes is expected to be minimised.

The ALMA data that we presented probe the distribution and kinematics of the molecular ISM in the whole galaxy up to scales of ~ 20 kpc. At the sensitivity of our data, we do not detect any signature of very high-velocity molecular outflows ($v > 250$ km s⁻¹). The CO(1-0) emission

is dominated by rotation in a molecular disk, which we modelled using the software 3D BAROLO, measuring a molecular mass of $M^{\text{disk}} = (7 \pm 5) \cdot 10^9 M_{\odot}$, corresponding to 78 % of the total molecular gas mass in this galaxy.

However, the model does not properly describe the complex CO(1-0) kinematics in the central region of MCG-03-58-007. The data-to-model residuals show a compact structure (within 2 kpc from the galaxy centre) with a 20σ significance, whose emission shows two symmetric peaks at $v \sim -170$ km/s and $v \sim +170$ km/s. This could be the signature of a low velocity molecular outflow. Under this hypothesis, we applied a simple biconical model and estimated the LOS velocity ($v = 170 \pm 4$ km/s), mass-loss rate ($\dot{M}_{\text{out}} \sim 54 M_{\odot} \text{ yr}^{-1}$), momentum rate ($\dot{P}_{\text{out}} \sim 8 \cdot 10^{34}$ g cm s⁻²), and kinetic power ($\dot{E}_{\text{out}} \sim 1.0 \cdot 10^{42}$ erg s⁻¹) of such putative molecular outflow. By comparing these values with the energetics of the X-ray disk-wind, we conclude that the energy coupling between the nuclear wind and the large-scale ISM is not as efficient as it is predicted for the more extreme outflows detected in some ULIRGs (Cicone et al. 2014; Fiore et al. 2017; Fluetsch et al. 2019). In the theoretical framework of the blast-wave AGN feedback scenario (King 2010; Faucher-Giguère & Quataert 2012), our results would be more consistent with a momentum-driven outflow rather than an energy-driven outflow. On the other hand, models invoking the effect of AGN radiation pressure on dusty clouds may provide an alternative explanation for the modest energetics of the putative molecular outflow (Ishibashi et al. 2018; Costa et al. 2018b), although they would not explain the simultaneous presence of a powerful X-ray UFO in this source. With an estimated SFR($r < 2$ kpc) = $10 \pm 5 M_{\odot} \text{ yr}^{-1}$, we cannot rule out a significant contribution of SF activity to the driving mechanism. However, in the hypothesis of a purely SF-driven outflow, the required coupling efficiency would be very high, i.e. 7%. Moreover, star formation feedback cannot be responsible for the nuclear X-ray UFO.

The low-velocity molecular outflow hypothesis is not the only interpretation for the compact CO residual emission detected in MCG-03-58-007. Indeed, the current ALMA data do not allow us to rule out that such structure traces a rotating ring or disk whose kinematics is decoupled from the main molecular disk (and so not accounted for by the 3D BAROLO modelling). However, the size and mass of this putative rotating structure in MCG-03-58-007 would exceed by a factor of 10–100 the typical values measured for CNDs, which have been detected in other Seyfert galaxies (García-Burillo et al. 2014b; Izumi et al. 2018; Combes et al. 2019). Moreover, in this CND hypothesis, MCG-03-58-007 would show neither a high-velocity nor a low-velocity molecular outflow, which would be even more bizarre given the presence of a powerful X-ray wind and of a kpc-scale ionised outflow (Braitto et al. 2018).

Our results, together with other recent works (Bischetti et al. 2019; Fluetsch et al. 2019; Cicone et al. 2018; Veilleux et al. 2017) show that the interpretation of molecular outflows in the framework of AGN feedback models is becoming more and more complicated as we increase sample sizes and study different types of galaxies. However, the targets studied so far do not constitute a complete and unbiased sample, which is necessary to investigate whether massive outflows are regulated by a universal mechanism and, if so, to construct a physical model that describes such mechanism.

ACKNOWLEDGEMENTS

This project has received funding from the European Union's Horizon 2020 research and innovation programme under the Marie Skłodowska Curie grant agreement No.664931. This paper makes use of the following ALMA data: ADS/JAO.ALMA#2016.1.00694.S. ALMA is a partnership of ESO (representing its member states), NSF (USA) and NINS (Japan), together with NRC (Canada), MOST and ASIAA (Taiwan), and KASI (Republic of Korea), in cooperation with the Republic of Chile. The Joint ALMA Observatory is operated by ESO, AUI/NRAO and NAOJ. We thank Paola Andreani, Roberto Maiolino and Fabio Castagna for the fruitful discussions. GAM is supported by the European Space Agency (ESA) Research Fellowships. We thank the referee for providing insightful comments that helped improve the paper.

REFERENCES

- Aalto S., García-Burillo S., Muller S., Winters J. M., van der Werf P., Henkel C., Costagliola F., Neri R., 2012, *A&A*, **537**, A44
- Alatalo K., et al., 2011, *ApJ*, **735**, 88
- Bieri R., Dubois Y., Rosdahl J., Wagner A., Silk J., Mamon G. A., 2017, *MNRAS*, **464**, 1854
- Bischetti M., et al., 2019, arXiv e-prints,
- Braito V., et al., 2018, *MNRAS*, **479**, 3592
- Cicone C., Feruglio C., Maiolino R., Fiore F., Piconcelli E., Menci N., Aussel H., Sturm E., 2012, *A&A*, **543**, A99
- Cicone C., et al., 2014, *A&A*, **562**, A21
- Cicone C., et al., 2017, *A&A*, **604**, A53
- Cicone C., et al., 2018, *ApJ*, **863**, 143
- Combes F., et al., 2013, *A&A*, **558**, A124
- Combes F., et al., 2019, *A&A*, **623**, A79
- Costa T., Rosdahl J., Sijacki D., Haehnelt M. G., 2018a, *MNRAS*, **473**, 4197
- Costa T., Rosdahl J., Sijacki D., Haehnelt M. G., 2018b, *MNRAS*, **479**, 2079
- Di Matteo T., Springel V., Hernquist L., 2005, *Nature*, **433**, 604
- Di Teodoro E. M., 2015, PhD thesis, University of Bologna
- Di Teodoro E. M., Fraternali F., 2015, *MNRAS*, **451**, 3021
- Faucher-Giguère C.-A., Quataert E., 2012, *MNRAS*, **425**, 605
- Feruglio C., Maiolino R., Piconcelli E., Menci N., Aussel H., Lamastra A., Fiore F., 2010, *A&A*, **518**, L155
- Feruglio C., et al., 2015, *A&A*, **583**, A99
- Fiore F., et al., 2017, *A&A*, **601**, A143
- Fischer J., et al., 2010, *A&A*, **518**, L41
- Fluetsch A., et al., 2019, *MNRAS*, **483**, 4586
- Fontanot F., De Lucia G., Monaco P., Somerville R. S., Santini P., 2009, *MNRAS*, **397**, 1776
- Fraternali F., van Moorsel G., Sancisi R., Oosterloo T., 2002, *AJ*, **123**, 3124
- García-Burillo S., et al., 2014a, *A&A*, **567**, A125
- García-Burillo S., et al., 2014b, *A&A*, **567**, A125
- García-Burillo S., et al., 2015, *A&A*, **580**, A35
- García-Burillo S., et al., 2017, *A&A*, **608**, A56
- Gofford J., Reeves J. N., McLaughlin D. E., Braito V., Turner T. J., Tombesi F., Cappi M., 2015, *MNRAS*, **451**, 4169
- González-Alfonso E., et al., 2017, *ApJ*, **836**, 11
- Grupponi C., et al., 2016, *Monthly Notices of the Royal Astronomical Society*, **458**, 4297
- Harrison C. M., Costa T., Tadhunter C. N., Flütsch A., Kakkad D., Perna M., Vietri G., 2018, *Nature Astronomy*, **2**, 198
- Hopkins P. F., Elvis M., 2010, *MNRAS*, **401**, 7
- Husemann B., et al., 2019, arXiv e-prints, p. arXiv:1905.10385
- Ishibashi W., Fabian A. C., 2015, *MNRAS*, **451**, 93
- Ishibashi W., Fabian A. C., Maiolino R., 2018, *MNRAS*, **476**, 512
- Izumi T., Wada K., Fukushige R., Hamamura S., Kohno K., 2018, *ApJ*, **867**, 48
- Jones D. H., et al., 2009, *Monthly Notices of the Royal Astronomical Society*, **399**, 683
- Kennicutt Jr. R. C., 1998, *ApJ*, **498**, 541
- King A. R., 2010, *MNRAS*, **402**, 1516
- Kormendy J., Ho L. C., 2013, *ARA&A*, **51**, 511
- Leroy A. K., et al., 2015, *ApJ*, **814**, 83
- Matzeu G. A., et al., 2019, *MNRAS*, **483**, 2836
- Mizumoto M., Izumi T., Kohno K., 2019, *ApJ*, **871**, 156
- Morganti R., Oosterloo T., Oonk J. B. R., Frieswijk W., Tadhunter C., 2015, *A&A*, **580**, A1
- Nakai N., Hayashi M., Handa T., Sofue Y., Hasegawa T., Sasaki M., 1987, *PASJ*, **39**, 685
- Oosterloo T., Raymond Oonk J. B., Morganti R., Combes F., Dasyra K., Salomé P., Vlahakis N., Tadhunter C., 2017, *A&A*, **608**, A38
- Papastergis E., Cattaneo A., Huang S., Giovanelli R., Haynes M. P., 2012, *ApJ*, **759**, 138
- Pereira-Santaella M., et al., 2018, *A&A*, **616**, A171
- Reeves J. N., O'Brien P. T., Ward M. J., 2003, *ApJ*, **593**, L65
- Richings A. J., Faucher-Giguère C.-A., 2018, *MNRAS*, **474**, 3673
- Sandstrom K. M., et al., 2013, *ApJ*, **777**, 5
- Schawinski K., et al., 2014, *mnras*, **440**, 889
- Sijacki D., Springel V., Di Matteo T., Hernquist L., 2007, *MNRAS*, **380**, 877
- Silk J., Rees M. J., 1998, *A&A*, **331**, L1
- Solomon P., Vanden Bout P. A., 2005, *Annu. Rev. Astron. Astrophys.*, **43**, 677
- Spoon H. W. W., et al., 2013, *ApJ*, **775**, 127
- Strong M., Pedlar A., Aalto S., Beswick R. J., Curran S., Booth R., 2004, *MNRAS*, **353**, 1151
- Sturm E., et al., 2011, *ApJ*, **733**, L16
- Tombesi F., Sambruna R. M., Reeves J. N., Braito V., Ballo L., Gofford J., Cappi M., Mushotzky R. F., 2010, *ApJ*, **719**, 700
- Tombesi F., Meléndez M., Veilleux S., Reeves J. N., González-Alfonso E., Reynolds C. S., 2015, *Nature*, **519**, 436
- Veilleux S., Cecil G., Bland-Hawthorn J., 2005, *ARA&A*, **43**, 769
- Veilleux S., et al., 2013, *ApJ*, **776**, 27
- Veilleux S., Bolatto A., Tombesi F., Meléndez M., Sturm E., González-Alfonso E., Fischer J., Rupke D. S. N., 2017, *ApJ*, **843**, 18
- Wagner A. Y., Bicknell G. V., Umemura M., 2012, *ApJ*, **757**, 136
- Zschaechner L. K., et al., 2018, *ApJ*, **867**, 111

This paper has been typeset from a $\text{\TeX}/\text{\LaTeX}$ file prepared by the author.