



<b>Publication Year</b>	2018
<b>Acceptance in OA</b>	2020-11-13T12:38:52Z
<b>Title</b>	Simulations of the flocculent spiral M33: what drives the spiral structure?
<b>Authors</b>	Dobbs, C. L., Pettitt, A. R., CORBELLI, Edvige, Pringle, J. E.
<b>Publisher's version (DOI)</b>	10.1093/mnras/sty1231
<b>Handle</b>	<a href="http://hdl.handle.net/20.500.12386/28319">http://hdl.handle.net/20.500.12386/28319</a>
<b>Journal</b>	MONTHLY NOTICES OF THE ROYAL ASTRONOMICAL SOCIETY
<b>Volume</b>	478

# Simulations of the flocculent spiral M33: what drives the spiral structure?

C. L. Dobbs,<sup>1</sup>★ A. R. Pettitt,<sup>2</sup> E. Corbelli<sup>3</sup> and J. E. Pringle<sup>4</sup>

<sup>1</sup>*School of Physics and Astronomy, University of Exeter, Stocker Road, Exeter EX4 4QL, UK*

<sup>2</sup>*Department of Physics, Faculty of Science, Hokkaido University, Sapporo 060-0810, Japan*

<sup>3</sup>*INAF-Osservatorio Astrofisico di Arcetri, Largo E. Fermi 5, I-50125 Firenze, Italy*

<sup>4</sup>*Institute of Astronomy, Madingley Road, Cambridge CB3 0HA, UK*

Accepted 2018 May 8. Received 2018 April 17; in original form 2018 February 16

## ABSTRACT

We perform simulations of isolated galaxies in order to investigate the likely origin of the spiral structure in M33. In our models, we find that gravitational instabilities in the stars and gas are able to reproduce the observed spiral pattern and velocity field of M33, as seen in HI, and no interaction is required. We also find that the optimum models have high levels of stellar feedback which create large holes similar to those observed in M33, while lower levels of feedback tend to produce a large amount of small-scale structure, and undisturbed long filaments of high surface density gas, hardly detected in the M33 disc. The gas component appears to have a significant role in producing the structure, so if there is little feedback, both the gas and stars organize into clear spiral arms, likely due to a lower combined  $Q$  (using gas and stars), and the ready ability of cold gas to undergo spiral shocks. By contrast models with higher feedback have a weaker spiral structure, especially in the stellar component, compared to grand-design galaxies. We did not see a large difference in the behaviour of  $Q_{\text{stars}}$  with most of these models, however, because  $Q_{\text{stars}}$  stayed relatively constant unless the disc was more strongly unstable. Our models suggest that although the stars produce some underlying spiral structure, this is relatively weak, and the gas physics has a considerable role in producing the large-scale structure of the ISM in flocculent spirals.

**Key words:** galaxies: individual: M33 – ISM: general – galaxies: spiral.

## 1 INTRODUCTION

Star formation is likely dependent on both the large-scale dynamics of a galaxy and the smaller scale gas physics. For example, in many galaxies, star formation is associated with the spiral arms. However, the relative contributions of spiral structure and gas physics on the overall distribution of the interstellar medium, and locations of star formation, are not yet clear. In this paper we examine the influence of both of these by studying the origin of spiral arms, and the effect of feedback and gas physics on the large-scale spiral structure for the nearby galaxy M33. In particular, we address what produces the spiral structure in M33, and the relevance of stellar feedback in reproducing the observed gas distribution.

There are several mechanisms for spiral arm formation, which include steady-state density wave theory, tidal interactions, bars, and localized gravitational instabilities (for a review, see Dobbs & Baba 2014). While there are many numerical simulations which demonstrate these mechanisms, and the resulting properties of the spiral arms, identifying the mechanism responsible for spiral arms in particular galaxies is still relatively rare. In some cases, galaxy

interactions are clearly generating spiral structure. For example, models of the interaction of M51 and its neighbour NGC 5195 have been shown to reproduce the spiral arm pattern very well (Hernquist 1990; Salo & Laurikainen 2000; Dobbs et al. 2010). Numerical simulations have also produced the structure of the Antennae galaxies as they undergo a merger (Karl et al. 2010; Renaud, Bournaud & Duc 2015; Lahén et al. 2017). For other galaxies, it is unclear what is producing the spiral arms. In isolated galaxies, gravitational instabilities in the stars may dominate the spiral arm structure. For the Milky Way, galaxy models where spiral arms are generated by gravitational instabilities produce a better match to both *GAIA* data (Baba et al. 2018) and the Galactic CO map compared to models using a fixed spiral arm potential (Baba, Saitoh & Wada 2010; Pettitt et al. 2015). Purcell et al. (2011) model the interaction of the Milky Way and Sagittarius, suggesting that this generates the spiral arms, though their simulations do not produce a very detailed spiral morphology of the Galaxy.

A second question is what is the importance of spiral structure for star formation. In some simulations, spiral arms determine the location of the formation of stars and molecular clouds (e.g. Dobbs & Pringle 2013; Pettitt et al. 2017), even though the spiral arms might not have a strong effect on the rate of star formation. This is often clearest in models where spiral arms are triggered by inter-

\* E-mail: [dobbs@astro.ex.ac.uk](mailto:dobbs@astro.ex.ac.uk)

actions (Pettitt et al. 2017), set up as fixed spiral arms (Dobbs & Pringle 2013), but may also occur for transient spiral arms induced by gravitational instabilities in the stellar disc. Other models do not presume that spiral arms have a large role in star formation. They instead suppose a ‘supernovae-driven ISM’, whereby feedback from supernovae produces shells and triggers further star formation (de Avillez & Breitschwerdt 2005; Padoan & Nordlund 2011; Inutsuka et al. 2015; Gatto et al. 2017). The large majority of these models do not include spiral arms.

Observed galaxies exhibit different strength arms, suggesting that the relative importance of spiral arms, versus other processes such as stellar feedback, may vary. M51 is characterized by massive GMCs and spurs hosting clusters along the spiral arms, thus the strong tidally induced spiral arms appear to play a significant role in star formation and shaping the ISM. In galaxies with particularly strong spiral arms, there may not be so much difference in the spiral structure whether or not stellar feedback occurs (see, for example models with different levels of stellar feedback in Dobbs, Burkert & Pringle 2011). However, in other galaxy types, and/or galaxies with a weak spiral structure, stellar feedback may have a greater role in determining the structure of the gas and stars.

M33 is one of the closest spiral galaxies to us and a member of the Local Group. As such there are high-resolution observations in HI, CO, and stellar cluster catalogues (Sharma et al. 2011; Gratier et al. 2012; Miura et al. 2012; Corbelli et al. 2014, 2017; Kam et al. 2017). M33 does not have particularly strong spiral arms or grand-design structure. Instead it exhibits a number of weaker spiral arms more characteristic of a flocculent spiral galaxy (Humphreys & Sandage 1980). Although in the near-infrared (NIR) there are two slightly more prominent arms, the spiral structure is very weak compared to grand-design galaxies such as M51, and further spiral arms are still evident (Jarrett et al. 2003).

There have been few studies to try and examine the structure of the M33 disc and determine its origin. A number of studies have investigated interactions of M33 with other members of the Local Group (Bekki 2008; Patel, Besla & Sohn 2017; Senczuk et al. 2018), although they did not investigate the detailed structure of the disc of M33. Patel et al. (2017) show that M33 appears to be approaching M31 for the first time. This implies that the current spiral arms are not the result of the interaction with M31, and instead M33 can essentially be considered as an isolated galaxy. Senczuk et al. (2018) instead propose an orbit whereby M33 and M31 had a close encounter 2 Gyr ago which produced two tidal arms. Rahimi & Kawata (2012) model an isolated ‘M33-type galaxy’ in terms of mass and size, but do not make direct comparisons of their models with the spiral structure of M33. They do however find that a relatively large amount of stellar feedback is required to produce a resemblance to M33.

In this paper, we perform numerical simulations of an isolated galaxy with a stellar and gas disc, and dark matter halo chosen to match the M33 galaxy. We investigate whether gaseous spiral arms resembling those of M33 can be produced from gravitational instabilities in the disc, without an interaction. We also examine the role of gas in the disc, in terms of contributing to gravitational instabilities, whether stellar feedback is important to reproduce the spiral structure, and the dependence on the thermal properties of the gas. We perform simulations with two different codes, SPHNG and GASOLINE2.

## 2 DETAILS OF SPHNG SIMULATIONS

We use the Smoothed Particle Hydrodynamics (SPH) code, developed by Bate, Bonnell & Price (1995), for most of these calculations.

The code includes star particles (Dobbs et al. 2010), adaptive softening (Price & Monaghan 2007), ISM heating and cooling (Dobbs 2008), and H<sub>2</sub> and CO formation (Dobbs 2008; Pettitt et al. 2014). Stellar feedback is included using the simple prescription of Dobbs et al. (2011), whereby an amount of energy given by

$$E = \frac{\epsilon M 10^{51}}{160 M_{\odot}} \text{erg} \quad (1)$$

is inserted for each star formation event. Here,  $10^{51}$  erg is the energy released by one supernova,  $M$  is the gas mass within a few smoothing lengths, and  $\epsilon$  is an efficiency parameter. The parameter  $\epsilon$  controls both the amount of star formation per feedback event (which is  $\epsilon M$ ), and the energy added per feedback event according to equation (1). We assume that one massive star forms per  $160 M_{\odot}$  of stars formed. Unlike previous work, here we use the total gas mass  $M$  within a few smoothing lengths to calculate the amount of star formation, rather than the mass of molecular hydrogen. For our models of M33, only a small amount of molecular hydrogen is formed, and indeed the actual M33 is mostly HI, so it seemed more reasonable to use the total mass. Energy is inserted as kinetic and thermal energy. The velocities and temperatures of the gas are chosen according to the snowplough solution for a blast wave. Although nominally feedback is inserted following a model for supernovae, in reality we expect other forms of feedback, which inject the ISM with a similar amount of energy, will occur and take place on time-scales shorter than supernovae. As such, our feedback prescription may be more representative of other forms of feedback (winds, ionization, radiation pressure), which act on shorter time-scales. We also ran a model with a short, 5 Myr delay (not shown), but this produced similar results.

In the simulations presented here, we model the gas and stars but include a NFW potential

$$\psi(r) = -\frac{GM_{\text{h}}f}{r} \ln(1 + r/r_{\text{h}}) \quad (2)$$

where

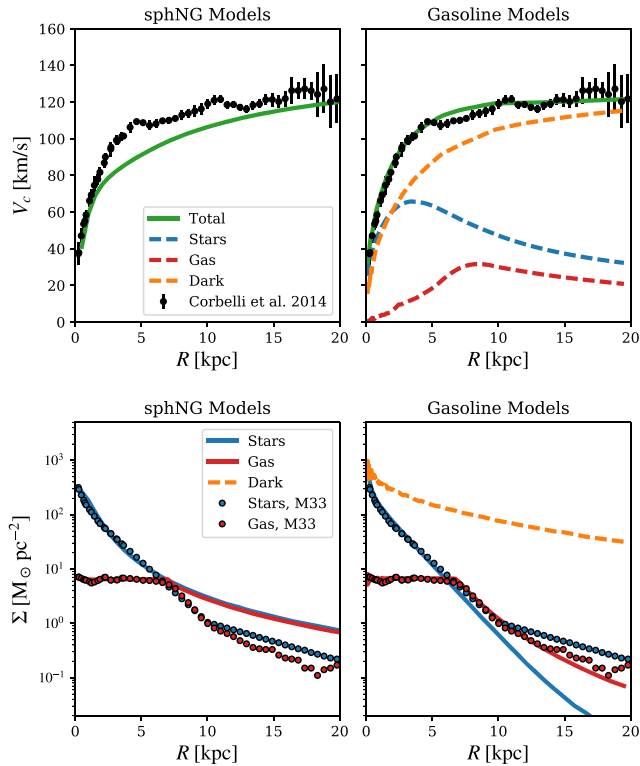
$$f = \ln(C + 1) - \frac{C}{C + 1} \quad (3)$$

(Navarro, Frenk & White 1996) for the dark matter halo. We adopt a couple of different sets of parameters, but both are based on the parameters used to fit the rotation curve to the stars, gas, and a NFW halo by Corbelli et al. (2014). There is some uncertainty, and degeneracy in the values of these different parameters in Corbelli et al. (2014), but as we show in Fig. 1, and similar figures in Corbelli et al. (2014), it is possible to fairly well match the rotation curve of M33. In our first set of models we take  $M_{\text{h}} = 4.3 \times 10^{11} M_{\odot}$  and  $r_{\text{h}} = 26$  kpc. We take a value of  $C = 6$  at the low end of the range of Corbelli et al. (2014), although we also tested using  $C = 8$  and did not find much difference.

### 2.1 Setting up of M33 initial conditions

We tried a number of different approaches to set up the initial conditions for our M33 models. We initially tried using the mkd95 program, part of the NEMO package, as used in Dobbs et al. (2010) for modelling M51 to set up the M33 galaxy. However, in order to acquire a rotation curve similar to that observed, a very large halo was required, and the gas and stars produced many very short spiral arms which did not resemble M33.

The second approach we used, and which is adopted for the SPHNG simulations presented, is to directly allocate gas and star particles according to the observed stellar and gas distributions,



**Figure 1.** In the top panels we compare the rotation curve for the SPHNG and GASOLINE2 models with that of M33. In the lower panels we compare the surface densities of the gas and stars.

from Corbelli et al. (2014). We set up the stellar mass distribution with a  $1/r$  density profile. The gas is distributed uniformly up to a radius of 7 kpc, beyond which the gas also drops off with a  $1/r$  profile. We show in Fig. 1 the surface densities of the stars and gas for the model, and those measured for the actual M33. Up to a radius of around 7 kpc, the main region of M33 which we are interested in, the gas, and stellar surface densities of the model match M33 well. Beyond this the gas density falls off. For simplicity, we have continued the same stellar distribution to lower radii (for M33 the stellar profile is also simply an extrapolation at large radii), and equate the gas surface density to the stellar density, although that means the gas surface density is a little high in the outer parts of the disc. This approach does not set up the stars and gas in equilibrium, but has the advantage that there is more flexibility in how to set up the gas and stars. In particular many schemes to set up stellar discs assume an exponential profile, whereas the M33 stellar disc is not fitted so well by an exponential with a single length scale. We truncate the disc at 20 kpc. We add a constant velocity dispersion of  $10 \text{ km s}^{-1}$  to the gas, again to agree roughly with observations (there is no evident radial gradient in the dispersion). We set up the velocity dispersions of the stars so that the vertical component of the dispersion matches the vertical gravity (van der Kruit 1988). This sets up a model with  $Q \sim 1$  for the stars, where

$$Q = \frac{\kappa \sigma}{3.36 G \Sigma} \quad (4)$$

(Toomre 1964), where  $\kappa$  is the epicyclic frequency,  $\sigma$  is the radial velocity dispersion, and  $\Sigma$  is the stellar surface density.  $Q$  increases slightly with radius compared to setting  $Q$  as a constant with this

method, but models run with constant  $Q$  instead produced relatively similar results. The velocity dispersions are then scaled to produce different values of  $Q$ . For our models with  $Q \sim 1$ , the velocity dispersion at the centre of the disc is around  $20\text{--}25 \text{ km s}^{-1}$ , in agreement with observations of M33 (Corbelli & Waltherbos 2007).

Theoretically, we expect a thin stellar disc to be unstable to gravitational instabilities if  $Q \lesssim 1$ . For the case of a real, or simulated disc, the disc obviously has a finite scale height, and the disc will contain stars as well as gas. There are several examples of combined  $Q$  parameters which take into account both gas and stars (Wang & Silk 1994; Romeo & Wiegert 2011). However, these tend to assume an isothermal gas, whereas the simulations we perform here exhibit a multiphase ISM. So we do not use a combined  $Q$  parameter; our values of  $Q$  represent the stellar component as given by equation (4). For our calculations there is more mass in stars than gas, so  $Q_{\text{stars}} < Q_{\text{gas}}$ . However, the effect of gas on the stability of the disc is not negligible, as we see in the calculations, and we find  $Q_{\text{stars}}$  does not appear to represent the complete behaviour of the disc.

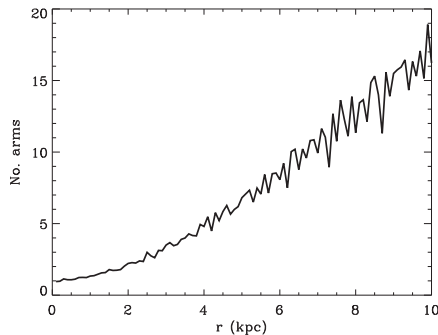
For the third approach, we take more care to set up the simulations in equilibrium, using GASOLINE2. We primarily ran these models as a check to see if the structures produced by the SPHNG models are an artefact of the initial conditions. We describe these simulations in Section 3.

In all our models, we only consider the atomic gas component of M33, and compare with H I maps of M33. The main reason for this is that molecular gas formation and evolution cannot be well resolved in our simulations. As shown in Duarte-Cabral et al. (2015), when stellar feedback is included in galaxy-scale simulations, little gas reaches or stays at the densities required to become molecular. At smaller scales, where it is possible to resolve the detailed structure of the clouds, larger amounts of molecular gas more consistent with observations are produced (Duarte-Cabral & Dobbs 2016; Rey-Raposo et al. 2017). For our M33 models, we do not actively switch off  $\text{H}_2$  formation in the cooling and chemistry routine in the code, but only a minimal amount of molecular gas is formed. The actual M33 does contain some molecular hydrogen in the centre (Corbelli et al. 2014). In our models we see an increase in gas surface density (by a factor of  $\sim 2$  at the centre of the galaxy (within a kpc radius), so there is some indication that our models would have more gas at the centre with time, which could correspond to the molecular distribution of the actual M33. However, overall M33 is H I dominated, and we would not expect the molecular gas component to have a significant effect on the development of large-scale structure in either the real M33 or our models, so we leave any investigations of molecular gas to future work.

We performed a number of different calculations, varying resolution, stellar feedback, minimum temperature of the gas and  $Q$  (Table 1). Because of the computational time taken to run simulations at higher resolution, we run our tests at relatively low resolution, and only perform a couple of simulations at high resolution. In the Static model, we do not evolve the stellar disc, so this effectively mimics a disc with very high  $Q$ . The structure in the gas is instead primarily driven by the gas physics, i.e. cooling, and stellar feedback. We also ran a model with  $Q \sim 2$ , which is not listed in Table 1, but the structure of the gas was not that dissimilar from our model with  $Q \sim 1$  (MedF), so we instead show the Static model where there are clearer differences. A pressure floor is applied below 300 K (see Robertson & Kravtsov 2008). In all the calculations, all the gas is initially given a temperature of 1000 K.

**Table 1.** List of calculations performed. By comparison, the observed total gas mass within the optical disc of M33 is around  $2 \times 10^9 M_{\odot}$ , with an uncertainty of 10–20 per cent. The stellar mass is around double this,  $4.3 \times 10^9 M_{\odot}$ , with similar uncertainties (Corbelli et al. 2014).

Run	No. gas particles	No. star particles	Gas particle mass ( $M_{\odot}$ )	Total gas mass ( $10^9 M_{\odot}$ )	Total stellar mass ( $10^9 M_{\odot}$ )	Feedback efficiency $\epsilon$ (per cent)	$Q_{\text{stars}}$	Length of simulation (Myr)
<b>SPHNG</b>								
LowF	1375 000	1375 000	2000	2.75	5.5	1	1	425
MedF	1375 000	1375 000	2000	2.75	5.5	5	1	675
HighF	1375 000	1375 000	2000	2.75	5.5	20	1	675
Static	1375 000	1375 000	2000	2.75	5.5	5	$\infty$	425
LowQ	1375 000	1375 000	2000	2.75	5.5	5	0.7	310
StarsOnly	0	1375 000	–	–	5.5	–	1	1000
StarsOnlyLowQ	0	1375 000	–	–	5.5	–	0.7	425
MedRes	2750 000	2750 000	1000	2.75	5.5	20	1	425
HighRes	7087 500	1675 000	390	2.77	5.5	20	1	425
<b>GASOLINE2</b>								
GSLNfb01	4000 000	4100 000	440	1.76	4.5	1	1	1000
GSLNfb05	4000 000	4100 000	440	1.76	4.5	5	1	1000
GSLNfb10	4000 000	4100 000	440	1.76	4.5	10	1	1000
GSLNfb20	4000 000	4100 000	440	1.76	4.5	20	1	1000

**Figure 2.** Predicted number of spiral arms for the model MedF.

## 2.2 Expected number of spiral arms

If the number of spiral arms in the galaxy is driven by Toomre instabilities, then the expected number of spiral arms is

$$m \sim \frac{\kappa^2 R}{4\pi G \Sigma} \quad (5)$$

(Fujii et al. 2011; Pettitt et al. 2015). The predicted number of spiral arms for model MedF is shown in Fig. 2. As expected from equation (5), the number of spiral arms increases with radius, in this case from two or three arms close to the centre to many spiral arms at larger radii.

## 3 DETAILS OF GASOLINE2 SIMULATIONS

We also ran calculations using the SPH code GASOLINE2 (Wadsley, Keller & Quinn 2017). The main reason for using a different SPH code was that it was easier to set up initial conditions closer to equilibrium, as it is possible to run the calculations first with ‘particle shuffling’ to settle the particles (McMillan & Dehnen 2007), whereby particles are repositioned azimuthally to remove structure (this is difficult with SPHNG because each  $N$ -body particle has a unique gravitational softening length which then becomes incorrect when particles are shuffled). We ran a number of calculations applying the shuffling for different lengths of time, but show here a

calculation where the shuffling is applied for 1 Gyr, then the simulation ran with isothermal conditions (and no star formation) for 500 Myr before cooling and star formation are turned on.

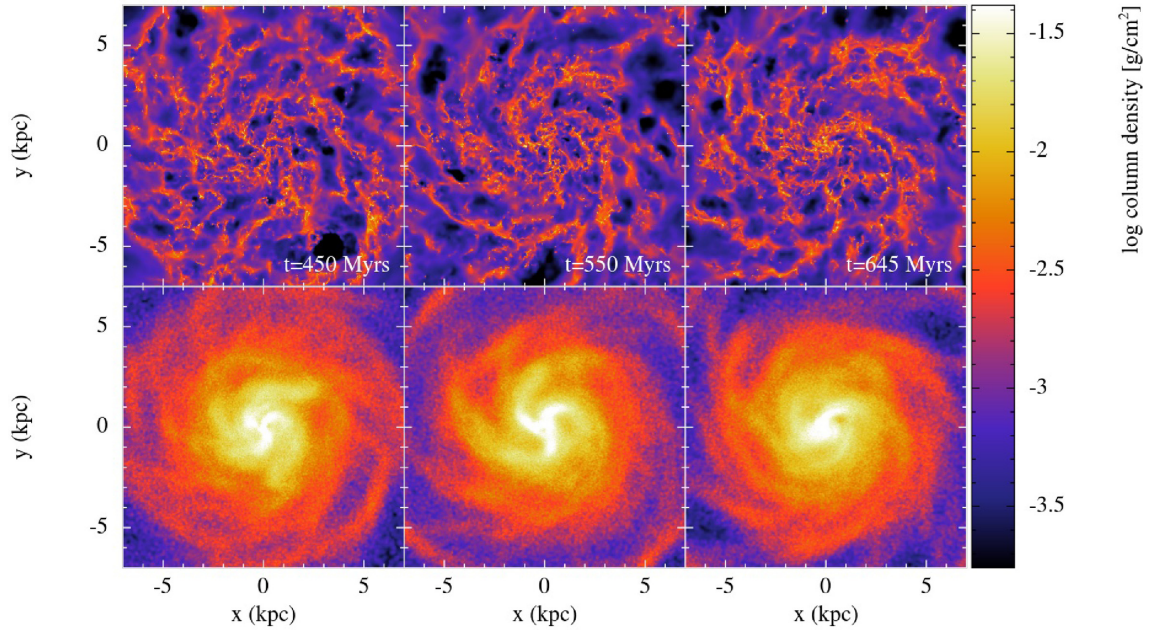
These models use initial conditions based on the GALIC code (Yurin & Springel 2014), with the addition of a gas disc tailored to match the surface density of the M33 system. The stellar disc follows an exponential profile in this case, set to match the stellar surface density in the inner/mid-disc. This set-up also includes a live dark matter halo that extends out to nearly 500 kpc. As shown in Fig. 1, the rotation curve, stellar surface density, and gas surface density provide a good match to the real M33. In comparison to the SPHNG calculations, the stellar surface density is lower, rather than higher than M33 in the outer parts of the disc. We anticipate though that the properties of the outer disc, where the surface densities are notably lower, are less critical than the inner parts for reproducing the structure of M33.

The physics included to study the evolution in our M33 model is similar in both codes. For the GASOLINE2 simulations we use the blast wave model of feedback (Stinson et al. 2006) whereby star particles are spawned from gas particles meeting a set of criteria, which then can deliver feedback into the surrounding gas throughout the simulation. The star formation efficiency is fixed at 10 per cent in all calculations shown. We adopt varying levels of feedback efficiency, as is done for the SPHNG calculations, though in that code there is no independent star formation efficiency. All remaining parameters for cooling and star formation are the same as in Pettitt et al. (2017). Similarly to the SPHNG simulations, ISM cooling and heating is included. We do not consider the formation and evolution of molecular hydrogen. The stellar Toomre  $Q$  and range of ISM temperatures are also similar to the SPHNG calculations. Details of all the GASOLINE2 calculations performed are listed in Table 1.

## 4 RESULTS OF SPHNG CALCULATIONS

### 4.1 Evolution of galaxy

We show the evolution of model HighF in Fig. 3, which is the highest feedback SPHNG model with  $Q \sim 1$ . We run this model up to a time of 675 Myr. The rotation period at 4 kpc is  $\sim 275$  Myr. By



**Figure 3.** The time evolution of the gas (top) and stellar (lower) distributions are shown for model HighF. The times of the panels are 450 Myr (left), 550 Myr (centre), and 645 Myr (right). The gas shows a structure consisting of multiple short spiral arms. The stars have a much smoother appearance, with three more prominent arms at the centre and weak features at larger radii.

the times shown in Fig. 3, i.e. a couple of rotations, any instabilities or features associated with the initial conditions tend to have largely disappeared. By 400 Myr, the evolution is fairly steady, and there is little difference between the second and third time frames shown. The spiral structure is flocculent, with many spiral arms and arm fragments, as well as shells which are likely the result of feedback. The stellar distribution exhibits some low mode spiral structure in the centre, and some weak spiral arms at larger radii. The stellar structure is also relatively steady with time, although slightly weaker at the last time frame. Although the structure in the gas is quite complex, there is some correlation between some of the more prominent spiral features in the gas, and the underlying structure in the stars. This suggests that the gravity of the stars is driving some large-scale structure, but the processes in the ISM are also significantly contributing to the large-scale structure of the gas in the galaxy.

#### 4.1.1 Comparison of models with different $Q$ /static stellar disc

In Fig. 4 we show models with  $Q \sim 0.7$  (LowQ), 1 (MedF), and our Static model. The model with  $Q \sim 0.7$  is least stable and produces very strong spiral arms in the stars. This causes this calculation to run very slowly, hence the time of the frame is only 310 Myr, compared to the other runs, where a time of 424 Myr is shown. For the LowQ model, the structure in the stars and gas is much stronger than the other models, and a very clear  $m = 3-4$  pattern is present in the centre of the disc. The increasing number of arms with radius is in agreement with Fig. 2.

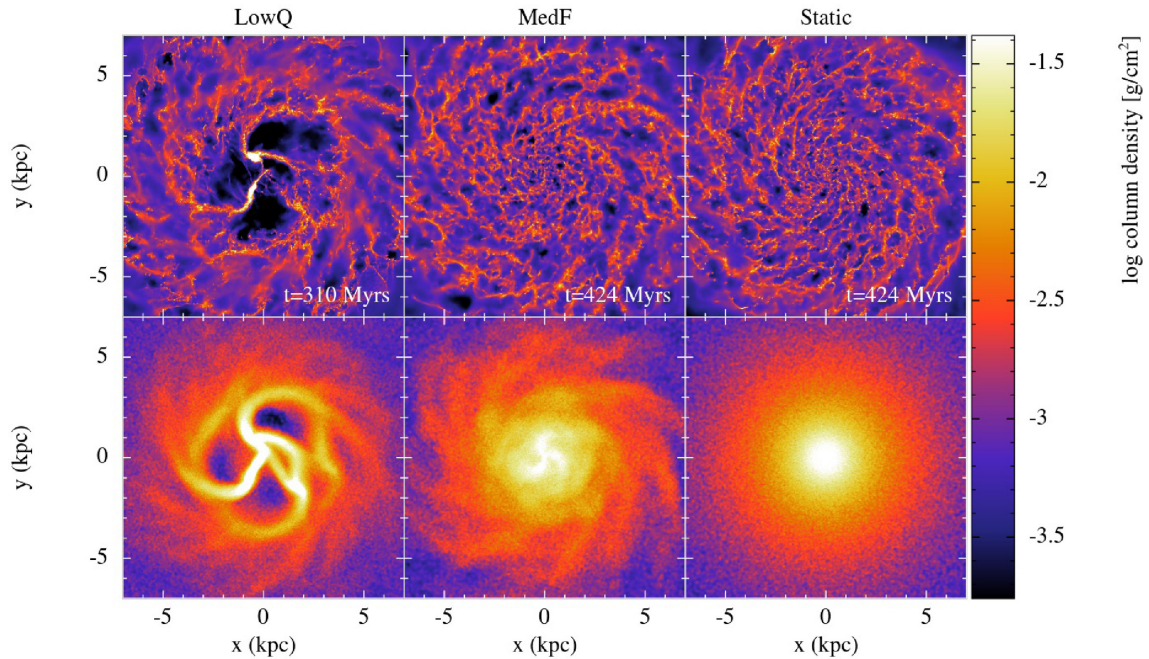
By definition there is no structure in the stars for the Static model, while with  $Q \sim 1$  there is some structure present. Although the gas distribution for the model with  $Q \sim 1$  and the Static model do not appear so different, for the model with  $Q \sim 1$ , there are gas features associated with corresponding features in the stellar density at large radii, and the large-scale spiral arms tend to be a little clearer and less numerous than the Static model. For the

Static model, the structure is driven by the gas physics, including self-gravity, heating and cooling, and stellar feedback. This leads to more small-scale structures, and multiple short arm fragments, as expected for structure driven by gravitational instabilities in the gas when the stellar disc is gravitationally stable (Elmegreen & Thomasson 1993; Elmegreen 1995). The structure of the gas in this case is a little more like, for example Tasker & Tan (2009), who model a gas disc in a fixed potential with no stellar spiral structure.

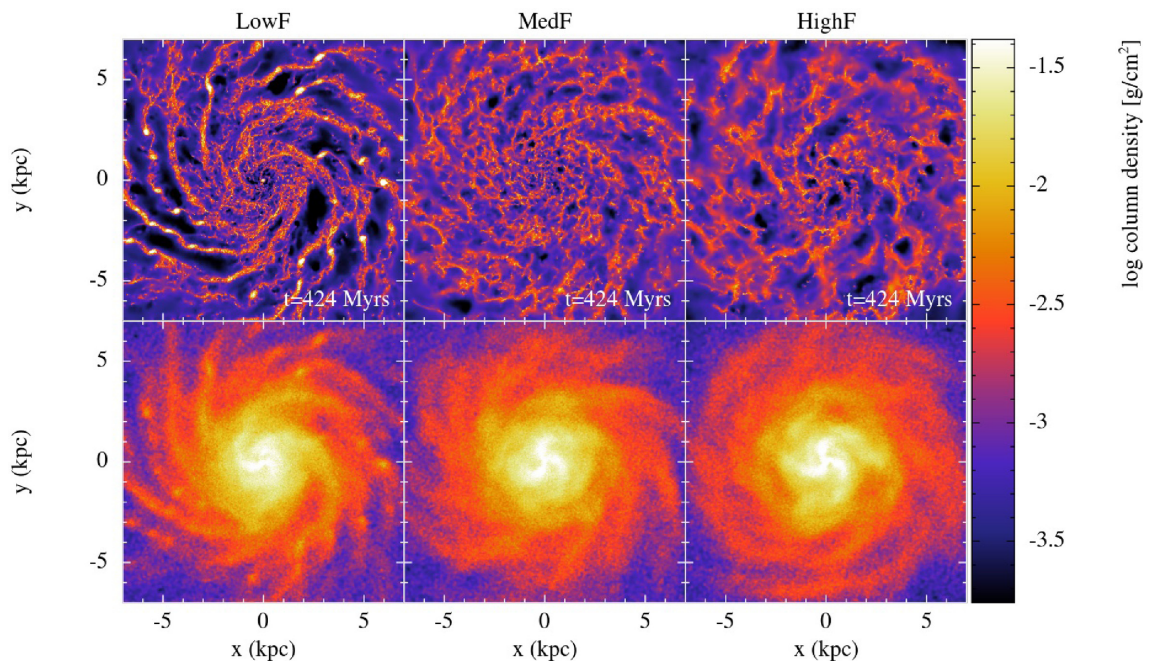
#### 4.1.2 Comparison of feedback efficiency

In Fig. 5 we show a comparison between models with low (LowF: left), medium (MedF: centre), and high (HighF: right) star formation efficiencies. There is a considerable difference in the structure of the gas for the model LowF, with lower feedback compared to the other simulations. This model produces longer, clearer spiral arms in both the stars and gas. With low feedback, the spiral arms in the gas appear continuous. In the other models, feedback acts to break up the spiral arms. Massive clumps of gas can also be seen along the spiral arms, which are produced when stellar feedback is unable to disrupt giant molecular clouds. For the low efficiency case, there is also a very clear correspondence between the gas and stars. The stellar arms are also more pronounced than any of the other models. Thus, in this model, the gas is evidently contributing to the generation and maintenance of stronger spiral arms in the stars.

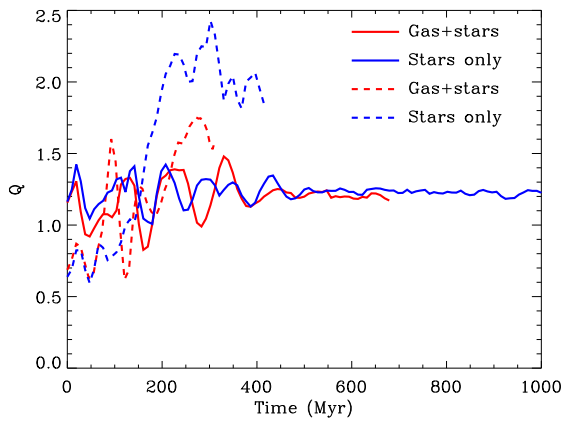
The models with the higher efficiencies both show similar, relatively weak structures in the stars, and less clear arms in the gas. For the highest star formation efficiency model, there actually appear to be slightly less numerous, more continuous spiral arms than the MedF model. This is presumably because the higher feedback disrupts, or even prevents the formation of weak features in the gas. The higher feedback is also able to blow out holes and shells, which are not evident in the other models. The asymmetry of the shells, and their aspect ratios compared to LowF, distinguishes the



**Figure 4.** The gas (top) and stellar (lower) distributions are shown for models with different  $Q$ : LowQ (left), MedF (centre), and Static (right) with  $Q \sim 0.5, 1,$  and  $\infty$ , respectively. For  $Q \sim 0.5$ , there are very strong arms in both the gas and stars. For the static stellar disc, there are many arms in the gas, and no clear spiral structure, as would be expected from gravitational instabilities only in the gas. For  $Q \sim 1$ , there is slightly clearer large-scale structure in the gas (this is more true for other star formation efficiencies, as we show in Fig. 5). The LowQ model is shown at an earlier time, as this model was so unstable it was difficult to run for long.



**Figure 5.** Models with high (LowF: left), moderate (MedF: right), and high feedback (HighF: right) efficiencies are shown. With the lower feedback efficiency the spiral arms are very clear, dense strongly bound regions of gas are clearly visible in the arms, and the stellar arms are also stronger compared to the other models. With higher feedback efficiency, the arms are disrupted by feedback, and the spiral structure is less clear in both the arms and gas. With the highest efficiency, supernovae shells start to become clearly visible in the gas.



**Figure 6.**  $Q$  for the stellar component is plotted for the models MedF (blue solid line), StarsOnly (red dashed line), LowQ (blue dotted line), and StarsOnlyLowQ (red dashed line). These models show the change in  $Q$  with (red) and without (blue) gas, starting with low (dashed) and higher (solid) values of  $Q$ . When the models start with  $Q \gtrsim 1$  there is little evolution in  $Q$ . However, if the disc is initially unstable,  $Q$  increases significantly, more when there is no gas compared to without.

low-density regions in model HighF as shells, rather than simply low-density regions between the spiral arms.

## 4.2 Explanation of models

Our models show that both the underlying gravity of the stellar disc, and the properties of the gas, determine the large-scale spiral structure in the stars and gas. The spiral arms in the stars are formed by gravitational instabilities in the disc, primarily in the stellar component. We hypothesize here that the spiral arms are primarily driven by gravitational instabilities in the stars, but that gas allows dissipation of energy in spiral shocks, which helps maintain the spiral arms. As discussed by Kalnajs (1972), in the absence of gas, as the stellar density increases locally, the stellar arms cannot dissipate energy and instead the velocity dispersion increases. When gas is present though, energy can instead be dissipated by the gas in spiral shocks. The amount of energy dissipated will depend on the compression of the gas. We test this hypothesis by comparing the evolution of galaxy models which only contain stars, and comparing  $Q$  for our models.

We note that in the case of transient spiral arms, the difference in pattern speed between the spiral arms and the angular velocity of the galaxy at a particular radius may be relatively small, particularly compared to grand-design-type spirals (Wada, Baba & Saitoh 2011; Grand, Kawata & Cropper 2012). However, when gas is cold ( $< 1000$  K), the sound speed becomes less than  $1 \text{ km s}^{-1}$ , and the gas can still experience a shock with a relatively small difference in velocities.

### 4.2.1 Evolution of $Q$

In all of our models,  $Q$  for the stars is lower than  $Q_{\text{gas}}$ , typically by a factor of several. This indicates that self-gravity will be significantly stronger in the stars than gas, and the stars, rather than gas, are likely to drive large-scale structure. To examine the role of gas in producing and/or maintaining the spiral arms, we also run a couple of models with no gas (StarsOnly and StarsOnlyLowQ). The difference between these models is that  $Q \sim 1$  in StarsOnly and  $\sim 0.7$  in StarsOnlyLowQ. We show in Fig. 6 the evolution of

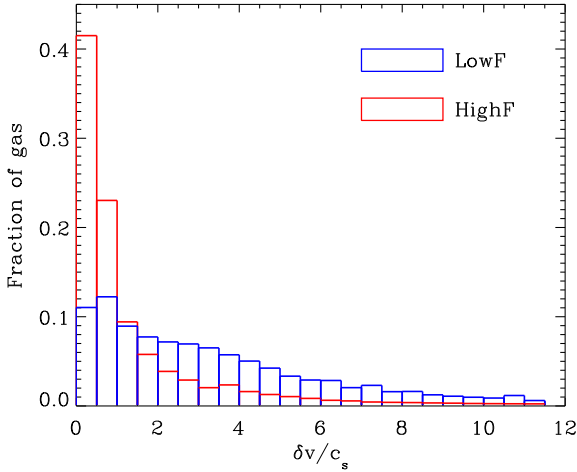
$Q$  in these models, and corresponding models with gas, MedF, and LowQ. For all models,  $Q$  is calculated at a radius of 4 kpc. Fig. 6 indicates that for the models with a larger initial  $Q$ , there is no increase in  $Q$ , for both models with and without gas. However, for the models which start highly unstable, with  $Q \sim 0.7$ , there is a large increase in  $Q$ . This is consistent with the work of Fujii et al. (2011). Provided the resolution is sufficient, these models with higher  $Q$  only show an increase in  $Q$  over time-scales of several Gyr, much longer than we can reasonably simulate with our models with gas. Presumably, these models form weaker spiral arms, the velocity dispersion of the stars remains fairly low, and the disc heats up only very slowly. The models with low initial  $Q$  in Fujii et al. (2011) also show a large increase in  $Q$  over short time-scales. In this case, the disc forms very strong arms, which presumably heat the stars up much quicker, and consequently the spiral arms in these unstable discs (and similarly spiral arms in underresolved discs) are very short-lived. Unfortunately, because the disc is so unstable, it is difficult to run our model with gas very long, but we nevertheless see a smaller increase in  $Q$  for our model with gas compared to with only stars. For the models with low  $Q$ , the gas does not make so much difference, because there is little change in  $Q$ , but our work suggests that gas may have a greater impact on more unstable models. Consequently, this suggests that to fully test the role of gas, and the ideas presented in Kalnajs (1972), we would need to consider relatively unstable gas discs.

We also tested how  $Q$  varied between the models at other radii. At smaller radii, we find similar behaviour, but at large radii, the change in  $Q$  is fairly small for all models, and we do not see a difference in behaviour with or without gas.

We can also compare the models with different levels of feedback. We would expect that in the models with low feedback, because there is more cold gas, the spiral shocks are likely to be stronger and dissipate more energy. Visually, a comparison of the spiral arms for the two models LowF and HighF matches this expectation. The stellar spiral arms are clearly stronger when there is a low level of feedback, particularly at larger radii. We might expect  $Q_{\text{stars}}$  to be lower for the low feedback case, however we find that  $Q$  is the same, both for the models with different feedback and different temperature thresholds. It is not clear why there is so little difference in  $Q$ , but it may be that gas has a non-negligible role in determining the stability of the disc. As mentioned in Section 2, it is difficult to constrain the combined gravitational instability of the gas and stars to a single parameter, because the gas is a multiphase medium. However, in LowF (the low feedback case), more of the gas is cold (few 100 K) compared to the other models. Thus, the gas is more unstable, and if the sound speed for the cold gas is used in a calculation of  $Q$ , we find that the  $Q$  for the gas is only a little higher than  $Q$  for the stars. In other models, where the gas is predominantly warm ISM, using the sound speed to calculate  $Q$  for the gas still gives a value at least several times higher than  $Q$  for the stars.

### 4.2.2 Response of the gas

Whether the gas shocks, and how strongly the gas shocks in response to stellar perturbations will depend on a number of factors including the strength of the perturbations, their pattern speed relative to the rotation of the galaxy, and the sound speed of the gas. Binney & Tremaine (2008) present a simple toy model for the response of gas to a potential, whereby a ‘force factor’ determines whether the gas undergoes a shock. They assume a fixed potential, but we adopt a similar idea with an evolving potential. We examine a similar type



**Figure 7.** Fraction of gas exhibiting different values of  $\delta v / c_s$  where  $\delta v$  represents the change in velocity of the gas as it crosses a spiral arm, and thus  $\delta v / c_s > 1$  represents shocks in the gas. The model with the low feedback efficiency exhibits a greater fraction of gas undergoing shocks, and thus the gas produces a stronger response to the underlying stellar structure, and clear spiral arms are seen. The model with the high feedback has less gas with large  $\delta v / c_s$ , and thus does not have such a strong response to the stellar structure.

of condition, but instead use the change in velocity,  $\delta v$  due to the stellar potential and the sound speed of the gas. If  $\delta v / c_s > 1$  then we would expect the gas to shock. Because the stellar potential varies with radius, we determine  $\delta v$  in radial bins of width 0.5 kpc. We compute  $\delta v$  by averaging the maximum change in azimuthal velocity for all the gas particles within a given radial bin, over a time period of 200 Myr. For each particle, we then compute  $\delta v / c_s$  using the  $\delta v$  averaged for the radial bin where the particle is located, and the sound speed of that particular gas particle.

We show histograms of  $\delta v / c_s$  in Fig. 7 for the models with high (HighF) and low feedback efficiencies (LowF). Fig. 7 indicates that the LowF model has a higher amount of gas with low  $\delta v / c_s$ , whereas the HighF model tends to exhibit lower  $\delta v / c_s$ . This again suggests that gas in the model with lower feedback is better able to shock, producing both more pronounced features in the gas and lowering the total  $Q$ , resulting in a clear multi-armed spiral structure. In contrast, for the model with higher feedback the gas tends to be warmer, so the gas has less ability to shock. Consequently, features in the gas are less pronounced and a more flocculent structure is apparent.

### 4.3 Comparison with actual M33

#### 4.3.1 H $\alpha$

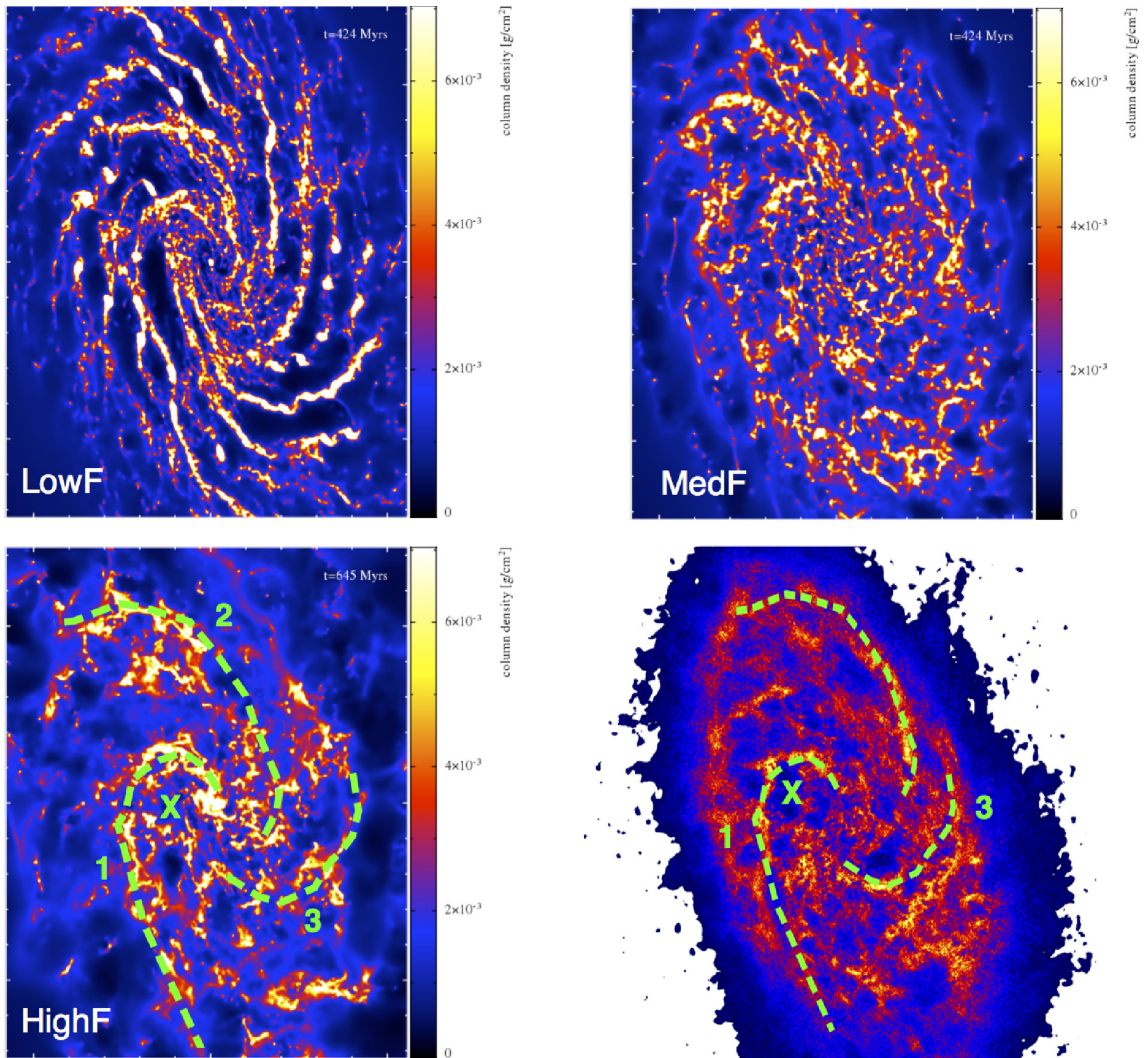
In Fig. 8 we show column density plots from some of the simulations compared to the H $\alpha$  map of Corbelli et al. (2014). The observations of M33 were made with the VLA and GBT and achieved a spatial resolution of 10 arcmin, or 41 pc at the distance of M33 (taken to be 840 kpc). The simulated galaxies have been rotated to match the orientation of M33. We take an inclination angle of  $54^\circ$  and position angle of  $23^\circ$ , from de Vaucouleurs et al. (1991). Note the simulated galaxies have also been reflected so that the spiral arms rotate in the same direction as M33. Only the model with high feedback, HighF, shows a particularly time-dependent morphology. For this model, we chose a time frame where the simulated galaxy best resembled the actual M33, while the other models are shown at time frames

of around 425 Myr. The simulated galaxies tend to show sharper and brighter features compared to the real M33, whereas the H $\alpha$  map for M33 appears much smoother (this is slightly less so for the model with the higher temperature threshold, where presumably the gas is smoothed out more). One possible explanation for part of this difference is that in reality the denser features may be molecular, and so do not appear in the VLA+GBT map. Previous studies show that for a whole galaxy, it is difficult to resolve the molecular component – only by modelling subregions of a galaxy or individual clouds are realistic molecular gas densities achieved (Duarte-Cabral & Dobbs 2016; Rey-Raposo et al. 2017). A second factor is that the resolution of the simulations is  $\lesssim 10$  pc in the denser regions, which is a factor of 4 or more higher than the M33 H $\alpha$  map.

The model with the highest feedback, HighF appears to show the best agreement with the real M33, in terms of spiral structure in the gas. Both the simulated and real galaxies appear to contain three dominant spiral arms and some fragments of spiral arms. We have highlighted the three main spiral arms in the HighF model with dashed lines. These lines were produced by dividing the galaxy into rings and finding local density peaks in the density versus azimuth. Density peaks at different radii are then assigned as a spiral arm or section. The spiral arm labelled ‘2’ comprises two sections joined together, while arms 1 and 3 are each one section. The lines were determined for a face-on map and then rotated. For the image of the real M33, arms 1 and 3 have simply been copied and pasted from those shown for the HighF model, indicating that the simulations have reproduced the shape and position of the arms remarkably well. Arm 2 has also been copied and pasted but shifted relative to arms 1 and 3. The shape and position of the arms are extremely similar in both the real and simulated galaxies, though in the actual M33 there is a stronger arm feature slightly lower than the plotted arm 3 (this arm in the actual M33 appears to consist of two sections, one of which is coincident with the plotted arm 3 and one which is just below this). Interestingly, arm 2 in the simulation arises partly from chance alignment of sections which are not connected when viewed face-on. As well as the labelled features, there are also additional fragments of spiral arm below arms labelled 2 and 3 in both the simulation and actual M33.

As mentioned above, we selected this time frame of the HighF model as that when the simulated M33 matched the real M33 particularly well, predominantly focusing on the shape and location of arm 1. We actually find two good matches between 400 and 700 Myr, at the time shown (645 Myr) and at 440 Myr. These time frames require the spiral arm features both to match the actual M33 features and lie in the correct orientation. In particular, these times are characterized by the ability of stellar feedback to produce a shell, or multiple shells which shape arm 1 and lead to a clear spiral arm at this location in those time frames. The low-density regions marked with an ‘X’ are shells blown out by the supernovae feedback shaping the spiral arm, and correspond to a large shell in M33 associated with NGC 604 (again marked with an ‘X’). Large shells produced by feedback are a characteristic of the HighF model, which are not readily apparent in the other models, but again do match features seen in the actual M33. We note that the spiral arms in the gas are quite short-lived as they are readily dispersed by feedback, and only last 10 s of Myr.

In contrast to the high feedback model, the models with low efficiency, LowF, and MedF show worse agreement. For the model MedF there is little large-scale structure in the gas, thus we can conclude that a model that does not produce some large-scale structure will not well represent M33. By contrast, the model with the low feedback efficiency shows too much large-scale spiral struc-

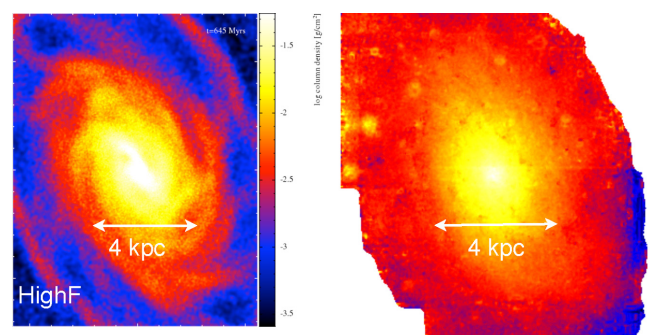


**Figure 8.** Column density images for different models presented in this paper compared with the actual M33 HI emission. All scales are linear, both for the observations and simulations. The top and bottom left panels show the models with different levels of feedback. The low feedback model (LowF) shows very strong spiral arms, and very bright dense clumps which are not seen in the actual M33. The medium feedback model shows less clear spiral arms compared to the actual M33. The best match by eye is the high feedback case. Here, the feedback is sufficient to create large holes or shells, which also appear to shape the gaseous arms and push the gas into a smaller number of arm features compared to the models with weaker feedback. For the models MedF and HighF, the time frames are shown when there is best agreement by eye with the real M33. Of all the models, only the HighF model shows particular differences in the structure (namely the appearance of large shells) with time such that the time of the snapshot is significant.

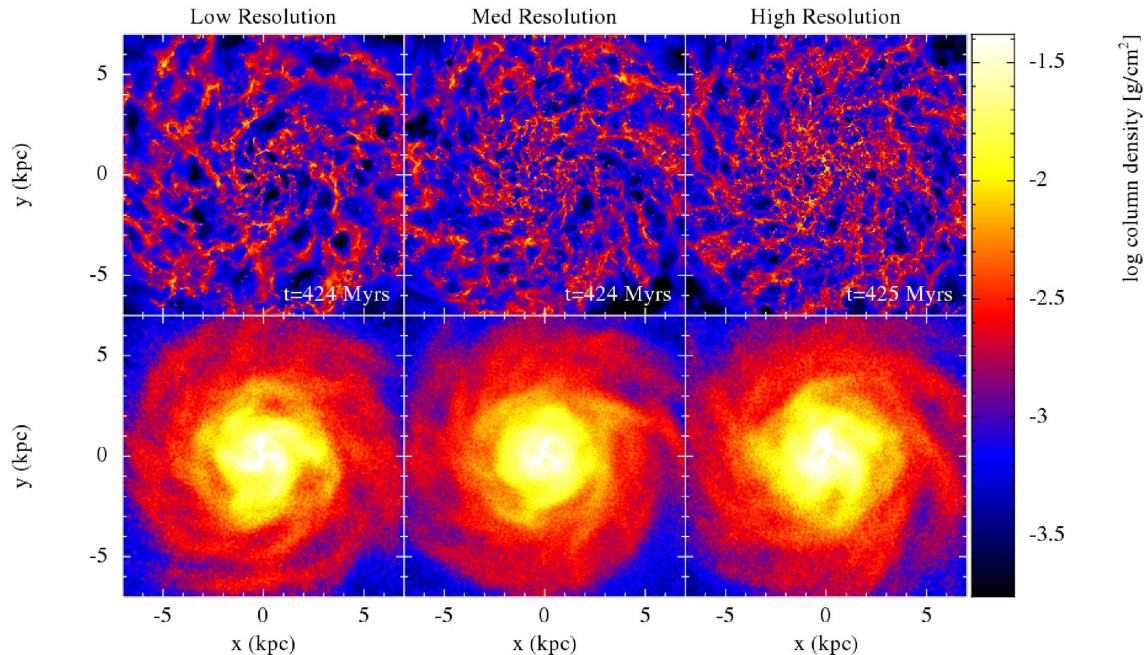
ture, and the spiral arms appear to be more coherent than the real M33. Thus overall, our models seem to suggest that the structure of M33 is due to a combination of gravity of the stars and gas, producing an underlying spiral perturbation, and stellar feedback which disrupts the spiral pattern, sometimes even reducing the number of spiral arms present in the gas, and creating shells which again may replace spiral structure.

#### 4.3.2 Stars

Fig. 9 compares the stellar density from the HighF model (left) and M33 (right) from Corbelli et al. (2014). Both figures use a logarithmic scale, although otherwise the scales are not chosen to match. The stellar density map of M33 is derived from a comparison of the synthetic spectral energy distribution with multiband optical imaging and reaches the sensitivity limit in the outer disc (blue colour in Fig. 9). Both the model and M33 show very weak spiral



**Figure 9.** The stellar density map is shown for the model HighF (left), from a time of 645 Myr, and the actual M33 (right). Both show a logarithmic scale, but otherwise the scales are not chosen to match. Both the model and the real M33 show very little spiral structure.



**Figure 10.** The gas (top) and stellar (lower) surface densities are shown for different resolution SPHNG models at times of 424 Myr (HighF, MedRes, and HighRes). The number of gas particles is 137 500 (left), 2750 000 (centre), 7087 500 (right). The structure of the gas looks fairly similar at different resolutions, in particular the effects of feedback in driving the gas structure. The feedback appears slightly less effective at higher resolution. There are some differences in the stellar disc, but these are attributable to small differences in  $Q$  for the different models.

arms. For the observations, it is difficult to distinguish any spiral arms, although by changing to a histogram scale with ds9 it is possible to see some spiral structures. For the models we note that the strength of the spiral arms varies a little with feedback, and with time, as they get slightly weaker in the HighF model at the latest times of  $\gtrsim 675$  Myr (so earlier time frames in the models show worse agreement with the observations).

#### 4.4 Higher resolution models

We compare SPHNG models with the standard (HighF model), and two higher resolutions, MedRes and HighRes in Fig. 10. All the models use the same feedback efficiency. The models appear relatively similar in both the gas and stars. In fact, the highest resolution model is more similar to the low-resolution model than the medium resolution case. There are some differences between the simulations, at higher resolution there is slightly more substructure in the gas, while in the medium resolution model the spiral structure in the stars is slightly less clear. We attribute these differences to the difference in behaviour of the feedback in the different models, and the stability of the disc, both of which are difficult to exactly replicate when changing resolution. The holes are perhaps not quite so clear in the higher resolution models, likely because the same amount of feedback is not quite so effective at the higher resolution. There are also differences in the evolution of  $Q$  for the models (at the few percent level), even though  $Q$  is initially 1, which likely explains the small differences in the stellar disc at the different resolutions. Generally, we found that quite small differences in  $Q$  lead to somewhat different stellar disc features, perhaps suggesting that our models could be further fine tuned to better represent the stellar structure of M33 if needed. Although not shown, a model with a lower feedback efficiency was also performed at the same resolution as model HighRes. This tended to show quite similar structures

to the corresponding low-resolution model. For the lower feedback case clearer spiral arms are not seen either at low or high resolution.

## 5 RESULTS OF GASOLINE CALCULATIONS

### 5.1 Global properties

We now turn to our second set of simulations, those made with the cosmologically focused SPH code GASOLINE2. While initial conditions are in general agreement there are a number of subtle differences between these and the simulations already discussed (both inherent to the code and in the initial conditions). The main difference is that these models are in much better equilibrium at initialization compared to the previous models.

Fig. 11 shows the evolution of the gas structure in all four gasoline calculations, with the only change being the feedback efficiency level. Each row shows a different model at five different time frames. While the discs are in very good dynamical equilibrium at  $t = 0$  Myr, as soon as feedback occurs a shockwave radially propagates through the gas disc, caused by the initial burst in star formation as the gas cools. This resulted in a ring-like feature in the 20 percent model, and a very weak ring in the 10 percent model, but was not visible in the weaker feedback cases. However, this ring rapidly disintegrates after 300–400 Myr, and the systems then enter a more stable evolution phase. As such, we only show results after 500 Myr of the activation of star formation and feedback.

In Fig. 11 a clear correlation can be seen between the strength of feedback and the structure of the ISM gas. The weakest feedback model has very well-defined spiral arms and a smooth inter-arm appearance. These dynamic spirals come and go as the simulation progresses, but the amount of structure in the disc is well maintained throughout the entire 500 Myr shown. The remaining models have a very similar structure, with only small segments maintain-

ing an arm-like structure. The size of cavities in the gas increases with feedback efficiency, as expected, with the strongest feedback model creating cavities greater than 2 kpc in diameter. For the 10 and 5 per cent model these cavities seem to reside in mostly the outer disc, where the lower stellar surface density and higher levels of differential rotation at larger radii allow for supernova-driven cavities to shear out into larger voids without filling up with gas as fast as those in the mid/inner disc. The 20 per cent model has strong enough feedback to excavate large cavities at smaller radii.

The overall behaviour of the *GASOLINE2* models is roughly similar to the *SPHNG* models, in particular the finding that with a low feedback efficiency, the arms are too continuous, and the large holes visible in M33 are not well produced, whereas better agreement is found with higher levels of feedback. The models with higher levels of feedback look fairly similar to the *MedF* model from the *SPHNG* simulations. The *HighF* *SPHNG* model tends to have somewhat larger voids, and spaces between the arms than the *GASOLINE2* models.

## 5.2 Observational diagnostics

### 5.2.1 Gas

We now present numerous tests of the models compared to various different observational constraints, as was done with the *SPHNG* models. We also make some additional comparisons using software designed for comparing *GASOLINE2* models to observations.

Fig. 12 shows a time frame of each of the *GASOLINE2* simulations compared to the gas surface density data of Corbelli et al. (2014) in the bottom right. Best fits were found via a combination of by eye and an automated routine using a structural similarity index (SSIM; built into *PYTHON*'s *SCIPY* module) of images of the gas surface density. The simulated disc is first inclined at the orientation of M33, then rotated in increments to assess the suitability of different phase angles. These images are smoothed over a scale of 2 kpc to leave only the strongest features. The SSIM is then calculated for each time-stamp and phase angle ( $\Delta t = 10$  My,  $\Delta\theta = 10^\circ$  using the time domain of 0.5–1.0 Gyr, resulting in 1800 images for each calculation). The best fitting of these low-resolution comparisons are then shown in Fig. 12, now at their natural resolution.

In Fig. 12 we show one of the better-fitting snapshots of each simulation, orientated in the same manner as the observed M33. Certain features like the arms shown in Fig. 8 are seen in some of these models, with accompanying inter-arm voids. The lowest feedback model displays some very similar features; the upper-right arm structure, the irregularly shaped arm north-west of the centre, and the straight-arm segment in the edge of disc to the south-east. The nature of dynamic spiral features such as these allows for spiral arms that are less regular than the assumed fixed log-spiral features used by density wave-like potentials (Grand, Kawata & Cropper 2012; Baba, Saitoh & Wada 2013). Cavities in the gas seen in M33 are a simple result of inter-arm voids. However, the gas does not display the same smaller scale features, like the irregular patchy features seen in the inter-arms of M33.

The 5 per cent feedback model shows a more disrupted spiral structure. Similar small arm features are seen as previously, though now the increased feedback stunts their growth considerably. This appears one of the poorer matches to the observational data, with both the feedback cavities and inter-arm regions too small to provide a good match for M33.

The remaining higher feedback models provide a good match to the general structure of M33, though neither is a precise match. The 20 per cent model is very effective at creating large ISM cavities,

much like the *SPHNG* models, though this comes at the expense of creating very few strong arm features. The cavities in the 20 per cent model may even be too large and numerous, with the disc perhaps showing too great a degree of fragmentation compared to M33. The 10 per cent feedback model is a good middle ground, creating a handful of large cavities but also managing to maintain some elongated arm features.

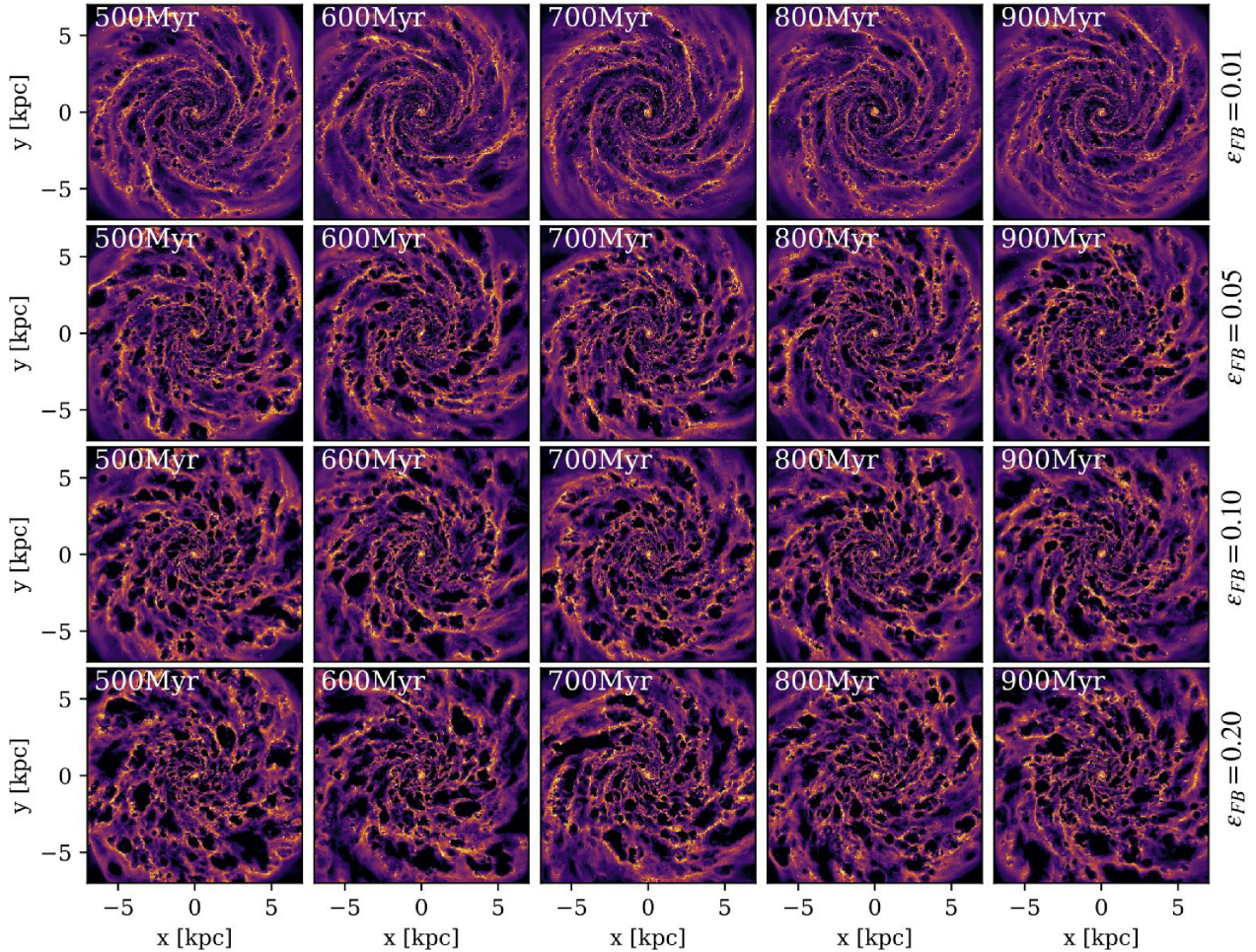
We found that many of the snapshots not shown here produced certain features very well, while missing others entirely. Enough realizations could feasibly eventually produce every feature simultaneously, though such a brute-force approach is hardly practical. It may also be that our choice of  $Q = 1$  is somewhat too stable to form the features seen. A higher  $Q$  value will promote the growth of features somewhat, overcoming some of the disruptive effects of the higher feedback and producing the higher arm–inter-arm contrast seen in the M33 gas. Though this brings with it accompanying problems, most notably in increasing susceptibility to bar formation. A small bulge component has already been added to this model to suppress bar formation, and decreases in  $Q$  will only accelerate this instability further.

All discs show a bright inner spot, which is not seen in most of the *SPHNG* models, though there is a slight inner concentration in the *HighF* model at later times (Fig. 3). We believe this is due to the live spherical mass distributions now present in the *GASOLINE2* models, namely a small bulge and the live dark matter halo. Momentum exchange between these features and the centre of the gas disc may cause an element of orbital decay in the gas, resulting in the build-up of small-scale structure seen in these calculations. However, this high-density inner gas deposit may be analogous to the peak seen in molecular gas seen in the centre of the M33 disc (Heyer et al. 2004).

### 5.2.2 Stars

The density of all stars within the 1, 10, and 20 per cent feedback models is shown in Fig. 13. This is compared to the stellar map of Corbelli et al. (2014), see also the M33 image in the 2MASS Large Galaxy Atlas. As already noted, there is very little structure seen in the observed data, save for a few hints of spiral arms (most noticeably just to the south–south-east of galactic centre in the mid-disc). All stars, both those formed in the simulation and those present in the initial conditions, are used for this figure. Generally, the stellar maps show only small differences in structure, and thus the stellar map is not so useful to distinguish between the different models. The lowest feedback model has the greatest degree of structure, with clear spiral arms both in the inner and outer discs. The highest feedback model shows the best agreement with the M33 data, with very little consistent spiral arm features in the stars. The feedback strength keeps the gas disc dynamically hot enough that it prevents the growth of stellar spiral features. In this case the  $Q$  or  $m$  swing parameters are poor indicators of the stability of the stellar disc, as both should effectively be the same for all of the simulations shown, though neglect to take into account any gas physics.

We show a mock stellar map of the young stellar population in the 10 per cent calculation (at the same time and orientation as used in the previous plots) in Fig. 14. The image was created using the ages and masses of the young star particles and the *PYNBODY* software package (no dust attenuation is included). Young stars are simply defined as any stars not present in the initial conditions, i.e. those that have formed from gas particles throughout the simulation. We use the *GALEX* (credit: NASA/JPL-Caltech) UV map as a rough proxy



**Figure 11.** Time series of gas in all GASLINE2 calculations. Each column shows a different time, and each row a different level of feedback.

for the young stellar structures in our simulated map. We only show a single map, as the 20 and 10 per cent show little difference, while the 1 and 5 per cent models are already deemed poor matches from the gas analysis. The young star formation regions in the simulation show a general similarity to the UV map, with filamentary and patchy pockets of young stars. The main inconsistency is the inner disc, where there is a dearth of young stars at this point in the simulation. Although earlier frames are in a little better agreement, both the young stars and  $\Sigma_{\text{SFR}}$  do not reach the same high level seen in observations probably because we do not include molecular gas production, and as such SFR is a product of dense atomic rather than molecular gas content.

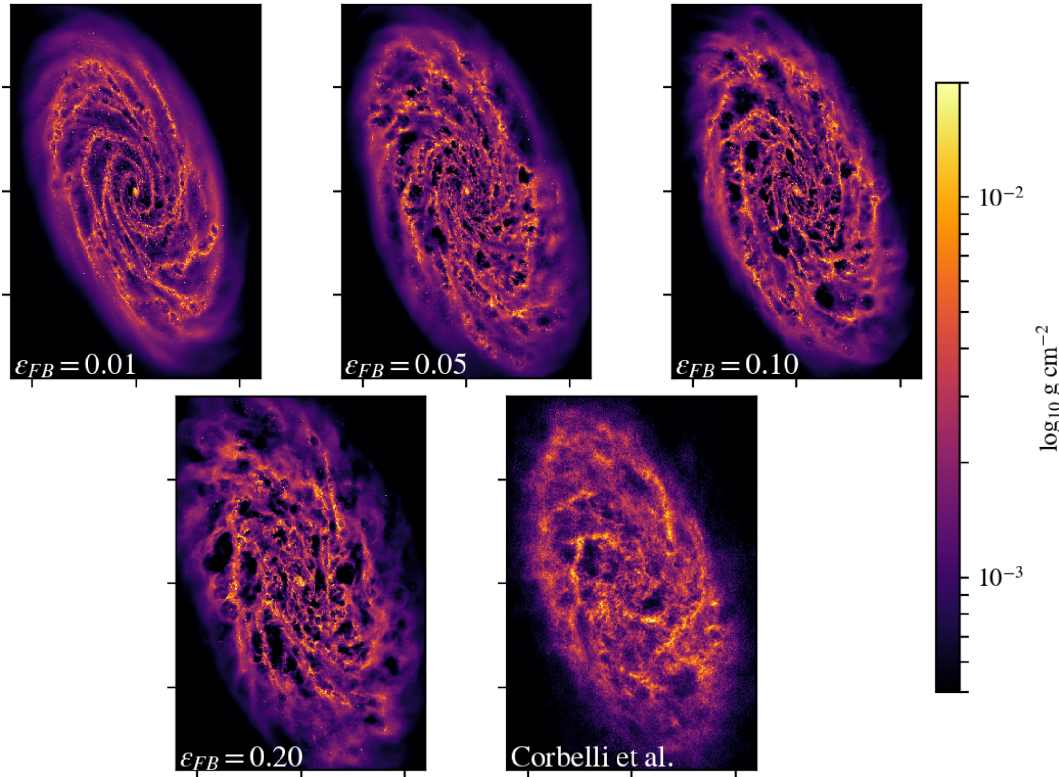
## 6 COMPARISON OF SPHNG AND GASLINE2 MODELS

### 6.1 Star formation rates

In this section we compare the star formation rates from the SPHNG and GASLINE2 models with different feedback. Fig. 15 shows the star formation rate versus time for the different models. The star formation rates clearly tend to be higher and more varied in the SPHNG models. This is mainly because in these models, the star formation rate and feedback are controlled by a single parameter, whereas in the GASLINE2 models, there are both a star formation

efficiency (constant) and a feedback efficiency (which varies), hence the star formation rates are more similar. Both sets of models show initial bursts of star formation, particularly in the higher feedback models, after which the star formation rate is comparatively more steady. With low feedback, there is less decrease (in the GASLINE2 model, no decrease) in the star formation rate after the initiation of star formation. Differences in the star formation rate, and the amount of energy added to the interstellar medium, likely explain the difference between the highest feedback models with the different codes. The MedF SPHNG model appears similar to the GASLINE2 models and exhibits a similar star formation rate. The observed star formation rate in M33 is around  $0.5 M_{\odot} \text{ yr}^{-1}$  (Verley et al. 2009), which is slightly higher than the GASLINE2 models, and comparable to the MedF SPHNG model. Our best-fitting SPHNG model, HighF, produces a higher star formation rate than is currently observed for M33.

The surface star formation rate,  $\Sigma_{\text{SFR}}$ , is shown in Fig. 16 for the GASLINE2 runs as a function of gas surface density,  $\Sigma_{\text{gas}}$ . The data are binned up into annuli of width 1 kpc moving from the centre to 7 kpc beyond which the surface density drops rapidly. Data are shown after 1 Gyr of evolution, though different time-stamps showed no discernible difference. Also shown are the observational data from Verley et al. (2010), where we have selected their atomic gas data plotted against bolometric and FUV surface star formation rates. All models trace effectively the same region of parameter



**Figure 12.** Best-fitting GASOLINE2 models compared to M33 gas distribution (lower right).

space, and produce a good match to the observational data terms of dispersion. The gas surface densities are somewhat lower though compared to the data, with the Verley et al. (2010) data tracing surface densities higher on average than used to initialize our simulations which were constrained to the VLT+GBT data of Corbelli et al. (2014). Also note that the gas budget of the GASOLINE2 simulations is continuously being depleted over time by star formation, as well as ejected out of plane compared to the idealized initial conditions via feedback. As such, after 1 Gyr the radially averaged surface density will be to some extent lower than the initial values, despite feedback continually delivering mass back from stars into the local ISM. The star formation rate is also slightly lower (as seen in Fig. 15), though some points to reach up to the 1 Gyr depletion time-scales as seen in the Verley et al. (2010) data. This deficit in star formation can be an effect of resolution or simply insufficient star formation efficiency; a parameter that was fixed to a fiducial 10 per cent value for all GASOLINE2 calculations.

## 6.2 The velocity field

We now compare our simulation data to the gas velocity field of M33, to further identify whether a high or low feedback recipe is the better match. Fig. 17 shows the velocity field map of Corbelli et al. (2014) in the upper left compared to the gas velocity field of the 1 per cent GASOLINE2 model and the 20 per cent feedback models from both codes. The GASOLINE2 plots are at the same time and orientation shown in Fig. 12. The line-of-sight velocity is shown from the reference of the recession velocity of M33.

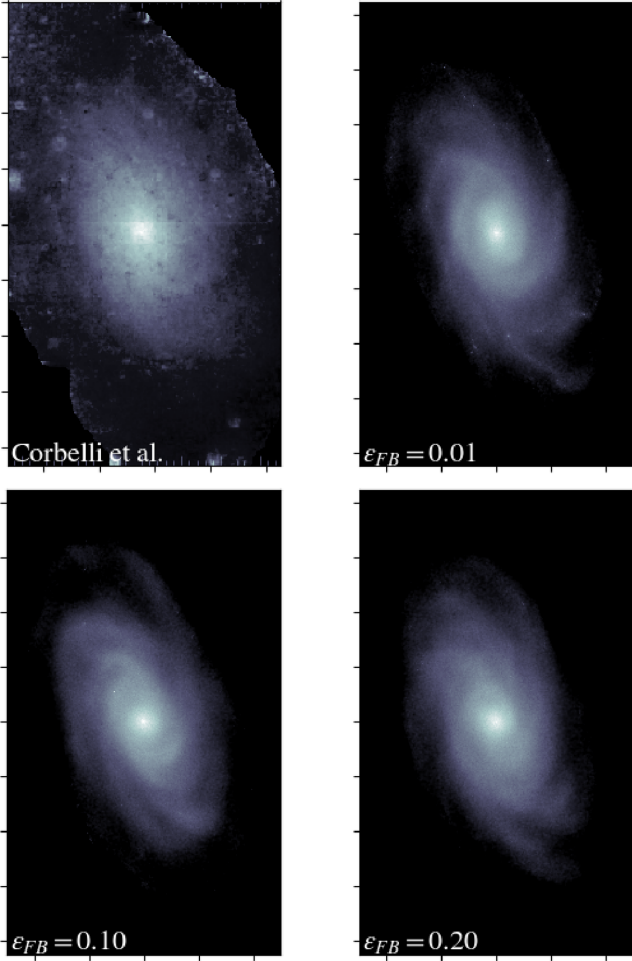
The observational velocity field data show many small-scale features, with clear departures from pure circular rotation throughout. The lowest feedback model has clear shortcomings here, showing a very smooth velocity field structure. The few non-circular motions

are seen around the spiral arms, and appear almost as concentric rings rather than arms. The higher feedback models show an excellent reproduction of the features seen in M33, with departures from circular rotation appearing in a very similar manner.

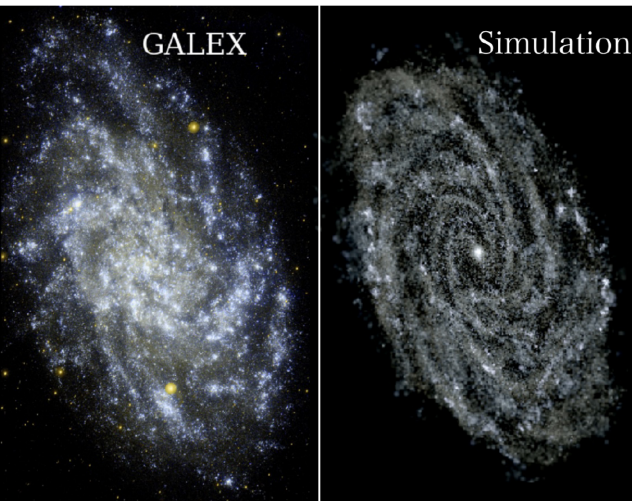
## 7 CONCLUSIONS

We have performed simulations of an isolated galaxy set up with similar gas, stellar and dark matter profiles to M33. Calculations were performed with two different SPH codes, SPHNG and GASOLINE2, with broadly consistent results between the two. We find that our models can reasonably reproduce the gaseous spiral structure of M33. The spiral features form as a result of gravitational instabilities in the stars and gas. Most previous work which has tried to explain spiral patterns in specific galaxies has concentrated on the generation of two armed spiral patterns by interactions with companions. Previous works however have not tried to reproduce a specific observed non-grand-design galaxy. Our results thus indicate that a perturbing galaxy is not needed to produce spiral arms in M33, and that gravitational instabilities alone reproduce the observed spiral structure.

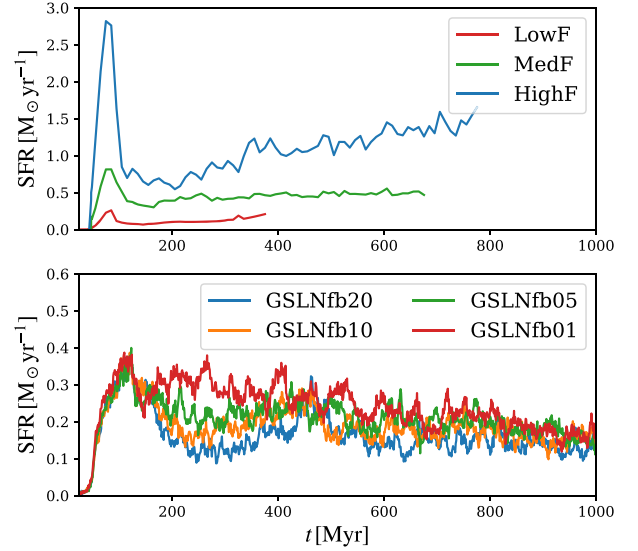
Our results suggest that the gas is very relevant to the formation of the spiral arms, as well as the stars. We see very different morphologies in the gas and stars depending on the gas physics. In particular, with a low feedback efficiency, strong spiral arms form in both the stars and gas, whereas weaker stellar arms, and more fragmented gaseous arms occur with a higher level of feedback. We suggest that the presence of gas allows the dissipation of energy in the stellar spirals, lowering  $Q$  in the stars and maintaining the spiral arms for longer, although most of our simulations start with  $Q \gtrsim 1$  and do not show a large increase in  $Q$  likely because the disc is not so unstable and therefore the increase in  $Q$  is only very moderate.



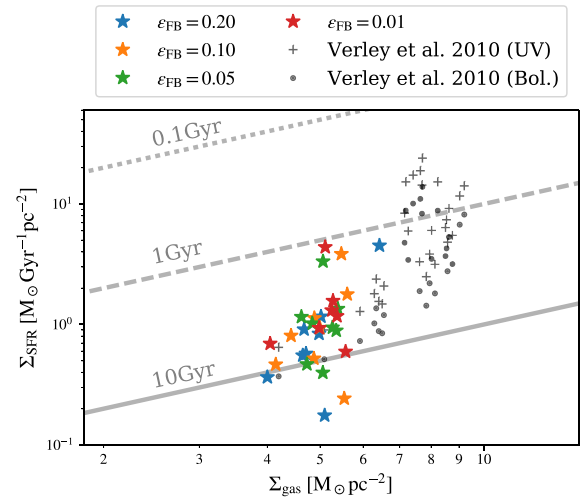
**Figure 13.** Stellar surface density maps in three *GASOLINE2* simulations compared to data from Corbelli et al. (2014).



**Figure 14.** Left: GALEX UV map of M33. Right: mock stellar image of the stars formed in the 10 per cent feedback *GASOLINE2* simulation.



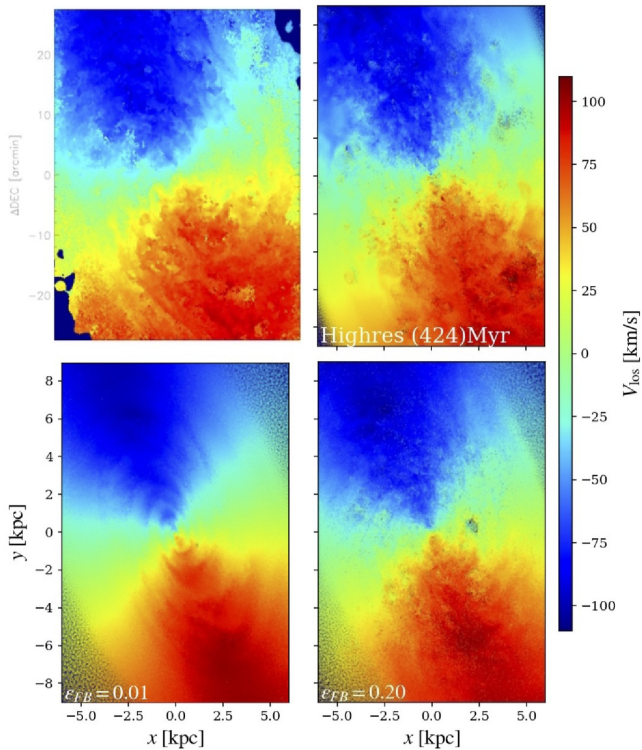
**Figure 15.** Star formation rate as a function of time in all *SPHNG* calculations (top) and for the *GASOLINE2* calculations with different levels of feedback (lower).



**Figure 16.** Surface star formation plotted against gas surface density in the *GASOLINE2* simulations after 1 Gyr of evolution. FUV and bolometrically derived surface star formation rates are plotted versus atomic gas data for M33 from Verley et al. (2010), shown by black dotted and plus points. Grey lines indicate constant depletion time-scales.

We only see a difference in  $Q$  when gas is included, compared to modelling only the stars, when  $Q < 1$  and the disc is more strongly unstable. Although we did not see a difference in  $Q$  for models with different feedback efficiencies, we noted that there is more cold gas at lower efficiencies, which means the combined  $Q$  for the gas and stars is smaller compared to the other simulations. This likely leads to the production of very strong spiral features in the model with the lowest levels of feedback (LowF).

We find that best agreement with M33 occurs with a high level of stellar feedback, in agreement with the findings of Rahimi & Kawata (2012). This is because the higher feedback blows out large holes in the gas creating clear voids which resemble the holes in M33, and because the gas is pushed into a smaller number of more prominent spiral arms. With a lower level of feedback, the gas is disrupted



**Figure 17.** Velocity map from Corbelli et al. (2014) (top left) compared to the HighRes SPHNG simulation and GASOLINE2 simulations with 1 and 20 per cent feedback. The velocity scale is the same for observations and simulation data (ignoring the  $180 \text{ km s}^{-1}$  recession velocity for M33). Maps for the GASOLINE2 simulations with 1 and 20 per cent feedback are shown at the best-fitting time frames of Fig. 12.

everywhere on small scales, producing many small fragments. With a very low feedback level, we get clear spiral arms, but they are much brighter than the actual M33, and appear continuous whereas the actual M33 does not contain long continuous spiral arms. For the feedback schemes in the codes presented here, we find good agreement with a feedback efficiency of 10–20 per cent, though more generally this value may vary according to the precise details of the feedback implemented. The stellar discs maintain a relatively feature-less morphology in the higher feedback calculations, which is in agreement with observed stellar mass maps of M33, displaying only faint spiral arm features in the mid/outer disc.

We checked the validity of our results by performing simulations with different resolutions, and with the two different codes. The agreement with different resolutions, and the dependence on the structure with feedback, is encouraging. Both show that intriguingly the worst agreement with M33 occurs with moderate levels of feedback (around 5 per cent), since the large voids between the spiral arms seen in M33 are only reproduced by large amounts of feedback (10–20 per cent), or in the case of low feedback stronger amplitude spiral arms occur in the stellar disc which gather gas into many elongated filaments or arms. We do find some difference in the dependence of feedback between the codes. In the gasoline models the size of the voids and arm segments are less sensitive to the feedback efficiency compared to the models using SPHNG. This is not unreasonable given they are two different codes with different feedback schemes, gravity pipelines, cooling functions, star formation recipes, etc.

Finally, we show a number of observational comparisons to M33. Maps of the line-of-sight velocity in the gas show a good agreement with M33 only in the case of high levels of feedback. Such feedback creates departures from circular rotation as seen in M33, whereas low and medium levels tend to show much smoother features. The star formation rates and efficiencies are in reasonable agreement with observed data, though neither is a perfect match, with GASOLINE2 models being systematically slightly lower than observed values, and SPHNG values varying with different levels of feedback, though the medium level of feedback produces a remarkable agreement with the observed value.

In this paper we have focused on the large-scale structure of M33, and shown very good agreement with the observed spiral structure of M33. Our models also provide the opportunity to investigate the giant molecular cloud population of M33, and the links between molecular clouds and star formation in one of the nearest neighbour galaxies, a topic we will consider in future work.

## ACKNOWLEDGEMENTS

We would like to thank the referee for a useful report which improved the presentation of this paper. Calculations for this paper were performed on the DiRAC machine ‘Complexity’, and the ISCA High Performance Computing Service at the University of Exeter. CLD acknowledges funding from the European Research Council for the FP7 ERC starting grant project LOCALSTAR. Numerical computations were also carried out on Cray XC30 at Center for Computational Astrophysics, National Astronomical Observatory of Japan. We utilized the PYNBODY (Pontzen et al. 2013) for post-processing and analysing of the TIPSY files created by GASOLINE2. Several figures in this paper were produced using SPLASH (Price 2007).

## REFERENCES

- Baba J., Saitoh T. R., Wada K., 2010, *PASJ*, 62, 1413  
 Baba J., Saitoh T. R., Wada K., 2013, *ApJ*, 763, 46  
 Baba J., Kawata D., Matsunaga N., Grand R. J. J., Hunt J. A. S., 2018, *ApJ*, 853, L23  
 Bate M. R., Bonnell I. A., Price N. M., 1995, *MNRAS*, 277, 362  
 Bekki K., 2008, *MNRAS*, 390, L24  
 Binney J., Tremaine S., 2008, *Galactic Dynamics*, 2nd edn. Princeton Univ. Press, Princeton, NJ  
 Corbelli E. et al., 2017, *A&A*, 601, A146  
 Corbelli E., Walterbos R. A. M., 2007, *ApJ*, 669, 315  
 Corbelli E., Thilker D., Zibetti S., Giovanardi C., Salucci P., 2014, *A&A*, 572, A23  
 de Avillez M. A., Breitschwerdt D., 2005, *A&A*, 436, 585  
 de Vaucouleurs G., de Vaucouleurs A., Corwin Jr. H. G., Buta R. J., Paturel G., Fouqué P., 1991, *Third Reference Catalogue of Bright Galaxies*. Volume I: Explanations and References. Volume II: Data for Galaxies Between  $0^h$  and  $12^h$ . Volume III: Data for Galaxies Between  $12^h$  and  $24^h$   
 Dobbs C. L., 2008, *MNRAS*, 391, 844  
 Dobbs C., Baba J., 2014, *PASA*, 31, e035  
 Dobbs C. L., Pringle J. E., 2013, *MNRAS*, 432, 653  
 Dobbs C. L., Theis C., Pringle J. E., Bate M. R., 2010, *MNRAS*, 403, 625  
 Dobbs C. L., Burkert A., Pringle J. E., 2011, *MNRAS*, 417, 1318  
 Duarte-Cabral A., Dobbs C. L., 2016, *MNRAS*, 458, 3667  
 Duarte-Cabral A., Acreman D. M., Dobbs C. L., Mottram J. C., Gibson S. J., Brunt C. M., Douglas K. A., 2015, *MNRAS*, 447, 2144  
 Elmegreen B. G., 1995, in Ferrara A., McKee C. F., Heiles C., Shapiro P. R., eds, *ASP Conf. Ser. Vol. 80, The Physics of the Interstellar Medium*

- and Intergalactic Medium Spiral Arms and Star Formation, Astron. Soc. Pac., San Francisco. p. 218
- Elmegreen B. G., Thomasson M., 1993, *A&A*, 272, 37
- Fujii M. S., Baba J., Saitoh T. R., Makino J., Kokubo E., Wada K., 2011, *ApJ*, 730, 109
- Gatto A. et al., 2017, *MNRAS*, 466, 1903
- Grand R. J. J., Kawata D., Cropper M., 2012, *MNRAS*, 421, 1529
- Gratier P. et al., 2012, *A&A*, 542, A108
- Hernquist L., 1990, in Wielen R., eds, *Dynamical Status of M51. Dynamics and Interactions of Galaxies*, p. 108
- Heyer M. H., Corbelli E., Schneider S. E., Young J. S., 2004, *ApJ*, 602, 723
- Humphreys R. M., Sandage A., 1980, *ApJS*, 44, 319
- Inutsuka S.-i., Inoue T., Iwasaki K., Hosokawa T., 2015, *A&A*, 580, A49
- Jarrett T. H., Chester T., Cutri R., Schneider S. E., Huchra J. P., 2003, *AJ*, 125, 525
- Kalnajs A. J., 1972, *Astrophys. Lett.*, 11, 41
- Kam S. Z., Carignan C., Chemin L., Foster T., Elson E., Jarrett T. H., 2017, *AJ*, 154, 41
- Karl S. J., Naab T., Johansson P. H., Kotarba H., Boily C. M., Renaud F., Theis C., 2010, *ApJ*, 715, L88
- Lahén N., Johansson P. H., Rantala A., Naab T., Frigo M., 2018, *MNRAS*, 475, 3934
- McMillan P. J., Dehnen W., 2007, *MNRAS*, 378, 541
- Miura R. E. et al., 2012, *ApJ*, 761, 37
- Navarro J. F., Frenk C. S., White S. D. M., 1996, *ApJ*, 462, 563
- Padoan P., Nordlund Å., 2011, *ApJ*, 730, 40
- Patel E., Besla G., Sohn S. T., 2017, *MNRAS*, 464, 3825
- Pettitt A. R., Dobbs C. L., Acreman D. M., Price D. J., 2014, *MNRAS*, 444, 919
- Pettitt A. R., Dobbs C. L., Acreman D. M., Bate M. R., 2015, *MNRAS*, 449, 3911
- Pettitt A. R., Tasker E. J., Wadsley J. W., Keller B. W., Benincasa S. M., 2017, *MNRAS*, 468, 4189
- Pontzen A., Roškar R., Stinson G., Woods R., 2013, pynbody: N-Body/SPH Analysis for Python, Astrophysics Source Code Library, record ascl 1305.002
- Price D. J., 2007, *Publ. Astron. Soc. Aust.*, 24, 159
- Price D. J., Monaghan J. J., 2007, *MNRAS*, 374, 1347
- Purcell C. W., Bullock J. S., Tollerud E. J., Rocha M., Chakrabarti S., 2011, *Nature*, 477, 301
- Rahimi A., Kawata D., 2012, *MNRAS*, 422, 2609
- Renaud F., Bournaud F., Duc P.-A., 2015, *MNRAS*, 446, 2038
- Rey-Raposo R., Dobbs C., Agertz O., Alig C., 2017, *MNRAS*, 464, 3536
- Robertson B. E., Kravtsov A. V., 2008, *ApJ*, 680, 1083
- Romeo A. B., Wiegert J., 2011, *MNRAS*, 416, 1191
- Salo H., Laurikainen E., 2000, *MNRAS*, 319, 393
- Semczuk M., Lokas E. L., Salomon J.-B., Athanassoula E., D’Onghia E., 2018, preprint ([arXiv:1804.04536](https://arxiv.org/abs/1804.04536))
- Sharma S., Corbelli E., Giovanardi C., Hunt L. K., Palla F., 2011, *A&A*, 534, A96
- Stinson G., Seth A., Katz N., Wadsley J., Governato F., Quinn T., 2006, *MNRAS*, 373, 1074
- Tasker E. J., Tan J. C., 2009, *ApJ*, 700, 358
- Toomre A., 1964, *ApJ*, 139, 1217
- van der Kruit P. C., 1988, *A&A*, 192, 117
- Verley S., Corbelli E., Giovanardi C., Hunt L. K., 2009, *A&A*, 493, 453
- Verley S., Corbelli E., Giovanardi C., Hunt L. K., 2010, *A&A*, 510, A64
- Wada K., Baba J., Saitoh T. R., 2011, *ApJ*, 735, 1
- Wadsley J. W., Keller B. W., Quinn T. R., 2017, *MNRAS*, 471, 2357
- Wang B., Silk J., 1994, *ApJ*, 427, 759
- Yurin D., Springel V., 2014, *MNRAS*, 444, 62

This paper has been typeset from a  $\text{\TeX}/\text{\LaTeX}$  file prepared by the author.