

Figure 5. Time-series analysis of PG 0947+396. The gray and black dashed lines in panels (i)–(m) are the original and continuum-cleaned rms spectra (see more details in Section 3.1). The meanings of the other panels, lines, and histograms are the same as in Figure 2.

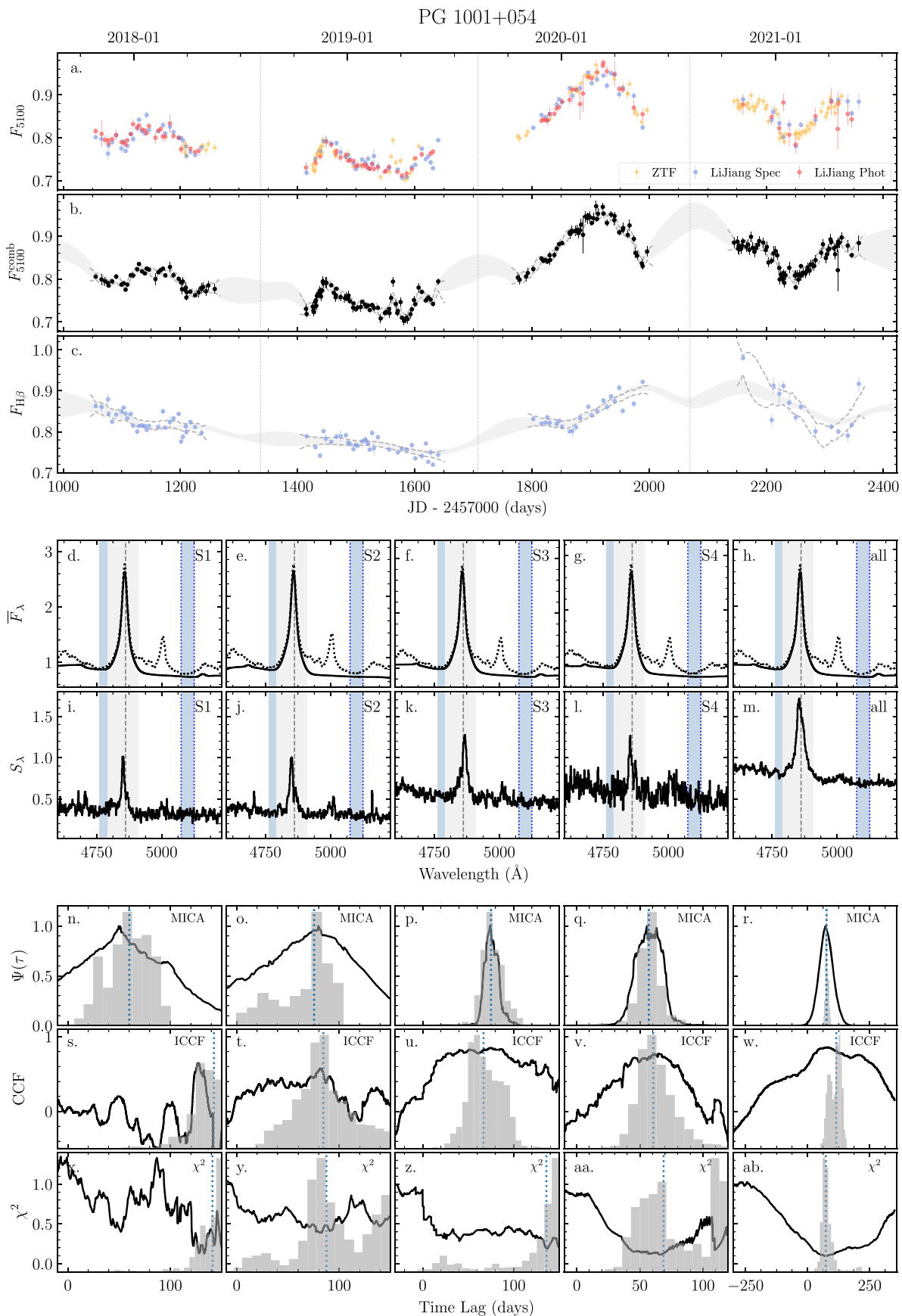


Figure 6. Time-series analysis of PG 1001+054. The black dotted and solid lines in panels (d)–(h) are the original and cleaned (e.g., Fe II, He II, narrow H β , and [O III] $\lambda\lambda$ 4959,5007) mean spectra. The meanings of the other panels, lines, and histograms are the same as in Figure 2.

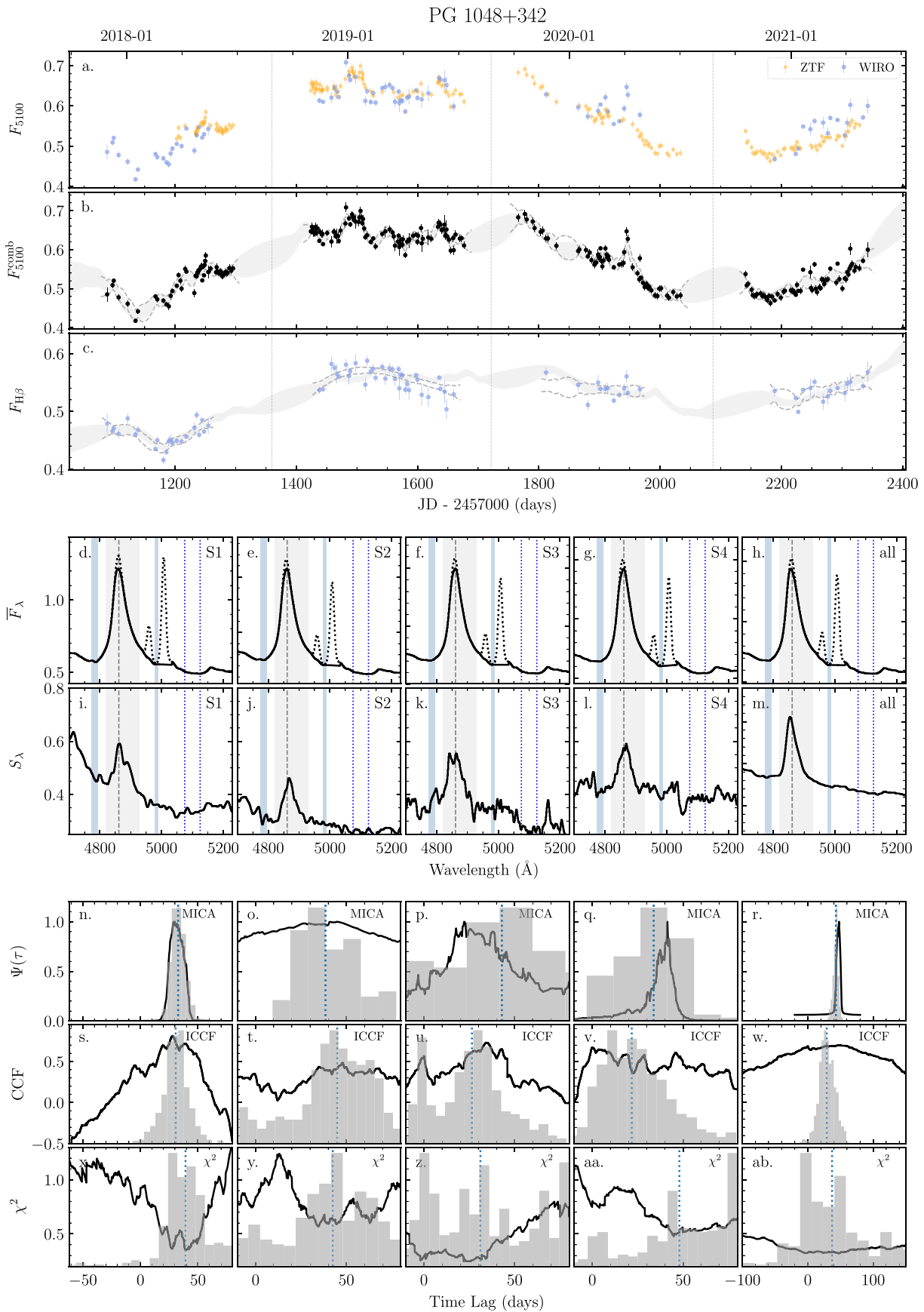


Figure 7. Time-series analysis of PG 1048+342. The meanings of the panels, lines, and histograms are the same as in Figure 2.