



Publication Year	2013
Acceptance in OA	2022-12-20T12:52:17Z
Title	Dissecting disks around B-type protostars
Authors	Sanchez-Monge, Alvaro, CESARONI, Riccardo, BELTRAN SOROLLA, MARIA TERESA, Kumar, M. S. Nanda, Stanke, Thomas, Zinnecker, Hans, Etoke, Sandra, GALLI, Daniele, Hummel, Christian A., MOSCADELLI, Luca, Preibisch, Thomas, Ratzka, Thorsten, van der Tak, Floris F. S., Vig, Sarita, Walmsley, C. Malcolm, Wang, Kuo-Song
Handle	http://hdl.handle.net/20.500.12386/32786

dissecting disks around B-type protostars

Alvaro Sanchez-Monge¹ - Riccardo Cesaroni¹ - Maite Beltran¹ - Nanda Kumar² - Thomas Stanke³ - Hans Zinnecker⁴ - Sandra Etoka⁵ - Daniele Galli¹
 Christian Hummel³ - Luca Moscadelli¹ - Thomas Preibisch⁶ - Thorsten Ratzka⁶ - Floris van der Tak⁷ - Sarita Vig⁸ - Malcolm Walmsley¹ - Kuo-Song Wang⁹

¹INAF-Osservatorio di Arcetri; ²Centro de Astrofisica da Universidade do Porto; ³ESO Garching; ⁴SOFIA Science Center; ⁵Jodrell Bank Center for Astrophysics; ⁶Universitäts-Sternwarte München; ⁷Netherlands Institute for Space Research; ⁸Indian Institute of Space Science and Technology; ⁹Leiden Observatory

SCIENTIFIC GOALS

- theoretical scenarios predict the formation of circumstellar disks [e.g., Bonnell & Bate 2006; Keto 2007; Krumholz et al 2009] but observational evidences for only a few B-type protostars [e.g. Cesaroni et al 2007; Kraus et al 2010; Beuther et al 2012]
- search for and increase** the number of known, convincing (sub)Keplerian disks in B-type protostars
- study the structure and kinematics of disks**
- determine the disk rotation curve

ALMA OBSERVATIONS

- band 7 [334.8 - 338.8 GHz] & [346.8 - 350.8 GHz]
spectral resolution: 0.4 km/s
- most extended Cycle 0 array configuration
angular resolution: 0.4 arcsec
primary beam (field of view): 18 arcsec
maximum observable structure: 2 arcsec
- correlator setup: CH₃CN(19-18), CH₃OH(7-6), SiO(8-7), C³⁴S(7-6), C¹⁷O(3-2), H¹³CO+(3-2), and many others

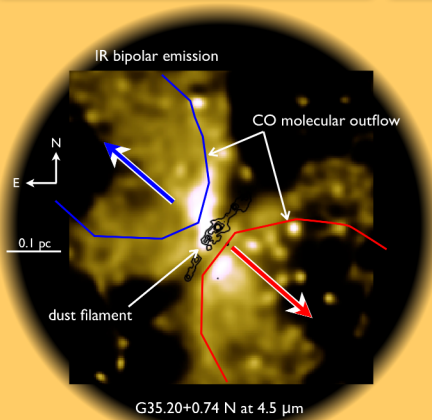
TARGET CHARACTERISTICS

- G35.20-0.74 N** @ 2.2 kpc
R.A. = 18:58:13 Dec. = 01:40:36
- G35.03+0.35** @ 3.4 kpc
R.A. = 18:54:00 Dec. = 02:01:19
- luminosities of $\sim 10^4 L_{\odot} \Rightarrow$ **B-type protostars**
- associated with free-free emission (VLA data) \Rightarrow **thermal jets / HII regions**
- bipolar nebulosities & green 'fuzzies' (IR data) \Rightarrow **bipolar outflows**
- prominent SiO emission (single-dish data) \Rightarrow **jets?**
- prominent CH₃CN emission (single-dish data) \Rightarrow **hot molecular cores?**

G35.20-0.74 N

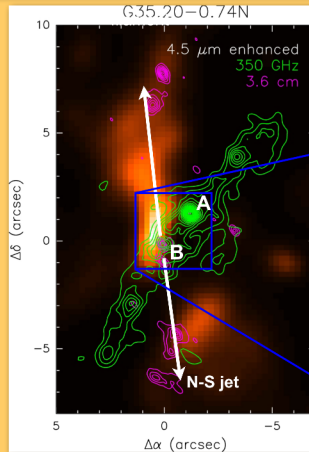
1. description of the region

- NE-SW infrared (IR) bipolar nebulosity
- NE-SW molecular outflow (in CO, HCO⁺)
- N-S thermal radiojet in cm continuum [Gibb et al 2003; De Buizer 2006; Wang et al 2013]



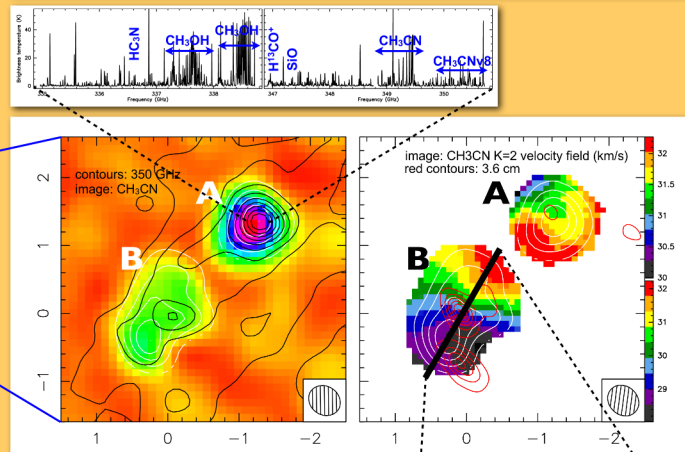
2. ALMA 350 GHz continuum emission

- 80 M_⊙ filament**, perpendicular to the IR bipolar nebulosity
- multiple cores** found along the filament
- core A is the strongest dust condensation
- core B lies at the center of N-S jet, detected in cm & IR

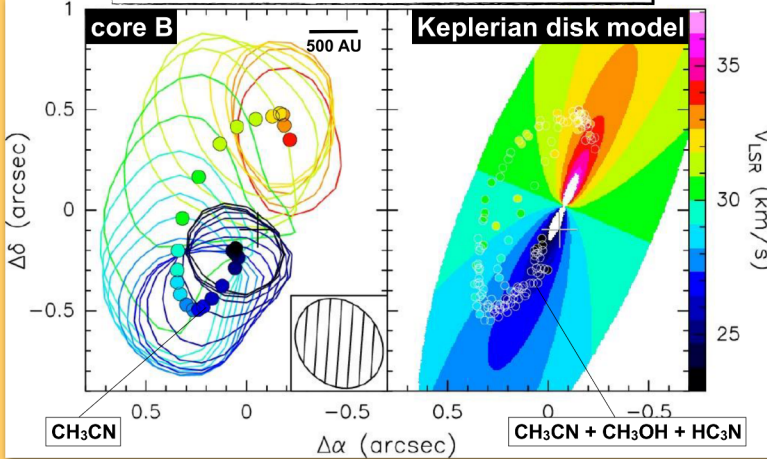


3. ALMA molecular line emission

- cores A and B show **rich spectra**, with many **hot-core tracers**
- emission of core B is more elongated and fragmented than core A
- M_{gas} (A) = 4.4 M_⊙ and M_{gas} (B) = 2.8 M_⊙ for a T = 100 K
- velocity gradients perpendicular to the bipolar outflow/IR-nebulosity**

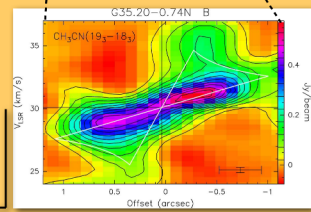


Keplerian disk: observations vs model



4. position-velocity plot across core B

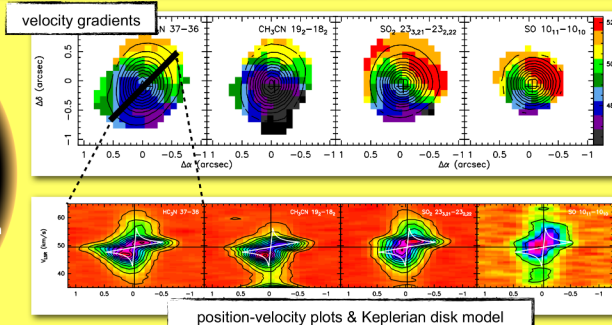
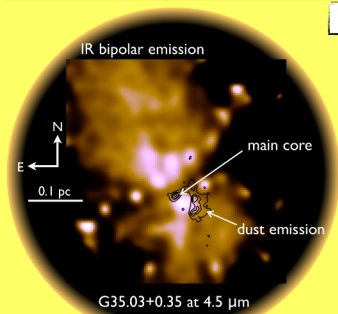
- the white pattern encompasses the region where emission is expected from a **Keplerian disk** inclined by 19° and rotating about an **18 M_⊙ star**



5. Keplerian disk in core B?

- left panel - peaks (from 2D-Gaussian fits) and 50% contour levels of CH₃CN emission colors correspond to velocities (i.e. different channels), the cross marks the continuum peak
- right panel - solid circles: peaks of emission at different velocities of CH₃CN, CH₃OH and HC₃N color: best-fit **Keplerian disk** model inclined by 19° and rotating about an **18 M_⊙ object**
- why line emission is detected only from the upper part of the disk?
possible opacity effect due to disk inclination w.r.t. the line of sight (may work for a flared disk)
- the dynamical mass (18 M_⊙) implies $\geq 3 \cdot 10^4 L_{\odot}$, greater than the bolometric luminosity of G35.20-0.74N this problem may be solved by postulating a close **binary system in Core B**

G35.03+0.35



1. ALMA 350 GHz continuum and line emission

- filament (with multiple cores) surrounding the IR emission
- main core** at the center of the bipolar infrared nebulosity, and associated with weak cm free-free emission [Cyganowski et al 2008; Codella et al 2010; Brogan et al 2011]

2. velocity maps and pv-plots

- clear **velocity gradient** SE-NW, perpendicular to bipolar nebulosity
- position-velocity plots along the velocity gradient (PA=45°)
- white patterns encompass the region where emission is expected from a **Keplerian disk** rotating about a **6 M_⊙ central object**

SUMMARY

- ALMA observations** of circumstellar disks in B-type protostars
- detection of **dust filaments** ($\sim 80 M_{\odot}$) with elongations perpendicular to IR bipolar nebulosities and outflows/jets
- several cores** (with masses 1 - 5 M_⊙) **along the filaments**, some of them showing rich chemistry (hot molecular cores)
- velocity gradients** perpendicular to the IR bipolar nebulosities, likely tracing the kinematics of **rotating structures**
- G35.20-0.74 N**
core B is resolved and can be modeled with an almost edge-on **Keplerian disk around an 18 M_⊙ source**, possibly a **binary system** [see Sanchez-Monge et al 2013, A&A, 552, L10]
- G35.03+0.35**
the main dense core shows **Keplerian-like rotation around a $\approx 6 M_{\odot}$ star**