



Publication Year	2016
Acceptance in OA	2020-06-05T11:04:49Z
Title	Spatially Resolved Star Formation Main Sequence of Galaxies in the CALIFA Survey
Authors	Cano-Díaz, M., Sánchez, S. F., ZIBETTI, Stefano, Ascasibar, Y., Bland-Hawthorn, J., Ziegler, B., González Delgado, R. M., Walcher, C. J., García-Benito, R., Mast, D., Mendoza-Pérez, M. A., Falcón-Barroso, J., Galbany, L., Husemann, B., Kehrig, C., Marino, R. A., Sánchez-Blázquez, P., López-Cobá, C., López-Sánchez, Á. R., Vilchez, J. M.
Publisher's version (DOI)	10.3847/2041-8205/821/2/L26
Handle	http://hdl.handle.net/20.500.12386/25935
Journal	THE ASTROPHYSICAL JOURNAL
Volume	821

SPATIALLY-RESOLVED STAR FORMATION MAIN SEQUENCE OF GALAXIES IN THE CALIFA SURVEY

M. CANO-DÍAZ¹, S.F. SÁNCHEZ¹, S. ZIBETTI², Y. ASCASIBAR^{3,4}, J. BLAND-HAWTHORN⁵, B. ZIEGLER⁶, R. M. GONZÁLEZ DELGADO⁷, C.J. WALCHER⁸, R. GARCÍA-BENITO⁷, D. MAST^{9,10}, M.A. MENDOZA-PÉREZ⁷, J. FALCÓN-BARROSO^{11,12}, L. GALBANY^{13,14}, B. HUSEMANN¹⁵, C. KEHRIG⁷, R. A. MARINO^{16,17}, P. SÁNCHEZ-BLÁZQUEZ^{3,18}, C. LÓPEZ-COBÁ¹, Á. R. LÓPEZ-SÁNCHEZ^{19,20}, J.M. VILCHEZ⁷

¹ INSTITUTO DE ASTRONOMÍA, UNIVERSIDAD NACIONAL AUTÓNOMA DE MÉXICO, APARTADO POSTAL 70-264, MEXICO D.F., 04510 MEXICO

² INAF-OSSERVATORIO ASTROFISICO DI ARCETRI, LARGO ENRICO FERMI 5, 50125 FIRENZE, ITALY

³ DEPARTAMENTO DE FÍSICA TEÓRICA, UNIVERSIDAD AUTÓNOMA DE MADRID, E-28049 MADRID, SPAIN

⁴ ASTRO-UAM, UAM, UNIDAD ASOCIADA CSIC

⁵ SYDNEY INSTITUTE FOR ASTRONOMY, SCHOOL OF PHYSICS, UNIVERSITY OF SYDNEY, NSW 2006, AUSTRALIA

⁶ UNIVERSITÄT WIEN, INSTITUT FÜR ASTROPHYSIK, TÜRKENSCHANZSTRASSE 17, A-1180 WIEN, AUSTRIA

⁷ INSTITUTO DE ASTROFÍSICA DE ANDALUCÍA (IAA-CSIC), GLORIETA DE LA ASTRONOMÍA S/N APTDO. 3004, 18008 GRANADA, SPAIN

⁸ LEIBNIZ-INSTITUT FÜR ASTROPHYSIK POTSDAM (AIP), AN DER STERNWARTE 16, D-14482 POTSDAM, GERMANY

⁹ OBSERVATORIO ASTRONÓMICO, LAPRIDA 854, X5000BGR, CÓRDOBA, ARGENTINA

¹⁰ CONSEJO DE INVESTIGACIONES CIENTÍFICAS Y TÉCNICAS DE LA REPÚBLICA ARGENTINA, AVDA. RIVADAVIA 1917, C1033AAJ, CABA, ARGENTINA

¹¹ INSTITUTO DE ASTROFÍSICA DE CANARIAS, VÍA LÁCTEA S/N, 38205 LA LAGUNA, TENERIFE, SPAIN

¹² DEPARTAMENTO DE ASTROFÍSICA, UNIVERSIDAD DE LA LAGUNA, 38205 LA LAGUNA, TENERIFE, SPAIN

¹³ MILLENNIUM INSTITUTE OF ASTROPHYSICS MAS, NUNCIO MONSEÑOR SÓTERO SANZ 100, PROVIDENCIA, 7500011 SANTIAGO, CHILE

¹⁴ DEPARTAMENTO DE ASTRONOMÍA, UNIVERSIDAD DE CHILE, CAMINO EL OBSERVATORIO 1515, LAS CONDES, SANTIAGO, CHILE

¹⁵ EUROPEAN SOUTHERN OBSERVATORY, KARL-SCHWARZSCHILD-STR. 2, 85748 GARCHING B. MÜNCHEN, GERMANY

¹⁶ DEP. DE ASTROFÍSICA Y CC. DE LA ATMÓSFERA, FACULTAD DE CC. FÍSICAS, UCM, AVDA. COMPLUTENSE S/N, 28040 MADRID, SPAIN

¹⁷ DEPARTMENT OF PHYSICS, INSTITUTE FOR ASTRONOMY, ETH ZÜRICH, CH-8093 ZÜRICH, SWITZERLAND

¹⁸ INSTITUTO DE ASTROFÍSICA, FACULTAD DE FÍSICA, PONTIFICIA UNIVERSIDAD CATÓLICA DE CHILE, CASILLA 306, SANTIAGO 22, CHILE

¹⁹ AUSTRALIAN ASTRONOMICAL OBSERVATORY, PO BOX 915, NORTH RYDE, NSW 1670, AUSTRALIA

²⁰ DEPARTMENT OF PHYSICS AND ASTRONOMY, MACQUARIE UNIVERSITY, NSW 2109, AUSTRALIA

Draft version August 12, 2018

ABSTRACT

The “main sequence of galaxies” – defined in terms of the total star formation rate ψ vs. the total stellar mass M_* – is a well-studied tight relation that has been observed at several wavelengths and at different redshifts. All earlier studies have derived this relation from integrated properties of galaxies. We recover the same relation from an analysis of spatially-resolved properties, with integral field spectroscopic (IFS) observations of 306 galaxies from the CALIFA survey. We consider the SFR surface density in units of $\log(M_\odot \text{ yr}^{-1} \text{ Kpc}^{-2})$ and the stellar mass surface density in units of $\log(M_\odot \text{ Kpc}^{-2})$ in individual spaxels which probe spatial scales of 0.5-1.5 Kpc. This local relation exhibits a high degree of correlation with small scatter ($\sigma = 0.23$ dex), irrespective of the dominant ionisation source of the host galaxy or its integrated stellar mass. We highlight: (i) the integrated star formation main sequence formed by galaxies whose dominant ionisation process is related to star formation, for which we find a slope of 0.81 ± 0.02 ; (ii) the spatially-resolved relation obtained with the spaxel analysis, we find a slope of 0.72 ± 0.04 ; (iii) for the integrated main sequence we identified also a sequence formed by galaxies that are dominated by an old stellar population, which we have called the retired galaxies sequence.

Subject headings: galaxies: star formation — galaxies: fundamental parameters— galaxies: evolution

1. INTRODUCTION

Thanks to the increasing number of statistical studies of both local and distant galaxies, it has been possible to reveal and confirm several correlations in extragalactic astronomy. One of these relations is the so-called star formation main sequence (SFMS) of actively star forming galaxies, which relates the star formation rate (SFR, ψ) and the stellar mass (M_*).

The SFMS is an approximately linear correlation between $\log\psi$ and $\log M_*$, that has been observed in the local universe as well as at high redshifts. See for example: Brinchmann et al. (2004), Salim et al. (2007), Renzini & Peng (2015) (hereafter RP15) for $z \sim 0$, Peng et al. (2010) for $z \lesssim 1$ and Daddi et al. (2007) (hereafter D07) for $z > 1$. In particular, Speagle et al. (2014) (hereafter S14) performed a compilation of SFMS relations reported in the literature and shows a summary of the evolutionary behaviour of the SFMS with redshift (up to $z \sim 6$). Katsianis et al. (2015)

performed a similar study of the evolution of this correlation for $z \sim 1 - 4$. The SFMS is also recovered in cosmological simulations (Davé et al. 2011; Torrey et al. 2014; Sparre et al. 2015, hereafter S15). In fact, this correlation has been proven to be tight, with a scatter of $\sim 0.2 - 0.35$ dex in observations and in theoretical predictions (D07, S15, S14). The values of the slope and zero points for the SFMS may vary within a large range in the literature (see S14 for a compilation). It has been proposed that this variations may originate from the selection criteria used to select star forming galaxies. RP15 has proposed a new objective definition for the SFMS for local galaxies, which favours values of 0.76 dex and $-7.64 \log(M_\odot \text{ yr}^{-1})$ for the slope and zero points respectively.

Although the physical distinction between star-forming and passive galaxies is not straightforward (see e.g. Casado et al. 2015), the SFMS correlation provides a convenient way to classify galaxies in terms of their SF properties. Generally, the star-forming galaxies lie on the main sequence, red ellip-

tical galaxies tend to lie below the relation, while the starburst galaxies, lie above the sequence (S15).

All previous SFMS studies have been done, using integrated quantities for the galaxies. Due to observational restrictions, the derivation of quantities like SFR and M_* have been performed using, for example, single fiber spectroscopy affected by aperture losses that need to be corrected. Integral Field Spectroscopy (IFS) allow to have spatial and spectroscopical information for extended objects, as it delivers individual spectra for each point of the observed target (restricted to the instrument spatial resolution), which makes IFS a suitable observational technique to study of spatially-resolved physical quantities in galaxies. Studying the SFMS with IFS would allow to obtain both, integrated and local correlations. If the field of view covers the entire optical extension of the galaxy, these data are not affected by aperture losses.

IFS when used to perform sky surveys, allows to do statistical studies of spatially-resolved physical quantities of galaxies. The Calar Alto Legacy Integral Field Area survey CALIFA, (Sánchez et al. 2012) is an ongoing extragalactic optical IFS survey, designed to observe around 600 galaxies, which makes it suitable to perform spatially-resolved studies with statistical significance.

We present the results of studying the spatially-resolved SFMS based on data from the CALIFA survey. Throughout this paper we have adopted a Salpeter IMF and a cosmology defined by: $H_0 = 71 \text{ km s}^{-1} \text{ Mpc}^{-1}$, $\Omega_\Lambda = 0.7$ and a flat Universe.

2. DATA AND SAMPLE OF GALAXIES

We used the available sample observed by CALIFA until February 2015, consisting of 535 galaxies that are representative of its mother sample (Walcher et al. 2014, mass and redshift ranges are $10^{9.7} < M_* < 10^{11.4} M_\odot$ and $0.005 < z < 0.03$ respectively), which includes galaxies of all morphological types, inclinations and environments. Galaxies from CALIFA extended sample observed as ancillary programs, i.e. galaxies not contemplated in the original mother sample, were also included. For this reason the M_* of some of the galaxies in our sample may be lower than the limits established on the mother sample. In order to avoid inclination effects, we clipped our sample to a low inclination (i) galaxies subsample with $i < 60$, for which 306 galaxies remained.

The observations were performed using the PMAS instrument (Roth et al. 2005) in the PPAK configuration (Kelz et al. 2006). The observing strategy guarantees a complete coverage of the spatial extension of the galaxies up to 2.5 effective radius, with a FWHM $\sim 2.5''$ (García-Benito et al. 2015), which corresponds to $\sim 1 \text{ kpc}$ at the average redshift of the survey (for further information of the survey, sample and observational strategy see: Sánchez et al. 2012)

We used data from the V500 setup that covers a wavelength range of 3745 to 7300 Å, with a nominal resolution of $\lambda/\Delta\lambda = 850$ at 4500 Å. The datacubes were provided by version 1.5 of the pipeline (García-Benito et al. 2015), and consist of a regular grid of 72×78 spectra, with a $1''$ /spaxel size centred in the galaxies.

3. STAR FORMATION RATES AND STELLAR MASS CALCULATION

The datacubes were analysed using the Pipe3D pipeline (Sánchez et al. 2016), which is a tool that fits the continuum with stellar population models and measures the nebular emission lines. This pipeline is based on the Fit3D fitting

tool (Sánchez et al. 2015). For this particular implementation we adopted the GSD156 library of simple stellar population models (Cid Fernandes et al. 2013, hereafter CF13), that comprises 156 templates covering 39 stellar ages (from 1 Myr to 13 Gyr), and 4 metallicities ($Z/Z_\odot = 0.2, 0.4, 1, \text{ and } 1.5$). These templates have been extensively used within the CALIFA collaboration (e.g. Pérez et al. 2013; González Delgado et al. 2014, CF13). Details of the fitting procedure, dust attenuation curve, and uncertainties of the process are given in (Sánchez et al. 2015, 2016).

We applied a spatial binning to each datacube to reach an homogenous S/N of 50 across the field of view. Then, the stellar population fitting was applied to the coadded spectra within each spatial bin. Finally, following the procedures described in CF13 and Sánchez et al. 2015b, we derive the best fitted model within each spatial bin to the continuum flux intensity in the corresponding spaxel. The stellar-population model is then subtracted to create a gas-pure cube comprising only the ionised gas emission lines. Thus it is assumed the same M/L ratio and dust attenuation for those spaxels within the same spatial-bin, to derive a spaxel-wise map of any stellar property, like the M_* surface density (Σ_*).

For the gas-pure cube, the strongest emission lines within the considered wavelength range, including $H\alpha$ and $H\beta$ are fitted spaxel-by-spaxel to derive their corresponding flux intensity and equivalent width (EW) maps. The $H\alpha$ flux is then corrected by the ionised gas dust attenuation, derived using the Balmer decrement assuming a canonical value of 2.86, adopting a Cardelli et al. (1989) extinction law and $R_V = 3.1$. The $H\alpha$ luminosity distribution is derived by correcting for the cosmological distance and, by applying the Kennicutt (1998) conversion from $H\alpha$ luminosity to SFR we derive both the integrated SFRs and the spaxel-wise distribution of the SFR surface density (μSFR). The measured μSFR and Σ_* have not been corrected for galaxy inclination. However, since we have limited our sample to galaxies with $i < 60$, the impact of inclination on the projected surface densities will be less than a factor of two.

4. RESULTS

The procedure described in Section 3 was applied to the 306 galaxies mentioned in Section 2 to construct the SFMS relation for the CALIFA sample.

4.1. Integrated SFMS relation

Figure 1, shows the integrated M_* vs. SFR relation that was constructed integrating the corresponding spatially-resolved quantities of all the galaxies in the sample. Preliminary versions of this plot for smaller subsamples of the CALIFA data have been already presented in Sánchez et al. (2013) and Catalán-Torrecilla et al. (2015).

In Figure 1 we classify the dominant ionisation source in the galaxies based on a combination of EWs($H\alpha$) classification, introduced by Cid Fernandes et al. (2011) and a classification using the Kewley demarcation limit (KL) (Kewley et al. 2001) in the Baldwin-Phillips-Terlevich (BPT) diagram (Baldwin et al. 1981): (i) the green symbols account for galaxies for which the $[\text{O III}]/\text{H}\beta$ and $[\text{N II}]/\text{H}\alpha$ line ratios of their integrated ionised gas emission lines lie above the KL and whose EW($H\alpha$) are $> 6\text{Å}$, meaning that the dominant ionisation process in these galaxies comes from the nuclear activity. (ii) The blue symbols represent the galaxies that lie below the KL in the BPT diagram, and whose EW($H\alpha$)

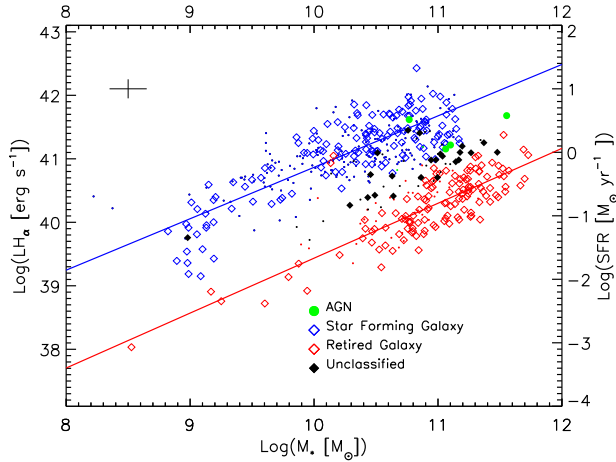


Figure 1. Integrated M_* vs. SFR relation for the CALIFA sample. Green symbols represent galaxies that lie above the Kewley Limit (KL) and whose $H\alpha$ Equivalent Widths (EW) are $> 6\text{\AA}$, i.e. are galaxies whose ionisation emission is dominated by the AGN activity. Blue symbols represent galaxies below the KL and with $EW(H\alpha) > 6\text{\AA}$, and that have inclinations $< 60^\circ$, i.e. that lie in the Star Formation Main Sequence (SFMS). Red symbols represent galaxies with $EW(H\alpha) < 3\text{\AA}$, i.e. that lie in a Retired Galaxies Sequence (RGS). Finally black symbols account for galaxies whose $EW(H\alpha)$ lie between 3\AA and 6\AA , i.e. galaxies whose dominant ionisation process is uncertain. Shaped symbols hold for galaxies in the low inclination subsample, that are the ones used for the rest of the analysis, however for completeness, the points show the complementary high inclination subsample. Blue and red lines are the linear fittings to the SFMS for low inclined galaxies and RGS respectively (See Table 1 for details). SFRs shown in the plot only hold for the SF dominated galaxies, for the rest these rates are only the result of the linear transformation of the $H\alpha$ luminosities with the Kennicutt (1998) relation. For further details of the galaxies classification please refer to Section 4.1.

are $> 6\text{\AA}$, which means that the ionisation processes in these galaxies are dominated by SF, as it is shown in Figure 3 of Sánchez et al. (2014). (iii) The red symbols account for galaxies whose $EW(H\alpha)$ are $< 3\text{\AA}$ regardless of their position in the BPT diagram, meaning that most probably the dominant processes in the gas ionisation come from an old stellar population (Cid Fernandes et al. 2011). (iv) Finally, black symbols represent galaxies whose $EW(H\alpha)$ are: $3\text{\AA} < EW < 6\text{\AA}$, which means that their main ionisation process remain uncertain. Shaped symbols account for the galaxies from the low i subsample, that are the ones used for the rest of the analysis. For completeness, points show the galaxies for the complementary high i subsample.

Although, we have transformed the $H\alpha$ luminosities to SFRs for all the galaxies adopting the Kennicutt (1998) relation, we should clarify that the interpretation of SFRs is only valid for galaxies (and regions) that are ionised by young stars (following our previous criteria). For the rest of the galaxies, the SFRs presented in the plot are indeed just a linear transformation of the $H\alpha$ luminosity.

For the star-forming and retired galaxies sequences (blue and red respectively), which, from now on will be referred to as SFMS and Retired Galaxies Sequence (RGS), we have fitted linear correlations between $\log(\psi)$ and $\log(M_*)$ whose characteristics are listed in Table 1, along with their dispersions. The slope and zero point for the SFMS are in good agreement with the values reported in the literature for local galaxies (RP15, S14 and references therein. For further details see section 5). For the black and green points no further analysis was performed due to the uncertain main ionisation process of the gas and due to its poor statistics, respectively.

The uncertainties of the derived quantities are dominated by the spectrophotometric accuracy of the CALIFA data, which is estimated to be $\sim 6\%$ (García-Benito et al. 2015), as well as the details of the procedure followed to derive the M_* and the SFRs. In the case of M_* it has been determined that the uncertainties are well constrained within a typical error of ~ 0.15 dex, (see e.g. the discussion in Sánchez et al. 2013). The typical size of the uncertainties for our data are shown in Figure 1, which are consistent with what has been previously found by Cid Fernandes et al. (2014) and Catalán-Torrecilla et al. (2015), and were taken into account when computing the linear fitting.

4.2. Spatially-Resolved SFMS relation

Next we explore the spatially-resolved SFMS for the CALIFA sample, by plotting the SFR surface density versus the M_* surface density in Figure 2. The individual spaxels used in constructing the relation have spatial scales of 0.5-1.5 kpc which are larger than typical HII region sizes (hundreds of parsecs) (González Delgado & Pérez 1997). It was derived using only the spaxels that fulfil the same criteria of the blue points in Figure 1, irrespective of the location of its host galaxy in that figure. Indeed, 11% of the included spaxels comes from galaxies for which the global ionisation is not dominated by SF (i.e., not blue in Fig. 1).

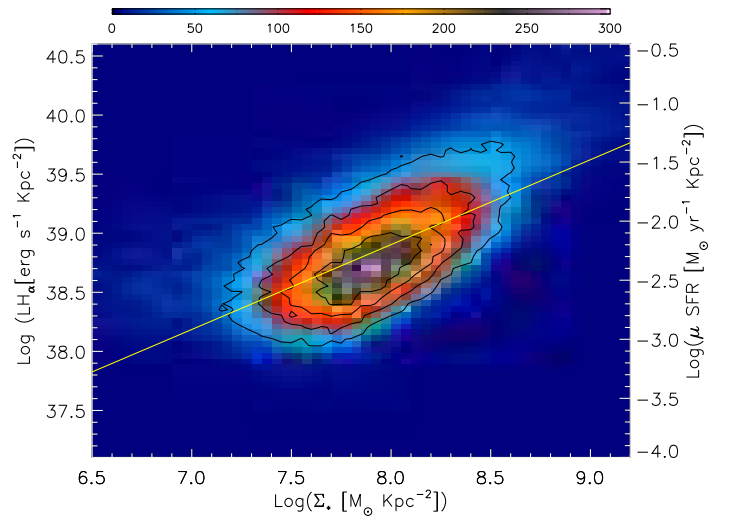


Figure 2. Spatially-Resolved SFMS relation for the CALIFA sample, that holds for scales in the range of 0.5-1.5 kpc. Colors in the plot represent the amount of data points presented in this study. The outermost contour holds within itself the 80% of the total data presented in the plot. Further contours hold 60%, 40% and 20% of the total amount of data in the plot. Yellow line represents the linear fitting to the spatially-resolved SFMS relation using the 80% of the data (see Table 1 for further details of the linear fitting).

A density plot of the local SFMS, based on 90,786 individual spectra, is shown in Figure 2. Colors account for the density of data points, and the yellow line represents a linear fitting to the correlation using only the 80% of the data, corresponding to the data contained inside the largest contour in the density plot which corresponds to the linear regime of the data. However in Table 1 we present the results of the fitting using both, 100% and 80% of the data. The fitting was performed using variable mass bins which individually contain 1% of the total amount of data and shows that the spatially-resolved SFMS relation holds in general, as a linear relation. Uncertainties in this plot are not shown, but were

Coefficient	SFMS		Spatially-Resolved SFMS	Spatially-Resolved SFMS
		RGS	100% of the data	80% of the data
Pearson Correlation Coeff. (ρ)	0.84	0.85	0.61	0.63
ρ 99% Confidence Interval	(0.76, 0.89)	(0.77, 0.90)	(0.60, 0.61)	(0.62, 0.63)
Slope	0.81±0.02	0.86±0.02	0.68±0.04	0.72±0.04
Zero Point	-8.34±0.19*	-10.32±0.24*	-7.63±0.34 [†]	-7.95±0.29 [†]
Standard Deviation (σ)	0.20	0.22	0.23	0.16

Table 1

Relevant intrinsic coefficients of the integrated SFMS and RGS relations and of the spatially-resolved SFMS relation, as well as those derived by a linear regression procedure to each of them. The σ value is the deviation about the fitting. *Units: [$\log(M_\odot \text{ yr}^{-1})$]. [†]Units: [$\log(M_\odot \text{ yr}^{-1} \text{ Kpc}^{-2})$]

taken into account in the computation of the linear fitting and are reflected in the errors of the slope and zero point of the correlation.

The spatially-resolved SFMS proves to be a tight correlation, as the standard deviation (σ) is quite small $\sigma = 0.23$ dex, comparable to the value obtained for the integrated relation, in this work and previous independent studies (see for example: D07, S14, S15).

5. DISCUSSION

In Section 4.1 we explored the tight correlation between the SFR (inferred from $H\alpha$ luminosity) and the total M_* for star-forming (SFMS) and retired (RGS) galaxies, in logarithmic scales. In the case of the integrated SFMS the slope and zero point (See Table 1) are in good agreement with the previously reported values. Even if the range of variation of reported slopes and zero points in the literature may be as large as ~ 0.4 –1 for the slope and $\sim -(4$ –10) for the zero points for local galaxies (S14), many recent works tend to constrain these values to smaller ranges, such as 0.71–0.77 and $-(6.78$ –7.64) (Zahid et al. 2012; Elbaz et al. 2007, RP15). Even more, published dispersions of this relation (~ 0.2 – 0.35 dex), are in good agreement with the dispersion found with our data (0.20 dex).

In section 4.2 we presented the spatially-resolved SFMS relation. The observed correlation holds on kpc scales, and is consistent with the slope of 0.66 ± 0.18 reported by Sánchez et al. (2013) for HII regions. Comparing the integrated and the spatially-resolved relations, our results (summarised in Table 1) indicate that not only the slopes, but also the intrinsic scatter, are roughly of the same order in both relations.

We explored the local relation in different M_* bins, finding that it has no dependence with this parameter. We fitted linear correlations to each mass bin relation, and used a 2D Kolmogorov-Smirnov test to verify that the spatially-resolved SFMS present the same distribution irrespective of the mass of the host galaxy, however we will explore this in more detail in further works. We also explored the possible effects in the local SFMS determination, relaxing our criteria to select the SF regions by allowing the regions laying below the KL and whose EW($H\alpha$) are < 3 to be considered also as SF regions. From this test we found that for both relations, using the 100% and 80% of the data the slope vary just ~ 0.04 dex, i.e. it has a little impact in our results.

From a physical point of view, we know that SF is a local process, and therefore it is not unreasonable that the scaling relations governing it are local as well. The fact that the SFMS relation remains as a tight linear correlation on kpc scales suggests that the conversion of gas into stars is mainly driven by local rather than global processes.

A local SFMS could only be derived from the global

one if the spatial distribution of both the μSFR and Σ_* followed similar patterns in all galaxies. Given the variations in the shape and normalization of these observed profiles (e.g. González Delgado et al. 2015, González Delgado et al., in preparation), it seems rather fine-tuned that a mechanism acting on the scale of the whole galaxy affects both surface densities exactly in the way required to yield a universal relation on resolved scales without a local process being involved.

To recover the global relation from the local one we just need to integrate the resolved quantities across the whole area of the galaxy. In terms of the stellar mass surface density Σ_h at the half-light radius R_h , the total stellar mass should roughly scale as $M_* \propto \Sigma_h R_h^2$. If the star formation surface density fulfils $\mu_{\text{SFR}} \propto \Sigma_*^\gamma$ at every point (i.e. a local SFMS with logarithmic slope γ), one obtains the integrated relation $\psi \propto \Sigma_h^\gamma R_h^2 = \Sigma_h^{\gamma-1} M_*$. Since $\Sigma_h \propto M_*^\beta$ with $\beta \sim 0.5$ (e.g. Kauffmann et al. 2003; González Delgado et al. 2015), the logarithmic slope of the integrated SFMS would be

$$\alpha = 1 + (\gamma - 1)\beta \sim 1 - 0.3 \times 0.5 = 0.85 \quad (1)$$

if it was a consequence of the local relation. If equation (1) holds, $\alpha - \gamma = (1 - \beta)(1 - \gamma) > 0$ implies that the integrated SFMS should be slightly steeper than the local relation, in rough agreement with the results reported in Table 1.

It must be noted, though, that this prediction is only valid if $M_* \propto \Sigma_h R_h^2$, which is merely a first-order approximation. Moreover, the measured value of the logarithmic slope α is rather sensitive to the sample selection criteria (inclination, EW threshold, etc.), and we have to keep in mind that the galaxies used in the integrated relation, even if they were selected for being dominated by the SF activity, may contain local zones that are not star-forming.

6. CONCLUSIONS

We report the spatially-resolved SFMS relation using IFS data from the CALIFA survey, that holds for kpc scales. Our sample consist of galaxies of mixed morphological types, and masses that extend to three orders of magnitude. M_* have been derived from stellar population fits to optical spectra and SFRs have been inferred from the extinction-corrected intensity of the $H\alpha$ emission line

For an integrated SFR vs. M_* plot we identified two main sequences, one accounts for the RGS and the other for the SFMS itself, for this last one we report a slope of 0.81 ± 0.02 and a dispersion of 0.20 dex. For the star-forming areas in each galaxy, irrespectively of their integrated properties, we find a correlation between the μSFR and the Σ_* that is as tight as the integrated one, and that seems to be the fundamental relation from which the global one is derived. For the local SFMS we found a slope of 0.72 ± 0.04 and a dispersion of 0.23 dex.

In future articles we will explore the possible dependance of this relation with other properties of the galaxies, like morphology, color, environment, etc., as well as the derivation of the spatially-resolved RGS

Acknowledgements: The referee, E. Pérez and R. Cid Fernandes for their comments. Financial support: MCD and SFS: DGAPA-UNAM funding; CONACyT-180125 and PAPIIT IA-100815 projects. ZS: EU Marie Curie Career Integration Grant "SteMaGE" PCIG12-GA-2012-326466. YA: RyC-2011-09461 and AYA2013-47742-C4-3-P projects from the Spanish MINECO and the SELGIFS programme, funded by the EU (FP7-PEOPLE-2013-IRSES-612701). CJW: Marie Curie Career Integration Grant 303912. RMGD: AyA2014-57490-P and JA P12-FQM2828 grants. JFB: AYA2013-48226-C3-1-P from the Spanish MINECO grant. LG: Millennium Science Initiative through grant IC120009, and by CONICYT through FONDECYT grant 3140566.

REFERENCES

- Baldwin, J. A., Phillips, M. M., & Terlevich, R. 1981, *PASP*, 93, 5
 Brinchmann, J., Charlot, S., White, et al. 2004, *MNRAS*, 351, 1151
 Cardelli, J. A., Clayton, G. C., & Mathis, J. S. 1989, *ApJ*, 345, 245
 Casado, J., Ascasibar, Y., Gavilán, M., et al. 2015, *MNRAS*, 451, 888
 Catalán-Torrecilla, C., Gil de Paz, A., et al. 2015, arXiv:1507.03801
 Cid Fernandes, R., Pérez, E., García Benito, R., et al. 2013, *A&A*, 557, A86
 Cid Fernandes, R., Stasińska, et al. 2011, *MNRAS*, 413, 1687
 Daddi, E., Dickinson, M., Morrison, G., et al. 2007, *ApJ*, 670, 156
 Davé, R., Oppenheimer, B. D., & Finlator, K. 2011, *MNRAS*, 415, 11
 Elbaz, D., Daddi, E., Le Borgne, D., et al. 2007, *A&A*, 468, 33
 García-Benito, R., Zibetti, S., Sánchez, S. F., et al. 2015, *A&A*, 576, A135
 González Delgado, R. M., & Pérez, E. 1997, *ApJS*, 108, 199
 González Delgado, R. M., Cid Fernandes, R., et al. 2014, *ApJ*, 791, L16
 González Delgado, R. M., García-Benito, R., et al. 2015, *A&A*, 581, A103
 Katsianis, A., Tescari, E., & Wyithe, J. S. B. 2015, arXiv:1508.01615
 Kauffmann, G., Heckman, T. M., et al. 2003, *MNRAS*, 341, 54
 Kelz, A., Verheijen, M. A. W., Roth, M. M., et al. 2006, *PASP*, 118, 129
 Kennicutt, R. C., Jr. 1998, *ARA&A*, 36, 189
 Kewley, L. J., Dopita, M. A., Sutherland, R. S., et al. 2001, *ApJ*, 556, 121
 Peng, Y.-j., Lilly, S. J., Kovač, K., et al. 2010, *ApJ*, 721, 193
 Pérez, E., Cid Fernandes, R., et al. 2013, *ApJ*, 764, L1
 Renzini, A., & Peng, Y.-j. 2015, *ApJ*, 801, L29
 Roth, M. M., Kelz, A., Fechner, T., et al. 2005, *PASP*, 117, 620
 Salim, S., Rich, R. M., Charlot, S., et al. 2007, *ApJS*, 173, 267
 Sánchez, S. F., Kennicutt, R. C., Gil de Paz, A., et al. 2012, *A&A*, 538, AA8
 Sánchez, S. F., Rosales-Ortega, F. F., et al. 2013, *A&A*, 554, A58
 Sánchez, S. F., Rosales-Ortega, F. F., et al. 2014, *A&A*, 563, A49
 Sánchez, S. F., Pérez, E., et al. 2015, arXiv:1509.08552
 Sánchez, S. F., Pérez, E., et al. 2016, arXiv:1602.01830
 Sparre, M., Hayward, C. C., Springel, V., et al. 2015, *MNRAS*, 447, 3548
 Speagle, J. S., Steinhardt, C. L., et al. 2014, *ApJS*, 214, 15
 Torrey, P., Vogelsberger, M., Genel, S., et al. 2014, *MNRAS*, 438, 1985
 Walcher, C. J., Wisotzki, L., Bekeraité, S., et al. 2014, *A&A*, 537, A1
 Zahid, H. J., Dima, G. I., Kewley, L. J., et al. 2012, *ApJ*, 757, 54