



|                                  |   |
|----------------------------------|---|
| <b>Publication Year</b>          | 2016  |
| <b>Acceptance in OA</b>          | 2020-05-20T09:45:50Z  |
| <b>Title</b>                     | High-resolution Very Large Array observations of 18 MIPS GAL bubbles  |
| <b>Authors</b>                   | INGALLINERA, Adriano, UMANA, Grazia Maria Gloria, Cavallaro, Francesco, Agliozzo, C., RIGGI, Simone, Flagey, N., Silva, K., Cerrigone, L., Cavallaro, F., TRIGILIO, CORRADO, LETO, PAOLO, BUEMI, CARLA SIMONA, BUFANO, FILOMENA |
| <b>Publisher's version (DOI)</b> | 10.1093/mnras/stw2053   |
| <b>Handle</b>                    | <a href="http://hdl.handle.net/20.500.12386/24989">http://hdl.handle.net/20.500.12386/24989</a>   |
| <b>Journal</b>                   | MONTHLY NOTICES OF THE ROYAL ASTRONOMICAL SOCIETY   |
| <b>Volume</b>                    | 463   |

# High-resolution Very Large Array observations of 18 MIPS GAL bubbles

A. Ingallinera,<sup>1</sup>★ C. Trigilio,<sup>1</sup> P. Leto,<sup>1</sup> G. Umana,<sup>1</sup> C. Buemi,<sup>1</sup> F. Bufano,<sup>1</sup>  
C. Agliozzo,<sup>2,3</sup> S. Riggi,<sup>1</sup> N. Flagey,<sup>4</sup> K. Silva,<sup>4,5</sup> L. Cerrigone<sup>6</sup> and F. Cavallaro<sup>1,7,8</sup>

<sup>1</sup>INAF – Osservatorio Astrofisico di Catania, Via Santa Sofia 78, I-95123 Catania, Italy

<sup>2</sup>Millennium Institute of Astrophysics, 7591245 Santiago, Chile

<sup>3</sup>Universidad Andrés Bello, Avda. Republica 252, 8320000 Santiago, Chile

<sup>4</sup>Canada–France–Hawaii Telescope Corporation, 65-1238 Mamalahoa Hwy, Kamuela, HI 96743, USA

<sup>5</sup>Physics and Astronomy Department, University of Hawaii Hilo, Hilo, HI 96720, USA

<sup>6</sup>ASTRON, the Netherlands Institute for Radioastronomy, PO Box 2, NL-7990 AA Dwingeloo, the Netherlands

<sup>7</sup>Università di Catania, Dipartimento di Fisica e Astronomia, Via Santa Sofia, 64, I-95123 Catania, Italy

<sup>8</sup>CSIRO Astronomy and Space Science, PO Box 76, Epping, NSW 1710, Australia

Accepted 2016 August 12. Received 2016 August 12; in original form 2016 June 4

## ABSTRACT

We present radio observations of 18 MIPS GAL bubbles performed at 5 GHz (6 cm) with the Karl G. Jansky Very Large Array in configuration B and BnA. The observations were aimed at understanding what kind of information high-resolution and high-sensitivity radio maps can supply on the circum-stellar envelopes of different kinds of evolved stars and what their comparison with infrared images with similar resolution can tell us. We found that the 18 bubbles can be grouped into five categories according to their radio morphology. The three bubbles presenting a central point source in the radio images all correspond to luminous blue variable star candidates. 11 bubbles show an elliptical shape and the total lack of a central object in the radio, and are likely associated with planetary nebulae. Under this assumption, we derive their distance, their ionized mass and their distribution on the Galactic plane. We discuss the possibility that the MIPS GAL bubbles catalogue (428 objects) may contain a large fraction of all Galactic planetary nebulae located at a distance between 1.4 kpc and 6.9 kpc and lying in the MIPS GAL field of view. Among the remaining bubbles, we identify also an H II region and a proto-planetary nebula candidate.

**Key words:** stars: evolution – stars: massive – planetary nebulae: general – radio continuum: stars.

## 1 INTRODUCTION

The *Spitzer Space Telescope* is permitting a great improvement of the knowledge on the celestial objects populating our Galaxy. Different surveys and targeted observations have allowed astronomers to observe through the Galactic dust, which prevents observations at shorter wavelengths, and many unknown sources have been unveiled. Thanks to the MIPS GAL Legacy Survey<sup>1</sup> (Carey et al. 2009), conducted with MIPS (The Multiband Imaging Photometer for *Spitzer*; Rieke et al. 2004), Mizuno et al. (2010) identified at 24  $\mu\text{m}$  428 roundish objects presenting diffuse emission. These small ( $\lesssim 1$  arcsec) rings, discs or shells (hereafter denoted as ‘bubbles’) are pervasive throughout the entire Galactic plane in the mid-infrared (IR). The main hypothesis about the nature of the bubbles is that they are different types of evolved stars. In fact, follow-up studies have found among them planetary nebulae (PNe), supernova

remnants, Wolf–Rayet (WR) stars, luminous blue-variable (LBV) stars, asymptotic giant branch (AGB) stars, and so on (see Nowak et al. 2014, for a review). However, currently, only about 30 per cent of the bubbles are classified. The discovery potential and the implications on the Galactic physics are huge both for high- and low-mass evolved stars.

Massive stars play a pivotal role in the evolution of their host galaxies. They are among the major contributors to the interstellar ultraviolet (UV) radiation and, via their strong stellar winds and final explosion, provide enrichment of processed material (gas and dust) and mechanical energy to the interstellar medium, strongly influencing subsequent local star formation. The details of post-main sequence (MS) evolution of massive stars are still poorly understood. Increasing the sample of these stars is fundamental to better constrain evolutionary model parameters. On the other hand, the bubbles catalogue is the right place where to find new PNe. Currently, only about 15 per cent of the expected Galactic PNe have been observed (Sabin et al. 2014). This difference is usually explained in terms of strong interstellar extinction in the Galactic plane.

\*E-mail: [ingallinera@oact.inaf.it](mailto:ingallinera@oact.inaf.it)

<sup>1</sup> <http://mipsgal.ipac.caltech.edu/>

**Table 1.** Observation summary. Flux densities are taken from [Paper I](#).

| [MGE]            | $\alpha$<br>(J2000) | $\delta$<br>(J2000) | Config. | Obs. time<br>(min) | Flux density<br>at 6 cm (mJy) | Classification  |
|------------------|---------------------|---------------------|---------|--------------------|-------------------------------|---|
| 002.2128–01.6131 | 17: 57: 03.9        | –27° 51′ 30″        | BnA     | 20                 | 1.6 ± 0.1                     |   |
| 005.2641+00.3775 | 17: 56: 13.4        | –24° 13′ 13″        | BnA     | 10                 | 9.0 ± 0.2                     |   |
| 005.6102–01.1516 | 18: 02: 48.4        | –24° 40′ 54″        | BnA     | 10                 | 38.1 ± 0.8                    |   |
| 008.9409+00.2532 | 18: 04: 36.3        | –21° 05′ 26″        | BnA     | 10                 | 8.2 ± 0.4                     |   |
| 009.3523+00.4733 | 18: 04: 38.9        | –20° 37′ 27″        | BnA     | 10                 | 17.7 ± 0.7                    | PN <sup>a</sup>   |
| 016.2280–00.3680 | 18: 21: 36.9        | –14° 59′ 41″        | B       | 8                  | 10.3 ± 0.6                    | PN? <sup>b</sup>  |
| 027.3839–00.3031 | 18: 42: 22.5        | –05° 04′ 29″        | B       | 8.5                | 18.1 ± 0.5                    |   |
| 028.7440+00.7076 | 18: 41: 16.0        | –03° 24′ 11″        | B       | 9                  | 6.4 ± 0.3                     |   |
| 030.1503+00.1237 | 18: 45: 55.2        | –02° 25′ 08″        | B       | 8                  | 22.9 ± 1.5                    | LBV? <sup>c</sup>   |
| 031.7290+00.6993 | 18: 46: 45.2        | –00° 45′ 06″        | B       | 8                  | 12.3 ± 0.1                    | H II region? <sup>b</sup>                                 |
| 032.4982+00.1615 | 18: 50: 04.3        | –00° 18′ 45″        | B       | 8                  | 4.7 ± 0.9                     | O5-6V? <sup>c</sup>                                       |
| 034.8961+00.3018 | 18: 53: 56.8        | 01° 53′ 08″         | B       | 9                  | 17.8 ± 0.4                    |   |
| 042.0787+00.5084 | 19: 06: 24.6        | 08° 22′ 02″         | B       | 8                  | 10.5 ± 0.1                    | LBV? <sup>c</sup>   |
| 042.7665+00.8222 | 19: 06: 33.6        | 09° 07′ 20″         | B       | 8                  | 12.7 ± 0.4                    | WC5-6 <sup>c</sup> ; [WC] <sup>d</sup> ; PN? <sup>e</sup> |
| 352.3117–00.9711 | 17: 29: 58.3        | –35° 56′ 56″        | BnA     | 10                 | 15.5 ± 0.9                    |   |
| 356.1447+00.0550 | 17: 35: 54.5        | –32° 10′ 35″        | BnA     | 10                 | 15.0 ± 0.7                    |   |
| 356.7168–01.7246 | 17: 44: 29.6        | –32° 38′ 11″        | BnA     | 12                 | 5.8 ± 0.1                     |   |
| 356.8155–00.3843 | 17: 39: 21.3        | –31° 50′ 44″        | BnA     | 10                 | 15.1 ± 0.4                    |   |

Notes. References: <sup>a</sup>Pottasch et al. (1988), <sup>b</sup>Anderson et al. (2011), <sup>c</sup>Flagey et al. (2014), <sup>d</sup>Gvaramadze, Kniazev & Fabrika (2010), <sup>e</sup>Clark, Larionov & Arkharov (2005).

In general, many kinds of evolved stars are known to be radio emitters. In the last phases of their life, the stars undergo several periods of enhanced mass-loss, with their external layers ejected to form a circum-stellar envelope (CSE). The now-exposed hot inner part of the star can ionize the CSE and continuum radio emission originates from it. The radio emission is therefore a helpful probe to complement IR observations in classifying the bubbles and deriving their physical properties, being a powerful tool to investigate circum-stellar ionized material. Between 2010 and 2012, we carried out radio continuum observations with the Karl G. Jansky Very Large Array (VLA) at 5 GHz (configuration D) and at 1.4 GHz (configuration C and CnB) of a subset of 55 bubbles (Ingallinera et al. 2014a, hereafter [Paper I](#)). We were able to calculate the radio spectral index ( $\alpha$  defined as  $S \propto \nu^\alpha$ , where  $S$  is the flux density and  $\nu$  the frequency) for 18 of them and to determine an upper limit for 13. We found that at least 70 per cent of them have spectral indices compatible with a thermal emission. Since one of the main goal of [Paper I](#) was to accurately calculate the radio flux densities, we chose VLA-compact configurations to avoid issues from the lack of short-spacing information. The drawback was a poorer resolution with respect to IR images, and morphological comparisons proved impossible. To overcome this problem, in this paper, we present new VLA observations at 5 GHz of 18 bubbles, using the more extended B and BnA configurations. The main goal of this work is to show how high-resolution and high-sensitivity radio images are an extremely powerful tool to discriminate low- and high-mass evolved stars, derive physical properties of PNe, disclose the mutual interaction of massive star ejecta and, in synergy with 8- $\mu$ m images, immediately recognize possible H II regions among the bubbles.

In Section 2, we supply technical details of observations and data reduction, grouping the observed bubbles by their radio morphology. In Sections 3–6, we discuss each morphological category separately. In Section 7, we comment the result obtained on PNe. Summary and conclusions are reported in Section 8.

## 2 OBSERVATIONS AND DATA REDUCTION

### 2.1 Sample selection and observations

In [Paper I](#), we had found that 44 out of 55 bubbles were unambiguously detected at 5 GHz, with sensitivity limits around  $\sim 100 \mu\text{Jy beam}^{-1}$ . For 18 of them, we were able to measure their flux density both at 1.4 and 5 GHz. This was the starting sample for this follow-up work. However, two of them (MGE 040.3704–00.4750 and MGE 031.9075–00.3087) resulted too much extended to be properly imaged with VLA (being more extended than the VLA largest angular scale) and were excluded. Other two bubbles (MGE 034.8961+00.3018 and MGE 027.3839–00.3031), non-detected at 1.4 GHz, were included in the sample. We selected these 18 bubbles for higher resolution 6-cm images. The sample was split in two groups, each one containing nine objects, depending on the source declination. For bubbles with declination above  $-20^\circ$ , we used the VLA in configuration B (baselines from 210 m to 11.1 km), while for the others, we opted for configuration BnA. Our choice was driven by the better imaging performance of VLA hybrid configurations when observing low-declination sources.

The observations were carried out in 2015 March (configuration B) and in 2015 May (configuration BnA). The flux calibrator was, for both groups, 3C286, while different gain calibrators were chosen from the standard VLA calibrators list, selected to be as close as possible to targeted sources. The time on source for the bubbles varied from 8 to 20 min, as reported in [Table 1](#).

We used the C-band receiver with a total bandwidth of 2 GHz, namely from 4 to 6 GHz, in order to have approximately the same central frequency as for the D-configuration observations described in [Paper I](#). We used the pseudo-continuum observing mode with 1024 2 MHz-wide channels, divided in 16 spectral windows, to easily identify and flag possible narrow-spectrum radio-frequency interferences (RFI).

**Table 2.** Image data. Radio morphology: ‘C’ bubbles with a central object; ‘E’ elliptical; ‘F’ filled elliptical.

| [MGE]            | Diameter<br>(arcsec) | Map rms<br>( $\mu\text{Jy beam}^{-1}$ ) | Radio<br>morph. |
|------------------|----------------------|---|-----------------|
| 002.2128–01.6131 | 13                   | 9.0                                     | F               |
| 005.2641+00.3775 | 14                   | 12.4                                    | E               |
| 005.6102–01.1516 | 18                   | 15.8                                    | E               |
| 008.9409+00.2532 | 16                   | 11.8                                    | E               |
| 009.3523+00.4733 | 14                   | 13.7                                    | E               |
| 016.2280–00.3680 | 17                   | 13.7                                    | E               |
| 027.3839–00.3031 | 68                   | 11.0                                    | C               |
| 028.7440+00.7076 | 33                   | 12.2                                    | O               |
| 030.1503+00.1237 | 13                   | 23.7                                    | C               |
| 031.7290+00.6993 | 31                   | 10.1                                    | O               |
| 032.4982+00.1615 | 8                    | 20.0                                    | O               |
| 034.8961+00.3018 | 24                   | 12.5                                    | E               |
| 042.0787+00.5084 | 20                   | 19.5                                    | C               |
| 042.7665+00.8222 | 13                   | 11.8                                    | F               |
| 352.3117–00.9711 | 22                   | 13.6                                    | E               |
| 356.1447+00.0550 | 30                   | 13.4                                    | F               |
| 356.7168–01.7246 | 17                   | 11.3                                    | B               |
| 356.8155–00.3843 | 20                   | 12.1                                    | F               |

## 2.2 Data reduction

A preliminary editing and calibration was applied by the NRAO staff with the *CASA* calibration pipeline version 1.3.1. After a careful check of the pipeline output, we found that the calibration process was performed perfectly, while a further bad data flagging was needed. RFI only slightly affected observations and more than 80 per cent of the data were useful.

A first imaging test was performed for all the bubbles that had not been resolved in Paper I to determine their angular size. The  $uv$  data of bubbles with size greater than the VLA B-configuration largest angular scale ( $\sim 15$  arcsec) were concatenated to the respective visibilities in D-configuration from our previous observations, in order to mitigate flux-loss issues and imaging artefacts. For the remaining bubbles, such a concatenation was not needed and was not performed, since we found that, in general, it increases the background noise. The noise increase is probably due to the higher noise of the D-configuration data and to the fact that we use the ‘natural’ weighting (inner part of the  $uv$  plane weighted more than the outer part). The final imaging process was performed with *CASA* using the task *CLEAN* and the multiscale algorithm (Cornwell 2008). To take into account wide-band effects, we used the multifrequency synthesis algorithm considering the first three terms of the Taylor expansion (Rau & Cornwell 2011). The achieved angular resolution was about 2 arcsec. This algorithm also returned a spectral index map. In Table 2, we report the angular size of each bubble and the rms of the final map.

## 2.3 Radio morphology

The high-resolution radio maps reveal that the 18 bubbles are characterized by different shapes. From a visual morphological analysis, we can group them into five categories. The first category consists of those bubbles with a clear evidence of a central point-like object (category ‘C’ in Table 2, see Fig. 1). The second gathers all those bubbles with an elliptical ring shape and the total lack of a compact central object or diffuse emission towards their centre (category ‘E’ in Table 2, see Fig. 2). A third category, dubbed ‘filled elliptical’, groups those bubbles whose radio morphology is intermediate

between the two previous categories, with diffuse emission towards the centre but without a clear central object (category ‘F’ in Table 2, see Fig. 3). The remaining four bubbles show a morphology clearly different from the three categories introduced above. One of them, MGE 356.7168–01.7246 (second row in Fig. 4), has a bipolar appearance (category ‘B’ in Table 2), while the others (first row in Fig. 4) are somehow peculiar (category ‘O’ in Table 2) and will be discussed individually in Section 6.

## 2.4 Optical and IR data

The classification and characterization of the bubbles presented in this work take advantage of IR and optical archive data. *Spitzer* images were retrieved from the InfraRed Science Archive<sup>2</sup> using the ‘cutout service’ for the surveys Galactic Legacy Infrared Mid-Plane Survey Extraordinaire (GLIMPSE) and MIPS GAL. This service provides processed FITS images for which no further data reduction is needed. Optical FITS images (H  $\alpha$  and *r* filters) were retrieved from the SuperCOSMOS H-alpha Survey (SHS; Parker et al. 2005; Frew et al. 2014) website.<sup>3</sup> Optical and IR magnitudes from 2MASS,<sup>4</sup> UKIDSS<sup>5</sup> and IPHAS<sup>6</sup> catalogues were taken from the VizieR catalogue access tool.<sup>7</sup>

## 3 BUBBLES WITH A CENTRAL OBJECT

The bubbles with a prominent central object at 24  $\mu\text{m}$  ( $\sim 15$  per cent of the total) are by far the most studied. Near- and mid-IR spectroscopy of the central object is able to impose strong constraints on the nature of the source. These bubbles have been found to be mostly evolved massive stars, mainly LBV candidates, O stars and WR stars, but also late-type giants (Gvaramadze et al. 2010; Wachter et al. 2010; Flagey et al. 2014; Nowak et al. 2014). At shorter wavelengths, the CSE becomes fainter and only seldom is observed at 8  $\mu\text{m}$  (Mizuno et al. 2010). The central object is instead usually detected at wavelengths as short as 1  $\mu\text{m}$  or less, which makes near-IR spectroscopy possible.

Among the bubbles observed in this work, three show a well-detected point-like central object in the radio (Fig. 1). The central object is also detected at 24  $\mu\text{m}$  and in IRAC bands. In Fig. 5, we show the superposition between the radio contours and the 24 (top row) and 8- $\mu\text{m}$  (bottom row) images. The CSE morphology needs further attention. At 8  $\mu\text{m}$ , we are able to detect only the CSE of MGE 030.1503+00.1237 (bottom centre in Fig. 5), which shows a ring structure slightly less extended than in the radio. At 24  $\mu\text{m}$ , the central object dominates the emission of MGE 030.1503+00.1237 (top centre in Fig. 5), while for the other two bubbles, it has approximately the same brightness of the ring-shaped CSEs. It is interesting to note that while for MGE 042.0787+00.5084 and MGE 030.1503+00.1237, the radio is co-spatial with the 24- $\mu\text{m}$  emission, this is not the case for MGE 027.3839–00.3031, where the radio nebula seems unrelated to IR.

From near-IR spectroscopy, Flagey et al. (2014) proposed MGE 042.0787+00.5084 and MGE 030.1503+00.1237 as LBV candidates. Ongoing spectroscopic studies on MGE 027.3839–00.3031

<sup>2</sup> <http://irsa.ipac.caltech.edu>

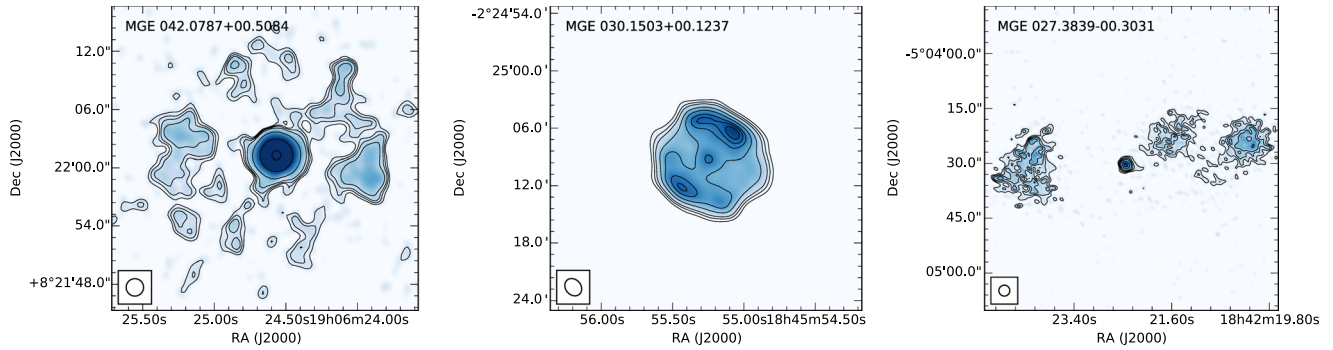
<sup>3</sup> <http://www-wfau.roe.ac.uk/sss/halpha/>

<sup>4</sup> The 2-Micron All-Sky Survey (Skrutskie et al. 2006).

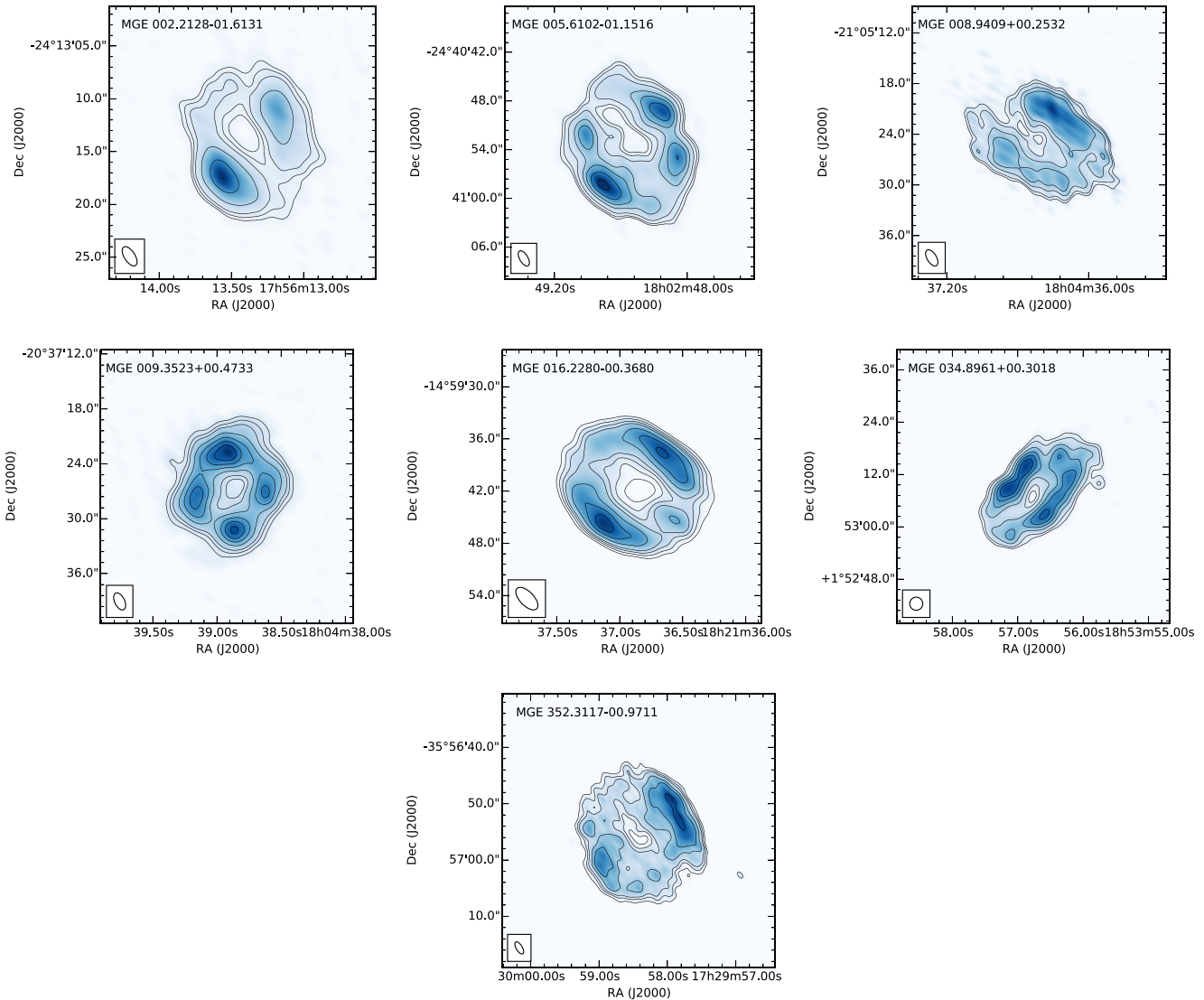
<sup>5</sup> UKIDSS-DR6 Galactic Plane Survey (Lucas et al. 2008).

<sup>6</sup> The INT Photometric H  $\alpha$  Survey of the Northern Galactic Plane (Drew et al. 2005).

<sup>7</sup> <http://vizier.u-strasbg.fr/viz-bin/VizieR-4>



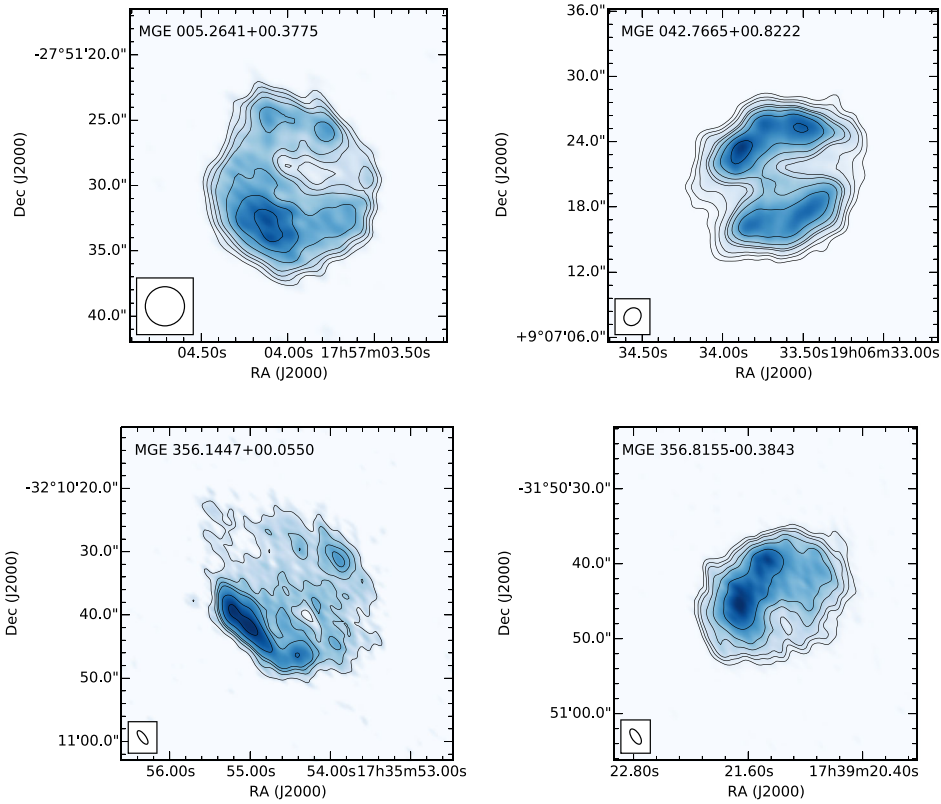
**Figure 1.** 6-cm images of the bubbles with central object (morphology ‘C’ of Table 2). From left to right: MGE 042.0787+00.5084, MGE 030.1503+00.1237 and MGE 027.3839–00.3031.



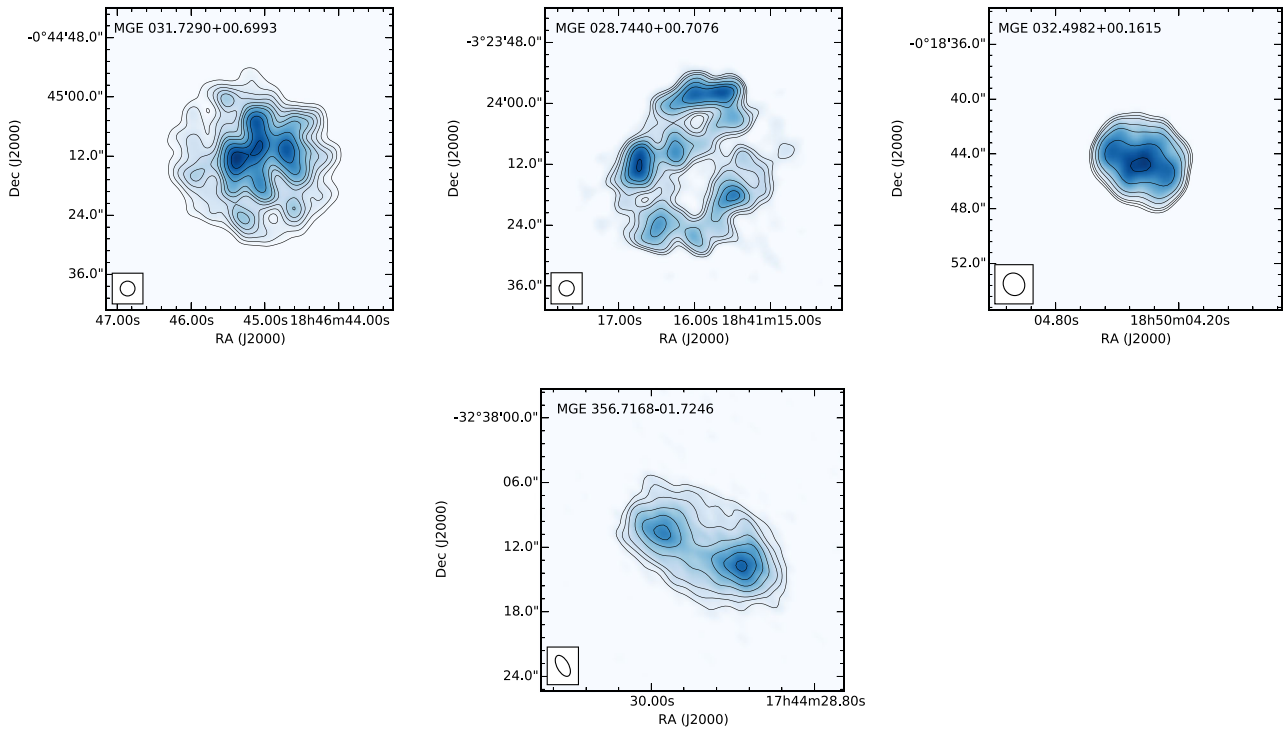
**Figure 2.** 6-cm images of the ‘elliptical’ bubbles (morphology ‘E’ of Table 2). From left to right: (row 1) MGE 002.2128–01.6131, MGE 005.6102–01.1516, MGE 008.9409+00.2532; (row 2) MGE 009.3523+00.4733, MGE 016.2280–00.3680, MGE 034.8961+00.3018; (row 3) MGE 352.3117–00.9711.

seem to support the same hypothesis (Silva et al., submitted). Radio continuum emission is observed in different classes of massive evolved stars, not only in hot stars like LBVs and WR stars, but also in cool red supergiants and yellow hypergiants (when they are in

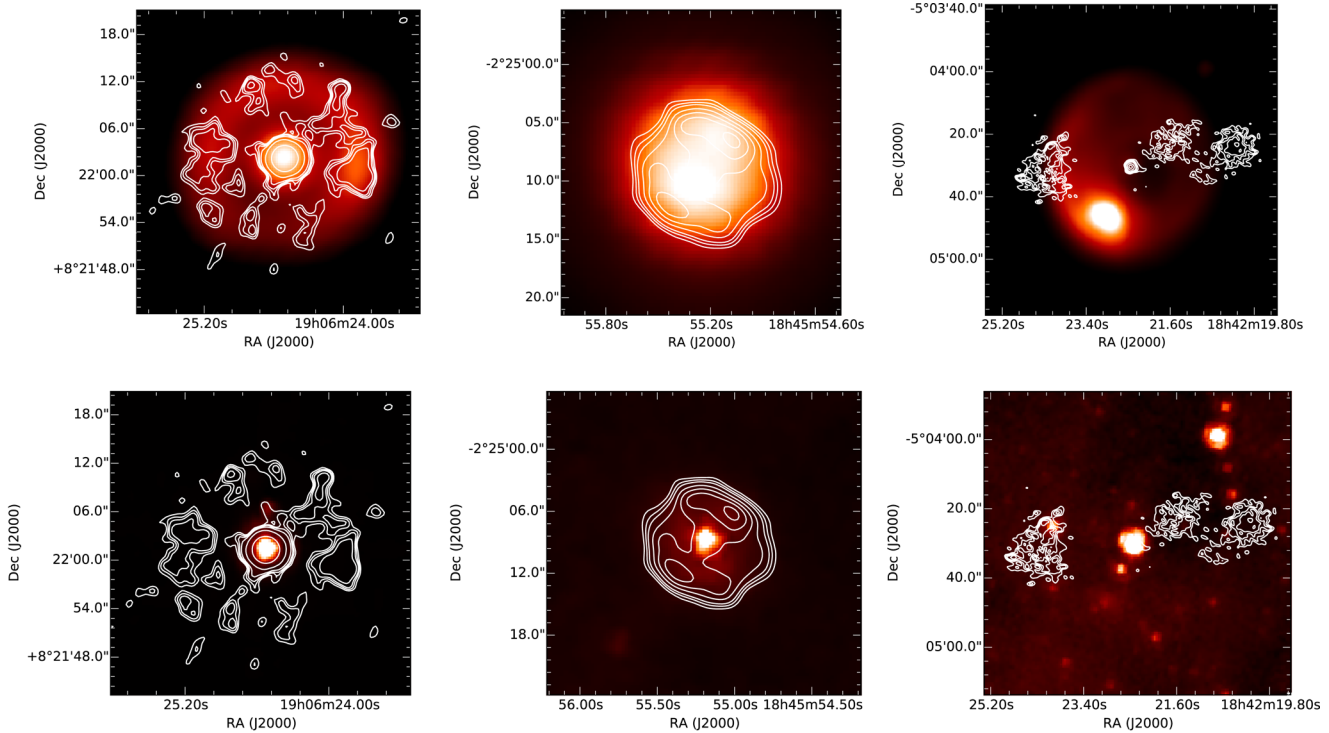
binary systems with a hot companion; Dougherty et al. 2010). Our high-resolution radio images show that at 6 cm, these bubbles appear as a point source surrounded by a circular or a bipolar nebula. These images are in agreement with the hot massive evolved star



**Figure 3.** 6-cm images of the ‘filled elliptical’ bubbles (morphology ‘F’ of Table 2). From left to right: (row 1) MGE 005.2641+00.3775, MGE 042.7665+00.8222; (row 2) MGE 356.1447+00.0550, MGE 356.8155–00.3843.



**Figure 4.** 6-cm images of the bubbles MGE 031.7290+00.6993, MGE 028.7440+00.7076 and MGE 032.4982+00.1615 (row 1, from left to right; morphology ‘O’ of Table 2); (row 2) MGE 356.7168–01.7246 (morphology ‘B’ of Table 2).



**Figure 5.** Superposition of 6-cm contours on 24 (top) and 8- $\mu\text{m}$  (bottom) images for the bubbles (from left to right) MGE 042.0787+00.5084, MGE 030.1503+00.1237, MGE 027.3839-00.3031.

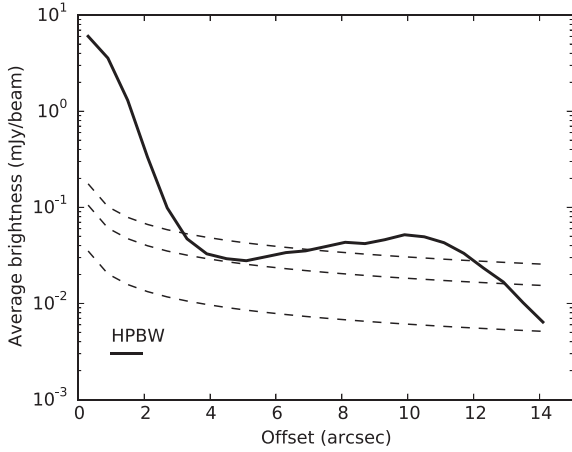
scenario. In this case, we expect that the radio emission originates from both the central object and from its CSE. The emission from the central object is mainly due to the stellar wind, a peculiar characteristic of the last stages of massive star evolution. The emission of the CSE derives from the ionization of the gas ejected by the star in previous moments. The shape of the radio nebula is greatly variable, with example of LBVs showing ring nebulae (Umana et al. 2011; Agliozzo et al. 2014) or bipolar nebulae (Umana et al. 2012).

For MGE 042.0787+00.5084 and MGE 030.1503+00.1237, the radio spectral energy distribution (SED) reported in Paper I is approximately flat, with spectral index values of 0.02 and 0.05, respectively. For MGE 027.3839-00.3031, we have only a lower limit of 0.9. At centimetre and millimetre wavelengths, the presence of a stellar wind translates into a positive spectral index, typically around 0.6 for steady winds with a spherical electron density distribution scaling as the inverse of squared distance from the star (Panagia & Felli 1975). The total radio emission of these sources is therefore reasonably the sum of different components, each of them characterized by a different value of the spectral index. The rarity of these stars and the limitation of instruments, both in resolution and in sensitivity, have prevented the possibility of studying the spectral index variation within the source, except for very few cases. The result is that, in general, these sources have been characterized only by an average spectral index, that could have hidden underlying poorly studied phenomena. In recent years, it has been pointed out that many WR stars do show a component of non-thermal emission. For example, Chapman et al. (1999) found that six out of nine WR stars exhibit a global spectral index around  $-0.6$ , typical of synchrotron emission. Further studies (see Walder, Folini & Meynet 2012, for a review) demonstrated that, in many cases, the non-thermal component arises from the collision of the winds of the WR star and of a companion massive star. In single WR stars, the possibility of synchrotron emission arising from the interaction

between the stellar wind and the CSE has been discussed as possible, but not observed yet (Cohen et al. 2006). It is disputed whether this synchrotron emission can be really observed in single WR stars (Blomme et al. 2010; van Loo 2010). An analogous process was suggested by Cohen et al. (2006) to explain the non-thermal radio emission from the very young PN V1018 Sco. In this case, the authors did not detect the central source but only spots of synchrotron radiation towards the edge of the optical nebula. In another work (Buemi et al., in preparation), we are showing that the LBV star HR Car presents a differentiated spectral index too, with synchrotron-like values towards the edge. Very similar results are also found for the LBV candidates G26.47+0.02 (Paron et al. 2012), where a spectral index  $\sim -0.9$  is found for the extended emission. In the next subsections, we exploit the high resolution and sensitivity of our radio data to study, in detail, the radio emission of these three bubbles, highlighting possible spectral index variations and their implications on the physics of these objects.

### 3.1 MGE 042.0787+00.5084

Spectral analysis of the central object in the near- and mid-IR showed that it has to be classified as a Be/B[e]/LBV star (Wachter et al. 2010; Flagey et al. 2014), so the star was proposed as an LBV candidate. This hypothesis is corroborated by the  $H\alpha$  excess ( $r - H\alpha = 1.77 \pm 0.03$ ), calculated from the IPHAS DR2 Source Catalogue (Barentsen et al. 2014). At radio wavelengths, this bubble is characterized by a central source with a flux density at 6 cm of  $7.0 \pm 0.2$  mJy, calculated with a Gaussian fit. The flux density of the whole source reported in Paper I was  $10.5 \pm 0.1$  mJy, so we can estimate a total flux density of  $3.5 \pm 0.1$  mJy for the CSE. In the radio, the CSE shows limb brightening, likely due to a spherical shell nature, and its brightness, especially in the inner part, is only slightly above the background noise. In order to highlight

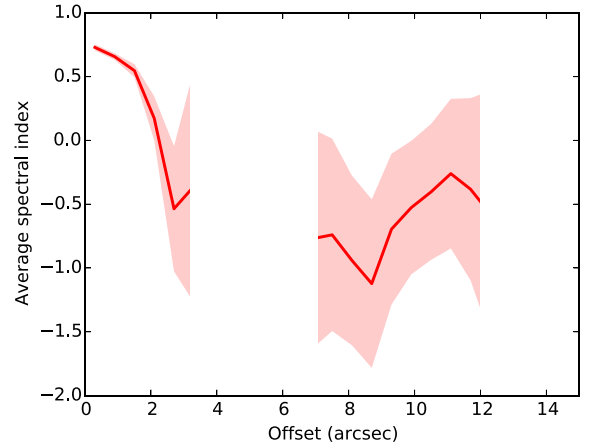


**Figure 6.** Radial profile at 6 cm of MGE 042.0787+00.5084. The solid line represents the average brightness, while the dashed lines are its error at, respectively, 1, 3 and 5 $\sigma$  level. The black rule on the bottom-left corner is the half-power beam width (HPBW), reported to highlight that the profile of the central object is compatible with a point source.

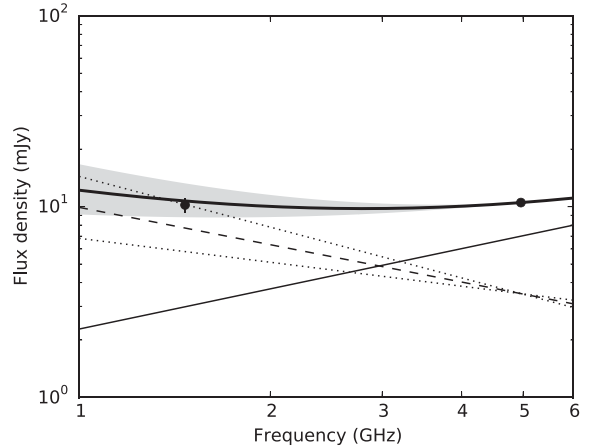
the faintest details of the bubble, we built its radial profile starting from a map obtained by concatenating the B- and D-configuration data sets, with an rms of 19.5  $\mu\text{Jy beam}^{-1}$  and an imposed circular restoring beam of 1.8 arcsec full width at half-maximum. In particular, we calculated the mean brightness of a series of circular annuli, centred on the central object, with a constant thick of 0.6 arcsec. The choice of a circular beam prevented the introduction of systematic errors deriving from the beam elliptical shape. To take into account fractional pixels, we stretched the map by a factor of 10 in both directions. The error associated with each computed mean brightness was estimated dividing the map rms by the square root of the number of independent beams per each annulus. The radial profile obtained is reported in Fig. 6. Apart from the central source, it is possible to clearly distinguish the limb brightening of the CSE, culminating at a distance  $r \sim 11$  arcsec. Though very faint, the inner part of the nebula is still above the 3 $\sigma$  level in this integrated view. As expected, the spectral index map, returned by CASA, was too noisy towards the CSE. To estimate the spectral index variation across the bubble, we used the same method of the radial profile described above, applied to the spectral index map, masked below 3 $\sigma$ . The error on spectral index was calculated as

$$\Delta\alpha(r) = \left( \left( \frac{\sqrt{2}}{\frac{I(r)}{\Delta I(r)} \ln \frac{\nu_{\max}}{\nu_{\min}}} \right)^2 + (\sigma_{\alpha}(r))^2 \right)^{1/2}, \quad (1)$$

where  $I(r)$  and  $\Delta I(r)$  are the brightness radial profile and its error as derived above,  $\nu_{\min} = 4.2$  GHz and  $\nu_{\max} = 6$  GHz are the boundary frequencies of the net bandwidth (i.e. after flagging operations) and  $\sigma_{\alpha}(r)$  is the standard deviation of the spectral index values inside the annulus at the distance  $r$ . The first term of the equation (1) is obtained by error propagation, assuming that the signal-to-noise ratio is constant across the entire bandwidth. In Fig. 7, we show the spectral index profile. The central object has a spectral index  $\alpha_{\text{cob}} = 0.70 \pm 0.03$ , perfectly compatible with a stellar wind, likely with a mean electron density decreasing more rapidly than  $r^{-2}$  (Panagia & Felli 1975). The spectral index of the most statistically significant part of the CSE ( $I(r)/\Delta I(r) > 5$ ), from  $r \sim 7$ –12 arcsec, varies between  $-0.25$  and  $-1.10$  with a mean value of  $-0.65$ . Despite a quite large error ( $\Delta\alpha \sim 0.6$ ), this is a significant clue of non-thermal



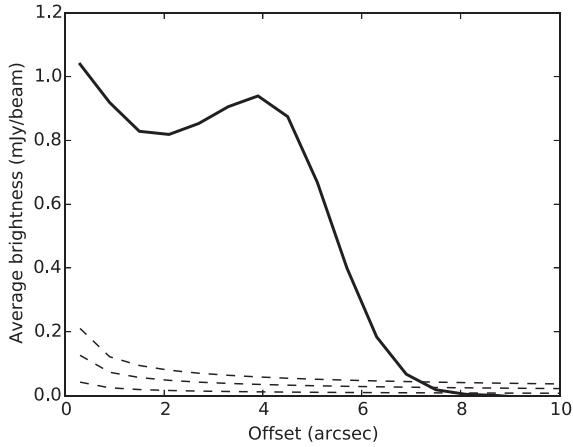
**Figure 7.** Radial profile of the spectral index of MGE 042.0787+00.5084. The solid line represents the average spectral index, while the shaded area its error. The plot is masked where  $I(r)/\Delta I(r) < 5$ .



**Figure 8.** SED of MGE 042.0787+00.5084, highlighting the contributions of the central object and of the CSE. The solid thin line is the SED of the central object, extrapolated from the measured flux at 4.959 GHz with a spectral index of  $\alpha_{\text{cob}} = 0.7$ . The dashed line is the SED of the CSE, considering a spectral index  $\alpha_{\text{neb}} = -0.65$ , with the dotted line representing the same SED but with spectral indices  $-0.42$  and  $-0.88$  (these limits are obtained from  $-0.65 \pm 0.23$ , where 0.23 is the error on  $\alpha_{\text{neb}}$  as calculated in the text). The thick line is the sum of the two SEDs, representing therefore the total flux density of the bubble, with the shaded area representing the uncertainties of  $\alpha_{\text{neb}}$ . The two solid circles are the flux density values reported in Paper I. The thick line passes through the 4.959 GHz point by construction, while it is possible to appreciate how the 1.468-GHz point lies inside the shaded area (best fit with  $\alpha_{\text{neb}} \sim -0.6$ ).

emission, which implies that an electron acceleration mechanism is taking place in the outer part of the CSE. The error on this mean value across the entire CSE can be calculated dividing the average  $\Delta\alpha$  by the square root of the number of points of the CSE for which  $I(r)/\Delta I(r) > 5$  and it results to be 0.23.

Once the flux densities of the central object and of the CSE were determined, we extrapolated these values towards low frequencies, to check if the independent 20-cm flux density value reported in Paper I is consistent with our model. In Fig. 8, we report the inferred SED of the bubble, plotting the two components (central object and CSE) and their sum (i.e. the bubble total flux density). We can see that the flux density measure at 20 cm is consistent, within the errors, with our model.



**Figure 9.** Radial brightness profile of MGE 030.1503+00.1237. The solid line represents the average brightness, while the dashed lines are its error at, respectively, 1, 3 and  $5\sigma$  level.

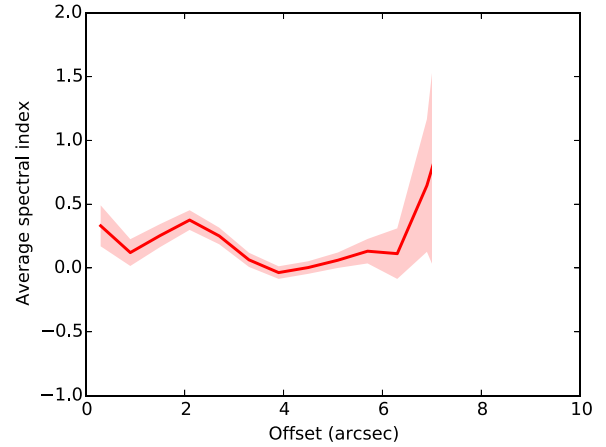
All our calculations on this bubble implicitly assumed that the flux density did not vary significantly between 2010 (6 cm, D configuration), 2012 (20 cm) and 2015 (6 cm, B configuration). Indeed, we are not able to exclude that such a variation could have occurred, because we are supposing that this bubble could be an LBV. In fact, at 6 cm, 2010 data have a poor resolution so we cannot distinguish between the point-like central object and the CSE, while in 2015 data, the CSE is likely resolved out, so the total flux density would be underestimated. However, since dramatic variations would invalidate our model, we are confident that the flux density of this bubble has not varied significantly in the last years.

### 3.2 MGE 030.1503+00.1237

Despite the huge number of observations in near- and mid-IR, the nature of this object is controversial. Lumsden et al. (2013) presented the catalogue of the Red MSX Sources survey searching for massive young stellar objects (MYSO) in our Galaxy. The authors excluded that MGE 030.1503+00.1237 could be a MYSO from near-IR selection criteria and from the high radio flux density at 6 cm (Urquhart et al. 2009). They suggested that Galactic sources with 6-cm flux densities above  $\sim 10$  mJy are likely to be PN or H II regions, since massive stars do not show such flux densities. However, it has been shown that LBVs do show high radio flux densities (e.g. Umana et al. 2012). More recently, near-IR spectroscopy of the central object revealed that it is a Be/B[e]/LBV star (Flagey et al. 2014), but with some uncertainties deriving from its faintness, and the star was proposed as an LBV candidate.

At radio wavelengths, the central object and the edge of the CSE are characterized by approximately the same brightness, in contrast with the previously discussed MGE 042.0787+00.5084 where the central object is dominant. In Fig. 9, we show the radial profile of this bubble, calculated as for MGE 042.0787+00.5084. We can clearly see how the average brightness towards the central object is roughly the same of the CSE edge brightness. We can also see how the inner part of the nebula is much brighter than that of MGE 042.0787+00.5084.

The spectral index does not show significant local departures from the mean value  $0.05 \pm 0.13$  reported in Paper I. In Fig. 10, we report the radial profile calculated as previously described. It is possible to notice that the spectral index varies between 0 and 0.4 for  $r \lesssim 6$  arcsec. The spectral index behaviour does not show a clear



**Figure 10.** Radial profile of the spectral index of MGE 030.1503+00.1237. The solid line represents the average spectral index, while the shaded area its error. The plot is masked where  $I(r)/\Delta I(r) < 5$ .

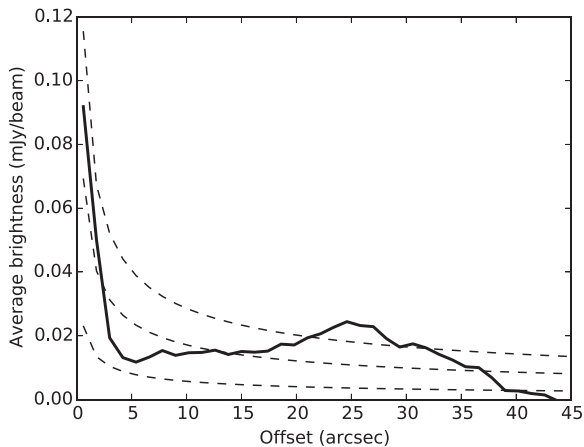
evidence of a stellar wind. However, Flagey et al. (2014) estimate that there is a stellar wind with a terminal velocity of  $200 \text{ km s}^{-1}$ . From the plot in Fig. 9, extrapolating the CSE brightness towards the centre of the bubble, we can estimate the flux density of the central object as  $\sim 0.4$  mJy, with the nebula brightness at the centre of the bubble  $\sim 0.65$  mJy beam $^{-1}$ . This means that a canonical spectral index of a stellar wind (0.6) would only barely affect what we see in Fig. 10, where indeed we can see a minimum hint of a rising spectral index for  $r \rightarrow 0$ . It would have no effect at all to the global spectral index reported in Paper I, given a total 6-cm flux density of  $22.9 \pm 1.5$  mJy.

### 3.3 MGE 027.3839–00.3031

This bubble has received very little attention despite its very peculiar morphology at  $24 \mu\text{m}$ . Gvaramadze et al. (2010) listed this bubble in their catalogue of massive star candidates unveiled by *Spitzer*. They report its ring shape and show that the source is also detected at 20 cm with a similar morphology. Near-IR spectroscopy by Silva et al. (submitted) shows that the central star is very likely an LBV. The star is also detected by 2MASS in *H* and *K* band (with magnitudes  $11.101 \pm 0.036$  and  $8.684 \pm 0.025$ , respectively). From UKIDSS-DR6 Galactic Plane Survey, we found a *J* magnitude of  $14.238 \pm 0.003$ . Both 2MASS and UKIDSS photometries suggest that the star is highly extincted.

The integrated radio flux density of this bubble, as reported in Paper I, is  $18.1 \pm 0.5$  mJy at 6 cm. However, the source has a remarkable angular extension ( $\sim 1$  arcmin in diameter) and then its brightness temperature is very low. The overall radio morphology of this bubble is similar to that of MGE 042.0787+00.5084, with a point-like central object and a faint CSE. However, the central symmetry of its CSE is less evident, and a bipolar shape seems to emerge. Beside a real enhancement of the emission towards these two lobes, it is possible that imaging artefacts greatly affect its appearance. Taking into account this weak symmetry, the radial profile was calculated limiting the area to  $\pm 45^\circ$  from the RA axis, where most of the CSE emission is located. In Fig. 11, we plot the obtained profile.

Though very faint, this bubble shows a profile with a brighter central object and a limb-brightened CSE. For this bubble, it is not possible to derive a reliable spectral index profile. Even for the central object, with a flux density  $\sim 0.12$  mJy (calculated from the



**Figure 11.** Radial brightness profile of MGE 027.3839–00.3031. The solid line represents the average brightness, while the dashed lines are its error at, respectively, 1, 3 and 5 $\sigma$  level.

map using a Gaussian fit), this calculation is difficult. For it, we obtain  $\alpha_{\text{cob}} = 0.9 \pm 1.0$ . This index is still compatible with a stellar wind, but given the extremely high error, this is no more than a hint.

In Paper I, we were not able to detect the source at 20 cm. Indeed, the Galactic Plane Survey image from MAGPIS shows the presence of the nebula at 20 cm, but the bubble is immersed in a very noisy background and a precise flux density measurement is not possible. The morphological similarity with the previous bubbles supports the hypothesis that MGE 027.3839–00.3031 could be an LBV.

#### 4 ELLIPTICAL BUBBLES

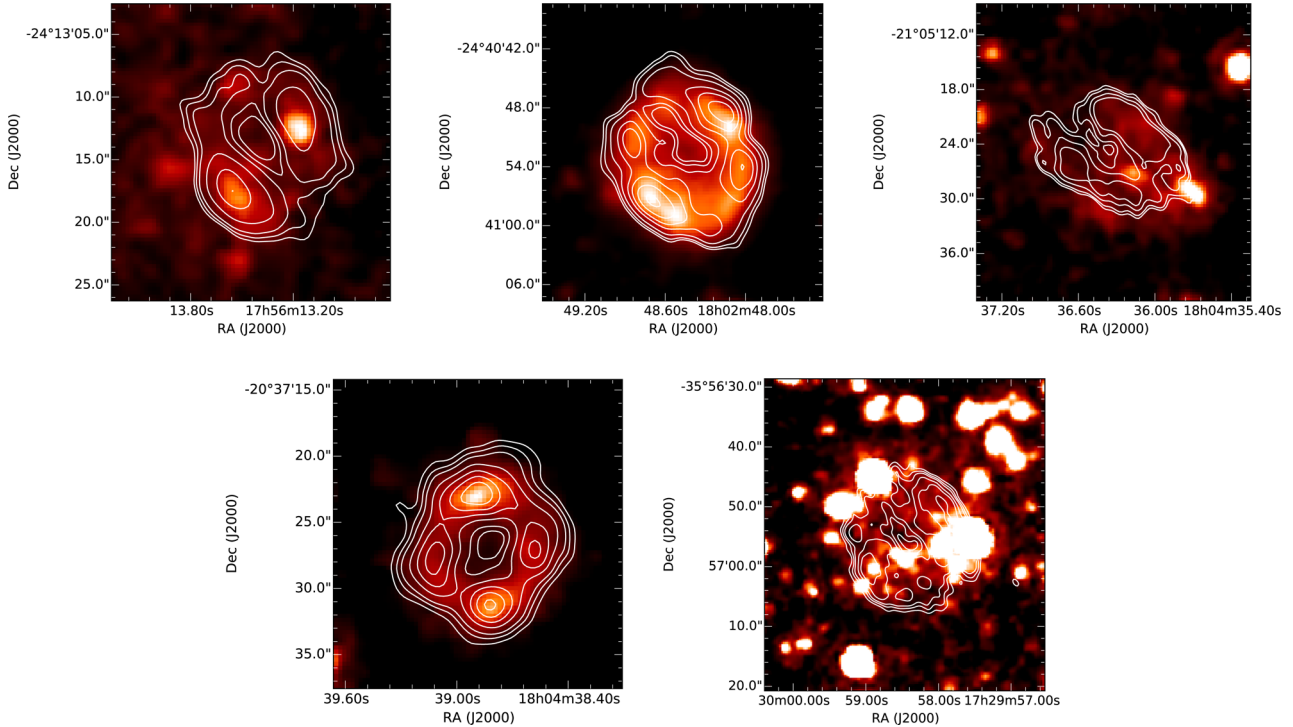
As reported in Section 2.2, seven bubbles show an ‘elliptical’ shape. Taking a look at Fig. 2, we can sketch a common morphological appearance. The basic shape of these bubbles is an elliptical ring, presenting different elongations. There is the total lack of a central object, with the brightness of the bubble centre comparable to background. The nebula brightness is not uniform along the ring. Furthermore, the brightness shows a rough bilateral symmetry, the axis of symmetry being its major axis. The brightness is enhanced perpendicularly to the axis of symmetry. A partial exception is represented by MGE 009.3523+00.4733 (Fig. 2, first picture of the second row) and, to a lesser extent, MGE 005.6102–01.1516, where, beside the (slightly hidden) bilateral symmetry, a clumpiness is evident.

The elliptical shape in Galactic objects is a common feature of PNe (e.g. Zhang & Kwok 1998). It is likely produced by the interaction of a fast wind with the previous slow wind of the AGB phase. Aaquist & Kwok (1996) and Zhang & Kwok (1998) showed that radio and optical morphologies could be well reproduced by the so-called prolate ellipsoidal shell model, where the winds interaction is modelled in an environment characterized by a radial and latitude-dependent density gradient. The PN appears, simply from projection, as a spherical shell, an ellipsoidal shell or butterfly-shaped. For spherical and ellipsoidal shells, the brightness towards one axis can be greater with respect to the orthogonal axis. The radio and optical emissions can be reproduced by the same model because they both arise from the circum-stellar gas.

Among the seven elliptical bubbles, MGE 009.3523+00.4733 is classified as a PN (Pottasch et al. 1988) and MGE 016.2280–00.3680 is a proposed PN candidate (Anderson et al. 2011). The remaining five bubbles are not classified yet. At 24  $\mu\text{m}$ ,

following the morphological classification scheme proposed by Mizuno et al. (2010), they all appear as a disc nebula, except MGE 005.6102–01.1516 classified as a ring nebula. Nowak et al. (2014) pointed out that, among the MIPS GAL bubbles, about 90 per cent of classified disc nebulae and 60 per cent of ring nebulae are PNe, and conversely, about 95 per cent of bubbles classified as PN are disc (65 per cent) or ring (30 per cent) nebulae. As we discussed in another work (Ingallinera et al. 2015), the difference between disc and ring nebula may be an artefact of the limited resolution of MIPS GAL and many disc nebula would appear as rings in higher resolution images. Taking into account the radio and MIPS GAL morphology, we propose the five unclassified elliptical bubbles as PN candidates.

A more meaningful radio-IR comparison can be made using GLIMPSE images instead of MIPS GAL. At the IRAC wavelengths, the image resolution is around 3 arcsec, only slightly worse than our VLA map resolution (around 2 arcsec), and twice as good as MIPS GAL. The heavy drawback is that GLIMPSE only seldom detects the MIPS GAL bubbles. This is mainly due to an intrinsic lower brightness at IRAC wavelengths and to a higher image noise both from background and foreground (Galactic diffuse emission, stars). As a result, only for five elliptical bubbles we were able to detect a counterpart in IRAC bands, while for the other two, namely MGE 016.2280–00.3680 and MGE 034.8961+00.3018, this was not possible. Superpositions of the 8- $\mu\text{m}$  images and 6-cm contours are presented in Fig. 12, except for MGE 352.3117–00.9711 where 4.5- $\mu\text{m}$  image is reported instead, since for this bubble, the 8- $\mu\text{m}$  image is characterized by an extremely high background. The comparison between radio and 8- $\mu\text{m}$  images shows a substantial coincidence of the two emission, with the 8- $\mu\text{m}$  emission slightly less extended than radio, except for MGE 008.9409+00.2532. As far as we know, there are not extensive studies on the morphological comparison between radio and the IR wavelengths covered by IRAC. Zhang & Kwok (2009) compared GLIMPSE and H  $\alpha$  which, tracing the excited gas, is usually co-spatial with radio emission. They found that the greatest differences between H  $\alpha$  and 8  $\mu\text{m}$  mainly characterize the bipolar PNe, where the former is much more extended. This kind of PNe is mostly excluded a priori from the MIPS GAL bubbles, since the sample was selected based on the roundish morphology (ellipsoidal discs are included, especially taking into account that many bubbles are only barely resolved). For the other types of PNe, some difference still exist. Zhang & Kwok (2009) then show the IR SED of some nebulae discussing the behaviour at IRAC bands. The result is that the large bands collect both continuum emission and lines from silicates, molecules [like polycyclic aromatic hydrocarbon (PAH) or H<sub>2</sub>] and atomic species (e.g. Br  $\alpha$ ). This makes the SED of each PN somehow peculiar, with no standard reference. In IRAC images, our elliptical bubbles, being close to Galactic plane, are located in fields particularly crowded with stars. Aperture photometry to derive their IR flux density is extremely hard and prone to errors. Exploiting the fact that both in radio and in GLIMPSE our bubbles are resolved, we built their SEDs starting from the brightness. To obtain a significant value for the brightness, we selected an area of the nebula far from contaminant stars in the image at the shortest wavelength where the bubble is still detected. We then calculated the median value of the brightness inside the same area, both for radio and IR. For GLIMPSE images, we estimated the background picking the median value of an opportune region close to the nebula and free of stars. In Fig. 13, we show the SEDs obtained, overplotting a pure free-free emission extrapolated from the 6-cm brightness using a spectral index  $\alpha = -0.1$ . The 8- $\mu\text{m}$  brightness is usually much higher than the extrapolated free-free value, very



**Figure 12.** Superposition of IRAC 8- $\mu\text{m}$  images and 6-cm contours of the ‘elliptical’ bubbles. From left to right: (row 1) MGE 005.2641+00.3775, MGE 005.6102–01.1516, MGE 008.9409+00.2532; (row 2) MGE 009.3523+00.4733, MGE 352.3117–00.9711 (for this last bubble, 4.5  $\mu\text{m}$  image is used instead).

likely because at this wavelength, the thermal emission from dust becomes dominant. The brightness at shorter wavelengths is closer to the free–free values, a sign that the emission is now dominated by gas continuum. However, several deviation can be observed, likely to be ascribed to the line transitions reported above. For example, the 4.5- $\mu\text{m}$  is higher than 5.8- $\mu\text{m}$  in MGE 008.9409+00.2532 and MGE 009.3523+00.4733 (SEDs in the second row of Fig. 13), a clear sign that the emission at this wavelength for these bubbles has a relevant line component.

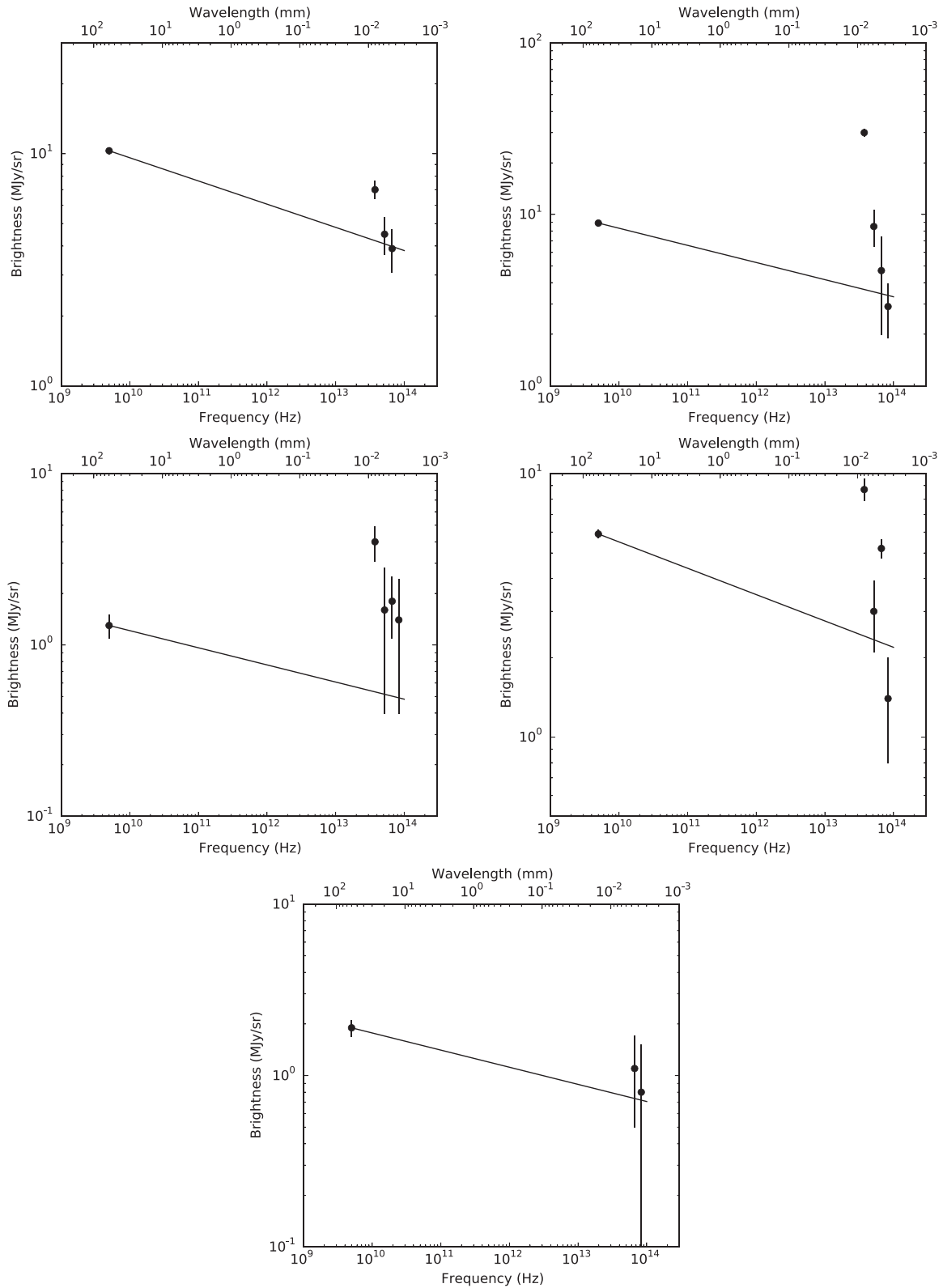
In this scenario, a rough similarity between IR and radio image is then remarkable. Indeed, in very young PNe, the dust component, whose composition is related to the original metallicity of the star, is prominent and is tightly linked to the evolutionary phase of the transition of the nebula (see, for example, Stanghellini et al. 2012). But as the CSE expands and the UV stellar radiation increases, most of the dust is destroyed and the optical and IR emission becomes dominated by gas lines from highly excited atomic species (Flagey et al. 2011). In particular, as the PN evolves, the 24- $\mu\text{m}$  emission begins to be dominated by [O IV] line at 25.9  $\mu\text{m}$  and to a lesser extent by [Ne V] line at 24.3  $\mu\text{m}$  (Chu et al. 2009). The [O IV] line at 25.9  $\mu\text{m}$  is a tracer of He II. In fact, the He II  $\lambda 4686$  line derives from the recombination of He III, whose excitation potential (54.4 eV) is close to that of O IV. The radio emission, arising from the ionized gas, mostly traces the same ionized and highly excited gaseous nebula and the PN retains the same overall morphology in all these parts of the electromagnetic spectrum. An exception is represented by optically thick evolved PNe where the diameter of the He II zone (and therefore the 24- $\mu\text{m}$  emission) is usually smaller than the ionized hydrogen zone (i.e. the radio nebula). It is probable that the component of the IR emission arising from thermal dust (8  $\mu\text{m}$ ) is co-spatial with the radio emission because the dust is heated by the same UV photons responsible for gas ionization. This morphological similarity is not observed in other kinds of Galactic

sources, nor in evolved massive star, as discussed in Section 3, nor in H II regions, as we are going to discuss in 6.1.

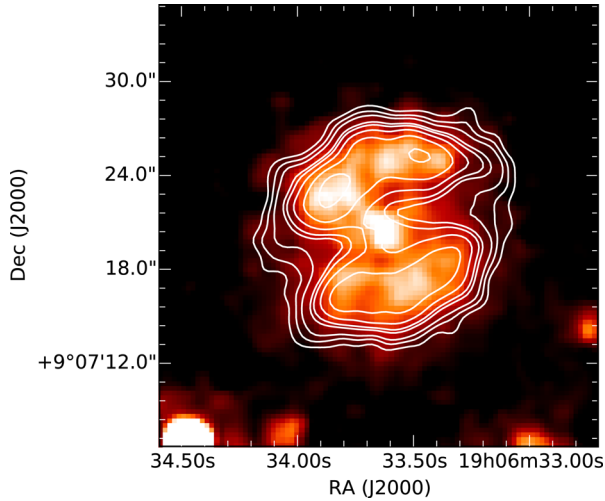
## 5 FILLED ELLIPTICAL BUBBLES

Four bubbles, labelled with ‘F’ in Table 2 and dubbed ‘filled elliptical bubbles’, show a morphology intermediate between the elliptical bubbles and those with central object. In the radio, these four bubbles are characterized by an overall roundish shape and at their centre, there is not a clear point source but a low-brightness diffuse emission filling almost all the nebula and clearly above the background level. Mizuno et al. (2010) classified them as discs, except MGE 042.7665+00.8222 classified as two-lobed nebula. None of these bubbles is definitely classified. The most studied of them is MGE 042.7665+00.8222, proposed by Clark et al. (2005) as a PN candidate. This interpretation seemed to be confirmed by Gvaramadze et al. (2010) who spectroscopically found that the central star is a WC, while Flagey et al. (2014) suggested that it is indeed a WC5–6 star. To shed light on the nature of these four bubbles, we search for their counterpart at 8  $\mu\text{m}$ . For MGE 042.7665+00.8222, the nebula and a central object are clearly detected (Fig. 14), while for the others, we found only hints of the nebula and no clear central objects. The central object is detected also in IPHAS (IPHAS2 J190633.67+090720.7) with a  $r$  magnitude of  $20.64 \pm 0.08$  (Bartens et al. 2014).

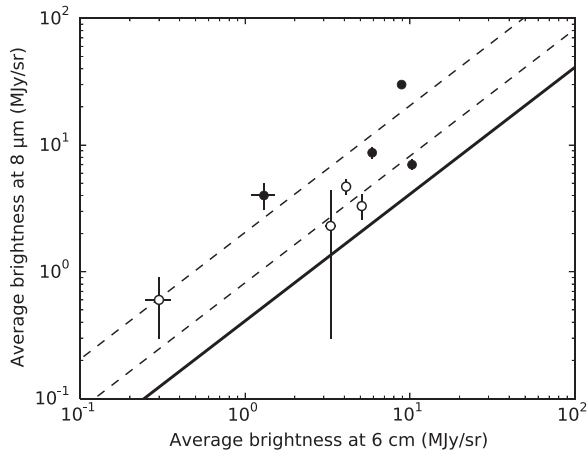
The striking difference between MGE 042.7665+00.8222 and the bubbles with central object is that the 8- $\mu\text{m}$  emission of the latter is largely dominated by the central object (Fig. 5), while in MGE 042.7665+00.8222, it has approximately the same brightness as the nebula. Indeed, the radio morphology is still compatible with a PN, closely resembling NGC 6439 shown by Zhang & Kwok (1998). And this is the case also for the other three bubbles, showing a strongly asymmetric elliptical shape resembling, for example,



**Figure 13.** SED of the ‘elliptical’ bubbles. From left to right: (row 1) MGE 005.2641+00.3775, MGE 005.6102–01.1516; (row 2) MGE 008.9409+00.2532, MGE 009.3523+00.4733; (row 3) MGE 352.3117–00.9711. The solid line is an extrapolation of the free–free emission from the 6-cm point, considering a spectral index  $\alpha = -0.1$ . Please notice that for some bubbles, it was not possible to derive their brightness in some bands.

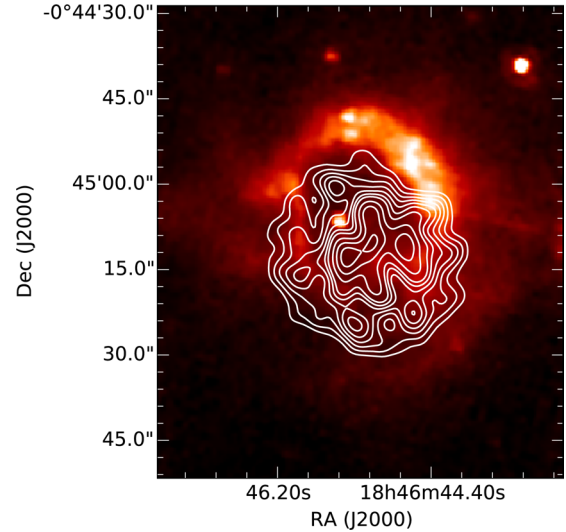


**Figure 14.** Superposition of 8- $\mu\text{m}$  image and 6-cm contours of MGE 042.7665+00.8222.



**Figure 15.** Average brightness at 8  $\mu\text{m}$  against average brightness at 6 cm for the ‘elliptical’ bubbles (solid circles) and for the ‘filled elliptical’ bubbles (open circles). The solid line represent a pure free–free emission, while the two dotted lines represent a brightness respectively twice and five times greater.

the PN Jonckheere 900 (PN VV 28). Bearing in mind what we discussed in Section 3 and that massive evolved stars are characterized by strong stellar winds, we suspect that these four bubbles could all be PN candidates. For all of them, we were able to estimate the average brightness at 8  $\mu\text{m}$  as described in Section 4, an operation not possible for the other IRAC bands because the low brightness and high background prevent their detection. In Fig. 15, we plot the 8- $\mu\text{m}$  brightness against the 6-cm brightness for the four filled elliptical bubbles and for the elliptical bubbles detected at 8  $\mu\text{m}$ . For filled elliptical bubbles, the mean ratio between the 8- $\mu\text{m}$  measured brightness and that expected extrapolating from radio, a pure free–free emission is  $2.7 \pm 1.3$ , while for the elliptical bubbles, it is  $5.2 \pm 2.7$ . This lower ratio explains the difficulty of their detection at 8  $\mu\text{m}$ . It is not possible, at least with our data, to say whether the discrepancy between these two morphological groups is real or it is just due to the poor statistics. If it were real, it could be ascribed to a dust deficiency and/or to less dominating line emission.



**Figure 16.** Superposition of 8- $\mu\text{m}$  image and 6-cm contours of MGE 031.7290+00.6993.

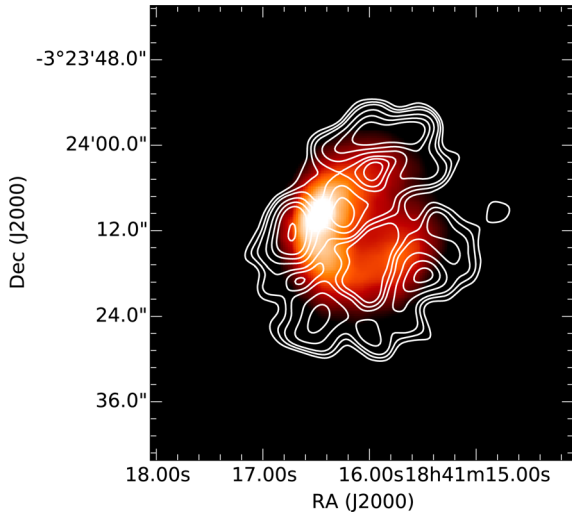
## 6 OTHER BUBBLES

### 6.1 The H II region candidate MGE 031.7290+00.6993

It is possible that a fraction of the MIPS GAL bubbles is not represented by evolved star CSEs but is related to young massive stars. These stars are usually embedded in clouds of pre-existing material (gas and dust) that becomes heated and excited. If the star is hot enough (spectral types O and early B), the circum-stellar gas is ionized and can be observed in radio as an H II region.

The mechanism of radio emission from H II region is the same of PNe (i.e. thermal free–free), characterized by a flat SED ( $\alpha = -0.1$  if optically thin). As previously said, massive evolved stars show a flat SED, at least globally. There is then a degeneracy between H II region and evolved stars in radio, and therefore it is not possible to discriminate between these kinds of sources from their SED. IR colours are sometimes used, since H II regions and PNe have different dust temperature and different IR emission mechanism. In Paper I, we showed that one of the most important IR band for this goal is the 8  $\mu\text{m}$ . The comparison between radio and 8  $\mu\text{m}$ , for example, effectively discriminates between H II regions and PNe. The peculiar element in H II regions is that the emission at 8  $\mu\text{m}$  traces the PAH outside the ionized nebula (Deharveng et al. 2010). This explains the 8- $\mu\text{m}$  excess in the comparison with radio with respect to PNe. However, since radio is a tracer of the ionized region, provided enough resolution, the reciprocal distribution of radio and 8- $\mu\text{m}$  emission is an immediate tool to spot H II regions.

In our sample, the bubble MGE 031.7290+00.6993 was proposed as an H II region by Anderson et al. (2011) on the basis of radio recombination lines studies. In Fig. 16, we report a superposition of the 8- $\mu\text{m}$  and radio emission. It is possible to note how the 8- $\mu\text{m}$  emission is clearly placed outside the ionized gas nebula traced by radio. Anderson et al. (2011) note that 208 (over 603) of their H II region candidates were associated with the ‘GLIMPSE bubbles’ found by (Churchwell et al. 2006; not to be confused with the MIPS GAL bubbles discussed in this work), objects that present a bubble structure at 8  $\mu\text{m}$  very similar to MGE 031.7290+00.6993. Our conclusion is therefore that MGE 031.7290+00.6993 is very likely an H II region. The most promising candidate for its ionizing star is



**Figure 17.** Superposition of 24- $\mu\text{m}$  image and 6-cm contours of MGE 028.7440+00.7076.

probably the point source GLIMPSE G031.7269+00.6988. It is located at the position of the 24- $\mu\text{m}$  maximum and at the geometrical centre of the radio emission. This star is likely detected in UKIDSS and IPHAS.

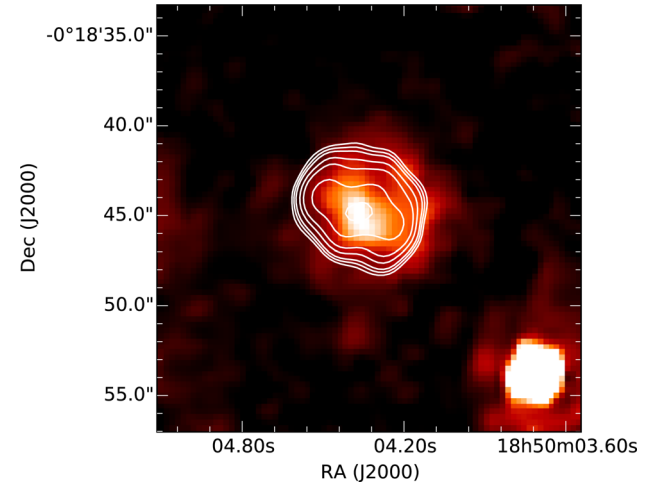
## 6.2 MGE 028.7440+00.7076

This bubble has a very peculiar radio morphology, being composed of two different ring-like structures and an overall ‘8’ shape. The nebula is not detected in any IRAC band, also because the field is particularly crowded with stars and diffuse emission. However, the relatively large extension of the radio nebula (33 arcsec) allows a significant comparison with the 24- $\mu\text{m}$  image (Fig. 17). From the superposition, it emerges that the 24- $\mu\text{m}$  emission is less extended than radio, and radio itself seems to wrap the former. In Paper I, we had reported a positive spectral index ( $\alpha = 0.39 \pm 0.26$ ) between 1.4 and 5 GHz, suggesting a thermal emission. This bubble is barely detected in H  $\alpha$  images from the SHS, appearing slightly more extended than the radio nebula. It is possible that this bubble is a ionization-stratified PN (with a central [O IV]/He II Strömgen zone). The PN nature is supported by the lack of central star candidates in IRAC images and at shorter wavelengths, excluding therefore the presence of a massive star. The peculiar morphology makes this source an interesting target for future studies.

## 6.3 MGE 032.4982+00.1615

This bubble is somehow puzzling. In Paper I we had reported that it was probably characterized by a non-thermal spectral index  $\alpha = -0.30 \pm 0.19$  calculated between 1.4 and 5 GHz. The high-resolution radio image reveals that it is a compact source approximately  $10 \times 7$  arcsec<sup>2</sup>. Flagey et al. (2014) suggested that its central star could be an O5-6V, based on near-IR spectroscopy, but they, however, warned that this classification is uncertain. They estimate a distance of 11 kpc based on near-IR colours.

From these new data at 5 GHz, we found that the spectral index of the nebula is  $\alpha = -0.8$ , even steeper than the one reported in Paper I. For the same source, Bihl et al. (2016) found a spectral index  $\alpha = -1.04 \pm 0.39$  between 1 and 2 GHz. Searching for flux density



**Figure 18.** Superposition of 8- $\mu\text{m}$  image and 6-cm contours of MGE 032.4982+00.1615.

variability, we found that the flux density at 5 GHz of the 2015 data is  $5.5 \pm 0.3$  mJy, in comparison with the 2010 value of  $4.7 \pm 0.9$  mJy. Though still within the error, the two measurements suggest that an increase in flux density may have taken place. The time variability over year-scale as well as a non-thermal radio spectrum have been recently associated with proto-PNe (e.g. Bains et al. 2009; Suárez et al. 2015; Cerrigone et al. submitted). In this scenario, the post-AGB star at the centre of the nebula is evolving from cool spectral types ( $T_{\text{eff}} \sim 5000$  K) towards hotter temperature ( $T_{\text{eff}} > 30\,000$  K). During its evolution, the star can therefore appear as spectral type O (Davis et al. 2005). The distance calculated by Flagey et al. (2014) is, however, too large to be compatible with this hypothesis. We suggest that the distance may have been overestimated in the hypothesis of a post-AGB star. In fact, the distance would be considerably less in this case, because post-AGB OB stars have similar  $T_{\text{eff}}$  and  $\log g$  to MS OB stars, but are less luminous. In IRAC images, in fact, the nebula appear extremely compact and co-spatial with radio (Fig. 18). Therefore, our hypothesis of a proto-PN cannot be ruled out and further investigation is needed.

## 6.4 MGE 356.7168–01.7246

The radio morphology of this bubble is strongly bipolar. A hint of bipolarity is observed also at 24  $\mu\text{m}$ , while at 8  $\mu\text{m}$ , the source, though partially outshined by a field star, has roughly the same morphology as in radio. The source is not unambiguously visible in any other of IRAC bands. In Paper I, we proposed this bubble as a PN candidate, based on IRAS colours. A spectral index analysis confirms the value reported in Paper I (compatible with a free-free emission) and shows no variation within the nebula. Collimated bipolar outflows are sometimes observed in young PNe (Redman et al. 2000) as well as in forming stars (Gusdorf et al. 2015). If the IRAS colour analysis is correct, the latter option should be dropped in favour of the first. The nebula is likely detected in the H  $\alpha$  images from the SHS, where it shows an elliptical shape with the same orientation of the radio nebula. The H  $\alpha$  nebula is too faint to identify a bipolar structure similar to the radio nebula. Doubts on the classification of this bubble remains and apart from having revealed the radio bipolar morphology, the present observations cannot give us further hints on its nature.

**Table 3.** Physical parameters of PNe and PN candidates.

| [MGE]            | Distance<br>(kpc) | Diam.<br>(pc) | $\langle n_e \rangle$<br>( $\text{cm}^{-3}$ ) | $M_{\text{ion}}$<br>( $M_{\odot}$ ) |
|------------------|-------------------|---------------|---|-------------------------------------|
| 005.2641+00.3775 | $6.0 \pm 2.7$     | 0.41          | 52  | 0.04                                |
| 005.6102-01.1516 | $3.3 \pm 1.4$     | 0.29          | 110   | 0.03                                |
| 008.9409+00.2532 | $5.9 \pm 2.6$     | 0.46          | 31  | 0.07                                |
| 009.3523+00.4733 | $4.7 \pm 2.1$     | 0.32          | 74  | 0.05                                |
| 016.2280-00.3680 | $5.4 \pm 2.4$     | 0.45          | 60  | 0.12                                |
| 034.8961+00.3018 | $4.0 \pm 1.7$     | 0.47          | 27  | 0.06                                |
| 352.3117-00.9711 | $4.3 \pm 1.8$     | 0.46          | 56  | 0.12                                |

## 7 DISCUSSION ON PNE

### 7.1 Physical properties

As stated in Section 4, the morphological analysis of the elliptical bubbles suggests that, along with the known PN and the PN candidate, they can be proposed as PN candidates. In this section, we assume this hypothesis valid and we derive some of their physical properties. In a previous work (Ingallinera et al. 2014b), we showed that the 6-cm map alone is a gold mine for deriving important physical characteristics of a PN, provided that the nebula is resolved (since the method we are using is based on the nebula brightness). As a first step, we need to estimate the distance of these bubbles, since no values are available in literature. A possible distance estimation is the statistical distance, calculated following the method by van de Steene & Zijlstra (1995) which assumes that the nebula is optically thin. The distance is derived from the flux density and angular extension of the nebula. This method, though very easy, is affected by large uncertainties (van de Steene & Zijlstra 1995 declare an accuracy of 40 per cent) and supplies a reasonable value only if the nebula is truly a PN.

To derive the mean electron density and the ionized mass, we followed the same procedure reported in Ingallinera et al. (2014b). For each bubble, we first create an optical depth map according to

$$B = B_{\text{bb}}(T_e)\tau_\nu, \quad (2)$$

where  $B$  is the brightness,  $T_e$  is the electron temperature,  $B_{\text{bb}}(T_e)$  is the brightness of a blackbody at a temperature  $T_e$  and  $\tau_\nu$  is the optical depth at the frequency  $\nu$ . Since for these bubbles  $T_e$  is not known, we assumed for it a typical value of  $10^4$  K (Ingallinera et al. 2014b). From the brightness map, it is then possible to derive an optical-depth map. The optical depth is related to the emission measure, EM, through the relation

$$\tau_\nu = 8.235 \times 10^{-2} T_e^{-1.35} \left( \frac{\nu}{\text{GHz}} \right)^{-2.1} \left( \frac{\text{EM}}{\text{pc} \times \text{cm}^{-6}} \right), \quad (3)$$

hence, we can derive the electron density  $n_e$  from the relation

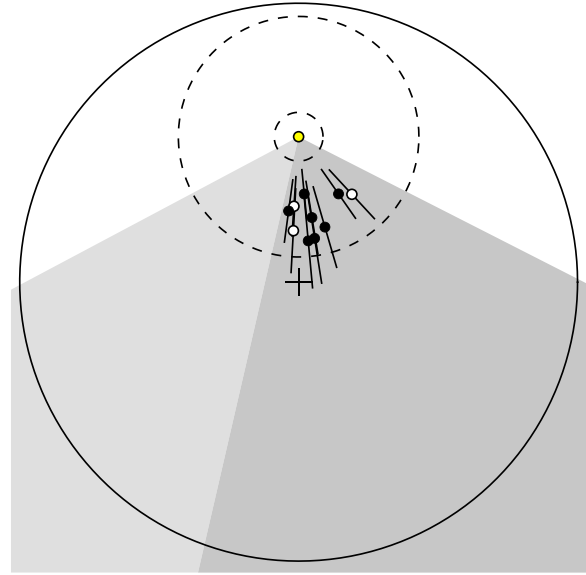
$$\text{EM} = \int_0^s n_e^2 ds, \quad (4)$$

where  $s$  is the line-of-sight coordinate. It is finally possible to derive the PN ionized mass as a volume integral:

$$M_{\text{ion}} \approx \int_V n_e m_p dV, \quad (5)$$

where  $m_p$  is the proton mass. For the actual calculation, we assumed that the bubble is simply a uniform sphere. This assumption has no effect on the total ionized mass but we warn the reader that the electron density is just an average value over the entire volume.

In Table 3, we report the distance, diameter, mean electron density and ionized mass, derived as discussed above, for the seven elliptical



**Figure 19.** Calculated position of the elliptical bubbles (solid circles and error bars) and filled elliptical bubbles (open circles and error bars) on to the Galactic plane. The Sun is represented with a yellow circle, the Galactic Centre with a cross and the Galaxy outer limit is assumed to be 16 kpc from the centre (solid circumference). The entire shaded area represents the portion of the Galactic plane covered by MIPS GAL. Its darker part satisfies  $\delta > -40^\circ$ , the lower declination limit of VLA. The two dashed circumferences represent the distance from the Sun at which a nebula with a diameter of 0.4 pc is seen under an angle of 12 (outer circumference) and 60 arcsec (inner).

bubbles. Please note that since  $M_{\text{ion}} \propto D^{5/2}$ ,  $D$  being the distance, the error on the ionized mass is of the order of 100 per cent and those values must be regarded as indicative just of the order of magnitude. Though the statistical distance method is intrinsically affected by relevant errors, it is possible to note how all these bubbles have a similar distance. This can be ascribed to the homogeneity of the original 24- $\mu\text{m}$  sample, consisting of objects with a similar angular extension and shape. We recall that Nowak et al. (2014) pointed out that almost all bubbles classified as PNe show a disc or ring morphology. PNe with very different 24- $\mu\text{m}$  shape were excluded a priori by Mizuno et al. (2010). Furthermore, more distant PNe are likely not resolved at 24  $\mu\text{m}$ , and so even in this case, they would have been excluded from the bubble catalogue. In Fig. 19, we report a sketch of the Galactic plane and we locate on it the seven elliptical bubbles, highlighting the uncertainties associated with their distances.

The morphological uniformity of the MIPS GAL bubbles translates also into a homogeneity of the physical characteristics of these objects. Kwok (1985) presented a plot showing the relationship between brightness temperature of a PN and the mean electron density. For our bubbles, we have mean brightness temperature ranging from about 2 K to about 10 K, which, according to that relationship, would translate to mean electron densities of the order of  $10^1$ – $10^2$   $\text{cm}^{-3}$ , in perfect agreement with the values we derived. Therefore, the relative homogeneity in the mean electron density can be ascribed to a uniformity in the bubble dimension (original sample selection bias) and in the radio flux densities (limited by the sensitivity of present instruments). van de Steene & Zijlstra (1995) report that the PNe with those values of brightness temperature and diameter are usually evolved PNe, with an age after post-AGB phase end much greater than  $10^3$  yr. As shown by Volk & Kwok

**Table 4.** Physical parameters for filled elliptical bubbles if they are considered PNe.

| [MGE]            | Distance<br>(kpc) | Diam.<br>(pc) | $\langle n_e \rangle$<br>( $\text{cm}^{-3}$ ) | $M_{\text{ion}}$<br>( $M_{\odot}$ ) |
|------------------|-------------------|---------------|---|-------------------------------------|
| 042.7665+00.8222 | $4.5 \pm 1.9$     | 0.44          | 52  | 0.10                                |
| 356.1447+00.0550 | $4.0 \pm 1.7$     | 0.58          | 36  | 0.16                                |
| 356.8155-00.3843 | $5.4 \pm 2.4$     | 0.34          | 70  | 0.06                                |

(1985), at these ages, the central star of the PN starts its contraction towards the white dwarf phase. The contraction implies that the total flux of UV (ionizing) photons decreases. The PN enters a phase of recombination where the radius of the ionized nebula is approximately constant, but its ionized mass decreases because of the gas dispersion (considering also the neutral gas, the nebula is still expanding). This can justify why five bubbles show ionized mass values significantly below  $0.1 M_{\odot}$ , in the sense that this could be a hint of aged PNe. Indeed, young PNe are characterized by these values of ionized mass, however, their mean electron density is higher and their radius is smaller (Cerrigone et al. 2008). We are aware that for young PNe, the statistical distance method may not be applied if the nebula is still optically thick at 5 GHz, but the spectral indices reported in Paper I and the spectral index maps obtained from these new data confirm that these seven bubbles are all optically thin at 5 GHz. The ionized masses found for these PNe are smaller than the median value found by Frew & Parker (2010), namely  $0.5\sqrt{\epsilon} M_{\odot}$ , where  $\epsilon$  is the filling factor. It is possible that the MIPS GAL sample is biased towards low-mass, high-excitation PNe (with the 24- $\mu\text{m}$  emission dominated by [O IV] line; e.g. Frew, Parker & Bojčić 2016). In this case, very aged PNe become unobservable with MIPS as the nebular excitation (and consequently the [O IV]-integrated flux) decreases when the central star becomes a white dwarf (Chu et al. 2009).

In Section 5, we discussed the possibility that also the filled elliptical bubbles could be PNe. Now we apply to them the same procedure described above for elliptical bubbles to derive their distance and then the other related physical parameters. We collect the result in Table 4. The distance calculation is not performed on MGE 002.2128-01.6131 since, as reported in Paper I, it is not optically thin at 5 GHz. Again, we underline that the values reported in Table 4 are meaningful only if the sources are truly PNe and, even if those values are in agreement to what should be expected from PNe, they cannot be used to demonstrate the PN nature of these bubbles. However, if the PN hypothesis is true, we can note how the values in Table 4 are very similar to those in Table 3. We report the filled elliptical bubbles in Fig. 19 as open circles.

In Ingallinera et al. (2014b), we found that the distance of the four PNe studied in that work ranged between 1.6 and 3.2 kpc. Those bubbles were selected because they were resolved also in D-configuration observations. From their angular extension, we estimate diameter values between 0.28 and 0.41 pc, in accordance to those derived in this paper. The different angular dimension of the bubbles in Ingallinera et al. (2014b) should then be ascribed mostly to their smaller distance rather than to physical differences.

## 7.2 Completeness of the bubbles catalogue with respect to PNe

One of the most promising aspect of the bubbles catalogue was that it appeared as the perfect place where to search for ‘missing PNe’.

It is expected that the number of Galactic PNe is around 20 000 (e.g. Zijlstra & Pottasch 1991), but only about 3300 of them are known (Sabin et al. 2014). When Mizuno et al. (2010) published the bubbles catalogue, about 15 per cent of them were associated with already classified object, and 90 per cent of them were PNe. The idea was that the PNe represented the dominant kind of object among the MIPS GAL bubbles and, in turn, the catalogue could contain a large quantity of previously unknown PNe. Mizuno et al. (2010) divided the bubbles into six categories, based on their morphology. The categories most populated are ‘ring’ and ‘disc’ nebulae, accounting for 339 objects out of 428.<sup>8</sup> As previously discussed, Nowak et al. (2014) found that more than 80 per cent of classified ‘ring’ and ‘disc’ bubbles are PNe, and that few other PNe are found in other categories. It is possible to estimate that the entire bubbles sample should contain about 300 PNe.

It is important now to establish whether the bubbles catalogue is complete with respect to round and elliptical PNe, that is, we are going to check if MIPS GAL successfully detected all the round and elliptical PNe resolved as bubbles lying in its field of view. A round or elliptical PN is listed in the bubbles catalogue only if it is a resolved object. Since MIPS GAL resolution is 6 arcsec, we can state that the minimum angular extension for a PN in the bubbles sample must be at least around 12 arcsec. In fact, this is also the lower limit of the angular extension for bubbles (except only for two). In the previous section, we found out that a typical value for an elliptical bubble diameter is around 0.4 pc, a value in accordance with many other estimates of the dimensions of PNe. A comparable mean value is derived for filled elliptical bubbles, in the hypothesis that they are PNe, and for PNe in Ingallinera et al. (2014b). Similar values are found by Bojčić et al. (2011) in their study of the radio emission of 26 PNe from the Macquarie/AAO/Strasbourg H $\alpha$  catalogue (Parker et al. 2006). A PN with a diameter of 0.4 pc is seen under an angle of 12 arcsec if it is located at about 6.9 kpc from the observer. In Fig. 19, we represent this limit with the outer dashed circumference. Beyond this distance, MIPS GAL is not able to fully resolve an object extended less than 0.4 pc, therefore any other PN beyond this limit unlikely is part of the bubbles sample. On the other hand, the largest ring bubble is 63 arcsec wide (and only 18 other bubbles are larger than it), the largest bubble classified as PN is 50 arcsec and the largest disc bubble is 42 arcsec. We can set then the approximate upper limit of 60 arcsec for the PNe in the bubbles sample. A PN with a diameter of 0.4 pc appears 60-arcsec wide when it is located at a distance of about 1.4 kpc. This distance (from the observer) is represented in Fig. 19 with the inner dashed circumference. These two distances and the MIPS GAL field of view (shaded region in Fig. 19) encompass an area of 49.8 kpc<sup>2</sup>. Now the outer limit of the Milky Way is somehow arbitrary, here we assume a radius of 16 kpc, a boundary beyond which the star density drops rapidly (for a discussion on the Galactic dimensions and outer rings, see Xu et al. 2015). This radius encompasses a total area of about 800 kpc<sup>2</sup>. Taking into account an exponential radial distribution with a scale-length of 3.5 kpc (Zijlstra & Pottasch 1991), we found that about 3000 PNe fall in the area where they can be observed as MIPS GAL bubbles. Morphological studies of PNe show that about two-third of them are elliptical or round, with the remaining showing bipolar or irregular shapes (Sabin et al. 2014). As previously said, in some bipolar PNe, the emission at 8  $\mu\text{m}$ , mainly tracing dust, is concentrated at their centre. The 24- $\mu\text{m}$  emission is due to both thermal

<sup>8</sup> The complete catalogue with the morphology types is available at: <http://vizier.u-strasbg.fr/viz-bin/VizieR?source=J/AJ/139/1542>.

dust continuum and gas lines, with the former decreasing as the PN ages and expands. The morphologies at 8 and 24  $\mu\text{m}$  and radio can therefore be very different, depending on the evolutionary age of the PN (Parker et al. 2012). We can therefore safely state that the number of PNe that can be seen as a bubble by MIPS is approximately around 2000.

The distribution of the PNe heights from the Galactic disc was investigated by Zijlstra & Pottasch (1991), who found a height scale value of 250 pc for an exponential disc model. Limiting our search between  $D_{\min} = 1.4$  kpc and  $D_{\max} = 6.9$  kpc, the average distance of an object in this area is

$$\langle D \rangle = \sqrt{\frac{D_{\min}^2 + D_{\max}^2}{2}} = 5.0 \text{ kpc.} \quad (6)$$

At this distance, 250 pc correspond to an angle of  $2.9$ . The MIPS-GAL latitude coverage is  $|b| < 1^\circ$ , except for  $-5^\circ < l < 7^\circ$  where  $|b| < 3^\circ$ . This means that the MIPS-GAL latitude coverage allows us to observe only about the 30 per cent of PNe. This percentage gives us a total of about 600 PNe that should appear as a bubble in MIPS-GAL. The fact that we likely observe only about 300 PNe as MIPS-GAL bubbles can then be ascribed to their aging, as discussed in previous section. This, in turn, means that the bubbles catalogue should contain approximately half of the elliptical and round PNe located between 1.4 and 6.9 kpc from us falling into the MIPS-GAL field of view.

If future studies on the bubbles will confirm our estimation, then this result will have two important implications on the search for Galactic PNe. First, going backwards through what discussed above, it will pose a constraint on the total number of Galactic PNe. Since this constraint is mainly derived from a statistical base, it could be used as an independent test for the estimates derived from stellar evolution models. Secondly, it will turn out that the IR band around 24  $\mu\text{m}$  is probably the best band where next-generation IR telescope shall search for PNe. In particular, the *James Webb Space Telescope*, improving seven-fold the *Spitzer* resolution, should be able to observe and resolve all the Galactic PNe as bubbles (possibly with the only exception of most evolved ones), even if we assume that its sensitivity with respect to *Spitzer* will just scale up as the ratio of their areas.

## 8 SUMMARY AND CONCLUSIONS

In this paper, we reported radio observations at 5 GHz of 18 MIPS-GAL bubbles, performed with the VLA in configuration B and BnA. The images show that the bubbles can be grouped in five different categories according to their radio morphology. Three bubbles show a clear evidence of a central point-like object; seven are characterized by an elliptical ring shape and the total lack of a compact central object or diffuse emission towards their centre; for four bubbles, the radio morphology is intermediate between the two previous categories, with diffuse emission towards the centre but without a clear central object; one has a bipolar appearance; the remaining three bubbles have a peculiar shape.

The bubbles with a central object in radio images (MGE 027.3839–00.3031, MGE 030.1503+00.1237, MGE 042.0787+00.5084) were associated with massive evolved stars, in particular, LBVs. This classification is compatible with the spectroscopic identification of the central star of two of them as B/B[e]/LBV stars. The radio emission from the central object is likely due to stellar winds. The CSE of MGE 042.0787+00.5084 shows relevant variations of spectral index, on the contrary, the CSE

of MGE 030.1503+00.1237 has a more homogeneous spectral index. The 24- $\mu\text{m}$  images of these bubbles show a morphological similarity with radio only in two cases, while at IRAC wavelengths, only the central object is detected.

The elliptical bubbles were associated with PNe. One of them is already classified as PN in literature. For the others, morphological considerations suggest that can be all proposed as PN candidates. If this hypothesis holds, we derive for them the distance, the diameter, the mean electron density and the ionized mass. We found that the elliptical bubbles are very similar also from the physical point of view. We ascribe this similarity to the selection bias of the bubbles catalogue.

Four bubbles presented a morphology intermediate between the first two, with the lack of a central object but with diffuse emission towards their centre. On average, they appear fainter at 8  $\mu\text{m}$  with respect to elliptical bubbles. Nevertheless, the radio and the 24- $\mu\text{m}$  morphology suggest that they can also be proposed as PN candidates.

The remaining bubbles show different radio morphologies. One of them, MGE 356.7168–01.7246, has a clear bipolar shape. The 8- $\mu\text{m}$  emission of MGE 031.7290+00.6993 is located outside the radio nebula and is proposed as an H II region. MGE 032.4982+00.1615 is only barely resolved in our radio images. Its flux density probably has varied with respect to 2010 data and its radio spectral index suggests that its radio emission is non-thermal. We propose that it could be a proto-PN. Finally, MGE 028.7440+00.7076 is a very peculiar object with the radio emission placed outside the 24  $\mu\text{m}$ .

As discussed in Section 7.2, the knowledge achieved so far in the discovery of PNe among the MIPS-GAL bubbles allows us to outline some general assertions about Galactic PNe. The number of known Galactic PNe is about the 15 per cent of what expected. The explanation is that, lying in proximity of the Galactic disc, many of them are heavily obscured in visible light. IR surveys, like MIPS-GAL, are able to observe through the Galactic clouds and potentially discover a large quantity of previously unknown PNe. In this sense, preliminary results indicated that the bubbles catalogue could harbour many PNe. Given the typical diameter of a PN, the field of view and the resolution of MIPS-GAL, we infer that the bubbles catalogue may contain about half of the Galactic PNe that would be resolved in MIPS-GAL. It is likely that the most evolved PNe are not detected in MIPS-GAL, since as the central star becomes white dwarf, the nebular excitation decreases and consequently their flux at 24  $\mu\text{m}$ . If this hypothesis will be confirmed, beside the discovery of 250 unknown PNe, it will pose an important constraint on the actual total number of Galactic PNe, being a significant statistical search on a relevant portion of our Galaxy. Furthermore, it will give the precise indication that the 24  $\mu\text{m}$  is the best band where to search for the remaining Galactic PNe when next-generation IR telescopes will provide better resolution and sensitivity than *Spitzer*.

The main goal of this work was to show the great potential of high-resolution high-sensitivity radio images. We showed that different kinds of evolved stars have strikingly different radio morphologies. We showed also how to use radio images to infer several physical properties of these Galactic objects. Even for the bubbles that we were not able to classify, the discovery of their peculiar radio morphology could lead to further investigations and to the discovery of new shape prototypes. We want to remark that the imaging performance achieved in these targeted observations are about to be achieved also by several ongoing Galactic surveys used as pathfinders for next generation radio telescopes (e.g. Bühr et al. 2016 with

VLA or Umana et al. 2015 with the ATCA<sup>9</sup> and ASKAP<sup>10</sup>). This work shows therefore what kind of information we can expect to derive on Galactic sources from future radio observations. Recalling the fundamental help of comparing radio maps with IR images, we highlight also the importance of the synergy with future IR telescopes, above all the *James Webb Space Telescope*, that will provide us with images of unprecedented sensitivity and angular resolution comparable to radio interferometers.

## ACKNOWLEDGEMENTS

This work is based on observations made with the VLA of the National Radio Astronomy Observatory, a facility of the National Science Foundation operated under cooperative agreement by Associated Universities Inc. Archive search made use of the SIMBAD data base and the VizieR catalogue access tool, operated by the Centre de Données astronomique de Strasbourg, and of the NASA/IPAC Infrared Science Archive, which is operated by the Jet Propulsion Laboratory, California Institute of Technology, under contract with the National Aeronautics and Space Administration. This publication makes use of data products from the Two Micron All-Sky Survey, which is a joint project of the University of Massachusetts and the Infrared Processing and Analysis Center/California Institute of Technology, funded by the National Aeronautics and Space Administration and the National Science Foundation. FB acknowledges support from the VIALACTEA Project, a Collaborative Project under Framework Programme 7 of the European Union, funded under Contract # 607380. CA acknowledges support from FONDECYT grant No. 3150463.

## REFERENCES

Aaquist O. B., Kwok S., 1996, *ApJ*, 462, 813  
 Agliozzo C., Noriega-Crespo A., Umana G., Flagey N., Buemi C., Ingallinera A., Trigilio C., Leto P., 2014, *MNRAS*, 440, 1391  
 Anderson L. D., Bania T. M., Balsler D. S., Rood R. T., 2011, *ApJS*, 194, 32  
 Bains I., Cohen M., Chapman J. M., Deacon R. M., Redman M. P., 2009, *MNRAS*, 397, 1386  
 Barentsen G. et al., 2014, *MNRAS*, 444, 3230  
 Bihl S. et al., 2016, *A&A*, 588, A97  
 Blomme R., De Becker M., Volpi D., Rauw G., 2010, *A&A*, 519, A111  
 Bojičić I. S., Parker Q. A., Frew D. J., Vaughan A. E., Filipović M. D., Gunawardhana M. L. P., 2011, *Astron. Nachr.*, 332, 697  
 Carey S. J. et al., 2009, *PASP*, 121, 76  
 Cerrigone L., Umana G., Trigilio C., Leto P., Buemi C. S., Hora J. L., 2008, *MNRAS*, 390, 363  
 Chapman J. M., Leitherer C., Koribalski B., Bouter R., Storey M., 1999, *ApJ*, 518, 890  
 Chu Y.-H. et al., 2009, *AJ*, 138, 691  
 Churchwell E. et al., 2006, *ApJ*, 649, 759  
 Clark J. S., Larionov V. M., Arkharov A., 2005, *A&A*, 435, 239  
 Cohen M., Chapman J. M., Deacon R. M., Sault R. J., Parker Q. A., Green A. J., 2006, *MNRAS*, 369, 189  
 Cornwell T. J., 2008, *IEEE J. Sel. Top. Signal Process.*, 2, 793  
 Davis C. J., Smith M. D., Gledhill T. M., Varricatt W. P., 2005, *MNRAS*, 360, 104  
 Deharveng L. et al., 2010, *A&A*, 523, A6

Dougherty S. M., Clark J. S., Negueruela I., Johnson T., Chapman J. M., 2010, *A&A*, 511, A58  
 Drew J. E. et al., 2005, *MNRAS*, 362, 753  
 Flagey N., Noriega-Crespo A., Billot N., Carey S. J., 2011, *ApJ*, 741, 4  
 Flagey N., Noriega-Crespo A., Petric A., Geballe T. R., 2014, *AJ*, 148, 34  
 Frew D. J., Parker Q. A., 2010, *Publ. Astron. Soc. Aust.*, 27, 129  
 Frew D. J., Bojičić I. S., Parker Q. A., Pierce M. J., Gunawardhana M. L. P., Reid W. A., 2014, *MNRAS*, 440, 1080  
 Frew D. J., Parker Q. A., Bojičić I. S., 2016, *MNRAS*, 455, 1459  
 Gusdorf A. et al., 2015, *A&A*, 575, A98  
 Gvaramadze V. V., Kniazev A. Y., Fabrika S., 2010, *MNRAS*, 405, 1047  
 Ingallinera A. et al., 2014a, *MNRAS*, 437, 3626 (Paper I)  
 Ingallinera A., Trigilio C., Umana G., Leto P., Agliozzo C., Buemi C., 2014b, *MNRAS*, 445, 4507  
 Ingallinera A., Trigilio C., Leto P., Umana G., Buemi C., Cerrigone L., Agliozzo C., 2015, *MNRAS*, 453, 3203  
 Kwok S., 1985, *AJ*, 90, 49  
 Lucas P. W. et al., 2008, *MNRAS*, 391, 136  
 Lumsden S. L., Hoare M. G., Urquhart J. S., Oudmaijer R. D., Davies B., Mottram J. C., Cooper H. D. B., Moore T. J. T., 2013, *ApJS*, 208, 11  
 Mizuno D. R. et al., 2010, *AJ*, 139, 1542  
 Nowak M., Flagey N., Noriega-Crespo A., Billot N., Carey S. J., Paladini R., Van Dyk S. D., 2014, *ApJ*, 796, 116  
 Panagia N., Felli M., 1975, *A&A*, 39, 1  
 Parker Q. A. et al., 2005, *MNRAS*, 362, 689  
 Parker Q. A. et al., 2006, *MNRAS*, 373, 79  
 Parker Q. A., Frew D. J., Acker A., Miszalski B., 2012, in Manchado A., Stanghellini L., Schönberner D., eds, *Proc. IAU Symp. 283, Planetary Nebulae: An Eye to the Future*. Kluwer, Dordrecht, p. 9  
 Paron S., Combi J. A., Petriella A., Giacani E., 2012, *A&A*, 543, A23  
 Pottasch S. R., Olling R., Bignell C., Zijlstra A. A., 1988, *A&A*, 205, 248  
 Rau U., Cornwell T. J., 2011, *A&A*, 532, A71  
 Redman M. P., O'Connor J. A., Holloway A. J., Bryce M., Meaburn J., 2000, *MNRAS*, 312, L23  
 Rieke G. H. et al., 2004, *ApJS*, 154, 25  
 Sabin L. et al., 2014, *MNRAS*, 443, 3388  
 Skrutskie M. F. et al., 2006, *AJ*, 131, 1163  
 Stanghellini L., García-Hernández D. A., García-Lario P., Davies J. E., Shaw R. A., Villaver E., Manchado A., Perea-Calderón J. V., 2012, *ApJ*, 753, 172  
 Suárez O. et al., 2015, *ApJ*, 806, 105  
 Umana G., Buemi C. S., Trigilio C., Leto P., Agliozzo C., Ingallinera A., Noriega-Crespo A., Hora J. L., 2011, *ApJ*, 739, L11  
 Umana G. et al., 2012, *MNRAS*, 427, 2975  
 Umana G. et al., 2015, *MNRAS*, 454, 902  
 Urquhart J. S. et al., 2009, *A&A*, 501, 539  
 van de Steene G. C., Zijlstra A. A., 1995, *A&A*, 293, 541  
 van Loo S., 2010, in Mart J., Luque-Escamilla P. L., Combi J. A., eds, *ASP Conf. Ser. Vol. 422, Astron. Soc. Pac., San Francisco*, p. 157  
 Volk K., Kwok S., 1985, *A&A*, 153, 79  
 Wachter S., Mauerhan J. C., Van Dyk S. D., Hoard D. W., Kafka S., Morris P. W., 2010, *AJ*, 139, 2330  
 Walder R., Folini D., Meynet G., 2012, *Space Sci. Rev.*, 166, 145  
 Xu Y., Newberg H. J., Carlin J. L., Liu C., Deng L., Li J., Schönrich R., Yanny B., 2015, *ApJ*, 801, 105  
 Zhang C. Y., Kwok S., 1998, *ApJS*, 117, 341  
 Zhang Y., Kwok S., 2009, *ApJ*, 706, 252  
 Zijlstra A. A., Pottasch S. R., 1991, *A&A*, 243, 478

<sup>9</sup> Australia Telescope Compact Array

<sup>10</sup> Australian SKA Pathfinder