



Publication Year	2019
Acceptance in OA	2020-12-29T17:20:55Z
Title	Resolving the Decades-long Transient FIRST J141918.9+394036: An Orphan Long Gamma-Ray Burst or a Young Magnetar Nebula?
Authors	Marcote, B., Nimmo, K., Salafia, Om Sharan, Paragi, Z., Hessels, J. W. T., Petroff, E., Karuppusamy, R.
Publisher's version (DOI)	10.3847/2041-8213/ab1aad
Handle	http://hdl.handle.net/20.500.12386/29317
Journal	THE ASTROPHYSICAL JOURNAL LETTERS
Volume	876



Resolving the Decades-long Transient FIRST J141918.9+394036: An Orphan Long Gamma-Ray Burst or a Young Magnetar Nebula?

B. Marcote¹ , K. Nimmo^{2,3}, O. S. Salafia^{4,5,6}, Z. Paragi¹ , J. W. T. Hessels^{2,3} , E. Petroff³, and R. Karuppusamy⁷

¹ Joint Institute for VLBI ERIC, Oude Hoogeveensedijk 4, 7991 PD Dwingeloo, The Netherlands; marcote@jive.eu

² ASTRON, Netherlands Institute for Radio Astronomy, Oude Hoogeveensedijk 4, 7991 PD Dwingeloo, The Netherlands

³ Anton Pannekoek Institute for Astronomy, University of Amsterdam, Science Park 904, 1098 XH Amsterdam, The Netherlands

⁴ Università degli Studi di Milano-Bicocca, Dip. di Fisica “G. Occhialini”, Piazza della Scienza 3, I-20126 Milano, Italy

⁵ INAF—Osservatorio Astronomico di Brera, via E. Bianchi 46, I-23807 Merate, Italy

⁶ INFN—Sezione di Milano-Bicocca, Piazza della Scienza 3, I-20126 Milano, Italy

⁷ Max-Planck-Institut für Radioastronomie, Auf dem Hügel 69, D-53121 Bonn, Germany

Received 2019 February 15; revised 2019 April 18; accepted 2019 April 18; published 2019 May 3

Abstract

Ofek identified FIRST J141918.9+394036 (hereafter FIRST J1419+3940) as a radio source sharing similar properties and host galaxy type to the compact, persistent radio source associated with the first known repeating fast radio burst, FRB 121102. Law et al. showed that FIRST J1419+3940 is a transient source decaying in brightness over the last few decades. One possible interpretation is that FIRST J1419+3940 is a nearby analog to FRB 121102 and that the radio emission represents a young magnetar nebula (as several scenarios assume for FRB 121102). Another interpretation is that FIRST J1419+3940 is the afterglow of an “orphan” long gamma-ray burst (GRB). The environment is similar to where most such events are produced. To distinguish between these hypotheses, we conducted very long baseline interferometric (VLBI) radio observations using the European VLBI Network (EVN) at 1.6 GHz to spatially resolve the emission and to search for millisecond-duration radio bursts. We detect FIRST J1419+3940 as a compact radio source with a flux density of $620 \pm 20 \mu\text{Jy}$ (on 2018 September 18) and a source size of $3.9 \pm 0.7 \text{ mas}$ (i.e., $1.6 \pm 0.3 \text{ pc}$ given the angular diameter distance of 83 Mpc). These results confirm that the radio emission is nonthermal and imply an average expansion velocity of $(0.10 \pm 0.02)c$. Contemporaneous high-time-resolution observations using the 100 m Effelsberg telescope detected no millisecond-duration bursts of astrophysical origin. The source properties and lack of short-duration bursts are consistent with a GRB jet expansion, whereas they disfavor a magnetar birth nebula.

Key words: galaxies: dwarf – galaxies: individual (FIRST J1419+3940) – gamma-ray burst: individual (FIRST J141918.9+394036) – radiation mechanisms: non-thermal – radio continuum: galaxies – techniques: high angular resolution

1. Introduction

Very long baseline radio interferometric (VLBI) observations are a powerful way to study astrophysical transients because they provide milliarcsecond angular resolution imaging and astrometry. Such transient events are produced by blast waves and slowly evolving synchrotron afterglows, whose temporal evolution and interaction with the surrounding medium are well characterized by VLBI observations that can measure the projected size and proper motion of such emission.

For example, this technique was successfully used to spatially resolve the emission and measure the expansion speed of the afterglow associated with the long gamma-ray burst (GRB) 030329 (Pihlström et al. 2007). VLBI observations have also been used to study the first detected binary neutron star merger, GRB 170817A (Abbott et al. 2017). The obtained measurement of the proper motion and physical size constrained the nature of the source to be a relativistic jet (Mooley et al. 2018; Ghirlanda et al. 2019). Furthermore, VLBI observations contributed to the first precise localization of a fast radio burst (FRB), the repeating source FRB 121102 (Spitler et al. 2014, 2016; Scholz et al. 2016). The burst source was associated with a compact ($<0.7 \text{ pc}$; Marcote et al. 2017), persistent radio source with a luminosity of $\nu L_\nu \approx 3 \times 10^{38} \text{ erg s}^{-1}$ at 1.7 GHz (Chatterjee et al. 2017), located inside a low-metallicity star-forming region in a dwarf galaxy at a redshift of 0.19273(8) (Bassa et al. 2017; Tendulkar et al. 2017). The environment of FRB 121102 is remarkably similar to the ones where long GRBs (as well as superluminous supernovae (SLSNe))

typically occur (Modjaz et al. 2008; Metzger et al. 2017), favoring several scenarios that consider repeating FRBs to be produced by newly born magnetars created in such events (see e.g., Margalit & Metzger 2018; Piro & Gaensler 2018). FRBs could thus be detectable at the sites of long GRBs, and the persistent source associated with FRB 121102 could be the longer-lived nebula following the afterglow of one of these events. In any case, FRBs are expected to be produced in relatively young objects ($\sim 10\text{--}100 \text{ yr}$) with possibly associated radio nebulae (Murase et al. 2016; Kashiyama & Murase 2017; Omand et al. 2018).

Based on the properties of FRB 121102’s persistent radio source and host galaxy, Ofek (2017) identified a number of similar sources in the Very Large Array (VLA) FIRST catalog. Law et al. (2018) showed that one of these sources, FIRST J141918.9+394036 (hereafter FIRST J1419+3940) is a slowly declining transient. Using archival observations, they showed that the source declined from $\sim 26 \text{ mJy}$ (at 1.4 GHz) in 1993 to $\lesssim 0.4 \text{ mJy}$ (at 3 GHz) in 2017. Both the light curve and the inferred luminosities of $\nu L_\nu \gtrsim 3 \times 10^{38} \text{ erg s}^{-1}$ are consistent with the afterglow of a long GRB, requiring a released kinetic energy of $\sim 10^{51} \text{ erg}$ at the time of the explosion (estimated to be $\sim 25\text{--}30 \text{ yr}$ ago). No convincing association with a previously detected GRB could be made, however (Law et al. 2018).

FIRST J1419+3940 is associated with a small star-forming galaxy at redshift of $z \approx 0.01957$. Both sources, FIRST J1419+3940 and FRB 121102, show similar environments: both exhibit compact and persistent radio emission with luminosities of

$\sim 10^{38}$ erg s $^{-1}$ located inside star-forming regions with equivalent star formation rates in similarly sized dwarf galaxies. Their physical nature could thus also be similar, and FIRST J1419+3940 might be associated with a source capable of producing FRBs.

Here we present European VLBI Network (EVN) radio observations of FIRST J1419+3940 that provide the first constraints on the source compactness, coupled with simultaneous searches for millisecond-duration bursts. We present the observations and data reduction in Section 2. We describe the results in Section 3, and their implications for the nature of FIRST J1419+3940 in Section 4. Finally, we present our conclusions in Section 5.

2. Observations and Data Reduction

We observed FIRST J1419+3940 on 2018 September 18 between 12:00 and 19:00 UTC at 18 cm (1.6 GHz) with the EVN, involving a total of 12 stations: Jodrell Bank Mark2, Westerbork single-dish, Effelsberg, Medicina, Onsala 25 m, Tianma, Toruń Hartebeesthoek, Sardinia, and three stations from e-MERLIN (Cambridge, Defford, and Knockin). The data were recorded with a total bandwidth of 128 MHz, and correlated in real time (e-EVN operational mode) at JIVE (The Netherlands) using the SFXC software correlator (Keimpema et al. 2015). The data were divided into eight subbands of 64 channels each, with full circular polarization products, and 1 s time averaging. We also buffered the baseband EVN data in parallel so that high-time-resolution correlations could be produced afterward, if a millisecond-duration radio burst was detected.

Furthermore, we simultaneously observed FIRST J1419+3940 in the frequency range 1580–1736 MHz using the 100 m Effelsberg telescope and the PSRIX pulsar data recorder (Lazarus et al. 2016). We recorded with two summed linear polarizations, achieving a gain of 1.5 K Jy $^{-1}$ and a receiver temperature of 25 K. The total bandwidth of 156 MHz was divided into 10 subbands—each one further divided into 64 channels and recorded with 32-bit time samples. The ultimate time and frequency resolution of the data were 40.96 μ s and 0.2438 MHz, respectively. Before processing, the subbands were combined into a single band and the data were converted to 4-bit samples to ensure compatibility with the PRESTO pulsar analysis software suite (Ransom 2001).

2.1. Interferometric Data

We observed J1642+3948 as fringe finder and J1419+3821 (located at only 1 $^{\circ}$ 3 from FIRST J1419+3940) as phase calibrator. We scheduled a phase-referencing cycle of 4.5 minutes on the target and 1.5 minutes on the phase calibrator, achieving a total time of ~ 4.5 hr on FIRST J1419+3940.

The interferometric data were reduced using AIPS⁸ (Greisen 2003) and Difmap (Shepherd et al. 1994) following standard procedures. A priori amplitude calibration was performed using the known gain curves and system temperature measurements recorded individually on each station during the observation. We used nominal system equivalent flux density (SEFD) values for the following stations: Jodrell Bank Mark2, Tianma, and the e-MERLIN stations. We manually flagged data affected by radio frequency interference

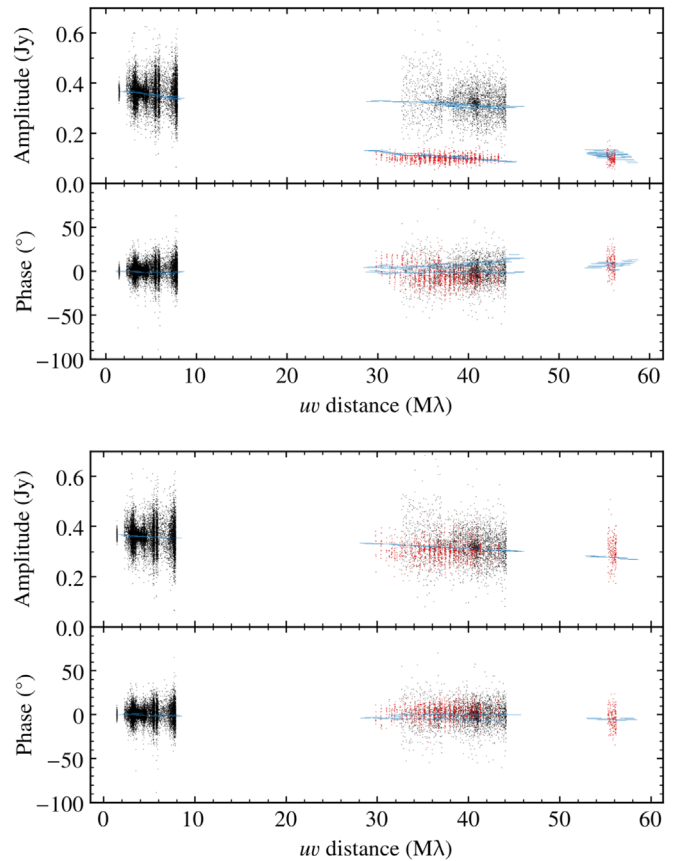


Figure 1. Obtained visibility data (amplitudes and phases) for the phase calibrator source, J1419+3821, after the original calibration (top) and in the alternate calibration where the gain calibration of the Tianma station was calibrated using a source model from only the stations with a robust amplitude calibration (bottom). See Section 2 for details. Red dots represent data from the baselines including the Tianma station. Blue lines represent the source model in each case.

(RFI) and then we fringe-fitted and bandpass-calibrated the data using the fringe finder and the phase calibrator. We imaged and self-calibrated the phase calibrator in Difmap to improve the final calibration of the data. The obtained solutions were then transferred to the target, which was subsequently imaged.

We note that Tianma did not produce reliable system temperature values during the experiment. Most of these measurements failed, and the existing ones exhibited a much larger scatter than usual. Therefore we used the nominal SEFD for amplitude calibration. This typically produces a satisfactory a priori calibration that can be further improved during imaging and self-calibration. Tianma, however, provides the longest east–west baselines in our array with no equivalent baselines to compare with, and it also does not have short spacings to establish a reliable station calibration. In this case imaging and parameterization of source properties by model-fitting is complicated due to the fact that some source parameters may correlate with the Tianma station gain (Natarajan et al. 2017).

Figure 1 displays the visibility amplitudes and phases as a function of projected baseline length in units of observing wavelength. The top panel shows the initial calibration, with the Tianma data highlighted in red. The low amplitudes may be consistent with a source that is very compact in general, but

⁸ The Astronomical Image Processing System (AIPS) is a software package produced and maintained by the National Radio Astronomy Observatory (NRAO).

well resolved in the east–west direction. The bottom panel shows the data after we apply an amplitude correction factor for Tianma, based on a source model obtained by only using the stations with robust calibration. The required scaling factor was about three, implying that the station could have been much less sensitive than expected.

Due to the uncertainty with the Tianma calibration, we decided to take the following procedure to analyze the data. Instead of fitting an elliptical-Gaussian model brightness distribution to the uv -data in model fitting, we assumed a circular-Gaussian brightness distribution. This is expected to be less sensitive to uncertainties in station gain calibration (Natarajan et al. 2017). In addition, we looked at the results derived from the following cases: Tianma removed from the data set, Tianma present with nominal gain calibration, and Tianma present but with its gain scaled to be in agreement with the most compact possible solution (as explained above). As we will see in Section 3, the fitted source sizes differ somewhat, but in all cases they support the same main conclusion: that our target is resolved on milliarcsecond scales.

2.2. High-time-resolution Data

The high-time-resolution Effelsberg data were analyzed to search for individual millisecond bursts or a periodic signal. First, using PRESTO’s `rfifind`, we identified specific time samples and frequency channels contaminated by RFI. The regions highlighted by `rfifind` and the frequency range 1610–1631 MHz, associated with RFI from the Iridium satellites, were masked prior to conducting the analysis. We then dedispersed the 4-bit data using the PRESTO tool `prepsubband` for 2500 trial dispersion measures (DMs) in the range 0–1210.8 pc cm^{-3} . The resulting dedispersed time series were then searched for single pulses above a 6σ threshold using PRESTO’s `single_pulse_search.py`, which applies a matched-filter technique using boxcar functions of various widths, and in our search was sensitive to burst durations in the range 40.96 μs and 0.02 s. Dynamic spectra of the identified single-pulse candidates were generated and inspected by eye to distinguish between astrophysical signals and RFI.

In addition, a Fourier-domain search was performed on each individual dedispersed time series using PRESTO’s `accel-search`, in order to search for periodic signals. Potential periodic signals were sifted using `ACCEL_sift.py`, and the remaining candidates were inspected by eye after folding using `prepfold`.

The RFI mitigation process was unable to remove all instances of RFI in the data. We calculate that of the ~ 4.3 hr Effelsberg on-source time, approximately 92.4% was examined for bursts and periodic signals. Note the discrepancy between the Effelsberg on-source time (~ 4.3 hr) and the EVN on-source time (~ 4.5 hr), which is due to Effelsberg’s longer slew time compared with other antennas.

The aforementioned analysis strategy was verified using similar data targeting pulsar PSR B2020+28. We performed a blind search and detected both individual pulses and the known periodicity of this pulsar.

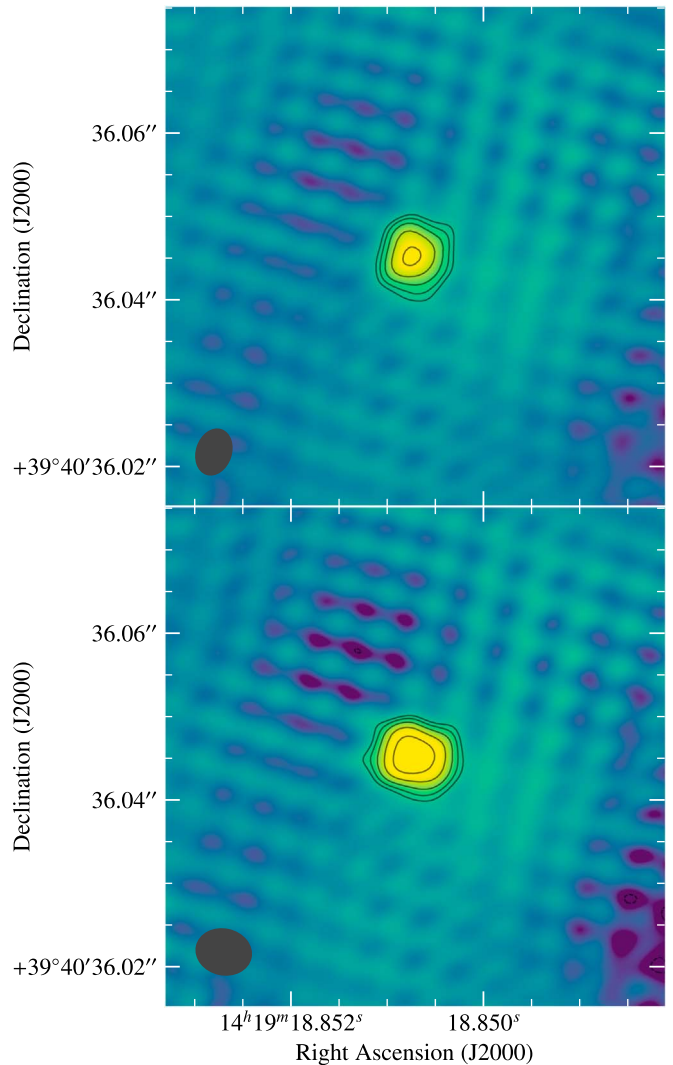


Figure 2. Images of FIRST J1419+3940 at 1.6 GHz with the EVN on 2018 September 18 derived from the two gain calibrations performed on Tianma data (original, top, and scaled, bottom). Contours start at a 3σ rms noise level of 25 and 29 $\mu\text{Jy beam}^{-1}$, respectively, and increase by factors of $\sqrt{2}$. The synthesized beams are represented by the dark gray ellipses at the bottom-left corner of each image.

3. Results and Discussion

3.1. On the Persistent Emission

FIRST J1419+3940 was detected on 2018 September 18 as a radio source that is compact on milliarcsecond scales (see Figure 2), with a flux density of $620 \pm 20 \mu\text{Jy}$ at a position of $\alpha(\text{J2000}) = 14^{\text{h}}19^{\text{m}}18^{\text{s}}.850722 \pm 0.23 \text{ mas}$ $\delta(\text{J2000}) = 39^{\circ}40'36''.04520 \pm 0.23 \text{ mas}$, where the quoted uncertainties represent the 1σ confidence interval and take into account the statistical uncertainties in the image (0.2 mas in both α and δ), the uncertainty in the phase calibrator position (0.1 mas; Beasley et al. 2002; Gordon et al. 2016), and the estimated uncertainties associated with the phase-referencing technique (0.06 and 0.04 mas for α and δ , respectively; Pradel et al. 2006). The obtained position is consistent with the one reported from the FIRST survey (Law et al. 2018), as well as the preliminary results published in Marcote et al. (2018). The measured flux density on 2018 September 18 follows the declining trend of the light curve reported from observations

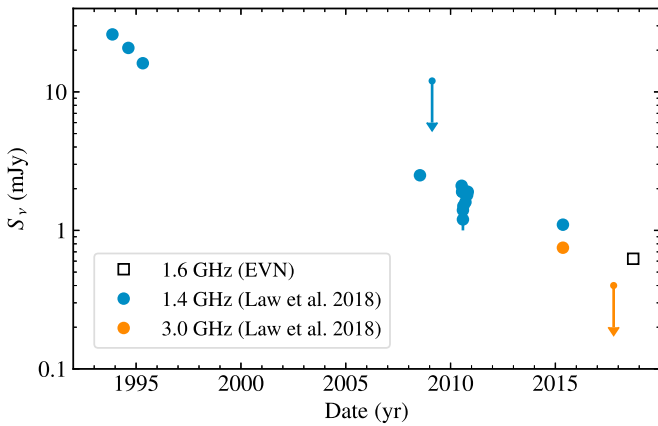


Figure 3. Light curve of FIRST J1419+3940 during the last 25 yr at 1.4–1.6 GHz (blue circles and open square) and 3.0 GHz (orange circles). Errors bars represent 1σ uncertainties (hidden by the size of the markers in most cases). Arrows represent 3σ upper-limits.

with the Karl G. Jansky VLA (see Figure 3). Given the luminosity distance of 87 Mpc, the obtained flux density corresponds to an isotropic luminosity $\nu L_\nu = (9.4 \pm 0.3) \times 10^{36}$ erg s $^{-1}$. Together with the last published VLA observation at 3.0 GHz, and considering the same value for our epoch (i.e., no declining trend is assumed), we can place a conservative 3σ upper limit on the spectral index between 1.6 and 3.0 GHz of $\alpha \lesssim -0.65$ (where $S_\nu \propto \nu^\alpha$).

FIRST J1419+3940 is significantly resolved in the obtained images given the size of the synthesized beam (5.5×4.1 mas 2), as the measured size is larger than the minimum resolvable size by the array (see Martí-Vidal et al. 2012; Natarajan et al. 2017, for a detailed explanation). By fitting a circular Gaussian to the uv -data we measure a source size of 4.3 ± 0.8 mas, where the uncertainty has been estimated through a χ^2 test. However, we note that the gain calibration of Tianma constitutes a potential source of systematic errors in the size measurement. To provide a more reliable measurement, we produced images without this station. Despite having poorer resolution (synthesized beam of 24×5.3 mas 2), we obtained a size that is significant and consistent within uncertainties with the value quoted above (3.9 ± 0.9 mas). Finally, we imaged the source with the gain correction applied to Tianma (as mentioned in the previous section), which provides the most stringent lower limit on the source size (i.e., assuming a point-like source during calibration). In this case we measured a source size of 3.4 ± 0.7 mas. The contribution of the longest baselines is therefore not critical as we obtain consistent results from all cases. We summarize the results of these different analyses in Table 1.

For comparison, the phase calibrator, J1419+3821, exhibits a main compact component with a measured size of 1.1–2.9 mas in all cases. The fact that the measured sizes are significantly different—while they are seen along almost the same Galactic line of sight—means that they are most likely intrinsic sizes, rather than due to scatter broadening. At the high Galactic latitudes of $\sim 67^\circ$ scatter broadening at GHz frequencies is almost negligible, and one would not expect strong variations of scattering size on small angular scales either (see, e.g., Pushkarev & Kovalev 2015).

We thus conclude that FIRST J1419+3940 is significantly resolved, with an angular size of $3.9^{+0.4+0.3}_{-0.5-0.2}$ mas, where the first uncertainties take into account the dispersion of the values from the different analyses, and the second ones consider the

estimated statistical uncertainties on the value. Given that the angular diameter distance to the source is 83 Mpc (Law et al. 2018), we derive a projected physical size of 1.6 ± 0.3 pc. This size also implies a brightness temperature of $T_b \sim 1.1 \times 10^7$ K, which clearly points to a nonthermal origin for the emission.

Law et al. (2018) estimated that the putative GRB producing the observed afterglow likely took place around ~ 25 – 30 yr ago. Considering an estimated central date for the explosion of ~ 1993 and taking into account the given uncertainties, the afterglow must have a mean expansion velocity of $v = (3.0 \pm 0.6) \times 10^4$ km s $^{-1}$, or $(0.10 \pm 0.02)c$, which is consistent with a mildly relativistic expansion. We note that the calculated expansion velocity is an average over the whole lifetime, during which a significant deceleration has likely occurred.

3.2. On the Single Burst Searches

We detected no astrophysical single pulses or periodic signals in the high-time-resolution Effelsberg data. We can estimate the expected DM toward FIRST J1419+3940 using Galactic electron density models (NE2001; Cordes & Lazio 2002, YMW16; Yao et al. 2017). For an extragalactic source, the observed DM can be divided into four components along the line of sight:

$$\text{DM}_{\text{obs}} = \text{DM}_{\text{MW}} + \text{DM}_{\text{MW}_{\text{halo}}} + \text{DM}_{\text{IGM}} + \text{DM}_{\text{host}}. \quad (1)$$

The Milky Way contribution to the DM along the line of sight is divided into the disk and spiral arm component, DM_{MW} , and the Galactic halo component, $\text{DM}_{\text{MW}_{\text{halo}}}$. The former, DM_{MW} , is 44 and 39 pc cm $^{-3}$ calculated using the NE2001 and YMW16 models, respectively. The uncertainties in these contributions are not well quantified, but are likely on the order of 20%. Using this, we can derive an approximate range of: $30 \lesssim \text{DM}_{\text{MW}} \lesssim 50$ pc cm $^{-3}$. We apply a Galactic halo contribution of ~ 60 – 100 pc cm $^{-3}$ to the DM (Prochaska & Zheng 2019). Given that the redshift of FIRST J1419+3940 is 0.01957 (Law et al. 2018), the mean intergalactic medium contribution to the DM is $\text{DM}_{\text{IGM}} \simeq 20$ pc cm $^{-3}$ (Ioka 2003; Inoue 2004). We assume that the DM contribution of the host galaxy of FIRST J1419+3940, DM_{host} , is comparable to that of the host galaxy of FRB 121102: $55 \lesssim \text{DM}_{\text{host}} \lesssim 225$ pc cm $^{-3}$ (Tendulkar et al. 2017). Combining all individual components using Equation (1) results in the approximate range $160 \lesssim \text{DM}_{\text{obs}} \lesssim 400$ pc cm $^{-3}$.

From the single-pulse candidates reported using `single_pulse_search.py`, an astrophysical burst would be identifiable provided the signal-to-noise ratio (S/N) exceeds ~ 10 . We can estimate the fluence limit of our search using

$$F = (\text{S/N})_{\text{min}} \frac{T_{\text{sys}}}{G} \sqrt{\frac{W_b}{n_{\text{pol}} \Delta\nu}} \quad (2)$$

(following Cordes & McLaughlin 2003), where $(\text{S/N})_{\text{min}}$ is our detection threshold of 10, T_{sys} is the system temperature, G is the telescope gain, n_{pol} is the number of recorded polarizations, $\Delta\nu$ is the total bandwidth, and W_b is the observed width of the burst. The observed width, W_b , accounts for broadening of the intrinsic width due to the finite time sampling of the data, intra-channel smearing, smearing due to DM-trial spacing, and scatter broadening. FRB 121102 has been shown to exhibit

Table 1
Properties of FIRST J1419+3940 Measured Following Different Imaging Approaches

	rms ($\mu\text{Jy beam}^{-1}$)	Peak Brightness ($\mu\text{Jy beam}^{-1}$)	Flux Density (μJy)	Size (mas)	Synthesized Beam (mas \times mas, $^\circ$)
Default calibration	19	300	620 ± 20	4.3 ± 0.8	$5.5 \times 4.1, -18^\circ$
Without Tianma	30	510	630 ± 30	3.9 ± 0.9	$24 \times 5.3, 75^\circ$
Corrected Tianma	25	459	620 ± 30	3.4 ± 0.7	$6.6 \times 5.4, 78^\circ$

individual bursts with widths $\lesssim 30 \mu\text{s}$ (Michilli et al. 2018) and there have been observations of FRBs with widths as large as $\sim 30 \text{ ms}$ (Petroff et al. 2016).⁹ Taking a DM of 300 pc cm^{-3} and intrinsic widths $30 \mu\text{s} - 30 \text{ ms}$, we find our fluence limit ranges from 0.1 Jy ms to 8 Jy ms.

4. Interpretation

4.1. Measured Source Size

In order to compare our measurements with the scenarios proposed by Law et al. (2018), we need to compute the expected apparent size of the source. At the time of our observation, $t_{\text{obs}} \sim 30 \text{ yr} \sim 10^4 \text{ days}$ after the initial explosion, the external shock produced by the GRB jet upon deceleration into the interstellar medium (ISM) is expected to be non-relativistic, and to have become essentially spherical. Detailed, long-term numerical relativistic hydrodynamics simulations (Zhang & MacFadyen 2009) indeed show that the blast wave is well-described by the spherical, non-relativistic Sedov–Von Neumann–Taylor solution after a time $5t_{\text{NR}} \approx 2 \times 10^3 E_{\text{iso},53}^{1/3} n_1^{-1/3} \text{ days}$, where t_{NR} is the light-crossing time of the Sedov length associated to the jet. The initial relativistic expansion phase, however, can still have effects on the relation between observed time and projected size. For that reason, we compute the jet deceleration dynamics and spreading employing the “trumpet” model from Granot & Piran (2012), which has been shown to be in good quantitative agreement with results from numerical relativistic hydrodynamics simulations. The observed size is estimated as the maximum projected size of the equal-arrival-time surface, relativistic beaming of radiation being negligible in our late-time observations. Using the same jet parameters as Law et al. (2018), namely an isotropic equivalent energy $E_{\text{iso}} = 2 \times 10^{53} \text{ erg}$, an ISM number density $n = 10 \text{ cm}^{-3}$ and a viewing angle $\theta_v = 0.6 \text{ rad}$, and further assuming a jet half-opening angle $\theta_j = 0.1 \text{ rad}$ (which implies a total jet energy $E_{\text{jet}} \sim 10^{51} \text{ erg}$), we obtain the size evolution shown by the red solid line in Figure 4, which is fully compatible with the measured one, assuming that the GRB took place in ~ 1993 . This disfavors the alternative scenario of a magnetar birth nebula, which would exhibit a significantly smaller size ($\lesssim 0.1 \text{ pc}$), due to the much lower expansion velocity (Murase et al. 2016).

4.2. Flux Density

While the measured size agrees well with the GRB scenario proposed by Law et al. (2018), our measured flux density $S_{1.6 \text{ GHz}} = 620 \pm 20 \mu\text{Jy}$ is low when compared to the extrapolation of their model. More precisely, adopting the same assumptions as Law et al. (2018), namely quasi-isotropic, adiabatic expansion, Deep Newtonian regime and an electron power-law index $p = 2.2$, the flux density should follow $S_\nu \propto \nu^{-0.6} t^{-0.96}$. Using the

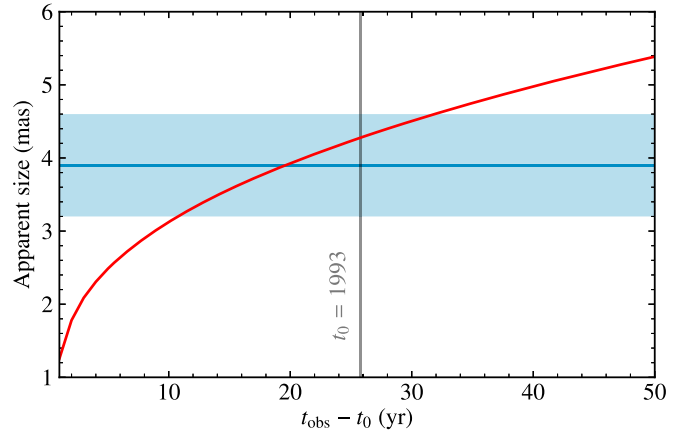


Figure 4. Apparent source size evolution. The red line shows the predicted apparent size evolution for a jet with parameters as those proposed by Law et al. (2018). The blue line and the lighter blue band show our measured apparent size and its 1σ uncertainty of $\theta_s = 3.9 \pm 0.7 \text{ mas}$. The gray vertical line marks the source age at the time of our observation, assuming that it originally exploded in 1993.

latest VLA detection as reference, which yielded a flux density of $1.1 \pm 0.1 \text{ mJy}$ at 1.52 GHz on 2015 May 11, and assuming the GRB to have happened in 1993, we should have measured $S_{1.6 \text{ GHz}} \approx 930 \pm 85 \mu\text{Jy}$ at the time of our observation, which is $\sim 3.5\sigma$ (summing the uncertainties in quadrature) above our measured flux density. As noted by Law et al. (2018), the latest VLASS non-detection $S_\nu < 400 \mu\text{Jy}$ at 3 GHz on 2017 October 11 already pointed to a faster decline after 2015. Several physical processes could lead to a steepening in the decay of the light curve, as follows.

1. The conditions in the shocked fluid could be changing as a consequence of the transition to the non-relativistic, Deep Newtonian phase, e.g., the fraction ϵ_e of shock energy given to electrons could decrease, or the electron momentum distribution power-law index p could decrease from $p = 2.2$ toward ~ 2 (Sironi & Giannios 2013). Both these effects would result in a steepening of the flux decay.
2. Contrary to what is stated by Law et al. (2018), the steepening could also be due to the shock crossing a dip in the ISM density. According to the argument by Law et al. (2018), based on Nakar & Granot (2007) and Mimica & Giannios (2011), an ISM density drop would result only in a smooth, slow change in the light curve. This is essentially a consequence of the assumption that the shock is relativistic ($\Gamma \gg 1$), in which case the angular timescale $R/2\Gamma^2 c$ would be of the same order as the observer time t_{obs} , and therefore any change in the shock conditions would be smeared out over that timescale. In our case, conversely, the shock expansion speed is non-relativistic, and the angular timescale is $\sim R/2c \ll t_{\text{obs}}$ (using our size measurement, we have

⁹ All published FRBs and their properties can be found in the FRB Catalogue: <http://www.frbcat.org>.

$R/c \sim 2.5$ yr, which is significantly smaller than the explosion age $t_{\text{obs}} \gtrsim 25$ yr, so that a drop in the ISM density at a radius slightly smaller than the observed size ~ 1.6 pc may justify the flux deficit. Such a drop could mark the outer radius of the star-forming region where the GRB exploded. Let us caution, though, that this requires some fine-tuning. In order for the shock to entirely cross the outer edge of the star-forming region in a short enough time, the latter should be approximately spherical and nearly concentric to the shock. By using the same shock dynamics model as in the previous section, we estimate the current shock expansion velocity to be $v_s \sim 0.03c \approx 9000 \text{ km s}^{-1}$. The shock thus traveled a distance $\Delta R \sim 0.03$ pc between the latest VLA detection at 1.5 GHz and our observation. The centers of the shock wave and the star-forming region, assumed spherical, should therefore be located less than ΔR away from each other. As the flux deficit we observe amounts to a factor $\sim 2/3$ reduction with respect to the expected value, we can partially relax these requirements, allowing the outer edge of the star-forming region to have some structure—e.g., bumps, filaments, a non-spherical shape—as long as $\sim 1/3$ (in terms of solid angle) of the shock wave still experiences a sharp density drop in the required time. This leads us to conclude that, while the arguments against an ambient medium density drop proposed by Law et al. (2018) do not hold in this case, this kind of explanation for the flux variation, while not impossible, remains rather unlikely.

Finally, we note that the flux deficit cannot be understood as due to scintillation-induced fluctuations, as the apparent size of the source is too large (Goodman 1997).

4.3. Comparison with FRB 121102

The association of FRB 121102 with a persistent radio counterpart (Chatterjee et al. 2017; Marcote et al. 2017) led to the discovery of FIRST J1419+3940, the characteristics of which match those of the persistent source coincident with FRB 121102 (Ofek 2017; Law et al. 2018): i.e., a compact radio source with a similar luminosity and co-located with a star-forming region of a dwarf galaxy. It is, therefore, natural to compare FIRST J1419+3940 with the radio counterpart of FRB 121102.

The declining light curve of FIRST J1419+3940 contrasts with the persistent emission from FRB 121102 (Chatterjee et al. 2017, A. Plavin et al. 2019, in preparation). Another discrepancy that arises is that the obtained source size of FIRST J1419+3940 is significantly larger than the one associated with FRB 121102 (< 0.7 pc; Marcote et al. 2017), implying a much higher expansion velocity. These differences can, naturally, be explained by a younger age of FIRST J1419+3940 (~ 30 yr) when compared with FRB 121102 (~ 100 yr; Metzger et al. 2017; Piro & Gaensler 2018). We note that although we conclude our observations are consistent with GRB jet expansion, we do not rule out the presence of a nebula driven by a highly magnetized neutron star contributing to a fraction of the radio emission observed. The presence of such nebula could cause the light curve to plateau at late times.

It has been hypothesized that the birth of a millisecond magnetar can connect FRB 121102 with long GRBs or SLSNe (Metzger et al. 2017). If we assume that millisecond magnetars can produce FRBs similar to what is observed in FRB 121102,

and that a magnetized neutron star resides within the radio source FIRST J1419+3940, we might expect FRBs from this source. The comparable ages of FIRST J1419+3940 and FRB 121102 leads to our assumption that the compact object residing within FIRST J1419+3940 is emitting bursts with a comparable energy distribution and duty cycle to FRB 121102.

Bursts from the repeating FRB 121102 have been observed with fluences of ~ 0.02 Jy ms (Gajjar et al. 2018) to $\gtrsim 7$ Jy ms (Marcote et al. 2017) and widths ranging from $\lesssim 30 \mu\text{s}$ (Michilli et al. 2018) to ~ 8.7 ms (Spitler et al. 2016). Taking this range of fluence values at the luminosity distance of FRB 121102 (972 Mpc) and scaling to the luminosity distance of FIRST J1419+3940 (87 Mpc), gives an estimated fluence range of 2.5–870 Jy ms. For bursts with widths exceeding ~ 9 ms, the fluence limit of our search increases beyond 2.5 Jy ms (see Section 3.2). Under the assumption that FIRST J1419+3940 is producing bursts with widths comparable to that of FRB 121102 and with an alignment (with respect to the observer) that is consistent with FRB 121102, single bursts from this source would be identifiable in the data.

The lack of short-duration bursts in our observation could imply that the source is in a quiescent state, similar to the behavior observed in FRB 121102 (Scholz et al. 2016; Gajjar et al. 2018). Alternatively, the hypothesized central compact object could be producing bursts that do not cross our line of sight. To ensure that our search was not affected by self-absorption, future observations of FIRST J1419+3940 at higher radio frequencies are required.

The potential connection of FRB 121102 with long GRBs or SLSNe has sparked targeted searches for millisecond-duration bursts and compact persistent radio sources at the positions of such events. In one such a search, Eftekhari et al. (2019) discovered a persistent radio source coincident with the SLSN PTF10hgi. An orphan GRB afterglow is explored as the potential origin of the emission, but is considered unlikely due to the high inferred isotropic jet energy, exceeding that of most observed long GRBs. Because the discovery of both this radio source and FIRST J1419+3940 were motivated by observations of FRB 121102 and its environment, we compare the inferred isotropic jet energy for both sources. The inferred properties of the radio source associated with PTF10hgi, assuming GRB jet expansion, is estimated as $E_{\text{iso}} \sim (3-5) \times 10^{53}$ erg, $n = 10^{-3}-10^2 \text{ cm}^{-3}$ (Eftekhari et al. 2019). Although this energy range is larger than the majority of observed long GRBs, it is comparable to that of FIRST J1419+3940 ($E_{\text{iso}} = 2 \times 10^{53}$ erg, $n = 10 \text{ cm}^{-3}$; Law et al. 2018). The results shown in the work presented here support the scenario in which FIRST J1419+3940 is an orphan GRB afterglow. Whether this is the case for PTF10hgi as well is not clear at this point, but we argue that the inferred high isotropic jet energy in itself does not exclude an off-axis jet origin. The ultimate probe of this scenario is very high angular resolution VLBI observations. Accurately measuring the source size at the redshift of PTF10hgi (about five times more distant than FIRST J1419+3940)—and especially considering its low flux density of $\sim 50 \mu\text{Jy}$ —is very challenging, and may only be possible with a very sensitive future SKA-VLBI array (Paragi et al. 2015) observing at high frequencies ($\gtrsim 5$ GHz).

5. Conclusions

FIRST J1419+3940 was reported as a slowly fading radio transient source. We provide the first constraints on the source size, using EVN data. These measurements confirm the

nonthermal emission of the source and are consistent with jet expansion from a putative orphan long GRB. The derived average expansion velocity is consistent with a mildly relativistic expansion, noting that a significant deceleration has likely happened during these ~ 30 yr after the event. A flux density lower than expected is reported, suggesting a faster decline after 2015. This decay could be explained by a change in the post-shock microphysical parameters following the transition to the non-relativistic phase, or by a drop in the ISM density (e.g., due to the shock reaching the outer edge of the star-forming region where the GRB exploded). We exclude scintillation-induced fluctuations as the origin of the reported variability.

Finally, although FIRST J1419+3940 was discovered in a search for persistent radio sources similar to that associated with FRB 121102, we note significant differences between these sources (e.g., FIRST J1419+3940 shows a significantly larger extend, and stronger luminosity decay). Still, FIRST J1419+3940 could be a site of potential FRB production, although the burst searches conducted during the EVN observation reported null results. Future radio observations are required to provide better constraints on the possible presence of FRBs arising from this object, as well as to characterize the evolution of the light curve and its accelerated decay.

We thank the anonymous referee for the useful comments and suggestions that helped to improve this Letter. We thank H. J. van Langevelde for an internal review of the manuscript. K.N. would like to thank R.A.M.J. Wijers for helpful comments and discussions. O.S. wishes to thank G. Ghirlanda for valuable discussions and insights. The European VLBI Network is a joint facility of independent European, African, Asian, and North American radio astronomy institutes. Scientific results from data presented in this publication are derived from the following EVN project code: RM015. e-MERLIN is a National Facility operated by the University of Manchester at Jodrell Bank Observatory on behalf of STFC. We thank the directors and staff of all the EVN telescopes for making this target of opportunity observation possible. We thank the staff of the Effelsberg Radio Telescope, and in particular U. Bach, for his support with simultaneous pulsar recording. B.M. acknowledges support from the Spanish Ministerio de Economía y Competitividad (MINECO) under grants AYA2016-76012-C3-1-P and MDM-2014-0369 of ICCUB (Unidad de Excelencia “María de Maeztu”). J.W.T. H. acknowledges funding from an NWO Vidi Fellowship and from the European Research Council under the European Union’s Seventh Framework Programme (FP/2007-2013)/ERC Starting grant agreement No. 337062 (“DRAGNET”). E.P. acknowledges funding from an NWO Veni Fellowship. R.K. is supported by the ERC synergy grant “BlackHoleCam: Imaging the Event Horizon of Black Holes” (grant No. 610058). This research made use of APLpy, an open-source plotting package for Python hosted at <http://aplpy.github.com>, Astropy, a community-developed core Python package

for Astronomy (Astropy Collaboration 2013), and Matplotlib (Hunter 2007).

ORCID iDs

B. Marcote  <https://orcid.org/0000-0001-9814-2354>
 Z. Paragi  <https://orcid.org/0000-0002-5195-335X>
 J. W. T. Hessels  <https://orcid.org/0000-0003-2317-1446>

References

- Abbott, B. P., Abbott, R., Abbott, T. D., et al. 2017, *ApJL*, 848, L12
 Astropy Collaboration 2013, *A&A*, 558, A33
 Bassa, C. G., Tendulkar, S. P., Adams, E. A. K., et al. 2017, *ApJL*, 843, L8
 Beasley, A. J., Gordon, D., Peck, A. B., et al. 2002, *ApJS*, 141, 13
 Chatterjee, S., Law, C. J., Wharton, R. S., et al. 2017, *Natur*, 541, 58
 Cordes, J. M., & Lazio, T. J. W. 2002, arXiv:astro-ph/0207156
 Cordes, J. M., & McLaughlin, M. A. 2003, *ApJ*, 596, 1142
 Eftekhari, T., Berger, E., Margalit, B., et al. 2019, arXiv:1901.10479
 Gajjar, V., Siemion, A. P. V., Price, D. C., et al. 2018, *ApJ*, 863, 2
 Ghirlanda, G., Salafia, O. S., Paragi, Z., et al. 2019, *Sci*, 363, 968
 Goodman, J. 1997, *NewA*, 2, 449
 Gordon, D., Jacobs, C., Beasley, A., et al. 2016, *AJ*, 151, 154
 Granot, J., & Piran, T. 2012, *MNRAS*, 421, 570
 Greisen, E. W. 2003, in *Information Handling in Astronomy—Historical Vistas*, Vol. 285, ed. A. Heck (Dordrecht: Kluwer), 109
 Hunter, J. D. 2007, *CSE*, 9, 90
 Inoue, S. 2004, *MNRAS*, 348, 999
 Ioka, K. 2003, *ApJL*, 598, L79
 Kashiyama, K., & Murase, K. 2017, *ApJL*, 839, L3
 Keimpema, A., Kettner, M. M., Pogrebenko, S. V., et al. 2015, *ExA*, 39, 259
 Law, C. J., Gaensler, B. M., Metzger, B. D., et al. 2018, *ApJL*, 866, L22
 Lazarus, P., Karuppusamy, R., Graikou, E., et al. 2016, *MNRAS*, 458, 868
 Marcote, B., Paragi, Z., Hessels, J. W. T., et al. 2017, *ApJL*, 834, L8
 Marcote, B., Paragi, Z., & Hessels, J. W. T. 2018, *ATel*, 12126, 1
 Margalit, B., & Metzger, B. D. 2018, *ApJL*, 868, L4
 Martí-Vidal, I., Pérez-Torres, M. A., & Lobanov, A. P. 2012, *A&A*, 541, A135
 Metzger, B. D., Berger, E., & Margalit, B. 2017, *ApJ*, 841, 14
 Michilli, D., Seymour, A., Hessels, J. W. T., et al. 2018, *Natur*, 553, 182
 Mimica, P., & Giannios, D. 2011, *MNRAS*, 418, 583
 Modjaz, M., Kewley, L., Kirshner, R. P., et al. 2008, *AJ*, 135, 1136
 Mooley, K. P., Deller, A. T., Gottlieb, O., et al. 2018, *Natur*, 561, 355
 Murase, K., Kashiyama, K., & Mészáros, P. 2016, *MNRAS*, 461, 1498
 Nakar, E., & Granot, J. 2007, *MNRAS*, 380, 1744
 Natarajan, I., Paragi, Z., Zwart, J., et al. 2017, *MNRAS*, 464, 4306
 Ofek, E. O. 2017, *ApJ*, 846, 44
 Omand, C. M. B., Kashiyama, K., & Murase, K. 2018, *MNRAS*, 474, 573
 Paragi, Z., Godfrey, L., Reynolds, C., et al. 2015, in *Advancing Astrophysics with the Square Kilometre Array (ASKA14)* (Trieste: SISSA), 143
 Petroff, E., Barr, E. D., Jameson, A., et al. 2016, *PASA*, 33, e045
 Pihlström, Y. M., Taylor, G. B., Granot, J., et al. 2007, *ApJ*, 664, 411
 Piro, A. L., & Gaensler, B. M. 2018, *ApJ*, 861, 150
 Pradel, N., Charlot, P., & Lestrade, J.-F. 2006, *A&A*, 452, 1099
 Prochaska, J. X., & Zheng, Y. 2019, *MNRAS*, 485, 648
 Pushkarev, A. B., & Kovalev, Y. Y. 2015, *MNRAS*, 452, 4274
 Ransom, S. M. 2001, PhD thesis, Harvard Univ.
 Scholz, P., Spitler, L. G., Hessels, J. W. T., et al. 2016, *ApJ*, 833, 177
 Shepherd, M. C., Pearson, T. J., & Taylor, G. B. 1994, *BAAS*, 26, 987
 Sironi, L., & Giannios, D. 2013, *ApJ*, 778, 107
 Spitler, L. G., Cordes, J. M., Hessels, J. W. T., et al. 2014, *ApJ*, 790, 101
 Spitler, L. G., Scholz, P., Hessels, J. W. T., et al. 2016, *Natur*, 531, 202
 Tendulkar, S. P., Bassa, C. G., Cordes, J. M., et al. 2017, *ApJL*, 834, L7
 Yao, J. M., Manchester, R. N., & Wang, N. 2017, *ApJ*, 835, 29
 Zhang, W., & MacFadyen, A. 2009, *ApJ*, 698, 1261